

**Flood Control Project Maintenance
Levee Inspections**

Maintenance Issue Types Only, Levee Inspection Report By Mile - Fall 2018

Reclamation District No. 0765 Glide

Waterway	Bank	Unit Miles	Inspection Start/End	Inspector
Unit No. 01 Sacramento River	Right	1.72	11/01/2018 11/01/2018	Luz Dial

LM Start		Rating **	M	Issue No.	18
LM End		Issue Type +	Ma	Location *	N/A
Category	Earthen Levee			GPS Latitude/Longitude	
				Start	End
Item	Emergency Supplies & Equipment			°	°
				°	°
DWR ID	DWR_RD0765_01_s_2013_18				
Comment Code					
Inspector Comment					
The LMA does not have an adequate supply of flood fight materials.					

No Photos

LM Start		Rating **	A	Issue No.	44
LM End		Issue Type +	Ma	Location *	N/A
Category	Earthen Levee			GPS Latitude/Longitude	
				Start	End
Item	Operations & Maintenance Manuals			°	°
				°	°
DWR ID	DWR_RD0765_01_s_2012_44				
Comment Code					
Inspector Comment					
LMA has a copy of O&M manual on file in office.					

No Photos

LM Start		Rating **	M	Issue No.	46
LM End		Issue Type +	Ma	Location *	N/A
Category	Earthen Levee			GPS Latitude/Longitude	
				Start	End
Item	Flood Preparedness & Training			°	°
				°	°
DWR ID	DWR_RD0765_01_s_2012_46				
Comment Code					
Inspector Comment					
LMA does not have a written flood preparedness plan. Also LMA staff has not been involved in flood training recently..					

No Photos

* Location LS : Land Side N/A : Not Applicable WS : Water Side CR : Crown	** Rating A : Acceptable M : Minimally Acceptable U : Unacceptable	N : Not Inspected/Rated C : Corrected A/W : Acceptable but Monitor & Maintain	+ Issue Type Ma : Maintenance Deficiency Ob : Design & System Obsolescence En : Enforcement
--	--	---	---

**Flood Control Project Maintenance
Levee Inspections**

Maintenance Issue Types Only, Levee Inspection Report By Mile - Fall 2018

Reclamation District No. 0765 Glide

Waterway	Bank	Unit Miles	Inspection Start/End	Inspector
Unit No. 01 Sacramento River	Right	1.72	11/01/2018 11/01/2018	Luz Dial

LM Start	0.12	Rating **	C	Issue No.	28
LM End	0.25	Issue Type +	Ma	Location *	LS
Category	Earthen Levee			GPS Latitude/Longitude	
				Start	End
Item	Trim / Thin Trees			38.501215 °	38.499421 °
				-121.560432 °	-121.560471 °
DWR ID	DWR_RD0765_01_s _ 2012_28				
Comment Code					
T3 : Trim and thin trees to allow visibility of the ground and room to flood fight.					
Inspector Comment					

No Photos

LM Start	0.21	Rating **	C	Issue No.	55
LM End	0.26	Issue Type +	Ma	Location *	WS
Category	Earthen Levee			GPS Latitude/Longitude	
				Start	End
Item	Vegetation			38.499923 °	38.499245 °
				-121.560454 °	-121.560401 °
DWR ID	DWR_RD0765_01_s _ 2018_55				
Comment Code					
V2 : Remove the wild growth other than native grasses from the levee slopes.					
Inspector Comment					

No Photos

LM Start	0.25	Rating **	C	Issue No.	11
LM End	0.27	Issue Type +	Ma	Location *	WS
Category	Earthen Levee			GPS Latitude/Longitude	
				Start	End
Item	Trim / Thin Trees			38.499405 °	38.499042 °
				-121.560445 °	-121.560430 °
DWR ID	DWR_RD0765_01_s _ 2012_11				
Comment Code					
T3 : Trim and thin trees to allow visibility of the ground and room to flood fight.					
Inspector Comment					

No Photos

* Location LS : Land Side N/A : Not Applicable WS : Water Side CR : Crown	** Rating A : Acceptable M : Minimally Acceptable U : Unacceptable	N : Not Inspected/Rated C : Corrected A/W : Acceptable but Monitor & Maintain	+ Issue Type Ma : Maintenance Deficiency Ob : Design & System Obsolescence En : Enforcement
--	--	---	---

**Flood Control Project Maintenance
Levee Inspections**

Maintenance Issue Types Only, Levee Inspection Report By Mile - Fall 2018

Reclamation District No. 0765 Glide

Waterway	Bank	Unit Miles	Inspection Start/End	Inspector
Unit No. 01 Sacramento River	Right	1.72	11/01/2018 11/01/2018	Luz Dial

LM Start	0.27	Rating **	C	Issue No.	14
LM End	0.30	Issue Type +	Ma	Location *	LS
Category	Earthen Levee			GPS Latitude/Longitude	
				Start	End
Item	Trim / Thin Trees			38.499065 °	38.498714 °
				-121.560468 °	-121.560460 °
DWR ID	DWR_RD0765_01_s _ 2012_14				
Comment Code					
T1 : Trim trees to at least five feet above ground level.					
Inspector Comment					

No Photos

LM Start	0.28	Rating **	A/W	Issue No.	57
LM End	0.28	Issue Type +	Ma	Location *	LS
Category	Earthen Levee			GPS Latitude/Longitude	
				Start	End
Item	Encroachments			38.498988 °	38.498988 °
				-121.560473 °	-121.560473 °
DWR ID	DWR_RD0765_01_s _ 2018_57				
Comment Code					
DE : Debris					
Inspector Comment					

Photo 1 of 1 : FA_2018_RD0765_211_57_20181101_00093.jpg



View of trash on levee. Fall 2018

LM Start	0.31	Rating **	C	Issue No.	23
LM End	0.31	Issue Type +	Ma	Location *	WS
Category	Earthen Levee			GPS Latitude/Longitude	
				Start	End
Item	Trim / Thin Trees			38.498453 °	38.498453 °
				-121.560360 °	-121.560360 °
DWR ID	DWR_RD0765_01_s _ 2012_23				
Comment Code					
T3 : Trim and thin trees to allow visibility of the ground and room to flood fight.					
Inspector Comment					

No Photos

* Location LS : Land Side N/A : Not Applicable WS : Water Side CR : Crown	** Rating A : Acceptable M : Minimally Acceptable U : Unacceptable	N : Not Inspected/Rated C : Corrected A/W : Acceptable but Monitor & Maintain	+ Issue Type Ma : Maintenance Deficiency Ob : Design & System Obsolescence En : Enforcement
--	--	---	---

**Flood Control Project Maintenance
Levee Inspections**

Maintenance Issue Types Only, Levee Inspection Report By Mile - Fall 2018

Reclamation District No. 0765 Glide

Waterway	Bank	Unit Miles	Inspection Start/End	Inspector
Unit No. 01 Sacramento River	Right	1.72	11/01/2018 11/01/2018	Luz Dial

LM Start	0.32	Rating **	C	Issue No.	9
LM End	0.35	Issue Type +	Ma	Location *	WS
Category	Earthen Levee		GPS Latitude/Longitude		
			Start	End	
Item	Vegetation		38.498351°	38.497854°	
			-121.560321°	-121.560276°	
DWR ID	DWR_RD0765_01_f_2017_9				
Comment Code					
V2 : Remove the wild growth other than native grasses from the levee slopes.					
Inspector Comment					

No Photos

LM Start	0.40	Rating **	C	Issue No.	21
LM End	0.40	Issue Type +	Ma	Location *	LS
Category	Earthen Levee		GPS Latitude/Longitude		
			Start	End	
Item	Trim / Thin Trees		38.497196°	38.497196°	
			-121.560147°	-121.560147°	
DWR ID	DWR_RD0765_01_s_2012_21				
Comment Code					
T1 : Trim trees to at least five feet above ground level.					
Inspector Comment					

No Photos

LM Start	0.41	Rating **	C	Issue No.	47
LM End	0.50	Issue Type +	Ma	Location *	LS
Category	Earthen Levee		GPS Latitude/Longitude		
			Start	End	
Item	Vegetation		38.497069°	38.495823°	
			-121.560106°	-121.559570°	
DWR ID	DWR_RD0765_01_f_2012_47				
Comment Code					
V2 : Remove the wild growth other than native grasses from the levee slopes.					
Inspector Comment					

No Photos

* Location LS : Land Side N/A : Not Applicable WS : Water Side CR : Crown	** Rating A : Acceptable M : Minimally Acceptable U : Unacceptable	N : Not Inspected/Rated C : Corrected A/W : Acceptable but Monitor & Maintain	+ Issue Type Ma : Maintenance Deficiency Ob : Design & System Obsolescence En : Enforcement
--	--	---	---

**Flood Control Project Maintenance
Levee Inspections**

Maintenance Issue Types Only, Levee Inspection Report By Mile - Fall 2018

Reclamation District No. 0765 Glide

Waterway	Bank	Unit Miles	Inspection Start/End	Inspector
Unit No. 01 Sacramento River	Right	1.72	11/01/2018 11/01/2018	Luz Dial

LM Start	0.45	Rating **	C	Issue No.	24
LM End	0.47	Issue Type +	Ma	Location *	WS
Category	Earthen Levee		GPS Latitude/Longitude		
			Start	End	
Item	Trim / Thin Trees		38.496534 °	38.496249 °	
			-121.559880 °	-121.559760 °	
DWR ID	DWR_RD0765_01_s _ 2012_24				
Comment Code					
T2 : Thin trees to allow visibility of the ground and room to flood fight.					
Inspector Comment					

No Photos

LM Start	0.54	Rating **	C	Issue No.	34
LM End	0.63	Issue Type +	Ma	Location *	LS
Category	Earthen Levee		GPS Latitude/Longitude		
			Start	End	
Item	Trim / Thin Trees		38.495347 °	38.494204 °	
			-121.559291 °	-121.558313 °	
DWR ID	DWR_RD0765_01_s _ 2012_34				
Comment Code					
T1 : Trim trees to at least five feet above ground level.					
Inspector Comment					

No Photos

LM Start	0.56	Rating **	C	Issue No.	10
LM End	0.59	Issue Type +	Ma	Location *	WS
Category	Earthen Levee		GPS Latitude/Longitude		
			Start	End	
Item	Trim / Thin Trees		38.495035 °	38.494642 °	
			-121.559027 °	-121.558697 °	
DWR ID	DWR_RD0765_01_s _ 2016_10				
Comment Code					
T2 : Thin trees to allow visibility of the ground and room to flood fight.					
Inspector Comment					

No Photos

* Location LS : Land Side N/A : Not Applicable WS : Water Side CR : Crown	** Rating A : Acceptable M : Minimally Acceptable U : Unacceptable	N : Not Inspected/Rated C : Corrected A/W : Acceptable but Monitor & Maintain	+ Issue Type Ma : Maintenance Deficiency Ob : Design & System Obsolescence En : Enforcement
--	--	---	---

**Flood Control Project Maintenance
Levee Inspections**

Maintenance Issue Types Only, Levee Inspection Report By Mile - Fall 2018

Reclamation District No. 0765 Glide

Waterway	Bank	Unit Miles	Inspection Start/End	Inspector
Unit No. 01 Sacramento River	Right	1.72	11/01/2018 11/01/2018	Luz Dial

LM Start	0.63	Rating **	C	Issue No.	15
LM End	0.70	Issue Type +	Ma	Location *	WS
Category	Earthen Levee			GPS Latitude/Longitude	
				Start	End
Item	Trim / Thin Trees			38.494180 °	38.493392 °
				-121.558269 °	-121.557640 °
DWR ID	DWR_RD0765_01_s _ 2012_15				
Comment Code					
T1 : Trim trees to at least five feet above ground level.					
Inspector Comment					

No Photos

LM Start	0.68	Rating **	C	Issue No.	35
LM End	0.72	Issue Type +	Ma	Location *	LS
Category	Earthen Levee			GPS Latitude/Longitude	
				Start	End
Item	Trim / Thin Trees			38.493596 °	38.493077 °
				-121.557832 °	-121.557451 °
DWR ID	DWR_RD0765_01_s __ 2012_35				
Comment Code					
T1 : Trim trees to at least five feet above ground level.					
Inspector Comment					

No Photos

LM Start	0.75	Rating **	M	Issue No.	68
LM End	0.75	Issue Type +	Ma	Location *	LS
Category	Earthen Levee			GPS Latitude/Longitude	
				Start	End
Item	Slope Stability			38.492705 °	38.492705 °
				-121.557193 °	-121.557193 °
DWR ID	DWR_RD0765_01_s _ 2017_68				
Comment Code					
S3 : Repair the levee slope damaged by vehicle traffic and prevent access where possible.					
Inspector Comment					
Damage caused by a truck.					

Photo 1 of 2 : FA_2018_RD0765_211_68_20180910_00077.jpg



Looking south on landside slope.

* Location LS : Land Side N/A : Not Applicable WS : Water Side CR : Crown	** Rating A : Acceptable M : Minimally Acceptable U : Unacceptable	N : Not Inspected/Rated C : Corrected A/W : Acceptable but Monitor & Maintain	+ Issue Type Ma : Maintenance Deficiency Ob : Design & System Obsolescence En : Enforcement
--	--	---	---

**Flood Control Project Maintenance
Levee Inspections**

Maintenance Issue Types Only, Levee Inspection Report By Mile - Fall 2018

Reclamation District No. 0765 Glide

Waterway	Bank	Unit Miles	Inspection Start/End	Inspector
Unit No. 01 Sacramento River	Right	1.72	11/01/2018 11/01/2018	Luz Dial

LM Start	0.75	Rating **	M	Issue No.	68 (cont)	
LM End	0.75	Issue Type +	Ma	Location *	LS	
Category	Earthen Levee			GPS Latitude/Longitude		
				Start		End
Item	Slope Stability			38.492705 °		38.492705 °
				-121.557193 °		-121.557193 °
DWR ID	DWR_RD0765_01_s_2017_68					
Comment Code						
S3 : Repair the levee slope damaged by vehicle traffic and prevent access where possible.						
Inspector Comment						
Damage caused by a truck.						

Photo 2 of 2 : FA_2018_RD0765_211_68_20180910_00078.jpg



Looking south at levee damage caused by vehicle traffic. (Spring 2017)

LM Start	0.77	Rating **	M	Issue No.	63
LM End	0.79	Issue Type +	Ma	Location *	LS
Category	Earthen Levee			GPS Latitude/Longitude	
				Start	End
Item	Vegetation			38.492457°	38.492145°
				-121.557084°	-121.556891°
DWR ID	DWR_RD0765_01_s_2018_63				
Comment Code					
V2 : Remove the wild growth other than native grasses from the levee slopes.					
Inspector Comment					

Photo 1 of 1 : FA_2018_RD0765_211_63_20181101_00094.jpg



View of wild brush on levee slope. Fall 2018

LM Start	0.77	Rating **	C	Issue No.	36
LM End	0.80	Issue Type +	Ma	Location *	LS
Category	Earthen Levee			GPS Latitude/Longitude	
				Start	End
Item	Trim / Thin Trees			38.492392 °	38.492034 °
				-121.557026 °	-121.556820 °
DWR ID	DWR_RD0765_01_f_2017_36				
Comment Code					
T1 : Trim trees to at least five feet above ground level.					
Inspector Comment					

No Photos

* Location LS : Land Side N/A : Not Applicable WS : Water Side CR : Crown	** Rating A : Acceptable M : Minimally Acceptable U : Unacceptable	N : Not Inspected/Rated C : Corrected A/W : Acceptable but Monitor & Maintain	+ Issue Type Ma : Maintenance Deficiency Ob : Design & System Obsolescence En : Enforcement
--	--	---	---

**Flood Control Project Maintenance
Levee Inspections**

Maintenance Issue Types Only, Levee Inspection Report By Mile - Fall 2018

Reclamation District No. 0765 Glide

Waterway	Bank	Unit Miles	Inspection Start/End	Inspector
Unit No. 01 Sacramento River	Right	1.72	11/01/2018 11/01/2018	Luz Dial

LM Start	0.79	Rating **	M	Issue No.	30
LM End	0.79	Issue Type +	Ma	Location *	WS
Category	Earthen Levee			GPS Latitude/Longitude	
				Start	End
Item	Encroachments			38.492247°	38.492247°
				-121.556872°	-121.556872°
DWR ID	DWR_RD0765_01_f_2018_30				
Comment Code					
DE : Debris					
Inspector Comment					
Sofa and debris dumped on slope.					

Photo 1 of 1 : FA_2018_RD0765_211_30_20181101_00092.jpg



View of debris dumped on slope. Fall 2018

LM Start	0.79	Rating **	C	Issue No.	6
LM End	0.94	Issue Type +	Ma	Location *	WS
Category	Earthen Levee			GPS Latitude/Longitude	
				Start	End
Item	Vegetation			38.492237 °	38.490311 °
				-121.556892 °	-121.555652 °
DWR ID	DWR_RD0765_01_f_2017_6				
Comment Code					
V2 : Remove the wild growth other than native grasses from the levee slopes.					
Inspector Comment					

No Photos

LM Start	0.86	Rating **	C	Issue No.	17
LM End	0.90	Issue Type +	Ma	Location *	LS
Category	Earthen Levee			GPS Latitude/Longitude	
				Start	End
Item	Trim / Thin Trees			38.491283 °	38.490837 °
				-121.556360 °	-121.556008 °
DWR ID	DWR_RD0765_01_s_2012_17				
Comment Code					
T1 : Trim trees to at least five feet above ground level.					
Inspector Comment					

No Photos

* Location
LS : Land Side N/A : Not Applicable
WS : Water Side
CR : Crown

** Rating
A : Acceptable N : Not Inspected/Rated
M : Minimally Acceptable C : Corrected
U : Unacceptable A/W : Acceptable but Monitor & Maintain

+ Issue Type
Ma : Maintenance Deficiency
Ob : Design & System Obsolescence
En : Enforcement

**Flood Control Project Maintenance
Levee Inspections**

Maintenance Issue Types Only, Levee Inspection Report By Mile - Fall 2018

Reclamation District No. 0765 Glide

Waterway	Bank	Unit Miles	Inspection Start/End	Inspector
Unit No. 01 Sacramento River	Right	1.72	11/01/2018 11/01/2018	Luz Dial

LM Start	0.86	Rating **	C	Issue No.	61
LM End	0.92	Issue Type +	Ma	Location *	LS
Category	Earthen Levee		GPS Latitude/Longitude		
			Start	End	
Item	Vegetation		38.491259 °	38.490457 °	
			-121.556359 °	-121.555822 °	
DWR ID	DWR_RD0765_01_s_2016_61				
Comment Code					
V2 : Remove the wild growth other than native grasses from the levee slopes.					
Inspector Comment					

No Photos

LM Start	0.92	Rating **	C	Issue No.	40
LM End	0.97	Issue Type +	Ma	Location *	LS
Category	Earthen Levee		GPS Latitude/Longitude		
			Start	End	
Item	Vegetation		38.490512 °	38.489840 °	
			-121.555829 °	-121.555484 °	
DWR ID	DWR_RD0765_01_s_2012_40				
Comment Code					
V2 : Remove the wild growth other than native grasses from the levee slopes.					
Inspector Comment					

No Photos

LM Start	0.98	Rating **	C	Issue No.	8
LM End	1.02	Issue Type +	Ma	Location *	WS
Category	Earthen Levee		GPS Latitude/Longitude		
			Start	End	
Item	Trim / Thin Trees		38.489681 °	38.489156 °	
			-121.555353 °	-121.555080 °	
DWR ID	DWR_RD0765_01_f_2017_8				
Comment Code					
T1 : Trim trees to at least five feet above ground level.					
Inspector Comment					

No Photos

* Location LS : Land Side N/A : Not Applicable WS : Water Side CR : Crown	** Rating A : Acceptable M : Minimally Acceptable U : Unacceptable	N : Not Inspected/Rated C : Corrected A/W : Acceptable but Monitor & Maintain	+ Issue Type Ma : Maintenance Deficiency Ob : Design & System Obsolescence En : Enforcement
--	--	---	---

**Flood Control Project Maintenance
Levee Inspections**

Maintenance Issue Types Only, Levee Inspection Report By Mile - Fall 2018

Reclamation District No. 0765 Glide

Waterway	Bank	Unit Miles	Inspection Start/End	Inspector
Unit No. 01 Sacramento River	Right	1.72	11/01/2018 11/01/2018	Luz Dial

LM Start	1.04	Rating **	C	Issue No.	58
LM End	1.04	Issue Type +	Ma	Location *	WS
Category	Earthen Levee		GPS Latitude/Longitude		
			Start	End	
Item	Encroachments		38.488903 °	38.488903 °	
			-121.554921 °	-121.554921 °	
DWR ID	DWR_RD0765_01_f_2014_58				
Comment Code					
TR : Tree or limb					
Inspector Comment					

No Photos

LM Start	1.07	Rating **	C	Issue No.	37
LM End	1.07	Issue Type +	Ma	Location *	LS
Category	Earthen Levee		GPS Latitude/Longitude		
			Start	End	
Item	Trim / Thin Trees		38.488503 °	38.488503 °	
			-121.554757 °	-121.554757 °	
DWR ID	DWR_RD0765_01_s_2012_37				
Comment Code					
T2 : Thin trees to allow visibility of the ground and room to flood fight.					
Inspector Comment					
.					

No Photos

LM Start	1.10	Rating **	C	Issue No.	65
LM End	1.14	Issue Type +	Ma	Location *	WS
Category	Earthen Levee		GPS Latitude/Longitude		
			Start	End	
Item	Vegetation		38.488058 °	38.487646 °	
			-121.554461 °	-121.554212 °	
DWR ID	DWR_RD0765_01_f_2016_65				
Comment Code					
V2 : Remove the wild growth other than native grasses from the levee slopes.					
Inspector Comment					
Vegetation on the waterside slope is cleared.					

No Photos

* Location LS : Land Side N/A : Not Applicable WS : Water Side CR : Crown	** Rating A : Acceptable M : Minimally Acceptable U : Unacceptable	N : Not Inspected/Rated C : Corrected A/W : Acceptable but Monitor & Maintain	+ Issue Type Ma : Maintenance Deficiency Ob : Design & System Obsolescence En : Enforcement
--	--	---	---

**Flood Control Project Maintenance
Levee Inspections**

Maintenance Issue Types Only, Levee Inspection Report By Mile - Fall 2018

Reclamation District No. 0765 Glide

Waterway	Bank	Unit Miles	Inspection Start/End	Inspector
Unit No. 01 Sacramento River	Right	1.72	11/01/2018 11/01/2018	Luz Dial

LM Start	1.13	Rating **	C	Issue No.	38
LM End	1.13	Issue Type +	Ma	Location *	LS
Category	Earthen Levee			GPS Latitude/Longitude	
				Start	End
Item	Trim / Thin Trees			38.487730 °	38.487730 °
				-121.554303 °	-121.554303 °
DWR ID	DWR_RD0765_01_s_2012_38				
Comment Code					
T1 : Trim trees to at least five feet above ground level.					
Inspector Comment					

No Photos

LM Start	1.17	Rating **	C	Issue No.	62
LM End	1.27	Issue Type +	Ma	Location *	WS
Category	Earthen Levee			GPS Latitude/Longitude	
				Start	End
Item	Vegetation			38.487151 °	38.485951 °
				-121.553886 °	-121.553157 °
DWR ID	DWR_RD0765_01_f_2016_62				
Comment Code					
V2 : Remove the wild growth other than native grasses from the levee slopes.					
Inspector Comment					

No Photos

LM Start	1.28	Rating **	C	Issue No.	33
LM End	1.32	Issue Type +	Ma	Location *	LS
Category	Earthen Levee			GPS Latitude/Longitude	
				Start	End
Item	Vegetation			38.485699 °	38.485161 °
				-121.553107 °	-121.552806 °
DWR ID	DWR_RD0765_01_f_2015_33				
Comment Code					
V2 : Remove the wild growth other than native grasses from the levee slopes.					
Inspector Comment					
LMA cleared dense vines on landside slope and toe.					

No Photos

* Location LS : Land Side N/A : Not Applicable WS : Water Side CR : Crown	** Rating A : Acceptable M : Minimally Acceptable U : Unacceptable	N : Not Inspected/Rated C : Corrected A/W : Acceptable but Monitor & Maintain	+ Issue Type Ma : Maintenance Deficiency Ob : Design & System Obsolescence En : Enforcement
--	--	---	---

Reclamation District No. 0765 Glide

No Photos

View of prunings left on slope. Fall 2018

Looking southeast at branch on waterward slope.

Page 13 of 22

**Flood Control Project Maintenance
Levee Inspections**

Maintenance Issue Types Only, Levee Inspection Report By Mile - Fall 2018

Reclamation District No. 0765 Glide

Waterway	Bank	Unit Miles	Inspection Start/End	Inspector
Unit No. 01 Sacramento River	Right	1.72	11/01/2018 11/01/2018	Luz Dial

LM Start	1.32	Rating **	M	Issue No.	7 (cont)	
LM End	1.34	Issue Type +	Ma	Location *	WS	
Category	Earthen Levee			GPS Latitude/Longitude		
				Start	End	
Item	Encroachments			38.485287 °	38.485014 °	
				-121.552818 °	-121.552618 °	
DWR ID	DWR_RD0765_01_s_2015_7					
Comment Code						
TR : Tree or limb						
Inspector Comment						
Downed tree branches across waterside slope.						

LM Start	1.32	Rating **	M	Issue No.	7 (cont)
LM End	1.34	Issue Type +	Ma	Location *	WS

Photo 2 of 4 : FA_2018_RD0765_211_7_20180910_00011.jpg



Looking northeast at tree limbs on waterward slope.

Photo 3 of 4 : FA_2018_RD0765_211_7_20180910_00012.jpg



Looking at several tree branches on waterward slope and berm.(2015)

LM Start	1.32	Rating **	M	Issue No.	7 (cont)
LM End	1.34	Issue Type +	Ma	Location *	WS

Photo 4 of 4 : FA_2018_RD0765_211_7_20180910_00013.jpg



Looking north at down tree across waterward slope.(2015)

* Location LS : Land Side N/A : Not Applicable WS : Water Side CR : Crown	** Rating A : Acceptable M : Minimally Acceptable U : Unacceptable	N : Not Inspected/Rated C : Corrected A/W : Acceptable but Monitor & Maintain	+ Issue Type Ma : Maintenance Deficiency Ob : Design & System Obsolescence En : Enforcement
--	--	--	---

Reclamation District No. 0765 Glide

Looking north at untrimmed trees on waterward slope. (Spring 2016)

Page 15 of 22

**Flood Control Project Maintenance
Levee Inspections**

Maintenance Issue Types Only, Levee Inspection Report By Mile - Fall 2018

Reclamation District No. 0765 Glide

Waterway	Bank	Unit Miles	Inspection Start/End	Inspector
Unit No. 01 Sacramento River	Right	1.72	11/01/2018 11/01/2018	Luz Dial

LM Start	1.42	Rating **	C	Issue No.	5
LM End	1.45	Issue Type +	Ma	Location *	WS
Category	Earthen Levee			GPS Latitude/Longitude	
				Start	End
Item	Trim / Thin Trees			38.483925 °	38.483530 °
				-121.551845 °	-121.551587 °
DWR ID	DWR_RD0765_01_s_2012_5				
Comment Code					
T2 : Thin trees to allow visibility of the ground and room to flood fight.					
Inspector Comment					
LMA trimmed willow trees on waterside slope.					

No Photos

LM Start	1.43	Rating **	M	Issue No.	67
LM End	1.43	Issue Type +	Ma	Location *	WS
Category	Earthen Levee			GPS Latitude/Longitude	
				Start	End
Item	Encroachments			38.483810 °	38.483810 °
				-121.551747 °	-121.551747 °
DWR ID	DWR_RD0765_01_s_2017_67				
Comment Code					
GA : Garbage					
Inspector Comment					
Sofa dumped on waterside slope.					

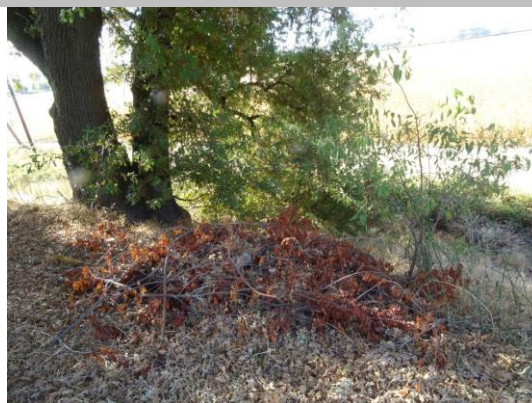
Photo 1 of 1 : FA_2018_RD0765_211_67_20180910_00076.jpg



View of sofa debris dumped on slope. Spring 2018

LM Start	1.44	Rating **	M	Issue No.	41
LM End	1.44	Issue Type +	Ma	Location *	LS
Category	Earthen Levee			GPS Latitude/Longitude	
				Start	End
Item	Trim / Thin Trees			38.483640 °	38.483640 °
				-121.551727 °	-121.551727 °
DWR ID	DWR_RD0765_01_s_2012_41				
Comment Code					
T1 : Trim trees to at least five feet above ground level.					
Inspector Comment					
Trim trees at least five feet above slope and remove prunings.					

Photo 1 of 1 : FA_2018_RD0765_211_41_20181101_00098.jpg



View of low branches and prunings on slope. Fall 2018

*** Location**

LS : Land Side N/A : Not Applicable
WS : Water Side
CR : Crown

**** Rating**

A : Acceptable N : Not Inspected/Rated
M : Minimally Acceptable C : Corrected
U : Unacceptable A/W : Acceptable but Monitor & Maintain

+ Issue Type

Ma : Maintenance Deficiency
Ob : Design & System Obsolescence
En : Enforcement

**Flood Control Project Maintenance
Levee Inspections**

Maintenance Issue Types Only, Levee Inspection Report By Mile - Fall 2018

Reclamation District No. 0765 Glide

Waterway	Bank	Unit Miles	Inspection Start/End	Inspector
Unit No. 01 Sacramento River	Right	1.72	11/01/2018 11/01/2018	Luz Dial

LM Start	1.47	Rating **	M	Issue No.	52
LM End	1.70	Issue Type +	Ma	Location *	LS
Category	Earthen Levee			GPS Latitude/Longitude	
				Start	End
Item	Vegetation			38.483340°	38.480345°
				-121.551565°	-121.549658°
DWR ID	DWR_RD0765_01_f _ 2018_52				
Comment Code					
V2 : Remove the wild growth other than native grasses from the levee slopes.					
Inspector Comment					
Trim tall brush along slope.					

Photo 1 of 3 : FA_2018_RD0765_211_52_20181101_00099.jpg



View of tall brush on levee slope. Fall 2018

LM Start	1.47	Rating **	M	Issue No.	52 (cont)
LM End	1.70	Issue Type +	Ma	Location *	LS

Photo 2 of 3 : FA_2018_RD0765_211_52_20181101_00101.jpg



View of tall brush on levee slope. Fall 2018

LM Start	1.47	Rating **	M	Issue No.	52 (cont)
LM End	1.70	Issue Type +	Ma	Location *	LS

Photo 3 of 3 : FA_2018_RD0765_211_52_20181101_00100.jpg



View of tall brush on levee slope. Fall 2018

* Location LS : Land Side N/A : Not Applicable WS : Water Side CR : Crown	** Rating A : Acceptable M : Minimally Acceptable U : Unacceptable	N : Not Inspected/Rated C : Corrected A/W : Acceptable but Monitor & Maintain	+ Issue Type Ma : Maintenance Deficiency Ob : Design & System Obsolescence En : Enforcement
--	--	---	---

Reclamation District No. 0765 Glide

Looking east at untrimmed tree on waterward slope.

Encroachment downed tree waterside used to control vehicle access looking northeast.

Slope stability waterside looking southeast.

Page 19 of 22

**Flood Control Project Maintenance
Levee Inspections**

Maintenance Issue Types Only, Levee Inspection Report By Mile - Fall 2018

Reclamation District No. 0765 Glide

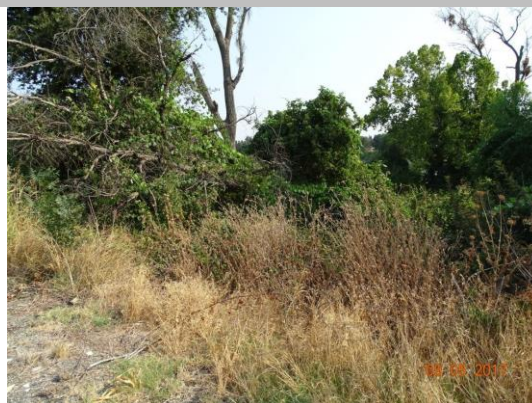
Waterway	Bank	Unit Miles	Inspection Start/End	Inspector
Unit No. 01 Sacramento River	Right	1.72	11/01/2018 11/01/2018	Luz Dial

LM Start	1.53	Rating **	C	Issue No.	48
LM End	1.57	Issue Type +	Ma	Location *	WS
Category	Earthen Levee			GPS Latitude/Longitude	
				Start	End
Item	Vegetation			38.482539 °	38.482045 °
				-121.550887 °	-121.550576 °
DWR ID	DWR_RD0765_01_f_2016_48				
Comment Code					
V2 : Remove the wild growth other than native grasses from the levee slopes.					
Inspector Comment					
LMA cleared grape vines.					

No Photos

LM Start	1.58	Rating **	M	Issue No.	1
LM End	1.58	Issue Type +	Ma	Location *	WS
Category	Earthen Levee			GPS Latitude/Longitude	
				Start	End
Item	Encroachments			38.481959 °	38.481959 °
				-121.550527 °	-121.550527 °
DWR ID	DWR_RD0765_01_f_2017_1				
Comment Code					
TR : Tree or limb					
Inspector Comment					
Downed tree on waterside slope.					

Photo 1 of 1 : FA_2018_RD0765_211_1_20180910_00001.jpg



Looking north at the downed tree.

LM Start	1.59	Rating **	M	Issue No.	39
LM End	1.59	Issue Type +	Ma	Location *	WS
Category	Earthen Levee			GPS Latitude/Longitude	
				Start	End
Item	Encroachments			38.481798 °	38.481798 °
				-121.550449 °	-121.550449 °
DWR ID	DWR_RD0765_01_f_2016_39				
Comment Code					
TR : Tree or limb					
Inspector Comment					
Downed tree on waterside slope.					

Photo 1 of 1 : FA_2018_RD0765_211_39_20180910_00045.jpg



Looking north at the waterside slope.

*** Location**

LS : Land Side N/A : Not Applicable
WS : Water Side
CR : Crown

**** Rating**

A : Acceptable N : Not Inspected/Rated
M : Minimally Acceptable C : Corrected
U : Unacceptable A/W : Acceptable but Monitor & Maintain

+ Issue Type

Ma : Maintenance Deficiency
Ob : Design & System Obsolescence
En : Enforcement

**Flood Control Project Maintenance
Levee Inspections**

Maintenance Issue Types Only, Levee Inspection Report By Mile - Fall 2018

Reclamation District No. 0765 Glide

Waterway	Bank	Unit Miles	Inspection Start/End	Inspector
Unit No. 01 Sacramento River	Right	1.72	11/01/2018 11/01/2018	Luz Dial

LM Start	1.59	Rating **	C	Issue No.	25
LM End	1.66	Issue Type +	Ma	Location *	WS
Category	Earthen Levee			GPS Latitude/Longitude	
				Start	End
Item	Vegetation			38.481782 °	38.480920 °
				-121.550426 °	-121.549729 °
DWR ID	DWR_RD0765_01_f_2016_25				
Comment Code					
V2 : Remove the wild growth other than native grasses from the levee slopes.					
Inspector Comment					
LMA trimmed dense vegetation on waterside slope.					

No Photos

LM Start	1.66	Rating **	C	Issue No.	53
LM End	1.67	Issue Type +	Ma	Location *	WS
Category	Earthen Levee			GPS Latitude/Longitude	
				Start	End
Item	Trim / Thin Trees			38.480892 °	38.480800 °
				-121.549654 °	-121.549583 °
DWR ID	DWR_RD0765_01_s_2013_53				
Comment Code					
T1 : Trim trees to at least five feet above ground level.					
Inspector Comment					
LMA trimmed trees.					

No Photos

LM Start	1.67	Rating **	M	Issue No.	13
LM End	1.68	Issue Type +	Ma	Location *	WS
Category	Earthen Levee			GPS Latitude/Longitude	
				Start	End
Item	Encroachments			38.480763 °	38.480632 °
				-121.549581 °	-121.549543 °
DWR ID	DWR_RD0765_01_s_2012_13				
Comment Code					
PR : Prunings					
Inspector Comment					
Large tree branch on waterside slope.					

Photo 1 of 2 : FA_2018_RD0765_211_13_20180910_00017.jpg



Looking northwest at tree limb in vegetation on waterside slope.

*** Location**

LS : Land Side N/A : Not Applicable
WS : Water Side
CR : Crown

**** Rating**

A : Acceptable N : Not Inspected/Rated
M : Minimally Acceptable C : Corrected
U : Unacceptable A/W : Acceptable but Monitor & Maintain

+ Issue Type

Ma : Maintenance Deficiency
Ob : Design & System Obsolescence
En : Enforcement

**Flood Control Project Maintenance
Levee Inspections**

Maintenance Issue Types Only, Levee Inspection Report By Mile - Fall 2018

Reclamation District No. 0765 Glide

Waterway	Bank	Unit Miles	Inspection Start/End	Inspector
Unit No. 01 Sacramento River	Right	1.72	11/01/2018 11/01/2018	Luz Dial

LM Start	1.67	Rating **	M	Issue No.	13 (cont)	
LM End	1.68	Issue Type +	Ma	Location *	WS	
Category	Earthen Levee			GPS Latitude/Longitude		
				Start	End	
Item	Encroachments			38.480763 °	38.480632 °	
				-121.549581 °	-121.549543 °	
DWR ID	DWR_RD0765_01_s_2012_13					
Comment Code						
PR : Prunings						
Inspector Comment						
Large tree branch on waterside slope.						

Photo 2 of 2 : FA_2018_RD0765_211_13_20180910_00018.jpg



Looking northwest at large tree limb on waterward slope.

* Location LS : Land Side N/A : Not Applicable WS : Water Side CR : Crown	** Rating A : Acceptable M : Minimally Acceptable U : Unacceptable	N : Not Inspected/Rated C : Corrected A/W : Acceptable but Monitor & Maintain	+ Issue Type Ma : Maintenance Deficiency Ob : Design & System Obsolescence En : Enforcement
--	--	---	---