

**Flood Control Project Maintenance
Levee Inspections**

Maintenance Issue Types Only, Levee Inspection Report By Mile - Fall 2017

Reclamation District No. 0765 Glide

Waterway	Bank	Unit Miles	Inspection Start/End	Inspector
Unit No. 01 Sacramento River	Right	1.72	09/05/2017 09/05/2017	Dave Torres

LM Start		Rating **	M	Issue No.	18
LM End		Issue Type +	Ma	Location *	N/A
Category	Earthen Levee		GPS Latitude/Longitude		
			Start	End	
Item	Emergency Supplies & Equipment			°	°
				°	°
DWR ID	DWR_RD0765_01_s_2013_18				
Comment Code					
Inspector Comment					
The LMA does not have an adequate supply of flood fight materials.					

No Photos

LM Start		Rating **	A	Issue No.	44
LM End		Issue Type +	Ma	Location *	N/A
Category	Earthen Levee		GPS Latitude/Longitude		
			Start	End	
Item	Operations & Maintenance Manuals			°	°
				°	°
DWR ID	DWR_RD0765_01_s_2012_44				
Comment Code					
Inspector Comment					
LMA has a copy of O&M manual on file in office.					

No Photos

* Location LS : Land Side N/A : Not Applicable WS : Water Side CR : Crown	** Rating A : Acceptable M : Minimally Acceptable U : Unacceptable	N : Not Inspected/Rated C : Corrected A/W : Acceptable but Monitor & Maintain	+ Issue Type Ma : Maintenance Deficiency Ob : Design & System Obsolescence En : Enforcement
----------------------------------------------------------------------------------------------	------------------------------------------------------------------------------------	-------------------------------------------------------------------------------------	-------------------------------------------------------------------------------------------------------------

**Flood Control Project Maintenance
Levee Inspections**

Maintenance Issue Types Only, Levee Inspection Report By Mile - Fall 2017

Reclamation District No. 0765 Glide

Waterway	Bank	Unit Miles	Inspection Start/End	Inspector
Unit No. 01 Sacramento River	Right	1.72	09/05/2017 09/05/2017	Dave Torres

LM Start		Rating **	M	Issue No.	46	
LM End		Issue Type +	Ma	Location *	N/A	
Category	Earthen Levee			GPS Latitude/Longitude		
				Start	End	
Item	Flood Preparedness & Training				o	
					o	
DWR ID	DWR_RD0765_01_s_2012_46					
Comment Code						
Inspector Comment						
LMA does not have a written flood preparedness plan. Also LMA staff has not been involved in flood training recently..						

No Photos

LM Start	0.05	Rating **	U	Issue No.	3
LM End	0.05	Issue Type +	Ma	Location *	LS
Category	Earthen Levee			GPS Latitude/Longitude	
				Start	End
Item	Trim / Thin Trees			38.502253 °	38.502253 °
				-121.560192 °	-121.560192 °
DWR ID	DWR_RD0765_01_s_2012_3				
Comment Code					
T1 : Trim trees to at least five feet above ground level.					
Inspector Comment					
Trees blocking view of landward slope.					

Photo 1 of 3 : FA_2017_RD0765_211_3_20170901_00001.jpg



Looking north at untrimmed trees along landward slope. (Spring 2017)

LM Start	0.05	Rating **	U	Issue No.	3 (cont)
LM End	0.05	Issue Type +	Ma	Location *	LS

Photo 2 of 3 : FA_2017_RD0765_211_3_20170901_00002.jpg



Looking southwest at untrimmed trees on landward slope.(Fall 2016)

* Location LS : Land Side N/A : Not Applicable WS : Water Side CR : Crown		** Rating A : Acceptable M : Minimally Acceptable U : Unacceptable		N : Not Inspected/Rated C : Corrected A/W : Acceptable but Monitor & Maintain		+ Issue Type Ma : Maintenance Deficiency Ob : Design & System Obsolescence En : Enforcement	
----------------------------------------------------------------------------------------------	--	------------------------------------------------------------------------------------	--	-------------------------------------------------------------------------------------	--	-------------------------------------------------------------------------------------------------------------	--

**Flood Control Project Maintenance
Levee Inspections**

Maintenance Issue Types Only, Levee Inspection Report By Mile - Fall 2017

Reclamation District No. 0765 Glide

Waterway	Bank	Unit Miles	Inspection Start/End	Inspector
Unit No. 01 Sacramento River	Right	1.72	09/05/2017 09/05/2017	Dave Torres

LM Start	0.05	Rating **	U	Issue No.	3 (cont)	
LM End	0.05	Issue Type +	Ma	Location *	LS	
Category	Earthen Levee			GPS Latitude/Longitude		
				Start		End
Item	Trim / Thin Trees			38.502253 °		38.502253 °
				-121.560192 °		-121.560192 °
DWR ID	DWR_RD0765_01_s_2012_3					
Comment Code						
T1 : Trim trees to at least five feet above ground level.						
Inspector Comment						
Trees blocking view of landward slope.						

Photo 3 of 3 : FA_2017_RD0765_211_3_20170901_00003.jpg



Looking north (upstream) at trees on landside slope. (Spring 2016)

LM Start	0.12	Rating **	M	Issue No.	28
LM End	0.25	Issue Type +	Ma	Location *	LS
Category	Earthen Levee			GPS Latitude/Longitude	
				Start	End
Item	Trim / Thin Trees			38.501215 °	38.499421 °
				-121.560432 °	-121.560471 °
DWR ID	DWR_RD0765_01_s_2012_28				
Comment Code					
T3 : Trim and thin trees to allow visibility of the ground and room to flood fight.					
Inspector Comment					

Photo 1 of 2 : FA_2017_RD0765_211_28_20170901_00028.jpg



Looking downstream (south) at trees on landside slope & toe.

LM Start	0.12	Rating **	M	Issue No.	28 (cont)
LM End	0.25	Issue Type +	Ma	Location *	LS

Photo 2 of 2 : FA_2017_RD0765_211_28_20170901_00029.jpg



Looking west at trees on landside toe.

* Location LS : Land Side N/A : Not Applicable WS : Water Side CR : Crown		** Rating A : Acceptable M : Minimally Acceptable U : Unacceptable		N : Not Inspected/Rated C : Corrected A/W : Acceptable but Monitor & Maintain		+ Issue Type Ma : Maintenance Deficiency Ob : Design & System Obsolescence En : Enforcement	
----------------------------------------------------------------------------------------------	--	------------------------------------------------------------------------------------	--	-------------------------------------------------------------------------------------	--	-------------------------------------------------------------------------------------------------------------	--

**Flood Control Project Maintenance
Levee Inspections**

Maintenance Issue Types Only, Levee Inspection Report By Mile - Fall 2017

Reclamation District No. 0765 Glide

Waterway	Bank	Unit Miles	Inspection Start/End	Inspector
Unit No. 01 Sacramento River	Right	1.72	09/05/2017 09/05/2017	Dave Torres

LM Start	0.14	Rating **	M	Issue No.	22
LM End	0.14	Issue Type +	Ma	Location *	LS
Category	Earthen Levee			GPS Latitude/Longitude	
				Start	End
Item	Vegetation			38.500928 °	38.500928 °
				-121.560431 °	-121.560431 °
DWR ID	DWR_RD0765_01_s_2012_22				
Comment Code					
V2 : Remove the wild growth other than native grasses from the levee slopes.					
Inspector Comment					
Control growth on landward slope.					

Photo 1 of 1 : FA_2017_RD0765_211_22_20170901_00019.jpg



Looking west at moderate veg on landward slope.

LM Start	0.24	Rating **	M	Issue No.	49
LM End	0.24	Issue Type +	Ma	Location *	LS
Category	Earthen Levee			GPS Latitude/Longitude	
				Start	End
Item	Vegetation			38.499530 °	38.499530 °
				-121.560490 °	-121.560490 °
DWR ID	DWR_RD0765_01_s_2013_49				
Comment Code					
V2 : Remove the wild growth other than native grasses from the levee slopes.					
Inspector Comment					
Control wild berryvines on landside slope.					

Photo 1 of 1 : FA_2017_RD0765_211_49_20170901_00049.jpg



Looking at wild berryvines or wild roses on landside slope and toe.

LM Start	0.25	Rating **	U	Issue No.	11
LM End	0.27	Issue Type +	Ma	Location *	WS
Category	Earthen Levee			GPS Latitude/Longitude	
				Start	End
Item	Trim / Thin Trees			38.499405 °	38.499042 °
				-121.560445 °	-121.560430 °
DWR ID	DWR_RD0765_01_s_2012_11				
Comment Code					
T3 : Trim and thin trees to allow visibility of the ground and room to flood fight.					
Inspector Comment					
Trees shall be trimmed and thinned on waterward slope.					

Photo 1 of 1 : FA_2017_RD0765_211_11_20170901_00013.jpg



Looking southwest at trees along landward shoulder and slope.

* Location LS : Land Side N/A : Not Applicable WS : Water Side CR : Crown		** Rating A : Acceptable M : Minimally Acceptable U : Unacceptable N : Not Inspected/Rated C : Corrected A/W : Acceptable but Monitor & Maintain		+ Issue Type Ma : Maintenance Deficiency Ob : Design & System Obsolescence En : Enforcement	
----------------------------------------------------------------------------------------------	--	---------------------------------------------------------------------------------------------------------------------------------------------------------------------------	--	-------------------------------------------------------------------------------------------------------------	--

**Flood Control Project Maintenance
Levee Inspections**

Maintenance Issue Types Only, Levee Inspection Report By Mile - Fall 2017

Reclamation District No. 0765 Glide

Waterway	Bank	Unit Miles	Inspection Start/End	Inspector
Unit No. 01 Sacramento River	Right	1.72	09/05/2017 09/05/2017	Dave Torres

LM Start	0.27	Rating **	U	Issue No.	14
LM End	0.34	Issue Type +	Ma	Location *	LS
Category	Earthen Levee			GPS Latitude/Longitude	
				Start	End
Item	Trim / Thin Trees			38.499065 °	38.498032 °
				-121.560468 °	-121.560337 °
DWR ID	DWR_RD0765_01_s_2012_14				
Comment Code					
T1 : Trim trees to at least five feet above ground level.					
Inspector Comment					
Untrimmed trees on landward slope has been untrimmed for multiple inspection cycles.					

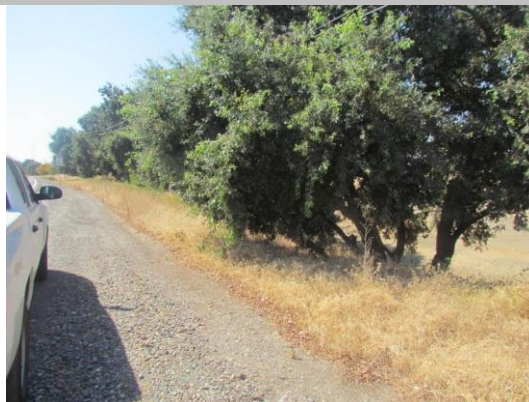
Photo 1 of 2 : FA_2017_RD0765_211_14_20170901_00016.jpg



Looking southwest at untrimmed trees on landward slope. (Spring 2017)

LM Start	0.27	Rating **	U	Issue No.	14 (cont)
LM End	0.34	Issue Type +	Ma	Location *	LS

Photo 2 of 2 : FA_2017_RD0765_211_14_20170901_00017.jpg



Looking southwest at untrimmed trees on landward slope. (Fall 2016)

LM Start	0.31	Rating **	M	Issue No.	23
LM End	0.31	Issue Type +	Ma	Location *	WS
Category	Earthen Levee			GPS Latitude/Longitude	
				Start	End
Item	Trim / Thin Trees			38.498453 °	38.498453 °
				-121.560360 °	-121.560360 °
DWR ID	DWR_RD0765_01_s_2012_23				
Comment Code					
T3 : Trim and thin trees to allow visibility of the ground and room to flood fight.					
Inspector Comment					
Trees should be trimmed and thinned.					

Photo 1 of 2 : FA_2017_RD0765_211_23_20170901_00020.jpg



Looking northeast at untrimmed trees on waterward shoulder. (Fall 2016)

* Location		** Rating		+ Issue Type	
LS : Land Side	N/A : Not Applicable	A : Acceptable	N : Not Inspected/Rated	Ma : Maintenance Deficiency	
WS : Water Side		M : Minimally Acceptable	C : Corrected	Ob : Design & System Obsolescence	
CR : Crown		U : Unacceptable	A/W : Acceptable but Monitor & Maintain	En : Enforcement	

**Flood Control Project Maintenance
Levee Inspections**

Maintenance Issue Types Only, Levee Inspection Report By Mile - Fall 2017

Reclamation District No. 0765 Glide

Waterway	Bank	Unit Miles	Inspection Start/End	Inspector
Unit No. 01 Sacramento River	Right	1.72	09/05/2017 09/05/2017	Dave Torres

LM Start	0.31	Rating **	M	Issue No.	23 (cont)	
LM End	0.31	Issue Type +	Ma	Location *	WS	
Category	Earthen Levee			GPS Latitude/Longitude		
				Start		End
Item	Trim / Thin Trees			38.498453 °		38.498453 °
				-121.560360 °		-121.560360 °
DWR ID	DWR_RD0765_01_s_2012_23					
Comment Code						
T3 : Trim and thin trees to allow visibility of the ground and room to flood fight.						
Inspector Comment						
Trees should be trimmed and thinned.						

Photo 2 of 2 : FA_2017_RD0765_211_23_20170901_00021.jpg



Looking northeast at trees along waterward shoulder and slope. (Spring 2016)

LM Start	0.32	Rating **	M	Issue No.	9
LM End	0.35	Issue Type +	Ma	Location *	WS
Category	Earthen Levee			GPS Latitude/Longitude	
				Start	End
Item	Vegetation			38.498351 °	38.497899 °
				-121.560321 °	-121.560243 °
DWR ID	DWR_RD0765_01_f_2017_9				
Comment Code					
V2 : Remove the wild growth other than native grasses from the levee slopes.					
Inspector Comment					

No Photos

* Location LS : Land Side N/A : Not Applicable WS : Water Side CR : Crown		** Rating A : Acceptable N : Not Inspected/Rated M : Minimally Acceptable C : Corrected U : Unacceptable A/W : Acceptable but Monitor & Maintain		+ Issue Type Ma : Maintenance Deficiency Ob : Design & System Obsolescence En : Enforcement
----------------------------------------------------------------------------------------------	--	---------------------------------------------------------------------------------------------------------------------------------------------------------------------------------------------------------------	--	-------------------------------------------------------------------------------------------------------------

**Flood Control Project Maintenance
Levee Inspections**

Maintenance Issue Types Only, Levee Inspection Report By Mile - Fall 2017

Reclamation District No. 0765 Glide

Waterway	Bank	Unit Miles	Inspection Start/End	Inspector
Unit No. 01 Sacramento River	Right	1.72	09/05/2017 09/05/2017	Dave Torres

LM Start	0.40	Rating **	M	Issue No.	21
LM End	0.40	Issue Type +	Ma	Location *	LS
Category	Earthen Levee			GPS Latitude/Longitude	
				Start	End
Item	Trim / Thin Trees			38.497196 °	38.497196 °
				-121.560147 °	-121.560147 °
DWR ID	DWR_RD0765_01_s_2012_21				
Comment Code					
T1 : Trim trees to at least five feet above ground level.					
Inspector Comment					

No Photos

LM Start	0.41	Rating **	U	Issue No.	47
LM End	0.50	Issue Type +	Ma	Location *	LS
Category	Earthen Levee			GPS Latitude/Longitude	
				Start	End
Item	Vegetation			38.497069 °	38.495823 °
				-121.560106 °	-121.559570 °
DWR ID	DWR_RD0765_01_f_2012_47				
Comment Code					
V2 : Remove the wild growth other than native grasses from the levee slopes.					
Inspector Comment					
Control wild berryvines and other vegetation on landside toe.					

Photo 1 of 3 : FA_2017_RD0765_211_47_20170919_00081.jpg



Looking south at the landside slope.

LM Start	0.41	Rating **	U	Issue No.	47 (cont)
LM End	0.50	Issue Type +	Ma	Location *	LS

Photo 2 of 3 : FA_2017_RD0765_211_47_20170901_00045.jpg



Looking north at dense willows on landward slope. (Spring 2017)

* Location LS : Land Side N/A : Not Applicable WS : Water Side CR : Crown		** Rating A : Acceptable M : Minimally Acceptable U : Unacceptable N : Not Inspected/Rated C : Corrected A/W : Acceptable but Monitor & Maintain		+ Issue Type Ma : Maintenance Deficiency Ob : Design & System Obsolescence En : Enforcement
----------------------------------------------------------------------------------------------	--	---------------------------------------------------------------------------------------------------------------------------------------------------------------------------	--	-------------------------------------------------------------------------------------------------------------

**Flood Control Project Maintenance
Levee Inspections**

Maintenance Issue Types Only, Levee Inspection Report By Mile - Fall 2017

Reclamation District No. 0765 Glide

Waterway	Bank	Unit Miles	Inspection Start/End	Inspector
Unit No. 01 Sacramento River	Right	1.72	09/05/2017 09/05/2017	Dave Torres

LM Start	0.41	Rating **	U	Issue No.	47 (cont)	
LM End	0.50	Issue Type +	Ma	Location *	LS	
Category	Earthen Levee			GPS Latitude/Longitude		
				Start		End
Item	Vegetation			38.497069 °		38.495823 °
				-121.560106 °		-121.559570 °
DWR ID	DWR_RD0765_01_f_2012_47					
Comment Code						
V2 : Remove the wild growth other than native grasses from the levee slopes.						
Inspector Comment						
Control wild berryvines and other vegetation on landside toe.						

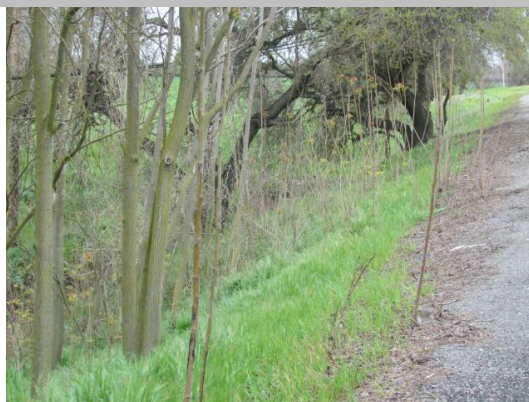
Photo 3 of 3 : FA_2017_RD0765_211_47_20170901_00046.jpg



Looking southwest at dense vegetation on landward shoulder and slope. (Fall 2016)

LM Start	0.43	Rating **	U	Issue No.	32
LM End	0.46	Issue Type +	Ma	Location *	LS
Category	Earthen Levee			GPS Latitude/Longitude	
				Start	End
Item	Trim / Thin Trees			38.496792 °	38.496321 °
				-121.560026 °	-121.559842 °
DWR ID	DWR_RD0765_01_s_2012_32				
Comment Code					
T3 : Trim and thin trees to allow visibility of the ground and room to flood fight.					
Inspector Comment					
New saplings and other wild veg should be removed.					

Photo 1 of 2 : FA_2017_RD0765_211_32_20170901_00034.jpg



Looking northwest at trees (saplings) on landward slope.

LM Start	0.43	Rating **	U	Issue No.	32 (cont)
LM End	0.46	Issue Type +	Ma	Location *	LS

Photo 2 of 2 : FA_2017_RD0765_211_32_20170901_00035.jpg



Looking southwest at dense vegetation on landside slope and toe. (2015)

* Location		** Rating		+ Issue Type	
LS : Land Side	N/A : Not Applicable	A : Acceptable	N : Not Inspected/Rated	Ma : Maintenance Deficiency	
WS : Water Side		M : Minimally Acceptable	C : Corrected	Ob : Design & System Obsolescence	
CR : Crown		U : Unacceptable	A/W : Acceptable but Monitor & Maintain	En : Enforcement	

**Flood Control Project Maintenance
Levee Inspections**

Maintenance Issue Types Only, Levee Inspection Report By Mile - Fall 2017

Reclamation District No. 0765 Glide

Waterway	Bank	Unit Miles	Inspection Start/End	Inspector
Unit No. 01 Sacramento River	Right	1.72	09/05/2017 09/05/2017	Dave Torres

LM Start	0.45	Rating **	U	Issue No.	24
LM End	0.47	Issue Type +	Ma	Location *	WS
Category	Earthen Levee			GPS Latitude/Longitude	
				Start	End
Item	Trim / Thin Trees			38.496534 °	38.496249 °
				-121.559880 °	-121.559760 °
DWR ID	DWR_RD0765_01_s_2012_24				
Comment Code					
T2 : Thin trees to allow visibility of the ground and room to flood fight.					
Inspector Comment					
Dense willows and untrimmed trees on waterward slope has been untrimmed for multiple inspection cycles.					

Photo 1 of 4 : FA_2017_RD0765_211_24_20170901_00022.jpg



Looking north at willows and other veg. on waterward slope. (Spring 2017)

LM Start	0.45	Rating **	U	Issue No.	24 (cont)
LM End	0.47	Issue Type +	Ma	Location *	WS

Photo 2 of 4 : FA_2017_RD0765_211_24_20170901_00023.jpg



Looking north at dense veg on waterward slope. (Spring 2017)

* Location LS : Land Side N/A : Not Applicable WS : Water Side CR : Crown		** Rating A : Acceptable M : Minimally Acceptable U : Unacceptable N : Not Inspected/Rated C : Corrected A/W : Acceptable but Monitor & Maintain		+ Issue Type Ma : Maintenance Deficiency Ob : Design & System Obsolescence En : Enforcement	
---------------------------------------------------------------------------------------	--	--------------------------------------------------------------------------------------------------------------------------------------------------------------------	--	------------------------------------------------------------------------------------------------------	--

**Flood Control Project Maintenance
Levee Inspections**

Maintenance Issue Types Only, Levee Inspection Report By Mile - Fall 2017

Reclamation District No. 0765 Glide

Waterway	Bank	Unit Miles	Inspection Start/End	Inspector
Unit No. 01 Sacramento River	Right	1.72	09/05/2017 09/05/2017	Dave Torres

LM Start	0.45	Rating **	U	Issue No.	24 (cont)	
LM End	0.47	Issue Type +	Ma	Location *	WS	
Category	Earthen Levee			GPS Latitude/Longitude		
				Start		End
Item	Trim / Thin Trees			38.496534 °		38.496249 °
				-121.559880 °		-121.559760 °
DWR ID	DWR_RD0765_01_s_2012_24					
Comment Code						
T2 : Thin trees to allow visibility of the ground and room to flood fight.						
Inspector Comment						
Dense willows and untrimmed trees on waterward slope has been untrimmed for multiple inspection cycles.						

Photo 3 of 4 : FA_2017_RD0765_211_24_20170901_00024.jpg



Looking northeast at large cluster of trees on waterward slope. (Fall 2016)

LM Start	0.45	Rating **	U	Issue No.	24 (cont)
LM End	0.47	Issue Type +	Ma	Location *	WS

Photo 4 of 4 : FA_2017_RD0765_211_24_20170901_00025.jpg



Looking northeast at cluster of trees on waterward slope. (Spring 2016)

LM Start	0.48	Rating **	U	Issue No.	59
LM End	0.48	Issue Type +	Ma	Location *	LS
Category	Earthen Levee			GPS Latitude/Longitude	
				Start	End
Item	Vegetation			38.496053 °	38.496053 °
				-121.559690 °	-121.559690 °
DWR ID	DWR_RD0765_01_s_2016_59				
Comment Code					
V2 : Remove the wild growth other than native grasses from the levee slopes.					
Inspector Comment					
Dense vegetation on landward slope.					

Photo 1 of 2 : FA_2017_RD0765_211_59_20170919_00083.jpg



Looking south at the landside slope.

* Location		** Rating		+ Issue Type	
LS : Land Side	N/A : Not Applicable	A : Acceptable	N : Not Inspected/Rated	Ma : Maintenance Deficiency	
WS : Water Side		M : Minimally Acceptable	C : Corrected	Ob : Design & System Obsolescence	
CR : Crown		U : Unacceptable	A/W : Acceptable but Monitor & Maintain	En : Enforcement	

**Flood Control Project Maintenance
Levee Inspections**

Maintenance Issue Types Only, Levee Inspection Report By Mile - Fall 2017

Reclamation District No. 0765 Glide

Waterway	Bank	Unit Miles	Inspection Start/End	Inspector
Unit No. 01 Sacramento River	Right	1.72	09/05/2017 09/05/2017	Dave Torres

LM Start	0.48	Rating **	U	Issue No.	59 (cont)	
LM End	0.48	Issue Type +	Ma	Location *	LS	
Category	Earthen Levee			GPS Latitude/Longitude		
				Start		End
Item	Vegetation			38.496053 °		38.496053 °
				-121.559690 °		-121.559690 °
DWR ID	DWR_RD0765_01_s_2016_59					
Comment Code						
V2 : Remove the wild growth other than native grasses from the levee slopes.						
Inspector Comment						
Dense vegetation on landward slope.						

Photo 2 of 2 : FA_2017_RD0765_211_59_20170901_00058.jpg



Looking northwest at dense vegetation on landward slope. (Fall 2016)

LM Start	0.54	Rating **	M	Issue No.	34
LM End	0.63	Issue Type +	Ma	Location *	LS
Category	Earthen Levee			GPS Latitude/Longitude	
				Start	End
Item	Trim / Thin Trees			38.495347 °	38.494204 °
				-121.559291 °	-121.558313 °
DWR ID	DWR_RD0765_01_s_2012_34				
Comment Code					
T1 : Trim trees to at least five feet above ground level.					
Inspector Comment					

Photo 1 of 1 : FA_2017_RD0765_211_34_20170919_00080.jpg



Looking south at landside slope.

LM Start	0.56	Rating **	M	Issue No.	10
LM End	0.59	Issue Type +	Ma	Location *	WS
Category	Earthen Levee			GPS Latitude/Longitude	
				Start	End
Item	Trim / Thin Trees			38.495035 °	38.494642 °
				-121.559027 °	-121.558697 °
DWR ID	DWR_RD0765_01_s_2016_10				
Comment Code					
T2 : Thin trees to allow visibility of the ground and room to flood fight.					
Inspector Comment					

Photo 1 of 1 : FA_2017_RD0765_211_10_20170901_00012.jpg



Looking northeast at trees on waterward slope.

*** Location**

LS : Land Side N/A : Not Applicable
WS : Water Side
CR : Crown

**** Rating**

A : Acceptable N : Not Inspected/Rated
M : Minimally Acceptable C : Corrected
U : Unacceptable A/W : Acceptable but Monitor & Maintain

+ Issue Type

Ma : Maintenance Deficiency
Ob : Design & System Obsolescence
En : Enforcement

**Flood Control Project Maintenance
Levee Inspections**

Maintenance Issue Types Only, Levee Inspection Report By Mile - Fall 2017

Reclamation District No. 0765 Glide

Waterway	Bank	Unit Miles	Inspection Start/End	Inspector
Unit No. 01 Sacramento River	Right	1.72	09/05/2017 09/05/2017	Dave Torres

LM Start	0.63	Rating **	M	Issue No.	15
LM End	0.70	Issue Type +	Ma	Location *	WS
Category	Earthen Levee			GPS Latitude/Longitude	
				Start	End
Item	Trim / Thin Trees			38.494171 °	38.493392 °
				-121.558253 °	-121.557640 °
DWR ID	DWR_RD0765_01_s _ 2012_15				
Comment Code					
T1 : Trim trees to at least five feet above ground level.					
Inspector Comment					

No Photos

LM Start	0.68	Rating **	M	Issue No.	35
LM End	0.72	Issue Type +	Ma	Location *	LS
Category	Earthen Levee			GPS Latitude/Longitude	
				Start	End
Item	Trim / Thin Trees			38.493596 °	38.493077 °
				-121.557832 °	-121.557451 °
DWR ID	DWR_RD0765_01_s _ 2012_35				
Comment Code					
T1 : Trim trees to at least five feet above ground level.					
Inspector Comment					

No Photos

* Location LS : Land Side N/A : Not Applicable WS : Water Side CR : Crown	** Rating A : Acceptable M : Minimally Acceptable U : Unacceptable N : Not Inspected/Rated C : Corrected A/W : Acceptable but Monitor & Maintain	+ Issue Type Ma : Maintenance Deficiency Ob : Design & System Obsolescence En : Enforcement
----------------------------------------------------------------------------------------------	-------------------------------------------------------------------------------------------------------------------------------------------------------------------------------	-------------------------------------------------------------------------------------------------------------

**Flood Control Project Maintenance
Levee Inspections**

Maintenance Issue Types Only, Levee Inspection Report By Mile - Fall 2017

Reclamation District No. 0765 Glide

Waterway	Bank	Unit Miles	Inspection Start/End	Inspector
Unit No. 01 Sacramento River	Right	1.72	09/05/2017 09/05/2017	Dave Torres

LM Start	0.74	Rating **	A	Issue No.	16
LM End	0.74	Issue Type +	Ma	Location *	LS
Category	Earthen Levee			GPS Latitude/Longitude	
				Start	End
Item	Animal Control			38.492842 °	38.492842 °
				-121.557308 °	-121.557308 °
DWR ID	DWR_RD0765_01_f_2017_16				
Comment Code					
A1 : Exterminate rodents and backfill and compact or grout burrows.					
Inspector Comment					

No Photos

LM Start	0.75	Rating **	M	Issue No.	68
LM End	0.75	Issue Type +	Ma	Location *	LS
Category	Earthen Levee			GPS Latitude/Longitude	
				Start	End
Item	Slope Stability			38.492705 °	38.492705 °
				-121.557193 °	-121.557193 °
DWR ID	DWR_RD0765_01_s_2017_68				
Comment Code					
S3 : Repair the levee slope damaged by vehicle traffic and prevent access where possible.					
Inspector Comment					
Damage caused by a truck.					

Photo 1 of 2 : FA_2017_RD0765_211_68_20170919_00084.jpg



Looking south on landside slope.

LM Start	0.75	Rating **	M	Issue No.	68 (cont)
LM End	0.75	Issue Type +	Ma	Location *	LS

Photo 2 of 2 : FA_2017_RD0765_211_68_20170901_00069.jpg



Looking south at levee damage caused by vehicle traffic. (Spring 2017)

* Location LS : Land Side N/A : Not Applicable WS : Water Side CR : Crown		** Rating A : Acceptable M : Minimally Acceptable U : Unacceptable		N : Not Inspected/Rated C : Corrected A/W : Acceptable but Monitor & Maintain		+ Issue Type Ma : Maintenance Deficiency Ob : Design & System Obsolescence En : Enforcement	
---------------------------------------------------------------------------------------	--	-----------------------------------------------------------------------------	--	-------------------------------------------------------------------------------------	--	------------------------------------------------------------------------------------------------------	--

**Flood Control Project Maintenance
Levee Inspections**

Maintenance Issue Types Only, Levee Inspection Report By Mile - Fall 2017

Reclamation District No. 0765 Glide

Waterway	Bank	Unit Miles	Inspection Start/End	Inspector
Unit No. 01 Sacramento River	Right	1.72	09/05/2017 09/05/2017	Dave Torres

LM Start	0.77	Rating **	U	Issue No.	36
LM End	0.80	Issue Type +	Ma	Location *	LS
Category	Earthen Levee			GPS Latitude/Longitude	
				Start	End
Item	Trim / Thin Trees			38.492392 °	38.492034 °
				-121.557026 °	-121.556820 °
DWR ID	DWR_RD0765_01_f_2017_36				
Comment Code					
T1 : Trim trees to at least five feet above ground level.					
Inspector Comment					
Untrimmed trees on landward slope.					

Photo 1 of 1 : FA_2017_RD0765_211_36_20170901_00038.jpg



Looking northwest at untrimmed trees on landward slope.

LM Start	0.86	Rating **	U	Issue No.	17
LM End	0.98	Issue Type +	Ma	Location *	LS
Category	Earthen Levee			GPS Latitude/Longitude	
				Start	End
Item	Trim / Thin Trees			38.491283 °	38.489771 °
				-121.556360 °	-121.555451 °
DWR ID	DWR_RD0765_01_s_2012_17				
Comment Code					
T1 : Trim trees to at least five feet above ground level.					
Inspector Comment					
Untrimmed trees on landward slope.					

Photo 1 of 1 : FA_2017_RD0765_211_17_20170901_00018.jpg



Looking northwest at untrimmed trees on landward slope.

* Location
LS : Land Side N/A : Not Applicable
WS : Water Side
CR : Crown

** Rating
A : Acceptable N : Not Inspected/Rated
M : Minimally Acceptable C : Corrected
U : Unacceptable A/W : Acceptable but Monitor & Maintain

+ Issue Type
Ma : Maintenance Deficiency
Ob : Design & System Obsolescence
En : Enforcement

**Flood Control Project Maintenance
Levee Inspections**

Maintenance Issue Types Only, Levee Inspection Report By Mile - Fall 2017

Reclamation District No. 0765 Glide

Waterway	Bank	Unit Miles	Inspection Start/End	Inspector
Unit No. 01 Sacramento River	Right	1.72	09/05/2017 09/05/2017	Dave Torres

LM Start	0.86	Rating **	M	Issue No.	61
LM End	0.92	Issue Type +	Ma	Location *	LS
Category	Earthen Levee			GPS Latitude/Longitude	
				Start	End
Item	Vegetation			38.491259 °	38.490457 °
				-121.556359 °	-121.555822 °
DWR ID	DWR_RD0765_01_s_2016_61				
Comment Code					
V2 : Remove the wild growth other than native grasses from the levee slopes.					
Inspector Comment					
Control dense vegetation (wild rose) on bottom half of landward slope and remove dead vines.					

Photo 1 of 3 : FA_2017_RD0765_211_61_20170901_00062.jpg



Looking northwest at dense dead berryvines on landward slope. (Spring 2017)

LM Start	0.86	Rating **	M	Issue No.	61 (cont)
LM End	0.92	Issue Type +	Ma	Location *	LS

Photo 2 of 3 : FA_2017_RD0765_211_61_20170901_00063.jpg



Looking west at berryvine at bottom half of landward slope. (Spring 2017)

LM Start	0.86	Rating **	M	Issue No.	61 (cont)
LM End	0.92	Issue Type +	Ma	Location *	LS

Photo 3 of 3 : FA_2017_RD0765_211_61_20170901_00064.jpg



Looking south at dense wildroses on landward slope. (Fall 2016)

* Location LS : Land Side N/A : Not Applicable WS : Water Side CR : Crown		** Rating A : Acceptable M : Minimally Acceptable U : Unacceptable N : Not Inspected/Rated C : Corrected A/W : Acceptable but Monitor & Maintain		+ Issue Type Ma : Maintenance Deficiency Ob : Design & System Obsolescence En : Enforcement	
---------------------------------------------------------------------------------------	--	--------------------------------------------------------------------------------------------------------------------------------------------------------------------	--	------------------------------------------------------------------------------------------------------	--

**Flood Control Project Maintenance
Levee Inspections**

Maintenance Issue Types Only, Levee Inspection Report By Mile - Fall 2017

Reclamation District No. 0765 Glide

Waterway	Bank	Unit Miles	Inspection Start/End	Inspector
Unit No. 01 Sacramento River	Right	1.72	09/05/2017 09/05/2017	Dave Torres

LM Start	0.90	Rating **	M	Issue No.	6
LM End	0.94	Issue Type +	Ma	Location *	WS
Category	Earthen Levee			GPS Latitude/Longitude	
				Start	End
Item	Vegetation			38.490805 °	38.490311 °
				-121.555933 °	-121.555652 °
DWR ID	DWR_RD0765_01_f_2017_6				
Comment Code					
V2 : Remove the wild growth other than native grasses from the levee slopes.					
Inspector Comment					
Control vegetation growth on waterside of levee.					

No Photos

LM Start	0.98	Rating **	M	Issue No.	8	
LM End	1.05	Issue Type +	Ma	Location *	WS	
Category	Earthen Levee			GPS Latitude/Longitude		
				Start	End	
Item	Trim / Thin Trees			38.489681 °	38.488775 °	
				-121.555353 °	-121.554848 °	
DWR ID	DWR_RD0765_01_f_2017_8					
Comment Code						
T1 : Trim trees to at least five feet above ground level.						
Inspector Comment						

No Photos

LM Start	1.01	Rating **	U	Issue No.	40
LM End	1.01	Issue Type +	Ma	Location *	LS
Category	Earthen Levee			GPS Latitude/Longitude	
				Start	End
Item	Vegetation			38.489283 °	38.489283 °
				-121.555223 °	-121.555223 °
DWR ID	DWR_RD0765_01_s_2012_40				
Comment Code					
V2 : Remove the wild growth other than native grasses from the levee slopes.					
Inspector Comment					
Wild growth on landward slope.					

Photo 1 of 2 : FA_2017_RD0765_211_40_20170901_00042.jpg



Looking south at new growth on landward slope. (Spring 2017)

* Location		** Rating		+ Issue Type	
LS : Land Side	N/A : Not Applicable	A : Acceptable	N : Not Inspected/Rated	Ma : Maintenance Deficiency	
WS : Water Side		M : Minimally Acceptable	C : Corrected	Ob : Design & System Obsolescence	
CR : Crown		U : Unacceptable	A/W : Acceptable but Monitor & Maintain	En : Enforcement	

**Flood Control Project Maintenance
Levee Inspections**

Maintenance Issue Types Only, Levee Inspection Report By Mile - Fall 2017

Reclamation District No. 0765 Glide

Waterway	Bank	Unit Miles	Inspection Start/End	Inspector
Unit No. 01 Sacramento River	Right	1.72	09/05/2017 09/05/2017	Dave Torres

LM Start	1.01	Rating **	U	Issue No.	40 (cont)	
LM End	1.01	Issue Type +	Ma	Location *	LS	
Category	Earthen Levee			GPS Latitude/Longitude		
				Start	End	
Item	Vegetation			38.489283 °	38.489283 °	
				-121.555223 °	-121.555223 °	
DWR ID	DWR_RD0765_01_s_2012_40					
Comment Code						
V2 : Remove the wild growth other than native grasses from the levee slopes.						
Inspector Comment						
Wild growth on landward slope.						

Photo 2 of 2 : FA_2017_RD0765_211_40_20170901_00043.jpg



Looking southwest at fig trees and other trees on landside slope and toe.
(Fall 2016)

LM Start	1.07	Rating **	M	Issue No.	37
LM End	1.07	Issue Type +	Ma	Location *	LS
Category	Earthen Levee			GPS Latitude/Longitude	
				Start	End
Item	Trim / Thin Trees			38.488503 °	38.488503 °
				-121.554757 °	-121.554757 °
DWR ID	DWR_RD0765_01_s_2012_37				
Comment Code					
T2 : Thin trees to allow visibility of the ground and room to flood fight.					
Inspector Comment					
Untrimmed trees on landward slope.					

No Photos

* Location LS : Land Side N/A : Not Applicable WS : Water Side CR : Crown		** Rating A : Acceptable N : Not Inspected/Rated M : Minimally Acceptable C : Corrected U : Unacceptable A/W : Acceptable but Monitor & Maintain		+ Issue Type Ma : Maintenance Deficiency Ob : Design & System Obsolescence En : Enforcement
----------------------------------------------------------------------------------------------	--	---------------------------------------------------------------------------------------------------------------------------------------------------------------------------------------------------------------	--	-------------------------------------------------------------------------------------------------------------

**Flood Control Project Maintenance
Levee Inspections**

Maintenance Issue Types Only, Levee Inspection Report By Mile - Fall 2017

Reclamation District No. 0765 Glide

Waterway	Bank	Unit Miles	Inspection Start/End	Inspector
Unit No. 01 Sacramento River	Right	1.72	09/05/2017 09/05/2017	Dave Torres

LM Start	1.09	Rating **	M	Issue No.	38
LM End	1.15	Issue Type +	Ma	Location *	LS
Category	Earthen Levee			GPS Latitude/Longitude	
				Start	End
Item	Trim / Thin Trees			38.488279 °	38.487465 °
				-121.554615 °	-121.554117 °
DWR ID	DWR_RD0765_01_s_2012_38				
Comment Code					
T1 : Trim trees to at least five feet above ground level.					
Inspector Comment					

Photo 1 of 1 : FA_2017_RD0765_211_38_20170901_00039.jpg



Looking southwest at untrimmed trees on landward slope.

LM Start	1.10	Rating **	M	Issue No.	65
LM End	1.14	Issue Type +	Ma	Location *	WS
Category	Earthen Levee			GPS Latitude/Longitude	
				Start	End
Item	Vegetation			38.488058 °	38.487646 °
				-121.554461 °	-121.554212 °
DWR ID	DWR_RD0765_01_f_2016_65				
Comment Code					
V2 : Remove the wild growth other than native grasses from the levee slopes.					
Inspector Comment					
Vegetation on the waterside slope.					

Photo 1 of 1 : FA_2017_RD0765_211_65_20170901_00066.jpg



Looking north at wildroses and untrimmed trees on waterward shoulder and slope.

* Location LS : Land Side N/A : Not Applicable WS : Water Side CR : Crown		** Rating A : Acceptable M : Minimally Acceptable U : Unacceptable N : Not Inspected/Rated C : Corrected A/W : Acceptable but Monitor & Maintain		+ Issue Type Ma : Maintenance Deficiency Ob : Design & System Obsolescence En : Enforcement	
---------------------------------------------------------------------------------------	--	--------------------------------------------------------------------------------------------------------------------------------------------------------------------	--	------------------------------------------------------------------------------------------------------	--

**Flood Control Project Maintenance
Levee Inspections**

Maintenance Issue Types Only, Levee Inspection Report By Mile - Fall 2017

Reclamation District No. 0765 Glide

Waterway	Bank	Unit Miles	Inspection Start/End	Inspector
Unit No. 01 Sacramento River	Right	1.72	09/05/2017 09/05/2017	Dave Torres

LM Start	1.17	Rating **	M	Issue No.	62
LM End	1.27	Issue Type +	Ma	Location *	WS
Category	Earthen Levee			GPS Latitude/Longitude	
				Start	End
Item	Vegetation			38.487151 °	38.485951 °
				-121.553886 °	-121.553157 °
DWR ID	DWR_RD0765_01_f_2016_62				
Comment Code					
V2 : Remove the wild growth other than native grasses from the levee slopes.					
Inspector Comment					

No Photos

LM Start	1.28	Rating **	U	Issue No.	33
LM End	1.32	Issue Type +	Ma	Location *	LS
Category	Earthen Levee			GPS Latitude/Longitude	
				Start	End
Item	Vegetation			38.485699 °	38.485161 °
				-121.553107 °	-121.552806 °
DWR ID	DWR_RD0765_01_f_2015_33				
Comment Code					
V2 : Remove the wild growth other than native grasses from the levee slopes.					
Inspector Comment					
Dense vines on landward slope and toe.					

Photo 1 of 3 : FA_2017_RD0765_211_33_20170919_00079.jpg



Looking south at the landside slope.

LM Start	1.28	Rating **	U	Issue No.	33 (cont)
LM End	1.32	Issue Type +	Ma	Location *	LS

Photo 2 of 3 : FA_2017_RD0765_211_33_20170901_00036.jpg



Looking west at dead vines on landward slope. (Spring 2017)

* Location LS : Land Side N/A : Not Applicable WS : Water Side CR : Crown		** Rating A : Acceptable M : Minimally Acceptable U : Unacceptable		N : Not Inspected/Rated C : Corrected A/W : Acceptable but Monitor & Maintain		+ Issue Type Ma : Maintenance Deficiency Ob : Design & System Obsolescence En : Enforcement	
---------------------------------------------------------------------------------------	--	-----------------------------------------------------------------------------	--	-------------------------------------------------------------------------------------	--	------------------------------------------------------------------------------------------------------	--

**Flood Control Project Maintenance
Levee Inspections**

Maintenance Issue Types Only, Levee Inspection Report By Mile - Fall 2017

Reclamation District No. 0765 Glide

Waterway	Bank	Unit Miles	Inspection Start/End	Inspector
Unit No. 01 Sacramento River	Right	1.72	09/05/2017 09/05/2017	Dave Torres

LM Start	1.28	Rating **	U	Issue No.	33 (cont)
LM End	1.32	Issue Type +	Ma	Location *	LS
Category	Earthen Levee			GPS Latitude/Longitude	
				Start	End
Item	Vegetation			38.485699 °	38.485161 °
				-121.553107 °	-121.552806 °
DWR ID	DWR_RD0765_01_f_2015_33				
Comment Code					
V2 : Remove the wild growth other than native grasses from the levee slopes.					
Inspector Comment					
Dense vines on landward slope and toe.					

Photo 3 of 3 : FA_2017_RD0765_211_33_20170901_00037.jpg



Looking west at dense vegetation (grapevines) on landward slope. (Fall 2016)

LM Start	1.29	Rating **	M	Issue No.	56
LM End	1.37	Issue Type +	Ma	Location *	WS
Category	Earthen Levee			GPS Latitude/Longitude	
				Start	End
Item	Vegetation			38.485662 °	38.484617 °
				-121.553001 °	-121.552327 °
DWR ID	DWR_RD0765_01_f_2016_56				
Comment Code					
V2 : Remove the wild growth other than native grasses from the levee slopes.					
Inspector Comment					
Wild gape vines on waterward slope					

Photo 1 of 1 : FA_2017_RD0765_211_56_20170919_00077.jpg



Looking northwest at waterside slope.

* Location LS : Land Side N/A : Not Applicable WS : Water Side CR : Crown		** Rating A : Acceptable N : Not Inspected/Rated M : Minimally Acceptable C : Corrected U : Unacceptable A/W : Acceptable but Monitor & Maintain		+ Issue Type Ma : Maintenance Deficiency Ob : Design & System Obsolescence En : Enforcement
----------------------------------------------------------------------------------------------	--	---------------------------------------------------------------------------------------------------------------------------------------------------------------------------------------------------------------	--	-------------------------------------------------------------------------------------------------------------

**Flood Control Project Maintenance
Levee Inspections**

Maintenance Issue Types Only, Levee Inspection Report By Mile - Fall 2017

Reclamation District No. 0765 Glide

Waterway	Bank	Unit Miles	Inspection Start/End	Inspector
Unit No. 01 Sacramento River	Right	1.72	09/05/2017 09/05/2017	Dave Torres

LM Start	1.29	Rating **	M	Issue No.	26
LM End	1.29	Issue Type +	Ma	Location *	LS
Category	Earthen Levee			GPS Latitude/Longitude	
				Start	End
Item	Trim / Thin Trees			38.485561 °	38.485561 °
				-121.553031 °	-121.553031 °
DWR ID	DWR_RD0765_01_s_2012_26				
Comment Code					
T1 : Trim trees to at least five feet above ground level.					
Inspector Comment					

No Photos

LM Start	1.32	Rating **	M	Issue No.	7
LM End	1.34	Issue Type +	Ma	Location *	WS
Category	Earthen Levee			GPS Latitude/Longitude	
				Start	End
Item	Encroachments			38.485287 °	38.485014 °
				-121.552818 °	-121.552618 °
DWR ID	DWR_RD0765_01_s_2015_7				
Comment Code					
TR : Tree or limb					
Inspector Comment					
Downed tree branches across waterward slope.					

LM Start	1.32	Rating **	M	Issue No.	7 (cont)
LM End	1.34	Issue Type +	Ma	Location *	WS

Photo 1 of 4 : FA_2017_RD0765_211_7_20170901_00008.jpg



Looking southeast at branch on waterward slope.

Photo 2 of 4 : FA_2017_RD0765_211_7_20170901_00009.jpg



Looking northeast at tree limbs on waterward slope.

* Location LS : Land Side N/A : Not Applicable WS : Water Side CR : Crown		** Rating A : Acceptable M : Minimally Acceptable U : Unacceptable N : Not Inspected/Rated C : Corrected A/W : Acceptable but Monitor & Maintain		+ Issue Type Ma : Maintenance Deficiency Ob : Design & System Obsolescence En : Enforcement
----------------------------------------------------------------------------------------------	--	---------------------------------------------------------------------------------------------------------------------------------------------------------------------------	--	-------------------------------------------------------------------------------------------------------------

**Flood Control Project Maintenance
Levee Inspections**

Maintenance Issue Types Only, Levee Inspection Report By Mile - Fall 2017

Reclamation District No. 0765 Glide

Waterway	Bank	Unit Miles	Inspection Start/End	Inspector
Unit No. 01 Sacramento River	Right	1.72	09/05/2017 09/05/2017	Dave Torres

LM Start	1.32	Rating **	M	Issue No.	7 (cont)	
LM End	1.34	Issue Type +	Ma	Location *	WS	
Category	Earthen Levee			GPS Latitude/Longitude		
				Start		End
Item	Encroachments			38.485287 °		38.485014 °
				-121.552818 °		-121.552618 °
DWR ID	DWR_RD0765_01_s_2015_7					
Comment Code						
TR : Tree or limb						
Inspector Comment						
Downed tree branches across waterward slope.						

LM Start	1.32	Rating **	M	Issue No.	7 (cont)
LM End	1.34	Issue Type +	Ma	Location *	WS

Photo 3 of 4 : FA_2017_RD0765_211_7_20170901_00010.jpg



Looking at several tree branches on waterward slope and berm.(2015)

Photo 4 of 4 : FA_2017_RD0765_211_7_20170901_00011.jpg



Looking north at down tree across waterward slope.(2015)

LM Start	1.39	Rating **	M	Issue No.	4	
LM End	1.39	Issue Type +	Ma	Location *	WS	
Category	Earthen Levee			GPS Latitude/Longitude		
				Start		End
Item	Trim / Thin Trees			38.484316 °		38.484316 °
				-121.552115 °		-121.552115 °
DWR ID	DWR_RD0765_01_s_2012_4					
Comment Code						
T1 : Trim trees to at least five feet above ground level.						
Inspector Comment						

Photo 1 of 3 : FA_2017_RD0765_211_4_20170901_00004.jpg



Looking northeast at untrimmed trees and other vegetation on waterward slope. (Fall 2016)

* Location
LS : Land Side N/A : Not Applicable
WS : Water Side
CR : Crown

** Rating
A : Acceptable N : Not Inspected/Rated
M : Minimally Acceptable C : Corrected
U : Unacceptable A/W : Acceptable but Monitor & Maintain

+ Issue Type
Ma : Maintenance Deficiency
Ob : Design & System Obsolescence
En : Enforcement

**Flood Control Project Maintenance
Levee Inspections**

Maintenance Issue Types Only, Levee Inspection Report By Mile - Fall 2017

Reclamation District No. 0765 Glide

Waterway	Bank	Unit Miles	Inspection Start/End	Inspector
Unit No. 01 Sacramento River	Right	1.72	09/05/2017 09/05/2017	Dave Torres

LM Start	1.43	Rating **	M	Issue No.	67
LM End	1.43	Issue Type +	Ma	Location *	WS
Category	Earthen Levee			GPS Latitude/Longitude	
				Start	End
Item	Encroachments			38.483810 °	38.483810 °
				-121.551747 °	-121.551747 °
DWR ID	DWR_RD0765_01_s_2017_67				
Comment Code					
GA : Garbage					
Inspector Comment					
Sofa dumped on waterward slope.					

Photo 1 of 1 : FA_2017_RD0765_211_67_20170901_00067.jpg



Looking east at sofa on waterward slope.

LM Start	1.44	Rating **	M	Issue No.	41
LM End	1.44	Issue Type +	Ma	Location *	LS
Category	Earthen Levee			GPS Latitude/Longitude	
				Start	End
Item	Trim / Thin Trees			38.483640 °	38.483640 °
				-121.551727 °	-121.551727 °
DWR ID	DWR_RD0765_01_s_2012_41				
Comment Code					
T1 : Trim trees to at least five feet above ground level.					
Inspector Comment					

No Photos

LM Start	1.47	Rating **	M	Issue No.	64
LM End	1.47	Issue Type +	Ma	Location *	WS
Category	Earthen Levee			GPS Latitude/Longitude	
				Start	End
Item	Encroachments			38.483333 °	38.483333 °
				-121.551440 °	-121.551440 °
DWR ID	DWR_RD0765_01_s_2016_64				
Comment Code					
TR : Tree or limb					
Inspector Comment					
Remove fallen tree on waterward slope.					

Photo 1 of 1 : FA_2017_RD0765_211_64_20170901_00065.jpg



Looking at fallen tree on waterward slope and toe.

* Location
LS : Land Side N/A : Not Applicable
WS : Water Side
CR : Crown

** Rating
A : Acceptable N : Not Inspected/Rated
M : Minimally Acceptable C : Corrected
U : Unacceptable A/W : Acceptable but Monitor & Maintain

+ Issue Type
Ma : Maintenance Deficiency
Ob : Design & System Obsolescence
En : Enforcement

**Flood Control Project Maintenance
Levee Inspections**

Maintenance Issue Types Only, Levee Inspection Report By Mile - Fall 2017

Reclamation District No. 0765 Glide

Waterway	Bank	Unit Miles	Inspection Start/End	Inspector
Unit No. 01 Sacramento River	Right	1.72	09/05/2017 09/05/2017	Dave Torres

LM Start	1.48	Rating **	M	Issue No.	42
LM End	1.50	Issue Type +	Ma	Location *	LS
Category	Earthen Levee			GPS Latitude/Longitude	
				Start	End
Item	Trim / Thin Trees			38.483170 °	38.482965 °
				-121.551367 °	-121.551265 °
DWR ID	DWR_RD0765_01_s_2012_42				
Comment Code					
T1 : Trim trees to at least five feet above ground level.					
Inspector Comment					

No Photos

LM Start	1.51	Rating **	M	Issue No.	50
LM End	1.51	Issue Type +	Ma	Location *	WS
Category	Earthen Levee			GPS Latitude/Longitude	
				Start	End
Item	Trim / Thin Trees			38.482870 °	38.482870 °
				-121.551127 °	-121.551127 °
DWR ID	DWR_RD0765_01_s_2016_50				
Comment Code					
T1 : Trim trees to at least five feet above ground level.					
Inspector Comment					

Photo 1 of 2 : FA_2017_RD0765_211_50_20170919_00076.jpg



Looking northwest on waterside slope.

LM Start	1.51	Rating **	M	Issue No.	50 (cont)
LM End	1.51	Issue Type +	Ma	Location *	WS

Photo 2 of 2 : FA_2017_RD0765_211_50_20170901_00050.jpg



Looking east at untrimmed tree on waterward slope.

* Location LS : Land Side N/A : Not Applicable WS : Water Side CR : Crown		** Rating A : Acceptable N : Not Inspected/Rated M : Minimally Acceptable C : Corrected U : Unacceptable A/W : Acceptable but Monitor & Maintain		+ Issue Type Ma : Maintenance Deficiency Ob : Design & System Obsolescence En : Enforcement
----------------------------------------------------------------------------------------------	--	---------------------------------------------------------------------------------------------------------------------------------------------------------------------------------------------------------------	--	-------------------------------------------------------------------------------------------------------------

**Flood Control Project Maintenance
Levee Inspections**

Maintenance Issue Types Only, Levee Inspection Report By Mile - Fall 2017

Reclamation District No. 0765 Glide

Waterway	Bank	Unit Miles	Inspection Start/End	Inspector
Unit No. 01 Sacramento River	Right	1.72	09/05/2017 09/05/2017	Dave Torres

LM Start	1.52	Rating **	U	Issue No.	29
LM End	1.62	Issue Type +	Ma	Location *	LS
Category	Earthen Levee			GPS Latitude/Longitude	
				Start	End
Item	Vegetation			38.482665 °	38.481421 °
				-121.551036 °	-121.550207 °
DWR ID	DWR_RD0765_01_s_2012_29				
Comment Code					
V2 : Remove the wild growth other than native grasses from the levee slopes.					
Inspector Comment					
Dense berryvines and dense trees on landward slope has been in place for multiple inspection cycles.					

Photo 1 of 5 : FA_2017_RD0765_211_29_20170919_00078.jpg



Looking northwest at the landside slope.

LM Start	1.52	Rating **	U	Issue No.	29 (cont)
LM End	1.62	Issue Type +	Ma	Location *	LS

Photo 2 of 5 : FA_2017_RD0765_211_29_20170901_00030.jpg

Looking southwest at dead vines and other veg on landward slope.
(Spring 2017)

LM Start	1.52	Rating **	U	Issue No.	29 (cont)
LM End	1.62	Issue Type +	Ma	Location *	LS

Photo 3 of 5 : FA_2017_RD0765_211_29_20170901_00031.jpg



Looking northwest at berryvines on landward slope and toe. (Fall 2016)

* Location LS : Land Side N/A : Not Applicable WS : Water Side CR : Crown		** Rating A : Acceptable M : Minimally Acceptable U : Unacceptable		N : Not Inspected/Rated C : Corrected A/W : Acceptable but Monitor & Maintain		+ Issue Type Ma : Maintenance Deficiency Ob : Design & System Obsolescence En : Enforcement	
---------------------------------------------------------------------------------------	--	-----------------------------------------------------------------------------	--	-------------------------------------------------------------------------------------	--	------------------------------------------------------------------------------------------------------	--

**Flood Control Project Maintenance
Levee Inspections**

Maintenance Issue Types Only, Levee Inspection Report By Mile - Fall 2017

Reclamation District No. 0765 Glide

Waterway	Bank	Unit Miles	Inspection Start/End	Inspector
Unit No. 01 Sacramento River	Right	1.72	09/05/2017 09/05/2017	Dave Torres

LM Start	1.52	Rating **	U	Issue No.	29 (cont)	
LM End	1.62	Issue Type +	Ma	Location *	LS	
Category	Earthen Levee			GPS Latitude/Longitude		
				Start		End
Item	Vegetation			38.482665 °		38.481421 °
				-121.551036 °		-121.550207 °
DWR ID	DWR_RD0765_01_s_2012_29					
Comment Code						
V2 : Remove the wild growth other than native grasses from the levee slopes.						
Inspector Comment						
Dense berryvines and dense trees on landward slope has been in place for multiple inspection cycles.						

Photo 4 of 5 : FA_2017_RD0765_211_29_20170901_00032.jpg



Looking southwest at dense berry vines and other vegetation on landward slope. (Fall 2016)

LM Start	1.52	Rating **	U	Issue No.	29 (cont)
LM End	1.62	Issue Type +	Ma	Location *	LS

Photo 5 of 5 : FA_2017_RD0765_211_29_20170901_00033.jpg



Looking southwest at ground cover on landward slope. (Spring 2016)

LM Start	1.53	Rating **	U	Issue No.	48
LM End	1.56	Issue Type +	Ma	Location *	WS
Category	Earthen Levee			GPS Latitude/Longitude	
				Start	End
Item	Vegetation			38.482539 °	38.482144 °
				-121.550887 °	-121.550657 °
DWR ID	DWR_RD0765_01_f_2016_48				
Comment Code					
V2 : Remove the wild growth other than native grasses from the levee slopes.					
Inspector Comment					
Wildgrape vines on waterward slope should be removed from waterward slope.					

Photo 1 of 3 : FA_2017_RD0765_211_48_20170919_00075.jpg



Looking southeast at the waterside slope.

* Location
LS : Land Side N/A : Not Applicable
WS : Water Side
CR : Crown

** Rating
A : Acceptable N : Not Inspected/Rated
M : Minimally Acceptable C : Corrected
U : Unacceptable A/W : Acceptable but Monitor & Maintain

+ Issue Type
Ma : Maintenance Deficiency
Ob : Design & System Obsolescence
En : Enforcement

**Flood Control Project Maintenance
Levee Inspections**

Maintenance Issue Types Only, Levee Inspection Report By Mile - Fall 2017

Reclamation District No. 0765 Glide

Waterway	Bank	Unit Miles	Inspection Start/End	Inspector
Unit No. 01 Sacramento River	Right	1.72	09/05/2017 09/05/2017	Dave Torres

LM Start	1.53	Rating **	U	Issue No.	48 (cont)
LM End	1.56	Issue Type +	Ma	Location *	WS
Category	Earthen Levee			GPS Latitude/Longitude	
				Start	End
Item	Vegetation			38.482539 °	38.482144 °
				-121.550887 °	-121.550657 °
DWR ID	DWR_RD0765_01_f_2016_48				
Comment Code					
V2 : Remove the wild growth other than native grasses from the levee slopes.					
Inspector Comment					
Wildgrape vines on waterward slope should be removed from waterward slope.					

LM Start	1.53	Rating **	U	Issue No.	48 (cont)
LM End	1.56	Issue Type +	Ma	Location *	WS

Photo 2 of 3 : FA_2017_RD0765_211_48_20170901_00047.jpg



Looking north at dead vines on waterward slope. (Spring 2017)

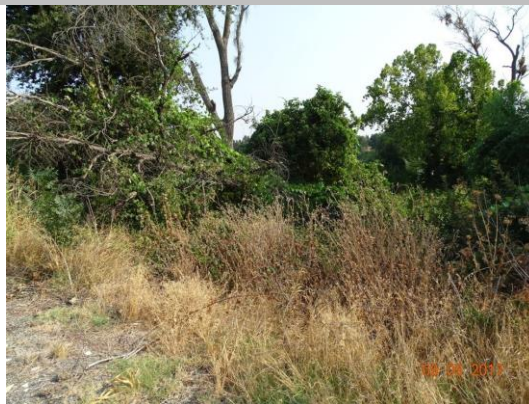
Photo 3 of 3 : FA_2017_RD0765_211_48_20170901_00048.jpg



Looking northeast at vines on waterward slope. (Fall 2016)

LM Start	1.58	Rating **	U	Issue No.	1
LM End	1.58	Issue Type +	Ma	Location *	WS
Category	Earthen Levee			GPS Latitude/Longitude	
				Start	End
Item	Encroachments			38.481959 °	38.481959 °
				-121.550527 °	-121.550527 °
DWR ID	DWR_RD0765_01_f_2017_1				
Comment Code					
TR : Tree or limb					
Inspector Comment					
Downed tree on waterward slope					

Photo 1 of 1 : FA_2017_RD0765_211_1_20170919_00070.jpg



Looking north at the downed tree.

* Location		** Rating		+ Issue Type	
LS : Land Side	N/A : Not Applicable	A : Acceptable	N : Not Inspected/Rated	Ma : Maintenance Deficiency	
WS : Water Side		M : Minimally Acceptable	C : Corrected	Ob : Design & System Obsolescence	
CR : Crown		U : Unacceptable	A/W : Acceptable but Monitor & Maintain	En : Enforcement	

**Flood Control Project Maintenance
Levee Inspections**

Maintenance Issue Types Only, Levee Inspection Report By Mile - Fall 2017

Reclamation District No. 0765 Glide

Waterway	Bank	Unit Miles	Inspection Start/End	Inspector
Unit No. 01 Sacramento River	Right	1.72	09/05/2017 09/05/2017	Dave Torres

LM Start	1.59	Rating **	U	Issue No.	39
LM End	1.59	Issue Type +	Ma	Location *	WS
Category	Earthen Levee			GPS Latitude/Longitude	
				Start	End
Item	Encroachments			38.481798 °	38.481798 °
				-121.550449 °	-121.550449 °
DWR ID	DWR_RD0765_01_f_2016_39				
Comment Code					
TR : Tree or limb					
Inspector Comment					
Downed tree on waterward slope.					

Photo 1 of 1 : FA_2017_RD0765_211_39_20170919_00074.jpg



Looking north at the waterside slope.

LM Start	1.59	Rating **	M	Issue No.	52
LM End	1.72	Issue Type +	Ma	Location *	WS
Category	Earthen Levee			GPS Latitude/Longitude	
				Start	End
Item	Trim / Thin Trees			38.481782 °	38.480164 °
				-121.550426 °	-121.549445 °
DWR ID	DWR_RD0765_01_s_2013_52				
Comment Code					
T1 : Trim trees to at least five feet above ground level.					
Inspector Comment					

No Photos

LM Start	1.59	Rating **	U	Issue No.	25
LM End	1.72	Issue Type +	Ma	Location *	WS
Category	Earthen Levee			GPS Latitude/Longitude	
				Start	End
Item	Vegetation			38.481782 °	38.480140 °
				-121.550426 °	-121.549426 °
DWR ID	DWR_RD0765_01_f_2016_25				
Comment Code					
V2 : Remove the wild growth other than native grasses from the levee slopes.					
Inspector Comment					
Dense vegetation on waterward slope.					

Photo 1 of 2 : FA_2017_RD0765_211_25_20170919_00085.jpg



Looking southeast at waterside slope.

* Location		** Rating		+ Issue Type	
LS : Land Side	N/A : Not Applicable	A : Acceptable	N : Not Inspected/Rated	Ma : Maintenance Deficiency	
WS : Water Side		M : Minimally Acceptable	C : Corrected	Ob : Design & System Obsolescence	
CR : Crown		U : Unacceptable	A/W : Acceptable but Monitor & Maintain	En : Enforcement	

**Flood Control Project Maintenance
Levee Inspections**

Maintenance Issue Types Only, Levee Inspection Report By Mile - Fall 2017

Reclamation District No. 0765 Glide

Waterway	Bank	Unit Miles	Inspection Start/End	Inspector
Unit No. 01 Sacramento River	Right	1.72	09/05/2017 09/05/2017	Dave Torres

LM Start	1.59	Rating **	U	Issue No.	25 (cont)
LM End	1.72	Issue Type +	Ma	Location *	WS
Category	Earthen Levee			GPS Latitude/Longitude	
				Start	End
Item	Vegetation			38.481782 °	38.480140 °
				-121.550426 °	-121.549426 °
DWR ID	DWR_RD0765_01_f_2016_25				
Comment Code					
V2 : Remove the wild growth other than native grasses from the levee slopes.					
Inspector Comment					
Dense vegetation on waterward slope.					

Photo 2 of 2 : FA_2017_RD0765_211_25_20170901_00026.jpg



Looking south on at dense berryvines on waterward slope.

LM Start	1.66	Rating **	U	Issue No.	53
LM End	1.67	Issue Type +	Ma	Location *	WS
Category	Earthen Levee			GPS Latitude/Longitude	
				Start	End
Item	Trim / Thin Trees			38.480892 °	38.480800 °
				-121.549654 °	-121.549583 °
DWR ID	DWR_RD0765_01_s_2013_53				
Comment Code					
T1 : Trim trees to at least five feet above ground level.					
Inspector Comment					
Untrimmed trees on waterward slope.					

Photo 1 of 2 : FA_2017_RD0765_211_53_20170901_00052.jpg



Looking north at dense untrimmed trees on waterward slope. (Spring 2017)

LM Start	1.66	Rating **	U	Issue No.	53 (cont)
LM End	1.67	Issue Type +	Ma	Location *	WS

Photo 2 of 2 : FA_2017_RD0765_211_53_20170901_00053.jpg



Looking north at dense vegetation on waterward slope. (Fall 2016)

* Location LS : Land Side N/A : Not Applicable WS : Water Side CR : Crown		** Rating A : Acceptable M : Minimally Acceptable U : Unacceptable		N : Not Inspected/Rated C : Corrected A/W : Acceptable but Monitor & Maintain		+ Issue Type Ma : Maintenance Deficiency Ob : Design & System Obsolescence En : Enforcement	
----------------------------------------------------------------------------------------------	--	------------------------------------------------------------------------------------	--	-------------------------------------------------------------------------------------	--	-------------------------------------------------------------------------------------------------------------	--

**Flood Control Project Maintenance
Levee Inspections**

Maintenance Issue Types Only, Levee Inspection Report By Mile - Fall 2017

Reclamation District No. 0765 Glide

Waterway	Bank	Unit Miles	Inspection Start/End	Inspector
Unit No. 01 Sacramento River	Right	1.72	09/05/2017 09/05/2017	Dave Torres

LM Start	1.67	Rating **	M	Issue No.	13
LM End	1.68	Issue Type +	Ma	Location *	WS
Category	Earthen Levee			GPS Latitude/Longitude	
				Start	End
Item	Encroachments			38.480763 °	38.480632 °
				-121.549581 °	-121.549543 °
DWR ID	DWR_RD0765_01_s_2012_13				
Comment Code					
PR : Prunings					
Inspector Comment					
Large tree branch on waterward slope.					

Photo 1 of 2 : FA_2017_RD0765_211_13_20170919_00086.jpg



Looking northwest at tree limb in vegetation on waterside slope.

LM Start	1.67	Rating **	M	Issue No.	13 (cont)
LM End	1.68	Issue Type +	Ma	Location *	WS

Photo 2 of 2 : FA_2017_RD0765_211_13_20170901_00015.jpg



Looking northwest at large tree limb on waterward slope.

* Location LS : Land Side N/A : Not Applicable WS : Water Side CR : Crown		** Rating A : Acceptable N : Not Inspected/Rated M : Minimally Acceptable C : Corrected U : Unacceptable A/W : Acceptable but Monitor & Maintain		+ Issue Type Ma : Maintenance Deficiency Ob : Design & System Obsolescence En : Enforcement
----------------------------------------------------------------------------------------------	--	---------------------------------------------------------------------------------------------------------------------------------------------------------------------------------------------------------------	--	-------------------------------------------------------------------------------------------------------------