

## Flood Control Project Maintenance Levee Inspections

### Fall 2024 Levee Maintenance Deficiency Summary Report

#### Sacramento River Basin

<b>RD0765</b>	Overall LMA Rating	Total LMA Miles						
<b>Reclamation District No. 0765 Glide</b>	<b>U</b>	<b>1.72</b>						
Rated Item	Maintenance Deficiency				Enforcement		Design & System Obsolescence	
	M Miles	U Miles	M + 4U Miles	Threshold %	M Miles	U Miles	M Miles	U Miles
<i>Earthen Levee</i>								
Vegetation	0.01		0.01	0.58%	0.01			
Trim / Thin Trees		0.07	0.28	16.26%				
Encroachments					0.19			
Erosion / Foot Traffic	0.01	0.03	0.13	7.55%				
Erosion / Rills	0.01		0.01	0.58%				
Erosion / Vehicle Traffic	0.02		0.02	1.16%				
Flood Preparedness & Training	0.02		0.02	1.16%				
<i>LMA Totals:</i>	0.07	0.10	0.47	27.29%	0.20	0.00	0.00	0.00

<b>Unit No. 01 Sacramento River RB</b>	Overall Unit Rating	Total Unit Miles						
<b>RD0765</b>	<b>U</b>	<b>1.72</b>						
Rated Item	Maintenance Deficiency				Enforcement		Design & System Obsolescence	
	M Miles	U Miles	M + 4U Miles	Threshold %	M Miles	U Miles	M Miles	U Miles
<i>Earthen Levee</i>								
Vegetation	0.01		0.01	0.58%	0.01			
Trim / Thin Trees		0.07	0.28	16.26%				
Encroachments					0.19			
Erosion / Foot Traffic	0.01	0.03	0.13	7.55%				
Erosion / Rills	0.01		0.01	0.58%				
Erosion / Vehicle Traffic	0.02		0.02	1.16%				
<i>Unit Totals:</i>	0.05	0.10	0.45	26.13%	0.20	0.00	0.00	0.00

**Flood Control Project Maintenance  
Levee Inspections  
LMA District Cover Sheet**

**Reclamation District No. 0765 Glide**

	Spring (March - May)	Summer ** (June - August)	Fall (September - November)	Winter ** (December - February)
† Overall LMA Rating (Fall Only)			U	

\*\* Non-receipt of Summer or Winter Inspection  
Reports may effect overall annual rating.

† SPRING INSPECTIONS: Overall maintenance ratings are not determined for the spring inspection results. Individual maintenance deficiencies are rated using the same criteria in the spring and in the fall.

FALL INSPECTIONS: The overall maintenance rating shown above is based on operation and maintenance deficiencies identified within the attached unit inspection reports. This rating is not intended to be an indication of risk.

Comments


**Flood Control Project Maintenance  
Levee Inspections  
Unit Cover Sheet**

**Reclamation District No. 0765 Glide**

Waterway			Bank	Unit Miles
Unit No. 01 Sacramento River			Right	1.72
	Spring (March - May)	Summer (June - August)	(September - November) Fall	Winter (December - February)
Unit Maintenance Rating (Fall Only)			U	
Date of Inspection	3/19/2024 - 3/19/2024		9/17/2024 - 9/17/2024	
DWR Inspector	Marvin Marshall		Marvin Marshall	
Accompanied By				

**Summer & Winter Inspections**

The Local Maintaining Agency (LMA) is responsible for summer and winter inspections. The LMA is required to submit a report regarding summer and winter inspections to the California Department of Water Resources (DWR).

DWR must be informed on the:

- a) completion of the inspection
- b) any changes other than the results of normal maintenance
- c) corrections to deficiencies noted in this report

If additional items are noted, further documentation of those items must also be submitted.

The LMA should submit this information to DWR using the LMA web application tool available at:

<http://cdec.water.ca.gov/lma.html>

If the LMA is unable to submit information on this webpage, please contact DWR for assistance.

*The LMA should submit the information and any associated documentation by September 30 for summer inspections and March 31 for winter inspections.*

**Flood Control Project Maintenance  
Levee Inspections**

**Levee Inspection Report By Mile - Fall 2024**

**Reclamation District No. 0765 Glide**

Waterway	Bank	Unit Miles	Inspection Start/End	Inspector
Unit No. 01 Sacramento River	Right	1.72	09/17/2024 09/17/2024	Marvin Marshall

LM Start		Rating **	A	Issue No.	18		
LM End		Issue Type +	Ma	Location *	N/A		
Category	Earthen Levee			GPS Latitude/Longitude			
				Start		End	
Item	Emergency Supplies & Equipment				o		o
					o		o
DWR ID	DWR_RD0765_01_s _ 2013_18						
Comment Code							
ES : Emergency Supplies & Equipment							
Inspector Comment							
The District is part of the Delta Emergency plan where supplies are kept in a central location that they can gain access to if and when needed.							

No Photos

LM Start		Rating **	A	Issue No.	44
LM End		Issue Type +	Ma	Location *	N/A
Category	Earthen Levee			GPS Latitude/Longitude	
				Start	End
Item	Operations & Maintenance Manuals				o
					o
DWR ID	DWR_RD0765_01_s _ 2012_44				
Comment Code					
OM : O&M Manuals					
Inspector Comment					
LMA has a copy of O&M manual on file in office.					

No Photos

LM Start		Rating **	M	Issue No.	46		
LM End		Issue Type +	Ma	Location *	N/A		
Category	Earthen Levee			GPS Latitude/Longitude			
				Start	End		
Item	Flood Preparedness & Training				o		o
					o		o
DWR ID	DWR_RD0765_01_s _ 2012_46						
Comment Code							
FP : Flood Preparedness & Training							
Inspector Comment							
LMA has not recently attended Flood Fight Training.							

No Photos

* Location		** Rating		+ Issue Type	
LS : Land Side	N/A : Not Applicable	A : Acceptable	N : Not Inspected/Rated	Ma : Maintenance Deficiency	
WS : Water Side		M : Minimally Acceptable	C : Corrected	Ob : Design & System Obsolescence	
CR : Crown		U : Unacceptable	A/W : Acceptable but Monitor & Maintain	En : Enforcement	

**Flood Control Project Maintenance  
Levee Inspections****Levee Inspection Report By Mile - Fall 2024****Reclamation District No. 0765 Glide**

Waterway	Bank	Unit Miles	Inspection Start/End	Inspector
Unit No. 01 Sacramento River	Right	1.72	09/17/2024 09/17/2024	Marvin Marshall

LM Start	0.00	Rating **	M	Issue No.	12
LM End	0.08	Issue Type +	En	Location *	LS
Category	Earthen Levee			GPS Latitude/Longitude	
				Start	End
Item	Encroachments			38.502962 °	38.501772 °
				-121.560112 °	-121.560250 °
DWR ID	DWR_RD0765_01_s_2020_12				
Comment Code					
FE : Fence					
Inspector Comment					
Fence prevents access on the landside slope.					

Photo 1 of 1 : FA\_2024\_RD0765\_211\_12\_20240911\_00007.jpg



Fence on the LS shoulder. Spring 2024

LM Start	0.02	Rating **	U	Issue No.	20
LM End	0.02	Issue Type +	Ma	Location *	WS
Category	Earthen Levee			GPS Latitude/Longitude	
				Start	End
Item	Erosion / Foot Traffic			38.502711 °	38.502711 °
				-121.560019 °	-121.560019 °
DWR ID	DWR_RD0765_01_f_2023_20				
Comment Code					
E3 : Repair the levee slope damaged by foot traffic and prevent access where possible.					
Inspector Comment					
Repair erosion caused by foot traffic.					

Photo 1 of 1 : FA\_2024\_RD0765\_211\_20\_20240911\_00010.jpg



Footpath on the WS slope. Spring 2024

LM Start	0.11	Rating **	M	Issue No.	11
LM End	0.11	Issue Type +	En	Location *	LS
Category	Earthen Levee			GPS Latitude/Longitude	
				Start	End
Item	Encroachments			38.501423 °	38.501423 °
				-121.560409 °	-121.560409 °
DWR ID	DWR_RD0765_01_s_2021_11				
Comment Code					
DE : Debris					
Inspector Comment					
Remove concrete on the LS levee toe.					

Photo 1 of 1 : FA\_2024\_RD0765\_211\_11\_20240918\_00016.jpg



Concrete footing on the LS levee toe. Spring 2024

* Location	** Rating	+ Issue Type
LS : Land Side WS : Water Side CR : Crown	A : Acceptable M : Minimally Acceptable U : Unacceptable	Ma : Maintenance Deficiency Ob : Design & System Obsolescence En : Enforcement
	N : Not Inspected/Rated C : Corrected A/W : Acceptable but Monitor & Maintain	



**Flood Control Project Maintenance  
Levee Inspections****Levee Inspection Report By Mile - Fall 2024****Reclamation District No. 0765 Glide**

Waterway	Bank	Unit Miles	Inspection Start/End	Inspector
Unit No. 01 Sacramento River	Right	1.72	09/17/2024 09/17/2024	Marvin Marshall

LM Start	0.43	Rating **	U	Issue No.	5
LM End	0.50	Issue Type +	Ma	Location *	LS
Category	Earthen Levee			GPS Latitude/Longitude	
				Start	End
Item	Trim / Thin Trees			38.496750 °	38.495772 °
				-121.560018 °	-121.559551 °
DWR ID	DWR_RD0765_01_f _ 2024_5				
Comment Code					
T1 : Trim and thin trees to at least five feet above ground level to allow visibility of the ground and room to flood fight.					
Inspector Comment					

Photo 1 of 1 : FA\_2024\_RD0765\_211\_5\_20240918\_00017.jpg



Trees on the LS slope. Fall 2024

LM Start	0.75	Rating **	M	Issue No.	68
LM End	0.75	Issue Type +	Ma	Location *	LS
Category	Earthen Levee			GPS Latitude/Longitude	
				Start	End
Item	Erosion / Rills			38.492705 °	38.492705 °
				-121.557193 °	-121.557193 °
DWR ID	DWR_RD0765_01_s_2017_68				
Comment Code					
E5 : Schedule repair of rills prior to the next inspection.					
Inspector Comment					

Photo 1 of 1 : FA\_2024\_RD0765\_211\_68\_20240918\_00018.jpg



Erosion on the LS slope. Fall 2024

LM Start	0.92	Rating **	M	Issue No.	6
LM End	0.92	Issue Type +	Ma	Location *	LS
Category	Earthen Levee			GPS Latitude/Longitude	
				Start	End
Item	Erosion / Vehicle Traffic			38.490514 °	38.490514 °
				-121.555831 °	-121.555831 °
DWR ID	DWR_RD0765_01_f_2024_6				
Comment Code					
E6 : Repair the levee slope damaged by vehicle traffic and prevent access where possible.					
Inspector Comment					

Photo 1 of 1 : FA\_2024\_RD0765\_211\_6\_20240918\_00019.jpg



Rutting on the LS shoulder. Fall 2024

* Location	** Rating	+ Issue Type
LS : Land Side WS : Water Side CR : Crown	A : Acceptable M : Minimally Acceptable U : Unacceptable	Ma : Maintenance Deficiency Ob : Design & System Obsolescence En : Enforcement
N : Not Inspected/Rated C : Corrected A/W : Acceptable but Monitor & Maintain		

**Flood Control Project Maintenance  
Levee Inspections****Levee Inspection Report By Mile - Fall 2024****Reclamation District No. 0765 Glide**

Waterway	Bank	Unit Miles	Inspection Start/End	Inspector
Unit No. 01 Sacramento River	Right	1.72	09/17/2024 09/17/2024	Marvin Marshall

LM Start	0.94	Rating **	U	Issue No.	24
LM End	0.94	Issue Type +	Ma	Location *	WS
Category	Earthen Levee			GPS Latitude/Longitude	
				Start	End
Item	Erosion / Foot Traffic			38.490265 °	38.490265 °
				-121.555617 °	-121.555617 °
DWR ID	DWR_RD0765_01_s _ 2019_24				
Comment Code					
E3 : Repair the levee slope damaged by foot traffic and prevent access where possible.					
Inspector Comment					
Erosion and footpath on the WS slope need to be repaired.					

Photo 1 of 1 : FA\_2024\_RD0765\_211\_24\_20240911\_00012.jpg



Erosion on the WS footpath. Spring 2024

LM Start	0.94	Rating **	M	Issue No.	40
LM End	0.94	Issue Type +	En	Location *	LS
Category	Earthen Levee			GPS Latitude/Longitude	
				Start	End
Item	Encroachments			38.490206 °	38.490206 °
				-121.555677 °	-121.555677 °
DWR ID	DWR_RD0765_01_s _ 2022_40				
Comment Code					
BU : Building					
Inspector Comment					
Building in the easement blocks access and visibility.					

Photo 1 of 1 : FA\_2024\_RD0765\_211\_40\_20240918\_00020.jpg



Building in the landside easement. Fall 2024

LM Start	0.95	Rating **	U	Issue No.	23
LM End	0.95	Issue Type +	Ma	Location *	WS
Category	Earthen Levee			GPS Latitude/Longitude	
				Start	End
Item	Erosion / Foot Traffic			38.490067 °	38.490067 °
				-121.555530 °	-121.555530 °
DWR ID	DWR_RD0765_01_s _ 2019_23				
Comment Code					
E3 : Repair the levee slope damaged by foot traffic and prevent access where possible.					
Inspector Comment					
Repair the erosion at the footpath on the WS slope.					

Photo 1 of 1 : FA\_2024\_RD0765\_211\_23\_20240911\_00011.jpg



Erosion at the footpath on the WS slope. Spring 2023

* Location	** Rating	+ Issue Type
LS : Land Side WS : Water Side CR : Crown	A : Acceptable M : Minimally Acceptable U : Unacceptable	Ma : Maintenance Deficiency Ob : Design & System Obsolescence En : Enforcement
N/A : Not Applicable	N : Not Inspected/Rated C : Corrected A/W : Acceptable but Monitor & Maintain	



**Flood Control Project Maintenance  
Levee Inspections**

**Levee Inspection Report By Mile - Fall 2024**

**Reclamation District No. 0765 Glide**

Waterway	Bank	Unit Miles	Inspection Start/End	Inspector
Unit No. 01 Sacramento River	Right	1.72	09/17/2024 09/17/2024	Marvin Marshall

LM Start	0.96	Rating **	M	Issue No.	7
LM End	0.96	Issue Type +	En	Location *	LS
Category	Earthen Levee			GPS Latitude/Longitude	
				Start	End
Item	Encroachments			38.490008 °	38.490008 °
				-121.555596 °	-121.555596 °
DWR ID	DWR_RD0765_01_f_2024_7				
Comment Code					
RA : Ramp					
Inspector Comment					

Photo 1 of 1 : FA\_2024\_RD0765\_211\_7\_20240918\_00021.jpg



Ramp and gate on the LS slope. Fall 2024

LM Start	0.96	Rating **	M	Issue No.	51
LM End	1.02	Issue Type +	En	Location *	LS
Category	Earthen Levee			GPS Latitude/Longitude	
				Start	End
Item	Encroachments			38.489949 °	38.489230 °
				-121.555544 °	-121.555168 °
DWR ID	DWR_RD0765_01_s_2013_51				
Comment Code					
DT : Ditch					
Inspector Comment					
This ditch has been in place for several years. Most of the ditch appears to be outside the 15 foot right-of-way.					

Photo 1 of 1 : FA\_2024\_RD0765\_211\_51\_20240911\_00015.jpg



Ditch near the landside toe. Spring 2022

LM Start	1.03	Rating **	M	Issue No.	19
LM End	1.03	Issue Type +	En	Location *	LS
Category	Earthen Levee			GPS Latitude/Longitude	
				Start	End
Item	Vegetation			38.489011 °	38.489011 °
				-121.554990 °	-121.554990 °
DWR ID	DWR_RD0765_01_f_2021_19				
Comment Code					
V6 : Landscaping					
Inspector Comment					
Remove cactus from LS slope.					

Photo 1 of 1 : FA\_2024\_RD0765\_211\_19\_20240911\_00009.jpg



Cactus on the LS slope. Fall 2021

* Location LS : Land Side    N/A : Not Applicable WS : Water Side CR : Crown		** Rating A : Acceptable M : Minimally Acceptable U : Unacceptable		N : Not Inspected/Rated C : Corrected A/W : Acceptable but Monitor & Maintain		+ Issue Type Ma : Maintenance Deficiency Ob : Design & System Obsolescence En : Enforcement	
---	--	---	--	---	--	--	--



**Flood Control Project Maintenance  
Levee Inspections****Levee Inspection Report By Mile - Fall 2024****Reclamation District No. 0765 Glide**

Waterway	Bank	Unit Miles	Inspection Start/End	Inspector
Unit No. 01 Sacramento River	Right	1.72	09/17/2024 09/17/2024	Marvin Marshall

LM Start	1.04	Rating **	C	Issue No.	3
LM End	1.04	Issue Type +	Ma	Location *	WS
Category	Earthen Levee			GPS Latitude/Longitude	
				Start	End
Item	Trim / Thin Trees			38.489000 °	38.489000 °
				-121.554900 °	-121.554900 °
DWR ID	DWR_RD0765_01_s_2024_3				
Comment Code					
T2 : Tree or limb.					
Inspector Comment					

No Photos

LM Start	1.06	Rating **	M	Issue No.	8
LM End	1.06	Issue Type +	En	Location *	LS
Category	Earthen Levee			GPS Latitude/Longitude	
				Start	End
Item	Encroachments			38.488643 °	38.488643 °
				-121.554878 °	-121.554878 °
DWR ID	DWR_RD0765_01_f_2024_8				
Comment Code					
RA : Ramp					
Inspector Comment					

Photo 1 of 1 : FA\_2024\_RD0765\_211\_8\_20240918\_00022.jpg



Ramp and gate on the LS slope. Fall 2024

LM Start	1.23	Rating **	M	Issue No.	32
LM End	1.23	Issue Type +	En	Location *	LS
Category	Earthen Levee			GPS Latitude/Longitude	
				Start	End
Item	Encroachments			38.486403 °	38.486403 °
				-121.553437 °	-121.553437 °
DWR ID	DWR_RD0765_01_f_2018_32				
Comment Code					
CR : Crops					
Inspector Comment					
Citrus tree is unpermitted within the levee easement.					

Photo 1 of 1 : FA\_2024\_RD0765\_211\_32\_20240911\_00013.jpg



View of citrus tree within levee easement. Fall 2018

* Location	** Rating	+ Issue Type
LS : Land Side WS : Water Side CR : Crown	A : Acceptable M : Minimally Acceptable U : Unacceptable	Ma : Maintenance Deficiency Ob : Design & System Obsolescence En : Enforcement
N/A : Not Applicable	N : Not Inspected/Rated C : Corrected A/W : Acceptable but Monitor & Maintain	

**Flood Control Project Maintenance  
Levee Inspections**

**Levee Inspection Report By Mile - Fall 2024**

**Reclamation District No. 0765 Glide**

Waterway	Bank	Unit Miles	Inspection Start/End	Inspector
Unit No. 01 Sacramento River	Right	1.72	09/17/2024 09/17/2024	Marvin Marshall

LM Start	1.31	Rating **	C	Issue No.	15
LM End	1.31	Issue Type +	Ma	Location *	LS
Category	Earthen Levee			GPS Latitude/Longitude	
				Start	End
Item	Trim / Thin Trees			38.485300 °	38.485300 °
				-121.553000 °	-121.553000 °
DWR ID	DWR_RD0765_01_s_2019_15				
Comment Code					
T2 : Tree or limb.					
Inspector Comment					

No Photos

LM Start	1.42	Rating **	M	Issue No.	10
LM End	1.42	Issue Type +	Ma	Location *	WS
Category	Earthen Levee			GPS Latitude/Longitude	
				Start	End
Item	Erosion / Foot Traffic			38.483973 °	38.483973 °
				-121.551855 °	-121.551855 °
DWR ID	DWR_RD0765_01_f_2021_10				
Comment Code					
E3 : Repair the levee slope damaged by foot traffic and prevent access where possible.					
Inspector Comment					

Photo 1 of 1 : FA\_2024\_RD0765\_211\_10\_20240911\_00005.jpg



Footpaths on the WS slope. Fall 2021

LM Start	1.46	Rating **	M	Issue No.	2
LM End	1.46	Issue Type +	Ma	Location *	WS
Category	Earthen Levee			GPS Latitude/Longitude	
				Start	End
Item	Erosion / Vehicle Traffic			38.483414 °	38.483414 °
				-121.551472 °	-121.551472 °
DWR ID	DWR_RD0765_01_s_2023_2				
Comment Code					
E6 : Repair the levee slope damaged by vehicle traffic and prevent access where possible.					
Inspector Comment					
Repair rutting on the WS shoulder.					

Photo 1 of 1 : FA\_2024\_RD0765\_211\_2\_20240911\_00002.jpg



Rutting on the WS shoulder. Spring 2023

* Location		** Rating		+ Issue Type	
LS : Land Side	N/A : Not Applicable	A : Acceptable	N : Not Inspected/Rated	Ma : Maintenance Deficiency	
WS : Water Side		M : Minimally Acceptable	C : Corrected	Ob : Design & System Obsolescence	
CR : Crown		U : Unacceptable	A/W : Acceptable but Monitor & Maintain	En : Enforcement	

**Flood Control Project Maintenance  
Levee Inspections**

**Levee Inspection Report By Mile - Fall 2024**

**Reclamation District No. 0765 Glide**

Waterway	Bank	Unit Miles	Inspection Start/End	Inspector
Unit No. 01 Sacramento River	Right	1.72	09/17/2024 09/17/2024	Marvin Marshall

LM Start	1.55	Rating **	A	Issue No.	60
LM End	1.61	Issue Type +	En	Location *	LS
Category	Earthen Levee			GPS Latitude/Longitude	
				Start	End
Item	Encroachments			38.482300 °	38.481482 °
				-121.550808 °	-121.550283 °
DWR ID	DWR_RD0765_01_f _ 2013_60				
Comment Code					
DT : Ditch					
Inspector Comment					

No Photos

LM Start	1.61	Rating **	N	Issue No.	9
LM End	1.61	Issue Type +	Ma	Location *	WS
Category	Earthen Levee			GPS Latitude/Longitude	
				Start	End
Item	Trim / Thin Trees			38.481560 °	38.481560 °
				-121.550295 °	-121.550295 °
DWR ID	DWR_RD0765_01_s_2020_9				
Comment Code					
T5 : Tree stumps.					
Inspector Comment					
Remove stump on the WS slope.					

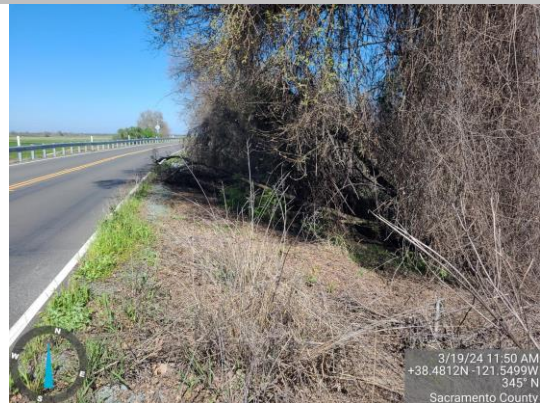
Photo 1 of 1 : FA\_2024\_RD0765\_211\_9\_20240911\_00004.jpg



Tree stump on the WS slope. Fall 2022

LM Start	1.64	Rating **	M	Issue No.	1
LM End	1.64	Issue Type +	Ma	Location *	WS
Category	Earthen Levee			GPS Latitude/Longitude	
				Start	End
Item	Vegetation			38.481151 °	38.481151 °
				-121.549866 °	-121.549866 °
DWR ID	DWR_RD0765_01_s_2023_1				
Comment Code					
V2 : Remove the wild growth and woody vegetation other than native grasses from the levee slopes.					
Inspector Comment					
Remove woody vegetation from within 20' of the crown. Trim trees to 5' above grade.					

Photo 1 of 1 : FA\_2024\_RD0765\_211\_1\_20240911\_00001.jpg



Limbs and woody growth on the WS slope. Spring 2023

<b>* Location</b> LS : Land Side    N/A : Not Applicable WS : Water Side CR : Crown		<b>** Rating</b> A : Acceptable M : Minimally Acceptable U : Unacceptable N : Not Inspected/Rated C : Corrected A/W : Acceptable but Monitor & Maintain		<b>+ Issue Type</b> Ma : Maintenance Deficiency Ob : Design & System Obsolescence En : Enforcement	
--	--	---	--	---	--