

**Flood Control Project Maintenance
Levee Inspections
Fall 2022 Levee Maintenance Deficiency Summary Report**

Sacramento River Basin

RD0765	Overall LMA Rating	Total LMA Miles						
Reclamation District No. 0765 Glide	M	1.72						
Rated Item	Maintenance Deficiency				Enforcement		Design & System Obsolescence	
	M Miles	U Miles	M + 4U Miles	Threshold %	M Miles	U Miles	M Miles	U Miles
<i>Earthen Levee</i>								
Vegetation	0.01		0.01	0.58%	0.01			
Trim / Thin Trees	0.02		0.02	1.16%	0.01			
Encroachments	0.02		0.02	1.16%	0.28	0.06		
Erosion / Foot Traffic		0.03	0.12	6.97%				
Erosion / Vehicle Traffic	0.03		0.03	1.74%				
Emergency Supplies & Equipment	0.02		0.02	1.16%				
Flood Preparedness & Training	0.02		0.02	1.16%				
<i>LMA Totals:</i>	0.11	0.03	0.23	13.36%	0.30	0.06	0.00	0.00

Unit No. 01 Sacramento River RB	Overall Unit Rating	Total Unit Miles						
RD0765	M	1.72						
Rated Item	Maintenance Deficiency				Enforcement		Design & System Obsolescence	
	M Miles	U Miles	M + 4U Miles	Threshold %	M Miles	U Miles	M Miles	U Miles
<i>Earthen Levee</i>								
Vegetation	0.01		0.01	0.58%	0.01			
Trim / Thin Trees	0.02		0.02	1.16%	0.01			
Encroachments	0.02		0.02	1.16%	0.28	0.06		
Erosion / Foot Traffic		0.03	0.12	6.97%				
Erosion / Vehicle Traffic	0.03		0.03	1.74%				
<i>Unit Totals:</i>	0.08	0.03	0.20	11.61%	0.30	0.06	0.00	0.00

Flood Control Project Maintenance Levee Inspections LMA District Cover Sheet

Reclamation District No. 0765 Glide

	Spring (March - May)	Summer ** (June - August)	Fall (September - November)	Winter ** (December - February)
† Overall LMA Rating (Fall Only)			M	

**** Non-receipt of Summer or Winter Inspection Reports may effect overall annual rating.**

SPRING INSPECTIONS: Overall maintenance ratings are not determined for the spring inspection results. Individual maintenance deficiencies are rated using the same criteria in the spring and in the fall.

FALL INSPECTIONS: The overall maintenance rating shown above is based on operation and maintenance deficiencies identified within the attached unit inspection reports. This rating is not intended to be an indication of risk.

Comments

[illegible]

**Flood Control Project Maintenance
Levee Inspections
Unit Cover Sheet**

Reclamation District No. 0765 Glide

Waterway			Bank	Unit Miles
Unit No. 01 Sacramento River			Right	1.72
	Spring (March - May)	Summer (June - August)	(September - November) Fall	Winter (December - February)
Unit Maintenance Rating (Fall Only)			M	
Date of Inspection	4/27/2022 - 4/27/2022		11/3/2022 - 11/3/2022	
DWR Inspector	Marvin Marshall		Marvin Marshall	
Accompanied By	David Dickson RD765			

Summer & Winter Inspections

The Local Maintaining Agency (LMA) is responsible for summer and winter inspections. The LMA is required to submit a report regarding summer and winter inspections to the California Department of Water Resources (DWR).

DWR must be informed on the:

- a) completion of the inspection
- b) any changes other than the results of normal maintenance
- c) corrections to deficiencies noted in this report

If additional items are noted, further documentation of those items must also be submitted.

The LMA should submit this information to DWR using the LMA web application tool available at:

<http://cdec.water.ca.gov/lma.html>

If the LMA is unable to submit information on this webpage, please contact DWR for assistance.

The LMA should submit the information and any associated documentation by September 30 for summer inspections and March 31 for winter inspections.

**Flood Control Project Maintenance
Levee Inspections**

Levee Inspection Report By Mile - Fall 2022

Reclamation District No. 0765 Glide

Waterway	Bank	Unit Miles	Inspection Start/End	Inspector
Unit No. 01 Sacramento River	Right	1.72	11/03/2022 11/03/2022	Marvin Marshall

LM Start		Rating **	M	Issue No.	18
LM End		Issue Type +	Ma	Location *	N/A
Category	Earthen Levee		GPS Latitude/Longitude		
			Start	End	
Item	Emergency Supplies & Equipment			°	°
				°	°
DWR ID	DWR_RD0765_01_s_2013_18				
Comment Code					
ES : Emergency Supplies & Equipment					
Inspector Comment					
The LMA does not have an adequate supply of flood fight materials.					

No Photos

LM Start		Rating **	A	Issue No.	44
LM End		Issue Type +	Ma	Location *	N/A
Category	Earthen Levee		GPS Latitude/Longitude		
			Start	End	
Item	Operations & Maintenance Manuals			°	°
				°	°
DWR ID	DWR_RD0765_01_s_2012_44				
Comment Code					
OM : O&M Manuals					
Inspector Comment					
LMA has a copy of O&M manual on file in office.					

No Photos

LM Start		Rating **	M	Issue No.	46
LM End		Issue Type +	Ma	Location *	N/A
Category	Earthen Levee		GPS Latitude/Longitude		
			Start	End	
Item	Flood Preparedness & Training			°	°
				°	°
DWR ID	DWR_RD0765_01_s_2012_46				
Comment Code					
FP : Flood Preparedness & Training					
Inspector Comment					
LMA has not recently attended Flood Fight Training.					

No Photos

* Location LS : Land Side N/A : Not Applicable WS : Water Side CR : Crown	** Rating A : Acceptable M : Minimally Acceptable U : Unacceptable	N : Not Inspected/Rated C : Corrected A/W : Acceptable but Monitor & Maintain	+ Issue Type Ma : Maintenance Deficiency Ob : Design & System Obsolescence En : Enforcement
--	--	---	---

**Flood Control Project Maintenance
Levee Inspections**

Levee Inspection Report By Mile - Fall 2022

Reclamation District No. 0765 Glide

Waterway	Bank	Unit Miles	Inspection Start/End	Inspector
Unit No. 01 Sacramento River	Right	1.72	11/03/2022 11/03/2022	Marvin Marshall

LM Start	0.00	Rating **	M	Issue No.	12
LM End	0.08	Issue Type +	En	Location *	LS
Category	Earthen Levee			GPS Latitude/Longitude	
				Start	End
Item	Encroachments			38.502962 °	38.501772 °
				-121.560112 °	-121.560250 °
DWR ID	DWR_RD0765_01_s_2020_12				
Comment Code					
FE : Fence					
Inspector Comment					
Fence prevents access on the landside slope.					

Photo 1 of 1 : FA_2022_RD0765_211_12_20220822_00004.jpg



View of the fence on the LS levee slope. Spring 2021.

LM Start	0.02	Rating **	U	Issue No.	20
LM End	0.02	Issue Type +	Ma	Location *	WS
Category	Earthen Levee			GPS Latitude/Longitude	
				Start	End
Item	Erosion / Foot Traffic			38.502711 °	38.502711 °
				-121.560019 °	-121.560019 °
DWR ID	DWR_RD0765_01_f_2022_20				
Comment Code					
E3 : Repair the levee slope damaged by foot traffic and prevent access where possible.					
Inspector Comment					
Repair erosion caused by foot traffic.					

Photo 1 of 1 : FA_2022_RD0765_211_20_20221103_00030.jpg



Footpath on the WS slope. Fall 2022

LM Start	0.07	Rating **	C	Issue No.	42
LM End	0.07	Issue Type +	Ma	Location *	WS
Category	Earthen Levee			GPS Latitude/Longitude	
				Start	End
Item	Erosion / Vehicle Traffic			38.501920 °	38.501920 °
				-121.560368 °	-121.560368 °
DWR ID	DWR_RD0765_01_s_2021_42				
Comment Code					
E6 : Repair the levee slope damaged by vehicle traffic and prevent access where possible.					
Inspector Comment					
Rutting has been repaired.					

No Photos

* Location LS : Land Side N/A : Not Applicable WS : Water Side CR : Crown		** Rating A : Acceptable M : Minimally Acceptable U : Unacceptable N : Not Inspected/Rated C : Corrected A/W : Acceptable but Monitor & Maintain		+ Issue Type Ma : Maintenance Deficiency Ob : Design & System Obsolescence En : Enforcement	
---	--	--	--	--	--

**Flood Control Project Maintenance
Levee Inspections**

Levee Inspection Report By Mile - Fall 2022

Reclamation District No. 0765 Glide

Waterway	Bank	Unit Miles	Inspection Start/End	Inspector
Unit No. 01 Sacramento River	Right	1.72	11/03/2022 11/03/2022	Marvin Marshall

LM Start	0.11	Rating **	M	Issue No.	11
LM End	0.11	Issue Type +	En	Location *	LS
Category	Earthen Levee			GPS Latitude/Longitude	
				Start	End
Item	Encroachments			38.501423 °	38.501423 °
				-121.560409 °	-121.560409 °
DWR ID	DWR_RD0765_01_s_2021_11				
Comment Code					
DE : Debris					
Inspector Comment					
Remove concrete debris on the LS levee toe.					

Photo 1 of 1 : FA_2022_RD0765_211_11_20220822_00003.jpg



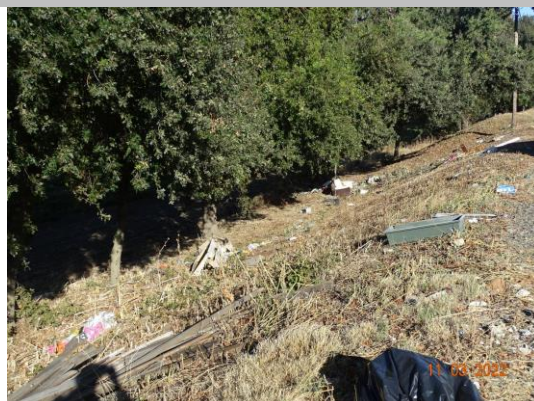
View of the concrete debris on the LS levee toe. Spring 2021.

LM Start	0.29	Rating **	C	Issue No.	39
LM End	0.29	Issue Type +	Ma	Location *	LS
Category	Earthen Levee			GPS Latitude/Longitude	
				Start	End
Item	Encroachments			38.498818 °	38.498818 °
				-121.560499 °	-121.560499 °
DWR ID	DWR_RD0765_01_s_2022_39				
Comment Code					
DE : Debris					
Inspector Comment					
Appliances have been removed.					

No Photos

LM Start	0.29	Rating **	M	Issue No.	34
LM End	0.29	Issue Type +	Ma	Location *	LS
Category	Earthen Levee			GPS Latitude/Longitude	
				Start	End
Item	Encroachments			38.498798 °	38.498798 °
				-121.560501 °	-121.560501 °
DWR ID	DWR_RD0765_01_f_2020_34				
Comment Code					
DE : Debris					
Inspector Comment					
Clean up debris at illegal dumping site.					

Photo 1 of 1 : FA_2022_RD0765_211_34_20221103_00031.jpg



Debris on LS slope. Fall 2022

* Location LS : Land Side N/A : Not Applicable WS : Water Side CR : Crown		** Rating A : Acceptable M : Minimally Acceptable U : Unacceptable N : Not Inspected/Rated C : Corrected A/W : Acceptable but Monitor & Maintain		+ Issue Type Ma : Maintenance Deficiency Ob : Design & System Obsolescence En : Enforcement	
---	--	--	--	--	--

**Flood Control Project Maintenance
Levee Inspections**

Levee Inspection Report By Mile - Fall 2022

Reclamation District No. 0765 Glide

Waterway	Bank	Unit Miles	Inspection Start/End	Inspector
Unit No. 01 Sacramento River	Right	1.72	11/03/2022 11/03/2022	Marvin Marshall

LM Start	0.51	Rating **	M	Issue No.	36
LM End	0.51	Issue Type +	Ma	Location *	WS
Category	Earthen Levee			GPS Latitude/Longitude	
				Start	End
Item	Trim / Thin Trees			38.495748 °	38.495748 °
				-121.559525 °	-121.559525 °
DWR ID	DWR_RD0765_01_f _ 2020_36				
Comment Code					
T3 : Fallen tree with root ball.					
Inspector Comment					
Fallen tree with exposed rootball.					

Photo 1 of 1 : FA_2022_RD0765_211_36_20220822_00018.jpg



View of fallen tree with exposed rootball on the waterside slope. Fall 2020

LM Start	0.69	Rating **	C	Issue No.	37
LM End	0.69	Issue Type +	Ma	Location *	WS
Category	Earthen Levee			GPS Latitude/Longitude	
				Start	End
Item	Encroachments			38.493462 °	38.493462 °
				-121.557653 °	-121.557653 °
DWR ID	DWR_RD0765_01_s_2022_37				
Comment Code					
DE : Debris					
Inspector Comment					
Debris has been removed.					

No Photos

LM Start	0.75	Rating **	M	Issue No.	68
LM End	0.75	Issue Type +	Ma	Location *	LS
Category	Earthen Levee			GPS Latitude/Longitude	
				Start	End
Item	Erosion / Vehicle Traffic			38.492705 °	38.492705 °
				-121.557193 °	-121.557193 °
DWR ID	DWR_RD0765_01_s_2017_68				
Comment Code					
E6 : Repair the levee slope damaged by vehicle traffic and prevent access where possible.					
Inspector Comment					
Repair tire rut damage on the LS shoulder.					

Photo 1 of 1 : FA_2022_RD0765_211_68_20220822_00027.jpg



View of the LS levee shoulder damaged by vehicle traffic. Spring 2021.

* Location LS : Land Side N/A : Not Applicable WS : Water Side CR : Crown	** Rating A : Acceptable M : Minimally Acceptable U : Unacceptable	N : Not Inspected/Rated C : Corrected A/W : Acceptable but Monitor & Maintain	+ Issue Type Ma : Maintenance Deficiency Ob : Design & System Obsolescence En : Enforcement
--	--	--	---

**Flood Control Project Maintenance
Levee Inspections**

Levee Inspection Report By Mile - Fall 2022

Reclamation District No. 0765 Glide

Waterway	Bank	Unit Miles	Inspection Start/End	Inspector
Unit No. 01 Sacramento River	Right	1.72	11/03/2022 11/03/2022	Marvin Marshall

LM Start	0.94	Rating **	U	Issue No.	24
LM End	0.94	Issue Type +	Ma	Location *	WS
Category	Earthen Levee			GPS Latitude/Longitude	
				Start	End
Item	Erosion / Foot Traffic			38.490265 °	38.490265 °
				-121.555617 °	-121.555617 °
DWR ID	DWR_RD0765_01_s_2019_24				
Comment Code					
E3 : Repair the levee slope damaged by foot traffic and prevent access where possible.					
Inspector Comment					
Erosion and footpath on the WS slope need to be repaired.					

Photo 1 of 1 : FA_2022_RD0765_211_24_20221103_00029.jpg



Erosion on the WS footpath. Fall 2022

LM Start	0.94	Rating **	M	Issue No.	40
LM End	0.94	Issue Type +	En	Location *	LS
Category	Earthen Levee			GPS Latitude/Longitude	
				Start	End
Item	Encroachments			38.490206 °	38.490206 °
				-121.555677 °	-121.555677 °
DWR ID	DWR_RD0765_01_s_2022_40				
Comment Code					
BU : Building					
Inspector Comment					
Building in the easement blocks access and visibility.					

Photo 1 of 1 : FA_2022_RD0765_211_40_20220822_00021.jpg



Building in the landside easement. Spring 2022

LM Start	0.95	Rating **	U	Issue No.	23
LM End	0.95	Issue Type +	Ma	Location *	WS
Category	Earthen Levee			GPS Latitude/Longitude	
				Start	End
Item	Erosion / Foot Traffic			38.490067 °	38.490067 °
				-121.555530 °	-121.555530 °
DWR ID	DWR_RD0765_01_s_2019_23				
Comment Code					
E3 : Repair the levee slope damaged by foot traffic and prevent access where possible.					
Inspector Comment					
Repair the erosion at the footpath on the WS slope.					

Photo 1 of 1 : FA_2022_RD0765_211_23_20220822_00010.jpg



Erosion at the footpath on the WS slope. Fall 2021

* Location LS : Land Side N/A : Not Applicable WS : Water Side CR : Crown		** Rating A : Acceptable N : Not Inspected/Rated M : Minimally Acceptable C : Corrected U : Unacceptable A/W : Acceptable but Monitor & Maintain		+ Issue Type Ma : Maintenance Deficiency Ob : Design & System Obsolescence En : Enforcement	
--	--	---	--	---	--

**Flood Control Project Maintenance
Levee Inspections**

Levee Inspection Report By Mile - Fall 2022

Reclamation District No. 0765 Glide

Waterway	Bank	Unit Miles	Inspection Start/End	Inspector
Unit No. 01 Sacramento River	Right	1.72	11/03/2022 11/03/2022	Marvin Marshall

LM Start	0.96	Rating **	M	Issue No.	51
LM End	1.02	Issue Type +	En	Location *	LS
Category	Earthen Levee			GPS Latitude/Longitude	
				Start	End
Item	Encroachments			38.489949 °	38.489230 °
				-121.555544 °	-121.555168 °
DWR ID	DWR_RD0765_01_s_2013_51				
Comment Code					
DT : Ditch					
Inspector Comment					
This ditch has been in place for several years. Most of the ditch appears to be outside the 15 foot right-of-way.					

Photo 1 of 1 : FA_2022_RD0765_211_51_20220822_00023.jpg



Ditch near the landside toe. Spring 2022

LM Start	0.99	Rating **	M	Issue No.	35
LM End	0.99	Issue Type +	Ma	Location *	WS
Category	Earthen Levee			GPS Latitude/Longitude	
				Start	End
Item	Erosion / Vehicle Traffic			38.489574 °	38.489574 °
				-121.555308 °	-121.555308 °
DWR ID	DWR_RD0765_01_s_2022_35				
Comment Code					
E6 : Repair the levee slope damaged by vehicle traffic and prevent access where possible.					
Inspector Comment					
Repair rutting on the waterside shoulder.					

Photo 1 of 1 : FA_2022_RD0765_211_35_20220822_00017.jpg



Rutting on the waterside shoulder. Spring 2022

LM Start	1.00	Rating **	A/W	Issue No.	30
LM End	1.00	Issue Type +	Ma	Location *	WS
Category	Earthen Levee			GPS Latitude/Longitude	
				Start	End
Item	Erosion / Foot Traffic			38.489503 °	38.489503 °
				-121.555272 °	-121.555272 °
DWR ID	DWR_RD0765_01_s_2022_30				
Comment Code					
E3 : Repair the levee slope damaged by foot traffic and prevent access where possible.					
Inspector Comment					
Monitor footpath for further erosion.					

Photo 1 of 1 : FA_2022_RD0765_211_30_20220822_00013.jpg



Footpath on the waterside slope. Spring 2022

* Location LS : Land Side N/A : Not Applicable WS : Water Side CR : Crown		** Rating A : Acceptable M : Minimally Acceptable U : Unacceptable		N : Not Inspected/Rated C : Corrected A/W : Acceptable but Monitor & Maintain		+ Issue Type Ma : Maintenance Deficiency Ob : Design & System Obsolescence En : Enforcement	
---	--	---	--	---	--	--	--

**Flood Control Project Maintenance
Levee Inspections**

Levee Inspection Report By Mile - Fall 2022

Reclamation District No. 0765 Glide

Waterway	Bank	Unit Miles	Inspection Start/End	Inspector
Unit No. 01 Sacramento River	Right	1.72	11/03/2022 11/03/2022	Marvin Marshall

LM Start	1.02	Rating **	M	Issue No.	21
LM End	1.02	Issue Type +	En	Location *	LS
Category	Earthen Levee			GPS Latitude/Longitude	
				Start	End
Item	Encroachments			38.489187 °	38.489187 °
				-121.555110 °	-121.555110 °
DWR ID	DWR_RD0765_01_f_2021_21				
Comment Code					
FW : Firewood					
Inspector Comment					
Remove wood pile from LS slope.					

Photo 1 of 1 : FA_2022_RD0765_211_21_20220822_00008.jpg



Wood/prunings pile in the LS easement. Fall 2021

LM Start	1.03	Rating **	M	Issue No.	19
LM End	1.03	Issue Type +	En	Location *	LS
Category	Earthen Levee			GPS Latitude/Longitude	
				Start	End
Item	Vegetation			38.489011 °	38.489011 °
				-121.554990 °	-121.554990 °
DWR ID	DWR_RD0765_01_f_2021_19				
Comment Code					
V6 : Landscaping					
Inspector Comment					
Remove cactus from LS slope.					

Photo 1 of 1 : FA_2022_RD0765_211_19_20220822_00007.jpg



Cactus on the LS slope. Fall 2021

LM Start	1.08	Rating **	M	Issue No.	14
LM End	1.08	Issue Type +	Ma	Location *	WS
Category	Earthen Levee			GPS Latitude/Longitude	
				Start	End
Item	Trim / Thin Trees			38.488401 °	38.488401 °
				-121.554658 °	-121.554658 °
DWR ID	DWR_RD0765_01_f_2021_14				
Comment Code					
T2 : Tree or limb.					
Inspector Comment					
Remove fallen tree from with 20' of the crown.					

Photo 1 of 1 : FA_2022_RD0765_211_14_20220822_00005.jpg



Fallen tree log within 20 of the WS crown. Fall 2021

* Location
LS : Land Side N/A : Not Applicable
WS : Water Side
CR : Crown

** Rating
A : Acceptable N : Not Inspected/Rated
M : Minimally Acceptable C : Corrected
U : Unacceptable A/W : Acceptable but Monitor & Maintain

+ Issue Type
Ma : Maintenance Deficiency
Ob : Design & System Obsolescence
En : Enforcement

**Flood Control Project Maintenance
Levee Inspections**

Levee Inspection Report By Mile - Fall 2022

Reclamation District No. 0765 Glide

Waterway	Bank	Unit Miles	Inspection Start/End	Inspector
Unit No. 01 Sacramento River	Right	1.72	11/03/2022 11/03/2022	Marvin Marshall

LM Start	1.16	Rating **	M	Issue No.	54
LM End	1.26	Issue Type +	En	Location *	LS
Category	Earthen Levee			GPS Latitude/Longitude	
				Start	End
Item	Encroachments			38.487348 °	38.485984 °
				-121.554044 °	-121.553202 °
DWR ID	DWR_RD0765_01_s_2015_54				
Comment Code					
FE : Fence					
Inspector Comment					
The landowner installed a temporary fence on the landside shoulder and slope.					

Photo 1 of 1 : FA_2022_RD0765_211_54_20220822_00024.jpg



View of the fence on the LS levee shoulder. Spring 2021.

LM Start	1.18	Rating **	C	Issue No.	43
LM End	1.21	Issue Type +	En	Location *	LS
Category	Earthen Levee			GPS Latitude/Longitude	
				Start	End
Item	Encroachments			38.487127 °	38.486702 °
				-121.553910 °	-121.553652 °
DWR ID	DWR_RD0765_01_s_2012_43				
Comment Code					
BU : Building					
Inspector Comment					
Building has been removed.					

No Photos

LM Start	1.23	Rating **	M	Issue No.	32
LM End	1.23	Issue Type +	En	Location *	LS
Category	Earthen Levee			GPS Latitude/Longitude	
				Start	End
Item	Encroachments			38.486403 °	38.486403 °
				-121.553437 °	-121.553437 °
DWR ID	DWR_RD0765_01_f_2018_32				
Comment Code					
CR : Crops					
Inspector Comment					
Citrus tree is unpermitted within the levee easement.					

Photo 1 of 1 : FA_2022_RD0765_211_32_20220822_00015.jpg



View of citrus tree within levee easement. Fall 2018

* Location LS : Land Side N/A : Not Applicable WS : Water Side CR : Crown	** Rating A : Acceptable M : Minimally Acceptable U : Unacceptable	N : Not Inspected/Rated C : Corrected A/W : Acceptable but Monitor & Maintain	+ Issue Type Ma : Maintenance Deficiency Ob : Design & System Obsolescence En : Enforcement
--	--	--	---

**Flood Control Project Maintenance
Levee Inspections**

Levee Inspection Report By Mile - Fall 2022

Reclamation District No. 0765 Glide

Waterway	Bank	Unit Miles	Inspection Start/End	Inspector
Unit No. 01 Sacramento River	Right	1.72	11/03/2022 11/03/2022	Marvin Marshall

LM Start	1.24	Rating **	C	Issue No.	2
LM End	1.24	Issue Type +	En	Location *	WS
Category	Earthen Levee			GPS Latitude/Longitude	
				Start	End
Item	Encroachments			38.486316 °	38.486316 °
				-121.553349 °	-121.553349 °
DWR ID	DWR_RD0765_01_f_2017_2				
Comment Code					
EQ : Equipment					
Inspector Comment					
Platform has been removed.					

No Photos

LM Start	1.29	Rating **	M	Issue No.	15
LM End	1.30	Issue Type +	Ma	Location *	LS
Category	Earthen Levee			GPS Latitude/Longitude	
				Start	End
Item	Vegetation			38.485644 °	38.485445 °
				-121.553128 °	-121.553014 °
DWR ID	DWR_RD0765_01_s_2019_15				
Comment Code					
V2 : Remove the wild growth and woody vegetation other than native grasses from the levee slopes.					
Inspector Comment					
Remove wild vines and growth on the LS slope.					

Photo 1 of 1 : FA_2022_RD0765_211_15_20220822_00006.jpg



Ivy growth on the LS slope. Fall 2021

LM Start	1.31	Rating **	M	Issue No.	26
LM End	1.31	Issue Type +	En	Location *	LS
Category	Earthen Levee			GPS Latitude/Longitude	
				Start	End
Item	Trim / Thin Trees			38.485387 °	38.485387 °
				-121.552975 °	-121.552975 °
DWR ID	DWR_RD0765_01_s_2021_26				
Comment Code					
T2 : Tree or limb.					
Inspector Comment					
Remove the cut trees from the LS levee slope.					

Photo 1 of 1 : FA_2022_RD0765_211_26_20220822_00012.jpg



Tree logs on the LS slope. Fall 2021

* Location LS : Land Side N/A : Not Applicable WS : Water Side CR : Crown	** Rating A : Acceptable M : Minimally Acceptable U : Unacceptable	N : Not Inspected/Rated C : Corrected A/W : Acceptable but Monitor & Maintain	+ Issue Type Ma : Maintenance Deficiency Ob : Design & System Obsolescence En : Enforcement
--	--	---	---

**Flood Control Project Maintenance
Levee Inspections**

Levee Inspection Report By Mile - Fall 2022

Reclamation District No. 0765 Glide

Waterway	Bank	Unit Miles	Inspection Start/End	Inspector
Unit No. 01 Sacramento River	Right	1.72	11/03/2022 11/03/2022	Marvin Marshall

LM Start	1.42	Rating **	A/W	Issue No.	10
LM End	1.42	Issue Type +	Ma	Location *	WS
Category	Earthen Levee			GPS Latitude/Longitude	
				Start	End
Item	Erosion / Foot Traffic			38.483973 °	38.483973 °
				-121.551855 °	-121.551855 °
DWR ID	DWR_RD0765_01_f_2021_10				
Comment Code					
E3 : Repair the levee slope damaged by foot traffic and prevent access where possible.					
Inspector Comment					
Monitor two footpaths for erosion.					

Photo 1 of 1 : FA_2022_RD0765_211_10_20220822_00002.jpg



Footpaths on the WS slope. Fall 2021

LM Start	1.43	Rating **	M	Issue No.	67
LM End	1.43	Issue Type +	Ma	Location *	WS
Category	Earthen Levee			GPS Latitude/Longitude	
				Start	End
Item	Encroachments			38.483810 °	38.483810 °
				-121.551747 °	-121.551747 °
DWR ID	DWR_RD0765_01_s_2017_67				
Comment Code					
GA : Garbage					
Inspector Comment					
Remove sofas dumped on waterside slope.					

Photo 1 of 1 : FA_2022_RD0765_211_67_20220822_00026.jpg



Sofas on the WS slope. Fall 2021

LM Start	1.45	Rating **	C	Issue No.	41
LM End	1.45	Issue Type +	Ma	Location *	WS
Category	Earthen Levee			GPS Latitude/Longitude	
				Start	End
Item	Erosion / Vehicle Traffic			38.483609 °	38.483609 °
				-121.551628 °	-121.551628 °
DWR ID	DWR_RD0765_01_s_2021_41				
Comment Code					
E6 : Repair the levee slope damaged by vehicle traffic and prevent access where possible.					
Inspector Comment					
Rutting has been repaired.					

No Photos

* Location LS : Land Side N/A : Not Applicable WS : Water Side CR : Crown	** Rating A : Acceptable M : Minimally Acceptable U : Unacceptable	N : Not Inspected/Rated C : Corrected A/W : Acceptable but Monitor & Maintain	+ Issue Type Ma : Maintenance Deficiency Ob : Design & System Obsolescence En : Enforcement
--	--	--	---

**Flood Control Project Maintenance
Levee Inspections**

Levee Inspection Report By Mile - Fall 2022

Reclamation District No. 0765 Glide

Waterway	Bank	Unit Miles	Inspection Start/End	Inspector
Unit No. 01 Sacramento River	Right	1.72	11/03/2022 11/03/2022	Marvin Marshall

LM Start	1.51	Rating **	M	Issue No.	31
LM End	1.51	Issue Type +	Ma	Location *	WS
Category	Earthen Levee			GPS Latitude/Longitude	
				Start	End
Item	Erosion / Vehicle Traffic			38.482788 °	38.482788 °
				-121.551048 °	-121.551048 °
DWR ID	DWR_RD0765_01_f_2019_31				
Comment Code					
E6 : Repair the levee slope damaged by vehicle traffic and prevent access where possible.					
Inspector Comment					
Repair slope damage caused by vehicle traffic.					

Photo 1 of 1 : FA_2022_RD0765_211_31_20220822_00014.jpg



Erosion and rutting from vehicle traffic on the WS slope. Fall 2021

LM Start	1.55	Rating **	U	Issue No.	60
LM End	1.61	Issue Type +	En	Location *	LS
Category	Earthen Levee			GPS Latitude/Longitude	
				Start	End
Item	Encroachments			38.482300 °	38.481482 °
				-121.550808 °	-121.550283 °
DWR ID	DWR_RD0765_01_f_2013_60				
Comment Code					
DT : Ditch					
Inspector Comment					
An old irrigation ditch located at the landside toe is covered with wild growth.					

Photo 1 of 1 : FA_2022_RD0765_211_60_20220822_00025.jpg



View of the overgrown ditch along the LS levee toe. Fall 2021

LM Start	1.60	Rating **	C	Issue No.	22
LM End	1.60	Issue Type +	Ma	Location *	WS
Category	Earthen Levee			GPS Latitude/Longitude	
				Start	End
Item	Encroachments			38.481708 °	38.481708 °
				-121.550346 °	-121.550346 °
DWR ID	DWR_RD0765_01_s_2022_22				
Comment Code					
DE : Debris					
Inspector Comment					
Debris pile has been removed.					

No Photos

* Location
LS : Land Side N/A : Not Applicable
WS : Water Side
CR : Crown

** Rating
A : Acceptable N : Not Inspected/Rated
M : Minimally Acceptable C : Corrected
U : Unacceptable A/W : Acceptable but Monitor & Maintain

+ Issue Type
Ma : Maintenance Deficiency
Ob : Design & System Obsolescence
En : Enforcement

**Flood Control Project Maintenance
Levee Inspections**

Levee Inspection Report By Mile - Fall 2022

Reclamation District No. 0765 Glide

Waterway	Bank	Unit Miles	Inspection Start/End	Inspector
Unit No. 01 Sacramento River	Right	1.72	11/03/2022 11/03/2022	Marvin Marshall

LM Start	1.61	Rating **	N	Issue No.	9
LM End	1.61	Issue Type +	Ma	Location *	WS
Category	Earthen Levee			GPS Latitude/Longitude	
				Start	End
Item	Trim / Thin Trees			38.481560 °	38.481560 °
				-121.550295 °	-121.550295 °
DWR ID	DWR_RD0765_01_s_2020_9				
Comment Code					
T5 : Tree stumps.					
Inspector Comment					
Remove stump on the WS slope.					

Photo 1 of 1 : FA_2022_RD0765_211_9_20221103_00028.jpg



Tree stump on the WS slope. Fall 2022

* Location LS : Land Side N/A : Not Applicable WS : Water Side CR : Crown	** Rating A : Acceptable N : Not Inspected/Rated M : Minimally Acceptable C : Corrected U : Unacceptable A/W : Acceptable but Monitor & Maintain	+ Issue Type Ma : Maintenance Deficiency Ob : Design & System Obsolescence En : Enforcement
--	---	---