

**Flood Control Project Maintenance  
Levee Inspections**

**Fall 2019 Levee Maintenance Deficiency Summary Report**

**Overall LMA & Unit Ratings, including USACE Erosion Survey**

**Sacramento River Basin**

<b>RD0765</b>	Overall LMA Rating	Total LMA Miles						
<b>Reclamation District No. 0765 Glide</b>	<b>U</b>	<b>1.72</b>						
Rated Item	Maintenance Deficiency				Enforcement		Design & System Obsolescence	
	M Miles	U Miles	M + 4U Miles	Threshold %	M Miles	U Miles	M Miles	U Miles
<i>Earthen Levee</i>								
Vegetation	0.36	0.04	0.52	30.20%				
Trim / Thin Trees	0.03		0.03	1.74%				
Encroachments	0.06		0.06	3.48%	0.32	0.06		
Slope Stability	0.04		0.04	2.32%				
Emergency Supplies & Equipment	0.02		0.02	1.16%				
<i>Supplemental</i>								
DRAFT DWR UCIP Field Study					0.05			
<i>LMA Totals:</i>	0.51	0.04	0.67	38.91%	0.37	0.06	0.00	0.00

<b>Unit No. 01 Sacramento River RB</b>	Overall Unit Rating	Total Unit Miles						
<b>RD0765</b>	<b>U</b>	<b>1.72</b>						
Rated Item	Maintenance Deficiency				Enforcement		Design & System Obsolescence	
	M Miles	U Miles	M + 4U Miles	Threshold %	M Miles	U Miles	M Miles	U Miles
<i>Earthen Levee</i>								
Vegetation	0.36	0.04	0.52	30.20%				
Trim / Thin Trees	0.03		0.03	1.74%				
Encroachments	0.06		0.06	3.48%	0.32	0.06		
Slope Stability	0.04		0.04	2.32%				
<i>Supplemental</i>								
DRAFT DWR UCIP Field Study					0.05			
<i>Unit Totals:</i>	0.49	0.04	0.65	37.75%	0.37	0.06	0.00	0.00

**Flood Control Project Maintenance  
Levee Inspections**  
**LMA District Cover Sheet**  
**Fall 2019 Levee Inspection Results**

**Reclamation District No. 0765 Glide**

	Spring (March - May)	Summer ** (June - August)	Fall (September - November)	Winter ** (December - February)
† Overall LMA Rating (Fall Only)			U	

\*\* Non-receipt of Summer or Winter Inspection  
Reports may effect overall annual rating.

† SPRING INSPECTIONS: Overall maintenance ratings are not determined for the spring inspection results. Individual maintenance deficiencies are rated using the same criteria in the spring and in the fall.

FALL INSPECTIONS: The overall maintenance rating shown above is based on operation and maintenance deficiencies identified within the attached unit inspection reports. This rating is not intended to be an indication of risk.

Comments


**Flood Control Project Maintenance  
Levee Inspections**

**Unit Cover Sheet**

**Fall 2019 Levee Inspection Results**

**Reclamation District No. 0765 Glide**

Waterway			Bank	Unit Miles
Unit No. 01 Sacramento River			Right	1.72
	Spring (March - May)	Summer (June - August)	(September - November) Fall	Winter (December - February)
Unit Maintenance Rating (Fall Only)			<b>U</b>	
Date of Inspection	4/10/2019 - 4/10/2019		11/12/2019 - 11/12/2019	
DWR Inspector	Luz Dial		Luz Dial	
Accompanied By	David Dickson RD765		David Dickson RD765	

**Summer & Winter Inspections**

The Local Maintaining Agency (LMA) is responsible for summer and winter inspections. The LMA is required to submit a report regarding summer and winter inspections to the California Department of Water Resources (DWR).

DWR must be informed on the:

- a) completion of the inspection
- b) any changes other than the results of normal maintenance
- c) corrections to deficiencies noted in this report

If additional items are noted, further documentation of those items must also be submitted.

The LMA should submit this information to DWR using the LMA web application tool available at:

<http://cdec.water.ca.gov/lma.html>

If the LMA is unable to submit information on this webpage, please contact DWR for assistance.

*The LMA should submit the information and any associated documentation by September 30 for summer inspections and March 31 for winter inspections.*

**Flood Control Project Maintenance  
Levee Inspections**

**Levee Inspection Report By Mile - Fall 2019**

**Reclamation District No. 0765 Glide**

Waterway	Bank	Unit Miles	Inspection Start/End	Inspector
Unit No. 01 Sacramento River	Right	1.72	11/12/2019 11/12/2019	Luz Dial

LM Start		Rating **	M	Issue No.	<b>18</b>
LM End		Issue Type +	Ma	Location *	N/A
Category	Earthen Levee			GPS Latitude/Longitude	
				Start	End
Item	Emergency Supplies & Equipment			°	°
				°	°
DWR ID	DWR_RD0765_01_s_2013_18				
Comment Code					
Inspector Comment					
The LMA does not have an adequate supply of flood fight materials.					

No Photos

LM Start		Rating **	A	Issue No.	<b>44</b>
LM End		Issue Type +	Ma	Location *	N/A
Category	Earthen Levee			GPS Latitude/Longitude	
				Start	End
Item	Operations & Maintenance Manuals			°	°
				°	°
DWR ID	DWR_RD0765_01_s_2012_44				
Comment Code					
Inspector Comment					
LMA has a copy of O&M manual on file in office.					

No Photos

LM Start		Rating **	A	Issue No.	<b>46</b>
LM End		Issue Type +	Ma	Location *	N/A
Category	Earthen Levee			GPS Latitude/Longitude	
				Start	End
Item	Flood Preparedness & Training			°	°
				°	°
DWR ID	DWR_RD0765_01_s_2012_46				
Comment Code					
Inspector Comment					
LMA plans to attend flood fight training on November 2019					

No Photos

**\* Location**  
 LS : Land Side    N/A : Not Applicable  
 WS : Water Side  
 CR : Crown

**\*\* Rating**  
 A : Acceptable                      N : Not Inspected/Rated  
 M : Minimally Acceptable        C : Corrected  
 U : Unacceptable                  A/W : Acceptable but Monitor & Maintain

**+ Issue Type**  
 Ma : Maintenance Deficiency  
 Ob : Design & System Obsolescence  
 En : Enforcement

**Flood Control Project Maintenance  
Levee Inspections**

**Levee Inspection Report By Mile - Fall 2019**

**Reclamation District No. 0765 Glide**

Waterway	Bank	Unit Miles	Inspection Start/End	Inspector
Unit No. 01 Sacramento River	Right	1.72	11/12/2019 11/12/2019	Luz Dial

LM Start	0.00	Rating **	M	Issue No.	12
LM End	0.11	Issue Type +	En	Location *	LS
Category	Earthen Levee			GPS Latitude/Longitude	
				Start	End
Item	Encroachments			38.502962°	38.501373°
				-121.560112°	-121.560402°
DWR ID	DWR_RD0765_01_s_2012_12				
Comment Code					
FE : Fence					
Inspector Comment					
Fence may prevent maintenance on the landside slope.					

Photo 1 of 1 : FA\_2019\_RD0765\_211\_12\_20190904\_00008.jpg



Looking southwest at the fence on the landside slope. Fall 2017

LM Start	0.05	Rating **	C	Issue No.	3
LM End	0.05	Issue Type +	Ma	Location *	LS
Category	Earthen Levee			GPS Latitude/Longitude	
				Start	End
Item	Trim / Thin Trees			38.502253 °	38.502253 °
				-121.560192 °	-121.560192 °
DWR ID	DWR_RD0765_01_s_2012_3				
Comment Code					
T1 : Trim trees to at least five feet above ground level.					
Inspector Comment					
Trim trees that are blocking view of the landside slope.					

No Photos

LM Start	0.43	Rating **	M	Issue No.	10
LM End	0.50	Issue Type +	Ma	Location *	LS
Category	Earthen Levee			GPS Latitude/Longitude	
				Start	End
Item	Vegetation			38.496717 °	38.495810 °
				-121.560023 °	-121.559520 °
DWR ID	DWR_RD0765_01_f_2019_10				
Comment Code					
V2 : Remove the wild growth other than native grasses from the levee slopes.					
Inspector Comment					
Remove wild growth of invasive plants.					

Photo 1 of 1 : FA\_2019\_RD0765\_211\_10\_20191112\_00048.jpg



View of invasive wild growth on the landside slope. Fall 2019

**\* Location**

LS : Land Side    N/A : Not Applicable  
WS : Water Side  
CR : Crown

**\*\* Rating**

A : Acceptable                      N : Not Inspected/Rated  
M : Minimally Acceptable        C : Corrected  
U : Unacceptable                  A/W : Acceptable but Monitor & Maintain

**+ Issue Type**

Ma : Maintenance Deficiency  
Ob : Design & System Obsolescence  
En : Enforcement

**Flood Control Project Maintenance  
Levee Inspections**

**Levee Inspection Report By Mile - Fall 2019**

**Reclamation District No. 0765 Glide**

Waterway	Bank	Unit Miles	Inspection Start/End	Inspector
Unit No. 01 Sacramento River	Right	1.72	11/12/2019 11/12/2019	Luz Dial

LM Start	0.54	Rating **	M	Issue No.	69
LM End	0.54	Issue Type +	En	Location *	
Category	Supplemental			GPS Latitude/Longitude	
				Start	End
Item	DRAFT DWR UCIP Field Study			38.495374 °	38.495374 °
				-121.559262 °	-121.559262 °
DWR ID	21138				
Comment Code					
Inspector Comment					
DS_ID:21138 FS_ID:44403 EP_NO: 3314 Repair Type: Non-Urgent Crossing Status: Found UCIP Comments: Dense vegetation limit's the ability to determine condition of landward slope for potential leaks associated with crossing. Recommend having owner clear slope to be able to properly inspect slopes for leaks. FIELD_STRUCT_DESC: 16-inch steel irrigation pipe through the levee, 4 feet below the crown. Cutoff wall around pipe at center of levee. Slant pump on the waterside (WS) slope, with 22-inch inlet pipe extending from channel. 16-inch pipe connects to 12-inch steel pipe at landside (LS) shoulder, extending to concrete standpipe discharge outlet at the toe. Cobble revetment on WS slope. (16-inch pipe installed and existing 16-inch pipe grouted work authorized under Permit No. 3314, 1960-C.M. Goethe) FS Date: 5/14/2013					

LM Start	<b>0.54</b>	Rating **	M	Issue No.	<b>69 (cont)</b>
LM End	<b>0.54</b>	Issue Type +	En	Location *	

Photo 1 of 3 : UCIP\_FA\_2019\_44403\_60815.jpg



View of waterward side-pipe, pump, control panels, and electrical conduit.

Photo 2 of 3 : UCIP\_FA\_2019\_44403\_60814.jpg



Siphon breaker encased in steel casing located on waterward side.

<b>* Location</b> LS : Land Side    N/A : Not Applicable WS : Water Side CR : Crown	<b>** Rating</b> A : Acceptable M : Minimally Acceptable U : Unacceptable	N : Not Inspected/Rated C : Corrected A/W : Acceptable but Monitor & Maintain	<b>+ Issue Type</b> Ma : Maintenance Deficiency Ob : Design & System Obsolescence En : Enforcement
--	--	---	---



**Flood Control Project Maintenance  
Levee Inspections**

**Levee Inspection Report By Mile - Fall 2019**

**Reclamation District No. 0765 Glide**

Waterway	Bank	Unit Miles	Inspection Start/End	Inspector
Unit No. 01 Sacramento River	Right	1.72	11/12/2019 11/12/2019	Luz Dial

LM Start	0.54	Rating **	M	Issue No.	69 (cont)	
LM End	0.54	Issue Type +	En	Location *		
Category	Supplemental			GPS Latitude/Longitude		
				Start	End	
Item	DRAFT DWR UCIP Field Study			38.495374 °	38.495374 °	
				-121.559262 °	-121.559262 °	
DWR ID	21138					
Comment Code						
Inspector Comment						
DS_ID:21138 FS_ID:44403 EP_NO: 3314 Repair Type: Non-Urgent Crossing Status: Found UCIP Comments: Dense vegetation limit's the ability to determine condition of landward slope for potential leaks associated with crossing. Recommend having owner clear slope to be able to properly inspect slopes for leaks. FIELD_STRUCT_DESC: 16-inch steel irrigation pipe through the levee, 4 feet below the crown. Cutoff wall around pipe at center of levee. Slant pump on the waterside (WS) slope, with 22-inch inlet pipe extending from channel. 16-inch pipe connects to 12-inch steel pipe at landside (LS) shoulder, extending to concrete standpipe discharge outlet at the toe. Cobble revetment on WS slope. (16-inch pipe installed and existing 16-inch pipe grouted work authorized under Permit No. 3314, 1960-C.M. Goethe) FS Date: 5/14/2013						

Photo 3 of 3 : UCIP\_FA\_2019\_44403\_60813.jpg



Close up of slant pump and control panel on waterward side.

LM Start	0.75	Rating **	M	Issue No.	68
LM End	0.75	Issue Type +	Ma	Location *	LS
Category	Earthen Levee			GPS Latitude/Longitude	
				Start	End
Item	Slope Stability			38.492705 °	38.492705 °
				-121.557193 °	-121.557193 °
DWR ID	DWR_RD0765_01_s_2017_68				
Comment Code					
S3 : Repair the levee slope damaged by vehicle traffic and prevent access where possible.					
Inspector Comment					
Repair tire rut damage on LS shoulder.					

Photo 1 of 2 : FA\_2019\_RD0765\_211\_68\_20190904\_00034.jpg



Looking south on landside slope.

<b>* Location</b> LS : Land Side    N/A : Not Applicable WS : Water Side CR : Crown	<b>** Rating</b> A : Acceptable M : Minimally Acceptable U : Unacceptable	N : Not Inspected/Rated C : Corrected A/W : Acceptable but Monitor & Maintain	<b>+ Issue Type</b> Ma : Maintenance Deficiency Ob : Design & System Obsolescence En : Enforcement
--	--	---	---

**Flood Control Project Maintenance  
Levee Inspections**

**Levee Inspection Report By Mile - Fall 2019**

**Reclamation District No. 0765 Glide**

Waterway	Bank	Unit Miles	Inspection Start/End	Inspector
Unit No. 01 Sacramento River	Right	1.72	11/12/2019 11/12/2019	Luz Dial

LM Start	0.75	Rating **	M	Issue No.	68 (cont)	
LM End	0.75	Issue Type +	Ma	Location *	LS	
Category	Earthen Levee			GPS Latitude/Longitude		
				Start	End	
Item	Slope Stability			38.492705 °	38.492705 °	
				-121.557193 °	-121.557193 °	
DWR ID	DWR_RD0765_01_s_2017_68					
Comment Code						
S3 : Repair the levee slope damaged by vehicle traffic and prevent access where possible.						
Inspector Comment						
Repair tire rut damage on LS shoulder.						

Photo 2 of 2 : FA\_2019\_RD0765\_211\_68\_20190904\_00035.jpg



Looking south at levee damage caused by vehicle traffic. (Spring 2017)

LM Start	0.75	Rating **	M	Issue No.	63
LM End	0.79	Issue Type +	Ma	Location *	LS
Category	Earthen Levee			GPS Latitude/Longitude	
				Start	End
Item	Vegetation			38.492647 °	38.492145 °
				-121.557192 °	-121.556891 °
DWR ID	DWR_RD0765_01_s_2018_63				
Comment Code					
V2 : Remove the wild growth other than native grasses from the levee slopes.					
Inspector Comment					

Photo 1 of 1 : FA\_2019\_RD0765\_211\_63\_20190904\_00032.jpg



View of brush on levee slope. Fall 2018

LM Start	0.94	Rating **	M	Issue No.	24
LM End	0.94	Issue Type +	Ma	Location *	WS
Category	Earthen Levee			GPS Latitude/Longitude	
				Start	End
Item	Slope Stability			38.490265 °	38.490265 °
				-121.555617 °	-121.555617 °
DWR ID	DWR_RD0765_01_s_2019_24				
Comment Code					
S2 : Repair the levee slope damaged by foot traffic and prevent access where possible.					
Inspector Comment					

Photo 1 of 1 : FA\_2019\_RD0765\_211\_24\_20190904\_00015.jpg



View looking downstream at footpath that cuts into levee slope. Spring 2019

\* Location  
LS : Land Side N/A : Not Applicable  
WS : Water Side  
CR : Crown

\*\* Rating  
A : Acceptable N : Not Inspected/Rated  
M : Minimally Acceptable C : Corrected  
U : Unacceptable A/W : Acceptable but Monitor & Maintain

+ Issue Type  
Ma : Maintenance Deficiency  
Ob : Design & System Obsolescence  
En : Enforcement



**Flood Control Project Maintenance  
Levee Inspections**

**Levee Inspection Report By Mile - Fall 2019**

**Reclamation District No. 0765 Glide**

Waterway	Bank	Unit Miles	Inspection Start/End	Inspector
Unit No. 01 Sacramento River	Right	1.72	11/12/2019 11/12/2019	Luz Dial

LM Start	0.95	Rating **	M	Issue No.	70	
LM End	0.95	Issue Type +	En	Location *		
Category	Supplemental			GPS Latitude/Longitude		
				Start		End
Item	DRAFT DWR UCIP Field Study			38.490192 °		38.490192 °
				-121.555628 °		-121.555628 °
DWR ID	21139					
Comment Code						
Inspector Comment						
DS_ID:21139 FS_ID:44404 EP_NO: 653 Repair Type: Non-Urgent Crossing Status: Found UCIP Comments: Dense vegetation on landward side limits visual inspection of potential leaks. Recommend clearing slope of vegetation. FIELD_STRUCT_DESC: 16-inch steel irrigation pipe through the levee, 14.3 feet below the crown. Pump on the landside (LS). Gate valve on the waterside (WS) slope. (16-inch pipe authorized under Permit No. 653, 1935-E. G. Elliott) [Additional Reference(s): DWR Levee Logs, 2005. USACE Sacramento O&M Manual Unit No. 114, April 1959, River Mile (RM) 50.29] FS Date: 5/14/2013						

LM Start	<b>0.95</b>	Rating **	M	Issue No.	<b>70 (cont)</b>
LM End	<b>0.95</b>	Issue Type +	En	Location *	

Photo 1 of 3 : UCIP\_FA\_2019\_44404\_60819.jpg



Pipe section visible at waterward toe.

Photo 2 of 3 : UCIP\_FA\_2019\_44404\_60818.jpg



View of waterward side--dense vegetation limits inspection.

<b>* Location</b> LS : Land Side    N/A : Not Applicable WS : Water Side CR : Crown	<b>** Rating</b> A : Acceptable M : Minimally Acceptable U : Unacceptable	N : Not Inspected/Rated C : Corrected A/W : Acceptable but Monitor & Maintain	<b>+ Issue Type</b> Ma : Maintenance Deficiency Ob : Design & System Obsolescence En : Enforcement
--	--	---	---

**Flood Control Project Maintenance  
Levee Inspections**

**Levee Inspection Report By Mile - Fall 2019**

**Reclamation District No. 0765 Glide**

Waterway	Bank	Unit Miles	Inspection Start/End	Inspector
Unit No. 01 Sacramento River	Right	1.72	11/12/2019 11/12/2019	Luz Dial

LM Start	0.95	Rating **	M	Issue No.	70 (cont)	
LM End	0.95	Issue Type +	En	Location *		
Category	Supplemental			GPS Latitude/Longitude		
				Start	End	
Item	DRAFT DWR UCIP Field Study			38.490192 °	38.490192 °	
				-121.555628 °	-121.555628 °	
DWR ID	21139					
Comment Code						
Inspector Comment						
DS_ID:21139						
FS_ID:44404						
EP_NO: 653						
Repair Type: Non-Urgent						
Crossing Status: Found						
UCIP Comments: Dense vegetation on landward side limits visual inspection of potential leaks. Recommend clearing slope of vegetation.						
FIELD_STRUCT_DESC: 16-inch steel irrigation pipe through the levee, 14.3 feet below the crown. Pump on the landside (LS). Gate valve on the waterside (WS) slope. (16-inch pipe authorized under Permit No. 653, 1935-E. G. Elliott) [Additional Reference(s): DWR Levee Logs, 2005. USACE Sacramento O&M Manual Unit No. 114, April 1959, River Mile (RM) 50.29)]						
FS Date: 5/14/2013						

Photo 3 of 3 : UCIP\_FA\_2019\_44404\_60821.jpg



View of landward side--dense vegetation limits inspection.

LM Start	0.95	Rating **	M	Issue No.	23
LM End	0.95	Issue Type +	Ma	Location *	WS
Category	Earthen Levee			GPS Latitude/Longitude	
				Start	End
Item	Slope Stability			38.490067 °	38.490067 °
				-121.555530 °	-121.555530 °
DWR ID	DWR_RD0765_01_s_2019_23				
Comment Code					
S2 : Repair the levee slope damaged by foot traffic and prevent access where possible.					
Inspector Comment					

Photo 1 of 1 : FA\_2019\_RD0765\_211\_23\_20190904\_00014.jpg



View looking east at footpath that cuts into levee slope. Spring 2019

<b>* Location</b> LS : Land Side    N/A : Not Applicable WS : Water Side CR : Crown	<b>** Rating</b> A : Acceptable M : Minimally Acceptable U : Unacceptable	N : Not Inspected/Rated C : Corrected A/W : Acceptable but Monitor & Maintain	<b>+ Issue Type</b> Ma : Maintenance Deficiency Ob : Design & System Obsolescence En : Enforcement
--	--	---	---

**Flood Control Project Maintenance  
Levee Inspections**

**Levee Inspection Report By Mile - Fall 2019**

**Reclamation District No. 0765 Glide**

Waterway	Bank	Unit Miles	Inspection Start/End	Inspector
Unit No. 01 Sacramento River	Right	1.72	11/12/2019 11/12/2019	Luz Dial

LM Start	0.96	Rating **	M	Issue No.	11
LM End	0.97	Issue Type +	Ma	Location *	LS
Category	Earthen Levee			GPS Latitude/Longitude	
				Start	End
Item	Vegetation			38.489980 °	38.489788 °
				-121.555532 °	-121.555467 °
DWR ID	DWR_RD0765_01_f_2019_11				
Comment Code					
V2 : Remove the wild growth other than native grasses from the levee slopes.					
Inspector Comment					
Remove wild vines on levee slope.					

No Photos

LM Start	0.96	Rating **	M	Issue No.	51
LM End	1.02	Issue Type +	En	Location *	LS
Category	Earthen Levee			GPS Latitude/Longitude	
				Start	End
Item	Encroachments			38.489949 °	38.489230 °
				-121.555544 °	-121.555168 °
DWR ID	DWR_RD0765_01_s_2013_51				
Comment Code					
DT : Ditch					
Inspector Comment					
This ditch has been in place for several years. Most of the ditch appears to be outside the 15 foot right-of-way.					

Photo 1 of 2 : FA\_2019\_RD0765\_211\_51\_20190904\_00022.jpg



Looking northwest at the irrigation ditch on the landside toe.

LM Start	<b>0.96</b>	Rating **	M	Issue No.	<b>51 (cont)</b>
LM End	<b>1.02</b>	Issue Type +	En	Location *	LS

Photo 2 of 2 : FA\_2019\_RD0765\_211\_51\_20190904\_00023.jpg



Looking southwest at irrigation ditch on landward toe.

**\* Location**  
LS : Land Side    N/A : Not Applicable  
WS : Water Side  
CR : Crown

**\*\* Rating**  
A : Acceptable                      N : Not Inspected/Rated  
M : Minimally Acceptable        C : Corrected  
U : Unacceptable                  A/W : Acceptable but Monitor & Maintain

**+ Issue Type**  
Ma : Maintenance Deficiency  
Ob : Design & System Obsolescence  
En : Enforcement



**Flood Control Project Maintenance  
Levee Inspections**

**Levee Inspection Report By Mile - Fall 2019**

**Reclamation District No. 0765 Glide**

Waterway	Bank	Unit Miles	Inspection Start/End	Inspector
Unit No. 01 Sacramento River	Right	1.72	11/12/2019 11/12/2019	Luz Dial

LM Start	<b>0.98</b>	Rating **	C	Issue No.	<b>22</b>
LM End	<b>0.98</b>	Issue Type +	En	Location *	WS
Category	Earthen Levee		GPS Latitude/Longitude		
			Start	End	
Item	Encroachments		38.489690 °	38.489690 °	
			-121.555328 °	-121.555328 °	
DWR ID	DWR_RD0765_01_s_2019_22				
Comment Code					
TR : Tree or limb					
Inspector Comment					
Remove a fallen tree from the levee slope.					

No Photos

LM Start	<b>1.08</b>	Rating **	M	Issue No.	<b>14</b>
LM End	<b>1.08</b>	Issue Type +	Ma	Location *	LS
Category	Earthen Levee		GPS Latitude/Longitude		
			Start	End	
Item	Vegetation		38.488442 °	38.488442 °	
			-121.554685 °	-121.554685 °	
DWR ID	DWR_RD0765_01_f_2019_14				
Comment Code					
V2 : Remove the wild growth other than native grasses from the levee slopes.					
Inspector Comment					
Trim wild growth on levee slope.					

No Photos

<b>* Location</b> LS : Land Side    N/A : Not Applicable WS : Water Side CR : Crown	<b>** Rating</b> A : Acceptable M : Minimally Acceptable U : Unacceptable	N : Not Inspected/Rated C : Corrected A/W : Acceptable but Monitor & Maintain	<b>+ Issue Type</b> Ma : Maintenance Deficiency Ob : Design & System Obsolescence En : Enforcement
--	--	---	---



**Flood Control Project Maintenance  
Levee Inspections**

**Levee Inspection Report By Mile - Fall 2019**

**Reclamation District No. 0765 Glide**

Waterway	Bank	Unit Miles	Inspection Start/End	Inspector
Unit No. 01 Sacramento River	Right	1.72	11/12/2019 11/12/2019	Luz Dial

LM Start	1.12	Rating **	M	Issue No.	71
LM End	1.12	Issue Type +	En	Location *	
Category	Supplemental			GPS Latitude/Longitude	
				Start	End
Item	DRAFT DWR UCIP Field Study			38.487917 °	38.487917 °
				-121.554405 °	-121.554405 °
DWR ID	21140				
Comment Code					
Inspector Comment					
DS_ID:21140					
FS_ID:44407					
EP_NO: N/A					
Repair Type: Non-Urgent					
Crossing Status: Indicator Found					
UCIP Comments: Dense vegetation on waterward and landward slopes limit visual inspection of potential leaks along pipe alignment.					
Recommend having owner clear vegetation along slopes.					
FIELD_STRUCT_DESC: 6-inch steel pipe of unknown purpose through the levee, 18.8 feet below the crown. Concrete standpipe on the landise (LS) toe. Pump located on the waterside (WS) slope. [Additional Reference(s): USACE Sacramento O&M Manual Unit No. 114, April 1959, (river mile (RM) 50.15)]					
FS Date: 4/9/2015					

LM Start	<b>1.12</b>	Rating **	M	Issue No.	<b>71 (cont)</b>
LM End	<b>1.12</b>	Issue Type +	En	Location *	

Photo 1 of 3 : UCIP\_FA\_2019\_44407\_73022.jpg



Overview of landward side--concrete standpipe and control panel located at toe.

Photo 2 of 3 : UCIP\_FA\_2019\_44407\_73021.jpg



Concrete standpipe with 2 gates inside located on landward side.

<b>* Location</b> LS : Land Side    N/A : Not Applicable WS : Water Side CR : Crown	<b>** Rating</b> A : Acceptable M : Minimally Acceptable U : Unacceptable	N : Not Inspected/Rated C : Corrected A/W : Acceptable but Monitor & Maintain	<b>+ Issue Type</b> Ma : Maintenance Deficiency Ob : Design & System Obsolescence En : Enforcement
--	--	---	---

**Flood Control Project Maintenance  
Levee Inspections**

**Levee Inspection Report By Mile - Fall 2019**

**Reclamation District No. 0765 Glide**

Waterway	Bank	Unit Miles	Inspection Start/End	Inspector
Unit No. 01 Sacramento River	Right	1.72	11/12/2019 11/12/2019	Luz Dial

LM Start	1.12	Rating **	M	Issue No.	71 (cont)	
LM End	1.12	Issue Type +	En	Location *		
Category	Supplemental			GPS Latitude/Longitude		
				Start	End	
Item	DRAFT DWR UCIP Field Study			38.487917 °	38.487917 °	
				-121.554405 °	-121.554405 °	
DWR ID	21140					
Comment Code						
Inspector Comment						
DS_ID:21140						
FS_ID:44407						
EP_NO: N/A						
Repair Type: Non-Urgent						
Crossing Status: Indicator Found						
UCIP Comments: Dense vegetation on waterward and landward slopes limit visual inspection of potential leaks along pipe alignment.						
Recommend having owner clear vegetation along slopes.						
FIELD_STRUCT_DESC: 6-inch steel pipe of unknown purpose through the levee, 18.8 feet below the crown. Concrete standpipe on the landise (LS) toe. Pump located on the waterside (WS) slope. [Additional						
Reference(s): USACE Sacramento O&M Manual Unit No. 114, April 1959, (river mile (RM) 50.15)]						
FS Date: 4/9/2015						

Photo 3 of 3 : UCIP\_FA\_2019\_44407\_73020.jpg



Conduits disconnected and damaged on waterward side.

LM Start	1.16	Rating **	M	Issue No.	54
LM End	1.26	Issue Type +	En	Location *	LS
Category	Earthen Levee			GPS Latitude/Longitude	
				Start	End
Item	Encroachments			38.487348 °	38.485984 °
				-121.554044 °	-121.553202 °
DWR ID	DWR_RD0765_01_s_2015_54				
Comment Code					
FE : Fence					
Inspector Comment					
Landowner installed a temporary fence on landside shoulder and slope.					

Photo 1 of 3 : FA\_2019\_RD0765\_211\_54\_20190904\_00027.jpg



Looking south at fencing for goats on landward slope. (Fall 2016)

<b>* Location</b> LS : Land Side    N/A : Not Applicable WS : Water Side CR : Crown	<b>** Rating</b> A : Acceptable M : Minimally Acceptable U : Unacceptable	N : Not Inspected/Rated C : Corrected A/W : Acceptable but Monitor & Maintain	<b>+ Issue Type</b> Ma : Maintenance Deficiency Ob : Design & System Obsolescence En : Enforcement
--	--	---	---

**Flood Control Project Maintenance  
Levee Inspections**

**Levee Inspection Report By Mile - Fall 2019**

**Reclamation District No. 0765 Glide**

Waterway	Bank	Unit Miles	Inspection Start/End	Inspector
Unit No. 01 Sacramento River	Right	1.72	11/12/2019 11/12/2019	Luz Dial

LM Start	1.16	Rating **	M	Issue No.	54 (cont)	
LM End	1.26	Issue Type +	En	Location *	LS	
Category	Earthen Levee			GPS Latitude/Longitude		
				Start		End
Item	Encroachments			38.487348 °	38.485984 °	
				-121.554044 °	-121.553202 °	
DWR ID	DWR_RD0765_01_s_2015_54					
Comment Code						
FE : Fence						
Inspector Comment						
Landowner installed a temporary fence on landside shoulder and slope.						

Photo 2 of 3 : FA\_2019\_RD0765\_211\_54\_20190904\_00028.jpg



Looking south at temporary fence on landward shoulder. (Spring 2016)

LM Start	<b>1.16</b>	Rating **	M	Issue No.	<b>54 (cont)</b>
LM End	<b>1.26</b>	Issue Type +	En	Location *	LS

Photo 3 of 3 : FA\_2019\_RD0765\_211\_54\_20190904\_00029.jpg



Looking south at temporary fence on landward slope. (Spring 2016)

LM Start	1.18	Rating **	M	Issue No.	43
LM End	1.21	Issue Type +	En	Location *	LS
Category	Earthen Levee			GPS Latitude/Longitude	
				Start	End
Item	Encroachments			38.487127 °	38.486702 °
				-121.553910 °	-121.553652 °
DWR ID	DWR_RD0765_01_s_2012_43				
Comment Code					
BU : Building					
Inspector Comment					

Photo 1 of 1 : FA\_2019\_RD0765\_211\_43\_20190904\_00020.jpg



Looking northwest at buildings along landside toe.

**\* Location**

LS : Land Side    N/A : Not Applicable  
WS : Water Side  
CR : Crown

**\*\* Rating**

A : Acceptable                      N : Not Inspected/Rated  
M : Minimally Acceptable        C : Corrected  
U : Unacceptable                  A/W : Acceptable but Monitor & Maintain

**+ Issue Type**

Ma : Maintenance Deficiency  
Ob : Design & System Obsolescence  
En : Enforcement



**Flood Control Project Maintenance  
Levee Inspections**

**Levee Inspection Report By Mile - Fall 2019**

**Reclamation District No. 0765 Glide**

Waterway	Bank	Unit Miles	Inspection Start/End	Inspector
Unit No. 01 Sacramento River	Right	1.72	11/12/2019 11/12/2019	Luz Dial

LM Start	1.20	Rating **	M	Issue No.	72
LM End	1.20	Issue Type +	En	Location *	
Category	Supplemental			GPS Latitude/Longitude	
				Start	End
Item	DRAFT DWR UCIP Field Study			38.486830 °	38.486830 °
				-121.553698 °	-121.553698 °
DWR ID	24660				
Comment Code					
Inspector Comment					
DS_ID:24660 FS_ID:43203 EP_NO: N/A Repair Type: Non-Urgent Crossing Status: Indicator Found UCIP Comments: Unable to confirm details of crossing. Need to contact owner to determine additional details about crossing and permit issued. FIELD_STRUCT_DESC: PG&E utility service box located on the landside shoulder. FS Date: 5/14/2013					

Photo 1 of 2 : UCIP\_FA\_2019\_43203\_71214.jpg



Utility box located on landward side.

LM Start	<b>1.20</b>	Rating **	M	Issue No.	<b>72 (cont)</b>
LM End	<b>1.20</b>	Issue Type +	En	Location *	

Photo 2 of 2 : UCIP\_FA\_2019\_43203\_71213.jpg



View of levee crown and waterward side.

<b>* Location</b> LS : Land Side    N/A : Not Applicable WS : Water Side CR : Crown	<b>** Rating</b> A : Acceptable M : Minimally Acceptable U : Unacceptable	<b>+ Issue Type</b> Ma : Maintenance Deficiency Ob : Design & System Obsolescence En : Enforcement
--	--	---



**Flood Control Project Maintenance  
Levee Inspections**

**Levee Inspection Report By Mile - Fall 2019**

**Reclamation District No. 0765 Glide**

Waterway	Bank	Unit Miles	Inspection Start/End	Inspector
Unit No. 01 Sacramento River	Right	1.72	11/12/2019 11/12/2019	Luz Dial

LM Start	1.23	Rating **	M	Issue No.	32
LM End	1.23	Issue Type +	En	Location *	LS
Category	Earthen Levee			GPS Latitude/Longitude	
				Start	End
Item	Encroachments			38.486403 °	38.486403 °
				-121.553437 °	-121.553437 °
DWR ID	DWR_RD0765_01_f_2018_32				
Comment Code					
CR : Crops					
Inspector Comment					
Citrus tree is unpermitted within levee easement.					

Photo 1 of 1 : FA\_2019\_RD0765\_211\_32\_20190904\_00017.jpg



View of citrus tree within levee easement. Fall 2018

LM Start	1.24	Rating **	M	Issue No.	2	
LM End	1.24	Issue Type +	En	Location *	WS	
Category	Earthen Levee			GPS Latitude/Longitude		
				Start		End
Item	Encroachments			38.486316 °		38.486316 °
				-121.553349 °		-121.553349 °
DWR ID	DWR_RD0765_01_f_2017_2					
Comment Code						
EQ : Equipment						
Inspector Comment						
Instruct landowner to remove a floating dock platform from the waterside levee slope.						

Photo 1 of 1 : FA\_2019\_RD0765\_211\_2\_20190904\_00002.jpg



Looking north at the waterside slope. Fall 2017

LM Start	1.28	Rating **	U	Issue No.	15
LM End	1.32	Issue Type +	Ma	Location *	LS
Category	Earthen Levee			GPS Latitude/Longitude	
				Start	End
Item	Vegetation			38.485728 °	38.485210 °
				-121.553042 °	-121.552862 °
DWR ID	DWR_RD0765_01_s_2019_15				
Comment Code					
V2 : Remove the wild growth other than native grasses from the levee slopes.					
Inspector Comment					
Remove wild vines and growth on LS slope					

Photo 1 of 1 : FA\_2019\_RD0765\_211\_15\_20190904\_00011.jpg



View of vines and grown on LS slope.

**\* Location**  
LS : Land Side    N/A : Not Applicable  
WS : Water Side  
CR : Crown

**\*\* Rating**  
A : Acceptable                      N : Not Inspected/Rated  
M : Minimally Acceptable        C : Corrected  
U : Unacceptable                  A/W : Acceptable but Monitor & Maintain

**+ Issue Type**  
Ma : Maintenance Deficiency  
Ob : Design & System Obsolescence  
En : Enforcement

**Flood Control Project Maintenance  
Levee Inspections**

**Levee Inspection Report By Mile - Fall 2019**

**Reclamation District No. 0765 Glide**

Waterway	Bank	Unit Miles	Inspection Start/End	Inspector
Unit No. 01 Sacramento River	Right	1.72	11/12/2019 11/12/2019	Luz Dial

LM Start	1.31	Rating **	M	Issue No.	20
LM End	1.31	Issue Type +	Ma	Location *	WS
Category	Earthen Levee			GPS Latitude/Longitude	
				Start	End
Item	Encroachments			38.485382 °	38.485382 °
				-121.552842 °	-121.552842 °
DWR ID	DWR_RD0765_01_s_2019_20				
Comment Code					
TR : Tree or limb					
Inspector Comment					
Remove fallen tree from levee slope.					

Photo 1 of 1 : FA\_2019\_RD0765\_211\_20\_20190904\_00012.jpg



View looking upstream at fallen tree on levee slope. Spring 2019

LM Start	1.32	Rating **	M	Issue No.	7
LM End	1.34	Issue Type +	Ma	Location *	WS
Category	Earthen Levee			GPS Latitude/Longitude	
				Start	End
Item	Encroachments			38.485287 °	38.485014 °
				-121.552818 °	-121.552618 °
DWR ID	DWR_RD0765_01_s_2015_7				
Comment Code					
TR : Tree or limb					
Inspector Comment					

Photo 1 of 2 : FA\_2019\_RD0765\_211\_7\_20190904\_00006.jpg



View looking downstream at tree log on levee slope. Spring 2019

LM Start	<b>1.32</b>	Rating **	M	Issue No.	<b>7 (cont)</b>
LM End	<b>1.34</b>	Issue Type +	Ma	Location *	WS

Photo 2 of 2 : FA\_2019\_RD0765\_211\_7\_20190904\_00007.jpg



Looking southeast at branch on waterward slope.

<b>* Location</b> LS : Land Side    N/A : Not Applicable WS : Water Side CR : Crown		<b>** Rating</b> A : Acceptable M : Minimally Acceptable U : Unacceptable N : Not Inspected/Rated C : Corrected A/W : Acceptable but Monitor & Maintain		<b>+ Issue Type</b> Ma : Maintenance Deficiency Ob : Design & System Obsolescence En : Enforcement	
--	--	---	--	---	--



**Flood Control Project Maintenance  
Levee Inspections**

**Levee Inspection Report By Mile - Fall 2019**

**Reclamation District No. 0765 Glide**

Waterway	Bank	Unit Miles	Inspection Start/End	Inspector
Unit No. 01 Sacramento River	Right	1.72	11/12/2019 11/12/2019	Luz Dial

LM Start	1.37	Rating **	M	Issue No.	73
LM End	1.37	Issue Type +	En	Location *	
Category	Supplemental			GPS Latitude/Longitude	
				Start	End
Item	DRAFT DWR UCIP Field Study			38.484656 °	38.484656 °
				-121.552362 °	-121.552362 °
DWR ID	24661				
Comment Code					
Inspector Comment					
DS_ID:24661					
FS_ID:39022					
EP_NO: N/A					
Repair Type: Non-Urgent					
Crossing Status: Indicator Found					
UCIP Comments: Need to contact owner to determine if crossing goes through levee.					
FIELD_STRUCT_DESC: 3-inch irrigation line through levee at unknown depth. Service box located on landside (LS) shoulder.					
FS Date: 5/14/2013					

Photo 1 of 1 : UCIP\_FA\_2019\_39022\_71212.jpg



Utility box located on landward shoulder.

LM Start	1.43	Rating **	M	Issue No.	67
LM End	1.43	Issue Type +	Ma	Location *	WS
Category	Earthen Levee			GPS Latitude/Longitude	
				Start	End
Item	Encroachments			38.483810 °	38.483810 °
				-121.551747 °	-121.551747 °
DWR ID	DWR_RD0765_01_s_2017_67				
Comment Code					
GA : Garbage					
Inspector Comment					
Remove sofa dumped on waterside slope.					

Photo 1 of 1 : FA\_2019\_RD0765\_211\_67\_20190904\_00033.jpg



View of sofa debris dumped on slope. Spring 2018

\* Location  
LS : Land Side N/A : Not Applicable  
WS : Water Side  
CR : Crown

\*\* Rating  
A : Acceptable N : Not Inspected/Rated  
M : Minimally Acceptable C : Corrected  
U : Unacceptable A/W : Acceptable but Monitor & Maintain

+ Issue Type  
Ma : Maintenance Deficiency  
Ob : Design & System Obsolescence  
En : Enforcement

**Flood Control Project Maintenance  
Levee Inspections**

**Levee Inspection Report By Mile - Fall 2019**

**Reclamation District No. 0765 Glide**

Waterway	Bank	Unit Miles	Inspection Start/End	Inspector
Unit No. 01 Sacramento River	Right	1.72	11/12/2019 11/12/2019	Luz Dial

LM Start	1.44	Rating **	M	Issue No.	41
LM End	1.44	Issue Type +	Ma	Location *	LS
Category	Earthen Levee			GPS Latitude/Longitude	
				Start	End
Item	Trim / Thin Trees			38.483640 °	38.483640 °
				-121.551727 °	-121.551727 °
DWR ID	DWR_RD0765_01_s_2012_41				
Comment Code					
T1 : Trim trees to at least five feet above ground level.					
Inspector Comment					
Trim trees to at least five feet above slope.					

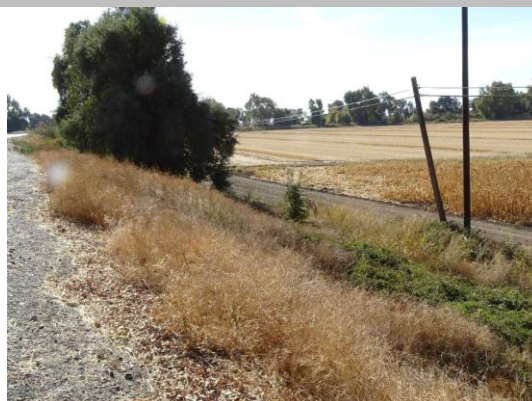
Photo 1 of 1 : FA\_2019\_RD0765\_211\_41\_20190904\_00018.jpg



View of low branches on slope. Fall 2018

LM Start	1.47	Rating **	M	Issue No.	52
LM End	1.70	Issue Type +	Ma	Location *	LS
Category	Earthen Levee			GPS Latitude/Longitude	
				Start	End
Item	Vegetation			38.483340 °	38.480345 °
				-121.551565 °	-121.549658 °
DWR ID	DWR_RD0765_01_f_2018_52				
Comment Code					
V2 : Remove the wild growth other than native grasses from the levee slopes.					
Inspector Comment					
Trim tall brush along slope.					

Photo 1 of 3 : FA\_2019\_RD0765\_211\_52\_20190904\_00024.jpg



View of tall brush on levee slope. Fall 2018

LM Start	<b>1.47</b>	Rating **	M	Issue No.	<b>52 (cont)</b>
LM End	<b>1.70</b>	Issue Type +	Ma	Location *	LS

Photo 2 of 3 : FA\_2019\_RD0765\_211\_52\_20190904\_00025.jpg



View of tall brush on levee slope. Fall 2018

<b>* Location</b> LS : Land Side    N/A : Not Applicable WS : Water Side CR : Crown		<b>** Rating</b> A : Acceptable M : Minimally Acceptable U : Unacceptable		N : Not Inspected/Rated C : Corrected A/W : Acceptable but Monitor & Maintain		<b>+ Issue Type</b> Ma : Maintenance Deficiency Ob : Design & System Obsolescence En : Enforcement	
--	--	--	--	---	--	---	--



**Flood Control Project Maintenance  
Levee Inspections**

**Levee Inspection Report By Mile - Fall 2019**

**Reclamation District No. 0765 Glide**

Waterway	Bank	Unit Miles	Inspection Start/End	Inspector
Unit No. 01 Sacramento River	Right	1.72	11/12/2019 11/12/2019	Luz Dial

LM Start	1.47	Rating **	M	Issue No.	52 (cont)
LM End	1.70	Issue Type +	Ma	Location *	LS
Category	Earthen Levee			GPS Latitude/Longitude	
				Start	End
Item	Vegetation			38.483340 °	38.480345 °
				-121.551565 °	-121.549658 °
DWR ID	DWR_RD0765_01_f_2018_52				
Comment Code					
V2 : Remove the wild growth other than native grasses from the levee slopes.					
Inspector Comment					
Trim tall brush along slope.					

Photo 3 of 3 : FA\_2019\_RD0765\_211\_52\_20190904\_00026.jpg



View of tall brush on levee slope. Fall 2018

LM Start	1.48	Rating **	M	Issue No.	42
LM End	1.50	Issue Type +	Ma	Location *	LS
Category	Earthen Levee			GPS Latitude/Longitude	
				Start	End
Item	Trim / Thin Trees			38.483170 °	38.482965 °
				-121.551367 °	-121.551265 °
DWR ID	DWR_RD0765_01_s_2012_42				
Comment Code					
T1 : Trim trees to at least five feet above ground level.					
Inspector Comment					

Photo 1 of 1 : FA\_2019\_RD0765\_211\_42\_20190904\_00019.jpg



View of low tree branches partially blocking visibility. Fall 2018

LM Start	1.51	Rating **	A/W	Issue No.	45
LM End	1.51	Issue Type +	Ma	Location *	WS
Category	Earthen Levee			GPS Latitude/Longitude	
				Start	End
Item	Encroachments			38.482835 °	38.482835 °
				-121.551083 °	-121.551083 °
DWR ID	DWR_RD0765_01_s_2018_45				
Comment Code					
TR : Tree or limb					
Inspector Comment					
Log used to control vehicle traffic access to levee.					

Photo 1 of 1 : FA\_2019\_RD0765\_211\_45\_20190904\_00021.jpg



Log on waterside slope is used to control vehicle access. Spring 2018

\* Location  
LS : Land Side    N/A : Not Applicable  
WS : Water Side  
CR : Crown

\*\* Rating  
A : Acceptable                      N : Not Inspected/Rated  
M : Minimally Acceptable        C : Corrected  
U : Unacceptable                  A/W : Acceptable but Monitor & Maintain

+ Issue Type  
Ma : Maintenance Deficiency  
Ob : Design & System Obsolescence  
En : Enforcement

## Reclamation District No. 0765 Glide

View looking southeast at slope instability due to vehicle traffic. Spring 2018

No Photos

Looking southwest at irrigation ditch at landward toe. (Fall 2014)

Page 19 of 21



**Flood Control Project Maintenance  
Levee Inspections**

**Levee Inspection Report By Mile - Fall 2019**

**Reclamation District No. 0765 Glide**

Waterway	Bank	Unit Miles	Inspection Start/End	Inspector
Unit No. 01 Sacramento River	Right	1.72	11/12/2019 11/12/2019	Luz Dial

LM Start	1.55	Rating **	U	Issue No.	60 (cont)	
LM End	1.61	Issue Type +	En	Location *	LS	
Category	Earthen Levee			GPS Latitude/Longitude		
				Start	End	
Item	Encroachments			38.482300 °	38.481482 °	
				-121.550808 °	-121.550283 °	
DWR ID	DWR_RD0765_01_f_2013_60					
Comment Code						
DT : Ditch						
Inspector Comment						
An old irrigation ditch is located at the landside toe.						

Photo 2 of 2 : FA\_2019\_RD0765\_211\_60\_20190904\_00031.jpg



Looking southwest at irrigation ditch on landward toe.

LM Start	1.58	Rating **	C	Issue No.	17
LM End	1.58	Issue Type +	Ma	Location *	WS
Category	Earthen Levee			GPS Latitude/Longitude	
				Start	End
Item	Trim / Thin Trees			38.481973 °	38.481973 °
				-121.550547 °	-121.550547 °
DWR ID	DWR_RD0765_01_s_2019_17				
Comment Code					
T1 : Trim trees to at least five feet above ground level.					
Inspector Comment					

No Photos

LM Start	1.58	Rating **	M	Issue No.	1
LM End	1.58	Issue Type +	Ma	Location *	WS
Category	Earthen Levee			GPS Latitude/Longitude	
				Start	End
Item	Encroachments			38.481959 °	38.481959 °
				-121.550527 °	-121.550527 °
DWR ID	DWR_RD0765_01_f_2017_1				
Comment Code					
TR : Tree or limb					
Inspector Comment					
Remove fallen tree on waterside slope.					

Photo 1 of 1 : FA\_2019\_RD0765\_211\_1\_20190904\_00001.jpg



View looking north at the fallen tree. Fall 2017

**\* Location**  
LS : Land Side    N/A : Not Applicable  
WS : Water Side  
CR : Crown

**\*\* Rating**  
A : Acceptable                      N : Not Inspected/Rated  
M : Minimally Acceptable        C : Corrected  
U : Unacceptable                  A/W : Acceptable but Monitor & Maintain

**+ Issue Type**  
Ma : Maintenance Deficiency  
Ob : Design & System Obsolescence  
En : Enforcement

**Flood Control Project Maintenance  
Levee Inspections**

**Levee Inspection Report By Mile - Fall 2019**

**Reclamation District No. 0765 Glide**

Waterway	Bank	Unit Miles	Inspection Start/End	Inspector
Unit No. 01 Sacramento River	Right	1.72	11/12/2019 11/12/2019	Luz Dial

LM Start	1.67	Rating **	M	Issue No.	13
LM End	1.68	Issue Type +	Ma	Location *	WS
Category	Earthen Levee			GPS Latitude/Longitude	
				Start	End
Item	Encroachments			38.480763 °	38.480632 °
				-121.549581 °	-121.549543 °
DWR ID	DWR_RD0765_01_s_2012_13				
Comment Code					
TR : Tree or limb					
Inspector Comment					
Remove large tree branch on waterside slope.					

Photo 1 of 2 : FA\_2019\_RD0765\_211\_13\_20190904\_00009.jpg



Looking northwest at tree limb in vegetation on waterside slope. Fall 2017

LM Start	<b>1.67</b>	Rating **	M	Issue No.	<b>13 (cont)</b>
LM End	<b>1.68</b>	Issue Type +	Ma	Location *	WS

Photo 2 of 2 : FA\_2019\_RD0765\_211\_13\_20190904\_00010.jpg



Looking northwest at large tree limb on waterward slope.

**\* Location**  
LS : Land Side    N/A : Not Applicable  
WS : Water Side  
CR : Crown

**\*\* Rating**  
A : Acceptable                      N : Not Inspected/Rated  
M : Minimally Acceptable        C : Corrected  
U : Unacceptable                  A/W : Acceptable but Monitor & Maintain

**+ Issue Type**  
Ma : Maintenance Deficiency  
Ob : Design & System Obsolescence  
En : Enforcement