

**Flood Control Project Maintenance
Levee Inspections**

Maintenance Issue Types Only, Levee Inspection Report By Mile - Fall 2024

Reclamation District No. 0556 Upper Andrus

Waterway	Bank	Unit Miles	Inspection Start/End	Inspector
Unit No. 01 Georgiana Slough	Right	5.48	10/22/2024 10/22/2024	Gregg McMillon

LM Start		Rating **	M	Issue No.	3
LM End		Issue Type +	Ma	Location *	N/A
Category	Earthen Levee		GPS Latitude/Longitude		
			Start	End	
Item	Flood Preparedness & Training				
DWR ID	DWR_RD0556_01_f_2014_3				
Comment Code					
FP : Flood Preparedness & Training					
Inspector Comment					
The members in the district have not been flood fight trained recently according to the district manager, but they are familier with flood fight methods in the field.					

No Photos

LM Start		Rating **	A	Issue No.	6
LM End		Issue Type +	Ma	Location *	N/A
Category	Earthen Levee		GPS Latitude/Longitude		
			Start	End	
Item	Operations & Maintenance Manuals				
DWR ID	DWR_RD0556_01_s_2012_6				
Comment Code					
OM : O&M Manuals					
Inspector Comment					
Sent electronic copy of O+M manual to LMA. In addition, the District engineer also has a copy.					

No Photos

LM Start		Rating **	A	Issue No.	8
LM End		Issue Type +	Ma	Location *	N/A
Category	Earthen Levee		GPS Latitude/Longitude		
			Start	End	
Item	Emergency Supplies & Equipment				
DWR ID	DWR_RD0556_01_f_2019_8				
Comment Code					
ES : Emergency Supplies & Equipment					
Inspector Comment					
The District has adequate flood fight materials on hand.					

No Photos

* Location LS : Land Side N/A : Not Applicable WS : Water Side CR : Crown	** Rating A : Acceptable M : Minimally Acceptable U : Unacceptable	N : Not Inspected/Rated C : Corrected A/W : Acceptable but Monitor & Maintain	+ Issue Type Ma : Maintenance Deficiency Ob : Design & System Obsolescence En : Enforcement
--	--	---	---

**Flood Control Project Maintenance
Levee Inspections**

Maintenance Issue Types Only, Levee Inspection Report By Mile - Fall 2024

Reclamation District No. 0556 Upper Andrus

Waterway	Bank	Unit Miles	Inspection Start/End	Inspector
Unit No. 01 Georgiana Slough	Right	5.48	10/22/2024 10/22/2024	Gregg McMillon

LM Start	0.38	Rating **	M	Issue No.	43
LM End	0.58	Issue Type +	Ma	Location *	WS
Category	Supplemental			GPS Latitude/Longitude	
				Start	End
Item	2018 USACE Erosion Survey			38.234038°	38.231879°
				-121.519817°	-121.522003°
DWR ID	DWR_RD0556_01_s _ 2022_43				
Comment Code					
Inspector Comment					
2018 Site ID: GEO 11.8 R					
Status: Eroding					
2018 Field Notes: No observed change.					
Site History: 2017 - Tree popout popouts eminent , significant toe erosion and whole bank failure in sections					

LM Start	0.38	Rating **	M	Issue No.	43 (cont)
LM End	0.58	Issue Type +	Ma	Location *	WS

Photo 1 of 2 : FA_2024_RD0556_18_43_20241001_00024.jpg



USACE 2018 Erosion Photo #1

Photo 2 of 2 : FA_2024_RD0556_18_43_20241001_00025.jpg



USACE 2018 Erosion Photo #2

LM Start	0.75	Rating **	M	Issue No.	65
LM End	0.84	Issue Type +	Ma	Location *	LS
Category	Earthen Levee			GPS Latitude/Longitude	
				Start	End
Item	Vegetation			38.230046°	38.229088°
				-121.524167°	-121.525347°
DWR ID	DWR_RD0556_01_f_2020_65				
Comment Code					
V2 : Remove the wild growth and woody vegetation other than native grasses from the levee slopes.					
Inspector Comment					

Photo 1 of 1 : FA_2024_RD0556_18_65_20241001_00038.jpg



View looking downstream at vegetation on the landside slope (Fall 2020).

* Location LS : Land Side N/A : Not Applicable WS : Water Side CR : Crown		** Rating A : Acceptable M : Minimally Acceptable U : Unacceptable N : Not Inspected/Rated C : Corrected A/W : Acceptable but Monitor & Maintain		+ Issue Type Ma : Maintenance Deficiency Ob : Design & System Obsolescence En : Enforcement	
--	--	---	--	---	--

**Flood Control Project Maintenance
Levee Inspections**

Maintenance Issue Types Only, Levee Inspection Report By Mile - Fall 2024

Reclamation District No. 0556 Upper Andrus

Waterway	Bank	Unit Miles	Inspection Start/End	Inspector
Unit No. 01 Georgiana Slough	Right	5.48	10/22/2024 10/22/2024	Gregg McMillon

LM Start	0.93	Rating **	M	Issue No.	64
LM End	0.99	Issue Type +	Ma	Location *	LS
Category	Earthen Levee			GPS Latitude/Longitude	
				Start	End
Item	Vegetation			38.228271°	38.227476°
				-121.526662°	-121.527057°
DWR ID	DWR_RD0556_01_f_2024_64				
Comment Code					
V1 : Control annual grass and weeds on the levee slopes and easements.					
Inspector Comment					

No Photos

LM Start	1.20	Rating **	M	Issue No.	42
LM End	1.53	Issue Type +	Ma	Location *	WS
Category	Supplemental			GPS Latitude/Longitude	
				Start	End
Item	2018 USACE Erosion Survey			38.227615°	38.225374°
				-121.529894°	-121.534406°
DWR ID	DWR_RD0556_01_s_2022_42				
Comment Code					
Inspector Comment					
2018 Site ID: GEO 10.9 R					
Status: Eroding					
2018 Field Notes: New erosion throughout site.					
Site History: 2017 - Significant toe erosion and whole bank failure in sections, large pockets from tree popouts.					

LM Start	1.20	Rating **	M	Issue No.	42 (cont)
LM End	1.53	Issue Type +	Ma	Location *	WS

Photo 1 of 2 : FA_2024_RD0556_18_42_20241001_00022.jpg



USACE 2018 Erosion Photo #1

Photo 2 of 2 : FA_2024_RD0556_18_42_20241001_00023.jpg



USACE 2018 Erosion Photo #2

* Location		** Rating		+ Issue Type	
LS : Land Side	N/A : Not Applicable	A : Acceptable	N : Not Inspected/Rated	Ma : Maintenance Deficiency	
WS : Water Side		M : Minimally Acceptable	C : Corrected	Ob : Design & System Obsolescence	
CR : Crown		U : Unacceptable	A/W : Acceptable but Monitor & Maintain	En : Enforcement	

**Flood Control Project Maintenance
Levee Inspections**

Maintenance Issue Types Only, Levee Inspection Report By Mile - Fall 2024

Reclamation District No. 0556 Upper Andrus

Waterway	Bank	Unit Miles	Inspection Start/End	Inspector
Unit No. 01 Georgiana Slough	Right	5.48	10/22/2024 10/22/2024	Gregg McMillon

LM Start	1.43	Rating **	M	Issue No.	82
LM End	1.43	Issue Type +	Ma	Location *	LS
Category	Earthen Levee			GPS Latitude/Longitude	
				Start	End
Item	Animal Control			38.226537°	38.226537°
				-121.533351°	-121.533351°
DWR ID	DWR_RD0556_01_f_2021_82				
Comment Code					
A1 : Exterminate rodents and backfill and compact or grout burrows.					
Inspector Comment					

Photo 1 of 1 : FA_2024_RD0556_18_82_20241023_00089.jpg



View of animal holes in landside hinge and slope. (Fall 2024)

LM Start	1.43	Rating **	A/W	Issue No.	40
LM End	1.43	Issue Type +	Ma	Location *	LS
Category	Earthen Levee			GPS Latitude/Longitude	
				Start	End
Item	Erosion / Bank Caving			38.226537°	38.226537°
				-121.533512°	-121.533512°
DWR ID	DWR_RD0556_01_f_2012_40				
Comment Code					
E1 : Note and monitor erosion site.					
Inspector Comment					
Erosion is covered by vegetation.					

Photo 1 of 1 : FA_2024_RD0556_18_40_20241001_00020.jpg



View of the erosion on the LS slope (Fall 2022).

LM Start	1.52	Rating **	M	Issue No.	62
LM End	1.56	Issue Type +	Ma	Location *	LS
Category	Earthen Levee			GPS Latitude/Longitude	
				Start	End
Item	Vegetation			38.225571°	38.225059°
				-121.534421°	-121.534913°
DWR ID	DWR_RD0556_01_f_2024_62				
Comment Code					
V2 : Remove the wild growth and woody vegetation other than native grasses from the levee slopes.					
Inspector Comment					

No Photos

* Location LS : Land Side N/A : Not Applicable WS : Water Side CR : Crown		** Rating A : Acceptable M : Minimally Acceptable U : Unacceptable N : Not Inspected/Rated C : Corrected A/W : Acceptable but Monitor & Maintain		+ Issue Type Ma : Maintenance Deficiency Ob : Design & System Obsolescence En : Enforcement
--	--	---	--	---

**Flood Control Project Maintenance
Levee Inspections**

Maintenance Issue Types Only, Levee Inspection Report By Mile - Fall 2024

Reclamation District No. 0556 Upper Andrus

Waterway	Bank	Unit Miles	Inspection Start/End	Inspector
Unit No. 01 Georgiana Slough	Right	5.48	10/22/2024 10/22/2024	Gregg McMillon

LM Start	1.57	Rating **	M	Issue No.	59
LM End	1.57	Issue Type +	Ma	Location *	WS
Category	Earthen Levee			GPS Latitude/Longitude	
				Start	End
Item	Trim / Thin Trees			38.224971°	38.224971°
				-121.534992°	-121.534992°
DWR ID	DWR_RD0556_01_f_2024_59				
Comment Code					
T2 : Tree or limb.					
Inspector Comment					
Fallen log should be removed from levee shoulder.					

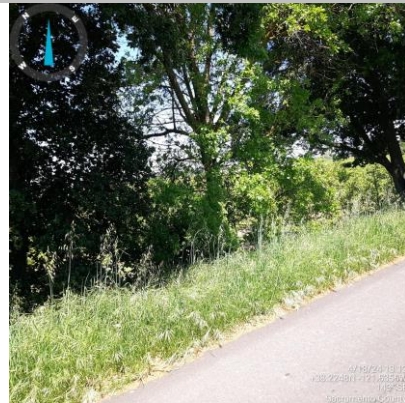
Photo 1 of 1 : FA_2024_RD0556_18_59_20241023_00092.jpg



View of log sitting on the waterside shoulder. (Fall 2024)

LM Start	1.61	Rating **	U	Issue No.	46
LM End	1.63	Issue Type +	Ma	Location *	LS
Category	Earthen Levee			GPS Latitude/Longitude	
				Start	End
Item	Trim / Thin Trees			38.224700°	38.224582°
				-121.535631°	-121.536075°
DWR ID	DWR_RD0556_01_s_2018_46				
Comment Code					
T1 : Trim and thin trees to at least five feet above ground level to allow visibility of the ground and room to flood fight.					
Inspector Comment					

Photo 1 of 1 : FA_2024_RD0556_18_46_20241001_00028.jpg



View looking upstream at thick trees on the landside slope (Spring 2024).

LM Start	1.72	Rating **	M	Issue No.	52
LM End	1.87	Issue Type +	Ma	Location *	LS
Category	Earthen Levee			GPS Latitude/Longitude	
				Start	End
Item	Vegetation			38.224217°	38.223819°
				-121.537631°	-121.540220°
DWR ID	DWR_RD0556_01_f_2024_52				
Comment Code					
V2 : Remove the wild growth and woody vegetation other than native grasses from the levee slopes.					
Inspector Comment					

No Photos

* Location		** Rating		+ Issue Type	
LS : Land Side	N/A : Not Applicable	A : Acceptable	N : Not Inspected/Rated	Ma : Maintenance Deficiency	
WS : Water Side		M : Minimally Acceptable	C : Corrected	Ob : Design & System Obsolescence	
CR : Crown		U : Unacceptable	A/W : Acceptable but Monitor & Maintain	En : Enforcement	

**Flood Control Project Maintenance
Levee Inspections**

Maintenance Issue Types Only, Levee Inspection Report By Mile - Fall 2024

Reclamation District No. 0556 Upper Andrus

Waterway	Bank	Unit Miles	Inspection Start/End	Inspector
Unit No. 01 Georgiana Slough	Right	5.48	10/22/2024 10/22/2024	Gregg McMillon

LM Start	1.97	Rating **	C	Issue No.	83
LM End	1.99	Issue Type +	Ma	Location *	LS
Category	Earthen Levee			GPS Latitude/Longitude	
				Start	End
Item	Trim / Thin Trees			38.223660°	38.223600°
				-121.542015°	-121.542543°
DWR ID	DWR_RD0556_01_f_2021_83				
Comment Code					
T1 : Trim and thin trees to at least five feet above ground level to allow visibility of the ground and room to flood fight.					
Inspector Comment					

No Photos

LM Start	2.06	Rating **	U	Issue No.	50
LM End	2.06	Issue Type +	Ma	Location *	LS
Category	Earthen Levee			GPS Latitude/Longitude	
				Start	End
Item	Vegetation			38.223369°	38.223369°
				-121.543654°	-121.543654°
DWR ID	DWR_RD0556_01_f_2024_50				
Comment Code					
V2 : Remove the wild growth and woody vegetation other than native grasses from the levee slopes.					
Inspector Comment					

Photo 1 of 1 : FA_2024_RD0556_18_50_20241023_00093.jpg



View of tall shrubs to be trimmed back on the landside shoulder. (Fall 2024)

LM Start	2.14	Rating **	M	Issue No.	49
LM End	2.28	Issue Type +	Ma	Location *	LS
Category	Earthen Levee			GPS Latitude/Longitude	
				Start	End
Item	Vegetation			38.222469°	38.220505°
				-121.544528°	-121.544217°
DWR ID	DWR_RD0556_01_f_2024_49				
Comment Code					
V2 : Remove the wild growth and woody vegetation other than native grasses from the levee slopes.					
Inspector Comment					

No Photos

* Location LS : Land Side N/A : Not Applicable WS : Water Side CR : Crown		** Rating A : Acceptable M : Minimally Acceptable U : Unacceptable N : Not Inspected/Rated C : Corrected A/W : Acceptable but Monitor & Maintain		+ Issue Type Ma : Maintenance Deficiency Ob : Design & System Obsolescence En : Enforcement
--	--	---	--	---

**Flood Control Project Maintenance
Levee Inspections**

Maintenance Issue Types Only, Levee Inspection Report By Mile - Fall 2024

Reclamation District No. 0556 Upper Andrus

Waterway	Bank	Unit Miles	Inspection Start/End	Inspector
Unit No. 01 Georgiana Slough	Right	5.48	10/22/2024 10/22/2024	Gregg McMillon

LM Start	2.69	Rating **	U	Issue No.	69
LM End	2.69	Issue Type +	Ma	Location *	LS
Category	Earthen Levee			GPS Latitude/Longitude	
				Start	End
Item	Trim / Thin Trees			38.215382°	38.215382°
				-121.541247°	-121.541247°
DWR ID	DWR_RD0556_01_f_2020_69				
Comment Code					
T1 : Trim and thin trees to at least five feet above ground level to allow visibility of the ground and room to flood fight.					
Inspector Comment					

Photo 1 of 1 : FA_2024_RD0556_18_69_20241001_00039.jpg



View of the tree on the LS slope (Fall 2022).

LM Start	2.72	Rating **	U	Issue No.	33
LM End	2.72	Issue Type +	Ma	Location *	LS
Category	Earthen Levee			GPS Latitude/Longitude	
				Start	End
Item	Trim / Thin Trees			38.215107°	38.215107°
				-121.540677°	-121.540677°
DWR ID	DWR_RD0556_01_s_2017_33				
Comment Code					
T3 : Fallen tree with root ball.					
Inspector Comment					
Fallen trees on landside. Remove the fallen tree and repair the levee damage. Ivy to be trimmed back to provide access to the fallen tree.					

Photo 1 of 2 : FA_2024_RD0556_18_33_20241023_00094.jpg



View of ivy and trees to be trimmed to expose fallen tree on the landside shoulder. (Fall 2024)

LM Start	2.72	Rating **	U	Issue No.	33 (cont)
LM End	2.72	Issue Type +	Ma	Location *	LS

Photo 2 of 2 : FA_2024_RD0556_18_33_20241001_00012.jpg



View of hole in landside slope caused by down tree (Spring 2021).

* Location LS : Land Side N/A : Not Applicable WS : Water Side CR : Crown		** Rating A : Acceptable M : Minimally Acceptable U : Unacceptable N : Not Inspected/Rated C : Corrected A/W : Acceptable but Monitor & Maintain		+ Issue Type Ma : Maintenance Deficiency Ob : Design & System Obsolescence En : Enforcement	
---	--	--	--	--	--

**Flood Control Project Maintenance
Levee Inspections****Maintenance Issue Types Only, Levee Inspection Report By Mile - Fall 2024****Reclamation District No. 0556 Upper Andrus**

Waterway	Bank	Unit Miles	Inspection Start/End	Inspector
Unit No. 01 Georgiana Slough	Right	5.48	10/22/2024 10/22/2024	Gregg McMillon

LM Start	2.85	Rating **	M	Issue No.	37
LM End	2.98	Issue Type +	Ma	Location *	WS
Category	Supplemental			GPS Latitude/Longitude	
				Start	End
Item	2018 USACE Erosion Survey			38.214144°	38.212577°
				-121.538692°	-121.537244°
DWR ID	DWR_RD0556_01_s_2022_37				
Comment Code					
Inspector Comment					
2018 Site ID: GEO 9.2 R					
Status: Eroding					
2018 Field Notes: New erosion along toe.					
Site History: 2017 - Toe erosion.					

Photo 1 of 2 : FA_2024_RD0556_18_37_20241001_00017.jpg



USACE 2018 Erosion Photo #1

LM Start	2.85	Rating **	M	Issue No.	37 (cont)
LM End	2.98	Issue Type +	Ma	Location *	WS

Photo 2 of 2 : FA_2024_RD0556_18_37_20241001_00018.jpg



USACE 2018 Erosion Photo #2

LM Start	3.14	Rating **	A/W	Issue No.	28
LM End	3.26	Issue Type +	Ma	Location *	LS
Category	Earthen Levee			GPS Latitude/Longitude	
				Start	End
Item	Animal Control			38.210985°	38.210160°
				-121.538372°	-121.540300°
DWR ID	DWR_RD0556_01_f_2017_28				
Comment Code					
A1 : Exterminate rodents and backfill and compact or grout burrows.					
Inspector Comment					
Monitor area for reinfestation of rodents.					

Photo 1 of 1 : FA_2024_RD0556_18_28_20241001_00008.jpg



View of rodent holes on the landside slope. Fall 2023.

* Location	** Rating	+ Issue Type
LS : Land Side WS : Water Side CR : Crown	A : Acceptable M : Minimally Acceptable U : Unacceptable	Ma : Maintenance Deficiency Ob : Design & System Obsolescence En : Enforcement
N/A : Not Applicable	N : Not Inspected/Rated C : Corrected A/W : Acceptable but Monitor & Maintain	

**Flood Control Project Maintenance
Levee Inspections****Maintenance Issue Types Only, Levee Inspection Report By Mile - Fall 2024****Reclamation District No. 0556 Upper Andrus**

Waterway	Bank	Unit Miles	Inspection Start/End	Inspector
Unit No. 01 Georgiana Slough	Right	5.48	10/22/2024 10/22/2024	Gregg McMillon

LM Start	3.18	Rating **	M	Issue No.	36
LM End	3.50	Issue Type +	Ma	Location *	WS
Category	Supplemental			GPS Latitude/Longitude	
				Start	End
Item	2018 USACE Erosion Survey			38.210674°	38.206919°
				-121.538854°	-121.541559°
DWR ID	DWR_RD0556_01_s_2022_36				
Comment Code					
Inspector Comment					
2018 Site ID: GEO 9.0 R					
Status: Eroding					
2018 Field Notes: Site extended downstream.					
Site History: 2017 - Toe erosion and failed revetment.					

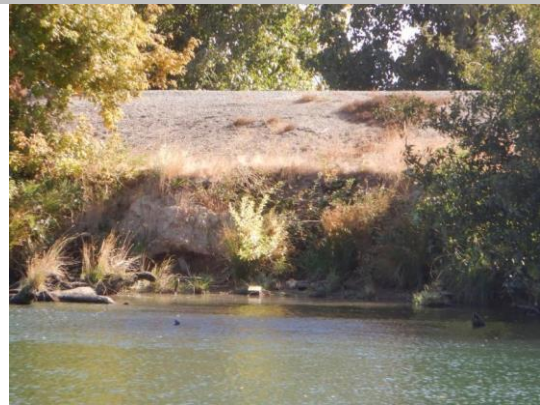
Photo 1 of 2 : FA_2024_RD0556_18_36_20241001_00015.jpg



USACE 2018 Erosion Photo #1

LM Start	3.18	Rating **	M	Issue No.	36 (cont)
LM End	3.50	Issue Type +	Ma	Location *	WS

Photo 2 of 2 : FA_2024_RD0556_18_36_20241001_00016.jpg



USACE 2018 Erosion Photo #2

LM Start	3.18	Rating **	U	Issue No.	55
LM End	3.18	Issue Type +	Ma	Location *	LS
Category	Earthen Levee			GPS Latitude/Longitude	
				Start	End
Item	Trim / Thin Trees			38.210745°	38.210745°
				-121.538967°	-121.538967°
DWR ID	DWR_RD0556_01_f_2019_55				
Comment Code					
T1 : Trim and thin trees to at least five feet above ground level to allow visibility of the ground and room to flood fight.					
Inspector Comment					
Some trimming was done but more work is needed.					

Photo 1 of 1 : FA_2024_RD0556_18_55_20241001_00034.jpg



View of the trees on the LS slope (Fall 2022).

* Location	** Rating	+ Issue Type
LS : Land Side WS : Water Side CR : Crown	A : Acceptable M : Minimally Acceptable U : Unacceptable	Ma : Maintenance Deficiency Ob : Design & System Obsolescence En : Enforcement
N/A : Not Applicable	N : Not Inspected/Rated C : Corrected A/W : Acceptable but Monitor & Maintain	

**Flood Control Project Maintenance
Levee Inspections****Maintenance Issue Types Only, Levee Inspection Report By Mile - Fall 2024****Reclamation District No. 0556 Upper Andrus**

Waterway	Bank	Unit Miles	Inspection Start/End	Inspector
Unit No. 01 Georgiana Slough	Right	5.48	10/22/2024 10/22/2024	Gregg McMillon

LM Start	3.22	Rating **	U	Issue No.	38
LM End	3.23	Issue Type +	Ma	Location *	LS
Category	Earthen Levee			GPS Latitude/Longitude	
				Start	End
Item	Trim / Thin Trees			38.210493°	38.210446°
				-121.539760°	-121.539804°
DWR ID	DWR_RD0556_01_s_2017_38				
Comment Code					
T1 : Trim and thin trees to at least five feet above ground level to allow visibility of the ground and room to flood fight.					
Inspector Comment					
Remove the wild tree growth and vegetation from the landside levee slope and toe so the ground can be seen.					

Photo 1 of 1 : FA_2024_RD0556_18_38_20241001_00019.jpg



View of the wild growth on the LS slope (Spring 2023).

LM Start	3.27	Rating **	M	Issue No.	89
LM End	3.29	Issue Type +	Ma	Location *	LS
Category	Earthen Levee			GPS Latitude/Longitude	
				Start	End
Item	Trim / Thin Trees			38.210114°	38.209895°
				-121.540342°	-121.540579°
DWR ID	DWR_RD0556_01_f_2022_89				
Comment Code					
T1 : Trim and thin trees to at least five feet above ground level to allow visibility of the ground and room to flood fight.					
Inspector Comment					

No Photos

LM Start	3.52	Rating **	U	Issue No.	41
LM End	3.81	Issue Type +	Ma	Location *	LS
Category	Earthen Levee			GPS Latitude/Longitude	
				Start	End
Item	Vegetation			38.206700°	38.202615°
				-121.541800°	-121.540807°
DWR ID	DWR_RD0556_01_s_2020_41				
Comment Code					
V2 : Remove the wild growth and woody vegetation other than native grasses from the levee slopes.					
Inspector Comment					

Photo 1 of 1 : FA_2024_RD0556_18_41_20241001_00021.jpg



View looking downstream at vegetation on the landside slope (Fall 2020).

* Location	** Rating	+ Issue Type
LS : Land Side WS : Water Side CR : Crown	A : Acceptable M : Minimally Acceptable U : Unacceptable	Ma : Maintenance Deficiency Ob : Design & System Obsolescence En : Enforcement
N/A : Not Applicable	N : Not Inspected/Rated C : Corrected A/W : Acceptable but Monitor & Maintain	

**Flood Control Project Maintenance
Levee Inspections**

Maintenance Issue Types Only, Levee Inspection Report By Mile - Fall 2024

Reclamation District No. 0556 Upper Andrus

Waterway	Bank	Unit Miles	Inspection Start/End	Inspector
Unit No. 01 Georgiana Slough	Right	5.48	10/22/2024 10/22/2024	Gregg McMillon

LM Start	3.56	Rating **	M	Issue No.	95
LM End	3.56	Issue Type +	Ma	Location *	LS
Category	Earthen Levee			GPS Latitude/Longitude	
				Start	End
Item	Trim / Thin Trees			38.206078°	38.206078°
				-121.541743°	-121.541743°
DWR ID	DWR_RD0556_01_s_2022_95				
Comment Code					
T2 : Tree or limb.					
Inspector Comment					

Photo 1 of 1 : FA_2024_RD0556_18_95_20241001_00045.jpg



View of down tree limbs on the landside slope (Spring 2022).

LM Start	3.94	Rating **	U	Issue No.	99
LM End	3.96	Issue Type +	Ma	Location *	LS
Category	Earthen Levee			GPS Latitude/Longitude	
				Start	End
Item	Vegetation			38.201514°	38.201402°
				-121.542595°	-121.542958°
DWR ID	DWR_RD0556_01_s_2022_99				
Comment Code					
V2 : Remove the wild growth and woody vegetation other than native grasses from the levee slopes.					
Inspector Comment					
Blackberries on landside slope.					

Photo 1 of 1 : FA_2024_RD0556_18_99_20241001_00046.jpg



View looking downstream at vegetation on the landside slope (Spring 2022).

LM Start	4.02	Rating **	M	Issue No.	101
LM End	4.02	Issue Type +	Ma	Location *	LS
Category	Earthen Levee			GPS Latitude/Longitude	
				Start	End
Item	Animal Control			38.201063°	38.201063°
				-121.543850°	-121.543850°
DWR ID	DWR_RD0556_01_s_2022_101				
Comment Code					
A1 : Exterminate rodents and backfill and compact or grout burrows.					
Inspector Comment					

Photo 1 of 1 : FA_2024_RD0556_18_101_20241001_00048.jpg



View of multiple animal holes in the landside slope (Spring 2022).

* Location LS : Land Side N/A : Not Applicable WS : Water Side CR : Crown		** Rating A : Acceptable M : Minimally Acceptable U : Unacceptable		N : Not Inspected/Rated C : Corrected A/W : Acceptable but Monitor & Maintain		+ Issue Type Ma : Maintenance Deficiency Ob : Design & System Obsolescence En : Enforcement	
--	--	--	--	---	--	---	--

**Flood Control Project Maintenance
Levee Inspections****Maintenance Issue Types Only, Levee Inspection Report By Mile - Fall 2024****Reclamation District No. 0556 Upper Andrus**

Waterway	Bank	Unit Miles	Inspection Start/End	Inspector
Unit No. 01 Georgiana Slough	Right	5.48	10/22/2024 10/22/2024	Gregg McMillon

LM Start	4.02	Rating **	M	Issue No.	117	
LM End	4.02	Issue Type +	Ma	Location *		
Category	Supplemental			GPS Latitude/Longitude		
				Start	End	
Item	DWR UCIP LMA Responsibility			38.201035°	38.201035°	
				-121.543936°	-121.543936°	
DWR ID	21581					
Comment Code						
Inspector Comment						
DS_ID:21581 FS_ID:61315 EP_NO: 13030 Repair Type: Non-Urgent EVAL Issue: 10, Unauthorized Modification or Non-Compliant Permit Crossing Status: Found UCIP Comments: 06/17/2020 Record is Non-Urgent. Pipe diameter field measured as 20-inch on both slopes. On landside berm pipe diameter changes from 20 inch to 18 inch. Unable to find a permit for modification of this crossing. No permit has been identified authorizing original O&M pipe through the levee. (O.Yakimov - DWR UCIP) FIELD_STRUCT_DESC: 18-inch steel drainage pipes through levee, 4.3 feet below crown. Pumps on landward side and 4-inch air valve. (18-inch pipe [HLM 4.01] authorized under Automatic Board Order (ABO) issued as Permit No. 11175, 1975 - RD0556). [Additional Reference(s): DWR Levee Log, unk.yr. (HLM 4.01). USACE Sacramento O&M Manual, Unit 103, June 1954, Revised 29 December 2016, (Station 397+36.3), listed as 20-inch pipe]. USACE As-Built Drawing No. 50-04-2631, Sheet 10, Station 397+36.3, March 1950, Revised 16 Dec.1952, listed as 20-inch pipe]. FS Date: 6/17/2020						

LM Start	4.02	Rating **	M	Issue No.	117 (cont)
LM End	4.02	Issue Type +	Ma	Location *	

Photo 1 of 3 : UCIP_FA_2024_61315_89138.jpg



Water-Side: Pipes on waterside berm

Photo 2 of 3 : UCIP_FA_2024_61315_89139.jpg



Water-Side: Pipes on waterside berm and levee slope on background

* Location	** Rating	+ Issue Type
LS : Land Side WS : Water Side CR : Crown	A : Acceptable M : Minimally Acceptable U : Unacceptable	Ma : Maintenance Deficiency Ob : Design & System Obsolescence En : Enforcement
N/A : Not Applicable	N : Not Inspected/Rated C : Corrected A/W : Acceptable but Monitor & Maintain	

**Flood Control Project Maintenance
Levee Inspections****Maintenance Issue Types Only, Levee Inspection Report By Mile - Fall 2024****Reclamation District No. 0556 Upper Andrus**

Waterway	Bank	Unit Miles	Inspection Start/End	Inspector
Unit No. 01 Georgiana Slough	Right	5.48	10/22/2024 10/22/2024	Gregg McMillon

LM Start	4.02	Rating **	M	Issue No.	117 (cont)
LM End	4.02	Issue Type +	Ma	Location *	
Category	Supplemental			GPS Latitude/Longitude	
				Start	End
Item	DWR UCIP LMA Responsibility			38.201035° -121.543936°	38.201035° -121.543936°
DWR ID	21581				

Photo 3 of 3 : UCIP_FA_2024_61315_89137.jpg



Land-Side: View of levee shoulder

LM Start	4.02	Rating **	M	Issue No.	118
LM End	4.02	Issue Type +	Ma	Location *	
Category	Supplemental			GPS Latitude/Longitude	
				Start	End
Item	DWR UCIP LMA Responsibility			38.201032° -121.543946°	38.201032° -121.543946°
DWR ID	20842				

Comment Code**Inspector Comment**

DS_ID:20842
FS_ID:61303
EP_NO: 13030
Repair Type: Non-Urgent
EVAL Issue: 10, Unauthorized Modification or Non-Compliant Permit
Crossing Status: Found
UCIP Comments: 06/17/2020 Record is Non-Urgent. Pipe diameter field measured as 20-inch on both slopes. On landside berm pipe diameter changes from 20 inch to 18 inch. Debris of 20-inch pipe welded to 16-inch pipe with open end found next to this crossing on landside berm. Unable to find a permit for modification of this crossing. No permit has been identified authorizing original O&M pipe through the levee. (O.Yakimov - DWR UCIP)
FIELD_STRUCT_DESC: 16-inch steel drainage pipe through levee, 4.3 feet below crown. Pump on landward side and 4-inch air valve. (16-inch pipe [HLM 4.01] authorized under Automatic Board Order (ABO) issued as Permit No. 11175, 1975 - RD0556). [Additional Reference(s): DWR Levee Log, unk.yr. (HLM 4.01). USACE Sacramento O&M Manual, Unit 103, June 1954, Revised 29 December 2016, (Station 397+20.5), listed as 16-inch pipe. USACE As-Built Drawing No. 50-04-2631, Sheet 10, Station 397+20.5, March 1950, Revised 16 Dec.1952, listed as 12-inch pipe].
FS Date: 6/17/2020

Photo 1 of 3 : UCIP_FA_2024_61303_89144.jpg



Top of Levee: View of levee crown looking downstream

* Location	** Rating	+ Issue Type
LS: Land Side WS: Water Side CR: Crown	A: Acceptable M: Minimally Acceptable U: Unacceptable	Ma: Maintenance Deficiency Ob: Design & System Obsolescence En: Enforcement
N: Not Inspected/Rated C: Corrected A/W: Acceptable but Monitor & Maintain		

**Flood Control Project Maintenance
Levee Inspections****Maintenance Issue Types Only, Levee Inspection Report By Mile - Fall 2024****Reclamation District No. 0556 Upper Andrus**

Waterway	Bank	Unit Miles	Inspection Start/End	Inspector
Unit No. 01 Georgiana Slough	Right	5.48	10/22/2024 10/22/2024	Gregg McMillon

LM Start	4.02	Rating **	M	Issue No.	118 (cont)	
LM End	4.02	Issue Type +	Ma	Location *		
Category	Supplemental			GPS Latitude/Longitude		
				Start	End	
Item	DWR UCIP LMA Responsibility			38.201032°	38.201032°	
				-121.543946°	-121.543946°	
DWR ID	20842					

Photo 2 of 3 : UCIP_FA_2024_61303_89147.jpg



Water-Side: Pipes on waterside berm looking from riverbank

LM Start	4.02	Rating **	M	Issue No.	118 (cont)
LM End	4.02	Issue Type +	Ma	Location *	

Photo 3 of 3 : UCIP_FA_2024_61303_89160.jpg



Land-Side: View of levee slope looking from toe

* Location LS : Land Side N/A : Not Applicable WS : Water Side CR : Crown	** Rating A : Acceptable M : Minimally Acceptable U : Unacceptable N : Not Inspected/Rated C : Corrected A/W : Acceptable but Monitor & Maintain	+ Issue Type Ma : Maintenance Deficiency Ob : Design & System Obsolescence En : Enforcement
--	---	---

**Flood Control Project Maintenance
Levee Inspections****Maintenance Issue Types Only, Levee Inspection Report By Mile - Fall 2024****Reclamation District No. 0556 Upper Andrus**

Waterway	Bank	Unit Miles	Inspection Start/End	Inspector
Unit No. 01 Georgiana Slough	Right	5.48	10/22/2024 10/22/2024	Gregg McMillon

LM Start	4.02	Rating **	M	Issue No.	119	
LM End	4.02	Issue Type +	Ma	Location *		
Category	Supplemental			GPS Latitude/Longitude		
				Start	End	
Item	DWR UCIP LMA Responsibility			38.201022°	38.201022°	
				-121.543973°	-121.543973°	
DWR ID	21437					
Comment Code						
Inspector Comment						
DS_ID:21437 FS_ID:61311 EP_NO: 10526 Repair Type: Non-Urgent EVAL Issue: 10, Unauthorized Modification or Non-Compliant Permit Crossing Status: Found UCIP Comments: 06/17/2020 Record is Non-Urgent. Pipe diameter field measured as 20-inch on both slopes. Unable to find a permit for modification of this crossing. (O.Yakimov - DWR UCIP) FIELD_STRUCT_DESC: 24-inch steel drainage pipes 3.5 ft below levee crown. Pumping plant on landside. 6" air valve, concrete saddle & wood beam on waterside. This crossing replaces 24-inch pipe (see DSID 25634). (24-inch pipe authorized under Permit No. 10526, 1975 - Reclamation District 556). [Additional Reference(s): USACE Sacramento O&M Manual, Unit 103, June 1954, Revised 29 December 2016, (Station 397+36.3), listed as 24-inch pipe. USACE As-Built Drawing No. 50-04-2631, Sheet 10, Station 397+36.3, March 1950, Revised 16 Dec.1952]. FS Date: 6/17/2020						

LM Start	4.02	Rating **	M	Issue No.	119 (cont)
LM End	4.02	Issue Type +	Ma	Location *	

Photo 1 of 3 : UCIP_FA_2024_61311_89154.jpg



Top of Levee: View of levee crown looking downstream

Photo 2 of 3 : UCIP_FA_2024_61311_89161.jpg



Land-Side: View of levee slope looking from toe

* Location	** Rating	+ Issue Type
LS : Land Side WS : Water Side CR : Crown	A : Acceptable M : Minimally Acceptable U : Unacceptable	Ma : Maintenance Deficiency Ob : Design & System Obsolescence En : Enforcement
N/A : Not Applicable	N : Not Inspected/Rated C : Corrected A/W : Acceptable but Monitor & Maintain	

**Flood Control Project Maintenance
Levee Inspections****Maintenance Issue Types Only, Levee Inspection Report By Mile - Fall 2024****Reclamation District No. 0556 Upper Andrus**

Waterway	Bank	Unit Miles	Inspection Start/End	Inspector
Unit No. 01 Georgiana Slough	Right	5.48	10/22/2024 10/22/2024	Gregg McMillon

LM Start	4.02	Rating **	M	Issue No.	119 (cont)
LM End	4.02	Issue Type +	Ma	Location *	
Category	Supplemental			GPS Latitude/Longitude	
				Start	End
Item	DWR UCIP LMA Responsibility			38.201022°	38.201022°
				-121.543973°	-121.543973°
DWR ID	21437				

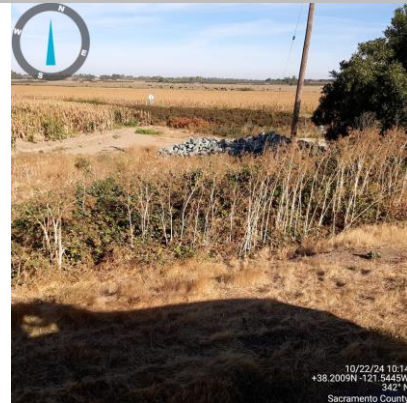
Photo 3 of 3 : UCIP_FA_2024_61311_89158.jpg



Water-Side: View of levee slope looking from crown

LM Start	4.03	Rating **	M	Issue No.	23
LM End	4.05	Issue Type +	Ma	Location *	LS
Category	Earthen Levee			GPS Latitude/Longitude	
				Start	End
Item	Vegetation			38.200975°	38.200827°
				-121.544145°	-121.544435°
DWR ID	DWR_RD0556_01_f_2024_23				
Comment Code					
V2 : Remove the wild growth and woody vegetation other than native grasses from the levee slopes.					
Inspector Comment					
Remove blackberry bushes from landside slope.					

Photo 1 of 1 : FA_2024_RD0556_18_23_20241023_00095.jpg



View of vegetation on the landside slope. (Fall 2024)

LM Start	4.08	Rating **	C	Issue No.	22
LM End	4.08	Issue Type +	Ma	Location *	WS
Category	Earthen Levee			GPS Latitude/Longitude	
				Start	End
Item	Vegetation			38.200587°	38.200490°
				-121.544775°	-121.544894°
DWR ID	DWR_RD0556_01_f_2023_22				
Comment Code					
V2 : Remove the wild growth and woody vegetation other than native grasses from the levee slopes.					
Inspector Comment					

No Photos

* Location LS : Land Side N/A : Not Applicable WS : Water Side CR : Crown	** Rating A : Acceptable M : Minimally Acceptable U : Unacceptable	N : Not Inspected/Rated C : Corrected A/W : Acceptable but Monitor & Maintain	+ Issue Type Ma : Maintenance Deficiency Ob : Design & System Obsolescence En : Enforcement
--	--	--	---

**Flood Control Project Maintenance
Levee Inspections**

Maintenance Issue Types Only, Levee Inspection Report By Mile - Fall 2024

Reclamation District No. 0556 Upper Andrus

Waterway	Bank	Unit Miles	Inspection Start/End	Inspector
Unit No. 01 Georgiana Slough	Right	5.48	10/22/2024 10/22/2024	Gregg McMillon

LM Start	4.40	Rating **	M	Issue No.	102
LM End	4.57	Issue Type +	Ma	Location *	LS
Category	Earthen Levee			GPS Latitude/Longitude	
				Start	End
Item	Vegetation			38.196514°	38.194882°
				-121.547638°	-121.550051°
DWR ID	DWR_RD0556_01_s_2022_102				
Comment Code					
V2 : Remove the wild growth and woody vegetation other than native grasses from the levee slopes.					
Inspector Comment					
Blackberries at LS toe.					

No Photos

LM Start	4.59	Rating **	C	Issue No.	35
LM End	4.62	Issue Type +	Ma	Location *	WS
Category	Earthen Levee			GPS Latitude/Longitude	
				Start	End
Item	Vegetation			38.194709°	38.194517°
				-121.550358°	-121.550709°
DWR ID	DWR_RD0556_01_f_2023_35				
Comment Code					
V2 : Remove the wild growth and woody vegetation other than native grasses from the levee slopes.					
Inspector Comment					

No Photos

LM Start	4.64	Rating **	C	Issue No.	71
LM End	4.64	Issue Type +	Ma	Location *	WS
Category	Earthen Levee			GPS Latitude/Longitude	
				Start	End
Item	Vegetation			38.194269°	38.194269°
				-121.551063°	-121.551063°
DWR ID	DWR_RD0556_01_s_2024_71				
Comment Code					
V2 : Remove the wild growth and woody vegetation other than native grasses from the levee slopes.					
Inspector Comment					

No Photos

* Location		** Rating		+ Issue Type	
LS : Land Side	N/A : Not Applicable	A : Acceptable	N : Not Inspected/Rated	Ma : Maintenance Deficiency	
WS : Water Side		M : Minimally Acceptable	C : Corrected	Ob : Design & System Obsolescence	
CR : Crown		U : Unacceptable	A/W : Acceptable but Monitor & Maintain	En : Enforcement	

**Flood Control Project Maintenance
Levee Inspections**

Maintenance Issue Types Only, Levee Inspection Report By Mile - Fall 2024

Reclamation District No. 0556 Upper Andrus

Waterway	Bank	Unit Miles	Inspection Start/End	Inspector
Unit No. 01 Georgiana Slough	Right	5.48	10/22/2024 10/22/2024	Gregg McMillon

LM Start	4.64	Rating **	C	Issue No.	60
LM End	4.64	Issue Type +	Ma	Location *	LS
Category	Earthen Levee			GPS Latitude/Longitude	
				Start	End
Item	Vegetation			38.194264°	38.194264°
				-121.551063°	-121.551063°
DWR ID	DWR_RD0556_01_s_2024_60				
Comment Code					
V2 : Remove the wild growth and woody vegetation other than native grasses from the levee slopes.					
Inspector Comment					

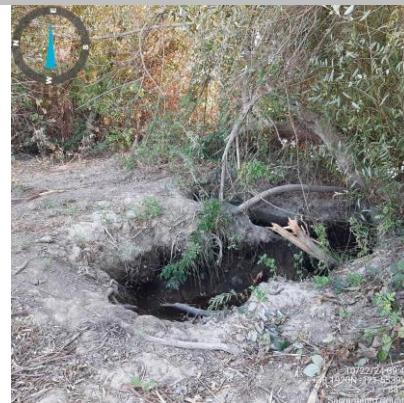
No Photos

LM Start	4.78	Rating **	M	Issue No.	104
LM End	4.78	Issue Type +	Ma	Location *	LS
Category	Earthen Levee			GPS Latitude/Longitude	
				Start	End
Item	Vegetation			38.192881°	38.192881°
				-121.552895°	-121.552895°
DWR ID	DWR_RD0556_01_s_2022_104				
Comment Code					
V4 : Elderberries are blocking visibility and flood fight capability.					
Inspector Comment					

No Photos

LM Start	4.87	Rating **	A/W	Issue No.	21
LM End	4.87	Issue Type +	Ma	Location *	WS
Category	Earthen Levee			GPS Latitude/Longitude	
				Start	End
Item	Erosion / Bank Caving			38.192041°	38.192041°
				-121.554096°	-121.554096°
DWR ID	DWR_RD0556_01_f_2024_21				
Comment Code					
E1 : Note and monitor erosion site.					
Inspector Comment					
Vegetation control revealed large collapsed portion of waterside bank. Erosion believed to be old beaver den that has collapsed and eroded away over time. Erosion is on the waterside berm, outside of the levee prism and will be monitored by the LMA to track erosion progress.					

Photo 1 of 1 : FA_2024_RD0556_18_21_20241023_00096.jpg



View of erosion at the edge of the waterside berm. (Fall 2024)

* Location		** Rating		+ Issue Type	
LS : Land Side	N/A : Not Applicable	A : Acceptable	N : Not Inspected/Rated	Ma : Maintenance Deficiency	
WS : Water Side		M : Minimally Acceptable	C : Corrected	Ob : Design & System Obsolescence	
CR : Crown		U : Unacceptable	A/W : Acceptable but Monitor & Maintain	En : Enforcement	

**Flood Control Project Maintenance
Levee Inspections****Maintenance Issue Types Only, Levee Inspection Report By Mile - Fall 2024****Reclamation District No. 0556 Upper Andrus**

Waterway	Bank	Unit Miles	Inspection Start/End	Inspector
Unit No. 01 Georgiana Slough	Right	5.48	10/22/2024 10/22/2024	Gregg McMillon

LM Start	4.88	Rating **	U	Issue No.	106
LM End	4.88	Issue Type +	Ma	Location *	LS
Category	Earthen Levee			GPS Latitude/Longitude	
				Start	End
Item	Vegetation			38.191981°	38.191981°
				-121.554180°	-121.554180°
DWR ID	DWR_RD0556_01_s _ 2022_106				
Comment Code					
V4 : Elderberries are blocking visibility and flood fight capability.					
Inspector Comment					

No Photos

LM Start	5.12	Rating **	M	Issue No.	20
LM End	5.34	Issue Type +	Ma	Location *	WS
Category	Supplemental			GPS Latitude/Longitude	
				Start	End
Item	2018 USACE Erosion Survey			38.189775°	38.187369°
				-121.557729°	-121.560247°
DWR ID	DWR_RD0556_01_s _ 2022_20				
Comment Code					
Inspector Comment					
2018 Site ID: GEO 7.0 R Status: Eroding 2018 Field Notes: Minor new toe erosion. Site History: 1997 - Toe damaged rock. 1999 - One pocket filled with gravel. 2000 - Eroding beach with some biotech rolls and stakes; some gravel on slope. 2001 - Staked, low fascine walls at bankline. 2005 - Stone revetment in between pockets. 2006 - New rock on upper slope behind brush boxes at the upstream end, Stone is sliding off the hard toe. 2016 - Fresh erosion observed. 2017 - Site extended downstream. Large erosion pockets and significant toe erosion.					

Photo 1 of 2 : FA_2024_RD0556_18_20_20241001_00003.jpg



USACE 2018 Erosion Photo #1

* Location	** Rating	+ Issue Type
LS : Land Side WS : Water Side CR : Crown	A : Acceptable M : Minimally Acceptable U : Unacceptable	Ma : Maintenance Deficiency Ob : Design & System Obsolescence En : Enforcement
N/A : Not Applicable	N : Not Inspected/Rated C : Corrected A/W : Acceptable but Monitor & Maintain	

**Flood Control Project Maintenance
Levee Inspections****Maintenance Issue Types Only, Levee Inspection Report By Mile - Fall 2024****Reclamation District No. 0556 Upper Andrus**

Waterway	Bank	Unit Miles	Inspection Start/End	Inspector
Unit No. 01 Georgiana Slough	Right	5.48	10/22/2024 10/22/2024	Gregg McMillon

LM Start	5.12	Rating **	M	Issue No.	20 (cont)
LM End	5.34	Issue Type +	Ma	Location *	WS
Category	Supplemental			GPS Latitude/Longitude	
				Start	End
Item	2018 USACE Erosion Survey			38.189775°	38.187369°
				-121.557729°	-121.560247°
DWR ID	DWR_RD0556_01_s _ 2022_20				

Photo 2 of 2 : FA_2024_RD0556_18_20_20241001_00004.jpg



USACE 2018 Erosion Photo #2

* Location LS : Land Side N/A : Not Applicable WS : Water Side CR : Crown	** Rating A : Acceptable M : Minimally Acceptable U : Unacceptable N : Not Inspected/Rated C : Corrected A/W : Acceptable but Monitor & Maintain	+ Issue Type Ma : Maintenance Deficiency Ob : Design & System Obsolescence En : Enforcement
--	---	---

**Flood Control Project Maintenance
Levee Inspections**

Maintenance Issue Types Only, Levee Inspection Report By Mile - Fall 2024

Reclamation District No. 0556 Upper Andrus

Waterway	Bank	Unit Miles	Inspection Start/End	Inspector
Unit No. 02 Sacramento River	Left	5.72	10/22/2024 10/22/2024	Gregg McMillon

LM Start	0.02	Rating **	U	Issue No.	92
LM End	0.14	Issue Type +	Ma	Location *	LS
Category	Earthen Levee			GPS Latitude/Longitude	
				Start	End
Item	Animal Control			38.239117°	38.238887°
				-121.518554°	-121.520789°
DWR ID	DWR_RD0556_02_s_2022_92				
Comment Code					
A1 : Exterminate rodents and backfill and compact or grout burrows.					
Inspector Comment					
Multiple rodent holes on the landside slope.					

Photo 1 of 1 : FA_2024_RD0556_19_92_20241001_00057.jpg



View of the rodent holes looking up the LS slope (Fall 2022).

LM Start	0.08	Rating **	M	Issue No.	42
LM End	0.13	Issue Type +	Ma	Location *	WS
Category	Earthen Levee			GPS Latitude/Longitude	
				Start	End
Item	Trim / Thin Trees			38.239029°	38.238986°
				-121.519667°	-121.520607°
DWR ID	DWR_RD0556_02_s_2021_42				
Comment Code					
T1 : Trim and thin trees to at least five feet above ground level to allow visibility of the ground and room to flood fight.					
Inspector Comment					

No Photos

LM Start	0.35	Rating **	M	Issue No.	74
LM End	0.42	Issue Type +	Ma	Location *	LS
Category	Earthen Levee			GPS Latitude/Longitude	
				Start	End
Item	Vegetation			38.238371°	38.238193°
				-121.524633°	-121.525820°
DWR ID	DWR_RD0556_02_f_2024_74				
Comment Code					
V2 : Remove the wild growth and woody vegetation other than native grasses from the levee slopes.					
Inspector Comment					

No Photos

* Location LS : Land Side N/A : Not Applicable WS : Water Side CR : Crown		** Rating A : Acceptable M : Minimally Acceptable U : Unacceptable		N : Not Inspected/Rated C : Corrected A/W : Acceptable but Monitor & Maintain		+ Issue Type Ma : Maintenance Deficiency Ob : Design & System Obsolescence En : Enforcement	
--	--	--	--	---	--	---	--

**Flood Control Project Maintenance
Levee Inspections****Maintenance Issue Types Only, Levee Inspection Report By Mile - Fall 2024****Reclamation District No. 0556 Upper Andrus**

Waterway	Bank	Unit Miles	Inspection Start/End	Inspector
Unit No. 02 Sacramento River	Left	5.72	10/22/2024 10/22/2024	Gregg McMillon

LM Start	0.42	Rating **	M	Issue No.	39
LM End	0.42	Issue Type +	Ma	Location *	LS
Category	Earthen Levee			GPS Latitude/Longitude	
				Start	End
Item	Trim / Thin Trees			38.238167°	38.238167°
				-121.525878°	-121.525878°
DWR ID	DWR_RD0556_02_s_2021_39				
Comment Code					
T1 : Trim and thin trees to at least five feet above ground level to allow visibility of the ground and room to flood fight.					
Inspector Comment					

No Photos

LM Start	0.70	Rating **	U	Issue No.	38
LM End	0.70	Issue Type +	Ma	Location *	LS
Category	Earthen Levee			GPS Latitude/Longitude	
				Start	End
Item	Erosion / Vehicle Traffic			38.237444°	38.237444°
				-121.530852°	-121.530852°
DWR ID	DWR_RD0556_02_s_2024_38				
Comment Code					
E6 : Repair the levee slope damaged by vehicle traffic and prevent access where possible.					
Inspector Comment					
LS slope needs to be backfilled and regraded to fix vehicle ruts.					

Photo 1 of 1 : FA_2024_RD0556_19_38_20241001_00028.jpg



View of vehicle rut on LS slope. (Spring 2024)

LM Start	0.74	Rating **	U	Issue No.	81
LM End	0.85	Issue Type +	Ma	Location *	LS
Category	Earthen Levee			GPS Latitude/Longitude	
				Start	End
Item	Trim / Thin Trees			38.237577°	38.237842°
				-121.531594°	-121.533616°
DWR ID	DWR_RD0556_02_f_2023_81				
Comment Code					
T1 : Trim and thin trees to at least five feet above ground level to allow visibility of the ground and room to flood fight.					
Inspector Comment					

Photo 1 of 1 : FA_2024_RD0556_19_81_20241001_00051.jpg



View looking upstream at thick vegetation on the landside slope (Fall 2021).

* Location LS : Land Side N/A : Not Applicable WS : Water Side CR : Crown		** Rating A : Acceptable M : Minimally Acceptable U : Unacceptable N : Not Inspected/Rated C : Corrected A/W : Acceptable but Monitor & Maintain		+ Issue Type Ma : Maintenance Deficiency Ob : Design & System Obsolescence En : Enforcement	
--	--	---	--	---	--

**Flood Control Project Maintenance
Levee Inspections****Maintenance Issue Types Only, Levee Inspection Report By Mile - Fall 2024****Reclamation District No. 0556 Upper Andrus**

Waterway	Bank	Unit Miles	Inspection Start/End	Inspector
Unit No. 02 Sacramento River	Left	5.72	10/22/2024 10/22/2024	Gregg McMillon

LM Start	0.80	Rating **	M	Issue No.	43
LM End	0.87	Issue Type +	Ma	Location *	WS
Category	Earthen Levee			GPS Latitude/Longitude	
				Start	End
Item	Vegetation			38.237755°	38.237911°
				-121.532793°	-121.534045°
DWR ID	DWR_RD0556_02_f_2024_43				
Comment Code					
V2 : Remove the wild growth and woody vegetation other than native grasses from the levee slopes.					
Inspector Comment					

No Photos

LM Start	0.94	Rating **	M	Issue No.	44
LM End	1.22	Issue Type +	Ma	Location *	WS
Category	Earthen Levee			GPS Latitude/Longitude	
				Start	End
Item	Trim / Thin Trees			38.238148°	38.239335°
				-121.535256°	-121.540247°
DWR ID	DWR_RD0556_02_f_2024_44				
Comment Code					
T1 : Trim and thin trees to at least five feet above ground level to allow visibility of the ground and room to flood fight.					
Inspector Comment					

No Photos

LM Start	0.96	Rating **	M	Issue No.	28
LM End	1.07	Issue Type +	Ma	Location *	LS
Category	Earthen Levee			GPS Latitude/Longitude	
				Start	End
Item	Vegetation			38.238255°	38.238683°
				-121.535635°	-121.537438°
DWR ID	DWR_RD0556_02_f_2024_28				
Comment Code					
V1 : Control annual grass and weeds on the levee slopes and easements.					
Inspector Comment					

No Photos

* Location LS : Land Side N/A : Not Applicable WS : Water Side CR : Crown		** Rating A : Acceptable M : Minimally Acceptable U : Unacceptable N : Not Inspected/Rated C : Corrected A/W : Acceptable but Monitor & Maintain		+ Issue Type Ma : Maintenance Deficiency Ob : Design & System Obsolescence En : Enforcement	
--	--	---	--	---	--

**Flood Control Project Maintenance
Levee Inspections****Maintenance Issue Types Only, Levee Inspection Report By Mile - Fall 2024****Reclamation District No. 0556 Upper Andrus**

Waterway	Bank	Unit Miles	Inspection Start/End	Inspector
Unit No. 02 Sacramento River	Left	5.72	10/22/2024 10/22/2024	Gregg McMillon

LM Start	1.03	Rating **	M	Issue No.	19
LM End	1.15	Issue Type +	Ma	Location *	WS
Category	Supplemental			GPS Latitude/Longitude	
				Start	End
Item	2018 USACE Erosion Survey			38.238772°	38.239265°
				-121.536788°	-121.538845°
DWR ID	DWR_RD0556_02_s_2022_19				
Comment Code					
Inspector Comment					
2018 Site ID: SAC 25.2 L					
Status: Eroding					
2018 Field Notes: Additional erosion along toe. Site extended upstream.					
Site History: 1997 - Rock is in poor condition and has failed in many places. Scallops in berm with remnants of old rock in the toe area.					
2005 - Brush boxes present. 2013 - Site extended upstream					
approximately 300 ft to include new erosion pockets. 2015 - Minor new					
erosion at toe. 2017 - Minor new erosion observed.					

LM Start	1.03	Rating **	M	Issue No.	19 (cont)
LM End	1.15	Issue Type +	Ma	Location *	WS

Photo 1 of 2 : FA_2024_RD0556_19_19_20241001_00015.jpg



USACE 2018 Erosion Photo #1

Photo 2 of 2 : FA_2024_RD0556_19_19_20241001_00016.jpg



USACE 2018 Erosion Photo #2

* Location LS : Land Side N/A : Not Applicable WS : Water Side CR : Crown		** Rating A : Acceptable M : Minimally Acceptable U : Unacceptable N : Not Inspected/Rated C : Corrected A/W : Acceptable but Monitor & Maintain		+ Issue Type Ma : Maintenance Deficiency Ob : Design & System Obsolescence En : Enforcement	
--	--	---	--	---	--

**Flood Control Project Maintenance
Levee Inspections**

Maintenance Issue Types Only, Levee Inspection Report By Mile - Fall 2024

Reclamation District No. 0556 Upper Andrus

Waterway	Bank	Unit Miles	Inspection Start/End	Inspector
Unit No. 02 Sacramento River	Left	5.72	10/22/2024 10/22/2024	Gregg McMillon

LM Start	1.15	Rating **	C	Issue No.	87
LM End	1.15	Issue Type +	Ma	Location *	LS
Category	Earthen Levee			GPS Latitude/Longitude	
				Start	End
Item	Trim / Thin Trees			38.238977°	38.238977°
				-121.538872°	-121.538872°
DWR ID	DWR_RD0556_02_s_2022_87				
Comment Code					
T1 : Trim and thin trees to at least five feet above ground level to allow visibility of the ground and room to flood fight.					
Inspector Comment					

No Photos

LM Start	1.20	Rating **	M	Issue No.	75
LM End	1.26	Issue Type +	Ma	Location *	LS
Category	Earthen Levee			GPS Latitude/Longitude	
				Start	End
Item	Animal Control			38.239226°	38.239473°
				-121.539869°	-121.540962°
DWR ID	DWR_RD0556_02_s_2022_75				
Comment Code					
A3 : No rodents visible, but rodent burrows visible; need to backfill and compact or grout burrows.					
Inspector Comment					

Photo 1 of 1 : FA_2024_RD0556_19_75_20241001_00046.jpg



View of animal holes in the landside slope (Spring 2022).

LM Start	1.31	Rating **	U	Issue No.	48
LM End	1.39	Issue Type +	Ma	Location *	WS
Category	Earthen Levee			GPS Latitude/Longitude	
				Start	End
Item	Vegetation			38.239640°	38.239917°
				-121.541690°	-121.543280°
DWR ID	DWR_RD0556_02_f_2024_48				
Comment Code					
V2 : Remove the wild growth and woody vegetation other than native grasses from the levee slopes.					
Inspector Comment					

Photo 1 of 1 : FA_2024_RD0556_19_48_20241106_00094.jpg



View of tall vegetation on the waterside hinge. (Fall 2024)

* Location LS : Land Side N/A : Not Applicable WS : Water Side CR : Crown		** Rating A : Acceptable M : Minimally Acceptable U : Unacceptable N : Not Inspected/Rated C : Corrected A/W : Acceptable but Monitor & Maintain		+ Issue Type Ma : Maintenance Deficiency Ob : Design & System Obsolescence En : Enforcement
--	--	---	--	---

**Flood Control Project Maintenance
Levee Inspections**

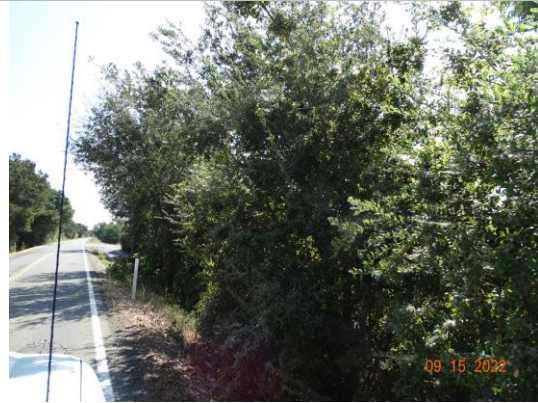
Maintenance Issue Types Only, Levee Inspection Report By Mile - Fall 2024

Reclamation District No. 0556 Upper Andrus

Waterway	Bank	Unit Miles	Inspection Start/End	Inspector
Unit No. 02 Sacramento River	Left	5.72	10/22/2024 10/22/2024	Gregg McMillon

LM Start	1.32	Rating **	M	Issue No.	115
LM End	1.32	Issue Type +	Ma	Location *	LS
Category	Earthen Levee			GPS Latitude/Longitude	
				Start	End
Item	Trim / Thin Trees			38.239681°	38.239681°
				-121.541945°	-121.541945°
DWR ID	DWR_RD0556_02_f_2021_115				
Comment Code					
T1 : Trim and thin trees to at least five feet above ground level to allow visibility of the ground and room to flood fight.					
Inspector Comment					

Photo 1 of 1 : FA_2024_RD0556_19_115_20241001_00060.jpg



View of the trees on the LS slope (Fall 2022).

LM Start	1.44	Rating **	M	Issue No.	49
LM End	1.55	Issue Type +	Ma	Location *	WS
Category	Earthen Levee			GPS Latitude/Longitude	
				Start	End
Item	Vegetation			38.240090°	38.240438°
				-121.544084°	-121.546003°
DWR ID	DWR_RD0556_02_f_2024_49				
Comment Code					
V2 : Remove the wild growth and woody vegetation other than native grasses from the levee slopes.					
Inspector Comment					

No Photos

* Location LS : Land Side N/A : Not Applicable WS : Water Side CR : Crown		** Rating A : Acceptable N : Not Inspected/Rated M : Minimally Acceptable C : Corrected U : Unacceptable A/W : Acceptable but Monitor & Maintain		+ Issue Type Ma : Maintenance Deficiency Ob : Design & System Obsolescence En : Enforcement
--	--	---	--	---

**Flood Control Project Maintenance
Levee Inspections****Maintenance Issue Types Only, Levee Inspection Report By Mile - Fall 2024****Reclamation District No. 0556 Upper Andrus**

Waterway	Bank	Unit Miles	Inspection Start/End	Inspector
Unit No. 02 Sacramento River	Left	5.72	10/22/2024 10/22/2024	Gregg McMillon

LM Start	1.45	Rating **	M	Issue No.	18
LM End	1.59	Issue Type +	Ma	Location *	WS
Category	Supplemental	GPS Latitude/Longitude			
		Start		End	
Item	2018 USACE Erosion Survey	38.240401°		38.240772°	
		-121.544106°		-121.546791°	
DWR ID	DWR_RD0556_02_s_2022_18				
Comment Code					
Inspector Comment					
2018 Site ID: SAC 24.8 L					
Status: Eroding					
2018 Field Notes: Site extended upstream.					
Site History: 1997 - Slow erosion of the berm at the waterline; bench below water. 2005 - Brush boxes present. 2010 - Minor new erosion. 2013 - There is little to no berm remaining at downstream end of this site. 2016 - New erosion on levee slope. 2017 - Significant lower bank erosion.					

LM Start	1.45	Rating **	M	Issue No.	18 (cont)
LM End	1.59	Issue Type +	Ma	Location *	WS

Photo 1 of 2 : FA_2024_RD0556_19_18_20241001_00013.jpg



USACE 2018 Erosion Photo #1

Photo 2 of 2 : FA_2024_RD0556_19_18_20241001_00014.jpg



USACE 2018 Erosion Photo #2

* Location LS : Land Side N/A : Not Applicable WS : Water Side CR : Crown		** Rating A : Acceptable M : Minimally Acceptable U : Unacceptable N : Not Inspected/Rated C : Corrected A/W : Acceptable but Monitor & Maintain		+ Issue Type Ma : Maintenance Deficiency Ob : Design & System Obsolescence En : Enforcement	
--	--	---	--	---	--

**Flood Control Project Maintenance
Levee Inspections**

Maintenance Issue Types Only, Levee Inspection Report By Mile - Fall 2024

Reclamation District No. 0556 Upper Andrus

Waterway	Bank	Unit Miles	Inspection Start/End	Inspector
Unit No. 02 Sacramento River	Left	5.72	10/22/2024 10/22/2024	Gregg McMillon

LM Start	1.58	Rating **	C	Issue No.	53
LM End	1.61	Issue Type +	Ma	Location *	WS
Category	Earthen Levee			GPS Latitude/Longitude	
				Start	End
Item	Vegetation			38.240566°	38.240636°
				-121.546631°	-121.547040°
DWR ID	DWR_RD0556_02_s_2024_53				
Comment Code					
V2 : Remove the wild growth and woody vegetation other than native grasses from the levee slopes.					
Inspector Comment					

No Photos

LM Start	1.79	Rating **	M	Issue No.	54
LM End	1.79	Issue Type +	Ma	Location *	LS
Category	Earthen Levee			GPS Latitude/Longitude	
				Start	End
Item	Vegetation			38.241020°	38.241020°
				-121.550339°	-121.550339°
DWR ID	DWR_RD0556_02_s_2024_54				
Comment Code					
V2 : Remove the wild growth and woody vegetation other than native grasses from the levee slopes.					
Inspector Comment					
Thin bushes growing on LS slope.					

No Photos

LM Start	2.06	Rating **	U	Issue No.	32
LM End	2.06	Issue Type +	Ma	Location *	LS
Category	Earthen Levee			GPS Latitude/Longitude	
				Start	End
Item	Vegetation			38.239470°	38.239470°
				-121.554845°	-121.554845°
DWR ID	DWR_RD0556_02_s_2020_32				
Comment Code					
V2 : Remove the wild growth and woody vegetation other than native grasses from the levee slopes.					
Inspector Comment					
Arundo growth should be removed to allow inspection and access to the landside slope and toe.					

Photo 1 of 1 : FA_2024_RD0556_19_32_20241001_00023.jpg



View of the arundo on the LS slope (Fall 2022).

* Location		** Rating		+ Issue Type	
LS : Land Side	N/A : Not Applicable	A : Acceptable	N : Not Inspected/Rated	Ma : Maintenance Deficiency	
WS : Water Side		M : Minimally Acceptable	C : Corrected	Ob : Design & System Obsolescence	
CR : Crown		U : Unacceptable	A/W : Acceptable but Monitor & Maintain	En : Enforcement	

**Flood Control Project Maintenance
Levee Inspections**

Maintenance Issue Types Only, Levee Inspection Report By Mile - Fall 2024

Reclamation District No. 0556 Upper Andrus

Waterway	Bank	Unit Miles	Inspection Start/End	Inspector
Unit No. 02 Sacramento River	Left	5.72	10/22/2024 10/22/2024	Gregg McMillon

LM Start	2.07	Rating **	C	Issue No.	77
LM End	2.11	Issue Type +	Ma	Location *	LS
Category	Earthen Levee			GPS Latitude/Longitude	
				Start	End
Item	Trim / Thin Trees			38.239304°	38.238996°
				-121.554982°	-121.555454°
DWR ID	DWR_RD0556_02_s_2021_77				
Comment Code					
T1 : Trim and thin trees to at least five feet above ground level to allow visibility of the ground and room to flood fight.					
Inspector Comment					

No Photos

LM Start	2.34	Rating **	C	Issue No.	83
LM End	2.34	Issue Type +	Ma	Location *	WS
Category	Earthen Levee			GPS Latitude/Longitude	
				Start	End
Item	Trim / Thin Trees			38.236300°	38.236300°
				-121.558008°	-121.558008°
DWR ID	DWR_RD0556_02_f_2021_83				
Comment Code					
T1 : Trim and thin trees to at least five feet above ground level to allow visibility of the ground and room to flood fight.					
Inspector Comment					

No Photos

LM Start	2.37	Rating **	C	Issue No.	72
LM End	2.37	Issue Type +	Ma	Location *	LS
Category	Earthen Levee			GPS Latitude/Longitude	
				Start	End
Item	Trim / Thin Trees			38.235900°	38.235900°
				-121.558041°	-121.558041°
DWR ID	DWR_RD0556_02_s_2021_72				
Comment Code					
T1 : Trim and thin trees to at least five feet above ground level to allow visibility of the ground and room to flood fight.					
Inspector Comment					

No Photos

* Location		** Rating		+ Issue Type	
LS : Land Side	N/A : Not Applicable	A : Acceptable	N : Not Inspected/Rated	Ma : Maintenance Deficiency	
WS : Water Side		M : Minimally Acceptable	C : Corrected	Ob : Design & System Obsolescence	
CR : Crown		U : Unacceptable	A/W : Acceptable but Monitor & Maintain	En : Enforcement	

**Flood Control Project Maintenance
Levee Inspections****Maintenance Issue Types Only, Levee Inspection Report By Mile - Fall 2024****Reclamation District No. 0556 Upper Andrus**

Waterway	Bank	Unit Miles	Inspection Start/End	Inspector
Unit No. 02 Sacramento River	Left	5.72	10/22/2024 10/22/2024	Gregg McMillon

LM Start	2.39	Rating **	U	Issue No.	89
LM End	2.39	Issue Type +	Ma	Location *	WS
Category	Earthen Levee			GPS Latitude/Longitude	
				Start	End
Item	Trim / Thin Trees			38.235578°	38.235578°
				-121.558105°	-121.558105°
DWR ID	DWR_RD0556_02_f_2021_89				
Comment Code					
T1 : Trim and thin trees to at least five feet above ground level to allow visibility of the ground and room to flood fight.					
Inspector Comment					

Photo 1 of 1 : FA_2024_RD0556_19_89_20241001_00054.jpg



View looking downstream at thick trees on the waterside slope (Fall 2021).

LM Start	2.44	Rating **	U	Issue No.	90
LM End	2.44	Issue Type +	Ma	Location *	WS
Category	Earthen Levee			GPS Latitude/Longitude	
				Start	End
Item	Trim / Thin Trees			38.234843°	38.234843°
				-121.558028°	-121.558028°
DWR ID	DWR_RD0556_02_f_2021_90				
Comment Code					
T1 : Trim and thin trees to at least five feet above ground level to allow visibility of the ground and room to flood fight.					
Inspector Comment					

Photo 1 of 1 : FA_2024_RD0556_19_90_20241001_00055.jpg



View of thick willows on the waterside slope (Spring 2022).

LM Start	2.59	Rating **	C	Issue No.	67
LM End	2.59	Issue Type +	Ma	Location *	LS
Category	Earthen Levee			GPS Latitude/Longitude	
				Start	End
Item	Trim / Thin Trees			38.232883°	38.232883°
				-121.557301°	-121.557301°
DWR ID	DWR_RD0556_02_s_2022_67				
Comment Code					
T1 : Trim and thin trees to at least five feet above ground level to allow visibility of the ground and room to flood fight.					
Inspector Comment					

No Photos

* Location LS : Land Side N/A : Not Applicable WS : Water Side CR : Crown		** Rating A : Acceptable M : Minimally Acceptable U : Unacceptable N : Not Inspected/Rated C : Corrected A/W : Acceptable but Monitor & Maintain		+ Issue Type Ma : Maintenance Deficiency Ob : Design & System Obsolescence En : Enforcement	
--	--	---	--	---	--

**Flood Control Project Maintenance
Levee Inspections**

Maintenance Issue Types Only, Levee Inspection Report By Mile - Fall 2024

Reclamation District No. 0556 Upper Andrus

Waterway	Bank	Unit Miles	Inspection Start/End	Inspector
Unit No. 02 Sacramento River	Left	5.72	10/22/2024 10/22/2024	Gregg McMillon

LM Start	2.59	Rating **	M	Issue No.	57
LM End	2.80	Issue Type +	Ma	Location *	LS
Category	Earthen Levee			GPS Latitude/Longitude	
				Start	End
Item	Vegetation			38.232827°	38.230116°
				-121.557263°	-121.555635°
DWR ID	DWR_RD0556_02_s_2024_57				
Comment Code					
V2 : Remove the wild growth and woody vegetation other than native grasses from the levee slopes.					
Inspector Comment					

No Photos

LM Start	2.73	Rating **	C	Issue No.	69
LM End	2.73	Issue Type +	Ma	Location *	LS
Category	Earthen Levee			GPS Latitude/Longitude	
				Start	End
Item	Trim / Thin Trees			38.230962°	38.230962°
				-121.556101°	-121.556101°
DWR ID	DWR_RD0556_02_s_2021_69				
Comment Code					
T1 : Trim and thin trees to at least five feet above ground level to allow visibility of the ground and room to flood fight.					
Inspector Comment					

No Photos

LM Start	2.75	Rating **	U	Issue No.	88
LM End	2.75	Issue Type +	Ma	Location *	LS
Category	Earthen Levee			GPS Latitude/Longitude	
				Start	End
Item	Trim / Thin Trees			38.230752°	38.230752°
				-121.556007°	-121.556007°
DWR ID	DWR_RD0556_02_f_2019_88				
Comment Code					
T2 : Tree or limb.					
Inspector Comment					
Broken tree limb blocking view of landside slope.					

Photo 1 of 1 : FA_2024_RD0556_19_88_20241001_00053.jpg



View of the tree limb on the LS slope (Fall 2022).

* Location LS : Land Side N/A : Not Applicable WS : Water Side CR : Crown		** Rating A : Acceptable M : Minimally Acceptable U : Unacceptable		N : Not Inspected/Rated C : Corrected A/W : Acceptable but Monitor & Maintain		+ Issue Type Ma : Maintenance Deficiency Ob : Design & System Obsolescence En : Enforcement	
---	--	---	--	---	--	--	--

**Flood Control Project Maintenance
Levee Inspections****Maintenance Issue Types Only, Levee Inspection Report By Mile - Fall 2024****Reclamation District No. 0556 Upper Andrus**

Waterway	Bank	Unit Miles	Inspection Start/End	Inspector
Unit No. 02 Sacramento River	Left	5.72	10/22/2024 10/22/2024	Gregg McMillon

LM Start	2.80	Rating **	M	Issue No.	64
LM End	2.80	Issue Type +	Ma	Location *	LS
Category	Earthen Levee			GPS Latitude/Longitude	
				Start	End
Item	Trim / Thin Trees			38.230021°	38.230021°
				-121.555557°	-121.555557°
DWR ID	DWR_RD0556_02_s_2022_64				
Comment Code					
T1 : Trim and thin trees to at least five feet above ground level to allow visibility of the ground and room to flood fight.					
Inspector Comment					

No Photos

LM Start	2.99	Rating **	M	Issue No.	29
LM End	2.99	Issue Type +	Ma	Location *	WS
Category	Earthen Levee			GPS Latitude/Longitude	
				Start	End
Item	Trim / Thin Trees			38.227411°	38.227411°
				-121.555195°	-121.555195°
DWR ID	DWR_RD0556_02_f_2024_29				
Comment Code					
T2 : Tree or limb.					
Inspector Comment					

No Photos

* Location LS : Land Side N/A : Not Applicable WS : Water Side CR : Crown	** Rating A : Acceptable M : Minimally Acceptable U : Unacceptable N : Not Inspected/Rated C : Corrected A/W : Acceptable but Monitor & Maintain	+ Issue Type Ma : Maintenance Deficiency Ob : Design & System Obsolescence En : Enforcement
--	---	---

**Flood Control Project Maintenance
Levee Inspections****Maintenance Issue Types Only, Levee Inspection Report By Mile - Fall 2024****Reclamation District No. 0556 Upper Andrus**

Waterway	Bank	Unit Miles	Inspection Start/End	Inspector
Unit No. 02 Sacramento River	Left	5.72	10/22/2024 10/22/2024	Gregg McMillon

LM Start	3.16	Rating **	M	Issue No.	17
LM End	3.28	Issue Type +	Ma	Location *	WS
Category	Supplemental			GPS Latitude/Longitude	
				Start	End
Item	2018 USACE Erosion Survey			38.224850°	38.223233°
				-121.555641°	-121.555687°

DWR ID DWR_RD0556_02_s_2022_17

Comment Code

Inspector Comment

2018 Site ID: SAC 23.2 L

Status: Eroding

2018 Field Notes: Additional tree popouts and new erosion throughout site.

Site History: 2000 - Recently fallen cottonwood at the downstream end.
2005 - Empty brush boxes. 2011 - A few trees have fallen since last year. 2012 - Potential new tree popout since last year. 2013 - New erosion at downstream end of site and a recent tree pop-out observed.
2016 - New erosion at the toe. 2017 - New erosion along lower bank.

LM Start	3.16	Rating **	M	Issue No.	17 (cont)
LM End	3.28	Issue Type +	Ma	Location *	WS

Photo 1 of 2 : FA_2024_RD0556_19_17_20241001_00011.jpg



USACE 2018 Erosion Photo #1

Photo 2 of 2 : FA_2024_RD0556_19_17_20241001_00012.jpg



USACE 2018 Erosion Photo #2

* Location	** Rating	+ Issue Type
LS: Land Side WS: Water Side CR: Crown	A: Acceptable M: Minimally Acceptable U: Unacceptable	Ma: Maintenance Deficiency Ob: Design & System Obsolescence En: Enforcement
N/A: Not Applicable	N: Not Inspected/Rated C: Corrected A/W: Acceptable but Monitor & Maintain	

**Flood Control Project Maintenance
Levee Inspections****Maintenance Issue Types Only, Levee Inspection Report By Mile - Fall 2024****Reclamation District No. 0556 Upper Andrus**

Waterway	Bank	Unit Miles	Inspection Start/End	Inspector
Unit No. 02 Sacramento River	Left	5.72	10/22/2024 10/22/2024	Gregg McMillon

LM Start	3.24	Rating **	C	Issue No.	61
LM End	3.26	Issue Type +	Ma	Location *	LS
Category	Earthen Levee			GPS Latitude/Longitude	
				Start	End
Item	Trim / Thin Trees			38.223707°	38.223457°
				-121.555396°	-121.555414°
DWR ID	DWR_RD0556_02_s_2021_61				
Comment Code					
T1 : Trim and thin trees to at least five feet above ground level to allow visibility of the ground and room to flood fight.					
Inspector Comment					

No Photos

LM Start	3.58	Rating **	M	Issue No.	16
LM End	3.64	Issue Type +	Ma	Location *	WS
Category	Supplemental			GPS Latitude/Longitude	
				Start	End
Item	2018 USACE Erosion Survey			38.218951°	38.218104°
				-121.556689°	-121.556819°
DWR ID	DWR_RD0556_02_s_2022_16				
Comment Code					
Inspector Comment					
2018 Site ID: SAC 22.7 L Status: Eroding 2018 Field Notes: No observed change. Site History: 1997 - Scallops into berm and very close to levee toe. 2005 - Brush boxes present. 2011 - New toe scour and freshly fallen tree. 2012 - New tree popout has taken significant portion of soil out of the levee. 2017 - Minor new erosion at toe.					

Photo 1 of 2 : FA_2024_RD0556_19_16_20241001_00009.jpg



USACE 2018 Erosion Photo #1

* Location LS : Land Side N/A : Not Applicable WS : Water Side CR : Crown		** Rating A : Acceptable M : Minimally Acceptable U : Unacceptable N : Not Inspected/Rated C : Corrected A/W : Acceptable but Monitor & Maintain		+ Issue Type Ma : Maintenance Deficiency Ob : Design & System Obsolescence En : Enforcement	
--	--	---	--	---	--

**Flood Control Project Maintenance
Levee Inspections****Maintenance Issue Types Only, Levee Inspection Report By Mile - Fall 2024****Reclamation District No. 0556 Upper Andrus**

Waterway	Bank	Unit Miles	Inspection Start/End	Inspector
Unit No. 02 Sacramento River	Left	5.72	10/22/2024 10/22/2024	Gregg McMillon

LM Start	3.58	Rating **	M	Issue No.	16 (cont)
LM End	3.64	Issue Type +	Ma	Location *	WS
Category	Supplemental			GPS Latitude/Longitude	
				Start	End
Item	2018 USACE Erosion Survey			38.218951°	38.218104°
				-121.556689°	-121.556819°
DWR ID	DWR_RD0556_02_s_2022_16				

Photo 2 of 2 : FA_2024_RD0556_19_16_20241001_00010.jpg



USACE 2018 Erosion Photo #2

LM Start	3.77	Rating **	U	Issue No.	40
LM End	3.77	Issue Type +	Ma	Location *	LS
Category	Earthen Levee			GPS Latitude/Longitude	
				Start	End
Item	Animal Control			38.216126°	38.216126°
				-121.556539°	-121.556539°
DWR ID	DWR_RD0556_02_f_2024_40				

Comment Code

A3 : No rodents visible, but rodent burrows visible; need to backfill and compact or grout burrows.

Inspector Comment

Photo 1 of 1 : FA_2024_RD0556_19_40_20241106_00102.jpg



View of large rodent hole on the landside slope. (Fall 2024)

* Location LS : Land Side N/A : Not Applicable WS : Water Side CR : Crown	** Rating A : Acceptable M : Minimally Acceptable U : Unacceptable N : Not Inspected/Rated C : Corrected A/W : Acceptable but Monitor & Maintain	+ Issue Type Ma : Maintenance Deficiency Ob : Design & System Obsolescence En : Enforcement
--	---	---

**Flood Control Project Maintenance
Levee Inspections****Maintenance Issue Types Only, Levee Inspection Report By Mile - Fall 2024****Reclamation District No. 0556 Upper Andrus**

Waterway	Bank	Unit Miles	Inspection Start/End	Inspector
Unit No. 02 Sacramento River	Left	5.72	10/22/2024 10/22/2024	Gregg McMillon

LM Start	3.95	Rating **	M	Issue No.	15
LM End	4.12	Issue Type +	Ma	Location *	WS
Category	Supplemental			GPS Latitude/Longitude	
				Start	End
Item	2018 USACE Erosion Survey			38.213581°	38.211112°
				-121.557197°	-121.557042°
DWR ID	DWR_RD0556_02_s_2022_15				

Comment Code**Inspector Comment**

2018 Site ID: SAC 22.5 L
Status: Eroding
2018 Field Notes: Minor new erosion at toe.
Site History: 2002 - Spot rock along berm, but not in the erosion pockets. 2005 - Some new minor stone revetment at the upstream end. Brush boxes present. 2006 - Currently installing new brush in downstream brush boxes. 2007 - Rock in middle portion for about 150 ft. 2010 - Some attempt at repairs but still has pockets of erosion. 2012 - More erosion along the toe. 2017 - New lower bank erosion at the upstream end. Locals placed rock in some erosion pockets.

LM Start	3.95	Rating **	M	Issue No.	15 (cont)
LM End	4.12	Issue Type +	Ma	Location *	WS

Photo 1 of 2 : FA_2024_RD0556_19_15_20241001_00007.jpg



USACE 2018 Erosion Photo #1

Photo 2 of 2 : FA_2024_RD0556_19_15_20241001_00008.jpg



USACE 2018 Erosion Photo #2

* Location	** Rating	+ Issue Type
LS: Land Side WS: Water Side CR: Crown	A: Acceptable M: Minimally Acceptable U: Unacceptable	Ma: Maintenance Deficiency Ob: Design & System Obsolescence En: Enforcement
N/A: Not Applicable	N: Not Inspected/Rated C: Corrected A/W: Acceptable but Monitor & Maintain	

**Flood Control Project Maintenance
Levee Inspections****Maintenance Issue Types Only, Levee Inspection Report By Mile - Fall 2024****Reclamation District No. 0556 Upper Andrus**

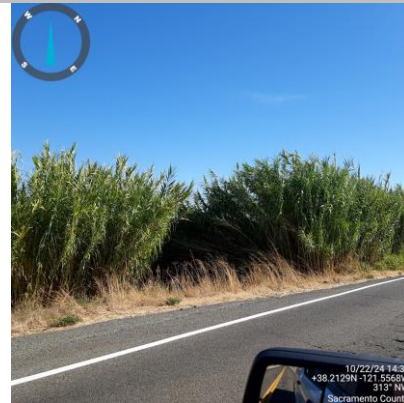
Waterway	Bank	Unit Miles	Inspection Start/End	Inspector
Unit No. 02 Sacramento River	Left	5.72	10/22/2024 10/22/2024	Gregg McMillon

LM Start	3.97	Rating **	C	Issue No.	5
LM End	3.97	Issue Type +	Ma	Location *	LS
Category	Earthen Levee			GPS Latitude/Longitude	
				Start	End
Item	Trim / Thin Trees			38.213244°	38.213244°
				-121.556803°	-121.556803°
DWR ID	DWR_RD0556_02_s_2021_5				
Comment Code					
T1 : Trim and thin trees to at least five feet above ground level to allow visibility of the ground and room to flood fight.					
Inspector Comment					

No Photos

LM Start	4.01	Rating **	U	Issue No.	71
LM End	4.01	Issue Type +	Ma	Location *	LS
Category	Earthen Levee			GPS Latitude/Longitude	
				Start	End
Item	Vegetation			38.212672°	38.212672°
				-121.556759°	-121.556759°
DWR ID	DWR_RD0556_02_s_2020_71				
Comment Code					
V2 : Remove the wild growth and woody vegetation other than native grasses from the levee slopes.					
Inspector Comment					
Arundo on the landside slope.					

Photo 1 of 1 : FA_2024_RD0556_19_71_20241106_00103.jpg



View of thick arundo on the landside slope. (Fall 2024)

LM Start	4.12	Rating **	M	Issue No.	62
LM End	4.15	Issue Type +	Ma	Location *	LS
Category	Earthen Levee			GPS Latitude/Longitude	
				Start	End
Item	Vegetation			38.211052°	38.210669°
				-121.556754°	-121.556785°
DWR ID	DWR_RD0556_02_s_2024_62				
Comment Code					
V2 : Remove the wild growth and woody vegetation other than native grasses from the levee slopes.					
Inspector Comment					

No Photos

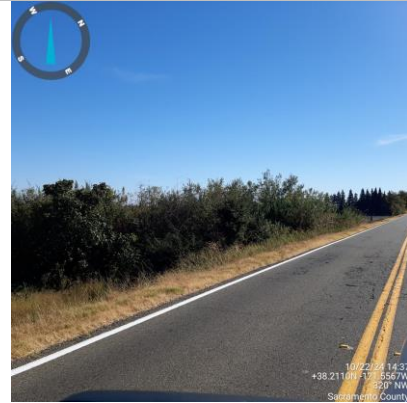
* Location LS : Land Side N/A : Not Applicable WS : Water Side CR : Crown	** Rating A : Acceptable M : Minimally Acceptable U : Unacceptable	N : Not Inspected/Rated C : Corrected A/W : Acceptable but Monitor & Maintain	+ Issue Type Ma : Maintenance Deficiency Ob : Design & System Obsolescence En : Enforcement
--	--	--	---

**Flood Control Project Maintenance
Levee Inspections****Maintenance Issue Types Only, Levee Inspection Report By Mile - Fall 2024****Reclamation District No. 0556 Upper Andrus**

Waterway	Bank	Unit Miles	Inspection Start/End	Inspector
Unit No. 02 Sacramento River	Left	5.72	10/22/2024 10/22/2024	Gregg McMillon

LM Start	4.15	Rating **	U	Issue No.	55
LM End	4.15	Issue Type +	Ma	Location *	LS
Category	Earthen Levee			GPS Latitude/Longitude	
				Start	End
Item	Trim / Thin Trees			38.210623°	38.210623°
				-121.556733°	-121.556733°
DWR ID	DWR_RD0556_02_s_2020_55				
Comment Code					
T1 : Trim and thin trees to at least five feet above ground level to allow visibility of the ground and room to flood fight.					
Inspector Comment					

Photo 1 of 1 : FA_2024_RD0556_19_55_20241106_00104.jpg



View of thick trees on the landside slope. (Fall 2024)

LM Start	4.22	Rating **	C	Issue No.	51
LM End	4.33	Issue Type +	Ma	Location *	LS
Category	Earthen Levee			GPS Latitude/Longitude	
				Start	End
Item	Trim / Thin Trees			38.209629°	38.208062°
				-121.556757°	-121.556807°
DWR ID	DWR_RD0556_02_s_2020_51				
Comment Code					
T1 : Trim and thin trees to at least five feet above ground level to allow visibility of the ground and room to flood fight.					
Inspector Comment					

No Photos

LM Start	4.44	Rating **	M	Issue No.	14
LM End	4.49	Issue Type +	Ma	Location *	WS
Category	Supplemental			GPS Latitude/Longitude	
				Start	End
Item	2018 USACE Erosion Survey			38.206377°	38.205729°
				-121.557184°	-121.557108°
DWR ID	DWR_RD0556_02_s_2022_14				
Comment Code					
Inspector Comment					
2018 Site ID: SAC 21.9 L					
Status: Eroding					
2018 Field Notes: No observed change.					
Site History: 2013 - Erosion pockets encroaching on levee foundation.					

Photo 1 of 2 : FA_2024_RD0556_19_14_20241001_00005.jpg



USACE 2018 Erosion Photo #1

* Location	** Rating	+ Issue Type
LS : Land Side WS : Water Side CR : Crown	A : Acceptable M : Minimally Acceptable U : Unacceptable	Ma : Maintenance Deficiency Ob : Design & System Obsolescence En : Enforcement
N : Not Inspected/Rated C : Corrected A/W : Acceptable but Monitor & Maintain		

**Flood Control Project Maintenance
Levee Inspections****Maintenance Issue Types Only, Levee Inspection Report By Mile - Fall 2024****Reclamation District No. 0556 Upper Andrus**

Waterway	Bank	Unit Miles	Inspection Start/End	Inspector
Unit No. 02 Sacramento River	Left	5.72	10/22/2024 10/22/2024	Gregg McMillon

LM Start	4.44	Rating **	M	Issue No.	14 (cont)
LM End	4.49	Issue Type +	Ma	Location *	WS
Category	Supplemental			GPS Latitude/Longitude	
				Start	End
Item	2018 USACE Erosion Survey			38.206377°	38.205729°
				-121.557184°	-121.557108°
DWR ID	DWR_RD0556_02_s _ 2022_14				

Photo 2 of 2 : FA_2024_RD0556_19_14_20241001_00006.jpg



USACE 2018 Erosion Photo #2

LM Start	4.47	Rating **	C	Issue No.	63
LM End	4.55	Issue Type +	Ma	Location *	LS
Category	Earthen Levee			GPS Latitude/Longitude	
				Start	End
Item	Vegetation			38.205970°	38.204804°
				-121.556801°	-121.556799°
DWR ID	DWR_RD0556_02_s _ 2024_63				

Comment Code

V2 : Remove the wild growth and woody vegetation other than native grasses from the levee slopes.

Inspector Comment

No Photos

LM Start	4.57	Rating **	M	Issue No.	60
LM End	4.57	Issue Type +	Ma	Location *	LS
Category	Earthen Levee			GPS Latitude/Longitude	
				Start	End
Item	Trim / Thin Trees			38.204537°	38.204537°
				-121.556782°	-121.556782°
DWR ID	DWR_RD0556_02_s _ 2021_60				

Comment Code

T1 : Trim and thin trees to at least five feet above ground level to allow visibility of the ground and room to flood fight.

Inspector Comment

Photo 1 of 1 : FA_2024_RD0556_19_60_20241001_00038.jpg



View looking upstream at trees on the landside slope (Fall 2021).

* Location	** Rating	+ Issue Type
LS : Land Side WS : Water Side CR : Crown	A : Acceptable M : Minimally Acceptable U : Unacceptable	Ma : Maintenance Deficiency Ob : Design & System Obsolescence En : Enforcement
N/A : Not Applicable	N : Not Inspected/Rated C : Corrected A/W : Acceptable but Monitor & Maintain	

**Flood Control Project Maintenance
Levee Inspections****Maintenance Issue Types Only, Levee Inspection Report By Mile - Fall 2024****Reclamation District No. 0556 Upper Andrus**

Waterway	Bank	Unit Miles	Inspection Start/End	Inspector
Unit No. 02 Sacramento River	Left	5.72	10/22/2024 10/22/2024	Gregg McMillon

LM Start	4.64	Rating **	U	Issue No.	58
LM End	4.64	Issue Type +	Ma	Location *	LS
Category	Earthen Levee			GPS Latitude/Longitude	
				Start	End
Item	Trim / Thin Trees			38.203480°	38.203480°
				-121.556824°	-121.556824°
DWR ID	DWR_RD0556_02_s_2018_58				
Comment Code					
T1 : Trim and thin trees to at least five feet above ground level to allow visibility of the ground and room to flood fight.					
Inspector Comment					
Remove fig tree from the landside slope.					

Photo 1 of 1 : FA_2024_RD0556_19_58_20241001_00036.jpg



View of the LS vegetation and fig tree in the background (Fall 2022).

LM Start	4.65	Rating **	M	Issue No.	27
LM End	4.71	Issue Type +	Ma	Location *	WS
Category	Earthen Levee			GPS Latitude/Longitude	
				Start	End
Item	Trim / Thin Trees			38.203425°	38.202513°
				-121.556845°	-121.556959°
DWR ID	DWR_RD0556_02_s_2017_27				
Comment Code					
T1 : Trim and thin trees to at least five feet above ground level to allow visibility of the ground and room to flood fight.					
Inspector Comment					
Trim trees and remove fallen trees from waterside slope.					

Photo 1 of 1 : FA_2024_RD0556_19_27_20241001_00019.jpg



View of overgrown and fallen trees on the WS slope (Fall 2022).

LM Start	4.67	Rating **	M	Issue No.	65
LM End	4.72	Issue Type +	Ma	Location *	LS
Category	Earthen Levee			GPS Latitude/Longitude	
				Start	End
Item	Vegetation			38.203144°	38.202431°
				-121.556815°	-121.556926°
DWR ID	DWR_RD0556_02_f_2024_65				
Comment Code					
V1 : Control annual grass and weeds on the levee slopes and easements.					
Inspector Comment					

No Photos

* Location	** Rating	+ Issue Type
LS : Land Side WS : Water Side CR : Crown	A : Acceptable M : Minimally Acceptable U : Unacceptable	Ma : Maintenance Deficiency Ob : Design & System Obsolescence En : Enforcement
N/A : Not Applicable	N : Not Inspected/Rated C : Corrected A/W : Acceptable but Monitor & Maintain	

**Flood Control Project Maintenance
Levee Inspections****Maintenance Issue Types Only, Levee Inspection Report By Mile - Fall 2024****Reclamation District No. 0556 Upper Andrus**

Waterway	Bank	Unit Miles	Inspection Start/End	Inspector
Unit No. 02 Sacramento River	Left	5.72	10/22/2024 10/22/2024	Gregg McMillon

LM Start	4.68	Rating **	U	Issue No.	3
LM End	4.72	Issue Type +	Ma	Location *	WS
Category	Earthen Levee			GPS Latitude/Longitude	
				Start	End
Item	Vegetation			38.202942°	38.202431°
				-121.556870°	-121.556960°
DWR ID	DWR_RD0556_02_f_2020_3				
Comment Code					
V2 : Remove the wild growth and woody vegetation other than native grasses from the levee slopes.					
Inspector Comment					
Cut arundo back 20' from waterside slope.					

Photo 1 of 1 : FA_2024_RD0556_19_3_20241001_00003.jpg



View of the arundo on the WS slope (Spring 2023).

LM Start	4.76	Rating **	M	Issue No.	85
LM End	4.84	Issue Type +	Ma	Location *	LS
Category	Earthen Levee			GPS Latitude/Longitude	
				Start	End
Item	Vegetation			38.201852°	38.200629°
				-121.557035°	-121.557232°
DWR ID	DWR_RD0556_02_s_2024_85				
Comment Code					
V2 : Remove the wild growth and woody vegetation other than native grasses from the levee slopes.					
Inspector Comment					

No Photos

LM Start	4.82	Rating **	U	Issue No.	52
LM End	4.88	Issue Type +	Ma	Location *	LS
Category	Earthen Levee			GPS Latitude/Longitude	
				Start	End
Item	Trim / Thin Trees			38.201017°	38.200136°
				-121.557135°	-121.557426°
DWR ID	DWR_RD0556_02_s_2021_52				
Comment Code					
T1 : Trim and thin trees to at least five feet above ground level to allow visibility of the ground and room to flood fight.					
Inspector Comment					
Bamboo and trees of heaven should be removed.					

Photo 1 of 1 : FA_2024_RD0556_19_52_20241001_00034.jpg



View looking downstream at bamboo and trees of heaven on landside slope (Spring 2021).

* Location	** Rating	+ Issue Type
LS : Land Side WS : Water Side CR : Crown	A : Acceptable M : Minimally Acceptable U : Unacceptable	Ma : Maintenance Deficiency Ob : Design & System Obsolescence En : Enforcement
N/A : Not Applicable	N : Not Inspected/Rated C : Corrected A/W : Acceptable but Monitor & Maintain	

**Flood Control Project Maintenance
Levee Inspections****Maintenance Issue Types Only, Levee Inspection Report By Mile - Fall 2024****Reclamation District No. 0556 Upper Andrus**

Waterway	Bank	Unit Miles	Inspection Start/End	Inspector
Unit No. 02 Sacramento River	Left	5.72	10/22/2024 10/22/2024	Gregg McMillon

LM Start	4.85	Rating **	C	Issue No.	66
LM End	4.87	Issue Type +	Ma	Location *	WS
Category	Earthen Levee			GPS Latitude/Longitude	
				Start	End
Item	Trim / Thin Trees			38.200543°	38.200246°
				-121.557286°	-121.557380°
DWR ID	DWR_RD0556_02_s_2021_66				
Comment Code					
T4 : Trim trees over roadway to at least 12 feet above ground level.					
Inspector Comment					

No Photos

LM Start	4.89	Rating **	M	Issue No.	50
LM End	4.95	Issue Type +	Ma	Location *	LS
Category	Earthen Levee			GPS Latitude/Longitude	
				Start	End
Item	Vegetation			38.199986°	38.199227°
				-121.557506°	-121.557884°
DWR ID	DWR_RD0556_02_f_2024_50				
Comment Code					
V1 : Control annual grass and weeds on the levee slopes and easements.					
Inspector Comment					

No Photos

LM Start	4.95	Rating **	M	Issue No.	103
LM End	4.95	Issue Type +	Ma	Location *	LS
Category	Earthen Levee			GPS Latitude/Longitude	
				Start	End
Item	Trim / Thin Trees			38.199223°	38.199223°
				-121.557876°	-121.557876°
DWR ID	DWR_RD0556_02_f_2021_103				
Comment Code					
T1 : Trim and thin trees to at least five feet above ground level to allow visibility of the ground and room to flood fight.					
Inspector Comment					

No Photos

* Location LS : Land Side N/A : Not Applicable WS : Water Side CR : Crown	** Rating A : Acceptable M : Minimally Acceptable U : Unacceptable	N : Not Inspected/Rated C : Corrected A/W : Acceptable but Monitor & Maintain	+ Issue Type Ma : Maintenance Deficiency Ob : Design & System Obsolescence En : Enforcement
--	--	--	---

**Flood Control Project Maintenance
Levee Inspections****Maintenance Issue Types Only, Levee Inspection Report By Mile - Fall 2024****Reclamation District No. 0556 Upper Andrus**

Waterway	Bank	Unit Miles	Inspection Start/End	Inspector
Unit No. 02 Sacramento River	Left	5.72	10/22/2024 10/22/2024	Gregg McMillon

LM Start	4.95	Rating **	U	Issue No.	91
LM End	5.09	Issue Type +	Ma	Location *	WS
Category	Earthen Levee			GPS Latitude/Longitude	
				Start	End
Item	Vegetation			38.199227°	38.197287°
				-121.557906°	-121.559023°
DWR ID	DWR_RD0556_02_s_2024_91				
Comment Code					
V2 : Remove the wild growth and woody vegetation other than native grasses from the levee slopes.					
Inspector Comment					

Photo 1 of 1 : FA_2024_RD0556_19_91_20241001_00056.jpg



View of tall vegetation on WS slope. (Spring 2024)

LM Start	5.05	Rating **	M	Issue No.	101
LM End	5.05	Issue Type +	Ma	Location *	LS
Category	Earthen Levee			GPS Latitude/Longitude	
				Start	End
Item	Trim / Thin Trees			38.197828°	38.197828°
				-121.558670°	-121.558670°
DWR ID	DWR_RD0556_02_f_2021_101				
Comment Code					
T1 : Trim and thin trees to at least five feet above ground level to allow visibility of the ground and room to flood fight.					
Inspector Comment					

No Photos

LM Start	5.22	Rating **	M	Issue No.	4
LM End	5.22	Issue Type +	Ma	Location *	LS
Category	Earthen Levee			GPS Latitude/Longitude	
				Start	End
Item	Trim / Thin Trees			38.195691°	38.195691°
				-121.560133°	-121.560133°
DWR ID	DWR_RD0556_02_s_2021_4				
Comment Code					
T1 : Trim and thin trees to at least five feet above ground level to allow visibility of the ground and room to flood fight.					
Inspector Comment					

No Photos

* Location LS : Land Side N/A : Not Applicable WS : Water Side CR : Crown	** Rating A : Acceptable M : Minimally Acceptable U : Unacceptable	N : Not Inspected/Rated C : Corrected A/W : Acceptable but Monitor & Maintain	+ Issue Type Ma : Maintenance Deficiency Ob : Design & System Obsolescence En : Enforcement
--	--	--	---

**Flood Control Project Maintenance
Levee Inspections****Maintenance Issue Types Only, Levee Inspection Report By Mile - Fall 2024****Reclamation District No. 0556 Upper Andrus**

Waterway	Bank	Unit Miles	Inspection Start/End	Inspector
Unit No. 02 Sacramento River	Left	5.72	10/22/2024 10/22/2024	Gregg McMillon

LM Start	5.38	Rating **	C	Issue No.	93
LM End	5.57	Issue Type +	Ma	Location *	LS
Category	Earthen Levee			GPS Latitude/Longitude	
				Start	End
Item	Vegetation			38.194034°	38.192615°
				-121.562195°	-121.565069°
DWR ID	DWR_RD0556_02_s_2024_93				
Comment Code					
V2 : Remove the wild growth and woody vegetation other than native grasses from the levee slopes.					
Inspector Comment					

No Photos

LM Start	5.52	Rating **	M	Issue No.	94
LM End	5.52	Issue Type +	Ma	Location *	WS
Category	Earthen Levee			GPS Latitude/Longitude	
				Start	End
Item	Trim / Thin Trees			38.192767°	38.192767°
				-121.564281°	-121.564281°
DWR ID	DWR_RD0556_02_s_2024_94				
Comment Code					
T2 : Tree or limb.					
Inspector Comment					
Remove fallen tree limbs from WS slope.					

No Photos

LM Start	5.64	Rating **	U	Issue No.	79
LM End	5.64	Issue Type +	Ma	Location *	LS
Category	Earthen Levee			GPS Latitude/Longitude	
				Start	End
Item	Animal Control			38.192237°	38.192237°
				-121.566368°	-121.566368°
DWR ID	DWR_RD0556_02_f_2018_79				
Comment Code					
A3 : No rodents visible, but rodent burrows visible; need to backfill and compact or grout burrows.					
Inspector Comment					
More than 2 cubic feet of soil was removed between the two large burrow holes.					

Photo 1 of 1 : FA_2024_RD0556_19_79_20241001_00049.jpg



View looking downstream at burrow holes on the landside slope (Fall 2020).

* Location	** Rating	+ Issue Type
LS : Land Side WS : Water Side CR : Crown	A : Acceptable M : Minimally Acceptable U : Unacceptable	Ma : Maintenance Deficiency Ob : Design & System Obsolescence En : Enforcement
N : Not Inspected/Rated C : Corrected A/W : Acceptable but Monitor & Maintain		