

**Flood Control Project Maintenance
Levee Inspections**

Maintenance Issue Types Only, Levee Inspection Report By Mile - Fall 2023

Reclamation District No. 0556 Upper Andrus

Waterway	Bank	Unit Miles	Inspection Start/End	Inspector
Unit No. 01 Georgiana Slough	Right	5.48	10/30/2023 10/30/2023	Zach Jojola

LM Start		Rating **	M	Issue No.	3
LM End		Issue Type +	Ma	Location *	N/A
Category	Earthen Levee			GPS Latitude/Longitude	
				Start	End
Item	Flood Preparedness & Training			°	°
				°	°
DWR ID	DWR_RD0556_01_f_2014_3				
Comment Code					
FP : Flood Preparedness & Training					
Inspector Comment					
The members in the district have not been flood fight trained recently according to the district manager, but they are familier with flood fight methods in the field.					

No Photos

LM Start		Rating **	A	Issue No.	6
LM End		Issue Type +	Ma	Location *	N/A
Category	Earthen Levee			GPS Latitude/Longitude	
				Start	End
Item	Operations & Maintenance Manuals			°	°
				°	°
DWR ID	DWR_RD0556_01_s_2012_6				
Comment Code					
OM : O&M Manuals					
Inspector Comment					
Sent electronic copy of O+M manual to LMA. In addition, the District engineer also has a copy.					

No Photos

LM Start		Rating **	A	Issue No.	8
LM End		Issue Type +	Ma	Location *	N/A
Category	Earthen Levee			GPS Latitude/Longitude	
				Start	End
Item	Emergency Supplies & Equipment			°	°
				°	°
DWR ID	DWR_RD0556_01_f_2019_8				
Comment Code					
ES : Emergency Supplies & Equipment					
Inspector Comment					
The District has adequate flood fight materials on hand.					

No Photos

* Location LS : Land Side N/A : Not Applicable WS : Water Side CR : Crown	** Rating A : Acceptable M : Minimally Acceptable U : Unacceptable	N : Not Inspected/Rated C : Corrected A/W : Acceptable but Monitor & Maintain	+ Issue Type Ma : Maintenance Deficiency Ob : Design & System Obsolescence En : Enforcement
--	--	---	---

**Flood Control Project Maintenance
Levee Inspections**

Maintenance Issue Types Only, Levee Inspection Report By Mile - Fall 2023

Reclamation District No. 0556 Upper Andrus

Waterway	Bank	Unit Miles	Inspection Start/End	Inspector
Unit No. 01 Georgiana Slough	Right	5.48	10/30/2023 10/30/2023	Zach Jojola

LM Start	0.17	Rating **	U	Issue No.	21
LM End	0.57	Issue Type +	Ma	Location *	LS
Category	Earthen Levee			GPS Latitude/Longitude	
				Start	End
Item	Trim / Thin Trees			38.236723°	38.232070°
				-121.518079°	-121.522067°
DWR ID	DWR_RD0556_01_s_2017_21				
Comment Code					
T1 : Trim and thin trees to at least five feet above ground level to allow visibility of the ground and room to flood fight.					
Inspector Comment					

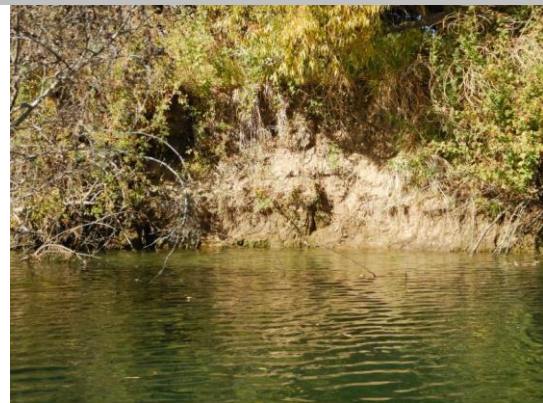
Photo 1 of 1 : FA_2023_RD0556_18_21_20231019_00006.jpg



View of the vegetation on the LS slope (Fall 2022).

LM Start	0.38	Rating **	M	Issue No.	43
LM End	0.58	Issue Type +	Ma	Location *	WS
Category	Supplemental			GPS Latitude/Longitude	
				Start	End
Item	2018 USACE Erosion Survey			38.234038°	38.231879°
				-121.519817°	-121.522003°
DWR ID	DWR_RD0556_01_s_2022_43				
Comment Code					
Inspector Comment					
2018 Site ID: GEO 11.8 R					
Status: Eroding					
2018 Field Notes: No observed change.					
Site History: 2017 - Tree popout popouts eminent , significant toe erosion and whole bank failure in sections					

Photo 1 of 2 : FA_2023_RD0556_18_43_20231019_00026.jpg



USACE 2018 Erosion Photo #1

LM Start	0.38	Rating **	M	Issue No.	43 (cont)
LM End	0.58	Issue Type +	Ma	Location *	WS

Photo 2 of 2 : FA_2023_RD0556_18_43_20231019_00027.jpg



USACE 2018 Erosion Photo #2

* Location LS : Land Side N/A : Not Applicable WS : Water Side CR : Crown		** Rating A : Acceptable M : Minimally Acceptable U : Unacceptable N : Not Inspected/Rated C : Corrected A/W : Acceptable but Monitor & Maintain		+ Issue Type Ma : Maintenance Deficiency Ob : Design & System Obsolescence En : Enforcement	
--	--	---	--	---	--

**Flood Control Project Maintenance
Levee Inspections**

Maintenance Issue Types Only, Levee Inspection Report By Mile - Fall 2023

Reclamation District No. 0556 Upper Andrus

Waterway	Bank	Unit Miles	Inspection Start/End	Inspector
Unit No. 01 Georgiana Slough	Right	5.48	10/30/2023 10/30/2023	Zach Jojola

LM Start	0.63	Rating **	C	Issue No.	84
LM End	0.63	Issue Type +	Ma	Location *	LS
Category	Earthen Levee			GPS Latitude/Longitude	
				Start	End
Item	Slope Stability			38.231428°	38.231428°
				-121.522772°	-121.522772°
DWR ID	DWR_RD0556_01_f _ 2021_84				
Comment Code					
S1 : Repair slope instability.					
Inspector Comment					

No Photos

LM Start	0.82	Rating **	M	Issue No.	65
LM End	0.83	Issue Type +	Ma	Location *	LS
Category	Earthen Levee			GPS Latitude/Longitude	
				Start	End
Item	Vegetation			38.229278°	38.229172°
				-121.525103°	-121.525279°
DWR ID	DWR_RD0556_01_f_2020_65				
Comment Code					
V2 : Remove the wild growth and woody vegetation other than native grasses from the levee slopes.					
Inspector Comment					

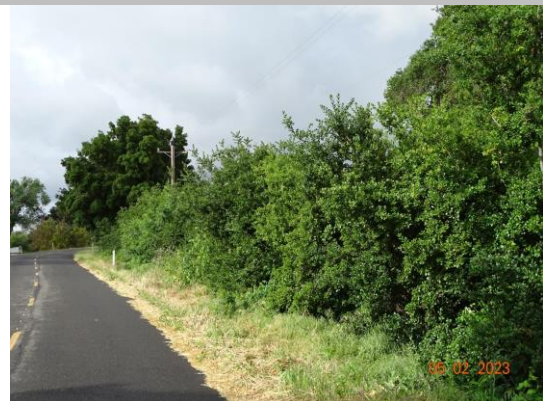
Photo 1 of 1 : FA_2023_RD0556_18_65_20231019_00038.jpg



View looking downstream at vegetation on the landside slope (Fall 2020).

LM Start	0.98	Rating **	U	Issue No.	66
LM End	1.17	Issue Type +	Ma	Location *	LS
Category	Earthen Levee			GPS Latitude/Longitude	
				Start	End
Item	Vegetation			38.227653°	38.227574°
				-121.527032°	-121.529479°
DWR ID	DWR_RD0556_01_f_2020_66				
Comment Code					
V2 : Remove the wild growth and woody vegetation other than native grasses from the levee slopes.					
Inspector Comment					

Photo 1 of 1 : FA_2023_RD0556_18_66_20231019_00039.jpg



View of the wild growth on the LS slope (Spring 2023).

* Location LS : Land Side N/A : Not Applicable WS : Water Side CR : Crown		** Rating A : Acceptable M : Minimally Acceptable U : Unacceptable		+ Issue Type Ma : Maintenance Deficiency Ob : Design & System Obsolescence En : Enforcement	
		N : Not Inspected/Rated C : Corrected A/W : Acceptable but Monitor & Maintain			

**Flood Control Project Maintenance
Levee Inspections**

Maintenance Issue Types Only, Levee Inspection Report By Mile - Fall 2023

Reclamation District No. 0556 Upper Andrus

Waterway	Bank	Unit Miles	Inspection Start/End	Inspector
Unit No. 01 Georgiana Slough	Right	5.48	10/30/2023 10/30/2023	Zach Jojola

LM Start	1.20	Rating **	M	Issue No.	42
LM End	1.53	Issue Type +	Ma	Location *	WS
Category	Supplemental			GPS Latitude/Longitude	
				Start	End
Item	2018 USACE Erosion Survey			38.227615°	38.225374°
				-121.529894°	-121.534406°
DWR ID	DWR_RD0556_01_s_2022_42				
Comment Code					
Inspector Comment					
2018 Site ID: GEO 10.9 R					
Status: Eroding					
2018 Field Notes: New erosion throughout site.					
Site History: 2017 - Significant toe erosion and whole bank failure in sections, large pockets from tree popouts.					

Photo 1 of 2 : FA_2023_RD0556_18_42_20231019_00024.jpg



USACE 2018 Erosion Photo #1

LM Start	1.20	Rating **	M	Issue No.	42 (cont)
LM End	1.53	Issue Type +	Ma	Location *	WS

Photo 2 of 2 : FA_2023_RD0556_18_42_20231019_00025.jpg



USACE 2018 Erosion Photo #2

LM Start	1.21	Rating **	U	Issue No.	81
LM End	1.21	Issue Type +	Ma	Location *	LS
Category	Earthen Levee			GPS Latitude/Longitude	
				Start	End
Item	Vegetation			38.227783°	38.227783°
				-121.530067°	-121.530067°
DWR ID	DWR_RD0556_01_f_2023_81				
Comment Code					
V2 : Remove the wild growth and woody vegetation other than native grasses from the levee slopes.					
Inspector Comment					
Blackberries on the landside slope.					

Photo 1 of 1 : FA_2023_RD0556_18_81_20231019_00041.jpg



View of blackberries on the landside slope (Spring 2022).

* Location LS : Land Side N/A : Not Applicable WS : Water Side CR : Crown	** Rating A : Acceptable M : Minimally Acceptable U : Unacceptable	N : Not Inspected/Rated C : Corrected A/W : Acceptable but Monitor & Maintain	+ Issue Type Ma : Maintenance Deficiency Ob : Design & System Obsolescence En : Enforcement
--	--	--	---

**Flood Control Project Maintenance
Levee Inspections**

Maintenance Issue Types Only, Levee Inspection Report By Mile - Fall 2023

Reclamation District No. 0556 Upper Andrus

Waterway	Bank	Unit Miles	Inspection Start/End	Inspector
Unit No. 01 Georgiana Slough	Right	5.48	10/30/2023 10/30/2023	Zach Jojola

LM Start	1.26	Rating **	U	Issue No.	87
LM End	1.30	Issue Type +	Ma	Location *	LS
Category	Earthen Levee			GPS Latitude/Longitude	
				Start	End
Item	Vegetation			38.227980°	38.227813°
				-121.530967°	-121.531751°
DWR ID	DWR_RD0556_01_s_2022_87				
Comment Code					
V2 : Remove the wild growth and woody vegetation other than native grasses from the levee slopes.					
Inspector Comment					

Photo 1 of 1 : FA_2023_RD0556_18_87_20231019_00045.jpg



View looking downstream at trees on the landside slope (Spring 2022).

LM Start	1.37	Rating **	U	Issue No.	88
LM End	1.54	Issue Type +	Ma	Location *	LS
Category	Earthen Levee			GPS Latitude/Longitude	
				Start	End
Item	Vegetation			38.227286°	38.225374°
				-121.532724°	-121.534665°
DWR ID	DWR_RD0556_01_s_2022_88				
Comment Code					
V2 : Remove the wild growth and woody vegetation other than native grasses from the levee slopes.					
Inspector Comment					

Photo 1 of 1 : FA_2023_RD0556_18_88_20231019_00046.jpg



View looking downstream at trees on the landside slope (Spring 2022).

LM Start	1.43	Rating **	M	Issue No.	82
LM End	1.43	Issue Type +	Ma	Location *	LS
Category	Earthen Levee			GPS Latitude/Longitude	
				Start	End
Item	Animal Control			38.226537°	38.226537°
				-121.533351°	-121.533351°
DWR ID	DWR_RD0556_01_f_2021_82				
Comment Code					
A1 : Exterminate rodents and backfill and compact or grout burrows.					
Inspector Comment					

Photo 1 of 1 : FA_2023_RD0556_18_82_20231019_00042.jpg



View of animal holes in landside hinge and slope (Fall 2021).

* Location LS : Land Side N/A : Not Applicable WS : Water Side CR : Crown		** Rating A : Acceptable M : Minimally Acceptable U : Unacceptable		N : Not Inspected/Rated C : Corrected A/W : Acceptable but Monitor & Maintain		+ Issue Type Ma : Maintenance Deficiency Ob : Design & System Obsolescence En : Enforcement	
---	--	---	--	---	--	--	--

**Flood Control Project Maintenance
Levee Inspections**

Maintenance Issue Types Only, Levee Inspection Report By Mile - Fall 2023

Reclamation District No. 0556 Upper Andrus

Waterway	Bank	Unit Miles	Inspection Start/End	Inspector
Unit No. 01 Georgiana Slough	Right	5.48	10/30/2023 10/30/2023	Zach Jojola

LM Start	1.43	Rating **	M	Issue No.	40
LM End	1.43	Issue Type +	Ma	Location *	LS
Category	Earthen Levee			GPS Latitude/Longitude	
				Start	End
Item	Erosion / Bank Caving			38.226537°	38.226537°
				-121.533512°	-121.533512°
DWR ID	DWR_RD0556_01_f_2012_40				
Comment Code					
E1 : Note and monitor erosion site.					
Inspector Comment					
Erosion is covered by vegetation.					

Photo 1 of 1 : FA_2023_RD0556_18_40_20231019_00022.jpg



View of the erosion on the LS slope (Fall 2022).

LM Start	1.55	Rating **	U	Issue No.	46
LM End	1.64	Issue Type +	Ma	Location *	LS
Category	Earthen Levee			GPS Latitude/Longitude	
				Start	End
Item	Trim / Thin Trees			38.225268°	38.224587°
				-121.534733°	-121.536129°
DWR ID	DWR_RD0556_01_s_2018_46				
Comment Code					
T1 : Trim and thin trees to at least five feet above ground level to allow visibility of the ground and room to flood fight.					
Inspector Comment					

Photo 1 of 1 : FA_2023_RD0556_18_46_20231019_00030.jpg



View looking upstream at thick trees on the landside slope (Fall 2020).

LM Start	1.71	Rating **	U	Issue No.	19
LM End	1.80	Issue Type +	Ma	Location *	LS
Category	Earthen Levee			GPS Latitude/Longitude	
				Start	End
Item	Vegetation			38.224301°	38.223965°
				-121.537367°	-121.539080°
DWR ID	DWR_RD0556_01_s_2020_19				
Comment Code					
V2 : Remove the wild growth and woody vegetation other than native grasses from the levee slopes.					
Inspector Comment					

Photo 1 of 1 : FA_2023_RD0556_18_19_20231019_00003.jpg



View looking downstream at thick wild vegetation on the landside slope (Spring 2020).

* Location LS : Land Side N/A : Not Applicable WS : Water Side CR : Crown		** Rating A : Acceptable M : Minimally Acceptable U : Unacceptable N : Not Inspected/Rated C : Corrected A/W : Acceptable but Monitor & Maintain		+ Issue Type Ma : Maintenance Deficiency Ob : Design & System Obsolescence En : Enforcement	
--	--	---	--	---	--

**Flood Control Project Maintenance
Levee Inspections**

Maintenance Issue Types Only, Levee Inspection Report By Mile - Fall 2023

Reclamation District No. 0556 Upper Andrus

Waterway	Bank	Unit Miles	Inspection Start/End	Inspector
Unit No. 01 Georgiana Slough	Right	5.48	10/30/2023 10/30/2023	Zach Jojola

LM Start	1.97	Rating **	M	Issue No.	83
LM End	1.99	Issue Type +	Ma	Location *	LS
Category	Earthen Levee			GPS Latitude/Longitude	
				Start	End
Item	Trim / Thin Trees			38.223660°	38.223600°
				-121.542015°	-121.542543°
DWR ID	DWR_RD0556_01_f_2021_83				
Comment Code					
T1 : Trim and thin trees to at least five feet above ground level to allow visibility of the ground and room to flood fight.					
Inspector Comment					

No Photos

LM Start	2.63	Rating **	M	Issue No.	68
LM End	2.63	Issue Type +	Ma	Location *	LS
Category	Earthen Levee			GPS Latitude/Longitude	
				Start	End
Item	Trim / Thin Trees			38.215850°	38.215850°
				-121.542045°	-121.542045°
DWR ID	DWR_RD0556_01_f_2020_68				
Comment Code					
T1 : Trim and thin trees to at least five feet above ground level to allow visibility of the ground and room to flood fight.					
Inspector Comment					

No Photos

LM Start	2.69	Rating **	U	Issue No.	69
LM End	2.69	Issue Type +	Ma	Location *	LS
Category	Earthen Levee			GPS Latitude/Longitude	
				Start	End
Item	Trim / Thin Trees			38.215382°	38.215382°
				-121.541247°	-121.541247°
DWR ID	DWR_RD0556_01_f_2020_69				
Comment Code					
T1 : Trim and thin trees to at least five feet above ground level to allow visibility of the ground and room to flood fight.					
Inspector Comment					

Photo 1 of 1 : FA_2023_RD0556_18_69_20231019_00040.jpg



View of the tree on the LS slope (Fall 2022).

* Location LS : Land Side N/A : Not Applicable WS : Water Side CR : Crown	** Rating A : Acceptable M : Minimally Acceptable U : Unacceptable	N : Not Inspected/Rated C : Corrected A/W : Acceptable but Monitor & Maintain	+ Issue Type Ma : Maintenance Deficiency Ob : Design & System Obsolescence En : Enforcement
--	--	---	---

**Flood Control Project Maintenance
Levee Inspections**

Maintenance Issue Types Only, Levee Inspection Report By Mile - Fall 2023

Reclamation District No. 0556 Upper Andrus

Waterway	Bank	Unit Miles	Inspection Start/End	Inspector
Unit No. 01 Georgiana Slough	Right	5.48	10/30/2023 10/30/2023	Zach Jojola

LM Start	2.72	Rating **	U	Issue No.	33
LM End	2.72	Issue Type +	Ma	Location *	LS
Category	Earthen Levee			GPS Latitude/Longitude	
				Start	End
Item	Trim / Thin Trees			38.215107°	38.215107°
				-121.540677°	-121.540677°
DWR ID	DWR_RD0556_01_s_2017_33				
Comment Code					
T3 : Fallen tree with root ball.					
Inspector Comment					
Fallen trees on landside. Remove the fallen tree and repair the levee damage.					

Photo 1 of 1 : FA_2023_RD0556_18_33_20231019_00014.jpg



View of hole in landside slope caused by down tree (Spring 2021).

LM Start	2.85	Rating **	M	Issue No.	37
LM End	2.98	Issue Type +	Ma	Location *	WS
Category	Supplemental			GPS Latitude/Longitude	
				Start	End
Item	2018 USACE Erosion Survey			38.214144°	38.212577°
				-121.538692°	-121.537244°
DWR ID	DWR_RD0556_01_s_2022_37				
Comment Code					
Inspector Comment					
2018 Site ID: GEO 9.2 R					
Status: Eroding					
2018 Field Notes: New erosion along toe.					
Site History: 2017 - Toe erosion.					

Photo 1 of 2 : FA_2023_RD0556_18_37_20231019_00018.jpg



USACE 2018 Erosion Photo #1

LM Start	2.85	Rating **	M	Issue No.	37 (cont)
LM End	2.98	Issue Type +	Ma	Location *	WS

Photo 2 of 2 : FA_2023_RD0556_18_37_20231019_00019.jpg



USACE 2018 Erosion Photo #2

* Location LS : Land Side N/A : Not Applicable WS : Water Side CR : Crown		** Rating A : Acceptable M : Minimally Acceptable U : Unacceptable N : Not Inspected/Rated C : Corrected A/W : Acceptable but Monitor & Maintain		+ Issue Type Ma : Maintenance Deficiency Ob : Design & System Obsolescence En : Enforcement	
--	--	---	--	---	--

**Flood Control Project Maintenance
Levee Inspections**

Maintenance Issue Types Only, Levee Inspection Report By Mile - Fall 2023

Reclamation District No. 0556 Upper Andrus

Waterway	Bank	Unit Miles	Inspection Start/End	Inspector
Unit No. 01 Georgiana Slough	Right	5.48	10/30/2023 10/30/2023	Zach Jojola

LM Start	3.14	Rating **	M	Issue No.	28
LM End	3.26	Issue Type +	Ma	Location *	LS
Category	Earthen Levee			GPS Latitude/Longitude	
				Start	End
Item	Animal Control			38.210985°	38.210160°
				-121.538372°	-121.540300°
DWR ID	DWR_RD0556_01_f_2017_28				
Comment Code					
A1 : Exterminate rodents and backfill and compact or grout burrows.					
Inspector Comment					
Multiple rodent holes on the landside slope.					

Photo 1 of 1 : FA_2023_RD0556_18_28_20231030_00092.jpg



View of rodent holes on the landside slope. Fall 2023.

LM Start	3.18	Rating **	M	Issue No.	36
LM End	3.50	Issue Type +	Ma	Location *	WS
Category	Supplemental			GPS Latitude/Longitude	
				Start	End
Item	2018 USACE Erosion Survey			38.210674°	38.206919°
				-121.538854°	-121.541559°
DWR ID	DWR_RD0556_01_s_2022_36				
Comment Code					
Inspector Comment					
2018 Site ID: GEO 9.0 R					
Status: Eroding					
2018 Field Notes: Site extended downstream.					
Site History: 2017 - Toe erosion and failed revetment.					

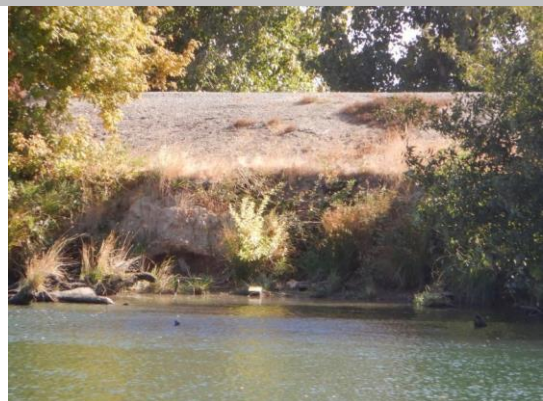
Photo 1 of 2 : FA_2023_RD0556_18_36_20231019_00016.jpg



USACE 2018 Erosion Photo #1

LM Start	3.18	Rating **	M	Issue No.	36 (cont)
LM End	3.50	Issue Type +	Ma	Location *	WS

Photo 2 of 2 : FA_2023_RD0556_18_36_20231019_00017.jpg



USACE 2018 Erosion Photo #2

* Location LS : Land Side N/A : Not Applicable WS : Water Side CR : Crown		** Rating A : Acceptable M : Minimally Acceptable U : Unacceptable N : Not Inspected/Rated C : Corrected A/W : Acceptable but Monitor & Maintain		+ Issue Type Ma : Maintenance Deficiency Ob : Design & System Obsolescence En : Enforcement	
--	--	---	--	---	--

**Flood Control Project Maintenance
Levee Inspections**

Maintenance Issue Types Only, Levee Inspection Report By Mile - Fall 2023

Reclamation District No. 0556 Upper Andrus

Waterway	Bank	Unit Miles	Inspection Start/End	Inspector
Unit No. 01 Georgiana Slough	Right	5.48	10/30/2023 10/30/2023	Zach Jojola

LM Start	3.18	Rating **	M	Issue No.	55
LM End	3.18	Issue Type +	Ma	Location *	LS
Category	Earthen Levee			GPS Latitude/Longitude	
				Start	End
Item	Trim / Thin Trees			38.210745°	38.210745°
				-121.538967°	-121.538967°
DWR ID	DWR_RD0556_01_f_2019_55				
Comment Code					
T1 : Trim and thin trees to at least five feet above ground level to allow visibility of the ground and room to flood fight.					
Inspector Comment					
Some trimming was done but more work is needed.					

Photo 1 of 1 : FA_2023_RD0556_18_55_20231019_00036.jpg



View of the trees on the LS slope (Fall 2022).

LM Start	3.22	Rating **	U	Issue No.	38
LM End	3.23	Issue Type +	Ma	Location *	LS
Category	Earthen Levee			GPS Latitude/Longitude	
				Start	End
Item	Trim / Thin Trees			38.210493°	38.210446°
				-121.539760°	-121.539804°
DWR ID	DWR_RD0556_01_s_2017_38				
Comment Code					
T1 : Trim and thin trees to at least five feet above ground level to allow visibility of the ground and room to flood fight.					
Inspector Comment					
Remove the wild tree growth and vegetation from the landside levee slope and toe so the ground can be seen.					

Photo 1 of 1 : FA_2023_RD0556_18_38_20231019_00020.jpg



View of the wild growth on the LS slope (Spring 2023).

LM Start	3.27	Rating **	M	Issue No.	89
LM End	3.29	Issue Type +	Ma	Location *	LS
Category	Earthen Levee			GPS Latitude/Longitude	
				Start	End
Item	Trim / Thin Trees			38.210114°	38.209895°
				-121.540342°	-121.540579°
DWR ID	DWR_RD0556_01_f_2022_89				
Comment Code					
T1 : Trim and thin trees to at least five feet above ground level to allow visibility of the ground and room to flood fight.					
Inspector Comment					

No Photos

* Location LS : Land Side N/A : Not Applicable WS : Water Side CR : Crown		** Rating A : Acceptable M : Minimally Acceptable U : Unacceptable N : Not Inspected/Rated C : Corrected A/W : Acceptable but Monitor & Maintain		+ Issue Type Ma : Maintenance Deficiency Ob : Design & System Obsolescence En : Enforcement	
--	--	---	--	---	--

**Flood Control Project Maintenance
Levee Inspections**

Maintenance Issue Types Only, Levee Inspection Report By Mile - Fall 2023

Reclamation District No. 0556 Upper Andrus

Waterway	Bank	Unit Miles	Inspection Start/End	Inspector
Unit No. 01 Georgiana Slough	Right	5.48	10/30/2023 10/30/2023	Zach Jojola

LM Start	3.56	Rating **	M	Issue No.	95
LM End	3.56	Issue Type +	Ma	Location *	LS
Category	Earthen Levee			GPS Latitude/Longitude	
				Start	End
Item	Trim / Thin Trees			38.206078°	38.206078°
				-121.541743°	-121.541743°
DWR ID	DWR_RD0556_01_s_2022_95				
Comment Code					
T2 : Tree or limb.					
Inspector Comment					

Photo 1 of 1 : FA_2023_RD0556_18_95_20231019_00048.jpg



View of down tree limbs on the landside slope (Spring 2022).

LM Start	3.60	Rating **	M	Issue No.	94
LM End	3.60	Issue Type +	Ma	Location *	LS
Category	Earthen Levee			GPS Latitude/Longitude	
				Start	End
Item	Trim / Thin Trees			38.205462°	38.205462°
				-121.541622°	-121.541622°
DWR ID	DWR_RD0556_01_s_2022_94				
Comment Code					
T1 : Trim and thin trees to at least five feet above ground level to allow visibility of the ground and room to flood fight.					
Inspector Comment					

No Photos

LM Start	3.68	Rating **	U	Issue No.	41
LM End	3.81	Issue Type +	Ma	Location *	LS
Category	Earthen Levee			GPS Latitude/Longitude	
				Start	End
Item	Vegetation			38.204360°	38.202615°
				-121.541286°	-121.540807°
DWR ID	DWR_RD0556_01_s_2020_41				
Comment Code					
V2 : Remove the wild growth and woody vegetation other than native grasses from the levee slopes.					
Inspector Comment					

Photo 1 of 1 : FA_2023_RD0556_18_41_20231019_00023.jpg



View looking downstream at vegetation on the landside slope (Fall 2020).

* Location LS : Land Side N/A : Not Applicable WS : Water Side CR : Crown		** Rating A : Acceptable M : Minimally Acceptable U : Unacceptable		+ Issue Type Ma : Maintenance Deficiency Ob : Design & System Obsolescence En : Enforcement	
		N : Not Inspected/Rated C : Corrected A/W : Acceptable but Monitor & Maintain			

**Flood Control Project Maintenance
Levee Inspections**

Maintenance Issue Types Only, Levee Inspection Report By Mile - Fall 2023

Reclamation District No. 0556 Upper Andrus

Waterway	Bank	Unit Miles	Inspection Start/End	Inspector
Unit No. 01 Georgiana Slough	Right	5.48	10/30/2023 10/30/2023	Zach Jojola

LM Start	3.94	Rating **	U	Issue No.	99
LM End	3.96	Issue Type +	Ma	Location *	LS
Category	Earthen Levee			GPS Latitude/Longitude	
				Start	End
Item	Vegetation			38.201514°	38.201402°
				-121.542595°	-121.542958°
DWR ID	DWR_RD0556_01_s_2022_99				
Comment Code					
V2 : Remove the wild growth and woody vegetation other than native grasses from the levee slopes.					
Inspector Comment					
Blackberries on landside slope.					

Photo 1 of 1 : FA_2023_RD0556_18_99_20231019_00049.jpg



View looking downstream at vegetation on the landside slope (Spring 2022).

LM Start	4.02	Rating **	M	Issue No.	101
LM End	4.02	Issue Type +	Ma	Location *	LS
Category	Earthen Levee			GPS Latitude/Longitude	
				Start	End
Item	Animal Control			38.201063°	38.201063°
				-121.543850°	-121.543850°
DWR ID	DWR_RD0556_01_s_2022_101				
Comment Code					
A1 : Exterminate rodents and backfill and compact or grout burrows.					
Inspector Comment					

Photo 1 of 1 : FA_2023_RD0556_18_101_20231019_00051.jpg



View of multiple animal holes in the landside slope (Spring 2022).

LM Start	4.08	Rating **	U	Issue No.	22
LM End	4.08	Issue Type +	Ma	Location *	WS
Category	Earthen Levee			GPS Latitude/Longitude	
				Start	End
Item	Vegetation			38.200587°	38.200490°
				-121.544775°	-121.544894°
DWR ID	DWR_RD0556_01_f_2023_22				
Comment Code					
V2 : Remove the wild growth and woody vegetation other than native grasses from the levee slopes.					
Inspector Comment					
Remove arundo.					

Photo 1 of 1 : FA_2023_RD0556_18_22_20231030_00093.jpg



View of arundo on the waterside shoulder. Fall 2023.

* Location LS : Land Side N/A : Not Applicable WS : Water Side CR : Crown		** Rating A : Acceptable M : Minimally Acceptable U : Unacceptable N : Not Inspected/Rated C : Corrected A/W : Acceptable but Monitor & Maintain		+ Issue Type Ma : Maintenance Deficiency Ob : Design & System Obsolescence En : Enforcement	
--	--	---	--	---	--

**Flood Control Project Maintenance
Levee Inspections**

Maintenance Issue Types Only, Levee Inspection Report By Mile - Fall 2023

Reclamation District No. 0556 Upper Andrus

Waterway	Bank	Unit Miles	Inspection Start/End	Inspector
Unit No. 01 Georgiana Slough	Right	5.48	10/30/2023 10/30/2023	Zach Jojola

LM Start	4.15	Rating **	U	Issue No.	23
LM End	4.22	Issue Type +	Ma	Location *	WS
Category	Earthen Levee			GPS Latitude/Longitude	
				Start	End
Item	Vegetation			38.199701°	38.198845°
				-121.545615°	-121.546239°
DWR ID	DWR_RD0556_01_f_2023_23				
Comment Code					
V2 : Remove the wild growth and woody vegetation other than native grasses from the levee slopes.					
Inspector Comment					
Remove arundo.					

Photo 1 of 1 : FA_2023_RD0556_18_23_20231030_00094.jpg



View of arundo on the waterside shoulder. Fall 2023.

LM Start	4.17	Rating **	M	Issue No.	39
LM End	4.33	Issue Type +	Ma	Location *	LS
Category	Earthen Levee			GPS Latitude/Longitude	
				Start	End
Item	Vegetation			38.199425°	38.197467°
				-121.545808°	-121.547146°
DWR ID	DWR_RD0556_01_f_2017_39				
Comment Code					
V2 : Remove the wild growth and woody vegetation other than native grasses from the levee slopes.					
Inspector Comment					
Blackberries at LS toe.					

Photo 1 of 1 : FA_2023_RD0556_18_39_20231019_00021.jpg



View of the blackberries on the LS toe (Fall 2022).

LM Start	4.33	Rating **	U	Issue No.	26
LM End	4.37	Issue Type +	Ma	Location *	WS
Category	Earthen Levee			GPS Latitude/Longitude	
				Start	End
Item	Vegetation			38.197442°	38.196922°
				-121.547148°	-121.547413°
DWR ID	DWR_RD0556_01_f_2023_26				
Comment Code					
V2 : Remove the wild growth and woody vegetation other than native grasses from the levee slopes.					
Inspector Comment					
Remove arundo.					

Photo 1 of 1 : FA_2023_RD0556_18_26_20231030_00095.jpg



View of arundo on the waterside shoulder. Fall 2023.

* Location LS : Land Side N/A : Not Applicable WS : Water Side CR : Crown		** Rating A : Acceptable M : Minimally Acceptable U : Unacceptable		N : Not Inspected/Rated C : Corrected A/W : Acceptable but Monitor & Maintain		+ Issue Type Ma : Maintenance Deficiency Ob : Design & System Obsolescence En : Enforcement	
--	--	--	--	---	--	---	--

**Flood Control Project Maintenance
Levee Inspections**

Maintenance Issue Types Only, Levee Inspection Report By Mile - Fall 2023

Reclamation District No. 0556 Upper Andrus

Waterway	Bank	Unit Miles	Inspection Start/End	Inspector
Unit No. 01 Georgiana Slough	Right	5.48	10/30/2023 10/30/2023	Zach Jojola

LM Start	4.40	Rating **	M	Issue No.	102
LM End	4.57	Issue Type +	Ma	Location *	LS
Category	Earthen Levee			GPS Latitude/Longitude	
				Start	End
Item	Vegetation			38.196514°	38.194882°
				-121.547638°	-121.550051°
DWR ID	DWR_RD0556_01_s_2022_102				
Comment Code					
V2 : Remove the wild growth and woody vegetation other than native grasses from the levee slopes.					
Inspector Comment					
Blackberries at LS toe.					

No Photos

LM Start	4.59	Rating **	U	Issue No.	35
LM End	4.62	Issue Type +	Ma	Location *	WS
Category	Earthen Levee			GPS Latitude/Longitude	
				Start	End
Item	Vegetation			38.194709°	38.194517°
				-121.550358°	-121.550709°
DWR ID	DWR_RD0556_01_f_2023_35				
Comment Code					
V2 : Remove the wild growth and woody vegetation other than native grasses from the levee slopes.					
Inspector Comment					
Remove arundo.					

Photo 1 of 1 : FA_2023_RD0556_18_35_20231030_00096.jpg



View of arundo on the waterside shoulder. Fall 2023.

LM Start	4.78	Rating **	M	Issue No.	104
LM End	4.78	Issue Type +	Ma	Location *	LS
Category	Earthen Levee			GPS Latitude/Longitude	
				Start	End
Item	Vegetation			38.192881°	38.192881°
				-121.552895°	-121.552895°
DWR ID	DWR_RD0556_01_s_2022_104				
Comment Code					
V4 : Elderberries are blocking visibility and flood fight capability.					
Inspector Comment					

No Photos

* Location LS : Land Side N/A : Not Applicable WS : Water Side CR : Crown	** Rating A : Acceptable M : Minimally Acceptable U : Unacceptable	N : Not Inspected/Rated C : Corrected A/W : Acceptable but Monitor & Maintain	+ Issue Type Ma : Maintenance Deficiency Ob : Design & System Obsolescence En : Enforcement
--	--	---	---

**Flood Control Project Maintenance
Levee Inspections**

Maintenance Issue Types Only, Levee Inspection Report By Mile - Fall 2023

Reclamation District No. 0556 Upper Andrus

Waterway	Bank	Unit Miles	Inspection Start/End	Inspector
Unit No. 01 Georgiana Slough	Right	5.48	10/30/2023 10/30/2023	Zach Jojola

LM Start	4.83	Rating **	M	Issue No.	49
LM End	4.85	Issue Type +	Ma	Location *	WS
Category	Earthen Levee			GPS Latitude/Longitude	
				Start	End
Item	Vegetation			38.192383°	38.192227°
				-121.553584°	-121.553799°
DWR ID	DWR_RD0556_01_f _ 2023_49				
Comment Code					
V2 : Remove the wild growth and woody vegetation other than native grasses from the levee slopes.					
Inspector Comment					
Thin sandbar willows.					

No Photos

LM Start	4.88	Rating **	U	Issue No.	106
LM End	4.88	Issue Type +	Ma	Location *	LS
Category	Earthen Levee			GPS Latitude/Longitude	
				Start	End
Item	Vegetation			38.191981°	38.191981°
				-121.554180°	-121.554180°
DWR ID	DWR_RD0556_01_s_2022_106				
Comment Code					
V4 : Elderberries are blocking visibility and flood fight capability.					
Inspector Comment					

No Photos

* Location LS : Land Side N/A : Not Applicable WS : Water Side CR : Crown	** Rating A : Acceptable M : Minimally Acceptable U : Unacceptable	N : Not Inspected/Rated C : Corrected A/W : Acceptable but Monitor & Maintain	+ Issue Type Ma : Maintenance Deficiency Ob : Design & System Obsolescence En : Enforcement
--	--	---	---

**Flood Control Project Maintenance
Levee Inspections**

Maintenance Issue Types Only, Levee Inspection Report By Mile - Fall 2023

Reclamation District No. 0556 Upper Andrus

Waterway	Bank	Unit Miles	Inspection Start/End	Inspector
Unit No. 01 Georgiana Slough	Right	5.48	10/30/2023 10/30/2023	Zach Jojola

LM Start	5.12	Rating **	M	Issue No.	20
LM End	5.34	Issue Type +	Ma	Location *	WS
Category	Supplemental			GPS Latitude/Longitude	
				Start	End
Item	2018 USACE Erosion Survey			38.189775°	38.187369°
				-121.557729°	-121.560247°
DWR ID	DWR_RD0556_01_s_2022_20				

Comment Code

Inspector Comment

2018 Site ID: GEO 7.0 R
 Status: Eroding
 2018 Field Notes: Minor new toe erosion.
 Site History: 1997 - Toe damaged rock. 1999 - One pocket filled with gravel. 2000 - Eroding beach with some biotech rolls and stakes; some gravel on slope. 2001 - Staked, low fascine walls at bankline. 2005 - Stone revetment in between pockets. 2006 - New rock on upper slope behind brush boxes at the upstream end, Stone is sliding off the hard toe. 2016 - Fresh erosion observed. 2017 - Site extended downstream. Large erosion pockets and significant toe erosion.

LM Start	5.12	Rating **	M	Issue No.	20 (cont)
LM End	5.34	Issue Type +	Ma	Location *	WS

Photo 1 of 2 : FA_2023_RD0556_18_20_20231019_00004.jpg



USACE 2018 Erosion Photo #1

Photo 2 of 2 : FA_2023_RD0556_18_20_20231019_00005.jpg



USACE 2018 Erosion Photo #2

* Location LS: Land Side N/A: Not Applicable WS: Water Side CR: Crown	** Rating A: Acceptable M: Minimally Acceptable U: Unacceptable	N: Not Inspected/Rated C: Corrected A/W: Acceptable but Monitor & Maintain	+ Issue Type Ma: Maintenance Deficiency Ob: Design & System Obsolescence En: Enforcement
--	---	---	--

**Flood Control Project Maintenance
Levee Inspections**

Maintenance Issue Types Only, Levee Inspection Report By Mile - Fall 2023

Reclamation District No. 0556 Upper Andrus

Waterway	Bank	Unit Miles	Inspection Start/End	Inspector
Unit No. 02 Sacramento River	Left	5.72	10/30/2023 10/30/2023	Zach Jojola

LM Start	0.02	Rating **	U	Issue No.	92
LM End	0.14	Issue Type +	Ma	Location *	LS
Category	Earthen Levee			GPS Latitude/Longitude	
				Start	End
Item	Animal Control			38.239117°	38.238887°
				-121.518554°	-121.520789°
DWR ID	DWR_RD0556_02_s_2022_92				
Comment Code					
A1 : Exterminate rodents and backfill and compact or grout burrows.					
Inspector Comment					
Multiple rodent holes on the landside slope.					

Photo 1 of 1 : FA_2023_RD0556_19_92_20231019_00063.jpg



View of the rodent holes looking up the LS slope (Fall 2022).

LM Start	0.04	Rating **	U	Issue No.	20
LM End	0.04	Issue Type +	Ma	Location *	WS
Category	Earthen Levee			GPS Latitude/Longitude	
				Start	End
Item	Erosion / Vehicle Traffic			38.239167°	38.239167°
				-121.519040°	-121.519040°
DWR ID	DWR_RD0556_02_f_2019_20				
Comment Code					
E6 : Repair the levee slope damaged by vehicle traffic and prevent access where possible.					
Inspector Comment					

Photo 1 of 1 : FA_2023_RD0556_19_20_20231019_00017.jpg



View of damage to waterside slope due to a vehicle (Spring 2022).

LM Start	0.08	Rating **	M	Issue No.	42
LM End	0.08	Issue Type +	Ma	Location *	WS
Category	Earthen Levee			GPS Latitude/Longitude	
				Start	End
Item	Trim / Thin Trees			38.239029°	38.239029°
				-121.519667°	-121.519667°
DWR ID	DWR_RD0556_02_s_2021_42				
Comment Code					
T1 : Trim and thin trees to at least five feet above ground level to allow visibility of the ground and room to flood fight.					
Inspector Comment					

No Photos

* Location LS : Land Side N/A : Not Applicable WS : Water Side CR : Crown		** Rating A : Acceptable M : Minimally Acceptable U : Unacceptable N : Not Inspected/Rated C : Corrected A/W : Acceptable but Monitor & Maintain		+ Issue Type Ma : Maintenance Deficiency Ob : Design & System Obsolescence En : Enforcement	
--	--	---	--	---	--

**Flood Control Project Maintenance
Levee Inspections**

Maintenance Issue Types Only, Levee Inspection Report By Mile - Fall 2023

Reclamation District No. 0556 Upper Andrus

Waterway	Bank	Unit Miles	Inspection Start/End	Inspector
Unit No. 02 Sacramento River	Left	5.72	10/30/2023 10/30/2023	Zach Jojola

LM Start	0.14	Rating **	C	Issue No.	44
LM End	0.14	Issue Type +	Ma	Location *	WS
Category	Earthen Levee			GPS Latitude/Longitude	
				Start	End
Item	Trim / Thin Trees			38.238902°	38.238902°
				-121.520748°	-121.520748°
DWR ID	DWR_RD0556_02_s _ 2022_44				
Comment Code					
T1 : Trim and thin trees to at least five feet above ground level to allow visibility of the ground and room to flood fight.					
Inspector Comment					

No Photos

LM Start	0.30	Rating **	M	Issue No.	82
LM End	0.30	Issue Type +	Ma	Location *	LS
Category	Earthen Levee			GPS Latitude/Longitude	
				Start	End
Item	Trim / Thin Trees			38.238516°	38.238516°
				-121.523640°	-121.523640°
DWR ID	DWR_RD0556_02_s _ 2021_82				
Comment Code					
T1 : Trim and thin trees to at least five feet above ground level to allow visibility of the ground and room to flood fight.					
Inspector Comment					

No Photos

LM Start	0.42	Rating **	M	Issue No.	39
LM End	0.42	Issue Type +	Ma	Location *	LS
Category	Earthen Levee			GPS Latitude/Longitude	
				Start	End
Item	Trim / Thin Trees			38.238167°	38.238167°
				-121.525878°	-121.525878°
DWR ID	DWR_RD0556_02_s _ 2021_39				
Comment Code					
T1 : Trim and thin trees to at least five feet above ground level to allow visibility of the ground and room to flood fight.					
Inspector Comment					

No Photos

* Location LS : Land Side N/A : Not Applicable WS : Water Side CR : Crown	** Rating A : Acceptable M : Minimally Acceptable U : Unacceptable	N : Not Inspected/Rated C : Corrected A/W : Acceptable but Monitor & Maintain	+ Issue Type Ma : Maintenance Deficiency Ob : Design & System Obsolescence En : Enforcement
--	--	---	---

**Flood Control Project Maintenance
Levee Inspections**

Maintenance Issue Types Only, Levee Inspection Report By Mile - Fall 2023

Reclamation District No. 0556 Upper Andrus

Waterway	Bank	Unit Miles	Inspection Start/End	Inspector
Unit No. 02 Sacramento River	Left	5.72	10/30/2023 10/30/2023	Zach Jojola

LM Start	0.50	Rating **	M	Issue No.	43
LM End	0.50	Issue Type +	Ma	Location *	WS
Category	Earthen Levee			GPS Latitude/Longitude	
				Start	End
Item	Erosion / Foot Traffic			38.237963°	38.237963°
				-121.527372°	-121.527372°
DWR ID	DWR_RD0556_02_f_2019_43				
Comment Code					
E3 : Repair the levee slope damaged by foot traffic and prevent access where possible.					
Inspector Comment					
Fishermen trail is on slope. Concrete blocks on the shoulder just downstream of the erosion help with preventing access.					

Photo 1 of 1 : FA_2023_RD0556_19_43_20231019_00031.jpg



View of fishermen trail digging into levee on the waterside slope (Fall 2019).

LM Start	0.63	Rating **	U	Issue No.	34
LM End	0.63	Issue Type +	Ma	Location *	WS
Category	Earthen Levee			GPS Latitude/Longitude	
				Start	End
Item	Trim / Thin Trees			38.237530°	38.237530°
				-121.529552°	-121.529552°
DWR ID	DWR_RD0556_02_f_2021_34				
Comment Code					
T1 : Trim and thin trees to at least five feet above ground level to allow visibility of the ground and room to flood fight.					
Inspector Comment					

Photo 1 of 1 : FA_2023_RD0556_19_34_20231019_00025.jpg



View looking downstream at thick tree on the waterside slope (Spring 2022).

LM Start	0.73	Rating **	U	Issue No.	48
LM End	0.73	Issue Type +	Ma	Location *	WS
Category	Earthen Levee			GPS Latitude/Longitude	
				Start	End
Item	Erosion / Vehicle Traffic			38.237588°	38.237588°
				-121.531453°	-121.531453°
DWR ID	DWR_RD0556_02_s_2022_48				
Comment Code					
E6 : Repair the levee slope damaged by vehicle traffic and prevent access where possible.					
Inspector Comment					

Photo 1 of 1 : FA_2023_RD0556_19_48_20231019_00035.jpg



View of damage to the waterside slope due to vehicle (Spring 2022).

* Location LS : Land Side N/A : Not Applicable WS : Water Side CR : Crown		** Rating A : Acceptable M : Minimally Acceptable U : Unacceptable		N : Not Inspected/Rated C : Corrected A/W : Acceptable but Monitor & Maintain		+ Issue Type Ma : Maintenance Deficiency Ob : Design & System Obsolescence En : Enforcement	
--	--	--	--	---	--	---	--

**Flood Control Project Maintenance
Levee Inspections**

Maintenance Issue Types Only, Levee Inspection Report By Mile - Fall 2023

Reclamation District No. 0556 Upper Andrus

Waterway	Bank	Unit Miles	Inspection Start/End	Inspector
Unit No. 02 Sacramento River	Left	5.72	10/30/2023 10/30/2023	Zach Jojola

LM Start	0.74	Rating **	U	Issue No.	81
LM End	0.85	Issue Type +	Ma	Location *	LS
Category	Earthen Levee			GPS Latitude/Longitude	
				Start	End
Item	Trim / Thin Trees			38.237577°	38.237842°
				-121.531594°	-121.533616°
DWR ID	DWR_RD0556_02_f_2023_81				
Comment Code					
T1 : Trim and thin trees to at least five feet above ground level to allow visibility of the ground and room to flood fight.					
Inspector Comment					

Photo 1 of 1 : FA_2023_RD0556_19_81_20231019_00057.jpg



View looking upstream at thick vegetation on the landside slope (Fall 2021).

LM Start	0.89	Rating **	M	Issue No.	118
LM End	0.89	Issue Type +	Ma	Location *	LS
Category	Earthen Levee			GPS Latitude/Longitude	
				Start	End
Item	Trim / Thin Trees			38.237937°	38.237937°
				-121.534316°	-121.534316°
DWR ID	DWR_RD0556_02_f_2021_118				
Comment Code					
T1 : Trim and thin trees to at least five feet above ground level to allow visibility of the ground and room to flood fight.					
Inspector Comment					

No Photos

* Location LS : Land Side N/A : Not Applicable WS : Water Side CR : Crown	** Rating A : Acceptable M : Minimally Acceptable U : Unacceptable	N : Not Inspected/Rated C : Corrected A/W : Acceptable but Monitor & Maintain	+ Issue Type Ma : Maintenance Deficiency Ob : Design & System Obsolescence En : Enforcement
--	--	---	---

**Flood Control Project Maintenance
Levee Inspections**

Maintenance Issue Types Only, Levee Inspection Report By Mile - Fall 2023

Reclamation District No. 0556 Upper Andrus

Waterway	Bank	Unit Miles	Inspection Start/End	Inspector
Unit No. 02 Sacramento River	Left	5.72	10/30/2023 10/30/2023	Zach Jojola

LM Start	1.03	Rating **	M	Issue No.	19
LM End	1.15	Issue Type +	Ma	Location *	WS
Category	Supplemental			GPS Latitude/Longitude	
				Start	End
Item	2018 USACE Erosion Survey			38.238772°	38.239265°
				-121.536788°	-121.538845°
DWR ID	DWR_RD0556_02_s_2022_19				
Comment Code					
Inspector Comment					
2018 Site ID: SAC 25.2 L					
Status: Eroding					
2018 Field Notes: Additional erosion along toe. Site extended upstream.					
Site History: 1997 - Rock is in poor condition and has failed in many places. Scallops in berm with remnants of old rock in the toe area.					
2005 - Brush boxes present. 2013 - Site extended upstream approximately 300 ft to include new erosion pockets. 2015 - Minor new erosion at toe. 2017 - Minor new erosion observed.					

LM Start	1.03	Rating **	M	Issue No.	19 (cont)
LM End	1.15	Issue Type +	Ma	Location *	WS

Photo 1 of 2 : FA_2023_RD0556_19_19_20231019_00015.jpg



USACE 2018 Erosion Photo #1

Photo 2 of 2 : FA_2023_RD0556_19_19_20231019_00016.jpg



USACE 2018 Erosion Photo #2

* Location LS : Land Side N/A : Not Applicable WS : Water Side CR : Crown	** Rating A : Acceptable M : Minimally Acceptable U : Unacceptable	N : Not Inspected/Rated C : Corrected A/W : Acceptable but Monitor & Maintain	+ Issue Type Ma : Maintenance Deficiency Ob : Design & System Obsolescence En : Enforcement
--	--	---	---

**Flood Control Project Maintenance
Levee Inspections**

Maintenance Issue Types Only, Levee Inspection Report By Mile - Fall 2023

Reclamation District No. 0556 Upper Andrus

Waterway	Bank	Unit Miles	Inspection Start/End	Inspector
Unit No. 02 Sacramento River	Left	5.72	10/30/2023 10/30/2023	Zach Jojola

LM Start	1.15	Rating **	M	Issue No.	87
LM End	1.15	Issue Type +	Ma	Location *	LS
Category	Earthen Levee			GPS Latitude/Longitude	
				Start	End
Item	Trim / Thin Trees			38.238977°	38.238977°
				-121.538872°	-121.538872°
DWR ID	DWR_RD0556_02_s_2022_87				
Comment Code					
T1 : Trim and thin trees to at least five feet above ground level to allow visibility of the ground and room to flood fight.					
Inspector Comment					

No Photos

LM Start	1.20	Rating **	M	Issue No.	75
LM End	1.26	Issue Type +	Ma	Location *	LS
Category	Earthen Levee			GPS Latitude/Longitude	
				Start	End
Item	Animal Control			38.239226°	38.239473°
				-121.539869°	-121.540962°
DWR ID	DWR_RD0556_02_s_2022_75				
Comment Code					
A3 : No rodents visible, but rodent burrows visible; need to backfill and compact or grout burrows.					
Inspector Comment					

Photo 1 of 1 : FA_2023_RD0556_19_75_20231019_00052.jpg



View of animal holes in the landside slope (Spring 2022).

LM Start	1.32	Rating **	M	Issue No.	115
LM End	1.32	Issue Type +	Ma	Location *	LS
Category	Earthen Levee			GPS Latitude/Longitude	
				Start	End
Item	Trim / Thin Trees			38.239681°	38.239681°
				-121.541945°	-121.541945°
DWR ID	DWR_RD0556_02_f_2021_115				
Comment Code					
T1 : Trim and thin trees to at least five feet above ground level to allow visibility of the ground and room to flood fight.					
Inspector Comment					

Photo 1 of 1 : FA_2023_RD0556_19_115_20231019_00067.jpg



View of the trees on the LS slope (Fall 2022).

* Location LS : Land Side N/A : Not Applicable WS : Water Side CR : Crown		** Rating A : Acceptable M : Minimally Acceptable U : Unacceptable N : Not Inspected/Rated C : Corrected A/W : Acceptable but Monitor & Maintain		+ Issue Type Ma : Maintenance Deficiency Ob : Design & System Obsolescence En : Enforcement	
--	--	---	--	---	--

**Flood Control Project Maintenance
Levee Inspections**

Maintenance Issue Types Only, Levee Inspection Report By Mile - Fall 2023

Reclamation District No. 0556 Upper Andrus

Waterway	Bank	Unit Miles	Inspection Start/End	Inspector
Unit No. 02 Sacramento River	Left	5.72	10/30/2023 10/30/2023	Zach Jojola

LM Start	1.43	Rating **	U	Issue No.	40
LM End	1.43	Issue Type +	Ma	Location *	WS
Category	Earthen Levee			GPS Latitude/Longitude	
				Start	End
Item	Trim / Thin Trees			38.240060°	38.240060°
				-121.543884°	-121.543884°
DWR ID	DWR_RD0556_02_f_2021_40				
Comment Code					
T1 : Trim and thin trees to at least five feet above ground level to allow visibility of the ground and room to flood fight.					
Inspector Comment					

Photo 1 of 1 : FA_2023_RD0556_19_40_20231019_00029.jpg



View looking upstream at thick vegetation on the waterside slope (Fall 2021).

LM Start	1.45	Rating **	M	Issue No.	18
LM End	1.59	Issue Type +	Ma	Location *	WS
Category	Supplemental			GPS Latitude/Longitude	
				Start	End
Item	2018 USACE Erosion Survey			38.240401°	38.240772°
				-121.544106°	-121.546791°
DWR ID	DWR_RD0556_02_s_2022_18				
Comment Code					
Inspector Comment					
2018 Site ID: SAC 24.8 L					
Status: Eroding					
2018 Field Notes: Site extended upstream.					
Site History: 1997 - Slow erosion of the berm at the waterline; bench below water. 2005 - Brush boxes present. 2010 - Minor new erosion.					
2013 - There is little to no berm remaining at downstream end of this site. 2016 - New erosion on levee slope. 2017 - Significant lower bank erosion.					

Photo 1 of 2 : FA_2023_RD0556_19_18_20231019_00013.jpg



USACE 2018 Erosion Photo #1

* Location LS: Land Side N/A: Not Applicable WS: Water Side CR: Crown		** Rating A: Acceptable N: Not Inspected/Rated M: Minimally Acceptable C: Corrected U: Unacceptable A/W: Acceptable but Monitor & Maintain		+ Issue Type Ma: Maintenance Deficiency Ob: Design & System Obsolescence En: Enforcement	
---	--	--	--	---	--

**Flood Control Project Maintenance
Levee Inspections**

Maintenance Issue Types Only, Levee Inspection Report By Mile - Fall 2023

Reclamation District No. 0556 Upper Andrus

Waterway	Bank	Unit Miles	Inspection Start/End	Inspector
Unit No. 02 Sacramento River	Left	5.72	10/30/2023 10/30/2023	Zach Jojola

LM Start	1.45	Rating **	M	Issue No.	18 (cont)
LM End	1.59	Issue Type +	Ma	Location *	WS
Category	Supplemental			GPS Latitude/Longitude	
				Start	End
Item	2018 USACE Erosion Survey			38.240401°	38.240772°
				-121.544106°	-121.546791°
DWR ID	DWR_RD0556_02_s_2022_18				

Photo 2 of 2 : FA_2023_RD0556_19_18_20231019_00014.jpg



USACE 2018 Erosion Photo #2

LM Start	1.47	Rating **	U	Issue No.	50
LM End	1.47	Issue Type +	Ma	Location *	WS
Category	Earthen Levee			GPS Latitude/Longitude	
				Start	End
Item	Trim / Thin Trees			38.240183°	38.240183°
				-121.544567°	-121.544567°
DWR ID	DWR_RD0556_02_f_2021_50				
Comment Code					
T2 : Tree or limb.					
Inspector Comment					

Photo 1 of 1 : FA_2023_RD0556_19_50_20231019_00036.jpg



View of down tree on the landside slope (Spring 2022).

LM Start	2.06	Rating **	U	Issue No.	32
LM End	2.06	Issue Type +	Ma	Location *	LS
Category	Earthen Levee			GPS Latitude/Longitude	
				Start	End
Item	Trim / Thin Trees			38.239470°	38.239470°
				-121.554845°	-121.554845°
DWR ID	DWR_RD0556_02_s_2020_32				
Comment Code					
T1 : Trim and thin trees to at least five feet above ground level to allow visibility of the ground and room to flood fight.					
Inspector Comment					
Arundo growth should be removed to allow inspection and access to the landside slope and toe.					

Photo 1 of 1 : FA_2023_RD0556_19_32_20231019_00023.jpg



View of the arundo on the LS slope (Fall 2022).

* Location LS : Land Side N/A : Not Applicable WS : Water Side CR : Crown		** Rating A : Acceptable M : Minimally Acceptable U : Unacceptable N : Not Inspected/Rated C : Corrected A/W : Acceptable but Monitor & Maintain		+ Issue Type Ma : Maintenance Deficiency Ob : Design & System Obsolescence En : Enforcement	
--	--	---	--	---	--

**Flood Control Project Maintenance
Levee Inspections**

Maintenance Issue Types Only, Levee Inspection Report By Mile - Fall 2023

Reclamation District No. 0556 Upper Andrus

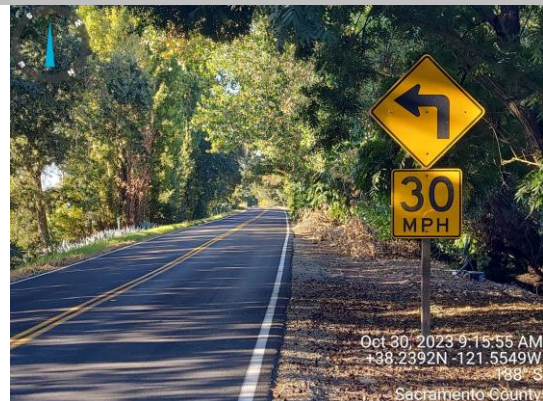
Waterway	Bank	Unit Miles	Inspection Start/End	Inspector
Unit No. 02 Sacramento River	Left	5.72	10/30/2023 10/30/2023	Zach Jojola

LM Start	2.07	Rating **	M	Issue No.	77
LM End	2.11	Issue Type +	Ma	Location *	LS
Category	Earthen Levee			GPS Latitude/Longitude	
				Start	End
Item	Trim / Thin Trees			38.239304°	38.238996°
				-121.554982°	-121.555454°
DWR ID	DWR_RD0556_02_s_2021_77				
Comment Code					
T1 : Trim and thin trees to at least five feet above ground level to allow visibility of the ground and room to flood fight.					
Inspector Comment					

No Photos

LM Start	2.12	Rating **	M	Issue No.	29
LM End	2.12	Issue Type +	Ma	Location *	WS
Category	Earthen Levee			GPS Latitude/Longitude	
				Start	End
Item	Trim / Thin Trees			38.238896°	38.238896°
				-121.555636°	-121.555636°
DWR ID	DWR_RD0556_02_f_2023_29				
Comment Code					
T2 : Tree or limb.					
Inspector Comment					
Limbs on the waterside shoulder.					

Photo 1 of 1 : FA_2023_RD0556_19_29_20231030_00105.jpg



View of limbs on the waterside shoulder. Fall 2023.

LM Start	2.34	Rating **	M	Issue No.	83
LM End	2.34	Issue Type +	Ma	Location *	WS
Category	Earthen Levee			GPS Latitude/Longitude	
				Start	End
Item	Trim / Thin Trees			38.236300°	38.236300°
				-121.558008°	-121.558008°
DWR ID	DWR_RD0556_02_f_2021_83				
Comment Code					
T1 : Trim and thin trees to at least five feet above ground level to allow visibility of the ground and room to flood fight.					
Inspector Comment					

No Photos

* Location LS : Land Side N/A : Not Applicable WS : Water Side CR : Crown		** Rating A : Acceptable M : Minimally Acceptable U : Unacceptable		N : Not Inspected/Rated C : Corrected A/W : Acceptable but Monitor & Maintain		+ Issue Type Ma : Maintenance Deficiency Ob : Design & System Obsolescence En : Enforcement	
---	--	---	--	---	--	--	--

**Flood Control Project Maintenance
Levee Inspections**

Maintenance Issue Types Only, Levee Inspection Report By Mile - Fall 2023

Reclamation District No. 0556 Upper Andrus

Waterway	Bank	Unit Miles	Inspection Start/End	Inspector
Unit No. 02 Sacramento River	Left	5.72	10/30/2023 10/30/2023	Zach Jojola

LM Start	2.37	Rating **	M	Issue No.	72
LM End	2.37	Issue Type +	Ma	Location *	LS
Category	Earthen Levee			GPS Latitude/Longitude	
				Start	End
Item	Trim / Thin Trees			38.235900°	38.235900°
				-121.558041°	-121.558041°
DWR ID	DWR_RD0556_02_s_2021_72				
Comment Code					
T1 : Trim and thin trees to at least five feet above ground level to allow visibility of the ground and room to flood fight.					
Inspector Comment					

No Photos

LM Start	2.39	Rating **	U	Issue No.	89
LM End	2.39	Issue Type +	Ma	Location *	WS
Category	Earthen Levee			GPS Latitude/Longitude	
				Start	End
Item	Trim / Thin Trees			38.235578°	38.235578°
				-121.558105°	-121.558105°
DWR ID	DWR_RD0556_02_f_2021_89				
Comment Code					
T1 : Trim and thin trees to at least five feet above ground level to allow visibility of the ground and room to flood fight.					
Inspector Comment					

Photo 1 of 1 : FA_2023_RD0556_19_89_20231019_00061.jpg



View looking downstream at thick trees on the waterside slope (Fall 2021).

LM Start	2.41	Rating **	M	Issue No.	74
LM End	2.41	Issue Type +	Ma	Location *	LS
Category	Earthen Levee			GPS Latitude/Longitude	
				Start	End
Item	Trim / Thin Trees			38.235331°	38.235331°
				-121.558072°	-121.558072°
DWR ID	DWR_RD0556_02_s_2022_74				
Comment Code					
T1 : Trim and thin trees to at least five feet above ground level to allow visibility of the ground and room to flood fight.					
Inspector Comment					

No Photos

* Location LS : Land Side N/A : Not Applicable WS : Water Side CR : Crown		** Rating A : Acceptable M : Minimally Acceptable U : Unacceptable N : Not Inspected/Rated C : Corrected A/W : Acceptable but Monitor & Maintain		+ Issue Type Ma : Maintenance Deficiency Ob : Design & System Obsolescence En : Enforcement	
---	--	--	--	--	--

**Flood Control Project Maintenance
Levee Inspections**

Maintenance Issue Types Only, Levee Inspection Report By Mile - Fall 2023

Reclamation District No. 0556 Upper Andrus

Waterway	Bank	Unit Miles	Inspection Start/End	Inspector
Unit No. 02 Sacramento River	Left	5.72	10/30/2023 10/30/2023	Zach Jojola

LM Start	2.44	Rating **	U	Issue No.	90
LM End	2.44	Issue Type +	Ma	Location *	WS
Category	Earthen Levee			GPS Latitude/Longitude	
				Start	End
Item	Trim / Thin Trees			38.234843°	38.234843°
				-121.558028°	-121.558028°
DWR ID	DWR_RD0556_02_f_2021_90				
Comment Code					
T1 : Trim and thin trees to at least five feet above ground level to allow visibility of the ground and room to flood fight.					
Inspector Comment					

Photo 1 of 1 : FA_2023_RD0556_19_90_20231019_00062.jpg



View of thick willows on the waterside slope (Spring 2022).

LM Start	2.59	Rating **	U	Issue No.	67
LM End	2.59	Issue Type +	Ma	Location *	LS
Category	Earthen Levee			GPS Latitude/Longitude	
				Start	End
Item	Trim / Thin Trees			38.232883°	38.232883°
				-121.557301°	-121.557301°
DWR ID	DWR_RD0556_02_s_2022_67				
Comment Code					
T1 : Trim and thin trees to at least five feet above ground level to allow visibility of the ground and room to flood fight.					
Inspector Comment					

Photo 1 of 1 : FA_2023_RD0556_19_67_20231019_00047.jpg



View of thick trees needing trimming on the landside slope (Spring 2022).

LM Start	2.73	Rating **	M	Issue No.	69
LM End	2.73	Issue Type +	Ma	Location *	LS
Category	Earthen Levee			GPS Latitude/Longitude	
				Start	End
Item	Trim / Thin Trees			38.230962°	38.230962°
				-121.556101°	-121.556101°
DWR ID	DWR_RD0556_02_s_2021_69				
Comment Code					
T1 : Trim and thin trees to at least five feet above ground level to allow visibility of the ground and room to flood fight.					
Inspector Comment					

No Photos

* Location LS : Land Side N/A : Not Applicable WS : Water Side CR : Crown		** Rating A : Acceptable N : Not Inspected/Rated M : Minimally Acceptable C : Corrected U : Unacceptable A/W : Acceptable but Monitor & Maintain		+ Issue Type Ma : Maintenance Deficiency Ob : Design & System Obsolescence En : Enforcement	
--	--	---	--	---	--

**Flood Control Project Maintenance
Levee Inspections**

Maintenance Issue Types Only, Levee Inspection Report By Mile - Fall 2023

Reclamation District No. 0556 Upper Andrus

Waterway	Bank	Unit Miles	Inspection Start/End	Inspector
Unit No. 02 Sacramento River	Left	5.72	10/30/2023 10/30/2023	Zach Jojola

LM Start	2.75	Rating **	U	Issue No.	88
LM End	2.75	Issue Type +	Ma	Location *	LS
Category	Earthen Levee			GPS Latitude/Longitude	
				Start	End
Item	Trim / Thin Trees			38.230752°	38.230752°
				-121.556007°	-121.556007°
DWR ID	DWR_RD0556_02_f_2019_88				
Comment Code					
T2 : Tree or limb.					
Inspector Comment					
Broken tree limb blocking view of landside slope.					

Photo 1 of 1 : FA_2023_RD0556_19_88_20231019_00060.jpg



View of the tree limb on the LS slope (Fall 2022).

LM Start	2.80	Rating **	M	Issue No.	64
LM End	2.80	Issue Type +	Ma	Location *	LS
Category	Earthen Levee			GPS Latitude/Longitude	
				Start	End
Item	Trim / Thin Trees			38.230021°	38.230021°
				-121.555557°	-121.555557°
DWR ID	DWR_RD0556_02_s_2022_64				
Comment Code					
T1 : Trim and thin trees to at least five feet above ground level to allow visibility of the ground and room to flood fight.					
Inspector Comment					

No Photos

LM Start	3.07	Rating **	C	Issue No.	62
LM End	3.07	Issue Type +	Ma	Location *	LS
Category	Earthen Levee			GPS Latitude/Longitude	
				Start	End
Item	Trim / Thin Trees			38.226265°	38.226265°
				-121.555233°	-121.555233°
DWR ID	DWR_RD0556_02_s_2022_62				
Comment Code					
T1 : Trim and thin trees to at least five feet above ground level to allow visibility of the ground and room to flood fight.					
Inspector Comment					

No Photos

* Location		** Rating		+ Issue Type	
LS : Land Side N/A : Not Applicable		A : Acceptable		Ma : Maintenance Deficiency	
WS : Water Side		M : Minimally Acceptable		Ob : Design & System Obsolescence	
CR : Crown		U : Unacceptable		En : Enforcement	
		N : Not Inspected/Rated			
		C : Corrected			
		A/W : Acceptable but Monitor & Maintain			

**Flood Control Project Maintenance
Levee Inspections**

Maintenance Issue Types Only, Levee Inspection Report By Mile - Fall 2023

Reclamation District No. 0556 Upper Andrus

Waterway	Bank	Unit Miles	Inspection Start/End	Inspector
Unit No. 02 Sacramento River	Left	5.72	10/30/2023 10/30/2023	Zach Jojola

LM Start	3.16	Rating **	M	Issue No.	17
LM End	3.28	Issue Type +	Ma	Location *	WS
Category	Supplemental			GPS Latitude/Longitude	
				Start	End
Item	2018 USACE Erosion Survey			38.224850°	38.223233°
				-121.555641°	-121.555687°
DWR ID	DWR_RD0556_02_s_2022_17				

Comment Code

Inspector Comment

2018 Site ID: SAC 23.2 L
 Status: Eroding
 2018 Field Notes: Additional tree popouts and new erosion throughout site.
 Site History: 2000 - Recently fallen cottonwood at the downstream end.
 2005 - Empty brush boxes. 2011 - A few trees have fallen since last year. 2012 - Potential new tree popout since last year. 2013 - New erosion at downstream end of site and a recent tree pop-out observed.
 2016 - New erosion at the toe. 2017 - New erosion along lower bank.

LM Start	3.16	Rating **	M	Issue No.	17 (cont)
LM End	3.28	Issue Type +	Ma	Location *	WS

Photo 1 of 2 : FA_2023_RD0556_19_17_20231019_00011.jpg



USACE 2018 Erosion Photo #1

Photo 2 of 2 : FA_2023_RD0556_19_17_20231019_00012.jpg



USACE 2018 Erosion Photo #2

* Location LS: Land Side N/A: Not Applicable WS: Water Side CR: Crown	** Rating A: Acceptable M: Minimally Acceptable U: Unacceptable	N: Not Inspected/Rated C: Corrected A/W: Acceptable but Monitor & Maintain	+ Issue Type Ma: Maintenance Deficiency Ob: Design & System Obsolescence En: Enforcement
--	---	--	--

**Flood Control Project Maintenance
Levee Inspections**

Maintenance Issue Types Only, Levee Inspection Report By Mile - Fall 2023

Reclamation District No. 0556 Upper Andrus

Waterway	Bank	Unit Miles	Inspection Start/End	Inspector
Unit No. 02 Sacramento River	Left	5.72	10/30/2023 10/30/2023	Zach Jojola

LM Start	3.24	Rating **	U	Issue No.	61
LM End	3.26	Issue Type +	Ma	Location *	LS
Category	Earthen Levee			GPS Latitude/Longitude	
				Start	End
Item	Trim / Thin Trees			38.223707°	38.223457°
				-121.555396°	-121.555414°
DWR ID	DWR_RD0556_02_s_2021_61				
Comment Code					
T1 : Trim and thin trees to at least five feet above ground level to allow visibility of the ground and room to flood fight.					
Inspector Comment					

Photo 1 of 1 : FA_2023_RD0556_19_61_20231019_00044.jpg



View looking downstream at willows on the landside slope (Spring 2021).

LM Start	3.38	Rating **	M	Issue No.	109
LM End	3.38	Issue Type +	Ma	Location *	LS
Category	Earthen Levee			GPS Latitude/Longitude	
				Start	End
Item	Trim / Thin Trees			38.221674°	38.221674°
				-121.555639°	-121.555639°
DWR ID	DWR_RD0556_02_s_2022_109				
Comment Code					
T1 : Trim and thin trees to at least five feet above ground level to allow visibility of the ground and room to flood fight.					
Inspector Comment					

No Photos

* Location LS: Land Side N/A: Not Applicable WS: Water Side CR: Crown	** Rating A: Acceptable M: Minimally Acceptable U: Unacceptable	N: Not Inspected/Rated C: Corrected A/W: Acceptable but Monitor & Maintain	+ Issue Type Ma: Maintenance Deficiency Ob: Design & System Obsolescence En: Enforcement
--	---	--	--

**Flood Control Project Maintenance
Levee Inspections**

Maintenance Issue Types Only, Levee Inspection Report By Mile - Fall 2023

Reclamation District No. 0556 Upper Andrus

Waterway	Bank	Unit Miles	Inspection Start/End	Inspector
Unit No. 02 Sacramento River	Left	5.72	10/30/2023 10/30/2023	Zach Jojola

LM Start	3.58	Rating **	M	Issue No.	16
LM End	3.64	Issue Type +	Ma	Location *	WS
Category	Supplemental			GPS Latitude/Longitude	
				Start	End
Item	2018 USACE Erosion Survey			38.218951°	38.218104°
				-121.556689°	-121.556819°
DWR ID	DWR_RD0556_02_s_2022_16				
Comment Code					
Inspector Comment					
2018 Site ID: SAC 22.7 L					
Status: Eroding					
2018 Field Notes: No observed change.					
Site History: 1997 - Scallops into berm and very close to levee toe.					
2005 - Brush boxes present. 2011 - New toe scour and freshly fallen tree. 2012 - New tree popout has taken significant portion of soil out of the levee. 2017 - Minor new erosion at toe.					

LM Start	3.58	Rating **	M	Issue No.	16 (cont)
LM End	3.64	Issue Type +	Ma	Location *	WS

Photo 1 of 2 : FA_2023_RD0556_19_16_20231019_00009.jpg



USACE 2018 Erosion Photo #1

Photo 2 of 2 : FA_2023_RD0556_19_16_20231019_00010.jpg



USACE 2018 Erosion Photo #2

* Location LS : Land Side N/A : Not Applicable WS : Water Side CR : Crown	** Rating A : Acceptable M : Minimally Acceptable U : Unacceptable	N : Not Inspected/Rated C : Corrected A/W : Acceptable but Monitor & Maintain	+ Issue Type Ma : Maintenance Deficiency Ob : Design & System Obsolescence En : Enforcement
--	--	--	---

**Flood Control Project Maintenance
Levee Inspections**

Maintenance Issue Types Only, Levee Inspection Report By Mile - Fall 2023

Reclamation District No. 0556 Upper Andrus

Waterway	Bank	Unit Miles	Inspection Start/End	Inspector
Unit No. 02 Sacramento River	Left	5.72	10/30/2023 10/30/2023	Zach Jojola

LM Start	3.83	Rating **	M	Issue No.	84
LM End	3.86	Issue Type +	Ma	Location *	LS
Category	Earthen Levee			GPS Latitude/Longitude	
				Start	End
Item	Trim / Thin Trees			38.215223°	38.214849°
				-121.556903°	-121.556865°
DWR ID	DWR_RD0556_02_f_2018_84				
Comment Code					
T1 : Trim and thin trees to at least five feet above ground level to allow visibility of the ground and room to flood fight.					
Inspector Comment					

Photo 1 of 1 : FA_2023_RD0556_19_84_20231019_00058.jpg



View of the trees on the LS slope (Fall 2022).

LM Start	3.95	Rating **	M	Issue No.	15
LM End	4.12	Issue Type +	Ma	Location *	WS
Category	Supplemental			GPS Latitude/Longitude	
				Start	End
Item	2018 USACE Erosion Survey			38.213581°	38.211112°
				-121.557197°	-121.557042°
DWR ID	DWR_RD0556_02_s_2022_15				
Comment Code					
Inspector Comment					
2018 Site ID: SAC 22.5 L					
Status: Eroding					
2018 Field Notes: Minor new erosion at toe.					
Site History: 2002 - Spot rock along berm, but not in the erosion pockets. 2005 - Some new minor stone revetment at the upstream end. Brush boxes present. 2006 - Currently installing new brush in downstream brush boxes. 2007 - Rock in middle portion for about 150 ft. 2010 - Some attempt at repairs but still has pockets of erosion. 2012 - More erosion along the toe. 2017 - New lower bank erosion at the upstream end. Locals placed rock in some erosion pockets.					

Photo 1 of 2 : FA_2023_RD0556_19_15_20231019_00007.jpg



USACE 2018 Erosion Photo #1

* Location LS : Land Side N/A : Not Applicable WS : Water Side CR : Crown	** Rating A : Acceptable M : Minimally Acceptable U : Unacceptable	N : Not Inspected/Rated C : Corrected A/W : Acceptable but Monitor & Maintain	+ Issue Type Ma : Maintenance Deficiency Ob : Design & System Obsolescence En : Enforcement
--	--	---	---

**Flood Control Project Maintenance
Levee Inspections**

Maintenance Issue Types Only, Levee Inspection Report By Mile - Fall 2023

Reclamation District No. 0556 Upper Andrus

Waterway	Bank	Unit Miles	Inspection Start/End	Inspector
Unit No. 02 Sacramento River	Left	5.72	10/30/2023 10/30/2023	Zach Jojola

LM Start	3.95	Rating **	M	Issue No.	15 (cont)
LM End	4.12	Issue Type +	Ma	Location *	WS
Category	Supplemental			GPS Latitude/Longitude	
				Start	End
Item	2018 USACE Erosion Survey			38.213581°	38.211112°
				-121.557197°	-121.557042°
DWR ID	DWR_RD0556_02_s_2022_15				

Photo 2 of 2 : FA_2023_RD0556_19_15_20231019_00008.jpg



USACE 2018 Erosion Photo #2

LM Start	3.97	Rating **	U	Issue No.	5
LM End	3.97	Issue Type +	Ma	Location *	LS
Category	Earthen Levee			GPS Latitude/Longitude	
				Start	End
Item	Trim / Thin Trees			38.213244°	38.213244°
				-121.556803°	-121.556803°
DWR ID	DWR_RD0556_02_s_2021_5				
Comment Code					
T1 : Trim and thin trees to at least five feet above ground level to allow visibility of the ground and room to flood fight.					
Inspector Comment					

Photo 1 of 1 : FA_2023_RD0556_19_5_20231019_00004.jpg



View looking upstream at trees needing trimming on the landside slope (Spring 2022).

LM Start	4.01	Rating **	U	Issue No.	71
LM End	4.01	Issue Type +	Ma	Location *	LS
Category	Earthen Levee			GPS Latitude/Longitude	
				Start	End
Item	Trim / Thin Trees			38.212672°	38.212672°
				-121.556759°	-121.556759°
DWR ID	DWR_RD0556_02_s_2020_71				
Comment Code					
T1 : Trim and thin trees to at least five feet above ground level to allow visibility of the ground and room to flood fight.					
Inspector Comment					
Arundo on the landside slope.					

Photo 1 of 1 : FA_2023_RD0556_19_71_20231019_00050.jpg



View of thick arundo on the landside slope (Spring 2020).

* Location LS : Land Side N/A : Not Applicable WS : Water Side CR : Crown		** Rating A : Acceptable M : Minimally Acceptable U : Unacceptable N : Not Inspected/Rated C : Corrected A/W : Acceptable but Monitor & Maintain		+ Issue Type Ma : Maintenance Deficiency Ob : Design & System Obsolescence En : Enforcement	
--	--	---	--	---	--

**Flood Control Project Maintenance
Levee Inspections**

Maintenance Issue Types Only, Levee Inspection Report By Mile - Fall 2023

Reclamation District No. 0556 Upper Andrus

Waterway	Bank	Unit Miles	Inspection Start/End	Inspector
Unit No. 02 Sacramento River	Left	5.72	10/30/2023 10/30/2023	Zach Jojola

LM Start	4.15	Rating **	U	Issue No.	55
LM End	4.15	Issue Type +	Ma	Location *	LS
Category	Earthen Levee			GPS Latitude/Longitude	
				Start	End
Item	Trim / Thin Trees			38.210623°	38.210623°
				-121.556733°	-121.556733°
DWR ID	DWR_RD0556_02_s_2020_55				
Comment Code					
T1 : Trim and thin trees to at least five feet above ground level to allow visibility of the ground and room to flood fight.					
Inspector Comment					

Photo 1 of 1 : FA_2023_RD0556_19_55_20231019_00039.jpg



View of thick tree on the landside slope (Spring 2020).

LM Start	4.22	Rating **	U	Issue No.	51
LM End	4.33	Issue Type +	Ma	Location *	LS
Category	Earthen Levee			GPS Latitude/Longitude	
				Start	End
Item	Trim / Thin Trees			38.209629°	38.208062°
				-121.556757°	-121.556807°
DWR ID	DWR_RD0556_02_s_2020_51				
Comment Code					
T1 : Trim and thin trees to at least five feet above ground level to allow visibility of the ground and room to flood fight.					
Inspector Comment					
Remove arundo from landside slope and willows on the landside toe.					

Photo 1 of 1 : FA_2023_RD0556_19_51_20231019_00037.jpg



View of thick arundo on the landside slope (Spring 2020).

LM Start	4.40	Rating **	M	Issue No.	65
LM End	4.40	Issue Type +	Ma	Location *	WS
Category	Earthen Levee			GPS Latitude/Longitude	
				Start	End
Item	Trim / Thin Trees			38.207032°	38.207032°
				-121.556819°	-121.556819°
DWR ID	DWR_RD0556_02_s_2021_65				
Comment Code					
T1 : Trim and thin trees to at least five feet above ground level to allow visibility of the ground and room to flood fight.					
Inspector Comment					

No Photos

* Location LS : Land Side N/A : Not Applicable WS : Water Side CR : Crown		** Rating A : Acceptable M : Minimally Acceptable U : Unacceptable		+ Issue Type Ma : Maintenance Deficiency Ob : Design & System Obsolescence En : Enforcement	
		N : Not Inspected/Rated C : Corrected A/W : Acceptable but Monitor & Maintain			

**Flood Control Project Maintenance
Levee Inspections**

Maintenance Issue Types Only, Levee Inspection Report By Mile - Fall 2023

Reclamation District No. 0556 Upper Andrus

Waterway	Bank	Unit Miles	Inspection Start/End	Inspector
Unit No. 02 Sacramento River	Left	5.72	10/30/2023 10/30/2023	Zach Jojola

LM Start	4.44	Rating **	M	Issue No.	14
LM End	4.49	Issue Type +	Ma	Location *	WS
Category	Supplemental			GPS Latitude/Longitude	
				Start	End
Item	2018 USACE Erosion Survey			38.206377°	38.205729°
				-121.557184°	-121.557108°
DWR ID	DWR_RD0556_02_s_2022_14				
Comment Code					
Inspector Comment					
2018 Site ID: SAC 21.9 L					
Status: Eroding					
2018 Field Notes: No observed change.					
Site History: 2013 - Erosion pockets encroaching on levee foundation.					

Photo 1 of 2 : FA_2023_RD0556_19_14_20231019_00005.jpg



USACE 2018 Erosion Photo #1

LM Start	4.44	Rating **	M	Issue No.	14 (cont)
LM End	4.49	Issue Type +	Ma	Location *	WS

Photo 2 of 2 : FA_2023_RD0556_19_14_20231019_00006.jpg



USACE 2018 Erosion Photo #2

LM Start	4.57	Rating **	C	Issue No.	56
LM End	4.57	Issue Type +	Ma	Location *	LS
Category	Earthen Levee			GPS Latitude/Longitude	
				Start	End
Item	Trim / Thin Trees			38.204558°	38.204544°
				-121.556773°	-121.556769°
DWR ID	DWR_RD0556_02_s_2018_56				
Comment Code					
T2 : Tree or limb.					
Inspector Comment					

No Photos

* Location LS : Land Side N/A : Not Applicable WS : Water Side CR : Crown	** Rating A : Acceptable M : Minimally Acceptable U : Unacceptable	N : Not Inspected/Rated C : Corrected A/W : Acceptable but Monitor & Maintain	+ Issue Type Ma : Maintenance Deficiency Ob : Design & System Obsolescence En : Enforcement
--	--	--	---

**Flood Control Project Maintenance
Levee Inspections**

Maintenance Issue Types Only, Levee Inspection Report By Mile - Fall 2023

Reclamation District No. 0556 Upper Andrus

Waterway	Bank	Unit Miles	Inspection Start/End	Inspector
Unit No. 02 Sacramento River	Left	5.72	10/30/2023 10/30/2023	Zach Jojola

LM Start	4.57	Rating **	U	Issue No.	60
LM End	4.57	Issue Type +	Ma	Location *	LS
Category	Earthen Levee			GPS Latitude/Longitude	
				Start	End
Item	Trim / Thin Trees			38.204537°	38.204537°
				-121.556782°	-121.556782°
DWR ID	DWR_RD0556_02_s_2021_60				
Comment Code					
T1 : Trim and thin trees to at least five feet above ground level to allow visibility of the ground and room to flood fight.					
Inspector Comment					

Photo 1 of 1 : FA_2023_RD0556_19_60_20231019_00043.jpg



View looking upstream at thick trees on the landside slope (Fall 2021).

LM Start	4.64	Rating **	U	Issue No.	58
LM End	4.64	Issue Type +	Ma	Location *	LS
Category	Earthen Levee			GPS Latitude/Longitude	
				Start	End
Item	Trim / Thin Trees			38.203480°	38.203480°
				-121.556824°	-121.556824°
DWR ID	DWR_RD0556_02_s_2018_58				
Comment Code					
T1 : Trim and thin trees to at least five feet above ground level to allow visibility of the ground and room to flood fight.					
Inspector Comment					
Remove fig tree from the landside slope.					

Photo 1 of 1 : FA_2023_RD0556_19_58_20231019_00041.jpg



View of the LS vegetation and fig tree in the background (Fall 2022).

LM Start	4.65	Rating **	M	Issue No.	27
LM End	4.65	Issue Type +	Ma	Location *	WS
Category	Earthen Levee			GPS Latitude/Longitude	
				Start	End
Item	Trim / Thin Trees			38.203425°	38.203425°
				-121.556845°	-121.556845°
DWR ID	DWR_RD0556_02_s_2017_27				
Comment Code					
T2 : Tree or limb.					
Inspector Comment					
Remove fallen tree from waterside slope.					

Photo 1 of 1 : FA_2023_RD0556_19_27_20231019_00020.jpg



View of the fallen tree on the WS slope (Fall 2022).

* Location		** Rating		+ Issue Type	
LS : Land Side	N/A : Not Applicable	A : Acceptable	N : Not Inspected/Rated	Ma : Maintenance Deficiency	
WS : Water Side		M : Minimally Acceptable	C : Corrected	Ob : Design & System Obsolescence	
CR : Crown		U : Unacceptable	A/W : Acceptable but Monitor & Maintain	En : Enforcement	

**Flood Control Project Maintenance
Levee Inspections**

Maintenance Issue Types Only, Levee Inspection Report By Mile - Fall 2023

Reclamation District No. 0556 Upper Andrus

Waterway	Bank	Unit Miles	Inspection Start/End	Inspector
Unit No. 02 Sacramento River	Left	5.72	10/30/2023 10/30/2023	Zach Jojola

LM Start	4.68	Rating **	U	Issue No.	3
LM End	4.72	Issue Type +	Ma	Location *	WS
Category	Earthen Levee			GPS Latitude/Longitude	
				Start	End
Item	Vegetation			38.202942°	38.202431°
				-121.556870°	-121.556960°
DWR ID	DWR_RD0556_02_f_2020_3				
Comment Code					
V2 : Remove the wild growth and woody vegetation other than native grasses from the levee slopes.					
Inspector Comment					
Cut arundo back 20' from waterside slope.					

Photo 1 of 1 : FA_2023_RD0556_19_3_20231019_00003.jpg



View of the arundo on the WS slope (Spring 2023).

LM Start	4.82	Rating **	U	Issue No.	52
LM End	4.88	Issue Type +	Ma	Location *	LS
Category	Earthen Levee			GPS Latitude/Longitude	
				Start	End
Item	Trim / Thin Trees			38.201017°	38.200136°
				-121.557135°	-121.557426°
DWR ID	DWR_RD0556_02_s_2021_52				
Comment Code					
T1 : Trim and thin trees to at least five feet above ground level to allow visibility of the ground and room to flood fight.					
Inspector Comment					
Bamboo and trees of heaven should be removed.					

Photo 1 of 1 : FA_2023_RD0556_19_52_20231019_00038.jpg



View looking downstream at bamboo and trees of heaven on landside slope (Spring 2021).

LM Start	4.85	Rating **	U	Issue No.	66
LM End	4.87	Issue Type +	Ma	Location *	WS
Category	Earthen Levee			GPS Latitude/Longitude	
				Start	End
Item	Trim / Thin Trees			38.200543°	38.200246°
				-121.557286°	-121.557380°
DWR ID	DWR_RD0556_02_s_2021_66				
Comment Code					
T4 : Trim trees over roadway to at least 12 feet above ground level.					
Inspector Comment					

Photo 1 of 1 : FA_2023_RD0556_19_66_20231019_00046.jpg



View looking upstream at willows on the waterside slope (Spring 2021).

* Location LS : Land Side N/A : Not Applicable WS : Water Side CR : Crown		** Rating A : Acceptable M : Minimally Acceptable U : Unacceptable		N : Not Inspected/Rated C : Corrected A/W : Acceptable but Monitor & Maintain		+ Issue Type Ma : Maintenance Deficiency Ob : Design & System Obsolescence En : Enforcement	
--	--	--	--	---	--	---	--

**Flood Control Project Maintenance
Levee Inspections**

Maintenance Issue Types Only, Levee Inspection Report By Mile - Fall 2023

Reclamation District No. 0556 Upper Andrus

Waterway	Bank	Unit Miles	Inspection Start/End	Inspector
Unit No. 02 Sacramento River	Left	5.72	10/30/2023 10/30/2023	Zach Jojola

LM Start	4.95	Rating **	M	Issue No.	103
LM End	4.95	Issue Type +	Ma	Location *	LS
Category	Earthen Levee			GPS Latitude/Longitude	
				Start	End
Item	Trim / Thin Trees			38.199223°	38.199223°
				-121.557876°	-121.557876°
DWR ID	DWR_RD0556_02_f_2021_103				
Comment Code					
T1 : Trim and thin trees to at least five feet above ground level to allow visibility of the ground and room to flood fight.					
Inspector Comment					

No Photos

LM Start	5.05	Rating **	M	Issue No.	101
LM End	5.05	Issue Type +	Ma	Location *	LS
Category	Earthen Levee			GPS Latitude/Longitude	
				Start	End
Item	Trim / Thin Trees			38.197828°	38.197828°
				-121.558670°	-121.558670°
DWR ID	DWR_RD0556_02_f_2021_101				
Comment Code					
T1 : Trim and thin trees to at least five feet above ground level to allow visibility of the ground and room to flood fight.					
Inspector Comment					

No Photos

LM Start	5.22	Rating **	M	Issue No.	4
LM End	5.22	Issue Type +	Ma	Location *	LS
Category	Earthen Levee			GPS Latitude/Longitude	
				Start	End
Item	Trim / Thin Trees			38.195691°	38.195691°
				-121.560133°	-121.560133°
DWR ID	DWR_RD0556_02_s_2021_4				
Comment Code					
T1 : Trim and thin trees to at least five feet above ground level to allow visibility of the ground and room to flood fight.					
Inspector Comment					

No Photos

* Location LS : Land Side N/A : Not Applicable WS : Water Side CR : Crown		** Rating A : Acceptable M : Minimally Acceptable U : Unacceptable		N : Not Inspected/Rated C : Corrected A/W : Acceptable but Monitor & Maintain		+ Issue Type Ma : Maintenance Deficiency Ob : Design & System Obsolescence En : Enforcement	
---	--	---	--	---	--	--	--

**Flood Control Project Maintenance
Levee Inspections**

Maintenance Issue Types Only, Levee Inspection Report By Mile - Fall 2023

Reclamation District No. 0556 Upper Andrus

Waterway	Bank	Unit Miles	Inspection Start/End	Inspector
Unit No. 02 Sacramento River	Left	5.72	10/30/2023 10/30/2023	Zach Jojola

LM Start	5.40	Rating **	C	Issue No.	99
LM End	5.40	Issue Type +	Ma	Location *	LS
Category	Earthen Levee			GPS Latitude/Longitude	
				Start	End
Item	Trim / Thin Trees			38.193846°	38.193846°
				-121.562461°	-121.562461°
DWR ID	DWR_RD0556_02_f_2021_99				
Comment Code					
T2 : Tree or limb.					
Inspector Comment					

No Photos

LM Start	5.64	Rating **	U	Issue No.	79
LM End	5.64	Issue Type +	Ma	Location *	LS
Category	Earthen Levee			GPS Latitude/Longitude	
				Start	End
Item	Animal Control			38.192237°	38.192237°
				-121.566368°	-121.566368°
DWR ID	DWR_RD0556_02_f_2018_79				
Comment Code					
A3 : No rodents visible, but rodent burrows visible; need to backfill and compact or grout burrows.					
Inspector Comment					
More than 2 cubic feet of soil was removed between the two large burrow holes.					

Photo 1 of 1 : FA_2023_RD0556_19_79_20231019_00055.jpg



View looking downstream at burrow holes on the landside slope (Fall 2020).

* Location LS : Land Side N/A : Not Applicable WS : Water Side CR : Crown	** Rating A : Acceptable M : Minimally Acceptable U : Unacceptable	N : Not Inspected/Rated C : Corrected A/W : Acceptable but Monitor & Maintain	+ Issue Type Ma : Maintenance Deficiency Ob : Design & System Obsolescence En : Enforcement
--	--	---	---