

**Flood Control Project Maintenance
Levee Inspections**

Maintenance Issue Types Only, Levee Inspection Report By Mile - Fall 2021

Reclamation District No. 0556 Upper Andrus

Waterway	Bank	Unit Miles	Inspection Start/End	Inspector
Unit No. 01 Georgiana Slough	Right	5.48	09/01/2021 09/01/2021	David Julian

LM Start		Rating **	M	Issue No.	3
LM End		Issue Type +	Ma	Location *	
Category	Earthen Levee		GPS Latitude/Longitude		
			Start	End	
Item	Flood Preparedness & Training			°	°
				°	°
DWR ID	DWR_RD0556_01_f_2014_3				
Comment Code					
Inspector Comment					
The members in the district have not been flood fight trained recently according to the district manager.					

No Photos

LM Start		Rating **	A	Issue No.	6
LM End		Issue Type +	Ma	Location *	
Category	Earthen Levee		GPS Latitude/Longitude		
			Start	End	
Item	Operations & Maintenance Manuals			°	°
				°	°
DWR ID	DWR_RD0556_01_s_2012_6				
Comment Code					
Inspector Comment					
Sent electronic copy of O+M manual to LMA.					

No Photos

LM Start		Rating **	M	Issue No.	8
LM End		Issue Type +	Ma	Location *	N/A
Category	Earthen Levee		GPS Latitude/Longitude		
			Start	End	
Item	Emergency Supplies & Equipment			°	°
				°	°
DWR ID	DWR_RD0556_01_f_2019_8				
Comment Code					
Inspector Comment					
According to the district manager, when they need supplies they will order them, there are no supplies stored.					

No Photos

* Location LS : Land Side N/A : Not Applicable WS : Water Side CR : Crown	** Rating A : Acceptable M : Minimally Acceptable U : Unacceptable	N : Not Inspected/Rated C : Corrected A/W : Acceptable but Monitor & Maintain	+ Issue Type Ma : Maintenance Deficiency Ob : Design & System Obsolescence En : Enforcement
--	--	---	---

**Flood Control Project Maintenance
Levee Inspections**

Maintenance Issue Types Only, Levee Inspection Report By Mile - Fall 2021

Reclamation District No. 0556 Upper Andrus

Waterway	Bank	Unit Miles	Inspection Start/End	Inspector
Unit No. 01 Georgiana Slough	Right	5.48	09/01/2021 09/01/2021	David Julian

LM Start	0.00	Rating **	U	Issue No.	21
LM End	0.57	Issue Type +	Ma	Location *	LS
Category	Earthen Levee			GPS Latitude/Longitude	
				Start	End
Item	Trim / Thin Trees			38.239100 °	38.232070 °
				-121.518250 °	-121.522067 °
DWR ID	DWR_RD0556_01_s_2017_21				
Comment Code					
T2 : Thin trees to allow visibility of the ground and room to flood fight.					
Inspector Comment					

Photo 1 of 1 : FA_2021_RD0556_18_21_20210830_00005.jpg



View looking downstream at thick trees on the landside slope (Fall 2019).

LM Start	0.38	Rating **	M	Issue No.	43
LM End	0.58	Issue Type +	Ma	Location *	WS
Category	Supplemental			GPS Latitude/Longitude	
				Start	End
Item	2018 USACE Erosion Survey			38.234038 °	38.231879 °
				-121.519817 °	-121.522003 °
DWR ID					
Comment Code					
Inspector Comment					
2018 Site ID: GEO 11.8 R					
Status: Eroding					
2018 Field Notes: No observed change.					
Site History: 2017 - Tree popout popouts eminent , significant toe erosion and whole bank failure in sections					

Photo 1 of 2 : FA_2021_RD0556_18_43_20211218_40.jpg



USACE 2018 Erosion Photo #1

LM Start	0.38	Rating **	M	Issue No.	43 (cont)
LM End	0.58	Issue Type +	Ma	Location *	WS

Photo 2 of 2 : FA_2021_RD0556_18_43_20211218_41.jpg



USACE 2018 Erosion Photo #2

DWR ID	
--------	--

* Location LS : Land Side N/A : Not Applicable WS : Water Side CR : Crown		** Rating A : Acceptable M : Minimally Acceptable U : Unacceptable N : Not Inspected/Rated C : Corrected A/W : Acceptable but Monitor & Maintain		+ Issue Type Ma : Maintenance Deficiency Ob : Design & System Obsolescence En : Enforcement	
---	--	--	--	--	--

**Flood Control Project Maintenance
Levee Inspections**

Maintenance Issue Types Only, Levee Inspection Report By Mile - Fall 2021

Reclamation District No. 0556 Upper Andrus

Waterway	Bank	Unit Miles	Inspection Start/End	Inspector
Unit No. 01 Georgiana Slough	Right	5.48	09/01/2021 09/01/2021	David Julian

LM Start	0.63	Rating **	U	Issue No.	84
LM End	0.63	Issue Type +	Ma	Location *	LS
Category	Earthen Levee			GPS Latitude/Longitude	
				Start	End
Item	Vegetation			38.231428 °	38.231428 °
				-121.522772 °	-121.522772 °
DWR ID	DWR_RD0556_01_f_2021_84				
Comment Code					
V7 : Trees / Woody Vegetation					
Inspector Comment					
Tree fell over and created large hole in landside slope.					

Photo 1 of 1 : FA_2021_RD0556_18_84_20211004_00158.jpg



View of fallen tree root ball and large hole in the landside slope (Fall 2021).

LM Start	0.82	Rating **	U	Issue No.	65
LM End	0.85	Issue Type +	Ma	Location *	LS
Category	Earthen Levee			GPS Latitude/Longitude	
				Start	End
Item	Vegetation			38.229278 °	38.229013 °
				-121.525103 °	-121.525562 °
DWR ID	DWR_RD0556_01_f_2020_65				
Comment Code					
V2 : Remove the wild growth other than native grasses from the levee slopes.					
Inspector Comment					

Photo 1 of 1 : FA_2021_RD0556_18_65_20210830_00035.jpg



View looking downstream at vegetation on the landside slope (Fall 2020).

LM Start	0.98	Rating **	U	Issue No.	66
LM End	1.17	Issue Type +	Ma	Location *	LS
Category	Earthen Levee			GPS Latitude/Longitude	
				Start	End
Item	Vegetation			38.227653 °	38.227574 °
				-121.527032 °	-121.529479 °
DWR ID	DWR_RD0556_01_f_2020_66				
Comment Code					
V2 : Remove the wild growth other than native grasses from the levee slopes.					
Inspector Comment					

Photo 1 of 1 : FA_2021_RD0556_18_66_20210830_00036.jpg



View looking upstream at annual vegetation on the landside slope (Fall 2020).

* Location		** Rating		+ Issue Type	
LS : Land Side	N/A : Not Applicable	A : Acceptable	N : Not Inspected/Rated	Ma : Maintenance Deficiency	
WS : Water Side		M : Minimally Acceptable	C : Corrected	Ob : Design & System Obsolescence	
CR : Crown		U : Unacceptable	A/W : Acceptable but Monitor & Maintain	En : Enforcement	

**Flood Control Project Maintenance
Levee Inspections**

Maintenance Issue Types Only, Levee Inspection Report By Mile - Fall 2021

Reclamation District No. 0556 Upper Andrus

Waterway	Bank	Unit Miles	Inspection Start/End	Inspector
Unit No. 01 Georgiana Slough	Right	5.48	09/01/2021 09/01/2021	David Julian

LM Start	1.20	Rating **	M	Issue No.	42
LM End	1.53	Issue Type +	Ma	Location *	WS
Category	Supplemental			GPS Latitude/Longitude	
				Start	End
Item	2018 USACE Erosion Survey			38.227615 °	38.225374 °
				-121.529894 °	-121.534406 °
DWR ID					
Comment Code					
Inspector Comment					
2018 Site ID: GEO 10.9 R Status: Eroding 2018 Field Notes: New erosion throughout site. Site History: 2017 - Significant toe erosion and whole bank failure in sections, large pockets from tree popouts.					

Photo 1 of 2 : FA_2021_RD0556_18_42_20211218_38.jpg



USACE 2018 Erosion Photo #1

LM Start	1.20	Rating **	M	Issue No.	42 (cont)
LM End	1.53	Issue Type +	Ma	Location *	WS

Photo 2 of 2 : FA_2021_RD0556_18_42_20211218_39.jpg



USACE 2018 Erosion Photo #2

DWR ID	
--------	--

LM Start	1.43	Rating **	M	Issue No.	82
LM End	1.43	Issue Type +	Ma	Location *	LS
Category	Earthen Levee			GPS Latitude/Longitude	
				Start	End
Item	Animal Control			38.226537 °	38.226537 °
				-121.533351 °	-121.533351 °
DWR ID	DWR_RD0556_01_f_2021_82				
Comment Code					
A1 : Exterminate rodents and backfill and compact or grout burrows.					
Inspector Comment					

Photo 1 of 1 : FA_2021_RD0556_18_82_20210901_00157.jpg



View of animal holes in landside hinge and slope (Fall 2021).

* Location LS : Land Side N/A : Not Applicable WS : Water Side CR : Crown		** Rating A : Acceptable M : Minimally Acceptable U : Unacceptable		N : Not Inspected/Rated C : Corrected A/W : Acceptable but Monitor & Maintain		+ Issue Type Ma : Maintenance Deficiency Ob : Design & System Obsolescence En : Enforcement	
---	--	---	--	---	--	--	--

**Flood Control Project Maintenance
Levee Inspections**

Maintenance Issue Types Only, Levee Inspection Report By Mile - Fall 2021

Reclamation District No. 0556 Upper Andrus

Waterway	Bank	Unit Miles	Inspection Start/End	Inspector
Unit No. 01 Georgiana Slough	Right	5.48	09/01/2021 09/01/2021	David Julian

LM Start	1.43	Rating **	M	Issue No.	40
LM End	1.43	Issue Type +	Ma	Location *	LS
Category	Earthen Levee			GPS Latitude/Longitude	
				Start	End
Item	Erosion / Bank Caving			38.226537 °	38.226537 °
				-121.533512 °	-121.533512 °
DWR ID	DWR_RD0556_01_f_2012_40				
Comment Code					
E1 : Note and monitor erosion site.					
Inspector Comment					
Erosion is covered by vegetation.					

Photo 1 of 1 : FA_2021_RD0556_18_40_20210830_00020.jpg



View of erosion that is covered by vegetation on the landside slope (October 2018).

LM Start	1.50	Rating **	M	Issue No.	22
LM End	1.50	Issue Type +	Ma	Location *	LS
Category	Earthen Levee			GPS Latitude/Longitude	
				Start	End
Item	Erosion / Bank Caving			38.225840 °	38.225840 °
				-121.534157 °	-121.534157 °
DWR ID	DWR_RD0556_01_s_2012_22				
Comment Code					
E1 : Note and monitor erosion site.					
Inspector Comment					
Dip at the top of the landside slope is greater than 3".					

Photo 1 of 1 : FA_2021_RD0556_18_22_20210830_00006.jpg



View of dip at the top of the landside slope (October 2018).

LM Start	1.55	Rating **	U	Issue No.	46
LM End	1.64	Issue Type +	Ma	Location *	LS
Category	Earthen Levee			GPS Latitude/Longitude	
				Start	End
Item	Trim / Thin Trees			38.225268 °	38.224587 °
				-121.534733 °	-121.536129 °
DWR ID	DWR_RD0556_01_s_2018_46				
Comment Code					
T1 : Trim trees to at least five feet above ground level.					
Inspector Comment					

Photo 1 of 1 : FA_2021_RD0556_18_46_20210830_00026.jpg



View looking upstream at thick trees on the landside slope (Fall 2020).

*** Location**
LS : Land Side N/A : Not Applicable
WS : Water Side
CR : Crown

**** Rating**
A : Acceptable N : Not Inspected/Rated
M : Minimally Acceptable C : Corrected
U : Unacceptable A/W : Acceptable but Monitor & Maintain

+ Issue Type
Ma : Maintenance Deficiency
Ob : Design & System Obsolescence
En : Enforcement

**Flood Control Project Maintenance
Levee Inspections**

Maintenance Issue Types Only, Levee Inspection Report By Mile - Fall 2021

Reclamation District No. 0556 Upper Andrus

Waterway	Bank	Unit Miles	Inspection Start/End	Inspector
Unit No. 01 Georgiana Slough	Right	5.48	09/01/2021 09/01/2021	David Julian

LM Start	1.71	Rating **	U	Issue No.	19
LM End	1.89	Issue Type +	Ma	Location *	LS
Category	Earthen Levee			GPS Latitude/Longitude	
				Start	End
Item	Vegetation			38.224301 °	38.223783 °
				-121.537367 °	-121.540572 °
DWR ID	DWR_RD0556_01_s_2020_19				
Comment Code					
V2 : Remove the wild growth other than native grasses from the levee slopes.					
Inspector Comment					

Photo 1 of 1 : FA_2021_RD0556_18_19_20210830_00003.jpg



View looking downstream at thick wild vegetation on the landside slope (Spring 2020).

LM Start	1.94	Rating **	M	Issue No.	83	
LM End	2.05	Issue Type +	Ma	Location *	LS	
Category	Earthen Levee			GPS Latitude/Longitude		
				Start		End
Item	Trim / Thin Trees			38.223529 °		38.223529 °
				-121.543227 °		-121.543228 °
DWR ID	DWR_RD0556_01_f_2021_83					
Comment Code						
T2 : Thin trees to allow visibility of the ground and room to flood fight.						
Inspector Comment						

No Photos

LM Start	2.05	Rating **	M	Issue No.	61
LM End	2.07	Issue Type +	Ma	Location *	LS
Category	Earthen Levee			GPS Latitude/Longitude	
				Start	End
Item	Animal Control			38.223487 °	38.223340 °
				-121.543482 °	-121.543917 °
DWR ID	DWR_RD0556_01_f_2020_61				
Comment Code					
A1 : Exterminate rodents and backfill and compact or grout burrows.					
Inspector Comment					

Photo 1 of 1 : FA_2021_RD0556_18_61_20210830_00034.jpg



View of multiple squirrel holes in the landside slope (Fall 2020).

* Location LS : Land Side N/A : Not Applicable WS : Water Side CR : Crown		** Rating A : Acceptable M : Minimally Acceptable U : Unacceptable		N : Not Inspected/Rated C : Corrected A/W : Acceptable but Monitor & Maintain		+ Issue Type Ma : Maintenance Deficiency Ob : Design & System Obsolescence En : Enforcement	
--	--	--	--	---	--	---	--

**Flood Control Project Maintenance
Levee Inspections**

Maintenance Issue Types Only, Levee Inspection Report By Mile - Fall 2021

Reclamation District No. 0556 Upper Andrus

Waterway	Bank	Unit Miles	Inspection Start/End	Inspector
Unit No. 01 Georgiana Slough	Right	5.48	09/01/2021 09/01/2021	David Julian

LM Start	2.32	Rating **	U	Issue No.	53
LM End	2.32	Issue Type +	Ma	Location *	LS
Category	Earthen Levee			GPS Latitude/Longitude	
				Start	End
Item	Trim / Thin Trees			38.219813 °	38.219813 °
				-121.544032 °	-121.544032 °
DWR ID	DWR_RD0556_01_f_2019_53				
Comment Code					
T2 : Thin trees to allow visibility of the ground and room to flood fight.					
Inspector Comment					

Photo 1 of 1 : FA_2021_RD0556_18_53_20210830_00030.jpg



View looking downstream at fig tree on the landside slope (Fall 2019).

LM Start	2.63	Rating **	M	Issue No.	68
LM End	2.63	Issue Type +	Ma	Location *	LS
Category	Earthen Levee			GPS Latitude/Longitude	
				Start	End
Item	Trim / Thin Trees			38.215850 °	38.215850 °
				-121.542045 °	-121.542045 °
DWR ID	DWR_RD0556_01_f_2020_68				
Comment Code					
T1 : Trim trees to at least five feet above ground level.					
Inspector Comment					

No Photos

LM Start	2.69	Rating **	U	Issue No.	69
LM End	2.69	Issue Type +	Ma	Location *	LS
Category	Earthen Levee			GPS Latitude/Longitude	
				Start	End
Item	Trim / Thin Trees			38.215382 °	38.215382 °
				-121.541247 °	-121.541247 °
DWR ID	DWR_RD0556_01_f_2020_69				
Comment Code					
T1 : Trim trees to at least five feet above ground level.					
Inspector Comment					

Photo 1 of 1 : FA_2021_RD0556_18_69_20210830_00037.jpg



View of thick tree on the landside slope (Fall 2020).

* Location LS : Land Side N/A : Not Applicable WS : Water Side CR : Crown		** Rating A : Acceptable M : Minimally Acceptable U : Unacceptable		N : Not Inspected/Rated C : Corrected A/W : Acceptable but Monitor & Maintain		+ Issue Type Ma : Maintenance Deficiency Ob : Design & System Obsolescence En : Enforcement	
--	--	--	--	---	--	---	--

**Flood Control Project Maintenance
Levee Inspections**

Maintenance Issue Types Only, Levee Inspection Report By Mile - Fall 2021

Reclamation District No. 0556 Upper Andrus

Waterway	Bank	Unit Miles	Inspection Start/End	Inspector
Unit No. 01 Georgiana Slough	Right	5.48	09/01/2021 09/01/2021	David Julian

LM Start	2.72	Rating **	U	Issue No.	33
LM End	2.72	Issue Type +	Ma	Location *	LS
Category	Earthen Levee			GPS Latitude/Longitude	
				Start	End
Item	Slope Stability			38.215107 °	38.215107 °
				-121.540677 °	-121.540677 °
DWR ID	DWR_RD0556_01_s_2017_33				
Comment Code					
S1 : Repair slope instability.					
Inspector Comment					
Fallen tree on landside. Remove the fallen tree and repair the levee damage.					

Photo 1 of 1 : FA_2021_RD0556_18_33_20210830_00015.jpg



View of hole in landside slope caused by down tree (Spring 2021).

LM Start	2.85	Rating **	M	Issue No.	37
LM End	2.98	Issue Type +	Ma	Location *	WS
Category	Supplemental			GPS Latitude/Longitude	
				Start	End
Item	2018 USACE Erosion Survey			38.214144 °	38.212577 °
				-121.538692 °	-121.537244 °
DWR ID					
Comment Code					
Inspector Comment					
2018 Site ID: GEO 9.2 R					
Status: Eroding					
2018 Field Notes: New erosion along toe.					
Site History: 2017 - Toe erosion.					

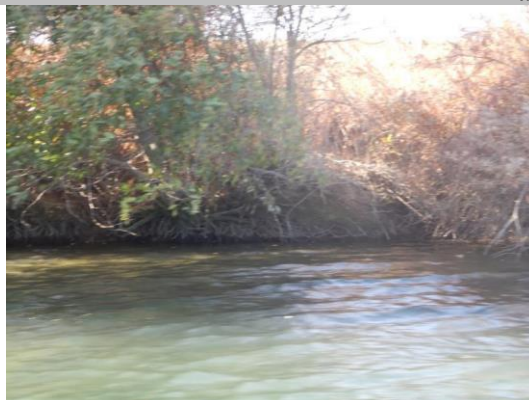
Photo 1 of 2 : FA_2021_RD0556_18_37_20211218_22.jpg



USACE 2018 Erosion Photo #1

LM Start	2.85	Rating **	M	Issue No.	37 (cont)
LM End	2.98	Issue Type +	Ma	Location *	WS

Photo 2 of 2 : FA_2021_RD0556_18_37_20211218_23.jpg



USACE 2018 Erosion Photo #2

DWR ID	
--------	--

* Location LS : Land Side N/A : Not Applicable WS : Water Side CR : Crown		** Rating A : Acceptable M : Minimally Acceptable U : Unacceptable		N : Not Inspected/Rated C : Corrected A/W : Acceptable but Monitor & Maintain		+ Issue Type Ma : Maintenance Deficiency Ob : Design & System Obsolescence En : Enforcement	
---	--	---	--	---	--	--	--

**Flood Control Project Maintenance
Levee Inspections**

Maintenance Issue Types Only, Levee Inspection Report By Mile - Fall 2021

Reclamation District No. 0556 Upper Andrus

Waterway	Bank	Unit Miles	Inspection Start/End	Inspector
Unit No. 01 Georgiana Slough	Right	5.48	09/01/2021 09/01/2021	David Julian

LM Start	3.14	Rating **	M	Issue No.	28
LM End	3.26	Issue Type +	Ma	Location *	LS
Category	Earthen Levee			GPS Latitude/Longitude	
				Start	End
Item	Animal Control			38.210985 °	38.210160 °
				-121.538372 °	-121.540300 °
DWR ID	DWR_RD0556_01_f_2017_28				
Comment Code					
A1 : Exterminate rodents and backfill and compact or grout burrows.					
Inspector Comment					

Photo 1 of 1 : FA_2021_RD0556_18_28_20210830_00010.jpg



Significant rodent activity in this area must be stopped. Holes should be backfilled.

LM Start	3.18	Rating **	M	Issue No.	36
LM End	3.50	Issue Type +	Ma	Location *	WS
Category	Supplemental			GPS Latitude/Longitude	
				Start	End
Item	2018 USACE Erosion Survey			38.210674 °	38.206919 °
				-121.538854 °	-121.541559 °
DWR ID					
Comment Code					
Inspector Comment					
2018 Site ID: GEO 9.0 R					
Status: Eroding					
2018 Field Notes: Site extended downstream.					
Site History: 2017 - Toe erosion and failed revetment.					

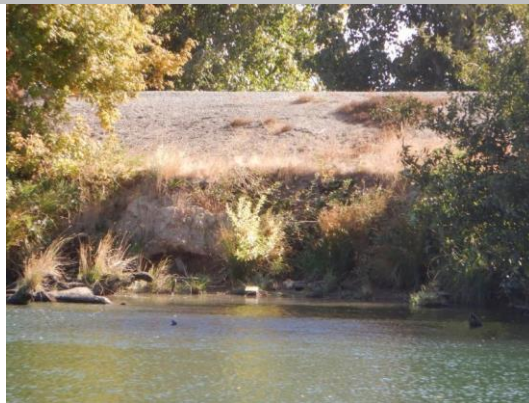
Photo 1 of 2 : FA_2021_RD0556_18_36_20211218_9.jpg



USACE 2018 Erosion Photo #1

LM Start	3.18	Rating **	M	Issue No.	36 (cont)
LM End	3.50	Issue Type +	Ma	Location *	WS

Photo 2 of 2 : FA_2021_RD0556_18_36_20211218_17.jpg



USACE 2018 Erosion Photo #2

DWR ID	
--------	--

* Location LS : Land Side N/A : Not Applicable WS : Water Side CR : Crown		** Rating A : Acceptable M : Minimally Acceptable U : Unacceptable N : Not Inspected/Rated C : Corrected A/W : Acceptable but Monitor & Maintain		+ Issue Type Ma : Maintenance Deficiency Ob : Design & System Obsolescence En : Enforcement	
---	--	--	--	--	--

**Flood Control Project Maintenance
Levee Inspections**

Maintenance Issue Types Only, Levee Inspection Report By Mile - Fall 2021

Reclamation District No. 0556 Upper Andrus

Waterway	Bank	Unit Miles	Inspection Start/End	Inspector
Unit No. 01 Georgiana Slough	Right	5.48	09/01/2021 09/01/2021	David Julian

LM Start	3.18	Rating **	U	Issue No.	55
LM End	3.18	Issue Type +	Ma	Location *	LS
Category	Earthen Levee			GPS Latitude/Longitude	
				Start	End
Item	Trim / Thin Trees			38.210745 °	38.210745 °
				-121.538967 °	-121.538967 °
DWR ID	DWR_RD0556_01_f_2019_55				
Comment Code					
T2 : Thin trees to allow visibility of the ground and room to flood fight.					
Inspector Comment					

Photo 1 of 1 : FA_2021_RD0556_18_55_20210830_00032.jpg



View of fig tree on the landside slope (Fall 2019).

LM Start	3.22	Rating **	U	Issue No.	38
LM End	3.29	Issue Type +	Ma	Location *	LS
Category	Earthen Levee			GPS Latitude/Longitude	
				Start	End
Item	Trim / Thin Trees			38.210493 °	38.209842 °
				-121.539760 °	-121.540658 °
DWR ID	DWR_RD0556_01_s_2017_38				
Comment Code					
T2 : Thin trees to allow visibility of the ground and room to flood fight.					
Inspector Comment					
Remove the wild tree growth and vegetation from the landside levee slope and toe so the ground can be seen.					

Photo 1 of 1 : FA_2021_RD0556_18_38_20210830_00018.jpg



View looking downstream at thick tree growth on the landside slope (Fall 2019).

LM Start	3.68	Rating **	U	Issue No.	41
LM End	3.81	Issue Type +	Ma	Location *	LS
Category	Earthen Levee			GPS Latitude/Longitude	
				Start	End
Item	Vegetation			38.204360 °	38.202615 °
				-121.541286 °	-121.540807 °
DWR ID	DWR_RD0556_01_s_2020_41				
Comment Code					
V2 : Remove the wild growth other than native grasses from the levee slopes.					
Inspector Comment					

Photo 1 of 1 : FA_2021_RD0556_18_41_20210830_00021.jpg



View looking downstream at vegetation on the landside slope (Fall 2020).

* Location		** Rating		+ Issue Type	
LS : Land Side	N/A : Not Applicable	A : Acceptable	N : Not Inspected/Rated	Ma : Maintenance Deficiency	
WS : Water Side		M : Minimally Acceptable	C : Corrected	Ob : Design & System Obsolescence	
CR : Crown		U : Unacceptable	A/W : Acceptable but Monitor & Maintain	En : Enforcement	

**Flood Control Project Maintenance
Levee Inspections**

Maintenance Issue Types Only, Levee Inspection Report By Mile - Fall 2021

Reclamation District No. 0556 Upper Andrus

Waterway	Bank	Unit Miles	Inspection Start/End	Inspector
Unit No. 01 Georgiana Slough	Right	5.48	09/01/2021 09/01/2021	David Julian

LM Start	3.82	Rating **	M	Issue No.	86
LM End	3.82	Issue Type +	Ma	Location *	LS
Category	Earthen Levee			GPS Latitude/Longitude	
				Start	End
Item	Erosion / Bank Caving			38.202481 °	38.202481 °
				-121.540839 °	-121.540839 °
DWR ID	DWR_RD0556_01_f_2021_86				
Comment Code					
E2 : Schedule repair of erosion site prior to the next inspection.					
Inspector Comment					
Exposed slope eroding, most likely due to runoff.					

Photo 1 of 1 : FA_2021_RD0556_18_86_20211004_00160.jpg



View of erosion rivulets in the landside slope (Spring 2021).

LM Start	4.22	Rating **	U	Issue No.	39
LM End	5.10	Issue Type +	Ma	Location *	LS
Category	Earthen Levee			GPS Latitude/Longitude	
				Start	End
Item	Vegetation			38.198884 °	38.190134 °
				-121.546223 °	-121.557559 °
DWR ID	DWR_RD0556_01_f_2017_39				
Comment Code					
V2 : Remove the wild growth other than native grasses from the levee slopes.					
Inspector Comment					
Remove wild growth including berry vines and arundo from landside slope and toe to allow for inspection and access.					

Photo 1 of 1 : FA_2021_RD0556_18_39_20210830_00019.jpg



View of dense growth of wild vegetation, berry vines and arundo on landside slope and toe.

* Location LS : Land Side N/A : Not Applicable WS : Water Side CR : Crown		** Rating A : Acceptable M : Minimally Acceptable U : Unacceptable N : Not Inspected/Rated C : Corrected A/W : Acceptable but Monitor & Maintain		+ Issue Type Ma : Maintenance Deficiency Ob : Design & System Obsolescence En : Enforcement	
---	--	--	--	--	--

**Flood Control Project Maintenance
Levee Inspections**

Maintenance Issue Types Only, Levee Inspection Report By Mile - Fall 2021

Reclamation District No. 0556 Upper Andrus

Waterway	Bank	Unit Miles	Inspection Start/End	Inspector
Unit No. 01 Georgiana Slough	Right	5.48	09/01/2021 09/01/2021	David Julian

LM Start	5.12	Rating **	M	Issue No.	20
LM End	5.34	Issue Type +	Ma	Location *	WS
Category	Supplemental			GPS Latitude/Longitude	
				Start	End
Item	2018 USACE Erosion Survey			38.189775 °	38.187369 °
				-121.557729 °	-121.560247 °
DWR ID					

Comment Code

Inspector Comment

2018 Site ID: GEO 7.0 R
 Status: Eroding
 2018 Field Notes: Minor new toe erosion.
 Site History: 1997 - Toe damaged rock. 1999 - One pocket filled with gravel. 2000 - Eroding beach with some biotech rolls and stakes; some gravel on slope. 2001 - Staked, low fascine walls at bankline. 2005 - Stone revetment in between pockets. 2006 - New rock on upper slope behind brush boxes at the upstream end, Stone is sliding off the hard toe. 2016 - Fresh erosion observed. 2017 - Site extended downstream. Large erosion pockets and significant toe erosion.

LM Start	5.12	Rating **	M	Issue No.	20 (cont)
LM End	5.34	Issue Type +	Ma	Location *	WS

DWR ID

Photo 1 of 2 : FA_2021_RD0556_18_20_20211218_4.jpg



USACE 2018 Erosion Photo #1

Photo 2 of 2 : FA_2021_RD0556_18_20_20211218_8.jpg



USACE 2018 Erosion Photo #2

* Location LS : Land Side N/A : Not Applicable WS : Water Side CR : Crown		** Rating A : Acceptable N : Not Inspected/Rated M : Minimally Acceptable C : Corrected U : Unacceptable A/W : Acceptable but Monitor & Maintain		+ Issue Type Ma : Maintenance Deficiency Ob : Design & System Obsolescence En : Enforcement
--	--	---	--	---

**Flood Control Project Maintenance
Levee Inspections**

Maintenance Issue Types Only, Levee Inspection Report By Mile - Fall 2021

Reclamation District No. 0556 Upper Andrus

Waterway	Bank	Unit Miles	Inspection Start/End	Inspector
Unit No. 01 Georgiana Slough	Right	5.48	09/01/2021 09/01/2021	David Julian

LM Start	5.24	Rating **	U	Issue No.	63
LM End	5.43	Issue Type +	Ma	Location *	WS
Category	Earthen Levee			GPS Latitude/Longitude	
				Start	End
Item	Vegetation			38.188576 °	38.186712 °
				-121.559326 °	-121.561673 °
DWR ID	DWR_RD0556_01_s _ 2020_63				
Comment Code					
V2 : Remove the wild growth other than native grasses from the levee slopes.					
Inspector Comment					

No Photos

* Location LS : Land Side N/A : Not Applicable WS : Water Side CR : Crown	** Rating A : Acceptable M : Minimally Acceptable U : Unacceptable N : Not Inspected/Rated C : Corrected A/W : Acceptable but Monitor & Maintain	+ Issue Type Ma : Maintenance Deficiency Ob : Design & System Obsolescence En : Enforcement
--	---	---

**Flood Control Project Maintenance
Levee Inspections**

Maintenance Issue Types Only, Levee Inspection Report By Mile - Fall 2021

Reclamation District No. 0556 Upper Andrus

Waterway	Bank	Unit Miles	Inspection Start/End	Inspector
Unit No. 02 Sacramento River	Left	5.72	10/22/2021 10/22/2021	David Julian

LM Start	0.03	Rating **	M	Issue No.	120
LM End	0.13	Issue Type +	Ma	Location *	LS
Category	Earthen Levee			GPS Latitude/Longitude	
				Start	End
Item	Vegetation			38.239100 °	38.238888 °
				-121.518819 °	-121.520677 °
DWR ID	DWR_RD0556_02_f_2021_120				
Comment Code					
V1 : Control annual grass and weeds on the levee slopes and easements.					
Inspector Comment					

No Photos

LM Start	0.04	Rating **	U	Issue No.	92
LM End	0.11	Issue Type +	Ma	Location *	LS
Category	Earthen Levee			GPS Latitude/Longitude	
				Start	End
Item	Animal Control			38.239106 °	38.238912 °
				-121.518972 °	-121.520247 °
DWR ID	DWR_RD0556_02_f_2019_92				
Comment Code					
A1 : Exterminate rodents and backfill and compact or grout burrows.					
Inspector Comment					
There are multiple fresh squirrel holes on the slope.					

Photo 1 of 1 : FA_2021_RD0556_19_92_20210830_00057.jpg



View of multiple fresh squirrel holes in the landside slope (Fall 2019).

LM Start	0.04	Rating **	U	Issue No.	20
LM End	0.04	Issue Type +	Ma	Location *	WS
Category	Earthen Levee			GPS Latitude/Longitude	
				Start	End
Item	Slope Stability			38.239167 °	38.239167 °
				-121.519040 °	-121.519040 °
DWR ID	DWR_RD0556_02_f_2019_20				
Comment Code					
S3 : Repair the levee slope damaged by vehicle traffic and prevent access where possible.					
Inspector Comment					

Photo 1 of 1 : FA_2021_RD0556_19_20_20211022_00094.jpg



View of depression caused by vehicle on the waterside slope (Fall 2021).

* Location LS : Land Side N/A : Not Applicable WS : Water Side CR : Crown		** Rating A : Acceptable M : Minimally Acceptable U : Unacceptable		N : Not Inspected/Rated C : Corrected A/W : Acceptable but Monitor & Maintain		+ Issue Type Ma : Maintenance Deficiency Ob : Design & System Obsolescence En : Enforcement	
--	--	--	--	---	--	---	--

**Flood Control Project Maintenance
Levee Inspections**

Maintenance Issue Types Only, Levee Inspection Report By Mile - Fall 2021

Reclamation District No. 0556 Upper Andrus

Waterway	Bank	Unit Miles	Inspection Start/End	Inspector
Unit No. 02 Sacramento River	Left	5.72	10/22/2021 10/22/2021	David Julian

LM Start	0.08	Rating **	M	Issue No.	42
LM End	0.08	Issue Type +	Ma	Location *	WS
Category	Earthen Levee			GPS Latitude/Longitude	
				Start	End
Item	Trim / Thin Trees			38.239029 °	38.239029 °
				-121.519667 °	-121.519667 °
DWR ID	DWR_RD0556_02_s_2021_42				
Comment Code					
T1 : Trim trees to at least five feet above ground level.					
Inspector Comment					

No Photos

LM Start	0.30	Rating **	M	Issue No.	82
LM End	0.30	Issue Type +	Ma	Location *	LS
Category	Earthen Levee			GPS Latitude/Longitude	
				Start	End
Item	Trim / Thin Trees			38.238516 °	38.238516 °
				-121.523640 °	-121.523640 °
DWR ID	DWR_RD0556_02_s_2021_82				
Comment Code					
T2 : Thin trees to allow visibility of the ground and room to flood fight.					
Inspector Comment					

No Photos

LM Start	0.30	Rating **	M	Issue No.	119
LM End	0.42	Issue Type +	Ma	Location *	LS
Category	Earthen Levee			GPS Latitude/Longitude	
				Start	End
Item	Vegetation			38.238516 °	38.238177 °
				-121.523640 °	-121.525821 °
DWR ID	DWR_RD0556_02_f_2021_119				
Comment Code					
V1 : Control annual grass and weeds on the levee slopes and easements.					
Inspector Comment					

No Photos

* Location		** Rating		+ Issue Type	
LS : Land Side	N/A : Not Applicable	A : Acceptable	N : Not Inspected/Rated	Ma : Maintenance Deficiency	
WS : Water Side		M : Minimally Acceptable	C : Corrected	Ob : Design & System Obsolescence	
CR : Crown		U : Unacceptable	A/W : Acceptable but Monitor & Maintain	En : Enforcement	

**Flood Control Project Maintenance
Levee Inspections**

Maintenance Issue Types Only, Levee Inspection Report By Mile - Fall 2021

Reclamation District No. 0556 Upper Andrus

Waterway	Bank	Unit Miles	Inspection Start/End	Inspector
Unit No. 02 Sacramento River	Left	5.72	10/22/2021 10/22/2021	David Julian

LM Start	0.42	Rating **	M	Issue No.	39
LM End	0.42	Issue Type +	Ma	Location *	LS
Category	Earthen Levee			GPS Latitude/Longitude	
				Start	End
Item	Trim / Thin Trees			38.238167 °	38.238167 °
				-121.525878 °	-121.525878 °
DWR ID	DWR_RD0556_02_s_2021_39				
Comment Code					
T1 : Trim trees to at least five feet above ground level.					
Inspector Comment					

No Photos

LM Start	0.50	Rating **	M	Issue No.	43
LM End	0.50	Issue Type +	Ma	Location *	WS
Category	Earthen Levee			GPS Latitude/Longitude	
				Start	End
Item	Slope Stability			38.237963 °	38.237963 °
				-121.527372 °	-121.527372 °
DWR ID	DWR_RD0556_02_f_2019_43				
Comment Code					
S2 : Repair the levee slope damaged by foot traffic and prevent access where possible.					
Inspector Comment					
Fishermen trail is on slope.					

Photo 1 of 1 : FA_2021_RD0556_19_43_20210830_00024.jpg



View of fishermen trail digging into levee on the waterside slope (Fall 2019).

LM Start	0.63	Rating **	U	Issue No.	34
LM End	0.63	Issue Type +	Ma	Location *	WS
Category	Earthen Levee			GPS Latitude/Longitude	
				Start	End
Item	Trim / Thin Trees			38.237530 °	38.237530 °
				-121.529552 °	-121.529552 °
DWR ID	DWR_RD0556_02_f_2021_34				
Comment Code					
T2 : Thin trees to allow visibility of the ground and room to flood fight.					
Inspector Comment					

Photo 1 of 1 : FA_2021_RD0556_19_34_20211022_00095.jpg



View looking downstream at thick tree on the waterside slope (Fall 2021).

* Location		** Rating		+ Issue Type	
LS : Land Side	N/A : Not Applicable	A : Acceptable	N : Not Inspected/Rated	Ma : Maintenance Deficiency	
WS : Water Side		M : Minimally Acceptable	C : Corrected	Ob : Design & System Obsolescence	
CR : Crown		U : Unacceptable	A/W : Acceptable but Monitor & Maintain	En : Enforcement	

**Flood Control Project Maintenance
Levee Inspections**

Maintenance Issue Types Only, Levee Inspection Report By Mile - Fall 2021

Reclamation District No. 0556 Upper Andrus

Waterway	Bank	Unit Miles	Inspection Start/End	Inspector
Unit No. 02 Sacramento River	Left	5.72	10/22/2021 10/22/2021	David Julian

LM Start	0.74	Rating **	U	Issue No.	81
LM End	0.85	Issue Type +	Ma	Location *	LS
Category	Earthen Levee			GPS Latitude/Longitude	
				Start	End
Item	Vegetation			38.237577 °	38.237842 °
				-121.531594 °	-121.533616 °
DWR ID	DWR_RD0556_02_s_2021_81				
Comment Code					
V7 : Trees / Woody Vegetation					
Inspector Comment					

Photo 1 of 1 : FA_2021_RD0556_19_81_20211022_00108.jpg



View looking upstream at thick vegetation on the landside slope (Fall 2021).

LM Start	0.89	Rating **	M	Issue No.	118
LM End	0.89	Issue Type +	Ma	Location *	LS
Category	Earthen Levee			GPS Latitude/Longitude	
				Start	End
Item	Trim / Thin Trees			38.237937 °	38.237937 °
				-121.534316 °	-121.534316 °
DWR ID	DWR_RD0556_02_f_2021_118				
Comment Code					
T2 : Thin trees to allow visibility of the ground and room to flood fight.					
Inspector Comment					

No Photos

LM Start	0.94	Rating **	M	Issue No.	117
LM End	1.11	Issue Type +	Ma	Location *	LS
Category	Earthen Levee			GPS Latitude/Longitude	
				Start	End
Item	Vegetation			38.238137 °	38.238844 °
				-121.535328 °	-121.538274 °
DWR ID	DWR_RD0556_02_f_2021_117				
Comment Code					
V1 : Control annual grass and weeds on the levee slopes and easements.					
Inspector Comment					

No Photos

* Location		** Rating		+ Issue Type	
LS : Land Side	N/A : Not Applicable	A : Acceptable	N : Not Inspected/Rated	Ma : Maintenance Deficiency	
WS : Water Side		M : Minimally Acceptable	C : Corrected	Ob : Design & System Obsolescence	
CR : Crown		U : Unacceptable	A/W : Acceptable but Monitor & Maintain	En : Enforcement	

**Flood Control Project Maintenance
Levee Inspections**

Maintenance Issue Types Only, Levee Inspection Report By Mile - Fall 2021

Reclamation District No. 0556 Upper Andrus

Waterway	Bank	Unit Miles	Inspection Start/End	Inspector
Unit No. 02 Sacramento River	Left	5.72	10/22/2021 10/22/2021	David Julian

LM Start	1.03	Rating **	M	Issue No.	19
LM End	1.15	Issue Type +	Ma	Location *	WS
Category	Supplemental			GPS Latitude/Longitude	
				Start	End
Item	2018 USACE Erosion Survey			38.238772 °	38.239265 °
				-121.536788 °	-121.538845 °
DWR ID					
Comment Code					
Inspector Comment					
2018 Site ID: SAC 25.2 L					
Status: Eroding					
2018 Field Notes: Additional erosion along toe. Site extended upstream.					
Site History: 1997 - Rock is in poor condition and has failed in many places. Scallops in berm with remnants of old rock in the toe area.					
2005 - Brush boxes present. 2013 - Site extended upstream					
approximately 300 ft to include new erosion pockets. 2015 - Minor new					
erosion at toe. 2017 - Minor new erosion observed.					

LM Start	1.03	Rating **	M	Issue No.	19 (cont)
LM End	1.15	Issue Type +	Ma	Location *	WS

DWR ID	
--------	--

Photo 1 of 2 : FA_2021_RD0556_19_19_20211218_61.jpg



USACE 2018 Erosion Photo #1

Photo 2 of 2 : FA_2021_RD0556_19_19_20211218_62.jpg



USACE 2018 Erosion Photo #2

* Location LS : Land Side N/A : Not Applicable WS : Water Side CR : Crown		** Rating A : Acceptable N : Not Inspected/Rated M : Minimally Acceptable C : Corrected U : Unacceptable A/W : Acceptable but Monitor & Maintain		+ Issue Type Ma : Maintenance Deficiency Ob : Design & System Obsolescence En : Enforcement
--	--	---	--	---

**Flood Control Project Maintenance
Levee Inspections**

Maintenance Issue Types Only, Levee Inspection Report By Mile - Fall 2021

Reclamation District No. 0556 Upper Andrus

Waterway	Bank	Unit Miles	Inspection Start/End	Inspector
Unit No. 02 Sacramento River	Left	5.72	10/22/2021 10/22/2021	David Julian

LM Start	1.15	Rating **	C	Issue No.	48
LM End	1.15	Issue Type +	Ma	Location *	WS
Category	Earthen Levee			GPS Latitude/Longitude	
				Start	End
Item	Trim / Thin Trees			38.239055 °	38.239055 °
				-121.538986 °	-121.538986 °
DWR ID	DWR_RD0556_02_s_2021_48				
Comment Code					
T2 : Thin trees to allow visibility of the ground and room to flood fight.					
Inspector Comment					

No Photos

LM Start	1.16	Rating **	U	Issue No.	116
LM End	1.17	Issue Type +	Ma	Location *	LS
Category	Earthen Levee			GPS Latitude/Longitude	
				Start	End
Item	Vegetation			38.239052 °	38.239116 °
				-121.539107 °	-121.539371 °
DWR ID	DWR_RD0556_02_f_2021_116				
Comment Code					
V2 : Remove the wild growth other than native grasses from the levee slopes.					
Inspector Comment					

Photo 1 of 1 : FA_2021_RD0556_19_116_20211022_00107.jpg



View of thick vegetation on the landside slope (Fall 2021).

LM Start	1.26	Rating **	M	Issue No.	113
LM End	1.83	Issue Type +	Ma	Location *	LS
Category	Earthen Levee			GPS Latitude/Longitude	
				Start	End
Item	Vegetation			38.239451 °	38.240956 °
				-121.540831 °	-121.551065 °
DWR ID	DWR_RD0556_02_f_2021_113				
Comment Code					
V1 : Control annual grass and weeds on the levee slopes and easements.					
Inspector Comment					

No Photos

* Location		** Rating		+ Issue Type	
LS : Land Side	N/A : Not Applicable	A : Acceptable	N : Not Inspected/Rated	Ma : Maintenance Deficiency	
WS : Water Side		M : Minimally Acceptable	C : Corrected	Ob : Design & System Obsolescence	
CR : Crown		U : Unacceptable	A/W : Acceptable but Monitor & Maintain	En : Enforcement	

**Flood Control Project Maintenance
Levee Inspections**

Maintenance Issue Types Only, Levee Inspection Report By Mile - Fall 2021

Reclamation District No. 0556 Upper Andrus

Waterway	Bank	Unit Miles	Inspection Start/End	Inspector
Unit No. 02 Sacramento River	Left	5.72	10/22/2021 10/22/2021	David Julian

LM Start	1.32	Rating **	M	Issue No.	115
LM End	1.32	Issue Type +	Ma	Location *	LS
Category	Earthen Levee			GPS Latitude/Longitude	
				Start	End
Item	Trim / Thin Trees			38.239681 °	38.239681 °
				-121.541945 °	-121.541945 °
DWR ID	DWR_RD0556_02_f_2021_115				
Comment Code					
T1 : Trim trees to at least five feet above ground level.					
Inspector Comment					

No Photos

LM Start	1.43	Rating **	U	Issue No.	40
LM End	1.43	Issue Type +	Ma	Location *	WS
Category	Earthen Levee			GPS Latitude/Longitude	
				Start	End
Item	Trim / Thin Trees			38.240060 °	38.240060 °
				-121.543884 °	-121.543884 °
DWR ID	DWR_RD0556_02_f_2021_40				
Comment Code					
T2 : Thin trees to allow visibility of the ground and room to flood fight.					
Inspector Comment					

Photo 1 of 1 : FA_2021_RD0556_19_40_20211022_00096.jpg



View looking upstream at thick vegetation on the waterside slope (Fall 2021).

* Location LS : Land Side N/A : Not Applicable WS : Water Side CR : Crown		** Rating A : Acceptable M : Minimally Acceptable U : Unacceptable N : Not Inspected/Rated C : Corrected A/W : Acceptable but Monitor & Maintain		+ Issue Type Ma : Maintenance Deficiency Ob : Design & System Obsolescence En : Enforcement	
---	--	--	--	--	--

**Flood Control Project Maintenance
Levee Inspections**

Maintenance Issue Types Only, Levee Inspection Report By Mile - Fall 2021

Reclamation District No. 0556 Upper Andrus

Waterway	Bank	Unit Miles	Inspection Start/End	Inspector
Unit No. 02 Sacramento River	Left	5.72	10/22/2021 10/22/2021	David Julian

LM Start	1.45	Rating **	M	Issue No.	18
LM End	1.59	Issue Type +	Ma	Location *	WS
Category	Supplemental			GPS Latitude/Longitude	
				Start	End
Item	2018 USACE Erosion Survey			38.240401 °	38.240772 °
				-121.544106 °	-121.546791 °
DWR ID					

Comment Code

Inspector Comment

2018 Site ID: SAC 24.8 L
 Status: Eroding
 2018 Field Notes: Site extended upstream.
 Site History: 1997 - Slow erosion of the berm at the waterline; bench below water. 2005 - Brush boxes present. 2010 - Minor new erosion. 2013 - There is little to no berm remaining at downstream end of this site. 2016 - New erosion on levee slope. 2017 - Significant lower bank erosion.

LM Start	1.45	Rating **	M	Issue No.	18 (cont)
LM End	1.59	Issue Type +	Ma	Location *	WS

Photo 1 of 2 : FA_2021_RD0556_19_18_20211218_59.jpg



USACE 2018 Erosion Photo #1

Photo 2 of 2 : FA_2021_RD0556_19_18_20211218_60.jpg



USACE 2018 Erosion Photo #2

DWR ID	
--------	--

* Location LS : Land Side N/A : Not Applicable WS : Water Side CR : Crown	** Rating A : Acceptable M : Minimally Acceptable U : Unacceptable N : Not Inspected/Rated C : Corrected A/W : Acceptable but Monitor & Maintain	+ Issue Type Ma : Maintenance Deficiency Ob : Design & System Obsolescence En : Enforcement
--	---	---

**Flood Control Project Maintenance
Levee Inspections**

Maintenance Issue Types Only, Levee Inspection Report By Mile - Fall 2021

Reclamation District No. 0556 Upper Andrus

Waterway	Bank	Unit Miles	Inspection Start/End	Inspector
Unit No. 02 Sacramento River	Left	5.72	10/22/2021 10/22/2021	David Julian

LM Start	1.47	Rating **	M	Issue No.	50
LM End	1.47	Issue Type +	Ma	Location *	WS
Category	Earthen Levee			GPS Latitude/Longitude	
				Start	End
Item	Encroachments			38.240183 °	38.240183 °
				-121.544567 °	-121.544567 °
DWR ID	DWR_RD0556_02_f_2021_50				
Comment Code					
TR : Tree or limb					
Inspector Comment					

No Photos

LM Start	1.47	Rating **	U	Issue No.	41
LM End	1.47	Issue Type +	Ma	Location *	LS
Category	Earthen Levee			GPS Latitude/Longitude	
				Start	End
Item	Vegetation			38.240175 °	38.240175 °
				-121.544683 °	-121.544683 °
DWR ID	DWR_RD0556_02_s_2018_41				
Comment Code					
V7 : Trees / Woody Vegetation					
Inspector Comment					
Cactus on the landside slope.					

Photo 1 of 1 : FA_2021_RD0556_19_41_20210830_00023.jpg



View of cactus and other landscaping.

LM Start	1.57	Rating **	U	Issue No.	47
LM End	1.57	Issue Type +	Ma	Location *	LS
Category	Earthen Levee			GPS Latitude/Longitude	
				Start	End
Item	Vegetation			38.240455 °	38.240455 °
				-121.546362 °	-121.546362 °
DWR ID	DWR_RD0556_02_s_2019_47				
Comment Code					
V7 : Trees / Woody Vegetation					
Inspector Comment					
Remove cactus from the landside slope.					

Photo 1 of 1 : FA_2021_RD0556_19_47_20210830_00028.jpg



View looking downstream at cactus on the landside slope (Spring 2019).

* Location LS : Land Side N/A : Not Applicable WS : Water Side CR : Crown		** Rating A : Acceptable M : Minimally Acceptable U : Unacceptable N : Not Inspected/Rated C : Corrected A/W : Acceptable but Monitor & Maintain		+ Issue Type Ma : Maintenance Deficiency Ob : Design & System Obsolescence En : Enforcement	
--	--	---	--	---	--

**Flood Control Project Maintenance
Levee Inspections**

Maintenance Issue Types Only, Levee Inspection Report By Mile - Fall 2021

Reclamation District No. 0556 Upper Andrus

Waterway	Bank	Unit Miles	Inspection Start/End	Inspector
Unit No. 02 Sacramento River	Left	5.72	10/22/2021 10/22/2021	David Julian

LM Start	1.89	Rating **	U	Issue No.	30
LM End	1.99	Issue Type +	Ma	Location *	LS
Category	Earthen Levee			GPS Latitude/Longitude	
				Start	End
Item	Vegetation			38.240775 °	38.240024 °
				-121.552183 °	-121.553860 °
DWR ID	DWR_RD0556_02_f_2017_30				
Comment Code					
V7 : Trees / Woody Vegetation					
Inspector Comment					
Remove cactus on the landside slope.					

Photo 1 of 1 : FA_2021_RD0556_19_30_20210830_00015.jpg



Trim/thin oleanders on landside slope.

LM Start	2.06	Rating **	U	Issue No.	32
LM End	2.06	Issue Type +	Ma	Location *	LS
Category	Earthen Levee			GPS Latitude/Longitude	
				Start	End
Item	Vegetation			38.239470 °	38.239470 °
				-121.554845 °	-121.554845 °
DWR ID	DWR_RD0556_02_s_2020_32				
Comment Code					
V7 : Trees / Woody Vegetation					
Inspector Comment					
Arundo growth should be removed to allow inspection and access to the landside slope and toe.					

Photo 1 of 1 : FA_2021_RD0556_19_32_20210830_00017.jpg



View of arundo on the landside slope and toe.

LM Start	2.07	Rating **	M	Issue No.	77
LM End	2.11	Issue Type +	Ma	Location *	LS
Category	Earthen Levee			GPS Latitude/Longitude	
				Start	End
Item	Trim / Thin Trees			38.239304 °	38.238996 °
				-121.554982 °	-121.555454 °
DWR ID	DWR_RD0556_02_s_2021_77				
Comment Code					
T1 : Trim trees to at least five feet above ground level.					
Inspector Comment					

No Photos

* Location		** Rating		+ Issue Type	
LS : Land Side	N/A : Not Applicable	A : Acceptable	N : Not Inspected/Rated	Ma : Maintenance Deficiency	
WS : Water Side		M : Minimally Acceptable	C : Corrected	Ob : Design & System Obsolescence	
CR : Crown		U : Unacceptable	A/W : Acceptable but Monitor & Maintain	En : Enforcement	

**Flood Control Project Maintenance
Levee Inspections**

Maintenance Issue Types Only, Levee Inspection Report By Mile - Fall 2021

Reclamation District No. 0556 Upper Andrus

Waterway	Bank	Unit Miles	Inspection Start/End	Inspector
Unit No. 02 Sacramento River	Left	5.72	10/22/2021 10/22/2021	David Julian

LM Start	2.10	Rating **	M	Issue No.	112
LM End	2.10	Issue Type +	Ma	Location *	LS
Category	Earthen Levee			GPS Latitude/Longitude	
				Start	End
Item	Vegetation			38.239061 °	38.239061 °
				-121.555353 °	-121.555353 °
DWR ID	DWR_RD0556_02_f_2021_112				
Comment Code					
V2 : Remove the wild growth other than native grasses from the levee slopes.					
Inspector Comment					
Century plants beginning to establish again.					

No Photos

LM Start	2.12	Rating **	U	Issue No.	57
LM End	2.12	Issue Type +	Ma	Location *	WS
Category	Earthen Levee			GPS Latitude/Longitude	
				Start	End
Item	Encroachments			38.238885 °	38.238885 °
				-121.555597 °	-121.555597 °
DWR ID	DWR_RD0556_02_f_2019_57				
Comment Code					
TR : Tree or limb					
Inspector Comment					
Remove downed tree.					

Photo 1 of 1 : FA_2021_RD0556_19_57_20210830_00037.jpg



View looking downstream at down tree on waterside shoulder (Fall 2020).

LM Start	2.13	Rating **	C	Issue No.	87
LM End	2.13	Issue Type +	Ma	Location *	LS
Category	Earthen Levee			GPS Latitude/Longitude	
				Start	End
Item	Vegetation			38.238780 °	38.238780 °
				-121.555717 °	-121.555717 °
DWR ID	DWR_RD0556_02_f_2018_87				
Comment Code					
V7 : Trees / Woody Vegetation					
Inspector Comment					
Remove cactus from the landside slope.					

No Photos

* Location LS : Land Side N/A : Not Applicable WS : Water Side CR : Crown		** Rating A : Acceptable M : Minimally Acceptable U : Unacceptable		N : Not Inspected/Rated C : Corrected A/W : Acceptable but Monitor & Maintain		+ Issue Type Ma : Maintenance Deficiency Ob : Design & System Obsolescence En : Enforcement	
--	--	--	--	---	--	---	--

**Flood Control Project Maintenance
Levee Inspections**

Maintenance Issue Types Only, Levee Inspection Report By Mile - Fall 2021

Reclamation District No. 0556 Upper Andrus

Waterway	Bank	Unit Miles	Inspection Start/End	Inspector
Unit No. 02 Sacramento River	Left	5.72	10/22/2021 10/22/2021	David Julian

LM Start	2.19	Rating **	U	Issue No.	33
LM End	2.22	Issue Type +	Ma	Location *	LS
Category	Earthen Levee			GPS Latitude/Longitude	
				Start	End
Item	Vegetation			38.238172 °	38.237883 °
				-121.556502 °	-121.556958 °
DWR ID	DWR_RD0556_02_f_2017_33				
Comment Code					
V7 : Trees / Woody Vegetation					
Inspector Comment					
Large growth of prickly pear cactus should be removed to allow inspection and access.					

Photo 1 of 1 : FA_2021_RD0556_19_33_20210830_00018.jpg



View of large growth of prickly pear cactus.

LM Start	2.23	Rating **	U	Issue No.	111
LM End	2.23	Issue Type +	Ma	Location *	LS
Category	Earthen Levee			GPS Latitude/Longitude	
				Start	End
Item	Vegetation			38.237741 °	38.237741 °
				-121.557062 °	-121.557062 °
DWR ID	DWR_RD0556_02_f_2021_111				
Comment Code					
V2 : Remove the wild growth other than native grasses from the levee slopes.					
Inspector Comment					

Photo 1 of 1 : FA_2021_RD0556_19_111_20211022_00105.jpg



View of thick vegetation on the landside slope (Fall 2021).

LM Start	2.26	Rating **	M	Issue No.	75
LM End	2.26	Issue Type +	Ma	Location *	WS
Category	Earthen Levee			GPS Latitude/Longitude	
				Start	End
Item	Vegetation			38.237434 °	38.237434 °
				-121.557414 °	-121.557414 °
DWR ID	DWR_RD0556_02_f_2021_75				
Comment Code					
V2 : Remove the wild growth other than native grasses from the levee slopes.					
Inspector Comment					

No Photos

* Location LS : Land Side N/A : Not Applicable WS : Water Side CR : Crown		** Rating A : Acceptable M : Minimally Acceptable U : Unacceptable		N : Not Inspected/Rated C : Corrected A/W : Acceptable but Monitor & Maintain		+ Issue Type Ma : Maintenance Deficiency Ob : Design & System Obsolescence En : Enforcement	
--	--	--	--	---	--	---	--

**Flood Control Project Maintenance
Levee Inspections**

Maintenance Issue Types Only, Levee Inspection Report By Mile - Fall 2021

Reclamation District No. 0556 Upper Andrus

Waterway	Bank	Unit Miles	Inspection Start/End	Inspector
Unit No. 02 Sacramento River	Left	5.72	10/22/2021 10/22/2021	David Julian

LM Start	2.34	Rating **	M	Issue No.	83
LM End	2.34	Issue Type +	Ma	Location *	WS
Category	Earthen Levee			GPS Latitude/Longitude	
				Start	End
Item	Trim / Thin Trees			38.236300 °	38.236300 °
				-121.558008 °	-121.558008 °
DWR ID	DWR_RD0556_02_f_2021_83				
Comment Code					
T2 : Thin trees to allow visibility of the ground and room to flood fight.					
Inspector Comment					

No Photos

LM Start	2.35	Rating **	M	Issue No.	110
LM End	2.80	Issue Type +	Ma	Location *	LS
Category	Earthen Levee			GPS Latitude/Longitude	
				Start	End
Item	Vegetation			38.236150 °	38.230151 °
				-121.558004 °	-121.555608 °
DWR ID	DWR_RD0556_02_f_2021_110				
Comment Code					
V1 : Control annual grass and weeds on the levee slopes and easements.					
Inspector Comment					

No Photos

LM Start	2.37	Rating **	M	Issue No.	72
LM End	2.37	Issue Type +	Ma	Location *	LS
Category	Earthen Levee			GPS Latitude/Longitude	
				Start	End
Item	Trim / Thin Trees			38.235900 °	38.235900 °
				-121.558041 °	-121.558041 °
DWR ID	DWR_RD0556_02_s_2021_72				
Comment Code					
T2 : Thin trees to allow visibility of the ground and room to flood fight.					
Inspector Comment					

No Photos

* Location LS : Land Side N/A : Not Applicable WS : Water Side CR : Crown		** Rating A : Acceptable M : Minimally Acceptable U : Unacceptable N : Not Inspected/Rated C : Corrected A/W : Acceptable but Monitor & Maintain		+ Issue Type Ma : Maintenance Deficiency Ob : Design & System Obsolescence En : Enforcement	
--	--	---	--	---	--

**Flood Control Project Maintenance
Levee Inspections**

Maintenance Issue Types Only, Levee Inspection Report By Mile - Fall 2021

Reclamation District No. 0556 Upper Andrus

Waterway	Bank	Unit Miles	Inspection Start/End	Inspector
Unit No. 02 Sacramento River	Left	5.72	10/22/2021 10/22/2021	David Julian

LM Start	2.39	Rating **	U	Issue No.	89
LM End	2.39	Issue Type +	Ma	Location *	WS
Category	Earthen Levee			GPS Latitude/Longitude	
				Start	End
Item	Trim / Thin Trees			38.235578 °	38.235578 °
				-121.558105 °	-121.558105 °
DWR ID	DWR_RD0556_02_f_2021_89				
Comment Code					
T2 : Thin trees to allow visibility of the ground and room to flood fight.					
Inspector Comment					

Photo 1 of 1 : FA_2021_RD0556_19_89_20211022_00098.jpg



View looking downstream at thick trees on the landside slope (Fall 2021).

LM Start	2.43	Rating **	U	Issue No.	45
LM End	2.45	Issue Type +	Ma	Location *	LS
Category	Earthen Levee			GPS Latitude/Longitude	
				Start	End
Item	Vegetation			38.235036 °	38.234721 °
				-121.558011 °	-121.557952 °
DWR ID	DWR_RD0556_02_s_2019_45				
Comment Code					
V7 : Trees / Woody Vegetation					
Inspector Comment					
Remove cactus from the landside slope.					

Photo 1 of 1 : FA_2021_RD0556_19_45_20210830_00026.jpg



View of cactus on the landside slope (Spring 2019).

LM Start	2.46	Rating **	U	Issue No.	90
LM End	2.46	Issue Type +	Ma	Location *	WS
Category	Earthen Levee			GPS Latitude/Longitude	
				Start	End
Item	Vegetation			38.234634 °	38.234634 °
				-121.557988 °	-121.557988 °
DWR ID	DWR_RD0556_02_f_2021_90				
Comment Code					
V2 : Remove the wild growth other than native grasses from the levee slopes.					
Inspector Comment					

Photo 1 of 1 : FA_2021_RD0556_19_90_20211022_00099.jpg



View looking upstream at thick vegetation on the waterside slope (Fall 2021).

* Location		** Rating		+ Issue Type	
LS : Land Side	N/A : Not Applicable	A : Acceptable	N : Not Inspected/Rated	Ma : Maintenance Deficiency	
WS : Water Side		M : Minimally Acceptable	C : Corrected	Ob : Design & System Obsolescence	
CR : Crown		U : Unacceptable	A/W : Acceptable but Monitor & Maintain	En : Enforcement	

**Flood Control Project Maintenance
Levee Inspections**

Maintenance Issue Types Only, Levee Inspection Report By Mile - Fall 2021

Reclamation District No. 0556 Upper Andrus

Waterway	Bank	Unit Miles	Inspection Start/End	Inspector
Unit No. 02 Sacramento River	Left	5.72	10/22/2021 10/22/2021	David Julian

LM Start	2.54	Rating **	U	Issue No.	76
LM End	2.54	Issue Type +	Ma	Location *	LS
Category	Earthen Levee			GPS Latitude/Longitude	
				Start	End
Item	Vegetation			38.233487 °	38.233487 °
				-121.557639 °	-121.557639 °
DWR ID	DWR_RD0556_02_s_2020_76				
Comment Code					
V7 : Trees / Woody Vegetation					
Inspector Comment					
Remove cactus on the landside toe.					

Photo 1 of 1 : FA_2021_RD0556_19_76_20210830_00049.jpg



View of large cactus on the landside slope (Fall 2020).

LM Start	2.69	Rating **	C	Issue No.	44
LM End	2.69	Issue Type +	Ma	Location *	WS
Category	Earthen Levee			GPS Latitude/Longitude	
				Start	End
Item	Encroachments			38.231494 °	38.231494 °
				-121.556474 °	-121.556474 °
DWR ID	DWR_RD0556_02_s_2020_44				
Comment Code					
TR : Tree or limb					
Inspector Comment					
Remove fallen tree from the waterside shoulder.					

No Photos

LM Start	2.73	Rating **	M	Issue No.	69
LM End	2.73	Issue Type +	Ma	Location *	LS
Category	Earthen Levee			GPS Latitude/Longitude	
				Start	End
Item	Trim / Thin Trees			38.230962 °	38.230962 °
				-121.556101 °	-121.556101 °
DWR ID	DWR_RD0556_02_s_2021_69				
Comment Code					
T1 : Trim trees to at least five feet above ground level.					
Inspector Comment					

No Photos

* Location LS : Land Side N/A : Not Applicable WS : Water Side CR : Crown		** Rating A : Acceptable M : Minimally Acceptable U : Unacceptable		+ Issue Type Ma : Maintenance Deficiency Ob : Design & System Obsolescence En : Enforcement	
		N : Not Inspected/Rated C : Corrected A/W : Acceptable but Monitor & Maintain			

**Flood Control Project Maintenance
Levee Inspections**

Maintenance Issue Types Only, Levee Inspection Report By Mile - Fall 2021

Reclamation District No. 0556 Upper Andrus

Waterway	Bank	Unit Miles	Inspection Start/End	Inspector
Unit No. 02 Sacramento River	Left	5.72	10/22/2021 10/22/2021	David Julian

LM Start	2.75	Rating **	U	Issue No.	88
LM End	2.75	Issue Type +	Ma	Location *	LS
Category	Earthen Levee			GPS Latitude/Longitude	
				Start	End
Item	Encroachments			38.230752 °	38.230752 °
				-121.556007 °	-121.556007 °
DWR ID	DWR_RD0556_02_f_2019_88				
Comment Code					
TR : Tree or limb					
Inspector Comment					
Broken tree limb blocking view of landside slope.					

Photo 1 of 1 : FA_2021_RD0556_19_88_20210830_00056.jpg



View of broken tree limb blocking the view of the landside slope (Fall 2019).

LM Start	2.89	Rating **	M	Issue No.	108
LM End	3.45	Issue Type +	Ma	Location *	LS
Category	Earthen Levee			GPS Latitude/Longitude	
				Start	End
Item	Vegetation			38.228846 °	38.220682 °
				-121.555263 °	-121.555897 °
DWR ID	DWR_RD0556_02_f_2021_108				
Comment Code					
V1 : Control annual grass and weeds on the levee slopes and easements.					
Inspector Comment					

No Photos

* Location LS : Land Side N/A : Not Applicable WS : Water Side CR : Crown	** Rating A : Acceptable M : Minimally Acceptable U : Unacceptable	N : Not Inspected/Rated C : Corrected A/W : Acceptable but Monitor & Maintain	+ Issue Type Ma : Maintenance Deficiency Ob : Design & System Obsolescence En : Enforcement
--	--	---	---

**Flood Control Project Maintenance
Levee Inspections**

Maintenance Issue Types Only, Levee Inspection Report By Mile - Fall 2021

Reclamation District No. 0556 Upper Andrus

Waterway	Bank	Unit Miles	Inspection Start/End	Inspector
Unit No. 02 Sacramento River	Left	5.72	10/22/2021 10/22/2021	David Julian

LM Start	3.16	Rating **	M	Issue No.	17
LM End	3.28	Issue Type +	Ma	Location *	WS
Category	Supplemental			GPS Latitude/Longitude	
				Start	End
Item	2018 USACE Erosion Survey			38.224850 °	38.223233 °
				-121.555641 °	-121.555687 °
DWR ID					

Comment Code

Inspector Comment

2018 Site ID: SAC 23.2 L
 Status: Eroding
 2018 Field Notes: Additional tree popouts and new erosion throughout site.
 Site History: 2000 - Recently fallen cottonwood at the downstream end.
 2005 - Empty brush boxes. 2011 - A few trees have fallen since last year. 2012 - Potential new tree popout since last year. 2013 - New erosion at downstream end of site and a recent tree pop-out observed.
 2016 - New erosion at the toe. 2017 - New erosion along lower bank.

LM Start	3.16	Rating **	M	Issue No.	17 (cont)
LM End	3.28	Issue Type +	Ma	Location *	WS

DWR ID	
--------	--

Photo 1 of 2 : FA_2021_RD0556_19_17_20211218_10.jpg



USACE 2018 Erosion Photo #1

Photo 2 of 2 : FA_2021_RD0556_19_17_20211218_58.jpg



USACE 2018 Erosion Photo #2

* Location LS : Land Side N/A : Not Applicable WS : Water Side CR : Crown	** Rating A : Acceptable M : Minimally Acceptable U : Unacceptable N : Not Inspected/Rated C : Corrected A/W : Acceptable but Monitor & Maintain	+ Issue Type Ma : Maintenance Deficiency Ob : Design & System Obsolescence En : Enforcement
--	---	---

**Flood Control Project Maintenance
Levee Inspections**

Maintenance Issue Types Only, Levee Inspection Report By Mile - Fall 2021

Reclamation District No. 0556 Upper Andrus

Waterway	Bank	Unit Miles	Inspection Start/End	Inspector
Unit No. 02 Sacramento River	Left	5.72	10/22/2021 10/22/2021	David Julian

LM Start	3.19	Rating **	C	Issue No.	62
LM End	3.19	Issue Type +	Ma	Location *	WS
Category	Earthen Levee			GPS Latitude/Longitude	
				Start	End
Item	Vegetation			38.224529 °	38.224529 °
				-121.555372 °	-121.555372 °
DWR ID	DWR_RD0556_02_s_2021_62				
Comment Code					
V7 : Trees / Woody Vegetation					
Inspector Comment					

No Photos

LM Start	3.24	Rating **	U	Issue No.	61
LM End	3.26	Issue Type +	Ma	Location *	LS
Category	Earthen Levee			GPS Latitude/Longitude	
				Start	End
Item	Vegetation			38.223707 °	38.223457 °
				-121.555396 °	-121.555414 °
DWR ID	DWR_RD0556_02_s_2021_61				
Comment Code					
V7 : Trees / Woody Vegetation					
Inspector Comment					

Photo 1 of 1 : FA_2021_RD0556_19_61_20210830_00040.jpg



View looking downstream at willows on the landside slope (Spring 2021).

LM Start	3.29	Rating **	M	Issue No.	85
LM End	3.29	Issue Type +	Ma	Location *	LS
Category	Earthen Levee			GPS Latitude/Longitude	
				Start	End
Item	Trim / Thin Trees			38.222995 °	38.222995 °
				-121.555433 °	-121.555433 °
DWR ID	DWR_RD0556_02_f_2019_85				
Comment Code					
T2 : Thin trees to allow visibility of the ground and room to flood fight.					
Inspector Comment					

No Photos

* Location		** Rating		+ Issue Type	
LS : Land Side	N/A : Not Applicable	A : Acceptable	N : Not Inspected/Rated	Ma : Maintenance Deficiency	
WS : Water Side		M : Minimally Acceptable	C : Corrected	Ob : Design & System Obsolescence	
CR : Crown		U : Unacceptable	A/W : Acceptable but Monitor & Maintain	En : Enforcement	

**Flood Control Project Maintenance
Levee Inspections**

Maintenance Issue Types Only, Levee Inspection Report By Mile - Fall 2021

Reclamation District No. 0556 Upper Andrus

Waterway	Bank	Unit Miles	Inspection Start/End	Inspector
Unit No. 02 Sacramento River	Left	5.72	10/22/2021 10/22/2021	David Julian

LM Start	3.38	Rating **	C	Issue No.	64
LM End	3.45	Issue Type +	Ma	Location *	WS
Category	Earthen Levee			GPS Latitude/Longitude	
				Start	End
Item	Vegetation			38.221741 °	38.220702 °
				-121.555667 °	-121.555934 °
DWR ID	DWR_RD0556_02_s_2021_64				
Comment Code					
V7 : Trees / Woody Vegetation					
Inspector Comment					

No Photos

LM Start	3.38	Rating **	M	Issue No.	109
LM End	3.38	Issue Type +	Ma	Location *	LS
Category	Earthen Levee			GPS Latitude/Longitude	
				Start	End
Item	Trim / Thin Trees			38.221674 °	38.221674 °
				-121.555639 °	-121.555639 °
DWR ID	DWR_RD0556_02_f_2021_109				
Comment Code					
T2 : Thin trees to allow visibility of the ground and room to flood fight.					
Inspector Comment					

No Photos

* Location LS : Land Side N/A : Not Applicable WS : Water Side CR : Crown	** Rating A : Acceptable M : Minimally Acceptable U : Unacceptable	N : Not Inspected/Rated C : Corrected A/W : Acceptable but Monitor & Maintain	+ Issue Type Ma : Maintenance Deficiency Ob : Design & System Obsolescence En : Enforcement
--	--	---	---

**Flood Control Project Maintenance
Levee Inspections**

Maintenance Issue Types Only, Levee Inspection Report By Mile - Fall 2021

Reclamation District No. 0556 Upper Andrus

Waterway	Bank	Unit Miles	Inspection Start/End	Inspector
Unit No. 02 Sacramento River	Left	5.72	10/22/2021 10/22/2021	David Julian

LM Start	3.58	Rating **	M	Issue No.	16
LM End	3.64	Issue Type +	Ma	Location *	WS
Category	Supplemental			GPS Latitude/Longitude	
				Start	End
Item	2018 USACE Erosion Survey			38.218951 °	38.218104 °
				-121.556689 °	-121.556819 °
DWR ID					
Comment Code					
Inspector Comment					
2018 Site ID: SAC 22.7 L					
Status: Eroding					
2018 Field Notes: No observed change.					
Site History: 1997 - Scallops into berm and very close to levee toe.					
2005 - Brush boxes present. 2011 - New toe scour and freshly fallen tree. 2012 - New tree popout has taken significant portion of soil out of the levee. 2017 - Minor new erosion at toe.					

Photo 1 of 2 : FA_2021_RD0556_19_16_20211218_8.jpg



USACE 2018 Erosion Photo #1

LM Start	3.58	Rating **	M	Issue No.	16 (cont)
LM End	3.64	Issue Type +	Ma	Location *	WS

Photo 2 of 2 : FA_2021_RD0556_19_16_20211218_9.jpg



USACE 2018 Erosion Photo #2

DWR ID	
--------	--

* Location
LS : Land Side N/A : Not Applicable
WS : Water Side
CR : Crown

** Rating
A : Acceptable N : Not Inspected/Rated
M : Minimally Acceptable C : Corrected
U : Unacceptable A/W : Acceptable but Monitor & Maintain

+ Issue Type
Ma : Maintenance Deficiency
Ob : Design & System Obsolescence
En : Enforcement

**Flood Control Project Maintenance
Levee Inspections**

Maintenance Issue Types Only, Levee Inspection Report By Mile - Fall 2021

Reclamation District No. 0556 Upper Andrus

Waterway	Bank	Unit Miles	Inspection Start/End	Inspector
Unit No. 02 Sacramento River	Left	5.72	10/22/2021 10/22/2021	David Julian

LM Start	3.68	Rating **	M	Issue No.	63
LM End	3.68	Issue Type +	Ma	Location *	WS
Category	Earthen Levee			GPS Latitude/Longitude	
				Start	End
Item	Erosion / Bank Caving			38.217462 °	38.217462 °
				-121.556647 °	-121.556647 °
DWR ID	DWR_RD0556_02_f_2019_63				
Comment Code					
E2 : Schedule repair of erosion site prior to the next inspection.					
Inspector Comment					
Repair erosion on waterside shoulder.					

Photo 1 of 1 : FA_2021_RD0556_19_63_20210830_00042.jpg



View of erosion on the waterside shoulder (Fall 2019).

LM Start	3.83	Rating **	M	Issue No.	84
LM End	3.87	Issue Type +	Ma	Location *	LS
Category	Earthen Levee			GPS Latitude/Longitude	
				Start	End
Item	Trim / Thin Trees			38.215223 °	38.214688 °
				-121.556903 °	-121.556868 °
DWR ID	DWR_RD0556_02_f_2018_84				
Comment Code					
T1 : Trim trees to at least five feet above ground level.					
Inspector Comment					

Photo 1 of 1 : FA_2021_RD0556_19_84_20210830_00053.jpg



View looking upstream at thick trees on the landside slope (Fall 2019).

LM Start	3.90	Rating **	M	Issue No.	107
LM End	3.93	Issue Type +	Ma	Location *	LS
Category	Earthen Levee			GPS Latitude/Longitude	
				Start	End
Item	Vegetation			38.214268 °	38.213856 °
				-121.556834 °	-121.556820 °
DWR ID	DWR_RD0556_02_f_2021_107				
Comment Code					
V2 : Remove the wild growth other than native grasses from the levee slopes.					
Inspector Comment					
Remove arundo beginning to establish.					

No Photos

* Location		** Rating		+ Issue Type	
LS : Land Side	N/A : Not Applicable	A : Acceptable	N : Not Inspected/Rated	Ma : Maintenance Deficiency	
WS : Water Side		M : Minimally Acceptable	C : Corrected	Ob : Design & System Obsolescence	
CR : Crown		U : Unacceptable	A/W : Acceptable but Monitor & Maintain	En : Enforcement	

**Flood Control Project Maintenance
Levee Inspections**

Maintenance Issue Types Only, Levee Inspection Report By Mile - Fall 2021

Reclamation District No. 0556 Upper Andrus

Waterway	Bank	Unit Miles	Inspection Start/End	Inspector
Unit No. 02 Sacramento River	Left	5.72	10/22/2021 10/22/2021	David Julian

LM Start	3.95	Rating **	M	Issue No.	15
LM End	4.12	Issue Type +	Ma	Location *	WS
Category	Supplemental			GPS Latitude/Longitude	
				Start	End
Item	2018 USACE Erosion Survey			38.213581 °	38.211112 °
				-121.557197 °	-121.557042 °
DWR ID					

Comment Code

Inspector Comment

2018 Site ID: SAC 22.5 L
 Status: Eroding
 2018 Field Notes: Minor new erosion at toe.
 Site History: 2002 - Spot rock along berm, but not in the erosion pockets. 2005 - Some new minor stone revetment at the upstream end. Brush boxes present. 2006 - Currently installing new brush in downstream brush boxes. 2007 - Rock in middle portion for about 150 ft. 2010 - Some attempt at repairs but still has pockets of erosion. 2012 - More erosion along the toe. 2017 - New lower bank erosion at the upstream end. Locals placed rock in some erosion pockets.

LM Start	3.95	Rating **	M	Issue No.	15 (cont)
LM End	4.12	Issue Type +	Ma	Location *	WS

DWR ID

Photo 1 of 2 : FA_2021_RD0556_19_15_20211218_6.jpg



USACE 2018 Erosion Photo #1

Photo 2 of 2 : FA_2021_RD0556_19_15_20211218_7.jpg



USACE 2018 Erosion Photo #2

* Location LS : Land Side N/A : Not Applicable WS : Water Side CR : Crown	** Rating A : Acceptable M : Minimally Acceptable U : Unacceptable	N : Not Inspected/Rated C : Corrected A/W : Acceptable but Monitor & Maintain	+ Issue Type Ma : Maintenance Deficiency Ob : Design & System Obsolescence En : Enforcement
--	--	---	---

**Flood Control Project Maintenance
Levee Inspections**

Maintenance Issue Types Only, Levee Inspection Report By Mile - Fall 2021

Reclamation District No. 0556 Upper Andrus

Waterway	Bank	Unit Miles	Inspection Start/End	Inspector
Unit No. 02 Sacramento River	Left	5.72	10/22/2021 10/22/2021	David Julian

LM Start	3.97	Rating **	M	Issue No.	5	
LM End	3.97	Issue Type +	Ma	Location *	LS	
Category	Earthen Levee			GPS Latitude/Longitude		
				Start		End
Item	Trim / Thin Trees			38.213244 °		38.213244 °
				-121.556803 °		-121.556803 °
DWR ID	DWR_RD0556_02_s_2021_5					
Comment Code						
T1 : Trim trees to at least five feet above ground level.						
Inspector Comment						

No Photos

LM Start	4.01	Rating **	U	Issue No.	71
LM End	4.01	Issue Type +	Ma	Location *	LS
Category	Earthen Levee			GPS Latitude/Longitude	
				Start	End
Item	Vegetation			38.212672 °	38.212672 °
				-121.556759 °	-121.556759 °
DWR ID	DWR_RD0556_02_s_2020_71				
Comment Code					
V7 : Trees / Woody Vegetation					
Inspector Comment					
Arundo on the landside slope.					

Photo 1 of 1 : FA_2021_RD0556_19_71_20210830_00046.jpg



View of thick arundo on the landside slope (Spring 2020).

LM Start	4.04	Rating **	M	Issue No.	106
LM End	4.10	Issue Type +	Ma	Location *	LS
Category	Earthen Levee			GPS Latitude/Longitude	
				Start	End
Item	Vegetation			38.212196 °	38.211372 °
				-121.556746 °	-121.556725 °
DWR ID	DWR_RD0556_02_f_2021_106				
Comment Code					
V1 : Control annual grass and weeds on the levee slopes and easements.					
Inspector Comment					

No Photos

* Location LS : Land Side N/A : Not Applicable WS : Water Side CR : Crown		** Rating A : Acceptable M : Minimally Acceptable U : Unacceptable		N : Not Inspected/Rated C : Corrected A/W : Acceptable but Monitor & Maintain		+ Issue Type Ma : Maintenance Deficiency Ob : Design & System Obsolescence En : Enforcement	
--	--	--	--	---	--	---	--

**Flood Control Project Maintenance
Levee Inspections**

Maintenance Issue Types Only, Levee Inspection Report By Mile - Fall 2021

Reclamation District No. 0556 Upper Andrus

Waterway	Bank	Unit Miles	Inspection Start/End	Inspector
Unit No. 02 Sacramento River	Left	5.72	10/22/2021 10/22/2021	David Julian

LM Start	4.13	Rating **	U	Issue No.	105
LM End	4.32	Issue Type +	Ma	Location *	LS
Category	Earthen Levee			GPS Latitude/Longitude	
				Start	End
Item	Vegetation			38.210922 °	38.208171 °
				-121.556735 °	-121.556800 °
DWR ID	DWR_RD0556_02_f_2021_105				
Comment Code					
V2 : Remove the wild growth other than native grasses from the levee slopes.					
Inspector Comment					

Photo 1 of 1 : FA_2021_RD0556_19_105_20211022_00104.jpg



View looking upstream at thick vegetation on the landside slope (Fall 2021).

LM Start	4.15	Rating **	C	Issue No.	53		
LM End	4.34	Issue Type +	Ma	Location *	WS		
Category	Earthen Levee			GPS Latitude/Longitude			
				Start	End		
Item	Vegetation			38.210623	°	38.207880	°
				-121.556732	°	-121.556842	°
DWR ID	DWR_RD0556_02_s_2020_53						
Comment Code							
V7 : Trees / Woody Vegetation							
Inspector Comment							
Trim arundo 20' back down waterside slope.							

No Photos

LM Start	4.15	Rating **	U	Issue No.	55
LM End	4.15	Issue Type +	Ma	Location *	LS
Category	Earthen Levee			GPS Latitude/Longitude	
				Start	End
Item	Trim / Thin Trees			38.210623 °	38.210623 °
				-121.556733 °	-121.556733 °
DWR ID	DWR_RD0556_02_s_2020_55				
Comment Code					
T2 : Thin trees to allow visibility of the ground and room to flood fight.					
Inspector Comment					

Photo 1 of 1 : FA_2021_RD0556_19_55_20210830_00035.jpg



View of thick tree on the landside slope (Spring 2020).

* Location LS : Land Side N/A : Not Applicable WS : Water Side CR : Crown		** Rating A : Acceptable M : Minimally Acceptable U : Unacceptable		N : Not Inspected/Rated C : Corrected A/W : Acceptable but Monitor & Maintain		+ Issue Type Ma : Maintenance Deficiency Ob : Design & System Obsolescence En : Enforcement	
--	--	--	--	---	--	---	--

**Flood Control Project Maintenance
Levee Inspections**

Maintenance Issue Types Only, Levee Inspection Report By Mile - Fall 2021

Reclamation District No. 0556 Upper Andrus

Waterway	Bank	Unit Miles	Inspection Start/End	Inspector
Unit No. 02 Sacramento River	Left	5.72	10/22/2021 10/22/2021	David Julian

LM Start	4.22	Rating **	U	Issue No.	51
LM End	4.33	Issue Type +	Ma	Location *	LS
Category	Earthen Levee			GPS Latitude/Longitude	
				Start	End
Item	Vegetation			38.209629 °	38.208062 °
				-121.556757 °	-121.556807 °
DWR ID	DWR_RD0556_02_s_2020_51				
Comment Code					
V7 : Trees / Woody Vegetation					
Inspector Comment					
Remove arundo from landside slope and willows on the landside toe.					

Photo 1 of 1 : FA_2021_RD0556_19_51_20210830_00031.jpg



View of thick arundo on the landside slope (Spring 2020).

LM Start	4.40	Rating **	M	Issue No.	65
LM End	4.40	Issue Type +	Ma	Location *	WS
Category	Earthen Levee			GPS Latitude/Longitude	
				Start	End
Item	Trim / Thin Trees			38.207032 °	38.207032 °
				-121.556819 °	-121.556819 °
DWR ID	DWR_RD0556_02_s_2021_65				
Comment Code					
T2 : Thin trees to allow visibility of the ground and room to flood fight.					
Inspector Comment					

No Photos

LM Start	4.43	Rating **	C	Issue No.	54
LM End	4.43	Issue Type +	Ma	Location *	WS
Category	Earthen Levee			GPS Latitude/Longitude	
				Start	End
Item	Encroachments			38.206628 °	38.206628 °
				-121.556829 °	-121.556829 °
DWR ID	DWR_RD0556_02_s_2018_54				
Comment Code					
TR : Tree or limb					
Inspector Comment					

No Photos

* Location		** Rating		+ Issue Type	
LS : Land Side	N/A : Not Applicable	A : Acceptable	N : Not Inspected/Rated	Ma : Maintenance Deficiency	
WS : Water Side		M : Minimally Acceptable	C : Corrected	Ob : Design & System Obsolescence	
CR : Crown		U : Unacceptable	A/W : Acceptable but Monitor & Maintain	En : Enforcement	

**Flood Control Project Maintenance
Levee Inspections**

Maintenance Issue Types Only, Levee Inspection Report By Mile - Fall 2021

Reclamation District No. 0556 Upper Andrus

Waterway	Bank	Unit Miles	Inspection Start/End	Inspector
Unit No. 02 Sacramento River	Left	5.72	10/22/2021 10/22/2021	David Julian

LM Start	4.44	Rating **	M	Issue No.	104
LM End	4.62	Issue Type +	Ma	Location *	LS
Category	Earthen Levee			GPS Latitude/Longitude	
				Start	End
Item	Vegetation			38.206418 °	38.203901 °
				-121.556770 °	-121.556774 °
DWR ID	DWR_RD0556_02_f_2021_104				
Comment Code					
V1 : Control annual grass and weeds on the levee slopes and easements.					
Inspector Comment					

No Photos

LM Start	4.44	Rating **	M	Issue No.	14
LM End	4.49	Issue Type +	Ma	Location *	WS
Category	Supplemental			GPS Latitude/Longitude	
				Start	End
Item	2018 USACE Erosion Survey			38.206377 °	38.205729 °
				-121.557184 °	-121.557108 °
DWR ID					
Comment Code					
Inspector Comment					
2018 Site ID: SAC 21.9 L					
Status: Eroding					
2018 Field Notes: No observed change.					
Site History: 2013 - Erosion pockets encroaching on levee foundation.					

Photo 1 of 2 : FA_2021_RD0556_19_14_20211218_4.jpg



USACE 2018 Erosion Photo #1

LM Start	4.44	Rating **	M	Issue No.	14 (cont)
LM End	4.49	Issue Type +	Ma	Location *	WS

Photo 2 of 2 : FA_2021_RD0556_19_14_20211218_5.jpg



USACE 2018 Erosion Photo #2

DWR ID	
--------	--

* Location LS : Land Side N/A : Not Applicable WS : Water Side CR : Crown		** Rating A : Acceptable M : Minimally Acceptable U : Unacceptable		N : Not Inspected/Rated C : Corrected A/W : Acceptable but Monitor & Maintain		+ Issue Type Ma : Maintenance Deficiency Ob : Design & System Obsolescence En : Enforcement	
--	--	--	--	---	--	---	--

**Flood Control Project Maintenance
Levee Inspections**

Maintenance Issue Types Only, Levee Inspection Report By Mile - Fall 2021

Reclamation District No. 0556 Upper Andrus

Waterway	Bank	Unit Miles	Inspection Start/End	Inspector
Unit No. 02 Sacramento River	Left	5.72	10/22/2021 10/22/2021	David Julian

LM Start	4.46	Rating **	U	Issue No.	67
LM End	4.47	Issue Type +	Ma	Location *	WS
Category	Earthen Levee			GPS Latitude/Longitude	
				Start	End
Item	Vegetation			38.206205 °	38.205968 °
				-121.556820 °	-121.556820 °
DWR ID	DWR_RD0556_02_s_2021_67				
Comment Code					
V7 : Trees / Woody Vegetation					
Inspector Comment					

Photo 1 of 1 : FA_2021_RD0556_19_67_20210830_00044.jpg



View looking downstream at willows on the waterside slope (Spring 2021).

LM Start	4.57	Rating **	U	Issue No.	56
LM End	4.57	Issue Type +	Ma	Location *	LS
Category	Earthen Levee			GPS Latitude/Longitude	
				Start	End
Item	Encroachments			38.204558 °	38.204544 °
				-121.556773 °	-121.556769 °
DWR ID	DWR_RD0556_02_s_2018_56				
Comment Code					
TR : Tree or limb					
Inspector Comment					
Remove dead tree/limb from the landside.					

Photo 1 of 1 : FA_2021_RD0556_19_56_20210830_00036.jpg



Fallen tree on landside should be removed.

LM Start	4.57	Rating **	U	Issue No.	60
LM End	4.57	Issue Type +	Ma	Location *	LS
Category	Earthen Levee			GPS Latitude/Longitude	
				Start	End
Item	Trim / Thin Trees			38.204537 °	38.204537 °
				-121.556782 °	-121.556782 °
DWR ID	DWR_RD0556_02_s_2021_60				
Comment Code					
T2 : Thin trees to allow visibility of the ground and room to flood fight.					
Inspector Comment					

Photo 1 of 1 : FA_2021_RD0556_19_60_20211022_00103.jpg



View looking upstream at thick trees on the landside slope (Fall 2021).

* Location		** Rating		+ Issue Type	
LS : Land Side	N/A : Not Applicable	A : Acceptable	N : Not Inspected/Rated	Ma : Maintenance Deficiency	
WS : Water Side		M : Minimally Acceptable	C : Corrected	Ob : Design & System Obsolescence	
CR : Crown		U : Unacceptable	A/W : Acceptable but Monitor & Maintain	En : Enforcement	

**Flood Control Project Maintenance
Levee Inspections**

Maintenance Issue Types Only, Levee Inspection Report By Mile - Fall 2021

Reclamation District No. 0556 Upper Andrus

Waterway	Bank	Unit Miles	Inspection Start/End	Inspector
Unit No. 02 Sacramento River	Left	5.72	10/22/2021 10/22/2021	David Julian

LM Start	4.62	Rating **	U	Issue No.	102
LM End	4.99	Issue Type +	Ma	Location *	LS
Category	Earthen Levee			GPS Latitude/Longitude	
				Start	End
Item	Vegetation			38.203902 °	38.198631 °
				-121.556775 °	-121.558196 °
DWR ID	DWR_RD0556_02_f_2021_102				
Comment Code					
V2 : Remove the wild growth other than native grasses from the levee slopes.					
Inspector Comment					
Blackberries on the landside slope.					

Photo 1 of 1 : FA_2021_RD0556_19_102_20211022_00102.jpg



View looking upstream at blackberries on the landside slope (Fall 2021).

LM Start	4.64	Rating **	U	Issue No.	58
LM End	4.64	Issue Type +	Ma	Location *	LS
Category	Earthen Levee			GPS Latitude/Longitude	
				Start	End
Item	Trim / Thin Trees			38.203480 °	38.203480 °
				-121.556824 °	-121.556824 °
DWR ID	DWR_RD0556_02_s_2018_58				
Comment Code					
T2 : Thin trees to allow visibility of the ground and room to flood fight.					
Inspector Comment					
Remove fig tree from the landside slope.					

Photo 1 of 1 : FA_2021_RD0556_19_58_20210830_00038.jpg



View of fig tree on landside slope (October 2018).

LM Start	4.65	Rating **	M	Issue No.	27
LM End	4.65	Issue Type +	Ma	Location *	WS
Category	Earthen Levee			GPS Latitude/Longitude	
				Start	End
Item	Encroachments			38.203425 °	38.203425 °
				-121.556845 °	-121.556845 °
DWR ID	DWR_RD0556_02_s_2017_27				
Comment Code					
TR : Tree or limb					
Inspector Comment					
Remove fallen tree from waterside slope.					

Photo 1 of 1 : FA_2021_RD0556_19_27_20210830_00013.jpg



View of fallen tree on the waterside slope (October 2018).

* Location		** Rating		+ Issue Type	
LS : Land Side	N/A : Not Applicable	A : Acceptable	N : Not Inspected/Rated	Ma : Maintenance Deficiency	
WS : Water Side		M : Minimally Acceptable	C : Corrected	Ob : Design & System Obsolescence	
CR : Crown		U : Unacceptable	A/W : Acceptable but Monitor & Maintain	En : Enforcement	

**Flood Control Project Maintenance
Levee Inspections**

Maintenance Issue Types Only, Levee Inspection Report By Mile - Fall 2021

Reclamation District No. 0556 Upper Andrus

Waterway	Bank	Unit Miles	Inspection Start/End	Inspector
Unit No. 02 Sacramento River	Left	5.72	10/22/2021 10/22/2021	David Julian

LM Start	4.68	Rating **	U	Issue No.	3
LM End	4.72	Issue Type +	Ma	Location *	WS
Category	Earthen Levee			GPS Latitude/Longitude	
				Start	End
Item	Vegetation			38.202942 °	38.202431 °
				-121.556870 °	-121.556960 °
DWR ID	DWR_RD0556_02_f_2020_3				
Comment Code					
V7 : Trees / Woody Vegetation					
Inspector Comment					
Cut arundo back 20' from waterside slope.					

Photo 1 of 1 : FA_2021_RD0556_19_3_20210830_00003.jpg



View of looking downstream at arundo on the waterside slope (Fall 2020).

LM Start	4.75	Rating **	M	Issue No.	93
LM End	4.78	Issue Type +	Ma	Location *	WS
Category	Earthen Levee			GPS Latitude/Longitude	
				Start	End
Item	Vegetation			38.201956 °	38.201535 °
				-121.557035 °	-121.557093 °
DWR ID	DWR_RD0556_02_f_2021_93				
Comment Code					
V2 : Remove the wild growth other than native grasses from the levee slopes.					
Inspector Comment					

No Photos

LM Start	4.81	Rating **	U	Issue No.	94
LM End	4.84	Issue Type +	Ma	Location *	WS
Category	Earthen Levee			GPS Latitude/Longitude	
				Start	End
Item	Vegetation			38.201122 °	38.200681 °
				-121.557142 °	-121.557241 °
DWR ID	DWR_RD0556_02_f_2021_94				
Comment Code					
V2 : Remove the wild growth other than native grasses from the levee slopes.					
Inspector Comment					

Photo 1 of 1 : FA_2021_RD0556_19_94_20211022_00100.jpg



View looking upstream at vegetation on the waterside slope (Fall 2021).

* Location LS : Land Side N/A : Not Applicable WS : Water Side CR : Crown		** Rating A : Acceptable M : Minimally Acceptable U : Unacceptable		+ Issue Type Ma : Maintenance Deficiency Ob : Design & System Obsolescence En : Enforcement	
		N : Not Inspected/Rated C : Corrected A/W : Acceptable but Monitor & Maintain			

**Flood Control Project Maintenance
Levee Inspections**

Maintenance Issue Types Only, Levee Inspection Report By Mile - Fall 2021

Reclamation District No. 0556 Upper Andrus

Waterway	Bank	Unit Miles	Inspection Start/End	Inspector
Unit No. 02 Sacramento River	Left	5.72	10/22/2021 10/22/2021	David Julian

LM Start	4.82	Rating **	U	Issue No.	52
LM End	4.88	Issue Type +	Ma	Location *	LS
Category	Earthen Levee			GPS Latitude/Longitude	
				Start	End
Item	Vegetation			38.201017 °	38.200136 °
				-121.557135 °	-121.557426 °
DWR ID	DWR_RD0556_02_s_2021_52				
Comment Code					
V7 : Trees / Woody Vegetation					
Inspector Comment					
Bamboo and trees of heaven should be removed.					

Photo 1 of 1 : FA_2021_RD0556_19_52_20210830_00032.jpg



View looking downstream at bamboo and trees of heaven on landside slope (Spring 2021).

LM Start	4.85	Rating **	U	Issue No.	66
LM End	4.87	Issue Type +	Ma	Location *	WS
Category	Earthen Levee			GPS Latitude/Longitude	
				Start	End
Item	Vegetation			38.200543 °	38.200246 °
				-121.557286 °	-121.557380 °
DWR ID	DWR_RD0556_02_s_2021_66				
Comment Code					
V7 : Trees / Woody Vegetation					
Inspector Comment					

Photo 1 of 1 : FA_2021_RD0556_19_66_20210830_00043.jpg



View looking upstream at willows on the waterside slope (Spring 2021).

LM Start	4.95	Rating **	M	Issue No.	103
LM End	4.95	Issue Type +	Ma	Location *	LS
Category	Earthen Levee			GPS Latitude/Longitude	
				Start	End
Item	Trim / Thin Trees			38.199223 °	38.199223 °
				-121.557876 °	-121.557876 °
DWR ID	DWR_RD0556_02_f_2021_103				
Comment Code					
T2 : Thin trees to allow visibility of the ground and room to flood fight.					
Inspector Comment					

No Photos

* Location		** Rating		+ Issue Type	
LS : Land Side	N/A : Not Applicable	A : Acceptable	N : Not Inspected/Rated	Ma : Maintenance Deficiency	
WS : Water Side		M : Minimally Acceptable	C : Corrected	Ob : Design & System Obsolescence	
CR : Crown		U : Unacceptable	A/W : Acceptable but Monitor & Maintain	En : Enforcement	

**Flood Control Project Maintenance
Levee Inspections**

Maintenance Issue Types Only, Levee Inspection Report By Mile - Fall 2021

Reclamation District No. 0556 Upper Andrus

Waterway	Bank	Unit Miles	Inspection Start/End	Inspector
Unit No. 02 Sacramento River	Left	5.72	10/22/2021 10/22/2021	David Julian

LM Start	4.95	Rating **	U	Issue No.	95
LM End	4.95	Issue Type +	Ma	Location *	WS
Category	Earthen Levee			GPS Latitude/Longitude	
				Start	End
Item	Encroachments			38.199147 °	38.199147 °
				-121.557965 °	-121.557965 °
DWR ID	DWR_RD0556_02_f_2021_95				
Comment Code					
GA : Garbage					
Inspector Comment					
Remove garbage on the waterside slope.					

Photo 1 of 1 : FA_2021_RD0556_19_95_20211022_00101.jpg



View of garbage on the waterside slope (Fall 2021).

LM Start	4.99	Rating **	M	Issue No.	100
LM End	5.07	Issue Type +	Ma	Location *	LS
Category	Earthen Levee			GPS Latitude/Longitude	
				Start	End
Item	Vegetation			38.198630 °	38.197585 °
				-121.558197 °	-121.558812 °
DWR ID	DWR_RD0556_02_f_2021_100				
Comment Code					
V1 : Control annual grass and weeds on the levee slopes and easements.					
Inspector Comment					

No Photos

LM Start	5.05	Rating **	M	Issue No.	101
LM End	5.05	Issue Type +	Ma	Location *	LS
Category	Earthen Levee			GPS Latitude/Longitude	
				Start	End
Item	Trim / Thin Trees			38.197828 °	38.197828 °
				-121.558670 °	-121.558670 °
DWR ID	DWR_RD0556_02_f_2021_101				
Comment Code					
T2 : Thin trees to allow visibility of the ground and room to flood fight.					
Inspector Comment					

No Photos

* Location		** Rating		+ Issue Type	
LS : Land Side	N/A : Not Applicable	A : Acceptable	N : Not Inspected/Rated	Ma : Maintenance Deficiency	
WS : Water Side		M : Minimally Acceptable	C : Corrected	Ob : Design & System Obsolescence	
CR : Crown		U : Unacceptable	A/W : Acceptable but Monitor & Maintain	En : Enforcement	

**Flood Control Project Maintenance
Levee Inspections**

Maintenance Issue Types Only, Levee Inspection Report By Mile - Fall 2021

Reclamation District No. 0556 Upper Andrus

Waterway	Bank	Unit Miles	Inspection Start/End	Inspector
Unit No. 02 Sacramento River	Left	5.72	10/22/2021 10/22/2021	David Julian

LM Start	5.08	Rating **	U	Issue No.	37
LM End	5.16	Issue Type +	Ma	Location *	LS
Category	Earthen Levee			GPS Latitude/Longitude	
				Start	End
Item	Vegetation			38.197407 °	38.196388 °
				-121.558950 °	-121.559558 °
DWR ID	DWR_RD0556_02_f_2017_37				
Comment Code					
V7 : Trees / Woody Vegetation					
Inspector Comment					
Remove large cactus partway down the landside slope.					

Photo 1 of 1 : FA_2021_RD0556_19_37_20210830_00021.jpg



View looking upstream at cactus partway down the landside slope (Fall 2020).

LM Start	5.21	Rating **	M	Issue No.	98	
LM End	5.70	Issue Type +	Ma	Location *	LS	
Category	Earthen Levee			GPS Latitude/Longitude		
				Start		End
Item	Vegetation			38.195840 °		38.191952 °
				-121.560001 °		-121.567334 °
DWR ID	DWR_RD0556_02_f_2021_98					
Comment Code						
V1 : Control annual grass and weeds on the levee slopes and easements.						
Inspector Comment						

No Photos

LM Start	5.22	Rating **	M	Issue No.	4
LM End	5.22	Issue Type +	Ma	Location *	LS
Category	Earthen Levee			GPS Latitude/Longitude	
				Start	End
Item	Trim / Thin Trees			38.195691 °	38.195691 °
				-121.560133 °	-121.560133 °
DWR ID	DWR_RD0556_02_s_2021_4				
Comment Code					
T2 : Thin trees to allow visibility of the ground and room to flood fight.					
Inspector Comment					

No Photos

* Location		** Rating		+ Issue Type	
LS : Land Side	N/A : Not Applicable	A : Acceptable	N : Not Inspected/Rated	Ma : Maintenance Deficiency	
WS : Water Side		M : Minimally Acceptable	C : Corrected	Ob : Design & System Obsolescence	
CR : Crown		U : Unacceptable	A/W : Acceptable but Monitor & Maintain	En : Enforcement	

**Flood Control Project Maintenance
Levee Inspections**

Maintenance Issue Types Only, Levee Inspection Report By Mile - Fall 2021

Reclamation District No. 0556 Upper Andrus

Waterway	Bank	Unit Miles	Inspection Start/End	Inspector
Unit No. 02 Sacramento River	Left	5.72	10/22/2021 10/22/2021	David Julian

LM Start	5.33	Rating **	M	Issue No.	96
LM End	5.33	Issue Type +	Ma	Location *	WS
Category	Earthen Levee			GPS Latitude/Longitude	
				Start	End
Item	Trim / Thin Trees			38.194512 °	38.194512 °
				-121.561478 °	-121.561478 °
DWR ID	DWR_RD0556_02_f_2021_96				
Comment Code					
T1 : Trim trees to at least five feet above ground level.					
Inspector Comment					

No Photos

LM Start	5.40	Rating **	M	Issue No.	99
LM End	5.40	Issue Type +	Ma	Location *	LS
Category	Earthen Levee			GPS Latitude/Longitude	
				Start	End
Item	Encroachments			38.193846 °	38.193846 °
				-121.562461 °	-121.562461 °
DWR ID	DWR_RD0556_02_f_2021_99				
Comment Code					
TR : Tree or limb					
Inspector Comment					

No Photos

LM Start	5.41	Rating **	M	Issue No.	97
LM End	5.41	Issue Type +	Ma	Location *	WS
Category	Earthen Levee			GPS Latitude/Longitude	
				Start	End
Item	Encroachments			38.193728 °	38.193728 °
				-121.562690 °	-121.562690 °
DWR ID	DWR_RD0556_02_f_2021_97				
Comment Code					
TR : Tree or limb					
Inspector Comment					

No Photos

* Location LS : Land Side N/A : Not Applicable WS : Water Side CR : Crown		** Rating A : Acceptable M : Minimally Acceptable U : Unacceptable		N : Not Inspected/Rated C : Corrected A/W : Acceptable but Monitor & Maintain		+ Issue Type Ma : Maintenance Deficiency Ob : Design & System Obsolescence En : Enforcement	
--	--	--	--	---	--	---	--

**Flood Control Project Maintenance
Levee Inspections**

Maintenance Issue Types Only, Levee Inspection Report By Mile - Fall 2021

Reclamation District No. 0556 Upper Andrus

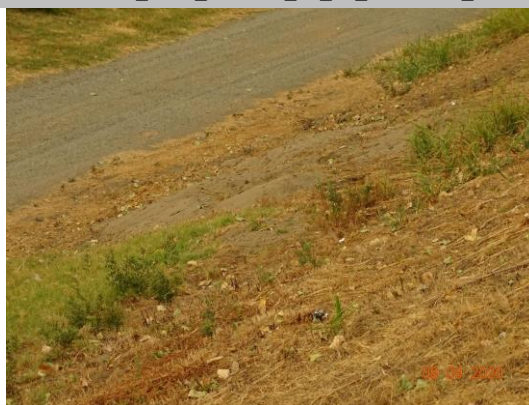
Waterway	Bank	Unit Miles	Inspection Start/End	Inspector
Unit No. 02 Sacramento River	Left	5.72	10/22/2021 10/22/2021	David Julian

LM Start	5.53	Rating **	C	Issue No.	74
LM End	5.53	Issue Type +	Ma	Location *	WS
Category	Earthen Levee			GPS Latitude/Longitude	
				Start	End
Item	Encroachments			38.192803 °	38.192803 °
				-121.564388 °	-121.564388 °
DWR ID	DWR_RD0556_02_f_2019_74				
Comment Code					
TR : Tree or limb					
Inspector Comment					

No Photos

LM Start	5.64	Rating **	U	Issue No.	79
LM End	5.64	Issue Type +	Ma	Location *	LS
Category	Earthen Levee			GPS Latitude/Longitude	
				Start	End
Item	Animal Control			38.192237 °	38.192237 °
				-121.566368 °	-121.566368 °
DWR ID	DWR_RD0556_02_f_2018_79				
Comment Code					
A3 : No rodents visible, but rodent burrows visible; need to backfill and compact or grout burrows.					
Inspector Comment					
More than 2 cubic feet of soil was removed between the two large burrow holes.					

Photo 1 of 1 : FA_2021_RD0556_19_79_20210830_00051.jpg



View looking downstream at burrow holes on the landside slope (Fall 2020).

* Location LS : Land Side N/A : Not Applicable WS : Water Side CR : Crown		** Rating A : Acceptable N : Not Inspected/Rated M : Minimally Acceptable C : Corrected U : Unacceptable A/W : Acceptable but Monitor & Maintain		+ Issue Type Ma : Maintenance Deficiency Ob : Design & System Obsolescence En : Enforcement
--	--	---	--	---