

**Flood Control Project Maintenance
Levee Inspections**

Maintenance Issue Types Only, Levee Inspection Report By Mile - Fall 2017

Reclamation District No. 0556 Upper Andrus

Waterway	Bank	Unit Miles	Inspection Start/End	Inspector
Unit No. 01 Georgiana Slough	Right	5.48	11/01/2017 11/01/2017	Keith Millard

LM Start		Rating **	M	Issue No.	3
LM End		Issue Type +	Ma	Location *	
Category	Earthen Levee			GPS Latitude/Longitude	
				Start	End
Item	Flood Preparedness & Training				
DWR ID	DWR_RD0556_01_f_2014_3				
Comment Code					
Inspector Comment					
The members in the district have not been flood fight trained recently according to the district manager.					

No Photos

LM Start		Rating **	A	Issue No.	6
LM End		Issue Type +	Ma	Location *	
Category	Earthen Levee			GPS Latitude/Longitude	
				Start	End
Item	Operations & Maintenance Manuals				
DWR ID	DWR_RD0556_01_s_2012_6				
Comment Code					
Inspector Comment					
District president has the O&M Manual.					

No Photos

* Location LS : Land Side N/A : Not Applicable WS : Water Side CR : Crown	** Rating A : Acceptable M : Minimally Acceptable U : Unacceptable	N : Not Inspected/Rated C : Corrected A/W : Acceptable but Monitor & Maintain	+ Issue Type Ma : Maintenance Deficiency Ob : Design & System Obsolescence En : Enforcement
--	--	---	---

**Flood Control Project Maintenance
Levee Inspections**

Maintenance Issue Types Only, Levee Inspection Report By Mile - Fall 2017

Reclamation District No. 0556 Upper Andrus

Waterway	Bank	Unit Miles	Inspection Start/End	Inspector
Unit No. 01 Georgiana Slough	Right	5.48	11/01/2017 11/01/2017	Keith Millard

LM Start		Rating **	M	Issue No.	8		
LM End		Issue Type +	Ma	Location *	N/A		
Category	Earthen Levee			GPS Latitude/Longitude			
				Start		End	
Item	Emergency Supplies & Equipment				°		°
					°		°
DWR ID	DWR_RD0556_01_f_2014_8						
Comment Code							
Inspector Comment							
According to the district manager, when they need supplies they will order them, there are no supplies stored.							

No Photos

LM Start	0.08	Rating **	U	Issue No.	21
LM End	0.84	Issue Type +	Ma	Location *	LS
Category	Earthen Levee			GPS Latitude/Longitude	
				Start	End
Item	Vegetation			38.238037 °	38.229105 °
				-121.518067 °	-121.525352 °
DWR ID	DWR_RD0556_01_s_2017_21				
Comment Code					
V7 : Trees / Woody Vegetation					
Inspector Comment					
Control the wild growth and trim the trees so the slope can be seen.					

Photo 1 of 1 : FA_2017_RD0556_18_21_20171002_00004.jpg



Looking downstream from levee mile 0.09 woody tree growth and wild weeds covering the levee slope and shoulder landside levee section.

* Location LS : Land Side N/A : Not Applicable WS : Water Side CR : Crown	** Rating A : Acceptable M : Minimally Acceptable U : Unacceptable	N : Not Inspected/Rated C : Corrected A/W : Acceptable but Monitor & Maintain	+ Issue Type Ma : Maintenance Deficiency Ob : Design & System Obsolescence En : Enforcement
--	--	---	---

**Flood Control Project Maintenance
Levee Inspections**

Maintenance Issue Types Only, Levee Inspection Report By Mile - Fall 2017

Reclamation District No. 0556 Upper Andrus

Waterway	Bank	Unit Miles	Inspection Start/End	Inspector
Unit No. 01 Georgiana Slough	Right	5.48	11/01/2017 11/01/2017	Keith Millard

LM Start	0.80	Rating **	M	Issue No.	12
LM End	3.36	Issue Type +	Ma	Location *	LS
Category	Earthen Levee			GPS Latitude/Longitude	
				Start	End
Item	Animal Control			38.229459 °	38.208959 °
				-121.524805 °	-121.541368 °
DWR ID	DWR_RD0556_01_s_2012_12				
Comment Code					
A1 : Exterminate rodents and backfill and compact or grout burrows.					
Inspector Comment					
Exterminate rodents and backfill and compact burrows.					

No Photos

LM Start	0.93	Rating **	U	Issue No.	10
LM End	1.54	Issue Type +	Ma	Location *	LS
Category	Earthen Levee			GPS Latitude/Longitude	
				Start	End
Item	Trim / Thin Trees			38.228295 °	38.225368 °
				-121.526688 °	-121.534677 °
DWR ID	DWR_RD0556_01_f_2015_10				
Comment Code					
T3 : Trim and thin trees to allow visibility of the ground and room to flood fight.					
Inspector Comment					
Thin out and remove the wild tree growth and vegetation on the landside levee slope and shoulder.					

Photo 1 of 1 : FA_2017_RD0556_18_10_20171002_00003.jpg



RD 556 Unit 1 levee miles 0.93-1.54 looking downstream landside slope.

LM Start	1.43	Rating **	M	Issue No.	40
LM End	1.43	Issue Type +	Ma	Location *	LS
Category	Earthen Levee			GPS Latitude/Longitude	
				Start	End
Item	Erosion / Bank Caving			38.226537 °	38.226537 °
				-121.533512 °	-121.533512 °
DWR ID	DWR_RD0556_01_f_2012_40				
Comment Code					
E1 : Note and monitor erosion site.					
Inspector Comment					

No Photos

* Location		** Rating		+ Issue Type	
LS : Land Side	N/A : Not Applicable	A : Acceptable	N : Not Inspected/Rated	Ma : Maintenance Deficiency	
WS : Water Side		M : Minimally Acceptable	C : Corrected	Ob : Design & System Obsolescence	
CR : Crown		U : Unacceptable	A/W : Acceptable but Monitor & Maintain	En : Enforcement	

**Flood Control Project Maintenance
Levee Inspections**

Maintenance Issue Types Only, Levee Inspection Report By Mile - Fall 2017

Reclamation District No. 0556 Upper Andrus

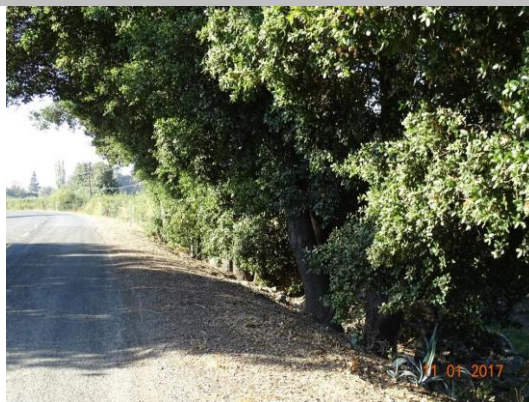
Waterway	Bank	Unit Miles	Inspection Start/End	Inspector
Unit No. 01 Georgiana Slough	Right	5.48	11/01/2017 11/01/2017	Keith Millard

LM Start	1.50	Rating **	M	Issue No.	22
LM End	1.50	Issue Type +	Ma	Location *	LS
Category	Earthen Levee			GPS Latitude/Longitude	
				Start	End
Item	Erosion / Bank Caving			38.225840 °	38.225840 °
				-121.534157 °	-121.534157 °
DWR ID	DWR_RD0556_01_s_2012_22				
Comment Code					
E1 : Note and monitor erosion site.					
Inspector Comment					

No Photos

LM Start	1.57	Rating **	M	Issue No.	386
LM End	1.65	Issue Type +	Ma	Location *	LS
Category	Earthen Levee			GPS Latitude/Longitude	
				Start	End
Item	Vegetation			38.224995 °	38.224623 °
				-121.535094 °	-121.536320 °
DWR ID	DWR_RD0556_01_f_2013_386				
Comment Code					
V2 : Remove the wild growth other than native grasses from the levee slopes.					
Inspector Comment					

Photo 1 of 1 : FA_2017_RD0556_18_386_20171117_00061.jpg



Remove the wild growth and trim trees from the landside levee slope.

* Location LS : Land Side N/A : Not Applicable WS : Water Side CR : Crown	** Rating A : Acceptable M : Minimally Acceptable U : Unacceptable	N : Not Inspected/Rated C : Corrected A/W : Acceptable but Monitor & Maintain	+ Issue Type Ma : Maintenance Deficiency Ob : Design & System Obsolescence En : Enforcement
--	--	---	---

**Flood Control Project Maintenance
Levee Inspections**

Maintenance Issue Types Only, Levee Inspection Report By Mile - Fall 2017

Reclamation District No. 0556 Upper Andrus

Waterway	Bank	Unit Miles	Inspection Start/End	Inspector
Unit No. 01 Georgiana Slough	Right	5.48	11/01/2017 11/01/2017	Keith Millard

LM Start	1.74	Rating **	U	Issue No.	74
LM End	2.29	Issue Type +	Ma	Location *	WS
Category	Earthen Levee			GPS Latitude/Longitude	
				Start	End
Item	Vegetation			38.224198 °	38.220317 °
				-121.537987 °	-121.544172 °
DWR ID	DWR_RD0556_01_f_2015_74				
Comment Code					
V7 : Trees / Woody Vegetation					
Inspector Comment					
Arundo and willows need to be removed. This vegetation completely blocks the view of the waterside slope, shoulder and toe.					

Photo 1 of 1 : FA_2017_RD0556_18_74_20171002_00024.jpg



RD 556 Unit 1 waterside levee mile 1.74-2.29.

LM Start	2.54	Rating **	M	Issue No.	32
LM End	2.81	Issue Type +	Ma	Location *	LS
Category	Earthen Levee			GPS Latitude/Longitude	
				Start	End
Item	Vegetation			38.216770 °	38.214455 °
				-121.543212 °	-121.539433 °
DWR ID	DWR_RD0556_01_f_2016_32				
Comment Code					
V2 : Remove the wild growth other than native grasses from the levee slopes.					
Inspector Comment					
Remove the vegetation from the landside slope.					

No Photos

LM Start	2.72	Rating **	U	Issue No.	33
LM End	2.72	Issue Type +	Ma	Location *	LS
Category	Earthen Levee			GPS Latitude/Longitude	
				Start	End
Item	Slope Stability			38.215107 °	38.215107 °
				-121.540677 °	-121.540677 °
DWR ID	DWR_RD0556_01_s_2017_33				
Comment Code					
S1 : Repair slope instability.					
Inspector Comment					
Fallen tree on landside. Remove the fallen tree and repair the levee damage.					

Photo 1 of 2 : FA_2017_RD0556_18_33_20171002_00010.jpg



RD 556 Unit 1 levee mile 2.72 fallen tree damage to shoulder and slope.

* Location		** Rating		+ Issue Type	
LS : Land Side	N/A : Not Applicable	A : Acceptable	N : Not Inspected/Rated	Ma : Maintenance Deficiency	
WS : Water Side		M : Minimally Acceptable	C : Corrected	Ob : Design & System Obsolescence	
CR : Crown		U : Unacceptable	A/W : Acceptable but Monitor & Maintain	En : Enforcement	

**Flood Control Project Maintenance
Levee Inspections**

Maintenance Issue Types Only, Levee Inspection Report By Mile - Fall 2017

Reclamation District No. 0556 Upper Andrus

Waterway	Bank	Unit Miles	Inspection Start/End	Inspector
Unit No. 01 Georgiana Slough	Right	5.48	11/01/2017 11/01/2017	Keith Millard

LM Start	2.72	Rating **	U	Issue No.	33 (cont)	
LM End	2.72	Issue Type +	Ma	Location *	LS	
Category	Earthen Levee			GPS Latitude/Longitude		
				Start		End
Item	Slope Stability			38.215107 °		38.215107 °
				-121.540677 °		-121.540677 °
DWR ID	DWR_RD0556_01_s_2017_33					
Comment Code						
S1 : Repair slope instability.						
Inspector Comment						
Fallen tree on landside. Remove the fallen tree and repair the levee damage.						

Photo 2 of 2 : FA_2017_RD0556_18_33_20171002_00011.jpg



RD 349 Unut 1 levee mile 2.72 the root ball of the fallen tree on slope landward.

LM Start	2.96	Rating **	A/W	Issue No.	63
LM End	2.99	Issue Type +	Ma	Location *	WS
Category	Earthen Levee			GPS Latitude/Longitude	
				Start	End
Item	Vegetation			38.212661 °	38.212328 °
				-121.537633 °	-121.537318 °
DWR ID	DWR_RD0556_01_s_2013_63				
Comment Code					
V2 : Remove the wild growth other than native grasses from the levee slopes.					
Inspector Comment					
Remove the vegetation from the waterside slope.					

No Photos

* Location LS : Land Side N/A : Not Applicable WS : Water Side CR : Crown		** Rating A : Acceptable N : Not Inspected/Rated M : Minimally Acceptable C : Corrected U : Unacceptable A/W : Acceptable but Monitor & Maintain		+ Issue Type Ma : Maintenance Deficiency Ob : Design & System Obsolescence En : Enforcement
--	--	---	--	---

**Flood Control Project Maintenance
Levee Inspections**

Maintenance Issue Types Only, Levee Inspection Report By Mile - Fall 2017

Reclamation District No. 0556 Upper Andrus

Waterway	Bank	Unit Miles	Inspection Start/End	Inspector
Unit No. 01 Georgiana Slough	Right	5.48	11/01/2017 11/01/2017	Keith Millard

LM Start	3.12	Rating **	U	Issue No.	35
LM End	3.14	Issue Type +	Ma	Location *	WS
Category	Earthen Levee			GPS Latitude/Longitude	
				Start	End
Item	Vegetation			38.211103 °	38.210970 °
				-121.537993 °	-121.538370 °
DWR ID	DWR_RD0556_01_s_2017_35				
Comment Code					
V2 : Remove the wild growth other than native grasses from the levee slopes.					
Inspector Comment					
Remove the unwanted wild growth from the waterside slope.					

Photo 1 of 1 : FA_2017_RD0556_18_35_20171002_00012.jpg



RD 556 Unit 1 levee mile 3.12-3.14 waterside shoulder and slope.

LM Start	3.14	Rating **	U	Issue No.	28
LM End	3.26	Issue Type +	Ma	Location *	LS
Category	Earthen Levee			GPS Latitude/Longitude	
				Start	End
Item	Animal Control			38.210985 °	38.210160 °
				-121.538372 °	-121.540300 °
DWR ID	DWR_RD0556_01_f_2017_28				
Comment Code					
A1 : Exterminate rodents and backfill and compact or grout burrows.					
Inspector Comment					

Photo 1 of 1 : FA_2017_RD0556_18_28_20171117_00065.jpg



Significant rodent activity in this area must be stopped. Holes should be backfilled.

* Location
LS : Land Side N/A : Not Applicable
WS : Water Side
CR : Crown

** Rating
A : Acceptable N : Not Inspected/Rated
M : Minimally Acceptable C : Corrected
U : Unacceptable A/W : Acceptable but Monitor & Maintain

+ Issue Type
Ma : Maintenance Deficiency
Ob : Design & System Obsolescence
En : Enforcement

**Flood Control Project Maintenance
Levee Inspections**

Maintenance Issue Types Only, Levee Inspection Report By Mile - Fall 2017

Reclamation District No. 0556 Upper Andrus

Waterway	Bank	Unit Miles	Inspection Start/End	Inspector
Unit No. 01 Georgiana Slough	Right	5.48	11/01/2017 11/01/2017	Keith Millard

LM Start	3.22	Rating **	U	Issue No.	36
LM End	3.22	Issue Type +	Ma	Location *	LS
Category	Earthen Levee			GPS Latitude/Longitude	
				Start	End
Item	Slope Stability			38.210528 °	38.210528 °
				-121.539678 °	-121.539678 °
DWR ID	DWR_RD0556_01_s_2017_36				
Comment Code					
S1 : Repair slope instability.					
Inspector Comment					
Repair the erosion sites.					

Photo 1 of 2 : FA_2017_RD0556_18_36_20171002_00013.jpg



556 Unit 1 levee mile 3.22 landside slope erosion.

LM Start	3.22	Rating **	U	Issue No.	36 (cont)
LM End	3.22	Issue Type +	Ma	Location *	LS

Photo 2 of 2 : FA_2017_RD0556_18_36_20171002_00014.jpg



556 Unit 1 slope erosion levee mile 3.22.

LM Start	3.24	Rating **	M	Issue No.	37
LM End	3.24	Issue Type +	Ma	Location *	LS
Category	Earthen Levee			GPS Latitude/Longitude	
				Start	End
Item	Slope Stability			38.210365 °	38.210365 °
				-121.540002 °	-121.540002 °
DWR ID	DWR_RD0556_01_s_2017_37				
Comment Code					
S1 : Repair slope instability.					
Inspector Comment					
Repair the erosion on the slope.					

Photo 1 of 1 : FA_2017_RD0556_18_37_20171002_00015.jpg



556 Unit 1 levee mile 3.24 landside slope.

*** Location**
LS : Land Side N/A : Not Applicable
WS : Water Side
CR : Crown

**** Rating**
A : Acceptable N : Not Inspected/Rated
M : Minimally Acceptable C : Corrected
U : Unacceptable A/W : Acceptable but Monitor & Maintain

+ Issue Type
Ma : Maintenance Deficiency
Ob : Design & System Obsolescence
En : Enforcement

**Flood Control Project Maintenance
Levee Inspections**

Maintenance Issue Types Only, Levee Inspection Report By Mile - Fall 2017

Reclamation District No. 0556 Upper Andrus

Waterway	Bank	Unit Miles	Inspection Start/End	Inspector
Unit No. 01 Georgiana Slough	Right	5.48	11/01/2017 11/01/2017	Keith Millard

LM Start	3.25	Rating **	U	Issue No.	38
LM End	3.29	Issue Type +	Ma	Location *	LS
Category	Earthen Levee			GPS Latitude/Longitude	
				Start	End
Item	Vegetation			38.210250 °	38.209842 °
				-121.540207 °	-121.540658 °
DWR ID	DWR_RD0556_01_s_2017_38				
Comment Code					
V7 : Trees / Woody Vegetation					
Inspector Comment					
Remove the wild tree growth and vegetation from the landside levee slope and toe so the ground can be seen.					

Photo 1 of 1 : FA_2017_RD0556_18_38_20171002_00016.jpg



556 Unit 1 levee mile 3.25-3.29 woody tree growth and vegetation blocking the view of the levee slope and toe.

LM Start	3.42	Rating **	M	Issue No.	41
LM End	3.93	Issue Type +	Ma	Location *	LS
Category	Earthen Levee			GPS Latitude/Longitude	
				Start	End
Item	Vegetation			38.208113 °	38.201603 °
				-121.541582 °	-121.542352 °
DWR ID	DWR_RD0556_01_s_2017_41				
Comment Code					
V2 : Remove the wild growth other than native grasses from the levee slopes.					
Inspector Comment					
Remove the wild growth other than annual grasses from the levee slope.					

Photo 1 of 1 : FA_2017_RD0556_18_41_20171002_00017.jpg



556 Unit 1 levee mile 3.42-5.47 landside shoulder and slope.

* Location
LS : Land Side N/A : Not Applicable
WS : Water Side
CR : Crown

** Rating
A : Acceptable N : Not Inspected/Rated
M : Minimally Acceptable C : Corrected
U : Unacceptable A/W : Acceptable but Monitor & Maintain

+ Issue Type
Ma : Maintenance Deficiency
Ob : Design & System Obsolescence
En : Enforcement

**Flood Control Project Maintenance
Levee Inspections**

Maintenance Issue Types Only, Levee Inspection Report By Mile - Fall 2017

Reclamation District No. 0556 Upper Andrus

Waterway	Bank	Unit Miles	Inspection Start/End	Inspector
Unit No. 01 Georgiana Slough	Right	5.48	11/01/2017 11/01/2017	Keith Millard

LM Start	3.43	Rating **	A/W	Issue No.	23
LM End	3.75	Issue Type +	Ma	Location *	
Category	Supplemental		GPS Latitude/Longitude		
			Start	End	
Item	2017 Storm Damage		38.208070 °	38.203400 °	
			-121.541700 °	-121.540990 °	

DWR ID DWR_RD0556_01_f_2017_23

Comment Code

Inspector Comment

Levee Evaluation Comments

Description:

Site ID No:67

Site Designation:USACE_CESPK_UPA1_2011_p_0143

Repair Type: Stability

Rating:Area of Concern

Field Date:2/7/2017

Notes: inactive ditch on landside toe, slope covered in heavy vegetation, minor landside lower slope sloughing observed,

LM Start	3.43	Rating **	A/W	Issue No.	23 (cont)
LM End	3.75	Issue Type +	Ma	Location *	

Photo 1 of 2 : LEVAL_FA_2017_67_701.jpg



Photo 2 of 2 : LEVAL_FA_2017_67_702.jpg



* Location LS : Land Side N/A : Not Applicable WS : Water Side CR : Crown		** Rating A : Acceptable N : Not Inspected/Rated M : Minimally Acceptable C : Corrected U : Unacceptable A/W : Acceptable but Monitor & Maintain		+ Issue Type Ma : Maintenance Deficiency Ob : Design & System Obsolescence En : Enforcement
--	--	---	--	---

**Flood Control Project Maintenance
Levee Inspections**

Maintenance Issue Types Only, Levee Inspection Report By Mile - Fall 2017

Reclamation District No. 0556 Upper Andrus

Waterway	Bank	Unit Miles	Inspection Start/End	Inspector
Unit No. 01 Georgiana Slough	Right	5.48	11/01/2017 11/01/2017	Keith Millard

LM Start	3.98	Rating **	U	Issue No.	39
LM End	5.48	Issue Type +	Ma	Location *	LS
Category	Earthen Levee			GPS Latitude/Longitude	
				Start	End
Item	Vegetation			38.201273 °	38.186464 °
				-121.543328 °	-121.562550 °
DWR ID	DWR_RD0556_01_f_2017_39				
Comment Code					
V2 : Remove the wild growth other than native grasses from the levee slopes.					
Inspector Comment					

Photo 1 of 1 : FA_2017_RD0556_18_39_20171117_00069.jpg



Control dense growth of wild vegetation, berry vines and arundo on landside to allow inspection and access.

LM Start	4.04	Rating **	M	Issue No.	59
LM End	4.80	Issue Type +	Ma	Location *	LS
Category	Earthen Levee			GPS Latitude/Longitude	
				Start	End
Item	Animal Control			38.200897 °	38.192662 °
				-121.544350 °	-121.553160 °
DWR ID	DWR_RD0556_01_f_2012_59				
Comment Code					
A1 : Exterminate rodents and backfill and compact or grout burrows.					
Inspector Comment					
Exterminate the rodents and backfill the burrows.					

No Photos

* Location LS : Land Side N/A : Not Applicable WS : Water Side CR : Crown		** Rating A : Acceptable N : Not Inspected/Rated M : Minimally Acceptable C : Corrected U : Unacceptable A/W : Acceptable but Monitor & Maintain		+ Issue Type Ma : Maintenance Deficiency Ob : Design & System Obsolescence En : Enforcement
--	--	---	--	---

**Flood Control Project Maintenance
Levee Inspections**

Maintenance Issue Types Only, Levee Inspection Report By Mile - Fall 2017

Reclamation District No. 0556 Upper Andrus

Waterway	Bank	Unit Miles	Inspection Start/End	Inspector
Unit No. 01 Georgiana Slough	Right	5.48	11/01/2017 11/01/2017	Keith Millard

LM Start	4.07	Rating **	U	Issue No.	67
LM End	5.48	Issue Type +	Ma	Location *	WS
Category	Earthen Levee			GPS Latitude/Longitude	
				Start	End
Item	Vegetation			38.200658 °	38.186464 °
				-121.544711 °	-121.562550 °
DWR ID	DWR_RD0556_01_s_2013_67				
Comment Code					
V2 : Remove the wild growth other than native grasses from the levee slopes.					
Inspector Comment					
Remove the wild weed growth and Arundo from the waterside levee section.					

Photo 1 of 1 : FA_2017_RD0556_18_67_20171002_00021.jpg



Looking downstream on the waterside arundo completely blocking view of the slope and shoulder.

LM Start	5.12	Rating **	M	Issue No.	1
LM End	5.27	Issue Type +	Ma	Location *	WS
Category	Supplemental			GPS Latitude/Longitude	
				Start	End
Item	2015 USACE Erosion Survey, DRAFT			38.189775 °	38.188121 °
				-121.557729 °	-121.559413 °
DWR ID	DWR_RD0556_01_f_2016_1				
Comment Code					
Inspector Comment					
1997 - Toe damaged rock. 1999 - One pocket filled with gravel. 2000 - Eroding beach with some biotech rolls and stakes; some gravel on slope. 2001 - Staked, low fascine walls at bankline. 2005 - Stone revetment in between pockets. 2006 - New rock on upper slope behind brush boxes at the upstream end. Stone is sliding off the hard toe. 2015: Last observed in 2013. [2015 Site ID: GEO_7-0_R]					

Photo 1 of 1 : FA_2017_RD0556_18_1_20171002_00001.jpg



USACE 2013 Photo #1

* Location LS : Land Side N/A : Not Applicable WS : Water Side CR : Crown		** Rating A : Acceptable M : Minimally Acceptable U : Unacceptable N : Not Inspected/Rated C : Corrected A/W : Acceptable but Monitor & Maintain		+ Issue Type Ma : Maintenance Deficiency Ob : Design & System Obsolescence En : Enforcement	
---	--	--	--	--	--

**Flood Control Project Maintenance
Levee Inspections**

Maintenance Issue Types Only, Levee Inspection Report By Mile - Fall 2017

Reclamation District No. 0556 Upper Andrus

Waterway	Bank	Unit Miles	Inspection Start/End	Inspector
Unit No. 02 Sacramento River	Left	5.72	11/01/2017 11/01/2017	Keith Millard

LM Start	0.00	Rating **	A/W	Issue No.	82
LM End	5.71	Issue Type +	Ma	Location *	WS
Category	Earthen Levee			GPS Latitude/Longitude	
				Start	End
Item	Vegetation			38.200550 °	38.191937 °
				-121.544190 °	-121.567510 °
DWR ID	DWR_RD0556_02_s_2013_82				
Comment Code					
V2 : Remove the wild growth other than native grasses from the levee slopes.					
Inspector Comment					

Photo 1 of 2 : FA_2017_RD0556_19_82_20171117_00051.jpg



Waterside levee slope and shoulder have been mowed to 20' from

LM Start	0.00	Rating **	A/W	Issue No.	82 (cont)
LM End	5.71	Issue Type +	Ma	Location *	WS

Photo 2 of 2 : FA_2017_RD0556_19_82_20171002_00014.jpg



RD 556 Unit 2 looking downstream of waterside slope.

* Location LS : Land Side N/A : Not Applicable WS : Water Side CR : Crown		** Rating A : Acceptable N : Not Inspected/Rated M : Minimally Acceptable C : Corrected U : Unacceptable A/W : Acceptable but Monitor & Maintain		+ Issue Type Ma : Maintenance Deficiency Ob : Design & System Obsolescence En : Enforcement
--	--	---	--	---

**Flood Control Project Maintenance
Levee Inspections**

Maintenance Issue Types Only, Levee Inspection Report By Mile - Fall 2017

Reclamation District No. 0556 Upper Andrus

Waterway	Bank	Unit Miles	Inspection Start/End	Inspector
Unit No. 02 Sacramento River	Left	5.72	11/01/2017 11/01/2017	Keith Millard

LM Start	0.31	Rating **	C	Issue No.	12
LM End	0.60	Issue Type +	Ma	Location *	WS
Category	Supplemental			GPS Latitude/Longitude	
				Start	End
Item	2015 USACE Erosion Survey, DRAFT			38.238784 °	38.237862 °
				-121.523932 °	-121.529188 °
DWR ID	DWR_RD0556_02_f_2016_12				
Comment Code					
Inspector Comment					
2002 - Two rocked sections (150 ft long) at the downstream end.					
2005 - Lots of old brush boxes, some with established vegetation in the area behind the boxes. 2006 - Some small spots fixed with stone.					
2009 - Minimal new erosion, rock in the middle of the reach may be new. 2011 - Minor new erosion at the toe. 2013 - Minor new erosion.					
2015: Site is currently under construction. [2015 Site ID: SAC_26-0_L]					
11/01/17: Construction appears to be complete.					

No Photos

LM Start	1.03	Rating **	M	Issue No.	2
LM End	1.15	Issue Type +	Ma	Location *	WS
Category	Supplemental			GPS Latitude/Longitude	
				Start	End
Item	2015 USACE Erosion Survey, DRAFT			38.238772 °	38.239265 °
				-121.536788 °	-121.538845 °
DWR ID	DWR_RD0556_02_f_2016_2				
Comment Code					
Inspector Comment					
1997 - Rock is in poor condition and has failed in many places. Scallops in berm with remnants of old rock in the toe area. 2005 - Brush boxes present. 2013 - Site extended upstream approximately 300 ft to include new erosion pockets. 2015: Minor new erosion at toe. [2015 Site ID: SAC 25-2 L]					

Photo 1 of 1 : FA_2017_RD0556_19_2_20171002_00002.jpg



USACE 2013 Photo #1

* Location LS : Land Side N/A : Not Applicable WS : Water Side CR : Crown	** Rating A : Acceptable M : Minimally Acceptable U : Unacceptable	N : Not Inspected/Rated C : Corrected A/W : Acceptable but Monitor & Maintain	+ Issue Type Ma : Maintenance Deficiency Ob : Design & System Obsolescence En : Enforcement
--	--	---	---

**Flood Control Project Maintenance
Levee Inspections**

Maintenance Issue Types Only, Levee Inspection Report By Mile - Fall 2017

Reclamation District No. 0556 Upper Andrus

Waterway	Bank	Unit Miles	Inspection Start/End	Inspector
Unit No. 02 Sacramento River	Left	5.72	11/01/2017 11/01/2017	Keith Millard

LM Start	1.45	Rating **	M	Issue No.	5
LM End	1.59	Issue Type +	Ma	Location *	WS
Category	Supplemental			GPS Latitude/Longitude	
				Start	End
Item	2015 USACE Erosion Survey, DRAFT			38.240401 °	38.240772 °
				-121.544106 °	-121.546791 °
DWR ID	DWR_RD0556_02_f_2016_5				
Comment Code					
Inspector Comment					
1997 - Slow erosion of the berm at the waterline; bench below water. 2005 - Brush boxes present. 2010 - Minor new erosion. 2013 - There is little to no berm remaining at downstream end of this site. 2015: No observed changes. [2015 Site ID: SAC_24-8_L]					

Photo 1 of 1 : FA_2017_RD0556_19_5_20171002_00005.jpg



USACE 2013 Photo #1

LM Start	2.06	Rating **	U	Issue No.	32
LM End	2.06	Issue Type +	Ma	Location *	LS
Category	Earthen Levee			GPS Latitude/Longitude	
				Start	End
Item	Vegetation			38.239470 °	38.239470 °
				-121.554845 °	-121.554845 °
DWR ID	DWR_RD0556_02_f_2017_32				
Comment Code					
V2 : Remove the wild growth other than native grasses from the levee slopes.					
Inspector Comment					

Photo 1 of 1 : FA_2017_RD0556_19_32_20171117_00057.jpg



Arundo growth should be removed to allow inspection and access to landside slope and toe.

* Location LS : Land Side N/A : Not Applicable WS : Water Side CR : Crown		** Rating A : Acceptable N : Not Inspected/Rated M : Minimally Acceptable C : Corrected U : Unacceptable A/W : Acceptable but Monitor & Maintain		+ Issue Type Ma : Maintenance Deficiency Ob : Design & System Obsolescence En : Enforcement
--	--	---	--	---

**Flood Control Project Maintenance
Levee Inspections**

Maintenance Issue Types Only, Levee Inspection Report By Mile - Fall 2017

Reclamation District No. 0556 Upper Andrus

Waterway	Bank	Unit Miles	Inspection Start/End	Inspector
Unit No. 02 Sacramento River	Left	5.72	11/01/2017 11/01/2017	Keith Millard

LM Start	2.27	Rating **	M	Issue No.	34
LM End	2.27	Issue Type +	Ma	Location *	LS
Category	Earthen Levee			GPS Latitude/Longitude	
				Start	End
Item	Animal Control			38.237248 °	38.237248 °
				-121.557632 °	-121.557632 °
DWR ID	DWR_RD0556_02_f_2017_34				
Comment Code					
A1 : Exterminate rodents and backfill and compact or grout burrows.					
Inspector Comment					

Photo 1 of 1 : FA_2017_RD0556_19_34_20171117_00059.jpg



Rodent burrows observed near the base of large nut tree on landside slope. Exterminate rodents and backfill burrows.

LM Start	2.93	Rating **	A/W	Issue No.	11
LM End	3.04	Issue Type +	Ma	Location *	WS
Category	Supplemental			GPS Latitude/Longitude	
				Start	End
Item	2015 USACE Erosion Survey, DRAFT			38.228202 °	38.226601 °
				-121.555502 °	-121.555605 °
DWR ID	DWR_RD0556_02_f_2016_11				
Comment Code					
Inspector Comment					
1997 - Few scallops in berm, some getting close to levee toe. 2005 - Brush boxes present. 2012 - More erosion of the toe since last year. 2015: No observed changes. [2015 Site ID: SAC_23-3_L]					

Photo 1 of 1 : FA_2017_RD0556_19_11_20171002_00009.jpg



USACE 2013 Photo #1

* Location LS : Land Side N/A : Not Applicable WS : Water Side CR : Crown		** Rating A : Acceptable N : Not Inspected/Rated M : Minimally Acceptable C : Corrected U : Unacceptable A/W : Acceptable but Monitor & Maintain		+ Issue Type Ma : Maintenance Deficiency Ob : Design & System Obsolescence En : Enforcement
--	--	---	--	---

**Flood Control Project Maintenance
Levee Inspections**

Maintenance Issue Types Only, Levee Inspection Report By Mile - Fall 2017

Reclamation District No. 0556 Upper Andrus

Waterway	Bank	Unit Miles	Inspection Start/End	Inspector
Unit No. 02 Sacramento River	Left	5.72	11/01/2017 11/01/2017	Keith Millard

LM Start	3.17	Rating **	M	Issue No.	10
LM End	3.28	Issue Type +	Ma	Location *	WS
Category	Supplemental			GPS Latitude/Longitude	
				Start	End
Item	2015 USACE Erosion Survey, DRAFT			38.224850 °	38.223233 °
				-121.555641 °	-121.555687 °
DWR ID	DWR_RD0556_02_f_2016_10				
Comment Code					
Inspector Comment					
2000 - Recently fallen cottonwood at the downstream end. 2005 - Empty brush boxes. 2011 - A few trees have fallen since last year. 2012 - Potential new tree popout since last year. 2013 - New erosion at downstream end of site and a recent tree pop-out observed. 2015: No observed changes. [2015 Site ID: SAC_23-2_L]					

Photo 1 of 1 : FA_2017_RD0556_19_10_20171002_00008.jpg



USACE 2013 Photo #1

LM Start	3.58	Rating **	M	Issue No.	8
LM End	3.64	Issue Type +	Ma	Location *	WS
Category	Supplemental			GPS Latitude/Longitude	
				Start	End
Item	2015 USACE Erosion Survey, DRAFT			38.218951 °	38.218104 °
				-121.556689 °	-121.556819 °
DWR ID	DWR_RD0556_02_f_2016_8				
Comment Code					
Inspector Comment					
1997 - Scallops into berm and very close to levee toe. 2005 - Brush boxes present. 2011 - New toe scour and freshly fallen tree. 2012 - New tree popout has taken significant portion of soil out of the levee. 2015: No observed changes. [2015 Site ID: SAC_22-7_L]					

Photo 1 of 1 : FA_2017_RD0556_19_8_20171002_00007.jpg



USACE 2013 Photo #1

* Location LS : Land Side N/A : Not Applicable WS : Water Side CR : Crown		** Rating A : Acceptable N : Not Inspected/Rated M : Minimally Acceptable C : Corrected U : Unacceptable A/W : Acceptable but Monitor & Maintain		+ Issue Type Ma : Maintenance Deficiency Ob : Design & System Obsolescence En : Enforcement	
--	--	---	--	---	--

**Flood Control Project Maintenance
Levee Inspections**

Maintenance Issue Types Only, Levee Inspection Report By Mile - Fall 2017

Reclamation District No. 0556 Upper Andrus

Waterway	Bank	Unit Miles	Inspection Start/End	Inspector
Unit No. 02 Sacramento River	Left	5.72	11/01/2017 11/01/2017	Keith Millard

LM Start	3.95	Rating **	M	Issue No.	4
LM End	4.12	Issue Type +	Ma	Location *	WS
Category	Supplemental			GPS Latitude/Longitude	
				Start	End
Item	2015 USACE Erosion Survey, DRAFT			38.213581 °	38.211112 °
				-121.557197 °	-121.557042 °
DWR ID	DWR_RD0556_02_f_2016_4				
Comment Code					
Inspector Comment					
2002 - Spot rock along berm, but not in the erosion pockets. 2005 - Some new minor stone revetment at the upstream end. Brush boxes present. 2006 - Currently installing new brush in downstream brush boxes. 2007 - Rock in middle portion for about 150 ft. 2010 - Some attempt at repairs but still has pockets of erosion. 2012 - More erosion along the toe. 2015: No observed changes. [2015 Site ID: SAC_22-5_L]					

Photo 1 of 1 : FA_2017_RD0556_19_4_20171002_00004.jpg



USACE 2013 Photo #1

LM Start	4.45	Rating **	M	Issue No.	7
LM End	4.49	Issue Type +	Ma	Location *	WS
Category	Supplemental			GPS Latitude/Longitude	
				Start	End
Item	2015 USACE Erosion Survey, DRAFT			38.206377 °	38.205729 °
				-121.557184 °	-121.557108 °
DWR ID	DWR_RD0556_02_f_2016_7				
Comment Code					
Inspector Comment					
2013 - Erosion pockets encroaching on levee foundation. 2015: No observed changes. [2015 Site ID: SAC_21-9_L]					

Photo 1 of 1 : FA_2017_RD0556_19_7_20171002_00006.jpg



USACE 2013 Photo #1

* Location LS : Land Side N/A : Not Applicable WS : Water Side CR : Crown		** Rating A : Acceptable N : Not Inspected/Rated M : Minimally Acceptable C : Corrected U : Unacceptable A/W : Acceptable but Monitor & Maintain		+ Issue Type Ma : Maintenance Deficiency Ob : Design & System Obsolescence En : Enforcement
--	--	---	--	---

**Flood Control Project Maintenance
Levee Inspections**

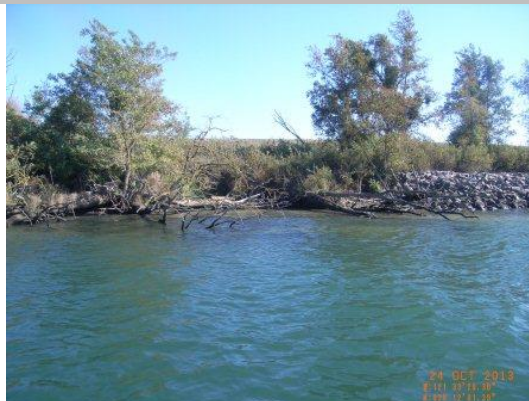
Maintenance Issue Types Only, Levee Inspection Report By Mile - Fall 2017

Reclamation District No. 0556 Upper Andrus

Waterway	Bank	Unit Miles	Inspection Start/End	Inspector
Unit No. 02 Sacramento River	Left	5.72	11/01/2017 11/01/2017	Keith Millard

LM Start	4.77	Rating **	A/W	Issue No.	3
LM End	4.88	Issue Type +	Ma	Location *	WS
Category	Supplemental			GPS Latitude/Longitude	
				Start	End
Item	2015 USACE Erosion Survey, DRAFT			38.201687 °	38.200225 °
				-121.557305 °	-121.557749 °
DWR ID	DWR_RD0556_02_f_2016_3				
Comment Code					
Inspector Comment					
1999 - Downstream 140 ft repaired with rock. 2010 - Lots of woody debris, but no changes to site. 2015: Site extended upstream due to erosion pockets. [2015 Site ID: SAC_21-5_L]					

Photo 1 of 1 : FA_2017_RD0556_19_3_20171002_00003.jpg



USACE 2013 Photo #1

LM Start	5.45	Rating **	M	Issue No.	20
LM End	5.45	Issue Type +	Ma	Location *	WS
Category	Earthen Levee			GPS Latitude/Longitude	
				Start	End
Item	Encroachments			38.193391 °	38.193391 °
				-121.563159 °	-121.563159 °
DWR ID	DWR_RD0556_02_s_2012_20				
Comment Code					
TR : Tree or limb					
Inspector Comment					
Cut up the fallen tree and remove it from the waterside levee section.					

No Photos

* Location LS : Land Side N/A : Not Applicable WS : Water Side CR : Crown		** Rating A : Acceptable N : Not Inspected/Rated M : Minimally Acceptable C : Corrected U : Unacceptable A/W : Acceptable but Monitor & Maintain		+ Issue Type Ma : Maintenance Deficiency Ob : Design & System Obsolescence En : Enforcement
--	--	---	--	---