

**Flood Control Project Maintenance
Levee Inspections**

Maintenance Issue Types Only, Levee Inspection Report By Mile - Fall 2014

Reclamation District No. 0556 Upper Andrus

Waterway	Bank	Unit Miles	Inspection Start/End	Inspector
Unit No. 01 Georgiana Slough	Right	5.48	10/30/2014 10/30/2014	Herman Phillips

LM Start		Rating **	M	Issue No.	3
LM End		Issue Type +	Ma	Location *	WS
Category	Earthen Levee		GPS Latitude/Longitude		
			Start	End	
Item	Flood Preparedness & Training			°	°
				°	°
DWR ID	DWR_RD0556_01_f_2014_3				
Action/Comments					
Inspector Comments: The members in the district have not been flood fight trained recently according to the district manager.					

No Photos

LM Start		Rating **	M	Issue No.	6
LM End		Issue Type +	Ma	Location *	WS
Category	Earthen Levee		GPS Latitude/Longitude		
			Start	End	
Item	Operations & Maintenance Manuals			°	°
				°	°
DWR ID	DWR_RD0556_01_s_2012_6				
Action/Comments					
Inspector Comments: District president has the O&M Manual.					

No Photos

LM Start		Rating **	M	Issue No.	8
LM End		Issue Type +	Ma	Location *	N/A
Category	Earthen Levee		GPS Latitude/Longitude		
			Start	End	
Item	Emergency Supplies & Equipment			°	°
				°	°
DWR ID	DWR_RD0556_01_f_2014_8				
Action/Comments					
Inspector Comments: According to the district manager, when they need supplies they will order them, there are no supplies stored.					

No Photos

* Location LS : Land Side N/A : Not Applicable WS : Water Side CR : Crown	** Rating A : Acceptable M : Minimally Acceptable U : Unacceptable	N : Not Inspected/Rated C : Corrected A/W : Acceptable but Monitor & Maintain	+ Issue Type Ma : Maintenance Deficiency Ob : Design & System Obsolescence En : Enforcement
--	--	---	---

Reclamation District No. 0556 Upper Andrus

Waterway	Bank	Unit Miles	Inspection Start/End	Inspector
Unit No. 01 Georgiana Slough	Right	5.48	10/30/2014 10/30/2014	Herman Phillips

LM Start	0.21	Rating **	M	Issue No.	23
LM End	1.37	Issue Type +	Ma	Location *	WS
Category	Earthen Levee			GPS Latitude/Longitude	
				Start	End
Item	Vegetation			38.236055 °	38.227238 °
				-121.518035 °	-121.532840 °
DWR ID	DWR_RD0556_01_f _ 2014_23				
Action/Comments					
Remove the wild growth other than native grasses from the levee slopes.					

Photo 1 of 1 : FA_2014_RD0556_18_23_20141113_00013.jpg



Looking downstream from levee mile 0.21 at the waterside slope. Tall weeds present beyond bridge.

LM Start	0.21	Rating **	M	Issue No.	26
LM End	1.70	Issue Type +	Ma	Location *	LS
Category	Earthen Levee			GPS Latitude/Longitude	
				Start	End
Item	Vegetation			38.236055 °	38.224305 °
				-121.518035 °	-121.537263 °
DWR ID	DWR_RD0556_01_f_2014_26				
Action/Comments					
Control annual grass and weeds on the levee slopes and easements.					

Photo 1 of 1 : FA_2014_RD0556_18_26_20141113_00014.jpg



Looking downstream from levee mile 0.21 at tall weeds on landside slope.

LM Start	0.27	Rating **	U	Issue No.	30
LM End	0.61	Issue Type +	Ma	Location *	WS
Category	Earthen Levee			GPS Latitude/Longitude	
				Start	End
Item	Vegetation			38.235427 °	38.231538 °
				-121.518523 °	-121.522553 °
DWR ID	DWR_RD0556_01_f_2014_30				
Action/Comments					
Trees / Woody Vegetation					
Inspector Comments: Remove the young willow trees from waterside slope.					

Photo 1 of 1 : FA_2014_RD0556_18_30_20141113_00015.jpg



Woody tree growth on waterside, young willow trees.

* Location	** Rating	+ Issue Type
LS : Land Side N/A : Not Applicable	A : Acceptable N : Not Inspected/Rated	Ma : Maintenance Deficiency
WS : Water Side	M : Minimally Acceptable C : Corrected	Ob : Design & System Obsolescence
CR : Crown	U : Unacceptable A/W : Acceptable but Monitor & Maintain	En : Enforcement

**Flood Control Project Maintenance
Levee Inspections**

Maintenance Issue Types Only, Levee Inspection Report By Mile - Fall 2014

Reclamation District No. 0556 Upper Andrus

Waterway	Bank	Unit Miles	Inspection Start/End	Inspector
Unit No. 01 Georgiana Slough	Right	5.48	10/30/2014 10/30/2014	Herman Phillips

LM Start	0.42	Rating **	U	Issue No.	61
LM End	0.42	Issue Type +	Ma	Location *	WS
Category	Earthen Levee			GPS Latitude/Longitude	
				Start	End
Item	Encroachments			38.233775 °	38.233775 °
				-121.520351 °	-121.520351 °
DWR ID	DWR_RD0556_01_f_2012_61				
Action/Comments					
Tree or limb Inspector Comments: At this location there is a dead tree. Remove it from the levee section.					

Photo 1 of 1 : FA_2014_RD0556_18_61_20141113_00016.jpg



This fallen down tree remains to be an issue, District need to remove from levee section.

LM Start	0.47	Rating **	M	Issue No.	32
LM End	0.57	Issue Type +	Ma	Location *	LS
Category	Earthen Levee			GPS Latitude/Longitude	
				Start	End
Item	Trim / Thin Trees			38.233138 °	38.232032 °
				-121.520958 °	-121.522003 °
DWR ID	DWR_RD0556_01_f_2014_32				
Action/Comments					
Trim trees to at least five feet above ground level.					

No Photos

LM Start	0.49	Rating **	M	Issue No.	10
LM End	0.49	Issue Type +	Ma	Location *	LS
Category	Earthen Levee			GPS Latitude/Longitude	
				Start	End
Item	Vegetation			38.232899 °	38.232899 °
				-121.521250 °	-121.521254 °
DWR ID	DWR_RD0556_01_f_2012_10				
Action/Comments					
Remove the wild growth other than native grasses from the levee slopes.					

No Photos

* Location LS : Land Side N/A : Not Applicable WS : Water Side CR : Crown		** Rating A : Acceptable N : Not Inspected/Rated M : Minimally Acceptable C : Corrected U : Unacceptable A/W : Acceptable but Monitor & Maintain		+ Issue Type Ma : Maintenance Deficiency Ob : Design & System Obsolescence En : Enforcement
--	--	---	--	---

**Flood Control Project Maintenance
Levee Inspections**

Maintenance Issue Types Only, Levee Inspection Report By Mile - Fall 2014

Reclamation District No. 0556 Upper Andrus

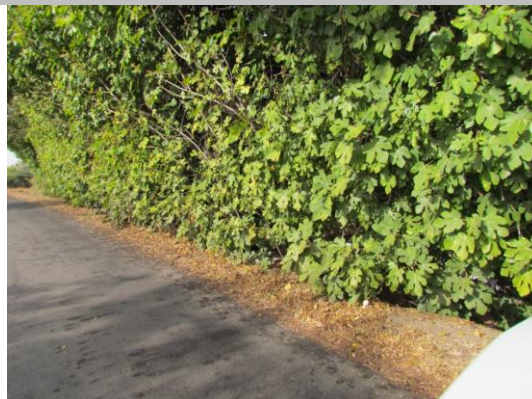
Waterway	Bank	Unit Miles	Inspection Start/End	Inspector
Unit No. 01 Georgiana Slough	Right	5.48	10/30/2014 10/30/2014	Herman Phillips

LM Start	0.56	Rating **	M	Issue No.	382
LM End	0.89	Issue Type +	Ma	Location *	LS
Category	Earthen Levee			GPS Latitude/Longitude	
				Start	End
Item	Vegetation			38.232093 °	38.228689 °
				-121.522042 °	-121.526053 °
DWR ID	DWR_RD0556_01_f_2013_382				
Action/Comments					
Remove the wild growth other than native grasses from the levee slopes.					

No Photos

LM Start	0.61	Rating **	U	Issue No.	376
LM End	0.90	Issue Type +	Ma	Location *	LS
Category	Earthen Levee			GPS Latitude/Longitude	
				Start	End
Item	Vegetation			38.231535 °	38.228602 °
				-121.522675 °	-121.526289 °
DWR ID	DWR_RD0556_01_s_2014_376				
Action/Comments					
Trees / Woody Vegetation					
Inspector Comments: District should remove these unwanted fig trees from the landside slope, unable to see ground.					

Photo 1 of 1 : FA_2014_RD0556_18_376_20141113_00017.jpg



Remove unwanted fig trees present on the landside slope.

LM Start	0.66	Rating **	M	Issue No.	7
LM End	1.34	Issue Type +	Ma	Location *	WS
Category	Earthen Levee			GPS Latitude/Longitude	
				Start	End
Item	Vegetation			38.231011 °	38.227508 °
				-121.523246 °	-121.532396 °
DWR ID	DWR_RD0556_01_s_2013_7				
Action/Comments					
Remove the wild growth other than native grasses from the levee slopes.					

No Photos

* Location LS : Land Side N/A : Not Applicable WS : Water Side CR : Crown		** Rating A : Acceptable N : Not Inspected/Rated M : Minimally Acceptable C : Corrected U : Unacceptable A/W : Acceptable but Monitor & Maintain		+ Issue Type Ma : Maintenance Deficiency Ob : Design & System Obsolescence En : Enforcement
--	--	---	--	---

**Flood Control Project Maintenance
Levee Inspections**

Maintenance Issue Types Only, Levee Inspection Report By Mile - Fall 2014

Reclamation District No. 0556 Upper Andrus

Waterway	Bank	Unit Miles	Inspection Start/End	Inspector
Unit No. 01 Georgiana Slough	Right	5.48	10/30/2014 10/30/2014	Herman Phillips

LM Start	0.80	Rating **	M	Issue No.	12
LM End	3.35	Issue Type +	Ma	Location *	LS
Category	Earthen Levee			GPS Latitude/Longitude	
				Start	End
Item	Animal Control			38.229459 °	38.208959 °
				-121.524805 °	-121.541368 °
DWR ID	DWR_RD0556_01_s_2012_12				
Action/Comments					
Exterminate rodents and backfill and compact or grout burrows.					

No Photos

LM Start	0.81	Rating **	M	Issue No.	19
LM End	0.84	Issue Type +	Ma	Location *	LS
Category	Earthen Levee			GPS Latitude/Longitude	
				Start	End
Item	Trim / Thin Trees			38.229312 °	38.229119 °
				-121.525001 °	-121.525443 °
DWR ID	DWR_RD0556_01_s_2013_19				
Action/Comments					
Thin trees to allow visibility of the ground and room to flood fight.					

No Photos

LM Start	0.87	Rating **	M	Issue No.	33
LM End	0.88	Issue Type +	Ma	Location *	LS
Category	Earthen Levee			GPS Latitude/Longitude	
				Start	End
Item	Vegetation			38.228861 °	38.228744 °
				-121.525826 °	-121.525897 °
DWR ID	DWR_RD0556_01_f_2012_33				
Action/Comments					
Remove the wild growth other than native grasses from the levee slopes.					

No Photos

* Location LS : Land Side N/A : Not Applicable WS : Water Side CR : Crown	** Rating A : Acceptable M : Minimally Acceptable U : Unacceptable	N : Not Inspected/Rated C : Corrected A/W : Acceptable but Monitor & Maintain	+ Issue Type Ma : Maintenance Deficiency Ob : Design & System Obsolescence En : Enforcement
--	--	---	---

**Flood Control Project Maintenance
Levee Inspections**

Maintenance Issue Types Only, Levee Inspection Report By Mile - Fall 2014

Reclamation District No. 0556 Upper Andrus

Waterway	Bank	Unit Miles	Inspection Start/End	Inspector
Unit No. 01 Georgiana Slough	Right	5.48	10/30/2014 10/30/2014	Herman Phillips

LM Start	0.90	Rating **	M	Issue No.	38
LM End	0.92	Issue Type +	Ma	Location *	LS
Category	Earthen Levee			GPS Latitude/Longitude	
				Start	End
Item	Vegetation			38.228603 °	38.228420 °
				-121.526253 °	-121.526542 °
DWR ID	DWR_RD0556_01_f_2014_38				
Action/Comments					
Remove the wild growth other than native grasses from the levee slopes.					

No Photos

LM Start	0.94	Rating **	M	Issue No.	41
LM End	1.11	Issue Type +	Ma	Location *	LS
Category	Earthen Levee			GPS Latitude/Longitude	
				Start	End
Item	Trim / Thin Trees			38.228160 °	38.227090 °
				-121.526810 °	-121.528472 °
DWR ID	DWR_RD0556_01_f_2014_41				
Action/Comments					
Trim trees to at least five feet above ground level.					

No Photos

LM Start	0.95	Rating **	M	Issue No.	1
LM End	1.22	Issue Type +	Ma	Location *	LS
Category	Earthen Levee			GPS Latitude/Longitude	
				Start	End
Item	Animal Control			38.228016 °	38.227854 °
				-121.526868 °	-121.530291 °
DWR ID	DWR_RD0556_01_f_2014_1				
Action/Comments					
Exterminate rodents and backfill and compact or grout burrows.					

No Photos

* Location LS : Land Side N/A : Not Applicable WS : Water Side CR : Crown	** Rating A : Acceptable M : Minimally Acceptable U : Unacceptable	N : Not Inspected/Rated C : Corrected A/W : Acceptable but Monitor & Maintain	+ Issue Type Ma : Maintenance Deficiency Ob : Design & System Obsolescence En : Enforcement
--	--	---	---

**Flood Control Project Maintenance
Levee Inspections**

Maintenance Issue Types Only, Levee Inspection Report By Mile - Fall 2014

Reclamation District No. 0556 Upper Andrus

Waterway	Bank	Unit Miles	Inspection Start/End	Inspector
Unit No. 01 Georgiana Slough	Right	5.48	10/30/2014 10/30/2014	Herman Phillips

LM Start	1.04	Rating **	M	Issue No.	36
LM End	1.27	Issue Type +	Ma	Location *	LS
Category	Earthen Levee			GPS Latitude/Longitude	
				Start	End
Item	Trim / Thin Trees			38.226780 °	38.227966 °
				-121.527465 °	-121.531176 °
DWR ID	DWR_RD0556_01_f_2012_36				
Action/Comments					
Thin trees to allow visibility of the ground and room to flood fight.					

No Photos

LM Start	1.08	Rating **	M	Issue No.	14
LM End	1.08	Issue Type +	Ma	Location *	LS
Category	Earthen Levee			GPS Latitude/Longitude	
				Start	End
Item	Erosion / Bank Caving			38.226887 °	38.226887 °
				-121.528022 °	-121.528022 °
DWR ID	DWR_RD0556_01_s_2012_14				
Action/Comments					
Note and monitor erosion site.					

No Photos

LM Start	1.15	Rating **	M	Issue No.	43
LM End	1.30	Issue Type +	Ma	Location *	LS
Category	Earthen Levee			GPS Latitude/Longitude	
				Start	End
Item	Trim / Thin Trees			38.227440 °	38.227788 °
				-121.529183 °	-121.531825 °
DWR ID	DWR_RD0556_01_f_2014_43				
Action/Comments					
Trim trees to at least five feet above ground level.					

No Photos

* Location LS : Land Side N/A : Not Applicable WS : Water Side CR : Crown	** Rating A : Acceptable M : Minimally Acceptable U : Unacceptable	N : Not Inspected/Rated C : Corrected A/W : Acceptable but Monitor & Maintain	+ Issue Type Ma : Maintenance Deficiency Ob : Design & System Obsolescence En : Enforcement
--	--	---	---

**Flood Control Project Maintenance
Levee Inspections**

Maintenance Issue Types Only, Levee Inspection Report By Mile - Fall 2014

Reclamation District No. 0556 Upper Andrus

Waterway	Bank	Unit Miles	Inspection Start/End	Inspector
Unit No. 01 Georgiana Slough	Right	5.48	10/30/2014 10/30/2014	Herman Phillips

LM Start	1.27	Rating **	M	Issue No.	37
LM End	1.27	Issue Type +	Ma	Location *	LS
Category	Earthen Levee			GPS Latitude/Longitude	
				Start	End
Item	Erosion / Bank Caving			38.227967 °	38.227967 °
				-121.531180 °	-121.531180 °
DWR ID	DWR_RD0556_01_f_2012_37				
Action/Comments					
Note and monitor erosion site.					

No Photos

LM Start	1.30	Rating **	M	Issue No.	45
LM End	1.30	Issue Type +	Ma	Location *	LS
Category	Earthen Levee			GPS Latitude/Longitude	
				Start	End
Item	Animal Control			38.227788 °	38.227788 °
				-121.531825 °	-121.531825 °
DWR ID	DWR_RD0556_01_f_2014_45				
Action/Comments					
Exterminate rodents and backfill and compact or grout burrows.					

No Photos

LM Start	1.33	Rating **	M	Issue No.	384
LM End	1.33	Issue Type +	Ma	Location *	LS
Category	Earthen Levee			GPS Latitude/Longitude	
				Start	End
Item	Trim / Thin Trees			38.227576 °	38.227561 °
				-121.532293 °	-121.532306 °
DWR ID	DWR_RD0556_01_f_2013_384				
Action/Comments					
Trim trees to at least five feet above ground level.					

No Photos

* Location LS : Land Side N/A : Not Applicable WS : Water Side CR : Crown		** Rating A : Acceptable N : Not Inspected/Rated M : Minimally Acceptable C : Corrected U : Unacceptable A/W : Acceptable but Monitor & Maintain		+ Issue Type Ma : Maintenance Deficiency Ob : Design & System Obsolescence En : Enforcement
--	--	---	--	---

**Flood Control Project Maintenance
Levee Inspections**

Maintenance Issue Types Only, Levee Inspection Report By Mile - Fall 2014

Reclamation District No. 0556 Upper Andrus

Waterway	Bank	Unit Miles	Inspection Start/End	Inspector
Unit No. 01 Georgiana Slough	Right	5.48	10/30/2014 10/30/2014	Herman Phillips

LM Start	1.34	Rating **	M	Issue No.	381
LM End	1.36	Issue Type +	Ma	Location *	WS
Category	Earthen Levee			GPS Latitude/Longitude	
				Start	End
Item	Vegetation			38.238169 °	38.227308 °
				-121.518199 °	-121.532696 °
DWR ID	DWR_RD0556_01_f_2013_381				
Action/Comments					
Remove the wild growth other than native grasses from the levee slopes.					

No Photos

LM Start	1.36	Rating **	M	Issue No.	29
LM End	1.37	Issue Type +	Ma	Location *	LS
Category	Earthen Levee			GPS Latitude/Longitude	
				Start	End
Item	Trim / Thin Trees			38.227320 °	38.227216 °
				-121.532707 °	-121.532870 °
DWR ID	DWR_RD0556_01_s_2013_29				
Action/Comments					
Thin trees to allow visibility of the ground and room to flood fight.					

No Photos

LM Start	1.39	Rating **	M	Issue No.	21	
LM End	1.39	Issue Type +	Ma	Location *	LS	
Category	Earthen Levee			GPS Latitude/Longitude		
				Start	End	
Item	Erosion / Bank Caving			38.227016 °	38.227016 °	
				-121.533105 °	-121.533105 °	
DWR ID	DWR_RD0556_01_f_2012_21					
Action/Comments						
Note and monitor erosion site.						

No Photos

* Location LS : Land Side N/A : Not Applicable WS : Water Side CR : Crown	** Rating A : Acceptable M : Minimally Acceptable U : Unacceptable	N : Not Inspected/Rated C : Corrected A/W : Acceptable but Monitor & Maintain	+ Issue Type Ma : Maintenance Deficiency Ob : Design & System Obsolescence En : Enforcement
--	--	---	---

**Flood Control Project Maintenance
Levee Inspections**

Maintenance Issue Types Only, Levee Inspection Report By Mile - Fall 2014

Reclamation District No. 0556 Upper Andrus

Waterway	Bank	Unit Miles	Inspection Start/End	Inspector
Unit No. 01 Georgiana Slough	Right	5.48	10/30/2014 10/30/2014	Herman Phillips

LM Start	1.43	Rating **	M	Issue No.	40
LM End	1.43	Issue Type +	Ma	Location *	LS
Category	Earthen Levee			GPS Latitude/Longitude	
				Start	End
Item	Erosion / Bank Caving			38.226537 °	38.226537 °
				-121.533512 °	-121.533512 °
DWR ID	DWR_RD0556_01_f_2012_40				
Action/Comments					
Note and monitor erosion site.					

No Photos

LM Start	1.49	Rating **	M	Issue No.	22
LM End	1.49	Issue Type +	Ma	Location *	LS
Category	Earthen Levee			GPS Latitude/Longitude	
				Start	End
Item	Erosion / Bank Caving			38.225840 °	38.225840 °
				-121.534157 °	-121.534157 °
DWR ID	DWR_RD0556_01_s_2012_22				
Action/Comments					
Note and monitor erosion site.					

No Photos

LM Start	1.57	Rating **	M	Issue No.	386
LM End	1.67	Issue Type +	Ma	Location *	LS
Category	Earthen Levee			GPS Latitude/Longitude	
				Start	End
Item	Vegetation			38.224995 °	38.224486 °
				-121.535094 °	-121.536766 °
DWR ID	DWR_RD0556_01_f_2013_386				
Action/Comments					
Remove the wild growth other than native grasses from the levee slopes.					

No Photos

* Location LS : Land Side N/A : Not Applicable WS : Water Side CR : Crown	** Rating A : Acceptable M : Minimally Acceptable U : Unacceptable	N : Not Inspected/Rated C : Corrected A/W : Acceptable but Monitor & Maintain	+ Issue Type Ma : Maintenance Deficiency Ob : Design & System Obsolescence En : Enforcement
--	--	---	---

**Flood Control Project Maintenance
Levee Inspections**

Maintenance Issue Types Only, Levee Inspection Report By Mile - Fall 2014

Reclamation District No. 0556 Upper Andrus

Waterway	Bank	Unit Miles	Inspection Start/End	Inspector
Unit No. 01 Georgiana Slough	Right	5.48	10/30/2014 10/30/2014	Herman Phillips

LM Start	1.59	Rating **	M	Issue No.	2
LM End	1.68	Issue Type +	Ma	Location *	LS
Category	Earthen Levee			GPS Latitude/Longitude	
				Start	End
Item	Vegetation			38.224769 °	38.224451 °
				-121.535569 °	-121.536927 °
DWR ID	DWR_RD0556_01_s_2012_2				
Action/Comments					
Remove the wild growth other than native grasses from the levee slopes.					

No Photos

LM Start	1.75	Rating **	U	Issue No.	49
LM End	1.98	Issue Type +	Ma	Location *	WS
Category	Earthen Levee			GPS Latitude/Longitude	
				Start	End
Item	Vegetation			38.224120 °	38.223590 °
				-121.538137 °	-121.542387 °
DWR ID	DWR_RD0556_01_f_2014_49				
Action/Comments					
Trees / Woody Vegetation					
Inspector Comments: Remove the unwanted tree growth from the levee section water ward.					

Photo 1 of 1 : FA_2014_RD0556_18_49_20141113_00019.jpg



Woody tree growth blocks view of the waterward slope.

LM Start	1.92	Rating **	M	Issue No.	387
LM End	4.11	Issue Type +	Ma	Location *	LS
Category	Earthen Levee			GPS Latitude/Longitude	
				Start	End
Item	Vegetation			38.223713 °	38.200105 °
				-121.541216 °	-121.545338 °
DWR ID	DWR_RD0556_01_f_2013_387				
Action/Comments					
Remove the wild growth other than native grasses from the levee slopes.					

No Photos

* Location LS : Land Side N/A : Not Applicable WS : Water Side CR : Crown		** Rating A : Acceptable N : Not Inspected/Rated M : Minimally Acceptable C : Corrected U : Unacceptable A/W : Acceptable but Monitor & Maintain		+ Issue Type Ma : Maintenance Deficiency Ob : Design & System Obsolescence En : Enforcement	
--	--	---	--	---	--

**Flood Control Project Maintenance
Levee Inspections**

Maintenance Issue Types Only, Levee Inspection Report By Mile - Fall 2014

Reclamation District No. 0556 Upper Andrus

Waterway	Bank	Unit Miles	Inspection Start/End	Inspector
Unit No. 01 Georgiana Slough	Right	5.48	10/30/2014 10/30/2014	Herman Phillips

LM Start	1.97	Rating **	M	Issue No.	20
LM End	2.04	Issue Type +	Ma	Location *	WS
Category	Earthen Levee			GPS Latitude/Longitude	
				Start	End
Item	Vegetation			38.223641 °	38.223452 °
				-121.542257 °	-121.543542 °
DWR ID	DWR_RD0556_01_s_2013_20				
Action/Comments					
Remove the wild growth other than native grasses from the levee slopes.					

No Photos

LM Start	2.17	Rating **	M	Issue No.	51
LM End	5.46	Issue Type +	Ma	Location *	LS
Category	Earthen Levee			GPS Latitude/Longitude	
				Start	End
Item	Vegetation			38.221773 °	38.186502 °
				-121.544630 °	-121.562375 °
DWR ID	DWR_RD0556_01_f_2014_51				
Action/Comments					
Remove the wild growth other than native grasses from the levee slopes.					

No Photos

LM Start	2.17	Rating **	M	Issue No.	50
LM End	3.19	Issue Type +	Ma	Location *	WS
Category	Earthen Levee			GPS Latitude/Longitude	
				Start	End
Item	Vegetation			38.221937 °	38.210658 °
				-121.544638 °	-121.539230 °
DWR ID	DWR_RD0556_01_f_2014_50				
Action/Comments					
Control annual grass and weeds on the levee slopes and easements.					

No Photos

* Location LS : Land Side N/A : Not Applicable WS : Water Side CR : Crown		** Rating A : Acceptable N : Not Inspected/Rated M : Minimally Acceptable C : Corrected U : Unacceptable A/W : Acceptable but Monitor & Maintain		+ Issue Type Ma : Maintenance Deficiency Ob : Design & System Obsolescence En : Enforcement
--	--	---	--	---

Reclamation District No. 0556 Upper Andrus

No Photos

Unsatisfactory tree growth completely blocking visibility of the levee section at this location.

Page 13 of 22

**Flood Control Project Maintenance
Levee Inspections**

Maintenance Issue Types Only, Levee Inspection Report By Mile - Fall 2014

Reclamation District No. 0556 Upper Andrus

Waterway	Bank	Unit Miles	Inspection Start/End	Inspector
Unit No. 01 Georgiana Slough	Right	5.48	10/30/2014 10/30/2014	Herman Phillips

LM Start	2.43	Rating **	M	Issue No.	388
LM End	2.78	Issue Type +	Ma	Location *	LS
Category	Earthen Levee			GPS Latitude/Longitude	
				Start	End
Item	Vegetation			38.218251 °	38.214575 °
				-121.543806 °	-121.539672 °
DWR ID	DWR_RD0556_01_f_2013_388				
Action/Comments					
Remove the wild growth other than native grasses from the levee slopes.					

No Photos

LM Start	2.46	Rating **	M	Issue No.	42
LM End	2.50	Issue Type +	Ma	Location *	LS
Category	Earthen Levee			GPS Latitude/Longitude	
				Start	End
Item	Trim / Thin Trees			38.217757 °	38.217285 °
				-121.543827 °	-121.543693 °
DWR ID	DWR_RD0556_01_f_2012_42				
Action/Comments					
Trim trees to at least five feet above ground level.					

No Photos

LM Start	2.46	Rating **	M	Issue No.	82
LM End	2.50	Issue Type +	Ma	Location *	LS
Category	Earthen Levee			GPS Latitude/Longitude	
				Start	End
Item	Vegetation			38.217757 °	38.217285 °
				-121.543827 °	-121.543693 °
DWR ID	DWR_RD0556_01_s_2012_82				
Action/Comments					
Remove the wild growth other than native grasses from the levee slopes.					

No Photos

* Location LS : Land Side N/A : Not Applicable WS : Water Side CR : Crown	** Rating A : Acceptable M : Minimally Acceptable U : Unacceptable	N : Not Inspected/Rated C : Corrected A/W : Acceptable but Monitor & Maintain	+ Issue Type Ma : Maintenance Deficiency Ob : Design & System Obsolescence En : Enforcement
--	--	---	---

**Flood Control Project Maintenance
Levee Inspections**

Maintenance Issue Types Only, Levee Inspection Report By Mile - Fall 2014

Reclamation District No. 0556 Upper Andrus

Waterway	Bank	Unit Miles	Inspection Start/End	Inspector
Unit No. 01 Georgiana Slough	Right	5.48	10/30/2014 10/30/2014	Herman Phillips

LM Start	2.52	Rating **	M	Issue No.	391
LM End	2.54	Issue Type +	Ma	Location *	WS
Category	Earthen Levee			GPS Latitude/Longitude	
				Start	End
Item	Vegetation			38.217030 °	38.216682 °
				-121.543444 °	-121.543145 °
DWR ID	DWR_RD0556_01_f_2013_391				
Action/Comments					
Remove the wild growth other than native grasses from the levee slopes.					

No Photos

LM Start	2.54	Rating **	M	Issue No.	44
LM End	2.62	Issue Type +	Ma	Location *	LS
Category	Earthen Levee			GPS Latitude/Longitude	
				Start	End
Item	Vegetation			38.216757 °	38.215924 °
				-121.543215 °	-121.542148 °
DWR ID	DWR_RD0556_01_f_2012_44				
Action/Comments					
Remove the wild growth other than native grasses from the levee slopes.					

No Photos

LM Start	2.64	Rating **	M	Issue No.	392
LM End	2.76	Issue Type +	Ma	Location *	LS
Category	Earthen Levee			GPS Latitude/Longitude	
				Start	End
Item	Vegetation			38.215690 °	38.214763 °
				-121.541804 °	-121.539978 °
DWR ID	DWR_RD0556_01_f_2013_392				
Action/Comments					
Remove the wild growth other than native grasses from the levee slopes.					

No Photos

* Location LS : Land Side N/A : Not Applicable WS : Water Side CR : Crown	** Rating A : Acceptable M : Minimally Acceptable U : Unacceptable	N : Not Inspected/Rated C : Corrected A/W : Acceptable but Monitor & Maintain	+ Issue Type Ma : Maintenance Deficiency Ob : Design & System Obsolescence En : Enforcement
--	--	---	---

**Flood Control Project Maintenance
Levee Inspections**

Maintenance Issue Types Only, Levee Inspection Report By Mile - Fall 2014

Reclamation District No. 0556 Upper Andrus

Waterway	Bank	Unit Miles	Inspection Start/End	Inspector
Unit No. 01 Georgiana Slough	Right	5.48	10/30/2014 10/30/2014	Herman Phillips

LM Start	2.70	Rating **	U	Issue No.	390
LM End	2.70	Issue Type +	Ma	Location *	LS
Category	Earthen Levee			GPS Latitude/Longitude	
				Start	End
Item	Vegetation			38.215149 °	38.215177 °
				-121.540802 °	-121.540875 °
DWR ID	DWR_RD0556_01_s_2014_390				
Action/Comments					
Remove the wild growth other than native grasses from the levee slopes.					
Inspector Comments: Wild growth of bambo on levee slope and shoulder landside.					

Photo 1 of 1 : FA_2014_RD0556_18_390_20141030_00010.jpg



Unsatisfactory growth of bambo on the landside slope and toe.

LM Start	2.75	Rating **	M	Issue No.	56
LM End	2.79	Issue Type +	Ma	Location *	LS
Category	Earthen Levee			GPS Latitude/Longitude	
				Start	End
Item	Vegetation			38.214930 °	38.214553 °
				-121.540200 °	-121.539487 °
DWR ID	DWR_RD0556_01_f_2014_56				
Action/Comments					
Remove the wild growth other than native grasses from the levee slopes.					

No Photos

LM Start	2.96	Rating **	M	Issue No.	63
LM End	2.99	Issue Type +	Ma	Location *	WS
Category	Earthen Levee			GPS Latitude/Longitude	
				Start	End
Item	Vegetation			38.212661 °	38.212328 °
				-121.537633 °	-121.537318 °
DWR ID	DWR_RD0556_01_s_2013_63				
Action/Comments					
Remove the wild growth other than native grasses from the levee slopes.					

No Photos

*** Location**
LS : Land Side N/A : Not Applicable
WS : Water Side
CR : Crown

**** Rating**
A : Acceptable N : Not Inspected/Rated
M : Minimally Acceptable C : Corrected
U : Unacceptable A/W : Acceptable but Monitor & Maintain

+ Issue Type
Ma : Maintenance Deficiency
Ob : Design & System Obsolescence
En : Enforcement

**Flood Control Project Maintenance
Levee Inspections**

Maintenance Issue Types Only, Levee Inspection Report By Mile - Fall 2014

Reclamation District No. 0556 Upper Andrus

Waterway	Bank	Unit Miles	Inspection Start/End	Inspector
Unit No. 01 Georgiana Slough	Right	5.48	10/30/2014 10/30/2014	Herman Phillips

LM Start	3.12	Rating **	M	Issue No.	62
LM End	3.14	Issue Type +	Ma	Location *	WS
Category	Earthen Levee			GPS Latitude/Longitude	
				Start	End
Item	Animal Control			38.211060 °	38.210913 °
				-121.538132 °	-121.538462 °
DWR ID	DWR_RD0556_01_f_2014_62				
Action/Comments					
Repair the levee slope damaged by livestock and prevent large animal access.					
Inspector Comments: Possible beaver den in are; activity at this location.					

No Photos

LM Start	3.12	Rating **	M	Issue No.	64
LM End	3.14	Issue Type +	Ma	Location *	WS
Category	Earthen Levee			GPS Latitude/Longitude	
				Start	End
Item	Vegetation			38.211060 °	38.210913 °
				-121.538132 °	-121.538463 °
DWR ID	DWR_RD0556_01_f_2014_64				
Action/Comments					
Control annual grass and weeds on the levee slopes and easements. Inspector Comments: Remove the arundo from the levee section while its at a young stage.					

Photo 1 of 1 : FA_2014_RD0556_18_64_20141113_00021.jpg



Waterside levee mile 3-12 to 3.14: young patch of arundo growing.

LM Start	3.16	Rating **	M	Issue No.	52
LM End	3.17	Issue Type +	Ma	Location *	LS
Category	Earthen Levee			GPS Latitude/Longitude	
				Start	End
Item	Trim / Thin Trees			38.210839 °	38.210767 °
				-121.538773 °	-121.538952 °
DWR ID	DWR_RD0556_01_f_2012_52				
Action/Comments					
Thin trees to allow visibility of the ground and room to flood fight.					

No Photos

* Location LS : Land Side N/A : Not Applicable WS : Water Side CR : Crown	** Rating A : Acceptable M : Minimally Acceptable U : Unacceptable	N : Not Inspected/Rated C : Corrected A/W : Acceptable but Monitor & Maintain	+ Issue Type Ma : Maintenance Deficiency Ob : Design & System Obsolescence En : Enforcement
--	--	---	---

**Flood Control Project Maintenance
Levee Inspections**

Maintenance Issue Types Only, Levee Inspection Report By Mile - Fall 2014

Reclamation District No. 0556 Upper Andrus

Waterway	Bank	Unit Miles	Inspection Start/End	Inspector
Unit No. 01 Georgiana Slough	Right	5.48	10/30/2014 10/30/2014	Herman Phillips

LM Start	3.23	Rating **	M	Issue No.	65
LM End	3.24	Issue Type +	Ma	Location *	LS
Category	Earthen Levee			GPS Latitude/Longitude	
				Start	End
Item	Animal Control			38.210363 °	38.210270 °
				-121.540020 °	-121.540207 °
DWR ID	DWR_RD0556_01_s_2013_65				
Action/Comments					
Exterminate rodents and backfill and compact or grout burrows.					

No Photos

DWR Start	3.24	Rating **	U	Issue No.	395
LM End	3.35	Issue Type +	Ma	Location *	LS
Category	Earthen Levee			GPS Latitude/Longitude	
				Start	End
Item	Vegetation			38.210185 °	38.208899 °
				-121.540264 °	-121.541340 °
DWR ID	DWR_RD0556_01_f_2013_395				
Action/Comments					
Remove the wild growth other than native grasses from the levee slopes.					
Inspector Comments: This wild growth is unsatisfactory and blocking visibility and access.					

Photo 1 of 1 : FA_2014_RD0556_18_395_20141030_00011.jpg



Unsatisfactory wild growth of cactus completely blocking visibility of the entire levee section between levee mile 3.24 thru 3.35. No new photo taken fall 2014, no change at this Issue.

LM Start	3.26	Rating **	M	Issue No.	13
LM End	3.26	Issue Type +	Ma	Location *	LS
Category	Earthen Levee			GPS Latitude/Longitude	
				Start	End
Item	Trim / Thin Trees			38.210145 °	38.210145 °
				-121.540337 °	-121.540337 °
DWR ID	DWR_RD0556_01_f_2012_13				
Action/Comments					
Thin trees to allow visibility of the ground and room to flood fight. Inspector Comments: These trees need to be trimmed and thinned in order to see the ground.					

No Photos

* Location LS : Land Side N/A : Not Applicable WS : Water Side CR : Crown	** Rating A : Acceptable M : Minimally Acceptable U : Unacceptable	N : Not Inspected/Rated C : Corrected A/W : Acceptable but Monitor & Maintain	+ Issue Type Ma : Maintenance Deficiency Ob : Design & System Obsolescence En : Enforcement
--	--	---	---

**Flood Control Project Maintenance
Levee Inspections**

Maintenance Issue Types Only, Levee Inspection Report By Mile - Fall 2014

Reclamation District No. 0556 Upper Andrus

Waterway	Bank	Unit Miles	Inspection Start/End	Inspector
Unit No. 01 Georgiana Slough	Right	5.48	10/30/2014 10/30/2014	Herman Phillips

LM Start	3.26	Rating **	M	Issue No.	31
LM End	3.26	Issue Type +	Ma	Location *	LS
Category	Earthen Levee			GPS Latitude/Longitude	
				Start	End
Item	Animal Control			38.210059 °	38.210059 °
				-121.540410 °	-121.540410 °
DWR ID	DWR_RD0556_01_s_2013_31				
Action/Comments					
No rodents visible, but rodent burrows visible; need to backfill and compact or grout burrows.					
Inspector Comments: Gopher damage along the landside ramp. The District is aware of the new discovery 4-25-2013.					

No Photos

LM Start	3.58	Rating **	U	Issue No.	68
LM End	3.84	Issue Type +	Ma	Location *	WS
Category	Earthen Levee			GPS Latitude/Longitude	
				Start	End
Item	Vegetation			38.205630 °	38.202080 °
				-121.541647 °	-121.541003 °
DWR ID	DWR_RD0556_01_f_2014_68				
Action/Comments					
Trees / Woody Vegetation					
Inspector Comments: Control unwanted wild trees waterside slope.					

Photo 1 of 1 : FA_2014_RD0556_18_68_20141113_00024.jpg



Unwanted woody tree growth view of slope and toe waterward.

LM Start	3.68	Rating **	M	Issue No.	58
LM End	4.16	Issue Type +	Ma	Location *	LS
Category	Earthen Levee			GPS Latitude/Longitude	
				Start	End
Item	Trim / Thin Trees			38.204317 °	38.199502 °
				-121.541259 °	-121.545736 °
DWR ID	DWR_RD0556_01_f_2012_58				
Action/Comments					
Thin trees to allow visibility of the ground and room to flood fight.					

No Photos

*** Location**
LS : Land Side N/A : Not Applicable
WS : Water Side
CR : Crown

**** Rating**
A : Acceptable N : Not Inspected/Rated
M : Minimally Acceptable C : Corrected
U : Unacceptable A/W : Acceptable but Monitor & Maintain

+ Issue Type
Ma : Maintenance Deficiency
Ob : Design & System Obsolescence
En : Enforcement

**Flood Control Project Maintenance
Levee Inspections**

Maintenance Issue Types Only, Levee Inspection Report By Mile - Fall 2014

Reclamation District No. 0556 Upper Andrus

Waterway	Bank	Unit Miles	Inspection Start/End	Inspector
Unit No. 01 Georgiana Slough	Right	5.48	10/30/2014 10/30/2014	Herman Phillips

LM Start	4.01	Rating **	M	Issue No.	71
LM End	5.46	Issue Type +	Ma	Location *	WS
Category	Earthen Levee			GPS Latitude/Longitude	
				Start	End
Item	Vegetation			38.200990 °	38.186502 °
				-121.544037 °	-121.562375 °
DWR ID	DWR_RD0556_01_f_2014_71				
Action/Comments					
Control annual grass and weeds on the levee slopes and easements.					

No Photos

LM Start	4.03	Rating **	M	Issue No.	60
LM End	4.05	Issue Type +	Ma	Location *	LS
Category	Earthen Levee			GPS Latitude/Longitude	
				Start	End
Item	Vegetation			38.200897 °	38.200712 °
				-121.544350 °	-121.544601 °
DWR ID	DWR_RD0556_01_f_2012_60				
Action/Comments					
Remove the wild growth other than native grasses from the levee slopes.					

No Photos

LM Start	4.03	Rating **	M	Issue No.	59
LM End	4.79	Issue Type +	Ma	Location *	LS
Category	Earthen Levee			GPS Latitude/Longitude	
				Start	End
Item	Animal Control			38.200897 °	38.192662 °
				-121.544350 °	-121.553160 °
DWR ID	DWR_RD0556_01_f_2012_59				
Action/Comments					
Exterminate rodents and backfill and compact or grout burrows.					

No Photos

* Location LS : Land Side N/A : Not Applicable WS : Water Side CR : Crown	** Rating A : Acceptable M : Minimally Acceptable U : Unacceptable	N : Not Inspected/Rated C : Corrected A/W : Acceptable but Monitor & Maintain	+ Issue Type Ma : Maintenance Deficiency Ob : Design & System Obsolescence En : Enforcement
--	--	---	---

**Flood Control Project Maintenance
Levee Inspections**

Maintenance Issue Types Only, Levee Inspection Report By Mile - Fall 2014

Reclamation District No. 0556 Upper Andrus

Waterway	Bank	Unit Miles	Inspection Start/End	Inspector
Unit No. 01 Georgiana Slough	Right	5.48	10/30/2014 10/30/2014	Herman Phillips

LM Start	4.05	Rating **	U	Issue No.	69
LM End	4.05	Issue Type +	Ma	Location *	LS
Category	Earthen Levee			GPS Latitude/Longitude	
				Start	End
Item	Animal Control			38.995700 °	38.995700 °
				-120.346300 °	-120.346300 °
DWR ID	DWR_RD0556_01_s_2013_69				
Action/Comments					
No rodents visible, but rodent burrows visible; need to backfill and compact or grout burrows.					
Inspector Comments: There is a rodent hole in crown roadway more than 3-feet deep. The RD need to fix this rodent hole in the crown roadway. No new photo taken at this location. No repair made.					

Photo 1 of 1 : FA_2014_RD0556_18_69_20141030_00008.jpg



This rodent hole is in the levee crown roadway and goes down some 3-4 feet deep. Repairs are needed before rainwater get inside causing more problems. Status: unsatisfactory. There was no new photo taken of this site during the inspection of 4-2014. No new photo taken; this hole has not been backfilled.

LM Start	4.05	Rating **	U	Issue No.	67
LM End	5.46	Issue Type +	Ma	Location *	WS
Category	Earthen Levee			GPS Latitude/Longitude	
				Start	End
Item	Vegetation			38.200658 °	38.186464 °
				-121.544711 °	-121.562550 °
DWR ID	DWR_RD0556_01_s_2013_67				
Action/Comments					
Remove the wild growth other than native grasses from the levee slopes.					
Inspector Comments: Remove the wild weed growth and Arundo from the waterside levee section.					

Photo 1 of 1 : FA_2014_RD0556_18_67_20141113_00029.jpg



Unwanted tall weeds along with Arundo present on the waterside slope.

* Location LS : Land Side N/A : Not Applicable WS : Water Side CR : Crown	** Rating A : Acceptable M : Minimally Acceptable U : Unacceptable	N : Not Inspected/Rated C : Corrected A/W : Acceptable but Monitor & Maintain	+ Issue Type Ma : Maintenance Deficiency Ob : Design & System Obsolescence En : Enforcement
--	--	---	---

**Flood Control Project Maintenance
Levee Inspections**

Maintenance Issue Types Only, Levee Inspection Report By Mile - Fall 2014

Reclamation District No. 0556 Upper Andrus

Waterway	Bank	Unit Miles	Inspection Start/End	Inspector
Unit No. 01 Georgiana Slough	Right	5.48	10/30/2014 10/30/2014	Herman Phillips

LM Start	4.05	Rating **	U	Issue No.	66
LM End	5.46	Issue Type +	Ma	Location *	LS
Category	Earthen Levee			GPS Latitude/Longitude	
				Start	End
Item	Vegetation			38.200659 °	38.186542 °
				-121.544711 °	-121.562411 °
DWR ID	DWR_RD0556_01_s_2013_66				
Action/Comments					
Remove the wild growth other than native grasses from the levee slopes.					
Inspector Comments: Remove the wild berries from the slope and toe of the levee section along with the tall weeds.					

Photo 1 of 1 : FA_2014_RD0556_18_66_20141113_00028.jpg



Unwanted tall weeds and berries growing on the landside slope and toe.

LM Start	5.00	Rating **	M	Issue No.	398
LM End	5.23	Issue Type +	Ma	Location *	LS
Category	Earthen Levee			GPS Latitude/Longitude	
				Start	End
Item	Vegetation			38.190860 °	38.188625 °
				-121.556315 °	-121.559246 °
DWR ID	DWR_RD0556_01_f_2013_398				
Action/Comments					
Remove the wild growth other than native grasses from the levee slopes.					

No Photos

LM Start	5.11	Rating **	M	Issue No.	16
LM End	5.28	Issue Type +	Ma	Location *	WS
Category	Supplemental			GPS Latitude/Longitude	
				Start	End
Item	USACE Erosion Survey			38.189775 °	38.187967 °
				-121.557729 °	-121.559572 °
DWR ID	DWR_RD0556_01_f_2014_16				
Action/Comments					
Inspector Comments: 1997 - Toe damaged rock. 1999 - One pocket filled with gravel. 2000 - Eroding beach with some biotech rolls and stakes; some gravel on slope. 2001 - Staked, low fascine walls at bankline. 2005 - Stone revetment in between pockets. 2006 - New rock on upper slope behind brush boxes at the upstream end, Stone is sliding off the hard toe. 2013: No observed changes. [2013 Site ID: GEO_7-0_R]					

Photo 1 of 1 : FA_2014_RD0556_18_16_20141030_00003.jpg



USACE 2013 Photo #1

* Location LS : Land Side N/A : Not Applicable WS : Water Side CR : Crown	** Rating A : Acceptable M : Minimally Acceptable U : Unacceptable	N : Not Inspected/Rated C : Corrected A/W : Acceptable but Monitor & Maintain	+ Issue Type Ma : Maintenance Deficiency Ob : Design & System Obsolescence En : Enforcement
--	--	--	---

**Flood Control Project Maintenance
Levee Inspections**

Maintenance Issue Types Only, Levee Inspection Report By Mile - Fall 2014

Reclamation District No. 0556 Upper Andrus

Waterway	Bank	Unit Miles	Inspection Start/End	Inspector
Unit No. 02 Sacramento River	Left	5.72	10/30/2014 10/30/2014	Herman Phillips

LM Start	0.08	Rating **	M	Issue No.	287
LM End	2.00	Issue Type +	Ma	Location *	LS
Category	Earthen Levee			GPS Latitude/Longitude	
				Start	End
Item	Vegetation			38.239034 °	38.239923 °
				-121.519684 °	-121.553800 °
DWR ID	DWR_RD0556_02_f_2013_287				
Action/Comments					
Remove the wild growth other than native grasses from the levee slopes.					

No Photos

LM Start	0.08	Rating **	M	Issue No.	65
LM End	0.14	Issue Type +	Ma	Location *	WS
Category	Earthen Levee			GPS Latitude/Longitude	
				Start	End
Item	Vegetation			38.239077 °	38.238935 °
				-121.519714 °	-121.520869 °
DWR ID	DWR_RD0556_02_s_2013_65				
Action/Comments					
Remove the wild growth other than native grasses from the levee slopes.					

No Photos

LM Start	0.11	Rating **	M	Issue No.	30
LM End	0.47	Issue Type +	Ma	Location *	LS
Category	Earthen Levee			GPS Latitude/Longitude	
				Start	End
Item	Vegetation			38.238974 °	38.238029 °
				-121.520171 °	-121.526841 °
DWR ID	DWR_RD0556_02_s_2013_30				
Action/Comments					
Remove the wild growth other than native grasses from the levee slopes.					

No Photos

* Location LS : Land Side N/A : Not Applicable WS : Water Side CR : Crown	** Rating A : Acceptable M : Minimally Acceptable U : Unacceptable	N : Not Inspected/Rated C : Corrected A/W : Acceptable but Monitor & Maintain	+ Issue Type Ma : Maintenance Deficiency Ob : Design & System Obsolescence En : Enforcement
--	--	---	---

**Flood Control Project Maintenance
Levee Inspections**

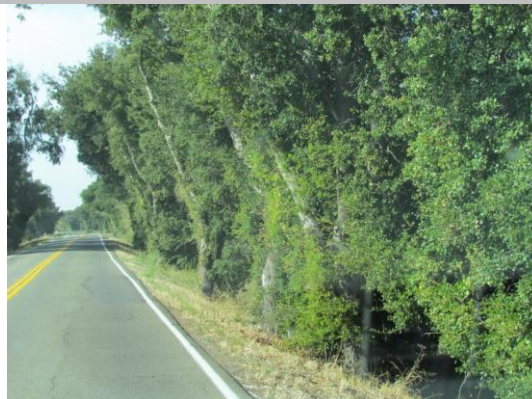
Maintenance Issue Types Only, Levee Inspection Report By Mile - Fall 2014

Reclamation District No. 0556 Upper Andrus

Waterway	Bank	Unit Miles	Inspection Start/End	Inspector
Unit No. 02 Sacramento River	Left	5.72	10/30/2014 10/30/2014	Herman Phillips

LM Start	0.12	Rating **	U	Issue No.	32
LM End	2.86	Issue Type +	Ma	Location *	WS
Category	Earthen Levee			GPS Latitude/Longitude	
				Start	End
Item	Trim / Thin Trees			38.238939 °	38.229108 °
				-121.520360 °	-121.555298 °
DWR ID	DWR_RD0556_02_f_2014_32				
Action/Comments					
Thin trees to allow visibility of the ground and room to flood fight. Inspector Comments: The trees should be trimmed up to allow the ground to be seen.					

Photo 1 of 1 : FA_2014_RD0556_19_32_20141113_00026.jpg



Woody tree growth on the waterside levee section.

LM Start	0.31	Rating **	M	Issue No.	28
LM End	0.60	Issue Type +	Ma	Location *	WS
Category	Supplemental			GPS Latitude/Longitude	
				Start	End
Item	USACE Erosion Survey			38.238784 °	38.237862 °
				-121.523932 °	-121.529188 °
DWR ID	DWR_RD0556_02_f_2014_28				
Action/Comments					
Inspector Comments: 2002 - Two rocked sections (150 ft long) at the downstream end. 2005 - Lots of old brush boxes, some with established vegetation in the area behind the boxes. 2006 - Some small spots fixed with stone. 2009 - Minimal new erosion, rock in the middle of the reach may be new. 2011 - Minor new erosion at the toe. 2013: Minor new erosion. [2013 Site ID: SAC_26-0_L]					

Photo 1 of 1 : FA_2014_RD0556_19_28_20141030_00010.jpg



USACE 2013 Photo #1

LM Start	0.48	Rating **	N	Issue No.	67
LM End	0.48	Issue Type +	Ma	Location *	WS
Category	Earthen Levee			GPS Latitude/Longitude	
				Start	End
Item	Trim / Thin Trees			38.238050 °	38.238050 °
				-121.526876 °	-121.526876 °
DWR ID	DWR_RD0556_02_s_2013_67				
Action/Comments					
Tree stumps.					

No Photos

* Location LS : Land Side N/A : Not Applicable WS : Water Side CR : Crown	** Rating A : Acceptable M : Minimally Acceptable U : Unacceptable	N : Not Inspected/Rated C : Corrected A/W : Acceptable but Monitor & Maintain	+ Issue Type Ma : Maintenance Deficiency Ob : Design & System Obsolescence En : Enforcement
--	--	---	---

**Flood Control Project Maintenance
Levee Inspections**

Maintenance Issue Types Only, Levee Inspection Report By Mile - Fall 2014

Reclamation District No. 0556 Upper Andrus

Waterway	Bank	Unit Miles	Inspection Start/End	Inspector
Unit No. 02 Sacramento River	Left	5.72	10/30/2014 10/30/2014	Herman Phillips

LM Start	0.53	Rating **	M	Issue No.	68
LM End	1.35	Issue Type +	Ma	Location *	LS
Category	Earthen Levee			GPS Latitude/Longitude	
				Start	End
Item	Vegetation			38.237833 °	38.239821 °
				-121.528093 °	-121.542438 °
DWR ID	DWR_RD0556_02_s_2013_68				
Action/Comments					
Remove the wild growth other than native grasses from the levee slopes.					

No Photos

LM Start	0.54	Rating **	M	Issue No.	34
LM End	0.83	Issue Type +	Ma	Location *	LS
Category	Earthen Levee			GPS Latitude/Longitude	
				Start	End
Item	Vegetation			38.237827 °	38.237810 °
				-121.528056 °	-121.533291 °
DWR ID	DWR_RD0556_02_f_2014_34				
Action/Comments					
Remove the wild growth other than native grasses from the levee slopes.					

No Photos

LM Start	0.90	Rating **	M	Issue No.	48
LM End	1.38	Issue Type +	Ma	Location *	LS
Category	Earthen Levee			GPS Latitude/Longitude	
				Start	End
Item	Vegetation			38.238020 °	38.239938 °
				-121.534572 °	-121.543044 °
DWR ID	DWR_RD0556_02_f_2012_48				
Action/Comments					
Remove the wild growth other than native grasses from the levee slopes.					

No Photos

* Location LS : Land Side N/A : Not Applicable WS : Water Side CR : Crown	** Rating A : Acceptable M : Minimally Acceptable U : Unacceptable	N : Not Inspected/Rated C : Corrected A/W : Acceptable but Monitor & Maintain	+ Issue Type Ma : Maintenance Deficiency Ob : Design & System Obsolescence En : Enforcement
--	--	---	---

**Flood Control Project Maintenance
Levee Inspections**

Maintenance Issue Types Only, Levee Inspection Report By Mile - Fall 2014

Reclamation District No. 0556 Upper Andrus

Waterway	Bank	Unit Miles	Inspection Start/End	Inspector
Unit No. 02 Sacramento River	Left	5.72	10/30/2014 10/30/2014	Herman Phillips

LM Start	1.11	Rating **	M	Issue No.	49
LM End	5.72	Issue Type +	Ma	Location *	WS
Category	Earthen Levee			GPS Latitude/Longitude	
				Start	End
Item	Vegetation			38.238840 °	38.191190 °
				-121.538206 °	-121.567346 °
DWR ID	DWR_RD0556_02_f_2012_49				
Action/Comments					
Remove the wild growth other than native grasses from the levee slopes.					

No Photos

LM Start	1.17	Rating **	U	Issue No.	69
LM End	1.37	Issue Type +	Ma	Location *	WS
Category	Earthen Levee			GPS Latitude/Longitude	
				Start	End
Item	Trim / Thin Trees			38.239151 °	38.239884 °
				-121.539351 °	-121.542766 °
DWR ID	DWR_RD0556_02_s_2013_69				
Action/Comments					
Thin trees to allow visibility of the ground and room to flood fight. Inspector Comments: No maintenance done since last inspection, no new photo taken.					

Photo 1 of 1 : FA_2014_RD0556_19_69_20141030_00013.jpg



Unwanted wild growth on the water side slope and toe. No new photo taken during Fall inspection 2014.

LM Start	1.45	Rating **	M	Issue No.	26
LM End	1.59	Issue Type +	Ma	Location *	WS
Category	Supplemental			GPS Latitude/Longitude	
				Start	End
Item	USACE Erosion Survey			38.240401 °	38.240772 °
				-121.544106 °	-121.546791 °
DWR ID	DWR_RD0556_02_f_2014_26				
Action/Comments					
Inspector Comments: 1997 - Slow erosion of the berm at the waterline; bench below water. 2005 - Brush boxes present. 2010 - Minor new erosion. 2013: There is little to no berm remaining at downstream end of this site. [2013 Site ID: SAC_24-8_L]					

Photo 1 of 1 : FA_2014_RD0556_19_26_20141030_00008.jpg



USACE 2013 Photo #1

* Location LS : Land Side N/A : Not Applicable WS : Water Side CR : Crown		** Rating A : Acceptable N : Not Inspected/Rated M : Minimally Acceptable C : Corrected U : Unacceptable A/W : Acceptable but Monitor & Maintain		+ Issue Type Ma : Maintenance Deficiency Ob : Design & System Obsolescence En : Enforcement
--	--	---	--	---

**Flood Control Project Maintenance
Levee Inspections**

Maintenance Issue Types Only, Levee Inspection Report By Mile - Fall 2014

Reclamation District No. 0556 Upper Andrus

Waterway	Bank	Unit Miles	Inspection Start/End	Inspector
Unit No. 02 Sacramento River	Left	5.72	10/30/2014 10/30/2014	Herman Phillips

LM Start	1.45	Rating **	M	Issue No.	50
LM End	3.28	Issue Type +	Ma	Location *	LS
Category	Earthen Levee			GPS Latitude/Longitude	
				Start	End
Item	Vegetation			38.240196 °	38.223070 °
				-121.544292 °	-121.555456 °
DWR ID	DWR_RD0556_02_f_2012_50				
Action/Comments					
Remove the wild growth other than native grasses from the levee slopes.					

No Photos

LM Start	1.52	Rating **	M	Issue No.	70
LM End	1.79	Issue Type +	Ma	Location *	WS
Category	Earthen Levee			GPS Latitude/Longitude	
				Start	End
Item	Vegetation			38.240371 °	38.241034 °
				-121.545463 °	-121.550501 °
DWR ID	DWR_RD0556_02_s_2013_70				
Action/Comments					
Remove the wild growth other than native grasses from the levee slopes.					

No Photos

LM Start	1.53	Rating **	U	Issue No.	71
LM End	1.71	Issue Type +	Ma	Location *	LS
Category	Earthen Levee			GPS Latitude/Longitude	
				Start	End
Item	Vegetation			38.240417 °	38.240959 °
				-121.545769 °	-121.549025 °
DWR ID	DWR_RD0556_02_s_2013_71				
Action/Comments					
Remove the wild growth other than native grasses from the levee slopes.					
Inspector Comments: District need to remoove the vegetation from the levee slopes.					

Photo 1 of 1 : FA_2014_RD0556_19_71_20141030_00014.jpg



Wild growth on landward levee section greater than 4-foot tall covering the levee slope and toe. No new photo Fall 2014.

* Location LS : Land Side N/A : Not Applicable WS : Water Side CR : Crown	** Rating A : Acceptable M : Minimally Acceptable U : Unacceptable	N : Not Inspected/Rated C : Corrected A/W : Acceptable but Monitor & Maintain	+ Issue Type Ma : Maintenance Deficiency Ob : Design & System Obsolescence En : Enforcement
--	--	---	---

**Flood Control Project Maintenance
Levee Inspections**

Maintenance Issue Types Only, Levee Inspection Report By Mile - Fall 2014

Reclamation District No. 0556 Upper Andrus

Waterway	Bank	Unit Miles	Inspection Start/End	Inspector
Unit No. 02 Sacramento River	Left	5.72	10/30/2014 10/30/2014	Herman Phillips

LM Start	1.71	Rating **	M	Issue No.	52
LM End	3.41	Issue Type +	Ma	Location *	WS
Category	Earthen Levee			GPS Latitude/Longitude	
				Start	End
Item	Vegetation			38.240959 °	38.221267 °
				-121.549026 °	-121.555754 °
DWR ID	DWR_RD0556_02_s_2013_52				
Action/Comments					
Remove the wild growth other than native grasses from the levee slopes.					

No Photos

LM Start	1.86	Rating **	M	Issue No.	72
LM End	4.27	Issue Type +	Ma	Location *	LS
Category	Earthen Levee			GPS Latitude/Longitude	
				Start	End
Item	Vegetation			38.240906 °	38.208791 °
				-121.551823 °	-121.556812 °
DWR ID	DWR_RD0556_02_s_2013_72				
Action/Comments					
Remove the wild growth other than native grasses from the levee slopes.					

No Photos

LM Start	1.88	Rating **	M	Issue No.	73
LM End	5.70	Issue Type +	Ma	Location *	WS
Category	Earthen Levee			GPS Latitude/Longitude	
				Start	End
Item	Vegetation			38.240799 °	38.191865 °
				-121.552373 °	-121.567498 °
DWR ID	DWR_RD0556_02_s_2013_73				
Action/Comments					
Remove the wild growth other than native grasses from the levee slopes.					

No Photos

* Location LS : Land Side N/A : Not Applicable WS : Water Side CR : Crown	** Rating A : Acceptable M : Minimally Acceptable U : Unacceptable	N : Not Inspected/Rated C : Corrected A/W : Acceptable but Monitor & Maintain	+ Issue Type Ma : Maintenance Deficiency Ob : Design & System Obsolescence En : Enforcement
--	--	---	---

**Flood Control Project Maintenance
Levee Inspections**

Maintenance Issue Types Only, Levee Inspection Report By Mile - Fall 2014

Reclamation District No. 0556 Upper Andrus

Waterway	Bank	Unit Miles	Inspection Start/End	Inspector
Unit No. 02 Sacramento River	Left	5.72	10/30/2014 10/30/2014	Herman Phillips

LM Start	1.90	Rating **	M	Issue No.	51
LM End	5.69	Issue Type +	Ma	Location *	WS
Category	Earthen Levee			GPS Latitude/Longitude	
				Start	End
Item	Vegetation			38.240740 °	°
				-121.552539 °	°
DWR ID	DWR_RD0556_02_f_2012_51				
Action/Comments					
Remove the wild growth other than native grasses from the levee slopes.					

No Photos

LM Start	1.98	Rating **	M	Issue No.	14
LM End	2.36	Issue Type +	Ma	Location *	LS
Category	Earthen Levee			GPS Latitude/Longitude	
				Start	End
Item	Vegetation			38.240022 °	38.236065 °
				-121.553700 °	-121.557990 °
DWR ID	DWR_RD0556_02_s_2012_14				
Action/Comments					
Remove the wild growth other than native grasses from the levee slopes.					

No Photos

LM Start	2.02	Rating **	M	Issue No.	75
LM End	2.06	Issue Type +	Ma	Location *	WS
Category	Earthen Levee			GPS Latitude/Longitude	
				Start	End
Item	Vegetation			38.239766 °	38.239474 °
				-121.554364 °	-121.554851 °
DWR ID	DWR_RD0556_02_s_2013_75				
Action/Comments					
Remove the wild growth other than native grasses from the levee slopes.					

No Photos

* Location LS : Land Side N/A : Not Applicable WS : Water Side CR : Crown	** Rating A : Acceptable M : Minimally Acceptable U : Unacceptable	N : Not Inspected/Rated C : Corrected A/W : Acceptable but Monitor & Maintain	+ Issue Type Ma : Maintenance Deficiency Ob : Design & System Obsolescence En : Enforcement
--	--	---	---

**Flood Control Project Maintenance
Levee Inspections**

Maintenance Issue Types Only, Levee Inspection Report By Mile - Fall 2014

Reclamation District No. 0556 Upper Andrus

Waterway	Bank	Unit Miles	Inspection Start/End	Inspector
Unit No. 02 Sacramento River	Left	5.72	10/30/2014 10/30/2014	Herman Phillips

LM Start	2.41	Rating **	M	Issue No.	77
LM End	5.14	Issue Type +	Ma	Location *	LS
Category	Earthen Levee			GPS Latitude/Longitude	
				Start	End
Item	Vegetation			38.235307 °	38.196564 °
				-121.558088 °	-121.559500 °
DWR ID	DWR_RD0556_02_s_2013_77				
Action/Comments					
Remove the wild growth other than native grasses from the levee slopes.					

No Photos

LM Start	2.69	Rating **	M	Issue No.	9
LM End	5.42	Issue Type +	Ma	Location *	LS
Category	Earthen Levee			GPS Latitude/Longitude	
				Start	End
Item	Trim / Thin Trees			38.231444 °	38.193523 °
				-121.556393 °	-121.562812 °
DWR ID	DWR_RD0556_02_s_2012_9				
Action/Comments					
Trim and thin trees to allow visibility of the ground and room to flood fight.					

No Photos

LM Start	2.81	Rating **	M	Issue No.	55
LM End	3.00	Issue Type +	Ma	Location *	LS
Category	Earthen Levee			GPS Latitude/Longitude	
				Start	End
Item	Trim / Thin Trees			38.229938 °	38.227167 °
				-121.555556 °	-121.555216 °
DWR ID	DWR_RD0556_02_f_2012_55				
Action/Comments					
Thin trees to allow visibility of the ground and room to flood fight.					

No Photos

* Location LS : Land Side N/A : Not Applicable WS : Water Side CR : Crown	** Rating A : Acceptable M : Minimally Acceptable U : Unacceptable	N : Not Inspected/Rated C : Corrected A/W : Acceptable but Monitor & Maintain	+ Issue Type Ma : Maintenance Deficiency Ob : Design & System Obsolescence En : Enforcement
--	--	---	---

**Flood Control Project Maintenance
Levee Inspections**

Maintenance Issue Types Only, Levee Inspection Report By Mile - Fall 2014

Reclamation District No. 0556 Upper Andrus

Waterway	Bank	Unit Miles	Inspection Start/End	Inspector
Unit No. 02 Sacramento River	Left	5.72	10/30/2014 10/30/2014	Herman Phillips

LM Start	2.92	Rating **	M	Issue No.	13
LM End	3.17	Issue Type +	Ma	Location *	WS
Category	Earthen Levee			GPS Latitude/Longitude	
				Start	End
Item	Vegetation			38.228326 °	38.224729 °
				-121.555149 °	-121.555331 °
DWR ID	DWR_RD0556_02_s_2012_13				
Action/Comments					
Remove the wild growth other than native grasses from the levee slopes.					

No Photos

LM Start	2.96	Rating **	M	Issue No.	25
LM End	3.02	Issue Type +	Ma	Location *	WS
Category	Supplemental			GPS Latitude/Longitude	
				Start	End
Item	USACE Erosion Survey			38.228202 °	38.226601 °
				-121.555502 °	-121.555605 °
DWR ID	DWR_RD0556_02_f_2014_25				
Action/Comments					
Inspector Comments: 1997 - Few scallops in berm, some getting close to levee toe. 2005 - Brush boxes present. 2012 - More erosion of the toe since last year. 2013: No observed changes. [2013 Site ID: SAC_23-3_L]					

Photo 1 of 1 : FA_2014_RD0556_19_25_20141030_00007.jpg



USACE 2013 Photo #1

LM Start	3.11	Rating **	M	Issue No.	56
LM End	3.18	Issue Type +	Ma	Location *	LS
Category	Earthen Levee			GPS Latitude/Longitude	
				Start	End
Item	Vegetation			38.225574 °	38.224522 °
				-121.555261 °	-121.555370 °
DWR ID	DWR_RD0556_02_f_2012_56				
Action/Comments					
Remove the wild growth other than native grasses from the levee slopes.					

No Photos

* Location LS : Land Side N/A : Not Applicable WS : Water Side CR : Crown		** Rating A : Acceptable N : Not Inspected/Rated M : Minimally Acceptable C : Corrected U : Unacceptable A/W : Acceptable but Monitor & Maintain		+ Issue Type Ma : Maintenance Deficiency Ob : Design & System Obsolescence En : Enforcement
--	--	---	--	---

**Flood Control Project Maintenance
Levee Inspections**

Maintenance Issue Types Only, Levee Inspection Report By Mile - Fall 2014

Reclamation District No. 0556 Upper Andrus

Waterway	Bank	Unit Miles	Inspection Start/End	Inspector
Unit No. 02 Sacramento River	Left	5.72	10/30/2014 10/30/2014	Herman Phillips

LM Start	3.16	Rating **	M	Issue No.	23
LM End	3.25	Issue Type +	Ma	Location *	WS
Category	Supplemental			GPS Latitude/Longitude	
				Start	End
Item	USACE Erosion Survey			38.224850 °	38.223233 °
				-121.555641 °	-121.555687 °
DWR ID	DWR_RD0556_02_f_2014_23				
Action/Comments					
Inspector Comments: 2000 - Recently fallen cottonwood at the downstream end. 2005 - Empty brush boxes. 2011 - A few trees have fallen since last year. 2012 - Potential new tree popout since last year. 2013: New erosion at downstream end of site and a recent tree pop-out observed. [2013 Site ID: SAC_23-2_L]					

Photo 1 of 1 : FA_2014_RD0556_19_23_20141030_00005.jpg



USACE 2013 Photo #1

LM Start	3.24	Rating **	M	Issue No.	18
LM End	3.26	Issue Type +	Ma	Location *	LS
Category	Earthen Levee			GPS Latitude/Longitude	
				Start	End
Item	Trim / Thin Trees			38.223689 °	38.223419 °
				-121.555370 °	-121.555404 °
DWR ID	DWR_RD0556_02_s_2012_18				
Action/Comments					
Thin trees to allow visibility of the ground and room to flood fight.					

No Photos

LM Start	3.40	Rating **	M	Issue No.	57
LM End	3.58	Issue Type +	Ma	Location *	LS
Category	Earthen Levee			GPS Latitude/Longitude	
				Start	End
Item	Trim / Thin Trees			38.221170 °	38.218765 °
				-121.555791 °	-121.556374 °
DWR ID	DWR_RD0556_02_f_2012_57				
Action/Comments					
Trim trees to at least five feet above ground level.					

No Photos

* Location LS : Land Side N/A : Not Applicable WS : Water Side CR : Crown		** Rating A : Acceptable N : Not Inspected/Rated M : Minimally Acceptable C : Corrected U : Unacceptable A/W : Acceptable but Monitor & Maintain		+ Issue Type Ma : Maintenance Deficiency Ob : Design & System Obsolescence En : Enforcement
--	--	---	--	---

**Flood Control Project Maintenance
Levee Inspections**

Maintenance Issue Types Only, Levee Inspection Report By Mile - Fall 2014

Reclamation District No. 0556 Upper Andrus

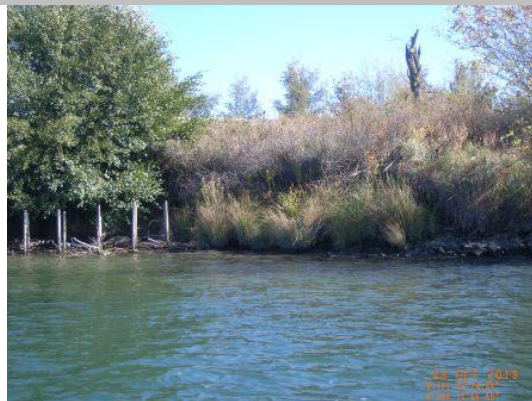
Waterway	Bank	Unit Miles	Inspection Start/End	Inspector
Unit No. 02 Sacramento River	Left	5.72	10/30/2014 10/30/2014	Herman Phillips

LM Start	3.57	Rating **	M	Issue No.	17
LM End	3.57	Issue Type +	Ma	Location *	LS
Category	Earthen Levee			GPS Latitude/Longitude	
				Start	End
Item	Trim / Thin Trees			38.218922 °	38.218921 °
				-121.556319 °	-121.556320 °
DWR ID	DWR_RD0556_02_s_2012_17				
Action/Comments					
Thin trees to allow visibility of the ground and room to flood fight.					

No Photos

LM Start	3.58	Rating **	M	Issue No.	22
LM End	3.63	Issue Type +	Ma	Location *	WS
Category	Supplemental			GPS Latitude/Longitude	
				Start	End
Item	USACE Erosion Survey			38.218951 °	38.218104 °
				-121.556689 °	-121.556819 °
DWR ID	DWR_RD0556_02_f_2014_22				
Action/Comments					
Inspector Comments: 1997 - Scallops into berm and very close to levee toe. 2005 - Brush boxes present. 2011 - New toe scour and freshly fallen tree. 2012 - New tree popout has taken significant portion of soil out of the levee. 2013: No observed changes. [2013 Site ID: SAC_22-7_L]					

Photo 1 of 1 : FA_2014_RD0556_19_22_20141030_00004.jpg



USACE 2013 Photo #1

LM Start	3.64	Rating **	M	Issue No.	58
LM End	3.67	Issue Type +	Ma	Location *	LS
Category	Earthen Levee			GPS Latitude/Longitude	
				Start	End
Item	Trim / Thin Trees			38.217984 °	38.217491 °
				-121.556537 °	-121.556630 °
DWR ID	DWR_RD0556_02_f_2012_58				
Action/Comments					
Thin trees to allow visibility of the ground and room to flood fight.					

No Photos

* Location LS : Land Side N/A : Not Applicable WS : Water Side CR : Crown		** Rating A : Acceptable N : Not Inspected/Rated M : Minimally Acceptable C : Corrected U : Unacceptable A/W : Acceptable but Monitor & Maintain		+ Issue Type Ma : Maintenance Deficiency Ob : Design & System Obsolescence En : Enforcement
--	--	---	--	---

**Flood Control Project Maintenance
Levee Inspections**

Maintenance Issue Types Only, Levee Inspection Report By Mile - Fall 2014

Reclamation District No. 0556 Upper Andrus

Waterway	Bank	Unit Miles	Inspection Start/End	Inspector
Unit No. 02 Sacramento River	Left	5.72	10/30/2014 10/30/2014	Herman Phillips

LM Start	3.75	Rating **	M	Issue No.	6
LM End	5.70	Issue Type +	Ma	Location *	LS
Category	Earthen Levee			GPS Latitude/Longitude	
				Start	End
Item	Vegetation			38.216407 °	38.191875 °
				-121.556714 °	-121.567455 °
DWR ID	DWR_RD0556_02_s_2012_6				
Action/Comments					
Remove the wild growth other than native grasses from the levee slopes.					

No Photos

LM Start	3.82	Rating **	M	Issue No.	16
LM End	4.13	Issue Type +	Ma	Location *	LS
Category	Earthen Levee			GPS Latitude/Longitude	
				Start	End
Item	Trim / Thin Trees			38.215319 °	38.210907 °
				-121.556842 °	-121.556738 °
DWR ID	DWR_RD0556_02_s_2012_16				
Action/Comments					
Thin trees to allow visibility of the ground and room to flood fight.					

No Photos

LM Start	4.06	Rating **	M	Issue No.	21
LM End	4.11	Issue Type +	Ma	Location *	WS
Category	Supplemental			GPS Latitude/Longitude	
				Start	End
Item	USACE Erosion Survey			38.213581 °	38.211112 °
				-121.557197 °	-121.557042 °
DWR ID	DWR_RD0556_02_f_2014_21				
Action/Comments					
Inspector Comments: 2002 - Spot rock along berm, but not in the erosion pockets. 2005 - Some new minor stone revetment at the upstream end. Brush boxes present. 2006 - Currently installing new brush in downstream brush boxes. 2007 - Rock in middle portion for about 150 ft. 2010 - Some attempt at repairs but still has pockets of erosion. 2012 - More erosion along the toe. 2013: No observed changes. [2013 Site ID: SAC_22-5_L]					

Photo 1 of 1 : FA_2014_RD0556_19_21_20141030_00003.jpg



USACE 2013 Photo #1

* Location LS : Land Side N/A : Not Applicable WS : Water Side CR : Crown		** Rating A : Acceptable M : Minimally Acceptable U : Unacceptable		N : Not Inspected/Rated C : Corrected A/W : Acceptable but Monitor & Maintain		+ Issue Type Ma : Maintenance Deficiency Ob : Design & System Obsolescence En : Enforcement	
---	--	---	--	---	--	--	--

**Flood Control Project Maintenance
Levee Inspections**

Maintenance Issue Types Only, Levee Inspection Report By Mile - Fall 2014

Reclamation District No. 0556 Upper Andrus

Waterway	Bank	Unit Miles	Inspection Start/End	Inspector
Unit No. 02 Sacramento River	Left	5.72	10/30/2014 10/30/2014	Herman Phillips

LM Start	4.12	Rating **	M	Issue No.	12
LM End	4.31	Issue Type +	Ma	Location *	LS
Category	Earthen Levee			GPS Latitude/Longitude	
				Start	End
Item	Trim / Thin Trees			38.211011 °	38.208195 °
				-121.556676 °	-121.556788 °
DWR ID	DWR_RD0556_02_s_2012_12				
Action/Comments					
Thin trees to allow visibility of the ground and room to flood fight.					

No Photos

LM Start	4.22	Rating **	U	Issue No.	35
LM End	4.60	Issue Type +	Ma	Location *	WS
Category	Earthen Levee			GPS Latitude/Longitude	
				Start	End
Item	Vegetation			38.209642 °	38.204006 °
				-121.556778 °	-121.556760 °
DWR ID	DWR_RD0556_02_f_2012_35				
Action/Comments					
Remove the wild growth other than native grasses from the levee slopes.					
Inspector Comments: The arundo on the waterside slope should be removed from the levee section.					

Photo 1 of 1 : FA_2014_RD0556_19_35_20141030_00011.jpg



Unsatisfactory wild growth of bambo blocking view of the levee section on the waterside shoulder and slope. No new photo.

LM Start	4.23	Rating **	M	Issue No.	15
LM End	4.26	Issue Type +	Ma	Location *	LS
Category	Earthen Levee			GPS Latitude/Longitude	
				Start	End
Item	Vegetation			38.209458 °	38.208936 °
				-121.556759 °	-121.556763 °
DWR ID	DWR_RD0556_02_s_2012_15				
Action/Comments					
Remove the wild growth other than native grasses from the levee slopes.					

No Photos

*** Location**
LS : Land Side N/A : Not Applicable
WS : Water Side
CR : Crown

**** Rating**
A : Acceptable N : Not Inspected/Rated
M : Minimally Acceptable C : Corrected
U : Unacceptable A/W : Acceptable but Monitor & Maintain

+ Issue Type
Ma : Maintenance Deficiency
Ob : Design & System Obsolescence
En : Enforcement

**Flood Control Project Maintenance
Levee Inspections**

Maintenance Issue Types Only, Levee Inspection Report By Mile - Fall 2014

Reclamation District No. 0556 Upper Andrus

Waterway	Bank	Unit Miles	Inspection Start/End	Inspector
Unit No. 02 Sacramento River	Left	5.72	10/30/2014 10/30/2014	Herman Phillips

LM Start	4.23	Rating **	M	Issue No.	8
LM End	4.27	Issue Type +	Ma	Location *	WS
Category	Earthen Levee			GPS Latitude/Longitude	
				Start	End
Item	Vegetation			38.209458 °	38.208808 °
				-121.556759 °	-121.556797 °
DWR ID	DWR_RD0556_02_s_2012_8				
Action/Comments					
Remove the wild growth other than native grasses from the levee slopes.					

No Photos

LM Start	4.44	Rating **	M	Issue No.	19
LM End	4.48	Issue Type +	Ma	Location *	WS
Category	Supplemental			GPS Latitude/Longitude	
				Start	End
Item	USACE Erosion Survey			38.206379 °	38.205733 °
				-121.557089 °	-121.556999 °
DWR ID	DWR_RD0556_02_f_2014_19				
Action/Comments					
Inspector Comments: 2013: Erosion pockets encroaching on levee foundation. [2013 Site ID: SAC_21-9_L]					

Photo 1 of 1 : FA_2014_RD0556_19_19_20141030_00002.jpg



USACE 2013 Photo #1

LM Start	4.45	Rating **	M	Issue No.	61
LM End	4.49	Issue Type +	Ma	Location *	LS
Category	Earthen Levee			GPS Latitude/Longitude	
				Start	End
Item	Vegetation			38.206187 °	38.205656 °
				-121.556816 °	-121.556802 °
DWR ID	DWR_RD0556_02_f_2012_61				
Action/Comments					
Remove the wild growth other than native grasses from the levee slopes.					

No Photos

* Location LS : Land Side N/A : Not Applicable WS : Water Side CR : Crown	** Rating A : Acceptable M : Minimally Acceptable U : Unacceptable	N : Not Inspected/Rated C : Corrected A/W : Acceptable but Monitor & Maintain	+ Issue Type Ma : Maintenance Deficiency Ob : Design & System Obsolescence En : Enforcement
--	--	---	---

**Flood Control Project Maintenance
Levee Inspections**

Maintenance Issue Types Only, Levee Inspection Report By Mile - Fall 2014

Reclamation District No. 0556 Upper Andrus

Waterway	Bank	Unit Miles	Inspection Start/End	Inspector
Unit No. 02 Sacramento River	Left	5.72	10/30/2014 10/30/2014	Herman Phillips

LM Start	4.53	Rating **	U	Issue No.	59
LM End	4.89	Issue Type +	Ma	Location *	LS
Category	Earthen Levee			GPS Latitude/Longitude	
				Start	End
Item	Vegetation			38.205036 °	38.199871 °
				-121.556784 °	-121.557650 °
DWR ID	DWR_RD0556_02_s_2013_59				
Action/Comments					
Remove the wild growth other than native grasses from the levee slopes.					
Inspector Comments: Remove the growth from levee slope landward.					
No new photo.					

Photo 1 of 1 : FA_2014_RD0556_19_59_20141030_00012.jpg



Unsatisfactory growth on landward levee.

LM Start	4.80	Rating **	M	Issue No.	5
LM End	4.92	Issue Type +	Ma	Location *	LS
Category	Earthen Levee			GPS Latitude/Longitude	
				Start	End
Item	Vegetation			38.201362 °	38.199558 °
				-121.557077 °	-121.557603 °
DWR ID	DWR_RD0556_02_s_2012_5				
Action/Comments					
Remove the wild growth other than native grasses from the levee slopes.					

No Photos

LM Start	4.80	Rating **	M	Issue No.	37
LM End	4.92	Issue Type +	Ma	Location *	LS
Category	Earthen Levee			GPS Latitude/Longitude	
				Start	End
Item	Vegetation			38.201362 °	38.199558 °
				-121.557077 °	-121.557603 °
DWR ID	DWR_RD0556_02_f_2012_37				
Action/Comments					
Remove the wild growth other than native grasses from the levee slopes.					

No Photos

* Location LS : Land Side N/A : Not Applicable WS : Water Side CR : Crown	** Rating A : Acceptable M : Minimally Acceptable U : Unacceptable	N : Not Inspected/Rated C : Corrected A/W : Acceptable but Monitor & Maintain	+ Issue Type Ma : Maintenance Deficiency Ob : Design & System Obsolescence En : Enforcement
--	--	---	---

**Flood Control Project Maintenance
Levee Inspections**

Maintenance Issue Types Only, Levee Inspection Report By Mile - Fall 2014

Reclamation District No. 0556 Upper Andrus

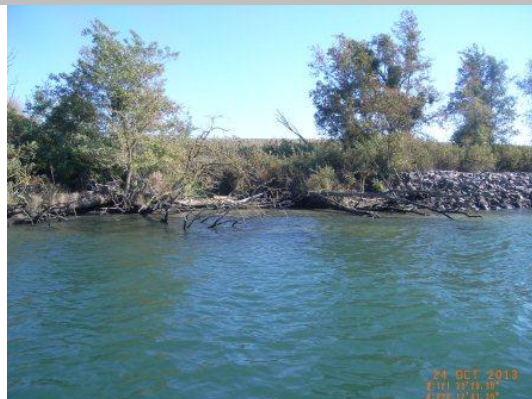
Waterway	Bank	Unit Miles	Inspection Start/End	Inspector
Unit No. 02 Sacramento River	Left	5.72	10/30/2014 10/30/2014	Herman Phillips

LM Start	4.82	Rating **	M	Issue No.	11
LM End	4.95	Issue Type +	Ma	Location *	WS
Category	Earthen Levee			GPS Latitude/Longitude	
				Start	End
Item	Vegetation			38.200676 °	38.199025 °
				-121.557136 °	-121.557923 °
DWR ID	DWR_RD0556_02_s_2012_11				
Action/Comments					
Remove the wild growth other than native grasses from the levee slopes.					

No Photos

LM Start	4.87	Rating **	M	Issue No.	3
LM End	4.88	Issue Type +	Ma	Location *	WS
Category	Supplemental			GPS Latitude/Longitude	
				Start	End
Item	USACE Erosion Survey			38.200646 °	38.200225 °
				-121.557606 °	-121.557749 °
DWR ID	DWR_RD0556_02_f_2014_3				
Action/Comments					
Inspector Comments: 1999 - Downstream 140 ft repaired with rock. 2010 - Lots of woody debris, but no changes to site. 2013: No observed changes. [2013 Site ID: SAC_21-5_L]					

Photo 1 of 1 : FA_2014_RD0556_19_3_20141030_00001.jpg



USACE 2013 Photo #1

LM Start	5.01	Rating **	M	Issue No.	4
LM End	5.07	Issue Type +	Ma	Location *	LS
Category	Earthen Levee			GPS Latitude/Longitude	
				Start	End
Item	Vegetation			38.198403 °	38.197618 °
				-121.558263 °	-121.558800 °
DWR ID	DWR_RD0556_02_s_2012_4				
Action/Comments					
Remove the wild growth other than native grasses from the levee slopes.					

No Photos

* Location LS : Land Side N/A : Not Applicable WS : Water Side CR : Crown	** Rating A : Acceptable M : Minimally Acceptable U : Unacceptable	N : Not Inspected/Rated C : Corrected A/W : Acceptable but Monitor & Maintain	+ Issue Type Ma : Maintenance Deficiency Ob : Design & System Obsolescence En : Enforcement
--	--	---	---

**Flood Control Project Maintenance
Levee Inspections**

Maintenance Issue Types Only, Levee Inspection Report By Mile - Fall 2014

Reclamation District No. 0556 Upper Andrus

Waterway	Bank	Unit Miles	Inspection Start/End	Inspector
Unit No. 02 Sacramento River	Left	5.72	10/30/2014 10/30/2014	Herman Phillips

LM Start	5.03	Rating **	M	Issue No.	10
LM End	5.21	Issue Type +	Ma	Location *	LS
Category	Earthen Levee			GPS Latitude/Longitude	
				Start	End
Item	Vegetation			38.198039 °	38.195649 °
				-121.558494 °	-121.560050 °
DWR ID	DWR_RD0556_02_s_2012_10				
Action/Comments					
Remove the wild growth other than native grasses from the levee slopes.					

No Photos

LM Start	5.38	Rating **	M	Issue No.	1
LM End	5.67	Issue Type +	Ma	Location *	LS
Category	Earthen Levee			GPS Latitude/Longitude	
				Start	End
Item	Vegetation			38.194068 °	38.192117 °
				-121.562117 °	-121.566833 °
DWR ID	DWR_RD0556_02_s_2012_1				
Action/Comments					
Remove the wild growth other than native grasses from the levee slopes.					

No Photos

LM Start	5.39	Rating **	M	Issue No.	41
LM End	5.42	Issue Type +	Ma	Location *	LS
Category	Earthen Levee			GPS Latitude/Longitude	
				Start	End
Item	Trim / Thin Trees			38.193850 °	38.193498 °
				-121.562362 °	-121.562868 °
DWR ID	DWR_RD0556_02_f_2012_41				
Action/Comments					
Thin trees to allow visibility of the ground and room to flood fight.					

No Photos

* Location LS : Land Side N/A : Not Applicable WS : Water Side CR : Crown	** Rating A : Acceptable M : Minimally Acceptable U : Unacceptable	N : Not Inspected/Rated C : Corrected A/W : Acceptable but Monitor & Maintain	+ Issue Type Ma : Maintenance Deficiency Ob : Design & System Obsolescence En : Enforcement
--	--	---	---