

**Flood Control Project Maintenance
Levee Inspections
Fall 2022 Levee Maintenance Deficiency Summary Report**

Sacramento River Basin

RD0556	Overall LMA Rating	Total LMA Miles						
Reclamation District No. 0556 Upper Andrus	U	11.20						
Rated Item	Maintenance Deficiency				Enforcement		Design & System Obsolescence	
	M Miles	U Miles	M + 4U Miles	Threshold %	M Miles	U Miles	M Miles	U Miles
<i>Earthen Levee</i>								
Vegetation	0.34	0.52	2.42	21.61%	0.03	1.17		
Trim / Thin Trees	0.37	1.37	5.85	52.23%	0.01			
Encroachments					0.08	0.01		
Animal Control	0.28	0.13	0.80	7.14%				
Slope Stability		0.01	0.04	0.36%				
Erosion / Bank Caving	0.01		0.01	0.09%				
Erosion / Foot Traffic	0.01		0.01	0.09%				
Erosion / Livestock	0.20		0.20	1.79%				
Erosion / Rills	0.02		0.02	0.18%				
Erosion / Vehicle Traffic		0.02	0.08	0.71%				
Emergency Supplies & Equipment	0.11		0.11	0.98%				
Flood Preparedness & Training	0.11		0.11	0.98%				
<i>Supplemental</i>								
2018 USACE Erosion Survey	1.86		1.86	16.61%				
DWR UCIP Field Study					0.18	0.07		
<i>LMA Totals:</i>	3.31	2.05	11.51	102.76%	0.30	1.25	0.00	0.00

Unit No. 01 Georgiana Slough RB	Overall Unit Rating	Total Unit Miles						
RD0556	U	5.48						
Rated Item	Maintenance Deficiency				Enforcement		Design & System Obsolescence	
	M Miles	U Miles	M + 4U Miles	Threshold %	M Miles	U Miles	M Miles	U Miles
<i>Earthen Levee</i>								
Vegetation	0.34	0.48	2.26	41.22%	0.01	0.50		
Trim / Thin Trees	0.10	0.91	3.74	68.22%	0.01			
Encroachments					0.06	0.01		
Animal Control	0.22		0.22	4.01%				
Slope Stability		0.01	0.04	0.73%				
Erosion / Bank Caving	0.01		0.01	0.18%				
Erosion / Livestock	0.20		0.20	3.65%				
Erosion / Rills	0.02		0.02	0.37%				
<i>Supplemental</i>								
2018 USACE Erosion Survey	1.20		1.20	21.89%				
DWR UCIP Field Study					0.11	0.02		
<i>Unit Totals:</i>	2.09	1.40	7.69	140.27%	0.19	0.53	0.00	0.00

**Flood Control Project Maintenance
Levee Inspections
Fall 2022 Levee Maintenance Deficiency Summary Report**

Sacramento River Basin (cont.)

Unit No. 02 Sacramento River LB	Overall Unit Rating	Total Unit Miles						
	U	5.72						
Rated Item	Maintenance Deficiency				Enforcement		Design & System Obsolescence	
	M Miles	U Miles	M + 4U Miles	Threshold %	M Miles	U Miles	M Miles	U Miles
Earthen Levee								
Vegetation		0.04	0.16	2.80%	0.02	0.67		
Trim / Thin Trees	0.27	0.46	2.11	36.90%				
Encroachments					0.02			
Animal Control	0.06	0.13	0.58	10.14%				
Erosion / Foot Traffic	0.01		0.01	0.18%				
Erosion / Vehicle Traffic		0.02	0.08	1.40%				
Supplemental								
2018 USACE Erosion Survey	0.66		0.66	11.54%				
DWR UCIP Field Study					0.07	0.05		
Unit Totals:	1.00	0.65	3.60	62.96%	0.11	0.72	0.00	0.00

**Flood Control Project Maintenance
Levee Inspections
LMA District Cover Sheet**

Reclamation District No. 0556 Upper Andrus

	Spring (March - May)	Summer ** (June - August)	Fall (September - November)	Winter ** (December - February)
† Overall LMA Rating (Fall Only)			U	

** Non-receipt of Summer or Winter Inspection
Reports may effect overall annual rating.

† SPRING INSPECTIONS: Overall maintenance ratings are not determined for the spring inspection results. Individual maintenance deficiencies are rated using the same criteria in the spring and in the fall.

FALL INSPECTIONS: The overall maintenance rating shown above is based on operation and maintenance deficiencies identified within the attached unit inspection reports. This rating is not intended to be an indication of risk.

Comments

**Flood Control Project Maintenance
Levee Inspections
Unit Cover Sheet**

Reclamation District No. 0556 Upper Andrus

Waterway			Bank	Unit Miles
Unit No. 01 Georgiana Slough			Right	5.48
	Spring (March - May)	Summer (June - August)	(September - November) Fall	Winter (December - February)
Unit Maintenance Rating (Fall Only)			U	
Date of Inspection	3/11/2022 - 3/11/2022		9/22/2022 - 9/22/2022	
DWR Inspector	David Julian		Saskia Donovan	
Accompanied By	Alan Silva Reclamation District 556		Alan Silva Reclamation District 556	

Summer & Winter Inspections

The Local Maintaining Agency (LMA) is responsible for summer and winter inspections. The LMA is required to submit a report regarding summer and winter inspections to the California Department of Water Resources (DWR).

DWR must be informed on the:

- a) completion of the inspection
- b) any changes other than the results of normal maintenance
- c) corrections to deficiencies noted in this report

If additional items are noted, further documentation of those items must also be submitted.

The LMA should submit this information to DWR using the LMA web application tool available at:

<http://cdec.water.ca.gov/lma.html>

If the LMA is unable to submit information on this webpage, please contact DWR for assistance.

The LMA should submit the information and any associated documentation by September 30 for summer inspections and March 31 for winter inspections.

**Flood Control Project Maintenance
Levee Inspections**

Levee Inspection Report By Mile - Fall 2022

Reclamation District No. 0556 Upper Andrus

Waterway	Bank	Unit Miles	Inspection Start/End	Inspector
Unit No. 01 Georgiana Slough	Right	5.48	09/22/2022 09/22/2022	Saskia Donovan

LM Start		Rating **	M	Issue No.	3
LM End		Issue Type +	Ma	Location *	N/A
Category	Earthen Levee			GPS Latitude/Longitude	
				Start	End
Item	Flood Preparedness & Training				°
					°
DWR ID	DWR_RD0556_01_f_2014_3				
Comment Code					
FP : Flood Preparedness & Training					
Inspector Comment					
The members in the district have not been flood fight trained recently according to the district manager, but they are familier with flood fight methods in the field.					

No Photos

LM Start		Rating **	A	Issue No.	6
LM End		Issue Type +	Ma	Location *	N/A
Category	Earthen Levee			GPS Latitude/Longitude	
				Start	End
Item	Operations & Maintenance Manuals				°
					°
DWR ID	DWR_RD0556_01_s_2012_6				
Comment Code					
OM : O&M Manuals					
Inspector Comment					
Sent electronic copy of O+M manual to LMA. In addition, the District engineer also has a copy.					

No Photos

LM Start		Rating **	M	Issue No.	8
LM End		Issue Type +	Ma	Location *	N/A
Category	Earthen Levee			GPS Latitude/Longitude	
				Start	End
Item	Emergency Supplies & Equipment				°
					°
DWR ID	DWR_RD0556_01_f_2019_8				
Comment Code					
ES : Emergency Supplies & Equipment					
Inspector Comment					
According to the District manager, when supplies are needed they will be ordered from reliable sources. No supplies are currently stored.					

No Photos

* Location LS : Land Side N/A : Not Applicable WS : Water Side CR : Crown	** Rating A : Acceptable M : Minimally Acceptable U : Unacceptable	N : Not Inspected/Rated C : Corrected A/W : Acceptable but Monitor & Maintain	+ Issue Type Ma : Maintenance Deficiency Ob : Design & System Obsolescence En : Enforcement
--	--	---	---

**Flood Control Project Maintenance
Levee Inspections**

Levee Inspection Report By Mile - Fall 2022

Reclamation District No. 0556 Upper Andrus

Waterway	Bank	Unit Miles	Inspection Start/End	Inspector
Unit No. 01 Georgiana Slough	Right	5.48	09/22/2022 09/22/2022	Saskia Donovan

LM Start	0.00	Rating **	U	Issue No.	21
LM End	0.57	Issue Type +	Ma	Location *	LS
Category	Earthen Levee			GPS Latitude/Longitude	
				Start	End
Item	Trim / Thin Trees			38.239100 °	38.232070 °
				-121.518250 °	-121.522067 °
DWR ID	DWR_RD0556_01_s _ 2017_21				
Comment Code					
T1 : Trim and thin trees to at least five feet above ground level to allow visibility of the ground and room to flood fight.					
Inspector Comment					

Photo 1 of 1 : FA_2022_RD0556_18_21_20221004_00171.jpg



View of the vegetation on the LS slope (Fall 2022).

LM Start	0.38	Rating **	M	Issue No.	43
LM End	0.58	Issue Type +	Ma	Location *	WS
Category	Supplemental			GPS Latitude/Longitude	
				Start	End
Item	2018 USACE Erosion Survey			38.234038 °	38.231879 °
				-121.519817 °	-121.522003 °
DWR ID	DWR_RD0556_01_s _ 2022_43				
Comment Code					
Inspector Comment					
2018 Site ID: GEO 11.8 R					
Status: Eroding					
2018 Field Notes: No observed change.					
Site History: 2017 - Tree popout popouts eminent , significant toe erosion and whole bank failure in sections					

Photo 1 of 2 : FA_2022_RD0556_18_43_20220831_00027.jpg



USACE 2018 Erosion Photo #1

LM Start	0.38	Rating **	M	Issue No.	43 (cont)
LM End	0.58	Issue Type +	Ma	Location *	WS

Photo 2 of 2 : FA_2022_RD0556_18_43_20220831_00028.jpg



USACE 2018 Erosion Photo #2

* Location LS : Land Side N/A : Not Applicable WS : Water Side CR : Crown	** Rating A : Acceptable M : Minimally Acceptable U : Unacceptable	N : Not Inspected/Rated C : Corrected A/W : Acceptable but Monitor & Maintain	+ Issue Type Ma : Maintenance Deficiency Ob : Design & System Obsolescence En : Enforcement
--	--	--	---

**Flood Control Project Maintenance
Levee Inspections**

Levee Inspection Report By Mile - Fall 2022

Reclamation District No. 0556 Upper Andrus

Waterway	Bank	Unit Miles	Inspection Start/End	Inspector
Unit No. 01 Georgiana Slough	Right	5.48	09/22/2022 09/22/2022	Saskia Donovan

LM Start	0.53	Rating **	M	Issue No.	112	
LM End	0.53	Issue Type +	En	Location *		
Category	Supplemental			GPS Latitude/Longitude		
				Start	End	
Item	DWR UCIP Field Study			38.232450 °	38.232450 °	
				-121.521624 °	-121.521624 °	
DWR ID	20821					
Comment Code						
Inspector Comment						
DS_ID:20821 FS_ID:61336 EP_NO: 5548 Repair Type: Non-Urgent EVAL Issue: 10, Unauthorized Modification or Non-Compliant Permit Crossing Status: Found UCIP Comments: 06/16/2020 Record remains Non-Urgent. Unable to inspect waterside slope due to overgrown vegetation. Unable to find pump on waterside, instead, a gas pump and screen filters installed on landside. Unable to find a permit for modification. (O.Yakimov - DWR UCIP) 05/13/2015 Dense vegetation prevents inspection of WS slope. (K.Fazel - DWR UCIP) FIELD_STRUCT_DESC: 12-inch steel irrigation discharge pipe through the levee, 5 feet below the crown. 1.25-inch electrical conduit through the levee at the same location. Pump and screen filters on the landside. Concrete steps on the landside (LS) slope. Cuts in pavement visible at the crossing. Siphon breaker on waterside shoulder. (12-inch pipe authorized under Permit No. 5548, 1966 - George K. Adams). [Additional Reference(s): DWR Levee Log, unk.yr. (HLM 0.54)]. FS Date: 6/16/2020 1:47:59 PM						

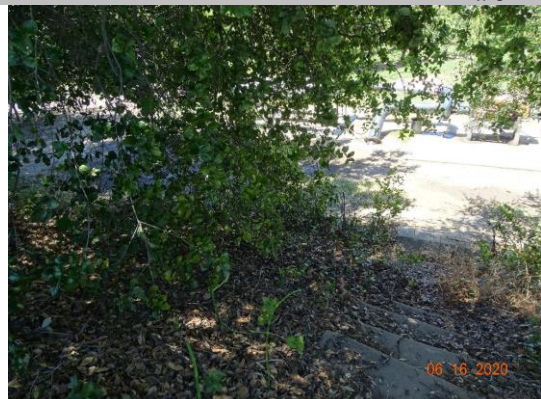
LM Start	0.53	Rating **	M	Issue No.	112 (cont)
LM End	0.53	Issue Type +	En	Location *	

Photo 1 of 3 : UCIP_FA_2022_61336_88650.jpg



Water-Side: View of levee slope looking from crown

Photo 2 of 3 : UCIP_FA_2022_61336_88648.jpg



Land-Side: View of levee slope looking from crown

* Location LS : Land Side N/A : Not Applicable WS : Water Side CR : Crown	** Rating A : Acceptable M : Minimally Acceptable U : Unacceptable	N : Not Inspected/Rated C : Corrected A/W : Acceptable but Monitor & Maintain	+ Issue Type Ma : Maintenance Deficiency Ob : Design & System Obsolescence En : Enforcement
--	--	---	---

**Flood Control Project Maintenance
Levee Inspections**

Levee Inspection Report By Mile - Fall 2022

Reclamation District No. 0556 Upper Andrus

Waterway	Bank	Unit Miles	Inspection Start/End	Inspector
Unit No. 01 Georgiana Slough	Right	5.48	09/22/2022 09/22/2022	Saskia Donovan

LM Start	0.53	Rating **	M	Issue No.	112 (cont)
LM End	0.53	Issue Type +	En	Location *	
Category	Supplemental			GPS Latitude/Longitude	
				Start	End
Item	DWR UCIP Field Study			38.232450 °	38.232450 °
				-121.521624 °	-121.521624 °
DWR ID	20821				

Photo 3 of 3 : UCIP_FA_2022_61336_88646.jpg



Land-Side: Screen filters and new pump on landside

LM Start	0.58	Rating **	A/W	Issue No.	85
LM End	0.58	Issue Type +	En	Location *	LS
Category	Earthen Levee			GPS Latitude/Longitude	
				Start	End
Item	Encroachments			38.231902 °	38.231902 °
				-121.522242 °	-121.522242 °
DWR ID	DWR_RD0556_01_f _ 2021_85				
Comment Code					
DE : Debris					
Inspector Comment					
Large bricks on the landside slope acting as revetment.					

Photo 1 of 1 : FA_2022_RD0556_18_85_20220831_00047.jpg



View of bricks on the landside slope (Spring 2021).

LM Start	0.63	Rating **	U	Issue No.	84
LM End	0.63	Issue Type +	Ma	Location *	LS
Category	Earthen Levee			GPS Latitude/Longitude	
				Start	End
Item	Slope Stability			38.231428 °	38.231428 °
				-121.522772 °	-121.522772 °
DWR ID	DWR_RD0556_01_f_2021_84				
Comment Code					
S1 : Repair slope instability.					
Inspector Comment					
Tree fell over and created large hole in landside slope. Tree was removed but hole remains.					

Photo 1 of 1 : FA_2022_RD0556_18_84_20220831_00046.jpg



View of hole in the landside slope where root ball had been (Spring 2022).

* Location
LS : Land Side N/A : Not Applicable
WS : Water Side
CR : Crown

** Rating
A : Acceptable N : Not Inspected/Rated
M : Minimally Acceptable C : Corrected
U : Unacceptable A/W : Acceptable but Monitor & Maintain

+ Issue Type
Ma : Maintenance Deficiency
Ob : Design & System Obsolescence
En : Enforcement

**Flood Control Project Maintenance
Levee Inspections**

Levee Inspection Report By Mile - Fall 2022

Reclamation District No. 0556 Upper Andrus

Waterway	Bank	Unit Miles	Inspection Start/End	Inspector
Unit No. 01 Georgiana Slough	Right	5.48	09/22/2022 09/22/2022	Saskia Donovan

LM Start	0.82	Rating **	U	Issue No.	65
LM End	0.85	Issue Type +	Ma	Location *	LS
Category	Earthen Levee			GPS Latitude/Longitude	
				Start	End
Item	Vegetation			38.229278 °	38.229013 °
				-121.525103 °	-121.525562 °
DWR ID	DWR_RD0556_01_f_2020_65				
Comment Code					
V2 : Remove the wild growth and woody vegetation other than native grasses from the levee slopes.					
Inspector Comment					

Photo 1 of 1 : FA_2022_RD0556_18_65_20220831_00041.jpg



View looking downstream at vegetation on the landside slope (Fall 2020).

LM Start	0.87	Rating **	U	Issue No.	24
LM End	0.92	Issue Type +	En	Location *	LS
Category	Earthen Levee			GPS Latitude/Longitude	
				Start	End
Item	Vegetation			38.228820 °	38.228419 °
				-121.525853 °	-121.526477 °
DWR ID	DWR_RD0556_01_f_2017_24				
Comment Code					
V6 : Landscaping					
Inspector Comment					

Photo 1 of 1 : FA_2022_RD0556_18_24_20221004_00172.jpg



View of the vegetation on the LS slope (Fall 2022).

LM Start	0.98	Rating **	U	Issue No.	66
LM End	1.17	Issue Type +	Ma	Location *	LS
Category	Earthen Levee			GPS Latitude/Longitude	
				Start	End
Item	Vegetation			38.227653 °	38.227574 °
				-121.527032 °	-121.529479 °
DWR ID	DWR_RD0556_01_f_2020_66				
Comment Code					
V2 : Remove the wild growth and woody vegetation other than native grasses from the levee slopes.					
Inspector Comment					

Photo 1 of 1 : FA_2022_RD0556_18_66_20220831_00042.jpg



View looking upstream at annual vegetation on the landside slope (Fall 2020).

* Location LS : Land Side N/A : Not Applicable WS : Water Side CR : Crown		** Rating A : Acceptable N : Not Inspected/Rated M : Minimally Acceptable C : Corrected U : Unacceptable A/W : Acceptable but Monitor & Maintain		+ Issue Type Ma : Maintenance Deficiency Ob : Design & System Obsolescence En : Enforcement	
--	--	---	--	---	--

**Flood Control Project Maintenance
Levee Inspections**

Levee Inspection Report By Mile - Fall 2022

Reclamation District No. 0556 Upper Andrus

Waterway	Bank	Unit Miles	Inspection Start/End	Inspector
Unit No. 01 Georgiana Slough	Right	5.48	09/22/2022 09/22/2022	Saskia Donovan

LM Start	1.20	Rating **	M	Issue No.	42
LM End	1.53	Issue Type +	Ma	Location *	WS
Category	Supplemental			GPS Latitude/Longitude	
				Start	End
Item	2018 USACE Erosion Survey			38.227615 °	38.225374 °
				-121.529894 °	-121.534406 °
DWR ID	DWR_RD0556_01_s_2022_42				
Comment Code					
Inspector Comment					
2018 Site ID: GEO 10.9 R					
Status: Eroding					
2018 Field Notes: New erosion throughout site.					
Site History: 2017 - Significant toe erosion and whole bank failure in sections, large pockets from tree popouts.					

Photo 1 of 2 : FA_2022_RD0556_18_42_20220831_00025.jpg



USACE 2018 Erosion Photo #1

LM Start	1.20	Rating **	M	Issue No.	42 (cont)
LM End	1.53	Issue Type +	Ma	Location *	WS

Photo 2 of 2 : FA_2022_RD0556_18_42_20220831_00026.jpg



USACE 2018 Erosion Photo #2

LM Start	1.21	Rating **	U	Issue No.	81
LM End	1.21	Issue Type +	Ma	Location *	LS
Category	Earthen Levee			GPS Latitude/Longitude	
				Start	End
Item	Vegetation			38.227783 °	38.227783 °
				-121.530067 °	-121.530067 °
DWR ID	DWR_RD0556_01_s_2022_81				
Comment Code					
V2 : Remove the wild growth and woody vegetation other than native grasses from the levee slopes.					
Inspector Comment					
Blackberries on the landside slope.					

Photo 1 of 1 : FA_2022_RD0556_18_81_20220831_00044.jpg



View of blackberries on the landside slope (Spring 2022).

*** Location**

LS : Land Side N/A : Not Applicable
WS : Water Side
CR : Crown

**** Rating**

A : Acceptable N : Not Inspected/Rated
M : Minimally Acceptable C : Corrected
U : Unacceptable A/W : Acceptable but Monitor & Maintain

+ Issue Type

Ma : Maintenance Deficiency
Ob : Design & System Obsolescence
En : Enforcement

**Flood Control Project Maintenance
Levee Inspections**

Levee Inspection Report By Mile - Fall 2022

Reclamation District No. 0556 Upper Andrus

Waterway	Bank	Unit Miles	Inspection Start/End	Inspector
Unit No. 01 Georgiana Slough	Right	5.48	09/22/2022 09/22/2022	Saskia Donovan

LM Start	1.26	Rating **	U	Issue No.	87
LM End	1.30	Issue Type +	Ma	Location *	LS
Category	Earthen Levee			GPS Latitude/Longitude	
				Start	End
Item	Trim / Thin Trees			38.227980 °	38.227813 °
				-121.530967 °	-121.531751 °
DWR ID	DWR_RD0556_01_s_2022_87				
Comment Code					
T1 : Trim and thin trees to at least five feet above ground level to allow visibility of the ground and room to flood fight.					
Inspector Comment					

Photo 1 of 1 : FA_2022_RD0556_18_87_20220831_00049.jpg



View looking downstream at trees on the landside slope (Spring 2022).

LM Start	1.31	Rating **	U	Issue No.	45
LM End	1.33	Issue Type +	En	Location *	LS
Category	Earthen Levee			GPS Latitude/Longitude	
				Start	End
Item	Vegetation			38.227775 °	38.227651 °
				-121.531810 °	-121.532159 °
DWR ID	DWR_RD0556_01_s_2018_45				
Comment Code					
V6 : Landscaping					
Inspector Comment					
Remove cactus and trim trees.					

Photo 1 of 1 : FA_2022_RD0556_18_45_20221004_00173.jpg



View of the cactus on the LS shoulder (Fall 2022).

*** Location**
 LS : Land Side N/A : Not Applicable
 WS : Water Side
 CR : Crown

**** Rating**
 A : Acceptable N : Not Inspected/Rated
 M : Minimally Acceptable C : Corrected
 U : Unacceptable A/W : Acceptable but Monitor & Maintain

+ Issue Type
 Ma : Maintenance Deficiency
 Ob : Design & System Obsolescence
 En : Enforcement

**Flood Control Project Maintenance
Levee Inspections**

Levee Inspection Report By Mile - Fall 2022

Reclamation District No. 0556 Upper Andrus

Waterway	Bank	Unit Miles	Inspection Start/End	Inspector
Unit No. 01 Georgiana Slough	Right	5.48	09/22/2022 09/22/2022	Saskia Donovan

LM Start	1.33	Rating **	M	Issue No.	113
LM End	1.33	Issue Type +	En	Location *	
Category	Supplemental			GPS Latitude/Longitude	
				Start	End
Item	DWR UCIP Field Study			38.227622 °	38.227622 °
				-121.532154 °	-121.532154 °
DWR ID	20825				

Comment Code

Inspector Comment

DS_ID:20825
FS_ID:61398
EP_NO: 13302
Repair Type: Non-Urgent
EVAL Issue: 6, Levee Damage or Threat for Levee Damage
Crossing Status: Found
UCIP Comments: 06/16/2020 Record remains Non-Urgent. Concrete standpipe on landside has been replaced with a pressure tank. Unable to find a permit for modification. Depression around air release vent on landside shoulder about 2 feet in diameter and 1/2-foot deep. (O.Yakimov - DWR UCIP)
05/27/2015 Seal beneath siphon breaker off LS toe leaking. Rodent activity near crown off LS shoulder. Need to contact owner about leaky seal. Dense vegetation prevented inspection of WS slope. (K.Fazel - DWR UCIP)
FIELD_STRUCT_DESC: 6-inch steel irrigation discharge pipe and 2-inch galvanized iron electrical conduit through the levee, 2 feet below the crown. Siphon valve on the landside (LS) shoulder. Pump, gate valve, and pressure tank at the LS toe. Service pole and electrical box at the LS toe. 6-inch polyvinyl chloride (PVC) standpipe adjacent to the pipe off the LS toe. (6-inch pipe authorized under Permit No. 13302, 1981 - Kaydix Ranch). [Additional Reference(s): DWR Levee Log, unk.yr. (HLM 1.32). USACE Sacramento O&M Manual, Unit 103, June 1954, Revised 29 December 2016, (Station 'R' 540+85), listed as 2-inch pipe. USACE As-Built Drawing No. 50-04-2671, Sheet 5, Station 540+85, 25 January 1951, Revised 18 Dec. 1952, listed as 2-inch pipe]. FS Date: 6/16/2020 4:21:56 PM

LM Start	1.33	Rating **	M	Issue No.	113 (cont)
LM End	1.33	Issue Type +	En	Location *	

Photo 1 of 3 : UCIP_FA_2022_61398_88672.jpg



Top of Levee: View of levee crown looking downstream

Photo 2 of 3 : UCIP_FA_2022_61398_88671.jpg



Land-Side: Air release valve on levee shoulder. Soil depression around it

* Location LS : Land Side N/A : Not Applicable WS : Water Side CR : Crown	** Rating A : Acceptable M : Minimally Acceptable U : Unacceptable	N : Not Inspected/Rated C : Corrected A/W : Acceptable but Monitor & Maintain	+ Issue Type Ma : Maintenance Deficiency Ob : Design & System Obsolescence En : Enforcement
--	--	--	---

**Flood Control Project Maintenance
Levee Inspections**

Levee Inspection Report By Mile - Fall 2022

Reclamation District No. 0556 Upper Andrus

Waterway	Bank	Unit Miles	Inspection Start/End	Inspector
Unit No. 01 Georgiana Slough	Right	5.48	09/22/2022 09/22/2022	Saskia Donovan

LM Start	1.33	Rating **	M	Issue No.	113 (cont)
LM End	1.33	Issue Type +	En	Location *	
Category	Supplemental			GPS Latitude/Longitude	
				Start	End
Item	DWR UCIP Field Study			38.227622 °	38.227622 °
				-121.532154 °	-121.532154 °
DWR ID	20825				

Photo 3 of 3 : UCIP_FA_2022_61398_88673.jpg



Water-Side: Intake pipe at riverbank

LM Start	1.34	Rating **	A/W	Issue No.	27
LM End	1.37	Issue Type +	En	Location *	LS
Category	Earthen Levee			GPS Latitude/Longitude	
				Start	End
Item	Encroachments			38.227521 °	38.227320 °
				-121.532393 °	-121.532710 °
DWR ID	DWR_RD0556_01_s_2013_27				
Comment Code					
DE : Debris					
Inspector Comment					
Concrete at toe of levee is acting like a stability berm.					

Photo 1 of 1 : FA_2022_RD0556_18_27_20220831_00009.jpg



View looking downstream at concrete rubble at landside toe (Fall 2021).

LM Start	1.37	Rating **	U	Issue No.	88
LM End	1.54	Issue Type +	Ma	Location *	LS
Category	Earthen Levee			GPS Latitude/Longitude	
				Start	End
Item	Trim / Thin Trees			38.227286 °	38.225374 °
				-121.532724 °	-121.534665 °
DWR ID	DWR_RD0556_01_s_2022_88				
Comment Code					
T1 : Trim and thin trees to at least five feet above ground level to allow visibility of the ground and room to flood fight.					
Inspector Comment					

Photo 1 of 1 : FA_2022_RD0556_18_88_20220831_00050.jpg



View looking downstream at trees on the landside slope (Spring 2022).

*** Location**

LS : Land Side N/A : Not Applicable
WS : Water Side
CR : Crown

**** Rating**

A : Acceptable N : Not Inspected/Rated
M : Minimally Acceptable C : Corrected
U : Unacceptable A/W : Acceptable but Monitor & Maintain

+ Issue Type

Ma : Maintenance Deficiency
Ob : Design & System Obsolescence
En : Enforcement

**Flood Control Project Maintenance
Levee Inspections**

Levee Inspection Report By Mile - Fall 2022

Reclamation District No. 0556 Upper Andrus

Waterway	Bank	Unit Miles	Inspection Start/End	Inspector
Unit No. 01 Georgiana Slough	Right	5.48	09/22/2022 09/22/2022	Saskia Donovan

LM Start	1.43	Rating **	M	Issue No.	82
LM End	1.43	Issue Type +	Ma	Location *	LS
Category	Earthen Levee			GPS Latitude/Longitude	
				Start	End
Item	Animal Control			38.226537 °	38.226537 °
				-121.533351 °	-121.533351 °
DWR ID	DWR_RD0556_01_f_2021_82				
Comment Code					
A1 : Exterminate rodents and backfill and compact or grout burrows.					
Inspector Comment					

Photo 1 of 1 : FA_2022_RD0556_18_82_20220831_00045.jpg



View of animal holes in landside hinge and slope (Fall 2021).

LM Start	1.43	Rating **	M	Issue No.	40
LM End	1.43	Issue Type +	Ma	Location *	LS
Category	Earthen Levee			GPS Latitude/Longitude	
				Start	End
Item	Erosion / Bank Caving			38.226537 °	38.226537 °
				-121.533512 °	-121.533512 °
DWR ID	DWR_RD0556_01_f _ 2012_40				
Comment Code					
E1 : Note and monitor erosion site.					
Inspector Comment					
Erosion is covered by vegetation.					

Photo 1 of 1 : FA_2022_RD0556_18_40_20221004_00175.jpg



View of the erosion on the LS slope (Fall 2022).

LM Start	1.50	Rating **	M	Issue No.	22
LM End	1.50	Issue Type +	Ma	Location *	LS
Category	Earthen Levee			GPS Latitude/Longitude	
				Start	End
Item	Erosion / Rills			38.225840 °	38.225840 °
				-121.534157 °	-121.534157 °
DWR ID	DWR_RD0556_01_s_2012_22				
Comment Code					
E5 : Schedule repair of rills prior to the next inspection.					
Inspector Comment					
Dip at the top of the landside slope is greater than 3". Erosion seems to be caused by surface runoff.					

Photo 1 of 1 : FA_2022_RD0556_18_22_20221004_00176.jpg



View of the erosion on the upper LS slope (Fall 2022).

* Location LS : Land Side N/A : Not Applicable WS : Water Side CR : Crown		** Rating A : Acceptable N : Not Inspected/Rated M : Minimally Acceptable C : Corrected U : Unacceptable A/W : Acceptable but Monitor & Maintain		+ Issue Type Ma : Maintenance Deficiency Ob : Design & System Obsolescence En : Enforcement	
---	--	--	--	--	--

**Flood Control Project Maintenance
Levee Inspections**

Levee Inspection Report By Mile - Fall 2022

Reclamation District No. 0556 Upper Andrus

Waterway	Bank	Unit Miles	Inspection Start/End	Inspector
Unit No. 01 Georgiana Slough	Right	5.48	09/22/2022 09/22/2022	Saskia Donovan

LM Start	1.55	Rating **	U	Issue No.	46
LM End	1.64	Issue Type +	Ma	Location *	LS
Category	Earthen Levee			GPS Latitude/Longitude	
				Start	End
Item	Trim / Thin Trees			38.225268 °	38.224587 °
				-121.534733 °	-121.536129 °
DWR ID	DWR_RD0556_01_s_2018_46				
Comment Code					
T1 : Trim and thin trees to at least five feet above ground level to allow visibility of the ground and room to flood fight.					
Inspector Comment					

Photo 1 of 1 : FA_2022_RD0556_18_46_20220831_00031.jpg



View looking upstream at thick trees on the landside slope (Fall 2020).

LM Start	1.55	Rating **	A/W	Issue No.	9
LM End	1.57	Issue Type +	En	Location *	WS
Category	Earthen Levee			GPS Latitude/Longitude	
				Start	End
Item	Trim / Thin Trees			38.225191 °	38.224976 °
				-121.534799 °	-121.535043 °
DWR ID	DWR_RD0556_01_s_2012_9				
Comment Code					
T2 : Tree or limb.					
Inspector Comment					
These cut up tree sections remain on the waterward slope to prevent parking in the area.					

Photo 1 of 1 : FA_2022_RD0556_18_9_20220831_00001.jpg



Cut tree sections on the waterside levee shoulder remain to prevent parking.

*** Location**
LS : Land Side N/A : Not Applicable
WS : Water Side
CR : Crown

**** Rating**
A : Acceptable N : Not Inspected/Rated
M : Minimally Acceptable C : Corrected
U : Unacceptable A/W : Acceptable but Monitor & Maintain

+ Issue Type
Ma : Maintenance Deficiency
Ob : Design & System Obsolescence
En : Enforcement

**Flood Control Project Maintenance
Levee Inspections**

Levee Inspection Report By Mile - Fall 2022

Reclamation District No. 0556 Upper Andrus

Waterway	Bank	Unit Miles	Inspection Start/End	Inspector
Unit No. 01 Georgiana Slough	Right	5.48	09/22/2022 09/22/2022	Saskia Donovan

LM Start	1.57	Rating **	M	Issue No.	114	
LM End	1.57	Issue Type +	En	Location *		
Category	Supplemental			GPS Latitude/Longitude		
				Start	End	
Item	DWR UCIP Field Study			38.225001 °	38.225001 °	
				-121.535007 °	-121.535007 °	
DWR ID	20827					
Comment Code						
Inspector Comment						
DS_ID:20827 FS_ID:61399 EP_NO: 11169 Repair Type: Non-Urgent EVAL Issue: 10, Unauthorized Modification or Non-Compliant Permit Crossing Status: Found UCIP Comments: 06/17/2020 Record remains Non-Urgent. Modifications to the crossing have been made after last UCIP inspection. Unable to find a permit for modifications. Enforcement case ENF 9545 open for this crossing. No permit has been identified authorizing original pipe. Need to have CVFPB review ABO and determine current owner. (O.Yakimov - DWR UCIP) 03/27/2015 Dense vegetation on LS and WS limited accessibility. (K.Fazel - DWR - UCIP) FIELD_STRUCT_DESC: 6-inch steel irrigation discharge pipe through the levee, 3.5 feet below the crown. Pump, butterfly valve, filler pump and pipe on the waterside (WS) berm. 2-inch electrical conduit through the levee. Service pole with electric meter and panel on waterside shoulder. (10-inch pipe [HLM 1.56] authorized under Automatic Board Order (ABO) issued as Permit No. 11169, 1975 - Darrell T. and B. M. Mealer). [Additional Reference(s): DWR Levee Log, unk.yr. (HLM 1.56), listed as 10-inch pipe. USACE Sacramento O&M Manual, Unit 103, June 1954, Revised 29 December 2016, (Station 'R' 528+02.1), listed as 10-inch pipe. USACE As-Built Drawing No. 50-04-2671, Sheet 4, near Station 528+00, 25 January 1951, Revised 18 Dec. 1952, listed as 10-inch pipe]. FS Date: 6/17/2020 9:36:26 AM						

LM Start	1.57	Rating **	M	Issue No.	114 (cont)
LM End	1.57	Issue Type +	En	Location *	

Photo 1 of 3 : UCIP_FA_2022_61399_88676.jpg



Top of Levee: View of levee crown looking downstream

Photo 2 of 3 : UCIP_FA_2022_61399_88675.jpg



Land-Side: Pipe and junction pole at levee toe

* Location LS : Land Side N/A : Not Applicable WS : Water Side CR : Crown	** Rating A : Acceptable M : Minimally Acceptable U : Unacceptable	N : Not Inspected/Rated C : Corrected A/W : Acceptable but Monitor & Maintain	+ Issue Type Ma : Maintenance Deficiency Ob : Design & System Obsolescence En : Enforcement
--	--	---	---

**Flood Control Project Maintenance
Levee Inspections**

Levee Inspection Report By Mile - Fall 2022

Reclamation District No. 0556 Upper Andrus

Waterway	Bank	Unit Miles	Inspection Start/End	Inspector
Unit No. 01 Georgiana Slough	Right	5.48	09/22/2022 09/22/2022	Saskia Donovan

LM Start	1.57	Rating **	M	Issue No.	114 (cont)
LM End	1.57	Issue Type +	En	Location *	
Category	Supplemental		GPS Latitude/Longitude		
			Start	End	
Item	DWR UCIP Field Study		38.225001 °	38.225001 °	
			-121.535007 °	-121.535007 °	
DWR ID	20827				

Photo 3 of 3 : UCIP_FA_2022_61399_88679.jpg



Water-Side: Pump, filler pump and line, butterfly valve on levee berm

LM Start	1.65	Rating **	U	Issue No.	17
LM End	1.70	Issue Type +	En	Location *	WS
Category	Earthen Levee			GPS Latitude/Longitude	
				Start	End
Item	Vegetation			38.224623 °	38.224408 °
				-121.536320 °	-121.537180 °
DWR ID	DWR_RD0556_01_s_2012_17				
Comment Code					
V6 : Landscaping					
Inspector Comment					
Oleanders blocking view down waterside slope					

Photo 1 of 1 : FA_2022_RD0556_18_17_20221004_00177.jpg



View of the oleander on the WS shoulder and slope (Fall 2022).

LM Start	1.66	Rating **	U	Issue No.	51
LM End	1.69	Issue Type +	En	Location *	LS
Category	Earthen Levee			GPS Latitude/Longitude	
				Start	End
Item	Vegetation			38.224487 °	38.224355 °
				-121.536492 °	-121.537055 °
DWR ID	DWR_RD0556_01_f_2019_51				
Comment Code					
V6 : Landscaping					
Inspector Comment					

Photo 1 of 1 : FA_2022_RD0556_18_51_20221004_00178.jpg



View of the landscaping on the LS slope looking downstream (Fall 2022).

* Location LS : Land Side N/A : Not Applicable WS : Water Side CR : Crown		** Rating A : Acceptable M : Minimally Acceptable U : Unacceptable N : Not Inspected/Rated C : Corrected A/W : Acceptable but Monitor & Maintain		+ Issue Type Ma : Maintenance Deficiency Ob : Design & System Obsolescence En : Enforcement	
--	--	---	--	---	--

**Flood Control Project Maintenance
Levee Inspections**

Levee Inspection Report By Mile - Fall 2022

Reclamation District No. 0556 Upper Andrus

Waterway	Bank	Unit Miles	Inspection Start/End	Inspector
Unit No. 01 Georgiana Slough	Right	5.48	09/22/2022 09/22/2022	Saskia Donovan

LM Start	1.71	Rating **	U	Issue No.	19
LM End	1.80	Issue Type +	Ma	Location *	LS
Category	Earthen Levee			GPS Latitude/Longitude	
				Start	End
Item	Vegetation			38.224301 °	38.223965 °
				-121.537367 °	-121.539080 °
DWR ID	DWR_RD0556_01_s_2020_19				
Comment Code					
V2 : Remove the wild growth and woody vegetation other than native grasses from the levee slopes.					
Inspector Comment					

Photo 1 of 1 : FA_2022_RD0556_18_19_20220831_00003.jpg



View looking downstream at thick wild vegetation on the landside slope (Spring 2020).

* Location LS : Land Side N/A : Not Applicable WS : Water Side CR : Crown	** Rating A : Acceptable N : Not Inspected/Rated M : Minimally Acceptable C : Corrected U : Unacceptable A/W : Acceptable but Monitor & Maintain	+ Issue Type Ma : Maintenance Deficiency Ob : Design & System Obsolescence En : Enforcement
--	---	---

**Flood Control Project Maintenance
Levee Inspections**

Levee Inspection Report By Mile - Fall 2022

Reclamation District No. 0556 Upper Andrus

Waterway	Bank	Unit Miles	Inspection Start/End	Inspector
Unit No. 01 Georgiana Slough	Right	5.48	09/22/2022 09/22/2022	Saskia Donovan

LM Start	1.89	Rating **	M	Issue No.	115	
LM End	1.89	Issue Type +	En	Location *		
Category	Supplemental			GPS Latitude/Longitude		
				Start	End	
Item	DWR UCIP Field Study			38.223760 °	38.223760 °	
				-121.540629 °	-121.540629 °	
DWR ID	20829					
Comment Code						
Inspector Comment						
DS_ID:20829 FS_ID:61414 EP_NO: 11178 Repair Type: Non-Urgent EVAL Issue: 6, Levee Damage or Threat for Levee Damage Crossing Status: Found UCIP Comments: 06/17/2020 Record remains Non-Urgent. Depression on landside levee slope less than 1/2-foot-deep in pipe alignment. Vegetation on both levee slopes. Limited visibility through vegetation restrains complete evaluation of slope condition. Electric meter is energized. No permit has been identified authorizing pipe. Need to have CVFPB review ABO and determine current owner. (O.Yakimov - DWR UCIP) 05/27/2015 Dense vegetation on WS and LS. Some oil leakage inside pumphouse. (K. Fazel - DWR UCIP) FIELD_STRUCT_DESC: 8-inch steel irrigation discharge pipe through the levee, 3.7 feet below the crown. 2-inch electrical conduit through the levee, next to the 8-inch discharge pipe. 1-inch air valve and pump on the waterside (WS) berm. Service pole on the landside (LS) slope. Tin and wood pump house on the WS berm. 12-foot by 3-foot concrete standpipe on the LS. (8-inch pipe [HLM 1.88] authorized under Automatic Board Order (ABO) issued as Permit No. 11178, 1975 - Allena D. Swett). [Additional Reference(s): DWR Levee Log, unk.yr. (HLM 1.88). USACE Sacramento O&M Manual, Unit 103, June 1954, Revised 29 December 2016, (Station 'R' 511+00), listed as 8-inch pipe. USACE As-Built Drawing No. 50-04-2671, Sheet 4, Station 511+00, 25 January 1951, Revised 18 Dec. 1952]. FS Date: 6/17/2020 10:33:05 AM						

Photo 1 of 3 : UCIP_FA_2022_61414_88746.jpg



Top of Levee: View of levee crown looking downstream

* Location LS : Land Side N/A : Not Applicable WS : Water Side CR : Crown	** Rating A : Acceptable M : Minimally Acceptable U : Unacceptable N : Not Inspected/Rated C : Corrected A/W : Acceptable but Monitor & Maintain	+ Issue Type Ma : Maintenance Deficiency Ob : Design & System Obsolescence En : Enforcement
--	---	---

**Flood Control Project Maintenance
Levee Inspections**

Levee Inspection Report By Mile - Fall 2022

Reclamation District No. 0556 Upper Andrus

Waterway	Bank	Unit Miles	Inspection Start/End	Inspector
Unit No. 01 Georgiana Slough	Right	5.48	09/22/2022 09/22/2022	Saskia Donovan

LM Start	1.89	Rating **	M	Issue No.	115 (cont)
LM End	1.89	Issue Type +	En	Location *	
Category	Supplemental		GPS Latitude/Longitude		
			Start	End	
Item	DWR UCIP Field Study		38.223760 °	38.223760 °	
			-121.540629 °	-121.540629 °	
DWR ID	20829				

Photo 2 of 3 : UCIP_FA_2022_61414_88747.jpg



Land-Side: View of levee slope looking from crown. Service pole on shoulder, concrete standpipe at levee toe

LM Start	1.89	Rating **	M	Issue No.	115 (cont)
LM End	1.89	Issue Type +	En	Location *	

Photo 3 of 3 : UCIP_FA_2022_61414_88743.jpg



Water-Side: View inside of pumphouse

LM Start	1.91	Rating **	U	Issue No.	47
LM End	1.93	Issue Type +	En	Location *	LS
Category	Earthen Levee			GPS Latitude/Longitude	
				Start	End
Item	Vegetation			38.223736 °	38.223673 °
				-121.541036 °	-121.541453 °
DWR ID	DWR_RD0556_01_s_2018_47				
Comment Code					
V6 : Landscaping					
Inspector Comment					
Dense vegetation prevents inspection and access.					

Photo 1 of 1 : FA_2022_RD0556_18_47_20221004_00179.jpg



View of the landscaping on the LS slope (Fall 2022).

* Location LS : Land Side N/A : Not Applicable WS : Water Side CR : Crown	** Rating A : Acceptable M : Minimally Acceptable U : Unacceptable	N : Not Inspected/Rated C : Corrected A/W : Acceptable but Monitor & Maintain	+ Issue Type Ma : Maintenance Deficiency Ob : Design & System Obsolescence En : Enforcement
--	--	---	---

**Flood Control Project Maintenance
Levee Inspections**

Levee Inspection Report By Mile - Fall 2022

Reclamation District No. 0556 Upper Andrus

Waterway	Bank	Unit Miles	Inspection Start/End	Inspector
Unit No. 01 Georgiana Slough	Right	5.48	09/22/2022 09/22/2022	Saskia Donovan

LM Start	1.94	Rating **	M	Issue No.	83
LM End	1.99	Issue Type +	Ma	Location *	LS
Category	Earthen Levee			GPS Latitude/Longitude	
				Start	End
Item	Trim / Thin Trees			38.223529 °	38.223600 °
				-121.543227 °	-121.542543 °
DWR ID	DWR_RD0556_01_f_2021_83				
Comment Code					
T1 : Trim and thin trees to at least five feet above ground level to allow visibility of the ground and room to flood fight.					
Inspector Comment					

No Photos

LM Start	2.05	Rating **	M	Issue No.	61
LM End	2.07	Issue Type +	Ma	Location *	LS
Category	Earthen Levee			GPS Latitude/Longitude	
				Start	End
Item	Animal Control			38.223487 °	38.223340 °
				-121.543482 °	-121.543917 °
DWR ID	DWR_RD0556_01_f_2020_61				
Comment Code					
A1 : Exterminate rodents and backfill and compact or grout burrows.					
Inspector Comment					

Photo 1 of 1 : FA_2022_RD0556_18_61_20220831_00039.jpg



View of multiple squirrel holes in the landside slope (Fall 2020).

LM Start	2.09	Rating **	M	Issue No.	25
LM End	2.11	Issue Type +	En	Location *	LS
Category	Earthen Levee			GPS Latitude/Longitude	
				Start	End
Item	Encroachments			38.223087 °	38.222850 °
				-121.544140 °	-121.544330 °
DWR ID	DWR_RD0556_01_f_2017_25				
Comment Code					
FE : Fence					
Inspector Comment					

No Photos

*** Location**
LS : Land Side N/A : Not Applicable
WS : Water Side
CR : Crown

**** Rating**
A : Acceptable N : Not Inspected/Rated
M : Minimally Acceptable C : Corrected
U : Unacceptable A/W : Acceptable but Monitor & Maintain

+ Issue Type
Ma : Maintenance Deficiency
Ob : Design & System Obsolescence
En : Enforcement

**Flood Control Project Maintenance
Levee Inspections**

Levee Inspection Report By Mile - Fall 2022

Reclamation District No. 0556 Upper Andrus

Waterway	Bank	Unit Miles	Inspection Start/End	Inspector
Unit No. 01 Georgiana Slough	Right	5.48	09/22/2022 09/22/2022	Saskia Donovan

LM Start	2.32	Rating **	U	Issue No.	53
LM End	2.32	Issue Type +	En	Location *	LS
Category	Earthen Levee			GPS Latitude/Longitude	
				Start	End
Item	Vegetation			38.219813 °	38.219813 °
				-121.544032 °	-121.544032 °
DWR ID	DWR_RD0556_01_f_2019_53				
Comment Code					
V6 : Landscaping					
Inspector Comment					

Photo 1 of 1 : FA_2022_RD0556_18_53_20221004_00180.jpg



View of the landscaping on the LS slope (Fall 2022).

LM Start	2.38	Rating **	U	Issue No.	31
LM End	2.47	Issue Type +	En	Location *	LS
Category	Earthen Levee			GPS Latitude/Longitude	
				Start	End
Item	Vegetation			38.219037 °	38.217781 °
				-121.543847 °	-121.543817 °
DWR ID	DWR_RD0556_01_s_2017_31				
Comment Code					
V6 : Landscaping					
Inspector Comment					

Photo 1 of 1 : FA_2022_RD0556_18_31_20221004_00181.jpg



View of the landscaping along the LS slope (Fall 2022).

* Location LS : Land Side N/A : Not Applicable WS : Water Side CR : Crown	** Rating A : Acceptable M : Minimally Acceptable U : Unacceptable	N : Not Inspected/Rated C : Corrected A/W : Acceptable but Monitor & Maintain	+ Issue Type Ma : Maintenance Deficiency Ob : Design & System Obsolescence En : Enforcement
--	--	---	---

**Flood Control Project Maintenance
Levee Inspections**

Levee Inspection Report By Mile - Fall 2022

Reclamation District No. 0556 Upper Andrus

Waterway	Bank	Unit Miles	Inspection Start/End	Inspector
Unit No. 01 Georgiana Slough	Right	5.48	09/22/2022 09/22/2022	Saskia Donovan

LM Start	2.44	Rating **	M	Issue No.	116	
LM End	2.44	Issue Type +	En	Location *		
Category	Supplemental			GPS Latitude/Longitude		
				Start	End	
Item	DWR UCIP Field Study			38.218242 °	38.218242 °	
				-121.543807 °	-121.543807 °	
DWR ID	20831					
Comment Code						
Inspector Comment						
DS_ID:20831 FS_ID:61499 EP_NO: 11169 Repair Type: Non-Urgent EVAL Issue: 6, Levee Damage or Threat for Levee Damage Crossing Status: Found UCIP Comments: 06/17/2020 Record remains Non-Urgent. 2-foot diameter sinkhole is still present on landside shoulder around air vent, size of hole is not growing over time. Electrical conduit is open on waterside slope with wires cut and not insulated. No permit has been identified authorizing pipe. Need to have CVFPB review ABO and determine current owner. (O.Yakimov - DWR UCIP) 07/12/2018 Hole near air vent on LS slope is still present but haven't increased in size. Pipe was running at the time of site visit, no leaks detected. Downgraded to "Non-Urgent" due to absence of levee threat. (O.Yakimov - DWR UCIP) 05/27/2015 2'x 2' hole on levee off LS shoulder. FIELD_STRUCT_DESC: 8-inch steel irrigation discharge pipe through the levee, 3.7 feet below the crown. 1-inch air valve. Pump and switch panel on the waterside (WS) berm. Service pole on the landside (LS). 9-foot by 3-foot concrete standpipe on the LS. 3 cables encased in a 1.5-inch steel conduit through the levee and on the WS, alongside the 8-inch pipe, disconnected on the WS. (8-inch pipe [HLM 2.44] authorized under Automatic Board Order (ABO) issued as Permit No. 11169, 1975 - Darrell T. and B. M. Mealer). [Additional Reference(s): DWR Levee Log, unk.yr. (HLM 2.44). USACE Sacramento O&M Manual, Unit 103, June 1954, Revised 29 December 2016, (Station 'R' 482+49.3), listed as 8-inch pipe. USACE As-Built Drawing No. 50-04-2671, Sheet 3, Station 482+49.3, 25 January 1951, Revised 18 Dec. 1952]. FS Date: 6/17/2020 10:55:51 AM						

Photo 1 of 3 : UCIP_FA_2022_61499_89030.jpg



Land-Side: View of levee slope looking from crown

* Location LS : Land Side N/A : Not Applicable WS : Water Side CR : Crown	** Rating A : Acceptable M : Minimally Acceptable U : Unacceptable	N : Not Inspected/Rated C : Corrected A/W : Acceptable but Monitor & Maintain	+ Issue Type Ma : Maintenance Deficiency Ob : Design & System Obsolescence En : Enforcement
--	--	---	---

**Flood Control Project Maintenance
Levee Inspections**

Levee Inspection Report By Mile - Fall 2022

Reclamation District No. 0556 Upper Andrus

Waterway	Bank	Unit Miles	Inspection Start/End	Inspector
Unit No. 01 Georgiana Slough	Right	5.48	09/22/2022 09/22/2022	Saskia Donovan

LM Start	2.44	Rating **	M	Issue No.	116 (cont)
LM End	2.44	Issue Type +	En	Location *	
Category	Supplemental		GPS Latitude/Longitude		
			Start	End	
Item	DWR UCIP Field Study		38.218242 °	38.218242 °	
			-121.543807 °	-121.543807 °	
DWR ID	20831				

Photo 2 of 3 : UCIP_FA_2022_61499_89028.jpg



Land-Side: Sinkhole around air vent on levee shoulder

LM Start	2.44	Rating **	M	Issue No.	116 (cont)
LM End	2.44	Issue Type +	En	Location *	

Photo 3 of 3 : UCIP_FA_2022_61499_89034.jpg



Water-Side: Open electrical conduit with wires inside on levee slope

LM Start	2.51	Rating **	U	Issue No.	54
LM End	2.54	Issue Type +	En	Location *	LS
Category	Earthen Levee			GPS Latitude/Longitude	
				Start	End
Item	Vegetation			38.217229 °	38.216830 °
				-121.543577 °	-121.543233 °
DWR ID	DWR_RD0556_01_f_2019_54				
Comment Code					
V6 : Landscaping					
Inspector Comment					

Photo 1 of 1 : FA_2022_RD0556_18_54_20221004_00182.jpg



View of the landscaping on the LS slope (Fall 2022).

* Location LS : Land Side N/A : Not Applicable WS : Water Side CR : Crown	** Rating A : Acceptable M : Minimally Acceptable U : Unacceptable	N : Not Inspected/Rated C : Corrected A/W : Acceptable but Monitor & Maintain	+ Issue Type Ma : Maintenance Deficiency Ob : Design & System Obsolescence En : Enforcement
--	--	---	---

**Flood Control Project Maintenance
Levee Inspections**

Levee Inspection Report By Mile - Fall 2022

Reclamation District No. 0556 Upper Andrus

Waterway	Bank	Unit Miles	Inspection Start/End	Inspector
Unit No. 01 Georgiana Slough	Right	5.48	09/22/2022 09/22/2022	Saskia Donovan

LM Start	2.63	Rating **	M	Issue No.	68
LM End	2.63	Issue Type +	Ma	Location *	LS
Category	Earthen Levee			GPS Latitude/Longitude	
				Start	End
Item	Trim / Thin Trees			38.215850 °	38.215850 °
				-121.542045 °	-121.542045 °
DWR ID	DWR_RD0556_01_f_2020_68				
Comment Code					
T1 : Trim and thin trees to at least five feet above ground level to allow visibility of the ground and room to flood fight.					
Inspector Comment					

No Photos

LM Start	2.69	Rating **	M	Issue No.	32
LM End	2.69	Issue Type +	En	Location *	LS
Category	Earthen Levee			GPS Latitude/Longitude	
				Start	End
Item	Encroachments			38.215375 °	38.215375 °
				-121.541258 °	-121.541258 °
DWR ID	DWR_RD0556_01_s_2020_32				
Comment Code					
FW : Firewood					
Inspector Comment					
Several large chunks of wood should be removed from landside toe.					

Photo 1 of 1 : FA_2022_RD0556_18_32_20220831_00014.jpg



View of large tree trunk sections on the landside hinge (Spring 2020).

LM Start	2.69	Rating **	U	Issue No.	69
LM End	2.69	Issue Type +	Ma	Location *	LS
Category	Earthen Levee			GPS Latitude/Longitude	
				Start	End
Item	Trim / Thin Trees			38.215382 °	38.215382 °
				-121.541247 °	-121.541247 °
DWR ID	DWR_RD0556_01_f_2020_69				
Comment Code					
T1 : Trim and thin trees to at least five feet above ground level to allow visibility of the ground and room to flood fight.					
Inspector Comment					

Photo 1 of 1 : FA_2022_RD0556_18_69_20221004_00184.jpg



View of the tree on the LS slope (Fall 2022).

* Location LS : Land Side N/A : Not Applicable WS : Water Side CR : Crown		** Rating A : Acceptable N : Not Inspected/Rated M : Minimally Acceptable C : Corrected U : Unacceptable A/W : Acceptable but Monitor & Maintain		+ Issue Type Ma : Maintenance Deficiency Ob : Design & System Obsolescence En : Enforcement
--	--	---	--	---

**Flood Control Project Maintenance
Levee Inspections**

Levee Inspection Report By Mile - Fall 2022

Reclamation District No. 0556 Upper Andrus

Waterway	Bank	Unit Miles	Inspection Start/End	Inspector
Unit No. 01 Georgiana Slough	Right	5.48	09/22/2022 09/22/2022	Saskia Donovan

LM Start	2.71	Rating **	M	Issue No.	117
LM End	2.71	Issue Type +	En	Location *	
Category	Supplemental			GPS Latitude/Longitude	
				Start	End
Item	DWR UCIP Field Study			38.215234 °	38.215234 °
				-121.540972 °	-121.540972 °
DWR ID	20848				

Comment Code

Inspector Comment

DS_ID:20848
FS_ID:61501
EP_NO: 11167
Repair Type: Non-Urgent
EVAL Issue: 10, Unauthorized Modification or Non-Compliant Permit
Crossing Status: Found
UCIP Comments: 06/17/2020 Record remains Non-Urgent. Unable to find a permit for sleeving 3-inch pipe through 8-inch pipe. No permit has been identified authorizing original pipe through the levee. Need to have CVFPB review ABO and determine current owner. (O.Yakimov - DWR UCIP)
06/05/2015 Pipe appears out of use; if so, coordinate with owner to abandon properly per Title 23. (K.Fazel - DWR UCIP)
FIELD_STRUCT_DESC: 3-inch steel irrigation discharge pipe sleeved through the 8-inch steel pipe, 3 feet below the crown. Annular space appears to be grouted. 3-inch pipe connected to the pump on the waterside (WS). 0.75-inch primer pipe. Gate valve on the WS berm. Polyvinyl chloride (PVC) standpipe off the landside (LS) toe, previously a 6-foot by 3-foot concrete standpipe. (8-inch pipe [HLM 2.70] authorized under Automatic Board Order (ABO) issued as Permit No. 11167, 1975 - Russel G. Graham). [Additional Reference(s): DWR Levee Log, unk.yr. (HLM 2.70). USACE Sacramento O&M Manual, Unit 103, June 1954, Revised 29 December 2016, (Station 'R' 468+52.7), listed as 8-inch pipe. USACE As-Built Drawing No. 50-04-2671, Sheet 3, Station 468+52.7, 25 January 1951, Revised 18 Dec. 1952, listed as 8-inch pipe].
FS Date: 6/17/2020 11:55:47 AM

LM Start	2.71	Rating **	M	Issue No.	117 (cont)
LM End	2.71	Issue Type +	En	Location *	

Photo 1 of 3 : UCIP_FA_2022_61501_89043.jpg



Land-Side: PVC standpipe off levee toe

Photo 2 of 3 : UCIP_FA_2022_61501_89045.jpg



Land-Side: View of piping on landside

* Location LS : Land Side N/A : Not Applicable WS : Water Side CR : Crown		** Rating A : Acceptable M : Minimally Acceptable U : Unacceptable N : Not Inspected/Rated C : Corrected A/W : Acceptable but Monitor & Maintain		+ Issue Type Ma : Maintenance Deficiency Ob : Design & System Obsolescence En : Enforcement	
--	--	---	--	---	--

Reclamation District No. 0556 Upper Andrus

**Flood Control Project Maintenance
Levee Inspections**

Levee Inspection Report By Mile - Fall 2022

Reclamation District No. 0556 Upper Andrus

Waterway	Bank	Unit Miles	Inspection Start/End	Inspector
Unit No. 01 Georgiana Slough	Right	5.48	09/22/2022 09/22/2022	Saskia Donovan

LM Start	2.71	Rating **	M	Issue No.	118 (cont)
LM End	2.71	Issue Type +	En	Location *	
Category	Supplemental		GPS Latitude/Longitude		
			Start	End	
Item	DWR UCIP Field Study		38.215223 °	38.215223 °	
			-121.540953 °	-121.540953 °	
DWR ID	20833				

Photo 2 of 3 : UCIP_FA_2022_61500_89035.jpg



Land-Side: View of levee slope looking from crown

LM Start	2.71	Rating **	M	Issue No.	118 (cont)
LM End	2.71	Issue Type +	En	Location *	

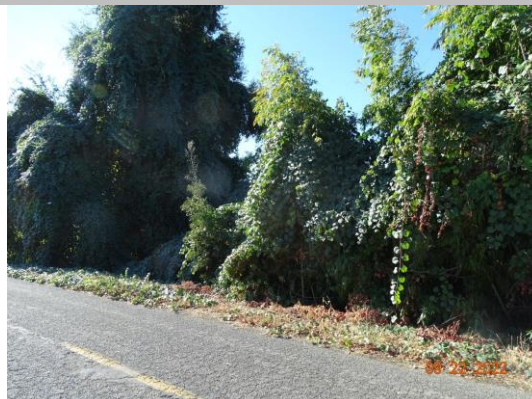
Photo 3 of 3 : UCIP_FA_2022_61500_89039.jpg



Water-Side: 12-inch to 10-inch sleeved pipe connection on levee slope

LM Start	2.72	Rating **	U	Issue No.	48
LM End	2.72	Issue Type +	En	Location *	LS
Category	Earthen Levee			GPS Latitude/Longitude	
				Start	End
Item	Vegetation			38.215085 °	38.215085 °
				-121.540724 °	-121.540724 °
DWR ID	DWR_RD0556_01_f_2018_48				
Comment Code					
V6 : Landscaping					
Inspector Comment					
Remove wild grapes and bamboo from landside.					

Photo 1 of 1 : FA_2022_RD0556_18_48_20221004_00183.jpg



View of the landscaping on the LS slope (Fall 2022).

* Location LS : Land Side N/A : Not Applicable WS : Water Side CR : Crown	** Rating A : Acceptable M : Minimally Acceptable U : Unacceptable	N : Not Inspected/Rated C : Corrected A/W : Acceptable but Monitor & Maintain	+ Issue Type Ma : Maintenance Deficiency Ob : Design & System Obsolescence En : Enforcement
--	--	--	---

**Flood Control Project Maintenance
Levee Inspections**

Levee Inspection Report By Mile - Fall 2022

Reclamation District No. 0556 Upper Andrus

Waterway	Bank	Unit Miles	Inspection Start/End	Inspector
Unit No. 01 Georgiana Slough	Right	5.48	09/22/2022 09/22/2022	Saskia Donovan

LM Start	2.72	Rating **	U	Issue No.	33
LM End	2.72	Issue Type +	Ma	Location *	LS
Category	Earthen Levee			GPS Latitude/Longitude	
				Start	End
Item	Trim / Thin Trees			38.215107 °	38.215107 °
				-121.540677 °	-121.540677 °
DWR ID	DWR_RD0556_01_s_2017_33				
Comment Code					
T3 : Fallen tree with root ball.					
Inspector Comment					
Fallen tree on landside. Remove the fallen tree and repair the levee damage.					

Photo 1 of 1 : FA_2022_RD0556_18_33_20220831_00015.jpg



View of hole in landside slope caused by down tree (Spring 2021).

LM Start	2.85	Rating **	M	Issue No.	37
LM End	2.98	Issue Type +	Ma	Location *	WS
Category	Supplemental			GPS Latitude/Longitude	
				Start	End
Item	2018 USACE Erosion Survey			38.214144 °	38.212577 °
				-121.538692 °	-121.537244 °
DWR ID	DWR_RD0556_01_s_2022_37				
Comment Code					
Inspector Comment					
2018 Site ID: GEO 9.2 R					
Status: Eroding					
2018 Field Notes: New erosion along toe.					
Site History: 2017 - Toe erosion.					

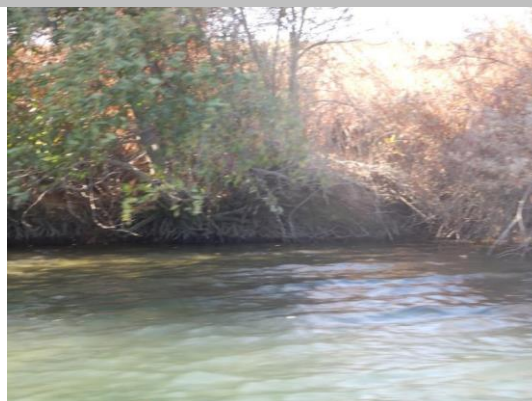
Photo 1 of 2 : FA_2022_RD0556_18_37_20220831_00019.jpg



USACE 2018 Erosion Photo #1

LM Start	2.85	Rating **	M	Issue No.	37 (cont)
LM End	2.98	Issue Type +	Ma	Location *	WS

Photo 2 of 2 : FA_2022_RD0556_18_37_20220831_00020.jpg



USACE 2018 Erosion Photo #2

* Location LS : Land Side N/A : Not Applicable WS : Water Side CR : Crown		** Rating A : Acceptable M : Minimally Acceptable U : Unacceptable N : Not Inspected/Rated C : Corrected A/W : Acceptable but Monitor & Maintain		+ Issue Type Ma : Maintenance Deficiency Ob : Design & System Obsolescence En : Enforcement	
--	--	---	--	---	--

**Flood Control Project Maintenance
Levee Inspections**

Levee Inspection Report By Mile - Fall 2022

Reclamation District No. 0556 Upper Andrus

Waterway	Bank	Unit Miles	Inspection Start/End	Inspector
Unit No. 01 Georgiana Slough	Right	5.48	09/22/2022 09/22/2022	Saskia Donovan

LM Start	3.14	Rating **	M	Issue No.	28
LM End	3.26	Issue Type +	Ma	Location *	LS
Category	Earthen Levee			GPS Latitude/Longitude	
				Start	End
Item	Animal Control			38.210985 °	38.210160 °
				-121.538372 °	-121.540300 °
DWR ID	DWR_RD0556_01_f_2017_28				
Comment Code					
A1 : Exterminate rodents and backfill and compact or grout burrows.					
Inspector Comment					

Photo 1 of 1 : FA_2022_RD0556_18_28_20221004_00185.jpg



View of the burrow on the LS slope (Fall 2022).

LM Start	3.15	Rating **	M	Issue No.	92
LM End	3.15	Issue Type +	En	Location *	LS
Category	Earthen Levee			GPS Latitude/Longitude	
				Start	End
Item	Trim / Thin Trees			38.210909 °	38.210909 °
				-121.538519 °	-121.538519 °
DWR ID	DWR_RD0556_01_s_2022_92				
Comment Code					
T2 : Tree or limb.					
Inspector Comment					

No Photos

LM Start	3.15	Rating **	M	Issue No.	93
LM End	3.15	Issue Type +	En	Location *	LS
Category	Earthen Levee			GPS Latitude/Longitude	
				Start	End
Item	Vegetation			38.210908 °	38.210908 °
				-121.538523 °	-121.538523 °
DWR ID	DWR_RD0556_01_s_2022_93				
Comment Code					
V6 : Landscaping					
Inspector Comment					
Ivy on the landside slope.					

Photo 1 of 1 : FA_2022_RD0556_18_93_20220831_00051.jpg



View of ivy on the landside slope (Spring 2022).

*** Location**

LS : Land Side N/A : Not Applicable
WS : Water Side
CR : Crown

**** Rating**

A : Acceptable N : Not Inspected/Rated
M : Minimally Acceptable C : Corrected
U : Unacceptable A/W : Acceptable but Monitor & Maintain

+ Issue Type

Ma : Maintenance Deficiency
Ob : Design & System Obsolescence
En : Enforcement

**Flood Control Project Maintenance
Levee Inspections**

Levee Inspection Report By Mile - Fall 2022

Reclamation District No. 0556 Upper Andrus

Waterway	Bank	Unit Miles	Inspection Start/End	Inspector
Unit No. 01 Georgiana Slough	Right	5.48	09/22/2022 09/22/2022	Saskia Donovan

LM Start	3.18	Rating **	M	Issue No.	36
LM End	3.50	Issue Type +	Ma	Location *	WS
Category	Supplemental			GPS Latitude/Longitude	
				Start	End
Item	2018 USACE Erosion Survey			38.210674 °	38.206919 °
				-121.538854 °	-121.541559 °
DWR ID	DWR_RD0556_01_s_2022_36				
Comment Code					
Inspector Comment					
2018 Site ID: GEO 9.0 R					
Status: Eroding					
2018 Field Notes: Site extended downstream.					
Site History: 2017 - Toe erosion and failed revetment.					

Photo 1 of 2 : FA_2022_RD0556_18_36_20220831_00017.jpg



USACE 2018 Erosion Photo #1

LM Start	3.18	Rating **	M	Issue No.	36 (cont)
LM End	3.50	Issue Type +	Ma	Location *	WS

Photo 2 of 2 : FA_2022_RD0556_18_36_20220831_00018.jpg



USACE 2018 Erosion Photo #2

LM Start	3.18	Rating **	U	Issue No.	55
LM End	3.18	Issue Type +	Ma	Location *	LS
Category	Earthen Levee			GPS Latitude/Longitude	
				Start	End
Item	Trim / Thin Trees			38.210745 °	38.210745 °
				-121.538967 °	-121.538967 °
DWR ID	DWR_RD0556_01_f_2019_55				
Comment Code					
T1 : Trim and thin trees to at least five feet above ground level to allow visibility of the ground and room to flood fight.					
Inspector Comment					

Photo 1 of 1 : FA_2022_RD0556_18_55_20221004_00186.jpg



View of the trees on the LS slope (Fall 2022).

*** Location**

LS : Land Side N/A : Not Applicable
WS : Water Side
CR : Crown

**** Rating**

A : Acceptable N : Not Inspected/Rated
M : Minimally Acceptable C : Corrected
U : Unacceptable A/W : Acceptable but Monitor & Maintain

+ Issue Type

Ma : Maintenance Deficiency
Ob : Design & System Obsolescence
En : Enforcement

**Flood Control Project Maintenance
Levee Inspections**

Levee Inspection Report By Mile - Fall 2022

Reclamation District No. 0556 Upper Andrus

Waterway	Bank	Unit Miles	Inspection Start/End	Inspector
Unit No. 01 Georgiana Slough	Right	5.48	09/22/2022 09/22/2022	Saskia Donovan

LM Start	3.19	Rating **	U	Issue No.	119	
LM End	3.19	Issue Type +	En	Location *		
Category	Supplemental			GPS Latitude/Longitude		
				Start	End	
Item	DWR UCIP Field Study			38.210683 °	38.210683 °	
				-121.539125 °	-121.539125 °	
DWR ID	20836					
Comment Code						
Inspector Comment						
DS_ID:20836 FS_ID:61291 EP_NO: 11174 Repair Type: Urgent EVAL Issue: 2a, Levee Integrity Crossing Status: Found UCIP Comments: 06/17/2020 Record is Urgent. 30-feet long, 3-feet wide, and 1-foot deep trench was excavated along landside levee toe. Soil is wet at the bottom of trench. Soil depression on waterside shoulder in pipe alignment. Intake pipe and pipe from pumphouse towards levee slope have been replaced. Unable to find a permit for modifications. No permit has been identified authorizing original pipe through the levee. Need to have CVFPB review ABO and determine current owner. (O.Yakimov - DWR UCIP) FIELD_STRUCT_DESC: 6-inch steel irrigation pipe through levee, 3.4 feet below crown. Pump in pump house on berm. Service pole on landward slope. Gate valve located underground and 48-inch concrete standpipe at landside toe. 1-inch electrical conduit at this location. (6-inch pipe [HLM 3.18] authorized under Automatic Board Order (ABO) issued as Permit No. 11174, 1975 - Delores M. Pollard). [Additional Reference(s): DWR Levee Log, unk.yr. (HLM 3.18). USACE Sacramento O&M Manual, Unit 103, June 1954, Revised 29 December 2016, (Station 441+19.6), listed as 6-inch pipe. USACE As-Built Drawing No. 50-04-2671, Sheet 2, near Station 440+00, 25 January 1951, Revised 18 Dec. 1952. USACE As-Built Drawing No. 50-04-2631, Sheet 11, Station 441+19.6, March 1950, Revised 16 Dec.1952]. FS Date: 6/17/2020						

LM Start	3.19	Rating **	U	Issue No.	119 (cont)
LM End	3.19	Issue Type +	En	Location *	

Photo 1 of 3 : UCIP_FA_2022_61291_89090.jpg



Water-Side: Soil depression in pipe alignment on levee shoulder

Photo 2 of 3 : UCIP_FA_2022_61291_89084.jpg



Land-Side: Trench at the base of standpipe

* Location LS : Land Side N/A : Not Applicable WS : Water Side CR : Crown	** Rating A : Acceptable M : Minimally Acceptable U : Unacceptable	N : Not Inspected/Rated C : Corrected A/W : Acceptable but Monitor & Maintain	+ Issue Type Ma : Maintenance Deficiency Ob : Design & System Obsolescence En : Enforcement
--	--	---	---

**Flood Control Project Maintenance
Levee Inspections**

Levee Inspection Report By Mile - Fall 2022

Reclamation District No. 0556 Upper Andrus

Waterway	Bank	Unit Miles	Inspection Start/End	Inspector
Unit No. 01 Georgiana Slough	Right	5.48	09/22/2022 09/22/2022	Saskia Donovan

LM Start	3.19	Rating **	U	Issue No.	119 (cont)
LM End	3.19	Issue Type +	En	Location *	
Category	Supplemental		GPS Latitude/Longitude		
			Start	End	
Item	DWR UCIP Field Study		38.210683 °	38.210683 °	
			-121.539125 °	-121.539125 °	
DWR ID	20836				

Photo 3 of 3 : UCIP_FA_2022_61291_89086.jpg



Overview of Levee: Overview of trench dug along landside toe

LM Start	3.22	Rating **	U	Issue No.	38
LM End	3.23	Issue Type +	Ma	Location *	LS
Category	Earthen Levee			GPS Latitude/Longitude	
				Start	End
Item	Trim / Thin Trees			38.210493 °	38.210446 °
				-121.539760 °	-121.539804 °
DWR ID	DWR_RD0556_01_s_2017_38				
Comment Code					
T1 : Trim and thin trees to at least five feet above ground level to allow visibility of the ground and room to flood fight.					
Inspector Comment					
Remove the wild tree growth and vegetation from the landside levee slope and toe so the ground can be seen.					

Photo 1 of 1 : FA_2022_RD0556_18_38_20220831_00021.jpg



View looking downstream at thick tree growth on the landside slope (Fall 2019).

LM Start	3.27	Rating **	M	Issue No.	89
LM End	3.29	Issue Type +	Ma	Location *	LS
Category	Earthen Levee			GPS Latitude/Longitude	
				Start	End
Item	Trim / Thin Trees			38.210114 °	38.209895 °
				-121.540342 °	-121.540579 °
DWR ID	DWR_RD0556_01_f_2022_89				
Comment Code					
T1 : Trim and thin trees to at least five feet above ground level to allow visibility of the ground and room to flood fight.					
Inspector Comment					

No Photos

* Location
LS : Land Side N/A : Not Applicable
WS : Water Side
CR : Crown

** Rating
A : Acceptable N : Not Inspected/Rated
M : Minimally Acceptable C : Corrected
U : Unacceptable A/W : Acceptable but Monitor & Maintain

+ Issue Type
Ma : Maintenance Deficiency
Ob : Design & System Obsolescence
En : Enforcement

**Flood Control Project Maintenance
Levee Inspections**

Levee Inspection Report By Mile - Fall 2022

Reclamation District No. 0556 Upper Andrus

Waterway	Bank	Unit Miles	Inspection Start/End	Inspector
Unit No. 01 Georgiana Slough	Right	5.48	09/22/2022 09/22/2022	Saskia Donovan

LM Start	3.36	Rating **	U	Issue No.	29
LM End	3.42	Issue Type +	En	Location *	LS
Category	Earthen Levee			GPS Latitude/Longitude	
				Start	End
Item	Vegetation			38.208917 °	38.208191 °
				-121.541338 °	-121.541578 °
DWR ID	DWR_RD0556_01_f_2017_29				
Comment Code					
V6 : Landscaping					
Inspector Comment					
Large cactus growing on shoulder and slope should be removed to allow inspection and access.					

Photo 1 of 1 : FA_2022_RD0556_18_29_20221004_00187.jpg



View of the cactus on the LS slope (Fall 2022).

LM Start	3.46	Rating **	U	Issue No.	58
LM End	3.46	Issue Type +	En	Location *	WS
Category	Earthen Levee			GPS Latitude/Longitude	
				Start	End
Item	Encroachments			38.207585 °	38.207585 °
				-121.541678 °	-121.541678 °
DWR ID	DWR_RD0556_01_f_2019_58				
Comment Code					
DE : Debris					
Inspector Comment					
Remove concrete debris piles.					

Photo 1 of 1 : FA_2022_RD0556_18_58_20221004_00188.jpg



View of the concrete debris on the WS slope (Fall 2022).

LM Start	3.56	Rating **	M	Issue No.	95
LM End	3.56	Issue Type +	Ma	Location *	LS
Category	Earthen Levee			GPS Latitude/Longitude	
				Start	End
Item	Trim / Thin Trees			38.206078 °	38.206078 °
				-121.541743 °	-121.541743 °
DWR ID	DWR_RD0556_01_s_2022_95				
Comment Code					
T2 : Tree or limb.					
Inspector Comment					

Photo 1 of 1 : FA_2022_RD0556_18_95_20220831_00052.jpg



View of down tree limbs on the landside slope (Spring 2022).

*** Location**
LS : Land Side N/A : Not Applicable
WS : Water Side
CR : Crown

**** Rating**
A : Acceptable N : Not Inspected/Rated
M : Minimally Acceptable C : Corrected
U : Unacceptable A/W : Acceptable but Monitor & Maintain

+ Issue Type
Ma : Maintenance Deficiency
Ob : Design & System Obsolescence
En : Enforcement

**Flood Control Project Maintenance
Levee Inspections**

Levee Inspection Report By Mile - Fall 2022

Reclamation District No. 0556 Upper Andrus

Waterway	Bank	Unit Miles	Inspection Start/End	Inspector
Unit No. 01 Georgiana Slough	Right	5.48	09/22/2022 09/22/2022	Saskia Donovan

LM Start	3.57	Rating **	U	Issue No.	120
LM End	3.57	Issue Type +	En	Location *	
Category	Supplemental			GPS Latitude/Longitude	
				Start	End
Item	DWR UCIP Field Study			38.205892 °	38.205892 °
				-121.541679 °	-121.541679 °
DWR ID	20840				

Comment Code

Inspector Comment

DS_ID:20840
FS_ID:61301
EP_NO: 11161
Repair Type: Urgent
EVAL Issue: 2b, Levee Integrity
Crossing Status: Found
UCIP Comments: 06/17/2020 Record is Urgent. Subsidence on landside shoulder measured 2' x 3' x 1.5'-deep around air vent. Crossing appears abandoned. Fence on landside slope and overgrown vegetation on both slopes prevent from detailed inspection of levee. No permit has been identified authorizing pipe. Need to have CVFPB review ABO and determine current owner. (O.Yakimov - DWR UCIP)
FIELD_STRUCT_DESC: 10-inch steel pipe through levee, 11.2 feet below crown. 2-inch air and vacuum valve and concrete spill box on landside of the levee. (10-inch pipe [HLM 3.57] authorized under Automatic Board Order (ABO) issued as Permit No. 11161, 1975 - L.J. Gamble & M. P. Darsie). [Additional Reference(s): DWR Levee Log, unk.yr. (HLM 3.57). USACE Sacramento O&M Manual, Unit 103, June 1954, Revised 29 December 2016, (Station 'R' 421+08.7), listed as 12-inch pipe. USACE As-Built Drawing No. 50-04-2671, Sheet 2, near Station 420+55, 25 January 1951, Revised 18 Dec. 1952, listed as 12-inch pipe. USACE As-Built Drawing No. 50-04-2631, Sheet 11, Station 421+08.7, March 1950, Revised 16 Dec.1952, listed as 12-inch pipe].
FS Date: 6/17/2020

LM Start	3.57	Rating **	U	Issue No.	120 (cont)
LM End	3.57	Issue Type +	En	Location *	

Photo 1 of 3 : UCIP_FA_2022_61301_89118.jpg



Top of Levee: View of levee crown looking downstream

Photo 2 of 3 : UCIP_FA_2022_61301_89119.jpg



Land-Side: View of levee slope looking from crown

* Location LS : Land Side N/A : Not Applicable WS : Water Side CR : Crown		** Rating A : Acceptable N : Not Inspected/Rated M : Minimally Acceptable C : Corrected U : Unacceptable A/W : Acceptable but Monitor & Maintain		+ Issue Type Ma : Maintenance Deficiency Ob : Design & System Obsolescence En : Enforcement	
--	--	---	--	---	--

**Flood Control Project Maintenance
Levee Inspections**

Levee Inspection Report By Mile - Fall 2022

Reclamation District No. 0556 Upper Andrus

Waterway	Bank	Unit Miles	Inspection Start/End	Inspector
Unit No. 01 Georgiana Slough	Right	5.48	09/22/2022 09/22/2022	Saskia Donovan

LM Start	3.57	Rating **	U	Issue No.	120 (cont)
LM End	3.57	Issue Type +	En	Location *	
Category	Supplemental			GPS Latitude/Longitude	
				Start	End
Item	DWR UCIP Field Study			38.205892 °	38.205892 °
				-121.541679 °	-121.541679 °
DWR ID	20840				

Photo 3 of 3 : UCIP_FA_2022_61301_89122.jpg



Land-Side: Sinkhole around air vent on levee shoulder

LM Start	3.60	Rating **	M	Issue No.	94
LM End	3.60	Issue Type +	Ma	Location *	LS
Category	Earthen Levee			GPS Latitude/Longitude	
				Start	End
Item	Trim / Thin Trees			38.205462 °	38.205462 °
				-121.541622 °	-121.541622 °
DWR ID	DWR_RD0556_01_s_2022_94				
Comment Code					
T1 : Trim and thin trees to at least five feet above ground level to allow visibility of the ground and room to flood fight.					
Inspector Comment					

No Photos

LM Start	3.66	Rating **	M	Issue No.	96
LM End	3.71	Issue Type +	Ma	Location *	LS
Category	Earthen Levee			GPS Latitude/Longitude	
				Start	End
Item	Animal Control			38.204630 °	38.204020 °
				-121.541382 °	-121.541196 °
DWR ID	DWR_RD0556_01_s_2022_96				
Comment Code					
A1 : Exterminate rodents and backfill and compact or grout burrows.					
Inspector Comment					

No Photos

* Location
LS : Land Side N/A : Not Applicable
WS : Water Side
CR : Crown

** Rating
A : Acceptable N : Not Inspected/Rated
M : Minimally Acceptable C : Corrected
U : Unacceptable A/W : Acceptable but Monitor & Maintain

+ Issue Type
Ma : Maintenance Deficiency
Ob : Design & System Obsolescence
En : Enforcement

**Flood Control Project Maintenance
Levee Inspections**

Levee Inspection Report By Mile - Fall 2022

Reclamation District No. 0556 Upper Andrus

Waterway	Bank	Unit Miles	Inspection Start/End	Inspector
Unit No. 01 Georgiana Slough	Right	5.48	09/22/2022 09/22/2022	Saskia Donovan

LM Start	3.66	Rating **	M	Issue No.	97
LM End	3.71	Issue Type +	Ma	Location *	LS
Category	Earthen Levee			GPS Latitude/Longitude	
				Start	End
Item	Erosion / Livestock			38.204630 °	38.204020 °
				-121.541382 °	-121.541196 °
DWR ID	DWR_RD0556_01_s_2022_97				
Comment Code					
E4 : Repair the levee slope damaged by livestock and prevent large animal access.					
Inspector Comment					
Cow on levee creating path and holes in landside shoulder.					

Photo 1 of 1 : FA_2022_RD0556_18_97_20220831_00053.jpg



View of cow path digging into landside slope (Spring 2022).

LM Start	3.68	Rating **	U	Issue No.	41
LM End	3.81	Issue Type +	Ma	Location *	LS
Category	Earthen Levee			GPS Latitude/Longitude	
				Start	End
Item	Vegetation			38.204360 °	38.202615 °
				-121.541286 °	-121.540807 °
DWR ID	DWR_RD0556_01_s_2020_41				
Comment Code					
V2 : Remove the wild growth and woody vegetation other than native grasses from the levee slopes.					
Inspector Comment					

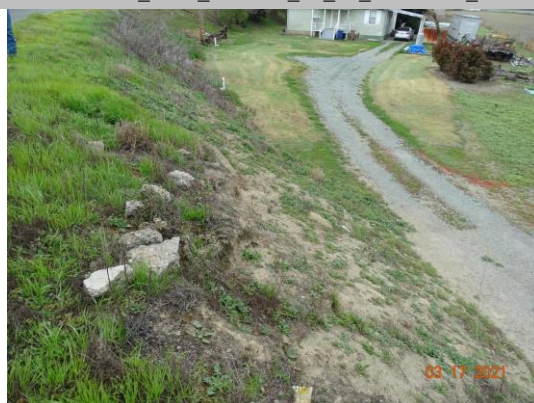
Photo 1 of 1 : FA_2022_RD0556_18_41_20220831_00024.jpg



View looking downstream at vegetation on the landside slope (Fall 2020).

LM Start	3.82	Rating **	M	Issue No.	86
LM End	3.82	Issue Type +	Ma	Location *	LS
Category	Earthen Levee			GPS Latitude/Longitude	
				Start	End
Item	Erosion / Rills			38.202481 °	38.202481 °
				-121.540839 °	-121.540839 °
DWR ID	DWR_RD0556_01_f_2021_86				
Comment Code					
E5 : Schedule repair of rills prior to the next inspection.					
Inspector Comment					
Exposed slope eroding, most likely due to runoff.					

Photo 1 of 1 : FA_2022_RD0556_18_86_20220831_00048.jpg



View of erosion rivulets in the landside slope (Spring 2021).

*** Location**
LS : Land Side N/A : Not Applicable
WS : Water Side
CR : Crown

**** Rating**
A : Acceptable N : Not Inspected/Rated
M : Minimally Acceptable C : Corrected
U : Unacceptable A/W : Acceptable but Monitor & Maintain

+ Issue Type
Ma : Maintenance Deficiency
Ob : Design & System Obsolescence
En : Enforcement

**Flood Control Project Maintenance
Levee Inspections**

Levee Inspection Report By Mile - Fall 2022

Reclamation District No. 0556 Upper Andrus

Waterway	Bank	Unit Miles	Inspection Start/End	Inspector
Unit No. 01 Georgiana Slough	Right	5.48	09/22/2022 09/22/2022	Saskia Donovan

LM Start	3.83	Rating **	M	Issue No.	98
LM End	3.83	Issue Type +	Ma	Location *	LS
Category	Earthen Levee			GPS Latitude/Longitude	
				Start	End
Item	Animal Control			38.202239 °	38.202239 °
				-121.540945 °	-121.540945 °
DWR ID	DWR_RD0556_01_s_2022_98				
Comment Code					
A1 : Exterminate rodents and backfill and compact or grout burrows.					
Inspector Comment					
One large fresh rodent hole. Multiple traps present.					

Photo 1 of 1 : FA_2022_RD0556_18_98_20220831_00054.jpg



View of large rodent hole in the landside slope (Spring 2022).

LM Start	3.84	Rating **	U	Issue No.	30
LM End	3.91	Issue Type +	En	Location *	LS
Category	Earthen Levee			GPS Latitude/Longitude	
				Start	End
Item	Vegetation			38.202061 °	38.201672 °
				-121.541113 °	-121.542133 °
DWR ID	DWR_RD0556_01_f_2017_30				
Comment Code					
V6 : Landscaping					
Inspector Comment					
Trim/thin landscaping to allow inspection and access to levee slope and toe.					

Photo 1 of 1 : FA_2022_RD0556_18_30_20221004_00189.jpg



View of the landscaping on the LS slope (Fall 2022).

LM Start	3.93	Rating **	U	Issue No.	34
LM End	3.98	Issue Type +	En	Location *	WS
Category	Earthen Levee			GPS Latitude/Longitude	
				Start	End
Item	Vegetation			38.201603 °	38.201273 °
				-121.542352 °	-121.543328 °
DWR ID	DWR_RD0556_01_f_2017_34				
Comment Code					
V6 : Landscaping					
Inspector Comment					
Remove large cactus from waterside shoulder to allow inspection and access.					

Photo 1 of 1 : FA_2022_RD0556_18_34_20221004_00190.jpg



View of the cactus on the WS shoulder (Fall 2022).

* Location LS : Land Side N/A : Not Applicable WS : Water Side CR : Crown	** Rating A : Acceptable M : Minimally Acceptable U : Unacceptable	N : Not Inspected/Rated C : Corrected A/W : Acceptable but Monitor & Maintain	+ Issue Type Ma : Maintenance Deficiency Ob : Design & System Obsolescence En : Enforcement
--	--	---	---

**Flood Control Project Maintenance
Levee Inspections**

Levee Inspection Report By Mile - Fall 2022

Reclamation District No. 0556 Upper Andrus

Waterway	Bank	Unit Miles	Inspection Start/End	Inspector
Unit No. 01 Georgiana Slough	Right	5.48	09/22/2022 09/22/2022	Saskia Donovan

LM Start	3.94	Rating **	M	Issue No.	100
LM End	3.94	Issue Type +	En	Location *	LS
Category	Earthen Levee			GPS Latitude/Longitude	
				Start	End
Item	Encroachments			38.201514 °	38.201514 °
				-121.542594 °	-121.542594 °
DWR ID	DWR_RD0556_01_s _ 2022_100				
Comment Code					
EQ : Equipment					
Inspector Comment					
Move equipment off of landside toe.					

Photo 1 of 1 : FA_2022_RD0556_18_100_20220831_00056.jpg



View of equipment stored at landside toe (Spring 2022).

LM Start	3.94	Rating **	U	Issue No.	99
LM End	3.96	Issue Type +	Ma	Location *	LS
Category	Earthen Levee			GPS Latitude/Longitude	
				Start	End
Item	Vegetation			38.201514 °	38.201402 °
				-121.542595 °	-121.542958 °
DWR ID	DWR_RD0556_01_s _ 2022_99				
Comment Code					
V2 : Remove the wild growth and woody vegetation other than native grasses from the levee slopes.					
Inspector Comment					
Blackberries on landside slope.					

Photo 1 of 1 : FA_2022_RD0556_18_99_20220831_00055.jpg



View looking downstream at vegetation on the landside slope (Spring 2022).

LM Start	4.02	Rating **	M	Issue No.	101
LM End	4.02	Issue Type +	Ma	Location *	LS
Category	Earthen Levee			GPS Latitude/Longitude	
				Start	End
Item	Animal Control			38.201063 °	38.201063 °
				-121.543850 °	-121.543850 °
DWR ID	DWR_RD0556_01_s _ 2022_101				
Comment Code					
A1 : Exterminate rodents and backfill and compact or grout burrows.					
Inspector Comment					

Photo 1 of 1 : FA_2022_RD0556_18_101_20220831_00057.jpg



View of multiple animal holes in the landside slope (Spring 2022).

* Location LS : Land Side N/A : Not Applicable WS : Water Side CR : Crown	** Rating A : Acceptable M : Minimally Acceptable U : Unacceptable	N : Not Inspected/Rated C : Corrected A/W : Acceptable but Monitor & Maintain	+ Issue Type Ma : Maintenance Deficiency Ob : Design & System Obsolescence En : Enforcement
--	--	--	---

**Flood Control Project Maintenance
Levee Inspections**

Levee Inspection Report By Mile - Fall 2022

Reclamation District No. 0556 Upper Andrus

Waterway	Bank	Unit Miles	Inspection Start/End	Inspector
Unit No. 01 Georgiana Slough	Right	5.48	09/22/2022 09/22/2022	Saskia Donovan

LM Start	4.02	Rating **	M	Issue No.	121
LM End	4.02	Issue Type +	En	Location *	
Category	Supplemental			GPS Latitude/Longitude	
				Start	End
Item	DWR UCIP Field Study			38.201035 °	38.201035 °
				-121.543936 °	-121.543936 °
DWR ID	21581				

Comment Code

Inspector Comment

DS_ID:21581
FS_ID:61315
EP_NO: 13030
Repair Type: Non-Urgent
EVAL Issue: 10, Unauthorized Modification or Non-Compliant Permit
Crossing Status: Found
UCIP Comments: 06/17/2020 Record is Non-Urgent. Pipe diameter field measured as 20-inch on both slopes. On landside berm pipe diameter changes from 20 inch to 18 inch. Unable to find a permit for modification of this crossing. No permit has been identified authorizing original O&M pipe through the levee. (O.Yakimov - DWR UCIP)
FIELD_STRUCT_DESC: 18-inch steel drainage pipes through levee, 4.3 feet below crown. Pumps on landward side and 4-inch air valve. (18-inch pipe [HLM 4.01] authorized under Automatic Board Order (ABO) issued as Permit No. 11175, 1975 - RD0556). [Additional Reference(s): DWR Levee Log, unk.yr. (HLM 4.01). USACE Sacramento O&M Manual, Unit 103, June 1954, Revised 29 December 2016, (Station 397+36.3), listed as 20-inch pipe]. USACE As-Built Drawing No. 50-04-2631, Sheet 10, Station 397+36.3, March 1950, Revised 16 Dec.1952, listed as 20-inch pipe].
FS Date: 6/17/2020

LM Start	4.02	Rating **	M	Issue No.	121 (cont)
LM End	4.02	Issue Type +	En	Location *	

Photo 1 of 3 : UCIP_FA_2022_61315_89138.jpg



Water-Side: Pipes on waterside berm

Photo 2 of 3 : UCIP_FA_2022_61315_89139.jpg



Water-Side: Pipes on waterside berm and levee slope on background

* Location LS : Land Side N/A : Not Applicable WS : Water Side CR : Crown	** Rating A : Acceptable M : Minimally Acceptable U : Unacceptable	N : Not Inspected/Rated C : Corrected A/W : Acceptable but Monitor & Maintain	+ Issue Type Ma : Maintenance Deficiency Ob : Design & System Obsolescence En : Enforcement
--	--	---	---

**Flood Control Project Maintenance
Levee Inspections**

Levee Inspection Report By Mile - Fall 2022

Reclamation District No. 0556 Upper Andrus

Waterway	Bank	Unit Miles	Inspection Start/End	Inspector
Unit No. 01 Georgiana Slough	Right	5.48	09/22/2022 09/22/2022	Saskia Donovan

LM Start	4.02	Rating **	M	Issue No.	121 (cont)
LM End	4.02	Issue Type +	En	Location *	
Category	Supplemental		GPS Latitude/Longitude		
			Start	End	
Item	DWR UCIP Field Study		38.201035 °	38.201035 °	
			-121.543936 °	-121.543936 °	
DWR ID	21581				

Photo 3 of 3 : UCIP_FA_2022_61315_89137.jpg



Land-Side: View of levee shoulder

LM Start	4.02	Rating **	M	Issue No.	122
LM End	4.02	Issue Type +	En	Location *	
Category	Supplemental		GPS Latitude/Longitude		
			Start	End	
Item	DWR UCIP Field Study		38.201032 °	38.201032 °	
			-121.543946 °	-121.543946 °	
DWR ID	20842				

Comment Code

Inspector Comment

DS_ID:20842
FS_ID:61303
EP_NO: 13030
Repair Type: Non-Urgent
EVAL Issue: 10, Unauthorized Modification or Non-Compliant Permit
Crossing Status: Found
UCIP Comments: 06/17/2020 Record is Non-Urgent. Pipe diameter field measured as 20-inch on both slopes. On landside berm pipe diameter changes from 20 inch to 18 inch. Debris of 20-inch pipe welded to 16-inch pipe with open end found next to this crossing on landside berm. Unable to find a permit for modification of this crossing. No permit has been identified authorizing original O&M pipe through the levee. (O.Yakimov - DWR UCIP)
FIELD_STRUCT_DESC: 16-inch steel drainage pipes through levee, 4.3 feet below crown. Pumps on landward side and 4-inch air valve. (16-inch pipe [HLM 4.01] authorized under Automatic Board Order (ABO) issued as Permit No. 11175, 1975 - RD0556). [Additional Reference(s): DWR Levee Log, unk.yr. (HLM 4.01). USACE Sacramento O&M Manual, Unit 103, June 1954, Revised 29 December 2016, (Station 397+20.5), listed as 16-inch pipe. USACE As-Built Drawing No. 50-04-2631, Sheet 10, Station 397+20.5, March 1950, Revised 16 Dec.1952, listed as 12-inch pipe].
FS Date: 6/17/2020

Photo 1 of 3 : UCIP_FA_2022_61303_89144.jpg



Top of Levee: View of levee crown looking downstream

* Location LS : Land Side N/A : Not Applicable WS : Water Side CR : Crown	** Rating A : Acceptable M : Minimally Acceptable U : Unacceptable N : Not Inspected/Rated C : Corrected A/W : Acceptable but Monitor & Maintain	+ Issue Type Ma : Maintenance Deficiency Ob : Design & System Obsolescence En : Enforcement
--	---	---

**Flood Control Project Maintenance
Levee Inspections**

Levee Inspection Report By Mile - Fall 2022

Reclamation District No. 0556 Upper Andrus

Waterway	Bank	Unit Miles	Inspection Start/End	Inspector
Unit No. 01 Georgiana Slough	Right	5.48	09/22/2022 09/22/2022	Saskia Donovan

LM Start	4.02	Rating **	M	Issue No.	122 (cont)
LM End	4.02	Issue Type +	En	Location *	
Category	Supplemental			GPS Latitude/Longitude	
				Start	End
Item	DWR UCIP Field Study			38.201032 °	38.201032 °
				-121.543946 °	-121.543946 °
DWR ID	20842				

Photo 2 of 3 : UCIP_FA_2022_61303_89147.jpg



Water-Side: Pipes on waterside berm looking from riverbank

LM Start	4.02	Rating **	M	Issue No.	122 (cont)
LM End	4.02	Issue Type +	En	Location *	

Photo 3 of 3 : UCIP_FA_2022_61303_89160.jpg



Land-Side: View of levee slope looking from toe

* Location LS : Land Side N/A : Not Applicable WS : Water Side CR : Crown	** Rating A : Acceptable M : Minimally Acceptable U : Unacceptable	N : Not Inspected/Rated C : Corrected A/W : Acceptable but Monitor & Maintain	+ Issue Type Ma : Maintenance Deficiency Ob : Design & System Obsolescence En : Enforcement
--	--	---	---

**Flood Control Project Maintenance
Levee Inspections**

Levee Inspection Report By Mile - Fall 2022

Reclamation District No. 0556 Upper Andrus

Waterway	Bank	Unit Miles	Inspection Start/End	Inspector
Unit No. 01 Georgiana Slough	Right	5.48	09/22/2022 09/22/2022	Saskia Donovan

LM Start	4.02	Rating **	M	Issue No.	123
LM End	4.02	Issue Type +	En	Location *	
Category	Supplemental			GPS Latitude/Longitude	
				Start	End
Item	DWR UCIP Field Study			38.201022 °	38.201022 °
				-121.543973 °	-121.543973 °
DWR ID	21437				

Comment Code

Inspector Comment

DS_ID:21437
FS_ID:61311
EP_NO: 10526
Repair Type: Non-Urgent
EVAL Issue: 10, Unauthorized Modification or Non-Compliant Permit
Crossing Status: Found
UCIP Comments: 06/17/2020 Record is Non-Urgent. Pipe diameter field measured as 20-inch on both slopes. Unable to find a permit for modification of this crossing. (O.Yakimov - DWR UCIP)

FIELD_STRUCT_DESC: 24-inch steel drainage pipes 3.5 ft below levee crown. Pumping plant on landside. 6" air valve, concrete saddle & wood beam on waterside. This crossing replaces 24-inch pipe (see DSID 25634). (24-inch pipe authorized under Permit No. 10526, 1975 - Reclamation District 556). [Additional Reference(s): USACE Sacramento O&M Manual, Unit 103, June 1954, Revised 29 December 2016, (Station 397+36.3), listed as 24-inch pipe. USACE As-Built Drawing No. 50-04-2631, Sheet 10, Station 397+36.3, March 1950, Revised 16 Dec.1952].
FS Date: 6/17/2020

LM Start	4.02	Rating **	M	Issue No.	123 (cont)
LM End	4.02	Issue Type +	En	Location *	

Photo 1 of 3 : UCIP_FA_2022_61311_89154.jpg



Top of Levee: View of levee crown looking downstream

Photo 2 of 3 : UCIP_FA_2022_61311_89161.jpg



Land-Side: View of levee slope looking from toe

* Location LS : Land Side N/A : Not Applicable WS : Water Side CR : Crown	** Rating A : Acceptable M : Minimally Acceptable U : Unacceptable	N : Not Inspected/Rated C : Corrected A/W : Acceptable but Monitor & Maintain	+ Issue Type Ma : Maintenance Deficiency Ob : Design & System Obsolescence En : Enforcement
--	--	--	---

**Flood Control Project Maintenance
Levee Inspections**

Levee Inspection Report By Mile - Fall 2022

Reclamation District No. 0556 Upper Andrus

Waterway	Bank	Unit Miles	Inspection Start/End	Inspector
Unit No. 01 Georgiana Slough	Right	5.48	09/22/2022 09/22/2022	Saskia Donovan

LM Start	4.02	Rating **	M	Issue No.	123 (cont)
LM End	4.02	Issue Type +	En	Location *	
Category	Supplemental			GPS Latitude/Longitude	
				Start	End
Item	DWR UCIP Field Study			38.201022 °	38.201022 °
				-121.543973 °	-121.543973 °
DWR ID	21437				

Photo 3 of 3 : UCIP_FA_2022_61311_89158.jpg



Water-Side: View of levee slope looking from crown

LM Start	4.17	Rating **	M	Issue No.	39
LM End	4.33	Issue Type +	Ma	Location *	LS
Category	Earthen Levee			GPS Latitude/Longitude	
				Start	End
Item	Vegetation			38.199425 °	38.197467 °
				-121.545808 °	-121.547146 °
DWR ID	DWR_RD0556_01_f_2017_39				
Comment Code					
V2 : Remove the wild growth and woody vegetation other than native grasses from the levee slopes.					
Inspector Comment					
Blackberries at LS toe.					

Photo 1 of 1 : FA_2022_RD0556_18_39_20221026_00195.jpg



View of the blackberries on the LS toe (Fall 2022).

LM Start	4.23	Rating **	M	Issue No.	111
LM End	4.25	Issue Type +	Ma	Location *	LS
Category	Earthen Levee			GPS Latitude/Longitude	
				Start	End
Item	Erosion / Livestock			38.198731 °	38.198510 °
				-121.546352 °	-121.546557 °
DWR ID	DWR_RD0556_01_s_2022_111				
Comment Code					
E4 : Repair the levee slope damaged by livestock and prevent large animal access.					
Inspector Comment					

Photo 1 of 1 : FA_2022_RD0556_18_111_20220831_00059.jpg



View looking upstream of erosion due to cow path on the landside slope (Spring 2022).

* Location LS : Land Side N/A : Not Applicable WS : Water Side CR : Crown		** Rating A : Acceptable M : Minimally Acceptable U : Unacceptable N : Not Inspected/Rated C : Corrected A/W : Acceptable but Monitor & Maintain		+ Issue Type Ma : Maintenance Deficiency Ob : Design & System Obsolescence En : Enforcement	
--	--	---	--	---	--

**Flood Control Project Maintenance
Levee Inspections**

Levee Inspection Report By Mile - Fall 2022

Reclamation District No. 0556 Upper Andrus

Waterway	Bank	Unit Miles	Inspection Start/End	Inspector
Unit No. 01 Georgiana Slough	Right	5.48	09/22/2022 09/22/2022	Saskia Donovan

LM Start	4.40	Rating **	M	Issue No.	102
LM End	4.57	Issue Type +	Ma	Location *	LS
Category	Earthen Levee			GPS Latitude/Longitude	
				Start	End
Item	Vegetation			38.196514 °	38.194882 °
				-121.547638 °	-121.550051 °
DWR ID	DWR_RD0556_01_s_2022_102				
Comment Code					
V2 : Remove the wild growth and woody vegetation other than native grasses from the levee slopes.					
Inspector Comment					
Blackberries at LS toe.					

No Photos

LM Start	4.78	Rating **	M	Issue No.	104
LM End	4.78	Issue Type +	Ma	Location *	LS
Category	Earthen Levee			GPS Latitude/Longitude	
				Start	End
Item	Vegetation			38.192881 °	38.192881 °
				-121.552895 °	-121.552895 °
DWR ID	DWR_RD0556_01_s_2022_104				
Comment Code					
V4 : Elderberries are blocking visibility and flood fight capability.					
Inspector Comment					

No Photos

LM Start	4.78	Rating **	M	Issue No.	105
LM End	4.78	Issue Type +	Ma	Location *	LS
Category	Earthen Levee			GPS Latitude/Longitude	
				Start	End
Item	Erosion / Livestock			38.192881 °	38.192881 °
				-121.552895 °	-121.552895 °
DWR ID	DWR_RD0556_01_s_2022_105				
Comment Code					
E4 : Repair the levee slope damaged by livestock and prevent large animal access.					
Inspector Comment					

No Photos

* Location LS : Land Side N/A : Not Applicable WS : Water Side CR : Crown	** Rating A : Acceptable M : Minimally Acceptable U : Unacceptable	N : Not Inspected/Rated C : Corrected A/W : Acceptable but Monitor & Maintain	+ Issue Type Ma : Maintenance Deficiency Ob : Design & System Obsolescence En : Enforcement
--	--	---	---

**Flood Control Project Maintenance
Levee Inspections**

Levee Inspection Report By Mile - Fall 2022

Reclamation District No. 0556 Upper Andrus

Waterway	Bank	Unit Miles	Inspection Start/End	Inspector
Unit No. 01 Georgiana Slough	Right	5.48	09/22/2022 09/22/2022	Saskia Donovan

LM Start	4.88	Rating **	U	Issue No.	106
LM End	4.88	Issue Type +	Ma	Location *	LS
Category	Earthen Levee			GPS Latitude/Longitude	
				Start	End
Item	Vegetation			38.191981 °	38.191981 °
				-121.554180 °	-121.554180 °
DWR ID	DWR_RD0556_01_s _ 2022_106				
Comment Code					
V4 : Elderberries are blocking visibility and flood fight capability.					
Inspector Comment					

No Photos

LM Start	5.09	Rating **	M	Issue No.	63
LM End	5.21	Issue Type +	Ma	Location *	LS
Category	Earthen Levee			GPS Latitude/Longitude	
				Start	End
Item	Erosion / Livestock			38.190255 °	38.188928 °
				-121.557440 °	-121.558976 °
DWR ID	DWR_RD0556_01_s _ 2022_63				
Comment Code					
E4 : Repair the levee slope damaged by livestock and prevent large animal access.					
Inspector Comment					

Photo 1 of 1 : FA_2022_RD0556_18_63_20221026_00192.jpg



View of the erosion due to livestock on the upper LS slope (Fall 2022).

* Location LS : Land Side N/A : Not Applicable WS : Water Side CR : Crown	** Rating A : Acceptable M : Minimally Acceptable U : Unacceptable	N : Not Inspected/Rated C : Corrected A/W : Acceptable but Monitor & Maintain	+ Issue Type Ma : Maintenance Deficiency Ob : Design & System Obsolescence En : Enforcement
--	--	---	---

**Flood Control Project Maintenance
Levee Inspections**

Levee Inspection Report By Mile - Fall 2022

Reclamation District No. 0556 Upper Andrus

Waterway	Bank	Unit Miles	Inspection Start/End	Inspector
Unit No. 01 Georgiana Slough	Right	5.48	09/22/2022 09/22/2022	Saskia Donovan

LM Start	5.12	Rating **	M	Issue No.	20
LM End	5.34	Issue Type +	Ma	Location *	WS
Category	Supplemental			GPS Latitude/Longitude	
				Start	End
Item	2018 USACE Erosion Survey			38.189775 °	38.187369 °
				-121.557729 °	-121.560247 °
DWR ID	DWR_RD0556_01_s _ 2022_20				

Comment Code

Inspector Comment

2018 Site ID: GEO 7.0 R
 Status: Eroding
 2018 Field Notes: Minor new toe erosion.
 Site History: 1997 - Toe damaged rock. 1999 - One pocket filled with gravel. 2000 - Eroding beach with some biotech rolls and stakes; some gravel on slope. 2001 - Staked, low fascine walls at bankline. 2005 - Stone revetment in between pockets. 2006 - New rock on upper slope behind brush boxes at the upstream end. Stone is sliding off the hard toe. 2016 - Fresh erosion observed. 2017 - Site extended downstream. Large erosion pockets and significant toe erosion.

LM Start	5.12	Rating **	M	Issue No.	20 (cont)
LM End	5.34	Issue Type +	Ma	Location *	WS

Photo 1 of 2 : FA_2022_RD0556_18_20_20220831_00004.jpg



USACE 2018 Erosion Photo #1

Photo 2 of 2 : FA_2022_RD0556_18_20_20220831_00005.jpg



USACE 2018 Erosion Photo #2

* Location LS : Land Side N/A : Not Applicable WS : Water Side CR : Crown	** Rating A : Acceptable M : Minimally Acceptable U : Unacceptable	N : Not Inspected/Rated C : Corrected A/W : Acceptable but Monitor & Maintain	+ Issue Type Ma : Maintenance Deficiency Ob : Design & System Obsolescence En : Enforcement
--	--	---	---

**Flood Control Project Maintenance
Levee Inspections**

Levee Inspection Report By Mile - Fall 2022

Reclamation District No. 0556 Upper Andrus

Waterway	Bank	Unit Miles	Inspection Start/End	Inspector
Unit No. 01 Georgiana Slough	Right	5.48	09/22/2022 09/22/2022	Saskia Donovan

LM Start	5.33	Rating **	M	Issue No.	124
LM End	5.33	Issue Type +	En	Location *	
Category	Supplemental			GPS Latitude/Longitude	
				Start	End
Item	DWR UCIP Field Study			38.187651 °	38.187651 °
				-121.560247 °	-121.560247 °
DWR ID	20847				

Comment Code

Inspector Comment

DS_ID:20847
FS_ID:61308
EP_NO: 10489
Repair Type: Non-Urgent
EVAL Issue: 10, Unauthorized Modification or Non-Compliant Permit
Crossing Status: Found
UCIP Comments: 06/22/2020 Record is Non-Urgent. Slant pump was removed and replaced with smaller pump on pile structure at riverbank. Unable to find a permit for modification. (O.Yakimov - DWR UCIP)
FIELD_STRUCT_DESC: 10-inch pipe through levee, 3.5 feet below crown. Pump on pile structure at riverbank. 1-inch electrical conduit through levee at this location. Siphon breaker in CMP riser on landward slope. A 9 ft x 42-inch concrete standpipe on landside. Service pole with electric meter and connection panel at landside toe. Two sand media filters on landside. This crossing replaces 6-inch pipe (see DSID 25650). (10-inch pipe authorized under Permit No. 10489, 1975 - Daecie and Gamble). [Additional Reference(s): DWR Levee Log, unk.yr. (HLM 5.32). USACE Sacramento O&M Manual, Unit 103, June 1954, Revised 29 December 2016, (Station 'R' 327+63.7), listed as 8-inch pipe. USACE As-Built Drawing No. 50-04-2631, Sheet 8, Station 327+63.7, March 1950, Revised 16 Dec.1952, listed as 8-inch pipe].
FS Date: 6/22/2020

LM Start	5.33	Rating **	M	Issue No.	124 (cont)
LM End	5.33	Issue Type +	En	Location *	

Photo 1 of 3 : UCIP_FA_2022_61308_89184.jpg



Top of Levee: View of levee crown looking downstream

Photo 2 of 3 : UCIP_FA_2022_61308_89185.jpg



Land-Side: View of levee slope looking from crown

* Location LS : Land Side N/A : Not Applicable WS : Water Side CR : Crown	** Rating A : Acceptable M : Minimally Acceptable U : Unacceptable	N : Not Inspected/Rated C : Corrected A/W : Acceptable but Monitor & Maintain	+ Issue Type Ma : Maintenance Deficiency Ob : Design & System Obsolescence En : Enforcement
--	--	--	---

**Flood Control Project Maintenance
Levee Inspections**

Levee Inspection Report By Mile - Fall 2022

Reclamation District No. 0556 Upper Andrus

Waterway	Bank	Unit Miles	Inspection Start/End	Inspector
Unit No. 01 Georgiana Slough	Right	5.48	09/22/2022 09/22/2022	Saskia Donovan

LM Start	5.33	Rating **	M	Issue No.	124 (cont)
LM End	5.33	Issue Type +	En	Location *	
Category	Supplemental		GPS Latitude/Longitude		
			Start	End	
Item	DWR UCIP Field Study		38.187651 °	38.187651 °	
			-121.560247 °	-121.560247 °	
DWR ID	20847				

Photo 3 of 3 : UCIP_FA_2022_61308_89191.jpg



Water-Side: Pump on pile structure looks recently replaced

LM Start	5.40	Rating **	A/W	Issue No.	107
LM End	5.40	Issue Type +	Ob	Location *	LS
Category	Earthen Levee			GPS Latitude/Longitude	
				Start	End
Item	Seepage / Sandboils			38.186915 °	38.186915 °
				-121.561320 °	-121.561320 °
DWR ID	DWR_RD0556_01_s_2022_107				
Comment Code					
SS : Seepage / Sandboils					
Inspector Comment					
Possible seepage at landside toe.					

Photo 1 of 1 : FA_2022_RD0556_18_107_20220831_00058.jpg



View of possible seepage in small ditch at landside toe (Spring 2022).

LM Start	5.46	Rating **	M	Issue No.	90
LM End	5.48	Issue Type +	En	Location *	LS
Category	Earthen Levee			GPS Latitude/Longitude	
				Start	End
Item	Encroachments			38.186565 °	38.186479 °
				-121.562233 °	-121.562519 °
DWR ID	DWR_RD0556_01_f_2022_90				
Comment Code					
FE : Fence					
Inspector Comment					

Photo 1 of 1 : FA_2022_RD0556_18_90_20221004_00191.jpg



View of the fence on the on LS shoulder (Fall 2022).

* Location LS : Land Side N/A : Not Applicable WS : Water Side CR : Crown		** Rating A : Acceptable M : Minimally Acceptable U : Unacceptable N : Not Inspected/Rated C : Corrected A/W : Acceptable but Monitor & Maintain		+ Issue Type Ma : Maintenance Deficiency Ob : Design & System Obsolescence En : Enforcement	
--	--	---	--	---	--

**Flood Control Project Maintenance
Levee Inspections**

Levee Inspection Report By Mile - Fall 2022

Reclamation District No. 0556 Upper Andrus

Waterway	Bank	Unit Miles	Inspection Start/End	Inspector
Unit No. 01 Georgiana Slough	Right	5.48	09/22/2022 09/22/2022	Saskia Donovan

LM Start	5.48	Rating **	U	Issue No.	44
LM End	5.48	Issue Type +	En	Location *	LS
Category	Earthen Levee			GPS Latitude/Longitude	
				Start	End
Item	Vegetation			38.186448 °	38.186447 °
				-121.562673 °	-121.562674 °
DWR ID	DWR_RD0556_01_s_2021_44				
Comment Code					
V6 : Landscaping					
Inspector Comment					

Photo 1 of 1 : FA_2022_RD0556_18_44_20220831_00029.jpg



View looking downstream landscaping shrubs on the landside slope (Spring 2021).

* Location LS : Land Side N/A : Not Applicable WS : Water Side CR : Crown	** Rating A : Acceptable N : Not Inspected/Rated M : Minimally Acceptable C : Corrected U : Unacceptable A/W : Acceptable but Monitor & Maintain	+ Issue Type Ma : Maintenance Deficiency Ob : Design & System Obsolescence En : Enforcement
--	---	---

**Flood Control Project Maintenance
Levee Inspections
Unit Cover Sheet**

Reclamation District No. 0556 Upper Andrus

Waterway			Bank	Unit Miles
Unit No. 02 Sacramento River			Left	5.72
	Spring (March - May)	Summer (June - August)	(September - November) Fall	Winter (December - February)
Unit Maintenance Rating (Fall Only)			U	
Date of Inspection	3/30/2022 - 3/30/2022		9/15/2022 - 9/15/2022	
DWR Inspector	David Julian		Saskia Donovan	
Accompanied By	Alan Silva Reclamation District 556		Oleg Yakimov DWR	

Summer & Winter Inspections

The Local Maintaining Agency (LMA) is responsible for summer and winter inspections. The LMA is required to submit a report regarding summer and winter inspections to the California Department of Water Resources (DWR).

DWR must be informed on the:

- a) completion of the inspection
- b) any changes other than the results of normal maintenance
- c) corrections to deficiencies noted in this report

If additional items are noted, further documentation of those items must also be submitted.

The LMA should submit this information to DWR using the LMA web application tool available at:

<http://cdec.water.ca.gov/lma.html>

If the LMA is unable to submit information on this webpage, please contact DWR for assistance.

The LMA should submit the information and any associated documentation by September 30 for summer inspections and March 31 for winter inspections.

**Flood Control Project Maintenance
Levee Inspections**

Levee Inspection Report By Mile - Fall 2022

Reclamation District No. 0556 Upper Andrus

Waterway	Bank	Unit Miles	Inspection Start/End	Inspector
Unit No. 02 Sacramento River	Left	5.72	09/15/2022 09/15/2022	Saskia Donovan

LM Start	0.02	Rating **	U	Issue No.	92
LM End	0.14	Issue Type +	Ma	Location *	LS
Category	Earthen Levee			GPS Latitude/Longitude	
				Start	End
Item	Animal Control			38.239117 °	38.238887 °
				-121.518554 °	-121.520789 °
DWR ID	DWR_RD0556_02_s_2022_92				
Comment Code					
A1 : Exterminate rodents and backfill and compact or grout burrows.					
Inspector Comment					
There are multiple fresh squirrel holes on the slope.					

Photo 1 of 1 : FA_2022_RD0556_19_92_20221003_00068.jpg



View of the rodent holes looking up the LS slope (Fall 2022).

LM Start	0.04	Rating **	U	Issue No.	20
LM End	0.04	Issue Type +	Ma	Location *	WS
Category	Earthen Levee			GPS Latitude/Longitude	
				Start	End
Item	Erosion / Vehicle Traffic			38.239167 °	38.239167 °
				-121.519040 °	-121.519040 °
DWR ID	DWR_RD0556_02_f _ 2019_20				
Comment Code					
E6 : Repair the levee slope damaged by vehicle traffic and prevent access where possible.					
Inspector Comment					

Photo 1 of 1 : FA_2022_RD0556_19_20_20220831_00017.jpg



View of damage to waterside slope due to a vehicle (Spring 2022).

LM Start	0.08	Rating **	M	Issue No.	42
LM End	0.08	Issue Type +	Ma	Location *	WS
Category	Earthen Levee			GPS Latitude/Longitude	
				Start	End
Item	Trim / Thin Trees			38.239029 °	38.239029 °
				-121.519667 °	-121.519667 °
DWR ID	DWR_RD0556_02_s_2021_42				
Comment Code					
T1 : Trim and thin trees to at least five feet above ground level to allow visibility of the ground and room to flood fight.					
Inspector Comment					

No Photos

* Location LS : Land Side N/A : Not Applicable WS : Water Side CR : Crown	** Rating A : Acceptable M : Minimally Acceptable U : Unacceptable	N : Not Inspected/Rated C : Corrected A/W : Acceptable but Monitor & Maintain	+ Issue Type Ma : Maintenance Deficiency Ob : Design & System Obsolescence En : Enforcement
--	--	---	---

**Flood Control Project Maintenance
Levee Inspections**

Levee Inspection Report By Mile - Fall 2022

Reclamation District No. 0556 Upper Andrus

Waterway	Bank	Unit Miles	Inspection Start/End	Inspector
Unit No. 02 Sacramento River	Left	5.72	09/15/2022 09/15/2022	Saskia Donovan

LM Start	0.14	Rating **	M	Issue No.	44
LM End	0.14	Issue Type +	Ma	Location *	WS
Category	Earthen Levee			GPS Latitude/Longitude	
				Start	End
Item	Trim / Thin Trees			38.238902 °	38.238902 °
				-121.520748 °	-121.520748 °
DWR ID	DWR_RD0556_02_s_2022_44				
Comment Code					
T1 : Trim and thin trees to at least five feet above ground level to allow visibility of the ground and room to flood fight.					
Inspector Comment					

No Photos

LM Start	0.27	Rating **	U	Issue No.	119
LM End	0.27	Issue Type +	En	Location *	
Category	Supplemental			GPS Latitude/Longitude	
				Start	End
Item	DWR UCIP Field Study			38.238564 °	38.238564 °
				-121.523162 °	-121.523162 °
DWR ID	20858				
Comment Code					
Inspector Comment					
DS_ID:20858 FS_ID:76291 EP_NO: 11179 Repair Type: Urgent EVAL Issue: 2a, Levee Integrity Crossing Status: Found UCIP Comments: 05/12/2022 The record has been upgraded from No Action Needed to Urgent. WS slope and berm near water has significant erosion greater than 1 foot. There is also excavation around the WS berm exposing the pipe that is greater than 1 foot. Recommend inspection in excavations that are causing a safety hazard. Crossing will be monitored until funding becomes available to address the issues. No permit other than ABO was found authorizing this encroachment. CVFPB will need to review crossing to determine owner. The UCIP inspection was completed with GEI staff, A. Lau. (H. Dunn – GEI) FIELD_STRUCT_DESC: 12-inch irrigation discharge pipe of an unknown material through the levee, 4.8 feet below the crown. Pump on a pile structure in the river. Service pole on each slope. (Retention of a 12-inch pipe through the levee, 4.8 feet below the crown, a pump on a pile structure in the river, and a service pole on each slope authorized under Automatic Board Order (ABO) issued as Permit No. 11179, 1975 - George K. Adams Ranches, Inc). [Additional Reference(s): DWR Levee Log]. FS Date: 5/12/2022 1:22:06 PM					

Photo 1 of 3 : UCIP_FA_2022_76291_113332.jpg



Levee crown.

* Location LS : Land Side N/A : Not Applicable WS : Water Side CR : Crown	** Rating A : Acceptable M : Minimally Acceptable U : Unacceptable	N : Not Inspected/Rated C : Corrected A/W : Acceptable but Monitor & Maintain	+ Issue Type Ma : Maintenance Deficiency Ob : Design & System Obsolescence En : Enforcement
--	--	---	---

**Flood Control Project Maintenance
Levee Inspections**

Levee Inspection Report By Mile - Fall 2022

Reclamation District No. 0556 Upper Andrus

Waterway	Bank	Unit Miles	Inspection Start/End	Inspector
Unit No. 02 Sacramento River	Left	5.72	09/15/2022 09/15/2022	Saskia Donovan

LM Start	0.27	Rating **	U	Issue No.	119 (cont)
LM End	0.27	Issue Type +	En	Location *	
Category	Supplemental		GPS Latitude/Longitude		
			Start	End	
Item	DWR UCIP Field Study		38.238564 °	38.238564 °	
			-121.523162 °	-121.523162 °	
DWR ID	20858				

Photo 2 of 3 : UCIP_FA_2022_76291_113334.jpg



LS view: Toe from crown.

LM Start	0.27	Rating **	U	Issue No.	119 (cont)
LM End	0.27	Issue Type +	En	Location *	

Photo 3 of 3 : UCIP_FA_2022_76291_113335.jpg



LS view: Closeup of exposed pipe on slope.

LM Start	0.30	Rating **	M	Issue No.	82
LM End	0.30	Issue Type +	Ma	Location *	LS
Category	Earthen Levee			GPS Latitude/Longitude	
				Start	End
Item	Trim / Thin Trees			38.238516 °	38.238516 °
				-121.523640 °	-121.523640 °
DWR ID	DWR_RD0556_02_s_2021_82				
Comment Code					
T1 : Trim and thin trees to at least five feet above ground level to allow visibility of the ground and room to flood fight.					
Inspector Comment					

No Photos

* Location LS : Land Side N/A : Not Applicable WS : Water Side CR : Crown	** Rating A : Acceptable M : Minimally Acceptable U : Unacceptable	N : Not Inspected/Rated C : Corrected A/W : Acceptable but Monitor & Maintain	+ Issue Type Ma : Maintenance Deficiency Ob : Design & System Obsolescence En : Enforcement
--	--	---	---

**Flood Control Project Maintenance
Levee Inspections**

Levee Inspection Report By Mile - Fall 2022

Reclamation District No. 0556 Upper Andrus

Waterway	Bank	Unit Miles	Inspection Start/End	Inspector
Unit No. 02 Sacramento River	Left	5.72	09/15/2022 09/15/2022	Saskia Donovan

LM Start	0.42	Rating **	M	Issue No.	39
LM End	0.42	Issue Type +	Ma	Location *	LS
Category	Earthen Levee			GPS Latitude/Longitude	
				Start	End
Item	Trim / Thin Trees			38.238167 °	38.238167 °
				-121.525878 °	-121.525878 °
DWR ID	DWR_RD0556_02_s_2021_39				
Comment Code					
T1 : Trim and thin trees to at least five feet above ground level to allow visibility of the ground and room to flood fight.					
Inspector Comment					

No Photos

LM Start	0.49	Rating **	U	Issue No.	120	
LM End	0.49	Issue Type +	En	Location *		
Category	Supplemental			GPS Latitude/Longitude		
				Start	End	
Item	DWR UCIP Field Study			38.237959 °	38.237959 °	
				-121.527109 °	-121.527109 °	
DWR ID	20850					
Comment Code						
Inspector Comment						
DS_ID:20850 FS_ID:76292 EP_NO: 11179 Repair Type: Urgent EVAL Issue: 2b, Levee Integrity Crossing Status: Found UCIP Comments: 05/12/2022 The record has been upgraded from No Action Needed to Urgent. Deep hole greater than 1 foot on LS berm around pipe covered with leaves and causing a fall and safety concern. Recommend filling in with dirt. LS riser missing lid. No permit other than ABO permit was found authorizing this encroachment. CVFPB will need to review crossing to determine owner. The UCIP inspection was completed with GEI staff, A. Lau. (H. Dunn – GEI)04/25/2013 Pump house and gate valve not found. (P. Amatya - DWR) FIELD_STRUCT_DESC: 10-inch steel irrigation discharge pipe through the levee, 4.8 feet below the crown. Slant pump and gate valve on the riverbank. Siphon breaker and service pole on the landside (LS) slope. Concrete spill box on the LS. (Retention of a 10-inch pipe through the levee, 4.8 feet below the crown, a pump and a gate valve in a pump house on the waterside [WS] slope, and a siphon breaker and a service pole on the LS slope authorized under Automatic Board Order (ABO) issued as Permit No. 11179, 1975 - George K. Adams Ranches, Inc). [Additional Reference(s): DWR Levee Log. USACE Sacramento O&M Manual 103, June 1954, (Station ""J"" 217+52), invert elevation 19 feet]. FS Date: 5/12/2022 1:22:55 PM						

Photo 1 of 3 : UCIP_FA_2022_76292_113345.jpg



Levee crown with some visible cracking.

* Location LS : Land Side N/A : Not Applicable WS : Water Side CR : Crown	** Rating A : Acceptable M : Minimally Acceptable U : Unacceptable	N : Not Inspected/Rated C : Corrected A/W : Acceptable but Monitor & Maintain	+ Issue Type Ma : Maintenance Deficiency Ob : Design & System Obsolescence En : Enforcement
--	--	---	---

**Flood Control Project Maintenance
Levee Inspections**

Levee Inspection Report By Mile - Fall 2022

Reclamation District No. 0556 Upper Andrus

Waterway	Bank	Unit Miles	Inspection Start/End	Inspector
Unit No. 02 Sacramento River	Left	5.72	09/15/2022 09/15/2022	Saskia Donovan

LM Start	0.49	Rating **	U	Issue No.	120 (cont)
LM End	0.49	Issue Type +	En	Location *	
Category	Supplemental		GPS Latitude/Longitude		
			Start	End	
Item	DWR UCIP Field Study		38.237959 °	38.237959 °	
			-121.527109 °	-121.527109 °	
DWR ID	20850				

Photo 2 of 3 : UCIP_FA_2022_76292_113346.jpg



LS view: Slope and toe from crown.

LM Start	0.49	Rating **	U	Issue No.	120 (cont)
LM End	0.49	Issue Type +	En	Location *	

Photo 3 of 3 : UCIP_FA_2022_76292_113347.jpg



LS view: Closeup of meter pole.

LM Start	0.50	Rating **	M	Issue No.	43
LM End	0.50	Issue Type +	Ma	Location *	WS
Category	Earthen Levee			GPS Latitude/Longitude	
				Start	End
Item	Erosion / Foot Traffic			38.237963 °	38.237963 °
				-121.527372 °	-121.527372 °
DWR ID	DWR_RD0556_02_f_2019_43				
Comment Code					
E3 : Repair the levee slope damaged by foot traffic and prevent access where possible.					
Inspector Comment					
Fishermen trail is on slope. Concrete blocks on the shoulder just downstream of the erosion help with preventing access.					

Photo 1 of 1 : FA_2022_RD0556_19_43_20220831_00031.jpg



View of fishermen trail digging into levee on the waterside slope (Fall 2019).

* Location LS : Land Side N/A : Not Applicable WS : Water Side CR : Crown		** Rating A : Acceptable N : Not Inspected/Rated M : Minimally Acceptable C : Corrected U : Unacceptable A/W : Acceptable but Monitor & Maintain		+ Issue Type Ma : Maintenance Deficiency Ob : Design & System Obsolescence En : Enforcement	
--	--	---	--	---	--

**Flood Control Project Maintenance
Levee Inspections**

Levee Inspection Report By Mile - Fall 2022

Reclamation District No. 0556 Upper Andrus

Waterway	Bank	Unit Miles	Inspection Start/End	Inspector
Unit No. 02 Sacramento River	Left	5.72	09/15/2022 09/15/2022	Saskia Donovan

LM Start	0.53	Rating **	U	Issue No.	25
LM End	0.56	Issue Type +	En	Location *	LS
Category	Earthen Levee			GPS Latitude/Longitude	
				Start	End
Item	Vegetation			38.237833 °	38.237725 °
				-121.527766 °	-121.528428 °
DWR ID	DWR_RD0556_02_f _ 2017_25				
Comment Code					
V6 : Landscaping					
Inspector Comment					
Trim/thin oleanders on the landside of the levee.					

Photo 1 of 1 : FA_2022_RD0556_19_25_20220831_00018.jpg



View of oleanders on the landside of the levee.

LM Start	0.63	Rating **	U	Issue No.	34
LM End	0.63	Issue Type +	Ma	Location *	WS
Category	Earthen Levee			GPS Latitude/Longitude	
				Start	End
Item	Trim / Thin Trees			38.237530 °	38.237530 °
				-121.529552 °	-121.529552 °
DWR ID	DWR_RD0556_02_f _ 2021_34				
Comment Code					
T1 : Trim and thin trees to at least five feet above ground level to allow visibility of the ground and room to flood fight.					
Inspector Comment					

Photo 1 of 1 : FA_2022_RD0556_19_34_20220831_00025.jpg



View looking downstream at thick tree on the waterside slope (Spring 2022).

LM Start	0.73	Rating **	U	Issue No.	48
LM End	0.73	Issue Type +	Ma	Location *	WS
Category	Earthen Levee			GPS Latitude/Longitude	
				Start	End
Item	Erosion / Vehicle Traffic			38.237588 °	38.237588 °
				-121.531453 °	-121.531453 °
DWR ID	DWR_RD0556_02_s_2022_48				
Comment Code					
E6 : Repair the levee slope damaged by vehicle traffic and prevent access where possible.					
Inspector Comment					

Photo 1 of 1 : FA_2022_RD0556_19_48_20220831_00035.jpg



View of damage to the waterside slope due to vehicle (Spring 2022).

* Location LS : Land Side N/A : Not Applicable WS : Water Side CR : Crown		** Rating A : Acceptable N : Not Inspected/Rated M : Minimally Acceptable C : Corrected U : Unacceptable A/W : Acceptable but Monitor & Maintain		+ Issue Type Ma : Maintenance Deficiency Ob : Design & System Obsolescence En : Enforcement	
--	--	---	--	---	--

**Flood Control Project Maintenance
Levee Inspections**

Levee Inspection Report By Mile - Fall 2022

Reclamation District No. 0556 Upper Andrus

Waterway	Bank	Unit Miles	Inspection Start/End	Inspector
Unit No. 02 Sacramento River	Left	5.72	09/15/2022 09/15/2022	Saskia Donovan

LM Start	0.74	Rating **	U	Issue No.	81
LM End	0.85	Issue Type +	Ma	Location *	LS
Category	Earthen Levee			GPS Latitude/Longitude	
				Start	End
Item	Trim / Thin Trees			38.237577 °	38.237842 °
				-121.531594 °	-121.533616 °
DWR ID	DWR_RD0556_02_s_2021_81				
Comment Code					
T1 : Trim and thin trees to at least five feet above ground level to allow visibility of the ground and room to flood fight.					
Inspector Comment					

Photo 1 of 1 : FA_2022_RD0556_19_81_20220831_00058.jpg



View looking upstream at thick vegetation on the landside slope (Fall 2021).

LM Start	0.89	Rating **	M	Issue No.	118
LM End	0.89	Issue Type +	Ma	Location *	LS
Category	Earthen Levee			GPS Latitude/Longitude	
				Start	End
Item	Trim / Thin Trees			38.237937 °	38.237937 °
				-121.534316 °	-121.534316 °
DWR ID	DWR_RD0556_02_f_2021_118				
Comment Code					
T1 : Trim and thin trees to at least five feet above ground level to allow visibility of the ground and room to flood fight.					
Inspector Comment					

No Photos

* Location LS : Land Side N/A : Not Applicable WS : Water Side CR : Crown	** Rating A : Acceptable M : Minimally Acceptable U : Unacceptable N : Not Inspected/Rated C : Corrected A/W : Acceptable but Monitor & Maintain	+ Issue Type Ma : Maintenance Deficiency Ob : Design & System Obsolescence En : Enforcement
--	---	---

**Flood Control Project Maintenance
Levee Inspections**

Levee Inspection Report By Mile - Fall 2022

Reclamation District No. 0556 Upper Andrus

Waterway	Bank	Unit Miles	Inspection Start/End	Inspector
Unit No. 02 Sacramento River	Left	5.72	09/15/2022 09/15/2022	Saskia Donovan

LM Start	0.94	Rating **	M	Issue No.	121
LM End	0.94	Issue Type +	En	Location *	
Category	Supplemental			GPS Latitude/Longitude	
				Start	End
Item	DWR UCIP Field Study			38.238125 °	38.238125 °
				-121.535267 °	-121.535267 °
DWR ID	20851				

Comment Code

Inspector Comment

DS_ID:20851
FS_ID:76293
EP_NO: 11186
Repair Type: Non-Urgent
EVAL Issue: 6, Levee Damage or Threat for Levee Damage
Crossing Status: Found
UCIP Comments: 05/12/2022 The record remains Non-Urgent. The plastic tank on WS is still leaking, causing minor erosion on the WS slope. Recommend repair of tank or hose to prevent further erosion. No permit other than ABO permit was found authorizing this encroachment. CVFPB will need to review crossing to determine owner. The UCIP inspection was completed with GEI staff, A. Lao. (H. Dunn – GEI)

04/25/2013 a concrete box on LS. Water is leaking from priming plastic tank and causing surface erosion on levee slope. (P. Amatya - DWR)
FIELD_STRUCT_DESC: 4-inch steel irrigation discharge pipe through the levee, 4.3 feet below the crown. Pump and gate valve in a pump house on the waterside (WS) berm. Siphon breaker and service pole on the landside (LS) slope. Concrete spill box with three 8-inch openings. (Retention of a 4-inch pipe through the levee, 4.3 feet below the crown, a pump in a pump house on the WS berm, and a siphon breaker and a service pole on the LS slope authorized under Automatic Board Order (ABO) issued as Permit No. 11186, 1975 - Margaret M. Marks).
[Additional Reference(s): DWR Levee Log. USACE Sacramento O&M Manual 103, June 1954, (Station ""J"" 192+00), 6-inch pipe referenced, invert elevation 18.8 feet].
FS Date: 5/12/2022 3:13:00 PM

LM Start	0.94	Rating **	M	Issue No.	121 (cont)
LM End	0.94	Issue Type +	En	Location *	

Photo 1 of 3 : UCIP_FA_2022_76293_113385.jpg



Levee crown.

Photo 2 of 3 : UCIP_FA_2022_76293_113386.jpg



WS view: Pump house and tank on slope from crown.

* Location LS : Land Side N/A : Not Applicable WS : Water Side CR : Crown	** Rating A : Acceptable M : Minimally Acceptable U : Unacceptable N : Not Inspected/Rated C : Corrected A/W : Acceptable but Monitor & Maintain	+ Issue Type Ma : Maintenance Deficiency Ob : Design & System Obsolescence En : Enforcement
--	---	---

**Flood Control Project Maintenance
Levee Inspections**

Levee Inspection Report By Mile - Fall 2022

Reclamation District No. 0556 Upper Andrus

Waterway	Bank	Unit Miles	Inspection Start/End	Inspector
Unit No. 02 Sacramento River	Left	5.72	09/15/2022 09/15/2022	Saskia Donovan

LM Start	0.94	Rating **	M	Issue No.	121 (cont)	
LM End	0.94	Issue Type +	En	Location *		
Category	Supplemental			GPS Latitude/Longitude		
				Start	End	
Item	DWR UCIP Field Study			38.238125 °	38.238125 °	
				-121.535267 °	-121.535267 °	
DWR ID	20851					

Photo 3 of 3 : UCIP_FA_2022_76293_113380.jpg



WS view: Closeup of pump in pumphouse on slope.

LM Start	1.03	Rating **	M	Issue No.	19
LM End	1.15	Issue Type +	Ma	Location *	WS
Category	Supplemental			GPS Latitude/Longitude	
				Start	End
Item	2018 USACE Erosion Survey			38.238772 °	38.239265 °
				-121.536788 °	-121.538845 °
DWR ID	DWR RD0556 02 s 2022 19				

Comment Code

Inspector Comment

2018 Site ID: SAC 25.2 L
 Status: Eroding
 2018 Field Notes: Additional erosion along toe. Site extended upstream.
 Site History: 1997 - Rock is in poor condition and has failed in many places. Scallops in berm with remnants of old rock in the toe area.
 2005 - Brush boxes present. 2013 - Site extended upstream approximately 300 ft to include new erosion pockets. 2015 - Minor new erosion at toe. 2017 - Minor new erosion observed.

Photo 1 of 2 : FA_2022_RD0556_19_19_20220831_00015.jpg



USACE 2018 Erosion Photo #1

* Location LS : Land Side N/A : Not Applicable WS : Water Side CR : Crown		** Rating A : Acceptable N : Not Inspected/Rated M : Minimally Acceptable C : Corrected U : Unacceptable A/W : Acceptable but Monitor & Maintain		+ Issue Type Ma : Maintenance Deficiency Ob : Design & System Obsolescence En : Enforcement
--	--	---	--	---

**Flood Control Project Maintenance
Levee Inspections**

Levee Inspection Report By Mile - Fall 2022

Reclamation District No. 0556 Upper Andrus

Waterway	Bank	Unit Miles	Inspection Start/End	Inspector
Unit No. 02 Sacramento River	Left	5.72	09/15/2022 09/15/2022	Saskia Donovan

LM Start	1.03	Rating **	M	Issue No.	19 (cont)
LM End	1.15	Issue Type +	Ma	Location *	WS
Category	Supplemental			GPS Latitude/Longitude	
				Start	End
Item	2018 USACE Erosion Survey			38.238772 °	38.239265 °
				-121.536788 °	-121.538845 °
DWR ID	DWR_RD0556_02_s_2022_19				

Photo 2 of 2 : FA_2022_RD0556_19_19_20220831_00016.jpg



USACE 2018 Erosion Photo #2

LM Start	1.11	Rating **	U	Issue No.	26
LM End	1.11	Issue Type +	En	Location *	LS
Category	Earthen Levee			GPS Latitude/Longitude	
				Start	End
Item	Vegetation			38.238857 °	38.238857 °
				-121.538310 °	-121.538310 °
DWR ID	DWR_RD0556_02_f _ 2017_26				
Comment Code					
V6 : Landscaping					
Inspector Comment					
Trim/thin oleanders on the landside of the levee.					

Photo 1 of 1 : FA_2022_RD0556_19_26_20221003_00069.jpg



View of the oleander on the LS slope (Fall 2022).

LM Start	1.15	Rating **	M	Issue No.	87
LM End	1.15	Issue Type +	Ma	Location *	LS
Category	Earthen Levee			GPS Latitude/Longitude	
				Start	End
Item	Trim / Thin Trees			38.238977 °	38.238977 °
				-121.538872 °	-121.538872 °
DWR ID	DWR_RD0556_02_s_2022_87				
Comment Code					
T1 : Trim and thin trees to at least five feet above ground level to allow visibility of the ground and room to flood fight.					
Inspector Comment					

No Photos

* Location LS : Land Side N/A : Not Applicable WS : Water Side CR : Crown	** Rating A : Acceptable M : Minimally Acceptable U : Unacceptable	N : Not Inspected/Rated C : Corrected A/W : Acceptable but Monitor & Maintain	+ Issue Type Ma : Maintenance Deficiency Ob : Design & System Obsolescence En : Enforcement
--	--	---	---

**Flood Control Project Maintenance
Levee Inspections**

Levee Inspection Report By Mile - Fall 2022

Reclamation District No. 0556 Upper Andrus

Waterway	Bank	Unit Miles	Inspection Start/End	Inspector
Unit No. 02 Sacramento River	Left	5.72	09/15/2022 09/15/2022	Saskia Donovan

LM Start	1.20	Rating **	M	Issue No.	75
LM End	1.26	Issue Type +	Ma	Location *	LS
Category	Earthen Levee			GPS Latitude/Longitude	
				Start	End
Item	Animal Control			38.239226 °	38.239473 °
				-121.539869 °	-121.540962 °
DWR ID	DWR_RD0556_02_s_2022_75				
Comment Code					
A3 : No rodents visible, but rodent burrows visible; need to backfill and compact or grout burrows.					
Inspector Comment					

Photo 1 of 1 : FA_2022_RD0556_19_75_20220831_00053.jpg



View of animal holes in the landside slope (Spring 2022).

LM Start	1.22	Rating **	U	Issue No.	122
LM End	1.22	Issue Type +	En	Location *	
Category	Supplemental			GPS Latitude/Longitude	
				Start	End
Item	DWR UCIP Field Study			38.239327 °	38.239327 °
				-121.540190 °	-121.540190 °
DWR ID	20852				
Comment Code					
Inspector Comment					
DS_ID:20852 FS_ID:76294 EP_NO: 11187 Repair Type: Urgent EVAL Issue: 3b, Flood Risk Crossing Status: Found UCIP Comments: 05/12/2022 The record has been upgraded from Non-Urgent to Urgent. Still a gap between the 6 and 10-inch pipe that should be grouted, as it's causing a flood risk concern. Appears abandoned, due to disconnected pump and pipe on LS toe. Owner will need to coordinate with the CVFPB to meet Title 23 requirements. No permit other than ABO permit was found authorizing this encroachment. CVFPB will need to review crossing to determine owner. The UCIP inspection was completed with GEI staff, A. Lao. (H. Dunn – GEI) 04/25/2013 Gap between 6-inch pipe and 10-inch pipe needs to be sealed. (P. Amatya - DWR) FIELD_STRUCT_DESC: 6-inch steel irrigation discharge pipe sleeved through a 10-inch steel pipe through the levee, 4.8 feet below the crown. Pump on the riverbank. (Retention of a 10-inch pipe through the levee, 4.8 feet below the crown, a flap gate on the waterside (WS) end, landside (LS) end open, used to sleeve portable irrigation pipe, authorized under Automatic Board Order (ABO) issued as Permit No. 11187, 1975 - Ernest and Alvine Machado). [Additional Reference(s): DWR Levee Log]. FS Date: 5/12/2022 3:24:55 PM					

Photo 1 of 3 : UCIP_FA_2022_76294_113391.jpg



Levee crown.

* Location LS : Land Side N/A : Not Applicable WS : Water Side CR : Crown	** Rating A : Acceptable M : Minimally Acceptable U : Unacceptable	N : Not Inspected/Rated C : Corrected A/W : Acceptable but Monitor & Maintain	+ Issue Type Ma : Maintenance Deficiency Ob : Design & System Obsolescence En : Enforcement
--	--	---	---

**Flood Control Project Maintenance
Levee Inspections**

Levee Inspection Report By Mile - Fall 2022

Reclamation District No. 0556 Upper Andrus

Waterway	Bank	Unit Miles	Inspection Start/End	Inspector
Unit No. 02 Sacramento River	Left	5.72	09/15/2022 09/15/2022	Saskia Donovan

LM Start	1.22	Rating **	U	Issue No.	122 (cont)
LM End	1.22	Issue Type +	En	Location *	
Category	Supplemental		GPS Latitude/Longitude		
			Start	End	
Item	DWR UCIP Field Study		38.239327 °	38.239327 °	
			-121.540190 °	-121.540190 °	
DWR ID	20852				

Photo 2 of 3 : UCIP_FA_2022_76294_113392.jpg



LS view: Pipe visible on the slope from crown.

LM Start	1.22	Rating **	U	Issue No.	122 (cont)
LM End	1.22	Issue Type +	En	Location *	

Photo 3 of 3 : UCIP_FA_2022_76294_113393.jpg



LS view: Closeup of gap between pipe on slope.

LM Start	1.32	Rating **	M	Issue No.	115
LM End	1.32	Issue Type +	Ma	Location *	LS
Category	Earthen Levee			GPS Latitude/Longitude	
				Start	End
Item	Trim / Thin Trees			38.239681 °	38.239681 °
				-121.541945 °	-121.541945 °
DWR ID	DWR_RD0556_02_f_2021_115				
Comment Code					
T1 : Trim and thin trees to at least five feet above ground level to allow visibility of the ground and room to flood fight.					
Inspector Comment					

Photo 1 of 1 : FA_2022_RD0556_19_115_20221003_00086.jpg



View of the trees on the LS slope (Fall 2022).

* Location LS : Land Side N/A : Not Applicable WS : Water Side CR : Crown	** Rating A : Acceptable M : Minimally Acceptable U : Unacceptable	N : Not Inspected/Rated C : Corrected A/W : Acceptable but Monitor & Maintain	+ Issue Type Ma : Maintenance Deficiency Ob : Design & System Obsolescence En : Enforcement
--	--	--	---

**Flood Control Project Maintenance
Levee Inspections**

Levee Inspection Report By Mile - Fall 2022

Reclamation District No. 0556 Upper Andrus

Waterway	Bank	Unit Miles	Inspection Start/End	Inspector
Unit No. 02 Sacramento River	Left	5.72	09/15/2022 09/15/2022	Saskia Donovan

LM Start	1.43	Rating **	U	Issue No.	40
LM End	1.43	Issue Type +	Ma	Location *	WS
Category	Earthen Levee			GPS Latitude/Longitude	
				Start	End
Item	Trim / Thin Trees			38.240060 °	38.240060 °
				-121.543884 °	-121.543884 °
DWR ID	DWR_RD0556_02_f_2021_40				
Comment Code					
T1 : Trim and thin trees to at least five feet above ground level to allow visibility of the ground and room to flood fight.					
Inspector Comment					

Photo 1 of 1 : FA_2022_RD0556_19_40_20220831_00029.jpg



View looking upstream at thick vegetation on the waterside slope (Fall 2021).

LM Start	1.45	Rating **	M	Issue No.	18	
LM End	1.59	Issue Type +	Ma	Location *	WS	
Category	Supplemental			GPS Latitude/Longitude		
				Start	End	
Item	2018 USACE Erosion Survey			38.240401 °	38.240772 °	
				-121.544106 °	-121.546791 °	
DWR ID	DWR_RD0556_02_s_2022_18					
Comment Code						
Inspector Comment						
2018 Site ID: SAC 24.8 L						
Status: Eroding						
2018 Field Notes: Site extended upstream.						
Site History: 1997 - Slow erosion of the berm at the waterline; bench below water. 2005 - Brush boxes present. 2010 - Minor new erosion.						
2013 - There is little to no berm remaining at downstream end of this site. 2016 - New erosion on levee slope. 2017 - Significant lower bank erosion.						

Photo 1 of 2 : FA_2022_RD0556_19_18_20220831_00013.jpg



USACE 2018 Erosion Photo #1

* Location LS : Land Side N/A : Not Applicable WS : Water Side CR : Crown		** Rating A : Acceptable N : Not Inspected/Rated M : Minimally Acceptable C : Corrected U : Unacceptable A/W : Acceptable but Monitor & Maintain		+ Issue Type Ma : Maintenance Deficiency Ob : Design & System Obsolescence En : Enforcement	
---	--	--	--	--	--

**Flood Control Project Maintenance
Levee Inspections**

Levee Inspection Report By Mile - Fall 2022

Reclamation District No. 0556 Upper Andrus

Waterway	Bank	Unit Miles	Inspection Start/End	Inspector
Unit No. 02 Sacramento River	Left	5.72	09/15/2022 09/15/2022	Saskia Donovan

LM Start	1.45	Rating **	M	Issue No.	18 (cont)
LM End	1.59	Issue Type +	Ma	Location *	WS
Category	Supplemental			GPS Latitude/Longitude	
				Start	End
Item	2018 USACE Erosion Survey			38.240401 °	38.240772 °
				-121.544106 °	-121.546791 °
DWR ID	DWR_RD0556_02_s_2022_18				

Photo 2 of 2 : FA_2022_RD0556_19_18_20220831_00014.jpg



USACE 2018 Erosion Photo #2

LM Start	1.47	Rating **	U	Issue No.	50
LM End	1.47	Issue Type +	Ma	Location *	WS
Category	Earthen Levee			GPS Latitude/Longitude	
				Start	End
Item	Trim / Thin Trees			38.240183 °	38.240183 °
				-121.544567 °	-121.544567 °
DWR ID	DWR_RD0556_02_f_2021_50				
Comment Code					
T2 : Tree or limb.					
Inspector Comment					

Photo 1 of 1 : FA_2022_RD0556_19_50_20220831_00036.jpg



View of down tree on the landside slope (Spring 2022).

LM Start	1.47	Rating **	U	Issue No.	41
LM End	1.47	Issue Type +	En	Location *	LS
Category	Earthen Levee			GPS Latitude/Longitude	
				Start	End
Item	Vegetation			38.240175 °	38.240175 °
				-121.544683 °	-121.544683 °
DWR ID	DWR_RD0556_02_s_2018_41				
Comment Code					
V6 : Landscaping					
Inspector Comment					
Cactus on the landside slope.					

Photo 1 of 1 : FA_2022_RD0556_19_41_20220831_00030.jpg



View of cactus and other landscaping.

* Location LS : Land Side N/A : Not Applicable WS : Water Side CR : Crown	** Rating A : Acceptable M : Minimally Acceptable U : Unacceptable	N : Not Inspected/Rated C : Corrected A/W : Acceptable but Monitor & Maintain	+ Issue Type Ma : Maintenance Deficiency Ob : Design & System Obsolescence En : Enforcement
--	--	---	---

**Flood Control Project Maintenance
Levee Inspections**

Levee Inspection Report By Mile - Fall 2022

Reclamation District No. 0556 Upper Andrus

Waterway	Bank	Unit Miles	Inspection Start/End	Inspector
Unit No. 02 Sacramento River	Left	5.72	09/15/2022 09/15/2022	Saskia Donovan

LM Start	1.51	Rating **	C	Issue No.	114
LM End	1.51	Issue Type +	En	Location *	LS
Category	Earthen Levee			GPS Latitude/Longitude	
				Start	End
Item	Trim / Thin Trees			38.240297 °	38.240297 °
				-121.545370 °	-121.545370 °
DWR ID	DWR_RD0556_02_f_2021_114				
Comment Code					
T2 : Tree or limb.					
Inspector Comment					
The branches have been removed.					

No Photos

LM Start	1.57	Rating **	U	Issue No.	47
LM End	1.57	Issue Type +	En	Location *	LS
Category	Earthen Levee			GPS Latitude/Longitude	
				Start	End
Item	Vegetation			38.240455 °	38.240455 °
				-121.546362 °	-121.546362 °
DWR ID	DWR_RD0556_02_s_2019_47				
Comment Code					
V6 : Landscaping					
Inspector Comment					
Remove cactus from the landside slope.					

Photo 1 of 1 : FA_2022_RD0556_19_47_20221003_00085.jpg



View of the cactus on the LS slope (Fall 2022).

* Location LS : Land Side N/A : Not Applicable WS : Water Side CR : Crown	** Rating A : Acceptable M : Minimally Acceptable U : Unacceptable	N : Not Inspected/Rated C : Corrected A/W : Acceptable but Monitor & Maintain	+ Issue Type Ma : Maintenance Deficiency Ob : Design & System Obsolescence En : Enforcement
--	--	---	---

**Flood Control Project Maintenance
Levee Inspections**

Levee Inspection Report By Mile - Fall 2022

Reclamation District No. 0556 Upper Andrus

Waterway	Bank	Unit Miles	Inspection Start/End	Inspector
Unit No. 02 Sacramento River	Left	5.72	09/15/2022 09/15/2022	Saskia Donovan

LM Start	1.78	Rating **	M	Issue No.	123
LM End	1.78	Issue Type +	En	Location *	
Category	Supplemental			GPS Latitude/Longitude	
				Start	End
Item	DWR UCIP Field Study			38.240998 °	38.240998 °
				-121.550265 °	-121.550265 °
DWR ID	20854				
Comment Code					
Inspector Comment					
DS_ID:20854 FS_ID:76296 EP_NO: N/A Repair Type: Non-Urgent EVAL Issue: 10, Unauthorized Modification or Non-Compliant Permit Crossing Status: Found UCIP Comments: 05/12/2022 The record has been upgraded from No Action Needed to Non-Urgent. Modification of new filtration system on LS toe. No permit was found authorizing this encroachment. CVFPB will need to review crossing to determine owner. Pump was running during. The UCIP inspection was completed with GEI staff, A. Lao. (H. Dunn – GEI) 04/25/2013 Pump was running during field survey. (P. Amatya - DWR) FIELD_STRUCT_DESC: 8-inch steel irrigation discharge pipe through the levee, 5.5 feet below the crown. Pump and gate valve on the waterside (WS) berm. Siphon breaker and service pole on the landside (LS) slope. Concrete standpipe on the LS. (Retention of an 8-inch pipe through the levee, 7.7 feet below the crown, a pump and a gate valve in a pump house on the WS berm, and a siphon breaker and a service pole on the LS slope authorized under Automatic Board Order (ABO) issued as Permit No. 11181, 1975 - Robert E. and G. P. Collins). [Additional Reference(s): DWR Levee Log. USACE Sacramento O&M Manual 103, June 1954, (Station ""J"" 149+10), invert elevation 18.6 feet]. FS Date: 5/12/2022 3:39:19 PM					

Photo 1 of 3 : UCIP_FA_2022_76296_113408.jpg



Levee crown.

LM Start	1.78	Rating **	M	Issue No.	123 (cont)
LM End	1.78	Issue Type +	En	Location *	

Photo 2 of 3 : UCIP_FA_2022_76296_113409.jpg



LS view: Slope with pipe and toe from crown.

* Location LS : Land Side N/A : Not Applicable WS : Water Side CR : Crown	** Rating A : Acceptable M : Minimally Acceptable U : Unacceptable	N : Not Inspected/Rated C : Corrected A/W : Acceptable but Monitor & Maintain	+ Issue Type Ma : Maintenance Deficiency Ob : Design & System Obsolescence En : Enforcement
--	--	---	---

**Flood Control Project Maintenance
Levee Inspections**

Levee Inspection Report By Mile - Fall 2022

Reclamation District No. 0556 Upper Andrus

Waterway	Bank	Unit Miles	Inspection Start/End	Inspector
Unit No. 02 Sacramento River	Left	5.72	09/15/2022 09/15/2022	Saskia Donovan

LM Start	1.78	Rating **	M	Issue No.	123 (cont)
LM End	1.78	Issue Type +	En	Location *	
Category	Supplemental		GPS Latitude/Longitude		
			Start	End	
Item	DWR UCIP Field Study		38.240998 °	38.240998 °	
			-121.550265 °	-121.550265 °	
DWR ID	20854				

Photo 3 of 3 : UCIP_FA_2022_76296_113410.jpg



LS view: Closeup of pipe on slope from toe.

LM Start	1.82	Rating **	U	Issue No.	70
LM End	1.92	Issue Type +	En	Location *	WS
Category	Earthen Levee			GPS Latitude/Longitude	
				Start	End
Item	Vegetation			38.241010 °	38.240618 °
				-121.551033 °	-121.552747 °
DWR ID	DWR_RD0556_02_f_2018_70				
Comment Code					
V6 : Landscaping					
Inspector Comment					
Thin oleanders to allow view down the levee slope.					

Photo 1 of 1 : FA_2022_RD0556_19_70_20220831_00050.jpg



View looking downstream at oleanders on the waterside slope (Fall 2020).

*** Location**
 LS : Land Side N/A : Not Applicable
 WS : Water Side
 CR : Crown

**** Rating**
 A : Acceptable N : Not Inspected/Rated
 M : Minimally Acceptable C : Corrected
 U : Unacceptable A/W : Acceptable but Monitor & Maintain

+ Issue Type
 Ma : Maintenance Deficiency
 Ob : Design & System Obsolescence
 En : Enforcement

**Flood Control Project Maintenance
Levee Inspections**

Levee Inspection Report By Mile - Fall 2022

Reclamation District No. 0556 Upper Andrus

Waterway	Bank	Unit Miles	Inspection Start/End	Inspector
Unit No. 02 Sacramento River	Left	5.72	09/15/2022 09/15/2022	Saskia Donovan

LM Start	1.83	Rating **	U	Issue No.	86
LM End	1.87	Issue Type +	En	Location *	LS
Category	Earthen Levee			GPS Latitude/Longitude	
				Start	End
Item	Vegetation			38.240944 °	38.240851 °
				-121.551078 °	-121.551833 °
DWR ID	DWR_RD0556_02_s_2020_86				
Comment Code					
V6 : Landscaping					
Inspector Comment					

Photo 1 of 1 : FA_2022_RD0556_19_86_20220831_00060.jpg



View looking upstream at landscaping on the landside slope (Spring 2020).

LM Start	1.89	Rating **	U	Issue No.	30
LM End	1.99	Issue Type +	En	Location *	LS
Category	Earthen Levee			GPS Latitude/Longitude	
				Start	End
Item	Vegetation			38.240775 °	38.240024 °
				-121.552183 °	-121.553860 °
DWR ID	DWR_RD0556_02_f_2017_30				
Comment Code					
V6 : Landscaping					
Inspector Comment					
Remove cactus on the landside slope.					

Photo 1 of 1 : FA_2022_RD0556_19_30_20221003_00084.jpg



View of the cactus on the LS slope (Fall 2022).

*** Location**

LS : Land Side N/A : Not Applicable
WS : Water Side
CR : Crown

**** Rating**

A : Acceptable N : Not Inspected/Rated
M : Minimally Acceptable C : Corrected
U : Unacceptable A/W : Acceptable but Monitor & Maintain

+ Issue Type

Ma : Maintenance Deficiency
Ob : Design & System Obsolescence
En : Enforcement

**Flood Control Project Maintenance
Levee Inspections**

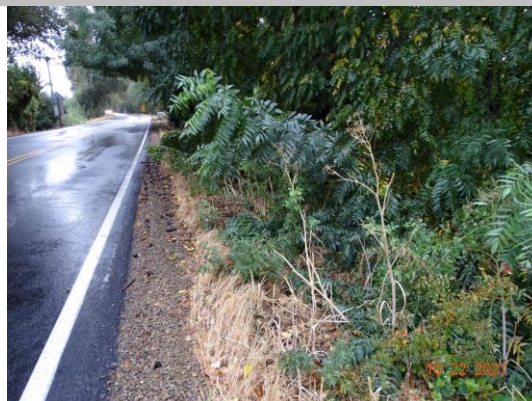
Levee Inspection Report By Mile - Fall 2022

Reclamation District No. 0556 Upper Andrus

Waterway	Bank	Unit Miles	Inspection Start/End	Inspector
Unit No. 02 Sacramento River	Left	5.72	09/15/2022 09/15/2022	Saskia Donovan

LM Start	2.02	Rating **	U	Issue No.	68
LM End	2.06	Issue Type +	En	Location *	WS
Category	Earthen Levee			GPS Latitude/Longitude	
				Start	End
Item	Vegetation			38.239807 °	38.239409 °
				-121.554221 °	-121.554889 °
DWR ID	DWR_RD0556_02_f_2021_68				
Comment Code					
V6 : Landscaping					
Inspector Comment					

Photo 1 of 1 : FA_2022_RD0556_19_68_20220831_00049.jpg



View looking downstream at landscaping on the waterside slope (Fall 2021).

LM Start	2.06	Rating **	U	Issue No.	32
LM End	2.06	Issue Type +	Ma	Location *	LS
Category	Earthen Levee			GPS Latitude/Longitude	
				Start	End
Item	Trim / Thin Trees			38.239470 °	38.239470 °
				-121.554845 °	-121.554845 °
DWR ID	DWR_RD0556_02_s_2020_32				
Comment Code					
T1 : Trim and thin trees to at least five feet above ground level to allow visibility of the ground and room to flood fight.					
Inspector Comment					
Arundo growth should be removed to allow inspection and access to the landside slope and toe.					

Photo 1 of 1 : FA_2022_RD0556_19_32_20221003_00083.jpg



View of the arundo on the LS slope (Fall 2022).

LM Start	2.07	Rating **	M	Issue No.	77
LM End	2.11	Issue Type +	Ma	Location *	LS
Category	Earthen Levee			GPS Latitude/Longitude	
				Start	End
Item	Trim / Thin Trees			38.239304 °	38.238996 °
				-121.554982 °	-121.555454 °
DWR ID	DWR_RD0556_02_s_2021_77				
Comment Code					
T1 : Trim and thin trees to at least five feet above ground level to allow visibility of the ground and room to flood fight.					
Inspector Comment					

No Photos

* Location
LS : Land Side N/A : Not Applicable
WS : Water Side
CR : Crown

** Rating
A : Acceptable N : Not Inspected/Rated
M : Minimally Acceptable C : Corrected
U : Unacceptable A/W : Acceptable but Monitor & Maintain

+ Issue Type
Ma : Maintenance Deficiency
Ob : Design & System Obsolescence
En : Enforcement

**Flood Control Project Maintenance
Levee Inspections**

Levee Inspection Report By Mile - Fall 2022

Reclamation District No. 0556 Upper Andrus

Waterway	Bank	Unit Miles	Inspection Start/End	Inspector
Unit No. 02 Sacramento River	Left	5.72	09/15/2022 09/15/2022	Saskia Donovan

LM Start	2.10	Rating **	M	Issue No.	112
LM End	2.10	Issue Type +	En	Location *	LS
Category	Earthen Levee			GPS Latitude/Longitude	
				Start	End
Item	Vegetation			38.239061 °	38.239061 °
				-121.555353 °	-121.555353 °
DWR ID	DWR_RD0556_02_f_2021_112				
Comment Code					
V6 : Landscaping					
Inspector Comment					
Century plants beginning to establish again.					

No Photos

LM Start	2.12	Rating **	C	Issue No.	57
LM End	2.12	Issue Type +	Ma	Location *	WS
Category	Earthen Levee			GPS Latitude/Longitude	
				Start	End
Item	Trim / Thin Trees			38.238885 °	38.238885 °
				-121.555597 °	-121.555597 °
DWR ID	DWR_RD0556_02_f_2019_57				
Comment Code					
T2 : Tree or limb.					
Inspector Comment					
The tree was removed.					

No Photos

LM Start	2.13	Rating **	U	Issue No.	73
LM End	2.17	Issue Type +	En	Location *	LS
Category	Earthen Levee			GPS Latitude/Longitude	
				Start	End
Item	Vegetation			38.238760 °	38.238312 °
				-121.555764 °	-121.556357 °
DWR ID	DWR_RD0556_02_s_2021_73				
Comment Code					
V6 : Landscaping					
Inspector Comment					

Photo 1 of 1 : FA_2022_RD0556_19_73_20220831_00052.jpg



View looking downstream at thick landscaping trees on the landside slope (Spring 2021).

* Location LS : Land Side N/A : Not Applicable WS : Water Side CR : Crown	** Rating A : Acceptable M : Minimally Acceptable U : Unacceptable	N : Not Inspected/Rated C : Corrected A/W : Acceptable but Monitor & Maintain	+ Issue Type Ma : Maintenance Deficiency Ob : Design & System Obsolescence En : Enforcement
--	--	---	---

**Flood Control Project Maintenance
Levee Inspections**

Levee Inspection Report By Mile - Fall 2022

Reclamation District No. 0556 Upper Andrus

Waterway	Bank	Unit Miles	Inspection Start/End	Inspector
Unit No. 02 Sacramento River	Left	5.72	09/15/2022 09/15/2022	Saskia Donovan

LM Start	2.14	Rating **	U	Issue No.	2
LM End	2.14	Issue Type +	En	Location *	WS
Category	Earthen Levee			GPS Latitude/Longitude	
				Start	End
Item	Vegetation			38.238644 °	38.238644 °
				-121.555967 °	-121.555967 °
DWR ID	DWR_RD0556_02_f _ 2020_2				
Comment Code					
V6 : Landscaping					
Inspector Comment					
Trim oleanders on the waterside slope.					

Photo 1 of 1 : FA_2022_RD0556_19_2_20220831_00002.jpg



View looking upstream oleanders on the waterside slope (Fall 2020).

LM Start	2.19	Rating **	U	Issue No.	33
LM End	2.22	Issue Type +	En	Location *	LS
Category	Earthen Levee			GPS Latitude/Longitude	
				Start	End
Item	Vegetation			38.238172 °	38.237883 °
				-121.556502 °	-121.556958 °
DWR ID	DWR_RD0556_02_f_2017_33				
Comment Code					
V6 : Landscaping					
Inspector Comment					
Large growth of prickly pear cactus should be removed to allow inspection and access.					

Photo 1 of 1 : FA_2022_RD0556_19_33_20221003_00082.jpg



View of the cactus on the LS slope (Fall 2022).

LM Start	2.23	Rating **	U	Issue No.	111
LM End	2.23	Issue Type +	En	Location *	LS
Category	Earthen Levee			GPS Latitude/Longitude	
				Start	End
Item	Vegetation			38.237741 °	38.237741 °
				-121.557062 °	-121.557062 °
DWR ID	DWR_RD0556_02_f_2021_111				
Comment Code					
V6 : Landscaping					
Inspector Comment					
Cactus on landside slope.					

Photo 1 of 1 : FA_2022_RD0556_19_111_20220831_00066.jpg



View of thick vegetation on the landside slope (Fall 2021).

*** Location**

LS : Land Side N/A : Not Applicable
WS : Water Side
CR : Crown

**** Rating**

A : Acceptable N : Not Inspected/Rated
M : Minimally Acceptable C : Corrected
U : Unacceptable A/W : Acceptable but Monitor & Maintain

+ Issue Type

Ma : Maintenance Deficiency
Ob : Design & System Obsolescence
En : Enforcement

**Flood Control Project Maintenance
Levee Inspections**

Levee Inspection Report By Mile - Fall 2022

Reclamation District No. 0556 Upper Andrus

Waterway	Bank	Unit Miles	Inspection Start/End	Inspector
Unit No. 02 Sacramento River	Left	5.72	09/15/2022 09/15/2022	Saskia Donovan

LM Start	2.25	Rating **	M	Issue No.	124	
LM End	2.25	Issue Type +	En	Location *		
Category	Supplemental			GPS Latitude/Longitude		
				Start	End	
Item	DWR UCIP Field Study			38.237553 °	38.237553 °	
				-121.557291 °	-121.557291 °	
DWR ID	20857					
Comment Code						
Inspector Comment						
DS_ID:20857 FS_ID:76299 EP_NO: 5986 Repair Type: Non-Urgent EVAL Issue: 10, Unauthorized Modification or Non-Compliant Permit Crossing Status: Found UCIP Comments: 05/12/2022 The record has been upgraded from No Action Needed to Non-Urgent. Modifications to crossing, pump and pipe sections on WS appear new and new filtration system on LS toe . The UCIP inspection was completed with GEI staff, A. Lao. (H. Dunn – GEI)04/25/2013 Service pole on LS. Siphon breaker not found on landward slope. (P. Amatya - DWR) FIELD_STRUCT_DESC: 12-inch steel irrigation discharge pipe through the levee, 3.5 feet below the crown. Pump on the waterside (WS) slope. 1.25-inch electrical conduit through the levee. (Plans for installation of a pump on the WS berm and a discharge pipe through the levee authorized under Permit No. 5986, 1968 - Malcolm McCormack). [Additional Reference(s): DWR Levee Log]. FS Date: 5/12/2022 4:03:00 PM						

LM Start	2.25	Rating **	M	Issue No.	124 (cont)
LM End	2.25	Issue Type +	En	Location *	

Photo 1 of 3 : UCIP_FA_2022_76299_113424.jpg



Levee crown.

Photo 2 of 3 : UCIP_FA_2022_76299_113425.jpg



WS view: Toe from crown.

* Location LS : Land Side N/A : Not Applicable WS : Water Side CR : Crown	** Rating A : Acceptable M : Minimally Acceptable U : Unacceptable	N : Not Inspected/Rated C : Corrected A/W : Acceptable but Monitor & Maintain	+ Issue Type Ma : Maintenance Deficiency Ob : Design & System Obsolescence En : Enforcement
--	--	---	---

Reclamation District No. 0556 Upper Andrus

Page 23 of 51

**Flood Control Project Maintenance
Levee Inspections**

Levee Inspection Report By Mile - Fall 2022

Reclamation District No. 0556 Upper Andrus

Waterway	Bank	Unit Miles	Inspection Start/End	Inspector
Unit No. 02 Sacramento River	Left	5.72	09/15/2022 09/15/2022	Saskia Donovan

LM Start	2.34	Rating **	M	Issue No.	83
LM End	2.34	Issue Type +	Ma	Location *	WS
Category	Earthen Levee			GPS Latitude/Longitude	
				Start	End
Item	Trim / Thin Trees			38.236300 °	38.236300 °
				-121.558008 °	-121.558008 °
DWR ID	DWR_RD0556_02_f_2021_83				
Comment Code					
T1 : Trim and thin trees to at least five feet above ground level to allow visibility of the ground and room to flood fight.					
Inspector Comment					

No Photos

LM Start	2.37	Rating **	M	Issue No.	72
LM End	2.37	Issue Type +	Ma	Location *	LS
Category	Earthen Levee			GPS Latitude/Longitude	
				Start	End
Item	Trim / Thin Trees			38.235900 °	38.235900 °
				-121.558041 °	-121.558041 °
DWR ID	DWR_RD0556_02_s_2021_72				
Comment Code					
T1 : Trim and thin trees to at least five feet above ground level to allow visibility of the ground and room to flood fight.					
Inspector Comment					

No Photos

LM Start	2.39	Rating **	U	Issue No.	89
LM End	2.39	Issue Type +	Ma	Location *	WS
Category	Earthen Levee			GPS Latitude/Longitude	
				Start	End
Item	Trim / Thin Trees			38.235578 °	38.235578 °
				-121.558105 °	-121.558105 °
DWR ID	DWR_RD0556_02_f_2021_89				
Comment Code					
T1 : Trim and thin trees to at least five feet above ground level to allow visibility of the ground and room to flood fight.					
Inspector Comment					

Photo 1 of 1 : FA_2022_RD0556_19_89_20220831_00062.jpg



View looking downstream at thick trees on the waterside slope (Fall 2021).

* Location LS : Land Side N/A : Not Applicable WS : Water Side CR : Crown	** Rating A : Acceptable M : Minimally Acceptable U : Unacceptable	N : Not Inspected/Rated C : Corrected A/W : Acceptable but Monitor & Maintain	+ Issue Type Ma : Maintenance Deficiency Ob : Design & System Obsolescence En : Enforcement
--	--	---	---

**Flood Control Project Maintenance
Levee Inspections**

Levee Inspection Report By Mile - Fall 2022

Reclamation District No. 0556 Upper Andrus

Waterway	Bank	Unit Miles	Inspection Start/End	Inspector
Unit No. 02 Sacramento River	Left	5.72	09/15/2022 09/15/2022	Saskia Donovan

LM Start	2.41	Rating **	M	Issue No.	74
LM End	2.41	Issue Type +	Ma	Location *	LS
Category	Earthen Levee			GPS Latitude/Longitude	
				Start	End
Item	Trim / Thin Trees			38.235331 °	38.235331 °
				-121.558072 °	-121.558072 °
DWR ID	DWR_RD0556_02_s_2022_74				
Comment Code					
T1 : Trim and thin trees to at least five feet above ground level to allow visibility of the ground and room to flood fight.					
Inspector Comment					

No Photos

LM Start	2.42	Rating **	M	Issue No.	125
LM End	2.42	Issue Type +	En	Location *	
Category	Supplemental			GPS Latitude/Longitude	
				Start	End
Item	DWR UCIP Field Study			38.235261 °	38.235261 °
				-121.558059 °	-121.558059 °
DWR ID	20859				
Comment Code					
Inspector Comment					
DS_ID:20859 FS_ID:76301 EP_NO: 11181 Repair Type: Non-Urgent EVAL Issue: 11, Maintenance Compliance Issue Crossing Status: Found UCIP Comments: 05/12/2022 The record remains Non-Urgent. LS riser is filled with dirt, recommend cleaning out. No permit other than ABO permit was found authorizing this encroachment. CVFPB will need to review crossing to determine owner. The UCIP inspection was completed with GEI staff, A. Lao. (H. Dunn – GEI) 04/25/2014 Needs to clean CMP riser for proper functioning of siphon breaker. (P. Amatya - DWR) FIELD_STRUCT_DESC: 10-inch steel irrigation discharge pipe through the levee, 5.8 feet below the crown. Pump and gate valve in a pump house on the waterside (WS) slope. Siphon breaker and service pole on the landside (LS) slope. (Retention of a 10-inch pipe through the levee, 5.8 feet below the crown, a pump and a gate valve in a pump house on the WS slope, and a siphon breaker and a service pole on the LS slope authorized under Automatic Board Order (ABO) issued as Permit No. 11181, 1975 - Robert E. and G. P. Collins). [Additional Reference(s): DWR Levee Log. USACE Sacramento O&M Manual 103, June 1954, (Station ""J"" 115+25), invert elevation 18.5 feet]. FS Date: 5/12/2022 4:20:11 PM					

Photo 1 of 3 : UCIP_FA_2022_76301_113433.jpg



Levee crown.

* Location LS : Land Side N/A : Not Applicable WS : Water Side CR : Crown	** Rating A : Acceptable M : Minimally Acceptable U : Unacceptable	N : Not Inspected/Rated C : Corrected A/W : Acceptable but Monitor & Maintain	+ Issue Type Ma : Maintenance Deficiency Ob : Design & System Obsolescence En : Enforcement
--	--	---	---

**Flood Control Project Maintenance
Levee Inspections**

Levee Inspection Report By Mile - Fall 2022

Reclamation District No. 0556 Upper Andrus

Waterway	Bank	Unit Miles	Inspection Start/End	Inspector
Unit No. 02 Sacramento River	Left	5.72	09/15/2022 09/15/2022	Saskia Donovan

LM Start	2.42	Rating **	M	Issue No.	125 (cont)
LM End	2.42	Issue Type +	En	Location *	
Category	Supplemental		GPS Latitude/Longitude		
			Start	End	
Item	DWR UCIP Field Study		38.235261 °	38.235261 °	
			-121.558059 °	-121.558059 °	
DWR ID	20859				

Photo 2 of 3 : UCIP_FA_2022_76301_113435.jpg



LS view: Riser visible at toe from crown.

LM Start	2.42	Rating **	M	Issue No.	125 (cont)
LM End	2.42	Issue Type +	En	Location *	

Photo 3 of 3 : UCIP_FA_2022_76301_113436.jpg



LS view: Closeup of riser and pipe at toe.

LM Start	2.43	Rating **	U	Issue No.	45
LM End	2.45	Issue Type +	En	Location *	LS
Category	Earthen Levee			GPS Latitude/Longitude	
				Start	End
Item	Vegetation			38.235036 °	38.234721 °
				-121.558011 °	-121.557952 °
DWR ID	DWR_RD0556_02_s_2019_45				
Comment Code					
V6 : Landscaping					
Inspector Comment					
Remove cactus from the landside slope.					

Photo 1 of 1 : FA_2022_RD0556_19_45_20221003_00081.jpg



View of the cactus on the LS slope (Fall 2022).

* Location LS : Land Side N/A : Not Applicable WS : Water Side CR : Crown	** Rating A : Acceptable M : Minimally Acceptable U : Unacceptable	N : Not Inspected/Rated C : Corrected A/W : Acceptable but Monitor & Maintain	+ Issue Type Ma : Maintenance Deficiency Ob : Design & System Obsolescence En : Enforcement
--	--	--	---

**Flood Control Project Maintenance
Levee Inspections**

Levee Inspection Report By Mile - Fall 2022

Reclamation District No. 0556 Upper Andrus

Waterway	Bank	Unit Miles	Inspection Start/End	Inspector
Unit No. 02 Sacramento River	Left	5.72	09/15/2022 09/15/2022	Saskia Donovan

LM Start	2.44	Rating **	U	Issue No.	90
LM End	2.44	Issue Type +	Ma	Location *	WS
Category	Earthen Levee			GPS Latitude/Longitude	
				Start	End
Item	Trim / Thin Trees			38.234843 °	38.234843 °
				-121.558028 °	-121.558028 °
DWR ID	DWR_RD0556_02_f _ 2021_90				
Comment Code					
T1 : Trim and thin trees to at least five feet above ground level to allow visibility of the ground and room to flood fight.					
Inspector Comment					

Photo 1 of 1 : FA_2022_RD0556_19_90_20220831_00063.jpg



View of thick willows on the waterside slope (Spring 2022).

LM Start	2.54	Rating **	U	Issue No.	76
LM End	2.54	Issue Type +	En	Location *	LS
Category	Earthen Levee			GPS Latitude/Longitude	
				Start	End
Item	Vegetation			38.233487 °	38.233487 °
				-121.557639 °	-121.557639 °
DWR ID	DWR_RD0556_02_s_2020_76				
Comment Code					
V6 : Landscaping					
Inspector Comment					
Remove cactus on the landside toe.					

Photo 1 of 1 : FA_2022_RD0556_19_76_20220831_00054.jpg



View of large cactus on the landside slope (Fall 2020).

LM Start	2.59	Rating **	U	Issue No.	67
LM End	2.59	Issue Type +	Ma	Location *	LS
Category	Earthen Levee			GPS Latitude/Longitude	
				Start	End
Item	Trim / Thin Trees			38.232883 °	38.232883 °
				-121.557301 °	-121.557301 °
DWR ID	DWR_RD0556_02_s_2022_67				
Comment Code					
T1 : Trim and thin trees to at least five feet above ground level to allow visibility of the ground and room to flood fight.					
Inspector Comment					

Photo 1 of 1 : FA_2022_RD0556_19_67_20220831_00048.jpg



View of thick trees needing trimming on the landside slope (Spring 2022).

* Location LS : Land Side N/A : Not Applicable WS : Water Side CR : Crown	** Rating A : Acceptable M : Minimally Acceptable U : Unacceptable	N : Not Inspected/Rated C : Corrected A/W : Acceptable but Monitor & Maintain	+ Issue Type Ma : Maintenance Deficiency Ob : Design & System Obsolescence En : Enforcement
--	--	--	---

**Flood Control Project Maintenance
Levee Inspections**

Levee Inspection Report By Mile - Fall 2022

Reclamation District No. 0556 Upper Andrus

Waterway	Bank	Unit Miles	Inspection Start/End	Inspector
Unit No. 02 Sacramento River	Left	5.72	09/15/2022 09/15/2022	Saskia Donovan

LM Start	2.73	Rating **	M	Issue No.	69
LM End	2.73	Issue Type +	Ma	Location *	LS
Category	Earthen Levee			GPS Latitude/Longitude	
				Start	End
Item	Trim / Thin Trees			38.230962 °	38.230962 °
				-121.556101 °	-121.556101 °
DWR ID	DWR_RD0556_02_s_2021_69				
Comment Code					
T1 : Trim and thin trees to at least five feet above ground level to allow visibility of the ground and room to flood fight.					
Inspector Comment					

No Photos

LM Start	2.75	Rating **	U	Issue No.	88
LM End	2.75	Issue Type +	Ma	Location *	LS
Category	Earthen Levee			GPS Latitude/Longitude	
				Start	End
Item	Trim / Thin Trees			38.230752 °	38.230752 °
				-121.556007 °	-121.556007 °
DWR ID	DWR_RD0556_02_f_2019_88				
Comment Code					
T2 : Tree or limb.					
Inspector Comment					
Broken tree limb blocking view of landside slope.					

Photo 1 of 1 : FA_2022_RD0556_19_88_20221003_00080.jpg



View of the tree limb on the LS slope (Fall 2022).

LM Start	2.80	Rating **	M	Issue No.	64
LM End	2.80	Issue Type +	Ma	Location *	LS
Category	Earthen Levee			GPS Latitude/Longitude	
				Start	End
Item	Trim / Thin Trees			38.230021 °	38.230021 °
				-121.555557 °	-121.555557 °
DWR ID	DWR_RD0556_02_s_2022_64				
Comment Code					
T1 : Trim and thin trees to at least five feet above ground level to allow visibility of the ground and room to flood fight.					
Inspector Comment					

No Photos

*** Location**
LS : Land Side N/A : Not Applicable
WS : Water Side
CR : Crown

**** Rating**
A : Acceptable N : Not Inspected/Rated
M : Minimally Acceptable C : Corrected
U : Unacceptable A/W : Acceptable but Monitor & Maintain

+ Issue Type
Ma : Maintenance Deficiency
Ob : Design & System Obsolescence
En : Enforcement

**Flood Control Project Maintenance
Levee Inspections**

Levee Inspection Report By Mile - Fall 2022

Reclamation District No. 0556 Upper Andrus

Waterway	Bank	Unit Miles	Inspection Start/End	Inspector
Unit No. 02 Sacramento River	Left	5.72	09/15/2022 09/15/2022	Saskia Donovan

LM Start	2.84	Rating **	M	Issue No.	126
LM End	2.84	Issue Type +	En	Location *	
Category	Supplemental			GPS Latitude/Longitude	
				Start	End
Item	DWR UCIP Field Study			38.229524 °	38.229524 °
				-121.555404 °	-121.555404 °
DWR ID	20849				
Comment Code					
Inspector Comment					
DS_ID:20849 FS_ID:76302 EP_NO: 11181 Repair Type: Non-Urgent EVAL Issue: 11, Maintenance Compliance Issue Crossing Status: Found UCIP Comments: 05/12/2022 The record remains Non-Urgent. Appears abandoned, no pump or pipe seen in WS pumphouse. Owner will need to coordinate with the CVFPB to meet Title 23 requirements. LS riser is filled with dirt, recommend removal if still in use. No permit other than ABO permit was found authorizing this encroachment. CVFPB will need to review crossing to determine owner. The UCIP inspection was completed with GEI staff, A. Lao. (H. Dunn – GEI) 04/25/2014 Needs to clean siphon breaker CMP riser. (P. Amatya - DWR) FIELD_STRUCT_DESC: 6-inch irrigation discharge pipe of an unknown material through the levee, 6 feet below the crown. Pressure tank in a pump house on the waterside (WS) berm. Service pole, siphon breaker, and distribution box on the landside (LS) slope. (Retention of a 6-inch pipe through the levee, 6 feet below the crown; a pump, a gate valve, and a pressure tank on the WS berm; and a service pole on the LS slope authorized under Automatic Board Order (ABO) issued as Permit No. 11181, 1975 - Robert E. and G. P. Collins). [Additional Reference(s): DWR Levee Log]. FS Date: 5/12/2022 4:27:14 PM					

LM Start	2.84	Rating **	M	Issue No.	126 (cont)
LM End	2.84	Issue Type +	En	Location *	

Photo 1 of 3 : UCIP_FA_2022_76302_113440.jpg



Levee crown.

Photo 2 of 3 : UCIP_FA_2022_76302_113441.jpg



WS view: Pumphouse visible on toe from crown.

* Location LS : Land Side N/A : Not Applicable WS : Water Side CR : Crown	** Rating A : Acceptable M : Minimally Acceptable U : Unacceptable	N : Not Inspected/Rated C : Corrected A/W : Acceptable but Monitor & Maintain	+ Issue Type Ma : Maintenance Deficiency Ob : Design & System Obsolescence En : Enforcement
--	--	---	---

**Flood Control Project Maintenance
Levee Inspections**

Levee Inspection Report By Mile - Fall 2022

Reclamation District No. 0556 Upper Andrus

Waterway	Bank	Unit Miles	Inspection Start/End	Inspector
Unit No. 02 Sacramento River	Left	5.72	09/15/2022 09/15/2022	Saskia Donovan

LM Start	2.84	Rating **	M	Issue No.	126 (cont)
LM End	2.84	Issue Type +	En	Location *	
Category	Supplemental		GPS Latitude/Longitude		
			Start	End	
Item	DWR UCIP Field Study		38.229524 °	38.229524 °	
			-121.555404 °	-121.555404 °	
DWR ID	20849				

Photo 3 of 3 : UCIP_FA_2022_76302_113442.jpg



WS view: Tank inside pumphouse, no pump.

LM Start	2.86	Rating **	U	Issue No.	46
LM End	2.87	Issue Type +	En	Location *	LS
Category	Earthen Levee			GPS Latitude/Longitude	
				Start	End
Item	Vegetation			38.229195 °	38.229082 °
				-121.555337 °	-121.555316 °
DWR ID	DWR_RD0556_02_f_2019_46				
Comment Code					
V6 : Landscaping					
Inspector Comment					

Photo 1 of 1 : FA_2022_RD0556_19_46_20221003_00079.jpg



View of the landscaping on the LS slope (Fall 2022).

LM Start	3.07	Rating **	M	Issue No.	62
LM End	3.07	Issue Type +	Ma	Location *	LS
Category	Earthen Levee			GPS Latitude/Longitude	
				Start	End
Item	Trim / Thin Trees			38.226265 °	38.226265 °
				-121.555233 °	-121.555233 °
DWR ID	DWR_RD0556_02_s_2022_62				
Comment Code					
T1 : Trim and thin trees to at least five feet above ground level to allow visibility of the ground and room to flood fight.					
Inspector Comment					

Photo 1 of 1 : FA_2022_RD0556_19_62_20221003_00078.jpg



View of the tree on the LS slope (Fall 2022).

* Location LS : Land Side N/A : Not Applicable WS : Water Side CR : Crown	** Rating A : Acceptable M : Minimally Acceptable U : Unacceptable	N : Not Inspected/Rated C : Corrected A/W : Acceptable but Monitor & Maintain	+ Issue Type Ma : Maintenance Deficiency Ob : Design & System Obsolescence En : Enforcement
--	--	--	---

**Flood Control Project Maintenance
Levee Inspections**

Levee Inspection Report By Mile - Fall 2022

Reclamation District No. 0556 Upper Andrus

Waterway	Bank	Unit Miles	Inspection Start/End	Inspector
Unit No. 02 Sacramento River	Left	5.72	09/15/2022 09/15/2022	Saskia Donovan

LM Start	3.07	Rating **	U	Issue No.	127
LM End	3.07	Issue Type +	En	Location *	
Category	Supplemental			GPS Latitude/Longitude	
				Start	End
Item	DWR UCIP Field Study			38.226225 °	38.226225 °
				-121.555236 °	-121.555236 °
DWR ID	20862				
Comment Code					
Inspector Comment					
DS_ID:20862 FS_ID:76303 EP_NO: N/A Repair Type: Urgent EVAL Issue: 3b, Flood Risk Crossing Status: Found UCIP Comments: 05/12/2022 Record updated from Non-Urgent to Urgent. Modification of sleeving the pipe, and gap in between pipe and sleeve, causes flood risk concern. The UCIP inspection was completed with GEI staff, A. Lao. (H. Dunn – GEI) 04/25/2013 9-inch steel pipe sleeved through 12-inch pipe. Needs to seal gap between two pipes. (P. Amatya - DWR) FIELD_STRUCT_DESC: 9-inch steel pipe sleeved through a 12-inch steel irrigation discharge pipe through the levee, 6 feet below the crown. Pump on a pile structure in the river. Steel walkway to the pump and wood steps on the waterside (WS) slope. Concrete spill box with two 8-inch openings. (12-inch steel discharge pipe (F) authorized under Permit No. 1173, 1947 - Reclamation District No. 556). (Retention of a 12-inch pipe through the levee, 6 feet below the crown, a pump on a pile structure in the river, a steel walkway to the pump, and wood steps on the WS slope authorized under Automatic Board Order (ABO) issued as Permit No. 11193, 1975 - Gertrude M. Reid). [Additional Reference(s): DWR Levee Log. USACE Sacramento O&M Manual 103, June 1954, (Station ""J"" 80+79), invert elevation 18.3 feet]. FS Date: 5/12/2022 12:09:29 PM					

LM Start	3.07	Rating **	U	Issue No.	127 (cont)
LM End	3.07	Issue Type +	En	Location *	

Photo 1 of 3 : UCIP_FA_2022_76303_113529.jpg



Levee crown.

Photo 2 of 3 : UCIP_FA_2022_76303_113530.jpg



LS view: Distribution box at toe from crown.

* Location LS : Land Side N/A : Not Applicable WS : Water Side CR : Crown	** Rating A : Acceptable M : Minimally Acceptable U : Unacceptable	N : Not Inspected/Rated C : Corrected A/W : Acceptable but Monitor & Maintain	+ Issue Type Ma : Maintenance Deficiency Ob : Design & System Obsolescence En : Enforcement
--	--	---	---

**Flood Control Project Maintenance
Levee Inspections**

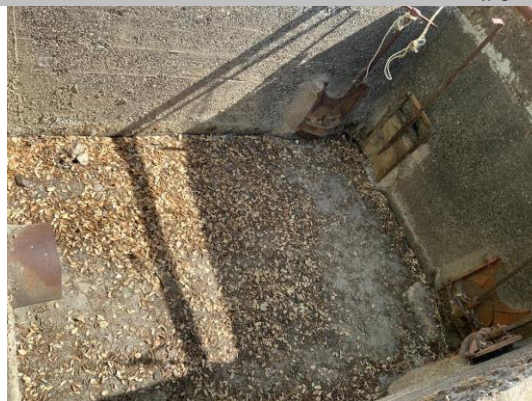
Levee Inspection Report By Mile - Fall 2022

Reclamation District No. 0556 Upper Andrus

Waterway	Bank	Unit Miles	Inspection Start/End	Inspector
Unit No. 02 Sacramento River	Left	5.72	09/15/2022 09/15/2022	Saskia Donovan

LM Start	3.07	Rating **	U	Issue No.	127 (cont)
LM End	3.07	Issue Type +	En	Location *	
Category	Supplemental			GPS Latitude/Longitude	
				Start	End
Item	DWR UCIP Field Study			38.226225 °	38.226225 °
				-121.555236 °	-121.555236 °
DWR ID	20862				

Photo 3 of 3 : UCIP_FA_2022_76303_113531.jpg



LS view: Pipe outlet in box at toe.

LM Start	3.07	Rating **	M	Issue No.	59
LM End	3.07	Issue Type +	En	Location *	WS
Category	Earthen Levee			GPS Latitude/Longitude	
				Start	End
Item	Encroachments			38.226155 °	38.226155 °
				-121.555273 °	-121.555273 °
DWR ID	DWR_RD0556_02_f _ 2019_59				
Comment Code					
MA : Material					
Inspector Comment					
There is an abandoned uninstalled pipe on waterside.					

Photo 1 of 1 : FA_2022_RD0556_19_59_20221003_00077.jpg



View of the abandoned pipe along the WS toe (Fall 2022).

*** Location**
 LS : Land Side N/A : Not Applicable
 WS : Water Side
 CR : Crown

**** Rating**
 A : Acceptable N : Not Inspected/Rated
 M : Minimally Acceptable C : Corrected
 U : Unacceptable A/W : Acceptable but Monitor & Maintain

+ Issue Type
 Ma : Maintenance Deficiency
 Ob : Design & System Obsolescence
 En : Enforcement

**Flood Control Project Maintenance
Levee Inspections**

Levee Inspection Report By Mile - Fall 2022

Reclamation District No. 0556 Upper Andrus

Waterway	Bank	Unit Miles	Inspection Start/End	Inspector
Unit No. 02 Sacramento River	Left	5.72	09/15/2022 09/15/2022	Saskia Donovan

LM Start	3.16	Rating **	M	Issue No.	17
LM End	3.28	Issue Type +	Ma	Location *	WS
Category	Supplemental			GPS Latitude/Longitude	
				Start	End
Item	2018 USACE Erosion Survey			38.224850 °	38.223233 °
				-121.555641 °	-121.555687 °
DWR ID	DWR_RD0556_02_s_2022_17				

Comment Code

Inspector Comment

2018 Site ID: SAC 23.2 L
 Status: Eroding
 2018 Field Notes: Additional tree popouts and new erosion throughout site.
 Site History: 2000 - Recently fallen cottonwood at the downstream end.
 2005 - Empty brush boxes. 2011 - A few trees have fallen since last year.
 2012 - Potential new tree popout since last year. 2013 - New erosion at downstream end of site and a recent tree pop-out observed.
 2016 - New erosion at the toe. 2017 - New erosion along lower bank.

LM Start	3.16	Rating **	M	Issue No.	17 (cont)
LM End	3.28	Issue Type +	Ma	Location *	WS

Photo 1 of 2 : FA_2022_RD0556_19_17_20220831_00011.jpg



USACE 2018 Erosion Photo #1

Photo 2 of 2 : FA_2022_RD0556_19_17_20220831_00012.jpg



USACE 2018 Erosion Photo #2

* Location LS : Land Side N/A : Not Applicable WS : Water Side CR : Crown	** Rating A : Acceptable M : Minimally Acceptable U : Unacceptable	N : Not Inspected/Rated C : Corrected A/W : Acceptable but Monitor & Maintain	+ Issue Type Ma : Maintenance Deficiency Ob : Design & System Obsolescence En : Enforcement
--	--	---	---

**Flood Control Project Maintenance
Levee Inspections**

Levee Inspection Report By Mile - Fall 2022

Reclamation District No. 0556 Upper Andrus

Waterway	Bank	Unit Miles	Inspection Start/End	Inspector
Unit No. 02 Sacramento River	Left	5.72	09/15/2022 09/15/2022	Saskia Donovan

LM Start	3.24	Rating **	U	Issue No.	61
LM End	3.26	Issue Type +	Ma	Location *	LS
Category	Earthen Levee			GPS Latitude/Longitude	
				Start	End
Item	Trim / Thin Trees			38.223707 °	38.223457 °
				-121.555396 °	-121.555414 °
DWR ID	DWR_RD0556_02_s_2021_61				
Comment Code					
T1 : Trim and thin trees to at least five feet above ground level to allow visibility of the ground and room to flood fight.					
Inspector Comment					

Photo 1 of 1 : FA_2022_RD0556_19_61_20220831_00045.jpg



View looking downstream at willows on the landside slope (Spring 2021).

LM Start	3.29	Rating **	C	Issue No.	85
LM End	3.29	Issue Type +	Ma	Location *	LS
Category	Earthen Levee			GPS Latitude/Longitude	
				Start	End
Item	Trim / Thin Trees			38.222995 °	38.222995 °
				-121.555433 °	-121.555433 °
DWR ID	DWR_RD0556_02_f_2019_85				
Comment Code					
T4 : Trim trees over roadway to at least 12 feet above ground level.					
Inspector Comment					

No Photos

LM Start	3.38	Rating **	M	Issue No.	109
LM End	3.38	Issue Type +	Ma	Location *	LS
Category	Earthen Levee			GPS Latitude/Longitude	
				Start	End
Item	Trim / Thin Trees			38.221674 °	38.221674 °
				-121.555639 °	-121.555639 °
DWR ID	DWR_RD0556_02_s_2022_109				
Comment Code					
T1 : Trim and thin trees to at least five feet above ground level to allow visibility of the ground and room to flood fight.					
Inspector Comment					

No Photos

* Location
LS : Land Side N/A : Not Applicable
WS : Water Side
CR : Crown

** Rating
A : Acceptable N : Not Inspected/Rated
M : Minimally Acceptable C : Corrected
U : Unacceptable A/W : Acceptable but Monitor & Maintain

+ Issue Type
Ma : Maintenance Deficiency
Ob : Design & System Obsolescence
En : Enforcement

**Flood Control Project Maintenance
Levee Inspections**

Levee Inspection Report By Mile - Fall 2022

Reclamation District No. 0556 Upper Andrus

Waterway	Bank	Unit Miles	Inspection Start/End	Inspector
Unit No. 02 Sacramento River	Left	5.72	09/15/2022 09/15/2022	Saskia Donovan

LM Start	3.51	Rating **	M	Issue No.	128
LM End	3.51	Issue Type +	En	Location *	
Category	Supplemental			GPS Latitude/Longitude	
				Start	End
Item	DWR UCIP Field Study			38.219851 °	38.219851 °
				-121.556129 °	-121.556129 °
DWR ID	20863				
Comment Code					
Inspector Comment					
DS_ID:20863 FS_ID:76304 EP_NO: 11181 Repair Type: Non-Urgent EVAL Issue: 10, Unauthorized Modification or Non-Compliant Permit Crossing Status: Found UCIP Comments: 05/12/2022 The record remains Non-Urgent. Modification to crossing, screen filter added on LS and removal of concrete spill box on LS. Filter is leaking off of the LS toe, recommend repair. Dense vegetation over majority of WS pipe. No permit other than ABO permit was found authorizing this encroachment. CVFPB will need to review crossing to determine owner. The UCIP inspection was completed with GEI staff, A. Lao. (H. Dunn – GEI) 04/25/22 Needs to fix siphon breaker. (P. Amatya -DWR) FIELD_STRUCT_DESC: 10-inch steel irrigation discharge pipe through the levee, 4.8 feet below the crown. Steel walkway to the pump on a pile structure in the river. Siphon breaker on the waterside (WS). Service pole on the landside (LS) slope. Concrete spill box with two 15-inch openings on the LS. (Retention of a 10-inch pipe through the levee, 4.8 feet below the crown, a steel walkway to the pump on a pile structure in the river, and a siphon breaker and a service pole on the LS slope authorized under Automatic Board Order (ABO) issued as Permit No. 11181, 1975 - Robert E. and G. P. Collins). [Additional Reference(s): DWR Levee Log. USACE Sacramento O&M Manual 103, June 1954, (Station ""J"" 58+00), invert elevation 18.2 feet]. FS Date: 5/12/2022 12:22:49 PM					

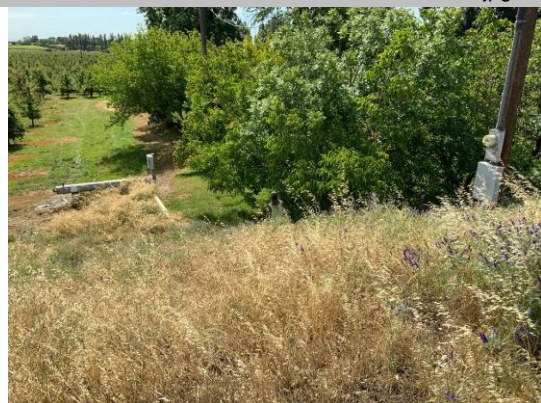
LM Start	3.51	Rating **	M	Issue No.	128 (cont)
LM End	3.51	Issue Type +	En	Location *	

Photo 1 of 3 : UCIP_FA_2022_76304_113537.jpg



Levee crown.

Photo 2 of 3 : UCIP_FA_2022_76304_113538.jpg



LS view: Meter on slope from crown.

* Location LS : Land Side N/A : Not Applicable WS : Water Side CR : Crown	** Rating A : Acceptable M : Minimally Acceptable U : Unacceptable	N : Not Inspected/Rated C : Corrected A/W : Acceptable but Monitor & Maintain	+ Issue Type Ma : Maintenance Deficiency Ob : Design & System Obsolescence En : Enforcement
--	--	---	---

**Flood Control Project Maintenance
Levee Inspections**

Levee Inspection Report By Mile - Fall 2022

Reclamation District No. 0556 Upper Andrus

Waterway	Bank	Unit Miles	Inspection Start/End	Inspector
Unit No. 02 Sacramento River	Left	5.72	09/15/2022 09/15/2022	Saskia Donovan

LM Start	3.51	Rating **	M	Issue No.	128 (cont)
LM End	3.51	Issue Type +	En	Location *	
Category	Supplemental			GPS Latitude/Longitude	
				Start	End
Item	DWR UCIP Field Study			38.219851 °	38.219851 °
				-121.556129 °	-121.556129 °
DWR ID	20863				

Photo 3 of 3 : UCIP_FA_2022_76304_113539.jpg



LS view: Closeup of pipe, meter box, and filter off toe.

LM Start	3.54	Rating **	M	Issue No.	78
LM End	3.54	Issue Type +	En	Location *	WS
Category	Earthen Levee			GPS Latitude/Longitude	
				Start	End
Item	Encroachments			38.219407 °	38.219407 °
				-121.556280 °	-121.556280 °
DWR ID	DWR_RD0556_02_f _ 2018_78				
Comment Code					
ST : Stairway					
Inspector Comment					
Stairs encroaching into slope do not have a permit.					

Photo 1 of 1 : FA_2022_RD0556_19_78_20221003_00070.jpg



View of the steps on the WS slope (Fall 2022).

LM Start	3.57	Rating **	A/W	Issue No.	23
LM End	3.95	Issue Type +	Ob	Location *	LS
Category	Earthen Levee			GPS Latitude/Longitude	
				Start	End
Item	Seepage / Sandboils			38.218950 °	38.213490 °
				-121.556300 °	-121.556850 °
DWR ID	DWR_RD0556_02_R_2012_03				
Comment Code					
SS : Seepage / Sandboils					
Inspector Comment					
This was a 2017 Storm Damage site.					
Seepage observed during 2017 high water.					
Site ID No:68					
Site Designation:DWR_RD0556_02_R_2012_03					

No Photos

* Location LS : Land Side N/A : Not Applicable WS : Water Side CR : Crown	** Rating A : Acceptable M : Minimally Acceptable U : Unacceptable	N : Not Inspected/Rated C : Corrected A/W : Acceptable but Monitor & Maintain	+ Issue Type Ma : Maintenance Deficiency Ob : Design & System Obsolescence En : Enforcement
--	--	--	---

**Flood Control Project Maintenance
Levee Inspections**

Levee Inspection Report By Mile - Fall 2022

Reclamation District No. 0556 Upper Andrus

Waterway	Bank	Unit Miles	Inspection Start/End	Inspector
Unit No. 02 Sacramento River	Left	5.72	09/15/2022 09/15/2022	Saskia Donovan

LM Start	3.58	Rating **	M	Issue No.	16
LM End	3.64	Issue Type +	Ma	Location *	WS
Category	Supplemental			GPS Latitude/Longitude	
				Start	End
Item	2018 USACE Erosion Survey			38.218951 °	38.218104 °
				-121.556689 °	-121.556819 °
DWR ID	DWR_RD0556_02_s_2022_16				
Comment Code					
Inspector Comment					
2018 Site ID: SAC 22.7 L					
Status: Eroding					
2018 Field Notes: No observed change.					
Site History: 1997 - Scallops into berm and very close to levee toe.					
2005 - Brush boxes present. 2011 - New toe scour and freshly fallen tree. 2012 - New tree popout has taken significant portion of soil out of the levee. 2017 - Minor new erosion at toe.					

LM Start	3.58	Rating **	M	Issue No.	16 (cont)
LM End	3.64	Issue Type +	Ma	Location *	WS

Photo 1 of 2 : FA_2022_RD0556_19_16_20220831_00009.jpg



USACE 2018 Erosion Photo #1

Photo 2 of 2 : FA_2022_RD0556_19_16_20220831_00010.jpg



USACE 2018 Erosion Photo #2

* Location LS : Land Side N/A : Not Applicable WS : Water Side CR : Crown	** Rating A : Acceptable M : Minimally Acceptable U : Unacceptable N : Not Inspected/Rated C : Corrected A/W : Acceptable but Monitor & Maintain	+ Issue Type Ma : Maintenance Deficiency Ob : Design & System Obsolescence En : Enforcement
--	---	---

**Flood Control Project Maintenance
Levee Inspections**

Levee Inspection Report By Mile - Fall 2022

Reclamation District No. 0556 Upper Andrus

Waterway	Bank	Unit Miles	Inspection Start/End	Inspector
Unit No. 02 Sacramento River	Left	5.72	09/15/2022 09/15/2022	Saskia Donovan

LM Start	3.68	Rating **	C	Issue No.	63
LM End	3.68	Issue Type +	Ma	Location *	WS
Category	Earthen Levee			GPS Latitude/Longitude	
				Start	End
Item	Erosion / Bank Caving			38.217462 °	38.217462 °
				-121.556647 °	-121.556647 °
DWR ID	DWR_RD0556_02_f_2019_63				
Comment Code					
E2 : Schedule repair of erosion site prior to the next inspection.					
Inspector Comment					
The erosion has been repaired.					

No Photos

LM Start	3.79	Rating **	U	Issue No.	108
LM End	3.79	Issue Type +	En	Location *	LS
Category	Earthen Levee			GPS Latitude/Longitude	
				Start	End
Item	Vegetation			38.215818 °	38.215818 °
				-121.556840 °	-121.556840 °
DWR ID	DWR_RD0556_02_f_2022_108				
Comment Code					
V6 : Landscaping					
Inspector Comment					

Photo 1 of 1 : FA_2022_RD0556_19_108_20221003_00076.jpg



View of the landscaping on the LS slope (Fall 2022).

LM Start	3.83	Rating **	M	Issue No.	84
LM End	3.86	Issue Type +	Ma	Location *	LS
Category	Earthen Levee			GPS Latitude/Longitude	
				Start	End
Item	Trim / Thin Trees			38.215223 °	38.214849 °
				-121.556903 °	-121.556865 °
DWR ID	DWR_RD0556_02_f_2018_84				
Comment Code					
T1 : Trim and thin trees to at least five feet above ground level to allow visibility of the ground and room to flood fight.					
Inspector Comment					

Photo 1 of 1 : FA_2022_RD0556_19_84_20221003_00075.jpg



View of the trees on the LS slope (Fall 2022).

* Location LS : Land Side N/A : Not Applicable WS : Water Side CR : Crown		** Rating A : Acceptable M : Minimally Acceptable U : Unacceptable N : Not Inspected/Rated C : Corrected A/W : Acceptable but Monitor & Maintain		+ Issue Type Ma : Maintenance Deficiency Ob : Design & System Obsolescence En : Enforcement	
--	--	---	--	---	--

**Flood Control Project Maintenance
Levee Inspections**

Levee Inspection Report By Mile - Fall 2022

Reclamation District No. 0556 Upper Andrus

Waterway	Bank	Unit Miles	Inspection Start/End	Inspector
Unit No. 02 Sacramento River	Left	5.72	09/15/2022 09/15/2022	Saskia Donovan

LM Start	3.95	Rating **	M	Issue No.	15
LM End	4.12	Issue Type +	Ma	Location *	WS
Category	Supplemental			GPS Latitude/Longitude	
				Start	End
Item	2018 USACE Erosion Survey			38.213581 °	38.211112 °
				-121.557197 °	-121.557042 °
DWR ID	DWR_RD0556_02_s_2022_15				

Comment Code

Inspector Comment

2018 Site ID: SAC 22.5 L

Status: Eroding

2018 Field Notes: Minor new erosion at toe.

Site History: 2002 - Spot rock along berm, but not in the erosion pockets. 2005 - Some new minor stone revetment at the upstream end. Brush boxes present. 2006 - Currently installing new brush in downstream brush boxes. 2007 - Rock in middle portion for about 150 ft. 2010 - Some attempt at repairs but still has pockets of erosion. 2012 - More erosion along the toe. 2017 - New lower bank erosion at the upstream end. Locals placed rock in some erosion pockets.

LM Start	3.95	Rating **	M	Issue No.	15 (cont)
LM End	4.12	Issue Type +	Ma	Location *	WS

Photo 1 of 2 : FA_2022_RD0556_19_15_20220831_00007.jpg



USACE 2018 Erosion Photo #1

Photo 2 of 2 : FA_2022_RD0556_19_15_20220831_00008.jpg



USACE 2018 Erosion Photo #2

* Location LS : Land Side N/A : Not Applicable WS : Water Side CR : Crown	** Rating A : Acceptable M : Minimally Acceptable U : Unacceptable	N : Not Inspected/Rated C : Corrected A/W : Acceptable but Monitor & Maintain	+ Issue Type Ma : Maintenance Deficiency Ob : Design & System Obsolescence En : Enforcement
--	--	---	---

Reclamation District No. 0556 Upper Andrus

Reclamation District No. 0556 Upper Andrus

**Flood Control Project Maintenance
Levee Inspections**

Levee Inspection Report By Mile - Fall 2022

Reclamation District No. 0556 Upper Andrus

Waterway	Bank	Unit Miles	Inspection Start/End	Inspector
Unit No. 02 Sacramento River	Left	5.72	09/15/2022 09/15/2022	Saskia Donovan

LM Start	4.44	Rating **	M	Issue No.	14
LM End	4.49	Issue Type +	Ma	Location *	WS
Category	Supplemental			GPS Latitude/Longitude	
				Start	End
Item	2018 USACE Erosion Survey			38.206377 °	38.205729 °
				-121.557184 °	-121.557108 °
DWR ID	DWR_RD0556_02_s_2022_14				
Comment Code					
Inspector Comment					
2018 Site ID: SAC 21.9 L					
Status: Eroding					
2018 Field Notes: No observed change.					
Site History: 2013 - Erosion pockets encroaching on levee foundation.					

Photo 1 of 2 : FA_2022_RD0556_19_14_20220831_00005.jpg



USACE 2018 Erosion Photo #1

LM Start	4.44	Rating **	M	Issue No.	14 (cont)
LM End	4.49	Issue Type +	Ma	Location *	WS

Photo 2 of 2 : FA_2022_RD0556_19_14_20220831_00006.jpg



USACE 2018 Erosion Photo #2

LM Start	4.57	Rating **	U	Issue No.	56
LM End	4.57	Issue Type +	Ma	Location *	LS
Category	Earthen Levee			GPS Latitude/Longitude	
				Start	End
Item	Trim / Thin Trees			38.204558 °	38.204544 °
				-121.556773 °	-121.556769 °
DWR ID	DWR_RD0556_02_s_2018_56				
Comment Code					
T2 : Tree or limb.					
Inspector Comment					
Remove dead tree/limb from the landside.					

Photo 1 of 1 : FA_2022_RD0556_19_56_20220831_00040.jpg



Fallen tree on landside should be removed.

*** Location**

LS : Land Side N/A : Not Applicable
WS : Water Side
CR : Crown

**** Rating**

A : Acceptable N : Not Inspected/Rated
M : Minimally Acceptable C : Corrected
U : Unacceptable A/W : Acceptable but Monitor & Maintain

+ Issue Type

Ma : Maintenance Deficiency
Ob : Design & System Obsolescence
En : Enforcement

**Flood Control Project Maintenance
Levee Inspections**

Levee Inspection Report By Mile - Fall 2022

Reclamation District No. 0556 Upper Andrus

Waterway	Bank	Unit Miles	Inspection Start/End	Inspector
Unit No. 02 Sacramento River	Left	5.72	09/15/2022 09/15/2022	Saskia Donovan

LM Start	4.57	Rating **	U	Issue No.	60
LM End	4.57	Issue Type +	Ma	Location *	LS
Category	Earthen Levee			GPS Latitude/Longitude	
				Start	End
Item	Trim / Thin Trees			38.204537 °	38.204537 °
				-121.556782 °	-121.556782 °
DWR ID	DWR_RD0556_02_s_2021_60				
Comment Code					
T1 : Trim and thin trees to at least five feet above ground level to allow visibility of the ground and room to flood fight.					
Inspector Comment					

Photo 1 of 1 : FA_2022_RD0556_19_60_20220831_00044.jpg



View looking upstream at thick trees on the landside slope (Fall 2021).

LM Start	4.64	Rating **	U	Issue No.	58
LM End	4.64	Issue Type +	Ma	Location *	LS
Category	Earthen Levee			GPS Latitude/Longitude	
				Start	End
Item	Trim / Thin Trees			38.203480 °	38.203480 °
				-121.556824 °	-121.556824 °
DWR ID	DWR_RD0556_02_s_2018_58				
Comment Code					
T1 : Trim and thin trees to at least five feet above ground level to allow visibility of the ground and room to flood fight.					
Inspector Comment					
Remove fig tree from the landside slope.					

Photo 1 of 1 : FA_2022_RD0556_19_58_20221003_00073.jpg



View of the LS vegetation and fig tree in the background (Fall 2022).

LM Start	4.65	Rating **	M	Issue No.	27
LM End	4.65	Issue Type +	Ma	Location *	WS
Category	Earthen Levee			GPS Latitude/Longitude	
				Start	End
Item	Trim / Thin Trees			38.203425 °	38.203425 °
				-121.556845 °	-121.556845 °
DWR ID	DWR_RD0556_02_s_2017_27				
Comment Code					
T2 : Tree or limb.					
Inspector Comment					
Remove fallen tree from waterside slope.					

Photo 1 of 1 : FA_2022_RD0556_19_27_20221003_00071.jpg



View of the fallen tree on the WS slope (Fall 2022).

*** Location**

LS : Land Side N/A : Not Applicable
WS : Water Side
CR : Crown

**** Rating**

A : Acceptable N : Not Inspected/Rated
M : Minimally Acceptable C : Corrected
U : Unacceptable A/W : Acceptable but Monitor & Maintain

+ Issue Type

Ma : Maintenance Deficiency
Ob : Design & System Obsolescence
En : Enforcement

**Flood Control Project Maintenance
Levee Inspections**

Levee Inspection Report By Mile - Fall 2022

Reclamation District No. 0556 Upper Andrus

Waterway	Bank	Unit Miles	Inspection Start/End	Inspector
Unit No. 02 Sacramento River	Left	5.72	09/15/2022 09/15/2022	Saskia Donovan

LM Start	4.68	Rating **	U	Issue No.	3
LM End	4.72	Issue Type +	Ma	Location *	WS
Category	Earthen Levee			GPS Latitude/Longitude	
				Start	End
Item	Vegetation			38.202942 °	38.202431 °
				-121.556870 °	-121.556960 °
DWR ID	DWR_RD0556_02_f_2020_3				
Comment Code					
V2 : Remove the wild growth and woody vegetation other than native grasses from the levee slopes.					
Inspector Comment					
Cut arundo back 20' from waterside slope.					

Photo 1 of 1 : FA_2022_RD0556_19_3_20220831_00003.jpg



View looking downstream at arundo on the waterside slope (Fall 2020).

LM Start	4.73	Rating **	M	Issue No.	129
LM End	4.73	Issue Type +	En	Location *	
Category	Supplemental			GPS Latitude/Longitude	
				Start	End
Item	DWR UCIP Field Study			38.202301 °	38.202301 °
				-121.556952 °	-121.556952 °
DWR ID	20867				
Comment Code					
Inspector Comment					
DS_ID:20867 FS_ID:76308 EP_NO: 11199 Repair Type: Non-Urgent EVAL Issue: 11, Maintenance Compliance Issue Crossing Status: Indicator Found UCIP Comments: 05/12/2022 The record remains Non-Urgent. Appears abandoned, LS riser covered in vegetation, recommend cleaning out if still in use. WS control panel is destroyed and overgrown with vegetation. No permit other than ABO permit was found authorizing this encroachment. CVFPB will need to review crossing to determine owner. The UCIP inspection was completed with GEI staff, A. Lao. (H. Dunn – GEI) 04/25/2013 Pump, gate valve and pumphouse not found on waterward slope. An abandoned electric control panel found on WS. May need to be properly abandoned. (P. Amatya - DWR) FIELD_STRUCT_DESC: 6-inch steel irrigation discharge pipe through the levee, 6.5 feet below the crown. Siphon and concrete spill box with two 8-inch openings. (Retention of a 6-inch pipe through the levee, 6.5 feet below the crown, a pump and a gate valve in a pump house on the waterside [WS] slope, and a siphon breaker and a service pole on the landside [LS] slope authorized under Automatic Board Order (ABO) issued as Permit No. 11199, 1975 - Toshi Tokuyoshi, et al.). [Additional Reference(s): DWR Levee Log. USACE Sacramento O&M Manual 103, June 1954, (Station ""H"" 159+97), invert elevation 17.9 feet]. FS Date: 5/12/2022 1:01:48 PM					

Photo 1 of 3 : UCIP_FA_2022_76308_113562.jpg



Levee crown.

* Location LS : Land Side N/A : Not Applicable WS : Water Side CR : Crown	** Rating A : Acceptable M : Minimally Acceptable U : Unacceptable	N : Not Inspected/Rated C : Corrected A/W : Acceptable but Monitor & Maintain	+ Issue Type Ma : Maintenance Deficiency Ob : Design & System Obsolescence En : Enforcement
--	--	---	---

**Flood Control Project Maintenance
Levee Inspections**

Levee Inspection Report By Mile - Fall 2022

Reclamation District No. 0556 Upper Andrus

Waterway	Bank	Unit Miles	Inspection Start/End	Inspector
Unit No. 02 Sacramento River	Left	5.72	09/15/2022 09/15/2022	Saskia Donovan

LM Start	4.73	Rating **	M	Issue No.	129 (cont)
LM End	4.73	Issue Type +	En	Location *	
Category	Supplemental		GPS Latitude/Longitude		
			Start	End	
Item	DWR UCIP Field Study		38.202301 °	38.202301 °	
			-121.556952 °	-121.556952 °	
DWR ID	20867				

Photo 2 of 3 : UCIP_FA_2022_76308_113563.jpg



LS view: Slope from crown.

LM Start	4.73	Rating **	M	Issue No.	129 (cont)
LM End	4.73	Issue Type +	En	Location *	

Photo 3 of 3 : UCIP_FA_2022_76308_113564.jpg



LS view: Covered riser visible on slope.

LM Start	4.82	Rating **	U	Issue No.	52
LM End	4.88	Issue Type +	Ma	Location *	LS
Category	Earthen Levee			GPS Latitude/Longitude	
				Start	End
Item	Trim / Thin Trees			38.201017 °	38.200136 °
				-121.557135 °	-121.557426 °
DWR ID	DWR_RD0556_02_s_2021_52				
Comment Code					
T1 : Trim and thin trees to at least five feet above ground level to allow visibility of the ground and room to flood fight.					
Inspector Comment					
Bamboo and trees of heaven should be removed.					

Photo 1 of 1 : FA_2022_RD0556_19_52_20220831_00038.jpg



View looking downstream at bamboo and trees of heaven on landside slope (Spring 2021).

* Location LS : Land Side N/A : Not Applicable WS : Water Side CR : Crown		** Rating A : Acceptable N : Not Inspected/Rated M : Minimally Acceptable C : Corrected U : Unacceptable A/W : Acceptable but Monitor & Maintain		+ Issue Type Ma : Maintenance Deficiency Ob : Design & System Obsolescence En : Enforcement	
--	--	---	--	---	--

**Flood Control Project Maintenance
Levee Inspections**

Levee Inspection Report By Mile - Fall 2022

Reclamation District No. 0556 Upper Andrus

Waterway	Bank	Unit Miles	Inspection Start/End	Inspector
Unit No. 02 Sacramento River	Left	5.72	09/15/2022 09/15/2022	Saskia Donovan

LM Start	4.85	Rating **	U	Issue No.	66
LM End	4.87	Issue Type +	Ma	Location *	WS
Category	Earthen Levee			GPS Latitude/Longitude	
				Start	End
Item	Trim / Thin Trees			38.200543 °	38.200246 °
				-121.557286 °	-121.557380 °
DWR ID	DWR_RD0556_02_s_2021_66				
Comment Code					
T4 : Trim trees over roadway to at least 12 feet above ground level.					
Inspector Comment					

Photo 1 of 1 : FA_2022_RD0556_19_66_20220831_00047.jpg



View looking upstream at willows on the waterside slope (Spring 2021).

LM Start	4.95	Rating **	M	Issue No.	103
LM End	4.95	Issue Type +	Ma	Location *	LS
Category	Earthen Levee			GPS Latitude/Longitude	
				Start	End
Item	Trim / Thin Trees			38.199223 °	38.199223 °
				-121.557876 °	-121.557876 °
DWR ID	DWR_RD0556_02_f_2021_103				
Comment Code					
T1 : Trim and thin trees to at least five feet above ground level to allow visibility of the ground and room to flood fight.					
Inspector Comment					

No Photos

LM Start	5.05	Rating **	M	Issue No.	101
LM End	5.05	Issue Type +	Ma	Location *	LS
Category	Earthen Levee			GPS Latitude/Longitude	
				Start	End
Item	Trim / Thin Trees			38.197828 °	38.197828 °
				-121.558670 °	-121.558670 °
DWR ID	DWR_RD0556_02_f_2021_101				
Comment Code					
T1 : Trim and thin trees to at least five feet above ground level to allow visibility of the ground and room to flood fight.					
Inspector Comment					

No Photos

* Location LS : Land Side N/A : Not Applicable WS : Water Side CR : Crown	** Rating A : Acceptable M : Minimally Acceptable U : Unacceptable	N : Not Inspected/Rated C : Corrected A/W : Acceptable but Monitor & Maintain	+ Issue Type Ma : Maintenance Deficiency Ob : Design & System Obsolescence En : Enforcement
--	--	---	---

**Flood Control Project Maintenance
Levee Inspections**

Levee Inspection Report By Mile - Fall 2022

Reclamation District No. 0556 Upper Andrus

Waterway	Bank	Unit Miles	Inspection Start/End	Inspector
Unit No. 02 Sacramento River	Left	5.72	09/15/2022 09/15/2022	Saskia Donovan

LM Start	5.08	Rating **	U	Issue No.	37
LM End	5.16	Issue Type +	En	Location *	LS
Category	Earthen Levee			GPS Latitude/Longitude	
				Start	End
Item	Vegetation			38.197407 °	38.196388 °
				-121.558950 °	-121.559558 °
DWR ID	DWR_RD0556_02_f _ 2017_37				
Comment Code					
V6 : Landscaping					
Inspector Comment					
Remove large cactus partway down the landside slope.					

Photo 1 of 1 : FA_2022_RD0556_19_37_20220831_00028.jpg



View looking upstream at cactus partway down the landside slope (Fall 2020).

* Location LS : Land Side N/A : Not Applicable WS : Water Side CR : Crown	** Rating A : Acceptable M : Minimally Acceptable U : Unacceptable	N : Not Inspected/Rated C : Corrected A/W : Acceptable but Monitor & Maintain	+ Issue Type Ma : Maintenance Deficiency Ob : Design & System Obsolescence En : Enforcement
--	--	---	---

**Flood Control Project Maintenance
Levee Inspections**

Levee Inspection Report By Mile - Fall 2022

Reclamation District No. 0556 Upper Andrus

Waterway	Bank	Unit Miles	Inspection Start/End	Inspector
Unit No. 02 Sacramento River	Left	5.72	09/15/2022 09/15/2022	Saskia Donovan

LM Start	5.21	Rating **	U	Issue No.	130
LM End	5.21	Issue Type +	En	Location *	
Category	Supplemental			GPS Latitude/Longitude	
				Start	End
Item	DWR UCIP Field Study			38.195755 °	38.195755 °
				-121.560078 °	-121.560078 °
DWR ID	20869				
Comment Code					
Inspector Comment					
DS_ID:20869 FS_ID:76310 EP_NO: 11185 Repair Type: Urgent EVAL Issue: 2b, Levee Integrity Crossing Status: Found UCIP Comments: 05/12/2022 The record remains Urgent. There is still a deep pit on WS toe covered with plywood, causing a safety concern and levee integrity concern, recommend filling in with dirt. LS siphon in riser is covered with vegetation, recommend cleaning out. New filter installation on LS as well as modifications to the LS concrete box. No permit other than ABO permit was found authorizing this encroachment. CVFPB will need to review crossing to determine owner. The UCIP inspection was completed with GEI staff, A. Lau. (H. Dunn – GEI)07/12/2018 Pit on WS is covered with plywood. Water pump is running, no leaks detected. LS part of crossing was reconstructed. New pipe was installed after CMP riser to supply water to sand filters. Remains Urgent due to large pit on WS that needs to be backfilled. (O.Yakimov-DWR UCIP)04/25/2013 Large pit on levee berm. FIELD_STRUCT_DESC: 8-inch irrigation discharge pipe of an unknown material through the levee, 5.7 feet below the crown. Pump and gate valve in a pump house on the waterside (WS) slope. Siphon breaker, concrete box, and service pole on the landside (LS) slope. (Retention of an 8-inch pipe through the levee, 5.7 feet below the crown, a pump and a gate valve in a pump house on the WS slope, and a siphon breaker and a service pole on the LS slope authorized under Automatic Board Order (ABO) issued as Permit No. 11185, 1975 - R. Walter Langhart). [Additional Reference(s): DWR Levee Log]. FS Date: 5/12/2022 1:31:01 PM					

Photo 1 of 3 : UCIP_FA_2022_76310_77690.jpg



View of pipe on WS and a pit covered by plywood.

* Location LS : Land Side N/A : Not Applicable WS : Water Side CR : Crown	** Rating A : Acceptable M : Minimally Acceptable U : Unacceptable N : Not Inspected/Rated C : Corrected A/W : Acceptable but Monitor & Maintain	+ Issue Type Ma : Maintenance Deficiency Ob : Design & System Obsolescence En : Enforcement
--	---	---

**Flood Control Project Maintenance
Levee Inspections**

Levee Inspection Report By Mile - Fall 2022

Reclamation District No. 0556 Upper Andrus

Waterway	Bank	Unit Miles	Inspection Start/End	Inspector
Unit No. 02 Sacramento River	Left	5.72	09/15/2022 09/15/2022	Saskia Donovan

LM Start	5.21	Rating **	U	Issue No.	130 (cont)
LM End	5.21	Issue Type +	En	Location *	
Category	Supplemental		GPS Latitude/Longitude		
			Start	End	
Item	DWR UCIP Field Study		38.195755 °	38.195755 °	
			-121.560078 °	-121.560078 °	
DWR ID	20869				

Photo 2 of 3 : UCIP_FA_2022_76310_77692.jpg



View of LS slope at the crossing.

LM Start	5.21	Rating **	U	Issue No.	130 (cont)
LM End	5.21	Issue Type +	En	Location *	

Photo 3 of 3 : UCIP_FA_2022_76310_20370.jpg



WS- intake pipe and pit on levee slope (center)

LM Start	5.22	Rating **	M	Issue No.	4
LM End	5.22	Issue Type +	Ma	Location *	LS
Category	Earthen Levee			GPS Latitude/Longitude	
				Start	End
Item	Trim / Thin Trees			38.195691 °	38.195691 °
				-121.560133 °	-121.560133 °
DWR ID	DWR_RD0556_02_s_2021_4				
Comment Code					
T1 : Trim and thin trees to at least five feet above ground level to allow visibility of the ground and room to flood fight.					
Inspector Comment					

No Photos

* Location LS : Land Side N/A : Not Applicable WS : Water Side CR : Crown	** Rating A : Acceptable M : Minimally Acceptable U : Unacceptable	N : Not Inspected/Rated C : Corrected A/W : Acceptable but Monitor & Maintain	+ Issue Type Ma : Maintenance Deficiency Ob : Design & System Obsolescence En : Enforcement
--	--	---	---

**Flood Control Project Maintenance
Levee Inspections**

Levee Inspection Report By Mile - Fall 2022

Reclamation District No. 0556 Upper Andrus

Waterway	Bank	Unit Miles	Inspection Start/End	Inspector
Unit No. 02 Sacramento River	Left	5.72	09/15/2022 09/15/2022	Saskia Donovan

LM Start	5.58	Rating **	A/W	Issue No.	80
LM End	5.72	Issue Type +	Ob	Location *	WS
Category	Earthen Levee			GPS Latitude/Longitude	
				Start	End
Item	Vegetation			38.192530 °	38.191865 °
				-121.565352 °	-121.567757 °
DWR ID	DWR_RD0556_02_f_2019_80				
Comment Code					
V5 : Environmental Requirements.					
Inspector Comment					
This is a DWR Revegetation Site.					

Photo 1 of 1 : FA_2022_RD0556_19_80_20221003_00072.jpg



View of the environmental mitigation sign on the WS slope (Fall 2022).

LM Start	5.64	Rating **	U	Issue No.	79
LM End	5.64	Issue Type +	Ma	Location *	LS
Category	Earthen Levee			GPS Latitude/Longitude	
				Start	End
Item	Animal Control			38.192237 °	38.192237 °
				-121.566368 °	-121.566368 °
DWR ID	DWR_RD0556_02_f_2018_79				
Comment Code					
A3 : No rodents visible, but rodent burrows visible; need to backfill and compact or grout burrows.					
Inspector Comment					
More than 2 cubic feet of soil was removed between the two large burrow holes.					

Photo 1 of 1 : FA_2022_RD0556_19_79_20220831_00056.jpg



View looking downstream at burrow holes on the landside slope (Fall 2020).

*** Location**
LS : Land Side N/A : Not Applicable
WS : Water Side
CR : Crown

**** Rating**
A : Acceptable N : Not Inspected/Rated
M : Minimally Acceptable C : Corrected
U : Unacceptable A/W : Acceptable but Monitor & Maintain

+ Issue Type
Ma : Maintenance Deficiency
Ob : Design & System Obsolescence
En : Enforcement