

**Flood Control Project Maintenance
Levee Inspections**

Fall 2019 Levee Maintenance Deficiency Summary Report

Overall LMA & Unit Ratings, including USACE Erosion Survey

Sacramento River Basin

RD0556	Overall LMA Rating	Total LMA Miles						
Reclamation District No. 0556 Upper Andrus	U	11.20						
Rated Item	Maintenance Deficiency				Enforcement		Design & System Obsolescence	
	M Miles	U Miles	M + 4U Miles	Threshold %	M Miles	U Miles	M Miles	U Miles
<i>Earthen Levee</i>								
Vegetation	1.47	9.60	39.87	355.97%	0.05	1.02		
Trim / Thin Trees	1.05	2.36	10.49	93.66%				
Encroachments	0.06	0.06	0.30	2.68%	0.24	0.09		
Animal Control	2.56	0.20	3.36	30.00%				
Slope Stability		0.03	0.12	1.07%				
Erosion / Bank Caving	0.03		0.03	0.27%				
Emergency Supplies & Equipment	0.11		0.11	0.98%				
Flood Preparedness & Training	0.11		0.11	0.98%				
<i>Supplemental</i>								
2017 USACE Erosion Survey	1.85		1.85	16.52%				
DRAFT DWR UCIP Field Study					0.23	0.01		
<i>LMA Totals:</i>	7.24	12.25	56.24	502.12%	0.52	1.12	0.00	0.00
Unit No. 01 Georgiana Slough RB	Overall Unit Rating	Total Unit Miles						
RD0556	U	5.48						
Rated Item	Maintenance Deficiency				Enforcement		Design & System Obsolescence	
	M Miles	U Miles	M + 4U Miles	Threshold %	M Miles	U Miles	M Miles	U Miles
<i>Earthen Levee</i>								
Vegetation	1.37	2.74	12.33	224.90%	0.02	0.31		
Trim / Thin Trees		2.23	8.92	162.70%				
Encroachments					0.01	0.07		
Animal Control	2.56	0.12	3.04	55.45%				
Slope Stability		0.02	0.08	1.46%				
Erosion / Bank Caving	0.02		0.02	0.37%				
<i>Supplemental</i>								
2017 USACE Erosion Survey	1.19		1.19	21.71%				
DRAFT DWR UCIP Field Study					0.12			
<i>Unit Totals:</i>	5.14	5.11	25.58	466.58%	0.15	0.38	0.00	0.00
Unit No. 02 Sacramento River LB	Overall Unit Rating	Total Unit Miles						
RD0556	U	5.72						
Rated Item	Maintenance Deficiency				Enforcement		Design & System Obsolescence	
	M Miles	U Miles	M + 4U Miles	Threshold %	M Miles	U Miles	M Miles	U Miles
<i>Earthen Levee</i>								
Vegetation	0.10	6.86	27.54	481.63%	0.03	0.71		
Trim / Thin Trees	1.05	0.13	1.57	27.46%				
Encroachments	0.06	0.06	0.30	5.25%	0.23	0.02		
Animal Control		0.08	0.32	5.60%				
Slope Stability		0.01	0.04	0.70%				
Erosion / Bank Caving	0.01		0.01	0.18%				
<i>Supplemental</i>								
2017 USACE Erosion Survey	0.66		0.66	11.54%				
DRAFT DWR UCIP Field Study					0.11	0.01		
<i>Unit Totals:</i>	1.88	7.14	30.44	532.35%	0.37	0.74	0.00	0.00

**Flood Control Project Maintenance
Levee Inspections**
LMA District Cover Sheet
Fall 2019 Levee Inspection Results

Reclamation District No. 0556 Upper Andrus

	Spring (March - May)	Summer ** (June - August)	Fall (September - November)	Winter ** (December - February)
† Overall LMA Rating (Fall Only)			U	

** Non-receipt of Summer or Winter Inspection
Reports may effect overall annual rating.

† **SPRING INSPECTIONS:** Overall maintenance ratings are not determined for the spring inspection results. Individual maintenance deficiencies are rated using the same criteria in the spring and in the fall.

FALL INSPECTIONS: The overall maintenance rating shown above is based on operation and maintenance deficiencies identified within the attached unit inspection reports. This rating is not intended to be an indication of risk.

Comments

**Flood Control Project Maintenance
Levee Inspections**

Unit Cover Sheet

Fall 2019 Levee Inspection Results

Reclamation District No. 0556 Upper Andrus

Waterway			Bank	Unit Miles
Unit No. 01 Georgiana Slough			Right	5.48
	Spring (March - May)	Summer (June - August)	(September - November) Fall	Winter (December - February)
Unit Maintenance Rating (Fall Only)			U	
Date of Inspection	3/21/2019 - 3/21/2019		10/18/2019 - 10/18/2019	
DWR Inspector	David Julian		David Julian	
Accompanied By	Alan Silva Reclamation District 556		Alan Silva Reclamation District 556	

Summer & Winter Inspections

The Local Maintaining Agency (LMA) is responsible for summer and winter inspections. The LMA is required to submit a report regarding summer and winter inspections to the California Department of Water Resources (DWR).

DWR must be informed on the:

- a) completion of the inspection
- b) any changes other than the results of normal maintenance
- c) corrections to deficiencies noted in this report

If additional items are noted, further documentation of those items must also be submitted.

The LMA should submit this information to DWR using the LMA web application tool available at:

<http://cdec.water.ca.gov/lma.html>

If the LMA is unable to submit information on this webpage, please contact DWR for assistance.

The LMA should submit the information and any associated documentation by September 30 for summer inspections and March 31 for winter inspections.

**Flood Control Project Maintenance
Levee Inspections**

Levee Inspection Report By Mile - Fall 2019

Reclamation District No. 0556 Upper Andrus

Waterway	Bank	Unit Miles	Inspection Start/End	Inspector
Unit No. 01 Georgiana Slough	Right	5.48	10/18/2019 10/18/2019	David Julian

LM Start		Rating **	M	Issue No.	3
LM End		Issue Type +	Ma	Location *	
Category	Earthen Levee			GPS Latitude/Longitude	
				Start	End
Item	Flood Preparedness & Training			°	°
				°	°
DWR ID	DWR_RD0556_01_f_2014_3				
Comment Code					
Inspector Comment					
The members in the district have not been flood fight trained recently according to the district manager.					

No Photos

LM Start		Rating **	A	Issue No.	6
LM End		Issue Type +	Ma	Location *	
Category	Earthen Levee			GPS Latitude/Longitude	
				Start	End
Item	Operations & Maintenance Manuals			°	°
				°	°
DWR ID	DWR_RD0556_01_s_2012_6				
Comment Code					
Inspector Comment					
Sent electronic copy of O+M manual to LMA.					

No Photos

LM Start		Rating **	M	Issue No.	8
LM End		Issue Type +	Ma	Location *	N/A
Category	Earthen Levee			GPS Latitude/Longitude	
				Start	End
Item	Emergency Supplies & Equipment			°	°
				°	°
DWR ID	DWR_RD0556_01_f_2019_8				
Comment Code					
Inspector Comment					
According to the district manager, when they need supplies they will order them, there are no supplies stored.					

No Photos

* Location LS : Land Side N/A : Not Applicable WS : Water Side CR : Crown	** Rating A : Acceptable M : Minimally Acceptable U : Unacceptable	N : Not Inspected/Rated C : Corrected A/W : Acceptable but Monitor & Maintain	+ Issue Type Ma : Maintenance Deficiency Ob : Design & System Obsolescence En : Enforcement
--	--	---	---

**Flood Control Project Maintenance
Levee Inspections**

Levee Inspection Report By Mile - Fall 2019

Reclamation District No. 0556 Upper Andrus

Waterway	Bank	Unit Miles	Inspection Start/End	Inspector
Unit No. 01 Georgiana Slough	Right	5.48	10/18/2019 10/18/2019	David Julian

LM Start	0.08	Rating **	U	Issue No.	21
LM End	0.58	Issue Type +	Ma	Location *	LS
Category	Earthen Levee			GPS Latitude/Longitude	
				Start	End
Item	Trim / Thin Trees			38.238037°	38.231927°
				-121.518067°	-121.522215°
DWR ID	DWR_RD0556_01_s_2017_21				
Comment Code					
T2 : Thin trees to allow visibility of the ground and room to flood fight.					
Inspector Comment					
Control the wild growth and trim the trees so the slope can be seen.					

Photo 1 of 1 : FA_2019_RD0556_18_21_20191021_00063.jpg



View looking downstream at thick trees on the landside slope (Fall 2019).

LM Start	0.39	Rating **	M	Issue No.	36
LM End	0.58	Issue Type +	Ma	Location *	WS
Category	Supplemental			GPS Latitude/Longitude	
				Start	End
Item	2017 USACE Erosion Survey			38.234038 °	38.231879 °
				-121.519817 °	-121.522003 °
DWR ID	DWR_RD0556_01_f_2018_36				
Comment Code					
Inspector Comment					
2017 Site ID: GEO 11.8 R					
Status: Eroding New					
2017 Field Notes: Tree popout popouts eminent , significant toe erosion and whole bank failure in sections					
Site History:					

No Photos

* Location LS : Land Side N/A : Not Applicable WS : Water Side CR : Crown	** Rating A : Acceptable M : Minimally Acceptable U : Unacceptable	N : Not Inspected/Rated C : Corrected A/W : Acceptable but Monitor & Maintain	+ Issue Type Ma : Maintenance Deficiency Ob : Design & System Obsolescence En : Enforcement
--	--	---	---

**Flood Control Project Maintenance
Levee Inspections**

Levee Inspection Report By Mile - Fall 2019

Reclamation District No. 0556 Upper Andrus

Waterway	Bank	Unit Miles	Inspection Start/End	Inspector
Unit No. 01 Georgiana Slough	Right	5.48	10/18/2019 10/18/2019	David Julian

LM Start	0.44	Rating **	M	Issue No.	60
LM End	0.44	Issue Type +	En	Location *	
Category	Supplemental			GPS Latitude/Longitude	
				Start	End
Item	DRAFT DWR UCIP Field Study			38.233537°	38.233537°
				-121.520483°	-121.520483°
DWR ID	20820				
Comment Code					
Inspector Comment					
DS_ID:20820 FS_ID:45564 EP_NO: 3448 Repair Type: Non-Urgent Crossing Status: Indicator Found UCIP Comments: Dense vegetation inhibited visibility of gasline marker on WS. Need to contact owner to determine status of crossing. FIELD_STRUCT_DESC: 4.5-inch steel natural gas pipeline through the levee, 4 feet below the crown. Location marker on the waterside (WS) shoulder. Cut in pavement visible at the crossing. Gas line marker on the landside (LS) and on the opposite bank at Reclamation District No. 263 (RD0263). Pipe not located in February 1991. (Plans for construction of a 4.5-inch gas line across Georgiana Slough from Andrus Island to Tyler Island authorized under Permit No. 3448, 1960 - Pacific Gas and Electric Company [PG&E]). [Additional Reference(s): DWR Levee Log]. FS Date: 5/27/2015					

LM Start	0.44	Rating **	M	Issue No.	60 (cont)
LM End	0.44	Issue Type +	En	Location *	

Photo 1 of 3 : UCIP_FA_2019_45564_74151.jpg



Gasline marker present on LS.

Photo 2 of 3 : UCIP_FA_2019_45564_74146.jpg



View of WS; cut in pavement in alignment with arrow and Olivia indicating location of crossing trench.

* Location LS : Land Side N/A : Not Applicable WS : Water Side CR : Crown	** Rating A : Acceptable M : Minimally Acceptable U : Unacceptable	N : Not Inspected/Rated C : Corrected A/W : Acceptable but Monitor & Maintain	+ Issue Type Ma : Maintenance Deficiency Ob : Design & System Obsolescence En : Enforcement
--	--	---	---

**Flood Control Project Maintenance
Levee Inspections**

Levee Inspection Report By Mile - Fall 2019

Reclamation District No. 0556 Upper Andrus

Waterway	Bank	Unit Miles	Inspection Start/End	Inspector
Unit No. 01 Georgiana Slough	Right	5.48	10/18/2019 10/18/2019	David Julian

LM Start	0.44	Rating **	M	Issue No.	60 (cont)	
LM End	0.44	Issue Type +	En	Location *		
Category	Supplemental			GPS Latitude/Longitude		
				Start	End	
Item	DRAFT DWR UCIP Field Study			38.233537 °	38.233537 °	
				-121.520483 °	-121.520483 °	
DWR ID	20820					
Comment Code						
Inspector Comment						
DS_ID:20820 FS_ID:45564 EP_NO: 3448 Repair Type: Non-Urgent Crossing Status: Indicator Found UCIP Comments: Dense vegetation inhibited visibility of gasline marker on WS. Need to contact owner to determine status of crossing. FIELD_STRUCT_DESC: 4.5-inch steel natural gas pipeline through the levee, 4 feet below the crown. Location marker on the waterside (WS) shoulder. Cut in pavement visible at the crossing. Gas line marker on the landside (LS) and on the opposite bank at Reclamation District No. 263 (RD0263). Pipe not located in February 1991. (Plans for construction of a 4.5-inch gas line across Georgiana Slough from Andrus Island to Tyler Island authorized under Permit No. 3448, 1960 - Pacific Gas and Electric Company [PG&E]). [Additional Reference(s): DWR Levee Log]. FS Date: 5/27/2015						

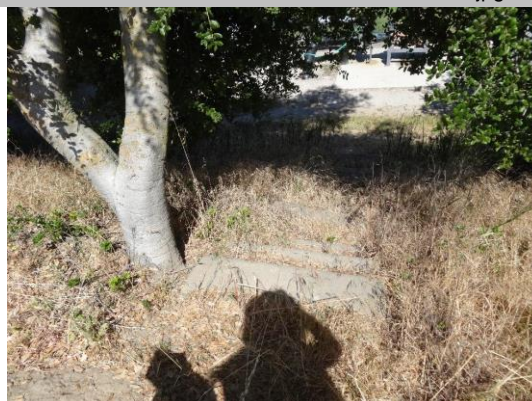
Photo 3 of 3 : UCIP_FA_2019_45564_74152.jpg



View of WS. Dense vegetation limited visibility of 'No Trespassing' sign.

LM Start	0.53	Rating **	M	Issue No.	61	
LM End	0.53	Issue Type +	En	Location *		
Category	Supplemental			GPS Latitude/Longitude		
				Start		End
Item	DRAFT DWR UCIP Field Study			38.232450 °		38.232450 °
				-121.521624 °		-121.521624 °
DWR ID	20821					
Comment Code						
Inspector Comment						
DS_ID:20821 FS_ID:45663 EP_NO: 5548 Repair Type: Non-Urgent Crossing Status: Found UCIP Comments: Dense vegetation prevents inspection of WS slope. FIELD_STRUCT_DESC: 12-inch steel irrigation discharge pipe through the levee, 5 feet below the crown. 1.25-inch electrical conduit through the levee at the same location. Pump on the waterside (WS). Concrete steps on the landside (LS) slope. Cuts in pavement visible at the crossing. (Plans to install a pump with a 12-inch discharge pipe and one electrical conduit through the levee authorized under Permit No. 5548, 1966 - George K. Adams). [Additional Reference(s): DWR Levee Log]. FS Date: 5/13/2015						

Photo 1 of 3 : UCIP_FA_2019_45663_74180.jpg



Concrete steps on LS slope.

* Location LS : Land Side N/A : Not Applicable WS : Water Side CR : Crown	** Rating A : Acceptable M : Minimally Acceptable U : Unacceptable	N : Not Inspected/Rated C : Corrected A/W : Acceptable but Monitor & Maintain	+ Issue Type Ma : Maintenance Deficiency Ob : Design & System Obsolescence En : Enforcement
--	--	---	---

**Flood Control Project Maintenance
Levee Inspections**

Levee Inspection Report By Mile - Fall 2019

Reclamation District No. 0556 Upper Andrus

Waterway	Bank	Unit Miles	Inspection Start/End	Inspector
Unit No. 01 Georgiana Slough	Right	5.48	10/18/2019 10/18/2019	David Julian

LM Start	0.53	Rating **	M	Issue No.	61 (cont)	
LM End	0.53	Issue Type +	En	Location *		
Category	Supplemental			GPS Latitude/Longitude		
				Start	End	
Item	DRAFT DWR UCIP Field Study			38.232450 °	38.232450 °	
				-121.521624 °	-121.521624 °	
DWR ID	20821					
Comment Code						
Inspector Comment						
DS_ID:20821 FS_ID:45663 EP_NO: 5548 Repair Type: Non-Urgent Crossing Status: Found UCIP Comments: Dense vegetation prevents inspection of WS slope. FIELD_STRUCT_DESC: 12-inch steel irrigation discharge pipe through the levee, 5 feet below the crown. 1.25-inch electrical conduit through the levee at the same location. Pump on the waterside (WS). Concrete steps on the landside (LS) slope. Cuts in pavement visible at the crossing. (Plans to install a pump with a 12-inch discharge pipe and one electrical conduit through the levee authorized under Permit No. 5548, 1966 - George K. Adams). [Additional Reference(s): DWR Levee Log]. FS Date: 5/13/2015						

Photo 2 of 3 : UCIP_FA_2019_45663_74181.jpg



View of WS with cuts visible on pavement.

LM Start	0.53	Rating **	M	Issue No.	61 (cont)
LM End	0.53	Issue Type +	En	Location *	

Photo 3 of 3 : UCIP_FA_2019_45663_74182.jpg



Pump and pipe into levee off LS toe.

* Location LS : Land Side N/A : Not Applicable WS : Water Side CR : Crown	** Rating A : Acceptable M : Minimally Acceptable U : Unacceptable	N : Not Inspected/Rated C : Corrected A/W : Acceptable but Monitor & Maintain	+ Issue Type Ma : Maintenance Deficiency Ob : Design & System Obsolescence En : Enforcement
--	--	---	---

**Flood Control Project Maintenance
Levee Inspections**

Levee Inspection Report By Mile - Fall 2019

Reclamation District No. 0556 Upper Andrus

Waterway	Bank	Unit Miles	Inspection Start/End	Inspector
Unit No. 01 Georgiana Slough	Right	5.48	10/18/2019 10/18/2019	David Julian

LM Start	0.54	Rating **	M	Issue No.	62	
LM End	0.54	Issue Type +	En	Location *		
Category	Supplemental			GPS Latitude/Longitude		
				Start		End
Item	DRAFT DWR UCIP Field Study			38.232354 °		38.232354 °
				-121.521727 °		-121.521727 °
DWR ID	20826					
Comment Code						
Inspector Comment						
DS_ID:20826 FS_ID:45664 EP_NO: 5548A Repair Type: Non-Urgent Crossing Status: Found UCIP Comments: Dense vegetation prevented inspection of WS slope. FIELD_STRUCT_DESC: 14-inch steel irrigation discharge pipe through the levee, 5 feet below the crown. Pump on the waterside (WS). Electrical conduit through the levee at the same location. Pole with electrical panel at the landside (LS) toe. Standpipe at the LS toe. (Plans to install a 7-gauge, 14-inch pipe through the levee authorized under Permit No. 5548-A, 1981 - Kaydix Company). [Additional Reference(s): DWR Levee Log]. FS Date: 5/27/2015						

Photo 1 of 3 : UCIP_FA_2019_45664_74190.jpg



View of LS with standpipe visible behind tree.

LM Start	0.54	Rating **	M	Issue No.	62 (cont)
LM End	0.54	Issue Type +	En	Location *	

Photo 2 of 3 : UCIP_FA_2019_45664_74191.jpg



View of WS with cuts visible on pavement.

* Location LS : Land Side N/A : Not Applicable WS : Water Side CR : Crown	** Rating A : Acceptable M : Minimally Acceptable U : Unacceptable	N : Not Inspected/Rated C : Corrected A/W : Acceptable but Monitor & Maintain	+ Issue Type Ma : Maintenance Deficiency Ob : Design & System Obsolescence En : Enforcement
--	--	---	---

**Flood Control Project Maintenance
Levee Inspections**

Levee Inspection Report By Mile - Fall 2019

Reclamation District No. 0556 Upper Andrus

Waterway	Bank	Unit Miles	Inspection Start/End	Inspector
Unit No. 01 Georgiana Slough	Right	5.48	10/18/2019 10/18/2019	David Julian

LM Start	0.54	Rating **	M	Issue No.	62 (cont)	
LM End	0.54	Issue Type +	En	Location *		
Category	Supplemental			GPS Latitude/Longitude		
				Start	End	
Item	DRAFT DWR UCIP Field Study			38.232354 °	38.232354 °	
				-121.521727 °	-121.521727 °	
DWR ID	20826					
Comment Code						
Inspector Comment						
DS_ID:20826 FS_ID:45664 EP_NO: 5548A Repair Type: Non-Urgent Crossing Status: Found UCIP Comments: Dense vegetation prevented inspection of WS slope. FIELD_STRUCT_DESC: 14-inch steel irrigation discharge pipe through the levee, 5 feet below the crown. Pump on the waterside (WS). Electrical conduit through the levee at the same location. Pole with electrical panel at the landside (LS) toe. Standpipe at the LS toe. (Plans to install a 7-gauge, 14-inch pipe through the levee authorized under Permit No. 5548-A, 1981 - Kaydix Company). [Additional Reference(s): DWR Levee Log]. FS Date: 5/27/2015						

Photo 3 of 3 : UCIP_FA_2019_45664_74192.jpg



Standpipe and service pole visible off LS toe.

LM Start	0.77	Rating **	M	Issue No.	19
LM End	1.27	Issue Type +	Ma	Location *	LS
Category	Earthen Levee			GPS Latitude/Longitude	
				Start	End
Item	Vegetation			38.229773 °	38.227978 °
				-121.524430 °	-121.531113 °
DWR ID	DWR_RD0556_01_f_2019_19				
Comment Code					
V1 : Control annual grass and weeds on the levee slopes and easements.					
Inspector Comment					

No Photos

* Location LS : Land Side N/A : Not Applicable WS : Water Side CR : Crown	** Rating A : Acceptable M : Minimally Acceptable U : Unacceptable	N : Not Inspected/Rated C : Corrected A/W : Acceptable but Monitor & Maintain	+ Issue Type Ma : Maintenance Deficiency Ob : Design & System Obsolescence En : Enforcement
--	--	---	---

**Flood Control Project Maintenance
Levee Inspections**

Levee Inspection Report By Mile - Fall 2019

Reclamation District No. 0556 Upper Andrus

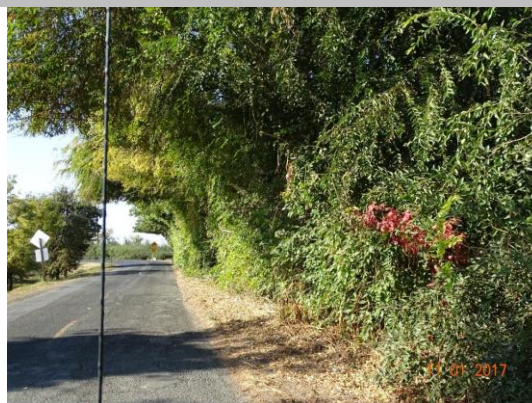
Waterway	Bank	Unit Miles	Inspection Start/End	Inspector
Unit No. 01 Georgiana Slough	Right	5.48	10/18/2019 10/18/2019	David Julian

LM Start	0.80	Rating **	M	Issue No.	12
LM End	3.36	Issue Type +	Ma	Location *	LS
Category	Earthen Levee			GPS Latitude/Longitude	
				Start	End
Item	Animal Control			38.229459 °	38.208959 °
				-121.524805 °	-121.541368 °
DWR ID	DWR_RD0556_01_s_2012_12				
Comment Code					
A1 : Exterminate rodents and backfill and compact or grout burrows.					
Inspector Comment					
Exterminate rodents and backfill and compact burrows.					

No Photos

LM Start	0.87	Rating **	U	Issue No.	24
LM End	0.87	Issue Type +	En	Location *	LS
Category	Earthen Levee			GPS Latitude/Longitude	
				Start	End
Item	Vegetation			38.228820 °	38.228820 °
				-121.525853 °	-121.525853 °
DWR ID	DWR_RD0556_01_f_2017_24				
Comment Code					
V6 : Landscaping					
Inspector Comment					

Photo 1 of 1 : FA_2019_RD0556_18_24_20190826_00006.jpg



Trim/thin landscaping to allow inspection and access to levee slope and toe.

* Location
LS : Land Side N/A : Not Applicable
WS : Water Side
CR : Crown

** Rating
A : Acceptable N : Not Inspected/Rated
M : Minimally Acceptable C : Corrected
U : Unacceptable A/W : Acceptable but Monitor & Maintain

+ Issue Type
Ma : Maintenance Deficiency
Ob : Design & System Obsolescence
En : Enforcement

**Flood Control Project Maintenance
Levee Inspections**

Levee Inspection Report By Mile - Fall 2019

Reclamation District No. 0556 Upper Andrus

Waterway	Bank	Unit Miles	Inspection Start/End	Inspector
Unit No. 01 Georgiana Slough	Right	5.48	10/18/2019 10/18/2019	David Julian

LM Start	1.17	Rating **	M	Issue No.	63
LM End	1.17	Issue Type +	En	Location *	
Category	Supplemental		GPS Latitude/Longitude		
			Start	End	
Item	DRAFT DWR UCIP Field Study		38.227534 °	38.227534 °	
			-121.529396 °	-121.529396 °	
DWR ID	25106				

Comment Code

Inspector Comment

DS_ID:25106
FS_ID:46799
EP_NO: N/A
Repair Type: Non-Urgent
Crossing Status: Found
UCIP Comments: Possible erosion above pipe on LS needs attention.
FIELD_STRUCT_DESC: 8-inch steel irrigation pipe through the levee, at an unknown depth. Visible on the landside (LS), 6 feet away from the 10-inch pipe at HLM 1.17. Post likely for protection of vent located on the shoulder. Power pole next to pipe on the LS. This crossing was field discovered.
FS Date: 5/27/2015

LM Start	1.17	Rating **	M	Issue No.	63 (cont)
LM End	1.17	Issue Type +	En	Location *	

Photo 1 of 3 : UCIP_FA_2019_46799_74739.jpg



LS view: 8-inch pipe off LS slope with possible erosion above pipe (circled).

Photo 2 of 3 : UCIP_FA_2019_46799_74740.jpg



LS view: Post located above pipe on LS slope.

* Location LS : Land Side N/A : Not Applicable WS : Water Side CR : Crown	** Rating A : Acceptable M : Minimally Acceptable U : Unacceptable N : Not Inspected/Rated C : Corrected A/W : Acceptable but Monitor & Maintain	+ Issue Type Ma : Maintenance Deficiency Ob : Design & System Obsolescence En : Enforcement
--	---	---

**Flood Control Project Maintenance
Levee Inspections**

Levee Inspection Report By Mile - Fall 2019

Reclamation District No. 0556 Upper Andrus

Waterway	Bank	Unit Miles	Inspection Start/End	Inspector
Unit No. 01 Georgiana Slough	Right	5.48	10/18/2019 10/18/2019	David Julian

LM Start	1.17	Rating **	M	Issue No.	63 (cont)	
LM End	1.17	Issue Type +	En	Location *		
Category	Supplemental			GPS Latitude/Longitude		
				Start	End	
Item	DRAFT DWR UCIP Field Study			38.227534 °	38.227534 °	
				-121.529396 °	-121.529396 °	
DWR ID	25106					
Comment Code						
Inspector Comment						
DS_ID:25106						
FS_ID:46799						
EP_NO: N/A						
Repair Type: Non-Urgent						
Crossing Status: Found						
UCIP Comments: Possible erosion above pipe on LS needs attention.						
FIELD_STRUCT_DESC: 8-inch steel irrigation pipe through the levee,						
at an unknown depth. Visible on the landside (LS), 6 feet away from the						
10-inch pipe at HLM 1.17. Post likely for protection of vent located on						
the shoulder. Power pole next to pipe on the LS. This crossing was field						
discovered.						
FS Date: 5/27/2015						

Photo 3 of 3 : UCIP_FA_2019_46799_74741.jpg



Electric pole next to pipe on LS.

LM Start	1.17	Rating **	M	Issue No.	64	
LM End	1.17	Issue Type +	En	Location *		
Category	Supplemental			GPS Latitude/Longitude		
				Start	End	
Item	DRAFT DWR UCIP Field Study			38.227568 °	38.227568 °	
				-121.529489 °	-121.529489 °	
DWR ID	20823					
Comment Code						
Inspector Comment						
DS_ID:20823 FS_ID:45683 EP_NO: 11169 Repair Type: Non-Urgent Crossing Status: Found UCIP Comments: Appears abandoned in place and if so should be done so properly. Desnse vegetation on WS limits visibility. FIELD_STRUCT_DESC: *ABANDONED* 10-inch steel irrigation discharge pipe through the levee, 3.8 feet below the crown. Located at the lower end of the rock revetment. (Plans to replace an existing 10-inch suction pipe with a 10-inch slant propeller pump on the levee authorized under Permit No. 4848, 1965 - Kay Dix Ranch Company. Retention of a 10-inch pipe through the levee, 3.8 feet below the crown, authorized under Automatic Board Order (ABO) issued as Permit No. 11169, 1975 - Darrell T. and B. M. Mealer). Abandoned in place. [Additional Reference(s): DWR Levee Log. USACE Sacramento O&M Manual 103, June 1954, (Station ""R"" 548+59.8), invert elevation 16.8 feet]. FS Date: 5/27/2015						

Photo 1 of 3 : UCIP_FA_2019_45683_74200.jpg



LS view of pipe appearing abandoned in place.

* Location		** Rating		+ Issue Type	
LS : Land Side	N/A : Not Applicable	A : Acceptable	N : Not Inspected/Rated	Ma : Maintenance Deficiency	
WS : Water Side		M : Minimally Acceptable	C : Corrected	Ob : Design & System Obsolescence	
CR : Crown		U : Unacceptable	A/W : Acceptable but Monitor & Maintain	En : Enforcement	

**Flood Control Project Maintenance
Levee Inspections**

Levee Inspection Report By Mile - Fall 2019

Reclamation District No. 0556 Upper Andrus

Waterway	Bank	Unit Miles	Inspection Start/End	Inspector
Unit No. 01 Georgiana Slough	Right	5.48	10/18/2019 10/18/2019	David Julian

LM Start	1.17	Rating **	M	Issue No.	64 (cont)	
LM End	1.17	Issue Type +	En	Location *		
Category	Supplemental			GPS Latitude/Longitude		
				Start	End	
Item	DRAFT DWR UCIP Field Study			38.227568 °	38.227568 °	
				-121.529489 °	-121.529489 °	
DWR ID	20823					
Comment Code						
Inspector Comment						
DS_ID:20823 FS_ID:45683 EP_NO: 11169 Repair Type: Non-Urgent Crossing Status: Found UCIP Comments: Appears abandoned in place and if so should be done so properly. Desnse vegetation on WS limits visibility. FIELD_STRUCT_DESC: *ABANDONED* 10-inch steel irrigation discharge pipe through the levee, 3.8 feet below the crown. Located at the lower end of the rock revetment. (Plans to replace an existing 10-inch suction pipe with a 10-inch slant propeller pump on the levee authorized under Permit No. 4848, 1965 - Kay Dix Ranch Company. Retention of a 10-inch pipe through the levee, 3.8 feet below the crown, authorized under Automatic Board Order (ABO) issued as Permit No. 11169, 1975 - Darrell T. and B. M. Mealer). Abandoned in place. [Additional Reference(s): DWR Levee Log. USACE Sacramento O&M Manual 103, June 1954, (Station ""R"" 548+59.8), invert elevation 16.8 feet]. FS Date: 5/27/2015						

Photo 2 of 3 : UCIP_FA_2019_45683_74201.jpg



Closeup of abandoned pipe.

LM Start	1.17	Rating **	M	Issue No.	64 (cont)
LM End	1.17	Issue Type +	En	Location *	

Photo 3 of 3 : UCIP_FA_2019_45683_74202.jpg



View up LS slope. 10" pipe (not visible) rests next to (visible) 8" pipe.

* Location LS : Land Side N/A : Not Applicable WS : Water Side CR : Crown	** Rating A : Acceptable M : Minimally Acceptable U : Unacceptable	N : Not Inspected/Rated C : Corrected A/W : Acceptable but Monitor & Maintain	+ Issue Type Ma : Maintenance Deficiency Ob : Design & System Obsolescence En : Enforcement
--	--	---	---

Reclamation District No. 0556 Upper Andrus

No Photos

Photo 1 of 1 : FA 2019 RD0556 18 49 20191021 00064.jpg



View looking downstream at thick vegetation the landside slope (Fall 2019).

Photo 1 of 1 : FA_2019_RD0556_18_45_20190826_00027.jpg



View of cactus on the landside shoulder (Spring 2019).

* Location	** Rating	+ Issue Type
LS : Land Side N/A : Not Applicable WS : Water Side CR : Crown	A : Acceptable N : Not Inspected/Rated M : Minimally Acceptable C : Corrected U : Unacceptable A/W : Acceptable but Monitor & Maintain	Ma : Maintenance Deficiency Ob : Design & System Obsolescence En : Enforcement

**Flood Control Project Maintenance
Levee Inspections**

Levee Inspection Report By Mile - Fall 2019

Reclamation District No. 0556 Upper Andrus

Waterway	Bank	Unit Miles	Inspection Start/End	Inspector
Unit No. 01 Georgiana Slough	Right	5.48	10/18/2019 10/18/2019	David Julian

LM Start	1.33	Rating **	M	Issue No.	65	
LM End	1.33	Issue Type +	En	Location *		
Category	Supplemental			GPS Latitude/Longitude		
				Start	End	
Item	DRAFT DWR UCIP Field Study			38.227622°	38.227622°	
				-121.532154°	-121.532154°	
DWR ID	20825					
Comment Code						
Inspector Comment						
DS_ID:20825 FS_ID:45692 EP_NO: 13302 Repair Type: Non-Urgent Crossing Status: Found UCIP Comments: Seal beneath siphon breaker off LS toe leaking. Rodent activity near crown off LS shoulder. Need to contact owner about leaky seal. Dense vegetation prevented inspection of WS slope. FIELD_STRUCT_DESC: 6-inch steel irrigation discharge pipe and 2-inch galvanized iron electrical conduit through the levee, 2 feet below the crown. Siphon valve on the landside (LS) shoulder. Concrete stand and pump at the LS toe. Circuit box also at the LS toe. Cuts visible in pavement. 6-inch polyvinyl chloride (PVC) standpipe adjacent to the pipe off the LS toe. (Plans to install a 6-inch irrigation pipe and electrical conduit through the levee authorized under Permit No. 13302, 1981 - Kaydix Ranch). [Additional Reference(s): DWR Levee Log. USACE Sacramento O&M Manual 103, June 1954, (Station ""R"" 540+85), invert elevation 16.3 feet]. FS Date: 5/27/2015						

Photo 1 of 3 : UCIP_FA_2019_45692_74204.jpg



Pipe, standpipe, electrical box at LS toe. Pumphouse in bush behind electrical box.

LM Start	1.33	Rating **	M	Issue No.	65 (cont)
LM End	1.33	Issue Type +	En	Location *	

Photo 2 of 3 : UCIP_FA_2019_45692_74205.jpg



WS view and cuts visible on pavement.

* Location LS : Land Side N/A : Not Applicable WS : Water Side CR : Crown	** Rating A : Acceptable M : Minimally Acceptable U : Unacceptable	N : Not Inspected/Rated C : Corrected A/W : Acceptable but Monitor & Maintain	+ Issue Type Ma : Maintenance Deficiency Ob : Design & System Obsolescence En : Enforcement
--	--	---	---

**Flood Control Project Maintenance
Levee Inspections**

Levee Inspection Report By Mile - Fall 2019

Reclamation District No. 0556 Upper Andrus

Waterway	Bank	Unit Miles	Inspection Start/End	Inspector
Unit No. 01 Georgiana Slough	Right	5.48	10/18/2019 10/18/2019	David Julian

LM Start	1.33	Rating **	M	Issue No.	65 (cont)	
LM End	1.33	Issue Type +	En	Location *		
Category	Supplemental			GPS Latitude/Longitude		
				Start	End	
Item	DRAFT DWR UCIP Field Study			38.227622°	38.227622°	
				-121.532154°	-121.532154°	
DWR ID	20825					
Comment Code						
Inspector Comment						
DS_ID:20825 FS_ID:45692 EP_NO: 13302 Repair Type: Non-Urgent Crossing Status: Found UCIP Comments: Seal beneath siphon breaker off LS toe leaking. Rodent activity near crown off LS shoulder. Need to contact owner about leaky seal. Dense vegetation prevented inspection of WS slope. FIELD_STRUCT_DESC: 6-inch steel irrigation discharge pipe and 2-inch galvanized iron electrical conduit through the levee, 2 feet below the crown. Siphon valve on the landside (LS) shoulder. Concrete stand and pump at the LS toe. Circuit box also at the LS toe. Cuts visible in pavement. 6-inch polyvinyl chloride (PVC) standpipe adjacent to the pipe off the LS toe. (Plans to install a 6-inch irrigation pipe and electrical conduit through the levee authorized under Permit No. 13302, 1981 - Kaydix Ranch). [Additional Reference(s): DWR Levee Log. USACE Sacramento O&M Manual 103, June 1954, (Station ""R"" 540+85), invert elevation 16.3 feet]. FS Date: 5/27/2015						

Photo 3 of 3 : UCIP_FA_2019_45692_74206.jpg



Closeup of pipe at LS toe. Seal beneath siphon breaker leaking.

LM Start	1.34	Rating **	U	Issue No.	27
LM End	1.37	Issue Type +	En	Location *	LS
Category	Earthen Levee			GPS Latitude/Longitude	
				Start	End
Item	Encroachments			38.227521 °	38.227320 °
				-121.532393 °	-121.532710 °
DWR ID	DWR_RD0556_01_s_2013_27				
Comment Code					
DE : Debris					
Inspector Comment					
Remove the pile of asphalt and concrete from the toe of levee.					

Photo 1 of 3 : FA_2019_RD0556_18_27_20190826_00009.jpg



View of concrete rubble at landside toe.

* Location LS : Land Side N/A : Not Applicable WS : Water Side CR : Crown	** Rating A : Acceptable M : Minimally Acceptable U : Unacceptable	N : Not Inspected/Rated C : Corrected A/W : Acceptable but Monitor & Maintain	+ Issue Type Ma : Maintenance Deficiency Ob : Design & System Obsolescence En : Enforcement
--	--	---	---

**Flood Control Project Maintenance
Levee Inspections**

Levee Inspection Report By Mile - Fall 2019

Reclamation District No. 0556 Upper Andrus

Waterway	Bank	Unit Miles	Inspection Start/End	Inspector
Unit No. 01 Georgiana Slough	Right	5.48	10/18/2019 10/18/2019	David Julian

LM Start	1.34	Rating **	U	Issue No.	27 (cont)	
LM End	1.37	Issue Type +	En	Location *	LS	
Category	Earthen Levee			GPS Latitude/Longitude		
				Start		End
Item	Encroachments			38.227521°		38.227320°
				-121.532393°		-121.532710°
DWR ID	DWR_RD0556_01_s_2013_27					
Comment Code						
DE : Debris						
Inspector Comment						
Remove the pile of asphalt and concrete from the toe of levee.						

Photo 2 of 3 : FA_2019_RD0556_18_27_20190826_00010.jpg



View of concrete rubble on landside slope and toe.

LM Start	1.34	Rating **	U	Issue No.	27 (cont)
LM End	1.37	Issue Type +	En	Location *	LS

Photo 3 of 3 : FA_2019_RD0556_18_27_20190826_00011.jpg



View concrete rubble on landside slope.

LM Start	1.43	Rating **	M	Issue No.	40
LM End	1.43	Issue Type +	Ma	Location *	LS
Category	Earthen Levee			GPS Latitude/Longitude	
				Start	End
Item	Erosion / Bank Caving			38.226537 °	38.226537 °
				-121.533512 °	-121.533512 °
DWR ID	DWR_RD0556_01_f_2012_40				
Comment Code					
E1 : Note and monitor erosion site.					
Inspector Comment					
Erosion is covered by vegetation.					

Photo 1 of 1 : FA_2019_RD0556_18_40_20190826_00024.jpg



View of erosion that is covered by vegetation on the landside slope (October 2018).

* Location LS : Land Side N/A : Not Applicable WS : Water Side CR : Crown	** Rating A : Acceptable M : Minimally Acceptable U : Unacceptable	N : Not Inspected/Rated C : Corrected A/W : Acceptable but Monitor & Maintain	+ Issue Type Ma : Maintenance Deficiency Ob : Design & System Obsolescence En : Enforcement
--	--	--	---

**Flood Control Project Maintenance
Levee Inspections**

Levee Inspection Report By Mile - Fall 2019

Reclamation District No. 0556 Upper Andrus

Waterway	Bank	Unit Miles	Inspection Start/End	Inspector
Unit No. 01 Georgiana Slough	Right	5.48	10/18/2019 10/18/2019	David Julian

LM Start	1.50	Rating **	M	Issue No.	22
LM End	1.50	Issue Type +	Ma	Location *	LS
Category	Earthen Levee			GPS Latitude/Longitude	
				Start	End
Item	Erosion / Bank Caving			38.225840 °	38.225840 °
				-121.534157 °	-121.534157 °
DWR ID	DWR_RD0556_01_s _ 2012_22				
Comment Code					
E1 : Note and monitor erosion site.					
Inspector Comment					
Dip at the top of the landside slope is greater than 3".					

Photo 1 of 1 : FA_2019_RD0556_18_22_20190826_00003.jpg



View of dip at the top of the landside slope (October 2018).

LM Start	1.55	Rating **	U	Issue No.	46
LM End	3.19	Issue Type +	Ma	Location *	LS
Category	Earthen Levee			GPS Latitude/Longitude	
				Start	End
Item	Trim / Thin Trees			38.225268 °	38.210659 °
				-121.534733 °	-121.539176 °
DWR ID	DWR_RD0556_01_s _ 2018_46				
Comment Code					
T1 : Trim trees to at least five feet above ground level.					
Inspector Comment					

No Photos

LM Start	1.55	Rating **	A/W	Issue No.	9
LM End	1.57	Issue Type +	En	Location *	WS
Category	Earthen Levee			GPS Latitude/Longitude	
				Start	End
Item	Encroachments			38.225191 °	38.224976 °
				-121.534799 °	-121.535043 °
DWR ID	DWR_RD0556_01_s _ 2012_9				
Comment Code					
TR : Tree or limb					
Inspector Comment					
These cut up tree sections remain on the waterward slope to prevent parking in the area.					

Photo 1 of 1 : FA_2019_RD0556_18_9_20190826_00001.jpg



Cut tree sections on the waterside levee shoulder remain to prevent parking.

*** Location**
LS : Land Side N/A : Not Applicable
WS : Water Side
CR : Crown

**** Rating**
A : Acceptable N : Not Inspected/Rated
M : Minimally Acceptable C : Corrected
U : Unacceptable A/W : Acceptable but Monitor & Maintain

+ Issue Type
Ma : Maintenance Deficiency
Ob : Design & System Obsolescence
En : Enforcement

**Flood Control Project Maintenance
Levee Inspections**

Levee Inspection Report By Mile - Fall 2019

Reclamation District No. 0556 Upper Andrus

Waterway	Bank	Unit Miles	Inspection Start/End	Inspector
Unit No. 01 Georgiana Slough	Right	5.48	10/18/2019 10/18/2019	David Julian

LM Start	1.57	Rating **	M	Issue No.	66	
LM End	1.57	Issue Type +	En	Location *		
Category	Supplemental			GPS Latitude/Longitude		
				Start	End	
Item	DRAFT DWR UCIP Field Study			38.225001°	38.225001°	
				-121.535007°	-121.535007°	
DWR ID	20827					
Comment Code						
Inspector Comment						
DS_ID:20827 FS_ID:45743 EP_NO: 11169 Repair Type: Non-Urgent Crossing Status: Found UCIP Comments: Dense vegetation on LS and WS limited accessibility. FIELD_STRUCT_DESC: 8-inch steel irrigation discharge pipe through the levee, 3.5 feet below the crown. 1-inch air valve. Pump and gate valve on the waterside (WS) berm. 2-inch electrical conduit through the levee. 36-inch concrete standpipe and concrete block step on the landside (LS) slope. (Retention of a 10-inch pipe through the levee, 3.5 feet below the crown, and a pump and a gate valve on the WS berm authorized under Automatic Board Order (ABO) issued as Permit No. 11169, 1975 - Darrell T. and B. M. Mealer). [Additional Reference(s): DWR Levee Log, 10-inch pipe referenced. USACE Sacramento O&M Manual 103, June 1954, (Station ""R"" 528+02.1), 10-inch pipe referenced, invert elevation 16.6 feet]. FS Date: 5/27/2015						

LM Start	1.57	Rating **	M	Issue No.	66 (cont)
LM End	1.57	Issue Type +	En	Location *	

Photo 1 of 3 : UCIP_FA_2019_45743_74240.jpg



Concrete standpipe and steps off LS toe.

Photo 2 of 3 : UCIP_FA_2019_45743_74241.jpg



Service pole next to standpipe off LS toe.

* Location LS : Land Side N/A : Not Applicable WS : Water Side CR : Crown	** Rating A : Acceptable M : Minimally Acceptable U : Unacceptable	N : Not Inspected/Rated C : Corrected A/W : Acceptable but Monitor & Maintain	+ Issue Type Ma : Maintenance Deficiency Ob : Design & System Obsolescence En : Enforcement
--	--	---	---

**Flood Control Project Maintenance
Levee Inspections**

Levee Inspection Report By Mile - Fall 2019

Reclamation District No. 0556 Upper Andrus

Waterway	Bank	Unit Miles	Inspection Start/End	Inspector
Unit No. 01 Georgiana Slough	Right	5.48	10/18/2019 10/18/2019	David Julian

LM Start	1.57	Rating **	M	Issue No.	66 (cont)	
LM End	1.57	Issue Type +	En	Location *		
Category	Supplemental			GPS Latitude/Longitude		
				Start	End	
Item	DRAFT DWR UCIP Field Study			38.225001 °	38.225001 °	
				-121.535007 °	-121.535007 °	
DWR ID	20827					
Comment Code						
Inspector Comment						
DS_ID:20827 FS_ID:45743 EP_NO: 11169 Repair Type: Non-Urgent Crossing Status: Found UCIP Comments: Dense vegetation on LS and WS limited accessibility. FIELD_STRUCT_DESC: 8-inch steel irrigation discharge pipe through the levee, 3.5 feet below the crown. 1-inch air valve. Pump and gate valve on the waterside (WS) berm. 2-inch electrical conduit through the levee. 36-inch concrete standpipe and concrete block step on the landside (LS) slope. (Retention of a 10-inch pipe through the levee, 3.5 feet below the crown, and a pump and a gate valve on the WS berm authorized under Automatic Board Order (ABO) issued as Permit No. 11169, 1975 - Darrell T. and B. M. Mealer). [Additional Reference(s): DWR Levee Log, 10-inch pipe referenced. USACE Sacramento O&M Manual 103, June 1954, (Station ""R"" 528+02.1), 10-inch pipe referenced, invert elevation 16.6 feet]. FS Date: 5/27/2015						

Photo 3 of 3 : UCIP_FA_2019_45743_74242.jpg



Slant pump and pipe with 2" electrical conduit into WS slope.

LM Start	1.65	Rating **	U	Issue No.	17
LM End	1.70	Issue Type +	En	Location *	WS
Category	Earthen Levee			GPS Latitude/Longitude	
				Start	End
Item	Vegetation			38.224623 °	38.224408 °
				-121.536320 °	-121.537180 °
DWR ID	DWR_RD0556_01_s_2012_17				
Comment Code					
V6 : Landscaping					
Inspector Comment					
Oleanders blocking view down waterside slope					

Photo 1 of 1 : FA_2019_RD0556_18_17_20191021_00078.jpg



View looking upstream at thick oleanders on the waterside slope (Fall 2019).

* Location LS : Land Side N/A : Not Applicable WS : Water Side CR : Crown	** Rating A : Acceptable M : Minimally Acceptable U : Unacceptable	N : Not Inspected/Rated C : Corrected A/W : Acceptable but Monitor & Maintain	+ Issue Type Ma : Maintenance Deficiency Ob : Design & System Obsolescence En : Enforcement
--	--	---	---

**Flood Control Project Maintenance
Levee Inspections**

Levee Inspection Report By Mile - Fall 2019

Reclamation District No. 0556 Upper Andrus

Waterway	Bank	Unit Miles	Inspection Start/End	Inspector
Unit No. 01 Georgiana Slough	Right	5.48	10/18/2019 10/18/2019	David Julian

LM Start	1.66	Rating **	U	Issue No.	51
LM End	1.69	Issue Type +	En	Location *	LS
Category	Earthen Levee			GPS Latitude/Longitude	
				Start	End
Item	Vegetation			38.224487 °	38.224355 °
				-121.536492 °	-121.537055 °
DWR ID	DWR_RD0556_01_f_2019_51				
Comment Code					
V6 : Landscaping					
Inspector Comment					

Photo 1 of 1 : FA_2019_RD0556_18_51_20191021_00065.jpg



View looking downstream at landscaping on the landside slope (Fall 2019).

LM Start	1.76	Rating **	U	Issue No.	59
LM End	2.50	Issue Type +	Ma	Location *	WS
Category	Earthen Levee			GPS Latitude/Longitude	
				Start	End
Item	Vegetation			38.224070 °	38.217322 °
				-121.538263 °	-121.543601 °
DWR ID	DWR_RD0556_01_f_2019_59				
Comment Code					
V2 : Remove the wild growth other than native grasses from the levee slopes.					
Inspector Comment					

Photo 1 of 1 : FA_2019_RD0556_18_59_20191021_00077.jpg



View looking upstream at thick vegetation on the waterside slope (Fall 2019).

*** Location**
LS : Land Side N/A : Not Applicable
WS : Water Side
CR : Crown

**** Rating**
A : Acceptable N : Not Inspected/Rated
M : Minimally Acceptable C : Corrected
U : Unacceptable A/W : Acceptable but Monitor & Maintain

+ Issue Type
Ma : Maintenance Deficiency
Ob : Design & System Obsolescence
En : Enforcement

**Flood Control Project Maintenance
Levee Inspections**

Levee Inspection Report By Mile - Fall 2019

Reclamation District No. 0556 Upper Andrus

Waterway	Bank	Unit Miles	Inspection Start/End	Inspector
Unit No. 01 Georgiana Slough	Right	5.48	10/18/2019 10/18/2019	David Julian

LM Start	1.79	Rating **	M	Issue No.	67	
LM End	1.79	Issue Type +	En	Location *		
Category	Supplemental			GPS Latitude/Longitude		
				Start		End
Item	DRAFT DWR UCIP Field Study			38.223999 °		38.223999 °
				-121.538735 °		-121.538735 °
DWR ID	20828					
Comment Code						
Inspector Comment						
DS_ID:20828 FS_ID:45746 EP_NO: 3735 Repair Type: Non-Urgent Crossing Status: Indicator Found UCIP Comments: Dense vegetation on LS and WS limited accessibility. FIELD_STRUCT_DESC: 4-inch electrical conduit of an unknown material under Georgiana Slough and through its levees, 4 feet below the crown. Pump on the waterside (WS) berm. Power pole on the landside (LS) in alignment with the cuts in the pavement. (Plans for installation of a 12-kilovolt submarine cable under Georgiana Slough and through its levees authorized under Permit No. 3735, 1961 - Pacific Gas and Electric Company [PG&E]). [Additional Reference(s): DWR Levee Log]. FS Date: 5/27/2015						

LM Start	1.79	Rating **	M	Issue No.	67 (cont)
LM End	1.79	Issue Type +	En	Location *	

Photo 1 of 3 : UCIP_FA_2019_45746_74250.jpg



View of WS and cuts in pavement.

Photo 2 of 3 : UCIP_FA_2019_45746_74251.jpg



Cuts in pavement in alignment with electric pole off LS toe.

* Location	** Rating	+ Issue Type
LS : Land Side WS : Water Side CR : Crown	A : Acceptable M : Minimally Acceptable U : Unacceptable	Ma : Maintenance Deficiency Ob : Design & System Obsolescence En : Enforcement
N/A : Not Applicable	N : Not Inspected/Rated C : Corrected A/W : Acceptable but Monitor & Maintain	

**Flood Control Project Maintenance
Levee Inspections**

Levee Inspection Report By Mile - Fall 2019

Reclamation District No. 0556 Upper Andrus

Waterway	Bank	Unit Miles	Inspection Start/End	Inspector
Unit No. 01 Georgiana Slough	Right	5.48	10/18/2019 10/18/2019	David Julian

LM Start	1.79	Rating **	M	Issue No.	67 (cont)	
LM End	1.79	Issue Type +	En	Location *		
Category	Supplemental			GPS Latitude/Longitude		
				Start		End
Item	DRAFT DWR UCIP Field Study			38.223999 °		38.223999 °
				-121.538735 °		-121.538735 °
DWR ID	20828					
Comment Code						
Inspector Comment						
DS_ID:20828 FS_ID:45746 EP_NO: 3735 Repair Type: Non-Urgent Crossing Status: Indicator Found UCIP Comments: Dense vegetation on LS and WS limited accessibility. FIELD_STRUCT_DESC: 4-inch electrical conduit of an unknown material under Georgiana Slough and through its levees, 4 feet below the crown. Pump on the waterside (WS) berm. Power pole on the landside (LS) in alignment with the cuts in the pavement. (Plans for installation of a 12-kilovolt submarine cable under Georgiana Slough and through its levees authorized under Permit No. 3735, 1961 - Pacific Gas and Electric Company [PG&E]). [Additional Reference(s): DWR Levee Log]. FS Date: 5/27/2015						

Photo 3 of 3 : UCIP_FA_2019_45746_74252.jpg



Pipe debris present at LS toe.

* Location LS : Land Side N/A : Not Applicable WS : Water Side CR : Crown	** Rating A : Acceptable M : Minimally Acceptable U : Unacceptable	N : Not Inspected/Rated C : Corrected A/W : Acceptable but Monitor & Maintain	+ Issue Type Ma : Maintenance Deficiency Ob : Design & System Obsolescence En : Enforcement
--	--	---	---

**Flood Control Project Maintenance
Levee Inspections**

Levee Inspection Report By Mile - Fall 2019

Reclamation District No. 0556 Upper Andrus

Waterway	Bank	Unit Miles	Inspection Start/End	Inspector
Unit No. 01 Georgiana Slough	Right	5.48	10/18/2019 10/18/2019	David Julian

LM Start	1.89	Rating **	M	Issue No.	68	
LM End	1.89	Issue Type +	En	Location *		
Category	Supplemental			GPS Latitude/Longitude		
				Start	End	
Item	DRAFT DWR UCIP Field Study			38.223760 °	38.223760 °	
				-121.540629 °	-121.540629 °	
DWR ID	20829					
Comment Code						
Inspector Comment						
DS_ID:20829 FS_ID:45764 EP_NO: 11178 Repair Type: Non-Urgent Crossing Status: Found UCIP Comments: Dense vegetation on WS and LS. Some oil leakage inside pumphouse. FIELD_STRUCT_DESC: 8-inch steel irrigation discharge pipe through the levee, 3.7 feet below the crown. 2-inch electrical conduit through the levee, next to the 8-inch discharge pipe. 1-inch air valve and pump on the waterside (WS) berm. Service pole on the landside (LS) slope. Tin and wood pump house on the WS berm. 12-foot by 3-foot concrete standpipe on the LS. (Retention of an 8-inch pipe through the levee, 3.7 feet below the crown, a pump on the WS berm, and a service pole on the LS slope authorized under Automatic Board Order (ABO) issued as Permit No. 11178, 1975 - Allena D. Swett). [Additional Reference(s): DWR Levee Log. USACE Sacramento O&M Manual 103, June 1954, (Station ""R"" 511+00), invert elevation 16.4 feet]. FS Date: 5/27/2015						

LM Start	1.89	Rating **	M	Issue No.	68 (cont)
LM End	1.89	Issue Type +	En	Location *	

Photo 1 of 3 : UCIP_FA_2019_45764_74260.jpg



LS view: service pole on LW slope. Standpipe not visible in photo.

Photo 2 of 3 : UCIP_FA_2019_45764_74261.jpg



Pole on LS slope with electric box and 2-inch conduit.

* Location	** Rating	+ Issue Type
LS : Land Side WS : Water Side CR : Crown	A : Acceptable M : Minimally Acceptable U : Unacceptable	Ma : Maintenance Deficiency Ob : Design & System Obsolescence En : Enforcement
N/A : Not Applicable	N : Not Inspected/Rated C : Corrected A/W : Acceptable but Monitor & Maintain	

**Flood Control Project Maintenance
Levee Inspections**

Levee Inspection Report By Mile - Fall 2019

Reclamation District No. 0556 Upper Andrus

Waterway	Bank	Unit Miles	Inspection Start/End	Inspector
Unit No. 01 Georgiana Slough	Right	5.48	10/18/2019 10/18/2019	David Julian

LM Start	1.89	Rating **	M	Issue No.	68 (cont)	
LM End	1.89	Issue Type +	En	Location *		
Category	Supplemental			GPS Latitude/Longitude		
				Start	End	
Item	DRAFT DWR UCIP Field Study			38.223760 °	38.223760 °	
				-121.540629 °	-121.540629 °	
DWR ID	20829					
Comment Code						
Inspector Comment						
DS_ID:20829 FS_ID:45764 EP_NO: 11178 Repair Type: Non-Urgent Crossing Status: Found UCIP Comments: Dense vegetation on WS and LS. Some oil leakage inside pumphouse. FIELD_STRUCT_DESC: 8-inch steel irrigation discharge pipe through the levee, 3.7 feet below the crown. 2-inch electrical conduit through the levee, next to the 8-inch discharge pipe. 1-inch air valve and pump on the waterside (WS) berm. Service pole on the landside (LS) slope. Tin and wood pump house on the WS berm. 12-foot by 3-foot concrete standpipe on the LS. (Retention of an 8-inch pipe through the levee, 3.7 feet below the crown, a pump on the WS berm, and a service pole on the LS slope authorized under Automatic Board Order (ABO) issued as Permit No. 11178, 1975 - Allena D. Swett). [Additional Reference(s): DWR Levee Log. USACE Sacramento O&M Manual 103, June 1954, (Station ""R"" 511+00), invert elevation 16.4 feet]. FS Date: 5/27/2015						

Photo 3 of 3 : UCIP_FA_2019_45764_74262.jpg



Standpipe on LS next to service pole.

LM Start	1.91	Rating **	U	Issue No.	47
LM End	1.93	Issue Type +	En	Location *	LS
Category	Earthen Levee			GPS Latitude/Longitude	
				Start	End
Item	Vegetation			38.223736 °	38.223673 °
				-121.541036 °	-121.541453 °
DWR ID	DWR_RD0556_01_s_2018_47				
Comment Code					
V6 : Landscaping					
Inspector Comment					
Dense vegetation prevents inspection and access.					

Photo 1 of 1 : FA_2019_RD0556_18_47_20190826_00028.jpg



Landscaping should be thinned.

* Location LS : Land Side N/A : Not Applicable WS : Water Side CR : Crown	** Rating A : Acceptable M : Minimally Acceptable U : Unacceptable	N : Not Inspected/Rated C : Corrected A/W : Acceptable but Monitor & Maintain	+ Issue Type Ma : Maintenance Deficiency Ob : Design & System Obsolescence En : Enforcement
--	--	---	---

**Flood Control Project Maintenance
Levee Inspections**

Levee Inspection Report By Mile - Fall 2019

Reclamation District No. 0556 Upper Andrus

Waterway	Bank	Unit Miles	Inspection Start/End	Inspector
Unit No. 01 Georgiana Slough	Right	5.48	10/18/2019 10/18/2019	David Julian

LM Start	2.09	Rating **	U	Issue No.	25
LM End	2.11	Issue Type +	En	Location *	LS
Category	Earthen Levee			GPS Latitude/Longitude	
				Start	End
Item	Encroachments			38.223087°	38.222850°
				-121.544140°	-121.544330°
DWR ID	DWR_RD0556_01_f_2017_25				
Comment Code					
FE : Fence					
Inspector Comment					

Photo 1 of 1 : FA_2019_RD0556_18_25_20190826_00007.jpg



Unpermitted fence covered in berry vines along landside levee toe should be moved back 10 feet to allow access.

LM Start	2.13	Rating **	M	Issue No.	69	
LM End	2.13	Issue Type +	En	Location *		
Category	Supplemental			GPS Latitude/Longitude		
				Start	End	
Item	DRAFT DWR UCIP Field Study			38.222560 °	38.222560 °	
				-121.544485 °	-121.544485 °	
DWR ID	20830					
Comment Code						
Inspector Comment						
DS_ID:20830						
FS_ID:45786						
EP_NO: 2392						
Repair Type: Non-Urgent						
Crossing Status: Found						
UCIP Comments: Hole and exposed depression adjacent to pipe at LS.						
Dense vegetation on WS and LS limited visibility.						
FIELD_STRUCT_DESC: 12-inch steel irrigation discharge pipe through						
the levee, 3 feet below the crown. Slant pump on the waterside (WS)						
bank. 1-inch electrical conduit through the levee, beside the 12-inch						
pipe, visible on the WS. Service pole and two standpipes at the						
landside (LS) toe. One of the two standpipes is 6 inches. (Plans for the						
installation of a pumping plant and a steel pipe through the levee						
authorized under Permit No. 2392, 1956 - Loyal D. Mealer). [Additional						
Reference(s): DWR Levee Log].						
FS Date: 5/27/2015						

Photo 1 of 3 : UCIP_FA_2019_45786_74280.jpg



WS view: Slant pump, 12-inch and 1-inch pipe through levee.

* Location LS : Land Side N/A : Not Applicable WS : Water Side CR : Crown	** Rating A : Acceptable M : Minimally Acceptable U : Unacceptable	N : Not Inspected/Rated C : Corrected A/W : Acceptable but Monitor & Maintain	+ Issue Type Ma : Maintenance Deficiency Ob : Design & System Obsolescence En : Enforcement
--	--	--	---

**Flood Control Project Maintenance
Levee Inspections**

Levee Inspection Report By Mile - Fall 2019

Reclamation District No. 0556 Upper Andrus

Waterway	Bank	Unit Miles	Inspection Start/End	Inspector
Unit No. 01 Georgiana Slough	Right	5.48	10/18/2019 10/18/2019	David Julian

LM Start	2.13	Rating **	M	Issue No.	69 (cont)	
LM End	2.13	Issue Type +	En	Location *		
Category	Supplemental			GPS Latitude/Longitude		
				Start	End	
Item	DRAFT DWR UCIP Field Study			38.222560 °	38.222560 °	
				-121.544485 °	-121.544485 °	
DWR ID	20830					
Comment Code						
Inspector Comment						
DS_ID:20830 FS_ID:45786 EP_NO: 2392 Repair Type: Non-Urgent Crossing Status: Found UCIP Comments: Hole and exposed depression adjacent to pipe at LS. Dense vegetation on WS and LS limited visibility. FIELD_STRUCT_DESC: 12-inch steel irrigation discharge pipe through the levee, 3 feet below the crown. Slant pump on the waterside (WS) bank. 1-inch electrical conduit through the levee, beside the 12-inch pipe, visible on the WS. Service pole and two standpipes at the landside (LS) toe. One of the two standpipes is 6 inches. (Plans for the installation of a pumping plant and a steel pipe through the levee authorized under Permit No. 2392, 1956 - Loyal D. Mealer). [Additional Reference(s): DWR Levee Log]. FS Date: 5/27/2015						

LM Start	2.13	Rating **	M	Issue No.	69 (cont)
LM End	2.13	Issue Type +	En	Location *	

Photo 2 of 3 : UCIP_FA_2019_45786_74281.jpg



View toward WS with cuts in pavement in alignment with pipe on WS

Photo 3 of 3 : UCIP_FA_2019_45786_74282.jpg



LS: 2 standpipes and service pole.

* Location LS : Land Side N/A : Not Applicable WS : Water Side CR : Crown	** Rating A : Acceptable M : Minimally Acceptable U : Unacceptable	N : Not Inspected/Rated C : Corrected A/W : Acceptable but Monitor & Maintain	+ Issue Type Ma : Maintenance Deficiency Ob : Design & System Obsolescence En : Enforcement
--	--	---	---

**Flood Control Project Maintenance
Levee Inspections**

Levee Inspection Report By Mile - Fall 2019

Reclamation District No. 0556 Upper Andrus

Waterway	Bank	Unit Miles	Inspection Start/End	Inspector
Unit No. 01 Georgiana Slough	Right	5.48	10/18/2019 10/18/2019	David Julian

LM Start	2.15	Rating **	M	Issue No.	52
LM End	2.32	Issue Type +	Ma	Location *	LS
Category	Earthen Levee			GPS Latitude/Longitude	
				Start	End
Item	Vegetation			38.222265 °	38.219890 °
				-121.544628 °	-121.544017 °
DWR ID	DWR_RD0556_01_f_2019_52				
Comment Code					
V1 : Control annual grass and weeds on the levee slopes and easements.					
Inspector Comment					

No Photos

LM Start	2.32	Rating **	U	Issue No.	53
LM End	2.32	Issue Type +	Ma	Location *	LS
Category	Earthen Levee			GPS Latitude/Longitude	
				Start	End
Item	Trim / Thin Trees			38.219813 °	38.219813 °
				-121.544032 °	-121.544032 °
DWR ID	DWR_RD0556_01_f_2019_53				
Comment Code					
T2 : Thin trees to allow visibility of the ground and room to flood fight.					
Inspector Comment					

Photo 1 of 1 : FA_2019_RD0556_18_53_20191021_00066.jpg



View looking downstream at fig tree on the landside slope (Fall 2019).

LM Start	2.38	Rating **	U	Issue No.	31
LM End	2.43	Issue Type +	En	Location *	LS
Category	Earthen Levee			GPS Latitude/Longitude	
				Start	End
Item	Vegetation			38.219037 °	38.218342 °
				-121.543847 °	-121.543842 °
DWR ID	DWR_RD0556_01_s_2017_31				
Comment Code					
V6 : Landscaping					
Inspector Comment					

Photo 1 of 1 : FA_2019_RD0556_18_31_20191021_00067.jpg



View looking downstream at landscaping on the landside slope (Fall 2019).

*** Location**

LS : Land Side N/A : Not Applicable
WS : Water Side
CR : Crown

**** Rating**

A : Acceptable N : Not Inspected/Rated
M : Minimally Acceptable C : Corrected
U : Unacceptable A/W : Acceptable but Monitor & Maintain

+ Issue Type

Ma : Maintenance Deficiency
Ob : Design & System Obsolescence
En : Enforcement

**Flood Control Project Maintenance
Levee Inspections**

Levee Inspection Report By Mile - Fall 2019

Reclamation District No. 0556 Upper Andrus

Waterway	Bank	Unit Miles	Inspection Start/End	Inspector
Unit No. 01 Georgiana Slough	Right	5.48	10/18/2019 10/18/2019	David Julian

LM Start	2.44	Rating **	M	Issue No.	70
LM End	2.44	Issue Type +	En	Location *	
Category	Supplemental			GPS Latitude/Longitude	
				Start	End
Item	DRAFT DWR UCIP Field Study			38.218242 °	38.218242 °
				-121.543807 °	-121.543807 °
DWR ID	20831				
Comment Code					
Inspector Comment					
DS_ID:20831 FS_ID:52734 EP_NO: 11169 Repair Type: Non-Urgent Crossing Status: Found UCIP Comments: 07/12/2018 Hole near air vent on LS slope is still present but haven't increased in size. Pipe was running at the time of site visit, no leaks detected. Downgraded to "Non-Urgent" due to absence of levee threat. (O.Yakimov-DWR UCIP)05/27/2015 2'x2' hole on levee off LS shoulder. FIELD_STRUCT_DESC: 8-inch steel irrigation discharge pipe through the levee, 3.7 feet below the crown. 1-inch air valve. Pump and switch panel on the waterside (WS) berm. Service pole on the landside (LS). 9-foot by 3-foot concrete standpipe on the LS. 3 cables encased in a 1.5-inch steel conduit through the levee and on the WS, alongside the 8-inch pipe, disconnected on the WS. (Retention of an 8-inch pipe through the levee, 3.7 feet below the crown, a pump and a switch panel on the WS berm, and a service pole on the LS authorized under Automatic Board Order (ABO) issued as Permit No. 11169, 1975 - Darrell T. and B. M. Mealer). [Additional Reference(s): DWR Levee Log. USACE Sacramento O&M Manual 103, June 1954, (Station ""R"" 482+49.3), invert elevation 16 feet]. FS Date: 7/12/2018 1:51:13 PM					

LM Start	2.44	Rating **	M	Issue No.	70 (cont)
LM End	2.44	Issue Type +	En	Location *	

Photo 1 of 3 : UCIP_FA_2019_52734_74287.jpg



Closeup of 8-inch and 1.5-inch pipes and platform off LS toe.

Photo 2 of 3 : UCIP_FA_2019_52734_74288.jpg



Concrete standpipe off LS toe.

* Location LS : Land Side N/A : Not Applicable WS : Water Side CR : Crown	** Rating A : Acceptable M : Minimally Acceptable U : Unacceptable	N : Not Inspected/Rated C : Corrected A/W : Acceptable but Monitor & Maintain	+ Issue Type Ma : Maintenance Deficiency Ob : Design & System Obsolescence En : Enforcement
--	--	---	---

**Flood Control Project Maintenance
Levee Inspections**

Levee Inspection Report By Mile - Fall 2019

Reclamation District No. 0556 Upper Andrus

Waterway	Bank	Unit Miles	Inspection Start/End	Inspector
Unit No. 01 Georgiana Slough	Right	5.48	10/18/2019 10/18/2019	David Julian

LM Start	2.44	Rating **	M	Issue No.	70 (cont)	
LM End	2.44	Issue Type +	En	Location *		
Category	Supplemental			GPS Latitude/Longitude		
				Start	End	
Item	DRAFT DWR UCIP Field Study			38.218242 °	38.218242 °	
				-121.543807 °	-121.543807 °	
DWR ID	20831					
Comment Code						
Inspector Comment						
DS_ID:20831 FS_ID:52734 EP_NO: 11169 Repair Type: Non-Urgent Crossing Status: Found UCIP Comments: 07/12/2018 Hole near air vent on LS slope is still present but haven't increased in size. Pipe was running at the time of site visit, no leaks detected. Downgraded to "Non-Urgent" due to absence of levee threat. (O.Yakimov-DWR UCIP)05/27/2015 2'x2' hole on levee off LS shoulder. FIELD_STRUCT_DESC: 8-inch steel irrigation discharge pipe through the levee, 3.7 feet below the crown. 1-inch air valve. Pump and switch panel on the waterside (WS) berm. Service pole on the landside (LS). 9-foot by 3-foot concrete standpipe on the LS. 3 cables encased in a 1.5-inch steel conduit through the levee and on the WS, alongside the 8-inch pipe, disconnected on the WS. (Retention of an 8-inch pipe through the levee, 3.7 feet below the crown, a pump and a switch panel on the WS berm, and a service pole on the LS authorized under Automatic Board Order (ABO) issued as Permit No. 11169, 1975 - Darrell T. and B. M. Mealer). [Additional Reference(s): DWR Levee Log. USACE Sacramento O&M Manual 103, June 1954, (Station ""R"" 482+49.3), invert elevation 16 feet]. FS Date: 7/12/2018 1:51:13 PM						

Photo 3 of 3 : UCIP_FA_2019_52734_74289.jpg



Closeup of concrete standpipe off LS toe.

LM Start	2.52	Rating **	U	Issue No.	54
LM End	2.54	Issue Type +	En	Location *	LS
Category	Earthen Levee			GPS Latitude/Longitude	
				Start	End
Item	Vegetation			38.217023 °	38.216830 °
				-121.543415 °	-121.543233 °
DWR ID	DWR_RD0556_01_f_2019_54				
Comment Code					
V6 : Landscaping					
Inspector Comment					

Photo 1 of 1 : FA_2019_RD0556_18_54_20191021_00068.jpg



View looking downstream at landscaping on the landside slope (Fall 2019).

* Location LS : Land Side N/A : Not Applicable WS : Water Side CR : Crown	** Rating A : Acceptable M : Minimally Acceptable U : Unacceptable	N : Not Inspected/Rated C : Corrected A/W : Acceptable but Monitor & Maintain	+ Issue Type Ma : Maintenance Deficiency Ob : Design & System Obsolescence En : Enforcement
--	--	---	---

**Flood Control Project Maintenance
Levee Inspections**

Levee Inspection Report By Mile - Fall 2019

Reclamation District No. 0556 Upper Andrus

Waterway	Bank	Unit Miles	Inspection Start/End	Inspector
Unit No. 01 Georgiana Slough	Right	5.48	10/18/2019 10/18/2019	David Julian

LM Start	2.54	Rating **	M	Issue No.	26
LM End	2.54	Issue Type +	En	Location *	LS
Category	Earthen Levee			GPS Latitude/Longitude	
				Start	End
Item	Encroachments			38.216850 °	38.216850 °
				-121.543302 °	-121.543302 °
DWR ID	DWR_RD0556_01_f_2018_26				
Comment Code					
TR : Tree or limb					
Inspector Comment					
Remove new trees from levee slope.					

Photo 1 of 1 : FA_2019_RD0556_18_26_20190826_00008.jpg



Newly planted tree on the land side slope (October 2018).

LM Start	2.54	Rating **	M	Issue No.	32
LM End	2.81	Issue Type +	Ma	Location *	LS
Category	Earthen Levee			GPS Latitude/Longitude	
				Start	End
Item	Vegetation			38.216770 °	38.214455 °
				-121.543212 °	-121.539433 °
DWR ID	DWR_RD0556_01_f_2016_32				
Comment Code					
V2 : Remove the wild growth other than native grasses from the levee slopes.					
Inspector Comment					
Remove the vegetation from the landside slope.					

No Photos

* Location
LS : Land Side N/A : Not Applicable
WS : Water Side
CR : Crown

** Rating
A : Acceptable
M : Minimally Acceptable
U : Unacceptable
N : Not Inspected/Rated
C : Corrected
A/W : Acceptable but Monitor & Maintain

+ Issue Type
Ma : Maintenance Deficiency
Ob : Design & System Obsolescence
En : Enforcement

**Flood Control Project Maintenance
Levee Inspections**

Levee Inspection Report By Mile - Fall 2019

Reclamation District No. 0556 Upper Andrus

Waterway	Bank	Unit Miles	Inspection Start/End	Inspector
Unit No. 01 Georgiana Slough	Right	5.48	10/18/2019 10/18/2019	David Julian

LM Start	2.71	Rating **	M	Issue No.	71
LM End	2.71	Issue Type +	En	Location *	
Category	Supplemental			GPS Latitude/Longitude	
				Start	End
Item	DRAFT DWR UCIP Field Study			38.215222 °	38.215222 °
				-121.540950 °	-121.540950 °
DWR ID	20848				
Comment Code					
Inspector Comment					
DS_ID:20848 FS_ID:45883 EP_NO: 11167 Repair Type: Non-Urgent Crossing Status: Found UCIP Comments: Pipe appears out of use; if so, coordinate with owner to abandon properly per Title 23. FIELD_STRUCT_DESC: 8-inch steel casing through the levee, 3 feet below the crown. 3-inch steel irrigation discharge pipe sleeved through the 8-inch casing. Annular space appears to be grouted. 3-inch pipe connected to the pump on the waterside (WS). 0.75-inch primer pipe. Gate valve on the WS berm. Polyvinyl chloride (PVC) standpipe off the landside (LS) toe, previously a 6-foot by 3-foot concrete standpipe. Pipe not in use. (Retention of an 8-inch pipe through the levee, 3 feet below the crown, and a gate valve on the WS berm authorized under Automatic Board Order (ABO) issued as Permit No. 11167, 1975 - Russel G. Graham, pipe not in use). [Additional Reference(s): DWR Levee Log. USACE Sacramento O&M Manual 103, June 1954, (Station ""R"" 468+52.7), invert elevation 15.9 feet]. FS Date: 6/5/2015 8:11:00 AM					

No Photos

LM Start	2.72	Rating **	U	Issue No.	48
LM End	2.75	Issue Type +	En	Location *	LS
Category	Earthen Levee			GPS Latitude/Longitude	
				Start	End
Item	Vegetation			38.215128 °	38.214955 °
				-121.540813 °	-121.540335 °
DWR ID	DWR_RD0556_01_f_2018_48				
Comment Code					
V6 : Landscaping					
Inspector Comment					
Remove wild grapes and bamboo from landside.					

Photo 1 of 1 : FA_2019_RD0556_18_48_20190826_00029.jpg



View of wild grapes and bamboo on the landside slope (Fall 2018).

* Location LS : Land Side N/A : Not Applicable WS : Water Side CR : Crown	** Rating A : Acceptable M : Minimally Acceptable U : Unacceptable	N : Not Inspected/Rated C : Corrected A/W : Acceptable but Monitor & Maintain	+ Issue Type Ma : Maintenance Deficiency Ob : Design & System Obsolescence En : Enforcement
--	--	---	---

**Flood Control Project Maintenance
Levee Inspections**

Levee Inspection Report By Mile - Fall 2019

Reclamation District No. 0556 Upper Andrus

Waterway	Bank	Unit Miles	Inspection Start/End	Inspector
Unit No. 01 Georgiana Slough	Right	5.48	10/18/2019 10/18/2019	David Julian

LM Start	2.72	Rating **	U	Issue No.	33
LM End	2.72	Issue Type +	Ma	Location *	LS
Category	Earthen Levee			GPS Latitude/Longitude	
				Start	End
Item	Slope Stability			38.215107°	38.215107°
				-121.540677°	-121.540677°
DWR ID	DWR_RD0556_01_s_2017_33				
Comment Code					
S1 : Repair slope instability.					
Inspector Comment					
Fallen tree on landside. Remove the fallen tree and repair the levee damage.					

Photo 1 of 2 : FA_2019_RD0556_18_33_20190826_00017.jpg



View of fallen tree damage to shoulder and slope.

LM Start	2.72	Rating **	U	Issue No.	33 (cont)
LM End	2.72	Issue Type +	Ma	Location *	LS

Photo 2 of 2 : FA_2019_RD0556_18_33_20190826_00018.jpg



View of the root ball of the fallen tree on slope landward.

LM Start	2.85	Rating **	M	Issue No.	43
LM End	2.98	Issue Type +	Ma	Location *	WS
Category	Supplemental			GPS Latitude/Longitude	
				Start	End
Item	2017 USACE Erosion Survey			38.214144 °	38.212577 °
				-121.538692 °	-121.537244 °
DWR ID	DWR_RD0556_01_f_2018_43				
Comment Code					
Inspector Comment					
2017 Site ID: GEO 9.2 R					
Status: Eroding New					
2017 Field Notes: Toe erosion.					
Site History:					

No Photos

* Location LS : Land Side N/A : Not Applicable WS : Water Side CR : Crown	** Rating A : Acceptable M : Minimally Acceptable U : Unacceptable	N : Not Inspected/Rated C : Corrected A/W : Acceptable but Monitor & Maintain	+ Issue Type Ma : Maintenance Deficiency Ob : Design & System Obsolescence En : Enforcement
--	--	--	---

**Flood Control Project Maintenance
Levee Inspections**

Levee Inspection Report By Mile - Fall 2019

Reclamation District No. 0556 Upper Andrus

Waterway	Bank	Unit Miles	Inspection Start/End	Inspector
Unit No. 01 Georgiana Slough	Right	5.48	10/18/2019 10/18/2019	David Julian

LM Start	3.12	Rating **	U	Issue No.	35
LM End	3.14	Issue Type +	Ma	Location *	WS
Category	Earthen Levee			GPS Latitude/Longitude	
				Start	End
Item	Vegetation			38.211103°	38.210970°
				-121.537993°	-121.538370°
DWR ID	DWR_RD0556_01_s_2017_35				
Comment Code					
V2 : Remove the wild growth other than native grasses from the levee slopes.					
Inspector Comment					
Remove the arundo from the waterside slope.					

Photo 1 of 1 : FA_2019_RD0556_18_35_20190826_00020.jpg



View of arundo on waterside slope.

LM Start	3.14	Rating **	U	Issue No.	28
LM End	3.26	Issue Type +	Ma	Location *	LS
Category	Earthen Levee			GPS Latitude/Longitude	
				Start	End
Item	Animal Control			38.210985 °	38.210160 °
				-121.538372 °	-121.540300 °
DWR ID	DWR_RD0556_01_f_2017_28				
Comment Code					
A1 : Exterminate rodents and backfill and compact or grout burrows.					
Inspector Comment					

Photo 1 of 1 : FA_2019_RD0556_18_28_20190826_00012.jpg



Significant rodent activity in this area must be stopped. Holes should be backfilled.

LM Start	3.18	Rating **	M	Issue No.	42
LM End	3.50	Issue Type +	Ma	Location *	WS
Category	Supplemental			GPS Latitude/Longitude	
				Start	End
Item	2017 USACE Erosion Survey			38.210674 °	38.206919 °
				-121.538854 °	-121.541559 °
DWR ID	DWR_RD0556_01_f_2018_42				
Comment Code					
Inspector Comment					
2017 Site ID: GEO 9.0 R					
Status: Eroding New					
2017 Field Notes: Toe erosion and failed revetment.					
Site History:					

No Photos

* Location LS : Land Side N/A : Not Applicable WS : Water Side CR : Crown		** Rating A : Acceptable N : Not Inspected/Rated M : Minimally Acceptable C : Corrected U : Unacceptable A/W : Acceptable but Monitor & Maintain		+ Issue Type Ma : Maintenance Deficiency Ob : Design & System Obsolescence En : Enforcement	
--	--	---	--	---	--

Levee Inspection Report By Mile - Fall 2019

Waterway	Bank	Unit Miles	Inspection Start/End	Inspector
Unit No. 01 Georgiana Slough	Right	5.48	10/18/2019 10/18/2019	David Julian

Photo 1 of 1 : FA_2019_RD0556_18_55_20191021_00069.jpg



View of fig tree on the landside slope (Fall 2019).

Photo 1 of 1 : FA_2019_RD0556_18_38_20191021_00070.jpg



View looking downstream at thick tree growth on the landside slope (Fall 2019)

Photo 1 of 1 : FA_2019_RD0556_18_57_20191021_00076.jpg



View looking upstream at thick vegetation on the waterside slope (Fall 2019)

* Location	** Rating	+ Issue Type
LS : Land Side N/A : Not Applicable WS : Water Side CR : Crown	A : Acceptable N : Not Inspected/Rated M : Minimally Acceptable C : Corrected U : Unacceptable A/W : Acceptable but Monitor & Maintain	Ma : Maintenance Deficiency Ob : Design & System Obsolescence En : Enforcement

**Flood Control Project Maintenance
Levee Inspections**

Levee Inspection Report By Mile - Fall 2019

Reclamation District No. 0556 Upper Andrus

Waterway	Bank	Unit Miles	Inspection Start/End	Inspector
Unit No. 01 Georgiana Slough	Right	5.48	10/18/2019 10/18/2019	David Julian

LM Start	3.38	Rating **	U	Issue No.	29
LM End	3.42	Issue Type +	En	Location *	LS
Category	Earthen Levee			GPS Latitude/Longitude	
				Start	End
Item	Vegetation			38.208755 °	38.208191 °
				-121.541395 °	-121.541578 °
DWR ID	DWR_RD0556_01_f_2017_29				
Comment Code					
V6 : Landscaping					
Inspector Comment					
Large cactus growing on shoulder and slope should be removed to allow inspection and access.					

Photo 1 of 1 : FA_2019_RD0556_18_29_20191021_00071.jpg



View looking downstream at cactus on the landside slope (Fall 2019).

LM Start	3.41	Rating **	U	Issue No.	56
LM End	3.41	Issue Type +	Ma	Location *	LS
Category	Earthen Levee			GPS Latitude/Longitude	
				Start	End
Item	Slope Stability			38.208210 °	38.208210 °
				-121.541588 °	-121.541588 °
DWR ID	DWR_RD0556_01_f_2019_56				
Comment Code					
S2 : Repair the levee slope damaged by foot traffic and prevent access where possible.					
Inspector Comment					
Slope worn down by goats					

Photo 1 of 2 : FA_2019_RD0556_18_56_20191021_00072.jpg



View looking downslope at levee terracing on the landside slope due to goats (Fall 2019).

LM Start	3.41	Rating **	U	Issue No.	56 (cont)
LM End	3.41	Issue Type +	Ma	Location *	LS

Photo 2 of 2 : FA_2019_RD0556_18_56_20191021_00073.jpg



View looking upstream at levee terracing on the landside slope due to goats (Fall 2019).

*** Location**
LS : Land Side N/A : Not Applicable
WS : Water Side
CR : Crown

**** Rating**
A : Acceptable N : Not Inspected/Rated
M : Minimally Acceptable C : Corrected
U : Unacceptable A/W : Acceptable but Monitor & Maintain

+ Issue Type
Ma : Maintenance Deficiency
Ob : Design & System Obsolescence
En : Enforcement

**Flood Control Project Maintenance
Levee Inspections**

Levee Inspection Report By Mile - Fall 2019

Reclamation District No. 0556 Upper Andrus

Waterway	Bank	Unit Miles	Inspection Start/End	Inspector
Unit No. 01 Georgiana Slough	Right	5.48	10/18/2019 10/18/2019	David Julian

LM Start	3.42	Rating **	M	Issue No.	41
LM End	3.85	Issue Type +	Ma	Location *	LS
Category	Earthen Levee			GPS Latitude/Longitude	
				Start	End
Item	Vegetation			38.208113 °	38.202053 °
				-121.541582 °	-121.541135 °
DWR ID	DWR_RD0556_01_f_2019_41				
Comment Code					
V2 : Remove the wild growth other than native grasses from the levee slopes.					
Inspector Comment					
Remove the wild growth and maintain annual vegetation on the levee slope.					

No Photos

LM Start	3.43	Rating **	A/W	Issue No.	23
LM End	3.75	Issue Type +	Ma	Location *	LS
Category	Supplemental			GPS Latitude/Longitude	
				Start	End
Item	2017 Storm Damage			38.208070 °	38.203400 °
				-121.541700 °	-121.540990 °
DWR ID	USACE_CESPK_UPA1_2011_p_0143				
Comment Code					
Inspector Comment					
Levee Evaluation Comments					
Description:					
Site ID No:67					
Site Designation:USACE_CESPK_UPA1_2011_p_0143					
Repair Type: Stability					
Rating:Area of Concern					
Field Date:2/7/2017					
Notes: inactive ditch on landside toe, slope covered in heavy vegetation, minor landside lower slope sloughing observed,					

Photo 1 of 2 : FA_2019_RD0556_18_23_20190826_00004.jpg



* Location
LS : Land Side N/A : Not Applicable
WS : Water Side
CR : Crown

** Rating
A : Acceptable N : Not Inspected/Rated
M : Minimally Acceptable C : Corrected
U : Unacceptable A/W : Acceptable but Monitor & Maintain

+ Issue Type
Ma : Maintenance Deficiency
Ob : Design & System Obsolescence
En : Enforcement

**Flood Control Project Maintenance
Levee Inspections**

Levee Inspection Report By Mile - Fall 2019

Reclamation District No. 0556 Upper Andrus

Waterway	Bank	Unit Miles	Inspection Start/End	Inspector
Unit No. 01 Georgiana Slough	Right	5.48	10/18/2019 10/18/2019	David Julian

LM Start	3.43	Rating **	A/W	Issue No.	23 (cont)
LM End	3.75	Issue Type +	Ma	Location *	LS
Category	Supplemental			GPS Latitude/Longitude	
				Start	End
Item	2017 Storm Damage			38.208070 °	38.203400 °
				-121.541700 °	-121.540990 °
DWR ID	USACE_CESPK_UPA1_2011_p_0143				
Comment Code					
Inspector Comment					
Levee Evaluation Comments					
Description:					
Site ID No:67					
Site Designation:USACE_CESPK_UPA1_2011_p_0143					
Repair Type: Stability					
Rating:Area of Concern					
Field Date:2/7/2017					
Notes: inactive ditch on landside toe, slope covered in heavy vegetation, minor landside lower slope sloughing observed,					

Photo 2 of 2 : FA_2019_RD0556_18_23_20190826_00005.jpg



LM Start	3.46	Rating **	U	Issue No.	58
LM End	3.46	Issue Type +	En	Location *	WS
Category	Earthen Levee			GPS Latitude/Longitude	
				Start	End
Item	Encroachments			38.207585 °	38.207585 °
				-121.541678 °	-121.541678 °
DWR ID	DWR_RD0556_01_f_2019_58				
Comment Code					
DE : Debris					
Inspector Comment					
Remove concrete debris piles					

Photo 1 of 1 : FA_2019_RD0556_18_58_20191021_00075.jpg



View of large concrete debris piles on the waterside shoulder. The waterside shoulder is much larger in this section. (Fall 2019).

* Location
LS : Land Side N/A : Not Applicable
WS : Water Side
CR : Crown

** Rating
A : Acceptable N : Not Inspected/Rated
M : Minimally Acceptable C : Corrected
U : Unacceptable A/W : Acceptable but Monitor & Maintain

+ Issue Type
Ma : Maintenance Deficiency
Ob : Design & System Obsolescence
En : Enforcement

Levee Inspection Report By Mile - Fall 2019

Waterway	Bank	Unit Miles	Inspection Start/End	Inspector
Unit No. 01 Georgiana Slough	Right	5.48	10/18/2019 10/18/2019	David Julian

Photo 1 of 1 : FA_2019_RD0556_18_30_20190826_00014.jpg



View of landscaping on levee slope and toe.


Photo 1 of 1 : FA_2019_RD0556_18_34_20190826_00019.jpg



11-01-2017

View of large cactus on waterside shoulder

Photo 1 of 1 : FA_2019_RD0556_18_39_20190826_00023.jpg



View of dense growth of wild vegetation, berry vines and arundo on

* Location	** Rating	+ Issue Type
LS : Land Side N/A : Not Applicable WS : Water Side CR : Crown	A : Acceptable N : Not Inspected/Rated M : Minimally Acceptable C : Corrected U : Unacceptable A/W : Acceptable but Monitor & Maintain	Ma : Maintenance Deficiency Ob : Design & System Obsolescence En : Enforcement

**Flood Control Project Maintenance
Levee Inspections**

Levee Inspection Report By Mile - Fall 2019

Reclamation District No. 0556 Upper Andrus

Waterway	Bank	Unit Miles	Inspection Start/End	Inspector
Unit No. 01 Georgiana Slough	Right	5.48	10/18/2019 10/18/2019	David Julian

LM Start	5.12	Rating **	M	Issue No.	37
LM End	5.34	Issue Type +	Ma	Location *	WS
Category	Supplemental			GPS Latitude/Longitude	
				Start	End
Item	2017 USACE Erosion Survey			38.189775 °	38.187369 °
				-121.557729 °	-121.560247 °
DWR ID	DWR_RD0556_01_f_2018_37				
Comment Code					
Inspector Comment					
2017 Site ID: GEO 7.0 R					
Status: Eroding					
2017 Field Notes: Site extended downstream. Large erosion pockets and significant toe erosion.					
Site History: 1997 - Toe damaged rock. 1999 - One pocket filled with gravel. 2000 - Eroding beach with some biotech rolls and stakes; some gravel on slope. 2001 - Staked, low fascine walls at bankline. 2005 - Stone revetment in between pockets. 2006 - New rock on upper slope behind brush boxes at the upstream end, Stone is sliding off the hard toe. 2016 - Fresh erosion observed.					

Photo 1 of 1 : FA_2019_RD0556_18_37_20190826_00021.jpg



USACE 2013 Photo #1

LM Start	5.46	Rating **	U	Issue No.	44
LM End	5.46	Issue Type +	En	Location *	LS
Category	Earthen Levee			GPS Latitude/Longitude	
				Start	End
Item	Encroachments			38.186593 °	38.186593 °
				-121.562217 °	-121.562217 °
DWR ID	DWR_RD0556_01_s_2017_44				
Comment Code					
TR : Tree or limb					
Inspector Comment					
Remove the fallen tree from the landside slope and repair the damage to the slope.					

Photo 1 of 2 : FA_2019_RD0556_18_44_20190826_00025.jpg



View of fallen tree on landside slope and damage to the slope.

*** Location**
 LS : Land Side N/A : Not Applicable
 WS : Water Side
 CR : Crown

**** Rating**
 A : Acceptable N : Not Inspected/Rated
 M : Minimally Acceptable C : Corrected
 U : Unacceptable A/W : Acceptable but Monitor & Maintain

+ Issue Type
 Ma : Maintenance Deficiency
 Ob : Design & System Obsolescence
 En : Enforcement

**Flood Control Project Maintenance
Levee Inspections**

Levee Inspection Report By Mile - Fall 2019

Reclamation District No. 0556 Upper Andrus

Waterway	Bank	Unit Miles	Inspection Start/End	Inspector
Unit No. 01 Georgiana Slough	Right	5.48	10/18/2019 10/18/2019	David Julian

LM Start	5.46	Rating **	U	Issue No.	44 (cont)	
LM End	5.46	Issue Type +	En	Location *	LS	
Category	Earthen Levee			GPS Latitude/Longitude		
				Start	End	
Item	Encroachments			38.186593 °	38.186593 °	
				-121.562217 °	-121.562217 °	
DWR ID	DWR_RD0556_01_s_2017_44					
Comment Code						
TR : Tree or limb						
Inspector Comment						
Remove the fallen tree from the landside slope and repair the damage to the slope.						

Photo 2 of 2 : FA_2019_RD0556_18_44_20190826_00026.jpg



View looking upstream at fallen tree landside slope and damage to the slope.

* Location LS : Land Side N/A : Not Applicable WS : Water Side CR : Crown	** Rating A : Acceptable M : Minimally Acceptable U : Unacceptable	N : Not Inspected/Rated C : Corrected A/W : Acceptable but Monitor & Maintain	+ Issue Type Ma : Maintenance Deficiency Ob : Design & System Obsolescence En : Enforcement
--	--	---	---

**Flood Control Project Maintenance
Levee Inspections**

Unit Cover Sheet

Fall 2019 Levee Inspection Results

Reclamation District No. 0556 Upper Andrus

Waterway			Bank	Unit Miles
Unit No. 02 Sacramento River			Left	5.72
	Spring (March - May)	Summer (June - August)	(September - November) Fall	Winter (December - February)
Unit Maintenance Rating (Fall Only)			U	
Date of Inspection	4/25/2019 - 4/25/2019		11/5/2019 - 11/5/2019	
DWR Inspector	David Julian		David Julian	
Accompanied By				

Summer & Winter Inspections

The Local Maintaining Agency (LMA) is responsible for summer and winter inspections. The LMA is required to submit a report regarding summer and winter inspections to the California Department of Water Resources (DWR).

DWR must be informed on the:

- a) completion of the inspection
- b) any changes other than the results of normal maintenance
- c) corrections to deficiencies noted in this report

If additional items are noted, further documentation of those items must also be submitted.

The LMA should submit this information to DWR using the LMA web application tool available at:

<http://cdec.water.ca.gov/lma.html>

If the LMA is unable to submit information on this webpage, please contact DWR for assistance.

The LMA should submit the information and any associated documentation by September 30 for summer inspections and March 31 for winter inspections.

**Flood Control Project Maintenance
Levee Inspections**

Levee Inspection Report By Mile - Fall 2019

Reclamation District No. 0556 Upper Andrus

Waterway	Bank	Unit Miles	Inspection Start/End	Inspector
Unit No. 02 Sacramento River	Left	5.72	11/05/2019 11/05/2019	David Julian

LM Start	0.04	Rating **	U	Issue No.	92
LM End	0.11	Issue Type +	Ma	Location *	LS
Category	Earthen Levee			GPS Latitude/Longitude	
				Start	End
Item	Animal Control			38.239106°	38.238912°
				-121.518972°	-121.520247°
DWR ID	DWR_RD0556_02_f_2019_92				
Comment Code					
A1 : Exterminate rodents and backfill and compact or grout burrows.					
Inspector Comment					
Multiple fresh squirrel holes					

Photo 1 of 1 : FA_2019_RD0556_19_92_20191107_00103.jpg



View of multiple fresh squirrel holes in the landside slope (Fall 2019).

LM Start	0.04	Rating **	U	Issue No.	20
LM End	0.04	Issue Type +	Ma	Location *	WS
Category	Earthen Levee			GPS Latitude/Longitude	
				Start	End
Item	Slope Stability			38.239167°	38.239167°
				-121.519040°	-121.519040°
DWR ID	DWR_RD0556_02_f_2019_20				
Comment Code					
S3 : Repair the levee slope damaged by vehicle traffic and prevent access where possible.					
Inspector Comment					

Photo 1 of 1 : FA_2019_RD0556_19_20_20191107_00080.jpg



View looking downstream at vehicle damage to the waterside slope (Fall 2019).

LM Start	0.11	Rating **	M	Issue No.	24
LM End	0.35	Issue Type +	Ma	Location *	WS
Category	Earthen Levee			GPS Latitude/Longitude	
				Start	End
Item	Trim / Thin Trees			38.238959 °	38.238410 °
				-121.520263 °	-121.524578 °
DWR ID	DWR_RD0556_02_s_2018_24				
Comment Code					
T1 : Trim trees to at least five feet above ground level.					
Inspector Comment					

No Photos

* Location		** Rating		+ Issue Type	
LS : Land Side	N/A : Not Applicable	A : Acceptable	N : Not Inspected/Rated	Ma : Maintenance Deficiency	
WS : Water Side		M : Minimally Acceptable	C : Corrected	Ob : Design & System Obsolescence	
CR : Crown		U : Unacceptable	A/W : Acceptable but Monitor & Maintain	En : Enforcement	

**Flood Control Project Maintenance
Levee Inspections**

Levee Inspection Report By Mile - Fall 2019

Reclamation District No. 0556 Upper Andrus

Waterway	Bank	Unit Miles	Inspection Start/End	Inspector
Unit No. 02 Sacramento River	Left	5.72	11/05/2019 11/05/2019	David Julian

LM Start	0.26	Rating **	U	Issue No.	91
LM End	0.43	Issue Type +	Ma	Location *	LS
Category	Earthen Levee			GPS Latitude/Longitude	
				Start	End
Item	Vegetation			38.238643 °	38.238147 °
				-121.522977 °	-121.526023 °
DWR ID	DWR_RD0556_02_f_2019_91				
Comment Code					
V1 : Control annual grass and weeds on the levee slopes and easements.					
Inspector Comment					

Photo 1 of 1 : FA_2019_RD0556_19_91_20191107_00102.jpg



View of thick vegetation on the landside slope (Fall 2019).

LM Start	0.32	Rating **	M	Issue No.	34
LM End	0.36	Issue Type +	Ma	Location *	WS
Category	Earthen Levee			GPS Latitude/Longitude	
				Start	End
Item	Vegetation			38.238469°	38.238375°
				-121.524054°	-121.524873°
DWR ID	DWR_RD0556_02_f_2019_34				
Comment Code					
V2 : Remove the wild growth other than native grasses from the levee slopes.					
Inspector Comment					

No Photos

LM Start	0.39	Rating **	C	Issue No.	22
LM End	0.39	Issue Type +	Ma	Location *	WS
Category	Earthen Levee			GPS Latitude/Longitude	
				Start	End
Item	Slope Stability			38.238292 °	38.238292 °
				-121.525362 °	-121.525362 °
DWR ID	DWR_RD0556_02_f_2018_22				
Comment Code					
S1 : Repair slope instability.					
Inspector Comment					
A foot path is digging into levee and should be monitored.					

No Photos

* Location LS : Land Side N/A : Not Applicable WS : Water Side CR : Crown	** Rating A : Acceptable M : Minimally Acceptable U : Unacceptable	N : Not Inspected/Rated C : Corrected A/W : Acceptable but Monitor & Maintain	+ Issue Type Ma : Maintenance Deficiency Ob : Design & System Obsolescence En : Enforcement
--	--	---	---

**Flood Control Project Maintenance
Levee Inspections**

Levee Inspection Report By Mile - Fall 2019

Reclamation District No. 0556 Upper Andrus

Waterway	Bank	Unit Miles	Inspection Start/End	Inspector
Unit No. 02 Sacramento River	Left	5.72	11/05/2019 11/05/2019	David Julian

LM Start	0.44	Rating **	M	Issue No.	40
LM End	0.51	Issue Type +	Ma	Location *	WS
Category	Earthen Levee			GPS Latitude/Longitude	
				Start	End
Item	Trim / Thin Trees			38.238142°	38.237900°
				-121.526198°	-121.527553°
DWR ID	DWR_RD0556_02_f_2018_40				
Comment Code					
T1 : Trim trees to at least five feet above ground level.					
Inspector Comment					

Photo 1 of 1 : FA_2019_RD0556_19_40_20190826_00023.jpg



View looking upstream at thick trees on the waterside slope (Spring 2019).

LM Start	0.50	Rating **	A/W	Issue No.	43
LM End	0.50	Issue Type +	Ma	Location *	WS
Category	Earthen Levee			GPS Latitude/Longitude	
				Start	End
Item	Slope Stability			38.237963 °	38.237963 °
				-121.527372 °	-121.527372 °
DWR ID	DWR_RD0556_02_f_2019_43				
Comment Code					
S2 : Repair the levee slope damaged by foot traffic and prevent access where possible.					
Inspector Comment					
Fishermen trail is on slope.					

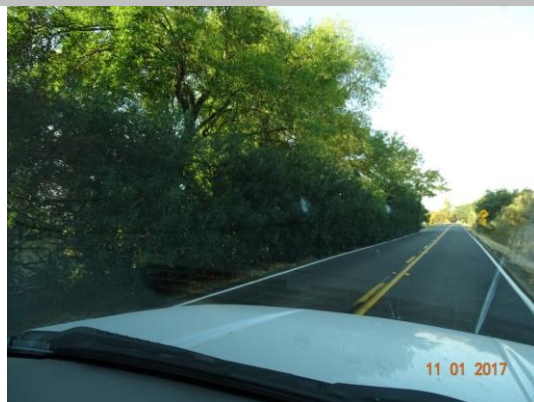
Photo 1 of 1 : FA_2019_RD0556_19_43_20191107_00081.jpg



View of fishermen trail digging into levee on the waterside slope (Fall 2019).

LM Start	0.55	Rating **	U	Issue No.	25
LM End	0.55	Issue Type +	En	Location *	LS
Category	Earthen Levee			GPS Latitude/Longitude	
				Start	End
Item	Vegetation			38.237810°	38.237810°
				-121.528182°	-121.528182°
DWR ID	DWR_RD0556_02_f_2017_25				
Comment Code					
V6 : Landscaping					
Inspector Comment					
Trim/thin oleanders on the landside of the levee.					

Photo 1 of 1 : FA_2019_RD0556_19_25_20190826_00010.jpg



View of oleanders on the landside of the levee.

* Location		** Rating		+ Issue Type	
LS : Land Side	N/A : Not Applicable	A : Acceptable	N : Not Inspected/Rated	Ma : Maintenance Deficiency	
WS : Water Side		M : Minimally Acceptable	C : Corrected	Ob : Design & System Obsolescence	
CR : Crown		U : Unacceptable	A/W : Acceptable but Monitor & Maintain	En : Enforcement	

**Flood Control Project Maintenance
Levee Inspections**

Levee Inspection Report By Mile - Fall 2019

Reclamation District No. 0556 Upper Andrus

Waterway	Bank	Unit Miles	Inspection Start/End	Inspector
Unit No. 02 Sacramento River	Left	5.72	11/05/2019 11/05/2019	David Julian

LM Start	0.58	Rating **	U	Issue No.	51
LM End	1.49	Issue Type +	Ma	Location *	WS
Category	Earthen Levee			GPS Latitude/Longitude	
				Start	End
Item	Vegetation			38.237712 °	38.240240 °
				-121.528657 °	-121.545037 °
DWR ID	DWR_RD0556_02_f_2018_51				
Comment Code					
V2 : Remove the wild growth other than native grasses from the levee slopes.					
Inspector Comment					
Remove wildgrowth 20' down the waterside slope.					

Photo 1 of 1 : FA_2019_RD0556_19_51_20190826_00030.jpg



View looking downstream at wildgrowth on the waterside slope (Spring 2019).

LM Start	0.58	Rating **	M	Issue No.	62
LM End	1.00	Issue Type +	Ma	Location *	WS
Category	Earthen Levee			GPS Latitude/Longitude	
				Start	End
Item	Trim / Thin Trees			38.237712 °	38.238395 °
				-121.528657 °	-121.536273 °
DWR ID	DWR_RD0556_02_f_2018_62				
Comment Code					
T1 : Trim trees to at least five feet above ground level.					
Inspector Comment					

No Photos

* Location
LS : Land Side N/A : Not Applicable
WS : Water Side
CR : Crown

** Rating
A : Acceptable
M : Minimally Acceptable
U : Unacceptable
N : Not Inspected/Rated
C : Corrected
A/W : Acceptable but Monitor & Maintain

+ Issue Type
Ma : Maintenance Deficiency
Ob : Design & System Obsolescence
En : Enforcement

**Flood Control Project Maintenance
Levee Inspections**

Levee Inspection Report By Mile - Fall 2019

Reclamation District No. 0556 Upper Andrus

Waterway	Bank	Unit Miles	Inspection Start/End	Inspector
Unit No. 02 Sacramento River	Left	5.72	11/05/2019 11/05/2019	David Julian

LM Start	0.65	Rating **	U	Issue No.	90
LM End	1.75	Issue Type +	Ma	Location *	LS
Category	Earthen Levee			GPS Latitude/Longitude	
				Start	End
Item	Vegetation			38.237408 °	38.240955 °
				-121.530048 °	-121.549669 °
DWR ID	DWR_RD0556_02_f_2019_90				
Comment Code					
V2 : Remove the wild growth other than native grasses from the levee slopes.					
Inspector Comment					
Blackberries are on the landside slope.					

Photo 1 of 1 : FA_2019_RD0556_19_90_20191107_00101.jpg



View looking upstream at thick vegetation on the landside slope (Fall 2019).

LM Start	0.69	Rating **	M	Issue No.	39
LM End	0.73	Issue Type +	Ma	Location *	LS
Category	Earthen Levee			GPS Latitude/Longitude	
				Start	End
Item	Trim / Thin Trees			38.237469 °	38.237568 °
				-121.530647 °	-121.531358 °
DWR ID	DWR_RD0556_02_s_2018_39				
Comment Code					
T1 : Trim trees to at least five feet above ground level.					
Inspector Comment					

No Photos

* Location
LS : Land Side N/A : Not Applicable
WS : Water Side
CR : Crown

** Rating
A : Acceptable
M : Minimally Acceptable
U : Unacceptable
N : Not Inspected/Rated
C : Corrected
A/W : Acceptable but Monitor & Maintain

+ Issue Type
Ma : Maintenance Deficiency
Ob : Design & System Obsolescence
En : Enforcement

**Flood Control Project Maintenance
Levee Inspections**

Levee Inspection Report By Mile - Fall 2019

Reclamation District No. 0556 Upper Andrus

Waterway	Bank	Unit Miles	Inspection Start/End	Inspector
Unit No. 02 Sacramento River	Left	5.72	11/05/2019 11/05/2019	David Julian

LM Start	0.94	Rating **	M	Issue No.	93
LM End	0.94	Issue Type +	En	Location *	
Category	Supplemental			GPS Latitude/Longitude	
				Start	End
Item	DRAFT DWR UCIP Field Study			38.238125°	38.238125°
				-121.535267°	-121.535267°
DWR ID	20851				
Comment Code					
Inspector Comment					
DS_ID:20851 FS_ID:12512 EP_NO: 11186 Repair Type: Non-Urgent Crossing Status: Found UCIP Comments: - a concrete box on LS- water is leaking from priming plastic tank and causing surface erosion on levee slope. FIELD_STRUCT_DESC: 4-inch steel irrigation discharge pipe through the levee, 4.3 feet below the crown. Pump and gate valve in a pump house on the waterside (WS) berm. Siphon breaker and service pole on the landside (LS) slope. Concrete spill box with three 8-inch openings. (Retention of a 4-inch pipe through the levee, 4.3 feet below the crown, a pump in a pump house on the WS berm, and a siphon breaker and a service pole on the LS slope authorized under Automatic Board Order (ABO) issued as Permit No. 11186, 1975 - Margaret M. Marks). [Additional Reference(s): DWR Levee Log. USACE Sacramento O&M Manual 103, June 1954, (Station ""J"" 192+00), 6-inch pipe referenced, invert elevation 18.8 feet]. FS Date: 4/25/2013					

LM Start	0.94	Rating **	M	Issue No.	93 (cont)
LM End	0.94	Issue Type +	En	Location *	

Photo 1 of 3 : UCIP_FA_2019_12512_20245.jpg



WS- pump house on levee berm

Photo 2 of 3 : UCIP_FA_2019_12512_20244.jpg



LS- steel pipe on a concrete box

* Location LS : Land Side N/A : Not Applicable WS : Water Side CR : Crown	** Rating A : Acceptable M : Minimally Acceptable U : Unacceptable	N : Not Inspected/Rated C : Corrected A/W : Acceptable but Monitor & Maintain	+ Issue Type Ma : Maintenance Deficiency Ob : Design & System Obsolescence En : Enforcement
--	--	---	---

Reclamation District No. 0556 Upper Andrus

**Flood Control Project Maintenance
Levee Inspections**

Levee Inspection Report By Mile - Fall 2019

Reclamation District No. 0556 Upper Andrus

Waterway	Bank	Unit Miles	Inspection Start/End	Inspector
Unit No. 02 Sacramento River	Left	5.72	11/05/2019 11/05/2019	David Julian

LM Start	1.14	Rating **	U	Issue No.	26
LM End	1.14	Issue Type +	En	Location *	LS
Category	Earthen Levee			GPS Latitude/Longitude	
				Start	End
Item	Vegetation			38.239005 °	38.239005 °
				-121.538772 °	-121.538772 °
DWR ID	DWR_RD0556_02_f_2017_26				
Comment Code					
V6 : Landscaping					
Inspector Comment					
Trim/thin oleanders on the landside of the levee.					

Photo 1 of 1 : FA_2019_RD0556_19_26_20190826_00011.jpg



Manage oleanders to allow inspection and access.

LM Start	1.16	Rating **	M	Issue No.	42
LM End	1.19	Issue Type +	Ma	Location *	WS
Category	Earthen Levee			GPS Latitude/Longitude	
				Start	End
Item	Trim / Thin Trees			38.239083°	38.239235°
				-121.539122°	-121.539695°
DWR ID	DWR_RD0556_02_s_2018_42				
Comment Code					
T1 : Trim trees to at least five feet above ground level.					
Inspector Comment					

No Photos

* Location
LS : Land Side N/A : Not Applicable
WS : Water Side
CR : Crown

** Rating
A : Acceptable N : Not Inspected/Rated
M : Minimally Acceptable C : Corrected
U : Unacceptable A/W : Acceptable but Monitor & Maintain

+ Issue Type
Ma : Maintenance Deficiency
Ob : Design & System Obsolescence
En : Enforcement

**Flood Control Project Maintenance
Levee Inspections**

Levee Inspection Report By Mile - Fall 2019

Reclamation District No. 0556 Upper Andrus

Waterway	Bank	Unit Miles	Inspection Start/End	Inspector
Unit No. 02 Sacramento River	Left	5.72	11/05/2019 11/05/2019	David Julian

LM Start	1.22	Rating **	M	Issue No.	94
LM End	1.22	Issue Type +	En	Location *	
Category	Supplemental			GPS Latitude/Longitude	
				Start	End
Item	DRAFT DWR UCIP Field Study			38.239327 °	38.239327 °
				-121.540190 °	-121.540190 °
DWR ID	20852				
Comment Code					
Inspector Comment					
DS_ID:20852 FS_ID:12573 EP_NO: 11187 Repair Type: Non-Urgent Crossing Status: Found UCIP Comments: - gap between 6-inch pipe and 10-inch pipe needs to be sealed. FIELD_STRUCT_DESC: 6-inch steel irrigation discharge pipe sleeved through a 10-inch steel pipe through the levee, 4.8 feet below the crown. Pump on the riverbank. (Retention of a 10-inch pipe through the levee, 4.8 feet below the crown, a flap gate on the waterside (WS) end, landside (LS) end open, used to sleeve portable irrigation pipe, authorized under Automatic Board Order (ABO) issued as Permit No. 11187, 1975 - Ernest and Alvine Machado). [Additional Reference(s): DWR Levee Log]. FS Date: 4/25/2013					

LM Start	1.22	Rating **	M	Issue No.	94 (cont)
LM End	1.22	Issue Type +	En	Location *	

Photo 1 of 3 : UCIP_FA_2019_12573_20381.jpg



LS- 6-inch steel pipe on orchard.

Photo 2 of 3 : UCIP_FA_2019_12573_20380.jpg



LS- 6-inch steel pipe sleeved through 10-inch steel pipe. 6" pipe is attached with air release valve.

* Location LS : Land Side N/A : Not Applicable WS : Water Side CR : Crown	** Rating A : Acceptable M : Minimally Acceptable U : Unacceptable	N : Not Inspected/Rated C : Corrected A/W : Acceptable but Monitor & Maintain	+ Issue Type Ma : Maintenance Deficiency Ob : Design & System Obsolescence En : Enforcement
--	--	---	---

**Flood Control Project Maintenance
Levee Inspections**

Levee Inspection Report By Mile - Fall 2019

Reclamation District No. 0556 Upper Andrus

Waterway	Bank	Unit Miles	Inspection Start/End	Inspector
Unit No. 02 Sacramento River	Left	5.72	11/05/2019 11/05/2019	David Julian

LM Start	1.22	Rating **	M	Issue No.	94 (cont)	
LM End	1.22	Issue Type +	En	Location *		
Category	Supplemental			GPS Latitude/Longitude		
				Start	End	
Item	DRAFT DWR UCIP Field Study			38.239327°	38.239327°	
				-121.540190°	-121.540190°	
DWR ID	20852					
Comment Code						
Inspector Comment						
DS_ID:20852 FS_ID:12573 EP_NO: 11187 Repair Type: Non-Urgent Crossing Status: Found UCIP Comments: - gap between 6-inch pipe and 10-inch pipe needs to be sealed. FIELD_STRUCT_DESC: 6-inch steel irrigation discharge pipe sleeved through a 10-inch steel pipe through the levee, 4.8 feet below the crown. Pump on the riverbank. (Retention of a 10-inch pipe through the levee, 4.8 feet below the crown, a flap gate on the waterside (WS) end, landside (LS) end open, used to sleeve portable irrigation pipe, authorized under Automatic Board Order (ABO) issued as Permit No. 11187, 1975 - Ernest and Alvine Machado). [Additional Reference(s): DWR Levee Log]. FS Date: 4/25/2013						

Photo 3 of 3 : UCIP_FA_2019_12573_20383.jpg



WS- 6-inch steel pipe on levee slope

LM Start	1.26	Rating **	U	Issue No.	65
LM End	1.29	Issue Type +	Ma	Location *	WS
Category	Earthen Levee			GPS Latitude/Longitude	
				Start	End
Item	Trim / Thin Trees			38.239485 °	38.239607 °
				-121.540865 °	-121.541430 °
DWR ID	DWR_RD0556_02_s_2019_65				
Comment Code					
T1 : Trim trees to at least five feet above ground level.					
Inspector Comment					

Photo 1 of 1 : FA_2019_RD0556_19_65_20191107_00082.jpg



View looking downstream at thick trees on the waterside slope (Fall 2019).

* Location LS : Land Side N/A : Not Applicable WS : Water Side CR : Crown	** Rating A : Acceptable M : Minimally Acceptable U : Unacceptable	N : Not Inspected/Rated C : Corrected A/W : Acceptable but Monitor & Maintain	+ Issue Type Ma : Maintenance Deficiency Ob : Design & System Obsolescence En : Enforcement
--	--	---	---

**Flood Control Project Maintenance
Levee Inspections**

Levee Inspection Report By Mile - Fall 2019

Reclamation District No. 0556 Upper Andrus

Waterway	Bank	Unit Miles	Inspection Start/End	Inspector
Unit No. 02 Sacramento River	Left	5.72	11/05/2019 11/05/2019	David Julian

LM Start	1.31	Rating **	U	Issue No.	28
LM End	1.31	Issue Type +	En	Location *	LS
Category	Earthen Levee			GPS Latitude/Longitude	
				Start	End
Item	Vegetation			38.239677 °	38.239677 °
				-121.541715 °	-121.541716 °
DWR ID	DWR_RD0556_02_f_2017_28				
Comment Code					
V6 : Landscaping					
Inspector Comment					
Trim/thin oleanders on the landside of the levee.					

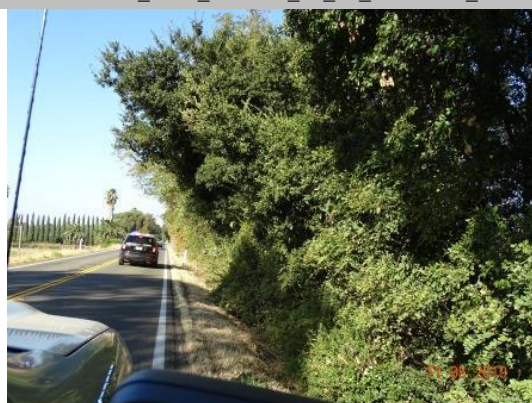
Photo 1 of 1 : FA_2019_RD0556_19_28_20190826_00013.jpg



View of oleanders on the landside of the levee.

LM Start	1.37	Rating **	U	Issue No.	66
LM End	1.43	Issue Type +	Ma	Location *	WS
Category	Earthen Levee			GPS Latitude/Longitude	
				Start	End
Item	Trim / Thin Trees			38.239888 °	38.240080 °
				-121.542833 °	-121.543942 °
DWR ID	DWR_RD0556_02_f_2019_66				
Comment Code					
T1 : Trim trees to at least five feet above ground level.					
Inspector Comment					

Photo 1 of 1 : FA_2019_RD0556_19_66_20191107_00083.jpg



View looking downstream at thick trees on the waterside slope (Fall 2019).

LM Start	1.39	Rating **	U	Issue No.	29
LM End	1.39	Issue Type +	En	Location *	LS
Category	Earthen Levee			GPS Latitude/Longitude	
				Start	End
Item	Encroachments			38.239935 °	38.239935 °
				-121.543148 °	-121.543148 °
DWR ID	DWR_RD0556_02_f_2017_29				
Comment Code					
EQ : Equipment					
Inspector Comment					
Remove/relocate the two large sea-train shipping containers to at least 10 feet from the landside toe to allow inspection and access.					

Photo 1 of 1 : FA_2019_RD0556_19_29_20190826_00014.jpg



View of two large sea-train shipping containers at the landside toe.

*** Location**

LS : Land Side N/A : Not Applicable
WS : Water Side
CR : Crown

**** Rating**

A : Acceptable N : Not Inspected/Rated
M : Minimally Acceptable C : Corrected
U : Unacceptable A/W : Acceptable but Monitor & Maintain

+ Issue Type

Ma : Maintenance Deficiency
Ob : Design & System Obsolescence
En : Enforcement

**Flood Control Project Maintenance
Levee Inspections**

Levee Inspection Report By Mile - Fall 2019

Reclamation District No. 0556 Upper Andrus

Waterway	Bank	Unit Miles	Inspection Start/End	Inspector
Unit No. 02 Sacramento River	Left	5.72	11/05/2019 11/05/2019	David Julian

LM Start	1.45	Rating **	M	Issue No.	18
LM End	1.59	Issue Type +	Ma	Location *	WS
Category	Supplemental			GPS Latitude/Longitude	
				Start	End
Item	2017 USACE Erosion Survey			38.240401°	38.240772°
				-121.544106°	-121.546791°
DWR ID	DWR_RD0556_02_f_2018_18				
Comment Code					
Inspector Comment					
2017 Site ID: SAC 24.8 L					
Status: Eroding					
2017 Field Notes: Significant lower bank erosion.					
Site History: 1997 - Slow erosion of the berm at the waterline; bench below water. 2005 - Brush boxes present. 2010 - Minor new erosion.					
2013 - There is little to no berm remaining at downstream end of this site. 2016 - New erosion on levee slope.					

Photo 1 of 1 : FA_2019_RD0556_19_18_20190826_00006.jpg



USACE 2013 Photo #1

LM Start	1.46	Rating **	U	Issue No.	48
LM End	1.46	Issue Type +	Ma	Location *	WS
Category	Earthen Levee			GPS Latitude/Longitude	
				Start	End
Item	Encroachments			38.240157°	38.240157°
				-121.544530°	-121.544530°
DWR ID	DWR_RD0556_02_f_2019_48				
Comment Code					
TR : Tree or limb					
Inspector Comment					
Remove down dead tree on waterside slope					

Photo 1 of 1 : FA_2019_RD0556_19_48_20191107_00084.jpg



View of downed dead tree on the waterside slope (Fall 2019).

* Location
LS : Land Side N/A : Not Applicable
WS : Water Side
CR : Crown

** Rating
A : Acceptable N : Not Inspected/Rated
M : Minimally Acceptable C : Corrected
U : Unacceptable A/W : Acceptable but Monitor & Maintain

+ Issue Type
Ma : Maintenance Deficiency
Ob : Design & System Obsolescence
En : Enforcement

**Flood Control Project Maintenance
Levee Inspections**

Levee Inspection Report By Mile - Fall 2019

Reclamation District No. 0556 Upper Andrus

Waterway	Bank	Unit Miles	Inspection Start/End	Inspector
Unit No. 02 Sacramento River	Left	5.72	11/05/2019 11/05/2019	David Julian

LM Start	1.48	Rating **	U	Issue No.	41
LM End	1.48	Issue Type +	En	Location *	LS
Category	Earthen Levee			GPS Latitude/Longitude	
				Start	End
Item	Vegetation			38.240212 °	38.240212 °
				-121.544719 °	-121.544719 °
DWR ID	DWR_RD0556_02_s_2018_41				
Comment Code					
V6 : Landscaping					
Inspector Comment					
Cactus and other landscaping should be removed and managed to allow access and inspection.					

Photo 1 of 1 : FA_2019_RD0556_19_41_20190826_00024.jpg



View of cactus and other landscaping.

LM Start	1.57	Rating **	U	Issue No.	47
LM End	1.57	Issue Type +	En	Location *	LS
Category	Earthen Levee			GPS Latitude/Longitude	
				Start	End
Item	Vegetation			38.240455 °	38.240455 °
				-121.546362 °	-121.546362 °
DWR ID	DWR_RD0556_02_s_2019_47				
Comment Code					
V6 : Landscaping					
Inspector Comment					
Remove cactus from the landside slope.					

Photo 1 of 1 : FA_2019_RD0556_19_47_20190826_00028.jpg



View looking downstream at cactus on the landside slope (Spring 2019).

LM Start	1.64	Rating **	M	Issue No.	67
LM End	1.73	Issue Type +	Ma	Location *	WS
Category	Earthen Levee			GPS Latitude/Longitude	
				Start	End
Item	Trim / Thin Trees			38.240733°	38.240972°
				-121.547738°	-121.549260°
DWR ID	DWR_RD0556_02_f_2018_67				
Comment Code					
T1 : Trim trees to at least five feet above ground level.					
Inspector Comment					

No Photos

* Location LS : Land Side N/A : Not Applicable WS : Water Side CR : Crown	** Rating A : Acceptable M : Minimally Acceptable U : Unacceptable	N : Not Inspected/Rated C : Corrected A/W : Acceptable but Monitor & Maintain	+ Issue Type Ma : Maintenance Deficiency Ob : Design & System Obsolescence En : Enforcement
--	--	--	---

**Flood Control Project Maintenance
Levee Inspections**

Levee Inspection Report By Mile - Fall 2019

Reclamation District No. 0556 Upper Andrus

Waterway	Bank	Unit Miles	Inspection Start/End	Inspector
Unit No. 02 Sacramento River	Left	5.72	11/05/2019 11/05/2019	David Julian

LM Start	1.76	Rating **	M	Issue No.	68
LM End	1.79	Issue Type +	Ma	Location *	WS
Category	Earthen Levee			GPS Latitude/Longitude	
				Start	End
Item	Trim / Thin Trees			38.241003 °	38.240998 °
				-121.549887 °	-121.550352 °
DWR ID	DWR_RD0556_02_f_2018_68				
Comment Code					
T1 : Trim trees to at least five feet above ground level.					
Inspector Comment					

No Photos

LM Start	1.82	Rating **	U	Issue No.	70
LM End	1.92	Issue Type +	En	Location *	WS
Category	Earthen Levee			GPS Latitude/Longitude	
				Start	End
Item	Vegetation			38.241010 °	38.240618 °
				-121.551033 °	-121.552747 °
DWR ID	DWR_RD0556_02_f_2018_70				
Comment Code					
V6 : Landscaping					
Inspector Comment					
Thin oleanders to allow view down the levee slope.					

Photo 1 of 1 : FA_2019_RD0556_19_70_20190826_00037.jpg



View looking downstream at oleanders (October 2018).

LM Start	1.83	Rating **	U	Issue No.	30
LM End	1.99	Issue Type +	En	Location *	LS
Category	Earthen Levee			GPS Latitude/Longitude	
				Start	End
Item	Vegetation			38.240955 °	38.240024 °
				-121.551233 °	-121.553860 °
DWR ID	DWR_RD0556_02_f_2017_30				
Comment Code					
V6 : Landscaping					
Inspector Comment					
Remove/thin various landscaping including trees, bushes, and a large cactus.					

Photo 1 of 1 : FA_2019_RD0556_19_30_20190826_00015.jpg



Trim/thin oleanders on landside slope.

* Location
LS : Land Side N/A : Not Applicable
WS : Water Side
CR : Crown

** Rating
A : Acceptable N : Not Inspected/Rated
M : Minimally Acceptable C : Corrected
U : Unacceptable A/W : Acceptable but Monitor & Maintain

+ Issue Type
Ma : Maintenance Deficiency
Ob : Design & System Obsolescence
En : Enforcement

Reclamation District No. 0556 Upper Andrus

View of down tree limbs on the waterside shoulder (Fall 2019).

View looking upstream at vegetation on waterside slope (October 2018).

View of arundo on the landside slope and toe.

Page 15 of 50

**Flood Control Project Maintenance
Levee Inspections**

Levee Inspection Report By Mile - Fall 2019

Reclamation District No. 0556 Upper Andrus

Waterway	Bank	Unit Miles	Inspection Start/End	Inspector
Unit No. 02 Sacramento River	Left	5.72	11/05/2019 11/05/2019	David Julian

LM Start	2.12	Rating **	U	Issue No.	57
LM End	2.12	Issue Type +	Ma	Location *	WS
Category	Earthen Levee			GPS Latitude/Longitude	
				Start	End
Item	Encroachments			38.238887 °	38.238887 °
				-121.555570 °	-121.555570 °
DWR ID	DWR_RD0556_02_f_2019_57				
Comment Code					
TR : Tree or limb					
Inspector Comment					
Remove downed tree.					

Photo 1 of 1 : FA_2019_RD0556_19_57_20191107_00086.jpg



Down tree on the waterside shoulder (Fall 2019).

LM Start	2.12	Rating **	M	Issue No.	72
LM End	2.22	Issue Type +	Ma	Location *	WS
Category	Earthen Levee			GPS Latitude/Longitude	
				Start	End
Item	Trim / Thin Trees			38.238828 °	38.237938 °
				-121.555693 °	-121.556955 °
DWR ID	DWR_RD0556_02_f_2018_72				
Comment Code					
T1 : Trim trees to at least five feet above ground level.					
Inspector Comment					

No Photos

LM Start	2.13	Rating **	U	Issue No.	87
LM End	2.13	Issue Type +	En	Location *	LS
Category	Earthen Levee			GPS Latitude/Longitude	
				Start	End
Item	Vegetation			38.238780 °	38.238780 °
				-121.555717 °	-121.555717 °
DWR ID	DWR_RD0556_02_f_2018_87				
Comment Code					
V6 : Landscaping					
Inspector Comment					
Cactus should be removed from the landside slope.					

Photo 1 of 1 : FA_2019_RD0556_19_87_20190826_00043.jpg



View of cactus on the landside slope (October 2018).

*** Location**

LS : Land Side N/A : Not Applicable
WS : Water Side
CR : Crown

**** Rating**

A : Acceptable N : Not Inspected/Rated
M : Minimally Acceptable C : Corrected
U : Unacceptable A/W : Acceptable but Monitor & Maintain

+ Issue Type

Ma : Maintenance Deficiency
Ob : Design & System Obsolescence
En : Enforcement

**Flood Control Project Maintenance
Levee Inspections**

Levee Inspection Report By Mile - Fall 2019

Reclamation District No. 0556 Upper Andrus

Waterway	Bank	Unit Miles	Inspection Start/End	Inspector
Unit No. 02 Sacramento River	Left	5.72	11/05/2019 11/05/2019	David Julian

LM Start	2.22	Rating **	U	Issue No.	33
LM End	2.22	Issue Type +	En	Location *	LS
Category	Earthen Levee			GPS Latitude/Longitude	
				Start	End
Item	Vegetation			38.237883 °	38.237883 °
				-121.556958 °	-121.556958 °
DWR ID	DWR_RD0556_02_f_2017_33				
Comment Code					
V6 : Landscaping					
Inspector Comment					
Large growth of prickly pear cactus should be removed to allow inspection and access.					

Photo 1 of 1 : FA_2019_RD0556_19_33_20190826_00018.jpg



View of large growth of prickly pear cactus.

LM Start	2.28	Rating **	M	Issue No.	1
LM End	2.28	Issue Type +	En	Location *	LS
Category	Earthen Levee			GPS Latitude/Longitude	
				Start	End
Item	Vegetation			38.237156 °	38.237156 °
				-121.557640 °	-121.557640 °
DWR ID	DWR_RD0556_02_f _ 2015_1				
Comment Code					
V6 : Landscaping					
Inspector Comment					
These unauthorized planted redwoods have been reported in the past inspections. The District needs to have the owner remove them from the levee slope.					

Photo 1 of 1 : FA_2019_RD0556_19_1_20190826_00001.jpg



RD 556 Unit 2 Levee mile 2.28 unauthorized planting of redwood trees planted on the slope.

LM Start	2.29	Rating **	U	Issue No.	35
LM End	2.33	Issue Type +	En	Location *	LS
Category	Earthen Levee			GPS Latitude/Longitude	
				Start	End
Item	Vegetation			38.237060°	38.236545°
				-121.557782°	-121.557910°
DWR ID	DWR_RD0556_02_f_2017_35				
Comment Code					
V6 : Landscaping					
Inspector Comment					
Trim/thin oleanders to allow inspection and access to landside slope and toe.					

Photo 1 of 1 : FA_2019_RD0556_19_35_20190826_00019.jpg



View of oleanders on the landside slope and toe.

*** Location**

LS : Land Side N/A : Not Applicable
WS : Water Side
CR : Crown

**** Rating**

A : Acceptable N : Not Inspected/Rated
M : Minimally Acceptable C : Corrected
U : Unacceptable A/W : Acceptable but Monitor & Maintain

+ Issue Type

Ma : Maintenance Deficiency
Ob : Design & System Obsolescence
En : Enforcement

**Flood Control Project Maintenance
Levee Inspections**

Levee Inspection Report By Mile - Fall 2019

Reclamation District No. 0556 Upper Andrus

Waterway	Bank	Unit Miles	Inspection Start/End	Inspector
Unit No. 02 Sacramento River	Left	5.72	11/05/2019 11/05/2019	David Julian

LM Start	2.33	Rating **	U	Issue No.	89
LM End	2.71	Issue Type +	Ma	Location *	LS
Category	Earthen Levee			GPS Latitude/Longitude	
				Start	End
Item	Vegetation			38.236485 °	38.231222 °
				-121.557950 °	-121.556285 °
DWR ID	DWR_RD0556_02_f_2019_89				
Comment Code					
V2 : Remove the wild growth other than native grasses from the levee slopes.					
Inspector Comment					

Photo 1 of 1 : FA_2019_RD0556_19_89_20191107_00100.jpg



View looking upstream at thick vegetation on the landside slope (Fall 2019).

LM Start	2.34	Rating **	U	Issue No.	21
LM End	2.77	Issue Type +	Ma	Location *	WS
Category	Earthen Levee			GPS Latitude/Longitude	
				Start	End
Item	Vegetation			38.236317 °	38.230478 °
				-121.557996 °	-121.555821 °
DWR ID	DWR_RD0556_02_s_2019_21				
Comment Code					
V2 : Remove the wild growth other than native grasses from the levee slopes.					
Inspector Comment					
Remove wild growth 20' down the waterside slope.					

Photo 1 of 1 : FA_2019_RD0556_19_21_20190826_00008.jpg



View looking downstream at thick wildgrowth on the waterside shoulder (Spring 2019).

*** Location**
LS : Land Side N/A : Not Applicable
WS : Water Side
CR : Crown

**** Rating**
A : Acceptable N : Not Inspected/Rated
M : Minimally Acceptable C : Corrected
U : Unacceptable A/W : Acceptable but Monitor & Maintain

+ Issue Type
Ma : Maintenance Deficiency
Ob : Design & System Obsolescence
En : Enforcement

**Flood Control Project Maintenance
Levee Inspections**

Levee Inspection Report By Mile - Fall 2019

Reclamation District No. 0556 Upper Andrus

Waterway	Bank	Unit Miles	Inspection Start/End	Inspector
Unit No. 02 Sacramento River	Left	5.72	11/05/2019 11/05/2019	David Julian

LM Start	2.42	Rating **	M	Issue No.	95
LM End	2.42	Issue Type +	En	Location *	
Category	Supplemental			GPS Latitude/Longitude	
				Start	End
Item	DRAFT DWR UCIP Field Study			38.235261 °	38.235261 °
				-121.558059 °	-121.558059 °
DWR ID	20859				
Comment Code					
Inspector Comment					
DS_ID:20859 FS_ID:12574 EP_NO: 11181 Repair Type: Non-Urgent Crossing Status: Found UCIP Comments: - Needs to clean CMP riser for proper functioning of siphon breaker. FIELD_STRUCT_DESC: 10-inch steel irrigation discharge pipe through the levee, 5.8 feet below the crown. Pump and gate valve in a pump house on the waterside (WS) slope. Siphon breaker and service pole on the landside (LS) slope. (Retention of a 10-inch pipe through the levee, 5.8 feet below the crown, a pump and a gate valve in a pump house on the WS slope, and a siphon breaker and a service pole on the LS slope authorized under Automatic Board Order (ABO) issued as Permit No. 11181, 1975 - Robert E. and G. P. Collins). [Additional Reference(s): DWR Levee Log. USACE Sacramento O&M Manual 103, June 1954, (Station ""J"" 115+25), invert elevation 18.5 feet]. FS Date: 4/25/2013					

LM Start	2.42	Rating **	M	Issue No.	95 (cont)
LM End	2.42	Issue Type +	En	Location *	

Photo 1 of 3 : UCIP_FA_2019_12574_20388.jpg



WS- pump house on levee berm

Photo 2 of 3 : UCIP_FA_2019_12574_20387.jpg



WS- pump, and gate valve in pump house.

* Location LS : Land Side N/A : Not Applicable WS : Water Side CR : Crown	** Rating A : Acceptable M : Minimally Acceptable U : Unacceptable	N : Not Inspected/Rated C : Corrected A/W : Acceptable but Monitor & Maintain	+ Issue Type Ma : Maintenance Deficiency Ob : Design & System Obsolescence En : Enforcement
--	--	---	---

**Flood Control Project Maintenance
Levee Inspections**

Levee Inspection Report By Mile - Fall 2019

Reclamation District No. 0556 Upper Andrus

Waterway	Bank	Unit Miles	Inspection Start/End	Inspector
Unit No. 02 Sacramento River	Left	5.72	11/05/2019 11/05/2019	David Julian

LM Start	2.42	Rating **	M	Issue No.	95 (cont)	
LM End	2.42	Issue Type +	En	Location *		
Category	Supplemental			GPS Latitude/Longitude		
				Start	End	
Item	DRAFT DWR UCIP Field Study			38.235261 °	38.235261 °	
				-121.558059 °	-121.558059 °	
DWR ID	20859					
Comment Code						
Inspector Comment						
DS_ID:20859 FS_ID:12574 EP_NO: 11181 Repair Type: Non-Urgent Crossing Status: Found UCIP Comments: - Needs to clean CMP riser for proper functioning of siphon breaker. FIELD_STRUCT_DESC: 10-inch steel irrigation discharge pipe through the levee, 5.8 feet below the crown. Pump and gate valve in a pump house on the waterside (WS) slope. Siphon breaker and service pole on the landside (LS) slope. (Retention of a 10-inch pipe through the levee, 5.8 feet below the crown, a pump and a gate valve in a pump house on the WS slope, and a siphon breaker and a service pole on the LS slope authorized under Automatic Board Order (ABO) issued as Permit No. 11181, 1975 - Robert E. and G. P. Collins). [Additional Reference(s): DWR Levee Log. USACE Sacramento O&M Manual 103, June 1954, (Station ""J"" 115+25), invert elevation 18.5 feet]. FS Date: 4/25/2013						

Photo 3 of 3 : UCIP_FA_2019_12574_20386.jpg



WS- power control panel and electric conduit in pump house.

LM Start	2.43	Rating **	U	Issue No.	45
LM End	2.43	Issue Type +	En	Location *	LS
Category	Earthen Levee			GPS Latitude/Longitude	
				Start	End
Item	Vegetation			38.235036 °	38.235036 °
				-121.558011 °	-121.558011 °
DWR ID	DWR_RD0556_02_s_2019_45				
Comment Code					
V6 : Landscaping					
Inspector Comment					
Remove cactus from the landside slope.					

Photo 1 of 1 : FA_2019_RD0556_19_45_20190826_00026.jpg



View of cactus on the landside slope (Spring 2019).

* Location LS : Land Side N/A : Not Applicable WS : Water Side CR : Crown	** Rating A : Acceptable M : Minimally Acceptable U : Unacceptable	N : Not Inspected/Rated C : Corrected A/W : Acceptable but Monitor & Maintain	+ Issue Type Ma : Maintenance Deficiency Ob : Design & System Obsolescence En : Enforcement
--	--	---	---

**Flood Control Project Maintenance
Levee Inspections**

Levee Inspection Report By Mile - Fall 2019

Reclamation District No. 0556 Upper Andrus

Waterway	Bank	Unit Miles	Inspection Start/End	Inspector
Unit No. 02 Sacramento River	Left	5.72	11/05/2019 11/05/2019	David Julian

LM Start	2.69	Rating **	M	Issue No.	44
LM End	2.69	Issue Type +	Ma	Location *	WS
Category	Earthen Levee			GPS Latitude/Longitude	
				Start	End
Item	Encroachments			38.231494 °	38.231494 °
				-121.556474 °	-121.556474 °
DWR ID	DWR_RD0556_02_s_2018_44				
Comment Code					
TR : Tree or limb					
Inspector Comment					
Remove fallen tree from the waterside shoulder.					

Photo 1 of 1 : FA_2019_RD0556_19_44_20190826_00025.jpg



View of fallen tree within 20' of the waterside shoulder (Spring 2019).

LM Start	2.75	Rating **	U	Issue No.	88
LM End	2.75	Issue Type +	Ma	Location *	LS
Category	Earthen Levee			GPS Latitude/Longitude	
				Start	End
Item	Encroachments			38.230752 °	38.230752 °
				-121.556007 °	-121.556007 °
DWR ID	DWR_RD0556_02_f_2019_88				
Comment Code					
TR : Tree or limb					
Inspector Comment					
Broken tree limb blocking view of landside slope.					

Photo 1 of 1 : FA_2019_RD0556_19_88_20191107_00099.jpg



View of broken tree limb blocking the view of the landside slope (Fall 2019).

*** Location**
LS : Land Side N/A : Not Applicable
WS : Water Side
CR : Crown

**** Rating**
A : Acceptable N : Not Inspected/Rated
M : Minimally Acceptable C : Corrected
U : Unacceptable A/W : Acceptable but Monitor & Maintain

+ Issue Type
Ma : Maintenance Deficiency
Ob : Design & System Obsolescence
En : Enforcement

**Flood Control Project Maintenance
Levee Inspections**

Levee Inspection Report By Mile - Fall 2019

Reclamation District No. 0556 Upper Andrus

Waterway	Bank	Unit Miles	Inspection Start/End	Inspector
Unit No. 02 Sacramento River	Left	5.72	11/05/2019 11/05/2019	David Julian

LM Start	2.84	Rating **	M	Issue No.	96	
LM End	2.84	Issue Type +	En	Location *		
Category	Supplemental			GPS Latitude/Longitude		
				Start	End	
Item	DRAFT DWR UCIP Field Study			38.229524 °	38.229524 °	
				-121.555404 °	-121.555404 °	
DWR ID	20849					
Comment Code						
Inspector Comment						
DS_ID:20849						
FS_ID:41713						
EP_NO: 11181						
Repair Type: Non-Urgent						
Crossing Status: Found						
UCIP Comments: - Needs to clean siphon breaker CMP riser.						
FIELD_STRUCT_DESC: 6-inch irrigation discharge pipe of an unknown material through the levee, 6 feet below the crown. Pressure tank in a pump house on the waterside (WS) berm. Service pole, siphon breaker, and distribution box on the landside (LS) slope. (Retention of a 6-inch pipe through the levee, 6 feet below the crown; a pump, a gate valve, and a pressure tank on the WS berm; and a service pole on the LS slope authorized under Automatic Board Order (ABO) issued as Permit No. 11181, 1975 - Robert E. and G. P. Collins). [Additional Reference(s): DWR Levee Log].						
FS Date: 4/25/2013						

LM Start	2.84	Rating **	M	Issue No.	96 (cont)
LM End	2.84	Issue Type +	En	Location *	

Photo 1 of 3 : UCIP_FA_2019_41713_20284.jpg



WS- pump house on levee berm.

Photo 2 of 3 : UCIP_FA_2019_41713_20283.jpg



LS- siphon breaker in CMP riser on levee slope.

* Location LS : Land Side N/A : Not Applicable WS : Water Side CR : Crown	** Rating A : Acceptable M : Minimally Acceptable U : Unacceptable	N : Not Inspected/Rated C : Corrected A/W : Acceptable but Monitor & Maintain	+ Issue Type Ma : Maintenance Deficiency Ob : Design & System Obsolescence En : Enforcement
--	--	--	---

**Flood Control Project Maintenance
Levee Inspections**

Levee Inspection Report By Mile - Fall 2019

Reclamation District No. 0556 Upper Andrus

Waterway	Bank	Unit Miles	Inspection Start/End	Inspector
Unit No. 02 Sacramento River	Left	5.72	11/05/2019 11/05/2019	David Julian

LM Start	2.84	Rating **	M	Issue No.	96 (cont)	
LM End	2.84	Issue Type +	En	Location *		
Category	Supplemental			GPS Latitude/Longitude		
				Start	End	
Item	DRAFT DWR UCIP Field Study			38.229524 °	38.229524 °	
				-121.555404 °	-121.555404 °	
DWR ID	20849					
Comment Code						
Inspector Comment						
DS_ID:20849 FS_ID:41713 EP_NO: 11181 Repair Type: Non-Urgent Crossing Status: Found UCIP Comments: - Needs to clean siphon breaker CMP riser. FIELD_STRUCT_DESC: 6-inch irrigation discharge pipe of an unknown material through the levee, 6 feet below the crown. Pressure tank in a pump house on the waterside (WS) berm. Service pole, siphon breaker, and distribution box on the landside (LS) slope. (Retention of a 6-inch pipe through the levee, 6 feet below the crown; a pump, a gate valve, and a pressure tank on the WS berm; and a service pole on the LS slope authorized under Automatic Board Order (ABO) issued as Permit No. 11181, 1975 - Robert E. and G. P. Collins). [Additional Reference(s): DWR Levee Log]. FS Date: 4/25/2013						

Photo 3 of 3 : UCIP_FA_2019_41713_20282.jpg



LS- concrete distribution box near toe of the levee

LM Start	2.86	Rating **	M	Issue No.	46
LM End	2.86	Issue Type +	En	Location *	LS
Category	Earthen Levee			GPS Latitude/Longitude	
				Start	End
Item	Vegetation			38.229195 °	38.229195 °
				-121.555337 °	-121.555337 °
DWR ID	DWR_RD0556_02_f _ 2019_46				
Comment Code					
V6 : Landscaping					
Inspector Comment					

Photo 1 of 1 : FA_2019_RD0556_19_46_20190826_00027.jpg



View looking upstream at beginning of landscaping on landside (October 2018).

* Location
 LS : Land Side N/A : Not Applicable
 WS : Water Side
 CR : Crown

** Rating
 A : Acceptable N : Not Inspected/Rated
 M : Minimally Acceptable C : Corrected
 U : Unacceptable A/W : Acceptable but Monitor & Maintain

+ Issue Type
 Ma : Maintenance Deficiency
 Ob : Design & System Obsolescence
 En : Enforcement

**Flood Control Project Maintenance
Levee Inspections**

Levee Inspection Report By Mile - Fall 2019

Reclamation District No. 0556 Upper Andrus

Waterway	Bank	Unit Miles	Inspection Start/End	Inspector
Unit No. 02 Sacramento River	Left	5.72	11/05/2019 11/05/2019	David Julian

LM Start	2.90	Rating **	U	Issue No.	76
LM End	5.10	Issue Type +	Ma	Location *	WS
Category	Earthen Levee			GPS Latitude/Longitude	
				Start	End
Item	Vegetation			38.228683 °	38.197183 °
				-121.555352 °	-121.559049 °
DWR ID	DWR_RD0556_02_f_2018_76				
Comment Code					
V2 : Remove the wild growth other than native grasses from the levee slopes.					
Inspector Comment					
Remove vegetation 20' from the waterside slope including patches of arundo.					

Photo 1 of 2 : FA_2019_RD0556_19_76_20190826_00039.jpg



View looking upstream at arundo on the waterside slope (Spring 2019).

LM Start	2.90	Rating **	U	Issue No.	76 (cont)
LM End	5.10	Issue Type +	Ma	Location *	WS

Photo 2 of 2 : FA_2019_RD0556_19_76_20190826_00040.jpg



View looking upstream at thick wildgrowth on the waterside slope (Spring 2019).

LM Start	2.90	Rating **	U	Issue No.	86
LM End	3.26	Issue Type +	Ma	Location *	LS
Category	Earthen Levee			GPS Latitude/Longitude	
				Start	End
Item	Vegetation			38.228627 °	38.223450 °
				-121.555220 °	-121.555398 °
DWR ID	DWR_RD0556_02_f_2019_86				
Comment Code					
V2 : Remove the wild growth other than native grasses from the levee slopes.					
Inspector Comment					

Photo 1 of 1 : FA_2019_RD0556_19_86_20191107_00098.jpg



View of thick vegetation on the landside slope (Fall 2019).

*** Location**

LS : Land Side N/A : Not Applicable
WS : Water Side
CR : Crown

**** Rating**

A : Acceptable N : Not Inspected/Rated
M : Minimally Acceptable C : Corrected
U : Unacceptable A/W : Acceptable but Monitor & Maintain

+ Issue Type

Ma : Maintenance Deficiency
Ob : Design & System Obsolescence
En : Enforcement

**Flood Control Project Maintenance
Levee Inspections**

Levee Inspection Report By Mile - Fall 2019

Reclamation District No. 0556 Upper Andrus

Waterway	Bank	Unit Miles	Inspection Start/End	Inspector
Unit No. 02 Sacramento River	Left	5.72	11/05/2019 11/05/2019	David Julian

LM Start	3.05	Rating **	M	Issue No.	77
LM End	3.05	Issue Type +	Ma	Location *	WS
Category	Earthen Levee			GPS Latitude/Longitude	
				Start	End
Item	Trim / Thin Trees			38.226567 °	38.226567 °
				-121.555225 °	-121.555225 °
DWR ID	DWR_RD0556_02_f_2018_77				
Comment Code					
T1 : Trim trees to at least five feet above ground level.					
Inspector Comment					

No Photos

LM Start	3.07	Rating **	M	Issue No.	97	
LM End	3.07	Issue Type +	En	Location *		
Category	Supplemental			GPS Latitude/Longitude		
				Start	End	
Item	DRAFT DWR UCIP Field Study			38.226225°	38.226225°	
				-121.555236°	-121.555236°	
DWR ID	20862					
Comment Code						
Inspector Comment						
DS_ID:20862 FS_ID:12525 EP_NO: N/A Repair Type: Non-Urgent Crossing Status: Found UCIP Comments: - 9-inch steel pipe sleeved through 12-inch pipe.- needs to seal gap between two pipes. FIELD_STRUCT_DESC: 9-inch steel pipe sleeved through a 12-inch steel irrigation discharge pipe through the levee, 6 feet below the crown. Pump on a pile structure in the river. Steel walkway to the pump and wood steps on the waterside (WS) slope. Concrete spill box with two 8-inch openings. (Retention of a 12-inch pipe through the levee, 6 feet below the crown, a pump on a pile structure in the river, a steel walkway to the pump, and wood steps on the WS slope authorized under Automatic Board Order (ABO) issued as Permit No. 11193, 1975 - Gertrude M. Reid). [Additional Reference(s): DWR Levee Log. USACE Sacramento O&M Manual 103, June 1954, (Station ""J"" 80+79), invert elevation 18.3 feet]. FS Date: 4/25/2013						

Photo 1 of 3 : UCIP_FA_2019_12525_20290.jpg



WS- walkway, pump, and pipe on steel pile structure in the river.

* Location LS : Land Side N/A : Not Applicable WS : Water Side CR : Crown	** Rating A : Acceptable M : Minimally Acceptable U : Unacceptable	N : Not Inspected/Rated C : Corrected A/W : Acceptable but Monitor & Maintain	+ Issue Type Ma : Maintenance Deficiency Ob : Design & System Obsolescence En : Enforcement
--	--	---	---

**Flood Control Project Maintenance
Levee Inspections**

Levee Inspection Report By Mile - Fall 2019

Reclamation District No. 0556 Upper Andrus

Waterway	Bank	Unit Miles	Inspection Start/End	Inspector
Unit No. 02 Sacramento River	Left	5.72	11/05/2019 11/05/2019	David Julian

LM Start	3.07	Rating **	M	Issue No.	97 (cont)	
LM End	3.07	Issue Type +	En	Location *		
Category	Supplemental			GPS Latitude/Longitude		
				Start	End	
Item	DRAFT DWR UCIP Field Study			38.226225°	38.226225°	
				-121.555236°	-121.555236°	
DWR ID	20862					
Comment Code						
Inspector Comment						
DS_ID:20862 FS_ID:12525 EP_NO: N/A Repair Type: Non-Urgent Crossing Status: Found UCIP Comments: - 9-inch steel pipe sleeved through 12-inch pipe.- needs to seal gap between two pipes. FIELD_STRUCT_DESC: 9-inch steel pipe sleeved through a 12-inch steel irrigation discharge pipe through the levee, 6 feet below the crown. Pump on a pile structure in the river. Steel walkway to the pump and wood steps on the waterside (WS) slope. Concrete spill box with two 8-inch openings. (Retention of a 12-inch pipe through the levee, 6 feet below the crown, a pump on a pile structure in the river, a steel walkway to the pump, and wood steps on the WS slope authorized under Automatic Board Order (ABO) issued as Permit No. 11193, 1975 - Gertrude M. Reid). [Additional Reference(s): DWR Levee Log. USACE Sacramento O&M Manual 103, June 1954, (Station ""J"" 80+79), invert elevation 18.3 feet]. FS Date: 4/25/2013						

LM Start	3.07	Rating **	M	Issue No.	97 (cont)
LM End	3.07	Issue Type +	En	Location *	

Photo 2 of 3 : UCIP_FA_2019_12525_20289.jpg



WS- 9-inch pipe sleeved through 10 inch steel pipe.

Photo 3 of 3 : UCIP_FA_2019_12525_20288.jpg



LS- a concrete spill box on landside of the levee.

* Location LS : Land Side N/A : Not Applicable WS : Water Side CR : Crown	** Rating A : Acceptable M : Minimally Acceptable U : Unacceptable	N : Not Inspected/Rated C : Corrected A/W : Acceptable but Monitor & Maintain	+ Issue Type Ma : Maintenance Deficiency Ob : Design & System Obsolescence En : Enforcement
--	--	---	---

**Flood Control Project Maintenance
Levee Inspections**

Levee Inspection Report By Mile - Fall 2019

Reclamation District No. 0556 Upper Andrus

Waterway	Bank	Unit Miles	Inspection Start/End	Inspector
Unit No. 02 Sacramento River	Left	5.72	11/05/2019 11/05/2019	David Julian

LM Start	3.07	Rating **	M	Issue No.	59
LM End	3.07	Issue Type +	En	Location *	WS
Category	Earthen Levee			GPS Latitude/Longitude	
				Start	End
Item	Encroachments			38.226155 °	38.226155 °
				-121.555273 °	-121.555273 °
DWR ID	DWR_RD0556_02_f_2019_59				
Comment Code					
MA : Material					
Inspector Comment					
There is an abandoned uninstalled pipe on waterside.					

Photo 1 of 1 : FA_2019_RD0556_19_59_20191107_00087.jpg



View of abandoned uninstalled pipe on the waterside toe (Fall 2019).

LM Start	3.17	Rating **	M	Issue No.	17
LM End	3.28	Issue Type +	Ma	Location *	WS
Category	Supplemental			GPS Latitude/Longitude	
				Start	End
Item	2017 USACE Erosion Survey			38.224850 °	38.223233 °
				-121.555641 °	-121.555687 °
DWR ID	DWR_RD0556_02_f_2018_17				
Comment Code					
Inspector Comment					
2017 Site ID: SAC 23.2 L					
Status: Eroding					
2017 Field Notes: New erosion along lower bank.					
Site History: 2000 - Recently fallen cottonwood at the downstream end.					
2005 - Empty brush boxes. 2011 - A few trees have fallen since last year.					
2012 - Potential new tree popout since last year. 2013 - New erosion at downstream end of site and a recent tree pop-out observed.					
2016 - New erosion at the toe.					

Photo 1 of 1 : FA_2019_RD0556_19_17_20190826_00005.jpg



USACE 2013 Photo #1

* Location LS : Land Side N/A : Not Applicable WS : Water Side CR : Crown	** Rating A : Acceptable M : Minimally Acceptable U : Unacceptable	N : Not Inspected/Rated C : Corrected A/W : Acceptable but Monitor & Maintain	+ Issue Type Ma : Maintenance Deficiency Ob : Design & System Obsolescence En : Enforcement
--	--	--	---

**Flood Control Project Maintenance
Levee Inspections**

Levee Inspection Report By Mile - Fall 2019

Reclamation District No. 0556 Upper Andrus

Waterway	Bank	Unit Miles	Inspection Start/End	Inspector
Unit No. 02 Sacramento River	Left	5.72	11/05/2019 11/05/2019	David Julian

LM Start	3.29	Rating **	M	Issue No.	85
LM End	3.29	Issue Type +	Ma	Location *	LS
Category	Earthen Levee			GPS Latitude/Longitude	
				Start	End
Item	Trim / Thin Trees			38.222995°	38.222995°
				-121.555433°	-121.555433°
DWR ID	DWR_RD0556_02_f_2019_85				
Comment Code					
T2 : Thin trees to allow visibility of the ground and room to flood fight.					
Inspector Comment					

No Photos

LM Start	3.51	Rating **	M	Issue No.	98
LM End	3.51	Issue Type +	En	Location *	
Category	Supplemental			GPS Latitude/Longitude	
				Start	End
Item	DRAFT DWR UCIP Field Study			38.219851°	38.219851°
				-121.556129°	-121.556129°
DWR ID	20863				
Comment Code					
Inspector Comment					
DS_ID:20863 FS_ID:12527 EP_NO: 11181 Repair Type: Non-Urgent Crossing Status: Found UCIP Comments: - needs to fix siphon breaker FIELD_STRUCT_DESC: 10-inch steel irrigation discharge pipe through the levee, 4.8 feet below the crown. Steel walkway to the pump on a pile structure in the river. Siphon breaker on the waterside (WS). Service pole on the landside (LS) slope. Concrete spill box with two 15-inch openings on the LS. (Retention of a 10-inch pipe through the levee, 4.8 feet below the crown, a steel walkway to the pump on a pile structure in the river, and a siphon breaker and a service pole on the LS slope authorized under Automatic Board Order (ABO) issued as Permit No. 11181, 1975 - Robert E. and G. P. Collins). [Additional Reference(s): DWR Levee Log. USACE Sacramento O&M Manual 103, June 1954, (Station ""J"" 58+00), invert elevation 18.2 feet]. FS Date: 4/25/2013					

Photo 1 of 3 : UCIP_FA_2019_12527_20297.jpg



WS- pump, pipe, and walkway on steel structure in the stream.

* Location LS : Land Side N/A : Not Applicable WS : Water Side CR : Crown	** Rating A : Acceptable M : Minimally Acceptable U : Unacceptable	N : Not Inspected/Rated C : Corrected A/W : Acceptable but Monitor & Maintain	+ Issue Type Ma : Maintenance Deficiency Ob : Design & System Obsolescence En : Enforcement
--	--	---	---

**Flood Control Project Maintenance
Levee Inspections**

Levee Inspection Report By Mile - Fall 2019

Reclamation District No. 0556 Upper Andrus

Waterway	Bank	Unit Miles	Inspection Start/End	Inspector
Unit No. 02 Sacramento River	Left	5.72	11/05/2019 11/05/2019	David Julian

LM Start	3.51	Rating **	M	Issue No.	98 (cont)	
LM End	3.51	Issue Type +	En	Location *		
Category	Supplemental			GPS Latitude/Longitude		
				Start	End	
Item	DRAFT DWR UCIP Field Study			38.219851 °	38.219851 °	
				-121.556129 °	-121.556129 °	
DWR ID	20863					
Comment Code						
Inspector Comment						
DS_ID:20863 FS_ID:12527 EP_NO: 11181 Repair Type: Non-Urgent Crossing Status: Found UCIP Comments: - needs to fix siphon breaker FIELD_STRUCT_DESC: 10-inch steel irrigation discharge pipe through the levee, 4.8 feet below the crown. Steel walkway to the pump on a pile structure in the river. Siphon breaker on the waterside (WS). Service pole on the landside (LS) slope. Concrete spill box with two 15-inch openings on the LS. (Retention of a 10-inch pipe through the levee, 4.8 feet below the crown, a steel walkway to the pump on a pile structure in the river, and a siphon breaker and a service pole on the LS slope authorized under Automatic Board Order (ABO) issued as Permit No. 11181, 1975 - Robert E. and G. P. Collins). [Additional Reference(s): DWR Levee Log. USACE Sacramento O&M Manual 103, June 1954, (Station ""J"" 58+00), invert elevation 18.2 feet]. FS Date: 4/25/2013						

LM Start	3.51	Rating **	M	Issue No.	98 (cont)
LM End	3.51	Issue Type +	En	Location *	

Photo 2 of 3 : UCIP_FA_2019_12527_20296.jpg



WS- siphon breaker and abandoned CMP riser laying adjacent to it.

Photo 3 of 3 : UCIP_FA_2019_12527_20295.jpg



WS- siphon breaker on levee slope.

* Location LS : Land Side N/A : Not Applicable WS : Water Side CR : Crown	** Rating A : Acceptable M : Minimally Acceptable U : Unacceptable	N : Not Inspected/Rated C : Corrected A/W : Acceptable but Monitor & Maintain	+ Issue Type Ma : Maintenance Deficiency Ob : Design & System Obsolescence En : Enforcement
--	--	---	---

**Flood Control Project Maintenance
Levee Inspections**

Levee Inspection Report By Mile - Fall 2019

Reclamation District No. 0556 Upper Andrus

Waterway	Bank	Unit Miles	Inspection Start/End	Inspector
Unit No. 02 Sacramento River	Left	5.72	11/05/2019 11/05/2019	David Julian

LM Start	3.54	Rating **	M	Issue No.	78
LM End	3.54	Issue Type +	En	Location *	WS
Category	Earthen Levee			GPS Latitude/Longitude	
				Start	End
Item	Encroachments			38.219407 °	38.219407 °
				-121.556280 °	-121.556280 °
DWR ID	DWR_RD0556_02_f_2018_78				
Comment Code					
ST : Stairway					
Inspector Comment					
Stairs encroaching into slope do not have a permit.					

Photo 1 of 1 : FA_2019_RD0556_19_78_20190826_00041.jpg



View of stairs on waterside slope (October 2018).

LM Start	3.57	Rating **	A/W	Issue No.	23	
LM End	3.95	Issue Type +	Ob	Location *		
Category	Supplemental			GPS Latitude/Longitude		
				Start		End
Item	2017 Storm Damage			38.218950 °		38.213490 °
				-121.556300 °		-121.556850 °
DWR ID	DWR_RD0556_02_R_2012_03					
Comment Code						
Inspector Comment						
Levee Evaluation Comments						
Description:						
Site ID No:68						
Site Designation:DWR_RD0556_02_R_2012_03						
Repair Type: Seepage						
Rating:						
Field Date:						
Notes:						

No Photos

* Location LS : Land Side N/A : Not Applicable WS : Water Side CR : Crown	** Rating A : Acceptable M : Minimally Acceptable U : Unacceptable	N : Not Inspected/Rated C : Corrected A/W : Acceptable but Monitor & Maintain	+ Issue Type Ma : Maintenance Deficiency Ob : Design & System Obsolescence En : Enforcement
--	--	--	---

**Flood Control Project Maintenance
Levee Inspections**

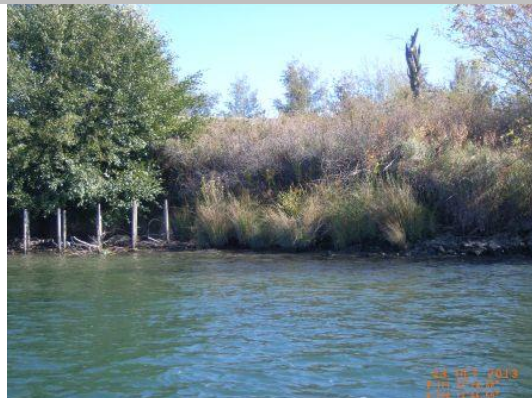
Levee Inspection Report By Mile - Fall 2019

Reclamation District No. 0556 Upper Andrus

Waterway	Bank	Unit Miles	Inspection Start/End	Inspector
Unit No. 02 Sacramento River	Left	5.72	11/05/2019 11/05/2019	David Julian

LM Start	3.58	Rating **	M	Issue No.	16
LM End	3.64	Issue Type +	Ma	Location *	WS
Category	Supplemental			GPS Latitude/Longitude	
				Start	End
Item	2017 USACE Erosion Survey			38.218951 °	38.218104 °
				-121.556689 °	-121.556819 °
DWR ID	DWR_RD0556_02_f_2018_16				
Comment Code					
Inspector Comment					
2017 Site ID: SAC 22.7 L					
Status: Eroding					
2017 Field Notes: Minor new erosion at toe.					
Site History: 1997 - Scallops into berm and very close to levee toe.					
2005 - Brush boxes present. 2011 - New toe scour and freshly fallen tree. 2012 - New tree popout has taken significant portion of soil out of the levee.					

Photo 1 of 1 : FA_2019_RD0556_19_16_20190826_00004.jpg



USACE 2013 Photo #1

LM Start	3.58	Rating **	U	Issue No.	49
LM End	3.74	Issue Type +	En	Location *	LS
Category	Earthen Levee			GPS Latitude/Longitude	
				Start	End
Item	Vegetation			38.218889 °	38.216543 °
				-121.556388 °	-121.556777 °
DWR ID	DWR_RD0556_02_s_2018_49				
Comment Code					
V6 : Landscaping					
Inspector Comment					
A row of evergreen trees block inspection and access. They should be trimmed to 5' above the levee.					

Photo 1 of 1 : FA_2019_RD0556_19_49_20190826_00029.jpg



View of landscaping trees on the landside.

*** Location**
 LS : Land Side N/A : Not Applicable
 WS : Water Side
 CR : Crown

**** Rating**
 A : Acceptable N : Not Inspected/Rated
 M : Minimally Acceptable C : Corrected
 U : Unacceptable A/W : Acceptable but Monitor & Maintain

+ Issue Type
 Ma : Maintenance Deficiency
 Ob : Design & System Obsolescence
 En : Enforcement

Levee Inspection Report By Mile - Fall 2019


Waterway	Bank	Unit Miles	Inspection Start/End	Inspector
Unit No. 02 Sacramento River	Left	5.72	11/05/2019 11/05/2019	David Julian

Photo 1 of 1 : FA_RD0556_19_63_20191107_00088.jpg



View of erosion on the waterside shoulder (Fall 2019).

Photo 1 of 1 : FA_2019_RD0556_19_84_20191107_00097.jpg



View looking upstream at thick trees on the landside slope (Fall 2019).

* Location	** Rating	+ Issue Type
LS : Land Side N/A : Not Applicable WS : Water Side CR : Crown	A : Acceptable N : Not Inspected/Rated M : Minimally Acceptable C : Corrected U : Unacceptable A/W : Acceptable but Monitor & Maintain	Ma : Maintenance Deficiency Ob : Design & System Obsolescence En : Enforcement

**Flood Control Project Maintenance
Levee Inspections**

Levee Inspection Report By Mile - Fall 2019

Reclamation District No. 0556 Upper Andrus

Waterway	Bank	Unit Miles	Inspection Start/End	Inspector
Unit No. 02 Sacramento River	Left	5.72	11/05/2019 11/05/2019	David Julian

LM Start	3.95	Rating **	M	Issue No.	15
LM End	4.12	Issue Type +	Ma	Location *	WS
Category	Supplemental			GPS Latitude/Longitude	
				Start	End
Item	2017 USACE Erosion Survey			38.213581 °	38.211112 °
				-121.557197 °	-121.557042 °
DWR ID	DWR_RD0556_02_f_2018_15				
Comment Code					
Inspector Comment					
2017 Site ID: SAC 22.5 L Status: Eroding 2017 Field Notes: New lower bank erosion at the upstream end. Locals placed rock in some erosion pockets. Site History: 2002 - Spot rock along berm, but not in the erosion pockets. 2005 - Some new minor stone revetment at the upstream end. Brush boxes present. 2006 - Currently installing new brush in downstream brush boxes. 2007 - Rock in middle portion for about 150 ft. 2010 - Some attempt at repairs but still has pockets of erosion. 2012 - More erosion along the toe.					

Photo 1 of 1 : FA_2019_RD0556_19_15_20190826_00003.jpg



USACE 2013 Photo #1

LM Start	3.99	Rating **	M	Issue No.	99	
LM End	3.99	Issue Type +	En	Location *		
Category	Supplemental			GPS Latitude/Longitude		
				Start	End	
Item	DRAFT DWR UCIP Field Study			38.213031 °	38.213031 °	
				-121.556800 °	-121.556800 °	
DWR ID	20864					
Comment Code						
Inspector Comment						
DS_ID:20864 FS_ID:12543 EP_NO: 11197 Repair Type: Non-Urgent Crossing Status: Found UCIP Comments: Electric control panel in pump house.Needs cleaning of CMP riser on landside. FIELD_STRUCT_DESC: 6-inch steel irrigation discharge pipe through the levee, 6.5 feet below the crown. Slant pump on a steel pile structure in the river. Walkway to the pump. Gate valve in a pump house on the waterside (WS) slope. Siphon breaker and service poles on the landside (LS) slope. Concrete standpipe on the LS. (Retention of a 6-inch pipe through the levee, 6.5 feet below the crown, a pump and a gate valve in a pump house on the WS slope, and a siphon breaker and a service pole on the LS slope authorized under Automatic Board Order (ABO) issued as Permit No. 11197, 1975 - Richard T. and Mary B. Souza). [Additional Reference(s): DWR Levee Log. USACE Sacramento O&M Manual 103, June 1954, (Station ""J"" 32+40), invert elevation 18.1 feet]. FS Date: 4/25/2013						

Photo 1 of 3 : UCIP_FA_2019_12543_20302.jpg



WS- pipe and pump on steel pile structure. Steel walkway from pump house to the pump on steel structure.

* Location LS : Land Side N/A : Not Applicable WS : Water Side CR : Crown	** Rating A : Acceptable M : Minimally Acceptable U : Unacceptable	N : Not Inspected/Rated C : Corrected A/W : Acceptable but Monitor & Maintain	+ Issue Type Ma : Maintenance Deficiency Ob : Design & System Obsolescence En : Enforcement
--	--	---	---

**Flood Control Project Maintenance
Levee Inspections**

Levee Inspection Report By Mile - Fall 2019

Reclamation District No. 0556 Upper Andrus

Waterway	Bank	Unit Miles	Inspection Start/End	Inspector
Unit No. 02 Sacramento River	Left	5.72	11/05/2019 11/05/2019	David Julian

LM Start	3.99	Rating **	M	Issue No.	99 (cont)	
LM End	3.99	Issue Type +	En	Location *		
Category	Supplemental			GPS Latitude/Longitude		
				Start	End	
Item	DRAFT DWR UCIP Field Study			38.213031 °	38.213031 °	
				-121.556800 °	-121.556800 °	
DWR ID	20864					
Comment Code						
Inspector Comment						
DS_ID:20864 FS_ID:12543 EP_NO: 11197 Repair Type: Non-Urgent Crossing Status: Found UCIP Comments: Electric control panel in pump house.Needs cleaning of CMP riser on landside. FIELD_STRUCT_DESC: 6-inch steel irrigation discharge pipe through the levee, 6.5 feet below the crown. Slant pump on a steel pile structure in the river. Walkway to the pump. Gate valve in a pump house on the waterside (WS) slope. Siphon breaker and service poles on the landside (LS) slope. Concrete standpipe on the LS. (Retention of a 6-inch pipe through the levee, 6.5 feet below the crown, a pump and a gate valve in a pump house on the WS slope, and a siphon breaker and a service pole on the LS slope authorized under Automatic Board Order (ABO) issued as Permit No. 11197, 1975 - Richard T. and Mary B. Souza). [Additional Reference(s): DWR Levee Log. USACE Sacramento O&M Manual 103, June 1954, (Station ""J"" 32+40), invert elevation 18.1 feet]. FS Date: 4/25/2013						

LM Start	3.99	Rating **	M	Issue No.	99 (cont)
LM End	3.99	Issue Type +	En	Location *	

Photo 2 of 3 : UCIP_FA_2019_12543_20301.jpg



LS- siphon breaker in CMP riser and concrete standpipe behind CMP riser.

Photo 3 of 3 : UCIP_FA_2019_12543_20300.jpg



LS- siphon breaker in CMP riser. It needs cleaning.

* Location LS : Land Side N/A : Not Applicable WS : Water Side CR : Crown	** Rating A : Acceptable M : Minimally Acceptable U : Unacceptable	N : Not Inspected/Rated C : Corrected A/W : Acceptable but Monitor & Maintain	+ Issue Type Ma : Maintenance Deficiency Ob : Design & System Obsolescence En : Enforcement
--	--	---	---

**Flood Control Project Maintenance
Levee Inspections**

Levee Inspection Report By Mile - Fall 2019

Reclamation District No. 0556 Upper Andrus

Waterway	Bank	Unit Miles	Inspection Start/End	Inspector
Unit No. 02 Sacramento River	Left	5.72	11/05/2019 11/05/2019	David Julian

LM Start	4.01	Rating **	U	Issue No.	52
LM End	5.02	Issue Type +	Ma	Location *	LS
Category	Earthen Levee			GPS Latitude/Longitude	
				Start	End
Item	Vegetation			38.212662 °	38.198213 °
				-121.556808 °	-121.558407 °
DWR ID	DWR_RD0556_02_s_2018_52				
Comment Code					
V2 : Remove the wild growth other than native grasses from the levee slopes.					
Inspector Comment					
Blackberries are located at the landside toe.					

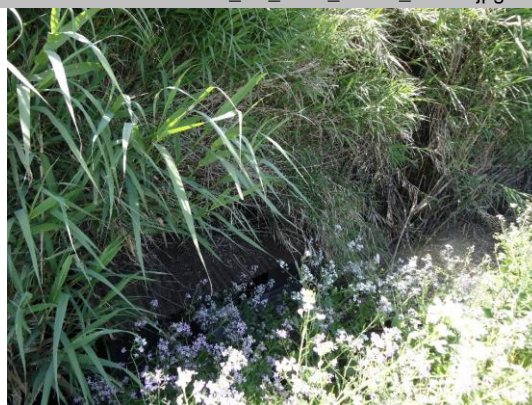
Photo 1 of 1 : FA_2019_RD0556_19_52_20191107_00096.jpg



View of vegetation on the landside slope. Weeds are obscuring the large blackberry vines at the landside toe (Fall 2019).

LM Start	4.26	Rating **	M	Issue No.	100	
LM End	4.26	Issue Type +	En	Location *		
Category	Supplemental			GPS Latitude/Longitude		
				Start	End	
Item	DRAFT DWR UCIP Field Study			38.209117°	38.209117°	
				-121.556803°	-121.556803°	
DWR ID	20865					
Comment Code						
Inspector Comment						
DS_ID:20865 FS_ID:12545 EP_NO: 11194 Repair Type: Non-Urgent Crossing Status: Found UCIP Comments: - CMP riser found abandoned on LS slope. Due to dense vegetation siphon breaker could not be found.- Dense vegetation on both sides of the levee.- Oil leaks from pump set. FIELD_STRUCT_DESC: 8-inch steel irrigation discharge pipe through the levee, 6.7 feet below the crown. Pump and gate valve in a pump house on the waterside (WS) slope. Siphon breaker on the landside (LS) slope. (Retention of an 8-inch pipe through the levee, 6.7 feet below the crown, a pump and a gate valve in a pump house on the WS slope, and a siphon breaker on the LS slope authorized under Automatic Board Order (ABO) issued as Permit No. 11194, 1975 - Gerald E. and William M. Robinson, et al.). [Additional Reference(s): DWR Levee Log. USACE Sacramento O&M Manual 103, June 1954, (Station ""J"" 18+20), invert elevation 18 feet]. FS Date: 4/25/2013						

Photo 1 of 3 : UCIP_FA_2019_12545_20310.jpg



WS- pump house not visible due to the dense vegetation.

* Location LS : Land Side N/A : Not Applicable WS : Water Side CR : Crown	** Rating A : Acceptable M : Minimally Acceptable U : Unacceptable	N : Not Inspected/Rated C : Corrected A/W : Acceptable but Monitor & Maintain	+ Issue Type Ma : Maintenance Deficiency Ob : Design & System Obsolescence En : Enforcement
--	--	---	---

**Flood Control Project Maintenance
Levee Inspections**

Levee Inspection Report By Mile - Fall 2019

Reclamation District No. 0556 Upper Andrus

Waterway	Bank	Unit Miles	Inspection Start/End	Inspector
Unit No. 02 Sacramento River	Left	5.72	11/05/2019 11/05/2019	David Julian

LM Start	4.26	Rating **	M	Issue No.	100 (cont)	
LM End	4.26	Issue Type +	En	Location *		
Category	Supplemental			GPS Latitude/Longitude		
				Start	End	
Item	DRAFT DWR UCIP Field Study			38.209117°	38.209117°	
				-121.556803°	-121.556803°	
DWR ID	20865					
Comment Code						
Inspector Comment						
DS_ID:20865 FS_ID:12545 EP_NO: 11194 Repair Type: Non-Urgent Crossing Status: Found UCIP Comments: - CMP riser found abandoned on LS slope. Due to dense vegetation siphon breaker could not be found.- Dense vegetation on both sides of the levee.- Oil leaks from pump set. FIELD_STRUCT_DESC: 8-inch steel irrigation discharge pipe through the levee, 6.7 feet below the crown. Pump and gate valve in a pump house on the waterside (WS) slope. Siphon breaker on the landside (LS) slope. (Retention of an 8-inch pipe through the levee, 6.7 feet below the crown, a pump and a gate valve in a pump house on the WS slope, and a siphon breaker on the LS slope authorized under Automatic Board Order (ABO) issued as Permit No. 11194, 1975 - Gerald E. and William M. Robinson, et al.). [Additional Reference(s): DWR Levee Log. USACE Sacramento O&M Manual 103, June 1954, (Station ""J"" 18+20), invert elevation 18 feet]. FS Date: 4/25/2013						

LM Start	4.26	Rating **	M	Issue No.	100 (cont)
LM End	4.26	Issue Type +	En	Location *	

Photo 2 of 3 : UCIP_FA_2019_12545_20309.jpg



WS- pump house inside the dense vegetation.

Photo 3 of 3 : UCIP_FA_2019_12545_20308.jpg



WS- pump, gate valve and pipe in pump house.

* Location LS : Land Side N/A : Not Applicable WS : Water Side CR : Crown	** Rating A : Acceptable M : Minimally Acceptable U : Unacceptable	N : Not Inspected/Rated C : Corrected A/W : Acceptable but Monitor & Maintain	+ Issue Type Ma : Maintenance Deficiency Ob : Design & System Obsolescence En : Enforcement
--	--	---	---

**Flood Control Project Maintenance
Levee Inspections**

Levee Inspection Report By Mile - Fall 2019

Reclamation District No. 0556 Upper Andrus

Waterway	Bank	Unit Miles	Inspection Start/End	Inspector
Unit No. 02 Sacramento River	Left	5.72	11/05/2019 11/05/2019	David Julian

LM Start	4.41	Rating **	C	Issue No.	55
LM End	4.41	Issue Type +	Ma	Location *	WS
Category	Earthen Levee			GPS Latitude/Longitude	
				Start	End
Item	Trim / Thin Trees			38.206922 °	38.206922 °
				-121.556837 °	-121.556837 °
DWR ID	DWR_RD0556_02_s_2018_55				
Comment Code					
T1 : Trim trees to at least five feet above ground level.					
Inspector Comment					

No Photos

LM Start	4.41	Rating **	U	Issue No.	36
LM End	4.44	Issue Type +	En	Location *	LS
Category	Earthen Levee			GPS Latitude/Longitude	
				Start	End
Item	Vegetation			38.206832 °	38.206418 °
				-121.556783 °	-121.556770 °
DWR ID	DWR_RD0556_02_f_2017_36				
Comment Code					
V6 : Landscaping					
Inspector Comment					
Oleanders, trees, and other landscaping should be trimmed to allow inspection and access to the landside slope and toe.					

Photo 1 of 1 : FA_2019_RD0556_19_36_20190826_00020.jpg



View of landscaping on the landside.

LM Start	4.43	Rating **	U	Issue No.	54
LM End	4.43	Issue Type +	En	Location *	WS
Category	Earthen Levee			GPS Latitude/Longitude	
				Start	End
Item	Encroachments			38.206628 °	38.206628 °
				-121.556829 °	-121.556829 °
DWR ID	DWR_RD0556_02_s_2018_54				
Comment Code					
TR : Tree or limb					
Inspector Comment					
Remove fallen tree and other woody debris on waterside slope					

Photo 1 of 1 : FA_2019_RD0556_19_54_20191107_00089.jpg



View of fallen tree and limbs on the waterside slope (Fall 2019).

*** Location**

LS : Land Side N/A : Not Applicable
WS : Water Side
CR : Crown

**** Rating**

A : Acceptable N : Not Inspected/Rated
M : Minimally Acceptable C : Corrected
U : Unacceptable A/W : Acceptable but Monitor & Maintain

+ Issue Type

Ma : Maintenance Deficiency
Ob : Design & System Obsolescence
En : Enforcement

**Flood Control Project Maintenance
Levee Inspections**

Levee Inspection Report By Mile - Fall 2019

Reclamation District No. 0556 Upper Andrus

Waterway	Bank	Unit Miles	Inspection Start/End	Inspector
Unit No. 02 Sacramento River	Left	5.72	11/05/2019 11/05/2019	David Julian

LM Start	4.45	Rating **	M	Issue No.	14
LM End	4.49	Issue Type +	Ma	Location *	WS
Category	Supplemental			GPS Latitude/Longitude	
				Start	End
Item	2017 USACE Erosion Survey			38.206377 °	38.205729 °
				-121.557184 °	-121.557108 °
DWR ID	DWR_RD0556_02_f_2018_14				
Comment Code					
Inspector Comment					
2017 Site ID: SAC 21.9 L					
Status: Eroding					
2017 Field Notes: No observed change..					
Site History: 2013 - Erosion pockets encroaching on levee foundation.					

Photo 1 of 1 : FA_2019_RD0556_19_14_20190826_00002.jpg



USACE 2013 Photo #1

LM Start	4.54	Rating **	M	Issue No.	101
LM End	4.54	Issue Type +	En	Location *	
Category	Supplemental			GPS Latitude/Longitude	
				Start	End
Item	DRAFT DWR UCIP Field Study			38.204974 °	38.204974 °
				-121.556789 °	-121.556789 °
DWR ID	20866				
Comment Code					
Inspector Comment					
DS_ID:20866 FS_ID:12546 EP_NO: 11940 Repair Type: Non-Urgent Crossing Status: Found UCIP Comments: - Abandoned crossing.- Siphon breaker on LS not found due to dense vegetation, - An abandoned CMP riser and service pole found on LS.- It may need to be properly abandoned. FIELD_STRUCT_DESC: *ABANDONED* 6-inch steel irrigation discharge pipe through the levee, 6.7 feet below the crown. Pump and gate valve in a pump house on the waterside (WS) slope. Siphon breaker and service pole on the landside (LS) slope. (Retention of a 6-inch pipe through the levee, 6.5 feet below the crown, a pump and a gate valve in a pump house on the WS slope, and a siphon breaker and a service pole on the LS slope authorized under Automatic Board Order (ABO) issued as Permit No. 11194, 1975 - Gerald E. and William M. Robinson, et al.). [Additional Reference(s): DWR Levee Log. USACE Sacramento O&M Manual 103, June 1954, (Station ""J"" 2+73), invert elevation 18 feet]. FS Date: 4/25/2013					

Photo 1 of 3 : UCIP_FA_2019_12546_20314.jpg



WS- abandoned pump house on levee slope. Dense vegetation on levee slope.

* Location LS : Land Side N/A : Not Applicable WS : Water Side CR : Crown	** Rating A : Acceptable M : Minimally Acceptable U : Unacceptable N : Not Inspected/Rated C : Corrected A/W : Acceptable but Monitor & Maintain	+ Issue Type Ma : Maintenance Deficiency Ob : Design & System Obsolescence En : Enforcement
--	---	---

**Flood Control Project Maintenance
Levee Inspections**

Levee Inspection Report By Mile - Fall 2019

Reclamation District No. 0556 Upper Andrus

Waterway	Bank	Unit Miles	Inspection Start/End	Inspector
Unit No. 02 Sacramento River	Left	5.72	11/05/2019 11/05/2019	David Julian

LM Start	4.54	Rating **	M	Issue No.	101 (cont)	
LM End	4.54	Issue Type +	En	Location *		
Category	Supplemental			GPS Latitude/Longitude		
				Start	End	
Item	DRAFT DWR UCIP Field Study			38.204974 °	38.204974 °	
				-121.556789 °	-121.556789 °	
DWR ID	20866					
Comment Code						
Inspector Comment						
DS_ID:20866 FS_ID:12546 EP_NO: 11940 Repair Type: Non-Urgent Crossing Status: Found UCIP Comments: - Abandoned crossing.- Siphon breaker on LS not found due to dense vegetation, - An abandoned CMP riser and service pole found on LS.- It may need to be properly abandoned. FIELD_STRUCT_DESC: *ABANDONED* 6-inch steel irrigation discharge pipe through the levee, 6.7 feet below the crown. Pump and gate valve in a pump house on the waterside (WS) slope. Siphon breaker and service pole on the landside (LS) slope. (Retention of a 6-inch pipe through the levee, 6.5 feet below the crown, a pump and a gate valve in a pump house on the WS slope, and a siphon breaker and a service pole on the LS slope authorized under Automatic Board Order (ABO) issued as Permit No. 11194, 1975 - Gerald E. and William M. Robinson, et al.). [Additional Reference(s): DWR Levee Log. USACE Sacramento O&M Manual 103, June 1954, (Station ""J"" 2+73), invert elevation 18 feet]. FS Date: 4/25/2013						

LM Start	4.54	Rating **	M	Issue No.	101 (cont)
LM End	4.54	Issue Type +	En	Location *	

Photo 2 of 3 : UCIP_FA_2019_12546_20313.jpg



WS- pipe daylight from levee slope to pump house.

Photo 3 of 3 : UCIP_FA_2019_12546_20315.jpg



WS- abandoned gate valve, pump, and pipe in pump house

* Location LS : Land Side N/A : Not Applicable WS : Water Side CR : Crown	** Rating A : Acceptable M : Minimally Acceptable U : Unacceptable	N : Not Inspected/Rated C : Corrected A/W : Acceptable but Monitor & Maintain	+ Issue Type Ma : Maintenance Deficiency Ob : Design & System Obsolescence En : Enforcement
--	--	---	---

**Flood Control Project Maintenance
Levee Inspections**

Levee Inspection Report By Mile - Fall 2019

Reclamation District No. 0556 Upper Andrus

Waterway	Bank	Unit Miles	Inspection Start/End	Inspector
Unit No. 02 Sacramento River	Left	5.72	11/05/2019 11/05/2019	David Julian

LM Start	4.56	Rating **	U	Issue No.	56
LM End	4.56	Issue Type +	Ma	Location *	LS
Category	Earthen Levee			GPS Latitude/Longitude	
				Start	End
Item	Encroachments			38.204666 °	38.204666 °
				-121.556813 °	-121.556813 °
DWR ID	DWR_RD0556_02_s_2018_56				
Comment Code					
TR : Tree or limb					
Inspector Comment					
Remove dead tree/limb from the landside.					

Photo 1 of 1 : FA_2019_RD0556_19_56_20190826_00033.jpg



Fallen tree on landside should be removed.

LM Start	4.63	Rating **	M	Issue No.	38
LM End	4.84	Issue Type +	En	Location *	LS
Category	Earthen Levee			GPS Latitude/Longitude	
				Start	End
Item	Encroachments			38.203693 °	38.200593 °
				-121.556683 °	-121.557208 °
DWR ID	DWR_RD0556_02_s_2012_38				
Comment Code					
FE : Fence					
Inspector Comment					
Remove this old fence from the levee section landside.					

Photo 1 of 1 : FA_2019_RD0556_19_38_20190826_00022.jpg



View of old fence posts on landside slope (October 2018).

LM Start	4.64	Rating **	U	Issue No.	58
LM End	4.64	Issue Type +	En	Location *	LS
Category	Earthen Levee			GPS Latitude/Longitude	
				Start	End
Item	Vegetation			38.203480 °	38.203480 °
				-121.556824 °	-121.556824 °
DWR ID	DWR_RD0556_02_s_2018_58				
Comment Code					
V6 : Landscaping					
Inspector Comment					
Remove fig tree from the landside slope.					

Photo 1 of 1 : FA_2019_RD0556_19_58_20190826_00034.jpg



View of fig tree on landside slope (October 2018).

*** Location**

LS : Land Side N/A : Not Applicable
WS : Water Side
CR : Crown

**** Rating**

A : Acceptable N : Not Inspected/Rated
M : Minimally Acceptable C : Corrected
U : Unacceptable A/W : Acceptable but Monitor & Maintain

+ Issue Type

Ma : Maintenance Deficiency
Ob : Design & System Obsolescence
En : Enforcement

Levee Inspection Report By Mile - Fall 2019

Waterway	Bank	Unit Miles	Inspection Start/End	Inspector
Unit No. 02 Sacramento River	Left	5.72	11/05/2019 11/05/2019	David Julian

Photo 1 of 1 : FA_2019_RD0556_19_27_20190826_00012.jpg



View of fallen tree on the waterside slope (October 2018).

Photo 1 of 3 : UCIP_FA_2019_12547_20320.jpg



LS- obstructed siphon breaker in CMP riser on levee slope.

* Location	** Rating	+ Issue Type
LS : Land Side N/A : Not Applicable	A : Acceptable N : Not Inspected/Rated	Ma : Maintenance Deficiency
WS : Water Side	M : Minimally Acceptable C : Corrected	Ob : Design & System Obsolescence
CR : Crown	U : Unacceptable A/W : Acceptable but Monitor & Maintain	En : Enforcement

**Flood Control Project Maintenance
Levee Inspections**

Levee Inspection Report By Mile - Fall 2019

Reclamation District No. 0556 Upper Andrus

Waterway	Bank	Unit Miles	Inspection Start/End	Inspector
Unit No. 02 Sacramento River	Left	5.72	11/05/2019 11/05/2019	David Julian

LM Start	4.73	Rating **	M	Issue No.	102 (cont)	
LM End	4.73	Issue Type +	En	Location *		
Category	Supplemental			GPS Latitude/Longitude		
				Start	End	
Item	DRAFT DWR UCIP Field Study			38.202301 °	38.202301 °	
				-121.556952 °	-121.556952 °	
DWR ID	20867					
Comment Code						
Inspector Comment						
DS_ID:20867 FS_ID:12547 EP_NO: 11199 Repair Type: Non-Urgent Crossing Status: Indicator Found UCIP Comments: - pump, gate valve and pumphouse not found on waterward slope.- an abandoned electric control panel found on WS.- may need to be properly abandoned. FIELD_STRUCT_DESC: 6-inch steel irrigation discharge pipe through the levee, 6.5 feet below the crown. Siphon and concrete spill box with two 8-inch openings. (Retention of a 6-inch pipe through the levee, 6.5 feet below the crown, a pump and a gate valve in a pump house on the waterside [WS] slope, and a siphon breaker and a service pole on the landside [LS] slope authorized under Automatic Board Order (ABO) issued as Permit No. 11199, 1975 - Toshi Tokuyoshi, et al.). [Additional Reference(s): DWR Levee Log. USACE Sacramento O&M Manual 103, June 1954, (Station ""H"" 159+97), invert elevation 17.9 feet]. FS Date: 4/25/2013						

LM Start	4.73	Rating **	M	Issue No.	102 (cont)
LM End	4.73	Issue Type +	En	Location *	

Photo 2 of 3 : UCIP_FA_2019_12547_20319.jpg



LS- concrete distribution box near levee toe.

Photo 3 of 3 : UCIP_FA_2019_12547_20318.jpg



LS- power pole and a concrete distribution box near levee toe.

* Location LS : Land Side N/A : Not Applicable WS : Water Side CR : Crown	** Rating A : Acceptable M : Minimally Acceptable U : Unacceptable	N : Not Inspected/Rated C : Corrected A/W : Acceptable but Monitor & Maintain	+ Issue Type Ma : Maintenance Deficiency Ob : Design & System Obsolescence En : Enforcement
--	--	---	---

**Flood Control Project Maintenance
Levee Inspections**

Levee Inspection Report By Mile - Fall 2019

Reclamation District No. 0556 Upper Andrus

Waterway	Bank	Unit Miles	Inspection Start/End	Inspector
Unit No. 02 Sacramento River	Left	5.72	11/05/2019 11/05/2019	David Julian

LM Start	4.79	Rating **	M	Issue No.	60
LM End	4.79	Issue Type +	En	Location *	LS
Category	Earthen Levee			GPS Latitude/Longitude	
				Start	End
Item	Vegetation			38.201402°	38.201402°
				-121.557108°	-121.557108°
DWR ID	DWR_RD0556_02_s_2018_60				
Comment Code					
V6 : Landscaping					
Inspector Comment					
Remove cactus before more can become established.					

Photo 1 of 1 : FA_2019_RD0556_19_60_20190826_00035.jpg



View of cactus on the landside slope (October 2018).

LM Start	4.82	Rating **	U	Issue No.	61
LM End	4.82	Issue Type +	En	Location *	LS
Category	Earthen Levee			GPS Latitude/Longitude	
				Start	End
Item	Vegetation			38.201002°	38.201002°
				-121.557170°	-121.557170°
DWR ID	DWR_RD0556_02_s_2018_61				
Comment Code					
V6 : Landscaping					
Inspector Comment					
Landside bamboo should be removed to allow inspection and access.					

Photo 1 of 1 : FA_2019_RD0556_19_61_20190826_00036.jpg



View of landside bamboo.

LM Start	4.94	Rating **	M	Issue No.	83
LM End	4.94	Issue Type +	Ma	Location *	LS
Category	Earthen Levee			GPS Latitude/Longitude	
				Start	End
Item	Trim / Thin Trees			38.199282 °	38.199282 °
				-121.557835 °	-121.557835 °
DWR ID	DWR_RD0556_02_f_2018_83				
Comment Code					
T1 : Trim trees to at least five feet above ground level.					
Inspector Comment					

No Photos

* Location LS : Land Side N/A : Not Applicable WS : Water Side CR : Crown	** Rating A : Acceptable M : Minimally Acceptable U : Unacceptable	N : Not Inspected/Rated C : Corrected A/W : Acceptable but Monitor & Maintain	+ Issue Type Ma : Maintenance Deficiency Ob : Design & System Obsolescence En : Enforcement
--	--	--	---

**Flood Control Project Maintenance
Levee Inspections**

Levee Inspection Report By Mile - Fall 2019

Reclamation District No. 0556 Upper Andrus

Waterway	Bank	Unit Miles	Inspection Start/End	Inspector
Unit No. 02 Sacramento River	Left	5.72	11/05/2019 11/05/2019	David Julian

LM Start	4.95	Rating **	M	Issue No.	103	
LM End	4.95	Issue Type +	En	Location *		
Category	Supplemental			GPS Latitude/Longitude		
				Start	End	
Item	DRAFT DWR UCIP Field Study			38.199133°	38.199133°	
				-121.557939°	-121.557939°	
DWR ID	20868					
Comment Code						
Inspector Comment						
DS_ID:20868 FS_ID:12564 EP_NO: 11191 Repair Type: Non-Urgent Crossing Status: Found UCIP Comments: - needs to fix CMP riser. FIELD_STRUCT_DESC: 8-inch irrigation discharge pipe of an unknown material through the levee, 5.7 feet below the crown. Pump on the waterside (WS) slope. Gate valve on the WS berm. Siphon breaker and service pole on the landside (LS) slope. (Retention of an 8-inch pipe through the levee, 5.7 feet below the crown, a pump on the WS slope, a gate valve on the WS berm, and a siphon breaker and a service pole on the LS slope authorized under Automatic Board Order (ABO) issued as Permit No. 11191, 1975 - Pacific Fruit Exchange). [Additional Reference(s): DWR Levee Log]. FS Date: 4/25/2013						

LM Start	4.95	Rating **	M	Issue No.	103 (cont)
LM End	4.95	Issue Type +	En	Location *	

Photo 1 of 3 : UCIP_FA_2019_12564_20347.jpg



WS- pump house on levee slope.

Photo 2 of 3 : UCIP_FA_2019_12564_20346.jpg



WS- pump, pipe and gate valve in pump house.

* Location LS : Land Side N/A : Not Applicable WS : Water Side CR : Crown	** Rating A : Acceptable M : Minimally Acceptable U : Unacceptable	N : Not Inspected/Rated C : Corrected A/W : Acceptable but Monitor & Maintain	+ Issue Type Ma : Maintenance Deficiency Ob : Design & System Obsolescence En : Enforcement
--	--	---	---

**Flood Control Project Maintenance
Levee Inspections**

Levee Inspection Report By Mile - Fall 2019

Reclamation District No. 0556 Upper Andrus

Waterway	Bank	Unit Miles	Inspection Start/End	Inspector
Unit No. 02 Sacramento River	Left	5.72	11/05/2019 11/05/2019	David Julian

LM Start	4.95	Rating **	M	Issue No.	103 (cont)	
LM End	4.95	Issue Type +	En	Location *		
Category	Supplemental			GPS Latitude/Longitude		
				Start	End	
Item	DRAFT DWR UCIP Field Study			38.199133°	38.199133°	
				-121.557939°	-121.557939°	
DWR ID	20868					
Comment Code						
Inspector Comment						
DS_ID:20868 FS_ID:12564 EP_NO: 11191 Repair Type: Non-Urgent Crossing Status: Found UCIP Comments: - needs to fix CMP riser. FIELD_STRUCT_DESC: 8-inch irrigation discharge pipe of an unknown material through the levee, 5.7 feet below the crown. Pump on the waterside (WS) slope. Gate valve on the WS berm. Siphon breaker and service pole on the landside (LS) slope. (Retention of an 8-inch pipe through the levee, 5.7 feet below the crown, a pump on the WS slope, a gate valve on the WS berm, and a siphon breaker and a service pole on the LS slope authorized under Automatic Board Order (ABO) issued as Permit No. 11191, 1975 - Pacific Fruit Exchange). [Additional Reference(s): DWR Levee Log]. FS Date: 4/25/2013						

Photo 3 of 3 : UCIP_FA_2019_12564_20351.jpg



WS- closer look at pump, pipe and gate valve in pump house.

LM Start	5.08	Rating **	U	Issue No.	37
LM End	5.16	Issue Type +	En	Location *	LS
Category	Earthen Levee			GPS Latitude/Longitude	
				Start	End
Item	Vegetation			38.197407°	38.196388°
				-121.558950°	-121.559558°
DWR ID	DWR_RD0556_02_f_2017_37				
Comment Code					
V6 : Landscaping					
Inspector Comment					
Remove large cactus to allow inspection and access to the landside slope and toe.					

Photo 1 of 1 : FA_2019_RD0556_19_37_20191107_00095.jpg



View looking upstream at cactus on the landside slope (Fall 2019).

* Location
LS : Land Side N/A : Not Applicable
WS : Water Side
CR : Crown

** Rating
A : Acceptable N : Not Inspected/Rated
M : Minimally Acceptable C : Corrected
U : Unacceptable A/W : Acceptable but Monitor & Maintain

+ Issue Type
Ma : Maintenance Deficiency
Ob : Design & System Obsolescence
En : Enforcement

**Flood Control Project Maintenance
Levee Inspections**

Levee Inspection Report By Mile - Fall 2019

Reclamation District No. 0556 Upper Andrus

Waterway	Bank	Unit Miles	Inspection Start/End	Inspector
Unit No. 02 Sacramento River	Left	5.72	11/05/2019 11/05/2019	David Julian

LM Start	5.21	Rating **	U	Issue No.	104	
LM End	5.21	Issue Type +	En	Location *		
Category	Supplemental			GPS Latitude/Longitude		
				Start	End	
Item	DRAFT DWR UCIP Field Study			38.195755 °	38.195755 °	
				-121.560078 °	-121.560078 °	
DWR ID	20869					
Comment Code						
Inspector Comment						
DS_ID:20869 FS_ID:52733 EP_NO: 11185 Repair Type: Urgent Crossing Status: Found UCIP Comments: 07/12/2018 Pit on WS is covered with plywood. Water pump is running, no leaks detected. LS part of crossing was reconstructed. New pipe was installed after CMP riser to supply water to sand filters. Remains Urgent due to large pit on WS that needs to be backfilled. (O.Yakimov-DWR UCIP)04/25/2013 Large pit on levee berm. FIELD_STRUCT_DESC: 8-inch irrigation discharge pipe of an unknown material through the levee, 5.7 feet below the crown. Pump and gate valve in a pump house on the waterside (WS) slope. Siphon breaker, concrete box, and service pole on the landside (LS) slope. (Retention of an 8-inch pipe through the levee, 5.7 feet below the crown, a pump and a gate valve in a pump house on the WS slope, and a siphon breaker and a service pole on the LS slope authorized under Automatic Board Order (ABO) issued as Permit No. 11185, 1975 - R. Walter Langhart). [Additional Reference(s): DWR Levee Log]. FS Date: 7/13/2018						

LM Start	5.21	Rating **	U	Issue No.	104 (cont)
LM End	5.21	Issue Type +	En	Location *	

Photo 1 of 3 : UCIP_FA_2019_52733_20364.jpg



WS- pump house on levee slope

Photo 2 of 3 : UCIP_FA_2019_52733_20363.jpg



WS- pipe daylight from the levee.

* Location LS : Land Side N/A : Not Applicable WS : Water Side CR : Crown	** Rating A : Acceptable M : Minimally Acceptable U : Unacceptable	N : Not Inspected/Rated C : Corrected A/W : Acceptable but Monitor & Maintain	+ Issue Type Ma : Maintenance Deficiency Ob : Design & System Obsolescence En : Enforcement
--	--	---	---

**Flood Control Project Maintenance
Levee Inspections**

Levee Inspection Report By Mile - Fall 2019

Reclamation District No. 0556 Upper Andrus

Waterway	Bank	Unit Miles	Inspection Start/End	Inspector
Unit No. 02 Sacramento River	Left	5.72	11/05/2019 11/05/2019	David Julian

LM Start	5.21	Rating **	U	Issue No.	104 (cont)
LM End	5.21	Issue Type +	En	Location *	
Category	Supplemental			GPS Latitude/Longitude	
				Start	End
Item	DRAFT DWR UCIP Field Study			38.195755°	38.195755°
				-121.560078°	-121.560078°
DWR ID	20869				
Comment Code					
Inspector Comment					
DS_ID:20869 FS_ID:52733 EP_NO: 11185 Repair Type: Urgent Crossing Status: Found UCIP Comments: 07/12/2018 Pit on WS is covered with plywood. Water pump is running, no leaks detected. LS part of crossing was reconstructed. New pipe was installed after CMP riser to supply water to sand filters. Remains Urgent due to large pit on WS that needs to be backfilled. (O.Yakimov-DWR UCIP)04/25/2013 Large pit on levee berm. FIELD_STRUCT_DESC: 8-inch irrigation discharge pipe of an unknown material through the levee, 5.7 feet below the crown. Pump and gate valve in a pump house on the waterside (WS) slope. Siphon breaker, concrete box, and service pole on the landside (LS) slope. (Retention of an 8-inch pipe through the levee, 5.7 feet below the crown, a pump and a gate valve in a pump house on the WS slope, and a siphon breaker and a service pole on the LS slope authorized under Automatic Board Order (ABO) issued as Permit No. 11185, 1975 - R. Walter Langhart). [Additional Reference(s): DWR Levee Log]. FS Date: 7/13/2018					

Photo 3 of 3 : UCIP_FA_2019_52733_20366.jpg



WS- electric conduit daylight near pump house.

LM Start	5.31	Rating **	M	Issue No.	64
LM End	5.31	Issue Type +	Ma	Location *	WS
Category	Earthen Levee			GPS Latitude/Longitude	
				Start	End
Item	Encroachments			38.194713°	38.194713°
				-121.561177°	-121.561177°
DWR ID	DWR_RD0556_02_f_2019_64				
Comment Code					
TR : Tree or limb					
Inspector Comment					

No Photos

* Location LS : Land Side N/A : Not Applicable WS : Water Side CR : Crown	** Rating A : Acceptable M : Minimally Acceptable U : Unacceptable	N : Not Inspected/Rated C : Corrected A/W : Acceptable but Monitor & Maintain	+ Issue Type Ma : Maintenance Deficiency Ob : Design & System Obsolescence En : Enforcement
--	--	---	---

**Flood Control Project Maintenance
Levee Inspections**

Levee Inspection Report By Mile - Fall 2019

Reclamation District No. 0556 Upper Andrus

Waterway	Bank	Unit Miles	Inspection Start/End	Inspector
Unit No. 02 Sacramento River	Left	5.72	11/05/2019 11/05/2019	David Julian

LM Start	5.35	Rating **	U	Issue No.	69
LM End	5.35	Issue Type +	Ma	Location *	WS
Category	Earthen Levee			GPS Latitude/Longitude	
				Start	End
Item	Encroachments			38.194337°	38.194337°
				-121.561698°	-121.561698°
DWR ID	DWR_RD0556_02_f_2019_69				
Comment Code					
TR : Tree or limb					
Inspector Comment					
Remove fallen tree limbs from the waterside shoulder.					

Photo 1 of 1 : FA_2019_RD0556_19_69_20191107_00090.jpg



View of large fallen tree limbs on the waterside shoulder. Leaves are obscuring the largest branches (Fall 2019).

LM Start	5.40	Rating **	U	Issue No.	31
LM End	5.44	Issue Type +	En	Location *	LS
Category	Earthen Levee			GPS Latitude/Longitude	
				Start	End
Item	Vegetation			38.193760 °	38.193445 °
				-121.562458 °	-121.562895 °
DWR ID	DWR_RD0556_02_s_2012_31				
Comment Code					
V6 : Landscaping					
Inspector Comment					
Remove cactus and thin oleanders to allow view down landside slope.					

Photo 1 of 1 : FA_2019_RD0556_19_31_20191107_00094.jpg



View looking upstream at landscaping on the landside shoulder (Fall 2019).

LM Start	5.46	Rating **	M	Issue No.	73
LM End	5.46	Issue Type +	Ma	Location *	WS
Category	Earthen Levee			GPS Latitude/Longitude	
				Start	End
Item	Encroachments			38.193302°	38.193302°
				-121.563328°	-121.563328°
DWR ID	DWR_RD0556_02_f_2019_73				
Comment Code					
TR : Tree or limb					
Inspector Comment					
Remove fallen tree limb from waterside shoulder.					

No Photos

* Location LS : Land Side N/A : Not Applicable WS : Water Side CR : Crown		** Rating A : Acceptable M : Minimally Acceptable U : Unacceptable		N : Not Inspected/Rated C : Corrected A/W : Acceptable but Monitor & Maintain		+ Issue Type Ma : Maintenance Deficiency Ob : Design & System Obsolescence En : Enforcement	
--	--	--	--	---	--	---	--

**Flood Control Project Maintenance
Levee Inspections**

Levee Inspection Report By Mile - Fall 2019

Reclamation District No. 0556 Upper Andrus

Waterway	Bank	Unit Miles	Inspection Start/End	Inspector
Unit No. 02 Sacramento River	Left	5.72	11/05/2019 11/05/2019	David Julian

LM Start	5.50	Rating **	M	Issue No.	81
LM End	5.56	Issue Type +	Ma	Location *	LS
Category	Earthen Levee			GPS Latitude/Longitude	
				Start	End
Item	Vegetation			38.192910 °	38.192550 °
				-121.563913 °	-121.564972 °
DWR ID	DWR_RD0556_02_f_2019_81				
Comment Code					
V2 : Remove the wild growth other than native grasses from the levee slopes.					
Inspector Comment					
Blackberries at landside toe need removal.					

Photo 1 of 1 : FA_2019_RD0556_19_81_20191107_00093.jpg



View looking downstream at blackberries at the landside toe (Fall 2019).

LM Start	5.53	Rating **	U	Issue No.	74
LM End	5.53	Issue Type +	Ma	Location *	WS
Category	Earthen Levee			GPS Latitude/Longitude	
				Start	End
Item	Encroachments			38.192803 °	38.192803 °
				-121.564388 °	-121.564388 °
DWR ID	DWR_RD0556_02_f_2019_74				
Comment Code					
TR : Tree or limb					
Inspector Comment					
Remove fallen tree from the waterside slope.					

Photo 1 of 1 : FA_2019_RD0556_19_74_20191107_00091.jpg



View of large fallen tree on the waterside slope (Fall 2019).

LM Start	5.56	Rating **	M	Issue No.	75
LM End	5.56	Issue Type +	Ma	Location *	WS
Category	Earthen Levee			GPS Latitude/Longitude	
				Start	End
Item	Encroachments			38.192623 °	38.192623 °
				-121.564928 °	-121.564928 °
DWR ID	DWR_RD0556_02_f_2019_75				
Comment Code					
TR : Tree or limb					
Inspector Comment					
Down tree limb hanging over waterside slope needs removal.					

No Photos

* Location		** Rating		+ Issue Type	
LS : Land Side	N/A : Not Applicable	A : Acceptable	N : Not Inspected/Rated	Ma : Maintenance Deficiency	
WS : Water Side		M : Minimally Acceptable	C : Corrected	Ob : Design & System Obsolescence	
CR : Crown		U : Unacceptable	A/W : Acceptable but Monitor & Maintain	En : Enforcement	

Reclamation District No. 0556 Upper Andrus

View of environmental mitigation sign on the waterside slope. The sign is mostly obscured by vegetation (Fall 2019).

View looking upstream at burrow holes on landside slope. (October 2018).

Page 50 of 50