

**Flood Control Project Maintenance  
Levee Inspections**

**Fall 2017 Levee Maintenance Deficiency Summary Report**

**Overall LMA & Unit Ratings, including USACE Erosion Survey**

**Sacramento River Basin**

<b>RD0556</b>	Overall LMA Rating	Total LMA Miles						
<b>Reclamation District No. 0556 Upper Andrus</b>	<b>U</b>	<b>11.20</b>						
Rated Item	Maintenance Deficiency				Enforcement		Design & System Obsolescence	
	M Miles	U Miles	M + 4U Miles	Threshold %	M Miles	U Miles	M Miles	U Miles
<i>Earthen Levee</i>								
Vegetation	0.86	4.29	18.02	160.89%	0.12	0.24		
Trim / Thin Trees		0.61	2.44	21.78%				
Encroachments	0.01		0.01	0.09%	0.21	0.08		
Animal Control	3.33	0.12	3.81	34.02%				
Slope Stability	0.01	0.02	0.09	0.80%				
Erosion / Bank Caving	0.02		0.02	0.18%				
Emergency Supplies & Equipment	0.11		0.11	0.98%				
Flood Preparedness & Training	0.11		0.11	0.98%				
<i>Supplemental</i>								
2015 USACE Erosion Survey, DRAFT	0.81		0.81	7.23%				
DWR UCIP Field Study					0.22	0.02		
<i>LMA Totals:</i>	5.26	5.04	25.42	226.95%	0.55	0.34	0.00	0.00

<b>Unit No. 01 Georgiana Slough RB</b>	Overall Unit Rating	Total Unit Miles						
<b>RD0556</b>	<b>U</b>	<b>5.48</b>						
Rated Item	Maintenance Deficiency				Enforcement		Design & System Obsolescence	
	M Miles	U Miles	M + 4U Miles	Threshold %	M Miles	U Miles	M Miles	U Miles
<i>Earthen Levee</i>								
Vegetation	0.86	4.28	17.98	327.96%	0.05	0.18		
Trim / Thin Trees		0.61	2.44	44.51%				
Encroachments						0.06		
Animal Control	3.32	0.12	3.80	69.31%				
Slope Stability	0.01	0.02	0.09	1.64%				
Erosion / Bank Caving	0.02		0.02	0.37%				
<i>Supplemental</i>								
2015 USACE Erosion Survey, DRAFT	0.15		0.15	2.74%				
DWR UCIP Field Study					0.11	0.01		
<i>Unit Totals:</i>	4.36	5.03	24.48	446.52%	0.16	0.25	0.00	0.00

<b>Unit No. 02 Sacramento River LB</b>	Overall Unit Rating	Total Unit Miles						
<b>RD0556</b>	<b>M</b>	<b>5.72</b>						
Rated Item	Maintenance Deficiency				Enforcement		Design & System Obsolescence	
	M Miles	U Miles	M + 4U Miles	Threshold %	M Miles	U Miles	M Miles	U Miles
<i>Earthen Levee</i>								
Vegetation		0.01	0.04	0.70%	0.07	0.06		
Encroachments	0.01		0.01	0.18%	0.21	0.02		
Animal Control	0.01		0.01	0.18%				
<i>Supplemental</i>								
2015 USACE Erosion Survey, DRAFT	0.66		0.66	11.54%				
DWR UCIP Field Study					0.11	0.01		
<i>Unit Totals:</i>	0.68	0.01	0.72	12.59%	0.39	0.09	0.00	0.00

**Flood Control Project Maintenance  
Levee Inspections**  
**LMA District Cover Sheet**  
**Fall 2017 Levee Inspection Results**

**Reclamation District No. 0556 Upper Andrus**

	Spring (March - May)	Summer ** (June - August)	Fall (September - November)	Winter ** (December - February)
† Overall LMA Rating (Fall Only)			U	

\*\* Non-receipt of Summer or Winter Inspection  
Reports may effect overall annual rating.

† SPRING INSPECTIONS: Overall maintenance ratings are not determined for the spring inspection results. Individual maintenance deficiencies are rated using the same criteria in the spring and in the fall.

FALL INSPECTIONS: The overall maintenance rating shown above is based on operation and maintenance deficiencies identified within the attached unit inspection reports. This rating is not intended to be an indication of risk.

Comments


**Flood Control Project Maintenance  
Levee Inspections**

**Unit Cover Sheet**

**Fall 2017 Levee Inspection Results**

**Reclamation District No. 0556 Upper Andrus**

Waterway			Bank	Unit Miles
Unit No. 01 Georgiana Slough			Right	5.48
	Spring (March - May)	Summer (June - August)	(September - November) Fall	Winter (December - February)
Unit Maintenance Rating (Fall Only)			<b>U</b>	
Date of Inspection	4/19/2017 - 4/19/2017		11/1/2017 - 11/1/2017	
DWR Inspector	Herman Phillips		Keith Millard	
Accompanied By	Alan Silva RD 556		Alan Silva RD 556	

**Summer & Winter Inspections**

The Local Maintaining Agency (LMA) is responsible for summer and winter inspections. The LMA is required to submit a report regarding summer and winter inspections to the California Department of Water Resources (DWR).

DWR must be informed on the:

- a) completion of the inspection
- b) any changes other than the results of normal maintenance
- c) corrections to deficiencies noted in this report

If additional items are noted, further documentation of those items must also be submitted.

The LMA should submit this information to DWR using the LMA web application tool available at:

<http://cdec.water.ca.gov/lma.html>

If the LMA is unable to submit information on this webpage, please contact DWR for assistance.

*The LMA should submit the information and any associated documentation by September 30 for summer inspections and March 31 for winter inspections.*

**Flood Control Project Maintenance  
Levee Inspections**

**Levee Inspection Report By Mile - Fall 2017**

**Reclamation District No. 0556 Upper Andrus**

Waterway	Bank	Unit Miles	Inspection Start/End	Inspector
Unit No. 01 Georgiana Slough	Right	5.48	11/01/2017 11/01/2017	Keith Millard

LM Start		Rating **	M	Issue No.	<b>3</b>
LM End		Issue Type +	Ma	Location *	
Category	Earthen Levee		GPS Latitude/Longitude		
			Start	End	
Item	Flood Preparedness & Training			°	°
				°	°
DWR ID	DWR_RD0556_01_f_2014_3				
Comment Code					
Inspector Comment					
The members in the district have not been flood fight trained recently according to the district manager.					

No Photos

LM Start		Rating **	A	Issue No.	<b>6</b>
LM End		Issue Type +	Ma	Location *	
Category	Earthen Levee		GPS Latitude/Longitude		
			Start	End	
Item	Operations & Maintenance Manuals			°	°
				°	°
DWR ID	DWR_RD0556_01_s_2012_6				
Comment Code					
Inspector Comment					
District president has the O&M Manual.					

No Photos

LM Start		Rating **	M	Issue No.	<b>8</b>
LM End		Issue Type +	Ma	Location *	N/A
Category	Earthen Levee		GPS Latitude/Longitude		
			Start	End	
Item	Emergency Supplies & Equipment			°	°
				°	°
DWR ID	DWR_RD0556_01_f_2014_8				
Comment Code					
Inspector Comment					
According to the district manager, when they need supplies they will order them, there are no supplies stored.					

No Photos

<b>* Location</b> LS : Land Side    N/A : Not Applicable WS : Water Side CR : Crown	<b>** Rating</b> A : Acceptable M : Minimally Acceptable U : Unacceptable	N : Not Inspected/Rated C : Corrected A/W : Acceptable but Monitor & Maintain	<b>+ Issue Type</b> Ma : Maintenance Deficiency Ob : Design & System Obsolescence En : Enforcement
--	--	---	---

**Flood Control Project Maintenance  
Levee Inspections**

**Levee Inspection Report By Mile - Fall 2017**

**Reclamation District No. 0556 Upper Andrus**

Waterway	Bank	Unit Miles	Inspection Start/End	Inspector
Unit No. 01 Georgiana Slough	Right	5.48	11/01/2017 11/01/2017	Keith Millard

LM Start	0.08	Rating **	U	Issue No.	21
LM End	0.84	Issue Type +	Ma	Location *	LS
Category	Earthen Levee			GPS Latitude/Longitude	
				Start	End
Item	Vegetation			38.238037 °	38.229105 °
				-121.518067 °	-121.525352 °
DWR ID	DWR_RD0556_01_s_2017_21				
Comment Code					
V7 : Trees / Woody Vegetation					
Inspector Comment					
Control the wild growth and trim the trees so the slope can be seen.					

Photo 1 of 1 : FA\_2017\_RD0556\_18\_21\_20171002\_00004.jpg



Looking downstream from levee mile 0.09 woody tree growth and wild weeds covering the levee slope and shoulder landside levee section.

LM Start	0.44	Rating **	M	Issue No.	387
LM End	0.44	Issue Type +	En	Location *	
Category	Supplemental			GPS Latitude/Longitude	
				Start	End
Item	DWR UCIP Field Study			38.233537 °	38.233537 °
				-121.520483 °	-121.520483 °
DWR ID					
Comment Code					
Inspector Comment					
FS_ID:45564					
DS_ID:20820					
EP_NO: 3448					
Repair Type: Non-Urgent					
Crossing Status: Indicator Found					
UCIP Comments: Dense vegetation inhibited visibility of gasline marker on WS. Need to contact owner to determine status of crossing.					
FIELD_STRUCT_DESC: 4-1/2-inch steel pipe gas line through levee, 4.0 feet below the crown. Location marker on waterward shoulder. (App. 3448-PG&E pipe not located 2/91). Cut in pavement visible at crossing. Gas line marker on LS and opposite bank at RD 263.					
FS Date: 5/27/2015					

Photo 1 of 3 : UCIP\_FA\_2017\_45564\_74151.jpg



Gasline marker present on LS.

* Location LS : Land Side    N/A : Not Applicable WS : Water Side CR : Crown		** Rating A : Acceptable M : Minimally Acceptable U : Unacceptable N : Not Inspected/Rated C : Corrected A/W : Acceptable but Monitor & Maintain		+ Issue Type Ma : Maintenance Deficiency Ob : Design & System Obsolescence En : Enforcement	
---	--	--	--	--	--

**Flood Control Project Maintenance  
Levee Inspections**

**Levee Inspection Report By Mile - Fall 2017**

**Reclamation District No. 0556 Upper Andrus**

Waterway	Bank	Unit Miles	Inspection Start/End	Inspector
Unit No. 01 Georgiana Slough	Right	5.48	11/01/2017 11/01/2017	Keith Millard

LM Start	0.44	Rating **	M	Issue No.	387 (cont)	
LM End	0.44	Issue Type +	En	Location *		
Category	Supplemental			GPS Latitude/Longitude		
				Start	End	
Item	DWR UCIP Field Study			38.233537 °	38.233537 °	
				-121.520483 °	-121.520483 °	
DWR ID						
Comment Code						
Inspector Comment						
FS_ID:45564						
DS_ID:20820						
EP_NO: 3448						
Repair Type: Non-Urgent						
Crossing Status: Indicator Found						
UCIP Comments: Dense vegetation inhibited visibility of gasoline marker on WS. Need to contact owner to determine status of crossing.						
FIELD_STRUCT_DESC: 4-1/2-inch steel pipe gas line through levee, 4.0 feet below the crown. Location marker on waterward shoulder. (App. 3448-PG&E pipe not located 2/91). Cut in pavement visible at crossing. Gas line marker on LS and opposite bank at RD 263.						
FS Date: 5/27/2015						

LM Start	<b>0.44</b>	Rating **	M	Issue No.	<b>387 (cont)</b>
LM End	<b>0.44</b>	Issue Type +	En	Location *	

Photo 2 of 3 : UCIP\_FA\_2017\_45564\_74146.jpg



View of WS; cut in pavement in alignment with arrow and Olivia indicating location of crossing trench.

Photo 3 of 3 : UCIP\_FA\_2017\_45564\_74152.jpg



View of WS. Dense vegetation limited visibility of 'No Trespassing' sign.

<b>* Location</b> LS : Land Side    N/A : Not Applicable WS : Water Side CR : Crown		<b>** Rating</b> A : Acceptable M : Minimally Acceptable U : Unacceptable		N : Not Inspected/Rated C : Corrected A/W : Acceptable but Monitor & Maintain		<b>+ Issue Type</b> Ma : Maintenance Deficiency Ob : Design & System Obsolescence En : Enforcement	
--	--	--	--	---	--	---	--



**Flood Control Project Maintenance  
Levee Inspections**

**Levee Inspection Report By Mile - Fall 2017**

**Reclamation District No. 0556 Upper Andrus**

Waterway	Bank	Unit Miles	Inspection Start/End	Inspector
Unit No. 01 Georgiana Slough	Right	5.48	11/01/2017 11/01/2017	Keith Millard

LM Start	0.53	Rating **	M	Issue No.	388	
LM End	0.53	Issue Type +	En	Location *		
Category	Supplemental			GPS Latitude/Longitude		
				Start	End	
Item	DWR UCIP Field Study			38.232450 °	38.232450 °	
				-121.521624 °	-121.521624 °	
DWR ID						
Comment Code						
Inspector Comment						
FS_ID:45663						
DS_ID:20821						
EP_NO: 5548						
Repair Type: Non-Urgent						
Crossing Status: Found						
UCIP Comments: Dense vegetation prevents inspection of WS slope.						
FIELD_STRUCT_DESC: 12-inch steel pipe through levee, 5.0 feet						
below crown. 1-1/4-inch electrical conduit through the levee. Concrete						
steps on landward slope. Pump off landward toe. Cuts visible on						
pavement. (App. 5548).						
FS Date: 5/13/2015						

Photo 1 of 3 : UCIP\_FA\_2017\_45663\_74180.jpg



Concrete steps on LS slope.

LM Start	<b>0.53</b>	Rating **	M	Issue No.	<b>388 (cont)</b>
LM End	<b>0.53</b>	Issue Type +	En	Location *	

Photo 2 of 3 : UCIP\_FA\_2017\_45663\_74181.jpg



View of WS with cuts visible on pavement.

<b>* Location</b> LS : Land Side    N/A : Not Applicable WS : Water Side CR : Crown	<b>** Rating</b> A : Acceptable M : Minimally Acceptable U : Unacceptable	N : Not Inspected/Rated C : Corrected A/W : Acceptable but Monitor & Maintain	<b>+ Issue Type</b> Ma : Maintenance Deficiency Ob : Design & System Obsolescence En : Enforcement
--	--	---	---

**Flood Control Project Maintenance  
Levee Inspections**

**Levee Inspection Report By Mile - Fall 2017**

**Reclamation District No. 0556 Upper Andrus**

Waterway	Bank	Unit Miles	Inspection Start/End	Inspector
Unit No. 01 Georgiana Slough	Right	5.48	11/01/2017 11/01/2017	Keith Millard

LM Start	0.53	Rating **	M	Issue No.	388 (cont)	
LM End	0.53	Issue Type +	En	Location *		
Category	Supplemental			GPS Latitude/Longitude		
				Start	End	
Item	DWR UCIP Field Study			38.232450 °	38.232450 °	
				-121.521624 °	-121.521624 °	
DWR ID						
Comment Code						
Inspector Comment						
FS_ID:45663 DS_ID:20821 EP_NO: 5548 Repair Type: Non-Urgent Crossing Status: Found UCIP Comments: Dense vegetation prevents inspection of WS slope. FIELD_STRUCT_DESC: 12-inch steel pipe through levee, 5.0 feet below crown. 1-1/4-inch electrical conduit through the levee. Concrete steps on landward slope. Pump off landward toe. Cuts visible on pavement. (App. 5548). FS Date: 5/13/2015						

Photo 3 of 3 : UCIP\_FA\_2017\_45663\_74182.jpg



Pump and pipe into levee off LS toe.

LM Start	0.54	Rating **	M	Issue No.	389
LM End	0.54	Issue Type +	En	Location *	
Category	Supplemental			GPS Latitude/Longitude	
				Start	End
Item	DWR UCIP Field Study			38.232354 °	38.232354 °
				-121.521727 °	-121.521727 °
DWR ID					
Comment Code					
Inspector Comment					
FS_ID:45664 DS_ID:20826 EP_NO: 5548A Repair Type: Non-Urgent Crossing Status: Found UCIP Comments: Dense vegetation prevented inspection of WS slope. FIELD_STRUCT_DESC: 14-inch pipe through levee 5.0 feet below the crown. Pole with panel and standpipe on landward toe (5548A- Kay Dix Ranch 1986). FS Date: 5/27/2015					

Photo 1 of 3 : UCIP\_FA\_2017\_45664\_74190.jpg



View of LS with standpipe visible behind tree.

<b>* Location</b> LS : Land Side    N/A : Not Applicable WS : Water Side CR : Crown		<b>** Rating</b> A : Acceptable M : Minimally Acceptable U : Unacceptable N : Not Inspected/Rated C : Corrected A/W : Acceptable but Monitor & Maintain		<b>+ Issue Type</b> Ma : Maintenance Deficiency Ob : Design & System Obsolescence En : Enforcement
--	--	---	--	---



**Flood Control Project Maintenance  
Levee Inspections**

**Levee Inspection Report By Mile - Fall 2017**

**Reclamation District No. 0556 Upper Andrus**

Waterway	Bank	Unit Miles	Inspection Start/End	Inspector
Unit No. 01 Georgiana Slough	Right	5.48	11/01/2017 11/01/2017	Keith Millard

LM Start	0.54	Rating **	M	Issue No.	389 (cont)
LM End	0.54	Issue Type +	En	Location *	
Category	Supplemental			GPS Latitude/Longitude	
				Start	End
Item	DWR UCIP Field Study			38.232354 °	38.232354 °
				-121.521727 °	-121.521727 °
DWR ID					
Comment Code					
Inspector Comment					
FS_ID:45664 DS_ID:20826 EP_NO: 5548A Repair Type: Non-Urgent Crossing Status: Found UCIP Comments: Dense vegetation prevented inspection of WS slope. FIELD_STRUCT_DESC: 14-inch pipe through levee 5.0 feet below the crown. Pole with panel and standpipe on landward toe (5548A- Kay Dix Ranch 1986). FS Date: 5/27/2015					

Photo 2 of 3 : UCIP\_FA\_2017\_45664\_74191.jpg



View of WS with cuts visible on pavement.

LM Start	<b>0.54</b>	Rating **	M	Issue No.	<b>389 (cont)</b>
LM End	<b>0.54</b>	Issue Type +	En	Location *	

Photo 3 of 3 : UCIP\_FA\_2017\_45664\_74192.jpg



Standpipe and service pole visible off LS toe.

<b>* Location</b> LS : Land Side    N/A : Not Applicable WS : Water Side CR : Crown	<b>** Rating</b> A : Acceptable M : Minimally Acceptable U : Unacceptable N : Not Inspected/Rated C : Corrected A/W : Acceptable but Monitor & Maintain	<b>+ Issue Type</b> Ma : Maintenance Deficiency Ob : Design & System Obsolescence En : Enforcement
--	---	---

**Flood Control Project Maintenance  
Levee Inspections**

**Levee Inspection Report By Mile - Fall 2017**

**Reclamation District No. 0556 Upper Andrus**

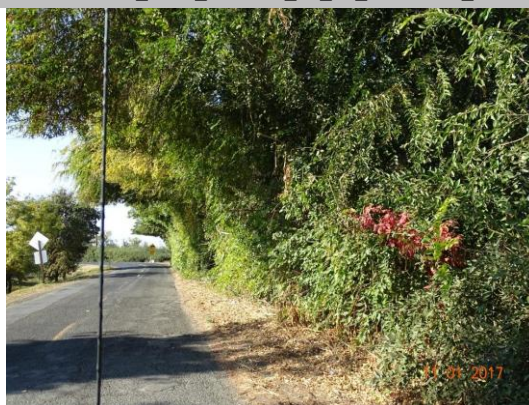
Waterway	Bank	Unit Miles	Inspection Start/End	Inspector
Unit No. 01 Georgiana Slough	Right	5.48	11/01/2017 11/01/2017	Keith Millard

LM Start	0.80	Rating **	M	Issue No.	12
LM End	3.36	Issue Type +	Ma	Location *	LS
Category	Earthen Levee			GPS Latitude/Longitude	
				Start	End
Item	Animal Control			38.229459 °	38.208959 °
				-121.524805 °	-121.541368 °
DWR ID	DWR_RD0556_01_s_2012_12				
Comment Code					
A1 : Exterminate rodents and backfill and compact or grout burrows.					
Inspector Comment					
Exterminate rodents and backfill and compact burrows.					

No Photos

LM Start	0.87	Rating **	U	Issue No.	24
LM End	0.92	Issue Type +	En	Location *	LS
Category	Earthen Levee			GPS Latitude/Longitude	
				Start	End
Item	Vegetation			38.228820 °	38.228480 °
				-121.525853 °	-121.526470 °
DWR ID	DWR_RD0556_01_f_2017_24				
Comment Code					
V6 : Landscaping					
Inspector Comment					

Photo 1 of 1 : FA\_2017\_RD0556\_18\_24\_20171117\_00060.jpg



Trim/thin landscaping to allow inspection and access to levee slope and toe.

LM Start	0.93	Rating **	U	Issue No.	10
LM End	1.54	Issue Type +	Ma	Location *	LS
Category	Earthen Levee			GPS Latitude/Longitude	
				Start	End
Item	Trim / Thin Trees			38.228295 °	38.225368 °
				-121.526688 °	-121.534677 °
DWR ID	DWR_RD0556_01_f_2015_10				
Comment Code					
T3 : Trim and thin trees to allow visibility of the ground and room to flood fight.					
Inspector Comment					
Thin out and remove the wild tree growth and vegetation on the landside levee slope and shoulder.					

Photo 1 of 1 : FA\_2017\_RD0556\_18\_10\_20171002\_00003.jpg



RD 556 Unit 1 levee miles 0.93-1.54 looking downstream landside slope.

<b>* Location</b>		<b>** Rating</b>		<b>+ Issue Type</b>	
LS : Land Side	N/A : Not Applicable	A : Acceptable	N : Not Inspected/Rated	Ma : Maintenance Deficiency	
WS : Water Side		M : Minimally Acceptable	C : Corrected	Ob : Design & System Obsolescence	
CR : Crown		U : Unacceptable	A/W : Acceptable but Monitor & Maintain	En : Enforcement	

**Flood Control Project Maintenance  
Levee Inspections**

**Levee Inspection Report By Mile - Fall 2017**

**Reclamation District No. 0556 Upper Andrus**

Waterway	Bank	Unit Miles	Inspection Start/End	Inspector
Unit No. 01 Georgiana Slough	Right	5.48	11/01/2017 11/01/2017	Keith Millard

LM Start	1.17	Rating **	M	Issue No.	390
LM End	1.17	Issue Type +	En	Location *	
Category	Supplemental			GPS Latitude/Longitude	
				Start	End
Item	DWR UCIP Field Study			38.227534 °	38.227534 °
				-121.529396 °	-121.529396 °
DWR ID					
Comment Code					
Inspector Comment					
FS_ID:46799 DS_ID:25106 EP_NO: N/A Repair Type: Non-Urgent Crossing Status: Found UCIP Comments: Possible erosion above pipe on LS needs attention. FIELD_STRUCT_DESC: 8-inch steel irrigation pipe unknown feet below crown visible on LS 6 ft away from 10-inch pipe. Post likely for protection of vent located off the crown on shoulder. Electric pole next to pipe on LS. FS Date: 5/27/2015					

LM Start	1.17	Rating **	M	Issue No.	390 (cont)
LM End	1.17	Issue Type +	En	Location *	

Photo 1 of 3 : UCIP\_FA\_2017\_46799\_74739.jpg



LS view: 8-inch pipe off LS slope with possible erosion above pipe (circled).

Photo 2 of 3 : UCIP\_FA\_2017\_46799\_74740.jpg



LS view: Post located above pipe on LS slope.

<b>* Location</b> LS : Land Side    N/A : Not Applicable WS : Water Side CR : Crown	<b>** Rating</b> A : Acceptable M : Minimally Acceptable U : Unacceptable	N : Not Inspected/Rated C : Corrected A/W : Acceptable but Monitor & Maintain	<b>+ Issue Type</b> Ma : Maintenance Deficiency Ob : Design & System Obsolescence En : Enforcement
--	--	---	---



**Flood Control Project Maintenance  
Levee Inspections**

**Levee Inspection Report By Mile - Fall 2017**

**Reclamation District No. 0556 Upper Andrus**

Waterway	Bank	Unit Miles	Inspection Start/End	Inspector
Unit No. 01 Georgiana Slough	Right	5.48	11/01/2017 11/01/2017	Keith Millard

LM Start	1.17	Rating **	M	Issue No.	390 (cont)
LM End	1.17	Issue Type +	En	Location *	
Category	Supplemental			GPS Latitude/Longitude	
				Start	End
Item	DWR UCIP Field Study			38.227534 °	38.227534 °
				-121.529396 °	-121.529396 °
DWR ID					
Comment Code					
Inspector Comment					
FS_ID:46799 DS_ID:25106 EP_NO: N/A Repair Type: Non-Urgent Crossing Status: Found UCIP Comments: Possible erosion above pipe on LS needs attention. FIELD_STRUCT_DESC: 8-inch steel irrigation pipe unknown feet below crown visible on LS 6 ft away from 10-inch pipe. Post likely for protection of vent located off the crown on shoulder. Electric pole next to pipe on LS. FS Date: 5/27/2015					

Photo 3 of 3 : UCIP\_FA\_2017\_46799\_74741.jpg



Electric pole next to pipe on LS.

LM Start	1.17	Rating **	M	Issue No.	391
LM End	1.17	Issue Type +	En	Location *	
Category	Supplemental			GPS Latitude/Longitude	
				Start	End
Item	DWR UCIP Field Study			38.227568 °	38.227568 °
				-121.529489 °	-121.529489 °
DWR ID					
Comment Code					
Inspector Comment					
FS_ID:45683 DS_ID:20823 EP_NO: 11169 Repair Type: Non-Urgent Crossing Status: Found UCIP Comments: Appears abandoned in place and if so should be done so properly. Dense vegetation on WS limits visibility. FIELD_STRUCT_DESC: 10-inch pipe through levee, 3.8 feet below crown. (Lower end of rock revetment)(ABO 11169 - Mealer and 4848). Abandoned in place. O&M Manual Sac 103, June 1954 FS Date: 5/27/2015					

Photo 1 of 3 : UCIP\_FA\_2017\_45683\_74200.jpg



LS view of pipe appearing abandoned in place.

<b>* Location</b> LS : Land Side    N/A : Not Applicable WS : Water Side CR : Crown	<b>** Rating</b> A : Acceptable M : Minimally Acceptable U : Unacceptable	N : Not Inspected/Rated C : Corrected A/W : Acceptable but Monitor & Maintain	<b>+ Issue Type</b> Ma : Maintenance Deficiency Ob : Design & System Obsolescence En : Enforcement
--	--	---	---

**Flood Control Project Maintenance  
Levee Inspections**

**Levee Inspection Report By Mile - Fall 2017**

**Reclamation District No. 0556 Upper Andrus**

Waterway	Bank	Unit Miles	Inspection Start/End	Inspector
Unit No. 01 Georgiana Slough	Right	5.48	11/01/2017 11/01/2017	Keith Millard

LM Start	1.17	Rating **	M	Issue No.	391 (cont)	
LM End	1.17	Issue Type +	En	Location *		
Category	Supplemental			GPS Latitude/Longitude		
				Start	End	
Item	DWR UCIP Field Study			38.227568 °	38.227568 °	
				-121.529489 °	-121.529489 °	
DWR ID						
Comment Code						
Inspector Comment						
FS_ID:45683						
DS_ID:20823						
EP_NO: 11169						
Repair Type: Non-Urgent						
Crossing Status: Found						
UCIP Comments: Appears abandoned in place and if so should be done so properly. Desnre vegetation on WS limits visibility.						
FIELD_STRUCT_DESC: 10-inch pipe through levee, 3.8 feet below crown. (Lower end of rock revetment)(ABO 11169 - Mealer and 4848).						
Abandoned in place. O&M Manual Sac 103, June 1954						
FS Date: 5/27/2015						

Photo 2 of 3 : UCIP\_FA\_2017\_45683\_74201.jpg



Closeup of abandoned pipe.

LM Start	1.17	Rating **	M	Issue No.	391 (cont)
LM End	1.17	Issue Type +	En	Location *	

Photo 3 of 3 : UCIP\_FA\_2017\_45683\_74202.jpg



View up LS slope. 10" pipe (not visible) rests next to (visible) 8" pipe.

<b>* Location</b> LS : Land Side    N/A : Not Applicable WS : Water Side CR : Crown		<b>** Rating</b> A : Acceptable M : Minimally Acceptable U : Unacceptable N : Not Inspected/Rated C : Corrected A/W : Acceptable but Monitor & Maintain		<b>+ Issue Type</b> Ma : Maintenance Deficiency Ob : Design & System Obsolescence En : Enforcement
--	--	---	--	---





**Flood Control Project Maintenance  
Levee Inspections**

**Levee Inspection Report By Mile - Fall 2017**

**Reclamation District No. 0556 Upper Andrus**

Waterway	Bank	Unit Miles	Inspection Start/End	Inspector
Unit No. 01 Georgiana Slough	Right	5.48	11/01/2017 11/01/2017	Keith Millard

LM Start	1.33	Rating **	M	Issue No.	392 (cont)	
LM End	1.33	Issue Type +	En	Location *		
Category	Supplemental			GPS Latitude/Longitude		
				Start		End
Item	DWR UCIP Field Study			38.227622 °	38.227622 °	
				-121.532154 °	-121.532154 °	
DWR ID						
Comment Code						
Inspector Comment						
FS_ID:45692						
DS_ID:20825						
EP_NO: 13302						
Repair Type: Non-Urgent						
Crossing Status: Found						
UCIP Comments: Seal beneath siphon breaker off LS toe leaking.						
Rodent activity near crown off LS shoulder. Need to contact owner						
about leaky seal. Dense vegetation prevented inspection of WS slope.						
FIELD_STRUCT_DESC: 6-inch steel pipe and 2-inch GI electrical						
conduit through levee 2 feet below crown; roadway with siphon valve on						
landward shoulder. Concrete stand and pump on landward toe; circuit						
box also. Cuts visible on pavement. 6-inch PVC standpipe adjacent to						
pipe off LS toe. (Kay Dix Ranch App. 13302). O&M Manual Sac 103,						
June 1954						
FS Date: 5/27/2015						

Photo 3 of 3 : UCIP\_FA\_2017\_45692\_74206.jpg



Closeup of pipe at LS toe. Seal beneath siphon breaker leaking.

LM Start	1.34	Rating **	U	Issue No.	27
LM End	1.37	Issue Type +	En	Location *	LS
Category	Earthen Levee			GPS Latitude/Longitude	
				Start	End
Item	Encroachments			38.227521 °	38.227320 °
				-121.532393 °	-121.532710 °
DWR ID	DWR_RD0556_01_s_2013_27				
Comment Code					
DE : Debris					
Inspector Comment					
Remove the pile of asphalt and concrete from the toe of levee.					

Photo 1 of 3 : FA\_2017\_RD0556\_18\_27\_20171002\_00005.jpg



RD 556 Unit 1 levee mile 1.34-1.37 landside toe.

<b>* Location</b> LS : Land Side    N/A : Not Applicable WS : Water Side CR : Crown		<b>** Rating</b> A : Acceptable M : Minimally Acceptable U : Unacceptable N : Not Inspected/Rated C : Corrected A/W : Acceptable but Monitor & Maintain		<b>+ Issue Type</b> Ma : Maintenance Deficiency Ob : Design & System Obsolescence En : Enforcement
--	--	---	--	---

**Flood Control Project Maintenance  
Levee Inspections**

**Levee Inspection Report By Mile - Fall 2017**

**Reclamation District No. 0556 Upper Andrus**

Waterway	Bank	Unit Miles	Inspection Start/End	Inspector
Unit No. 01 Georgiana Slough	Right	5.48	11/01/2017 11/01/2017	Keith Millard

LM Start	1.34	Rating **	U	Issue No.	27 (cont)	
LM End	1.37	Issue Type +	En	Location *	LS	
Category	Earthen Levee			GPS Latitude/Longitude		
				Start		End
Item	Encroachments			38.227521 °		38.227320 °
				-121.532393 °		-121.532710 °
DWR ID	DWR_RD0556_01_s_2013_27					
Comment Code						
DE : Debris						
Inspector Comment						
Remove the pile of asphalt and concrete from the toe of levee.						

LM Start	<b>1.34</b>	Rating **	U	Issue No.	<b>27 (cont)</b>
LM End	<b>1.37</b>	Issue Type +	En	Location *	LS

Photo 2 of 3 : FA\_2017\_RD0556\_18\_27\_20171002\_00006.jpg



RD 556 Unit 1 levee mile 1.34-1.37 continuation of material on the toe.

Photo 3 of 3 : FA\_2017\_RD0556\_18\_27\_20171002\_00007.jpg



RD 556 unit 1 levee miles 1.34-1.37 landside toe.

LM Start	1.43	Rating **	M	Issue No.	40
LM End	1.43	Issue Type +	Ma	Location *	LS
Category	Earthen Levee			GPS Latitude/Longitude	
				Start	End
Item	Erosion / Bank Caving			38.226537 °	38.226537 °
				-121.533512 °	-121.533512 °
DWR ID	DWR_RD0556_01_f_2012_40				
Comment Code					
E1 : Note and monitor erosion site.					
Inspector Comment					

No Photos

<b>* Location</b> LS : Land Side    N/A : Not Applicable WS : Water Side CR : Crown		<b>** Rating</b> A : Acceptable                      N : Not Inspected/Rated M : Minimally Acceptable        C : Corrected U : Unacceptable                  A/W : Acceptable but Monitor & Maintain		<b>+ Issue Type</b> Ma : Maintenance Deficiency Ob : Design & System Obsolescence En : Enforcement
--	--	---	--	---



**Flood Control Project Maintenance  
Levee Inspections**

**Levee Inspection Report By Mile - Fall 2017**

**Reclamation District No. 0556 Upper Andrus**

Waterway	Bank	Unit Miles	Inspection Start/End	Inspector
Unit No. 01 Georgiana Slough	Right	5.48	11/01/2017 11/01/2017	Keith Millard

LM Start	1.50	Rating **	M	Issue No.	22
LM End	1.50	Issue Type +	Ma	Location *	LS
Category	Earthen Levee			GPS Latitude/Longitude	
				Start	End
Item	Erosion / Bank Caving			38.225840 °	38.225840 °
				-121.534157 °	-121.534157 °
DWR ID	DWR_RD0556_01_s_2012_22				
Comment Code					
E1 : Note and monitor erosion site.					
Inspector Comment					

No Photos

LM Start	1.55	Rating **	A/W	Issue No.	9
LM End	1.57	Issue Type +	En	Location *	WS
Category	Earthen Levee			GPS Latitude/Longitude	
				Start	End
Item	Encroachments			38.225191 °	38.224976 °
				-121.534799 °	-121.535043 °
DWR ID	DWR_RD0556_01_s_2012_9				
Comment Code					
TR : Tree or limb					
Inspector Comment					
These cut up tree sections remain on the waterward slope to prevent parking in the area.					

Photo 1 of 1 : FA\_2017\_RD0556\_18\_9\_20171002\_00002.jpg



Cut tree sections on the waterside levee shoulder remain to prevent parking.

<b>* Location</b> LS : Land Side    N/A : Not Applicable WS : Water Side CR : Crown		<b>** Rating</b> A : Acceptable                      N : Not Inspected/Rated M : Minimally Acceptable        C : Corrected U : Unacceptable                  A/W : Acceptable but Monitor & Maintain		<b>+ Issue Type</b> Ma : Maintenance Deficiency Ob : Design & System Obsolescence En : Enforcement
--	--	---	--	---

**Flood Control Project Maintenance  
Levee Inspections**

**Levee Inspection Report By Mile - Fall 2017**

**Reclamation District No. 0556 Upper Andrus**

Waterway	Bank	Unit Miles	Inspection Start/End	Inspector
Unit No. 01 Georgiana Slough	Right	5.48	11/01/2017 11/01/2017	Keith Millard

LM Start	1.57	Rating **	M	Issue No.	393	
LM End	1.57	Issue Type +	En	Location *		
Category	Supplemental			GPS Latitude/Longitude		
				Start	End	
Item	DWR UCIP Field Study			38.225001 °	38.225001 °	
				-121.535007 °	-121.535007 °	
DWR ID						
Comment Code						
Inspector Comment						
FS_ID:45743						
DS_ID:20827						
EP_NO: 11169						
Repair Type: Non-Urgent						
Crossing Status: Found						
UCIP Comments: Dense vegetation on LS and WS limited accessibility.						
FIELD_STRUCT_DESC: 8-inch steel pipe through levee, 3.5 feet below crown. Pump and gate valve on WS berm. 2-inch electrical conduit into WS slope. A 36-inch concrete standpipe and concrete block step on Landward Slope. (Listed as 10-inch in ABO 11169 - Mealer). O&M Manual Sac 103, June 1954						
FS Date: 5/27/2015						

Photo 1 of 3 : UCIP\_FA\_2017\_45743\_74240.jpg



Concrete standpipe and steps off LS toe.

LM Start	<b>1.57</b>	Rating **	M	Issue No.	<b>393 (cont)</b>
LM End	<b>1.57</b>	Issue Type +	En	Location *	

Photo 2 of 3 : UCIP\_FA\_2017\_45743\_74241.jpg



Service pole next to standpipe off LS toe.


<b>* Location</b> LS : Land Side    N/A : Not Applicable WS : Water Side CR : Crown		<b>** Rating</b> A : Acceptable                      N : Not Inspected/Rated M : Minimally Acceptable        C : Corrected U : Unacceptable                  A/W : Acceptable but Monitor & Maintain		<b>+ Issue Type</b> Ma : Maintenance Deficiency Ob : Design & System Obsolescence En : Enforcement
--	--	---	--	---



## Levee Inspection Report By Mile - Fall 2017

Waterway	Bank	Unit Miles	Inspection Start/End	Inspector
Unit No. 01 Georgiana Slough	Right	5.48	11/01/2017 11/01/2017	Keith Millard

Photo 3 of 3 : UCIP\_FA\_2017\_45743\_74242.jpg



Slant pump and pipe with 2" electrical conduit into WS slope.

Photo 1 of 1 : FA\_2017\_RD0556\_18\_386\_20171117\_00061.jpg



Remove the wild growth and trim trees from the landside levee slope.

Wednesday, January 03, 2018 09:46 **FINAL DATA** Page 16 of 35

**Flood Control Project Maintenance  
Levee Inspections**

**Levee Inspection Report By Mile - Fall 2017**

**Reclamation District No. 0556 Upper Andrus**

Waterway	Bank	Unit Miles	Inspection Start/End	Inspector
Unit No. 01 Georgiana Slough	Right	5.48	11/01/2017 11/01/2017	Keith Millard

LM Start	1.65	Rating **	M	Issue No.	17
LM End	1.70	Issue Type +	En	Location *	WS
Category	Earthen Levee			GPS Latitude/Longitude	
				Start	End
Item	Vegetation			38.224623 °	38.224408 °
				-121.536320 °	-121.537180 °
DWR ID	DWR_RD0556_01_s_2012_17				
Comment Code					
V6 : Landscaping					
Inspector Comment					
Maintain the landscaping on the landside slope and shoulder.					

No Photos

LM Start	1.74	Rating **	U	Issue No.	74
LM End	2.29	Issue Type +	Ma	Location *	WS
Category	Earthen Levee			GPS Latitude/Longitude	
				Start	End
Item	Vegetation			38.224198 °	38.220317 °
				-121.537987 °	-121.544172 °
DWR ID	DWR_RD0556_01_f_2015_74				
Comment Code					
V7 : Trees / Woody Vegetation					
Inspector Comment					
Arundo and willows need to be removed. This vegetation completely blocks the view of the waterside slope, shoulder and toe.					

Photo 1 of 1 : FA\_2017\_RD0556\_18\_74\_20171002\_00024.jpg



RD 556 Unit 1 waterside levee mile 1.74-2.29.

<b>* Location</b> LS : Land Side    N/A : Not Applicable WS : Water Side CR : Crown		<b>** Rating</b> A : Acceptable                      N : Not Inspected/Rated M : Minimally Acceptable        C : Corrected U : Unacceptable                  A/W : Acceptable but Monitor & Maintain		<b>+ Issue Type</b> Ma : Maintenance Deficiency Ob : Design & System Obsolescence En : Enforcement
--	--	---	--	---

**Flood Control Project Maintenance  
Levee Inspections**

**Levee Inspection Report By Mile - Fall 2017**

**Reclamation District No. 0556 Upper Andrus**

Waterway	Bank	Unit Miles	Inspection Start/End	Inspector
Unit No. 01 Georgiana Slough	Right	5.48	11/01/2017 11/01/2017	Keith Millard

LM Start	1.79	Rating **	M	Issue No.	394
LM End	1.79	Issue Type +	En	Location *	
Category	Supplemental			GPS Latitude/Longitude	
				Start	End
Item	DWR UCIP Field Study			38.223999°	38.223999°
				-121.538735°	-121.538735°
DWR ID					
Comment Code					
Inspector Comment					
FS_ID:45746					
DS_ID:20828					
EP_NO: 3735					
Repair Type: Non-Urgent					
Crossing Status: Indicator Found					
UCIP Comments: Dense vegetation on LS and WS limited accessibility.					
FIELD_STRUCT_DESC: 4-inch electric conduit through levee, 4.0 feet below the crown. Pump on berm. Underground submarine cable crossing. (App. 3735-PG&E). Electric pole on LS in alignment with cuts in pavement.					
FS Date: 5/27/2015					

Photo 1 of 3 : UCIP\_FA\_2017\_45746\_74250.jpg



View of WS and cuts in pavement.

LM Start	<b>1.79</b>	Rating **	M	Issue No.	<b>394 (cont)</b>
LM End	<b>1.79</b>	Issue Type +	En	Location *	

Photo 2 of 3 : UCIP\_FA\_2017\_45746\_74251.jpg



Cuts in pavement in alignment with electric pole off LS toe.

<b>* Location</b> LS : Land Side    N/A : Not Applicable WS : Water Side CR : Crown	<b>** Rating</b> A : Acceptable M : Minimally Acceptable U : Unacceptable N : Not Inspected/Rated C : Corrected A/W : Acceptable but Monitor & Maintain	<b>+ Issue Type</b> Ma : Maintenance Deficiency Ob : Design & System Obsolescence En : Enforcement
--	---	---



**Flood Control Project Maintenance  
Levee Inspections**

**Levee Inspection Report By Mile - Fall 2017**

**Reclamation District No. 0556 Upper Andrus**

Waterway	Bank	Unit Miles	Inspection Start/End	Inspector
Unit No. 01 Georgiana Slough	Right	5.48	11/01/2017 11/01/2017	Keith Millard

LM Start	1.79	Rating **	M	Issue No.	394 (cont)	
LM End	1.79	Issue Type +	En	Location *		
Category	Supplemental			GPS Latitude/Longitude		
				Start	End	
Item	DWR UCIP Field Study			38.223999 °	38.223999 °	
				-121.538735 °	-121.538735 °	
DWR ID						
Comment Code						
Inspector Comment						
FS_ID:45746 DS_ID:20828 EP_NO: 3735 Repair Type: Non-Urgent Crossing Status: Indicator Found UCIP Comments: Dense vegetation on LS and WS limited accessibility. FIELD_STRUCT_DESC: 4-inch electric conduit through levee, 4.0 feet below the crown. Pump on berm. Underground submarine cable crossing. (App. 3735-PG&E). Electric pole on LS in alignment with cuts in pavement. FS Date: 5/27/2015						

Photo 3 of 3 : UCIP\_FA\_2017\_45746\_74252.jpg



Pipe debris present at LS toe.

LM Start	1.89	Rating **	M	Issue No.	395
LM End	1.89	Issue Type +	En	Location *	
Category	Supplemental			GPS Latitude/Longitude	
				Start	End
Item	DWR UCIP Field Study			38.223760 °	38.223760 °
				-121.540629 °	-121.540629 °
DWR ID					
Comment Code					
Inspector Comment					
FS_ID:45764 DS_ID:20829 EP_NO: 11178 Repair Type: Non-Urgent Crossing Status: Found UCIP Comments: Dense vegetation on WS and LS. Some oil leakage inside pumphouse. FIELD_STRUCT_DESC: 8-inch steel irrigation pipe through levee, 3.7 feet below crown. 2-inch electric conduit through levee next to 8-inch. A 1-inch air valve and pump on berm. Service pole on landward slope. Tin and wood pump house on berm. A 12-ft x 36-inch concrete standpipe on landside. (ABO- 11178 - Swett). O&M Manual Sac 103, June 1954 FS Date: 5/27/2015					

Photo 1 of 3 : UCIP\_FA\_2017\_45764\_74260.jpg



LS view: service pole on LW slope. Standpipe not visible in photo.

<b>* Location</b> LS : Land Side    N/A : Not Applicable WS : Water Side CR : Crown		<b>** Rating</b> A : Acceptable                      N : Not Inspected/Rated M : Minimally Acceptable        C : Corrected U : Unacceptable                  A/W : Acceptable but Monitor & Maintain		<b>+ Issue Type</b> Ma : Maintenance Deficiency Ob : Design & System Obsolescence En : Enforcement
--	--	---	--	---

**Flood Control Project Maintenance  
Levee Inspections**

**Levee Inspection Report By Mile - Fall 2017**

**Reclamation District No. 0556 Upper Andrus**

Waterway	Bank	Unit Miles	Inspection Start/End	Inspector
Unit No. 01 Georgiana Slough	Right	5.48	11/01/2017 11/01/2017	Keith Millard

LM Start	1.89	Rating **	M	Issue No.	395 (cont)	
LM End	1.89	Issue Type +	En	Location *		
Category	Supplemental			GPS Latitude/Longitude		
				Start	End	
Item	DWR UCIP Field Study			38.223760 °	38.223760 °	
				-121.540629 °	-121.540629 °	
DWR ID						
Comment Code						
Inspector Comment						
FS_ID:45764 DS_ID:20829 EP_NO: 11178 Repair Type: Non-Urgent Crossing Status: Found UCIP Comments: Dense vegetation on WS and LS. Some oil leakage inside pumphouse. FIELD_STRUCT_DESC: 8-inch steel irrigation pipe through levee, 3.7 feet below crown. 2-inch electric conduit through levee next to 8-inch. A 1-inch air valve and pump on berm. Service pole on landward slope. Tin and wood pump house on berm. A 12-ft x 36-inch concrete standpipe on landside. (ABO- 11178 - Swett). O&M Manual Sac 103, June 1954 FS Date: 5/27/2015						

Photo 2 of 3 : UCIP\_FA\_2017\_45764\_74261.jpg



Pole on LS slope with electric box and 2-inch conduit.

LM Start	<b>1.89</b>	Rating **	M	Issue No.	<b>395 (cont)</b>
LM End	<b>1.89</b>	Issue Type +	En	Location *	

Photo 3 of 3 : UCIP\_FA\_2017\_45764\_74262.jpg



Standpipe on LS next to service pole.

<b>* Location</b> LS : Land Side    N/A : Not Applicable WS : Water Side CR : Crown		<b>** Rating</b> A : Acceptable M : Minimally Acceptable U : Unacceptable		<b>+ Issue Type</b> Ma : Maintenance Deficiency Ob : Design & System Obsolescence En : Enforcement	
		N : Not Inspected/Rated C : Corrected A/W : Acceptable but Monitor & Maintain			



**Flood Control Project Maintenance  
Levee Inspections**

**Levee Inspection Report By Mile - Fall 2017**

**Reclamation District No. 0556 Upper Andrus**

Waterway	Bank	Unit Miles	Inspection Start/End	Inspector
Unit No. 01 Georgiana Slough	Right	5.48	11/01/2017 11/01/2017	Keith Millard

LM Start	2.09	Rating **	U	Issue No.	25
LM End	2.11	Issue Type +	En	Location *	LS
Category	Earthen Levee			GPS Latitude/Longitude	
				Start	End
Item	Encroachments			38.223087 °	38.222850 °
				-121.544140 °	-121.544330 °
DWR ID	DWR_RD0556_01_f_2017_25				
Comment Code					
FE : Fence					
Inspector Comment					

Photo 1 of 1 : FA\_2017\_RD0556\_18\_25\_20171117\_00062.jpg



Unpermitted fence covered in berry vines along landside levee toe should be moved back 10 feet to allow access.

LM Start	2.13	Rating **	M	Issue No.	396	
LM End	2.13	Issue Type +	En	Location *		
Category	Supplemental			GPS Latitude/Longitude		
				Start		End
Item	DWR UCIP Field Study			38.222560 °		38.222560 °
				-121.544485 °		-121.544485 °
DWR ID						
Comment Code						
Inspector Comment						
FS_ID:45786 DS_ID:20830 EP_NO: 2392 Repair Type: Non-Urgent Crossing Status: Found UCIP Comments: Hole and exposed depression adjacent to pipe at LS. Dense vegetation on WS and LS limited visibility. FIELD_STRUCT_DESC: 12 inch steel irrigation pipe through levee, 3.0 feet below crown. Slant pump on bank. 1-inch electrical conduit through levee beside 12-inch pipe, visible on WS. Service pole and 2 standpipes at LW toe, one of which is a 6-inch standpipe. (App. 2392 - Swett) FS Date: 5/27/2015						

Photo 1 of 3 : UCIP\_FA\_2017\_45786\_74280.jpg



WS view: Slant pump, 12-inch and 1-inch pipe through levee.

* Location LS : Land Side    N/A : Not Applicable WS : Water Side CR : Crown		** Rating A : Acceptable M : Minimally Acceptable U : Unacceptable N : Not Inspected/Rated C : Corrected A/W : Acceptable but Monitor & Maintain		+ Issue Type Ma : Maintenance Deficiency Ob : Design & System Obsolescence En : Enforcement	
---	--	--	--	--	--

**Flood Control Project Maintenance  
Levee Inspections**

**Levee Inspection Report By Mile - Fall 2017**

**Reclamation District No. 0556 Upper Andrus**

Waterway	Bank	Unit Miles	Inspection Start/End	Inspector
Unit No. 01 Georgiana Slough	Right	5.48	11/01/2017 11/01/2017	Keith Millard

LM Start	2.13	Rating **	M	Issue No.	396 (cont)	
LM End	2.13	Issue Type +	En	Location *		
Category	Supplemental			GPS Latitude/Longitude		
				Start		End
Item	DWR UCIP Field Study			38.222560 °		38.222560 °
				-121.544485 °		-121.544485 °
DWR ID						
Comment Code						
Inspector Comment						
FS_ID:45786 DS_ID:20830 EP_NO: 2392 Repair Type: Non-Urgent Crossing Status: Found UCIP Comments: Hole and exposed depression adjacent to pipe at LS. Dense vegetation on WS and LS limited visibility. FIELD_STRUCT_DESC: 12 inch steel irrigation pipe through levee, 3.0 feet below crown. Slant pump on bank. 1-inch electrical conduit through levee beside 12-inch pipe, visible on WS. Service pole and 2 standpipes at LW toe, one of which is a 6-inch standpipe. (App. 2392 - Swett) FS Date: 5/27/2015						

Photo 2 of 3 : UCIP\_FA\_2017\_45786\_74281.jpg



View toward WS with cuts in pavement in alignment with pipe on WS

LM Start	<b>2.13</b>	Rating **	M	Issue No.	<b>396 (cont)</b>
LM End	<b>2.13</b>	Issue Type +	En	Location *	

Photo 3 of 3 : UCIP\_FA\_2017\_45786\_74282.jpg



LS: 2 standpipes and service pole.

<b>* Location</b> LS : Land Side    N/A : Not Applicable WS : Water Side CR : Crown		<b>** Rating</b> A : Acceptable M : Minimally Acceptable U : Unacceptable N : Not Inspected/Rated C : Corrected A/W : Acceptable but Monitor & Maintain		<b>+ Issue Type</b> Ma : Maintenance Deficiency Ob : Design & System Obsolescence En : Enforcement
--	--	---	--	---

**Flood Control Project Maintenance  
Levee Inspections**

**Levee Inspection Report By Mile - Fall 2017**

**Reclamation District No. 0556 Upper Andrus**

Waterway	Bank	Unit Miles	Inspection Start/End	Inspector
Unit No. 01 Georgiana Slough	Right	5.48	11/01/2017 11/01/2017	Keith Millard

LM Start	2.34	Rating **	U	Issue No.	26
LM End	2.34	Issue Type +	En	Location *	LS
Category	Earthen Levee			GPS Latitude/Longitude	
				Start	End
Item	Vegetation			38.219592 °	38.219592 °
				-121.543960 °	-121.543960 °
DWR ID	DWR_RD0556_01_f_2017_26				
Comment Code					
V6 : Landscaping					
Inspector Comment					

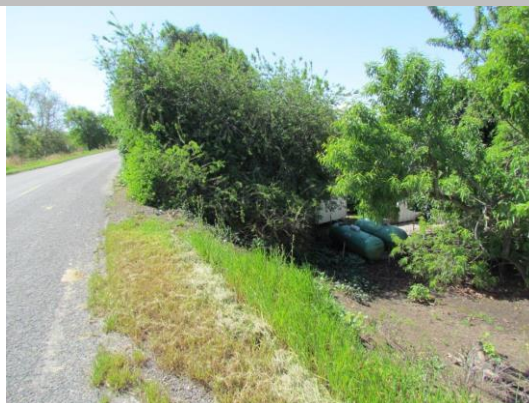
Photo 1 of 1 : FA\_2017\_RD0556\_18\_26\_20171117\_00063.jpg



Large fig tree should be trimmed to allow inspection and access to levee slope and toe.

LM Start	2.38	Rating **	U	Issue No.	31
LM End	2.43	Issue Type +	En	Location *	LS
Category	Earthen Levee			GPS Latitude/Longitude	
				Start	End
Item	Vegetation			38.219037 °	38.218342 °
				-121.543847 °	-121.543842 °
DWR ID	DWR_RD0556_01_s_2017_31				
Comment Code					
V6 : Landscaping					
Inspector Comment					

Photo 1 of 2 : FA\_2017\_RD0556\_18\_31\_20171102\_00009.jpg



Looking downstream from the landside shoulder woody tree growth blocking the slope and shoulder.

LM Start	<b>2.38</b>	Rating **	U	Issue No.	<b>31 (cont)</b>
LM End	<b>2.43</b>	Issue Type +	En	Location *	LS

Photo 2 of 2 : FA\_2017\_RD0556\_18\_31\_20171117\_00064.jpg



Trim and thin trees to allow visibility of the slope and ground.

* Location LS : Land Side    N/A : Not Applicable WS : Water Side CR : Crown		** Rating A : Acceptable M : Minimally Acceptable U : Unacceptable N : Not Inspected/Rated C : Corrected A/W : Acceptable but Monitor & Maintain		+ Issue Type Ma : Maintenance Deficiency Ob : Design & System Obsolescence En : Enforcement	
---	--	--	--	--	--



**Flood Control Project Maintenance  
Levee Inspections**

**Levee Inspection Report By Mile - Fall 2017**

**Reclamation District No. 0556 Upper Andrus**

Waterway	Bank	Unit Miles	Inspection Start/End	Inspector
Unit No. 01 Georgiana Slough	Right	5.48	11/01/2017 11/01/2017	Keith Millard

LM Start	2.44	Rating **	U	Issue No.	397
LM End	2.44	Issue Type +	En	Location *	
Category	Supplemental			GPS Latitude/Longitude	
				Start	End
Item	DWR UCIP Field Study			38.218242 °	38.218242 °
				-121.543807 °	-121.543807 °
DWR ID					
Comment Code					
Inspector Comment					
FS_ID:45803 DS_ID:20831 EP_NO: 11169 Repair Type: Urgent Crossing Status: Found UCIP Comments: 2'x2' hole on levee off LS shoulder. FIELD_STRUCT_DESC: 8 inch steel irrigation pipe through levee, 3.7 feet below crown. Pump and switch panel on berm. Service pole on landward side. A 9 ft x 36-inch concrete standpipe on landside of the levee. 3 cables encased in 1.5-inch steel pipe at WS alongside 8-inch pipe, disconnected at WS. (ABO 11169-Mealer). O&M Manual Sac 103, June 1954. FS Date: 5/27/2015					

LM Start	<b>2.44</b>	Rating **	U	Issue No.	<b>397 (cont)</b>
LM End	<b>2.44</b>	Issue Type +	En	Location *	

Photo 1 of 3 : UCIP\_FA\_2017\_45803\_74285.jpg



Pipe, pump @LS toe. 2'x2' hole off shoulder. Spigot in hole possibly for irrigation. House and service pole in background.

Photo 2 of 3 : UCIP\_FA\_2017\_45803\_74286.jpg



Closeup of 8-inch pipe, electrical conduit and box at LS berm.

<b>* Location</b> LS : Land Side    N/A : Not Applicable WS : Water Side CR : Crown	<b>** Rating</b> A : Acceptable M : Minimally Acceptable U : Unacceptable	N : Not Inspected/Rated C : Corrected A/W : Acceptable but Monitor & Maintain	<b>+ Issue Type</b> Ma : Maintenance Deficiency Ob : Design & System Obsolescence En : Enforcement
--	--	---	---

**Flood Control Project Maintenance  
Levee Inspections**

**Levee Inspection Report By Mile - Fall 2017**

**Reclamation District No. 0556 Upper Andrus**

Waterway	Bank	Unit Miles	Inspection Start/End	Inspector
Unit No. 01 Georgiana Slough	Right	5.48	11/01/2017 11/01/2017	Keith Millard

LM Start	2.44	Rating **	U	Issue No.	397 (cont)	
LM End	2.44	Issue Type +	En	Location *		
Category	Supplemental			GPS Latitude/Longitude		
				Start		End
Item	DWR UCIP Field Study			38.218242 °		38.218242 °
				-121.543807 °		-121.543807 °
DWR ID						
Comment Code						
Inspector Comment						
FS_ID:45803 DS_ID:20831 EP_NO: 11169 Repair Type: Urgent Crossing Status: Found UCIP Comments: 2'x2' hole on levee off LS shoulder. FIELD_STRUCT_DESC: 8 inch steel irrigation pipe through levee, 3.7 feet below crown. Pump and switch panel on berm. Service pole on landward side. A 9 ft x 36-inch concrete standpipe on landside of the levee. 3 cables encased in 1.5-inch steel pipe at WS alongside 8-inch pipe, disconnected at WS. (ABO 11169-Mealer). O&M Manual Sac 103, June 1954. FS Date: 5/27/2015						

Photo 3 of 3 : UCIP\_FA\_2017\_45803\_74287.jpg



Closeup of 8-inch and 1.5-inch pipes and platform off LS toe.

LM Start	2.54	Rating **	M	Issue No.	32
LM End	2.81	Issue Type +	Ma	Location *	LS
Category	Earthen Levee			GPS Latitude/Longitude	
				Start	End
Item	Vegetation			38.216770 °	38.214455 °
				-121.543212 °	-121.539433 °
DWR ID	DWR_RD0556_01_f_2016_32				
Comment Code					
V2 : Remove the wild growth other than native grasses from the levee slopes.					
Inspector Comment					
Remove the vegetation from the landside slope.					

No Photos

<b>* Location</b> LS : Land Side    N/A : Not Applicable WS : Water Side CR : Crown		<b>** Rating</b> A : Acceptable M : Minimally Acceptable U : Unacceptable		N : Not Inspected/Rated C : Corrected A/W : Acceptable but Monitor & Maintain		<b>+ Issue Type</b> Ma : Maintenance Deficiency Ob : Design & System Obsolescence En : Enforcement	
--	--	--	--	---	--	---	--



**Flood Control Project Maintenance  
Levee Inspections**

**Levee Inspection Report By Mile - Fall 2017**

**Reclamation District No. 0556 Upper Andrus**

Waterway	Bank	Unit Miles	Inspection Start/End	Inspector
Unit No. 01 Georgiana Slough	Right	5.48	11/01/2017 11/01/2017	Keith Millard

LM Start	2.71	Rating **	M	Issue No.	398
LM End	2.71	Issue Type +	En	Location *	
Category	Supplemental			GPS Latitude/Longitude	
				Start	End
Item	DWR UCIP Field Study			38.215222 °	38.215222 °
				-121.540950 °	-121.540950 °
DWR ID					
Comment Code					
Inspector Comment					
FS_ID:45883 DS_ID:20848 EP_NO: 11167 Repair Type: Non-Urgent Crossing Status: Found UCIP Comments: Pipe appears out of use; if so, coordinate with owner to abandon properly per Title 23. FIELD_STRUCT_DESC: 8-inch steel casing with 3-inch steel irrigation pipeline sleeved through it, 3.0 feet below crown. Annular space appears grouted. 3-inch pipe connected to pump on WS. Gate valve on waterward berm. Pipe not in use. PVC standpipe off LS toe (previously 6'x36" concrete standpipe). (ABO 11167 - Graham). O&M Manual Sac 103, June 1954 FS Date: 6/5/2015 8:11:00 AM					

No Photos

LM Start	2.72	Rating **	U	Issue No.	33
LM End	2.72	Issue Type +	Ma	Location *	LS
Category	Earthen Levee			GPS Latitude/Longitude	
				Start	End
Item	Slope Stability			38.215107 °	38.215107 °
				-121.540677 °	-121.540677 °
DWR ID	DWR_RD0556_01_s_2017_33				
Comment Code					
S1 : Repair slope instability.					
Inspector Comment					
Fallen tree on landside. Remove the fallen tree and repair the levee damage.					

Photo 1 of 2 : FA\_2017\_RD0556\_18\_33\_20171002\_00010.jpg



RD 556 Unit 1 levee mile 2.72 fallen tree damage to shoulder and slope.

<b>* Location</b> LS : Land Side    N/A : Not Applicable WS : Water Side CR : Crown		<b>** Rating</b> A : Acceptable                      N : Not Inspected/Rated M : Minimally Acceptable        C : Corrected U : Unacceptable                  A/W : Acceptable but Monitor & Maintain		<b>+ Issue Type</b> Ma : Maintenance Deficiency Ob : Design & System Obsolescence En : Enforcement
--	--	---	--	---

**Flood Control Project Maintenance  
Levee Inspections**

**Levee Inspection Report By Mile - Fall 2017**

**Reclamation District No. 0556 Upper Andrus**

Waterway	Bank	Unit Miles	Inspection Start/End	Inspector
Unit No. 01 Georgiana Slough	Right	5.48	11/01/2017 11/01/2017	Keith Millard

LM Start	2.72	Rating **	U	Issue No.	33 (cont)	
LM End	2.72	Issue Type +	Ma	Location *	LS	
Category	Earthen Levee			GPS Latitude/Longitude		
				Start		End
Item	Slope Stability			38.215107 °		38.215107 °
				-121.540677 °		-121.540677 °
DWR ID	DWR_RD0556_01_s_2017_33					
Comment Code						
S1 : Repair slope instability.						
Inspector Comment						
Fallen tree on landside. Remove the fallen tree and repair the levee damage.						

Photo 2 of 2 : FA\_2017\_RD0556\_18\_33\_20171002\_00011.jpg



RD 349 Unut 1 levee mile 2.72 the root ball of the fallen tree on slope landward.

LM Start	2.96	Rating **	A/W	Issue No.	63
LM End	2.99	Issue Type +	Ma	Location *	WS
Category	Earthen Levee			GPS Latitude/Longitude	
				Start	End
Item	Vegetation			38.212661 °	38.212328 °
				-121.537633 °	-121.537318 °
DWR ID	DWR_RD0556_01_s_2013_63				
Comment Code					
V2 : Remove the wild growth other than native grasses from the levee slopes.					
Inspector Comment					
Remove the vegetation from the waterside slope.					

No Photos

LM Start	3.12	Rating **	U	Issue No.	35
LM End	3.14	Issue Type +	Ma	Location *	WS
Category	Earthen Levee			GPS Latitude/Longitude	
				Start	End
Item	Vegetation			38.211103 °	38.210970 °
				-121.537993 °	-121.538370 °
DWR ID	DWR_RD0556_01_s_2017_35				
Comment Code					
V2 : Remove the wild growth other than native grasses from the levee slopes.					
Inspector Comment					
Remove the unwanted wild growth from the waterside slope.					

Photo 1 of 1 : FA\_2017\_RD0556\_18\_35\_20171002\_00012.jpg



RD 556 Unit 1 levee mile 3.12-3.14 waterside shoulder and slope.

<b>* Location</b> LS : Land Side    N/A : Not Applicable WS : Water Side CR : Crown		<b>** Rating</b> A : Acceptable M : Minimally Acceptable U : Unacceptable N : Not Inspected/Rated C : Corrected A/W : Acceptable but Monitor & Maintain		<b>+ Issue Type</b> Ma : Maintenance Deficiency Ob : Design & System Obsolescence En : Enforcement	
--	--	---	--	---	--

**Flood Control Project Maintenance  
Levee Inspections**

**Levee Inspection Report By Mile - Fall 2017**

**Reclamation District No. 0556 Upper Andrus**

Waterway	Bank	Unit Miles	Inspection Start/End	Inspector
Unit No. 01 Georgiana Slough	Right	5.48	11/01/2017 11/01/2017	Keith Millard

LM Start	3.14	Rating **	U	Issue No.	28
LM End	3.26	Issue Type +	Ma	Location *	LS
Category	Earthen Levee			GPS Latitude/Longitude	
				Start	End
Item	Animal Control			38.210985 °	38.210160 °
				-121.538372 °	-121.540300 °
DWR ID	DWR_RD0556_01_f_2017_28				
Comment Code					
A1 : Exterminate rodents and backfill and compact or grout burrows.					
Inspector Comment					

Photo 1 of 1 : FA\_2017\_RD0556\_18\_28\_20171117\_00065.jpg



Significant rodent activity in this area must be stopped. Holes should be backfilled.

LM Start	3.22	Rating **	U	Issue No.	36
LM End	3.22	Issue Type +	Ma	Location *	LS
Category	Earthen Levee			GPS Latitude/Longitude	
				Start	End
Item	Slope Stability			38.210528 °	38.210528 °
				-121.539678 °	-121.539678 °
DWR ID	DWR_RD0556_01_s_2017_36				
Comment Code					
S1 : Repair slope instability.					
Inspector Comment					
Repair the erosion sites.					

Photo 1 of 2 : FA\_2017\_RD0556\_18\_36\_20171002\_00013.jpg



556 Unit 1 levee mile 3.22 landside slope erosion.

LM Start	<b>3.22</b>	Rating **	U	Issue No.	<b>36 (cont)</b>
LM End	<b>3.22</b>	Issue Type +	Ma	Location *	LS

Photo 2 of 2 : FA\_2017\_RD0556\_18\_36\_20171002\_00014.jpg



556 Unit 1 slope erosion levee mile 3.22.

<b>* Location</b> LS : Land Side    N/A : Not Applicable WS : Water Side CR : Crown		<b>** Rating</b> A : Acceptable M : Minimally Acceptable U : Unacceptable		<b>+ Issue Type</b> Ma : Maintenance Deficiency Ob : Design & System Obsolescence En : Enforcement	
		N : Not Inspected/Rated C : Corrected A/W : Acceptable but Monitor & Maintain			



**Flood Control Project Maintenance  
Levee Inspections**

**Levee Inspection Report By Mile - Fall 2017**

**Reclamation District No. 0556 Upper Andrus**

Waterway	Bank	Unit Miles	Inspection Start/End	Inspector
Unit No. 01 Georgiana Slough	Right	5.48	11/01/2017 11/01/2017	Keith Millard

LM Start	3.24	Rating **	M	Issue No.	37
LM End	3.24	Issue Type +	Ma	Location *	LS
Category	Earthen Levee			GPS Latitude/Longitude	
				Start	End
Item	Slope Stability			38.210365 °	38.210365 °
				-121.540002 °	-121.540002 °
DWR ID	DWR_RD0556_01_s_2017_37				
Comment Code					
S1 : Repair slope instability.					
Inspector Comment					
Repair the erosion on the slope.					

Photo 1 of 1 : FA\_2017\_RD0556\_18\_37\_20171002\_00015.jpg



556 Unit 1 levee mile 3.24 landside slope.

LM Start	3.25	Rating **	U	Issue No.	38
LM End	3.29	Issue Type +	Ma	Location *	LS
Category	Earthen Levee			GPS Latitude/Longitude	
				Start	End
Item	Vegetation			38.210250 °	38.209842 °
				-121.540207 °	-121.540658 °
DWR ID	DWR_RD0556_01_s_2017_38				
Comment Code					
V7 : Trees / Woody Vegetation					
Inspector Comment					
Remove the wild tree growth and vegetation from the landside levee slope and toe so the ground can be seen.					

Photo 1 of 1 : FA\_2017\_RD0556\_18\_38\_20171002\_00016.jpg



556 Unit 1 levee mile 3.25-3.29 woody tree growth and vegetation blocking the view of the levee slope and toe.

LM Start	3.38	Rating **	U	Issue No.	29
LM End	3.38	Issue Type +	En	Location *	LS
Category	Earthen Levee			GPS Latitude/Longitude	
				Start	End
Item	Vegetation			38.208755 °	38.208755 °
				-121.541395 °	-121.541395 °
DWR ID	DWR_RD0556_01_f_2017_29				
Comment Code					
V6 : Landscaping					
Inspector Comment					

Photo 1 of 1 : FA\_2017\_RD0556\_18\_29\_20171117\_00066.jpg



Large cactus growing on shoulder and slope should be removed to allow inspection and access.

**\* Location**

LS : Land Side    N/A : Not Applicable  
WS : Water Side  
CR : Crown

**\*\* Rating**

A : Acceptable                      N : Not Inspected/Rated  
M : Minimally Acceptable        C : Corrected  
U : Unacceptable                  A/W : Acceptable but Monitor & Maintain

**+ Issue Type**

Ma : Maintenance Deficiency  
Ob : Design & System Obsolescence  
En : Enforcement



**Flood Control Project Maintenance  
Levee Inspections**

**Levee Inspection Report By Mile - Fall 2017**

**Reclamation District No. 0556 Upper Andrus**

Waterway	Bank	Unit Miles	Inspection Start/End	Inspector
Unit No. 01 Georgiana Slough	Right	5.48	11/01/2017 11/01/2017	Keith Millard

LM Start	3.42	Rating **	M	Issue No.	41
LM End	3.93	Issue Type +	Ma	Location *	LS
Category	Earthen Levee			GPS Latitude/Longitude	
				Start	End
Item	Vegetation			38.208113 °	38.201603 °
				-121.541582 °	-121.542352 °
DWR ID	DWR_RD0556_01_s_2017_41				
Comment Code					
V2 : Remove the wild growth other than native grasses from the levee slopes.					
Inspector Comment					
Remove the wild growth other than annual grasses from the levee slope.					

Photo 1 of 1 : FA\_2017\_RD0556\_18\_41\_20171002\_00017.jpg



556 Unit 1 levee mile 3.42-5.47 landside shoulder and slope.

LM Start	3.43	Rating **	A/W	Issue No.	23
LM End	3.75	Issue Type +	Ma	Location *	
Category	Supplemental			GPS Latitude/Longitude	
				Start	End
Item	2017 Storm Damage			38.208070 °	38.203400 °
				-121.541700 °	-121.540990 °
DWR ID	DWR_RD0556_01_f_2017_23				
Comment Code					
Inspector Comment					
Levee Evaluation Comments					
Description:					
Site ID No:67					
Site Designation:USACE_CESPK_UPA1_2011_p_0143					
Repair Type: Stability					
Rating:Area of Concern					
Field Date:2/7/2017					
Notes: inactive ditch on landside toe, slope covered in heavy vegetation, minor landside lower slope sloughing observed,					

Photo 1 of 2 : LEVAL\_FA\_2017\_67\_701.jpg



* Location		** Rating		+ Issue Type	
LS : Land Side	N/A : Not Applicable	A : Acceptable	N : Not Inspected/Rated	Ma : Maintenance Deficiency	
WS : Water Side		M : Minimally Acceptable	C : Corrected	Ob : Design & System Obsolescence	
CR : Crown		U : Unacceptable	A/W : Acceptable but Monitor & Maintain	En : Enforcement	

**Flood Control Project Maintenance  
Levee Inspections**

**Levee Inspection Report By Mile - Fall 2017**

**Reclamation District No. 0556 Upper Andrus**

Waterway	Bank	Unit Miles	Inspection Start/End	Inspector
Unit No. 01 Georgiana Slough	Right	5.48	11/01/2017 11/01/2017	Keith Millard

LM Start	3.43	Rating **	A/W	Issue No.	23 (cont)
LM End	3.75	Issue Type +	Ma	Location *	
Category	Supplemental			GPS Latitude/Longitude	
				Start	End
Item	2017 Storm Damage			38.208070 °	38.203400 °
				-121.541700 °	-121.540990 °
DWR ID	DWR_RD0556_01_f_2017_23				
Comment Code					
Inspector Comment					
Levee Evaluation Comments					
Description:					
Site ID No:67					
Site Designation:USACE_CESPK_UPA1_2011_p_0143					
Repair Type: Stability					
Rating:Area of Concern					
Field Date:2/7/2017					
Notes: inactive ditch on landside toe, slope covered in heavy vegetation, minor landside lower slope sloughing observed,					

Photo 2 of 2 : LEVAL\_FA\_2017\_67\_702.jpg



LM Start	3.91	Rating **	U	Issue No.	30
LM End	3.91	Issue Type +	En	Location *	LS
Category	Earthen Levee			GPS Latitude/Longitude	
				Start	End
Item	Vegetation			38.201672 °	38.201672 °
				-121.542133 °	-121.542133 °
DWR ID	DWR_RD0556_01_f_2017_30				
Comment Code					
V6 : Landscaping					
Inspector Comment					

Photo 1 of 1 : FA\_2017\_RD0556\_18\_30\_20171117\_00067.jpg



Trim/thin landscaping to allow inspection and access to levee slope and toe.

<b>* Location</b> LS : Land Side    N/A : Not Applicable WS : Water Side CR : Crown		<b>** Rating</b> A : Acceptable                      N : Not Inspected/Rated M : Minimally Acceptable        C : Corrected U : Unacceptable                    A/W : Acceptable but Monitor & Maintain		<b>+ Issue Type</b> Ma : Maintenance Deficiency Ob : Design & System Obsolescence En : Enforcement
--	--	---	--	---

**Flood Control Project Maintenance  
Levee Inspections**

**Levee Inspection Report By Mile - Fall 2017**

**Reclamation District No. 0556 Upper Andrus**

Waterway	Bank	Unit Miles	Inspection Start/End	Inspector
Unit No. 01 Georgiana Slough	Right	5.48	11/01/2017 11/01/2017	Keith Millard

LM Start	3.93	Rating **	U	Issue No.	34
LM End	3.98	Issue Type +	En	Location *	WS
Category	Earthen Levee			GPS Latitude/Longitude	
				Start	End
Item	Vegetation			38.201603 °	38.201273 °
				-121.542352 °	-121.543328 °
DWR ID	DWR_RD0556_01_f_2017_34				
Comment Code					
V6 : Landscaping					
Inspector Comment					

Photo 1 of 1 : FA\_2017\_RD0556\_18\_34\_20171117\_00068.jpg



Remove large cactus from waterside shoulder to allow inspection and access.

LM Start	3.94	Rating **	C	Issue No.	70
LM End	4.01	Issue Type +	En	Location *	WS
Category	Earthen Levee			GPS Latitude/Longitude	
				Start	End
Item	Encroachments			38.201515 °	38.201105 °
				-121.542573 °	-121.543720 °
DWR ID	DWR_RD0556_01_f_2014_70				
Comment Code					
CR : Crops					
Inspector Comment					
Violations have been corrected, NOV has been closed by CVFPB.					

No Photos

LM Start	3.95	Rating **	C	Issue No.	86
LM End	4.06	Issue Type +	En	Location *	WS
Category	Earthen Levee			GPS Latitude/Longitude	
				Start	End
Item	Encroachments			38.201475 °	38.200617 °
				-121.542832 °	-121.544530 °
DWR ID	DWR_RD0556_01_s_2012_86				
Comment Code					
BU : Building					
Inspector Comment					
There is a remodeled home on waterward berm. The CVFPB is aware of the structure. Permit number 18590 has been secured by land owner for the dwelling and improvements.					

No Photos

* Location		** Rating		+ Issue Type	
LS : Land Side	N/A : Not Applicable	A : Acceptable	N : Not Inspected/Rated	Ma : Maintenance Deficiency	
WS : Water Side		M : Minimally Acceptable	C : Corrected	Ob : Design & System Obsolescence	
CR : Crown		U : Unacceptable	A/W : Acceptable but Monitor & Maintain	En : Enforcement	

**Flood Control Project Maintenance  
Levee Inspections**

**Levee Inspection Report By Mile - Fall 2017**

**Reclamation District No. 0556 Upper Andrus**

Waterway	Bank	Unit Miles	Inspection Start/End	Inspector
Unit No. 01 Georgiana Slough	Right	5.48	11/01/2017 11/01/2017	Keith Millard

LM Start	3.98	Rating **	U	Issue No.	39
LM End	5.48	Issue Type +	Ma	Location *	LS
Category	Earthen Levee			GPS Latitude/Longitude	
				Start	End
Item	Vegetation			38.201273 °	38.186464 °
				-121.543328 °	-121.562550 °
DWR ID	DWR_RD0556_01_f_2017_39				
Comment Code					
V2 : Remove the wild growth other than native grasses from the levee slopes.					
Inspector Comment					

Photo 1 of 1 : FA\_2017\_RD0556\_18\_39\_20171117\_00069.jpg



Control dense growth of wild vegetation, berry vines and arundo on landside to allow inspection and access.

LM Start	4.04	Rating **	M	Issue No.	59
LM End	4.80	Issue Type +	Ma	Location *	LS
Category	Earthen Levee			GPS Latitude/Longitude	
				Start	End
Item	Animal Control			38.200897 °	38.192662 °
				-121.544350 °	-121.553160 °
DWR ID	DWR_RD0556_01_f_2012_59				
Comment Code					
A1 : Exterminate rodents and backfill and compact or grout burrows.					
Inspector Comment					
Exterminate the rodents and backfill the burrows.					

No Photos

LM Start	4.07	Rating **	U	Issue No.	67
LM End	5.48	Issue Type +	Ma	Location *	WS
Category	Earthen Levee			GPS Latitude/Longitude	
				Start	End
Item	Vegetation			38.200658 °	38.186464 °
				-121.544711 °	-121.562550 °
DWR ID	DWR_RD0556_01_s_2013_67				
Comment Code					
V2 : Remove the wild growth other than native grasses from the levee slopes.					
Inspector Comment					
Remove the wild weed growth and Arundo from the waterside levee section.					

Photo 1 of 1 : FA\_2017\_RD0556\_18\_67\_20171002\_00021.jpg



Looking downstream on the waterside arundo completely blocking view of the slope and shoulder.

<b>* Location</b> LS : Land Side    N/A : Not Applicable WS : Water Side CR : Crown		<b>** Rating</b> A : Acceptable M : Minimally Acceptable U : Unacceptable		<b>+ Issue Type</b> Ma : Maintenance Deficiency Ob : Design & System Obsolescence En : Enforcement	
		N : Not Inspected/Rated C : Corrected A/W : Acceptable but Monitor & Maintain			



**Flood Control Project Maintenance  
Levee Inspections**

**Levee Inspection Report By Mile - Fall 2017**

**Reclamation District No. 0556 Upper Andrus**

Waterway	Bank	Unit Miles	Inspection Start/End	Inspector
Unit No. 01 Georgiana Slough	Right	5.48	11/01/2017 11/01/2017	Keith Millard

LM Start	5.12	Rating **	M	Issue No.	1
LM End	5.27	Issue Type +	Ma	Location *	WS
Category	Supplemental			GPS Latitude/Longitude	
				Start	End
Item	2015 USACE Erosion Survey, DRAFT			38.189775 °	38.188121 °
				-121.557729 °	-121.559413 °
DWR ID	DWR_RD0556_01_f_2016_1				
Comment Code					
Inspector Comment					
1997 - Toe damaged rock. 1999 - One pocket filled with gravel. 2000 - Eroding beach with some biotech rolls and stakes; some gravel on slope. 2001 - Staked, low fascine walls at bankline. 2005 - Stone revetment in between pockets. 2006 - New rock on upper slope behind brush boxes at the upstream end, Stone is sliding off the hard toe. 2015: Last observed in 2013. [2015 Site ID: GEO_7-0_R]					

Photo 1 of 1 : FA\_2017\_RD0556\_18\_1\_20171002\_00001.jpg



USACE 2013 Photo #1

LM Start	5.46	Rating **	U	Issue No.	44
LM End	5.46	Issue Type +	En	Location *	LS
Category	Earthen Levee			GPS Latitude/Longitude	
				Start	End
Item	Encroachments			38.186593 °	38.186593 °
				-121.562217 °	-121.562217 °
DWR ID	DWR_RD0556_01_s_2017_44				
Comment Code					
TR : Tree or limb					
Inspector Comment					
Remove the fallen tree from the landside slope and repair the damage to the slope.					

Photo 1 of 2 : FA\_2017\_RD0556\_18\_44\_20171002\_00018.jpg



RD 556 Unit 1 levee mile 5.46 fallen tree on landside slope and damage to the slope.

<b>* Location</b> LS : Land Side    N/A : Not Applicable WS : Water Side CR : Crown		<b>** Rating</b> A : Acceptable                      N : Not Inspected/Rated M : Minimally Acceptable        C : Corrected U : Unacceptable                  A/W : Acceptable but Monitor & Maintain		<b>+ Issue Type</b> Ma : Maintenance Deficiency Ob : Design & System Obsolescence En : Enforcement
--	--	---	--	---

**Flood Control Project Maintenance  
Levee Inspections**

**Levee Inspection Report By Mile - Fall 2017**

**Reclamation District No. 0556 Upper Andrus**

Waterway	Bank	Unit Miles	Inspection Start/End	Inspector
Unit No. 01 Georgiana Slough	Right	5.48	11/01/2017 11/01/2017	Keith Millard

LM Start	5.46	Rating **	U	Issue No.	44 (cont)	
LM End	5.46	Issue Type +	En	Location *	LS	
Category	Earthen Levee			GPS Latitude/Longitude		
				Start	End	
Item	Encroachments			38.186593 °	38.186593 °	
				-121.562217 °	-121.562217 °	
DWR ID	DWR_RD0556_01_s_2017_44					
Comment Code						
TR : Tree or limb						
Inspector Comment						
Remove the fallen tree from the landside slope and repair the damage to the slope.						

Photo 2 of 2 : FA\_2017\_RD0556\_18\_44\_20171002\_00019.jpg



view from upstream.

<b>* Location</b> LS : Land Side    N/A : Not Applicable WS : Water Side CR : Crown	<b>** Rating</b> A : Acceptable M : Minimally Acceptable U : Unacceptable	N : Not Inspected/Rated C : Corrected A/W : Acceptable but Monitor & Maintain	<b>+ Issue Type</b> Ma : Maintenance Deficiency Ob : Design & System Obsolescence En : Enforcement
--	--	---	---

**Flood Control Project Maintenance  
Levee Inspections**

**Unit Cover Sheet**

**Fall 2017 Levee Inspection Results**

**Reclamation District No. 0556 Upper Andrus**

Waterway			Bank	Unit Miles
Unit No. 02 Sacramento River			Left	5.72
	Spring (March - May)	Summer (June - August)	(September - November) Fall	Winter (December - February)
Unit Maintenance Rating (Fall Only)			<b>M</b>	
Date of Inspection	4/19/2017 - 4/19/2017		11/1/2017 - 11/1/2017	
DWR Inspector	Herman Phillips		Keith Millard	
Accompanied By	Duwain Silva RD 556		Alan Silva RD 556	

**Summer & Winter Inspections**

The Local Maintaining Agency (LMA) is responsible for summer and winter inspections. The LMA is required to submit a report regarding summer and winter inspections to the California Department of Water Resources (DWR).

DWR must be informed on the:

- a) completion of the inspection
- b) any changes other than the results of normal maintenance
- c) corrections to deficiencies noted in this report

If additional items are noted, further documentation of those items must also be submitted.

The LMA should submit this information to DWR using the LMA web application tool available at:

<http://cdec.water.ca.gov/lma.html>

If the LMA is unable to submit information on this webpage, please contact DWR for assistance.

*The LMA should submit the information and any associated documentation by September 30 for summer inspections and March 31 for winter inspections.*



**Flood Control Project Maintenance  
Levee Inspections**

**Levee Inspection Report By Mile - Fall 2017**

**Reclamation District No. 0556 Upper Andrus**

Waterway	Bank	Unit Miles	Inspection Start/End	Inspector
Unit No. 02 Sacramento River	Left	5.72	11/01/2017 11/01/2017	Keith Millard

LM Start	0.00	Rating **	A/W	Issue No.	82
LM End	5.71	Issue Type +	Ma	Location *	WS
Category	Earthen Levee			GPS Latitude/Longitude	
				Start	End
Item	Vegetation			38.200550 °	38.191937 °
				-121.544190 °	-121.567510 °
DWR ID	DWR_RD0556_02_s_2013_82				
Comment Code					
V2 : Remove the wild growth other than native grasses from the levee slopes.					
Inspector Comment					

Photo 1 of 2 : FA\_2017\_RD0556\_19\_82\_20171117\_00051.jpg



Waterside levee slope and shoulder have been mowed to 20' from

LM Start	<b>0.00</b>	Rating **	A/W	Issue No.	<b>82 (cont)</b>
LM End	<b>5.71</b>	Issue Type +	Ma	Location *	WS

Photo 2 of 2 : FA\_2017\_RD0556\_19\_82\_20171002\_00014.jpg



RD 556 Unit 2 looking downstream of waterside slope.

* Location LS : Land Side    N/A : Not Applicable WS : Water Side CR : Crown		** Rating A : Acceptable M : Minimally Acceptable U : Unacceptable N : Not Inspected/Rated C : Corrected A/W : Acceptable but Monitor & Maintain		+ Issue Type Ma : Maintenance Deficiency Ob : Design & System Obsolescence En : Enforcement	
---	--	--	--	--	--

**Flood Control Project Maintenance  
Levee Inspections**

**Levee Inspection Report By Mile - Fall 2017**

**Reclamation District No. 0556 Upper Andrus**

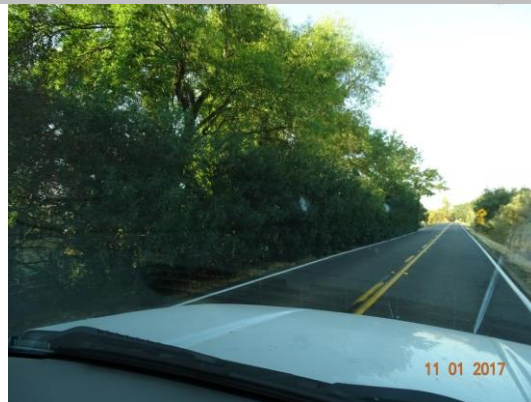
Waterway	Bank	Unit Miles	Inspection Start/End	Inspector
Unit No. 02 Sacramento River	Left	5.72	11/01/2017 11/01/2017	Keith Millard

LM Start	0.31	Rating **	C	Issue No.	12
LM End	0.60	Issue Type +	Ma	Location *	WS
Category	Supplemental			GPS Latitude/Longitude	
				Start	End
Item	2015 USACE Erosion Survey, DRAFT			38.238784 °	38.237862 °
				-121.523932 °	-121.529188 °
DWR ID	DWR_RD0556_02_f_2016_12				
Comment Code					
Inspector Comment					
2002 - Two rocked sections (150 ft long) at the downstream end.					
2005 - Lots of old brush boxes, some with established vegetation in the area behind the boxes.					
2006 - Some small spots fixed with stone.					
2009 - Minimal new erosion, rock in the middle of the reach may be new.					
2011 - Minor new erosion at the toe.					
2013 - Minor new erosion.					
2015: Site is currently under construction. [2015 Site ID: SAC_26-0_L]					
11/01/17: Construction appears to be complete.					

No Photos

LM Start	0.55	Rating **	M	Issue No.	25
LM End	0.55	Issue Type +	En	Location *	LS
Category	Earthen Levee			GPS Latitude/Longitude	
				Start	End
Item	Vegetation			38.237810 °	38.237810 °
				-121.528182 °	-121.528182 °
DWR ID	DWR_RD0556_02_f_2017_25				
Comment Code					
V6 : Landscaping					
Inspector Comment					

Photo 1 of 1 : FA\_2017\_RD0556\_19\_25\_20171117\_00053.jpg



Trim/thin oleanders.

<b>* Location</b> LS : Land Side    N/A : Not Applicable WS : Water Side CR : Crown		<b>** Rating</b> A : Acceptable                      N : Not Inspected/Rated M : Minimally Acceptable        C : Corrected U : Unacceptable                  A/W : Acceptable but Monitor & Maintain		<b>+ Issue Type</b> Ma : Maintenance Deficiency Ob : Design & System Obsolescence En : Enforcement
--	--	---	--	---

**Flood Control Project Maintenance  
Levee Inspections**

**Levee Inspection Report By Mile - Fall 2017**

**Reclamation District No. 0556 Upper Andrus**

Waterway	Bank	Unit Miles	Inspection Start/End	Inspector
Unit No. 02 Sacramento River	Left	5.72	11/01/2017 11/01/2017	Keith Millard

LM Start	0.94	Rating **	M	Issue No.	83
LM End	0.94	Issue Type +	En	Location *	
Category	Supplemental			GPS Latitude/Longitude	
				Start	End
Item	DWR UCIP Field Study			38.238125 °	38.238125 °
				-121.535267 °	-121.535267 °
DWR ID					
Comment Code					
Inspector Comment					
FS_ID:12512					
DS_ID:20851					
EP_NO: 11186					
Repair Type: Non-Urgent					
Crossing Status: Found					
UCIP Comments: - a concrete box on LS- water is leaking from priming plastic tank and causing surface erosion on levee slope.					
FIELD_STRUCT_DESC: 4-inch pipe through levee, 4.3-feet below crown. Pump in pump house on berm. Siphon breaker and service pole on landward slope. A concrete spillbox with 3-8-inch openings. (ABO #11186 - Marks). O&M Manual Sac 103, June 1954.					
FS Date: 4/25/2013					

Photo 1 of 3 : UCIP\_FA\_2017\_12512\_20245.jpg



WS- pump house on levee berm

LM Start	<b>0.94</b>	Rating **	M	Issue No.	<b>83 (cont)</b>
LM End	<b>0.94</b>	Issue Type +	En	Location *	

Photo 2 of 3 : UCIP\_FA\_2017\_12512\_20244.jpg



LS- steel pipe on a concrete box

<b>* Location</b> LS : Land Side    N/A : Not Applicable WS : Water Side CR : Crown		<b>** Rating</b> A : Acceptable M : Minimally Acceptable U : Unacceptable		N : Not Inspected/Rated C : Corrected A/W : Acceptable but Monitor & Maintain		<b>+ Issue Type</b> Ma : Maintenance Deficiency Ob : Design & System Obsolescence En : Enforcement	
--	--	--	--	---	--	---	--



**Flood Control Project Maintenance  
Levee Inspections**

**Levee Inspection Report By Mile - Fall 2017**

**Reclamation District No. 0556 Upper Andrus**

Waterway	Bank	Unit Miles	Inspection Start/End	Inspector
Unit No. 02 Sacramento River	Left	5.72	11/01/2017 11/01/2017	Keith Millard

LM Start	0.94	Rating **	M	Issue No.	83 (cont)	
LM End	0.94	Issue Type +	En	Location *		
Category	Supplemental			GPS Latitude/Longitude		
				Start	End	
Item	DWR UCIP Field Study			38.238125 °	38.238125 °	
				-121.535267 °	-121.535267 °	
DWR ID						
Comment Code						
Inspector Comment						
FS_ID:12512						
DS_ID:20851						
EP_NO: 11186						
Repair Type: Non-Urgent						
Crossing Status: Found						
UCIP Comments: - a concrete box on LS- water is leaking from priming plastic tank and causing surface erosion on levee slope.						
FIELD_STRUCT_DESC: 4-inch pipe through levee, 4.3-feet below crown. Pump in pump house on berm. Siphon breaker and service pole on landward slope. A concrete spillbox with 3-8-inch openings. (ABO #11186 - Marks). O&M Manual Sac 103, June 1954.						
FS Date: 4/25/2013						

Photo 3 of 3 : UCIP\_FA\_2017\_12512\_20243.jpg



WS- pipe daylight from the pump house.

LM Start	1.03	Rating **	M	Issue No.	2
LM End	1.15	Issue Type +	Ma	Location *	WS
Category	Supplemental			GPS Latitude/Longitude	
				Start	End
Item	2015 USACE Erosion Survey, DRAFT			38.238772 °	38.239265 °
				-121.536788 °	-121.538845 °
DWR ID	DWR_RD0556_02_f_2016_2				
Comment Code					
Inspector Comment					
1997 - Rock is in poor condition and has failed in many places. Scallops in berm with remnants of old rock in the toe area. 2005 - Brush boxes present. 2013 - Site extended upstream approximately 300 ft to include new erosion pockets. 2015: Minor new erosion at toe. [2015 Site ID: SAC_25-2_L]					

Photo 1 of 1 : FA\_2017\_RD0556\_19\_2\_20171002\_00002.jpg



USACE 2013 Photo #1

<b>* Location</b> LS : Land Side    N/A : Not Applicable WS : Water Side CR : Crown		<b>** Rating</b> A : Acceptable M : Minimally Acceptable U : Unacceptable		N : Not Inspected/Rated C : Corrected A/W : Acceptable but Monitor & Maintain		<b>+ Issue Type</b> Ma : Maintenance Deficiency Ob : Design & System Obsolescence En : Enforcement	
--	--	--	--	---	--	---	--

**Flood Control Project Maintenance  
Levee Inspections**

**Levee Inspection Report By Mile - Fall 2017**

**Reclamation District No. 0556 Upper Andrus**

Waterway	Bank	Unit Miles	Inspection Start/End	Inspector
Unit No. 02 Sacramento River	Left	5.72	11/01/2017 11/01/2017	Keith Millard

LM Start	1.14	Rating **	M	Issue No.	26
LM End	1.14	Issue Type +	En	Location *	LS
Category	Earthen Levee			GPS Latitude/Longitude	
				Start	End
Item	Vegetation			38.239005 °	38.239005 °
				-121.538772 °	-121.538772 °
DWR ID	DWR_RD0556_02_f_2017_26				
Comment Code					
V6 : Landscaping					
Inspector Comment					
Trim/thin oleanders.					

No Photos

LM Start	1.22	Rating **	M	Issue No.	84
LM End	1.22	Issue Type +	En	Location *	
Category	Supplemental			GPS Latitude/Longitude	
				Start	End
Item	DWR UCIP Field Study			38.239327 °	38.239327 °
				-121.540190 °	-121.540190 °
DWR ID					
Comment Code					
Inspector Comment					
FS_ID:12573 DS_ID:20852 EP_NO: 11187 Repair Type: Non-Urgent Crossing Status: Found UCIP Comments: - gap between 6-inch pipe and 10-inch pipe needs to be sealed. FIELD_STRUCT_DESC: A 6-inch steel pipe sleeved through 10-inch pipe through levee, 4.8 feet below crown. Pump on waterside of the levee on river bank. (ABO #11187 Machado). FS Date: 4/25/2013					

Photo 1 of 3 : UCIP\_FA\_2017\_12573\_20381.jpg



LS- 6-inch steel pipe on orchard.

* Location LS : Land Side    N/A : Not Applicable WS : Water Side CR : Crown		** Rating A : Acceptable M : Minimally Acceptable U : Unacceptable N : Not Inspected/Rated C : Corrected A/W : Acceptable but Monitor & Maintain		+ Issue Type Ma : Maintenance Deficiency Ob : Design & System Obsolescence En : Enforcement	
---	--	--	--	--	--

**Flood Control Project Maintenance  
Levee Inspections**

**Levee Inspection Report By Mile - Fall 2017**

**Reclamation District No. 0556 Upper Andrus**

Waterway	Bank	Unit Miles	Inspection Start/End	Inspector
Unit No. 02 Sacramento River	Left	5.72	11/01/2017 11/01/2017	Keith Millard

LM Start	1.22	Rating **	M	Issue No.	84 (cont)	
LM End	1.22	Issue Type +	En	Location *		
Category	Supplemental			GPS Latitude/Longitude		
				Start	End	
Item	DWR UCIP Field Study			38.239327 °	38.239327 °	
				-121.540190 °	-121.540190 °	
DWR ID						
Comment Code						
Inspector Comment						
FS_ID:12573						
DS_ID:20852						
EP_NO: 11187						
Repair Type: Non-Urgent						
Crossing Status: Found						
UCIP Comments: - gap between 6-inch pipe and 10-inch pipe needs to be sealed.						
FIELD_STRUCT_DESC: A 6-inch steel pipe sleeved through 10-inch pipe through levee, 4.8 feet below crown. Pump on waterside of the levee on river bank. (ABO #11187 Machado).						
FS Date: 4/25/2013						

LM Start	1.22	Rating **	M	Issue No.	84 (cont)
LM End	1.22	Issue Type +	En	Location *	

Photo 2 of 3 : UCIP\_FA\_2017\_12573\_20380.jpg



LS- 6-inch steel pipe sleeved through 10-inch steel pipe. 6" pipe is attached with air release valve.

Photo 3 of 3 : UCIP\_FA\_2017\_12573\_20383.jpg



WS- 6-inch steel pipe on levee slope

<b>* Location</b> LS : Land Side    N/A : Not Applicable WS : Water Side CR : Crown	<b>** Rating</b> A : Acceptable M : Minimally Acceptable U : Unacceptable N : Not Inspected/Rated C : Corrected A/W : Acceptable but Monitor & Maintain	<b>+ Issue Type</b> Ma : Maintenance Deficiency Ob : Design & System Obsolescence En : Enforcement
--	---	---



**Flood Control Project Maintenance  
Levee Inspections**

**Levee Inspection Report By Mile - Fall 2017**

**Reclamation District No. 0556 Upper Andrus**

Waterway	Bank	Unit Miles	Inspection Start/End	Inspector
Unit No. 02 Sacramento River	Left	5.72	11/01/2017 11/01/2017	Keith Millard

LM Start	1.31	Rating **	U	Issue No.	28
LM End	1.31	Issue Type +	En	Location *	LS
Category	Earthen Levee			GPS Latitude/Longitude	
				Start	End
Item	Vegetation			38.239677 °	38.239677 °
				-121.541715 °	-121.541715 °
DWR ID	DWR_RD0556_02_f_2017_28				
Comment Code					
V6 : Landscaping					
Inspector Comment					

Photo 1 of 1 : FA\_2017\_RD0556\_19\_28\_20171117\_00054.jpg



Trim/thin oleanders.

LM Start	1.39	Rating **	U	Issue No.	29
LM End	1.39	Issue Type +	En	Location *	LS
Category	Earthen Levee			GPS Latitude/Longitude	
				Start	End
Item	Encroachments			38.239935 °	38.239935 °
				-121.543148 °	-121.543148 °
DWR ID	DWR_RD0556_02_f_2017_29				
Comment Code					
EQ : Equipment					
Inspector Comment					

Photo 1 of 1 : FA\_2017\_RD0556\_19\_29\_20171117\_00055.jpg



Remove/relocate two large sea-train shipping containers to 10 feet from landside toe to allow inspection and access.

LM Start	1.45	Rating **	M	Issue No.	5
LM End	1.59	Issue Type +	Ma	Location *	WS
Category	Supplemental			GPS Latitude/Longitude	
				Start	End
Item	2015 USACE Erosion Survey, DRAFT			38.240401 °	38.240772 °
				-121.544106 °	-121.546791 °
DWR ID	DWR_RD0556_02_f_2016_5				
Comment Code					
Inspector Comment					
1997 - Slow erosion of the berm at the waterline; bench below water. 2005 - Brush boxes present. 2010 - Minor new erosion. 2013 - There is little to no berm remaining at downstream end of this site. 2015: No observed changes. [2015 Site ID: SAC_24-8_L]					

Photo 1 of 1 : FA\_2017\_RD0556\_19\_5\_20171002\_00005.jpg



USACE 2013 Photo #1

* Location		** Rating		+ Issue Type	
LS : Land Side	N/A : Not Applicable	A : Acceptable	N : Not Inspected/Rated	Ma : Maintenance Deficiency	
WS : Water Side		M : Minimally Acceptable	C : Corrected	Ob : Design & System Obsolescence	
CR : Crown		U : Unacceptable	A/W : Acceptable but Monitor & Maintain	En : Enforcement	

**Flood Control Project Maintenance  
Levee Inspections**

**Levee Inspection Report By Mile - Fall 2017**

**Reclamation District No. 0556 Upper Andrus**

Waterway	Bank	Unit Miles	Inspection Start/End	Inspector
Unit No. 02 Sacramento River	Left	5.72	11/01/2017 11/01/2017	Keith Millard

LM Start	1.83	Rating **	U	Issue No.	30
LM End	1.83	Issue Type +	En	Location *	LS
Category	Earthen Levee			GPS Latitude/Longitude	
				Start	End
Item	Vegetation			38.240955 °	38.240955 °
				-121.551233 °	-121.551233 °
DWR ID	DWR_RD0556_02_f_2017_30				
Comment Code					
V6 : Landscaping					
Inspector Comment					

Photo 1 of 1 : FA\_2017\_RD0556\_19\_30\_20171117\_00056.jpg



Trim/thin oleanders on landside slope.

LM Start	2.06	Rating **	U	Issue No.	32
LM End	2.06	Issue Type +	Ma	Location *	LS
Category	Earthen Levee			GPS Latitude/Longitude	
				Start	End
Item	Vegetation			38.239470 °	38.239470 °
				-121.554845 °	-121.554845 °
DWR ID	DWR_RD0556_02_f_2017_32				
Comment Code					
V2 : Remove the wild growth other than native grasses from the levee slopes.					
Inspector Comment					

Photo 1 of 1 : FA\_2017\_RD0556\_19\_32\_20171117\_00057.jpg



Arundo growth should be removed to allow inspection and access to landside slope and toe.

LM Start	2.22	Rating **	U	Issue No.	33
LM End	2.22	Issue Type +	En	Location *	LS
Category	Earthen Levee			GPS Latitude/Longitude	
				Start	End
Item	Vegetation			38.237883 °	38.237883 °
				-121.556958 °	-121.556958 °
DWR ID	DWR_RD0556_02_f_2017_33				
Comment Code					
V6 : Landscaping					
Inspector Comment					

Photo 1 of 1 : FA\_2017\_RD0556\_19\_33\_20171117\_00058.jpg



Large growth of prickly pear cactus should be removed to allow inspection and access.

**\* Location**

LS : Land Side    N/A : Not Applicable  
WS : Water Side  
CR : Crown

**\*\* Rating**

A : Acceptable                      N : Not Inspected/Rated  
M : Minimally Acceptable        C : Corrected  
U : Unacceptable                  A/W : Acceptable but Monitor & Maintain

**+ Issue Type**

Ma : Maintenance Deficiency  
Ob : Design & System Obsolescence  
En : Enforcement

**Flood Control Project Maintenance  
Levee Inspections**

**Levee Inspection Report By Mile - Fall 2017**

**Reclamation District No. 0556 Upper Andrus**

Waterway	Bank	Unit Miles	Inspection Start/End	Inspector
Unit No. 02 Sacramento River	Left	5.72	11/01/2017 11/01/2017	Keith Millard

LM Start	2.27	Rating **	M	Issue No.	34
LM End	2.27	Issue Type +	Ma	Location *	LS
Category	Earthen Levee			GPS Latitude/Longitude	
				Start	End
Item	Animal Control			38.237248 °	38.237248 °
				-121.557632 °	-121.557632 °
DWR ID	DWR_RD0556_02_f_2017_34				
Comment Code					
A1 : Exterminate rodents and backfill and compact or grout burrows.					
Inspector Comment					

Photo 1 of 1 : FA\_2017\_RD0556\_19\_34\_20171117\_00059.jpg



Rodent burrows observed near the base of large nut tree on landside slope. Exterminate rodents and backfill burrows.

LM Start	2.28	Rating **	U	Issue No.	1
LM End	2.28	Issue Type +	En	Location *	LS
Category	Earthen Levee			GPS Latitude/Longitude	
				Start	End
Item	Vegetation			38.237156 °	38.237156 °
				-121.557640 °	-121.557640 °
DWR ID	DWR_RD0556_02_f_2015_1				
Comment Code					
V6 : Landscaping					
Inspector Comment					
These unauthorized planted redwoods have been reported in the past inspections, the District needs to have the owner remove them from the levee slope.					

Photo 1 of 1 : FA\_2017\_RD0556\_19\_1\_20171002\_00001.jpg



RD 556 Unit 2 Levee mile 2.28 unauthorized planting of redwood trees planted on the slope.

<b>* Location</b> LS : Land Side    N/A : Not Applicable WS : Water Side CR : Crown		<b>** Rating</b> A : Acceptable M : Minimally Acceptable U : Unacceptable		N : Not Inspected/Rated C : Corrected A/W : Acceptable but Monitor & Maintain		<b>+ Issue Type</b> Ma : Maintenance Deficiency Ob : Design & System Obsolescence En : Enforcement	
--	--	--	--	---	--	---	--



**Flood Control Project Maintenance  
Levee Inspections**

**Levee Inspection Report By Mile - Fall 2017**

**Reclamation District No. 0556 Upper Andrus**

Waterway	Bank	Unit Miles	Inspection Start/End	Inspector
Unit No. 02 Sacramento River	Left	5.72	11/01/2017 11/01/2017	Keith Millard

LM Start	2.29	Rating **	U	Issue No.	35
LM End	2.29	Issue Type +	En	Location *	LS
Category	Earthen Levee			GPS Latitude/Longitude	
				Start	End
Item	Vegetation			38.237060 °	38.237060 °
				-121.557782 °	-121.557782 °
DWR ID	DWR_RD0556_02_f_2017_35				
Comment Code					
V6 : Landscaping					
Inspector Comment					

Photo 1 of 1 : FA\_2017\_RD0556\_19\_35\_20171117\_00060.jpg



Trim/thin oleanders to allow inspection and access to landside slope and toe.

LM Start	2.42	Rating **	M	Issue No.	85
LM End	2.42	Issue Type +	En	Location *	
Category	Supplemental			GPS Latitude/Longitude	
				Start	End
Item	DWR UCIP Field Study			38.235261 °	38.235261 °
				-121.558059 °	-121.558059 °
DWR ID					
Comment Code					
Inspector Comment					
FS_ID:12574 DS_ID:20859 EP_NO: 11181 Repair Type: Non-Urgent Crossing Status: Found UCIP Comments: - Needs to clean CMP riser for proper functioning of siphon breaker. FIELD_STRUCT_DESC: A 10-inch steel irrigation pipe through levee, 5.8 feet below crown. Pump and gate valve in pump house on waterward slope. Siphon breaker and service pole on landward slope. (ABO #11181- Collins.). O&M Manual Sac 103, June 1954. FS Date: 4/25/2013					

Photo 1 of 3 : UCIP\_FA\_2017\_12574\_20388.jpg



WS- pump house on levee berm

<b>* Location</b> LS : Land Side    N/A : Not Applicable WS : Water Side CR : Crown		<b>** Rating</b> A : Acceptable M : Minimally Acceptable U : Unacceptable N : Not Inspected/Rated C : Corrected A/W : Acceptable but Monitor & Maintain		<b>+ Issue Type</b> Ma : Maintenance Deficiency Ob : Design & System Obsolescence En : Enforcement
--	--	---	--	---

**Flood Control Project Maintenance  
Levee Inspections**

**Levee Inspection Report By Mile - Fall 2017**

**Reclamation District No. 0556 Upper Andrus**

Waterway	Bank	Unit Miles	Inspection Start/End	Inspector
Unit No. 02 Sacramento River	Left	5.72	11/01/2017 11/01/2017	Keith Millard

LM Start	2.42	Rating **	M	Issue No.	85 (cont)
LM End	2.42	Issue Type +	En	Location *	
Category	Supplemental			GPS Latitude/Longitude	
				Start	End
Item	DWR UCIP Field Study			38.235261 °	38.235261 °
				-121.558059 °	-121.558059 °
DWR ID					
Comment Code					
Inspector Comment					
FS_ID:12574					
DS_ID:20859					
EP_NO: 11181					
Repair Type: Non-Urgent					
Crossing Status: Found					
UCIP Comments: - Needs to clean CMP riser for proper functioning of siphon breaker.					
FIELD_STRUCT_DESC: A 10-inch steel irrigation pipe through levee, 5.8 feet below crown. Pump and gate valve in pump house on waterward slope. Siphon breaker and service pole on landward slope. (ABO #11181- Collins.). O&M Manual Sac 103, June 1954.					
FS Date: 4/25/2013					

Photo 2 of 3 : UCIP\_FA\_2017\_12574\_20387.jpg



WS- pump, and gate valve in pump house.

LM Start	<b>2.42</b>	Rating **	M	Issue No.	<b>85 (cont)</b>
LM End	<b>2.42</b>	Issue Type +	En	Location *	

Photo 3 of 3 : UCIP\_FA\_2017\_12574\_20386.jpg



WS- power control panel and electric conduit in pump house.

<b>* Location</b> LS : Land Side    N/A : Not Applicable WS : Water Side CR : Crown		<b>** Rating</b> A : Acceptable M : Minimally Acceptable U : Unacceptable N : Not Inspected/Rated C : Corrected A/W : Acceptable but Monitor & Maintain		<b>+ Issue Type</b> Ma : Maintenance Deficiency Ob : Design & System Obsolescence En : Enforcement
--	--	---	--	---

**Flood Control Project Maintenance  
Levee Inspections**

**Levee Inspection Report By Mile - Fall 2017**

**Reclamation District No. 0556 Upper Andrus**

Waterway	Bank	Unit Miles	Inspection Start/End	Inspector
Unit No. 02 Sacramento River	Left	5.72	11/01/2017 11/01/2017	Keith Millard

LM Start	2.84	Rating **	M	Issue No.	86
LM End	2.84	Issue Type +	En	Location *	
Category	Supplemental			GPS Latitude/Longitude	
				Start	End
Item	DWR UCIP Field Study			38.229524 °	38.229524 °
				-121.555404 °	-121.555404 °
DWR ID					
Comment Code					
Inspector Comment					
FS_ID:41713 DS_ID:20849 EP_NO: 11181 Repair Type: Non-Urgent Crossing Status: Found UCIP Comments: - Needs to clean siphon breaker CMP riser. FIELD_STRUCT_DESC: A 6-inch pipe through levee, 6.0 feet below crown. Pressure tank in pump house on waterward berm. Service pole, siphon breaker and distribution box on landward slope. (ABO #11181 - Collins.) FS Date: 4/25/2013					

Photo 1 of 3 : UCIP\_FA\_2017\_41713\_20284.jpg



WS- pump house on levee berm.

LM Start	<b>2.84</b>	Rating **	M	Issue No.	<b>86 (cont)</b>
LM End	<b>2.84</b>	Issue Type +	En	Location *	

Photo 2 of 3 : UCIP\_FA\_2017\_41713\_20283.jpg



LS- siphon breaker in CMP riser on levee slope.

<b>* Location</b> LS : Land Side    N/A : Not Applicable WS : Water Side CR : Crown		<b>** Rating</b> A : Acceptable M : Minimally Acceptable U : Unacceptable		N : Not Inspected/Rated C : Corrected A/W : Acceptable but Monitor & Maintain		<b>+ Issue Type</b> Ma : Maintenance Deficiency Ob : Design & System Obsolescence En : Enforcement	
--	--	--	--	---	--	---	--



**Flood Control Project Maintenance  
Levee Inspections**

**Levee Inspection Report By Mile - Fall 2017**

**Reclamation District No. 0556 Upper Andrus**

Waterway	Bank	Unit Miles	Inspection Start/End	Inspector
Unit No. 02 Sacramento River	Left	5.72	11/01/2017 11/01/2017	Keith Millard

LM Start	2.84	Rating **	M	Issue No.	86 (cont)	
LM End	2.84	Issue Type +	En	Location *		
Category	Supplemental			GPS Latitude/Longitude		
				Start	End	
Item	DWR UCIP Field Study			38.229524 °	38.229524 °	
				-121.555404 °	-121.555404 °	
DWR ID						
Comment Code						
Inspector Comment						
FS_ID:41713 DS_ID:20849 EP_NO: 11181 Repair Type: Non-Urgent Crossing Status: Found UCIP Comments: - Needs to clean siphon breaker CMP riser. FIELD_STRUCT_DESC: A 6-inch pipe through levee, 6.0 feet below crown. Pressure tank in pump house on waterward berm. Service pole, siphon breaker and distribution box on landward slope. (ABO #11181 - Collins.) FS Date: 4/25/2013						

Photo 3 of 3 : UCIP\_FA\_2017\_41713\_20282.jpg



LS- concrete distribution box near toe of the levee

LM Start	2.93	Rating **	A/W	Issue No.	11
LM End	3.04	Issue Type +	Ma	Location *	WS
Category	Supplemental			GPS Latitude/Longitude	
				Start	End
Item	2015 USACE Erosion Survey, DRAFT			38.228202 °	38.226601 °
				-121.555502 °	-121.555605 °
DWR ID	DWR_RD0556_02_f_2016_11				
Comment Code					
Inspector Comment					
1997 - Few scallops in berm, some getting close to levee toe. 2005 - Brush boxes present. 2012 - More erosion of the toe since last year. 2015: No observed changes. [2015 Site ID: SAC_23-3_L]					

Photo 1 of 1 : FA\_2017\_RD0556\_19\_11\_20171002\_00009.jpg



USACE 2013 Photo #1

<b>* Location</b> LS : Land Side    N/A : Not Applicable WS : Water Side CR : Crown	<b>** Rating</b> A : Acceptable M : Minimally Acceptable U : Unacceptable	N : Not Inspected/Rated C : Corrected A/W : Acceptable but Monitor & Maintain	<b>+ Issue Type</b> Ma : Maintenance Deficiency Ob : Design & System Obsolescence En : Enforcement
--	--	---	---

**Flood Control Project Maintenance  
Levee Inspections**

**Levee Inspection Report By Mile - Fall 2017**

**Reclamation District No. 0556 Upper Andrus**

Waterway	Bank	Unit Miles	Inspection Start/End	Inspector
Unit No. 02 Sacramento River	Left	5.72	11/01/2017 11/01/2017	Keith Millard

LM Start	3.07	Rating **	M	Issue No.	87
LM End	3.07	Issue Type +	En	Location *	
Category	Supplemental			GPS Latitude/Longitude	
				Start	End
Item	DWR UCIP Field Study			38.226225 °	38.226225 °
				-121.555236 °	-121.555236 °
DWR ID					
Comment Code					
Inspector Comment					
FS_ID:12525					
DS_ID:20862					
EP_NO: N/A					
Repair Type: Non-Urgent					
Crossing Status: Found					
UCIP Comments: - 9-inch steel pipe sleeved through 12-inch pipe.- needs to seal gap between two pipes.					
FIELD_STRUCT_DESC: A 9-inch steel pipe sleeved through 12-inch steel irrigation pipe through levee, 6.0 feet below crown. Pump on pile structure in stream. Steel walkway to pump, wood steps on waterward slope. Concrete spillbox with 2- 8 inch openings. (ABO #11193-Reid.). O&M Manual Sac 103, June 1954.					
FS Date: 4/25/2013					

LM Start	<b>3.07</b>	Rating **	M	Issue No.	<b>87 (cont)</b>
LM End	<b>3.07</b>	Issue Type +	En	Location *	

Photo 1 of 3 : UCIP\_FA\_2017\_12525\_20290.jpg



WS- walkway, pump, and pipe on steel pile structure in the river.

Photo 2 of 3 : UCIP\_FA\_2017\_12525\_20289.jpg



WS- 9-inch pipe sleeved through 10 inch steel pipe.

<b>* Location</b> LS : Land Side    N/A : Not Applicable WS : Water Side CR : Crown	<b>** Rating</b> A : Acceptable M : Minimally Acceptable U : Unacceptable	N : Not Inspected/Rated C : Corrected A/W : Acceptable but Monitor & Maintain	<b>+ Issue Type</b> Ma : Maintenance Deficiency Ob : Design & System Obsolescence En : Enforcement
--	--	---	---

## Levee Inspection Report By Mile - Fall 2017

Waterway	Bank	Unit Miles	Inspection Start/End	Inspector
Unit No. 02 Sacramento River	Left	5.72	11/01/2017 11/01/2017	Keith Millard

Photo 3 of 3 : UCIP\_FA\_201255\_20288.jpg

LS- a concrete spill box on landside of the levee.

Photo 1 of 1 : FA\_2017\_RD0556\_19\_10\_20171002\_00008.jpg



28 OCT 2013  
7:12:17 37.44, 67.4208 -121.8167

USACE 2013 Photo #1

* Location	** Rating	+ Issue Type
LS : Land Side    N/A : Not Applicable WS : Water Side CR : Crown	A : Acceptable                      N : Not Inspected/Rated M : Minimally Acceptable        C : Corrected U : Unacceptable                  A/W : Acceptable but Monitor & Maintain	Ma : Maintenance Deficiency Ob : Design & System Obsolescence En : Enforcement



**Flood Control Project Maintenance  
Levee Inspections**

**Levee Inspection Report By Mile - Fall 2017**

**Reclamation District No. 0556 Upper Andrus**

Waterway	Bank	Unit Miles	Inspection Start/End	Inspector
Unit No. 02 Sacramento River	Left	5.72	11/01/2017 11/01/2017	Keith Millard

LM Start	3.51	Rating **	M	Issue No.	88
LM End	3.51	Issue Type +	En	Location *	
Category	Supplemental			GPS Latitude/Longitude	
				Start	End
Item	DWR UCIP Field Study			38.219851 °	38.219851 °
				-121.556129 °	-121.556129 °
DWR ID					
Comment Code					
Inspector Comment					
FS_ID:12527					
DS_ID:20863					
EP_NO: 11181					
Repair Type: Non-Urgent					
Crossing Status: Found					
UCIP Comments: - needs to fix siphon breaker					
FIELD_STRUCT_DESC: A 10-inch steel irrigation pipe through levee, 4.8 feet below crown. Steel walkway to pump on pile structure in stream. Siphon breaker on waterside and service pole on landward slope. A concrete spillbox with 2-15 inch openings on landside. (ABO # 11181- Collins.). O&M Manual Sac 103, June 1954.					
FS Date: 4/25/2013					

LM Start	<b>3.51</b>	Rating **	M	Issue No.	<b>88 (cont)</b>
LM End	<b>3.51</b>	Issue Type +	En	Location *	

Photo 1 of 3 : UCIP\_FA\_2017\_12527\_20297.jpg



WS- pump, pipe, and walkway on steel structure in the stream.

Photo 2 of 3 : UCIP\_FA\_2017\_12527\_20296.jpg



WS- siphon breaker and abandoned CMP riser laying adjacent to it.

<b>* Location</b> LS : Land Side    N/A : Not Applicable WS : Water Side CR : Crown	<b>** Rating</b> A : Acceptable M : Minimally Acceptable U : Unacceptable	N : Not Inspected/Rated C : Corrected A/W : Acceptable but Monitor & Maintain	<b>+ Issue Type</b> Ma : Maintenance Deficiency Ob : Design & System Obsolescence En : Enforcement
--	--	---	---

**Flood Control Project Maintenance  
Levee Inspections**

**Levee Inspection Report By Mile - Fall 2017**

**Reclamation District No. 0556 Upper Andrus**

Waterway	Bank	Unit Miles	Inspection Start/End	Inspector
Unit No. 02 Sacramento River	Left	5.72	11/01/2017 11/01/2017	Keith Millard

LM Start	3.51	Rating **	M	Issue No.	88 (cont)	
LM End	3.51	Issue Type +	En	Location *		
Category	Supplemental			GPS Latitude/Longitude		
				Start	End	
Item	DWR UCIP Field Study			38.219851 °	38.219851 °	
				-121.556129 °	-121.556129 °	
DWR ID						
Comment Code						
Inspector Comment						
FS_ID:12527						
DS_ID:20863						
EP_NO: 11181						
Repair Type: Non-Urgent						
Crossing Status: Found						
UCIP Comments: - needs to fix siphon breaker						
FIELD_STRUCT_DESC: A 10-inch steel irrigation pipe through levee,						
4.8 feet below crown. Steel walkway to pump on pile structure in						
stream. Siphon breaker on waterside and service pole on landward						
slope. A concrete spillbox with 2-15 inch openings on landside. (ABO #						
11181- Collins.). O&M Manual Sac 103, June 1954.						
FS Date: 4/25/2013						

Photo 3 of 3 : UCIP\_FA\_2017\_12527\_20295.jpg



WS- siphon breaker on levee slope.

LM Start	3.57	Rating **	A/W	Issue No.	24	
LM End	3.95	Issue Type +	Ob	Location *		
Category	Supplemental			GPS Latitude/Longitude		
				Start	End	
Item	2017 Storm Damage			38.218950 °	38.213490 °	
				-121.556300 °	-121.556850 °	
DWR ID	DWR_RD0556_02_f_2017_24					
Comment Code						
Inspector Comment						
Levee Evaluation Comments						
Description:						
Site ID No:68						
Site Designation:DWR_RD0556_02_R_2012_03						
Repair Type: Seepage						
Rating:						
Field Date:						
Notes:						

No Photos

<b>* Location</b> LS : Land Side    N/A : Not Applicable WS : Water Side CR : Crown	<b>** Rating</b> A : Acceptable M : Minimally Acceptable U : Unacceptable	N : Not Inspected/Rated C : Corrected A/W : Acceptable but Monitor & Maintain	<b>+ Issue Type</b> Ma : Maintenance Deficiency Ob : Design & System Obsolescence En : Enforcement
--	--	---	---

**Flood Control Project Maintenance  
Levee Inspections**

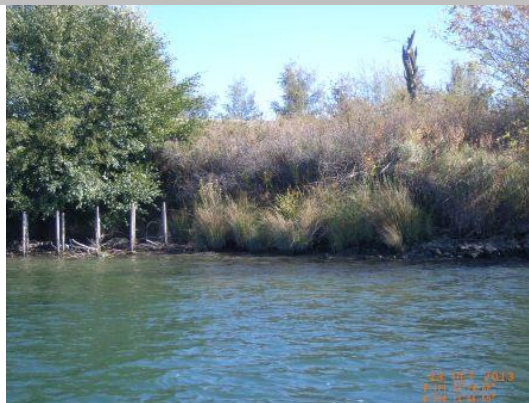
**Levee Inspection Report By Mile - Fall 2017**

**Reclamation District No. 0556 Upper Andrus**

Waterway	Bank	Unit Miles	Inspection Start/End	Inspector
Unit No. 02 Sacramento River	Left	5.72	11/01/2017 11/01/2017	Keith Millard

LM Start	3.58	Rating **	M	Issue No.	8
LM End	3.64	Issue Type +	Ma	Location *	WS
Category	Supplemental			GPS Latitude/Longitude	
				Start	End
Item	2015 USACE Erosion Survey, DRAFT			38.218951 °	38.218104 °
				-121.556689 °	-121.556819 °
DWR ID	DWR_RD0556_02_f_2016_8				
Comment Code					
Inspector Comment					
1997 - Scallops into berm and very close to levee toe. 2005 - Brush boxes present. 2011 - New toe scour and freshly fallen tree. 2012 - New tree popout has taken significant portion of soil out of the levee. 2015: No observed changes. [2015 Site ID: SAC_22-7_L]					

Photo 1 of 1 : FA\_2017\_RD0556\_19\_8\_20171002\_00007.jpg



USACE 2013 Photo #1

LM Start	3.95	Rating **	M	Issue No.	4
LM End	4.12	Issue Type +	Ma	Location *	WS
Category	Supplemental			GPS Latitude/Longitude	
				Start	End
Item	2015 USACE Erosion Survey, DRAFT			38.213581 °	38.211112 °
				-121.557197 °	-121.557042 °
DWR ID	DWR_RD0556_02_f_2016_4				
Comment Code					
Inspector Comment					
2002 - Spot rock along berm, but not in the erosion pockets. 2005 - Some new minor stone revetment at the upstream end. Brush boxes present. 2006 - Currently installing new brush in downstream brush boxes. 2007 - Rock in middle portion for about 150 ft. 2010 - Some attempt at repairs but still has pockets of erosion. 2012 - More erosion along the toe. 2015: No observed changes. [2015 Site ID: SAC_22-5_L]					

Photo 1 of 1 : FA\_2017\_RD0556\_19\_4\_20171002\_00004.jpg



USACE 2013 Photo #1

<b>* Location</b> LS : Land Side    N/A : Not Applicable WS : Water Side CR : Crown		<b>** Rating</b> A : Acceptable                      N : Not Inspected/Rated M : Minimally Acceptable        C : Corrected U : Unacceptable                  A/W : Acceptable but Monitor & Maintain		<b>+ Issue Type</b> Ma : Maintenance Deficiency Ob : Design & System Obsolescence En : Enforcement
--	--	---	--	---



**Flood Control Project Maintenance  
Levee Inspections**

**Levee Inspection Report By Mile - Fall 2017**

**Reclamation District No. 0556 Upper Andrus**

Waterway	Bank	Unit Miles	Inspection Start/End	Inspector
Unit No. 02 Sacramento River	Left	5.72	11/01/2017 11/01/2017	Keith Millard

LM Start	3.99	Rating **	M	Issue No.	89	
LM End	3.99	Issue Type +	En	Location *		
Category	Supplemental			GPS Latitude/Longitude		
				Start		End
Item	DWR UCIP Field Study			38.213031 °		38.213031 °
				-121.556800 °		-121.556800 °
DWR ID						
Comment Code						
Inspector Comment						
FS_ID:12543 DS_ID:20864 EP_NO: 11197 Repair Type: Non-Urgent Crossing Status: Found UCIP Comments: Electric control panel in pump house.Needs cleaning of CMP riser on landside. FIELD_STRUCT_DESC: A 6-inch steel irrigation pipe through levee 6.5 feet below crown. Slanted pump on steel pile structure in the stream, walkway to the pump, and gate valve in pump house on waterward slope. Siphon breaker and service poles on landward slope. Concrete standpipe on landside. (ABO #11197- Souza.). O&M Manual Sac 103, June 1954. FS Date: 4/25/2013						

LM Start	<b>3.99</b>	Rating **	M	Issue No.	<b>89 (cont)</b>
LM End	<b>3.99</b>	Issue Type +	En	Location *	

Photo 1 of 3 : UCIP\_FA\_2017\_12543\_20302.jpg



WS- pipe and pump on steel pile structure. Steel walkway from pump house to the pump on steel structure.

Photo 2 of 3 : UCIP\_FA\_2017\_12543\_20301.jpg



LS- siphon breaker in CMP riser and concrete standpipe behind CMP riser.

<b>* Location</b> LS : Land Side    N/A : Not Applicable WS : Water Side CR : Crown		<b>** Rating</b> A : Acceptable M : Minimally Acceptable U : Unacceptable		N : Not Inspected/Rated C : Corrected A/W : Acceptable but Monitor & Maintain		<b>+ Issue Type</b> Ma : Maintenance Deficiency Ob : Design & System Obsolescence En : Enforcement	
--	--	--	--	---	--	---	--

## Levee Inspection Report By Mile - Fall 2017


Waterway	Bank	Unit Miles	Inspection Start/End	Inspector
Unit No. 02 Sacramento River	Left	5.72	11/01/2017 11/01/2017	Keith Millard

Photo 3 of 3 : UCIP\_FA\_2017\_12543\_20300.jpg



LS- siphon breaker in CMP riser. It needs cleaning.

Photo 1 of 3 : UCIP\_FA\_2017\_12545\_20310.jpg



WS- pump house not visible due to the dense vegetation.

* Location	** Rating	+ Issue Type
LS : Land Side    N/A : Not Applicable WS : Water Side CR : Crown	A : Acceptable                      N : Not Inspected/Rated M : Minimally Acceptable        C : Corrected U : Unacceptable                  A/W : Acceptable but Monitor & Maintain	Ma : Maintenance Deficiency Ob : Design & System Obsolescence En : Enforcement

**Flood Control Project Maintenance  
Levee Inspections**

**Levee Inspection Report By Mile - Fall 2017**

**Reclamation District No. 0556 Upper Andrus**

Waterway	Bank	Unit Miles	Inspection Start/End	Inspector
Unit No. 02 Sacramento River	Left	5.72	11/01/2017 11/01/2017	Keith Millard

LM Start	4.26	Rating **	M	Issue No.	90 (cont)	
LM End	4.26	Issue Type +	En	Location *		
Category	Supplemental			GPS Latitude/Longitude		
				Start	End	
Item	DWR UCIP Field Study			38.209117 °	38.209117 °	
				-121.556803 °	-121.556803 °	
DWR ID						
Comment Code						
Inspector Comment						
FS_ID:12545 DS_ID:20865 EP_NO: 11194 Repair Type: Non-Urgent Crossing Status: Found UCIP Comments: - CMP riser found abandoned on LS slope. Due to dense vegetation siphon breaker could not be found.- Dense vegetation on both sides of the levee.- Oil leaks from pump set. FIELD_STRUCT_DESC: A 8-inch pipe through levee, 6.7 feet below crown. Pump and gate valve in pump house on waterward slope. Siphon breaker on landward slope. (ABO #11194- Robinson.). O&M Manual Sac 103, June 1954. FS Date: 4/25/2013						

LM Start	<b>4.26</b>	Rating **	M	Issue No.	<b>90 (cont)</b>
LM End	<b>4.26</b>	Issue Type +	En	Location *	

Photo 2 of 3 : UCIP\_FA\_2017\_12545\_20309.jpg



WS- pump house inside the dense vegetation.

Photo 3 of 3 : UCIP\_FA\_2017\_12545\_20308.jpg



WS- pump, gate valve and pipe in pump house.

<b>* Location</b> LS : Land Side    N/A : Not Applicable WS : Water Side CR : Crown		<b>** Rating</b> A : Acceptable M : Minimally Acceptable U : Unacceptable		<b>+ Issue Type</b> Ma : Maintenance Deficiency Ob : Design & System Obsolescence En : Enforcement	
		N : Not Inspected/Rated C : Corrected A/W : Acceptable but Monitor & Maintain			



**Flood Control Project Maintenance  
Levee Inspections**

**Levee Inspection Report By Mile - Fall 2017**

**Reclamation District No. 0556 Upper Andrus**

Waterway	Bank	Unit Miles	Inspection Start/End	Inspector
Unit No. 02 Sacramento River	Left	5.72	11/01/2017 11/01/2017	Keith Millard

LM Start	4.41	Rating **	M	Issue No.	36	
LM End	4.41	Issue Type +	En	Location *	LS	
Category	Earthen Levee			GPS Latitude/Longitude		
				Start		End
Item	Vegetation			38.206915 °		38.206915 °
				-121.556818 °		-121.556818 °
DWR ID	DWR_RD0556_02_f_2017_36					
Comment Code						
V6 : Landscaping						
Inspector Comment						

Photo 1 of 1 : FA\_2017\_RD0556\_19\_36\_20171117\_00061.jpg



Oleanders, trees and other landscaping should be trimmed to allow inspection and access to landside slope and toe.

LM Start	4.45	Rating **	M	Issue No.	7
LM End	4.49	Issue Type +	Ma	Location *	WS
Category	Supplemental			GPS Latitude/Longitude	
				Start	End
Item	2015 USACE Erosion Survey, DRAFT			38.206377 °	38.205729 °
				-121.557184 °	-121.557108 °
DWR ID	DWR_RD0556_02_f_2016_7				
Comment Code					
Inspector Comment					
2013 - Erosion pockets encroaching on levee foundation. 2015: No observed changes. [2015 Site ID: SAC_21-9_L]					

Photo 1 of 1 : FA\_2017\_RD0556\_19\_7\_20171002\_00006.jpg



USACE 2013 Photo #1

<b>* Location</b> LS : Land Side    N/A : Not Applicable WS : Water Side CR : Crown		<b>** Rating</b> A : Acceptable M : Minimally Acceptable U : Unacceptable N : Not Inspected/Rated C : Corrected A/W : Acceptable but Monitor & Maintain		<b>+ Issue Type</b> Ma : Maintenance Deficiency Ob : Design & System Obsolescence En : Enforcement
--	--	---	--	---

**Flood Control Project Maintenance  
Levee Inspections**

**Levee Inspection Report By Mile - Fall 2017**

**Reclamation District No. 0556 Upper Andrus**

Waterway	Bank	Unit Miles	Inspection Start/End	Inspector
Unit No. 02 Sacramento River	Left	5.72	11/01/2017 11/01/2017	Keith Millard

LM Start	4.54	Rating **	M	Issue No.	91
LM End	4.54	Issue Type +	En	Location *	
Category	Supplemental			GPS Latitude/Longitude	
				Start	End
Item	DWR UCIP Field Study			38.204974 °	38.204974 °
				-121.556789 °	-121.556789 °
DWR ID					
Comment Code					
Inspector Comment					
FS_ID:12546 DS_ID:20866 EP_NO: 11940 Repair Type: Non-Urgent Crossing Status: Found UCIP Comments: - Abandoned crossing.- Siphon breaker on LS not found due to dense vegetation, - An abandoned CMP riser and service pole found on LS.- It may need to be properly abandoned. FIELD_STRUCT_DESC: Abandoned 6-inch pipe through levee, 6.7 feet below crown. Pump and gate valve in pump house on waterward slope. Siphon breaker and service pole on landward slope. (ABO # 11940-Robinson.). O&M Manual Sac 103, June 1954. FS Date: 4/25/2013					

LM Start	<b>4.54</b>	Rating **	M	Issue No.	<b>91 (cont)</b>
LM End	<b>4.54</b>	Issue Type +	En	Location *	

Photo 1 of 3 : UCIP\_FA\_2017\_12546\_20314.jpg



WS- abandoned pump house on levee slope. Dense vegetation on levee slope.

Photo 2 of 3 : UCIP\_FA\_2017\_12546\_20313.jpg



WS- pipe daylight from levee slope to pump house.

<b>* Location</b> LS : Land Side    N/A : Not Applicable WS : Water Side CR : Crown	<b>** Rating</b> A : Acceptable M : Minimally Acceptable U : Unacceptable	N : Not Inspected/Rated C : Corrected A/W : Acceptable but Monitor & Maintain	<b>+ Issue Type</b> Ma : Maintenance Deficiency Ob : Design & System Obsolescence En : Enforcement
--	--	---	---

**Flood Control Project Maintenance  
Levee Inspections**

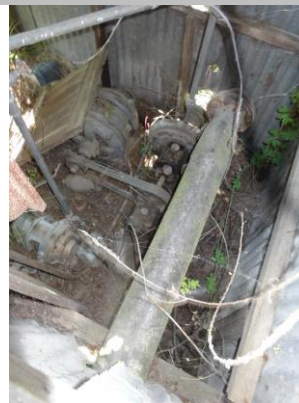
**Levee Inspection Report By Mile - Fall 2017**

**Reclamation District No. 0556 Upper Andrus**

Waterway	Bank	Unit Miles	Inspection Start/End	Inspector
Unit No. 02 Sacramento River	Left	5.72	11/01/2017 11/01/2017	Keith Millard

LM Start	4.54	Rating **	M	Issue No.	91 (cont)	
LM End	4.54	Issue Type +	En	Location *		
Category	Supplemental			GPS Latitude/Longitude		
				Start	End	
Item	DWR UCIP Field Study			38.204974 °	38.204974 °	
				-121.556789 °	-121.556789 °	
DWR ID						
Comment Code						
Inspector Comment						
FS_ID:12546 DS_ID:20866 EP_NO: 11940 Repair Type: Non-Urgent Crossing Status: Found UCIP Comments: - Abandoned crossing.- Siphon breaker on LS not found due to dense vegetation, - An abandoned CMP riser and service pole found on LS.- It may need to be properly abandoned. FIELD_STRUCT_DESC: Abandoned 6-inch pipe through levee, 6.7 feet below crown. Pump and gate valve in pump house on waterward slope. Siphon breaker and service pole on landward slope. (ABO # 11940-Robinson.). O&M Manual Sac 103, June 1954. FS Date: 4/25/2013						

Photo 3 of 3 : UCIP\_FA\_2017\_12546\_20315.jpg



WS- abandoned gate valve, pump, and pipe in pump house

LM Start	4.63	Rating **	M	Issue No.	38
LM End	4.84	Issue Type +	En	Location *	LS
Category	Earthen Levee			GPS Latitude/Longitude	
				Start	End
Item	Encroachments			38.203693 °	38.200593 °
				-121.556683 °	-121.557208 °
DWR ID	DWR_RD0556_02_s_2012_38				
Comment Code					
FE : Fence					
Inspector Comment					
Remove this old fence from the levee section landside.					

No Photos

<b>* Location</b> LS : Land Side    N/A : Not Applicable WS : Water Side CR : Crown	<b>** Rating</b> A : Acceptable M : Minimally Acceptable U : Unacceptable	N : Not Inspected/Rated C : Corrected A/W : Acceptable but Monitor & Maintain	<b>+ Issue Type</b> Ma : Maintenance Deficiency Ob : Design & System Obsolescence En : Enforcement
--	--	---	---



**Flood Control Project Maintenance  
Levee Inspections**

**Levee Inspection Report By Mile - Fall 2017**

**Reclamation District No. 0556 Upper Andrus**

Waterway	Bank	Unit Miles	Inspection Start/End	Inspector
Unit No. 02 Sacramento River	Left	5.72	11/01/2017 11/01/2017	Keith Millard

LM Start	4.65	Rating **	U	Issue No.	27
LM End	4.65	Issue Type +	En	Location *	WS
Category	Earthen Levee			GPS Latitude/Longitude	
				Start	End
Item	Encroachments			38.203425 °	38.203425 °
				-121.556845 °	-121.556845 °
DWR ID	DWR_RD0556_02_s_2017_27				
Comment Code					
TR : Tree or limb					
Inspector Comment					

LM Start	<b>4.65</b>	Rating **	U	Issue No.	<b>27 (cont)</b>
LM End	<b>4.65</b>	Issue Type +	En	Location *	WS

Photo 1 of 2 : FA\_2017\_RD0556\_19\_27\_20171002\_00011.jpg



RD 556 Unit 2 levee mile 2.16-2.19 waterside toe of slope.

Photo 2 of 2 : FA\_2017\_RD0556\_19\_27\_20171002\_00012.jpg



RD 556 Unit 2 levee mile 2.16-2.19 waterside toe looking downstream.

<b>* Location</b> LS : Land Side    N/A : Not Applicable WS : Water Side CR : Crown		<b>** Rating</b> A : Acceptable                      N : Not Inspected/Rated M : Minimally Acceptable        C : Corrected U : Unacceptable                  A/W : Acceptable but Monitor & Maintain		<b>+ Issue Type</b> Ma : Maintenance Deficiency Ob : Design & System Obsolescence En : Enforcement
--	--	---	--	---

**Flood Control Project Maintenance  
Levee Inspections**

**Levee Inspection Report By Mile - Fall 2017**

**Reclamation District No. 0556 Upper Andrus**

Waterway	Bank	Unit Miles	Inspection Start/End	Inspector
Unit No. 02 Sacramento River	Left	5.72	11/01/2017 11/01/2017	Keith Millard

LM Start	4.73	Rating **	M	Issue No.	92
LM End	4.73	Issue Type +	En	Location *	
Category	Supplemental			GPS Latitude/Longitude	
				Start	End
Item	DWR UCIP Field Study			38.202301 °	38.202301 °
				-121.556952 °	-121.556952 °
DWR ID					
Comment Code					
Inspector Comment					
FS_ID:12547 DS_ID:20867 EP_NO: 11199 Repair Type: Non-Urgent Crossing Status: Indicator Found UCIP Comments: - pump, gate valve and pumphouse not found on waterward slope.- an abandoned electric control panel found on WS.- may need to be properly abandoned. FIELD_STRUCT_DESC: A 6-inch steel irrigation pipe through levee, 6.5 feet below crown. Siphon and concrete spill box with 2- 8 inch openings. (ABO #11199- Tokoyoshi.). O&M Manual Sac 103, June 1954. FS Date: 4/25/2013					

Photo 1 of 3 : UCIP\_FA\_2017\_12547\_20320.jpg



LS- obstructed siphon breaker in CMP riser on levee slope.

LM Start	<b>4.73</b>	Rating **	M	Issue No.	<b>92 (cont)</b>
LM End	<b>4.73</b>	Issue Type +	En	Location *	

Photo 2 of 3 : UCIP\_FA\_2017\_12547\_20319.jpg



LS- concrete distribution box near levee toe.

<b>* Location</b> LS : Land Side    N/A : Not Applicable WS : Water Side CR : Crown		<b>** Rating</b> A : Acceptable M : Minimally Acceptable U : Unacceptable		N : Not Inspected/Rated C : Corrected A/W : Acceptable but Monitor & Maintain		<b>+ Issue Type</b> Ma : Maintenance Deficiency Ob : Design & System Obsolescence En : Enforcement	
--	--	--	--	---	--	---	--

**Flood Control Project Maintenance  
Levee Inspections**

**Levee Inspection Report By Mile - Fall 2017**

**Reclamation District No. 0556 Upper Andrus**

Waterway	Bank	Unit Miles	Inspection Start/End	Inspector
Unit No. 02 Sacramento River	Left	5.72	11/01/2017 11/01/2017	Keith Millard

LM Start	4.73	Rating **	M	Issue No.	92 (cont)	
LM End	4.73	Issue Type +	En	Location *		
Category	Supplemental			GPS Latitude/Longitude		
				Start	End	
Item	DWR UCIP Field Study			38.202301 °	38.202301 °	
				-121.556952 °	-121.556952 °	
DWR ID						
Comment Code						
Inspector Comment						
FS_ID:12547 DS_ID:20867 EP_NO: 11199 Repair Type: Non-Urgent Crossing Status: Indicator Found UCIP Comments: - pump, gate valve and pumphouse not found on waterward slope.- an abandoned electric control panel found on WS.- may need to be properly abandoned. FIELD_STRUCT_DESC: A 6-inch steel irrigation pipe through levee, 6.5 feet below crown. Siphon and concrete spill box with 2- 8 inch openings. (ABO #11199- Tokoyoshi.). O&M Manual Sac 103, June 1954. FS Date: 4/25/2013						

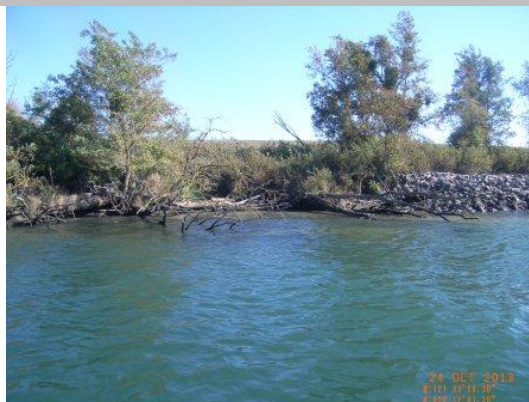
Photo 3 of 3 : UCIP\_FA\_2017\_12547\_20318.jpg



LS- power pole and a concrete distribution box near levee toe.

LM Start	4.77	Rating **	A/W	Issue No.	3
LM End	4.88	Issue Type +	Ma	Location *	WS
Category	Supplemental			GPS Latitude/Longitude	
				Start	End
Item	2015 USACE Erosion Survey, DRAFT			38.201687 °	38.200225 °
				-121.557305 °	-121.557749 °
DWR ID	DWR_RD0556_02_f_2016_3				
Comment Code					
Inspector Comment					
1999 - Downstream 140 ft repaired with rock. 2010 - Lots of woody debris, but no changes to site. 2015: Site extended upstream due to erosion pockets. [2015 Site ID: SAC_21-5_L]					

Photo 1 of 1 : FA\_2017\_RD0556\_19\_3\_20171002\_00003.jpg



USACE 2013 Photo #1

<b>* Location</b> LS : Land Side    N/A : Not Applicable WS : Water Side CR : Crown		<b>** Rating</b> A : Acceptable M : Minimally Acceptable U : Unacceptable N : Not Inspected/Rated C : Corrected A/W : Acceptable but Monitor & Maintain		<b>+ Issue Type</b> Ma : Maintenance Deficiency Ob : Design & System Obsolescence En : Enforcement
--	--	---	--	---



**Flood Control Project Maintenance  
Levee Inspections**

**Levee Inspection Report By Mile - Fall 2017**

**Reclamation District No. 0556 Upper Andrus**

Waterway	Bank	Unit Miles	Inspection Start/End	Inspector
Unit No. 02 Sacramento River	Left	5.72	11/01/2017 11/01/2017	Keith Millard

LM Start	4.95	Rating **	M	Issue No.	93	
LM End	4.95	Issue Type +	En	Location *		
Category	Supplemental			GPS Latitude/Longitude		
				Start	End	
Item	DWR UCIP Field Study			38.199133 °	38.199133 °	
				-121.557939 °	-121.557939 °	
DWR ID						
Comment Code						
Inspector Comment						
FS_ID:12564 DS_ID:20868 EP_NO: 11191 Repair Type: Non-Urgent Crossing Status: Found UCIP Comments: - needs to fix CMP riser. FIELD_STRUCT_DESC: A 8-inch pipe through levee, 5.7 feet below crown. Pump on waterward slope, gate valve on berm. Siphon breaker and service pole on landward slope. (ABO #11191-Pacific Fruit Exchange.) FS Date: 4/25/2013						

Photo 1 of 3 : UCIP\_FA\_2017\_12564\_20347.jpg



WS- pump house on levee slope.

LM Start	<b>4.95</b>	Rating **	M	Issue No.	<b>93 (cont)</b>
LM End	<b>4.95</b>	Issue Type +	En	Location *	

Photo 2 of 3 : UCIP\_FA\_2017\_12564\_20346.jpg



WS- pump, pipe and gate valve in pump house.

<b>* Location</b> LS : Land Side    N/A : Not Applicable WS : Water Side CR : Crown		<b>** Rating</b> A : Acceptable M : Minimally Acceptable U : Unacceptable N : Not Inspected/Rated C : Corrected A/W : Acceptable but Monitor & Maintain		<b>+ Issue Type</b> Ma : Maintenance Deficiency Ob : Design & System Obsolescence En : Enforcement
--	--	---	--	---



**Flood Control Project Maintenance  
Levee Inspections**

**Levee Inspection Report By Mile - Fall 2017**

**Reclamation District No. 0556 Upper Andrus**

Waterway	Bank	Unit Miles	Inspection Start/End	Inspector
Unit No. 02 Sacramento River	Left	5.72	11/01/2017 11/01/2017	Keith Millard

LM Start	5.21	Rating **	U	Issue No.	94
LM End	5.21	Issue Type +	En	Location *	
Category	Supplemental			GPS Latitude/Longitude	
				Start	End
Item	DWR UCIP Field Study			38.195755 °	38.195755 °
				-121.560078 °	-121.560078 °
DWR ID					
Comment Code					
Inspector Comment					
FS_ID:12570 DS_ID:20869 EP_NO: 11185 Repair Type: Urgent Crossing Status: Found UCIP Comments: Large pit and erosion on WS levee berm. FIELD_STRUCT_DESC: A 8-inch pipe through levee, 5.7 feet below crown. Pump and gate valve in pump house on waterward slope. Siphon breaker, concrete box, and service pole on landward slope. (ABO # 11185- Langhart.) FS Date: 4/25/2013					

Photo 1 of 3 : UCIP\_FA\_2017\_12570\_20364.jpg



WS- pump house on levee slope

LM Start	<b>5.21</b>	Rating **	U	Issue No.	<b>94 (cont)</b>
LM End	<b>5.21</b>	Issue Type +	En	Location *	

Photo 2 of 3 : UCIP\_FA\_2017\_12570\_20363.jpg



WS- pipe daylight from the levee.

<b>* Location</b> LS : Land Side    N/A : Not Applicable WS : Water Side CR : Crown	<b>** Rating</b> A : Acceptable M : Minimally Acceptable U : Unacceptable	N : Not Inspected/Rated C : Corrected A/W : Acceptable but Monitor & Maintain	<b>+ Issue Type</b> Ma : Maintenance Deficiency Ob : Design & System Obsolescence En : Enforcement
--	--	---	---



**Flood Control Project Maintenance  
Levee Inspections**

**Levee Inspection Report By Mile - Fall 2017**

**Reclamation District No. 0556 Upper Andrus**

Waterway	Bank	Unit Miles	Inspection Start/End	Inspector
Unit No. 02 Sacramento River	Left	5.72	11/01/2017 11/01/2017	Keith Millard

LM Start	5.21	Rating **	U	Issue No.	94 (cont)	
LM End	5.21	Issue Type +	En	Location *		
Category	Supplemental			GPS Latitude/Longitude		
				Start	End	
Item	DWR UCIP Field Study			38.195755 °	38.195755 °	
				-121.560078 °	-121.560078 °	
DWR ID						
Comment Code						
Inspector Comment						
FS_ID:12570						
DS_ID:20869						
EP_NO: 11185						
Repair Type: Urgent						
Crossing Status: Found						
UCIP Comments: Large pit and erosion on WS levee berm.						
FIELD_STRUCT_DESC: A 8-inch pipe through levee, 5.7 feet below crown. Pump and gate valve in pump house on waterward slope.						
Siphon breaker, concrete box, and service pole on landward slope.						
(ABO # 11185- Langhart.)						
FS Date: 4/25/2013						

Photo 3 of 3 : UCIP\_FA\_2017\_12570\_20367.jpg



WS- intake pipe in the stream.

LM Start	5.40	Rating **	M	Issue No.	31
LM End	5.44	Issue Type +	En	Location *	LS
Category	Earthen Levee			GPS Latitude/Longitude	
				Start	End
Item	Vegetation			38.193760 °	38.193445 °
				-121.562458 °	-121.562895 °
DWR ID	DWR_RD0556_02_s_2012_31				
Comment Code					
V6 : Landscaping					
Inspector Comment					
Control the wild growth within the landscaping. This choice of plant has taken over the levee slope and shoulder making it imposible to view the slope and ground.					

Photo 1 of 1 : FA\_2017\_RD0556\_19\_31\_20171002\_00013.jpg



RD 556 Unit 2 levee mile 5.40-5.44 landside levee shoulder and slope looking downstream.

<b>* Location</b> LS : Land Side    N/A : Not Applicable WS : Water Side CR : Crown		<b>** Rating</b> A : Acceptable                      N : Not Inspected/Rated M : Minimally Acceptable        C : Corrected U : Unacceptable                  A/W : Acceptable but Monitor & Maintain		<b>+ Issue Type</b> Ma : Maintenance Deficiency Ob : Design & System Obsolescence En : Enforcement
--	--	---	--	---

**Flood Control Project Maintenance  
Levee Inspections**

**Levee Inspection Report By Mile - Fall 2017**

**Reclamation District No. 0556 Upper Andrus**

Waterway	Bank	Unit Miles	Inspection Start/End	Inspector
Unit No. 02 Sacramento River	Left	5.72	11/01/2017 11/01/2017	Keith Millard

LM Start	5.45	Rating **	M	Issue No.	20
LM End	5.45	Issue Type +	Ma	Location *	WS
Category	Earthen Levee			GPS Latitude/Longitude	
				Start	End
Item	Encroachments			38.193391 °	38.193391 °
				-121.563159 °	-121.563159 °
DWR ID	DWR_RD0556_02_s_2012_20				
Comment Code					
TR : Tree or limb					
Inspector Comment					
Cut up the fallen tree and remove it from the waterside levee section.					

No Photos

<b>* Location</b> LS : Land Side    N/A : Not Applicable WS : Water Side CR : Crown	<b>** Rating</b> A : Acceptable M : Minimally Acceptable U : Unacceptable N : Not Inspected/Rated C : Corrected A/W : Acceptable but Monitor & Maintain	<b>+ Issue Type</b> Ma : Maintenance Deficiency Ob : Design & System Obsolescence En : Enforcement
--	---	---