

**Flood Control Project Maintenance
Levee Inspections**

Fall 2016 Levee Maintenance Deficiency Summary Report

Overall LMA & Unit Ratings, including USACE Erosion Survey

Sacramento River Basin

RD0556	Overall LMA Rating	Total LMA Miles						
Reclamation District No. 0556 Upper Andrus	U	11.20						
Rated Item	Maintenance Deficiency				Enforcement		Design & System Obsolescence	
	M Miles	U Miles	M + 4U Miles	Threshold %	M Miles	U Miles	M Miles	U Miles
<i>Earthen Levee</i>								
Vegetation	2.32	8.06	34.56	308.56%	0.33	0.04		
Trim / Thin Trees	1.30	1.10	5.70	50.89%				
Encroachments	0.02	0.02	0.10	0.89%	0.32	0.10		
Animal Control	3.34		3.34	29.82%				
Slope Stability	0.01		0.01	0.09%				
Erosion / Bank Caving	0.02		0.02	0.18%				
Operations & Maintenance Manuals	0.11		0.11	0.98%				
Emergency Supplies & Equipment	0.11		0.11	0.98%				
Flood Preparedness & Training	0.11		0.11	0.98%				
<i>Supplemental</i>								
2015 USACE Erosion Survey, DRAFT	1.32		1.32	11.79%				
DWR UCIP Field Study					0.22	0.02		
<i>LMA Totals:</i>	8.67	9.18	45.39	405.25%	0.87	0.16	0.00	0.00

Unit No. 01 Georgiana Slough RB	Overall Unit Rating	Total Unit Miles						
RD0556	U	5.48						
Rated Item	Maintenance Deficiency				Enforcement		Design & System Obsolescence	
	M Miles	U Miles	M + 4U Miles	Threshold %	M Miles	U Miles	M Miles	U Miles
<i>Earthen Levee</i>								
Vegetation	1.08	4.87	20.56	375.02%	0.05			
Trim / Thin Trees	0.01	1.10	4.41	80.44%				
Encroachments		0.02	0.08	1.46%	0.11	0.10		
Animal Control	3.34		3.34	60.92%				
Slope Stability	0.01		0.01	0.18%				
Erosion / Bank Caving	0.02		0.02	0.37%				
<i>Supplemental</i>								
2015 USACE Erosion Survey, DRAFT	0.15		0.15	2.74%				
DWR UCIP Field Study					0.11	0.01		
<i>Unit Totals:</i>	4.61	5.99	28.57	521.12%	0.27	0.11	0.00	0.00

Unit No. 02 Sacramento River LB	Overall Unit Rating	Total Unit Miles						
RD0556	U	5.72						
Rated Item	Maintenance Deficiency				Enforcement		Design & System Obsolescence	
	M Miles	U Miles	M + 4U Miles	Threshold %	M Miles	U Miles	M Miles	U Miles
<i>Earthen Levee</i>								
Vegetation	1.24	3.19	14.00	244.84%	0.28	0.04		
Trim / Thin Trees	1.29		1.29	22.56%				
Encroachments	0.02		0.02	0.35%	0.21			
<i>Supplemental</i>								
2015 USACE Erosion Survey, DRAFT	1.17		1.17	20.46%				
DWR UCIP Field Study					0.11	0.01		
<i>Unit Totals:</i>	3.72	3.19	16.48	288.21%	0.60	0.05	0.00	0.00

**Flood Control Project Maintenance
Levee Inspections**
LMA District Cover Sheet
Fall 2016 Levee Inspection Results

Reclamation District No. 0556 Upper Andrus

	Spring (March - May)	Summer ** (June - August)	Fall (September - November)	Winter ** (December - February)
† Overall LMA Rating (Fall Only)			U	

** Non-receipt of Summer or Winter Inspection
Reports may effect overall annual rating.

† SPRING INSPECTIONS: Overall maintenance ratings are not determined for the spring inspection results. Individual maintenance deficiencies are rated using the same criteria in the spring and in the fall.

FALL INSPECTIONS: The overall maintenance rating shown above is based on operation and maintenance deficiencies identified within the attached unit inspection reports. This rating is not intended to be an indication of risk.

Comments

**Flood Control Project Maintenance
Levee Inspections**

Unit Cover Sheet

Fall 2016 Levee Inspection Results

Reclamation District No. 0556 Upper Andrus

Waterway			Bank	Unit Miles
Unit No. 01 Georgiana Slough			Right	5.48
	Spring (March - May)	Summer (June - August)	(September - November) Fall	Winter (December - February)
Unit Maintenance Rating (Fall Only)			U	
Date of Inspection	3/9/2016 - 3/9/2016		9/23/2016 - 9/23/2016	
DWR Inspector	Herman Phillips		Herman Phillips	
Accompanied By	Mr. DuWain Silva RD 556		DuWain Silva RD 556	

Summer & Winter Inspections

The Local Maintaining Agency (LMA) is responsible for summer and winter inspections. The LMA is required to submit a report regarding summer and winter inspections to the California Department of Water Resources (DWR).

DWR must be informed on the:

- a) completion of the inspection
- b) any changes other than the results of normal maintenance
- c) corrections to deficiencies noted in this report

If additional items are noted, further documentation of those items must also be submitted.

The LMA should submit this information to DWR using the LMA web application tool available at:

<http://cdec.water.ca.gov/lma.html>

If the LMA is unable to submit information on this webpage, please contact DWR for assistance.

The LMA should submit the information and any associated documentation by September 30 for summer inspections and March 31 for winter inspections.

**Flood Control Project Maintenance
Levee Inspections**

Levee Inspection Report By Mile - Fall 2016

Reclamation District No. 0556 Upper Andrus

Waterway	Bank	Unit Miles	Inspection Start/End	Inspector
Unit No. 01 Georgiana Slough	Right	5.48	09/23/2016 09/23/2016	Herman Phillips

LM Start		Rating **	M	Issue No.	3
LM End		Issue Type +	Ma	Location *	WS
Category	Earthen Levee		GPS Latitude/Longitude		
			Start	End	
Item	Flood Preparedness & Training			°	°
				°	°
DWR ID	DWR_RD0556_01_f_2014_3				
Comment Code					
Inspector Comment					
The members in the district have not been flood fight trained recently according to the district manager.					

No Photos

LM Start		Rating **	M	Issue No.	6
LM End		Issue Type +	Ma	Location *	WS
Category	Earthen Levee		GPS Latitude/Longitude		
			Start	End	
Item	Operations & Maintenance Manuals			°	°
				°	°
DWR ID	DWR_RD0556_01_s_2012_6				
Comment Code					
Inspector Comment					
District president has the O&M Manual.					

No Photos

LM Start		Rating **	M	Issue No.	8
LM End		Issue Type +	Ma	Location *	N/A
Category	Earthen Levee		GPS Latitude/Longitude		
			Start	End	
Item	Emergency Supplies & Equipment			°	°
				°	°
DWR ID	DWR_RD0556_01_f_2014_8				
Comment Code					
Inspector Comment					
According to the district manager, when they need supplies they will order them, there are no supplies stored.					

No Photos

* Location LS : Land Side N/A : Not Applicable WS : Water Side CR : Crown	** Rating A : Acceptable M : Minimally Acceptable U : Unacceptable	N : Not Inspected/Rated C : Corrected A/W : Acceptable but Monitor & Maintain	+ Issue Type Ma : Maintenance Deficiency Ob : Design & System Obsolescence En : Enforcement
--	--	---	---

**Flood Control Project Maintenance
Levee Inspections**

Levee Inspection Report By Mile - Fall 2016

Reclamation District No. 0556 Upper Andrus

Waterway	Bank	Unit Miles	Inspection Start/End	Inspector
Unit No. 01 Georgiana Slough	Right	5.48	09/23/2016 09/23/2016	Herman Phillips

LM Start	0.08	Rating **	A	Issue No.	21
LM End	0.40	Issue Type +	Ma	Location *	WS
Category	Earthen Levee			GPS Latitude/Longitude	
				Start	End
Item	Vegetation			38.237977 °	38.233935 °
				-121.518112 °	-121.520094 °
DWR ID	DWR_RD0556_01_f_2016_21				
Comment Code					
V1 : Control annual grass and weeds on the levee slopes and easements.					
Inspector Comment					
No unwanted vegetation on the waterside from levee mile 0.08-0.40.					

Photo 1 of 1 : FA_2016_RD0556_18_21_20161025_00056.jpg



RD 556 Unit 1 levee mile 0.08-0.40.

LM Start	0.24	Rating **	U	Issue No.	26
LM End	0.73	Issue Type +	Ma	Location *	LS
Category	Earthen Levee			GPS Latitude/Longitude	
				Start	End
Item	Trim / Thin Trees			38.235807 °	38.230273 °
				-121.518278 °	-121.523907 °
DWR ID	DWR_RD0556_01_f_2015_26				
Comment Code					
T1 : Trim trees to at least five feet above ground level.					
Inspector Comment					
Trim the trees two at least five foot above ground.					

Photo 1 of 1 : FA_2016_RD0556_18_26_20161025_00050.jpg



RD 556 Unit 1 landside levee miles 0.24-0.73 looking downstream.

LM Start	0.40	Rating **	M	Issue No.	24
LM End	1.08	Issue Type +	Ma	Location *	WS
Category	Earthen Levee			GPS Latitude/Longitude	
				Start	End
Item	Vegetation			38.233935 °	38.226861 °
				-121.520094 °	-121.528015 °
DWR ID	DWR_RD0556_01_f_2016_24				
Comment Code					
V2 : Remove the wild growth other than native grasses from the levee slopes.					
Inspector Comment					
Remove the wild growth other than native grasses from the waterside slope.					

No Photos

* Location LS : Land Side N/A : Not Applicable WS : Water Side CR : Crown		** Rating A : Acceptable M : Minimally Acceptable U : Unacceptable		+ Issue Type Ma : Maintenance Deficiency Ob : Design & System Obsolescence En : Enforcement	
		N : Not Inspected/Rated C : Corrected A/W : Acceptable but Monitor & Maintain			

**Flood Control Project Maintenance
Levee Inspections**

Levee Inspection Report By Mile - Fall 2016

Reclamation District No. 0556 Upper Andrus

Waterway	Bank	Unit Miles	Inspection Start/End	Inspector
Unit No. 01 Georgiana Slough	Right	5.48	09/23/2016 09/23/2016	Herman Phillips

LM Start	0.44	Rating **	M	Issue No.	388
LM End	0.44	Issue Type +	En	Location *	WS
Category	Supplemental			GPS Latitude/Longitude	
				Start	End
Item	DWR UCIP Field Study			38.233537 °	38.233537 °
				-121.520483 °	-121.520483 °
DWR ID					
Comment Code					
Inspector Comment					
FS_ID:45564					
DS_ID:20820					
EP_NO: 3448					
Repair Type: Non-Urgent					
Crossing Status: Indicator Found					
UCIP Comments: Dense vegetation inhibited visibility of gasline marker on WS. Need to contact owner to determine status of crossing.					
FIELD_STRUCT_DESC: 4-1/2-inch steel pipe gas line through levee, 4.0 feet below the crown. Location marker on waterward shoulder. (App. 3448-PG&E pipe not located 2/91). Cut in pavement visible at crossing. Gasline marker on LS and opposite bank at RD 263.					
FS Date: 5/27/2015					

Photo 1 of 2 : UCIP_FA_2016_45564_74151.jpg



Gasline marker present on LS.

LM Start	0.44	Rating **	M	Issue No.	388 (cont)
LM End	0.44	Issue Type +	En	Location *	WS

Photo 2 of 2 : UCIP_FA_2016_45564_74146.jpg



View of WS; cut in pavement in alignment with arrow and Olivia indicating location of crossing trench.

* Location LS : Land Side N/A : Not Applicable WS : Water Side CR : Crown	** Rating A : Acceptable M : Minimally Acceptable U : Unacceptable	N : Not Inspected/Rated C : Corrected A/W : Acceptable but Monitor & Maintain	+ Issue Type Ma : Maintenance Deficiency Ob : Design & System Obsolescence En : Enforcement
--	--	---	---

**Flood Control Project Maintenance
Levee Inspections**

Levee Inspection Report By Mile - Fall 2016

Reclamation District No. 0556 Upper Andrus

Waterway	Bank	Unit Miles	Inspection Start/End	Inspector
Unit No. 01 Georgiana Slough	Right	5.48	09/23/2016 09/23/2016	Herman Phillips

LM Start	0.53	Rating **	M	Issue No.	389
LM End	0.53	Issue Type +	En	Location *	WS
Category	Supplemental			GPS Latitude/Longitude	
				Start	End
Item	DWR UCIP Field Study			38.232450 °	38.232450 °
				-121.521624 °	-121.521624 °
DWR ID					

Comment Code

Inspector Comment

FS_ID:45663
DS_ID:20821
EP_NO: 5548
Repair Type: Non-Urgent
Crossing Status: Found
UCIP Comments: Dense vegetation prevents inspection of WS slope.
FIELD_STRUCT_DESC: 12-inch steel pipe through levee, 5.0 feet below crown. 1-1/4-inch electrical conduit through the levee. Concrete steps on landward slope. Pump off landward toe. Cuts visible on pavement. (App. 5548).
FS Date: 5/13/2015

LM Start	0.53	Rating **	M	Issue No.	389 (cont)
LM End	0.53	Issue Type +	En	Location *	WS

Photo 1 of 2 : UCIP_FA_2016_45663_74180.jpg



Concrete steps on LS slope.

Photo 2 of 2 : UCIP_FA_2016_45663_74181.jpg



View of WS with cuts visible on pavement.

* Location LS : Land Side N/A : Not Applicable WS : Water Side CR : Crown	** Rating A : Acceptable M : Minimally Acceptable U : Unacceptable N : Not Inspected/Rated C : Corrected A/W : Acceptable but Monitor & Maintain	+ Issue Type Ma : Maintenance Deficiency Ob : Design & System Obsolescence En : Enforcement
--	---	---

**Flood Control Project Maintenance
Levee Inspections**

Levee Inspection Report By Mile - Fall 2016

Reclamation District No. 0556 Upper Andrus

Waterway	Bank	Unit Miles	Inspection Start/End	Inspector
Unit No. 01 Georgiana Slough	Right	5.48	09/23/2016 09/23/2016	Herman Phillips

LM Start	0.54	Rating **	M	Issue No.	390
LM End	0.54	Issue Type +	En	Location *	WS
Category	Supplemental			GPS Latitude/Longitude	
				Start	End
Item	DWR UCIP Field Study			38.232354 °	38.232354 °
				-121.521727 °	-121.521727 °
DWR ID					

Comment Code

Inspector Comment

FS_ID:45664
DS_ID:20826
EP_NO: 5548A
Repair Type: Non-Urgent
Crossing Status: Found
UCIP Comments: Dense vegetation prevented inspection of WS slope.
FIELD_STRUCT_DESC: 14-inch pipe through levee 5.0 feet below the crown. Pole with panel and standpipe on landward toe (5548A- Kay Dix Ranch 1986).
FS Date: 5/27/2015

LM Start	0.54	Rating **	M	Issue No.	390 (cont)
LM End	0.54	Issue Type +	En	Location *	WS

Photo 1 of 2 : UCIP_FA_2016_45664_74190.jpg



View of LS with standpipe visible behind tree.

Photo 2 of 2 : UCIP_FA_2016_45664_74191.jpg



View of WS with cuts visible on pavement.

* Location LS : Land Side N/A : Not Applicable WS : Water Side CR : Crown	** Rating A : Acceptable M : Minimally Acceptable U : Unacceptable	N : Not Inspected/Rated C : Corrected A/W : Acceptable but Monitor & Maintain	+ Issue Type Ma : Maintenance Deficiency Ob : Design & System Obsolescence En : Enforcement
--	--	---	---

Levee Inspection Report By Mile - Fall 2016

Waterway	Bank	Unit Miles	Inspection Start/End	Inspector
Unit No. 01 Georgiana Slough	Right	5.48	09/23/2016 09/23/2016	Herman Phillips

Photo 1 of 1 : FA_2016_RD0556_18_376_20160919_00016.jpg



Remove unwanted fig trees present on the landside slope.

Photo 1 of 1 : FA_2016_RD0556_18_10_20161025_00051.jpg



RD 556 Unit 1 levee miles 0.93-1.54 looking downstream landside slope.

* Location	** Rating	+ Issue Type
LS : Land Side WS : Water Side CR : Crown	N/A : Not Applicable A : Acceptable M : Minimally Acceptable U : Unacceptable	N : Not Inspected/Rated C : Corrected A/W : Acceptable but Monitor & Maintain
		Ma : Maintenance Deficiency Ob : Design & System Obsolescence En : Enforcement

**Flood Control Project Maintenance
Levee Inspections**

Levee Inspection Report By Mile - Fall 2016

Reclamation District No. 0556 Upper Andrus

Waterway	Bank	Unit Miles	Inspection Start/End	Inspector
Unit No. 01 Georgiana Slough	Right	5.48	09/23/2016 09/23/2016	Herman Phillips

LM Start	1.17	Rating **	M	Issue No.	387
LM End	1.17	Issue Type +	En	Location *	LS
Category	Supplemental			GPS Latitude/Longitude	
				Start	End
Item	DWR UCIP Field Study			38.227534 °	38.227534 °
				-121.529396 °	-121.529396 °
DWR ID					

Comment Code

Inspector Comment

FS_ID:46799
DS_ID:25106
EP_NO: N/A
Repair Type: Non-Urgent
Crossing Status: Found
UCIP Comments: Possible erosion above pipe on LS needs attention.
FIELD_STRUCT_DESC: 8-inch steel irrigation pipe unknown feet below crown visible on LS 6 ft away from 10-inch pipe. Post likely for protection of vent located off the crown on shoulder. Electric pole next to pipe on LS.
FS Date: 5/27/2015

LM Start	1.17	Rating **	M	Issue No.	387 (cont)
LM End	1.17	Issue Type +	En	Location *	LS

Photo 1 of 2 : UCIP_FA_2016_46799_74739.jpg



LS view: 8-inch pipe off LS slope with possible erosion above pipe (circled).

Photo 2 of 2 : UCIP_FA_2016_46799_74740.jpg



LS view: Post located above pipe on LS slope.

* Location LS : Land Side N/A : Not Applicable WS : Water Side CR : Crown	** Rating A : Acceptable M : Minimally Acceptable U : Unacceptable N : Not Inspected/Rated C : Corrected A/W : Acceptable but Monitor & Maintain	+ Issue Type Ma : Maintenance Deficiency Ob : Design & System Obsolescence En : Enforcement
--	---	---

**Flood Control Project Maintenance
Levee Inspections**

Levee Inspection Report By Mile - Fall 2016

Reclamation District No. 0556 Upper Andrus

Waterway	Bank	Unit Miles	Inspection Start/End	Inspector
Unit No. 01 Georgiana Slough	Right	5.48	09/23/2016 09/23/2016	Herman Phillips

LM Start	1.17	Rating **	M	Issue No.	391
LM End	1.17	Issue Type +	En	Location *	LS
Category	Supplemental			GPS Latitude/Longitude	
				Start	End
Item	DWR UCIP Field Study			38.227568 °	38.227568 °
				-121.529489 °	-121.529489 °
DWR ID					

Comment Code

Inspector Comment

FS_ID:45683
DS_ID:20823
EP_NO: 11169
Repair Type: Non-Urgent
Crossing Status: Found
UCIP Comments: Appears abandoned in place and if so should be done so properly. Dense vegetation on WS limits visibility.
FIELD_STRUCT_DESC: 10-inch pipe through levee, 3.8 feet below crown. (Lower end of rock revetment)(ABO 11169 - Mealer and 4848).
Abandoned in place. O&M Manual Sac 103, June 1954
FS Date: 5/27/2015

LM Start	1.17	Rating **	M	Issue No.	391 (cont)
LM End	1.17	Issue Type +	En	Location *	LS

Photo 1 of 2 : UCIP_FA_2016_45683_74200.jpg



LS view of pipe appearing abandoned in place.

Photo 2 of 2 : UCIP_FA_2016_45683_74201.jpg



Closeup of abandoned pipe.

* Location LS : Land Side N/A : Not Applicable WS : Water Side CR : Crown	** Rating A : Acceptable M : Minimally Acceptable U : Unacceptable N : Not Inspected/Rated C : Corrected A/W : Acceptable but Monitor & Maintain	+ Issue Type Ma : Maintenance Deficiency Ob : Design & System Obsolescence En : Enforcement
--	---	---

**Flood Control Project Maintenance
Levee Inspections**

Levee Inspection Report By Mile - Fall 2016

Reclamation District No. 0556 Upper Andrus

Waterway	Bank	Unit Miles	Inspection Start/End	Inspector
Unit No. 01 Georgiana Slough	Right	5.48	09/23/2016 09/23/2016	Herman Phillips

LM Start	1.33	Rating **	M	Issue No.	392
LM End	1.33	Issue Type +	En	Location *	LS
Category	Supplemental			GPS Latitude/Longitude	
				Start	End
Item	DWR UCIP Field Study			38.227622 °	38.227622 °
				-121.532154 °	-121.532154 °
DWR ID					
Comment Code					
Inspector Comment					
FS_ID:45692 DS_ID:20825 EP_NO: 13302 Repair Type: Non-Urgent Crossing Status: Found UCIP Comments: Seal beneath siphon breaker off LS toe leaking. Rodent activity near crown off LS shoulder. Need to contact owner about leaky seal. Dense vegetation prevented inspection of WS slope. FIELD_STRUCT_DESC: 6-inch steel pipe and 2-inch GI electrical conduit through levee 2 feet below crown; roadway with siphon valve on landward shoulder. Concrete stand and pump on landward toe; circuit box also. Cuts visible on pavement. 6-inch PVC standpipe adjacent to pipe off LS toe. (Kay Dix Ranch App. 13302). O&M Manual Sac 103, June 1954 FS Date: 5/27/2015					

Photo 1 of 2 : UCIP_FA_2016_45692_74204.jpg



Pipe, standpipe, electrical box at LS toe. Pump house in bush behind electrical box.

LM Start	1.33	Rating **	M	Issue No.	392 (cont)
LM End	1.33	Issue Type +	En	Location *	LS

Photo 2 of 2 : UCIP_FA_2016_45692_74205.jpg



WS view and cuts visible on pavement.

* Location LS : Land Side N/A : Not Applicable WS : Water Side CR : Crown	** Rating A : Acceptable M : Minimally Acceptable U : Unacceptable	N : Not Inspected/Rated C : Corrected A/W : Acceptable but Monitor & Maintain	+ Issue Type Ma : Maintenance Deficiency Ob : Design & System Obsolescence En : Enforcement
--	--	---	---

**Flood Control Project Maintenance
Levee Inspections**

Levee Inspection Report By Mile - Fall 2016

Reclamation District No. 0556 Upper Andrus

Waterway	Bank	Unit Miles	Inspection Start/End	Inspector
Unit No. 01 Georgiana Slough	Right	5.48	09/23/2016 09/23/2016	Herman Phillips

LM Start	1.34	Rating **	U	Issue No.	27
LM End	1.37	Issue Type +	En	Location *	LS
Category	Earthen Levee			GPS Latitude/Longitude	
				Start	End
Item	Encroachments			38.227521 °	38.227320 °
				-121.532393 °	-121.532710 °
DWR ID	DWR_RD0556_01_s_2013_27				
Comment Code					
DE : Debris					
Inspector Comment					
Remove the pile of asphalt and concrete from the toe of levee.					

LM Start	1.34	Rating **	U	Issue No.	27 (cont)
LM End	1.37	Issue Type +	En	Location *	LS

Photo 1 of 3 : FA_2016_RD0556_18_27_20161025_00052.jpg



ARD 556 unit 1 levee miles 1.34-1.37 unauthorized piles of asphalt and concrete dumped on the landside levee toe.

Photo 2 of 3 : FA_2016_RD0556_18_27_20161025_00053.jpg



RD 556 Unit 1 levee miles 1.34-1.37.

LM Start	1.34	Rating **	U	Issue No.	27 (cont)
LM End	1.37	Issue Type +	En	Location *	LS

Photo 3 of 3 : FA_2016_RD0556_18_27_20161025_00054.jpg



RD 556 unit 1 levee miles 1.34-1.37 landside.

* Location LS : Land Side N/A : Not Applicable WS : Water Side CR : Crown		** Rating A : Acceptable N : Not Inspected/Rated M : Minimally Acceptable C : Corrected U : Unacceptable A/W : Acceptable but Monitor & Maintain		+ Issue Type Ma : Maintenance Deficiency Ob : Design & System Obsolescence En : Enforcement	
--	--	---	--	---	--

**Flood Control Project Maintenance
Levee Inspections**

Levee Inspection Report By Mile - Fall 2016

Reclamation District No. 0556 Upper Andrus

Waterway	Bank	Unit Miles	Inspection Start/End	Inspector
Unit No. 01 Georgiana Slough	Right	5.48	09/23/2016 09/23/2016	Herman Phillips

LM Start	1.37	Rating **	M	Issue No.	29
LM End	1.38	Issue Type +	Ma	Location *	LS
Category	Earthen Levee			GPS Latitude/Longitude	
				Start	End
Item	Trim / Thin Trees			38.227320 °	38.227216 °
				-121.532707 °	-121.532870 °
DWR ID	DWR_RD0556_01_s_2013_29				
Comment Code					
T2 : Thin trees to allow visibility of the ground and room to flood fight.					
Inspector Comment					
Thin out the trees to allow visibility of the landside slope.					

No Photos

LM Start	1.43	Rating **	M	Issue No.	40
LM End	1.43	Issue Type +	Ma	Location *	LS
Category	Earthen Levee			GPS Latitude/Longitude	
				Start	End
Item	Erosion / Bank Caving			38.226537 °	38.226537 °
				-121.533512 °	-121.533512 °
DWR ID	DWR_RD0556_01_f_2012_40				
Comment Code					
E1 : Note and monitor erosion site.					
Inspector Comment					
Monitor the erosion site listed.					

No Photos

LM Start	1.50	Rating **	M	Issue No.	22
LM End	1.50	Issue Type +	Ma	Location *	LS
Category	Earthen Levee			GPS Latitude/Longitude	
				Start	End
Item	Erosion / Bank Caving			38.225840 °	38.225840 °
				-121.534157 °	-121.534157 °
DWR ID	DWR_RD0556_01_s_2012_22				
Comment Code					
E1 : Note and monitor erosion site.					
Inspector Comment					
Monitor the erosion site listed.					

No Photos

* Location LS : Land Side N/A : Not Applicable WS : Water Side CR : Crown		** Rating A : Acceptable M : Minimally Acceptable U : Unacceptable N : Not Inspected/Rated C : Corrected A/W : Acceptable but Monitor & Maintain		+ Issue Type Ma : Maintenance Deficiency Ob : Design & System Obsolescence En : Enforcement	
--	--	---	--	---	--

**Flood Control Project Maintenance
Levee Inspections**

Levee Inspection Report By Mile - Fall 2016

Reclamation District No. 0556 Upper Andrus

Waterway	Bank	Unit Miles	Inspection Start/End	Inspector
Unit No. 01 Georgiana Slough	Right	5.48	09/23/2016 09/23/2016	Herman Phillips

LM Start	1.55	Rating **	U	Issue No.	9
LM End	1.57	Issue Type +	Ma	Location *	WS
Category	Earthen Levee			GPS Latitude/Longitude	
				Start	End
Item	Encroachments			38.225191 °	38.224976 °
				-121.534799 °	-121.535043 °
DWR ID	DWR_RD0556_01_s_2012_9				
Comment Code					
TR : Tree or limb					
Inspector Comment					
These cut up tree sections remain on the waterward slope. The owner is on the Reclamation District's Board, Mr. Silva said he will ask him to remove the encroachment.					

Photo 1 of 1 : FA_2016_RD0556_18_9_20160919_00002.jpg



Unsatisfactory dumping of cut up tree sections on the waterside levee shoulder.

LM Start	1.57	Rating **	M	Issue No.	393
LM End	1.57	Issue Type +	En	Location *	WS
Category	Supplemental			GPS Latitude/Longitude	
				Start	End
Item	DWR UCIP Field Study			38.225001 °	38.225001 °
				-121.535007 °	-121.535007 °
DWR ID					
Comment Code					
Inspector Comment					
FS_ID:45743					
DS_ID:20827					
EP_NO: 11169					
Repair Type: Non-Urgent					
Crossing Status: Found					
UCIP Comments: Dense vegetation on LS and WS limited accessibility.					
FIELD_STRUCT_DESC: 8-inch steel pipe through levee, 3.5 feet below crown. Pump and gate valve on WS berm. 2-inch electrical conduit into WS slope. A 36-inch concrete standpipe and concrete block step on Landward Slope. (Listed as 10-inch in ABO 11169 - Mealer). O&M Manual Sac 103, June 1954					
FS Date: 5/27/2015					

Photo 1 of 2 : UCIP_FA_2016_45743_74240.jpg



Concrete standpipe and steps off LS toe.

* Location LS : Land Side N/A : Not Applicable WS : Water Side CR : Crown	** Rating A : Acceptable M : Minimally Acceptable U : Unacceptable	N : Not Inspected/Rated C : Corrected A/W : Acceptable but Monitor & Maintain	+ Issue Type Ma : Maintenance Deficiency Ob : Design & System Obsolescence En : Enforcement
--	--	---	---

**Flood Control Project Maintenance
Levee Inspections**

Levee Inspection Report By Mile - Fall 2016

Reclamation District No. 0556 Upper Andrus

Waterway	Bank	Unit Miles	Inspection Start/End	Inspector
Unit No. 01 Georgiana Slough	Right	5.48	09/23/2016 09/23/2016	Herman Phillips

LM Start	1.57	Rating **	M	Issue No.	393 (cont)	
LM End	1.57	Issue Type +	En	Location *	WS	
Category	Supplemental			GPS Latitude/Longitude		
				Start	End	
Item	DWR UCIP Field Study			38.225001 °	38.225001 °	
				-121.535007 °	-121.535007 °	
DWR ID						
Comment Code						
Inspector Comment						
FS_ID:45743						
DS_ID:20827						
EP_NO: 11169						
Repair Type: Non-Urgent						
Crossing Status: Found						
UCIP Comments: Dense vegetation on LS and WS limited accessibility.						
FIELD_STRUCT_DESC: 8-inch steel pipe through levee, 3.5 feet below crown. Pump and gate valve on WS berm. 2-inch electrical conduit into WS slope. A 36-inch concrete standpipe and concrete block step on Landward Slope. (Listed as 10-inch in ABO 11169 - Mealer). O&M Manual Sac 103, June 1954						
FS Date: 5/27/2015						

Photo 2 of 2 : UCIP_FA_2016_45743_74241.jpg



Service pole next to standpipe off LS toe.

LM Start	1.57	Rating **	M	Issue No.	386
LM End	1.67	Issue Type +	Ma	Location *	LS
Category	Earthen Levee			GPS Latitude/Longitude	
				Start	End
Item	Vegetation			38.224995 °	38.224486 °
				-121.535094 °	-121.536766 °
DWR ID	DWR_RD0556_01_f_2013_386				
Comment Code					
V2 : Remove the wild growth other than native grasses from the levee slopes.					
Inspector Comment					
Remove the wild growth from the landside levee slope.					

No Photos

* Location LS : Land Side N/A : Not Applicable WS : Water Side CR : Crown	** Rating A : Acceptable M : Minimally Acceptable U : Unacceptable	N : Not Inspected/Rated C : Corrected A/W : Acceptable but Monitor & Maintain	+ Issue Type Ma : Maintenance Deficiency Ob : Design & System Obsolescence En : Enforcement
--	--	---	---

**Flood Control Project Maintenance
Levee Inspections**

Levee Inspection Report By Mile - Fall 2016

Reclamation District No. 0556 Upper Andrus

Waterway	Bank	Unit Miles	Inspection Start/End	Inspector
Unit No. 01 Georgiana Slough	Right	5.48	09/23/2016 09/23/2016	Herman Phillips

LM Start	1.65	Rating **	M	Issue No.	17
LM End	1.70	Issue Type +	En	Location *	WS
Category	Earthen Levee			GPS Latitude/Longitude	
				Start	End
Item	Vegetation			38.224623 °	38.224408 °
				-121.536320 °	-121.537180 °
DWR ID	DWR_RD0556_01_s_2012_17				
Comment Code					
V6 : Landscaping					
Inspector Comment					
Maintain the landscaping on the landside slope and shoulder.					

No Photos

LM Start	1.74	Rating **	U	Issue No.	74
LM End	2.29	Issue Type +	Ma	Location *	WS
Category	Earthen Levee			GPS Latitude/Longitude	
				Start	End
Item	Vegetation			38.224198 °	38.220317 °
				-121.537987 °	-121.544172 °
DWR ID	DWR_RD0556_01_f_2015_74				
Comment Code					
V7 : Trees / Woody Vegetation					
Inspector Comment					
This arundo needs to be removed, this vegetation completely blocks the view of the waterside slope, shoulder and toe.					

Photo 1 of 1 : FA_2016_RD0556_18_74_20161101_00057.jpg



RD 556 Unit 1 waterside levee mile 1.74-2.29.

*** Location**

LS : Land Side N/A : Not Applicable
WS : Water Side
CR : Crown

**** Rating**

A : Acceptable N : Not Inspected/Rated
M : Minimally Acceptable C : Corrected
U : Unacceptable A/W : Acceptable but Monitor & Maintain

+ Issue Type

Ma : Maintenance Deficiency
Ob : Design & System Obsolescence
En : Enforcement

**Flood Control Project Maintenance
Levee Inspections**

Levee Inspection Report By Mile - Fall 2016

Reclamation District No. 0556 Upper Andrus

Waterway	Bank	Unit Miles	Inspection Start/End	Inspector
Unit No. 01 Georgiana Slough	Right	5.48	09/23/2016 09/23/2016	Herman Phillips

LM Start	1.79	Rating **	M	Issue No.	394
LM End	1.79	Issue Type +	En	Location *	WS
Category	Supplemental			GPS Latitude/Longitude	
				Start	End
Item	DWR UCIP Field Study			38.223999 °	38.223999 °
				-121.538735 °	-121.538735 °
DWR ID					

Comment Code

Inspector Comment

FS_ID:45746
DS_ID:20828
EP_NO: 3735
Repair Type: Non-Urgent
Crossing Status: Indicator Found
UCIP Comments: Dense vegetation on LS and WS limited accessibility.
FIELD_STRUCT_DESC: 4-inch electric conduit through levee, 4.0 feet below the crown. Pump on berm. Underground submarine cable crossing. (App. 3735-PG&E). Electric pole on LS in alignment with cuts in pavement.
FS Date: 5/27/2015

LM Start	1.79	Rating **	M	Issue No.	394 (cont)
LM End	1.79	Issue Type +	En	Location *	WS

Photo 1 of 2 : UCIP_FA_2016_45746_74250.jpg



View of WS and cuts in pavement.

Photo 2 of 2 : UCIP_FA_2016_45746_74251.jpg



Cuts in pavement in alignment with electric pole off LS toe.

* Location LS : Land Side N/A : Not Applicable WS : Water Side CR : Crown	** Rating A : Acceptable M : Minimally Acceptable U : Unacceptable N : Not Inspected/Rated C : Corrected A/W : Acceptable but Monitor & Maintain	+ Issue Type Ma : Maintenance Deficiency Ob : Design & System Obsolescence En : Enforcement
--	---	---

**Flood Control Project Maintenance
Levee Inspections**

Levee Inspection Report By Mile - Fall 2016

Reclamation District No. 0556 Upper Andrus

Waterway	Bank	Unit Miles	Inspection Start/End	Inspector
Unit No. 01 Georgiana Slough	Right	5.48	09/23/2016 09/23/2016	Herman Phillips

LM Start	1.89	Rating **	M	Issue No.	395
LM End	1.89	Issue Type +	En	Location *	WS
Category	Supplemental			GPS Latitude/Longitude	
				Start	End
Item	DWR UCIP Field Study			38.223760 °	38.223760 °
				-121.540629 °	-121.540629 °
DWR ID					
Comment Code					
Inspector Comment					
FS_ID:45764 DS_ID:20829 EP_NO: 11178 Repair Type: Non-Urgent Crossing Status: Found UCIP Comments: Dense vegetation on WS and LS. Some oil leakage inside pumphouse. FIELD_STRUCT_DESC: 8-inch steel irrigation pipe through levee, 3.7 feet below crown. 2-inch electric conduit through levee next to 8-inch. A 1-inch air valve and pump on berm. Service pole on landward slope. Tin and wood pump house on berm. A 12-ft x 36-inch concrete standpipe on landside. (ABO- 11178 - Swett). O&M Manual Sac 103, June 1954 FS Date: 5/27/2015					

Photo 1 of 2 : UCIP_FA_2016_45764_74260.jpg



LS view: service pole on LW slope. Standpipe not visible in photo.

LM Start	1.89	Rating **	M	Issue No.	395 (cont)
LM End	1.89	Issue Type +	En	Location *	WS

Photo 2 of 2 : UCIP_FA_2016_45764_74261.jpg



Pole on LS slope with electric box and 2-inch conduit.

* Location	** Rating	+ Issue Type
LS : Land Side WS : Water Side CR : Crown	A : Acceptable M : Minimally Acceptable U : Unacceptable	Ma : Maintenance Deficiency Ob : Design & System Obsolescence En : Enforcement
N/A : Not Applicable	N : Not Inspected/Rated C : Corrected A/W : Acceptable but Monitor & Maintain	

**Flood Control Project Maintenance
Levee Inspections**

Levee Inspection Report By Mile - Fall 2016

Reclamation District No. 0556 Upper Andrus

Waterway	Bank	Unit Miles	Inspection Start/End	Inspector
Unit No. 01 Georgiana Slough	Right	5.48	09/23/2016 09/23/2016	Herman Phillips

LM Start	2.13	Rating **	M	Issue No.	396
LM End	2.13	Issue Type +	En	Location *	WS
Category	Supplemental			GPS Latitude/Longitude	
				Start	End
Item	DWR UCIP Field Study			38.222560 °	38.222560 °
				-121.544485 °	-121.544485 °
DWR ID					
Comment Code					
Inspector Comment					
FS_ID:45786 DS_ID:20830 EP_NO: 2392 Repair Type: Non-Urgent Crossing Status: Found UCIP Comments: Hole and exposed depression adjacent to pipe at LS. Dense vegetation on WS and LS limited visibility. FIELD_STRUCT_DESC: 12 inch steel irrigation pipe through levee, 3.0 feet below crown. Slant pump on bank. 1-inch electrical conduit through levee beside 12-inch pipe, visible on WS. Service pole and 2 standpipes at LW toe, one of which is a 6-inch standpipe. (App. 2392 - Swett) FS Date: 5/27/2015					

LM Start	2.13	Rating **	M	Issue No.	396 (cont)
LM End	2.13	Issue Type +	En	Location *	WS

Photo 1 of 2 : UCIP_FA_2016_45786_74280.jpg



WS view: Slant pump, 12-inch and 1-inch pipe through levee.

Photo 2 of 2 : UCIP_FA_2016_45786_74281.jpg



View toward WS with cuts in pavement in alignment with pipe on WS

* Location LS : Land Side N/A : Not Applicable WS : Water Side CR : Crown	** Rating A : Acceptable M : Minimally Acceptable U : Unacceptable	N : Not Inspected/Rated C : Corrected A/W : Acceptable but Monitor & Maintain	+ Issue Type Ma : Maintenance Deficiency Ob : Design & System Obsolescence En : Enforcement
--	--	---	---

**Flood Control Project Maintenance
Levee Inspections**

Levee Inspection Report By Mile - Fall 2016

Reclamation District No. 0556 Upper Andrus

Waterway	Bank	Unit Miles	Inspection Start/End	Inspector
Unit No. 01 Georgiana Slough	Right	5.48	09/23/2016 09/23/2016	Herman Phillips

LM Start	2.38	Rating **	U	Issue No.	47
LM End	2.42	Issue Type +	Ma	Location *	LS
Category	Earthen Levee			GPS Latitude/Longitude	
				Start	End
Item	Vegetation			38.219065 °	38.218458 °
				-121.543855 °	-121.543838 °
DWR ID	DWR_RD0556_01_f_2012_47				
Comment Code					
V7 : Trees / Woody Vegetation					
Inspector Comment					
This section of trees need to be removed from levee section, visibility completely blocked.					

Photo 1 of 1 : FA_2016_RD0556_18_47_20161025_00055.jpg



RD 556 Unit 1 levee miles 2.38-2.42 landside slope.

LM Start	2.44	Rating **	U	Issue No.	397
LM End	2.44	Issue Type +	En	Location *	LS
Category	Supplemental			GPS Latitude/Longitude	
				Start	End
Item	DWR UCIP Field Study			38.218242 °	38.218242 °
				-121.543807 °	-121.543807 °
DWR ID					
Comment Code					
Inspector Comment					
FS_ID:45803 DS_ID:20831 EP_NO: 11169 Repair Type: Urgent Crossing Status: Found UCIP Comments: 2'x2' hole on levee off LS shoulder. FIELD_STRUCT_DESC: 8 inch steel irrigation pipe through levee, 3.7 feet below crown. Pump and switch panel on berm. Service pole on landward side. A 9 ft x 36-inch concrete standpipe on landside of the levee. 3 cables encased in 1.5-inch steel pipe at WS alongside 8-inch pipe, disconnected at WS. (ABO 11169-Mealer). O&M Manual Sac 103, June 1954. FS Date: 5/27/2015					

Photo 1 of 2 : UCIP_FA_2016_45803_74285.jpg



Pipe, pump @LS toe. 2'x2' hole off shoulder. Spigot in hole possibly for irrigation. House and service pole in background.

* Location LS : Land Side N/A : Not Applicable WS : Water Side CR : Crown	** Rating A : Acceptable M : Minimally Acceptable U : Unacceptable N : Not Inspected/Rated C : Corrected A/W : Acceptable but Monitor & Maintain	+ Issue Type Ma : Maintenance Deficiency Ob : Design & System Obsolescence En : Enforcement
--	---	---

**Flood Control Project Maintenance
Levee Inspections**

Levee Inspection Report By Mile - Fall 2016

Reclamation District No. 0556 Upper Andrus

Waterway	Bank	Unit Miles	Inspection Start/End	Inspector
Unit No. 01 Georgiana Slough	Right	5.48	09/23/2016 09/23/2016	Herman Phillips

LM Start	2.44	Rating **	U	Issue No.	397 (cont)
LM End	2.44	Issue Type +	En	Location *	LS
Category	Supplemental			GPS Latitude/Longitude	
				Start	End
Item	DWR UCIP Field Study			38.218242 °	38.218242 °
				-121.543807 °	-121.543807 °
DWR ID					
Comment Code					
Inspector Comment					
FS_ID:45803 DS_ID:20831 EP_NO: 11169 Repair Type: Urgent Crossing Status: Found UCIP Comments: 2'x2' hole on levee off LS shoulder. FIELD_STRUCT_DESC: 8 inch steel irrigation pipe through levee, 3.7 feet below crown. Pump and switch panel on berm. Service pole on landward side. A 9 ft x 36-inch concrete standpipe on landside of the levee. 3 cables encased in 1.5-inch steel pipe at WS alongside 8-inch pipe, disconnected at WS. (ABO 11169-Mealer). O&M Manual Sac 103, June 1954. FS Date: 5/27/2015					

Photo 2 of 2 : UCIP_FA_2016_45803_74286.jpg



Closeup of 8-inch pipe, electrical conduit and box at LS berm.

LM Start	2.54	Rating **	M	Issue No.	32
LM End	2.81	Issue Type +	Ma	Location *	LS
Category	Earthen Levee			GPS Latitude/Longitude	
				Start	End
Item	Vegetation			38.216770 °	38.214455 °
				-121.543212 °	-121.539433 °
DWR ID	DWR_RD0556_01_f_2016_32				
Comment Code					
V2 : Remove the wild growth other than native grasses from the levee slopes.					
Inspector Comment					
Remove the vegetation from the landside slope.					

No Photos

* Location LS : Land Side N/A : Not Applicable WS : Water Side CR : Crown	** Rating A : Acceptable M : Minimally Acceptable U : Unacceptable	N : Not Inspected/Rated C : Corrected A/W : Acceptable but Monitor & Maintain	+ Issue Type Ma : Maintenance Deficiency Ob : Design & System Obsolescence En : Enforcement
--	--	---	---

**Flood Control Project Maintenance
Levee Inspections**

Levee Inspection Report By Mile - Fall 2016

Reclamation District No. 0556 Upper Andrus

Waterway	Bank	Unit Miles	Inspection Start/End	Inspector
Unit No. 01 Georgiana Slough	Right	5.48	09/23/2016 09/23/2016	Herman Phillips

LM Start	2.71	Rating **	M	Issue No.	398
LM End	2.71	Issue Type +	En	Location *	LS
Category	Supplemental			GPS Latitude/Longitude	
				Start	End
Item	DWR UCIP Field Study			38.215222 °	38.215222 °
				-121.540950 °	-121.540950 °
DWR ID					
Comment Code					
Inspector Comment					
FS_ID:45883					
DS_ID:20848					
EP_NO: 11167					
Repair Type: Non-Urgent					
Crossing Status: Found					
UCIP Comments: Pipe appears out of use; if so, coordinate with owner to abandon properly per Title 23.					
FIELD_STRUCT_DESC: 8-inch steel casing with 3-inch steel irrigation pipeline sleeved through it, 3.0 feet below crown. Annular space appears grouted. 3-inch pipe connected to pump on WS. Gate valve on waterward berm. Pipe not in use. PVC standpipe off LS toe (previously 6'x36" concrete standpipe). (ABO 11167 - Graham). O&M Manual Sac 103, June 1954					
FS Date: 6/5/2015 8:11:00 AM					

No Photos

LM Start	2.96	Rating **	M	Issue No.	63
LM End	2.99	Issue Type +	Ma	Location *	WS
Category	Earthen Levee			GPS Latitude/Longitude	
				Start	End
Item	Vegetation			38.212661 °	38.212328 °
				-121.537633 °	-121.537318 °
DWR ID	DWR_RD0556_01_s_2013_63				
Comment Code					
V2 : Remove the wild growth other than native grasses from the levee slopes.					
Inspector Comment					
Remove the vegetation from the waterside slope.					

No Photos

* Location LS : Land Side N/A : Not Applicable WS : Water Side CR : Crown	** Rating A : Acceptable M : Minimally Acceptable U : Unacceptable	N : Not Inspected/Rated C : Corrected A/W : Acceptable but Monitor & Maintain	+ Issue Type Ma : Maintenance Deficiency Ob : Design & System Obsolescence En : Enforcement
--	--	---	---

Reclamation District No. 0556 Upper Andrus

No Photos

Unsatisfactory woody tree growth and arondo blocking view of landside levee shoulder and slope.

RD 556 Unit 1 landside shoulder levee mile 3.22.Page 21 of 25

**Flood Control Project Maintenance
Levee Inspections**

Levee Inspection Report By Mile - Fall 2016

Reclamation District No. 0556 Upper Andrus

Waterway	Bank	Unit Miles	Inspection Start/End	Inspector
Unit No. 01 Georgiana Slough	Right	5.48	09/23/2016 09/23/2016	Herman Phillips

LM Start	3.32	Rating **	U	Issue No.	80
LM End	3.92	Issue Type +	Ma	Location *	WS
Category	Earthen Levee			GPS Latitude/Longitude	
				Start	End
Item	Vegetation			38.209497°	38.201645°
				-121.540917°	-121.542198°
DWR ID	DWR_RD0556_01_f_2015_80				
Comment Code					
V2 : Remove the wild growth other than native grasses from the levee slopes.					
Inspector Comment					
Remove this unsatisfactory growth from the waterside so the slope can be inspected.					

Photo 1 of 1 : FA_2016_RD0556_18_80_20160919_00014.jpg



Looking downstream from levee mile 3.32-3.92 waterside unsatisfactory growth of willows blocks the view of the slope.

LM Start	3.53	Rating **	U	Issue No.	83
LM End	4.07	Issue Type +	Ma	Location *	LS
Category	Earthen Levee			GPS Latitude/Longitude	
				Start	End
Item	Vegetation			38.206568 °	38.200653 °
				-121.541810 °	-121.544667 °
DWR ID	DWR_RD0556_01_f_2015_83				
Comment Code					
V2 : Remove the wild growth other than native grasses from the levee slopes.					
Inspector Comment					
Thin out this growth of trees to allow viewing the levee slope and shoulder.					

Photo 1 of 1 : FA_2016_RD0556_18_83_20160919_00015.jpg



Looking downstream from the landside slope unsatisfactory woody tree growth blocking view of levee section.

*** Location**

LS : Land Side N/A : Not Applicable
WS : Water Side
CR : Crown

**** Rating**

A : Acceptable N : Not Inspected/Rated
M : Minimally Acceptable C : Corrected
U : Unacceptable A/W : Acceptable but Monitor & Maintain

+ Issue Type

Ma : Maintenance Deficiency
Ob : Design & System Obsolescence
En : Enforcement

**Flood Control Project Maintenance
Levee Inspections**

Levee Inspection Report By Mile - Fall 2016

Reclamation District No. 0556 Upper Andrus

Waterway	Bank	Unit Miles	Inspection Start/End	Inspector
Unit No. 01 Georgiana Slough	Right	5.48	09/23/2016 09/23/2016	Herman Phillips

LM Start	3.94	Rating **	U	Issue No.	70
LM End	4.01	Issue Type +	En	Location *	WS
Category	Earthen Levee			GPS Latitude/Longitude	
				Start	End
Item	Encroachments			38.201515 °	38.201105 °
				-121.542573 °	-121.543720 °
DWR ID	DWR_RD0556_01_f_2014_70				
Comment Code					
CR : Crops					
Inspector Comment					
Remove the unauthorized planter boxes repack earth materials back on slope.					

Photo 1 of 2 : FA_2016_RD0556_18_70_20160919_00010.jpg



Landowner has dug into waterward slope and placed planterboxes.

LM Start	3.94	Rating **	U	Issue No.	70 (cont)
LM End	4.01	Issue Type +	En	Location *	WS

Photo 2 of 2 : FA_2016_RD0556_18_70_20160919_00011.jpg



Continue placement of unauthorized planter boxes into levee slope waterside.

LM Start	3.95	Rating **	M	Issue No.	86
LM End	4.06	Issue Type +	En	Location *	WS
Category	Earthen Levee			GPS Latitude/Longitude	
				Start	End
Item	Encroachments			38.201475 °	38.200617 °
				-121.542832 °	-121.544530 °
DWR ID	DWR_RD0556_01_s_2012_86				
Comment Code					
BU : Building					
Inspector Comment					
There is a remodeled home on waterward berm. The CVFPB is aware of the structure. A permit has been secured by land owner for the dwelling.					

No Photos

* Location LS : Land Side N/A : Not Applicable WS : Water Side CR : Crown		** Rating A : Acceptable M : Minimally Acceptable U : Unacceptable N : Not Inspected/Rated C : Corrected A/W : Acceptable but Monitor & Maintain		+ Issue Type Ma : Maintenance Deficiency Ob : Design & System Obsolescence En : Enforcement	
--	--	---	--	---	--

Reclamation District No. 0556 Upper Andrus

No Photos

Unwanted tall weeds and berries growing on the landside slope and toe.

Looking downstream on waterside the arundo completely covering the levee section.

Page 24 of 25

**Flood Control Project Maintenance
Levee Inspections**

Levee Inspection Report By Mile - Fall 2016

Reclamation District No. 0556 Upper Andrus

Waterway	Bank	Unit Miles	Inspection Start/End	Inspector
Unit No. 01 Georgiana Slough	Right	5.48	09/23/2016 09/23/2016	Herman Phillips

LM Start	5.12	Rating **	M	Issue No.	1
LM End	5.27	Issue Type +	Ma	Location *	WS
Category	Supplemental			GPS Latitude/Longitude	
				Start	End
Item	2015 USACE Erosion Survey, DRAFT			38.189775 °	38.188121 °
				-121.557729 °	-121.559413 °
DWR ID	DWR_RD0556_01_f_2016_1				
Comment Code					
Inspector Comment					
1997 - Toe damaged rock. 1999 - One pocket filled with gravel. 2000 - Eroding beach with some biotech rolls and stakes; some gravel on slope. 2001 - Staked, low fascine walls at bankline. 2005 - Stone revetment in between pockets. 2006 - New rock on upper slope behind brush boxes at the upstream end, Stone is sliding off the hard toe. 2015: Last observed in 2013. [2015 Site ID: GEO_7-0_R]					

Photo 1 of 1 : FA_2016_RD0556_18_1_20160919_00001.jpg



USACE 2013 Photo #1

* Location LS : Land Side N/A : Not Applicable WS : Water Side CR : Crown	** Rating A : Acceptable M : Minimally Acceptable U : Unacceptable N : Not Inspected/Rated C : Corrected A/W : Acceptable but Monitor & Maintain	+ Issue Type Ma : Maintenance Deficiency Ob : Design & System Obsolescence En : Enforcement
--	---	---

**Flood Control Project Maintenance
Levee Inspections**

Unit Cover Sheet

Fall 2016 Levee Inspection Results

Reclamation District No. 0556 Upper Andrus

Waterway			Bank	Unit Miles
Unit No. 02 Sacramento River			Left	5.72
	Spring (March - May)	Summer (June - August)	(September - November) Fall	Winter (December - February)
Unit Maintenance Rating (Fall Only)			U	
Date of Inspection	3/9/2016 - 3/9/2016		9/23/2016 - 9/23/2016	
DWR Inspector	Herman Phillips		Herman Phillips	
Accompanied By	Mr. DuWain Silva RD 556		Mr. DuWain Silva RD 556	

Summer & Winter Inspections

The Local Maintaining Agency (LMA) is responsible for summer and winter inspections. The LMA is required to submit a report regarding summer and winter inspections to the California Department of Water Resources (DWR).

DWR must be informed on the:

- a) completion of the inspection
- b) any changes other than the results of normal maintenance
- c) corrections to deficiencies noted in this report

If additional items are noted, further documentation of those items must also be submitted.

The LMA should submit this information to DWR using the LMA web application tool available at:

<http://cdec.water.ca.gov/lma.html>

If the LMA is unable to submit information on this webpage, please contact DWR for assistance.

The LMA should submit the information and any associated documentation by September 30 for summer inspections and March 31 for winter inspections.

**Flood Control Project Maintenance
Levee Inspections**

Levee Inspection Report By Mile - Fall 2016

Reclamation District No. 0556 Upper Andrus

Waterway	Bank	Unit Miles	Inspection Start/End	Inspector
Unit No. 02 Sacramento River	Left	5.72	09/23/2016 09/23/2016	Herman Phillips

LM Start	0.00	Rating **	U	Issue No.	29
LM End	1.35	Issue Type +	Ma	Location *	LS
Category	Earthen Levee			GPS Latitude/Longitude	
				Start	End
Item	Vegetation			38.200550 °	38.239821 °
				-121.544190 °	-121.542440 °
DWR ID	DWR_RD0556_02_f_2016_29				
Comment Code					
V1 : Control annual grass and weeds on the levee slopes and easements.					
Inspector Comment					
Control the wild vegetation and wild tree growth from the landside slope and shoulder heading downstream					

Photo 1 of 1 : FA_2016_RD0556_19_29_20161031_00052.jpg



RD 556 Unit 2 looking downstream landside levee mile 0.00-1.35.

LM Start	0.00	Rating **	U	Issue No.	82
LM End	1.82	Issue Type +	Ma	Location *	WS
Category	Earthen Levee			GPS Latitude/Longitude	
				Start	End
Item	Vegetation			38.200550 °	38.240999 °
				-121.544190 °	-121.551002 °
DWR ID	DWR_RD0556_02_s_2013_82				
Comment Code					
V2 : Remove the wild growth other than native grasses from the levee slopes.					
Inspector Comment					
Waterside levee slope and shoulder is covered with wild tree growth and other unsatisfactory vegetation.					

Photo 1 of 1 : FA_2016_RD0556_19_82_20161031_00051.jpg



RD 556 Unit 2 looking downstream of waterside slope.

*** Location**

LS : Land Side N/A : Not Applicable
WS : Water Side
CR : Crown

**** Rating**

A : Acceptable N : Not Inspected/Rated
M : Minimally Acceptable C : Corrected
U : Unacceptable A/W : Acceptable but Monitor & Maintain

+ Issue Type

Ma : Maintenance Deficiency
Ob : Design & System Obsolescence
En : Enforcement

**Flood Control Project Maintenance
Levee Inspections**

Levee Inspection Report By Mile - Fall 2016

Reclamation District No. 0556 Upper Andrus

Waterway	Bank	Unit Miles	Inspection Start/End	Inspector
Unit No. 02 Sacramento River	Left	5.72	09/23/2016 09/23/2016	Herman Phillips

LM Start	0.31	Rating **	M	Issue No.	12
LM End	0.60	Issue Type +	Ma	Location *	WS
Category	Supplemental			GPS Latitude/Longitude	
				Start	End
Item	2015 USACE Erosion Survey, DRAFT			38.238784 °	38.237862 °
				-121.523932 °	-121.529188 °
DWR ID	DWR_RD0556_02_f_2016_12				
Comment Code					
Inspector Comment					
2002 - Two rocked sections (150 ft long) at the downstream end.					
2005 - Lots of old brush boxes, some with established vegetation in the area behind the boxes. 2006 - Some small spots fixed with stone.					
2009 - Minimal new erosion, rock in the middle of the reach may be new. 2011 - Minor new erosion at the toe. 2013 - Minor new erosion.					
2015: Site is currently under construction. [2015 Site ID: SAC_26-0_L]					

Photo 1 of 1 : FA_2016_RD0556_19_12_20160919_00010.jpg



USACE 2013 Photo #1

LM Start	0.94	Rating **	M	Issue No.	88
LM End	0.94	Issue Type +	En	Location *	WS
Category	Supplemental			GPS Latitude/Longitude	
				Start	End
Item	DWR UCIP Field Study			38.238125 °	38.238125 °
				-121.535267 °	-121.535267 °
DWR ID					
Comment Code					
Inspector Comment					
FS_ID:12512					
DS_ID:20851					
EP_NO: 11186					
Repair Type: Non-Urgent					
Crossing Status: Found					
UCIP Comments: - a concrete box on LS- water is leaking from priming plastic tank and causing surface erosion on levee slope.					
FIELD_STRUCT_DESC: 4-inch pipe through levee, 4.3-feet below crown. Pump in pump house on berm. Siphon breaker and service pole on landward slope. A concrete spillbox with 3-8-inch openings. (ABO #11186 - Marks). O&M Manual Sac 103, June 1954.					
FS Date: 4/25/2013					

Photo 1 of 2 : UCIP_FA_2016_12512_20245.jpg



WS- pump house on levee berm

* Location LS : Land Side N/A : Not Applicable WS : Water Side CR : Crown	** Rating A : Acceptable M : Minimally Acceptable U : Unacceptable N : Not Inspected/Rated C : Corrected A/W : Acceptable but Monitor & Maintain	+ Issue Type Ma : Maintenance Deficiency Ob : Design & System Obsolescence En : Enforcement
--	---	---

**Flood Control Project Maintenance
Levee Inspections**

Levee Inspection Report By Mile - Fall 2016

Reclamation District No. 0556 Upper Andrus

Waterway	Bank	Unit Miles	Inspection Start/End	Inspector
Unit No. 02 Sacramento River	Left	5.72	09/23/2016 09/23/2016	Herman Phillips

LM Start	0.94	Rating **	M	Issue No.	88 (cont)	
LM End	0.94	Issue Type +	En	Location *	WS	
Category	Supplemental			GPS Latitude/Longitude		
				Start	End	
Item	DWR UCIP Field Study			38.238125 °	38.238125 °	
				-121.535267 °	-121.535267 °	
DWR ID						
Comment Code						
Inspector Comment						
FS_ID:12512						
DS_ID:20851						
EP_NO: 11186						
Repair Type: Non-Urgent						
Crossing Status: Found						
UCIP Comments: - a concrete box on LS- water is leaking from priming plastic tank and causing surface erosion on levee slope.						
FIELD_STRUCT_DESC: 4-inch pipe through levee, 4.3-feet below crown. Pump in pump house on berm. Siphon breaker and service pole on landward slope. A concrete spillbox with 3-8-inch openings. (ABO #11186 - Marks). O&M Manual Sac 103, June 1954.						
FS Date: 4/25/2013						

Photo 2 of 2 : UCIP_FA_2016_12512_20244.jpg



LS- steel pipe on a concrete box

LM Start	1.03	Rating **	M	Issue No.	2
LM End	1.15	Issue Type +	Ma	Location *	WS
Category	Supplemental			GPS Latitude/Longitude	
				Start	End
Item	2015 USACE Erosion Survey, DRAFT			38.238772 °	38.239265 °
				-121.536788 °	-121.538845 °
DWR ID	DWR_RD0556_02_f_2016_2				
Comment Code					
Inspector Comment					
1997 - Rock is in poor condition and has failed in many places. Scallops in berm with remnants of old rock in the toe area. 2005 - Brush boxes present. 2013 - Site extended upstream approximately 300 ft to include new erosion pockets. 2015: Minor new erosion at toe. [2015 Site ID: SAC_25-2_L]					

Photo 1 of 1 : FA_2016_RD0556_19_2_20160919_00002.jpg



USACE 2013 Photo #1

* Location LS : Land Side N/A : Not Applicable WS : Water Side CR : Crown	** Rating A : Acceptable M : Minimally Acceptable U : Unacceptable	N : Not Inspected/Rated C : Corrected A/W : Acceptable but Monitor & Maintain	+ Issue Type Ma : Maintenance Deficiency Ob : Design & System Obsolescence En : Enforcement
--	--	---	---

**Flood Control Project Maintenance
Levee Inspections**

Levee Inspection Report By Mile - Fall 2016

Reclamation District No. 0556 Upper Andrus

Waterway	Bank	Unit Miles	Inspection Start/End	Inspector
Unit No. 02 Sacramento River	Left	5.72	09/23/2016 09/23/2016	Herman Phillips

LM Start	1.22	Rating **	M	Issue No.	97
LM End	1.22	Issue Type +	En	Location *	WS
Category	Supplemental			GPS Latitude/Longitude	
				Start	End
Item	DWR UCIP Field Study			38.239327 °	38.239327 °
				-121.540190 °	-121.540190 °
DWR ID					

Comment Code

Inspector Comment

FS_ID:12573
DS_ID:20852
EP_NO: 11187
Repair Type: Non-Urgent
Crossing Status: Found
UCIP Comments: - gap between 6-inch pipe and 10-inch pipe needs to be sealed.
FIELD_STRUCT_DESC: A 6-inch steel pipe sleeved through 10-inch pipe through levee, 4.8 feet below crown. Pump on waterside of the levee on river bank. (ABO #11187 Machado).
FS Date: 4/25/2013

LM Start	1.22	Rating **	M	Issue No.	97 (cont)
LM End	1.22	Issue Type +	En	Location *	WS

Photo 1 of 2 : UCIP_FA_2016_12573_20381.jpg



LS- 6-inch steel pipe on orchard.

Photo 2 of 2 : UCIP_FA_2016_12573_20380.jpg



LS- 6-inch steel pipe sleeved through 10-inch steel pipe. 6" pipe is attached with air release valve.

* Location LS : Land Side N/A : Not Applicable WS : Water Side CR : Crown	** Rating A : Acceptable M : Minimally Acceptable U : Unacceptable	N : Not Inspected/Rated C : Corrected A/W : Acceptable but Monitor & Maintain	+ Issue Type Ma : Maintenance Deficiency Ob : Design & System Obsolescence En : Enforcement
--	--	---	---

**Flood Control Project Maintenance
Levee Inspections**

Levee Inspection Report By Mile - Fall 2016

Reclamation District No. 0556 Upper Andrus

Waterway	Bank	Unit Miles	Inspection Start/End	Inspector
Unit No. 02 Sacramento River	Left	5.72	09/23/2016 09/23/2016	Herman Phillips

LM Start	1.37	Rating **	M	Issue No.	42
LM End	2.61	Issue Type +	Ma	Location *	LS
Category	Earthen Levee			GPS Latitude/Longitude	
				Start	End
Item	Vegetation			38.239905 °	38.232545 °
				-121.542780 °	-121.557110 °
DWR ID	DWR_RD0556_02_f_2012_42				
Comment Code					
V2 : Remove the wild growth other than native grasses from the levee slopes.					
Inspector Comment					
Remove the wild growth other than native grasses from the landside slope.					

No Photos

LM Start	1.45	Rating **	M	Issue No.	5
LM End	1.59	Issue Type +	Ma	Location *	WS
Category	Supplemental			GPS Latitude/Longitude	
				Start	End
Item	2015 USACE Erosion Survey, DRAFT			38.240401 °	38.240772 °
				-121.544106 °	-121.546791 °
DWR ID	DWR_RD0556_02_f_2016_5				
Comment Code					
Inspector Comment					
1997 - Slow erosion of the berm at the waterline; bench below water. 2005 - Brush boxes present. 2010 - Minor new erosion. 2013 - There is little to no berm remaining at downstream end of this site. 2015: No observed changes. [2015 Site ID: SAC_24-8_L]					

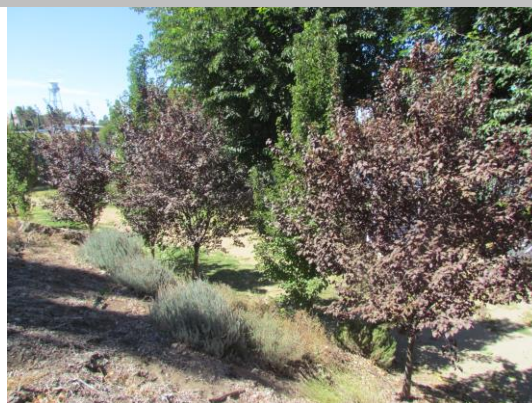
Photo 1 of 1 : FA_2016_RD0556_19_5_20160919_00005.jpg



USACE 2013 Photo #1

LM Start	2.16	Rating **	U	Issue No.	27
LM End	2.19	Issue Type +	En	Location *	WS
Category	Earthen Levee			GPS Latitude/Longitude	
				Start	End
Item	Vegetation			38.238477 °	38.238173 °
				-121.556202 °	-121.556575 °
DWR ID	DWR_RD0556_02_f_2016_27				
Comment Code					
V6 : Landscaping					
Inspector Comment					
Unauthorized tree planting on the waterside easement.					

Photo 1 of 2 : FA_2016_RD0556_19_27_20161031_00053.jpg



RD 556 Unit 2 levee mile 2.16-2.19 waterside toe of slope.

*** Location**

LS : Land Side N/A : Not Applicable
WS : Water Side
CR : Crown

**** Rating**

A : Acceptable N : Not Inspected/Rated
M : Minimally Acceptable C : Corrected
U : Unacceptable A/W : Acceptable but Monitor & Maintain

+ Issue Type

Ma : Maintenance Deficiency
Ob : Design & System Obsolescence
En : Enforcement

**Flood Control Project Maintenance
Levee Inspections**

Levee Inspection Report By Mile - Fall 2016

Reclamation District No. 0556 Upper Andrus

Waterway	Bank	Unit Miles	Inspection Start/End	Inspector
Unit No. 02 Sacramento River	Left	5.72	09/23/2016 09/23/2016	Herman Phillips

LM Start	2.16	Rating **	U	Issue No.	27 (cont)	
LM End	2.19	Issue Type +	En	Location *	WS	
Category	Earthen Levee			GPS Latitude/Longitude		
				Start	End	
Item	Vegetation			38.238477 °	38.238173 °	
				-121.556202 °	-121.556575 °	
DWR ID	DWR_RD0556_02_f _ 2016_27					
Comment Code						
V6 : Landscaping						
Inspector Comment						
Unauthorized tree planting on the waterside easement.						

Photo 2 of 2 : FA_2016_RD0556_19_27_20161031_00054.jpg



RD 556 Unit 2 levee mile 2.16-2.19 waterside toe looking downstream.

LM Start	2.28	Rating **	U	Issue No.	1
LM End	2.28	Issue Type +	En	Location *	LS
Category	Earthen Levee			GPS Latitude/Longitude	
				Start	End
Item	Vegetation			38.237156 °	38.237156 °
				-121.557640 °	-121.557640 °
DWR ID	DWR_RD0556_02_f_2015_1				
Comment Code					
V6 : Landscaping					
Inspector Comment					
These unauthorized planted redwoods have been reported in the past inspections, the District needs to have the owner remove them from the levee slope.					

Photo 1 of 1 : FA_2016_RD0556_19_1_20160919_00001.jpg



RD 556 Unit 2 Levee mile 2.28 unauthorized planting of redwood trees planted on the slope.

*** Location**

LS : Land Side N/A : Not Applicable
WS : Water Side
CR : Crown

**** Rating**

A : Acceptable N : Not Inspected/Rated
M : Minimally Acceptable C : Corrected
U : Unacceptable A/W : Acceptable but Monitor & Maintain

+ Issue Type

Ma : Maintenance Deficiency
Ob : Design & System Obsolescence
En : Enforcement

**Flood Control Project Maintenance
Levee Inspections**

Levee Inspection Report By Mile - Fall 2016

Reclamation District No. 0556 Upper Andrus

Waterway	Bank	Unit Miles	Inspection Start/End	Inspector
Unit No. 02 Sacramento River	Left	5.72	09/23/2016 09/23/2016	Herman Phillips

LM Start	2.42	Rating **	M	Issue No.	98
LM End	2.42	Issue Type +	En	Location *	LS
Category	Supplemental			GPS Latitude/Longitude	
				Start	End
Item	DWR UCIP Field Study			38.235261 °	38.235261 °
				-121.558059 °	-121.558059 °
DWR ID					
Comment Code					
Inspector Comment					
FS_ID:12574					
DS_ID:20859					
EP_NO: 11181					
Repair Type: Non-Urgent					
Crossing Status: Found					
UCIP Comments: - Needs to clean CMP riser for proper functioning of siphon breaker.					
FIELD_STRUCT_DESC: A 10-inch steel irrigation pipe through levee, 5.8 feet below crown. Pump and gate valve in pump house on waterward slope. Siphon breaker and service pole on landward slope. (ABO #11181- Collins.). O&M Manual Sac 103, June 1954.					
FS Date: 4/25/2013					

Photo 1 of 2 : UCIP_FA_2016_12574_20388.jpg



WS- pump house on levee berm

LM Start	2.42	Rating **	M	Issue No.	98 (cont)
LM End	2.42	Issue Type +	En	Location *	LS

Photo 2 of 2 : UCIP_FA_2016_12574_20387.jpg



WS- pump, and gate valve in pump house.

* Location LS : Land Side N/A : Not Applicable WS : Water Side CR : Crown	** Rating A : Acceptable M : Minimally Acceptable U : Unacceptable	N : Not Inspected/Rated C : Corrected A/W : Acceptable but Monitor & Maintain	+ Issue Type Ma : Maintenance Deficiency Ob : Design & System Obsolescence En : Enforcement
--	--	---	---

**Flood Control Project Maintenance
Levee Inspections**

Levee Inspection Report By Mile - Fall 2016

Reclamation District No. 0556 Upper Andrus

Waterway	Bank	Unit Miles	Inspection Start/End	Inspector
Unit No. 02 Sacramento River	Left	5.72	09/23/2016 09/23/2016	Herman Phillips

LM Start	2.69	Rating **	M	Issue No.	81
LM End	2.69	Issue Type +	Ma	Location *	WS
Category	Earthen Levee			GPS Latitude/Longitude	
				Start	End
Item	Encroachments			38.231465 °	38.231465 °
				-121.556490 °	-121.556490 °
DWR ID	DWR_RD0556_02_f_2015_81				
Comment Code					
TR : Tree or limb					
Inspector Comment					
Remove the discarded tree branches and tree from the water slope.					

No Photos

LM Start	2.70	Rating **	M	Issue No.	9
LM End	3.99	Issue Type +	Ma	Location *	LS
Category	Earthen Levee			GPS Latitude/Longitude	
				Start	End
Item	Trim / Thin Trees			38.231444 °	38.212918 °
				-121.556393 °	-121.556850 °
DWR ID	DWR_RD0556_02_s_2012_9				
Comment Code					
T3 : Trim and thin trees to allow visibility of the ground and room to flood fight.					
Inspector Comment					

No Photos

* Location LS : Land Side N/A : Not Applicable WS : Water Side CR : Crown	** Rating A : Acceptable M : Minimally Acceptable U : Unacceptable	N : Not Inspected/Rated C : Corrected A/W : Acceptable but Monitor & Maintain	+ Issue Type Ma : Maintenance Deficiency Ob : Design & System Obsolescence En : Enforcement
--	--	---	---

**Flood Control Project Maintenance
Levee Inspections**

Levee Inspection Report By Mile - Fall 2016

Reclamation District No. 0556 Upper Andrus

Waterway	Bank	Unit Miles	Inspection Start/End	Inspector
Unit No. 02 Sacramento River	Left	5.72	09/23/2016 09/23/2016	Herman Phillips

LM Start	2.84	Rating **	M	Issue No.	99
LM End	2.84	Issue Type +	En	Location *	LS
Category	Supplemental			GPS Latitude/Longitude	
				Start	End
Item	DWR UCIP Field Study			38.229524 °	38.229524 °
				-121.555404 °	-121.555404 °
DWR ID					

Comment Code

Inspector Comment

FS_ID:41713
DS_ID:20849
EP_NO: 11181
Repair Type: Non-Urgent
Crossing Status: Found
UCIP Comments: - Needs to clean siphon breaker CMP riser.
FIELD_STRUCT_DESC: A 6-inch pipe through levee, 6.0 feet below crown. Pressure tank in pump house on waterward berm. Service pole, siphon breaker and distribution box on landward slope. (ABO #11181 - Collins.)
FS Date: 4/25/2013

LM Start	2.84	Rating **	M	Issue No.	99 (cont)
LM End	2.84	Issue Type +	En	Location *	LS

Photo 1 of 2 : UCIP_FA_2016_41713_20284.jpg



WS- pump house on levee berm.

Photo 2 of 2 : UCIP_FA_2016_41713_20283.jpg



LS- siphon breaker in CMP riser on levee slope.

*** Location**

LS : Land Side N/A : Not Applicable
WS : Water Side
CR : Crown

**** Rating**

A : Acceptable N : Not Inspected/Rated
M : Minimally Acceptable C : Corrected
U : Unacceptable A/W : Acceptable but Monitor & Maintain

+ Issue Type

Ma : Maintenance Deficiency
Ob : Design & System Obsolescence
En : Enforcement

**Flood Control Project Maintenance
Levee Inspections**

Levee Inspection Report By Mile - Fall 2016

Reclamation District No. 0556 Upper Andrus

Waterway	Bank	Unit Miles	Inspection Start/End	Inspector
Unit No. 02 Sacramento River	Left	5.72	09/23/2016 09/23/2016	Herman Phillips

LM Start	2.93	Rating **	M	Issue No.	11
LM End	3.04	Issue Type +	Ma	Location *	WS
Category	Supplemental			GPS Latitude/Longitude	
				Start	End
Item	2015 USACE Erosion Survey, DRAFT			38.228202 °	38.226601 °
				-121.555502 °	-121.555605 °
DWR ID	DWR_RD0556_02_f_2016_11				
Comment Code					
Inspector Comment					
1997 - Few scallops in berm, some getting close to levee toe. 2005 - Brush boxes present. 2012 - More erosion of the toe since last year. 2015: No observed changes. [2015 Site ID: SAC_23-3_L]					

Photo 1 of 1 : FA_2016_RD0556_19_11_20160919_00009.jpg



USACE 2013 Photo #1

LM Start	3.07	Rating **	M	Issue No.	89
LM End	3.07	Issue Type +	En	Location *	WS
Category	Supplemental			GPS Latitude/Longitude	
				Start	End
Item	DWR UCIP Field Study			38.226225 °	38.226225 °
				-121.555236 °	-121.555236 °
DWR ID					
Comment Code					
Inspector Comment					
FS_ID:12525 DS_ID:20862 EP_NO: N/A Repair Type: Non-Urgent Crossing Status: Found UCIP Comments: - 9-inch steel pipe sleeved through 12-inch pipe.- needs to seal gap between two pipes. FIELD_STRUCT_DESC: A 9-inch steel pipe sleeved through 12-inch steel irrigation pipe through levee, 6.0 feet below crown. Pump on pile structure in stream. Steel walkway to pump, wood steps on waterward slope. Concrete spillbox with 2- 8 inch openings. (ABO #11193-Reid.). O&M Manual Sac 103, June 1954. FS Date: 4/25/2013					

Photo 1 of 2 : UCIP_FA_2016_12525_20290.jpg



WS- walkway, pump, and pipe on steel pile structure in the river.

* Location LS : Land Side N/A : Not Applicable WS : Water Side CR : Crown		** Rating A : Acceptable M : Minimally Acceptable U : Unacceptable N : Not Inspected/Rated C : Corrected A/W : Acceptable but Monitor & Maintain		+ Issue Type Ma : Maintenance Deficiency Ob : Design & System Obsolescence En : Enforcement	
--	--	---	--	---	--

**Flood Control Project Maintenance
Levee Inspections**

Levee Inspection Report By Mile - Fall 2016

Reclamation District No. 0556 Upper Andrus

Waterway	Bank	Unit Miles	Inspection Start/End	Inspector
Unit No. 02 Sacramento River	Left	5.72	09/23/2016 09/23/2016	Herman Phillips

LM Start	3.07	Rating **	M	Issue No.	89 (cont)	
LM End	3.07	Issue Type +	En	Location *	WS	
Category	Supplemental			GPS Latitude/Longitude		
				Start		End
Item	DWR UCIP Field Study			38.226225 °		38.226225 °
				-121.555236 °		-121.555236 °
DWR ID						
Comment Code						
Inspector Comment						
FS_ID:12525 DS_ID:20862 EP_NO: N/A Repair Type: Non-Urgent Crossing Status: Found UCIP Comments: - 9-inch steel pipe sleeved through 12-inch pipe.- needs to seal gap between two pipes. FIELD_STRUCT_DESC: A 9-inch steel pipe sleeved through 12-inch steel irrigation pipe through levee, 6.0 feet below crown. Pump on pile structure in stream. Steel walkway to pump, wood steps on waterward slope. Concrete spillbox with 2- 8 inch openings. (ABO #11193-Reid.). O&M Manual Sac 103, June 1954. FS Date: 4/25/2013						

Photo 2 of 2 : UCIP_FA_2016_12525_20289.jpg



WS- 9-inch pipe sleeved through 10 inch steel pipe.

LM Start	3.17	Rating **	M	Issue No.	10
LM End	3.28	Issue Type +	Ma	Location *	WS
Category	Supplemental			GPS Latitude/Longitude	
				Start	End
Item	2015 USACE Erosion Survey, DRAFT			38.224850 °	38.223233 °
				-121.555641 °	-121.555687 °
DWR ID	DWR_RD0556_02_f_2016_10				
Comment Code					
Inspector Comment					
2000 - Recently fallen cottonwood at the downstream end. 2005 - Empty brush boxes. 2011 - A few trees have fallen since last year. 2012 - Potential new tree popout since last year. 2013 - New erosion at downstream end of site and a recent tree pop-out observed. 2015: No observed changes. [2015 Site ID: SAC_23-2_L]					

Photo 1 of 1 : FA_2016_RD0556_19_10_20160919_00008.jpg



USACE 2013 Photo #1

* Location LS : Land Side N/A : Not Applicable WS : Water Side CR : Crown	** Rating A : Acceptable M : Minimally Acceptable U : Unacceptable	N : Not Inspected/Rated C : Corrected A/W : Acceptable but Monitor & Maintain	+ Issue Type Ma : Maintenance Deficiency Ob : Design & System Obsolescence En : Enforcement
--	--	---	---

**Flood Control Project Maintenance
Levee Inspections**

Levee Inspection Report By Mile - Fall 2016

Reclamation District No. 0556 Upper Andrus

Waterway	Bank	Unit Miles	Inspection Start/End	Inspector
Unit No. 02 Sacramento River	Left	5.72	09/23/2016 09/23/2016	Herman Phillips

LM Start	3.51	Rating **	M	Issue No.	90
LM End	3.51	Issue Type +	En	Location *	WS
Category	Supplemental			GPS Latitude/Longitude	
				Start	End
Item	DWR UCIP Field Study			38.219851 °	38.219851 °
				-121.556129 °	-121.556129 °
DWR ID					
Comment Code					
Inspector Comment					
FS_ID:12527					
DS_ID:20863					
EP_NO: 11181					
Repair Type: Non-Urgent					
Crossing Status: Found					
UCIP Comments: - needs to fix siphon breaker					
FIELD_STRUCT_DESC: A 10-inch steel irrigation pipe through levee,					
4.8 feet below crown. Steel walkway to pump on pile structure in					
stream. Siphon breaker on waterside and service pole on landward					
slope. A concrete spillbox with 2-15 inch openings on landside. (ABO #					
11181- Collins.). O&M Manual Sac 103, June 1954.					
FS Date: 4/25/2013					

LM Start	3.51	Rating **	M	Issue No.	90 (cont)
LM End	3.51	Issue Type +	En	Location *	WS

Photo 1 of 2 : UCIP_FA_2016_12527_20297.jpg



WS- pump, pipe, and walkway on steel structure in the stream.

Photo 2 of 2 : UCIP_FA_2016_12527_20296.jpg



WS- siphon breaker and abandoned CMP riser laying adjacent to it.

* Location LS : Land Side N/A : Not Applicable WS : Water Side CR : Crown	** Rating A : Acceptable M : Minimally Acceptable U : Unacceptable	N : Not Inspected/Rated C : Corrected A/W : Acceptable but Monitor & Maintain	+ Issue Type Ma : Maintenance Deficiency Ob : Design & System Obsolescence En : Enforcement
--	--	---	---

**Flood Control Project Maintenance
Levee Inspections**

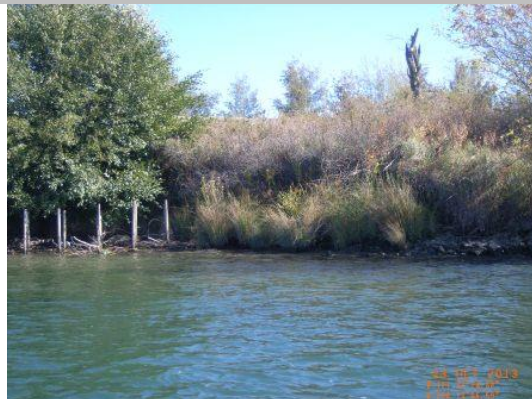
Levee Inspection Report By Mile - Fall 2016

Reclamation District No. 0556 Upper Andrus

Waterway	Bank	Unit Miles	Inspection Start/End	Inspector
Unit No. 02 Sacramento River	Left	5.72	09/23/2016 09/23/2016	Herman Phillips

LM Start	3.58	Rating **	M	Issue No.	8
LM End	3.64	Issue Type +	Ma	Location *	WS
Category	Supplemental			GPS Latitude/Longitude	
				Start	End
Item	2015 USACE Erosion Survey, DRAFT			38.218951 °	38.218104 °
				-121.556689 °	-121.556819 °
DWR ID	DWR_RD0556_02_f_2016_8				
Comment Code					
Inspector Comment					
1997 - Scallops into berm and very close to levee toe. 2005 - Brush boxes present. 2011 - New toe scour and freshly fallen tree. 2012 - New tree popout has taken significant portion of soil out of the levee. 2015: No observed changes. [2015 Site ID: SAC_22-7_L]					

Photo 1 of 1 : FA_2016_RD0556_19_8_20160919_00007.jpg



USACE 2013 Photo #1

LM Start	3.95	Rating **	M	Issue No.	4
LM End	4.12	Issue Type +	Ma	Location *	WS
Category	Supplemental			GPS Latitude/Longitude	
				Start	End
Item	2015 USACE Erosion Survey, DRAFT			38.213581 °	38.211112 °
				-121.557197 °	-121.557042 °
DWR ID	DWR_RD0556_02_f_2016_4				
Comment Code					
Inspector Comment					
2002 - Spot rock along berm, but not in the erosion pockets. 2005 - Some new minor stone revetment at the upstream end. Brush boxes present. 2006 - Currently installing new brush in downstream brush boxes. 2007 - Rock in middle portion for about 150 ft. 2010 - Some attempt at repairs but still has pockets of erosion. 2012 - More erosion along the toe. 2015: No observed changes. [2015 Site ID: SAC_22-5_L]					

Photo 1 of 1 : FA_2016_RD0556_19_4_20160919_00004.jpg



USACE 2013 Photo #1

* Location LS : Land Side N/A : Not Applicable WS : Water Side CR : Crown		** Rating A : Acceptable N : Not Inspected/Rated M : Minimally Acceptable C : Corrected U : Unacceptable A/W : Acceptable but Monitor & Maintain		+ Issue Type Ma : Maintenance Deficiency Ob : Design & System Obsolescence En : Enforcement	
--	--	---	--	---	--

**Flood Control Project Maintenance
Levee Inspections**

Levee Inspection Report By Mile - Fall 2016

Reclamation District No. 0556 Upper Andrus

Waterway	Bank	Unit Miles	Inspection Start/End	Inspector
Unit No. 02 Sacramento River	Left	5.72	09/23/2016 09/23/2016	Herman Phillips

LM Start	3.99	Rating **	M	Issue No.	91
LM End	3.99	Issue Type +	En	Location *	WS
Category	Supplemental			GPS Latitude/Longitude	
				Start	End
Item	DWR UCIP Field Study			38.213031 °	38.213031 °
				-121.556800 °	-121.556800 °
DWR ID					
Comment Code					
Inspector Comment					
FS_ID:12543 DS_ID:20864 EP_NO: 11197 Repair Type: Non-Urgent Crossing Status: Found UCIP Comments: Electric control panel in pump house.Needs cleaning of CMP riser on landside. FIELD_STRUCT_DESC: A 6-inch steel irrigation pipe through levee 6.5 feet below crown. Slanted pump on steel pile structure in the stream, walkway to the pump, and gate valve in pump house on waterward slope. Siphon breaker and service poles on landward slope. Concrete standpipe on landside. (ABO #11197- Souza.). O&M Manual Sac 103, June 1954. FS Date: 4/25/2013					

LM Start	3.99	Rating **	M	Issue No.	91 (cont)
LM End	3.99	Issue Type +	En	Location *	WS

Photo 1 of 2 : UCIP_FA_2016_12543_20302.jpg



WS- pipe and pump on steel pile structure. Steel walkway from pump house to the pump on steel structure.

Photo 2 of 2 : UCIP_FA_2016_12543_20301.jpg



LS- siphon breaker in CMP riser and concrete standpipe behind CMP riser.

* Location LS : Land Side N/A : Not Applicable WS : Water Side CR : Crown	** Rating A : Acceptable M : Minimally Acceptable U : Unacceptable	N : Not Inspected/Rated C : Corrected A/W : Acceptable but Monitor & Maintain	+ Issue Type Ma : Maintenance Deficiency Ob : Design & System Obsolescence En : Enforcement
--	--	---	---

**Flood Control Project Maintenance
Levee Inspections**

Levee Inspection Report By Mile - Fall 2016

Reclamation District No. 0556 Upper Andrus

Waterway	Bank	Unit Miles	Inspection Start/End	Inspector
Unit No. 02 Sacramento River	Left	5.72	09/23/2016 09/23/2016	Herman Phillips

LM Start	3.99	Rating **	U	Issue No.	86
LM End	3.99	Issue Type +	Ma	Location *	LS
Category	Earthen Levee			GPS Latitude/Longitude	
				Start	End
Item	Vegetation			38.212918 °	38.212918 °
				-121.556848 °	-121.556848 °
DWR ID	DWR_RD0556_02_f_2015_86				
Comment Code					
V2 : Remove the wild growth other than native grasses from the levee slopes.					
Inspector Comment					
Remove the patch of bamboo from the landside shoulder.					

Photo 1 of 1 : FA_2016_RD0556_19_86_20160919_00013.jpg



Landside levee shoulder levee mile 3.99 RD 556 Unit 2.

LM Start	4.21	Rating **	U	Issue No.	87
LM End	4.22	Issue Type +	Ma	Location *	LS
Category	Earthen Levee			GPS Latitude/Longitude	
				Start	End
Item	Vegetation			38.209818 °	38.209638 °
				-121.556818 °	-121.556835 °
DWR ID	DWR_RD0556_02_f_2015_87				
Comment Code					
V2 : Remove the wild growth other than native grasses from the levee slopes.					
Inspector Comment					
Remove the unsatisfactory patch of bamboo from the landside levee shoulder and slope.					

Photo 1 of 1 : FA_2016_RD0556_19_87_20160919_00014.jpg



RD 556 Unit 2 looking downstream from the landside shoulder levee miles 4.21-4.22.

*** Location**
LS : Land Side N/A : Not Applicable
WS : Water Side
CR : Crown

**** Rating**
A : Acceptable N : Not Inspected/Rated
M : Minimally Acceptable C : Corrected
U : Unacceptable A/W : Acceptable but Monitor & Maintain

+ Issue Type
Ma : Maintenance Deficiency
Ob : Design & System Obsolescence
En : Enforcement

**Flood Control Project Maintenance
Levee Inspections**

Levee Inspection Report By Mile - Fall 2016

Reclamation District No. 0556 Upper Andrus

Waterway	Bank	Unit Miles	Inspection Start/End	Inspector
Unit No. 02 Sacramento River	Left	5.72	09/23/2016 09/23/2016	Herman Phillips

LM Start	4.26	Rating **	M	Issue No.	92
LM End	4.26	Issue Type +	En	Location *	LS
Category	Supplemental			GPS Latitude/Longitude	
				Start	End
Item	DWR UCIP Field Study			38.209117 °	38.209117 °
				-121.556803 °	-121.556803 °
DWR ID					
Comment Code					
Inspector Comment					
FS_ID:12545 DS_ID:20865 EP_NO: 11194 Repair Type: Non-Urgent Crossing Status: Found UCIP Comments: - CMP riser found abandoned on LS slope. Due to dense vegetation siphon breaker could not be found.- Dense vegetation on both sides of the levee.- Oil leaks from pump set. FIELD_STRUCT_DESC: A 8-inch pipe through levee, 6.7 feet below crown. Pump and gate valve in pump house on waterward slope. Siphon breaker on landward slope. (ABO #11194- Robinson.). O&M Manual Sac 103, June 1954. FS Date: 4/25/2013					

LM Start	4.26	Rating **	M	Issue No.	92 (cont)
LM End	4.26	Issue Type +	En	Location *	LS

Photo 1 of 2 : UCIP_FA_2016_12545_20310.jpg



WS- pump house not visible due to the dense vegetation.

Photo 2 of 2 : UCIP_FA_2016_12545_20309.jpg



WS- pump house inside the dense vegetation.

* Location LS : Land Side N/A : Not Applicable WS : Water Side CR : Crown	** Rating A : Acceptable M : Minimally Acceptable U : Unacceptable	N : Not Inspected/Rated C : Corrected A/W : Acceptable but Monitor & Maintain	+ Issue Type Ma : Maintenance Deficiency Ob : Design & System Obsolescence En : Enforcement
--	--	---	---

**Flood Control Project Maintenance
Levee Inspections**

Levee Inspection Report By Mile - Fall 2016

Reclamation District No. 0556 Upper Andrus

Waterway	Bank	Unit Miles	Inspection Start/End	Inspector
Unit No. 02 Sacramento River	Left	5.72	09/23/2016 09/23/2016	Herman Phillips

LM Start	4.39	Rating **	M	Issue No.	40
LM End	4.63	Issue Type +	En	Location *	LS
Category	Earthen Levee			GPS Latitude/Longitude	
				Start	End
Item	Vegetation			38.207202 °	38.203693 °
				-121.556853 °	-121.556685 °
DWR ID	DWR_RD0556_02_s_2012_40				
Comment Code					
V6 : Landscaping					
Inspector Comment					
The landscape needs maintenance as wild growth has been allowed to grow inside the landscaped area.					

No Photos

LM Start	4.45	Rating **	M	Issue No.	7
LM End	4.49	Issue Type +	Ma	Location *	WS
Category	Supplemental			GPS Latitude/Longitude	
				Start	End
Item	2015 USACE Erosion Survey, DRAFT			38.206377 °	38.205729 °
				-121.557184 °	-121.557108 °
DWR ID	DWR_RD0556_02_f_2016_7				
Comment Code					
Inspector Comment					
2013 - Erosion pockets encroaching on levee foundation. 2015: No observed changes. [2015 Site ID: SAC_21-9_L]					

Photo 1 of 1 : FA_2016_RD0556_19_7_20160919_00006.jpg



USACE 2013 Photo #1

* Location LS : Land Side N/A : Not Applicable WS : Water Side CR : Crown	** Rating A : Acceptable M : Minimally Acceptable U : Unacceptable	N : Not Inspected/Rated C : Corrected A/W : Acceptable but Monitor & Maintain	+ Issue Type Ma : Maintenance Deficiency Ob : Design & System Obsolescence En : Enforcement
--	--	---	---

**Flood Control Project Maintenance
Levee Inspections**

Levee Inspection Report By Mile - Fall 2016

Reclamation District No. 0556 Upper Andrus

Waterway	Bank	Unit Miles	Inspection Start/End	Inspector
Unit No. 02 Sacramento River	Left	5.72	09/23/2016 09/23/2016	Herman Phillips

LM Start	4.54	Rating **	M	Issue No.	93
LM End	4.54	Issue Type +	En	Location *	WS
Category	Supplemental			GPS Latitude/Longitude	
				Start	End
Item	DWR UCIP Field Study			38.204974 °	38.204974 °
				-121.556789 °	-121.556789 °
DWR ID					
Comment Code					
Inspector Comment					
FS_ID:12546 DS_ID:20866 EP_NO: 11940 Repair Type: Non-Urgent Crossing Status: Found UCIP Comments: - Abandoned crossing.- Siphon breaker on LS not found due to dense vegetation, - An abandoned CMP riser and service pole found on LS.- It may need to be properly abandoned. FIELD_STRUCT_DESC: Abandoned 6-inch pipe through levee, 6.7 feet below crown. Pump and gate valve in pumphouse on waterward slope. Siphon breaker and service pole on landward slope. (ABO # 11940-Robinson.). O&M Manual Sac 103, June 1954. FS Date: 4/25/2013					

LM Start	4.54	Rating **	M	Issue No.	93 (cont)
LM End	4.54	Issue Type +	En	Location *	WS

Photo 1 of 2 : UCIP_FA_2016_12546_20314.jpg



WS- abandoned pump house on levee slope. Dense vegetation on levee slope.

Photo 2 of 2 : UCIP_FA_2016_12546_20313.jpg



WS- pipe daylight from levee slope to pump house.

* Location LS : Land Side N/A : Not Applicable WS : Water Side CR : Crown	** Rating A : Acceptable M : Minimally Acceptable U : Unacceptable	N : Not Inspected/Rated C : Corrected A/W : Acceptable but Monitor & Maintain	+ Issue Type Ma : Maintenance Deficiency Ob : Design & System Obsolescence En : Enforcement
--	--	---	---

**Flood Control Project Maintenance
Levee Inspections**

Levee Inspection Report By Mile - Fall 2016

Reclamation District No. 0556 Upper Andrus

Waterway	Bank	Unit Miles	Inspection Start/End	Inspector
Unit No. 02 Sacramento River	Left	5.72	09/23/2016 09/23/2016	Herman Phillips

LM Start	4.63	Rating **	M	Issue No.	38
LM End	4.84	Issue Type +	En	Location *	LS
Category	Earthen Levee			GPS Latitude/Longitude	
				Start	End
Item	Encroachments			38.203693 °	38.200593 °
				-121.556683 °	-121.557208 °
DWR ID	DWR_RD0556_02_s_2012_38				
Comment Code					
FE : Fence					
Inspector Comment					
Remove this old fence from the levee section landside.					

No Photos

LM Start	4.73	Rating **	M	Issue No.	94
LM End	4.73	Issue Type +	En	Location *	LS
Category	Supplemental			GPS Latitude/Longitude	
				Start	End
Item	DWR UCIP Field Study			38.202301 °	38.202301 °
				-121.556952 °	-121.556952 °
DWR ID					
Comment Code					
Inspector Comment					
FS_ID:12547 DS_ID:20867 EP_NO: 11199 Repair Type: Non-Urgent Crossing Status: Indicator Found UCIP Comments: - pump, gate valve and pumphouse not found on waterward slope.- an abandoned electric control panel found on WS.- may need to be properly abandoned. FIELD_STRUCT_DESC: A 6-inch steel irrigation pipe through levee, 6.5 feet below crown. Siphon and concrete spill box with 2- 8 inch openings. (ABO #11199- Tokoyoshi.). O&M Manual Sac 103, June 1954. FS Date: 4/25/2013					

Photo 1 of 2 : UCIP_FA_2016_12547_20320.jpg



LS- obstructed siphon breaker in CMP riser on levee slope.

* Location LS : Land Side N/A : Not Applicable WS : Water Side CR : Crown	** Rating A : Acceptable M : Minimally Acceptable U : Unacceptable N : Not Inspected/Rated C : Corrected A/W : Acceptable but Monitor & Maintain	+ Issue Type Ma : Maintenance Deficiency Ob : Design & System Obsolescence En : Enforcement
--	---	---

**Flood Control Project Maintenance
Levee Inspections**

Levee Inspection Report By Mile - Fall 2016

Reclamation District No. 0556 Upper Andrus

Waterway	Bank	Unit Miles	Inspection Start/End	Inspector
Unit No. 02 Sacramento River	Left	5.72	09/23/2016 09/23/2016	Herman Phillips

LM Start	4.73	Rating **	M	Issue No.	94 (cont)
LM End	4.73	Issue Type +	En	Location *	LS
Category	Supplemental			GPS Latitude/Longitude	
				Start	End
Item	DWR UCIP Field Study			38.202301°	38.202301°
				-121.556952°	-121.556952°
DWR ID					
Comment Code					
Inspector Comment					
FS_ID:12547 DS_ID:20867 EP_NO: 11199 Repair Type: Non-Urgent Crossing Status: Indicator Found UCIP Comments: - pump, gate valve and pumphouse not found on waterward slope.- an abandoned electric control panel found on WS.- may need to be properly abandoned. FIELD_STRUCT_DESC: A 6-inch steel irrigation pipe through levee, 6.5 feet below crown. Siphon and concrete spill box with 2- 8 inch openings. (ABO #11199- Tokoyoshi.). O&M Manual Sac 103, June 1954. FS Date: 4/25/2013					

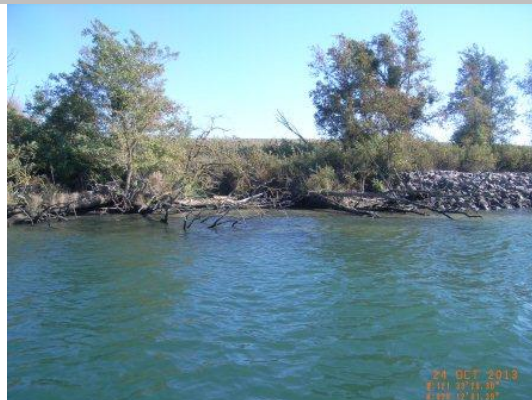
Photo 2 of 2 : UCIP_FA_2016_12547_20319.jpg



LS- concrete distribution box near levee toe.

LM Start	4.77	Rating **	M	Issue No.	3
LM End	4.88	Issue Type +	Ma	Location *	WS
Category	Supplemental			GPS Latitude/Longitude	
				Start	End
Item	2015 USACE Erosion Survey, DRAFT			38.201687 °	38.200225 °
				-121.557305 °	-121.557749 °
DWR ID	DWR_RD0556_02_f_2016_3				
Comment Code					
Inspector Comment					
1999 - Downstream 140 ft repaired with rock. 2010 - Lots of woody debris, but no changes to site. 2015: Site extended upstream due to erosion pockets. [2015 Site ID: SAC_21-5_L]					

Photo 1 of 1 : FA_2016_RD0556_19_3_20160919_00003.jpg



USACE 2013 Photo #1

* Location LS : Land Side N/A : Not Applicable WS : Water Side CR : Crown	** Rating A : Acceptable M : Minimally Acceptable U : Unacceptable	N : Not Inspected/Rated C : Corrected A/W : Acceptable but Monitor & Maintain	+ Issue Type Ma : Maintenance Deficiency Ob : Design & System Obsolescence En : Enforcement
--	--	---	---

**Flood Control Project Maintenance
Levee Inspections**

Levee Inspection Report By Mile - Fall 2016

Reclamation District No. 0556 Upper Andrus

Waterway	Bank	Unit Miles	Inspection Start/End	Inspector
Unit No. 02 Sacramento River	Left	5.72	09/23/2016 09/23/2016	Herman Phillips

LM Start	4.95	Rating **	M	Issue No.	95
LM End	4.95	Issue Type +	En	Location *	WS
Category	Supplemental			GPS Latitude/Longitude	
				Start	End
Item	DWR UCIP Field Study			38.199133°	38.199133°
				-121.557939°	-121.557939°
DWR ID					
Comment Code					
Inspector Comment					
FS_ID:12564 DS_ID:20868 EP_NO: 11191 Repair Type: Non-Urgent Crossing Status: Found UCIP Comments: - needs to fix CMP riser. FIELD_STRUCT_DESC: A 8-inch pipe through levee, 5.7 feet below crown. Pump on waterward slope, gate valve on berm. Siphon breaker and service pole on landward slope. (ABO #11191-Pacific Fruit Exchange.) FS Date: 4/25/2013					

Photo 1 of 2 : UCIP_FA_2016_12564_20347.jpg



WS- pump house on levee slope.

LM Start	4.95	Rating **	M	Issue No.	95 (cont)
LM End	4.95	Issue Type +	En	Location *	WS

Photo 2 of 2 : UCIP_FA_2016_12564_20346.jpg



WS- pump, pipe and gate valve in pump house.

* Location LS : Land Side N/A : Not Applicable WS : Water Side CR : Crown	** Rating A : Acceptable M : Minimally Acceptable U : Unacceptable	N : Not Inspected/Rated C : Corrected A/W : Acceptable but Monitor & Maintain	+ Issue Type Ma : Maintenance Deficiency Ob : Design & System Obsolescence En : Enforcement
--	--	---	---

**Flood Control Project Maintenance
Levee Inspections**

Levee Inspection Report By Mile - Fall 2016

Reclamation District No. 0556 Upper Andrus

Waterway	Bank	Unit Miles	Inspection Start/End	Inspector
Unit No. 02 Sacramento River	Left	5.72	09/23/2016 09/23/2016	Herman Phillips

LM Start	5.21	Rating **	U	Issue No.	96
LM End	5.21	Issue Type +	En	Location *	WS
Category	Supplemental			GPS Latitude/Longitude	
				Start	End
Item	DWR UCIP Field Study			38.195755 °	38.195755 °
				-121.560078 °	-121.560078 °
DWR ID					

Comment Code

Inspector Comment

FS_ID:12570
DS_ID:20869
EP_NO: 11185
Repair Type: Urgent
Crossing Status: Found
UCIP Comments: Large pit and erosion on WS levee berm.
FIELD_STRUCT_DESC: A 8-inch pipe through levee, 5.7 feet below crown. Pump and gate valve in pumphouse on waterward slope. Siphon breaker, concrete box, and service pole on landward slope. (ABO # 11185- Langhart.)
FS Date: 4/25/2013

LM Start	5.21	Rating **	U	Issue No.	96 (cont)
LM End	5.21	Issue Type +	En	Location *	WS

Photo 1 of 2 : UCIP_FA_2016_12570_20364.jpg



WS- pump house on levee slope

Photo 2 of 2 : UCIP_FA_2016_12570_20363.jpg



WS- pipe daylight from the levee.

*** Location**

LS : Land Side N/A : Not Applicable
WS : Water Side
CR : Crown

**** Rating**

A : Acceptable N : Not Inspected/Rated
M : Minimally Acceptable C : Corrected
U : Unacceptable A/W : Acceptable but Monitor & Maintain

+ Issue Type

Ma : Maintenance Deficiency
Ob : Design & System Obsolescence
En : Enforcement

**Flood Control Project Maintenance
Levee Inspections**

Levee Inspection Report By Mile - Fall 2016

Reclamation District No. 0556 Upper Andrus

Waterway	Bank	Unit Miles	Inspection Start/End	Inspector
Unit No. 02 Sacramento River	Left	5.72	09/23/2016 09/23/2016	Herman Phillips

LM Start	5.40	Rating **	M	Issue No.	31
LM End	5.44	Issue Type +	En	Location *	LS
Category	Earthen Levee			GPS Latitude/Longitude	
				Start	End
Item	Vegetation			38.193760 °	38.193445 °
				-121.562458 °	-121.562895 °
DWR ID	DWR_RD0556_02_s_2012_31				
Comment Code					
V6 : Landscaping					
Inspector Comment					
Control the wild growth within the landscaping. This choice of plant has taken over the levee slope and shoulder making it imposible to view the slope and ground.					

Photo 1 of 1 : FA_2016_RD0556_19_31_20161101_00055.jpg



RD 556 Unit 2 levee mile 5.40-5.44 landside levee shoulder and slope looking downstream.

LM Start	5.45	Rating **	M	Issue No.	20
LM End	5.45	Issue Type +	Ma	Location *	WS
Category	Earthen Levee			GPS Latitude/Longitude	
				Start	End
Item	Encroachments			38.193391 °	38.193391 °
				-121.563159 °	-121.563159 °
DWR ID	DWR_RD0556_02_s_2012_20				
Comment Code					
TR : Tree or limb					
Inspector Comment					
Cut up the fallen tree and remove it from the waterside levee section.					

No Photos

LM Start	5.53	Rating **	A	Issue No.	28
LM End	5.70	Issue Type +	Ma	Location *	LS
Category	Earthen Levee			GPS Latitude/Longitude	
				Start	End
Item	Vegetation			38.192782 °	38.191926 °
				-121.564387 °	-121.567387 °
DWR ID	DWR_RD0556_02_f_2016_28				
Comment Code					
V1 : Control annual grass and weeds on the levee slopes and easements.					
Inspector Comment					
Levee miles 5.53-5.70 no unwanted vegetation on the landside levee slope. Good job.					

No Photos

* Location LS : Land Side N/A : Not Applicable WS : Water Side CR : Crown		** Rating A : Acceptable M : Minimally Acceptable U : Unacceptable N : Not Inspected/Rated C : Corrected A/W : Acceptable but Monitor & Maintain		+ Issue Type Ma : Maintenance Deficiency Ob : Design & System Obsolescence En : Enforcement	
--	--	---	--	---	--

**Flood Control Project Maintenance
Levee Inspections**

Levee Inspection Report By Mile - Fall 2016

Reclamation District No. 0556 Upper Andrus

Waterway	Bank	Unit Miles	Inspection Start/End	Inspector
Unit No. 02 Sacramento River	Left	5.72	09/23/2016 09/23/2016	Herman Phillips

* Location LS : Land Side N/A : Not Applicable WS : Water Side CR : Crown	** Rating A : Acceptable N : Not Inspected/Rated M : Minimally Acceptable C : Corrected U : Unacceptable A/W : Acceptable but Monitor & Maintain	+ Issue Type Ma : Maintenance Deficiency Ob : Design & System Obsolescence En : Enforcement
--	---	---