

**Flood Control Project Maintenance
Levee Inspections**

Fall 2014 Levee Maintenance Deficiency Summary Report

Overall LMA & Unit Ratings, including USACE Erosion Survey

Sacramento River Basin

RD0556	Overall LMA Rating	Total LMA Miles						
Reclamation District No. 0556 Upper Andrus	U	11.20						
Rated Item	Maintenance Deficiency				Enforcement		Design & System Obsolescence	
	M Miles	U Miles	M + 4U Miles	Threshold %	M Miles	U Miles	M Miles	U Miles
<i>Earthen Levee</i>								
Vegetation	46.06	5.09	66.42	593.01%	0.72			
Trim / Thin Trees	6.73	2.94	18.49	165.08%				
Encroachments		0.01	0.04	0.36%	1.08	0.14		
Animal Control	3.63	0.01	3.67	32.77%				
Erosion / Bank Caving	0.06		0.06	0.54%				
Operations & Maintenance Manuals	0.11		0.11	0.98%				
Emergency Supplies & Equipment	0.11		0.11	0.98%				
Flood Preparedness & Training	0.11		0.11	0.98%				
<i>Supplemental</i>								
USACE Erosion Survey	1.03		1.03	9.20%				
DWR UCIP Field Study					0.10	0.01		
<i>LMA Totals:</i>	57.85	8.05	90.05	803.98%	1.90	0.15	0.00	0.00

Unit No. 01 Georgiana Slough RB	Overall Unit Rating	Total Unit Miles						
RD0556	U	5.48						
Rated Item	Maintenance Deficiency				Enforcement		Design & System Obsolescence	
	M Miles	U Miles	M + 4U Miles	Threshold %	M Miles	U Miles	M Miles	U Miles
<i>Earthen Levee</i>								
Vegetation	12.88	4.12	29.36	535.53%	0.35			
Trim / Thin Trees	1.24		1.24	22.62%				
Encroachments		0.01	0.04	0.73%	0.64	0.14		
Animal Control	3.63	0.01	3.67	66.94%				
Erosion / Bank Caving	0.06		0.06	1.09%				
<i>Supplemental</i>								
USACE Erosion Survey	0.17		0.17	3.10%				
<i>Unit Totals:</i>	17.98	4.14	34.54	630.01%	0.99	0.14	0.00	0.00

Unit No. 02 Sacramento River LB	Overall Unit Rating	Total Unit Miles						
RD0556	U	5.72						
Rated Item	Maintenance Deficiency				Enforcement		Design & System Obsolescence	
	M Miles	U Miles	M + 4U Miles	Threshold %	M Miles	U Miles	M Miles	U Miles
<i>Earthen Levee</i>								
Vegetation	33.18	0.97	37.06	648.12%	0.37			
Trim / Thin Trees	5.49	2.94	17.25	301.68%				
Encroachments					0.44			
<i>Supplemental</i>								
USACE Erosion Survey	0.86		0.86	15.04%				
DWR UCIP Field Study					0.10	0.01		
<i>Unit Totals:</i>	39.53	3.91	55.17	964.84%	0.91	0.01	0.00	0.00

**Flood Control Project Maintenance
Levee Inspections**
LMA District Cover Sheet
Fall 2014 Levee Inspection Results

Reclamation District No. 0556 Upper Andrus

	Spring (March - May)	Summer ** (June - August)	Fall (September - November)	Winter ** (December - February)
* Overall LMA Rating (Fall Only)			U	

** Non-receipt of Summer or Winter Inspection Reports may effect overall annual rating.

*

SPRING INSPECTIONS: Overall maintenance ratings are not determined for the spring inspection results. Individual maintenance deficiencies are rated using the same criteria in the spring and in the fall.

FALL INSPECTIONS: The overall maintenance rating shown above is based on operation and maintenance deficiencies identified within the attached unit inspection reports. This rating is not intended to be an indication of risk.

Comments

**Flood Control Project Maintenance
Levee Inspections**

Unit Cover Sheet

Fall 2014 Levee Inspection Results

Reclamation District No. 0556 Upper Andrus

Waterway			Bank	Unit Miles
Unit No. 01 Georgiana Slough			Right	5.48
	Spring (March - May)	Summer (June - August)	(September - November) Fall	Winter (December - February)
Unit Maintenance Rating (Fall Only)			U	
Date of Inspection	04/10/2014 - 04/10/2014		10/30/2014 - 10/30/2014	
DWR Inspector	Herman Phillips		Herman Phillips	
Accompanied By	DuWain Silva RD 556		DuWain Silva RD 556	

Summer & Winter Inspections

The Local Maintaining Agency (LMA) is responsible for summer and winter inspections. The LMA is required to submit a report regarding summer and winter inspections to the California Department of Water Resources (DWR).

DWR must be informed on the:

- a) completion of the inspection
- b) any changes other than the results of normal maintenance
- c) corrections to deficiencies noted in this report

If additional items are noted, further documentation of those items must also be submitted.

The LMA should submit this information to DWR using the LMA web application tool available at:

<http://cdec.water.ca.gov/lma.html>

If the LMA is unable to submit information on this webpage, please contact DWR for assistance.

The LMA should submit the information and any associated documentation by September 30 for summer inspections and March 31 for winter inspections.

**Flood Control Project Maintenance
Levee Inspections**

Levee Inspection Report By Mile - Fall 2014

Reclamation District No. 0556 Upper Andrus

Waterway	Bank	Unit Miles	Inspection Start/End	Inspector
Unit No. 01 Georgiana Slough	Right	5.48	10/30/2014 10/30/2014	Herman Phillips

LM Start		Rating **	M	Issue No.	3
LM End		Issue Type +	Ma	Location *	WS
Category	Earthen Levee		GPS Latitude/Longitude		
			Start	End	
Item	Flood Preparedness & Training			°	°
				°	°
DWR ID	DWR_RD0556_01_f_2014_3				
Action/Comments					
Inspector Comments: The members in the district have not been flood fight trained recently according to the district manager.					

No Photos

LM Start		Rating **	M	Issue No.	6
LM End		Issue Type +	Ma	Location *	WS
Category	Earthen Levee		GPS Latitude/Longitude		
			Start	End	
Item	Operations & Maintenance Manuals			°	°
				°	°
DWR ID	DWR_RD0556_01_s_2012_6				
Action/Comments					
Inspector Comments: District president has the O&M Manual.					

No Photos

LM Start		Rating **	M	Issue No.	8
LM End		Issue Type +	Ma	Location *	N/A
Category	Earthen Levee		GPS Latitude/Longitude		
			Start	End	
Item	Emergency Supplies & Equipment			°	°
				°	°
DWR ID	DWR_RD0556_01_f_2014_8				
Action/Comments					
Inspector Comments: According to the district manager, when they need supplies they will order them, there are no supplies stored.					

No Photos

*** Location**

LS : Land Side N/A : Not Applicable
WS : Water Side
CR : Crown

**** Rating**

A : Acceptable N : Not Inspected/Rated
M : Minimally Acceptable C : Corrected
U : Unacceptable A/W : Acceptable but Monitor & Maintain

+ Issue Type

Ma : Maintenance Deficiency
Ob : Design & System Obsolescence
En : Enforcement

Levee Inspection Report By Mile - Fall 2014

Waterway	Bank	Unit Miles	Inspection Start/End	Inspector
Unit No. 01 Georgiana Slough	Right	5.48	10/30/2014 10/30/2014	Herman Phillips

Photo 1 of 1 : FA_2014_RD0556_18_23_20141113_00013.jpg



Looking downstream from levee mile 0.21 at the waterside slope. Tall weeds present beyond bridge.

Photo 1 of 1 : FA_2014_RD0556_18_26_20141113_00014.jpg



Looking downstream from levee mile 0.21 at tall weeds on landside slope.

Photo 1 of 1 : FA 2014 RD0556 18 30 20141113 00015.jpg



Woody tree growth on waterside, young willow trees.

* Location	** Rating	+ Issue Type
LS : Land Side N/A : Not Applicable WS : Water Side CR : Crown	A : Acceptable N : Not Inspected/Rated M : Minimally Acceptable C : Corrected U : Unacceptable A/W : Acceptable but Monitor & Maintain	Ma : Maintenance Deficiency Ob : Design & System Obsolescence En : Enforcement

**Flood Control Project Maintenance
Levee Inspections**

Levee Inspection Report By Mile - Fall 2014

Reclamation District No. 0556 Upper Andrus

Waterway	Bank	Unit Miles	Inspection Start/End	Inspector
Unit No. 01 Georgiana Slough	Right	5.48	10/30/2014 10/30/2014	Herman Phillips

LM Start	0.42	Rating **	U	Issue No.	61
LM End	0.42	Issue Type +	Ma	Location *	WS
Category	Earthen Levee			GPS Latitude/Longitude	
				Start	End
Item	Encroachments			38.233775 °	38.233775 °
				-121.520351 °	-121.520351 °
DWR ID	DWR_RD0556_01_f_2012_61				
Action/Comments					
Tree or limb					
Inspector Comments: At this location there is a dead tree. Remove it from the levee section.					

Photo 1 of 1 : FA_2014_RD0556_18_61_20141113_00016.jpg



This fallen down tree remains to be an issue, District need to remove from levee section.

LM Start	0.47	Rating **	M	Issue No.	32
LM End	0.57	Issue Type +	Ma	Location *	LS
Category	Earthen Levee			GPS Latitude/Longitude	
				Start	End
Item	Trim / Thin Trees			38.233138 °	38.232032 °
				-121.520958 °	-121.522003 °
DWR ID	DWR_RD0556_01_f_2014_32				
Action/Comments					
Trim trees to at least five feet above ground level.					

No Photos

LM Start	0.49	Rating **	M	Issue No.	10
LM End	0.49	Issue Type +	Ma	Location *	LS
Category	Earthen Levee			GPS Latitude/Longitude	
				Start	End
Item	Vegetation			38.232899 °	38.232899 °
				-121.521250 °	-121.521254 °
DWR ID	DWR_RD0556_01_f_2012_10				
Action/Comments					
Remove the wild growth other than native grasses from the levee slopes.					

No Photos

* Location
LS : Land Side N/A : Not Applicable
WS : Water Side
CR : Crown

** Rating
A : Acceptable N : Not Inspected/Rated
M : Minimally Acceptable C : Corrected
U : Unacceptable A/W : Acceptable but Monitor & Maintain

+ Issue Type
Ma : Maintenance Deficiency
Ob : Design & System Obsolescence
En : Enforcement

**Flood Control Project Maintenance
Levee Inspections**

Levee Inspection Report By Mile - Fall 2014

Reclamation District No. 0556 Upper Andrus

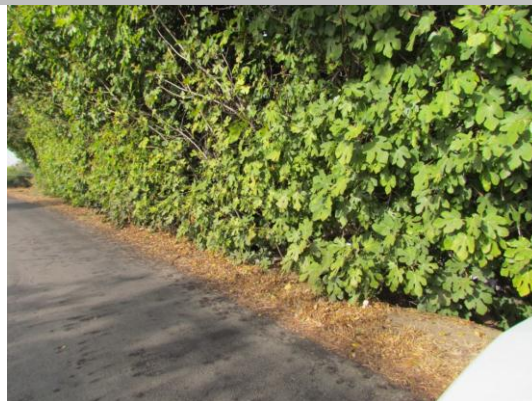
Waterway	Bank	Unit Miles	Inspection Start/End	Inspector
Unit No. 01 Georgiana Slough	Right	5.48	10/30/2014 10/30/2014	Herman Phillips

LM Start	0.56	Rating **	M	Issue No.	382
LM End	0.89	Issue Type +	Ma	Location *	LS
Category	Earthen Levee			GPS Latitude/Longitude	
				Start	End
Item	Vegetation			38.232093 °	38.228689 °
				-121.522042 °	-121.526053 °
DWR ID	DWR_RD0556_01_f_2013_382				
Action/Comments					
Remove the wild growth other than native grasses from the levee slopes.					

No Photos

LM Start	0.61	Rating **	U	Issue No.	376
LM End	0.90	Issue Type +	Ma	Location *	LS
Category	Earthen Levee			GPS Latitude/Longitude	
				Start	End
Item	Vegetation			38.231535 °	38.228602 °
				-121.522675 °	-121.526289 °
DWR ID	DWR_RD0556_01_s_2014_376				
Action/Comments					
Trees / Woody Vegetation					
Inspector Comments: District should remove these unwanted fig trees from the landside slope, unable to see ground.					

Photo 1 of 1 : FA_2014_RD0556_18_376_20141113_00017.jpg



Remove unwanted fig trees present on the landside slope.

LM Start	0.66	Rating **	M	Issue No.	7
LM End	1.34	Issue Type +	Ma	Location *	WS
Category	Earthen Levee			GPS Latitude/Longitude	
				Start	End
Item	Vegetation			38.231011 °	38.227508 °
				-121.523246 °	-121.532396 °
DWR ID	DWR_RD0556_01_s_2013_7				
Action/Comments					
Remove the wild growth other than native grasses from the levee slopes.					

No Photos

* Location LS : Land Side N/A : Not Applicable WS : Water Side CR : Crown	** Rating A : Acceptable M : Minimally Acceptable U : Unacceptable	N : Not Inspected/Rated C : Corrected A/W : Acceptable but Monitor & Maintain	+ Issue Type Ma : Maintenance Deficiency Ob : Design & System Obsolescence En : Enforcement
--	--	---	---

**Flood Control Project Maintenance
Levee Inspections**

Levee Inspection Report By Mile - Fall 2014

Reclamation District No. 0556 Upper Andrus

Waterway	Bank	Unit Miles	Inspection Start/End	Inspector
Unit No. 01 Georgiana Slough	Right	5.48	10/30/2014 10/30/2014	Herman Phillips

LM Start	0.80	Rating **	M	Issue No.	12
LM End	3.35	Issue Type +	Ma	Location *	LS
Category	Earthen Levee			GPS Latitude/Longitude	
				Start	End
Item	Animal Control			38.229459 °	38.208959 °
				-121.524805 °	-121.541368 °
DWR ID	DWR_RD0556_01_s_2012_12				
Action/Comments					
Exterminate rodents and backfill and compact or grout burrows.					

No Photos

LM Start	0.81	Rating **	M	Issue No.	19
LM End	0.84	Issue Type +	Ma	Location *	LS
Category	Earthen Levee			GPS Latitude/Longitude	
				Start	End
Item	Trim / Thin Trees			38.229312 °	38.229119 °
				-121.525001 °	-121.525443 °
DWR ID	DWR_RD0556_01_s_2013_19				
Action/Comments					
Thin trees to allow visibility of the ground and room to flood fight.					

No Photos

LM Start	0.87	Rating **	M	Issue No.	33
LM End	0.88	Issue Type +	Ma	Location *	LS
Category	Earthen Levee			GPS Latitude/Longitude	
				Start	End
Item	Vegetation			38.228861 °	38.228744 °
				-121.525826 °	-121.525897 °
DWR ID	DWR_RD0556_01_f_2012_33				
Action/Comments					
Remove the wild growth other than native grasses from the levee slopes.					

No Photos

*** Location**
 LS : Land Side N/A : Not Applicable
 WS : Water Side
 CR : Crown

**** Rating**
 A : Acceptable N : Not Inspected/Rated
 M : Minimally Acceptable C : Corrected
 U : Unacceptable A/W : Acceptable but Monitor & Maintain

+ Issue Type
 Ma : Maintenance Deficiency
 Ob : Design & System Obsolescence
 En : Enforcement

**Flood Control Project Maintenance
Levee Inspections**

Levee Inspection Report By Mile - Fall 2014

Reclamation District No. 0556 Upper Andrus

Waterway	Bank	Unit Miles	Inspection Start/End	Inspector
Unit No. 01 Georgiana Slough	Right	5.48	10/30/2014 10/30/2014	Herman Phillips

LM Start	0.89	Rating **	M	Issue No.	5
LM End	0.90	Issue Type +	En	Location *	LS
Category	Earthen Levee			GPS Latitude/Longitude	
				Start	End
Item	Vegetation			38.228680 °	38.228618 °
				-121.526200 °	-121.526290 °
DWR ID	DWR_RD0556_01_s_2012_5				
Action/Comments					
Landscaping					

No Photos

LM Start	0.90	Rating **	M	Issue No.	38
LM End	0.92	Issue Type +	Ma	Location *	LS
Category	Earthen Levee			GPS Latitude/Longitude	
				Start	End
Item	Vegetation			38.228603 °	38.228420 °
				-121.526253 °	-121.526542 °
DWR ID	DWR_RD0556_01_f_2014_38				
Action/Comments					
Remove the wild growth other than native grasses from the levee slopes.					

No Photos

LM Start	0.94	Rating **	M	Issue No.	41
LM End	1.11	Issue Type +	Ma	Location *	LS
Category	Earthen Levee			GPS Latitude/Longitude	
				Start	End
Item	Trim / Thin Trees			38.228160 °	38.227090 °
				-121.526810 °	-121.528472 °
DWR ID	DWR_RD0556_01_f_2014_41				
Action/Comments					
Trim trees to at least five feet above ground level.					

No Photos

* Location LS : Land Side N/A : Not Applicable WS : Water Side CR : Crown	** Rating A : Acceptable M : Minimally Acceptable U : Unacceptable	N : Not Inspected/Rated C : Corrected A/W : Acceptable but Monitor & Maintain	+ Issue Type Ma : Maintenance Deficiency Ob : Design & System Obsolescence En : Enforcement
--	--	---	---

**Flood Control Project Maintenance
Levee Inspections**

Levee Inspection Report By Mile - Fall 2014

Reclamation District No. 0556 Upper Andrus

Waterway	Bank	Unit Miles	Inspection Start/End	Inspector
Unit No. 01 Georgiana Slough	Right	5.48	10/30/2014 10/30/2014	Herman Phillips

LM Start	0.95	Rating **	M	Issue No.	1
LM End	1.22	Issue Type +	Ma	Location *	LS
Category	Earthen Levee			GPS Latitude/Longitude	
				Start	End
Item	Animal Control			38.228016 °	38.227854 °
				-121.526868 °	-121.530291 °
DWR ID	DWR_RD0556_01_f_2014_1				
Action/Comments					
Exterminate rodents and backfill and compact or grout burrows.					

No Photos

LM Start	1.04	Rating **	M	Issue No.	36
LM End	1.27	Issue Type +	Ma	Location *	LS
Category	Earthen Levee			GPS Latitude/Longitude	
				Start	End
Item	Trim / Thin Trees			38.226780 °	38.227966 °
				-121.527465 °	-121.531176 °
DWR ID	DWR_RD0556_01_f_2012_36				
Action/Comments					
Thin trees to allow visibility of the ground and room to flood fight.					

No Photos

LM Start	1.08	Rating **	M	Issue No.	14
LM End	1.08	Issue Type +	Ma	Location *	LS
Category	Earthen Levee			GPS Latitude/Longitude	
				Start	End
Item	Erosion / Bank Caving			38.226887 °	38.226887 °
				-121.528022 °	-121.528022 °
DWR ID	DWR_RD0556_01_s_2012_14				
Action/Comments					
Note and monitor erosion site.					

No Photos

* Location LS : Land Side N/A : Not Applicable WS : Water Side CR : Crown	** Rating A : Acceptable M : Minimally Acceptable U : Unacceptable	N : Not Inspected/Rated C : Corrected A/W : Acceptable but Monitor & Maintain	+ Issue Type Ma : Maintenance Deficiency Ob : Design & System Obsolescence En : Enforcement
--	--	---	---

**Flood Control Project Maintenance
Levee Inspections**

Levee Inspection Report By Mile - Fall 2014

Reclamation District No. 0556 Upper Andrus

Waterway	Bank	Unit Miles	Inspection Start/End	Inspector
Unit No. 01 Georgiana Slough	Right	5.48	10/30/2014 10/30/2014	Herman Phillips

LM Start	1.15	Rating **	M	Issue No.	43
LM End	1.30	Issue Type +	Ma	Location *	LS
Category	Earthen Levee			GPS Latitude/Longitude	
				Start	End
Item	Trim / Thin Trees			38.227440 °	38.227788 °
				-121.529183 °	-121.531825 °
DWR ID	DWR_RD0556_01_f_2014_43				
Action/Comments					
Trim trees to at least five feet above ground level.					

No Photos

LM Start	1.27	Rating **	M	Issue No.	37
LM End	1.27	Issue Type +	Ma	Location *	LS
Category	Earthen Levee			GPS Latitude/Longitude	
				Start	End
Item	Erosion / Bank Caving			38.227967 °	38.227967 °
				-121.531180 °	-121.531180 °
DWR ID	DWR_RD0556_01_f_2012_37				
Action/Comments					
Note and monitor erosion site.					

No Photos

LM Start	1.30	Rating **	M	Issue No.	45
LM End	1.30	Issue Type +	Ma	Location *	LS
Category	Earthen Levee			GPS Latitude/Longitude	
				Start	End
Item	Animal Control			38.227788 °	38.227788 °
				-121.531825 °	-121.531825 °
DWR ID	DWR_RD0556_01_f_2014_45				
Action/Comments					
Exterminate rodents and backfill and compact or grout burrows.					

No Photos

* Location LS : Land Side N/A : Not Applicable WS : Water Side CR : Crown		** Rating A : Acceptable N : Not Inspected/Rated M : Minimally Acceptable C : Corrected U : Unacceptable A/W : Acceptable but Monitor & Maintain		+ Issue Type Ma : Maintenance Deficiency Ob : Design & System Obsolescence En : Enforcement
--	--	---	--	---

**Flood Control Project Maintenance
Levee Inspections**

Levee Inspection Report By Mile - Fall 2014

Reclamation District No. 0556 Upper Andrus

Waterway	Bank	Unit Miles	Inspection Start/End	Inspector
Unit No. 01 Georgiana Slough	Right	5.48	10/30/2014 10/30/2014	Herman Phillips

LM Start	1.32	Rating **	M	Issue No.	46
LM End	1.34	Issue Type +	En	Location *	LS
Category	Earthen Levee			GPS Latitude/Longitude	
				Start	End
Item	Encroachments			38.227633 °	38.227538 °
				-121.532160 °	-121.532397 °
DWR ID	DWR_RD0556_01_f_2014_46				
Action/Comments					
Landscape Irrigation					

No Photos

LM Start	1.33	Rating **	M	Issue No.	384
LM End	1.33	Issue Type +	Ma	Location *	LS
Category	Earthen Levee			GPS Latitude/Longitude	
				Start	End
Item	Trim / Thin Trees			38.227576 °	38.227561 °
				-121.532293 °	-121.532306 °
DWR ID	DWR_RD0556_01_f_2013_384				
Action/Comments					
Trim trees to at least five feet above ground level.					

No Photos

LM Start	1.34	Rating **	U	Issue No.	27
LM End	1.36	Issue Type +	En	Location *	LS
Category	Earthen Levee			GPS Latitude/Longitude	
				Start	End
Item	Encroachments			38.227521 °	38.227320 °
				-121.532393 °	-121.532710 °
DWR ID	DWR_RD0556_01_s_2013_27				
Action/Comments					
Debris					
Inspector Comments: Asphalt dumped along toe of levee. Issue not removed 10-30-2014 Fall inspection.					

Photo 1 of 1 : FA_2014_RD0556_18_27_20141030_00005.jpg



Unauthorized asphalt dumping on the levee toe. No new photo taken; during the fall inspection 2014 this issue was still there.

*** Location**
LS : Land Side N/A : Not Applicable
WS : Water Side
CR : Crown

**** Rating**
A : Acceptable N : Not Inspected/Rated
M : Minimally Acceptable C : Corrected
U : Unacceptable A/W : Acceptable but Monitor & Maintain

+ Issue Type
Ma : Maintenance Deficiency
Ob : Design & System Obsolescence
En : Enforcement

**Flood Control Project Maintenance
Levee Inspections**

Levee Inspection Report By Mile - Fall 2014

Reclamation District No. 0556 Upper Andrus

Waterway	Bank	Unit Miles	Inspection Start/End	Inspector
Unit No. 01 Georgiana Slough	Right	5.48	10/30/2014 10/30/2014	Herman Phillips

LM Start	1.34	Rating **	M	Issue No.	381
LM End	1.36	Issue Type +	Ma	Location *	WS
Category	Earthen Levee			GPS Latitude/Longitude	
				Start	End
Item	Vegetation			38.238169 °	38.227308 °
				-121.518199 °	-121.532696 °
DWR ID	DWR_RD0556_01_f_2013_381				
Action/Comments					
Remove the wild growth other than native grasses from the levee slopes.					

No Photos

LM Start	1.36	Rating **	M	Issue No.	29
LM End	1.37	Issue Type +	Ma	Location *	LS
Category	Earthen Levee			GPS Latitude/Longitude	
				Start	End
Item	Trim / Thin Trees			38.227320 °	38.227216 °
				-121.532707 °	-121.532870 °
DWR ID	DWR_RD0556_01_s_2013_29				
Action/Comments					
Thin trees to allow visibility of the ground and room to flood fight.					

No Photos

LM Start	1.39	Rating **	M	Issue No.	21
LM End	1.39	Issue Type +	Ma	Location *	LS
Category	Earthen Levee			GPS Latitude/Longitude	
				Start	End
Item	Erosion / Bank Caving			38.227016 °	38.227016 °
				-121.533105 °	-121.533105 °
DWR ID	DWR_RD0556_01_f_2012_21				
Action/Comments					
Note and monitor erosion site.					

No Photos

* Location LS : Land Side N/A : Not Applicable WS : Water Side CR : Crown	** Rating A : Acceptable M : Minimally Acceptable U : Unacceptable	N : Not Inspected/Rated C : Corrected A/W : Acceptable but Monitor & Maintain	+ Issue Type Ma : Maintenance Deficiency Ob : Design & System Obsolescence En : Enforcement
--	--	---	---

**Flood Control Project Maintenance
Levee Inspections**

Levee Inspection Report By Mile - Fall 2014

Reclamation District No. 0556 Upper Andrus

Waterway	Bank	Unit Miles	Inspection Start/End	Inspector
Unit No. 01 Georgiana Slough	Right	5.48	10/30/2014 10/30/2014	Herman Phillips

LM Start	1.43	Rating **	M	Issue No.	40
LM End	1.43	Issue Type +	Ma	Location *	LS
Category	Earthen Levee			GPS Latitude/Longitude	
				Start	End
Item	Erosion / Bank Caving			38.226537 °	38.226537 °
				-121.533512 °	-121.533512 °
DWR ID	DWR_RD0556_01_f_2012_40				
Action/Comments					
Note and monitor erosion site.					

No Photos

LM Start	1.49	Rating **	M	Issue No.	22
LM End	1.49	Issue Type +	Ma	Location *	LS
Category	Earthen Levee			GPS Latitude/Longitude	
				Start	End
Item	Erosion / Bank Caving			38.225840 °	38.225840 °
				-121.534157 °	-121.534157 °
DWR ID	DWR_RD0556_01_s_2012_22				
Action/Comments					
Note and monitor erosion site.					

No Photos

LM Start	1.55	Rating **	U	Issue No.	9
LM End	1.57	Issue Type +	En	Location *	WS
Category	Earthen Levee			GPS Latitude/Longitude	
				Start	End
Item	Encroachments			38.225191 °	38.224976 °
				-121.534799 °	-121.535043 °
DWR ID	DWR_RD0556_01_s_2012_9				
Action/Comments					
Tree or limb Inspector Comments: These cut up tree sections remain on the waterward slope. The owner is on the Reclamation District's Board, Mr. Silva said he will ask him to remove the encroachment. No updated photo was taken 9-27-2013.					

Photo 1 of 1 : FA_2014_RD0556_18_9_20141113_00018.jpg



Unwanted cut up tree sections remains on the waterward slope, landowner sits on the Reclamation Board for RD 556.

* Location LS : Land Side N/A : Not Applicable WS : Water Side CR : Crown	** Rating A : Acceptable M : Minimally Acceptable U : Unacceptable	N : Not Inspected/Rated C : Corrected A/W : Acceptable but Monitor & Maintain	+ Issue Type Ma : Maintenance Deficiency Ob : Design & System Obsolescence En : Enforcement
--	--	---	---

**Flood Control Project Maintenance
Levee Inspections**

Levee Inspection Report By Mile - Fall 2014

Reclamation District No. 0556 Upper Andrus

Waterway	Bank	Unit Miles	Inspection Start/End	Inspector
Unit No. 01 Georgiana Slough	Right	5.48	10/30/2014 10/30/2014	Herman Phillips

LM Start	1.57	Rating **	M	Issue No.	386
LM End	1.67	Issue Type +	Ma	Location *	LS
Category	Earthen Levee			GPS Latitude/Longitude	
				Start	End
Item	Vegetation			38.224995 °	38.224486 °
				-121.535094 °	-121.536766 °
DWR ID	DWR_RD0556_01_f_2013_386				
Action/Comments					
Remove the wild growth other than native grasses from the levee slopes.					

No Photos

LM Start	1.59	Rating **	M	Issue No.	2
LM End	1.68	Issue Type +	Ma	Location *	LS
Category	Earthen Levee			GPS Latitude/Longitude	
				Start	End
Item	Vegetation			38.224769 °	38.224451 °
				-121.535569 °	-121.536927 °
DWR ID	DWR_RD0556_01_s_2012_2				
Action/Comments					
Remove the wild growth other than native grasses from the levee slopes.					

No Photos

LM Start	1.64	Rating **	M	Issue No.	17
LM End	1.69	Issue Type +	En	Location *	WS
Category	Earthen Levee			GPS Latitude/Longitude	
				Start	End
Item	Vegetation			38.224623 °	38.224408 °
				-121.536320 °	-121.537180 °
DWR ID	DWR_RD0556_01_s_2012_17				
Action/Comments					
Landscaping					

No Photos

* Location LS : Land Side N/A : Not Applicable WS : Water Side CR : Crown	** Rating A : Acceptable M : Minimally Acceptable U : Unacceptable	N : Not Inspected/Rated C : Corrected A/W : Acceptable but Monitor & Maintain	+ Issue Type Ma : Maintenance Deficiency Ob : Design & System Obsolescence En : Enforcement
--	--	---	---

**Flood Control Project Maintenance
Levee Inspections**

Levee Inspection Report By Mile - Fall 2014

Reclamation District No. 0556 Upper Andrus

Waterway	Bank	Unit Miles	Inspection Start/End	Inspector
Unit No. 01 Georgiana Slough	Right	5.48	10/30/2014 10/30/2014	Herman Phillips

LM Start	1.65	Rating **	M	Issue No.	18
LM End	1.68	Issue Type +	En	Location *	LS
Category	Earthen Levee			GPS Latitude/Longitude	
				Start	End
Item	Vegetation			38.224567 °	38.224438 °
				-121.536523 °	-121.537048 °
DWR ID	DWR_RD0556_01_s_2012_18				
Action/Comments					
Landscaping					

No Photos

LM Start	1.75	Rating **	U	Issue No.	49
LM End	1.98	Issue Type +	Ma	Location *	WS
Category	Earthen Levee			GPS Latitude/Longitude	
				Start	End
Item	Vegetation			38.224120 °	38.223590 °
				-121.538137 °	-121.542387 °
DWR ID	DWR_RD0556_01_f_2014_49				
Action/Comments					
Trees / Woody Vegetation					
Inspector Comments: Remove the unwanted tree growth from the levee section water ward.					

Photo 1 of 1 : FA_2014_RD0556_18_49_20141113_00019.jpg



Woody tree growth blocks view of the waterward slope.

LM Start	1.92	Rating **	M	Issue No.	387
LM End	4.11	Issue Type +	Ma	Location *	LS
Category	Earthen Levee			GPS Latitude/Longitude	
				Start	End
Item	Vegetation			38.223713 °	38.200105 °
				-121.541216 °	-121.545338 °
DWR ID	DWR_RD0556_01_f_2013_387				
Action/Comments					
Remove the wild growth other than native grasses from the levee slopes.					

No Photos

* Location LS : Land Side N/A : Not Applicable WS : Water Side CR : Crown		** Rating A : Acceptable N : Not Inspected/Rated M : Minimally Acceptable C : Corrected U : Unacceptable A/W : Acceptable but Monitor & Maintain		+ Issue Type Ma : Maintenance Deficiency Ob : Design & System Obsolescence En : Enforcement
--	--	---	--	---

**Flood Control Project Maintenance
Levee Inspections**

Levee Inspection Report By Mile - Fall 2014

Reclamation District No. 0556 Upper Andrus

Waterway	Bank	Unit Miles	Inspection Start/End	Inspector
Unit No. 01 Georgiana Slough	Right	5.48	10/30/2014 10/30/2014	Herman Phillips

LM Start	1.97	Rating **	M	Issue No.	20
LM End	2.04	Issue Type +	Ma	Location *	WS
Category	Earthen Levee			GPS Latitude/Longitude	
				Start	End
Item	Vegetation			38.223641 °	38.223452 °
				-121.542257 °	-121.543542 °
DWR ID	DWR_RD0556_01_s_2013_20				
Action/Comments					
Remove the wild growth other than native grasses from the levee slopes.					

No Photos

LM Start	2.17	Rating **	M	Issue No.	51
LM End	5.46	Issue Type +	Ma	Location *	LS
Category	Earthen Levee			GPS Latitude/Longitude	
				Start	End
Item	Vegetation			38.221773 °	38.186502 °
				-121.544630 °	-121.562375 °
DWR ID	DWR_RD0556_01_f_2014_51				
Action/Comments					
Remove the wild growth other than native grasses from the levee slopes.					

No Photos

LM Start	2.17	Rating **	M	Issue No.	50
LM End	3.19	Issue Type +	Ma	Location *	WS
Category	Earthen Levee			GPS Latitude/Longitude	
				Start	End
Item	Vegetation			38.221937 °	38.210658 °
				-121.544638 °	-121.539230 °
DWR ID	DWR_RD0556_01_f_2014_50				
Action/Comments					
Control annual grass and weeds on the levee slopes and easements.					

No Photos

*** Location**
 LS : Land Side N/A : Not Applicable
 WS : Water Side
 CR : Crown

**** Rating**
 A : Acceptable N : Not Inspected/Rated
 M : Minimally Acceptable C : Corrected
 U : Unacceptable A/W : Acceptable but Monitor & Maintain

+ Issue Type
 Ma : Maintenance Deficiency
 Ob : Design & System Obsolescence
 En : Enforcement

**Flood Control Project Maintenance
Levee Inspections**

Levee Inspection Report By Mile - Fall 2014

Reclamation District No. 0556 Upper Andrus

Waterway	Bank	Unit Miles	Inspection Start/End	Inspector
Unit No. 01 Georgiana Slough	Right	5.48	10/30/2014 10/30/2014	Herman Phillips

LM Start	2.32	Rating **	M	Issue No.	15
LM End	2.32	Issue Type +	Ma	Location *	LS
Category	Earthen Levee			GPS Latitude/Longitude	
				Start	End
Item	Erosion / Bank Caving			38.219858 °	38.219858 °
				-121.544021 °	-121.544021 °
DWR ID	DWR_RD0556_01_s_2012_15				
Action/Comments					
Note and monitor erosion site.					

No Photos

LM Start	2.32	Rating **	U	Issue No.	24
LM End	2.34	Issue Type +	Ma	Location *	LS
Category	Earthen Levee			GPS Latitude/Longitude	
				Start	End
Item	Vegetation			38.219822 °	38.219592 °
				-121.544000 °	-121.543927 °
DWR ID	DWR_RD0556_01_s_2012_24				
Action/Comments					
Trees / Woody Vegetation					
Inspector Comments: Unable to see the levee section for heavy growth of trees.					

Photo 1 of 1 : FA_2014_RD0556_18_24_20141030_00004.jpg



Unsatisfactory woody tree growth and tall weeds along the shoulder, slope and toe landward.

LM Start	2.37	Rating **	M	Issue No.	25
LM End	2.42	Issue Type +	En	Location *	LS
Category	Earthen Levee			GPS Latitude/Longitude	
				Start	End
Item	Vegetation			38.219083 °	38.218410 °
				-121.543872 °	-121.543865 °
DWR ID	DWR_RD0556_01_s_2012_25				
Action/Comments					
Landscaping					

No Photos

* Location LS : Land Side N/A : Not Applicable WS : Water Side CR : Crown	** Rating A : Acceptable M : Minimally Acceptable U : Unacceptable	N : Not Inspected/Rated C : Corrected A/W : Acceptable but Monitor & Maintain	+ Issue Type Ma : Maintenance Deficiency Ob : Design & System Obsolescence En : Enforcement
--	--	---	---

**Flood Control Project Maintenance
Levee Inspections**

Levee Inspection Report By Mile - Fall 2014

Reclamation District No. 0556 Upper Andrus

Waterway	Bank	Unit Miles	Inspection Start/End	Inspector
Unit No. 01 Georgiana Slough	Right	5.48	10/30/2014 10/30/2014	Herman Phillips

LM Start	2.42	Rating **	U	Issue No.	47
LM End	2.46	Issue Type +	Ma	Location *	LS
Category	Earthen Levee			GPS Latitude/Longitude	
				Start	End
Item	Vegetation			38.218426 °	38.217846 °
				-121.543800 °	-121.543796 °
DWR ID	DWR_RD0556_01_f_2012_47				
Action/Comments					
Trees / Woody Vegetation					
Inspector Comments: This section of trees need to be removed from levee section, visibility completely blocked.					

Photo 1 of 1 : FA_2014_RD0556_18_47_20141113_00022.jpg



Unsatisfactory tree growth completely blocking visibility of the levee section at this location.

LM Start	2.42	Rating **	M	Issue No.	28
LM End	2.69	Issue Type +	En	Location *	LS
Category	Earthen Levee			GPS Latitude/Longitude	
				Start	End
Item	Encroachments			38.218373 °	38.215230 °
				-121.543847 °	-121.541147 °
DWR ID	DWR_RD0556_01_s_2012_28				
Action/Comments					
Building					

No Photos

LM Start	2.43	Rating **	M	Issue No.	388
LM End	2.78	Issue Type +	Ma	Location *	LS
Category	Earthen Levee			GPS Latitude/Longitude	
				Start	End
Item	Vegetation			38.218251 °	38.214575 °
				-121.543806 °	-121.539672 °
DWR ID	DWR_RD0556_01_f_2013_388				
Action/Comments					
Remove the wild growth other than native grasses from the levee slopes.					

No Photos

*** Location**
LS : Land Side N/A : Not Applicable
WS : Water Side
CR : Crown

**** Rating**
A : Acceptable N : Not Inspected/Rated
M : Minimally Acceptable C : Corrected
U : Unacceptable A/W : Acceptable but Monitor & Maintain

+ Issue Type
Ma : Maintenance Deficiency
Ob : Design & System Obsolescence
En : Enforcement

**Flood Control Project Maintenance
Levee Inspections**

Levee Inspection Report By Mile - Fall 2014

Reclamation District No. 0556 Upper Andrus

Waterway	Bank	Unit Miles	Inspection Start/End	Inspector
Unit No. 01 Georgiana Slough	Right	5.48	10/30/2014 10/30/2014	Herman Phillips

LM Start	2.46	Rating **	M	Issue No.	42
LM End	2.50	Issue Type +	Ma	Location *	LS
Category	Earthen Levee			GPS Latitude/Longitude	
				Start	End
Item	Trim / Thin Trees			38.217757 °	38.217285 °
				-121.543827 °	-121.543693 °
DWR ID	DWR_RD0556_01_f_2012_42				
Action/Comments					
Trim trees to at least five feet above ground level.					

No Photos

LM Start	2.46	Rating **	M	Issue No.	82
LM End	2.50	Issue Type +	Ma	Location *	LS
Category	Earthen Levee			GPS Latitude/Longitude	
				Start	End
Item	Vegetation			38.217757 °	38.217285 °
				-121.543827 °	-121.543693 °
DWR ID	DWR_RD0556_01_s_2012_82				
Action/Comments					
Remove the wild growth other than native grasses from the levee slopes.					

No Photos

LM Start	2.47	Rating **	M	Issue No.	53
LM End	2.47	Issue Type +	En	Location *	LS
Category	Earthen Levee			GPS Latitude/Longitude	
				Start	End
Item	Encroachments			38.217568 °	38.217568 °
				-121.543740 °	-121.543740 °
DWR ID	DWR_RD0556_01_s_2013_53				
Action/Comments					
Tree or limb					

No Photos

*** Location**
 LS : Land Side N/A : Not Applicable
 WS : Water Side
 CR : Crown

**** Rating**
 A : Acceptable N : Not Inspected/Rated
 M : Minimally Acceptable C : Corrected
 U : Unacceptable A/W : Acceptable but Monitor & Maintain

+ Issue Type
 Ma : Maintenance Deficiency
 Ob : Design & System Obsolescence
 En : Enforcement

**Flood Control Project Maintenance
Levee Inspections**

Levee Inspection Report By Mile - Fall 2014

Reclamation District No. 0556 Upper Andrus

Waterway	Bank	Unit Miles	Inspection Start/End	Inspector
Unit No. 01 Georgiana Slough	Right	5.48	10/30/2014 10/30/2014	Herman Phillips

LM Start	2.48	Rating **	M	Issue No.	389
LM End	2.48	Issue Type +	En	Location *	LS
Category	Earthen Levee			GPS Latitude/Longitude	
				Start	End
Item	Encroachments			38.217453 °	38.217453 °
				-121.543754 °	-121.543754 °
DWR ID	DWR_RD0556_01_f_2013_389				
Action/Comments					
Fence					

No Photos

LM Start	2.50	Rating **	M	Issue No.	378
LM End	2.50	Issue Type +	En	Location *	LS
Category	Earthen Levee			GPS Latitude/Longitude	
				Start	End
Item	Encroachments			38.217198 °	38.217198 °
				-121.543544 °	-121.543544 °
DWR ID	DWR_RD0556_01_s_2014_378				
Action/Comments					
Tree or limb					

No Photos

LM Start	2.52	Rating **	M	Issue No.	391
LM End	2.54	Issue Type +	Ma	Location *	WS
Category	Earthen Levee			GPS Latitude/Longitude	
				Start	End
Item	Vegetation			38.217030 °	38.216682 °
				-121.543444 °	-121.543145 °
DWR ID	DWR_RD0556_01_f_2013_391				
Action/Comments					
Remove the wild growth other than native grasses from the levee slopes.					

No Photos

* Location LS : Land Side N/A : Not Applicable WS : Water Side CR : Crown	** Rating A : Acceptable M : Minimally Acceptable U : Unacceptable	N : Not Inspected/Rated C : Corrected A/W : Acceptable but Monitor & Maintain	+ Issue Type Ma : Maintenance Deficiency Ob : Design & System Obsolescence En : Enforcement
--	--	---	---

**Flood Control Project Maintenance
Levee Inspections**

Levee Inspection Report By Mile - Fall 2014

Reclamation District No. 0556 Upper Andrus

Waterway	Bank	Unit Miles	Inspection Start/End	Inspector
Unit No. 01 Georgiana Slough	Right	5.48	10/30/2014 10/30/2014	Herman Phillips

LM Start	2.54	Rating **	M	Issue No.	44
LM End	2.62	Issue Type +	Ma	Location *	LS
Category	Earthen Levee			GPS Latitude/Longitude	
				Start	End
Item	Vegetation			38.216757 °	38.215924 °
				-121.543215 °	-121.542148 °
DWR ID	DWR_RD0556_01_f_2012_44				
Action/Comments					
Remove the wild growth other than native grasses from the levee slopes.					

No Photos

LM Start	2.64	Rating **	M	Issue No.	392
LM End	2.76	Issue Type +	Ma	Location *	LS
Category	Earthen Levee			GPS Latitude/Longitude	
				Start	End
Item	Vegetation			38.215690 °	38.214763 °
				-121.541804 °	-121.539978 °
DWR ID	DWR_RD0556_01_f_2013_392				
Action/Comments					
Remove the wild growth other than native grasses from the levee slopes.					

No Photos

LM Start	2.70	Rating **	U	Issue No.	390
LM End	2.70	Issue Type +	Ma	Location *	LS
Category	Earthen Levee			GPS Latitude/Longitude	
				Start	End
Item	Vegetation			38.215149 °	38.215177 °
				-121.540802 °	-121.540875 °
DWR ID	DWR_RD0556_01_s_2014_390				
Action/Comments					
Remove the wild growth other than native grasses from the levee slopes.					
Inspector Comments: Wild growth of bambo on levee slope and shoulder landside.					

Photo 1 of 1 : FA_2014_RD0556_18_390_20141030_00010.jpg



Unsatisfactory growth of bambo on the landside slope and toe.

*** Location**
LS : Land Side N/A : Not Applicable
WS : Water Side
CR : Crown

**** Rating**
A : Acceptable N : Not Inspected/Rated
M : Minimally Acceptable C : Corrected
U : Unacceptable A/W : Acceptable but Monitor & Maintain

+ Issue Type
Ma : Maintenance Deficiency
Ob : Design & System Obsolescence
En : Enforcement

**Flood Control Project Maintenance
Levee Inspections**

Levee Inspection Report By Mile - Fall 2014

Reclamation District No. 0556 Upper Andrus

Waterway	Bank	Unit Miles	Inspection Start/End	Inspector
Unit No. 01 Georgiana Slough	Right	5.48	10/30/2014 10/30/2014	Herman Phillips

LM Start	2.75	Rating **	M	Issue No.	56
LM End	2.79	Issue Type +	Ma	Location *	LS
Category	Earthen Levee			GPS Latitude/Longitude	
				Start	End
Item	Vegetation			38.214930 °	38.214553 °
				-121.540200 °	-121.539487 °
DWR ID	DWR_RD0556_01_f_2014_56				
Action/Comments					
Remove the wild growth other than native grasses from the levee slopes.					

No Photos

LM Start	2.96	Rating **	M	Issue No.	63
LM End	2.99	Issue Type +	Ma	Location *	WS
Category	Earthen Levee			GPS Latitude/Longitude	
				Start	End
Item	Vegetation			38.212661 °	38.212328 °
				-121.537633 °	-121.537318 °
DWR ID	DWR_RD0556_01_s_2013_63				
Action/Comments					
Remove the wild growth other than native grasses from the levee slopes.					

No Photos

LM Start	2.97	Rating **	M	Issue No.	34
LM End	2.99	Issue Type +	En	Location *	LS
Category	Earthen Levee			GPS Latitude/Longitude	
				Start	End
Item	Vegetation			38.212573 °	38.212320 °
				-121.537648 °	-121.537407 °
DWR ID	DWR_RD0556_01_s_2012_34				
Action/Comments					
Landscaping					

No Photos

* Location LS : Land Side N/A : Not Applicable WS : Water Side CR : Crown	** Rating A : Acceptable M : Minimally Acceptable U : Unacceptable	N : Not Inspected/Rated C : Corrected A/W : Acceptable but Monitor & Maintain	+ Issue Type Ma : Maintenance Deficiency Ob : Design & System Obsolescence En : Enforcement
--	--	---	---

**Flood Control Project Maintenance
Levee Inspections**

Levee Inspection Report By Mile - Fall 2014

Reclamation District No. 0556 Upper Andrus

Waterway	Bank	Unit Miles	Inspection Start/End	Inspector
Unit No. 01 Georgiana Slough	Right	5.48	10/30/2014 10/30/2014	Herman Phillips

LM Start	2.99	Rating **	M	Issue No.	35
LM End	3.04	Issue Type +	En	Location *	LS
Category	Earthen Levee			GPS Latitude/Longitude	
				Start	End
Item	Vegetation			38.212242 °	38.211650 °
				-121.537333 °	-121.536972 °
DWR ID	DWR_RD0556_01_s _ 2012_35				
Action/Comments					
Landscaping					

No Photos

LM Start	3.12	Rating **	M	Issue No.	39
LM End	3.15	Issue Type +	En	Location *	LS
Category	Earthen Levee			GPS Latitude/Longitude	
				Start	End
Item	Vegetation			38.211010 °	38.210857 °
				-121.538043 °	-121.538632 °
DWR ID	DWR_RD0556_01_s _ 2012_39				
Action/Comments					
Landscaping					

No Photos

LM Start	3.12	Rating **	M	Issue No.	62
LM End	3.14	Issue Type +	Ma	Location *	WS
Category	Earthen Levee			GPS Latitude/Longitude	
				Start	End
Item	Animal Control			38.211060 °	38.210913 °
				-121.538132 °	-121.538462 °
DWR ID	DWR_RD0556_01_f _ 2014_62				
Action/Comments					
Repair the levee slope damaged by livestock and prevent large animal access.					
Inspector Comments: Possible beaver den in are; activity at this location.					

No Photos

* Location LS : Land Side N/A : Not Applicable WS : Water Side CR : Crown	** Rating A : Acceptable M : Minimally Acceptable U : Unacceptable	N : Not Inspected/Rated C : Corrected A/W : Acceptable but Monitor & Maintain	+ Issue Type Ma : Maintenance Deficiency Ob : Design & System Obsolescence En : Enforcement
--	--	---	---

**Flood Control Project Maintenance
Levee Inspections**

Levee Inspection Report By Mile - Fall 2014

Reclamation District No. 0556 Upper Andrus

Waterway	Bank	Unit Miles	Inspection Start/End	Inspector
Unit No. 01 Georgiana Slough	Right	5.48	10/30/2014 10/30/2014	Herman Phillips

LM Start	3.12	Rating **	M	Issue No.	64
LM End	3.14	Issue Type +	Ma	Location *	WS
Category	Earthen Levee			GPS Latitude/Longitude	
				Start	End
Item	Vegetation			38.211060 °	38.210913 °
				-121.538132 °	-121.538463 °
DWR ID	DWR_RD0556_01_f_2014_64				
Action/Comments					
Control annual grass and weeds on the levee slopes and easements. Inspector Comments: Remove the arundo from the levee section while its at a young stage.					

Photo 1 of 1 : FA_2014_RD0556_18_64_20141113_00021.jpg



Waterside levee mile 3-12 to 3.14: young patch of arundo growing.

LM Start	3.16	Rating **	M	Issue No.	52
LM End	3.17	Issue Type +	Ma	Location *	LS
Category	Earthen Levee			GPS Latitude/Longitude	
				Start	End
Item	Trim / Thin Trees			38.210839 °	38.210767 °
				-121.538773 °	-121.538952 °
DWR ID	DWR_RD0556_01_f_2012_52				
Action/Comments					
Thin trees to allow visibility of the ground and room to flood fight.					

No Photos

LM Start	3.23	Rating **	M	Issue No.	65
LM End	3.24	Issue Type +	Ma	Location *	LS
Category	Earthen Levee			GPS Latitude/Longitude	
				Start	End
Item	Animal Control			38.210363 °	38.210270 °
				-121.540020 °	-121.540207 °
DWR ID	DWR_RD0556_01_s_2013_65				
Action/Comments					
Exterminate rodents and backfill and compact or grout burrows.					

No Photos

* Location
LS : Land Side N/A : Not Applicable
WS : Water Side
CR : Crown

** Rating
A : Acceptable N : Not Inspected/Rated
M : Minimally Acceptable C : Corrected
U : Unacceptable A/W : Acceptable but Monitor & Maintain

+ Issue Type
Ma : Maintenance Deficiency
Ob : Design & System Obsolescence
En : Enforcement

**Flood Control Project Maintenance
Levee Inspections**

Levee Inspection Report By Mile - Fall 2014

Reclamation District No. 0556 Upper Andrus

Waterway	Bank	Unit Miles	Inspection Start/End	Inspector
Unit No. 01 Georgiana Slough	Right	5.48	10/30/2014 10/30/2014	Herman Phillips

LM Start	3.24	Rating **	M	Issue No.	394
LM End	3.35	Issue Type +	En	Location *	LS
Category	Earthen Levee			GPS Latitude/Longitude	
				Start	End
Item	Encroachments			38.210185 °	38.208899 °
				-121.540264 °	-121.541340 °
DWR ID	DWR_RD0556_01_f_2013_394				
Action/Comments					
Fence					

No Photos

LM Start	3.24	Rating **	U	Issue No.	395
LM End	3.35	Issue Type +	Ma	Location *	LS
Category	Earthen Levee			GPS Latitude/Longitude	
				Start	End
Item	Vegetation			38.210185 °	38.208899 °
				-121.540264 °	-121.541340 °
DWR ID	DWR_RD0556_01_f_2013_395				
Action/Comments					
Remove the wild growth other than native grasses from the levee slopes.					
Inspector Comments: This wild growth is unsatisfactory and blocking visibility and access.					

Photo 1 of 1 : FA_2014_RD0556_18_395_20141030_00011.jpg



Unsatisfactory wild growth of cactus completely blocking visibility of the entire levee section between levee mile 3.24 thru 3.35. No new photo taken fall 2014, no change at this Issue.

LM Start	3.26	Rating **	M	Issue No.	13
LM End	3.26	Issue Type +	Ma	Location *	LS
Category	Earthen Levee			GPS Latitude/Longitude	
				Start	End
Item	Trim / Thin Trees			38.210145 °	38.210145 °
				-121.540337 °	-121.540337 °
DWR ID	DWR_RD0556_01_f_2012_13				
Action/Comments					
Thin trees to allow visibility of the ground and room to flood fight. Inspector Comments: These trees need to be trimmed and thinned in order to see the ground.					

No Photos

* **Location**
LS : Land Side N/A : Not Applicable
WS : Water Side
CR : Crown

** **Rating**
A : Acceptable N : Not Inspected/Rated
M : Minimally Acceptable C : Corrected
U : Unacceptable A/W : Acceptable but Monitor & Maintain

+ **Issue Type**
Ma : Maintenance Deficiency
Ob : Design & System Obsolescence
En : Enforcement

**Flood Control Project Maintenance
Levee Inspections**

Levee Inspection Report By Mile - Fall 2014

Reclamation District No. 0556 Upper Andrus

Waterway	Bank	Unit Miles	Inspection Start/End	Inspector
Unit No. 01 Georgiana Slough	Right	5.48	10/30/2014 10/30/2014	Herman Phillips

LM Start	3.26	Rating **	M	Issue No.	31
LM End	3.26	Issue Type +	Ma	Location *	LS
Category	Earthen Levee			GPS Latitude/Longitude	
				Start	End
Item	Animal Control			38.210059 °	38.210059 °
				-121.540410 °	-121.540410 °
DWR ID	DWR_RD0556_01_s_2013_31				
Action/Comments					
No rodents visible, but rodent burrows visible; need to backfill and compact or grout burrows.					
Inspector Comments: Gopher damage along the landside ramp. The District is aware of the new discovery 4-25-2013.					

No Photos

LM Start	3.26	Rating **	M	Issue No.	54
LM End	3.35	Issue Type +	En	Location *	LS
Category	Earthen Levee			GPS Latitude/Longitude	
				Start	End
Item	Encroachments			38.210059 °	38.208927 °
				-121.540412 °	-121.541338 °
DWR ID	DWR_RD0556_01_f_2012_54				
Action/Comments					
Fence					

No Photos

LM Start	3.35	Rating **	M	Issue No.	48
LM End	3.42	Issue Type +	En	Location *	LS
Category	Earthen Levee			GPS Latitude/Longitude	
				Start	End
Item	Vegetation			38.208982 °	38.208112 °
				-121.541340 °	-121.541558 °
DWR ID	DWR_RD0556_01_s_2012_48				
Action/Comments					
Landscaping					

No Photos

* Location LS : Land Side N/A : Not Applicable WS : Water Side CR : Crown	** Rating A : Acceptable M : Minimally Acceptable U : Unacceptable	N : Not Inspected/Rated C : Corrected A/W : Acceptable but Monitor & Maintain	+ Issue Type Ma : Maintenance Deficiency Ob : Design & System Obsolescence En : Enforcement
--	--	---	---

**Flood Control Project Maintenance
Levee Inspections**

Levee Inspection Report By Mile - Fall 2014

Reclamation District No. 0556 Upper Andrus

Waterway	Bank	Unit Miles	Inspection Start/End	Inspector
Unit No. 01 Georgiana Slough	Right	5.48	10/30/2014 10/30/2014	Herman Phillips

LM Start	3.45	Rating **	M	Issue No.	57
LM End	3.45	Issue Type +	En	Location *	WS
Category	Earthen Levee			GPS Latitude/Longitude	
				Start	End
Item	Encroachments			38.207630 °	38.207630 °
				-121.541699 °	-121.541699 °
DWR ID	DWR_RD0556_01_f_2012_57				
Action/Comments					
Garbage					

No Photos

LM Start	3.58	Rating **	U	Issue No.	68
LM End	3.84	Issue Type +	Ma	Location *	WS
Category	Earthen Levee			GPS Latitude/Longitude	
				Start	End
Item	Vegetation			38.205630 °	38.202080 °
				-121.541647 °	-121.541003 °
DWR ID	DWR_RD0556_01_f_2014_68				
Action/Comments					
Trees / Woody Vegetation					
Inspector Comments: Control unwanted wild trees waterside slope.					

Photo 1 of 1 : FA_2014_RD0556_18_68_20141113_00024.jpg



Unwanted woody tree growth view of slope and toe waterward.

LM Start	3.68	Rating **	M	Issue No.	58
LM End	4.16	Issue Type +	Ma	Location *	LS
Category	Earthen Levee			GPS Latitude/Longitude	
				Start	End
Item	Trim / Thin Trees			38.204317 °	38.199502 °
				-121.541259 °	-121.545736 °
DWR ID	DWR_RD0556_01_f_2012_58				
Action/Comments					
Thin trees to allow visibility of the ground and room to flood fight.					

No Photos

*** Location**
LS : Land Side N/A : Not Applicable
WS : Water Side
CR : Crown

**** Rating**
A : Acceptable N : Not Inspected/Rated
M : Minimally Acceptable C : Corrected
U : Unacceptable A/W : Acceptable but Monitor & Maintain

+ Issue Type
Ma : Maintenance Deficiency
Ob : Design & System Obsolescence
En : Enforcement

**Flood Control Project Maintenance
Levee Inspections**

Levee Inspection Report By Mile - Fall 2014

Reclamation District No. 0556 Upper Andrus

Waterway	Bank	Unit Miles	Inspection Start/End	Inspector
Unit No. 01 Georgiana Slough	Right	5.48	10/30/2014 10/30/2014	Herman Phillips

LM Start	3.87	Rating **	M	Issue No.	55
LM End	3.91	Issue Type +	En	Location *	LS
Category	Earthen Levee			GPS Latitude/Longitude	
				Start	End
Item	Vegetation			38.201907 °	38.201603 °
				-121.541672 °	-121.542302 °
DWR ID	DWR_RD0556_01_s_2012_55				
Action/Comments					
Landscaping					

No Photos

LM Start	3.93	Rating **	U	Issue No.	70
LM End	4.00	Issue Type +	En	Location *	WS
Category	Earthen Levee			GPS Latitude/Longitude	
				Start	End
Item	Encroachments			38.201515 °	38.201105 °
				-121.542573 °	-121.543720 °
DWR ID	DWR_RD0556_01_f_2014_70				
Action/Comments					
Crops					
Inspector Comments: Remove the unauthorized planter boxes repack earth materials back on slope.					

LM Start	3.93	Rating **	U	Issue No.	70 (cont)
LM End	4.00	Issue Type +	En	Location *	WS

Photo 1 of 2 : FA_2014_RD0556_18_70_20141113_00025.jpg



Landowner has dug into waterward slope and placed planterboxes.

Photo 2 of 2 : FA_2014_RD0556_18_70_20141113_00026.jpg



Continue placement of unauthorized planter boxes into levee slope waterside.

*** Location**
LS : Land Side N/A : Not Applicable
WS : Water Side
CR : Crown

**** Rating**
A : Acceptable N : Not Inspected/Rated
M : Minimally Acceptable C : Corrected
U : Unacceptable A/W : Acceptable but Monitor & Maintain

+ Issue Type
Ma : Maintenance Deficiency
Ob : Design & System Obsolescence
En : Enforcement

**Flood Control Project Maintenance
Levee Inspections**

Levee Inspection Report By Mile - Fall 2014

Reclamation District No. 0556 Upper Andrus

Waterway	Bank	Unit Miles	Inspection Start/End	Inspector
Unit No. 01 Georgiana Slough	Right	5.48	10/30/2014 10/30/2014	Herman Phillips

LM Start	3.94	Rating **	M	Issue No.	86
LM End	4.05	Issue Type +	En	Location *	WS
Category	Earthen Levee			GPS Latitude/Longitude	
				Start	End
Item	Encroachments			38.201475 °	38.200617 °
				-121.542832 °	-121.544530 °
DWR ID	DWR_RD0556_01_s_2012_86				
Action/Comments					
Building					
Inspector Comments: There is a remodeled home on waterward berm. The CVFPB is aware of the structure. A permit has been secured by land owner for the dwelling.					

No Photos

LM Start	4.01	Rating **	M	Issue No.	71
LM End	5.46	Issue Type +	Ma	Location *	WS
Category	Earthen Levee			GPS Latitude/Longitude	
				Start	End
Item	Vegetation			38.200990 °	38.186502 °
				-121.544037 °	-121.562375 °
DWR ID	DWR_RD0556_01_f_2014_71				
Action/Comments					
Control annual grass and weeds on the levee slopes and easements.					

No Photos

LM Start	4.01	Rating **	U	Issue No.	4
LM End	4.04	Issue Type +	En	Location *	WS
Category	Earthen Levee			GPS Latitude/Longitude	
				Start	End
Item	Encroachments			38.201028 °	38.200801 °
				-121.543930 °	-121.544400 °
DWR ID	DWR_RD0556_01_s_2014_4				
Action/Comments					
Abandoned vehicles Inspector Comments: The levee is used to store vehicles at this location. There are lots of issues going on at this location, storing vehicles just happens to be one of them. Notice of violation needs to be issued to landowner.					

Photo 1 of 2 : FA_2014_RD0556_18_4_20141030_00001.jpg



Several vehicles using the water side shoulder as parking/storage.

* Location LS : Land Side N/A : Not Applicable WS : Water Side CR : Crown	** Rating A : Acceptable M : Minimally Acceptable U : Unacceptable	N : Not Inspected/Rated C : Corrected A/W : Acceptable but Monitor & Maintain	+ Issue Type Ma : Maintenance Deficiency Ob : Design & System Obsolescence En : Enforcement
--	--	---	---

**Flood Control Project Maintenance
Levee Inspections**

Levee Inspection Report By Mile - Fall 2014

Reclamation District No. 0556 Upper Andrus

Waterway	Bank	Unit Miles	Inspection Start/End	Inspector
Unit No. 01 Georgiana Slough	Right	5.48	10/30/2014 10/30/2014	Herman Phillips

LM Start	4.01	Rating **	U	Issue No.	4 (cont)	
LM End	4.04	Issue Type +	En	Location *	WS	
Category	Earthen Levee			GPS Latitude/Longitude		
				Start		End
Item	Encroachments			38.201028 °		38.200801 °
				-121.543930 °		-121.544400 °
DWR ID	DWR_RD0556_01_s_2014_4					
Action/Comments						
Abandoned vehicles Inspector Comments: The levee is used to store vehicles at this location. There are lots of issues going on at this location, storing vehicles just happens to be one of them. Notice of violation needs to be issued to landowner.						

Photo 2 of 2 : FA_2014_RD0556_18_4_20141113_00023.jpg



Unauthorized storage of vehicles and various other items stored at this location.

LM Start	4.03	Rating **	M	Issue No.	60
LM End	4.05	Issue Type +	Ma	Location *	LS
Category	Earthen Levee			GPS Latitude/Longitude	
				Start	End
Item	Vegetation			38.200897 °	38.200712 °
				-121.544350 °	-121.544601 °
DWR ID	DWR_RD0556_01_f_2012_60				
Action/Comments					
Remove the wild growth other than native grasses from the levee slopes.					

No Photos

LM Start	4.03	Rating **	M	Issue No.	59
LM End	4.79	Issue Type +	Ma	Location *	LS
Category	Earthen Levee			GPS Latitude/Longitude	
				Start	End
Item	Animal Control			38.200897 °	38.192662 °
				-121.544350 °	-121.553160 °
DWR ID	DWR_RD0556_01_f_2012_59				
Action/Comments					
Exterminate rodents and backfill and compact or grout burrows.					

No Photos

* Location LS : Land Side N/A : Not Applicable WS : Water Side CR : Crown	** Rating A : Acceptable M : Minimally Acceptable U : Unacceptable	N : Not Inspected/Rated C : Corrected A/W : Acceptable but Monitor & Maintain	+ Issue Type Ma : Maintenance Deficiency Ob : Design & System Obsolescence En : Enforcement
--	--	---	---

Levee Inspection Report By Mile - Fall 2014

Waterway	Bank	Unit Miles	Inspection Start/End	Inspector
Unit No. 01 Georgiana Slough	Right	5.48	10/30/2014 10/30/2014	Herman Phillips

Photo 1 of 1 : FA_2014_RD0556_18_69_20141030_00008.jpg



This rodent hole is in the levee crown roadway and goes down some 3-4 feet deep. Repairs are needed before rainwater get inside causing more problems. Status: unsatisfactory. There was no new photo taken of this site during the inspection of 4-2014. No new photo taken; this hole has not been backfilled.

Photo 1 of 1 : FA_2014_RD0556_18_67_20141113_00029.jpg



Unwanted tall weeds along with *Arundo* present on the waterside slope.

* Location	** Rating	+ Issue Type
LS : Land Side N/A : Not Applicable	A : Acceptable N : Not Inspected/Rated	Ma : Maintenance Deficiency
WS : Water Side	M : Minimally Acceptable C : Corrected	Ob : Design & System Obsolescence
CR : Crown	U : Unacceptable A/W : Acceptable but Monitor & Maintain	En : Enforcement

**Flood Control Project Maintenance
Levee Inspections**

Levee Inspection Report By Mile - Fall 2014

Reclamation District No. 0556 Upper Andrus

Waterway	Bank	Unit Miles	Inspection Start/End	Inspector
Unit No. 01 Georgiana Slough	Right	5.48	10/30/2014 10/30/2014	Herman Phillips

LM Start	4.05	Rating **	U	Issue No.	66
LM End	5.46	Issue Type +	Ma	Location *	LS
Category	Earthen Levee			GPS Latitude/Longitude	
				Start	End
Item	Vegetation			38.200659 °	38.186542 °
				-121.544711 °	-121.562411 °
DWR ID	DWR_RD0556_01_s_2013_66				
Action/Comments					
Remove the wild growth other than native grasses from the levee slopes.					
Inspector Comments: Remove the wild berries from the slope and toe of the levee section along with the tall weeds.					

Photo 1 of 1 : FA_2014_RD0556_18_66_20141113_00028.jpg



Unwanted tall weeds and berries growing on the landside slope and toe.

LM Start	5.00	Rating **	M	Issue No.	398
LM End	5.23	Issue Type +	Ma	Location *	LS
Category	Earthen Levee			GPS Latitude/Longitude	
				Start	End
Item	Vegetation			38.190860 °	38.188625 °
				-121.556315 °	-121.559246 °
DWR ID	DWR_RD0556_01_f_2013_398				
Action/Comments					
Remove the wild growth other than native grasses from the levee slopes.					

No Photos

LM Start	5.11	Rating **	M	Issue No.	16
LM End	5.28	Issue Type +	Ma	Location *	WS
Category	Supplemental			GPS Latitude/Longitude	
				Start	End
Item	USACE Erosion Survey			38.189775 °	38.187967 °
				-121.557729 °	-121.559572 °
DWR ID	DWR_RD0556_01_f_2014_16				
Action/Comments					
Inspector Comments: 1997 - Toe damaged rock. 1999 - One pocket filled with gravel. 2000 - Eroding beach with some biotech rolls and stakes; some gravel on slope. 2001 - Staked, low fascine walls at bankline. 2005 - Stone revetment in between pockets. 2006 - New rock on upper slope behind brush boxes at the upstream end, Stone is sliding off the hard toe. 2013: No observed changes. [2013 Site ID: GEO_7-0_R]					

Photo 1 of 1 : FA_2014_RD0556_18_16_20141030_00003.jpg



USACE 2013 Photo #1

* Location LS : Land Side N/A : Not Applicable WS : Water Side CR : Crown	** Rating A : Acceptable M : Minimally Acceptable U : Unacceptable	N : Not Inspected/Rated C : Corrected A/W : Acceptable but Monitor & Maintain	+ Issue Type Ma : Maintenance Deficiency Ob : Design & System Obsolescence En : Enforcement
--	--	--	---

**Flood Control Project Maintenance
Levee Inspections**

Unit Cover Sheet

Fall 2014 Levee Inspection Results

Reclamation District No. 0556 Upper Andrus

Waterway			Bank	Unit Miles
Unit No. 02 Sacramento River			Left	5.72
	Spring (March - May)	Summer (June - August)	(September - November) Fall	Winter (December - February)
Unit Maintenance Rating (Fall Only)			U	
Date of Inspection	04/10/2014 - 04/10/2014		10/30/2014 - 10/30/2014	
DWR Inspector	Herman Phillips		Herman Phillips	
Accompanied By	Mr. DuWain Silva RD 556		Mr. DuWain Silva RD 556	

Summer & Winter Inspections

The Local Maintaining Agency (LMA) is responsible for summer and winter inspections. The LMA is required to submit a report regarding summer and winter inspections to the California Department of Water Resources (DWR).

DWR must be informed on the:

- completion of the inspection
- any changes other than the results of normal maintenance
- corrections to deficiencies noted in this report

If additional items are noted, further documentation of those items must also be submitted.

The LMA should submit this information to DWR using the LMA web application tool available at:

<http://cdec.water.ca.gov/lma.html>

If the LMA is unable to submit information on this webpage, please contact DWR for assistance.

The LMA should submit the information and any associated documentation by September 30 for summer inspections and March 31 for winter inspections.

**Flood Control Project Maintenance
Levee Inspections**

Levee Inspection Report By Mile - Fall 2014

Reclamation District No. 0556 Upper Andrus

Waterway	Bank	Unit Miles	Inspection Start/End	Inspector
Unit No. 02 Sacramento River	Left	5.72	10/30/2014 10/30/2014	Herman Phillips

LM Start	0.00	Rating **	U	Issue No.	82
LM End	0.00	Issue Type +	Ma	Location *	WS
Category	Earthen Levee			GPS Latitude/Longitude	
				Start	End
Item	Vegetation			38.200550 °	38.200550 °
				-121.544190 °	-121.544190 °
DWR ID	DWR_RD0556_02_s_2013_82				
Action/Comments					
Remove the wild growth other than native grasses from the levee slopes. Inspector Comments: Both slopes downstream covered with wild growth.					

Photo 1 of 1 : FA_2014_RD0556_19_82_20141113_00027.jpg



Standing at levee mile 0.00 looking downstream both slope covered with wild growth.

LM Start	0.07	Rating **	M	Issue No.	43
LM End	0.07	Issue Type +	Ma	Location *	WS
Category	Earthen Levee			GPS Latitude/Longitude	
				Start	End
Item	Trim / Thin Trees			38.239049 °	38.239031 °
				-121.519520 °	-121.519524 °
DWR ID	DWR_RD0556_02_f_2012_43				
Action/Comments					
Thin trees to allow visibility of the ground and room to flood fight.					

No Photos

LM Start	0.07	Rating **	M	Issue No.	60
LM End	1.86	Issue Type +	Ma	Location *	WS
Category	Earthen Levee			GPS Latitude/Longitude	
				Start	End
Item	Trim / Thin Trees			38.239078 °	38.240907 °
				-121.519565 °	-121.551834 °
DWR ID	DWR_RD0556_02_s_2013_60				
Action/Comments					
Thin trees to allow visibility of the ground and room to flood fight.					

No Photos

* Location LS : Land Side N/A : Not Applicable WS : Water Side CR : Crown	** Rating A : Acceptable M : Minimally Acceptable U : Unacceptable	N : Not Inspected/Rated C : Corrected A/W : Acceptable but Monitor & Maintain	+ Issue Type Ma : Maintenance Deficiency Ob : Design & System Obsolescence En : Enforcement
--	--	---	---

**Flood Control Project Maintenance
Levee Inspections**

Levee Inspection Report By Mile - Fall 2014

Reclamation District No. 0556 Upper Andrus

Waterway	Bank	Unit Miles	Inspection Start/End	Inspector
Unit No. 02 Sacramento River	Left	5.72	10/30/2014 10/30/2014	Herman Phillips

LM Start	0.08	Rating **	M	Issue No.	287
LM End	2.00	Issue Type +	Ma	Location *	LS
Category	Earthen Levee			GPS Latitude/Longitude	
				Start	End
Item	Vegetation			38.239034 °	38.239923 °
				-121.519684 °	-121.553800 °
DWR ID	DWR_RD0556_02_f_2013_287				
Action/Comments					
Remove the wild growth other than native grasses from the levee slopes.					

No Photos

LM Start	0.08	Rating **	M	Issue No.	65
LM End	0.14	Issue Type +	Ma	Location *	WS
Category	Earthen Levee			GPS Latitude/Longitude	
				Start	End
Item	Vegetation			38.239077 °	38.238935 °
				-121.519714 °	-121.520869 °
DWR ID	DWR_RD0556_02_s_2013_65				
Action/Comments					
Remove the wild growth other than native grasses from the levee slopes.					

No Photos

LM Start	0.11	Rating **	M	Issue No.	30
LM End	0.47	Issue Type +	Ma	Location *	LS
Category	Earthen Levee			GPS Latitude/Longitude	
				Start	End
Item	Vegetation			38.238974 °	38.238029 °
				-121.520171 °	-121.526841 °
DWR ID	DWR_RD0556_02_s_2013_30				
Action/Comments					
Remove the wild growth other than native grasses from the levee slopes.					

No Photos

* Location LS : Land Side N/A : Not Applicable WS : Water Side CR : Crown	** Rating A : Acceptable M : Minimally Acceptable U : Unacceptable	N : Not Inspected/Rated C : Corrected A/W : Acceptable but Monitor & Maintain	+ Issue Type Ma : Maintenance Deficiency Ob : Design & System Obsolescence En : Enforcement
--	--	---	---

**Flood Control Project Maintenance
Levee Inspections**

Levee Inspection Report By Mile - Fall 2014

Reclamation District No. 0556 Upper Andrus

Waterway	Bank	Unit Miles	Inspection Start/End	Inspector
Unit No. 02 Sacramento River	Left	5.72	10/30/2014 10/30/2014	Herman Phillips

LM Start	0.12	Rating **	U	Issue No.	32
LM End	2.86	Issue Type +	Ma	Location *	WS
Category	Earthen Levee			GPS Latitude/Longitude	
				Start	End
Item	Trim / Thin Trees			38.238939 °	38.229108 °
				-121.520360 °	-121.555298 °
DWR ID	DWR_RD0556_02_f_2014_32				
Action/Comments					
Thin trees to allow visibility of the ground and room to flood fight. Inspector Comments: The trees should be trimmed up to allow the ground to be seen.					

Photo 1 of 1 : FA_2014_RD0556_19_32_20141113_00026.jpg



Woody tree growth on the waterside levee section.

LM Start	0.31	Rating **	M	Issue No.	28
LM End	0.60	Issue Type +	Ma	Location *	WS
Category	Supplemental			GPS Latitude/Longitude	
				Start	End
Item	USACE Erosion Survey			38.238784 °	38.237862 °
				-121.523932 °	-121.529188 °
DWR ID	DWR_RD0556_02_f_2014_28				
Action/Comments					
Inspector Comments: 2002 - Two rocked sections (150 ft long) at the downstream end. 2005 - Lots of old brush boxes, some with established vegetation in the area behind the boxes. 2006 - Some small spots fixed with stone. 2009 - Minimal new erosion, rock in the middle of the reach may be new. 2011 - Minor new erosion at the toe. 2013: Minor new erosion. [2013 Site ID: SAC_26-0_L]					

Photo 1 of 1 : FA_2014_RD0556_19_28_20141030_00010.jpg



USACE 2013 Photo #1

LM Start	0.48	Rating **	N	Issue No.	67
LM End	0.48	Issue Type +	Ma	Location *	WS
Category	Earthen Levee			GPS Latitude/Longitude	
				Start	End
Item	Trim / Thin Trees			38.238050 °	38.238050 °
				-121.526876 °	-121.526876 °
DWR ID	DWR_RD0556_02_s_2013_67				
Action/Comments					
Tree stumps.					

No Photos

* Location LS : Land Side N/A : Not Applicable WS : Water Side CR : Crown	** Rating A : Acceptable M : Minimally Acceptable U : Unacceptable	N : Not Inspected/Rated C : Corrected A/W : Acceptable but Monitor & Maintain	+ Issue Type Ma : Maintenance Deficiency Ob : Design & System Obsolescence En : Enforcement
--	--	---	---

**Flood Control Project Maintenance
Levee Inspections**

Levee Inspection Report By Mile - Fall 2014

Reclamation District No. 0556 Upper Andrus

Waterway	Bank	Unit Miles	Inspection Start/End	Inspector
Unit No. 02 Sacramento River	Left	5.72	10/30/2014 10/30/2014	Herman Phillips

LM Start	0.53	Rating **	M	Issue No.	68
LM End	1.35	Issue Type +	Ma	Location *	LS
Category	Earthen Levee			GPS Latitude/Longitude	
				Start	End
Item	Vegetation			38.237833 °	38.239821 °
				-121.528093 °	-121.542438 °
DWR ID	DWR_RD0556_02_s_2013_68				
Action/Comments					
Remove the wild growth other than native grasses from the levee slopes.					

No Photos

LM Start	0.54	Rating **	M	Issue No.	34
LM End	0.83	Issue Type +	Ma	Location *	LS
Category	Earthen Levee			GPS Latitude/Longitude	
				Start	End
Item	Vegetation			38.237827 °	38.237810 °
				-121.528056 °	-121.533291 °
DWR ID	DWR_RD0556_02_f_2014_34				
Action/Comments					
Remove the wild growth other than native grasses from the levee slopes.					

No Photos

LM Start	0.90	Rating **	M	Issue No.	48
LM End	1.38	Issue Type +	Ma	Location *	LS
Category	Earthen Levee			GPS Latitude/Longitude	
				Start	End
Item	Vegetation			38.238020 °	38.239938 °
				-121.534572 °	-121.543044 °
DWR ID	DWR_RD0556_02_f_2012_48				
Action/Comments					
Remove the wild growth other than native grasses from the levee slopes.					

No Photos

* Location LS : Land Side N/A : Not Applicable WS : Water Side CR : Crown	** Rating A : Acceptable M : Minimally Acceptable U : Unacceptable	N : Not Inspected/Rated C : Corrected A/W : Acceptable but Monitor & Maintain	+ Issue Type Ma : Maintenance Deficiency Ob : Design & System Obsolescence En : Enforcement
--	--	---	---

**Flood Control Project Maintenance
Levee Inspections**

Levee Inspection Report By Mile - Fall 2014

Reclamation District No. 0556 Upper Andrus

Waterway	Bank	Unit Miles	Inspection Start/End	Inspector
Unit No. 02 Sacramento River	Left	5.72	10/30/2014 10/30/2014	Herman Phillips

LM Start	0.94	Rating **	M	Issue No.	29
LM End	0.94	Issue Type +	En	Location *	LS
Category	Supplemental			GPS Latitude/Longitude	
				Start	End
Item	DWR UCIP Field Study			38.238125 °	38.238125 °
				-121.535267 °	-121.535267 °
DWR ID	DWR_RD0556_02_f_2014_29				
Action/Comments					
Inspector Comments: FS_ID:12512					
EP_NO: 11186					
Repair Type: Non-Urgent					
Crossing Status: Found					
UCIP Comments: - a concrete box on LSwater is leaking from					
priming plastic tank and causing surface erosion on levee slope.					
FIELD_STRUCT_DESC: 4-inch pipe through levee, 4.3-feet below					
crown. Pump in pump house on berm. Siphon breaker and service pole					
on landward slope. A concrete spillbox with 3-8-inch openings. (ABO					
#11186 - Marks). O&M Manual Sac 103, June 1954.					
FS Date: 4/25/2013					

No Photos

LM Start	0.99	Rating **	M	Issue No.	42
LM End	5.38	Issue Type +	Ma	Location *	LS
Category	Earthen Levee			GPS Latitude/Longitude	
				Start	End
Item	Vegetation			38.238342 °	38.193991 °
				-121.536118 °	-121.562238 °
DWR ID	DWR_RD0556_02_f_2012_42				
Action/Comments					
Remove the wild growth other than native grasses from the levee slopes.					

No Photos

LM Start	1.03	Rating **	M	Issue No.	27
LM End	1.16	Issue Type +	Ma	Location *	WS
Category	Supplemental			GPS Latitude/Longitude	
				Start	End
Item	USACE Erosion Survey			38.238772 °	38.239265 °
				-121.536788 °	-121.538845 °
DWR ID	DWR_RD0556_02_f_2014_27				
Action/Comments					
Inspector Comments: 1997 - Rock is in poor condition and has failed in many places. Scallops in berm with remnants of old rock in the toe area. 2005 - Brush boxes present. 2013: Site extended upstream approximately 300 ft to include new erosion pockets. [2013 Site ID: SAC_25-2_L]					

Photo 1 of 1 : FA_2014_RD0556_19_27_20141030_00009.jpg



USACE 2013 Photo #1

* Location LS : Land Side N/A : Not Applicable WS : Water Side CR : Crown	** Rating A : Acceptable M : Minimally Acceptable U : Unacceptable	N : Not Inspected/Rated C : Corrected A/W : Acceptable but Monitor & Maintain	+ Issue Type Ma : Maintenance Deficiency Ob : Design & System Obsolescence En : Enforcement
--	--	--	---

**Flood Control Project Maintenance
Levee Inspections**

Levee Inspection Report By Mile - Fall 2014

Reclamation District No. 0556 Upper Andrus

Waterway	Bank	Unit Miles	Inspection Start/End	Inspector
Unit No. 02 Sacramento River	Left	5.72	10/30/2014 10/30/2014	Herman Phillips

LM Start	1.03	Rating **	U	Issue No.	24
LM End	1.07	Issue Type +	Ma	Location *	LS
Category	Earthen Levee			GPS Latitude/Longitude	
				Start	End
Item	Vegetation			38.238525 °	38.238673 °
				-121.536844 °	-121.537471 °
DWR ID	DWR_RD0556_02_s_2013_24				
Action/Comments					
Remove the wild growth other than native grasses from the levee slopes. Inspector Comments: No new photo of this issue taken during the Fall 2014.					

Photo 1 of 1 : FA_2014_RD0556_19_24_20141030_00006.jpg



Unsatisfactory growth on the landward slope and toe of the levee section.

LM Start	1.11	Rating **	M	Issue No.	49
LM End	5.72	Issue Type +	Ma	Location *	WS
Category	Earthen Levee			GPS Latitude/Longitude	
				Start	End
Item	Vegetation			38.238840 °	38.191190 °
				-121.538206 °	-121.567346 °
DWR ID	DWR_RD0556_02_f_2012_49				
Action/Comments					
Remove the wild growth other than native grasses from the levee slopes.					

No Photos

LM Start	1.17	Rating **	U	Issue No.	69
LM End	1.37	Issue Type +	Ma	Location *	WS
Category	Earthen Levee			GPS Latitude/Longitude	
				Start	End
Item	Trim / Thin Trees			38.239151 °	38.239884 °
				-121.539351 °	-121.542766 °
DWR ID	DWR_RD0556_02_s_2013_69				
Action/Comments					
Thin trees to allow visibility of the ground and room to flood fight. Inspector Comments: No maintenance done since last inspection, no new photo taken.					

Photo 1 of 1 : FA_2014_RD0556_19_69_20141030_00013.jpg



Unwanted wild growth on the water side slope and toe. No new photo taken during Fall inspection 2014.

*** Location**

LS : Land Side N/A : Not Applicable
WS : Water Side
CR : Crown

**** Rating**

A : Acceptable N : Not Inspected/Rated
M : Minimally Acceptable C : Corrected
U : Unacceptable A/W : Acceptable but Monitor & Maintain

+ Issue Type

Ma : Maintenance Deficiency
Ob : Design & System Obsolescence
En : Enforcement

**Flood Control Project Maintenance
Levee Inspections**

Levee Inspection Report By Mile - Fall 2014

Reclamation District No. 0556 Upper Andrus

Waterway	Bank	Unit Miles	Inspection Start/End	Inspector
Unit No. 02 Sacramento River	Left	5.72	10/30/2014 10/30/2014	Herman Phillips

LM Start	1.22	Rating **	M	Issue No.	36
LM End	1.22	Issue Type +	En	Location *	WS
Category	Supplemental			GPS Latitude/Longitude	
				Start	End
Item	DWR UCIP Field Study			38.239327 °	38.239327 °
				-121.540190 °	-121.540190 °
DWR ID	DWR_RD0556_02_f_2014_36				
Action/Comments					
Inspector Comments: FS_ID:12573					
EP_NO: 11187					
Repair Type: Non-Urgent					
Crossing Status: Found					
UCIP Comments: - gap between 6-inch pipe and 10-inch pipe needs to be sealed.					
FIELD_STRUCT_DESC: A 6-inch steel pipe sleeved through 10-inch pipe through levee, 4.8 feet below crown. Pump on waterside of the levee on river bank. (ABO #11187 Machado).					
FS Date: 4/25/2013					

No Photos

LM Start	1.45	Rating **	M	Issue No.	26
LM End	1.59	Issue Type +	Ma	Location *	WS
Category	Supplemental			GPS Latitude/Longitude	
				Start	End
Item	USACE Erosion Survey			38.240401 °	38.240772 °
				-121.544106 °	-121.546791 °
DWR ID	DWR_RD0556_02_f_2014_26				
Action/Comments					
Inspector Comments: 1997 - Slow erosion of the berm at the waterline; bench below water. 2005 - Brush boxes present. 2010 - Minor new erosion. 2013: There is little to no berm remaining at downstream end of this site. [2013 Site ID: SAC_24-8_L]					

Photo 1 of 1 : FA_2014_RD0556_19_26_20141030_00008.jpg



USACE 2013 Photo #1

LM Start	1.45	Rating **	M	Issue No.	50
LM End	3.28	Issue Type +	Ma	Location *	LS
Category	Earthen Levee			GPS Latitude/Longitude	
				Start	End
Item	Vegetation			38.240196 °	38.223070 °
				-121.544292 °	-121.555456 °
DWR ID	DWR_RD0556_02_f_2012_50				
Action/Comments					
Remove the wild growth other than native grasses from the levee slopes.					

No Photos

* Location LS : Land Side N/A : Not Applicable WS : Water Side CR : Crown	** Rating A : Acceptable M : Minimally Acceptable U : Unacceptable	N : Not Inspected/Rated C : Corrected A/W : Acceptable but Monitor & Maintain	+ Issue Type Ma : Maintenance Deficiency Ob : Design & System Obsolescence En : Enforcement
--	--	---	---

**Flood Control Project Maintenance
Levee Inspections**

Levee Inspection Report By Mile - Fall 2014

Reclamation District No. 0556 Upper Andrus

Waterway	Bank	Unit Miles	Inspection Start/End	Inspector
Unit No. 02 Sacramento River	Left	5.72	10/30/2014 10/30/2014	Herman Phillips

LM Start	1.52	Rating **	M	Issue No.	70
LM End	1.79	Issue Type +	Ma	Location *	WS
Category	Earthen Levee			GPS Latitude/Longitude	
				Start	End
Item	Vegetation			38.240371 °	38.241034 °
				-121.545463 °	-121.550501 °
DWR ID	DWR_RD0556_02_s_2013_70				
Action/Comments					
Remove the wild growth other than native grasses from the levee slopes.					

No Photos

LM Start	1.53	Rating **	U	Issue No.	71
LM End	1.71	Issue Type +	Ma	Location *	LS
Category	Earthen Levee			GPS Latitude/Longitude	
				Start	End
Item	Vegetation			38.240417 °	38.240959 °
				-121.545769 °	-121.549025 °
DWR ID	DWR_RD0556_02_s_2013_71				
Action/Comments					
Remove the wild growth other than native grasses from the levee slopes.					
Inspector Comments: District need to remoove the vegetation from the levee slopes.					

Photo 1 of 1 : FA_2014_RD0556_19_71_20141030_00014.jpg



Wild growth on landward levee section greater than 4-foot tall covering the levee slope and toe. No new photo Fall 2014.

LM Start	1.71	Rating **	M	Issue No.	52
LM End	3.41	Issue Type +	Ma	Location *	WS
Category	Earthen Levee			GPS Latitude/Longitude	
				Start	End
Item	Vegetation			38.240959 °	38.221267 °
				-121.549026 °	-121.555754 °
DWR ID	DWR_RD0556_02_s_2013_52				
Action/Comments					
Remove the wild growth other than native grasses from the levee slopes.					

No Photos

* Location
LS : Land Side N/A : Not Applicable
WS : Water Side
CR : Crown

** Rating
A : Acceptable N : Not Inspected/Rated
M : Minimally Acceptable C : Corrected
U : Unacceptable A/W : Acceptable but Monitor & Maintain

+ Issue Type
Ma : Maintenance Deficiency
Ob : Design & System Obsolescence
En : Enforcement

**Flood Control Project Maintenance
Levee Inspections**

Levee Inspection Report By Mile - Fall 2014

Reclamation District No. 0556 Upper Andrus

Waterway	Bank	Unit Miles	Inspection Start/End	Inspector
Unit No. 02 Sacramento River	Left	5.72	10/30/2014 10/30/2014	Herman Phillips

LM Start	1.86	Rating **	M	Issue No.	72
LM End	4.27	Issue Type +	Ma	Location *	LS
Category	Earthen Levee			GPS Latitude/Longitude	
				Start	End
Item	Vegetation			38.240906 °	38.208791 °
				-121.551823 °	-121.556812 °
DWR ID	DWR_RD0556_02_s_2013_72				
Action/Comments					
Remove the wild growth other than native grasses from the levee slopes.					

No Photos

LM Start	1.88	Rating **	M	Issue No.	73
LM End	5.70	Issue Type +	Ma	Location *	WS
Category	Earthen Levee			GPS Latitude/Longitude	
				Start	End
Item	Vegetation			38.240799 °	38.191865 °
				-121.552373 °	-121.567498 °
DWR ID	DWR_RD0556_02_s_2013_73				
Action/Comments					
Remove the wild growth other than native grasses from the levee slopes.					

No Photos

LM Start	1.90	Rating **	M	Issue No.	51
LM End	5.69	Issue Type +	Ma	Location *	WS
Category	Earthen Levee			GPS Latitude/Longitude	
				Start	End
Item	Vegetation			38.240740 °	°
				-121.552539 °	°
DWR ID	DWR_RD0556_02_f_2012_51				
Action/Comments					
Remove the wild growth other than native grasses from the levee slopes.					

No Photos

* Location LS : Land Side N/A : Not Applicable WS : Water Side CR : Crown	** Rating A : Acceptable M : Minimally Acceptable U : Unacceptable	N : Not Inspected/Rated C : Corrected A/W : Acceptable but Monitor & Maintain	+ Issue Type Ma : Maintenance Deficiency Ob : Design & System Obsolescence En : Enforcement
--	--	---	---

**Flood Control Project Maintenance
Levee Inspections**

Levee Inspection Report By Mile - Fall 2014

Reclamation District No. 0556 Upper Andrus

Waterway	Bank	Unit Miles	Inspection Start/End	Inspector
Unit No. 02 Sacramento River	Left	5.72	10/30/2014 10/30/2014	Herman Phillips

LM Start	1.98	Rating **	M	Issue No.	14
LM End	2.36	Issue Type +	Ma	Location *	LS
Category	Earthen Levee			GPS Latitude/Longitude	
				Start	End
Item	Vegetation			38.240022 °	38.236065 °
				-121.553700 °	-121.557990 °
DWR ID	DWR_RD0556_02_s_2012_14				
Action/Comments					
Remove the wild growth other than native grasses from the levee slopes.					

No Photos

LM Start	2.02	Rating **	M	Issue No.	75
LM End	2.06	Issue Type +	Ma	Location *	WS
Category	Earthen Levee			GPS Latitude/Longitude	
				Start	End
Item	Vegetation			38.239766 °	38.239474 °
				-121.554364 °	-121.554851 °
DWR ID	DWR_RD0556_02_s_2013_75				
Action/Comments					
Remove the wild growth other than native grasses from the levee slopes.					

No Photos

LM Start	2.41	Rating **	M	Issue No.	77
LM End	5.14	Issue Type +	Ma	Location *	LS
Category	Earthen Levee			GPS Latitude/Longitude	
				Start	End
Item	Vegetation			38.235307 °	38.196564 °
				-121.558088 °	-121.559500 °
DWR ID	DWR_RD0556_02_s_2013_77				
Action/Comments					
Remove the wild growth other than native grasses from the levee slopes.					

No Photos

* Location LS : Land Side N/A : Not Applicable WS : Water Side CR : Crown	** Rating A : Acceptable M : Minimally Acceptable U : Unacceptable	N : Not Inspected/Rated C : Corrected A/W : Acceptable but Monitor & Maintain	+ Issue Type Ma : Maintenance Deficiency Ob : Design & System Obsolescence En : Enforcement
--	--	---	---

**Flood Control Project Maintenance
Levee Inspections**

Levee Inspection Report By Mile - Fall 2014

Reclamation District No. 0556 Upper Andrus

Waterway	Bank	Unit Miles	Inspection Start/End	Inspector
Unit No. 02 Sacramento River	Left	5.72	10/30/2014 10/30/2014	Herman Phillips

LM Start	2.41	Rating **	M	Issue No.	44
LM End	2.41	Issue Type +	En	Location *	LS
Category	Supplemental			GPS Latitude/Longitude	
				Start	End
Item	DWR UCIP Field Study			38.235261 °	38.235261 °
				-121.558059 °	-121.558059 °
DWR ID	DWR_RD0556_02_f_2014_44				
Action/Comments					
Inspector Comments: FS_ID:12574 EP_NO: 11181 Repair Type: Non-Urgent Crossing Status: Found UCIP Comments: - Needs to clean CMP riser for proper functioning of siphon breaker. FIELD_STRUCT_DESC: A 10-inch steel irrigation pipe through levee, 5.8 feet below crown. Pump and gate valve in pump house on waterward slope. Siphon breaker and service pole on landward slope. (ABO #11181- Collins.). O&M Manual Sac 103, June 1954. FS Date: 4/25/2013					

No Photos

LM Start	2.69	Rating **	M	Issue No.	9
LM End	5.42	Issue Type +	Ma	Location *	LS
Category	Earthen Levee			GPS Latitude/Longitude	
				Start	End
Item	Trim / Thin Trees			38.231444 °	38.193523 °
				-121.556393 °	-121.562812 °
DWR ID	DWR_RD0556_02_s_2012_9				
Action/Comments					
Trim and thin trees to allow visibility of the ground and room to flood fight.					

No Photos

LM Start	2.81	Rating **	M	Issue No.	55
LM End	3.00	Issue Type +	Ma	Location *	LS
Category	Earthen Levee			GPS Latitude/Longitude	
				Start	End
Item	Trim / Thin Trees			38.229938 °	38.227167 °
				-121.555556 °	-121.555216 °
DWR ID	DWR_RD0556_02_f_2012_55				
Action/Comments					
Thin trees to allow visibility of the ground and room to flood fight.					

No Photos

* Location LS : Land Side N/A : Not Applicable WS : Water Side CR : Crown		** Rating A : Acceptable M : Minimally Acceptable U : Unacceptable		N : Not Inspected/Rated C : Corrected A/W : Acceptable but Monitor & Maintain		+ Issue Type Ma : Maintenance Deficiency Ob : Design & System Obsolescence En : Enforcement	
---	--	---	--	---	--	--	--

**Flood Control Project Maintenance
Levee Inspections**

Levee Inspection Report By Mile - Fall 2014

Reclamation District No. 0556 Upper Andrus

Waterway	Bank	Unit Miles	Inspection Start/End	Inspector
Unit No. 02 Sacramento River	Left	5.72	10/30/2014 10/30/2014	Herman Phillips

LM Start	2.92	Rating **	M	Issue No.	13
LM End	3.17	Issue Type +	Ma	Location *	WS
Category	Earthen Levee			GPS Latitude/Longitude	
				Start	End
Item	Vegetation			38.228326 °	38.224729 °
				-121.555149 °	-121.555331 °
DWR ID	DWR_RD0556_02_s_2012_13				
Action/Comments					
Remove the wild growth other than native grasses from the levee slopes.					

No Photos

LM Start	2.96	Rating **	M	Issue No.	25
LM End	3.02	Issue Type +	Ma	Location *	WS
Category	Supplemental			GPS Latitude/Longitude	
				Start	End
Item	USACE Erosion Survey			38.228202 °	38.226601 °
				-121.555502 °	-121.555605 °
DWR ID	DWR_RD0556_02_f_2014_25				
Action/Comments					
Inspector Comments: 1997 - Few scallops in berm, some getting close to levee toe. 2005 - Brush boxes present. 2012 - More erosion of the toe since last year. 2013: No observed changes. [2013 Site ID: SAC_23-3_L]					

Photo 1 of 1 : FA_2014_RD0556_19_25_20141030_00007.jpg



USACE 2013 Photo #1

LM Start	3.06	Rating **	M	Issue No.	45
LM End	3.06	Issue Type +	En	Location *	WS
Category	Supplemental			GPS Latitude/Longitude	
				Start	End
Item	DWR UCIP Field Study			38.226225 °	38.226225 °
				-121.555236 °	-121.555236 °
DWR ID	DWR_RD0556_02_f_2014_45				
Action/Comments					
Inspector Comments: FS_ID:12525					
EP_NO: N/A					
Repair Type: Non-Urgent					
Crossing Status: Found					
UCIP Comments: - 9-inch steel pipe sleeved through 12-inch pipe.					
needs to seal gap between two pipes.					
FIELD_STRUCT_DESC: A 9-inch steel pipe sleeved through 12-inch					
steel irrigation pipe through levee, 6.0 feet below crown. Pump on pile					
structure in stream. Steel walkway to pump, wood steps on waterward					
slope. Concrete spillbox with 2- 8 inch openings. (ABO #11193-Reid.).					
O&M Manual Sac 103, June 1954.					
FS Date: 4/25/2013					

No Photos

* Location LS : Land Side N/A : Not Applicable WS : Water Side CR : Crown		** Rating A : Acceptable M : Minimally Acceptable U : Unacceptable		N : Not Inspected/Rated C : Corrected A/W : Acceptable but Monitor & Maintain		+ Issue Type Ma : Maintenance Deficiency Ob : Design & System Obsolescence En : Enforcement	
--	--	--	--	---	--	---	--

**Flood Control Project Maintenance
Levee Inspections**

Levee Inspection Report By Mile - Fall 2014

Reclamation District No. 0556 Upper Andrus

Waterway	Bank	Unit Miles	Inspection Start/End	Inspector
Unit No. 02 Sacramento River	Left	5.72	10/30/2014 10/30/2014	Herman Phillips

LM Start	3.11	Rating **	M	Issue No.	56
LM End	3.18	Issue Type +	Ma	Location *	LS
Category	Earthen Levee			GPS Latitude/Longitude	
				Start	End
Item	Vegetation			38.225574 °	38.224522 °
				-121.555261 °	-121.555370 °
DWR ID	DWR_RD0556_02_f_2012_56				
Action/Comments					
Remove the wild growth other than native grasses from the levee slopes.					

No Photos

LM Start	3.16	Rating **	M	Issue No.	23
LM End	3.25	Issue Type +	Ma	Location *	WS
Category	Supplemental			GPS Latitude/Longitude	
				Start	End
Item	USACE Erosion Survey			38.224850 °	38.223233 °
				-121.555641 °	-121.555687 °
DWR ID	DWR_RD0556_02_f_2014_23				
Action/Comments					
Inspector Comments: 2000 - Recently fallen cottonwood at the downstream end. 2005 - Empty brush boxes. 2011 - A few trees have fallen since last year. 2012 - Potential new tree popout since last year. 2013: New erosion at downstream end of site and a recent tree pop-out observed. [2013 Site ID: SAC_23-2_L]					

Photo 1 of 1 : FA_2014_RD0556_19_23_20141030_00005.jpg



USACE 2013 Photo #1

LM Start	3.24	Rating **	M	Issue No.	18
LM End	3.26	Issue Type +	Ma	Location *	LS
Category	Earthen Levee			GPS Latitude/Longitude	
				Start	End
Item	Trim / Thin Trees			38.223689 °	38.223419 °
				-121.555370 °	-121.555404 °
DWR ID	DWR_RD0556_02_s_2012_18				
Action/Comments					
Thin trees to allow visibility of the ground and room to flood fight.					

No Photos

* Location LS : Land Side N/A : Not Applicable WS : Water Side CR : Crown		** Rating A : Acceptable N : Not Inspected/Rated M : Minimally Acceptable C : Corrected U : Unacceptable A/W : Acceptable but Monitor & Maintain		+ Issue Type Ma : Maintenance Deficiency Ob : Design & System Obsolescence En : Enforcement
--	--	---	--	---

**Flood Control Project Maintenance
Levee Inspections**

Levee Inspection Report By Mile - Fall 2014

Reclamation District No. 0556 Upper Andrus

Waterway	Bank	Unit Miles	Inspection Start/End	Inspector
Unit No. 02 Sacramento River	Left	5.72	10/30/2014 10/30/2014	Herman Phillips

LM Start	3.40	Rating **	M	Issue No.	57
LM End	3.58	Issue Type +	Ma	Location *	LS
Category	Earthen Levee			GPS Latitude/Longitude	
				Start	End
Item	Trim / Thin Trees			38.221170 °	38.218765 °
				-121.555791 °	-121.556374 °
DWR ID	DWR_RD0556_02_f_2012_57				
Action/Comments					
Trim trees to at least five feet above ground level.					

No Photos

LM Start	3.51	Rating **	M	Issue No.	46
LM End	3.51	Issue Type +	En	Location *	LS
Category	Supplemental			GPS Latitude/Longitude	
				Start	End
Item	DWR UCIP Field Study			38.219851 °	38.219851 °
				-121.556129 °	-121.556129 °
DWR ID	DWR_RD0556_02_f_2014_46				
Action/Comments					
Inspector Comments: FS_ID:12527					
EP_NO: 11181					
Repair Type: Non-Urgent					
Crossing Status: Found					
UCIP Comments: - needs to fix siphon breaker					
FIELD_STRUCT_DESC: A 10-inch steel irrigation pipe through levee, 4.8 feet below crown. Steel walkway to pump on pile structure in stream. Siphon breaker on waterside and service pole on landward slope. A concrete spillbox with 2-15 inch openings on landside. (ABO # 11181- Collins.). O&M Manual Sac 103, June 1954.					
FS Date: 4/25/2013					

No Photos

LM Start	3.57	Rating **	M	Issue No.	17
LM End	3.57	Issue Type +	Ma	Location *	LS
Category	Earthen Levee			GPS Latitude/Longitude	
				Start	End
Item	Trim / Thin Trees			38.218922 °	38.218921 °
				-121.556319 °	-121.556320 °
DWR ID	DWR_RD0556_02_s_2012_17				
Action/Comments					
Thin trees to allow visibility of the ground and room to flood fight.					

No Photos

* Location LS : Land Side N/A : Not Applicable WS : Water Side CR : Crown	** Rating A : Acceptable M : Minimally Acceptable U : Unacceptable	N : Not Inspected/Rated C : Corrected A/W : Acceptable but Monitor & Maintain	+ Issue Type Ma : Maintenance Deficiency Ob : Design & System Obsolescence En : Enforcement
--	--	---	---

**Flood Control Project Maintenance
Levee Inspections**

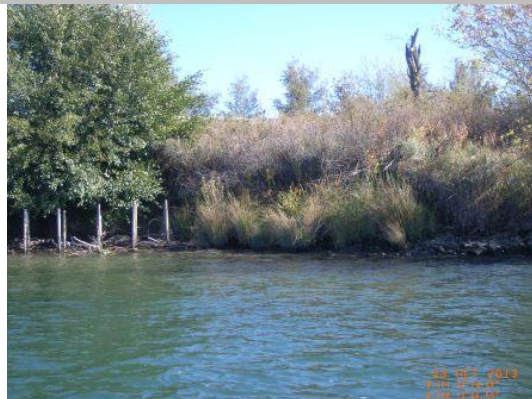
Levee Inspection Report By Mile - Fall 2014

Reclamation District No. 0556 Upper Andrus

Waterway	Bank	Unit Miles	Inspection Start/End	Inspector
Unit No. 02 Sacramento River	Left	5.72	10/30/2014 10/30/2014	Herman Phillips

LM Start	3.58	Rating **	M	Issue No.	22
LM End	3.63	Issue Type +	Ma	Location *	WS
Category	Supplemental			GPS Latitude/Longitude	
				Start	End
Item	USACE Erosion Survey			38.218951 °	38.218104 °
				-121.556689 °	-121.556819 °
DWR ID	DWR_RD0556_02_f_2014_22				
Action/Comments					
Inspector Comments: 1997 - Scallops into berm and very close to levee toe. 2005 - Brush boxes present. 2011 - New toe scour and freshly fallen tree. 2012 - New tree popout has taken significant portion of soil out of the levee. 2013: No observed changes. [2013 Site ID: SAC_22-7_L]					

Photo 1 of 1 : FA_2014_RD0556_19_22_20141030_00004.jpg



USACE 2013 Photo #1

LM Start	3.64	Rating **	M	Issue No.	58
LM End	3.67	Issue Type +	Ma	Location *	LS
Category	Earthen Levee			GPS Latitude/Longitude	
				Start	End
Item	Trim / Thin Trees			38.217984 °	38.217491 °
				-121.556537 °	-121.556630 °
DWR ID	DWR_RD0556_02_f_2012_58				
Action/Comments					
Thin trees to allow visibility of the ground and room to flood fight.					

No Photos

LM Start	3.75	Rating **	M	Issue No.	6
LM End	5.70	Issue Type +	Ma	Location *	LS
Category	Earthen Levee			GPS Latitude/Longitude	
				Start	End
Item	Vegetation			38.216407 °	38.191875 °
				-121.556714 °	-121.567455 °
DWR ID	DWR_RD0556_02_s_2012_6				
Action/Comments					
Remove the wild growth other than native grasses from the levee slopes.					

No Photos

*** Location**
LS : Land Side N/A : Not Applicable
WS : Water Side
CR : Crown

**** Rating**
A : Acceptable N : Not Inspected/Rated
M : Minimally Acceptable C : Corrected
U : Unacceptable A/W : Acceptable but Monitor & Maintain

+ Issue Type
Ma : Maintenance Deficiency
Ob : Design & System Obsolescence
En : Enforcement

**Flood Control Project Maintenance
Levee Inspections**

Levee Inspection Report By Mile - Fall 2014

Reclamation District No. 0556 Upper Andrus

Waterway	Bank	Unit Miles	Inspection Start/End	Inspector
Unit No. 02 Sacramento River	Left	5.72	10/30/2014 10/30/2014	Herman Phillips

LM Start	3.82	Rating **	M	Issue No.	16
LM End	4.13	Issue Type +	Ma	Location *	LS
Category	Earthen Levee			GPS Latitude/Longitude	
				Start	End
Item	Trim / Thin Trees			38.215319 °	38.210907 °
				-121.556842 °	-121.556738 °
DWR ID	DWR_RD0556_02_s_2012_16				
Action/Comments					
Thin trees to allow visibility of the ground and room to flood fight.					

No Photos

LM Start	3.98	Rating **	M	Issue No.	47
LM End	3.98	Issue Type +	En	Location *	LS
Category	Supplemental			GPS Latitude/Longitude	
				Start	End
Item	DWR UCIP Field Study			38.213031 °	38.213031 °
				-121.556800 °	-121.556800 °
DWR ID	DWR_RD0556_02_f_2014_47				
Action/Comments					
Inspector Comments: FS_ID:12543					
EP_NO: 11197					
Repair Type: Non-Urgent					
Crossing Status: Found					
UCIP Comments: Electric control panel in pump house needs					
cleaning of CMP riser on landside.					
FIELD_STRUCT_DESC: A 6-inch steel irrigation pipe through levee 6.5					
feet below crown. Slanted pump on steel pile structure in the stream,					
walkway to the pump, and gate valve in pump house on waterward					
slope. Siphon breaker and service poles on landward slope. Concrete					
standpipe on landside. (ABO #11197- Souza.). O&M Manual Sac 103,					
June 1954.					
FS Date: 4/25/2013					

No Photos

* Location LS : Land Side N/A : Not Applicable WS : Water Side CR : Crown	** Rating A : Acceptable M : Minimally Acceptable U : Unacceptable	N : Not Inspected/Rated C : Corrected A/W : Acceptable but Monitor & Maintain	+ Issue Type Ma : Maintenance Deficiency Ob : Design & System Obsolescence En : Enforcement
--	--	---	---

Levee Inspection Report By Mile - Fall 2014

Waterway	Bank	Unit Miles	Inspection Start/End	Inspector
Unit No. 02 Sacramento River	Left	5.72	10/30/2014 10/30/2014	Herman Phillips

Photo 1 of 1 : FA_2014_RD0556_19_21_20141030_00003.jpg



USACE 2013 Photo #1

No Photos

Photo 1 of 1 : FA_2014_RD0556_19_35_20141030_00011.jpg



Unsatisfactory wild growth of bambo blocking view of the levee section on the waterside shoulder and slope. No new photo.

* Location	** Rating	+ Issue Type
LS : Land Side N/A : Not Applicable WS : Water Side CR : Crown	A : Acceptable N : Not Inspected/Rated M : Minimally Acceptable C : Corrected U : Unacceptable A/W : Acceptable but Monitor & Maintain	Ma : Maintenance Deficiency Ob : Design & System Obsolescence En : Enforcement

**Flood Control Project Maintenance
Levee Inspections**

Levee Inspection Report By Mile - Fall 2014

Reclamation District No. 0556 Upper Andrus

Waterway	Bank	Unit Miles	Inspection Start/End	Inspector
Unit No. 02 Sacramento River	Left	5.72	10/30/2014 10/30/2014	Herman Phillips

LM Start	4.23	Rating **	M	Issue No.	15
LM End	4.26	Issue Type +	Ma	Location *	LS
Category	Earthen Levee			GPS Latitude/Longitude	
				Start	End
Item	Vegetation			38.209458 °	38.208936 °
				-121.556759 °	-121.556763 °
DWR ID	DWR_RD0556_02_s_2012_15				
Action/Comments					
Remove the wild growth other than native grasses from the levee slopes.					

No Photos

LM Start	4.23	Rating **	M	Issue No.	8
LM End	4.27	Issue Type +	Ma	Location *	WS
Category	Earthen Levee			GPS Latitude/Longitude	
				Start	End
Item	Vegetation			38.209458 °	38.208808 °
				-121.556759 °	-121.556797 °
DWR ID	DWR_RD0556_02_s_2012_8				
Action/Comments					
Remove the wild growth other than native grasses from the levee slopes.					

No Photos

LM Start	4.25	Rating **	M	Issue No.	53
LM End	4.25	Issue Type +	En	Location *	WS
Category	Supplemental			GPS Latitude/Longitude	
				Start	End
Item	DWR UCIP Field Study			38.209117 °	38.209117 °
				-121.556803 °	-121.556803 °
DWR ID	DWR_RD0556_02_f_2014_53				
Action/Comments					
Inspector Comments: FS_ID:12545					
EP_NO: 11194					
Repair Type: Non-Urgent					
Crossing Status: Found					
UCIP Comments: - CMP riser found abandoned on LS slope. Due to dense vegetation siphon breaker could not be found.Dense vegetation on both sides of the levee.Oil leaks from pump set.					
FIELD_STRUCT_DESC: A 8-inch pipe through levee, 6.7 feet below crown. Pump and gate valve in pump house on waterward slope.					
Siphon breaker on landward slope. (ABO #11194- Robinson.). O&M Manual Sac 103, June 1954.					
FS Date: 4/25/2013					

No Photos

* Location LS : Land Side N/A : Not Applicable WS : Water Side CR : Crown	** Rating A : Acceptable M : Minimally Acceptable U : Unacceptable	N : Not Inspected/Rated C : Corrected A/W : Acceptable but Monitor & Maintain	+ Issue Type Ma : Maintenance Deficiency Ob : Design & System Obsolescence En : Enforcement
--	--	---	---

**Flood Control Project Maintenance
Levee Inspections**

Levee Inspection Report By Mile - Fall 2014

Reclamation District No. 0556 Upper Andrus

Waterway	Bank	Unit Miles	Inspection Start/End	Inspector
Unit No. 02 Sacramento River	Left	5.72	10/30/2014 10/30/2014	Herman Phillips

LM Start	4.39	Rating **	M	Issue No.	40
LM End	4.64	Issue Type +	En	Location *	LS
Category	Earthen Levee			GPS Latitude/Longitude	
				Start	End
Item	Vegetation			38.207202 °	38.203693 °
				-121.556853 °	-121.556685 °
DWR ID	DWR_RD0556_02_s_2012_40				
Action/Comments					
Landscaping					

No Photos

LM Start	4.44	Rating **	M	Issue No.	19
LM End	4.48	Issue Type +	Ma	Location *	WS
Category	Supplemental			GPS Latitude/Longitude	
				Start	End
Item	USACE Erosion Survey			38.206379 °	38.205733 °
				-121.557089 °	-121.556999 °
DWR ID	DWR_RD0556_02_f_2014_19				
Action/Comments					
Inspector Comments: 2013: Erosion pockets encroaching on levee foundation. [2013 Site ID: SAC_21-9_L]					

Photo 1 of 1 : FA_2014_RD0556_19_19_20141030_00002.jpg



USACE 2013 Photo #1

LM Start	4.45	Rating **	M	Issue No.	61
LM End	4.49	Issue Type +	Ma	Location *	LS
Category	Earthen Levee			GPS Latitude/Longitude	
				Start	End
Item	Vegetation			38.206187 °	38.205656 °
				-121.556816 °	-121.556802 °
DWR ID	DWR_RD0556_02_f_2012_61				
Action/Comments					
Remove the wild growth other than native grasses from the levee slopes.					

No Photos

* Location LS : Land Side N/A : Not Applicable WS : Water Side CR : Crown	** Rating A : Acceptable M : Minimally Acceptable U : Unacceptable	N : Not Inspected/Rated C : Corrected A/W : Acceptable but Monitor & Maintain	+ Issue Type Ma : Maintenance Deficiency Ob : Design & System Obsolescence En : Enforcement
--	--	---	---

**Flood Control Project Maintenance
Levee Inspections**

Levee Inspection Report By Mile - Fall 2014

Reclamation District No. 0556 Upper Andrus

Waterway	Bank	Unit Miles	Inspection Start/End	Inspector
Unit No. 02 Sacramento River	Left	5.72	10/30/2014 10/30/2014	Herman Phillips

LM Start	4.53	Rating **	U	Issue No.	59
LM End	4.89	Issue Type +	Ma	Location *	LS
Category	Earthen Levee			GPS Latitude/Longitude	
				Start	End
Item	Vegetation			38.205036 °	38.199871 °
				-121.556784 °	-121.557650 °
DWR ID	DWR_RD0556_02_s_2013_59				
Action/Comments					
Remove the wild growth other than native grasses from the levee slopes.					
Inspector Comments: Remove the growth from levee slope landward.					
No new photo.					

Photo 1 of 1 : FA_2014_RD0556_19_59_20141030_00012.jpg



Unsatisfactory growth on landward levee.

LM Start	4.53	Rating **	M	Issue No.	54
LM End	4.53	Issue Type +	En	Location *	LS
Category	Supplemental			GPS Latitude/Longitude	
				Start	End
Item	DWR UCIP Field Study			38.204974 °	38.204974 °
				-121.556789 °	-121.556789 °
DWR ID	DWR_RD0556_02_f_2014_54				
Action/Comments					
Inspector Comments: FS_ID:12546 EP_NO: 11940 Repair Type: Non-Urgent Crossing Status: Found UCIP Comments: - Abandoned crossing.Siphon breaker on LS not found due to dense vegetation, An abandoned CMP riser and service pole found on LS.It may need to be properly abandoned. FIELD_STRUCT_DESC: Abandoned 6-inch pipe through levee, 6.7 feet below crown. Pump and gate valve in pumphouse on waterward slope. Siphon breaker and service pole on landward slope. (ABO # 11940-Robinson.). O&M Manual Sac 103, June 1954. FS Date: 4/25/2013					

No Photos

LM Start	4.63	Rating **	M	Issue No.	7
LM End	4.74	Issue Type +	En	Location *	LS
Category	Earthen Levee			GPS Latitude/Longitude	
				Start	End
Item	Encroachments			38.203727 °	38.202218 °
				-121.556835 °	-121.556960 °
DWR ID	DWR_RD0556_02_s_2012_7				
Action/Comments					
Fence					

No Photos

* Location LS : Land Side N/A : Not Applicable WS : Water Side CR : Crown		** Rating A : Acceptable N : Not Inspected/Rated M : Minimally Acceptable C : Corrected U : Unacceptable A/W : Acceptable but Monitor & Maintain		+ Issue Type Ma : Maintenance Deficiency Ob : Design & System Obsolescence En : Enforcement
--	--	---	--	---

Levee Inspection Report By Mile - Fall 2014

Waterway	Bank	Unit Miles	Inspection Start/End	Inspector
Unit No. 02 Sacramento River	Left	5.72	10/30/2014 10/30/2014	Herman Phillips

No Photos

No Photos

No Photos

* Location	** Rating	+ Issue Type
LS : Land Side N/A : Not Applicable	A : Acceptable N : Not Inspected/Rated	Ma : Maintenance Deficiency
WS : Water Side	M : Minimally Acceptable C : Corrected	Ob : Design & System Obsolescence
CR : Crown	U : Unacceptable A/W : Acceptable but Monitor & Maintain	En : Enforcement

**Flood Control Project Maintenance
Levee Inspections**

Levee Inspection Report By Mile - Fall 2014

Reclamation District No. 0556 Upper Andrus

Waterway	Bank	Unit Miles	Inspection Start/End	Inspector
Unit No. 02 Sacramento River	Left	5.72	10/30/2014 10/30/2014	Herman Phillips

LM Start	4.80	Rating **	M	Issue No.	5
LM End	4.92	Issue Type +	Ma	Location *	LS
Category	Earthen Levee			GPS Latitude/Longitude	
				Start	End
Item	Vegetation			38.201362 °	38.199558 °
				-121.557077 °	-121.557603 °
DWR ID	DWR_RD0556_02_s_2012_5				
Action/Comments					
Remove the wild growth other than native grasses from the levee slopes.					

No Photos

LM Start	4.80	Rating **	M	Issue No.	37
LM End	4.92	Issue Type +	Ma	Location *	LS
Category	Earthen Levee			GPS Latitude/Longitude	
				Start	End
Item	Vegetation			38.201362 °	38.199558 °
				-121.557077 °	-121.557603 °
DWR ID	DWR_RD0556_02_f_2012_37				
Action/Comments					
Remove the wild growth other than native grasses from the levee slopes.					

No Photos

LM Start	4.82	Rating **	M	Issue No.	11
LM End	4.95	Issue Type +	Ma	Location *	WS
Category	Earthen Levee			GPS Latitude/Longitude	
				Start	End
Item	Vegetation			38.200676 °	38.199025 °
				-121.557136 °	-121.557923 °
DWR ID	DWR_RD0556_02_s_2012_11				
Action/Comments					
Remove the wild growth other than native grasses from the levee slopes.					

No Photos

* Location LS : Land Side N/A : Not Applicable WS : Water Side CR : Crown	** Rating A : Acceptable M : Minimally Acceptable U : Unacceptable	N : Not Inspected/Rated C : Corrected A/W : Acceptable but Monitor & Maintain	+ Issue Type Ma : Maintenance Deficiency Ob : Design & System Obsolescence En : Enforcement
--	--	---	---

**Flood Control Project Maintenance
Levee Inspections**

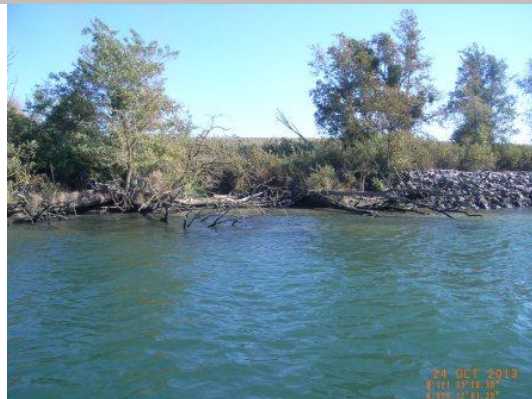
Levee Inspection Report By Mile - Fall 2014

Reclamation District No. 0556 Upper Andrus

Waterway	Bank	Unit Miles	Inspection Start/End	Inspector
Unit No. 02 Sacramento River	Left	5.72	10/30/2014 10/30/2014	Herman Phillips

LM Start	4.87	Rating **	M	Issue No.	3
LM End	4.88	Issue Type +	Ma	Location *	WS
Category	Supplemental			GPS Latitude/Longitude	
				Start	End
Item	USACE Erosion Survey			38.200646 °	38.200225 °
				-121.557606 °	-121.557749 °
DWR ID	DWR_RD0556_02_f_2014_3				
Action/Comments					
Inspector Comments: 1999 - Downstream 140 ft repaired with rock. 2010 - Lots of woody debris, but no changes to site. 2013: No observed changes. [2013 Site ID: SAC_21-5_L]					

Photo 1 of 1 : FA_2014_RD0556_19_3_20141030_00001.jpg



USACE 2013 Photo #1

LM Start	4.95	Rating **	M	Issue No.	63
LM End	4.95	Issue Type +	En	Location *	WS
Category	Supplemental			GPS Latitude/Longitude	
				Start	End
Item	DWR UCIP Field Study			38.199133 °	38.199133 °
				-121.557939 °	-121.557939 °
DWR ID	DWR_RD0556_02_f_2014_63				
Action/Comments					
Inspector Comments: FS_ID:12564					
EP_NO: 11191					
Repair Type: Non-Urgent					
Crossing Status: Found					
UCIP Comments: - needs to fix CMP riser.					
FIELD_STRUCT_DESC: A 8-inch pipe through levee, 5.7 feet below crown. Pump on waterward slope, gate valve on berm. Siphon breaker and service pole on landward slope. (ABO #11191-Pacific Fruit Exchange.)					
FS Date: 4/25/2013					

No Photos

LM Start	5.01	Rating **	M	Issue No.	4
LM End	5.07	Issue Type +	Ma	Location *	LS
Category	Earthen Levee			GPS Latitude/Longitude	
				Start	End
Item	Vegetation			38.198403 °	38.197618 °
				-121.558263 °	-121.558800 °
DWR ID	DWR_RD0556_02_s_2012_4				
Action/Comments					
Remove the wild growth other than native grasses from the levee slopes.					

No Photos

* Location LS : Land Side N/A : Not Applicable WS : Water Side CR : Crown	** Rating A : Acceptable M : Minimally Acceptable U : Unacceptable	N : Not Inspected/Rated C : Corrected A/W : Acceptable but Monitor & Maintain	+ Issue Type Ma : Maintenance Deficiency Ob : Design & System Obsolescence En : Enforcement
--	--	---	---

**Flood Control Project Maintenance
Levee Inspections**

Levee Inspection Report By Mile - Fall 2014

Reclamation District No. 0556 Upper Andrus

Waterway	Bank	Unit Miles	Inspection Start/End	Inspector
Unit No. 02 Sacramento River	Left	5.72	10/30/2014 10/30/2014	Herman Phillips

LM Start	5.03	Rating **	M	Issue No.	10
LM End	5.21	Issue Type +	Ma	Location *	LS
Category	Earthen Levee			GPS Latitude/Longitude	
				Start	End
Item	Vegetation			38.198039 °	38.195649 °
				-121.558494 °	-121.560050 °
DWR ID	DWR_RD0556_02_s_2012_10				
Action/Comments					
Remove the wild growth other than native grasses from the levee slopes.					

No Photos

LM Start	5.09	Rating **	M	Issue No.	33
LM End	5.16	Issue Type +	En	Location *	LS
Category	Earthen Levee			GPS Latitude/Longitude	
				Start	End
Item	Vegetation			38.197453 °	38.196493 °
				-121.558972 °	-121.559510 °
DWR ID	DWR_RD0556_02_s_2012_33				
Action/Comments					
Landscaping					

No Photos

LM Start	5.21	Rating **	U	Issue No.	64
LM End	5.21	Issue Type +	En	Location *	LS
Category	Supplemental			GPS Latitude/Longitude	
				Start	End
Item	DWR UCIP Field Study			38.195755 °	38.195755 °
				-121.560078 °	-121.560078 °
DWR ID	DWR_RD0556_02_f_2014_64				
Action/Comments					
Inspector Comments: FS_ID:12570					
EP_NO: 11185					
Repair Type: Urgent					
Crossing Status: Found					
UCIP Comments: Large pit and erosion on WS levee berm.					
FIELD_STRUCT_DESC: A 8-inch pipe through levee, 5.7 feet below crown. Pump and gate valve in pumphouse on waterward slope. Siphon breaker, concrete box, and service pole on landward slope. (ABO # 11185- Langhart.)					
FS Date: 4/25/2013					

No Photos

* Location LS : Land Side N/A : Not Applicable WS : Water Side CR : Crown	** Rating A : Acceptable M : Minimally Acceptable U : Unacceptable	N : Not Inspected/Rated C : Corrected A/W : Acceptable but Monitor & Maintain	+ Issue Type Ma : Maintenance Deficiency Ob : Design & System Obsolescence En : Enforcement
--	--	---	---

**Flood Control Project Maintenance
Levee Inspections**

Levee Inspection Report By Mile - Fall 2014

Reclamation District No. 0556 Upper Andrus

Waterway	Bank	Unit Miles	Inspection Start/End	Inspector
Unit No. 02 Sacramento River	Left	5.72	10/30/2014 10/30/2014	Herman Phillips

LM Start	5.38	Rating **	M	Issue No.	1
LM End	5.67	Issue Type +	Ma	Location *	LS
Category	Earthen Levee			GPS Latitude/Longitude	
				Start	End
Item	Vegetation			38.194068 °	38.192117 °
				-121.562117 °	-121.566833 °
DWR ID	DWR_RD0556_02_s_2012_1				
Action/Comments					
Remove the wild growth other than native grasses from the levee slopes.					

No Photos

LM Start	5.39	Rating **	M	Issue No.	41
LM End	5.42	Issue Type +	Ma	Location *	LS
Category	Earthen Levee			GPS Latitude/Longitude	
				Start	End
Item	Trim / Thin Trees			38.193850 °	38.193498 °
				-121.562362 °	-121.562868 °
DWR ID	DWR_RD0556_02_f_2012_41				
Action/Comments					
Thin trees to allow visibility of the ground and room to flood fight.					

No Photos

LM Start	5.41	Rating **	M	Issue No.	31
LM End	5.44	Issue Type +	En	Location *	LS
Category	Earthen Levee			GPS Latitude/Longitude	
				Start	End
Item	Vegetation			38.193760 °	38.193445 °
				-121.562458 °	-121.562895 °
DWR ID	DWR_RD0556_02_s_2012_31				
Action/Comments					
Landscaping					

No Photos

*** Location**
 LS : Land Side N/A : Not Applicable
 WS : Water Side
 CR : Crown

**** Rating**
 A : Acceptable N : Not Inspected/Rated
 M : Minimally Acceptable C : Corrected
 U : Unacceptable A/W : Acceptable but Monitor & Maintain

+ Issue Type
 Ma : Maintenance Deficiency
 Ob : Design & System Obsolescence
 En : Enforcement

**Flood Control Project Maintenance
Levee Inspections**

Levee Inspection Report By Mile - Fall 2014

Reclamation District No. 0556 Upper Andrus

Waterway	Bank	Unit Miles	Inspection Start/End	Inspector
Unit No. 02 Sacramento River	Left	5.72	10/30/2014 10/30/2014	Herman Phillips

LM Start	5.42	Rating **	M	Issue No.	2
LM End	5.44	Issue Type +	En	Location *	LS
Category	Earthen Levee			GPS Latitude/Longitude	
				Start	End
Item	Vegetation			38.193708 °	38.193445 °
				-121.562622 °	-121.562965 °
DWR ID	DWR_RD0556_02_s_2012_2				
Action/Comments					
Landscaping					

No Photos

LM Start	5.45	Rating **	M	Issue No.	20
LM End	5.45	Issue Type +	En	Location *	WS
Category	Earthen Levee			GPS Latitude/Longitude	
				Start	End
Item	Encroachments			38.193391 °	38.193391 °
				-121.563159 °	-121.563159 °
DWR ID	DWR_RD0556_02_s_2012_20				
Action/Comments					
Tree or limb					

No Photos

* Location LS : Land Side N/A : Not Applicable WS : Water Side CR : Crown	** Rating A : Acceptable M : Minimally Acceptable U : Unacceptable	N : Not Inspected/Rated C : Corrected A/W : Acceptable but Monitor & Maintain	+ Issue Type Ma : Maintenance Deficiency Ob : Design & System Obsolescence En : Enforcement
--	--	---	---