

**Flood Control Project Maintenance  
Levee Inspections**

**Fall 2011 Levee Maintenance Deficiency Summary Report**

**Overall LMA & Unit Ratings, including USACE Erosion Survey**

**Sacramento River Basin**

<b>RD0556</b>	Overall LMA Rating	Total LMA Miles				
<b>Reclamation District No. 0556 Upper Andrus</b>	<b>U</b>	<b>11.19</b>				
Rated Item	M Miles	U Miles	M + 4U Miles	Threshold %	Encroachments	
					PO Miles	CO Miles
<i>Earthen Levee</i>						
Vegetation	4.07	0.03	4.19	37.44%		
Trim / Thin Trees	3.27	0.02	3.35	29.94%		
Encroachments	0.02	0.22	0.90	8.04%	1.77	0.31
Animal Control	0.27		0.27	2.41%		
Erosion / Bank Caving	0.01		0.01	0.09%		
<i>Supplemental</i>						
USACE Erosion Survey	1.19		1.19	10.63%		
<i>LMA Totals:</i>	8.83	0.27	9.91	88.56%	1.77	0.31

<b>Unit No. 01 Georgiana Slough RB</b>	Overall Unit Rating	Total Unit Miles				
<b>RD0556</b>	<b>U</b>	<b>5.47</b>				
Rated Item	M Miles	U Miles	M + 4U Miles	Threshold %	Encroachments	
					PO Miles	CO Miles
<i>Earthen Levee</i>						
Vegetation	0.63		0.63	11.52%		
Trim / Thin Trees	0.01	0.02	0.09	1.65%		
Encroachments	0.02	0.22	0.90	16.45%	0.97	0.22
Animal Control	0.27		0.27	4.94%		
Erosion / Bank Caving	0.01		0.01	0.18%		
<i>Supplemental</i>						
USACE Erosion Survey	0.27		0.27	4.94%		
<i>Unit Totals:</i>	1.21	0.24	2.17	39.67%	0.97	0.22

<b>Unit No. 02 Sacramento River LB</b>	Overall Unit Rating	Total Unit Miles				
<b>RD0556</b>	<b>U</b>	<b>5.72</b>				
Rated Item	M Miles	U Miles	M + 4U Miles	Threshold %	Encroachments	
					PO Miles	CO Miles
<i>Earthen Levee</i>						
Vegetation	3.44	0.03	3.56	62.24%		
Trim / Thin Trees	3.26		3.26	56.99%		
Encroachments					0.80	0.09
<i>Supplemental</i>						
USACE Erosion Survey	0.92		0.92	16.08%		
<i>Unit Totals:</i>	7.62	0.03	7.74	135.31%	0.80	0.09

**Flood Control Project Maintenance  
Levee Inspections**  
**LMA District Cover Sheet**  
**Fall 2011 Levee Inspection Results**

**Reclamation District No. 0556 Upper Andrus**

	Spring (March - May)	Summer ** (June - August)	Fall (September - November)	Winter ** (December - February)
* Overall LMA Rating (Fall Only)			U	

\*\* Non-receipt of Summer or Winter Inspection Reports may effect overall annual rating.

\*  
SPRING INSPECTIONS: Overall maintenance ratings are not determined for the spring inspection results. Individual maintenance deficiencies are rated using the same criteria in the spring and in the fall.

FALL INSPECTIONS: The overall maintenance rating shown above is based on operation and maintenance deficiencies identified within the attached unit inspection reports.

Comments


**Flood Control Project Maintenance  
Levee Inspections**

**Unit Cover Sheet**

**Fall 2011 Levee Inspection Results**

**Reclamation District No. 0556 Upper Andrus**

Waterway			Bank	Unit Miles
Unit No. 01 Georgiana Slough			Right	5.47
	Spring (March - May)	Summer (June - August)	(September - November) Fall	Winter (December - February)
Unit Maintenance Rating (Fall Only)			<b>U</b>	
Date of Inspection	3/29/2011 - 3/29/2011		11/16/2011 - 11/16/2011	
DWR Inspector	Herman Phillips		Herman Phillips	
Accompanied By	DuWain Silva RD 556		DuWain Silva RD 556	

Check one:

- ☐ During the current winter (or summer) inspection period, my staff or I have inspected the levee and associated flood project components identified in the attached Levee Inspection Report by Mile. We have found no changes in flood project conditions other than the results of our normal maintenance and the corrections we have made to maintenance deficiencies identified in the enclosed report.
- ☐ During the current winter (or summer) inspection period, my staff or I have inspected the levee and associated flood project components identified in the attached Levee Inspection Report by Mile. In addition to the results of our normal maintenance and the corrections we have made to maintenance deficiencies identified in the report, we have found the following changes in flood project conditions.

(In the comment section below or on additional sheet(s), identify change of condition by: Start to End Levee Mile or GPS coordinates, location (Land Side, Water Side, or Crown), Item identification, and description of the current condition).

**Comments**

One of the boxes above is to be checked by the Local Maintaining Agency (LMA). If the second box is checked, additional information must also be submitted. This Unit Cover Sheet should be signed and dated by the LMA Representative and returned to DWR with any additional sheets by September 30 (Summer Inspection) or March 31 (Winter Inspection). Please retain a copy for your records. Please mail all of this information to :

DWR Summer/Winter Inspection Reports  
3310 El Camino Avenue, Suite 200  
Sacramento, CA 95821-9000

**X**

Signature of LMA Representative

Date

**Flood Control Project Maintenance  
Levee Inspections**

**Levee Inspection Report By Mile - Fall 2011**

**Reclamation District No. 0556 Upper Andrus**

Waterway						Bank	Unit Miles	Inspection Start/End		Inspector
Unit No. 01 Georgiana Slough						Right	5.47	11/16/2011 11/16/2011		Herman Phillips
LMR No.	Levee Mile		Category	Item	Location	Rating	Action/Comment	GPS Latitude/Longitude		Issue No. Photo
	Start	End						Start	End	
1	0.00	0.00	Earthen Levee	Vegetation	LS	M	Remove the wild growth other than native grasses from the levee slopes.	°	°	7
								°	°	Y
2	0.00	0.00	Earthen Levee	Vegetation	WS	M	Remove the wild growth other than native grasses from the levee slopes.	°	°	8
								°	°	Y
3	0.07	0.07	Earthen Levee	Vegetation	LS	A	Remove the wild growth other than native grasses from the levee slopes.	38.238052 °	38.238052 °	12
								-121.518178 °	-121.518178 °	Y
4	0.27	0.90	Earthen Levee	Vegetation	LS	C	Remove the wild growth other than native grasses from the levee slopes.	38.235433 °	38.228623 °	3
								-121.518600 °	-121.526292 °	
5	0.42	0.42	Earthen Levee	Encroachments	WS	M	Tree or limb	38.233694 °	38.233694 °	10
								-121.520319 °	-121.520319 °	Y
6	0.89	0.90	Earthen Levee	Encroachments	LS	PO	Landscaping	38.228680 °	38.228618 °	5
								-121.526200 °	-121.526290 °	
7	0.90	0.91	Earthen Levee	Trim / Thin Trees	LS	C	Trim trees to at least five feet above ground level.	38.228625 °	38.228463 °	6
								-121.526292 °	-121.526497 °	
8	0.95	1.22	Earthen Levee	Animal Control	LS	M	Exterminate rodents and backfill and compact or grout burrows.	38.228016 °	38.227854 °	1
								-121.526868 °	-121.530291 °	
9	1.20	1.31	Earthen Levee	Trim / Thin Trees	LS	C	Trim trees to at least five feet above ground level.	38.227800 °	38.227797 °	11
								-121.530028 °	-121.531967 °	
10	1.32	1.42	Earthen Levee	Trim / Thin Trees	LS	C	Trim trees to at least five feet above ground level.	38.227712 °	38.226640 °	13
								-121.532123 °	-121.533457 °	
11	1.45	1.52	Earthen Levee	Vegetation	LS	C	Remove the wild growth other than native grasses from the levee slopes.	38.226293 °	38.225548 °	14
								-121.533642 °	-121.534597 °	
12	1.55	1.57	Earthen Levee	Encroachments	WS	U	Tree or limb Inspector Comments: These cut up tree sections remain on the water ward slope. The owner is on the Reclamation Board, Mr Silva said he will ask him to remove the encroachment. 11-16-2011.	38.225191 °	38.224976 °	9
								-121.534799 °	-121.535043 °	Y
13	1.59	1.68	Earthen Levee	Vegetation	LS	M	Remove the wild growth other than native grasses from the levee slopes.	38.224769 °	38.224451 °	2
								-121.535569 °	-121.536927 °	
14	1.64	1.69	Earthen Levee	Encroachments	WS	CO	Landscaping	38.224623 °	38.224408 °	17
								-121.536320 °	-121.537180 °	
15	1.65	1.68	Earthen Levee	Encroachments	LS	PO	Landscaping	38.224567 °	38.224438 °	18
								-121.536523 °	-121.537048 °	
16	1.77	2.07	Earthen Levee	Vegetation	LS	M	Remove the wild growth other than native grasses from the levee slopes.	38.224001 °	38.223234 °	20
								-121.538586 °	-121.543999 °	
17	2.32	2.32	Earthen Levee	Erosion / Bank Caving	LS	M	Note and monitor erosion site.	38.219858 °	38.219858 °	15
								-121.544021 °	-121.544021 °	Y

**\* Location**

LS : Land Side  
WS : Water Side  
CR : Crown

**\*\* Rating**

A : Acceptable      PO : Partially Obstructing      N : Not Inspected, see Inspector Comment      C : Corrected  
M : Minimally Acceptable      CO : Completely Obstructing  
U : Unacceptable      W : Watch/Monitor

**Flood Control Project Maintenance  
Levee Inspections**

**Levee Inspection Report By Mile - Fall 2011**

**Reclamation District No. 0556 Upper Andrus**

Waterway						Bank	Unit Miles	Inspection Start/End	Inspector
Unit No. 01 Georgiana Slough						Right	5.47	11/16/2011 11/16/2011	Herman Phillips

LMR No.	Levee Mile		Category	Item	Location *	Rating **	Action/Comment	GPS Latitude/Longitude		Issue No. Photo
	Start	End						Start	End	
18	2.32	2.34	Earthen Levee	Trim / Thin Trees	LS	U	Trim trees to at least five feet above ground level.	38.219822 ° -121.544000 °	38.219592 ° -121.543927 °	24 Y
19	2.37	2.42	Earthen Levee	Encroachments	LS	PO	Landscaping	38.219083 ° -121.543872 °	38.218410 ° -121.543865 °	25
20	2.42	2.46	Earthen Levee	Encroachments	LS	CO	Landscaping	38.218426 ° -121.543800 °	38.217846 ° -121.543796 °	16
21	2.42	2.42	Earthen Levee	Vegetation	LS	M	Remove the wild growth other than native grasses from the levee slopes.	38.218373 ° -121.543847 °	38.218373 ° -121.543847 °	26
22	2.42	2.69	Earthen Levee	Encroachments	LS	PO	Buildings	38.218373 ° -121.543847 °	38.215230 ° -121.541147 °	28
23	2.44	2.62	Earthen Levee	Encroachments	LS	U	Firewood	38.218128 ° -121.543788 °	38.215881 ° -121.542149 °	4 Y
24	2.46	2.50	Earthen Levee	Vegetation	LS	M	Remove the wild growth other than native grasses from the levee slopes.	38.217757 ° -121.543827 °	38.217285 ° -121.543693 °	82
25	2.71	2.74	Earthen Levee	Vegetation	LS	M	Remove the wild growth other than native grasses from the levee slopes.	38.215115 ° -121.540940 °	38.214885 ° -121.540457 °	29
26	2.71	2.72	Earthen Levee	Trim / Thin Trees	LS	M	Trim trees to at least five feet above ground level.	38.215063 ° -121.540833 °	38.214992 ° -121.540727 °	30
27	2.95	2.95	Earthen Levee	Encroachments	LS	PO	Landscaping	38.212773 ° -121.537857 °	38.212773 ° -121.537857 °	32
28	2.97	2.99	Earthen Levee	Encroachments	LS	CO	Landscaping	38.212573 ° -121.537648 °	38.212320 ° -121.537407 °	34
29	2.99	3.04	Earthen Levee	Encroachments	LS	PO	Landscaping	38.212242 ° -121.537333 °	38.211650 ° -121.536972 °	35
30	3.12	3.15	Earthen Levee	Encroachments	LS	PO	Landscaping	38.211010 ° -121.538043 °	38.210857 ° -121.538632 °	39
31	3.31	3.32	Earthen Levee	Encroachments	LS	PO	Landscaping	38.209525 ° -121.540880 °	38.209352 ° -121.540972 °	46
32	3.35	3.75	Earthen Levee	Encroachments	LS	PO	Fences	38.209003 ° -121.541328 °	38.203418 ° -121.541070 °	47
33	3.35	3.42	Earthen Levee	Encroachments	LS	PO	Landscaping	38.208982 ° -121.541340 °	38.208112 ° -121.541558 °	48
34	3.44	3.46	Earthen Levee	Encroachments	WS	U	Pipe	38.207812 ° -121.541683 °	38.207552 ° -121.541755 °	51 Y
35	3.57	3.58	Earthen Levee	Encroachments	WS	M	Garbage	38.205888 ° -121.541763 °	38.205808 ° -121.541747 °	53
36	3.87	3.91	Earthen Levee	Encroachments	LS	PO	Landscaping	38.201907 ° -121.541672 °	38.201603 ° -121.542302 °	55

**\* Location**

LS : Land Side  
WS : Water Side  
CR : Crown

**\*\* Rating**

A : Acceptable      PO : Partially Obstructing      N : Not Inspected, see Inspector Comment      C : Corrected  
M : Minimally Acceptable      CO : Completely Obstructing  
U : Unacceptable      W : Watch/Monitor

**Flood Control Project Maintenance  
Levee Inspections**

**Levee Inspection Report By Mile - Fall 2011**

**Reclamation District No. 0556 Upper Andrus**

Waterway						Bank	Unit Miles	Inspection Start/End	Inspector	
Unit No. 01 Georgiana Slough						Right	5.47	11/16/2011 11/16/2011	Herman Phillips	

LMR No.	Levee Mile		Category	Item	* Location	** Rating	Action/Comment	GPS Latitude/Longitude		Issue No.
	Start	End						Start	End	Photo
37	3.94	4.05	Earthen Levee	Encroachments	WS	CO	Buildings Inspector Comments: There is a remodeling of a home here The owner is Dona Blower.	38.201475 ° -121.542832 °	38.200617 ° -121.544530 °	86
38	4.01	4.15	Earthen Levee	Vegetation	LS	M	Remove the wild growth other than native grasses from the levee slopes.	38.200930 ° -121.543990 °	38.199552 ° -121.545590 °	58
39	4.95	5.22	Supplemental	USACE Erosion Survey	WS	M	Inspector Comments: 1997 - Toe damaged rock. 1999 - One pocket filled with gravel. 2000 - Eroding beach with some biotech rolls and stakes; some gravel on slope. 2001 - Staked, low fascine walls at bankline. 2005 - Stone revetment in between pockets. 2006 - New rock on upper slope behind brush boxes at the upstream end, Stone is sliding off the hard toe. 2011: No observed change. [2011 Site ID: GEO_7-0_R]	38.189775 ° -121.557729 °	38.188121 ° -121.559413 °	19 Y

**\* Location**

LS : Land Side  
WS : Water Side  
CR : Crown

**\*\* Rating**

A : Acceptable      PO : Partially Obstructing      N : Not Inspected, see Inspector Comment      C : Corrected  
M : Minimally Acceptable      CO : Completely Obstructing  
U : Unacceptable      W : Watch/Monitor

**Flood Control Project Maintenance  
Levee Inspections**

**Levee Inspection Report By Mile - Fall 2011**

**Reclamation District No. 0556 Upper Andrus**

Waterway	Bank	Unit Miles	Inspection Start/End	Inspector
Unit No. 01 Georgiana Slough	Right	5.47	11/16/2011 11/16/2011	Herman Phillips

Levee Mile Report Line	1
Start Levee Mile	0.00
End Levee Mile	0.00
Location	Land Side
Category	Earthen Levee
Item	Vegetation
Standing on land side looking downstream from levee mile 0.00 Unit 1 RD 556. Photo taken 11-17-2010	
phillips_f_20110929_172.jpg	



Levee Mile Report Line	2
Start Levee Mile	0.00
End Levee Mile	0.00
Location	Water Side
Category	Earthen Levee
Item	Vegetation
Standing on water side from levee mile 0.00 looking downstream of RD 556 Unit 1. Photo taken 11-17-2010.	
phillips_f_20110929_173.jpg	



Levee Mile Report Line	3
Start Levee Mile	0.07
End Levee Mile	0.07
Location	Land Side
Category	Earthen Levee
Item	Vegetation
Looking downstream from levee mile 0.07. Photo taken 11-16-2011	
phillips_f_20111128_063.jpg	

**\* Location**

LS : Land Side  
WS : Water Side  
CR : Crown

**\*\* Rating**

A : Acceptable  
M : Minimally Acceptable  
U : Unacceptable

PO : Partially Obstructing  
CO : Completely Obstructing  
W : Watch/Monitor

N : Not Inspected, see Inspector Comment    C : Corrected



**Flood Control Project Maintenance  
Levee Inspections**

**Levee Inspection Report By Mile - Fall 2011**

**Reclamation District No. 0556 Upper Andrus**

Waterway	Bank	Unit Miles	Inspection Start/End	Inspector
Unit No. 01 Georgiana Slough	Right	5.47	11/16/2011 11/16/2011	Herman Phillips

Levee Mile Report Line	5
Start Levee Mile	0.42
End Levee Mile	0.42
Location	Water Side
Category	Earthen Levee
Item	Encroachments

Looking downstream from levee mile 0.42 two fallen trees on waterward slope. Photo taken 3-29-2011

phillips\_f\_20110929\_176.jpg



Levee Mile Report Line	12
Start Levee Mile	1.55
End Levee Mile	1.57
Location	Water Side
Category	Earthen Levee
Item	Encroachments

Standing on land side from levee mile 1.55 looking at water side shoulder unauthorized dumping of cut up trees has been placed on levee section to levee mile 1.57. District needs to remove this encroachment from the levee section. Photo taken 11-17-2010

phillips\_f\_20110929\_174.jpg



Levee Mile Report Line	12
Start Levee Mile	1.55
End Levee Mile	1.57
Location	Water Side
Category	Earthen Levee
Item	Encroachments

The land owner stated that he would have these trees removed from levee section next month (April). Photo taken 3-29-2011.

phillips\_f\_20110929\_175.jpg



**\* Location**

LS : Land Side  
WS : Water Side  
CR : Crown

**\*\* Rating**

A : Acceptable  
M : Minimally Acceptable  
U : Unacceptable

PO : Partially Obstructing  
CO : Completely Obstructing  
W : Watch/Monitor

N : Not Inspected, see Inspector Comment C : Corrected



**Flood Control Project Maintenance  
Levee Inspections**

**Levee Inspection Report By Mile - Fall 2011**

**Reclamation District No. 0556 Upper Andrus**

Waterway	Bank	Unit Miles	Inspection Start/End	Inspector
Unit No. 01 Georgiana Slough	Right	5.47	11/16/2011 11/16/2011	Herman Phillips

Levee Mile Report Line	17
Start Levee Mile	2.32
End Levee Mile	2.32
Location	Land Side
Category	Earthen Levee
Item	Erosion / Bank Caving

Looking at new erosion site levee mile 2.32 landside slope UNIT # 1 RD 556. Photo taken 3-29-2011.

phillips\_f\_20110929\_179.jpg



Levee Mile Report Line	18
Start Levee Mile	2.32
End Levee Mile	2.34
Location	Land Side
Category	Earthen Levee
Item	Trim / Thin Trees

Standing on waterside of Unit 1 RD 556 from levee miles 2.34 looking back upstream to levee 2.32 unauthorized tree growth remains on levee section. Phot taken 11-17-2010

phillips\_f\_20110929\_180.jpg



Levee Mile Report Line	23
Start Levee Mile	2.44
End Levee Mile	2.62
Location	Land Side
Category	Earthen Levee
Item	Encroachments

Levee mile 2.44 to levee mile 2.62 fire wood placed on landside slope and toe of levee section. Photo taken 11-16-2011.

phillips\_f\_20111128\_064.jpg



**\* Location**

LS : Land Side  
WS : Water Side  
CR : Crown

**\*\* Rating**

A : Acceptable  
M : Minimally Acceptable  
U : Unacceptable

PO : Partially Obstructing  
CO : Completely Obstructing  
W : Watch/Monitor

N : Not Inspected, see Inspector Comment C : Corrected

**Flood Control Project Maintenance  
Levee Inspections**

**Levee Inspection Report By Mile - Fall 2011**

**Reclamation District No. 0556 Upper Andrus**

Waterway	Bank	Unit Miles	Inspection Start/End	Inspector
Unit No. 01 Georgiana Slough	Right	5.47	11/16/2011 11/16/2011	Herman Phillips

Levee Mile Report Line	23
Start Levee Mile	2.44
End Levee Mile	2.62
Location	Land Side
Category	Earthen Levee
Item	Encroachments

Standing at levee mile 2.62 looking upstream landside at the downstream end of the firewood pile. Photo taken 11-16-2011.

phillips\_f\_20111128\_066.jpg



Levee Mile Report Line	34
Start Levee Mile	3.44
End Levee Mile	3.46
Location	Water Side
Category	Earthen Levee
Item	Encroachments

Unit 1 RD 556 Unauthorized dumping of concrete pipe and blocks of water side shoulder and berm. Photo taken 11-17-2010 (Unsatisfactory).

phillips\_f\_20110929\_181.jpg



Levee Mile Report Line	34
Start Levee Mile	3.44
End Levee Mile	3.46
Location	Water Side
Category	Earthen Levee
Item	Encroachments

This pipe continue to be on waterward side of RD 556 Unit 1. New photo taken 3-29-2011. Unsatisfactory.

phillips\_f\_20110929\_182.jpg



**\* Location**

LS : Land Side  
WS : Water Side  
CR : Crown

**\*\* Rating**

A : Acceptable  
M : Minimally Acceptable  
U : Unacceptable

PO : Partially Obstructing  
CO : Completely Obstructing  
W : Watch/Monitor

N : Not Inspected, see Inspector Comment C : Corrected



**Flood Control Project Maintenance  
Levee Inspections**

**Levee Inspection Report By Mile - Fall 2011**

**Reclamation District No. 0556 Upper Andrus**

Waterway	Bank	Unit Miles	Inspection Start/End	Inspector
Unit No. 01 Georgiana Slough	Right	5.47	11/16/2011 11/16/2011	Herman Phillips

Levee Mile Report Line	39
Start Levee Mile	4.95
End Levee Mile	5.22
Location	Water Side
Category	Supplemental
Item	USACE Erosion Survey

USACE 2011 Photo #1

USACE2011\_GEO\_7-0\_R\_1.jpg



Levee Mile Report Line	39
Start Levee Mile	4.95
End Levee Mile	5.22
Location	Water Side
Category	Supplemental
Item	USACE Erosion Survey

USACE 2011 Photo #2

USACE2011\_GEO\_7-0\_R\_2.jpg



Levee Mile Report Line	39
Start Levee Mile	4.95
End Levee Mile	5.22
Location	Water Side
Category	Supplemental
Item	USACE Erosion Survey

USACE 2011 Photo #3

USACE2011\_GEO\_7-0\_R\_3.jpg



<b>* Location</b> LS : Land Side WS : Water Side CR : Crown	<b>** Rating</b> A : Acceptable M : Minimally Acceptable U : Unacceptable	PO : Partially Obstructing CO : Completely Obstructing W : Watch/Monitor	N : Not Inspected, see Inspector Comment C : Corrected
--	--	--	---

**Flood Control Project Maintenance  
Levee Inspections**

**Unit Cover Sheet**

**Fall 2011 Levee Inspection Results**

**Reclamation District No. 0556 Upper Andrus**

Waterway			Bank	Unit Miles
Unit No. 02 Sacramento River			Left	5.72
	Spring (March - May)	Summer (June - August)	(September - November) Fall	Winter (December - February)
Unit Maintenance Rating (Fall Only)			U	
Date of Inspection	3/29/2011 - 3/29/2011		11/16/2011 - 11/16/2011	
DWR Inspector	Herman Phillips		Herman Phillips	
Accompanied By	Mr. DuWain Silva RD 556		Mr. DuWain Silva RD 556	

Check one:

- ☐ During the current winter (or summer) inspection period, my staff or I have inspected the levee and associated flood project components identified in the attached Levee Inspection Report by Mile. We have found no changes in flood project conditions other than the results of our normal maintenance and the corrections we have made to maintenance deficiencies identified in the enclosed report.
- ☐ During the current winter (or summer) inspection period, my staff or I have inspected the levee and associated flood project components identified in the attached Levee Inspection Report by Mile. In addition to the results of our normal maintenance and the corrections we have made to maintenance deficiencies identified in the report, we have found the following changes in flood project conditions.

(In the comment section below or on additional sheet(s), identify change of condition by: Start to End Levee Mile or GPS coordinates, location (Land Side, Water Side, or Crown), Item identification, and description of the current condition).

**Comments**

One of the boxes above is to be checked by the Local Maintaining Agency (LMA). If the second box is checked, additional information must also be submitted. This Unit Cover Sheet should be signed and dated by the LMA Representative and returned to DWR with any additional sheets by September 30 (Summer Inspection) or March 31 (Winter Inspection). Please retain a copy for your records. Please mail all of this information to :

DWR Summer/Winter Inspection Reports  
3310 El Camino Avenue, Suite 200  
Sacramento, CA 95821-9000

**X**

Signature of LMA Representative

Date

**Flood Control Project Maintenance  
Levee Inspections**

**Levee Inspection Report By Mile - Fall 2011**

**Reclamation District No. 0556 Upper Andrus**

Waterway						Bank	Unit Miles	Inspection Start/End		Inspector
Unit No. 02 Sacramento River						Left	5.72	11/16/2011 11/16/2011		Herman Phillips

LMR No.	Levee Mile		Category	Item	Location *	Rating **	Action/Comment	GPS Latitude/Longitude		Issue No. Photo
	Start	End						Start	End	
1	0.00	0.00	Earthen Levee	Vegetation	LS	A	Remove the wild growth other than native grasses from the levee slopes.	38.239096 ° -121.518248 °	38.239096 ° -121.518248 °	20 Y
2	0.00	0.00	Earthen Levee	Vegetation	WS	M	Remove the wild growth other than native grasses from the levee slopes.	38.239096 ° -121.518248 °	38.239096 ° -121.518248 °	21 Y
3	0.31	0.60	Supplemental	USACE Erosion Survey	WS	M	Inspector Comments: 2002 - Two rocked sections (150 ft long) at the downstream end. 2005 - Lots of old brush boxes, some with established vegetation in the area behind the boxes. 2006 - Some small spots fixed with stone. 2009 - Minimal new erosion, rock in the middle of the reach may be new. 2011: Minor new erosion at the toe. [2011 Site ID: SAC_26-0_L]	38.238784 ° -121.523932 °	38.237862 ° -121.529188 °	25 Y
4	1.03	1.04	Earthen Levee	Vegetation	WS	U	Remove the wild growth other than native grasses from the levee slopes.	38.238524 ° -121.536808 °	38.238566 ° -121.536984 °	24 Y
5	1.08	1.11	Supplemental	USACE Erosion Survey	WS	M	Inspector Comments: 1997 - Rock is in poor condition and has failed in many places. Scallops in berm with remnants of old rock in the toe area. 2005 - Brush boxes present. 2011: No observed change. [2011 Site ID: SAC_25-2_L]	38.239006 ° -121.537765 °	38.239265 ° -121.538845 °	26 Y
6	1.45	1.45	Earthen Levee	Vegetation	WS	U	Remove the wild growth other than native grasses from the levee slopes.	38.240118 ° -121.544255 °	38.240118 ° -121.544255 °	19 Y
7	1.45	1.53	Supplemental	USACE Erosion Survey	WS	M	Inspector Comments: 1997 - Slow erosion of the berm at the waterline; bench below water. 2005 - Brush boxes present. 2010 - Minor new erosion. 2011: No observed change. [2011 Site ID: SAC_24-8_L]	38.240401 ° -121.544106 °	38.240772 ° -121.546791 °	27 Y
8	1.50	1.50	Earthen Levee	Vegetation	LS	U	Remove the wild growth other than native grasses from the levee slopes.	38.240270 ° -121.545152 °	38.240270 ° -121.545152 °	23 Y
9	1.98	2.36	Earthen Levee	Vegetation	LS	M	Remove the wild growth other than native grasses from the levee slopes.	38.240022 ° -121.553700 °	38.236065 ° -121.557990 °	14
10	2.69	5.42	Earthen Levee	Trim / Thin Trees	LS	M	Trim and thin trees to allow visibility of the ground and room to flood fight.	38.231444 ° -121.556393 °	38.193523 ° -121.562812 °	9
11	2.83	3.02	Supplemental	USACE Erosion Survey	WS	M	Inspector Comments: 1997 - Few scallops in berm, some getting close to levee toe. 2005 - Brush boxes present. 2011: No observed change. [2011 Site ID: SAC_23-3_L]	38.228202 ° -121.555502 °	38.226601 ° -121.555605 °	28 Y
12	2.84	2.87	Earthen Levee	Encroachments	LS	CO	Landscaping	38.229553 ° -121.555398 °	38.229097 ° -121.555325 °	22
13	2.92	3.17	Earthen Levee	Vegetation	WS	M	Remove the wild growth other than native grasses from the levee slopes.	38.228326 ° -121.555149 °	38.224729 ° -121.555331 °	13

**\* Location**

LS : Land Side  
WS : Water Side  
CR : Crown

**\*\* Rating**

A : Acceptable  
M : Minimally Acceptable  
U : Unacceptable

PO : Partially Obstructing  
CO : Completely Obstructing  
W : Watch/Monitor

N : Not Inspected, see Inspector Comment  
C : Corrected

**Flood Control Project Maintenance  
Levee Inspections**

**Levee Inspection Report By Mile - Fall 2011**

**Reclamation District No. 0556 Upper Andrus**

Waterway				Bank	Unit Miles	Inspection Start/End	Inspector
Unit No. 02 Sacramento River				Left	5.72	11/16/2011 11/16/2011	Herman Phillips

LMR No.	Levee Mile		Category	Item	Location *	Rating **	Action/Comment	GPS Latitude/Longitude		Issue No. Photo
	Start	End						Start	End	
14	3.03	3.25	Supplemental	USACE Erosion Survey	WS	M	Inspector Comments: 2000 - Recently fallen cottonwood at the downstream end. 2005 - Empty brush boxes. 2011: A few trees have fallen since last year. [2011 Site ID: SAC_23-2_L]	38.224850 ° -121.555641 °	38.223233 ° -121.555687 °	29 Y
15	3.24	3.26	Earthen Levee	Trim / Thin Trees	LS	M	Thin trees to allow visibility of the ground and room to flood fight.	38.223689 ° -121.555370 °	38.223419 ° -121.555404 °	18
16	3.49	3.49	Supplemental	USACE Erosion Survey	WS	M	Inspector Comments: 1997 - Scallops into berm and very close to levee toe. 2005 - Brush boxes present. 2011: New toe scour and freshly fallen tree. [2011 Site ID: SAC_22-7_L]	38.218104 ° -121.556819 °	38.218951 ° -121.556689 °	30 Y
17	3.57	3.57	Earthen Levee	Trim / Thin Trees	LS	M	Thin trees to allow visibility of the ground and room to flood fight.	38.218922 ° -121.556319 °	38.218921 ° -121.556320 °	17
18	3.75	5.70	Earthen Levee	Vegetation	LS	M	Remove the wild growth other than native grasses from the levee slopes.	38.216407 ° -121.556714 °	38.191875 ° -121.567455 °	6
19	3.82	4.13	Earthen Levee	Trim / Thin Trees	LS	M	Thin trees to allow visibility of the ground and room to flood fight.	38.215319 ° -121.556842 °	38.210907 ° -121.556738 °	16
20	3.94	4.03	Supplemental	USACE Erosion Survey	WS	M	Inspector Comments: 2002 - Spot rock along berm, but not in the erosion pockets. 2005 - Some new minor stone revetment at the upstream end. Brush boxes present. 2006 - Currently installing new brush in downstream brush boxes. 2007 - Rock in middle portion for about 150 ft. 2010 - Some attempt at repairs but still has pockets of erosion. 2011: No observed change. [2011 Site ID: SAC_22-5_L]	38.213581 ° -121.557197 °	38.211112 ° -121.557042 °	32 Y
21	4.12	4.31	Earthen Levee	Trim / Thin Trees	LS	M	Thin trees to allow visibility of the ground and room to flood fight.	38.211011 ° -121.556676 °	38.208195 ° -121.556788 °	12
22	4.23	4.26	Earthen Levee	Vegetation	LS	M	Remove the wild growth other than native grasses from the levee slopes.	38.209458 ° -121.556759 °	38.208936 ° -121.556763 °	15
23	4.23	4.27	Earthen Levee	Vegetation	WS	M	Remove the wild growth other than native grasses from the levee slopes.	38.209458 ° -121.556759 °	38.208808 ° -121.556797 °	8
24	4.39	4.64	Earthen Levee	Encroachments	LS	PO	Landscaping	38.207202 ° -121.556853 °	38.203693 ° -121.556685 °	40
25	4.63	4.74	Earthen Levee	Encroachments	LS	PO	Fences	38.203727 ° -121.556835 °	38.202218 ° -121.556960 °	7
26	4.64	4.85	Earthen Levee	Encroachments	LS	PO	Fences	38.203693 ° -121.556683 °	38.200593 ° -121.557208 °	38

**\* Location**

LS : Land Side  
WS : Water Side  
CR : Crown

**\*\* Rating**

A : Acceptable      PO : Partially Obstructing      N : Not Inspected, see Inspector Comment      C : Corrected  
M : Minimally Acceptable      CO : Completely Obstructing  
U : Unacceptable      W : Watch/Monitor



**Flood Control Project Maintenance  
Levee Inspections**

**Levee Inspection Report By Mile - Fall 2011**

**Reclamation District No. 0556 Upper Andrus**

Waterway	Bank	Unit Miles	Inspection Start/End	Inspector
Unit No. 02 Sacramento River	Left	5.72	11/16/2011 11/16/2011	Herman Phillips

LMR No.	Levee Mile		Category	Item	Location *	Rating **	Action/Comment	GPS Latitude/Longitude		Issue No. Photo
	Start	End						Start	End	
27	4.73	4.73	Supplemental	USACE Erosion Survey	WS	M	Inspector Comments: 1999 - Downstream 140 ft repaired with rock. 2010 - Lots of woody debris, but no changes to site. 2011: No observed change. [2011 Site ID: SAC_21-5_L]	38.200225 ° -121.557749 °	38.200646 ° -121.557606 °	34 Y
28	4.74	4.85	Earthen Levee	Encroachments	WS	PO	Fences	38.202250 ° -121.556892 °	38.200597 ° -121.557203 °	39
29	4.80	4.92	Earthen Levee	Vegetation	LS	M	Remove the wild growth other than native grasses from the levee slopes.	38.201362 ° -121.557077 °	38.199558 ° -121.557603 °	5
30	4.82	4.95	Earthen Levee	Vegetation	WS	M	Remove the wild growth other than native grasses from the levee slopes.	38.200676 ° -121.557136 °	38.199025 ° -121.557923 °	11
31	5.01	5.07	Earthen Levee	Vegetation	LS	M	Remove the wild growth other than native grasses from the levee slopes.	38.198403 ° -121.558263 °	38.197618 ° -121.558800 °	4
32	5.03	5.21	Earthen Levee	Vegetation	LS	M	Remove the wild growth other than native grasses from the levee slopes.	38.198039 ° -121.558494 °	38.195649 ° -121.560050 °	10
33	5.09	5.16	Earthen Levee	Encroachments	LS	PO	Landscaping	38.197453 ° -121.558972 °	38.196493 ° -121.559510 °	33
34	5.10	5.16	Earthen Levee	Encroachments	LS	CO	Landscaping	38.197295 ° -121.558982 °	38.196488 ° -121.559465 °	3
35	5.38	5.67	Earthen Levee	Vegetation	LS	M	Remove the wild growth other than native grasses from the levee slopes.	38.194068 ° -121.562117 °	38.192117 ° -121.566833 °	1
36	5.41	5.44	Earthen Levee	Encroachments	LS	PO	Landscaping	38.193760 ° -121.562458 °	38.193445 ° -121.562895 °	31
37	5.42	5.44	Earthen Levee	Encroachments	LS	PO	Landscaping	38.193708 ° -121.562622 °	38.193445 ° -121.562965 °	2

**\* Location**

LS : Land Side  
WS : Water Side  
CR : Crown

**\*\* Rating**

A : Acceptable      PO : Partially Obstructing      N : Not Inspected, see Inspector Comment      C : Corrected  
M : Minimally Acceptable      CO : Completely Obstructing  
U : Unacceptable      W : Watch/Monitor

**Flood Control Project Maintenance  
Levee Inspections**

**Levee Inspection Report By Mile - Fall 2011**

**Reclamation District No. 0556 Upper Andrus**

Waterway	Bank	Unit Miles	Inspection Start/End	Inspector
Unit No. 02 Sacramento River	Left	5.72	11/16/2011 11/16/2011	Herman Phillips

Levee Mile Report Line	1
Start Levee Mile	0.00
End Levee Mile	0.00
Location	Land Side
Category	Earthen Levee
Item	Vegetation

Looking downstream from levee mile 0.00 unit 2 looking from landward slope. Photo taken 11-16-2011.

phillips\_f\_20111128\_067.jpg



Levee Mile Report Line	2
Start Levee Mile	0.00
End Levee Mile	0.00
Location	Water Side
Category	Earthen Levee
Item	Vegetation

Standing on the waterward side for levee mile 0.00 looking ownstream. Photo taken 11-16-2011.

phillips\_f\_20111128\_068.jpg



Levee Mile Report Line	3
Start Levee Mile	0.31
End Levee Mile	0.60
Location	Water Side
Category	Supplemental
Item	USACE Erosion Survey

USACE 2011 Photo #1

USACE2011\_SAC\_26-0\_L\_1.jpg



**\* Location**

LS : Land Side  
WS : Water Side  
CR : Crown

**\*\* Rating**

A : Acceptable  
M : Minimally Acceptable  
U : Unacceptable

PO : Partially Obstructing  
CO : Completely Obstructing  
W : Watch/Monitor

N : Not Inspected, see Inspector Comment C : Corrected

**Flood Control Project Maintenance  
Levee Inspections**

**Levee Inspection Report By Mile - Fall 2011**

**Reclamation District No. 0556 Upper Andrus**

Waterway	Bank	Unit Miles	Inspection Start/End	Inspector
Unit No. 02 Sacramento River	Left	5.72	11/16/2011 11/16/2011	Herman Phillips

Levee Mile Report Line	3
Start Levee Mile	0.31
End Levee Mile	0.60
Location	Water Side
Category	Supplemental
Item	USACE Erosion Survey

USACE 2011 Photo #2

USACE2011\_SAC\_26-0\_L\_2.jpg



Levee Mile Report Line	4
Start Levee Mile	1.03
End Levee Mile	1.04
Location	Water Side
Category	Earthen Levee
Item	Vegetation

Waterside levee mile 1.03 to levee mile 1.04 RD 556 Unit 2. Photo taken 11-16-2011.

phillips\_f\_20111128\_072.jpg



Levee Mile Report Line	5
Start Levee Mile	1.08
End Levee Mile	1.11
Location	Water Side
Category	Supplemental
Item	USACE Erosion Survey

USACE 2011 Photo #1

USACE2011\_SAC\_25-2\_L\_1.jpg

**\* Location**

LS : Land Side  
WS : Water Side  
CR : Crown

**\*\* Rating**

A : Acceptable  
M : Minimally Acceptable  
U : Unacceptable

PO : Partially Obstructing  
CO : Completely Obstructing  
W : Watch/Monitor

N : Not Inspected, see Inspector Comment C : Corrected



**Flood Control Project Maintenance  
Levee Inspections**

**Levee Inspection Report By Mile - Fall 2011**

**Reclamation District No. 0556 Upper Andrus**

Waterway	Bank	Unit Miles	Inspection Start/End	Inspector
Unit No. 02 Sacramento River	Left	5.72	11/16/2011 11/16/2011	Herman Phillips

Levee Mile Report Line	5
Start Levee Mile	1.08
End Levee Mile	1.11
Location	Water Side
Category	Supplemental
Item	USACE Erosion Survey

USACE 2011 Photo #2

USACE2011\_SAC\_25-2\_L\_2.jpg



Levee Mile Report Line	6
Start Levee Mile	1.45
End Levee Mile	1.45
Location	Water Side
Category	Earthen Levee
Item	Vegetation

Waterside levee mile 1.45 Unit 2 RD 556. Photo taken 11-16-2011.

phillips\_f\_20111128\_071.jpg



Levee Mile Report Line	7
Start Levee Mile	1.45
End Levee Mile	1.53
Location	Water Side
Category	Supplemental
Item	USACE Erosion Survey

USACE 2011 Photo #1

USACE2011\_SAC\_24-8\_L\_1.jpg

**\* Location**

LS : Land Side  
WS : Water Side  
CR : Crown

**\*\* Rating**

A : Acceptable  
M : Minimally Acceptable  
U : Unacceptable

PO : Partially Obstructing  
CO : Completely Obstructing  
W : Watch/Monitor

N : Not Inspected, see Inspector Comment  
C : Corrected

**Flood Control Project Maintenance  
Levee Inspections**

**Levee Inspection Report By Mile - Fall 2011**

**Reclamation District No. 0556 Upper Andrus**

Waterway	Bank	Unit Miles	Inspection Start/End	Inspector
Unit No. 02 Sacramento River	Left	5.72	11/16/2011 11/16/2011	Herman Phillips

Levee Mile Report Line	7
Start Levee Mile	1.45
End Levee Mile	1.53
Location	Water Side
Category	Supplemental
Item	USACE Erosion Survey

USACE 2011 Photo #2

USACE2011\_SAC\_24-8\_L\_2.jpg



Levee Mile Report Line	7
Start Levee Mile	1.45
End Levee Mile	1.53
Location	Water Side
Category	Supplemental
Item	USACE Erosion Survey

USACE 2011 Photo #3

USACE2011\_SAC\_24-8\_L\_3.jpg



Levee Mile Report Line	8
Start Levee Mile	1.50
End Levee Mile	1.50
Location	Land Side
Category	Earthen Levee
Item	Vegetation

Looking downstream from levee mile 1.50. Photo taken 11-16-2011

phillips\_f\_20111128\_070.jpg



<b>* Location</b> LS : Land Side WS : Water Side CR : Crown	<b>** Rating</b> A : Acceptable M : Minimally Acceptable U : Unacceptable	PO : Partially Obstructing CO : Completely Obstructing W : Watch/Monitor	N : Not Inspected, see Inspector Comment C : Corrected
--	--	--	---

**Flood Control Project Maintenance  
Levee Inspections**

**Levee Inspection Report By Mile - Fall 2011**

**Reclamation District No. 0556 Upper Andrus**

Waterway	Bank	Unit Miles	Inspection Start/End	Inspector
Unit No. 02 Sacramento River	Left	5.72	11/16/2011 11/16/2011	Herman Phillips

Levee Mile Report Line	11
Start Levee Mile	2.83
End Levee Mile	3.02
Location	Water Side
Category	Supplemental
Item	USACE Erosion Survey

USACE 2011 Photo #1

USACE2011\_SAC\_23-3\_L\_1.jpg



Levee Mile Report Line	11
Start Levee Mile	2.83
End Levee Mile	3.02
Location	Water Side
Category	Supplemental
Item	USACE Erosion Survey

USACE 2011 Photo #2

USACE2011\_SAC\_23-3\_L\_2.jpg



Levee Mile Report Line	14
Start Levee Mile	3.03
End Levee Mile	3.25
Location	Water Side
Category	Supplemental
Item	USACE Erosion Survey

USACE 2011 Photo #1

USACE2011\_SAC\_23-2\_L\_1.jpg

**\* Location**

LS : Land Side  
WS : Water Side  
CR : Crown

**\*\* Rating**

A : Acceptable  
M : Minimally Acceptable  
U : Unacceptable

PO : Partially Obstructing  
CO : Completely Obstructing  
W : Watch/Monitor

N : Not Inspected, see Inspector Comment    C : Corrected



**Flood Control Project Maintenance  
Levee Inspections**

**Levee Inspection Report By Mile - Fall 2011**

**Reclamation District No. 0556 Upper Andrus**

Waterway	Bank	Unit Miles	Inspection Start/End	Inspector
Unit No. 02 Sacramento River	Left	5.72	11/16/2011 11/16/2011	Herman Phillips

Levee Mile Report Line	14
Start Levee Mile	3.03
End Levee Mile	3.25
Location	Water Side
Category	Supplemental
Item	USACE Erosion Survey

USACE 2011 Photo #2

USACE2011\_SAC\_23-2\_L\_2.jpg



Levee Mile Report Line	14
Start Levee Mile	3.03
End Levee Mile	3.25
Location	Water Side
Category	Supplemental
Item	USACE Erosion Survey

USACE 2011 Photo #3

USACE2011\_SAC\_23-2\_L\_3.jpg



Levee Mile Report Line	16
Start Levee Mile	3.49
End Levee Mile	3.49
Location	Water Side
Category	Supplemental
Item	USACE Erosion Survey

USACE 2011 Photo #1

USACE2011\_SAC\_22-7\_L\_1.jpg

**\* Location**

LS : Land Side  
WS : Water Side  
CR : Crown

**\*\* Rating**

A : Acceptable  
M : Minimally Acceptable  
U : Unacceptable

PO : Partially Obstructing  
CO : Completely Obstructing  
W : Watch/Monitor

N : Not Inspected, see Inspector Comment    C : Corrected

**Flood Control Project Maintenance  
Levee Inspections**

**Levee Inspection Report By Mile - Fall 2011**

**Reclamation District No. 0556 Upper Andrus**

Waterway	Bank	Unit Miles	Inspection Start/End	Inspector
Unit No. 02 Sacramento River	Left	5.72	11/16/2011 11/16/2011	Herman Phillips

Levee Mile Report Line	16
Start Levee Mile	3.49
End Levee Mile	3.49
Location	Water Side
Category	Supplemental
Item	USACE Erosion Survey

USACE 2011 Photo #2

USACE2011\_SAC\_22-7\_L\_2.jpg



Levee Mile Report Line	20
Start Levee Mile	3.94
End Levee Mile	4.03
Location	Water Side
Category	Supplemental
Item	USACE Erosion Survey

USACE 2011 Photo #1

USACE2011\_SAC\_22-5\_L\_1.jpg



Levee Mile Report Line	20
Start Levee Mile	3.94
End Levee Mile	4.03
Location	Water Side
Category	Supplemental
Item	USACE Erosion Survey

USACE 2011 Photo #2

USACE2011\_SAC\_22-5\_L\_2.jpg

**\* Location**

LS : Land Side  
WS : Water Side  
CR : Crown

**\*\* Rating**

A : Acceptable  
M : Minimally Acceptable  
U : Unacceptable

PO : Partially Obstructing  
CO : Completely Obstructing  
W : Watch/Monitor

N : Not Inspected, see Inspector Comment    C : Corrected

**Flood Control Project Maintenance  
Levee Inspections**

**Levee Inspection Report By Mile - Fall 2011**

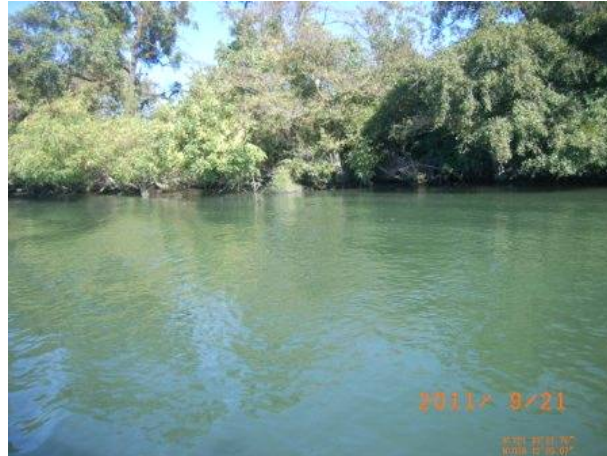
**Reclamation District No. 0556 Upper Andrus**

Waterway	Bank	Unit Miles	Inspection Start/End	Inspector
Unit No. 02 Sacramento River	Left	5.72	11/16/2011 11/16/2011	Herman Phillips

Levee Mile Report Line	27
Start Levee Mile	4.73
End Levee Mile	4.73
Location	Water Side
Category	Supplemental
Item	USACE Erosion Survey

USACE 2011 Photo #1

USACE2011\_SAC\_21-5\_L\_1.jpg



Levee Mile Report Line	27
Start Levee Mile	4.73
End Levee Mile	4.73
Location	Water Side
Category	Supplemental
Item	USACE Erosion Survey

USACE 2011 Photo #2

USACE2011\_SAC\_21-5\_L\_2.jpg



<b>* Location</b> LS : Land Side WS : Water Side CR : Crown	<b>** Rating</b> A : Acceptable M : Minimally Acceptable U : Unacceptable	PO : Partially Obstructing CO : Completely Obstructing W : Watch/Monitor	N : Not Inspected, see Inspector Comment C : Corrected
--	--	--	---