

**Flood Control Project Maintenance
Levee Inspections**

Maintenance Issue Types Only, Levee Inspection Report By Mile - Fall 2024

Reclamation District No. 0554 Walnut Grove

Waterway	Bank	Unit Miles	Inspection Start/End	Inspector
Unit No. 01 Sacramento River	Left	1.13	10/22/2024 10/22/2024	Gregg McMillon

LM Start		Rating **	A	Issue No.	3
LM End		Issue Type +	Ma	Location *	
Category	Earthen Levee		GPS Latitude/Longitude		
			Start	End	
Item	Flood Preparedness & Training				
DWR ID	DWR_RD0554_01_f_2014_3				
Comment Code					
FP : Flood Preparedness & Training					
Inspector Comment					
The district is prepared to partner with neighboring Districts as in the past.					

No Photos

LM Start		Rating **	A	Issue No.	35
LM End		Issue Type +	Ma	Location *	
Category	Earthen Levee		GPS Latitude/Longitude		
			Start	End	
Item	Operations & Maintenance Manuals				
DWR ID	DWR_RD0554_01_f_2014_35				
Comment Code					
OM : O&M Manuals					
Inspector Comment					
The district has the O&M Manual on hand.					

No Photos

LM Start		Rating **	A	Issue No.	36
LM End		Issue Type +	Ma	Location *	
Category	Earthen Levee		GPS Latitude/Longitude		
			Start	End	
Item	Emergency Supplies & Equipment				
DWR ID	DWR_RD0554_01_f_2019_36				
Comment Code					
ES : Emergency Supplies & Equipment					
Inspector Comment					
The district shares with neighboring district, RD 551.					

No Photos

* Location LS : Land Side N/A : Not Applicable WS : Water Side CR : Crown	** Rating A : Acceptable M : Minimally Acceptable U : Unacceptable	N : Not Inspected/Rated C : Corrected A/W : Acceptable but Monitor & Maintain	+ Issue Type Ma : Maintenance Deficiency Ob : Design & System Obsolescence En : Enforcement
--	--	---	---

**Flood Control Project Maintenance
Levee Inspections**

Maintenance Issue Types Only, Levee Inspection Report By Mile - Fall 2024

Reclamation District No. 0554 Walnut Grove

Waterway	Bank	Unit Miles	Inspection Start/End	Inspector
Unit No. 01 Sacramento River	Left	1.13	10/22/2024 10/22/2024	Gregg McMillon

LM Start	0.02	Rating **	M	Issue No.	51
LM End	0.17	Issue Type +	Ma	Location *	WS
Category	Earthen Levee			GPS Latitude/Longitude	
				Start	End
Item	Vegetation			38.249496°	38.247351°
				-121.510033°	-121.509983°
DWR ID	DWR_RD0554_01_s_2022_51				
Comment Code					
V2 : Remove the wild growth and woody vegetation other than native grasses from the levee slopes.					
Inspector Comment					

Photo 1 of 1 : FA_2024_RD0554_176_51_20241001_00016.jpg



View looking downstream at vegetation on the top of the waterside slope (Spring 2022).

LM Start	0.07	Rating **	M	Issue No.	58
LM End	0.07	Issue Type +	Ma	Location *	WS
Category	Earthen Levee			GPS Latitude/Longitude	
				Start	End
Item	Trim / Thin Trees			38.248783°	38.248783°
				-121.509977°	-121.509977°
DWR ID	DWR_RD0554_01_s_2021_58				
Comment Code					
T1 : Trim and thin trees to at least five feet above ground level to allow visibility of the ground and room to flood fight.					
Inspector Comment					
Low hanging trees on the waterside slope need to be trimmed up at least 5 feet for visibility.					

Photo 1 of 1 : FA_2024_RD0554_176_58_20241001_00020.jpg



View of low hanging trees on the waterside slope (Fall 2023).

LM Start	0.10	Rating **	M	Issue No.	11
LM End	0.10	Issue Type +	Ma	Location *	WS
Category	Earthen Levee			GPS Latitude/Longitude	
				Start	End
Item	Erosion / Bank Caving			38.248262°	38.248262°
				-121.509901°	-121.509901°
DWR ID	DWR_RD0554_01_s_2014_11				
Comment Code					
E2 : Schedule repair of erosion site prior to the next inspection.					
Inspector Comment					
This is not a new erosion site, repairs are needed. One tree has fallen into the Sac River at the erosion site. This site can be seen better from the river by boat. The wild grapes block the view from the waterside shoulder looking down the slope. Rated as M because it is an oversized levee section.					

Photo 1 of 1 : FA_2024_RD0554_176_11_20241001_00003.jpg



View of the erosion on the WS slope (Spring 2023).

* Location LS : Land Side N/A : Not Applicable WS : Water Side CR : Crown		** Rating A : Acceptable M : Minimally Acceptable U : Unacceptable N : Not Inspected/Rated C : Corrected A/W : Acceptable but Monitor & Maintain		+ Issue Type Ma : Maintenance Deficiency Ob : Design & System Obsolescence En : Enforcement	
--	--	---	--	---	--

**Flood Control Project Maintenance
Levee Inspections****Maintenance Issue Types Only, Levee Inspection Report By Mile - Fall 2024****Reclamation District No. 0554 Walnut Grove**

Waterway	Bank	Unit Miles	Inspection Start/End	Inspector
Unit No. 01 Sacramento River	Left	1.13	10/22/2024 10/22/2024	Gregg McMillon

LM Start	0.26	Rating **	M	Issue No.	24
LM End	0.36	Issue Type +	Ma	Location *	WS
Category	Supplemental			GPS Latitude/Longitude	
				Start	End
Item	2018 USACE Erosion Survey			38.246222°	38.245017°
				-121.510878°	-121.511740°
DWR ID	DWR_RD0554_01_s _ 2022_24				
Comment Code					
Inspector Comment					
2018 Site ID: SAC 27.0 L					
Status: Eroding					
2018 Field Notes: No observed change.					
Site History: 2009 - Tension cracks on road on top of levee. Erosion into the levee slope and mass failure. 2013 - Short vertical sections at bank toe. 2017 - Minor new erosion at toe.					

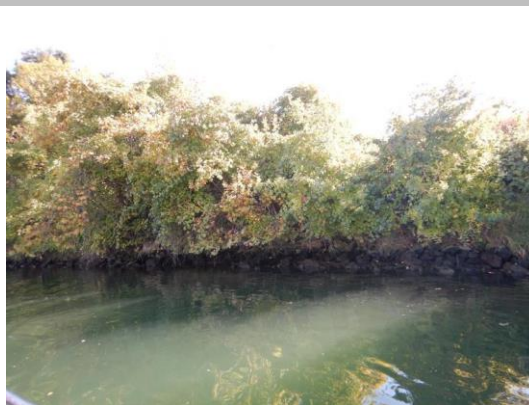
LM Start	0.26	Rating **	M	Issue No.	24 (cont)
LM End	0.36	Issue Type +	Ma	Location *	WS

Photo 1 of 2 : FA_2024_RD0554_176_24_20241001_00005.jpg



USACE 2018 Erosion Photo #1

Photo 2 of 2 : FA_2024_RD0554_176_24_20241001_00006.jpg



USACE 2018 Erosion Photo #2

LM Start	0.32	Rating **	U	Issue No.	13
LM End	0.32	Issue Type +	Ma	Location *	LS
Category	Earthen Levee			GPS Latitude/Longitude	
				Start	End
Item	Erosion / Rills			38.245389°	38.245389°
				-121.511085°	-121.511085°
DWR ID	DWR_RD0554_01_s _ 2014_13				
Comment Code					
E5 : Schedule repair of rills prior to the next inspection.					
Inspector Comment					
There is a large bush growing in the eroded gully. This site is in need of repairing. It has gotten worse since Fall 2021.					

Photo 1 of 1 : FA_2024_RD0554_176_13_20241001_00004.jpg



View looking down eroded gully in the LS slope. (Spring 2024)

* Location	** Rating	+ Issue Type
LS : Land Side WS : Water Side CR : Crown	A : Acceptable M : Minimally Acceptable U : Unacceptable	Ma : Maintenance Deficiency Ob : Design & System Obsolescence En : Enforcement
N/A : Not Applicable	N : Not Inspected/Rated C : Corrected A/W : Acceptable but Monitor & Maintain	

**Flood Control Project Maintenance
Levee Inspections**

Maintenance Issue Types Only, Levee Inspection Report By Mile - Fall 2024

Reclamation District No. 0554 Walnut Grove

Waterway	Bank	Unit Miles	Inspection Start/End	Inspector
Unit No. 01 Sacramento River	Left	1.13	10/22/2024 10/22/2024	Gregg McMillon

LM Start	0.32	Rating **	U	Issue No.	56
LM End	0.32	Issue Type +	Ma	Location *	LS
Category	Earthen Levee			GPS Latitude/Longitude	
				Start	End
Item	Vegetation			38.245388°	38.245388°
				-121.511211°	-121.511211°
DWR ID	DWR_RD0554_01_f_2021_56				
Comment Code					
V2 : Remove the wild growth and woody vegetation other than native grasses from the levee slopes.					
Inspector Comment					

Photo 1 of 1 : FA_2024_RD0554_176_56_20241023_00026.jpg



View looking downstream at vegetation on the landside slope. (Fall 2024)

LM Start	0.34	Rating **	M	Issue No.	55
LM End	0.34	Issue Type +	Ma	Location *	LS
Category	Earthen Levee			GPS Latitude/Longitude	
				Start	End
Item	Trim / Thin Trees			38.245140°	38.245140°
				-121.511350°	-121.511350°
DWR ID	DWR_RD0554_01_f_2021_55				
Comment Code					
T1 : Trim and thin trees to at least five feet above ground level to allow visibility of the ground and room to flood fight.					
Inspector Comment					
Remove Tree of Heaven before it gets further established.					

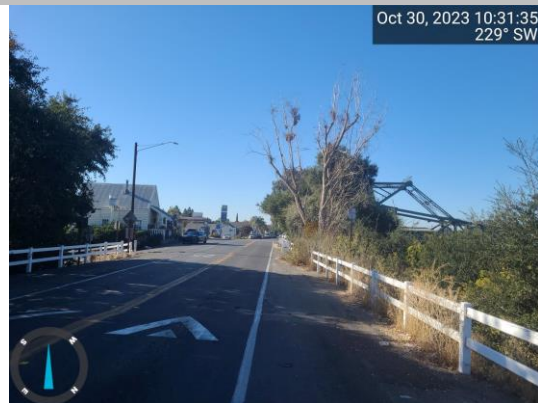
Photo 1 of 1 : FA_2024_RD0554_176_55_20241001_00017.jpg



View of the tree on the LS slope (Spring 2023).

LM Start	0.59	Rating **	M	Issue No.	46
LM End	0.59	Issue Type +	Ma	Location *	WS
Category	Earthen Levee			GPS Latitude/Longitude	
				Start	End
Item	Trim / Thin Trees			38.242125°	38.242125°
				-121.514080°	-121.514080°
DWR ID	DWR_RD0554_01_f_2019_46				
Comment Code					
T1 : Trim and thin trees to at least five feet above ground level to allow visibility of the ground and room to flood fight.					
Inspector Comment					
Low hanging trees on the waterside slope need to be trimmed up at least 5 feet for visibility.					

Photo 1 of 1 : FA_2024_RD0554_176_46_20241001_00014.jpg



View of low hanging trees on the waterside slope (Fall 2023).

* Location		** Rating		+ Issue Type	
LS : Land Side	N/A : Not Applicable	A : Acceptable	N : Not Inspected/Rated	Ma : Maintenance Deficiency	
WS : Water Side		M : Minimally Acceptable	C : Corrected	Ob : Design & System Obsolescence	
CR : Crown		U : Unacceptable	A/W : Acceptable but Monitor & Maintain	En : Enforcement	

**Flood Control Project Maintenance
Levee Inspections**

Maintenance Issue Types Only, Levee Inspection Report By Mile - Fall 2024

Reclamation District No. 0554 Walnut Grove

Waterway	Bank	Unit Miles	Inspection Start/End	Inspector
Unit No. 01 Sacramento River	Left	1.13	10/22/2024 10/22/2024	Gregg McMillon

LM Start	0.66	Rating **	M	Issue No.	5
LM End	0.66	Issue Type +	Ma	Location *	LS
Category	Earthen Levee			GPS Latitude/Longitude	
				Start	End
Item	Vegetation			38.241317°	38.241317°
				-121.514794°	-121.514794°
DWR ID	DWR_RD0554_01_s_2024_5				
Comment Code					
V2 : Remove the wild growth and woody vegetation other than native grasses from the levee slopes.					
Inspector Comment					
Vegetation has been trimmed, additional trimming of the large shrubs on the landside slope is needed.					

Photo 1 of 1 : FA_2024_RD0554_176_5_20241023_00027.jpg



View of shrubs on the landside slope. (Fall 2024)

LM Start	0.81	Rating **	U	Issue No.	49
LM End	0.83	Issue Type +	Ma	Location *	LS
Category	Earthen Levee			GPS Latitude/Longitude	
				Start	End
Item	Trim / Thin Trees			38.239587°	38.239344°
				-121.516353°	-121.516563°
DWR ID	DWR_RD0554_01_f_2019_49				
Comment Code					
T1 : Trim and thin trees to at least five feet above ground level to allow visibility of the ground and room to flood fight.					
Inspector Comment					

Photo 1 of 1 : FA_2024_RD0554_176_49_20241001_00015.jpg



View of the trees on the LS slope (Spring 2023).

LM Start	0.90	Rating **	U	Issue No.	30
LM End	0.96	Issue Type +	Ma	Location *	LS
Category	Earthen Levee			GPS Latitude/Longitude	
				Start	End
Item	Trim / Thin Trees			38.238396°	38.237604°
				-121.516938°	-121.516774°
DWR ID	DWR_RD0554_01_f_2016_30				
Comment Code					
T1 : Trim and thin trees to at least five feet above ground level to allow visibility of the ground and room to flood fight.					
Inspector Comment					

Photo 1 of 1 : FA_2024_RD0554_176_30_20241001_00011.jpg



View of the trees on the LS slope (Spring 2023).

* Location LS : Land Side N/A : Not Applicable WS : Water Side CR : Crown		** Rating A : Acceptable M : Minimally Acceptable U : Unacceptable		N : Not Inspected/Rated C : Corrected A/W : Acceptable but Monitor & Maintain		+ Issue Type Ma : Maintenance Deficiency Ob : Design & System Obsolescence En : Enforcement	
--	--	--	--	---	--	---	--

**Flood Control Project Maintenance
Levee Inspections**

Maintenance Issue Types Only, Levee Inspection Report By Mile - Fall 2024

Reclamation District No. 0554 Walnut Grove

Waterway	Bank	Unit Miles	Inspection Start/End	Inspector
Unit No. 01 Sacramento River	Left	1.13	10/22/2024 10/22/2024	Gregg McMillon

LM Start	0.95	Rating **	M	Issue No.	59
LM End	0.95	Issue Type +	Ma	Location *	WS
Category	Earthen Levee			GPS Latitude/Longitude	
				Start	End
Item	Trim / Thin Trees			38.237632°	38.237632°
				-121.516880°	-121.516880°
DWR ID	DWR_RD0554_01_f_2020_59				
Comment Code					
T1 : Trim and thin trees to at least five feet above ground level to allow visibility of the ground and room to flood fight.					
Inspector Comment					
The trees have been trimmed but more work is needed.					

Photo 1 of 1 : FA_2024_RD0554_176_59_20241001_00021.jpg



View of the trees on the WS slope (Spring 2023).

LM Start	1.03	Rating **	U	Issue No.	37
LM End	1.03	Issue Type +	Ma	Location *	WS
Category	Earthen Levee			GPS Latitude/Longitude	
				Start	End
Item	Trim / Thin Trees			38.236518°	38.236518°
				-121.516771°	-121.516771°
DWR ID	DWR_RD0554_01_f_2019_37				
Comment Code					
T1 : Trim and thin trees to at least five feet above ground level to allow visibility of the ground and room to flood fight.					
Inspector Comment					

Photo 1 of 1 : FA_2024_RD0554_176_37_20241001_00013.jpg



View of the trees on the WS slope (Spring 2023).

* Location LS : Land Side N/A : Not Applicable WS : Water Side CR : Crown		** Rating A : Acceptable N : Not Inspected/Rated M : Minimally Acceptable C : Corrected U : Unacceptable A/W : Acceptable but Monitor & Maintain		+ Issue Type Ma : Maintenance Deficiency Ob : Design & System Obsolescence En : Enforcement
--	--	---	--	---