

Flood Control Project Maintenance
Levee Inspections
LMA District Cover Sheet

Reclamation District No. 0551 Pearson

	Spring (March - May)	Summer ** (June - August)	Fall (September - November)	Winter ** (December - February)
† Overall LMA Rating (Fall Only)				

** Non-receipt of Summer or Winter Inspection
Reports may effect overall annual rating.

†
SPRING INSPECTIONS: Overall maintenance ratings are not determined for the spring inspection results. Individual maintenance deficiencies are rated using the same criteria in the spring and in the fall.

FALL INSPECTIONS: The overall maintenance rating shown above is based on operation and maintenance deficiencies identified within the attached unit inspection reports. This rating is not intended to be an indication of risk.

Comments

**Flood Control Project Maintenance
Levee Inspections
Unit Cover Sheet**

Reclamation District No. 0551 Pearson

Waterway			Bank	Unit Miles
Unit No. 01 Sacramento River			Left	1.83
	Spring (March - May)	Summer (June - August)	(September - November) Fall	Winter (December - February)
Unit Maintenance Rating (Fall Only)				
Date of Inspection	3/11/2024 - 3/11/2024			
DWR Inspector	Gregg McMillon			
Accompanied By	Topper Van Loben Sels Reclamation District 755			
	Michael Engelmann DWR			

Summer & Winter Inspections

The Local Maintaining Agency (LMA) is responsible for summer and winter inspections. The LMA is required to submit a report regarding summer and winter inspections to the California Department of Water Resources (DWR).

DWR must be informed on the:

- a) completion of the inspection
- b) any changes other than the results of normal maintenance
- c) corrections to deficiencies noted in this report

If additional items are noted, further documentation of those items must also be submitted.

The LMA should submit this information to DWR using the LMA web application tool available at:

<http://cdec.water.ca.gov/lma.html>

If the LMA is unable to submit information on this webpage, please contact DWR for assistance.

The LMA should submit the information and any associated documentation by September 30 for summer inspections and March 31 for winter inspections.

**Flood Control Project Maintenance
Levee Inspections**

Levee Inspection Report By Mile - Spring 2024

Reclamation District No. 0551 Pearson

Waterway	Bank	Unit Miles	Inspection Start/End	Inspector
Unit No. 01 Sacramento River	Left	1.83	03/11/2024 03/11/2024	Gregg McMillon

LM Start		Rating **	A	Issue No.	14
LM End		Issue Type +	Ma	Location *	
Category	Earthen Levee		GPS Latitude/Longitude		
			Start	End	
Item	Flood Preparedness & Training			°	°
				°	°
DWR ID	DWR_RD0755_01_f_2014_14				
Comment Code					
FP : Flood Preparedness & Training					
Inspector Comment					
District has been trained in Flood Fight Methods.					

No Photos

LM Start		Rating **	A	Issue No.	15
LM End		Issue Type +	Ma	Location *	
Category	Earthen Levee		GPS Latitude/Longitude		
			Start	End	
Item	Emergency Supplies & Equipment			°	°
				°	°
DWR ID	DWR_RD0755_01_f_2014_15				
Comment Code					
ES : Emergency Supplies & Equipment					
Inspector Comment					
District maintains supply of sand bags and has emergency supplies stored in locked container near Courtland's fire house.					

No Photos

LM Start		Rating **	A	Issue No.	16
LM End		Issue Type +	Ma	Location *	
Category	Earthen Levee		GPS Latitude/Longitude		
			Start	End	
Item	Operations & Maintenance Manuals			°	°
				°	°
DWR ID	DWR_RD0755_01_f_2014_16				
Comment Code					
OM : O&M Manuals					
Inspector Comment					
District has O&M Manual on hand.					

No Photos

* Location LS : Land Side N/A : Not Applicable WS : Water Side CR : Crown	** Rating A : Acceptable M : Minimally Acceptable U : Unacceptable	N : Not Inspected/Rated C : Corrected A/W : Acceptable but Monitor & Maintain	+ Issue Type Ma : Maintenance Deficiency Ob : Design & System Obsolescence En : Enforcement
--	--	---	---

Flood Control Project Maintenance
Levee Inspections

Levee Inspection Report By Mile - Spring 2024

Reclamation District No. 0551 Pearson

Waterway	Bank	Unit Miles	Inspection Start/End	Inspector
Unit No. 01 Sacramento River	Left	1.83	03/11/2024 03/11/2024	Gregg McMillon

LM Start	0.10	Rating **	U	Issue No.	1
LM End	0.15	Issue Type +	Ma	Location *	WS
Category	Earthen Levee			GPS Latitude/Longitude	
				Start	End
Item	Vegetation			38.347139°	38.346853°
				-121.537538°	-121.538382°
DWR ID	DWR_RD0755_01_s_2024_1				
Comment Code					
V1 : Control annual grass and weeds on the levee slopes and easements.					
Inspector Comment					

Photo 1 of 1 : SP_2024_RD0755_177_1_20240311_00021.jpg



View of vegetation on WS slope. (Spring 2024)

LM Start	0.10	Rating **	U	Issue No.	17
LM End	0.15	Issue Type +	Ma	Location *	LS
Category	Earthen Levee			GPS Latitude/Longitude	
				Start	End
Item	Vegetation			38.347139°	38.346853°
				-121.537538°	-121.538382°
DWR ID	DWR_RD0755_01_s_2024_17				
Comment Code					
V1 : Control annual grass and weeds on the levee slopes and easements.					
Inspector Comment					

Photo 1 of 1 : SP_2024_RD0755_177_17_20240311_00022.jpg



View of tall vegetation on LS slope. (Spring 2024)

LM Start	0.10	Rating **	M	Issue No.	20
LM End	0.15	Issue Type +	Ma	Location *	CR
Category	Earthen Levee			GPS Latitude/Longitude	
				Start	End
Item	Vegetation			38.347139°	38.346853°
				-121.537538°	-121.538382°
DWR ID	DWR_RD0755_01_s_2024_20				
Comment Code					
V1 : Control annual grass and weeds on the levee slopes and easements.					
Inspector Comment					

No Photos

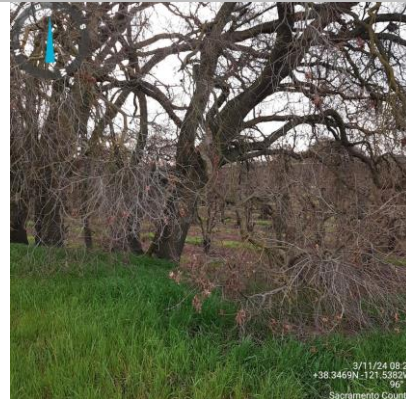
* Location LS : Land Side N/A : Not Applicable WS : Water Side CR : Crown		** Rating A : Acceptable M : Minimally Acceptable U : Unacceptable N : Not Inspected/Rated C : Corrected A/W : Acceptable but Monitor & Maintain		+ Issue Type Ma : Maintenance Deficiency Ob : Design & System Obsolescence En : Enforcement	
--	--	---	--	---	--

**Flood Control Project Maintenance
Levee Inspections****Levee Inspection Report By Mile - Spring 2024****Reclamation District No. 0551 Pearson**

Waterway	Bank	Unit Miles	Inspection Start/End	Inspector
Unit No. 01 Sacramento River	Left	1.83	03/11/2024 03/11/2024	Gregg McMillon

LM Start	0.14	Rating **	U	Issue No.	19
LM End	0.14	Issue Type +	Ma	Location *	LS
Category	Earthen Levee			GPS Latitude/Longitude	
				Start	End
Item	Trim / Thin Trees			38.347139°	38.347139°
				-121.537538°	-121.537538°
DWR ID	DWR_RD0755_01_s_2024_19				
Comment Code					
T1 : Trim and thin trees to at least five feet above ground level to allow visibility of the ground and room to flood fight.					
Inspector Comment					
Remove tree limbs on LS slope.					

Photo 1 of 1 : SP_2024_RD0755_177_19_20240311_00023.jpg



LM Start	0.17	Rating **	U	Issue No.	45	
LM End	0.17	Issue Type +	En	Location *		
Category	Supplemental			GPS Latitude/Longitude		
				Start	End	
Item	DWR UCIP Field Study			38.346783 °	38.346783 °	
				-121.538834 °	-121.538834 °	
DWR ID	18848					
Comment Code						
Inspector Comment						
DS_ID:18848 FS_ID:57010 EP_NO: 11221 Repair Type: Urgent EVAL Issue: 1, Pipe Integrity Crossing Status: Found UCIP Comments: 05/26/2020 Record updated to Urgent. Through holes in pipe on LS slope. Open end of electrical conduit without wires at LS toe next to abandoned service pole. These two could pose flood risk to landside. 14-inch to 12-inch pipe welded connection on LS shoulder. Ruined pile structure at riverbank, missing pump. Abandoned service pole at LS toe. Crossing appears abandoned. Need to have CVFPB review ABO and determine current owner. Coordinates of crossing have been updated. (O.Yakimov - DWR UCIP) FIELD_STRUCT_DESC: 14-inch irrigation discharge pipe of an unknown material through the levee, invert elevation 4.2 feet below the crown, 2-inch steel electrical conduit at same location. Pump on a pile structure in the river. Wooden stairs and walkway to the pump. 42-inch concrete standpipe and service pole at landside toe. (14-inch pipe [HLM 0.18] authorized under Automatic Board Order (ABO) issued as Permit No. 11221, 1975 - Greene and Hemly, Inc). [Additional Reference(s): DWR Levee Log, 2005 (HLM 0.18). USACE As-Built Drawing No. 50-04-2983, Sheet 14, RM 36.5, March 1954, listed as 12-inch pipe]. FS Date: 5/26/2020 9:45:18 AM						

Photo 1 of 3 : UCIP_SP_2024_57010_84335.jpg



Top of Levee: View of levee crown looking upstream

* Location	** Rating	+ Issue Type
LS: Land Side WS: Water Side CR: Crown	A: Acceptable M: Minimally Acceptable U: Unacceptable	Ma: Maintenance Deficiency Ob: Design & System Obsolescence En: Enforcement
N/A: Not Applicable	N: Not Inspected/Rated C: Corrected A/W: Acceptable but Monitor & Maintain	

**Flood Control Project Maintenance
Levee Inspections****Levee Inspection Report By Mile - Spring 2024****Reclamation District No. 0551 Pearson**

Waterway	Bank	Unit Miles	Inspection Start/End	Inspector
Unit No. 01 Sacramento River	Left	1.83	03/11/2024 03/11/2024	Gregg McMillon

LM Start	0.17	Rating **	U	Issue No.	45 (cont)
LM End	0.17	Issue Type +	En	Location *	
Category	Supplemental			GPS Latitude/Longitude	
				Start	End
Item	DWR UCIP Field Study			38.346783 °	38.346783 °
				-121.538834 °	-121.538834 °
DWR ID	18848				

Photo 2 of 3 : UCIP_SP_2024_57010_84336.jpg



Water-Side: View of levee slope looking from crown

LM Start	0.17	Rating **	U	Issue No.	45 (cont)
LM End	0.17	Issue Type +	En	Location *	

Photo 3 of 3 : UCIP_SP_2024_57010_84337.jpg



Water-Side: Signs of ruined pile structure on levee slope

LM Start	0.21	Rating **	M	Issue No.	10
LM End	0.21	Issue Type +	Ma	Location *	LS
Category	Earthen Levee			GPS Latitude/Longitude	
				Start	End
Item	Slope Stability			38.346428°	38.346428°
				-121.539400°	-121.539400°
DWR ID	DWR_RD0755_01_s_2019_10				
Comment Code					
S1 : Repair slope instability.					
Inspector Comment					
There is a 2" separation between roadway and levee on the landside shoulder.					

Photo 1 of 1 : SP_2024_RD0755_177_10_20240301_00001.jpg



View of the small slip on the LS shoulder (Fall 2022).

* Location	** Rating	+ Issue Type
LS : Land Side WS : Water Side CR : Crown	A : Acceptable M : Minimally Acceptable U : Unacceptable	Ma : Maintenance Deficiency Ob : Design & System Obsolescence En : Enforcement
N/A : Not Applicable	N : Not Inspected/Rated C : Corrected A/W : Acceptable but Monitor & Maintain	

Flood Control Project Maintenance
Levee Inspections

Levee Inspection Report By Mile - Spring 2024

Reclamation District No. 0551 Pearson

Waterway	Bank	Unit Miles	Inspection Start/End	Inspector
Unit No. 01 Sacramento River	Left	1.83	03/11/2024 03/11/2024	Gregg McMillon

LM Start	0.23	Rating **	M	Issue No.	2
LM End	0.23	Issue Type +	Ma	Location *	LS
Category	Earthen Levee			GPS Latitude/Longitude	
				Start	End
Item	Animal Control			38.346341°	38.346341°
				-121.539618°	-121.539618°
DWR ID	DWR_RD0755_01_s_2024_2				
Comment Code					
A3 : No rodents visible, but rodent burrows visible; need to backfill and compact or grout burrows.					
Inspector Comment					

Photo 1 of 1 : SP_2024_RD0755_177_2_20240311_00011.jpg



View of rodent burrow mounds. (Spring 2024)

LM Start	0.25	Rating **	M	Issue No.	21
LM End	0.59	Issue Type +	Ma	Location *	WS
Category	Earthen Levee			GPS Latitude/Longitude	
				Start	End
Item	Vegetation			38.346286°	38.345488°
				-121.540060°	-121.546170°
DWR ID	DWR_RD0755_01_s_2024_21				
Comment Code					
V1 : Control annual grass and weeds on the levee slopes and easements.					
Inspector Comment					

No Photos

LM Start	0.25	Rating **	M	Issue No.	4
LM End	0.59	Issue Type +	Ma	Location *	LS
Category	Earthen Levee			GPS Latitude/Longitude	
				Start	End
Item	Vegetation			38.346286°	38.345488°
				-121.540057°	-121.546173°
DWR ID	DWR_RD0755_01_s_2024_4				
Comment Code					
V1 : Control annual grass and weeds on the levee slopes and easements.					
Inspector Comment					

No Photos

* Location LS : Land Side N/A : Not Applicable WS : Water Side CR : Crown	** Rating A : Acceptable M : Minimally Acceptable U : Unacceptable	N : Not Inspected/Rated C : Corrected A/W : Acceptable but Monitor & Maintain	+ Issue Type Ma : Maintenance Deficiency Ob : Design & System Obsolescence En : Enforcement
--	--	--	---

**Flood Control Project Maintenance
Levee Inspections**

Levee Inspection Report By Mile - Spring 2024

Reclamation District No. 0551 Pearson

Waterway	Bank	Unit Miles	Inspection Start/End	Inspector
Unit No. 01 Sacramento River	Left	1.83	03/11/2024 03/11/2024	Gregg McMillon

LM Start	0.28	Rating **	C	Issue No.	18
LM End	0.28	Issue Type +	Ma	Location *	WS
Category	Earthen Levee			GPS Latitude/Longitude	
				Start	End
Item	Erosion / Bank Caving			38.346249°	38.346331°
				-121.540542°	-121.540664°
DWR ID	DWR_RD0755_01_s _ 2020_18				
Comment Code					
E2 : Schedule repair of erosion site prior to the next inspection.					
Inspector Comment					
Spring 2023: Erosion site has been repaired. Fall 2022: Erosion repair is pending. This was a 2017 Storm Damage site. Damage consists of erosion of the lower waterside levee slope and bank approximately 27 feet in length. Site ID No:327 Site Designation:LMA-154 3/25/2020 Field Notes: Erosion is significant. At least 1' into waterside slope. No riprap present.					

No Photos

LM Start	0.30	Rating **	M	Issue No.	3
LM End	0.30	Issue Type +	Ma	Location *	LS
Category	Earthen Levee			GPS Latitude/Longitude	
				Start	End
Item	Trim / Thin Trees			38.346115°	38.346115°
				-121.540908°	-121.540908°
DWR ID	DWR_RD0755_01_s _ 2024_3				
Comment Code					
T2 : Tree or limb.					
Inspector Comment					
Tree limbs and trimmings should be removed from the LS slope.					

Photo 1 of 1 : SP_2024_RD0755_177_3_20240311_00012.jpg



View of fallen tree limbs on the LS slope. (Spring 2024)

* Location LS : Land Side N/A : Not Applicable WS : Water Side CR : Crown	** Rating A : Acceptable M : Minimally Acceptable U : Unacceptable	N : Not Inspected/Rated C : Corrected A/W : Acceptable but Monitor & Maintain	+ Issue Type Ma : Maintenance Deficiency Ob : Design & System Obsolescence En : Enforcement
--	--	---	---

**Flood Control Project Maintenance
Levee Inspections****Levee Inspection Report By Mile - Spring 2024****Reclamation District No. 0551 Pearson**

Waterway	Bank	Unit Miles	Inspection Start/End	Inspector
Unit No. 01 Sacramento River	Left	1.83	03/11/2024 03/11/2024	Gregg McMillon

LM Start	0.43	Rating **	M	Issue No.	46	
LM End	0.43	Issue Type +	En	Location *		
Category	Supplemental			GPS Latitude/Longitude		
				Start	End	
Item	DWR UCIP Field Study			38.345640°	38.345640°	
				-121.543277°	-121.543277°	
DWR ID	18849					
Comment Code						
Inspector Comment						
DS_ID:18849						
FS_ID:57013						
EP_NO: 4302						
Repair Type: Non-Urgent						
EVAL Issue: 11, Maintenance Compliance Issue						
Crossing Status: Found						
UCIP Comments: 05/26/2020 Record remains Non-Urgent. Pump is running, minor leak through pump sealing on WS slope observed. (O.Yakimov - DWR UCIP)						
08/06/2013 FBC about 2 feet.Power conduit also through the levee.Wet ground on pump site/location. May need investigation about wet ground.						
FIELD_STRUCT_DESC: 8-inch coated steel irrigation discharge pipe through the levee, 2 feet below the crown. 2-inch electrical conduit through the levee at same location. Pump, electrical box, and control valve on the waterside (WS) slope. Siphon breaker on the landside (LS) shoulder. Pipe connected to two screen filters on LS. Service pole at the LS toe. (8-inch pipe [HLM 0.43] authorized under Permit No. 4302, 1963 - E. C. Hemly). [Additional Reference(s): DWR Levee Log, 2005 (HLM 0.44)].						
FS Date: 5/26/2020 10:33:38 AM						

LM Start	0.43	Rating **	M	Issue No.	46 (cont)
LM End	0.43	Issue Type +	En	Location *	

Photo 1 of 3 : UCIP_SP_2024_57013_84356.jpg



Top of Levee: View on levee crown at the crossing looking downstream

Photo 2 of 3 : UCIP_SP_2024_57013_84357.jpg



Water-Side: View of levee slope looking from crown

* Location	** Rating	+ Issue Type
LS: Land Side WS: Water Side CR: Crown	A: Acceptable M: Minimally Acceptable U: Unacceptable	Ma: Maintenance Deficiency Ob: Design & System Obsolescence En: Enforcement
N/A: Not Applicable	N: Not Inspected/Rated C: Corrected A/W: Acceptable but Monitor & Maintain	

**Flood Control Project Maintenance
Levee Inspections****Levee Inspection Report By Mile - Spring 2024****Reclamation District No. 0551 Pearson**

Waterway	Bank	Unit Miles	Inspection Start/End	Inspector
Unit No. 01 Sacramento River	Left	1.83	03/11/2024 03/11/2024	Gregg McMillon

LM Start	0.43	Rating **	M	Issue No.	46 (cont)
LM End	0.43	Issue Type +	En	Location *	
Category	Supplemental			GPS Latitude/Longitude	
				Start	End
Item	DWR UCIP Field Study			38.345640°	38.345640°
				-121.543277°	-121.543277°
DWR ID	18849				

Photo 3 of 3 : UCIP_SP_2024_57013_84358.jpg



Land-Side: View of levee slope looking from crown

LM Start	0.46	Rating **	A/W	Issue No.	5
LM End	0.46	Issue Type +	Ma	Location *	LS
Category	Earthen Levee			GPS Latitude/Longitude	
				Start	End
Item	Erosion / Rills			38.345672°	38.345672°
				-121.543734°	-121.543734°
DWR ID	DWR_RD0755_01_s_2024_5				
Comment Code					
E5 : Schedule repair of rills prior to the next inspection.					
Inspector Comment					
Erosion rills on the LS slope should be monitored.					

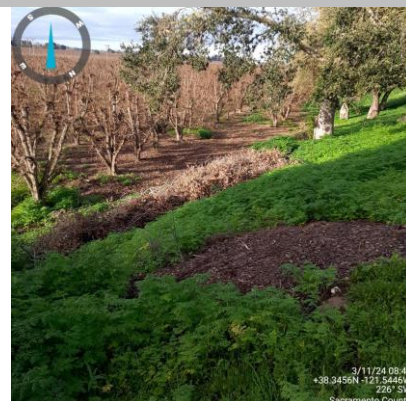
Photo 1 of 1 : SP_2024_RD0755_177_5_20240311_00013.jpg



Monitor erosion on LS slope. (Spring 2024)

LM Start	0.51	Rating **	M	Issue No.	6
LM End	0.51	Issue Type +	En	Location *	LS
Category	Earthen Levee			GPS Latitude/Longitude	
				Start	End
Item	Encroachments			38.345667°	38.345667°
				-121.544726°	-121.544726°
DWR ID	DWR_RD0755_01_s_2024_6				
Comment Code					
PR : Prunings					
Inspector Comment					
Pruning pile to be removed on the LS slope.					

Photo 1 of 1 : SP_2024_RD0755_177_6_20240311_00014.jpg



View of pruning pile on the LS slope. (Spring 2024)

* Location	** Rating	+ Issue Type
LS : Land Side WS : Water Side CR : Crown	A : Acceptable M : Minimally Acceptable U : Unacceptable	Ma : Maintenance Deficiency Ob : Design & System Obsolescence En : Enforcement
N/A : Not Applicable	N : Not Inspected/Rated C : Corrected A/W : Acceptable but Monitor & Maintain	

**Flood Control Project Maintenance
Levee Inspections**

Levee Inspection Report By Mile - Spring 2024

Reclamation District No. 0551 Pearson

Waterway	Bank	Unit Miles	Inspection Start/End	Inspector
Unit No. 01 Sacramento River	Left	1.83	03/11/2024 03/11/2024	Gregg McMillon

LM Start	0.59	Rating **	A/W	Issue No.	38
LM End	0.59	Issue Type +	En	Location *	WS
Category	Earthen Levee			GPS Latitude/Longitude	
				Start	End
Item	Encroachments			38.345490°	38.345490°
				-121.546098°	-121.546098°
DWR ID	DWR_RD0755_01_f _ 2022_38				
Comment Code					
MISC : Miscellaneous					
Inspector Comment					
There are tree logs on the WS shoulder to prevent parking.					

Photo 1 of 1 : SP_2024_RD0755_177_38_20240301_00009.jpg



View of the logs on the WS shoulder (Fall 2022).

LM Start	0.68	Rating **	M	Issue No.	47	
LM End	0.68	Issue Type +	En	Location *		
Category	Supplemental			GPS Latitude/Longitude		
				Start	End	
Item	DWR UCIP Field Study			38.345113°	38.345113°	
				-121.547789°	-121.547789°	
DWR ID	18850					
Comment Code						
Inspector Comment						
DS_ID:18850 FS_ID:57034 EP_NO: 4637 Repair Type: Non-Urgent EVAL Issue: 10, Unauthorized Modification or Non-Compliant Permit Crossing Status: Found UCIP Comments: 05/26/2020 Record updated from No Action Needed to Non-Urgent. Pumping platform on pile structure in the river has been removed. Unable to find permit authorizing modifications to this crossing to sleeve 12-inch pipe through 16-inch pipe. (O.Yakimov - DWR UCIP) 08/06/2013 12-inch steel pipe sleeved through 16 in steel pipe. Pump was running during field survey. FIELD_STRUCT_DESC: 12-inch pipe sleeved through a 16-inch coated steel irrigation discharge pipe through the levee, 5 feet below the crown. Pump on pumping platform of WS slope with stairs to the pump. Flow meter installed on 12-inch pipe. This crossing replaces 16-inch pipe (see DSID 25613). (Replacement of a portion of 16-inch pipe through the levee section authorized under Permit No. 4637, 1964 - Green and McKeown Farms, Inc). [Additional Reference(s): DWR Levee Log, 2005 (HLM 0.70). USACE Sacramento O&M Manual, Unit 111, May 1959, Revised 29 December 2016, (RM 35.90), listed as 14-inch pipe]. FS Date: 5/26/2020 8:27:31 AM						

Photo 1 of 3 : UCIP_SP_2024_57034_84419.jpg



Top of Levee: View of levee crown at the crossing looking upstream

* Location LS : Land Side N/A : Not Applicable WS : Water Side CR : Crown	** Rating A : Acceptable M : Minimally Acceptable U : Unacceptable	N : Not Inspected/Rated C : Corrected A/W : Acceptable but Monitor & Maintain	+ Issue Type Ma : Maintenance Deficiency Ob : Design & System Obsolescence En : Enforcement
--	--	---	---

**Flood Control Project Maintenance
Levee Inspections****Levee Inspection Report By Mile - Spring 2024****Reclamation District No. 0551 Pearson**

Waterway	Bank	Unit Miles	Inspection Start/End	Inspector
Unit No. 01 Sacramento River	Left	1.83	03/11/2024 03/11/2024	Gregg McMillon

LM Start	0.68	Rating **	M	Issue No.	47 (cont)
LM End	0.68	Issue Type +	En	Location *	
Category	Supplemental			GPS Latitude/Longitude	
				Start	End
Item	DWR UCIP Field Study			38.345113°	38.345113°
				-121.547789°	-121.547789°
DWR ID	18850				

Photo 2 of 3 : UCIP_SP_2024_57034_84421.jpg



Land-Side: View of landside looking from crown

LM Start	0.68	Rating **	M	Issue No.	47 (cont)
LM End	0.68	Issue Type +	En	Location *	

Photo 3 of 3 : UCIP_SP_2024_57034_84425.jpg



Water-Side: View of levee slope looking towards crown

* Location	** Rating	+ Issue Type
LS: Land Side WS: Water Side CR: Crown	A: Acceptable M: Minimally Acceptable U: Unacceptable	Ma: Maintenance Deficiency Ob: Design & System Obsolescence En: Enforcement
N/A: Not Applicable	N: Not Inspected/Rated C: Corrected A/W: Acceptable but Monitor & Maintain	

**Flood Control Project Maintenance
Levee Inspections****Levee Inspection Report By Mile - Spring 2024****Reclamation District No. 0551 Pearson**

Waterway	Bank	Unit Miles	Inspection Start/End	Inspector
Unit No. 01 Sacramento River	Left	1.83	03/11/2024 03/11/2024	Gregg McMillon

LM Start	0.70	Rating **	M	Issue No.	48
LM End	0.70	Issue Type +	Ma	Location *	
Category	Supplemental			GPS Latitude/Longitude	
				Start	End
Item	DWR UCIP LMA Responsibility			38.345057°	38.345057°
				-121.548050°	-121.548050°
DWR ID	18852				
Comment Code					
Inspector Comment					
DS_ID:18852 FS_ID:57038 EP_NO: 11222 Repair Type: Non-Urgent EVAL Issue: Crossing Status: Found UCIP Comments: 05/26/2020 Record updated from No Action Needed to Non-Urgent. No permit has been identified authorizing pipe. Pipe was running during site visit pumping water to the waterside. (O.Yakimov - DWR UCIP) 08/06/2013 It was working during field survey. A pump found 150 ft from the levee. Not sure whether the pump belong to this drainage system. FIELD_STRUCT_DESC: 16-inch steel drainage pipe sleeved through a 24-inch steel drainage pipe through the levee, invert elevation 8 feet below the crown. Air vent installed on the pipe on WS slope. Concrete headwall on LS. (12-inch pipe sleeved through 24-inch pipe-inch pipe [HLM 0.71] authorized under Automatic Board Order (ABO) issued as Permit No. 11222, 1975 - Green McKeown, Inc). [Additional Reference(s): DWR Levee Log, 2005 (HLM 0.71), referenced as 12-inch pipe through 24-inch pipe. USACE Sacramento O&M Manual, Unit 111, May 1959, Revised 29 December 2016, (RM 35.89), listed as 24-inch pipe]. FS Date: 5/26/2020 3:00:07 PM					

LM Start	0.70	Rating **	M	Issue No.	48 (cont)
LM End	0.70	Issue Type +	Ma	Location *	

Photo 1 of 3 : UCIP_SP_2024_57038_84440.jpg



Top of Levee: View of levee crown looking downstream

Photo 2 of 3 : UCIP_SP_2024_57038_84442.jpg



Water-Side: View of levee slope looking from crown

* Location	** Rating	+ Issue Type
LS : Land Side WS : Water Side CR : Crown	A : Acceptable M : Minimally Acceptable U : Unacceptable	Ma : Maintenance Deficiency Ob : Design & System Obsolescence En : Enforcement
N/A : Not Applicable	N : Not Inspected/Rated C : Corrected A/W : Acceptable but Monitor & Maintain	

**Flood Control Project Maintenance
Levee Inspections****Levee Inspection Report By Mile - Spring 2024****Reclamation District No. 0551 Pearson**

Waterway	Bank	Unit Miles	Inspection Start/End	Inspector
Unit No. 01 Sacramento River	Left	1.83	03/11/2024 03/11/2024	Gregg McMillon

LM Start	0.70	Rating **	M	Issue No.	48 (cont)
LM End	0.70	Issue Type +	Ma	Location *	
Category	Supplemental			GPS Latitude/Longitude	
				Start	End
Item	DWR UCIP LMA Responsibility			38.345057°	38.345057°
				-121.548050°	-121.548050°
DWR ID	18852				

Photo 3 of 3 : UCIP_SP_2024_57038_84443.jpg



Water-Side: Pipe and air release valve on levee slope

LM Start	0.80	Rating **	M	Issue No.	7
LM End	0.80	Issue Type +	En	Location *	LS
Category	Earthen Levee			GPS Latitude/Longitude	
				Start	End
Item	Encroachments			38.344650°	38.344650°
				-121.549875°	-121.549875°
DWR ID	DWR_RD0755_01_s_2024_7				
Comment Code					
PR : Prunings					
Inspector Comment					
Pruning pile to be removed on the LS slope.					

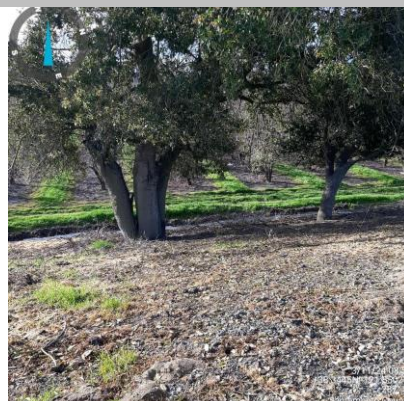
Photo 1 of 1 : SP_2024_RD0755_177_7_20240311_00015.jpg



View of pruning pile on the LS slope. (Spring 2024)

LM Start	0.82	Rating **	M	Issue No.	8
LM End	0.82	Issue Type +	Ma	Location *	LS
Category	Earthen Levee			GPS Latitude/Longitude	
				Start	End
Item	Trim / Thin Trees			38.344544°	38.344544°
				-121.550270°	-121.550270°
DWR ID	DWR_RD0755_01_s_2024_8				
Comment Code					
T2 : Tree or limb.					
Inspector Comment					
Remove tree limbs on LS slope.					

Photo 1 of 1 : SP_2024_RD0755_177_8_20240311_00016.jpg



View of tree limbs on the LS slope. (Spring 2024)

* Location	** Rating	+ Issue Type
LS : Land Side WS : Water Side CR : Crown	A : Acceptable M : Minimally Acceptable U : Unacceptable	Ma : Maintenance Deficiency Ob : Design & System Obsolescence En : Enforcement
N/A : Not Applicable	N : Not Inspected/Rated C : Corrected A/W : Acceptable but Monitor & Maintain	

**Flood Control Project Maintenance
Levee Inspections**

Levee Inspection Report By Mile - Spring 2024

Reclamation District No. 0551 Pearson

Waterway	Bank	Unit Miles	Inspection Start/End	Inspector
Unit No. 01 Sacramento River	Left	1.83	03/11/2024 03/11/2024	Gregg McMillon

LM Start	0.85	Rating **	M	Issue No.	9
LM End	0.85	Issue Type +	Ma	Location *	LS
Category	Earthen Levee			GPS Latitude/Longitude	
				Start	End
Item	Trim / Thin Trees			38.344413°	38.344413°
				-121.550772°	-121.550772°
DWR ID	DWR_RD0755_01_s_2024_9				
Comment Code					
T2 : Tree or limb.					
Inspector Comment					
Remove tree limbs on LS slope.					

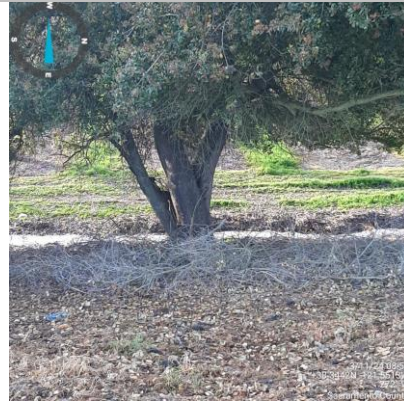
Photo 1 of 1 : SP_2024_RD0755_177_9_20240311_00017.jpg



View of tree limbs on the LS slope. (Spring 2024)

LM Start	0.89	Rating **	M	Issue No.	11
LM End	0.89	Issue Type +	Ma	Location *	LS
Category	Earthen Levee			GPS Latitude/Longitude	
				Start	End
Item	Trim / Thin Trees			38.344260°	38.344260°
				-121.551376°	-121.551376°
DWR ID	DWR_RD0755_01_s_2024_11				
Comment Code					
T2 : Tree or limb.					
Inspector Comment					
Remove tree limbs on LS slope.					

Photo 1 of 1 : SP_2024_RD0755_177_11_20240311_00018.jpg



View of tree limbs on the LS slope. (Spring 2024)

* Location LS : Land Side N/A : Not Applicable WS : Water Side CR : Crown	** Rating A : Acceptable M : Minimally Acceptable U : Unacceptable	N : Not Inspected/Rated C : Corrected A/W : Acceptable but Monitor & Maintain	+ Issue Type Ma : Maintenance Deficiency Ob : Design & System Obsolescence En : Enforcement
--	--	---	---

Flood Control Project Maintenance
Levee Inspections

Levee Inspection Report By Mile - Spring 2024

Reclamation District No. 0551 Pearson

Waterway	Bank	Unit Miles	Inspection Start/End	Inspector
Unit No. 01 Sacramento River	Left	1.83	03/11/2024 03/11/2024	Gregg McMillon

LM Start	0.93	Rating **	U	Issue No.	49
LM End	0.93	Issue Type +	En	Location *	
Category	Supplemental			GPS Latitude/Longitude	
				Start	End
Item	DWR UCIP Field Study			38.344103°	38.344103°
				-121.552119°	-121.552119°
DWR ID	18855				

Comment Code

Inspector Comment

DS_ID:18855
FS_ID:57080
EP_NO: 11225
Repair Type: Urgent
EVAL Issue: 1, Pipe Integrity
Crossing Status: Found
UCIP Comments: 05/27/2020 Record updated from Non-Urgent to Urgent. Through holes in pipe on waterside slope, sinkhole on WS shoulder measures 3'x3'x1'. Erosion continues to levee crown - road pavement. Asphalt patch repair on the crown. Knocked down service pole with electric box on LS slope. Crossing appears abandoned. Need to have CVFPB review ABO and determine current owner. (O.Yakimov - DWR UCIP)
08/06/2013 Abandoned pipe and pump. Service pole, power box lying on LS slope.
FIELD_STRUCT_DESC: 10-inch irrigation discharge pipe of an unknown material and a 1-inch electrical conduit through the levee, invert elevation 5.6 feet below the crown. Pump on a pile structure with a walkway to the pump. Abandoned service pole on the landside (LS) slope. (10-inch pipe [HLM 0.94] authorized under Automatic Board Order (ABO) issued as Permit No. 11225, 1975 - Helen D. Wilson). [Additional Reference(s): DWR Levee Log, 2005 (HLM 0.94). USACE Sacramento O&M Manual, Unit 111, May 1959, Revised 29 December 2016, (RM 35.66), listed as 10-inch pipe. USACE As-Built Drawing No. 50-04-2983, Sheet 13, downstream of Station 515+00, March 1954].
FS Date: 5/27/2020 4:30:47 PM

LM Start	0.93	Rating **	U	Issue No.	49 (cont)
LM End	0.93	Issue Type +	En	Location *	

Photo 1 of 3 : UCIP_SP_2024_57080_84498.jpg



Top of Levee: View of levee crown looking across the road

Photo 2 of 3 : UCIP_SP_2024_57080_84493.jpg



Top of Levee: Patch in road pavement within pipe alignment

* Location	** Rating	+ Issue Type
LS : Land Side WS : Water Side CR : Crown	A : Acceptable M : Minimally Acceptable U : Unacceptable	Ma : Maintenance Deficiency Ob : Design & System Obsolescence En : Enforcement
N/A : Not Applicable	N : Not Inspected/Rated C : Corrected A/W : Acceptable but Monitor & Maintain	

**Flood Control Project Maintenance
Levee Inspections****Levee Inspection Report By Mile - Spring 2024****Reclamation District No. 0551 Pearson**

Waterway	Bank	Unit Miles	Inspection Start/End	Inspector
Unit No. 01 Sacramento River	Left	1.83	03/11/2024 03/11/2024	Gregg McMillon

LM Start	0.93	Rating **	U	Issue No.	49 (cont)
LM End	0.93	Issue Type +	En	Location *	
Category	Supplemental		GPS Latitude/Longitude		
			Start	End	
Item	DWR UCIP Field Study		38.344103°	38.344103°	
			-121.552119°	-121.552119°	
DWR ID	18855				

Photo 3 of 3 : UCIP_SP_2024_57080_84495.jpg



Water-Side: View of levee slope looking from crown

LM Start	1.04	Rating **	M	Issue No.	50
LM End	1.04	Issue Type +	En	Location *	
Category	Supplemental		GPS Latitude/Longitude		
			Start	End	
Item	DWR UCIP Field Study		38.343625°	38.343625°	
			-121.554145°	-121.554145°	
DWR ID	18856				

Comment Code**Inspector Comment**

DS_ID:18856
FS_ID:57081
EP_NO: N/A
Repair Type: Non-Urgent
EVAL Issue: 6, Levee Damage or Threat for Levee Damage
Crossing Status: Found
UCIP Comments: 05/27/2020 Record remains Non-Urgent. A sinkhole is developing on levee crown closer to waterside hinge. The sinkhole is currently measuring 12"x18" in size. Was unable to locate pipe on landside slope. Crossing appears abandoned. No permit has been identified authorizing pipe. (O.Yakimov - DWR UCIP)
08/06/2013 Needs to be properly abandoned.
FIELD_STRUCT_DESC: 12-inch pipe of an unknown material or purpose through the levee, invert elevation 5 feet below the crown. Siphon breaker on the waterside (WS). Pipe not found on the landside (LS). [Additional Reference(s): DWR Levee Log, 2005 (HLM 1.05). USACE Sacramento O&M Manual, Unit 111, May 1959, Revised 29 December 2016, (RM 35.55), listed as 12-inch pipe].
FS Date: 5/27/2020 7:33:53 AM

Photo 1 of 3 : UCIP_SP_2024_57081_84506.jpg



Top of Levee: View of levee crown looking upstream

* Location	** Rating	+ Issue Type
LS : Land Side WS : Water Side CR : Crown	A : Acceptable M : Minimally Acceptable U : Unacceptable	Ma : Maintenance Deficiency Ob : Design & System Obsolescence En : Enforcement
N : Not Inspected/Rated C : Corrected A/W : Acceptable but Monitor & Maintain		

**Flood Control Project Maintenance
Levee Inspections****Levee Inspection Report By Mile - Spring 2024****Reclamation District No. 0551 Pearson**

Waterway	Bank	Unit Miles	Inspection Start/End	Inspector
Unit No. 01 Sacramento River	Left	1.83	03/11/2024 03/11/2024	Gregg McMillon

LM Start	1.04	Rating **	M	Issue No.	50 (cont)
LM End	1.04	Issue Type +	En	Location *	
Category	Supplemental		GPS Latitude/Longitude		
			Start	End	
Item	DWR UCIP Field Study		38.343625°	38.343625°	
			-121.554145°	-121.554145°	
DWR ID	18856				

Photo 2 of 3 : UCIP_SP_2024_57081_84507.jpg



Water-Side: View of levee slope looking from crown

LM Start	1.04	Rating **	M	Issue No.	50 (cont)
LM End	1.04	Issue Type +	En	Location *	

Photo 3 of 3 : UCIP_SP_2024_57081_84508.jpg



Land-Side: View of levee slope looking from crown

LM Start	1.05	Rating **	M	Issue No.	23
LM End	1.08	Issue Type +	En	Location *	LS
Category	Earthen Levee			GPS Latitude/Longitude	
				Start	End
Item	Vegetation			38.343595°	38.343487°
				-121.554238°	-121.554768°
DWR ID	DWR_RD0755_01_s_2017_23				
Comment Code					
V6 : Landscaping					
Inspector Comment					
Ground vegetation, shrubs and trees should be maintained to allow inspection and access to landside slope and toe.					

Photo 1 of 1 : SP_2024_RD0755_177_23_20240301_00005.jpg



View of the landscaping on the LS slope (Fall 2023).

* Location	** Rating	+ Issue Type
LS : Land Side WS : Water Side CR : Crown	A : Acceptable M : Minimally Acceptable U : Unacceptable	Ma : Maintenance Deficiency Ob : Design & System Obsolescence En : Enforcement
N/A : Not Applicable	N : Not Inspected/Rated C : Corrected A/W : Acceptable but Monitor & Maintain	

**Flood Control Project Maintenance
Levee Inspections**

Levee Inspection Report By Mile - Spring 2024

Reclamation District No. 0551 Pearson

Waterway	Bank	Unit Miles	Inspection Start/End	Inspector
Unit No. 01 Sacramento River	Left	1.83	03/11/2024 03/11/2024	Gregg McMillon

LM Start	1.08	Rating **	M	Issue No.	44
LM End	1.08	Issue Type +	En	Location *	LS
Category	Earthen Levee			GPS Latitude/Longitude	
				Start	End
Item	Encroachments			38.343470°	38.343470°
				-121.554775°	-121.554775°
DWR ID	DWR_RD0755_01_f_2019_44				
Comment Code					
LI : Landscape Irrigation					
Inspector Comment					
Landscape valve and sprinkler are on the landside slope.					

Photo 1 of 1 : SP_2024_RD0755_177_44_20240301_00010.jpg



View of the valve and sprinkler on the LS slope (Fall 2022).

LM Start	1.12	Rating **	U	Issue No.	51	
LM End	1.12	Issue Type +	En	Location *		
Category	Supplemental			GPS Latitude/Longitude		
				Start	End	
Item	DWR UCIP Field Study			38.343305°	38.343305°	
				-121.555538°	-121.555538°	
DWR ID	18857					
Comment Code						
Inspector Comment						
DS_ID:18857 FS_ID:57083 EP_NO: 11219 Repair Type: Urgent EVAL Issue: 2a, Levee Integrity Crossing Status: Found UCIP Comments: 05/27/2020 Record updated from Non-Urgent to Urgent. Unauthorized 8'x3'x3' excavation between pump house and WS levee slope was observed. Excavation exposes 8-inch pipe cut-off that was welded to a 6-inch pipe going towards pump house. Pump is running, minor water leaks from pump in pump house observed. CMP riser on LS shoulder is filled with soil and debris. No permit has been identified authorizing pipe. (O.Yakimov - DWR UCIP) 08/06/2013 requires cleaning of siphon breaker box. FIELD_STRUCT_DESC: 8-inch irrigation discharge pipe of an unknown material through the levee, invert elevation 5.7 feet below the crown. Siphon breaker in a 26-inch corrugated metal pipe (CMP) riser on the landside (LS) shoulder. Power pole on the LS. Pump and power box in a pump house on the waterside (WS) slope. Electrical conduit through the levee at the same location. (8-inch pipe [HLM 1.13] authorized under Automatic Board Order (ABO) issued as Permit No. 11219, 1975 - David J. Jr and Bonnie Elliott). [Additional Reference(s): DWR Levee Log, 2005 (HLM 1.13). USACE Sacramento O&M Manual, Unit 111, May 1959, Revised 29 December 2016, (RM 35.47), listed as 8-inch pipe]. FS Date: 5/27/2020 9:09:23 AM						

Photo 1 of 3 : UCIP_SP_2024_57083_84526.jpg



Land-Side: Soil and debris inside of CMP riser

* Location LS : Land Side N/A : Not Applicable WS : Water Side CR : Crown	** Rating A : Acceptable M : Minimally Acceptable U : Unacceptable	N : Not Inspected/Rated C : Corrected A/W : Acceptable but Monitor & Maintain	+ Issue Type Ma : Maintenance Deficiency Ob : Design & System Obsolescence En : Enforcement
--	--	---	---

**Flood Control Project Maintenance
Levee Inspections****Levee Inspection Report By Mile - Spring 2024****Reclamation District No. 0551 Pearson**

Waterway	Bank	Unit Miles	Inspection Start/End	Inspector
Unit No. 01 Sacramento River	Left	1.83	03/11/2024 03/11/2024	Gregg McMillon

LM Start	1.12	Rating **	U	Issue No.	51 (cont)
LM End	1.12	Issue Type +	En	Location *	
Category	Supplemental		GPS Latitude/Longitude		
			Start	End	
Item	DWR UCIP Field Study		38.343305°	38.343305°	
			-121.555538°	-121.555538°	
DWR ID	18857				

Photo 2 of 3 : UCIP_SP_2024_57083_84528.jpg



Water-Side: 8'x3'x3' excavation between pump house and levee slope to expose pipe

LM Start	1.12	Rating **	U	Issue No.	51 (cont)
LM End	1.12	Issue Type +	En	Location *	

Photo 3 of 3 : UCIP_SP_2024_57083_84529.jpg



Water-Side: View inside of pump house

LM Start	1.18	Rating **	M	Issue No.	32
LM End	1.43	Issue Type +	En	Location *	LS
Category	Earthen Levee			GPS Latitude/Longitude	
				Start	End
Item	Encroachments			38.343133°	38.341108°
				-121.556565°	-121.560220°
DWR ID	DWR_RD0755_01_s_2019_32				
Comment Code					
CR : Crops					
Inspector Comment					
Orchard trees are on the landside slope.					

Photo 1 of 1 : SP_2024_RD0755_177_32_20240301_00007.jpg



View of the orchard along the LS toe (Fall 2022).

* Location	** Rating	+ Issue Type
LS : Land Side WS : Water Side CR : Crown	A : Acceptable M : Minimally Acceptable U : Unacceptable	Ma : Maintenance Deficiency Ob : Design & System Obsolescence En : Enforcement
N/A : Not Applicable	N : Not Inspected/Rated C : Corrected A/W : Acceptable but Monitor & Maintain	

**Flood Control Project Maintenance
Levee Inspections**

Levee Inspection Report By Mile - Spring 2024

Reclamation District No. 0551 Pearson

Waterway	Bank	Unit Miles	Inspection Start/End	Inspector
Unit No. 01 Sacramento River	Left	1.83	03/11/2024 03/11/2024	Gregg McMillon

LM Start	1.20	Rating **	A/W	Issue No.	12
LM End	1.20	Issue Type +	Ma	Location *	LS
Category	Earthen Levee			GPS Latitude/Longitude	
				Start	End
Item	Erosion / Bank Caving			38.342957°	38.342957°
				-121.557019°	-121.557019°
DWR ID	DWR_RD0755_01_s_2024_12				
Comment Code					
E1 : Note and monitor erosion site.					
Inspector Comment					
Monitor erosion on LS slope.					

Photo 1 of 1 : SP_2024_RD0755_177_12_20240311_00019.jpg



View of erosion on LS slope. (Spring 2024)

LM Start	1.23	Rating **	A/W	Issue No.	22
LM End	1.29	Issue Type +	Ma	Location *	WS
Category	Earthen Levee			GPS Latitude/Longitude	
				Start	End
Item	Erosion / Bank Caving			38.342992°	38.342633°
				-121.557572°	-121.558622°
DWR ID	LMA-155				
Comment Code					
E1 : Note and monitor erosion site.					
Inspector Comment					
This was a 2017 Storm Damage site. Damage consists of erosion of the lower waterside levee slope and bank approximately 322 feet in length. Site ID No:328 Site Designation:LMA-155 6/18/2020 Field Notes: Erosion is into berm and not prism.					

Photo 1 of 1 : SP_2024_RD0755_177_22_20240301_00004.jpg



* Location LS : Land Side N/A : Not Applicable WS : Water Side CR : Crown	** Rating A : Acceptable M : Minimally Acceptable U : Unacceptable N : Not Inspected/Rated C : Corrected A/W : Acceptable but Monitor & Maintain	+ Issue Type Ma : Maintenance Deficiency Ob : Design & System Obsolescence En : Enforcement
--	---	---

**Flood Control Project Maintenance
Levee Inspections****Levee Inspection Report By Mile - Spring 2024****Reclamation District No. 0551 Pearson**

Waterway	Bank	Unit Miles	Inspection Start/End	Inspector
Unit No. 01 Sacramento River	Left	1.83	03/11/2024 03/11/2024	Gregg McMillon

LM Start	1.30	Rating **	M	Issue No.	13
LM End	1.31	Issue Type +	Ma	Location *	LS
Category	Earthen Levee			GPS Latitude/Longitude	
				Start	End
Item	Vegetation			38.342426°	38.342415°
				-121.558813°	-121.558843°
DWR ID	DWR_RD0755_01_s_2024_13				
Comment Code					
V2 : Remove the wild growth and woody vegetation other than native grasses from the levee slopes.					
Inspector Comment					

Photo 1 of 1 : SP_2024_RD0755_177_13_20240311_00020.jpg



View of woody vegetation on the LS slope. (Spring 2024)

LM Start	1.58	Rating **	M	Issue No.	33
LM End	1.72	Issue Type +	En	Location *	LS
Category	Earthen Levee			GPS Latitude/Longitude	
				Start	End
Item	Encroachments			38.339360°	38.337767°
				-121.561855°	-121.563602°
DWR ID	DWR_RD0755_01_s_2019_33				
Comment Code					
CR : Crops					
Inspector Comment					
Pear trees are on the landside slope.					

Photo 1 of 1 : SP_2024_RD0755_177_33_20240301_00008.jpg



View of the trees along the LS toe (Fall 2023).

* Location LS : Land Side N/A : Not Applicable WS : Water Side CR : Crown	** Rating A : Acceptable M : Minimally Acceptable U : Unacceptable N : Not Inspected/Rated C : Corrected A/W : Acceptable but Monitor & Maintain	+ Issue Type Ma : Maintenance Deficiency Ob : Design & System Obsolescence En : Enforcement
--	---	---

**Flood Control Project Maintenance
Levee Inspections**

Levee Inspection Report By Mile - Spring 2024

Reclamation District No. 0551 Pearson

Waterway	Bank	Unit Miles	Inspection Start/End	Inspector
Unit No. 01 Sacramento River	Left	1.83	03/11/2024 03/11/2024	Gregg McMillon

LM Start	1.64	Rating **	M	Issue No.	52
LM End	1.64	Issue Type +	En	Location *	
Category	Supplemental			GPS Latitude/Longitude	
				Start	End
Item	DWR UCIP Field Study			38.338715°	38.338715°
				-121.562560°	-121.562560°
DWR ID	18858				

Comment Code

Inspector Comment

DS_ID:18858
FS_ID:57084
EP_NO: 11219
Repair Type: Non-Urgent
EVAL Issue: 10, Unauthorized Modification or Non-Compliant Permit
Crossing Status: Found
UCIP Comments: 05/27/2020 Record remains Non-Urgent. 14-inch supply pipe segment on waterside cut off between closure device and levee shoulder and replaced with 12-inch pipe from WS shoulder to riverbank. Pump house with a pump at LS toe was built. 8-inch pipe daylights in this pump house. Pump on pile structure in the river and walkway to the pump have been abandoned. 2-inch electrical conduit through the levee has open end with no wires on LS shoulder - should be abandoned properly. Need to have CVFPB review ABO and determine current owner. (O.Yakimov - DWR UCIP)
08/06/2013 Pump and walkway seem abandoned.- Power line is not connected with pump.- A pump house like structure found on LS levee toe.
FIELD_STRUCT_DESC: 14-inch irrigation discharge pipe of an unknown material through the levee, invert elevation 8.5 feet below the crown. Pump house at landside levee toe. Siphon breaker and power pole on the landside (LS) slope. 2-inch electrical conduit through the levee at the same location. Pump on pile structure in the river and walkway to the pump have been abandoned. (14-inch pipe [HLM 1.65] authorized under Automatic Board Order (ABO) issued as Permit No. 11219, 1975 - David J. Jr and Bonnie Elliott). [Additional Reference(s): DWR Levee Log, 2005 (HLM 1.65). USACE Sacramento O&M Manual, Unit 111, May 1959, Revised 29 December 2016, (RM35.02), 14-inch pipe referenced in RD0551. USACE As-Built Drawing No. 50-4-2983, Sheet 11, page 15, March 1954. USACE As-Built Drawing No. 06-13-1100, Sheet 12, near 'L' 1283+75, January 1933].
FS Date: 5/27/2020 10:02:44 AM

Photo 1 of 3 : UCIP_SP_2024_57084_84534.jpg



Water-Side: View of levee slope looking from crown. Abandoned pipe on waterside

* Location	** Rating	+ Issue Type
LS: Land Side WS: Water Side CR: Crown	A: Acceptable M: Minimally Acceptable U: Unacceptable	Ma: Maintenance Deficiency Ob: Design & System Obsolescence En: Enforcement
N/A: Not Applicable	N: Not Inspected/Rated C: Corrected A/W: Acceptable but Monitor & Maintain	

**Flood Control Project Maintenance
Levee Inspections**

Levee Inspection Report By Mile - Spring 2024

Reclamation District No. 0551 Pearson

Waterway	Bank	Unit Miles	Inspection Start/End	Inspector
Unit No. 01 Sacramento River	Left	1.83	03/11/2024 03/11/2024	Gregg McMillon

LM Start	1.64	Rating **	M	Issue No.	52 (cont)
LM End	1.64	Issue Type +	En	Location *	
Category	Supplemental		GPS Latitude/Longitude		
			Start	End	
Item	DWR UCIP Field Study		38.338715°	38.338715°	
			-121.562560°	-121.562560°	
DWR ID	18858				

Photo 2 of 3 : UCIP_SP_2024_57084_84538.jpg



Water-Side: 16-inch supply pipe has been cut off between levee slope and shut off device

LM Start	1.64	Rating **	M	Issue No.	52 (cont)
LM End	1.64	Issue Type +	En	Location *	

Photo 3 of 3 : UCIP_SP_2024_57084_84539.jpg



Water-Side: Abandoned 16-inch supply pipe under walkway and pumping pier on riverbank

LM Start	1.73	Rating **	U	Issue No.	25
LM End	1.84	Issue Type +	En	Location *	LS
Category	Earthen Levee			GPS Latitude/Longitude	
				Start	End
Item	Vegetation			38.337688°	38.336437°
				-121.563738°	-121.564800°
DWR ID	DWR_RD0755_01_f_2017_25				
Comment Code					
V6 : Landscaping					
Inspector Comment					
Landscaping on the landside should be maintained to allow inspection and access to levee slope and toe.					

Photo 1 of 1 : SP_2024_RD0755_177_25_20240301_00006.jpg



View looking upstream at landscaping on the landside slope (Fall 2021).

* Location LS : Land Side WS : Water Side CR : Crown	** Rating A : Acceptable M : Minimally Acceptable U : Unacceptable	N : Not Inspected/Rated C : Corrected A/W : Acceptable but Monitor & Maintain	+ Issue Type Ma : Maintenance Deficiency Ob : Design & System Obsolescence En : Enforcement
--	--	--	---

**Flood Control Project Maintenance
Levee Inspections****Levee Inspection Report By Mile - Spring 2024****Reclamation District No. 0551 Pearson**

Waterway	Bank	Unit Miles	Inspection Start/End	Inspector
Unit No. 01 Sacramento River	Left	1.83	03/11/2024 03/11/2024	Gregg McMillon

* Location LS: Land Side N/A: Not Applicable WS: Water Side CR: Crown	** Rating A: Acceptable M: Minimally Acceptable U: Unacceptable N: Not Inspected/Rated C: Corrected A/W: Acceptable but Monitor & Maintain	+ Issue Type Ma: Maintenance Deficiency Ob: Design & System Obsolescence En: Enforcement
--	---	--

**Flood Control Project Maintenance
Levee Inspections
Unit Cover Sheet**

Reclamation District No. 0551 Pearson

Waterway			Bank	Unit Miles
Unit No. 02 Sacramento River			Left	6.78
	Spring (March - May)	Summer (June - August)	(September - November) Fall	Winter (December - February)
Unit Maintenance Rating (Fall Only)				
Date of Inspection	3/11/2024 - 3/11/2024			
DWR Inspector	Gregg McMillon			
Accompanied By	Topper Van Loben Sels Reclamation District 551			
	Michael Engelmann DWR			
	Doug Chan Trustee			

Summer & Winter Inspections

The Local Maintaining Agency (LMA) is responsible for summer and winter inspections. The LMA is required to submit a report regarding summer and winter inspections to the California Department of Water Resources (DWR).

DWR must be informed on the:

- a) completion of the inspection
- b) any changes other than the results of normal maintenance
- c) corrections to deficiencies noted in this report

If additional items are noted, further documentation of those items must also be submitted.

The LMA should submit this information to DWR using the LMA web application tool available at:

<http://cdec.water.ca.gov/lma.html>

If the LMA is unable to submit information on this webpage, please contact DWR for assistance.

The LMA should submit the information and any associated documentation by September 30 for summer inspections and March 31 for winter inspections.

**Flood Control Project Maintenance
Levee Inspections****Levee Inspection Report By Mile - Spring 2024****Reclamation District No. 0551 Pearson**

Waterway	Bank	Unit Miles	Inspection Start/End	Inspector
Unit No. 02 Sacramento River	Left	6.78	03/11/2024 03/11/2024	Gregg McMillon

LM Start	0.04	Rating **	U	Issue No.	81
LM End	0.32	Issue Type +	Ma	Location *	LS
Category	Earthen Levee			GPS Latitude/Longitude	
				Start	End
Item	Vegetation			38.335814°	38.332974°
				-121.565075°	-121.568568°
DWR ID	DWR_RD0551_01_s_2024_81				
Comment Code					
V1 : Control annual grass and weeds on the levee slopes and easements.					
Inspector Comment					

Photo 1 of 1 : SP_2024_RD0551_175_81_20240318_00126.jpg



View of tall grass on the LS slope. (Spring 2024)

LM Start	0.05	Rating **	U	Issue No.	37
LM End	0.35	Issue Type +	Ma	Location *	WS
Category	Earthen Levee			GPS Latitude/Longitude	
				Start	End
Item	Vegetation			38.335738°	38.332698°
				-121.565414°	-121.569088°
DWR ID	DWR_RD0551_01_s_2024_37				
Comment Code					
V1 : Control annual grass and weeds on the levee slopes and easements.					
Inspector Comment					

Photo 1 of 1 : SP_2024_RD0551_175_37_20240318_00127.jpg



View of tall grass on the WS slope. (Spring 2024)

* Location LS : Land Side N/A : Not Applicable WS : Water Side CR : Crown	** Rating A : Acceptable M : Minimally Acceptable U : Unacceptable N : Not Inspected/Rated C : Corrected A/W : Acceptable but Monitor & Maintain	+ Issue Type Ma : Maintenance Deficiency Ob : Design & System Obsolescence En : Enforcement
--	---	---

**Flood Control Project Maintenance
Levee Inspections**

Levee Inspection Report By Mile - Spring 2024

Reclamation District No. 0551 Pearson

Waterway	Bank	Unit Miles	Inspection Start/End	Inspector
Unit No. 02 Sacramento River	Left	6.78	03/11/2024 03/11/2024	Gregg McMillon

LM Start	0.07	Rating **	M	Issue No.	94
LM End	0.07	Issue Type +	En	Location *	
Category	Supplemental			GPS Latitude/Longitude	
				Start	End
Item	DWR UCIP Field Study			38.335670°	38.335670°
				-121.565490°	-121.565490°
DWR ID	21971				
Comment Code					
Inspector Comment					
DS_ID:21971 FS_ID:57695 EP_NO: 8664 Repair Type: Non-Urgent EVAL Issue: 10, Unauthorized Modification or Non-Compliant Permit Crossing Status: Found UCIP Comments: 05/27/2020 Record updated from No Action Needed to Non-Urgent. 8-inch pipe sleeved through 10-inch pipe. Installed new pump with gate valve and pressure booster, service pole with electric panel next to pumphouse. Abandoned pump and gate valve in pump house, abandoned 48-inch and 24-inch concrete standpipes at pump house on the LS toe. Unable to locate a permit authorizing modification. Need to have CVFPB review ABO and determine current owner. (O.Yakimov - DWR UCIP) FIELD_STRUCT_DESC: 8-inch pipe sleeved through 10-inch coated steel irrigation pipe through the levee, 5 feet below the crown. Pump with gate valve and pressure booster, service pole with electrical panel next to pumphouse on the landside slope. (Retention of irrigation pumping plant, centrifugal pump and gate valve in pump house, landside toe of the levee [HLM 0.05] authorized under Automatic Board Order (ABO) issued as Permit No. 8664, 1972 - Lincoln Chan). [Additional Reference(s): DWR Levee Log, 2005 (HLM 0.05). USACE Sacramento O&M Manual, Unit 111, May 1959, Revised 29 December 2016, (RM 34.75), listed as 10-inch pipe]. FS Date: 5/27/2020 10:13:34 AM					

Photo 1 of 3 : UCIP_SP_2024_57695_85475.jpg



Land-Side: Abandoned concrete standpipes

LM Start	0.07	Rating **	M	Issue No.	94 (cont)
LM End	0.07	Issue Type +	En	Location *	

Photo 2 of 3 : UCIP_SP_2024_57695_85479.jpg



Water-Side: 10-inch to 8-inch pipe welded connection

* Location LS : Land Side N/A : Not Applicable WS : Water Side CR : Crown	** Rating A : Acceptable M : Minimally Acceptable U : Unacceptable	N : Not Inspected/Rated C : Corrected A/W : Acceptable but Monitor & Maintain	+ Issue Type Ma : Maintenance Deficiency Ob : Design & System Obsolescence En : Enforcement
--	--	---	---

**Flood Control Project Maintenance
Levee Inspections**

Levee Inspection Report By Mile - Spring 2024

Reclamation District No. 0551 Pearson

Waterway	Bank	Unit Miles	Inspection Start/End	Inspector
Unit No. 02 Sacramento River	Left	6.78	03/11/2024 03/11/2024	Gregg McMillon

LM Start	0.07	Rating **	M	Issue No.	94 (cont)
LM End	0.07	Issue Type +	En	Location *	
Category	Supplemental			GPS Latitude/Longitude	
				Start	End
Item	DWR UCIP Field Study			38.335670 °	38.335670 °
				-121.565490 °	-121.565490 °
DWR ID	21971				

Photo 3 of 3 : UCIP_SP_2024_57695_85477.jpg



Land-Side: Abandoned 10-inch pipe between pumphouse and concrete standpipe

LM Start	0.15	Rating **	C	Issue No.	93
LM End	0.15	Issue Type +	En	Location *	LS
Category	Earthen Levee			GPS Latitude/Longitude	
				Start	End
Item	Encroachments			38.334817 °	38.334817 °
				-121.566452 °	-121.566452 °
DWR ID	DWR_RD0551_01_f_2022_93				
Comment Code					
FW : Firewood					
Inspector Comment					

No Photos

* Location LS : Land Side N/A : Not Applicable WS : Water Side CR : Crown	** Rating A : Acceptable M : Minimally Acceptable U : Unacceptable	N : Not Inspected/Rated C : Corrected A/W : Acceptable but Monitor & Maintain	+ Issue Type Ma : Maintenance Deficiency Ob : Design & System Obsolescence En : Enforcement
--	--	---	---

**Flood Control Project Maintenance
Levee Inspections**

Levee Inspection Report By Mile - Spring 2024

Reclamation District No. 0551 Pearson

Waterway	Bank	Unit Miles	Inspection Start/End	Inspector
Unit No. 02 Sacramento River	Left	6.78	03/11/2024 03/11/2024	Gregg McMillon

LM Start	0.40	Rating **	U	Issue No.	17
LM End	0.51	Issue Type +	En	Location *	WS
Category	Earthen Levee			GPS Latitude/Longitude	
				Start	End
Item	Vegetation			38.332115°	38.330818°
				-121.569658°	-121.570980°
DWR ID	DWR_RD0551_01_f_2018_17				
Comment Code					
V6 : Landscaping					
Inspector Comment					
Trim oleanders on waterside hinge.					

Photo 1 of 1 : SP_2024_RD0551_175_17_20240301_00004.jpg



View looking upstream of landscaping blocking view down waterside slope (Fall 2023).

LM Start	0.49	Rating **	M	Issue No.	21
LM End	0.49	Issue Type +	En	Location *	WS
Category	Earthen Levee			GPS Latitude/Longitude	
				Start	End
Item	Encroachments			38.331063°	38.331063°
				-121.570634°	-121.570634°
DWR ID	DWR_RD0551_01_s_2014_21				
Comment Code					
BU : Building					
Inspector Comment					
11750 River Road - The new land owner is working with the LMA trying to get CVFPB Permits for this project. No other work at this site. Waiting to hear from Enforcements.					

Photo 1 of 1 : SP_2024_RD0551_175_21_20240301_00006.jpg



View of the building on the WS toe (Fall 2022).

LM Start	0.56	Rating **	M	Issue No.	69
LM End	0.59	Issue Type +	En	Location *	LS
Category	Earthen Levee			GPS Latitude/Longitude	
				Start	End
Item	Vegetation			38.330242°	38.329830°
				-121.571405°	-121.571725°
DWR ID	DWR_RD0551_01_f_2019_69				
Comment Code					
V6 : Landscaping					
Inspector Comment					

Photo 1 of 1 : SP_2024_RD0551_175_69_20240301_00029.jpg



View of the landscaping on the LS slope (Fall 2022).

* Location LS : Land Side N/A : Not Applicable WS : Water Side CR : Crown		** Rating A : Acceptable M : Minimally Acceptable U : Unacceptable		+ Issue Type Ma : Maintenance Deficiency Ob : Design & System Obsolescence En : Enforcement	
		N : Not Inspected/Rated C : Corrected A/W : Acceptable but Monitor & Maintain			

**Flood Control Project Maintenance
Levee Inspections**

Levee Inspection Report By Mile - Spring 2024

Reclamation District No. 0551 Pearson

Waterway	Bank	Unit Miles	Inspection Start/End	Inspector
Unit No. 02 Sacramento River	Left	6.78	03/11/2024 03/11/2024	Gregg McMillon

LM Start	0.60	Rating **	U	Issue No.	80
LM End	0.72	Issue Type +	Ma	Location *	LS
Category	Earthen Levee			GPS Latitude/Longitude	
				Start	End
Item	Vegetation			38.329786°	38.328317°
				-121.571850°	-121.573030°
DWR ID	DWR_RD0551_01_s_2024_80				
Comment Code					
V1 : Control annual grass and weeds on the levee slopes and easements.					
Inspector Comment					

Photo 1 of 1 : SP_2024_RD0551_175_80_20240318_00128.jpg



View of tall grass on the LS slope. (Spring 2024)

LM Start	0.60	Rating **	U	Issue No.	39
LM End	1.40	Issue Type +	Ma	Location *	WS
Category	Earthen Levee			GPS Latitude/Longitude	
				Start	End
Item	Vegetation			38.329786°	38.318979°
				-121.571850°	-121.576508°
DWR ID	DWR_RD0551_01_s_2024_39				
Comment Code					
V1 : Control annual grass and weeds on the levee slopes and easements.					
Inspector Comment					

Photo 1 of 1 : SP_2024_RD0551_175_39_20240311_00102.jpg



View of tall grass on WS slope. (Spring 2024)

* Location LS : Land Side N/A : Not Applicable WS : Water Side CR : Crown	** Rating A : Acceptable M : Minimally Acceptable U : Unacceptable	N : Not Inspected/Rated C : Corrected A/W : Acceptable but Monitor & Maintain	+ Issue Type Ma : Maintenance Deficiency Ob : Design & System Obsolescence En : Enforcement
--	--	---	---

**Flood Control Project Maintenance
Levee Inspections****Levee Inspection Report By Mile - Spring 2024****Reclamation District No. 0551 Pearson**

Waterway	Bank	Unit Miles	Inspection Start/End	Inspector
Unit No. 02 Sacramento River	Left	6.78	03/11/2024 03/11/2024	Gregg McMillon

LM Start	0.71	Rating **	M	Issue No.	95	
LM End	0.71	Issue Type +	En	Location *		
Category	Supplemental			GPS Latitude/Longitude		
				Start	End	
Item	DWR UCIP Field Study			38.328401°	38.328401°	
				-121.572954°	-121.572954°	
DWR ID	21985					
Comment Code						
Inspector Comment						
DS_ID:21985 FS_ID:60085 EP_NO: 6220 Repair Type: Non-Urgent EVAL Issue: 6, Levee Damage or Threat for Levee Damage Crossing Status: Found UCIP Comments: 05/27/2020 Record remains Non-Urgent. Two sinkholes on waterside levee slope that measure 18"x 12"x 6" deep found in pipe alignment. Crossing appears abandoned. Pipe is heavily rusted at riverbank. From conversation with adjacent property owner found out that pipe is located on easement to the property just across from the crossing and used to serve water for orchard on landside. (O.Yakimov - DWR UCIP) 04/10/2013 Pipe abandoned and should be removed. (W.Wylie - DWR UCIP) FIELD_STRUCT_DESC: 8-inch coated steel irrigation pipe through the levee, 6.1 feet below the crown. Pump on the waterside (WS) with slide gate and air vent. (8-inch pipe authorized under Permit No. 6220, 1968 - Robert U. Grant). [Additional Reference(s): DWR Levee Log, 2005 (HLM 0.71)]. FS Date: 5/27/2020 8:59:30 AM						

LM Start	0.71	Rating **	M	Issue No.	95 (cont)
LM End	0.71	Issue Type +	En	Location *	

Photo 1 of 3 : UCIP_SP_2024_60085_87347.jpg



Water-Side: Abandoned pipe, pump, and gate valve

Photo 2 of 3 : UCIP_SP_2024_60085_87350.jpg



Water-Side: A sinkhole in pipe alignment measures 12"x 18"x 6" deep

* Location	** Rating	+ Issue Type
LS: Land Side WS: Water Side CR: Crown	A: Acceptable M: Minimally Acceptable U: Unacceptable	Ma: Maintenance Deficiency Ob: Design & System Obsolescence En: Enforcement
N/A: Not Applicable	N: Not Inspected/Rated C: Corrected A/W: Acceptable but Monitor & Maintain	

**Flood Control Project Maintenance
Levee Inspections**

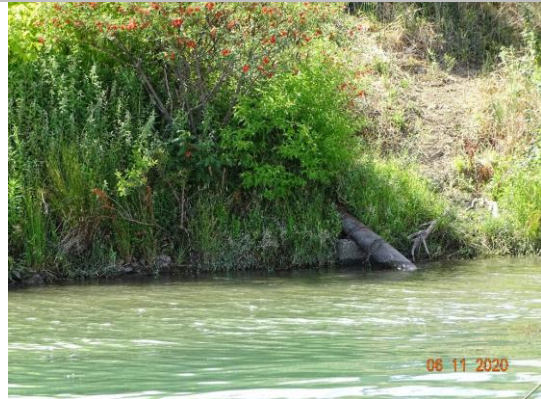
Levee Inspection Report By Mile - Spring 2024

Reclamation District No. 0551 Pearson

Waterway	Bank	Unit Miles	Inspection Start/End	Inspector
Unit No. 02 Sacramento River	Left	6.78	03/11/2024 03/11/2024	Gregg McMillon

LM Start	0.71	Rating **	M	Issue No.	95 (cont)	
LM End	0.71	Issue Type +	En	Location *		
Category	Supplemental			GPS Latitude/Longitude		
				Start	End	
Item	DWR UCIP Field Study			38.328401°	38.328401°	
				-121.572954°	-121.572954°	
DWR ID	21985					

Photo 3 of 3 : UCIP_SP_2024_60085_87352.jpg



Water-Side: Heavily rusted pipe in riverbank

LM Start	0.73	Rating **	U	Issue No.	57
LM End	0.76	Issue Type +	En	Location *	LS
Category	Earthen Levee			GPS Latitude/Longitude	
				Start	End
Item	Vegetation			38.328122°	38.327783°
				-121.573130°	-121.573362°
DWR ID	DWR_RD0551_01_f _ 2018_57				
Comment Code					
V6 : Landscaping					
Inspector Comment					

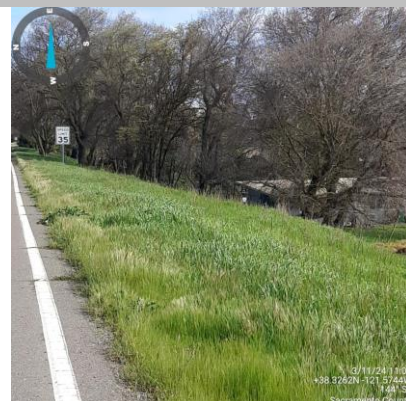
Photo 1 of 1 : SP_2024_RD0551_175_57_20240301_00022.jpg



View of thick landscaping on the landside slope (Fall 2021).

LM Start	0.88	Rating **	U	Issue No.	79
LM End	0.88	Issue Type +	Ma	Location *	LS
Category	Earthen Levee			GPS Latitude/Longitude	
				Start	End
Item	Vegetation			38.326222°	38.326222°
				-121.574390°	-121.574390°
DWR ID	DWR_RD0551_01_s_2024_79				
Comment Code					
V1 : Control annual grass and weeds on the levee slopes and easements.					
Inspector Comment					

Photo 1 of 1 : SP_2024_RD0551_175_79_20240314_00108.jpg



View of tall grass on the LS slope. (Spring 2024)

* Location LS : Land Side N/A : Not Applicable WS : Water Side CR : Crown		** Rating A : Acceptable M : Minimally Acceptable U : Unacceptable N : Not Inspected/Rated C : Corrected A/W : Acceptable but Monitor & Maintain		+ Issue Type Ma : Maintenance Deficiency Ob : Design & System Obsolescence En : Enforcement	
--	--	---	--	---	--

**Flood Control Project Maintenance
Levee Inspections**

Levee Inspection Report By Mile - Spring 2024

Reclamation District No. 0551 Pearson

Waterway	Bank	Unit Miles	Inspection Start/End	Inspector
Unit No. 02 Sacramento River	Left	6.78	03/11/2024 03/11/2024	Gregg McMillon

LM Start	0.89	Rating **	U	Issue No.	96
LM End	0.89	Issue Type +	En	Location *	
Category	Supplemental			GPS Latitude/Longitude	
				Start	End
Item	DWR UCIP Field Study			38.326088°	38.326088°
				-121.574525°	-121.574525°
DWR ID	21986				
Comment Code					
Inspector Comment					
DS_ID:21986 FS_ID:60086 EP_NO: 701 Repair Type: Urgent EVAL Issue: 1, Pipe Integrity Crossing Status: Found UCIP Comments: 06/02/2020 Record updated from Non-Urgent to Urgent. Through hole in pipe visible on landside slope, missing wall of pipe at riverbank. 2-foot diameter scour hole present around a hole in pipe on landside slope. 3-foot diameter and 3-inch deep depression of levee slope just above this hole. Crossing appears abandoned. (O.Yakimov - DWR UCIP) 04/10/2013 Pipe appears abandoned and should be done so properly. Good candidate for video inspection. (W.Wylie - DWR UCIP) FIELD_STRUCT_DESC: 14-inch steel irrigation pipe through the levee, 7.2 feet below the crown. Pump in pump house on the waterside (WS) slope. Service pole on the landside (LS) slope. 1-inch galvanized filler pipe, and a 2-inch electrical conduit at the same location. (16-inch pipe authorized under Permit No. 701, 1937 - American Trust Company). [Additional Reference(s): DWR Levee Log, 2005 (HLM 0.89). USACE Sacramento O&M Manual, Unit 111, May 1959, Revised 29 December 2016, (RM 33.91), listed as 14-inch pipe. USACE As-Built Drawing No. 06-13-1100, Sheet 12, upstream of 'L' 1348+33, January 1933]. FS Date: 6/2/2020 10:38:50 AM					

LM Start	0.89	Rating **	U	Issue No.	96 (cont)
LM End	0.89	Issue Type +	En	Location *	

Photo 1 of 3 : UCIP_SP_2024_60086_87357.jpg



Land-Side: View of through hole in pipe on levee slope

Photo 2 of 3 : UCIP_SP_2024_60086_87359.jpg



Water-Side: Abandoned pumphouse on levee slope

* Location LS: Land Side N/A: Not Applicable WS: Water Side CR: Crown	** Rating A: Acceptable M: Minimally Acceptable U: Unacceptable	N: Not Inspected/Rated C: Corrected A/W: Acceptable but Monitor & Maintain	+ Issue Type Ma: Maintenance Deficiency Ob: Design & System Obsolescence En: Enforcement
--	---	--	--

Flood Control Project Maintenance
Levee Inspections

Levee Inspection Report By Mile - Spring 2024

Reclamation District No. 0551 Pearson

Waterway	Bank	Unit Miles	Inspection Start/End	Inspector
Unit No. 02 Sacramento River	Left	6.78	03/11/2024 03/11/2024	Gregg McMillon

LM Start	0.89	Rating **	U	Issue No.	96 (cont)
LM End	0.89	Issue Type +	En	Location *	
Category	Supplemental		GPS Latitude/Longitude		
			Start	End	
Item	DWR UCIP Field Study		38.326088 °	38.326088 °	
			-121.574525 °	-121.574525 °	
DWR ID	21986				

Photo 3 of 3 : UCIP_SP_2024_60086_87353.jpg



Water-Side: Missing wall of pipe at riverbank

LM Start	0.90	Rating **	M	Issue No.	97
LM End	0.90	Issue Type +	En	Location *	
Category	Supplemental		GPS Latitude/Longitude		
			Start	End	
Item	DWR UCIP Field Study		38.325955 °	38.325955 °	
			-121.574608 °	-121.574608 °	
DWR ID	21987				

Comment Code

Inspector Comment

DS_ID:21987
FS_ID:60092
EP_NO: 793A
Repair Type: Non-Urgent
EVAL Issue: 10, Unauthorized Modification or Non-Compliant Permit Crossing Status: Found
UCIP Comments: 06/02/2020 Record updated from No Action Needed to Non-Urgent. Pump and screen filters installed on landside, capped old 12-inch pipe on landside slope next to the standpipe. Unable to find a permit authorizing modifications to this crossing. Two abandoned concrete standpipes on the landside slope and at the toe, abandoned pump piles at riverbank. Minor runoff erosion on waterside shoulder in pipe alignment. Pipe debris at riverbank. (O.Yakimov - DWR UCIP)
FIELD_STRUCT_DESC: 8-inch steel irrigation pipe sleeved through a 12-inch pipe with annular space grouted 7.8 feet below the crown. Pump and pressure booster at the landside (LS) toe with switch panel and power pole. (12-inch pipe authorized under Permit No. 793, 1939 - Margaret H. Smith Estate). (Sleeving 8-inch pipe through existing 10-inch pipe and grouting annular space authorized under Permit No. 793A, 1974 - George W.G. Smith). [Additional Reference(s): DWR Levee Log, 2005 (HLM 0.90). USACE Sacramento O&M Manual, Unit 111, May 1959, Revised 29 December 2016, (RM 33.90), listed as 12-inch pipe].
FS Date: 6/2/2020 1:07:09 PM

Photo 1 of 3 : UCIP_SP_2024_60092_87369.jpg



Land-Side: Levee slope, and abandoned concrete standpipe

* Location	** Rating	+ Issue Type
LS: Land Side WS: Water Side CR: Crown	A: Acceptable M: Minimally Acceptable U: Unacceptable	Ma: Maintenance Deficiency Ob: Design & System Obsolescence En: Enforcement
N/A: Not Applicable	N: Not Inspected/Rated C: Corrected A/W: Acceptable but Monitor & Maintain	

Flood Control Project Maintenance
Levee Inspections

Levee Inspection Report By Mile - Spring 2024

Reclamation District No. 0551 Pearson

Waterway	Bank	Unit Miles	Inspection Start/End	Inspector
Unit No. 02 Sacramento River	Left	6.78	03/11/2024 03/11/2024	Gregg McMillon

LM Start	0.90	Rating **	M	Issue No.	97 (cont)
LM End	0.90	Issue Type +	En	Location *	
Category	Supplemental			GPS Latitude/Longitude	
				Start	End
Item	DWR UCIP Field Study			38.325955°	38.325955°
				-121.574608°	-121.574608°
DWR ID	21987				

Photo 2 of 3 : UCIP_SP_2024_60092_87367.jpg



Land-Side: Capped old 12-inch pipe on levee slope

LM Start	0.90	Rating **	M	Issue No.	97 (cont)
LM End	0.90	Issue Type +	En	Location *	

Photo 3 of 3 : UCIP_SP_2024_60092_87365.jpg



Land-Side: 8-inch pipe comes out of 12-inch pipe on levee slope

LM Start	0.93	Rating **	M	Issue No.	45
LM End	0.93	Issue Type +	En	Location *	LS
Category	Earthen Levee			GPS Latitude/Longitude	
				Start	End
Item	Vegetation			38.325577°	38.325577°
				-121.574800°	-121.574800°
DWR ID	DWR_RD0551_01_s_2020_45				
Comment Code					
V6 : Landscaping					
Inspector Comment					
There is ivy covering the LS slope.					

Photo 1 of 1 : SP_2024_RD0551_175_45_20240301_00012.jpg



View of ivy on the landside slope (Fall 2023).

* Location	** Rating	+ Issue Type
LS : Land Side WS : Water Side CR : Crown	A : Acceptable M : Minimally Acceptable U : Unacceptable	Ma : Maintenance Deficiency Ob : Design & System Obsolescence En : Enforcement
N/A : Not Applicable	N : Not Inspected/Rated C : Corrected A/W : Acceptable but Monitor & Maintain	

**Flood Control Project Maintenance
Levee Inspections**

Levee Inspection Report By Mile - Spring 2024

Reclamation District No. 0551 Pearson

Waterway	Bank	Unit Miles	Inspection Start/End	Inspector
Unit No. 02 Sacramento River	Left	6.78	03/11/2024 03/11/2024	Gregg McMillon

LM Start	0.96	Rating **	U	Issue No.	35
LM End	0.96	Issue Type +	Ma	Location *	LS
Category	Earthen Levee			GPS Latitude/Longitude	
				Start	End
Item	Trim / Thin Trees			38.325202°	38.325202°
				-121.574985°	-121.574985°
DWR ID	DWR_RD0551_02_s_2024_35				
Comment Code					
T2 : Tree or limb.					
Inspector Comment					
Remove the broken tree limbs from the LS slope.					

Photo 1 of 1 : SP_2024_RD0551_175_35_20240311_00099.jpg



View of tree limbs on the LS slope. (Spring 2024)

LM Start	0.97	Rating **	U	Issue No.	78
LM End	1.27	Issue Type +	Ma	Location *	LS
Category	Earthen Levee			GPS Latitude/Longitude	
				Start	End
Item	Vegetation			38.325030°	38.320801°
				-121.575043°	-121.576329°
DWR ID	DWR_RD0551_01_s_2024_78				
Comment Code					
V1 : Control annual grass and weeds on the levee slopes and easements.					
Inspector Comment					

Photo 1 of 1 : SP_2024_RD0551_175_78_20240314_00109.jpg



View of tall grass on the LS slope. (Spring 2024)

LM Start	1.28	Rating **	M	Issue No.	63
LM End	1.28	Issue Type +	En	Location *	LS
Category	Earthen Levee			GPS Latitude/Longitude	
				Start	End
Item	Vegetation			38.320707°	38.320707°
				-121.576335°	-121.576335°
DWR ID	DWR_RD0551_01_s_2019_63				
Comment Code					
V6 : Landscaping					
Inspector Comment					
Cactus is located on landside slope.					

Photo 1 of 1 : SP_2024_RD0551_175_63_20240301_00028.jpg



View of the cactus on the LS slope (Fall 2022).

* Location LS : Land Side N/A : Not Applicable WS : Water Side CR : Crown		** Rating A : Acceptable M : Minimally Acceptable U : Unacceptable		+ Issue Type Ma : Maintenance Deficiency Ob : Design & System Obsolescence En : Enforcement	
		N : Not Inspected/Rated C : Corrected A/W : Acceptable but Monitor & Maintain			

**Flood Control Project Maintenance
Levee Inspections**

Levee Inspection Report By Mile - Spring 2024

Reclamation District No. 0551 Pearson

Waterway	Bank	Unit Miles	Inspection Start/End	Inspector
Unit No. 02 Sacramento River	Left	6.78	03/11/2024 03/11/2024	Gregg McMillon

LM Start	1.36	Rating **	U	Issue No.	46
LM End	1.36	Issue Type +	En	Location *	LS
Category	Earthen Levee			GPS Latitude/Longitude	
				Start	End
Item	Vegetation			38.319621°	38.319621°
				-121.576531°	-121.576531°
DWR ID	DWR_RD0551_01_f_2017_46				
Comment Code					
V6 : Landscaping					
Inspector Comment					
Landscaping should be maintained to allow inspection and access to landside slope and toe.					

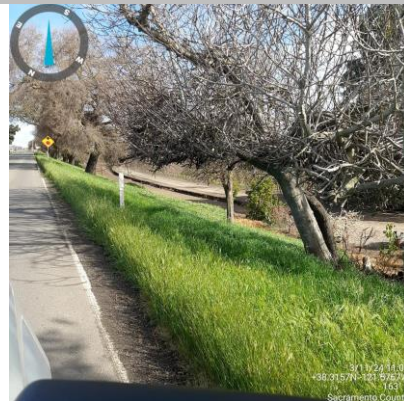
Photo 1 of 1 : SP_2024_RD0551_175_46_20240301_00013.jpg



View of the landscaping on the LS slope (Fall 2022).

LM Start	1.40	Rating **	U	Issue No.	77
LM End	1.69	Issue Type +	Ma	Location *	LS
Category	Earthen Levee			GPS Latitude/Longitude	
				Start	End
Item	Vegetation			38.318979°	38.314780°
				-121.576508°	-121.576755°
DWR ID	DWR_RD0551_01_s_2024_77				
Comment Code					
V1 : Control annual grass and weeds on the levee slopes and easements.					
Inspector Comment					

Photo 1 of 1 : SP_2024_RD0551_175_77_20240314_00110.jpg



View of tall grass on the LS slope. (Spring 2024)

LM Start	1.48	Rating **	U	Issue No.	41
LM End	1.53	Issue Type +	Ma	Location *	WS
Category	Earthen Levee			GPS Latitude/Longitude	
				Start	End
Item	Vegetation			38.317802°	38.317138°
				-121.576677°	-121.576567°
DWR ID	DWR_RD0551_01_s_2024_41				
Comment Code					
V1 : Control annual grass and weeds on the levee slopes and easements.					
Inspector Comment					

Photo 1 of 1 : SP_2024_RD0551_175_41_20240311_00103.jpg



View of tall grass on WS slope. (Spring 2024)

* Location LS : Land Side N/A : Not Applicable WS : Water Side CR : Crown		** Rating A : Acceptable M : Minimally Acceptable U : Unacceptable N : Not Inspected/Rated C : Corrected A/W : Acceptable but Monitor & Maintain		+ Issue Type Ma : Maintenance Deficiency Ob : Design & System Obsolescence En : Enforcement	
--	--	---	--	---	--

**Flood Control Project Maintenance
Levee Inspections**

Levee Inspection Report By Mile - Spring 2024

Reclamation District No. 0551 Pearson

Waterway	Bank	Unit Miles	Inspection Start/End	Inspector
Unit No. 02 Sacramento River	Left	6.78	03/11/2024 03/11/2024	Gregg McMillon

LM Start	1.51	Rating **	M	Issue No.	98	
LM End	1.51	Issue Type +	En	Location *		
Category	Supplemental			GPS Latitude/Longitude		
				Start	End	
Item	DWR UCIP Field Study			38.317452°	38.317452°	
				-121.576564°	-121.576564°	
DWR ID	22007					
Comment Code						
Inspector Comment						
DS_ID:22007 FS_ID:60128 EP_NO: 16640 Repair Type: Non-Urgent EVAL Issue: 10, Unauthorized Modification or Non-Compliant Permit Crossing Status: Found UCIP Comments: 06/02/2020 Record updated from No Action Needed to Non-Urgent. Unable to locate a permit authorizing to sleeve 10-inch pipe through 12-inch pipe. (O.Yakimov - DWR UCIP) FIELD_STRUCT_DESC: 10-inch coated steel irrigation pipe sleeved through a 12-inch pipe, 2 feet below the crown. Pump in pump house on the waterside (WS). Pipe discharges into a 6-foot by 10-foot concrete distribution box on the landside (LS) slope. (12-inch pipe authorized under Permit No. 16640, 1996 - Carel D. Van Loben Sels). FS Date: 6/2/2020 9:21:00 AM						

LM Start	1.51	Rating **	M	Issue No.	98 (cont)
LM End	1.51	Issue Type +	En	Location *	

Photo 1 of 3 : UCIP_SP_2024_60128_87408.jpg



Top of Levee: View of levee crown looking downstream

Photo 2 of 3 : UCIP_SP_2024_60128_87410.jpg



Land-Side: View of levee slope looking from crown

* Location LS : Land Side N/A : Not Applicable WS : Water Side CR : Crown	** Rating A : Acceptable M : Minimally Acceptable U : Unacceptable	N : Not Inspected/Rated C : Corrected A/W : Acceptable but Monitor & Maintain	+ Issue Type Ma : Maintenance Deficiency Ob : Design & System Obsolescence En : Enforcement
--	--	---	---

**Flood Control Project Maintenance
Levee Inspections****Levee Inspection Report By Mile - Spring 2024****Reclamation District No. 0551 Pearson**

Waterway	Bank	Unit Miles	Inspection Start/End	Inspector
Unit No. 02 Sacramento River	Left	6.78	03/11/2024 03/11/2024	Gregg McMillon

LM Start	1.51	Rating **	M	Issue No.	98 (cont)
LM End	1.51	Issue Type +	En	Location *	
Category	Supplemental			GPS Latitude/Longitude	
				Start	End
Item	DWR UCIP Field Study			38.317452°	38.317452°
				-121.576564°	-121.576564°
DWR ID	22007				

Photo 3 of 3 : UCIP_SP_2024_60128_87411.jpg



Land-Side: Concrete distribution box at levee toe covered with metal grate

LM Start	1.53	Rating **	M	Issue No.	6
LM End	1.60	Issue Type +	En	Location *	WS
Category	Earthen Levee			GPS Latitude/Longitude	
				Start	End
Item	Vegetation			38.317138°	38.316060°
				-121.576567°	-121.576688°
DWR ID	DWR_RD0551_01_s_2012_6				
Comment Code					
V6 : Landscaping					
Inspector Comment					
Thin landscaping to allow visibility and access down waterside slope.					

Photo 1 of 1 : SP_2024_RD0551_175_6_20240301_00003.jpg



View of the landscaping on the WS shoulder and slope (Fall 2022).

LM Start	1.64	Rating **	U	Issue No.	42
LM End	2.33	Issue Type +	Ma	Location *	WS
Category	Earthen Levee			GPS Latitude/Longitude	
				Start	End
Item	Vegetation			38.315527°	38.306243°
				-121.576804°	-121.572640°
DWR ID	DWR_RD0551_01_s_2024_42				
Comment Code					
V1 : Control annual grass and weeds on the levee slopes and easements.					
Inspector Comment					

Photo 1 of 1 : SP_2024_RD0551_175_42_20240311_00105.jpg



View of tall grass on WS slope. (Spring 2024)

* Location	** Rating	+ Issue Type
LS : Land Side WS : Water Side CR : Crown	A : Acceptable M : Minimally Acceptable U : Unacceptable	Ma : Maintenance Deficiency Ob : Design & System Obsolescence En : Enforcement
N : Not Inspected/Rated C : Corrected A/W : Acceptable but Monitor & Maintain		

**Flood Control Project Maintenance
Levee Inspections****Levee Inspection Report By Mile - Spring 2024****Reclamation District No. 0551 Pearson**

Waterway	Bank	Unit Miles	Inspection Start/End	Inspector
Unit No. 02 Sacramento River	Left	6.78	03/11/2024 03/11/2024	Gregg McMillon

LM Start	1.70	Rating **	U	Issue No.	62
LM End	1.70	Issue Type +	En	Location *	LS
Category	Earthen Levee			GPS Latitude/Longitude	
				Start	End
Item	Vegetation			38.314687°	38.314687°
				-121.576727°	-121.576727°
DWR ID	DWR_RD0551_01_s_2019_62				
Comment Code					
V6 : Landscaping					
Inspector Comment					
Landscaping is blocking the view down the landside slope.					

Photo 1 of 1 : SP_2024_RD0551_175_62_20240301_00027.jpg



View of the landscaping on the LS slope (Fall 2022).

LM Start	1.73	Rating **	U	Issue No.	76
LM End	2.24	Issue Type +	Ma	Location *	LS
Category	Earthen Levee			GPS Latitude/Longitude	
				Start	End
Item	Vegetation			38.314223°	38.307483°
				-121.576655°	-121.573341°
DWR ID	DWR_RD0551_01_s_2024_76				
Comment Code					
V1 : Control annual grass and weeds on the levee slopes and easements.					
Inspector Comment					

Photo 1 of 1 : SP_2024_RD0551_175_76_20240314_00111.jpg



View of tall grass on the LS slope. (Spring 2024)

* Location LS : Land Side N/A : Not Applicable WS : Water Side CR : Crown	** Rating A : Acceptable M : Minimally Acceptable U : Unacceptable N : Not Inspected/Rated C : Corrected A/W : Acceptable but Monitor & Maintain	+ Issue Type Ma : Maintenance Deficiency Ob : Design & System Obsolescence En : Enforcement
--	---	---

**Flood Control Project Maintenance
Levee Inspections**

Levee Inspection Report By Mile - Spring 2024

Reclamation District No. 0551 Pearson

Waterway	Bank	Unit Miles	Inspection Start/End	Inspector
Unit No. 02 Sacramento River	Left	6.78	03/11/2024 03/11/2024	Gregg McMillon

LM Start	1.78	Rating **	M	Issue No.	99
LM End	1.78	Issue Type +	En	Location *	
Category	Supplemental			GPS Latitude/Longitude	
				Start	End
Item	DWR UCIP Field Study			38.313552°	38.313552°
				-121.576640°	-121.576640°
DWR ID	21990				

Comment Code

Inspector Comment

DS_ID:21990
FS_ID:60145
EP_NO: 11145
Repair Type: Non-Urgent
EVAL Issue: 10, Unauthorized Modification or Non-Compliant Permit
Crossing Status: Found
UCIP Comments: 06/02/2020 Record remains Non-Urgent. A portion on pipe on landside slope was replaced. Due to overgrown vegetation unable to locate connection of a replaced pipe segment to a pipe through the levee and evaluate levee slope condition. Pumphouse on waterside has been removed. Intake pipe at riverbank to the pump has been replaced, pipe debris left at riverbank. Unable to locate a permit for replacing the pipe segment on landside slope. No permit has been identified authorizing pipe through the levee. Need to have CVFPB review ABO and determine current owner. (O.Yakimov - DWR UCIP)
Based on District notes from January 14, 2014, pump discharge pipe has been repaired. Pipe failing on LS slope causing erosion along pipe alignment. Pipe debris on both slopes should be removed as well.: As of 12/13/2013 District President noted that the landowner had made repairs to the LS slope leaks.: As of 12/17/2013 District submitted letter to landowner explaining UCIP report details including photos of the pipe problems
FIELD_STRUCT_DESC: 10-inch irrigation pipe of an unknown material through the levee, 4.7 feet below the crown. Pump on concrete pad, butterfly valve, and U-shaped headwall on the waterside (WS) slope. 36-inch concrete riser on the landside (LS) toe. 1-inch electrical conduit at the same location. Service pole at the LS toe. (10-inch pipe [HLM 1.78] authorized under Automatic Board Order (ABO) issued as Permit No. 11145, 1975 - Horace D. & Lucile Towne). [Additional Reference(s): DWR Levee Log, 2005 (HLM 1.78). USACE Sacramento O&M Manual, Unit 111, May 1959, Revised 29 December 2016, (RM 33.02), listed as 8-inch pipe. USACE As-Built Drawing No. 06-13-1100, Sheet 13, RM 33, upstream of 'L' 1396+35, January 1933].
FS Date: 6/2/2020 11:15:34 AM

Photo 1 of 3 : UCIP_SP_2024_60145_87424.jpg



Water-Side: View of levee slope looking from crown

* Location	** Rating	+ Issue Type
LS: Land Side WS: Water Side CR: Crown	A: Acceptable M: Minimally Acceptable U: Unacceptable	Ma: Maintenance Deficiency Ob: Design & System Obsolescence En: Enforcement
N/A: Not Applicable	N: Not Inspected/Rated C: Corrected A/W: Acceptable but Monitor & Maintain	

**Flood Control Project Maintenance
Levee Inspections****Levee Inspection Report By Mile - Spring 2024****Reclamation District No. 0551 Pearson**

Waterway	Bank	Unit Miles	Inspection Start/End	Inspector
Unit No. 02 Sacramento River	Left	6.78	03/11/2024 03/11/2024	Gregg McMillon

LM Start	1.78	Rating **	M	Issue No.	99 (cont)
LM End	1.78	Issue Type +	En	Location *	
Category	Supplemental			GPS Latitude/Longitude	
				Start	End
Item	DWR UCIP Field Study			38.313552°	38.313552°
				-121.576640°	-121.576640°
DWR ID	21990				

Photo 2 of 3 : UCIP_SP_2024_60145_87422.jpg



Water-Side: Overview of waterside looking from river

LM Start	1.78	Rating **	M	Issue No.	99 (cont)
LM End	1.78	Issue Type +	En	Location *	

Photo 3 of 3 : UCIP_SP_2024_60145_87420.jpg



Land-Side: New pipe visible on levee slope

LM Start	2.24	Rating **	M	Issue No.	40
LM End	2.24	Issue Type +	Ma	Location *	LS
Category	Earthen Levee			GPS Latitude/Longitude	
				Start	End
Item	Trim / Thin Trees			38.307469°	38.307469°
				-121.573203°	-121.573203°
DWR ID	DWR_RD0551_01_s_2023_40				
Comment Code					
T2 : Tree or limb.					
Inspector Comment					

Photo 1 of 1 : SP_2024_RD0551_175_40_20240301_00010.jpg



View of the tree limb on the LS slope (Spring 2023).

* Location	** Rating	+ Issue Type
LS : Land Side WS : Water Side CR : Crown	A : Acceptable M : Minimally Acceptable U : Unacceptable	Ma : Maintenance Deficiency Ob : Design & System Obsolescence En : Enforcement
N/A : Not Applicable	N : Not Inspected/Rated C : Corrected A/W : Acceptable but Monitor & Maintain	

**Flood Control Project Maintenance
Levee Inspections**

Levee Inspection Report By Mile - Spring 2024

Reclamation District No. 0551 Pearson

Waterway	Bank	Unit Miles	Inspection Start/End	Inspector
Unit No. 02 Sacramento River	Left	6.78	03/11/2024 03/11/2024	Gregg McMillon

LM Start	2.25	Rating **	U	Issue No.	47
LM End	2.35	Issue Type +	En	Location *	LS
Category	Earthen Levee			GPS Latitude/Longitude	
				Start	End
Item	Vegetation			38.307283°	38.306025°
				-121.573182°	-121.572387°
DWR ID	DWR_RD0551_01_f_2017_47				
Comment Code					
V6 : Landscaping					
Inspector Comment					
Landscaping hides levee slope. Toe is mostly visible. Landscaping should be maintained to allow inspection and access to landside slope and toe.					

Photo 1 of 1 : SP_2024_RD0551_175_47_20240301_00014.jpg



View of the landscaping on the LS slope (Fall 2022).

LM Start	2.26	Rating **	M	Issue No.	61
LM End	2.35	Issue Type +	En	Location *	LS
Category	Earthen Levee			GPS Latitude/Longitude	
				Start	End
Item	Encroachments			38.307220°	38.305995°
				-121.573153°	-121.572367°
DWR ID	DWR_RD0551_01_s_2019_61				
Comment Code					
FE : Fence					
Inspector Comment					
A chainlink fence is located on the landside.					

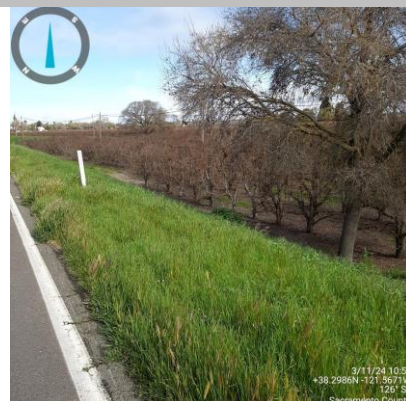
Photo 1 of 1 : SP_2024_RD0551_175_61_20240301_00026.jpg



View of the fence on the LS slope (Fall 2022).

LM Start	2.38	Rating **	U	Issue No.	75
LM End	2.99	Issue Type +	Ma	Location *	LS
Category	Earthen Levee			GPS Latitude/Longitude	
				Start	End
Item	Vegetation			38.305579°	38.297927°
				-121.572168°	-121.566639°
DWR ID	DWR_RD0551_01_s_2024_75				
Comment Code					
V1 : Control annual grass and weeds on the levee slopes and easements.					
Inspector Comment					

Photo 1 of 1 : SP_2024_RD0551_175_75_20240314_00112.jpg



View of tall grass on the LS slope. (Spring 2024)

* Location LS : Land Side N/A : Not Applicable WS : Water Side CR : Crown		** Rating A : Acceptable M : Minimally Acceptable U : Unacceptable N : Not Inspected/Rated C : Corrected A/W : Acceptable but Monitor & Maintain		+ Issue Type Ma : Maintenance Deficiency Ob : Design & System Obsolescence En : Enforcement	
--	--	---	--	---	--

**Flood Control Project Maintenance
Levee Inspections**

Levee Inspection Report By Mile - Spring 2024

Reclamation District No. 0551 Pearson

Waterway	Bank	Unit Miles	Inspection Start/End	Inspector
Unit No. 02 Sacramento River	Left	6.78	03/11/2024 03/11/2024	Gregg McMillon

LM Start	2.41	Rating **	M	Issue No.	100
LM End	2.41	Issue Type +	En	Location *	
Category	Supplemental			GPS Latitude/Longitude	
				Start	End
Item	DWR UCIP Field Study			38.305189°	38.305189°
				-121.572012°	-121.572012°
DWR ID	21994				
Comment Code					
Inspector Comment					
DS_ID:21994 FS_ID:60233 EP_NO: 11141 Repair Type: Non-Urgent EVAL Issue: 10, Unauthorized Modification or Non-Compliant Permit Crossing Status: Found UCIP Comments: 06/02/2020 Record remains Non-Urgent. Field measured pipe through the levee to be 11-inch in diameter. 8-inch pipe sleeved through 11-inch pipe. Annular space between pipes seems to be grouted. Concrete standpipe at landside levee toe has been removed. Unable to locate a permit for modifications. No permit has been identified authorizing original pipe. Need to have CVFPB review ABO and determine current owner. (O.Yakimov - DWR UCIP) 04/10/2013 Records indicate this pipe was abandoned, but it appears to be active. Verify status. (W.Wylie - DWR UCIP) FIELD_STRUCT_DESC: 8-inch steel irrigation pipe sleeved through 11-inch pipe through the levee, 8 feet below the crown. Slant pump on the waterside (WS) slope. Service pole on the landside (LS) slope with a 1.5-inch galvanized iron electrical conduit through the levee at the same location. This crossing replaces 12-inch pipe (see DSID 25637). (12-inch pipe authorized under Permit No. 747, 1938 - Runyon And Stephenson). (12-inch pipe [HLM 2.32] authorized under Automatic Board Order (ABO) issued as Permit No. 1975, 1975 - Adele Runyon, Et Al). [Additional Reference(s): DWR Levee Log, 2005 (HLM 2.42), listed as 12-inch pipe. USACE Sacramento O&M Manual, Unit 111, May 1959, Revised 29 December 2016, (RM 32.38), listed as 12-inch pipe. USACE As-Built Drawing No. 06-13-1100, Sheet 13, 'L' 1422+78, January 1933, listed as 12-inch pipe. USACE As-Built Drawing No. 50-04-2983, Sheet 9, STA 1+50, March 1954]. FS Date: 6/2/2020 9:53:01 AM					

Photo 1 of 3 : UCIP_SP_2024_60233_87517.jpg



Land-Side: Overview of levee slope. Concrete standpipe is gone

* Location	** Rating	+ Issue Type
LS: Land Side WS: Water Side CR: Crown	A: Acceptable M: Minimally Acceptable U: Unacceptable	Ma: Maintenance Deficiency Ob: Design & System Obsolescence En: Enforcement
N/A: Not Applicable	N: Not Inspected/Rated C: Corrected A/W: Acceptable but Monitor & Maintain	

**Flood Control Project Maintenance
Levee Inspections**

Levee Inspection Report By Mile - Spring 2024

Reclamation District No. 0551 Pearson

Waterway	Bank	Unit Miles	Inspection Start/End	Inspector
Unit No. 02 Sacramento River	Left	6.78	03/11/2024 03/11/2024	Gregg McMillon

LM Start	2.41	Rating **	M	Issue No.	100 (cont)
LM End	2.41	Issue Type +	En	Location *	
Category	Supplemental		GPS Latitude/Longitude		
			Start	End	
Item	DWR UCIP Field Study		38.305189°	38.305189°	
			-121.572012°	-121.572012°	
DWR ID	21994				

Photo 2 of 3 : UCIP_SP_2024_60233_87515.jpg



Water-Side: 8-inch pipe sleeved through 11-inch pipe. Annular space filler plug with grout spilled on pipe

LM Start	2.41	Rating **	M	Issue No.	100 (cont)
LM End	2.41	Issue Type +	En	Location *	

Photo 3 of 3 : UCIP_SP_2024_60233_87519.jpg



Water-Side: View of levee slope and pipe looking from river

LM Start	2.49	Rating **	U	Issue No.	43
LM End	6.78	Issue Type +	Ma	Location *	WS
Category	Earthen Levee			GPS Latitude/Longitude	
				Start	End
Item	Vegetation			38.304133°	38.258989°
				-121.571612°	-121.517901°
DWR ID	DWR_RD0551_01_s_2024_43				
Comment Code					
V1 : Control annual grass and weeds on the levee slopes and easements.					
Inspector Comment					

Photo 1 of 1 : SP_2024_RD0551_175_43_20240311_00104.jpg



View of tall grass on WS slope. (Spring 2024)

* Location LS : Land Side N/A : Not Applicable WS : Water Side CR : Crown		** Rating A : Acceptable M : Minimally Acceptable U : Unacceptable N : Not Inspected/Rated C : Corrected A/W : Acceptable but Monitor & Maintain		+ Issue Type Ma : Maintenance Deficiency Ob : Design & System Obsolescence En : Enforcement	
--	--	---	--	---	--

**Flood Control Project Maintenance
Levee Inspections****Levee Inspection Report By Mile - Spring 2024****Reclamation District No. 0551 Pearson**

Waterway	Bank	Unit Miles	Inspection Start/End	Inspector
Unit No. 02 Sacramento River	Left	6.78	03/11/2024 03/11/2024	Gregg McMillon

LM Start	2.62	Rating **	M	Issue No.	88
LM End	2.62	Issue Type +	Ma	Location *	LS
Category	Earthen Levee			GPS Latitude/Longitude	
				Start	End
Item	Animal Control			38.302511°	38.302511°
				-121.570354°	-121.570354°
DWR ID	DWR_RD0551_01_f_2021_88				
Comment Code					
A1 : Exterminate rodents and backfill and compact or grout burrows.					
Inspector Comment					
Rodent holes need to be backfilled and compacted.					

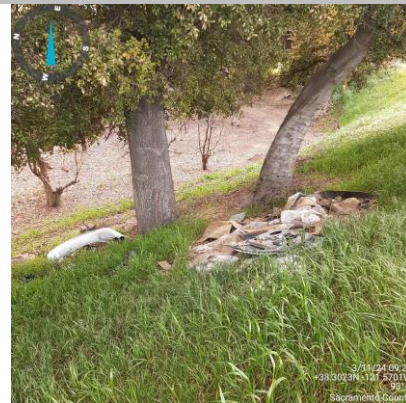
Photo 1 of 1 : SP_2024_RD0551_175_88_20240301_00030.jpg



View looking at multiple animal holes in the landside slope (Fall 2023).

LM Start	2.65	Rating **	U	Issue No.	36
LM End	2.65	Issue Type +	Ma	Location *	LS
Category	Earthen Levee			GPS Latitude/Longitude	
				Start	End
Item	Encroachments			38.302103°	38.302103°
				-121.570002°	-121.570002°
DWR ID	DWR_RD0551_01_s_2024_36				
Comment Code					
GA : Garbage					
Inspector Comment					
Car door, bumper, and carpet need to be removed.					

Photo 1 of 1 : SP_2024_RD0551_175_36_20240314_00113.jpg



View of garbage and car debris on the LS slope. (Spring 2024)

* Location	** Rating	+ Issue Type
LS : Land Side WS : Water Side CR : Crown	A : Acceptable M : Minimally Acceptable U : Unacceptable	Ma : Maintenance Deficiency Ob : Design & System Obsolescence En : Enforcement
N/A : Not Applicable	N : Not Inspected/Rated C : Corrected A/W : Acceptable but Monitor & Maintain	

Flood Control Project Maintenance
Levee Inspections

Levee Inspection Report By Mile - Spring 2024

Reclamation District No. 0551 Pearson

Waterway	Bank	Unit Miles	Inspection Start/End	Inspector
Unit No. 02 Sacramento River	Left	6.78	03/11/2024 03/11/2024	Gregg McMillon

LM Start	2.96	Rating **	M	Issue No.	101
LM End	2.96	Issue Type +	En	Location *	
Category	Supplemental			GPS Latitude/Longitude	
				Start	End
Item	DWR UCIP Field Study			38.298323°	38.298323°
				-121.566941°	-121.566941°
DWR ID	22032				
Comment Code					
Inspector Comment					
DS_ID:22032 FS_ID:60293 EP_NO: 1204 Repair Type: Non-Urgent EVAL Issue: 10, Unauthorized Modification or Non-Compliant Permit Crossing Status: Found UCIP Comments: 06/02/2020 Record remains Non-Urgent. Unable to locate a permit authorizing to sleeve 10-inch pipe through 12-inch pipe. Wet spot on the ground observed at concrete standpipe. (O.Yakimov - DWR UCIP) 04/10/2013 Gap between sleeved pipes does not appear to be grouted on LS slope. (W.Wylie - DWR UCIP) FIELD_STRUCT_DESC: 12-inch steel irrigation conduit through the levee, 6 feet below the crown. 10-inch irrigation pipe sleeved through the 12-inch conduit. Pump on pile structure on the waterside (WS) toe. 48-inch concrete riser on the landside (LS) toe. (12-inch pipe authorized under Permit No. 1204, 1947 - M. J. Barry Estate). [Additional Reference(s): USACE Sacramento O&M Manual, Unit 111, May 1959, Revised 29 December 2016, (RM 31.82), listed as 12-inch pipe]. USACE As-Built Drawing No. 06-13-1100, Sheet 13, upstream of 'L' 1460+20, January 1933. USACE As-Built Drawing No. 50-04-2983, Sheet 8, STA 30+80, March 1954]. FS Date: 6/2/2020 1:26:54 PM					

LM Start	2.96	Rating **	M	Issue No.	101 (cont)
LM End	2.96	Issue Type +	En	Location *	

Photo 1 of 3 : UCIP_SP_2024_60293_87554.jpg



Water-Side: Pump on pile structure and timber walkway to the pump

Photo 2 of 3 : UCIP_SP_2024_60293_87556.jpg



Land-Side: View of levee slope looking from crown

* Location	** Rating	+ Issue Type
LS: Land Side WS: Water Side CR: Crown	A: Acceptable M: Minimally Acceptable U: Unacceptable	Ma: Maintenance Deficiency Ob: Design & System Obsolescence En: Enforcement
N/A: Not Applicable	N: Not Inspected/Rated C: Corrected A/W: Acceptable but Monitor & Maintain	

**Flood Control Project Maintenance
Levee Inspections**

Levee Inspection Report By Mile - Spring 2024

Reclamation District No. 0551 Pearson

Waterway	Bank	Unit Miles	Inspection Start/End	Inspector
Unit No. 02 Sacramento River	Left	6.78	03/11/2024 03/11/2024	Gregg McMillon

LM Start	2.96	Rating **	M	Issue No.	101 (cont)
LM End	2.96	Issue Type +	En	Location *	
Category	Supplemental		GPS Latitude/Longitude		
			Start	End	
Item	DWR UCIP Field Study		38.298323°	38.298323°	
			-121.566941°	-121.566941°	
DWR ID	22032				

Photo 3 of 3 : UCIP_SP_2024_60293_87559.jpg



Land-Side: 48-inch concrete standpipe at levee toe. Wet spot on the ground next to it

LM Start	3.01	Rating **	U	Issue No.	56
LM End	3.03	Issue Type +	En	Location *	LS
Category	Earthen Levee			GPS Latitude/Longitude	
				Start	End
Item	Vegetation			38.297744°	38.297527°
				-121.566446°	-121.566225°
DWR ID	DWR_RD0551_01_f_2018_56				
Comment Code					
V6 : Landscaping					
Inspector Comment					

Photo 1 of 1 : SP_2024_RD0551_175_56_20240301_00021.jpg



View of the landscaping on the LS slope (Fall 2022).

LM Start	3.33	Rating **	M	Issue No.	74
LM End	3.33	Issue Type +	En	Location *	LS
Category	Earthen Levee			GPS Latitude/Longitude	
				Start	End
Item	Encroachments			38.294053°	38.294053°
				-121.562894°	-121.562894°
DWR ID	DWR_RD0551_01_s_2024_74				
Comment Code					
MISC : Miscellaneous					
Inspector Comment					
Move bee boxes off levee toe.					

Photo 1 of 1 : SP_2024_RD0551_175_74_20240314_00114.jpg



View of bee boxes located at the levee toe road. (Spring 2024)

* Location	** Rating	+ Issue Type
LS : Land Side WS : Water Side CR : Crown	A : Acceptable M : Minimally Acceptable U : Unacceptable	Ma : Maintenance Deficiency Ob : Design & System Obsolescence En : Enforcement
	N : Not Inspected/Rated C : Corrected A/W : Acceptable but Monitor & Maintain	

Flood Control Project Maintenance
Levee Inspections

Levee Inspection Report By Mile - Spring 2024

Reclamation District No. 0551 Pearson

Waterway	Bank	Unit Miles	Inspection Start/End	Inspector
Unit No. 02 Sacramento River	Left	6.78	03/11/2024 03/11/2024	Gregg McMillon

LM Start	3.38	Rating **	M	Issue No.	102
LM End	3.38	Issue Type +	En	Location *	
Category	Supplemental			GPS Latitude/Longitude	
				Start	End
Item	DWR UCIP Field Study			38.293486°	38.293486°
				-121.562328°	-121.562328°
DWR ID	22041				
Comment Code					
Inspector Comment					
DS_ID:22041 FS_ID:60354 EP_NO: N/A Repair Type: Non-Urgent EVAL Issue: 4b, Safety Issue Crossing Status: Found UCIP Comments: 06/03/2020 Record updated from No Action Needed to Non-Urgent. Damaged CMP riser on landside slope missing cover - safety issue. Pump on waterside slope is removed and replaced with submersible pump. Unable to find a permit for modification. No permit has been identified authorizing pipe through levee. (O.Yakimov - DWR UCIP) FIELD_STRUCT_DESC: 12-inch steel irrigation pipe through the levee, 6 feet below the crown. Pipe measures 10 inches in diameter at the slopes of the levee. Metal steps to pump on concrete pad on the waterside (WS). Vent in a 36-inch corrugated metal pipe (CMP) riser on the landside (LS) shoulder. 1-inch electrical conduit at the same location with an electrical panel on a pole at the LS toe. [Additional Reference(s): USACE Sacramento O&M Manual, Unit 111, May 1959, Revised 29 December 2016, (RM 31.38), listed as 12-inch pipe. USACE As-Built Drawing No. 06-13-1100, Sheet 13, upstream of 'L' 1482+00, January 1933]. FS Date: 6/3/2020 11:25:42 AM					

LM Start	3.38	Rating **	M	Issue No.	102 (cont)
LM End	3.38	Issue Type +	En	Location *	

Photo 1 of 3 : UCIP_SP_2024_60354_87569.jpg



Top of Levee: View of levee crown looking towards landside. Cut in pavement in pipe alignment is visible

Photo 2 of 3 : UCIP_SP_2024_60354_87570.jpg



Water-Side: View of levee slope looking from crown

* Location	** Rating	+ Issue Type
LS : Land Side WS : Water Side CR : Crown	A : Acceptable M : Minimally Acceptable U : Unacceptable	Ma : Maintenance Deficiency Ob : Design & System Obsolescence En : Enforcement
N/A : Not Applicable	N : Not Inspected/Rated C : Corrected A/W : Acceptable but Monitor & Maintain	

**Flood Control Project Maintenance
Levee Inspections****Levee Inspection Report By Mile - Spring 2024****Reclamation District No. 0551 Pearson**

Waterway	Bank	Unit Miles	Inspection Start/End	Inspector
Unit No. 02 Sacramento River	Left	6.78	03/11/2024 03/11/2024	Gregg McMillon

LM Start	3.38	Rating **	M	Issue No.	102 (cont)
LM End	3.38	Issue Type +	En	Location *	
Category	Supplemental		GPS Latitude/Longitude		
			Start	End	
Item	DWR UCIP Field Study		38.293486°	38.293486°	
			-121.562328°	-121.562328°	
DWR ID	22041				

Photo 3 of 3 : UCIP_SP_2024_60354_87571.jpg



Water-Side: A pad where pump was installed on levee slope

LM Start	3.40	Rating **	M	Issue No.	103
LM End	3.40	Issue Type +	En	Location *	
Category	Supplemental		GPS Latitude/Longitude		
			Start	End	
Item	DWR UCIP Field Study		38.293290°	38.293290°	
			-121.562120°	-121.562120°	
DWR ID	22011				

Comment Code**Inspector Comment**

DS_ID:22011
FS_ID:60363
EP_NO: 1541
Repair Type: Non-Urgent
EVAL Issue: 4b, Safety Issue
Crossing Status: Found
UCIP Comments: 06/03/2020 Record updated from No Action Needed to Non-Urgent. Safety concern - missing cover on CMP riser on landside slope. Missing file of permit No. 18225, unable to confirm pipe replacement details. (O.Yakimov - DWR UCIP)
FIELD_STRUCT_DESC: 12-inch steel irrigation pipe through the levee, 8.5 feet below the crown. Pump on pile structure in stream. Siphon breaker in a 24-inch corrugated metal pipe (CMP) riser on the landside (LS) slope. 36-inch concrete standpipe with slide gate at landside levee toe. (12-inch pipe authorized under Permit No. 1541, 1951 - Vorden Farms, Inc.). (Installation of 2 pumps and replacement of existing pipe above ground on both levee slopes authorized under Permit No. 18225, 2007 - Robert Arceo). [Additional Reference(s): DWR Levee Log, 2005 (HLM 3.42). USACE As-Built Drawing No. 50-04-2983, Sheet 7, downstream of STA 51+62.35, March 1954].
FS Date: 6/3/2020 11:52:04 AM

Photo 1 of 3 : UCIP_SP_2024_60363_87583.jpg



Top of Levee: View of levee crown looking downstream

* Location	** Rating	+ Issue Type
LS: Land Side WS: Water Side CR: Crown	A: Acceptable M: Minimally Acceptable U: Unacceptable	Ma: Maintenance Deficiency Ob: Design & System Obsolescence En: Enforcement
N/A: Not Applicable	N: Not Inspected/Rated C: Corrected A/W: Acceptable but Monitor & Maintain	

**Flood Control Project Maintenance
Levee Inspections****Levee Inspection Report By Mile - Spring 2024****Reclamation District No. 0551 Pearson**

Waterway	Bank	Unit Miles	Inspection Start/End	Inspector
Unit No. 02 Sacramento River	Left	6.78	03/11/2024 03/11/2024	Gregg McMillon

LM Start	3.40	Rating **	M	Issue No.	103 (cont)
LM End	3.40	Issue Type +	En	Location *	
Category	Supplemental			GPS Latitude/Longitude	
				Start	End
Item	DWR UCIP Field Study			38.293290°	38.293290°
				-121.562120°	-121.562120°
DWR ID	22011				

Photo 2 of 3 : UCIP_SP_2024_60363_87584.jpg



Water-Side: View of levee slope looking from crown

LM Start	3.40	Rating **	M	Issue No.	103 (cont)
LM End	3.40	Issue Type +	En	Location *	

Photo 3 of 3 : UCIP_SP_2024_60363_87585.jpg



Water-Side: Pump on pile structure in the stream, walkway bridge

LM Start	3.40	Rating **	U	Issue No.	73
LM End	3.40	Issue Type +	Ma	Location *	LS
Category	Earthen Levee			GPS Latitude/Longitude	
				Start	End
Item	Vegetation			38.293305°	38.293305°
				-121.562103°	-121.562103°
DWR ID	DWR_RD0551_01_s_2024_73				
Comment Code					
V1 : Control annual grass and weeds on the levee slopes and easements.					
Inspector Comment					

Photo 1 of 1 : SP_2024_RD0551_175_73_20240314_00115.jpg



View of tall grass on the LS slope. (Spring 2024)

* Location	** Rating	+ Issue Type
LS : Land Side WS : Water Side CR : Crown	A : Acceptable M : Minimally Acceptable U : Unacceptable	Ma : Maintenance Deficiency Ob : Design & System Obsolescence En : Enforcement
N/A : Not Applicable	N : Not Inspected/Rated C : Corrected A/W : Acceptable but Monitor & Maintain	

**Flood Control Project Maintenance
Levee Inspections****Levee Inspection Report By Mile - Spring 2024****Reclamation District No. 0551 Pearson**

Waterway	Bank	Unit Miles	Inspection Start/End	Inspector
Unit No. 02 Sacramento River	Left	6.78	03/11/2024 03/11/2024	Gregg McMillon

LM Start	3.45	Rating **	U	Issue No.	55
LM End	3.45	Issue Type +	En	Location *	LS
Category	Earthen Levee			GPS Latitude/Longitude	
				Start	End
Item	Vegetation			38.292710°	38.292710°
				-121.561440°	-121.561440°
DWR ID	DWR_RD0551_01_f_2018_55				
Comment Code					
V6 : Landscaping					
Inspector Comment					

Photo 1 of 1 : SP_2024_RD0551_175_55_20240301_00020.jpg



View of the landscaping on the LS slope (Fall 2022).

LM Start	3.48	Rating **	U	Issue No.	72
LM End	3.67	Issue Type +	Ma	Location *	LS
Category	Earthen Levee			GPS Latitude/Longitude	
				Start	End
Item	Vegetation			38.292376°	38.290278°
				-121.561127°	-121.558787°
DWR ID	DWR_RD0551_01_s_2024_72				
Comment Code					
V1 : Control annual grass and weeds on the levee slopes and easements.					
Inspector Comment					

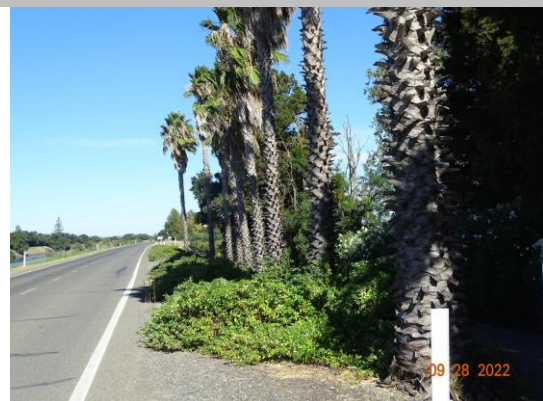
Photo 1 of 1 : SP_2024_RD0551_175_72_20240314_00116.jpg



View of tall grass on the LS slope. (Spring 2024)

LM Start	3.71	Rating **	M	Issue No.	54
LM End	3.74	Issue Type +	En	Location *	LS
Category	Earthen Levee			GPS Latitude/Longitude	
				Start	End
Item	Vegetation			38.289920°	38.289544°
				-121.558357°	-121.557956°
DWR ID	DWR_RD0551_01_f_2018_54				
Comment Code					
V6 : Landscaping					
Inspector Comment					

Photo 1 of 1 : SP_2024_RD0551_175_54_20240301_00019.jpg



View of the landscaping on the LS slope (Fall 2022).

* Location	** Rating	+ Issue Type
LS : Land Side WS : Water Side CR : Crown	A : Acceptable M : Minimally Acceptable U : Unacceptable	Ma : Maintenance Deficiency Ob : Design & System Obsolescence En : Enforcement
N/A : Not Applicable	N : Not Inspected/Rated C : Corrected A/W : Acceptable but Monitor & Maintain	

**Flood Control Project Maintenance
Levee Inspections**

Levee Inspection Report By Mile - Spring 2024

Reclamation District No. 0551 Pearson

Waterway	Bank	Unit Miles	Inspection Start/End	Inspector
Unit No. 02 Sacramento River	Left	6.78	03/11/2024 03/11/2024	Gregg McMillon

LM Start	3.78	Rating **	U	Issue No.	48
LM End	3.85	Issue Type +	En	Location *	LS
Category	Earthen Levee			GPS Latitude/Longitude	
				Start	End
Item	Vegetation			38.289067°	38.288394°
				-121.557423°	-121.556591°
DWR ID	DWR_RD0551_01_f_2017_48				
Comment Code					
V6 : Landscaping					
Inspector Comment					
Landscaping should be maintained to allow inspection and access to landside slope and toe.					

Photo 1 of 1 : SP_2024_RD0551_175_48_20240301_00015.jpg



View of the landscaping on the LS slope (Fall 2022).

LM Start	3.86	Rating **	U	Issue No.	71
LM End	4.17	Issue Type +	Ma	Location *	LS
Category	Earthen Levee			GPS Latitude/Longitude	
				Start	End
Item	Vegetation			38.288249°	38.284847°
				-121.556454°	-121.552726°
DWR ID	DWR_RD0551_01_s_2024_71				
Comment Code					
V1 : Control annual grass and weeds on the levee slopes and easements.					
Inspector Comment					

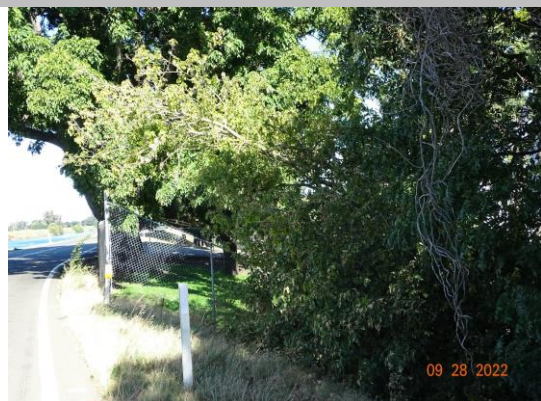
Photo 1 of 1 : SP_2024_RD0551_175_71_20240314_00117.jpg



View of tall grass on the LS slope. (Spring 2024)

LM Start	4.18	Rating **	M	Issue No.	60
LM End	4.23	Issue Type +	En	Location *	LS
Category	Earthen Levee			GPS Latitude/Longitude	
				Start	End
Item	Encroachments			38.284795°	38.284318°
				-121.552597°	-121.551830°
DWR ID	DWR_RD0551_01_s_2019_60				
Comment Code					
FE : Fence					
Inspector Comment					
A chainlink fence is located on landside.					

Photo 1 of 1 : SP_2024_RD0551_175_60_20240301_00025.jpg



View of the fence on the LS shoulder and slope (Fall 2022).

* Location LS : Land Side N/A : Not Applicable WS : Water Side CR : Crown		** Rating A : Acceptable M : Minimally Acceptable U : Unacceptable		N : Not Inspected/Rated C : Corrected A/W : Acceptable but Monitor & Maintain		+ Issue Type Ma : Maintenance Deficiency Ob : Design & System Obsolescence En : Enforcement	
--	--	--	--	---	--	---	--

**Flood Control Project Maintenance
Levee Inspections**

Levee Inspection Report By Mile - Spring 2024

Reclamation District No. 0551 Pearson

Waterway	Bank	Unit Miles	Inspection Start/End	Inspector
Unit No. 02 Sacramento River	Left	6.78	03/11/2024 03/11/2024	Gregg McMillon

LM Start	4.22	Rating **	U	Issue No.	52
LM End	4.22	Issue Type +	En	Location *	LS
Category	Earthen Levee			GPS Latitude/Longitude	
				Start	End
Item	Vegetation			38.284400°	38.284400°
				-121.552035°	-121.552035°
DWR ID	DWR_RD0551_01_f_2018_52				
Comment Code					
V6 : Landscaping					
Inspector Comment					

Photo 1 of 1 : SP_2024_RD0551_175_52_20240301_00018.jpg



View of the landscaping on the LS slope (Fall 2022).

LM Start	4.24	Rating **	U	Issue No.	70
LM End	4.80	Issue Type +	Ma	Location *	LS
Category	Earthen Levee			GPS Latitude/Longitude	
				Start	End
Item	Vegetation			38.284295°	38.278987°
				-121.551735°	-121.543927°
DWR ID	DWR_RD0551_01_s_2024_70				
Comment Code					
V1 : Control annual grass and weeds on the levee slopes and easements.					
Inspector Comment					

Photo 1 of 1 : SP_2024_RD0551_175_70_20240314_00118.jpg



View of tall grass on the LS slope. (Spring 2024)

LM Start	4.40	Rating **	C	Issue No.	38
LM End	4.40	Issue Type +	Ma	Location *	LS
Category	Earthen Levee			GPS Latitude/Longitude	
				Start	End
Item	Trim / Thin Trees			38.282903°	38.282903°
				-121.549398°	-121.549398°
DWR ID	DWR_RD0551_01_s_2023_38				
Comment Code					
T2 : Tree or limb.					
Inspector Comment					

No Photos

* Location LS : Land Side N/A : Not Applicable WS : Water Side CR : Crown		** Rating A : Acceptable M : Minimally Acceptable U : Unacceptable		+ Issue Type Ma : Maintenance Deficiency Ob : Design & System Obsolescence En : Enforcement	
		N : Not Inspected/Rated C : Corrected A/W : Acceptable but Monitor & Maintain			

Flood Control Project Maintenance
Levee Inspections

Levee Inspection Report By Mile - Spring 2024

Reclamation District No. 0551 Pearson

Waterway	Bank	Unit Miles	Inspection Start/End	Inspector
Unit No. 02 Sacramento River	Left	6.78	03/11/2024 03/11/2024	Gregg McMillon

LM Start	4.46	Rating **	M	Issue No.	104
LM End	4.46	Issue Type +	En	Location *	
Category	Supplemental			GPS Latitude/Longitude	
				Start	End
Item	DWR UCIP Field Study			38.282388°	38.282388°
				-121.548547°	-121.548547°
DWR ID	22019				
Comment Code					
Inspector Comment					
DS_ID:22019 FS_ID:60578 EP_NO: 11142 Repair Type: Non-Urgent EVAL Issue: 10, Unauthorized Modification or Non-Compliant Permit Crossing Status: Found UCIP Comments: 06/03/2020 Record updated from No Action Needed to Non-Urgent. No permit has been identified authorizing original pipe. Unable to locate a permit for sleeving 6-inch pipe through 10-inch pipe. Need to have CVFPB review ABO and determine current owner. (O.Yakimov - DWR UCIP) FIELD_STRUCT_DESC: 6-inch irrigation pipe sleeved through the 10-inch irrigation pipe of an unknown material through the levee, 6.5 feet below the crown. Pump and butterfly valve on a concrete pad on the waterside (WS) slope. Air vent on pipe at landside toe. Electrical panel, and meter on a service pole at landside toe. 1-inch galvanized steel electrical conduit at the same location. (10-inch pipe [HLM 4.49] authorized under Automatic Board Order (ABO) issued as Permit No. 11142, 1975 - Tadashi Kimiye & Saburo Hirose). [Additional Reference(s): DWR Levee Log, 2005 (HLM 4.49). USACE Sacramento O&M Manual, Unit 111, May 1959, Revised 29 December 2016, (RM 30.31), listed as 10-inch pipe. USACE As-Built Drawing No. 06-13-1100, Sheet 14, near 'L' 1530+00, January 1933]. FS Date: 6/3/2020 1:28:59 PM					

LM Start	4.46	Rating **	M	Issue No.	104 (cont)
LM End	4.46	Issue Type +	En	Location *	

Photo 1 of 3 : UCIP_SP_2024_60578_87846.jpg



Top of Levee: View of levee crown looking upstream

Photo 2 of 3 : UCIP_SP_2024_60578_87850.jpg



Land-Side: Service pole at levee toe

* Location	** Rating	+ Issue Type
LS: Land Side WS: Water Side CR: Crown	A: Acceptable M: Minimally Acceptable U: Unacceptable	Ma: Maintenance Deficiency Ob: Design & System Obsolescence En: Enforcement
N/A: Not Applicable	N: Not Inspected/Rated C: Corrected A/W: Acceptable but Monitor & Maintain	

**Flood Control Project Maintenance
Levee Inspections**

Levee Inspection Report By Mile - Spring 2024

Reclamation District No. 0551 Pearson

Waterway	Bank	Unit Miles	Inspection Start/End	Inspector
Unit No. 02 Sacramento River	Left	6.78	03/11/2024 03/11/2024	Gregg McMillon

LM Start	4.46	Rating **	M	Issue No.	104 (cont)
LM End	4.46	Issue Type +	En	Location *	
Category	Supplemental			GPS Latitude/Longitude	
				Start	End
Item	DWR UCIP Field Study			38.282388 °	38.282388 °
				-121.548547 °	-121.548547 °
DWR ID	22019				

Photo 3 of 3 : UCIP_SP_2024_60578_87844.jpg



Land-Side: Pipe end with air vent at levee toe

* Location LS : Land Side N/A : Not Applicable WS : Water Side CR : Crown	** Rating A : Acceptable M : Minimally Acceptable U : Unacceptable	N : Not Inspected/Rated C : Corrected A/W : Acceptable but Monitor & Maintain	+ Issue Type Ma : Maintenance Deficiency Ob : Design & System Obsolescence En : Enforcement
--	--	---	---

Flood Control Project Maintenance
Levee Inspections

Levee Inspection Report By Mile - Spring 2024

Reclamation District No. 0551 Pearson

Waterway	Bank	Unit Miles	Inspection Start/End	Inspector
Unit No. 02 Sacramento River	Left	6.78	03/11/2024 03/11/2024	Gregg McMillon

LM Start	4.59	Rating **	U	Issue No.	105
LM End	4.59	Issue Type +	En	Location *	
Category	Supplemental			GPS Latitude/Longitude	
				Start	End
Item	DWR UCIP Field Study			38.281074°	38.281074°
				-121.546628°	-121.546628°
DWR ID	22020				

Comment Code

Inspector Comment

DS_ID:22020
FS_ID:60620
EP_NO: 11152
Repair Type: Urgent
EVAL Issue: 1, Pipe Integrity
Crossing Status: Found
UCIP Comments: 06/03/2020 Record updated from Non-Urgent to Urgent. Pipe is in failed condition. Pipe segment on waterside levee slope is removed. Through holes in pipe visible on waterside slope. Pump and intake pipe are removed from piled structure in the stream. 8' x 9' x 2'- deep depression on landside slope in pipe alignment. Crossing appears abandoned. (O.Yakimov - DWR UCIP)
10/24/2016 Per Mr. Topper Van Loben, LMA contact, new owner is working with DCC Engineering to obtain CVFPB permit for pipe rehabilitation. Work rehabilitation for existing pipe includes sleeving an 8-inch steel pipe through existing pipe and grouting space between pipes. Crossing has been downgraded to Non-Urgent since walkway has been repaired and pipe in the process of being rehabilitated. UCIP staff is waiting for permit authorizing pipe rehabilitation. (O. Magana - DWR UCIP) (Olivia) As of 09/21/2015 owner is working with Gilbert Labrie, LMA consultant, to resolve issue. (T. Van Loben - LMA representative / G. Labrie - LMA Engineer - DCC Engineering)As of 12/17/2013 District submitted letter to landowner explaining UCIP report details including photos of the pipe problems. (T. Van Loben - LMA representative / G. Labrie - LMA Engineer - DCC Engineering)As of 12/13/2013 the District has contacted the tenant farmer who is in the process of contacting the owner to update on condition of pipe. (T. Van Loben - LMA representative / G. Labrie - LMA Engineer - DCC Engineering) 04/11/2013 Pier for pump is falling apart and is a hazard to the public. Some settlement along pipe on LS slope. (W. Wylie - DWR UCIP)
FIELD_STRUCT_DESC: 10-inch steel irrigation pipe through the levee 6.5 feet below the crown. Service pole and a 36-inch concrete standpipe are located on the landside (LS) toe. 1-inch electrical conduit at same location. Metal walkway, pump, and control panel are located on the waterside (WS). Pump previous on pile structure has been removed. (10-inch pipe authorized under Permit No. 636, 1935 - John E. Erickson). (10-inch pipe [HLM 4.63] authorized under Automatic Board Order (ABO) issued as Permit No. 11152, 1975 - Frank A. Willcox et.al). [Additional Reference(s): DWR Levee Log, 2005 (HLM 4.63). USACE Sacramento O&M Manual, Unit 111, May 1959, Revised 29 December 2016, (RM 30.15), listed as 10-inch pipe. Drawing Number 50-4-2983, Sheet 5. USACE As-Built Drawing No. 06-13-1100, Sheet 14, upstream of 'L' 1542+00, January 1933. USACE As-Built Drawing No. 50-04-2983, Sheet 5, downstream of STA 115+10, March 1954].
FS Date: 6/3/2020 7:38:19 AM

Photo 1 of 3 : UCIP_SP_2024_60620_87853.jpg



Water-Side: Pipe cut on levee slope

* Location	** Rating	+ Issue Type
LS: Land Side WS: Water Side CR: Crown	A: Acceptable M: Minimally Acceptable U: Unacceptable	N: Not Inspected/Rated C: Corrected A/W: Acceptable but Monitor & Maintain
N/A: Not Applicable		Ma: Maintenance Deficiency Ob: Design & System Obsolescence En: Enforcement

**Flood Control Project Maintenance
Levee Inspections****Levee Inspection Report By Mile - Spring 2024****Reclamation District No. 0551 Pearson**

Waterway	Bank	Unit Miles	Inspection Start/End	Inspector
Unit No. 02 Sacramento River	Left	6.78	03/11/2024 03/11/2024	Gregg McMillon

LM Start	4.59	Rating **	U	Issue No.	105 (cont)
LM End	4.59	Issue Type +	En	Location *	
Category	Supplemental			GPS Latitude/Longitude	
				Start	End
Item	DWR UCIP Field Study			38.281074°	38.281074°
				-121.546628°	-121.546628°
DWR ID	22020				

Photo 2 of 3 : UCIP_SP_2024_60620_87854.jpg



Water-Side: Through holes in pipe on levee slope

LM Start	4.59	Rating **	U	Issue No.	105 (cont)
LM End	4.59	Issue Type +	En	Location *	

Photo 3 of 3 : UCIP_SP_2024_60620_87857.jpg



Land-Side: Pipe daylights on levee slope. Slope depression found at this location measures 8' x 9' x 2' deep

LM Start	4.82	Rating **	U	Issue No.	25
LM End	4.86	Issue Type +	En	Location *	LS
Category	Earthen Levee			GPS Latitude/Longitude	
				Start	End
Item	Vegetation			38.278760°	38.278287°
				-121.543608°	-121.543132°
DWR ID	DWR_RD0551_01_f_2018_25				
Comment Code					
V6 : Landscaping					
Inspector Comment					

Photo 1 of 1 : SP_2024_RD0551_175_25_20240301_00008.jpg



View of the landscaping on the LS slope (Fall 2022).

* Location	** Rating	+ Issue Type
LS : Land Side WS : Water Side CR : Crown	A : Acceptable M : Minimally Acceptable U : Unacceptable	Ma : Maintenance Deficiency Ob : Design & System Obsolescence En : Enforcement
N/A : Not Applicable	N : Not Inspected/Rated C : Corrected A/W : Acceptable but Monitor & Maintain	

**Flood Control Project Maintenance
Levee Inspections****Levee Inspection Report By Mile - Spring 2024****Reclamation District No. 0551 Pearson**

Waterway	Bank	Unit Miles	Inspection Start/End	Inspector
Unit No. 02 Sacramento River	Left	6.78	03/11/2024 03/11/2024	Gregg McMillon

LM Start	4.87	Rating **	U	Issue No.	68
LM End	4.91	Issue Type +	Ma	Location *	LS
Category	Earthen Levee			GPS Latitude/Longitude	
				Start	End
Item	Vegetation			38.278181°	38.277842°
				-121.543073°	-121.542548°
DWR ID	DWR_RD0551_01_s_2024_68				
Comment Code					
V1 : Control annual grass and weeds on the levee slopes and easements.					
Inspector Comment					

Photo 1 of 1 : SP_2024_RD0551_175_68_20240314_00125.jpg



View of tall grass on the LS slope. (Spring 2024)

* Location LS : Land Side N/A : Not Applicable WS : Water Side CR : Crown	** Rating A : Acceptable M : Minimally Acceptable U : Unacceptable N : Not Inspected/Rated C : Corrected A/W : Acceptable but Monitor & Maintain	+ Issue Type Ma : Maintenance Deficiency Ob : Design & System Obsolescence En : Enforcement
--	---	---

**Flood Control Project Maintenance
Levee Inspections**

Levee Inspection Report By Mile - Spring 2024

Reclamation District No. 0551 Pearson

Waterway	Bank	Unit Miles	Inspection Start/End	Inspector
Unit No. 02 Sacramento River	Left	6.78	03/11/2024 03/11/2024	Gregg McMillon

LM Start	4.97	Rating **	U	Issue No.	106	
LM End	4.97	Issue Type +	En	Location *		
Category	Supplemental			GPS Latitude/Longitude		
				Start	End	
Item	DWR UCIP Field Study			38.277080°	38.277080°	
				-121.541790°	-121.541790°	
DWR ID	22043					
Comment Code						
Inspector Comment						
DS_ID:22043 FS_ID:60623 EP_NO: 16800 Repair Type: Urgent EVAL Issue: 1, Pipe Integrity Crossing Status: Found UCIP Comments: 07/21/2022 Record updated from No Action Needed to Urgent. Pipe failed near the landside concrete standpipe. Pipe discovered to have significant wear, pitting, and holes. Enforcement Case No. 2022-15616 issued for this crossing. (O.Yakimov - DWR UCIP) 06/03/2020 Record remains No Action Needed. No issues observed during inspection. (O.Yakimov - DWR UCIP) FIELD_STRUCT_DESC: 16-inch coated steel irrigation pipe through the levee, 4.71 feet below the crown. Pump and butterfly valve in pump house on the waterside (WS) slope. Service poles on the landside (LS) slope. 48-inch concrete riser off the LS toe. 1-inch galvanized iron filler pipe and 2-inch electrical conduit at the same location. This crossing replaces 16-inch pipe (see DSID 25622). (16-inch pipe authorized under Permit No. 16773, 1997 - Joe Green Ranch). (In-kind replacement of the of the existing 16-inch diameter steel pipe and the 2-inch electrical conduit from the landside hinge to the landside levee toe approved under Project Authorization No. WC2023007, 2023 - MBK Engineers, on behalf of Umer Malik). [Additional Reference(s) of original crossing: DWR Levee Log, 2005 (HLM 5.01). USACE Sacramento O&M Manual, Unit 111, May 1959, Revised 29 December 2016, (RM 29.79), listed as 16-inch pipe. USACE As-Built Drawing No. 06-13-1100, Sheet 14, 'L' 1560+12, January 1933]. FS Date: 6/3/2020 11:27:14 AM						

Photo 1 of 3 : UCIP_SP_2024_60623_87869.jpg



Top of Levee: View of levee crown looking towards landside

* Location LS : Land Side N/A : Not Applicable WS : Water Side CR : Crown	** Rating A : Acceptable M : Minimally Acceptable U : Unacceptable	N : Not Inspected/Rated C : Corrected A/W : Acceptable but Monitor & Maintain	+ Issue Type Ma : Maintenance Deficiency Ob : Design & System Obsolescence En : Enforcement
--	--	---	---

**Flood Control Project Maintenance
Levee Inspections****Levee Inspection Report By Mile - Spring 2024****Reclamation District No. 0551 Pearson**

Waterway	Bank	Unit Miles	Inspection Start/End	Inspector
Unit No. 02 Sacramento River	Left	6.78	03/11/2024 03/11/2024	Gregg McMillon

LM Start	4.97	Rating **	U	Issue No.	106 (cont)
LM End	4.97	Issue Type +	En	Location *	
Category	Supplemental		GPS Latitude/Longitude		
			Start	End	
Item	DWR UCIP Field Study		38.277080°	38.277080°	
			-121.541790°	-121.541790°	
DWR ID	22043				

Photo 2 of 3 : UCIP_SP_2024_60623_87870.jpg



Water-Side: Pumphouse on levee slope

LM Start	4.97	Rating **	U	Issue No.	106 (cont)
LM End	4.97	Issue Type +	En	Location *	

Photo 3 of 3 : UCIP_SP_2024_60623_87871.jpg



Water-Side: Water supply pipe and filler pile at pumphouse on levee slope

* Location	** Rating	+ Issue Type
LS : Land Side N/A : Not Applicable WS : Water Side CR : Crown	A : Acceptable M : Minimally Acceptable U : Unacceptable N : Not Inspected/Rated C : Corrected A/W : Acceptable but Monitor & Maintain	Ma : Maintenance Deficiency Ob : Design & System Obsolescence En : Enforcement

**Flood Control Project Maintenance
Levee Inspections**

Levee Inspection Report By Mile - Spring 2024

Reclamation District No. 0551 Pearson

Waterway	Bank	Unit Miles	Inspection Start/End	Inspector
Unit No. 02 Sacramento River	Left	6.78	03/11/2024 03/11/2024	Gregg McMillon

LM Start	4.98	Rating **	U	Issue No.	107
LM End	4.98	Issue Type +	En	Location *	
Category	Supplemental			GPS Latitude/Longitude	
				Start	End
Item	DWR UCIP Field Study			38.277072°	38.277072°
				-121.541779°	-121.541779°
DWR ID	22021				
Comment Code					
Inspector Comment					
DS_ID:22021 FS_ID:77178 EP_NO: 16800 Repair Type: Urgent EVAL Issue: 1, Pipe Integrity Crossing Status: Found UCIP Comments: 08/15/2022 Record updated from No Action Needed to Urgent. Enforcement case 2022-15620 was open for this crossing. Pipe is leaking near landside concrete standpipe and may be damaged by tree roots. (O.Yakimov - DWR UCIP) 06/03/2020 Record remains No Action Needed. No issues observed during inspection. (O.Yakimov - DWR UCIP) FIELD_STRUCT_DESC: 16-inch coated steel irrigation pipe through the levee, 4.67 feet below the crown. Pump and slide gate in pump house on the waterside (WS) slope. Service poles on the landside (LS) slope. 1-inch galvanized iron filler pipe at the same location. This crossing replaces 16-inch pipe (see DSID 25621). (16-inch pipe authorized under Permit No. 16800, 1997 - William Schultz). (Replacement portions of the pipe within waterside and landside slopes approved under Project Authorization No. WA2023173, 2023 - Michael Moncrief on behalf of James Hardesty). [Additional Reference(s) of original crossing: DWR Levee Log, 2005 (HLM 5.01), listed as 14-inch pipe. USACE Sacramento O&M Manual, Unit 111, May 1959, Revised 29 December 2016, (RM 29.79), listed as 16-inch pipe. USACE As-Built Drawing No. 06-13-1100, Sheet 14, 'L' 1560+12, January 1933]. FS Date: 6/3/2020					

LM Start	4.98	Rating **	U	Issue No.	107 (cont)
LM End	4.98	Issue Type +	En	Location *	

Photo 1 of 3 : UCIP_SP_2024_77178_87875.jpg



Top of Levee: View of levee crown looking towards landside

Photo 2 of 3 : UCIP_SP_2024_77178_87878.jpg



Land-Side: View of levee slope looking from crown

* Location LS: Land Side N/A: Not Applicable WS: Water Side CR: Crown	** Rating A: Acceptable M: Minimally Acceptable U: Unacceptable	N: Not Inspected/Rated C: Corrected A/W: Acceptable but Monitor & Maintain	+ Issue Type Ma: Maintenance Deficiency Ob: Design & System Obsolescence En: Enforcement
--	---	--	--

**Flood Control Project Maintenance
Levee Inspections**

Levee Inspection Report By Mile - Spring 2024

Reclamation District No. 0551 Pearson

Waterway	Bank	Unit Miles	Inspection Start/End	Inspector
Unit No. 02 Sacramento River	Left	6.78	03/11/2024 03/11/2024	Gregg McMillon

LM Start	4.98	Rating **	U	Issue No.	107 (cont)
LM End	4.98	Issue Type +	En	Location *	
Category	Supplemental			GPS Latitude/Longitude	
				Start	End
Item	DWR UCIP Field Study			38.277072°	38.277072°
				-121.541779°	-121.541779°
DWR ID	22021				

Photo 3 of 3 : UCIP_SP_2024_77178_87879.jpg



Land-Side: View of pipe at levee toe

LM Start	5.00	Rating **	U	Issue No.	44
LM End	5.00	Issue Type +	En	Location *	LS
Category	Earthen Levee			GPS Latitude/Longitude	
				Start	End
Item	Vegetation			38.276870°	38.276870°
				-121.541463°	-121.541463°
DWR ID	DWR_RD0551_01_f_2019_44				
Comment Code					
V6 : Landscaping					
Inspector Comment					

Photo 1 of 1 : SP_2024_RD0551_175_44_20240301_00011.jpg



View of the landscaping on the LS slope (Fall 2022).

* Location LS : Land Side N/A : Not Applicable WS : Water Side CR : Crown	** Rating A : Acceptable M : Minimally Acceptable U : Unacceptable	N : Not Inspected/Rated C : Corrected A/W : Acceptable but Monitor & Maintain	+ Issue Type Ma : Maintenance Deficiency Ob : Design & System Obsolescence En : Enforcement
--	--	--	---

**Flood Control Project Maintenance
Levee Inspections****Levee Inspection Report By Mile - Spring 2024****Reclamation District No. 0551 Pearson**

Waterway	Bank	Unit Miles	Inspection Start/End	Inspector
Unit No. 02 Sacramento River	Left	6.78	03/11/2024 03/11/2024	Gregg McMillon

LM Start	5.01	Rating **	M	Issue No.	108
LM End	5.01	Issue Type +	En	Location *	
Category	Supplemental			GPS Latitude/Longitude	
				Start	End
Item	DWR UCIP Field Study			38.276708°	38.276708°
				-121.541349°	-121.541349°
DWR ID	25122				
Comment Code					
Inspector Comment					
DS_ID:25122					
FS_ID:56199					
EP_NO: N/A					
Repair Type: Non-Urgent					
EVAL Issue: 10, Unauthorized Modification or Non-Compliant Permit					
Crossing Status: Found					
UCIP Comments: 06/03/2020 Record is Non-Urgent. Five conduits are visible under bridge to boat launching two of which are open ended.					
Recommend capping conduits under bridge to prevent water backflow.					
(O.Yakimov - DWR UCIP)					
FIELD_STRUCT_DESC: 6-inch wrapped and soil proofed galvanized iron conduit through the levee 2-feet below the crown. Electric, water, and other utility pipes sleeved through conduit with welded steel caps and annular space grouted. (6-inch steel utility chase authorized under Permit No. 18769, 2013 - Michael & Jill Steinbacher).					
FS Date: 6/3/2020					

LM Start	5.01	Rating **	M	Issue No.	108 (cont)
LM End	5.01	Issue Type +	En	Location *	

Photo 1 of 3 : UCIP_SP_2024_56199_87884.jpg



Water-Side: View of levee slope looking from crown

Photo 2 of 3 : UCIP_SP_2024_56199_87885.jpg



Water-Side: Conduits under walkway

* Location	** Rating	+ Issue Type
LS: Land Side WS: Water Side CR: Crown	A: Acceptable M: Minimally Acceptable U: Unacceptable	Ma: Maintenance Deficiency Ob: Design & System Obsolescence En: Enforcement
N/A: Not Applicable	N: Not Inspected/Rated C: Corrected A/W: Acceptable but Monitor & Maintain	

Flood Control Project Maintenance
Levee Inspections

Levee Inspection Report By Mile - Spring 2024

Reclamation District No. 0551 Pearson

Waterway	Bank	Unit Miles	Inspection Start/End	Inspector
Unit No. 02 Sacramento River	Left	6.78	03/11/2024 03/11/2024	Gregg McMillon

LM Start	5.01	Rating **	M	Issue No.	108 (cont)
LM End	5.01	Issue Type +	En	Location *	
Category	Supplemental		GPS Latitude/Longitude		
			Start	End	
Item	DWR UCIP Field Study		38.276708 °	38.276708 °	
			-121.541349 °	-121.541349 °	
DWR ID	25122				

Photo 3 of 3 : UCIP_SP_2024_56199_87886.jpg



Water-Side: Another view of conduits under walkway

LM Start	5.08	Rating **	U	Issue No.	49
LM End	5.08	Issue Type +	En	Location *	LS
Category	Earthen Levee		GPS Latitude/Longitude		
			Start	End	
Item	Vegetation		38.275865 °	38.275865 °	
			-121.540461 °	-121.540461 °	
DWR ID	DWR_RD0551_01_f_2017_49				

Comment Code

V6 : Landscaping

Inspector Comment

Landscaping should be maintained to allow inspection and access to landside slope and toe.

Photo 1 of 1 : SP_2024_RD0551_175_49_20240301_00016.jpg



View of the landscaping on the LS slope (Fall 2022).

LM Start	5.11	Rating **	U	Issue No.	67
LM End	5.37	Issue Type +	Ma	Location *	LS
Category	Earthen Levee		GPS Latitude/Longitude		
			Start	End	
Item	Vegetation		38.275647 °	38.273067 °	
			-121.540041 °	-121.536517 °	
DWR ID	DWR_RD0551_01_s_2024_67				

Comment Code

V1 : Control annual grass and weeds on the levee slopes and easements.

Inspector Comment

Photo 1 of 1 : SP_2024_RD0551_175_67_20240314_00119.jpg



View of tall grass on the LS slope. (Spring 2024)

* Location	** Rating	+ Issue Type
LS : Land Side WS : Water Side CR : Crown	A : Acceptable M : Minimally Acceptable U : Unacceptable	Ma : Maintenance Deficiency Ob : Design & System Obsolescence En : Enforcement
N/A : Not Applicable	N : Not Inspected/Rated C : Corrected A/W : Acceptable but Monitor & Maintain	

**Flood Control Project Maintenance
Levee Inspections**

Levee Inspection Report By Mile - Spring 2024

Reclamation District No. 0551 Pearson

Waterway	Bank	Unit Miles	Inspection Start/End	Inspector
Unit No. 02 Sacramento River	Left	6.78	03/11/2024 03/11/2024	Gregg McMillon

LM Start	5.26	Rating **	U	Issue No.	109
LM End	5.26	Issue Type +	En	Location *	
Category	Supplemental			GPS Latitude/Longitude	
				Start	End
Item	DWR UCIP Field Study			38.274147°	38.274147°
				-121.538076°	-121.538076°
DWR ID	22023				
Comment Code					
Inspector Comment					
DS_ID:22023 FS_ID:60630 EP_NO: 11131 Repair Type: Urgent EVAL Issue: 2a, Levee Integrity Crossing Status: Found UCIP Comments: 06/09/2020 Record updated from Non-Urgent to Urgent. 7-foot diameter 1-foot deep unauthorized excavation found at landside levee toe next to the concrete standpipe. Excavation is apparently made to expose and fix leaking pipe. Abandoned closure device and concrete standpipe at landside toe. 2.5-inch PVC connected to pipe end at landside toe. Pipe is running - no leaks detected. CMP riser on landside slope missing cover - fall hazard. No permit has been identified authorizing pipe. Need to have CVFPB review ABO and determine current owner. (O.Yakimov - DWR UCIP) 01/15/2014 Based on District notes from January 15, 2014, pump discharge pipe has been repaired. Corrosion holes in pipe at LS toe good indicator that pipe is failing internally. Pipe should be examined internally for damage (video inspect).: As of 12/12/2013 the District discussed with farmer tenant what needed to be done, and the tenant informed the District that they would address the repairs.: As of 12/17/2013 District submitted letter to landowner explaining UCIP report details including photos of the pipe problems FIELD_STRUCT_DESC: 10-inch steel exterior coated irrigation pipe through the levee, 7.7 feet below the crown. Pump and slide gate on a concrete pad on the waterside (WS) slope. Siphon breaker in a 24-inch corrugated metal pipe (CMP) riser on the landside (LS) slope. 36-inch concrete standpipe, shut off device, and power pole with panel box on the LS toe. 1.5-inch galvanized steel electrical conduit at the same location. (10-inch pipe [HLM 5.3] authorized under Automatic Board Order (ABO) issued as Permit No. 11131, 1975 - Helen Crofton Sloane Latimer). [Additional Reference(s): DWR Levee Log, 2005 (HLM 5.30). USACE Sacramento O&M Manual, Unit 111, May 1959, Revised 29 December 2016, (RM 29.52), listed as 9-inch pipe. USACE As-Built Drawing No. 06-13-1100, Sheet 14, 'L' 1571+85, January 1933, listed as 9-inch pipe]. FS Date: 6/9/2020 10:52:00 AM					

Photo 1 of 3 : UCIP_SP_2024_60630_87896.jpg



Water-Side: Pump, slide gate valve, and intake pipe on levee slope

* Location LS: Land Side N/A: Not Applicable WS: Water Side CR: Crown	** Rating A: Acceptable M: Minimally Acceptable U: Unacceptable	N: Not Inspected/Rated C: Corrected A/W: Acceptable but Monitor & Maintain	+ Issue Type Ma: Maintenance Deficiency Ob: Design & System Obsolescence En: Enforcement
--	---	--	--

**Flood Control Project Maintenance
Levee Inspections**

Levee Inspection Report By Mile - Spring 2024

Reclamation District No. 0551 Pearson

Waterway	Bank	Unit Miles	Inspection Start/End	Inspector
Unit No. 02 Sacramento River	Left	6.78	03/11/2024 03/11/2024	Gregg McMillon

LM Start	5.26	Rating **	U	Issue No.	109 (cont)
LM End	5.26	Issue Type +	En	Location *	
Category	Supplemental		GPS Latitude/Longitude		
			Start	End	
Item	DWR UCIP Field Study		38.274147°	38.274147°	
			-121.538076°	-121.538076°	
DWR ID	22023				

Photo 2 of 3 : UCIP_SP_2024_60630_87901.jpg



Land-Side: Uncovered 24-inch CMP riser on levee slope

LM Start	5.26	Rating **	U	Issue No.	109 (cont)
LM End	5.26	Issue Type +	En	Location *	

Photo 3 of 3 : UCIP_SP_2024_60630_87904.jpg



Land-Side: 7-foot diameter and 1-foot deep excavation at levee toe

LM Start	5.54	Rating **	M	Issue No.	58
LM End	5.54	Issue Type +	En	Location *	LS
Category	Earthen Levee			GPS Latitude/Longitude	
				Start	End
Item	Vegetation			38.271415°	38.271415°
				-121.534307°	-121.534307°
DWR ID	DWR_RD0551_01_s_2019_58				
Comment Code					
V6 : Landscaping					
Inspector Comment					
Thin landscaping to allow visibility and access down landside slope.					

Photo 1 of 1 : SP_2024_RD0551_175_58_20240301_00023.jpg



View of the landscaping on the LS slope (Fall 2022).

* Location LS : Land Side N/A : Not Applicable WS : Water Side CR : Crown	** Rating A : Acceptable M : Minimally Acceptable U : Unacceptable	N : Not Inspected/Rated C : Corrected A/W : Acceptable but Monitor & Maintain	+ Issue Type Ma : Maintenance Deficiency Ob : Design & System Obsolescence En : Enforcement
--	--	--	---

**Flood Control Project Maintenance
Levee Inspections**

Levee Inspection Report By Mile - Spring 2024

Reclamation District No. 0551 Pearson

Waterway	Bank	Unit Miles	Inspection Start/End	Inspector
Unit No. 02 Sacramento River	Left	6.78	03/11/2024 03/11/2024	Gregg McMillon

LM Start	5.57	Rating **	U	Issue No.	66
LM End	5.57	Issue Type +	Ma	Location *	LS
Category	Earthen Levee			GPS Latitude/Longitude	
				Start	End
Item	Vegetation			38.271049°	38.271049°
				-121.533857°	-121.533857°
DWR ID	DWR_RD0551_01_s_2024_66				
Comment Code					
V1 : Control annual grass and weeds on the levee slopes and easements.					
Inspector Comment					

Photo 1 of 1 : SP_2024_RD0551_175_66_20240314_00120.jpg



View of tall grass on the LS slope. (Spring 2024)

LM Start	5.59	Rating **	U	Issue No.	24
LM End	5.62	Issue Type +	En	Location *	LS
Category	Earthen Levee			GPS Latitude/Longitude	
				Start	End
Item	Vegetation			38.270840°	38.270574°
				-121.533577°	-121.533281°
DWR ID	DWR_RD0551_01_f_2018_24				
Comment Code					
V6 : Landscaping					
Inspector Comment					

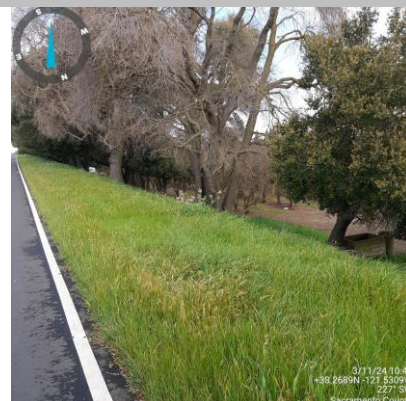
Photo 1 of 1 : SP_2024_RD0551_175_24_20240301_00007.jpg



View of the landscaping on the LS slope (Fall 2022).

LM Start	5.62	Rating **	U	Issue No.	65
LM End	5.89	Issue Type +	Ma	Location *	LS
Category	Earthen Levee			GPS Latitude/Longitude	
				Start	End
Item	Vegetation			38.270574°	38.267938°
				-121.533280°	-121.529556°
DWR ID	DWR_RD0551_01_s_2024_65				
Comment Code					
V1 : Control annual grass and weeds on the levee slopes and easements.					
Inspector Comment					

Photo 1 of 1 : SP_2024_RD0551_175_65_20240314_00121.jpg



View of tall grass on the LS slope. (Spring 2024)

* Location LS : Land Side N/A : Not Applicable WS : Water Side CR : Crown		** Rating A : Acceptable M : Minimally Acceptable U : Unacceptable N : Not Inspected/Rated C : Corrected A/W : Acceptable but Monitor & Maintain		+ Issue Type Ma : Maintenance Deficiency Ob : Design & System Obsolescence En : Enforcement	
--	--	---	--	---	--

**Flood Control Project Maintenance
Levee Inspections****Levee Inspection Report By Mile - Spring 2024****Reclamation District No. 0551 Pearson**

Waterway	Bank	Unit Miles	Inspection Start/End	Inspector
Unit No. 02 Sacramento River	Left	6.78	03/11/2024 03/11/2024	Gregg McMillon

LM Start	5.72	Rating **	M	Issue No.	110
LM End	5.72	Issue Type +	En	Location *	
Category	Supplemental			GPS Latitude/Longitude	
				Start	End
Item	DWR UCIP Field Study			38.269542°	38.269542°
				-121.531832°	-121.531832°
DWR ID	22025				
Comment Code					
Inspector Comment					
DS_ID:22025 FS_ID:60636 EP_NO: 11134 Repair Type: Non-Urgent EVAL Issue: 4b, Safety Issue Crossing Status: Found UCIP Comments: 06/09/2020 Record updated from No Action Needed to Non-Urgent. CMP riser on landside slope needs a cover - fall hazard. Pipe is running - minor leak through siphon breaker on the top of standpipe and landside toe. No permit has been identified authorizing pipe. Need to have CVFPB review ABO and determine current owner. (O.Yakimov - DWR UCIP) FIELD_STRUCT_DESC: 8-inch irrigation pipe of an unknown material through the levee, 8 feet below the crown. Water pump, gate valve, pressure tank, filler pump on a concrete pad on the waterside (WS) slope. Siphon breaker in a 24-inch CMP riser on the landside (LS) slope. Service pole with electrical panel and meter at landside levee toe. 14-inch steel standpipe with siphon breaker on top at landside toe. 2-inch galvanized steel electrical conduit through the levee at this location. (8-inch pipe [HLM 5.77] authorized under Automatic Board Order (ABO) issued as Permit No. 11134, 1975 - John & Voine B. Molino, et al). [Additional Reference(s): DWR Levee Log, 2005 (HLM 5.77). USACE Sacramento O&M Manual, Unit 111, May 1959, Revised 29 December 2016, (RM 29.03), listed as 6-inch pipe. USACE As-Built Drawing No. 06-13-1100, Sheet 14, upstream of 'L' 1600+60, January 1933, listed as 6-inch pipe]. FS Date: 6/9/2020 2:22:02 PM					

Photo 1 of 3 : UCIP_SP_2024_60636_87919.jpg



Water-Side: Concrete pad on levee slope with pumps, valve, pressure tank

* Location	** Rating	+ Issue Type
LS: Land Side WS: Water Side CR: Crown	A: Acceptable M: Minimally Acceptable U: Unacceptable	Ma: Maintenance Deficiency Ob: Design & System Obsolescence En: Enforcement
N/A: Not Applicable	N: Not Inspected/Rated C: Corrected A/W: Acceptable but Monitor & Maintain	

**Flood Control Project Maintenance
Levee Inspections****Levee Inspection Report By Mile - Spring 2024****Reclamation District No. 0551 Pearson**

Waterway	Bank	Unit Miles	Inspection Start/End	Inspector
Unit No. 02 Sacramento River	Left	6.78	03/11/2024 03/11/2024	Gregg McMillon

LM Start	5.72	Rating **	M	Issue No.	110 (cont)
LM End	5.72	Issue Type +	En	Location *	
Category	Supplemental			GPS Latitude/Longitude	
				Start	End
Item	DWR UCIP Field Study			38.269542 °	38.269542 °
				-121.531832 °	-121.531832 °
DWR ID	22025				

Photo 2 of 3 : UCIP_SP_2024_60636_87920.jpg



Land-Side: View of levee slope looking from crown

LM Start	5.72	Rating **	M	Issue No.	110 (cont)
LM End	5.72	Issue Type +	En	Location *	

Photo 3 of 3 : UCIP_SP_2024_60636_87922.jpg



Land-Side: Service pole with electrical panels at the toe

* Location	** Rating	+ Issue Type
LS : Land Side WS : Water Side CR : Crown	A : Acceptable M : Minimally Acceptable U : Unacceptable	Ma : Maintenance Deficiency Ob : Design & System Obsolescence En : Enforcement
N/A : Not Applicable	N : Not Inspected/Rated C : Corrected A/W : Acceptable but Monitor & Maintain	

Flood Control Project Maintenance
Levee Inspections

Levee Inspection Report By Mile - Spring 2024

Reclamation District No. 0551 Pearson

Waterway	Bank	Unit Miles	Inspection Start/End	Inspector
Unit No. 02 Sacramento River	Left	6.78	03/11/2024 03/11/2024	Gregg McMillon

LM Start	5.88	Rating **	M	Issue No.	111	
LM End	5.88	Issue Type +	En	Location *		
Category	Supplemental			GPS Latitude/Longitude		
				Start	End	
Item	DWR UCIP Field Study			38.268033 °	38.268033 °	
				-121.529660 °	-121.529660 °	
DWR ID	22026					
Comment Code						
Inspector Comment						
DS_ID:22026 FS_ID:60641 EP_NO: 11123 Repair Type: Non-Urgent EVAL Issue: 10, Unauthorized Modification or Non-Compliant Permit Crossing Status: Found UCIP Comments: 06/09/2020 Record updated from No Action Needed to Non-Urgent. Unable to find a permit authorizing to sleeve 10-inch through 12-inch pipe. (O.Yakimov - DWR UCIP) FIELD_STRUCT_DESC: 10-inch steel irrigation pipe sleeved through the 12-inch steel pipe through the levee, 3.8 feet below the crown. Pump and butterfly valve in pump house on the waterside (WS) slope. 48-inch concrete standpipe on the landside (LS) toe, and a 1.5-inch galvanized iron electrical conduit at the same location with a service pole on the LS slope. (12-inch pipe authorized under Permit No. 1656, 1952 - Alexander Johnson). (10-inch pipe [HLM 5.93] authorized under Automatic Board Order (ABO) issued as Permit No. 11123, 1975 - Anthony & Leonilia Castanho). [Additional Reference(s): DWR Levee Log, 2005 (HLM 5.87), listed as 10-inch pipe. USACE Sacramento O&M Manual, Unit 111, May 1959, Revised 29 December 2016, (RM 28.87), listed as 10-inch pipe]. FS Date: 6/9/2020 3:52:11 PM						

LM Start	5.88	Rating **	M	Issue No.	111 (cont)
LM End	5.88	Issue Type +	En	Location *	

Photo 1 of 3 : UCIP_SP_2024_60641_88028.jpg



Water-Side: View of levee slope looking from crown. Pump house on levee slope

Photo 2 of 3 : UCIP_SP_2024_60641_88029.jpg



Water-Side: Sleeving point on levee slope

* Location	** Rating	+ Issue Type
LS: Land Side WS: Water Side CR: Crown	A: Acceptable M: Minimally Acceptable U: Unacceptable	Ma: Maintenance Deficiency Ob: Design & System Obsolescence En: Enforcement
N/A: Not Applicable	N: Not Inspected/Rated C: Corrected A/W: Acceptable but Monitor & Maintain	

**Flood Control Project Maintenance
Levee Inspections**

Levee Inspection Report By Mile - Spring 2024

Reclamation District No. 0551 Pearson

Waterway	Bank	Unit Miles	Inspection Start/End	Inspector
Unit No. 02 Sacramento River	Left	6.78	03/11/2024 03/11/2024	Gregg McMillon

LM Start	5.88	Rating **	M	Issue No.	111 (cont)	
LM End	5.88	Issue Type +	En	Location *		
Category	Supplemental			GPS Latitude/Longitude		
				Start		End
Item	DWR UCIP Field Study			38.268033°		38.268033°
				-121.529660°		-121.529660°
DWR ID	22026					

Photo 3 of 3 : UCIP_SP_2024_60641_88032.jpg



Land-Side: View of levee slope looking from crown

LM Start	5.90	Rating **	A/W	Issue No.	59
LM End	5.90	Issue Type +	En	Location *	LS
Category	Earthen Levee			GPS Latitude/Longitude	
				Start	End
Item	Encroachments			38.267757°	38.267757°
				-121.529443°	-121.529443°
DWR ID	DWR_RD0551_01_f_2018_59				
Comment Code					
MA : Material					
Inspector Comment					
Boxes were placed on the landside shoulder inhibiting parking and access down the levee.					

Photo 1 of 1 : SP_2024_RD0551_175_59_20240301_00024.jpg



View of the concrete blocks on the LS shoulder (Fall 2022).

LM Start	5.91	Rating **	U	Issue No.	91
LM End	5.91	Issue Type +	En	Location *	LS
Category	Earthen Levee			GPS Latitude/Longitude	
				Start	End
Item	Vegetation			38.267738°	38.267738°
				-121.529175°	-121.529175°
DWR ID	DWR_RD0551_01_f_2021_91				
Comment Code					
V6 : Landscaping					
Inspector Comment					

Photo 1 of 1 : SP_2024_RD0551_175_91_20240301_00031.jpg



View of landscaping on the landside slope (Fall 2021).

* Location LS : Land Side N/A : Not Applicable WS : Water Side CR : Crown		** Rating A : Acceptable M : Minimally Acceptable U : Unacceptable		+ Issue Type Ma : Maintenance Deficiency Ob : Design & System Obsolescence En : Enforcement	
		N : Not Inspected/Rated C : Corrected A/W : Acceptable but Monitor & Maintain			

**Flood Control Project Maintenance
Levee Inspections**

Levee Inspection Report By Mile - Spring 2024

Reclamation District No. 0551 Pearson

Waterway	Bank	Unit Miles	Inspection Start/End	Inspector
Unit No. 02 Sacramento River	Left	6.78	03/11/2024 03/11/2024	Gregg McMillon

LM Start	5.92	Rating **	M	Issue No.	64
LM End	6.18	Issue Type +	Ma	Location *	LS
Category	Earthen Levee			GPS Latitude/Longitude	
				Start	End
Item	Vegetation			38.267648 °	38.264938 °
				-121.529146 °	-121.525746 °
DWR ID	DWR_RD0551_01_s_2024_64				
Comment Code					
V1 : Control annual grass and weeds on the levee slopes and easements.					
Inspector Comment					

No Photos

LM Start	6.07	Rating **	U	Issue No.	2
LM End	6.07	Issue Type +	Ma	Location *	WS
Category	Earthen Levee			GPS Latitude/Longitude	
				Start	End
Item	Erosion / Bank Caving			38.265890 °	38.265890 °
				-121.527360 °	-121.527360 °
DWR ID	DWR_RD0551_01_s_2020_2				
Comment Code					
E2 : Schedule repair of erosion site prior to the next inspection.					
Inspector Comment					
Two foot vertical erosion into the midslope of the waterside prism.					

Photo 1 of 2 : SP_2024_RD0551_175_2_20240301_00001.jpg



View of the erosion on the WS slope (Fall 2023).

LM Start	6.07	Rating **	U	Issue No.	2 (cont)
LM End	6.07	Issue Type +	Ma	Location *	WS

Photo 2 of 2 : SP_2024_RD0551_175_2_20240301_00002.jpg



View from the channel of erosion into the waterside prism (Summer 2020).

* Location LS : Land Side N/A : Not Applicable WS : Water Side CR : Crown		** Rating A : Acceptable M : Minimally Acceptable U : Unacceptable N : Not Inspected/Rated C : Corrected A/W : Acceptable but Monitor & Maintain		+ Issue Type Ma : Maintenance Deficiency Ob : Design & System Obsolescence En : Enforcement	
--	--	---	--	---	--

**Flood Control Project Maintenance
Levee Inspections****Levee Inspection Report By Mile - Spring 2024****Reclamation District No. 0551 Pearson**

Waterway	Bank	Unit Miles	Inspection Start/End	Inspector
Unit No. 02 Sacramento River	Left	6.78	03/11/2024 03/11/2024	Gregg McMillon

LM Start	6.16	Rating **	M	Issue No.	112
LM End	6.16	Issue Type +	En	Location *	
Category	Supplemental			GPS Latitude/Longitude	
				Start	End
Item	DWR UCIP Field Study			38.265182°	38.265182°
				-121.526136°	-121.526136°
DWR ID	22027				
Comment Code					
Inspector Comment					
DS_ID:22027 FS_ID:60650 EP_NO: 11122 Repair Type: Non-Urgent EVAL Issue: 10, Unauthorized Modification or Non-Compliant Permit Crossing Status: Indicator Found UCIP Comments: 06/09/2020 Record updated from No Action Needed to Non-Urgent. Pump is moved downstream to a separate piled steel pad and connected to existing 10-inch pipe through the levee. Concrete distribution box at landside toe seems abandoned. Fine media filtration system installed on landside and connected to this crossing. Unable to find permit for system modifications. Pipe is running - minor water leak through pump sealing on waterside slope. (O.Yakimov - DWR UCIP) FIELD_STRUCT_DESC: 10-inch steel exterior coated irrigation pipe through the levee, 8 feet below the crown. Abandoned pile structure on waterside slope and in stream. Pump and butterfly valve on steel piled pad on waterside slope downstream of abandoned structure. Service pole with electrical panel and meter, media filters off landside toe. Abandoned 4-foot by 6-foot concrete distribution box at landside levee toe. This crossing replaces 8-inch pipe (see DSID 21998). (10-inch pipe authorized under Permit No. 4303, 1963 - Robert M. Carmany). (10-inch pipe [HLM 6.21] authorized under Automatic Board Order (ABO) issued as Permit No. 11122, 1975 - Robert M. And Francis Carmany). [Additional Reference(s): DWR Levee Log, 2005 (HLM 6.21)]. FS Date: 6/9/2020 8:33:40 AM					

LM Start	6.16	Rating **	M	Issue No.	112 (cont)
LM End	6.16	Issue Type +	En	Location *	

Photo 1 of 3 : UCIP_SP_2024_60650_87927.jpg



Top of Levee: View of levee crown looking towards waterside

Photo 2 of 3 : UCIP_SP_2024_60650_87923.jpg



Water-Side: Abandoned pile structure on levee slope and in channel

* Location	** Rating	+ Issue Type
LS: Land Side WS: Water Side CR: Crown	A: Acceptable M: Minimally Acceptable U: Unacceptable	Ma: Maintenance Deficiency Ob: Design & System Obsolescence En: Enforcement
N/A: Not Applicable	N: Not Inspected/Rated C: Corrected A/W: Acceptable but Monitor & Maintain	

**Flood Control Project Maintenance
Levee Inspections**

Levee Inspection Report By Mile - Spring 2024

Reclamation District No. 0551 Pearson

Waterway	Bank	Unit Miles	Inspection Start/End	Inspector
Unit No. 02 Sacramento River	Left	6.78	03/11/2024 03/11/2024	Gregg McMillon

LM Start	6.16	Rating **	M	Issue No.	112 (cont)
LM End	6.16	Issue Type +	En	Location *	
Category	Supplemental			GPS Latitude/Longitude	
				Start	End
Item	DWR UCIP Field Study			38.265182°	38.265182°
				-121.526136°	-121.526136°
DWR ID	22027				

Photo 3 of 3 : UCIP_SP_2024_60650_87930.jpg



Water-Side: 10-inch pipe at abandoned structure on levee slope

LM Start	6.19	Rating **	U	Issue No.	51
LM End	6.26	Issue Type +	En	Location *	LS
Category	Earthen Levee			GPS Latitude/Longitude	
				Start	End
Item	Vegetation			38.264814°	38.264112°
				-121.525728°	-121.524845°
DWR ID	DWR_RD0551_01_f_2017_51				
Comment Code					
V6 : Landscaping					
Inspector Comment					
Landscaping should be maintained to allow inspection and access to landside slope and toe.					

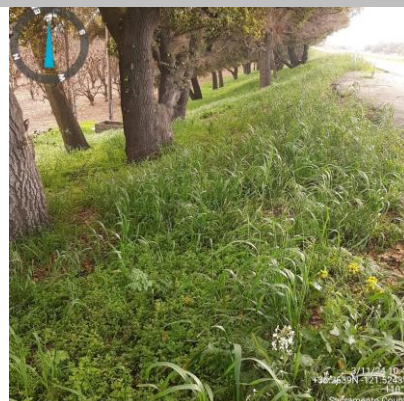
Photo 1 of 1 : SP_2024_RD0551_175_51_20240301_00017.jpg



View of the landscaping on the LS shoulder and slope (Fall 2022).

LM Start	6.29	Rating **	U	Issue No.	53
LM End	6.43	Issue Type +	Ma	Location *	LS
Category	Earthen Levee			GPS Latitude/Longitude	
				Start	End
Item	Vegetation			38.263877°	38.262418°
				-121.524389°	-121.522522°
DWR ID	DWR_RD0551_01_s_2024_53				
Comment Code					
V1 : Control annual grass and weeds on the levee slopes and easements.					
Inspector Comment					

Photo 1 of 1 : SP_2024_RD0551_175_53_20240314_00123.jpg



View of tall grass on the LS slope. (Spring 2024)

* Location LS : Land Side N/A : Not Applicable WS : Water Side CR : Crown	** Rating A : Acceptable M : Minimally Acceptable U : Unacceptable	N : Not Inspected/Rated C : Corrected A/W : Acceptable but Monitor & Maintain	+ Issue Type Ma : Maintenance Deficiency Ob : Design & System Obsolescence En : Enforcement
--	--	--	---

**Flood Control Project Maintenance
Levee Inspections****Levee Inspection Report By Mile - Spring 2024****Reclamation District No. 0551 Pearson**

Waterway	Bank	Unit Miles	Inspection Start/End	Inspector
Unit No. 02 Sacramento River	Left	6.78	03/11/2024 03/11/2024	Gregg McMillon

LM Start	6.30	Rating **	M	Issue No.	113	
LM End	6.30	Issue Type +	En	Location *		
Category	Supplemental			GPS Latitude/Longitude		
				Start		End
Item	DWR UCIP Field Study			38.263669 °		38.263669 °
				-121.524231 °		-121.524231 °
DWR ID	22028					
Comment Code						
Inspector Comment						
DS_ID:22028						
FS_ID:60690						
EP_NO: N/A						
Repair Type: Non-Urgent						
EVAL Issue: 10, Unauthorized Modification or Non-Compliant Permit						
Crossing Status: Found						
UCIP Comments: 06/02/2020 Record updated from No Action Needed						
to Non-Urgent. Pipe is capped with steel plate inside of concrete						
distribution box at landside toe. 6-inch steel pipe going around the						
concrete box apparently connected underground at levee toe to the pipe						
through the levee. Unable to find a permit for modifications. No permit						
has been identified authorizing pipe through the levee. (O.Yakimov -						
DWR UCIP)						
FIELD_STRUCT_DESC: 12-inch welded steel irrigation pipe through						
the levee, 6.3 feet below the crown. Slant pump and slide gate on the						
waterside (WS) slope. 4-foot by 6-foot concrete distribution box, siphon						
breaker and vent on 6-inch pipe next to the concrete box at landside						
toe. [Additional Reference(s): DWR Levee Log, 2005 (HLM 6.36).						
USACE Sacramento O&M Manual, Unit 111, May 1959, Revised 29						
December 2016, (RM 28.44), listed as 8-inch pipe. USACE As-Built						
Drawing No. 06-13-1100, Sheet 14, downstream of 'L' 1627+05,						
January 1933, listed as 8-inch pipe. USACE As-Built Drawing No. 50-04-						
2983, Sheet 3, STA 35+09.5, March 1954, listed as 8-inch pipe].						
FS Date: 6/2/2020 2:09:57 PM						

LM Start	6.30	Rating **	M	Issue No.	113 (cont)
LM End	6.30	Issue Type +	En	Location *	

Photo 1 of 3 : UCIP_SP_2024_60690_87969.jpg



Water-Side: Pump on concrete pad on levee slope

Photo 2 of 3 : UCIP_SP_2024_60690_87964.jpg



Land-Side: View inside of concrete distribution box. Pipe is capped

* Location	** Rating	+ Issue Type
LS: Land Side WS: Water Side CR: Crown	A: Acceptable M: Minimally Acceptable U: Unacceptable	Ma: Maintenance Deficiency Ob: Design & System Obsolescence En: Enforcement
N/A: Not Applicable	N: Not Inspected/Rated C: Corrected A/W: Acceptable but Monitor & Maintain	

**Flood Control Project Maintenance
Levee Inspections**

Levee Inspection Report By Mile - Spring 2024

Reclamation District No. 0551 Pearson

Waterway	Bank	Unit Miles	Inspection Start/End	Inspector
Unit No. 02 Sacramento River	Left	6.78	03/11/2024 03/11/2024	Gregg McMillon

LM Start	6.30	Rating **	M	Issue No.	113 (cont)
LM End	6.30	Issue Type +	En	Location *	
Category	Supplemental		GPS Latitude/Longitude		
			Start	End	
Item	DWR UCIP Field Study		38.263669 °	38.263669 °	
			-121.524231 °	-121.524231 °	
DWR ID	22028				

Photo 3 of 3 : UCIP_SP_2024_60690_87965.jpg



Land-Side: 6-inch steel pipe continued with a PVC pipe at the concrete box

LM Start	6.44	Rating **	M	Issue No.	20
LM End	6.44	Issue Type +	En	Location *	LS
Category	Earthen Levee			GPS Latitude/Longitude	
				Start	End
Item	Vegetation			38.262388 °	38.262388 °
				-121.522368 °	-121.522368 °
DWR ID	DWR_RD0551_01_s_2019_20				
Comment Code					
V6 : Landscaping					
Inspector Comment					
Cactus on the landside slope should be removed.					

Photo 1 of 1 : SP_2024_RD0551_175_20_20240301_00005.jpg



View of the cactus and other landscaping on the LS slope (Fall 2022).

LM Start	6.45	Rating **	U	Issue No.	50
LM End	6.78	Issue Type +	Ma	Location *	LS
Category	Earthen Levee			GPS Latitude/Longitude	
				Start	End
Item	Vegetation			38.262236°	38.258975°
				-121.522174°	-121.517882°
DWR ID	DWR_RD0551_01_s_2024_50				
Comment Code					
V1 : Control annual grass and weeds on the levee slopes and easements.					
Inspector Comment					

Photo 1 of 1 : SP_2024_RD0551_175_50_20240314_00124.jpg



View of tall grass on the LS slope. (Spring 2024)

* Location LS : Land Side N/A : Not Applicable WS : Water Side CR : Crown		** Rating A : Acceptable M : Minimally Acceptable U : Unacceptable N : Not Inspected/Rated C : Corrected A/W : Acceptable but Monitor & Maintain		+ Issue Type Ma : Maintenance Deficiency Ob : Design & System Obsolescence En : Enforcement	
--	--	---	--	---	--

Flood Control Project Maintenance
Levee Inspections

Levee Inspection Report By Mile - Spring 2024

Reclamation District No. 0551 Pearson

Waterway	Bank	Unit Miles	Inspection Start/End	Inspector
Unit No. 02 Sacramento River	Left	6.78	03/11/2024 03/11/2024	Gregg McMillon

LM Start	6.48	Rating **	M	Issue No.	114
LM End	6.48	Issue Type +	En	Location *	
Category	Supplemental			GPS Latitude/Longitude	
				Start	End
Item	DWR UCIP Field Study			38.261958°	38.261958°
				-121.521885°	-121.521885°
DWR ID	22029				
Comment Code					
Inspector Comment					
DS_ID:22029					
FS_ID:60696					
EP_NO: 3354					
Repair Type: Non-Urgent					
EVAL Issue: 10, Unauthorized Modification or Non-Compliant Permit					
Crossing Status: Found					
UCIP Comments: 06/02/2020 Record updated from No Action Needed to Non-Urgent. 12-inch pipe sleeved through 14-inch pipe through the levee. Unable to find a permit for modification. Pipe is running - leaks not detected. (O.Yakimov - DWR UCIP)					
FIELD_STRUCT_DESC: 12-inch steel irrigation pipe sleeved through 14-inch coated steel pipe through the levee, 3.5 feet below the crown. Slant pump on a concrete slab on the waterside (WS) slope. Siphon breaker in a 24-inch corrugated metal pipe (CMP) riser on the landside (LS) shoulder. Slide gate in a 48-inch concrete riser on the LS toe. 1.5-inch electrical conduit at the same location. This crossing replaces 12-inch pipe (see DSID 22000). (14-inch pipe authorized under Permit No. 3354, 1960 - F.I. Christie). [Additional Reference(s): DWR Levee Log, 2005 (HLM 6.53), listed as 14-inch pipe. USACE As-Built Drawing No. 06-13-1100, Sheet 14, 'L' 1640+00, January 1933, , listed as 14-inch pipe].					
FS Date: 6/2/2020 2:31:53 PM					

LM Start	6.48	Rating **	M	Issue No.	114 (cont)
LM End	6.48	Issue Type +	En	Location *	

Photo 1 of 3 : UCIP_SP_2024_60696_87977.jpg



Water-Side: 12-inch pipe through 14-inch pipe enter headwall

Photo 2 of 3 : UCIP_SP_2024_60696_87979.jpg



Land-Side: Sleeved pipe is visible on levee shoulder

* Location	** Rating	+ Issue Type
LS: Land Side WS: Water Side CR: Crown	A: Acceptable M: Minimally Acceptable U: Unacceptable	Ma: Maintenance Deficiency Ob: Design & System Obsolescence En: Enforcement
N/A: Not Applicable	N: Not Inspected/Rated C: Corrected A/W: Acceptable but Monitor & Maintain	

**Flood Control Project Maintenance
Levee Inspections**

Levee Inspection Report By Mile - Spring 2024

Reclamation District No. 0551 Pearson

Waterway	Bank	Unit Miles	Inspection Start/End	Inspector
Unit No. 02 Sacramento River	Left	6.78	03/11/2024 03/11/2024	Gregg McMillon

LM Start	6.48	Rating **	M	Issue No.	114 (cont)
LM End	6.48	Issue Type +	En	Location *	
Category	Supplemental			GPS Latitude/Longitude	
				Start	End
Item	DWR UCIP Field Study			38.261958 °	38.261958 °
				-121.521885 °	-121.521885 °
DWR ID	22029				

Photo 3 of 3 : UCIP_SP_2024_60696_87980.jpg



Land-Side: Concrete standpipe height raised with a metal sheet

* Location LS : Land Side N/A : Not Applicable WS : Water Side CR : Crown	** Rating A : Acceptable M : Minimally Acceptable U : Unacceptable	N : Not Inspected/Rated C : Corrected A/W : Acceptable but Monitor & Maintain	+ Issue Type Ma : Maintenance Deficiency Ob : Design & System Obsolescence En : Enforcement
--	--	---	---

**Flood Control Project Maintenance
Levee Inspections**

Levee Inspection Report By Mile - Spring 2024

Reclamation District No. 0551 Pearson

Waterway	Bank	Unit Miles	Inspection Start/End	Inspector
Unit No. 02 Sacramento River	Left	6.78	03/11/2024 03/11/2024	Gregg McMillon

LM Start	6.68	Rating **	M	Issue No.	115	
LM End	6.68	Issue Type +	En	Location *		
Category	Supplemental			GPS Latitude/Longitude		
				Start	End	
Item	DWR UCIP Field Study			38.259871°	38.259871°	
				-121.519181°	-121.519181°	
DWR ID	22030					
Comment Code						
Inspector Comment						
DS_ID:22030 FS_ID:60701 EP_NO: 11126 Repair Type: Non-Urgent EVAL Issue: 10, Unauthorized Modification or Non-Compliant Permit Crossing Status: Found UCIP Comments: 06/02/2020 Record updated from No Action Needed to Non-Urgent. Field measured 8-inch pipe sleeved through 12-inch pipe. Appears that annular space between pipes has been grouted through a plugged hole at landside shoulder. Concrete standpipe and distribution box at landside toe look abandoned. Water is designed to go around concrete box to either underground pipe of screen filter. Unable to find a permit for modifications. Pipe is running - no leaks detected. No permit has been identified authorizing pipe through the levee. Need to have CVFPB review ABO and determine current owner. (O.Yakimov - DWR UCIP) FIELD_STRUCT_DESC: 8-inch irrigation pipe sleeved through the 12-inch steel pipe through the levee, 3 feet below crown. Water pump, filler pump and pressure tank on a concrete pad on the waterside (WS) slope. Butterfly valves at pump and at the landside (LS) toe. Abandoned concrete standpipe and concrete distribution box at landside toe. Screen filter at landside levee toe, service pole a 1.5-inch galvanized electrical conduit at the same location. (12-inch pipe [HLM 6.74] authorized under Automatic Board Order (ABO) issued as Permit No. 11126, 1975 - Alma K. Fletcher). [Additional Reference(s): DWR Levee Log, 2005 (HLM 6.74), listed as 12-inch pipe. USACE Sacramento O&M Manual, Unit 111, May 1959, Revised 29 December 2016, (RM 28.06), listed as 6-inch pipe. USACE As-Built Drawing No. 06-13-1100, Sheet 14, upstream of 'L' 1652+65, January 1933, listed as 6-inch pipe]. FS Date: 6/2/2020 3:17:35 PM						

Photo 1 of 3 : UCIP_SP_2024_60701_87997.jpg



Land-Side: Pipe sleeved through 12-inch pipe visible on levee shoulder.
Grout filler plug on top of pipe

* Location	** Rating	+ Issue Type
LS: Land Side N/A: Not Applicable WS: Water Side CR: Crown	A: Acceptable M: Minimally Acceptable U: Unacceptable N: Not Inspected/Rated C: Corrected A/W: Acceptable but Monitor & Maintain	Ma: Maintenance Deficiency Ob: Design & System Obsolescence En: Enforcement

**Flood Control Project Maintenance
Levee Inspections****Levee Inspection Report By Mile - Spring 2024****Reclamation District No. 0551 Pearson**

Waterway	Bank	Unit Miles	Inspection Start/End	Inspector
Unit No. 02 Sacramento River	Left	6.78	03/11/2024 03/11/2024	Gregg McMillon

LM Start	6.68	Rating **	M	Issue No.	115 (cont)
LM End	6.68	Issue Type +	En	Location *	
Category	Supplemental			GPS Latitude/Longitude	
				Start	End
Item	DWR UCIP Field Study			38.259871 °	38.259871 °
				-121.519181 °	-121.519181 °
DWR ID	22030				

Photo 2 of 3 : UCIP_SP_2024_60701_87987.jpg



Water-Side: View of levee slope looking from crown

LM Start	6.68	Rating **	M	Issue No.	115 (cont)
LM End	6.68	Issue Type +	En	Location *	

Photo 3 of 3 : UCIP_SP_2024_60701_87994.jpg



Water-Side: View of water pump, filler pump and pressure tank on concrete pad on levee slope

* Location	** Rating	+ Issue Type
LS : Land Side N/A : Not Applicable WS : Water Side CR : Crown	A : Acceptable M : Minimally Acceptable U : Unacceptable N : Not Inspected/Rated C : Corrected A/W : Acceptable but Monitor & Maintain	Ma : Maintenance Deficiency Ob : Design & System Obsolescence En : Enforcement