

**Flood Control Project Maintenance
Levee Inspections
LMA District Cover Sheet**

Reclamation District No. 0551 Pearson

	Spring (March - May)	Summer ** (June - August)	Fall (September - November)	Winter ** (December - February)
† Overall LMA Rating (Fall Only)				

** Non-receipt of Summer or Winter Inspection
Reports may effect overall annual rating.

†
SPRING INSPECTIONS: Overall maintenance ratings are not determined for the spring inspection results. Individual maintenance deficiencies are rated using the same criteria in the spring and in the fall.

FALL INSPECTIONS: The overall maintenance rating shown above is based on operation and maintenance deficiencies identified within the attached unit inspection reports. This rating is not intended to be an indication of risk.

Comments

**Flood Control Project Maintenance
Levee Inspections
Unit Cover Sheet**

Reclamation District No. 0551 Pearson

Waterway			Bank	Unit Miles
Unit No. 01 Sacramento River			Left	6.78
	Spring (March - May)	Summer (June - August)	(September - November) Fall	Winter (December - February)
Unit Maintenance Rating (Fall Only)				
Date of Inspection	3/10/2022 - 3/10/2022			
DWR Inspector	David Julian			
Accompanied By	Topper van Loben Sels RD 551			

Summer & Winter Inspections

The Local Maintaining Agency (LMA) is responsible for summer and winter inspections. The LMA is required to submit a report regarding summer and winter inspections to the California Department of Water Resources (DWR).

DWR must be informed on the:

- a) completion of the inspection
- b) any changes other than the results of normal maintenance
- c) corrections to deficiencies noted in this report

If additional items are noted, further documentation of those items must also be submitted.

The LMA should submit this information to DWR using the LMA web application tool available at:

<http://cdec.water.ca.gov/lma.html>

If the LMA is unable to submit information on this webpage, please contact DWR for assistance.

The LMA should submit the information and any associated documentation by September 30 for summer inspections and March 31 for winter inspections.

**Flood Control Project Maintenance
Levee Inspections**

Levee Inspection Report By Mile - Spring 2022

Reclamation District No. 0551 Pearson

Waterway	Bank	Unit Miles	Inspection Start/End	Inspector
Unit No. 01 Sacramento River	Left	6.78	03/10/2022 03/10/2022	David Julian

LM Start		Rating **	A	Issue No.	3
LM End		Issue Type +	Ma	Location *	
Category	Earthen Levee		GPS Latitude/Longitude		
			Start	End	
Item	Emergency Supplies & Equipment			°	°
				°	°
DWR ID	DWR_RD0551_01_s_2012_3				
Comment Code					
Inspector Comment					
District has emergency supplies stored in locked container near Courtland's fire house.					

No Photos

LM Start		Rating **	A	Issue No.	15
LM End		Issue Type +	Ma	Location *	
Category	Earthen Levee		GPS Latitude/Longitude		
			Start	End	
Item	Flood Preparedness & Training			°	°
				°	°
DWR ID	DWR_RD0551_01_s_2012_15				
Comment Code					
Inspector Comment					
District has been trained in Flood Fight Methods.					

No Photos

LM Start		Rating **	A	Issue No.	23
LM End		Issue Type +	Ma	Location *	
Category	Earthen Levee		GPS Latitude/Longitude		
			Start	End	
Item	Operations & Maintenance Manuals			°	°
				°	°
DWR ID	DWR_RD0551_01_s_2012_23				
Comment Code					
Inspector Comment					
District has O&M Manual on hand and stored with flood fight materials.					

No Photos

* Location
LS : Land Side N/A : Not Applicable
WS : Water Side
CR : Crown

** Rating
A : Acceptable
M : Minimally Acceptable
U : Unacceptable
N : Not Inspected/Rated
C : Corrected
A/W : Acceptable but Monitor & Maintain

+ Issue Type
Ma : Maintenance Deficiency
Ob : Design & System Obsolescence
En : Enforcement

**Flood Control Project Maintenance
Levee Inspections**

Levee Inspection Report By Mile - Spring 2022

Reclamation District No. 0551 Pearson

Waterway	Bank	Unit Miles	Inspection Start/End	Inspector
Unit No. 01 Sacramento River	Left	6.78	03/10/2022 03/10/2022	David Julian

LM Start	0.06	Rating **	M	Issue No.	102
LM End	0.31	Issue Type +	Ma	Location *	LS
Category	Earthen Levee			GPS Latitude/Longitude	
				Start	End
Item	Vegetation			38.335718 °	38.333069 °
				-121.565308 °	-121.568503 °
DWR ID	DWR_RD0551_01_s_2022_102				
Comment Code					
V1 : Control annual grass and weeds on the levee slopes and easements.					
Inspector Comment					

No Photos

LM Start	0.07	Rating **	M	Issue No.	4	
LM End	0.07	Issue Type +	En	Location *		
Category	Supplemental			GPS Latitude/Longitude		
				Start	End	
Item	DWR UCIP Field Study			38.335670 °	38.335670 °	
				-121.565490 °	-121.565490 °	
DWR ID	21971					
Comment Code						
Inspector Comment						
FS_ID:57695 DS_ID:21971 EP_NO: 8664 Repair Type: Non-Urgent Crossing Status: Found UCIP Comments: 05/27/2020 Record updated from No Action Needed to Non-Urgent. 8-inch pipe sleeved through 10-inch pipe. Installed new pump with gate valve and pressure booster, service pole with electric panel next to pumphouse. Abandoned pump and gate valve in pump house, abandoned 48-inch and 24-inch concrete standpipes at pump house on the LS toe. Unable to locate a permit authorizing modification. Need to have CVFPB review ABO and determine current owner. (O.Yakimov - DWR UCIP) FIELD_STRUCT_DESC: 8-inch pipe sleeved through 10-inch coated steel irrigation pipe through the levee, 5 feet below the crown. Pump with gate valve and pressure booster, service pole with electrical panel next to pumphouse on the landside slope. (Retention of irrigation pumping plant, centrifugal pump and gate valve in pump house, landside toe of the levee [HLM 0.05] authorized under Automatic Board Order (ABO) issued as Permit No. 8664, 1972 - Lincoln Chan). [Additional Reference(s): DWR Levee Log, 2005 (HLM 0.05). USACE Sacramento O&M Manual, Unit 111, May 1959, Revised 29 December 2016, (RM 34.75), listed as 10-inch pipe]. FS Date: 5/27/2020 10:13:34 AM						

Photo 1 of 3 : UCIP_SP_2022_57695_85472.jpg



Water-Side: View of levee slope

* Location LS : Land Side N/A : Not Applicable WS : Water Side CR : Crown	** Rating A : Acceptable M : Minimally Acceptable U : Unacceptable	N : Not Inspected/Rated C : Corrected A/W : Acceptable but Monitor & Maintain	+ Issue Type Ma : Maintenance Deficiency Ob : Design & System Obsolescence En : Enforcement
--	--	---	---

**Flood Control Project Maintenance
Levee Inspections**

Levee Inspection Report By Mile - Spring 2022

Reclamation District No. 0551 Pearson

Waterway	Bank	Unit Miles	Inspection Start/End	Inspector
Unit No. 01 Sacramento River	Left	6.78	03/10/2022 03/10/2022	David Julian

LM Start	0.07	Rating **	M	Issue No.	4 (cont)
LM End	0.07	Issue Type +	En	Location *	
Category	Supplemental		GPS Latitude/Longitude		
			Start	End	
Item	DWR UCIP Field Study		38.335670 °	38.335670 °	
			-121.565490 °	-121.565490 °	
DWR ID	21971				

Photo 2 of 3 : UCIP_SP_2022_57695_85471.jpg



Top of Levee: View of levee crown at the crossing

LM Start	0.07	Rating **	M	Issue No.	4 (cont)
LM End	0.07	Issue Type +	En	Location *	

Photo 3 of 3 : UCIP_SP_2022_57695_85474.jpg



Land-Side: View of levee slope looking from crown

LM Start	0.09	Rating **	M	Issue No.	85
LM End	0.34	Issue Type +	Ma	Location *	WS
Category	Earthen Levee			GPS Latitude/Longitude	
				Start	End
Item	Vegetation			38.335423 °	38.332725 °
				-121.565817 °	-121.568957 °
DWR ID	DWR_RD0551_01_s_2022_85				
Comment Code					
V1 : Control annual grass and weeds on the levee slopes and easements.					
Inspector Comment					

No Photos

* Location LS : Land Side N/A : Not Applicable WS : Water Side CR : Crown	** Rating A : Acceptable M : Minimally Acceptable U : Unacceptable	N : Not Inspected/Rated C : Corrected A/W : Acceptable but Monitor & Maintain	+ Issue Type Ma : Maintenance Deficiency Ob : Design & System Obsolescence En : Enforcement
--	--	--	---

**Flood Control Project Maintenance
Levee Inspections**

Levee Inspection Report By Mile - Spring 2022

Reclamation District No. 0551 Pearson

Waterway	Bank	Unit Miles	Inspection Start/End	Inspector
Unit No. 01 Sacramento River	Left	6.78	03/10/2022 03/10/2022	David Julian

LM Start	0.31	Rating **	M	Issue No.	5	
LM End	0.31	Issue Type +	En	Location *		
Category	Supplemental			GPS Latitude/Longitude		
				Start	End	
Item	DWR UCIP Field Study			38.333117 °	38.333117 °	
				-121.568483 °	-121.568483 °	
DWR ID	21974					
Comment Code						
Inspector Comment						
FS_ID:60001 DS_ID:21974 EP_NO: N/A Repair Type: Non-Urgent Crossing Status: Not Found UCIP Comments: 05/27/2020 Record updated from No Action Needed to Non-Urgent. Crossing not found. No permit has been identified authorizing pipe. (O.Yakimov - DWR UCIP) FIELD_STRUCT_DESC: 3-inch pipe of an unknown material or purpose through the levee, 9.3 feet below the crown. Gate valve on the waterside (WS) end. (Cat. IVA - Chan). [Additional Reference(s): DWR Levee Log, 2005 (HLM 0.31). USACE Sacramento O&M Manual, Unit 111, May 1959, Revised 29 December 2016, (RM 34.49), listed as 4-inch pipe]. FS Date: 5/27/2020 11:20:28 AM						

Photo 1 of 3 : UCIP_SP_2022_60001_87290.jpg



Top of Levee: View of levee crown looking towards waterside

LM Start	0.31	Rating **	M	Issue No.	5 (cont)
LM End	0.31	Issue Type +	En	Location *	

Photo 2 of 3 : UCIP_SP_2022_60001_87291.jpg



Land-Side: View of levee slope looking from crown

* Location LS : Land Side N/A : Not Applicable WS : Water Side CR : Crown	** Rating A : Acceptable M : Minimally Acceptable U : Unacceptable	N : Not Inspected/Rated C : Corrected A/W : Acceptable but Monitor & Maintain	+ Issue Type Ma : Maintenance Deficiency Ob : Design & System Obsolescence En : Enforcement
--	--	---	---

**Flood Control Project Maintenance
Levee Inspections**

Levee Inspection Report By Mile - Spring 2022

Reclamation District No. 0551 Pearson

Waterway	Bank	Unit Miles	Inspection Start/End	Inspector
Unit No. 01 Sacramento River	Left	6.78	03/10/2022 03/10/2022	David Julian

LM Start	0.31	Rating **	M	Issue No.	5 (cont)
LM End	0.31	Issue Type +	En	Location *	
Category	Supplemental		GPS Latitude/Longitude		
			Start	End	
Item	DWR UCIP Field Study		38.333117 °	38.333117 °	
			-121.568483 °	-121.568483 °	
DWR ID	21974				

Photo 3 of 3 : UCIP_SP_2022_60001_87294.jpg



Land-Side: View of levee slope looking from toe

LM Start	0.40	Rating **	U	Issue No.	17
LM End	0.51	Issue Type +	En	Location *	WS
Category	Earthen Levee			GPS Latitude/Longitude	
				Start	End
Item	Vegetation			38.332115 °	38.330818 °
				-121.569658 °	-121.570980 °
DWR ID	DWR_RD0551_01_f_2018_17				
Comment Code					
V6 : Landscaping					
Inspector Comment					
Trim oleanders on waterside hinge.					

Photo 1 of 1 : SP_2022_RD0551_175_17_20220307_00004.jpg



View looking downstream of landscaping blocking view down waterside slope (Spring 2020).

* Location LS : Land Side N/A : Not Applicable WS : Water Side CR : Crown	** Rating A : Acceptable M : Minimally Acceptable U : Unacceptable	N : Not Inspected/Rated C : Corrected A/W : Acceptable but Monitor & Maintain	+ Issue Type Ma : Maintenance Deficiency Ob : Design & System Obsolescence En : Enforcement
--	--	---	---

**Flood Control Project Maintenance
Levee Inspections**

Levee Inspection Report By Mile - Spring 2022

Reclamation District No. 0551 Pearson

Waterway	Bank	Unit Miles	Inspection Start/End	Inspector
Unit No. 01 Sacramento River	Left	6.78	03/10/2022 03/10/2022	David Julian

LM Start	0.41	Rating **	M	Issue No.	7	
LM End	0.41	Issue Type +	En	Location *		
Category	Supplemental			GPS Latitude/Longitude		
				Start	End	
Item	DWR UCIP Field Study			38.332039 °	38.332039 °	
				-121.569730 °	-121.569730 °	
DWR ID	21982					
Comment Code						
Inspector Comment						
FS_ID:60032 DS_ID:21982 EP_NO: 2759 Repair Type: Non-Urgent Crossing Status: Found UCIP Comments: 05/27/2020 Record remains Non-Urgent. Unauthorized encroachment recorded in Levee Log prior to 2011. Unable to determine pipe material through the levee. PVC pipe is visible in a plastic box on waterside. (O.Yakimov - DWR UCIP) 04/1-/2013 Unclear where exact crossing is located (W.Wylie - DWR UCIP) FIELD_STRUCT_DESC: [Courtland Boating Facilities] 1-inch steel water line through the levee, at an unknown depth. Ramp and boating facilities on the waterside (WS). Pipe visible under buildings at concrete foundation on the landside (LS). Water service connections for irrigation located on the WS slope. (Reference to existing 1-inch water pipe to be connected to the trailer made in Permit No. 2759, 1958 - Jack and Belva Swisley and Ed Hathaway). FS Date: 5/27/2020 3:05:40 PM						

LM Start	0.41	Rating **	M	Issue No.	7 (cont)
LM End	0.41	Issue Type +	En	Location *	

Photo 1 of 3 : UCIP_SP_2022_60032_87319.jpg



Top of Levee: View of levee crown looking towards waterside

Photo 2 of 3 : UCIP_SP_2022_60032_87318.jpg



Land-Side: Stores on landside where pipe is crossing

* Location LS : Land Side N/A : Not Applicable WS : Water Side CR : Crown	** Rating A : Acceptable M : Minimally Acceptable U : Unacceptable	N : Not Inspected/Rated C : Corrected A/W : Acceptable but Monitor & Maintain	+ Issue Type Ma : Maintenance Deficiency Ob : Design & System Obsolescence En : Enforcement
--	--	---	---

**Flood Control Project Maintenance
Levee Inspections**

Levee Inspection Report By Mile - Spring 2022

Reclamation District No. 0551 Pearson

Waterway	Bank	Unit Miles	Inspection Start/End	Inspector
Unit No. 01 Sacramento River	Left	6.78	03/10/2022 03/10/2022	David Julian

LM Start	0.41	Rating **	M	Issue No.	7 (cont)
LM End	0.41	Issue Type +	En	Location *	
Category	Supplemental		GPS Latitude/Longitude		
			Start	End	
Item	DWR UCIP Field Study		38.332039 °	38.332039 °	
			-121.569730 °	-121.569730 °	
DWR ID	21982				

Photo 3 of 3 : UCIP_SP_2022_60032_87317.jpg



Land-Side: Overview of landside where PVC pipe is found

LM Start	0.48	Rating **	M	Issue No.	101
LM End	0.48	Issue Type +	Ma	Location *	LS
Category	Earthen Levee			GPS Latitude/Longitude	
				Start	End
Item	Vegetation			38.331126 °	38.331126 °
				-121.570579 °	-121.570579 °
DWR ID	DWR_RD0551_01_s_2022_101				
Comment Code					
V1 : Control annual grass and weeds on the levee slopes and easements.					
Inspector Comment					

No Photos

LM Start	0.49	Rating **	M	Issue No.	21
LM End	0.49	Issue Type +	En	Location *	WS
Category	Earthen Levee			GPS Latitude/Longitude	
				Start	End
Item	Encroachments			38.331063 °	38.331063 °
				-121.570634 °	-121.570634 °
DWR ID	DWR_RD0551_01_s_2014_21				
Comment Code					
BU : Building					
Inspector Comment					
11750 River Road - The new land owner is working with the LMA trying to get CVFPB Permits for this project. No other work at this site. Waiting to hear from Enforcements.					

Photo 1 of 1 : SP_2022_RD0551_175_21_20220307_00006.jpg



Photo taken 4-06-2017. Building and steps have been there since at least January 2014. No work done, no permit issued.

* Location LS : Land Side N/A : Not Applicable WS : Water Side CR : Crown	** Rating A : Acceptable M : Minimally Acceptable U : Unacceptable	N : Not Inspected/Rated C : Corrected A/W : Acceptable but Monitor & Maintain	+ Issue Type Ma : Maintenance Deficiency Ob : Design & System Obsolescence En : Enforcement
--	--	--	---

**Flood Control Project Maintenance
Levee Inspections**

Levee Inspection Report By Mile - Spring 2022

Reclamation District No. 0551 Pearson

Waterway	Bank	Unit Miles	Inspection Start/End	Inspector
Unit No. 01 Sacramento River	Left	6.78	03/10/2022 03/10/2022	David Julian

LM Start	0.56	Rating **	M	Issue No.	69
LM End	0.59	Issue Type +	En	Location *	LS
Category	Earthen Levee			GPS Latitude/Longitude	
				Start	End
Item	Vegetation			38.330242 °	38.329830 °
				-121.571405 °	-121.571725 °
DWR ID	DWR_RD0551_01_f _ 2019_69				
Comment Code					
V6 : Landscaping					
Inspector Comment					

Photo 1 of 1 : SP_2022_RD0551_175_69_20220307_00030.jpg



View looking downstream at landscaping on the landside slope (Fall 2019).

LM Start	0.60	Rating **	M	Issue No.	8	
LM End	0.60	Issue Type +	En	Location *		
Category	Supplemental			GPS Latitude/Longitude		
				Start	End	
Item	DWR UCIP Field Study			38.329740 °	38.329740 °	
				-121.571891 °	-121.571891 °	
DWR ID	21984					
Comment Code						
Inspector Comment						
FS_ID:60080 DS_ID:21984 EP_NO: 3673 Repair Type: Non-Urgent Crossing Status: Not Found UCIP Comments: 05/27/2020 Record updated from No Action Needed to Non-Urgent. Crossing not found. A sign noticed during last inspection on opposite side of river is gone. Recommend owner to install communication line markers. (O.Yakimov - DWR UCIP) 04/10/2013 Sign on opposite side of river is a good indication of communication line location. (W.Wylie - DWR UCIP) FIELD_STRUCT_DESC: 2.5-inch steel telephone conduit through the levee and across the channel, 3 feet below the crown. (Armored submarine 2.5-inch steel conduit telephone cable authorized under Permit No. 3673, 1961 - Delta Telephone and Telegraph Company). [Additional Reference(s): DWR Levee Log, 2005 (HLM 0.60)]. FS Date: 5/27/2020 8:25:53 AM						

Photo 1 of 3 : UCIP_SP_2022_60080_87333.jpg



Top of Levee: View of levee crown looking towards waterside

* Location LS : Land Side N/A : Not Applicable WS : Water Side CR : Crown	** Rating A : Acceptable M : Minimally Acceptable U : Unacceptable	N : Not Inspected/Rated C : Corrected A/W : Acceptable but Monitor & Maintain	+ Issue Type Ma : Maintenance Deficiency Ob : Design & System Obsolescence En : Enforcement
--	--	---	---

**Flood Control Project Maintenance
Levee Inspections**

Levee Inspection Report By Mile - Spring 2022

Reclamation District No. 0551 Pearson

Waterway	Bank	Unit Miles	Inspection Start/End	Inspector
Unit No. 01 Sacramento River	Left	6.78	03/10/2022 03/10/2022	David Julian

LM Start	0.60	Rating **	M	Issue No.	8 (cont)
LM End	0.60	Issue Type +	En	Location *	
Category	Supplemental		GPS Latitude/Longitude		
			Start	End	
Item	DWR UCIP Field Study		38.329740 °	38.329740 °	
			-121.571891 °	-121.571891 °	
DWR ID	21984				

Photo 2 of 3 : UCIP_SP_2022_60080_87334.jpg



Land-Side: View of landside at potential crossing

LM Start	0.60	Rating **	M	Issue No.	8 (cont)
LM End	0.60	Issue Type +	En	Location *	

Photo 3 of 3 : UCIP_SP_2022_60080_87335.jpg



Water-Side: View of levee slope looking from crown

LM Start	0.63	Rating **	M	Issue No.	100
LM End	2.23	Issue Type +	Ma	Location *	LS
Category	Earthen Levee			GPS Latitude/Longitude	
				Start	End
Item	Vegetation			38.329444 °	38.307624 °
				-121.572110 °	-121.573428 °
DWR ID	DWR_RD0551_01_s_2022_100				
Comment Code					
V1 : Control annual grass and weeds on the levee slopes and easements.					
Inspector Comment					

No Photos

* Location LS : Land Side N/A : Not Applicable WS : Water Side CR : Crown	** Rating A : Acceptable M : Minimally Acceptable U : Unacceptable	N : Not Inspected/Rated C : Corrected A/W : Acceptable but Monitor & Maintain	+ Issue Type Ma : Maintenance Deficiency Ob : Design & System Obsolescence En : Enforcement
--	--	---	---

**Flood Control Project Maintenance
Levee Inspections**

Levee Inspection Report By Mile - Spring 2022

Reclamation District No. 0551 Pearson

Waterway	Bank	Unit Miles	Inspection Start/End	Inspector
Unit No. 01 Sacramento River	Left	6.78	03/10/2022 03/10/2022	David Julian

LM Start	0.71	Rating **	M	Issue No.	9	
LM End	0.71	Issue Type +	En	Location *		
Category	Supplemental			GPS Latitude/Longitude		
				Start	End	
Item	DWR UCIP Field Study			38.328401 °	38.328401 °	
				-121.572954 °	-121.572954 °	
DWR ID	21985					
Comment Code						
Inspector Comment						
FS_ID:60085 DS_ID:21985 EP_NO: 6220 Repair Type: Non-Urgent Crossing Status: Found UCIP Comments: 05/27/2020 Record remains Non-Urgent. Two sinkholes on waterside levee slope that measure 18"x 12"x 6" deep found in pipe alignment. Crossing appears abandoned. Pipe is heavily rusted at riverbank. From conversation with adjacent property owner found out that pipe is located on easement to the property just across from the crossing and used to serve water for orchard on landside. (O.Yakimov - DWR UCIP) 04/10/2013 Pipe abandoned and should be removed. (W.Wylie - DWR UCIP) FIELD_STRUCT_DESC: 8-inch coated steel irrigation pipe through the levee, 6.1 feet below the crown. Pump on the waterside (WS) with slide gate and air vent. (8-inch pipe authorized under Permit No. 6220, 1968 - Robert U. Grant). [Additional Reference(s): DWR Levee Log, 2005 (HLM 0.71)]. FS Date: 5/27/2020 8:59:30 AM						

Photo 1 of 3 : UCIP_SP_2022_60085_87345.jpg



Top of Levee: View of levee crown looking towards landside

LM Start	0.71	Rating **	M	Issue No.	9 (cont)
LM End	0.71	Issue Type +	En	Location *	

Photo 2 of 3 : UCIP_SP_2022_60085_87343.jpg



Land-Side: View of levee slope looking from crown

* Location LS : Land Side N/A : Not Applicable WS : Water Side CR : Crown		** Rating A : Acceptable N : Not Inspected/Rated M : Minimally Acceptable C : Corrected U : Unacceptable A/W : Acceptable but Monitor & Maintain		+ Issue Type Ma : Maintenance Deficiency Ob : Design & System Obsolescence En : Enforcement	
--	--	---	--	---	--

**Flood Control Project Maintenance
Levee Inspections**

Levee Inspection Report By Mile - Spring 2022

Reclamation District No. 0551 Pearson

Waterway	Bank	Unit Miles	Inspection Start/End	Inspector
Unit No. 01 Sacramento River	Left	6.78	03/10/2022 03/10/2022	David Julian

LM Start	0.71	Rating **	M	Issue No.	9 (cont)
LM End	0.71	Issue Type +	En	Location *	
Category	Supplemental			GPS Latitude/Longitude	
				Start	End
Item	DWR UCIP Field Study			38.328401 °	38.328401 °
				-121.572954 °	-121.572954 °
DWR ID	21985				

Photo 3 of 3 : UCIP_SP_2022_60085_87349.jpg



Water-Side: View of levee slope looking towards crown

LM Start	0.73	Rating **	U	Issue No.	57
LM End	0.76	Issue Type +	En	Location *	LS
Category	Earthen Levee			GPS Latitude/Longitude	
				Start	End
Item	Vegetation			38.328122 °	38.327783 °
				-121.573130 °	-121.573362 °
DWR ID	DWR_RD0551_01_f_2018_57				
Comment Code					
V6 : Landscaping					
Inspector Comment					

Photo 1 of 1 : SP_2022_RD0551_175_57_20220307_00021.jpg



View of thick landscaping on the landside slope (Fall 2021).

LM Start	0.77	Rating **	C	Issue No.	95
LM End	0.77	Issue Type +	Ma	Location *	LS
Category	Earthen Levee			GPS Latitude/Longitude	
				Start	End
Item	Encroachments			38.327662 °	38.327662 °
				-121.573483 °	-121.573483 °
DWR ID	DWR_RD0551_01_s_2021_95				
Comment Code					
TR : Tree or limb					
Inspector Comment					

No Photos

* Location LS : Land Side N/A : Not Applicable WS : Water Side CR : Crown	** Rating A : Acceptable M : Minimally Acceptable U : Unacceptable	N : Not Inspected/Rated C : Corrected A/W : Acceptable but Monitor & Maintain	+ Issue Type Ma : Maintenance Deficiency Ob : Design & System Obsolescence En : Enforcement
--	--	---	---

**Flood Control Project Maintenance
Levee Inspections**

Levee Inspection Report By Mile - Spring 2022

Reclamation District No. 0551 Pearson

Waterway	Bank	Unit Miles	Inspection Start/End	Inspector
Unit No. 01 Sacramento River	Left	6.78	03/10/2022 03/10/2022	David Julian

LM Start	0.89	Rating **	U	Issue No.	10
LM End	0.89	Issue Type +	En	Location *	
Category	Supplemental			GPS Latitude/Longitude	
				Start	End
Item	DWR UCIP Field Study			38.326088 °	38.326088 °
				-121.574525 °	-121.574525 °
DWR ID	21986				
Comment Code					
Inspector Comment					
FS_ID:60086 DS_ID:21986 EP_NO: 701 Repair Type: Urgent Crossing Status: Found UCIP Comments: 06/02/2020 Record updated from Non-Urgent to Urgent. Through hole in pipe visible on landside slope, missing wall of pipe at riverbank. 2-foot diameter scour hole present around a hole in pipe on landside slope. 3-foot diameter and 3-inch deep depression of levee slope just above this hole. Crossing appears abandoned. (O.Yakimov - DWR UCIP) 04/10/2013 Pipe appears abandoned and should be done so properly. Good candidate for video inspection. (W.Wylie - DWR UCIP) FIELD_STRUCT_DESC: 14-inch steel irrigation pipe through the levee, 7.2 feet below the crown. Pump in pump house on the waterside (WS) slope. Service pole on the landside (LS) slope. 1-inch galvanized filler pipe, and a 2-inch electrical conduit at the same location. (16-inch pipe authorized under Permit No. 701, 1937 - American Trust Company). [Additional Reference(s): DWR Levee Log, 2005 (HLM 0.89). USACE Sacramento O&M Manual, Unit 111, May 1959, Revised 29 December 2016, (RM 33.91), listed as 14-inch pipe. USACE As-Built Drawing No. 06-13-1100, Sheet 12, upstream of 'L' 1348+33, January 1933]. FS Date: 6/2/2020 10:38:50 AM					

LM Start	0.89	Rating **	U	Issue No.	10 (cont)
LM End	0.89	Issue Type +	En	Location *	

Photo 1 of 3 : UCIP_SP_2022_60086_87355.jpg



Top of Levee: View of levee crown looking towards waterside

Photo 2 of 3 : UCIP_SP_2022_60086_87356.jpg



Land-Side: View of levee slope looking from crown

* Location LS : Land Side N/A : Not Applicable WS : Water Side CR : Crown	** Rating A : Acceptable M : Minimally Acceptable U : Unacceptable	N : Not Inspected/Rated C : Corrected A/W : Acceptable but Monitor & Maintain	+ Issue Type Ma : Maintenance Deficiency Ob : Design & System Obsolescence En : Enforcement
--	--	---	---

**Flood Control Project Maintenance
Levee Inspections**

Levee Inspection Report By Mile - Spring 2022

Reclamation District No. 0551 Pearson

Waterway	Bank	Unit Miles	Inspection Start/End	Inspector
Unit No. 01 Sacramento River	Left	6.78	03/10/2022 03/10/2022	David Julian

LM Start	0.89	Rating **	U	Issue No.	10 (cont)
LM End	0.89	Issue Type +	En	Location *	
Category	Supplemental		GPS Latitude/Longitude		
			Start	End	
Item	DWR UCIP Field Study		38.326088 °	38.326088 °	
			-121.574525 °	-121.574525 °	
DWR ID	21986				

Photo 3 of 3 : UCIP_SP_2022_60086_87358.jpg



Land-Side: 1-inch filler line through levee connected to the pipe

LM Start	0.90	Rating **	M	Issue No.	11
LM End	0.90	Issue Type +	En	Location *	
Category	Supplemental		GPS Latitude/Longitude		
			Start	End	
Item	DWR UCIP Field Study		38.325955 °	38.325955 °	
			-121.574608 °	-121.574608 °	
DWR ID	21987				

Comment Code

Inspector Comment

FS_ID:60092
DS_ID:21987
EP_NO: 793A
Repair Type: Non-Urgent
Crossing Status: Found
UCIP Comments: 06/02/2020 Record updated from No Action Needed to Non-Urgent. Pump and screen filters installed on landside, capped old 12-inch pipe on landside slope next to the standpipe. Unable to find a permit authorizing modifications to this crossing. Two abandoned concrete standpipes on the landside slope and at the toe, abandoned pump piles at riverbank. Minor runoff erosion on waterside shoulder in pipe alignment. Pipe debris at riverbank. (O.Yakimov - DWR UCIP)
FIELD_STRUCT_DESC: 8-inch steel irrigation pipe sleeved through a 12-inch pipe with annular space grouted 7.8 feet below the crown. Pump and pressure booster at the landside (LS) toe with switch panel and power pole. (12-inch pipe authorized under Permit No. 793, 1939 - Margaret H. Smith Estate). (Sleeving 8-inch pipe through existing 10-inch pipe and grouting annular space authorized under Permit No. 793A, 1974 - George W.G. Smith). [Additional Reference(s): DWR Levee Log, 2005 (HLM 0.90). USACE Sacramento O&M Manual, Unit 111, May 1959, Revised 29 December 2016, (RM 33.90), listed as 12-inch pipe].
FS Date: 6/2/2020 1:07:09 PM

Photo 1 of 3 : UCIP_SP_2022_60092_87362.jpg



Top of Levee: View of levee crown looking towards waterside

* Location LS : Land Side N/A : Not Applicable WS : Water Side CR : Crown	** Rating A : Acceptable M : Minimally Acceptable U : Unacceptable	N : Not Inspected/Rated C : Corrected A/W : Acceptable but Monitor & Maintain	+ Issue Type Ma : Maintenance Deficiency Ob : Design & System Obsolescence En : Enforcement
--	--	---	---

**Flood Control Project Maintenance
Levee Inspections**

Levee Inspection Report By Mile - Spring 2022

Reclamation District No. 0551 Pearson

Waterway	Bank	Unit Miles	Inspection Start/End	Inspector
Unit No. 01 Sacramento River	Left	6.78	03/10/2022 03/10/2022	David Julian

LM Start	0.90	Rating **	M	Issue No.	11 (cont)
LM End	0.90	Issue Type +	En	Location *	
Category	Supplemental		GPS Latitude/Longitude		
			Start	End	
Item	DWR UCIP Field Study		38.325955 °	38.325955 °	
			-121.574608 °	-121.574608 °	
DWR ID	21987				

Photo 2 of 3 : UCIP_SP_2022_60092_87361.jpg



Water-Side: View of levee slope looking from crown

LM Start	0.90	Rating **	M	Issue No.	11 (cont)
LM End	0.90	Issue Type +	En	Location *	

Photo 3 of 3 : UCIP_SP_2022_60092_87363.jpg



Water-Side: Pipe intake and pipe debris around. View from river

LM Start	0.93	Rating **	M	Issue No.	45
LM End	0.93	Issue Type +	En	Location *	LS
Category	Earthen Levee			GPS Latitude/Longitude	
				Start	End
Item	Vegetation			38.325577 °	38.325577 °
				-121.574800 °	-121.574800 °
DWR ID	DWR_RD0551_01_s_2020_45				
Comment Code					
V6 : Landscaping					
Inspector Comment					

No Photos

* Location LS : Land Side N/A : Not Applicable WS : Water Side CR : Crown	** Rating A : Acceptable M : Minimally Acceptable U : Unacceptable	N : Not Inspected/Rated C : Corrected A/W : Acceptable but Monitor & Maintain	+ Issue Type Ma : Maintenance Deficiency Ob : Design & System Obsolescence En : Enforcement
--	--	---	---

**Flood Control Project Maintenance
Levee Inspections**

Levee Inspection Report By Mile - Spring 2022

Reclamation District No. 0551 Pearson

Waterway	Bank	Unit Miles	Inspection Start/End	Inspector
Unit No. 01 Sacramento River	Left	6.78	03/10/2022 03/10/2022	David Julian

LM Start	1.28	Rating **	M	Issue No.	63
LM End	1.28	Issue Type +	En	Location *	LS
Category	Earthen Levee			GPS Latitude/Longitude	
				Start	End
Item	Vegetation			38.320707 °	38.320707 °
				-121.576335 °	-121.576335 °
DWR ID	DWR_RD0551_01_s_2019_63				
Comment Code					
V6 : Landscaping					
Inspector Comment					
Cactus is located on landside slope.					

Photo 1 of 1 : SP_2022_RD0551_175_63_20220307_00027.jpg



View of cactus at the bottom of the landside slope (Spring 2019).

LM Start	1.36	Rating **	U	Issue No.	46
LM End	1.36	Issue Type +	En	Location *	LS
Category	Earthen Levee			GPS Latitude/Longitude	
				Start	End
Item	Vegetation			38.319621 °	38.319621 °
				-121.576531 °	-121.576531 °
DWR ID	DWR_RD0551_01_f_2017_46				
Comment Code					
V6 : Landscaping					
Inspector Comment					
Landscaping should be maintained to allow inspection and access to landside slope and toe.					

Photo 1 of 1 : SP_2022_RD0551_175_46_20220307_00012.jpg



View looking upstream at landscaping on the landside slope (Fall 2019).

*** Location**
LS : Land Side N/A : Not Applicable
WS : Water Side
CR : Crown

**** Rating**
A : Acceptable N : Not Inspected/Rated
M : Minimally Acceptable C : Corrected
U : Unacceptable A/W : Acceptable but Monitor & Maintain

+ Issue Type
Ma : Maintenance Deficiency
Ob : Design & System Obsolescence
En : Enforcement

**Flood Control Project Maintenance
Levee Inspections**

Levee Inspection Report By Mile - Spring 2022

Reclamation District No. 0551 Pearson

Waterway	Bank	Unit Miles	Inspection Start/End	Inspector
Unit No. 01 Sacramento River	Left	6.78	03/10/2022 03/10/2022	David Julian

LM Start	1.43	Rating **	M	Issue No.	12	
LM End	1.43	Issue Type +	En	Location *		
Category	Supplemental			GPS Latitude/Longitude		
				Start		End
Item	DWR UCIP Field Study			38.318582 °	38.318582 °	
				-121.576498 °	-121.576498 °	
DWR ID	22972					
Comment Code						
Inspector Comment						
FS_ID:60099 DS_ID:22972 EP_NO: N/A Repair Type: Non-Urgent Crossing Status: Found UCIP Comments: 06/02/2020 Record updated from No Action Needed to Non-Urgent. No permit has been found authorizing this crossing through the levee. Conduit seems to cross intersection diagonally. (O.Yakimov - DWR UCIP) FIELD_STRUCT_DESC: 3-inch polyvinyl chloride (PVC) electrical conduit through the levee, 5 feet below the crown. Joint pole (JP) on the landside (LS) toe with a utility box on the LS shoulder. 2.5-inch steel conduit visible under bridge. FS Date: 6/2/2020 2:30:34 PM						

Photo 1 of 3 : UCIP_SP_2022_60099_87395.jpg



Top of Levee: View of intersection where conduit crossing levee

LM Start	1.43	Rating **	M	Issue No.	12 (cont)
LM End	1.43	Issue Type +	En	Location *	

Photo 2 of 3 : UCIP_SP_2022_60099_87396.jpg



Land-Side: Service box and underground christy box on levee shoulder. Junction pole at the toe

* Location LS : Land Side N/A : Not Applicable WS : Water Side CR : Crown	** Rating A : Acceptable M : Minimally Acceptable U : Unacceptable	N : Not Inspected/Rated C : Corrected A/W : Acceptable but Monitor & Maintain	+ Issue Type Ma : Maintenance Deficiency Ob : Design & System Obsolescence En : Enforcement
--	--	---	---

**Flood Control Project Maintenance
Levee Inspections**

Levee Inspection Report By Mile - Spring 2022

Reclamation District No. 0551 Pearson

Waterway	Bank	Unit Miles	Inspection Start/End	Inspector
Unit No. 01 Sacramento River	Left	6.78	03/10/2022 03/10/2022	David Julian

LM Start	1.43	Rating **	M	Issue No.	12 (cont)
LM End	1.43	Issue Type +	En	Location *	
Category	Supplemental		GPS Latitude/Longitude		
			Start	End	
Item	DWR UCIP Field Study		38.318582 °	38.318582 °	
			-121.576498 °	-121.576498 °	
DWR ID	22972				

Photo 3 of 3 : UCIP_SP_2022_60099_87397.jpg



Land-Side: View of levee shoulder at the crossing

LM Start	1.50	Rating **	M	Issue No.	13
LM End	1.50	Issue Type +	En	Location *	
Category	Supplemental		GPS Latitude/Longitude		
			Start	End	
Item	DWR UCIP Field Study		38.317480 °	38.317480 °	
			-121.576568 °	-121.576568 °	
DWR ID	21988				

Comment Code

Inspector Comment

FS_ID:60100
DS_ID:21988
EP_NO: 11148
Repair Type: Non-Urgent
Crossing Status: Found
UCIP Comments: 06/02/2020 Record updated from No Action Needed to Non-Urgent. No permit has been identified authorizing pipe. Need to have CVFPB review ABO and determine current owner. No permit found authorizing sleeving 6-inch pipe through 10-inch pipe. Pump is running - minor leaks through pump sealing. (O.Yakimov - DWR UCIP)
FIELD_STRUCT_DESC: 6-inch steel irrigation pipe sleeved through a 10-inch pipe, 6.8 feet below the crown. Pump in pump house on the waterside (WS) slope. Service pole on the landside (LS) slope. Filtration system installed on the LS toe. (10-inch pipe [HLM 1.51] authorized under Automatic Board Order (ABO) issued as Permit No. 11148, 1975 - M.C.C. Van Loben Sells). [Additional Reference(s): DWR Levee Log, 2005 (HLM 1.51). USACE Sacramento O&M Manual, Unit 111, May 1959, Revised 29 December 2016, (RM 33.29), listed as 10-inch pipe. USACE As-Built Drawing No. 06-13-1100, Sheet 12, near 'L' 1370+00, January 1933, listed as 10-inch pipe].
FS Date: 6/2/2020 3:12:27 PM

Photo 1 of 3 : UCIP_SP_2022_60100_87399.jpg



Top of Levee: View of levee crown looking downstream

* Location LS : Land Side N/A : Not Applicable WS : Water Side CR : Crown	** Rating A : Acceptable M : Minimally Acceptable U : Unacceptable	N : Not Inspected/Rated C : Corrected A/W : Acceptable but Monitor & Maintain	+ Issue Type Ma : Maintenance Deficiency Ob : Design & System Obsolescence En : Enforcement
--	--	--	---

**Flood Control Project Maintenance
Levee Inspections**

Levee Inspection Report By Mile - Spring 2022

Reclamation District No. 0551 Pearson

Waterway	Bank	Unit Miles	Inspection Start/End	Inspector
Unit No. 01 Sacramento River	Left	6.78	03/10/2022 03/10/2022	David Julian

LM Start	1.50	Rating **	M	Issue No.	13 (cont)
LM End	1.50	Issue Type +	En	Location *	
Category	Supplemental		GPS Latitude/Longitude		
			Start	End	
Item	DWR UCIP Field Study		38.317480 °	38.317480 °	
			-121.576568 °	-121.576568 °	
DWR ID	21988				

Photo 2 of 3 : UCIP_SP_2022_60100_87401.jpg



Land-Side: View of levee slope looking from crown

LM Start	1.50	Rating **	M	Issue No.	13 (cont)
LM End	1.50	Issue Type +	En	Location *	

Photo 3 of 3 : UCIP_SP_2022_60100_87402.jpg



Land-Side: Filtering and mixing facility at levee toe. 6-inch pipe daylights here

* Location LS : Land Side N/A : Not Applicable WS : Water Side CR : Crown	** Rating A : Acceptable M : Minimally Acceptable U : Unacceptable	N : Not Inspected/Rated C : Corrected A/W : Acceptable but Monitor & Maintain	+ Issue Type Ma : Maintenance Deficiency Ob : Design & System Obsolescence En : Enforcement
--	--	---	---

**Flood Control Project Maintenance
Levee Inspections**

Levee Inspection Report By Mile - Spring 2022

Reclamation District No. 0551 Pearson

Waterway	Bank	Unit Miles	Inspection Start/End	Inspector
Unit No. 01 Sacramento River	Left	6.78	03/10/2022 03/10/2022	David Julian

LM Start	1.51	Rating **	M	Issue No.	14	
LM End	1.51	Issue Type +	En	Location *		
Category	Supplemental			GPS Latitude/Longitude		
				Start		End
Item	DWR UCIP Field Study			38.317452 °	38.317452 °	
				-121.576564 °	-121.576564 °	
DWR ID	22007					
Comment Code						
Inspector Comment						
FS_ID:60128 DS_ID:22007 EP_NO: 16640 Repair Type: Non-Urgent Crossing Status: Found UCIP Comments: 06/02/2020 Record updated from No Action Needed to Non-Urgent. Unable to locate a permit authorizing to sleeve 10-inch pipe through 12-inch pipe. (O.Yakimov - DWR UCIP) FIELD_STRUCT_DESC: 10-inch coated steel irrigation pipe sleeved through a 12-inch pipe, 2 feet below the crown. Pump in pump house on the waterside (WS). Pipe discharges into a 6-foot by 10-foot concrete distribution box on the landside (LS) slope. (12-inch pipe authorized under Permit No. 16640, 1996 - Carel D. Van Loben Sels). FS Date: 6/2/2020 9:21:00 AM						

LM Start	1.51	Rating **	M	Issue No.	14 (cont)
LM End	1.51	Issue Type +	En	Location *	

Photo 1 of 3 : UCIP_SP_2022_60128_87408.jpg



Top of Levee: View of levee crown looking downstream

Photo 2 of 3 : UCIP_SP_2022_60128_87410.jpg



Land-Side: View of levee slope looking from crown

* Location LS : Land Side N/A : Not Applicable WS : Water Side CR : Crown	** Rating A : Acceptable M : Minimally Acceptable U : Unacceptable	N : Not Inspected/Rated C : Corrected A/W : Acceptable but Monitor & Maintain	+ Issue Type Ma : Maintenance Deficiency Ob : Design & System Obsolescence En : Enforcement
--	--	---	---

**Flood Control Project Maintenance
Levee Inspections**

Levee Inspection Report By Mile - Spring 2022

Reclamation District No. 0551 Pearson

Waterway	Bank	Unit Miles	Inspection Start/End	Inspector
Unit No. 01 Sacramento River	Left	6.78	03/10/2022 03/10/2022	David Julian

LM Start	1.51	Rating **	M	Issue No.	14 (cont)
LM End	1.51	Issue Type +	En	Location *	
Category	Supplemental		GPS Latitude/Longitude		
			Start	End	
Item	DWR UCIP Field Study		38.317452 °	38.317452 °	
			-121.576564 °	-121.576564 °	
DWR ID	22007				

Photo 3 of 3 : UCIP_SP_2022_60128_87411.jpg



Land-Side: Concrete distribution box at levee toe covered with metal grate

LM Start	1.53	Rating **	M	Issue No.	6
LM End	1.60	Issue Type +	En	Location *	WS
Category	Earthen Levee			GPS Latitude/Longitude	
				Start	End
Item	Vegetation			38.317138 °	38.316060 °
				-121.576567 °	-121.576688 °
DWR ID	DWR_RD0551_01_s_2012_6				
Comment Code					
V6 : Landscaping					
Inspector Comment					
Thin landscaping to allow visibility and access down waterside slope.					

Photo 1 of 1 : SP_2022_RD0551_175_6_20220307_00003.jpg



View looking downstream at landscaping on the waterside shoulder (Spring 2018).

* Location LS : Land Side N/A : Not Applicable WS : Water Side CR : Crown	** Rating A : Acceptable M : Minimally Acceptable U : Unacceptable	N : Not Inspected/Rated C : Corrected A/W : Acceptable but Monitor & Maintain	+ Issue Type Ma : Maintenance Deficiency Ob : Design & System Obsolescence En : Enforcement
--	--	---	---

**Flood Control Project Maintenance
Levee Inspections**

Levee Inspection Report By Mile - Spring 2022

Reclamation District No. 0551 Pearson

Waterway	Bank	Unit Miles	Inspection Start/End	Inspector
Unit No. 01 Sacramento River	Left	6.78	03/10/2022 03/10/2022	David Julian

LM Start	1.70	Rating **	U	Issue No.	62
LM End	1.70	Issue Type +	En	Location *	LS
Category	Earthen Levee			GPS Latitude/Longitude	
				Start	End
Item	Vegetation			38.314687 °	38.314687 °
				-121.576727 °	-121.576727 °
DWR ID	DWR_RD0551_01_s_2019_62				
Comment Code					
V6 : Landscaping					
Inspector Comment					
Landscaping is blocking the view down the landside slope.					

Photo 1 of 1 : SP_2022_RD0551_175_62_20220307_00026.jpg



View looking upstream at landscaping on the landside slope (Spring 2019).

* Location LS : Land Side N/A : Not Applicable WS : Water Side CR : Crown	** Rating A : Acceptable M : Minimally Acceptable U : Unacceptable	N : Not Inspected/Rated C : Corrected A/W : Acceptable but Monitor & Maintain	+ Issue Type Ma : Maintenance Deficiency Ob : Design & System Obsolescence En : Enforcement
--	--	---	---

**Flood Control Project Maintenance
Levee Inspections**

Levee Inspection Report By Mile - Spring 2022

Reclamation District No. 0551 Pearson

Waterway	Bank	Unit Miles	Inspection Start/End	Inspector
Unit No. 01 Sacramento River	Left	6.78	03/10/2022 03/10/2022	David Julian

LM Start	1.78	Rating **	M	Issue No.	16
LM End	1.78	Issue Type +	En	Location *	
Category	Supplemental			GPS Latitude/Longitude	
				Start	End
Item	DWR UCIP Field Study			38.313552 °	38.313552 °
				-121.576640 °	-121.576640 °
DWR ID	21990				
Comment Code					
Inspector Comment					
FS_ID:60145 DS_ID:21990 EP_NO: 11145 Repair Type: Non-Urgent Crossing Status: Found UCIP Comments: 06/02/2020 Record remains Non-Urgent. A portion on pipe on landside slope was replaced. Due to overgrown vegetation unable to locate connection of a replaced pipe segment to a pipe through the levee and evaluate levee slope condition. Pumphouse on waterside has been removed. Intake pipe at riverbank to the pump has been replaced, pipe debris left at riverbank. Unable to locate a permit for replacing the pipe segment on landside slope. No permit has been identified authorizing pipe through the levee. Need to have CVFPB review ABO and determine current owner. (O.Yakimov - DWR UCIP) Based on District notes from January 14, 2014, pump discharge pipe has been repaired. Pipe failing on LS slope causing erosion along pipe alignment. Pipe debris on both slopes should be removed as well.: As of 12/13/2013 District President noted that the landowner had made repairs to the LS slope leaks.: As of 12/17/2013 District submitted letter to landowner explaining UCIP report details including photos of the pipe problems FIELD_STRUCT_DESC: 10-inch irrigation pipe of an unknown material through the levee, 4.7 feet below the crown. Pump on concrete pad, butterfly valve, and U-shaped headwall on the waterside (WS) slope. 36-inch concrete riser on the landside (LS) toe. 1-inch electrical conduit at the same location. Service pole at the LS toe. (10-inch pipe [HLM 1.78] authorized under Automatic Board Order (ABO) issued as Permit No. 11145, 1975 - Horace D. & Lucile Towne). [Additional Reference(s): DWR Levee Log, 2005 (HLM 1.78). USACE Sacramento O&M Manual, Unit 111, May 1959, Revised 29 December 2016, (RM 33.02), listed as 8-inch pipe. USACE As-Built Drawing No. 06-13-1100, Sheet 13, RM 33, upstream of 'L' 1396+35, January 1933]. FS Date: 6/2/2020 11:15:34 AM					

Photo 1 of 3 : UCIP_SP_2022_60145_87423.jpg



Top of Levee: View of levee crown looking upstream

* Location LS : Land Side N/A : Not Applicable WS : Water Side CR : Crown	** Rating A : Acceptable M : Minimally Acceptable U : Unacceptable	N : Not Inspected/Rated C : Corrected A/W : Acceptable but Monitor & Maintain	+ Issue Type Ma : Maintenance Deficiency Ob : Design & System Obsolescence En : Enforcement
--	--	---	---

**Flood Control Project Maintenance
Levee Inspections**

Levee Inspection Report By Mile - Spring 2022

Reclamation District No. 0551 Pearson

Waterway	Bank	Unit Miles	Inspection Start/End	Inspector
Unit No. 01 Sacramento River	Left	6.78	03/10/2022 03/10/2022	David Julian

LM Start	1.78	Rating **	M	Issue No.	16 (cont)
LM End	1.78	Issue Type +	En	Location *	
Category	Supplemental		GPS Latitude/Longitude		
			Start	End	
Item	DWR UCIP Field Study		38.313552 °	38.313552 °	
			-121.576640 °	-121.576640 °	
DWR ID	21990				

Photo 2 of 3 : UCIP_SP_2022_60145_87425.jpg



Land-Side: View of levee slope looking from crown

LM Start	1.78	Rating **	M	Issue No.	16 (cont)
LM End	1.78	Issue Type +	En	Location *	

Photo 3 of 3 : UCIP_SP_2022_60145_87424.jpg



Water-Side: View of levee slope looking from crown

* Location LS : Land Side N/A : Not Applicable WS : Water Side CR : Crown	** Rating A : Acceptable M : Minimally Acceptable U : Unacceptable	N : Not Inspected/Rated C : Corrected A/W : Acceptable but Monitor & Maintain	+ Issue Type Ma : Maintenance Deficiency Ob : Design & System Obsolescence En : Enforcement
--	--	---	---

**Flood Control Project Maintenance
Levee Inspections**

Levee Inspection Report By Mile - Spring 2022

Reclamation District No. 0551 Pearson

Waterway	Bank	Unit Miles	Inspection Start/End	Inspector
Unit No. 01 Sacramento River	Left	6.78	03/10/2022 03/10/2022	David Julian

LM Start	2.01	Rating **	M	Issue No.	18	
LM End	2.01	Issue Type +	En	Location *		
Category	Supplemental			GPS Latitude/Longitude		
				Start		End
Item	DWR UCIP Field Study			38.310237 °		38.310237 °
				-121.575470 °		-121.575470 °
DWR ID	22040					
Comment Code						
Inspector Comment						
FS_ID:60156 DS_ID:22040 EP_NO: 3676 Repair Type: Non-Urgent Crossing Status: Not Found UCIP Comments: 06/02/2020 Record remains Non-Urgent. Crossing not found. Cut in road pavement is still visible. No permit has been identified authorizing original 12-inch pipe. (O.Yakimov - DWR UCIP) 04/10/2013 Fresh cut through pavement on crown indicates recent work on pipes at this location. Need to determine if pipe was removed or abandoned in place. (W.Wylie - DWR UCIP) FIELD_STRUCT_DESC: 8-inch coated steel irrigation pipe sleeved through a 12-inch pipe through the levee, 5 feet below the crown. Pump on platform on the waterside (WS). (Sleeving 8-inch pipe through existing 12-inch pipe authorized under Permit No. 3676, 1961 - Runyon and Dorsey). [Additional Reference(s): DWR Levee Log, 2005 (HLM 2.02). USACE Sacramento O&M Manual, Unit 111, May 1959, Revised 29 December 2016, (RM 32.78), listed as 10-inch pipe]. FS Date: 6/2/2020 1:33:33 PM						

LM Start	2.01	Rating **	M	Issue No.	18 (cont)
LM End	2.01	Issue Type +	En	Location *	

Photo 1 of 3 : UCIP_SP_2022_60156_87427.jpg



Top of Levee: View of levee crown looking towards landside. Cut in road pavement visible

Photo 2 of 3 : UCIP_SP_2022_60156_87428.jpg



Land-Side: View of levee slope looking from crown

* Location LS : Land Side N/A : Not Applicable WS : Water Side CR : Crown		** Rating A : Acceptable N : Not Inspected/Rated M : Minimally Acceptable C : Corrected U : Unacceptable A/W : Acceptable but Monitor & Maintain		+ Issue Type Ma : Maintenance Deficiency Ob : Design & System Obsolescence En : Enforcement
--	--	---	--	---

**Flood Control Project Maintenance
Levee Inspections**

Levee Inspection Report By Mile - Spring 2022

Reclamation District No. 0551 Pearson

Waterway	Bank	Unit Miles	Inspection Start/End	Inspector
Unit No. 01 Sacramento River	Left	6.78	03/10/2022 03/10/2022	David Julian

LM Start	2.01	Rating **	M	Issue No.	18 (cont)
LM End	2.01	Issue Type +	En	Location *	
Category	Supplemental		GPS Latitude/Longitude		
			Start	End	
Item	DWR UCIP Field Study		38.310237 °	38.310237 °	
			-121.575470 °	-121.575470 °	
DWR ID	22040				

Photo 3 of 3 : UCIP_SP_2022_60156_87429.jpg



Water-Side: View of levee slope looking from crown

LM Start	2.01	Rating **	M	Issue No.	19
LM End	2.01	Issue Type +	En	Location *	
Category	Supplemental		GPS Latitude/Longitude		
			Start	End	
Item	DWR UCIP Field Study		38.310223 °	38.310223 °	
			-121.575458 °	-121.575458 °	
DWR ID	21991				

Comment Code

Inspector Comment

FS_ID:60178
DS_ID:21991
EP_NO: 6551
Repair Type: Non-Urgent
Crossing Status: Found
UCIP Comments: 06/02/2020 Record remains Non-Urgent. No permit has been identified authorizing original 14-inch pipe. Pipe was running, no leaks observed. (O.Yakimov - DWR UCIP)
04/10/2013 Rodent activity undermining pipe on LS slope. (W.Wylie - DWR UCIP)
FIELD_STRUCT_DESC: 10-inch steel irrigation pipe sleeved through 14-inch polyvinyl chloride (PVC) wrapped steel pipe through the levee, 3 feet below the crown. Butterfly valve on the waterside (WS) shoulder. 2-inch galvanized electrical conduit at the same location. Pump on pile structure on the WS toe. Screen filter and 2 additional pumps on the landside (LS) toe. (Sleeving 10-inch pipe through existing 16-inch pipe authorized under Permit No. 6551, 1969 - John D. Wheeler). [Additional Reference(s): DWR Levee Log, 2005 (HLM 2.02). USACE Sacramento O&M Manual, Unit 111, May 1959, Revised 29 December 2016, (RM 32.78), listed as 14-inch pipe]. USACE As-Built Drawing No. 06-13-1100, Sheet 13, near 'L' 1406+40, January 1933, listed as 14-inch pipe].
FS Date: 6/2/2020 4:05:03 PM

Photo 1 of 3 : UCIP_SP_2022_60178_87494.jpg



Top of Levee: View of levee crown looking towards landside. Cut in road pavement visible

* Location LS : Land Side N/A : Not Applicable WS : Water Side CR : Crown	** Rating A : Acceptable M : Minimally Acceptable U : Unacceptable	N : Not Inspected/Rated C : Corrected A/W : Acceptable but Monitor & Maintain	+ Issue Type Ma : Maintenance Deficiency Ob : Design & System Obsolescence En : Enforcement
--	--	--	---

**Flood Control Project Maintenance
Levee Inspections**

Levee Inspection Report By Mile - Spring 2022

Reclamation District No. 0551 Pearson

Waterway	Bank	Unit Miles	Inspection Start/End	Inspector
Unit No. 01 Sacramento River	Left	6.78	03/10/2022 03/10/2022	David Julian

LM Start	2.01	Rating **	M	Issue No.	19 (cont)
LM End	2.01	Issue Type +	En	Location *	
Category	Supplemental			GPS Latitude/Longitude	
				Start	End
Item	DWR UCIP Field Study			38.310223 °	38.310223 °
				-121.575458 °	-121.575458 °
DWR ID	21991				

Photo 2 of 3 : UCIP_SP_2022_60178_87495.jpg



Water-Side: View of levee slope looking from crown

LM Start	2.01	Rating **	M	Issue No.	19 (cont)
LM End	2.01	Issue Type +	En	Location *	

Photo 3 of 3 : UCIP_SP_2022_60178_87496.jpg



Land-Side: View of levee slope looking from crown

* Location LS : Land Side N/A : Not Applicable WS : Water Side CR : Crown	** Rating A : Acceptable M : Minimally Acceptable U : Unacceptable	N : Not Inspected/Rated C : Corrected A/W : Acceptable but Monitor & Maintain	+ Issue Type Ma : Maintenance Deficiency Ob : Design & System Obsolescence En : Enforcement
--	--	---	---

**Flood Control Project Maintenance
Levee Inspections**

Levee Inspection Report By Mile - Spring 2022

Reclamation District No. 0551 Pearson

Waterway	Bank	Unit Miles	Inspection Start/End	Inspector
Unit No. 01 Sacramento River	Left	6.78	03/10/2022 03/10/2022	David Julian

LM Start	2.22	Rating **	M	Issue No.	22
LM End	2.22	Issue Type +	En	Location *	
Category	Supplemental			GPS Latitude/Longitude	
				Start	End
Item	DWR UCIP Field Study			38.307676 °	38.307676 °
				-121.573530 °	-121.573530 °
DWR ID	21992				
Comment Code					
Inspector Comment					
FS_ID:60214 DS_ID:21992 EP_NO: N/A Repair Type: Non-Urgent Crossing Status: Not Found UCIP Comments: 06/02/2020 Record updated from No Action Needed to Non-Urgent. Crossing not found. Concrete retaining wall on waterside shoulder at this place. Need to confirm proper method of abandonment. No permit has been identified authorizing pipe. (O.Yakimov - DWR UCIP) FIELD_STRUCT_DESC: 4-inch pipe of an unknown material or purpose through the levee, 7.7 feet below the crown. Filled with concrete. Concrete headwall along the waterside (WS) shoulder may be a good indicator of pipe location. (Cat. IVA - Wheeler). [Additional Reference(s): DWR Levee Log, 2005 (HLM 2.24). USACE Sacramento O&M Manual, Unit 111, May 1959, Revised 29 December 2016, (RM 32.56), listed as 4-inch pipe. USACE As-Built Drawing No. 06-13-1100, Sheet 13, 'L' 1416+45, January 1933]. FS Date: 6/2/2020 7:59:52 AM					

LM Start	2.22	Rating **	M	Issue No.	22 (cont)
LM End	2.22	Issue Type +	En	Location *	

Photo 1 of 3 : UCIP_SP_2022_60214_87501.jpg



Top of Levee: View of levee crown looking downstream

Photo 2 of 3 : UCIP_SP_2022_60214_87502.jpg



Land-Side: View of levee slope looking from crown

* Location LS : Land Side N/A : Not Applicable WS : Water Side CR : Crown	** Rating A : Acceptable M : Minimally Acceptable U : Unacceptable	N : Not Inspected/Rated C : Corrected A/W : Acceptable but Monitor & Maintain	+ Issue Type Ma : Maintenance Deficiency Ob : Design & System Obsolescence En : Enforcement
--	--	---	---

**Flood Control Project Maintenance
Levee Inspections**

Levee Inspection Report By Mile - Spring 2022

Reclamation District No. 0551 Pearson

Waterway	Bank	Unit Miles	Inspection Start/End	Inspector
Unit No. 01 Sacramento River	Left	6.78	03/10/2022 03/10/2022	David Julian

LM Start	2.22	Rating **	M	Issue No.	22 (cont)
LM End	2.22	Issue Type +	En	Location *	
Category	Supplemental		GPS Latitude/Longitude		
			Start	End	
Item	DWR UCIP Field Study		38.307676 °	38.307676 °	
			-121.573530 °	-121.573530 °	
DWR ID	21992				

Photo 3 of 3 : UCIP_SP_2022_60214_87503.jpg



Water-Side: View of levee slope looking from crown

LM Start	2.25	Rating **	U	Issue No.	47
LM End	2.35	Issue Type +	En	Location *	LS
Category	Earthen Levee			GPS Latitude/Longitude	
				Start	End
Item	Vegetation			38.307283 °	38.306025 °
				-121.573182 °	-121.572387 °
DWR ID	DWR_RD0551_01_f_2017_47				
Comment Code					
V6 : Landscaping					
Inspector Comment					
Landscaping hides levee slope. Toe is mostly visible. Landscaping should be maintained to allow inspection and access to landside slope and toe.					

Photo 1 of 1 : SP_2022_RD0551_175_47_20220307_00013.jpg



View looking upstream at landscaping on the landside slope (Fall 2019).

LM Start	2.26	Rating **	M	Issue No.	61
LM End	2.35	Issue Type +	En	Location *	LS
Category	Earthen Levee			GPS Latitude/Longitude	
				Start	End
Item	Encroachments			38.307220 °	38.305995 °
				-121.573153 °	-121.572367 °
DWR ID	DWR_RD0551_01_s_2019_61				
Comment Code					
FE : Fence					
Inspector Comment					
A chainlink fence is located on the landside.					

Photo 1 of 1 : SP_2022_RD0551_175_61_20220307_00025.jpg



View looking upstream at chainlink fence on the landside slope (Spring 2019).

* Location		** Rating		+ Issue Type	
LS : Land Side	N/A : Not Applicable	A : Acceptable	N : Not Inspected/Rated	Ma : Maintenance Deficiency	
WS : Water Side		M : Minimally Acceptable	C : Corrected	Ob : Design & System Obsolescence	
CR : Crown		U : Unacceptable	A/W : Acceptable but Monitor & Maintain	En : Enforcement	

**Flood Control Project Maintenance
Levee Inspections**

Levee Inspection Report By Mile - Spring 2022

Reclamation District No. 0551 Pearson

Waterway	Bank	Unit Miles	Inspection Start/End	Inspector
Unit No. 01 Sacramento River	Left	6.78	03/10/2022 03/10/2022	David Julian

LM Start	2.37	Rating **	M	Issue No.	99
LM End	3.39	Issue Type +	Ma	Location *	LS
Category	Earthen Levee			GPS Latitude/Longitude	
				Start	End
Item	Vegetation			38.305807 °	38.293317 °
				-121.572278 °	-121.562110 °
DWR ID	DWR_RD0551_01_s_2022_99				
Comment Code					
V1 : Control annual grass and weeds on the levee slopes and easements.					
Inspector Comment					

Photo 1 of 1 : SP_2022_RD0551_175_99_20220311_00185.jpg



View looking upstream at annual vegetation on the landside slope (Spring 2022).

LM Start	2.41	Rating **	M	Issue No.	26
LM End	2.41	Issue Type +	En	Location *	
Category	Supplemental			GPS Latitude/Longitude	
				Start	End
Item	DWR UCIP Field Study			38.305234 °	38.305234 °
				-121.572030 °	-121.572030 °
DWR ID	21993				
Comment Code					
Inspector Comment					

Photo 1 of 3 : UCIP_SP_2022_60216_19224.jpg



Steel pile platform remains at WS toe.

FS_ID:60216
DS_ID:21993
EP_NO: 1248
Repair Type: Non-Urgent
Crossing Status: Indicator Found
UCIP Comments: 06/02/2020 Record updated from No Action Needed to Non-Urgent. Crossing appears abandoned. Unable to locate a permit and confirm proper pipe abandonment. (O.Yakimov - DWR UCIP)

FIELD_STRUCT_DESC: 10-inch irrigation pipe of an unknown material through the levee, 5 feet below the crown. Concrete plug on the waterside (WS) end. Concrete headwall, electrical connection box, concrete abutment on WS slope. Steel pile pumping platform remains at the WS toe. No pump or other appurtenances found. (12-inch pipe authorized under Permit No. 1248, 1947 - Estate of Laura R. Dorsey). [Additional Reference(s): DWR Levee Log, 2005 (HLM 2.42). USACE As-Built Drawing No. 50-04-2983, Sheet 9, STA 1+45, March 1954, listed as 8-inch pipe].
FS Date: 6/2/2020 8:36:51 AM

* Location LS : Land Side N/A : Not Applicable WS : Water Side CR : Crown	** Rating A : Acceptable M : Minimally Acceptable U : Unacceptable	N : Not Inspected/Rated C : Corrected A/W : Acceptable but Monitor & Maintain	+ Issue Type Ma : Maintenance Deficiency Ob : Design & System Obsolescence En : Enforcement
--	--	--	---

**Flood Control Project Maintenance
Levee Inspections**

Levee Inspection Report By Mile - Spring 2022

Reclamation District No. 0551 Pearson

Waterway	Bank	Unit Miles	Inspection Start/End	Inspector
Unit No. 01 Sacramento River	Left	6.78	03/10/2022 03/10/2022	David Julian

LM Start	2.41	Rating **	M	Issue No.	26 (cont)
LM End	2.41	Issue Type +	En	Location *	
Category	Supplemental			GPS Latitude/Longitude	
				Start	End
Item	DWR UCIP Field Study			38.305234 °	38.305234 °
				-121.572030 °	-121.572030 °
DWR ID	21993				

Photo 2 of 3 : UCIP_SP_2022_60216_87506.jpg



Enter photo 2 description or comment here.

LM Start	2.41	Rating **	M	Issue No.	26 (cont)
LM End	2.41	Issue Type +	En	Location *	

Photo 3 of 3 : UCIP_SP_2022_60216_87507.jpg



Enter photo 3 description or comment here.

* Location LS : Land Side N/A : Not Applicable WS : Water Side CR : Crown	** Rating A : Acceptable M : Minimally Acceptable U : Unacceptable	N : Not Inspected/Rated C : Corrected A/W : Acceptable but Monitor & Maintain	+ Issue Type Ma : Maintenance Deficiency Ob : Design & System Obsolescence En : Enforcement
--	--	---	---

**Flood Control Project Maintenance
Levee Inspections**

Levee Inspection Report By Mile - Spring 2022

Reclamation District No. 0551 Pearson

Waterway	Bank	Unit Miles	Inspection Start/End	Inspector
Unit No. 01 Sacramento River	Left	6.78	03/10/2022 03/10/2022	David Julian

LM Start	2.41	Rating **	M	Issue No.	27
LM End	2.41	Issue Type +	En	Location *	
Category	Supplemental			GPS Latitude/Longitude	
				Start	End
Item	DWR UCIP Field Study			38.305189 °	38.305189 °
				-121.572012 °	-121.572012 °
DWR ID	21994				
Comment Code					
Inspector Comment					
FS_ID:60233 DS_ID:21994 EP_NO: 11141 Repair Type: Non-Urgent Crossing Status: Found UCIP Comments: 06/02/2020 Record remains Non-Urgent. Field measured pipe through the levee to be 11-inch in diameter. 8-inch pipe sleeved through 11-inch pipe. Annular space between pipes seems to be grouted. Concrete standpipe at landside levee toe has been removed. Unable to locate a permit for modifications. No permit has been identified authorizing original pipe. Need to have CVFPB review ABO and determine current owner. (O.Yakimov - DWR UCIP) 04/10/2013 Records indicate this pipe was abandoned, but it appears to be active. Verify status. (W.Wylie - DWR UCIP) FIELD_STRUCT_DESC: 8-inch steel irrigation pipe sleeved through 11-inch pipe through the levee, 8 feet below the crown. Slant pump on the waterside (WS) slope. Service pole on the landside (LS) slope with a 1.5-inch galvanized iron electrical conduit through the levee at the same location. This crossing replaces 12-inch pipe (see DSID 25637). (12-inch pipe authorized under Permit No. 747, 1938 - Runyon And Stephenson). (12-inch pipe [HLM 2.32] authorized under Automatic Board Order (ABO) issued as Permit No. 1975, 1975 - Adele Runyon, Et Al). [Additional Reference(s): DWR Levee Log, 2005 (HLM 2.42), listed as 12-inch pipe. USACE Sacramento O&M Manual, Unit 111, May 1959, Revised 29 December 2016, (RM 32.38), listed as 12-inch pipe. USACE As-Built Drawing No. 06-13-1100, Sheet 13, 'L' 1422+78, January 1933, listed as 12-inch pipe. USACE As-Built Drawing No. 50-04-2983, Sheet 9, STA 1+50, March 1954]. FS Date: 6/2/2020 9:53:01 AM					

Photo 1 of 3 : UCIP_SP_2022_60233_87514.jpg



Top of Levee: View of levee crown looking towards waterside

* Location LS : Land Side N/A : Not Applicable WS : Water Side CR : Crown	** Rating A : Acceptable M : Minimally Acceptable U : Unacceptable N : Not Inspected/Rated C : Corrected A/W : Acceptable but Monitor & Maintain	+ Issue Type Ma : Maintenance Deficiency Ob : Design & System Obsolescence En : Enforcement
--	---	---

**Flood Control Project Maintenance
Levee Inspections**

Levee Inspection Report By Mile - Spring 2022

Reclamation District No. 0551 Pearson

Waterway	Bank	Unit Miles	Inspection Start/End	Inspector
Unit No. 01 Sacramento River	Left	6.78	03/10/2022 03/10/2022	David Julian

LM Start	2.41	Rating **	M	Issue No.	27 (cont)
LM End	2.41	Issue Type +	En	Location *	
Category	Supplemental		GPS Latitude/Longitude		
			Start	End	
Item	DWR UCIP Field Study		38.305189 °	38.305189 °	
			-121.572012 °	-121.572012 °	
DWR ID	21994				

Photo 2 of 3 : UCIP_SP_2022_60233_87513.jpg



Land-Side: View of levee slope looking from crown

LM Start	2.41	Rating **	M	Issue No.	27 (cont)
LM End	2.41	Issue Type +	En	Location *	

Photo 3 of 3 : UCIP_SP_2022_60233_87517.jpg



Land-Side: Overview of levee slope. Concrete standpipe is gone

LM Start	2.62	Rating **	M	Issue No.	88
LM End	2.62	Issue Type +	Ma	Location *	LS
Category	Earthen Levee			GPS Latitude/Longitude	
				Start	End
Item	Animal Control			38.302511 °	38.302511 °
				-121.570354 °	-121.570354 °
DWR ID	DWR_RD0551_01_f_2021_88				
Comment Code					
A1 : Exterminate rodents and backfill and compact or grout burrows.					
Inspector Comment					

Photo 1 of 1 : SP_2022_RD0551_175_88_20220307_00031.jpg



View looking multiple animal holes in the landside slope (Fall 2021).

* Location LS : Land Side N/A : Not Applicable WS : Water Side CR : Crown		** Rating A : Acceptable M : Minimally Acceptable U : Unacceptable		+ Issue Type Ma : Maintenance Deficiency Ob : Design & System Obsolescence En : Enforcement	
		N : Not Inspected/Rated C : Corrected A/W : Acceptable but Monitor & Maintain			

**Flood Control Project Maintenance
Levee Inspections**

Levee Inspection Report By Mile - Spring 2022

Reclamation District No. 0551 Pearson

Waterway	Bank	Unit Miles	Inspection Start/End	Inspector
Unit No. 01 Sacramento River	Left	6.78	03/10/2022 03/10/2022	David Julian

LM Start	2.96	Rating **	M	Issue No.	28
LM End	2.96	Issue Type +	En	Location *	
Category	Supplemental			GPS Latitude/Longitude	
				Start	End
Item	DWR UCIP Field Study			38.298323 °	38.298323 °
				-121.566941 °	-121.566941 °
DWR ID	22032				
Comment Code					
Inspector Comment					
FS_ID:60293 DS_ID:22032 EP_NO: 1204 Repair Type: Non-Urgent Crossing Status: Found UCIP Comments: 06/02/2020 Record remains Non-Urgent. Unable to locate a permit authorizing to sleeve 10-inch pipe through 12-inch pipe. Wet spot on the ground observed at concrete standpipe. (O.Yakimov - DWR UCIP) 04/10/2013 Gap between sleeved pipes does not appear to be grouted on LS slope. (W.Wylie - DWR UCIP) FIELD_STRUCT_DESC: 12-inch steel irrigation conduit through the levee, 6 feet below the crown. 10-inch irrigation pipe sleeved through the 12-inch conduit. Pump on pile structure on the waterside (WS) toe. 48-inch concrete riser on the landside (LS) toe. (12-inch pipe authorized under Permit No. 1204, 1947 - M. J. Barry Estate). [Additional Reference(s): USACE Sacramento O&M Manual, Unit 111, May 1959, Revised 29 December 2016, (RM 31.82), listed as 12-inch pipe]. USACE As-Built Drawing No. 06-13-1100, Sheet 13, upstream of 'L' 1460+20, January 1933. USACE As-Built Drawing No. 50-04-2983, Sheet 8, STA 30+80, March 1954]. FS Date: 6/2/2020 1:26:54 PM					
LM Start	2.96	Rating **	M	Issue No.	28 (cont)
LM End	2.96	Issue Type +	En	Location *	

Photo 1 of 3 : UCIP_SP_2022_60293_87552.jpg



Top of Levee: View of levee crown looking downstream

Photo 2 of 3 : UCIP_SP_2022_60293_87555.jpg



Water-Side: Pump on pile structure in river channel

* Location LS : Land Side N/A : Not Applicable WS : Water Side CR : Crown	** Rating A : Acceptable M : Minimally Acceptable U : Unacceptable	N : Not Inspected/Rated C : Corrected A/W : Acceptable but Monitor & Maintain	+ Issue Type Ma : Maintenance Deficiency Ob : Design & System Obsolescence En : Enforcement
--	--	---	---

**Flood Control Project Maintenance
Levee Inspections**

Levee Inspection Report By Mile - Spring 2022

Reclamation District No. 0551 Pearson

Waterway	Bank	Unit Miles	Inspection Start/End	Inspector
Unit No. 01 Sacramento River	Left	6.78	03/10/2022 03/10/2022	David Julian

LM Start	2.96	Rating **	M	Issue No.	29 (cont)
LM End	2.96	Issue Type +	En	Location *	
Category	Supplemental		GPS Latitude/Longitude		
			Start	End	
Item	DWR UCIP Field Study		38.298311 °	38.298311 °	
			-121.566932 °	-121.566932 °	
DWR ID	22010				

Photo 2 of 3 : UCIP_SP_2022_60299_87561.jpg



Water-Side: View of levee slope looking from crown

LM Start	2.96	Rating **	M	Issue No.	29 (cont)
LM End	2.96	Issue Type +	En	Location *	

Photo 3 of 3 : UCIP_SP_2022_60299_87562.jpg



Land-Side: View of levee slope looking from crown

* Location LS : Land Side N/A : Not Applicable WS : Water Side CR : Crown	** Rating A : Acceptable M : Minimally Acceptable U : Unacceptable	N : Not Inspected/Rated C : Corrected A/W : Acceptable but Monitor & Maintain	+ Issue Type Ma : Maintenance Deficiency Ob : Design & System Obsolescence En : Enforcement
--	--	---	---

**Flood Control Project Maintenance
Levee Inspections**

Levee Inspection Report By Mile - Spring 2022

Reclamation District No. 0551 Pearson

Waterway	Bank	Unit Miles	Inspection Start/End	Inspector
Unit No. 01 Sacramento River	Left	6.78	03/10/2022 03/10/2022	David Julian

LM Start	2.96	Rating **	M	Issue No.	30
LM End	2.96	Issue Type +	En	Location *	
Category	Supplemental			GPS Latitude/Longitude	
				Start	End
Item	DWR UCIP Field Study			38.298311 °	38.298311 °
				-121.566950 °	-121.566950 °
DWR ID	22042				
Comment Code					
Inspector Comment					
FS_ID:60300 DS_ID:22042 EP_NO: N/A Repair Type: Non-Urgent Crossing Status: Found UCIP Comments: 06/02/2020 Record updated from No Action Needed to Non-Urgent. No permit has been found authorizing this pipe through the levee. (O.Yakimov - DWR UCIP) FIELD_STRUCT_DESC: 1.5-inch steel electrical conduit through the levee, 3 feet below the crown. Service pole, connection box, and electric meter at landside toe. Provides power to a pump on pile structure in river channel. On waterside attached to the walkway. FS Date: 6/2/2020 3:24:24 PM					

Photo 1 of 3 : UCIP_SP_2022_60300_87565.jpg



Top of Levee: View of levee crown looking downstream

LM Start	2.96	Rating **	M	Issue No.	30 (cont)
LM End	2.96	Issue Type +	En	Location *	

Photo 2 of 3 : UCIP_SP_2022_60300_87566.jpg



Water-Side: View of levee slope looking from crown

* Location LS : Land Side N/A : Not Applicable WS : Water Side CR : Crown	** Rating A : Acceptable M : Minimally Acceptable U : Unacceptable	N : Not Inspected/Rated C : Corrected A/W : Acceptable but Monitor & Maintain	+ Issue Type Ma : Maintenance Deficiency Ob : Design & System Obsolescence En : Enforcement
--	--	---	---

**Flood Control Project Maintenance
Levee Inspections**

Levee Inspection Report By Mile - Spring 2022

Reclamation District No. 0551 Pearson

Waterway	Bank	Unit Miles	Inspection Start/End	Inspector
Unit No. 01 Sacramento River	Left	6.78	03/10/2022 03/10/2022	David Julian

LM Start	2.96	Rating **	M	Issue No.	30 (cont)
LM End	2.96	Issue Type +	En	Location *	
Category	Supplemental			GPS Latitude/Longitude	
				Start	End
Item	DWR UCIP Field Study			38.298311 °	38.298311 °
				-121.566950 °	-121.566950 °
DWR ID	22042				

Photo 3 of 3 : UCIP_SP_2022_60300_87567.jpg



Land-Side: View of levee slope looking from crown

LM Start	2.97	Rating **	M	Issue No.	86
LM End	3.25	Issue Type +	Ma	Location *	WS
Category	Earthen Levee			GPS Latitude/Longitude	
				Start	End
Item	Vegetation			38.298158 °	38.294864 °
				-121.566820 °	-121.563800 °
DWR ID	DWR_RD0551_01_s_2022_86				
Comment Code					
V1 : Control annual grass and weeds on the levee slopes and easements.					
Inspector Comment					

No Photos

LM Start	3.01	Rating **	U	Issue No.	56
LM End	3.03	Issue Type +	En	Location *	LS
Category	Earthen Levee			GPS Latitude/Longitude	
				Start	End
Item	Vegetation			38.297744 °	38.297527 °
				-121.566446 °	-121.566225 °
DWR ID	DWR_RD0551_01_f_2018_56				
Comment Code					
V6 : Landscaping					
Inspector Comment					

Photo 1 of 1 : SP_2022_RD0551_175_56_20220307_00020.jpg



View looking upstream at landscaping on the landside slope (November 2018).

* Location LS : Land Side N/A : Not Applicable WS : Water Side CR : Crown	** Rating A : Acceptable M : Minimally Acceptable U : Unacceptable	N : Not Inspected/Rated C : Corrected A/W : Acceptable but Monitor & Maintain	+ Issue Type Ma : Maintenance Deficiency Ob : Design & System Obsolescence En : Enforcement
--	--	--	---

**Flood Control Project Maintenance
Levee Inspections**

Levee Inspection Report By Mile - Spring 2022

Reclamation District No. 0551 Pearson

Waterway	Bank	Unit Miles	Inspection Start/End	Inspector
Unit No. 01 Sacramento River	Left	6.78	03/10/2022 03/10/2022	David Julian

LM Start	3.38	Rating **	M	Issue No.	31	
LM End	3.38	Issue Type +	En	Location *		
Category	Supplemental			GPS Latitude/Longitude		
				Start	End	
Item	DWR UCIP Field Study			38.293486 °	38.293486 °	
				-121.562328 °	-121.562328 °	
DWR ID	22041					
Comment Code						
Inspector Comment						
FS_ID:60354 DS_ID:22041 EP_NO: N/A Repair Type: Non-Urgent Crossing Status: Found UCIP Comments: 06/03/2020 Record updated from No Action Needed to Non-Urgent. Damaged CMP riser on landside slope missing cover - safety issue. Pump on waterside slope is removed and replaced with submersible pump. Unable to find a permit for modification. No permit has been identified authorizing pipe through levee. (O.Yakimov - DWR UCIP)						
FIELD_STRUCT_DESC: 12-inch steel irrigation pipe through the levee, 6 feet below the crown. Pipe measures 10 inches in diameter at the slopes of the levee. Metal steps to pump on concrete pad on the waterside (WS). Vent in a 36-inch corrugated metal pipe (CMP) riser on the landside (LS) shoulder. 1-inch electrical conduit at the same location with an electrical panel on a pole at the LS toe. [Additional Reference(s): USACE Sacramento O&M Manual, Unit 111, May 1959, Revised 29 December 2016, (RM 31.38), listed as 12-inch pipe. USACE As-Built Drawing No. 06-13-1100, Sheet 13, upstream of 'L' 1482+00, January 1933]. FS Date: 6/3/2020 11:25:42 AM						

Photo 1 of 3 : UCIP_SP_2022_60354_87569.jpg



Top of Levee: View of levee crown looking towards landside. Cut in pavement in pipe alignment is visible

LM Start	3.38	Rating **	M	Issue No.	31 (cont)
LM End	3.38	Issue Type +	En	Location *	

Photo 2 of 3 : UCIP_SP_2022_60354_87570.jpg



Water-Side: View of levee slope looking from crown

* Location LS : Land Side N/A : Not Applicable WS : Water Side CR : Crown	** Rating A : Acceptable M : Minimally Acceptable U : Unacceptable	N : Not Inspected/Rated C : Corrected A/W : Acceptable but Monitor & Maintain	+ Issue Type Ma : Maintenance Deficiency Ob : Design & System Obsolescence En : Enforcement
--	--	---	---

**Flood Control Project Maintenance
Levee Inspections**

Levee Inspection Report By Mile - Spring 2022

Reclamation District No. 0551 Pearson

Waterway	Bank	Unit Miles	Inspection Start/End	Inspector
Unit No. 01 Sacramento River	Left	6.78	03/10/2022 03/10/2022	David Julian

LM Start	3.40	Rating **	M	Issue No.	32 (cont)
LM End	3.40	Issue Type +	En	Location *	
Category	Supplemental		GPS Latitude/Longitude		
			Start	End	
Item	DWR UCIP Field Study		38.293290 °	38.293290 °	
			-121.562120 °	-121.562120 °	
DWR ID	22011				

Photo 2 of 3 : UCIP_SP_2022_60363_87584.jpg



Water-Side: View of levee slope looking from crown

LM Start	3.40	Rating **	M	Issue No.	32 (cont)
LM End	3.40	Issue Type +	En	Location *	

Photo 3 of 3 : UCIP_SP_2022_60363_87585.jpg



Water-Side: Pump on pile structure in the stream, walkway bridge

LM Start	3.45	Rating **	U	Issue No.	55
LM End	3.45	Issue Type +	En	Location *	LS
Category	Earthen Levee			GPS Latitude/Longitude	
				Start	End
Item	Vegetation			38.292710 °	38.292710 °
				-121.561440 °	-121.561440 °
DWR ID	DWR_RD0551_01_f_2018_55				
Comment Code					
V6 : Landscaping					
Inspector Comment					

Photo 1 of 1 : SP_2022_RD0551_175_55_20220307_00019.jpg



View looking downstream at landscaping on the landside slope (Fall 2019).

* Location LS : Land Side N/A : Not Applicable WS : Water Side CR : Crown		** Rating A : Acceptable M : Minimally Acceptable U : Unacceptable N : Not Inspected/Rated C : Corrected A/W : Acceptable but Monitor & Maintain		+ Issue Type Ma : Maintenance Deficiency Ob : Design & System Obsolescence En : Enforcement	
--	--	---	--	---	--

**Flood Control Project Maintenance
Levee Inspections**

Levee Inspection Report By Mile - Spring 2022

Reclamation District No. 0551 Pearson

Waterway	Bank	Unit Miles	Inspection Start/End	Inspector
Unit No. 01 Sacramento River	Left	6.78	03/10/2022 03/10/2022	David Julian

LM Start	3.51	Rating **	M	Issue No.	33	
LM End	3.51	Issue Type +	En	Location *		
Category	Supplemental			GPS Latitude/Longitude		
				Start	End	
Item	DWR UCIP Field Study			38.292039 °	38.292039 °	
				-121.560795 °	-121.560795 °	
DWR ID	22033					
Comment Code						
Inspector Comment						
FS_ID:60380 DS_ID:22033 EP_NO: N/A Repair Type: Non-Urgent Crossing Status: Not Found UCIP Comments: 06/03/2020 Record updated from No Action Needed in place by grouting with concrete authorized under Permit No. 2276. No permit has been identified authorizing pipe installation. Pipe was abandoned in place and grouted with concrete under Permit No. 2276. (O.Yakimov - DWR UCIP) FIELD_STRUCT_DESC: 8-inch steel irrigation pipe through the levee, 6.7 feet below the crown. Pump on the waterside (WS). (Abandonment in place by grouting with concrete authorized under Permit No. 2276, 1956 - Paul V. Amick Sr.). [Additional Reference(s): USACE Sacramento O&M Manual, Unit 111, May 1959, Revised 29 December 2016, (RM 31.26), listed as 8-inch pipe. USACE As-Built Drawing No. 06-13-1100, Sheet 13, downstream of 'L' 1482+00, January 1933]. FS Date: 6/3/2020 2:29:58 PM						

LM Start	3.51	Rating **	M	Issue No.	33 (cont)
LM End	3.51	Issue Type +	En	Location *	

Photo 1 of 3 : UCIP_SP_2022_60380_87590.jpg



Top of Levee: View of levee crown looking towards landside

Photo 2 of 3 : UCIP_SP_2022_60380_87591.jpg



Water-Side: View of levee slope looking from crown

* Location LS : Land Side N/A : Not Applicable WS : Water Side CR : Crown	** Rating A : Acceptable M : Minimally Acceptable U : Unacceptable	N : Not Inspected/Rated C : Corrected A/W : Acceptable but Monitor & Maintain	+ Issue Type Ma : Maintenance Deficiency Ob : Design & System Obsolescence En : Enforcement
--	--	---	---

**Flood Control Project Maintenance
Levee Inspections**

Levee Inspection Report By Mile - Spring 2022

Reclamation District No. 0551 Pearson

Waterway	Bank	Unit Miles	Inspection Start/End	Inspector
Unit No. 01 Sacramento River	Left	6.78	03/10/2022 03/10/2022	David Julian

LM Start	3.51	Rating **	M	Issue No.	33 (cont)
LM End	3.51	Issue Type +	En	Location *	
Category	Supplemental		GPS Latitude/Longitude		
			Start	End	
Item	DWR UCIP Field Study		38.292039 °	38.292039 °	
			-121.560795 °	-121.560795 °	
DWR ID	22033				

Photo 3 of 3 : UCIP_SP_2022_60380_87592.jpg



Land-Side: View of levee slope looking from crown

LM Start	3.52	Rating **	M	Issue No.	35
LM End	3.52	Issue Type +	En	Location *	
Category	Supplemental		GPS Latitude/Longitude		
			Start	End	
Item	DWR UCIP Field Study		38.291922 °	38.291922 °	
			-121.560667 °	-121.560667 °	
DWR ID	22012				

Comment Code

Inspector Comment

FS_ID:60384
DS_ID:22012
EP_NO: 11153

Repair Type: Non-Urgent

Crossing Status: Not Found

UCIP Comments: 06/03/2020 Record updated from No Action Needed to Non-Urgent. Crossing not found. No permit has been identified authorizing pipe. Need to have CVFPB review ABO and determine current owner. (O.Yakimov - DWR UCIP)

FIELD_STRUCT_DESC: 10-inch steel irrigation pipe through the levee, 3.8 feet below the crown. Thin plates tack welded on ends. (10-inch pipe [HLM 3.55] authorized under Automatic Board Order (ABO) issued as Permit No. 11153, 1975 - Wilcox Fruit Company). [Additional Reference(s): DWR Levee Log, 2005 (HLM 3.55)].
FS Date: 6/3/2020 3:23:30 PM

Photo 1 of 3 : UCIP_SP_2022_60384_87594.jpg



Top of Levee: View of levee crown looking downstream

*** Location**

LS : Land Side N/A : Not Applicable
WS : Water Side
CR : Crown

**** Rating**

A : Acceptable N : Not Inspected/Rated
M : Minimally Acceptable C : Corrected
U : Unacceptable A/W : Acceptable but Monitor & Maintain

+ Issue Type

Ma : Maintenance Deficiency
Ob : Design & System Obsolescence
En : Enforcement

**Flood Control Project Maintenance
Levee Inspections**

Levee Inspection Report By Mile - Spring 2022

Reclamation District No. 0551 Pearson

Waterway	Bank	Unit Miles	Inspection Start/End	Inspector
Unit No. 01 Sacramento River	Left	6.78	03/10/2022 03/10/2022	David Julian

LM Start	3.52	Rating **	M	Issue No.	35 (cont)
LM End	3.52	Issue Type +	En	Location *	
Category	Supplemental			GPS Latitude/Longitude	
				Start	End
Item	DWR UCIP Field Study			38.291922 °	38.291922 °
				-121.560667 °	-121.560667 °
DWR ID	22012				

Photo 2 of 3 : UCIP_SP_2022_60384_87593.jpg



Land-Side: View of levee slope looking from crown

LM Start	3.52	Rating **	M	Issue No.	35 (cont)
LM End	3.52	Issue Type +	En	Location *	

Photo 3 of 3 : UCIP_SP_2022_60384_87595.jpg



Water-Side: View of levee slope looking from crown

* Location LS : Land Side N/A : Not Applicable WS : Water Side CR : Crown	** Rating A : Acceptable M : Minimally Acceptable U : Unacceptable	N : Not Inspected/Rated C : Corrected A/W : Acceptable but Monitor & Maintain	+ Issue Type Ma : Maintenance Deficiency Ob : Design & System Obsolescence En : Enforcement
--	--	---	---

**Flood Control Project Maintenance
Levee Inspections**

Levee Inspection Report By Mile - Spring 2022

Reclamation District No. 0551 Pearson

Waterway	Bank	Unit Miles	Inspection Start/End	Inspector
Unit No. 01 Sacramento River	Left	6.78	03/10/2022 03/10/2022	David Julian

LM Start	3.68	Rating **	M	Issue No.	36
LM End	3.68	Issue Type +	En	Location *	
Category	Supplemental			GPS Latitude/Longitude	
				Start	End
Item	DWR UCIP Field Study			38.290175 °	38.290175 °
				-121.558717 °	-121.558717 °
DWR ID	22013				
Comment Code					
Inspector Comment					
FS_ID:60391 DS_ID:22013 EP_NO: 2276 Repair Type: Non-Urgent Crossing Status: Found UCIP Comments: 06/03/2020 Record updated from No Action Needed to Non-Urgent. Unable to inspect landside levee slope due to overgrown vegetation. (O.Yakimov - DWR UCIP) FIELD_STRUCT_DESC: 12-inch pipe through levee, 5.8-feet below crown. Slant pump on waterward slope. 48-inch concrete riser on LS toe and a 1-inch galvanized steel electrical conduit at same location. (Installation of a pipe through levee authorized under Permit No. 2276, 1956 - Paul V. Amick Sr.). [Additional Reference(s): DWR Levee Log, 2005 (HLM 3.72)]. FS Date: 6/3/2020 7:49:50 AM					

Photo 1 of 3 : UCIP_SP_2022_60391_87602.jpg



Water-Side: Pipe and slant pump on waterside levee slope

LM Start	3.68	Rating **	M	Issue No.	36 (cont)
LM End	3.68	Issue Type +	En	Location *	

Photo 2 of 3 : UCIP_SP_2022_60391_87601.jpg



Water-Side: 12-inch pipe daylights on waterside slope

* Location LS : Land Side N/A : Not Applicable WS : Water Side CR : Crown	** Rating A : Acceptable M : Minimally Acceptable U : Unacceptable	N : Not Inspected/Rated C : Corrected A/W : Acceptable but Monitor & Maintain	+ Issue Type Ma : Maintenance Deficiency Ob : Design & System Obsolescence En : Enforcement
--	--	---	---

**Flood Control Project Maintenance
Levee Inspections**

Levee Inspection Report By Mile - Spring 2022

Reclamation District No. 0551 Pearson

Waterway	Bank	Unit Miles	Inspection Start/End	Inspector
Unit No. 01 Sacramento River	Left	6.78	03/10/2022 03/10/2022	David Julian

LM Start	3.68	Rating **	M	Issue No.	36 (cont)
LM End	3.68	Issue Type +	En	Location *	
Category	Supplemental		GPS Latitude/Longitude		
			Start	End	
Item	DWR UCIP Field Study		38.290175 °	38.290175 °	
			-121.558717 °	-121.558717 °	
DWR ID	22013				

Photo 3 of 3 : UCIP_SP_2022_60391_87603.jpg



Land-Side: View of levee slope looking from crown

LM Start	3.68	Rating **	M	Issue No.	37
LM End	3.68	Issue Type +	En	Location *	
Category	Supplemental		GPS Latitude/Longitude		
			Start	End	
Item	DWR UCIP Field Study		38.290146 °	38.290146 °	
			-121.558673 °	-121.558673 °	
DWR ID	22014				

Comment Code

Inspector Comment

FS_ID:60439
DS_ID:22014
EP_NO: 11153
Repair Type: Non-Urgent
Crossing Status: Not Found
UCIP Comments: 06/03/2020 Record updated from No Action Needed to Non-Urgent. Crossing not found. Unauthorized encroachment recorded in Levee Log prior to 2011. Need to have CVFPB review ABO and determine current owner. (O.Yakimov - DWR UCIP)

FIELD_STRUCT_DESC: 2-inch pipe of an unknown material or purpose through the levee, 5.8 feet below the crown. Both ends capped. (2-inch pipe [HLM 3.72] authorized under Automatic Board Order (ABO) issued as Permit No. 11153, 1975 - Wilcox Fruit Company). [Additional Reference(s): DWR Levee Log, 2005 (HLM 3.72)].

FS Date: 6/3/2020 1:43:42 PM

Photo 1 of 3 : UCIP_SP_2022_60439_87729.jpg



Top of Levee: View of levee crown looking towards landside

* Location		** Rating		+ Issue Type	
LS : Land Side	N/A : Not Applicable	A : Acceptable	N : Not Inspected/Rated	Ma : Maintenance Deficiency	
WS : Water Side		M : Minimally Acceptable	C : Corrected	Ob : Design & System Obsolescence	
CR : Crown		U : Unacceptable	A/W : Acceptable but Monitor & Maintain	En : Enforcement	

**Flood Control Project Maintenance
Levee Inspections**

Levee Inspection Report By Mile - Spring 2022

Reclamation District No. 0551 Pearson

Waterway	Bank	Unit Miles	Inspection Start/End	Inspector
Unit No. 01 Sacramento River	Left	6.78	03/10/2022 03/10/2022	David Julian

LM Start	3.68	Rating **	M	Issue No.	37 (cont)
LM End	3.68	Issue Type +	En	Location *	
Category	Supplemental		GPS Latitude/Longitude		
			Start	End	
Item	DWR UCIP Field Study		38.290146 °	38.290146 °	
			-121.558673 °	-121.558673 °	
DWR ID	22014				

Photo 2 of 3 : UCIP_SP_2022_60439_87724.jpg



Water-Side: View of levee slope looking from crown

LM Start	3.68	Rating **	M	Issue No.	37 (cont)
LM End	3.68	Issue Type +	En	Location *	

Photo 3 of 3 : UCIP_SP_2022_60439_87725.jpg



Land-Side: View of levee slope looking from crown. Overgrown vegetation prevents slope evaluation

LM Start	3.71	Rating **	M	Issue No.	54
LM End	3.74	Issue Type +	En	Location *	LS
Category	Earthen Levee			GPS Latitude/Longitude	
				Start	End
Item	Vegetation			38.289920 °	38.289544 °
				-121.558357 °	-121.557956 °
DWR ID	DWR_RD0551_01_f_2018_54				
Comment Code					
V6 : Landscaping					
Inspector Comment					

No Photos

* Location LS : Land Side N/A : Not Applicable WS : Water Side CR : Crown	** Rating A : Acceptable M : Minimally Acceptable U : Unacceptable	N : Not Inspected/Rated C : Corrected A/W : Acceptable but Monitor & Maintain	+ Issue Type Ma : Maintenance Deficiency Ob : Design & System Obsolescence En : Enforcement
--	--	---	---

**Flood Control Project Maintenance
Levee Inspections**

Levee Inspection Report By Mile - Spring 2022

Reclamation District No. 0551 Pearson

Waterway	Bank	Unit Miles	Inspection Start/End	Inspector
Unit No. 01 Sacramento River	Left	6.78	03/10/2022 03/10/2022	David Julian

LM Start	3.72	Rating **	M	Issue No.	38	
LM End	3.72	Issue Type +	En	Location *		
Category	Supplemental			GPS Latitude/Longitude		
				Start		End
Item	DWR UCIP Field Study			38.289783 °		38.289783 °
				-121.558252 °		-121.558252 °
DWR ID	22015					
Comment Code						
Inspector Comment						
FS_ID:60441 DS_ID:22015 EP_NO: 5916 Repair Type: Non-Urgent Crossing Status: Not Found UCIP Comments: 06/03/2020 Record updated from No Action Needed to Non-Urgent. Crossing not found. (O.Yakimov - DWR UCIP)						
FIELD_STRUCT_DESC: 2-inch pipe of an unknown material or purpose through the levee, 3 feet below the crown. Landside (LS) end capped. (1-inch pipe (STA 120+50) authorized under Permit No. 5916, 1967 - Wilcox Fruit Company). [Additional Reference(s): DWR Levee Log, 2005 (HLM 3.75)]. FS Date: 6/3/2020 1:54:41 PM						

Photo 1 of 3 : UCIP_SP_2022_60441_87726.jpg



Top of Levee: View of levee crown looking towards landside

LM Start	3.72	Rating **	M	Issue No.	38 (cont)
LM End	3.72	Issue Type +	En	Location *	

Photo 2 of 3 : UCIP_SP_2022_60441_87727.jpg



Water-Side: View of levee slope looking from crown

* Location LS : Land Side N/A : Not Applicable WS : Water Side CR : Crown	** Rating A : Acceptable M : Minimally Acceptable U : Unacceptable	N : Not Inspected/Rated C : Corrected A/W : Acceptable but Monitor & Maintain	+ Issue Type Ma : Maintenance Deficiency Ob : Design & System Obsolescence En : Enforcement
--	--	---	---

**Flood Control Project Maintenance
Levee Inspections**

Levee Inspection Report By Mile - Spring 2022

Reclamation District No. 0551 Pearson

Waterway	Bank	Unit Miles	Inspection Start/End	Inspector
Unit No. 01 Sacramento River	Left	6.78	03/10/2022 03/10/2022	David Julian

LM Start	3.72	Rating **	M	Issue No.	38 (cont)	
LM End	3.72	Issue Type +	En	Location *		
Category	Supplemental			GPS Latitude/Longitude		
				Start	End	
Item	DWR UCIP Field Study			38.289783 °	38.289783 °	
				-121.558252 °	-121.558252 °	
DWR ID	22015					

Photo 3 of 3 : UCIP_SP_2022_60441_87728.jpg



Land-Side: View of levee slope looking from crown

LM Start	3.78	Rating **	U	Issue No.	48
LM End	3.85	Issue Type +	En	Location *	LS
Category	Earthen Levee			GPS Latitude/Longitude	
				Start	End
Item	Vegetation			38.289067 °	38.288394 °
				-121.557423 °	-121.556591 °
DWR ID	DWR_RD0551_01_f_2017_48				
Comment Code					
V6 : Landscaping					
Inspector Comment					
Landscaping should be maintained to allow inspection and access to landside slope and toe.					

Photo 1 of 1 : SP_2022_RD0551_175_48_20220307_00014.jpg



View looking upstream at landscaping on the landside slope (Fall 2019).

*** Location**
LS : Land Side N/A : Not Applicable
WS : Water Side
CR : Crown

**** Rating**
A : Acceptable N : Not Inspected/Rated
M : Minimally Acceptable C : Corrected
U : Unacceptable A/W : Acceptable but Monitor & Maintain

+ Issue Type
Ma : Maintenance Deficiency
Ob : Design & System Obsolescence
En : Enforcement

**Flood Control Project Maintenance
Levee Inspections**

Levee Inspection Report By Mile - Spring 2022

Reclamation District No. 0551 Pearson

Waterway	Bank	Unit Miles	Inspection Start/End	Inspector
Unit No. 01 Sacramento River	Left	6.78	03/10/2022 03/10/2022	David Julian

LM Start	3.81	Rating **	M	Issue No.	39
LM End	3.81	Issue Type +	En	Location *	
Category	Supplemental			GPS Latitude/Longitude	
				Start	End
Item	DWR UCIP Field Study			38.288733 °	38.288733 °
				-121.557166 °	-121.557166 °
DWR ID	22016				
Comment Code					
Inspector Comment					
FS_ID:60444 DS_ID:22016 EP_NO: 11133 Repair Type: Non-Urgent Crossing Status: Found UCIP Comments: 06/03/2020 Record updated from No Action Needed to Non-Urgent. Crossing appears abandoned. 2-inch PVC pipe is connected to the pipe through the levee, pipe is open on waterside slope. Disconnected cable is coming out of PVC pipe. Unauthorized encroachment recorded in Levee Log prior to 2011. Need to have CVFPB review ABO and determine current owner. (O.Yakimov - DWR UCIP) FIELD_STRUCT_DESC: 2-inch galvanized steel pipe of unknown purpose through the levee, 2 feet below the crown. (2-inch pipe [HLM 3.83] authorized under Automatic Board Order (ABO) issued as Permit No. 11133, 1975 - Warren G. & Margie Mara). [Additional Reference(s): DWR Levee Log, 2005 (HLM 3.83)]. FS Date: 6/3/2020 2:00:44 PM					

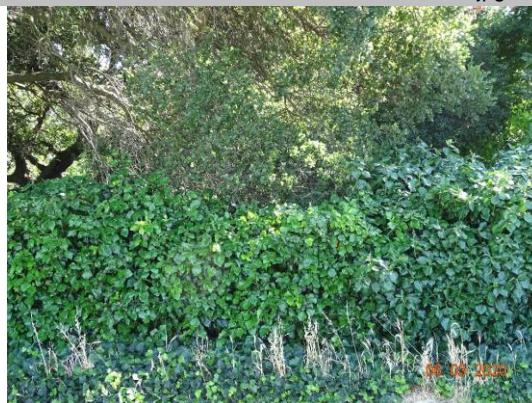
Photo 1 of 3 : UCIP_SP_2022_60444_87731.jpg



Top of Levee: View of levee crown looking towards landside

LM Start	3.81	Rating **	M	Issue No.	39 (cont)
LM End	3.81	Issue Type +	En	Location *	

Photo 2 of 3 : UCIP_SP_2022_60444_87732.jpg



Land-Side: Landscaping on levee shoulder

* Location	** Rating	+ Issue Type
LS : Land Side N/A : Not Applicable	A : Acceptable	Ma : Maintenance Deficiency
WS : Water Side	M : Minimally Acceptable	Ob : Design & System Obsolescence
CR : Crown	U : Unacceptable	En : Enforcement
	N : Not Inspected/Rated	
	C : Corrected	
	A/W : Acceptable but Monitor & Maintain	

**Flood Control Project Maintenance
Levee Inspections**

Levee Inspection Report By Mile - Spring 2022

Reclamation District No. 0551 Pearson

Waterway	Bank	Unit Miles	Inspection Start/End	Inspector
Unit No. 01 Sacramento River	Left	6.78	03/10/2022 03/10/2022	David Julian

LM Start	3.81	Rating **	M	Issue No.	39 (cont)
LM End	3.81	Issue Type +	En	Location *	
Category	Supplemental		GPS Latitude/Longitude		
			Start	End	
Item	DWR UCIP Field Study		38.288733 °	38.288733 °	
			-121.557166 °	-121.557166 °	
DWR ID	22016				

Photo 3 of 3 : UCIP_SP_2022_60444_87733.jpg



Water-Side: View of levee slope looking from crown

LM Start	3.84	Rating **	C	Issue No.	1
LM End	3.84	Issue Type +	Ma	Location *	WS
Category	Earthen Levee			GPS Latitude/Longitude	
				Start	End
Item	Animal Control			38.288235 °	38.288235 °
				-121.557000 °	-121.557000 °
DWR ID	DWR_RD0551_01_s_2020_1				
Comment Code					
A3 : No rodents visible, but rodent burrows visible; need to backfill and compact or grout burrows.					
Inspector Comment					
Hole has been filled with concrete.					

No Photos

LM Start	3.89	Rating **	U	Issue No.	90
LM End	3.89	Issue Type +	Ma	Location *	LS
Category	Earthen Levee			GPS Latitude/Longitude	
				Start	End
Item	Animal Control			38.287898 °	38.287898 °
				-121.556062 °	-121.556062 °
DWR ID	DWR_RD0551_01_f_2020_90				
Comment Code					
A1 : Exterminate rodents and backfill and compact or grout burrows.					
Inspector Comment					
A couple large fresh rodent holes in the landside slope.					

Photo 1 of 1 : SP_2022_RD0551_175_90_20220307_00033.jpg



View of large animal hole in the landside slope (Fall 2020).

* Location LS : Land Side N/A : Not Applicable WS : Water Side CR : Crown	** Rating A : Acceptable M : Minimally Acceptable U : Unacceptable	N : Not Inspected/Rated C : Corrected A/W : Acceptable but Monitor & Maintain	+ Issue Type Ma : Maintenance Deficiency Ob : Design & System Obsolescence En : Enforcement
--	--	--	---

**Flood Control Project Maintenance
Levee Inspections**

Levee Inspection Report By Mile - Spring 2022

Reclamation District No. 0551 Pearson

Waterway	Bank	Unit Miles	Inspection Start/End	Inspector
Unit No. 01 Sacramento River	Left	6.78	03/10/2022 03/10/2022	David Julian

LM Start	3.90	Rating **	M	Issue No.	40
LM End	3.90	Issue Type +	En	Location *	
Category	Supplemental			GPS Latitude/Longitude	
				Start	End
Item	DWR UCIP Field Study			38.287851 °	38.287851 °
				-121.555985 °	-121.555985 °
DWR ID	22017				
Comment Code					
Inspector Comment					
FS_ID:60445 DS_ID:22017 EP_NO: 11153 Repair Type: Non-Urgent Crossing Status: Found UCIP Comments: 06/03/2020 Record updated from No Action Needed to Non-Urgent. Unauthorized encroachment recorded in Levee Log prior to 2011. Need to have CVFPB review ABO and determine current owner. Burrow hole under pipe on landside slope. (O.Yakimov - DWR UCIP) FIELD_STRUCT_DESC: 10-inch pipe through the levee 4.0 feet below the crown. Siphon breaker on LS shoulder. Screen filter, concrete standpipe, service pole with electric meter and connection box at LS toe. 1.5-inch galvanized iron electrical conduit through the levee at same alignment. (10-inch pipe [HLM 3.93] authorized under Automatic Board Order (ABO) issued as Permit No. 11153, 1975 - Wilcox Fruit Company). [Additional Reference(s): DWR Levee Log, 2005 (HLM 3.93)]. FS Date: 6/3/2020 2:22:09 PM					

LM Start	3.90	Rating **	M	Issue No.	40 (cont)
LM End	3.90	Issue Type +	En	Location *	

Photo 1 of 3 : UCIP_SP_2022_60445_19285.jpg



Slant pump, butterfly valve, electrical conduit and pipe on WS slope.

Photo 2 of 3 : UCIP_SP_2022_60445_19284.jpg



Pipe, air vent, siphon breaker, and electrical conduit on LS slope.

* Location LS : Land Side N/A : Not Applicable WS : Water Side CR : Crown		** Rating A : Acceptable N : Not Inspected/Rated M : Minimally Acceptable C : Corrected U : Unacceptable A/W : Acceptable but Monitor & Maintain		+ Issue Type Ma : Maintenance Deficiency Ob : Design & System Obsolescence En : Enforcement
--	--	---	--	---

**Flood Control Project Maintenance
Levee Inspections**

Levee Inspection Report By Mile - Spring 2022

Reclamation District No. 0551 Pearson

Waterway	Bank	Unit Miles	Inspection Start/End	Inspector
Unit No. 01 Sacramento River	Left	6.78	03/10/2022 03/10/2022	David Julian

LM Start	3.90	Rating **	M	Issue No.	40 (cont)
LM End	3.90	Issue Type +	En	Location *	
Category	Supplemental		GPS Latitude/Longitude		
			Start	End	
Item	DWR UCIP Field Study		38.287851 °	38.287851 °	
			-121.555985 °	-121.555985 °	
DWR ID	22017				

Photo 3 of 3 : UCIP_SP_2022_60445_19283.jpg



Pressure booster at LS toe.

LM Start	3.91	Rating **	M	Issue No.	66
LM End	3.91	Issue Type +	Ma	Location *	LS
Category	Earthen Levee			GPS Latitude/Longitude	
				Start	End
Item	Erosion / Livestock			38.287760 °	38.287760 °
				-121.555837 °	-121.555837 °
DWR ID	DWR_RD0551_01_f _ 2019_66				
Comment Code					
E4 : Repair the levee slope damaged by livestock and prevent large animal access.					
Inspector Comment					
Erosion due to goats on the landside slope.					

Photo 1 of 1 : SP_2022_RD0551_175_66_20220307_00029.jpg



View looking downstream at erosion due to goats on the landside slope (Fall 2019).

* Location LS : Land Side N/A : Not Applicable WS : Water Side CR : Crown		** Rating A : Acceptable N : Not Inspected/Rated M : Minimally Acceptable C : Corrected U : Unacceptable A/W : Acceptable but Monitor & Maintain		+ Issue Type Ma : Maintenance Deficiency Ob : Design & System Obsolescence En : Enforcement	
--	--	---	--	---	--

**Flood Control Project Maintenance
Levee Inspections**

Levee Inspection Report By Mile - Spring 2022

Reclamation District No. 0551 Pearson

Waterway	Bank	Unit Miles	Inspection Start/End	Inspector
Unit No. 01 Sacramento River	Left	6.78	03/10/2022 03/10/2022	David Julian

LM Start	4.01	Rating **	M	Issue No.	41	
LM End	4.01	Issue Type +	En	Location *		
Category	Supplemental			GPS Latitude/Longitude		
				Start	End	
Item	DWR UCIP Field Study			38.286593 °	38.286593 °	
				-121.554591 °	-121.554591 °	
DWR ID	22034					
Comment Code						
Inspector Comment						
FS_ID:60450 DS_ID:22034 EP_NO: N/A Repair Type: Non-Urgent Crossing Status: Not Found UCIP Comments: 06/03/2020 Record remains Non-Urgent. Crossing not found. Metal and pipe debris on waterside slope. No pipe evidence found on landside. No permit has been identified authorizing pipe. (O.Yakimov - DWR UCIP) 04/11/2013 Abandoned. Determine if pipe was removed or abandoned in place. W.Wylie - DWR UCIP) FIELD_STRUCT_DESC: 8-inch irrigation pipe through the levee 6.7-feet below the crown. [Additional Reference(s): USACE Sacramento O&M Manual, Unit 111, May 1959, Revised 29 December 2016, (RM 30.76), listed as 8-inch pipe. USACE As-Built Drawing No. 06-13-1100, Sheet 13, downstream of 'L' 1504+00, January 1933]. FS Date: 6/3/2020						

LM Start	4.01	Rating **	M	Issue No.	41 (cont)
LM End	4.01	Issue Type +	En	Location *	

Photo 1 of 3 : UCIP_SP_2022_60450_87746.jpg



Top of Levee: View of levee crown looking upstream

Photo 2 of 3 : UCIP_SP_2022_60450_87747.jpg



Water-Side: View of levee slope looking from crown

* Location LS : Land Side N/A : Not Applicable WS : Water Side CR : Crown	** Rating A : Acceptable M : Minimally Acceptable U : Unacceptable	N : Not Inspected/Rated C : Corrected A/W : Acceptable but Monitor & Maintain	+ Issue Type Ma : Maintenance Deficiency Ob : Design & System Obsolescence En : Enforcement
--	--	---	---

**Flood Control Project Maintenance
Levee Inspections**

Levee Inspection Report By Mile - Spring 2022

Reclamation District No. 0551 Pearson

Waterway	Bank	Unit Miles	Inspection Start/End	Inspector
Unit No. 01 Sacramento River	Left	6.78	03/10/2022 03/10/2022	David Julian

LM Start	4.01	Rating **	M	Issue No.	41 (cont)
LM End	4.01	Issue Type +	En	Location *	
Category	Supplemental			GPS Latitude/Longitude	
				Start	End
Item	DWR UCIP Field Study			38.286593 °	38.286593 °
				-121.554591 °	-121.554591 °
DWR ID	22034				

Photo 3 of 3 : UCIP_SP_2022_60450_87748.jpg



Water-Side: Two markers on waterside slope may indicate pipe alignment

* Location LS : Land Side N/A : Not Applicable WS : Water Side CR : Crown	** Rating A : Acceptable M : Minimally Acceptable U : Unacceptable	N : Not Inspected/Rated C : Corrected A/W : Acceptable but Monitor & Maintain	+ Issue Type Ma : Maintenance Deficiency Ob : Design & System Obsolescence En : Enforcement
--	--	---	---

**Flood Control Project Maintenance
Levee Inspections**

Levee Inspection Report By Mile - Spring 2022

Reclamation District No. 0551 Pearson

Waterway	Bank	Unit Miles	Inspection Start/End	Inspector
Unit No. 01 Sacramento River	Left	6.78	03/10/2022 03/10/2022	David Julian

LM Start	4.02	Rating **	M	Issue No.	42
LM End	4.02	Issue Type +	En	Location *	
Category	Supplemental			GPS Latitude/Longitude	
				Start	End
Item	DWR UCIP Field Study			38.286568 °	38.286568 °
				-121.554569 °	-121.554569 °
DWR ID	22018				
Comment Code					
Inspector Comment					
<p>FS_ID:60460 DS_ID:22018 EP_NO: 11146 Repair Type: Non-Urgent Crossing Status: Found UCIP Comments: 06/03/2020 Record remains Non-Urgent. Pipe is exposed on landside due to 7.0' x 4.5' excavation 16 feet from levee toe. Pipe is running. Water is supplied to orchard through a hose connected to a pipe at excavation. Pipe inflow from standpipe is plugged with concrete as seen on photo. Drainage from hose connection gets into open concrete pipe at excavation that goes towards the orchard. No permit has been identified authorizing pipe. Need to have CVFPB review ABO and determine current owner. (O.Yakimov - DWR UCIP) 04/11/2013 Wooden walkway in bad repair and presents a hazard to the public. (W.Wylie - DWR UCIP) FIELD_STRUCT_DESC: 14-inch irrigation pipe of an unknown material through the levee, 10.4 feet below the crown. Pump on pile structure in stream with wooden walkway. 48-inch concrete standpipe on the landside (LS) toe with booster pump and electrical panel, media filtration facility on landside. Siphon breaker in a 24-inch corrugated metal pipe (CMP) riser on the LS slope. 1.5-inch electrical conduit at the same location. (14-inch pipe [HLM 4.04] authorized under Automatic Board Order (ABO) issued as Permit No. 11146, 1975 - Edgar D. Turner III). [Additional Reference(s): DWR Levee Log, 2005 (HLM 4.04). USACE Sacramento O&M Manual, Unit 111, May 1959, Revised 29 December 2016, (RM 30.75), listed as 14-inch pipe. USACE As-Built Drawing No. 06-13-1100, Sheet 13, downstream of 'L' 1504+00, January 1933]. FS Date: 6/3/2020 3:44:18 PM</p>					

Photo 1 of 3 : UCIP_SP_2022_60460_87782.jpg



Top of Levee: View of levee crown looking upstream

* Location LS : Land Side N/A : Not Applicable WS : Water Side CR : Crown	** Rating A : Acceptable M : Minimally Acceptable U : Unacceptable N : Not Inspected/Rated C : Corrected A/W : Acceptable but Monitor & Maintain	+ Issue Type Ma : Maintenance Deficiency Ob : Design & System Obsolescence En : Enforcement
--	---	---

**Flood Control Project Maintenance
Levee Inspections**

Levee Inspection Report By Mile - Spring 2022

Reclamation District No. 0551 Pearson

Waterway	Bank	Unit Miles	Inspection Start/End	Inspector
Unit No. 01 Sacramento River	Left	6.78	03/10/2022 03/10/2022	David Julian

LM Start	4.02	Rating **	M	Issue No.	42 (cont)
LM End	4.02	Issue Type +	En	Location *	
Category	Supplemental			GPS Latitude/Longitude	
				Start	End
Item	DWR UCIP Field Study			38.286568 °	38.286568 °
				-121.554569 °	-121.554569 °
DWR ID	22018				

Photo 2 of 3 : UCIP_SP_2022_60460_87783.jpg



Water-Side: View of levee slope looking from crown

LM Start	4.02	Rating **	M	Issue No.	42 (cont)
LM End	4.02	Issue Type +	En	Location *	

Photo 3 of 3 : UCIP_SP_2022_60460_87784.jpg



Water-Side: Pump on pile structure in channel. Wooden walkway is in bad shape

* Location LS : Land Side N/A : Not Applicable WS : Water Side CR : Crown	** Rating A : Acceptable M : Minimally Acceptable U : Unacceptable N : Not Inspected/Rated C : Corrected A/W : Acceptable but Monitor & Maintain	+ Issue Type Ma : Maintenance Deficiency Ob : Design & System Obsolescence En : Enforcement
--	---	---

**Flood Control Project Maintenance
Levee Inspections**

Levee Inspection Report By Mile - Spring 2022

Reclamation District No. 0551 Pearson

Waterway	Bank	Unit Miles	Inspection Start/End	Inspector
Unit No. 01 Sacramento River	Left	6.78	03/10/2022 03/10/2022	David Julian

LM Start	4.02	Rating **	M	Issue No.	43	
LM End	4.02	Issue Type +	En	Location *		
Category	Supplemental			GPS Latitude/Longitude		
				Start	End	
Item	DWR UCIP Field Study			38.286538 °	38.286538 °	
				-121.554562 °	-121.554562 °	
DWR ID	22035					
Comment Code						
Inspector Comment						
FS_ID:60557 DS_ID:22035 EP_NO: N/A Repair Type: Non-Urgent Crossing Status: Not Found UCIP Comments: 06/03/2020 Record updated from No Action Needed to Non-Urgent. Crossing not found. No permit has been identified authorizing pipe. (O.Yakimov - DWR UCIP)						
FIELD_STRUCT_DESC: 10-inch irrigation pipe of an unknown material through the levee, 7.8 feet below the crown. Pump on the waterside (WS). [Additional Reference(s): USACE Sacramento O&M Manual, Unit 111, May 1959, Revised 29 December 2016, (RM 30.75), listed as 10-inch pipe. USACE As-Built Drawing No. 06-13-1100, Sheet 13, downstream of 'L' 1504+00, January 1933]. FS Date: 6/3/2020 10:29:31 AM						

Photo 1 of 3 : UCIP_SP_2022_60557_87842.jpg



Top of Levee: View of levee crown looking towards waterside

LM Start	4.02	Rating **	M	Issue No.	43 (cont)
LM End	4.02	Issue Type +	En	Location *	

Photo 2 of 3 : UCIP_SP_2022_60557_87841.jpg



Land-Side: View of levee slope looking from crown

* Location LS : Land Side N/A : Not Applicable WS : Water Side CR : Crown	** Rating A : Acceptable M : Minimally Acceptable U : Unacceptable	N : Not Inspected/Rated C : Corrected A/W : Acceptable but Monitor & Maintain	+ Issue Type Ma : Maintenance Deficiency Ob : Design & System Obsolescence En : Enforcement
--	--	---	---

**Flood Control Project Maintenance
Levee Inspections**

Levee Inspection Report By Mile - Spring 2022

Reclamation District No. 0551 Pearson

Waterway	Bank	Unit Miles	Inspection Start/End	Inspector
Unit No. 01 Sacramento River	Left	6.78	03/10/2022 03/10/2022	David Julian

LM Start	4.02	Rating **	M	Issue No.	43 (cont)
LM End	4.02	Issue Type +	En	Location *	
Category	Supplemental		GPS Latitude/Longitude		
			Start	End	
Item	DWR UCIP Field Study		38.286538 °	38.286538 °	
			-121.554562 °	-121.554562 °	
DWR ID	22035				

Photo 3 of 3 : UCIP_SP_2022_60557_87843.jpg



Water-Side: View of levee slope looking from crown

LM Start	4.04	Rating **	U	Issue No.	53
LM End	4.04	Issue Type +	Ma	Location *	LS
Category	Earthen Levee			GPS Latitude/Longitude	
				Start	End
Item	Animal Control			38.286255 °	38.286255 °
				-121.554193 °	-121.554193 °
DWR ID	DWR_RD0551_01_f_2018_53				
Comment Code					
A3 : No rodents visible, but rodent burrows visible; need to backfill and compact or grout burrows.					
Inspector Comment					
Multiple fresh rodent holes on the slope.					

Photo 1 of 1 : SP_2022_RD0551_175_53_20220307_00018.jpg



View looking downstream at fresh rodent holes in the landside slope (Fall 2019).

LM Start	4.14	Rating **	C	Issue No.	64
LM End	4.14	Issue Type +	Ma	Location *	LS
Category	Earthen Levee			GPS Latitude/Longitude	
				Start	End
Item	Encroachments			38.285140 °	38.285140 °
				-121.553006 °	-121.553006 °
DWR ID	DWR_RD0551_01_f_2021_64				
Comment Code					
TR : Tree or limb					
Inspector Comment					

No Photos

* Location LS : Land Side N/A : Not Applicable WS : Water Side CR : Crown	** Rating A : Acceptable M : Minimally Acceptable U : Unacceptable	N : Not Inspected/Rated C : Corrected A/W : Acceptable but Monitor & Maintain	+ Issue Type Ma : Maintenance Deficiency Ob : Design & System Obsolescence En : Enforcement
--	--	---	---

**Flood Control Project Maintenance
Levee Inspections**

Levee Inspection Report By Mile - Spring 2022

Reclamation District No. 0551 Pearson

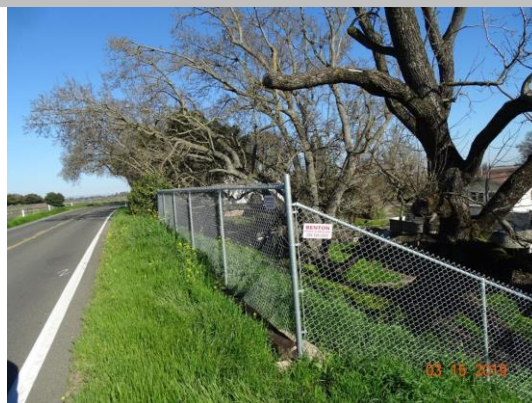
Waterway	Bank	Unit Miles	Inspection Start/End	Inspector
Unit No. 01 Sacramento River	Left	6.78	03/10/2022 03/10/2022	David Julian

LM Start	4.17	Rating **	M	Issue No.	92
LM End	4.88	Issue Type +	Ma	Location *	WS
Category	Earthen Levee			GPS Latitude/Longitude	
				Start	End
Item	Vegetation			38.284860 °	38.278116 °
				-121.552746 °	-121.542991 °
DWR ID	DWR_RD0551_01_s_2022_92				
Comment Code					
V1 : Control annual grass and weeds on the levee slopes and easements.					
Inspector Comment					

No Photos

LM Start	4.18	Rating **	M	Issue No.	60
LM End	4.23	Issue Type +	En	Location *	LS
Category	Earthen Levee			GPS Latitude/Longitude	
				Start	End
Item	Encroachments			38.284795 °	38.284318 °
				-121.552597 °	-121.551830 °
DWR ID	DWR_RD0551_01_s_2019_60				
Comment Code					
FE : Fence					
Inspector Comment					
A chainlink fence is located on landside.					

Photo 1 of 1 : SP_2022_RD0551_175_60_20220307_00024.jpg



View looking upstream at chainlink fence on the landside slope and shoulder (Spring 2019).

*** Location**
LS : Land Side N/A : Not Applicable
WS : Water Side
CR : Crown

**** Rating**
A : Acceptable N : Not Inspected/Rated
M : Minimally Acceptable C : Corrected
U : Unacceptable A/W : Acceptable but Monitor & Maintain

+ Issue Type
Ma : Maintenance Deficiency
Ob : Design & System Obsolescence
En : Enforcement

**Flood Control Project Maintenance
Levee Inspections**

Levee Inspection Report By Mile - Spring 2022

Reclamation District No. 0551 Pearson

Waterway	Bank	Unit Miles	Inspection Start/End	Inspector
Unit No. 01 Sacramento River	Left	6.78	03/10/2022 03/10/2022	David Julian

LM Start	4.22	Rating **	U	Issue No.	52
LM End	4.22	Issue Type +	En	Location *	LS
Category	Earthen Levee			GPS Latitude/Longitude	
				Start	End
Item	Vegetation			38.284400 °	38.284400 °
				-121.552035 °	-121.552035 °
DWR ID	DWR_RD0551_01_f _ 2018_52				
Comment Code					
V6 : Landscaping					
Inspector Comment					

Photo 1 of 1 : SP_2022_RD0551_175_52_20220307_00017.jpg



View looking upstream at landscaping on the landside slope (November 2018).

LM Start	4.45	Rating **	M	Issue No.	50
LM End	4.45	Issue Type +	En	Location *	
Category	Supplemental			GPS Latitude/Longitude	
				Start	End
Item	DWR UCIP Field Study			38.282390 °	38.282390 °
				-121.548545 °	-121.548545 °
DWR ID	22009				
Comment Code					
Inspector Comment					
FS_ID:60558 DS_ID:22009 EP_NO: 11142 Repair Type: Non-Urgent Crossing Status: Not Found UCIP Comments: 06/03/2020 Record is Non-Urgent. Crossing not found. No permit has been identified authorizing pipe. (O.Yakimov - DWR UCIP) FIELD_STRUCT_DESC: 6-inch irrigation pipe of an unknown material through the levee, 6.5 feet below the crown. Pump on concrete pad on the waterside (WS) slope. [Additional Reference(s): USACE Sacramento O&M Manual, Unit 111, May 1959, Revised 29 December 2016, (RM 30.31), listed as 6-inch pipe. USACE As-Built Drawing No. 06-13-1100, Sheet 14, near 'L' 1530+00, January 1933]. FS Date: 6/3/2020 10:46:37 AM					

Photo 1 of 2 : UCIP_SP_2022_60558_19536.jpg



Siphon breaker and vent on pipe at LS toe.

* Location LS : Land Side N/A : Not Applicable WS : Water Side CR : Crown	** Rating A : Acceptable M : Minimally Acceptable U : Unacceptable N : Not Inspected/Rated C : Corrected A/W : Acceptable but Monitor & Maintain	+ Issue Type Ma : Maintenance Deficiency Ob : Design & System Obsolescence En : Enforcement
--	---	---

**Flood Control Project Maintenance
Levee Inspections**

Levee Inspection Report By Mile - Spring 2022

Reclamation District No. 0551 Pearson

Waterway	Bank	Unit Miles	Inspection Start/End	Inspector
Unit No. 01 Sacramento River	Left	6.78	03/10/2022 03/10/2022	David Julian

LM Start	4.45	Rating **	M	Issue No.	50 (cont)
LM End	4.45	Issue Type +	En	Location *	
Category	Supplemental		GPS Latitude/Longitude		
			Start	End	
Item	DWR UCIP Field Study		38.282390 °	38.282390 °	
			-121.548545 °	-121.548545 °	
DWR ID	22009				

Photo 2 of 2 : UCIP_SP_2022_60558_19535.jpg



Siphon breaker and vent on pipe at LS toe.

LM Start	4.46	Rating **	M	Issue No.	65
LM End	4.46	Issue Type +	En	Location *	
Category	Supplemental		GPS Latitude/Longitude		
			Start	End	
Item	DWR UCIP Field Study		38.282388 °	38.282388 °	
			-121.548547 °	-121.548547 °	
DWR ID	22019				

Comment Code

Inspector Comment

FS_ID:60578
DS_ID:22019
EP_NO: 11142
Repair Type: Non-Urgent
Crossing Status: Found
UCIP Comments: 06/03/2020 Record updated from No Action Needed to Non-Urgent. No permit has been identified authorizing original pipe. Unable to locate a permit for sleeving 6-inch pipe through 10-inch pipe. Need to have CVFPB review ABO and determine current owner. (O.Yakimov - DWR UCIP)
FIELD_STRUCT_DESC: 6-inch irrigation pipe sleeved through the 10-inch irrigation pipe of an unknown material through the levee, 6.5 feet below the crown. Pump and butterfly valve on a concrete pad on the waterside (WS) slope. Air vent on pipe at landside toe. Electrical panel, and meter on a service pole at landside toe. 1-inch galvanized steel electrical conduit at the same location. (10-inch pipe [HLM 4.49] authorized under Automatic Board Order (ABO) issued as Permit No. 11142, 1975 - Tadashi Kimiye & Saburo Hirose). [Additional Reference(s): DWR Levee Log, 2005 (HLM 4.49). USACE Sacramento O&M Manual, Unit 111, May 1959, Revised 29 December 2016, (RM 30.31), listed as 10-inch pipe. USACE As-Built Drawing No. 06-13-1100, Sheet 14, near 'L' 1530+00, January 1933].
FS Date: 6/3/2020 1:28:59 PM

Photo 1 of 3 : UCIP_SP_2022_60578_87846.jpg



Top of Levee: View of levee crown looking upstream

* Location LS : Land Side N/A : Not Applicable WS : Water Side CR : Crown	** Rating A : Acceptable M : Minimally Acceptable U : Unacceptable	N : Not Inspected/Rated C : Corrected A/W : Acceptable but Monitor & Maintain	+ Issue Type Ma : Maintenance Deficiency Ob : Design & System Obsolescence En : Enforcement
--	--	---	---

**Flood Control Project Maintenance
Levee Inspections**

Levee Inspection Report By Mile - Spring 2022

Reclamation District No. 0551 Pearson

Waterway	Bank	Unit Miles	Inspection Start/End	Inspector
Unit No. 01 Sacramento River	Left	6.78	03/10/2022 03/10/2022	David Julian

LM Start	4.46	Rating **	M	Issue No.	65 (cont)
LM End	4.46	Issue Type +	En	Location *	
Category	Supplemental		GPS Latitude/Longitude		
			Start	End	
Item	DWR UCIP Field Study		38.282388 °	38.282388 °	
			-121.548547 °	-121.548547 °	
DWR ID	22019				

Photo 2 of 3 : UCIP_SP_2022_60578_87850.jpg



Land-Side: Service pole at levee toe

LM Start	4.46	Rating **	M	Issue No.	65 (cont)
LM End	4.46	Issue Type +	En	Location *	

Photo 3 of 3 : UCIP_SP_2022_60578_87844.jpg



Land-Side: Pipe end with air vent at levee toe

* Location LS : Land Side N/A : Not Applicable WS : Water Side CR : Crown	** Rating A : Acceptable M : Minimally Acceptable U : Unacceptable	N : Not Inspected/Rated C : Corrected A/W : Acceptable but Monitor & Maintain	+ Issue Type Ma : Maintenance Deficiency Ob : Design & System Obsolescence En : Enforcement
--	--	---	---

**Flood Control Project Maintenance
Levee Inspections**

Levee Inspection Report By Mile - Spring 2022

Reclamation District No. 0551 Pearson

Waterway	Bank	Unit Miles	Inspection Start/End	Inspector
Unit No. 01 Sacramento River	Left	6.78	03/10/2022 03/10/2022	David Julian

LM Start	4.59	Rating **	U	Issue No.	67
LM End	4.59	Issue Type +	En	Location *	
Category	Supplemental			GPS Latitude/Longitude	
				Start	End
Item	DWR UCIP Field Study			38.281074 °	38.281074 °
				-121.546628 °	-121.546628 °
DWR ID	22020				

Comment Code

Inspector Comment

FS_ID:60620
DS_ID:22020
EP_NO: 11152
Repair Type: Urgent
Crossing Status: Found
UCIP Comments: 06/03/2020 Record updated from Non-Urgent to Urgent. Pipe is in failed condition. Pipe segment on waterside levee slope is removed. Through holes in pipe visible on waterside slope. Pump and intake pipe are removed from piled structure in the stream. 8' x 9' x 2'- deep depression on landside slope in pipe alignment. Crossing appears abandoned. (O.Yakimov - DWR UCIP)
10/24/2016 Per Mr. Topper Van Loben, LMA contact, new owner is working with DCC Engineering to obtain CVFPB permit for pipe rehabilitation. Work rehabilitation for existing pipe includes sleeving an 8-inch steel pipe through existing pipe and grouting space between pipes. Crossing has been downgraded to Non-Urgent since walkway has been repaired and pipe in the process of being rehabilitated. UCIP staff is waiting for permit authorizing pipe rehabilitation. (O. Magana - DWR UCIP) (Olivia) As of 09/21/2015 owner is working with Gilbert Labrie, LMA consultant, to resolve issue. (T. Van Loben - LMA representative / G. Labrie - LMA Engineer - DCC Engineering)As of 12/17/2013 District submitted letter to landowner explaining UCIP report details including photos of the pipe problems. (T. Van Loben - LMA representative / G. Labrie - LMA Engineer - DCC Engineering)As of 12/13/2013 the District has contacted the tenant farmer who is in the process of contacting the owner to update on condition of pipe. (T. Van Loben - LMA representative / G. Labrie - LMA Engineer - DCC Engineering) 04/11/2013 Pier for pump is falling apart and is a hazard to the public. Some settlement along pipe on LS slope. (W. Wylie - DWR UCIP)
FIELD_STRUCT_DESC: 10-inch steel irrigation pipe through the levee 6.5 feet below the crown. Service pole and a 36-inch concrete standpipe are located on the landside (LS) toe. 1-inch electrical conduit at same location. Metal walkway, pump, and control panel are located on the waterside (WS). Pump previous on pile structure has been removed. (10-inch pipe authorized under Permit No. 636, 1935 - John E. Erickson). (10-inch pipe [HLM 4.63] authorized under Automatic Board Order (ABO) issued as Permit No. 11152, 1975 - Frank A. Willcox et.al). [Additional Reference(s): DWR Levee Log, 2005 (HLM 4.63). USACE Sacramento O&M Manual, Unit 111, May 1959, Revised 29 December 2016, (RM 30.15), listed as 10-inch pipe. Drawing Number 50-4-2983, Sheet 5. USACE As-Built Drawing No. 06-13-1100, Sheet 14, upstream of 'L' 1542+00, January 1933. USACE As-Built Drawing No. 50-04-2983, Sheet 5, downstream of STA 115+10, March 1954].
FS Date: 6/3/2020 7:38:19 AM

Photo 1 of 3 : UCIP_SP_2022_60620_87852.jpg



Top of Levee: View of levee crown looking towards landside

* Location LS : Land Side N/A : Not Applicable WS : Water Side CR : Crown	** Rating A : Acceptable M : Minimally Acceptable U : Unacceptable	N : Not Inspected/Rated C : Corrected A/W : Acceptable but Monitor & Maintain	+ Issue Type Ma : Maintenance Deficiency Ob : Design & System Obsolescence En : Enforcement
--	--	--	---

**Flood Control Project Maintenance
Levee Inspections**

Levee Inspection Report By Mile - Spring 2022

Reclamation District No. 0551 Pearson

Waterway	Bank	Unit Miles	Inspection Start/End	Inspector
Unit No. 01 Sacramento River	Left	6.78	03/10/2022 03/10/2022	David Julian

LM Start	4.59	Rating **	U	Issue No.	67 (cont)
LM End	4.59	Issue Type +	En	Location *	
Category	Supplemental		GPS Latitude/Longitude		
			Start	End	
Item	DWR UCIP Field Study		38.281074 °	38.281074 °	
			-121.546628 °	-121.546628 °	
DWR ID	22020				

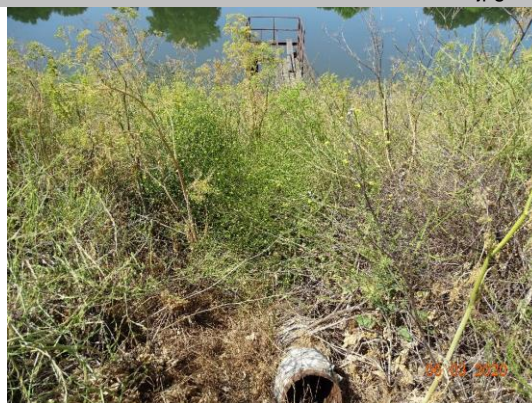
Photo 2 of 3 : UCIP_SP_2022_60620_87851.jpg



Water-Side: View of levee slope looking from crown

LM Start	4.59	Rating **	U	Issue No.	67 (cont)
LM End	4.59	Issue Type +	En	Location *	

Photo 3 of 3 : UCIP_SP_2022_60620_87853.jpg



Water-Side: Pipe cut on levee slope

LM Start	4.65	Rating **	M	Issue No.	97
LM End	4.92	Issue Type +	Ma	Location *	LS
Category	Earthen Levee			GPS Latitude/Longitude	
				Start	End
Item	Vegetation			38.280544 °	38.277690 °
				-121.545872 °	-121.542424 °
DWR ID	DWR_RD0551_01_s_2022_97				
Comment Code					
V1 : Control annual grass and weeds on the levee slopes and easements.					
Inspector Comment					

No Photos

* Location LS : Land Side N/A : Not Applicable WS : Water Side CR : Crown	** Rating A : Acceptable M : Minimally Acceptable U : Unacceptable	N : Not Inspected/Rated C : Corrected A/W : Acceptable but Monitor & Maintain	+ Issue Type Ma : Maintenance Deficiency Ob : Design & System Obsolescence En : Enforcement
--	--	--	---

**Flood Control Project Maintenance
Levee Inspections**

Levee Inspection Report By Mile - Spring 2022

Reclamation District No. 0551 Pearson

Waterway	Bank	Unit Miles	Inspection Start/End	Inspector
Unit No. 01 Sacramento River	Left	6.78	03/10/2022 03/10/2022	David Julian

LM Start	4.72	Rating **	M	Issue No.	98
LM End	4.72	Issue Type +	En	Location *	LS
Category	Earthen Levee			GPS Latitude/Longitude	
				Start	End
Item	Encroachments			38.279817 °	38.279817 °
				-121.544929 °	-121.544929 °
DWR ID	DWR_RD0551_01_s_2022_98				
Comment Code					
TR : Tree or limb					
Inspector Comment					

No Photos

LM Start	4.82	Rating **	M	Issue No.	68
LM End	4.82	Issue Type +	En	Location *	
Category	Supplemental			GPS Latitude/Longitude	
				Start	End
Item	DWR UCIP Field Study			38.278764 °	38.278764 °
				-121.543728 °	-121.543728 °
DWR ID	22036				
Comment Code					
Inspector Comment					
FS_ID:60621 DS_ID:22036 EP_NO: N/A Repair Type: Non-Urgent Crossing Status: Not Found UCIP Comments: 06/03/2020 Record updated from No Action Needed to Non-Urgent. Crossing not found. No permit has been identified authorizing pipe. (O.Yakimov - DWR UCIP)					
FIELD_STRUCT_DESC: 12-inch steel irrigation pipe through the levee, 4 feet below the crown. Pump and motor on a concrete slab on the waterside (WS) slope. [Additional Reference(s): USACE Sacramento O&M Manual, Unit 111, May 1959, Revised 29 December 2016, (RM 29.95), listed as 12-inch pipe. USACE As-Built Drawing No. 06-13-1100, Sheet 14, near 'L' 1543+45, January 1933. USACE As-Built Drawing No. 50-04-2983, Sheet 5, downstream of STA 125+70, March 1954]. FS Date: 6/3/2020 10:51:39 AM					

Photo 1 of 3 : UCIP_SP_2022_60621_87858.jpg



Top of Levee: View of levee crown looking towards landside

* Location LS : Land Side N/A : Not Applicable WS : Water Side CR : Crown	** Rating A : Acceptable M : Minimally Acceptable U : Unacceptable	N : Not Inspected/Rated C : Corrected A/W : Acceptable but Monitor & Maintain	+ Issue Type Ma : Maintenance Deficiency Ob : Design & System Obsolescence En : Enforcement
--	--	---	---

**Flood Control Project Maintenance
Levee Inspections**

Levee Inspection Report By Mile - Spring 2022

Reclamation District No. 0551 Pearson

Waterway	Bank	Unit Miles	Inspection Start/End	Inspector
Unit No. 01 Sacramento River	Left	6.78	03/10/2022 03/10/2022	David Julian

LM Start	4.82	Rating **	M	Issue No.	68 (cont)
LM End	4.82	Issue Type +	En	Location *	
Category	Supplemental		GPS Latitude/Longitude		
			Start	End	
Item	DWR UCIP Field Study		38.278764 °	38.278764 °	
			-121.543728 °	-121.543728 °	
DWR ID	22036				

Photo 2 of 3 : UCIP_SP_2022_60621_87859.jpg



Water-Side: View of levee slope looking from crown

LM Start	4.82	Rating **	M	Issue No.	68 (cont)
LM End	4.82	Issue Type +	En	Location *	

Photo 3 of 3 : UCIP_SP_2022_60621_87860.jpg



Land-Side: View of levee slope looking from crown. Water well and facility at levee toe

LM Start	4.82	Rating **	U	Issue No.	25
LM End	4.86	Issue Type +	En	Location *	LS
Category	Earthen Levee			GPS Latitude/Longitude	
				Start	End
Item	Vegetation			38.278760 °	38.278287 °
				-121.543608 °	-121.543132 °
DWR ID	DWR_RD0551_01_f_2018_25				
Comment Code					
V6 : Landscaping					
Inspector Comment					

Photo 1 of 1 : SP_2022_RD0551_175_25_20220307_00008.jpg



View looking upstream at landscaping on the landside slope (November 2018).

* Location LS : Land Side N/A : Not Applicable WS : Water Side CR : Crown	** Rating A : Acceptable M : Minimally Acceptable U : Unacceptable	N : Not Inspected/Rated C : Corrected A/W : Acceptable but Monitor & Maintain	+ Issue Type Ma : Maintenance Deficiency Ob : Design & System Obsolescence En : Enforcement
--	--	---	---

**Flood Control Project Maintenance
Levee Inspections**

Levee Inspection Report By Mile - Spring 2022

Reclamation District No. 0551 Pearson

Waterway	Bank	Unit Miles	Inspection Start/End	Inspector
Unit No. 01 Sacramento River	Left	6.78	03/10/2022 03/10/2022	David Julian

LM Start	5.00	Rating **	U	Issue No.	44
LM End	5.00	Issue Type +	En	Location *	LS
Category	Earthen Levee			GPS Latitude/Longitude	
				Start	End
Item	Vegetation			38.276870 °	38.276870 °
				-121.541463 °	-121.541463 °
DWR ID	DWR_RD0551_01_f_2019_44				
Comment Code					
V6 : Landscaping					
Inspector Comment					

Photo 1 of 1 : SP_2022_RD0551_175_44_20220307_00011.jpg



View looking slightly upstream at landscaping on the landside slope (Fall 2019).

LM Start	5.01	Rating **	M	Issue No.	70	
LM End	5.01	Issue Type +	En	Location *		
Category	Supplemental			GPS Latitude/Longitude		
				Start		End
Item	DWR UCIP Field Study			38.276708 °		38.276708 °
				-121.541349 °		-121.541349 °
DWR ID	25122					
Comment Code						
Inspector Comment						
FS_ID:56199						
DS_ID:25122						
EP_NO: N/A						
Repair Type: Non-Urgent						
Crossing Status: Found						
UCIP Comments: 06/03/2020 Record is Non-Urgent. Five conduits are visible under bridge to boat launching two of which are open ended.						
Recommend capping conduits under bridge to prevent water backflow.						
(O.Yakimov - DWR UCIP)						
FIELD_STRUCT_DESC: 6-inch wrapped and soil proofed galvanized iron conduit through the levee 2-feet below the crown. Electric, water, and other utility pipes sleeved through conduit with welded steel caps and annular space grouted. (6-inch steel utility chase authorized under Permit No. 18769, 2013 - Michael & Jill Steinbacher).						
FS Date: 6/3/2020						

Photo 1 of 3 : UCIP_SP_2022_56199_87883.jpg



Top of Levee: View of levee crown looking towards landside

* Location LS : Land Side N/A : Not Applicable WS : Water Side CR : Crown	** Rating A : Acceptable M : Minimally Acceptable U : Unacceptable	N : Not Inspected/Rated C : Corrected A/W : Acceptable but Monitor & Maintain	+ Issue Type Ma : Maintenance Deficiency Ob : Design & System Obsolescence En : Enforcement
--	--	---	---

**Flood Control Project Maintenance
Levee Inspections**

Levee Inspection Report By Mile - Spring 2022

Reclamation District No. 0551 Pearson

Waterway	Bank	Unit Miles	Inspection Start/End	Inspector
Unit No. 01 Sacramento River	Left	6.78	03/10/2022 03/10/2022	David Julian

LM Start	5.01	Rating **	M	Issue No.	70 (cont)
LM End	5.01	Issue Type +	En	Location *	
Category	Supplemental		GPS Latitude/Longitude		
			Start	End	
Item	DWR UCIP Field Study		38.276708 °	38.276708 °	
			-121.541349 °	-121.541349 °	
DWR ID	25122				

Photo 2 of 3 : UCIP_SP_2022_56199_87884.jpg



Water-Side: View of levee slope looking from crown

LM Start	5.01	Rating **	M	Issue No.	70 (cont)
LM End	5.01	Issue Type +	En	Location *	

Photo 3 of 3 : UCIP_SP_2022_56199_87885.jpg



Water-Side: Conduits under walkway

LM Start	5.02	Rating **	U	Issue No.	89
LM End	5.02	Issue Type +	Ma	Location *	LS
Category	Earthen Levee			GPS Latitude/Longitude	
				Start	End
Item	Animal Control			38.276577 °	38.276577 °
				-121.541148 °	-121.541148 °
DWR ID	DWR_RD0551_01_f_2020_89				
Comment Code					
A1 : Exterminate rodents and backfill and compact or grout burrows.					
Inspector Comment					
Multiple large rodent holes burrowed under trees in the landside slope.					

Photo 1 of 1 : SP_2022_RD0551_175_89_20220307_00032.jpg



View large animal hole in the landside slope (Fall 2020).

*** Location**

LS : Land Side N/A : Not Applicable
WS : Water Side
CR : Crown

**** Rating**

A : Acceptable N : Not Inspected/Rated
M : Minimally Acceptable C : Corrected
U : Unacceptable A/W : Acceptable but Monitor & Maintain

+ Issue Type

Ma : Maintenance Deficiency
Ob : Design & System Obsolescence
En : Enforcement

**Flood Control Project Maintenance
Levee Inspections**

Levee Inspection Report By Mile - Spring 2022

Reclamation District No. 0551 Pearson

Waterway	Bank	Unit Miles	Inspection Start/End	Inspector
Unit No. 01 Sacramento River	Left	6.78	03/10/2022 03/10/2022	David Julian

LM Start	5.05	Rating **	M	Issue No.	71	
LM End	5.05	Issue Type +	En	Location *		
Category	Supplemental			GPS Latitude/Longitude		
				Start	End	
Item	DWR UCIP Field Study			38.276220 °	38.276220 °	
				-121.540811 °	-121.540811 °	
DWR ID	22022					
Comment Code						
Inspector Comment						
FS_ID:60628 DS_ID:22022 EP_NO: 11125 Repair Type: Non-Urgent Crossing Status: Found UCIP Comments: 06/03/2020 Record remains Non-Urgent. Crossing appears abandoned. Service pole at landside toe with electric panel and meter is broken down. Unable to evaluate waterside slope due to overgrown vegetation. Unauthorized encroachment recorded in Levee Log prior to 2011. Need to have CVFPB review ABO and determine current owner. (O.Yakimov - DWR UCIP) 04/11/2013 Pumphouse has been removed from pump and pump is in disrepair. Pipe at LS toe is sleeved or has been replaced with a 6-inch PVC pipe. This pump appears abandoned and should be done so properly. (W.Wylie - DWR UCIP) FIELD_STRUCT_DESC: 6-inch irrigation pipe of an unknown material through the levee, 6.5 feet below the crown. Pump and slide gate on the waterside (WS) slope. 1-inch electrical conduit at the same location with service pole at the landside (LS) toe. 4-foot by 6-foot concrete distribution box at the LS toe. (6-inch pipe [HLM 5.09] authorized under Automatic Board Order (ABO) issued as Permit No. 11125, 1975 - William H. And Evelyn J. Cortopassi). [Additional Reference(s): DWR Levee Log, 2005 (HLM 5.09). USACE Sacramento O&M Manual, Unit 111, May 1959, Revised 29 December 2016, (RM 29.71), listed as 6-inch pipe. USACE As-Built Drawing No. 06-13-1100, Sheet 14, downstream of 'L' 1560+12, January 1933]. FS Date: 6/3/2020 4:46:04 PM						

Photo 1 of 3 : UCIP_SP_2022_60628_87889.jpg



Top of Levee: View of levee crown looking towards landside

* Location LS : Land Side N/A : Not Applicable WS : Water Side CR : Crown	** Rating A : Acceptable M : Minimally Acceptable U : Unacceptable N : Not Inspected/Rated C : Corrected A/W : Acceptable but Monitor & Maintain	+ Issue Type Ma : Maintenance Deficiency Ob : Design & System Obsolescence En : Enforcement
--	---	---

**Flood Control Project Maintenance
Levee Inspections**

Levee Inspection Report By Mile - Spring 2022

Reclamation District No. 0551 Pearson

Waterway	Bank	Unit Miles	Inspection Start/End	Inspector
Unit No. 01 Sacramento River	Left	6.78	03/10/2022 03/10/2022	David Julian

LM Start	5.05	Rating **	M	Issue No.	71 (cont)
LM End	5.05	Issue Type +	En	Location *	
Category	Supplemental		GPS Latitude/Longitude		
			Start	End	
Item	DWR UCIP Field Study		38.276220 °	38.276220 °	
			-121.540811 °	-121.540811 °	
DWR ID	22022				

Photo 2 of 3 : UCIP_SP_2022_60628_87890.jpg



Water-Side: View of levee slope looking from crown. Abandoned pumphouse on levee slope

LM Start	5.05	Rating **	M	Issue No.	71 (cont)
LM End	5.05	Issue Type +	En	Location *	

Photo 3 of 3 : UCIP_SP_2022_60628_87891.jpg



Water-Side: View inside of abandoned pumphouse

LM Start	5.08	Rating **	U	Issue No.	49
LM End	5.08	Issue Type +	En	Location *	LS
Category	Earthen Levee			GPS Latitude/Longitude	
				Start	End
Item	Vegetation			38.275865 °	38.275865 °
				-121.540461 °	-121.540461 °
DWR ID	DWR_RD0551_01_f_2017_49				
Comment Code					
V6 : Landscaping					
Inspector Comment					
Landscaping should be maintained to allow inspection and access to landside slope and toe.					

Photo 1 of 1 : SP_2022_RD0551_175_49_20220307_00015.jpg



View looking upstream at landscaping on the landside slope (Fall 2019).

* Location LS : Land Side N/A : Not Applicable WS : Water Side CR : Crown		** Rating A : Acceptable M : Minimally Acceptable U : Unacceptable N : Not Inspected/Rated C : Corrected A/W : Acceptable but Monitor & Maintain		+ Issue Type Ma : Maintenance Deficiency Ob : Design & System Obsolescence En : Enforcement	
--	--	---	--	---	--

**Flood Control Project Maintenance
Levee Inspections**

Levee Inspection Report By Mile - Spring 2022

Reclamation District No. 0551 Pearson

Waterway	Bank	Unit Miles	Inspection Start/End	Inspector
Unit No. 01 Sacramento River	Left	6.78	03/10/2022 03/10/2022	David Julian

LM Start	5.17	Rating **	M	Issue No.	93
LM End	5.31	Issue Type +	Ma	Location *	WS
Category	Earthen Levee			GPS Latitude/Longitude	
				Start	End
Item	Vegetation			38.275026 °	38.273684 °
				-121.539307 °	-121.537459 °
DWR ID	DWR_RD0551_01_s_2022_93				
Comment Code					
V1 : Control annual grass and weeds on the levee slopes and easements.					
Inspector Comment					

No Photos

LM Start	5.20	Rating **	A/W	Issue No.	34
LM End	5.28	Issue Type +	Ob	Location *	N/A
Category	Supplemental			GPS Latitude/Longitude	
				Start	End
Item	2017 Storm Damage			38.274592 °	38.273800 °
				-121.538958 °	-121.537869 °
DWR ID	LMA-169				
Comment Code					
Inspector Comment					
Repair not complete as of September 2021.					
Levee Evaluation Comments					
Description:District Station 273+82 to 278+08, Sec. 21 and 22, T. 5 N. R. 4 E., M.D.M. Approximately 426 linear-feet of erosion exists along the waterside slope of the Sacramento River. The erosion commences approximately halfway down the slope and extends to the rip rap.					
Some existing rip rap has been pulled off in this section.					
Site ID No:342					
Site Designation:LMA-169					
Repair Type: Erosion					
Rating:Serious					
Field Date:7/14/2017					
Notes: there is a 7 ft scarp that extends for 40-60 ft in very sandy soil, scarps are 2-4 ft the rest of the length. Worst site in this RD so far.					
Serious because of the length of this deeper scarp and the weak soil here. Crown is a paved road.					

Photo 1 of 2 : SP_2022_RD0551_175_34_20220307_00009.jpg



* Location LS : Land Side N/A : Not Applicable WS : Water Side CR : Crown	** Rating A : Acceptable M : Minimally Acceptable U : Unacceptable	N : Not Inspected/Rated C : Corrected A/W : Acceptable but Monitor & Maintain	+ Issue Type Ma : Maintenance Deficiency Ob : Design & System Obsolescence En : Enforcement
--	--	---	---

**Flood Control Project Maintenance
Levee Inspections**

Levee Inspection Report By Mile - Spring 2022

Reclamation District No. 0551 Pearson

Waterway	Bank	Unit Miles	Inspection Start/End	Inspector
Unit No. 01 Sacramento River	Left	6.78	03/10/2022 03/10/2022	David Julian

LM Start	5.20	Rating **	A/W	Issue No.	34 (cont)
LM End	5.28	Issue Type +	Ob	Location *	N/A
Category	Supplemental			GPS Latitude/Longitude	
				Start	End
Item	2017 Storm Damage			38.274592 °	38.273800 °
				-121.538958 °	-121.537869 °
DWR ID	LMA-169				

Photo 2 of 2 : SP_2022_RD0551_175_34_20220307_00010.jpg



* Location LS : Land Side N/A : Not Applicable WS : Water Side CR : Crown	** Rating A : Acceptable M : Minimally Acceptable U : Unacceptable	N : Not Inspected/Rated C : Corrected A/W : Acceptable but Monitor & Maintain	+ Issue Type Ma : Maintenance Deficiency Ob : Design & System Obsolescence En : Enforcement
--	--	---	---

**Flood Control Project Maintenance
Levee Inspections**

Levee Inspection Report By Mile - Spring 2022

Reclamation District No. 0551 Pearson

Waterway	Bank	Unit Miles	Inspection Start/End	Inspector
Unit No. 01 Sacramento River	Left	6.78	03/10/2022 03/10/2022	David Julian

LM Start	5.26	Rating **	U	Issue No.	72
LM End	5.26	Issue Type +	En	Location *	
Category	Supplemental			GPS Latitude/Longitude	
				Start	End
Item	DWR UCIP Field Study			38.274147 °	38.274147 °
				-121.538076 °	-121.538076 °
DWR ID	22023				

Comment Code

Inspector Comment

FS_ID:60630
DS_ID:22023
EP_NO: 11131
Repair Type: Urgent
Crossing Status: Found
UCIP Comments: 06/09/2020 Record updated from Non-Urgent to Urgent. 7-foot diameter 1-foot deep unauthorized excavation found at landside levee toe next to the concrete standpipe. Excavation is apparently made to expose and fix leaking pipe. Abandoned closure device and concrete standpipe at landside toe. 2.5-inch PVC connected to pipe end at landside toe. Pipe is running - no leaks detected. CMP riser on landside slope missing cover - fall hazard. No permit has been identified authorizing pipe. Need to have CVFPB review ABO and determine current owner. (O.Yakimov - DWR UCIP)
01/15/2014 Based on District notes from January 15, 2014, pump discharge pipe has been repaired. Corrosion holes in pipe at LS toe good indicator that pipe is failing internally. Pipe should be examined internally for damage (video inspect).: As of 12/12/2013 the District discussed with farmer tenant what needed to be done, and the tenant informed the District that they would address the repairs.: As of 12/17/2013 District submitted letter to landowner explaining UCIP report details including photos of the pipe problems
FIELD_STRUCT_DESC: 10-inch steel exterior coated irrigation pipe through the levee, 7.7 feet below the crown. Pump and slide gate on a concrete pad on the waterside (WS) slope. Siphon breaker in a 24-inch corrugated metal pipe (CMP) riser on the landside (LS) slope. 36-inch concrete standpipe, shut off device, and power pole with panel box on the LS toe. 1.5-inch galvanized steel electrical conduit at the same location. (10-inch pipe [HLM 5.3] authorized under Automatic Board Order (ABO) issued as Permit No. 11131, 1975 - Helen Crofton Sloane Latimer). [Additional Reference(s): DWR Levee Log, 2005 (HLM 5.30). USACE Sacramento O&M Manual, Unit 111, May 1959, Revised 29 December 2016, (RM 29.52), listed as 9-inch pipe. USACE As-Built Drawing No. 06-13-1100, Sheet 14, 'L' 1571+85, January 1933, listed as 9-inch pipe].
FS Date: 6/9/2020 10:52:00 AM

Photo 1 of 3 : UCIP_SP_2022_60630_87898.jpg



Top of Levee: View of levee crown looking downstream

* Location	** Rating	+ Issue Type
LS : Land Side N/A : Not Applicable WS : Water Side CR : Crown	A : Acceptable M : Minimally Acceptable U : Unacceptable N : Not Inspected/Rated C : Corrected A/W : Acceptable but Monitor & Maintain	Ma : Maintenance Deficiency Ob : Design & System Obsolescence En : Enforcement

**Flood Control Project Maintenance
Levee Inspections**

Levee Inspection Report By Mile - Spring 2022

Reclamation District No. 0551 Pearson

Waterway	Bank	Unit Miles	Inspection Start/End	Inspector
Unit No. 01 Sacramento River	Left	6.78	03/10/2022 03/10/2022	David Julian

LM Start	5.26	Rating **	U	Issue No.	72 (cont)
LM End	5.26	Issue Type +	En	Location *	
Category	Supplemental		GPS Latitude/Longitude		
			Start	End	
Item	DWR UCIP Field Study		38.274147 °	38.274147 °	
			-121.538076 °	-121.538076 °	
DWR ID	22023				

Photo 2 of 3 : UCIP_SP_2022_60630_87899.jpg



Water-Side: View of levee slope looking from crown

LM Start	5.26	Rating **	U	Issue No.	72 (cont)
LM End	5.26	Issue Type +	En	Location *	

Photo 3 of 3 : UCIP_SP_2022_60630_87896.jpg



Water-Side: Pump, slide gate valve, and intake pipe on levee slope

LM Start	5.54	Rating **	M	Issue No.	58
LM End	5.54	Issue Type +	En	Location *	LS
Category	Earthen Levee			GPS Latitude/Longitude	
				Start	End
Item	Vegetation			38.271415 °	38.271415 °
				-121.534307 °	-121.534307 °
DWR ID	DWR_RD0551_01_s_2019_58				
Comment Code					
V6 : Landscaping					
Inspector Comment					
Thin landscaping to allow visibility and access down landside slope.					

Photo 1 of 1 : SP_2022_RD0551_175_58_20220307_00022.jpg



View looking upstream at landscaping on the landside slope (Spring 2019).

* Location LS : Land Side N/A : Not Applicable WS : Water Side CR : Crown	** Rating A : Acceptable M : Minimally Acceptable U : Unacceptable	N : Not Inspected/Rated C : Corrected A/W : Acceptable but Monitor & Maintain	+ Issue Type Ma : Maintenance Deficiency Ob : Design & System Obsolescence En : Enforcement
--	--	---	---

**Flood Control Project Maintenance
Levee Inspections**

Levee Inspection Report By Mile - Spring 2022

Reclamation District No. 0551 Pearson

Waterway	Bank	Unit Miles	Inspection Start/End	Inspector
Unit No. 01 Sacramento River	Left	6.78	03/10/2022 03/10/2022	David Julian

LM Start	5.55	Rating **	M	Issue No.	73	
LM End	5.55	Issue Type +	En	Location *		
Category	Supplemental			GPS Latitude/Longitude		
				Start	End	
Item	DWR UCIP Field Study			38.271251 °	38.271251 °	
				-121.534189 °	-121.534189 °	
DWR ID	22024					
Comment Code						
Inspector Comment						
FS_ID:60635 DS_ID:22024 EP_NO: 11131 Repair Type: Non-Urgent Crossing Status: Found UCIP Comments: 06/09/2020 Record updated from No Action Needed to Non-Urgent. Unable to evaluate levee slopes due to overgrown vegetation on waterside and landscaping on landside. No permit has been identified authorizing pipe. Need to have CVFPB review ABO and determine current owner. (O.Yakimov - DWR UCIP) 04/11/2013 Good candidate for video inspection. (W.Wylie - DWR UCIP) FIELD_STRUCT_DESC: 8-inch irrigation pipe of an unknown material through the levee, 7.7 feet below the crown. Pump house, pump, and slide gate on a concrete pad on the waterside (WS) slope. 5-foot by 6-foot concrete distribution box at the landside (LS) toe. Service pole on the LS slope, electrical conduit of unknown diameter at this location. (8-inch pipe [HLM 5.6] authorized under Automatic Board Order (ABO) issued as Permit No. 11131, 1975 - Helen Crofton Sloane Latimer). [Additional Reference(s): DWR Levee Log, 2005 (HLM 5.60). USACE Sacramento O&M Manual, Unit 111, May 1959, Revised 29 December 2016, (RM 29.20), listed as 6-inch pipe. USACE As-Built Drawing No. 06-13-1100, Sheet 14, downstream of 'L' 1588+00, January 1933, listed as 6-inch pipe]. FS Date: 6/9/2020 2:08:08 PM						

LM Start	5.55	Rating **	M	Issue No.	73 (cont)
LM End	5.55	Issue Type +	En	Location *	

Photo 1 of 3 : UCIP_SP_2022_60635_87911.jpg



Top of Levee: View of levee crown looking upstream

Photo 2 of 3 : UCIP_SP_2022_60635_87912.jpg



Water-Side: Dense vegetation on levee slope. View of pumphouse on the slope

* Location LS : Land Side N/A : Not Applicable WS : Water Side CR : Crown	** Rating A : Acceptable M : Minimally Acceptable U : Unacceptable	N : Not Inspected/Rated C : Corrected A/W : Acceptable but Monitor & Maintain	+ Issue Type Ma : Maintenance Deficiency Ob : Design & System Obsolescence En : Enforcement
--	--	---	---

**Flood Control Project Maintenance
Levee Inspections**

Levee Inspection Report By Mile - Spring 2022

Reclamation District No. 0551 Pearson

Waterway	Bank	Unit Miles	Inspection Start/End	Inspector
Unit No. 01 Sacramento River	Left	6.78	03/10/2022 03/10/2022	David Julian

LM Start	5.55	Rating **	M	Issue No.	73 (cont)
LM End	5.55	Issue Type +	En	Location *	
Category	Supplemental			GPS Latitude/Longitude	
				Start	End
Item	DWR UCIP Field Study			38.271251 °	38.271251 °
				-121.534189 °	-121.534189 °
DWR ID	22024				

Photo 3 of 3 : UCIP_SP_2022_60635_87913.jpg



Water-Side: Pump in pumphouse on levee slope

LM Start	5.59	Rating **	U	Issue No.	24
LM End	5.62	Issue Type +	En	Location *	LS
Category	Earthen Levee			GPS Latitude/Longitude	
				Start	End
Item	Vegetation			38.270840 °	38.270574 °
				-121.533577 °	-121.533281 °
DWR ID	DWR_RD0551_01_f_2018_24				
Comment Code					
V6 : Landscaping					
Inspector Comment					

Photo 1 of 1 : SP_2022_RD0551_175_24_20220307_00007.jpg



View looking upstream at landscaping on the landside slope (November 2018).

*** Location**
LS : Land Side N/A : Not Applicable
WS : Water Side
CR : Crown

**** Rating**
A : Acceptable N : Not Inspected/Rated
M : Minimally Acceptable C : Corrected
U : Unacceptable A/W : Acceptable but Monitor & Maintain

+ Issue Type
Ma : Maintenance Deficiency
Ob : Design & System Obsolescence
En : Enforcement

**Flood Control Project Maintenance
Levee Inspections**

Levee Inspection Report By Mile - Spring 2022

Reclamation District No. 0551 Pearson

Waterway	Bank	Unit Miles	Inspection Start/End	Inspector
Unit No. 01 Sacramento River	Left	6.78	03/10/2022 03/10/2022	David Julian

LM Start	5.72	Rating **	M	Issue No.	74
LM End	5.72	Issue Type +	En	Location *	
Category	Supplemental			GPS Latitude/Longitude	
				Start	End
Item	DWR UCIP Field Study			38.269542 °	38.269542 °
				-121.531832 °	-121.531832 °
DWR ID	22025				

Comment Code

Inspector Comment

FS_ID:60636
DS_ID:22025
EP_NO: 11134
Repair Type: Non-Urgent
Crossing Status: Found
UCIP Comments: 06/09/2020 Record updated from No Action Needed to Non-Urgent. CMP riser on landside slope needs a cover - fall hazard. Pipe is running - minor leak through siphon breaker on the top of standpipe and landside toe. No permit has been identified authorizing pipe. Need to have CVFPB review ABO and determine current owner. (O.Yakimov - DWR UCIP)

FIELD_STRUCT_DESC: 8-inch irrigation pipe of an unknown material through the levee, 8 feet below the crown. Water pump, gate valve, pressure tank, filler pump on a concrete pad on the waterside (WS) slope. Siphon breaker in a 24-inch CMP riser on the landside (LS) slope. Service pole with electrical panel and meter at landside levee toe. 14-inch steel standpipe with siphon breaker on top at landside toe. 2-inch galvanized steel electrical conduit through the levee at this location. (8-inch pipe [HLM 5.77] authorized under Automatic Board Order (ABO) issued as Permit No. 11134, 1975 - John & Voine B. Molino, et al). [Additional Reference(s): DWR Levee Log, 2005 (HLM 5.77). USACE Sacramento O&M Manual, Unit 111, May 1959, Revised 29 December 2016, (RM 29.03), listed as 6-inch pipe. USACE As-Built Drawing No. 06-13-1100, Sheet 14, upstream of 'L' 1600+60, January 1933, listed as 6-inch pipe].
FS Date: 6/9/2020 2:22:02 PM

LM Start	5.72	Rating **	M	Issue No.	74 (cont)
LM End	5.72	Issue Type +	En	Location *	

Photo 1 of 3 : UCIP_SP_2022_60636_87917.jpg



Top of Levee: View of levee crown looking towards landside

Photo 2 of 3 : UCIP_SP_2022_60636_87918.jpg



Water-Side: View of levee slope looking from crown

* Location LS : Land Side N/A : Not Applicable WS : Water Side CR : Crown		** Rating A : Acceptable M : Minimally Acceptable U : Unacceptable		N : Not Inspected/Rated C : Corrected A/W : Acceptable but Monitor & Maintain		+ Issue Type Ma : Maintenance Deficiency Ob : Design & System Obsolescence En : Enforcement	
--	--	--	--	---	--	---	--

**Flood Control Project Maintenance
Levee Inspections**

Levee Inspection Report By Mile - Spring 2022

Reclamation District No. 0551 Pearson

Waterway	Bank	Unit Miles	Inspection Start/End	Inspector
Unit No. 01 Sacramento River	Left	6.78	03/10/2022 03/10/2022	David Julian

LM Start	5.72	Rating **	M	Issue No.	74 (cont)
LM End	5.72	Issue Type +	En	Location *	
Category	Supplemental		GPS Latitude/Longitude		
			Start	End	
Item	DWR UCIP Field Study		38.269542 °	38.269542 °	
			-121.531832 °	-121.531832 °	
DWR ID	22025				

Photo 3 of 3 : UCIP_SP_2022_60636_87919.jpg



Water-Side: Concrete pad on levee slope with pumps, valve, pressure tank

LM Start	5.78	Rating **	M	Issue No.	75
LM End	5.78	Issue Type +	En	Location *	
Category	Supplemental		GPS Latitude/Longitude		
			Start	End	
Item	DWR UCIP Field Study		38.268983 °	38.268983 °	
			-121.531042 °	-121.531042 °	
DWR ID	22038				

Comment Code

Inspector Comment

FS_ID:60639

DS_ID:22038

EP_NO: N/A

Repair Type: Non-Urgent

Crossing Status: Found

UCIP Comments: 06/09/2020 Record updated from No Action Needed to Non-Urgent. Crossing appears abandoned. Pipe is plugged with concrete as visible inside of concrete distribution box at landside toe. Unable to locate a permit and confirm proper pipe abandonment. Pipe not found on waterside. No permit has been identified authorizing pipe through the levee. (O.Yakimov - DWR UCIP)

FIELD_STRUCT_DESC: 10-inch steel irrigation pipe through the levee, 4.4 feet below the crown. 4-foot by 6-foot concrete distribution box at the landside (LS) toe. Pipe filled with concrete at the LS toe. [Additional Reference(s): USACE Sacramento O&M Manual, Unit 111, May 1959, Revised 29 December 2016, (RM 28.97), listed as 8-inch pipe]. USACE As-Built Drawing No. 06-13-1100, Sheet 14, downstream of 'L' 1600+60, January 1933, listed as 8-inch pipe].

FS Date: 6/9/2020 3:46:26 PM

Photo 1 of 3 : UCIP_SP_2022_60639_88019.jpg



Top of Levee: View of levee crown looking downstream

* Location LS : Land Side N/A : Not Applicable WS : Water Side CR : Crown	** Rating A : Acceptable M : Minimally Acceptable U : Unacceptable	N : Not Inspected/Rated C : Corrected A/W : Acceptable but Monitor & Maintain	+ Issue Type Ma : Maintenance Deficiency Ob : Design & System Obsolescence En : Enforcement
--	--	---	---

**Flood Control Project Maintenance
Levee Inspections**

Levee Inspection Report By Mile - Spring 2022

Reclamation District No. 0551 Pearson

Waterway	Bank	Unit Miles	Inspection Start/End	Inspector
Unit No. 01 Sacramento River	Left	6.78	03/10/2022 03/10/2022	David Julian

LM Start	5.78	Rating **	M	Issue No.	75 (cont)
LM End	5.78	Issue Type +	En	Location *	
Category	Supplemental		GPS Latitude/Longitude		
			Start	End	
Item	DWR UCIP Field Study		38.268983 °	38.268983 °	
			-121.531042 °	-121.531042 °	
DWR ID	22038				

Photo 2 of 3 : UCIP_SP_2022_60639_88020.jpg



Water-Side: View of levee slope looking from crown

LM Start	5.78	Rating **	M	Issue No.	75 (cont)
LM End	5.78	Issue Type +	En	Location *	

Photo 3 of 3 : UCIP_SP_2022_60639_88018.jpg



Land-Side: View of levee slope looking from crown

LM Start	5.85	Rating **	M	Issue No.	96
LM End	5.85	Issue Type +	Ma	Location *	LS
Category	Earthen Levee			GPS Latitude/Longitude	
				Start	End
Item	Vegetation			38.268302 °	38.268302 °
				-121.530024 °	-121.530024 °
DWR ID	DWR_RD0551_01_s_2022_96				
Comment Code					
V2 : Remove the wild growth and woody vegetation other than native grasses from the levee slopes.					
Inspector Comment					
Remove newly established oaks.					

No Photos

* Location LS : Land Side N/A : Not Applicable WS : Water Side CR : Crown	** Rating A : Acceptable M : Minimally Acceptable U : Unacceptable	N : Not Inspected/Rated C : Corrected A/W : Acceptable but Monitor & Maintain	+ Issue Type Ma : Maintenance Deficiency Ob : Design & System Obsolescence En : Enforcement
--	--	--	---

**Flood Control Project Maintenance
Levee Inspections**

Levee Inspection Report By Mile - Spring 2022

Reclamation District No. 0551 Pearson

Waterway	Bank	Unit Miles	Inspection Start/End	Inspector
Unit No. 01 Sacramento River	Left	6.78	03/10/2022 03/10/2022	David Julian

LM Start	5.88	Rating **	M	Issue No.	76	
LM End	5.88	Issue Type +	En	Location *		
Category	Supplemental			GPS Latitude/Longitude		
				Start		End
Item	DWR UCIP Field Study			38.268033	°	38.268033
				-121.529660	°	-121.529660
DWR ID	21997					
Comment Code						
Inspector Comment						
FS_ID:60640 DS_ID:21997 EP_NO: N/A Repair Type: Non-Urgent Crossing Status: Found UCIP Comments: 06/09/2020 Record updated from No Action Needed to Non-Urgent. No permit has been identified authorizing pipe. (O.Yakimov - DWR UCIP)						
FIELD_STRUCT_DESC: 2-inch steel domestic water line through the levee, 3 feet below the crown. Pump house on the waterside. Air vent on landside shoulder. [Additional Reference(s): USACE Sacramento O&M Manual, Unit 111, May 1959, Revised 29 December 2016, (RM 28.87), listed as 2-inch pipe]. FS Date: 6/9/2020 3:51:38 PM						

Photo 1 of 3 : UCIP_SP_2022_60640_88021.jpg



Top of Levee: View of levee crown looking upstream

LM Start	5.88	Rating **	M	Issue No.	76 (cont)
LM End	5.88	Issue Type +	En	Location *	

Photo 2 of 3 : UCIP_SP_2022_60640_88022.jpg



Water-Side: Levee slope, pumphouse on the slope

* Location LS : Land Side N/A : Not Applicable WS : Water Side CR : Crown	** Rating A : Acceptable M : Minimally Acceptable U : Unacceptable	N : Not Inspected/Rated C : Corrected A/W : Acceptable but Monitor & Maintain	+ Issue Type Ma : Maintenance Deficiency Ob : Design & System Obsolescence En : Enforcement
--	--	---	---

**Flood Control Project Maintenance
Levee Inspections**

Levee Inspection Report By Mile - Spring 2022

Reclamation District No. 0551 Pearson

Waterway	Bank	Unit Miles	Inspection Start/End	Inspector
Unit No. 01 Sacramento River	Left	6.78	03/10/2022 03/10/2022	David Julian

LM Start	5.88	Rating **	M	Issue No.	76 (cont)
LM End	5.88	Issue Type +	En	Location *	
Category	Supplemental		GPS Latitude/Longitude		
			Start	End	
Item	DWR UCIP Field Study		38.268033 °	38.268033 °	
			-121.529660 °	-121.529660 °	
DWR ID	21997				

Photo 3 of 3 : UCIP_SP_2022_60640_88023.jpg



Water-Side: Pipe daylights on levee slope

LM Start	5.88	Rating **	M	Issue No.	77
LM End	5.88	Issue Type +	En	Location *	
Category	Supplemental		GPS Latitude/Longitude		
			Start	End	
Item	DWR UCIP Field Study		38.268033 °	38.268033 °	
			-121.529660 °	-121.529660 °	
DWR ID	22026				

Comment Code

Inspector Comment

FS_ID:60641
 DS_ID:22026
 EP_NO: 11123
 Repair Type: Non-Urgent
 Crossing Status: Found
 UCIP Comments: 06/09/2020 Record updated from No Action Needed to Non-Urgent. Unable to find a permit authorizing to sleeve 10-inch through 12-inch pipe. (O.Yakimov - DWR UCIP)
 FIELD_STRUCT_DESC: 10-inch steel irrigation pipe sleeved through the 12-inch steel pipe through the levee, 3.8 feet below the crown. Pump and butterfly valve in pump house on the waterside (WS) slope. 48-inch concrete standpipe on the landside (LS) toe, and a 1.5-inch galvanized iron electrical conduit at the same location with a service pole on the LS slope. (12-inch pipe authorized under Permit No. 1656, 1952 - Alexander Johnson). (10-inch pipe [HLM 5.93] authorized under Automatic Board Order (ABO) issued as Permit No. 11123, 1975 - Anthony & Leonilia Castanho). [Additional Reference(s): DWR Levee Log, 2005 (HLM 5.87), listed as 10-inch pipe. USACE Sacramento O&M Manual, Unit 111, May 1959, Revised 29 December 2016, (RM 28.87), listed as 10-inch pipe].
 FS Date: 6/9/2020 3:52:11 PM

Photo 1 of 3 : UCIP_SP_2022_60641_88027.jpg



Top of Levee: View of levee crown looking upstream

* Location LS : Land Side N/A : Not Applicable WS : Water Side CR : Crown		** Rating A : Acceptable N : Not Inspected/Rated M : Minimally Acceptable C : Corrected U : Unacceptable A/W : Acceptable but Monitor & Maintain		+ Issue Type Ma : Maintenance Deficiency Ob : Design & System Obsolescence En : Enforcement
--	--	---	--	---

**Flood Control Project Maintenance
Levee Inspections**

Levee Inspection Report By Mile - Spring 2022

Reclamation District No. 0551 Pearson

Waterway	Bank	Unit Miles	Inspection Start/End	Inspector
Unit No. 01 Sacramento River	Left	6.78	03/10/2022 03/10/2022	David Julian

LM Start	5.88	Rating **	M	Issue No.	77 (cont)
LM End	5.88	Issue Type +	En	Location *	
Category	Supplemental		GPS Latitude/Longitude		
			Start	End	
Item	DWR UCIP Field Study		38.268033 °	38.268033 °	
			-121.529660 °	-121.529660 °	
DWR ID	22026				

Photo 2 of 3 : UCIP_SP_2022_60641_88028.jpg



Water-Side: View of levee slope looking from crown. Pump house on levee slope

LM Start	5.88	Rating **	M	Issue No.	77 (cont)
LM End	5.88	Issue Type +	En	Location *	

Photo 3 of 3 : UCIP_SP_2022_60641_88029.jpg



Water-Side: Sleeve point on levee slope

LM Start	5.90	Rating **	A/W	Issue No.	59
LM End	5.90	Issue Type +	En	Location *	LS
Category	Earthen Levee			GPS Latitude/Longitude	
				Start	End
Item	Encroachments			38.267757 °	38.267757 °
				-121.529443 °	-121.529443 °
DWR ID	DWR_RD0551_01_f _ 2018_59				
Comment Code					
MA : Material					
Inspector Comment					
Boxes on landside shoulder inhibiting access down the levee.					

Photo 1 of 1 : SP_2022_RD0551_175_59_20220307_00023.jpg



View of boxes on the land side shoulder that landowner placed to block traffic from using driveway (November 2018).

* Location LS : Land Side N/A : Not Applicable WS : Water Side CR : Crown	** Rating A : Acceptable M : Minimally Acceptable U : Unacceptable	N : Not Inspected/Rated C : Corrected A/W : Acceptable but Monitor & Maintain	+ Issue Type Ma : Maintenance Deficiency Ob : Design & System Obsolescence En : Enforcement
--	--	---	---

**Flood Control Project Maintenance
Levee Inspections**

Levee Inspection Report By Mile - Spring 2022

Reclamation District No. 0551 Pearson

Waterway	Bank	Unit Miles	Inspection Start/End	Inspector
Unit No. 01 Sacramento River	Left	6.78	03/10/2022 03/10/2022	David Julian

LM Start	5.91	Rating **	U	Issue No.	91
LM End	5.91	Issue Type +	En	Location *	LS
Category	Earthen Levee			GPS Latitude/Longitude	
				Start	End
Item	Vegetation			38.267738 °	38.267738 °
				-121.529175 °	-121.529175 °
DWR ID	DWR_RD0551_01_f_2021_91				
Comment Code					
V6 : Landscaping					
Inspector Comment					

Photo 1 of 1 : SP_2022_RD0551_175_91_20220307_00034.jpg



View of landscaping on the landside slope (Fall 2021).

LM Start	5.97	Rating **	M	Issue No.	87
LM End	6.78	Issue Type +	Ma	Location *	LS
Category	Earthen Levee			GPS Latitude/Longitude	
				Start	End
Item	Vegetation			38.267137 °	38.258907 °
				-121.528420 °	-121.517848 °
DWR ID	DWR_RD0551_01_s_2022_87				
Comment Code					
V1 : Control annual grass and weeds on the levee slopes and easements.					
Inspector Comment					

No Photos

LM Start	6.07	Rating **	U	Issue No.	2
LM End	6.07	Issue Type +	Ma	Location *	WS
Category	Earthen Levee			GPS Latitude/Longitude	
				Start	End
Item	Erosion / Bank Caving			38.265890 °	38.265890 °
				-121.527360 °	-121.527360 °
DWR ID	DWR_RD0551_01_s_2020_2				
Comment Code					
E2 : Schedule repair of erosion site prior to the next inspection.					
Inspector Comment					
Two foot vertical erosion into the midslope of the waterside prism.					

Photo 1 of 1 : SP_2022_RD0551_175_2_20220307_00002.jpg



View from the channel of erosion into the waterside prism (Summer 2020).

* Location LS : Land Side N/A : Not Applicable WS : Water Side CR : Crown	** Rating A : Acceptable M : Minimally Acceptable U : Unacceptable	N : Not Inspected/Rated C : Corrected A/W : Acceptable but Monitor & Maintain	+ Issue Type Ma : Maintenance Deficiency Ob : Design & System Obsolescence En : Enforcement
--	--	---	---

**Flood Control Project Maintenance
Levee Inspections**

Levee Inspection Report By Mile - Spring 2022

Reclamation District No. 0551 Pearson

Waterway	Bank	Unit Miles	Inspection Start/End	Inspector
Unit No. 01 Sacramento River	Left	6.78	03/10/2022 03/10/2022	David Julian

LM Start	6.16	Rating **	M	Issue No.	78
LM End	6.16	Issue Type +	En	Location *	
Category	Supplemental			GPS Latitude/Longitude	
				Start	End
Item	DWR UCIP Field Study			38.265182 °	38.265182 °
				-121.526136 °	-121.526136 °
DWR ID	21999				
Comment Code					
Inspector Comment					
FS_ID:60643 DS_ID:21999 EP_NO: N/A Repair Type: Non-Urgent Crossing Status: Not Found UCIP Comments: 06/09/2020 Record updated from No Action Needed to Non-Urgent. Crossing not found. No permit has been identified authorizing pipe. (O.Yakimov - DWR UCIP) FIELD_STRUCT_DESC: 3.5-inch conduit of unknown purpose of an unknown material through the levee, 5.8 feet below the crown. [Additional Reference(s): USACE Sacramento O&M Manual, Unit 111, May 1959, Revised 29 December 2016, (RM 28.59), listed as 3.5-inch pipe]. FS Date: 6/9/2020 4:31:25 PM					

LM Start	6.16	Rating **	M	Issue No.	78 (cont)
LM End	6.16	Issue Type +	En	Location *	

Photo 1 of 3 : UCIP_SP_2022_60643_87950.jpg



Top of Levee: View of levee crown looking downstream

Photo 2 of 3 : UCIP_SP_2022_60643_87949.jpg



Water-Side: Electrical panel next to the pump on levee slope

* Location LS : Land Side N/A : Not Applicable WS : Water Side CR : Crown	** Rating A : Acceptable M : Minimally Acceptable U : Unacceptable	N : Not Inspected/Rated C : Corrected A/W : Acceptable but Monitor & Maintain	+ Issue Type Ma : Maintenance Deficiency Ob : Design & System Obsolescence En : Enforcement
--	--	---	---

**Flood Control Project Maintenance
Levee Inspections**

Levee Inspection Report By Mile - Spring 2022

Reclamation District No. 0551 Pearson

Waterway	Bank	Unit Miles	Inspection Start/End	Inspector
Unit No. 01 Sacramento River	Left	6.78	03/10/2022 03/10/2022	David Julian

LM Start	6.16	Rating **	M	Issue No.	78 (cont)
LM End	6.16	Issue Type +	En	Location *	
Category	Supplemental		GPS Latitude/Longitude		
			Start	End	
Item	DWR UCIP Field Study		38.265182 °	38.265182 °	
			-121.526136 °	-121.526136 °	
DWR ID	21999				

Photo 3 of 3 : UCIP_SP_2022_60643_87951.jpg



Land-Side: View of levee slope looking from crown

LM Start	6.16	Rating **	M	Issue No.	79
LM End	6.16	Issue Type +	En	Location *	
Category	Supplemental		GPS Latitude/Longitude		
			Start	End	
Item	DWR UCIP Field Study		38.265182 °	38.265182 °	
			-121.526136 °	-121.526136 °	
DWR ID	22027				

Comment Code

Inspector Comment

FS_ID:60650
DS_ID:22027
EP_NO: 11122
Repair Type: Non-Urgent
Crossing Status: Indicator Found
UCIP Comments: 06/09/2020 Record updated from No Action Needed to Non-Urgent. Pump is moved downstream to a separate piled steel pad and connected to existing 10-inch pipe through the levee. Concrete distribution box at landside toe seems abandoned. Fine media filtration system installed on landside and connected to this crossing. Unable to find permit for system modifications. Pipe is running - minor water leak through pump sealing on waterside slope. (O.Yakimov - DWR UCIP)
FIELD_STRUCT_DESC: 10-inch steel exterior coated irrigation pipe through the levee, 8 feet below the crown. Abandoned pile structure on waterside slope and in stream. Pump and butterfly valve on steel piled pad on waterside slope downstream of abandoned structure. Service pole with electrical panel and meter, media filters off landside toe. Abandoned 4-foot by 6-foot concrete distribution box at landside levee toe. This crossing replaces 8-inch pipe (see DSID 21998). (10-inch pipe authorized under Permit No. 4303, 1963 - Robert M. Carmany). (10-inch pipe [HLM 6.21] authorized under Automatic Board Order (ABO) issued as Permit No. 11122, 1975 - Robert M. And Francis Carmany). [Additional Reference(s): DWR Levee Log, 2005 (HLM 6.21)].
FS Date: 6/9/2020 8:33:40 AM

Photo 1 of 3 : UCIP_SP_2022_60650_87927.jpg



Top of Levee: View of levee crown looking towards waterside

* Location LS : Land Side N/A : Not Applicable WS : Water Side CR : Crown	** Rating A : Acceptable M : Minimally Acceptable U : Unacceptable	N : Not Inspected/Rated C : Corrected A/W : Acceptable but Monitor & Maintain	+ Issue Type Ma : Maintenance Deficiency Ob : Design & System Obsolescence En : Enforcement
--	--	--	---

**Flood Control Project Maintenance
Levee Inspections**

Levee Inspection Report By Mile - Spring 2022

Reclamation District No. 0551 Pearson

Waterway	Bank	Unit Miles	Inspection Start/End	Inspector
Unit No. 01 Sacramento River	Left	6.78	03/10/2022 03/10/2022	David Julian

LM Start	6.16	Rating **	M	Issue No.	79 (cont)
LM End	6.16	Issue Type +	En	Location *	
Category	Supplemental		GPS Latitude/Longitude		
			Start	End	
Item	DWR UCIP Field Study		38.265182 °	38.265182 °	
			-121.526136 °	-121.526136 °	
DWR ID	22027				

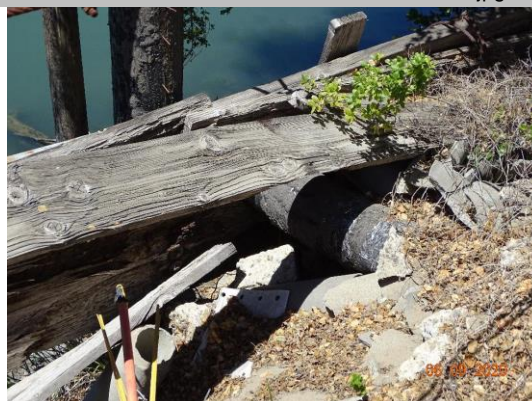
Photo 2 of 3 : UCIP_SP_2022_60650_87923.jpg



Water-Side: Abandoned pile structure on levee slope and in channel

LM Start	6.16	Rating **	M	Issue No.	79 (cont)
LM End	6.16	Issue Type +	En	Location *	

Photo 3 of 3 : UCIP_SP_2022_60650_87930.jpg



Water-Side: 10-inch pipe at abandoned structure on levee slope

LM Start	6.19	Rating **	U	Issue No.	51
LM End	6.26	Issue Type +	En	Location *	LS
Category	Earthen Levee			GPS Latitude/Longitude	
				Start	End
Item	Vegetation			38.264814 °	38.264112 °
				-121.525728 °	-121.524845 °
DWR ID	DWR_RD0551_01_f_2017_51				
Comment Code					
V6 : Landscaping					
Inspector Comment					
Landscaping should be maintained to allow inspection and access to landside slope and toe.					

Photo 1 of 1 : SP_2022_RD0551_175_51_20220307_00016.jpg



View looking downstream at landscaping on the landside slope (Fall 2019).

* Location LS : Land Side N/A : Not Applicable WS : Water Side CR : Crown		** Rating A : Acceptable N : Not Inspected/Rated M : Minimally Acceptable C : Corrected U : Unacceptable A/W : Acceptable but Monitor & Maintain		+ Issue Type Ma : Maintenance Deficiency Ob : Design & System Obsolescence En : Enforcement	
--	--	---	--	---	--

**Flood Control Project Maintenance
Levee Inspections**

Levee Inspection Report By Mile - Spring 2022

Reclamation District No. 0551 Pearson

Waterway	Bank	Unit Miles	Inspection Start/End	Inspector
Unit No. 01 Sacramento River	Left	6.78	03/10/2022 03/10/2022	David Julian

LM Start	6.30	Rating **	M	Issue No.	80	
LM End	6.30	Issue Type +	En	Location *		
Category	Supplemental			GPS Latitude/Longitude		
				Start	End	
Item	DWR UCIP Field Study			38.263669 °	38.263669 °	
				-121.524231 °	-121.524231 °	
DWR ID	21977					
Comment Code						
Inspector Comment						
FS_ID:60684 DS_ID:21977 EP_NO: N/A Repair Type: Non-Urgent Crossing Status: Found UCIP Comments: 06/02/2020 Record updated from No Action Needed to Non-Urgent. No permit has been identified authorizing crossing. (O.Yakimov - DWR UCIP) FIELD_STRUCT_DESC: 1.5-inch galvanized steel electrical conduit through the levee, 6.3 feet below the crown. Slant pump on the waterside (WS) slope. [Additional Reference(s): DWR Levee Log, 2005 (HLM 6.36), listed as 3.5-inch pipe. USACE Sacramento O&M Manual, Unit 111, May 1959, Revised 29 December 2016, (RM 28.44), listed as 3.5-inch pipe. FS Date: 6/2/2020 1:59:48 PM						

Photo 1 of 3 : UCIP_SP_2022_60684_87960.jpg



Top of Levee: View of levee crown looking downstream

LM Start	6.30	Rating **	M	Issue No.	80 (cont)
LM End	6.30	Issue Type +	En	Location *	

Photo 2 of 3 : UCIP_SP_2022_60684_87961.jpg



Land-Side: View of levee slope looking from crown

* Location LS : Land Side N/A : Not Applicable WS : Water Side CR : Crown	** Rating A : Acceptable M : Minimally Acceptable U : Unacceptable	N : Not Inspected/Rated C : Corrected A/W : Acceptable but Monitor & Maintain	+ Issue Type Ma : Maintenance Deficiency Ob : Design & System Obsolescence En : Enforcement
--	--	---	---

**Flood Control Project Maintenance
Levee Inspections**

Levee Inspection Report By Mile - Spring 2022

Reclamation District No. 0551 Pearson

Waterway	Bank	Unit Miles	Inspection Start/End	Inspector
Unit No. 01 Sacramento River	Left	6.78	03/10/2022 03/10/2022	David Julian

LM Start	6.30	Rating **	M	Issue No.	80 (cont)
LM End	6.30	Issue Type +	En	Location *	
Category	Supplemental		GPS Latitude/Longitude		
			Start	End	
Item	DWR UCIP Field Study		38.263669 °	38.263669 °	
			-121.524231 °	-121.524231 °	
DWR ID	21977				

Photo 3 of 3 : UCIP_SP_2022_60684_87962.jpg



Land-Side: Service pole at levee toe

LM Start	6.30	Rating **	M	Issue No.	81
LM End	6.30	Issue Type +	En	Location *	
Category	Supplemental		GPS Latitude/Longitude		
			Start	End	
Item	DWR UCIP Field Study		38.263669 °	38.263669 °	
			-121.524231 °	-121.524231 °	
DWR ID	22028				

Comment Code

Inspector Comment

FS_ID:60690
DS_ID:22028
EP_NO: N/A
Repair Type: Non-Urgent
Crossing Status: Found
UCIP Comments: 06/02/2020 Record updated from No Action Needed to Non-Urgent. Pipe is capped with steel plate inside of concrete distribution box at landside toe. 6-inch steel pipe going around the concrete box apparently connected underground at levee toe to the pipe through the levee. Unable to find a permit for modifications. No permit has been identified authorizing pipe through the levee. (O.Yakimov - DWR UCIP)
FIELD_STRUCT_DESC: 12-inch welded steel irrigation pipe through the levee, 6.3 feet below the crown. Slant pump and slide gate on the waterside (WS) slope. 4-foot by 6-foot concrete distribution box, siphon breaker and vent on 6-inch pipe next to the concrete box at landside toe. [Additional Reference(s): DWR Levee Log, 2005 (HLM 6.36). USACE Sacramento O&M Manual, Unit 111, May 1959, Revised 29 December 2016, (RM 28.44), listed as 8-inch pipe. USACE As-Built Drawing No. 06-13-1100, Sheet 14, downstream of 'L' 1627+05, January 1933, listed as 8-inch pipe. USACE As-Built Drawing No. 50-04-2983, Sheet 3, STA 35+09.5, March 1954, listed as 8-inch pipe].
FS Date: 6/2/2020 2:09:57 PM

Photo 1 of 3 : UCIP_SP_2022_60690_87970.jpg



Top of Levee: View of levee crown looking downstream

* Location LS : Land Side N/A : Not Applicable WS : Water Side CR : Crown	** Rating A : Acceptable M : Minimally Acceptable U : Unacceptable	N : Not Inspected/Rated C : Corrected A/W : Acceptable but Monitor & Maintain	+ Issue Type Ma : Maintenance Deficiency Ob : Design & System Obsolescence En : Enforcement
--	--	---	---

**Flood Control Project Maintenance
Levee Inspections**

Levee Inspection Report By Mile - Spring 2022

Reclamation District No. 0551 Pearson

Waterway	Bank	Unit Miles	Inspection Start/End	Inspector
Unit No. 01 Sacramento River	Left	6.78	03/10/2022 03/10/2022	David Julian

LM Start	6.30	Rating **	M	Issue No.	81 (cont)
LM End	6.30	Issue Type +	En	Location *	
Category	Supplemental		GPS Latitude/Longitude		
			Start	End	
Item	DWR UCIP Field Study		38.263669 °	38.263669 °	
			-121.524231 °	-121.524231 °	
DWR ID	22028				

Photo 2 of 3 : UCIP_SP_2022_60690_87968.jpg



Water-Side: View of levee slope looking from crown

LM Start	6.30	Rating **	M	Issue No.	81 (cont)
LM End	6.30	Issue Type +	En	Location *	

Photo 3 of 3 : UCIP_SP_2022_60690_87969.jpg



Water-Side: Pump on concrete pad on levee slope

LM Start	6.44	Rating **	M	Issue No.	20
LM End	6.44	Issue Type +	En	Location *	LS
Category	Earthen Levee			GPS Latitude/Longitude	
				Start	End
Item	Vegetation			38.262388 °	38.262388 °
				-121.522368 °	-121.522368 °
DWR ID	DWR_RD0551_01_s_ 2019_20				
Comment Code					
V6 : Landscaping					
Inspector Comment					
Cactus on the landside slope should be removed.					

Photo 1 of 1 : SP_2022_RD0551_175_20_20220307_00005.jpg



View of cactus on the landside shoulder (Spring 2019).

* Location LS : Land Side N/A : Not Applicable WS : Water Side CR : Crown		** Rating A : Acceptable M : Minimally Acceptable U : Unacceptable N : Not Inspected/Rated C : Corrected A/W : Acceptable but Monitor & Maintain		+ Issue Type Ma : Maintenance Deficiency Ob : Design & System Obsolescence En : Enforcement	
--	--	---	--	---	--

**Flood Control Project Maintenance
Levee Inspections**

Levee Inspection Report By Mile - Spring 2022

Reclamation District No. 0551 Pearson

Waterway	Bank	Unit Miles	Inspection Start/End	Inspector
Unit No. 01 Sacramento River	Left	6.78	03/10/2022 03/10/2022	David Julian

LM Start	6.48	Rating **	M	Issue No.	82	
LM End	6.48	Issue Type +	En	Location *		
Category	Supplemental			GPS Latitude/Longitude		
				Start	End	
Item	DWR UCIP Field Study			38.261958 °	38.261958 °	
				-121.521885 °	-121.521885 °	
DWR ID	22029					
Comment Code						
Inspector Comment						
FS_ID:60696 DS_ID:22029 EP_NO: 3354 Repair Type: Non-Urgent Crossing Status: Found UCIP Comments: 06/02/2020 Record updated from No Action Needed to Non-Urgent. 12-inch pipe sleeved through 14-inch pipe through the levee. Unable to find a permit for modification. Pipe is running - leaks not detected. (O.Yakimov - DWR UCIP) FIELD_STRUCT_DESC: 12-inch steel irrigation pipe sleeved through 14-inch coated steel pipe through the levee, 3.5 feet below the crown. Slant pump on a concrete slab on the waterside (WS) slope. Siphon breaker in a 24-inch corrugated metal pipe (CMP) riser on the landside (LS) shoulder. Slide gate in a 48-inch concrete riser on the LS toe. 1.5-inch electrical conduit at the same location. This crossing replaces 12-inch pipe (see DSID 22000). (14-inch pipe authorized under Permit No. 3354, 1960 - F.I. Christie). [Additional Reference(s): DWR Levee Log, 2005 (HLM 6.53), listed as 14-inch pipe. USACE As-Built Drawing No. 06-13-1100, Sheet 14, 'L' 1640+00, January 1933, , listed as 14-inch pipe]. FS Date: 6/2/2020 2:31:53 PM						

LM Start	6.48	Rating **	M	Issue No.	82 (cont)
LM End	6.48	Issue Type +	En	Location *	

Photo 1 of 3 : UCIP_SP_2022_60696_87974.jpg



Top of Levee: View of levee crown looking downstream

Photo 2 of 3 : UCIP_SP_2022_60696_87975.jpg



Water-Side: View of levee slope looking from crown

* Location LS : Land Side N/A : Not Applicable WS : Water Side CR : Crown	** Rating A : Acceptable M : Minimally Acceptable U : Unacceptable	N : Not Inspected/Rated C : Corrected A/W : Acceptable but Monitor & Maintain	+ Issue Type Ma : Maintenance Deficiency Ob : Design & System Obsolescence En : Enforcement
--	--	---	---

Reclamation District No. 0551 Pearson

**Flood Control Project Maintenance
Levee Inspections**

Levee Inspection Report By Mile - Spring 2022

Reclamation District No. 0551 Pearson

Waterway	Bank	Unit Miles	Inspection Start/End	Inspector
Unit No. 01 Sacramento River	Left	6.78	03/10/2022 03/10/2022	David Julian

LM Start	6.51	Rating **	M	Issue No.	83 (cont)
LM End	6.51	Issue Type +	En	Location *	
Category	Supplemental		GPS Latitude/Longitude		
			Start	End	
Item	DWR UCIP Field Study		38.261620 °	38.261620 °	
			-121.521419 °	-121.521419 °	
DWR ID	22001				

Photo 2 of 3 : UCIP_SP_2022_60698_87985.jpg



Land-Side: View of landside looking from crown

LM Start	6.51	Rating **	M	Issue No.	83 (cont)
LM End	6.51	Issue Type +	En	Location *	

Photo 3 of 3 : UCIP_SP_2022_60698_87986.jpg



Water-Side: View of levee slope looking from crown

LM Start	6.59	Rating **	M	Issue No.	94
LM End	6.59	Issue Type +	Ma	Location *	LS
Category	Earthen Levee			GPS Latitude/Longitude	
				Start	End
Item	Encroachments			38.260818 °	38.260818 °
				-121.520309 °	-121.520309 °
DWR ID	DWR_RD0551_01_s_2022_94				
Comment Code					
TR : Tree or limb					
Inspector Comment					

No Photos

* Location LS : Land Side N/A : Not Applicable WS : Water Side CR : Crown	** Rating A : Acceptable M : Minimally Acceptable U : Unacceptable	N : Not Inspected/Rated C : Corrected A/W : Acceptable but Monitor & Maintain	+ Issue Type Ma : Maintenance Deficiency Ob : Design & System Obsolescence En : Enforcement
--	--	---	---

**Flood Control Project Maintenance
Levee Inspections**

Levee Inspection Report By Mile - Spring 2022

Reclamation District No. 0551 Pearson

Waterway	Bank	Unit Miles	Inspection Start/End	Inspector
Unit No. 01 Sacramento River	Left	6.78	03/10/2022 03/10/2022	David Julian

LM Start	6.68	Rating **	M	Issue No.	84
LM End	6.68	Issue Type +	En	Location *	
Category	Supplemental			GPS Latitude/Longitude	
				Start	End
Item	DWR UCIP Field Study			38.259871 °	38.259871 °
				-121.519181 °	-121.519181 °
DWR ID	22030				
Comment Code					
Inspector Comment					
FS_ID:60701					
DS_ID:22030					
EP_NO: 11126					
Repair Type: Non-Urgent					
Crossing Status: Found					
UCIP Comments: 06/02/2020 Record updated from No Action Needed to Non-Urgent. Field measured 8-inch pipe sleeved through 12-inch pipe. Appears that annular space between pipes has been grouted through a plugged hole at landside shoulder. Concrete standpipe and distribution box at landside toe look abandoned. Water is designed to go around concrete box to either underground pipe of screen filter. Unable to find a permit for modifications. Pipe is running - no leaks detected. No permit has been identified authorizing pipe through the levee. Need to have CVFPB review ABO and determine current owner. (O.Yakimov - DWR UCIP)					
FIELD_STRUCT_DESC: 8-inch irrigation pipe sleeved through the 12-inch steel pipe through the levee, 3 feet below crown. Water pump, filler pump and pressure tank on a concrete pad on the waterside (WS) slope. Butterfly valves at pump and at the landside (LS) toe. Abandoned concrete standpipe and concrete distribution box at landside toe. Screen filter at landside levee toe, service pole a 1.5-inch galvanized electrical conduit at the same location. (12-inch pipe [HLM 6.74] authorized under Automatic Board Order (ABO) issued as Permit No. 11126, 1975 - Alma K. Fletcher). [Additional Reference(s): DWR Levee Log, 2005 (HLM 6.74), listed as 12-inch pipe. USACE Sacramento O&M Manual, Unit 111, May 1959, Revised 29 December 2016, (RM 28.06), listed as 6-inch pipe. USACE As-Built Drawing No. 06-13-1100, Sheet 14, upstream of 'L' 1652+65, January 1933, listed as 6-inch pipe].					
FS Date: 6/2/2020 3:17:35 PM					

Photo 1 of 3 : UCIP_SP_2022_60701_87995.jpg



Top of Levee: View of levee crown looking downstream

* Location LS : Land Side N/A : Not Applicable WS : Water Side CR : Crown	** Rating A : Acceptable M : Minimally Acceptable U : Unacceptable	N : Not Inspected/Rated C : Corrected A/W : Acceptable but Monitor & Maintain	+ Issue Type Ma : Maintenance Deficiency Ob : Design & System Obsolescence En : Enforcement
--	--	---	---

**Flood Control Project Maintenance
Levee Inspections**

Levee Inspection Report By Mile - Spring 2022

Reclamation District No. 0551 Pearson

Waterway	Bank	Unit Miles	Inspection Start/End	Inspector
Unit No. 01 Sacramento River	Left	6.78	03/10/2022 03/10/2022	David Julian

LM Start	6.68	Rating **	M	Issue No.	84 (cont)
LM End	6.68	Issue Type +	En	Location *	
Category	Supplemental		GPS Latitude/Longitude		
			Start	End	
Item	DWR UCIP Field Study		38.259871 °	38.259871 °	
			-121.519181 °	-121.519181 °	
DWR ID	22030				

Photo 2 of 3 : UCIP_SP_2022_60701_87996.jpg



Land-Side: View of levee slope looking from crown

LM Start	6.68	Rating **	M	Issue No.	84 (cont)
LM End	6.68	Issue Type +	En	Location *	

Photo 3 of 3 : UCIP_SP_2022_60701_87997.jpg



Land-Side: Pipe sleeved through 12-inch pipe visible on levee shoulder.
Grout filler plug on top of pipe

* Location LS : Land Side N/A : Not Applicable WS : Water Side CR : Crown	** Rating A : Acceptable M : Minimally Acceptable U : Unacceptable	N : Not Inspected/Rated C : Corrected A/W : Acceptable but Monitor & Maintain	+ Issue Type Ma : Maintenance Deficiency Ob : Design & System Obsolescence En : Enforcement
--	--	---	---