

**Flood Control Project Maintenance  
Levee Inspections**  
**LMA District Cover Sheet**  
**Spring 2019 Levee Inspection Results**

**Reclamation District No. 0551 Pearson**

	Spring (March - May)	Summer ** (June - August)	Fall (September - November)	Winter ** (December - February)
† Overall LMA Rating (Fall Only)				

\*\* Non-receipt of Summer or Winter Inspection  
Reports may effect overall annual rating.

† SPRING INSPECTIONS: Overall maintenance ratings are not determined for the spring inspection results. Individual maintenance deficiencies are rated using the same criteria in the spring and in the fall.

FALL INSPECTIONS: The overall maintenance rating shown above is based on operation and maintenance deficiencies identified within the attached unit inspection reports. This rating is not intended to be an indication of risk.

Comments


**Flood Control Project Maintenance  
Levee Inspections**

**Unit Cover Sheet**

**Spring 2019 Levee Inspection Results**

**Reclamation District No. 0551 Pearson**

Waterway			Bank	Unit Miles
Unit No. 01 Sacramento River			Left	6.78
	Spring (March - May)	Summer (June - August)	(September - November) Fall	Winter (December - February)
Unit Maintenance Rating (Fall Only)				
Date of Inspection	3/15/2019 - 3/15/2019			
DWR Inspector	David Julian			
Accompanied By	Mr. Topper Van Loben Sels RD 551			

**Summer & Winter Inspections**

The Local Maintaining Agency (LMA) is responsible for summer and winter inspections. The LMA is required to submit a report regarding summer and winter inspections to the California Department of Water Resources (DWR).

DWR must be informed on the:

- a) completion of the inspection
- b) any changes other than the results of normal maintenance
- c) corrections to deficiencies noted in this report

If additional items are noted, further documentation of those items must also be submitted.

The LMA should submit this information to DWR using the LMA web application tool available at:

<http://cdec.water.ca.gov/lma.html>

If the LMA is unable to submit information on this webpage, please contact DWR for assistance.

*The LMA should submit the information and any associated documentation by September 30 for summer inspections and March 31 for winter inspections.*

**Flood Control Project Maintenance  
Levee Inspections**

**Levee Inspection Report By Mile - Spring 2019**

**Reclamation District No. 0551 Pearson**

Waterway	Bank	Unit Miles	Inspection Start/End	Inspector
Unit No. 01 Sacramento River	Left	6.78	03/15/2019 03/15/2019	David Julian

LM Start		Rating **	A	Issue No.	3
LM End		Issue Type +	Ma	Location *	
Category	Earthen Levee		GPS Latitude/Longitude		
			Start	End	
Item	Emergency Supplies & Equipment				
DWR ID	DWR_RD0551_01_s_2012_3				
Comment Code					
Inspector Comment					
District has emergency supplies stored in locked container near Courtland's fire house.					

No Photos

LM Start		Rating **	A	Issue No.	15
LM End		Issue Type +	Ma	Location *	
Category	Earthen Levee		GPS Latitude/Longitude		
			Start	End	
Item	Flood Preparedness & Training				
DWR ID	DWR_RD0551_01_s_2012_15				
Comment Code					
Inspector Comment					
District has been trained in Flood Fight Methods.					

No Photos

LM Start		Rating **	A	Issue No.	23
LM End		Issue Type +	Ma	Location *	
Category	Earthen Levee		GPS Latitude/Longitude		
			Start	End	
Item	Operations & Maintenance Manuals				
DWR ID	DWR_RD0551_01_s_2012_23				
Comment Code					
Inspector Comment					
District has O&M Manual on hand and stored with flood fight materials.					

No Photos

<b>* Location</b> LS : Land Side    N/A : Not Applicable WS : Water Side CR : Crown	<b>** Rating</b> A : Acceptable M : Minimally Acceptable U : Unacceptable	N : Not Inspected/Rated C : Corrected A/W : Acceptable but Monitor & Maintain	<b>+ Issue Type</b> Ma : Maintenance Deficiency Ob : Design & System Obsolescence En : Enforcement
--	--	---	---

**Flood Control Project Maintenance  
Levee Inspections**

**Levee Inspection Report By Mile - Spring 2019**

**Reclamation District No. 0551 Pearson**

Waterway	Bank	Unit Miles	Inspection Start/End	Inspector
Unit No. 01 Sacramento River	Left	6.78	03/15/2019 03/15/2019	David Julian

LM Start	0.40	Rating **	M	Issue No.	17
LM End	0.51	Issue Type +	En	Location *	WS
Category	Earthen Levee			GPS Latitude/Longitude	
				Start	End
Item	Vegetation			38.332115 °	38.330818 °
				-121.569658 °	-121.570980 °
DWR ID	DWR_RD0551_01_f_2018_17				
Comment Code					
V6 : Landscaping					
Inspector Comment					

No Photos

LM Start	0.41	Rating **	M	Issue No.	64
LM End	0.41	Issue Type +	En	Location *	
Category	Supplemental			GPS Latitude/Longitude	
				Start	End
Item	DWR UCIP Field Study			38.332039 °	38.332039 °
				-121.569730 °	-121.569730 °
DWR ID	21982				
Comment Code					
Inspector Comment					
FS_ID:11705 DS_ID:21982 EP_NO: 2759 Repair Type: Non-Urgent Crossing Status: Found UCIP Comments: Unclear where exact crossing is located. FIELD_STRUCT_DESC: [Courtland Boating Facilities] 1-inch steel water line through the levee, at an unknown depth. Ramp and boating facilities on the waterside (WS). Pipe visible under buildings at concrete foundation on the landside (LS). Water service connections for irrigation located on the WS slope. (Permit No. 2759, 1958 - Courtland Dock). [Additional Reference(s): DWR Levee Log, 2005]. FS Date: 4/10/2013					

Photo 1 of 3 : UCIP\_SP\_2019\_11705\_19145.jpg



Irrigation pipes on WS slope.

<b>* Location</b> LS : Land Side    N/A : Not Applicable WS : Water Side CR : Crown		<b>** Rating</b> A : Acceptable                      N : Not Inspected/Rated M : Minimally Acceptable        C : Corrected U : Unacceptable                  A/W : Acceptable but Monitor & Maintain		<b>+ Issue Type</b> Ma : Maintenance Deficiency Ob : Design & System Obsolescence En : Enforcement
--	--	---	--	---

**Flood Control Project Maintenance  
Levee Inspections**

**Levee Inspection Report By Mile - Spring 2019**

**Reclamation District No. 0551 Pearson**

Waterway	Bank	Unit Miles	Inspection Start/End	Inspector
Unit No. 01 Sacramento River	Left	6.78	03/15/2019 03/15/2019	David Julian

LM Start	0.41	Rating **	M	Issue No.	64 (cont)	
LM End	0.41	Issue Type +	En	Location *		
Category	Supplemental			GPS Latitude/Longitude		
				Start	End	
Item	DWR UCIP Field Study			38.332039 °	38.332039 °	
				-121.569730 °	-121.569730 °	
DWR ID	21982					
Comment Code						
Inspector Comment						
FS_ID:11705 DS_ID:21982 EP_NO: 2759 Repair Type: Non-Urgent Crossing Status: Found UCIP Comments: Unclear where exact crossing is located. FIELD_STRUCT_DESC: [Courtland Boating Facilities] 1-inch steel water line through the levee, at an unknown depth. Ramp and boating facilities on the waterside (WS). Pipe visible under buildings at concrete foundation on the landside (LS). Water service connections for irrigation located on the WS slope. (Permit No. 2759, 1958 - Courtland Dock). [Additional Reference(s): DWR Levee Log, 2005]. FS Date: 4/10/2013						

Photo 2 of 3 : UCIP\_SP\_2019\_11705\_19144.jpg



Irrigation pipes on WS slope.

LM Start	<b>0.41</b>	Rating **	M	Issue No.	<b>64 (cont)</b>
LM End	<b>0.41</b>	Issue Type +	En	Location *	

Photo 3 of 3 : UCIP\_SP\_2019\_11705\_19143.jpg



Various disconnected pipes visible at foundation/retaining wall under buildings on LS.

<b>* Location</b> LS : Land Side    N/A : Not Applicable WS : Water Side CR : Crown		<b>** Rating</b> A : Acceptable M : Minimally Acceptable U : Unacceptable		N : Not Inspected/Rated C : Corrected A/W : Acceptable but Monitor & Maintain		<b>+ Issue Type</b> Ma : Maintenance Deficiency Ob : Design & System Obsolescence En : Enforcement	
--	--	--	--	---	--	---	--

**Flood Control Project Maintenance  
Levee Inspections**

**Levee Inspection Report By Mile - Spring 2019**

**Reclamation District No. 0551 Pearson**

Waterway	Bank	Unit Miles	Inspection Start/End	Inspector
Unit No. 01 Sacramento River	Left	6.78	03/15/2019 03/15/2019	David Julian

LM Start	0.49	Rating **	M	Issue No.	21
LM End	0.49	Issue Type +	En	Location *	WS
Category	Earthen Levee			GPS Latitude/Longitude	
				Start	End
Item	Encroachments			38.331063 °	38.331063 °
				-121.570634 °	-121.570634 °
DWR ID	DWR_RD0551_01_s_2014_21				
Comment Code					
BU : Building					
Inspector Comment					
11750 River Road - The new land owner is working with the LMA trying to get CVFPB Permits for this project. No other work at this site. Waiting to hear from Enforcements.					

LM Start	<b>0.49</b>	Rating **	M	Issue No.	<b>21 (cont)</b>
LM End	<b>0.49</b>	Issue Type +	En	Location *	WS

Photo 1 of 3 : SP\_2019\_RD0551\_175\_21\_20190311\_00007.jpg



Building and steps waterward. Photo taken 01-04-2014.

Photo 2 of 3 : SP\_2019\_RD0551\_175\_21\_20190311\_00008.jpg



Building remodeling project on waterside levee section. Photo taken 01-04-2014.

LM Start	<b>0.49</b>	Rating **	M	Issue No.	<b>21 (cont)</b>
LM End	<b>0.49</b>	Issue Type +	En	Location *	WS

Photo 3 of 3 : SP\_2019\_RD0551\_175\_21\_20190311\_00009.jpg



Photo taken 4-06-2017 no change. No work done, no permit issued.

* Location LS : Land Side    N/A : Not Applicable WS : Water Side CR : Crown		** Rating A : Acceptable M : Minimally Acceptable U : Unacceptable N : Not Inspected/Rated C : Corrected A/W : Acceptable but Monitor & Maintain		+ Issue Type Ma : Maintenance Deficiency Ob : Design & System Obsolescence En : Enforcement	
---	--	--	--	--	--



**Flood Control Project Maintenance  
Levee Inspections**

**Levee Inspection Report By Mile - Spring 2019**

**Reclamation District No. 0551 Pearson**

Waterway	Bank	Unit Miles	Inspection Start/End	Inspector
Unit No. 01 Sacramento River	Left	6.78	03/15/2019 03/15/2019	David Julian

LM Start	0.49	Rating **	C	Issue No.	19
LM End	0.49	Issue Type +	Ma	Location *	LS
Category	Earthen Levee			GPS Latitude/Longitude	
				Start	End
Item	Vegetation			38.331078 °	38.331078 °
				-121.570703 °	-121.570703 °
DWR ID	DWR_RD0551_01_f_2017_19				
Comment Code					
V2 : Remove the wild growth other than native grasses from the levee slopes.					
Inspector Comment					
Dense landside vegetation has been cleared and should be maintained.					

No Photos

LM Start	0.71	Rating **	M	Issue No.	65	
LM End	0.71	Issue Type +	En	Location *		
Category	Supplemental			GPS Latitude/Longitude		
				Start	End	
Item	DWR UCIP Field Study			38.328401 °	38.328401 °	
				-121.572954 °	-121.572954 °	
DWR ID	21985					
Comment Code						
Inspector Comment						
FS_ID:11726 DS_ID:21985 EP_NO: 6220 Repair Type: Non-Urgent Crossing Status: Found UCIP Comments: Pipe abandoned and should be removed. FIELD_STRUCT_DESC: 8-inch coated steel irrigation pipe through the levee, 6.1 feet below the crown. Pump on the waterside (WS) with slide gate and air vent. (Permit No. 6220, 1968 - Robert U. Grant). [Additional Reference(s): DWR Levee Log, 2005]. FS Date: 4/10/2013						

Photo 1 of 3 : UCIP\_SP\_2019\_11726\_19165.jpg



Abandoned pump covered in vegetation on WS slope.

* Location LS : Land Side    N/A : Not Applicable WS : Water Side CR : Crown		** Rating A : Acceptable M : Minimally Acceptable U : Unacceptable N : Not Inspected/Rated C : Corrected A/W : Acceptable but Monitor & Maintain		+ Issue Type Ma : Maintenance Deficiency Ob : Design & System Obsolescence En : Enforcement	
---	--	--	--	--	--

**Flood Control Project Maintenance  
Levee Inspections**

**Levee Inspection Report By Mile - Spring 2019**

**Reclamation District No. 0551 Pearson**

Waterway	Bank	Unit Miles	Inspection Start/End	Inspector
Unit No. 01 Sacramento River	Left	6.78	03/15/2019 03/15/2019	David Julian

LM Start	0.71	Rating **	M	Issue No.	65 (cont)	
LM End	0.71	Issue Type +	En	Location *		
Category	Supplemental			GPS Latitude/Longitude		
				Start	End	
Item	DWR UCIP Field Study			38.328401 °	38.328401 °	
				-121.572954 °	-121.572954 °	
DWR ID	21985					
Comment Code						
Inspector Comment						
FS_ID:11726						
DS_ID:21985						
EP_NO: 6220						
Repair Type: Non-Urgent						
Crossing Status: Found						
UCIP Comments: Pipe abandoned and should be removed.						
FIELD_STRUCT_DESC: 8-inch coated steel irrigation pipe through the						
levee, 6.1 feet below the crown. Pump on the waterside (WS) with slide						
gate and air vent. (Permit No. 6220, 1968 - Robert U. Grant). [Additional						
Reference(s): DWR Levee Log, 2005].						
FS Date: 4/10/2013						

Photo 2 of 3 : UCIP\_SP\_2019\_11726\_19164.jpg



Pump, slide gate, and missing vent pipe on WS slope.

LM Start	<b>0.71</b>	Rating **	M	Issue No.	<b>65 (cont)</b>
LM End	<b>0.71</b>	Issue Type +	En	Location *	

Photo 3 of 3 : UCIP\_SP\_2019\_11726\_19163.jpg



JP and pipe covered with vegetation on LS toe.

\* Location  
 LS : Land Side    N/A : Not Applicable  
 WS : Water Side  
 CR : Crown

\*\* Rating  
 A : Acceptable  
 M : Minimally Acceptable  
 U : Unacceptable  
 N : Not Inspected/Rated  
 C : Corrected  
 A/W : Acceptable but Monitor & Maintain

+ Issue Type  
 Ma : Maintenance Deficiency  
 Ob : Design & System Obsolescence  
 En : Enforcement



**Flood Control Project Maintenance  
Levee Inspections**

**Levee Inspection Report By Mile - Spring 2019**

**Reclamation District No. 0551 Pearson**

Waterway	Bank	Unit Miles	Inspection Start/End	Inspector
Unit No. 01 Sacramento River	Left	6.78	03/15/2019 03/15/2019	David Julian

LM Start	0.76	Rating **	U	Issue No.	57
LM End	0.76	Issue Type +	En	Location *	LS
Category	Earthen Levee			GPS Latitude/Longitude	
				Start	End
Item	Vegetation			38.327783 °	38.327783 °
				-121.573362 °	-121.573362 °
DWR ID	DWR_RD0551_01_f_2018_57				
Comment Code					
V6 : Landscaping					
Inspector Comment					

Photo 1 of 1 : SP\_2019\_RD0551\_175\_57\_20190311\_00079.jpg



View looking upstream at landscaping on the landside slope (November 2018).

LM Start	0.89	Rating **	M	Issue No.	66
LM End	0.89	Issue Type +	En	Location *	
Category	Supplemental			GPS Latitude/Longitude	
				Start	End
Item	DWR UCIP Field Study			38.326088 °	38.326088 °
				-121.574525 °	-121.574525 °
DWR ID	21986				
Comment Code					
Inspector Comment					
FS_ID:11727					
DS_ID:21986					
EP_NO: 701					
Repair Type: Non-Urgent					
Crossing Status: Found					
UCIP Comments: Pipe appears abandoned and should be done so properly. Good candidate for video inspection.					
FIELD_STRUCT_DESC: 14-inch steel irrigation pipe through the levee, 7.2 feet below the crown. Pump in pump house on the waterside (WS) slope. Service pole on the landside (LS) slope. 1-inch galvanized filler pipe, and a 2-inch electrical conduit at the same location. (Permit No. 701, 1937 - American Trust Company). [Additional Reference(s): DWR Levee Log, 2005. USACE Sacramento O&M Manual 111, May 1959, (RM 33.91)].					
FS Date: 4/10/2013					

Photo 1 of 3 : UCIP\_SP\_2019\_11727\_19168.jpg



Pump house and pipes visible on WS slope.

<b>* Location</b> LS : Land Side    N/A : Not Applicable WS : Water Side CR : Crown		<b>** Rating</b> A : Acceptable M : Minimally Acceptable U : Unacceptable N : Not Inspected/Rated C : Corrected A/W : Acceptable but Monitor & Maintain		<b>+ Issue Type</b> Ma : Maintenance Deficiency Ob : Design & System Obsolescence En : Enforcement	
--	--	---	--	---	--

**Flood Control Project Maintenance  
Levee Inspections**

**Levee Inspection Report By Mile - Spring 2019**

**Reclamation District No. 0551 Pearson**

Waterway	Bank	Unit Miles	Inspection Start/End	Inspector
Unit No. 01 Sacramento River	Left	6.78	03/15/2019 03/15/2019	David Julian

LM Start	0.89	Rating **	M	Issue No.	66 (cont)	
LM End	0.89	Issue Type +	En	Location *		
Category	Supplemental			GPS Latitude/Longitude		
				Start		End
Item	DWR UCIP Field Study			38.326088 °		38.326088 °
				-121.574525 °		-121.574525 °
DWR ID	21986					
Comment Code						
Inspector Comment						
FS_ID:11727 DS_ID:21986 EP_NO: 701 Repair Type: Non-Urgent Crossing Status: Found UCIP Comments: Pipe appears abandoned and should be done so properly. Good candidate for video inspection. FIELD_STRUCT_DESC: 14-inch steel irrigation pipe through the levee, 7.2 feet below the crown. Pump in pump house on the waterside (WS) slope. Service pole on the landside (LS) slope. 1-inch galvanized filler pipe, and a 2-inch electrical conduit at the same location. (Permit No. 701, 1937 - American Trust Company). [Additional Reference(s): DWR Levee Log, 2005. USACE Sacramento O&M Manual 111, May 1959, (RM 33.91)]. FS Date: 4/10/2013						

LM Start	<b>0.89</b>	Rating **	M	Issue No.	<b>66 (cont)</b>
LM End	<b>0.89</b>	Issue Type +	En	Location *	

Photo 2 of 3 : UCIP\_SP\_2019\_11727\_19167.jpg



Pipe and JP visible on LS toe.

Photo 3 of 3 : UCIP\_SP\_2019\_11727\_19166.jpg



galvanized iron filler pipe and 16-inch pipe visible at LS toe.

<b>* Location</b> LS : Land Side    N/A : Not Applicable WS : Water Side CR : Crown		<b>** Rating</b> A : Acceptable M : Minimally Acceptable U : Unacceptable N : Not Inspected/Rated C : Corrected A/W : Acceptable but Monitor & Maintain		<b>+ Issue Type</b> Ma : Maintenance Deficiency Ob : Design & System Obsolescence En : Enforcement
--	--	---	--	---

**Flood Control Project Maintenance  
Levee Inspections**

**Levee Inspection Report By Mile - Spring 2019**

**Reclamation District No. 0551 Pearson**

Waterway	Bank	Unit Miles	Inspection Start/End	Inspector
Unit No. 01 Sacramento River	Left	6.78	03/15/2019 03/15/2019	David Julian

LM Start	1.28	Rating **	M	Issue No.	63
LM End	1.28	Issue Type +	En	Location *	LS
Category	Earthen Levee			GPS Latitude/Longitude	
				Start	End
Item	Vegetation			38.320707 °	38.320707 °
				-121.576335 °	-121.576335 °
DWR ID	DWR_RD0551_01_s_2019_63				
Comment Code					
V6 : Landscaping					
Inspector Comment					
Cactus is located on landside slope.					

Photo 1 of 1 : SP\_2019\_RD0551\_175\_63\_20190320\_00119.jpg



View of cactus at the bottom of the landside slope (Spring 2019).

LM Start	1.36	Rating **	M	Issue No.	46
LM End	1.36	Issue Type +	En	Location *	LS
Category	Earthen Levee			GPS Latitude/Longitude	
				Start	End
Item	Vegetation			38.319621 °	38.319621 °
				-121.576531 °	-121.576531 °
DWR ID	DWR_RD0551_01_f_2017_46				
Comment Code					
V6 : Landscaping					
Inspector Comment					
Landscaping should be maintained to allow inspection and access to landside slope and toe.					

Photo 1 of 1 : SP\_2019\_RD0551\_175\_46\_20190311\_00071.jpg



View of landscaping on landside slope and toe.

LM Start	1.36	Rating **	M	Issue No.	45
LM End	1.36	Issue Type +	En	Location *	LS
Category	Earthen Levee			GPS Latitude/Longitude	
				Start	End
Item	Encroachments			38.319620 °	38.319620 °
				-121.576531 °	-121.576531 °
DWR ID	DWR_RD0551_01_f_2017_45				
Comment Code					
TA : Tank					
Inspector Comment					
LMA says tank is now 10' from levee toe. Verify in Fall 2019 inspection that tank is 10' from toe.					

Photo 1 of 1 : SP\_2019\_RD0551\_175\_45\_20190311\_00070.jpg



Tank at landside toe should be removed to allow inspection and access.

* Location		** Rating		+ Issue Type	
LS : Land Side	N/A : Not Applicable	A : Acceptable	N : Not Inspected/Rated	Ma : Maintenance Deficiency	
WS : Water Side		M : Minimally Acceptable	C : Corrected	Ob : Design & System Obsolescence	
CR : Crown		U : Unacceptable	A/W : Acceptable but Monitor & Maintain	En : Enforcement	



**Flood Control Project Maintenance  
Levee Inspections**

**Levee Inspection Report By Mile - Spring 2019**

**Reclamation District No. 0551 Pearson**

Waterway	Bank	Unit Miles	Inspection Start/End	Inspector
Unit No. 01 Sacramento River	Left	6.78	03/15/2019 03/15/2019	David Julian

LM Start	1.53	Rating **	M	Issue No.	6
LM End	1.60	Issue Type +	En	Location *	WS
Category	Earthen Levee			GPS Latitude/Longitude	
				Start	End
Item	Vegetation			38.317138 °	38.316060 °
				-121.576567 °	-121.576688 °
DWR ID	DWR_RD0551_01_s_2012_6				
Comment Code					
V6 : Landscaping					
Inspector Comment					
Thin landscaping to allow visibility and access down waterside slope.					

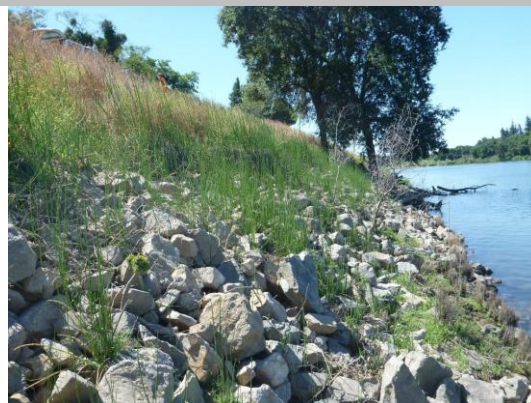
Photo 1 of 1 : SP\_2019\_RD0551\_175\_6\_20190311\_00001.jpg



View looking downstream at landscaping on the waterside shoulder (Spring 2018).

LM Start	1.61	Rating **	M	Issue No.	18
LM End	1.68	Issue Type +	Ma	Location *	
Category	Supplemental			GPS Latitude/Longitude	
				Start	End
Item	2017 Storm Damage			38.315922 °	38.314978 °
				-121.576864 °	-121.576936 °
DWR ID	DWR_RD0551_01_f_2017_18				
Comment Code					
Inspector Comment					
Levee Evaluation Comments					
Description:District Station 84+15 to 87+60, Sec. 06, T. 5 N. R. 4 E., M.D.M. Approximately 135 linear-feet of erosion/sloughing exists along the waterside levee slope of the Sacramento River. Sloughing commences approximately 3/4 of the way down the slope from the crown and extends into the rip rap. Some existing rip rap has been pulled off in this section.					
Site ID No:331					
Site Designation:LMA-158					
Repair Type: Erosion					
Rating:Area of Concern					
Field Date:7/13/2017					
Notes: thorney veg on upper slope, light veg within rip rap. Crown is a paved road. 1 ft vertical scarp max just above rip rap so we rated it as a lower priority.					

Photo 1 of 3 : SP\_2019\_RD0551\_175\_18\_20190311\_00002.jpg



<b>* Location</b> LS : Land Side    N/A : Not Applicable WS : Water Side CR : Crown		<b>** Rating</b> A : Acceptable                      N : Not Inspected/Rated M : Minimally Acceptable        C : Corrected U : Unacceptable                  A/W : Acceptable but Monitor & Maintain		<b>+ Issue Type</b> Ma : Maintenance Deficiency Ob : Design & System Obsolescence En : Enforcement
--	--	---	--	---

**Flood Control Project Maintenance  
Levee Inspections**

**Levee Inspection Report By Mile - Spring 2019**

**Reclamation District No. 0551 Pearson**

Waterway	Bank	Unit Miles	Inspection Start/End	Inspector
Unit No. 01 Sacramento River	Left	6.78	03/15/2019 03/15/2019	David Julian

LM Start	1.61	Rating **	M	Issue No.	18 (cont)	
LM End	1.68	Issue Type +	Ma	Location *		
Category	Supplemental			GPS Latitude/Longitude		
				Start		End
Item	2017 Storm Damage			38.315922 °		38.314978 °
				-121.576864 °		-121.576936 °
DWR ID	DWR_RD0551_01_f_2017_18					
Comment Code						
Inspector Comment						
Levee Evaluation Comments						
Description:District Station 84+15 to 87+60, Sec. 06, T. 5 N. R. 4 E., M.D.M. Approximately 135 linear-feet of erosion/sloughing exists along the waterside levee slope of the Sacramento River. Sloughing commences approximately 3/4 of the way down the slope from the crown and extends into the rip rap. Some existing rip rap has been pulled off in this section.						
Site ID No:331						
Site Designation:LMA-158						
Repair Type: Erosion						
Rating:Area of Concern						
Field Date:7/13/2017						
Notes: thorney veg on upper slope, light veg within rip rap. Crown is a paved road. 1 ft vertical scarp max just above rip rap so we rated it as a lower priority.						

Photo 2 of 3 : SP\_2019\_RD0551\_175\_18\_20190311\_00003.jpg



Photo 3 of 3 : SP\_2019\_RD0551\_175\_18\_20190311\_00004.jpg



<b>* Location</b> LS : Land Side    N/A : Not Applicable WS : Water Side CR : Crown		<b>** Rating</b> A : Acceptable M : Minimally Acceptable U : Unacceptable		N : Not Inspected/Rated C : Corrected A/W : Acceptable but Monitor & Maintain		<b>+ Issue Type</b> Ma : Maintenance Deficiency Ob : Design & System Obsolescence En : Enforcement	
--	--	--	--	---	--	---	--



# Reclamation District No. 0551 Pearson

**Flood Control Project Maintenance  
Levee Inspections**

**Levee Inspection Report By Mile - Spring 2019**

**Reclamation District No. 0551 Pearson**

Waterway	Bank	Unit Miles	Inspection Start/End	Inspector
Unit No. 01 Sacramento River	Left	6.78	03/15/2019 03/15/2019	David Julian

LM Start	1.78	Rating **	M	Issue No.	67 (cont)	
LM End	1.78	Issue Type +	En	Location *		
Category	Supplemental			GPS Latitude/Longitude		
				Start	End	
Item	DWR UCIP Field Study			38.313552 °	38.313552 °	
				-121.576640 °	-121.576640 °	
DWR ID	21990					
Comment Code						
Inspector Comment						
FS_ID:26874 DS_ID:21990 EP_NO: 11145 Repair Type: Non-Urgent Crossing Status: Found UCIP Comments: Based on District notes from January 14, 2014, pump discharge pipe has been repaired. Pipe failing on LS slope causing erosion along pipe alignment. Pipe debris on both slopes should be removed as well.: As of 12/13/2013 District President noted that the landowner had made repairs to the LS slope leaks.: As of 12/17/2013 District submitted letter to landowner explaining UCIP report details including photos of the pipe problems FIELD_STRUCT_DESC: 10-inch irrigation pipe of an unknown material through the levee, 4.7 feet below the crown. Pump in a 7-foot by 9-foot concrete pump house on the waterside (WS) slope. 36-inch concrete riser on the landside (LS) toe. 1-inch electrical conduit at the same location. Service pole at the LS toe. (Automatic Board Order (ABO) issued as Permit No. 11145, 1975 - Horace D. and Lucile Towne). [Additional Reference(s): DWR Levee Log, 2005. USACE Sacramento O&M Manual 111, May 1959, (RM 33.02), listed as an 8-inch pipe]. FS Date: 1/15/2014						

LM Start	<b>1.78</b>	Rating **	M	Issue No.	<b>67 (cont)</b>
LM End	<b>1.78</b>	Issue Type +	En	Location *	

Photo 2 of 3 : UCIP\_SP\_2019\_26874\_49595.jpg



36-inch concrete standpipe at LS toe.

Photo 3 of 3 : UCIP\_SP\_2019\_26874\_49594.jpg



Pipe failing on LS slope due to corrosion holes causing erosion.

<b>* Location</b> LS : Land Side    N/A : Not Applicable WS : Water Side CR : Crown		<b>** Rating</b> A : Acceptable M : Minimally Acceptable U : Unacceptable		N : Not Inspected/Rated C : Corrected A/W : Acceptable but Monitor & Maintain		<b>+ Issue Type</b> Ma : Maintenance Deficiency Ob : Design & System Obsolescence En : Enforcement	
--	--	--	--	---	--	---	--

**Flood Control Project Maintenance  
Levee Inspections**

**Levee Inspection Report By Mile - Spring 2019**

**Reclamation District No. 0551 Pearson**

Waterway	Bank	Unit Miles	Inspection Start/End	Inspector
Unit No. 01 Sacramento River	Left	6.78	03/15/2019 03/15/2019	David Julian

LM Start	2.01	Rating **	M	Issue No.	68	
LM End	2.01	Issue Type +	En	Location *		
Category	Supplemental			GPS Latitude/Longitude		
				Start	End	
Item	DWR UCIP Field Study			38.310237 °	38.310237 °	
				-121.575470 °	-121.575470 °	
DWR ID	22040					
Comment Code						
Inspector Comment						
FS_ID:11749 DS_ID:22040 EP_NO: 3676 Repair Type: Non-Urgent Crossing Status: Not Found UCIP Comments: Fresh cut through pavement on crown indicates recent work on pipes at this location. Need to determine if pipe was removed or abandoned in place. FIELD_STRUCT_DESC: 2 of 2: 8-inch coated steel irrigation pipe through the levee, 5 feet below the crown. 8-inch pipe sleeved through a 12-inch pipe. Pump on platform on the waterside (WS). (Permit No. 3676, 1961 - Runyon and Dorsey). [Additional Reference(s): DWR Levee Log, 2005. USACE Sacramento O&M Manual 111, May 1959, (RM 33.02)]. FS Date: 4/10/2013						

Photo 1 of 1 : UCIP\_SP\_2019\_11749\_19217.jpg



Fresh cut through pavement at crown.

LM Start	2.01	Rating **	M	Issue No.	69	
LM End	2.01	Issue Type +	En	Location *		
Category	Supplemental			GPS Latitude/Longitude		
				Start	End	
Item	DWR UCIP Field Study			38.310223 °	38.310223 °	
				-121.575458 °	-121.575458 °	
DWR ID	21991					
Comment Code						
Inspector Comment						
FS_ID:11763 DS_ID:21991 EP_NO: 6551 Repair Type: Non-Urgent Crossing Status: Found UCIP Comments: Rodent activity undermining pipe on LS slope. FIELD_STRUCT_DESC: 1 of 2: 14-inch polyvinyl chloride (PVC) wrapped steel irrigation pipe through the levee, 3 feet below the crown. Butterfly valve on the waterside (WS) shoulder. 2-inch galvanized electrical conduit at the same location. Pump on pile structure on the WS toe. Pressure booster and pump on the landside (LS) toe. (Permit No. 6551, 1969 - John D. Wheeler). [Additional Reference(s): DWR Levee Log, 2005. USACE Sacramento O&M Manual 111, May 1959, (RM 32.78)]. FS Date: 4/10/2013						

Photo 1 of 3 : UCIP\_SP\_2019\_11763\_19222.jpg



Pipe, butterfly valve, and electrical conduit 3-feet below the crown on the WS shoulder.

<b>* Location</b> LS : Land Side    N/A : Not Applicable WS : Water Side CR : Crown		<b>** Rating</b> A : Acceptable M : Minimally Acceptable U : Unacceptable N : Not Inspected/Rated C : Corrected A/W : Acceptable but Monitor & Maintain		<b>+ Issue Type</b> Ma : Maintenance Deficiency Ob : Design & System Obsolescence En : Enforcement
--	--	---	--	---



**Flood Control Project Maintenance  
Levee Inspections**

**Levee Inspection Report By Mile - Spring 2019**

**Reclamation District No. 0551 Pearson**

Waterway	Bank	Unit Miles	Inspection Start/End	Inspector
Unit No. 01 Sacramento River	Left	6.78	03/15/2019 03/15/2019	David Julian

LM Start	2.01	Rating **	M	Issue No.	69 (cont)	
LM End	2.01	Issue Type +	En	Location *		
Category	Supplemental			GPS Latitude/Longitude		
				Start		End
Item	DWR UCIP Field Study			38.310223 °		38.310223 °
				-121.575458 °		-121.575458 °
DWR ID	21991					
Comment Code						
Inspector Comment						
FS_ID:11763 DS_ID:21991 EP_NO: 6551 Repair Type: Non-Urgent Crossing Status: Found UCIP Comments: Rodent activity undermining pipe on LS slope. FIELD_STRUCT_DESC: 1 of 2: 14-inch polyvinyl chloride (PVC) wrapped steel irrigation pipe through the levee, 3 feet below the crown. Butterfly valve on the waterside (WS) shoulder. 2-inch galvanized electrical conduit at the same location. Pump on pile structure on the WS toe. Pressure booster and pump on the landside (LS) toe. (Permit No. 6551, 1969 - John D. Wheeler). [Additional Reference(s): DWR Levee Log, 2005. USACE Sacramento O&M Manual 111, May 1959, (RM 32.78)]. FS Date: 4/10/2013						

LM Start	<b>2.01</b>	Rating **	M	Issue No.	<b>69 (cont)</b>
LM End	<b>2.01</b>	Issue Type +	En	Location *	

Photo 2 of 3 : UCIP\_SP\_2019\_11763\_19221.jpg



Pipe, electrical conduit, and booster pump on LS toe.

Photo 3 of 3 : UCIP\_SP\_2019\_11763\_19220.jpg



Rodent activity undermining pipe on LS slope.

<b>* Location</b> LS : Land Side    N/A : Not Applicable WS : Water Side CR : Crown		<b>** Rating</b> A : Acceptable M : Minimally Acceptable U : Unacceptable N : Not Inspected/Rated C : Corrected A/W : Acceptable but Monitor & Maintain		<b>+ Issue Type</b> Ma : Maintenance Deficiency Ob : Design & System Obsolescence En : Enforcement
--	--	---	--	---

**Flood Control Project Maintenance  
Levee Inspections**

## Levee Inspection Report By Mile - Spring 2019

### Reclamation District No. 0551 Pearson

Waterway	Bank	Unit Miles	Inspection Start/End	Inspector
Unit No. 01 Sacramento River	Left	6.78	03/15/2019 03/15/2019	David Julian

LM Start	2.26	Rating **	M	Issue No.	61
LM End	2.33	Issue Type +	En	Location *	LS
Category	Earthen Levee			GPS Latitude/Longitude	
				Start	End
Item	Encroachments			38.307220 °	38.306222 °
				-121.573153 °	-121.572518 °
DWR ID	DWR_RD0551_01_s_2019_61				
Comment Code					
FE : Fence					
Inspector Comment					
A chainlink fence is located on the landside.					

Photo 1 of 1 : SP\_2019\_RD0551\_175\_61\_20190320\_00117.jpg



View looking upstream at chainlink fence on the landside slope (Spring 2019).

LM Start	2.29	Rating **	U	Issue No.	47
LM End	2.29	Issue Type +	En	Location *	LS
Category	Earthen Levee			GPS Latitude/Longitude	
				Start	End
Item	Vegetation			38.306755 °	38.306755 °
				-121.572916 °	-121.572916 °
DWR ID	DWR_RD0551_01_f_2017_47				
Comment Code					
V6 : Landscaping					
Inspector Comment					
Landscaping hides levee slope. Toe is mostly visible. Landscaping should be maintained to allow inspection and access to landside slope and toe.					

Photo 1 of 1 : SP\_2019\_RD0551\_175\_47\_20190311\_00072.jpg



View of landscaping on landside slope and toe.

**\* Location**  
LS : Land Side    N/A : Not Applicable  
WS : Water Side  
CR : Crown

**\*\* Rating**  
A : Acceptable  
M : Minimally Acceptable  
U : Unacceptable  
N : Not Inspected/Rated  
C : Corrected  
A/W : Acceptable but Monitor & Maintain

**+ Issue Type**  
Ma : Maintenance Deficiency  
Ob : Design & System Obsolescence  
En : Enforcement



**Flood Control Project Maintenance  
Levee Inspections**

**Levee Inspection Report By Mile - Spring 2019**

**Reclamation District No. 0551 Pearson**

Waterway	Bank	Unit Miles	Inspection Start/End	Inspector
Unit No. 01 Sacramento River	Left	6.78	03/15/2019 03/15/2019	David Julian

LM Start	2.41	Rating **	M	Issue No.	70
LM End	2.41	Issue Type +	En	Location *	
Category	Supplemental			GPS Latitude/Longitude	
				Start	End
Item	DWR UCIP Field Study			38.305189 °	38.305189 °
				-121.572012 °	-121.572012 °
DWR ID	21994				
Comment Code					
Inspector Comment					
FS_ID:11783 DS_ID:21994 EP_NO: 11141 Repair Type: Non-Urgent Crossing Status: Found UCIP Comments: Records indicate this pipe was abandoned, but it appears to be active. Verify status. FIELD_STRUCT_DESC: 10-inch steel irrigation pipe through the levee, 8 feet below the crown. Slant pump on the waterside (WS) slope. Service pole on the landside (LS) slope with a 1.5-inch galvanized iron electrical conduit through the levee at the same location. (Automatic Board Order (ABO) issued as Permit No. 11141, 1975 - Adele Runyon, et al.). [Additional Reference(s): DWR Levee Log, 2005. USACE Sacramento O&M Manual 111, May 1959, (RM 32.38), listed as a 12-inch pipe]. FS Date: 4/10/2013					

Photo 1 of 2 : UCIP\_SP\_2019\_11783\_19241.jpg



JP and concrete standpipe on LS toe.

LM Start	<b>2.41</b>	Rating **	M	Issue No.	<b>70 (cont)</b>
LM End	<b>2.41</b>	Issue Type +	En	Location *	

Photo 2 of 2 : UCIP\_SP\_2019\_11783\_19240.jpg



Pump, pipe, and butterfly valve on WS slope.

<b>* Location</b> LS : Land Side    N/A : Not Applicable WS : Water Side CR : Crown		<b>** Rating</b> A : Acceptable M : Minimally Acceptable U : Unacceptable N : Not Inspected/Rated C : Corrected A/W : Acceptable but Monitor & Maintain		<b>+ Issue Type</b> Ma : Maintenance Deficiency Ob : Design & System Obsolescence En : Enforcement
--	--	---	--	---

## Reclamation District No. 0551 Pearson

Page 18 of 62

**Flood Control Project Maintenance  
Levee Inspections**

**Levee Inspection Report By Mile - Spring 2019**

**Reclamation District No. 0551 Pearson**

Waterway	Bank	Unit Miles	Inspection Start/End	Inspector
Unit No. 01 Sacramento River	Left	6.78	03/15/2019 03/15/2019	David Julian

LM Start	2.71	Rating **	A/W	Issue No.	22 (cont)	
LM End	2.74	Issue Type +	Ma	Location *		
Category	Supplemental			GPS Latitude/Longitude		
				Start	End	
Item	2017 Storm Damage			38.301258 °	38.300922 °	
				-121.569550 °	-121.569258 °	
DWR ID	DWR_RD0551_01_f_2017_22					
Comment Code						
Inspector Comment						
Levee Evaluation Comments						
Description:District Station 142+31 to 143+80, Sec. 08, T. 5 N. R. 4 E., M.D.M. Approximately 149 linear-feet of erosion exists along the waterside slope of the Sacramento River. The erosion exists near the rip rap line about 3/4 of the way down the slope. Some existing rip rap has been pulled off in this section.						
Site ID No:332						
Site Designation:LMA-159						
Repair Type: Erosion						
Rating:Area of Concern						
Field Date:7/13/2017						
Notes: Crown is a paved road. Minor errosion right above and in the top of the rip rap.						

Photo 3 of 3 : SP\_2019\_RD0551\_175\_22\_20190311\_00012.jpg



LM Start	2.96	Rating **	M	Issue No.	71
LM End	2.96	Issue Type +	En	Location *	
Category	Supplemental			GPS Latitude/Longitude	
				Start	End
Item	DWR UCIP Field Study			38.298323 °	38.298323 °
				-121.566941 °	-121.566941 °
DWR ID	22032				
Comment Code					
Inspector Comment					
FS_ID:11803 DS_ID:22032 EP_NO: 1204 Repair Type: Non-Urgent Crossing Status: Found UCIP Comments: Gap between sleeved pipes does not appear to be grouted on LS slope. FIELD_STRUCT_DESC: 12-inch steel irrigation conduit through the levee, 6 feet below the crown. 10-inch irrigation pipe sleeved through the 12-inch conduit. Pump on pile structure on the waterside (WS) toe. 48-inch concrete riser on the landside (LS) toe. (Permit No. 1204, 1947 - M. J. Barry Estate). [Additional Reference(s): USACE Sacramento O&M Manual 111, May 1959, (RM 31.82)]. FS Date: 4/10/2013					

Photo 1 of 2 : UCIP\_SP\_2019\_11803\_19261.jpg



48-inch concrete riser on LS toe.

<b>* Location</b> LS : Land Side    N/A : Not Applicable WS : Water Side CR : Crown		<b>** Rating</b> A : Acceptable M : Minimally Acceptable U : Unacceptable N : Not Inspected/Rated C : Corrected A/W : Acceptable but Monitor & Maintain		<b>+ Issue Type</b> Ma : Maintenance Deficiency Ob : Design & System Obsolescence En : Enforcement
--	--	---	--	---



**Flood Control Project Maintenance  
Levee Inspections**

**Levee Inspection Report By Mile - Spring 2019**

**Reclamation District No. 0551 Pearson**

Waterway	Bank	Unit Miles	Inspection Start/End	Inspector
Unit No. 01 Sacramento River	Left	6.78	03/15/2019 03/15/2019	David Julian

LM Start	2.96	Rating **	M	Issue No.	71 (cont)	
LM End	2.96	Issue Type +	En	Location *		
Category	Supplemental			GPS Latitude/Longitude		
				Start		End
Item	DWR UCIP Field Study			38.298323 °	38.298323 °	
				-121.566941 °	-121.566941 °	
DWR ID	22032					
Comment Code						
Inspector Comment						
FS_ID:11803 DS_ID:22032 EP_NO: 1204 Repair Type: Non-Urgent Crossing Status: Found UCIP Comments: Gap between sleeved pipes does not appear to be grouted on LS slope. FIELD_STRUCT_DESC: 12-inch steel irrigation conduit through the levee, 6 feet below the crown. 10-inch irrigation pipe sleeved through the 12-inch conduit. Pump on pile structure on the waterside (WS) toe. 48-inch concrete riser on the landside (LS) toe. (Permit No. 1204, 1947 - M. J. Barry Estate). [Additional Reference(s): USACE Sacramento O&M Manual 111, May 1959, (RM 31.82)]. FS Date: 4/10/2013						

Photo 2 of 2 : UCIP\_SP\_2019\_11803\_19260.jpg



10-inch steel irrigation pipe and steel pump structure on WS toe.

LM Start	3.03	Rating **	U	Issue No.	56
LM End	3.03	Issue Type +	En	Location *	LS
Category	Earthen Levee			GPS Latitude/Longitude	
				Start	End
Item	Vegetation			38.297527 °	38.297527 °
				-121.566225 °	-121.566225 °
DWR ID	DWR_RD0551_01_f_2018_56				
Comment Code					
V6 : Landscaping					
Inspector Comment					

Photo 1 of 1 : SP\_2019\_RD0551\_175\_56\_20190311\_00078.jpg



View looking upstream at landscaping on the landside slope (November 2018).

<b>* Location</b> LS : Land Side    N/A : Not Applicable WS : Water Side CR : Crown		<b>** Rating</b> A : Acceptable M : Minimally Acceptable U : Unacceptable		N : Not Inspected/Rated C : Corrected A/W : Acceptable but Monitor & Maintain		<b>+ Issue Type</b> Ma : Maintenance Deficiency Ob : Design & System Obsolescence En : Enforcement	
--	--	--	--	---	--	---	--

## Reclamation District No. 0551 Pearson

* Location	** Rating	+ Issue Type
LS : Land Side    N/A : Not Applicable	A : Acceptable                      N : Not Inspected/Rated	Ma : Maintenance Deficiency
WS : Water Side	M : Minimally Acceptable        C : Corrected	Ob : Design & System Obsolescence
CR : Crown	U : Unacceptable                  A/W : Acceptable but Monitor & Maintain	En : Enforcement



# Reclamation District No. 0551 Pearson

Page 22 of 62

**Flood Control Project Maintenance  
Levee Inspections**

**Levee Inspection Report By Mile - Spring 2019**

**Reclamation District No. 0551 Pearson**

Waterway	Bank	Unit Miles	Inspection Start/End	Inspector
Unit No. 01 Sacramento River	Left	6.78	03/15/2019 03/15/2019	David Julian

LM Start	3.34	Rating **	M	Issue No.	27 (cont)	
LM End	3.36	Issue Type +	Ma	Location *		
Category	Supplemental			GPS Latitude/Longitude		
				Start		End
Item	2017 Storm Damage			38.293842 °		38.293642 °
				-121.562917 °		-121.562708 °
DWR ID	DWR_RD0551_01_f_2017_27					
Comment Code						
Inspector Comment						
Levee Evaluation Comments						
Description:District Station 175+36 to 176+30, Sec. 08, T. 5 N. R. 4 E., M.D.M. Approximately 94 linear-feet of erosion exists along the waterside slope of the Sacramento River. The erosion occurs within the rip rap area near the waterline. Sloughing is exhibited in the in the bottom half of the slope. Some existing rip rap has been pulled off in this section.						
Site ID No:334						
Site Designation:LMA-161						
Repair Type: Erosion						
Rating:Area of Concern						
Field Date:7/13/2017						
Notes: Crown is a paved road. Scarps upto 3 ft within rip rap and 18 in above rip rap. Lower priority because erosion does not significantly cut into prism and damage was not continuous through whole site.						

Photo 2 of 3 : SP\_2019\_RD0551\_175\_27\_20190311\_00019.jpg



Photo 3 of 3 : SP\_2019\_RD0551\_175\_27\_20190311\_00020.jpg



<b>* Location</b> LS : Land Side    N/A : Not Applicable WS : Water Side CR : Crown		<b>** Rating</b> A : Acceptable M : Minimally Acceptable U : Unacceptable N : Not Inspected/Rated C : Corrected A/W : Acceptable but Monitor & Maintain		<b>+ Issue Type</b> Ma : Maintenance Deficiency Ob : Design & System Obsolescence En : Enforcement
--	--	---	--	---

**Flood Control Project Maintenance  
Levee Inspections**

**Levee Inspection Report By Mile - Spring 2019**

**Reclamation District No. 0551 Pearson**

Waterway	Bank	Unit Miles	Inspection Start/End	Inspector
Unit No. 01 Sacramento River	Left	6.78	03/15/2019 03/15/2019	David Julian

LM Start	3.45	Rating **	M	Issue No.	55
LM End	3.45	Issue Type +	En	Location *	LS
Category	Earthen Levee			GPS Latitude/Longitude	
				Start	End
Item	Vegetation			38.292710 °	38.292710 °
				-121.561440 °	-121.561440 °
DWR ID	DWR_RD0551_01_f_2018_55				
Comment Code					
V6 : Landscaping					
Inspector Comment					

No Photos

LM Start	3.71	Rating **	M	Issue No.	54
LM End	3.71	Issue Type +	En	Location *	LS
Category	Earthen Levee			GPS Latitude/Longitude	
				Start	End
Item	Vegetation			38.289920 °	38.289920 °
				-121.558357 °	-121.558357 °
DWR ID	DWR_RD0551_01_f_2018_54				
Comment Code					
V6 : Landscaping					
Inspector Comment					

No Photos

LM Start	3.81	Rating **	U	Issue No.	48
LM End	3.81	Issue Type +	En	Location *	LS
Category	Earthen Levee			GPS Latitude/Longitude	
				Start	End
Item	Vegetation			38.288783 °	38.288783 °
				-121.557128 °	-121.557128 °
DWR ID	DWR_RD0551_01_f_2017_48				
Comment Code					
V6 : Landscaping					
Inspector Comment					
Landscaping should be maintained to allow inspection and access to landside slope and toe.					

Photo 1 of 1 : SP\_2019\_RD0551\_175\_48\_20190311\_00073.jpg



View of landscaping on landside slope and toe.

<b>* Location</b> LS : Land Side    N/A : Not Applicable WS : Water Side CR : Crown		<b>** Rating</b> A : Acceptable                      N : Not Inspected/Rated M : Minimally Acceptable        C : Corrected U : Unacceptable                  A/W : Acceptable but Monitor & Maintain		<b>+ Issue Type</b> Ma : Maintenance Deficiency Ob : Design & System Obsolescence En : Enforcement
--	--	---	--	---



**Flood Control Project Maintenance  
Levee Inspections**

**Levee Inspection Report By Mile - Spring 2019**

**Reclamation District No. 0551 Pearson**

Waterway	Bank	Unit Miles	Inspection Start/End	Inspector
Unit No. 01 Sacramento River	Left	6.78	03/15/2019 03/15/2019	David Julian

LM Start	4.01	Rating **	M	Issue No.	72
LM End	4.01	Issue Type +	En	Location *	
Category	Supplemental			GPS Latitude/Longitude	
				Start	End
Item	DWR UCIP Field Study			38.286593 °	38.286593 °
				-121.554591 °	-121.554591 °
DWR ID	22034				
Comment Code					
Inspector Comment					
FS_ID:11817					
DS_ID:22034					
EP_NO: N/A					
Repair Type: Non-Urgent					
Crossing Status: Found					
UCIP Comments: Abandoned. Determine if pipe was removed or abandoned in place.					
FIELD_STRUCT_DESC: 8-inch irrigation pipe through the levee 6.7-feet below the crown. Abandoned slide gate at pad on WS slope. Originally included in O+M manual 1959.					
FS Date: 4/11/2013					

LM Start	<b>4.01</b>	Rating **	M	Issue No.	<b>72 (cont)</b>
LM End	<b>4.01</b>	Issue Type +	En	Location *	

Photo 1 of 2 : UCIP\_SP\_2019\_11817\_19287.jpg



Abandoned slide gate on WS slope.

Photo 2 of 2 : UCIP\_SP\_2019\_11817\_19286.jpg



Abandoned slide gate on WS slope.

<b>* Location</b> LS : Land Side    N/A : Not Applicable WS : Water Side CR : Crown	<b>** Rating</b> A : Acceptable M : Minimally Acceptable U : Unacceptable N : Not Inspected/Rated C : Corrected A/W : Acceptable but Monitor & Maintain	<b>+ Issue Type</b> Ma : Maintenance Deficiency Ob : Design & System Obsolescence En : Enforcement
--	---	---

**Flood Control Project Maintenance  
Levee Inspections**

**Levee Inspection Report By Mile - Spring 2019**

**Reclamation District No. 0551 Pearson**

Waterway	Bank	Unit Miles	Inspection Start/End	Inspector
Unit No. 01 Sacramento River	Left	6.78	03/15/2019 03/15/2019	David Julian

LM Start	4.02	Rating **	M	Issue No.	73
LM End	4.02	Issue Type +	En	Location *	
Category	Supplemental			GPS Latitude/Longitude	
				Start	End
Item	DWR UCIP Field Study			38.286568 °	38.286568 °
				-121.554569 °	-121.554569 °
DWR ID	22018				
Comment Code					
Inspector Comment					
FS_ID:11823					
DS_ID:22018					
EP_NO: 11146					
Repair Type: Non-Urgent					
Crossing Status: Found					
UCIP Comments: Wooden walkway in bad repair and presents a hazard to the public.					
FIELD_STRUCT_DESC: 14-inch irrigation pipe of an unknown material through the levee, 10.4 feet below the crown. Pump on pile structure in stream with wooden walkway. 48-inch concrete standpipe on the landside (LS) toe with booster pump and electrical panel. Siphon breaker in a 24-inch corrugated metal pipe (CMP) riser on the LS slope. 1.5-inch electrical conduit at the same location. (Automatic Board Order (ABO) issued as Permit No. 11146, 1975 - Edgar D. Turner, III).					
[Additional Reference(s): DWR Levee Log, 2005. USACE Sacramento O&M Manual 111, May 1959, (RM 30.75)].					
FS Date: 4/11/2013					

LM Start	<b>4.02</b>	Rating **	M	Issue No.	<b>73 (cont)</b>
LM End	<b>4.02</b>	Issue Type +	En	Location *	

Photo 1 of 2 : UCIP\_SP\_2019\_11823\_19301.jpg



24-inch CMP riser and 48-inch concrete riser on LS slope.

Photo 2 of 2 : UCIP\_SP\_2019\_11823\_19300.jpg



Pump on pier with wooden walkway on WS toe.

<b>* Location</b> LS : Land Side    N/A : Not Applicable WS : Water Side CR : Crown	<b>** Rating</b> A : Acceptable M : Minimally Acceptable U : Unacceptable	N : Not Inspected/Rated C : Corrected A/W : Acceptable but Monitor & Maintain	<b>+ Issue Type</b> Ma : Maintenance Deficiency Ob : Design & System Obsolescence En : Enforcement
--	--	---	---



**Flood Control Project Maintenance  
Levee Inspections**

**Levee Inspection Report By Mile - Spring 2019**

**Reclamation District No. 0551 Pearson**

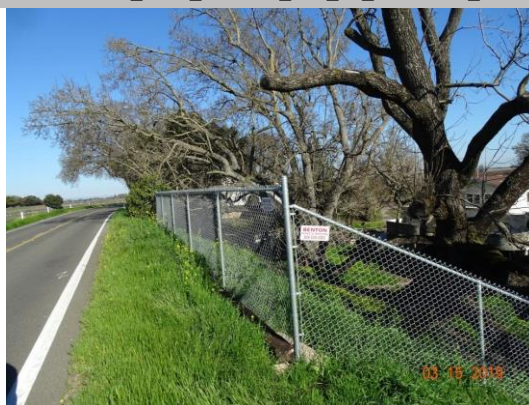
Waterway	Bank	Unit Miles	Inspection Start/End	Inspector
Unit No. 01 Sacramento River	Left	6.78	03/15/2019 03/15/2019	David Julian

LM Start	4.04	Rating **	M	Issue No.	53
LM End	4.04	Issue Type +	Ma	Location *	LS
Category	Earthen Levee			GPS Latitude/Longitude	
				Start	End
Item	Animal Control			38.286255 °	38.286255 °
				-121.554193 °	-121.554193 °
DWR ID	DWR_RD0551_01_f_2018_53				
Comment Code					
A3 : No rodents visible, but rodent burrows visible; need to backfill and compact or grout burrows.					
Inspector Comment					
Rodent trap program has reduced squirrel issue. Backfill holes and continue to monitor.					

No Photos

LM Start	4.18	Rating **	M	Issue No.	60
LM End	4.23	Issue Type +	En	Location *	LS
Category	Earthen Levee			GPS Latitude/Longitude	
				Start	End
Item	Encroachments			38.284795 °	38.284318 °
				-121.552597 °	-121.551830 °
DWR ID	DWR_RD0551_01_s_2019_60				
Comment Code					
FE : Fence					
Inspector Comment					
A chainlink fence is located on landside.					

Photo 1 of 1 : SP\_2019\_RD0551\_175\_60\_20190320\_00116.jpg



View looking upstream at chainlink fence on the landside slope and shoulder (Spring 2019).

LM Start	4.22	Rating **	M	Issue No.	52
LM End	4.22	Issue Type +	En	Location *	LS
Category	Earthen Levee			GPS Latitude/Longitude	
				Start	End
Item	Vegetation			38.284400 °	38.284400 °
				-121.552035 °	-121.552035 °
DWR ID	DWR_RD0551_01_f_2018_52				
Comment Code					
V6 : Landscaping					
Inspector Comment					

Photo 1 of 1 : SP\_2019\_RD0551\_175\_52\_20190311\_00077.jpg



View looking upstream at landscaping on the landside slope (November 2018).

<b>* Location</b> LS : Land Side    N/A : Not Applicable WS : Water Side CR : Crown		<b>** Rating</b> A : Acceptable M : Minimally Acceptable U : Unacceptable		<b>+ Issue Type</b> Ma : Maintenance Deficiency Ob : Design & System Obsolescence En : Enforcement	
		N : Not Inspected/Rated C : Corrected A/W : Acceptable but Monitor & Maintain			

**Flood Control Project Maintenance  
Levee Inspections**

**Levee Inspection Report By Mile - Spring 2019**

**Reclamation District No. 0551 Pearson**

Waterway	Bank	Unit Miles	Inspection Start/End	Inspector
Unit No. 01 Sacramento River	Left	6.78	03/15/2019 03/15/2019	David Julian

LM Start	4.39	Rating **	M	Issue No.	28
LM End	4.47	Issue Type +	Ma	Location *	
Category	Supplemental			GPS Latitude/Longitude	
				Start	End
Item	2017 Storm Damage			38.282778 °	38.282108 °
				-121.549531 °	-121.548386 °
DWR ID	DWR_RD0551_01_f_2017_28				
Comment Code					
Inspector Comment					
Levee Evaluation Comments					
Description:District Station 231+12 to 235+26, Sec. 16, T. 5 N. R. 4 E., M.D.M. Approximately 414 linear-feet of erosion and subsequent sloughing exists along the waterside slope of the Sacramento River. The erosion commences approximately 3/4 of the way down the slope to the rip rap line.					
Site ID No:336					
Site Designation:LMA-163					
Repair Type: Erosion					
Rating:Area of Concern					
Field Date:7/13/2017					
Notes: We only saw erosion on about 1½ the length reported by the LMA, but there is another site very close by. Crown is a paved road. Scarps up to 5 ft deep above the rip rap, mostly smaller though so rated this a lower priority site.					

Photo 1 of 3 : SP\_2019\_RD0551\_175\_28\_20190311\_00021.jpg



Photo 2 of 3 : SP\_2019\_RD0551\_175\_28\_20190311\_00022.jpg



LM Start	<b>4.39</b>	Rating **	M	Issue No.	<b>28 (cont)</b>
LM End	<b>4.47</b>	Issue Type +	Ma	Location *	

<b>* Location</b> LS : Land Side    N/A : Not Applicable WS : Water Side CR : Crown	<b>** Rating</b> A : Acceptable M : Minimally Acceptable U : Unacceptable N : Not Inspected/Rated C : Corrected A/W : Acceptable but Monitor & Maintain	<b>+ Issue Type</b> Ma : Maintenance Deficiency Ob : Design & System Obsolescence En : Enforcement
--	---	---

**Flood Control Project Maintenance  
Levee Inspections**

**Levee Inspection Report By Mile - Spring 2019**

**Reclamation District No. 0551 Pearson**

Waterway	Bank	Unit Miles	Inspection Start/End	Inspector
Unit No. 01 Sacramento River	Left	6.78	03/15/2019 03/15/2019	David Julian

LM Start	4.39	Rating **	M	Issue No.	28 (cont)	
LM End	4.47	Issue Type +	Ma	Location *		
Category	Supplemental			GPS Latitude/Longitude		
				Start	End	
Item	2017 Storm Damage			38.282778 °	38.282108 °	
				-121.549531 °	-121.548386 °	
DWR ID	DWR_RD0551_01_f_2017_28					
Comment Code						
Inspector Comment						
Levee Evaluation Comments						
Description:District Station 231+12 to 235+26, Sec. 16, T. 5 N. R. 4 E., M.D.M. Approximately 414 linear-feet of erosion and subsequent sloughing exists along the waterside slope of the Sacramento River. The erosion commences approximately 3/4 of the way down the slope to the rip rap line.						
Site ID No:336						
Site Designation:LMA-163						
Repair Type: Erosion						
Rating:Area of Concern						
Field Date:7/13/2017						
Notes: We only saw erosion on about 1½ the length reported by the LMA, but there is another site very close by. Crown is a paved road. Scarps up to 5 ft deep above the rip rap, mostly smaller though so rated this a lower priority site.						

Photo 3 of 3 : SP\_2019\_RD0551\_175\_28\_20190311\_00023.jpg



LM Start	4.49	Rating **	A/W	Issue No.	29
LM End	4.52	Issue Type +	Ma	Location *	
Category	Supplemental			GPS Latitude/Longitude	
				Start	End
Item	2017 Storm Damage			38.281994 °	38.281653 °
				-121.548214 °	-121.547700 °
DWR ID	DWR_RD0551_01_f_2017_29				
Comment Code					
Inspector Comment					
Levee Evaluation Comments					
Description: District Station 235+90 to 237+83, Sec. 16, T. 5 N. R. 4 E., M.D.M. Approximately 193 linear-feet of erosion exists along the waterside slope of the Sacramento River. The erosion commences approximately halfway down the slope and extends to the rip rap. Some existing rip rap has been pulled off in this section.					
Site ID No:337					
Site Designation:LMA-164					
Repair Type: Erosion					
Rating:Area of Concern					
Field Date:7/13/2017					
Notes: Crown is paved road. Veg on slope, not lower bank. Scarps up to 18 in deep above rip rap. Lower priority because erosion is fairly small and rip rap is in good shape through most of the site.					

Photo 1 of 3 : SP\_2019\_RD0551\_175\_29\_20190311\_00024.jpg



<b>* Location</b> LS : Land Side    N/A : Not Applicable WS : Water Side CR : Crown		<b>** Rating</b> A : Acceptable                      N : Not Inspected/Rated M : Minimally Acceptable        C : Corrected U : Unacceptable                  A/W : Acceptable but Monitor & Maintain		<b>+ Issue Type</b> Ma : Maintenance Deficiency Ob : Design & System Obsolescence En : Enforcement
--	--	---	--	---



## Reclamation District No. 0551 Pearson

Waterway	Bank	Unit Miles	Inspection Start/End	Inspector
Unit No. 01 Sacramento River	Left	6.78	03/15/2019 03/15/2019	David Julian

LM Start	4.49	Rating **	A/W	Issue No.	29 (cont)	
LM End	4.52	Issue Type +	Ma	Location *		
Category	Supplemental			GPS Latitude/Longitude		
				Start		End
Item	2017 Storm Damage			38.281994 °		38.281653 °
				-121.548214 °		-121.547700 °
DWR ID	DWR_RD0551_01_f _ 2017_29					
Comment Code						
Inspector Comment						
Levee Evaluation Comments						
Description: District Station 235+90 to 237+83, Sec. 16, T. 5 N. R. 4 E., M.D.M. Approximately 193 linear-feet of erosion exists along the waterside slope of the Sacramento River. The erosion commences approximately halfway down the slope and extends to the rip rap. Some existing rip rap has been pulled off in this section.						
Site ID No:337						
Site Designation:LMA-164						
Repair Type: Erosion						
Rating:Area of Concern						
Field Date:7/13/2017						
Notes: Crown is paved road. Veg on slope, not lower bank. Scarps up to 18 in deep above rip rap. Lower priority because erosion is fairly small and rip rap is in good shape through most of the site.						

LM Start	<b>4.49</b>	Rating **	A/W	Issue No.	<b>29 (cont)</b>
LM End	<b>4.52</b>	Issue Type +	Ma	Location *	

A photograph showing a wide river with a calm, blue surface. The foreground is dominated by a steep, rocky bank covered in grey stones and patches of green grass. To the right, a grassy hillside rises, featuring a white building with a dark roof. The sky is clear and blue, and the overall scene is bright and sunny.

* Location	** Rating	+ Issue Type
LS : Land Side    N/A : Not Applicable	A : Acceptable                      N : Not Inspected/Rated	Ma : Maintenance Deficiency
WS : Water Side	M : Minimally Acceptable            C : Corrected	Ob : Design & System Obsolescence
CR : Crown	U : Unacceptable                      A/W : Acceptable but Monitor & Maintain	En : Enforcement

**Flood Control Project Maintenance  
Levee Inspections**

**Levee Inspection Report By Mile - Spring 2019**

**Reclamation District No. 0551 Pearson**

Waterway	Bank	Unit Miles	Inspection Start/End	Inspector
Unit No. 01 Sacramento River	Left	6.78	03/15/2019 03/15/2019	David Julian

LM Start	4.59	Rating **	M	Issue No.	74
LM End	4.59	Issue Type +	En	Location *	
Category	Supplemental			GPS Latitude/Longitude	
				Start	End
Item	DWR UCIP Field Study			38.281074 °	38.281074 °
				-121.546628 °	-121.546628 °
DWR ID	22020				

**Comment Code**

**Inspector Comment**

FS\_ID:51324  
DS\_ID:22020  
EP\_NO: 11152  
Repair Type: Non-Urgent  
Crossing Status: Found  
UCIP Comments: 10/24/2016 Per Mr. Topper Van Loben, LMA contact, new owner is working with DCC Engineering to obtain CVFPB permit for pipe rehabilitation. Work rehabilitation for existing pipe includes sleeving an 8-inch steel pipe through existing pipe and grouting space between pipes. Crossing has been downgraded to Non-Urgent since walkway has been repaired and pipe in the process of being rehabilitated. UCIP staff is waiting for permit authorizing pipe rehabilitation. (O. Magana - DWR UCIP) (Olivia) As of 09/21/2015 owner is working with Gilbert Labrie, LMA consultant, to resolve issue. (T. Van Loben - LMA representative / G. Labrie - LMA Engineer - DCC Engineering)As of 12/17/2013 District submitted letter to landowner explaining UCIP report details including photos of the pipe problems. (T. Van Loben - LMA representative / G. Labrie - LMA Engineer - DCC Engineering)As of 12/13/2013 the District has contacted the tenant farmer who is in the process of contacting the owner to update on condition of pipe. (T. Van Loben - LMA representative / G. Labrie - LMA Engineer - DCC Engineering) 04/11/2013 Pier for pump is falling appart and is a hazard to the public. Some settlement along pipe on LS slope. (W. Wylie - DWR UCIP)  
FIELD\_STRUCT\_DESC: 10-inch steel irrigation pipe through the levee 6.5 feet below the crown. Service pole and a 36-inch concrete riser are located on the landside (LS) toe. 1-inch electrical conduit at same location. Metal walkway, pump, and control panel are located on the waterside (WS). Pump previous on pile structure has been removed not found in Oct 2016. (10-inch pipe authorized under Automatic Board Order (ABO) issued as Permit No. 11152, 1975 - Wilcox) [Additional Reference(s): DWR Levee Log, 2005. USACE Sacramento O&M Manual Unit 111, May 1959, (RM 30.15), Drawing Number 50-4-2983, Sheet 5]  
FS Date: 10/24/2016

Photo 1 of 3 : UCIP\_SP\_2019\_51324\_46281.jpg



Pipe and stand pipe on LS toe with subsidence along pipe on LS slope.

* Location	** Rating	+ Issue Type
LS : Land Side WS : Water Side CR : Crown	A : Acceptable M : Minimally Acceptable U : Unacceptable	Ma : Maintenance Deficiency Ob : Design & System Obsolescence En : Enforcement
N/A : Not Applicable	N : Not Inspected/Rated C : Corrected A/W : Acceptable but Monitor & Maintain	

**Flood Control Project Maintenance  
Levee Inspections**

**Levee Inspection Report By Mile - Spring 2019**

**Reclamation District No. 0551 Pearson**

Waterway	Bank	Unit Miles	Inspection Start/End	Inspector
Unit No. 01 Sacramento River	Left	6.78	03/15/2019 03/15/2019	David Julian

LM Start	4.59	Rating **	M	Issue No.	74 (cont)	
LM End	4.59	Issue Type +	En	Location *		
Category	Supplemental			GPS Latitude/Longitude		
				Start	End	
Item	DWR UCIP Field Study			38.281074 °	38.281074 °	
				-121.546628 °	-121.546628 °	
DWR ID	22020					

**Comment Code**

**Inspector Comment**

FS\_ID:51324  
DS\_ID:22020  
EP\_NO: 11152  
Repair Type: Non-Urgent  
Crossing Status: Found  
UCIP Comments: 10/24/2016 Per Mr. Topper Van Loben, LMA contact, new owner is working with DCC Engineering to obtain CVFPB permit for pipe rehabilitation. Work rehabilitation for existing pipe includes sleeving an 8-inch steel pipe through existing pipe and grouting space between pipes. Crossing has been downgraded to Non-Urgent since walkway has been repaired and pipe in the process of being rehabilitated. UCIP staff is waiting for permit authorizing pipe rehabilitation. (O. Magana - DWR UCIP) (Olivia) As of 09/21/2015 owner is working with Gilbert Labrie, LMA consultant, to resolve issue. (T. Van Loben - LMA representative / G. Labrie - LMA Engineer - DCC Engineering)As of 12/17/2013 District submitted letter to landowner explaining UCIP report details including photos of the pipe problems. (T. Van Loben - LMA representative / G. Labrie - LMA Engineer - DCC Engineering)As of 12/13/2013 the District has contacted the tenant farmer who is in the process of contacting the owner to update on condition of pipe. (T. Van Loben - LMA representative / G. Labrie - LMA Engineer - DCC Engineering) 04/11/2013 Pier for pump is falling appart and is a hazard to the public. Some settlement along pipe on LS slope. (W. Wylie - DWR UCIP)  
FIELD\_STRUCT\_DESC: 10-inch steel irrigation pipe through the levee 6.5 feet below the crown. Service pole and a 36-inch concrete riser are located on the landside (LS) toe. 1-inch electrical conduit at same location. Metal walkway, pump, and control panel are located on the waterside (WS). Pump previous on pile structure has been removed not found in Oct 2016. (10-inch pipe authorized under Automatic Board Order (ABO) issued as Permit No. 11152, 1975 - Wilcox) [Additional Reference(s): DWR Levee Log, 2005. USACE Sacramento O&M Manual Unit 111, May 1959, (RM 30.15), Drawing Number 50-4-2983, Sheet 5]  
FS Date: 10/24/2016

Photo 2 of 3 : UCIP\_SP\_2019\_51324\_46280.jpg



Pump on pier showing structural failure on WS toe.

<b>* Location</b> LS : Land Side    N/A : Not Applicable WS : Water Side CR : Crown	<b>** Rating</b> A : Acceptable M : Minimally Acceptable U : Unacceptable N : Not Inspected/Rated C : Corrected A/W : Acceptable but Monitor & Maintain	<b>+ Issue Type</b> Ma : Maintenance Deficiency Ob : Design & System Obsolescence En : Enforcement
--	---	---



**Flood Control Project Maintenance  
Levee Inspections**

**Levee Inspection Report By Mile - Spring 2019**

**Reclamation District No. 0551 Pearson**

Waterway	Bank	Unit Miles	Inspection Start/End	Inspector
Unit No. 01 Sacramento River	Left	6.78	03/15/2019 03/15/2019	David Julian

LM Start	4.59	Rating **	M	Issue No.	74 (cont)	
LM End	4.59	Issue Type +	En	Location *		
Category	Supplemental			GPS Latitude/Longitude		
				Start	End	
Item	DWR UCIP Field Study			38.281074 °	38.281074 °	
				-121.546628 °	-121.546628 °	
DWR ID	22020					

**Comment Code**

**Inspector Comment**

FS\_ID:51324  
DS\_ID:22020  
EP\_NO: 11152  
Repair Type: Non-Urgent  
Crossing Status: Found  
UCIP Comments: 10/24/2016 Per Mr. Topper Van Loben, LMA contact, new owner is working with DCC Engineering to obtain CVFPB permit for pipe rehabilitation. Work rehabilitation for existing pipe includes sleeving an 8-inch steel pipe through existing pipe and grouting space between pipes. Crossing has been downgraded to Non-Urgent since walkway has been repaired and pipe in the process of being rehabilitated. UCIP staff is waiting for permit authorizing pipe rehabilitation. (O. Magana - DWR UCIP) (Olivia) As of 09/21/2015 owner is working with Gilbert Labrie, LMA consultant, to resolve issue. (T. Van Loben - LMA representative / G. Labrie - LMA Engineer - DCC Engineering)As of 12/17/2013 District submitted letter to landowner explaining UCIP report details including photos of the pipe problems. (T. Van Loben - LMA representative / G. Labrie - LMA Engineer - DCC Engineering)As of 12/13/2013 the District has contacted the tenant farmer who is in the process of contacting the owner to update on condition of pipe. (T. Van Loben - LMA representative / G. Labrie - LMA Engineer - DCC Engineering) 04/11/2013 Pier for pump is falling apart and is a hazard to the public. Some settlement along pipe on LS slope. (W. Wylie - DWR UCIP)  
FIELD\_STRUCT\_DESC: 10-inch steel irrigation pipe through the levee 6.5 feet below the crown. Service pole and a 36-inch concrete riser are located on the landside (LS) toe. 1-inch electrical conduit at same location. Metal walkway, pump, and control panel are located on the waterside (WS). Pump previous on pile structure has been removed not found in Oct 2016. (10-inch pipe authorized under Automatic Board Order (ABO) issued as Permit No. 11152, 1975 - Wilcox) [Additional Reference(s): DWR Levee Log, 2005. USACE Sacramento O&M Manual Unit 111, May 1959, (RM 30.15), Drawing Number 50-4-2983, Sheet 5]  
FS Date: 10/24/2016

Photo 3 of 3 : UCIP\_SP\_2019\_51324\_76157.jpg



View of levee crown and LS slope, photo taken downstream of crossing looking upstream.

<b>* Location</b> LS : Land Side    N/A : Not Applicable WS : Water Side CR : Crown		<b>** Rating</b> A : Acceptable                      N : Not Inspected/Rated M : Minimally Acceptable        C : Corrected U : Unacceptable                  A/W : Acceptable but Monitor & Maintain		<b>+ Issue Type</b> Ma : Maintenance Deficiency Ob : Design & System Obsolescence En : Enforcement
--	--	---	--	---

**Flood Control Project Maintenance  
Levee Inspections**

**Levee Inspection Report By Mile - Spring 2019**

**Reclamation District No. 0551 Pearson**

Waterway	Bank	Unit Miles	Inspection Start/End	Inspector
Unit No. 01 Sacramento River	Left	6.78	03/15/2019 03/15/2019	David Julian

LM Start	4.67	Rating **	A/W	Issue No.	30
LM End	4.70	Issue Type +	Ma	Location *	
Category	Supplemental			GPS Latitude/Longitude	
				Start	End
Item	2017 Storm Damage			38.280236 °	38.279892 °
				-121.545758 °	-121.545314 °
DWR ID	DWR_RD0551_01_f_2017_30				
Comment Code					
Inspector Comment					
Levee Evaluation Comments					
Description:District Station 245+47 to 247+26, Sec. 16, T. 5 N. R. 4 E., M.D.M. Approximately 179 linear-feet of erosion and sloughing exists along the waterside slope of the Sacramento River. The erosion commences approximately halfway down the slope and extends to the rip rap. Some existing rip rap has been pulled off in this section.					
Site ID No:338					
Site Designation:LMA-165					
Repair Type: Erosion					
Rating:Area of Concern					
Field Date:7/13/2017					
Notes: Crown is paved road. Scarps up to 7 ft deep, 2 ft typical above the rip rap. Area of concern because the deeper scarp only covered a short distance and was already vegetated so not actively eroding.					

Photo 1 of 3 : SP\_2019\_RD0551\_175\_30\_20190311\_00027.jpg



Photo 2 of 3 : SP\_2019\_RD0551\_175\_30\_20190311\_00028.jpg



LM Start	<b>4.67</b>	Rating **	A/W	Issue No.	<b>30 (cont)</b>
LM End	<b>4.70</b>	Issue Type +	Ma	Location *	

<b>* Location</b> LS : Land Side    N/A : Not Applicable WS : Water Side CR : Crown	<b>** Rating</b> A : Acceptable M : Minimally Acceptable U : Unacceptable	N : Not Inspected/Rated C : Corrected A/W : Acceptable but Monitor & Maintain	<b>+ Issue Type</b> Ma : Maintenance Deficiency Ob : Design & System Obsolescence En : Enforcement
--	--	---	---

**Flood Control Project Maintenance  
Levee Inspections**

**Levee Inspection Report By Mile - Spring 2019**

**Reclamation District No. 0551 Pearson**

Waterway	Bank	Unit Miles	Inspection Start/End	Inspector
Unit No. 01 Sacramento River	Left	6.78	03/15/2019 03/15/2019	David Julian

LM Start	4.67	Rating **	A/W	Issue No.	30 (cont)	
LM End	4.70	Issue Type +	Ma	Location *		
Category	Supplemental			GPS Latitude/Longitude		
				Start		End
Item	2017 Storm Damage			38.280236 °		38.279892 °
				-121.545758 °		-121.545314 °
DWR ID	DWR_RD0551_01_f_2017_30					
Comment Code						
Inspector Comment						
Levee Evaluation Comments						
Description:District Station 245+47 to 247+26, Sec. 16, T. 5 N. R. 4 E., M.D.M. Approximately 179 linear-feet of erosion and sloughing exists along the waterside slope of the Sacramento River. The erosion commences approximately halfway down the slope and extends to the rip rap. Some existing rip rap has been pulled off in this section.						
Site ID No:338						
Site Designation:LMA-165						
Repair Type: Erosion						
Rating:Area of Concern						
Field Date:7/13/2017						
Notes: Crown is paved road. Scarps up to 7 ft deep, 2 ft typical above the rip rap. Area of concern because the deeper scarp only covered a short distance and was already vegetated so not actively eroding.						

Photo 3 of 3 : SP\_2019\_RD0551\_175\_30\_20190311\_00029.jpg



LM Start	4.82	Rating **	U	Issue No.	25
LM End	4.86	Issue Type +	En	Location *	LS
Category	Earthen Levee			GPS Latitude/Longitude	
				Start	End
Item	Vegetation			38.278760 °	38.278287 °
				-121.543608 °	-121.543132 °
DWR ID	DWR_RD0551_01_f_2018_25				
Comment Code					
V6 : Landscaping					
Inspector Comment					

Photo 1 of 1 : SP\_2019\_RD0551\_175\_25\_20190311\_00014.jpg



View looking upstream at landscaping on the landside slope (November 2018).

<b>* Location</b> LS : Land Side    N/A : Not Applicable WS : Water Side CR : Crown	<b>** Rating</b> A : Acceptable M : Minimally Acceptable U : Unacceptable	N : Not Inspected/Rated C : Corrected A/W : Acceptable but Monitor & Maintain	<b>+ Issue Type</b> Ma : Maintenance Deficiency Ob : Design & System Obsolescence En : Enforcement
--	--	---	---



## Reclamation District No. 0551 Pearson

Page 36 of 62

**Flood Control Project Maintenance  
Levee Inspections**

## Levee Inspection Report By Mile - Spring 2019

### Reclamation District No. 0551 Pearson

Waterway	Bank	Unit Miles	Inspection Start/End	Inspector
Unit No. 01 Sacramento River	Left	6.78	03/15/2019 03/15/2019	David Julian

LM Start	4.92	Rating **	A/W	Issue No.	31 (cont)	
LM End	4.95	Issue Type +	Ma	Location *		
Category	Supplemental			GPS Latitude/Longitude		
				Start	End	
Item	2017 Storm Damage			38.277589 °	38.277256 °	
				-121.542575 °	-121.542211 °	
DWR ID	DWR_RD0551_01_f_2017_31					
Comment Code						
Inspector Comment						
Levee Evaluation Comments						
Description:District Station 258+80 to 260+40, Sec. 16, T. 5 N. R. 4 E., M.D.M. Approximately 160 linear-feet of erosion exists along the waterside slope of the Sacramento River. The erosion commences approximately halfway down the slope from the crown and extends to the rip rap. Some existing rip rap has been pulled off in this section.						
Site ID No:339						
Site Designation:LMA-166						
Repair Type: Erosion						
Rating:Area of Concern						
Field Date:7/14/2017						
Notes: crown is a paved road. Scarps of 2.5 ft just above rip rap. Area of concern because erosion is fairly small.						

Photo 3 of 3 : SP\_2019\_RD0551\_175\_31\_20190311\_00032.jpg



LM Start	5.05	Rating **	M	Issue No.	75	
LM End	5.05	Issue Type +	En	Location *		
Category	Supplemental			GPS Latitude/Longitude		
				Start	End	
Item	DWR UCIP Field Study			38.276220 °	38.276220 °	
				-121.540811 °	-121.540811 °	
DWR ID	22022					
Comment Code						
Inspector Comment						
FS_ID:12105 DS_ID:22022 EP_NO: 11125 Repair Type: Non-Urgent Crossing Status: Found UCIP Comments: Pump house has been removed from pump and pump is in disrepair. Pipe at LS toe is sleeved or has been replaced with a 6-inch PVC pipe. This pump appears abandoned and should be done so properly. FIELD_STRUCT_DESC: 6-inch irrigation pipe of an unknown material through the levee, 6.5 feet below the crown. Pump and slide gate on the waterside (WS) slope. 1-inch electrical conduit at the same location with service pole at the landside (LS) toe. 4-foot by 6-foot concrete distribution box at the LS toe. (Automatic Board Order (ABO) issued as Permit No. 11125, 1975 - William H. and Evelyn J. Cortopassi). [Additional Reference(s): DWR Levee Log, 2005. USACE Sacramento O&M Manual 111, May 1959, (RM 29.71)]. FS Date: 4/11/2013						

Photo 1 of 3 : UCIP\_SP\_2019\_12105\_19649.jpg



Pipe in distribution box at LS toe.

<b>* Location</b> LS : Land Side    N/A : Not Applicable WS : Water Side CR : Crown		<b>** Rating</b> A : Acceptable                      N : Not Inspected/Rated M : Minimally Acceptable        C : Corrected U : Unacceptable                  A/W : Acceptable but Monitor & Maintain		<b>+ Issue Type</b> Ma : Maintenance Deficiency Ob : Design & System Obsolescence En : Enforcement
--	--	---	--	---

**Flood Control Project Maintenance  
Levee Inspections**

**Levee Inspection Report By Mile - Spring 2019**

**Reclamation District No. 0551 Pearson**

Waterway	Bank	Unit Miles	Inspection Start/End	Inspector
Unit No. 01 Sacramento River	Left	6.78	03/15/2019 03/15/2019	David Julian

LM Start	5.05	Rating **	M	Issue No.	75 (cont)	
LM End	5.05	Issue Type +	En	Location *		
Category	Supplemental			GPS Latitude/Longitude		
				Start	End	
Item	DWR UCIP Field Study			38.276220 °	38.276220 °	
				-121.540811 °	-121.540811 °	
DWR ID	22022					
Comment Code						
Inspector Comment						
FS_ID:12105 DS_ID:22022 EP_NO: 11125 Repair Type: Non-Urgent Crossing Status: Found UCIP Comments: Pumphouse has been removed from pump and pump is in disrepair. Pipe at LS toe is sleeved or has been replaced with a 6-inch PVC pipe. This pump appears abandoned and should be done so properly. FIELD_STRUCT_DESC: 6-inch irrigation pipe of an unknown material through the levee, 6.5 feet below the crown. Pump and slide gate on the waterside (WS) slope. 1-inch electrical conduit at the same location with service pole at the landside (LS) toe. 4-foot by 6-foot concrete distribution box at the LS toe. (Automatic Board Order (ABO) issued as Permit No. 11125, 1975 - William H. and Evelyn J. Cortopassi). [Additional Reference(s): DWR Levee Log, 2005. USACE Sacramento O&M Manual 111, May 1959, (RM 29.71)]. FS Date: 4/11/2013						

Photo 2 of 3 : UCIP\_SP\_2019\_12105\_19648.jpg



Meter on pole at LS toe.

LM Start	<b>5.05</b>	Rating **	M	Issue No.	<b>75 (cont)</b>
LM End	<b>5.05</b>	Issue Type +	En	Location *	

Photo 3 of 3 : UCIP\_SP\_2019\_12105\_19647.jpg



Relocated pumphouse on WS shoulder.

<b>* Location</b> LS : Land Side    N/A : Not Applicable WS : Water Side CR : Crown		<b>** Rating</b> A : Acceptable M : Minimally Acceptable U : Unacceptable N : Not Inspected/Rated C : Corrected A/W : Acceptable but Monitor & Maintain		<b>+ Issue Type</b> Ma : Maintenance Deficiency Ob : Design & System Obsolescence En : Enforcement
--	--	---	--	---





**Flood Control Project Maintenance  
Levee Inspections**

## Levee Inspection Report By Mile - Spring 2019

### Reclamation District No. 0551 Pearson

Waterway	Bank	Unit Miles	Inspection Start/End	Inspector
Unit No. 01 Sacramento River	Left	6.78	03/15/2019 03/15/2019	David Julian

LM Start	5.06	Rating **	A/W	Issue No.	32 (cont)	
LM End	5.09	Issue Type +	Ma	Location *		
Category	Supplemental			GPS Latitude/Longitude		
				Start		End
Item	2017 Storm Damage			38.276072 °		38.275761 °
				-121.540869 °		-121.540497 °
DWR ID	DWR_RD0551_01_f _ 2017_32					
Comment Code						
Inspector Comment						
Levee Evaluation Comments						
Description:District Station 266+16 to 267+71, Sec. 21, T. 5 N. R. 4 E., M.D.M. Approximately 155 linear-feet of erosion and sloughing exists along the waterside slope of the Sacramento River. The erosion commences approximately 3/4 of the way down the slope from the crown and extends into the rip rap. Some existing rip rap has been pulled off in this section.						
Site ID No:340						
Site Designation:LMA-167						
Repair Type: Erosion						
Rating:Area of Concern						
Field Date:7/14/2017						
Notes: Crown is a paved road. There is a private boat dock in the middle of the site. Some exposed filter fabric. On the upstream side erosion is above the rip rap and on the downstream side it is within the rip rap. Scarps are 2-3 ft deep. Area of concern because erosion is not very deep into prism.						

Photo 3 of 3 : SP\_2019\_RD0551\_175\_32\_20190311\_00035.jpg



LM Start	5.08	Rating **	M	Issue No.	49
LM End	5.08	Issue Type +	En	Location *	LS
Category	Earthen Levee			GPS Latitude/Longitude	
				Start	End
Item	Vegetation			38.275865 °	38.275865 °
				-121.540461 °	-121.540461 °
DWR ID	DWR_RD0551_01_f_2017_49				
Comment Code					
V6 : Landscaping					
Inspector Comment					
Landscaping should be maintained to allow inspection and access to landside slope and toe.					

Photo 1 of 1 : SP\_2019\_RD0551\_175\_49\_20190311\_00074.jpg



View of landscaping on landside slope and toe.

<b>* Location</b> LS : Land Side    N/A : Not Applicable WS : Water Side CR : Crown		<b>** Rating</b> A : Acceptable M : Minimally Acceptable U : Unacceptable N : Not Inspected/Rated C : Corrected A/W : Acceptable but Monitor & Maintain		<b>+ Issue Type</b> Ma : Maintenance Deficiency Ob : Design & System Obsolescence En : Enforcement
--	--	---	--	---

## Reclamation District No. 0551 Pearson



**Flood Control Project Maintenance  
Levee Inspections**

## Levee Inspection Report By Mile - Spring 2019

### Reclamation District No. 0551 Pearson

Waterway	Bank	Unit Miles	Inspection Start/End	Inspector
Unit No. 01 Sacramento River	Left	6.78	03/15/2019 03/15/2019	David Julian

LM Start	<b>5.12</b>	Rating **	A/W	Issue No.	<b>33 (cont)</b>
LM End	<b>5.16</b>	Issue Type +	Ma	Location *	
Category	Supplemental		GPS Latitude/Longitude		
			Start	End	
Item	2017 Storm Damage		38.275442 °	38.274997 °	
			-121.540094 °	-121.539514 °	
DWR ID	DWR_RD0551_01_f_2017_33				
Comment Code					
Inspector Comment					
<p>Levee Evaluation Comments</p> <p>Description: District Station 269+37 to 271+66, Sec. 21, T. 5 N. R. 4 E., M.D.M. Approximately 229 linear-feet of erosion and sloughing exists along the waterside slope of the Sacramento River. The erosion commences approximately 3/4 of the way down the slope from the crown and extends to the rip rap.</p> <p>Site ID No: 341</p> <p>Site Designation: LMA-168</p> <p>Repair Type: Erosion</p> <p>Rating: Area of Concern</p> <p>Field Date: 7/14/2017</p> <p>Notes: crown is a paved road. Scarps upto 4-5 ft, but 18 inches for most of the length. Large tree within site. Area of concern because deeper erosion is only present for a short distance.</p>					

Photo 3 of 3 : SP\_2019\_RD0551\_175\_33\_20190311\_00038.jpg



LM Start	<b>5.20</b>	Rating **	M	Issue No.	<b>34</b>
LM End	<b>5.28</b>	Issue Type +	Ma	Location *	
Category	Supplemental		GPS Latitude/Longitude		
			Start	End	
Item	2017 Storm Damage		38.274592 °	38.273800 °	
			-121.538958 °	-121.537869 °	
DWR ID	DWR_RD0551_01_f_2017_34				
Comment Code					
Inspector Comment					
<p>Levee Evaluation Comments</p> <p>Description: District Station 273+82 to 278+08, Sec. 21 and 22, T. 5 N. R. 4 E., M.D.M. Approximately 426 linear-feet of erosion exists along the waterside slope of the Sacramento River. The erosion commences approximately halfway down the slope and extends to the rip rap. Some existing rip rap has been pulled off in this section.</p> <p>Site ID No: 342</p> <p>Site Designation: LMA-169</p> <p>Repair Type: Erosion</p> <p>Rating: Serious</p> <p>Field Date: 7/14/2017</p> <p>Notes: there is a 7 ft scarp that extends for 40-60 ft in very sandy soil, scarps are 2-4 ft the rest of the length. Worst site in this RD so far. Serious because of the length of this deeper scarp and the weak soil here. Crown is a paved road.</p>					

Photo 1 of 3 : SP\_2019\_RD0551\_175\_34\_20190311\_00039.jpg



<b>* Location</b> LS : Land Side    N/A : Not Applicable WS : Water Side CR : Crown		<b>** Rating</b> A : Acceptable M : Minimally Acceptable U : Unacceptable		N : Not Inspected/Rated C : Corrected A/W : Acceptable but Monitor & Maintain		<b>+ Issue Type</b> Ma : Maintenance Deficiency Ob : Design & System Obsolescence En : Enforcement	
--	--	--	--	---	--	---	--

**Flood Control Project Maintenance  
Levee Inspections**

**Levee Inspection Report By Mile - Spring 2019**

**Reclamation District No. 0551 Pearson**

Waterway	Bank	Unit Miles	Inspection Start/End	Inspector
Unit No. 01 Sacramento River	Left	6.78	03/15/2019 03/15/2019	David Julian

LM Start	5.20	Rating **	M	Issue No.	34 (cont)	
LM End	5.28	Issue Type +	Ma	Location *		
Category	Supplemental			GPS Latitude/Longitude		
				Start		End
Item	2017 Storm Damage			38.274592 °		38.273800 °
				-121.538958 °		-121.537869 °
DWR ID	DWR_RD0551_01_f_2017_34					
Comment Code						
Inspector Comment						
Levee Evaluation Comments						
Description:District Station 273+82 to 278+08, Sec. 21 and 22, T. 5 N. R. 4 E., M.D.M. Approximately 426 linear-feet of erosion exists along the waterside slope of the Sacramento River. The erosion commences approximately halfway down the slope and extends to the rip rap. Some existing rip rap has been pulled off in this section.						
Site ID No:342						
Site Designation:LMA-169						
Repair Type: Erosion						
Rating:Serious						
Field Date:7/14/2017						
Notes: there is a 7 ft scarp that extends for 40-60 ft in very sandy soil, scarps are 2-4 ft the rest of the length. Worst site in this RD so far. Serious because of the length of this deeper scarp and the weak soil here. Crown is a paved road.						

Photo 2 of 3 : SP\_2019\_RD0551\_175\_34\_20190311\_00040.jpg



Photo 3 of 3 : SP\_2019\_RD0551\_175\_34\_20190311\_00041.jpg



LM Start	<b>5.20</b>	Rating **	M	Issue No.	<b>34 (cont)</b>
LM End	<b>5.28</b>	Issue Type +	Ma	Location *	

<b>* Location</b> LS : Land Side    N/A : Not Applicable WS : Water Side CR : Crown		<b>** Rating</b> A : Acceptable M : Minimally Acceptable U : Unacceptable		N : Not Inspected/Rated C : Corrected A/W : Acceptable but Monitor & Maintain		<b>+ Issue Type</b> Ma : Maintenance Deficiency Ob : Design & System Obsolescence En : Enforcement	
--	--	--	--	---	--	---	--

**Flood Control Project Maintenance  
Levee Inspections**

**Levee Inspection Report By Mile - Spring 2019**

**Reclamation District No. 0551 Pearson**

Waterway	Bank	Unit Miles	Inspection Start/End	Inspector
Unit No. 01 Sacramento River	Left	6.78	03/15/2019 03/15/2019	David Julian

LM Start	5.26	Rating **	M	Issue No.	76
LM End	5.26	Issue Type +	En	Location *	
Category	Supplemental			GPS Latitude/Longitude	
				Start	End
Item	DWR UCIP Field Study			38.274147 °	38.274147 °
				-121.538076 °	-121.538076 °
DWR ID	22023				
Comment Code					
Inspector Comment					
FS_ID:26875 DS_ID:22023 EP_NO: 11131 Repair Type: Non-Urgent Crossing Status: Found UCIP Comments: Based on District notes from January 15, 2014, pump discharge pipe has been repaired. Corrosion holes in pipe at LS toe good indicator that pipe is failing internally. Pipe should be examined internally for damage (video inspect).: As of 12/12/2013 the District discussed with farmer tenant what needed to be done, and the tenant informed the District that they would address the repairs.: As of 12/17/2013 District submitted letter to landowner explaining UCIP report details including photos of the pipe problems FIELD_STRUCT_DESC: 10-inch irrigation pipe of an unknown material through the levee, 7.7 feet below the crown. Pump and slide gate on a concrete pad on the waterside (WS) slope. Siphon breaker in a 24-inch corrugated metal pipe (CMP) riser on the landside (LS) slope. Concrete riser and power pole with panel box on the LS toe. (Automatic Board Order (ABO) issued as Permit No. 11131, 1975 - Helen Crofton and Sloane Latimer). [Additional Reference(s): DWR Levee Log, 2005. USACE Sacramento O&M Manual 111, May 1959, (RM 29.52) (9-inch pipe listed)]. FS Date: 1/15/2014					

LM Start	<b>5.26</b>	Rating **	M	Issue No.	<b>76 (cont)</b>
LM End	<b>5.26</b>	Issue Type +	En	Location *	

Photo 1 of 3 : UCIP\_SP\_2019\_26875\_49602.jpg



Concrete standpipe, JP and meter, and 4-inch steel pipe visible at LS toe.

Photo 2 of 3 : UCIP\_SP\_2019\_26875\_49601.jpg



Pump and slide gate at Concrete pad on WS slope.

<b>* Location</b> LS : Land Side    N/A : Not Applicable WS : Water Side CR : Crown		<b>** Rating</b> A : Acceptable M : Minimally Acceptable U : Unacceptable		N : Not Inspected/Rated C : Corrected A/W : Acceptable but Monitor & Maintain		<b>+ Issue Type</b> Ma : Maintenance Deficiency Ob : Design & System Obsolescence En : Enforcement	
--	--	--	--	---	--	---	--



**Flood Control Project Maintenance  
Levee Inspections**

**Levee Inspection Report By Mile - Spring 2019**

**Reclamation District No. 0551 Pearson**

Waterway	Bank	Unit Miles	Inspection Start/End	Inspector
Unit No. 01 Sacramento River	Left	6.78	03/15/2019 03/15/2019	David Julian

LM Start	5.26	Rating **	M	Issue No.	76 (cont)	
LM End	5.26	Issue Type +	En	Location *		
Category	Supplemental			GPS Latitude/Longitude		
				Start		End
Item	DWR UCIP Field Study			38.274147 °		38.274147 °
				-121.538076 °		-121.538076 °
DWR ID	22023					
Comment Code						
Inspector Comment						
FS_ID:26875 DS_ID:22023 EP_NO: 11131 Repair Type: Non-Urgent Crossing Status: Found UCIP Comments: Based on District notes from January 15, 2014, pump discharge pipe has been repaired. Corrosion holes in pipe at LS toe good indicator that pipe is failing internally. Pipe should be examined internally for damage (video inspect).: As of 12/12/2013 the District discussed with farmer tenant what needed to be done, and the tenant informed the District that they would address the repairs.: As of 12/17/2013 District submitted letter to landowner explaining UCIP report details including photos of the pipe problems FIELD_STRUCT_DESC: 10-inch irrigation pipe of an unknown material through the levee, 7.7 feet below the crown. Pump and slide gate on a concrete pad on the waterside (WS) slope. Siphon breaker in a 24-inch corrugated metal pipe (CMP) riser on the landside (LS) slope. Concrete riser and power pole with panel box on the LS toe. (Automatic Board Order (ABO) issued as Permit No. 11131, 1975 - Helen Crofton and Sloane Latimer). [Additional Reference(s): DWR Levee Log, 2005. USACE Sacramento O&M Manual 111, May 1959, (RM 29.52) (9-inch pipe listed)]. FS Date: 1/15/2014						

Photo 3 of 3 : UCIP\_SP\_2019\_26875\_49600.jpg



Siphon breaker in 24-inch CMP riser on LS slope.

<b>* Location</b> LS : Land Side    N/A : Not Applicable WS : Water Side CR : Crown	<b>** Rating</b> A : Acceptable M : Minimally Acceptable U : Unacceptable N : Not Inspected/Rated C : Corrected A/W : Acceptable but Monitor & Maintain	<b>+ Issue Type</b> Ma : Maintenance Deficiency Ob : Design & System Obsolescence En : Enforcement
--	---	---



**Flood Control Project Maintenance  
Levee Inspections**

## Levee Inspection Report By Mile - Spring 2019

### Reclamation District No. 0551 Pearson

Waterway	Bank	Unit Miles	Inspection Start/End	Inspector
Unit No. 01 Sacramento River	Left	6.78	03/15/2019 03/15/2019	David Julian

LM Start	<b>5.38</b>	Rating **	A/W	Issue No.	<b>35 (cont)</b>
LM End	<b>5.42</b>	Issue Type +	Ma	Location *	
Category	Supplemental			GPS Latitude/Longitude	
				Start	End
Item	2017 Storm Damage			38.272867 °	38.272411 °
				-121.536597 °	-121.535983 °
DWR ID	DWR_RD0551_01_f_2017_35				
Comment Code					
Inspector Comment					
<p>Levee Evaluation Comments</p> <p>Description: District Station 283+08 to 285+49, Sec. 22, T. 5 N. R. 4 E., M.D.M. Approximately 241 linear-feet of erosion and sloughing exists along the waterside slope of the Sacramento River. The erosion commences approximately 3/4 of the way down the slope and extends to the rip rap. Some existing rip rap has been pulled off in this section.</p> <p>Site ID No: 343</p> <p>Site Designation: LMA-170</p> <p>Repair Type: Erosion</p> <p>Rating: Area of Concern</p> <p>Field Date: 7/14/2017</p> <p>Notes: Crown is a paved road. Scarps above rip rap 2-4 ft deep, but not continuous through whole site. Area of concern because erosion is not very deep into prism and is not continuous throughout site.</p>					

Photo 3 of 3 : SP\_2019\_RD0551\_175\_35\_20190311\_00044.jpg



LM Start	<b>5.52</b>	Rating **	A/W	Issue No.	<b>36</b>
LM End	<b>5.54</b>	Issue Type +	Ma	Location *	
Category	Supplemental			GPS Latitude/Longitude	
				Start	End
Item	2017 Storm Damage			38.271406 °	38.271208 °
				-121.534644 °	-121.534381 °
DWR ID	DWR_RD0551_01_f_2017_36				
Comment Code					
Inspector Comment					
<p>Levee Evaluation Comments</p> <p>Description: District Station 290+80 to 291+85, Sec. 22, T. 5 N. R. 4 E., M.D.M. Approximately 105 linear-feet of erosion and sloughing exists along the waterside slope of the Sacramento River. The erosion commences approximately 3/4 of the way down the slope and extends into the rip rap. Some existing rip rap has been pulled off in this section.</p> <p>Site ID No: 344</p> <p>Site Designation: LMA-171</p> <p>Repair Type: Erosion</p> <p>Rating: Area of Concern</p> <p>Field Date: 7/14/2017</p> <p>Notes: Crown is a paved road. Erosion scarps 1-4 ft deep just above rip rap. Area of concern because erosion is not very deep into prism.</p>					

Photo 1 of 3 : SP\_2019\_RD0551\_175\_36\_20190311\_00045.jpg



<b>* Location</b> LS : Land Side    N/A : Not Applicable WS : Water Side CR : Crown		<b>** Rating</b> A : Acceptable                      N : Not Inspected/Rated M : Minimally Acceptable        C : Corrected U : Unacceptable                  A/W : Acceptable but Monitor & Maintain		<b>+ Issue Type</b> Ma : Maintenance Deficiency Ob : Design & System Obsolescence En : Enforcement	
--	--	---	--	---	--



**Flood Control Project Maintenance  
Levee Inspections**

**Levee Inspection Report By Mile - Spring 2019**

**Reclamation District No. 0551 Pearson**

Waterway	Bank	Unit Miles	Inspection Start/End	Inspector
Unit No. 01 Sacramento River	Left	6.78	03/15/2019 03/15/2019	David Julian

LM Start	5.52	Rating **	A/W	Issue No.	36 (cont)	
LM End	5.54	Issue Type +	Ma	Location *		
Category	Supplemental			GPS Latitude/Longitude		
				Start	End	
Item	2017 Storm Damage			38.271406 °	38.271208 °	
				-121.534644 °	-121.534381 °	
DWR ID	DWR_RD0551_01_f_2017_36					
Comment Code						
Inspector Comment						
Levee Evaluation Comments						
Description:District Station 290+80 to 291+85, Sec. 22, T. 5 N. R. 4 E., M.D.M. Approximately 105 linear-feet of erosion and sloughing exists along the waterside slope of the Sacramento River. The erosion commences approximately 3/4 of the way down the slope and extends into the rip rap. Some existing rip rap has been pulled off in this section.						
Site ID No:344						
Site Designation:LMA-171						
Repair Type: Erosion						
Rating:Area of Concern						
Field Date:7/14/2017						
Notes: Crown is a paved road. Erosion scarps 1-4 ft deep just above rip rap. Area of concern because erosion is not very deep into prism.						

Photo 2 of 3 : SP\_2019\_RD0551\_175\_36\_20190311\_00046.jpg



Photo 3 of 3 : SP\_2019\_RD0551\_175\_36\_20190311\_00047.jpg



LM Start	<b>5.52</b>	Rating **	A/W	Issue No.	<b>36 (cont)</b>
LM End	<b>5.54</b>	Issue Type +	Ma	Location *	

<b>* Location</b> LS : Land Side    N/A : Not Applicable WS : Water Side CR : Crown	<b>** Rating</b> A : Acceptable M : Minimally Acceptable U : Unacceptable	N : Not Inspected/Rated C : Corrected A/W : Acceptable but Monitor & Maintain	<b>+ Issue Type</b> Ma : Maintenance Deficiency Ob : Design & System Obsolescence En : Enforcement
--	--	---	---

**Flood Control Project Maintenance  
Levee Inspections**

**Levee Inspection Report By Mile - Spring 2019**

**Reclamation District No. 0551 Pearson**

Waterway	Bank	Unit Miles	Inspection Start/End	Inspector
Unit No. 01 Sacramento River	Left	6.78	03/15/2019 03/15/2019	David Julian

LM Start	5.54	Rating **	M	Issue No.	58
LM End	5.54	Issue Type +	En	Location *	LS
Category	Earthen Levee			GPS Latitude/Longitude	
				Start	End
Item	Vegetation			38.271415 °	38.271415 °
				-121.534307 °	-121.534307 °
DWR ID	DWR_RD0551_01_s_2019_58				
Comment Code					
V6 : Landscaping					
Inspector Comment					
Thin landscaping to allow visibility and access down landside slope.					

Photo 1 of 1 : SP\_2019\_RD0551\_175\_58\_20190320\_00115.jpg



View looking upstream at landscaping on the landside slope (Spring 2019).

LM Start	5.59	Rating **	U	Issue No.	24
LM End	5.59	Issue Type +	En	Location *	LS
Category	Earthen Levee			GPS Latitude/Longitude	
				Start	End
Item	Vegetation			38.270840 °	38.270833 °
				-121.533577 °	-121.533563 °
DWR ID	DWR_RD0551_01_f_2018_24				
Comment Code					
V6 : Landscaping					
Inspector Comment					

Photo 1 of 1 : SP\_2019\_RD0551\_175\_24\_20190311\_00013.jpg



View looking upstream at land scaping on the landside slope (November 2018).

\* Location  
LS : Land Side    N/A : Not Applicable  
WS : Water Side  
CR : Crown

\*\* Rating  
A : Acceptable  
M : Minimally Acceptable  
U : Unacceptable  
N : Not Inspected/Rated  
C : Corrected  
A/W : Acceptable but Monitor & Maintain

+ Issue Type  
Ma : Maintenance Deficiency  
Ob : Design & System Obsolescence  
En : Enforcement

**Flood Control Project Maintenance  
Levee Inspections**

**Levee Inspection Report By Mile - Spring 2019**

**Reclamation District No. 0551 Pearson**

Waterway	Bank	Unit Miles	Inspection Start/End	Inspector
Unit No. 01 Sacramento River	Left	6.78	03/15/2019 03/15/2019	David Julian

LM Start	5.77	Rating **	A/W	Issue No.	37
LM End	5.79	Issue Type +	Ma	Location *	
Category	Supplemental			GPS Latitude/Longitude	
				Start	End
Item	2017 Storm Damage		38.269025 °	38.268814 °	
			-121.531361 °	-121.531058 °	
DWR ID	DWR_RD0551_01_f_2017_37				
Comment Code					
Inspector Comment					
Levee Evaluation Comments					
Description:District Station 303+60 to 304+75, Sec. 22, T. 5 N. R. 4 E., M.D.M. Approximately 115 linear-feet of erosion and sloughing exists along the waterside slope of the Sacramento River. The erosion occurs just above the rip rap line. Some existing rip rap has been pulled off in this section.					
Site ID No:345					
Site Designation:LMA-172					
Repair Type: Erosion					
Rating:Area of Concern					
Field Date:7/14/2017					
Notes: Crown is a paved road. 4 ft deep scarp above the rip rap. Area of concern because erosion is not very deep into prism and there was lots of vegetation growing in the damaged area indicating it may be an older issue.					

Photo 1 of 3 : SP\_2019\_RD0551\_175\_37\_20190311\_00048.jpg



Photo 2 of 3 : SP\_2019\_RD0551\_175\_37\_20190311\_00049.jpg



LM Start	<b>5.77</b>	Rating **	A/W	Issue No.	<b>37 (cont)</b>
LM End	<b>5.79</b>	Issue Type +	Ma	Location *	

<b>* Location</b> LS : Land Side    N/A : Not Applicable WS : Water Side CR : Crown		<b>** Rating</b> A : Acceptable M : Minimally Acceptable U : Unacceptable N : Not Inspected/Rated C : Corrected A/W : Acceptable but Monitor & Maintain		<b>+ Issue Type</b> Ma : Maintenance Deficiency Ob : Design & System Obsolescence En : Enforcement
--	--	---	--	---



**Flood Control Project Maintenance  
Levee Inspections**

## Levee Inspection Report By Mile - Spring 2019

### Reclamation District No. 0551 Pearson

Waterway	Bank	Unit Miles	Inspection Start/End	Inspector
Unit No. 01 Sacramento River	Left	6.78	03/15/2019 03/15/2019	David Julian

LM Start	<b>5.77</b>	Rating **	A/W	Issue No.	<b>37 (cont)</b>
LM End	<b>5.79</b>	Issue Type +	Ma	Location *	
Category	Supplemental		GPS Latitude/Longitude		
			Start	End	
Item	2017 Storm Damage		38.269025 °	38.268814 °	
			-121.531361 °	-121.531058 °	
DWR ID	DWR_RD0551_01_f_2017_37				
Comment Code					
Inspector Comment					
<p>Levee Evaluation Comments</p> <p>Description: District Station 303+60 to 304+75, Sec. 22, T. 5 N. R. 4 E., M.D.M. Approximately 115 linear-feet of erosion and sloughing exists along the waterside slope of the Sacramento River. The erosion occurs just above the rip rap line. Some existing rip rap has been pulled off in this section.</p> <p>Site ID No: 345</p> <p>Site Designation: LMA-172</p> <p>Repair Type: Erosion</p> <p>Rating: Area of Concern</p> <p>Field Date: 7/14/2017</p> <p>Notes: Crown is a paved road. 4 ft deep scarp above the rip rap. Area of concern because erosion is not very deep into prism and there was lots of vegetation growing in the damaged area indicating it may be an older issue.</p>					

Photo 3 of 3 : SP\_2019\_RD0551\_175\_37\_20190311\_00050.jpg



LM Start	<b>5.85</b>	Rating **	M	Issue No.	<b>38</b>
LM End	<b>5.86</b>	Issue Type +	Ma	Location *	
Category	Supplemental		GPS Latitude/Longitude		
			Start	End	
Item	2017 Storm Damage		38.268244 °	38.268139 °	
			-121.530233 °	-121.530075 °	
DWR ID	DWR_RD0551_01_f_2017_38				
Comment Code					
Inspector Comment					
<p>Levee Evaluation Comments</p> <p>Description: District Station 307+90 to 305+49, Sec. 22, T. 5 N. R. 4 E., M.D.M. Approximately 59 linear-feet of erosion exists along the waterside slope of the Sacramento River. The erosion occurs approximately halfway down the slope within the rip rapped area. Existing rip rap has been pulled off in this section.</p> <p>Site ID No: 346</p> <p>Site Designation: LMA-173</p> <p>Repair Type: Erosion</p> <p>Rating: Area of Concern</p> <p>Field Date: 7/14/2017</p> <p>Notes: Crown is a paved road. Erosion scarps 4-6 ft high, but soil is more stable than other nearby sites with large gravel in silt or clay so we rated this as an area of concern.</p>					

Photo 1 of 3 : SP\_2019\_RD0551\_175\_38\_20190311\_00051.jpg



* Location		** Rating		+ Issue Type	
LS : Land Side	N/A : Not Applicable	A : Acceptable	N : Not Inspected/Rated	Ma : Maintenance Deficiency	
WS : Water Side		M : Minimally Acceptable	C : Corrected	Ob : Design & System Obsolescence	
CR : Crown		U : Unacceptable	A/W : Acceptable but Monitor & Maintain	En : Enforcement	

**Flood Control Project Maintenance  
Levee Inspections**

## Levee Inspection Report By Mile - Spring 2019

### Reclamation District No. 0551 Pearson

Waterway	Bank	Unit Miles	Inspection Start/End	Inspector
Unit No. 01 Sacramento River	Left	6.78	03/15/2019 03/15/2019	David Julian

LM Start	5.85	Rating **	M	Issue No.	38 (cont)	
LM End	5.86	Issue Type +	Ma	Location *		
Category	Supplemental			GPS Latitude/Longitude		
				Start		End
Item	2017 Storm Damage			38.268244 °		38.268139 °
				-121.530233 °		-121.530075 °
DWR ID	DWR_RD0551_01_f_2017_38					
Comment Code						
Inspector Comment						
Levee Evaluation Comments						
Description:District Station 307+90 to 305+49, Sec. 22, T. 5 N. R. 4 E., M.D.M. Approximately 59 linear-feet of erosion exists along the waterside slope of the Sacramento River. The erosion occurs approximately halfway down the slope within the rip rapped area. Existing rip rap has been pulled off in this section.						
Site ID No:346						
Site Designation:LMA-173						
Repair Type: Erosion						
Rating:Area of Concern						
Field Date:7/14/2017						
Notes: Crown is a paved road. Erosion scarps 4-6 ft high, but soil is more stable than other nearby sites with large gravel in silt or clay so we rated this as an area of concern.						

Photo 2 of 3 : SP\_2019\_RD0551\_175\_38\_20190311\_00052.jpg



LM Start	<b>5.85</b>	Rating **	M	Issue No.	<b>38 (cont)</b>
LM End	<b>5.86</b>	Issue Type +	Ma	Location *	

Photo 3 of 3 : SP\_2019\_RD0551\_175\_38\_20190311\_00053.jpg



<b>* Location</b> LS : Land Side    N/A : Not Applicable WS : Water Side CR : Crown	<b>** Rating</b> A : Acceptable M : Minimally Acceptable U : Unacceptable	N : Not Inspected/Rated C : Corrected A/W : Acceptable but Monitor & Maintain	<b>+ Issue Type</b> Ma : Maintenance Deficiency Ob : Design & System Obsolescence En : Enforcement
--	--	---	---

**Flood Control Project Maintenance  
Levee Inspections**

**Levee Inspection Report By Mile - Spring 2019**

**Reclamation District No. 0551 Pearson**

Waterway	Bank	Unit Miles	Inspection Start/End	Inspector
Unit No. 01 Sacramento River	Left	6.78	03/15/2019 03/15/2019	David Julian

LM Start	5.88	Rating **	M	Issue No.	39
LM End	5.90	Issue Type +	Ma	Location *	
Category	Supplemental			GPS Latitude/Longitude	
				Start	End
Item	2017 Storm Damage			38.267989 °	38.267775 °
				-121.529853 °	-121.529533 °
DWR ID	DWR_RD0551_01_f_2017_39				
Comment Code					
Inspector Comment					
Levee Evaluation Comments					
Description:District Station 309+33 to 310+53, Sec. 22, T. 5 N. R. 4 E., M.D.M. Approximately 120 linear-feet of erosion and sloughing exists along the waterside slope of the Sacramento River. The erosion commences approximately halfway down the slope, extending into the rip rap. Some existing rip rap has been pulled off in this section.					
Site ID No:347					
Site Designation:LMA-174					
Repair Type: Erosion					
Rating:Area of Concern					
Field Date:7/14/2017					
Notes: Crown is a paved road. Pump house in the middle of this site. 18 inch scarps in and just above top of rip rap. Area of concern because erosion is not very deep into prism.					

Photo 1 of 3 : SP\_2019\_RD0551\_175\_39\_20190311\_00054.jpg



LM Start	<b>5.88</b>	Rating **	M	Issue No.	<b>39 (cont)</b>
LM End	<b>5.90</b>	Issue Type +	Ma	Location *	

Photo 2 of 3 : SP\_2019\_RD0551\_175\_39\_20190311\_00055.jpg



<b>* Location</b> LS : Land Side    N/A : Not Applicable WS : Water Side CR : Crown		<b>** Rating</b> A : Acceptable M : Minimally Acceptable U : Unacceptable N : Not Inspected/Rated C : Corrected A/W : Acceptable but Monitor & Maintain		<b>+ Issue Type</b> Ma : Maintenance Deficiency Ob : Design & System Obsolescence En : Enforcement
--	--	---	--	---



**Flood Control Project Maintenance  
Levee Inspections**

**Levee Inspection Report By Mile - Spring 2019**

**Reclamation District No. 0551 Pearson**

Waterway	Bank	Unit Miles	Inspection Start/End	Inspector
Unit No. 01 Sacramento River	Left	6.78	03/15/2019 03/15/2019	David Julian

LM Start	5.88	Rating **	M	Issue No.	39 (cont)	
LM End	5.90	Issue Type +	Ma	Location *		
Category	Supplemental			GPS Latitude/Longitude		
				Start		End
Item	2017 Storm Damage			38.267989 °		38.267775 °
				-121.529853 °		-121.529533 °
DWR ID	DWR_RD0551_01_f_2017_39					
Comment Code						
Inspector Comment						
Levee Evaluation Comments						
Description:District Station 309+33 to 310+53, Sec. 22, T. 5 N. R. 4 E., M.D.M. Approximately 120 linear-feet of erosion and sloughing exists along the waterside slope of the Sacramento River. The erosion commences approximately halfway down the slope, extending into the rip rap. Some existing rip rap has been pulled off in this section.						
Site ID No:347						
Site Designation:LMA-174						
Repair Type: Erosion						
Rating:Area of Concern						
Field Date:7/14/2017						
Notes: Crown is a paved road. Pump house in the middle of this site. 18 inch scarps in and just above top of rip rap. Area of concern because erosion is not very deep into prism.						

Photo 3 of 3 : SP\_2019\_RD0551\_175\_39\_20190311\_00056.jpg



LM Start	5.90	Rating **	M	Issue No.	50
LM End	5.90	Issue Type +	En	Location *	LS
Category	Earthen Levee			GPS Latitude/Longitude	
				Start	End
Item	Vegetation			38.267833 °	38.267833 °
				-121.529438 °	-121.529438 °
DWR ID	DWR_RD0551_01_f_2017_50				
Comment Code					
V6 : Landscaping					
Inspector Comment					
Landscaping should be maintained to allow inspection and access to landside slope and toe. Trim/thin oleanders and ivy					

Photo 1 of 1 : SP\_2019\_RD0551\_175\_50\_20190311\_00075.jpg



View of landscaping on landside slope and toe.

<b>* Location</b> LS : Land Side    N/A : Not Applicable WS : Water Side CR : Crown		<b>** Rating</b> A : Acceptable M : Minimally Acceptable U : Unacceptable N : Not Inspected/Rated C : Corrected A/W : Acceptable but Monitor & Maintain		<b>+ Issue Type</b> Ma : Maintenance Deficiency Ob : Design & System Obsolescence En : Enforcement
--	--	---	--	---

**Flood Control Project Maintenance  
Levee Inspections**

**Levee Inspection Report By Mile - Spring 2019**

**Reclamation District No. 0551 Pearson**

Waterway	Bank	Unit Miles	Inspection Start/End	Inspector
Unit No. 01 Sacramento River	Left	6.78	03/15/2019 03/15/2019	David Julian

LM Start	5.90	Rating **	A/W	Issue No.	59
LM End	5.90	Issue Type +	En	Location *	LS
Category	Earthen Levee			GPS Latitude/Longitude	
				Start	End
Item	Encroachments			38.267757 °	38.267757 °
				-121.529443 °	-121.529443 °
DWR ID	DWR_RD0551_01_f_2018_59				
Comment Code					
MA : Material					
Inspector Comment					
Boxes on landside shoulder inhibiting access down the levee					

Photo 1 of 1 : SP\_2019\_RD0551\_175\_59\_20190311\_00080.jpg



View of boxes on the land side shoulder that landowner placed to block traffic from using driveway (November 2018).

LM Start	5.95	Rating **	M	Issue No.	40
LM End	5.97	Issue Type +	Ma	Location *	
Category	Supplemental			GPS Latitude/Longitude	
				Start	End
Item	2017 Storm Damage			38.267286 °	38.267094 °
				-121.528886 °	-121.528642 °
DWR ID	DWR_RD0551_01_f_2017_40				
Comment Code					
Inspector Comment					
Levee Evaluation Comments					
Description:District Station 313+15 to 314+15, Sec. 22, T. 5 N. R. 4 E., M.D.M. Approximately 100 linear-feet of erosion and sloughing exists along the waterside slope of the Sacramento River. The erosion commences approximately halfway down the slope and extends into the rip rap. Some existing rip rap has been pulled off in this section.					
Site ID No:349					
Site Designation:LMA-176					
Repair Type: Erosion					
Rating:Area of Concern					
Field Date:7/14/2017					
Notes: 18 in to 3 ft vertical scarps just above rip rap. Crown is a paved road. Area of concern because erosion is not very deep into prism.					

Photo 1 of 3 : SP\_2019\_RD0551\_175\_40\_20190311\_00057.jpg



<b>* Location</b> LS : Land Side    N/A : Not Applicable WS : Water Side CR : Crown		<b>** Rating</b> A : Acceptable M : Minimally Acceptable U : Unacceptable N : Not Inspected/Rated C : Corrected A/W : Acceptable but Monitor & Maintain		<b>+ Issue Type</b> Ma : Maintenance Deficiency Ob : Design & System Obsolescence En : Enforcement
--	--	---	--	---

**Flood Control Project Maintenance  
Levee Inspections**

**Levee Inspection Report By Mile - Spring 2019**

**Reclamation District No. 0551 Pearson**

Waterway	Bank	Unit Miles	Inspection Start/End	Inspector
Unit No. 01 Sacramento River	Left	6.78	03/15/2019 03/15/2019	David Julian

LM Start	5.95	Rating **	M	Issue No.	40 (cont)
LM End	5.97	Issue Type +	Ma	Location *	
Category	Supplemental			GPS Latitude/Longitude	
				Start	End
Item	2017 Storm Damage			38.267286 °	38.267094 °
				-121.528886 °	-121.528642 °
DWR ID	DWR_RD0551_01_f_2017_40				
Comment Code					
Inspector Comment					
Levee Evaluation Comments					
Description:District Station 313+15 to 314+15, Sec. 22, T. 5 N. R. 4 E., M.D.M. Approximately 100 linear-feet of erosion and sloughing exists along the waterside slope of the Sacramento River. The erosion commences approximately halfway down the slope and extends into the rip rap. Some existing rip rap has been pulled off in this section.					
Site ID No:349					
Site Designation:LMA-176					
Repair Type: Erosion					
Rating:Area of Concern					
Field Date:7/14/2017					
Notes: 18 in to 3 ft vertical scarps just above rip rap. Crown is a paved road. Area of concern because erosion is not very deep into prism.					

Photo 2 of 3 : SP\_2019\_RD0551\_175\_40\_20190311\_00058.jpg



Photo 3 of 3 : SP\_2019\_RD0551\_175\_40\_20190311\_00059.jpg



<b>* Location</b> LS : Land Side    N/A : Not Applicable WS : Water Side CR : Crown		<b>** Rating</b> A : Acceptable M : Minimally Acceptable U : Unacceptable		N : Not Inspected/Rated C : Corrected A/W : Acceptable but Monitor & Maintain		<b>+ Issue Type</b> Ma : Maintenance Deficiency Ob : Design & System Obsolescence En : Enforcement	
--	--	--	--	---	--	---	--



**Flood Control Project Maintenance  
Levee Inspections**

## Levee Inspection Report By Mile - Spring 2019

### Reclamation District No. 0551 Pearson

Waterway	Bank	Unit Miles	Inspection Start/End	Inspector
Unit No. 01 Sacramento River	Left	6.78	03/15/2019 03/15/2019	David Julian

LM Start	6.01	Rating **	M	Issue No.	41
LM End	6.08	Issue Type +	Ma	Location *	
Category	Supplemental			GPS Latitude/Longitude	
				Start	End
Item	2017 Storm Damage			38.266686 °	38.265917 °
				-121.528128 °	-121.527194 °
DWR ID	DWR_RD0551_01_f_2017_41				
Comment Code					
Inspector Comment					
Levee Evaluation Comments					
Description:District Station 316+24 to 320+12, Sec. 22, T. 5 N. R. 4 E., M.D.M. Approximately 388 linear-feet of erosion exists along the waterside slope of the Sacramento River. The erosion commences approximately halfway down the slope and extends into the rip rap. Some existing rip rap has been pulled off in this section.					
Site ID No:350					
Site Designation:LMA-177					
Repair Type: Erosion					
Rating:Area of Concern					
Field Date:7/14/2017					
Notes: Crown is a paved road. Erosion scarps between 1-6 ft deep. Area of concern because the deeper erosion only extended for a short distance.					

Photo 1 of 3 : SP\_2019\_RD0551\_175\_41\_20190311\_00060.jpg



Photo 2 of 3 : SP\_2019\_RD0551\_175\_41\_20190311\_00061.jpg



LM Start	<b>6.01</b>	Rating **	M	Issue No.	<b>41 (cont)</b>
LM End	<b>6.08</b>	Issue Type +	Ma	Location *	

<b>* Location</b> LS : Land Side    N/A : Not Applicable WS : Water Side CR : Crown	<b>** Rating</b> A : Acceptable M : Minimally Acceptable U : Unacceptable	N : Not Inspected/Rated C : Corrected A/W : Acceptable but Monitor & Maintain	<b>+ Issue Type</b> Ma : Maintenance Deficiency Ob : Design & System Obsolescence En : Enforcement
--	--	---	---

**Flood Control Project Maintenance  
Levee Inspections**

**Levee Inspection Report By Mile - Spring 2019**

**Reclamation District No. 0551 Pearson**

Waterway	Bank	Unit Miles	Inspection Start/End	Inspector
Unit No. 01 Sacramento River	Left	6.78	03/15/2019 03/15/2019	David Julian

LM Start	6.01	Rating **	M	Issue No.	41 (cont)	
LM End	6.08	Issue Type +	Ma	Location *		
Category	Supplemental			GPS Latitude/Longitude		
				Start		End
Item	2017 Storm Damage			38.266686 °		38.265917 °
				-121.528128 °		-121.527194 °
DWR ID	DWR_RD0551_01_f_2017_41					
Comment Code						
Inspector Comment						
Levee Evaluation Comments						
Description:District Station 316+24 to 320+12, Sec. 22, T. 5 N. R. 4 E., M.D.M. Approximately 388 linear-feet of erosion exists along the waterside slope of the Sacramento River. The erosion commences approximately halfway down the slope and extends into the rip rap. Some existing rip rap has been pulled off in this section.						
Site ID No:350						
Site Designation:LMA-177						
Repair Type: Erosion						
Rating:Area of Concern						
Field Date:7/14/2017						
Notes: Crown is aved road. Erosion scarps between 1-6 ft deep. Area of concern because the deeper erosion only extended for a short distance.						

Photo 3 of 3 : SP\_2019\_RD0551\_175\_41\_20190311\_00062.jpg



LM Start	6.19	Rating **	U	Issue No.	51
LM End	6.26	Issue Type +	En	Location *	LS
Category	Earthen Levee			GPS Latitude/Longitude	
				Start	End
Item	Vegetation			38.264814 °	38.264112 °
				-121.525728 °	-121.524845 °
DWR ID	DWR_RD0551_01_f_2017_51				
Comment Code					
V6 : Landscaping					
Inspector Comment					
Landscaping should be maintained to allow inspection and access to landside slope and toe.					

Photo 1 of 1 : SP\_2019\_RD0551\_175\_51\_20190311\_00076.jpg



View of landscaping on landside slope and toe.

<b>* Location</b> LS : Land Side    N/A : Not Applicable WS : Water Side CR : Crown		<b>** Rating</b> A : Acceptable M : Minimally Acceptable U : Unacceptable		N : Not Inspected/Rated C : Corrected A/W : Acceptable but Monitor & Maintain		<b>+ Issue Type</b> Ma : Maintenance Deficiency Ob : Design & System Obsolescence En : Enforcement	
--	--	--	--	---	--	---	--

**Flood Control Project Maintenance  
Levee Inspections**

**Levee Inspection Report By Mile - Spring 2019**

**Reclamation District No. 0551 Pearson**

Waterway	Bank	Unit Miles	Inspection Start/End	Inspector
Unit No. 01 Sacramento River	Left	6.78	03/15/2019 03/15/2019	David Julian

LM Start	6.22	Rating **	A/W	Issue No.	42
LM End	6.24	Issue Type +	Ma	Location *	
Category	Supplemental			GPS Latitude/Longitude	
				Start	End
Item	2017 Storm Damage			38.264436 °	38.264233 °
				-121.525472 °	-121.525219 °
DWR ID	DWR_RD0551_01_f_2017_42				
Comment Code					
Inspector Comment					
Levee Evaluation Comments					
Description:District Station 327+45 to 328+45, Sec. 22, T. 5 N. R. 4 E., M.D.M. Approximately 100 linear-feet of erosion and sloughing exists along the waterside slope of the Sacramento River. The erosion commences approximately halfway down the slope and extends into the rip rap. Existing rip rap has been pulled off in this section.					
Site ID No:351					
Site Designation:LMA-178					
Repair Type: Erosion					
Rating:Serious					
Field Date:7/14/2017					
Notes: Crown is a paved road. Scarps above rip rap are about 7 ft deep. Rated this serious because erosion scarps are pretty deep, sandy material, steep slope, the rip rap is in poor condition and high traffic on the levee road.					

Photo 1 of 3 : SP\_2019\_RD0551\_175\_42\_20190311\_00063.jpg



Photo 2 of 3 : SP\_2019\_RD0551\_175\_42\_20190311\_00064.jpg



LM Start	<b>6.22</b>	Rating **	A/W	Issue No.	<b>42 (cont)</b>
LM End	<b>6.24</b>	Issue Type +	Ma	Location *	

<b>* Location</b> LS : Land Side    N/A : Not Applicable WS : Water Side CR : Crown	<b>** Rating</b> A : Acceptable M : Minimally Acceptable U : Unacceptable	N : Not Inspected/Rated C : Corrected A/W : Acceptable but Monitor & Maintain	<b>+ Issue Type</b> Ma : Maintenance Deficiency Ob : Design & System Obsolescence En : Enforcement
--	--	---	---



# Reclamation District No. 0551 Pearson

A photograph showing a rocky shoreline in the foreground, with tall, thin grasses growing on a sloping bank. A large, leafy tree stands on the hillside, and a body of water is visible to the left under a clear blue sky.A photograph of a natural area, likely a riparian zone. In the foreground, there are several tall, thin, green grasses growing from a sandy or silty ground. To the right, a large, thick tree trunk is visible, partially covered in moss or lichen. A fallen log lies horizontally across the middle ground. The background shows more vegetation and a body of water, though it is somewhat out of focus. The overall scene suggests a healthy, undisturbed natural environment.Page 60 of 62

**Flood Control Project Maintenance  
Levee Inspections**

**Levee Inspection Report By Mile - Spring 2019**

**Reclamation District No. 0551 Pearson**

Waterway	Bank	Unit Miles	Inspection Start/End	Inspector
Unit No. 01 Sacramento River	Left	6.78	03/15/2019 03/15/2019	David Julian

LM Start	6.27	Rating **	A/W	Issue No.	43 (cont)	
LM End	6.29	Issue Type +	Ma	Location *		
Category	Supplemental			GPS Latitude/Longitude		
				Start		End
Item	2017 Storm Damage			38.263906 °		38.263756 °
				-121.524778 °		-121.524575 °
DWR ID	DWR_RD0551_01_f_2017_43					
Comment Code						
Inspector Comment						
Levee Evaluation Comments						
Description:District Station 330+19 to 330+99, Sec. 22, T. 5 N. R. 4 E., M.D.M. Approximately 80 linear-feet of erosion/sloughing and minor slippage exists along the waterside slope of the Sacramento River. The erosion/sloughing commences approximately halfway down the slope and extends into the rip rap. Existing rip rap has been pulled off in this section.						
Site ID No:352						
Site Designation:LMA-179						
Repair Type: Erosion						
Rating:Area of Concern						
Field Date:7/14/2017						
Notes: Crown is a paved road. Erosion scarps are only 1 ft deep. Area of concern because erosion is not very deep into prism.						

Photo 2 of 3 : SP\_2019\_RD0551\_175\_43\_20190311\_00067.jpg



Photo 3 of 3 : SP\_2019\_RD0551\_175\_43\_20190311\_00068.jpg



<b>* Location</b> LS : Land Side    N/A : Not Applicable WS : Water Side CR : Crown		<b>** Rating</b> A : Acceptable M : Minimally Acceptable U : Unacceptable N : Not Inspected/Rated C : Corrected A/W : Acceptable but Monitor & Maintain		<b>+ Issue Type</b> Ma : Maintenance Deficiency Ob : Design & System Obsolescence En : Enforcement
--	--	---	--	---

**Flood Control Project Maintenance  
Levee Inspections**

**Levee Inspection Report By Mile - Spring 2019**

**Reclamation District No. 0551 Pearson**

Waterway	Bank	Unit Miles	Inspection Start/End	Inspector
Unit No. 01 Sacramento River	Left	6.78	03/15/2019 03/15/2019	David Julian

LM Start	6.44	Rating **	M	Issue No.	20
LM End	6.44	Issue Type +	En	Location *	LS
Category	Earthen Levee			GPS Latitude/Longitude	
				Start	End
Item	Vegetation			38.262388 °	38.262388 °
				-121.522368 °	-121.522368 °
DWR ID	DWR_RD0551_01_s_2019_20				
Comment Code					
V6 : Landscaping					
Inspector Comment					
Cactus on the landside slope should be removed.					

Photo 1 of 1 : SP\_2019\_RD0551\_175\_20\_20190320\_00114.jpg



View of cactus on the landside shoulder (Spring 2019).

<b>* Location</b> LS : Land Side    N/A : Not Applicable WS : Water Side CR : Crown	<b>** Rating</b> A : Acceptable M : Minimally Acceptable U : Unacceptable N : Not Inspected/Rated C : Corrected A/W : Acceptable but Monitor & Maintain	<b>+ Issue Type</b> Ma : Maintenance Deficiency Ob : Design & System Obsolescence En : Enforcement
--	---	---