

**Flood Control Project Maintenance
Levee Inspections****LMA District Cover Sheet****Spring 2016 Levee Inspection Results****Reclamation District No. 0551 Pearson**

	Spring (March - May)	Summer ** (June - August)	Fall (September - November)	Winter ** (December - February)
* Overall LMA Rating (Fall Only)				

** Non-receipt of Summer or Winter Inspection Reports may effect overall annual rating.

*
SPRING INSPECTIONS: Overall maintenance ratings are not determined for the spring inspection results. Individual maintenance deficiencies are rated using the same criteria in the spring and in the fall.

FALL INSPECTIONS: The overall maintenance rating shown above is based on operation and maintenance deficiencies identified within the attached unit inspection reports. This rating is not intended to be an indication of risk.

Comments

**Flood Control Project Maintenance
Levee Inspections**

Unit Cover Sheet

Spring 2016 Levee Inspection Results

Reclamation District No. 0551 Pearson

Waterway			Bank	Unit Miles
Unit No. 01 Sacramento River			Left	6.78
	Spring (March - May)	Summer (June - August)	(September - November) Fall	Winter (December - February)
Unit Maintenance Rating (Fall Only)				
Date of Inspection	3/15/2016 - 3/15/2016			
DWR Inspector	Herman Phillips			
Accompanied By	Mr. Topper Van-Loben-Sels RD 551			

Summer & Winter Inspections

The Local Maintaining Agency (LMA) is responsible for summer and winter inspections. The LMA is required to submit a report regarding summer and winter inspections to the California Department of Water Resources (DWR).

DWR must be informed on the:

- a) completion of the inspection
- b) any changes other than the results of normal maintenance
- c) corrections to deficiencies noted in this report

If additional items are noted, further documentation of those items must also be submitted.

The LMA should submit this information to DWR using the LMA web application tool available at:

<http://cdec.water.ca.gov/lma.html>

If the LMA is unable to submit information on this webpage, please contact DWR for assistance.

The LMA should submit the information and any associated documentation by September 30 for summer inspections and March 31 for winter inspections.

**Flood Control Project Maintenance
Levee Inspections**

Levee Inspection Report By Mile - Spring 2016

Reclamation District No. 0551 Pearson

Waterway	Bank	Unit Miles	Inspection Start/End	Inspector
Unit No. 01 Sacramento River	Left	6.78	03/15/2016 03/15/2016	Herman Phillips

LM Start		Rating **	A	Issue No.	3
LM End		Issue Type +	Ma	Location *	LS
Category	Earthen Levee		GPS Latitude/Longitude		
			Start	End	
Item	Emergency Supplies & Equipment			°	°
				°	°
DWR ID	DWR_RD0551_01_s_2012_3				
Comment Code					
Inspector Comment					
District has emergency supplies stored in locked container near Courtland's fire house.					

No Photos

LM Start		Rating **	A	Issue No.	15
LM End		Issue Type +	Ma	Location *	LS
Category	Earthen Levee		GPS Latitude/Longitude		
			Start	End	
Item	Flood Preparedness & Training			°	°
				°	°
DWR ID	DWR_RD0551_01_s_2012_15				
Comment Code					
Inspector Comment					
District has been trained in Flood Fight Methods					

No Photos

LM Start		Rating **	A	Issue No.	23
LM End		Issue Type +	Ma	Location *	LS
Category	Earthen Levee		GPS Latitude/Longitude		
			Start	End	
Item	Operations & Maintenance Manuals			°	°
				°	°
DWR ID	DWR_RD0551_01_s_2012_23				
Comment Code					
Inspector Comment					
District has O&M Manual on hand and stored with flood fight materials.					

No Photos

* Location LS : Land Side N/A : Not Applicable WS : Water Side CR : Crown	** Rating A : Acceptable M : Minimally Acceptable U : Unacceptable	N : Not Inspected/Rated C : Corrected A/W : Acceptable but Monitor & Maintain	+ Issue Type Ma : Maintenance Deficiency Ob : Design & System Obsolescence En : Enforcement
--	--	---	---

**Flood Control Project Maintenance
Levee Inspections**

Levee Inspection Report By Mile - Spring 2016

Reclamation District No. 0551 Pearson

Waterway	Bank	Unit Miles	Inspection Start/End	Inspector
Unit No. 01 Sacramento River	Left	6.78	03/15/2016 03/15/2016	Herman Phillips

LM Start	0.02	Rating **	M	Issue No.	31
LM End	0.02	Issue Type +	Ma	Location *	LS
Category	Earthen Levee			GPS Latitude/Longitude	
				Start	End
Item	Vegetation			38.336057 °	38.336057 °
				-121.564750 °	-121.564750 °
DWR ID	DWR_RD0551_01_s_2016_31				
Comment Code					
V1 : Control annual grass and weeds on the levee slopes and easements.					
Inspector Comment					

Photo 1 of 1 : SP_2016_RD0551_175_31_20160329_00037.jpg



Looking upstream from levee mile 0.00 landside slope RD 551.

LM Start	0.02	Rating **	M	Issue No.	20
LM End	6.78	Issue Type +	Ma	Location *	WS
Category	Earthen Levee			GPS Latitude/Longitude	
				Start	End
Item	Vegetation			38.336057 °	38.258923 °
				-121.564752 °	-121.517765 °
DWR ID	DWR_RD0551_01_s_2016_20				
Comment Code					
V1 : Control annual grass and weeds on the levee slopes and easements.					
Inspector Comment					
Weeds present on the waterside slope and shoulder.					

Photo 1 of 1 : SP_2016_RD0551_175_20_20160329_00038.jpg



Looking downstream from levee mile 0.00 waterside shoulder and slope.

LM Start	0.03	Rating **	C	Issue No.	25
LM End	0.03	Issue Type +	Ma	Location *	WS
Category	Earthen Levee			GPS Latitude/Longitude	
				Start	End
Item	Encroachments			38.336123 °	38.336123 °
				-121.565022 °	-121.565022 °
DWR ID	DWR_RD0551_01_f_2015_25				
Comment Code					
GA : Garbage					
Inspector Comment					
Remove the garbage and mattress from the waterside slope.					

No Photos

* Location		** Rating		+ Issue Type	
LS : Land Side	N/A : Not Applicable	A : Acceptable	N : Not Inspected/Rated	Ma : Maintenance Deficiency	
WS : Water Side		M : Minimally Acceptable	C : Corrected	Ob : Design & System Obsolescence	
CR : Crown		U : Unacceptable	A/W : Acceptable but Monitor & Maintain	En : Enforcement	

**Flood Control Project Maintenance
Levee Inspections**

Levee Inspection Report By Mile - Spring 2016

Reclamation District No. 0551 Pearson

Waterway	Bank	Unit Miles	Inspection Start/End	Inspector
Unit No. 01 Sacramento River	Left	6.78	03/15/2016 03/15/2016	Herman Phillips

LM Start	0.39	Rating **	M	Issue No.	24
LM End	0.53	Issue Type +	En	Location *	WS
Category	Earthen Levee			GPS Latitude/Longitude	
				Start	End
Item	Encroachments			38.332192 °	38.330637 °
				-121.569570 °	-121.571118 °
DWR ID	DWR_RD0551_01_s_2016_24				
Comment Code					
LI : Landscape Irrigation					
Inspector Comment					

No Photos

LM Start	0.41	Rating **	M	Issue No.	38
LM End	0.41	Issue Type +	En	Location *	WS
Category	Supplemental			GPS Latitude/Longitude	
				Start	End
Item	DWR UCIP Field Study			38.332039 °	38.332039 °
				-121.569730 °	-121.569730 °
DWR ID					
Comment Code					
Inspector Comment					
FS_ID:11705					
DS_ID:21982					
EP_NO: 2759					
Repair Type: Non-Urgent					
Crossing Status: Found					
UCIP Comments: Unclear where exact crossing is located.					
FIELD_STRUCT_DESC: 1-inch steel waterline through the levee.					
Ramp, boating facilities on waterward side (Courtland boating facilities).					
Pipe visible under buildings at concrete foundation on LS. Water					
service connections for irrigation located on WS slope. (Permit No.					
2759, 1959)					
FS Date: 4/10/2013					

Photo 1 of 2 : UCIP_SP_2016_11705_19145.jpg



Irrigation pipes on WS slope.

* Location LS : Land Side N/A : Not Applicable WS : Water Side CR : Crown		** Rating A : Acceptable M : Minimally Acceptable U : Unacceptable N : Not Inspected/Rated C : Corrected A/W : Acceptable but Monitor & Maintain		+ Issue Type Ma : Maintenance Deficiency Ob : Design & System Obsolescence En : Enforcement
--	--	---	--	---

**Flood Control Project Maintenance
Levee Inspections**

Levee Inspection Report By Mile - Spring 2016

Reclamation District No. 0551 Pearson

Waterway	Bank	Unit Miles	Inspection Start/End	Inspector
Unit No. 01 Sacramento River	Left	6.78	03/15/2016 03/15/2016	Herman Phillips

LM Start	0.41	Rating **	M	Issue No.	38 (cont)	
LM End	0.41	Issue Type +	En	Location *	WS	
Category	Supplemental			GPS Latitude/Longitude		
				Start	End	
Item	DWR UCIP Field Study			38.332039 °	38.332039 °	
				-121.569730 °	-121.569730 °	
DWR ID						
Comment Code						
Inspector Comment						
FS_ID:11705						
DS_ID:21982						
EP_NO: 2759						
Repair Type: Non-Urgent						
Crossing Status: Found						
UCIP Comments: Unclear where exact crossing is located.						
FIELD_STRUCT_DESC: 1-inch steel waterline through the levee.						
Ramp, boating facilities on waterward side (Courtland boating facilities).						
Pipe visible under buildings at concrete foundation on LS. Water						
service connections for irrigation located on WS slope. (Permit No.						
2759, 1959)						
FS Date: 4/10/2013						

Photo 2 of 2 : UCIP_SP_2016_11705_19144.jpg



Irrigation pipes on WS slope.

LM Start	0.47	Rating **	M	Issue No.	26
LM End	0.47	Issue Type +	En	Location *	WS
Category	Earthen Levee			GPS Latitude/Longitude	
				Start	End
Item	Encroachments			38.331295 °	38.331295 °
				-121.570513 °	-121.570513 °
DWR ID	DWR_RD0551_01_f_ 2015_26				
Comment Code					
EQ : Equipment					
Inspector Comment					
Boat trailer (2) parked on the waterside shoulder. RD In process of having them removed.					

No Photos

* Location LS : Land Side N/A : Not Applicable WS : Water Side CR : Crown		** Rating A : Acceptable M : Minimally Acceptable U : Unacceptable		N : Not Inspected/Rated C : Corrected A/W : Acceptable but Monitor & Maintain		+ Issue Type Ma : Maintenance Deficiency Ob : Design & System Obsolescence En : Enforcement	
--	--	--	--	---	--	---	--

**Flood Control Project Maintenance
Levee Inspections**

Levee Inspection Report By Mile - Spring 2016

Reclamation District No. 0551 Pearson

Waterway	Bank	Unit Miles	Inspection Start/End	Inspector
Unit No. 01 Sacramento River	Left	6.78	03/15/2016 03/15/2016	Herman Phillips

LM Start	0.49	Rating **	U	Issue No.	21
LM End	0.49	Issue Type +	En	Location *	WS
Category	Earthen Levee			GPS Latitude/Longitude	
				Start	End
Item	Encroachments			38.331158 °	38.331158 °
				-121.570751 °	-121.570751 °
DWR ID	DWR_RD0551_01_s_2014_21				
Comment Code					
BU : Building					
Inspector Comment					
The new land owner is working with the LMA trying to get CVFPB Permits for this project, this is the 2nd year in process. This site is still being worked on.					

Photo 1 of 2 : SP_2016_RD0551_175_21_20160223_00001.jpg



Building remodeling project on waterside levee section. Photo taken 01-04-2014.

LM Start	0.49	Rating **	U	Issue No.	21 (cont)
LM End	0.49	Issue Type +	En	Location *	WS

Photo 2 of 2 : SP_2016_RD0551_175_21_20160223_00002.jpg



Building and steps waterward. Photo taken 01-04-2014.

* Location LS : Land Side N/A : Not Applicable WS : Water Side CR : Crown		** Rating A : Acceptable M : Minimally Acceptable U : Unacceptable N : Not Inspected/Rated C : Corrected A/W : Acceptable but Monitor & Maintain		+ Issue Type Ma : Maintenance Deficiency Ob : Design & System Obsolescence En : Enforcement	
---	--	--	--	--	--

**Flood Control Project Maintenance
Levee Inspections**

Levee Inspection Report By Mile - Spring 2016

Reclamation District No. 0551 Pearson

Waterway	Bank	Unit Miles	Inspection Start/End	Inspector
Unit No. 01 Sacramento River	Left	6.78	03/15/2016 03/15/2016	Herman Phillips

LM Start	0.71	Rating **	M	Issue No.	39
LM End	0.71	Issue Type +	En	Location *	WS
Category	Supplemental			GPS Latitude/Longitude	
				Start	End
Item	DWR UCIP Field Study			38.328401 °	38.328401 °
				-121.572954 °	-121.572954 °
DWR ID					
Comment Code					
Inspector Comment					
FS_ID:11726 DS_ID:21985 EP_NO: 6220 Repair Type: Non-Urgent Crossing Status: Found UCIP Comments: Pipe abandoned and should be removed. FIELD_STRUCT_DESC: 8-inch steel irrigation pipe through the levee 6.1-feet below the crown. Pump on waterside with slide gate and air vent. (Permit No. 6220, 1968) FS Date: 4/10/2013					

LM Start	0.71	Rating **	M	Issue No.	39 (cont)
LM End	0.71	Issue Type +	En	Location *	WS

Photo 1 of 2 : UCIP_SP_2016_11726_19165.jpg



Abandoned pump covered in vegetation on WS slope.

Photo 2 of 2 : UCIP_SP_2016_11726_19164.jpg



Pump, slide gate, and missing vent pipe on WS slope.

* Location LS : Land Side N/A : Not Applicable WS : Water Side CR : Crown		** Rating A : Acceptable M : Minimally Acceptable U : Unacceptable		N : Not Inspected/Rated C : Corrected A/W : Acceptable but Monitor & Maintain		+ Issue Type Ma : Maintenance Deficiency Ob : Design & System Obsolescence En : Enforcement	
--	--	--	--	---	--	---	--

**Flood Control Project Maintenance
Levee Inspections**

Levee Inspection Report By Mile - Spring 2016

Reclamation District No. 0551 Pearson

Waterway	Bank	Unit Miles	Inspection Start/End	Inspector
Unit No. 01 Sacramento River	Left	6.78	03/15/2016 03/15/2016	Herman Phillips

LM Start	0.74	Rating **	M	Issue No.	22
LM End	0.74	Issue Type +	En	Location *	LS
Category	Earthen Levee			GPS Latitude/Longitude	
				Start	End
Item	Encroachments			38.328028 °	38.328028 °
				-121.573298 °	-121.573298 °
DWR ID	DWR_RD0551_01_f_2014_22				
Comment Code					
AV : Abandoned vehicles					
Inspector Comment					
The District will talk with landowner.					

No Photos

LM Start	0.89	Rating **	M	Issue No.	40
LM End	0.89	Issue Type +	En	Location *	LS
Category	Supplemental			GPS Latitude/Longitude	
				Start	End
Item	DWR UCIP Field Study			38.326088 °	38.326088 °
				-121.574525 °	-121.574525 °
DWR ID					
Comment Code					
Inspector Comment					
FS_ID:11727 DS_ID:21986 EP_NO: 701 Repair Type: Non-Urgent Crossing Status: Found UCIP Comments: Pipe appears abandoned and should be done so properly. Good candidate for video inspection. FIELD_STRUCT_DESC: 14-inch steel irrigation pipe through the levee, 7.2 feet below crown. Pump in pump house on waterward slope. Service pole on landward slope. (Permit No. 701-Smith). 1-inch galvanized filler pipe and a 2-inch electrical conduit at same location. Originally included in O+M manual (1959). FS Date: 4/10/2013					

Photo 1 of 2 : UCIP_SP_2016_11727_19168.jpg



Pump house and pipes visible on WS slope.

* Location LS : Land Side N/A : Not Applicable WS : Water Side CR : Crown		** Rating A : Acceptable M : Minimally Acceptable U : Unacceptable N : Not Inspected/Rated C : Corrected A/W : Acceptable but Monitor & Maintain		+ Issue Type Ma : Maintenance Deficiency Ob : Design & System Obsolescence En : Enforcement
--	--	---	--	---

**Flood Control Project Maintenance
Levee Inspections**

Levee Inspection Report By Mile - Spring 2016

Reclamation District No. 0551 Pearson

Waterway	Bank	Unit Miles	Inspection Start/End	Inspector
Unit No. 01 Sacramento River	Left	6.78	03/15/2016 03/15/2016	Herman Phillips

LM Start	0.89	Rating **	M	Issue No.	40 (cont)	
LM End	0.89	Issue Type +	En	Location *	LS	
Category	Supplemental			GPS Latitude/Longitude		
				Start	End	
Item	DWR UCIP Field Study			38.326088 °	38.326088 °	
				-121.574525 °	-121.574525 °	
DWR ID						
Comment Code						
Inspector Comment						
FS_ID:11727						
DS_ID:21986						
EP_NO: 701						
Repair Type: Non-Urgent						
Crossing Status: Found						
UCIP Comments: Pipe appears abandoned and should be done so properly. Good candidate for video inspection.						
FIELD_STRUCT_DESC: 14-inch steel irrigation pipe through the levee, 7.2 feet below crown. Pump in pump house on waterward slope. Service pole on landward slope. (Permit No. 701-Smith). 1-inch galvanized filler pipe and a 2-inch electrical conduit at same location. Originally included in O+M manual (1959).						
FS Date: 4/10/2013						

Photo 2 of 2 : UCIP_SP_2016_11727_19167.jpg



Pipe and JP visible on LS toe.

LM Start	1.32	Rating **	M	Issue No.	27
LM End	1.37	Issue Type +	Ma	Location *	LS
Category	Earthen Levee			GPS Latitude/Longitude	
				Start	End
Item	Trim / Thin Trees			38.320067 °	38.319472 °
				-121.576468 °	-121.576538 °
DWR ID	DWR_RD0551_01_s_2016_27				
Comment Code					
T2 : Thin trees to allow visibility of the ground and room to flood fight.					
Inspector Comment					

No Photos

* Location LS : Land Side N/A : Not Applicable WS : Water Side CR : Crown		** Rating A : Acceptable N : Not Inspected/Rated M : Minimally Acceptable C : Corrected U : Unacceptable A/W : Acceptable but Monitor & Maintain		+ Issue Type Ma : Maintenance Deficiency Ob : Design & System Obsolescence En : Enforcement
--	--	---	--	---

**Flood Control Project Maintenance
Levee Inspections**

Levee Inspection Report By Mile - Spring 2016

Reclamation District No. 0551 Pearson

Waterway	Bank	Unit Miles	Inspection Start/End	Inspector
Unit No. 01 Sacramento River	Left	6.78	03/15/2016 03/15/2016	Herman Phillips

LM Start	1.53	Rating **	M	Issue No.	6
LM End	1.60	Issue Type +	En	Location *	WS
Category	Earthen Levee			GPS Latitude/Longitude	
				Start	End
Item	Vegetation			38.317138 °	38.316060 °
				-121.576567 °	-121.576688 °
DWR ID	DWR_RD0551_01_s_2012_6				
Comment Code					
V6 : Landscaping					
Inspector Comment					

No Photos

LM Start	1.53	Rating **	M	Issue No.	28
LM End	1.60	Issue Type +	Ma	Location *	WS
Category	Earthen Levee			GPS Latitude/Longitude	
				Start	End
Item	Trim / Thin Trees			38.317078 °	38.316037 °
				-121.576615 °	-121.576710 °
DWR ID	DWR_RD0551_01_s_2016_28				
Comment Code					
T2 : Thin trees to allow visibility of the ground and room to flood fight.					
Inspector Comment					

No Photos

* Location LS : Land Side N/A : Not Applicable WS : Water Side CR : Crown		** Rating A : Acceptable N : Not Inspected/Rated M : Minimally Acceptable C : Corrected U : Unacceptable A/W : Acceptable but Monitor & Maintain		+ Issue Type Ma : Maintenance Deficiency Ob : Design & System Obsolescence En : Enforcement
--	--	---	--	---

**Flood Control Project Maintenance
Levee Inspections**

Levee Inspection Report By Mile - Spring 2016

Reclamation District No. 0551 Pearson

Waterway	Bank	Unit Miles	Inspection Start/End	Inspector
Unit No. 01 Sacramento River	Left	6.78	03/15/2016 03/15/2016	Herman Phillips

LM Start	1.78	Rating **	M	Issue No.	42
LM End	1.78	Issue Type +	En	Location *	WS
Category	Supplemental			GPS Latitude/Longitude	
				Start	End
Item	DWR UCIP Field Study			38.313552 °	38.313552 °
				-121.576640 °	-121.576640 °
DWR ID					

Comment Code

Inspector Comment

FS_ID:26874
DS_ID:21990
EP_NO: 11145
Repair Type: Non-Urgent
Crossing Status: Found
UCIP Comments: Based on District notes from January 14, 2014, pump discharge pipe has been repaired. Pipe failing on LS slope causing erosion along pipe alignment. Pipe debris on both slopes should be removed as well.: As of 12/13/2013 District President noted that the landowner had made repairs to the LS slope leaks.: As of 12/17/2013 District submitted letter to landowner explaining UCIP report details including photos of the pipe problems
FIELD_STRUCT_DESC: 10-inch pipe through levee, 4.7 feet below crown. Pump in 7'X9' concrete pump house on waterward slope. 36-inch concrete riser on LS toe. 1-inch electrical conduit at same location. Service pole at landward toe (ABO No. 11145-Towne). Originally included in O+M manual (1959).
FS Date: 1/15/2014

LM Start	1.78	Rating **	M	Issue No.	42 (cont)
LM End	1.78	Issue Type +	En	Location *	WS

Photo 1 of 2 : UCIP_SP_2016_26874_49596.jpg



Pumphouse on WS slope.

Photo 2 of 2 : UCIP_SP_2016_26874_49595.jpg



36-inch concrete standpipe at LS toe.

* Location	** Rating	+ Issue Type
LS : Land Side WS : Water Side CR : Crown	A : Acceptable M : Minimally Acceptable U : Unacceptable	Ma : Maintenance Deficiency Ob : Design & System Obsolescence En : Enforcement
N/A : Not Applicable	N : Not Inspected/Rated C : Corrected A/W : Acceptable but Monitor & Maintain	

**Flood Control Project Maintenance
Levee Inspections**

Levee Inspection Report By Mile - Spring 2016

Reclamation District No. 0551 Pearson

Waterway	Bank	Unit Miles	Inspection Start/End	Inspector
Unit No. 01 Sacramento River	Left	6.78	03/15/2016 03/15/2016	Herman Phillips

LM Start	2.01	Rating **	M	Issue No.	41
LM End	2.01	Issue Type +	En	Location *	WS
Category	Supplemental			GPS Latitude/Longitude	
				Start	End
Item	DWR UCIP Field Study			38.310237 °	38.310237 °
				-121.575470 °	-121.575470 °
DWR ID					
Comment Code					
Inspector Comment					
FS_ID:11749					
DS_ID:22040					
EP_NO: 3676					
Repair Type: Non-Urgent					
Crossing Status: Not Found					
UCIP Comments: Fresh cut through pavement on crown indicates recent work on pipes at this location. Need to determine if pipe was removed or abandoned in place.					
FIELD_STRUCT_DESC: 2 of 2: 8-inch steel irrigation pipe sleeved through a 12-inch pipe, 5 feet below crown. Pump on platform waterside. (Permit No. 3676-Wheeler).					
FS Date: 4/10/2013					

Photo 1 of 1 : UCIP_SP_2016_11749_19217.jpg



Fresh cut through pavement at crown.

LM Start	2.01	Rating **	M	Issue No.	32
LM End	2.01	Issue Type +	En	Location *	WS
Category	Supplemental			GPS Latitude/Longitude	
				Start	End
Item	DWR UCIP Field Study			38.310223 °	38.310223 °
				-121.575458 °	-121.575458 °
DWR ID					
Comment Code					
Inspector Comment					
FS_ID:11763					
DS_ID:21991					
EP_NO: 6551					
Repair Type: Non-Urgent					
Crossing Status: Found					
UCIP Comments: Rodent activity undermining pipe on LS slope.					
FIELD_STRUCT_DESC: 1 of 2: 14-inch PVC wrapped Steel irrigation					
pipe 3-feet below the crown. Butterfly valve on WS shoulder. 2-inch					
galvanized electric conduit at same location. Pump on pile structure on					
WS toe. Pressure booster and pump on LS toe. (Permit No. 6551-					
Wheeler 1969).					
FS Date: 4/10/2013					

Photo 1 of 2 : UCIP_SP_2016_11763_19222.jpg



Pipe, butterfly valve, and electrical conduit 3-feet below the crown on the WS shoulder.

* Location		** Rating		+ Issue Type	
LS : Land Side	N/A : Not Applicable	A : Acceptable	N : Not Inspected/Rated	Ma : Maintenance Deficiency	
WS : Water Side		M : Minimally Acceptable	C : Corrected	Ob : Design & System Obsolescence	
CR : Crown		U : Unacceptable	A/W : Acceptable but Monitor & Maintain	En : Enforcement	

**Flood Control Project Maintenance
Levee Inspections**

Levee Inspection Report By Mile - Spring 2016

Reclamation District No. 0551 Pearson

Waterway	Bank	Unit Miles	Inspection Start/End	Inspector
Unit No. 01 Sacramento River	Left	6.78	03/15/2016 03/15/2016	Herman Phillips

LM Start	2.01	Rating **	M	Issue No.	32 (cont)	
LM End	2.01	Issue Type +	En	Location *	WS	
Category	Supplemental			GPS Latitude/Longitude		
				Start	End	
Item	DWR UCIP Field Study			38.310223 °	38.310223 °	
				-121.575458 °	-121.575458 °	
DWR ID						
Comment Code						
Inspector Comment						
FS_ID:11763						
DS_ID:21991						
EP_NO: 6551						
Repair Type: Non-Urgent						
Crossing Status: Found						
UCIP Comments: Rodent activity undermining pipe on LS slope.						
FIELD_STRUCT_DESC: 1 of 2: 14-inch PVC wrapped Steel irrigation						
pipe 3-feet below the crown. Butterfly valve on WS shoulder. 2-inch						
galvanized electric conduit at same location. Pump on pile structure on						
WS toe. Pressure booster and pump on LS toe. (Permit No. 6551-						
Wheeler 1969).						
FS Date: 4/10/2013						

Photo 2 of 2 : UCIP_SP_2016_11763_19221.jpg



Pipe, electrical conduit, and booster pump on LS toe.

LM Start	2.24	Rating **	M	Issue No.	29
LM End	2.24	Issue Type +	Ma	Location *	LS
Category	Earthen Levee			GPS Latitude/Longitude	
				Start	End
Item	Trim / Thin Trees			38.307350 °	38.307350 °
				-121.573320 °	-121.573317 °
DWR ID	DWR_RD0551_01_s_2016_29				
Comment Code					
T2 : Thin trees to allow visibility of the ground and room to flood fight.					
Inspector Comment					

No Photos

* Location LS : Land Side N/A : Not Applicable WS : Water Side CR : Crown	** Rating A : Acceptable M : Minimally Acceptable U : Unacceptable	N : Not Inspected/Rated C : Corrected A/W : Acceptable but Monitor & Maintain	+ Issue Type Ma : Maintenance Deficiency Ob : Design & System Obsolescence En : Enforcement
--	--	---	---

**Flood Control Project Maintenance
Levee Inspections**

Levee Inspection Report By Mile - Spring 2016

Reclamation District No. 0551 Pearson

Waterway	Bank	Unit Miles	Inspection Start/End	Inspector
Unit No. 01 Sacramento River	Left	6.78	03/15/2016 03/15/2016	Herman Phillips

LM Start	2.41	Rating **	M	Issue No.	33
LM End	2.41	Issue Type +	En	Location *	LS
Category	Supplemental			GPS Latitude/Longitude	
				Start	End
Item	DWR UCIP Field Study			38.305189 °	38.305189 °
				-121.572012 °	-121.572012 °
DWR ID					
Comment Code					
Inspector Comment					
FS_ID:11783 DS_ID:21994 EP_NO: 11141 Repair Type: Non-Urgent Crossing Status: Found UCIP Comments: Records indicate this pipe was abandoned, but it appears to be active. Verify status. FIELD_STRUCT_DESC: 10-inch steel irrigation pipe through levee, 8.0 feet below the crown. Slant pump on waterward slope. Service pole on landward slope with a 1.5-inch galvanized iron electrical conduit through the levee at same location. (ABO No. 11141-Runyon). Originally included in O+M manual (1959). FS Date: 4/10/2013					

LM Start	2.41	Rating **	M	Issue No.	33 (cont)
LM End	2.41	Issue Type +	En	Location *	LS

Photo 1 of 2 : UCIP_SP_2016_11783_19241.jpg



JP and concrete standpipe on LS toe.

Photo 2 of 2 : UCIP_SP_2016_11783_19240.jpg



Pump, pipe, and butterfly valve on WS slope.

* Location LS : Land Side N/A : Not Applicable WS : Water Side CR : Crown		** Rating A : Acceptable M : Minimally Acceptable U : Unacceptable N : Not Inspected/Rated C : Corrected A/W : Acceptable but Monitor & Maintain		+ Issue Type Ma : Maintenance Deficiency Ob : Design & System Obsolescence En : Enforcement
--	--	---	--	---

**Flood Control Project Maintenance
Levee Inspections**

Levee Inspection Report By Mile - Spring 2016

Reclamation District No. 0551 Pearson

Waterway	Bank	Unit Miles	Inspection Start/End	Inspector
Unit No. 01 Sacramento River	Left	6.78	03/15/2016 03/15/2016	Herman Phillips

LM Start	4.01	Rating **	M	Issue No.	36
LM End	4.01	Issue Type +	En	Location *	LS
Category	Supplemental			GPS Latitude/Longitude	
				Start	End
Item	DWR UCIP Field Study			38.286593 °	38.286593 °
				-121.554591 °	-121.554591 °
DWR ID					
Comment Code					
Inspector Comment					
FS_ID:11817					
DS_ID:22034					
EP_NO: N/A					
Repair Type: Non-Urgent					
Crossing Status: Found					
UCIP Comments: Abandoned. Determine if pipe was removed or abandoned in place.					
FIELD_STRUCT_DESC: 8-inch irrigation pipe through the levee 6.7-feet below the crown. Abandoned slide gate at pad on WS slope.					
Originally included in O+M manual 1959.					
FS Date: 4/11/2013					

Photo 1 of 2 : UCIP_SP_2016_11817_19287.jpg



Abandoned slide gate on WS slope.

LM Start	4.01	Rating **	M	Issue No.	36 (cont)
LM End	4.01	Issue Type +	En	Location *	LS

Photo 2 of 2 : UCIP_SP_2016_11817_19286.jpg



Abandoned slide gate on WS slope.

* Location LS : Land Side N/A : Not Applicable WS : Water Side CR : Crown		** Rating A : Acceptable N : Not Inspected/Rated M : Minimally Acceptable C : Corrected U : Unacceptable A/W : Acceptable but Monitor & Maintain		+ Issue Type Ma : Maintenance Deficiency Ob : Design & System Obsolescence En : Enforcement
--	--	---	--	---

**Flood Control Project Maintenance
Levee Inspections**

Levee Inspection Report By Mile - Spring 2016

Reclamation District No. 0551 Pearson

Waterway	Bank	Unit Miles	Inspection Start/End	Inspector
Unit No. 01 Sacramento River	Left	6.78	03/15/2016 03/15/2016	Herman Phillips

LM Start	4.02	Rating **	M	Issue No.	37
LM End	4.02	Issue Type +	En	Location *	LS
Category	Supplemental			GPS Latitude/Longitude	
				Start	End
Item	DWR UCIP Field Study			38.286568 °	38.286568 °
				-121.554569 °	-121.554569 °
DWR ID					
Comment Code					
Inspector Comment					
FS_ID:11823 DS_ID:22018 EP_NO: 11146 Repair Type: Non-Urgent Crossing Status: Found UCIP Comments: Wooden walkway in bad repair and presents a hazard to the public. FIELD_STRUCT_DESC: 14-inch pipe through levee, 10.4 feet below crown. Pump on pile structure in stream with wooden walkway. 48-inch concrete standpipe on LS toe with booster pump and electric panel. Siphon breaker in 24-inch CMP riser on LS slope. 1.5-inch electrical conduit at same location.(ABO No. 11146- Turner). Originally included in O+M manual 1959. FS Date: 4/11/2013					

LM Start	4.02	Rating **	M	Issue No.	37 (cont)
LM End	4.02	Issue Type +	En	Location *	LS

Photo 1 of 2 : UCIP_SP_2016_11823_19301.jpg



24-inch CMP riser and 48-inch concrete riser on LS slope.

Photo 2 of 2 : UCIP_SP_2016_11823_19300.jpg



Pump on pier with wooden walkway on WS toe.

* Location LS : Land Side N/A : Not Applicable WS : Water Side CR : Crown		** Rating A : Acceptable M : Minimally Acceptable U : Unacceptable N : Not Inspected/Rated C : Corrected A/W : Acceptable but Monitor & Maintain		+ Issue Type Ma : Maintenance Deficiency Ob : Design & System Obsolescence En : Enforcement
--	--	---	--	---

**Flood Control Project Maintenance
Levee Inspections**

Levee Inspection Report By Mile - Spring 2016

Reclamation District No. 0551 Pearson

Waterway	Bank	Unit Miles	Inspection Start/End	Inspector
Unit No. 01 Sacramento River	Left	6.78	03/15/2016 03/15/2016	Herman Phillips

LM Start	4.59	Rating **	U	Issue No.	44
LM End	4.59	Issue Type +	En	Location *	LS
Category	Supplemental			GPS Latitude/Longitude	
				Start	End
Item	DWR UCIP Field Study			38.281074 °	38.281074 °
				-121.546628 °	-121.546628 °
DWR ID					

Comment Code

Inspector Comment

FS_ID:46644
DS_ID:22020
EP_NO: 11152
Repair Type: Urgent
Crossing Status: Found
UCIP Comments: Pier for pump is falling apart and is a hazard to the public. Some settlement along pipe on LS slope.: As of 12/13/2013 the District has contacted the tenant farmer who is in the process of contacting the owner to update on condition of pipe: As of 12/17/2013 District submitted letter to landowner explaining UCIP report details including photos of the pipe problems: (Olivia) As of 09/21/2015 owner is working with Gilbert Labrie, LMA consultant, to resolve issue.
FIELD_STRUCT_DESC: 10-inch steel irrigation pipe through the levee 6.5 feet below the crown. Pump on pile structure in stream. Service pole at landward toe and a 36-inch concrete riser on the LS toe. 1-inch electrical conduit at same location. (ABO No. 11152-Wilcox) Originally included in O+M manual 1959.
FS Date: 4/11/2013

LM Start	4.59	Rating **	U	Issue No.	44 (cont)
LM End	4.59	Issue Type +	En	Location *	LS

Photo 1 of 2 : UCIP_SP_2016_46644_46281.jpg



Pipe and stand pipe on LS toe with subsidence along pipe on LS slope.

Photo 2 of 2 : UCIP_SP_2016_46644_46280.jpg



Pump on pier showing structural failure on WS toe.

* Location LS : Land Side N/A : Not Applicable WS : Water Side CR : Crown		** Rating A : Acceptable M : Minimally Acceptable U : Unacceptable N : Not Inspected/Rated C : Corrected A/W : Acceptable but Monitor & Maintain		+ Issue Type Ma : Maintenance Deficiency Ob : Design & System Obsolescence En : Enforcement	
--	--	---	--	---	--

**Flood Control Project Maintenance
Levee Inspections**

Levee Inspection Report By Mile - Spring 2016

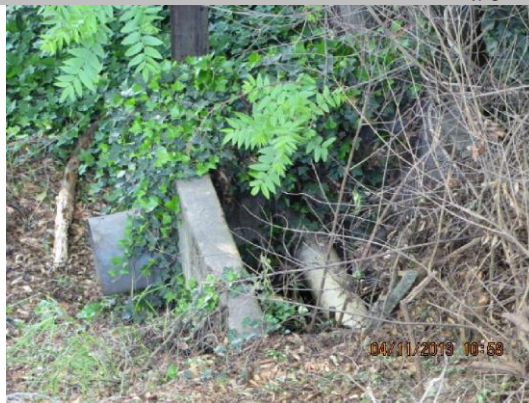
Reclamation District No. 0551 Pearson

Waterway	Bank	Unit Miles	Inspection Start/End	Inspector
Unit No. 01 Sacramento River	Left	6.78	03/15/2016 03/15/2016	Herman Phillips

LM Start	5.05	Rating **	M	Issue No.	35
LM End	5.05	Issue Type +	En	Location *	LS
Category	Supplemental			GPS Latitude/Longitude	
				Start	End
Item	DWR UCIP Field Study			38.276220 °	38.276220 °
				-121.540811 °	-121.540811 °
DWR ID					
Comment Code					
Inspector Comment					
FS_ID:12105 DS_ID:22022 EP_NO: 11125 Repair Type: Non-Urgent Crossing Status: Found UCIP Comments: Pumphouse has been removed from pump and pump is in disrepair. Pipe at LS toe is sleeved or has been replaced with a 6-inch PVC pipe. This pump appears abandoned and should be done so properly. FIELD_STRUCT_DESC: 6-inch pipe through the levee 6.5-feet below the crown. Pump and slide gate on WS slope. 1-inch electrical conduit at same location with service pole at landward toe. 4'X6' concrete distribution box at LS toe (ABO No. 11125- Cortopassi). Originally included in O+M manual 1959. FS Date: 4/11/2013					

LM Start	5.05	Rating **	M	Issue No.	35 (cont)
LM End	5.05	Issue Type +	En	Location *	LS

Photo 1 of 2 : UCIP_SP_2016_12105_19649.jpg



Pipe in distribution box at LS toe.

Photo 2 of 2 : UCIP_SP_2016_12105_19648.jpg



Meter on pole at LS toe.

* Location LS : Land Side N/A : Not Applicable WS : Water Side CR : Crown		** Rating A : Acceptable M : Minimally Acceptable U : Unacceptable N : Not Inspected/Rated C : Corrected A/W : Acceptable but Monitor & Maintain		+ Issue Type Ma : Maintenance Deficiency Ob : Design & System Obsolescence En : Enforcement
--	--	---	--	---

**Flood Control Project Maintenance
Levee Inspections**

Levee Inspection Report By Mile - Spring 2016

Reclamation District No. 0551 Pearson

Waterway	Bank	Unit Miles	Inspection Start/End	Inspector
Unit No. 01 Sacramento River	Left	6.78	03/15/2016 03/15/2016	Herman Phillips

LM Start	5.26	Rating **	M	Issue No.	43
LM End	5.26	Issue Type +	En	Location *	LS
Category	Supplemental			GPS Latitude/Longitude	
				Start	End
Item	DWR UCIP Field Study			38.274147 °	38.274147 °
				-121.538076 °	-121.538076 °
DWR ID					
Comment Code					
Inspector Comment					
FS_ID:26875 DS_ID:22023 EP_NO: 11131 Repair Type: Non-Urgent Crossing Status: Found UCIP Comments: Based on District notes from January 15, 2014, pump discharge pipe has been repaired. Corrosion holes in pipe at LS toe good indicator that pipe is failing internally. Pipe should be examined internally for damage (video inspect).: As of 12/12/2013 the District discussed with farmer tenant what needed to be done, and the tenant informed the District that they would address the repairs.: As of 12/17/2013 District submitted letter to landowner explaining UCIP report details including photos of the pipe problems FIELD_STRUCT_DESC: 10-inch pipe through the levee 7.7-feet below the crown. Pump and slide gate on concrete pad on waterward slope. Siphon breaker in 24-inch CMP riser on LS slope. Concrete riser, power pole with panel box on landward toe. (ABO No. 11131-Latimer). Originally included in the O+M manual 1959. FS Date: 1/15/2014					

LM Start	5.26	Rating **	M	Issue No.	43 (cont)
LM End	5.26	Issue Type +	En	Location *	LS

Photo 1 of 2 : UCIP_SP_2016_26875_49602.jpg



Concrete standpipe, JP and meter, and 4-inch steel pipe visible at LS toe.

Photo 2 of 2 : UCIP_SP_2016_26875_49601.jpg



Pump and slide gate at Concrete pad on WS slope.

* Location LS : Land Side N/A : Not Applicable WS : Water Side CR : Crown		** Rating A : Acceptable M : Minimally Acceptable U : Unacceptable N : Not Inspected/Rated C : Corrected A/W : Acceptable but Monitor & Maintain		+ Issue Type Ma : Maintenance Deficiency Ob : Design & System Obsolescence En : Enforcement	
--	--	---	--	---	--

**Flood Control Project Maintenance
Levee Inspections**

Levee Inspection Report By Mile - Spring 2016

Reclamation District No. 0551 Pearson

Waterway	Bank	Unit Miles	Inspection Start/End	Inspector
Unit No. 01 Sacramento River	Left	6.78	03/15/2016 03/15/2016	Herman Phillips

LM Start	6.52	Rating **	M	Issue No.	30
LM End	6.52	Issue Type +	En	Location *	LS
Category	Earthen Levee		GPS Latitude/Longitude		
			Start	End	
Item	Encroachments		38.261567 °	38.261567 °	
			-121.521245 °	-121.521245 °	
DWR ID	DWR_RD0551_01_s _ 2016_30				
Comment Code					
TR : Tree or limb					
Inspector Comment					

No Photos

* Location LS : Land Side N/A : Not Applicable WS : Water Side CR : Crown	** Rating A : Acceptable M : Minimally Acceptable U : Unacceptable N : Not Inspected/Rated C : Corrected A/W : Acceptable but Monitor & Maintain	+ Issue Type Ma : Maintenance Deficiency Ob : Design & System Obsolescence En : Enforcement
--	---	---