

**Flood Control Project Maintenance
Levee Inspections**

Maintenance Issue Types Only, Levee Inspection Report By Mile - Spring 2021

Reclamation District No. 0544 Upper Roberts Island

Waterway	Bank	Unit Miles	Inspection Start/End	Inspector
Unit No. 01 San Joaquin River	Left	6.05	03/30/2021 03/30/2021	Alberto De Leon

LM Start	0.00	Rating **	M	Issue No.	66
LM End	0.00	Issue Type +	Ma	Location *	N/A
Category	Earthen Levee			GPS Latitude/Longitude	
				Start	End
Item	Flood Preparedness & Training			°	°
				°	°
DWR ID	DWR_RD0544_01_s_2012_66				
Comment Code					
Inspector Comment					
The LMA has a good working knowledge of flood response. However, LMA has not been involved in flood training for several years.					

No Photos

LM Start	0.00	Rating **	A	Issue No.	71
LM End	0.00	Issue Type +	Ma	Location *	N/A
Category	Earthen Levee			GPS Latitude/Longitude	
				Start	End
Item	Operations & Maintenance Manuals			°	°
				°	°
DWR ID	DWR_RD0544_01_s_2013_71				
Comment Code					
Inspector Comment					
The LMA has a copy of O&M manual on file in the office.					

No Photos

LM Start	0.00	Rating **	A	Issue No.	72
LM End	0.00	Issue Type +	Ma	Location *	N/A
Category	Earthen Levee			GPS Latitude/Longitude	
				Start	End
Item	Emergency Supplies & Equipment			°	°
				°	°
DWR ID	DWR_RD0544_01_s_2013_72				
Comment Code					
Inspector Comment					
The LMA maintains an adequate supply of floodfight material.					

No Photos

* Location LS : Land Side N/A : Not Applicable WS : Water Side CR : Crown	** Rating A : Acceptable M : Minimally Acceptable U : Unacceptable	N : Not Inspected/Rated C : Corrected A/W : Acceptable but Monitor & Maintain	+ Issue Type Ma : Maintenance Deficiency Ob : Design & System Obsolescence En : Enforcement
--	--	---	---

**Flood Control Project Maintenance
Levee Inspections**

Maintenance Issue Types Only, Levee Inspection Report By Mile - Spring 2021

Reclamation District No. 0544 Upper Roberts Island

Waterway	Bank	Unit Miles	Inspection Start/End	Inspector
Unit No. 01 San Joaquin River	Left	6.05	03/30/2021 03/30/2021	Alberto De Leon

LM Start	0.25	Rating **	M	Issue No.	27
LM End	0.34	Issue Type +	Ma	Location *	LS
Category	Earthen Levee			GPS Latitude/Longitude	
				Start	End
Item	Vegetation			37.867253 °	37.865927 °
				-121.327799 °	-121.327849 °
DWR ID	DWR_RD0544_01_f_2020_27				
Comment Code					
V1 : Control annual grass and weeds on the levee slopes and easements.					
Inspector Comment					
Vegetation is obstructing the view of landside slope and easement.					

No Photos

LM Start	0.45	Rating **	M	Issue No.	113
LM End	0.53	Issue Type +	Ma	Location *	LS
Category	Earthen Levee			GPS Latitude/Longitude	
				Start	End
Item	Vegetation			37.864699 °	37.864405 °
				-121.326683 °	-121.325231 °
DWR ID	DWR_RD0544_01_s_2021_113				
Comment Code					
V1 : Control annual grass and weeds on the levee slopes and easements.					
Inspector Comment					

No Photos

LM Start	0.46	Rating **	M	Issue No.	116
LM End	0.46	Issue Type +	Ma	Location *	WS
Category	Earthen Levee			GPS Latitude/Longitude	
				Start	End
Item	Vegetation			37.864644 °	37.864644 °
				-121.326522 °	-121.326522 °
DWR ID	DWR_RD0544_01_s_2021_116				
Comment Code					
V4 : Elderberries are blocking visibility and flood fight capability.					
Inspector Comment					

No Photos

* Location LS : Land Side N/A : Not Applicable WS : Water Side CR : Crown	** Rating A : Acceptable M : Minimally Acceptable U : Unacceptable	N : Not Inspected/Rated C : Corrected A/W : Acceptable but Monitor & Maintain	+ Issue Type Ma : Maintenance Deficiency Ob : Design & System Obsolescence En : Enforcement
--	--	---	---

**Flood Control Project Maintenance
Levee Inspections**

Maintenance Issue Types Only, Levee Inspection Report By Mile - Spring 2021

Reclamation District No. 0544 Upper Roberts Island

Waterway	Bank	Unit Miles	Inspection Start/End	Inspector
Unit No. 01 San Joaquin River	Left	6.05	03/30/2021 03/30/2021	Alberto De Leon

LM Start	0.48	Rating **	M	Issue No.	115
LM End	0.48	Issue Type +	Ma	Location *	WS
Category	Earthen Levee		GPS Latitude/Longitude		
			Start	End	
Item	Vegetation		37.864588 °	37.864588 °	
			-121.326286 °	-121.326286 °	
DWR ID	DWR_RD0544_01_s_2021_115				
Comment Code					
V4 : Elderberries are blocking visibility and flood fight capability.					
Inspector Comment					

No Photos

LM Start	0.49	Rating **	M	Issue No.	114
LM End	0.49	Issue Type +	Ma	Location *	WS
Category	Earthen Levee		GPS Latitude/Longitude		
			Start	End	
Item	Vegetation		37.864544 °	37.864544 °	
			-121.326063 °	-121.326063 °	
DWR ID	DWR_RD0544_01_s_2021_114				
Comment Code					
V4 : Elderberries are blocking visibility and flood fight capability.					
Inspector Comment					

No Photos

LM Start	0.63	Rating **	M	Issue No.	28
LM End	0.63	Issue Type +	Ma	Location *	CR
Category	Earthen Levee		GPS Latitude/Longitude		
			Start	End	
Item	Repair Gates		37.864017 °	37.864017 °	
			-121.323548 °	-121.323548 °	
DWR ID	DWR_RD0544_01_f_2020_28				
Comment Code					
Inspector Comment					
Gate needs to be maintained in order to properly open and secure.					

No Photos

* Location LS : Land Side N/A : Not Applicable WS : Water Side CR : Crown	** Rating A : Acceptable M : Minimally Acceptable U : Unacceptable	N : Not Inspected/Rated C : Corrected A/W : Acceptable but Monitor & Maintain	+ Issue Type Ma : Maintenance Deficiency Ob : Design & System Obsolescence En : Enforcement
--	--	---	---

**Flood Control Project Maintenance
Levee Inspections**

Maintenance Issue Types Only, Levee Inspection Report By Mile - Spring 2021

Reclamation District No. 0544 Upper Roberts Island

Waterway	Bank	Unit Miles	Inspection Start/End	Inspector
Unit No. 01 San Joaquin River	Left	6.05	03/30/2021 03/30/2021	Alberto De Leon

LM Start	0.64	Rating **	M	Issue No.	75
LM End	0.64	Issue Type +	Ma	Location *	WS
Category	Earthen Levee			GPS Latitude/Longitude	
				Start	End
Item	Erosion / Bank Caving			37.863900 °	37.863900 °
				-121.323500 °	-121.323400 °
DWR ID	LMA-477				
Comment Code					
E2 : Schedule repair of erosion site prior to the next inspection.					
Inspector Comment					
2017 Storm Damage Site. Slope protection repairs are needed along the waterside slope due to erosion and riprap displacement from high water.					
Site ID No:571					
Site Designation:LMA-477					

Photo 1 of 1 : LEVAL_SP_2021_571_4478.jpg



LM Start	0.74	Rating **	C	Issue No.	29
LM End	0.74	Issue Type +	Ma	Location *	LS
Category	Earthen Levee			GPS Latitude/Longitude	
				Start	End
Item	Trim / Thin Trees			37.863323 °	37.863323 °
				-121.321752 °	-121.321752 °
DWR ID	DWR_RD0544_01_f_2020_29				
Comment Code					
T1 : Trim trees to at least five feet above ground level.					
Inspector Comment					

No Photos

LM Start	0.75	Rating **	C	Issue No.	33
LM End	0.75	Issue Type +	Ma	Location *	CR
Category	Earthen Levee			GPS Latitude/Longitude	
				Start	End
Item	Repair Gates			37.863255 °	37.863255 °
				-121.321568 °	-121.321568 °
DWR ID	DWR_RD0544_01_f_2020_33				
Comment Code					
Inspector Comment					

No Photos

* Location LS : Land Side N/A : Not Applicable WS : Water Side CR : Crown	** Rating A : Acceptable M : Minimally Acceptable U : Unacceptable	N : Not Inspected/Rated C : Corrected A/W : Acceptable but Monitor & Maintain	+ Issue Type Ma : Maintenance Deficiency Ob : Design & System Obsolescence En : Enforcement
--	--	---	---

**Flood Control Project Maintenance
Levee Inspections**

Maintenance Issue Types Only, Levee Inspection Report By Mile - Spring 2021

Reclamation District No. 0544 Upper Roberts Island

Waterway	Bank	Unit Miles	Inspection Start/End	Inspector
Unit No. 01 San Joaquin River	Left	6.05	03/30/2021 03/30/2021	Alberto De Leon

LM Start	0.78	Rating **	M	Issue No.	35
LM End	1.10	Issue Type +	Ma	Location *	LS
Category	Earthen Levee			GPS Latitude/Longitude	
				Start	End
Item	Vegetation			37.863065 °	37.859761 °
				-121.321199 °	-121.318485 °
DWR ID	DWR_RD0544_01_f_2020_35				
Comment Code					
V1 : Control annual grass and weeds on the levee slopes and easements.					
Inspector Comment					

No Photos

LM Start	0.83	Rating **	C	Issue No.	36
LM End	0.83	Issue Type +	Ma	Location *	CR
Category	Earthen Levee			GPS Latitude/Longitude	
				Start	End
Item	Repair Gates			37.862357 °	37.862357 °
				-121.320891 °	-121.320891 °
DWR ID	DWR_RD0544_01_f_2020_36				
Comment Code					
Inspector Comment					

No Photos

LM Start	0.99	Rating **	M	Issue No.	77
LM End	1.02	Issue Type +	Ma	Location *	WS
Category	Earthen Levee			GPS Latitude/Longitude	
				Start	End
Item	Erosion / Bank Caving			37.860400 °	37.860200 °
				-121.320300 °	-121.319700 °
DWR ID	LMA-476				
Comment Code					
E2 : Schedule repair of erosion site prior to the next inspection.					
Inspector Comment					
2017 Storm Damage Site, Slope protection repairs are needed along the waterside slope due to erosion and riprap displacement from high water.					
Site ID No:570					
Site Designation:LMA-476					

Photo 1 of 1 : LEVAL_SP_2021_570_4602.jpg



* Location LS : Land Side N/A : Not Applicable WS : Water Side CR : Crown	** Rating A : Acceptable M : Minimally Acceptable U : Unacceptable	N : Not Inspected/Rated C : Corrected A/W : Acceptable but Monitor & Maintain	+ Issue Type Ma : Maintenance Deficiency Ob : Design & System Obsolescence En : Enforcement
--	--	---	---

**Flood Control Project Maintenance
Levee Inspections**

Maintenance Issue Types Only, Levee Inspection Report By Mile - Spring 2021

Reclamation District No. 0544 Upper Roberts Island

Waterway	Bank	Unit Miles	Inspection Start/End	Inspector
Unit No. 01 San Joaquin River	Left	6.05	03/30/2021 03/30/2021	Alberto De Leon

LM Start	1.10	Rating **	C	Issue No.	37
LM End	1.10	Issue Type +	Ma	Location *	LS
Category	Earthen Levee			GPS Latitude/Longitude	
				Start	End
Item	Trim / Thin Trees			37.859682 °	37.859682 °
				-121.318424 °	-121.318424 °
DWR ID	DWR_RD0544_01_f_2020_37				
Comment Code					
T3 : Trim and thin trees to allow visibility of the ground and room to flood fight.					
Inspector Comment					

No Photos

LM Start	1.12	Rating **	C	Issue No.	39
LM End	1.12	Issue Type +	Ma	Location *	LS
Category	Earthen Levee			GPS Latitude/Longitude	
				Start	End
Item	Trim / Thin Trees			37.859423 °	37.859423 °
				-121.318328 °	-121.318328 °
DWR ID	DWR_RD0544_01_s_2012_39				
Comment Code					
T1 : Trim trees to at least five feet above ground level.					
Inspector Comment					

No Photos

LM Start	1.19	Rating **	M	Issue No.	12
LM End	1.19	Issue Type +	Ma	Location *	LS
Category	Earthen Levee			GPS Latitude/Longitude	
				Start	End
Item	Vegetation			37.858489 °	37.858489 °
				-121.318743 °	-121.318743 °
DWR ID	DWR_RD0544_01_s_2018_12				
Comment Code					
V4 : Elderberries are blocking visibility and flood fight capability.					
Inspector Comment					

No Photos

* Location LS : Land Side N/A : Not Applicable WS : Water Side CR : Crown	** Rating A : Acceptable M : Minimally Acceptable U : Unacceptable	N : Not Inspected/Rated C : Corrected A/W : Acceptable but Monitor & Maintain	+ Issue Type Ma : Maintenance Deficiency Ob : Design & System Obsolescence En : Enforcement
--	--	---	---

**Flood Control Project Maintenance
Levee Inspections**

Maintenance Issue Types Only, Levee Inspection Report By Mile - Spring 2021

Reclamation District No. 0544 Upper Roberts Island

Waterway	Bank	Unit Miles	Inspection Start/End	Inspector
Unit No. 01 San Joaquin River	Left	6.05	03/30/2021 03/30/2021	Alberto De Leon

LM Start	1.38	Rating **	C	Issue No.	38
LM End	1.38	Issue Type +	Ma	Location *	LS
Category	Earthen Levee			GPS Latitude/Longitude	
				Start	End
Item	Trim / Thin Trees			37.856442 °	37.856442 °
				-121.321135 °	-121.321135 °
DWR ID	DWR_RD0544_01_f_2020_38				
Comment Code					
T2 : Thin trees to allow visibility of the ground and room to flood fight.					
Inspector Comment					

No Photos

LM Start	1.44	Rating **	C	Issue No.	42
LM End	1.44	Issue Type +	Ma	Location *	LS
Category	Earthen Levee			GPS Latitude/Longitude	
				Start	End
Item	Trim / Thin Trees			37.855617 °	37.855617 °
				-121.321157 °	-121.321157 °
DWR ID	DWR_RD0544_01_f_2018_42				
Comment Code					
T1 : Trim trees to at least five feet above ground level.					
Inspector Comment					

No Photos

LM Start	1.44	Rating **	N	Issue No.	14
LM End	1.44	Issue Type +	Ma	Location *	WS
Category	Earthen Levee			GPS Latitude/Longitude	
				Start	End
Item	Trim / Thin Trees			37.855583 °	37.855583 °
				-121.321177 °	-121.321177 °
DWR ID	DWR_RD0544_01_s_2012_14				
Comment Code					
T5 : Tree stumps.					
Inspector Comment					

No Photos

* Location LS : Land Side N/A : Not Applicable WS : Water Side CR : Crown	** Rating A : Acceptable M : Minimally Acceptable U : Unacceptable	N : Not Inspected/Rated C : Corrected A/W : Acceptable but Monitor & Maintain	+ Issue Type Ma : Maintenance Deficiency Ob : Design & System Obsolescence En : Enforcement
--	--	---	---

**Flood Control Project Maintenance
Levee Inspections**

Maintenance Issue Types Only, Levee Inspection Report By Mile - Spring 2021

Reclamation District No. 0544 Upper Roberts Island

Waterway	Bank	Unit Miles	Inspection Start/End	Inspector
Unit No. 01 San Joaquin River	Left	6.05	03/30/2021 03/30/2021	Alberto De Leon

LM Start	1.63	Rating **	U	Issue No.	46
LM End	1.63	Issue Type +	Ma	Location *	LS
Category	Earthen Levee			GPS Latitude/Longitude	
				Start	End
Item	Animal Control			37.854651 °	37.854651 °
				-121.322406 °	-121.322406 °
DWR ID	DWR_RD0544_01_f_2020_46				
Comment Code					
A3 : No rodents visible, but rodent burrows visible; need to backfill and compact or grout burrows.					
Inspector Comment					
Landside slope has multiple rodent holes.					

Photo 1 of 1 : SP_2021_RD0544_108_46_20210210_00012.jpg



View of landside slope with multiple large rodent holes. Fall 2020

LM Start	1.83	Rating **	M	Issue No.	61
LM End	2.24	Issue Type +	Ma	Location *	LS
Category	Earthen Levee			GPS Latitude/Longitude	
				Start	End
Item	Vegetation			37.853026 °	37.848354 °
				-121.324134 °	-121.324875 °
DWR ID	DWR_RD0544_01_f_2020_61				
Comment Code					
V1 : Control annual grass and weeds on the levee slopes and easements.					
Inspector Comment					

No Photos

LM Start	1.89	Rating **	M	Issue No.	127
LM End	1.91	Issue Type +	Ma	Location *	WS
Category	Earthen Levee			GPS Latitude/Longitude	
				Start	End
Item	Erosion / Bank Caving			37.852300 °	37.852000 °
				-121.323700 °	-121.323600 °
DWR ID	LMA-475				
Comment Code					
E2 : Schedule repair of erosion site prior to the next inspection.					
Inspector Comment					
2017 Storm Damage Site,Slope protection repairs are needed along the waterside slope due to erosion and riprap displacement from high water. Site ID No:569. Site Designation:LMA-475					

Photo 1 of 1 : LEVAL_SP_2021_569_4616.jpg



* Location
LS : Land Side N/A : Not Applicable
WS : Water Side
CR : Crown

** Rating
A : Acceptable N : Not Inspected/Rated
M : Minimally Acceptable C : Corrected
U : Unacceptable A/W : Acceptable but Monitor & Maintain

+ Issue Type
Ma : Maintenance Deficiency
Ob : Design & System Obsolescence
En : Enforcement

**Flood Control Project Maintenance
Levee Inspections**

Maintenance Issue Types Only, Levee Inspection Report By Mile - Spring 2021

Reclamation District No. 0544 Upper Roberts Island

Waterway	Bank	Unit Miles	Inspection Start/End	Inspector
Unit No. 01 San Joaquin River	Left	6.05	03/30/2021 03/30/2021	Alberto De Leon

LM Start	1.98	Rating **	M	Issue No.	52
LM End	1.98	Issue Type +	Ma	Location *	WS
Category	Earthen Levee		GPS Latitude/Longitude		
			Start	End	
Item	Encroachments		37.851180 °	37.851180 °	
			-121.322805 °	-121.322805 °	
DWR ID	DWR_RD0544_01_f_2020_52				
Comment Code					
TR : Tree or limb					
Inspector Comment					

No Photos

LM Start	2.26	Rating **	M	Issue No.	62
LM End	2.26	Issue Type +	Ma	Location *	CR
Category	Earthen Levee		GPS Latitude/Longitude		
			Start	End	
Item	Repair Gates		37.848110 °	37.848110 °	
			-121.324845 °	-121.324845 °	
DWR ID	DWR_RD0544_01_f_2020_62				
Comment Code					
Inspector Comment					
Gate needs to be maintained in order to properly open and secure.					

No Photos

LM Start	2.27	Rating **	M	Issue No.	34
LM End	2.36	Issue Type +	Ma	Location *	LS
Category	Earthen Levee		GPS Latitude/Longitude		
			Start	End	
Item	Animal Control		37.847987 °	37.846743 °	
			-121.324829 °	-121.324336 °	
DWR ID	DWR_RD0544_01_s_2012_34				
Comment Code					
A3 : No rodents visible, but rodent burrows visible; need to backfill and compact or grout burrows.					
Inspector Comment					
There are several rodent holes within this landside reach.					

No Photos

* Location LS : Land Side N/A : Not Applicable WS : Water Side CR : Crown	** Rating A : Acceptable M : Minimally Acceptable U : Unacceptable	N : Not Inspected/Rated C : Corrected A/W : Acceptable but Monitor & Maintain	+ Issue Type Ma : Maintenance Deficiency Ob : Design & System Obsolescence En : Enforcement
--	--	---	---

**Flood Control Project Maintenance
Levee Inspections**

Maintenance Issue Types Only, Levee Inspection Report By Mile - Spring 2021

Reclamation District No. 0544 Upper Roberts Island

Waterway	Bank	Unit Miles	Inspection Start/End	Inspector
Unit No. 01 San Joaquin River	Left	6.05	03/30/2021 03/30/2021	Alberto De Leon

LM Start	2.27	Rating **	C	Issue No.	97
LM End	2.27	Issue Type +	Ma	Location *	LS
Category	Earthen Levee		GPS Latitude/Longitude		
			Start	End	
Item	Encroachments		37.847924 °	37.847924 °	
			-121.324834 °	-121.324834 °	
DWR ID	DWR_RD0544_01_s_2020_97				
Comment Code					
TR : Tree or limb					
Inspector Comment					

No Photos

LM Start	2.31	Rating **	M	Issue No.	128
LM End	2.35	Issue Type +	Ma	Location *	WS
Category	Earthen Levee		GPS Latitude/Longitude		
			Start	End	
Item	Erosion / Bank Caving		37.847300 °	37.846800 °	
			-121.324700 °	-121.324400 °	
DWR ID	LMA-474				
Comment Code					
E2 : Schedule repair of erosion site prior to the next inspection.					
Inspector Comment					
2017 Storm Damage Site, Slope protection repairs are needed along the waterside slope due to erosion and riprap displacement from high water. Site ID No:568 Site Designation:LMA-474					

Photo 1 of 1 : LEVAL_SP_2021_568_4540.jpg



LM Start	2.32	Rating **	M	Issue No.	63
LM End	2.36	Issue Type +	Ma	Location *	WS
Category	Earthen Levee		GPS Latitude/Longitude		
			Start	End	
Item	Animal Control		37.847213 °	37.846750 °	
			-121.324615 °	-121.324305 °	
DWR ID	DWR_RD0544_01_f_2020_63				
Comment Code					
A3 : No rodents visible, but rodent burrows visible; need to backfill and compact or grout burrows.					
Inspector Comment					

No Photos

* Location LS : Land Side N/A : Not Applicable WS : Water Side CR : Crown	** Rating A : Acceptable M : Minimally Acceptable U : Unacceptable	N : Not Inspected/Rated C : Corrected A/W : Acceptable but Monitor & Maintain	+ Issue Type Ma : Maintenance Deficiency Ob : Design & System Obsolescence En : Enforcement
--	--	---	---

**Flood Control Project Maintenance
Levee Inspections**

Maintenance Issue Types Only, Levee Inspection Report By Mile - Spring 2021

Reclamation District No. 0544 Upper Roberts Island

Waterway	Bank	Unit Miles	Inspection Start/End	Inspector
Unit No. 01 San Joaquin River	Left	6.05	03/30/2021 03/30/2021	Alberto De Leon

LM Start	2.33	Rating **	M	Issue No.	22
LM End	2.33	Issue Type +	Ma	Location *	CR
Category	Earthen Levee			GPS Latitude/Longitude	
				Start	End
Item	Crown Surface / Depressions / Rutting			37.847146 °	37.847146 °
				-121.324617 °	-121.324617 °
DWR ID	DWR_RD0544_01_s_2021_22				
Comment Code					
C2 : Repair depressions or ruts in the crown or slope.					
Inspector Comment					

No Photos

LM Start	2.36	Rating **	M	Issue No.	64
LM End	2.36	Issue Type +	Ma	Location *	LS
Category	Earthen Levee			GPS Latitude/Longitude	
				Start	End
Item	Trim / Thin Trees			37.846716 °	37.846716 °
				-121.324271 °	-121.324271 °
DWR ID	DWR_RD0544_01_f_2020_64				
Comment Code					
T1 : Trim trees to at least five feet above ground level.					
Inspector Comment					

No Photos

LM Start	2.53	Rating **	M	Issue No.	129
LM End	2.56	Issue Type +	Ma	Location *	WS
Category	Earthen Levee			GPS Latitude/Longitude	
				Start	End
Item	Erosion / Bank Caving			37.844900 °	37.844500 °
				-121.322300 °	-121.321900 °
DWR ID	LMA-473				
Comment Code					
E2 : Schedule repair of erosion site prior to the next inspection.					
Inspector Comment					
2017 Storm Damage Site, Slope protection repairs are needed along the waterside slope due to erosion and riprap displacement from high water.					
Site ID No:567					
Site Designation:LMA-473					

Photo 1 of 1 : LEVAL_SP_2021_567_4554.jpg



* Location
LS : Land Side N/A : Not Applicable
WS : Water Side
CR : Crown

** Rating
A : Acceptable N : Not Inspected/Rated
M : Minimally Acceptable C : Corrected
U : Unacceptable A/W : Acceptable but Monitor & Maintain

+ Issue Type
Ma : Maintenance Deficiency
Ob : Design & System Obsolescence
En : Enforcement

**Flood Control Project Maintenance
Levee Inspections**

Maintenance Issue Types Only, Levee Inspection Report By Mile - Spring 2021

Reclamation District No. 0544 Upper Roberts Island

Waterway	Bank	Unit Miles	Inspection Start/End	Inspector
Unit No. 01 San Joaquin River	Left	6.05	03/30/2021 03/30/2021	Alberto De Leon

LM Start	2.77	Rating **	C	Issue No.	73
LM End	3.16	Issue Type +	Ma	Location *	WS
Category	Earthen Levee		GPS Latitude/Longitude		
			Start	End	
Item	Vegetation		37.841546 °	37.837678 °	
			-121.321377 °	-121.317554 °	
DWR ID	DWR_RD0544_01_f_2020_73				
Comment Code					
V1 : Control annual grass and weeds on the levee slopes and easements.					
Inspector Comment					

No Photos

LM Start	2.85	Rating **	M	Issue No.	70
LM End	3.16	Issue Type +	Ma	Location *	LS
Category	Earthen Levee		GPS Latitude/Longitude		
			Start	End	
Item	Vegetation		37.841059 °	37.837679 °	
			-121.320170 °	-121.317554 °	
DWR ID	DWR_RD0544_01_f_2020_70				
Comment Code					
V1 : Control annual grass and weeds on the levee slopes and easements.					
Inspector Comment					

No Photos

LM Start	2.85	Rating **	N	Issue No.	110
LM End	2.85	Issue Type +	Ma	Location *	LS
Category	Earthen Levee		GPS Latitude/Longitude		
			Start	End	
Item	Trim / Thin Trees		37.841060 °	37.841060 °	
			-121.320168 °	-121.320168 °	
DWR ID	DWR_RD0544_01_s_2021_110				
Comment Code					
T5 : Tree stumps.					
Inspector Comment					

No Photos

* Location LS : Land Side N/A : Not Applicable WS : Water Side CR : Crown	** Rating A : Acceptable M : Minimally Acceptable U : Unacceptable	N : Not Inspected/Rated C : Corrected A/W : Acceptable but Monitor & Maintain	+ Issue Type Ma : Maintenance Deficiency Ob : Design & System Obsolescence En : Enforcement
--	--	---	---

**Flood Control Project Maintenance
Levee Inspections**

Maintenance Issue Types Only, Levee Inspection Report By Mile - Spring 2021

Reclamation District No. 0544 Upper Roberts Island

Waterway	Bank	Unit Miles	Inspection Start/End	Inspector
Unit No. 01 San Joaquin River	Left	6.05	03/30/2021 03/30/2021	Alberto De Leon

LM Start	2.94	Rating **	M	Issue No.	1
LM End	2.94	Issue Type +	Ma	Location *	WS
Category	Supplemental			GPS Latitude/Longitude	
				Start	End
Item	DWR Erosion Survey			37.840541 °	37.840541 °
				-121.318430 °	-121.318430 °
DWR ID	RD0544U01RM49.67				

Comment Code

Inspector Comment

Site ID: RD0544U01RM49.67

09/24/2020: From 2014 to present, no significant changes were observed during the annual survey. The site is immediately downstream of a levee slope section protected with riprap.

08/13/2013: Pump has been removed. A larger pocket erosion has been found at the erosion site.

08/07/2012: The erosion is immediately upstream of a river bend. Dense vegetation is visible at the erosion site.

LM Start	2.94	Rating **	M	Issue No.	1 (cont)
LM End	2.94	Issue Type +	Ma	Location *	WS

Photo 1 of 2 : SP_2021_RD0544_108_1_20210210_00001.jpg



9/24/2020: View of the erosion looking upstream with riprap visible beyond the upstream end.

Photo 2 of 2 : SP_2021_RD0544_108_1_20210210_00002.jpg



9/24/2020: Close-up view of the erosion.

* Location LS : Land Side N/A : Not Applicable WS : Water Side CR : Crown	** Rating A : Acceptable M : Minimally Acceptable U : Unacceptable	N : Not Inspected/Rated C : Corrected A/W : Acceptable but Monitor & Maintain	+ Issue Type Ma : Maintenance Deficiency Ob : Design & System Obsolescence En : Enforcement
--	--	---	---

**Flood Control Project Maintenance
Levee Inspections**

Maintenance Issue Types Only, Levee Inspection Report By Mile - Spring 2021

Reclamation District No. 0544 Upper Roberts Island

Waterway	Bank	Unit Miles	Inspection Start/End	Inspector
Unit No. 01 San Joaquin River	Left	6.05	03/30/2021 03/30/2021	Alberto De Leon

LM Start	2.94	Rating **	M	Issue No.	87
LM End	2.94	Issue Type +	Ma	Location *	CR
Category	Earthen Levee			GPS Latitude/Longitude	
				Start	End
Item	Repair Gates			37.840630 °	37.840630 °
				-121.318533 °	-121.318533 °
DWR ID	DWR_RD0544_01_f_2020_87				
Comment Code					
Inspector Comment					
Gate needs to be maintained in order to properly open and secure.					

No Photos

LM Start	3.05	Rating **	U	Issue No.	92
LM End	3.05	Issue Type +	Ma	Location *	LS
Category	Earthen Levee			GPS Latitude/Longitude	
				Start	End
Item	Animal Control			37.839176 °	37.839176 °
				-121.317972 °	-121.317972 °
DWR ID	DWR_RD0544_01_s_2020_92				
Comment Code					
A3 : No rodents visible, but rodent burrows visible; need to backfill and compact or grout burrows.					
Inspector Comment					

Photo 1 of 1 : SP_2021_RD0544_108_92_20210210_00023.jpg



View of large animal burrow on landside slope. Spring 2020

LM Start	3.07	Rating **	C	Issue No.	90	
LM End	3.07	Issue Type +	Ma	Location *	LS	
Category	Earthen Levee			GPS Latitude/Longitude		
				Start		End
Item	Trim / Thin Trees			37.838913 °	37.838913 °	
				-121.317906 °	-121.317906 °	
DWR ID	DWR_RD0544_01_f_2020_90					
Comment Code						
T1 : Trim trees to at least five feet above ground level.						
Inspector Comment						

No Photos

* Location LS : Land Side N/A : Not Applicable WS : Water Side CR : Crown	** Rating A : Acceptable M : Minimally Acceptable U : Unacceptable	N : Not Inspected/Rated C : Corrected A/W : Acceptable but Monitor & Maintain	+ Issue Type Ma : Maintenance Deficiency Ob : Design & System Obsolescence En : Enforcement
--	--	---	---

**Flood Control Project Maintenance
Levee Inspections**

Maintenance Issue Types Only, Levee Inspection Report By Mile - Spring 2021

Reclamation District No. 0544 Upper Roberts Island

Waterway	Bank	Unit Miles	Inspection Start/End	Inspector
Unit No. 01 San Joaquin River	Left	6.05	03/30/2021 03/30/2021	Alberto De Leon

LM Start	3.21	Rating **	M	Issue No.	131
LM End	3.22	Issue Type +	Ma	Location *	WS
Category	Earthen Levee			GPS Latitude/Longitude	
				Start	End
Item	Erosion / Bank Caving			37.836900 °	37.836700 °
				-121.317300 °	-121.317300 °
DWR ID	LMA-472				
Comment Code					
E2 : Schedule repair of erosion site prior to the next inspection.					
Inspector Comment					
2017 storm damage site, ID 566, LMA-472. Slope protection repairs are needed along the waterside slope due to erosion and riprap displacement from high water.					

Photo 1 of 1 : LEVAL_SP_2021_566_4714.jpg



LM Start	3.23	Rating **	M	Issue No.	86
LM End	3.23	Issue Type +	Ma	Location *	LS
Category	Earthen Levee			GPS Latitude/Longitude	
				Start	End
Item	Vegetation			37.836590 °	37.836590 °
				-121.317286 °	-121.317286 °
DWR ID	DWR_RD0544_01_s_2020_86				
Comment Code					
V4 : Elderberries are blocking visibility and flood fight capability.					
Inspector Comment					

No Photos

LM Start	3.24	Rating **	M	Issue No.	80
LM End	3.47	Issue Type +	Ma	Location *	LS
Category	Earthen Levee			GPS Latitude/Longitude	
				Start	End
Item	Vegetation			37.836504 °	37.833657 °
				-121.317270 °	-121.315023 °
DWR ID	DWR_RD0544_01_s_2020_80				
Comment Code					
V1 : Control annual grass and weeds on the levee slopes and easements.					
Inspector Comment					

No Photos

* Location
LS : Land Side N/A : Not Applicable
WS : Water Side
CR : Crown

** Rating
A : Acceptable N : Not Inspected/Rated
M : Minimally Acceptable C : Corrected
U : Unacceptable A/W : Acceptable but Monitor & Maintain

+ Issue Type
Ma : Maintenance Deficiency
Ob : Design & System Obsolescence
En : Enforcement

**Flood Control Project Maintenance
Levee Inspections**

Maintenance Issue Types Only, Levee Inspection Report By Mile - Spring 2021

Reclamation District No. 0544 Upper Roberts Island

Waterway	Bank	Unit Miles	Inspection Start/End	Inspector
Unit No. 01 San Joaquin River	Left	6.05	03/30/2021 03/30/2021	Alberto De Leon

LM Start	3.26	Rating **	M	Issue No.	82
LM End	3.26	Issue Type +	Ma	Location *	LS
Category	Earthen Levee			GPS Latitude/Longitude	
				Start	End
Item	Vegetation			37.836118 °	37.836118 °
				-121.317154 °	-121.317154 °
DWR ID	DWR_RD0544_01_s_2020_82				
Comment Code					
V4 : Elderberries are blocking visibility and flood fight capability.					
Inspector Comment					

No Photos

LM Start	3.32	Rating **	U	Issue No.	107
LM End	3.32	Issue Type +	Ma	Location *	LS
Category	Earthen Levee			GPS Latitude/Longitude	
				Start	End
Item	Animal Control			37.835424 °	37.835424 °
				-121.316803 °	-121.316803 °
DWR ID	DWR_RD0544_01_s_2021_107				
Comment Code					
A3 : No rodents visible, but rodent burrows visible; need to backfill and compact or grout burrows.					
Inspector Comment					

Photo 1 of 1 : SP_2021_RD0544_108_107_20210412_00090.jpg



View of large animal burrow along the landside slope. Spring 2021

LM Start	3.48	Rating **	M	Issue No.	56
LM End	3.48	Issue Type +	Ma	Location *	LS
Category	Earthen Levee			GPS Latitude/Longitude	
				Start	End
Item	Vegetation			37.833583 °	37.833583 °
				-121.314968 °	-121.314968 °
DWR ID	DWR_RD0544_01_s_2012_56				
Comment Code					
V4 : Elderberries are blocking visibility and flood fight capability.					
Inspector Comment					

No Photos

* Location LS : Land Side N/A : Not Applicable WS : Water Side CR : Crown	** Rating A : Acceptable M : Minimally Acceptable U : Unacceptable	N : Not Inspected/Rated C : Corrected A/W : Acceptable but Monitor & Maintain	+ Issue Type Ma : Maintenance Deficiency Ob : Design & System Obsolescence En : Enforcement
--	--	---	---

**Flood Control Project Maintenance
Levee Inspections**

Maintenance Issue Types Only, Levee Inspection Report By Mile - Spring 2021

Reclamation District No. 0544 Upper Roberts Island

Waterway	Bank	Unit Miles	Inspection Start/End	Inspector
Unit No. 01 San Joaquin River	Left	6.05	03/30/2021 03/30/2021	Alberto De Leon

LM Start	3.49	Rating **	A/W	Issue No.	19	
LM End	3.49	Issue Type +	Ma	Location *		
Category	Supplemental			GPS Latitude/Longitude		
				Start		End
Item	DWR UCIP LMA Responsibility			37.833475 °	37.833475 °	
				-121.314822 °	-121.314822 °	
DWR ID	22658					
Comment Code						
Inspector Comment						
FS_ID:24892 DS_ID:22658 EP_NO: N/A Repair Type: No Action Needed Crossing Status: Found UCIP Comments: - pipe on channel bank looks comparatively new.- pump approximately 500 ft. from the levee center on landside in drainage ditch.- a tall concrete standpipe and service pole near the pump. FIELD_STRUCT_DESC: 12-inch steel drainage discharge pipe through the levee, 3 feet below the crown. Pump and concrete standpipe in a drainage ditch on the landside (LS). Air vent on the waterside (WS). [Additional Reference(s): DWR Levee Log, 2005. USACE San Joaquin O&M Manual 7, April 1964, (HLM 3.53)]. FS Date: 10/29/2013						

LM Start	3.49	Rating **	A/W	Issue No.	19 (cont)
LM End	3.49	Issue Type +	Ma	Location *	

Photo 1 of 3 : UCIP_SP_2021_24892_44853.jpg



WS view: exposed steel pipe on bank of the channel.

Photo 2 of 3 : UCIP_SP_2021_24892_44852.jpg



WS view: exposed steel pipe and air vent on the pipe.

* Location LS : Land Side N/A : Not Applicable WS : Water Side CR : Crown	** Rating A : Acceptable M : Minimally Acceptable U : Unacceptable	N : Not Inspected/Rated C : Corrected A/W : Acceptable but Monitor & Maintain	+ Issue Type Ma : Maintenance Deficiency Ob : Design & System Obsolescence En : Enforcement
--	--	---	---

**Flood Control Project Maintenance
Levee Inspections**

Maintenance Issue Types Only, Levee Inspection Report By Mile - Spring 2021

Reclamation District No. 0544 Upper Roberts Island

Waterway	Bank	Unit Miles	Inspection Start/End	Inspector
Unit No. 01 San Joaquin River	Left	6.05	03/30/2021 03/30/2021	Alberto De Leon

LM Start	3.49	Rating **	A/W	Issue No.	19 (cont)
LM End	3.49	Issue Type +	Ma	Location *	
Category	Supplemental			GPS Latitude/Longitude	
				Start	End
Item	DWR UCIP LMA Responsibility			37.833475 °	37.833475 °
				-121.314822 °	-121.314822 °
DWR ID	22658				

Photo 3 of 3 : UCIP_SP_2021_24892_44851.jpg



LS view: service pole, pump, and a concrete standpipe on bank of drainage ditch about 500 ft from the levee.

LM Start	3.49	Rating **	M	Issue No.	79
LM End	3.65	Issue Type +	Ma	Location *	LS
Category	Earthen Levee			GPS Latitude/Longitude	
				Start	End
Item	Vegetation			37.833421 °	37.831773 °
				-121.314766 °	-121.312790 °
DWR ID	DWR_RD0544_01_s_2020_79				
Comment Code					
V1 : Control annual grass and weeds on the levee slopes and easements.					
Inspector Comment					

No Photos

LM Start	3.59	Rating **	M	Issue No.	106
LM End	3.59	Issue Type +	Ma	Location *	LS
Category	Earthen Levee			GPS Latitude/Longitude	
				Start	End
Item	Vegetation			37.832453 °	37.832453 °
				-121.313591 °	-121.313591 °
DWR ID	DWR_RD0544_01_s_2021_106				
Comment Code					
V4 : Elderberries are blocking visibility and flood fight capability.					
Inspector Comment					

No Photos

* Location LS : Land Side N/A : Not Applicable WS : Water Side CR : Crown	** Rating A : Acceptable M : Minimally Acceptable U : Unacceptable	N : Not Inspected/Rated C : Corrected A/W : Acceptable but Monitor & Maintain	+ Issue Type Ma : Maintenance Deficiency Ob : Design & System Obsolescence En : Enforcement
--	--	---	---

**Flood Control Project Maintenance
Levee Inspections**

Maintenance Issue Types Only, Levee Inspection Report By Mile - Spring 2021

Reclamation District No. 0544 Upper Roberts Island

Waterway	Bank	Unit Miles	Inspection Start/End	Inspector
Unit No. 01 San Joaquin River	Left	6.05	03/30/2021 03/30/2021	Alberto De Leon

LM Start	3.65	Rating **	M	Issue No.	132
LM End	3.67	Issue Type +	Ma	Location *	WS
Category	Earthen Levee			GPS Latitude/Longitude	
				Start	End
Item	Erosion / Bank Caving			37.831800 °	37.831600 °
				-121.312700 °	-121.312600 °
DWR ID	LMA-471				
Comment Code					
E2 : Schedule repair of erosion site prior to the next inspection.					
Inspector Comment					
2017 Storm Damage Site, Slope protection repairs are needed along the waterside slope due to erosion and riprap displacement from high water.					
Site ID No:565					
Site Designation:LMA-471					

Photo 1 of 1 : LEVAL_SP_2021_565_4745.jpg



LM Start	3.69	Rating **	M	Issue No.	133
LM End	3.73	Issue Type +	Ma	Location *	WS
Category	Earthen Levee			GPS Latitude/Longitude	
				Start	End
Item	Erosion / Bank Caving			37.831300 °	37.830700 °
				-121.312600 °	-121.312300 °
DWR ID	LMA-470				
Comment Code					
E2 : Schedule repair of erosion site prior to the next inspection.					
Inspector Comment					
2017 Storm Damage Site, Slope protection repairs are needed along the waterside slope due to erosion and riprap displacement from high water.					
Site ID No:564					
Site Designation:LMA-470					

Photo 1 of 1 : LEVAL_SP_2021_564_4748.jpg



LM Start	3.76	Rating **	M	Issue No.	105
LM End	3.85	Issue Type +	Ma	Location *	LS
Category	Earthen Levee			GPS Latitude/Longitude	
				Start	End
Item	Vegetation			37.830273 °	37.828986 °
				-121.312328 °	-121.311881 °
DWR ID	DWR_RD0544_01_s_2021_105				
Comment Code					
V4 : Elderberries are blocking visibility and flood fight capability.					
Inspector Comment					

No Photos

* Location LS : Land Side N/A : Not Applicable WS : Water Side CR : Crown	** Rating A : Acceptable M : Minimally Acceptable U : Unacceptable	N : Not Inspected/Rated C : Corrected A/W : Acceptable but Monitor & Maintain	+ Issue Type Ma : Maintenance Deficiency Ob : Design & System Obsolescence En : Enforcement
--	--	---	---

**Flood Control Project Maintenance
Levee Inspections**

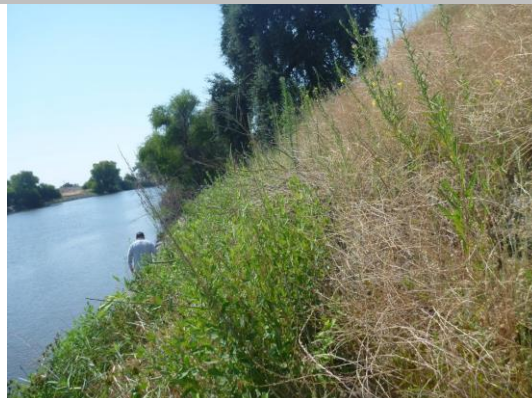
Maintenance Issue Types Only, Levee Inspection Report By Mile - Spring 2021

Reclamation District No. 0544 Upper Roberts Island

Waterway	Bank	Unit Miles	Inspection Start/End	Inspector
Unit No. 01 San Joaquin River	Left	6.05	03/30/2021 03/30/2021	Alberto De Leon

LM Start	3.79	Rating **	A/W	Issue No.	135
LM End	3.82	Issue Type +	Ma	Location *	WS
Category	Supplemental			GPS Latitude/Longitude	
				Start	End
Item	2017 Storm Damage			37.829800 °	37.829400 °
				-121.312100 °	-121.312000 °
DWR ID	LMA 468-469				
Comment Code					
Inspector Comment					
Planned For Repair.					
Levee Evaluation Comments					
Description:Slope protection repairs are needed along the waterside slope due to erosion and riprap displacement from high water. Based upon levee inspections, it was determined the waterside levee slope is eroding, deteriorating, and degrading. The eroded levee sections need to be restored back to design standards to prevent further deterioration and damage.					
Site ID No:562					
Site Designation:LMA 468-469					
Repair Type: Erosion					
Rating:Serious					
Field Date:8/11/2017					
Notes: Site combined with LMA-469:					

Photo 1 of 3 : LEVAL_SP_2021_562_4770.jpg



LM Start	3.79	Rating **	A/W	Issue No.	135 (cont)
LM End	3.82	Issue Type +	Ma	Location *	WS

Photo 2 of 3 : LEVAL_SP_2021_562_4835.jpg



* Location LS : Land Side N/A : Not Applicable WS : Water Side CR : Crown	** Rating A : Acceptable M : Minimally Acceptable U : Unacceptable	N : Not Inspected/Rated C : Corrected A/W : Acceptable but Monitor & Maintain	+ Issue Type Ma : Maintenance Deficiency Ob : Design & System Obsolescence En : Enforcement
--	--	---	---

**Flood Control Project Maintenance
Levee Inspections**

Maintenance Issue Types Only, Levee Inspection Report By Mile - Spring 2021

Reclamation District No. 0544 Upper Roberts Island

Waterway	Bank	Unit Miles	Inspection Start/End	Inspector
Unit No. 01 San Joaquin River	Left	6.05	03/30/2021 03/30/2021	Alberto De Leon

LM Start	3.79	Rating **	A/W	Issue No.	135 (cont)
LM End	3.82	Issue Type +	Ma	Location *	WS
Category	Supplemental			GPS Latitude/Longitude	
				Start	End
Item	2017 Storm Damage			37.829800 °	37.829400 °
				-121.312100 °	-121.312000 °
DWR ID	LMA 468-469				

Photo 3 of 3 : LEVAL_SP_2021_562_4836.jpg



LM Start	3.87	Rating **	M	Issue No.	74
LM End	3.92	Issue Type +	Ma	Location *	LS
Category	Earthen Levee			GPS Latitude/Longitude	
				Start	End
Item	Vegetation			37.828687 °	37.828044 °
				-121.311777 °	-121.311463 °
DWR ID	DWR_RD0544_01_s_2020_74				
Comment Code					
V4 : Elderberries are blocking visibility and flood fight capability.					
Inspector Comment					

No Photos

LM Start	3.92	Rating **	M	Issue No.	11
LM End	4.05	Issue Type +	Ma	Location *	WS
Category	Earthen Levee			GPS Latitude/Longitude	
				Start	End
Item	Animal Control			37.828078 °	37.826315 °
				-121.311483 °	-121.311024 °
DWR ID	DWR_RD0544_01_s_2012_11				
Comment Code					
A1 : Exterminate rodents and backfill and compact or grout burrows.					
Inspector Comment					
There are large rodent holes on the waterside slope.					

Photo 1 of 1 : SP_2021_RD0544_108_11_20210210_00006.jpg



Looking at large rodent holes on waterward slope.

* Location LS : Land Side N/A : Not Applicable WS : Water Side CR : Crown	** Rating A : Acceptable M : Minimally Acceptable U : Unacceptable	N : Not Inspected/Rated C : Corrected A/W : Acceptable but Monitor & Maintain	+ Issue Type Ma : Maintenance Deficiency Ob : Design & System Obsolescence En : Enforcement
--	--	---	---

**Flood Control Project Maintenance
Levee Inspections**

Maintenance Issue Types Only, Levee Inspection Report By Mile - Spring 2021

Reclamation District No. 0544 Upper Roberts Island

Waterway	Bank	Unit Miles	Inspection Start/End	Inspector
Unit No. 01 San Joaquin River	Left	6.05	03/30/2021 03/30/2021	Alberto De Leon

LM Start	3.92	Rating **	M	Issue No.	83
LM End	3.92	Issue Type +	Ma	Location *	LS
Category	Earthen Levee		GPS Latitude/Longitude		
			Start	End	
Item	Vegetation		37.827992 °	37.827992 °	
			-121.311449 °	-121.311449 °	
DWR ID	DWR_RD0544_01_s _ 2021_83				
Comment Code					
V2 : Remove the wild growth other than native grasses from the levee slopes.					
Inspector Comment					

No Photos

LM Start	3.97	Rating **	M	Issue No.	24
LM End	3.97	Issue Type +	Ma	Location *	LS
Category	Earthen Levee		GPS Latitude/Longitude		
			Start	End	
Item	Vegetation		37.827360 °	37.827360 °	
			-121.311067 °	-121.311067 °	
DWR ID	DWR_RD0544_01_s _ 2015_24				
Comment Code					
V4 : Elderberries are blocking visibility and flood fight capability.					
Inspector Comment					

No Photos

LM Start	4.09	Rating **	M	Issue No.	65
LM End	4.09	Issue Type +	Ma	Location *	LS
Category	Earthen Levee		GPS Latitude/Longitude		
			Start	End	
Item	Vegetation		37.825935 °	37.825935 °	
			-121.311447 °	-121.311447 °	
DWR ID	DWR_RD0544_01_s _ 2020_65				
Comment Code					
V4 : Elderberries are blocking visibility and flood fight capability.					
Inspector Comment					

No Photos

* Location LS : Land Side N/A : Not Applicable WS : Water Side CR : Crown	** Rating A : Acceptable M : Minimally Acceptable U : Unacceptable	N : Not Inspected/Rated C : Corrected A/W : Acceptable but Monitor & Maintain	+ Issue Type Ma : Maintenance Deficiency Ob : Design & System Obsolescence En : Enforcement
--	--	---	---

**Flood Control Project Maintenance
Levee Inspections**

Maintenance Issue Types Only, Levee Inspection Report By Mile - Spring 2021

Reclamation District No. 0544 Upper Roberts Island

Waterway	Bank	Unit Miles	Inspection Start/End	Inspector
Unit No. 01 San Joaquin River	Left	6.05	03/30/2021 03/30/2021	Alberto De Leon

LM Start	4.11	Rating **	M	Issue No.	94
LM End	4.11	Issue Type +	Ma	Location *	LS
Category	Earthen Levee		GPS Latitude/Longitude		
			Start	End	
Item	Vegetation		37.825822 °	37.825822 °	
			-121.311789 °	-121.311789 °	
DWR ID	DWR_RD0544_01_f_2020_94				
Comment Code					
V4 : Elderberries are blocking visibility and flood fight capability.					
Inspector Comment					

No Photos

LM Start	4.18	Rating **	M	Issue No.	60
LM End	4.18	Issue Type +	Ma	Location *	WS
Category	Earthen Levee		GPS Latitude/Longitude		
			Start	End	
Item	Vegetation		37.825726 °	37.825726 °	
			-121.313055 °	-121.313055 °	
DWR ID	DWR_RD0544_01_s_2020_60				
Comment Code					
V4 : Elderberries are blocking visibility and flood fight capability.					
Inspector Comment					

No Photos

LM Start	4.21	Rating **	M	Issue No.	81
LM End	4.22	Issue Type +	Ma	Location *	LS
Category	Earthen Levee		GPS Latitude/Longitude		
			Start	End	
Item	Vegetation		37.825629 °	37.825603 °	
			-121.313618 °	-121.313782 °	
DWR ID	DWR_RD0544_01_s_2021_81				
Comment Code					
V4 : Elderberries are blocking visibility and flood fight capability.					
Inspector Comment					

No Photos

* Location LS : Land Side N/A : Not Applicable WS : Water Side CR : Crown	** Rating A : Acceptable M : Minimally Acceptable U : Unacceptable	N : Not Inspected/Rated C : Corrected A/W : Acceptable but Monitor & Maintain	+ Issue Type Ma : Maintenance Deficiency Ob : Design & System Obsolescence En : Enforcement
--	--	---	---

**Flood Control Project Maintenance
Levee Inspections**

Maintenance Issue Types Only, Levee Inspection Report By Mile - Spring 2021

Reclamation District No. 0544 Upper Roberts Island

Waterway	Bank	Unit Miles	Inspection Start/End	Inspector
Unit No. 01 San Joaquin River	Left	6.05	03/30/2021 03/30/2021	Alberto De Leon

LM Start	4.23	Rating **	M	Issue No.	91
LM End	4.28	Issue Type +	Ma	Location *	LS
Category	Earthen Levee		GPS Latitude/Longitude		
			Start	End	
Item	Vegetation		37.825555 °	37.825220 °	
			-121.314064 °	-121.314817 °	
DWR ID	DWR_RD0544_01_f_2020_91				
Comment Code					
V2 : Remove the wild growth other than native grasses from the levee slopes.					
Inspector Comment					

No Photos

LM Start	4.30	Rating **	M	Issue No.	59
LM End	4.32	Issue Type +	Ma	Location *	LS
Category	Earthen Levee		GPS Latitude/Longitude		
			Start	End	
Item	Vegetation		37.824943 °	37.824690 °	
			-121.315008 °	-121.315147 °	
DWR ID	DWR_RD0544_01_s_2012_59				
Comment Code					
V4 : Elderberries are blocking visibility and flood fight capability.					
Inspector Comment					

No Photos

LM Start	4.37	Rating **	M	Issue No.	89
LM End	4.68	Issue Type +	Ma	Location *	LS
Category	Earthen Levee		GPS Latitude/Longitude		
			Start	End	
Item	Vegetation		37.824071 °	37.821816 °	
			-121.315235 °	-121.320077 °	
DWR ID	DWR_RD0544_01_s_2021_89				
Comment Code					
V4 : Elderberries are blocking visibility and flood fight capability.					
Inspector Comment					

No Photos

* Location LS : Land Side N/A : Not Applicable WS : Water Side CR : Crown	** Rating A : Acceptable M : Minimally Acceptable U : Unacceptable	N : Not Inspected/Rated C : Corrected A/W : Acceptable but Monitor & Maintain	+ Issue Type Ma : Maintenance Deficiency Ob : Design & System Obsolescence En : Enforcement
--	--	---	---

**Flood Control Project Maintenance
Levee Inspections**

Maintenance Issue Types Only, Levee Inspection Report By Mile - Spring 2021

Reclamation District No. 0544 Upper Roberts Island

Waterway	Bank	Unit Miles	Inspection Start/End	Inspector
Unit No. 01 San Joaquin River	Left	6.05	03/30/2021 03/30/2021	Alberto De Leon

LM Start	4.37	Rating **	M	Issue No.	98
LM End	4.37	Issue Type +	Ma	Location *	LS
Category	Earthen Levee			GPS Latitude/Longitude	
				Start	End
Item	Animal Control			37.824003 °	37.824003 °
				-121.315244 °	-121.315244 °
DWR ID	DWR_RD0544_01_f_2020_98				
Comment Code					
A3 : No rodents visible, but rodent burrows visible; need to backfill and compact or grout burrows.					
Inspector Comment					

No Photos

LM Start	4.38	Rating **	U	Issue No.	100
LM End	4.72	Issue Type +	Ma	Location *	LS
Category	Earthen Levee			GPS Latitude/Longitude	
				Start	End
Item	Vegetation			37.823940 °	37.821486 °
				-121.315280 °	-121.320738 °
DWR ID	DWR_RD0544_01_f_2020_100				
Comment Code					
V2 : Remove the wild growth other than native grasses from the levee slopes.					
Inspector Comment					

Photo 1 of 1 : SP_2021_RD0544_108_100_20210210_00026.jpg



View vegetation and wild growth on landside slope. Fall 2020

LM Start	4.46	Rating **	M	Issue No.	136
LM End	4.48	Issue Type +	Ma	Location *	WS
Category	Earthen Levee			GPS Latitude/Longitude	
				Start	End
Item	Erosion / Bank Caving			37.823200 °	37.823000 °
				-121.316400 °	-121.316800 °
DWR ID	LMA-467				
Comment Code					
E2 : Schedule repair of erosion site prior to the next inspection.					
Inspector Comment					
2017 storm damage site, ID 561, LMA-467. Slope protection repairs are needed along the waterside slope due to erosion and riprap displacement from high water. Site combined with LMA-466 in field; length and coordinates redefined in field.					

Photo 1 of 1 : LEVAL_SP_2021_561_4862.jpg



* Location
LS : Land Side N/A : Not Applicable
WS : Water Side
CR : Crown

** Rating
A : Acceptable N : Not Inspected/Rated
M : Minimally Acceptable C : Corrected
U : Unacceptable A/W : Acceptable but Monitor & Maintain

+ Issue Type
Ma : Maintenance Deficiency
Ob : Design & System Obsolescence
En : Enforcement

**Flood Control Project Maintenance
Levee Inspections**

Maintenance Issue Types Only, Levee Inspection Report By Mile - Spring 2021

Reclamation District No. 0544 Upper Roberts Island

Waterway	Bank	Unit Miles	Inspection Start/End	Inspector
Unit No. 01 San Joaquin River	Left	6.05	03/30/2021 03/30/2021	Alberto De Leon

LM Start	4.48	Rating **	M	Issue No.	103
LM End	4.48	Issue Type +	Ma	Location *	LS
Category	Earthen Levee		GPS Latitude/Longitude		
			Start	End	
Item	Animal Control		37.823027 °	37.823027 °	
			-121.316737 °	-121.316737 °	
DWR ID	DWR_RD0544_01_f_2014_103				
Comment Code					
A3 : No rodents visible, but rodent burrows visible; need to backfill and compact or grout burrows.					
Inspector Comment					

No Photos

LM Start	4.49	Rating **	M	Issue No.	41
LM End	4.49	Issue Type +	Ma	Location *	WS
Category	Earthen Levee		GPS Latitude/Longitude		
			Start	End	
Item	Vegetation		37.822934 °	37.822934 °	
			-121.316870 °	-121.316870 °	
DWR ID	DWR_RD0544_01_s_2012_41				
Comment Code					
V4 : Elderberries are blocking visibility and flood fight capability.					
Inspector Comment					

No Photos

LM Start	4.59	Rating **	N	Issue No.	93
LM End	4.59	Issue Type +	Ma	Location *	LS
Category	Earthen Levee		GPS Latitude/Longitude		
			Start	End	
Item	Trim / Thin Trees		37.822327 °	37.822327 °	
			-121.318541 °	-121.318541 °	
DWR ID	DWR_RD0544_01_s_2021_93				
Comment Code					
T5 : Tree stumps.					
Inspector Comment					

No Photos

* Location LS : Land Side N/A : Not Applicable WS : Water Side CR : Crown	** Rating A : Acceptable M : Minimally Acceptable U : Unacceptable	N : Not Inspected/Rated C : Corrected A/W : Acceptable but Monitor & Maintain	+ Issue Type Ma : Maintenance Deficiency Ob : Design & System Obsolescence En : Enforcement
--	--	---	---

**Flood Control Project Maintenance
Levee Inspections**

Maintenance Issue Types Only, Levee Inspection Report By Mile - Spring 2021

Reclamation District No. 0544 Upper Roberts Island

Waterway	Bank	Unit Miles	Inspection Start/End	Inspector
Unit No. 01 San Joaquin River	Left	6.05	03/30/2021 03/30/2021	Alberto De Leon

LM Start	4.67	Rating **	M	Issue No.	51
LM End	4.67	Issue Type +	Ma	Location *	LS
Category	Earthen Levee			GPS Latitude/Longitude	
				Start	End
Item	Animal Control			37.821849 °	37.821849 °
				-121.319979 °	-121.319979 °
DWR ID	DWR_RD0544_01_s_2020_51				
Comment Code					
A3 : No rodents visible, but rodent burrows visible; need to backfill and compact or grout burrows.					
Inspector Comment					

Photo 1 of 1 : SP_2021_RD0544_108_51_20210210_00014.jpg



View of animal burrow on landside slope. Spring 2020

LM Start	4.71	Rating **	M	Issue No.	26
LM End	4.73	Issue Type +	Ma	Location *	LS
Category	Earthen Levee			GPS Latitude/Longitude	
				Start	End
Item	Vegetation			37.821646 °	37.821368 °
				-121.320521 °	-121.320843 °
DWR ID	DWR_RD0544_01_s_2012_26				
Comment Code					
V4 : Elderberries are blocking visibility and flood fight capability.					
Inspector Comment					

No Photos

LM Start	4.76	Rating **	M	Issue No.	49
LM End	4.76	Issue Type +	Ma	Location *	LS
Category	Earthen Levee			GPS Latitude/Longitude	
				Start	End
Item	Vegetation			37.821053 °	37.821053 °
				-121.321064 °	-121.321064 °
DWR ID	DWR_RD0544_01_s_2020_49				
Comment Code					
V4 : Elderberries are blocking visibility and flood fight capability.					
Inspector Comment					

No Photos

* Location LS : Land Side N/A : Not Applicable WS : Water Side CR : Crown	** Rating A : Acceptable M : Minimally Acceptable U : Unacceptable	N : Not Inspected/Rated C : Corrected A/W : Acceptable but Monitor & Maintain	+ Issue Type Ma : Maintenance Deficiency Ob : Design & System Obsolescence En : Enforcement
--	--	---	---

**Flood Control Project Maintenance
Levee Inspections**

Maintenance Issue Types Only, Levee Inspection Report By Mile - Spring 2021

Reclamation District No. 0544 Upper Roberts Island

Waterway	Bank	Unit Miles	Inspection Start/End	Inspector
Unit No. 01 San Joaquin River	Left	6.05	03/30/2021 03/30/2021	Alberto De Leon

LM Start	4.78	Rating **	M	Issue No.	48
LM End	4.78	Issue Type +	Ma	Location *	LS
Category	Earthen Levee			GPS Latitude/Longitude	
				Start	End
Item	Trim / Thin Trees			37.820797 °	37.820797 °
				-121.321156 °	-121.321156 °
DWR ID	DWR_RD0544_01_s_2020_48				
Comment Code					
T3 : Trim and thin trees to allow visibility of the ground and room to flood fight.					
Inspector Comment					

No Photos

LM Start	4.97	Rating **	C	Issue No.	139
LM End	4.99	Issue Type +	Ma	Location *	WS
Category	Supplemental			GPS Latitude/Longitude	
				Start	End
Item	2017 Storm Damage			37.818600 °	37.818400 °
				-121.319200 °	-121.319000 °
DWR ID	LMA-465				
Comment Code					
Inspector Comment					
Repair has been completed.					

No Photos

* Location LS : Land Side N/A : Not Applicable WS : Water Side CR : Crown	** Rating A : Acceptable M : Minimally Acceptable U : Unacceptable	N : Not Inspected/Rated C : Corrected A/W : Acceptable but Monitor & Maintain	+ Issue Type Ma : Maintenance Deficiency Ob : Design & System Obsolescence En : Enforcement
--	--	---	---

**Flood Control Project Maintenance
Levee Inspections**

Maintenance Issue Types Only, Levee Inspection Report By Mile - Spring 2021

Reclamation District No. 0544 Upper Roberts Island

Waterway	Bank	Unit Miles	Inspection Start/End	Inspector
Unit No. 01 San Joaquin River	Left	6.05	03/30/2021 03/30/2021	Alberto De Leon

LM Start	5.32	Rating **	A/W	Issue No.	140
LM End	5.36	Issue Type +	Ma	Location *	WS
Category	Supplemental			GPS Latitude/Longitude	
				Start	End
Item	2017 Storm Damage			37.813900 °	37.813500 °
				-121.319900 °	-121.319400 °
DWR ID	LMA-464				
Comment Code					
Inspector Comment					
Planned For Repair.					
Levee Evaluation Comments					
Description:Slope protection repairs are needed along the waterside slope due to erosion and riprap displacement from high water. Based upon levee inspections, it was determined the waterside levee slope is eroding, deteriorating, and degrading. The eroded levee sections need to be restored back to design standards to prevent further deterioration and damage.					
Site ID No:558					
Site Designation:LMA-464					
Repair Type: Erosion					
Rating:Serious					
Field Date:8/16/2017					
Notes:					

Photo 1 of 4 : SP_2021_RD0544_108_140_20210210_00041.jpg



View of waterside erosion repair in progress. Fall 2020

LM Start	5.32	Rating **	A/W	Issue No.	140 (cont)
LM End	5.36	Issue Type +	Ma	Location *	WS

Photo 2 of 4 : LEVAL_SP_2021_558_4900.jpg



*** Location**
LS : Land Side N/A : Not Applicable
WS : Water Side
CR : Crown

**** Rating**
A : Acceptable N : Not Inspected/Rated
M : Minimally Acceptable C : Corrected
U : Unacceptable A/W : Acceptable but Monitor & Maintain

+ Issue Type
Ma : Maintenance Deficiency
Ob : Design & System Obsolescence
En : Enforcement

**Flood Control Project Maintenance
Levee Inspections**

Maintenance Issue Types Only, Levee Inspection Report By Mile - Spring 2021

Reclamation District No. 0544 Upper Roberts Island

Waterway	Bank	Unit Miles	Inspection Start/End	Inspector
Unit No. 01 San Joaquin River	Left	6.05	03/30/2021 03/30/2021	Alberto De Leon

LM Start	5.32	Rating **	A/W	Issue No.	140 (cont)
LM End	5.36	Issue Type +	Ma	Location *	WS
Category	Supplemental		GPS Latitude/Longitude		
			Start	End	
Item	2017 Storm Damage		37.813900 °	37.813500 °	
			-121.319900 °	-121.319400 °	
DWR ID	LMA-464				

Photo 3 of 4 : LEVAL_SP_2021_558_4904.jpg



LM Start	5.32	Rating **	A/W	Issue No.	140 (cont)
LM End	5.36	Issue Type +	Ma	Location *	WS

Photo 4 of 4 : LEVAL_SP_2021_558_4910.jpg



LM Start	5.34	Rating **	C	Issue No.	141
LM End	5.38	Issue Type +	Ma	Location *	WS
Category	Earthen Levee			GPS Latitude/Longitude	
				Start	End
Item	Erosion / Bank Caving			37.813629 °	37.813258 °
				-121.319562 °	-121.319066 °
DWR ID	LMA-463				
Comment Code					
E2 : Schedule repair of erosion site prior to the next inspection.					
Inspector Comment					
Erosion site has been repaired.					

No Photos

* Location LS : Land Side N/A : Not Applicable WS : Water Side CR : Crown	** Rating A : Acceptable M : Minimally Acceptable U : Unacceptable	N : Not Inspected/Rated C : Corrected A/W : Acceptable but Monitor & Maintain	+ Issue Type Ma : Maintenance Deficiency Ob : Design & System Obsolescence En : Enforcement
--	--	---	---

**Flood Control Project Maintenance
Levee Inspections**

Maintenance Issue Types Only, Levee Inspection Report By Mile - Spring 2021

Reclamation District No. 0544 Upper Roberts Island

Waterway	Bank	Unit Miles	Inspection Start/End	Inspector
Unit No. 01 San Joaquin River	Left	6.05	03/30/2021 03/30/2021	Alberto De Leon

LM Start	5.39	Rating **	M	Issue No.	44
LM End	5.39	Issue Type +	Ma	Location *	WS
Category	Earthen Levee		GPS Latitude/Longitude		
			Start	End	
Item	Vegetation		37.813195 °	37.813195 °	
			-121.318969 °	-121.318969 °	
DWR ID	DWR_RD0544_01_s_2021_44				
Comment Code					
V4 : Elderberries are blocking visibility and flood fight capability.					
Inspector Comment					

No Photos

LM Start	5.50	Rating **	M	Issue No.	43
LM End	5.55	Issue Type +	Ma	Location *	LS
Category	Earthen Levee		GPS Latitude/Longitude		
			Start	End	
Item	Vegetation		37.812046 °	37.811727 °	
			-121.319828 °	-121.320766 °	
DWR ID	DWR_RD0544_01_s_2020_43				
Comment Code					
V2 : Remove the wild growth other than native grasses from the levee slopes.					
Inspector Comment					

No Photos

LM Start	5.53	Rating **	A/W	Issue No.	18
LM End	5.53	Issue Type +	Ma	Location *	LS
Category	Earthen Levee		GPS Latitude/Longitude		
			Start	End	
Item	Vegetation		37.811837 °	37.811837 °	
			-121.320426 °	-121.320426 °	
DWR ID	DWR_RD0544_01_s_2012_18				
Comment Code					
V4 : Elderberries are blocking visibility and flood fight capability.					
Inspector Comment					

No Photos

* Location LS : Land Side N/A : Not Applicable WS : Water Side CR : Crown	** Rating A : Acceptable M : Minimally Acceptable U : Unacceptable	N : Not Inspected/Rated C : Corrected A/W : Acceptable but Monitor & Maintain	+ Issue Type Ma : Maintenance Deficiency Ob : Design & System Obsolescence En : Enforcement
--	--	---	---

**Flood Control Project Maintenance
Levee Inspections**

Maintenance Issue Types Only, Levee Inspection Report By Mile - Spring 2021

Reclamation District No. 0544 Upper Roberts Island

Waterway	Bank	Unit Miles	Inspection Start/End	Inspector
Unit No. 01 San Joaquin River	Left	6.05	03/30/2021 03/30/2021	Alberto De Leon

LM Start	5.57	Rating **	M	Issue No.	32
LM End	5.57	Issue Type +	Ma	Location *	WS
Category	Earthen Levee		GPS Latitude/Longitude		
			Start	End	
Item	Vegetation		37.811611 °	37.811611 °	
			-121.321096 °	-121.321096 °	
DWR ID	DWR_RD0544_01_s_2021_32				
Comment Code					
V4 : Elderberries are blocking visibility and flood fight capability.					
Inspector Comment					

No Photos

LM Start	5.64	Rating **	N	Issue No.	40
LM End	5.64	Issue Type +	Ma	Location *	LS
Category	Earthen Levee		GPS Latitude/Longitude		
			Start	End	
Item	Trim / Thin Trees		37.811199 °	37.811199 °	
			-121.322176 °	-121.322176 °	
DWR ID	DWR_RD0544_01_s_2012_40				
Comment Code					
T5 : Tree stumps.					
Inspector Comment					

No Photos

LM Start	5.64	Rating **	C	Issue No.	31
LM End	5.64	Issue Type +	Ma	Location *	LS
Category	Earthen Levee		GPS Latitude/Longitude		
			Start	End	
Item	Animal Control		37.811206 °	37.811206 °	
			-121.322240 °	-121.322240 °	
DWR ID	DWR_RD0544_01_s_2020_31				
Comment Code					
A3 : No rodents visible, but rodent burrows visible; need to backfill and compact or grout burrows.					
Inspector Comment					

No Photos

* Location LS : Land Side N/A : Not Applicable WS : Water Side CR : Crown	** Rating A : Acceptable M : Minimally Acceptable U : Unacceptable	N : Not Inspected/Rated C : Corrected A/W : Acceptable but Monitor & Maintain	+ Issue Type Ma : Maintenance Deficiency Ob : Design & System Obsolescence En : Enforcement
--	--	---	---

**Flood Control Project Maintenance
Levee Inspections**

Maintenance Issue Types Only, Levee Inspection Report By Mile - Spring 2021

Reclamation District No. 0544 Upper Roberts Island

Waterway	Bank	Unit Miles	Inspection Start/End	Inspector
Unit No. 01 San Joaquin River	Left	6.05	03/30/2021 03/30/2021	Alberto De Leon

LM Start	5.91	Rating **	M	Issue No.	30							
LM End	5.91	Issue Type +	Ma	Location *	LS							
Category	Earthen Levee		GPS Latitude/Longitude									
			Start	End								
Item	Vegetation		37.810065 °	37.810065 °								
			-121.326377 °	-121.326377 °								
DWR ID	DWR_RD0544_01_s_2021_30											
Comment Code												
V1 : Control annual grass and weeds on the levee slopes and easements.												
Inspector Comment												

No Photos

*** Location**
 LS : Land Side N/A : Not Applicable
 WS : Water Side
 CR : Crown

**** Rating**
 A : Acceptable N : Not Inspected/Rated
 M : Minimally Acceptable C : Corrected
 U : Unacceptable A/W : Acceptable but Monitor & Maintain

+ Issue Type
 Ma : Maintenance Deficiency
 Ob : Design & System Obsolescence
 En : Enforcement

**Flood Control Project Maintenance
Levee Inspections**

Maintenance Issue Types Only, Levee Inspection Report By Mile - Spring 2021

Reclamation District No. 0544 Upper Roberts Island

Waterway	Bank	Unit Miles	Inspection Start/End	Inspector
Unit No. 02 Old River	Right	4.15	03/30/2021 03/30/2021	Alberto De Leon

LM Start	0.21	Rating **	C	Issue No.	17
LM End	0.26	Issue Type +	Ma	Location *	WS
Category	Earthen Levee			GPS Latitude/Longitude	
				Start	End
Item	Vegetation			37.808335 °	37.808625 °
				-121.331975 °	-121.332772 °
DWR ID	DWR_RD0544_02_f_2020_17				
Comment Code					
V2 : Remove the wild growth other than native grasses from the levee slopes.					
Inspector Comment					

No Photos

LM Start	0.21	Rating **	A/W	Issue No.	37
LM End	0.23	Issue Type +	Ma	Location *	WS
Category	Earthen Levee			GPS Latitude/Longitude	
				Start	End
Item	Erosion / Bank Caving			37.808300 °	37.808400 °
				-121.332000 °	-121.332200 °
DWR ID	LMA-462				
Comment Code					
E1 : Note and monitor erosion site.					
Inspector Comment					
2017 Storm Damage Site, ID No:556, LMA-462. Waterside slope should be monitored for erosion and riprap displacement during high water.					

Photo 1 of 1 : LEVAL_SP_2021_556_4520.jpg



LM Start	0.39	Rating **	C	Issue No.	19
LM End	0.39	Issue Type +	Ma	Location *	LS
Category	Earthen Levee			GPS Latitude/Longitude	
				Start	End
Item	Trim / Thin Trees			37.809664 °	37.809664 °
				-121.334634 °	-121.334634 °
DWR ID	DWR_RD0544_02_f_2020_19				
Comment Code					
T1 : Trim trees to at least five feet above ground level.					
Inspector Comment					

No Photos

* Location LS : Land Side N/A : Not Applicable WS : Water Side CR : Crown	** Rating A : Acceptable M : Minimally Acceptable U : Unacceptable	N : Not Inspected/Rated C : Corrected A/W : Acceptable but Monitor & Maintain	+ Issue Type Ma : Maintenance Deficiency Ob : Design & System Obsolescence En : Enforcement
--	--	---	---

Reclamation District No. 0544 Upper Roberts Island

No Photos

Photo 1 of 1 : LEVAL SP_2021_555_4527.jpg



Photo 1 of 1 : LEVAL SP_2021_554_4630.jpg

Page 2 of 25

**Flood Control Project Maintenance
Levee Inspections**

Maintenance Issue Types Only, Levee Inspection Report By Mile - Spring 2021

Reclamation District No. 0544 Upper Roberts Island

Waterway	Bank	Unit Miles	Inspection Start/End	Inspector
Unit No. 02 Old River	Right	4.15	03/30/2021 03/30/2021	Alberto De Leon

LM Start	0.64	Rating **	C	Issue No.	66
LM End	0.69	Issue Type +	Ma	Location *	LS
Category	Earthen Levee		GPS Latitude/Longitude		
			Start	End	
Item	Vegetation		37.813234 °	37.813980 °	
			-121.335034 °	-121.334779 °	
DWR ID	DWR_RD0544_02_s_2020_66				
Comment Code					
V2 : Remove the wild growth other than native grasses from the levee slopes.					
Inspector Comment					

No Photos

LM Start	0.72	Rating **	A/W	Issue No.	5
LM End	0.72	Issue Type +	Ma	Location *	LS
Category	Earthen Levee		GPS Latitude/Longitude		
			Start	End	
Item	Vegetation		37.814333 °	37.814333 °	
			-121.334592 °	-121.334592 °	
DWR ID	DWR_RD0544_02_s_2012_5				
Comment Code					
V4 : Elderberries are blocking visibility and flood fight capability.					
Inspector Comment					

No Photos

LM Start	0.79	Rating **	M	Issue No.	24
LM End	0.79	Issue Type +	Ma	Location *	WS
Category	Earthen Levee		GPS Latitude/Longitude		
			Start	End	
Item	Vegetation		37.815231 °	37.815231 °	
			-121.333790 °	-121.333790 °	
DWR ID	DWR_RD0544_02_f_2020_24				
Comment Code					
V4 : Elderberries are blocking visibility and flood fight capability.					
Inspector Comment					

No Photos

* Location LS : Land Side N/A : Not Applicable WS : Water Side CR : Crown	** Rating A : Acceptable M : Minimally Acceptable U : Unacceptable	N : Not Inspected/Rated C : Corrected A/W : Acceptable but Monitor & Maintain	+ Issue Type Ma : Maintenance Deficiency Ob : Design & System Obsolescence En : Enforcement
--	--	---	---

**Flood Control Project Maintenance
Levee Inspections**

Maintenance Issue Types Only, Levee Inspection Report By Mile - Spring 2021

Reclamation District No. 0544 Upper Roberts Island

Waterway	Bank	Unit Miles	Inspection Start/End	Inspector
Unit No. 02 Old River	Right	4.15	03/30/2021 03/30/2021	Alberto De Leon

LM Start	1.01	Rating **	A/W	Issue No.	82
LM End	1.02	Issue Type +	Ma	Location *	WS
Category	Earthen Levee			GPS Latitude/Longitude	
				Start	End
Item	Erosion / Bank Caving			37.818100 °	37.818200 °
				-121.332800 °	-121.332800 °
DWR ID	LMA-458				
Comment Code					
E1 : Note and monitor erosion site.					
Inspector Comment					
2017 Storm Damage Site, ID No:552, LMA-458. Monitor waterside slope for possible erosion and rip rap displacement during high water events.					

Photo 1 of 1 : LEVAL_SP_2021_552_4810.jpg



LM Start	1.13	Rating **	M	Issue No.	27
LM End	1.13	Issue Type +	Ma	Location *	CR
Category	Earthen Levee			GPS Latitude/Longitude	
				Start	End
Item	Repair Gates			37.819568 °	37.819568 °
				-121.333893 °	-121.333893 °
DWR ID	DWR_RD0544_02_f _ 2020_27				
Comment Code					
Inspector Comment					
Gates need to be properly maintained in order to properly close and secure.					

No Photos

LM Start	1.26	Rating **	M	Issue No.	40	
LM End	1.32	Issue Type +	Ma	Location *	LS	
Category	Earthen Levee			GPS Latitude/Longitude		
				Start		End
Item	Vegetation			37.820479 °		37.820971 °
				-121.336040 °		-121.336982 °
DWR ID	DWR_RD0544_02_s_2021_40					
Comment Code						
V1 : Control annual grass and weeds on the levee slopes and easements.						
Inspector Comment						

No Photos

* Location LS : Land Side N/A : Not Applicable WS : Water Side CR : Crown	** Rating A : Acceptable M : Minimally Acceptable U : Unacceptable	N : Not Inspected/Rated C : Corrected A/W : Acceptable but Monitor & Maintain	+ Issue Type Ma : Maintenance Deficiency Ob : Design & System Obsolescence En : Enforcement
--	--	---	---

**Flood Control Project Maintenance
Levee Inspections**

Maintenance Issue Types Only, Levee Inspection Report By Mile - Spring 2021

Reclamation District No. 0544 Upper Roberts Island

Waterway	Bank	Unit Miles	Inspection Start/End	Inspector
Unit No. 02 Old River	Right	4.15	03/30/2021 03/30/2021	Alberto De Leon

LM Start	1.28	Rating **	C	Issue No.	34
LM End	1.35	Issue Type +	Ma	Location *	WS
Category	Earthen Levee		GPS Latitude/Longitude		
			Start	End	
Item	Vegetation		37.820582 °	37.821202 °	
			-121.336258 °	-121.337422 °	
DWR ID	DWR_RD0544_02_f_2020_34				
Comment Code					
V2 : Remove the wild growth other than native grasses from the levee slopes.					
Inspector Comment					

No Photos

LM Start	1.32	Rating **	M	Issue No.	10
LM End	1.39	Issue Type +	Ma	Location *	LS
Category	Earthen Levee		GPS Latitude/Longitude		
			Start	End	
Item	Vegetation		37.820968 °	37.821446 °	
			-121.336983 °	-121.337943 °	
DWR ID	DWR_RD0544_02_s_2012_10				
Comment Code					
V4 : Elderberries are blocking visibility and flood fight capability.					
Inspector Comment					

No Photos

LM Start	1.34	Rating **	M	Issue No.	56
LM End	1.45	Issue Type +	Ma	Location *	LS
Category	Earthen Levee		GPS Latitude/Longitude		
			Start	End	
Item	Animal Control		37.821168 °	37.822083 °	
			-121.337212 °	-121.338862 °	
DWR ID	DWR_RD0544_02_s_2021_56				
Comment Code					
A3 : No rodents visible, but rodent burrows visible; need to backfill and compact or grout burrows.					
Inspector Comment					
No rodents visible but continue to monitor the area for future activity.					

No Photos

* Location LS : Land Side N/A : Not Applicable WS : Water Side CR : Crown	** Rating A : Acceptable M : Minimally Acceptable U : Unacceptable	N : Not Inspected/Rated C : Corrected A/W : Acceptable but Monitor & Maintain	+ Issue Type Ma : Maintenance Deficiency Ob : Design & System Obsolescence En : Enforcement
--	--	---	---

**Flood Control Project Maintenance
Levee Inspections**

Maintenance Issue Types Only, Levee Inspection Report By Mile - Spring 2021

Reclamation District No. 0544 Upper Roberts Island

Waterway	Bank	Unit Miles	Inspection Start/End	Inspector
Unit No. 02 Old River	Right	4.15	03/30/2021 03/30/2021	Alberto De Leon

LM Start	1.44	Rating **	A/W	Issue No.	28
LM End	1.45	Issue Type +	Ma	Location *	WS
Category	Earthen Levee			GPS Latitude/Longitude	
				Start	End
Item	Animal Control			37.821954 °	37.822032 °
				-121.338715 °	-121.338837 °
DWR ID	DWR_RD0544_02_s_2012_28				
Comment Code					
A3 : No rodents visible, but rodent burrows visible; need to backfill and compact or grout burrows.					
Inspector Comment					
No rodents visible but continue to monitor for future activity.					

No Photos

LM Start	2.00	Rating **	M	Issue No.	58
LM End	2.09	Issue Type +	Ma	Location *	LS
Category	Earthen Levee			GPS Latitude/Longitude	
				Start	End
Item	Animal Control			37.818624 °	37.819493 °
				-121.343206 °	-121.344545 °
DWR ID	DWR_RD0544_02_s_2015_58				
Comment Code					
A1 : Exterminate rodents and backfill and compact or grout burrows.					
Inspector Comment					
There are several rodent holes within this reach on the landside slope.					

No Photos

LM Start	2.01	Rating **	C	Issue No.	49
LM End	2.07	Issue Type +	Ma	Location *	LS
Category	Earthen Levee			GPS Latitude/Longitude	
				Start	End
Item	Vegetation			37.818739 °	37.819294 °
				-121.343379 °	-121.344255 °
DWR ID	DWR_RD0544_02_f_2020_49				
Comment Code					
V2 : Remove the wild growth other than native grasses from the levee slopes.					
Inspector Comment					

No Photos

* Location LS : Land Side N/A : Not Applicable WS : Water Side CR : Crown	** Rating A : Acceptable M : Minimally Acceptable U : Unacceptable	N : Not Inspected/Rated C : Corrected A/W : Acceptable but Monitor & Maintain	+ Issue Type Ma : Maintenance Deficiency Ob : Design & System Obsolescence En : Enforcement
--	--	---	---

**Flood Control Project Maintenance
Levee Inspections**

Maintenance Issue Types Only, Levee Inspection Report By Mile - Spring 2021

Reclamation District No. 0544 Upper Roberts Island

Waterway	Bank	Unit Miles	Inspection Start/End	Inspector
Unit No. 02 Old River	Right	4.15	03/30/2021 03/30/2021	Alberto De Leon

LM Start	2.03	Rating **	M	Issue No.	103
LM End	2.03	Issue Type +	Ma	Location *	LS
Category	Earthen Levee		GPS Latitude/Longitude		
			Start	End	
Item	Vegetation		37.818931 °	37.818931 °	
			-121.343657 °	-121.343657 °	
DWR ID	DWR_RD0544_02_s _ 2021_103				
Comment Code					
V4 : Elderberries are blocking visibility and flood fight capability.					
Inspector Comment					

No Photos

LM Start	2.04	Rating **	M	Issue No.	102
LM End	2.04	Issue Type +	Ma	Location *	WS
Category	Earthen Levee		GPS Latitude/Longitude		
			Start	End	
Item	Vegetation		37.819047 °	37.819047 °	
			-121.343839 °	-121.343839 °	
DWR ID	DWR_RD0544_02_s _ 2021_102				
Comment Code					
V4 : Elderberries are blocking visibility and flood fight capability.					
Inspector Comment					

No Photos

LM Start	2.07	Rating **	M	Issue No.	13
LM End	2.09	Issue Type +	Ma	Location *	LS
Category	Earthen Levee		GPS Latitude/Longitude		
			Start	End	
Item	Vegetation		37.819337 °	37.819460 °	
			-121.344275 °	-121.344492 °	
DWR ID	DWR_RD0544_02_s _ 2012_13				
Comment Code					
V4 : Elderberries are blocking visibility and flood fight capability.					
Inspector Comment					

No Photos

* Location LS : Land Side N/A : Not Applicable WS : Water Side CR : Crown	** Rating A : Acceptable M : Minimally Acceptable U : Unacceptable	N : Not Inspected/Rated C : Corrected A/W : Acceptable but Monitor & Maintain	+ Issue Type Ma : Maintenance Deficiency Ob : Design & System Obsolescence En : Enforcement
--	--	---	---

**Flood Control Project Maintenance
Levee Inspections**

Maintenance Issue Types Only, Levee Inspection Report By Mile - Spring 2021

Reclamation District No. 0544 Upper Roberts Island

Waterway	Bank	Unit Miles	Inspection Start/End	Inspector
Unit No. 02 Old River	Right	4.15	03/30/2021 03/30/2021	Alberto De Leon

LM Start	2.11	Rating **	M	Issue No.	101
LM End	2.11	Issue Type +	Ma	Location *	LS
Category	Earthen Levee			GPS Latitude/Longitude	
				Start	End
Item	Vegetation			37.819635 °	37.819635 °
				-121.344813 °	-121.344813 °
DWR ID	DWR_RD0544_02_s_2021_101				
Comment Code					
V4 : Elderberries are blocking visibility and flood fight capability.					
Inspector Comment					

No Photos

LM Start	2.17	Rating **	A/W	Issue No.	87
LM End	2.18	Issue Type +	Ma	Location *	WS
Category	Supplemental			GPS Latitude/Longitude	
				Start	End
Item	2017 Storm Damage			37.820300 °	37.820300 °
				-121.345600 °	-121.345700 °
DWR ID	LMA-457				
Comment Code					
Inspector Comment					
Planned For Repair.					
Levee Evaluation Comments					
Description:Slope protection repairs are needed along the waterside slope due to erosion and riprap displacement from high water. Based upon levee inspections, it was determined the waterside levee slope is eroding, deteriorating, and degrading. The eroded levee sections need to be restored back to design standards to prevent further deterioration and damage.					
Site ID No:551					
Site Designation:LMA-457					
Repair Type: Erosion					
Rating:Serious					
Field Date:8/18/2017					
Notes:					

Photo 1 of 3 : LEVAL_SP_2021_551_4817.jpg



* Location
LS : Land Side N/A : Not Applicable
WS : Water Side
CR : Crown

** Rating
A : Acceptable N : Not Inspected/Rated
M : Minimally Acceptable C : Corrected
U : Unacceptable A/W : Acceptable but Monitor & Maintain

+ Issue Type
Ma : Maintenance Deficiency
Ob : Design & System Obsolescence
En : Enforcement

**Flood Control Project Maintenance
Levee Inspections**

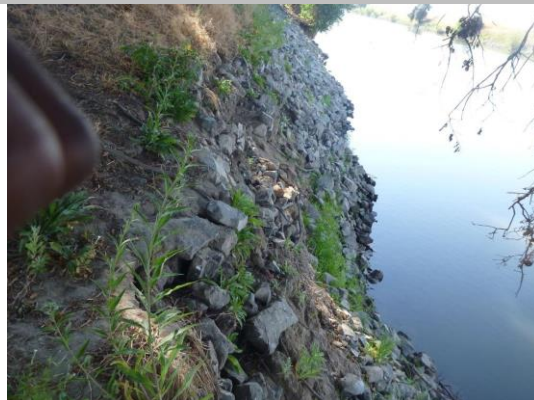
Maintenance Issue Types Only, Levee Inspection Report By Mile - Spring 2021

Reclamation District No. 0544 Upper Roberts Island

Waterway	Bank	Unit Miles	Inspection Start/End	Inspector
Unit No. 02 Old River	Right	4.15	03/30/2021 03/30/2021	Alberto De Leon

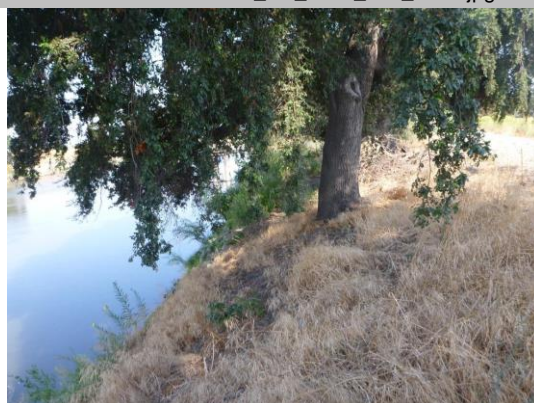
LM Start	2.17	Rating **	A/W	Issue No.	87 (cont)
LM End	2.18	Issue Type +	Ma	Location *	WS
Category	Supplemental			GPS Latitude/Longitude	
				Start	End
Item	2017 Storm Damage			37.820300 °	37.820300 °
				-121.345600 °	-121.345700 °
DWR ID	LMA-457				

Photo 2 of 3 : LEVAL_SP_2021_551_4818.jpg



LM Start	2.17	Rating **	A/W	Issue No.	87 (cont)
LM End	2.18	Issue Type +	Ma	Location *	WS

Photo 3 of 3 : LEVAL_SP_2021_551_4824.jpg



LM Start	2.18	Rating **	A/W	Issue No.	88
LM End	2.19	Issue Type +	Ma	Location *	WS
Category	Earthen Levee			GPS Latitude/Longitude	
				Start	End
Item	Erosion / Bank Caving			37.820400 °	37.820500 °
				-121.345800 °	-121.345900 °
DWR ID	LMA-456				

Photo 1 of 1 : LEVAL_SP_2021_550_4570.jpg



Comment Code					
E1 : Note and monitor erosion site.					
Inspector Comment					
2017 storm damage site, ID 550, site LMA-456. Monitor waterside slope for erosion and riprap displacement during high water.					

* Location	** Rating	+ Issue Type
LS : Land Side N/A : Not Applicable	A : Acceptable	Ma : Maintenance Deficiency
WS : Water Side	M : Minimally Acceptable	Ob : Design & System Obsolescence
CR : Crown	U : Unacceptable	En : Enforcement
	N : Not Inspected/Rated	
	C : Corrected	
	A/W : Acceptable but Monitor & Maintain	

**Flood Control Project Maintenance
Levee Inspections**

Maintenance Issue Types Only, Levee Inspection Report By Mile - Spring 2021

Reclamation District No. 0544 Upper Roberts Island

Waterway	Bank	Unit Miles	Inspection Start/End	Inspector
Unit No. 02 Old River	Right	4.15	03/30/2021 03/30/2021	Alberto De Leon

LM Start	2.21	Rating **	M	Issue No.	32
LM End	2.21	Issue Type +	Ma	Location *	WS
Category	Earthen Levee		GPS Latitude/Longitude		
			Start	End	
Item	Animal Control		37.820697 °	37.820697 °	
			-121.346050 °	-121.346050 °	
DWR ID	DWR_RD0544_02_s_2012_32				
Comment Code					
A3 : No rodents visible, but rodent burrows visible; need to backfill and compact or grout burrows.					
Inspector Comment					

No Photos

LM Start	2.31	Rating **	M	Issue No.	1
LM End	2.31	Issue Type +	Ma	Location *	WS
Category	Supplemental		GPS Latitude/Longitude		
			Start	End	
Item	DWR Erosion Survey		37.821763 °	37.821763 °	
			-121.347275 °	-121.347275 °	
DWR ID	RD0544U02RM33.21				
Comment Code					
Inspector Comment					
Site ID: RD0544U02RM33.21 09/30/2020: From 2013 to present, no significant changes were observed during the annual survey. 08/07/2012: The site was first reported in 2012 spring levee inspection report. The data were estimated as the site is underneath an irrigation pump station and is inaccessible by boat or land survey. It's possible the pump station played a role in the erosion.					

Photo 1 of 2 : SP_2021_RD0544_109_1_20210210_00001.jpg



9/30/2020: View of the erosion with the irrigation pipe and pump station.

* Location	** Rating	+ Issue Type
LS : Land Side N/A : Not Applicable WS : Water Side CR : Crown	A : Acceptable M : Minimally Acceptable U : Unacceptable N : Not Inspected/Rated C : Corrected A/W : Acceptable but Monitor & Maintain	Ma : Maintenance Deficiency Ob : Design & System Obsolescence En : Enforcement

**Flood Control Project Maintenance
Levee Inspections**

Maintenance Issue Types Only, Levee Inspection Report By Mile - Spring 2021

Reclamation District No. 0544 Upper Roberts Island

Waterway	Bank	Unit Miles	Inspection Start/End	Inspector
Unit No. 02 Old River	Right	4.15	03/30/2021 03/30/2021	Alberto De Leon

LM Start	2.31	Rating **	M	Issue No.	1 (cont)
LM End	2.31	Issue Type +	Ma	Location *	WS
Category	Supplemental			GPS Latitude/Longitude	
				Start	End
Item	DWR Erosion Survey			37.821763 °	37.821763 °
				-121.347275 °	-121.347275 °
DWR ID	RD0544U02RM33.21				

Photo 2 of 2 : SP_2021_RD0544_109_1_20210210_00002.jpg



9/30/2020: Close-up view of the erosion.

LM Start	2.43	Rating **	M	Issue No.	36
LM End	2.50	Issue Type +	Ma	Location *	LS
Category	Earthen Levee			GPS Latitude/Longitude	
				Start	End
Item	Animal Control			37.821146 °	37.820286 °
				-121.348992 °	-121.349462 °
DWR ID	DWR_RD0544_02_s_2019_36				
Comment Code					
A3 : No rodents visible, but rodent burrows visible; need to backfill and compact or grout burrows.					
Inspector Comment					

No Photos

LM Start	2.48	Rating **	M	Issue No.	50
LM End	2.59	Issue Type +	Ma	Location *	WS
Category	Earthen Levee			GPS Latitude/Longitude	
				Start	End
Item	Vegetation			37.820596 °	37.819091 °
				-121.349279 °	-121.350252 °
DWR ID	DWR_RD0544_02_s_2020_50				
Comment Code					
V2 : Remove the wild growth other than native grasses from the levee slopes.					
Inspector Comment					

No Photos

* Location LS : Land Side N/A : Not Applicable WS : Water Side CR : Crown	** Rating A : Acceptable M : Minimally Acceptable U : Unacceptable	N : Not Inspected/Rated C : Corrected A/W : Acceptable but Monitor & Maintain	+ Issue Type Ma : Maintenance Deficiency Ob : Design & System Obsolescence En : Enforcement
--	--	---	---

**Flood Control Project Maintenance
Levee Inspections**

Maintenance Issue Types Only, Levee Inspection Report By Mile - Spring 2021

Reclamation District No. 0544 Upper Roberts Island

Waterway	Bank	Unit Miles	Inspection Start/End	Inspector
Unit No. 02 Old River	Right	4.15	03/30/2021 03/30/2021	Alberto De Leon

LM Start	2.48	Rating **	M	Issue No.	52
LM End	2.48	Issue Type +	Ma	Location *	LS
Category	Earthen Levee		GPS Latitude/Longitude		
			Start	End	
Item	Vegetation		37.820526 °	37.820526 °	
			-121.349349 °	-121.349349 °	
DWR ID	DWR_RD0544_02_s_2020_52				
Comment Code					
V4 : Elderberries are blocking visibility and flood fight capability.					
Inspector Comment					

No Photos

LM Start	2.58	Rating **	M	Issue No.	100
LM End	2.58	Issue Type +	Ma	Location *	LS
Category	Earthen Levee		GPS Latitude/Longitude		
			Start	End	
Item	Vegetation		37.819312 °	37.819312 °	
			-121.350148 °	-121.350148 °	
DWR ID	DWR_RD0544_02_s_2021_100				
Comment Code					
V4 : Elderberries are blocking visibility and flood fight capability.					
Inspector Comment					

No Photos

LM Start	2.61	Rating **	M	Issue No.	62
LM End	2.61	Issue Type +	Ma	Location *	LS
Category	Earthen Levee		GPS Latitude/Longitude		
			Start	End	
Item	Vegetation		37.818932 °	37.818932 °	
			-121.350373 °	-121.350373 °	
DWR ID	DWR_RD0544_02_s_2021_62				
Comment Code					
V4 : Elderberries are blocking visibility and flood fight capability.					
Inspector Comment					

No Photos

* Location LS : Land Side N/A : Not Applicable WS : Water Side CR : Crown	** Rating A : Acceptable M : Minimally Acceptable U : Unacceptable	N : Not Inspected/Rated C : Corrected A/W : Acceptable but Monitor & Maintain	+ Issue Type Ma : Maintenance Deficiency Ob : Design & System Obsolescence En : Enforcement
--	--	---	---

**Flood Control Project Maintenance
Levee Inspections**

Maintenance Issue Types Only, Levee Inspection Report By Mile - Spring 2021

Reclamation District No. 0544 Upper Roberts Island

Waterway	Bank	Unit Miles	Inspection Start/End	Inspector
Unit No. 02 Old River	Right	4.15	03/30/2021 03/30/2021	Alberto De Leon

LM Start	2.62	Rating **	M	Issue No.	74
LM End	3.20	Issue Type +	Ma	Location *	LS
Category	Earthen Levee			GPS Latitude/Longitude	
				Start	End
Item	Vegetation			37.818779 °	37.818768 °
				-121.350485 °	-121.359462 °
DWR ID	DWR_RD0544_02_s_2021_74				
Comment Code					
V1 : Control annual grass and weeds on the levee slopes and easements.					
Inspector Comment					

No Photos

LM Start	2.65	Rating **	M	Issue No.	2
LM End	2.67	Issue Type +	Ma	Location *	WS
Category	Supplemental			GPS Latitude/Longitude	
				Start	End
Item	DWR Erosion Survey			37.817945 °	37.817945 °
				-121.351285 °	-121.351285 °
DWR ID	RD0544U02RM32.91				
Comment Code					
Inspector Comment					
Site ID: RD0544U02RM32.91					
09/30/2020: From 2013 to present, no significant changes were observed during the annual survey.					
08/07/2012: Series of pocket erosion sites were discovered at the levee toe during the boat survey. The area is covered with vegetation and riprap, but the riprap has been washed away.					

Photo 1 of 2 : SP_2021_RD0544_109_2_20210210_00003.jpg



9/30/2020: View of an erosion pocket.

LM Start	2.65	Rating **	M	Issue No.	2 (cont)
LM End	2.67	Issue Type +	Ma	Location *	WS

Photo 2 of 2 : SP_2021_RD0544_109_2_20210210_00004.jpg



9/30/2020: Another erosion pocket.

* Location LS : Land Side N/A : Not Applicable WS : Water Side CR : Crown		** Rating A : Acceptable M : Minimally Acceptable U : Unacceptable		N : Not Inspected/Rated C : Corrected A/W : Acceptable but Monitor & Maintain		+ Issue Type Ma : Maintenance Deficiency Ob : Design & System Obsolescence En : Enforcement	
---	--	---	--	---	--	--	--

**Flood Control Project Maintenance
Levee Inspections**

Maintenance Issue Types Only, Levee Inspection Report By Mile - Spring 2021

Reclamation District No. 0544 Upper Roberts Island

Waterway	Bank	Unit Miles	Inspection Start/End	Inspector
Unit No. 02 Old River	Right	4.15	03/30/2021 03/30/2021	Alberto De Leon

LM Start	2.67	Rating **	M	Issue No.	99
LM End	2.68	Issue Type +	Ma	Location *	LS
Category	Earthen Levee			GPS Latitude/Longitude	
				Start	End
Item	Vegetation			37.818218 °	37.818026 °
				-121.350984 °	-121.351217 °
DWR ID	DWR_RD0544_02_s_2021_99				
Comment Code					
V4 : Elderberries are blocking visibility and flood fight capability.					
Inspector Comment					

No Photos

LM Start	2.67	Rating **	M	Issue No.	76
LM End	2.67	Issue Type +	Ma	Location *	LS
Category	Earthen Levee			GPS Latitude/Longitude	
				Start	End
Item	Animal Control			37.818112 °	37.818112 °
				-121.351108 °	-121.351108 °
DWR ID	DWR_RD0544_02_s_2020_76				
Comment Code					
A3 : No rodents visible, but rodent burrows visible; need to backfill and compact or grout burrows.					
Inspector Comment					

No Photos

LM Start	2.68	Rating **	A/W	Issue No.	90
LM End	2.71	Issue Type +	Ma	Location *	WS
Category	Earthen Levee			GPS Latitude/Longitude	
				Start	End
Item	Erosion / Bank Caving			37.818000 °	37.817800 °
				-121.351200 °	-121.351500 °
DWR ID	LMA-454				
Comment Code					
E1 : Note and monitor erosion site.					
Inspector Comment					
2017 Storm Damage Site, ID No:548, LMA-454. Monitor waterside slope for possible erosion and rip rap displacement during high water events.					

Photo 1 of 1 : LEVAL_SP_2021_548_4666.jpg



* Location LS : Land Side N/A : Not Applicable WS : Water Side CR : Crown	** Rating A : Acceptable M : Minimally Acceptable U : Unacceptable	N : Not Inspected/Rated C : Corrected A/W : Acceptable but Monitor & Maintain	+ Issue Type Ma : Maintenance Deficiency Ob : Design & System Obsolescence En : Enforcement
--	--	---	---

**Flood Control Project Maintenance
Levee Inspections**

Maintenance Issue Types Only, Levee Inspection Report By Mile - Spring 2021

Reclamation District No. 0544 Upper Roberts Island

Waterway	Bank	Unit Miles	Inspection Start/End	Inspector
Unit No. 02 Old River	Right	4.15	03/30/2021 03/30/2021	Alberto De Leon

LM Start	2.70	Rating **	M	Issue No.	89
LM End	2.70	Issue Type +	Ma	Location *	LS
Category	Earthen Levee			GPS Latitude/Longitude	
				Start	End
Item	Vegetation			37.817820 °	37.817820 °
				-121.351495 °	-121.351495 °
DWR ID	DWR_RD0544_02_s_2021_89				
Comment Code					
V4 : Elderberries are blocking visibility and flood fight capability.					
Inspector Comment					

No Photos

LM Start	2.76	Rating **	A/W	Issue No.	91
LM End	2.77	Issue Type +	Ma	Location *	WS
Category	Earthen Levee			GPS Latitude/Longitude	
				Start	End
Item	Erosion / Bank Caving			37.817400 °	37.817300 °
				-121.352300 °	-121.352500 °
DWR ID	LMA-453				
Comment Code					
E1 : Note and monitor erosion site.					
Inspector Comment					
2017 Storm Damage site, ID No:547, LMA-453. Monitor waterside slope for possible erosion and rip rap displacement during high water events.					

Photo 1 of 1 : LEVAL_SP_2021_547_4688.jpg



LM Start	2.80	Rating **	M	Issue No.	86
LM End	2.80	Issue Type +	Ma	Location *	LS
Category	Earthen Levee			GPS Latitude/Longitude	
				Start	End
Item	Vegetation			37.817184 °	37.817184 °
				-121.352945 °	-121.352945 °
DWR ID	DWR_RD0544_02_s_2021_86				
Comment Code					
V4 : Elderberries are blocking visibility and flood fight capability.					
Inspector Comment					

No Photos

* Location LS : Land Side N/A : Not Applicable WS : Water Side CR : Crown	** Rating A : Acceptable M : Minimally Acceptable U : Unacceptable	N : Not Inspected/Rated C : Corrected A/W : Acceptable but Monitor & Maintain	+ Issue Type Ma : Maintenance Deficiency Ob : Design & System Obsolescence En : Enforcement
--	--	---	---

**Flood Control Project Maintenance
Levee Inspections**

Maintenance Issue Types Only, Levee Inspection Report By Mile - Spring 2021

Reclamation District No. 0544 Upper Roberts Island

Waterway	Bank	Unit Miles	Inspection Start/End	Inspector
Unit No. 02 Old River	Right	4.15	03/30/2021 03/30/2021	Alberto De Leon

LM Start	2.80	Rating **	C	Issue No.	53
LM End	2.80	Issue Type +	Ma	Location *	LS
Category	Earthen Levee		GPS Latitude/Longitude		
			Start	End	
Item	Trim / Thin Trees		37.817187 °	37.817187 °	
			-121.352964 °	-121.352964 °	
DWR ID	DWR_RD0544_02_f_2014_53				
Comment Code					
T2 : Thin trees to allow visibility of the ground and room to flood fight.					
Inspector Comment					

No Photos

LM Start	2.86	Rating **	M	Issue No.	79
LM End	2.92	Issue Type +	Ma	Location *	WS
Category	Earthen Levee		GPS Latitude/Longitude		
			Start	End	
Item	Vegetation		37.817113 °	37.817247 °	
			-121.354154 °	-121.355093 °	
DWR ID	DWR_RD0544_02_s_2021_79				
Comment Code					
V1 : Control annual grass and weeds on the levee slopes and easements.					
Inspector Comment					

No Photos

LM Start	2.94	Rating **	M	Issue No.	43
LM End	2.94	Issue Type +	Ma	Location *	CR
Category	Earthen Levee		GPS Latitude/Longitude		
			Start	End	
Item	Repair Gates		37.817317 °	37.817317 °	
			-121.355586 °	-121.355586 °	
DWR ID	DWR_RD0544_02_f_2020_43				
Comment Code					
Inspector Comment					
Gates need to be properly maintained in order to properly close and secure.					

No Photos

* Location LS : Land Side N/A : Not Applicable WS : Water Side CR : Crown	** Rating A : Acceptable M : Minimally Acceptable U : Unacceptable	N : Not Inspected/Rated C : Corrected A/W : Acceptable but Monitor & Maintain	+ Issue Type Ma : Maintenance Deficiency Ob : Design & System Obsolescence En : Enforcement
--	--	---	---

**Flood Control Project Maintenance
Levee Inspections**

Maintenance Issue Types Only, Levee Inspection Report By Mile - Spring 2021

Reclamation District No. 0544 Upper Roberts Island

Waterway	Bank	Unit Miles	Inspection Start/End	Inspector
Unit No. 02 Old River	Right	4.15	03/30/2021 03/30/2021	Alberto De Leon

LM Start	3.11	Rating **	A/W	Issue No.	92
LM End	3.12	Issue Type +	Ma	Location *	WS
Category	Earthen Levee			GPS Latitude/Longitude	
				Start	End
Item	Erosion / Bank Caving			37.817700 °	37.817800 °
				-121.358600 °	-121.358700 °
DWR ID	LMA-452				
Comment Code					
E1 : Note and monitor erosion site.					
Inspector Comment					
2017 Storm Damage Site, ID No:546, LMA-452. Monitor waterside slope for possible erosion and rip rap displacement during high water events.					

Photo 1 of 1 : LEVAL_SP_2021_546_4698.jpg



LM Start	3.17	Rating **	M	Issue No.	51
LM End	3.17	Issue Type +	Ma	Location *	LS
Category	Earthen Levee			GPS Latitude/Longitude	
				Start	End
Item	Animal Control			37.818431 °	37.818431 °
				-121.359200 °	-121.359200 °
DWR ID	DWR_RD0544_02_s_2020_51				
Comment Code					
A3 : No rodents visible, but rodent burrows visible; need to backfill and compact or grout burrows.					
Inspector Comment					

No Photos

LM Start	3.18	Rating **	M	Issue No.	75
LM End	3.19	Issue Type +	Ma	Location *	WS
Category	Earthen Levee			GPS Latitude/Longitude	
				Start	End
Item	Vegetation			37.818490 °	37.818690 °
				-121.359236 °	-121.359397 °
DWR ID	DWR_RD0544_02_s_2021_75				
Comment Code					
V4 : Elderberries are blocking visibility and flood fight capability.					
Inspector Comment					

No Photos

* Location LS : Land Side N/A : Not Applicable WS : Water Side CR : Crown	** Rating A : Acceptable M : Minimally Acceptable U : Unacceptable	N : Not Inspected/Rated C : Corrected A/W : Acceptable but Monitor & Maintain	+ Issue Type Ma : Maintenance Deficiency Ob : Design & System Obsolescence En : Enforcement
--	--	---	---

**Flood Control Project Maintenance
Levee Inspections**

Maintenance Issue Types Only, Levee Inspection Report By Mile - Spring 2021

Reclamation District No. 0544 Upper Roberts Island

Waterway	Bank	Unit Miles	Inspection Start/End	Inspector
Unit No. 02 Old River	Right	4.15	03/30/2021 03/30/2021	Alberto De Leon

LM Start	3.20	Rating **	M	Issue No.	30
LM End	3.26	Issue Type +	Ma	Location *	WS
Category	Earthen Levee		GPS Latitude/Longitude		
			Start	End	
Item	Animal Control		37.818748 °	37.819410 °	
			-121.359440 °	-121.360217 °	
DWR ID	DWR_RD0544_02_s_2013_30				
Comment Code					
A3 : No rodents visible, but rodent burrows visible; need to backfill and compact or grout burrows.					
Inspector Comment					

No Photos

LM Start	3.24	Rating **	M	Issue No.	48
LM End	3.24	Issue Type +	Ma	Location *	LS
Category	Earthen Levee		GPS Latitude/Longitude		
			Start	End	
Item	Vegetation		37.819182 °	37.819182 °	
			-121.359900 °	-121.359900 °	
DWR ID	DWR_RD0544_02_s_2020_48				
Comment Code					
V4 : Elderberries are blocking visibility and flood fight capability.					
Inspector Comment					

No Photos

LM Start	3.24	Rating **	M	Issue No.	67
LM End	3.45	Issue Type +	Ma	Location *	LS
Category	Earthen Levee		GPS Latitude/Longitude		
			Start	End	
Item	Vegetation		37.819214 °	37.819630 °	
			-121.359947 °	-121.363478 °	
DWR ID	DWR_RD0544_02_s_2021_67				
Comment Code					
V1 : Control annual grass and weeds on the levee slopes and easements.					
Inspector Comment					

No Photos

* Location LS : Land Side N/A : Not Applicable WS : Water Side CR : Crown	** Rating A : Acceptable M : Minimally Acceptable U : Unacceptable	N : Not Inspected/Rated C : Corrected A/W : Acceptable but Monitor & Maintain	+ Issue Type Ma : Maintenance Deficiency Ob : Design & System Obsolescence En : Enforcement
--	--	---	---

**Flood Control Project Maintenance
Levee Inspections**

Maintenance Issue Types Only, Levee Inspection Report By Mile - Spring 2021

Reclamation District No. 0544 Upper Roberts Island

Waterway	Bank	Unit Miles	Inspection Start/End	Inspector
Unit No. 02 Old River	Right	4.15	03/30/2021 03/30/2021	Alberto De Leon

LM Start	3.25	Rating **	U	Issue No.	78
LM End	3.25	Issue Type +	Ma	Location *	WS
Category	Earthen Levee			GPS Latitude/Longitude	
				Start	End
Item	Slope Stability			37.819347 °	37.819347 °
				-121.360103 °	-121.360103 °
DWR ID	DWR_RD0544_02_s_2017_78				
Comment Code					
S1 : Repair slope instability.					
Inspector Comment					
There is a retaining wall on the waterside slope that is in poor condition. The soil on the waterside slope, between the hinge and retaining wall has seperated and there are verticle cuts greater than 1 foot.					

Photo 1 of 2 : SP_2021_RD0544_109_78_20210210_00017.jpg

View of soil separation and damaged retaining wall on waterside slope.
Spring 2020

LM Start	3.25	Rating **	U	Issue No.	78 (cont)
LM End	3.25	Issue Type +	Ma	Location *	WS

Photo 2 of 2 : SP_2021_RD0544_109_78_20210210_00018.jpg

View of soil separation and damaged retaining wall on waterside slope.
Spring 2020

LM Start	3.25	Rating **	A/W	Issue No.	93
LM End	3.34	Issue Type +	Ma	Location *	WS
Category	Earthen Levee			GPS Latitude/Longitude	
				Start	End
Item	Erosion / Bank Caving			37.819300 °	37.819800 °
				-121.360200 °	-121.361600 °
DWR ID	LMA-451				
Comment Code					
E1 : Note and monitor erosion site.					
Inspector Comment					
2017 Strom Damage site ID No:545, LMA-451. Monitor waterside slope for possible erosion and rip rap displacement during high water events.					

Photo 1 of 1 : LEVAL_SP_2021_545_4707.jpg



* Location		** Rating		+ Issue Type	
LS : Land Side	N/A : Not Applicable	A : Acceptable	N : Not Inspected/Rated	Ma : Maintenance Deficiency	
WS : Water Side		M : Minimally Acceptable	C : Corrected	Ob : Design & System Obsolescence	
CR : Crown		U : Unacceptable	A/W : Acceptable but Monitor & Maintain	En : Enforcement	

**Flood Control Project Maintenance
Levee Inspections**

Maintenance Issue Types Only, Levee Inspection Report By Mile - Spring 2021

Reclamation District No. 0544 Upper Roberts Island

Waterway	Bank	Unit Miles	Inspection Start/End	Inspector
Unit No. 02 Old River	Right	4.15	03/30/2021 03/30/2021	Alberto De Leon

LM Start	3.29	Rating **	M	Issue No.	54
LM End	3.29	Issue Type +	Ma	Location *	LS
Category	Earthen Levee		GPS Latitude/Longitude		
			Start	End	
Item	Vegetation		37.819635 °	37.819635 °	
			-121.360619 °	-121.360619 °	
DWR ID	DWR_RD0544_02_f_2014_54				
Comment Code					
V4 : Elderberries are blocking visibility and flood fight capability.					
Inspector Comment					

No Photos

LM Start	3.29	Rating **	M	Issue No.	73
LM End	3.33	Issue Type +	Ma	Location *	LS
Category	Earthen Levee		GPS Latitude/Longitude		
			Start	End	
Item	Animal Control		37.819647 °	37.819846 °	
			-121.360635 °	-121.361301 °	
DWR ID	DWR_RD0544_02_s_2021_73				
Comment Code					
A3 : No rodents visible, but rodent burrows visible; need to backfill and compact or grout burrows.					
Inspector Comment					

No Photos

LM Start	3.33	Rating **	M	Issue No.	72
LM End	3.33	Issue Type +	Ma	Location *	WS
Category	Earthen Levee		GPS Latitude/Longitude		
			Start	End	
Item	Vegetation		37.819853 °	37.819853 °	
			-121.361363 °	-121.361363 °	
DWR ID	DWR_RD0544_02_s_2021_72				
Comment Code					
V4 : Elderberries are blocking visibility and flood fight capability.					
Inspector Comment					

No Photos

* Location LS : Land Side N/A : Not Applicable WS : Water Side CR : Crown	** Rating A : Acceptable M : Minimally Acceptable U : Unacceptable	N : Not Inspected/Rated C : Corrected A/W : Acceptable but Monitor & Maintain	+ Issue Type Ma : Maintenance Deficiency Ob : Design & System Obsolescence En : Enforcement
--	--	---	---

**Flood Control Project Maintenance
Levee Inspections**

Maintenance Issue Types Only, Levee Inspection Report By Mile - Spring 2021

Reclamation District No. 0544 Upper Roberts Island

Waterway	Bank	Unit Miles	Inspection Start/End	Inspector
Unit No. 02 Old River	Right	4.15	03/30/2021 03/30/2021	Alberto De Leon

LM Start	3.37	Rating **	M	Issue No.	47
LM End	3.37	Issue Type +	Ma	Location *	LS
Category	Earthen Levee		GPS Latitude/Longitude		
			Start	End	
Item	Vegetation		37.819824 °	37.819824 °	
			-121.362105 °	-121.362105 °	
DWR ID	DWR_RD0544_02_s_2020_47				
Comment Code					
V4 : Elderberries are blocking visibility and flood fight capability.					
Inspector Comment					

No Photos

LM Start	3.44	Rating **	M	Issue No.	46
LM End	3.45	Issue Type +	Ma	Location *	LS
Category	Earthen Levee		GPS Latitude/Longitude		
			Start	End	
Item	Vegetation		37.819650 °	37.819625 °	
			-121.363300 °	-121.363544 °	
DWR ID	DWR_RD0544_02_s_2020_46				
Comment Code					
V4 : Elderberries are blocking visibility and flood fight capability.					
Inspector Comment					

No Photos

LM Start	3.48	Rating **	M	Issue No.	44
LM End	3.48	Issue Type +	Ma	Location *	LS
Category	Earthen Levee		GPS Latitude/Longitude		
			Start	End	
Item	Vegetation		37.819566 °	37.819566 °	
			-121.364138 °	-121.364138 °	
DWR ID	DWR_RD0544_02_s_2020_44				
Comment Code					
V4 : Elderberries are blocking visibility and flood fight capability.					
Inspector Comment					

No Photos

* Location LS : Land Side N/A : Not Applicable WS : Water Side CR : Crown	** Rating A : Acceptable M : Minimally Acceptable U : Unacceptable	N : Not Inspected/Rated C : Corrected A/W : Acceptable but Monitor & Maintain	+ Issue Type Ma : Maintenance Deficiency Ob : Design & System Obsolescence En : Enforcement
--	--	---	---

**Flood Control Project Maintenance
Levee Inspections**

Maintenance Issue Types Only, Levee Inspection Report By Mile - Spring 2021

Reclamation District No. 0544 Upper Roberts Island

Waterway	Bank	Unit Miles	Inspection Start/End	Inspector
Unit No. 02 Old River	Right	4.15	03/30/2021 03/30/2021	Alberto De Leon

LM Start	3.52	Rating **	M	Issue No.	60
LM End	3.52	Issue Type +	Ma	Location *	LS
Category	Earthen Levee			GPS Latitude/Longitude	
				Start	End
Item	Vegetation			37.819511 °	37.819511 °
				-121.364922 °	-121.364922 °
DWR ID	DWR_RD0544_02_s_2021_60				
Comment Code					
V1 : Control annual grass and weeds on the levee slopes and easements.					
Inspector Comment					

No Photos

LM Start	3.57	Rating **	A/W	Issue No.	95
LM End	3.58	Issue Type +	Ma	Location *	WS
Category	Earthen Levee			GPS Latitude/Longitude	
				Start	End
Item	Erosion / Bank Caving			37.819400 °	37.819400 °
				-121.365800 °	-121.365900 °
DWR ID	LMA-449				
Comment Code					
E1 : Note and monitor erosion site.					
Inspector Comment					
2017 Storm Damage site, ID No: 543, LMA-449. Monitor waterside slope for possible erosion and rip rap displacement during high water events.					

Photo 1 of 1 : SP_2021_RD0544_109_95_20210210_00030.jpg



View of revetment at the erosion site on waterside slope. Spring 2020

LM Start	3.61	Rating **	M	Issue No.	29	
LM End	3.61	Issue Type +	Ma	Location *	LS	
Category	Earthen Levee			GPS Latitude/Longitude		
				Start		End
Item	Vegetation			37.819486 °		37.819486 °
				-121.366493 °		-121.366493 °
DWR ID	DWR_RD0544_02_s_2021_29					
Comment Code						
V2 : Remove the wild growth other than native grasses from the levee slopes.						
Inspector Comment						

No Photos

* Location LS : Land Side N/A : Not Applicable WS : Water Side CR : Crown	** Rating A : Acceptable M : Minimally Acceptable U : Unacceptable	N : Not Inspected/Rated C : Corrected A/W : Acceptable but Monitor & Maintain	+ Issue Type Ma : Maintenance Deficiency Ob : Design & System Obsolescence En : Enforcement
--	--	---	---

**Flood Control Project Maintenance
Levee Inspections**

Maintenance Issue Types Only, Levee Inspection Report By Mile - Spring 2021

Reclamation District No. 0544 Upper Roberts Island

Waterway	Bank	Unit Miles	Inspection Start/End	Inspector
Unit No. 02 Old River	Right	4.15	03/30/2021 03/30/2021	Alberto De Leon

LM Start	3.72	Rating **	U	Issue No.	69
LM End	3.76	Issue Type +	Ma	Location *	WS
Category	Earthen Levee			GPS Latitude/Longitude	
				Start	End
Item	Vegetation			37.820403 °	37.820884 °
				-121.368004 °	-121.368467 °
DWR ID	DWR_RD0544_02_f_2020_69				
Comment Code					
V2 : Remove the wild growth other than native grasses from the levee slopes.					
Inspector Comment					

Photo 1 of 1 : SP_2021_RD0544_109_69_20210412_00061.jpg



View vegetation and wild growth on waterside slope. Spring 2021

LM Start	4.04	Rating **	N	Issue No.	20
LM End	4.04	Issue Type +	Ma	Location *	WS
Category	Earthen Levee			GPS Latitude/Longitude	
				Start	End
Item	Trim / Thin Trees			37.821597 °	37.821597 °
				-121.373108 °	-121.373108 °
DWR ID	DWR_RD0544_02_s_2021_20				
Comment Code					
T5 : Tree stumps.					
Inspector Comment					

No Photos

LM Start	4.04	Rating **	M	Issue No.	18
LM End	4.14	Issue Type +	Ma	Location *	LS
Category	Earthen Levee			GPS Latitude/Longitude	
				Start	End
Item	Animal Control			37.821597 °	37.822434 °
				-121.373108 °	-121.374590 °
DWR ID	DWR_RD0544_02_s_2021_18				
Comment Code					
A3 : No rodents visible, but rodent burrows visible; need to backfill and compact or grout burrows.					
Inspector Comment					

No Photos

* Location LS : Land Side N/A : Not Applicable WS : Water Side CR : Crown	** Rating A : Acceptable M : Minimally Acceptable U : Unacceptable	N : Not Inspected/Rated C : Corrected A/W : Acceptable but Monitor & Maintain	+ Issue Type Ma : Maintenance Deficiency Ob : Design & System Obsolescence En : Enforcement
--	--	---	---

**Flood Control Project Maintenance
Levee Inspections**

Maintenance Issue Types Only, Levee Inspection Report By Mile - Spring 2021

Reclamation District No. 0544 Upper Roberts Island

Waterway	Bank	Unit Miles	Inspection Start/End	Inspector
Unit No. 02 Old River	Right	4.15	03/30/2021 03/30/2021	Alberto De Leon

LM Start	4.04	Rating **	M	Issue No.	22
LM End	4.15	Issue Type +	Ma	Location *	LS
Category	Earthen Levee		GPS Latitude/Longitude		
			Start	End	
Item	Vegetation		37.821620 °	37.822511 °	
			-121.373107 °	-121.374628 °	
DWR ID	DWR_RD0544_02_s _ 2020_22				
Comment Code					
V1 : Control annual grass and weeds on the levee slopes and easements.					
Inspector Comment					

No Photos

LM Start	4.05	Rating **	M	Issue No.	64
LM End	4.05	Issue Type +	Ma	Location *	LS
Category	Earthen Levee		GPS Latitude/Longitude		
			Start	End	
Item	Vegetation		37.821620 °	37.821620 °	
			-121.373283 °	-121.373283 °	
DWR ID	DWR_RD0544_02_s _ 2015_64				
Comment Code					
V4 : Elderberries are blocking visibility and flood fight capability.					
Inspector Comment					

No Photos

LM Start	4.08	Rating **	C	Issue No.	23
LM End	4.08	Issue Type +	Ma	Location *	LS
Category	Earthen Levee		GPS Latitude/Longitude		
			Start	End	
Item	Animal Control		37.821769 °	37.821769 °	
			-121.373903 °	-121.373903 °	
DWR ID	DWR_RD0544_02_s _ 2020_23				
Comment Code					
A3 : No rodents visible, but rodent burrows visible; need to backfill and compact or grout burrows.					
Inspector Comment					

No Photos

* Location LS : Land Side N/A : Not Applicable WS : Water Side CR : Crown	** Rating A : Acceptable M : Minimally Acceptable U : Unacceptable	N : Not Inspected/Rated C : Corrected A/W : Acceptable but Monitor & Maintain	+ Issue Type Ma : Maintenance Deficiency Ob : Design & System Obsolescence En : Enforcement
--	--	---	---