

**Flood Control Project Maintenance
Levee Inspections**

Maintenance Issue Types Only, Levee Inspection Report By Mile - Spring 2019

Reclamation District No. 0544 Upper Roberts Island

Waterway	Bank	Unit Miles	Inspection Start/End	Inspector
Unit No. 01 San Joaquin River	Left	6.05	05/09/2019 05/09/2019	Alberto De Leon

LM Start	0.00	Rating **	M	Issue No.	66
LM End	0.00	Issue Type +	Ma	Location *	N/A
Category	Earthen Levee			GPS Latitude/Longitude	
				Start	End
Item	Flood Preparedness & Training				
DWR ID	DWR_RD0544_01_s_2012_66				
Comment Code					
Inspector Comment					
The LMA has a good working knowledge of flood response. However, LMA has not been involved in flood training for several years.					

No Photos

LM Start	0.00	Rating **	A	Issue No.	71
LM End	0.00	Issue Type +	Ma	Location *	N/A
Category	Earthen Levee			GPS Latitude/Longitude	
				Start	End
Item	Operations & Maintenance Manuals				
DWR ID	DWR_RD0544_01_s_2013_71				
Comment Code					
Inspector Comment					
The LMA has a copy of O&M manual on file in the office.					

No Photos

LM Start	0.00	Rating **	A	Issue No.	72
LM End	0.00	Issue Type +	Ma	Location *	N/A
Category	Earthen Levee			GPS Latitude/Longitude	
				Start	End
Item	Emergency Supplies & Equipment				
DWR ID	DWR_RD0544_01_s_2013_72				
Comment Code					
Inspector Comment					
The LMA maintains an adequate supply of floodfight material.					

No Photos

* Location LS : Land Side N/A : Not Applicable WS : Water Side CR : Crown	** Rating A : Acceptable M : Minimally Acceptable U : Unacceptable	N : Not Inspected/Rated C : Corrected A/W : Acceptable but Monitor & Maintain	+ Issue Type Ma : Maintenance Deficiency Ob : Design & System Obsolescence En : Enforcement
--	--	---	---

**Flood Control Project Maintenance
Levee Inspections**

Maintenance Issue Types Only, Levee Inspection Report By Mile - Spring 2019

Reclamation District No. 0544 Upper Roberts Island

Waterway	Bank	Unit Miles	Inspection Start/End	Inspector
Unit No. 01 San Joaquin River	Left	6.05	05/09/2019 05/09/2019	Alberto De Leon

LM Start	0.01	Rating **	C	Issue No.	92
LM End	0.01	Issue Type +	Ma	Location *	LS
Category	Earthen Levee			GPS Latitude/Longitude	
				Start	End
Item	Trim / Thin Trees			37.870285 °	37.870285 °
				-121.329822 °	-121.329822 °
DWR ID	DWR_RD0544_01_f_2014_92				
Comment Code					
T1 : Trim trees to at least five feet above ground level.					
Inspector Comment					
Tree has been trimmed on the landside slope.					

No Photos

LM Start	0.06	Rating **	C	Issue No.	118
LM End	0.06	Issue Type +	Ma	Location *	LS
Category	Earthen Levee			GPS Latitude/Longitude	
				Start	End
Item	Erosion / Bank Caving			37.869570 °	37.869570 °
				-121.329556 °	-121.329556 °
DWR ID	DWR_RD0544_01_f_2015_118				
Comment Code					
E2 : Schedule repair of erosion site prior to the next inspection.					
Inspector Comment					
Finger erosion on the landside slope has been repaired.					

No Photos

LM Start	0.12	Rating **	M	Issue No.	38
LM End	0.12	Issue Type +	Ma	Location *	WS
Category	Earthen Levee			GPS Latitude/Longitude	
				Start	End
Item	Trim / Thin Trees			37.868989 °	37.868989 °
				-121.328849 °	-121.328849 °
DWR ID	DWR_RD0544_01_s_2019_38				
Comment Code					
T3 : Trim and thin trees to allow visibility of the ground and room to flood fight.					
Inspector Comment					

No Photos

* Location		** Rating		+ Issue Type	
LS : Land Side	N/A : Not Applicable	A : Acceptable	N : Not Inspected/Rated	Ma : Maintenance Deficiency	
WS : Water Side		M : Minimally Acceptable	C : Corrected	Ob : Design & System Obsolescence	
CR : Crown		U : Unacceptable	A/W : Acceptable but Monitor & Maintain	En : Enforcement	

**Flood Control Project Maintenance
Levee Inspections**

Maintenance Issue Types Only, Levee Inspection Report By Mile - Spring 2019

Reclamation District No. 0544 Upper Roberts Island

Waterway	Bank	Unit Miles	Inspection Start/End	Inspector
Unit No. 01 San Joaquin River	Left	6.05	05/09/2019 05/09/2019	Alberto De Leon

LM Start	0.26	Rating **	C	Issue No.	101
LM End	0.34	Issue Type +	Ma	Location *	CR
Category	Earthen Levee			GPS Latitude/Longitude	
				Start	End
Item	Crown Surface / Depressions / Rutting			37.867148 °	37.866036 °
				-121.327797 °	-121.327862 °
DWR ID	DWR_RD0544_01_s_2016_101				
Comment Code					
C1 : Add appropriate material and re-grade the levee to bring the crown above the design elevation.					
Inspector Comment					

No Photos

LM Start	0.42	Rating **	C	Issue No.	2
LM End	0.42	Issue Type +	Ma	Location *	LS
Category	Earthen Levee			GPS Latitude/Longitude	
				Start	End
Item	Trim / Thin Trees			37.864958 °	37.864958 °
				-121.327142 °	-121.327142 °
DWR ID	DWR_RD0544_01_s_2012_2				
Comment Code					
T2 : Thin trees to allow visibility of the ground and room to flood fight.					
Inspector Comment					
Large tree has been trimmed on the landside slope.					

No Photos

LM Start	0.47	Rating **	M	Issue No.	53
LM End	0.47	Issue Type +	Ma	Location *	WS
Category	Earthen Levee			GPS Latitude/Longitude	
				Start	End
Item	Encroachments			37.864650 °	37.864650 °
				-121.326462 °	-121.326462 °
DWR ID	DWR_RD0544_01_s_2019_53				
Comment Code					
PR : Prunings					
Inspector Comment					
Prunings are on the waterside shoulder.					

No Photos

* Location		** Rating		+ Issue Type	
LS : Land Side	N/A : Not Applicable	A : Acceptable	N : Not Inspected/Rated	Ma : Maintenance Deficiency	
WS : Water Side		M : Minimally Acceptable	C : Corrected	Ob : Design & System Obsolescence	
CR : Crown		U : Unacceptable	A/W : Acceptable but Monitor & Maintain	En : Enforcement	

**Flood Control Project Maintenance
Levee Inspections**

Maintenance Issue Types Only, Levee Inspection Report By Mile - Spring 2019

Reclamation District No. 0544 Upper Roberts Island

Waterway	Bank	Unit Miles	Inspection Start/End	Inspector
Unit No. 01 San Joaquin River	Left	6.05	05/09/2019 05/09/2019	Alberto De Leon

LM Start	0.48	Rating **	M	Issue No.	3
LM End	0.57	Issue Type +	Ma	Location *	WS
Category	Earthen Levee			GPS Latitude/Longitude	
				Start	End
Item	Vegetation			37.864578 °	37.864312 °
				-121.326210 °	-121.324576 °
DWR ID	DWR_RD0544_01_s_2012_3				
Comment Code					
V1 : Control annual grass and weeds on the levee slopes and easements.					
Inspector Comment					

Photo 1 of 2 : SP_2019_RD0544_108_3_20190313_00003.jpg



Looking southeast at the waterside slope.

LM Start	0.48	Rating **	M	Issue No.	3 (cont)
LM End	0.57	Issue Type +	Ma	Location *	WS

Photo 2 of 2 : SP_2019_RD0544_108_3_20190313_00004.jpg



Looking south at dense veg on waterward slope.

LM Start	0.55	Rating **	M	Issue No.	61
LM End	0.63	Issue Type +	Ma	Location *	CR
Category	Earthen Levee			GPS Latitude/Longitude	
				Start	End
Item	Crown Surface / Depressions / Rutting			37.864359 °	37.864011 °
				-121.324939 °	-121.323562 °
DWR ID	DWR_RD0544_01_f_2013_61				
Comment Code					
C1 : Add appropriate material and re-grade the levee to bring the crown above the design elevation.					
Inspector Comment					

No Photos

* Location		** Rating		+ Issue Type	
LS : Land Side	N/A : Not Applicable	A : Acceptable	N : Not Inspected/Rated	Ma : Maintenance Deficiency	
WS : Water Side		M : Minimally Acceptable	C : Corrected	Ob : Design & System Obsolescence	
CR : Crown		U : Unacceptable	A/W : Acceptable but Monitor & Maintain	En : Enforcement	

**Flood Control Project Maintenance
Levee Inspections**

Maintenance Issue Types Only, Levee Inspection Report By Mile - Spring 2019

Reclamation District No. 0544 Upper Roberts Island

Waterway	Bank	Unit Miles	Inspection Start/End	Inspector
Unit No. 01 San Joaquin River	Left	6.05	05/09/2019 05/09/2019	Alberto De Leon

LM Start	0.64	Rating **	A/W	Issue No.	75 (cont)
LM End	0.64	Issue Type +	Ma	Location *	
Category	Supplemental			GPS Latitude/Longitude	
				Start	End
Item	2017 Storm Damage			37.863900 °	37.863900 °
				-121.323500 °	-121.323400 °
DWR ID	DWR_RD0544_01_f _ 2017_75				
Comment Code					
Inspector Comment					
Levee Evaluation Comments					
Description:Slope protection repairs are needed along the waterside slope due to erosion and riprap displacement from high water. Based upon levee inspections, it was determined the waterside levee slope is eroding, deteriorating, and degrading. The eroded levee sections need to be restored back to design standards to prevent further deterioration and damage.					
Site ID No:571					
Site Designation:LMA-477					
Repair Type: Erosion					
Rating:Area of Concern					
Field Date:8/10/2017					
Notes:					

Photo 3 of 3 : LEVAL_SP_2019_571_4487.jpg



LM Start	0.73	Rating **	M	Issue No.	57
LM End	0.73	Issue Type +	Ma	Location *	LS
Category	Earthen Levee			GPS Latitude/Longitude	
				Start	End
Item	Trim / Thin Trees			37.863379 °	37.863379 °
				-121.321875 °	-121.321875 °
DWR ID	DWR_RD0544_01_s_2019_57				
Comment Code					
T1 : Trim trees to at least five feet above ground level.					
Inspector Comment					

No Photos

* Location LS : Land Side N/A : Not Applicable WS : Water Side CR : Crown	** Rating A : Acceptable M : Minimally Acceptable U : Unacceptable	N : Not Inspected/Rated C : Corrected A/W : Acceptable but Monitor & Maintain	+ Issue Type Ma : Maintenance Deficiency Ob : Design & System Obsolescence En : Enforcement
--	--	---	---

**Flood Control Project Maintenance
Levee Inspections**

Maintenance Issue Types Only, Levee Inspection Report By Mile - Spring 2019

Reclamation District No. 0544 Upper Roberts Island

Waterway	Bank	Unit Miles	Inspection Start/End	Inspector
Unit No. 01 San Joaquin River	Left	6.05	05/09/2019 05/09/2019	Alberto De Leon

LM Start	0.78	Rating **	C	Issue No.	73
LM End	0.78	Issue Type +	Ma	Location *	WS
Category	Earthen Levee			GPS Latitude/Longitude	
				Start	End
Item	Trim / Thin Trees			37.863016 °	37.863016 °
				-121.321137 °	-121.321137 °
DWR ID	DWR_RD0544_01_f_2013_73				
Comment Code					
T1 : Trim trees to at least five feet above ground level.					
Inspector Comment					

No Photos

LM Start	0.81	Rating **	M	Issue No.	93
LM End	0.81	Issue Type +	Ma	Location *	LS
Category	Earthen Levee			GPS Latitude/Longitude	
				Start	End
Item	Trim / Thin Trees			37.862694 °	37.862694 °
				-121.320887 °	-121.320887 °
DWR ID	DWR_RD0544_01_f_2014_93				
Comment Code					
T1 : Trim trees to at least five feet above ground level.					
Inspector Comment					

Photo 1 of 1 : SP_2019_RD0544_108_93_20190313_00061.jpg



Looking west at untrimmed trees on landward slope and toe, Fall 2015.

LM Start	0.95	Rating **	M	Issue No.	60
LM End	1.06	Issue Type +	Ma	Location *	WS
Category	Earthen Levee			GPS Latitude/Longitude	
				Start	End
Item	Vegetation			37.860703 °	37.860021 °
				-121.320767 °	-121.319057 °
DWR ID	DWR_RD0544_01_s_2019_60				
Comment Code					
V1 : Control annual grass and weeds on the levee slopes and easements.					
Inspector Comment					

No Photos

* Location		** Rating		+ Issue Type	
LS : Land Side	N/A : Not Applicable	A : Acceptable	N : Not Inspected/Rated	Ma : Maintenance Deficiency	
WS : Water Side		M : Minimally Acceptable	C : Corrected	Ob : Design & System Obsolescence	
CR : Crown		U : Unacceptable	A/W : Acceptable but Monitor & Maintain	En : Enforcement	

**Flood Control Project Maintenance
Levee Inspections**

Maintenance Issue Types Only, Levee Inspection Report By Mile - Spring 2019

Reclamation District No. 0544 Upper Roberts Island

Waterway	Bank	Unit Miles	Inspection Start/End	Inspector
Unit No. 01 San Joaquin River	Left	6.05	05/09/2019 05/09/2019	Alberto De Leon

LM Start	0.99	Rating **	A/W	Issue No.	77 (cont)
LM End	1.02	Issue Type +	Ma	Location *	
Category	Supplemental			GPS Latitude/Longitude	
				Start	End
Item	2017 Storm Damage			37.860400 °	37.860200 °
				-121.320300 °	-121.319700 °
DWR ID	DWR_RD0544_01_f_2017_77				
Comment Code					
Inspector Comment					
Levee Evaluation Comments					
Description:Slope protection repairs are needed along the waterside slope due to erosion and riprap displacement from high water. Based upon levee inspections, it was determined the waterside levee slope is eroding, deteriorating, and degrading. The eroded levee sections need to be restored back to design standards to prevent further deterioration and damage.					
Site ID No:570					
Site Designation:LMA-476					
Repair Type: Erosion					
Rating:Area of Concern					
Field Date:8/10/2017					
Notes:					

Photo 3 of 3 : LEVAL_SP_2019_570_4602.jpg



LM Start	1.12	Rating **	M	Issue No.	39
LM End	1.12	Issue Type +	Ma	Location *	LS
Category	Earthen Levee			GPS Latitude/Longitude	
				Start	End
Item	Trim / Thin Trees			37.859423 °	37.859423 °
				-121.318328 °	-121.318328 °
DWR ID	DWR_RD0544_01_s_2012_39				
Comment Code					
T1 : Trim trees to at least five feet above ground level.					
Inspector Comment					
There are untrimmed trees on the landside slope.					

Photo 1 of 2 : SP_2019_RD0544_108_39_20190313_00027.jpg



Looking southwest at landside slope.

* Location LS : Land Side N/A : Not Applicable WS : Water Side CR : Crown	** Rating A : Acceptable M : Minimally Acceptable U : Unacceptable	N : Not Inspected/Rated C : Corrected A/W : Acceptable but Monitor & Maintain	+ Issue Type Ma : Maintenance Deficiency Ob : Design & System Obsolescence En : Enforcement
--	--	---	---

**Flood Control Project Maintenance
Levee Inspections**

Maintenance Issue Types Only, Levee Inspection Report By Mile - Spring 2019

Reclamation District No. 0544 Upper Roberts Island

Waterway	Bank	Unit Miles	Inspection Start/End	Inspector
Unit No. 01 San Joaquin River	Left	6.05	05/09/2019 05/09/2019	Alberto De Leon

LM Start	1.12	Rating **	M	Issue No.	39 (cont)	
LM End	1.12	Issue Type +	Ma	Location *	LS	
Category	Earthen Levee			GPS Latitude/Longitude		
				Start		End
Item	Trim / Thin Trees			37.859423 °		37.859423 °
				-121.318328 °		-121.318328 °
DWR ID	DWR_RD0544_01_s_2012_39					
Comment Code						
T1 : Trim trees to at least five feet above ground level.						
Inspector Comment						
There are untrimmed trees on the landside slope.						

Photo 2 of 2 : SP_2019_RD0544_108_39_20190313_00028.jpg



Looking southwest at untrimmed tree on landward slope.

LM Start	1.19	Rating **	M	Issue No.	12
LM End	1.19	Issue Type +	Ma	Location *	LS
Category	Earthen Levee			GPS Latitude/Longitude	
				Start	End
Item	Vegetation			37.858489 °	37.858489 °
				-121.318743 °	-121.318743 °
DWR ID	DWR_RD0544_01_s_2018_12				
Comment Code					
V4 : Elderberries are blocking visibility and flood fight capability.					
Inspector Comment					

No Photos

LM Start	1.29	Rating **	M	Issue No.	89
LM End	1.29	Issue Type +	Ma	Location *	LS
Category	Earthen Levee			GPS Latitude/Longitude	
				Start	End
Item	Trim / Thin Trees			37.857321 °	37.857321 °
				-121.319943 °	-121.319943 °
DWR ID	DWR_RD0544_01_s_2014_89				
Comment Code					
T1 : Trim trees to at least five feet above ground level.					
Inspector Comment					

Photo 1 of 1 : SP_2019_RD0544_108_89_20190313_00057.jpg



Looking southwest at dense veg on landward slope and toe.

* Location		** Rating		+ Issue Type	
LS : Land Side	N/A : Not Applicable	A : Acceptable	N : Not Inspected/Rated	Ma : Maintenance Deficiency	
WS : Water Side		M : Minimally Acceptable	C : Corrected	Ob : Design & System Obsolescence	
CR : Crown		U : Unacceptable	A/W : Acceptable but Monitor & Maintain	En : Enforcement	

**Flood Control Project Maintenance
Levee Inspections**

Maintenance Issue Types Only, Levee Inspection Report By Mile - Spring 2019

Reclamation District No. 0544 Upper Roberts Island

Waterway	Bank	Unit Miles	Inspection Start/End	Inspector
Unit No. 01 San Joaquin River	Left	6.05	05/09/2019 05/09/2019	Alberto De Leon

LM Start	1.32	Rating **	M	Issue No.	63
LM End	1.32	Issue Type +	Ma	Location *	LS
Category	Earthen Levee			GPS Latitude/Longitude	
				Start	End
Item	Encroachments			37.857093 °	37.857093 °
				-121.320378 °	-121.320378 °
DWR ID	DWR_RD0544_01_s_2019_63				
Comment Code					
TR : Tree or limb					
Inspector Comment					

Photo 1 of 1 : SP_2019_RD0544_108_63_20190523_00162.jpg



View of tree limbs on landside slope. (Spring 2019)

LM Start	1.38	Rating **	M	Issue No.	64
LM End	1.38	Issue Type +	Ma	Location *	LS
Category	Earthen Levee			GPS Latitude/Longitude	
				Start	End
Item	Trim / Thin Trees			37.856443 °	37.856443 °
				-121.321123 °	-121.321123 °
DWR ID	DWR_RD0544_01_s_2019_64				
Comment Code					
T1 : Trim trees to at least five feet above ground level.					
Inspector Comment					

No Photos

LM Start	1.44	Rating **	M	Issue No.	42
LM End	1.44	Issue Type +	Ma	Location *	LS
Category	Earthen Levee			GPS Latitude/Longitude	
				Start	End
Item	Trim / Thin Trees			37.855617 °	37.855617 °
				-121.321157 °	-121.321157 °
DWR ID	DWR_RD0544_01_f_2018_42				
Comment Code					
T1 : Trim trees to at least five feet above ground level.					
Inspector Comment					

Photo 1 of 1 : SP_2019_RD0544_108_42_20190313_00029.jpg



Looking at untrimmed tree at landward toe. (Fall 2018)

* Location		** Rating		+ Issue Type	
LS : Land Side	N/A : Not Applicable	A : Acceptable	N : Not Inspected/Rated	Ma : Maintenance Deficiency	
WS : Water Side		M : Minimally Acceptable	C : Corrected	Ob : Design & System Obsolescence	
CR : Crown		U : Unacceptable	A/W : Acceptable but Monitor & Maintain	En : Enforcement	

**Flood Control Project Maintenance
Levee Inspections**

Maintenance Issue Types Only, Levee Inspection Report By Mile - Spring 2019

Reclamation District No. 0544 Upper Roberts Island

Waterway	Bank	Unit Miles	Inspection Start/End	Inspector
Unit No. 01 San Joaquin River	Left	6.05	05/09/2019 05/09/2019	Alberto De Leon

LM Start	1.44	Rating **	N	Issue No.	14
LM End	1.44	Issue Type +	Ma	Location *	WS
Category	Earthen Levee			GPS Latitude/Longitude	
				Start	End
Item	Trim / Thin Trees			37.855583 °	37.855583 °
				-121.321177 °	-121.321177 °
DWR ID	DWR_RD0544_01_s_2012_14				
Comment Code					
T5 : Tree stumps.					
Inspector Comment					

No Photos

LM Start	1.46	Rating **	M	Issue No.	87
LM End	1.48	Issue Type +	Ma	Location *	LS
Category	Earthen Levee			GPS Latitude/Longitude	
				Start	End
Item	Trim / Thin Trees			37.855416 °	37.855043 °
				-121.321171 °	-121.321122 °
DWR ID	DWR_RD0544_01_s_2015_87				
Comment Code					
T1 : Trim trees to at least five feet above ground level.					
Inspector Comment					

Photo 1 of 1 : SP_2019_RD0544_108_87_20190313_00056.jpg



Looking west at untrimmed tree at landward toe, Fall 2015.

LM Start	1.50	Rating **	M	Issue No.	119
LM End	1.51	Issue Type +	Ma	Location *	WS
Category	Earthen Levee			GPS Latitude/Longitude	
				Start	End
Item	Slope Stability			37.854844 °	37.854564 °
				-121.321090 °	-121.321031 °
DWR ID	DWR_RD0544_01_f_2015_119				
Comment Code					
S2 : Repair the levee slope damaged by foot traffic and prevent access where possible.					
Inspector Comment					
The slope is damaged due to fishermen using the slope as a ramp.					

Photo 1 of 3 : SP_2019_RD0544_108_119_20190313_00074.jpg



Looking southeast at damaged waterward slope, Fall 2015.

* Location		** Rating		+ Issue Type	
LS : Land Side	N/A : Not Applicable	A : Acceptable	N : Not Inspected/Rated	Ma : Maintenance Deficiency	
WS : Water Side		M : Minimally Acceptable	C : Corrected	Ob : Design & System Obsolescence	
CR : Crown		U : Unacceptable	A/W : Acceptable but Monitor & Maintain	En : Enforcement	

**Flood Control Project Maintenance
Levee Inspections**

Maintenance Issue Types Only, Levee Inspection Report By Mile - Spring 2019

Reclamation District No. 0544 Upper Roberts Island

Waterway	Bank	Unit Miles	Inspection Start/End	Inspector
Unit No. 01 San Joaquin River	Left	6.05	05/09/2019 05/09/2019	Alberto De Leon

LM Start	1.50	Rating **	M	Issue No.	119 (cont)	
LM End	1.51	Issue Type +	Ma	Location *	WS	
Category	Earthen Levee			GPS Latitude/Longitude		
				Start		End
Item	Slope Stability			37.854844 °		37.854564 °
				-121.321090 °		-121.321031 °
DWR ID	DWR_RD0544_01_f_2015_119					
Comment Code						
S2 : Repair the levee slope damaged by foot traffic and prevent access where possible.						
Inspector Comment						
The slope is damaged due to fishermen using the slope as a ramp.						

Photo 2 of 3 : SP_2019_RD0544_108_119_20190313_00075.jpg



Looking east at damaged waterward slope, Fall 2015.

LM Start	1.50	Rating **	M	Issue No.	119 (cont)
LM End	1.51	Issue Type +	Ma	Location *	WS

Photo 3 of 3 : SP_2019_RD0544_108_119_20190313_00076.jpg



Looking southeast at damaged waterward slope, Fall 2015

LM Start	1.56	Rating **	U	Issue No.	43
LM End	1.66	Issue Type +	Ma	Location *	WS
Category	Earthen Levee			GPS Latitude/Longitude	
				Start	End
Item	Vegetation			37.854068 °	37.854815 °
				-121.321387 °	-121.322939 °
DWR ID	DWR_RD0544_01_s_2012_43				
Comment Code					
V2 : Remove the wild growth other than native grasses from the levee slopes.					
Inspector Comment					
There is dense vegetation on the waterside slope.					

Photo 1 of 1 : SP_2019_RD0544_108_43_20190313_00030.jpg



Looking east at dense veg on waterward slope.

* Location
LS : Land Side N/A : Not Applicable
WS : Water Side
CR : Crown

** Rating
A : Acceptable N : Not Inspected/Rated
M : Minimally Acceptable C : Corrected
U : Unacceptable A/W : Acceptable but Monitor & Maintain

+ Issue Type
Ma : Maintenance Deficiency
Ob : Design & System Obsolescence
En : Enforcement

**Flood Control Project Maintenance
Levee Inspections**

Maintenance Issue Types Only, Levee Inspection Report By Mile - Spring 2019

Reclamation District No. 0544 Upper Roberts Island

Waterway	Bank	Unit Miles	Inspection Start/End	Inspector
Unit No. 01 San Joaquin River	Left	6.05	05/09/2019 05/09/2019	Alberto De Leon

LM Start	1.59	Rating **	M	Issue No.	95
LM End	1.59	Issue Type +	Ma	Location *	LS
Category	Earthen Levee			GPS Latitude/Longitude	
				Start	End
Item	Trim / Thin Trees			37.854299 °	37.854299 °
				-121.321865 °	-121.321865 °
DWR ID	DWR_RD0544_01_s_2018_95				
Comment Code					
T1 : Trim trees to at least five feet above ground level.					
Inspector Comment					
There is an untrimmed tree on the landside slope.					

Photo 1 of 1 : SP_2019_RD0544_108_95_20190313_00062.jpg



Looking southwest at untrimmed tree on landward slope.

LM Start	1.63	Rating **	U	Issue No.	146
LM End	1.63	Issue Type +	Ma	Location *	LS
Category	Earthen Levee			GPS Latitude/Longitude	
				Start	End
Item	Animal Control			37.854643 °	37.854643 °
				-121.322429 °	-121.322429 °
DWR ID	DWR_RD0544_01_f_2017_146				
Comment Code					
A3 : No rodents visible, but rodent burrows visible; need to backfill and compact or grout burrows.					
Inspector Comment					
There is a large rodent hole on the landside slope.					

Photo 1 of 1 : SP_2019_RD0544_108_146_20190313_00116.jpg



Looking east at the landside slope.

LM Start	1.64	Rating **	M	Issue No.	145
LM End	1.64	Issue Type +	Ma	Location *	LS
Category	Earthen Levee			GPS Latitude/Longitude	
				Start	End
Item	Trim / Thin Trees			37.854673 °	37.854673 °
				-121.322492 °	-121.322492 °
DWR ID	DWR_RD0544_01_f_2017_145				
Comment Code					
T1 : Trim trees to at least five feet above ground level.					
Inspector Comment					

Photo 1 of 1 : SP_2019_RD0544_108_145_20190313_00115.jpg



Looking northwest at the landside slope.

* Location
LS : Land Side N/A : Not Applicable
WS : Water Side
CR : Crown

** Rating
A : Acceptable N : Not Inspected/Rated
M : Minimally Acceptable C : Corrected
U : Unacceptable A/W : Acceptable but Monitor & Maintain

+ Issue Type
Ma : Maintenance Deficiency
Ob : Design & System Obsolescence
En : Enforcement

**Flood Control Project Maintenance
Levee Inspections**

Maintenance Issue Types Only, Levee Inspection Report By Mile - Spring 2019

Reclamation District No. 0544 Upper Roberts Island

Waterway	Bank	Unit Miles	Inspection Start/End	Inspector
Unit No. 01 San Joaquin River	Left	6.05	05/09/2019 05/09/2019	Alberto De Leon

LM Start	1.74	Rating **	M	Issue No.	65
LM End	2.01	Issue Type +	Ma	Location *	WS
Category	Earthen Levee			GPS Latitude/Longitude	
				Start	End
Item	Vegetation			37.854318 °	37.850775 °
				-121.324027 °	-121.322454 °
DWR ID	DWR_RD0544_01_s_2019_65				
Comment Code					
V2 : Remove the wild growth other than native grasses from the levee slopes.					
Inspector Comment					

No Photos

LM Start	1.78	Rating **	M	Issue No.	88
LM End	1.78	Issue Type +	Ma	Location *	LS
Category	Earthen Levee			GPS Latitude/Longitude	
				Start	End
Item	Trim / Thin Trees			37.853770 °	37.853770 °
				-121.324293 °	-121.324293 °
DWR ID	DWR_RD0544_01_s_2015_88				
Comment Code					
T1 : Trim trees to at least five feet above ground level.					
Inspector Comment					

No Photos

LM Start	1.82	Rating **	C	Issue No.	80
LM End	1.82	Issue Type +	Ma	Location *	LS
Category	Earthen Levee			GPS Latitude/Longitude	
				Start	End
Item	Erosion / Bank Caving			37.853173 °	37.853173 °
				-121.324145 °	-121.324145 °
DWR ID	DWR_RD0544_01_s_2017_80				
Comment Code					
E2 : Schedule repair of erosion site prior to the next inspection.					
Inspector Comment					
Slope repaired where it was damaged due to water runoff.					

No Photos

* Location LS : Land Side N/A : Not Applicable WS : Water Side CR : Crown		** Rating A : Acceptable M : Minimally Acceptable U : Unacceptable N : Not Inspected/Rated C : Corrected A/W : Acceptable but Monitor & Maintain		+ Issue Type Ma : Maintenance Deficiency Ob : Design & System Obsolescence En : Enforcement	
--	--	---	--	---	--

**Flood Control Project Maintenance
Levee Inspections**

Maintenance Issue Types Only, Levee Inspection Report By Mile - Spring 2019

Reclamation District No. 0544 Upper Roberts Island

Waterway	Bank	Unit Miles	Inspection Start/End	Inspector
Unit No. 01 San Joaquin River	Left	6.05	05/09/2019 05/09/2019	Alberto De Leon

LM Start	1.88	Rating **	M	Issue No.	81
LM End	1.88	Issue Type +	Ma	Location *	LS
Category	Earthen Levee		GPS Latitude/Longitude		
			Start	End	
Item	Animal Control		37.852327 °	37.852327 °	
			-121.323767 °	-121.323767 °	
DWR ID	DWR_RD0544_01_f_2017_81				
Comment Code					
A1 : Exterminate rodents and backfill and compact or grout burrows.					
Inspector Comment					
Active rodents are on the levee.					

No Photos

LM Start	1.89	Rating **	A/W	Issue No.	127
LM End	1.91	Issue Type +	Ma	Location *	
Category	Supplemental		GPS Latitude/Longitude		
			Start	End	
Item	2017 Storm Damage		37.852300 °	37.852000 °	
			-121.323700 °	-121.323600 °	
DWR ID	DWR_RD0544_01_f_2017_127				
Comment Code					
Inspector Comment					
Levee Evaluation Comments Description:Slope protection repairs are needed along the waterside slope due to erosion and riprap displacement from high water. Based upon levee inspections, it was determined the waterside levee slope is eroding, deteriorating, and degrading. The eroded levee sections need to be restored back to design standards to prevent further deterioration and damage. Site ID No:569 Site Designation:LMA-475 Repair Type: Erosion Rating:Area of Concern Field Date:8/10/2017 Notes:					

Photo 1 of 3 : LEVAL_SP_2019_569_4614.jpg



* Location LS : Land Side N/A : Not Applicable WS : Water Side CR : Crown	** Rating A : Acceptable M : Minimally Acceptable U : Unacceptable	N : Not Inspected/Rated C : Corrected A/W : Acceptable but Monitor & Maintain	+ Issue Type Ma : Maintenance Deficiency Ob : Design & System Obsolescence En : Enforcement
--	--	---	---

**Flood Control Project Maintenance
Levee Inspections**

Maintenance Issue Types Only, Levee Inspection Report By Mile - Spring 2019

Reclamation District No. 0544 Upper Roberts Island

Waterway	Bank	Unit Miles	Inspection Start/End	Inspector
Unit No. 01 San Joaquin River	Left	6.05	05/09/2019 05/09/2019	Alberto De Leon

LM Start	1.89	Rating **	A/W	Issue No.	127 (cont)
LM End	1.91	Issue Type +	Ma	Location *	
Category	Supplemental			GPS Latitude/Longitude	
				Start	End
Item	2017 Storm Damage			37.852300 °	37.852000 °
				-121.323700 °	-121.323600 °
DWR ID	DWR_RD0544_01_f_2017_127				
Comment Code					
Inspector Comment					
Levee Evaluation Comments					
Description:Slope protection repairs are needed along the waterside slope due to erosion and riprap displacement from high water. Based upon levee inspections, it was determined the waterside levee slope is eroding, deteriorating, and degrading. The eroded levee sections need to be restored back to design standards to prevent further deterioration and damage.					
Site ID No:569					
Site Designation:LMA-475					
Repair Type: Erosion					
Rating:Area of Concern					
Field Date:8/10/2017					
Notes:					

Photo 2 of 3 : LEVAL_SP_2019_569_4615.jpg



LM Start	1.89	Rating **	A/W	Issue No.	127 (cont)
LM End	1.91	Issue Type +	Ma	Location *	

Photo 3 of 3 : LEVAL_SP_2019_569_4616.jpg



* Location LS : Land Side N/A : Not Applicable WS : Water Side CR : Crown	** Rating A : Acceptable M : Minimally Acceptable U : Unacceptable N : Not Inspected/Rated C : Corrected A/W : Acceptable but Monitor & Maintain	+ Issue Type Ma : Maintenance Deficiency Ob : Design & System Obsolescence En : Enforcement
--	---	---

**Flood Control Project Maintenance
Levee Inspections**

Maintenance Issue Types Only, Levee Inspection Report By Mile - Spring 2019

Reclamation District No. 0544 Upper Roberts Island

Waterway	Bank	Unit Miles	Inspection Start/End	Inspector
Unit No. 01 San Joaquin River	Left	6.05	05/09/2019 05/09/2019	Alberto De Leon

LM Start	2.25	Rating **	M	Issue No.	82
LM End	2.25	Issue Type +	Ma	Location *	LS
Category	Earthen Levee			GPS Latitude/Longitude	
				Start	End
Item	Encroachments			37.848302 °	37.848302 °
				-121.324877 °	-121.324877 °
DWR ID	DWR_RD0544_01_s_2017_82				
Comment Code					
EQ : Equipment					
Inspector Comment					
An old irrigation pipe needs to be removed.					

Photo 1 of 1 : SP_2019_RD0544_108_82_20190313_00053.jpg



Looking southwest at old irrigation pipe on landward shoulder.

LM Start	2.25	Rating **	C	Issue No.	23
LM End	2.25	Issue Type +	Ma	Location *	LS
Category	Earthen Levee			GPS Latitude/Longitude	
				Start	End
Item	Erosion / Bank Caving			37.848198 °	37.848198 °
				-121.324802 °	-121.324802 °
DWR ID	DWR_RD0544_01_s_2012_23				
Comment Code					
E2 : Schedule repair of erosion site prior to the next inspection.					
Inspector Comment					
Caving/erosion around irrigation pipe on landside slope has been fixed.					

No Photos

LM Start	2.26	Rating **	M	Issue No.	98
LM End	2.31	Issue Type +	Ma	Location *	LS
Category	Earthen Levee			GPS Latitude/Longitude	
				Start	End
Item	Trim / Thin Trees			37.848021 °	37.847343 °
				-121.324839 °	-121.324672 °
DWR ID	DWR_RD0544_01_f_2014_98				
Comment Code					
T2 : Thin trees to allow visibility of the ground and room to flood fight.					
Inspector Comment					
Untrimmed trees are on the landside slope.					

Photo 1 of 1 : SP_2019_RD0544_108_98_20190313_00063.jpg



Looking south at untrimmed trees on landward slope.

* Location LS : Land Side N/A : Not Applicable WS : Water Side CR : Crown		** Rating A : Acceptable M : Minimally Acceptable U : Unacceptable		N : Not Inspected/Rated C : Corrected A/W : Acceptable but Monitor & Maintain		+ Issue Type Ma : Maintenance Deficiency Ob : Design & System Obsolescence En : Enforcement	
--	--	--	--	---	--	---	--

**Flood Control Project Maintenance
Levee Inspections**

Maintenance Issue Types Only, Levee Inspection Report By Mile - Spring 2019

Reclamation District No. 0544 Upper Roberts Island

Waterway	Bank	Unit Miles	Inspection Start/End	Inspector
Unit No. 01 San Joaquin River	Left	6.05	05/09/2019 05/09/2019	Alberto De Leon

LM Start	2.27	Rating **	C	Issue No.	44
LM End	2.27	Issue Type +	Ma	Location *	LS
Category	Earthen Levee			GPS Latitude/Longitude	
				Start	End
Item	Erosion / Bank Caving			37.847990 °	37.847990 °
				-121.324897 °	-121.324897 °
DWR ID	DWR_RD0544_01_f_2018_44				
Comment Code					
E2 : Schedule repair of erosion site prior to the next inspection.					
Inspector Comment					
Erosion around an irrigation pipe on the landward slope has been repaired.					

No Photos

LM Start	2.27	Rating **	M	Issue No.	8
LM End	2.33	Issue Type +	Ma	Location *	LS
Category	Earthen Levee			GPS Latitude/Longitude	
				Start	End
Item	Animal Control			37.847973 °	37.847105 °
				-121.324820 °	-121.324577 °
DWR ID	DWR_RD0544_01_s_2012_8				
Comment Code					
A3 : No rodents visible, but rodent burrows visible; need to backfill and compact or grout burrows.					
Inspector Comment					

Photo 1 of 1 : SP_2019_RD0544_108_8_20190313_00013.jpg



Looking southwest at several rodent holes on landward shoulder and slope.

LM Start	2.30	Rating **	M	Issue No.	90
LM End	2.30	Issue Type +	Ma	Location *	CR
Category	Earthen Levee			GPS Latitude/Longitude	
				Start	End
Item	Crown Surface / Depressions / Rutting			37.847542 °	37.847542 °
				-121.324732 °	-121.324732 °
DWR ID	DWR_RD0544_01_s_2019_90				
Comment Code					
C2 : Repair depressions or ruts in the crown or slope.					
Inspector Comment					

Photo 1 of 1 : SP_2019_RD0544_108_90_20190313_00058.jpg



Looking at sinkhole on levee crown.

* Location
LS : Land Side N/A : Not Applicable
WS : Water Side
CR : Crown

** Rating
A : Acceptable N : Not Inspected/Rated
M : Minimally Acceptable C : Corrected
U : Unacceptable A/W : Acceptable but Monitor & Maintain

+ Issue Type
Ma : Maintenance Deficiency
Ob : Design & System Obsolescence
En : Enforcement

**Flood Control Project Maintenance
Levee Inspections**

Maintenance Issue Types Only, Levee Inspection Report By Mile - Spring 2019

Reclamation District No. 0544 Upper Roberts Island

Waterway	Bank	Unit Miles	Inspection Start/End	Inspector
Unit No. 01 San Joaquin River	Left	6.05	05/09/2019 05/09/2019	Alberto De Leon

LM Start	2.31	Rating **	M	Issue No.	149
LM End	2.31	Issue Type +	Ma	Location *	LS
Category	Earthen Levee			GPS Latitude/Longitude	
				Start	End
Item	Trim / Thin Trees			37.847327 °	37.847327 °
				-121.324663 °	-121.324663 °
DWR ID	DWR_RD0544_01_f_2017_149				
Comment Code					
T1 : Trim trees to at least five feet above ground level.					
Inspector Comment					

No Photos

LM Start	2.31	Rating **	A/W	Issue No.	128
LM End	2.35	Issue Type +	Ma	Location *	
Category	Supplemental			GPS Latitude/Longitude	
				Start	End
Item	2017 Storm Damage			37.847300 °	37.846800 °
				-121.324700 °	-121.324400 °
DWR ID	DWR_RD0544_01_f_2017_128				
Comment Code					
Inspector Comment					
Levee Evaluation Comments					
Description:Slope protection repairs are needed along the waterside slope due to erosion and riprap displacement from high water. Based upon levee inspections, it was determined the waterside levee slope is eroding, deteriorating, and degrading. The eroded levee sections need to be restored back to design standards to prevent further deterioration and damage.					
Site ID No:568					
Site Designation:LMA-474					
Repair Type: Erosion					
Rating:Area of Concern					
Field Date:8/10/2017					
Notes:					

Photo 1 of 3 : LEVAL_SP_2019_568_4540.jpg



* Location LS : Land Side N/A : Not Applicable WS : Water Side CR : Crown	** Rating A : Acceptable M : Minimally Acceptable U : Unacceptable	N : Not Inspected/Rated C : Corrected A/W : Acceptable but Monitor & Maintain	+ Issue Type Ma : Maintenance Deficiency Ob : Design & System Obsolescence En : Enforcement
--	--	---	---

**Flood Control Project Maintenance
Levee Inspections**

Maintenance Issue Types Only, Levee Inspection Report By Mile - Spring 2019

Reclamation District No. 0544 Upper Roberts Island

Waterway	Bank	Unit Miles	Inspection Start/End	Inspector
Unit No. 01 San Joaquin River	Left	6.05	05/09/2019 05/09/2019	Alberto De Leon

LM Start	2.31	Rating **	A/W	Issue No.	128 (cont)
LM End	2.35	Issue Type +	Ma	Location *	
Category	Supplemental			GPS Latitude/Longitude	
				Start	End
Item	2017 Storm Damage			37.847300 °	37.846800 °
				-121.324700 °	-121.324400 °
DWR ID	DWR_RD0544_01_f_2017_128				
Comment Code					
Inspector Comment					
Levee Evaluation Comments					
Description:Slope protection repairs are needed along the waterside slope due to erosion and riprap displacement from high water. Based upon levee inspections, it was determined the waterside levee slope is eroding, deteriorating, and degrading. The eroded levee sections need to be restored back to design standards to prevent further deterioration and damage.					
Site ID No:568					
Site Designation:LMA-474					
Repair Type: Erosion					
Rating:Area of Concern					
Field Date:8/10/2017					
Notes:					

Photo 2 of 3 : LEVAL_SP_2019_568_4545.jpg



LM Start	2.31	Rating **	A/W	Issue No.	128 (cont)
LM End	2.35	Issue Type +	Ma	Location *	

Photo 3 of 3 : LEVAL_SP_2019_568_4547.jpg



* Location LS : Land Side N/A : Not Applicable WS : Water Side CR : Crown	** Rating A : Acceptable M : Minimally Acceptable U : Unacceptable N : Not Inspected/Rated C : Corrected A/W : Acceptable but Monitor & Maintain	+ Issue Type Ma : Maintenance Deficiency Ob : Design & System Obsolescence En : Enforcement
--	---	---

**Flood Control Project Maintenance
Levee Inspections**

Maintenance Issue Types Only, Levee Inspection Report By Mile - Spring 2019

Reclamation District No. 0544 Upper Roberts Island

Waterway	Bank	Unit Miles	Inspection Start/End	Inspector
Unit No. 01 San Joaquin River	Left	6.05	05/09/2019 05/09/2019	Alberto De Leon

LM Start	2.32	Rating **	U	Issue No.	34
LM End	2.36	Issue Type +	Ma	Location *	LS
Category	Earthen Levee			GPS Latitude/Longitude	
				Start	End
Item	Animal Control			37.847292 °	37.846743 °
				-121.324662 °	-121.324336 °
DWR ID	DWR_RD0544_01_s_2012_34				
Comment Code					
A1 : Exterminate rodents and backfill and compact or grout burrows.					
Inspector Comment					
There are several rodent holes within this reach.					

Photo 1 of 3 : SP_2019_RD0544_108_34_20190313_00023.jpg



Looking east at large rodent hole on landward slope.

LM Start	2.32	Rating **	U	Issue No.	34 (cont)
LM End	2.36	Issue Type +	Ma	Location *	LS

Photo 2 of 3 : SP_2019_RD0544_108_34_20190313_00024.jpg



Looking south at several rodent holes on landward shoulder and slope.

LM Start	2.32	Rating **	U	Issue No.	34 (cont)
LM End	2.36	Issue Type +	Ma	Location *	LS

Photo 3 of 3 : SP_2019_RD0544_108_34_20190313_00025.jpg



Looking at rodent hole on levee crown.

* Location LS : Land Side N/A : Not Applicable WS : Water Side CR : Crown		** Rating A : Acceptable M : Minimally Acceptable U : Unacceptable		N : Not Inspected/Rated C : Corrected A/W : Acceptable but Monitor & Maintain		+ Issue Type Ma : Maintenance Deficiency Ob : Design & System Obsolescence En : Enforcement	
---	--	---	--	---	--	--	--

**Flood Control Project Maintenance
Levee Inspections**

Maintenance Issue Types Only, Levee Inspection Report By Mile - Spring 2019

Reclamation District No. 0544 Upper Roberts Island

Waterway	Bank	Unit Miles	Inspection Start/End	Inspector
Unit No. 01 San Joaquin River	Left	6.05	05/09/2019 05/09/2019	Alberto De Leon

LM Start	2.33	Rating **	C	Issue No.	46
LM End	2.33	Issue Type +	Ma	Location *	WS
Category	Earthen Levee			GPS Latitude/Longitude	
				Start	End
Item	Erosion / Bank Caving			37.847112 °	37.847112 °
				-121.324555 °	-121.324555 °
DWR ID	DWR_RD0544_01_f_2018_46				
Comment Code					
E1 : Note and monitor erosion site.					
Inspector Comment					
Caving on the waterward shoulder has been repaired.					

No Photos

LM Start	2.43	Rating **	U	Issue No.	91
LM End	2.43	Issue Type +	Ma	Location *	LS
Category	Earthen Levee			GPS Latitude/Longitude	
				Start	End
Item	Slope Stability			37.845973 °	37.845973 °
				-121.323373 °	-121.323373 °
DWR ID	DWR_RD0544_01_s_2017_91				
Comment Code					
S3 : Repair the levee slope damaged by vehicle traffic and prevent access where possible.					
Inspector Comment					
There is slope stability with a depression in the crown due to vehicle traffic.					

Photo 1 of 1 : SP_2019_RD0544_108_91_20190313_00059.jpg



Looking south at depression on levee crown and landward slope.

* Location LS : Land Side N/A : Not Applicable WS : Water Side CR : Crown		** Rating A : Acceptable N : Not Inspected/Rated M : Minimally Acceptable C : Corrected U : Unacceptable A/W : Acceptable but Monitor & Maintain		+ Issue Type Ma : Maintenance Deficiency Ob : Design & System Obsolescence En : Enforcement
--	--	---	--	---

**Flood Control Project Maintenance
Levee Inspections**

Maintenance Issue Types Only, Levee Inspection Report By Mile - Spring 2019

Reclamation District No. 0544 Upper Roberts Island

Waterway	Bank	Unit Miles	Inspection Start/End	Inspector
Unit No. 01 San Joaquin River	Left	6.05	05/09/2019 05/09/2019	Alberto De Leon

LM Start	2.53	Rating **	A/W	Issue No.	129							
LM End	2.56	Issue Type +	Ma	Location *								
Category	Supplemental		GPS Latitude/Longitude									
			Start	End								
Item	2017 Storm Damage		37.844900 °	37.844500 °								
			-121.322300 °	-121.321900 °								
DWR ID	DWR_RD0544_01_f_2017_129											
Comment Code												
Inspector Comment												
<p>Levee Evaluation Comments</p> <p>Description: Slope protection repairs are needed along the waterside slope due to erosion and riprap displacement from high water. Based upon levee inspections, it was determined the waterside levee slope is eroding, deteriorating, and degrading. The eroded levee sections need to be restored back to design standards to prevent further deterioration and damage.</p> <p>Site ID No: 567</p> <p>Site Designation: LMA-473</p> <p>Repair Type: Erosion</p> <p>Rating: Area of Concern</p> <p>Field Date: 8/10/2017</p> <p>Notes: large rodent holes observed on landside slope.</p>												

Photo 1 of 3 : LEVAL_SP_2019_567_4552.jpg



LM Start	2.53	Rating **	A/W	Issue No.	129 (cont)
LM End	2.56	Issue Type +	Ma	Location *	

Photo 2 of 3 : LEVAL_SP_2019_567_4554.jpg



* Location LS : Land Side N/A : Not Applicable WS : Water Side CR : Crown		** Rating A : Acceptable N : Not Inspected/Rated M : Minimally Acceptable C : Corrected U : Unacceptable A/W : Acceptable but Monitor & Maintain		+ Issue Type Ma : Maintenance Deficiency Ob : Design & System Obsolescence En : Enforcement
--	--	---	--	---

**Flood Control Project Maintenance
Levee Inspections**

Maintenance Issue Types Only, Levee Inspection Report By Mile - Spring 2019

Reclamation District No. 0544 Upper Roberts Island

Waterway	Bank	Unit Miles	Inspection Start/End	Inspector
Unit No. 01 San Joaquin River	Left	6.05	05/09/2019 05/09/2019	Alberto De Leon

LM Start	2.53	Rating **	A/W	Issue No.	129 (cont)
LM End	2.56	Issue Type +	Ma	Location *	
Category	Supplemental			GPS Latitude/Longitude	
				Start	End
Item	2017 Storm Damage			37.844900 °	37.844500 °
				-121.322300 °	-121.321900 °
DWR ID	DWR_RD0544_01_f_2017_129				
Comment Code					
Inspector Comment					
Levee Evaluation Comments					
Description:Slope protection repairs are needed along the waterside slope due to erosion and riprap displacement from high water. Based upon levee inspections, it was determined the waterside levee slope is eroding, deteriorating, and degrading. The eroded levee sections need to be restored back to design standards to prevent further deterioration and damage.					
Site ID No:567					
Site Designation:LMA-473					
Repair Type: Erosion					
Rating:Area of Concern					
Field Date:8/10/2017					
Notes: large rodent holes observed on landside slope.					

Photo 3 of 3 : LEVAL_SP_2019_567_4556.jpg



LM Start	2.77	Rating **	M	Issue No.	74
LM End	2.80	Issue Type +	Ma	Location *	WS
Category	Earthen Levee			GPS Latitude/Longitude	
				Start	End
Item	Vegetation			37.841580 °	37.841289 °
				-121.321434 °	-121.320935 °
DWR ID	DWR_RD0544_01_s_2019_74				
Comment Code					
V2 : Remove the wild growth other than native grasses from the levee slopes.					
Inspector Comment					

No Photos

* Location LS : Land Side N/A : Not Applicable WS : Water Side CR : Crown	** Rating A : Acceptable M : Minimally Acceptable U : Unacceptable N : Not Inspected/Rated C : Corrected A/W : Acceptable but Monitor & Maintain	+ Issue Type Ma : Maintenance Deficiency Ob : Design & System Obsolescence En : Enforcement
--	---	---

**Flood Control Project Maintenance
Levee Inspections**

Maintenance Issue Types Only, Levee Inspection Report By Mile - Spring 2019

Reclamation District No. 0544 Upper Roberts Island

Waterway	Bank	Unit Miles	Inspection Start/End	Inspector
Unit No. 01 San Joaquin River	Left	6.05	05/09/2019 05/09/2019	Alberto De Leon

LM Start	2.84	Rating **	N	Issue No.	22
LM End	2.84	Issue Type +	Ma	Location *	LS
Category	Earthen Levee			GPS Latitude/Longitude	
				Start	End
Item	Trim / Thin Trees			37.841075 °	37.841075 °
				-121.320205 °	-121.320205 °
DWR ID	DWR_RD0544_01_s_2012_22				
Comment Code					
T5 : Tree stumps.					
Inspector Comment					

No Photos

LM Start	2.89	Rating **	U	Issue No.	106
LM End	3.16	Issue Type +	Ma	Location *	WS
Category	Earthen Levee			GPS Latitude/Longitude	
				Start	End
Item	Vegetation			37.840952 °	37.837588 °
				-121.319327 °	-121.317540 °
DWR ID	DWR_RD0544_01_s_2015_106				
Comment Code					
V2 : Remove the wild growth other than native grasses from the levee slopes.					
Inspector Comment					
There are dense willows and vegetation on the waterside slope.					

Photo 1 of 1 : SP_2019_RD0544_108_106_20190313_00066.jpg



Looking southeast at dense willows (veg) on waterward slope and toe, Fall 2015.

LM Start	2.95	Rating **	M	Issue No.	107
LM End	2.96	Issue Type +	Ma	Location *	LS
Category	Earthen Levee			GPS Latitude/Longitude	
				Start	End
Item	Erosion / Bank Caving			37.840560 °	37.840467 °
				-121.318463 °	-121.318367 °
DWR ID	DWR_RD0544_01_s_2015_107				
Comment Code					
E1 : Note and monitor erosion site.					
Inspector Comment					
Several depressions are on the landside slope within this reach.					

Photo 1 of 2 : SP_2019_RD0544_108_107_20190313_00067.jpg



Looking south at depression on landward slope.

*** Location**
LS : Land Side N/A : Not Applicable
WS : Water Side
CR : Crown

**** Rating**
A : Acceptable N : Not Inspected/Rated
M : Minimally Acceptable C : Corrected
U : Unacceptable A/W : Acceptable but Monitor & Maintain

+ Issue Type
Ma : Maintenance Deficiency
Ob : Design & System Obsolescence
En : Enforcement

**Flood Control Project Maintenance
Levee Inspections**

Maintenance Issue Types Only, Levee Inspection Report By Mile - Spring 2019

Reclamation District No. 0544 Upper Roberts Island

Waterway	Bank	Unit Miles	Inspection Start/End	Inspector
Unit No. 01 San Joaquin River	Left	6.05	05/09/2019 05/09/2019	Alberto De Leon

LM Start	2.95	Rating **	M	Issue No.	107 (cont)	
LM End	2.96	Issue Type +	Ma	Location *	LS	
Category	Earthen Levee			GPS Latitude/Longitude		
				Start		End
Item	Erosion / Bank Caving			37.840560 °		37.840467 °
				-121.318463 °		-121.318367 °
DWR ID	DWR_RD0544_01_s_2015_107					
Comment Code						
E1 : Note and monitor erosion site.						
Inspector Comment						
Several depressions are on the landside slope within this reach.						

Photo 2 of 2 : SP_2019_RD0544_108_107_20190313_00068.jpg



Looking west at depression on landward shoulder.

LM Start	2.95	Rating **	M	Issue No.	5
LM End	2.95	Issue Type +	Ma	Location *	WS
Category	Supplemental			GPS Latitude/Longitude	
				Start	End
Item	DWR Erosion Survey			37.840697 °	37.840697 °
				-121.318252 °	-121.318252 °
DWR ID	RD0544U01RM49.67				
Comment Code					
Inspector Comment					
09/13/2017: No significant change observed.					
07/25/2016: No significant change observed.					
06/24/2015: No significant change observed.					
06/19/2014: No significant change observed.					
08/13/2013: Pump has been removed. A larger pocket erosion has been found at the erosion site.					
08/07/2012: The erosion is immediately upstream of a river bend.					
Dense vegetation is visible at the erosion site. [2017 Site ID:RD0544U01RM49.67]					

Photo 1 of 3 : SP_2019_RD0544_108_5_20190313_00010.jpg



Front view of the erosion.

* Location LS : Land Side N/A : Not Applicable WS : Water Side CR : Crown		** Rating A : Acceptable M : Minimally Acceptable U : Unacceptable N : Not Inspected/Rated C : Corrected A/W : Acceptable but Monitor & Maintain		+ Issue Type Ma : Maintenance Deficiency Ob : Design & System Obsolescence En : Enforcement	
---	--	--	--	--	--

**Flood Control Project Maintenance
Levee Inspections**

Maintenance Issue Types Only, Levee Inspection Report By Mile - Spring 2019

Reclamation District No. 0544 Upper Roberts Island

Waterway	Bank	Unit Miles	Inspection Start/End	Inspector
Unit No. 01 San Joaquin River	Left	6.05	05/09/2019 05/09/2019	Alberto De Leon

LM Start	2.95	Rating **	M	Issue No.	5 (cont)	
LM End	2.95	Issue Type +	Ma	Location *	WS	
Category	Supplemental			GPS Latitude/Longitude		
				Start		End
Item	DWR Erosion Survey			37.840697 °		37.840697 °
				-121.318252 °		-121.318252 °
DWR ID	RD0544U01RM49.67					
Comment Code						
Inspector Comment						
09/13/2017: No significant change observed.						
07/25/2016: No significant change observed.						
06/24/2015: No significant change observed.						
06/19/2014: No significant change observed.						
08/13/2013: Pump has been removed. A larger pocket erosion has been found at the erosion site.						
08/07/2012: The erosion is immediately upstream of a river bend.						
Dense vegetation is visible at the erosion site. [2017 Site ID:RD0544U01RM49.67]						

Photo 2 of 3 : SP_2019_RD0544_108_5_20190313_00011.jpg



Front view of the erosion.

LM Start	2.95	Rating **	M	Issue No.	5 (cont)
LM End	2.95	Issue Type +	Ma	Location *	WS

Photo 3 of 3 : SP_2019_RD0544_108_5_20190313_00012.jpg



Downstream view of the site.

* Location LS : Land Side N/A : Not Applicable WS : Water Side CR : Crown	** Rating A : Acceptable M : Minimally Acceptable U : Unacceptable	N : Not Inspected/Rated C : Corrected A/W : Acceptable but Monitor & Maintain	+ Issue Type Ma : Maintenance Deficiency Ob : Design & System Obsolescence En : Enforcement
--	--	---	---

**Flood Control Project Maintenance
Levee Inspections**

Maintenance Issue Types Only, Levee Inspection Report By Mile - Spring 2019

Reclamation District No. 0544 Upper Roberts Island

Waterway	Bank	Unit Miles	Inspection Start/End	Inspector
Unit No. 01 San Joaquin River	Left	6.05	05/09/2019 05/09/2019	Alberto De Leon

LM Start	2.95	Rating **	M	Issue No.	47
LM End	3.19	Issue Type +	Ma	Location *	LS
Category	Earthen Levee			GPS Latitude/Longitude	
				Start	End
Item	Vegetation			37.840485 °	37.837225 °
				-121.318390 °	-121.317408 °
DWR ID	DWR_RD0544_01_s_2012_47				
Comment Code					
V2 : Remove the wild growth other than native grasses from the levee slopes.					
Inspector Comment					

Photo 1 of 1 : SP_2019_RD0544_108_47_20190313_00036.jpg



Looking south at dense veg on landward slope, Fall 2015.

LM Start	3.08	Rating **	M	Issue No.	108
LM End	3.08	Issue Type +	Ma	Location *	LS
Category	Earthen Levee			GPS Latitude/Longitude	
				Start	End
Item	Trim / Thin Trees			37.838733 °	37.838733 °
				-121.317918 °	-121.317918 °
DWR ID	DWR_RD0544_01_s_2015_108				
Comment Code					
T1 : Trim trees to at least five feet above ground level.					
Inspector Comment					

No Photos

LM Start	3.14	Rating **	C	Issue No.	76
LM End	3.14	Issue Type +	Ma	Location *	WS
Category	Earthen Levee			GPS Latitude/Longitude	
				Start	End
Item	Erosion / Bank Caving			37.837929 °	37.837929 °
				-121.317663 °	-121.317663 °
DWR ID	DWR_RD0544_01_f_2013_76				
Comment Code					
E2 : Schedule repair of erosion site prior to the next inspection.					
Inspector Comment					
Slope damaged that extended from the levee slope to shoulder has been repaired.					

No Photos

* Location		** Rating		+ Issue Type	
LS : Land Side	N/A : Not Applicable	A : Acceptable	N : Not Inspected/Rated	Ma : Maintenance Deficiency	
WS : Water Side		M : Minimally Acceptable	C : Corrected	Ob : Design & System Obsolescence	
CR : Crown		U : Unacceptable	A/W : Acceptable but Monitor & Maintain	En : Enforcement	

**Flood Control Project Maintenance
Levee Inspections**

Maintenance Issue Types Only, Levee Inspection Report By Mile - Spring 2019

Reclamation District No. 0544 Upper Roberts Island

Waterway	Bank	Unit Miles	Inspection Start/End	Inspector
Unit No. 01 San Joaquin River	Left	6.05	05/09/2019 05/09/2019	Alberto De Leon

LM Start	3.17	Rating **	C	Issue No.	62
LM End	3.17	Issue Type +	Ma	Location *	WS
Category	Earthen Levee			GPS Latitude/Longitude	
				Start	End
Item	Slope Stability			37.837530 °	37.837530 °
				-121.317510 °	-121.317510 °
DWR ID	DWR_RD0544_01_s_2012_62				
Comment Code					
S2 : Repair the levee slope damaged by foot traffic and prevent access where possible.					
Inspector Comment					
Slope damaged due to foot traffic has been repaired.					

No Photos

LM Start	3.21	Rating **	A/W	Issue No.	131
LM End	3.22	Issue Type +	Ma	Location *	
Category	Supplemental			GPS Latitude/Longitude	
				Start	End
Item	2017 Storm Damage			37.836900 °	37.836700 °
				-121.317300 °	-121.317300 °
DWR ID	DWR_RD0544_01_f_2017_131				
Comment Code					
Inspector Comment					
Levee Evaluation Comments					
Description:Slope protection repairs are needed along the waterside slope due to erosion and riprap displacement from high water. Based upon levee inspections, it was determined the waterside levee slope is eroding, deteriorating, and degrading. The eroded levee sections need to be restored back to design standards to prevent further deterioration and damage.					
Site ID No:566					
Site Designation:LMA-472					
Repair Type: Erosion					
Rating:Area of Concern					
Field Date:8/10/2017					
Notes:					

Photo 1 of 3 : LEVAL_SP_2019_566_4714.jpg



* Location LS : Land Side N/A : Not Applicable WS : Water Side CR : Crown		** Rating A : Acceptable N : Not Inspected/Rated M : Minimally Acceptable C : Corrected U : Unacceptable A/W : Acceptable but Monitor & Maintain		+ Issue Type Ma : Maintenance Deficiency Ob : Design & System Obsolescence En : Enforcement
--	--	--	--	---

**Flood Control Project Maintenance
Levee Inspections**

Maintenance Issue Types Only, Levee Inspection Report By Mile - Spring 2019

Reclamation District No. 0544 Upper Roberts Island

Waterway	Bank	Unit Miles	Inspection Start/End	Inspector
Unit No. 01 San Joaquin River	Left	6.05	05/09/2019 05/09/2019	Alberto De Leon

LM Start	3.21	Rating **	A/W	Issue No.	131 (cont)
LM End	3.22	Issue Type +	Ma	Location *	
Category	Supplemental			GPS Latitude/Longitude	
				Start	End
Item	2017 Storm Damage			37.836900 °	37.836700 °
				-121.317300 °	-121.317300 °
DWR ID	DWR_RD0544_01_f_2017_131				
Comment Code					
Inspector Comment					
Levee Evaluation Comments					
Description:Slope protection repairs are needed along the waterside slope due to erosion and riprap displacement from high water. Based upon levee inspections, it was determined the waterside levee slope is eroding, deteriorating, and degrading. The eroded levee sections need to be restored back to design standards to prevent further deterioration and damage.					
Site ID No:566					
Site Designation:LMA-472					
Repair Type: Erosion					
Rating:Area of Concern					
Field Date:8/10/2017					
Notes:					

Photo 2 of 3 : LEVAL_SP_2019_566_4717.jpg



LM Start	3.21	Rating **	A/W	Issue No.	131 (cont)
LM End	3.22	Issue Type +	Ma	Location *	

Photo 3 of 3 : LEVAL_SP_2019_566_4722.jpg



* Location LS : Land Side N/A : Not Applicable WS : Water Side CR : Crown		** Rating A : Acceptable N : Not Inspected/Rated M : Minimally Acceptable C : Corrected U : Unacceptable A/W : Acceptable but Monitor & Maintain		+ Issue Type Ma : Maintenance Deficiency Ob : Design & System Obsolescence En : Enforcement
--	--	---	--	---

**Flood Control Project Maintenance
Levee Inspections**

Maintenance Issue Types Only, Levee Inspection Report By Mile - Spring 2019

Reclamation District No. 0544 Upper Roberts Island

Waterway	Bank	Unit Miles	Inspection Start/End	Inspector
Unit No. 01 San Joaquin River	Left	6.05	05/09/2019 05/09/2019	Alberto De Leon

LM Start	3.22	Rating **	U	Issue No.	49
LM End	3.67	Issue Type +	Ma	Location *	WS
Category	Earthen Levee			GPS Latitude/Longitude	
				Start	End
Item	Vegetation			37.836763 °	37.831494 °
				-121.317307 °	-121.312569 °
DWR ID	DWR_RD0544_01_s_2012_49				
Comment Code					
V2 : Remove the wild growth other than native grasses from the levee slopes.					
Inspector Comment					
There is dense vegetation on the waterside slope.					

Photo 1 of 1 : SP_2019_RD0544_108_49_20190313_00038.jpg



Looking northeast at dense veg on waterward slope.

LM Start	3.23	Rating **	U	Issue No.	48
LM End	3.26	Issue Type +	Ma	Location *	LS
Category	Earthen Levee			GPS Latitude/Longitude	
				Start	End
Item	Vegetation			37.836615 °	37.836133 °
				-121.317285 °	-121.317153 °
DWR ID	DWR_RD0544_01_s_2012_48				
Comment Code					
V2 : Remove the wild growth other than native grasses from the levee slopes.					
Inspector Comment					

Photo 1 of 1 : SP_2019_RD0544_108_48_20190313_00037.jpg



Looking south at typical view of dense veg on landward slope.

LM Start	3.48	Rating **	M	Issue No.	56
LM End	3.48	Issue Type +	Ma	Location *	LS
Category	Earthen Levee			GPS Latitude/Longitude	
				Start	End
Item	Vegetation			37.833583 °	37.833583 °
				-121.314968 °	-121.314968 °
DWR ID	DWR_RD0544_01_s_2012_56				
Comment Code					
V4 : Elderberries are blocking visibility and flood fight capability.					
Inspector Comment					

No Photos

* Location		** Rating		+ Issue Type	
LS : Land Side	N/A : Not Applicable	A : Acceptable	N : Not Inspected/Rated	Ma : Maintenance Deficiency	
WS : Water Side		M : Minimally Acceptable	C : Corrected	Ob : Design & System Obsolescence	
CR : Crown		U : Unacceptable	A/W : Acceptable but Monitor & Maintain	En : Enforcement	

**Flood Control Project Maintenance
Levee Inspections**

Maintenance Issue Types Only, Levee Inspection Report By Mile - Spring 2019

Reclamation District No. 0544 Upper Roberts Island

Waterway	Bank	Unit Miles	Inspection Start/End	Inspector
Unit No. 01 San Joaquin River	Left	6.05	05/09/2019 05/09/2019	Alberto De Leon

LM Start	3.49	Rating **	A/W	Issue No.	160
LM End	3.49	Issue Type +	Ma	Location *	
Category	Supplemental			GPS Latitude/Longitude	
				Start	End
Item	DWR UCIP LMA Responsibility			37.833475 °	37.833475 °
				-121.314822 °	-121.314822 °
DWR ID	22658				
Comment Code					
Inspector Comment					
FS_ID:24892 DS_ID:22658 EP_NO: N/A Repair Type: No Action Needed Crossing Status: Found UCIP Comments: - pipe on channel bank looks comparatively new.- pump approximately 500 ft. from the levee center on landside in drainage ditch.- a tall concrete standpipe and service pole near the pump. FIELD_STRUCT_DESC: 12-inch steel drainage discharge pipe through the levee, 3 feet below the crown. Pump and concrete standpipe in a drainage ditch on the landside (LS). Air vent on the waterside (WS). [Additional Reference(s): DWR Levee Log, 2005. USACE San Joaquin O&M Manual 7, April 1964, (HLM 3.53)]. FS Date: 10/29/2013					

LM Start	3.49	Rating **	A/W	Issue No.	160 (cont)
LM End	3.49	Issue Type +	Ma	Location *	

Photo 1 of 3 : UCIP_SP_2019_24892_44853.jpg



WS view: exposed steel pipe on bank of the channel.

Photo 2 of 3 : UCIP_SP_2019_24892_44852.jpg



WS view: exposed steel pipe and air vent on the pipe.

* Location LS : Land Side N/A : Not Applicable WS : Water Side CR : Crown		** Rating A : Acceptable M : Minimally Acceptable U : Unacceptable N : Not Inspected/Rated C : Corrected A/W : Acceptable but Monitor & Maintain		+ Issue Type Ma : Maintenance Deficiency Ob : Design & System Obsolescence En : Enforcement
--	--	---	--	---

**Flood Control Project Maintenance
Levee Inspections**

Maintenance Issue Types Only, Levee Inspection Report By Mile - Spring 2019

Reclamation District No. 0544 Upper Roberts Island

Waterway	Bank	Unit Miles	Inspection Start/End	Inspector
Unit No. 01 San Joaquin River	Left	6.05	05/09/2019 05/09/2019	Alberto De Leon

LM Start	3.49	Rating **	A/W	Issue No.	160 (cont)	
LM End	3.49	Issue Type +	Ma	Location *		
Category	Supplemental			GPS Latitude/Longitude		
				Start	End	
Item	DWR UCIP LMA Responsibility			37.833475 °	37.833475 °	
				-121.314822 °	-121.314822 °	
DWR ID	22658					
Comment Code						
Inspector Comment						
FS_ID:24892						
DS_ID:22658						
EP_NO: N/A						
Repair Type: No Action Needed						
Crossing Status: Found						
UCIP Comments: - pipe on channel bank looks comparatively new.- pump approximately 500 ft. from the levee center on landside in drainage ditch.- a tall concrete standpipe and service pole near the pump.						
FIELD_STRUCT_DESC: 12-inch steel drainage discharge pipe through the levee, 3 feet below the crown. Pump and concrete standpipe in a drainage ditch on the landside (LS). Air vent on the waterside (WS). [Additional Reference(s): DWR Levee Log, 2005. USACE San Joaquin O&M Manual 7, April 1964, (HLM 3.53)].						
FS Date: 10/29/2013						

Photo 3 of 3 : UCIP_SP_2019_24892_44851.jpg



LS view: service pole, pump, and a concrete standpipe on bank of drainage ditch about 500 ft from the levee.

LM Start	3.49	Rating **	U	Issue No.	51
LM End	4.74	Issue Type +	Ma	Location *	LS
Category	Earthen Levee			GPS Latitude/Longitude	
				Start	End
Item	Vegetation			37.833432 °	37.821319 °
				-121.314792 °	-121.320875 °
DWR ID	DWR_RD0544_01_s_2012_51				
Comment Code					
V2 : Remove the wild growth other than native grasses from the levee slopes.					
Inspector Comment					

Photo 1 of 1 : SP_2019_RD0544_108_51_20190313_00039.jpg



Looking southeast at the landside slope.

* Location LS : Land Side N/A : Not Applicable WS : Water Side CR : Crown	** Rating A : Acceptable M : Minimally Acceptable U : Unacceptable	N : Not Inspected/Rated C : Corrected A/W : Acceptable but Monitor & Maintain	+ Issue Type Ma : Maintenance Deficiency Ob : Design & System Obsolescence En : Enforcement
--	--	---	---

**Flood Control Project Maintenance
Levee Inspections**

Maintenance Issue Types Only, Levee Inspection Report By Mile - Spring 2019

Reclamation District No. 0544 Upper Roberts Island

Waterway	Bank	Unit Miles	Inspection Start/End	Inspector
Unit No. 01 San Joaquin River	Left	6.05	05/09/2019 05/09/2019	Alberto De Leon

LM Start	3.65	Rating **	A/W	Issue No.	132 (cont)	
LM End	3.67	Issue Type +	Ma	Location *		
Category	Supplemental			GPS Latitude/Longitude		
				Start		End
Item	2017 Storm Damage			37.831800 °		37.831600 °
				-121.312700 °		-121.312600 °
DWR ID	DWR_RD0544_01_f_2017_132					
Comment Code						
Inspector Comment						
Levee Evaluation Comments						
Description:Slope protection repairs are needed along the waterside slope due to erosion and riprap displacement from high water. Based upon levee inspections, it was determined the waterside levee slope is eroding, deteriorating, and degrading. The eroded levee sections need to be restored back to design standards to prevent further deterioration and damage.						
Site ID No:565						
Site Designation:LMA-471						
Repair Type: Erosion						
Rating:Area of Concern						
Field Date:8/11/2017						
Notes: dense shrubs on levee slope						

Photo 3 of 3 : LEVAL_SP_2019_565_4745.jpg



LM Start	3.69	Rating **	A/W	Issue No.	133
LM End	3.73	Issue Type +	Ma	Location *	
Category	Supplemental			GPS Latitude/Longitude	
				Start	End
Item	2017 Storm Damage			37.831300 °	37.830700 °
				-121.312600 °	-121.312300 °
DWR ID	DWR_RD0544_01_f_2017_133				
Comment Code					
Inspector Comment					
Levee Evaluation Comments					
Description:Slope protection repairs are needed along the waterside slope due to erosion and riprap displacement from high water. Based upon levee inspections, it was determined the waterside levee slope is eroding, deteriorating, and degrading. The eroded levee sections need to be restored back to design standards to prevent further deterioration and damage.					
Site ID No:564					
Site Designation:LMA-470					
Repair Type: Erosion					
Rating:Area of Concern					
Field Date:8/11/2017					
Notes: big rodent holes on levee slopes					

Photo 1 of 3 : LEVAL_SP_2019_564_4748.jpg



* Location LS : Land Side N/A : Not Applicable WS : Water Side CR : Crown		** Rating A : Acceptable N : Not Inspected/Rated M : Minimally Acceptable C : Corrected U : Unacceptable A/W : Acceptable but Monitor & Maintain		+ Issue Type Ma : Maintenance Deficiency Ob : Design & System Obsolescence En : Enforcement
--	--	---	--	---

**Flood Control Project Maintenance
Levee Inspections**

Maintenance Issue Types Only, Levee Inspection Report By Mile - Spring 2019

Reclamation District No. 0544 Upper Roberts Island

Waterway	Bank	Unit Miles	Inspection Start/End	Inspector
Unit No. 01 San Joaquin River	Left	6.05	05/09/2019 05/09/2019	Alberto De Leon

LM Start	3.69	Rating **	A/W	Issue No.	133 (cont)
LM End	3.73	Issue Type +	Ma	Location *	
Category	Supplemental			GPS Latitude/Longitude	
				Start	End
Item	2017 Storm Damage			37.831300 °	37.830700 °
				-121.312600 °	-121.312300 °
DWR ID	DWR_RD0544_01_f_2017_133				
Comment Code					
Inspector Comment					
Levee Evaluation Comments					
Description:Slope protection repairs are needed along the waterside slope due to erosion and riprap displacement from high water. Based upon levee inspections, it was determined the waterside levee slope is eroding, deteriorating, and degrading. The eroded levee sections need to be restored back to design standards to prevent further deterioration and damage.					
Site ID No:564					
Site Designation:LMA-470					
Repair Type: Erosion					
Rating:Area of Concern					
Field Date:8/11/2017					
Notes: big rodent holes on levee slopes					

Photo 2 of 3 : LEVAL_SP_2019_564_4750.jpg



LM Start	3.69	Rating **	A/W	Issue No.	133 (cont)
LM End	3.73	Issue Type +	Ma	Location *	

Photo 3 of 3 : LEVAL_SP_2019_564_4756.jpg



* Location LS : Land Side N/A : Not Applicable WS : Water Side CR : Crown	** Rating A : Acceptable M : Minimally Acceptable U : Unacceptable N : Not Inspected/Rated C : Corrected A/W : Acceptable but Monitor & Maintain	+ Issue Type Ma : Maintenance Deficiency Ob : Design & System Obsolescence En : Enforcement
--	---	---

**Flood Control Project Maintenance
Levee Inspections**

Maintenance Issue Types Only, Levee Inspection Report By Mile - Spring 2019

Reclamation District No. 0544 Upper Roberts Island

Waterway	Bank	Unit Miles	Inspection Start/End	Inspector
Unit No. 01 San Joaquin River	Left	6.05	05/09/2019 05/09/2019	Alberto De Leon

LM Start	3.76	Rating **	M	Issue No.	109
LM End	3.92	Issue Type +	Ma	Location *	LS
Category	Earthen Levee			GPS Latitude/Longitude	
				Start	End
Item	Vegetation			37.830250 °	37.828013 °
				-121.312323 °	-121.311467 °
DWR ID	DWR_RD0544_01_s_2015_109				
Comment Code					
V4 : Elderberries are blocking visibility and flood fight capability.					
Inspector Comment					

No Photos

LM Start	3.79	Rating **	A/W	Issue No.	134
LM End	3.81	Issue Type +	Ma	Location *	
Category	Supplemental			GPS Latitude/Longitude	
				Start	End
Item	2017 Storm Damage			37.829800 °	37.829600 °
				-121.312100 °	-121.312100 °
DWR ID	DWR_RD0544_01_f_2017_134				
Comment Code					
Inspector Comment					
Levee Evaluation Comments					
Description:Slope protection repairs are needed along the waterside slope due to erosion and riprap displacement from high water. Based upon levee inspections, it was determined the waterside levee slope is eroding, deteriorating, and degrading. The eroded levee sections need to be restored back to design standards to prevent further deterioration and damage.					
Site ID No:563					
Site Designation:LMA-469					
Repair Type: Erosion					
Rating:Serious					
Field Date:8/11/2017					
Notes: site combined with LMA-468;see LMA-468 for details.					

No Photos

* Location LS : Land Side N/A : Not Applicable WS : Water Side CR : Crown	** Rating A : Acceptable M : Minimally Acceptable U : Unacceptable N : Not Inspected/Rated C : Corrected A/W : Acceptable but Monitor & Maintain	+ Issue Type Ma : Maintenance Deficiency Ob : Design & System Obsolescence En : Enforcement
--	---	---

**Flood Control Project Maintenance
Levee Inspections**

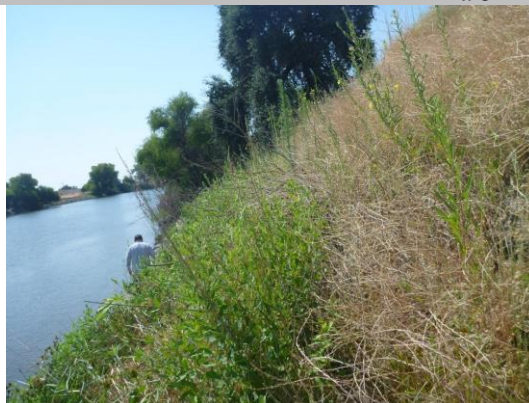
Maintenance Issue Types Only, Levee Inspection Report By Mile - Spring 2019

Reclamation District No. 0544 Upper Roberts Island

Waterway	Bank	Unit Miles	Inspection Start/End	Inspector
Unit No. 01 San Joaquin River	Left	6.05	05/09/2019 05/09/2019	Alberto De Leon

LM Start	3.81	Rating **	A/W	Issue No.	135
LM End	3.82	Issue Type +	Ma	Location *	
Category	Supplemental			GPS Latitude/Longitude	
				Start	End
Item	2017 Storm Damage			37.829600 °	37.829400 °
				-121.312000 °	-121.312000 °
DWR ID	DWR_RD0544_01_f_2017_135				
Comment Code					
Inspector Comment					
Levee Evaluation Comments					
Description:Slope protection repairs are needed along the waterside slope due to erosion and riprap displacement from high water. Based upon levee inspections, it was determined the waterside levee slope is eroding, deteriorating, and degrading. The eroded levee sections need to be restored back to design standards to prevent further deterioration and damage.					
Site ID No:562					
Site Designation:LMA-468					
Repair Type: Erosion					
Rating:Serious					
Field Date:8/11/2017					
Notes: Site combined with LMA-469;					

Photo 1 of 3 : LEVAL_SP_2019_562_4770.jpg



LM Start	3.81	Rating **	A/W	Issue No.	135 (cont)
LM End	3.82	Issue Type +	Ma	Location *	

Photo 2 of 3 : LEVAL_SP_2019_562_4835.jpg



* Location LS : Land Side N/A : Not Applicable WS : Water Side CR : Crown	** Rating A : Acceptable M : Minimally Acceptable U : Unacceptable N : Not Inspected/Rated C : Corrected A/W : Acceptable but Monitor & Maintain	+ Issue Type Ma : Maintenance Deficiency Ob : Design & System Obsolescence En : Enforcement
--	---	---

**Flood Control Project Maintenance
Levee Inspections**

Maintenance Issue Types Only, Levee Inspection Report By Mile - Spring 2019

Reclamation District No. 0544 Upper Roberts Island

Waterway	Bank	Unit Miles	Inspection Start/End	Inspector
Unit No. 01 San Joaquin River	Left	6.05	05/09/2019 05/09/2019	Alberto De Leon

LM Start	3.81	Rating **	A/W	Issue No.	135 (cont)	
LM End	3.82	Issue Type +	Ma	Location *		
Category	Supplemental			GPS Latitude/Longitude		
				Start	End	
Item	2017 Storm Damage			37.829600 °	37.829400 °	
				-121.312000 °	-121.312000 °	
DWR ID	DWR_RD0544_01_f_2017_135					
Comment Code						
Inspector Comment						
Levee Evaluation Comments						
Description:Slope protection repairs are needed along the waterside slope due to erosion and riprap displacement from high water. Based upon levee inspections, it was determined the waterside levee slope is eroding, deteriorating, and degrading. The eroded levee sections need to be restored back to design standards to prevent further deterioration and damage.						
Site ID No:562						
Site Designation:LMA-468						
Repair Type: Erosion						
Rating:Serious						
Field Date:8/11/2017						
Notes: Site combined with LMA-469;						

Photo 3 of 3 : LEVAL_SP_2019_562_4836.jpg



LM Start	3.92	Rating **	M	Issue No.	11
LM End	4.05	Issue Type +	Ma	Location *	WS
Category	Earthen Levee			GPS Latitude/Longitude	
				Start	End
Item	Animal Control			37.828078 °	37.826315 °
				-121.311483 °	-121.311024 °
DWR ID	DWR_RD0544_01_s_2012_11				
Comment Code					
A1 : Exterminate rodents and backfill and compact or grout burrows.					
Inspector Comment					
There are large rodent holes on the waterside slope.					

Photo 1 of 1 : SP_2019_RD0544_108_11_20190313_00017.jpg



Looking at large rodent holes on waterward slope.

* Location LS : Land Side N/A : Not Applicable WS : Water Side CR : Crown		** Rating A : Acceptable N : Not Inspected/Rated M : Minimally Acceptable C : Corrected U : Unacceptable A/W : Acceptable but Monitor & Maintain		+ Issue Type Ma : Maintenance Deficiency Ob : Design & System Obsolescence En : Enforcement
--	--	---	--	---

**Flood Control Project Maintenance
Levee Inspections**

Maintenance Issue Types Only, Levee Inspection Report By Mile - Spring 2019

Reclamation District No. 0544 Upper Roberts Island

Waterway	Bank	Unit Miles	Inspection Start/End	Inspector
Unit No. 01 San Joaquin River	Left	6.05	05/09/2019 05/09/2019	Alberto De Leon

LM Start	3.97	Rating **	M	Issue No.	24
LM End	3.97	Issue Type +	Ma	Location *	LS
Category	Earthen Levee			GPS Latitude/Longitude	
				Start	End
Item	Vegetation			37.827360 °	37.827360 °
				-121.311067 °	-121.311067 °
DWR ID	DWR_RD0544_01_s_2015_24				
Comment Code					
V4 : Elderberries are blocking visibility and flood fight capability.					
Inspector Comment					

No Photos

LM Start	4.25	Rating **	U	Issue No.	120
LM End	4.28	Issue Type +	Ma	Location *	LS
Category	Earthen Levee			GPS Latitude/Longitude	
				Start	End
Item	Trim / Thin Trees			37.825482 °	37.825229 °
				-121.314298 °	-121.314771 °
DWR ID	DWR_RD0544_01_f_2015_120				
Comment Code					
T1 : Trim trees to at least five feet above ground level.					
Inspector Comment					
There are several untrimmed trees on the landside slope.					

Photo 1 of 1 : SP_2019_RD0544_108_120_20190313_00077.jpg



Looking southwest at untrimmed trees on landward slope.

LM Start	4.30	Rating **	M	Issue No.	59
LM End	4.30	Issue Type +	Ma	Location *	LS
Category	Earthen Levee			GPS Latitude/Longitude	
				Start	End
Item	Vegetation			37.824943 °	37.824943 °
				-121.315008 °	-121.315008 °
DWR ID	DWR_RD0544_01_s_2012_59				
Comment Code					
V4 : Elderberries are blocking visibility and flood fight capability.					
Inspector Comment					

No Photos

* Location		** Rating		+ Issue Type	
LS : Land Side	N/A : Not Applicable	A : Acceptable	N : Not Inspected/Rated	Ma : Maintenance Deficiency	
WS : Water Side		M : Minimally Acceptable	C : Corrected	Ob : Design & System Obsolescence	
CR : Crown		U : Unacceptable	A/W : Acceptable but Monitor & Maintain	En : Enforcement	

**Flood Control Project Maintenance
Levee Inspections**

Maintenance Issue Types Only, Levee Inspection Report By Mile - Spring 2019

Reclamation District No. 0544 Upper Roberts Island

Waterway	Bank	Unit Miles	Inspection Start/End	Inspector
Unit No. 01 San Joaquin River	Left	6.05	05/09/2019 05/09/2019	Alberto De Leon

LM Start	4.36	Rating **	M	Issue No.	102
LM End	4.42	Issue Type +	Ma	Location *	CR
Category	Earthen Levee			GPS Latitude/Longitude	
				Start	End
Item	Crown Surface / Depressions / Rutting			37.824170 °	37.823494 °
				-121.315223 °	-121.315792 °
DWR ID	DWR_RD0544_01_f_2017_102				
Comment Code					
C3 : Add appropriate gravel or road base. Grade and compact.					
Inspector Comment					

No Photos

LM Start	4.41	Rating **	U	Issue No.	117
LM End	4.79	Issue Type +	Ma	Location *	WS
Category	Earthen Levee			GPS Latitude/Longitude	
				Start	End
Item	Vegetation			37.823522 °	37.820557 °
				-121.315735 °	-121.321217 °
DWR ID	DWR_RD0544_01_s_2017_117				
Comment Code					
V2 : Remove the wild growth other than native grasses from the levee slopes.					
Inspector Comment					

Photo 1 of 2 : SP_2019_RD0544_108_117_20190313_00071.jpg



Looking southwest at the waterside slope.

LM Start	4.41	Rating **	U	Issue No.	117 (cont)
LM End	4.79	Issue Type +	Ma	Location *	WS

Photo 2 of 2 : SP_2019_RD0544_108_117_20190313_00072.jpg



Looking south at dense veg on waterward slope.

* Location LS : Land Side N/A : Not Applicable WS : Water Side CR : Crown		** Rating A : Acceptable M : Minimally Acceptable U : Unacceptable N : Not Inspected/Rated C : Corrected A/W : Acceptable but Monitor & Maintain		+ Issue Type Ma : Maintenance Deficiency Ob : Design & System Obsolescence En : Enforcement
--	--	---	--	---

**Flood Control Project Maintenance
Levee Inspections**

Maintenance Issue Types Only, Levee Inspection Report By Mile - Spring 2019

Reclamation District No. 0544 Upper Roberts Island

Waterway	Bank	Unit Miles	Inspection Start/End	Inspector
Unit No. 01 San Joaquin River	Left	6.05	05/09/2019 05/09/2019	Alberto De Leon

LM Start	4.46	Rating **	A/W	Issue No.	136 (cont)	
LM End	4.48	Issue Type +	Ma	Location *		
Category	Supplemental			GPS Latitude/Longitude		
				Start	End	
Item	2017 Storm Damage			37.823200 °	37.823000 °	
				-121.316400 °	-121.316800 °	
DWR ID	DWR_RD0544_01_f_2017_136					
Comment Code						
Inspector Comment						
Levee Evaluation Comments						
Description:Slope protection repairs are needed along the waterside slope due to erosion and riprap displacement from high water. Based upon levee inspections, it was determined the waterside levee slope is eroding, deteriorating, and degrading. The eroded levee sections need to be restored back to design standards to prevent further deterioration and damage.						
Site ID No:561						
Site Designation:LMA-467						
Repair Type: Erosion						
Rating:Area of Concern						
Field Date:8/11/2017						
Notes: site combined with LMA-466 in field; length and coordinates redefined in field.						

Photo 3 of 3 : LEVAL_SP_2019_561_4867.jpg



LM Start	4.48	Rating **	A/W	Issue No.	138
LM End	4.48	Issue Type +	Ma	Location *	
Category	Supplemental			GPS Latitude/Longitude	
				Start	End
Item	2017 Storm Damage			37.823000 °	37.823000 °
				-121.316700 °	-121.316800 °
DWR ID	DWR_RD0544_01_f_2017_138				
Comment Code					
Inspector Comment					
Levee Evaluation Comments					
Description:Slope protection repairs are needed along the waterside slope due to erosion and riprap displacement from high water. Based upon levee inspections, it was determined the waterside levee slope is eroding, deteriorating, and degrading. The eroded levee sections need to be restored back to design standards to prevent further deterioration and damage.					
Site ID No:560					
Site Designation:LMA-466					
Repair Type: Erosion					
Rating:Area of Concern					
Field Date:8/11/2017					
Notes: site combined with LMA-467 in field; see LMA-467 for details.					

No Photos

* Location LS : Land Side N/A : Not Applicable WS : Water Side CR : Crown		** Rating A : Acceptable N : Not Inspected/Rated M : Minimally Acceptable C : Corrected U : Unacceptable A/W : Acceptable but Monitor & Maintain		+ Issue Type Ma : Maintenance Deficiency Ob : Design & System Obsolescence En : Enforcement
--	--	---	--	---

**Flood Control Project Maintenance
Levee Inspections**

Maintenance Issue Types Only, Levee Inspection Report By Mile - Spring 2019

Reclamation District No. 0544 Upper Roberts Island

Waterway	Bank	Unit Miles	Inspection Start/End	Inspector
Unit No. 01 San Joaquin River	Left	6.05	05/09/2019 05/09/2019	Alberto De Leon

LM Start	4.48	Rating **	M	Issue No.	103
LM End	4.48	Issue Type +	Ma	Location *	LS
Category	Earthen Levee			GPS Latitude/Longitude	
				Start	End
Item	Animal Control			37.823027 °	37.823027 °
				-121.316737 °	-121.316737 °
DWR ID	DWR_RD0544_01_f_2014_103				
Comment Code					
A1 : Exterminate rodents and backfill and compact or grout burrows.					
Inspector Comment					

No Photos

LM Start	4.49	Rating **	U	Issue No.	41
LM End	4.49	Issue Type +	Ma	Location *	LS
Category	Earthen Levee			GPS Latitude/Longitude	
				Start	End
Item	Vegetation			37.822934 °	37.822934 °
				-121.316870 °	-121.316870 °
DWR ID	DWR_RD0544_01_s_2012_41				
Comment Code					
V4 : Elderberries are blocking visibility and flood fight capability.					
Inspector Comment					

No Photos

LM Start	4.64	Rating **	U	Issue No.	104
LM End	4.68	Issue Type +	Ma	Location *	LS
Category	Earthen Levee			GPS Latitude/Longitude	
				Start	End
Item	Trim / Thin Trees			37.822033 °	37.821826 °
				-121.319432 °	-121.320071 °
DWR ID	DWR_RD0544_01_f_2014_104				
Comment Code					
T2 : Thin trees to allow visibility of the ground and room to flood fight.					
Inspector Comment					
Dense untrimmed trees are on the landside slope.					

Photo 1 of 1 : SP_2019_RD0544_108_104_20190313_00064.jpg



Looking southwest at dense untrimmed trees on landward slope fall 2015.

* Location		** Rating		+ Issue Type	
LS : Land Side	N/A : Not Applicable	A : Acceptable	N : Not Inspected/Rated	Ma : Maintenance Deficiency	
WS : Water Side		M : Minimally Acceptable	C : Corrected	Ob : Design & System Obsolescence	
CR : Crown		U : Unacceptable	A/W : Acceptable but Monitor & Maintain	En : Enforcement	

**Flood Control Project Maintenance
Levee Inspections**

Maintenance Issue Types Only, Levee Inspection Report By Mile - Spring 2019

Reclamation District No. 0544 Upper Roberts Island

Waterway	Bank	Unit Miles	Inspection Start/End	Inspector
Unit No. 01 San Joaquin River	Left	6.05	05/09/2019 05/09/2019	Alberto De Leon

LM Start	4.69	Rating **	U	Issue No.	105
LM End	4.69	Issue Type +	Ma	Location *	LS
Category	Earthen Levee			GPS Latitude/Longitude	
				Start	End
Item	Trim / Thin Trees			37.821775 °	37.821775 °
				-121.320203 °	-121.320203 °
DWR ID	DWR_RD0544_01_f_2014_105				
Comment Code					
T2 : Thin trees to allow visibility of the ground and room to flood fight.					
Inspector Comment					
A tree has overgrown onto the levee crown.					

Photo 1 of 1 : SP_2019_RD0544_108_105_20190313_00065.jpg



Looking south at overgrown tree on landward shoulder.

LM Start	4.69	Rating **	C	Issue No.	111
LM End	4.69	Issue Type +	Ma	Location *	LS
Category	Earthen Levee			GPS Latitude/Longitude	
				Start	End
Item	Encroachments			37.821783 °	37.821783 °
				-121.320237 °	-121.320237 °
DWR ID	DWR_RD0544_01_s_2019_111				
Comment Code					
PR : Prunings					
Inspector Comment					
Prunings are on the landside shoulder have been removed.					

No Photos

LM Start	4.71	Rating **	A/W	Issue No.	29	
LM End	4.71	Issue Type +	Ma	Location *	CR	
Category	Earthen Levee			GPS Latitude/Longitude		
				Start		End
Item	Animal Control			37.821626 °		37.821626 °
				-121.320471 °		-121.320471 °
DWR ID	DWR_RD0544_01_s_2012_29					
Comment Code						
A3 : No rodents visible, but rodent burrows visible; need to backfill and compact or grout burrows.						
Inspector Comment						
District has employed a rodent control program and grouted holes.						

No Photos

* Location LS : Land Side N/A : Not Applicable WS : Water Side CR : Crown		** Rating A : Acceptable M : Minimally Acceptable U : Unacceptable N : Not Inspected/Rated C : Corrected A/W : Acceptable but Monitor & Maintain		+ Issue Type Ma : Maintenance Deficiency Ob : Design & System Obsolescence En : Enforcement	
--	--	---	--	---	--

**Flood Control Project Maintenance
Levee Inspections**

Maintenance Issue Types Only, Levee Inspection Report By Mile - Spring 2019

Reclamation District No. 0544 Upper Roberts Island

Waterway	Bank	Unit Miles	Inspection Start/End	Inspector
Unit No. 01 San Joaquin River	Left	6.05	05/09/2019 05/09/2019	Alberto De Leon

LM Start	4.71	Rating **	M	Issue No.	26
LM End	4.74	Issue Type +	Ma	Location *	LS
Category	Earthen Levee			GPS Latitude/Longitude	
				Start	End
Item	Vegetation			37.821592 °	37.821253 °
				-121.320617 °	-121.320927 °
DWR ID	DWR_RD0544_01_s_2012_26				
Comment Code					
V4 : Elderberries are blocking visibility and flood fight capability.					
Inspector Comment					

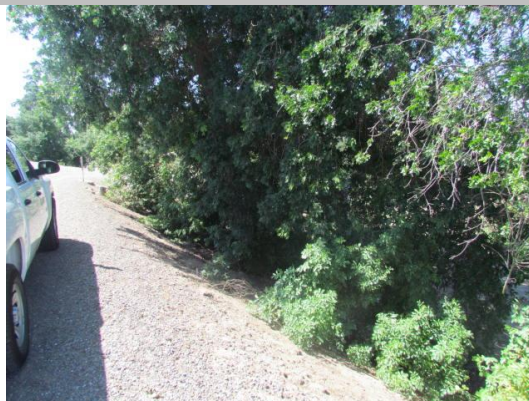
No Photos

LM Start	4.74	Rating **	C	Issue No.	83
LM End	4.74	Issue Type +	Ma	Location *	LS
Category	Earthen Levee			GPS Latitude/Longitude	
				Start	End
Item	Animal Control			37.821287 °	37.821287 °
				-121.320897 °	-121.320897 °
DWR ID	DWR_RD0544_01_f_2016_83				
Comment Code					
A3 : No rodents visible, but rodent burrows visible; need to backfill and compact or grout burrows.					
Inspector Comment					
A large rodent hole on the waterside shoulder has been grouted.					

No Photos

LM Start	4.77	Rating **	M	Issue No.	112
LM End	4.77	Issue Type +	Ma	Location *	LS
Category	Earthen Levee			GPS Latitude/Longitude	
				Start	End
Item	Trim / Thin Trees			37.820828 °	37.820828 °
				-121.321193 °	-121.321193 °
DWR ID	DWR_RD0544_01_s_2015_112				
Comment Code					
T1 : Trim trees to at least five feet above ground level.					
Inspector Comment					

Photo 1 of 1 : SP_2019_RD0544_108_112_20190313_00069.jpg



Looking southwest at dense trees on landward slope and toe.

* Location		** Rating		+ Issue Type	
LS : Land Side	N/A : Not Applicable	A : Acceptable	N : Not Inspected/Rated	Ma : Maintenance Deficiency	
WS : Water Side		M : Minimally Acceptable	C : Corrected	Ob : Design & System Obsolescence	
CR : Crown		U : Unacceptable	A/W : Acceptable but Monitor & Maintain	En : Enforcement	

**Flood Control Project Maintenance
Levee Inspections**

Maintenance Issue Types Only, Levee Inspection Report By Mile - Spring 2019

Reclamation District No. 0544 Upper Roberts Island

Waterway	Bank	Unit Miles	Inspection Start/End	Inspector
Unit No. 01 San Joaquin River	Left	6.05	05/09/2019 05/09/2019	Alberto De Leon

LM Start	4.77	Rating **	U	Issue No.	113
LM End	4.77	Issue Type +	Ma	Location *	WS
Category	Earthen Levee			GPS Latitude/Longitude	
				Start	End
Item	Animal Control			37.820828 °	37.820828 °
				-121.321193 °	-121.321193 °
DWR ID	DWR_RD0544_01_s_2015_113				
Comment Code					
A3 : No rodents visible, but rodent burrows visible; need to backfill and compact or grout burrows.					
Inspector Comment					
A large hole, possibly a rodent hole, is on the waterside slope.					

Photo 1 of 1 : SP_2019_RD0544_108_113_20190313_00070.jpg



Looking north at large hole on waterward slope.

LM Start	4.80	Rating **	C	Issue No.	52
LM End	4.80	Issue Type +	Ma	Location *	LS
Category	Earthen Levee			GPS Latitude/Longitude	
				Start	End
Item	Encroachments			37.820472 °	37.820472 °
				-121.321190 °	-121.321190 °
DWR ID	DWR_RD0544_01_f_2018_52				
Comment Code					
PR : Prunings					
Inspector Comment					

No Photos

* Location LS : Land Side N/A : Not Applicable WS : Water Side CR : Crown	** Rating A : Acceptable M : Minimally Acceptable U : Unacceptable	N : Not Inspected/Rated C : Corrected A/W : Acceptable but Monitor & Maintain	+ Issue Type Ma : Maintenance Deficiency Ob : Design & System Obsolescence En : Enforcement
--	--	---	---

Reclamation District No. 0544 Upper Roberts Island

Waterway	Bank	Unit Miles	Inspection Start/End	Inspector
Unit No. 01 San Joaquin River	Left	6.05	05/09/2019 05/09/2019	Alberto De Leon

LM Start	4.97	Rating **	A/W	Issue No.	139
LM End	4.99	Issue Type +	Ma	Location *	
Category	Supplemental			GPS Latitude/Longitude	
				Start	End
Item	2017 Storm Damage			37.818600 °	37.818400 °
				-121.319200 °	-121.319000 °
DWR ID	DWR_RD0544_01_f _ 2017_139				
Comment Code					
Inspector Comment					
Levee Evaluation Comments					
Description:Slope protection repairs are needed along the waterside slope due to erosion and riprap displacement from high water. Based upon levee inspections, it was determined the waterside levee slope is eroding, deteriorating, and degrading. The eroded levee sections need to be restored back to design standards to prevent further deterioration and damage.					
Site ID No:559					
Site Designation:LMA-465					
Repair Type: Erosion					
Rating:Serious					
Field Date:8/11/2017					
Notes:					

LM Start	4.97	Rating **	A/W	Issue No.	139 (cont)
LM End	4.99	Issue Type +	Ma	Location *	

A photograph showing a gravel area in the foreground, a body of water to the left, and a white pickup truck parked in the background near some trees and a building.

* Location	** Rating	+ Issue Type
LS : Land Side WS : Water Side CR : Crown	A : Acceptable M : Minimally Acceptable U : Unacceptable	Ma : Maintenance Deficiency Ob : Design & System Obsolescence En : Enforcement
N/A : Not Applicable	N : Not Inspected/Rated C : Corrected A/W : Acceptable but Monitor & Maintain	

**Flood Control Project Maintenance
Levee Inspections**

Maintenance Issue Types Only, Levee Inspection Report By Mile - Spring 2019

Reclamation District No. 0544 Upper Roberts Island

Waterway	Bank	Unit Miles	Inspection Start/End	Inspector
Unit No. 01 San Joaquin River	Left	6.05	05/09/2019 05/09/2019	Alberto De Leon

LM Start	4.97	Rating **	A/W	Issue No.	139 (cont)	
LM End	4.99	Issue Type +	Ma	Location *		
Category	Supplemental			GPS Latitude/Longitude		
				Start	End	
Item	2017 Storm Damage			37.818600 °	37.818400 °	
				-121.319200 °	-121.319000 °	
DWR ID	DWR_RD0544_01_f_2017_139					
Comment Code						
Inspector Comment						
Levee Evaluation Comments						
Description:Slope protection repairs are needed along the waterside slope due to erosion and riprap displacement from high water. Based upon levee inspections, it was determined the waterside levee slope is eroding, deteriorating, and degrading. The eroded levee sections need to be restored back to design standards to prevent further deterioration and damage.						
Site ID No:559						
Site Designation:LMA-465						
Repair Type: Erosion						
Rating:Serious						
Field Date:8/11/2017						
Notes:						

Photo 3 of 3 : LEVAL_SP_2019_559_4894.jpg



LM Start	5.02	Rating **	M	Issue No.	125
LM End	5.02	Issue Type +	Ma	Location *	LS
Category	Earthen Levee			GPS Latitude/Longitude	
				Start	End
Item	Animal Control			37.817942 °	37.817942 °
				-121.319118 °	-121.319118 °
DWR ID	DWR_RD0544_01_s_2017_125				
Comment Code					
A1 : Exterminate rodents and backfill and compact or grout burrows.					
Inspector Comment					

No Photos

* Location LS : Land Side N/A : Not Applicable WS : Water Side CR : Crown	** Rating A : Acceptable M : Minimally Acceptable U : Unacceptable	N : Not Inspected/Rated C : Corrected A/W : Acceptable but Monitor & Maintain	+ Issue Type Ma : Maintenance Deficiency Ob : Design & System Obsolescence En : Enforcement
--	--	---	---

**Flood Control Project Maintenance
Levee Inspections**

Maintenance Issue Types Only, Levee Inspection Report By Mile - Spring 2019

Reclamation District No. 0544 Upper Roberts Island

Waterway	Bank	Unit Miles	Inspection Start/End	Inspector
Unit No. 01 San Joaquin River	Left	6.05	05/09/2019 05/09/2019	Alberto De Leon

LM Start	5.07	Rating **	M	Issue No.	32
LM End	5.07	Issue Type +	Ma	Location *	WS
Category	Earthen Levee			GPS Latitude/Longitude	
				Start	End
Item	Animal Control			37.817291 °	37.817291 °
				-121.319399 °	-121.319399 °
DWR ID	DWR_RD0544_01_f_2017_32				
Comment Code					
A1 : Exterminate rodents and backfill and compact or grout burrows.					
Inspector Comment					

No Photos

LM Start	5.32	Rating **	A/W	Issue No.	140
LM End	5.36	Issue Type +	Ma	Location *	
Category	Supplemental			GPS Latitude/Longitude	
				Start	End
Item	2017 Storm Damage			37.813900 °	37.813500 °
				-121.319900 °	-121.319400 °
DWR ID	DWR_RD0544_01_f _ 2017_140				
Comment Code					
Inspector Comment					
Levee Evaluation Comments					
Description:Slope protection repairs are needed along the waterside slope due to erosion and riprap displacement from high water. Based upon levee inspections, it was determined the waterside levee slope is eroding, deteriorating, and degrading. The eroded levee sections need to be restored back to design standards to prevent further deterioration and damage.					
Site ID No:558					
Site Designation:LMA-464					
Repair Type: Erosion					
Rating:Serious					
Field Date:8/16/2017					
Notes:					

Photo 1 of 3 : LEVAL_SP_2019_558_4900.jpg



* Location LS : Land Side N/A : Not Applicable WS : Water Side CR : Crown		** Rating A : Acceptable N : Not Inspected/Rated M : Minimally Acceptable C : Corrected U : Unacceptable A/W : Acceptable but Monitor & Maintain		+ Issue Type Ma : Maintenance Deficiency Ob : Design & System Obsolescence En : Enforcement
--	--	---	--	---

**Flood Control Project Maintenance
Levee Inspections**

Maintenance Issue Types Only, Levee Inspection Report By Mile - Spring 2019

Reclamation District No. 0544 Upper Roberts Island

Waterway	Bank	Unit Miles	Inspection Start/End	Inspector
Unit No. 01 San Joaquin River	Left	6.05	05/09/2019 05/09/2019	Alberto De Leon

LM Start	5.32	Rating **	A/W	Issue No.	140 (cont)
LM End	5.36	Issue Type +	Ma	Location *	
Category	Supplemental			GPS Latitude/Longitude	
				Start	End
Item	2017 Storm Damage			37.813900 °	37.813500 °
				-121.319900 °	-121.319400 °
DWR ID	DWR_RD0544_01_f_2017_140				
Comment Code					
Inspector Comment					
Levee Evaluation Comments					
Description:Slope protection repairs are needed along the waterside slope due to erosion and riprap displacement from high water. Based upon levee inspections, it was determined the waterside levee slope is eroding, deteriorating, and degrading. The eroded levee sections need to be restored back to design standards to prevent further deterioration and damage.					
Site ID No:558					
Site Designation:LMA-464					
Repair Type: Erosion					
Rating:Serious					
Field Date:8/16/2017					
Notes:					

Photo 2 of 3 : LEVAL_SP_2019_558_4904.jpg



LM Start	5.32	Rating **	A/W	Issue No.	140 (cont)
LM End	5.36	Issue Type +	Ma	Location *	

Photo 3 of 3 : LEVAL_SP_2019_558_4910.jpg



* Location
LS : Land Side N/A : Not Applicable
WS : Water Side
CR : Crown

** Rating
A : Acceptable
M : Minimally Acceptable
U : Unacceptable
N : Not Inspected/Rated
C : Corrected
A/W : Acceptable but Monitor & Maintain

+ Issue Type
Ma : Maintenance Deficiency
Ob : Design & System Obsolescence
En : Enforcement

**Flood Control Project Maintenance
Levee Inspections**

Maintenance Issue Types Only, Levee Inspection Report By Mile - Spring 2019

Reclamation District No. 0544 Upper Roberts Island

Waterway	Bank	Unit Miles	Inspection Start/End	Inspector
Unit No. 01 San Joaquin River	Left	6.05	05/09/2019 05/09/2019	Alberto De Leon

LM Start	5.36	Rating **	A/W	Issue No.	141 (cont)
LM End	5.37	Issue Type +	Ma	Location *	
Category	Supplemental			GPS Latitude/Longitude	
				Start	End
Item	2017 Storm Damage			37.813400 °	37.813300 °
				-121.319300 °	-121.319200 °
DWR ID	DWR_RD0544_01_f_2017_141				
Comment Code					
Inspector Comment					
Levee Evaluation Comments					
Description:Slope protection repairs are needed along the waterside slope due to erosion and riprap displacement from high water. Based upon levee inspections, it was determined the waterside levee slope is eroding, deteriorating, and degrading. The eroded levee sections need to be restored back to design standards to prevent further deterioration and damage.					
Site ID No:557					
Site Designation:LMA-463					
Repair Type: Erosion					
Rating:Area of Concern					
Field Date:8/16/2017					
Notes:					

Photo 3 of 3 : LEVAL_SP_2019_557_4514.jpg



LM Start	5.49	Rating **	U	Issue No.	18
LM End	5.55	Issue Type +	Ma	Location *	LS
Category	Earthen Levee			GPS Latitude/Longitude	
				Start	End
Item	Vegetation			37.812033 °	37.811687 °
				-121.319737 °	-121.320677 °
DWR ID	DWR_RD0544_01_s_2012_18				
Comment Code					
V4 : Elderberries are blocking visibility and flood fight capability.					
Inspector Comment					
Elderberry exists on the slope of the levee.					

No Photos

* Location LS : Land Side N/A : Not Applicable WS : Water Side CR : Crown	** Rating A : Acceptable M : Minimally Acceptable U : Unacceptable	N : Not Inspected/Rated C : Corrected A/W : Acceptable but Monitor & Maintain	+ Issue Type Ma : Maintenance Deficiency Ob : Design & System Obsolescence En : Enforcement
--	--	---	---

**Flood Control Project Maintenance
Levee Inspections**

Maintenance Issue Types Only, Levee Inspection Report By Mile - Spring 2019

Reclamation District No. 0544 Upper Roberts Island

Waterway	Bank	Unit Miles	Inspection Start/End	Inspector
Unit No. 01 San Joaquin River	Left	6.05	05/09/2019 05/09/2019	Alberto De Leon

LM Start	5.64	Rating **	N	Issue No.	40
LM End	5.64	Issue Type +	Ma	Location *	LS
Category	Earthen Levee			GPS Latitude/Longitude	
				Start	End
Item	Trim / Thin Trees			37.811199°	37.811199°
				-121.322176°	-121.322176°
DWR ID	DWR_RD0544_01_s_2012_40				
Comment Code					
T5 : Tree stumps.					
Inspector Comment					

No Photos

LM Start	5.72	Rating **	M	Issue No.	96
LM End	5.72	Issue Type +	Ma	Location *	WS
Category	Earthen Levee			GPS Latitude/Longitude	
				Start	End
Item	Encroachments			37.811188°	37.811188°
				-121.323585°	-121.323585°
DWR ID	DWR_RD0544_01_s_2019_96				
Comment Code					
TR : Tree or limb					
Inspector Comment					

No Photos

LM Start	5.84	Rating **	M	Issue No.	97
LM End	5.84	Issue Type +	Ma	Location *	LS
Category	Earthen Levee			GPS Latitude/Longitude	
				Start	End
Item	Encroachments			37.810853°	37.810853°
				-121.325651°	-121.325651°
DWR ID	DWR_RD0544_01_s_2019_97				
Comment Code					
TR : Tree or limb					
Inspector Comment					

No Photos

* Location		** Rating		+ Issue Type	
LS : Land Side	N/A : Not Applicable	A : Acceptable	N : Not Inspected/Rated	Ma : Maintenance Deficiency	
WS : Water Side		M : Minimally Acceptable	C : Corrected	Ob : Design & System Obsolescence	
CR : Crown		U : Unacceptable	A/W : Acceptable but Monitor & Maintain	En : Enforcement	

**Flood Control Project Maintenance
Levee Inspections**

Maintenance Issue Types Only, Levee Inspection Report By Mile - Spring 2019

Reclamation District No. 0544 Upper Roberts Island

Waterway	Bank	Unit Miles	Inspection Start/End	Inspector
Unit No. 02 Old River	Right	4.15	05/09/2019 05/16/2019	Alberto De Leon

LM Start	0.21	Rating **	A/W	Issue No.	37
LM End	0.23	Issue Type +	Ma	Location *	
Category	Supplemental			GPS Latitude/Longitude	
				Start	End
Item	2017 Storm Damage			37.808300 °	37.808400 °
				-121.332000 °	-121.332200 °
DWR ID	DWR_RD0544_02_f_2017_37				
Comment Code					
Inspector Comment					
Levee Evaluation Comments					
Description:Slope protection repairs are needed along the waterside slope due to erosion and riprap displacement from high water. Based upon levee inspections, it was determined the waterside levee slope is eroding, deteriorating, and degrading. The eroded levee sections need to be restored back to design standards to prevent further deterioration and damage.					
Site ID No:556					
Site Designation:LMA-462					
Repair Type: Erosion					
Rating:Area of Concern					
Field Date:8/16/2017					
Notes:					

Photo 1 of 3 : LEVAL_SP_2019_556_4520.jpg



LM Start	0.21	Rating **	A/W	Issue No.	37 (cont)
LM End	0.23	Issue Type +	Ma	Location *	

Photo 2 of 3 : LEVAL_SP_2019_556_4521.jpg



* Location LS : Land Side N/A : Not Applicable WS : Water Side CR : Crown		** Rating A : Acceptable N : Not Inspected/Rated M : Minimally Acceptable C : Corrected U : Unacceptable A/W : Acceptable but Monitor & Maintain		+ Issue Type Ma : Maintenance Deficiency Ob : Design & System Obsolescence En : Enforcement
--	--	---	--	---

**Flood Control Project Maintenance
Levee Inspections**

Maintenance Issue Types Only, Levee Inspection Report By Mile - Spring 2019

Reclamation District No. 0544 Upper Roberts Island

Waterway	Bank	Unit Miles	Inspection Start/End	Inspector
Unit No. 02 Old River	Right	4.15	05/09/2019 05/16/2019	Alberto De Leon

LM Start	0.21	Rating **	A/W	Issue No.	37 (cont)
LM End	0.23	Issue Type +	Ma	Location *	
Category	Supplemental			GPS Latitude/Longitude	
				Start	End
Item	2017 Storm Damage			37.808300 °	37.808400 °
				-121.332000 °	-121.332200 °
DWR ID	DWR_RD0544_02_f_2017_37				
Comment Code					
Inspector Comment					
Levee Evaluation Comments					
Description:Slope protection repairs are needed along the waterside slope due to erosion and riprap displacement from high water. Based upon levee inspections, it was determined the waterside levee slope is eroding, deteriorating, and degrading. The eroded levee sections need to be restored back to design standards to prevent further deterioration and damage.					
Site ID No:556					
Site Designation:LMA-462					
Repair Type: Erosion					
Rating:Area of Concern					
Field Date:8/16/2017					
Notes:					

Photo 3 of 3 : LEVAL_SP_2019_556_4522.jpg



LM Start	0.21	Rating **	U	Issue No.	2
LM End	0.26	Issue Type +	Ma	Location *	WS
Category	Earthen Levee			GPS Latitude/Longitude	
				Start	End
Item	Vegetation			37.808331 °	37.808576 °
				-121.331997 °	-121.332672 °
DWR ID	DWR_RD0544_02_s_2018_2				
Comment Code					
V2 : Remove the wild growth other than native grasses from the levee slopes.					
Inspector Comment					

Photo 1 of 1 : SP_2019_RD0544_109_2_20190313_00002.jpg



Looking southeast at dense veg on waterward slope. (Spring 2018)

* Location LS : Land Side N/A : Not Applicable WS : Water Side CR : Crown	** Rating A : Acceptable M : Minimally Acceptable U : Unacceptable	N : Not Inspected/Rated C : Corrected A/W : Acceptable but Monitor & Maintain	+ Issue Type Ma : Maintenance Deficiency Ob : Design & System Obsolescence En : Enforcement
--	--	---	---

**Flood Control Project Maintenance
Levee Inspections**

Maintenance Issue Types Only, Levee Inspection Report By Mile - Spring 2019

Reclamation District No. 0544 Upper Roberts Island

Waterway	Bank	Unit Miles	Inspection Start/End	Inspector
Unit No. 02 Old River	Right	4.15	05/09/2019 05/16/2019	Alberto De Leon

LM Start	0.40	Rating **	M	Issue No.	4
LM End	0.40	Issue Type +	Ma	Location *	LS
Category	Earthen Levee			GPS Latitude/Longitude	
				Start	End
Item	Vegetation			37.809788 °	37.809788 °
				-121.334727 °	-121.334727 °
DWR ID	DWR_RD0544_02_s_2012_4				
Comment Code					
V4 : Elderberries are blocking visibility and flood fight capability.					
Inspector Comment					

No Photos

LM Start	0.43	Rating **	M	Issue No.	1
LM End	1.12	Issue Type +	Ma	Location *	LS
Category	Earthen Levee			GPS Latitude/Longitude	
				Start	End
Item	Vegetation			37.810250 °	37.819452 °
				-121.334933 °	-121.333755 °
DWR ID	DWR_RD0544_02_s_2012_1				
Comment Code					
V2 : Remove the wild growth other than native grasses from the levee slopes.					
Inspector Comment					

Photo 1 of 1 : SP_2019_RD0544_109_1_20190313_00001.jpg



Looking southwest at dense vegetation at landward toe.

LM Start	0.44	Rating **	C	Issue No.	71
LM End	0.44	Issue Type +	Ma	Location *	LS
Category	Earthen Levee			GPS Latitude/Longitude	
				Start	End
Item	Erosion / Bank Caving			37.810388 °	37.810388 °
				-121.334977 °	-121.334977 °
DWR ID	DWR_RD0544_02_s_2017_71				
Comment Code					
Inspector Comment					
Landside erosion due to runoff.					

No Photos

* Location		** Rating		+ Issue Type	
LS : Land Side	N/A : Not Applicable	A : Acceptable	N : Not Inspected/Rated	Ma : Maintenance Deficiency	
WS : Water Side		M : Minimally Acceptable	C : Corrected	Ob : Design & System Obsolescence	
CR : Crown		U : Unacceptable	A/W : Acceptable but Monitor & Maintain	En : Enforcement	

**Flood Control Project Maintenance
Levee Inspections**

Maintenance Issue Types Only, Levee Inspection Report By Mile - Spring 2019

Reclamation District No. 0544 Upper Roberts Island

Waterway	Bank	Unit Miles	Inspection Start/End	Inspector
Unit No. 02 Old River	Right	4.15	05/09/2019 05/16/2019	Alberto De Leon

LM Start	0.44	Rating **	A/W	Issue No.	70
LM End	0.46	Issue Type +	Ma	Location *	
Category	Supplemental		GPS Latitude/Longitude		
			Start	End	
Item	2017 Storm Damage		37.810400 °	37.810700 °	
			-121.335000 °	-121.335000 °	
DWR ID	DWR_RD0544_02_f_2017_70				
Comment Code					
Inspector Comment					
Levee Evaluation Comments Description: Slope protection repairs are needed along the waterside slope due to erosion and riprap displacement from high water. Based upon levee inspections, it was determined the waterside levee slope is eroding, deteriorating, and degrading. The eroded levee sections need to be restored back to design standards to prevent further deterioration and damage. Site ID No: 555 Site Designation: LMA-461 Repair Type: Erosion Rating: Area of Concern Field Date: 8/16/2017 Notes:					

Photo 1 of 3 : LEVAL_SP_2019_555_4527.jpg



LM Start	0.44	Rating **	A/W	Issue No.	70 (cont)
LM End	0.46	Issue Type +	Ma	Location *	

Photo 2 of 3 : LEVAL_SP_2019_555_4624.jpg



* Location LS : Land Side N/A : Not Applicable WS : Water Side CR : Crown	** Rating A : Acceptable M : Minimally Acceptable U : Unacceptable N : Not Inspected/Rated C : Corrected A/W : Acceptable but Monitor & Maintain	+ Issue Type Ma : Maintenance Deficiency Ob : Design & System Obsolescence En : Enforcement
--	---	---

**Flood Control Project Maintenance
Levee Inspections**

Maintenance Issue Types Only, Levee Inspection Report By Mile - Spring 2019

Reclamation District No. 0544 Upper Roberts Island

Waterway	Bank	Unit Miles	Inspection Start/End	Inspector
Unit No. 02 Old River	Right	4.15	05/09/2019 05/16/2019	Alberto De Leon

LM Start	0.44	Rating **	A/W	Issue No.	70 (cont)
LM End	0.46	Issue Type +	Ma	Location *	
Category	Supplemental		GPS Latitude/Longitude		
			Start	End	
Item	2017 Storm Damage		37.810400 °	37.810700 °	
			-121.335000 °	-121.335000 °	
DWR ID	DWR_RD0544_02_f_2017_70				
Comment Code					
Inspector Comment					
<p>Levee Evaluation Comments</p> <p>Description: Slope protection repairs are needed along the waterside slope due to erosion and riprap displacement from high water. Based upon levee inspections, it was determined the waterside levee slope is eroding, deteriorating, and degrading. The eroded levee sections need to be restored back to design standards to prevent further deterioration and damage.</p> <p>Site ID No: 555</p> <p>Site Designation: LMA-461</p> <p>Repair Type: Erosion</p> <p>Rating: Area of Concern</p> <p>Field Date: 8/16/2017</p> <p>Notes:</p>					

Photo 3 of 3 : LEVAL_SP_2019_555_4626.jpg



LM Start	0.57	Rating **	A/W	Issue No.	80
LM End	0.58	Issue Type +	Ma	Location *	
Category	Supplemental		GPS Latitude/Longitude		
			Start	End	
Item	2017 Storm Damage		37.812300 °	37.812400 °	
			-121.335100 °	-121.335100 °	
DWR ID	DWR_RD0544_02_f_2017_80				
Comment Code					
Inspector Comment					
<p>Levee Evaluation Comments</p> <p>Description: Slope protection repairs are needed along the waterside slope due to erosion and riprap displacement from high water. Based upon levee inspections, it was determined the waterside levee slope is eroding, deteriorating, and degrading. The eroded levee sections need to be restored back to design standards to prevent further deterioration and damage.</p> <p>Site ID No: 554</p> <p>Site Designation: LMA-460</p> <p>Repair Type: Erosion</p> <p>Rating: Area of Concern</p> <p>Field Date: 8/16/2017</p> <p>Notes:</p>					

Photo 1 of 3 : LEVAL_SP_2019_554_4630.jpg



* Location		** Rating		+ Issue Type	
LS : Land Side	N/A : Not Applicable	A : Acceptable	N : Not Inspected/Rated	Ma : Maintenance Deficiency	
WS : Water Side		M : Minimally Acceptable	C : Corrected	Ob : Design & System Obsolescence	
CR : Crown		U : Unacceptable	A/W : Acceptable but Monitor & Maintain	En : Enforcement	

**Flood Control Project Maintenance
Levee Inspections**

Maintenance Issue Types Only, Levee Inspection Report By Mile - Spring 2019

Reclamation District No. 0544 Upper Roberts Island

Waterway	Bank	Unit Miles	Inspection Start/End	Inspector
Unit No. 02 Old River	Right	4.15	05/09/2019 05/16/2019	Alberto De Leon

LM Start	0.64	Rating **	U	Issue No.	27
LM End	0.64	Issue Type +	Ma	Location *	WS
Category	Earthen Levee			GPS Latitude/Longitude	
				Start	End
Item	Encroachments			37.813307 °	37.813307 °
				-121.335135 °	-121.335135 °
DWR ID	DWR_RD0544_02_f_2018_27				
Comment Code					
TR : Tree or limb					
Inspector Comment					

Photo 1 of 2 : SP_2019_RD0544_109_27_20190313_00019.jpg



Looking east at tree trunk on waterside slope. (Fall 2018)

LM Start	0.64	Rating **	U	Issue No.	27 (cont)
LM End	0.64	Issue Type +	Ma	Location *	WS

Photo 2 of 2 : SP_2019_RD0544_109_27_20190313_00020.jpg



Looking southeast at tree limbs on waterward shoulder. (Fall 2018)

LM Start	0.71	Rating **	M	Issue No.	98
LM End	0.71	Issue Type +	Ma	Location *	LS
Category	Earthen Levee			GPS Latitude/Longitude	
				Start	End
Item	Animal Control			37.814267 °	37.814267 °
				-121.334627 °	-121.334627 °
DWR ID	DWR_RD0544_02_f_2017_98				
Comment Code					
A3 : No rodents visible, but rodent burrows visible; need to backfill and compact or grout burrows.					
Inspector Comment					

No Photos

* Location LS : Land Side N/A : Not Applicable WS : Water Side CR : Crown		** Rating A : Acceptable M : Minimally Acceptable U : Unacceptable		N : Not Inspected/Rated C : Corrected A/W : Acceptable but Monitor & Maintain		+ Issue Type Ma : Maintenance Deficiency Ob : Design & System Obsolescence En : Enforcement	
--	--	--	--	---	--	---	--

**Flood Control Project Maintenance
Levee Inspections**

Maintenance Issue Types Only, Levee Inspection Report By Mile - Spring 2019

Reclamation District No. 0544 Upper Roberts Island

Waterway	Bank	Unit Miles	Inspection Start/End	Inspector
Unit No. 02 Old River	Right	4.15	05/09/2019 05/16/2019	Alberto De Leon

LM Start	0.72	Rating **	A/W	Issue No.	5
LM End	0.72	Issue Type +	Ma	Location *	LS
Category	Earthen Levee			GPS Latitude/Longitude	
				Start	End
Item	Vegetation			37.814333 °	37.814333 °
				-121.334592 °	-121.334592 °
DWR ID	DWR_RD0544_02_s _ 2012_5				
Comment Code					
V4 : Elderberries are blocking visibility and flood fight capability.					
Inspector Comment					

No Photos

LM Start	0.78	Rating **	C	Issue No.	8
LM End	0.78	Issue Type +	Ma	Location *	WS
Category	Interior Drainage & Piping Systems			GPS Latitude/Longitude	
				Start	End
Item	Erosion Areas			37.815094 °	37.815094 °
				-121.333927 °	-121.333927 °
DWR ID	DWR_RD0544_02_s _ 2012_8				
Comment Code					
Inspector Comment					
Erosion has been repaired.					

No Photos

* Location LS : Land Side N/A : Not Applicable WS : Water Side CR : Crown	** Rating A : Acceptable M : Minimally Acceptable U : Unacceptable N : Not Inspected/Rated C : Corrected A/W : Acceptable but Monitor & Maintain	+ Issue Type Ma : Maintenance Deficiency Ob : Design & System Obsolescence En : Enforcement
--	---	---

**Flood Control Project Maintenance
Levee Inspections**

Maintenance Issue Types Only, Levee Inspection Report By Mile - Spring 2019

Reclamation District No. 0544 Upper Roberts Island

Waterway	Bank	Unit Miles	Inspection Start/End	Inspector
Unit No. 02 Old River	Right	4.15	05/09/2019 05/16/2019	Alberto De Leon

LM Start	1.01	Rating **	A/W	Issue No.	82 (cont)
LM End	1.02	Issue Type +	Ma	Location *	
Category	Supplemental			GPS Latitude/Longitude	
				Start	End
Item	2017 Storm Damage			37.818100 °	37.818200 °
				-121.332800 °	-121.332800 °
DWR ID	DWR_RD0544_02_f_2017_82				
Comment Code					
Inspector Comment					
Levee Evaluation Comments					
Description:Slope protection repairs are needed along the waterside slope due to erosion and riprap displacement from high water. Based upon levee inspections, it was determined the waterside levee slope is eroding, deteriorating, and degrading. The eroded levee sections need to be restored back to design standards to prevent further deterioration and damage.					
Site ID No:552					
Site Designation:LMA-458					
Repair Type: Erosion					
Rating:Area of Concern					
Field Date:8/16/2017					
Notes:					

Photo 3 of 3 : LEVAL_SP_2019_552_4813.jpg



LM Start	1.29	Rating **	U	Issue No.	101
LM End	1.56	Issue Type +	Ma	Location *	WS
Category	Earthen Levee			GPS Latitude/Longitude	
				Start	End
Item	Vegetation			37.820668 °	37.822239 °
				-121.336491 °	-121.340589 °
DWR ID	DWR_RD0544_02_f_2017_101				
Comment Code					
V2 : Remove the wild growth other than native grasses from the levee slopes.					
Inspector Comment					

Photo 1 of 1 : SP_2019_RD0544_109_101_20190313_00087.jpg



Looking northwest at the waterside slope.

* Location LS : Land Side N/A : Not Applicable WS : Water Side CR : Crown		** Rating A : Acceptable N : Not Inspected/Rated M : Minimally Acceptable C : Corrected U : Unacceptable A/W : Acceptable but Monitor & Maintain		+ Issue Type Ma : Maintenance Deficiency Ob : Design & System Obsolescence En : Enforcement
--	--	---	--	---

**Flood Control Project Maintenance
Levee Inspections**

Maintenance Issue Types Only, Levee Inspection Report By Mile - Spring 2019

Reclamation District No. 0544 Upper Roberts Island

Waterway	Bank	Unit Miles	Inspection Start/End	Inspector
Unit No. 02 Old River	Right	4.15	05/09/2019 05/16/2019	Alberto De Leon

LM Start	1.29	Rating **	U	Issue No.	102
LM End	1.56	Issue Type +	Ma	Location *	LS
Category	Earthen Levee			GPS Latitude/Longitude	
				Start	End
Item	Vegetation			37.820668 °	37.822239 °
				-121.336491 °	-121.340589 °
DWR ID	DWR_RD0544_02_f_2017_102				
Comment Code					
V2 : Remove the wild growth other than native grasses from the levee slopes.					
Inspector Comment					

Photo 1 of 1 : SP_2019_RD0544_109_102_20190313_00088.jpg



Looking northwest at the landside slope.

LM Start	1.34	Rating **	M	Issue No.	56
LM End	1.45	Issue Type +	Ma	Location *	LS
Category	Earthen Levee			GPS Latitude/Longitude	
				Start	End
Item	Animal Control			37.821168 °	37.822083 °
				-121.337212 °	-121.338862 °
DWR ID	DWR_RD0544_02_s_2015_56				
Comment Code					
A1 : Exterminate rodents and backfill and compact or grout burrows.					
Inspector Comment					

No Photos

LM Start	1.38	Rating **	U	Issue No.	10
LM End	1.38	Issue Type +	Ma	Location *	LS
Category	Earthen Levee			GPS Latitude/Longitude	
				Start	End
Item	Vegetation			37.821423 °	37.821423 °
				-121.337878 °	-121.337878 °
DWR ID	DWR_RD0544_02_s_2012_10				
Comment Code					
V4 : Elderberries are blocking visibility and flood fight capability.					
Inspector Comment					
Dense elderberry on landside slope and toe.					

No Photos

* Location		** Rating		+ Issue Type	
LS : Land Side	N/A : Not Applicable	A : Acceptable	N : Not Inspected/Rated	Ma : Maintenance Deficiency	
WS : Water Side		M : Minimally Acceptable	C : Corrected	Ob : Design & System Obsolescence	
CR : Crown		U : Unacceptable	A/W : Acceptable but Monitor & Maintain	En : Enforcement	

**Flood Control Project Maintenance
Levee Inspections**

Maintenance Issue Types Only, Levee Inspection Report By Mile - Spring 2019

Reclamation District No. 0544 Upper Roberts Island

Waterway	Bank	Unit Miles	Inspection Start/End	Inspector
Unit No. 02 Old River	Right	4.15	05/09/2019 05/16/2019	Alberto De Leon

LM Start	1.40	Rating **	M	Issue No.	22
LM End	1.42	Issue Type +	Ma	Location *	LS
Category	Earthen Levee			GPS Latitude/Longitude	
				Start	End
Item	Slope Stability			37.821518 °	37.821697 °
				-121.338092 °	-121.338397 °
DWR ID	DWR_RD0544_02_s_2012_22				
Comment Code					
S3 : Repair the levee slope damaged by vehicle traffic and prevent access where possible.					
Inspector Comment					
Damage caused by vehicle traffic.					

Photo 1 of 2 : SP_2019_RD0544_109_22_20190313_00015.jpg



Looking northwest at slope damage caused by vehicle traffic (Fall 2014).

LM Start	1.40	Rating **	M	Issue No.	22 (cont)
LM End	1.42	Issue Type +	Ma	Location *	LS

Photo 2 of 2 : SP_2019_RD0544_109_22_20190313_00016.jpg



Looking northwest at slope damage caused by vehicle traffic.

LM Start	1.44	Rating **	M	Issue No.	28
LM End	1.44	Issue Type +	Ma	Location *	WS
Category	Earthen Levee			GPS Latitude/Longitude	
				Start	End
Item	Animal Control			37.821954 °	37.821954 °
				-121.338715 °	-121.338715 °
DWR ID	DWR_RD0544_02_s_2012_28				
Comment Code					
A1 : Exterminate rodents and backfill and compact or grout burrows.					
Inspector Comment					

No Photos

* Location LS : Land Side N/A : Not Applicable WS : Water Side CR : Crown		** Rating A : Acceptable M : Minimally Acceptable U : Unacceptable		N : Not Inspected/Rated C : Corrected A/W : Acceptable but Monitor & Maintain		+ Issue Type Ma : Maintenance Deficiency Ob : Design & System Obsolescence En : Enforcement	
---	--	---	--	---	--	--	--

**Flood Control Project Maintenance
Levee Inspections**

Maintenance Issue Types Only, Levee Inspection Report By Mile - Spring 2019

Reclamation District No. 0544 Upper Roberts Island

Waterway	Bank	Unit Miles	Inspection Start/End	Inspector
Unit No. 02 Old River	Right	4.15	05/09/2019 05/16/2019	Alberto De Leon

LM Start	1.86	Rating **	C	Issue No.	38
LM End	1.86	Issue Type +	Ma	Location *	WS
Category	Earthen Levee			GPS Latitude/Longitude	
				Start	End
Item	Erosion / Bank Caving			37.817983 °	37.817983 °
				-121.341682 °	-121.341682 °
DWR ID	DWR_RD0544_02_s_2015_38				
Comment Code					
E1 : Note and monitor erosion site.					
Inspector Comment					
Erosion/Caving on waterside shoulder and slope 18" x 6" x 15'.					

No Photos

LM Start	1.91	Rating **	M	Issue No.	34
LM End	1.91	Issue Type +	Ma	Location *	WS
Category	Earthen Levee			GPS Latitude/Longitude	
				Start	End
Item	Erosion / Bank Caving			37.817658 °	37.817658 °
				-121.342097 °	-121.342097 °
DWR ID	DWR_RD0544_02_f_2018_34				
Comment Code					
E1 : Note and monitor erosion site.					
Inspector Comment					
Erosion is caused by foot traffic.					

Photo 1 of 2 : SP_2019_RD0544_109_34_20190313_00024.jpg



Looking east at foot erosion on waterward slope. (Fall 2018)

LM Start	1.91	Rating **	M	Issue No.	34 (cont)
LM End	1.91	Issue Type +	Ma	Location *	WS

Photo 2 of 2 : SP_2019_RD0544_109_34_20190313_00025.jpg



Looking west at erosion on waterward slope. (Fall 2018)

* Location LS : Land Side N/A : Not Applicable WS : Water Side CR : Crown		** Rating A : Acceptable M : Minimally Acceptable U : Unacceptable		N : Not Inspected/Rated C : Corrected A/W : Acceptable but Monitor & Maintain		+ Issue Type Ma : Maintenance Deficiency Ob : Design & System Obsolescence En : Enforcement	
--	--	--	--	---	--	---	--

**Flood Control Project Maintenance
Levee Inspections**

Maintenance Issue Types Only, Levee Inspection Report By Mile - Spring 2019

Reclamation District No. 0544 Upper Roberts Island

Waterway	Bank	Unit Miles	Inspection Start/End	Inspector
Unit No. 02 Old River	Right	4.15	05/09/2019 05/16/2019	Alberto De Leon

LM Start	2.02	Rating **	U	Issue No.	58
LM End	2.09	Issue Type +	Ma	Location *	LS
Category	Earthen Levee			GPS Latitude/Longitude	
				Start	End
Item	Animal Control			37.818853 °	37.819493 °
				-121.343473 °	-121.344545 °
DWR ID	DWR_RD0544_02_s_2015_58				
Comment Code					
A1 : Exterminate rodents and backfill and compact or grout burrows.					
Inspector Comment					
Several rodent holes within reach on landside slope.					

Photo 1 of 1 : SP_2019_RD0544_109_58_20190313_00038.jpg



Looking at typical rodent holes on landward slope.

LM Start	2.07	Rating **	U	Issue No.	13
LM End	2.09	Issue Type +	Ma	Location *	LS
Category	Earthen Levee			GPS Latitude/Longitude	
				Start	End
Item	Vegetation			37.819337 °	37.819460 °
				-121.344275 °	-121.344492 °
DWR ID	DWR_RD0544_02_s_2012_13				
Comment Code					
V4 : Elderberries are blocking visibility and flood fight capability.					
Inspector Comment					

No Photos

* Location LS : Land Side N/A : Not Applicable WS : Water Side CR : Crown		** Rating A : Acceptable N : Not Inspected/Rated M : Minimally Acceptable C : Corrected U : Unacceptable A/W : Acceptable but Monitor & Maintain		+ Issue Type Ma : Maintenance Deficiency Ob : Design & System Obsolescence En : Enforcement
--	--	---	--	---

**Flood Control Project Maintenance
Levee Inspections**

Maintenance Issue Types Only, Levee Inspection Report By Mile - Spring 2019

Reclamation District No. 0544 Upper Roberts Island

Waterway	Bank	Unit Miles	Inspection Start/End	Inspector
Unit No. 02 Old River	Right	4.15	05/09/2019 05/16/2019	Alberto De Leon

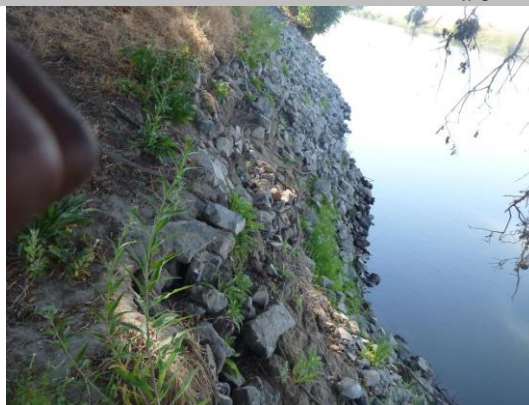
LM Start	2.17	Rating **	A/W	Issue No.	87
LM End	2.18	Issue Type +	Ma	Location *	
Category	Supplemental		GPS Latitude/Longitude		
			Start	End	
Item	2017 Storm Damage		37.820300 °	37.820300 °	
			-121.345600 °	-121.345700 °	
DWR ID	DWR_RD0544_02_f_2017_87				
Comment Code					
Inspector Comment					
<p>Levee Evaluation Comments</p> <p>Description: Slope protection repairs are needed along the waterside slope due to erosion and riprap displacement from high water. Based upon levee inspections, it was determined the waterside levee slope is eroding, deteriorating, and degrading. The eroded levee sections need to be restored back to design standards to prevent further deterioration and damage.</p> <p>Site ID No: 551</p> <p>Site Designation: LMA-457</p> <p>Repair Type: Erosion</p> <p>Rating: Serious</p> <p>Field Date: 8/18/2017</p> <p>Notes:</p>					

Photo 1 of 3 : LEVAL_SP_2019_551_4817.jpg



LM Start	2.17	Rating **	A/W	Issue No.	87 (cont)
LM End	2.18	Issue Type +	Ma	Location *	

Photo 2 of 3 : LEVAL_SP_2019_551_4818.jpg



* Location LS : Land Side N/A : Not Applicable WS : Water Side CR : Crown	** Rating A : Acceptable M : Minimally Acceptable U : Unacceptable N : Not Inspected/Rated C : Corrected A/W : Acceptable but Monitor & Maintain	+ Issue Type Ma : Maintenance Deficiency Ob : Design & System Obsolescence En : Enforcement
--	---	---

**Flood Control Project Maintenance
Levee Inspections**

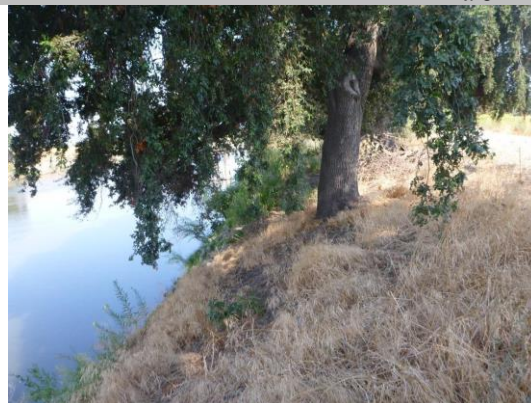
Maintenance Issue Types Only, Levee Inspection Report By Mile - Spring 2019

Reclamation District No. 0544 Upper Roberts Island

Waterway	Bank	Unit Miles	Inspection Start/End	Inspector
Unit No. 02 Old River	Right	4.15	05/09/2019 05/16/2019	Alberto De Leon

LM Start	2.17	Rating **	A/W	Issue No.	87 (cont)
LM End	2.18	Issue Type +	Ma	Location *	
Category	Supplemental			GPS Latitude/Longitude	
				Start	End
Item	2017 Storm Damage			37.820300 °	37.820300 °
				-121.345600 °	-121.345700 °
DWR ID	DWR_RD0544_02_f_2017_87				
Comment Code					
Inspector Comment					
<p>Levee Evaluation Comments</p> <p>Description: Slope protection repairs are needed along the waterside slope due to erosion and riprap displacement from high water. Based upon levee inspections, it was determined the waterside levee slope is eroding, deteriorating, and degrading. The eroded levee sections need to be restored back to design standards to prevent further deterioration and damage.</p> <p>Site ID No: 551</p> <p>Site Designation: LMA-457</p> <p>Repair Type: Erosion</p> <p>Rating: Serious</p> <p>Field Date: 8/18/2017</p> <p>Notes:</p>					

Photo 3 of 3 : LEVAL_SP_2019_551_4824.jpg



LM Start	2.18	Rating **	A/W	Issue No.	88
LM End	2.19	Issue Type +	Ma	Location *	
Category	Supplemental			GPS Latitude/Longitude	
				Start	End
Item	2017 Storm Damage			37.820400 °	37.820500 °
				-121.345800 °	-121.345900 °
DWR ID	DWR_RD0544_02_f_2017_88				
Comment Code					
Inspector Comment					
<p>Levee Evaluation Comments</p> <p>Description: Slope protection repairs are needed along the waterside slope due to erosion and riprap displacement from high water. Based upon levee inspections, it was determined the waterside levee slope is eroding, deteriorating, and degrading. The eroded levee sections need to be restored back to design standards to prevent further deterioration and damage.</p> <p>Site ID No: 550</p> <p>Site Designation: LMA-456</p> <p>Repair Type: Erosion</p> <p>Rating: Area of Concern</p> <p>Field Date: 8/18/2017</p> <p>Notes:</p>					

Photo 1 of 4 : LEVAL_SP_2019_550_4832.jpg



* Location LS : Land Side N/A : Not Applicable WS : Water Side CR : Crown		** Rating A : Acceptable N : Not Inspected/Rated M : Minimally Acceptable C : Corrected U : Unacceptable A/W : Acceptable but Monitor & Maintain		+ Issue Type Ma : Maintenance Deficiency Ob : Design & System Obsolescence En : Enforcement	
--	--	---	--	---	--

**Flood Control Project Maintenance
Levee Inspections**

Maintenance Issue Types Only, Levee Inspection Report By Mile - Spring 2019

Reclamation District No. 0544 Upper Roberts Island

Waterway	Bank	Unit Miles	Inspection Start/End	Inspector
Unit No. 02 Old River	Right	4.15	05/09/2019 05/16/2019	Alberto De Leon

LM Start	2.18	Rating **	A/W	Issue No.	88 (cont)
LM End	2.19	Issue Type +	Ma	Location *	
Category	Supplemental			GPS Latitude/Longitude	
				Start	End
Item	2017 Storm Damage			37.820400 °	37.820500 °
				-121.345800 °	-121.345900 °
DWR ID	DWR_RD0544_02_f_2017_88				
Comment Code					
Inspector Comment					
Levee Evaluation Comments Description: Slope protection repairs are needed along the waterside slope due to erosion and riprap displacement from high water. Based upon levee inspections, it was determined the waterside levee slope is eroding, deteriorating, and degrading. The eroded levee sections need to be restored back to design standards to prevent further deterioration and damage. Site ID No: 550 Site Designation: LMA-456 Repair Type: Erosion Rating: Area of Concern Field Date: 8/18/2017 Notes:					

Photo 4 of 4 : LEVAL_SP_2019_550_4575.jpg



LM Start	2.21	Rating **	M	Issue No.	32
LM End	2.21	Issue Type +	Ma	Location *	WS
Category	Earthen Levee			GPS Latitude/Longitude	
				Start	End
Item	Animal Control			37.820697 °	37.820697 °
				-121.346050 °	-121.346050 °
DWR ID	DWR_RD0544_02_s_2012_32				
Comment Code					
Inspector Comment					
A3 : No rodents visible, but rodent burrows visible; need to backfill and compact or grout burrows.					

No Photos

* Location LS : Land Side N/A : Not Applicable WS : Water Side CR : Crown	** Rating A : Acceptable M : Minimally Acceptable U : Unacceptable	N : Not Inspected/Rated C : Corrected A/W : Acceptable but Monitor & Maintain	+ Issue Type Ma : Maintenance Deficiency Ob : Design & System Obsolescence En : Enforcement
--	--	---	---

**Flood Control Project Maintenance
Levee Inspections**

Maintenance Issue Types Only, Levee Inspection Report By Mile - Spring 2019

Reclamation District No. 0544 Upper Roberts Island

Waterway	Bank	Unit Miles	Inspection Start/End	Inspector
Unit No. 02 Old River	Right	4.15	05/09/2019 05/16/2019	Alberto De Leon

LM Start	2.24	Rating **	M	Issue No.	33
LM End	2.35	Issue Type +	Ma	Location *	LS
Category	Earthen Levee			GPS Latitude/Longitude	
				Start	End
Item	Animal Control			37.821096 °	37.821945 °
				-121.346418 °	-121.347897 °
DWR ID	DWR_RD0544_02_s_2012_33				
Comment Code					
A1 : Exterminate rodents and backfill and compact or grout burrows.					
Inspector Comment					

No Photos

LM Start	2.31	Rating **	M	Issue No.	11
LM End	2.31	Issue Type +	Ma	Location *	WS
Category	Supplemental			GPS Latitude/Longitude	
				Start	End
Item	DWR Erosion Survey			37.821763 °	37.821763 °
				-121.347275 °	-121.347275 °
DWR ID	RD0544U02RM33.21				
Comment Code					
Inspector Comment					
09/13/2017: No significant change observed.					
07/25/2016: No significant change observed.					
06/25/2015: No significant change observed.					
07/02/2014: No significant change observed.					
08/20/2013: No significant change observed.					
08/07/2012: The site was first reported in 2012 spring levee inspection report. The data were estimated as the site is underneath a irrigation pump station and inaccessible by boat or land survey. It's possible the pump station played a role in the erosion. [2017 Site ID:RD0544U02RM33.21]					

Photo 1 of 3 : SP_2019_RD0544_109_11_20190313_00010.jpg



Front view of the erosion site. View is partially blocked by the pump structure and vegetation at the site.

* Location LS : Land Side N/A : Not Applicable WS : Water Side CR : Crown		** Rating A : Acceptable M : Minimally Acceptable U : Unacceptable N : Not Inspected/Rated C : Corrected A/W : Acceptable but Monitor & Maintain		+ Issue Type Ma : Maintenance Deficiency Ob : Design & System Obsolescence En : Enforcement	
---	--	--	--	--	--

**Flood Control Project Maintenance
Levee Inspections**

Maintenance Issue Types Only, Levee Inspection Report By Mile - Spring 2019

Reclamation District No. 0544 Upper Roberts Island

Waterway	Bank	Unit Miles	Inspection Start/End	Inspector
Unit No. 02 Old River	Right	4.15	05/09/2019 05/16/2019	Alberto De Leon

LM Start	2.31	Rating **	M	Issue No.	11 (cont)
LM End	2.31	Issue Type +	Ma	Location *	WS
Category	Supplemental			GPS Latitude/Longitude	
				Start	End
Item	DWR Erosion Survey			37.821763 °	37.821763 °
				-121.347275 °	-121.347275 °
DWR ID	RD0544U02RM33.21				
Comment Code					
Inspector Comment					
09/13/2017: No significant change observed.					
07/25/2016: No significant change observed.					
06/25/2015: No significant change observed.					
07/02/2014: No significant change observed.					
08/20/2013: No significant change observed.					
08/07/2012: The site was first reported in 2012 spring levee inspection report. The data were estimated as the site is underneath a irrigation pump station and inaccessible by boat or land survey. It's possible the pump station played a role in the erosion. [2017 Site ID:RD0544U02RM33.21]					

Photo 2 of 3 : SP_2019_RD0544_109_11_20190313_00011.jpg



Front view of the site.

LM Start	2.31	Rating **	M	Issue No.	11 (cont)
LM End	2.31	Issue Type +	Ma	Location *	WS

Photo 3 of 3 : SP_2019_RD0544_109_11_20190313_00012.jpg



Close view of the site.

* Location LS : Land Side N/A : Not Applicable WS : Water Side CR : Crown	** Rating A : Acceptable M : Minimally Acceptable U : Unacceptable	N : Not Inspected/Rated C : Corrected A/W : Acceptable but Monitor & Maintain	+ Issue Type Ma : Maintenance Deficiency Ob : Design & System Obsolescence En : Enforcement
--	--	---	---

Reclamation District No. 0544 Upper Roberts Island

Waterway	Bank	Unit Miles	Inspection Start/End	Inspector
Unit No. 02 Old River	Right	4.15	05/09/2019 05/16/2019	Alberto De Leon

LM Start	2.32	Rating **	A/W	Issue No.	89
LM End	2.33	Issue Type +	Ma	Location *	
Category	Supplemental			GPS Latitude/Longitude	
				Start	End
Item	2017 Storm Damage			37.821800 °	37.821900 °
				-121.347500 °	-121.347600 °
DWR ID	DWR_RD0544_02_f _ 2017_89				
Comment Code					
Inspector Comment					
Levee Evaluation Comments					
Description:Slope protection repairs are needed along the waterside slope due to erosion and riprap displacement from high water. Based upon levee inspections, it was determined the waterside levee slope is eroding, deteriorating, and degrading. The eroded levee sections need to be restored back to design standards to prevent further deterioration and damage.					
Site ID No:549					
Site Designation:LMA-455					
Repair Type: Erosion					
Rating:Area of Concern					
Field Date:8/18/2017					
Notes:					

LM Start	2.32	Rating **	A/W	Issue No.	89 (cont)
LM End	2.33	Issue Type +	Ma	Location *	

A photograph showing a riverbank with exposed tree roots and dense vegetation. The roots are thick and gnarled, extending from the left side of the frame towards the water. The vegetation is lush and green, covering the bank and the surrounding area. The water is visible on the right side of the frame, reflecting the sky and the surrounding greenery.

A photograph showing a riverbank with large, mature trees. The trees have thick trunks and dense green foliage. Their roots are exposed and spread out over the sandy and rocky ground. The river is visible on the left side of the image, reflecting the sky and trees. The ground is uneven, with patches of grass and small plants growing between the roots and rocks.

* Location	** Rating	+ Issue Type
LS : Land Side N/A : Not Applicable WS : Water Side CR : Crown	A : Acceptable N : Not Inspected/Rated M : Minimally Acceptable C : Corrected U : Unacceptable A/W : Acceptable but Monitor & Maintain	Ma : Maintenance Deficiency Ob : Design & System Obsolescence En : Enforcement

**Flood Control Project Maintenance
Levee Inspections**

Maintenance Issue Types Only, Levee Inspection Report By Mile - Spring 2019

Reclamation District No. 0544 Upper Roberts Island

Waterway	Bank	Unit Miles	Inspection Start/End	Inspector
Unit No. 02 Old River	Right	4.15	05/09/2019 05/16/2019	Alberto De Leon

LM Start	2.32	Rating **	A/W	Issue No.	89 (cont)
LM End	2.33	Issue Type +	Ma	Location *	
Category	Supplemental			GPS Latitude/Longitude	
				Start	End
Item	2017 Storm Damage			37.821800 °	37.821900 °
				-121.347500 °	-121.347600 °
DWR ID	DWR_RD0544_02_f_2017_89				
Comment Code					
Inspector Comment					
Levee Evaluation Comments					
Description:Slope protection repairs are needed along the waterside slope due to erosion and riprap displacement from high water. Based upon levee inspections, it was determined the waterside levee slope is eroding, deteriorating, and degrading. The eroded levee sections need to be restored back to design standards to prevent further deterioration and damage.					
Site ID No:549					
Site Designation:LMA-455					
Repair Type: Erosion					
Rating:Area of Concern					
Field Date:8/18/2017					
Notes:					

Photo 3 of 3 : LEVAL_SP_2019_549_4654.jpg



LM Start	2.41	Rating **	U	Issue No.	73
LM End	2.59	Issue Type +	Ma	Location *	LS
Category	Earthen Levee			GPS Latitude/Longitude	
				Start	End
Item	Vegetation			37.821423 °	37.819153 °
				-121.348849 °	-121.350231 °
DWR ID	DWR_RD0544_02_f_2017_73				
Comment Code					
V2 : Remove the wild growth other than native grasses from the levee slopes.					
Inspector Comment					

Photo 1 of 1 : SP_2019_RD0544_109_73_20190313_00050.jpg



Looking southwest at the landside slope.

* Location LS : Land Side N/A : Not Applicable WS : Water Side CR : Crown		** Rating A : Acceptable N : Not Inspected/Rated M : Minimally Acceptable C : Corrected U : Unacceptable A/W : Acceptable but Monitor & Maintain		+ Issue Type Ma : Maintenance Deficiency Ob : Design & System Obsolescence En : Enforcement
--	--	---	--	---

**Flood Control Project Maintenance
Levee Inspections**

Maintenance Issue Types Only, Levee Inspection Report By Mile - Spring 2019

Reclamation District No. 0544 Upper Roberts Island

Waterway	Bank	Unit Miles	Inspection Start/End	Inspector
Unit No. 02 Old River	Right	4.15	05/09/2019 05/16/2019	Alberto De Leon

LM Start	2.43	Rating **	U	Issue No.	36
LM End	2.50	Issue Type +	Ma	Location *	LS
Category	Earthen Levee			GPS Latitude/Longitude	
				Start	End
Item	Animal Control			37.821146 °	37.820286 °
				-121.348992 °	-121.349462 °
DWR ID	DWR_RD0544_02_s_2019_36				
Comment Code					
A3 : No rodents visible, but rodent burrows visible; need to backfill and compact or grout burrows.					
Inspector Comment					

Photo 1 of 2 : SP_2019_RD0544_109_36_20190523_00120.jpg



View of animal burrow on landside slope. (Spring 2019)

LM Start	2.43	Rating **	U	Issue No.	36 (cont)
LM End	2.50	Issue Type +	Ma	Location *	LS

Photo 2 of 2 : SP_2019_RD0544_109_36_20190523_00121.jpg



View of landside slope with multiple animal burrows. (Spring 2019)

LM Start	2.57	Rating **	C	Issue No.	75
LM End	2.57	Issue Type +	Ma	Location *	WS
Category	Earthen Levee			GPS Latitude/Longitude	
				Start	End
Item	Encroachments			37.819373 °	37.819373 °
				-121.350077 °	-121.350077 °
DWR ID	DWR_RD0544_02_s_2017_75				
Comment Code					
TR : Tree or limb					
Inspector Comment					
Dead tree limbs on waterside slope.					

No Photos

* Location LS : Land Side N/A : Not Applicable WS : Water Side CR : Crown		** Rating A : Acceptable M : Minimally Acceptable U : Unacceptable N : Not Inspected/Rated C : Corrected A/W : Acceptable but Monitor & Maintain		+ Issue Type Ma : Maintenance Deficiency Ob : Design & System Obsolescence En : Enforcement
--	--	---	--	---

**Flood Control Project Maintenance
Levee Inspections**

Maintenance Issue Types Only, Levee Inspection Report By Mile - Spring 2019

Reclamation District No. 0544 Upper Roberts Island

Waterway	Bank	Unit Miles	Inspection Start/End	Inspector
Unit No. 02 Old River	Right	4.15	05/09/2019 05/16/2019	Alberto De Leon

LM Start	2.61	Rating **	M	Issue No.	69
LM End	2.61	Issue Type +	Ma	Location *	WS
Category	Earthen Levee			GPS Latitude/Longitude	
				Start	End
Item	Erosion / Bank Caving			37.818806 °	37.818806 °
				-121.350437 °	-121.350437 °
DWR ID	DWR_RD0544_02_f_2016_69				
Comment Code					
E2 : Schedule repair of erosion site prior to the next inspection.					
Inspector Comment					
Erosion greater than 1' deep and greater than 3' wide. Owner backfilled erosion with rock 3/4 filled. Still need to backfill the remaining erosion.					

Photo 1 of 5 : SP_2019_RD0544_109_69_20190313_00041.jpg



Looking south at erosion on shoulder. (Spring 2018)

LM Start	2.61	Rating **	M	Issue No.	69 (cont)
LM End	2.61	Issue Type +	Ma	Location *	WS

Photo 2 of 5 : SP_2019_RD0544_109_69_20190313_00042.jpg



Looking east at erosion on waterward slope. (Spring 2018)

LM Start	2.61	Rating **	M	Issue No.	69 (cont)
LM End	2.61	Issue Type +	Ma	Location *	WS

Photo 3 of 5 : SP_2019_RD0544_109_69_20190313_00043.jpg



Looking south at erosion on waterward shoulder and slope.

* Location LS : Land Side N/A : Not Applicable WS : Water Side CR : Crown		** Rating A : Acceptable M : Minimally Acceptable U : Unacceptable N : Not Inspected/Rated C : Corrected A/W : Acceptable but Monitor & Maintain		+ Issue Type Ma : Maintenance Deficiency Ob : Design & System Obsolescence En : Enforcement	
---	--	--	--	--	--

**Flood Control Project Maintenance
Levee Inspections**

Maintenance Issue Types Only, Levee Inspection Report By Mile - Spring 2019

Reclamation District No. 0544 Upper Roberts Island

Waterway	Bank	Unit Miles	Inspection Start/End	Inspector
Unit No. 02 Old River	Right	4.15	05/09/2019 05/16/2019	Alberto De Leon

LM Start	2.61	Rating **	M	Issue No.	69 (cont)	
LM End	2.61	Issue Type +	Ma	Location *	WS	
Category	Earthen Levee			GPS Latitude/Longitude		
				Start	End	
Item	Erosion / Bank Caving			37.818806 °	37.818806 °	
				-121.350437 °	-121.350437 °	
DWR ID	DWR_RD0544_02_f_2016_69					
Comment Code						
E2 : Schedule repair of erosion site prior to the next inspection.						
Inspector Comment						
Erosion greater than 1' deep and greater than 3' wide. Owner backfilled erosion with rock 3/4 filled. Still need to backfill the remaining erosion.						

Photo 4 of 5 : SP_2019_RD0544_109_69_20190313_00044.jpg



Looking south at waterward erosion.

LM Start	2.61	Rating **	M	Issue No.	69 (cont)
LM End	2.61	Issue Type +	Ma	Location *	WS

Photo 5 of 5 : SP_2019_RD0544_109_69_20190313_00045.jpg



Looking north at erosion on waterward shoulder and slope.

LM Start	2.67	Rating **	M	Issue No.	76
LM End	2.67	Issue Type +	Ma	Location *	LS
Category	Earthen Levee			GPS Latitude/Longitude	
				Start	End
Item	Animal Control			37.818112 °	37.818112 °
				-121.351108 °	-121.351108 °
DWR ID	DWR_RD0544_02_s_2017_76				
Comment Code					
A3 : No rodents visible, but rodent burrows visible; need to backfill and compact or grout burrows.					
Inspector Comment					

No Photos

* Location		** Rating		+ Issue Type	
LS : Land Side	N/A : Not Applicable	A : Acceptable	N : Not Inspected/Rated	Ma : Maintenance Deficiency	
WS : Water Side		M : Minimally Acceptable	C : Corrected	Ob : Design & System Obsolescence	
CR : Crown		U : Unacceptable	A/W : Acceptable but Monitor & Maintain	En : Enforcement	

**Flood Control Project Maintenance
Levee Inspections**

Maintenance Issue Types Only, Levee Inspection Report By Mile - Spring 2019

Reclamation District No. 0544 Upper Roberts Island

Waterway	Bank	Unit Miles	Inspection Start/End	Inspector
Unit No. 02 Old River	Right	4.15	05/09/2019 05/16/2019	Alberto De Leon

LM Start	2.68	Rating **	M	Issue No.	7
LM End	2.70	Issue Type +	Ma	Location *	WS
Category	Supplemental			GPS Latitude/Longitude	
				Start	End
Item	DWR Erosion Survey			37.817905 °	37.817905 °
				-121.351102 °	-121.351102 °
DWR ID	RD0544U02RM32.91				
Comment Code					
Inspector Comment					
09/13/2017: No significant change observed. 07/25/2016: No significant change observed. 06/25/2015: No significant change observed. 07/02/2014: No significant change observed. 10/11/2013: No significant change observed. 08/07/2012: Series of pocket erosion were discovered at the levee toe during the boat survey. The area is covered with vegetation and riprap, but the rip rap has been washed away. [2017 Site ID:RD0544U02RM32.91]					

LM Start	2.68	Rating **	M	Issue No.	7 (cont)
LM End	2.70	Issue Type +	Ma	Location *	WS

Photo 1 of 2 : SP_2019_RD0544_109_7_20190313_00004.jpg



Front view of the pocket erosion. Note vegetation and riprap at the site.

Photo 2 of 2 : SP_2019_RD0544_109_7_20190313_00005.jpg



Front view of the pocket erosion.

* Location LS : Land Side N/A : Not Applicable WS : Water Side CR : Crown	** Rating A : Acceptable M : Minimally Acceptable U : Unacceptable	N : Not Inspected/Rated C : Corrected A/W : Acceptable but Monitor & Maintain	+ Issue Type Ma : Maintenance Deficiency Ob : Design & System Obsolescence En : Enforcement
--	--	---	---

**Flood Control Project Maintenance
Levee Inspections**

Maintenance Issue Types Only, Levee Inspection Report By Mile - Spring 2019

Reclamation District No. 0544 Upper Roberts Island

Waterway	Bank	Unit Miles	Inspection Start/End	Inspector
Unit No. 02 Old River	Right	4.15	05/09/2019 05/16/2019	Alberto De Leon

LM Start	2.68	Rating **	A/W	Issue No.	90
LM End	2.71	Issue Type +	Ma	Location *	
Category	Supplemental			GPS Latitude/Longitude	
				Start	End
Item	2017 Storm Damage			37.818000 °	37.817800 °
				-121.351200 °	-121.351500 °
DWR ID	DWR_RD0544_02_f_2017_90				
Comment Code					
Inspector Comment					
Levee Evaluation Comments					
Description:Slope protection repairs are needed along the waterside slope due to erosion and riprap displacement from high water. Based upon levee inspections, it was determined the waterside levee slope is eroding, deteriorating, and degrading. The eroded levee sections need to be restored back to design standards to prevent further deterioration and damage.					
Site ID No:548					
Site Designation:LMA-454					
Repair Type: Erosion					
Rating:Area of Concern					
Field Date:8/18/2017					
Notes:					

Photo 1 of 3 : LEVAL_SP_2019_548_4661.jpg



LM Start	2.68	Rating **	A/W	Issue No.	90 (cont)
LM End	2.71	Issue Type +	Ma	Location *	

Photo 2 of 3 : LEVAL_SP_2019_548_4666.jpg



* Location LS : Land Side N/A : Not Applicable WS : Water Side CR : Crown	** Rating A : Acceptable M : Minimally Acceptable U : Unacceptable	N : Not Inspected/Rated C : Corrected A/W : Acceptable but Monitor & Maintain	+ Issue Type Ma : Maintenance Deficiency Ob : Design & System Obsolescence En : Enforcement
--	--	---	---

**Flood Control Project Maintenance
Levee Inspections**

Maintenance Issue Types Only, Levee Inspection Report By Mile - Spring 2019

Reclamation District No. 0544 Upper Roberts Island

Waterway	Bank	Unit Miles	Inspection Start/End	Inspector
Unit No. 02 Old River	Right	4.15	05/09/2019 05/16/2019	Alberto De Leon

LM Start	2.71	Rating **	U	Issue No.	43
LM End	3.45	Issue Type +	Ma	Location *	LS
Category	Earthen Levee			GPS Latitude/Longitude	
				Start	End
Item	Vegetation			37.817747 °	37.819583 °
				-121.351578 °	-121.363559 °
DWR ID	DWR_RD0544_02_s_2012_43				
Comment Code					
V2 : Remove the wild growth other than native grasses from the levee slopes.					
Inspector Comment					

Photo 1 of 2 : SP_2019_RD0544_109_43_20190313_00031.jpg



Looking southwest at levee.

LM Start	2.71	Rating **	U	Issue No.	43 (cont)
LM End	3.45	Issue Type +	Ma	Location *	LS

Photo 2 of 2 : SP_2019_RD0544_109_43_20190313_00032.jpg



Looking at dense vegetation on landward and waterward slope.

*** Location**
LS : Land Side N/A : Not Applicable
WS : Water Side
CR : Crown

**** Rating**
A : Acceptable N : Not Inspected/Rated
M : Minimally Acceptable C : Corrected
U : Unacceptable A/W : Acceptable but Monitor & Maintain

+ Issue Type
Ma : Maintenance Deficiency
Ob : Design & System Obsolescence
En : Enforcement

**Flood Control Project Maintenance
Levee Inspections**

Maintenance Issue Types Only, Levee Inspection Report By Mile - Spring 2019

Reclamation District No. 0544 Upper Roberts Island

Waterway	Bank	Unit Miles	Inspection Start/End	Inspector
Unit No. 02 Old River	Right	4.15	05/09/2019 05/16/2019	Alberto De Leon

LM Start	2.76	Rating **	A/W	Issue No.	91
LM End	2.77	Issue Type +	Ma	Location *	
Category	Supplemental			GPS Latitude/Longitude	
				Start	End
Item	2017 Storm Damage		37.817400 °	37.817300 °	
			-121.352300 °	-121.352500 °	
DWR ID	DWR_RD0544_02_f_2017_91				
Comment Code					
Inspector Comment					
Levee Evaluation Comments					
Description:Slope protection repairs are needed along the waterside slope due to erosion and riprap displacement from high water. Based upon levee inspections, it was determined the waterside levee slope is eroding, deteriorating, and degrading. The eroded levee sections need to be restored back to design standards to prevent further deterioration and damage.					
Site ID No:547					
Site Designation:LMA-453					
Repair Type: Erosion					
Rating:Area of Concern					
Field Date:8/18/2017					
Notes: levee slopes covered in dense vegetations that hindered visibility.					

Photo 1 of 3 : LEVAL_SP_2019_547_4677.jpg



LM Start	2.76	Rating **	A/W	Issue No.	91 (cont)
LM End	2.77	Issue Type +	Ma	Location *	

Photo 2 of 3 : LEVAL_SP_2019_547_4687.jpg



* Location LS : Land Side N/A : Not Applicable WS : Water Side CR : Crown	** Rating A : Acceptable M : Minimally Acceptable U : Unacceptable N : Not Inspected/Rated C : Corrected A/W : Acceptable but Monitor & Maintain	+ Issue Type Ma : Maintenance Deficiency Ob : Design & System Obsolescence En : Enforcement
--	---	---

**Flood Control Project Maintenance
Levee Inspections**

Maintenance Issue Types Only, Levee Inspection Report By Mile - Spring 2019

Reclamation District No. 0544 Upper Roberts Island

Waterway	Bank	Unit Miles	Inspection Start/End	Inspector
Unit No. 02 Old River	Right	4.15	05/09/2019 05/16/2019	Alberto De Leon

LM Start	2.76	Rating **	A/W	Issue No.	91 (cont)	
LM End	2.77	Issue Type +	Ma	Location *		
Category	Supplemental			GPS Latitude/Longitude		
				Start	End	
Item	2017 Storm Damage			37.817400 °	37.817300 °	
				-121.352300 °	-121.352500 °	
DWR ID	DWR_RD0544_02_f_2017_91					
Comment Code						
Inspector Comment						
Levee Evaluation Comments						
Description:Slope protection repairs are needed along the waterside slope due to erosion and riprap displacement from high water. Based upon levee inspections, it was determined the waterside levee slope is eroding, deteriorating, and degrading. The eroded levee sections need to be restored back to design standards to prevent further deterioration and damage.						
Site ID No:547						
Site Designation:LMA-453						
Repair Type: Erosion						
Rating:Area of Concern						
Field Date:8/18/2017						
Notes: levee slopes covered in dense vegetations that hindered visibility.						

Photo 3 of 3 : LEVAL_SP_2019_547_4688.jpg



LM Start	2.80	Rating **	M	Issue No.	53
LM End	2.80	Issue Type +	Ma	Location *	LS
Category	Earthen Levee			GPS Latitude/Longitude	
				Start	End
Item	Trim / Thin Trees			37.817187 °	37.817187 °
				-121.352964 °	-121.352964 °
DWR ID	DWR_RD0544_02_f _ 2014_53				
Comment Code					
T2 : Thin trees to allow visibility of the ground and room to flood fight.					
Inspector Comment					

Photo 1 of 1 : SP_2019_RD0544_109_53_20190313_00036.jpg



Looking southwest at untrimmed tree on landward slope fall 2015.

* Location LS : Land Side N/A : Not Applicable WS : Water Side CR : Crown	** Rating A : Acceptable M : Minimally Acceptable U : Unacceptable	N : Not Inspected/Rated C : Corrected A/W : Acceptable but Monitor & Maintain	+ Issue Type Ma : Maintenance Deficiency Ob : Design & System Obsolescence En : Enforcement
--	--	---	---

**Flood Control Project Maintenance
Levee Inspections**

Maintenance Issue Types Only, Levee Inspection Report By Mile - Spring 2019

Reclamation District No. 0544 Upper Roberts Island

Waterway	Bank	Unit Miles	Inspection Start/End	Inspector
Unit No. 02 Old River	Right	4.15	05/09/2019 05/16/2019	Alberto De Leon

LM Start	3.10	Rating **	U	Issue No.	77
LM End	3.10	Issue Type +	Ma	Location *	WS
Category	Earthen Levee			GPS Latitude/Longitude	
				Start	End
Item	Erosion / Bank Caving			37.817588 °	37.817588 °
				-121.358352 °	-121.358352 °
DWR ID	DWR_RD0544_02_s_2017_77				
Comment Code					
E1 : Note and monitor erosion site.					
Inspector Comment					
Rip rap was placed but does not meet Title 23 standards.					

Photo 1 of 1 : SP_2019_RD0544_109_77_20190313_00051.jpg



Looking northeast at concrete rubble on waterward slope.

LM Start	3.11	Rating **	A/W	Issue No.	92
LM End	3.12	Issue Type +	Ma	Location *	
Category	Supplemental			GPS Latitude/Longitude	
				Start	End
Item	2017 Storm Damage			37.817700 °	37.817800 °
				-121.358600 °	-121.358700 °
DWR ID	DWR_RD0544_02_f_2017_92				
Comment Code					
Inspector Comment					
Levee Evaluation Comments					
Description:Slope protection repairs are needed along the waterside slope due to erosion and riprap displacement from high water. Based upon levee inspections, it was determined the waterside levee slope is eroding, deteriorating, and degrading. The eroded levee sections need to be restored back to design standards to prevent further deterioration and damage.					
Site ID No:546					
Site Designation:LMA-452					
Repair Type: Erosion					
Rating:Area of Concern					
Field Date:8/18/2017					
Notes: dense vegetations on both sides of the levee made the slopes inaccessible					

Photo 1 of 3 : LEVAL_SP_2019_546_4693.jpg



* Location LS : Land Side N/A : Not Applicable WS : Water Side CR : Crown		** Rating A : Acceptable N : Not Inspected/Rated M : Minimally Acceptable C : Corrected U : Unacceptable A/W : Acceptable but Monitor & Maintain		+ Issue Type Ma : Maintenance Deficiency Ob : Design & System Obsolescence En : Enforcement
--	--	---	--	---

**Flood Control Project Maintenance
Levee Inspections**

Maintenance Issue Types Only, Levee Inspection Report By Mile - Spring 2019

Reclamation District No. 0544 Upper Roberts Island

Waterway	Bank	Unit Miles	Inspection Start/End	Inspector
Unit No. 02 Old River	Right	4.15	05/09/2019 05/16/2019	Alberto De Leon

LM Start	3.11	Rating **	A/W	Issue No.	92 (cont)	
LM End	3.12	Issue Type +	Ma	Location *		
Category	Supplemental			GPS Latitude/Longitude		
				Start		End
Item	2017 Storm Damage			37.817700 °		37.817800 °
				-121.358600 °		-121.358700 °
DWR ID	DWR_RD0544_02_f_2017_92					
Comment Code						
Inspector Comment						
Levee Evaluation Comments						
Description:Slope protection repairs are needed along the waterside slope due to erosion and riprap displacement from high water. Based upon levee inspections, it was determined the waterside levee slope is eroding, deteriorating, and degrading. The eroded levee sections need to be restored back to design standards to prevent further deterioration and damage.						
Site ID No:546						
Site Designation:LMA-452						
Repair Type: Erosion						
Rating:Area of Concern						
Field Date:8/18/2017						
Notes: dense vegetations on both sides of the levee made the slopes inaccessible						

Photo 2 of 3 : LEVAL_SP_2019_546_4695.jpg



LM Start	3.11	Rating **	A/W	Issue No.	92 (cont)
LM End	3.12	Issue Type +	Ma	Location *	

Photo 3 of 3 : LEVAL_SP_2019_546_4698.jpg



* Location LS : Land Side N/A : Not Applicable WS : Water Side CR : Crown	** Rating A : Acceptable M : Minimally Acceptable U : Unacceptable N : Not Inspected/Rated C : Corrected A/W : Acceptable but Monitor & Maintain	+ Issue Type Ma : Maintenance Deficiency Ob : Design & System Obsolescence En : Enforcement
--	---	---

**Flood Control Project Maintenance
Levee Inspections**

Maintenance Issue Types Only, Levee Inspection Report By Mile - Spring 2019

Reclamation District No. 0544 Upper Roberts Island

Waterway	Bank	Unit Miles	Inspection Start/End	Inspector
Unit No. 02 Old River	Right	4.15	05/09/2019 05/16/2019	Alberto De Leon

LM Start	3.20	Rating **	M	Issue No.	30
LM End	3.40	Issue Type +	Ma	Location *	WS
Category	Earthen Levee			GPS Latitude/Longitude	
				Start	End
Item	Animal Control			37.818748 °	37.819717 °
				-121.359440 °	-121.362733 °
DWR ID	DWR_RD0544_02_s _ 2013_30				
Comment Code					
A1 : Exterminate rodents and backfill and compact or grout burrows.					
Inspector Comment					

No Photos

LM Start	3.22	Rating **	M	Issue No.	62
LM End	3.22	Issue Type +	Ma	Location *	LS
Category	Earthen Levee			GPS Latitude/Longitude	
				Start	End
Item	Trim / Thin Trees			37.818985 °	37.818985 °
				-121.359675 °	-121.359675 °
DWR ID	DWR_RD0544_02_s _ 2015_62				
Comment Code					
T1 : Trim trees to at least five feet above ground level.					
Inspector Comment					

No Photos

* Location LS : Land Side N/A : Not Applicable WS : Water Side CR : Crown		** Rating A : Acceptable N : Not Inspected/Rated M : Minimally Acceptable C : Corrected U : Unacceptable A/W : Acceptable but Monitor & Maintain		+ Issue Type Ma : Maintenance Deficiency Ob : Design & System Obsolescence En : Enforcement
--	--	---	--	---

**Flood Control Project Maintenance
Levee Inspections**

Maintenance Issue Types Only, Levee Inspection Report By Mile - Spring 2019

Reclamation District No. 0544 Upper Roberts Island

Waterway	Bank	Unit Miles	Inspection Start/End	Inspector
Unit No. 02 Old River	Right	4.15	05/09/2019 05/16/2019	Alberto De Leon

LM Start	3.25	Rating **	A/W	Issue No.	93
LM End	3.34	Issue Type +	Ma	Location *	
Category	Supplemental			GPS Latitude/Longitude	
				Start	End
Item	2017 Storm Damage			37.819300 °	37.819800 °
				-121.360200 °	-121.361600 °
DWR ID	DWR_RD0544_02_f_2017_93				
Comment Code					
Inspector Comment					
Levee Evaluation Comments					
Description:Slope protection repairs are needed along the waterside slope due to erosion and riprap displacement from high water. Based upon levee inspections, it was determined the waterside levee slope is eroding, deteriorating, and degrading. The eroded levee sections need to be restored back to design standards to prevent further deterioration and damage.					
Site ID No:545					
Site Designation:LMA-451					
Repair Type: Erosion					
Rating:Area of Concern					
Field Date:8/18/2017					
Notes:					

Photo 1 of 3 : LEVAL_SP_2019_545_4707.jpg



LM Start	3.25	Rating **	A/W	Issue No.	93 (cont)
LM End	3.34	Issue Type +	Ma	Location *	

Photo 2 of 3 : LEVAL_SP_2019_545_4712.jpg



* Location LS : Land Side N/A : Not Applicable WS : Water Side CR : Crown	** Rating A : Acceptable M : Minimally Acceptable U : Unacceptable N : Not Inspected/Rated C : Corrected A/W : Acceptable but Monitor & Maintain	+ Issue Type Ma : Maintenance Deficiency Ob : Design & System Obsolescence En : Enforcement
--	---	---

**Flood Control Project Maintenance
Levee Inspections**

Maintenance Issue Types Only, Levee Inspection Report By Mile - Spring 2019

Reclamation District No. 0544 Upper Roberts Island

Waterway	Bank	Unit Miles	Inspection Start/End	Inspector
Unit No. 02 Old River	Right	4.15	05/09/2019 05/16/2019	Alberto De Leon

LM Start	3.25	Rating **	A/W	Issue No.	93 (cont)
LM End	3.34	Issue Type +	Ma	Location *	
Category	Supplemental			GPS Latitude/Longitude	
				Start	End
Item	2017 Storm Damage			37.819300 °	37.819800 °
				-121.360200 °	-121.361600 °
DWR ID	DWR_RD0544_02_f_2017_93				
Comment Code					
Inspector Comment					
Levee Evaluation Comments					
Description:Slope protection repairs are needed along the waterside slope due to erosion and riprap displacement from high water. Based upon levee inspections, it was determined the waterside levee slope is eroding, deteriorating, and degrading. The eroded levee sections need to be restored back to design standards to prevent further deterioration and damage.					
Site ID No:545					
Site Designation:LMA-451					
Repair Type: Erosion					
Rating:Area of Concern					
Field Date:8/18/2017					
Notes:					

Photo 3 of 3 : LEVAL_SP_2019_545_4774.jpg



LM Start	3.29	Rating **	M	Issue No.	54
LM End	3.29	Issue Type +	Ma	Location *	LS
Category	Earthen Levee			GPS Latitude/Longitude	
				Start	End
Item	Vegetation			37.819635 °	37.819635 °
				-121.360619 °	-121.360619 °
DWR ID	DWR_RD0544_02_f_2014_54				
Comment Code					
V4 : Elderberries are blocking visibility and flood fight capability.					
Inspector Comment					

No Photos

* Location LS : Land Side N/A : Not Applicable WS : Water Side CR : Crown	** Rating A : Acceptable M : Minimally Acceptable U : Unacceptable	N : Not Inspected/Rated C : Corrected A/W : Acceptable but Monitor & Maintain	+ Issue Type Ma : Maintenance Deficiency Ob : Design & System Obsolescence En : Enforcement
--	--	---	---

**Flood Control Project Maintenance
Levee Inspections**

Maintenance Issue Types Only, Levee Inspection Report By Mile - Spring 2019

Reclamation District No. 0544 Upper Roberts Island

Waterway	Bank	Unit Miles	Inspection Start/End	Inspector
Unit No. 02 Old River	Right	4.15	05/09/2019 05/16/2019	Alberto De Leon

LM Start	3.51	Rating **	A/W	Issue No.	94 (cont)
LM End	3.55	Issue Type +	Ma	Location *	
Category	Supplemental			GPS Latitude/Longitude	
				Start	End
Item	2017 Storm Damage			37.819500 °	37.819400 °
				-121.364700 °	-121.365400 °
DWR ID	DWR_RD0544_02_f_2017_94				
Comment Code					
Inspector Comment					
Levee Evaluation Comments					
Description:Slope protection repairs are needed along the waterside slope due to erosion and riprap displacement from high water. Based upon levee inspections, it was determined the waterside levee slope is eroding, deteriorating, and degrading. The eroded levee sections need to be restored back to design standards to prevent further deterioration and damage.					
Site ID No:544					
Site Designation:LMA-450					
Repair Type: Erosion					
Rating:Area of Concern					
Field Date:8/18/2017					
Notes:					

Photo 2 of 3 : LEVAL_SP_2019_544_4782.jpg



Photo 3 of 3 : LEVAL_SP_2019_544_4783.jpg



LM Start	3.51	Rating **	A/W	Issue No.	94 (cont)
LM End	3.55	Issue Type +	Ma	Location *	

* Location LS : Land Side N/A : Not Applicable WS : Water Side CR : Crown	** Rating A : Acceptable M : Minimally Acceptable U : Unacceptable	N : Not Inspected/Rated C : Corrected A/W : Acceptable but Monitor & Maintain	+ Issue Type Ma : Maintenance Deficiency Ob : Design & System Obsolescence En : Enforcement
--	--	---	---

**Flood Control Project Maintenance
Levee Inspections**

Maintenance Issue Types Only, Levee Inspection Report By Mile - Spring 2019

Reclamation District No. 0544 Upper Roberts Island

Waterway	Bank	Unit Miles	Inspection Start/End	Inspector
Unit No. 02 Old River	Right	4.15	05/09/2019 05/16/2019	Alberto De Leon

LM Start	3.57	Rating **	M	Issue No.	19
LM End	3.57	Issue Type +	Ma	Location *	LS
Category	Earthen Levee			GPS Latitude/Longitude	
				Start	End
Item	Trim / Thin Trees			37.819400 °	37.819400 °
				-121.365762 °	-121.365762 °
DWR ID	DWR_RD0544_02_f_2013_19				
Comment Code					
T1 : Trim trees to at least five feet above ground level.					
Inspector Comment					

No Photos

LM Start	3.57	Rating **	A/W	Issue No.	95
LM End	3.58	Issue Type +	Ma	Location *	
Category	Supplemental			GPS Latitude/Longitude	
				Start	End
Item	2017 Storm Damage			37.819400 °	37.819400 °
				-121.365800 °	-121.365900 °
DWR ID	DWR_RD0544_02_f _ 2017_95				
Comment Code					
Inspector Comment					
Levee Evaluation Comments					
Description:Slope protection repairs are needed along the waterside slope due to erosion and riprap displacement from high water. Based upon levee inspections, it was determined the waterside levee slope is eroding, deteriorating, and degrading. The eroded levee sections need to be restored back to design standards to prevent further deterioration and damage.					
Site ID No:543					
Site Designation:LMA-449					
Repair Type: Erosion					
Rating:Area of Concern					
Field Date:8/18/2017					
Notes:					

Photo 1 of 3 : LEVAL_SP_2019_543_4790.jpg



* Location LS : Land Side N/A : Not Applicable WS : Water Side CR : Crown		** Rating A : Acceptable N : Not Inspected/Rated M : Minimally Acceptable C : Corrected U : Unacceptable A/W : Acceptable but Monitor & Maintain		+ Issue Type Ma : Maintenance Deficiency Ob : Design & System Obsolescence En : Enforcement
--	--	---	--	---

**Flood Control Project Maintenance
Levee Inspections**

Maintenance Issue Types Only, Levee Inspection Report By Mile - Spring 2019

Reclamation District No. 0544 Upper Roberts Island

Waterway	Bank	Unit Miles	Inspection Start/End	Inspector
Unit No. 02 Old River	Right	4.15	05/09/2019 05/16/2019	Alberto De Leon

LM Start	3.57	Rating **	A/W	Issue No.	95 (cont)
LM End	3.58	Issue Type +	Ma	Location *	
Category	Supplemental			GPS Latitude/Longitude	
				Start	End
Item	2017 Storm Damage			37.819400 °	37.819400 °
				-121.365800 °	-121.365900 °
DWR ID	DWR_RD0544_02_f_2017_95				
Comment Code					
Inspector Comment					
Levee Evaluation Comments					
Description:Slope protection repairs are needed along the waterside slope due to erosion and riprap displacement from high water. Based upon levee inspections, it was determined the waterside levee slope is eroding, deteriorating, and degrading. The eroded levee sections need to be restored back to design standards to prevent further deterioration and damage.					
Site ID No:543					
Site Designation:LMA-449					
Repair Type: Erosion					
Rating:Area of Concern					
Field Date:8/18/2017					
Notes:					

Photo 2 of 3 : LEVAL_SP_2019_543_4797.jpg



LM Start	3.57	Rating **	A/W	Issue No.	95 (cont)
LM End	3.58	Issue Type +	Ma	Location *	

Photo 3 of 3 : LEVAL_SP_2019_543_4799.jpg



* Location LS : Land Side N/A : Not Applicable WS : Water Side CR : Crown	** Rating A : Acceptable M : Minimally Acceptable U : Unacceptable	N : Not Inspected/Rated C : Corrected A/W : Acceptable but Monitor & Maintain	+ Issue Type Ma : Maintenance Deficiency Ob : Design & System Obsolescence En : Enforcement
--	--	---	---

**Flood Control Project Maintenance
Levee Inspections**

Maintenance Issue Types Only, Levee Inspection Report By Mile - Spring 2019

Reclamation District No. 0544 Upper Roberts Island

Waterway	Bank	Unit Miles	Inspection Start/End	Inspector
Unit No. 02 Old River	Right	4.15	05/09/2019 05/16/2019	Alberto De Leon

LM Start	3.58	Rating **	M	Issue No.	67
LM End	3.58	Issue Type +	Ma	Location *	LS
Category	Earthen Levee			GPS Latitude/Longitude	
				Start	End
Item	Animal Control			37.819419 °	37.819419 °
				-121.365854 °	-121.365854 °
DWR ID	DWR_RD0544_02_f_2015_67				
Comment Code					
A3 : No rodents visible, but rodent burrows visible; need to backfill and compact or grout burrows.					
Inspector Comment					
Large rodent holes on landward slope.					

Photo 1 of 2 : SP_2019_RD0544_109_67_20190313_00039.jpg



Looking northeast at typical view of rodent holes on landward slope.

LM Start	3.58	Rating **	M	Issue No.	67 (cont)
LM End	3.58	Issue Type +	Ma	Location *	LS

Photo 2 of 2 : SP_2019_RD0544_109_67_20190313_00040.jpg



Looking north at typical view of rodent holes on landward slope.

LM Start	4.05	Rating **	U	Issue No.	64
LM End	4.05	Issue Type +	Ma	Location *	LS
Category	Earthen Levee			GPS Latitude/Longitude	
				Start	End
Item	Vegetation			37.821620 °	37.821620 °
				-121.373283 °	-121.373283 °
DWR ID	DWR_RD0544_02_s_2015_64				
Comment Code					
V4 : Elderberries are blocking visibility and flood fight capability.					
Inspector Comment					

No Photos

* Location LS : Land Side N/A : Not Applicable WS : Water Side CR : Crown		** Rating A : Acceptable M : Minimally Acceptable U : Unacceptable N : Not Inspected/Rated C : Corrected A/W : Acceptable but Monitor & Maintain		+ Issue Type Ma : Maintenance Deficiency Ob : Design & System Obsolescence En : Enforcement	
---	--	--	--	--	--