

**Flood Control Project Maintenance
Levee Inspections**

Maintenance Issue Types Only, Levee Inspection Report By Mile - Spring 2016

Reclamation District No. 0544 Upper Roberts Island

Waterway	Bank	Unit Miles	Inspection Start/End	Inspector
Unit No. 01 San Joaquin River	Left	6.05	04/19/2016 04/19/2016	Richard Willoughby

LM Start	0.00	Rating **	M	Issue No.	66
LM End	0.00	Issue Type +	Ma	Location *	N/A
Category	Earthen Levee			GPS Latitude/Longitude	
				Start	End
Item	Flood Preparedness & Training				
DWR ID	DWR_RD0544_01_s_2012_66				
Comment Code					
Inspector Comment					
The LMA has a good working knowledge of flood response. LMA has not been involved in flood training for several years.					

No Photos

LM Start	0.00	Rating **	A	Issue No.	71
LM End	0.00	Issue Type +	Ma	Location *	N/A
Category	Earthen Levee			GPS Latitude/Longitude	
				Start	End
Item	Operations & Maintenance Manuals				
DWR ID	DWR_RD0544_01_s_2013_71				
Comment Code					
Inspector Comment					
The LMA has a copy of O&M manual on file in the office.					

No Photos

LM Start	0.00	Rating **	A	Issue No.	72
LM End	0.00	Issue Type +	Ma	Location *	N/A
Category	Earthen Levee			GPS Latitude/Longitude	
				Start	End
Item	Emergency Supplies & Equipment				
DWR ID	DWR_RD0544_01_s_2013_72				
Comment Code					
Inspector Comment					
The LMA maintains an adequate supply of floodfight material.					

No Photos

* Location LS : Land Side N/A : Not Applicable WS : Water Side CR : Crown	** Rating A : Acceptable M : Minimally Acceptable U : Unacceptable	N : Not Inspected/Rated C : Corrected A/W : Acceptable but Monitor & Maintain	+ Issue Type Ma : Maintenance Deficiency Ob : Design & System Obsolescence En : Enforcement
--	--	---	---

**Flood Control Project Maintenance
Levee Inspections**

Maintenance Issue Types Only, Levee Inspection Report By Mile - Spring 2016

Reclamation District No. 0544 Upper Roberts Island

Waterway	Bank	Unit Miles	Inspection Start/End	Inspector
Unit No. 01 San Joaquin River	Left	6.05	04/19/2016 04/19/2016	Richard Willoughby

LM Start	0.01	Rating **	M	Issue No.	92
LM End	0.01	Issue Type +	Ma	Location *	LS
Category	Earthen Levee			GPS Latitude/Longitude	
				Start	End
Item	Trim / Thin Trees			37.870285 °	37.870285 °
				-121.329822 °	-121.329822 °
DWR ID	DWR_RD0544_01_f_2014_92				
Comment Code					
T1 : Trim trees to at least five feet above ground level.					
Inspector Comment					

No Photos

LM Start	0.04	Rating **	M	Issue No.	84
LM End	6.04	Issue Type +	Ma	Location *	WS
Category	Earthen Levee			GPS Latitude/Longitude	
				Start	End
Item	Vegetation			37.869888 °	37.808808 °
				-121.329620 °	-121.328119 °
DWR ID	DWR_RD0544_01_s_2016_84				
Comment Code					
V1 : Control annual grass and weeds on the levee slopes and easements.					
Inspector Comment					

No Photos

LM Start	0.04	Rating **	M	Issue No.	83
LM End	6.04	Issue Type +	Ma	Location *	LS
Category	Earthen Levee			GPS Latitude/Longitude	
				Start	End
Item	Vegetation			37.869887 °	37.808808 °
				-121.329620 °	-121.328119 °
DWR ID	DWR_RD0544_01_s_2016_83				
Comment Code					
V1 : Control annual grass and weeds on the levee slopes and easements.					
Inspector Comment					

No Photos

* Location LS : Land Side N/A : Not Applicable WS : Water Side CR : Crown		** Rating A : Acceptable N : Not Inspected/Rated M : Minimally Acceptable C : Corrected U : Unacceptable A/W : Acceptable but Monitor & Maintain		+ Issue Type Ma : Maintenance Deficiency Ob : Design & System Obsolescence En : Enforcement	
--	--	---	--	---	--

**Flood Control Project Maintenance
Levee Inspections**

Maintenance Issue Types Only, Levee Inspection Report By Mile - Spring 2016

Reclamation District No. 0544 Upper Roberts Island

Waterway	Bank	Unit Miles	Inspection Start/End	Inspector
Unit No. 01 San Joaquin River	Left	6.05	04/19/2016 04/19/2016	Richard Willoughby

LM Start	0.06	Rating **	M	Issue No.	4 (cont)	
LM End	0.19	Issue Type +	Ma	Location *	LS	
Category	Earthen Levee			GPS Latitude/Longitude		
				Start		End
Item	Encroachments			37.869606 °	37.868163 °	
				-121.329571 °	-121.328132 °	
DWR ID	DWR_RD0544_01_s_2012_4					
Comment Code						
EQ : Equipment						
Inspector Comment						
Farm equipment and supplies stored at landward toe.						

Photo 4 of 5 : SP_2016_RD0544_108_4_20160404_00007.jpg



Looking north at equipment along landside toe.

LM Start	0.06	Rating **	M	Issue No.	4 (cont)
LM End	0.19	Issue Type +	Ma	Location *	LS

Photo 5 of 5 : SP_2016_RD0544_108_4_20160404_00008.jpg



Looking south at equipment along landside toe.

LM Start	0.06	Rating **	U	Issue No.	118
LM End	0.06	Issue Type +	Ma	Location *	LS
Category	Earthen Levee			GPS Latitude/Longitude	
				Start	End
Item	Erosion / Bank Caving			37.869570 °	37.869570 °
				-121.329556 °	-121.329556 °
DWR ID	DWR_RD0544_01_f_2015_118				
Comment Code					
E1 : Note and monitor erosion site.					
Inspector Comment					
Finger erosion noted on landward slope.					

Photo 1 of 1 : SP_2016_RD0544_108_118_20160404_00072.jpg



Looking west at landside erosion for shoulder to middle of levee slope.

*** Location**
LS : Land Side N/A : Not Applicable
WS : Water Side
CR : Crown

**** Rating**
A : Acceptable N : Not Inspected/Rated
M : Minimally Acceptable C : Corrected
U : Unacceptable A/W : Acceptable but Monitor & Maintain

+ Issue Type
Ma : Maintenance Deficiency
Ob : Design & System Obsolescence
En : Enforcement

**Flood Control Project Maintenance
Levee Inspections**

Maintenance Issue Types Only, Levee Inspection Report By Mile - Spring 2016

Reclamation District No. 0544 Upper Roberts Island

Waterway	Bank	Unit Miles	Inspection Start/End	Inspector
Unit No. 01 San Joaquin River	Left	6.05	04/19/2016 04/19/2016	Richard Willoughby

LM Start	0.26	Rating **	M	Issue No.	101
LM End	0.34	Issue Type +	Ma	Location *	LS
Category	Earthen Levee			GPS Latitude/Longitude	
				Start	End
Item	Crown Surface / Depressions / Rutting			37.867148 °	37.866036 °
				-121.327797 °	-121.327862 °
DWR ID	DWR_RD0544_01_s_2016_101				
Comment Code					
C1 : Add appropriate material and re-grade the levee to bring the crown above the design elevation.					
Inspector Comment					

No Photos

LM Start	0.42	Rating **	M	Issue No.	2
LM End	0.42	Issue Type +	Ma	Location *	LS
Category	Earthen Levee			GPS Latitude/Longitude	
				Start	End
Item	Trim / Thin Trees			37.864958 °	37.864958 °
				-121.327142 °	-121.327142 °
DWR ID	DWR_RD0544_01_s_2012_2				
Comment Code					
T2 : Thin trees to allow visibility of the ground and room to flood fight.					
Inspector Comment					

No Photos

LM Start	0.45	Rating **	M	Issue No.	6
LM End	0.45	Issue Type +	Ma	Location *	WS
Category	Earthen Levee			GPS Latitude/Longitude	
				Start	End
Item	Encroachments			37.864713 °	37.864713 °
				-121.326708 °	-121.326708 °
DWR ID	DWR_RD0544_01_f_2013_6				
Comment Code					
PR : Prunings					
Inspector Comment					
Broken tree limbs on waterward slope and berm.					

Photo 1 of 1 : SP_2016_RD0544_108_6_20160404_00010.jpg



Looking southeast at tree branch on waterward slope.

* Location		** Rating		+ Issue Type	
LS : Land Side	N/A : Not Applicable	A : Acceptable	N : Not Inspected/Rated	Ma : Maintenance Deficiency	
WS : Water Side		M : Minimally Acceptable	C : Corrected	Ob : Design & System Obsolescence	
CR : Crown		U : Unacceptable	A/W : Acceptable but Monitor & Maintain	En : Enforcement	

**Flood Control Project Maintenance
Levee Inspections**

Maintenance Issue Types Only, Levee Inspection Report By Mile - Spring 2016

Reclamation District No. 0544 Upper Roberts Island

Waterway	Bank	Unit Miles	Inspection Start/End	Inspector
Unit No. 01 San Joaquin River	Left	6.05	04/19/2016 04/19/2016	Richard Willoughby

LM Start	0.48	Rating **	A/W	Issue No.	3
LM End	0.67	Issue Type +	Ma	Location *	WS
Category	Earthen Levee			GPS Latitude/Longitude	
				Start	End
Item	Vegetation			37.864578 °	37.863753 °
				-121.326210 °	-121.322835 °
DWR ID	DWR_RD0544_01_s_2012_3				
Comment Code					
V2 : Remove the wild growth other than native grasses from the levee slopes.					
Inspector Comment					
Issue has been corrected, but should be monitored.					

LM Start	0.48	Rating **	A/W	Issue No.	3 (cont)
LM End	0.67	Issue Type +	Ma	Location *	WS

Photo 1 of 2 : SP_2016_RD0544_108_3_20160404_00002.jpg



Looking south at typical view of levee. (Spring 2014)

Photo 2 of 2 : SP_2016_RD0544_108_3_20160404_00003.jpg



Looking south at overgrown on landward and waterward slopes.

LM Start	0.55	Rating **	M	Issue No.	61
LM End	0.63	Issue Type +	Ma	Location *	CR
Category	Earthen Levee			GPS Latitude/Longitude	
				Start	End
Item	Crown Surface / Depressions / Rutting			37.864359 °	37.864011 °
				-121.324939 °	-121.323562 °
DWR ID	DWR_RD0544_01_f_2013_61				
Comment Code					
C1 : Add appropriate material and re-grade the levee to bring the crown above the design elevation.					
Inspector Comment					

No Photos

* Location		** Rating		+ Issue Type	
LS : Land Side	N/A : Not Applicable	A : Acceptable	N : Not Inspected/Rated	Ma : Maintenance Deficiency	
WS : Water Side		M : Minimally Acceptable	C : Corrected	Ob : Design & System Obsolescence	
CR : Crown		U : Unacceptable	A/W : Acceptable but Monitor & Maintain	En : Enforcement	

**Flood Control Project Maintenance
Levee Inspections**

Maintenance Issue Types Only, Levee Inspection Report By Mile - Spring 2016

Reclamation District No. 0544 Upper Roberts Island

Waterway	Bank	Unit Miles	Inspection Start/End	Inspector
Unit No. 01 San Joaquin River	Left	6.05	04/19/2016 04/19/2016	Richard Willoughby

LM Start	0.73	Rating **	M	Issue No.	12
LM End	0.73	Issue Type +	Ma	Location *	WS
Category	Earthen Levee			GPS Latitude/Longitude	
				Start	End
Item	Trim / Thin Trees			37.863380 °	37.863380 °
				-121.321897 °	-121.321897 °
DWR ID	DWR_RD0544_01_s_2012_12				
Comment Code					
T4 : Trim trees over roadway to at least 12 feet above ground level.					
Inspector Comment					

No Photos

LM Start	0.78	Rating **	M	Issue No.	73
LM End	0.78	Issue Type +	Ma	Location *	WS
Category	Earthen Levee			GPS Latitude/Longitude	
				Start	End
Item	Trim / Thin Trees			37.863016 °	37.863016 °
				-121.321137 °	-121.321137 °
DWR ID	DWR_RD0544_01_f_2013_73				
Comment Code					
T1 : Trim trees to at least five feet above ground level.					
Inspector Comment					

No Photos

LM Start	0.81	Rating **	U	Issue No.	93
LM End	0.81	Issue Type +	Ma	Location *	LS
Category	Earthen Levee			GPS Latitude/Longitude	
				Start	End
Item	Trim / Thin Trees			37.862694 °	37.862694 °
				-121.320887 °	-121.320887 °
DWR ID	DWR_RD0544_01_f_2014_93				
Comment Code					
T1 : Trim trees to at least five feet above ground level.					
Inspector Comment					

Photo 1 of 1 : SP_2016_RD0544_108_93_20160404_00057.jpg



Looking west at untrimmed trees on landward slope and toe fall 2015.

* Location LS : Land Side N/A : Not Applicable WS : Water Side CR : Crown		** Rating A : Acceptable M : Minimally Acceptable U : Unacceptable N : Not Inspected/Rated C : Corrected A/W : Acceptable but Monitor & Maintain		+ Issue Type Ma : Maintenance Deficiency Ob : Design & System Obsolescence En : Enforcement	
--	--	---	--	---	--

**Flood Control Project Maintenance
Levee Inspections**

Maintenance Issue Types Only, Levee Inspection Report By Mile - Spring 2016

Reclamation District No. 0544 Upper Roberts Island

Waterway	Bank	Unit Miles	Inspection Start/End	Inspector
Unit No. 01 San Joaquin River	Left	6.05	04/19/2016 04/19/2016	Richard Willoughby

LM Start	1.29	Rating **	M	Issue No.	89
LM End	1.29	Issue Type +	Ma	Location *	LS
Category	Earthen Levee			GPS Latitude/Longitude	
				Start	End
Item	Trim / Thin Trees			37.857321 °	37.857321 °
				-121.319943 °	-121.319943 °
DWR ID	DWR_RD0544_01_s_2014_89				
Comment Code					
T1 : Trim trees to at least five feet above ground level.					
Inspector Comment					

No Photos

LM Start	1.33	Rating **	M	Issue No.	19
LM End	1.43	Issue Type +	Ma	Location *	WS
Category	Earthen Levee			GPS Latitude/Longitude	
				Start	End
Item	Vegetation			37.857042 °	37.855792 °
				-121.320480 °	-121.321212 °
DWR ID	DWR_RD0544_01_s_2012_19				
Comment Code					
V2 : Remove the wild growth other than native grasses from the levee slopes.					
Inspector Comment					

No Photos

LM Start	1.42	Rating **	U	Issue No.	87
LM End	1.48	Issue Type +	Ma	Location *	LS
Category	Earthen Levee			GPS Latitude/Longitude	
				Start	End
Item	Trim / Thin Trees			37.855948 °	37.855043 °
				-121.321250 °	-121.321122 °
DWR ID	DWR_RD0544_01_s_2015_87				
Comment Code					
T1 : Trim trees to at least five feet above ground level.					
Inspector Comment					

Photo 1 of 1 : SP_2016_RD0544_108_87_20160404_00051.jpg



Looking west at untrimmed tree at landward toe fall 2015.

* Location		** Rating		+ Issue Type	
LS : Land Side	N/A : Not Applicable	A : Acceptable	N : Not Inspected/Rated	Ma : Maintenance Deficiency	
WS : Water Side		M : Minimally Acceptable	C : Corrected	Ob : Design & System Obsolescence	
CR : Crown		U : Unacceptable	A/W : Acceptable but Monitor & Maintain	En : Enforcement	

**Flood Control Project Maintenance
Levee Inspections**

Maintenance Issue Types Only, Levee Inspection Report By Mile - Spring 2016

Reclamation District No. 0544 Upper Roberts Island

Waterway	Bank	Unit Miles	Inspection Start/End	Inspector
Unit No. 01 San Joaquin River	Left	6.05	04/19/2016 04/19/2016	Richard Willoughby

LM Start	1.43	Rating **	N	Issue No.	13
LM End	1.43	Issue Type +	Ma	Location *	LS
Category	Earthen Levee			GPS Latitude/Longitude	
				Start	End
Item	Trim / Thin Trees			37.855778 °	37.855778 °
				-121.321206 °	-121.321206 °
DWR ID	DWR_RD0544_01_s_2012_13				
Comment Code					
T5 : Tree stumps.					
Inspector Comment					

No Photos

LM Start	1.44	Rating **	N	Issue No.	14
LM End	1.44	Issue Type +	Ma	Location *	WS
Category	Earthen Levee			GPS Latitude/Longitude	
				Start	End
Item	Trim / Thin Trees			37.855583 °	37.855583 °
				-121.321177 °	-121.321177 °
DWR ID	DWR_RD0544_01_s_2012_14				
Comment Code					
T5 : Tree stumps.					
Inspector Comment					

No Photos

LM Start	1.48	Rating **	A/W	Issue No.	94
LM End	1.50	Issue Type +	Ma	Location *	WS
Category	Earthen Levee			GPS Latitude/Longitude	
				Start	End
Item	Vegetation			37.855097 °	37.854722 °
				-121.321136 °	-121.321072 °
DWR ID	DWR_RD0544_01_f_2014_94				
Comment Code					
V2 : Remove the wild growth other than native grasses from the levee slopes.					
Inspector Comment					
Issue has been corrected, but should be monitored.					

Photo 1 of 1 : SP_2016_RD0544_108_94_20160404_00058.jpg



Looking north at vegetation on waterward shoulder and slope.

* Location LS : Land Side N/A : Not Applicable WS : Water Side CR : Crown		** Rating A : Acceptable N : Not Inspected/Rated M : Minimally Acceptable C : Corrected U : Unacceptable A/W : Acceptable but Monitor & Maintain		+ Issue Type Ma : Maintenance Deficiency Ob : Design & System Obsolescence En : Enforcement
--	--	---	--	---

**Flood Control Project Maintenance
Levee Inspections**

Maintenance Issue Types Only, Levee Inspection Report By Mile - Spring 2016

Reclamation District No. 0544 Upper Roberts Island

Waterway	Bank	Unit Miles	Inspection Start/End	Inspector
Unit No. 01 San Joaquin River	Left	6.05	04/19/2016 04/19/2016	Richard Willoughby

LM Start	1.48	Rating **	A/W	Issue No.	42
LM End	1.54	Issue Type +	Ma	Location *	LS
Category	Earthen Levee			GPS Latitude/Longitude	
				Start	End
Item	Vegetation			37.855087 °	37.854187 °
				-121.321127 °	-121.321055 °
DWR ID	DWR_RD0544_01_s_2012_42				
Comment Code					
V2 : Remove the wild growth other than native grasses from the levee slopes.					
Inspector Comment					
Issue has been corrected, but should be monitored.					

No Photos

LM Start	1.50	Rating **	U	Issue No.	119
LM End	1.51	Issue Type +	Ma	Location *	WS
Category	Earthen Levee			GPS Latitude/Longitude	
				Start	End
Item	Slope Stability			37.854844 °	37.854564 °
				-121.321090 °	-121.321031 °
DWR ID	DWR_RD0544_01_f_2015_119				
Comment Code					
S3 : Repair the levee slope damaged by vehicle traffic and prevent access where possible.					
Inspector Comment					
Damaged levee slope due to fishermen using slope as a ramp.					

Photo 1 of 3 : SP_2016_RD0544_108_119_20160404_00073.jpg



Looking southeast at damaged waterward slope fall 2015.

LM Start	1.50	Rating **	U	Issue No.	119 (cont)
LM End	1.51	Issue Type +	Ma	Location *	WS

Photo 2 of 3 : SP_2016_RD0544_108_119_20160404_00074.jpg



Looking east at damaged waterward slope fall 2015.

* Location LS : Land Side N/A : Not Applicable WS : Water Side CR : Crown		** Rating A : Acceptable M : Minimally Acceptable U : Unacceptable N : Not Inspected/Rated C : Corrected A/W : Acceptable but Monitor & Maintain		+ Issue Type Ma : Maintenance Deficiency Ob : Design & System Obsolescence En : Enforcement
--	--	---	--	---

**Flood Control Project Maintenance
Levee Inspections**

Maintenance Issue Types Only, Levee Inspection Report By Mile - Spring 2016

Reclamation District No. 0544 Upper Roberts Island

Waterway	Bank	Unit Miles	Inspection Start/End	Inspector
Unit No. 01 San Joaquin River	Left	6.05	04/19/2016 04/19/2016	Richard Willoughby

LM Start	1.50	Rating **	U	Issue No.	119 (cont)	
LM End	1.51	Issue Type +	Ma	Location *	WS	
Category	Earthen Levee			GPS Latitude/Longitude		
				Start		End
Item	Slope Stability			37.854844 °		37.854564 °
				-121.321090 °		-121.321031 °
DWR ID	DWR_RD0544_01_f_2015_119					
Comment Code						
S3 : Repair the levee slope damaged by vehicle traffic and prevent access where possible.						
Inspector Comment						
Damaged levee slope due to fishermen using slope as a ramp.						

Photo 3 of 3 : SP_2016_RD0544_108_119_20160404_00075.jpg



Looking southeast at damaged waterward slope fall 2015

LM Start	1.57	Rating **	A/W	Issue No.	43
LM End	1.68	Issue Type +	Ma	Location *	WS
Category	Earthen Levee			GPS Latitude/Longitude	
				Start	End
Item	Vegetation			37.854108 °	37.854837 °
				-121.321582 °	-121.323280 °
DWR ID	DWR_RD0544_01_s_2012_43				
Comment Code					
V2 : Remove the wild growth other than native grasses from the levee slopes.					
Inspector Comment					
Issue has been corrected, but should be monitored.					

No Photos

LM Start	1.59	Rating **	M	Issue No.	95
LM End	1.59	Issue Type +	Ma	Location *	LS
Category	Earthen Levee			GPS Latitude/Longitude	
				Start	End
Item	Trim / Thin Trees			37.854299 °	37.854299 °
				-121.321865 °	-121.321865 °
DWR ID	DWR_RD0544_01_f_2014_95				
Comment Code					
T1 : Trim trees to at least five feet above ground level.					
Inspector Comment					

No Photos

* Location		** Rating		+ Issue Type	
LS : Land Side	N/A : Not Applicable	A : Acceptable	N : Not Inspected/Rated	Ma : Maintenance Deficiency	
WS : Water Side		M : Minimally Acceptable	C : Corrected	Ob : Design & System Obsolescence	
CR : Crown		U : Unacceptable	A/W : Acceptable but Monitor & Maintain	En : Enforcement	

**Flood Control Project Maintenance
Levee Inspections**

Maintenance Issue Types Only, Levee Inspection Report By Mile - Spring 2016

Reclamation District No. 0544 Upper Roberts Island

Waterway	Bank	Unit Miles	Inspection Start/End	Inspector
Unit No. 01 San Joaquin River	Left	6.05	04/19/2016 04/19/2016	Richard Willoughby

LM Start	1.64	Rating **	U	Issue No.	96
LM End	1.64	Issue Type +	Ma	Location *	LS
Category	Earthen Levee			GPS Latitude/Longitude	
				Start	End
Item	Trim / Thin Trees			37.854681 °	37.854681 °
				-121.322493 °	-121.322493 °
DWR ID	DWR_RD0544_01_f_2014_96				
Comment Code					
T2 : Thin trees to allow visibility of the ground and room to flood fight.					
Inspector Comment					

Photo 1 of 1 : SP_2016_RD0544_108_96_20160404_00059.jpg



Looking at untrimmed tree on landward slope and toe.

LM Start	1.72	Rating **	A/W	Issue No.	55
LM End	1.84	Issue Type +	Ma	Location *	LS
Category	Earthen Levee			GPS Latitude/Longitude	
				Start	End
Item	Vegetation			37.854530 °	37.852850 °
				-121.323870 °	-121.324058 °
DWR ID	DWR_RD0544_01_s_2012_55				
Comment Code					
V2 : Remove the wild growth other than native grasses from the levee slopes.					
Inspector Comment					

No Photos

LM Start	1.78	Rating **	M	Issue No.	88
LM End	1.78	Issue Type +	Ma	Location *	LS
Category	Earthen Levee			GPS Latitude/Longitude	
				Start	End
Item	Trim / Thin Trees			37.853770 °	37.853770 °
				-121.324293 °	-121.324293 °
DWR ID	DWR_RD0544_01_s_2015_88				
Comment Code					
T1 : Trim trees to at least five feet above ground level.					
Inspector Comment					

No Photos

* Location LS : Land Side N/A : Not Applicable WS : Water Side CR : Crown		** Rating A : Acceptable M : Minimally Acceptable U : Unacceptable N : Not Inspected/Rated C : Corrected A/W : Acceptable but Monitor & Maintain		+ Issue Type Ma : Maintenance Deficiency Ob : Design & System Obsolescence En : Enforcement	
---	--	--	--	--	--

**Flood Control Project Maintenance
Levee Inspections**

Maintenance Issue Types Only, Levee Inspection Report By Mile - Spring 2016

Reclamation District No. 0544 Upper Roberts Island

Waterway	Bank	Unit Miles	Inspection Start/End	Inspector
Unit No. 01 San Joaquin River	Left	6.05	04/19/2016 04/19/2016	Richard Willoughby

LM Start	1.80	Rating **	A/W	Issue No.	20
LM End	1.80	Issue Type +	Ma	Location *	LS
Category	Earthen Levee			GPS Latitude/Longitude	
				Start	End
Item	Encroachments			37.853445 °	37.853445 °
				-121.324227 °	-121.324227 °
DWR ID	DWR_RD0544_01_s _ 2012_20				
Comment Code					
PR : Prunings					
Inspector Comment					

No Photos

LM Start	1.82	Rating **	M	Issue No.	5
LM End	1.82	Issue Type +	Ma	Location *	LS
Category	Earthen Levee			GPS Latitude/Longitude	
				Start	End
Item	Slope Stability			37.853188 °	37.853188 °
				-121.324145 °	-121.324145 °
DWR ID	DWR_RD0544_01_s _ 2013_5				
Comment Code					
S3 : Repair the levee slope damaged by vehicle traffic and prevent access where possible.					
Inspector Comment					
Slope damaged by vehicle traffic.					

Photo 1 of 1 : SP_2016_RD0544_108_5_20160404_00009.jpg



Looking east at landward slope damaged by vehicle traffic.

LM Start	1.85	Rating **	A/W	Issue No.	21
LM End	1.85	Issue Type +	Ma	Location *	LS
Category	Earthen Levee			GPS Latitude/Longitude	
				Start	End
Item	Encroachments			37.852771 °	37.852771 °
				-121.324014 °	-121.324014 °
DWR ID	DWR_RD0544_01_s _ 2012_21				
Comment Code					
PR : Prunings					
Inspector Comment					

No Photos

* Location LS : Land Side N/A : Not Applicable WS : Water Side CR : Crown		** Rating A : Acceptable N : Not Inspected/Rated M : Minimally Acceptable C : Corrected U : Unacceptable A/W : Acceptable but Monitor & Maintain		+ Issue Type Ma : Maintenance Deficiency Ob : Design & System Obsolescence En : Enforcement
--	--	---	--	---

**Flood Control Project Maintenance
Levee Inspections**

Maintenance Issue Types Only, Levee Inspection Report By Mile - Spring 2016

Reclamation District No. 0544 Upper Roberts Island

Waterway	Bank	Unit Miles	Inspection Start/End	Inspector
Unit No. 01 San Joaquin River	Left	6.05	04/19/2016 04/19/2016	Richard Willoughby

LM Start	1.94	Rating **	A/W	Issue No.	44
LM End	2.26	Issue Type +	Ma	Location *	LS
Category	Earthen Levee			GPS Latitude/Longitude	
				Start	End
Item	Vegetation			37.851615 °	37.848105 °
				-121.323210 °	-121.324857 °
DWR ID	DWR_RD0544_01_s_2012_44				
Comment Code					
V2 : Remove the wild growth other than native grasses from the levee slopes.					
Inspector Comment					
Issue has been corrected, but should be monitored.					

No Photos

LM Start	2.01	Rating **	A/W	Issue No.	90
LM End	2.01	Issue Type +	Ma	Location *	CR
Category	Earthen Levee			GPS Latitude/Longitude	
				Start	End
Item	Animal Control			37.850825 °	37.850825 °
				-121.322475 °	-121.322475 °
DWR ID	DWR_RD0544_01_s_2014_90				
Comment Code					
A3 : No rodents visible, but rodent burrows visible; need to backfill and compact or grout burrows.					
Inspector Comment					
LMA grouted rodent hole on levee crown.					

Photo 1 of 2 : SP_2016_RD0544_108_90_20160404_00052.jpg



Looking at rodent hole on levee crown.

LM Start	2.01	Rating **	A/W	Issue No.	90 (cont)
LM End	2.01	Issue Type +	Ma	Location *	CR

Photo 2 of 2 : SP_2016_RD0544_108_90_20160404_00053.jpg



Looking at grouted rodent hole on levee crown.

* Location		** Rating		+ Issue Type	
LS : Land Side	N/A : Not Applicable	A : Acceptable	N : Not Inspected/Rated	Ma : Maintenance Deficiency	
WS : Water Side		M : Minimally Acceptable	C : Corrected	Ob : Design & System Obsolescence	
CR : Crown		U : Unacceptable	A/W : Acceptable but Monitor & Maintain	En : Enforcement	

**Flood Control Project Maintenance
Levee Inspections**

Maintenance Issue Types Only, Levee Inspection Report By Mile - Spring 2016

Reclamation District No. 0544 Upper Roberts Island

Waterway	Bank	Unit Miles	Inspection Start/End	Inspector
Unit No. 01 San Joaquin River	Left	6.05	04/19/2016 04/19/2016	Richard Willoughby

LM Start	2.02	Rating **	A/W	Issue No.	97
LM End	2.25	Issue Type +	Ma	Location *	WS
Category	Earthen Levee			GPS Latitude/Longitude	
				Start	End
Item	Vegetation			37.850632 °	37.848206 °
				-121.322501 °	-121.324869 °
DWR ID	DWR_RD0544_01_f_2014_97				
Comment Code					
V2 : Remove the wild growth other than native grasses from the levee slopes.					
Inspector Comment					

No Photos

LM Start	2.26	Rating **	U	Issue No.	23
LM End	2.26	Issue Type +	Ma	Location *	LS
Category	Earthen Levee			GPS Latitude/Longitude	
				Start	End
Item	Erosion / Bank Caving			37.848155 °	37.848155 °
				-121.324897 °	-121.324897 °
DWR ID	DWR_RD0544_01_s_2012_23				
Comment Code					
E2 : Schedule repair of erosion site prior to the next inspection.					
Inspector Comment					
Caving/erosion around irrigation pipe on landside slope.					

Photo 1 of 3 : SP_2016_RD0544_108_23_20160404_00017.jpg



Looking south at erosion around irrigation pipe on landside slope. (Fall 2014)

LM Start	2.26	Rating **	U	Issue No.	23 (cont)
LM End	2.26	Issue Type +	Ma	Location *	LS

Photo 2 of 3 : SP_2016_RD0544_108_23_20160404_00018.jpg



Looking north at erosion under irrigation pipe on landside slope.

* Location LS : Land Side N/A : Not Applicable WS : Water Side CR : Crown		** Rating A : Acceptable M : Minimally Acceptable U : Unacceptable N : Not Inspected/Rated C : Corrected A/W : Acceptable but Monitor & Maintain		+ Issue Type Ma : Maintenance Deficiency Ob : Design & System Obsolescence En : Enforcement	
--	--	---	--	---	--

**Flood Control Project Maintenance
Levee Inspections**

Maintenance Issue Types Only, Levee Inspection Report By Mile - Spring 2016

Reclamation District No. 0544 Upper Roberts Island

Waterway	Bank	Unit Miles	Inspection Start/End	Inspector
Unit No. 01 San Joaquin River	Left	6.05	04/19/2016 04/19/2016	Richard Willoughby

LM Start	2.26	Rating **	U	Issue No.	23 (cont)	
LM End	2.26	Issue Type +	Ma	Location *	LS	
Category	Earthen Levee			GPS Latitude/Longitude		
				Start		End
Item	Erosion / Bank Caving			37.848155 °		37.848155 °
				-121.324897 °		-121.324897 °
DWR ID	DWR_RD0544_01_s_2012_23					
Comment Code						
E2 : Schedule repair of erosion site prior to the next inspection.						
Inspector Comment						
Caving/erosion around irrigation pipe on landside slope.						

Photo 3 of 3 : SP_2016_RD0544_108_23_20160404_00019.jpg



Looking east at erosion under irrigation pipe on landside slope.

LM Start	2.26	Rating **	M	Issue No.	98
LM End	2.31	Issue Type +	Ma	Location *	LS
Category	Earthen Levee			GPS Latitude/Longitude	
				Start	End
Item	Trim / Thin Trees			37.848021 °	37.847343 °
				-121.324839 °	-121.324672 °
DWR ID	DWR_RD0544_01_f_2014_98				
Comment Code					
T2 : Thin trees to allow visibility of the ground and room to flood fight.					
Inspector Comment					

No Photos

LM Start	2.27	Rating **	M	Issue No.	8
LM End	2.33	Issue Type +	Ma	Location *	LS
Category	Earthen Levee			GPS Latitude/Longitude	
				Start	End
Item	Animal Control			37.847973 °	37.847105 °
				-121.324820 °	-121.324577 °
DWR ID	DWR_RD0544_01_s_2012_8				
Comment Code					
A3 : No rodents visible, but rodent burrows visible; need to backfill and compact or grout burrows.					
Inspector Comment					

No Photos

* Location LS : Land Side N/A : Not Applicable WS : Water Side CR : Crown		** Rating A : Acceptable M : Minimally Acceptable U : Unacceptable		N : Not Inspected/Rated C : Corrected A/W : Acceptable but Monitor & Maintain		+ Issue Type Ma : Maintenance Deficiency Ob : Design & System Obsolescence En : Enforcement	
--	--	--	--	---	--	---	--

**Flood Control Project Maintenance
Levee Inspections**

Maintenance Issue Types Only, Levee Inspection Report By Mile - Spring 2016

Reclamation District No. 0544 Upper Roberts Island

Waterway	Bank	Unit Miles	Inspection Start/End	Inspector
Unit No. 01 San Joaquin River	Left	6.05	04/19/2016 04/19/2016	Richard Willoughby

LM Start	2.32	Rating **	M	Issue No.	34
LM End	2.36	Issue Type +	Ma	Location *	LS
Category	Earthen Levee			GPS Latitude/Longitude	
				Start	End
Item	Animal Control			37.847292 °	37.846743 °
				-121.324662 °	-121.324336 °
DWR ID	DWR_RD0544_01_s_2012_34				
Comment Code					
A1 : Exterminate rodents and backfill and compact or grout burrows.					
Inspector Comment					
Several rodent hole within this reach.					

Photo 1 of 2 : SP_2016_RD0544_108_34_20160404_00025.jpg



Looking south at several rodent holes on landward shoulder and slope.

LM Start	2.32	Rating **	M	Issue No.	34 (cont)
LM End	2.36	Issue Type +	Ma	Location *	LS

Photo 2 of 2 : SP_2016_RD0544_108_34_20160404_00026.jpg



Looking at rodent hole on levee crown.

LM Start	2.36	Rating **	A/W	Issue No.	74
LM End	2.36	Issue Type +	Ma	Location *	LS
Category	Earthen Levee			GPS Latitude/Longitude	
				Start	End
Item	Trim / Thin Trees			37.846687 °	37.846687 °
				-121.324278 °	-121.324278 °
DWR ID	DWR_RD0544_01_f_2013_74				
Comment Code					
T1 : Trim trees to at least five feet above ground level.					
Inspector Comment					

No Photos

* Location LS : Land Side N/A : Not Applicable WS : Water Side CR : Crown		** Rating A : Acceptable M : Minimally Acceptable U : Unacceptable		N : Not Inspected/Rated C : Corrected A/W : Acceptable but Monitor & Maintain		+ Issue Type Ma : Maintenance Deficiency Ob : Design & System Obsolescence En : Enforcement	
--	--	--	--	---	--	---	--

**Flood Control Project Maintenance
Levee Inspections**

Maintenance Issue Types Only, Levee Inspection Report By Mile - Spring 2016

Reclamation District No. 0544 Upper Roberts Island

Waterway	Bank	Unit Miles	Inspection Start/End	Inspector
Unit No. 01 San Joaquin River	Left	6.05	04/19/2016 04/19/2016	Richard Willoughby

LM Start	2.37	Rating **	A/W	Issue No.	65
LM End	2.37	Issue Type +	Ma	Location *	LS
Category	Earthen Levee			GPS Latitude/Longitude	
				Start	End
Item	Trim / Thin Trees			37.846660 °	37.846660 °
				-121.324240 °	-121.324240 °
DWR ID	DWR_RD0544_01_s_2013_65				
Comment Code					
T2 : Thin trees to allow visibility of the ground and room to flood fight.					
Inspector Comment					

No Photos

LM Start	2.46	Rating **	M	Issue No.	99
LM End	3.18	Issue Type +	Ma	Location *	WS
Category	Earthen Levee			GPS Latitude/Longitude	
				Start	End
Item	Vegetation			37.845640 °	37.837391 °
				-121.322975 °	-121.317456 °
DWR ID	DWR_RD0544_01_f_2014_99				
Comment Code					
V2 : Remove the wild growth other than native grasses from the levee slopes.					
Inspector Comment					

Photo 1 of 1 : SP_2016_RD0544_108_99_20160404_00060.jpg



Looking south at dense vegetation on waterward shoulder and slope.

LM Start	2.57	Rating **	M	Issue No.	60
LM End	2.57	Issue Type +	Ma	Location *	LS
Category	Earthen Levee			GPS Latitude/Longitude	
				Start	End
Item	Slope Stability			37.844337 °	37.844337 °
				-121.321853 °	-121.321853 °
DWR ID	DWR_RD0544_01_s_2012_60				
Comment Code					
S2 : Repair the levee slope damaged by foot traffic and prevent access where possible.					
Inspector Comment					
Finger erosion on landward slope.					

Photo 1 of 2 : SP_2016_RD0544_108_60_20160404_00041.jpg



Looking north at slope damage on landside slope.

* Location LS : Land Side N/A : Not Applicable WS : Water Side CR : Crown		** Rating A : Acceptable M : Minimally Acceptable U : Unacceptable		+ Issue Type Ma : Maintenance Deficiency Ob : Design & System Obsolescence En : Enforcement	
		N : Not Inspected/Rated C : Corrected A/W : Acceptable but Monitor & Maintain			

**Flood Control Project Maintenance
Levee Inspections**

Maintenance Issue Types Only, Levee Inspection Report By Mile - Spring 2016

Reclamation District No. 0544 Upper Roberts Island

Waterway	Bank	Unit Miles	Inspection Start/End	Inspector
Unit No. 01 San Joaquin River	Left	6.05	04/19/2016 04/19/2016	Richard Willoughby

LM Start	2.57	Rating **	M	Issue No.	60 (cont)	
LM End	2.57	Issue Type +	Ma	Location *	LS	
Category	Earthen Levee			GPS Latitude/Longitude		
				Start		End
Item	Slope Stability			37.844337 °		37.844337 °
				-121.321853 °		-121.321853 °
DWR ID	DWR_RD0544_01_s_2012_60					
Comment Code						
S2 : Repair the levee slope damaged by foot traffic and prevent access where possible.						
Inspector Comment						
Finger erosion on landward slope.						

Photo 2 of 2 : SP_2016_RD0544_108_60_20160404_00042.jpg



Looking south at slope damage on landside slope.

LM Start	2.65	Rating **	M	Issue No.	100
LM End	2.94	Issue Type +	Ma	Location *	CR
Category	Earthen Levee			GPS Latitude/Longitude	
				Start	End
Item	Vegetation			37.843262 °	37.840656 °
				-121.321666 °	-121.318590 °
DWR ID	DWR_RD0544_01_f_2014_100				
Comment Code					
V2 : Remove the wild growth other than native grasses from the levee slopes.					
Inspector Comment					

Photo 1 of 1 : SP_2016_RD0544_108_100_20160404_00061.jpg



Looking south at vegetation on levee crown.

LM Start	2.84	Rating **	N	Issue No.	22
LM End	2.84	Issue Type +	Ma	Location *	LS
Category	Earthen Levee			GPS Latitude/Longitude	
				Start	End
Item	Trim / Thin Trees			37.841075 °	37.841075 °
				-121.320205 °	-121.320205 °
DWR ID	DWR_RD0544_01_s_2012_22				
Comment Code					
T5 : Tree stumps.					
Inspector Comment					

No Photos

* Location		** Rating		+ Issue Type	
LS : Land Side	N/A : Not Applicable	A : Acceptable	N : Not Inspected/Rated	Ma : Maintenance Deficiency	
WS : Water Side		M : Minimally Acceptable	C : Corrected	Ob : Design & System Obsolescence	
CR : Crown		U : Unacceptable	A/W : Acceptable but Monitor & Maintain	En : Enforcement	

**Flood Control Project Maintenance
Levee Inspections**

Maintenance Issue Types Only, Levee Inspection Report By Mile - Spring 2016

Reclamation District No. 0544 Upper Roberts Island

Waterway	Bank	Unit Miles	Inspection Start/End	Inspector
Unit No. 01 San Joaquin River	Left	6.05	04/19/2016 04/19/2016	Richard Willoughby

LM Start	2.89	Rating **	U	Issue No.	106
LM End	3.16	Issue Type +	Ma	Location *	WS
Category	Earthen Levee			GPS Latitude/Longitude	
				Start	End
Item	Vegetation			37.840952 °	37.837588 °
				-121.319327 °	-121.317540 °
DWR ID	DWR_RD0544_01_s_2015_106				
Comment Code					
V2 : Remove the wild growth other than native grasses from the levee slopes.					
Inspector Comment					
Dense willows and vegetation waterward slope.					

Photo 1 of 1 : SP_2016_RD0544_108_106_20160404_00064.jpg



Looking southeast at dense willows (veg) on waterward slope and toe fall 2015.

LM Start	2.95	Rating **	M	Issue No.	107
LM End	2.96	Issue Type +	Ma	Location *	LS
Category	Earthen Levee			GPS Latitude/Longitude	
				Start	End
Item	Erosion / Bank Caving			37.840560 °	37.840467 °
				-121.318463 °	-121.318367 °
DWR ID	DWR_RD0544_01_s_2015_107				
Comment Code					
E1 : Note and monitor erosion site.					
Inspector Comment					
Several depressions on landward slope within this reach.					

Photo 1 of 2 : SP_2016_RD0544_108_107_20160404_00065.jpg



Looking south at depression on landward slope.

LM Start	2.95	Rating **	M	Issue No.	107 (cont)
LM End	2.96	Issue Type +	Ma	Location *	LS

Photo 2 of 2 : SP_2016_RD0544_108_107_20160404_00066.jpg



Looking west at depression on landward shoulder.

* Location LS : Land Side N/A : Not Applicable WS : Water Side CR : Crown		** Rating A : Acceptable M : Minimally Acceptable U : Unacceptable		N : Not Inspected/Rated C : Corrected A/W : Acceptable but Monitor & Maintain		+ Issue Type Ma : Maintenance Deficiency Ob : Design & System Obsolescence En : Enforcement	
---	--	---	--	---	--	--	--

**Flood Control Project Maintenance
Levee Inspections**

Maintenance Issue Types Only, Levee Inspection Report By Mile - Spring 2016

Reclamation District No. 0544 Upper Roberts Island

Waterway	Bank	Unit Miles	Inspection Start/End	Inspector
Unit No. 01 San Joaquin River	Left	6.05	04/19/2016 04/19/2016	Richard Willoughby

LM Start	2.95	Rating **	U	Issue No.	38
LM End	2.95	Issue Type +	Ma	Location *	WS
Category	Supplemental			GPS Latitude/Longitude	
				Start	End
Item	DWR Erosion Survey			37.840697 °	37.840697 °
				-121.318252 °	-121.318252 °
DWR ID	DWR_RD0544_01_s _ 2016_38				
Comment Code					
Inspector Comment					
06/24/2015: No significant change observed.					
6/19/2014: No significant change observed.					
08/13/2013: Pump has been removed. A larger pocket erosion has been found at the erosion site.					
08/07/2012: The erosion is immediately upstream of a river bend.					
Dense vegetation is visible at the erosion site. [2015 Site ID:RD0544U01RM49.67]					

LM Start	2.95	Rating **	U	Issue No.	38 (cont)
LM End	2.95	Issue Type +	Ma	Location *	WS

Photo 1 of 2 : SP_2016_RD0544_108_38_20160404_00029.jpg



Close view of the site.

Photo 2 of 2 : SP_2016_RD0544_108_38_20160404_00030.jpg



Front view of the erosion.

* Location LS : Land Side N/A : Not Applicable WS : Water Side CR : Crown		** Rating A : Acceptable M : Minimally Acceptable U : Unacceptable N : Not Inspected/Rated C : Corrected A/W : Acceptable but Monitor & Maintain		+ Issue Type Ma : Maintenance Deficiency Ob : Design & System Obsolescence En : Enforcement
--	--	---	--	---

**Flood Control Project Maintenance
Levee Inspections**

Maintenance Issue Types Only, Levee Inspection Report By Mile - Spring 2016

Reclamation District No. 0544 Upper Roberts Island

Waterway	Bank	Unit Miles	Inspection Start/End	Inspector
Unit No. 01 San Joaquin River	Left	6.05	04/19/2016 04/19/2016	Richard Willoughby

LM Start	2.95	Rating **	U	Issue No.	47
LM End	3.19	Issue Type +	Ma	Location *	LS
Category	Earthen Levee			GPS Latitude/Longitude	
				Start	End
Item	Vegetation			37.840485 °	37.837225 °
				-121.318390 °	-121.317408 °
DWR ID	DWR_RD0544_01_s_2012_47				
Comment Code					
V2 : Remove the wild growth other than native grasses from the levee slopes.					
Inspector Comment					

Photo 1 of 1 : SP_2016_RD0544_108_47_20160404_00037.jpg



Looking south at dense veg on landward slope fall 2015.

LM Start	3.08	Rating **	M	Issue No.	108
LM End	3.08	Issue Type +	Ma	Location *	LS
Category	Earthen Levee			GPS Latitude/Longitude	
				Start	End
Item	Trim / Thin Trees			37.838733 °	37.838733 °
				-121.317918 °	-121.317918 °
DWR ID	DWR_RD0544_01_s_2015_108				
Comment Code					
T1 : Trim trees to at least five feet above ground level.					
Inspector Comment					

No Photos

LM Start	3.14	Rating **	M	Issue No.	76
LM End	3.14	Issue Type +	Ma	Location *	WS
Category	Earthen Levee			GPS Latitude/Longitude	
				Start	End
Item	Slope Stability			37.837929 °	37.837929 °
				-121.317663 °	-121.317663 °
DWR ID	DWR_RD0544_01_f_2013_76				
Comment Code					
S1 : Repair slope instability.					
Inspector Comment					
Slope damaged extends from levee slope to shoulder.					

Photo 1 of 1 : SP_2016_RD0544_108_76_20160404_00048.jpg



Looking east at slope damage on waterward slope.

* Location LS : Land Side N/A : Not Applicable WS : Water Side CR : Crown		** Rating A : Acceptable M : Minimally Acceptable U : Unacceptable N : Not Inspected/Rated C : Corrected A/W : Acceptable but Monitor & Maintain		+ Issue Type Ma : Maintenance Deficiency Ob : Design & System Obsolescence En : Enforcement	
--	--	---	--	---	--

**Flood Control Project Maintenance
Levee Inspections**

Maintenance Issue Types Only, Levee Inspection Report By Mile - Spring 2016

Reclamation District No. 0544 Upper Roberts Island

Waterway	Bank	Unit Miles	Inspection Start/End	Inspector
Unit No. 01 San Joaquin River	Left	6.05	04/19/2016 04/19/2016	Richard Willoughby

LM Start	3.17	Rating **	M	Issue No.	62
LM End	3.17	Issue Type +	Ma	Location *	WS
Category	Earthen Levee			GPS Latitude/Longitude	
				Start	End
Item	Slope Stability			37.837530 °	37.837530 °
				-121.317510 °	-121.317510 °
DWR ID	DWR_RD0544_01_s_2012_62				
Comment Code					
S2 : Repair the levee slope damaged by foot traffic and prevent access where possible.					
Inspector Comment					
Slope damage due to foot traffic.					

Photo 1 of 1 : SP_2016_RD0544_108_62_20160404_00043.jpg



Looking east at slope damaged by foot traffic near pump house on waterside of levee.

LM Start	3.22	Rating **	M	Issue No.	49
LM End	3.84	Issue Type +	Ma	Location *	WS
Category	Earthen Levee			GPS Latitude/Longitude	
				Start	End
Item	Vegetation			37.836763 °	37.829195 °
				-121.317307 °	-121.311918 °
DWR ID	DWR_RD0544_01_s_2012_49				
Comment Code					
V2 : Remove the wild growth other than native grasses from the levee slopes.					
Inspector Comment					

Photo 1 of 1 : SP_2016_RD0544_108_49_20160404_00038.jpg



Looking southwest at untrimmed trees at landward toe.

LM Start	3.23	Rating **	M	Issue No.	48
LM End	3.26	Issue Type +	Ma	Location *	LS
Category	Earthen Levee			GPS Latitude/Longitude	
				Start	End
Item	Vegetation			37.836615 °	37.836133 °
				-121.317285 °	-121.317153 °
DWR ID	DWR_RD0544_01_s_2012_48				
Comment Code					
V4 : Elderberries are blocking visibility and flood fight capability.					
Inspector Comment					

No Photos

* Location		** Rating		+ Issue Type	
LS : Land Side	N/A : Not Applicable	A : Acceptable	N : Not Inspected/Rated	Ma : Maintenance Deficiency	
WS : Water Side		M : Minimally Acceptable	C : Corrected	Ob : Design & System Obsolescence	
CR : Crown		U : Unacceptable	A/W : Acceptable but Monitor & Maintain	En : Enforcement	

**Flood Control Project Maintenance
Levee Inspections**

Maintenance Issue Types Only, Levee Inspection Report By Mile - Spring 2016

Reclamation District No. 0544 Upper Roberts Island

Waterway	Bank	Unit Miles	Inspection Start/End	Inspector
Unit No. 01 San Joaquin River	Left	6.05	04/19/2016 04/19/2016	Richard Willoughby

LM Start	3.29	Rating **	M	Issue No.	50
LM End	3.29	Issue Type +	Ma	Location *	WS
Category	Earthen Levee			GPS Latitude/Longitude	
				Start	End
Item	Erosion / Bank Caving			37.835815 °	37.835815 °
				-121.316997 °	-121.316997 °
DWR ID	DWR_RD0544_01_s _ 2012_50				
Comment Code					
E1 : Note and monitor erosion site.					
Inspector Comment					
Erosion located on waterside shoulder. Erosion caused by rain runoff.					

Photo 1 of 1 : SP_2016_RD0544_108_50_20160404_00039.jpg



Looking east at erosion on waterward slope.

LM Start	3.48	Rating **	M	Issue No.	56
LM End	3.48	Issue Type +	Ma	Location *	LS
Category	Earthen Levee			GPS Latitude/Longitude	
				Start	End
Item	Vegetation			37.833583 °	37.833583 °
				-121.314968 °	-121.314968 °
DWR ID	DWR_RD0544_01_s _ 2012_56				
Comment Code					
V4 : Elderberries are blocking visibility and flood fight capability.					
Inspector Comment					

No Photos

LM Start	3.49	Rating **	M	Issue No.	51
LM End	4.67	Issue Type +	Ma	Location *	LS
Category	Earthen Levee			GPS Latitude/Longitude	
				Start	End
Item	Vegetation			37.833432 °	37.821853 °
				-121.314792 °	-121.319992 °
DWR ID	DWR_RD0544_01_s _ 2012_51				
Comment Code					
V2 : Remove the wild growth other than native grasses from the levee slopes.					
Inspector Comment					

No Photos

* Location		** Rating		+ Issue Type	
LS : Land Side WS : Water Side CR : Crown		A : Acceptable M : Minimally Acceptable U : Unacceptable		Ma : Maintenance Deficiency Ob : Design & System Obsolescence En : Enforcement	
N/A : Not Applicable		N : Not Inspected/Rated C : Corrected A/W : Acceptable but Monitor & Maintain			

**Flood Control Project Maintenance
Levee Inspections**

Maintenance Issue Types Only, Levee Inspection Report By Mile - Spring 2016

Reclamation District No. 0544 Upper Roberts Island

Waterway	Bank	Unit Miles	Inspection Start/End	Inspector
Unit No. 01 San Joaquin River	Left	6.05	04/19/2016 04/19/2016	Richard Willoughby

LM Start	3.76	Rating **	M	Issue No.	109
LM End	3.92	Issue Type +	Ma	Location *	LS
Category	Earthen Levee			GPS Latitude/Longitude	
				Start	End
Item	Vegetation			37.830250 °	37.828013 °
				-121.312323 °	-121.311467 °
DWR ID	DWR_RD0544_01_s_2015_109				
Comment Code					
V4 : Elderberries are blocking visibility and flood fight capability.					
Inspector Comment					

No Photos

LM Start	3.90	Rating **	M	Issue No.	102
LM End	4.64	Issue Type +	Ma	Location *	LS
Category	Earthen Levee			GPS Latitude/Longitude	
				Start	End
Item	Vegetation			37.828372 °	37.822028 °
				-121.311607 °	-121.319429 °
DWR ID	DWR_RD0544_01_f_2014_102				
Comment Code					
V2 : Remove the wild growth other than native grasses from the levee slopes.					
Inspector Comment					

No Photos

LM Start	3.97	Rating **	M	Issue No.	24
LM End	3.97	Issue Type +	Ma	Location *	LS
Category	Earthen Levee			GPS Latitude/Longitude	
				Start	End
Item	Vegetation			37.827360 °	37.827360 °
				-121.311067 °	-121.311067 °
DWR ID	DWR_RD0544_01_s_2015_24				
Comment Code					
V4 : Elderberries are blocking visibility and flood fight capability.					
Inspector Comment					

No Photos

* Location LS : Land Side N/A : Not Applicable WS : Water Side CR : Crown		** Rating A : Acceptable N : Not Inspected/Rated M : Minimally Acceptable C : Corrected U : Unacceptable A/W : Acceptable but Monitor & Maintain		+ Issue Type Ma : Maintenance Deficiency Ob : Design & System Obsolescence En : Enforcement	
--	--	---	--	---	--

**Flood Control Project Maintenance
Levee Inspections**

Maintenance Issue Types Only, Levee Inspection Report By Mile - Spring 2016

Reclamation District No. 0544 Upper Roberts Island

Waterway	Bank	Unit Miles	Inspection Start/End	Inspector
Unit No. 01 San Joaquin River	Left	6.05	04/19/2016 04/19/2016	Richard Willoughby

LM Start	4.03	Rating **	M	Issue No.	11
LM End	4.05	Issue Type +	Ma	Location *	WS
Category	Earthen Levee			GPS Latitude/Longitude	
				Start	End
Item	Animal Control			37.826621 °	37.826315 °
				-121.310820 °	-121.311024 °
DWR ID	DWR_RD0544_01_s _ 2012_11				
Comment Code					
A1 : Exterminate rodents and backfill and compact or grout burrows.					
Inspector Comment					

No Photos

LM Start	4.09	Rating **	M	Issue No.	110
LM End	4.09	Issue Type +	Ma	Location *	LS
Category	Earthen Levee			GPS Latitude/Longitude	
				Start	End
Item	Trim / Thin Trees			37.825852 °	37.825852 °
				-121.311542 °	-121.311542 °
DWR ID	DWR_RD0544_01_s _ 2015_110				
Comment Code					
T1 : Trim trees to at least five feet above ground level.					
Inspector Comment					

No Photos

LM Start	4.14	Rating **	M	Issue No.	52
LM End	4.30	Issue Type +	Ma	Location *	WS
Category	Earthen Levee			GPS Latitude/Longitude	
				Start	End
Item	Vegetation			37.825762 °	37.825005 °
				-121.312393 °	-121.314982 °
DWR ID	DWR_RD0544_01_s _ 2012_52				
Comment Code					
V2 : Remove the wild growth other than native grasses from the levee slopes.					
Inspector Comment					

No Photos

* Location		** Rating		+ Issue Type	
LS : Land Side	N/A : Not Applicable	A : Acceptable	N : Not Inspected/Rated	Ma : Maintenance Deficiency	
WS : Water Side		M : Minimally Acceptable	C : Corrected	Ob : Design & System Obsolescence	
CR : Crown		U : Unacceptable	A/W : Acceptable but Monitor & Maintain	En : Enforcement	

**Flood Control Project Maintenance
Levee Inspections**

Maintenance Issue Types Only, Levee Inspection Report By Mile - Spring 2016

Reclamation District No. 0544 Upper Roberts Island

Waterway	Bank	Unit Miles	Inspection Start/End	Inspector
Unit No. 01 San Joaquin River	Left	6.05	04/19/2016 04/19/2016	Richard Willoughby

LM Start	4.23	Rating **	M	Issue No.	46
LM End	4.24	Issue Type +	Ma	Location *	WS
Category	Supplemental			GPS Latitude/Longitude	
				Start	End
Item	DWR Erosion Survey			37.825248 °	37.825248 °
				-121.313856 °	-121.313856 °
DWR ID	DWR_RD0544_01_s _ 2016_46				
Comment Code					
Inspector Comment					
06/24/2015: No significant change observed.					
06/19/2014: No significant change observed.					
08/13/2013: The erosion has been caused by irrigation pipe. [2015 Site ID:RD0544U01RM51.04]					

LM Start	4.23	Rating **	M	Issue No.	46 (cont)
LM End	4.24	Issue Type +	Ma	Location *	WS

Photo 1 of 2 : SP_2016_RD0544_108_46_20160404_00035.jpg



Front view of the site.

Photo 2 of 2 : SP_2016_RD0544_108_46_20160404_00036.jpg



Close view of the site.

LM Start	4.24	Rating **	U	Issue No.	57
LM End	4.49	Issue Type +	Ma	Location *	LS
Category	Earthen Levee			GPS Latitude/Longitude	
				Start	End
Item	Vegetation			37.825517 °	37.822955 °
				-121.314160 °	-121.316835 °
DWR ID	DWR_RD0544_01_s _ 2012_57				
Comment Code					
V4 : Elderberries are blocking visibility and flood fight capability.					
Inspector Comment					
Dense elderberry on landward slope and toe.					

Photo 1 of 1 : SP_2016_RD0544_108_57_20160404_00040.jpg



Looking southwest at dense elderberries on landward slope fall 2015.

* Location		** Rating		+ Issue Type	
LS : Land Side	N/A : Not Applicable	A : Acceptable	N : Not Inspected/Rated	Ma : Maintenance Deficiency	
WS : Water Side		M : Minimally Acceptable	C : Corrected	Ob : Design & System Obsolescence	
CR : Crown		U : Unacceptable	A/W : Acceptable but Monitor & Maintain	En : Enforcement	

**Flood Control Project Maintenance
Levee Inspections**

Maintenance Issue Types Only, Levee Inspection Report By Mile - Spring 2016

Reclamation District No. 0544 Upper Roberts Island

Waterway	Bank	Unit Miles	Inspection Start/End	Inspector
Unit No. 01 San Joaquin River	Left	6.05	04/19/2016 04/19/2016	Richard Willoughby

LM Start	4.25	Rating **	M	Issue No.	120
LM End	4.28	Issue Type +	Ma	Location *	LS
Category	Earthen Levee			GPS Latitude/Longitude	
				Start	End
Item	Trim / Thin Trees			37.825482 °	37.825229 °
				-121.314298 °	-121.314771 °
DWR ID	DWR_RD0544_01_f_2015_120				
Comment Code					
T1 : Trim trees to at least five feet above ground level.					
Inspector Comment					

No Photos

LM Start	4.30	Rating **	M	Issue No.	59
LM End	4.30	Issue Type +	Ma	Location *	LS
Category	Earthen Levee			GPS Latitude/Longitude	
				Start	End
Item	Vegetation			37.824943 °	37.824943 °
				-121.315008 °	-121.315008 °
DWR ID	DWR_RD0544_01_s_2012_59				
Comment Code					
V4 : Elderberries are blocking visibility and flood fight capability.					
Inspector Comment					

No Photos

LM Start	4.40	Rating **	M	Issue No.	54
LM End	6.05	Issue Type +	Ma	Location *	WS
Category	Earthen Levee			GPS Latitude/Longitude	
				Start	End
Item	Vegetation			37.823617 °	37.808766 °
				-121.315550 °	-121.328198 °
DWR ID	DWR_RD0544_01_s_2012_54				
Comment Code					
V2 : Remove the wild growth other than native grasses from the levee slopes.					
Inspector Comment					
Issue has been corrected, but should be monitored.					

No Photos

* Location LS : Land Side N/A : Not Applicable WS : Water Side CR : Crown		** Rating A : Acceptable N : Not Inspected/Rated M : Minimally Acceptable C : Corrected U : Unacceptable A/W : Acceptable but Monitor & Maintain		+ Issue Type Ma : Maintenance Deficiency Ob : Design & System Obsolescence En : Enforcement
--	--	---	--	---

**Flood Control Project Maintenance
Levee Inspections**

Maintenance Issue Types Only, Levee Inspection Report By Mile - Spring 2016

Reclamation District No. 0544 Upper Roberts Island

Waterway	Bank	Unit Miles	Inspection Start/End	Inspector
Unit No. 01 San Joaquin River	Left	6.05	04/19/2016 04/19/2016	Richard Willoughby

LM Start	4.48	Rating **	M	Issue No.	103
LM End	4.48	Issue Type +	Ma	Location *	LS
Category	Earthen Levee			GPS Latitude/Longitude	
				Start	End
Item	Animal Control			37.823027 °	37.823027 °
				-121.316737 °	-121.316737 °
DWR ID	DWR_RD0544_01_f_2014_103				
Comment Code					
A1 : Exterminate rodents and backfill and compact or grout burrows.					
Inspector Comment					

No Photos

LM Start	4.49	Rating **	U	Issue No.	41
LM End	4.49	Issue Type +	Ma	Location *	LS
Category	Earthen Levee			GPS Latitude/Longitude	
				Start	End
Item	Vegetation			37.822934 °	37.822934 °
				-121.316870 °	-121.316870 °
DWR ID	DWR_RD0544_01_s_2012_41				
Comment Code					
V4 : Elderberries are blocking visibility and flood fight capability.					
Inspector Comment					

Photo 1 of 1 : SP_2016_RD0544_108_41_20160404_00033.jpg



Looking south at elderberries on landside slope and toe.

LM Start	4.64	Rating **	U	Issue No.	104
LM End	4.68	Issue Type +	Ma	Location *	LS
Category	Earthen Levee			GPS Latitude/Longitude	
				Start	End
Item	Trim / Thin Trees			37.822033 °	37.821826 °
				-121.319432 °	-121.320071 °
DWR ID	DWR_RD0544_01_f_2014_104				
Comment Code					
T2 : Thin trees to allow visibility of the ground and room to flood fight.					
Inspector Comment					
Dense untrimmed trees on landward slope.					

Photo 1 of 1 : SP_2016_RD0544_108_104_20160404_00062.jpg



Looking southwest at dense untrimmed trees on landward slope fall 2015.

* Location LS : Land Side N/A : Not Applicable WS : Water Side CR : Crown		** Rating A : Acceptable M : Minimally Acceptable U : Unacceptable		+ Issue Type Ma : Maintenance Deficiency Ob : Design & System Obsolescence En : Enforcement	
		N : Not Inspected/Rated C : Corrected A/W : Acceptable but Monitor & Maintain			

**Flood Control Project Maintenance
Levee Inspections**

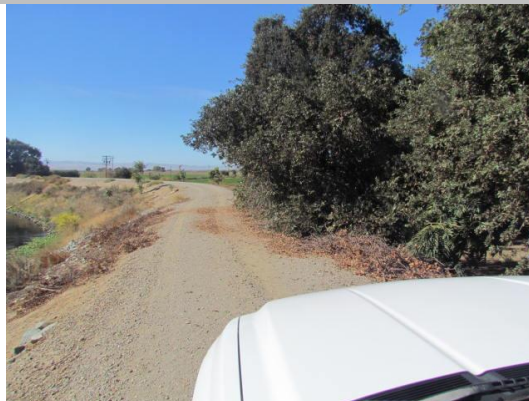
Maintenance Issue Types Only, Levee Inspection Report By Mile - Spring 2016

Reclamation District No. 0544 Upper Roberts Island

Waterway	Bank	Unit Miles	Inspection Start/End	Inspector
Unit No. 01 San Joaquin River	Left	6.05	04/19/2016 04/19/2016	Richard Willoughby

LM Start	4.69	Rating **	U	Issue No.	105
LM End	4.69	Issue Type +	Ma	Location *	LS
Category	Earthen Levee			GPS Latitude/Longitude	
				Start	End
Item	Trim / Thin Trees			37.821775 °	37.821775 °
				-121.320203 °	-121.320203 °
DWR ID	DWR_RD0544_01_f_2014_105				
Comment Code					
T2 : Thin trees to allow visibility of the ground and room to flood fight.					
Inspector Comment					
Tree has overgrown onto levee crown.					

Photo 1 of 1 : SP_2016_RD0544_108_105_20160404_00063.jpg



Looking south at overgrown tree on landward shoulder.

LM Start	4.69	Rating **	M	Issue No.	111
LM End	4.69	Issue Type +	Ma	Location *	LS
Category	Earthen Levee			GPS Latitude/Longitude	
				Start	End
Item	Encroachments			37.821783 °	37.821783 °
				-121.320237 °	-121.320237 °
DWR ID	DWR_RD0544_01_s_2015_111				
Comment Code					
PR : Prunings					
Inspector Comment					
Prunings on landward shoulder.					

No Photos

LM Start	4.71	Rating **	M	Issue No.	28	
LM End	4.71	Issue Type +	Ma	Location *	LS	
Category	Earthen Levee			GPS Latitude/Longitude		
				Start		End
Item	Slope Stability			37.821626 °		37.821626 °
				-121.320471 °		-121.320471 °
DWR ID	DWR_RD0544_01_s_2012_28					
Comment Code						
S1 : Repair slope instability.						
Inspector Comment						

Photo 1 of 2 : SP_2016_RD0544_108_28_20160404_00021.jpg



Looking northeast at erosion around irrigation pipe on landside slope.

* Location
LS : Land Side N/A : Not Applicable
WS : Water Side
CR : Crown

** Rating
A : Acceptable N : Not Inspected/Rated
M : Minimally Acceptable C : Corrected
U : Unacceptable A/W : Acceptable but Monitor & Maintain

+ Issue Type
Ma : Maintenance Deficiency
Ob : Design & System Obsolescence
En : Enforcement

**Flood Control Project Maintenance
Levee Inspections**

Maintenance Issue Types Only, Levee Inspection Report By Mile - Spring 2016

Reclamation District No. 0544 Upper Roberts Island

Waterway	Bank	Unit Miles	Inspection Start/End	Inspector
Unit No. 01 San Joaquin River	Left	6.05	04/19/2016 04/19/2016	Richard Willoughby

LM Start	4.71	Rating **	M	Issue No.	28 (cont)	
LM End	4.71	Issue Type +	Ma	Location *	LS	
Category	Earthen Levee			GPS Latitude/Longitude		
				Start		End
Item	Slope Stability			37.821626 °	37.821626 °	
				-121.320471 °	-121.320471 °	
DWR ID	DWR_RD0544_01_s_2012_28					
Comment Code						
S1 : Repair slope instability.						
Inspector Comment						

Photo 2 of 2 : SP_2016_RD0544_108_28_20160404_00022.jpg



Looking north at erosion around irrigation pipe on landside

LM Start	4.71	Rating **	M	Issue No.	29
LM End	4.71	Issue Type +	Ma	Location *	CR
Category	Earthen Levee			GPS Latitude/Longitude	
				Start	End
Item	Animal Control			37.821626 °	37.821626 °
				-121.320471 °	-121.320471 °
DWR ID	DWR_RD0544_01_s_2012_29				
Comment Code					
A3 : No rodents visible, but rodent burrows visible; need to backfill and compact or grout burrows.					
Inspector Comment					
District has employed a rodent control program and grouted holes.					

No Photos

LM Start	4.71	Rating **	M	Issue No.	26
LM End	4.74	Issue Type +	Ma	Location *	LS
Category	Earthen Levee			GPS Latitude/Longitude	
				Start	End
Item	Vegetation			37.821592 °	37.821253 °
				-121.320617 °	-121.320927 °
DWR ID	DWR_RD0544_01_s_2012_26				
Comment Code					
V4 : Elderberries are blocking visibility and flood fight capability.					
Inspector Comment					

No Photos

* Location		** Rating		+ Issue Type	
LS : Land Side	N/A : Not Applicable	A : Acceptable	N : Not Inspected/Rated	Ma : Maintenance Deficiency	
WS : Water Side		M : Minimally Acceptable	C : Corrected	Ob : Design & System Obsolescence	
CR : Crown		U : Unacceptable	A/W : Acceptable but Monitor & Maintain	En : Enforcement	

**Flood Control Project Maintenance
Levee Inspections**

Maintenance Issue Types Only, Levee Inspection Report By Mile - Spring 2016

Reclamation District No. 0544 Upper Roberts Island

Waterway	Bank	Unit Miles	Inspection Start/End	Inspector
Unit No. 01 San Joaquin River	Left	6.05	04/19/2016 04/19/2016	Richard Willoughby

LM Start	4.77	Rating **	U	Issue No.	112
LM End	4.77	Issue Type +	Ma	Location *	LS
Category	Earthen Levee			GPS Latitude/Longitude	
				Start	End
Item	Trim / Thin Trees			37.820828 °	37.820828 °
				-121.321193 °	-121.321193 °
DWR ID	DWR_RD0544_01_s_2015_112				
Comment Code					
T1 : Trim trees to at least five feet above ground level.					
Inspector Comment					

Photo 1 of 1 : SP_2016_RD0544_108_112_20160404_00067.jpg



Looking southwest at dense trees on landward slope and toe.

LM Start	4.77	Rating **	U	Issue No.	113
LM End	4.77	Issue Type +	Ma	Location *	WS
Category	Earthen Levee			GPS Latitude/Longitude	
				Start	End
Item	Erosion / Bank Caving			37.820828 °	37.820828 °
				-121.321193 °	-121.321193 °
DWR ID	DWR_RD0544_01_s_2015_113				
Comment Code					
E1 : Note and monitor erosion site.					
Inspector Comment					
Large hole, possibly a rodent hole, on waterward slope.					

Photo 1 of 1 : SP_2016_RD0544_108_113_20160404_00068.jpg



Looking north at large hole on waterward slope.

LM Start	4.81	Rating **	A/W	Issue No.	30
LM End	4.81	Issue Type +	Ma	Location *	LS
Category	Earthen Levee			GPS Latitude/Longitude	
				Start	End
Item	Encroachments			37.820227 °	37.820227 °
				-121.321115 °	-121.321115 °
DWR ID	DWR_RD0544_01_s_2012_30				
Comment Code					
PR : Prunings					
Inspector Comment					
Remove dead stumps at landside toe and prunings on landside slope.					

No Photos

* Location		** Rating		+ Issue Type	
LS : Land Side	N/A : Not Applicable	A : Acceptable	N : Not Inspected/Rated	Ma : Maintenance Deficiency	
WS : Water Side		M : Minimally Acceptable	C : Corrected	Ob : Design & System Obsolescence	
CR : Crown		U : Unacceptable	A/W : Acceptable but Monitor & Maintain	En : Enforcement	

**Flood Control Project Maintenance
Levee Inspections**

Maintenance Issue Types Only, Levee Inspection Report By Mile - Spring 2016

Reclamation District No. 0544 Upper Roberts Island

Waterway	Bank	Unit Miles	Inspection Start/End	Inspector
Unit No. 01 San Joaquin River	Left	6.05	04/19/2016 04/19/2016	Richard Willoughby

LM Start	4.83	Rating **	M	Issue No.	31
LM End	6.05	Issue Type +	Ma	Location *	LS
Category	Earthen Levee			GPS Latitude/Longitude	
				Start	End
Item	Vegetation			37.820081 °	37.808766 °
				-121.321043 °	-121.328198 °
DWR ID	DWR_RD0544_01_s_2012_31				
Comment Code					
V2 : Remove the wild growth other than native grasses from the levee slopes.					
Inspector Comment					

No Photos

LM Start	4.86	Rating **	M	Issue No.	114
LM End	4.86	Issue Type +	Ma	Location *	LS
Category	Earthen Levee			GPS Latitude/Longitude	
				Start	End
Item	Vegetation			37.819642 °	37.819642 °
				-121.320777 °	-121.320777 °
DWR ID	DWR_RD0544_01_s_2015_114				
Comment Code					
V2 : Remove the wild growth other than native grasses from the levee slopes.					
Inspector Comment					
Cactus on landward slope.					

No Photos

LM Start	4.89	Rating **	A/W	Issue No.	32
LM End	4.89	Issue Type +	Ma	Location *	LS
Category	Earthen Levee			GPS Latitude/Longitude	
				Start	End
Item	Vegetation			37.819249 °	37.819249 °
				-121.320460 °	-121.320460 °
DWR ID	DWR_RD0544_01_s_2012_32				
Comment Code					
V2 : Remove the wild growth other than native grasses from the levee slopes.					
Inspector Comment					
Issue has been corrected, but should be monitored.					

No Photos

* Location		** Rating		+ Issue Type	
LS : Land Side	N/A : Not Applicable	A : Acceptable	N : Not Inspected/Rated	Ma : Maintenance Deficiency	
WS : Water Side		M : Minimally Acceptable	C : Corrected	Ob : Design & System Obsolescence	
CR : Crown		U : Unacceptable	A/W : Acceptable but Monitor & Maintain	En : Enforcement	

**Flood Control Project Maintenance
Levee Inspections**

Maintenance Issue Types Only, Levee Inspection Report By Mile - Spring 2016

Reclamation District No. 0544 Upper Roberts Island

Waterway	Bank	Unit Miles	Inspection Start/End	Inspector
Unit No. 01 San Joaquin River	Left	6.05	04/19/2016 04/19/2016	Richard Willoughby

LM Start	4.95	Rating **	A/W	Issue No.	33
LM End	5.26	Issue Type +	Ma	Location *	LS
Category	Earthen Levee			GPS Latitude/Longitude	
				Start	End
Item	Vegetation			37.818718 °	37.814662 °
				-121.319508 °	-121.320302 °
DWR ID	DWR_RD0544_01_s_2012_33				
Comment Code					
V2 : Remove the wild growth other than native grasses from the levee slopes.					
Inspector Comment					
Vegetation has been sprayed, and it should be monitored.					

Photo 1 of 2 : SP_2016_RD0544_108_33_20160404_00023.jpg



Looking southwest at cleared landward slope and berm fall 2015.

LM Start	4.95	Rating **	A/W	Issue No.	33 (cont)
LM End	5.26	Issue Type +	Ma	Location *	LS

Photo 2 of 2 : SP_2016_RD0544_108_33_20160404_00024.jpg



Looking southwest at dense vegetation at landward slope and toe.(Spring 2015)

LM Start	5.00	Rating **	M	Issue No.	17
LM End	5.00	Issue Type +	Ma	Location *	LS
Category	Earthen Levee			GPS Latitude/Longitude	
				Start	End
Item	Vegetation			37.818152 °	37.818152 °
				-121.319095 °	-121.319095 °
DWR ID	DWR_RD0544_01_s_2012_17				
Comment Code					
V4 : Elderberries are blocking visibility and flood fight capability.					
Inspector Comment					

No Photos

* Location		** Rating		+ Issue Type	
LS : Land Side	N/A : Not Applicable	A : Acceptable	N : Not Inspected/Rated	Ma : Maintenance Deficiency	
WS : Water Side		M : Minimally Acceptable	C : Corrected	Ob : Design & System Obsolescence	
CR : Crown		U : Unacceptable	A/W : Acceptable but Monitor & Maintain	En : Enforcement	

**Flood Control Project Maintenance
Levee Inspections**

Maintenance Issue Types Only, Levee Inspection Report By Mile - Spring 2016

Reclamation District No. 0544 Upper Roberts Island

Waterway	Bank	Unit Miles	Inspection Start/End	Inspector
Unit No. 01 San Joaquin River	Left	6.05	04/19/2016 04/19/2016	Richard Willoughby

LM Start	5.34	Rating **	M	Issue No.	35
LM End	5.34	Issue Type +	Ma	Location *	LS
Category	Earthen Levee			GPS Latitude/Longitude	
				Start	End
Item	Vegetation			37.813659 °	37.813659 °
				-121.319614 °	-121.319614 °
DWR ID	DWR_RD0544_01_s_2012_35				
Comment Code					
V2 : Remove the wild growth other than native grasses from the levee slopes.					
Inspector Comment					
LMA corrected site, but some vegetation still exists.					

Photo 1 of 1 : SP_2016_RD0544_108_35_20160404_00027.jpg



Looking south at bamboo on landward slope and toe.

LM Start	5.49	Rating **	U	Issue No.	18
LM End	5.55	Issue Type +	Ma	Location *	LS
Category	Earthen Levee			GPS Latitude/Longitude	
				Start	End
Item	Vegetation			37.812033 °	37.811687 °
				-121.319737 °	-121.320677 °
DWR ID	DWR_RD0544_01_s_2012_18				
Comment Code					
V4 : Elderberries are blocking visibility and flood fight capability.					
Inspector Comment					
Elderberry exists on the slope of the levee.					

Photo 1 of 2 : SP_2016_RD0544_108_18_20160404_00015.jpg



Looking south at dense vegetation on landward slope and toe. (Spirig 2015)

LM Start	5.49	Rating **	U	Issue No.	18 (cont)
LM End	5.55	Issue Type +	Ma	Location *	LS

Photo 2 of 2 : SP_2016_RD0544_108_18_20160404_00016.jpg



Looking south at elderberries on landside slope and toe.

* Location LS : Land Side N/A : Not Applicable WS : Water Side CR : Crown		** Rating A : Acceptable M : Minimally Acceptable U : Unacceptable		N : Not Inspected/Rated C : Corrected A/W : Acceptable but Monitor & Maintain		+ Issue Type Ma : Maintenance Deficiency Ob : Design & System Obsolescence En : Enforcement	
---	--	---	--	---	--	--	--

**Flood Control Project Maintenance
Levee Inspections**

Maintenance Issue Types Only, Levee Inspection Report By Mile - Spring 2016

Reclamation District No. 0544 Upper Roberts Island

Waterway	Bank	Unit Miles	Inspection Start/End	Inspector
Unit No. 01 San Joaquin River	Left	6.05	04/19/2016 04/19/2016	Richard Willoughby

LM Start	5.60	Rating **	U	Issue No.	121
LM End	5.60	Issue Type +	Ma	Location *	WS
Category	Earthen Levee			GPS Latitude/Longitude	
				Start	End
Item	Erosion / Bank Caving			37.811234 °	37.811234 °
				-121.321412 °	-121.321412 °
DWR ID	DWR_RD0544_01_f_2015_121				
Comment Code					
E2 : Schedule repair of erosion site prior to the next inspection.					
Inspector Comment					
Someone digging/excavating on waterward berm. Excavation in 3ft wide and eighteen inches deep and ten feet long.					

Photo 1 of 4 : SP_2016_RD0544_108_121_20160404_00076.jpg



Looking west at excavation on waterward berm.

LM Start	5.60	Rating **	U	Issue No.	121 (cont)
LM End	5.60	Issue Type +	Ma	Location *	WS

Photo 2 of 4 : SP_2016_RD0544_108_121_20160404_00077.jpg



Looking east at excavation on waterward berm.

LM Start	5.60	Rating **	U	Issue No.	121 (cont)
LM End	5.60	Issue Type +	Ma	Location *	WS

Photo 3 of 4 : SP_2016_RD0544_108_121_20160404_00078.jpg



Looking northeast at excavation on waterward berm

* Location LS : Land Side N/A : Not Applicable WS : Water Side CR : Crown		** Rating A : Acceptable M : Minimally Acceptable U : Unacceptable		N : Not Inspected/Rated C : Corrected A/W : Acceptable but Monitor & Maintain		+ Issue Type Ma : Maintenance Deficiency Ob : Design & System Obsolescence En : Enforcement	
---	--	---	--	---	--	--	--

**Flood Control Project Maintenance
Levee Inspections**

Maintenance Issue Types Only, Levee Inspection Report By Mile - Spring 2016

Reclamation District No. 0544 Upper Roberts Island

Waterway	Bank	Unit Miles	Inspection Start/End	Inspector
Unit No. 01 San Joaquin River	Left	6.05	04/19/2016 04/19/2016	Richard Willoughby

LM Start	5.60	Rating **	U	Issue No.	121 (cont)	
LM End	5.60	Issue Type +	Ma	Location *	WS	
Category	Earthen Levee			GPS Latitude/Longitude		
				Start		End
Item	Erosion / Bank Caving			37.811234 °	37.811234 °	
				-121.321412 °	-121.321412 °	
DWR ID	DWR_RD0544_01_f_2015_121					
Comment Code						
E2 : Schedule repair of erosion site prior to the next inspection.						
Inspector Comment						
Someone digging/excavating on waterward berm. Excavation in 3ft wide and eighteen inches deep and ten feet long.						

Photo 4 of 4 : SP_2016_RD0544_108_121_20160404_00079.jpg



Looking southeast at excavation on waterward berm.

LM Start	5.64	Rating **	N	Issue No.	40
LM End	5.64	Issue Type +	Ma	Location *	LS
Category	Earthen Levee			GPS Latitude/Longitude	
				Start	End
Item	Trim / Thin Trees			37.811199 °	37.811199 °
				-121.322176 °	-121.322176 °
DWR ID	DWR_RD0544_01_s_2012_40				
Comment Code					
T5 : Tree stumps.					
Inspector Comment					

No Photos

LM Start	5.72	Rating **	M	Issue No.	115
LM End	5.72	Issue Type +	Ma	Location *	LS
Category	Earthen Levee			GPS Latitude/Longitude	
				Start	End
Item	Slope Stability			37.811225 °	37.811225 °
				-121.323575 °	-121.323575 °
DWR ID	DWR_RD0544_01_s_2015_115				
Comment Code					
S2 : Repair the levee slope damaged by foot traffic and prevent access where possible.					
Inspector Comment					
Landowner excavated several steps into landward and waterward slopes					

Photo 1 of 3 : SP_2016_RD0544_108_115_20160404_00069.jpg



Looking west at slope damage on landward slope.

* Location		** Rating		+ Issue Type	
LS : Land Side	N/A : Not Applicable	A : Acceptable	N : Not Inspected/Rated	Ma : Maintenance Deficiency	
WS : Water Side		M : Minimally Acceptable	C : Corrected	Ob : Design & System Obsolescence	
CR : Crown		U : Unacceptable	A/W : Acceptable but Monitor & Maintain	En : Enforcement	

**Flood Control Project Maintenance
Levee Inspections**

Maintenance Issue Types Only, Levee Inspection Report By Mile - Spring 2016

Reclamation District No. 0544 Upper Roberts Island

Waterway	Bank	Unit Miles	Inspection Start/End	Inspector
Unit No. 01 San Joaquin River	Left	6.05	04/19/2016 04/19/2016	Richard Willoughby

LM Start	5.72	Rating **	M	Issue No.	115 (cont)	
LM End	5.72	Issue Type +	Ma	Location *	LS	
Category	Earthen Levee			GPS Latitude/Longitude		
				Start		End
Item	Slope Stability			37.811225 °		37.811225 °
				-121.323575 °		-121.323575 °
DWR ID	DWR_RD0544_01_s_2015_115					
Comment Code						
S2 : Repair the levee slope damaged by foot traffic and prevent access where possible.						
Inspector Comment						
Landowner excavated several steps into landward and waterward slopes						

Photo 2 of 3 : SP_2016_RD0544_108_115_20160404_00070.jpg



Looking east at slope damage on waterward slope.

LM Start	5.72	Rating **	M	Issue No.	115 (cont)
LM End	5.72	Issue Type +	Ma	Location *	LS

Photo 3 of 3 : SP_2016_RD0544_108_115_20160404_00071.jpg



Looking northwest at slope damage on landward toe.

LM Start	5.86	Rating **	A/W	Issue No.	116
LM End	6.04	Issue Type +	Ma	Location *	LS
Category	Earthen Levee			GPS Latitude/Longitude	
				Start	End
Item	Vegetation			37.810685 °	37.808880 °
				-121.325827 °	-121.328055 °
DWR ID	DWR_RD0544_01_s_2015_116				
Comment Code					
V2 : Remove the wild growth other than native grasses from the levee slopes.					
Inspector Comment					

No Photos

* Location LS : Land Side N/A : Not Applicable WS : Water Side CR : Crown		** Rating A : Acceptable N : Not Inspected/Rated M : Minimally Acceptable C : Corrected U : Unacceptable A/W : Acceptable but Monitor & Maintain		+ Issue Type Ma : Maintenance Deficiency Ob : Design & System Obsolescence En : Enforcement	
--	--	---	--	---	--

**Flood Control Project Maintenance
Levee Inspections**

Maintenance Issue Types Only, Levee Inspection Report By Mile - Spring 2016

Reclamation District No. 0544 Upper Roberts Island

Waterway	Bank	Unit Miles	Inspection Start/End	Inspector
Unit No. 02 Old River	Right	4.15	04/19/2016 04/19/2016	Richard Willoughby

LM Start	0.00	Rating **	M	Issue No.	66
LM End	4.15	Issue Type +	Ma	Location *	LS
Category	Earthen Levee			GPS Latitude/Longitude	
				Start	End
Item	Vegetation			37.808752 °	°
				-121.328194 °	°
DWR ID	DWR_RD0544_02_s _ 2016_66				
Comment Code					
V1 : Control annual grass and weeds on the levee slopes and easements.					
Inspector Comment					

No Photos

LM Start	0.00	Rating **	M	Issue No.	68	
LM End	4.15	Issue Type +	Ma	Location *	WS	
Category	Earthen Levee			GPS Latitude/Longitude		
				Start		End
Item	Vegetation			37.808752 °		°
				-121.328194 °		°
DWR ID	DWR_RD0544_02_s _ 2016_68					
Comment Code						
V1 : Control annual grass and weeds on the levee slopes and easements.						
Inspector Comment						

No Photos

LM Start	0.03	Rating **	A/W	Issue No.	3
LM End	0.17	Issue Type +	Ma	Location *	LS
Category	Earthen Levee			GPS Latitude/Longitude	
				Start	End
Item	Vegetation			37.808603 °	37.808213 °
				-121.328719 °	-121.331241 °
DWR ID	DWR_RD0544_02_s _ 2012_3				
Comment Code					
V2 : Remove the wild growth other than native grasses from the levee slopes.					
Inspector Comment					

Photo 1 of 2 : SP_2016_RD0544_109_3_20160404_00002.jpg



Looking south at dense veg on landward slope and toe fall 2015.

* Location LS : Land Side N/A : Not Applicable WS : Water Side CR : Crown		** Rating A : Acceptable M : Minimally Acceptable U : Unacceptable		N : Not Inspected/Rated C : Corrected A/W : Acceptable but Monitor & Maintain		+ Issue Type Ma : Maintenance Deficiency Ob : Design & System Obsolescence En : Enforcement	
--	--	--	--	---	--	---	--

**Flood Control Project Maintenance
Levee Inspections**

Maintenance Issue Types Only, Levee Inspection Report By Mile - Spring 2016

Reclamation District No. 0544 Upper Roberts Island

Waterway	Bank	Unit Miles	Inspection Start/End	Inspector
Unit No. 02 Old River	Right	4.15	04/19/2016 04/19/2016	Richard Willoughby

LM Start	0.03	Rating **	A/W	Issue No.	3 (cont)	
LM End	0.17	Issue Type +	Ma	Location *	LS	
Category	Earthen Levee			GPS Latitude/Longitude		
				Start		End
Item	Vegetation			37.808603 °	37.808213 °	
				-121.328719 °	-121.331241 °	
DWR ID	DWR_RD0544_02_s _ 2012_3					
Comment Code						
V2 : Remove the wild growth other than native grasses from the levee slopes.						
Inspector Comment						

Photo 2 of 2 : SP_2016_RD0544_109_3_20160404_00003.jpg



Looking south at dense vegetation at landward toe spring 2014.

LM Start	0.27	Rating **	A/W	Issue No.	2
LM End	0.43	Issue Type +	Ma	Location *	WS
Category	Earthen Levee			GPS Latitude/Longitude	
				Start	End
Item	Vegetation			37.808687 °	37.810253 °
				-121.332964 °	-121.334930 °
DWR ID	DWR_RD0544_02_s _ 2012_2				
Comment Code					
V2 : Remove the wild growth other than native grasses from the levee slopes.					
Inspector Comment					

No Photos

LM Start	0.40	Rating **	A/W	Issue No.	4
LM End	0.40	Issue Type +	Ma	Location *	LS
Category	Earthen Levee			GPS Latitude/Longitude	
				Start	End
Item	Vegetation			37.809788 °	37.809788 °
				-121.334727 °	-121.334727 °
DWR ID	DWR_RD0544_02_s _ 2012_4				
Comment Code					
V4 : Elderberries are blocking visibility and flood fight capability.					
Inspector Comment					

No Photos

* Location LS : Land Side N/A : Not Applicable WS : Water Side CR : Crown		** Rating A : Acceptable N : Not Inspected/Rated M : Minimally Acceptable C : Corrected U : Unacceptable A/W : Acceptable but Monitor & Maintain		+ Issue Type Ma : Maintenance Deficiency Ob : Design & System Obsolescence En : Enforcement
--	--	---	--	---

**Flood Control Project Maintenance
Levee Inspections**

Maintenance Issue Types Only, Levee Inspection Report By Mile - Spring 2016

Reclamation District No. 0544 Upper Roberts Island

Waterway	Bank	Unit Miles	Inspection Start/End	Inspector
Unit No. 02 Old River	Right	4.15	04/19/2016 04/19/2016	Richard Willoughby

LM Start	0.43	Rating **	A/W	Issue No.	1
LM End	1.12	Issue Type +	Ma	Location *	LS
Category	Earthen Levee			GPS Latitude/Longitude	
				Start	End
Item	Vegetation			37.810250 °	37.819452 °
				-121.334933 °	-121.333755 °
DWR ID	DWR_RD0544_02_s_2012_1				
Comment Code					
V2 : Remove the wild growth other than native grasses from the levee slopes.					
Inspector Comment					

Photo 1 of 1 : SP_2016_RD0544_109_1_20160404_00001.jpg



Looking southwest at dense vegetation at landward toe.

LM Start	0.52	Rating **	N	Issue No.	11
LM End	0.52	Issue Type +	Ma	Location *	LS
Category	Earthen Levee			GPS Latitude/Longitude	
				Start	End
Item	Trim / Thin Trees			37.811592 °	37.811592 °
				-121.335018 °	-121.335018 °
DWR ID	DWR_RD0544_02_s_2012_11				
Comment Code					
T5 : Tree stumps.					
Inspector Comment					

No Photos

LM Start	0.64	Rating **	U	Issue No.	46
LM End	0.64	Issue Type +	Ma	Location *	LS
Category	Earthen Levee			GPS Latitude/Longitude	
				Start	End
Item	Erosion / Bank Caving			37.813197 °	37.813197 °
				-121.335055 °	-121.335055 °
DWR ID	DWR_RD0544_02_s_2015_46				
Comment Code					
E1 : Note and monitor erosion site.					
Inspector Comment					
Depression greater than one inch deep and greater that three inches on landward shoulder					

Photo 1 of 1 : SP_2016_RD0544_109_46_20160404_00040.jpg



Looking at depression on landward shoulder.

* Location		** Rating		+ Issue Type	
LS : Land Side	N/A : Not Applicable	A : Acceptable	N : Not Inspected/Rated	Ma : Maintenance Deficiency	
WS : Water Side		M : Minimally Acceptable	C : Corrected	Ob : Design & System Obsolescence	
CR : Crown		U : Unacceptable	A/W : Acceptable but Monitor & Maintain	En : Enforcement	

**Flood Control Project Maintenance
Levee Inspections**

Maintenance Issue Types Only, Levee Inspection Report By Mile - Spring 2016

Reclamation District No. 0544 Upper Roberts Island

Waterway	Bank	Unit Miles	Inspection Start/End	Inspector
Unit No. 02 Old River	Right	4.15	04/19/2016 04/19/2016	Richard Willoughby

LM Start	0.72	Rating **	A/W	Issue No.	5
LM End	0.72	Issue Type +	Ma	Location *	LS
Category	Earthen Levee			GPS Latitude/Longitude	
				Start	End
Item	Vegetation			37.814333 °	37.814333 °
				-121.334592 °	-121.334592 °
DWR ID	DWR_RD0544_02_s_2012_5				
Comment Code					
V4 : Elderberries are blocking visibility and flood fight capability.					
Inspector Comment					

No Photos

LM Start	0.78	Rating **	U	Issue No.	8
LM End	0.78	Issue Type +	Ma	Location *	WS
Category	Interior Drainage & Piping Systems			GPS Latitude/Longitude	
				Start	End
Item	Erosion Areas			37.815094 °	37.815094 °
				-121.333927 °	-121.333927 °
DWR ID	DWR_RD0544_02_s_2012_8				
Comment Code					
Inspector Comment					
Caving under and around siphon on waterside shoulder. No material 3' below pipe. Caving around siphon is 20" to 24" deep approximately 72" in diameter. During 2012 spring inspection hole appears to be enlarging.					

Photo 1 of 8 : SP_2016_RD0544_109_8_20160404_00007.jpg



Looking at top of siphon on waterside shoulder with 3' of caving around pipe.

LM Start	0.78	Rating **	U	Issue No.	8 (cont)
LM End	0.78	Issue Type +	Ma	Location *	WS

Photo 2 of 8 : SP_2016_RD0544_109_8_20160404_00008.jpg



Looking at caving around 10" siphon pipe on waterside shoulder.

* Location LS : Land Side N/A : Not Applicable WS : Water Side CR : Crown		** Rating A : Acceptable M : Minimally Acceptable U : Unacceptable N : Not Inspected/Rated C : Corrected A/W : Acceptable but Monitor & Maintain		+ Issue Type Ma : Maintenance Deficiency Ob : Design & System Obsolescence En : Enforcement	
--	--	---	--	---	--

**Flood Control Project Maintenance
Levee Inspections**

Maintenance Issue Types Only, Levee Inspection Report By Mile - Spring 2016

Reclamation District No. 0544 Upper Roberts Island

Waterway	Bank	Unit Miles	Inspection Start/End	Inspector
Unit No. 02 Old River	Right	4.15	04/19/2016 04/19/2016	Richard Willoughby

LM Start	0.78	Rating **	U	Issue No.	8 (cont)	
LM End	0.78	Issue Type +	Ma	Location *	WS	
Category	Interior Drainage & Piping Systems			GPS Latitude/Longitude		
				Start		End
Item	Erosion Areas			37.815094 °		37.815094 °
				-121.333927 °		-121.333927 °
DWR ID	DWR_RD0544_02_s_2012_8					
Comment Code						
Inspector Comment						
Caving under and around siphon on waterside shoulder. No material 3' below pipe. Caving around siphon is 20" to 24" deep approximately 72" in diameter. During 2012 spring inspection hole appears to be enlarging.						

LM Start	0.78	Rating **	U	Issue No.	8 (cont)
LM End	0.78	Issue Type +	Ma	Location *	WS

LM Start	0.78	Rating **	U	Issue No.	8 (cont)
LM End	0.78	Issue Type +	Ma	Location *	WS

Photo 3 of 8 : SP_2016_RD0544_109_8_20160404_00009.jpg



Looking south at depression greater than 6" on waterside shoulder.

Photo 4 of 8 : SP_2016_RD0544_109_8_20160404_00010.jpg



Looking east at caving around siphon on waterside shoulder. (Spring 2012)

Photo 5 of 8 : SP_2016_RD0544_109_8_20160404_00011.jpg



Looking at top of siphon with a depression greater than 6" on waterside shoulder.

* Location		** Rating		+ Issue Type	
LS : Land Side	N/A : Not Applicable	A : Acceptable	N : Not Inspected/Rated	Ma : Maintenance Deficiency	
WS : Water Side		M : Minimally Acceptable	C : Corrected	Ob : Design & System Obsolescence	
CR : Crown		U : Unacceptable	A/W : Acceptable but Monitor & Maintain	En : Enforcement	

**Flood Control Project Maintenance
Levee Inspections**

Maintenance Issue Types Only, Levee Inspection Report By Mile - Spring 2016

Reclamation District No. 0544 Upper Roberts Island

Waterway	Bank	Unit Miles	Inspection Start/End	Inspector
Unit No. 02 Old River	Right	4.15	04/19/2016 04/19/2016	Richard Willoughby

LM Start	0.78	Rating **	U	Issue No.	8 (cont)	
LM End	0.78	Issue Type +	Ma	Location *	WS	
Category	Interior Drainage & Piping Systems			GPS Latitude/Longitude		
				Start		End
Item	Erosion Areas			37.815094 °		37.815094 °
				-121.333927 °		-121.333927 °
DWR ID	DWR_RD0544_02_s_2012_8					
Comment Code						
Inspector Comment						
Caving under and around siphon on waterside shoulder. No material 3' below pipe. Caving around siphon is 20" to 24" deep approximately 72" in diameter. During 2012 spring inspection hole appears to be enlarging.						

LM Start	0.78	Rating **	U	Issue No.	8 (cont)
LM End	0.78	Issue Type +	Ma	Location *	WS

LM Start	0.78	Rating **	U	Issue No.	8 (cont)
LM End	0.78	Issue Type +	Ma	Location *	WS

Photo 6 of 8 : SP_2016_RD0544_109_8_20160404_00012.jpg



Looking west at caving around siphon on waterside shoulder. (Spring 2012)

Photo 7 of 8 : SP_2016_RD0544_109_8_20160404_00013.jpg



Looking south at caving around siphon on waterside shoulder. (Spring 2012)

Photo 8 of 8 : SP_2016_RD0544_109_8_20160404_00014.jpg



Looking south at depression greater than 6" around siphon on waterside shoulder.

* Location LS : Land Side N/A : Not Applicable WS : Water Side CR : Crown		** Rating A : Acceptable M : Minimally Acceptable U : Unacceptable		+ Issue Type Ma : Maintenance Deficiency Ob : Design & System Obsolescence En : Enforcement	
		N : Not Inspected/Rated C : Corrected A/W : Acceptable but Monitor & Maintain			

**Flood Control Project Maintenance
Levee Inspections**

Maintenance Issue Types Only, Levee Inspection Report By Mile - Spring 2016

Reclamation District No. 0544 Upper Roberts Island

Waterway	Bank	Unit Miles	Inspection Start/End	Inspector
Unit No. 02 Old River	Right	4.15	04/19/2016 04/19/2016	Richard Willoughby

LM Start	1.30	Rating **	U	Issue No.	49
LM End	1.40	Issue Type +	Ma	Location *	WS
Category	Earthen Levee			GPS Latitude/Longitude	
				Start	End
Item	Vegetation			37.820767 °	37.821582 °
				-121.336611 °	-121.338102 °
DWR ID	DWR_RD0544_02_f_2014_49				
Comment Code					
V2 : Remove the wild growth other than native grasses from the levee slopes.					
Inspector Comment					
Tobacco plants on waterward slope.					

Photo 1 of 2 : SP_2016_RD0544_109_49_20160404_00041.jpg



Looking southwest at dense vegetation on landward slope and toe.

LM Start	1.30	Rating **	U	Issue No.	49 (cont)
LM End	1.40	Issue Type +	Ma	Location *	WS

Photo 2 of 2 : SP_2016_RD0544_109_49_20160404_00042.jpg



Looking south at several tobacco plants on waterward slope.

LM Start	1.34	Rating **	M	Issue No.	56
LM End	1.45	Issue Type +	Ma	Location *	LS
Category	Earthen Levee			GPS Latitude/Longitude	
				Start	End
Item	Animal Control			37.821168 °	37.822083 °
				-121.337212 °	-121.338862 °
DWR ID	DWR_RD0544_02_s_2015_56				
Comment Code					
A1 : Exterminate rodents and backfill and compact or grout burrows.					
Inspector Comment					

No Photos

* Location		** Rating		+ Issue Type	
LS : Land Side	N/A : Not Applicable	A : Acceptable	N : Not Inspected/Rated	Ma : Maintenance Deficiency	
WS : Water Side		M : Minimally Acceptable	C : Corrected	Ob : Design & System Obsolescence	
CR : Crown		U : Unacceptable	A/W : Acceptable but Monitor & Maintain	En : Enforcement	

**Flood Control Project Maintenance
Levee Inspections**

Maintenance Issue Types Only, Levee Inspection Report By Mile - Spring 2016

Reclamation District No. 0544 Upper Roberts Island

Waterway	Bank	Unit Miles	Inspection Start/End	Inspector
Unit No. 02 Old River	Right	4.15	04/19/2016 04/19/2016	Richard Willoughby

LM Start	1.37	Rating **	M	Issue No.	14
LM End	1.37	Issue Type +	Ma	Location *	WS
Category	Earthen Levee			GPS Latitude/Longitude	
				Start	End
Item	Vegetation			37.821323 °	37.821323 °
				-121.337725 °	-121.337725 °
DWR ID	DWR_RD0544_02_s_2012_14				
Comment Code					
V2 : Remove the wild growth other than native grasses from the levee slopes.					
Inspector Comment					
Control bamboo on waterside slope.					

No Photos

LM Start	1.38	Rating **	U	Issue No.	10
LM End	1.38	Issue Type +	Ma	Location *	LS
Category	Earthen Levee			GPS Latitude/Longitude	
				Start	End
Item	Vegetation			37.821423 °	37.821423 °
				-121.337878 °	-121.337878 °
DWR ID	DWR_RD0544_02_s_2012_10				
Comment Code					
V4 : Elderberries are blocking visibility and flood fight capability.					
Inspector Comment					
Dense elderberry on landward slope and toe.					

Photo 1 of 2 : SP_2016_RD0544_109_10_20160404_00018.jpg



Looking southwest at elderberries on landside slope.

LM Start	1.38	Rating **	U	Issue No.	10 (cont)
LM End	1.38	Issue Type +	Ma	Location *	LS

Photo 2 of 2 : SP_2016_RD0544_109_10_20160404_00019.jpg



Looking south at elderberries on landside slope and toe.

* Location LS : Land Side N/A : Not Applicable WS : Water Side CR : Crown		** Rating A : Acceptable M : Minimally Acceptable U : Unacceptable		N : Not Inspected/Rated C : Corrected A/W : Acceptable but Monitor & Maintain	+ Issue Type Ma : Maintenance Deficiency Ob : Design & System Obsolescence En : Enforcement
--	--	--	--	---	---

**Flood Control Project Maintenance
Levee Inspections**

Maintenance Issue Types Only, Levee Inspection Report By Mile - Spring 2016

Reclamation District No. 0544 Upper Roberts Island

Waterway	Bank	Unit Miles	Inspection Start/End	Inspector
Unit No. 02 Old River	Right	4.15	04/19/2016 04/19/2016	Richard Willoughby

LM Start	1.42	Rating **	M	Issue No.	22
LM End	1.42	Issue Type +	Ma	Location *	LS
Category	Earthen Levee			GPS Latitude/Longitude	
				Start	End
Item	Slope Stability			37.821697 °	37.821697 °
				-121.338397 °	-121.338397 °
DWR ID	DWR_RD0544_02_s _ 2012_22				
Comment Code					
S3 : Repair the levee slope damaged by vehicle traffic and prevent access where possible.					
Inspector Comment					
Damage caused by vehicle traffic.					

Photo 1 of 2 : SP_2016_RD0544_109_22_20160404_00031.jpg



Looking northwest at slope damage caused by vehicle traffic (Fall 2014).

LM Start	1.42	Rating **	M	Issue No.	22 (cont)
LM End	1.42	Issue Type +	Ma	Location *	LS

Photo 2 of 2 : SP_2016_RD0544_109_22_20160404_00032.jpg



Looking northwest at slope damage caused by vehicle traffic.

LM Start	1.44	Rating **	M	Issue No.	28
LM End	1.44	Issue Type +	Ma	Location *	WS
Category	Earthen Levee			GPS Latitude/Longitude	
				Start	End
Item	Animal Control			37.821954 °	37.821954 °
				-121.338715 °	-121.338715 °
DWR ID	DWR_RD0544_02_s _ 2012_28				
Comment Code					
A1 : Exterminate rodents and backfill and compact or grout burrows.					
Inspector Comment					

No Photos

* Location		** Rating		+ Issue Type	
LS : Land Side	N/A : Not Applicable	A : Acceptable	N : Not Inspected/Rated	Ma : Maintenance Deficiency	
WS : Water Side		M : Minimally Acceptable	C : Corrected	Ob : Design & System Obsolescence	
CR : Crown		U : Unacceptable	A/W : Acceptable but Monitor & Maintain	En : Enforcement	

**Flood Control Project Maintenance
Levee Inspections**

Maintenance Issue Types Only, Levee Inspection Report By Mile - Spring 2016

Reclamation District No. 0544 Upper Roberts Island

Waterway	Bank	Unit Miles	Inspection Start/End	Inspector
Unit No. 02 Old River	Right	4.15	04/19/2016 04/19/2016	Richard Willoughby

LM Start	1.86	Rating **	U	Issue No.	38
LM End	1.86	Issue Type +	Ma	Location *	WS
Category	Earthen Levee			GPS Latitude/Longitude	
				Start	End
Item	Erosion / Bank Caving			37.817983 °	37.817983 °
				-121.341682 °	-121.341682 °
DWR ID	DWR_RD0544_02_s _ 2015_38				
Comment Code					
E1 : Note and monitor erosion site.					
Inspector Comment					
Erosion/Caving on waterward shoulder and slope 18" x 6" x 15'.					

Photo 1 of 2 : SP_2016_RD0544_109_38_20160404_00037.jpg



Looking southeast at erosion/caving on waterward slope.

LM Start	1.86	Rating **	U	Issue No.	38 (cont)
LM End	1.86	Issue Type +	Ma	Location *	WS

Photo 2 of 2 : SP_2016_RD0544_109_38_20160404_00038.jpg



Looking east at erosion/caving on waterward slope.

LM Start	2.01	Rating **	A/W	Issue No.	44
LM End	2.01	Issue Type +	Ma	Location *	LS
Category	Earthen Levee			GPS Latitude/Longitude	
				Start	End
Item	Trim / Thin Trees			37.818733 °	37.818733 °
				-121.343340 °	-121.343340 °
DWR ID	DWR_RD0544_02_s _ 2012_44				
Comment Code					
T1 : Trim trees to at least five feet above ground level.					
Inspector Comment					

No Photos

* Location LS : Land Side N/A : Not Applicable WS : Water Side CR : Crown		** Rating A : Acceptable N : Not Inspected/Rated M : Minimally Acceptable C : Corrected U : Unacceptable A/W : Acceptable but Monitor & Maintain		+ Issue Type Ma : Maintenance Deficiency Ob : Design & System Obsolescence En : Enforcement
--	--	---	--	---

**Flood Control Project Maintenance
Levee Inspections**

Maintenance Issue Types Only, Levee Inspection Report By Mile - Spring 2016

Reclamation District No. 0544 Upper Roberts Island

Waterway	Bank	Unit Miles	Inspection Start/End	Inspector
Unit No. 02 Old River	Right	4.15	04/19/2016 04/19/2016	Richard Willoughby

LM Start	2.02	Rating **	A/W	Issue No.	57
LM End	2.02	Issue Type +	Ma	Location *	LS
Category	Earthen Levee			GPS Latitude/Longitude	
				Start	End
Item	Encroachments			37.818853 °	37.818853 °
				-121.343473 °	-121.343473 °
DWR ID	DWR_RD0544_02_s _ 2015_57				
Comment Code					
PR : Prunings					
Inspector Comment					
Large pruning pile at landward toe.					

Photo 1 of 1 : SP_2016_RD0544_109_57_20160404_00048.jpg



Looking west at pruning pile at landward toe.(Spring 2015)

LM Start	2.02	Rating **	U	Issue No.	58
LM End	2.09	Issue Type +	Ma	Location *	LS
Category	Earthen Levee			GPS Latitude/Longitude	
				Start	End
Item	Animal Control			37.818853 °	37.819493 °
				-121.343473 °	-121.344545 °
DWR ID	DWR_RD0544_02_s _ 2015_58				
Comment Code					
A1 : Exterminate rodents and backfill and compact or grout burrows.					
Inspector Comment					
Several rodent holes within reach on landward slope.					

Photo 1 of 1 : SP_2016_RD0544_109_58_20160404_00049.jpg



Looking at typical rodent holes on landward slope.

LM Start	2.02	Rating **	A/W	Issue No.	39
LM End	2.16	Issue Type +	Ma	Location *	LS
Category	Earthen Levee			GPS Latitude/Longitude	
				Start	End
Item	Vegetation			37.818842 °	37.820193 °
				-121.343520 °	-121.345525 °
DWR ID	DWR_RD0544_02_s _ 2012_39				
Comment Code					
V2 : Remove the wild growth other than native grasses from the levee slopes.					
Inspector Comment					

No Photos

* Location		** Rating		+ Issue Type	
LS : Land Side	N/A : Not Applicable	A : Acceptable	N : Not Inspected/Rated	Ma : Maintenance Deficiency	
WS : Water Side		M : Minimally Acceptable	C : Corrected	Ob : Design & System Obsolescence	
CR : Crown		U : Unacceptable	A/W : Acceptable but Monitor & Maintain	En : Enforcement	

**Flood Control Project Maintenance
Levee Inspections**

Maintenance Issue Types Only, Levee Inspection Report By Mile - Spring 2016

Reclamation District No. 0544 Upper Roberts Island

Waterway	Bank	Unit Miles	Inspection Start/End	Inspector
Unit No. 02 Old River	Right	4.15	04/19/2016 04/19/2016	Richard Willoughby

LM Start	2.07	Rating **	M	Issue No.	13
LM End	2.09	Issue Type +	Ma	Location *	LS
Category	Earthen Levee			GPS Latitude/Longitude	
				Start	End
Item	Vegetation			37.819337 °	37.819460 °
				-121.344275 °	-121.344492 °
DWR ID	DWR_RD0544_02_s_2012_13				
Comment Code					
V4 : Elderberries are blocking visibility and flood fight capability.					
Inspector Comment					

Photo 1 of 1 : SP_2016_RD0544_109_13_20160404_00022.jpg



Looking northwest at elderberries on landside slope and toe.

LM Start	2.12	Rating **	U	Issue No.	59
LM End	2.12	Issue Type +	Ma	Location *	LS
Category	Earthen Levee			GPS Latitude/Longitude	
				Start	End
Item	Trim / Thin Trees			37.819738 °	37.819738 °
				-121.344922 °	-121.344922 °
DWR ID	DWR_RD0544_02_s_2015_59				
Comment Code					
T1 : Trim trees to at least five feet above ground level.					
Inspector Comment					
Untrimmed trees on landward shoulder and slope.					

Photo 1 of 1 : SP_2016_RD0544_109_59_20160404_00050.jpg



Looking southwest at untrimmed trees on landward slope and toe fall 2015.

LM Start	2.20	Rating **	M	Issue No.	60
LM End	2.20	Issue Type +	Ma	Location *	LS
Category	Earthen Levee			GPS Latitude/Longitude	
				Start	End
Item	Trim / Thin Trees			37.820655 °	37.820655 °
				-121.345982 °	-121.345982 °
DWR ID	DWR_RD0544_02_s_2015_60				
Comment Code					
T1 : Trim trees to at least five feet above ground level.					
Inspector Comment					

No Photos

* Location		** Rating		+ Issue Type	
LS : Land Side	N/A : Not Applicable	A : Acceptable	N : Not Inspected/Rated	Ma : Maintenance Deficiency	
WS : Water Side		M : Minimally Acceptable	C : Corrected	Ob : Design & System Obsolescence	
CR : Crown		U : Unacceptable	A/W : Acceptable but Monitor & Maintain	En : Enforcement	

**Flood Control Project Maintenance
Levee Inspections**

Maintenance Issue Types Only, Levee Inspection Report By Mile - Spring 2016

Reclamation District No. 0544 Upper Roberts Island

Waterway	Bank	Unit Miles	Inspection Start/End	Inspector
Unit No. 02 Old River	Right	4.15	04/19/2016 04/19/2016	Richard Willoughby

LM Start	2.21	Rating **	M	Issue No.	50
LM End	2.21	Issue Type +	Ma	Location *	WS
Category	Earthen Levee			GPS Latitude/Longitude	
				Start	End
Item	Encroachments			37.820646 °	37.820646 °
				-121.346014 °	-121.346014 °
DWR ID	DWR_RD0544_02_f_2014_50				
Comment Code					
GA : Garbage					
Inspector Comment					
Discarded intake pipe on waterward slope.					

Photo 1 of 1 : SP_2016_RD0544_109_50_20160404_00043.jpg



Looking northwest at pipe on waterward slope.

LM Start	2.21	Rating **	M	Issue No.	32
LM End	2.21	Issue Type +	Ma	Location *	WS
Category	Earthen Levee			GPS Latitude/Longitude	
				Start	End
Item	Animal Control			37.820697 °	37.820697 °
				-121.346050 °	-121.346050 °
DWR ID	DWR_RD0544_02_s_2012_32				
Comment Code					
A3 : No rodents visible, but rodent burrows visible; need to backfill and compact or grout burrows.					
Inspector Comment					

No Photos

LM Start	2.24	Rating **	M	Issue No.	33
LM End	2.35	Issue Type +	Ma	Location *	LS
Category	Earthen Levee			GPS Latitude/Longitude	
				Start	End
Item	Animal Control			37.821096 °	37.821945 °
				-121.346418 °	-121.347897 °
DWR ID	DWR_RD0544_02_s_2012_33				
Comment Code					
A3 : No rodents visible, but rodent burrows visible; need to backfill and compact or grout burrows.					
Inspector Comment					

No Photos

* Location LS : Land Side N/A : Not Applicable WS : Water Side CR : Crown		** Rating A : Acceptable N : Not Inspected/Rated M : Minimally Acceptable C : Corrected U : Unacceptable A/W : Acceptable but Monitor & Maintain		+ Issue Type Ma : Maintenance Deficiency Ob : Design & System Obsolescence En : Enforcement
--	--	---	--	---

**Flood Control Project Maintenance
Levee Inspections**

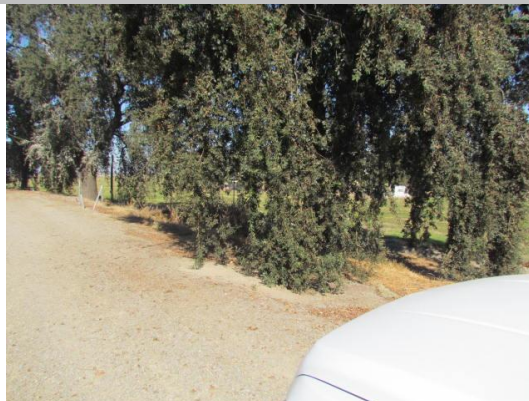
Maintenance Issue Types Only, Levee Inspection Report By Mile - Spring 2016

Reclamation District No. 0544 Upper Roberts Island

Waterway	Bank	Unit Miles	Inspection Start/End	Inspector
Unit No. 02 Old River	Right	4.15	04/19/2016 04/19/2016	Richard Willoughby

LM Start	2.28	Rating **	U	Issue No.	61
LM End	2.28	Issue Type +	Ma	Location *	LS
Category	Earthen Levee			GPS Latitude/Longitude	
				Start	End
Item	Trim / Thin Trees			37.821473 °	37.821473 °
				-121.346860 °	-121.346860 °
DWR ID	DWR_RD0544_02_s_2015_61				
Comment Code					
T1 : Trim trees to at least five feet above ground level.					
Inspector Comment					
Untrimmed tree on landward shoulder.					

Photo 1 of 1 : SP_2016_RD0544_109_61_20160404_00051.jpg



Looking west at untrimmed trees on landward slope fall 2015.

LM Start	2.29	Rating **	A/W	Issue No.	40
LM End	2.29	Issue Type +	Ma	Location *	LS
Category	Earthen Levee			GPS Latitude/Longitude	
				Start	End
Item	Vegetation			37.821628 °	37.821628 °
				-121.346972 °	-121.346972 °
DWR ID	DWR_RD0544_02_s_2012_40				
Comment Code					
V2 : Remove the wild growth other than native grasses from the levee slopes.					
Inspector Comment					

No Photos

LM Start	2.31	Rating **	M	Issue No.	51
LM End	2.31	Issue Type +	Ma	Location *	WS
Category	Earthen Levee			GPS Latitude/Longitude	
				Start	End
Item	Encroachments			37.821757 °	37.821757 °
				-121.347181 °	-121.347181 °
DWR ID	DWR_RD0544_02_s_2014_51				
Comment Code					
PI : Pipe					
Inspector Comment					
Landowner repaired pump and replaced pipe and left pump shaft and pipe on waterward slope.					

Photo 1 of 1 : SP_2016_RD0544_109_51_20160404_00044.jpg



Looking north at old pump shaft and pipe on waterward slope.

* Location
LS : Land Side N/A : Not Applicable
WS : Water Side
CR : Crown

** Rating
A : Acceptable N : Not Inspected/Rated
M : Minimally Acceptable C : Corrected
U : Unacceptable A/W : Acceptable but Monitor & Maintain

+ Issue Type
Ma : Maintenance Deficiency
Ob : Design & System Obsolescence
En : Enforcement

**Flood Control Project Maintenance
Levee Inspections**

Maintenance Issue Types Only, Levee Inspection Report By Mile - Spring 2016

Reclamation District No. 0544 Upper Roberts Island

Waterway	Bank	Unit Miles	Inspection Start/End	Inspector
Unit No. 02 Old River	Right	4.15	04/19/2016 04/19/2016	Richard Willoughby

LM Start	2.31	Rating **	M	Issue No.	12
LM End	2.31	Issue Type +	Ma	Location *	WS
Category	Supplemental			GPS Latitude/Longitude	
				Start	End
Item	DWR Erosion Survey			37.821763 °	37.821763 °
				-121.347275 °	-121.347275 °
DWR ID	DWR_RD0544_02_s_2016_12				
Comment Code					
Inspector Comment					
06/25/2015: No significant change observed. 07/02/2014: No significant change observed. 08/20/2013: No significant change observed. 08/07/2012: The site was first reported in 2012 spring levee inspection report. The data were estimated as the site is underneath a irrigation pump station and inaccessible by boat or land survey. It?s possible the pump station played a role in the erosion. [2015 Site ID:RD0544U02RM33.21]					

Photo 1 of 2 : SP_2016_RD0544_109_12_20160404_00020.jpg



Front view of the site.

LM Start	2.31	Rating **	M	Issue No.	12 (cont)
LM End	2.31	Issue Type +	Ma	Location *	WS

Photo 2 of 2 : SP_2016_RD0544_109_12_20160404_00021.jpg



Front view of the site.

* Location LS : Land Side N/A : Not Applicable WS : Water Side CR : Crown		** Rating A : Acceptable M : Minimally Acceptable U : Unacceptable N : Not Inspected/Rated C : Corrected A/W : Acceptable but Monitor & Maintain		+ Issue Type Ma : Maintenance Deficiency Ob : Design & System Obsolescence En : Enforcement
--	--	---	--	---

**Flood Control Project Maintenance
Levee Inspections**

Maintenance Issue Types Only, Levee Inspection Report By Mile - Spring 2016

Reclamation District No. 0544 Upper Roberts Island

Waterway	Bank	Unit Miles	Inspection Start/End	Inspector
Unit No. 02 Old River	Right	4.15	04/19/2016 04/19/2016	Richard Willoughby

LM Start	2.32	Rating **	M	Issue No.	41
LM End	2.41	Issue Type +	Ma	Location *	LS
Category	Earthen Levee			GPS Latitude/Longitude	
				Start	End
Item	Vegetation			37.821840 °	37.821433 °
				-121.347428 °	-121.348849 °
DWR ID	DWR_RD0544_02_s_2012_41				
Comment Code					
V2 : Remove the wild growth other than native grasses from the levee slopes.					
Inspector Comment					

No Photos

LM Start	2.44	Rating **	M	Issue No.	42
LM End	3.24	Issue Type +	Ma	Location *	WS
Category	Earthen Levee			GPS Latitude/Longitude	
				Start	End
Item	Vegetation			37.821037 °	37.819200 °
				-121.349050 °	-121.359943 °
DWR ID	DWR_RD0544_02_s_2012_42				
Comment Code					
V2 : Remove the wild growth other than native grasses from the levee slopes.					
Inspector Comment					

No Photos

LM Start	2.61	Rating **	U	Issue No.	9
LM End	2.61	Issue Type +	Ma	Location *	WS
Category	Supplemental			GPS Latitude/Longitude	
				Start	End
Item	DWR Erosion Survey			37.818861 °	37.818861 °
				-121.350400 °	-121.350400 °
DWR ID	DWR_RD0544_02_f_2015_9				
Comment Code					
Inspector Comment					
06/25/2015: The site was discovered during the boat survey. Irrigation pipe leakage caused the soil to sink at the upper levee shoulder. The lower part of the levee is protected by riprap rocks. The irrigation pump was operating at the site. [2015 Site ID:RD0544U02RM33]					

Photo 1 of 3 : SP_2016_RD0544_109_9_20160404_00015.jpg



Front view of the erosion site.

* Location LS : Land Side N/A : Not Applicable WS : Water Side CR : Crown		** Rating A : Acceptable N : Not Inspected/Rated M : Minimally Acceptable C : Corrected U : Unacceptable A/W : Acceptable but Monitor & Maintain		+ Issue Type Ma : Maintenance Deficiency Ob : Design & System Obsolescence En : Enforcement	
--	--	---	--	---	--

**Flood Control Project Maintenance
Levee Inspections**

Maintenance Issue Types Only, Levee Inspection Report By Mile - Spring 2016

Reclamation District No. 0544 Upper Roberts Island

Waterway	Bank	Unit Miles	Inspection Start/End	Inspector
Unit No. 02 Old River	Right	4.15	04/19/2016 04/19/2016	Richard Willoughby

LM Start	2.61	Rating **	U	Issue No.	9 (cont)	
LM End	2.61	Issue Type +	Ma	Location *	WS	
Category	Supplemental			GPS Latitude/Longitude		
				Start		End
Item	DWR Erosion Survey			37.818861 °	37.818861 °	
				-121.350400 °	-121.350400 °	
DWR ID	DWR_RD0544_02_f_2015_9					
Comment Code						
Inspector Comment						
06/25/2015: The site was discovered during the boat survey. Irrigation pipe leakage caused the soil to sink at the upper levee shoulder. The lower part of the levee is protected by riprap rocks. The irrigation pump was operating at the site. [2015 Site ID:RD0544U02RM33]						

LM Start	2.61	Rating **	U	Issue No.	9 (cont)
LM End	2.61	Issue Type +	Ma	Location *	WS

Photo 2 of 3 : SP_2016_RD0544_109_9_20160404_00016.jpg



Close view of the erosion.

Photo 3 of 3 : SP_2016_RD0544_109_9_20160404_00017.jpg



Close view of the erosion. Vegetation around the site is visible.

* Location LS : Land Side N/A : Not Applicable WS : Water Side CR : Crown		** Rating A : Acceptable M : Minimally Acceptable U : Unacceptable N : Not Inspected/Rated C : Corrected A/W : Acceptable but Monitor & Maintain		+ Issue Type Ma : Maintenance Deficiency Ob : Design & System Obsolescence En : Enforcement	
---	--	--	--	--	--

**Flood Control Project Maintenance
Levee Inspections**

Maintenance Issue Types Only, Levee Inspection Report By Mile - Spring 2016

Reclamation District No. 0544 Upper Roberts Island

Waterway	Bank	Unit Miles	Inspection Start/End	Inspector
Unit No. 02 Old River	Right	4.15	04/19/2016 04/19/2016	Richard Willoughby

LM Start	2.67	Rating **	M	Issue No.	7
LM End	2.69	Issue Type +	Ma	Location *	WS
Category	Supplemental			GPS Latitude/Longitude	
				Start	End
Item	DWR Erosion Survey			37.817760 °	37.817760 °
				-121.350850 °	-121.350850 °
DWR ID	DWR_RD0544_02_s_2016_7				
Comment Code					
Inspector Comment					
06/25/2015: No significant change observed. 07/02/2014: No significant change observed. 10/11/2013: No significant change observed. 08/07/2012: Series of pocket erosion were discovered at the levee toe during the boat survey. The area is covered with vegetation and riprap, but the rip rap has been washed away. [2015 Site ID:RD0544U02RM32.91]					

LM Start	2.67	Rating **	M	Issue No.	7 (cont)
LM End	2.69	Issue Type +	Ma	Location *	WS

Photo 1 of 2 : SP_2016_RD0544_109_7_20160404_00005.jpg



Front view of pocket erosion. Note the vegetation and riprap at the site.

Photo 2 of 2 : SP_2016_RD0544_109_7_20160404_00006.jpg



Close view of pocket erosion.

* Location LS : Land Side N/A : Not Applicable WS : Water Side CR : Crown		** Rating A : Acceptable M : Minimally Acceptable U : Unacceptable		N : Not Inspected/Rated C : Corrected A/W : Acceptable but Monitor & Maintain		+ Issue Type Ma : Maintenance Deficiency Ob : Design & System Obsolescence En : Enforcement	
--	--	--	--	---	--	---	--

**Flood Control Project Maintenance
Levee Inspections**

Maintenance Issue Types Only, Levee Inspection Report By Mile - Spring 2016

Reclamation District No. 0544 Upper Roberts Island

Waterway	Bank	Unit Miles	Inspection Start/End	Inspector
Unit No. 02 Old River	Right	4.15	04/19/2016 04/19/2016	Richard Willoughby

LM Start	2.69	Rating **	A/W	Issue No.	52
LM End	3.20	Issue Type +	Ma	Location *	CR
Category	Earthen Levee			GPS Latitude/Longitude	
				Start	End
Item	Vegetation			37.817928 °	37.818824 °
				-121.351355 °	-121.359523 °
DWR ID	DWR_RD0544_02_f _ 2014_52				
Comment Code					
V2 : Remove the wild growth other than native grasses from the levee slopes.					
Inspector Comment					

Photo 1 of 1 : SP_2016_RD0544_109_52_20160404_00045.jpg



Looking south at vegetation on levee crown.

LM Start	2.71	Rating **	U	Issue No.	43
LM End	3.05	Issue Type +	Ma	Location *	LS
Category	Earthen Levee			GPS Latitude/Longitude	
				Start	End
Item	Vegetation			37.817747 °	37.817497 °
				-121.351578 °	-121.357490 °
DWR ID	DWR_RD0544_02_s_2012_43				
Comment Code					
V2 : Remove the wild growth other than native grasses from the levee slopes.					
Inspector Comment					

Photo 1 of 1 : SP_2016_RD0544_109_43_20160404_00039.jpg



Looking south a dense vegetation on landward and waterward slope.

LM Start	2.80	Rating **	U	Issue No.	53
LM End	2.80	Issue Type +	Ma	Location *	LS
Category	Earthen Levee			GPS Latitude/Longitude	
				Start	End
Item	Trim / Thin Trees			37.817187 °	37.817187 °
				-121.352964 °	-121.352964 °
DWR ID	DWR_RD0544_02_f_2014_53				
Comment Code					
T2 : Thin trees to allow visibility of the ground and room to flood fight.					
Inspector Comment					

Photo 1 of 1 : SP_2016_RD0544_109_53_20160404_00046.jpg



Looking southwest at untrimmed tree on landward slope fall 2015.

* Location LS : Land Side N/A : Not Applicable WS : Water Side CR : Crown		** Rating A : Acceptable M : Minimally Acceptable U : Unacceptable		N : Not Inspected/Rated C : Corrected A/W : Acceptable but Monitor & Maintain		+ Issue Type Ma : Maintenance Deficiency Ob : Design & System Obsolescence En : Enforcement	
--	--	--	--	---	--	---	--

**Flood Control Project Maintenance
Levee Inspections**

Maintenance Issue Types Only, Levee Inspection Report By Mile - Spring 2016

Reclamation District No. 0544 Upper Roberts Island

Waterway	Bank	Unit Miles	Inspection Start/End	Inspector
Unit No. 02 Old River	Right	4.15	04/19/2016 04/19/2016	Richard Willoughby

LM Start	3.20	Rating **	M	Issue No.	30
LM End	3.40	Issue Type +	Ma	Location *	WS
Category	Earthen Levee			GPS Latitude/Longitude	
				Start	End
Item	Animal Control			37.818748 °	37.819717 °
				-121.359440 °	-121.362733 °
DWR ID	DWR_RD0544_02_s_2013_30				
Comment Code					
A1 : Exterminate rodents and backfill and compact or grout burrows.					
Inspector Comment					

No Photos

LM Start	3.22	Rating **	M	Issue No.	62
LM End	3.22	Issue Type +	Ma	Location *	LS
Category	Earthen Levee			GPS Latitude/Longitude	
				Start	End
Item	Trim / Thin Trees			37.818985 °	37.818985 °
				-121.359675 °	-121.359675 °
DWR ID	DWR_RD0544_02_s_2015_62				
Comment Code					
T1 : Trim trees to at least five feet above ground level.					
Inspector Comment					

No Photos

LM Start	3.29	Rating **	M	Issue No.	54
LM End	3.29	Issue Type +	Ma	Location *	LS
Category	Earthen Levee			GPS Latitude/Longitude	
				Start	End
Item	Vegetation			37.819635 °	37.819635 °
				-121.360619 °	-121.360619 °
DWR ID	DWR_RD0544_02_f_2014_54				
Comment Code					
V4 : Elderberries are blocking visibility and flood fight capability.					
Inspector Comment					

No Photos

* Location LS : Land Side N/A : Not Applicable WS : Water Side CR : Crown		** Rating A : Acceptable N : Not Inspected/Rated M : Minimally Acceptable C : Corrected U : Unacceptable A/W : Acceptable but Monitor & Maintain		+ Issue Type Ma : Maintenance Deficiency Ob : Design & System Obsolescence En : Enforcement
--	--	---	--	---

**Flood Control Project Maintenance
Levee Inspections**

Maintenance Issue Types Only, Levee Inspection Report By Mile - Spring 2016

Reclamation District No. 0544 Upper Roberts Island

Waterway	Bank	Unit Miles	Inspection Start/End	Inspector
Unit No. 02 Old River	Right	4.15	04/19/2016 04/19/2016	Richard Willoughby

LM Start	3.48	Rating **	U	Issue No.	36
LM End	3.51	Issue Type +	Ma	Location *	LS
Category	Earthen Levee			GPS Latitude/Longitude	
				Start	End
Item	Vegetation			37.819576 °	37.819530 °
				-121.364056 °	-121.364653 °
DWR ID	DWR_RD0544_02_s_2012_36				
Comment Code					
V2 : Remove the wild growth other than native grasses from the levee slopes.					
Inspector Comment					
Cactus on landside slope.					

LM Start	3.48	Rating **	U	Issue No.	36 (cont)
LM End	3.51	Issue Type +	Ma	Location *	LS

Photo 1 of 3 : SP_2016_RD0544_109_36_20160404_00034.jpg



Looking northwest at cactus on landward slope and toe fall 2015

Photo 2 of 3 : SP_2016_RD0544_109_36_20160404_00035.jpg



Looking north at cactus on landside slope and toe spring 2015

LM Start	3.48	Rating **	U	Issue No.	36 (cont)
LM End	3.51	Issue Type +	Ma	Location *	LS

Photo 3 of 3 : SP_2016_RD0544_109_36_20160404_00036.jpg



Looking southwest at overgrown cactus on landside slope spring 2015.

* Location LS : Land Side N/A : Not Applicable WS : Water Side CR : Crown		** Rating A : Acceptable M : Minimally Acceptable U : Unacceptable		+ Issue Type Ma : Maintenance Deficiency Ob : Design & System Obsolescence En : Enforcement	
		N : Not Inspected/Rated C : Corrected A/W : Acceptable but Monitor & Maintain			

**Flood Control Project Maintenance
Levee Inspections**

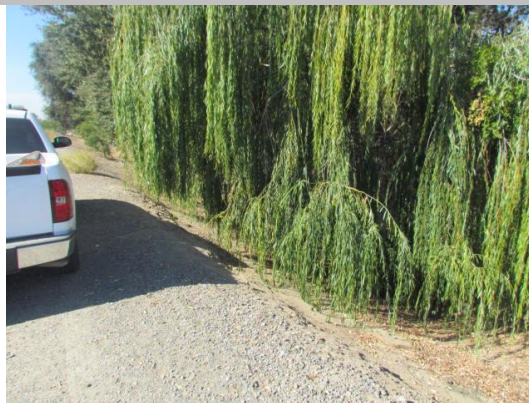
Maintenance Issue Types Only, Levee Inspection Report By Mile - Spring 2016

Reclamation District No. 0544 Upper Roberts Island

Waterway	Bank	Unit Miles	Inspection Start/End	Inspector
Unit No. 02 Old River	Right	4.15	04/19/2016 04/19/2016	Richard Willoughby

LM Start	3.49	Rating **	U	Issue No.	55
LM End	3.52	Issue Type +	Ma	Location *	LS
Category	Earthen Levee			GPS Latitude/Longitude	
				Start	End
Item	Trim / Thin Trees			37.819563 °	37.819542 °
				-121.364307 °	-121.364908 °
DWR ID	DWR_RD0544_02_f_2014_55				
Comment Code					
T2 : Thin trees to allow visibility of the ground and room to flood fight.					
Inspector Comment					

Photo 1 of 1 : SP_2016_RD0544_109_55_20160404_00047.jpg



Looking southwest at untrimmed trees on landward slope and toe fall 2015.

LM Start	3.55	Rating **	M	Issue No.	47
LM End	4.14	Issue Type +	Ma	Location *	LS
Category	Earthen Levee			GPS Latitude/Longitude	
				Start	End
Item	Vegetation			37.819443 °	37.822442 °
				-121.365305 °	-121.374608 °
DWR ID	DWR_RD0544_02_s_2012_47				
Comment Code					
V2 : Remove the wild growth other than native grasses from the levee slopes.					
Inspector Comment					

No Photos

LM Start	3.57	Rating **	M	Issue No.	19
LM End	3.80	Issue Type +	Ma	Location *	LS
Category	Earthen Levee			GPS Latitude/Longitude	
				Start	End
Item	Trim / Thin Trees			37.819428 °	37.821334 °
				-121.365742 °	-121.369017 °
DWR ID	DWR_RD0544_02_f_2013_19				
Comment Code					
T1 : Trim trees to at least five feet above ground level.					
Inspector Comment					

No Photos

* Location		** Rating		+ Issue Type	
LS : Land Side	N/A : Not Applicable	A : Acceptable	N : Not Inspected/Rated	Ma : Maintenance Deficiency	
WS : Water Side		M : Minimally Acceptable	C : Corrected	Ob : Design & System Obsolescence	
CR : Crown		U : Unacceptable	A/W : Acceptable but Monitor & Maintain	En : Enforcement	

**Flood Control Project Maintenance
Levee Inspections**

Maintenance Issue Types Only, Levee Inspection Report By Mile - Spring 2016

Reclamation District No. 0544 Upper Roberts Island

Waterway	Bank	Unit Miles	Inspection Start/End	Inspector
Unit No. 02 Old River	Right	4.15	04/19/2016 04/19/2016	Richard Willoughby

LM Start	3.58	Rating **	U	Issue No.	67
LM End	3.58	Issue Type +	Ma	Location *	LS
Category	Earthen Levee			GPS Latitude/Longitude	
				Start	End
Item	Animal Control			37.819419 °	37.819419 °
				-121.365854 °	-121.365854 °
DWR ID	DWR_RD0544_02_f_2015_67				
Comment Code					
A1 : Exterminate rodents and backfill and compact or grout burrows.					
Inspector Comment					
Large rodent holes on landward slope.					

Photo 1 of 2 : SP_2016_RD0544_109_67_20160404_00054.jpg



Looking northeast at typical view of rodent holes on landward slope.

LM Start	3.58	Rating **	U	Issue No.	67 (cont)
LM End	3.58	Issue Type +	Ma	Location *	LS

Photo 2 of 2 : SP_2016_RD0544_109_67_20160404_00055.jpg



Looking north at typical view of rodent holes on landward slope.

LM Start	3.58	Rating **	M	Issue No.	48
LM End	4.14	Issue Type +	Ma	Location *	WS
Category	Earthen Levee			GPS Latitude/Longitude	
				Start	End
Item	Vegetation			37.819408 °	37.822442 °
				-121.366005 °	-121.374607 °
DWR ID	DWR_RD0544_02_s_2012_48				
Comment Code					
V2 : Remove the wild growth other than native grasses from the levee slopes.					
Inspector Comment					

No Photos

* Location		** Rating		+ Issue Type	
LS : Land Side	N/A : Not Applicable	A : Acceptable	N : Not Inspected/Rated	Ma : Maintenance Deficiency	
WS : Water Side		M : Minimally Acceptable	C : Corrected	Ob : Design & System Obsolescence	
CR : Crown		U : Unacceptable	A/W : Acceptable but Monitor & Maintain	En : Enforcement	

**Flood Control Project Maintenance
Levee Inspections**

Maintenance Issue Types Only, Levee Inspection Report By Mile - Spring 2016

Reclamation District No. 0544 Upper Roberts Island

Waterway	Bank	Unit Miles	Inspection Start/End	Inspector
Unit No. 02 Old River	Right	4.15	04/19/2016 04/19/2016	Richard Willoughby

LM Start	3.73	Rating **	A/W	Issue No.	63
LM End	3.73	Issue Type +	Ma	Location *	LS
Category	Earthen Levee			GPS Latitude/Longitude	
				Start	End
Item	Vegetation			37.820492 °	37.820492 °
				-121.368093 °	-121.368093 °
DWR ID	DWR_RD0544_02_s_2015_63				
Comment Code					
V2 : Remove the wild growth other than native grasses from the levee slopes.					
Inspector Comment					
Control willows on waterward slope.					

No Photos

LM Start	4.05	Rating **	U	Issue No.	64
LM End	4.05	Issue Type +	Ma	Location *	LS
Category	Earthen Levee			GPS Latitude/Longitude	
				Start	End
Item	Vegetation			37.821620 °	37.821620 °
				-121.373283 °	-121.373283 °
DWR ID	DWR_RD0544_02_s_2015_64				
Comment Code					
V4 : Elderberries are blocking visibility and flood fight capability.					
Inspector Comment					

Photo 1 of 1 : SP_2016_RD0544_109_64_20160404_00052.jpg



Looking southwest at dense elderberry bush on landward slope and toe.
(Spring 2015)

* Location LS : Land Side N/A : Not Applicable WS : Water Side CR : Crown		** Rating A : Acceptable N : Not Inspected/Rated M : Minimally Acceptable C : Corrected U : Unacceptable A/W : Acceptable but Monitor & Maintain		+ Issue Type Ma : Maintenance Deficiency Ob : Design & System Obsolescence En : Enforcement
--	--	---	--	---

**Flood Control Project Maintenance
Levee Inspections**

Maintenance Issue Types Only, Levee Inspection Report By Mile - Spring 2016

Reclamation District No. 0544 Upper Roberts Island

Waterway	Bank	Unit Miles	Inspection Start/End	Inspector
Unit No. 02 Old River	Right	4.15	04/19/2016 04/19/2016	Richard Willoughby

LM Start	4.10	Rating **	U	Issue No.	65
LM End	4.16	Issue Type +	Ma	Location *	LS
Category	Earthen Levee			GPS Latitude/Longitude	
				Start	End
Item	Vegetation			37.821870 °	37.822623 °
				-121.374125 °	-121.374695 °
DWR ID	DWR_RD0544_02_s_2015_65				
Comment Code					
V2 : Remove the wild growth other than native grasses from the levee slopes.					
Inspector Comment					

Photo 1 of 1 : SP_2016_RD0544_109_65_20160404_00053.jpg



Looking southwest at dense vegetation on landward slope and toe.
(Spring 2015)

* Location LS : Land Side N/A : Not Applicable WS : Water Side CR : Crown	** Rating A : Acceptable M : Minimally Acceptable U : Unacceptable N : Not Inspected/Rated C : Corrected A/W : Acceptable but Monitor & Maintain	+ Issue Type Ma : Maintenance Deficiency Ob : Design & System Obsolescence En : Enforcement
--	---	---