

**Flood Control Project Maintenance  
Levee Inspections**

## Maintenance Issue Types Only, Levee Inspection Report By Mile - Spring 2015

### Reclamation District No. 0544 Upper Roberts Island

Waterway	Bank	Unit Miles	Inspection Start/End	Inspector
Unit No. 01 San Joaquin River	Left	6.05	04/28/2015 04/28/2015	Richard Willoughby

LM Start	0.00	Rating **	M	Issue No.	66
LM End	0.00	Issue Type +	Ma	Location *	N/A
Category	Earthen Levee			GPS Latitude/Longitude	
				Start	End
Item	Flood Preparedness & Training				°
					°
DWR ID	DWR_RD0544_01_s _ 2012_66				
Action/Comments					
Inspector Comments: The LMA has a good working knowledge of flood response. LMA has not been involved in flood training for several years.					

No Photos

LM Start	0.00	Rating **	A	Issue No.	71	
LM End	0.00	Issue Type +	Ma	Location *	N/A	
Category	Earthen Levee			GPS Latitude/Longitude		
				Start	End	
Item	Operations & Maintenance Manuals				°	°
					°	°
DWR ID	DWR_RD0544_01_s _ 2013_71					
Action/Comments						
Inspector Comments: The LMA has a copy of O&M manual on file in the office.						

No Photos

LM Start	0.00	Rating **	A	Issue No.	72	
LM End	0.00	Issue Type +	Ma	Location *	N/A	
Category	Earthen Levee			GPS Latitude/Longitude		
				Start		End
Item	Emergency Supplies & Equipment					°
						°
DWR ID	DWR_RD0544_01_s _ 2013_72					
Action/Comments						
Inspector Comments: The LMA maintains an adequate supply of floodfight material.						

No Photos

<b>* Location</b> LS : Land Side    N/A : Not Applicable WS : Water Side CR : Crown		<b>** Rating</b> A : Acceptable                      N : Not Inspected/Rated M : Minimally Acceptable        C : Corrected U : Unacceptable                  A/W : Acceptable but Monitor & Maintain		<b>+ Issue Type</b> Ma : Maintenance Deficiency Ob : Design & System Obsolescence En : Enforcement	
--	--	---	--	---	--

**Flood Control Project Maintenance  
Levee Inspections**

## Maintenance Issue Types Only, Levee Inspection Report By Mile - Spring 2015

### Reclamation District No. 0544 Upper Roberts Island

Waterway	Bank	Unit Miles	Inspection Start/End	Inspector
Unit No. 01 San Joaquin River	Left	6.05	04/28/2015 04/28/2015	Richard Willoughby

LM Start	0.01	Rating **	M	Issue No.	92
LM End	0.01	Issue Type +	Ma	Location *	LS
Category	Earthen Levee			GPS Latitude/Longitude	
				Start	End
Item	Trim / Thin Trees			37.870285 °	37.870285 °
				-121.329822 °	-121.329822 °
DWR ID	DWR_RD0544_01_f_2014_92				
Action/Comments					
Trim trees to at least five feet above ground level.					

No Photos

LM Start	0.23	Rating **	M	Issue No.	4
LM End	0.23	Issue Type +	Ma	Location *	LS
Category	Earthen Levee			GPS Latitude/Longitude	
				Start	End
Item	Encroachments			37.867590 °	37.867590 °
				-121.327813 °	-121.327813 °
DWR ID	DWR_RD0544_01_s_2012_4				
Action/Comments					
Equipment					
Inspector Comments: Farm equipment and supplies stored at landward toe.					

Photo 1 of 3 : SP\_2015\_RD0544\_108\_4\_20150430\_00070.jpg



Looking south at farm equipment at landward toe. (Spring 2015)

Photo 2 of 3 : SP\_2015\_RD0544\_108\_4\_20150309\_00003.jpg



Looking north at equipment along landside toe.

<b>* Location</b> LS : Land Side    N/A : Not Applicable WS : Water Side CR : Crown		<b>** Rating</b> A : Acceptable M : Minimally Acceptable U : Unacceptable N : Not Inspected/Rated C : Corrected A/W : Acceptable but Monitor & Maintain		<b>+ Issue Type</b> Ma : Maintenance Deficiency Ob : Design & System Obsolescence En : Enforcement	
--	--	---	--	---	--

**Flood Control Project Maintenance  
Levee Inspections**

## Maintenance Issue Types Only, Levee Inspection Report By Mile - Spring 2015

### Reclamation District No. 0544 Upper Roberts Island

Waterway	Bank	Unit Miles	Inspection Start/End	Inspector
Unit No. 01 San Joaquin River	Left	6.05	04/28/2015 04/28/2015	Richard Willoughby

LM Start	0.23	Rating **	M	Issue No.	4 (cont)	
LM End	0.23	Issue Type +	Ma	Location *	LS	
Category	Earthen Levee			GPS Latitude/Longitude		
				Start		End
Item	Encroachments			37.867590 °		37.867590 °
				-121.327813 °		-121.327813 °
DWR ID	DWR_RD0544_01_s_2012_4					
Action/Comments						
Equipment						
Inspector Comments: Farm equipment and supplies stored at landward toe.						

Photo 3 of 3 : SP\_2015\_RD0544\_108\_4\_20150309\_00004.jpg



Looking south at equipment along landside toe.

LM Start	0.42	Rating **	A/W	Issue No.	2
LM End	0.42	Issue Type +	Ma	Location *	LS
Category	Earthen Levee			GPS Latitude/Longitude	
				Start	End
Item	Trim / Thin Trees			37.864958 °	37.864958 °
				-121.327142 °	-121.327142 °
DWR ID	DWR_RD0544_01_s_2012_2				
Action/Comments					
Thin trees to allow visibility of the ground and room to flood fight.					

No Photos

LM Start	0.45	Rating **	M	Issue No.	6
LM End	0.45	Issue Type +	Ma	Location *	WS
Category	Earthen Levee			GPS Latitude/Longitude	
				Start	End
Item	Encroachments			37.864713 °	37.864713 °
				-121.326708 °	-121.326708 °
DWR ID	DWR_RD0544_01_f_2013_6				
Action/Comments					
Prunings					
Inspector Comments: Broken tree limbs on waterward slope and berm.					

Photo 1 of 1 : SP\_2015\_RD0544\_108\_6\_20150309\_00006.jpg



Looking southeast at tree branch on waterward slope.

<b>* Location</b> LS : Land Side    N/A : Not Applicable WS : Water Side CR : Crown		<b>** Rating</b> A : Acceptable M : Minimally Acceptable U : Unacceptable N : Not Inspected/Rated C : Corrected A/W : Acceptable but Monitor & Maintain		<b>+ Issue Type</b> Ma : Maintenance Deficiency Ob : Design & System Obsolescence En : Enforcement	
--	--	---	--	---	--

**Flood Control Project Maintenance  
Levee Inspections**

## Maintenance Issue Types Only, Levee Inspection Report By Mile - Spring 2015

### Reclamation District No. 0544 Upper Roberts Island

Waterway	Bank	Unit Miles	Inspection Start/End	Inspector
Unit No. 01 San Joaquin River	Left	6.05	04/28/2015 04/28/2015	Richard Willoughby

LM Start	0.48	Rating **	A/W	Issue No.	3
LM End	0.67	Issue Type +	Ma	Location *	WS
Category	Earthen Levee			GPS Latitude/Longitude	
				Start	End
Item	Vegetation			37.864578 °	37.863753 °
				-121.326210 °	-121.322835 °
DWR ID	DWR_RD0544_01_s_2012_3				
Action/Comments					
Remove the wild growth other than native grasses from the levee slopes.					

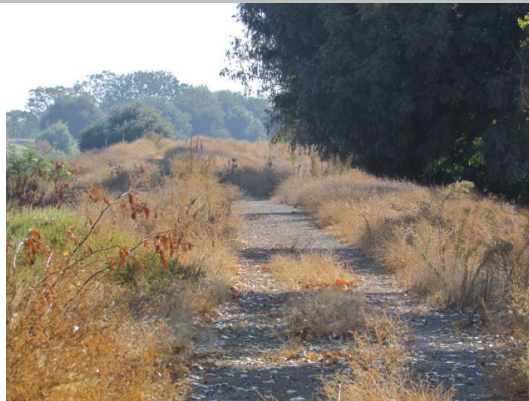
Photo 1 of 2 : SP\_2015\_RD0544\_108\_3\_20150309\_00001.jpg



Looking south at typical view of levee. (Spring 2014)

LM Start	<b>0.48</b>	Rating **	A/W	Issue No.	<b>3 (cont)</b>
LM End	<b>0.67</b>	Issue Type +	Ma	Location *	WS

Photo 2 of 2 : SP\_2015\_RD0544\_108\_3\_20150309\_00002.jpg



Looking south at overgrown on landward and waterward slopes.

LM Start	0.55	Rating **	A/W	Issue No.	61
LM End	0.63	Issue Type +	Ma	Location *	CR
Category	Earthen Levee			GPS Latitude/Longitude	
				Start	End
Item	Crown Surface / Depressions / Rutting			37.864359 °	37.864011 °
				-121.324939 °	-121.323562 °
DWR ID	DWR_RD0544_01_f_2013_61				
Action/Comments					
Add appropriate material and re-grade the levee to bring the crown above the design elevation.					

No Photos

<b>* Location</b> LS : Land Side    N/A : Not Applicable WS : Water Side CR : Crown		<b>** Rating</b> A : Acceptable M : Minimally Acceptable U : Unacceptable		N : Not Inspected/Rated C : Corrected A/W : Acceptable but Monitor & Maintain		<b>+ Issue Type</b> Ma : Maintenance Deficiency Ob : Design & System Obsolescence En : Enforcement	
--	--	--	--	---	--	---	--

**Flood Control Project Maintenance  
Levee Inspections**

## Maintenance Issue Types Only, Levee Inspection Report By Mile - Spring 2015

### Reclamation District No. 0544 Upper Roberts Island

Waterway	Bank	Unit Miles	Inspection Start/End	Inspector
Unit No. 01 San Joaquin River	Left	6.05	04/28/2015 04/28/2015	Richard Willoughby

LM Start	0.73	Rating **	A/W	Issue No.	12
LM End	0.73	Issue Type +	Ma	Location *	WS
Category	Earthen Levee			GPS Latitude/Longitude	
				Start	End
Item	Trim / Thin Trees			37.863380 °	37.863380 °
				-121.321897 °	-121.321897 °
DWR ID	DWR_RD0544_01_s _ 2012_12				
Action/Comments					
Trim trees over roadway to at least 12 feet above ground level.					

No Photos

LM Start	0.78	Rating **	M	Issue No.	73	
LM End	0.78	Issue Type +	Ma	Location *	WS	
Category	Earthen Levee			GPS Latitude/Longitude		
				Start	End	
Item	Trim / Thin Trees				°	
					°	
DWR ID	DWR_RD0544_01_f _ 2013_73					
Action/Comments						
Trim trees to at least five feet above ground level.						

No Photos

LM Start	0.81	Rating **	M	Issue No.	93
LM End	0.81	Issue Type +	Ma	Location *	LS
Category	Earthen Levee			GPS Latitude/Longitude	
				Start	End
Item	Trim / Thin Trees			37.862694 °	37.862694 °
				-121.320887 °	-121.320887 °
DWR ID	DWR_RD0544_01_f _ 2014_93				
Action/Comments					
Trim trees to at least five feet above ground level.					

No Photos

<b>* Location</b> LS : Land Side    N/A : Not Applicable WS : Water Side CR : Crown		<b>** Rating</b> A : Acceptable                      N : Not Inspected/Rated M : Minimally Acceptable        C : Corrected U : Unacceptable                  A/W : Acceptable but Monitor & Maintain		<b>+ Issue Type</b> Ma : Maintenance Deficiency Ob : Design & System Obsolescence En : Enforcement
--	--	---	--	---



**Flood Control Project Maintenance  
Levee Inspections**

## Maintenance Issue Types Only, Levee Inspection Report By Mile - Spring 2015

### Reclamation District No. 0544 Upper Roberts Island

Waterway	Bank	Unit Miles	Inspection Start/End	Inspector
Unit No. 01 San Joaquin River	Left	6.05	04/28/2015 04/28/2015	Richard Willoughby

LM Start	1.12	Rating **	M	Issue No.	39
LM End	1.12	Issue Type +	Ma	Location *	LS
Category	Earthen Levee			GPS Latitude/Longitude	
				Start	End
Item	Trim / Thin Trees			37.859423 °	37.859423 °
				-121.318328 °	-121.318328 °
DWR ID	DWR_RD0544_01_s _ 2012_39				
Action/Comments					
Trim trees to at least five feet above ground level.					

Photo 1 of 1 : SP\_2015\_RD0544\_108\_39\_20150430\_00075.jpg



Looking southwest at untrimmed tree at landward slope and toe.

LM Start	1.13	Rating **	M	Issue No.	15
LM End	1.30	Issue Type +	Ma	Location *	LS
Category	Earthen Levee			GPS Latitude/Longitude	
				Start	End
Item	Vegetation			37.859287 °	37.857322 °
				-121.318333 °	-121.319985 °
DWR ID	DWR_RD0544_01_s _ 2012_15				
Action/Comments					
Remove the wild growth other than native grasses from the levee slopes.					

Photo 1 of 1 : SP\_2015\_RD0544\_108\_15\_20150309\_00009.jpg



Looking southeast at dense vegetation on landward toe.

LM Start	1.29	Rating **	M	Issue No.	89
LM End	1.29	Issue Type +	Ma	Location *	LS
Category	Earthen Levee			GPS Latitude/Longitude	
				Start	End
Item	Trim / Thin Trees			37.857321 °	37.857321 °
				-121.319943 °	-121.319943 °
DWR ID	DWR_RD0544_01_s _ 2014_89				
Action/Comments					
Trim trees to at least five feet above ground level.					

No Photos

<b>* Location</b> LS : Land Side    N/A : Not Applicable WS : Water Side CR : Crown		<b>** Rating</b> A : Acceptable                      N : Not Inspected/Rated M : Minimally Acceptable        C : Corrected U : Unacceptable                  A/W : Acceptable but Monitor & Maintain		<b>+ Issue Type</b> Ma : Maintenance Deficiency Ob : Design & System Obsolescence En : Enforcement
--	--	---	--	---

**Flood Control Project Maintenance  
Levee Inspections**

## Maintenance Issue Types Only, Levee Inspection Report By Mile - Spring 2015

### Reclamation District No. 0544 Upper Roberts Island

Waterway	Bank	Unit Miles	Inspection Start/End	Inspector
Unit No. 01 San Joaquin River	Left	6.05	04/28/2015 04/28/2015	Richard Willoughby

LM Start	1.33	Rating **	A/W	Issue No.	19
LM End	1.43	Issue Type +	Ma	Location *	WS
Category	Earthen Levee			GPS Latitude/Longitude	
				Start	End
Item	Vegetation			37.857042 °	37.855792 °
				-121.320480 °	-121.321212 °
DWR ID	DWR_RD0544_01_s _ 2012_19				
Action/Comments					
Remove the wild growth other than native grasses from the levee slopes.					

No Photos

LM Start	1.42	Rating **	M	Issue No.	87
LM End	1.48	Issue Type +	Ma	Location *	LS
Category	Earthen Levee			GPS Latitude/Longitude	
				Start	End
Item	Trim / Thin Trees			37.855948 °	37.855043 °
				-121.321250 °	-121.321122 °
DWR ID	DWR_RD0544_01_s _ 2015_87				
Action/Comments					
Trim trees to at least five feet above ground level.					

No Photos

LM Start	1.43	Rating **	N	Issue No.	13
LM End	1.43	Issue Type +	Ma	Location *	LS
Category	Earthen Levee			GPS Latitude/Longitude	
				Start	End
Item	Trim / Thin Trees			37.855778 °	37.855778 °
				-121.321206 °	-121.321206 °
DWR ID	DWR_RD0544_01_s _ 2012_13				
Action/Comments					
Tree stumps.					

No Photos

<b>* Location</b> LS : Land Side    N/A : Not Applicable WS : Water Side CR : Crown		<b>** Rating</b> A : Acceptable                      N : Not Inspected/Rated M : Minimally Acceptable        C : Corrected U : Unacceptable                  A/W : Acceptable but Monitor & Maintain		<b>+ Issue Type</b> Ma : Maintenance Deficiency Ob : Design & System Obsolescence En : Enforcement
--	--	---	--	---

# Reclamation District No. 0544 Upper Roberts Island

No Photos

Looking north at vegetation on waterward shoulder and slope.

No Photos

Page 8 of 37



**Flood Control Project Maintenance  
Levee Inspections**

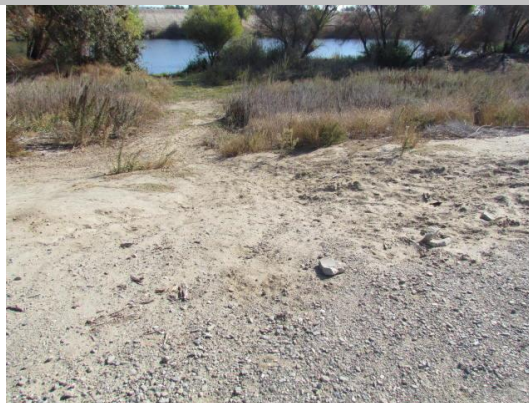
## Maintenance Issue Types Only, Levee Inspection Report By Mile - Spring 2015

### Reclamation District No. 0544 Upper Roberts Island

Waterway	Bank	Unit Miles	Inspection Start/End	Inspector
Unit No. 01 San Joaquin River	Left	6.05	04/28/2015 04/28/2015	Richard Willoughby

LM Start	1.56	Rating **	M	Issue No.	64
LM End	1.56	Issue Type +	Ma	Location *	WS
Category	Earthen Levee			GPS Latitude/Longitude	
				Start	End
Item	Slope Stability			37.854081 °	37.854081 °
				-121.321268 °	-121.321268 °
DWR ID	DWR_RD0544_01_f_2013_64				
Action/Comments					
Repair the levee slope damaged by vehicle traffic and prevent access where possible.					
Inspector Comments: Damaged levee slope due to fishermen using slope as a ramp.					

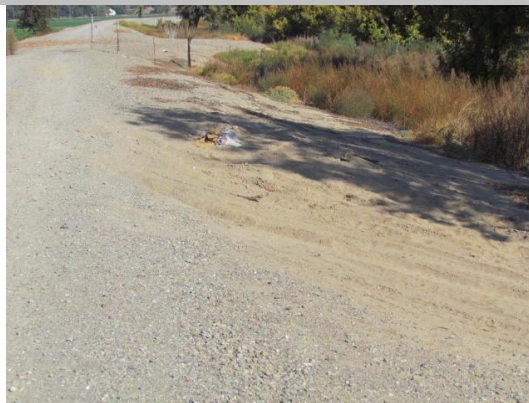
Photo 1 of 2 : SP\_2015\_RD0544\_108\_64\_20150309\_00043.jpg



Looking east at damaged waterward slope.

LM Start	<b>1.56</b>	Rating **	M	Issue No.	<b>64 (cont)</b>
LM End	<b>1.56</b>	Issue Type +	Ma	Location *	WS

Photo 2 of 2 : SP\_2015\_RD0544\_108\_64\_20150309\_00044.jpg



Looking northeast at waterward slope.

LM Start	1.57	Rating **	A/W	Issue No.	43
LM End	1.68	Issue Type +	Ma	Location *	WS
Category	Earthen Levee			GPS Latitude/Longitude	
				Start	End
Item	Vegetation			37.854108 °	37.854837 °
				-121.321582 °	-121.323280 °
DWR ID	DWR_RD0544_01_s_2012_43				
Action/Comments					
Remove the wild growth other than native grasses from the levee slopes.					

No Photos

<b>* Location</b> LS : Land Side    N/A : Not Applicable WS : Water Side CR : Crown		<b>** Rating</b> A : Acceptable                      N : Not Inspected/Rated M : Minimally Acceptable        C : Corrected U : Unacceptable                  A/W : Acceptable but Monitor & Maintain		<b>+ Issue Type</b> Ma : Maintenance Deficiency Ob : Design & System Obsolescence En : Enforcement
--	--	---	--	---

**Flood Control Project Maintenance  
Levee Inspections**

## Maintenance Issue Types Only, Levee Inspection Report By Mile - Spring 2015

### Reclamation District No. 0544 Upper Roberts Island

Waterway	Bank	Unit Miles	Inspection Start/End	Inspector
Unit No. 01 San Joaquin River	Left	6.05	04/28/2015 04/28/2015	Richard Willoughby

LM Start	1.59	Rating **	M	Issue No.	95
LM End	1.59	Issue Type +	Ma	Location *	LS
Category	Earthen Levee			GPS Latitude/Longitude	
				Start	End
Item	Trim / Thin Trees			37.854299 °	37.854299 °
				-121.321865 °	-121.321865 °
DWR ID	DWR_RD0544_01_f_2014_95				
Action/Comments					
Trim trees to at least five feet above ground level.					

No Photos

LM Start	1.64	Rating **	M	Issue No.	96
LM End	1.64	Issue Type +	Ma	Location *	LS
Category	Earthen Levee			GPS Latitude/Longitude	
				Start	End
Item	Trim / Thin Trees			37.854681 °	37.854681 °
				-121.322493 °	-121.322493 °
DWR ID	DWR_RD0544_01_f_2014_96				
Action/Comments					
Thin trees to allow visibility of the ground and room to flood fight.					

No Photos

LM Start	1.72	Rating **	A/W	Issue No.	55
LM End	1.84	Issue Type +	Ma	Location *	LS
Category	Earthen Levee			GPS Latitude/Longitude	
				Start	End
Item	Vegetation			37.854530 °	37.852850 °
				-121.323870 °	-121.324058 °
DWR ID	DWR_RD0544_01_s_2012_55				
Action/Comments					
Remove the wild growth other than native grasses from the levee slopes.					

No Photos

<b>* Location</b> LS : Land Side    N/A : Not Applicable WS : Water Side CR : Crown		<b>** Rating</b> A : Acceptable                      N : Not Inspected/Rated M : Minimally Acceptable        C : Corrected U : Unacceptable                  A/W : Acceptable but Monitor & Maintain		<b>+ Issue Type</b> Ma : Maintenance Deficiency Ob : Design & System Obsolescence En : Enforcement
--	--	---	--	---

**Flood Control Project Maintenance  
Levee Inspections**

## Maintenance Issue Types Only, Levee Inspection Report By Mile - Spring 2015

### Reclamation District No. 0544 Upper Roberts Island

Waterway	Bank	Unit Miles	Inspection Start/End	Inspector
Unit No. 01 San Joaquin River	Left	6.05	04/28/2015 04/28/2015	Richard Willoughby

LM Start	1.78	Rating **	M	Issue No.	88
LM End	1.78	Issue Type +	Ma	Location *	LS
Category	Earthen Levee			GPS Latitude/Longitude	
				Start	End
Item	Trim / Thin Trees			37.853770 °	37.853770 °
				-121.324293 °	-121.324293 °
DWR ID	DWR_RD0544_01_s _ 2015_88				
Action/Comments					
Trim trees to at least five feet above ground level.					

No Photos

LM Start	1.80	Rating **	A/W	Issue No.	20
LM End	1.80	Issue Type +	Ma	Location *	LS
Category	Earthen Levee			GPS Latitude/Longitude	
				Start	End
Item	Encroachments			37.853445 °	37.853445 °
				-121.324227 °	-121.324227 °
DWR ID	DWR_RD0544_01_s _ 2012_20				
Action/Comments					
Prunings					

No Photos

LM Start	1.82	Rating **	M	Issue No.	5
LM End	1.82	Issue Type +	Ma	Location *	LS
Category	Earthen Levee			GPS Latitude/Longitude	
				Start	End
Item	Slope Stability			37.853188 °	37.853188 °
				-121.324145 °	-121.324145 °
DWR ID	DWR_RD0544_01_s _ 2013_5				
Action/Comments					
Repair the levee slope damaged by vehicle traffic and prevent access where possible.					
Inspector Comments: Slope damaged by vehicle traffic.					

Photo 1 of 1 : SP\_2015\_RD0544\_108\_5\_20150309\_00005.jpg



Looking east at landward slope damaged by vehicle traffic.

* Location		** Rating		+ Issue Type	
LS : Land Side	N/A : Not Applicable	A : Acceptable	N : Not Inspected/Rated	Ma : Maintenance Deficiency	
WS : Water Side		M : Minimally Acceptable	C : Corrected	Ob : Design & System Obsolescence	
CR : Crown		U : Unacceptable	A/W : Acceptable but Monitor & Maintain	En : Enforcement	

**Flood Control Project Maintenance  
Levee Inspections**

## Maintenance Issue Types Only, Levee Inspection Report By Mile - Spring 2015

### Reclamation District No. 0544 Upper Roberts Island

Waterway	Bank	Unit Miles	Inspection Start/End	Inspector
Unit No. 01 San Joaquin River	Left	6.05	04/28/2015 04/28/2015	Richard Willoughby

LM Start	1.85	Rating **	A/W	Issue No.	21
LM End	1.85	Issue Type +	Ma	Location *	LS
Category	Earthen Levee			GPS Latitude/Longitude	
				Start	End
Item	Encroachments			37.852771 °	37.852771 °
				-121.324014 °	-121.324014 °
DWR ID	DWR_RD0544_01_s _ 2012_21				
Action/Comments					
Prunings					

No Photos

LM Start	1.94	Rating **	A/W	Issue No.	44
LM End	2.26	Issue Type +	Ma	Location *	LS
Category	Earthen Levee			GPS Latitude/Longitude	
				Start	End
Item	Vegetation			37.851615 °	37.848105 °
				-121.323210 °	-121.324857 °
DWR ID	DWR_RD0544_01_s _ 2012_44				
Action/Comments					
Remove the wild growth other than native grasses from the levee slopes.					

No Photos

LM Start	2.01	Rating **	A/W	Issue No.	90
LM End	2.01	Issue Type +	Ma	Location *	CR
Category	Earthen Levee			GPS Latitude/Longitude	
				Start	End
Item	Animal Control			37.850825 °	37.850825 °
				-121.322475 °	-121.322475 °
DWR ID	DWR_RD0544_01_s _ 2014_90				
Action/Comments					
No rodents visible, but rodent burrows visible; need to backfill and compact or grout burrows.					
Inspector Comments: LMA grouted rodent hole on levee crown.					

Photo 1 of 2 : SP\_2015\_RD0544\_108\_90\_20150309\_00050.jpg



Looking at rodent hole on levee crown.

<b>* Location</b> LS : Land Side    N/A : Not Applicable WS : Water Side CR : Crown		<b>** Rating</b> A : Acceptable                      N : Not Inspected/Rated M : Minimally Acceptable        C : Corrected U : Unacceptable                  A/W : Acceptable but Monitor & Maintain		<b>+ Issue Type</b> Ma : Maintenance Deficiency Ob : Design & System Obsolescence En : Enforcement	
--	--	---	--	---	--



**Flood Control Project Maintenance  
Levee Inspections**

## Maintenance Issue Types Only, Levee Inspection Report By Mile - Spring 2015

### Reclamation District No. 0544 Upper Roberts Island

Waterway	Bank	Unit Miles	Inspection Start/End	Inspector
Unit No. 01 San Joaquin River	Left	6.05	04/28/2015 04/28/2015	Richard Willoughby

LM Start	2.01	Rating **	A/W	Issue No.	90 (cont)
LM End	2.01	Issue Type +	Ma	Location *	CR
Category	Earthen Levee			GPS Latitude/Longitude	
				Start	End
Item	Animal Control			37.850825 °	37.850825 °
				-121.322475 °	-121.322475 °
DWR ID	DWR_RD0544_01_s_2014_90				
Action/Comments					
No rodents visible, but rodent burrows visible; need to backfill and compact or grout burrows.					
Inspector Comments: LMA grouted rodent hole on levee crown.					

Photo 2 of 2 : SP\_2015\_RD0544\_108\_90\_20150309\_00051.jpg



Looking at grouted rodent hole on levee crown.

LM Start	2.02	Rating **	A/W	Issue No.	97
LM End	2.25	Issue Type +	Ma	Location *	WS
Category	Earthen Levee			GPS Latitude/Longitude	
				Start	End
Item	Vegetation			37.850632 °	37.848206 °
				-121.322501 °	-121.324869 °
DWR ID	DWR_RD0544_01_f_2014_97				
Action/Comments					
Remove the wild growth other than native grasses from the levee slopes.					

No Photos

LM Start	2.26	Rating **	U	Issue No.	23
LM End	2.26	Issue Type +	Ma	Location *	LS
Category	Earthen Levee			GPS Latitude/Longitude	
				Start	End
Item	Erosion / Bank Caving			37.848155 °	37.848155 °
				-121.324897 °	-121.324897 °
DWR ID	DWR_RD0544_01_s_2012_23				
Action/Comments					
Schedule repair of erosion site prior to the next inspection. Inspector Comments: Caving/erosion around irrigation pipe on landside slope.					

Photo 1 of 3 : SP\_2015\_RD0544\_108\_23\_20150309\_00024.jpg



Looking south at erosion around irrigation pipe on landside slope. (Fall 2014)

<b>* Location</b> LS : Land Side    N/A : Not Applicable WS : Water Side CR : Crown		<b>** Rating</b> A : Acceptable                      N : Not Inspected/Rated M : Minimally Acceptable        C : Corrected U : Unacceptable                  A/W : Acceptable but Monitor & Maintain		<b>+ Issue Type</b> Ma : Maintenance Deficiency Ob : Design & System Obsolescence En : Enforcement	
--	--	---	--	---	--



**Flood Control Project Maintenance  
Levee Inspections**

**Maintenance Issue Types Only, Levee Inspection Report By Mile - Spring 2015**

**Reclamation District No. 0544 Upper Roberts Island**

Waterway	Bank	Unit Miles	Inspection Start/End	Inspector
Unit No. 01 San Joaquin River	Left	6.05	04/28/2015 04/28/2015	Richard Willoughby

LM Start	2.26	Rating **	U	Issue No.	23 (cont)
LM End	2.26	Issue Type +	Ma	Location *	LS
Category	Earthen Levee			GPS Latitude/Longitude	
				Start	End
Item	Erosion / Bank Caving			37.848155 °	37.848155 °
				-121.324897 °	-121.324897 °
DWR ID	DWR_RD0544_01_s_2012_23				
Action/Comments					
Schedule repair of erosion site prior to the next inspection. Inspector Comments: Caving/erosion around irrigation pipe on landside slope.					

Photo 2 of 3 : SP\_2015\_RD0544\_108\_23\_20150309\_00025.jpg



Looking north at erosion under irrigation pipe on landside slope.

Photo 3 of 3 : SP\_2015\_RD0544\_108\_23\_20150309\_00026.jpg



Looking east at erosion under irrigation pipe on landside slope.

LM Start	2.26	Rating **	M	Issue No.	98
LM End	2.31	Issue Type +	Ma	Location *	LS
Category	Earthen Levee			GPS Latitude/Longitude	
				Start	End
Item	Trim / Thin Trees			37.848021 °	37.847343 °
				-121.324839 °	-121.324672 °
DWR ID	DWR_RD0544_01_f_2014_98				
Action/Comments					
Thin trees to allow visibility of the ground and room to flood fight.					

No Photos

* Location		** Rating		+ Issue Type	
LS : Land Side	N/A : Not Applicable	A : Acceptable	N : Not Inspected/Rated	Ma : Maintenance Deficiency	
WS : Water Side		M : Minimally Acceptable	C : Corrected	Ob : Design & System Obsolescence	
CR : Crown		U : Unacceptable	A/W : Acceptable but Monitor & Maintain	En : Enforcement	



**Flood Control Project Maintenance  
Levee Inspections**

## Maintenance Issue Types Only, Levee Inspection Report By Mile - Spring 2015

### Reclamation District No. 0544 Upper Roberts Island

Waterway	Bank	Unit Miles	Inspection Start/End	Inspector
Unit No. 01 San Joaquin River	Left	6.05	04/28/2015 04/28/2015	Richard Willoughby

LM Start	2.33	Rating **	M	Issue No.	7
LM End	2.33	Issue Type +	Ma	Location *	LS
Category	Earthen Levee			GPS Latitude/Longitude	
				Start	End
Item	Encroachments			37.847108 °	37.847108 °
				-121.324585 °	-121.324585 °
DWR ID	DWR_RD0544_01_s_2012_7				
Action/Comments					
Garbage					
Inspector Comments: Garbage and prunings at landside toe.					

Photo 1 of 1 : SP\_2015\_RD0544\_108\_7\_20150309\_00007.jpg



Looking southwest at garbage at landside toe.

LM Start	2.36	Rating **	M	Issue No.	74
LM End	2.36	Issue Type +	Ma	Location *	LS
Category	Earthen Levee			GPS Latitude/Longitude	
				Start	End
Item	Trim / Thin Trees			37.846687 °	37.846687 °
				-121.324278 °	-121.324278 °
DWR ID	DWR_RD0544_01_f_2013_74				
Action/Comments					
Trim trees to at least five feet above ground level.					

No Photos

LM Start	2.37	Rating **	A/W	Issue No.	65
LM End	2.37	Issue Type +	Ma	Location *	LS
Category	Earthen Levee			GPS Latitude/Longitude	
				Start	End
Item	Trim / Thin Trees			37.846660 °	37.846660 °
				-121.324240 °	-121.324240 °
DWR ID	DWR_RD0544_01_s_2013_65				
Action/Comments					
Thin trees to allow visibility of the ground and room to flood fight.					

No Photos

<b>* Location</b> LS : Land Side    N/A : Not Applicable WS : Water Side CR : Crown		<b>** Rating</b> A : Acceptable M : Minimally Acceptable U : Unacceptable N : Not Inspected/Rated C : Corrected A/W : Acceptable but Monitor & Maintain		<b>+ Issue Type</b> Ma : Maintenance Deficiency Ob : Design & System Obsolescence En : Enforcement	
--	--	---	--	---	--



**Flood Control Project Maintenance  
Levee Inspections**

## Maintenance Issue Types Only, Levee Inspection Report By Mile - Spring 2015

### Reclamation District No. 0544 Upper Roberts Island

Waterway	Bank	Unit Miles	Inspection Start/End	Inspector
Unit No. 01 San Joaquin River	Left	6.05	04/28/2015 04/28/2015	Richard Willoughby

LM Start	2.46	Rating **	A/W	Issue No.	99
LM End	3.18	Issue Type +	Ma	Location *	WS
Category	Earthen Levee			GPS Latitude/Longitude	
				Start	End
Item	Vegetation			37.845640 °	37.837391 °
				-121.322975 °	-121.317456 °
DWR ID	DWR_RD0544_01_f_2014_99				
Action/Comments					
Remove the wild growth other than native grasses from the levee slopes.					

Photo 1 of 1 : SP\_2015\_RD0544\_108\_99\_20150309\_00055.jpg



Looking south at dense vegetation on waterward shoulder and slope.

LM Start	2.57	Rating **	M	Issue No.	60
LM End	2.57	Issue Type +	Ma	Location *	LS
Category	Earthen Levee			GPS Latitude/Longitude	
				Start	End
Item	Slope Stability			37.844337 °	37.844337 °
				-121.321853 °	-121.321853 °
DWR ID	DWR_RD0544_01_s_2012_60				
Action/Comments					
Repair the levee slope damaged by foot traffic and prevent access where possible.					

Photo 1 of 2 : SP\_2015\_RD0544\_108\_60\_20150309\_00039.jpg



Looking north at slope damage on landside slope.

LM Start	<b>2.57</b>	Rating **	M	Issue No.	<b>60 (cont)</b>
LM End	<b>2.57</b>	Issue Type +	Ma	Location *	LS

Photo 2 of 2 : SP\_2015\_RD0544\_108\_60\_20150309\_00040.jpg



Looking south at slope damage on landside slope.

<b>* Location</b> LS : Land Side    N/A : Not Applicable WS : Water Side CR : Crown		<b>** Rating</b> A : Acceptable M : Minimally Acceptable U : Unacceptable N : Not Inspected/Rated C : Corrected A/W : Acceptable but Monitor & Maintain		<b>+ Issue Type</b> Ma : Maintenance Deficiency Ob : Design & System Obsolescence En : Enforcement	
--	--	---	--	---	--

**Flood Control Project Maintenance  
Levee Inspections**

## Maintenance Issue Types Only, Levee Inspection Report By Mile - Spring 2015

### Reclamation District No. 0544 Upper Roberts Island

Waterway	Bank	Unit Miles	Inspection Start/End	Inspector
Unit No. 01 San Joaquin River	Left	6.05	04/28/2015 04/28/2015	Richard Willoughby

LM Start	2.65	Rating **	A/W	Issue No.	100
LM End	2.94	Issue Type +	Ma	Location *	CR
Category	Earthen Levee			GPS Latitude/Longitude	
				Start	End
Item	Vegetation			37.843262 °	37.840656 °
				-121.321666 °	-121.318590 °
DWR ID	DWR_RD0544_01_f_2014_100				
Action/Comments					
Remove the wild growth other than native grasses from the levee slopes.					

Photo 1 of 1 : SP\_2015\_RD0544\_108\_100\_20150309\_00056.jpg



Looking south at vegetation on levee crown.

LM Start	2.84	Rating **	N	Issue No.	22
LM End	2.84	Issue Type +	Ma	Location *	LS
Category	Earthen Levee			GPS Latitude/Longitude	
				Start	End
Item	Trim / Thin Trees			37.841075 °	37.841075 °
				-121.320205 °	-121.320205 °
DWR ID	DWR_RD0544_01_s_2012_22				
Action/Comments					
Tree stumps.					

No Photos

LM Start	2.89	Rating **	M	Issue No.	106
LM End	2.89	Issue Type +	Ma	Location *	WS
Category	Earthen Levee			GPS Latitude/Longitude	
				Start	End
Item	Vegetation			37.840952 °	37.840952 °
				-121.319327 °	-121.319327 °
DWR ID	DWR_RD0544_01_s_2015_106				
Action/Comments					
Remove the wild growth other than native grasses from the levee slopes.					

No Photos

<b>* Location</b> LS : Land Side    N/A : Not Applicable WS : Water Side CR : Crown		<b>** Rating</b> A : Acceptable M : Minimally Acceptable U : Unacceptable N : Not Inspected/Rated C : Corrected A/W : Acceptable but Monitor & Maintain		<b>+ Issue Type</b> Ma : Maintenance Deficiency Ob : Design & System Obsolescence En : Enforcement	
--	--	---	--	---	--



**Flood Control Project Maintenance  
Levee Inspections**

## Maintenance Issue Types Only, Levee Inspection Report By Mile - Spring 2015

### Reclamation District No. 0544 Upper Roberts Island

Waterway	Bank	Unit Miles	Inspection Start/End	Inspector
Unit No. 01 San Joaquin River	Left	6.05	04/28/2015 04/28/2015	Richard Willoughby

LM Start	2.95	Rating **	M	Issue No.	107
LM End	2.96	Issue Type +	Ma	Location *	LS
Category	Earthen Levee			GPS Latitude/Longitude	
				Start	End
Item	Erosion / Bank Caving			37.840560 °	37.840467 °
				-121.318463 °	-121.318367 °
DWR ID	DWR_RD0544_01_s_2015_107				
Action/Comments					
Note and monitor erosion site. Inspector Comments: Several depressions on landward slope within this reach.					

Photo 1 of 2 : SP\_2015\_RD0544\_108\_107\_20150430\_00078.jpg



Looking south at depression on landward slope.

LM Start	<b>2.95</b>	Rating **	M	Issue No.	<b>107 (cont)</b>
LM End	<b>2.96</b>	Issue Type +	Ma	Location *	LS

Photo 2 of 2 : SP\_2015\_RD0544\_108\_107\_20150430\_00079.jpg



Looking west at depression on landward shoulder.

LM Start	2.95	Rating **	U	Issue No.	78
LM End	2.95	Issue Type +	Ma	Location *	WS
Category	Supplemental			GPS Latitude/Longitude	
				Start	End
Item	DWR Erosion Survey			37.840697 °	37.840697 °
				-121.318252 °	-121.318252 °
DWR ID	DWR_RD0544_01_s_2015_78				
Action/Comments					
Inspector Comments: 6/19/2014: No significant change observed. 08/13/2013: Pump has been removed. A larger pocket erosion has been found at the erosion site. 08/07/2012: The erosion is immediately upstream of a river bend. Dense vegetation is visible at the erosion site. [2014 Site ID:RD0544U01RM49.67]					

Photo 1 of 1 : SP\_2015\_RD0544\_108\_78\_20150309\_00048.jpg



Upstream view of the site.

* Location		** Rating		+ Issue Type	
LS : Land Side	N/A : Not Applicable	A : Acceptable	N : Not Inspected/Rated	Ma : Maintenance Deficiency	
WS : Water Side		M : Minimally Acceptable	C : Corrected	Ob : Design & System Obsolescence	
CR : Crown		U : Unacceptable	A/W : Acceptable but Monitor & Maintain	En : Enforcement	

**Flood Control Project Maintenance  
Levee Inspections**

## Maintenance Issue Types Only, Levee Inspection Report By Mile - Spring 2015

### Reclamation District No. 0544 Upper Roberts Island

Waterway	Bank	Unit Miles	Inspection Start/End	Inspector
Unit No. 01 San Joaquin River	Left	6.05	04/28/2015 04/28/2015	Richard Willoughby

LM Start	2.95	Rating **	M	Issue No.	47
LM End	3.19	Issue Type +	Ma	Location *	LS
Category	Earthen Levee			GPS Latitude/Longitude	
				Start	End
Item	Vegetation			37.840485 °	37.837225 °
				-121.318390 °	-121.317408 °
DWR ID	DWR_RD0544_01_s_2012_47				
Action/Comments					
Remove the wild growth other than native grasses from the levee slopes.					

No Photos

LM Start	3.08	Rating **	M	Issue No.	108
LM End	3.08	Issue Type +	Ma	Location *	LS
Category	Earthen Levee			GPS Latitude/Longitude	
				Start	End
Item	Trim / Thin Trees			37.838733 °	37.838733 °
				-121.317918 °	-121.317918 °
DWR ID	DWR_RD0544_01_s_2015_108				
Action/Comments					
Trim trees to at least five feet above ground level.					

No Photos

LM Start	3.14	Rating **	M	Issue No.	76
LM End	3.14	Issue Type +	Ma	Location *	WS
Category	Earthen Levee			GPS Latitude/Longitude	
				Start	End
Item	Slope Stability			37.837929 °	37.837929 °
				-121.317663 °	-121.317663 °
DWR ID	DWR_RD0544_01_f_2013_76				
Action/Comments					
Repair slope instability. Inspector Comments: Slope damaged extends from levee slope to shoulder.					

Photo 1 of 1 : SP\_2015\_RD0544\_108\_76\_20150309\_00047.jpg



Looking east at slope damage on waterward slope.

* Location		** Rating		+ Issue Type	
LS : Land Side	N/A : Not Applicable	A : Acceptable	N : Not Inspected/Rated	Ma : Maintenance Deficiency	
WS : Water Side		M : Minimally Acceptable	C : Corrected	Ob : Design & System Obsolescence	
CR : Crown		U : Unacceptable	A/W : Acceptable but Monitor & Maintain	En : Enforcement	

**Flood Control Project Maintenance  
Levee Inspections**

## Maintenance Issue Types Only, Levee Inspection Report By Mile - Spring 2015

### Reclamation District No. 0544 Upper Roberts Island

Waterway	Bank	Unit Miles	Inspection Start/End	Inspector
Unit No. 01 San Joaquin River	Left	6.05	04/28/2015 04/28/2015	Richard Willoughby

LM Start	3.17	Rating **	M	Issue No.	62
LM End	3.17	Issue Type +	Ma	Location *	WS
Category	Earthen Levee			GPS Latitude/Longitude	
				Start	End
Item	Slope Stability			37.837530 °	37.837530 °
				-121.317510 °	-121.317510 °
DWR ID	DWR_RD0544_01_s_2012_62				
Action/Comments					
Repair the levee slope damaged by foot traffic and prevent access where possible.					
Inspector Comments: Slope damage due to foot traffic.					

Photo 1 of 1 : SP\_2015\_RD0544\_108\_62\_20150309\_00041.jpg



Looking east at slope damaged by foot traffic near pump house on waterside of levee.

LM Start	3.22	Rating **	M	Issue No.	49
LM End	3.84	Issue Type +	Ma	Location *	WS
Category	Earthen Levee			GPS Latitude/Longitude	
				Start	End
Item	Vegetation			37.836763 °	37.829195 °
				-121.317307 °	-121.311918 °
DWR ID	DWR_RD0544_01_s_2012_49				
Action/Comments					
Remove the wild growth other than native grasses from the levee slopes.					

Photo 1 of 1 : SP\_2015\_RD0544\_108\_49\_20150430\_00080.jpg



Looking southwest at untrimmed trees at landward toe.

LM Start	3.23	Rating **	M	Issue No.	48
LM End	3.26	Issue Type +	Ma	Location *	LS
Category	Earthen Levee			GPS Latitude/Longitude	
				Start	End
Item	Vegetation			37.836615 °	37.836133 °
				-121.317285 °	-121.317153 °
DWR ID	DWR_RD0544_01_s_2012_48				
Action/Comments					
Elderberries are blocking visibility and flood fight capability.					

No Photos

* Location		** Rating		+ Issue Type	
LS : Land Side	N/A : Not Applicable	A : Acceptable	N : Not Inspected/Rated	Ma : Maintenance Deficiency	
WS : Water Side		M : Minimally Acceptable	C : Corrected	Ob : Design & System Obsolescence	
CR : Crown		U : Unacceptable	A/W : Acceptable but Monitor & Maintain	En : Enforcement	



**Flood Control Project Maintenance  
Levee Inspections**

## Maintenance Issue Types Only, Levee Inspection Report By Mile - Spring 2015

### Reclamation District No. 0544 Upper Roberts Island

Waterway	Bank	Unit Miles	Inspection Start/End	Inspector
Unit No. 01 San Joaquin River	Left	6.05	04/28/2015 04/28/2015	Richard Willoughby

LM Start	3.29	Rating **	M	Issue No.	50
LM End	3.29	Issue Type +	Ma	Location *	WS
Category	Earthen Levee			GPS Latitude/Longitude	
				Start	End
Item	Erosion / Bank Caving			37.835815 °	37.835815 °
				-121.316997 °	-121.316997 °
DWR ID	DWR_RD0544_01_s _ 2012_50				
Action/Comments					
Note and monitor erosion site.					
Inspector Comments: Erosion located on waterside shoulder. Erosion caused by rain runoff.					

Photo 1 of 1 : SP\_2015\_RD0544\_108\_50\_20150309\_00036.jpg



Looking east at erosion on waterward slope.

LM Start	3.48	Rating **	M	Issue No.	56
LM End	3.48	Issue Type +	Ma	Location *	LS
Category	Earthen Levee			GPS Latitude/Longitude	
				Start	End
Item	Vegetation			37.833583 °	37.833583 °
				-121.314968 °	-121.314968 °
DWR ID	DWR_RD0544_01_s _ 2012_56				
Action/Comments					
Elderberries are blocking visibility and flood fight capability.					

No Photos

LM Start	3.49	Rating **	M	Issue No.	51
LM End	4.67	Issue Type +	Ma	Location *	LS
Category	Earthen Levee			GPS Latitude/Longitude	
				Start	End
Item	Vegetation			37.833432 °	37.821853 °
				-121.314792 °	-121.319992 °
DWR ID	DWR_RD0544_01_s _ 2012_51				
Action/Comments					
Remove the wild growth other than native grasses from the levee slopes.					

No Photos

* Location		** Rating		+ Issue Type	
LS : Land Side	N/A : Not Applicable	A : Acceptable	N : Not Inspected/Rated	Ma : Maintenance Deficiency	
WS : Water Side		M : Minimally Acceptable	C : Corrected	Ob : Design & System Obsolescence	
CR : Crown		U : Unacceptable	A/W : Acceptable but Monitor & Maintain	En : Enforcement	

**Flood Control Project Maintenance  
Levee Inspections**

## Maintenance Issue Types Only, Levee Inspection Report By Mile - Spring 2015

### Reclamation District No. 0544 Upper Roberts Island

Waterway	Bank	Unit Miles	Inspection Start/End	Inspector
Unit No. 01 San Joaquin River	Left	6.05	04/28/2015 04/28/2015	Richard Willoughby

LM Start	3.76	Rating **	M	Issue No.	109
LM End	3.92	Issue Type +	Ma	Location *	LS
Category	Earthen Levee			GPS Latitude/Longitude	
				Start	End
Item	Vegetation			37.830250 °	37.828013 °
				-121.312323 °	-121.311467 °
DWR ID	DWR_RD0544_01_s_2015_109				
Action/Comments					
Elderberries are blocking visibility and flood fight capability.					

No Photos

LM Start	3.90	Rating **	M	Issue No.	102
LM End	4.64	Issue Type +	Ma	Location *	LS
Category	Earthen Levee			GPS Latitude/Longitude	
				Start	End
Item	Vegetation			37.828372 °	37.822028 °
				-121.311607 °	-121.319429 °
DWR ID	DWR_RD0544_01_f_2014_102				
Action/Comments					
Remove the wild growth other than native grasses from the levee slopes.					

No Photos

LM Start	3.94	Rating **	A/W	Issue No.	63
LM End	4.30	Issue Type +	Ma	Location *	CR
Category	Earthen Levee			GPS Latitude/Longitude	
				Start	End
Item	Crown Surface / Depressions / Rutting			37.827800 °	37.824953 °
				-121.311332 °	-121.314988 °
DWR ID	DWR_RD0544_01_s_2012_63				
Action/Comments					
Add appropriate gravel or road base. Grade and compact.					

Photo 1 of 1 : SP\_2015\_RD0544\_108\_63\_20150309\_00042.jpg



Looking south at one of several sites needing gravel or road base on levee crown.

* Location		** Rating		+ Issue Type	
LS : Land Side	N/A : Not Applicable	A : Acceptable	N : Not Inspected/Rated	Ma : Maintenance Deficiency	
WS : Water Side		M : Minimally Acceptable	C : Corrected	Ob : Design & System Obsolescence	
CR : Crown		U : Unacceptable	A/W : Acceptable but Monitor & Maintain	En : Enforcement	



**Flood Control Project Maintenance  
Levee Inspections**

**Maintenance Issue Types Only, Levee Inspection Report By Mile - Spring 2015**

**Reclamation District No. 0544 Upper Roberts Island**

Waterway	Bank	Unit Miles	Inspection Start/End	Inspector
Unit No. 01 San Joaquin River	Left	6.05	04/28/2015 04/28/2015	Richard Willoughby

LM Start	3.97	Rating **	M	Issue No.	24
LM End	3.97	Issue Type +	Ma	Location *	LS
Category	Earthen Levee			GPS Latitude/Longitude	
				Start	End
Item	Vegetation			37.827360 °	37.827360 °
				-121.311067 °	-121.311067 °
DWR ID	DWR_RD0544_01_s _ 2015_24				
Action/Comments					
Elderberries are blocking visibility and flood fight capability.					

No Photos

LM Start	4.03	Rating **	M	Issue No.	11
LM End	4.05	Issue Type +	Ma	Location *	WS
Category	Earthen Levee			GPS Latitude/Longitude	
				Start	End
Item	Animal Control			37.826621 °	37.826315 °
				-121.310820 °	-121.311024 °
DWR ID	DWR_RD0544_01_s _ 2012_11				
Action/Comments					
Exterminate rodents and backfill and compact or grout burrows.					

No Photos

LM Start	4.09	Rating **	M	Issue No.	110
LM End	4.09	Issue Type +	Ma	Location *	LS
Category	Earthen Levee			GPS Latitude/Longitude	
				Start	End
Item	Trim / Thin Trees			37.825852 °	37.825852 °
				-121.311542 °	-121.311542 °
DWR ID	DWR_RD0544_01_s _ 2015_110				
Action/Comments					
Trim trees to at least five feet above ground level.					

No Photos

<b>* Location</b> LS : Land Side    N/A : Not Applicable WS : Water Side CR : Crown		<b>** Rating</b> A : Acceptable                      N : Not Inspected/Rated M : Minimally Acceptable        C : Corrected U : Unacceptable                  A/W : Acceptable but Monitor & Maintain		<b>+ Issue Type</b> Ma : Maintenance Deficiency Ob : Design & System Obsolescence En : Enforcement
--	--	---	--	---

**Flood Control Project Maintenance  
Levee Inspections**

## Maintenance Issue Types Only, Levee Inspection Report By Mile - Spring 2015

### Reclamation District No. 0544 Upper Roberts Island

Waterway	Bank	Unit Miles	Inspection Start/End	Inspector
Unit No. 01 San Joaquin River	Left	6.05	04/28/2015 04/28/2015	Richard Willoughby

LM Start	4.14	Rating **	M	Issue No.	52
LM End	4.30	Issue Type +	Ma	Location *	WS
Category	Earthen Levee			GPS Latitude/Longitude	
				Start	End
Item	Vegetation			37.825762 °	37.825005 °
				-121.312393 °	-121.314982 °
DWR ID	DWR_RD0544_01_s _ 2012_52				
Action/Comments					
Remove the wild growth other than native grasses from the levee slopes.					

No Photos

LM Start	4.23	Rating **	M	Issue No.	79
LM End	4.23	Issue Type +	Ma	Location *	WS
Category	Supplemental			GPS Latitude/Longitude	
				Start	End
Item	DWR Erosion Survey			37.825248 °	37.825248 °
				-121.313856 °	-121.313856 °
DWR ID	DWR_RD0544_01_s _ 2015_79				
Action/Comments					
Inspector Comments: 06/19/2014: No significant change observed. 08/13/2013: The erosion has been caused by irrigation pipe. [2014 Site ID:RD0544U01RM51.04]					

Photo 1 of 1 : SP\_2015\_RD0544\_108\_79\_20150309\_00049.jpg



View from upstream of the site.

LM Start	4.24	Rating **	M	Issue No.	57
LM End	4.49	Issue Type +	Ma	Location *	LS
Category	Earthen Levee			GPS Latitude/Longitude	
				Start	End
Item	Vegetation			37.825517 °	37.822955 °
				-121.314160 °	-121.316835 °
DWR ID	DWR_RD0544_01_s _ 2012_57				
Action/Comments					
Elderberries are blocking visibility and flood fight capability.					

No Photos

<b>* Location</b> LS : Land Side    N/A : Not Applicable WS : Water Side CR : Crown		<b>** Rating</b> A : Acceptable                      N : Not Inspected/Rated M : Minimally Acceptable        C : Corrected U : Unacceptable                  A/W : Acceptable but Monitor & Maintain		<b>+ Issue Type</b> Ma : Maintenance Deficiency Ob : Design & System Obsolescence En : Enforcement
--	--	---	--	---

**Flood Control Project Maintenance  
Levee Inspections**

**Maintenance Issue Types Only, Levee Inspection Report By Mile - Spring 2015**

**Reclamation District No. 0544 Upper Roberts Island**

Waterway	Bank	Unit Miles	Inspection Start/End	Inspector
Unit No. 01 San Joaquin River	Left	6.05	04/28/2015 04/28/2015	Richard Willoughby

LM Start	4.30	Rating **	A/W	Issue No.	58
LM End	4.30	Issue Type +	Ma	Location *	CR
Category	Earthen Levee			GPS Latitude/Longitude	
				Start	End
Item	Crown Surface / Depressions / Rutting			37.825035 °	37.825035 °
				-121.314967 °	-121.314967 °
DWR ID	DWR_RD0544_01_s _ 2012_58				
Action/Comments					
Repair depressions or ruts in the crown or slope.					
Inspector Comments: Depression across levee crown					

Photo 1 of 2 : SP\_2015\_RD0544\_108\_58\_20150309\_00037.jpg



Looking southeast at depression on waterside shoulder.

Photo 2 of 2 : SP\_2015\_RD0544\_108\_58\_20150309\_00038.jpg



Looking south at depression greater than 6" on waterside shoulder.

LM Start	4.30	Rating **	M	Issue No.	59
LM End	4.30	Issue Type +	Ma	Location *	LS
Category	Earthen Levee			GPS Latitude/Longitude	
				Start	End
Item	Vegetation			37.824943 °	37.824943 °
				-121.315008 °	-121.315008 °
DWR ID	DWR_RD0544_01_s _ 2012_59				
Action/Comments					
Elderberries are blocking visibility and flood fight capability.					

No Photos

* Location		** Rating		+ Issue Type	
LS : Land Side	N/A : Not Applicable	A : Acceptable	N : Not Inspected/Rated	Ma : Maintenance Deficiency	
WS : Water Side		M : Minimally Acceptable	C : Corrected	Ob : Design & System Obsolescence	
CR : Crown		U : Unacceptable	A/W : Acceptable but Monitor & Maintain	En : Enforcement	

**Flood Control Project Maintenance  
Levee Inspections**

## Maintenance Issue Types Only, Levee Inspection Report By Mile - Spring 2015

### Reclamation District No. 0544 Upper Roberts Island

Waterway	Bank	Unit Miles	Inspection Start/End	Inspector
Unit No. 01 San Joaquin River	Left	6.05	04/28/2015 04/28/2015	Richard Willoughby

LM Start	4.32	Rating **	U	Issue No.	101
LM End	4.32	Issue Type +	Ma	Location *	WS
Category	Supplemental			GPS Latitude/Longitude	
				Start	End
Item	DWR Erosion Survey			37.824360 °	37.824360 °
				-121.314360 °	-121.314360 °
DWR ID	DWR_RD0544_01_s_2015_101				
Action/Comments					
Inspector Comments: 6/19/2014: No significant change observed. 08/13/2013: This erosion has been caused by instability of the levee . Larger trees exist downstream of the erosion site. [2014 Site ID:RD0544U01RM51.09]					

Photo 1 of 1 : SP\_2015\_RD0544\_108\_101\_20150309\_00057.jpg



View from downstream.

LM Start	4.40	Rating **	M	Issue No.	54
LM End	6.05	Issue Type +	Ma	Location *	WS
Category	Earthen Levee			GPS Latitude/Longitude	
				Start	End
Item	Vegetation			37.823617 °	37.808766 °
				-121.315550 °	-121.328198 °
DWR ID	DWR_RD0544_01_s_2012_54				
Action/Comments					
Remove the wild growth other than native grasses from the levee slopes.					

No Photos

LM Start	4.48	Rating **	M	Issue No.	103
LM End	4.48	Issue Type +	Ma	Location *	LS
Category	Earthen Levee			GPS Latitude/Longitude	
				Start	End
Item	Animal Control			37.823027 °	37.823027 °
				-121.316737 °	-121.316737 °
DWR ID	DWR_RD0544_01_f_2014_103				
Action/Comments					
Exterminate rodents and backfill and compact or grout burrows.					

No Photos

<b>* Location</b> LS : Land Side    N/A : Not Applicable WS : Water Side CR : Crown	<b>** Rating</b> A : Acceptable M : Minimally Acceptable U : Unacceptable	N : Not Inspected/Rated C : Corrected A/W : Acceptable but Monitor & Maintain	<b>+ Issue Type</b> Ma : Maintenance Deficiency Ob : Design & System Obsolescence En : Enforcement
--	--	---	---

**Flood Control Project Maintenance  
Levee Inspections**

## Maintenance Issue Types Only, Levee Inspection Report By Mile - Spring 2015

### Reclamation District No. 0544 Upper Roberts Island

Waterway	Bank	Unit Miles	Inspection Start/End	Inspector
Unit No. 01 San Joaquin River	Left	6.05	04/28/2015 04/28/2015	Richard Willoughby

LM Start	4.49	Rating **	U	Issue No.	41
LM End	4.49	Issue Type +	Ma	Location *	LS
Category	Earthen Levee			GPS Latitude/Longitude	
				Start	End
Item	Vegetation			37.822934 °	37.822934 °
				-121.316870 °	-121.316870 °
DWR ID	DWR_RD0544_01_s_2012_41				
Action/Comments					
Elderberries are blocking visibility and flood fight capability.					

Photo 1 of 1 : SP\_2015\_RD0544\_108\_41\_20150309\_00034.jpg



Looking south at elderberries on landside slope and toe.

LM Start	4.64	Rating **	M	Issue No.	104
LM End	4.68	Issue Type +	Ma	Location *	LS
Category	Earthen Levee			GPS Latitude/Longitude	
				Start	End
Item	Trim / Thin Trees			37.822033 °	37.821826 °
				-121.319432 °	-121.320071 °
DWR ID	DWR_RD0544_01_f_2014_104				
Action/Comments					
Thin trees to allow visibility of the ground and room to flood fight.					

No Photos

LM Start	4.69	Rating **	U	Issue No.	105
LM End	4.69	Issue Type +	Ma	Location *	LS
Category	Earthen Levee			GPS Latitude/Longitude	
				Start	End
Item	Trim / Thin Trees			37.821775 °	37.821775 °
				-121.320203 °	-121.320203 °
DWR ID	DWR_RD0544_01_f_2014_105				
Action/Comments					
Thin trees to allow visibility of the ground and room to flood fight.					
Inspector Comments: Tree has overgrown onto levee crown.					

Photo 1 of 1 : SP\_2015\_RD0544\_108\_105\_20150309\_00058.jpg



Looking south at overgrown tree on landward shoulder.

<b>* Location</b> LS : Land Side    N/A : Not Applicable WS : Water Side CR : Crown		<b>** Rating</b> A : Acceptable M : Minimally Acceptable U : Unacceptable N : Not Inspected/Rated C : Corrected A/W : Acceptable but Monitor & Maintain		<b>+ Issue Type</b> Ma : Maintenance Deficiency Ob : Design & System Obsolescence En : Enforcement	
--	--	---	--	---	--



**Flood Control Project Maintenance  
Levee Inspections**

## Maintenance Issue Types Only, Levee Inspection Report By Mile - Spring 2015

### Reclamation District No. 0544 Upper Roberts Island

Waterway	Bank	Unit Miles	Inspection Start/End	Inspector
Unit No. 01 San Joaquin River	Left	6.05	04/28/2015 04/28/2015	Richard Willoughby

LM Start	4.69	Rating **	M	Issue No.	111
LM End	4.69	Issue Type +	Ma	Location *	LS
Category	Earthen Levee			GPS Latitude/Longitude	
				Start	End
Item	Encroachments			37.821783 °	37.821783 °
				-121.320237 °	-121.320237 °
DWR ID	DWR_RD0544_01_s_2015_111				
Action/Comments					
Prunings					
Inspector Comments: Prunings on landward shoulder.					

No Photos

LM Start	4.71	Rating **	M	Issue No.	28
LM End	4.71	Issue Type +	Ma	Location *	LS
Category	Earthen Levee			GPS Latitude/Longitude	
				Start	End
Item	Slope Stability			37.821626 °	37.821626 °
				-121.320471 °	-121.320471 °
DWR ID	DWR_RD0544_01_s_2012_28				
Action/Comments					
Repair slope instability.					

Photo 1 of 2 : SP\_2015\_RD0544\_108\_28\_20150309\_00027.jpg



Looking northeast at erosion around irrigation pipe on landside slope.

Photo 2 of 2 : SP\_2015\_RD0544\_108\_28\_20150309\_00028.jpg



Looking north at erosion around irrigation pipe on landside

<b>* Location</b> LS : Land Side    N/A : Not Applicable WS : Water Side CR : Crown		<b>** Rating</b> A : Acceptable                      N : Not Inspected/Rated M : Minimally Acceptable        C : Corrected U : Unacceptable                  A/W : Acceptable but Monitor & Maintain		<b>+ Issue Type</b> Ma : Maintenance Deficiency Ob : Design & System Obsolescence En : Enforcement
--	--	---	--	---

**Flood Control Project Maintenance  
Levee Inspections**

## Maintenance Issue Types Only, Levee Inspection Report By Mile - Spring 2015

### Reclamation District No. 0544 Upper Roberts Island

Waterway	Bank	Unit Miles	Inspection Start/End	Inspector
Unit No. 01 San Joaquin River	Left	6.05	04/28/2015 04/28/2015	Richard Willoughby

LM Start	4.71	Rating **	A/W	Issue No.	29
LM End	4.71	Issue Type +	Ma	Location *	CR
Category	Earthen Levee			GPS Latitude/Longitude	
				Start	End
Item	Animal Control			37.821626 °	37.821626 °
				-121.320471 °	-121.320471 °
DWR ID	DWR_RD0544_01_s _ 2012_29				
Action/Comments					
No rodents visible, but rodent burrows visible; need to backfill and compact or grout burrows.					

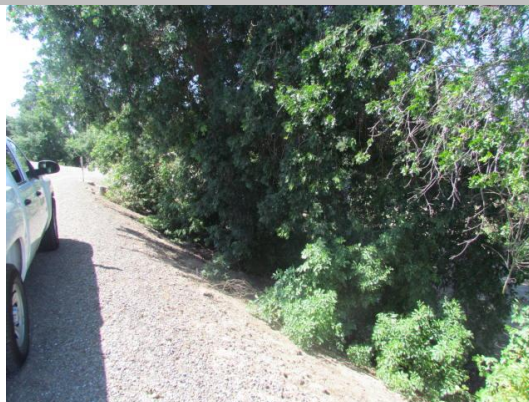
No Photos

LM Start	4.71	Rating **	M	Issue No.	26
LM End	4.74	Issue Type +	Ma	Location *	LS
Category	Earthen Levee			GPS Latitude/Longitude	
				Start	End
Item	Vegetation			37.821592 °	37.821253 °
				-121.320617 °	-121.320927 °
DWR ID	DWR_RD0544_01_s _ 2012_26				
Action/Comments					
Elderberries are blocking visibility and flood fight capability.					

No Photos

LM Start	4.77	Rating **	U	Issue No.	112
LM End	4.77	Issue Type +	Ma	Location *	LS
Category	Earthen Levee			GPS Latitude/Longitude	
				Start	End
Item	Trim / Thin Trees			37.820828 °	37.820828 °
				-121.321193 °	-121.321193 °
DWR ID	DWR_RD0544_01_s _ 2015_112				
Action/Comments					
Trim trees to at least five feet above ground level.					

Photo 1 of 1 : SP\_2015\_RD0544\_108\_112\_20150430\_00082.jpg



Looking southwest at dense trees on landward slope and toe.

<b>* Location</b> LS : Land Side    N/A : Not Applicable WS : Water Side CR : Crown		<b>** Rating</b> A : Acceptable                      N : Not Inspected/Rated M : Minimally Acceptable        C : Corrected U : Unacceptable                  A/W : Acceptable but Monitor & Maintain		<b>+ Issue Type</b> Ma : Maintenance Deficiency Ob : Design & System Obsolescence En : Enforcement	
--	--	---	--	---	--

**Flood Control Project Maintenance  
Levee Inspections**

**Maintenance Issue Types Only, Levee Inspection Report By Mile - Spring 2015**

**Reclamation District No. 0544 Upper Roberts Island**

Waterway	Bank	Unit Miles	Inspection Start/End	Inspector
Unit No. 01 San Joaquin River	Left	6.05	04/28/2015 04/28/2015	Richard Willoughby

LM Start	4.77	Rating **	U	Issue No.	113
LM End	4.77	Issue Type +	Ma	Location *	WS
Category	Earthen Levee			GPS Latitude/Longitude	
				Start	End
Item	Erosion / Bank Caving			37.820828 °	37.820828 °
				-121.321193 °	-121.321193 °
DWR ID	DWR_RD0544_01_s_2015_113				
Action/Comments					
Note and monitor erosion site.					
Inspector Comments: Large hole, possibly a rodent hole, on waterward slope.					

Photo 1 of 1 : SP\_2015\_RD0544\_108\_113\_20150430\_00083.jpg



Looking north at large hole on waterward slope.

LM Start	4.81	Rating **	A/W	Issue No.	30
LM End	4.81	Issue Type +	Ma	Location *	LS
Category	Earthen Levee			GPS Latitude/Longitude	
				Start	End
Item	Encroachments			37.820227 °	37.820227 °
				-121.321115 °	-121.321115 °
DWR ID	DWR_RD0544_01_s_2012_30				
Action/Comments					
Prunings Inspector Comments: Remove dead stumps at landside toe and prunings on landside slope.					

No Photos

LM Start	4.83	Rating **	M	Issue No.	31
LM End	6.05	Issue Type +	Ma	Location *	LS
Category	Earthen Levee			GPS Latitude/Longitude	
				Start	End
Item	Vegetation			37.820081 °	37.808766 °
				-121.321043 °	-121.328198 °
DWR ID	DWR_RD0544_01_s_2012_31				
Action/Comments					
Remove the wild growth other than native grasses from the levee slopes.					

No Photos

<b>* Location</b> LS : Land Side    N/A : Not Applicable WS : Water Side CR : Crown		<b>** Rating</b> A : Acceptable                      N : Not Inspected/Rated M : Minimally Acceptable        C : Corrected U : Unacceptable                  A/W : Acceptable but Monitor & Maintain		<b>+ Issue Type</b> Ma : Maintenance Deficiency Ob : Design & System Obsolescence En : Enforcement
--	--	---	--	---

**Flood Control Project Maintenance  
Levee Inspections**

## Maintenance Issue Types Only, Levee Inspection Report By Mile - Spring 2015

### Reclamation District No. 0544 Upper Roberts Island

Waterway	Bank	Unit Miles	Inspection Start/End	Inspector
Unit No. 01 San Joaquin River	Left	6.05	04/28/2015 04/28/2015	Richard Willoughby

LM Start	4.86	Rating **	M	Issue No.	114
LM End	4.86	Issue Type +	Ma	Location *	LS
Category	Earthen Levee			GPS Latitude/Longitude	
				Start	End
Item	Vegetation			37.819642 °	37.819642 °
				-121.320777 °	-121.320777 °
DWR ID	DWR_RD0544_01_s _ 2015_114				
Action/Comments					
Remove the wild growth other than native grasses from the levee slopes.					
Inspector Comments: Cactus on landward slope.					

No Photos

LM Start	4.89	Rating **	M	Issue No.	32
LM End	4.89	Issue Type +	Ma	Location *	LS
Category	Earthen Levee			GPS Latitude/Longitude	
				Start	End
Item	Vegetation			37.819249 °	37.819249 °
				-121.320460 °	-121.320460 °
DWR ID	DWR_RD0544_01_s _ 2012_32				
Action/Comments					
Remove the wild growth other than native grasses from the levee slopes.					

No Photos

LM Start	4.95	Rating **	M	Issue No.	33
LM End	5.26	Issue Type +	Ma	Location *	LS
Category	Earthen Levee			GPS Latitude/Longitude	
				Start	End
Item	Vegetation			37.818718 °	37.814662 °
				-121.319508 °	-121.320302 °
DWR ID	DWR_RD0544_01_s _ 2012_33				
Action/Comments					
Remove the wild growth other than native grasses from the levee slopes.					
Inspector Comments: Vegetation has been sprayed, but still blocking view of landward toe.					

Photo 1 of 5 : SP\_2015\_RD0544\_108\_33\_20150430\_00084.jpg



Looking southwest at dense vegetation at landward slope and toe.(Spring 2015)

* Location		** Rating		+ Issue Type	
LS : Land Side	N/A : Not Applicable	A : Acceptable	N : Not Inspected/Rated	Ma : Maintenance Deficiency	
WS : Water Side		M : Minimally Acceptable	C : Corrected	Ob : Design & System Obsolescence	
CR : Crown		U : Unacceptable	A/W : Acceptable but Monitor & Maintain	En : Enforcement	



**Flood Control Project Maintenance  
Levee Inspections**

## Maintenance Issue Types Only, Levee Inspection Report By Mile - Spring 2015

### Reclamation District No. 0544 Upper Roberts Island

Waterway	Bank	Unit Miles	Inspection Start/End	Inspector
Unit No. 01 San Joaquin River	Left	6.05	04/28/2015 04/28/2015	Richard Willoughby

LM Start	4.95	Rating **	M	Issue No.	33 (cont)
LM End	5.26	Issue Type +	Ma	Location *	LS
Category	Earthen Levee			GPS Latitude/Longitude	
				Start	End
Item	Vegetation			37.818718 °	37.814662 °
				-121.319508 °	-121.320302 °
DWR ID	DWR_RD0544_01_s_2012_33				
Action/Comments					
Remove the wild growth other than native grasses from the levee slopes.					
Inspector Comments: Vegetation has been sprayed, but still blocking view of landward toe.					

LM Start	<b>4.95</b>	Rating **	M	Issue No.	<b>33 (cont)</b>
LM End	<b>5.26</b>	Issue Type +	Ma	Location *	LS

LM Start	<b>4.95</b>	Rating **	M	Issue No.	<b>33 (cont)</b>
LM End	<b>5.26</b>	Issue Type +	Ma	Location *	LS

Photo 2 of 5 : SP\_2015\_RD0544\_108\_33\_20150430\_00085.jpg



Looking northwest at dense vegetation at landward toe. (Spring 2015)

Photo 3 of 5 : SP\_2015\_RD0544\_108\_33\_20150309\_00029.jpg



Looking north at dead vegetation still blocking landward toe.

Photo 4 of 5 : SP\_2015\_RD0544\_108\_33\_20150309\_00030.jpg



Looking southeast at dense veg. on landside slope and toe.

<b>* Location</b> LS : Land Side    N/A : Not Applicable WS : Water Side CR : Crown		<b>** Rating</b> A : Acceptable                      N : Not Inspected/Rated M : Minimally Acceptable        C : Corrected U : Unacceptable                  A/W : Acceptable but Monitor & Maintain		<b>+ Issue Type</b> Ma : Maintenance Deficiency Ob : Design & System Obsolescence En : Enforcement	
--	--	---	--	---	--

**Flood Control Project Maintenance  
Levee Inspections**

## Maintenance Issue Types Only, Levee Inspection Report By Mile - Spring 2015

### Reclamation District No. 0544 Upper Roberts Island

Waterway	Bank	Unit Miles	Inspection Start/End	Inspector
Unit No. 01 San Joaquin River	Left	6.05	04/28/2015 04/28/2015	Richard Willoughby

LM Start	4.95	Rating **	M	Issue No.	33 (cont)
LM End	5.26	Issue Type +	Ma	Location *	LS
Category	Earthen Levee			GPS Latitude/Longitude	
				Start	End
Item	Vegetation			37.818718 °	37.814662 °
				-121.319508 °	-121.320302 °
DWR ID	DWR_RD0544_01_s_2012_33				
Action/Comments					
Remove the wild growth other than native grasses from the levee slopes.					
Inspector Comments: Vegetation has been sprayed, but still blocking view of landward toe.					

Photo 5 of 5 : SP\_2015\_RD0544\_108\_33\_20150309\_00031.jpg



Looking south at dead vegetation still blocking landward toe.

LM Start	5.00	Rating **	M	Issue No.	17
LM End	5.00	Issue Type +	Ma	Location *	LS
Category	Earthen Levee			GPS Latitude/Longitude	
				Start	End
Item	Vegetation			37.818152 °	37.818152 °
				-121.319095 °	-121.319095 °
DWR ID	DWR_RD0544_01_s_2012_17				
Action/Comments					
Elderberries are blocking visibility and flood fight capability.					

No Photos

LM Start	5.34	Rating **	U	Issue No.	35
LM End	5.34	Issue Type +	Ma	Location *	LS
Category	Earthen Levee			GPS Latitude/Longitude	
				Start	End
Item	Vegetation			37.813659 °	37.813659 °
				-121.319614 °	-121.319614 °
DWR ID	DWR_RD0544_01_s_2012_35				
Action/Comments					
Trees / Woody Vegetation					
Inspector Comments: Bamboo blocking landward toe.					

Photo 1 of 1 : SP\_2015\_RD0544\_108\_35\_20150309\_00032.jpg



Looking south at bamboo on landward slope and toe.

<b>* Location</b> LS : Land Side    N/A : Not Applicable WS : Water Side CR : Crown		<b>** Rating</b> A : Acceptable M : Minimally Acceptable U : Unacceptable		N : Not Inspected/Rated C : Corrected A/W : Acceptable but Monitor & Maintain		<b>+ Issue Type</b> Ma : Maintenance Deficiency Ob : Design & System Obsolescence En : Enforcement	
--	--	--	--	---	--	---	--

**Flood Control Project Maintenance  
Levee Inspections**

**Maintenance Issue Types Only, Levee Inspection Report By Mile - Spring 2015**

**Reclamation District No. 0544 Upper Roberts Island**

Waterway	Bank	Unit Miles	Inspection Start/End	Inspector
Unit No. 01 San Joaquin River	Left	6.05	04/28/2015 04/28/2015	Richard Willoughby

LM Start	5.49	Rating **	U	Issue No.	18
LM End	5.55	Issue Type +	Ma	Location *	LS
Category	Earthen Levee			GPS Latitude/Longitude	
				Start	End
Item	Vegetation			37.812033 °	37.811687 °
				-121.319737 °	-121.320677 °
DWR ID	DWR_RD0544_01_s_2012_18				
Action/Comments					
Elderberries are blocking visibility and flood fight capability.					

Photo 1 of 3 : SP\_2015\_RD0544\_108\_18\_20150430\_00086.jpg



Looking south at dense vegetation on landward slope and toe.(Spring 2015)

LM Start	<b>5.49</b>	Rating **	U	Issue No.	<b>18 (cont)</b>
LM End	<b>5.55</b>	Issue Type +	Ma	Location *	LS

Photo 2 of 3 : SP\_2015\_RD0544\_108\_18\_20150309\_00022.jpg



Looking south at elderberries on landside slope and toe.

LM Start	<b>5.49</b>	Rating **	U	Issue No.	<b>18 (cont)</b>
LM End	<b>5.55</b>	Issue Type +	Ma	Location *	LS

Photo 3 of 3 : SP\_2015\_RD0544\_108\_18\_20150309\_00023.jpg



Looking southwest on elderberries on landside slope and toe.

**\* Location**

LS : Land Side    N/A : Not Applicable  
WS : Water Side  
CR : Crown

**\*\* Rating**

A : Acceptable                      N : Not Inspected/Rated  
M : Minimally Acceptable        C : Corrected  
U : Unacceptable                  A/W : Acceptable but Monitor & Maintain

**+ Issue Type**

Ma : Maintenance Deficiency  
Ob : Design & System Obsolescence  
En : Enforcement



**Flood Control Project Maintenance  
Levee Inspections**

## Maintenance Issue Types Only, Levee Inspection Report By Mile - Spring 2015

### Reclamation District No. 0544 Upper Roberts Island

Waterway	Bank	Unit Miles	Inspection Start/End	Inspector
Unit No. 01 San Joaquin River	Left	6.05	04/28/2015 04/28/2015	Richard Willoughby

LM Start	5.64	Rating **	N	Issue No.	40
LM End	5.64	Issue Type +	Ma	Location *	LS
Category	Earthen Levee			GPS Latitude/Longitude	
				Start	End
Item	Trim / Thin Trees			37.811199 °	37.811199 °
				-121.322176 °	-121.322176 °
DWR ID	DWR_RD0544_01_s _ 2012_40				
Action/Comments					
Tree stumps.					

No Photos

LM Start	5.72	Rating **	M	Issue No.	115
LM End	5.72	Issue Type +	Ma	Location *	LS
Category	Earthen Levee			GPS Latitude/Longitude	
				Start	End
Item	Slope Stability			37.811225 °	37.811225 °
				-121.323575 °	-121.323575 °
DWR ID	DWR_RD0544_01_s _ 2015_115				
Action/Comments					
Repair the levee slope damaged by foot traffic and prevent access where possible.					
Inspector Comments: Landowner excavated several steps into landward and waterward slopes					

Photo 1 of 3 : SP\_2015\_RD0544\_108\_115\_20150430\_00087.jpg



Looking west at slope damage on landward slope.

LM Start	<b>5.72</b>	Rating **	M	Issue No.	<b>115 (cont)</b>
LM End	<b>5.72</b>	Issue Type +	Ma	Location *	LS

Photo 2 of 3 : SP\_2015\_RD0544\_108\_115\_20150430\_00088.jpg



Looking east at slope damage on waterward slope.

<b>* Location</b> LS : Land Side    N/A : Not Applicable WS : Water Side CR : Crown		<b>** Rating</b> A : Acceptable                      N : Not Inspected/Rated M : Minimally Acceptable        C : Corrected U : Unacceptable                  A/W : Acceptable but Monitor & Maintain		<b>+ Issue Type</b> Ma : Maintenance Deficiency Ob : Design & System Obsolescence En : Enforcement	
--	--	---	--	---	--



**Flood Control Project Maintenance  
Levee Inspections**

## Maintenance Issue Types Only, Levee Inspection Report By Mile - Spring 2015

### Reclamation District No. 0544 Upper Roberts Island

Waterway	Bank	Unit Miles	Inspection Start/End	Inspector
Unit No. 01 San Joaquin River	Left	6.05	04/28/2015 04/28/2015	Richard Willoughby

LM Start	5.72	Rating **	M	Issue No.	115 (cont)	
LM End	5.72	Issue Type +	Ma	Location *	LS	
Category	Earthen Levee			GPS Latitude/Longitude		
				Start		End
Item	Slope Stability			37.811225 °		37.811225 °
				-121.323575 °		-121.323575 °
DWR ID	DWR_RD0544_01_s_2015_115					
Action/Comments						
Repair the levee slope damaged by foot traffic and prevent access where possible.						
Inspector Comments: Landowner excavated several steps into landward and waterward slopes						

Photo 3 of 3 : SP\_2015\_RD0544\_108\_115\_20150430\_00089.jpg



Looking northwest at slope damage on landward toe.

LM Start	5.86	Rating **	M	Issue No.	116
LM End	6.04	Issue Type +	Ma	Location *	LS
Category	Earthen Levee			GPS Latitude/Longitude	
				Start	End
Item	Vegetation			37.810685 °	37.808880 °
				-121.325827 °	-121.328055 °
DWR ID	DWR_RD0544_01_s_2015_116				
Action/Comments					
Remove the wild growth other than native grasses from the levee slopes.					

No Photos

LM Start	5.95	Rating **	U	Issue No.	117
LM End	5.95	Issue Type +	Ma	Location *	LS
Category	Earthen Levee			GPS Latitude/Longitude	
				Start	End
Item	Trim / Thin Trees			37.809613 °	37.809613 °
				-121.326758 °	-121.326758 °
DWR ID	DWR_RD0544_01_s_2015_117				
Action/Comments					
Trim trees to at least five feet above ground level.					

Photo 1 of 1 : SP\_2015\_RD0544\_108\_117\_20150430\_00090.jpg



Looking west at untrimmed tree on landward slope.

* Location		** Rating		+ Issue Type	
LS : Land Side	N/A : Not Applicable	A : Acceptable	N : Not Inspected/Rated	Ma : Maintenance Deficiency	
WS : Water Side		M : Minimally Acceptable	C : Corrected	Ob : Design & System Obsolescence	
CR : Crown		U : Unacceptable	A/W : Acceptable but Monitor & Maintain	En : Enforcement	

**Flood Control Project Maintenance  
Levee Inspections**

## Maintenance Issue Types Only, Levee Inspection Report By Mile - Spring 2015

### Reclamation District No. 0544 Upper Roberts Island

Waterway	Bank	Unit Miles	Inspection Start/End	Inspector
Unit No. 02 Old River	Right	4.15	04/28/2015 04/28/2015	Richard Willoughby

LM Start	0.03	Rating **	U	Issue No.	3
LM End	0.37	Issue Type +	Ma	Location *	LS
Category	Earthen Levee			GPS Latitude/Longitude	
				Start	End
Item	Vegetation			37.808603 °	37.809442 °
				-121.328719 °	-121.334415 °
DWR ID	DWR_RD0544_02_s_2012_3				
Action/Comments					
Remove the wild growth other than native grasses from the levee slopes.					

Photo 1 of 1 : SP\_2015\_RD0544\_109\_3\_20150430\_00053.jpg



Looking south at dense vegetation at landward toe.

LM Start	0.27	Rating **	A/W	Issue No.	2
LM End	0.43	Issue Type +	Ma	Location *	WS
Category	Earthen Levee			GPS Latitude/Longitude	
				Start	End
Item	Vegetation			37.808687 °	37.810253 °
				-121.332964 °	-121.334930 °
DWR ID	DWR_RD0544_02_s_2012_2				
Action/Comments					
Remove the wild growth other than native grasses from the levee slopes.					

No Photos

LM Start	0.40	Rating **	U	Issue No.	4
LM End	0.40	Issue Type +	Ma	Location *	LS
Category	Earthen Levee			GPS Latitude/Longitude	
				Start	End
Item	Vegetation			37.809788 °	37.809788 °
				-121.334727 °	-121.334727 °
DWR ID	DWR_RD0544_02_s_2012_4				
Action/Comments					
Elderberries are blocking visibility and flood fight capability.					

Photo 1 of 3 : SP\_2015\_RD0544\_109\_4\_20150309\_00001.jpg



Looking northwest at elderberries on landside slope and toe.

<b>* Location</b> LS : Land Side    N/A : Not Applicable WS : Water Side CR : Crown		<b>** Rating</b> A : Acceptable                      N : Not Inspected/Rated M : Minimally Acceptable        C : Corrected U : Unacceptable                  A/W : Acceptable but Monitor & Maintain		<b>+ Issue Type</b> Ma : Maintenance Deficiency Ob : Design & System Obsolescence En : Enforcement	
--	--	---	--	---	--

**Flood Control Project Maintenance  
Levee Inspections**

## Maintenance Issue Types Only, Levee Inspection Report By Mile - Spring 2015

### Reclamation District No. 0544 Upper Roberts Island

Waterway	Bank	Unit Miles	Inspection Start/End	Inspector
Unit No. 02 Old River	Right	4.15	04/28/2015 04/28/2015	Richard Willoughby

LM Start	0.40	Rating **	U	Issue No.	4 (cont)	
LM End	0.40	Issue Type +	Ma	Location *	LS	
Category	Earthen Levee			GPS Latitude/Longitude		
				Start		End
Item	Vegetation			37.809788 °		37.809788 °
				-121.334727 °		-121.334727 °
DWR ID	DWR_RD0544_02_s_2012_4					
Action/Comments						
Elderberries are blocking visibility and flood fight capability.						

Photo 2 of 3 : SP\_2015\_RD0544\_109\_4\_20150309\_00002.jpg



Looking northwest at elderberry on landside slope. (Spring 2012)

LM Start	<b>0.40</b>	Rating **	U	Issue No.	<b>4 (cont)</b>
LM End	<b>0.40</b>	Issue Type +	Ma	Location *	LS

Photo 3 of 3 : SP\_2015\_RD0544\_109\_4\_20150309\_00003.jpg



Looking south at elderberries on landside slope.

LM Start	0.43	Rating **	M	Issue No.	1
LM End	1.12	Issue Type +	Ma	Location *	LS
Category	Earthen Levee			GPS Latitude/Longitude	
				Start	End
Item	Vegetation			37.810250 °	37.819452 °
				-121.334933 °	-121.333755 °
DWR ID	DWR_RD0544_02_s_2012_1				
Action/Comments					
Remove the wild growth other than native grasses from the levee slopes.					

Photo 1 of 1 : SP\_2015\_RD0544\_109\_1\_20150430\_00054.jpg



Looking southwest at dense vegetation at landward toe.

**\* Location**  
LS : Land Side    N/A : Not Applicable  
WS : Water Side  
CR : Crown

**\*\* Rating**  
A : Acceptable                      N : Not Inspected/Rated  
M : Minimally Acceptable        C : Corrected  
U : Unacceptable                  A/W : Acceptable but Monitor & Maintain

**+ Issue Type**  
Ma : Maintenance Deficiency  
Ob : Design & System Obsolescence  
En : Enforcement



**Flood Control Project Maintenance  
Levee Inspections**

## Maintenance Issue Types Only, Levee Inspection Report By Mile - Spring 2015

### Reclamation District No. 0544 Upper Roberts Island

Waterway	Bank	Unit Miles	Inspection Start/End	Inspector
Unit No. 02 Old River	Right	4.15	04/28/2015 04/28/2015	Richard Willoughby

LM Start	0.52	Rating **	N	Issue No.	11
LM End	0.52	Issue Type +	Ma	Location *	LS
Category	Earthen Levee			GPS Latitude/Longitude	
				Start	End
Item	Trim / Thin Trees			37.811592 °	37.811592 °
				-121.335018 °	-121.335018 °
DWR ID	DWR_RD0544_02_s_2012_11				
Action/Comments					
Tree stumps.					

No Photos

LM Start	0.64	Rating **	U	Issue No.	46
LM End	0.64	Issue Type +	Ma	Location *	LS
Category	Earthen Levee			GPS Latitude/Longitude	
				Start	End
Item	Erosion / Bank Caving			37.813197 °	37.813197 °
				-121.335055 °	-121.335055 °
DWR ID	DWR_RD0544_02_s_2015_46				
Action/Comments					
Note and monitor erosion site. Inspector Comments: Depression greater than one inch deep and greater than three inches on landward shoulder					

Photo 1 of 1 : SP\_2015\_RD0544\_109\_46\_20150430\_00055.jpg



Looking at depression on landward shoulder.

LM Start	0.72	Rating **	U	Issue No.	5
LM End	0.72	Issue Type +	Ma	Location *	LS
Category	Earthen Levee			GPS Latitude/Longitude	
				Start	End
Item	Vegetation			37.814333 °	37.814333 °
				-121.334592 °	-121.334592 °
DWR ID	DWR_RD0544_02_s_2012_5				
Action/Comments					
Elderberries are blocking visibility and flood fight capability.					

Photo 1 of 1 : SP\_2015\_RD0544\_109\_5\_20150309\_00004.jpg



Looking south at elderberries on landside slope and toe.

<b>* Location</b> LS : Land Side    N/A : Not Applicable WS : Water Side CR : Crown		<b>** Rating</b> A : Acceptable M : Minimally Acceptable U : Unacceptable N : Not Inspected/Rated C : Corrected A/W : Acceptable but Monitor & Maintain		<b>+ Issue Type</b> Ma : Maintenance Deficiency Ob : Design & System Obsolescence En : Enforcement	
--	--	---	--	---	--



**Flood Control Project Maintenance  
Levee Inspections**

## Maintenance Issue Types Only, Levee Inspection Report By Mile - Spring 2015

### Reclamation District No. 0544 Upper Roberts Island

Waterway	Bank	Unit Miles	Inspection Start/End	Inspector
Unit No. 02 Old River	Right	4.15	04/28/2015 04/28/2015	Richard Willoughby

LM Start	0.79	Rating **	U	Issue No.	8
LM End	0.79	Issue Type +	Ma	Location *	WS
Category	Interior Drainage & Piping Systems			GPS Latitude/Longitude	
				Start	End
Item	Erosion Areas			37.815160 °	37.815160 °
				-121.333875 °	-121.333875 °
DWR ID	DWR_RD0544_02_s_2012_8				
Action/Comments					
Inspector Comments: Caving under and around siphon on waterside shoulder. No material 3' below pipe. Caving around siphon is 20" to 24" deep approximately 72" in diameter. During 2012 spring inspection hole appears to be enlarging.					

Photo 1 of 8 : SP\_2015\_RD0544\_109\_8\_20150309\_00006.jpg



Looking at top of siphon on waterside shoulder with 3' of caving around pipe.

Photo 2 of 8 : SP\_2015\_RD0544\_109\_8\_20150309\_00007.jpg



Looking at caving around 10" siphon pipe on waterside shoulder.

Photo 3 of 8 : SP\_2015\_RD0544\_109\_8\_20150309\_00008.jpg



Looking south at depression greater than 6" on waterside shoulder.

LM Start	<b>0.79</b>	Rating **	U	Issue No.	<b>8 (cont)</b>
LM End	<b>0.79</b>	Issue Type +	Ma	Location *	WS

LM Start	<b>0.79</b>	Rating **	U	Issue No.	<b>8 (cont)</b>
LM End	<b>0.79</b>	Issue Type +	Ma	Location *	WS

* Location		** Rating		+ Issue Type	
LS : Land Side	N/A : Not Applicable	A : Acceptable	N : Not Inspected/Rated	Ma : Maintenance Deficiency	
WS : Water Side		M : Minimally Acceptable	C : Corrected	Ob : Design & System Obsolescence	
CR : Crown		U : Unacceptable	A/W : Acceptable but Monitor & Maintain	En : Enforcement	

**Flood Control Project Maintenance  
Levee Inspections**

## Maintenance Issue Types Only, Levee Inspection Report By Mile - Spring 2015

### Reclamation District No. 0544 Upper Roberts Island

Waterway	Bank	Unit Miles	Inspection Start/End	Inspector
Unit No. 02 Old River	Right	4.15	04/28/2015 04/28/2015	Richard Willoughby

LM Start	0.79	Rating **	U	Issue No.	8 (cont)	
LM End	0.79	Issue Type +	Ma	Location *	WS	
Category	Interior Drainage & Piping Systems			GPS Latitude/Longitude		
				Start		End
Item	Erosion Areas			37.815160 °	37.815160 °	
				-121.333875 °	-121.333875 °	
DWR ID	DWR_RD0544_02_s_2012_8					
Action/Comments						
Inspector Comments: Caving under and around siphon on waterside shoulder. No material 3' below pipe. Caving around siphon is 20" to 24" deep approximately 72" in diameter. During 2012 spring inspection hole appears to be enlarging.						

Photo 4 of 8 : SP\_2015\_RD0544\_109\_8\_20150309\_00009.jpg



Looking east at caving around siphon on waterside shoulder. (Spring 2012)

LM Start	<b>0.79</b>	Rating **	U	Issue No.	<b>8 (cont)</b>
LM End	<b>0.79</b>	Issue Type +	Ma	Location *	WS

Photo 5 of 8 : SP\_2015\_RD0544\_109\_8\_20150309\_00010.jpg



Looking at top of siphon with a depression greater than 6" on waterside shoulder.

LM Start	<b>0.79</b>	Rating **	U	Issue No.	<b>8 (cont)</b>
LM End	<b>0.79</b>	Issue Type +	Ma	Location *	WS

Photo 6 of 8 : SP\_2015\_RD0544\_109\_8\_20150309\_00011.jpg



Looking west at caving around siphon on waterside shoulder. (Spring 2012)

<b>* Location</b> LS : Land Side    N/A : Not Applicable WS : Water Side CR : Crown		<b>** Rating</b> A : Acceptable M : Minimally Acceptable U : Unacceptable N : Not Inspected/Rated C : Corrected A/W : Acceptable but Monitor & Maintain		<b>+ Issue Type</b> Ma : Maintenance Deficiency Ob : Design & System Obsolescence En : Enforcement	
--	--	---	--	---	--



**Flood Control Project Maintenance  
Levee Inspections**

## Maintenance Issue Types Only, Levee Inspection Report By Mile - Spring 2015

### Reclamation District No. 0544 Upper Roberts Island

Waterway	Bank	Unit Miles	Inspection Start/End	Inspector
Unit No. 02 Old River	Right	4.15	04/28/2015 04/28/2015	Richard Willoughby

LM Start	0.79	Rating **	U	Issue No.	8 (cont)	
LM End	0.79	Issue Type +	Ma	Location *	WS	
Category	Interior Drainage & Piping Systems			GPS Latitude/Longitude		
				Start	End	
Item	Erosion Areas			37.815160 °	37.815160 °	
				-121.333875 °	-121.333875 °	
DWR ID	DWR_RD0544_02_s_2012_8					
Action/Comments						
Inspector Comments: Caving under and around siphon on waterside shoulder. No material 3' below pipe. Caving around siphon is 20" to 24" deep approximately 72" in diameter. During 2012 spring inspection hole appears to be enlarging.						

Photo 7 of 8 : SP\_2015\_RD0544\_109\_8\_20150309\_00012.jpg



Looking south at caving around siphon on waterside shoulder.(Spring 2012)

LM Start	<b>0.79</b>	Rating **	U	Issue No.	<b>8 (cont)</b>
LM End	<b>0.79</b>	Issue Type +	Ma	Location *	WS

Photo 8 of 8 : SP\_2015\_RD0544\_109\_8\_20150309\_00013.jpg



Looking south at depression greater than 6" around siphon on waterside shoulder.

LM Start	1.30	Rating **	U	Issue No.	49
LM End	1.40	Issue Type +	Ma	Location *	WS
Category	Earthen Levee			GPS Latitude/Longitude	
				Start	End
Item	Vegetation			37.820767 °	37.821582 °
				-121.336611 °	-121.338102 °
DWR ID	DWR_RD0544_02_f_2014_49				
Action/Comments					
Remove the wild growth other than native grasses from the levee slopes.					
Inspector Comments: Tobacco plants on waterward slope.					

Photo 1 of 2 : SP\_2015\_RD0544\_109\_49\_20150430\_00056.jpg



Looking southwest at dense vegetation on landward slope and toe.

<b>* Location</b>		<b>** Rating</b>		<b>+ Issue Type</b>	
LS : Land Side	N/A : Not Applicable	A : Acceptable	N : Not Inspected/Rated	Ma : Maintenance Deficiency	
WS : Water Side		M : Minimally Acceptable	C : Corrected	Ob : Design & System Obsolescence	
CR : Crown		U : Unacceptable	A/W : Acceptable but Monitor & Maintain	En : Enforcement	

**Flood Control Project Maintenance  
Levee Inspections**

## Maintenance Issue Types Only, Levee Inspection Report By Mile - Spring 2015

### Reclamation District No. 0544 Upper Roberts Island

Waterway	Bank	Unit Miles	Inspection Start/End	Inspector
Unit No. 02 Old River	Right	4.15	04/28/2015 04/28/2015	Richard Willoughby

LM Start	1.30	Rating **	U	Issue No.	49 (cont)	
LM End	1.40	Issue Type +	Ma	Location *	WS	
Category	Earthen Levee			GPS Latitude/Longitude		
				Start		End
Item	Vegetation			37.820767 °		37.821582 °
				-121.336611 °		-121.338102 °
DWR ID	DWR_RD0544_02_f_2014_49					
Action/Comments						
Remove the wild growth other than native grasses from the levee slopes.						
Inspector Comments: Tobacco plants on waterward slope.						

Photo 2 of 2 : SP\_2015\_RD0544\_109\_49\_20150309\_00040.jpg



Looking south at several tobacco plants on waterward slope.

LM Start	1.34	Rating **	M	Issue No.	56
LM End	1.45	Issue Type +	Ma	Location *	WS
Category	Earthen Levee			GPS Latitude/Longitude	
				Start	End
Item	Animal Control			37.821168 °	37.822083 °
				-121.337212 °	-121.338862 °
DWR ID	DWR_RD0544_02_s_2015_56				
Action/Comments					
Exterminate rodents and backfill and compact or grout burrows.					

No Photos

LM Start	1.37	Rating **	M	Issue No.	14
LM End	1.37	Issue Type +	Ma	Location *	WS
Category	Earthen Levee			GPS Latitude/Longitude	
				Start	End
Item	Vegetation			37.821323 °	37.821323 °
				-121.337725 °	-121.337725 °
DWR ID	DWR_RD0544_02_s_2012_14				
Action/Comments					
Remove the wild growth other than native grasses from the levee slopes.					
Inspector Comments: Control bamboo on waterside slope.					

No Photos

<b>* Location</b> LS : Land Side    N/A : Not Applicable WS : Water Side CR : Crown		<b>** Rating</b> A : Acceptable                      N : Not Inspected/Rated M : Minimally Acceptable        C : Corrected U : Unacceptable                  A/W : Acceptable but Monitor & Maintain		<b>+ Issue Type</b> Ma : Maintenance Deficiency Ob : Design & System Obsolescence En : Enforcement
--	--	---	--	---



**Flood Control Project Maintenance  
Levee Inspections**

## Maintenance Issue Types Only, Levee Inspection Report By Mile - Spring 2015

### Reclamation District No. 0544 Upper Roberts Island

Waterway	Bank	Unit Miles	Inspection Start/End	Inspector
Unit No. 02 Old River	Right	4.15	04/28/2015 04/28/2015	Richard Willoughby

LM Start	1.38	Rating **	U	Issue No.	10
LM End	1.38	Issue Type +	Ma	Location *	LS
Category	Earthen Levee			GPS Latitude/Longitude	
				Start	End
Item	Vegetation			37.821423 °	37.821423 °
				-121.337878 °	-121.337878 °
DWR ID	DWR_RD0544_02_s_2012_10				
Action/Comments					
Elderberries are blocking visibility and flood fight capability.					

Photo 1 of 2 : SP\_2015\_RD0544\_109\_10\_20150309\_00015.jpg



Looking southwest at elderberries on landside slope.

LM Start	<b>1.38</b>	Rating **	U	Issue No.	<b>10 (cont)</b>
LM End	<b>1.38</b>	Issue Type +	Ma	Location *	LS

Photo 2 of 2 : SP\_2015\_RD0544\_109\_10\_20150309\_00016.jpg



Looking south at elderberries on landside slope and toe.

LM Start	1.42	Rating **	M	Issue No.	22
LM End	1.42	Issue Type +	Ma	Location *	LS
Category	Earthen Levee			GPS Latitude/Longitude	
				Start	End
Item	Slope Stability			37.821697 °	37.821697 °
				-121.338397 °	-121.338397 °
DWR ID	DWR_RD0544_02_s_2012_22				
Action/Comments					
Repair the levee slope damaged by vehicle traffic and prevent access where possible.					
Inspector Comments: Damage caused by vehicle traffic.					

Photo 1 of 2 : SP\_2015\_RD0544\_109\_22\_20150309\_00031.jpg



Looking northwest at slope damage caused by vehicle traffic (Fall 2014).

**\* Location**  
LS : Land Side    N/A : Not Applicable  
WS : Water Side  
CR : Crown

**\*\* Rating**  
A : Acceptable                      N : Not Inspected/Rated  
M : Minimally Acceptable        C : Corrected  
U : Unacceptable                  A/W : Acceptable but Monitor & Maintain

**+ Issue Type**  
Ma : Maintenance Deficiency  
Ob : Design & System Obsolescence  
En : Enforcement

**Flood Control Project Maintenance  
Levee Inspections**

## Maintenance Issue Types Only, Levee Inspection Report By Mile - Spring 2015

### Reclamation District No. 0544 Upper Roberts Island

Waterway	Bank	Unit Miles	Inspection Start/End	Inspector
Unit No. 02 Old River	Right	4.15	04/28/2015 04/28/2015	Richard Willoughby

LM Start	1.42	Rating **	M	Issue No.	22 (cont)
LM End	1.42	Issue Type +	Ma	Location *	LS
Category	Earthen Levee			GPS Latitude/Longitude	
				Start	End
Item	Slope Stability			37.821697 °	37.821697 °
				-121.338397 °	-121.338397 °
DWR ID	DWR_RD0544_02_s_2012_22				
Action/Comments					
Repair the levee slope damaged by vehicle traffic and prevent access where possible.					
Inspector Comments: Damage caused by vehicle traffic.					

Photo 2 of 2 : SP\_2015\_RD0544\_109\_22\_20150309\_00032.jpg



Looking northwest at slope damage caused by vehicle traffic.

LM Start	1.44	Rating **	M	Issue No.	28
LM End	1.44	Issue Type +	Ma	Location *	WS
Category	Earthen Levee			GPS Latitude/Longitude	
				Start	End
Item	Animal Control			37.821954 °	37.821954 °
				-121.338715 °	-121.338715 °
DWR ID	DWR_RD0544_02_s_2012_28				
Action/Comments					
Exterminate rodents and backfill and compact or grout burrows.					

No Photos

LM Start	1.86	Rating **	U	Issue No.	38
LM End	1.86	Issue Type +	Ma	Location *	WS
Category	Earthen Levee			GPS Latitude/Longitude	
				Start	End
Item	Erosion / Bank Caving			37.817983 °	37.817983 °
				-121.341682 °	-121.341682 °
DWR ID	DWR_RD0544_02_s_2015_38				
Action/Comments					
Note and monitor erosion site.					
Inspector Comments: Erosion/Caving on waterward shoulder and slope 18" x 6" x 15'.					

Photo 1 of 2 : SP\_2015\_RD0544\_109\_38\_20150430\_00057.jpg



Looking southeast at erosion/caving on waterward slope.

<b>* Location</b> LS : Land Side    N/A : Not Applicable WS : Water Side CR : Crown		<b>** Rating</b> A : Acceptable M : Minimally Acceptable U : Unacceptable		N : Not Inspected/Rated C : Corrected A/W : Acceptable but Monitor & Maintain		<b>+ Issue Type</b> Ma : Maintenance Deficiency Ob : Design & System Obsolescence En : Enforcement	
--	--	--	--	---	--	---	--

**Flood Control Project Maintenance  
Levee Inspections**

## Maintenance Issue Types Only, Levee Inspection Report By Mile - Spring 2015

### Reclamation District No. 0544 Upper Roberts Island

Waterway	Bank	Unit Miles	Inspection Start/End	Inspector
Unit No. 02 Old River	Right	4.15	04/28/2015 04/28/2015	Richard Willoughby

LM Start	1.86	Rating **	U	Issue No.	38 (cont)	
LM End	1.86	Issue Type +	Ma	Location *	WS	
Category	Earthen Levee			GPS Latitude/Longitude		
				Start	End	
Item	Erosion / Bank Caving			37.817983 °	37.817983 °	
				-121.341682 °	-121.341682 °	
DWR ID	DWR_RD0544_02_s _ 2015_38					
Action/Comments						
Note and monitor erosion site. Inspector Comments: Erosion/Caving on waterward shoulder and slope 18" x 6" x 15'.						

Photo 2 of 2 : SP\_2015\_RD0544\_109\_38\_20150430\_00058.jpg



Looking east at erosion/caving on waterward slope.

LM Start	2.01	Rating **	A/W	Issue No.	44
LM End	2.01	Issue Type +	Ma	Location *	LS
Category	Earthen Levee			GPS Latitude/Longitude	
				Start	End
Item	Trim / Thin Trees			37.818733 °	37.818733 °
				-121.343340 °	-121.343340 °
DWR ID	DWR_RD0544_02_s _ 2012_44				
Action/Comments					
Trim trees to at least five feet above ground level.					

No Photos

LM Start	2.02	Rating **	U	Issue No.	57
LM End	2.02	Issue Type +	Ma	Location *	LS
Category	Earthen Levee			GPS Latitude/Longitude	
				Start	End
Item	Encroachments			37.818853 °	37.818853 °
				-121.343473 °	-121.343473 °
DWR ID	DWR_RD0544_02_s _ 2015_57				
Action/Comments					
Prunings					
Inspector Comments: Large pruning pile at landward toe.					

Photo 1 of 1 : SP\_2015\_RD0544\_109\_57\_20150430\_00059.jpg



Looking west at pruning pile at landward toe.(Spring 2015)

* Location		** Rating		+ Issue Type	
LS : Land Side	N/A : Not Applicable	A : Acceptable	N : Not Inspected/Rated	Ma : Maintenance Deficiency	
WS : Water Side		M : Minimally Acceptable	C : Corrected	Ob : Design & System Obsolescence	
CR : Crown		U : Unacceptable	A/W : Acceptable but Monitor & Maintain	En : Enforcement	







**Flood Control Project Maintenance  
Levee Inspections**

## Maintenance Issue Types Only, Levee Inspection Report By Mile - Spring 2015

### Reclamation District No. 0544 Upper Roberts Island

Waterway	Bank	Unit Miles	Inspection Start/End	Inspector
Unit No. 02 Old River	Right	4.15	04/28/2015 04/28/2015	Richard Willoughby

LM Start	2.12	Rating **	M	Issue No.	59
LM End	2.12	Issue Type +	Ma	Location *	LS
Category	Earthen Levee			GPS Latitude/Longitude	
				Start	End
Item	Trim / Thin Trees			37.819738 °	37.819738 °
				-121.344922 °	-121.344922 °
DWR ID	DWR_RD0544_02_s_2015_59				
Action/Comments					
Trim trees to at least five feet above ground level.					

No Photos

LM Start	2.20	Rating **	M	Issue No.	60
LM End	2.20	Issue Type +	Ma	Location *	LS
Category	Earthen Levee			GPS Latitude/Longitude	
				Start	End
Item	Trim / Thin Trees			37.820655 °	37.820655 °
				-121.345982 °	-121.345982 °
DWR ID	DWR_RD0544_02_s_2015_60				
Action/Comments					
Trim trees to at least five feet above ground level.					

No Photos

LM Start	2.21	Rating **	M	Issue No.	50
LM End	2.21	Issue Type +	Ma	Location *	WS
Category	Earthen Levee			GPS Latitude/Longitude	
				Start	End
Item	Encroachments			37.820646 °	37.820646 °
				-121.346014 °	-121.346014 °
DWR ID	DWR_RD0544_02_f_2014_50				
Action/Comments					
Garbage					
Inspector Comments: Discarded intake pipe on waterward slope.					

Photo 1 of 1 : SP\_2015\_RD0544\_109\_50\_20150309\_00041.jpg



Looking northwest at pipe on waterward slope.

<b>* Location</b> LS : Land Side    N/A : Not Applicable WS : Water Side CR : Crown		<b>** Rating</b> A : Acceptable                      N : Not Inspected/Rated M : Minimally Acceptable        C : Corrected U : Unacceptable                  A/W : Acceptable but Monitor & Maintain		<b>+ Issue Type</b> Ma : Maintenance Deficiency Ob : Design & System Obsolescence En : Enforcement
--	--	---	--	---

**Flood Control Project Maintenance  
Levee Inspections**

## Maintenance Issue Types Only, Levee Inspection Report By Mile - Spring 2015

### Reclamation District No. 0544 Upper Roberts Island

Waterway	Bank	Unit Miles	Inspection Start/End	Inspector
Unit No. 02 Old River	Right	4.15	04/28/2015 04/28/2015	Richard Willoughby

LM Start	2.21	Rating **	M	Issue No.	32
LM End	2.21	Issue Type +	Ma	Location *	WS
Category	Earthen Levee			GPS Latitude/Longitude	
				Start	End
Item	Animal Control			37.820697 °	37.820697 °
				-121.346050 °	-121.346050 °
DWR ID	DWR_RD0544_02_s _ 2012_32				
Action/Comments					
No rodents visible, but rodent burrows visible; need to backfill and compact or grout burrows.					

No Photos

LM Start	2.24	Rating **	M	Issue No.	33
LM End	2.35	Issue Type +	Ma	Location *	LS
Category	Earthen Levee			GPS Latitude/Longitude	
				Start	End
Item	Animal Control			37.821096 °	37.821945 °
				-121.346418 °	-121.347897 °
DWR ID	DWR_RD0544_02_s _ 2012_33				
Action/Comments					
No rodents visible, but rodent burrows visible; need to backfill and compact or grout burrows.					

No Photos

LM Start	2.28	Rating **	M	Issue No.	61
LM End	2.28	Issue Type +	Ma	Location *	LS
Category	Earthen Levee			GPS Latitude/Longitude	
				Start	End
Item	Trim / Thin Trees				37.821540 °
					-121.346895 °
DWR ID	DWR_RD0544_02_s _ 2015_61				
Action/Comments					
Trim trees to at least five feet above ground level.					

No Photos

<b>* Location</b> LS : Land Side    N/A : Not Applicable WS : Water Side CR : Crown		<b>** Rating</b> A : Acceptable                      N : Not Inspected/Rated M : Minimally Acceptable        C : Corrected U : Unacceptable                  A/W : Acceptable but Monitor & Maintain		<b>+ Issue Type</b> Ma : Maintenance Deficiency Ob : Design & System Obsolescence En : Enforcement	
--	--	---	--	---	--

**Flood Control Project Maintenance  
Levee Inspections**

## Maintenance Issue Types Only, Levee Inspection Report By Mile - Spring 2015

### Reclamation District No. 0544 Upper Roberts Island

Waterway	Bank	Unit Miles	Inspection Start/End	Inspector
Unit No. 02 Old River	Right	4.15	04/28/2015 04/28/2015	Richard Willoughby

LM Start	2.29	Rating **	M	Issue No.	40
LM End	2.29	Issue Type +	Ma	Location *	LS
Category	Earthen Levee			GPS Latitude/Longitude	
				Start	End
Item	Vegetation			37.821628 °	37.821628 °
				-121.346972 °	-121.346972 °
DWR ID	DWR_RD0544_02_s_2012_40				
Action/Comments					
Remove the wild growth other than native grasses from the levee slopes.					

No Photos

LM Start	2.31	Rating **	M	Issue No.	51
LM End	2.31	Issue Type +	Ma	Location *	WS
Category	Earthen Levee			GPS Latitude/Longitude	
				Start	End
Item	Encroachments			37.821757 °	37.821757 °
				-121.347181 °	-121.347181 °
DWR ID	DWR_RD0544_02_s_2014_51				
Action/Comments					
Pipe Inspector Comments: Landowner repaired pump and replaced pipe and left pump shaft and pipe on waterward slope.					

Photo 1 of 1 : SP\_2015\_RD0544\_109\_51\_20150309\_00042.jpg



Looking north at old pump shaft and pipe on waterward slope.

LM Start	2.31	Rating **	M	Issue No.	12
LM End	2.31	Issue Type +	Ma	Location *	WS
Category	Supplemental			GPS Latitude/Longitude	
				Start	End
Item	DWR Erosion Survey			37.821763 °	37.821763 °
				-121.347275 °	-121.347275 °
DWR ID	DWR_RD0544_02_s_2015_12				
Action/Comments					
Inspector Comments: 07/02/2014: No significant change observed. 08/20/2013: No significant change observed. 08/07/2012: The site was first reported in 2012 spring levee inspection report. The data were estimated as the site is underneath a irrigation pump station and inaccessible by boat or land survey. It's possible the pump station played a role in the erosion. [2014 Site ID:RD0544U02RM33.21]					

Photo 1 of 1 : SP\_2015\_RD0544\_109\_12\_20150309\_00017.jpg



Front view of the erosion site. View is partially blocked by the pump structure and vegetation.

<b>* Location</b> LS : Land Side    N/A : Not Applicable WS : Water Side CR : Crown		<b>** Rating</b> A : Acceptable M : Minimally Acceptable U : Unacceptable N : Not Inspected/Rated C : Corrected A/W : Acceptable but Monitor & Maintain		<b>+ Issue Type</b> Ma : Maintenance Deficiency Ob : Design & System Obsolescence En : Enforcement	
--	--	---	--	---	--

**Flood Control Project Maintenance  
Levee Inspections**

## Maintenance Issue Types Only, Levee Inspection Report By Mile - Spring 2015

### Reclamation District No. 0544 Upper Roberts Island

Waterway	Bank	Unit Miles	Inspection Start/End	Inspector
Unit No. 02 Old River	Right	4.15	04/28/2015 04/28/2015	Richard Willoughby

LM Start	2.31	Rating **	U	Issue No.	24
LM End	2.31	Issue Type +	Ma	Location *	WS
Category	Rivers, Channels & Designated Floodways			GPS Latitude/Longitude	
				Start	End
Item	Erosion / Bank Caving			37.821763 °	37.821763 °
				-121.347275 °	-121.347275 °
DWR ID	DWR_RD0544_02_s_2012_24				
Action/Comments					
Inspector Comments: Large erosion and beaver activity at waterside toe of levee.					

Photo 1 of 3 : SP\_2015\_RD0544\_109\_24\_20150309\_00034.jpg



Looking south at beaver hole at waterside toe.

LM Start	<b>2.31</b>	Rating **	U	Issue No.	<b>24 (cont)</b>
LM End	<b>2.31</b>	Issue Type +	Ma	Location *	WS

Photo 2 of 3 : SP\_2015\_RD0544\_109\_24\_20150309\_00035.jpg



Looking south at river erosion at waterside toe near pumping station.

LM Start	<b>2.31</b>	Rating **	U	Issue No.	<b>24 (cont)</b>
LM End	<b>2.31</b>	Issue Type +	Ma	Location *	WS

Photo 3 of 3 : SP\_2015\_RD0544\_109\_24\_20150309\_00036.jpg



Looking north at erosion on waterside slope.

**\* Location**  
LS : Land Side    N/A : Not Applicable  
WS : Water Side  
CR : Crown

**\*\* Rating**  
A : Acceptable                      N : Not Inspected/Rated  
M : Minimally Acceptable        C : Corrected  
U : Unacceptable                  A/W : Acceptable but Monitor & Maintain

**+ Issue Type**  
Ma : Maintenance Deficiency  
Ob : Design & System Obsolescence  
En : Enforcement



**Flood Control Project Maintenance  
Levee Inspections**

## Maintenance Issue Types Only, Levee Inspection Report By Mile - Spring 2015

### Reclamation District No. 0544 Upper Roberts Island

Waterway	Bank	Unit Miles	Inspection Start/End	Inspector
Unit No. 02 Old River	Right	4.15	04/28/2015 04/28/2015	Richard Willoughby

LM Start	2.32	Rating **	M	Issue No.	41
LM End	3.24	Issue Type +	Ma	Location *	LS
Category	Earthen Levee			GPS Latitude/Longitude	
				Start	End
Item	Vegetation			37.821840 °	37.819198 °
				-121.347428 °	-121.359940 °
DWR ID	DWR_RD0544_02_s _ 2012_41				
Action/Comments					
Remove the wild growth other than native grasses from the levee slopes.					

No Photos

LM Start	2.44	Rating **	M	Issue No.	42
LM End	3.24	Issue Type +	Ma	Location *	WS
Category	Earthen Levee			GPS Latitude/Longitude	
				Start	End
Item	Vegetation			37.821037 °	37.819200 °
				-121.349050 °	-121.359943 °
DWR ID	DWR_RD0544_02_s _ 2012_42				
Action/Comments					
Remove the wild growth other than native grasses from the levee slopes.					

No Photos

LM Start	2.61	Rating **	M	Issue No.	15
LM End	2.61	Issue Type +	Ma	Location *	CR
Category	Earthen Levee			GPS Latitude/Longitude	
				Start	End
Item	Encroachments			37.818867 °	37.818867 °
				-121.350393 °	-121.350393 °
DWR ID	DWR_RD0544_02_s _ 2012_15				
Action/Comments					
Pipe Inspector Comments: Abandoned pipe at landside and waterside shoulder is open on both ends.					

Photo 1 of 1 : SP\_2015\_RD0544\_109\_15\_20150309\_00019.jpg



Abandoned pipe at LM 2.65, landside view.

* Location LS : Land Side    N/A : Not Applicable WS : Water Side CR : Crown		** Rating A : Acceptable                      N : Not Inspected/Rated M : Minimally Acceptable        C : Corrected U : Unacceptable                  A/W : Acceptable but Monitor & Maintain		+ Issue Type Ma : Maintenance Deficiency Ob : Design & System Obsolescence En : Enforcement	
---	--	--	--	--	--

**Flood Control Project Maintenance  
Levee Inspections**

## Maintenance Issue Types Only, Levee Inspection Report By Mile - Spring 2015

### Reclamation District No. 0544 Upper Roberts Island

Waterway	Bank	Unit Miles	Inspection Start/End	Inspector
Unit No. 02 Old River	Right	4.15	04/28/2015 04/28/2015	Richard Willoughby

LM Start	2.68	Rating **	M	Issue No.	9
LM End	2.68	Issue Type +	Ma	Location *	WS
Category	Supplemental			GPS Latitude/Longitude	
				Start	End
Item	DWR Erosion Survey			37.817760 °	37.817760 °
				-121.350850 °	-121.350850 °
DWR ID	DWR_RD0544_02_s_2015_9				
Action/Comments					
Inspector Comments: 07/02/2014: No significant change observed. 10/11/2013: No significant change observed. 08/07/2012: Series of pocket erosion were discovered at the levee toe during the boat survey. The area is covered with vegetation and riprap, but the rip rap has been washed away. [2014 Site ID:RD0544U02RM32.91]					

Photo 1 of 1 : SP\_2015\_RD0544\_109\_9\_20150309\_00014.jpg



Front view of pocket erosion. Note the vegetation and riprap at the site.

LM Start	2.69	Rating **	A/W	Issue No.	52
LM End	3.20	Issue Type +	Ma	Location *	CR
Category	Earthen Levee			GPS Latitude/Longitude	
				Start	End
Item	Vegetation			37.817928 °	37.818824 °
				-121.351355 °	-121.359523 °
DWR ID	DWR_RD0544_02_f_2014_52				
Action/Comments					
Remove the wild growth other than native grasses from the levee slopes.					

Photo 1 of 1 : SP\_2015\_RD0544\_109\_52\_20150309\_00043.jpg



Looking south at vegetation on levee crown.

LM Start	2.71	Rating **	U	Issue No.	43
LM End	3.05	Issue Type +	Ma	Location *	LS
Category	Earthen Levee			GPS Latitude/Longitude	
				Start	End
Item	Vegetation			37.817747 °	37.817497 °
				-121.351578 °	-121.357490 °
DWR ID	DWR_RD0544_02_s_2012_43				
Action/Comments					
Remove the wild growth other than native grasses from the levee slopes.					

Photo 1 of 1 : SP\_2015\_RD0544\_109\_43\_20150309\_00039.jpg



Looking south at dense vegetation on landward and waterward slope.

<b>* Location</b>		<b>** Rating</b>		<b>+ Issue Type</b>	
LS : Land Side	N/A : Not Applicable	A : Acceptable	N : Not Inspected/Rated	Ma : Maintenance Deficiency	
WS : Water Side		M : Minimally Acceptable	C : Corrected	Ob : Design & System Obsolescence	
CR : Crown		U : Unacceptable	A/W : Acceptable but Monitor & Maintain	En : Enforcement	

**Flood Control Project Maintenance  
Levee Inspections**

## Maintenance Issue Types Only, Levee Inspection Report By Mile - Spring 2015

### Reclamation District No. 0544 Upper Roberts Island

Waterway	Bank	Unit Miles	Inspection Start/End	Inspector
Unit No. 02 Old River	Right	4.15	04/28/2015 04/28/2015	Richard Willoughby

LM Start	2.80	Rating **	M	Issue No.	53
LM End	2.80	Issue Type +	Ma	Location *	LS
Category	Earthen Levee			GPS Latitude/Longitude	
				Start	End
Item	Trim / Thin Trees			37.817187 °	37.817187 °
				-121.352964 °	-121.352964 °
DWR ID	DWR_RD0544_02_f_2014_53				
Action/Comments					
Thin trees to allow visibility of the ground and room to flood fight.					

No Photos

LM Start	3.20	Rating **	M	Issue No.	30
LM End	3.40	Issue Type +	Ma	Location *	WS
Category	Earthen Levee			GPS Latitude/Longitude	
				Start	End
Item	Animal Control			37.818748 °	37.819717 °
				-121.359440 °	-121.362733 °
DWR ID	DWR_RD0544_02_s_2013_30				
Action/Comments					
Exterminate rodents and backfill and compact or grout burrows.					

No Photos

LM Start	3.22	Rating **	M	Issue No.	62
LM End	3.22	Issue Type +	Ma	Location *	LS
Category	Earthen Levee			GPS Latitude/Longitude	
				Start	End
Item	Trim / Thin Trees			37.818985 °	37.818985 °
				-121.359675 °	-121.359675 °
DWR ID	DWR_RD0544_02_s_2015_62				
Action/Comments					
Trim trees to at least five feet above ground level.					

No Photos

<b>* Location</b> LS : Land Side    N/A : Not Applicable WS : Water Side CR : Crown		<b>** Rating</b> A : Acceptable                      N : Not Inspected/Rated M : Minimally Acceptable        C : Corrected U : Unacceptable                  A/W : Acceptable but Monitor & Maintain		<b>+ Issue Type</b> Ma : Maintenance Deficiency Ob : Design & System Obsolescence En : Enforcement
--	--	---	--	---

**Flood Control Project Maintenance  
Levee Inspections**

## Maintenance Issue Types Only, Levee Inspection Report By Mile - Spring 2015

### Reclamation District No. 0544 Upper Roberts Island

Waterway	Bank	Unit Miles	Inspection Start/End	Inspector
Unit No. 02 Old River	Right	4.15	04/28/2015 04/28/2015	Richard Willoughby

LM Start	3.29	Rating **	M	Issue No.	54
LM End	3.29	Issue Type +	Ma	Location *	LS
Category	Earthen Levee			GPS Latitude/Longitude	
				Start	End
Item	Vegetation			37.819635 °	37.819635 °
				-121.360619 °	-121.360619 °
DWR ID	DWR_RD0544_02_f_2014_54				
Action/Comments					
Elderberries are blocking visibility and flood fight capability.					

No Photos

LM Start	3.48	Rating **	M	Issue No.	36
LM End	3.51	Issue Type +	Ma	Location *	LS
Category	Earthen Levee			GPS Latitude/Longitude	
				Start	End
Item	Vegetation			37.819576 °	37.819530 °
				-121.364056 °	-121.364653 °
DWR ID	DWR_RD0544_02_s_2012_36				
Action/Comments					
Remove the wild growth other than native grasses from the levee slopes.					
Inspector Comments: Cactus on landside slope.					

Photo 1 of 2 : SP\_2015\_RD0544\_109\_36\_20150309\_00037.jpg



Looking north at cactus on landside slope and toe.

LM Start	<b>3.48</b>	Rating **	M	Issue No.	<b>36 (cont)</b>
LM End	<b>3.51</b>	Issue Type +	Ma	Location *	LS

Photo 2 of 2 : SP\_2015\_RD0544\_109\_36\_20150309\_00038.jpg



Looking southwest at overgrown cactus on landside slope.

* Location		** Rating		+ Issue Type	
LS : Land Side	N/A : Not Applicable	A : Acceptable	N : Not Inspected/Rated	Ma : Maintenance Deficiency	
WS : Water Side		M : Minimally Acceptable	C : Corrected	Ob : Design & System Obsolescence	
CR : Crown		U : Unacceptable	A/W : Acceptable but Monitor & Maintain	En : Enforcement	



**Flood Control Project Maintenance  
Levee Inspections**

## Maintenance Issue Types Only, Levee Inspection Report By Mile - Spring 2015

### Reclamation District No. 0544 Upper Roberts Island

Waterway	Bank	Unit Miles	Inspection Start/End	Inspector
Unit No. 02 Old River	Right	4.15	04/28/2015 04/28/2015	Richard Willoughby

LM Start	3.49	Rating **	M	Issue No.	55
LM End	3.52	Issue Type +	Ma	Location *	LS
Category	Earthen Levee			GPS Latitude/Longitude	
				Start	End
Item	Trim / Thin Trees			37.819563 °	37.819542 °
				-121.364307 °	-121.364908 °
DWR ID	DWR_RD0544_02_f_2014_55				
Action/Comments					
Thin trees to allow visibility of the ground and room to flood fight.					

No Photos

LM Start	3.55	Rating **	M	Issue No.	47
LM End	4.14	Issue Type +	Ma	Location *	LS
Category	Earthen Levee			GPS Latitude/Longitude	
				Start	End
Item	Vegetation			37.819443 °	37.822442 °
				-121.365305 °	-121.374608 °
DWR ID	DWR_RD0544_02_s_2012_47				
Action/Comments					
Remove the wild growth other than native grasses from the levee slopes.					

No Photos

LM Start	3.57	Rating **	M	Issue No.	19
LM End	3.80	Issue Type +	Ma	Location *	LS
Category	Earthen Levee			GPS Latitude/Longitude	
				Start	End
Item	Trim / Thin Trees				37.821327 °
					-121.369023 °
DWR ID	DWR_RD0544_02_f_2013_19				
Action/Comments					
Trim trees to at least five feet above ground level.					

No Photos

<b>* Location</b> LS : Land Side    N/A : Not Applicable WS : Water Side CR : Crown		<b>** Rating</b> A : Acceptable                      N : Not Inspected/Rated M : Minimally Acceptable        C : Corrected U : Unacceptable                  A/W : Acceptable but Monitor & Maintain		<b>+ Issue Type</b> Ma : Maintenance Deficiency Ob : Design & System Obsolescence En : Enforcement	
--	--	---	--	---	--

**Flood Control Project Maintenance  
Levee Inspections**

## Maintenance Issue Types Only, Levee Inspection Report By Mile - Spring 2015

### Reclamation District No. 0544 Upper Roberts Island

Waterway	Bank	Unit Miles	Inspection Start/End	Inspector
Unit No. 02 Old River	Right	4.15	04/28/2015 04/28/2015	Richard Willoughby

LM Start	3.58	Rating **	M	Issue No.	48
LM End	4.14	Issue Type +	Ma	Location *	WS
Category	Earthen Levee			GPS Latitude/Longitude	
				Start	End
Item	Vegetation			37.819408 °	37.822442 °
				-121.366005 °	-121.374607 °
DWR ID	DWR_RD0544_02_s _ 2012_48				
Action/Comments					
Remove the wild growth other than native grasses from the levee slopes.					

No Photos

LM Start	3.73	Rating **	M	Issue No.	63
LM End	3.73	Issue Type +	Ma	Location *	LS
Category	Earthen Levee			GPS Latitude/Longitude	
				Start	End
Item	Vegetation			37.820492 °	37.820492 °
				-121.368093 °	-121.368093 °
DWR ID	DWR_RD0544_02_s _ 2015_63				
Action/Comments					
Remove the wild growth other than native grasses from the levee slopes.					
Inspector Comments: Control willows on waterward slope.					

No Photos

LM Start	4.05	Rating **	U	Issue No.	64
LM End	4.05	Issue Type +	Ma	Location *	LS
Category	Earthen Levee			GPS Latitude/Longitude	
				Start	End
Item	Vegetation			37.821620 °	37.821620 °
				-121.373283 °	-121.373283 °
DWR ID	DWR_RD0544_02_s _ 2015_64				
Action/Comments					
Elderberries are blocking visibility and flood fight capability.					

Photo 1 of 1 : SP\_2015\_RD0544\_109\_64\_20150430\_00061.jpg



Looking southwest at dense elderberry bush on landward slope and toe.  
(Spring 2015)

<b>* Location</b> LS : Land Side    N/A : Not Applicable WS : Water Side CR : Crown		<b>** Rating</b> A : Acceptable M : Minimally Acceptable U : Unacceptable N : Not Inspected/Rated C : Corrected A/W : Acceptable but Monitor & Maintain		<b>+ Issue Type</b> Ma : Maintenance Deficiency Ob : Design & System Obsolescence En : Enforcement	
--	--	---	--	---	--

**Flood Control Project Maintenance  
Levee Inspections**

**Maintenance Issue Types Only, Levee Inspection Report By Mile - Spring 2015**

**Reclamation District No. 0544 Upper Roberts Island**

Waterway	Bank	Unit Miles	Inspection Start/End	Inspector
Unit No. 02 Old River	Right	4.15	04/28/2015 04/28/2015	Richard Willoughby

LM Start	4.10	Rating **	U	Issue No.	65
LM End	4.16	Issue Type +	Ma	Location *	LS
Category	Earthen Levee			GPS Latitude/Longitude	
				Start	End
Item	Vegetation			37.821870 °	37.822623 °
				-121.374125 °	-121.374695 °
DWR ID	DWR_RD0544_02_s _ 2015_65				
Action/Comments					
Remove the wild growth other than native grasses from the levee slopes.					

Photo 1 of 1 : SP\_2015\_RD0544\_109\_65\_20150430\_00062.jpg



Looking southwest at dense vegetation on landward slope and toe.  
(Spring 2015)

<b>* Location</b> LS : Land Side    N/A : Not Applicable WS : Water Side CR : Crown		<b>** Rating</b> A : Acceptable                      N : Not Inspected/Rated M : Minimally Acceptable        C : Corrected U : Unacceptable                  A/W : Acceptable but Monitor & Maintain		<b>+ Issue Type</b> Ma : Maintenance Deficiency Ob : Design & System Obsolescence En : Enforcement
--	--	---	--	---