

**Flood Control Project Maintenance
Levee Inspections**

Maintenance Issue Types Only, Levee Inspection Report By Mile - Fall 2024

Reclamation District No. 0524 Middle Roberts Island

Waterway	Bank	Unit Miles	Inspection Start/End	Inspector
Unit No. 01 San Joaquin River	Left	6.20	10/29/2024 10/29/2024	Alberto De Leon

LM Start	0.00	Rating **	A	Issue No.	121
LM End	0.00	Issue Type +	Ma	Location *	N/A
Category	Earthen Levee		GPS Latitude/Longitude		
			Start	End	
Item	Operations & Maintenance Manuals				
DWR ID	DWR_RD0524_01_s_2012_121				
Comment Code					
OM : O&M Manuals					
Inspector Comment					
The RD has a digital copy of the O&M manual.					

No Photos

LM Start	0.00	Rating **	A	Issue No.	123
LM End	0.00	Issue Type +	Ma	Location *	N/A
Category	Earthen Levee		GPS Latitude/Longitude		
			Start	End	
Item	Flood Preparedness & Training				
DWR ID	DWR_RD0524_01_s_2012_123				
Comment Code					
FP : Flood Preparedness & Training					
Inspector Comment					

No Photos

LM Start	0.00	Rating **	A	Issue No.	138
LM End	0.00	Issue Type +	Ma	Location *	N/A
Category	Earthen Levee		GPS Latitude/Longitude		
			Start	End	
Item	Emergency Supplies & Equipment				
DWR ID	DWR_RD0524_01_s_2013_138				
Comment Code					
ES : Emergency Supplies & Equipment					
Inspector Comment					
The LMA has emergency supplies or equipment stored in a shipping container at LM 4.65, (37.890799, -121.32913).					

Photo 1 of 1 : FA_2024_RD0524_107_138_20240910_00022.jpg



View of container with Districts Flood Fight Materials. Spring 2021

* Location	** Rating	+ Issue Type
LS : Land Side WS : Water Side CR : Crown	A : Acceptable M : Minimally Acceptable U : Unacceptable	Ma : Maintenance Deficiency Ob : Design & System Obsolescence En : Enforcement
N/A : Not Applicable	N : Not Inspected/Rated C : Corrected A/W : Acceptable but Monitor & Maintain	

**Flood Control Project Maintenance
Levee Inspections**

Maintenance Issue Types Only, Levee Inspection Report By Mile - Fall 2024

Reclamation District No. 0524 Middle Roberts Island

Waterway	Bank	Unit Miles	Inspection Start/End	Inspector
Unit No. 01 San Joaquin River	Left	6.20	10/29/2024 10/29/2024	Alberto De Leon

LM Start	0.01	Rating **	A/W	Issue No.	107
LM End	0.15	Issue Type +	Ma	Location *	LS
Category	Earthen Levee			GPS Latitude/Longitude	
				Start	End
Item	Animal Control			37.941151°	37.939628°
				-121.346011°	-121.344376°
DWR ID	DWR_RD0524_01_f_2019_107				
Comment Code					
A3 : No rodents visible, but rodent burrows visible; need to backfill and compact or grout burrows.					
Inspector Comment					

No Photos

LM Start	0.32	Rating **	M	Issue No.	113
LM End	0.37	Issue Type +	Ma	Location *	WS
Category	Earthen Levee			GPS Latitude/Longitude	
				Start	End
Item	Animal Control			37.938434°	37.938535°
				-121.341967°	-121.341037°
DWR ID	DWR_RD0524_01_f_2019_113				
Comment Code					
A3 : No rodents visible, but rodent burrows visible; need to backfill and compact or grout burrows.					
Inspector Comment					

No Photos

LM Start	0.44	Rating **	A/W	Issue No.	126
LM End	0.44	Issue Type +	Ma	Location *	LS
Category	Earthen Levee			GPS Latitude/Longitude	
				Start	End
Item	Animal Control			37.938662°	37.938662°
				-121.339723°	-121.339723°
DWR ID	DWR_RD0524_01_f_2019_126				
Comment Code					
A3 : No rodents visible, but rodent burrows visible; need to backfill and compact or grout burrows.					
Inspector Comment					

No Photos

* Location		** Rating		+ Issue Type	
LS : Land Side	N/A : Not Applicable	A : Acceptable	N : Not Inspected/Rated	Ma : Maintenance Deficiency	
WS : Water Side		M : Minimally Acceptable	C : Corrected	Ob : Design & System Obsolescence	
CR : Crown		U : Unacceptable	A/W : Acceptable but Monitor & Maintain	En : Enforcement	

**Flood Control Project Maintenance
Levee Inspections**

Maintenance Issue Types Only, Levee Inspection Report By Mile - Fall 2024

Reclamation District No. 0524 Middle Roberts Island

Waterway	Bank	Unit Miles	Inspection Start/End	Inspector
Unit No. 01 San Joaquin River	Left	6.20	10/29/2024 10/29/2024	Alberto De Leon

LM Start	0.90	Rating **	A/W	Issue No.	328
LM End	0.91	Issue Type +	Ma	Location *	LS
Category	Earthen Levee			GPS Latitude/Longitude	
				Start	End
Item	Vegetation			37.935314°	37.935289°
				-121.333350°	-121.333190°
DWR ID	DWR_RD0524_01_s _ 2021_328				
Comment Code					
V4 : Elderberries are blocking visibility and flood fight capability.					
Inspector Comment					

No Photos

LM Start	0.93	Rating **	M	Issue No.	158
LM End	0.98	Issue Type +	Ma	Location *	LS
Category	Earthen Levee			GPS Latitude/Longitude	
				Start	End
Item	Animal Control			37.935262°	37.935168°
				-121.332745°	-121.331917°
DWR ID	DWR_RD0524_01_s _ 2017_158				
Comment Code					
A3 : No rodents visible, but rodent burrows visible; need to backfill and compact or grout burrows.					
Inspector Comment					

No Photos

* Location LS : Land Side N/A : Not Applicable WS : Water Side CR : Crown		** Rating A : Acceptable M : Minimally Acceptable U : Unacceptable N : Not Inspected/Rated C : Corrected A/W : Acceptable but Monitor & Maintain		+ Issue Type Ma : Maintenance Deficiency Ob : Design & System Obsolescence En : Enforcement
--	--	---	--	---

**Flood Control Project Maintenance
Levee Inspections****Maintenance Issue Types Only, Levee Inspection Report By Mile - Fall 2024****Reclamation District No. 0524 Middle Roberts Island**

Waterway	Bank	Unit Miles	Inspection Start/End	Inspector
Unit No. 01 San Joaquin River	Left	6.20	10/29/2024 10/29/2024	Alberto De Leon

LM Start	0.98	Rating **	M	Issue No.	927
LM End	0.98	Issue Type +	Ma	Location *	
Category	Supplemental			GPS Latitude/Longitude	
				Start	End
Item	DWR UCIP LMA Responsibility			37.935163°	37.935163°
				-121.331887°	-121.331887°
DWR ID	20598				
Comment Code					
Inspector Comment					
DS_ID:20598 FS_ID:83469 EP_NO: N/A Repair Type: Non-Urgent EVAL Issue: Crossing Status: Found UCIP Comments: 04/29/2024 Record remains Non-Urgent. Pipe is a good candidate for internal pipe inspection. (J. Taylor - DWR UCIP)06/23/2020 Record updated from No Action Needed to Non-Urgent. System Feature. Crossing appears abandoned. (D.Sanoski - DWR UCIP) FIELD_STRUCT_DESC: 36-inch drainage pipe of an unknown material through the levee, 15 feet below the crown. Landside (LS) end is not visible. Concrete headwall at outlet on the waterside (WS) slope is visible. Pipe appears to be abandoned in place. Slide gate on the WS removed. [Additional Reference(s): DWR Levee Log, 2004 (HLM 0.99). USACE San Joaquin O&M Manual, Unit 7, April 1964, Revised 29 December 2016, (0.99), listed as 36-inch pipe]. FS Date: 4/29/2024 12:26:34 PM					

LM Start	0.98	Rating **	M	Issue No.	927 (cont)
LM End	0.98	Issue Type +	Ma	Location *	

Photo 1 of 3 : UCIP_FA_2024_83469_122088.jpg



Overview of levee crown looking U/S.

Photo 2 of 3 : UCIP_FA_2024_83469_122089.jpg



WS view: overview of WS slope with the concrete headwall in WS slope.

* Location	** Rating	+ Issue Type
LS : Land Side WS : Water Side CR : Crown	A : Acceptable M : Minimally Acceptable U : Unacceptable	Ma : Maintenance Deficiency Ob : Design & System Obsolescence En : Enforcement
N/A : Not Applicable	N : Not Inspected/Rated C : Corrected A/W : Acceptable but Monitor & Maintain	

**Flood Control Project Maintenance
Levee Inspections****Maintenance Issue Types Only, Levee Inspection Report By Mile - Fall 2024****Reclamation District No. 0524 Middle Roberts Island**

Waterway	Bank	Unit Miles	Inspection Start/End	Inspector
Unit No. 01 San Joaquin River	Left	6.20	10/29/2024 10/29/2024	Alberto De Leon

LM Start	0.98	Rating **	M	Issue No.	927 (cont)
LM End	0.98	Issue Type +	Ma	Location *	
Category	Supplemental			GPS Latitude/Longitude	
				Start	End
Item	DWR UCIP LMA Responsibility			37.935163°	37.935163°
				-121.331887°	-121.331887°
DWR ID	20598				

Photo 3 of 3 : UCIP_FA_2024_83469_122090.jpg



WS view: view of concrete headwall. Pipe not safely accessible.

LM Start	1.01	Rating **	A/W	Issue No.	324
LM End	1.03	Issue Type +	Ma	Location *	LS
Category	Earthen Levee			GPS Latitude/Longitude	
				Start	End
Item	Vegetation			37.935057°	37.934977°
				-121.331356°	-121.331027°
DWR ID	DWR_RD0524_01_s _ 2021_324				
Comment Code					
V4 : Elderberries are blocking visibility and flood fight capability.					
Inspector Comment					

No Photos

* Location LS : Land Side N/A : Not Applicable WS : Water Side CR : Crown	** Rating A : Acceptable M : Minimally Acceptable U : Unacceptable N : Not Inspected/Rated C : Corrected A/W : Acceptable but Monitor & Maintain	+ Issue Type Ma : Maintenance Deficiency Ob : Design & System Obsolescence En : Enforcement
--	---	---

**Flood Control Project Maintenance
Levee Inspections**

Maintenance Issue Types Only, Levee Inspection Report By Mile - Fall 2024

Reclamation District No. 0524 Middle Roberts Island

Waterway	Bank	Unit Miles	Inspection Start/End	Inspector
Unit No. 01 San Joaquin River	Left	6.20	10/29/2024 10/29/2024	Alberto De Leon

LM Start	1.15	Rating **	U	Issue No.	1
LM End	1.23	Issue Type +	Ma	Location *	WS
Category	Supplemental			GPS Latitude/Longitude	
				Start	End
Item	DWR Erosion Survey			37.933347°	37.933347°
				-121.329110°	-121.329110°
DWR ID	RD0524U01RM41.79				
Comment Code					
Inspector Comment					
Site ID: RD0524U01RM41.79					
8/9/2024: From 2010 to present, no significant changes were observed during the annual survey. Minimal vegetation covers the upper levee slope. The lower slope is covered with medium dense vegetation. Riprap is visible in some areas.					
09/07/2010: Vegetation is visible at the water line. There is an exposed pipe discharge partially hanging at the mid-slope, possibly still used for discharging irrigation/runoff water. There is minimal rip rap protection along the bank, and what's left of it is no longer adequately protecting the bank.					
9/29/2009: Site consists of a 400-foot long eroding bank with minimal vegetation and protection; the existing rip rap has sloughed, rendering it useless; note that there is an exposed section of a pipe.					
10/18/2006: There is extensive loss of rip rap on some sections; sewage disposal pond is on the landside of the levee; there is an exposed pipe outlet "hanging" from the upper slope.					

Photo 1 of 1 : SJR2024_RD0524U01RM41.79_1.JPG



8/9/2024: Aerial view of the erosion.

LM Start	1.16	Rating **	M	Issue No.	323
LM End	1.16	Issue Type +	Ma	Location *	LS
Category	Earthen Levee			GPS Latitude/Longitude	
				Start	End
Item	Vegetation			37.933798°	37.933798°
				-121.329313°	-121.329313°
DWR ID	DWR_RD0524_01_s_2021_323				
Comment Code					
V4 : Elderberries are blocking visibility and flood fight capability.					
Inspector Comment					

No Photos

* Location LS : Land Side N/A : Not Applicable WS : Water Side CR : Crown	** Rating A : Acceptable M : Minimally Acceptable U : Unacceptable	N : Not Inspected/Rated C : Corrected A/W : Acceptable but Monitor & Maintain	+ Issue Type Ma : Maintenance Deficiency Ob : Design & System Obsolescence En : Enforcement
--	--	---	---

**Flood Control Project Maintenance
Levee Inspections****Maintenance Issue Types Only, Levee Inspection Report By Mile - Fall 2024****Reclamation District No. 0524 Middle Roberts Island**

Waterway	Bank	Unit Miles	Inspection Start/End	Inspector
Unit No. 01 San Joaquin River	Left	6.20	10/29/2024 10/29/2024	Alberto De Leon

LM Start	1.22	Rating **	M	Issue No.	322
LM End	1.24	Issue Type +	Ma	Location *	LS
Category	Earthen Levee			GPS Latitude/Longitude	
				Start	End
Item	Vegetation			37.933029°	37.932760°
				-121.328901°	-121.328780°
DWR ID	DWR_RD0524_01_s_2021_322				
Comment Code					
V4 : Elderberries are blocking visibility and flood fight capability.					
Inspector Comment					

No Photos

LM Start	1.28	Rating **	M	Issue No.	104
LM End	1.28	Issue Type +	Ma	Location *	LS
Category	Earthen Levee			GPS Latitude/Longitude	
				Start	End
Item	Trim / Thin Trees			37.932135°	37.932135°
				-121.328478°	-121.328478°
DWR ID	DWR_RD0524_01_f_2024_104				
Comment Code					
T1 : Trim and thin trees to at least five feet above ground level to allow visibility of the ground and room to flood fight.					
Inspector Comment					

No Photos

LM Start	1.29	Rating **	U	Issue No.	50
LM End	1.29	Issue Type +	Ma	Location *	LS
Category	Earthen Levee			GPS Latitude/Longitude	
				Start	End
Item	Animal Control			37.932091°	37.932091°
				-121.328432°	-121.328432°
DWR ID	DWR_RD0524_01_s_2024_50				
Comment Code					
A3 : No rodents visible, but rodent burrows visible; need to backfill and compact or grout burrows.					
Inspector Comment					

Photo 1 of 1 : FA_2024_RD0524_107_50_20240910_00017.jpg



View of large animal burrow along the landside slope. Spring 2024

* Location	** Rating	+ Issue Type
LS : Land Side WS : Water Side CR : Crown	A : Acceptable M : Minimally Acceptable U : Unacceptable	Ma : Maintenance Deficiency Ob : Design & System Obsolescence En : Enforcement
N : Not Inspected/Rated C : Corrected A/W : Acceptable but Monitor & Maintain		

**Flood Control Project Maintenance
Levee Inspections**

Maintenance Issue Types Only, Levee Inspection Report By Mile - Fall 2024

Reclamation District No. 0524 Middle Roberts Island

Waterway	Bank	Unit Miles	Inspection Start/End	Inspector
Unit No. 01 San Joaquin River	Left	6.20	10/29/2024 10/29/2024	Alberto De Leon

LM Start	1.56	Rating **	M	Issue No.	99
LM End	1.61	Issue Type +	Ma	Location *	LS
Category	Earthen Levee			GPS Latitude/Longitude	
				Start	End
Item	Vegetation			37.928134°	37.927628°
				-121.328173°	-121.327708°
DWR ID	DWR_RD0524_01_f_2024_99				
Comment Code					
V1 : Control annual grass and weeds on the levee slopes and easements.					
Inspector Comment					

No Photos

LM Start	1.58	Rating **	M	Issue No.	103
LM End	1.61	Issue Type +	Ma	Location *	WS
Category	Earthen Levee			GPS Latitude/Longitude	
				Start	End
Item	Vegetation			37.927949°	37.927628°
				-121.328051°	-121.327708°
DWR ID	DWR_RD0524_01_f_2024_103				
Comment Code					
V1 : Control annual grass and weeds on the levee slopes and easements.					
Inspector Comment					

No Photos

LM Start	1.60	Rating **	M	Issue No.	131
LM End	1.60	Issue Type +	Ma	Location *	LS
Category	Earthen Levee			GPS Latitude/Longitude	
				Start	End
Item	Animal Control			37.927698°	37.927698°
				-121.327806°	-121.327806°
DWR ID	DWR_RD0524_01_s_2022_131				
Comment Code					
A3 : No rodents visible, but rodent burrows visible; need to backfill and compact or grout burrows.					
Inspector Comment					

No Photos

* Location LS : Land Side N/A : Not Applicable WS : Water Side CR : Crown		** Rating A : Acceptable M : Minimally Acceptable U : Unacceptable N : Not Inspected/Rated C : Corrected A/W : Acceptable but Monitor & Maintain		+ Issue Type Ma : Maintenance Deficiency Ob : Design & System Obsolescence En : Enforcement
--	--	---	--	---

**Flood Control Project Maintenance
Levee Inspections**

Maintenance Issue Types Only, Levee Inspection Report By Mile - Fall 2024

Reclamation District No. 0524 Middle Roberts Island

Waterway	Bank	Unit Miles	Inspection Start/End	Inspector
Unit No. 01 San Joaquin River	Left	6.20	10/29/2024 10/29/2024	Alberto De Leon

LM Start	1.67	Rating **	M	Issue No.	97
LM End	1.68	Issue Type +	Ma	Location *	LS
Category	Earthen Levee			GPS Latitude/Longitude	
				Start	End
Item	Vegetation			37.927049°	37.926909°
				-121.326893°	-121.326718°
DWR ID	DWR_RD0524_01_f_2024_97				
Comment Code					
V2 : Remove the wild growth and woody vegetation other than native grasses from the levee slopes.					
Inspector Comment					

No Photos

LM Start	1.74	Rating **	M	Issue No.	96
LM End	1.76	Issue Type +	Ma	Location *	LS
Category	Earthen Levee			GPS Latitude/Longitude	
				Start	End
Item	Vegetation			37.926266°	37.925990°
				-121.326082°	-121.325811°
DWR ID	DWR_RD0524_01_f_2024_96				
Comment Code					
V2 : Remove the wild growth and woody vegetation other than native grasses from the levee slopes.					
Inspector Comment					

No Photos

LM Start	1.94	Rating **	C	Issue No.	46
LM End	1.94	Issue Type +	Ma	Location *	WS
Category	Earthen Levee			GPS Latitude/Longitude	
				Start	End
Item	Erosion / Bank Caving			37.923780°	37.923780°
				-121.324257°	-121.324257°
DWR ID	DWR_RD0524_01_s_2024_46				
Comment Code					
E2 : Schedule repair of erosion site prior to the next inspection.					
Inspector Comment					

No Photos

* Location LS : Land Side N/A : Not Applicable WS : Water Side CR : Crown		** Rating A : Acceptable N : Not Inspected/Rated M : Minimally Acceptable C : Corrected U : Unacceptable A/W : Acceptable but Monitor & Maintain		+ Issue Type Ma : Maintenance Deficiency Ob : Design & System Obsolescence En : Enforcement
--	--	---	--	---

**Flood Control Project Maintenance
Levee Inspections**

Maintenance Issue Types Only, Levee Inspection Report By Mile - Fall 2024

Reclamation District No. 0524 Middle Roberts Island

Waterway	Bank	Unit Miles	Inspection Start/End	Inspector
Unit No. 01 San Joaquin River	Left	6.20	10/29/2024 10/29/2024	Alberto De Leon

LM Start	1.95	Rating **	M	Issue No.	94
LM End	1.95	Issue Type +	Ma	Location *	LS
Category	Earthen Levee			GPS Latitude/Longitude	
				Start	End
Item	Trim / Thin Trees			37.923649°	37.923649°
				-121.324209°	-121.324209°
DWR ID	DWR_RD0524_01_f_2024_94				
Comment Code					
T1 : Trim and thin trees to at least five feet above ground level to allow visibility of the ground and room to flood fight.					
Inspector Comment					

No Photos

LM Start	1.99	Rating **	M	Issue No.	93
LM End	2.04	Issue Type +	Ma	Location *	WS
Category	Earthen Levee			GPS Latitude/Longitude	
				Start	End
Item	Vegetation			37.923014°	37.922482°
				-121.323973°	-121.323522°
DWR ID	DWR_RD0524_01_f_2024_93				
Comment Code					
V1 : Control annual grass and weeds on the levee slopes and easements.					
Inspector Comment					

No Photos

LM Start	1.99	Rating **	M	Issue No.	92
LM End	2.04	Issue Type +	Ma	Location *	LS
Category	Earthen Levee			GPS Latitude/Longitude	
				Start	End
Item	Trim / Thin Trees			37.923003°	37.922454°
				-121.323978°	-121.323539°
DWR ID	DWR_RD0524_01_f_2024_92				
Comment Code					
T1 : Trim and thin trees to at least five feet above ground level to allow visibility of the ground and room to flood fight.					
Inspector Comment					

No Photos

* Location LS : Land Side N/A : Not Applicable WS : Water Side CR : Crown		** Rating A : Acceptable N : Not Inspected/Rated M : Minimally Acceptable C : Corrected U : Unacceptable A/W : Acceptable but Monitor & Maintain		+ Issue Type Ma : Maintenance Deficiency Ob : Design & System Obsolescence En : Enforcement
--	--	---	--	---

**Flood Control Project Maintenance
Levee Inspections**

Maintenance Issue Types Only, Levee Inspection Report By Mile - Fall 2024

Reclamation District No. 0524 Middle Roberts Island

Waterway	Bank	Unit Miles	Inspection Start/End	Inspector
Unit No. 01 San Joaquin River	Left	6.20	10/29/2024 10/29/2024	Alberto De Leon

LM Start	2.00	Rating **	M	Issue No.	316
LM End	2.00	Issue Type +	Ma	Location *	LS
Category	Earthen Levee			GPS Latitude/Longitude	
				Start	End
Item	Vegetation			37.922873°	37.922873°
				-121.323830°	-121.323830°
DWR ID	DWR_RD0524_01_s_2021_316				
Comment Code					
V4 : Elderberries are blocking visibility and flood fight capability.					
Inspector Comment					

No Photos

LM Start	2.06	Rating **	U	Issue No.	315
LM End	2.06	Issue Type +	Ma	Location *	WS
Category	Earthen Levee			GPS Latitude/Longitude	
				Start	End
Item	Vegetation			37.922177°	37.922177°
				-121.323221°	-121.323221°
DWR ID	DWR_RD0524_01_s_2021_315				
Comment Code					
V4 : Elderberries are blocking visibility and flood fight capability.					
Inspector Comment					

No Photos

LM Start	2.09	Rating **	M	Issue No.	88
LM End	2.24	Issue Type +	Ma	Location *	LS
Category	Earthen Levee			GPS Latitude/Longitude	
				Start	End
Item	Vegetation			37.921931°	37.920570°
				-121.322957°	-121.320744°
DWR ID	DWR_RD0524_01_f_2024_88				
Comment Code					
V1 : Control annual grass and weeds on the levee slopes and easements.					
Inspector Comment					

No Photos

* Location LS : Land Side N/A : Not Applicable WS : Water Side CR : Crown		** Rating A : Acceptable N : Not Inspected/Rated M : Minimally Acceptable C : Corrected U : Unacceptable A/W : Acceptable but Monitor & Maintain		+ Issue Type Ma : Maintenance Deficiency Ob : Design & System Obsolescence En : Enforcement
--	--	---	--	---

**Flood Control Project Maintenance
Levee Inspections****Maintenance Issue Types Only, Levee Inspection Report By Mile - Fall 2024****Reclamation District No. 0524 Middle Roberts Island**

Waterway	Bank	Unit Miles	Inspection Start/End	Inspector
Unit No. 01 San Joaquin River	Left	6.20	10/29/2024 10/29/2024	Alberto De Leon

LM Start	2.09	Rating **	U	Issue No.	250
LM End	2.09	Issue Type +	Ma	Location *	WS
Category	Earthen Levee			GPS Latitude/Longitude	
				Start	End
Item	Vegetation			37.921887°	37.921887°
				-121.322846°	-121.322846°
DWR ID	DWR_RD0524_01_s _ 2021_250				
Comment Code					
V4 : Elderberries are blocking visibility and flood fight capability.					
Inspector Comment					

No Photos

LM Start	2.10	Rating **	M	Issue No.	91
LM End	2.20	Issue Type +	Ma	Location *	WS
Category	Earthen Levee			GPS Latitude/Longitude	
				Start	End
Item	Vegetation			37.921778°	37.920865°
				-121.322738°	-121.321275°
DWR ID	DWR_RD0524_01_f _ 2024_91				
Comment Code					
V1 : Control annual grass and weeds on the levee slopes and easements.					
Inspector Comment					

No Photos

LM Start	2.27	Rating **	U	Issue No.	32
LM End	2.29	Issue Type +	Ma	Location *	LS
Category	Earthen Levee			GPS Latitude/Longitude	
				Start	End
Item	Vegetation			37.920372°	37.920167°
				-121.320230°	-121.319890°
DWR ID	DWR_RD0524_01_s _ 2012_32				
Comment Code					
V4 : Elderberries are blocking visibility and flood fight capability.					
Inspector Comment					

No Photos

* Location LS : Land Side N/A : Not Applicable WS : Water Side CR : Crown	** Rating A : Acceptable M : Minimally Acceptable U : Unacceptable	+ Issue Type Ma : Maintenance Deficiency Ob : Design & System Obsolescence En : Enforcement
--	--	---

N : Not Inspected/Rated
C : Corrected
A/W : Acceptable but Monitor & Maintain

**Flood Control Project Maintenance
Levee Inspections**

Maintenance Issue Types Only, Levee Inspection Report By Mile - Fall 2024

Reclamation District No. 0524 Middle Roberts Island

Waterway	Bank	Unit Miles	Inspection Start/End	Inspector
Unit No. 01 San Joaquin River	Left	6.20	10/29/2024 10/29/2024	Alberto De Leon

LM Start	2.29	Rating **	A/W	Issue No.	256
LM End	2.29	Issue Type +	Ma	Location *	WS
Category	Earthen Levee			GPS Latitude/Longitude	
				Start	End
Item	Vegetation			37.920223°	37.920223°
				-121.319986°	-121.319986°
DWR ID	DWR_RD0524_01_s _ 2020_256				
Comment Code					
V4 : Elderberries are blocking visibility and flood fight capability.					
Inspector Comment					

No Photos

LM Start	2.33	Rating **	A/W	Issue No.	133
LM End	2.33	Issue Type +	Ma	Location *	LS
Category	Earthen Levee			GPS Latitude/Longitude	
				Start	End
Item	Animal Control			37.919743°	37.919743°
				-121.319625°	-121.319625°
DWR ID	DWR_RD0524_01_s _ 2019_133				
Comment Code					
A3 : No rodents visible, but rodent burrows visible; need to backfill and compact or grout burrows.					
Inspector Comment					
No rodents present but continue to monitor for future activity.					

No Photos

LM Start	2.34	Rating **	M	Issue No.	87
LM End	2.45	Issue Type +	Ma	Location *	WS
Category	Earthen Levee			GPS Latitude/Longitude	
				Start	End
Item	Vegetation			37.919552°	37.918471°
				-121.319637°	-121.321095°
DWR ID	DWR_RD0524_01_f _ 2024_87				
Comment Code					
V1 : Control annual grass and weeds on the levee slopes and easements.					
Inspector Comment					

No Photos

* Location LS : Land Side N/A : Not Applicable WS : Water Side CR : Crown		** Rating A : Acceptable N : Not Inspected/Rated M : Minimally Acceptable C : Corrected U : Unacceptable A/W : Acceptable but Monitor & Maintain		+ Issue Type Ma : Maintenance Deficiency Ob : Design & System Obsolescence En : Enforcement
--	--	---	--	---

**Flood Control Project Maintenance
Levee Inspections**

Maintenance Issue Types Only, Levee Inspection Report By Mile - Fall 2024

Reclamation District No. 0524 Middle Roberts Island

Waterway	Bank	Unit Miles	Inspection Start/End	Inspector
Unit No. 01 San Joaquin River	Left	6.20	10/29/2024 10/29/2024	Alberto De Leon

LM Start	2.34	Rating **	M	Issue No.	86
LM End	2.45	Issue Type +	Ma	Location *	LS
Category	Earthen Levee			GPS Latitude/Longitude	
				Start	End
Item	Vegetation			37.919548°	37.918476°
				-121.319633°	-121.321100°
DWR ID	DWR_RD0524_01_f_2024_86				
Comment Code					
V1 : Control annual grass and weeds on the levee slopes and easements.					
Inspector Comment					

No Photos

LM Start	2.36	Rating **	M	Issue No.	252
LM End	2.36	Issue Type +	Ma	Location *	LS
Category	Earthen Levee			GPS Latitude/Longitude	
				Start	End
Item	Vegetation			37.919244°	37.919244°
				-121.319767°	-121.319767°
DWR ID	DWR_RD0524_01_s_2020_252				
Comment Code					
V4 : Elderberries are blocking visibility and flood fight capability.					
Inspector Comment					

No Photos

LM Start	2.40	Rating **	U	Issue No.	37
LM End	2.44	Issue Type +	Ma	Location *	LS
Category	Earthen Levee			GPS Latitude/Longitude	
				Start	End
Item	Vegetation			37.918867°	37.918568°
				-121.320296°	-121.320875°
DWR ID	DWR_RD0524_01_s_2012_37				
Comment Code					
V4 : Elderberries are blocking visibility and flood fight capability.					
Inspector Comment					

No Photos

* Location LS : Land Side N/A : Not Applicable WS : Water Side CR : Crown	** Rating A : Acceptable M : Minimally Acceptable U : Unacceptable	N : Not Inspected/Rated C : Corrected A/W : Acceptable but Monitor & Maintain	+ Issue Type Ma : Maintenance Deficiency Ob : Design & System Obsolescence En : Enforcement
--	--	---	---

**Flood Control Project Maintenance
Levee Inspections**

Maintenance Issue Types Only, Levee Inspection Report By Mile - Fall 2024

Reclamation District No. 0524 Middle Roberts Island

Waterway	Bank	Unit Miles	Inspection Start/End	Inspector
Unit No. 01 San Joaquin River	Left	6.20	10/29/2024 10/29/2024	Alberto De Leon

LM Start	2.48	Rating **	U	Issue No.	249
LM End	2.48	Issue Type +	Ma	Location *	WS
Category	Earthen Levee			GPS Latitude/Longitude	
				Start	End
Item	Vegetation			37.918382°	37.918382°
				-121.321475°	-121.321475°
DWR ID	DWR_RD0524_01_f_2017_249				
Comment Code					
V4 : Elderberries are blocking visibility and flood fight capability.					
Inspector Comment					

No Photos

LM Start	2.50	Rating **	U	Issue No.	169
LM End	2.50	Issue Type +	Ma	Location *	LS
Category	Earthen Levee			GPS Latitude/Longitude	
				Start	End
Item	Vegetation			37.918264°	37.918264°
				-121.321860°	-121.321860°
DWR ID	DWR_RD0524_01_f_2021_169				
Comment Code					
V4 : Elderberries are blocking visibility and flood fight capability.					
Inspector Comment					

No Photos

LM Start	2.50	Rating **	U	Issue No.	38
LM End	2.50	Issue Type +	Ma	Location *	WS
Category	Earthen Levee			GPS Latitude/Longitude	
				Start	End
Item	Vegetation			37.918287°	37.918287°
				-121.321980°	-121.321980°
DWR ID	DWR_RD0524_01_s_2012_38				
Comment Code					
V4 : Elderberries are blocking visibility and flood fight capability.					
Inspector Comment					

No Photos

* Location LS : Land Side N/A : Not Applicable WS : Water Side CR : Crown		** Rating A : Acceptable N : Not Inspected/Rated M : Minimally Acceptable C : Corrected U : Unacceptable A/W : Acceptable but Monitor & Maintain		+ Issue Type Ma : Maintenance Deficiency Ob : Design & System Obsolescence En : Enforcement
--	--	---	--	---

**Flood Control Project Maintenance
Levee Inspections**

Maintenance Issue Types Only, Levee Inspection Report By Mile - Fall 2024

Reclamation District No. 0524 Middle Roberts Island

Waterway	Bank	Unit Miles	Inspection Start/End	Inspector
Unit No. 01 San Joaquin River	Left	6.20	10/29/2024 10/29/2024	Alberto De Leon

LM Start	2.53	Rating **	U	Issue No.	40
LM End	2.58	Issue Type +	Ma	Location *	LS
Category	Earthen Levee			GPS Latitude/Longitude	
				Start	End
Item	Vegetation			37.918022°	37.917373°
				-121.322445°	-121.322785°
DWR ID	DWR_RD0524_01_s_2012_40				
Comment Code					
V4 : Elderberries are blocking visibility and flood fight capability.					
Inspector Comment					

No Photos

LM Start	2.59	Rating **	M	Issue No.	85
LM End	2.63	Issue Type +	Ma	Location *	LS
Category	Earthen Levee			GPS Latitude/Longitude	
				Start	End
Item	Vegetation			37.917265°	37.916884°
				-121.322712°	-121.322245°
DWR ID	DWR_RD0524_01_f_2024_85				
Comment Code					
V1 : Control annual grass and weeds on the levee slopes and easements.					
Inspector Comment					

No Photos

LM Start	2.64	Rating **	U	Issue No.	43
LM End	2.64	Issue Type +	Ma	Location *	LS
Category	Earthen Levee			GPS Latitude/Longitude	
				Start	End
Item	Vegetation			37.916780°	37.916780°
				-121.322095°	-121.322095°
DWR ID	DWR_RD0524_01_s_2012_43				
Comment Code					
V4 : Elderberries are blocking visibility and flood fight capability.					
Inspector Comment					

No Photos

* Location LS : Land Side N/A : Not Applicable WS : Water Side CR : Crown		** Rating A : Acceptable N : Not Inspected/Rated M : Minimally Acceptable C : Corrected U : Unacceptable A/W : Acceptable but Monitor & Maintain		+ Issue Type Ma : Maintenance Deficiency Ob : Design & System Obsolescence En : Enforcement
--	--	---	--	---

**Flood Control Project Maintenance
Levee Inspections**

Maintenance Issue Types Only, Levee Inspection Report By Mile - Fall 2024

Reclamation District No. 0524 Middle Roberts Island

Waterway	Bank	Unit Miles	Inspection Start/End	Inspector
Unit No. 01 San Joaquin River	Left	6.20	10/29/2024 10/29/2024	Alberto De Leon

LM Start	2.69	Rating **	M	Issue No.	83
LM End	2.72	Issue Type +	Ma	Location *	WS
Category	Earthen Levee			GPS Latitude/Longitude	
				Start	End
Item	Vegetation			37.916160°	37.915813°
				-121.322108°	-121.322441°
DWR ID	DWR_RD0524_01_f_2024_83				
Comment Code					
V1 : Control annual grass and weeds on the levee slopes and easements.					
Inspector Comment					

No Photos

LM Start	2.69	Rating **	M	Issue No.	84
LM End	2.69	Issue Type +	Ma	Location *	LS
Category	Earthen Levee			GPS Latitude/Longitude	
				Start	End
Item	Trim / Thin Trees			37.916095°	37.916095°
				-121.322162°	-121.322162°
DWR ID	DWR_RD0524_01_f_2024_84				
Comment Code					
T1 : Trim and thin trees to at least five feet above ground level to allow visibility of the ground and room to flood fight.					
Inspector Comment					

No Photos

LM Start	2.71	Rating **	M	Issue No.	82
LM End	2.72	Issue Type +	Ma	Location *	LS
Category	Earthen Levee			GPS Latitude/Longitude	
				Start	End
Item	Trim / Thin Trees			37.915909°	37.915712°
				-121.322341°	-121.322483°
DWR ID	DWR_RD0524_01_f_2024_82				
Comment Code					
T1 : Trim and thin trees to at least five feet above ground level to allow visibility of the ground and room to flood fight.					
Inspector Comment					

No Photos

* Location LS : Land Side N/A : Not Applicable WS : Water Side CR : Crown		** Rating A : Acceptable N : Not Inspected/Rated M : Minimally Acceptable C : Corrected U : Unacceptable A/W : Acceptable but Monitor & Maintain		+ Issue Type Ma : Maintenance Deficiency Ob : Design & System Obsolescence En : Enforcement
--	--	---	--	---

**Flood Control Project Maintenance
Levee Inspections**

Maintenance Issue Types Only, Levee Inspection Report By Mile - Fall 2024

Reclamation District No. 0524 Middle Roberts Island

Waterway	Bank	Unit Miles	Inspection Start/End	Inspector
Unit No. 01 San Joaquin River	Left	6.20	10/29/2024 10/29/2024	Alberto De Leon

LM Start	2.77	Rating **	M	Issue No.	25
LM End	3.09	Issue Type +	Ma	Location *	LS
Category	Earthen Levee			GPS Latitude/Longitude	
				Start	End
Item	Vegetation			37.915202°	37.911155°
				-121.322912°	-121.324984°
DWR ID	DWR_RD0524_01_f_2023_25				
Comment Code					
V2 : Remove the wild growth and woody vegetation other than native grasses from the levee slopes.					
Inspector Comment					

No Photos

LM Start	2.77	Rating **	M	Issue No.	79
LM End	2.89	Issue Type +	Ma	Location *	WS
Category	Earthen Levee			GPS Latitude/Longitude	
				Start	End
Item	Vegetation			37.915200°	37.913995°
				-121.322922°	-121.324362°
DWR ID	DWR_RD0524_01_f_2024_79				
Comment Code					
V1 : Control annual grass and weeds on the levee slopes and easements.					
Inspector Comment					

No Photos

LM Start	2.77	Rating **	M	Issue No.	81
LM End	2.83	Issue Type +	Ma	Location *	LS
Category	Earthen Levee			GPS Latitude/Longitude	
				Start	End
Item	Trim / Thin Trees			37.915196°	37.914771°
				-121.322937°	-121.323871°
DWR ID	DWR_RD0524_01_f_2024_81				
Comment Code					
T1 : Trim and thin trees to at least five feet above ground level to allow visibility of the ground and room to flood fight.					
Inspector Comment					

No Photos

* Location LS : Land Side N/A : Not Applicable WS : Water Side CR : Crown		** Rating A : Acceptable N : Not Inspected/Rated M : Minimally Acceptable C : Corrected U : Unacceptable A/W : Acceptable but Monitor & Maintain		+ Issue Type Ma : Maintenance Deficiency Ob : Design & System Obsolescence En : Enforcement
--	--	---	--	---

**Flood Control Project Maintenance
Levee Inspections**

Maintenance Issue Types Only, Levee Inspection Report By Mile - Fall 2024

Reclamation District No. 0524 Middle Roberts Island

Waterway	Bank	Unit Miles	Inspection Start/End	Inspector
Unit No. 01 San Joaquin River	Left	6.20	10/29/2024 10/29/2024	Alberto De Leon

LM Start	2.80	Rating **	A/W	Issue No.	48
LM End	2.80	Issue Type +	Ma	Location *	LS
Category	Earthen Levee			GPS Latitude/Longitude	
				Start	End
Item	Vegetation			37.915022°	37.915022°
				-121.323443°	-121.323443°
DWR ID	DWR_RD0524_01_s_2012_48				
Comment Code					
V4 : Elderberries are blocking visibility and flood fight capability.					
Inspector Comment					

No Photos

LM Start	2.85	Rating **	M	Issue No.	80
LM End	2.87	Issue Type +	Ma	Location *	LS
Category	Earthen Levee			GPS Latitude/Longitude	
				Start	End
Item	Trim / Thin Trees			37.914571°	37.914224°
				-121.324095°	-121.324316°
DWR ID	DWR_RD0524_01_f_2024_80				
Comment Code					
T1 : Trim and thin trees to at least five feet above ground level to allow visibility of the ground and room to flood fight.					
Inspector Comment					

No Photos

LM Start	2.86	Rating **	U	Issue No.	49
LM End	2.86	Issue Type +	Ma	Location *	LS
Category	Earthen Levee			GPS Latitude/Longitude	
				Start	End
Item	Vegetation			37.914427°	37.914427°
				-121.324198°	-121.324198°
DWR ID	DWR_RD0524_01_s_2012_49				
Comment Code					
V4 : Elderberries are blocking visibility and flood fight capability.					
Inspector Comment					

No Photos

* Location LS : Land Side N/A : Not Applicable WS : Water Side CR : Crown		** Rating A : Acceptable N : Not Inspected/Rated M : Minimally Acceptable C : Corrected U : Unacceptable A/W : Acceptable but Monitor & Maintain		+ Issue Type Ma : Maintenance Deficiency Ob : Design & System Obsolescence En : Enforcement
--	--	---	--	---

**Flood Control Project Maintenance
Levee Inspections****Maintenance Issue Types Only, Levee Inspection Report By Mile - Fall 2024****Reclamation District No. 0524 Middle Roberts Island**

Waterway	Bank	Unit Miles	Inspection Start/End	Inspector
Unit No. 01 San Joaquin River	Left	6.20	10/29/2024 10/29/2024	Alberto De Leon

LM Start	2.91	Rating **	M	Issue No.	78
LM End	2.93	Issue Type +	Ma	Location *	LS
Category	Earthen Levee			GPS Latitude/Longitude	
				Start	End
Item	Trim / Thin Trees			37.913645°	37.913358°
				-121.324415°	-121.324438°
DWR ID	DWR_RD0524_01_f_2024_78				
Comment Code					
T1 : Trim and thin trees to at least five feet above ground level to allow visibility of the ground and room to flood fight.					
Inspector Comment					

No Photos

LM Start	2.94	Rating **	U	Issue No.	925
LM End	3.28	Issue Type +	Ma	Location *	LS
Category	Earthen Levee			GPS Latitude/Longitude	
				Start	End
Item	Animal Control			37.913206°	37.908410°
				-121.324533°	-121.325438°
DWR ID	DWR_RD0524_01_s_2012_925				
Comment Code					
A1 : Exterminate rodents and backfill and compact or grout burrows.					
Inspector Comment					
There are several rodent holes on the levee slope.					

Photo 1 of 1 : FA_2024_RD0524_107_925_20240910_00035.jpg



View of multiple animal burrows along the landside slope. Spring 2024

* Location LS : Land Side N/A : Not Applicable WS : Water Side CR : Crown	** Rating A : Acceptable M : Minimally Acceptable U : Unacceptable N : Not Inspected/Rated C : Corrected A/W : Acceptable but Monitor & Maintain	+ Issue Type Ma : Maintenance Deficiency Ob : Design & System Obsolescence En : Enforcement
--	---	---

**Flood Control Project Maintenance
Levee Inspections****Maintenance Issue Types Only, Levee Inspection Report By Mile - Fall 2024****Reclamation District No. 0524 Middle Roberts Island**

Waterway	Bank	Unit Miles	Inspection Start/End	Inspector
Unit No. 01 San Joaquin River	Left	6.20	10/29/2024 10/29/2024	Alberto De Leon

LM Start	2.95	Rating **	A	Issue No.	930
LM End	2.95	Issue Type +	Ma	Location *	
Category	Supplemental			GPS Latitude/Longitude	
				Start	End
Item	DWR UCIP LMA Responsibility			37.913101°	37.913101°
				-121.324500°	-121.324500°
DWR ID	20617				
Comment Code					
Inspector Comment					
DS_ID:20617 FS_ID:83695 EP_NO: N/A Repair Type: No Action Needed EVAL Issue: Crossing Status: Indicator Found UCIP Comments: 04/29/2024 Record remains No Action Needed. No issues observed during inspection. (J. Taylor - DWR UCIP)06/24/2020 Record remains No Action Needed. No issues observed during inspection. System Feature. (D.Sanoski - DWR UCIP) 08/20/2013 Review crossing with inspector as records indicate that this should be an 8-inch pipe through levee 3.0 feet below crown, pump on landward side. Siphon breaker on the waterward slope. Originally included in the 1964 O&M manual. (W.Wylie - DWR UCIP) FIELD_STRUCT_DESC: 16-inch wrapped steel storm discharge pipe through the levee, 1.5 feet below the crown. Pump on steel pile structure at drainage canal off landside (LS) toe. [Additional Reference(s): DWR Levee Log, 2004 (HLM 2.99, listed as 8-inch pipe). USACE San Joaquin O&M Manual, Unit 7, April 1964, Revised 29 December 2016, (2.99), listed as 9-inch pipe]. FS Date: 4/29/2024 11:15:32 AM					

LM Start	2.95	Rating **	A	Issue No.	930 (cont)
LM End	2.95	Issue Type +	Ma	Location *	

Photo 1 of 3 : UCIP_FA_2024_83695_122789.jpg



Overview of levee crown.

Photo 2 of 3 : UCIP_FA_2024_83695_122790.jpg



WS view: overview of WS slope and channel with pipe visible on slope and entering near WS shoulder.

* Location	** Rating	+ Issue Type
LS: Land Side WS: Water Side CR: Crown	A: Acceptable M: Minimally Acceptable U: Unacceptable	Ma: Maintenance Deficiency Ob: Design & System Obsolescence En: Enforcement
N/A: Not Applicable	N: Not Inspected/Rated C: Corrected A/W: Acceptable but Monitor & Maintain	

**Flood Control Project Maintenance
Levee Inspections****Maintenance Issue Types Only, Levee Inspection Report By Mile - Fall 2024****Reclamation District No. 0524 Middle Roberts Island**

Waterway	Bank	Unit Miles	Inspection Start/End	Inspector
Unit No. 01 San Joaquin River	Left	6.20	10/29/2024 10/29/2024	Alberto De Leon

LM Start	2.95	Rating **	A	Issue No.	930 (cont)
LM End	2.95	Issue Type +	Ma	Location *	
Category	Supplemental			GPS Latitude/Longitude	
				Start	End
Item	DWR UCIP LMA Responsibility			37.913101°	37.913101°
				-121.324500°	-121.324500°
DWR ID	20617				

Photo 3 of 3 : UCIP_FA_2024_83695_122791.jpg



LS view: overview of LS slope and toe with pipe visible on slope and entering near LS shoulder.

LM Start	3.14	Rating **	U	Issue No.	45
LM End	3.22	Issue Type +	Ma	Location *	WS
Category	Earthen Levee			GPS Latitude/Longitude	
				Start	End
Item	Animal Control			37.910529°	37.909325°
				-121.325415°	-121.325411°
DWR ID	DWR_RD0524_01_s_2024_45				
Comment Code					
A3 : No rodents visible, but rodent burrows visible; need to backfill and compact or grout burrows.					
Inspector Comment					

No Photos

LM Start	3.31	Rating **	M	Issue No.	77
LM End	3.38	Issue Type +	Ma	Location *	LS
Category	Earthen Levee			GPS Latitude/Longitude	
				Start	End
Item	Trim / Thin Trees			37.908016°	37.907018°
				-121.325419°	-121.325353°
DWR ID	DWR_RD0524_01_f_2024_77				
Comment Code					
T1 : Trim and thin trees to at least five feet above ground level to allow visibility of the ground and room to flood fight.					
Inspector Comment					

No Photos

* Location LS : Land Side N/A : Not Applicable WS : Water Side CR : Crown		** Rating A : Acceptable M : Minimally Acceptable U : Unacceptable N : Not Inspected/Rated C : Corrected A/W : Acceptable but Monitor & Maintain		+ Issue Type Ma : Maintenance Deficiency Ob : Design & System Obsolescence En : Enforcement	
--	--	---	--	---	--

**Flood Control Project Maintenance
Levee Inspections****Maintenance Issue Types Only, Levee Inspection Report By Mile - Fall 2024****Reclamation District No. 0524 Middle Roberts Island**

Waterway	Bank	Unit Miles	Inspection Start/End	Inspector
Unit No. 01 San Joaquin River	Left	6.20	10/29/2024 10/29/2024	Alberto De Leon

LM Start	3.34	Rating **	M	Issue No.	215							
LM End	3.34	Issue Type +	Ma	Location *	LS							
Category	Earthen Levee		GPS Latitude/Longitude									
			Start	End								
Item	Animal Control		37.907563°	37.907563°								
			-121.325439°	-121.325439°								
DWR ID	DWR_RD0524_01_s_2020_215											
Comment Code												
A3 : No rodents visible, but rodent burrows visible; need to backfill and compact or grout burrows.												
Inspector Comment												

No Photos

LM Start	3.39	Rating **	M	Issue No.	153							
LM End	3.39	Issue Type +	Ma	Location *	LS							
Category	Earthen Levee		GPS Latitude/Longitude									
			Start	End								
Item	Animal Control		37.906935°	37.906935°								
			-121.325310°	-121.325310°								
DWR ID	DWR_RD0524_01_f_2020_153											
Comment Code												
A3 : No rodents visible, but rodent burrows visible; need to backfill and compact or grout burrows.												
Inspector Comment												

No Photos

LM Start	3.40	Rating **	M	Issue No.	76							
LM End	3.43	Issue Type +	Ma	Location *	WS							
Category	Earthen Levee		GPS Latitude/Longitude									
			Start	End								
Item	Vegetation		37.906737°	37.906400°								
			-121.325289°	-121.324997°								
DWR ID	DWR_RD0524_01_f_2024_76											
Comment Code												
V1 : Control annual grass and weeds on the levee slopes and easements.												
Inspector Comment												

No Photos

* Location	** Rating	+ Issue Type
LS : Land Side WS : Water Side CR : Crown	A : Acceptable M : Minimally Acceptable U : Unacceptable	Ma : Maintenance Deficiency Ob : Design & System Obsolescence En : Enforcement
N/A : Not Applicable	N : Not Inspected/Rated C : Corrected A/W : Acceptable but Monitor & Maintain	

**Flood Control Project Maintenance
Levee Inspections****Maintenance Issue Types Only, Levee Inspection Report By Mile - Fall 2024****Reclamation District No. 0524 Middle Roberts Island**

Waterway	Bank	Unit Miles	Inspection Start/End	Inspector
Unit No. 01 San Joaquin River	Left	6.20	10/29/2024 10/29/2024	Alberto De Leon

LM Start	3.44	Rating **	M	Issue No.	75
LM End	3.44	Issue Type +	Ma	Location *	LS
Category	Earthen Levee			GPS Latitude/Longitude	
				Start	End
Item	Trim / Thin Trees			37.906254°	37.906254°
				-121.324745°	-121.324745°
DWR ID	DWR_RD0524_01_f_2024_75				
Comment Code					
T1 : Trim and thin trees to at least five feet above ground level to allow visibility of the ground and room to flood fight.					
Inspector Comment					

No Photos

LM Start	3.49	Rating **	U	Issue No.	41
LM End	3.49	Issue Type +	Ma	Location *	WS
Category	Earthen Levee			GPS Latitude/Longitude	
				Start	End
Item	Animal Control			37.905844°	37.905844°
				-121.324057°	-121.324057°
DWR ID	DWR_RD0524_01_s_2024_41				
Comment Code					
A3 : No rodents visible, but rodent burrows visible; need to backfill and compact or grout burrows.					
Inspector Comment					

Photo 1 of 1 : FA_2024_RD0524_107_41_20240910_00014.jpg



View of large animal burrow along the waterside slope. Spring 2024

LM Start	3.50	Rating **	M	Issue No.	73
LM End	3.66	Issue Type +	Ma	Location *	WS
Category	Earthen Levee			GPS Latitude/Longitude	
				Start	End
Item	Vegetation			37.905713°	37.903903°
				-121.323986°	-121.325207°
DWR ID	DWR_RD0524_01_f_2024_73				
Comment Code					
V1 : Control annual grass and weeds on the levee slopes and easements.					
Inspector Comment					

No Photos

* Location	** Rating	+ Issue Type
LS : Land Side WS : Water Side CR : Crown	A : Acceptable M : Minimally Acceptable U : Unacceptable	Ma : Maintenance Deficiency Ob : Design & System Obsolescence En : Enforcement
N/A : Not Applicable	N : Not Inspected/Rated C : Corrected A/W : Acceptable but Monitor & Maintain	

**Flood Control Project Maintenance
Levee Inspections****Maintenance Issue Types Only, Levee Inspection Report By Mile - Fall 2024****Reclamation District No. 0524 Middle Roberts Island**

Waterway	Bank	Unit Miles	Inspection Start/End	Inspector
Unit No. 01 San Joaquin River	Left	6.20	10/29/2024 10/29/2024	Alberto De Leon

LM Start	3.53	Rating **	M	Issue No.	74
LM End	3.55	Issue Type +	Ma	Location *	LS
Category	Earthen Levee			GPS Latitude/Longitude	
				Start	End
Item	Trim / Thin Trees			37.905283°	37.904973°
				-121.323827°	-121.323869°
DWR ID	DWR_RD0524_01_f_2024_74				
Comment Code					
T1 : Trim and thin trees to at least five feet above ground level to allow visibility of the ground and room to flood fight.					
Inspector Comment					

No Photos

LM Start	3.58	Rating **	N	Issue No.	302
LM End	3.61	Issue Type +	Ma	Location *	LS
Category	Earthen Levee			GPS Latitude/Longitude	
				Start	End
Item	Trim / Thin Trees			37.904635°	37.904407°
				-121.324113°	-121.324480°
DWR ID	DWR_RD0524_01_s_2021_302				
Comment Code					
T5 : Tree stumps.					
Inspector Comment					

No Photos

LM Start	3.59	Rating **	M	Issue No.	209
LM End	3.69	Issue Type +	Ma	Location *	LS
Category	Earthen Levee			GPS Latitude/Longitude	
				Start	End
Item	Animal Control			37.904546°	37.903556°
				-121.324323°	-121.325500°
DWR ID	DWR_RD0524_01_s_2020_209				
Comment Code					
A3 : No rodents visible, but rodent burrows visible; need to backfill and compact or grout burrows.					
Inspector Comment					

No Photos

* Location LS : Land Side N/A : Not Applicable WS : Water Side CR : Crown		** Rating A : Acceptable M : Minimally Acceptable U : Unacceptable N : Not Inspected/Rated C : Corrected A/W : Acceptable but Monitor & Maintain		+ Issue Type Ma : Maintenance Deficiency Ob : Design & System Obsolescence En : Enforcement	
--	--	---	--	---	--

**Flood Control Project Maintenance
Levee Inspections**

Maintenance Issue Types Only, Levee Inspection Report By Mile - Fall 2024

Reclamation District No. 0524 Middle Roberts Island

Waterway	Bank	Unit Miles	Inspection Start/End	Inspector
Unit No. 01 San Joaquin River	Left	6.20	10/29/2024 10/29/2024	Alberto De Leon

LM Start	3.61	Rating **	M	Issue No.	159
LM End	3.64	Issue Type +	Ma	Location *	WS
Category	Earthen Levee			GPS Latitude/Longitude	
				Start	End
Item	Animal Control			37.904430°	37.904103°
				-121.324594°	-121.325056°
DWR ID	DWR_RD0524_01_f_2019_159				
Comment Code					
A3 : No rodents visible, but rodent burrows visible; need to backfill and compact or grout burrows.					
Inspector Comment					

No Photos

LM Start	3.82	Rating **	M	Issue No.	72
LM End	3.82	Issue Type +	Ma	Location *	WS
Category	Earthen Levee			GPS Latitude/Longitude	
				Start	End
Item	Trim / Thin Trees			37.901847°	37.901847°
				-121.326509°	-121.326509°
DWR ID	DWR_RD0524_01_f_2024_72				
Comment Code					
T1 : Trim and thin trees to at least five feet above ground level to allow visibility of the ground and room to flood fight.					
Inspector Comment					

No Photos

LM Start	3.83	Rating **	M	Issue No.	71
LM End	3.83	Issue Type +	Ma	Location *	LS
Category	Earthen Levee			GPS Latitude/Longitude	
				Start	End
Item	Trim / Thin Trees			37.901788°	37.901788°
				-121.326500°	-121.326500°
DWR ID	DWR_RD0524_01_f_2024_71				
Comment Code					
T1 : Trim and thin trees to at least five feet above ground level to allow visibility of the ground and room to flood fight.					
Inspector Comment					

No Photos

* Location LS : Land Side N/A : Not Applicable WS : Water Side CR : Crown		** Rating A : Acceptable N : Not Inspected/Rated M : Minimally Acceptable C : Corrected U : Unacceptable A/W : Acceptable but Monitor & Maintain		+ Issue Type Ma : Maintenance Deficiency Ob : Design & System Obsolescence En : Enforcement
--	--	---	--	---

**Flood Control Project Maintenance
Levee Inspections**

Maintenance Issue Types Only, Levee Inspection Report By Mile - Fall 2024

Reclamation District No. 0524 Middle Roberts Island

Waterway	Bank	Unit Miles	Inspection Start/End	Inspector
Unit No. 01 San Joaquin River	Left	6.20	10/29/2024 10/29/2024	Alberto De Leon

LM Start	3.90	Rating **	M	Issue No.	70
LM End	3.90	Issue Type +	Ma	Location *	LS
Category	Earthen Levee			GPS Latitude/Longitude	
				Start	End
Item	Trim / Thin Trees			37.900801°	37.900801°
				-121.326408°	-121.326408°
DWR ID	DWR_RD0524_01_f_2024_70				
Comment Code					
T1 : Trim and thin trees to at least five feet above ground level to allow visibility of the ground and room to flood fight.					
Inspector Comment					

No Photos

LM Start	3.97	Rating **	A/W	Issue No.	142
LM End	4.00	Issue Type +	Ma	Location *	LS
Category	Earthen Levee			GPS Latitude/Longitude	
				Start	End
Item	Animal Control			37.899699°	37.899306°
				-121.326653°	-121.326837°
DWR ID	DWR_RD0524_01_f_2020_142				
Comment Code					
A3 : No rodents visible, but rodent burrows visible; need to backfill and compact or grout burrows.					
Inspector Comment					
Monitor for future rodent activity.					

No Photos

LM Start	4.17	Rating **	M	Issue No.	68
LM End	4.36	Issue Type +	Ma	Location *	WS
Category	Earthen Levee			GPS Latitude/Longitude	
				Start	End
Item	Vegetation			37.897012°	37.894472°
				-121.327925°	-121.329218°
DWR ID	DWR_RD0524_01_f_2024_68				
Comment Code					
V1 : Control annual grass and weeds on the levee slopes and easements.					
Inspector Comment					

No Photos

* Location		** Rating		+ Issue Type	
LS : Land Side	N/A : Not Applicable	A : Acceptable	N : Not Inspected/Rated	Ma : Maintenance Deficiency	
WS : Water Side		M : Minimally Acceptable	C : Corrected	Ob : Design & System Obsolescence	
CR : Crown		U : Unacceptable	A/W : Acceptable but Monitor & Maintain	En : Enforcement	

**Flood Control Project Maintenance
Levee Inspections**

Maintenance Issue Types Only, Levee Inspection Report By Mile - Fall 2024

Reclamation District No. 0524 Middle Roberts Island

Waterway	Bank	Unit Miles	Inspection Start/End	Inspector
Unit No. 01 San Joaquin River	Left	6.20	10/29/2024 10/29/2024	Alberto De Leon

LM Start	4.38	Rating **	M	Issue No.	294
LM End	4.56	Issue Type +	Ma	Location *	LS
Category	Earthen Levee			GPS Latitude/Longitude	
				Start	End
Item	Animal Control			37.894299°	37.891830°
				-121.329258°	-121.328317°
DWR ID	DWR_RD0524_01_s _ 2021_294				
Comment Code					
A3 : No rodents visible, but rodent burrows visible; need to backfill and compact or grout burrows.					
Inspector Comment					

No Photos

LM Start	4.38	Rating **	M	Issue No.	33
LM End	4.52	Issue Type +	Ma	Location *	WS
Category	Earthen Levee			GPS Latitude/Longitude	
				Start	End
Item	Animal Control			37.894291°	37.892466°
				-121.329255°	-121.328240°
DWR ID	DWR_RD0524_01_s _ 2024_33				
Comment Code					
A3 : No rodents visible, but rodent burrows visible; need to backfill and compact or grout burrows.					
Inspector Comment					

No Photos

LM Start	4.38	Rating **	M	Issue No.	67
LM End	4.45	Issue Type +	Ma	Location *	LS
Category	Earthen Levee			GPS Latitude/Longitude	
				Start	End
Item	Vegetation			37.894279°	37.893270°
				-121.329258°	-121.328951°
DWR ID	DWR_RD0524_01_f _ 2024_67				
Comment Code					
V1 : Control annual grass and weeds on the levee slopes and easements.					
Inspector Comment					

No Photos

* Location LS : Land Side N/A : Not Applicable WS : Water Side CR : Crown		** Rating A : Acceptable M : Minimally Acceptable U : Unacceptable N : Not Inspected/Rated C : Corrected A/W : Acceptable but Monitor & Maintain		+ Issue Type Ma : Maintenance Deficiency Ob : Design & System Obsolescence En : Enforcement
--	--	---	--	---

**Flood Control Project Maintenance
Levee Inspections****Maintenance Issue Types Only, Levee Inspection Report By Mile - Fall 2024****Reclamation District No. 0524 Middle Roberts Island**

Waterway	Bank	Unit Miles	Inspection Start/End	Inspector
Unit No. 01 San Joaquin River	Left	6.20	10/29/2024 10/29/2024	Alberto De Leon

LM Start	4.55	Rating **	C	Issue No.	16
LM End	4.55	Issue Type +	Ma	Location *	LS
Category	Earthen Levee			GPS Latitude/Longitude	
				Start	End
Item	Trim / Thin Trees			37.891967°	37.891967°
				-121.328256°	-121.328256°
DWR ID	DWR_RD0524_01_s_2023_16				
Comment Code					
T3 : Fallen tree with root ball.					
Inspector Comment					

No Photos

LM Start	4.63	Rating **	U	Issue No.	28
LM End	4.63	Issue Type +	Ma	Location *	LS
Category	Earthen Levee			GPS Latitude/Longitude	
				Start	End
Item	Animal Control			37.891013°	37.891013°
				-121.328949°	-121.328949°
DWR ID	DWR_RD0524_01_s_2024_28				
Comment Code					
A3 : No rodents visible, but rodent burrows visible; need to backfill and compact or grout burrows.					
Inspector Comment					

Photo 1 of 1 : FA_2024_RD0524_107_28_20240910_00009.jpg



View of multiple burrow holes along the landside slope. Spring 2024

LM Start	4.68	Rating **	M	Issue No.	66
LM End	4.68	Issue Type +	Ma	Location *	LS
Category	Earthen Levee			GPS Latitude/Longitude	
				Start	End
Item	Trim / Thin Trees			37.890298°	37.890298°
				-121.329446°	-121.329446°
DWR ID	DWR_RD0524_01_f_2024_66				
Comment Code					
T1 : Trim and thin trees to at least five feet above ground level to allow visibility of the ground and room to flood fight.					
Inspector Comment					

No Photos

* Location LS : Land Side N/A : Not Applicable WS : Water Side CR : Crown	** Rating A : Acceptable M : Minimally Acceptable U : Unacceptable	N : Not Inspected/Rated C : Corrected A/W : Acceptable but Monitor & Maintain	+ Issue Type Ma : Maintenance Deficiency Ob : Design & System Obsolescence En : Enforcement
--	--	--	---

**Flood Control Project Maintenance
Levee Inspections**

Maintenance Issue Types Only, Levee Inspection Report By Mile - Fall 2024

Reclamation District No. 0524 Middle Roberts Island

Waterway	Bank	Unit Miles	Inspection Start/End	Inspector
Unit No. 01 San Joaquin River	Left	6.20	10/29/2024 10/29/2024	Alberto De Leon

LM Start	4.70	Rating **	M	Issue No.	65
LM End	4.70	Issue Type +	Ma	Location *	LS
Category	Earthen Levee			GPS Latitude/Longitude	
				Start	End
Item	Trim / Thin Trees			37.890079°	37.890079°
				-121.329507°	-121.329507°
DWR ID	DWR_RD0524_01_f_2024_65				
Comment Code					
T1 : Trim and thin trees to at least five feet above ground level to allow visibility of the ground and room to flood fight.					
Inspector Comment					

No Photos

LM Start	4.73	Rating **	M	Issue No.	119
LM End	4.73	Issue Type +	Ma	Location *	LS
Category	Earthen Levee			GPS Latitude/Longitude	
				Start	End
Item	Animal Control			37.889690°	37.889690°
				-121.329754°	-121.329754°
DWR ID	DWR_RD0524_01_s_2022_119				
Comment Code					
A3 : No rodents visible, but rodent burrows visible; need to backfill and compact or grout burrows.					
Inspector Comment					

No Photos

LM Start	4.73	Rating **	M	Issue No.	62
LM End	5.05	Issue Type +	Ma	Location *	LS
Category	Earthen Levee			GPS Latitude/Longitude	
				Start	End
Item	Vegetation			37.889665°	37.885691°
				-121.329719°	-121.332127°
DWR ID	DWR_RD0524_01_f_2024_62				
Comment Code					
V1 : Control annual grass and weeds on the levee slopes and easements.					
Inspector Comment					

No Photos

* Location LS : Land Side N/A : Not Applicable WS : Water Side CR : Crown		** Rating A : Acceptable M : Minimally Acceptable U : Unacceptable		N : Not Inspected/Rated C : Corrected A/W : Acceptable but Monitor & Maintain		+ Issue Type Ma : Maintenance Deficiency Ob : Design & System Obsolescence En : Enforcement	
--	--	--	--	---	--	---	--

**Flood Control Project Maintenance
Levee Inspections**

Maintenance Issue Types Only, Levee Inspection Report By Mile - Fall 2024

Reclamation District No. 0524 Middle Roberts Island

Waterway	Bank	Unit Miles	Inspection Start/End	Inspector
Unit No. 01 San Joaquin River	Left	6.20	10/29/2024 10/29/2024	Alberto De Leon

LM Start	4.76	Rating **	A/W	Issue No.	236
LM End	4.76	Issue Type +	Ma	Location *	WS
Category	Earthen Levee			GPS Latitude/Longitude	
				Start	End
Item	Erosion / Bank Caving			37.889300°	37.889300°
				-121.329800°	-121.329800°
DWR ID	DWR_RD0524_01_s_2020_236				
Comment Code					
E1 : Note and monitor erosion site.					
Inspector Comment					
This is a 2017 Strom Damage Site, ID No. 523, LMA-429.					

Photo 1 of 2 : LEVAL_FA_2024_523_4217.jpg



LM Start	4.76	Rating **	A/W	Issue No.	236 (cont)
LM End	4.76	Issue Type +	Ma	Location *	WS

Photo 2 of 2 : FA_2024_RD0524_107_236_20240910_00030.jpg



View of bank erosion looking upstream. Spring 2024

LM Start	4.80	Rating **	M	Issue No.	146
LM End	4.87	Issue Type +	Ma	Location *	LS
Category	Earthen Levee			GPS Latitude/Longitude	
				Start	End
Item	Animal Control			37.888673°	37.887864°
				-121.330068°	-121.330729°
DWR ID	DWR_RD0524_01_f_2022_146				
Comment Code					
A3 : No rodents visible, but rodent burrows visible; need to backfill and compact or grout burrows.					
Inspector Comment					

No Photos

* Location LS : Land Side N/A : Not Applicable WS : Water Side CR : Crown		** Rating A : Acceptable M : Minimally Acceptable U : Unacceptable N : Not Inspected/Rated C : Corrected A/W : Acceptable but Monitor & Maintain		+ Issue Type Ma : Maintenance Deficiency Ob : Design & System Obsolescence En : Enforcement
--	--	---	--	---

**Flood Control Project Maintenance
Levee Inspections****Maintenance Issue Types Only, Levee Inspection Report By Mile - Fall 2024****Reclamation District No. 0524 Middle Roberts Island**

Waterway	Bank	Unit Miles	Inspection Start/End	Inspector
Unit No. 01 San Joaquin River	Left	6.20	10/29/2024 10/29/2024	Alberto De Leon

LM Start	4.88	Rating **	M	Issue No.	59
LM End	5.16	Issue Type +	Ma	Location *	WS
Category	Earthen Levee			GPS Latitude/Longitude	
				Start	End
Item	Vegetation			37.887810°	37.884081°
				-121.330810°	-121.332103°
DWR ID	DWR_RD0524_01_f_2024_59				
Comment Code					
V1 : Control annual grass and weeds on the levee slopes and easements.					
Inspector Comment					

No Photos

LM Start	4.90	Rating **	M	Issue No.	64
LM End	4.90	Issue Type +	Ma	Location *	CR
Category	Earthen Levee			GPS Latitude/Longitude	
				Start	End
Item	Trim / Thin Trees			37.887586°	37.887586°
				-121.331203°	-121.331203°
DWR ID	DWR_RD0524_01_f_2024_64				
Comment Code					
T4 : Trim trees over roadway to at least 12 feet above ground level.					
Inspector Comment					

No Photos

LM Start	4.94	Rating **	M	Issue No.	63
LM End	4.94	Issue Type +	Ma	Location *	LS
Category	Earthen Levee			GPS Latitude/Longitude	
				Start	End
Item	Trim / Thin Trees			37.887228°	37.887228°
				-121.331616°	-121.331616°
DWR ID	DWR_RD0524_01_f_2024_63				
Comment Code					
T1 : Trim and thin trees to at least five feet above ground level to allow visibility of the ground and room to flood fight.					
Inspector Comment					

No Photos

* Location LS : Land Side N/A : Not Applicable WS : Water Side CR : Crown	** Rating A : Acceptable M : Minimally Acceptable U : Unacceptable	+ Issue Type Ma : Maintenance Deficiency Ob : Design & System Obsolescence En : Enforcement
--	--	---

**Flood Control Project Maintenance
Levee Inspections****Maintenance Issue Types Only, Levee Inspection Report By Mile - Fall 2024****Reclamation District No. 0524 Middle Roberts Island**

Waterway	Bank	Unit Miles	Inspection Start/End	Inspector
Unit No. 01 San Joaquin River	Left	6.20	10/29/2024 10/29/2024	Alberto De Leon

LM Start	4.94	Rating **	U	Issue No.	15
LM End	4.96	Issue Type +	Ma	Location *	LS
Category	Earthen Levee			GPS Latitude/Longitude	
				Start	End
Item	Animal Control			37.887136°	37.886867°
				-121.331722°	-121.331893°
DWR ID	DWR_RD0524_01_s_2024_15				
Comment Code					
A3 : No rodents visible, but rodent burrows visible; need to backfill and compact or grout burrows.					
Inspector Comment					

Photo 1 of 1 : FA_2024_RD0524_107_15_20240910_00007.jpg



View of large animal burrow along the landside slope. Spring 2024

LM Start	4.96	Rating **	M	Issue No.	114
LM End	4.98	Issue Type +	Ma	Location *	LS
Category	Earthen Levee			GPS Latitude/Longitude	
				Start	End
Item	Vegetation			37.886994°	37.886596°
				-121.331829°	-121.332007°
DWR ID	DWR_RD0524_01_s_2012_114				
Comment Code					
V4 : Elderberries are blocking visibility and flood fight capability.					
Inspector Comment					

No Photos

LM Start	5.03	Rating **	A/W	Issue No.	177
LM End	5.05	Issue Type +	Ma	Location *	LS
Category	Earthen Levee			GPS Latitude/Longitude	
				Start	End
Item	Vegetation			37.885981°	37.885641°
				-121.332130°	-121.332162°
DWR ID	DWR_RD0524_01_s_2020_177				
Comment Code					
V4 : Elderberries are blocking visibility and flood fight capability.					
Inspector Comment					

No Photos

* Location LS : Land Side N/A : Not Applicable WS : Water Side CR : Crown	** Rating A : Acceptable M : Minimally Acceptable U : Unacceptable	+ Issue Type Ma : Maintenance Deficiency Ob : Design & System Obsolescence En : Enforcement
--	--	---

**Flood Control Project Maintenance
Levee Inspections****Maintenance Issue Types Only, Levee Inspection Report By Mile - Fall 2024****Reclamation District No. 0524 Middle Roberts Island**

Waterway	Bank	Unit Miles	Inspection Start/End	Inspector
Unit No. 01 San Joaquin River	Left	6.20	10/29/2024 10/29/2024	Alberto De Leon

LM Start	5.05	Rating **	M	Issue No.	61
LM End	5.08	Issue Type +	Ma	Location *	LS
Category	Earthen Levee			GPS Latitude/Longitude	
				Start	End
Item	Trim / Thin Trees			37.885577°	37.885283°
				-121.332147°	-121.332167°
DWR ID	DWR_RD0524_01_f_2024_61				
Comment Code					
T1 : Trim and thin trees to at least five feet above ground level to allow visibility of the ground and room to flood fight.					
Inspector Comment					

No Photos

LM Start	5.13	Rating **	M	Issue No.	60
LM End	5.13	Issue Type +	Ma	Location *	LS
Category	Earthen Levee			GPS Latitude/Longitude	
				Start	End
Item	Trim / Thin Trees			37.884542°	37.884542°
				-121.332159°	-121.332159°
DWR ID	DWR_RD0524_01_f_2024_60				
Comment Code					
T1 : Trim and thin trees to at least five feet above ground level to allow visibility of the ground and room to flood fight.					
Inspector Comment					

No Photos

LM Start	5.17	Rating **	M	Issue No.	58
LM End	5.17	Issue Type +	Ma	Location *	LS
Category	Earthen Levee			GPS Latitude/Longitude	
				Start	End
Item	Trim / Thin Trees			37.883973°	37.883973°
				-121.332095°	-121.332095°
DWR ID	DWR_RD0524_01_f_2024_58				
Comment Code					
T1 : Trim and thin trees to at least five feet above ground level to allow visibility of the ground and room to flood fight.					
Inspector Comment					

No Photos

* Location LS : Land Side N/A : Not Applicable WS : Water Side CR : Crown	** Rating A : Acceptable M : Minimally Acceptable U : Unacceptable	N : Not Inspected/Rated C : Corrected A/W : Acceptable but Monitor & Maintain	+ Issue Type Ma : Maintenance Deficiency Ob : Design & System Obsolescence En : Enforcement
--	--	--	---

**Flood Control Project Maintenance
Levee Inspections****Maintenance Issue Types Only, Levee Inspection Report By Mile - Fall 2024****Reclamation District No. 0524 Middle Roberts Island**

Waterway	Bank	Unit Miles	Inspection Start/End	Inspector
Unit No. 01 San Joaquin River	Left	6.20	10/29/2024 10/29/2024	Alberto De Leon

LM Start	5.19	Rating **	M	Issue No.	289
LM End	5.19	Issue Type +	Ma	Location *	LS
Category	Earthen Levee			GPS Latitude/Longitude	
				Start	End
Item	Vegetation			37.883621°	37.883621°
				-121.332121°	-121.332121°
DWR ID	DWR_RD0524_01_s_2021_289				
Comment Code					
V4 : Elderberries are blocking visibility and flood fight capability.					
Inspector Comment					

No Photos

LM Start	5.21	Rating **	U	Issue No.	57
LM End	5.21	Issue Type +	Ma	Location *	LS
Category	Earthen Levee			GPS Latitude/Longitude	
				Start	End
Item	Vegetation			37.883285°	37.883285°
				-121.332142°	-121.332142°
DWR ID	DWR_RD0524_01_f_2024_57				
Comment Code					
V2 : Remove the wild growth and woody vegetation other than native grasses from the levee slopes.					
Inspector Comment					

Photo 1 of 1 : FA_2024_RD0524_107_57_20241029_00089.jpg



View of vegetation on the landside slope and easement. Fall 2024

LM Start	5.22	Rating **	M	Issue No.	54
LM End	5.59	Issue Type +	Ma	Location *	WS
Category	Earthen Levee			GPS Latitude/Longitude	
				Start	End
Item	Vegetation			37.883147°	37.878018°
				-121.332213°	-121.332675°
DWR ID	DWR_RD0524_01_f_2024_54				
Comment Code					
V1 : Control annual grass and weeds on the levee slopes and easements.					
Inspector Comment					

No Photos

* Location LS : Land Side N/A : Not Applicable WS : Water Side CR : Crown		** Rating A : Acceptable M : Minimally Acceptable U : Unacceptable N : Not Inspected/Rated C : Corrected A/W : Acceptable but Monitor & Maintain		+ Issue Type Ma : Maintenance Deficiency Ob : Design & System Obsolescence En : Enforcement	
--	--	---	--	---	--

**Flood Control Project Maintenance
Levee Inspections****Maintenance Issue Types Only, Levee Inspection Report By Mile - Fall 2024****Reclamation District No. 0524 Middle Roberts Island**

Waterway	Bank	Unit Miles	Inspection Start/End	Inspector
Unit No. 01 San Joaquin River	Left	6.20	10/29/2024 10/29/2024	Alberto De Leon

LM Start	5.22	Rating **	M	Issue No.	55
LM End	5.51	Issue Type +	Ma	Location *	LS
Category	Earthen Levee			GPS Latitude/Longitude	
				Start	End
Item	Vegetation			37.883146°	37.879144°
				-121.332212°	-121.333179°
DWR ID	DWR_RD0524_01_f_2024_55				
Comment Code					
V1 : Control annual grass and weeds on the levee slopes and easements.					
Inspector Comment					

No Photos

LM Start	5.29	Rating **	M	Issue No.	137
LM End	5.29	Issue Type +	Ma	Location *	LS
Category	Earthen Levee			GPS Latitude/Longitude	
				Start	End
Item	Animal Control			37.882208°	37.882208°
				-121.332669°	-121.332669°
DWR ID	DWR_RD0524_01_f_2022_137				
Comment Code					
A3 : No rodents visible, but rodent burrows visible; need to backfill and compact or grout burrows.					
Inspector Comment					

No Photos

LM Start	5.34	Rating **	N	Issue No.	90
LM End	5.34	Issue Type +	Ma	Location *	LS
Category	Earthen Levee			GPS Latitude/Longitude	
				Start	End
Item	Trim / Thin Trees			37.881557°	37.881557°
				-121.332807°	-121.332807°
DWR ID	DWR_RD0524_01_f_2020_90				
Comment Code					
T5 : Tree stumps.					
Inspector Comment					

No Photos

* Location LS : Land Side N/A : Not Applicable WS : Water Side CR : Crown	** Rating A : Acceptable M : Minimally Acceptable U : Unacceptable	N : Not Inspected/Rated C : Corrected A/W : Acceptable but Monitor & Maintain	+ Issue Type Ma : Maintenance Deficiency Ob : Design & System Obsolescence En : Enforcement
--	--	--	---

**Flood Control Project Maintenance
Levee Inspections****Maintenance Issue Types Only, Levee Inspection Report By Mile - Fall 2024****Reclamation District No. 0524 Middle Roberts Island**

Waterway	Bank	Unit Miles	Inspection Start/End	Inspector
Unit No. 01 San Joaquin River	Left	6.20	10/29/2024 10/29/2024	Alberto De Leon

LM Start	5.36	Rating **	N	Issue No.	89
LM End	5.36	Issue Type +	Ma	Location *	LS
Category	Earthen Levee			GPS Latitude/Longitude	
				Start	End
Item	Trim / Thin Trees			37.881172°	37.881172°
				-121.332842°	-121.332842°
DWR ID	DWR_RD0524_01_f_2020_89				
Comment Code					
T5 : Tree stumps.					
Inspector Comment					

No Photos

LM Start	5.41	Rating **	M	Issue No.	938
LM End	5.41	Issue Type +	Ma	Location *	
Category	Supplemental			GPS Latitude/Longitude	
				Start	End
Item	DWR UCIP LMA Responsibility			37.880544°	37.880544°
				-121.332904°	-121.332904°
DWR ID	20659				
Comment Code					
Inspector Comment					
DS_ID:20659 FS_ID:84030 EP_NO: N/A Repair Type: Non-Urgent EVAL Issue: Crossing Status: Not Found UCIP Comments: 04/29/2024 Record remains Non-Urgent. Record is a duplicate of DSID 20630 or vice versa. Either way crossing has been abandoned and grouted in place or removed by KSN according to Aaron Kissingteller. Crossing not found during current inspection. (J. Taylor - DWR UCIP)06/24/2020 Record updated from No Action Needed to Non-Urgent. Crossing appears to have been removed, but needs to be confirmed. Crossing not found. Limited inspection on LS due to overgrown vegetation. System Feature. (D.Sanoski - DWR UCIP) FIELD_STRUCT_DESC: 10-inch steel drainage pipe through the levee, 6 feet below the crown. Pump on the landside (LS). Flap gate on the waterside (WS) end. [Additional Reference(s): DWR Levee Log, 2004 (HLM 5.48). USACE San Joaquin O&M Manual, Unit 7, April 1964, Revised 29 December 2016, (5.48), listed as 10-inch pipe]. Drawing No. 07-04-1490, Sheet 1490/4, (Station 8+01.3)]. FS Date: 4/29/2024 10:51:21 AM					

Photo 1 of 3 : UCIP_FA_2024_84030_122993.jpg



Overview of levee crown.

* Location	** Rating	+ Issue Type
LS : Land Side WS : Water Side CR : Crown	A : Acceptable M : Minimally Acceptable U : Unacceptable	Ma : Maintenance Deficiency Ob : Design & System Obsolescence En : Enforcement
N/A : Not Applicable	N : Not Inspected/Rated C : Corrected A/W : Acceptable but Monitor & Maintain	

**Flood Control Project Maintenance
Levee Inspections****Maintenance Issue Types Only, Levee Inspection Report By Mile - Fall 2024****Reclamation District No. 0524 Middle Roberts Island**

Waterway	Bank	Unit Miles	Inspection Start/End	Inspector
Unit No. 01 San Joaquin River	Left	6.20	10/29/2024 10/29/2024	Alberto De Leon

LM Start	5.41	Rating **	M	Issue No.	938 (cont)
LM End	5.41	Issue Type +	Ma	Location *	
Category	Supplemental			GPS Latitude/Longitude	
				Start	End
Item	DWR UCIP LMA Responsibility			37.880544°	37.880544°
				-121.332904°	-121.332904°
DWR ID	20659				

Photo 2 of 3 : UCIP_FA_2024_84030_122994.jpg



WS view: overview of WS slope and channel.

LM Start	5.41	Rating **	M	Issue No.	938 (cont)
LM End	5.41	Issue Type +	Ma	Location *	

Photo 3 of 3 : UCIP_FA_2024_84030_122995.jpg



LS view: overview of LS slope and toe.

* Location LS : Land Side N/A : Not Applicable WS : Water Side CR : Crown	** Rating A : Acceptable M : Minimally Acceptable U : Unacceptable N : Not Inspected/Rated C : Corrected A/W : Acceptable but Monitor & Maintain	+ Issue Type Ma : Maintenance Deficiency Ob : Design & System Obsolescence En : Enforcement
--	---	---

**Flood Control Project Maintenance
Levee Inspections****Maintenance Issue Types Only, Levee Inspection Report By Mile - Fall 2024****Reclamation District No. 0524 Middle Roberts Island**

Waterway	Bank	Unit Miles	Inspection Start/End	Inspector
Unit No. 01 San Joaquin River	Left	6.20	10/29/2024 10/29/2024	Alberto De Leon

LM Start	5.42	Rating **	M	Issue No.	939
LM End	5.42	Issue Type +	Ma	Location *	
Category	Supplemental			GPS Latitude/Longitude	
				Start	End
Item	DWR UCIP LMA Responsibility			37.880358°	37.880358°
				-121.332972°	-121.332972°
DWR ID	20631				
Comment Code					
Inspector Comment					
DS_ID:20631 FS_ID:83784 EP_NO: N/A Repair Type: Non-Urgent EVAL Issue: Crossing Status: Found UCIP Comments: 04/29/2024 Record updated from Non-Urgent to No Action Needed. Pipe found in working condition. System feature. (J. Taylor - DWR UCIP)06/25/2020 Record remains Non-Urgent. Limited inspection on LS due to overgrown vegetation. System Feature. (D.Sanoski - DWR UCIP) 08/23/2013 Recent work being done on WS slope. Pipe may still be in use. (W.Wylie - DWR UCIP) FIELD_STRUCT_DESC: 10-inch steel drainage pipe through the levee, 6 feet below the crown. 8-inch pipe sleeved through this pipe. [Additional Reference(s): DWR Levee Log, 2004 (HLM 5.50). USACE San Joaquin O&M Manual, Unit 7, April 1964, Revised 29 December 2016, (5.50), listed as 10-inch pipe]. FS Date: 4/29/2024 11:11:23 AM					

LM Start	5.42	Rating **	M	Issue No.	939 (cont)
LM End	5.42	Issue Type +	Ma	Location *	

Photo 1 of 3 : UCIP_FA_2024_83784_122996.jpg



Overview of levee crown.

Photo 2 of 3 : UCIP_FA_2024_83784_122997.jpg



WS view: overview of WS slope and channel. Pipe visible on WS shoulder with siphon breaker. Pipe actively discharging into channel.

* Location	** Rating	+ Issue Type
LS : Land Side WS : Water Side CR : Crown	A : Acceptable M : Minimally Acceptable U : Unacceptable	Ma : Maintenance Deficiency Ob : Design & System Obsolescence En : Enforcement
N/A : Not Applicable	N : Not Inspected/Rated C : Corrected A/W : Acceptable but Monitor & Maintain	

**Flood Control Project Maintenance
Levee Inspections****Maintenance Issue Types Only, Levee Inspection Report By Mile - Fall 2024****Reclamation District No. 0524 Middle Roberts Island**

Waterway	Bank	Unit Miles	Inspection Start/End	Inspector
Unit No. 01 San Joaquin River	Left	6.20	10/29/2024 10/29/2024	Alberto De Leon

LM Start	5.42	Rating **	M	Issue No.	939 (cont)
LM End	5.42	Issue Type +	Ma	Location *	
Category	Supplemental			GPS Latitude/Longitude	
				Start	End
Item	DWR UCIP LMA Responsibility			37.880358°	37.880358°
				-121.332972°	-121.332972°
DWR ID	20631				

Photo 3 of 3 : UCIP_FA_2024_83784_122998.jpg



LS view: overview of LS slope and toe.

LM Start	5.45	Rating **	M	Issue No.	56
LM End	5.45	Issue Type +	Ma	Location *	LS
Category	Earthen Levee			GPS Latitude/Longitude	
				Start	End
Item	Trim / Thin Trees			37.880018°	37.880018°
				-121.333056°	-121.333056°
DWR ID	DWR_RD0524_01_f_2024_56				
Comment Code					
T1 : Trim and thin trees to at least five feet above ground level to allow visibility of the ground and room to flood fight.					
Inspector Comment					

No Photos

* Location LS : Land Side N/A : Not Applicable WS : Water Side CR : Crown		** Rating A : Acceptable M : Minimally Acceptable U : Unacceptable N : Not Inspected/Rated C : Corrected A/W : Acceptable but Monitor & Maintain		+ Issue Type Ma : Maintenance Deficiency Ob : Design & System Obsolescence En : Enforcement	
--	--	---	--	---	--

**Flood Control Project Maintenance
Levee Inspections****Maintenance Issue Types Only, Levee Inspection Report By Mile - Fall 2024****Reclamation District No. 0524 Middle Roberts Island**

Waterway	Bank	Unit Miles	Inspection Start/End	Inspector
Unit No. 01 San Joaquin River	Left	6.20	10/29/2024 10/29/2024	Alberto De Leon

LM Start	5.53	Rating **	M	Issue No.	2
LM End	5.54	Issue Type +	Ma	Location *	WS
Category	Supplemental		GPS Latitude/Longitude		
Item	DWR Erosion Survey		Start	End	
			37.878798°	37.878798°	
DWR ID	RD0524U01RM46.06		-121.333111°	-121.333111°	

Comment Code

Inspector Comment

Site ID: RD0524U01RM46.06

8/9/2024: From 2021 to present, no significant changes were observed during the annual survey.

08/20/2021: During the erosion survey, the erosion length was increased to 75 feet.

09/24/2020: From 2014 to present, no significant changes were observed during the annual survey. Vegetation is limiting the view but undercutting of the levee toe is still visible.

08/13/2013: Larger trees are at the levee shoulder, and an irrigation pump station is next to the erosion site.

LM Start	5.53	Rating **	M	Issue No.	2 (cont)
LM End	5.54	Issue Type +	Ma	Location *	WS

Photo 1 of 2 : SJR2024_RD0524U01RM46.06_4.JPG



8/9/2024: Aerial view of the erosion.

Photo 2 of 2 : SJR2024_RD0524U01RM46.06_7.JPG



8/31/2023: View of the erosion immediately downstream of an irrigation pipe.

* Location LS: Land Side N/A: Not Applicable WS: Water Side CR: Crown	** Rating A: Acceptable M: Minimally Acceptable U: Unacceptable N: Not Inspected/Rated C: Corrected A/W: Acceptable but Monitor & Maintain	+ Issue Type Ma: Maintenance Deficiency Ob: Design & System Obsolescence En: Enforcement
---	---	--

**Flood Control Project Maintenance
Levee Inspections****Maintenance Issue Types Only, Levee Inspection Report By Mile - Fall 2024****Reclamation District No. 0524 Middle Roberts Island**

Waterway	Bank	Unit Miles	Inspection Start/End	Inspector
Unit No. 01 San Joaquin River	Left	6.20	10/29/2024 10/29/2024	Alberto De Leon

LM Start	5.68	Rating **	M	Issue No.	52
LM End	5.92	Issue Type +	Ma	Location *	LS
Category	Earthen Levee			GPS Latitude/Longitude	
				Start	End
Item	Vegetation			37.876810°	37.873582°
				-121.332306°	-121.332571°
DWR ID	DWR_RD0524_01_f_2024_52				
Comment Code					
V2 : Remove the wild growth and woody vegetation other than native grasses from the levee slopes.					
Inspector Comment					

No Photos

LM Start	5.68	Rating **	M	Issue No.	53
LM End	5.92	Issue Type +	Ma	Location *	WS
Category	Earthen Levee			GPS Latitude/Longitude	
				Start	End
Item	Vegetation			37.876801°	37.873582°
				-121.332298°	-121.332566°
DWR ID	DWR_RD0524_01_f_2024_53				
Comment Code					
V2 : Remove the wild growth and woody vegetation other than native grasses from the levee slopes.					
Inspector Comment					

No Photos

* Location LS : Land Side N/A : Not Applicable WS : Water Side CR : Crown	** Rating A : Acceptable M : Minimally Acceptable U : Unacceptable N : Not Inspected/Rated C : Corrected A/W : Acceptable but Monitor & Maintain	+ Issue Type Ma : Maintenance Deficiency Ob : Design & System Obsolescence En : Enforcement
--	---	---

**Flood Control Project Maintenance
Levee Inspections****Maintenance Issue Types Only, Levee Inspection Report By Mile - Fall 2024****Reclamation District No. 0524 Middle Roberts Island**

Waterway	Bank	Unit Miles	Inspection Start/End	Inspector
Unit No. 01 San Joaquin River	Left	6.20	10/29/2024 10/29/2024	Alberto De Leon

LM Start	5.86	Rating **	M	Issue No.	942	
LM End	5.86	Issue Type +	Ma	Location *		
Category	Supplemental			GPS Latitude/Longitude		
				Start	End	
Item	DWR UCIP LMA Responsibility			37.874328°	37.874328°	
				-121.333231°	-121.333231°	
DWR ID	20637					
Comment Code						
Inspector Comment						
DS_ID:20637 FS_ID:83813 EP_NO: N/A Repair Type: Non-Urgent EVAL Issue: Crossing Status: Not Found UCIP Comments: 04/29/2024 Record remains Non-Urgent. Geophysical results did not confirm presence of pipe through levee. Record will remain in UCIP's inspection records until future Levee Improvement Project can confirm no crossing was found through the levee. (J. Taylor - DWR UCIP)06/25/2020 Record updated from No Action Needed to Non-Urgent. Geophysical results did not confirm presence of pipe through levee. Record will remain in UCIP's inspection records until future Levee Improvement Project can confirm no crossing was found through the levee. System Feature. (D.Sanoski - DWR UCIP) FIELD_STRUCT_DESC: 12-inch drainage pipe of an unknown material through the levee, 8 feet below the crown. Concrete box structure on the waterside (WS) slope. [Additional Reference(s): DWR Levee Log, 2004 (HLM 5.91). USACE San Joaquin O&M Manual, Unit 7, April 1964, Revised 29 December 2016, (5.91), listed as 12-inch pipe, abandoned]. FS Date: 4/29/2024 2:46:18 PM						

LM Start	5.86	Rating **	M	Issue No.	942 (cont)
LM End	5.86	Issue Type +	Ma	Location *	

Photo 1 of 3 : UCIP_FA_2024_83813_123056.jpg



Overview of levee crown.

Photo 2 of 3 : UCIP_FA_2024_83813_123057.jpg



WS view: overview of WS slope and channel.

* Location	** Rating	+ Issue Type
LS: Land Side WS: Water Side CR: Crown	A: Acceptable M: Minimally Acceptable U: Unacceptable	Ma: Maintenance Deficiency Ob: Design & System Obsolescence En: Enforcement
N/A: Not Applicable	N: Not Inspected/Rated C: Corrected A/W: Acceptable but Monitor & Maintain	

**Flood Control Project Maintenance
Levee Inspections****Maintenance Issue Types Only, Levee Inspection Report By Mile - Fall 2024****Reclamation District No. 0524 Middle Roberts Island**

Waterway	Bank	Unit Miles	Inspection Start/End	Inspector
Unit No. 01 San Joaquin River	Left	6.20	10/29/2024 10/29/2024	Alberto De Leon

LM Start	5.86	Rating **	M	Issue No.	942 (cont)	
LM End	5.86	Issue Type +	Ma	Location *		
Category	Supplemental			GPS Latitude/Longitude		
				Start	End	
Item	DWR UCIP LMA Responsibility			37.874328°	37.874328°	
				-121.333231°	-121.333231°	
DWR ID	20637					

Photo 3 of 3 : UCIP_FA_2024_83813_123058.jpg



LS view: overview of LS slope and toe.

LM Start	5.87	Rating **	M	Issue No.	943
LM End	5.87	Issue Type +	Ma	Location *	
Category	Supplemental			GPS Latitude/Longitude	
				Start	End
Item	DWR UCIP LMA Responsibility			37.874114°	37.874114°
				-121.333147°	-121.333147°
DWR ID	20639				

Comment Code**Inspector Comment**

DS_ID:20639
FS_ID:83816
EP_NO: N/A
Repair Type: Non-Urgent
EVAL Issue:
Crossing Status: Indicator Found
UCIP Comments: 04/29/2024 Record remains Non-Urgent. Grouted pipe found in concrete riser beneath 12-inch pipe DSID 20638. Distribution box on WS may have been repurposed for DSID 20638. Unable to locate a permit and confirm proper pipe abandonment. (J. Taylor - DWR UCIP)06/25/2020 Record updated from No Action Needed to Non-Urgent. Crossing not found. Geophysical results did not confirm presence of pipe through levee. Record will remain in UCIP's inspection records until future Levee Improvement Project can confirm no crossing was found through the levee. System Feature. (D.Sanoski - DWR UCIP)
FIELD_STRUCT_DESC: 21-inch by 21-inch reinforced concrete box drainage culvert through the levee, 20 feet below the crown. Brick distribution box at the toe of the waterside (WS) slope. Concrete distribution box at the toe of the landside (LS) slope. [Additional Reference(s): DWR Levee Log, 2004. USACE San Joaquin O&M Manual 7, April 1964, (HLM 5.94)].
FS Date: 4/29/2024 2:58:53 PM

Photo 1 of 3 : UCIP_FA_2024_83816_123063.jpg



Overview of levee crown.

* Location	** Rating	+ Issue Type
LS : Land Side WS : Water Side CR : Crown	A : Acceptable M : Minimally Acceptable U : Unacceptable	Ma : Maintenance Deficiency Ob : Design & System Obsolescence En : Enforcement
N/A : Not Applicable	N : Not Inspected/Rated C : Corrected A/W : Acceptable but Monitor & Maintain	

**Flood Control Project Maintenance
Levee Inspections**

Maintenance Issue Types Only, Levee Inspection Report By Mile - Fall 2024

Reclamation District No. 0524 Middle Roberts Island

Waterway	Bank	Unit Miles	Inspection Start/End	Inspector
Unit No. 01 San Joaquin River	Left	6.20	10/29/2024 10/29/2024	Alberto De Leon

LM Start	5.87	Rating **	M	Issue No.	943 (cont)
LM End	5.87	Issue Type +	Ma	Location *	
Category	Supplemental			GPS Latitude/Longitude	
				Start	End
Item	DWR UCIP LMA Responsibility			37.874114°	37.874114°
				-121.333147°	-121.333147°
DWR ID	20639				

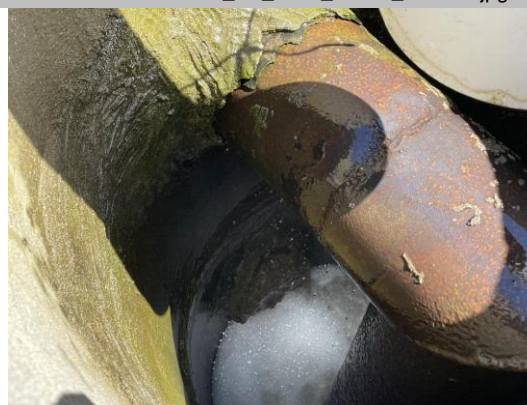
Photo 2 of 3 : UCIP_FA_2024_83816_123064.jpg



WS view: overview of WS slope and channel.

LM Start	5.87	Rating **	M	Issue No.	943 (cont)
LM End	5.87	Issue Type +	Ma	Location *	

Photo 3 of 3 : UCIP_FA_2024_83816_123065.jpg



LS view: inside concrete riser on LS toe. Grouted pipe under visible pipe.

LM Start	5.95	Rating **	M	Issue No.	100
LM End	5.95	Issue Type +	Ma	Location *	LS
Category	Earthen Levee			GPS Latitude/Longitude	
				Start	End
Item	Erosion / Foot Traffic			37.873343°	37.873343°
				-121.332053°	-121.332053°
DWR ID	DWR_RD0524_01_s_2022_100				
Comment Code					
E3 : Repair the levee slope damaged by foot traffic and prevent access where possible.					
Inspector Comment					

No Photos

* Location LS : Land Side N/A : Not Applicable WS : Water Side CR : Crown		** Rating A : Acceptable M : Minimally Acceptable U : Unacceptable N : Not Inspected/Rated C : Corrected A/W : Acceptable but Monitor & Maintain		+ Issue Type Ma : Maintenance Deficiency Ob : Design & System Obsolescence En : Enforcement
--	--	---	--	---

**Flood Control Project Maintenance
Levee Inspections****Maintenance Issue Types Only, Levee Inspection Report By Mile - Fall 2024****Reclamation District No. 0524 Middle Roberts Island**

Waterway	Bank	Unit Miles	Inspection Start/End	Inspector
Unit No. 01 San Joaquin River	Left	6.20	10/29/2024 10/29/2024	Alberto De Leon

LM Start	6.02	Rating **	M	Issue No.	17
LM End	6.10	Issue Type +	Ma	Location *	LS
Category	Earthen Levee			GPS Latitude/Longitude	
				Start	End
Item	Vegetation			37.872767°	37.871744°
				-121.331011°	-121.330404°
DWR ID	DWR_RD0524_01_f_2023_17				
Comment Code					
V2 : Remove the wild growth and woody vegetation other than native grasses from the levee slopes.					
Inspector Comment					

No Photos

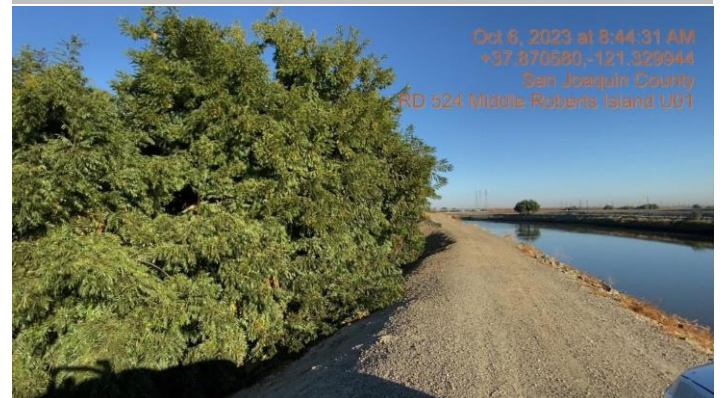
LM Start	6.11	Rating **	U	Issue No.	98
LM End	6.14	Issue Type +	Ma	Location *	LS
Category	Earthen Levee			GPS Latitude/Longitude	
				Start	End
Item	Vegetation			37.871613°	37.871262°
				-121.330322°	-121.330202°
DWR ID	DWR_RD0524_01_s_2022_98				
Comment Code					
V2 : Remove the wild growth and woody vegetation other than native grasses from the levee slopes.					
Inspector Comment					
There are berry bushes and ivy growing within the landside easement.					

Photo 1 of 1 : FA_2024_RD0524_107_98_20241029_00088.jpg

View of berry bushes and ivy along the landside slope and easement.
Fall 2024

LM Start	6.16	Rating **	U	Issue No.	188
LM End	6.18	Issue Type +	Ma	Location *	LS
Category	Earthen Levee			GPS Latitude/Longitude	
				Start	End
Item	Trim / Thin Trees			37.870930°	37.870675°
				-121.330048°	-121.329969°
DWR ID	DWR_RD0524_01_f_2021_188				
Comment Code					
T1 : Trim and thin trees to at least five feet above ground level to allow visibility of the ground and room to flood fight.					
Inspector Comment					

Photo 1 of 1 : FA_2024_RD0524_107_188_20240910_00025.jpg



View of untrimmed trees along the landside slope. Fall 2023

* Location	** Rating	+ Issue Type
LS : Land Side WS : Water Side CR : Crown	A : Acceptable M : Minimally Acceptable U : Unacceptable	Ma : Maintenance Deficiency Ob : Design & System Obsolescence En : Enforcement
N : Not Inspected/Rated C : Corrected A/W : Acceptable but Monitor & Maintain		