

**Flood Control Project Maintenance
Levee Inspections**

Maintenance Issue Types Only, Levee Inspection Report By Mile - Fall 2019

Reclamation District No. 0524 Middle Roberts Island

Waterway	Bank	Unit Miles	Inspection Start/End	Inspector
Unit No. 01 San Joaquin River	Left	6.20	10/02/2019 11/14/2019	Alberto De Leon

LM Start	0.00	Rating **	A	Issue No.	121
LM End	0.00	Issue Type +	Ma	Location *	N/A
Category	Earthen Levee			GPS Latitude/Longitude	
				Start	End
Item	Operations & Maintenance Manuals			°	°
DWR ID	DWR_RD0524_01_s_2012_121				
Comment Code					
Inspector Comment					
The RD has a digital copy of the O&M manual.					

No Photos

LM Start	0.00	Rating **	M	Issue No.	123
LM End	0.00	Issue Type +	Ma	Location *	N/A
Category	Earthen Levee			GPS Latitude/Longitude	
				Start	End
Item	Flood Preparedness & Training			°	°
DWR ID	DWR_RD0524_01_s_2012_123				
Comment Code					
Inspector Comment					
No recent training.					

No Photos

LM Start	0.00	Rating **	M	Issue No.	138
LM End	0.00	Issue Type +	Ma	Location *	N/A
Category	Earthen Levee			GPS Latitude/Longitude	
				Start	End
Item	Emergency Supplies & Equipment			°	°
DWR ID	DWR_RD0524_01_s_2013_138				
Comment Code					
Inspector Comment					
The LMA does not appear to have emergency supplies or equipment.					

No Photos

* Location LS : Land Side N/A : Not Applicable WS : Water Side CR : Crown	** Rating A : Acceptable M : Minimally Acceptable U : Unacceptable	N : Not Inspected/Rated C : Corrected A/W : Acceptable but Monitor & Maintain	+ Issue Type Ma : Maintenance Deficiency Ob : Design & System Obsolescence En : Enforcement
--	--	---	---

**Flood Control Project Maintenance
Levee Inspections**

Maintenance Issue Types Only, Levee Inspection Report By Mile - Fall 2019

Reclamation District No. 0524 Middle Roberts Island

Waterway	Bank	Unit Miles	Inspection Start/End	Inspector
Unit No. 01 San Joaquin River	Left	6.20	10/02/2019 11/14/2019	Alberto De Leon

LM Start	0.01	Rating **	M	Issue No.	107
LM End	0.13	Issue Type +	Ma	Location *	LS
Category	Earthen Levee		GPS Latitude/Longitude		
			Start	End	
Item	Animal Control		37.941151°	37.939900°	
			-121.346011°	-121.344580°	
DWR ID	DWR_RD0524_01_f_2019_107				
Comment Code					
A3 : No rodents visible, but rodent burrows visible; need to backfill and compact or grout burrows.					
Inspector Comment					

No Photos

LM Start	0.01	Rating **	M	Issue No.	131
LM End	0.01	Issue Type +	Ma	Location *	WS
Category	Earthen Levee		GPS Latitude/Longitude		
			Start	End	
Item	Animal Control		37.941113°	37.941113°	
			-121.345959°	-121.345959°	
DWR ID	DWR_RD0524_01_s_2019_131				
Comment Code					
A3 : No rodents visible, but rodent burrows visible; need to backfill and compact or grout burrows.					
Inspector Comment					
Multiple small holes on waterside shoulder do not appear to be active.					

No Photos

LM Start	0.14	Rating **	M	Issue No.	108
LM End	0.19	Issue Type +	Ma	Location *	LS
Category	Earthen Levee		GPS Latitude/Longitude		
			Start	End	
Item	Animal Control		37.939679°	37.939136°	
			-121.344391°	-121.343941°	
DWR ID	DWR_RD0524_01_f_2019_108				
Comment Code					
A3 : No rodents visible, but rodent burrows visible; need to backfill and compact or grout burrows.					
Inspector Comment					

No Photos

* Location LS : Land Side N/A : Not Applicable WS : Water Side CR : Crown	** Rating A : Acceptable M : Minimally Acceptable U : Unacceptable	N : Not Inspected/Rated C : Corrected A/W : Acceptable but Monitor & Maintain	+ Issue Type Ma : Maintenance Deficiency Ob : Design & System Obsolescence En : Enforcement
--	--	---	---

**Flood Control Project Maintenance
Levee Inspections**

Maintenance Issue Types Only, Levee Inspection Report By Mile - Fall 2019

Reclamation District No. 0524 Middle Roberts Island

Waterway	Bank	Unit Miles	Inspection Start/End	Inspector
Unit No. 01 San Joaquin River	Left	6.20	10/02/2019 11/14/2019	Alberto De Leon

LM Start	0.18	Rating **	U	Issue No.	1
LM End	0.18	Issue Type +	Ma	Location *	
Category	Supplemental			GPS Latitude/Longitude	
				Start	End
Item	DWR Erosion Survey			37.939085 °	37.939085 °
				-121.343917 °	-121.343917 °
DWR ID	RD0524U01RM40.85				
Comment Code					
Inspector Comment					
Site ID: RD0524U01RM40.85 08/13/2019: No significant change observed. 09/13/2017: No significant change observed. 07/25/2016: No significant change observed. 06/24/2015: No significant change observed. 06/19/2014: No significant change observed. 08/13/2013: The erosion was discovered during 2013 spring levee inspection. Inspector comment: Erosion is located along the lower level of water-ward slope.					

LM Start	0.18	Rating **	U	Issue No.	1 (cont)
LM End	0.18	Issue Type +	Ma	Location *	

Photo 1 of 3 : SJR2019_RD0524U01RM40.85_4.JPG



Close-up view of the erosion.

Photo 2 of 3 : SJR2019_RD0524U01RM40.85_1.JPG



Front view of the erosion.

* Location LS : Land Side N/A : Not Applicable WS : Water Side CR : Crown	** Rating A : Acceptable M : Minimally Acceptable U : Unacceptable	N : Not Inspected/Rated C : Corrected A/W : Acceptable but Monitor & Maintain	+ Issue Type Ma : Maintenance Deficiency Ob : Design & System Obsolescence En : Enforcement
--	--	---	---

**Flood Control Project Maintenance
Levee Inspections**

Maintenance Issue Types Only, Levee Inspection Report By Mile - Fall 2019

Reclamation District No. 0524 Middle Roberts Island

Waterway	Bank	Unit Miles	Inspection Start/End	Inspector
Unit No. 01 San Joaquin River	Left	6.20	10/02/2019 11/14/2019	Alberto De Leon

LM Start	0.18	Rating **	U	Issue No.	1 (cont)	
LM End	0.18	Issue Type +	Ma	Location *		
Category	Supplemental			GPS Latitude/Longitude		
				Start		End
Item	DWR Erosion Survey			37.939085 °		37.939085 °
				-121.343917 °		-121.343917 °
DWR ID	RD0524U01RM40.85					
Comment Code						
Inspector Comment						
Site ID: RD0524U01RM40.85 08/13/2019: No significant change observed. 09/13/2017: No significant change observed. 07/25/2016: No significant change observed. 06/24/2015: No significant change observed. 06/19/2014: No significant change observed. 08/13/2013: The erosion was discovered during 2013 spring levee inspection. Inspector comment: Erosion is located along the lower level of water-ward slope.						

Photo 3 of 3 : SJR2019_RD0524U01RM40.85_2.JPG



Front view of the erosion.

LM Start	0.23	Rating **	M	Issue No.	201
LM End	0.23	Issue Type +	Ma	Location *	WS
Category	Earthen Levee			GPS Latitude/Longitude	
				Start	End
Item	Trim / Thin Trees			37.938648 °	37.938648 °
				-121.343480 °	-121.343480 °
DWR ID	DWR_RD0524_01_f_2016_201				
Comment Code					
T1 : Trim trees to at least five feet above ground level.					
Inspector Comment					

Photo 1 of 2 : FA_2019_RD0524_107_201_20190830_00184.jpg



View of tree on waterside slope looking upstream. Spring 2019.

* Location LS : Land Side N/A : Not Applicable WS : Water Side CR : Crown	** Rating A : Acceptable M : Minimally Acceptable U : Unacceptable	N : Not Inspected/Rated C : Corrected A/W : Acceptable but Monitor & Maintain	+ Issue Type Ma : Maintenance Deficiency Ob : Design & System Obsolescence En : Enforcement
--	--	---	---

**Flood Control Project Maintenance
Levee Inspections**

Maintenance Issue Types Only, Levee Inspection Report By Mile - Fall 2019

Reclamation District No. 0524 Middle Roberts Island

Waterway	Bank	Unit Miles	Inspection Start/End	Inspector
Unit No. 01 San Joaquin River	Left	6.20	10/02/2019 11/14/2019	Alberto De Leon

LM Start	0.27	Rating **	U	Issue No.	179 (cont)	
LM End	0.27	Issue Type +	Ma	Location *	WS	
Category	Earthen Levee			GPS Latitude/Longitude		
				Start		End
Item	Trim / Thin Trees			37.938438 °		37.938438 °
				-121.342883 °		-121.342883 °
DWR ID	DWR_RD0524_01_s_2014_179					
Comment Code						
T3 : Trim and thin trees to allow visibility of the ground and room to flood fight.						
Inspector Comment						
Tree blocking view of waterside slope.						

Photo 2 of 2 : FA_2019_RD0524_107_179_20190830_00160.jpg



Looking east at untrimmed tree on waterward slope. (Fall 2016)

LM Start	0.31	Rating **	M	Issue No.	112
LM End	0.31	Issue Type +	Ma	Location *	WS
Category	Earthen Levee			GPS Latitude/Longitude	
				Start	End
Item	Trim / Thin Trees			37.938409 °	37.938409 °
				-121.342140 °	-121.342140 °
DWR ID	DWR_RD0524_01_f_2019_112				
Comment Code					
T1 : Trim trees to at least five feet above ground level.					
Inspector Comment					

No Photos

LM Start	0.32	Rating **	M	Issue No.	113
LM End	0.32	Issue Type +	Ma	Location *	WS
Category	Earthen Levee			GPS Latitude/Longitude	
				Start	End
Item	Animal Control			37.938434 °	37.938434 °
				-121.341968 °	-121.341968 °
DWR ID	DWR_RD0524_01_f_2019_113				
Comment Code					
A3 : No rodents visible, but rodent burrows visible; need to backfill and compact or grout burrows.					
Inspector Comment					

No Photos

* Location LS : Land Side N/A : Not Applicable WS : Water Side CR : Crown	** Rating A : Acceptable M : Minimally Acceptable U : Unacceptable	N : Not Inspected/Rated C : Corrected A/W : Acceptable but Monitor & Maintain	+ Issue Type Ma : Maintenance Deficiency Ob : Design & System Obsolescence En : Enforcement
--	--	---	---

Reclamation District No. 0524 Middle Roberts Island

No Photos

Front view of the erosion site.

Looking downstream of the erosion.

Page 7 of 116

**Flood Control Project Maintenance
Levee Inspections**

Maintenance Issue Types Only, Levee Inspection Report By Mile - Fall 2019

Reclamation District No. 0524 Middle Roberts Island

Waterway	Bank	Unit Miles	Inspection Start/End	Inspector
Unit No. 01 San Joaquin River	Left	6.20	10/02/2019 11/14/2019	Alberto De Leon

LM Start	0.34	Rating **	M	Issue No.	2 (cont)	
LM End	0.34	Issue Type +	Ma	Location *		
Category	Supplemental			GPS Latitude/Longitude		
				Start		End
Item	DWR Erosion Survey			37.938461 °		37.938461 °
				-121.341526 °		-121.341526 °
DWR ID	RD0524U01RM40.93					
Comment Code						
Inspector Comment						
Site ID: RD0524U01RM40.93						
08/13/2019: No significant change observed.						
09/13/2017: There are two pocket erosions at the site; both erosions are around 10 ft long and 6 ft high.						

Photo 3 of 3 : SJR2019_RD0524U01RM40.93_3.JPG



Close-up view of the erosion site.

LM Start	0.35	Rating **	M	Issue No.	119
LM End	0.35	Issue Type +	Ma	Location *	LS
Category	Earthen Levee			GPS Latitude/Longitude	
				Start	End
Item	Animal Control			37.938487 °	37.938487 °
				-121.341491 °	-121.341491 °
DWR ID	DWR_RD0524_01_f_2019_119				
Comment Code					
A1 : Exterminate rodents and backfill and compact or grout burrows.					
Inspector Comment					

No Photos

LM Start	0.36	Rating **	U	Issue No.	125
LM End	0.36	Issue Type +	Ma	Location *	LS
Category	Earthen Levee			GPS Latitude/Longitude	
				Start	End
Item	Animal Control			37.938509 °	37.938509 °
				-121.341300 °	-121.341300 °
DWR ID	DWR_RD0524_01_f_2019_125				
Comment Code					
A3 : No rodents visible, but rodent burrows visible; need to backfill and compact or grout burrows.					
Inspector Comment					

Photo 1 of 2 : FA_2019_RD0524_107_125_20191117_00359.jpg



View of large rodent hole on landside slope. Fall 2019

* Location LS : Land Side N/A : Not Applicable WS : Water Side CR : Crown	** Rating A : Acceptable M : Minimally Acceptable U : Unacceptable	N : Not Inspected/Rated C : Corrected A/W : Acceptable but Monitor & Maintain	+ Issue Type Ma : Maintenance Deficiency Ob : Design & System Obsolescence En : Enforcement
--	--	--	---

**Flood Control Project Maintenance
Levee Inspections**

Maintenance Issue Types Only, Levee Inspection Report By Mile - Fall 2019

Reclamation District No. 0524 Middle Roberts Island

Waterway	Bank	Unit Miles	Inspection Start/End	Inspector
Unit No. 01 San Joaquin River	Left	6.20	10/02/2019 11/14/2019	Alberto De Leon

LM Start	0.36	Rating **	M	Issue No.	126
LM End	0.46	Issue Type +	Ma	Location *	LS
Category	Earthen Levee			GPS Latitude/Longitude	
				Start	End
Item	Animal Control			37.938528°	37.938707°
				-121.341178°	-121.339397°
DWR ID	DWR_RD0524_01_f_2019_126				
Comment Code					
A3 : No rodents visible, but rodent burrows visible; need to backfill and compact or grout burrows.					
Inspector Comment					

No Photos

LM Start	0.40	Rating **	U	Issue No.	5	
LM End	0.40	Issue Type +	Ma	Location *		
Category	Supplemental			GPS Latitude/Longitude		
				Start		End
Item	DWR Erosion Survey			37.938870 °		37.938870 °
				-121.340460 °		-121.340460 °
DWR ID	RD0524U01RM40.99					
Comment Code						
Inspector Comment						
Site ID: RD0524U01RM40.99						
08/13/2019: No significant change observed.						
09/13/2017: No significant change observed.						
07/25/2016: More vegetation observed at the site.						
06/24/2015: No significant change observed.						
06/19/2014: No significant change observed.						
08/13/2013: No significant change at this site.						
08/07/2012: The erosion is at the upper levee slope, and likely caused by slope slip. The lower levee slope is covered with dense vegetation.						

Photo 1 of 3 : SJR2019_RD0524U01RM40.99_1.jpg



Front view of the erosion site.

* Location LS : Land Side N/A : Not Applicable WS : Water Side CR : Crown	** Rating A : Acceptable M : Minimally Acceptable U : Unacceptable	N : Not Inspected/Rated C : Corrected A/W : Acceptable but Monitor & Maintain	+ Issue Type Ma : Maintenance Deficiency Ob : Design & System Obsolescence En : Enforcement
--	--	---	---

**Flood Control Project Maintenance
Levee Inspections**

Maintenance Issue Types Only, Levee Inspection Report By Mile - Fall 2019

Reclamation District No. 0524 Middle Roberts Island

Waterway	Bank	Unit Miles	Inspection Start/End	Inspector
Unit No. 01 San Joaquin River	Left	6.20	10/02/2019 11/14/2019	Alberto De Leon

LM Start	0.40	Rating **	U	Issue No.	5 (cont)	
LM End	0.40	Issue Type +	Ma	Location *		
Category	Supplemental			GPS Latitude/Longitude		
				Start		End
Item	DWR Erosion Survey			37.938870 °		37.938870 °
				-121.340460 °		-121.340460 °
DWR ID	RD0524U01RM40.99					
Comment Code						
Inspector Comment						
Site ID: RD0524U01RM40.99						
08/13/2019: No significant change observed.						
09/13/2017: No significant change observed.						
07/25/2016: More vegetation observed at the site.						
06/24/2015: No significant change observed.						
06/19/2014: No significant change observed.						
08/13/2013: No significant change at this site.						
08/07/2012: The erosion is at the upper levee slope, and likely caused by slope slip. The lower levee slope is covered with dense vegetation.						

LM Start	0.40	Rating **	U	Issue No.	5 (cont)
LM End	0.40	Issue Type +	Ma	Location *	

Photo 2 of 3 : SJR2019_RD0524U01RM40.99_2.jpg



Front view of the site.

Photo 3 of 3 : SJR2019_RD0524U01RM40.99_3.jpg



Close-up view of the erosion.

* Location LS : Land Side N/A : Not Applicable WS : Water Side CR : Crown	** Rating A : Acceptable M : Minimally Acceptable U : Unacceptable	N : Not Inspected/Rated C : Corrected A/W : Acceptable but Monitor & Maintain	+ Issue Type Ma : Maintenance Deficiency Ob : Design & System Obsolescence En : Enforcement
--	--	---	---

**Flood Control Project Maintenance
Levee Inspections**

Maintenance Issue Types Only, Levee Inspection Report By Mile - Fall 2019

Reclamation District No. 0524 Middle Roberts Island

Waterway	Bank	Unit Miles	Inspection Start/End	Inspector
Unit No. 01 San Joaquin River	Left	6.20	10/02/2019 11/14/2019	Alberto De Leon

LM Start	0.43	Rating **	C	Issue No.	170
LM End	0.43	Issue Type +	Ma	Location *	WS
Category	Earthen Levee			GPS Latitude/Longitude	
				Start	End
Item	Erosion / Bank Caving			37.938669 °	37.938669 °
				-121.340006 °	-121.340006 °
DWR ID	DWR_RD0524_01_s_2015_170				
Comment Code					
E2 : Schedule repair of erosion site prior to the next inspection.					
Inspector Comment					
Erosion on waterside toe, exposed area does not have rip rap					

No Photos

LM Start	0.47	Rating **	M	Issue No.	127
LM End	0.63	Issue Type +	Ma	Location *	LS
Category	Earthen Levee			GPS Latitude/Longitude	
				Start	End
Item	Vegetation			37.938717 °	37.938238 °
				-121.339133 °	-121.336479 °
DWR ID	DWR_RD0524_01_f_2019_127				
Comment Code					
V1 : Control annual grass and weeds on the levee slopes and easements.					
Inspector Comment					

No Photos

LM Start	0.63	Rating **	U	Issue No.	11
LM End	0.64	Issue Type +	Ma	Location *	WS
Category	Earthen Levee			GPS Latitude/Longitude	
				Start	End
Item	Vegetation			37.938232 °	37.938160 °
				-121.336484 °	-121.336357 °
DWR ID	DWR_RD0524_01_s_2012_11				
Comment Code					
V2 : Remove the wild growth other than native grasses from the levee slopes.					
Inspector Comment					
Arrundo on waterside slope					

Photo 1 of 2 : FA_2019_RD0524_107_11_20190830_00013.jpg



Looking at bamboo on waterward slope. (Spring 2018)

*** Location**

LS : Land Side N/A : Not Applicable
WS : Water Side
CR : Crown

**** Rating**

A : Acceptable N : Not Inspected/Rated
M : Minimally Acceptable C : Corrected
U : Unacceptable A/W : Acceptable but Monitor & Maintain

+ Issue Type

Ma : Maintenance Deficiency
Ob : Design & System Obsolescence
En : Enforcement

**Flood Control Project Maintenance
Levee Inspections**

Maintenance Issue Types Only, Levee Inspection Report By Mile - Fall 2019

Reclamation District No. 0524 Middle Roberts Island

Waterway	Bank	Unit Miles	Inspection Start/End	Inspector
Unit No. 01 San Joaquin River	Left	6.20	10/02/2019 11/14/2019	Alberto De Leon

LM Start	0.63	Rating **	U	Issue No.	11 (cont)	
LM End	0.64	Issue Type +	Ma	Location *	WS	
Category	Earthen Levee			GPS Latitude/Longitude		
				Start		End
Item	Vegetation			37.938232°		37.938160°
				-121.336484°		-121.336357°
DWR ID	DWR_RD0524_01_s_2012_11					
Comment Code						
V2 : Remove the wild growth other than native grasses from the levee slopes.						
Inspector Comment						
Arrundo on waterside slope						

Photo 2 of 2 : FA_2019_RD0524_107_11_20190830_00014.jpg



Looking southeast at the waterside slope.

LM Start	0.63	Rating **	U	Issue No.	15
LM End	0.63	Issue Type +	Ma	Location *	
Category	Supplemental			GPS Latitude/Longitude	
				Start	End
Item	DWR Erosion Survey			37.938247 °	37.938247 °
				-121.336503 °	-121.336503 °
DWR ID	RD0524U01RM41.26				
Comment Code					
Inspector Comment					
Site ID: RD0524U01RM41.26					
08/13/2019: No significant change observed.					
09/13/2017: The erosion was discovered by levee inspection. The erosion site is immediately downstream of tall vegetation.					

Photo 1 of 3 : SJR2019_RD0524U01RM41.26_1.JPG



Front view of the erosion. The erosion is located at the shadow of the vegetation.

LM Start	0.63	Rating **	U	Issue No.	15 (cont)
LM End	0.63	Issue Type +	Ma	Location *	

Photo 2 of 3 : SJR2019_RD0524U01RM41.26_2.JPG



Front view of the erosion.

* Location LS : Land Side N/A : Not Applicable WS : Water Side CR : Crown		** Rating A : Acceptable M : Minimally Acceptable U : Unacceptable N : Not Inspected/Rated C : Corrected A/W : Acceptable but Monitor & Maintain		+ Issue Type Ma : Maintenance Deficiency Ob : Design & System Obsolescence En : Enforcement	
--	--	---	--	---	--

**Flood Control Project Maintenance
Levee Inspections**

Maintenance Issue Types Only, Levee Inspection Report By Mile - Fall 2019

Reclamation District No. 0524 Middle Roberts Island

Waterway	Bank	Unit Miles	Inspection Start/End	Inspector
Unit No. 01 San Joaquin River	Left	6.20	10/02/2019 11/14/2019	Alberto De Leon

LM Start	0.63	Rating **	U	Issue No.	15 (cont)	
LM End	0.63	Issue Type +	Ma	Location *		
Category	Supplemental			GPS Latitude/Longitude		
				Start	End	
Item	DWR Erosion Survey			37.938247 °	37.938247 °	
				-121.336503 °	-121.336503 °	
DWR ID	RD0524U01RM41.26					
Comment Code						
Inspector Comment						
Site ID: RD0524U01RM41.26						
08/13/2019: No significant change observed.						
09/13/2017: The erosion was discovered by levee inspection. The erosion site is immediately downstream of tall vegetation.						

Photo 3 of 3 : SJR2019_RD0524U01RM41.26_5.JPG



Close-up view of the erosion between the high bushes.

LM Start	0.67	Rating **	U	Issue No.	14
LM End	0.67	Issue Type +	Ma	Location *	WS
Category	Earthen Levee			GPS Latitude/Longitude	
				Start	End
Item	Vegetation			37.937808 °	37.937808 °
				-121.335913 °	-121.335913 °
DWR ID	DWR_RD0524_01_s_2012_14				
Comment Code					
V2 : Remove the wild growth other than native grasses from the levee slopes.					
Inspector Comment					
Arundo on waterside slope					

Photo 1 of 2 : FA_2019_RD0524_107_14_20191117_00363.jpg



View of bamboo on waterside slope. Fall 2019

LM Start	0.67	Rating **	U	Issue No.	14 (cont)
LM End	0.67	Issue Type +	Ma	Location *	WS

Photo 2 of 2 : FA_2019_RD0524_107_14_20190830_00015.jpg



Looking south at dying bamboo on waterward slope. Fall 2015

* Location LS : Land Side N/A : Not Applicable WS : Water Side CR : Crown	** Rating A : Acceptable M : Minimally Acceptable U : Unacceptable	N : Not Inspected/Rated C : Corrected A/W : Acceptable but Monitor & Maintain	+ Issue Type Ma : Maintenance Deficiency Ob : Design & System Obsolescence En : Enforcement
--	--	---	---

**Flood Control Project Maintenance
Levee Inspections**

Maintenance Issue Types Only, Levee Inspection Report By Mile - Fall 2019

Reclamation District No. 0524 Middle Roberts Island

Waterway	Bank	Unit Miles	Inspection Start/End	Inspector
Unit No. 01 San Joaquin River	Left	6.20	10/02/2019 11/14/2019	Alberto De Leon

LM Start	0.70	Rating **	M	Issue No.	16	
LM End	0.70	Issue Type +	Ma	Location *		
Category	Supplemental			GPS Latitude/Longitude		
				Start	End	
Item	DWR Erosion Survey			37.937577 °	37.937577 °	
				-121.335491 °	-121.335491 °	
DWR ID	RD0524U01RM41.34					
Comment Code						
Inspector Comment						
Site ID: RD0524U01RM41.34						
08/22/2019: No significant change observed.						
09/13/2017: Pocket erosion above the protected levee toe.						

LM Start	0.70	Rating **	M	Issue No.	16 (cont)
LM End	0.70	Issue Type +	Ma	Location *	

Photo 1 of 2 : SJR2019_RD0524U01RM41.34_1.JPG



Front view of the erosion.

Photo 2 of 2 : SJR2019_RD0524U01RM41.34_2.JPG



Close-up view of the erosion.

* Location LS : Land Side N/A : Not Applicable WS : Water Side CR : Crown	** Rating A : Acceptable M : Minimally Acceptable U : Unacceptable	N : Not Inspected/Rated C : Corrected A/W : Acceptable but Monitor & Maintain	+ Issue Type Ma : Maintenance Deficiency Ob : Design & System Obsolescence En : Enforcement
--	--	---	---

**Flood Control Project Maintenance
Levee Inspections**

Maintenance Issue Types Only, Levee Inspection Report By Mile - Fall 2019

Reclamation District No. 0524 Middle Roberts Island

Waterway	Bank	Unit Miles	Inspection Start/End	Inspector
Unit No. 01 San Joaquin River	Left	6.20	10/02/2019 11/14/2019	Alberto De Leon

LM Start	0.70	Rating **	A/W	Issue No.	153
LM End	0.70	Issue Type +	Ma	Location *	
Category	Supplemental			GPS Latitude/Longitude	
				Start	End
Item	2017 Storm Damage			37.937500 °	37.937500 °
				-121.335500 °	-121.335500 °
DWR ID	LMA-447				
Comment Code					
Inspector Comment					
Levee Evaluation Comments					
Description:Slope protection repairs are needed along the waterside slope due to erosion and riprap displacement from high water. Based upon levee inspections, it was determined the waterside levee slope is eroding, deteriorating, and degrading. The eroded levee sections need to be restored back to design standards to prevent further deterioration and damage.					
Site ID No:541					
Site Designation:LMA-447					
Repair Type: Erosion					
Rating:Area of Concern					
Field Date:8/10/2017					
Notes:					

Photo 1 of 3 : LEVAL_FA_2019_541_4079.jpg



LM Start	0.70	Rating **	A/W	Issue No.	153 (cont)
LM End	0.70	Issue Type +	Ma	Location *	

Photo 2 of 3 : LEVAL_FA_2019_541_4080.jpg



* Location LS : Land Side N/A : Not Applicable WS : Water Side CR : Crown	** Rating A : Acceptable M : Minimally Acceptable U : Unacceptable	N : Not Inspected/Rated C : Corrected A/W : Acceptable but Monitor & Maintain	+ Issue Type Ma : Maintenance Deficiency Ob : Design & System Obsolescence En : Enforcement
--	--	---	---

**Flood Control Project Maintenance
Levee Inspections**

Maintenance Issue Types Only, Levee Inspection Report By Mile - Fall 2019

Reclamation District No. 0524 Middle Roberts Island

Waterway	Bank	Unit Miles	Inspection Start/End	Inspector
Unit No. 01 San Joaquin River	Left	6.20	10/02/2019 11/14/2019	Alberto De Leon

LM Start	0.70	Rating **	A/W	Issue No.	153 (cont)
LM End	0.70	Issue Type +	Ma	Location *	
Category	Supplemental			GPS Latitude/Longitude	
				Start	End
Item	2017 Storm Damage			37.937500°	37.937500°
				-121.335500°	-121.335500°
DWR ID	LMA-447				
Comment Code					
Inspector Comment					
<p>Levee Evaluation Comments</p> <p>Description: Slope protection repairs are needed along the waterside slope due to erosion and riprap displacement from high water. Based upon levee inspections, it was determined the waterside levee slope is eroding, deteriorating, and degrading. The eroded levee sections need to be restored back to design standards to prevent further deterioration and damage.</p> <p>Site ID No: 541</p> <p>Site Designation: LMA-447</p> <p>Repair Type: Erosion</p> <p>Rating: Area of Concern</p> <p>Field Date: 8/10/2017</p> <p>Notes:</p>					

Photo 3 of 3 : LEVAL_FA_2019_541_4083.jpg



LM Start	0.71	Rating **	M	Issue No.	17
LM End	0.73	Issue Type +	Ma	Location *	
Category	Supplemental			GPS Latitude/Longitude	
				Start	End
Item	DWR Erosion Survey			37.937222°	37.937222°
				-121.335277°	-121.335277°
DWR ID	RD0524U01RM41.36				
Comment Code					
Inspector Comment					
<p>Site ID: RD0524U01RM41.36</p> <p>08/13/2019: No significant change observed.</p> <p>09/13/2017: No significant change observed.</p> <p>07/25/2016: No significant change observed.</p> <p>06/24/2015: The erosion site is immediately downstream of the RR bridge.</p>					

Photo 1 of 3 : SJR2019_RD0524U01RM41.36_1.JPG



Front view of the erosion.

* Location LS : Land Side N/A : Not Applicable WS : Water Side CR : Crown	** Rating A : Acceptable M : Minimally Acceptable U : Unacceptable	N : Not Inspected/Rated C : Corrected A/W : Acceptable but Monitor & Maintain	+ Issue Type Ma : Maintenance Deficiency Ob : Design & System Obsolescence En : Enforcement
--	--	---	---

**Flood Control Project Maintenance
Levee Inspections**

Maintenance Issue Types Only, Levee Inspection Report By Mile - Fall 2019

Reclamation District No. 0524 Middle Roberts Island

Waterway	Bank	Unit Miles	Inspection Start/End	Inspector
Unit No. 01 San Joaquin River	Left	6.20	10/02/2019 11/14/2019	Alberto De Leon

LM Start	0.72	Rating **	M	Issue No.	157 (cont)	
LM End	0.72	Issue Type +	Ma	Location *	LS	
Category	Earthen Levee			GPS Latitude/Longitude		
				Start		End
Item	Erosion / Bank Caving			37.937290 °	37.937290 °	
				-121.335417 °	-121.335417 °	
DWR ID	DWR_RD0524_01_s_2017_157					
Comment Code						
E2 : Schedule repair of erosion site prior to the next inspection.						
Inspector Comment						
Slope damage caused by rain runoff on landside slope.						

Photo 2 of 2 : FA_2019_RD0524_107_157_20190830_00148.jpg



Looking west at slope damage caused by rain runoff on landward slope.

LM Start	0.72	Rating **	M	Issue No.	129
LM End	0.72	Issue Type +	Ma	Location *	LS
Category	Earthen Levee			GPS Latitude/Longitude	
				Start	End
Item	Trim / Thin Trees			37.937268 °	37.937268 °
				-121.335341 °	-121.335341 °
DWR ID	DWR_RD0524_01_f_2019_129				
Comment Code					
T1 : Trim trees to at least five feet above ground level.					
Inspector Comment					

No Photos

* Location
LS : Land Side N/A : Not Applicable
WS : Water Side
CR : Crown

** Rating
A : Acceptable N : Not Inspected/Rated
M : Minimally Acceptable C : Corrected
U : Unacceptable A/W : Acceptable but Monitor & Maintain

+ Issue Type
Ma : Maintenance Deficiency
Ob : Design & System Obsolescence
En : Enforcement

**Flood Control Project Maintenance
Levee Inspections**

Maintenance Issue Types Only, Levee Inspection Report By Mile - Fall 2019

Reclamation District No. 0524 Middle Roberts Island

Waterway	Bank	Unit Miles	Inspection Start/End	Inspector
Unit No. 01 San Joaquin River	Left	6.20	10/02/2019 11/14/2019	Alberto De Leon

LM Start	0.72	Rating **	A/W	Issue No.	154
LM End	0.73	Issue Type +	Ma	Location *	
Category	Supplemental			GPS Latitude/Longitude	
				Start	End
Item	2017 Storm Damage			37.937200 °	37.937100 °
				-121.335300 °	-121.335300 °
DWR ID	LMA-446				

Comment Code

Inspector Comment

Levee Evaluation Comments

Description: Slope protection repairs are needed along the waterside slope due to erosion and riprap displacement from high water. Based upon levee inspections, it was determined the waterside levee slope is eroding, deteriorating, and degrading. The eroded levee sections need to be restored back to design standards to prevent further deterioration and damage.

Site ID No: 540

Site Designation: LMA-446

Repair Type: Erosion

Rating: Area of Concern

Field Date: 8/10/2017

Notes:

LM Start	0.72	Rating **	A/W	Issue No.	154 (cont)
LM End	0.73	Issue Type +	Ma	Location *	

Photo 1 of 3 : LEVAL_FA_2019_540_4087.jpg



Photo 2 of 3 : LEVAL_FA_2019_540_4088.jpg



* Location LS : Land Side N/A : Not Applicable WS : Water Side CR : Crown		** Rating A : Acceptable N : Not Inspected/Rated M : Minimally Acceptable C : Corrected U : Unacceptable A/W : Acceptable but Monitor & Maintain		+ Issue Type Ma : Maintenance Deficiency Ob : Design & System Obsolescence En : Enforcement	
--	--	---	--	---	--

**Flood Control Project Maintenance
Levee Inspections**

Maintenance Issue Types Only, Levee Inspection Report By Mile - Fall 2019

Reclamation District No. 0524 Middle Roberts Island

Waterway	Bank	Unit Miles	Inspection Start/End	Inspector
Unit No. 01 San Joaquin River	Left	6.20	10/02/2019 11/14/2019	Alberto De Leon

LM Start	0.72	Rating **	A/W	Issue No.	154 (cont)	
LM End	0.73	Issue Type +	Ma	Location *		
Category	Supplemental			GPS Latitude/Longitude		
				Start	End	
Item	2017 Storm Damage			37.937200 °	37.937100 °	
				-121.335300 °	-121.335300 °	
DWR ID	LMA-446					
Comment Code						
Inspector Comment						
Levee Evaluation Comments						
Description:Slope protection repairs are needed along the waterside slope due to erosion and riprap displacement from high water. Based upon levee inspections, it was determined the waterside levee slope is eroding, deteriorating, and degrading. The eroded levee sections need to be restored back to design standards to prevent further deterioration and damage.						
Site ID No:540						
Site Designation:LMA-446						
Repair Type: Erosion						
Rating:Area of Concern						
Field Date:8/10/2017						
Notes:						

Photo 3 of 3 : LEVAL_FA_2019_540_4089.jpg



LM Start	0.75	Rating **	U	Issue No.	262
LM End	0.78	Issue Type +	Ma	Location *	LS
Category	Earthen Levee			GPS Latitude/Longitude	
				Start	End
Item	Vegetation			37.936813 °	37.936539 °
				-121.335019 °	-121.334863 °
DWR ID	DWR_RD0524_01_s_2012_262				
Comment Code					
V2 : Remove the wild growth other than native grasses from the levee slopes.					
Inspector Comment					
Dense vegetation at landside toe along fence line.					

Photo 1 of 3 : FA_2019_RD0524_107_262_20190830_00244.jpg



Looking northeast at the landside slope.

* Location LS : Land Side N/A : Not Applicable WS : Water Side CR : Crown	** Rating A : Acceptable M : Minimally Acceptable U : Unacceptable	N : Not Inspected/Rated C : Corrected A/W : Acceptable but Monitor & Maintain	+ Issue Type Ma : Maintenance Deficiency Ob : Design & System Obsolescence En : Enforcement
--	--	---	---

**Flood Control Project Maintenance
Levee Inspections**

Maintenance Issue Types Only, Levee Inspection Report By Mile - Fall 2019

Reclamation District No. 0524 Middle Roberts Island

Waterway	Bank	Unit Miles	Inspection Start/End	Inspector
Unit No. 01 San Joaquin River	Left	6.20	10/02/2019 11/14/2019	Alberto De Leon

LM Start	0.75	Rating **	U	Issue No.	262 (cont)
LM End	0.78	Issue Type +	Ma	Location *	LS
Category	Earthen Levee			GPS Latitude/Longitude	
				Start	End
Item	Vegetation			37.936813 °	37.936539 °
				-121.335019 °	-121.334863 °
DWR ID	DWR_RD0524_01_s_2012_262				
Comment Code					
V2 : Remove the wild growth other than native grasses from the levee slopes.					
Inspector Comment					
Dense vegetation at landside toe along fence line.					

LM Start	0.75	Rating **	U	Issue No.	262 (cont)
LM End	0.78	Issue Type +	Ma	Location *	LS

Photo 2 of 3 : FA_2019_RD0524_107_262_20190830_00245.jpg



Looking west at dense vegetation at landward slope and toe fall 2015.

Photo 3 of 3 : FA_2019_RD0524_107_262_20190830_00246.jpg



Looking west at dense vegetation on landside toe. Spring 2014

* Location LS : Land Side N/A : Not Applicable WS : Water Side CR : Crown	** Rating A : Acceptable M : Minimally Acceptable U : Unacceptable N : Not Inspected/Rated C : Corrected A/W : Acceptable but Monitor & Maintain	+ Issue Type Ma : Maintenance Deficiency Ob : Design & System Obsolescence En : Enforcement
--	---	---

Reclamation District No. 0524 Middle Roberts Island

**Flood Control Project Maintenance
Levee Inspections**

Maintenance Issue Types Only, Levee Inspection Report By Mile - Fall 2019

Reclamation District No. 0524 Middle Roberts Island

Waterway	Bank	Unit Miles	Inspection Start/End	Inspector
Unit No. 01 San Joaquin River	Left	6.20	10/02/2019 11/14/2019	Alberto De Leon

LM Start	0.76	Rating **	U	Issue No.	21 (cont)	
LM End	0.77	Issue Type +	Ma	Location *		
Category	Supplemental			GPS Latitude/Longitude		
				Start	End	
Item	DWR Erosion Survey			37.936821 °	37.936821 °	
				-121.334582 °	-121.334582 °	
DWR ID	RD0524U01RM41.39					
Comment Code						
Inspector Comment						
Site ID: RD0524U01RM41.39						
08/13/2019: No significant change observed.						
09/13/2017: No significant change observed.						
07/25/2016: No significant change observed.						
06/24/2015: No significant change observed.						
06/19/2014: No significant change observed.						
08/13/2013: No significant change at this site.						
08/07/2012: The site has been visited by boat survey. No significant change observed.						
08/23/2011: The site is located immediately upstream of a Railroad bridge. Dense vegetation at the water line blocks the view of erosion.						

Photo 3 of 3 : SJR2019_RD0524U01RM41.39_3.jpg



Downstream view of the erosion.

LM Start	0.79	Rating **	A/W	Issue No.	155
LM End	0.80	Issue Type +	Ma	Location *	WS
Category	Supplemental			GPS Latitude/Longitude	
				Start	End
Item	2017 Storm Damage			37.936300 °	37.936200 °
				-121.334700 °	-121.334600 °
DWR ID	LMA-444				
Comment Code					
Inspector Comment					
Levee Evaluation Comments					
Description:Slope protection repairs are needed along the waterside slope due to erosion and riprap displacement from high water. Based upon levee inspections, it was determined the waterside levee slope is eroding, deteriorating, and degrading. The eroded levee sections need to be restored back to design standards to prevent further deterioration and damage.					
Site ID No:538					
Site Designation:LMA-444					
Repair Type: Erosion					
Rating:Area of Concern					
Field Date:8/10/2017					
Notes:					

Photo 1 of 3 : LEVAL_FA_2019_538_4097.jpg



* Location LS : Land Side N/A : Not Applicable WS : Water Side CR : Crown	** Rating A : Acceptable M : Minimally Acceptable U : Unacceptable	N : Not Inspected/Rated C : Corrected A/W : Acceptable but Monitor & Maintain	+ Issue Type Ma : Maintenance Deficiency Ob : Design & System Obsolescence En : Enforcement
--	--	---	---

**Flood Control Project Maintenance
Levee Inspections**

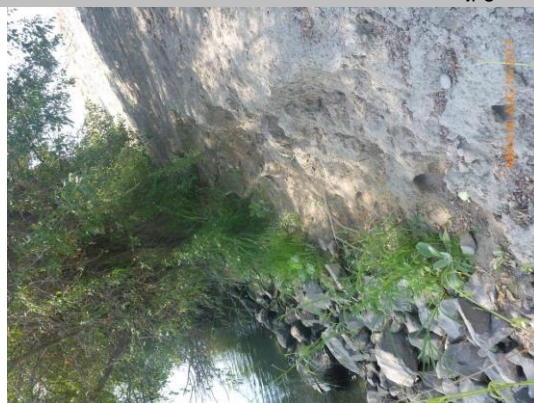
Maintenance Issue Types Only, Levee Inspection Report By Mile - Fall 2019

Reclamation District No. 0524 Middle Roberts Island

Waterway	Bank	Unit Miles	Inspection Start/End	Inspector
Unit No. 01 San Joaquin River	Left	6.20	10/02/2019 11/14/2019	Alberto De Leon

LM Start	0.79	Rating **	A/W	Issue No.	155 (cont)	
LM End	0.80	Issue Type +	Ma	Location *	WS	
Category	Supplemental			GPS Latitude/Longitude		
				Start	End	
Item	2017 Storm Damage			37.936300 °	37.936200 °	
				-121.334700 °	-121.334600 °	
DWR ID	LMA-444					
Comment Code						
Inspector Comment						
Levee Evaluation Comments						
Description:Slope protection repairs are needed along the waterside slope due to erosion and riprap displacement from high water. Based upon levee inspections, it was determined the waterside levee slope is eroding, deteriorating, and degrading. The eroded levee sections need to be restored back to design standards to prevent further deterioration and damage.						
Site ID No:538						
Site Designation:LMA-444						
Repair Type: Erosion						
Rating:Area of Concern						
Field Date:8/10/2017						
Notes:						

Photo 2 of 3 : LEVAL_FA_2019_538_4098.jpg



LM Start	0.79	Rating **	A/W	Issue No.	155 (cont)
LM End	0.80	Issue Type +	Ma	Location *	WS

Photo 3 of 3 : LEVAL_FA_2019_538_4099.jpg



* Location LS : Land Side N/A : Not Applicable WS : Water Side CR : Crown	** Rating A : Acceptable M : Minimally Acceptable U : Unacceptable	N : Not Inspected/Rated C : Corrected A/W : Acceptable but Monitor & Maintain	+ Issue Type Ma : Maintenance Deficiency Ob : Design & System Obsolescence En : Enforcement
--	--	---	---

**Flood Control Project Maintenance
Levee Inspections**

Maintenance Issue Types Only, Levee Inspection Report By Mile - Fall 2019

Reclamation District No. 0524 Middle Roberts Island

Waterway	Bank	Unit Miles	Inspection Start/End	Inspector
Unit No. 01 San Joaquin River	Left	6.20	10/02/2019 11/14/2019	Alberto De Leon

LM Start	0.83	Rating **	U	Issue No.	22
LM End	0.84	Issue Type +	Ma	Location *	
Category	Supplemental			GPS Latitude/Longitude	
				Start	End
Item	DWR Erosion Survey			37.935930 °	37.935930 °
				-121.334133 °	-121.334133 °
DWR ID	RD0524U01RM41.44				
Comment Code					
Inspector Comment					
Site ID: RD0524U01RM41.44 08/13/2019: No significant change observed. 09/13/2017: No significant change observed. 07/25/2016: No significant change observed. 06/24/2015: No significant change observed. 06/19/2014: No significant change observed. 08/13/2013: Site was discovered during boat survey. The dense vegetation blocks a clear view of the erosion. Size of erosion site was very roughly estimated.					

Photo 1 of 3 : SJR2019_RD0524U01RM41.44_1.JPG



Front view of the erosion. The tree and vegetation block the view of the site.

LM Start	0.83	Rating **	U	Issue No.	22 (cont)
LM End	0.84	Issue Type +	Ma	Location *	

Photo 2 of 3 : SJR2019_RD0524U01RM41.44_2.JPG



Close-up view of the erosion site.

* Location LS : Land Side N/A : Not Applicable WS : Water Side CR : Crown	** Rating A : Acceptable M : Minimally Acceptable U : Unacceptable	N : Not Inspected/Rated C : Corrected A/W : Acceptable but Monitor & Maintain	+ Issue Type Ma : Maintenance Deficiency Ob : Design & System Obsolescence En : Enforcement
--	--	---	---

**Flood Control Project Maintenance
Levee Inspections**

Maintenance Issue Types Only, Levee Inspection Report By Mile - Fall 2019

Reclamation District No. 0524 Middle Roberts Island

Waterway	Bank	Unit Miles	Inspection Start/End	Inspector
Unit No. 01 San Joaquin River	Left	6.20	10/02/2019 11/14/2019	Alberto De Leon

LM Start	0.83	Rating **	U	Issue No.	22 (cont)	
LM End	0.84	Issue Type +	Ma	Location *		
Category	Supplemental			GPS Latitude/Longitude		
				Start		End
Item	DWR Erosion Survey			37.935930 °		37.935930 °
				-121.334133 °		-121.334133 °
DWR ID	RD0524U01RM41.44					
Comment Code						
Inspector Comment						
Site ID: RD0524U01RM41.44						
08/13/2019: No significant change observed.						
09/13/2017: No significant change observed.						
07/25/2016: No significant change observed.						
06/24/2015: No significant change observed.						
06/19/2014: No significant change observed.						
08/13/2013: Site was discovered during boat survey. The dense vegetation blocks a clear view of the erosion. Size of erosion site was very roughly estimated.						

Photo 3 of 3 : SJR2019_RD0524U01RM41.44_3.JPG



Close-up view of the site.

LM Start	0.90	Rating **	M	Issue No.	149
LM End	0.90	Issue Type +	Ma	Location *	WS
Category	Earthen Levee			GPS Latitude/Longitude	
				Start	End
Item	Trim / Thin Trees			37.935319 °	37.935319 °
				-121.333406 °	-121.333406 °
DWR ID	DWR_RD0524_01_s_2018_149				
Comment Code					
T1 : Trim trees to at least five feet above ground level.					
Inspector Comment					

Photo 1 of 1 : FA_2019_RD0524_107_149_20190830_00135.jpg



Looking southeast at untrimmed trees on waterward slope. (Spring 2018)

* Location LS : Land Side N/A : Not Applicable WS : Water Side CR : Crown	** Rating A : Acceptable M : Minimally Acceptable U : Unacceptable	N : Not Inspected/Rated C : Corrected A/W : Acceptable but Monitor & Maintain	+ Issue Type Ma : Maintenance Deficiency Ob : Design & System Obsolescence En : Enforcement
--	--	--	---

**Flood Control Project Maintenance
Levee Inspections**

Maintenance Issue Types Only, Levee Inspection Report By Mile - Fall 2019

Reclamation District No. 0524 Middle Roberts Island

Waterway	Bank	Unit Miles	Inspection Start/End	Inspector
Unit No. 01 San Joaquin River	Left	6.20	10/02/2019 11/14/2019	Alberto De Leon

LM Start	0.90	Rating **	A/W	Issue No.	193
LM End	0.91	Issue Type +	Ma	Location *	
Category	Supplemental			GPS Latitude/Longitude	
				Start	End
Item	2017 Storm Damage			37.935400 °	37.935300 °
				-121.333300 °	-121.333200 °
DWR ID	LMA-443				
Comment Code					
Inspector Comment					
Levee Evaluation Comments					
Description:Slope protection repairs are needed along the waterside slope due to erosion and riprap displacement from high water. Based upon levee inspections, it was determined the waterside levee slope is eroding, deteriorating, and degrading. The eroded levee sections need to be restored back to design standards to prevent further deterioration and damage.					
Site ID No:537					
Site Designation:LMA-443					
Repair Type: Erosion					
Rating:Serious					
Field Date:8/10/2017					
Notes:					

Photo 1 of 3 : LEVAL_FA_2019_537_4102.jpg



LM Start	0.90	Rating **	A/W	Issue No.	193 (cont)
LM End	0.91	Issue Type +	Ma	Location *	

Photo 2 of 3 : LEVAL_FA_2019_537_4103.jpg



* Location LS : Land Side N/A : Not Applicable WS : Water Side CR : Crown	** Rating A : Acceptable M : Minimally Acceptable U : Unacceptable	N : Not Inspected/Rated C : Corrected A/W : Acceptable but Monitor & Maintain	+ Issue Type Ma : Maintenance Deficiency Ob : Design & System Obsolescence En : Enforcement
--	--	---	---

**Flood Control Project Maintenance
Levee Inspections**

Maintenance Issue Types Only, Levee Inspection Report By Mile - Fall 2019

Reclamation District No. 0524 Middle Roberts Island

Waterway	Bank	Unit Miles	Inspection Start/End	Inspector
Unit No. 01 San Joaquin River	Left	6.20	10/02/2019 11/14/2019	Alberto De Leon

LM Start	0.90	Rating **	A/W	Issue No.	193 (cont)
LM End	0.91	Issue Type +	Ma	Location *	
Category	Supplemental			GPS Latitude/Longitude	
				Start	End
Item	2017 Storm Damage			37.935400 °	37.935300 °
				-121.333300 °	-121.333200 °
DWR ID	LMA-443				
Comment Code					
Inspector Comment					
Levee Evaluation Comments					
Description:Slope protection repairs are needed along the waterside slope due to erosion and riprap displacement from high water. Based upon levee inspections, it was determined the waterside levee slope is eroding, deteriorating, and degrading. The eroded levee sections need to be restored back to design standards to prevent further deterioration and damage.					
Site ID No:537					
Site Designation:LMA-443					
Repair Type: Erosion					
Rating:Serious					
Field Date:8/10/2017					
Notes:					

Photo 3 of 3 : LEVAL_FA_2019_537_4104.jpg



LM Start	0.91	Rating **	A/W	Issue No.	187
LM End		Issue Type +	Ma	Location *	
Category	Supplemental			GPS Latitude/Longitude	
				Start	End
Item	2017 Storm Damage			37.935580°	°
				-121.333200°	°
DWR ID	DWR_RD0524_01_s_2012_99				
Comment Code					
Inspector Comment					
Levee Evaluation Comments					
Description:					
Site ID No:87					
Site Designation:DWR_RD0524_01_s_2012_99					
Repair Type: Erosion					
Rating:Area of Concern					
Field Date:6/7/2017					
Notes: no observable defects to levee, vegetation blocks ws toe					

Photo 1 of 3 : LEVAL_FA_2019_87_1285.jpg



* Location LS : Land Side N/A : Not Applicable WS : Water Side CR : Crown	** Rating A : Acceptable M : Minimally Acceptable U : Unacceptable	N : Not Inspected/Rated C : Corrected A/W : Acceptable but Monitor & Maintain	+ Issue Type Ma : Maintenance Deficiency Ob : Design & System Obsolescence En : Enforcement
--	--	---	---

**Flood Control Project Maintenance
Levee Inspections**

Maintenance Issue Types Only, Levee Inspection Report By Mile - Fall 2019

Reclamation District No. 0524 Middle Roberts Island

Waterway	Bank	Unit Miles	Inspection Start/End	Inspector
Unit No. 01 San Joaquin River	Left	6.20	10/02/2019 11/14/2019	Alberto De Leon

LM Start	0.91	Rating **	A/W	Issue No.	187 (cont)	
LM End		Issue Type +	Ma	Location *		
Category	Supplemental			GPS Latitude/Longitude		
				Start	End	
Item	2017 Storm Damage			37.935580 °		°
				-121.333200 °		°
DWR ID	DWR_RD0524_01_s_2012_99					
Comment Code						
Inspector Comment						
Levee Evaluation Comments						
Description:						
Site ID No:87						
Site Designation:DWR_RD0524_01_s_2012_99						
Repair Type: Erosion						
Rating:Area of Concern						
Field Date:6/7/2017						
Notes: no observable defects to levee, vegetation blocks ws toe						

LM Start	0.91	Rating **	A/W	Issue No.	187 (cont)
LM End		Issue Type +	Ma	Location *	

Photo 2 of 3 : LEVAL_FA_2019_87_1286.jpg



Photo 3 of 3 : LEVAL_FA_2019_87_1290.jpg



* Location
LS : Land Side N/A : Not Applicable
WS : Water Side
CR : Crown

** Rating
A : Acceptable N : Not Inspected/Rated
M : Minimally Acceptable C : Corrected
U : Unacceptable A/W : Acceptable but Monitor & Maintain

+ Issue Type
Ma : Maintenance Deficiency
Ob : Design & System Obsolescence
En : Enforcement

**Flood Control Project Maintenance
Levee Inspections**

Maintenance Issue Types Only, Levee Inspection Report By Mile - Fall 2019

Reclamation District No. 0524 Middle Roberts Island

Waterway	Bank	Unit Miles	Inspection Start/End	Inspector
Unit No. 01 San Joaquin River	Left	6.20	10/02/2019 11/14/2019	Alberto De Leon

LM Start	0.91	Rating **	U	Issue No.	29
LM End	0.91	Issue Type +	Ma	Location *	
Category	Supplemental			GPS Latitude/Longitude	
				Start	End
Item	DWR Erosion Survey			37.935576°	37.935576°
				-121.333202°	-121.333202°
DWR ID	RD0524U01RM41.5				

Comment Code

Inspector Comment

Site ID: RD0524U01RM41.5
 08/13/2019: No significant change observed. Signs of animal activities at the site.
 09/13/2017: No significant change observed.
 07/25/2016: No significant change observed.
 06/24/2015: No significant change observed.
 06/19/2014: No significant change observed.
 08/13/2013: No significant change at this site.
 08/07/2012: The site has been visited by boat survey. No significant change observed
 08/23/2011: The erosion site is immediately downstream of the riprap protection.

LM Start	0.91	Rating **	U	Issue No.	29 (cont)
LM End	0.91	Issue Type +	Ma	Location *	

Photo 1 of 3 : SJR2019_RD0524U01RM41.50_2.jpg



Front view of the erosion.

Photo 2 of 3 : SJR2019_RD0524U01RM41.50_1.jpg



Close-up view of the erosion.

* Location LS : Land Side N/A : Not Applicable WS : Water Side CR : Crown	** Rating A : Acceptable M : Minimally Acceptable U : Unacceptable	N : Not Inspected/Rated C : Corrected A/W : Acceptable but Monitor & Maintain	+ Issue Type Ma : Maintenance Deficiency Ob : Design & System Obsolescence En : Enforcement
--	--	--	---

**Flood Control Project Maintenance
Levee Inspections**

Maintenance Issue Types Only, Levee Inspection Report By Mile - Fall 2019

Reclamation District No. 0524 Middle Roberts Island

Waterway	Bank	Unit Miles	Inspection Start/End	Inspector
Unit No. 01 San Joaquin River	Left	6.20	10/02/2019 11/14/2019	Alberto De Leon

LM Start	0.91	Rating **	U	Issue No.	29 (cont)	
LM End	0.91	Issue Type +	Ma	Location *		
Category	Supplemental			GPS Latitude/Longitude		
				Start	End	
Item	DWR Erosion Survey			37.935576°	37.935576°	
				-121.333202°	-121.333202°	
DWR ID	RD0524U01RM41.5					
Comment Code						
Inspector Comment						
Site ID: RD0524U01RM41.5						
08/13/2019: No significant change observed. Signs of animal activities at the site.						
09/13/2017: No significant change observed.						
07/25/2016: No significant change observed.						
06/24/2015: No significant change observed.						
06/19/2014: No significant change observed.						
08/13/2013: No significant change at this site.						
08/07/2012: The site has been visited by boat survey. No significant change observed						
08/23/2011: The erosion site is immediately downstream of the riprap protection.						

Photo 3 of 3 : SJR2019_RD0524U01RM41.50_3.jpg



Close-up view of the erosion.

LM Start	0.92	Rating **	M	Issue No.	158
LM End	1.02	Issue Type +	Ma	Location *	LS
Category	Earthen Levee			GPS Latitude/Longitude	
				Start	End
Item	Animal Control			37.935257 °	37.934988 °
				-121.332969 °	-121.331152 °
DWR ID	DWR_RD0524_01_s_2017_158				
Comment Code					
A3 : No rodents visible, but rodent burrows visible; need to backfill and compact or grout burrows.					
Inspector Comment					
Multiple large rodent holes along this stretch.					

No Photos

* Location LS : Land Side N/A : Not Applicable WS : Water Side CR : Crown	** Rating A : Acceptable M : Minimally Acceptable U : Unacceptable	N : Not Inspected/Rated C : Corrected A/W : Acceptable but Monitor & Maintain	+ Issue Type Ma : Maintenance Deficiency Ob : Design & System Obsolescence En : Enforcement
--	--	---	---

**Flood Control Project Maintenance
Levee Inspections**

Maintenance Issue Types Only, Levee Inspection Report By Mile - Fall 2019

Reclamation District No. 0524 Middle Roberts Island

Waterway	Bank	Unit Miles	Inspection Start/End	Inspector
Unit No. 01 San Joaquin River	Left	6.20	10/02/2019 11/14/2019	Alberto De Leon

LM Start	0.93	Rating **	C	Issue No.	77
LM End	1.01	Issue Type +	Ma	Location *	LS
Category	Earthen Levee			GPS Latitude/Longitude	
				Start	End
Item	Trim / Thin Trees			37.935259 °	37.935049 °
				-121.332864 °	-121.331334 °
DWR ID	DWR_RD0524_01_s_2012_77				
Comment Code					
T1 : Trim trees to at least five feet above ground level.					
Inspector Comment					
Trees have been trimmed					

No Photos

LM Start	0.97	Rating **	M	Issue No.	20
LM End	0.97	Issue Type +	Ma	Location *	WS
Category	Earthen Levee			GPS Latitude/Longitude	
				Start	End
Item	Trim / Thin Trees			37.935181 °	37.935181 °
				-121.332125 °	-121.332125 °
DWR ID	DWR_RD0524_01_f_2017_20				
Comment Code					
T3 : Trim and thin trees to allow visibility of the ground and room to flood fight.					
Inspector Comment					

Photo 1 of 1 : FA_2019_RD0524_107_20_20190830_00028.jpg



Looking southeast at untrimmed tree on waterward slope.(Fall 2018)

* Location LS : Land Side N/A : Not Applicable WS : Water Side CR : Crown	** Rating A : Acceptable M : Minimally Acceptable U : Unacceptable	N : Not Inspected/Rated C : Corrected A/W : Acceptable but Monitor & Maintain	+ Issue Type Ma : Maintenance Deficiency Ob : Design & System Obsolescence En : Enforcement
--	--	---	---

**Flood Control Project Maintenance
Levee Inspections**

Maintenance Issue Types Only, Levee Inspection Report By Mile - Fall 2019

Reclamation District No. 0524 Middle Roberts Island

Waterway	Bank	Unit Miles	Inspection Start/End	Inspector
Unit No. 01 San Joaquin River	Left	6.20	10/02/2019 11/14/2019	Alberto De Leon

LM Start	0.98	Rating **	A/W	Issue No.	937
LM End	0.98	Issue Type +	Ma	Location *	
Category	Supplemental			GPS Latitude/Longitude	
				Start	End
Item	DRAFT DWR UCIP LMA Responsibility			37.935163°	37.935163°
				-121.331887°	-121.331887°
DWR ID	20598				
Comment Code					
Inspector Comment					
DS_ID:20598					
FS_ID:17575					
EP_NO: N/A					
Repair Type: No Action Needed					
Crossing Status: Found					
UCIP Comments:					
FIELD_STRUCT_DESC: *ABANDONED* 36-inch drainage pipe of an unknown material through the levee, 15 feet below the crown. Landside (LS) end is not visible. Concrete headwall at outlet on the waterside (WS) slope is visible. Pipe appears to be abandoned in place. Slide gate on the WS removed. [Additional Reference(s): DWR Levee Log, 2004. USACE San Joaquin O&M Manual 7, April 1964, (HLM 0.99)].					
FS Date: 8/16/2013					

LM Start	0.98	Rating **	A/W	Issue No.	937 (cont)
LM End	0.98	Issue Type +	Ma	Location *	

Photo 1 of 2 : UCIP_FA_2019_17575_29736.jpg



Concrete headwall visible on WS slope.

Photo 2 of 2 : UCIP_FA_2019_17575_29735.jpg



Slide gate removed from headwall on WS slope.

* Location LS : Land Side N/A : Not Applicable WS : Water Side CR : Crown	** Rating A : Acceptable M : Minimally Acceptable U : Unacceptable	N : Not Inspected/Rated C : Corrected A/W : Acceptable but Monitor & Maintain	+ Issue Type Ma : Maintenance Deficiency Ob : Design & System Obsolescence En : Enforcement
--	--	---	---

**Flood Control Project Maintenance
Levee Inspections**

Maintenance Issue Types Only, Levee Inspection Report By Mile - Fall 2019

Reclamation District No. 0524 Middle Roberts Island

Waterway	Bank	Unit Miles	Inspection Start/End	Inspector
Unit No. 01 San Joaquin River	Left	6.20	10/02/2019 11/14/2019	Alberto De Leon

LM Start	1.00	Rating **	U	Issue No.	30
LM End	1.00	Issue Type +	Ma	Location *	
Category	Supplemental			GPS Latitude/Longitude	
				Start	End
Item	DWR Erosion Survey			37.935410 °	37.935410 °
				-121.331560 °	-121.331560 °
DWR ID	RD0524U01RM41.58				
Comment Code					
Inspector Comment					
Site ID: RD0524U01RM41.58					
08/13/2019: No significant change observed.					
09/13/2017: No significant change observed.					
07/25/2016: No significant change observed.					
06/24/2015: No significant change observed.					
06/19/2014: No significant change observed.					
08/13/2013: No significant change at this site.					
08/07/2012: The erosion was discovered during the boat survey.					

LM Start	1.00	Rating **	U	Issue No.	30 (cont)
LM End	1.00	Issue Type +	Ma	Location *	

Photo 1 of 3 : SJR2019_RD0524U01RM41.58_1.jpg



Front view of the erosion.

Photo 2 of 3 : SJR2019_RD0524U01RM41.58_3.jpg



Close-up view of the erosion.

* Location LS : Land Side N/A : Not Applicable WS : Water Side CR : Crown	** Rating A : Acceptable M : Minimally Acceptable U : Unacceptable N : Not Inspected/Rated C : Corrected A/W : Acceptable but Monitor & Maintain	+ Issue Type Ma : Maintenance Deficiency Ob : Design & System Obsolescence En : Enforcement
--	---	---

**Flood Control Project Maintenance
Levee Inspections**

Maintenance Issue Types Only, Levee Inspection Report By Mile - Fall 2019

Reclamation District No. 0524 Middle Roberts Island

Waterway	Bank	Unit Miles	Inspection Start/End	Inspector
Unit No. 01 San Joaquin River	Left	6.20	10/02/2019 11/14/2019	Alberto De Leon

LM Start	1.00	Rating **	U	Issue No.	33 (cont)
LM End	1.00	Issue Type +	Ma	Location *	
Category	Supplemental			GPS Latitude/Longitude	
				Start	End
Item	DWR Erosion Survey			37.935078 °	37.935078 °
				-121.331134 °	-121.331134 °
DWR ID	RD0524U01RM41.59				

Comment Code

Inspector Comment

Site ID: RD0524U01RM41.59
 08/13/2019: No significant change observed.
 09/13/2017: No significant change observed.
 07/25/2016: No significant change observed.
 06/24/2015: No significant change observed.
 06/19/2014: No significant change observed.
 08/13/2013: No significant change at this site.
 08/07/2012: The site has been visited by boat survey. Site has been repaired, but new erosion occurred at the levee slope and immediately upstream of the repaired site.
 08/23/2011: The site is about 500 ft downstream of bridge. The levee toe seems to be protected, but the protection is being washed away.

LM Start	1.00	Rating **	U	Issue No.	33 (cont)
LM End	1.00	Issue Type +	Ma	Location *	

Photo 2 of 3 : SJR2019_RD0524U01RM41.59_3.jpg



Close-up view of the erosion.

Photo 3 of 3 : SJR2019_RD0524U01RM41.59_2.jpg



Front view of the site.

* Location LS : Land Side N/A : Not Applicable WS : Water Side CR : Crown	** Rating A : Acceptable M : Minimally Acceptable U : Unacceptable	N : Not Inspected/Rated C : Corrected A/W : Acceptable but Monitor & Maintain	+ Issue Type Ma : Maintenance Deficiency Ob : Design & System Obsolescence En : Enforcement
--	--	---	---

Reclamation District No. 0524 Middle Roberts Island

* Location	** Rating	+ Issue Type
LS : Land Side N/A : Not Applicable	A : Acceptable N : Not Inspected/Rated	Ma : Maintenance Deficiency
WS : Water Side	M : Minimally Acceptable C : Corrected	Ob : Design & System Obsolescence
CR : Crown	U : Unacceptable A/W : Acceptable but Monitor & Maintain	En : Enforcement

**Flood Control Project Maintenance
Levee Inspections**

Maintenance Issue Types Only, Levee Inspection Report By Mile - Fall 2019

Reclamation District No. 0524 Middle Roberts Island

Waterway	Bank	Unit Miles	Inspection Start/End	Inspector
Unit No. 01 San Joaquin River	Left	6.20	10/02/2019 11/14/2019	Alberto De Leon

LM Start	1.00	Rating **	A/W	Issue No.	198 (cont)
LM End	1.01	Issue Type +	Ma	Location *	
Category	Supplemental			GPS Latitude/Longitude	
				Start	End
Item	2017 Storm Damage			37.935100 °	37.935100 °
				-121.331500 °	-121.331300 °
DWR ID	LMA-442				
Comment Code					
Inspector Comment					
Levee Evaluation Comments					
Description:Slope protection repairs are needed along the waterside slope due to erosion and riprap displacement from high water. Based upon levee inspections, it was determined the waterside levee slope is eroding, deteriorating, and degrading. The eroded levee sections need to be restored back to design standards to prevent further deterioration and damage.					
Site ID No:536					
Site Designation:LMA-442					
Repair Type: Erosion					
Rating:Area of Concern					
Field Date:8/10/2017					
Notes: Appears to be previous repair site adjacent to LMA-442. Large fox den on land side					

Photo 3 of 3 : LEVAL_FA_2019_536_4111.jpg



LM Start	1.02	Rating **	U	Issue No.	238
LM End	1.02	Issue Type +	Ma	Location *	LS
Category	Earthen Levee			GPS Latitude/Longitude	
				Start	End
Item	Animal Control			37.934991 °	37.934991 °
				-121.331160 °	-121.331160 °
DWR ID	DWR_RD0524_01_f_2017_238				
Comment Code					
A3 : No rodents visible, but rodent burrows visible; need to backfill and compact or grout burrows.					
Inspector Comment					
Multiple large rodent holes on landward slope and toe. Large hole on crown near landside shoulder					

Photo 1 of 3 : FA_2019_RD0524_107_238_20190830_00233.jpg



Large rodent hole landside shoulder looking downstream. Spring 2019.

* Location LS : Land Side N/A : Not Applicable WS : Water Side CR : Crown	** Rating A : Acceptable M : Minimally Acceptable U : Unacceptable	N : Not Inspected/Rated C : Corrected A/W : Acceptable but Monitor & Maintain	+ Issue Type Ma : Maintenance Deficiency Ob : Design & System Obsolescence En : Enforcement
--	--	---	---

**Flood Control Project Maintenance
Levee Inspections**

Maintenance Issue Types Only, Levee Inspection Report By Mile - Fall 2019

Reclamation District No. 0524 Middle Roberts Island

Waterway	Bank	Unit Miles	Inspection Start/End	Inspector
Unit No. 01 San Joaquin River	Left	6.20	10/02/2019 11/14/2019	Alberto De Leon

LM Start	1.07	Rating **	C	Issue No.	18
LM End	1.07	Issue Type +	Ma	Location *	LS
Category	Earthen Levee			GPS Latitude/Longitude	
				Start	End
Item	Slope Stability			37.934718 °	37.934718 °
				-121.330382 °	-121.330382 °
DWR ID	DWR_RD0524_01_s_2012_18				
Comment Code					
S1 : Repair slope instability.					
Inspector Comment					
Slope damage extends from shoulder to middle of slope.					

No Photos

LM Start	1.11	Rating **	M	Issue No.	132
LM End	1.11	Issue Type +	Ma	Location *	CR
Category	Earthen Levee			GPS Latitude/Longitude	
				Start	End
Item	Crown Surface / Depressions / Rutting			37.934333 °	37.934333 °
				-121.329822 °	-121.329822 °
DWR ID	DWR_RD0524_01_s_2019_132				
Comment Code					
C2 : Repair depressions or ruts in the crown or slope.					
Inspector Comment					
Transition from bridge access to levee crown needs backfill					

No Photos

LM Start	1.12	Rating **	C	Issue No.	171
LM End	1.16	Issue Type +	Ma	Location *	WS
Category	Earthen Levee			GPS Latitude/Longitude	
				Start	End
Item	Encroachments			37.934225 °	37.933815 °
				-121.329693 °	-121.329242 °
DWR ID	DWR_RD0524_01_s_2015_171				
Comment Code					
PR : Prunings					
Inspector Comment					
Prunings left on waterside shoulder and slope.					

No Photos

* Location LS : Land Side N/A : Not Applicable WS : Water Side CR : Crown	** Rating A : Acceptable M : Minimally Acceptable U : Unacceptable	N : Not Inspected/Rated C : Corrected A/W : Acceptable but Monitor & Maintain	+ Issue Type Ma : Maintenance Deficiency Ob : Design & System Obsolescence En : Enforcement
--	--	---	---

Reclamation District No. 0524 Middle Roberts Island

Waterway	Bank	Unit Miles	Inspection Start/End	Inspector
Unit No. 01 San Joaquin River	Left	6.20	10/02/2019 11/14/2019	Alberto De Leon

LM Start	1.15	Rating **	U	Issue No.	44
LM End	1.23	Issue Type +	Ma	Location *	
Category	Supplemental			GPS Latitude/Longitude	
				Start	End
Item	DWR Erosion Survey			37.933347 °	37.933347 °
				-121.329110 °	-121.329110 °
DWR ID	RD0524U01RM41.79				

Comment Code

[illegible]

Inspector Comment	
1	
2	
3	
4	
5	
6	
7	
8	
9	
10	
11	
12	
13	
14	
15	
16	
17	
18	
19	
20	
21	
22	
23	
24	
25	
26	
27	
28	
29	
30	
31	
32	
33	
34	
35	
36	
37	
38	
39	
40	
41	
42	
43	
44	
45	
46	
47	
48	
49	
50	
51	
52	
53	
54	
55	
56	
57	
58	
59	
60	
61	
62	
63	
64	
65	
66	
67	
68	
69	
70	
71	
72	
73	
74	
75	
76	
77	
78	
79	
80	
81	
82	
83	
84	
85	
86	
87	
88	
89	
90	
91	
92	
93	
94	
95	
96	
97	
98	
99	
100	

Site ID: RD0524U01RM41.79

08/13/2019: No significant change observed.

09/13/2017: No significant change observed.

07/25/2016: No significant change observed.

06/24/2015: No significant change observed.

06/19/2014: No significant change observed.

08/13/2013: No significant change at this site

08/07/2012: The site has been visited by boat survey. No significant change observed

08/23/2011: No significant change observed on site.

09/07/2010: No significant change observed on site. Vegetation is visible at the water line. There is an exposed pipe discharge partially hanging at the mid-slope, possibly still used for discharging irrigation/runoff water. There is minimal rip rap protection along the bank, and what's left of it is no longer adequately protecting the bank.

9/29/2009: Site consists of a 400-foot long eroding bank with minimal vegetation and protection; the existing rip rap has sloughed, rendering it useless; note that there is an exposed section of a pipe.

10/18/2006: There is extensive loss of rip rap on some sections; sewage disposal pond is on the landside of the levee; there is an exposed pipe outlet "hanging" from the upper slope.

LM Start	1.15	Rating **	U	Issue No.	44 (cont)
LM End	1.23	Issue Type +	Ma	Location *	

Photo 1 of 3 : SJR2019_RD0524U01RM41.79_1.jpg



Direct view of the site.

Photo 2 of 3 : SJR2019_RD0524U01RM41.79_2.jpg



Direct view of the site.

* Location	** Rating	+ Issue Type
LS : Land Side N/A : Not Applicable WS : Water Side CR : Crown	A : Acceptable N : Not Inspected/Rated M : Minimally Acceptable C : Corrected U : Unacceptable A/W : Acceptable but Monitor & Maintain	Ma : Maintenance Deficiency Ob : Design & System Obsolescence En : Enforcement

**Flood Control Project Maintenance
Levee Inspections**

Maintenance Issue Types Only, Levee Inspection Report By Mile - Fall 2019

Reclamation District No. 0524 Middle Roberts Island

Waterway	Bank	Unit Miles	Inspection Start/End	Inspector
Unit No. 01 San Joaquin River	Left	6.20	10/02/2019 11/14/2019	Alberto De Leon

LM Start	1.15	Rating **	U	Issue No.	44 (cont)	
LM End	1.23	Issue Type +	Ma	Location *		
Category	Supplemental			GPS Latitude/Longitude		
				Start	End	
Item	DWR Erosion Survey			37.933347 °	37.933347 °	
				-121.329110 °	-121.329110 °	
DWR ID	RD0524U01RM41.79					
Comment Code						
Inspector Comment						
Site ID: RD0524U01RM41.79 08/13/2019: No significant change observed. 09/13/2017: No significant change observed. 07/25/2016: No significant change observed. 06/24/2015: No significant change observed. 06/19/2014: No significant change observed. 08/13/2013: No significant change at this site. 08/07/2012: The site has been visited by boat survey. No significant change observed 08/23/2011: No significant change observed on site. 09/07/2010: No significant change observed on site. Vegetation is visible at the water line. There is an exposed pipe discharge partially hanging at the mid-slope, possibly still used for discharging irrigation/runoff water. There is minimal rip rap protection along the bank, and what's left of it is no longer adequately protecting the bank. 9/29/2009: Site consists of a 400-foot long eroding bank with minimal vegetation and protection; the existing rip rap has sloughed, rendering it useless; note that there is an exposed section of a pipe. 10/18/2006: There is extensive loss of rip rap on some sections; sewage disposal pond is on the landside of the levee; there is an exposed pipe outlet "hanging" from the upper slope.						

Photo 3 of 3 : SJR2019_RD0524U01RM41.79_4.jpg



Close-up view of the erosion.

LM Start	1.16	Rating **	M	Issue No.	19
LM End	1.16	Issue Type +	Ma	Location *	WS
Category	Earthen Levee			GPS Latitude/Longitude	
				Start	End
Item	Trim / Thin Trees			37.933810 °	37.933810 °
				-121.329317 °	-121.329317 °
DWR ID	DWR_RD0524_01_s_2012_19				
Comment Code					
T3 : Trim and thin trees to allow visibility of the ground and room to flood fight.					
Inspector Comment					

Photo 1 of 1 : FA_2019_RD0524_107_19_20190830_00027.jpg



Looking southeast at low hanging tree branches at waterside toe.

* Location LS : Land Side N/A : Not Applicable WS : Water Side CR : Crown	** Rating A : Acceptable M : Minimally Acceptable U : Unacceptable	N : Not Inspected/Rated C : Corrected A/W : Acceptable but Monitor & Maintain	+ Issue Type Ma : Maintenance Deficiency Ob : Design & System Obsolescence En : Enforcement
--	--	---	---

**Flood Control Project Maintenance
Levee Inspections**

Maintenance Issue Types Only, Levee Inspection Report By Mile - Fall 2019

Reclamation District No. 0524 Middle Roberts Island

Waterway	Bank	Unit Miles	Inspection Start/End	Inspector
Unit No. 01 San Joaquin River	Left	6.20	10/02/2019 11/14/2019	Alberto De Leon

LM Start	1.16	Rating **	M	Issue No.	915
LM End	1.23	Issue Type +	Ma	Location *	LS
Category	Earthen Levee			GPS Latitude/Longitude	
				Start	End
Item	Vegetation			37.933775 °	37.932784 °
				-121.329250 °	-121.328765 °
DWR ID	DWR_RD0524_01_s_2012_915				
Comment Code					
V2 : Remove the wild growth other than native grasses from the levee slopes.					
Inspector Comment					
Control veg at landside toe.					

Photo 1 of 1 : FA_2019_RD0524_107_915_20190830_00254.jpg



Looking southwest at dense veg at landward toe and berm. (Fall 2016)

LM Start	1.18	Rating **	A/W	Issue No.	221
LM End	1.20	Issue Type +	Ma	Location *	
Category	Supplemental			GPS Latitude/Longitude	
				Start	End
Item	2017 Storm Damage			37.933500 °	37.933200 °
				-121.329100 °	-121.328900 °
DWR ID	LMA-441				
Comment Code					
Inspector Comment					
Levee Evaluation Comments					
Description:Slope protection repairs are needed along the waterside slope due to erosion and riprap displacement from high water. Based upon levee inspections, it was determined the waterside levee slope is eroding, deteriorating, and degrading. The eroded levee sections need to be restored back to design standards to prevent further deterioration and damage.					
Site ID No:535					
Site Designation:LMA-441					
Repair Type: Erosion					
Rating:Area of Concern					
Field Date:8/10/2017					
Notes:					

Photo 1 of 3 : LEVAL_FA_2019_535_4115.jpg



* Location
 LS : Land Side N/A : Not Applicable
 WS : Water Side
 CR : Crown

** Rating
 A : Acceptable
 M : Minimally Acceptable
 U : Unacceptable
 N : Not Inspected/Rated
 C : Corrected
 A/W : Acceptable but Monitor & Maintain

+ Issue Type
 Ma : Maintenance Deficiency
 Ob : Design & System Obsolescence
 En : Enforcement

**Flood Control Project Maintenance
Levee Inspections**

Maintenance Issue Types Only, Levee Inspection Report By Mile - Fall 2019

Reclamation District No. 0524 Middle Roberts Island

Waterway	Bank	Unit Miles	Inspection Start/End	Inspector
Unit No. 01 San Joaquin River	Left	6.20	10/02/2019 11/14/2019	Alberto De Leon

LM Start	1.18	Rating **	A/W	Issue No.	221 (cont)
LM End	1.20	Issue Type +	Ma	Location *	
Category	Supplemental			GPS Latitude/Longitude	
				Start	End
Item	2017 Storm Damage			37.933500°	37.933200°
				-121.329100°	-121.328900°
DWR ID	LMA-441				
Comment Code					
Inspector Comment					
Levee Evaluation Comments					
Description:Slope protection repairs are needed along the waterside slope due to erosion and riprap displacement from high water. Based upon levee inspections, it was determined the waterside levee slope is eroding, deteriorating, and degrading. The eroded levee sections need to be restored back to design standards to prevent further deterioration and damage.					
Site ID No:535					
Site Designation:LMA-441					
Repair Type: Erosion					
Rating:Area of Concern					
Field Date:8/10/2017					
Notes:					

Photo 2 of 3 : LEVAL_FA_2019_535_4116.jpg



LM Start	1.18	Rating **	A/W	Issue No.	221 (cont)
LM End	1.20	Issue Type +	Ma	Location *	

Photo 3 of 3 : LEVAL_FA_2019_535_4117.jpg



* Location LS : Land Side N/A : Not Applicable WS : Water Side CR : Crown	** Rating A : Acceptable M : Minimally Acceptable U : Unacceptable	N : Not Inspected/Rated C : Corrected A/W : Acceptable but Monitor & Maintain	+ Issue Type Ma : Maintenance Deficiency Ob : Design & System Obsolescence En : Enforcement
--	--	---	---

**Flood Control Project Maintenance
Levee Inspections**

Maintenance Issue Types Only, Levee Inspection Report By Mile - Fall 2019

Reclamation District No. 0524 Middle Roberts Island

Waterway	Bank	Unit Miles	Inspection Start/End	Inspector
Unit No. 01 San Joaquin River	Left	6.20	10/02/2019 11/14/2019	Alberto De Leon

LM Start	1.22	Rating **	M	Issue No.	144
LM End	1.22	Issue Type +	Ma	Location *	WS
Category	Earthen Levee			GPS Latitude/Longitude	
				Start	End
Item	Erosion / Bank Caving			37.933036 °	37.933036 °
				-121.328893 °	-121.328893 °
DWR ID	DWR_RD0524_01_f_2019_144				
Comment Code					
E2 : Schedule repair of erosion site prior to the next inspection.					
Inspector Comment					

Photo 1 of 1 : FA_2019_RD0524_107_144_20191117_00367.jpg



View of erosion on waterside slope caused by surface runoff. Fall 2019

LM Start	1.25	Rating **	A/W	Issue No.	222
LM End	1.30	Issue Type +	Ma	Location *	
Category	Supplemental			GPS Latitude/Longitude	
				Start	End
Item	2017 Storm Damage			37.932600 °	37.931900 °
				-121.328700 °	-121.328400 °
DWR ID	LMA-440				
Comment Code					
Inspector Comment					
Levee Evaluation Comments					
Description:Slope protection repairs are needed along the waterside slope due to erosion and riprap displacement from high water. Based upon levee inspections, it was determined the waterside levee slope is eroding, deteriorating, and degrading. The eroded levee sections need to be restored back to design standards to prevent further deterioration and damage.					
Site ID No:534					
Site Designation:LMA-440					
Repair Type: Erosion					
Rating:Serious					
Field Date:8/10/2017					
Notes: site is related to, but not combined with, LMA-439 a portion of this site has been repaired.					

Photo 1 of 3 : LEVAL_FA_2019_534_4121.jpg



* Location
LS : Land Side N/A : Not Applicable
WS : Water Side
CR : Crown

** Rating
A : Acceptable N : Not Inspected/Rated
M : Minimally Acceptable C : Corrected
U : Unacceptable A/W : Acceptable but Monitor & Maintain

+ Issue Type
Ma : Maintenance Deficiency
Ob : Design & System Obsolescence
En : Enforcement

**Flood Control Project Maintenance
Levee Inspections**

Maintenance Issue Types Only, Levee Inspection Report By Mile - Fall 2019

Reclamation District No. 0524 Middle Roberts Island

Waterway	Bank	Unit Miles	Inspection Start/End	Inspector
Unit No. 01 San Joaquin River	Left	6.20	10/02/2019 11/14/2019	Alberto De Leon

LM Start	1.25	Rating **	A/W	Issue No.	222 (cont)							
LM End	1.30	Issue Type +	Ma	Location *								
Category	Supplemental		GPS Latitude/Longitude									
			Start	End								
Item	2017 Storm Damage		37.932600 °	37.931900 °								
			-121.328700 °	-121.328400 °								
DWR ID	LMA-440											
Comment Code												
Inspector Comment												
<p>Levee Evaluation Comments</p> <p>Description: Slope protection repairs are needed along the waterside slope due to erosion and riprap displacement from high water. Based upon levee inspections, it was determined the waterside levee slope is eroding, deteriorating, and degrading. The eroded levee sections need to be restored back to design standards to prevent further deterioration and damage.</p> <p>Site ID No: 534</p> <p>Site Designation: LMA-440</p> <p>Repair Type: Erosion</p> <p>Rating: Serious</p> <p>Field Date: 8/10/2017</p> <p>Notes: site is related to, but not combined with, LMA-439 a portion of this site has been repaired.</p>												

Photo 2 of 3 : LEVAL_FA_2019_534_4122.jpg



Photo 3 of 3 : LEVAL_FA_2019_534_4126.jpg



* Location LS : Land Side N/A : Not Applicable WS : Water Side CR : Crown	** Rating A : Acceptable M : Minimally Acceptable U : Unacceptable	N : Not Inspected/Rated C : Corrected A/W : Acceptable but Monitor & Maintain	+ Issue Type Ma : Maintenance Deficiency Ob : Design & System Obsolescence En : Enforcement
--	--	---	---

**Flood Control Project Maintenance
Levee Inspections**

Maintenance Issue Types Only, Levee Inspection Report By Mile - Fall 2019

Reclamation District No. 0524 Middle Roberts Island

Waterway	Bank	Unit Miles	Inspection Start/End	Inspector
Unit No. 01 San Joaquin River	Left	6.20	10/02/2019 11/14/2019	Alberto De Leon

LM Start	1.27	Rating **	M	Issue No.	130
LM End	1.27	Issue Type +	Ma	Location *	LS
Category	Earthen Levee			GPS Latitude/Longitude	
				Start	End
Item	Erosion / Bank Caving			37.932347°	37.932347°
				-121.328588°	-121.328588°
DWR ID	DWR_RD0524_01_f_2019_130				
Comment Code					
E2 : Schedule repair of erosion site prior to the next inspection.					
Inspector Comment					

No Photos

LM Start	1.27	Rating **	A/W	Issue No.	47
LM End	1.33	Issue Type +	Ma	Location *	
Category	Supplemental			GPS Latitude/Longitude	
				Start	End
Item	DWR Erosion Survey			37.931858°	37.931858°
				-121.328300°	-121.328300°
DWR ID	RD0524U01RM41.92				
Comment Code					
Inspector Comment					
Site ID: RD0524U01RM41.92 08/13/2019: No significant change observed. 09/13/2017: The erosion has developed along the levee slope. The length of the erosion is nearly doubled comparing to the prior survey. 07/25/2016: No significant change observed. 06/24/2015: No significant change observed. 06/19/2014: No significant change observed. 08/13/2013: New signs of animal activity were found. 08/07/2012: The site was first reported in 2012 spring levee inspection report.					

Photo 1 of 3 : SJR2019_RD0524U01RM41.92_2.jpg



Downstream view of the erosion.

* Location LS : Land Side N/A : Not Applicable WS : Water Side CR : Crown	** Rating A : Acceptable M : Minimally Acceptable U : Unacceptable	N : Not Inspected/Rated C : Corrected A/W : Acceptable but Monitor & Maintain	+ Issue Type Ma : Maintenance Deficiency Ob : Design & System Obsolescence En : Enforcement
--	--	---	---

**Flood Control Project Maintenance
Levee Inspections**

Maintenance Issue Types Only, Levee Inspection Report By Mile - Fall 2019

Reclamation District No. 0524 Middle Roberts Island

Waterway	Bank	Unit Miles	Inspection Start/End	Inspector
Unit No. 01 San Joaquin River	Left	6.20	10/02/2019 11/14/2019	Alberto De Leon

LM Start	1.27	Rating **	A/W	Issue No.	47 (cont)	
LM End	1.33	Issue Type +	Ma	Location *		
Category	Supplemental			GPS Latitude/Longitude		
				Start	End	
Item	DWR Erosion Survey			37.931858 °	37.931858 °	
				-121.328300 °	-121.328300 °	
DWR ID	RD0524U01RM41.92					
Comment Code						
Inspector Comment						
Site ID: RD0524U01RM41.92 08/13/2019: No significant change observed. 09/13/2017: The erosion has developed along the levee slope. The length of the erosion is nearly doubled comparing to the prior survey. 07/25/2016: No significant change observed. 06/24/2015: No significant change observed. 06/19/2014: No significant change observed. 08/13/2013: New signs of animal activity were found. 08/07/2012: The site was first reported in 2012 spring levee inspection report.						

Photo 2 of 3 : SJR2019_RD0524U01RM41.92_1.jpg



Front view of the erosion.

LM Start	1.27	Rating **	A/W	Issue No.	47 (cont)
LM End	1.33	Issue Type +	Ma	Location *	

Photo 3 of 3 : SJR2019_RD0524U01RM41.92_5.jpg



Close-up view of the erosion.

* Location LS : Land Side N/A : Not Applicable WS : Water Side CR : Crown	** Rating A : Acceptable M : Minimally Acceptable U : Unacceptable	N : Not Inspected/Rated C : Corrected A/W : Acceptable but Monitor & Maintain	+ Issue Type Ma : Maintenance Deficiency Ob : Design & System Obsolescence En : Enforcement
--	--	---	---

**Flood Control Project Maintenance
Levee Inspections**

Maintenance Issue Types Only, Levee Inspection Report By Mile - Fall 2019

Reclamation District No. 0524 Middle Roberts Island

Waterway	Bank	Unit Miles	Inspection Start/End	Inspector
Unit No. 01 San Joaquin River	Left	6.20	10/02/2019 11/14/2019	Alberto De Leon

LM Start	1.29	Rating **	M	Issue No.	940
LM End	1.29	Issue Type +	Ma	Location *	
Category	Supplemental			GPS Latitude/Longitude	
				Start	End
Item	DRAFT DWR UCIP LMA Responsibility			37.931977°	37.931977°
				-121.328401°	-121.328401°
DWR ID	20602				
Comment Code					
Inspector Comment					
DS_ID:20602 FS_ID:53162 EP_NO: N/A Repair Type: Non-Urgent Crossing Status: Found UCIP Comments: 10/2/2018 Pipe appears abandoned, but both the pipe and levee appear in good condition; downgrading to Non-Urgent (D. Sanoski - DWR UCIP).11/16/2016 same as previous inspection both ends are open. This pipe does not appear in use. Need to contact owner to determine status of crossing. If the crossing is abandoned or in use, owner will need to coordinate with the CVFPB to comply with Title 23 requirements. (O. Magana - DWR UCIP)08/16/2013 Pipe appears to be open on both ends. Abandoned and should be done so properly. (W. Wylie - DWR UCIP) FIELD_STRUCT_DESC: *ABANDONED* 12-inch steel drainage pipe through the levee, 3.5 feet below the crown. Pipe is opened on the waterside (WS) and landside (LS) ends. The pump house referenced in O&M manual is missing from the LS (2013). [Additional Reference(s): DWR Levee Log, 2004. USACE San Joaquin O&M Manual 7, April 1964, (HLM 1.31)]. FS Date: 10/2/2018 1:10:16 PM					

Photo 1 of 3 : UCIP_FA_2019_53162_29862.jpg



Pipe visible and open on WS slope.

LM Start	1.29	Rating **	M	Issue No.	940 (cont)
LM End	1.29	Issue Type +	Ma	Location *	

Photo 2 of 3 : UCIP_FA_2019_53162_29861.jpg



Pipe open and visible on LS slope.

* Location LS : Land Side N/A : Not Applicable WS : Water Side CR : Crown	** Rating A : Acceptable M : Minimally Acceptable U : Unacceptable	N : Not Inspected/Rated C : Corrected A/W : Acceptable but Monitor & Maintain	+ Issue Type Ma : Maintenance Deficiency Ob : Design & System Obsolescence En : Enforcement
--	--	---	---

**Flood Control Project Maintenance
Levee Inspections**

Maintenance Issue Types Only, Levee Inspection Report By Mile - Fall 2019

Reclamation District No. 0524 Middle Roberts Island

Waterway	Bank	Unit Miles	Inspection Start/End	Inspector
Unit No. 01 San Joaquin River	Left	6.20	10/02/2019 11/14/2019	Alberto De Leon

LM Start	1.29	Rating **	M	Issue No.	940 (cont)	
LM End	1.29	Issue Type +	Ma	Location *		
Category	Supplemental			GPS Latitude/Longitude		
				Start	End	
Item	DRAFT DWR UCIP LMA Responsibility			37.931977 °	37.931977 °	
				-121.328401 °	-121.328401 °	
DWR ID	20602					
Comment Code						
Inspector Comment						
DS_ID:20602 FS_ID:53162 EP_NO: N/A Repair Type: Non-Urgent Crossing Status: Found UCIP Comments: 10/2/2018 Pipe appears abandoned, but both the pipe and levee appear in good condition; downgrading to Non-Urgent (D. Sanoski - DWR UCIP).11/16/2016 same as previous inspection both ends are open. This pipe does not appear in use. Need to contact owner to determine status of crossing. If the crossing is abandoned or in use, owner will need to coordinate with the CVFPB to comply with Title 23 requirements. (O. Magana - DWR UCIP)08/16/2013 Pipe appears to be open on both ends. Abandoned and should be done so properly. (W. Wylie - DWR UCIP) FIELD_STRUCT_DESC: *ABANDONED* 12-inch steel drainage pipe through the levee, 3.5 feet below the crown. Pipe is opened on the waterside (WS) and landside (LS) ends. The pump house referenced in O&M manual is missing from the LS (2013). [Additional Reference(s): DWR Levee Log, 2004. USACE San Joaquin O&M Manual 7, April 1964, (HLM 1.31)]. FS Date: 10/2/2018 1:10:16 PM						

Photo 3 of 3 : UCIP_FA_2019_53162_29860.jpg



Pipe appears open on both ends. View from LS slope.

* Location LS : Land Side N/A : Not Applicable WS : Water Side CR : Crown	** Rating A : Acceptable M : Minimally Acceptable U : Unacceptable N : Not Inspected/Rated C : Corrected A/W : Acceptable but Monitor & Maintain	+ Issue Type Ma : Maintenance Deficiency Ob : Design & System Obsolescence En : Enforcement
--	---	---

**Flood Control Project Maintenance
Levee Inspections**

Maintenance Issue Types Only, Levee Inspection Report By Mile - Fall 2019

Reclamation District No. 0524 Middle Roberts Island

Waterway	Bank	Unit Miles	Inspection Start/End	Inspector
Unit No. 01 San Joaquin River	Left	6.20	10/02/2019 11/14/2019	Alberto De Leon

LM Start	1.33	Rating **	A/W	Issue No.	225
LM End	1.33	Issue Type +	Ma	Location *	
Category	Supplemental			GPS Latitude/Longitude	
				Start	End
Item	2017 Storm Damage			37.931500°	37.931500°
				-121.328200°	-121.328200°
DWR ID	LMA-438				
Comment Code					
Inspector Comment					
Levee Evaluation Comments Description: Slope protection repairs are needed along the waterside slope due to erosion and riprap displacement from high water. Based upon levee inspections, it was determined the waterside levee slope is eroding, deteriorating, and degrading. The eroded levee sections need to be restored back to design standards to prevent further deterioration and damage. Site ID No: 532 Site Designation: LMA-438 Repair Type: Erosion Rating: Area of Concern Field Date: 8/10/2017 Notes:					

Photo 1 of 3 : LEVAL_FA_2019_532_4171.jpg



LM Start	1.33	Rating **	A/W	Issue No.	225 (cont)
LM End	1.33	Issue Type +	Ma	Location *	

Photo 2 of 3 : LEVAL_FA_2019_532_4173.jpg



* Location LS : Land Side N/A : Not Applicable WS : Water Side CR : Crown	** Rating A : Acceptable M : Minimally Acceptable U : Unacceptable	N : Not Inspected/Rated C : Corrected A/W : Acceptable but Monitor & Maintain	+ Issue Type Ma : Maintenance Deficiency Ob : Design & System Obsolescence En : Enforcement
--	--	---	---

**Flood Control Project Maintenance
Levee Inspections**

Maintenance Issue Types Only, Levee Inspection Report By Mile - Fall 2019

Reclamation District No. 0524 Middle Roberts Island

Waterway	Bank	Unit Miles	Inspection Start/End	Inspector
Unit No. 01 San Joaquin River	Left	6.20	10/02/2019 11/14/2019	Alberto De Leon

LM Start	1.33	Rating **	A/W	Issue No.	225 (cont)							
LM End	1.33	Issue Type +	Ma	Location *								
Category	Supplemental		GPS Latitude/Longitude									
			Start	End								
Item	2017 Storm Damage		37.931500°	37.931500°								
			-121.328200°	-121.328200°								
DWR ID	LMA-438											
Comment Code												
Inspector Comment												
Levee Evaluation Comments Description: Slope protection repairs are needed along the waterside slope due to erosion and riprap displacement from high water. Based upon levee inspections, it was determined the waterside levee slope is eroding, deteriorating, and degrading. The eroded levee sections need to be restored back to design standards to prevent further deterioration and damage. Site ID No: 532 Site Designation: LMA-438 Repair Type: Erosion Rating: Area of Concern Field Date: 8/10/2017 Notes:												

Photo 3 of 3 : LEVAL_FA_2019_532_4174.jpg



LM Start	1.33	Rating **	M	Issue No.	55							
LM End	1.33	Issue Type +	Ma	Location *								
Category	Supplemental		GPS Latitude/Longitude									
			Start	End								
Item	DWR Erosion Survey		37.931510°	37.931510°								
			-121.328120°	-121.328120°								
DWR ID	RD0524U01RM41.95											
Comment Code												
Inspector Comment												
Site ID: RD0524U01RM41.95 08/13/2019: No significant change observed. 09/13/2017: The erosion is located immediately upstream of a protected levee section.												

Photo 1 of 2 : SJR2019_RD0524U01RM41.95_4.JPG



Front view of the erosion.

* Location LS : Land Side N/A : Not Applicable WS : Water Side CR : Crown	** Rating A : Acceptable M : Minimally Acceptable U : Unacceptable	N : Not Inspected/Rated C : Corrected A/W : Acceptable but Monitor & Maintain	+ Issue Type Ma : Maintenance Deficiency Ob : Design & System Obsolescence En : Enforcement
--	--	---	---

**Flood Control Project Maintenance
Levee Inspections**

Maintenance Issue Types Only, Levee Inspection Report By Mile - Fall 2019

Reclamation District No. 0524 Middle Roberts Island

Waterway	Bank	Unit Miles	Inspection Start/End	Inspector
Unit No. 01 San Joaquin River	Left	6.20	10/02/2019 11/14/2019	Alberto De Leon

LM Start	1.33	Rating **	M	Issue No.	55 (cont)	
LM End	1.33	Issue Type +	Ma	Location *		
Category	Supplemental			GPS Latitude/Longitude		
				Start	End	
Item	DWR Erosion Survey			37.931510°	37.931510°	
				-121.328120°	-121.328120°	
DWR ID	RD0524U01RM41.95					
Comment Code						
Inspector Comment						
Site ID: RD0524U01RM41.95						
08/13/2019: No significant change observed.						
09/13/2017: The erosion is located immediately upstream of a protected levee section.						

Photo 2 of 2 : SJR2019_RD0524U01RM41.95_5.JPG



Close-up view of the erosion.

LM Start	1.39	Rating **	U	Issue No.	56
LM End	1.39	Issue Type +	Ma	Location *	
Category	Supplemental			GPS Latitude/Longitude	
				Start	End
Item	DWR Erosion Survey			37.930575 °	37.930575 °
				-121.328090 °	-121.328090 °
DWR ID	RD0524U01RM42.03				
Comment Code					
Inspector Comment					
Site ID: RD0524U01RM42.03					
08/13/2019: No significant change observed.					
09/13/2017: No significant change observed					
07/25/2016: No significant change observed					
06/24/2015: No significant change observed.					
06/19/2014: No significant change observed.					
08/13/2013: No significant change observed.					
08/07/2012: The site was first reported in 2012 spring levee inspection report. The site is located about 750 ft downstream of SR 4 Bridge.					

Photo 1 of 3 : SJR2019_RD0524U01RM42.03_1.jpg



Front view of the erosion.

* Location LS : Land Side N/A : Not Applicable WS : Water Side CR : Crown		** Rating A : Acceptable M : Minimally Acceptable U : Unacceptable		N : Not Inspected/Rated C : Corrected A/W : Acceptable but Monitor & Maintain		+ Issue Type Ma : Maintenance Deficiency Ob : Design & System Obsolescence En : Enforcement	
---	--	---	--	---	--	--	--

**Flood Control Project Maintenance
Levee Inspections**

Maintenance Issue Types Only, Levee Inspection Report By Mile - Fall 2019

Reclamation District No. 0524 Middle Roberts Island

Waterway	Bank	Unit Miles	Inspection Start/End	Inspector
Unit No. 01 San Joaquin River	Left	6.20	10/02/2019 11/14/2019	Alberto De Leon

LM Start	1.39	Rating **	U	Issue No.	56 (cont)	
LM End	1.39	Issue Type +	Ma	Location *		
Category	Supplemental			GPS Latitude/Longitude		
				Start	End	
Item	DWR Erosion Survey			37.930575 °	37.930575 °	
				-121.328090 °	-121.328090 °	
DWR ID	RD0524U01RM42.03					
Comment Code						
Inspector Comment						
Site ID: RD0524U01RM42.03 08/13/2019: No significant change observed. 09/13/2017: No significant change observed 07/25/2016: No significant change observed 06/24/2015: No significant change observed. 06/19/2014: No significant change observed. 08/13/2013: No significant change observed. 08/07/2012: The site was first reported in 2012 spring levee inspection report. The site is located about 750 ft downstream of SR 4 Bridge.						

LM Start	1.39	Rating **	U	Issue No.	56 (cont)
LM End	1.39	Issue Type +	Ma	Location *	

Photo 2 of 3 : SJR2019_RD0524U01RM42.03_4.jpg



Front view of the erosion.

Photo 3 of 3 : SJR2019_RD0524U01RM42.03_2.jpg



Close-up view of the erosion.

* Location LS : Land Side N/A : Not Applicable WS : Water Side CR : Crown	** Rating A : Acceptable M : Minimally Acceptable U : Unacceptable	N : Not Inspected/Rated C : Corrected A/W : Acceptable but Monitor & Maintain	+ Issue Type Ma : Maintenance Deficiency Ob : Design & System Obsolescence En : Enforcement
--	--	---	---

**Flood Control Project Maintenance
Levee Inspections**

Maintenance Issue Types Only, Levee Inspection Report By Mile - Fall 2019

Reclamation District No. 0524 Middle Roberts Island

Waterway	Bank	Unit Miles	Inspection Start/End	Inspector
Unit No. 01 San Joaquin River	Left	6.20	10/02/2019 11/14/2019	Alberto De Leon

LM Start	1.43	Rating **	A/W	Issue No.	226
LM End	1.44	Issue Type +	Ma	Location *	
Category	Supplemental			GPS Latitude/Longitude	
				Start	End
Item	2017 Storm Damage			37.930100 °	37.929900 °
				-121.328300 °	-121.328300 °
DWR ID	LMA-436				
Comment Code					
Inspector Comment					
Levee Evaluation Comments					
Description:Slope protection repairs are needed along the waterside slope due to erosion and riprap displacement from high water. Based upon levee inspections, it was determined the waterside levee slope is eroding, deteriorating, and degrading. The eroded levee sections need to be restored back to design standards to prevent further deterioration and damage.					
Site ID No:530					
Site Designation:LMA-436					
Repair Type: Erosion					
Rating:Area of Concern					
Field Date:8/10/2017					
Notes:					

Photo 1 of 3 : LEVAL_FA_2019_530_4182.jpg



LM Start	1.43	Rating **	A/W	Issue No.	226 (cont)
LM End	1.44	Issue Type +	Ma	Location *	

Photo 2 of 3 : LEVAL_FA_2019_530_4184.jpg



* Location LS : Land Side N/A : Not Applicable WS : Water Side CR : Crown	** Rating A : Acceptable M : Minimally Acceptable U : Unacceptable	N : Not Inspected/Rated C : Corrected A/W : Acceptable but Monitor & Maintain	+ Issue Type Ma : Maintenance Deficiency Ob : Design & System Obsolescence En : Enforcement
--	--	---	---

**Flood Control Project Maintenance
Levee Inspections**

Maintenance Issue Types Only, Levee Inspection Report By Mile - Fall 2019

Reclamation District No. 0524 Middle Roberts Island

Waterway	Bank	Unit Miles	Inspection Start/End	Inspector
Unit No. 01 San Joaquin River	Left	6.20	10/02/2019 11/14/2019	Alberto De Leon

LM Start	1.43	Rating **	A/W	Issue No.	226 (cont)							
LM End	1.44	Issue Type +	Ma	Location *								
Category	Supplemental		GPS Latitude/Longitude									
			Start	End								
Item	2017 Storm Damage		37.930100°	37.929900°								
			-121.328300°	-121.328300°								
DWR ID	LMA-436											
Comment Code												
Inspector Comment												
Levee Evaluation Comments Description: Slope protection repairs are needed along the waterside slope due to erosion and riprap displacement from high water. Based upon levee inspections, it was determined the waterside levee slope is eroding, deteriorating, and degrading. The eroded levee sections need to be restored back to design standards to prevent further deterioration and damage. Site ID No: 530 Site Designation: LMA-436 Repair Type: Erosion Rating: Area of Concern Field Date: 8/10/2017 Notes:												

Photo 3 of 3 : LEVAL_FA_2019_530_4185.jpg



LM Start	1.45	Rating **	U	Issue No.	60							
LM End	1.47	Issue Type +	Ma	Location *								
Category	Supplemental		GPS Latitude/Longitude									
			Start	End								
Item	DWR Erosion Survey		37.929650°	37.929650°								
			-121.328110°	-121.328110°								
DWR ID	RD0524U01RM42.09											
Comment Code												
Inspector Comment												
Site ID: RD0524U01RM42.09 08/13/2019: No significant change observed. 09/13/2017: No significant change observed. 07/25/2016: No significant change observed. 06/24/2015: No significant change observed. 06/19/2014: No significant change observed. 08/13/2013: The site is located approximately 400 ft. downstream SR 4 Bridge. Dense vegetation is visible at the toe.												

Photo 1 of 3 : SJR2019_RD0524U01RM42.09_1.JPG



Front view of the erosion site.

* Location LS : Land Side N/A : Not Applicable WS : Water Side CR : Crown		** Rating A : Acceptable N : Not Inspected/Rated M : Minimally Acceptable C : Corrected U : Unacceptable A/W : Acceptable but Monitor & Maintain		+ Issue Type Ma : Maintenance Deficiency Ob : Design & System Obsolescence En : Enforcement
--	--	---	--	---

**Flood Control Project Maintenance
Levee Inspections**

Maintenance Issue Types Only, Levee Inspection Report By Mile - Fall 2019

Reclamation District No. 0524 Middle Roberts Island

Waterway	Bank	Unit Miles	Inspection Start/End	Inspector
Unit No. 01 San Joaquin River	Left	6.20	10/02/2019 11/14/2019	Alberto De Leon

LM Start	1.45	Rating **	U	Issue No.	60 (cont)	
LM End	1.47	Issue Type +	Ma	Location *		
Category	Supplemental			GPS Latitude/Longitude		
				Start	End	
Item	DWR Erosion Survey			37.929650 °	37.929650 °	
				-121.328110 °	-121.328110 °	
DWR ID	RD0524U01RM42.09					
Comment Code						
Inspector Comment						
Site ID: RD0524U01RM42.09 08/13/2019: No significant change observed. 09/13/2017: No significant change observed. 07/25/2016: No significant change observed. 06/24/2015: No significant change observed. 06/19/2014: No significant change observed. 08/13/2013: The site is located approximately 400 ft. downstream SR 4 Bridge. Dense vegetation is visible at the toe.						

LM Start	1.45	Rating **	U	Issue No.	60 (cont)
LM End	1.47	Issue Type +	Ma	Location *	

Photo 2 of 3 : SJR2019_RD0524U01RM42.09_2.JPG



Front view of the erosion.

Photo 3 of 3 : SJR2019_RD0524U01RM42.09_3.JPG



Close-up view of the erosion. Note the vegetation at the site.

* Location LS : Land Side N/A : Not Applicable WS : Water Side CR : Crown	** Rating A : Acceptable M : Minimally Acceptable U : Unacceptable	N : Not Inspected/Rated C : Corrected A/W : Acceptable but Monitor & Maintain	+ Issue Type Ma : Maintenance Deficiency Ob : Design & System Obsolescence En : Enforcement
--	--	---	---

**Flood Control Project Maintenance
Levee Inspections**

Maintenance Issue Types Only, Levee Inspection Report By Mile - Fall 2019

Reclamation District No. 0524 Middle Roberts Island

Waterway	Bank	Unit Miles	Inspection Start/End	Inspector
Unit No. 01 San Joaquin River	Left	6.20	10/02/2019 11/14/2019	Alberto De Leon

LM Start	1.49	Rating **	U	Issue No.	916
LM End	1.49	Issue Type +	Ma	Location *	LS
Category	Earthen Levee			GPS Latitude/Longitude	
				Start	End
Item	Trim / Thin Trees			37.929118 °	37.929118 °
				-121.328368 °	-121.328368 °
DWR ID	DWR_RD0524_01_s_2012_916				
Comment Code					
T3 : Trim and thin trees to allow visibility of the ground and room to flood fight.					
Inspector Comment					
Untrimmed trees and dense vegetation on landside toe.					

Photo 1 of 1 : FA_2019_RD0524_107_916_20190830_00255.jpg



Looking at dense trees on landward slope and toe fall 2015

LM Start	1.56	Rating **	U	Issue No.	62	
LM End	1.62	Issue Type +	Ma	Location *		
Category	Supplemental			GPS Latitude/Longitude		
				Start	End	
Item	DWR Erosion Survey			37.927770°	37.927770°	
				-121.327870°	-121.327870°	
DWR ID	RD0524U01RM42.2					
Comment Code						
Inspector Comment						
Site ID: RD0524U01RM42.2						
08/13/2019: No significant change observed.						
09/13/2017: No significant change observed.						
07/25/2016: No significant change observed.						
06/24/2015: No significant change observed.						
06/19/2014: No significant change observed.						
08/13/2013: No significant change observed.						
08/07/2012: The site has been visited by boat survey. No significant change observed						
08/23/2011: No significant change observed on site. Trees concerned still in place.						
09/07/2010: No significant change observed on site. The concern here is the undermining of the levee toe where most of trees are. There are erosion pockets lined along the lower slope and at the base of the trees, exposing tree roots. There is minimal slope protection.						
09/29/2009: The lower slope is lined with minor erosion pockets; some tree roots are exposed; there is visible undermining of the levee toe; site is immediately upstream of the Highway 4 Bridge; the bridge is possibly causing a scour to occur, eroding the bank.						

Photo 1 of 3 : SJR2019_RD0524U01RM42.20_2.jpg



Front view of the site where undermining has occurred.

* Location LS : Land Side N/A : Not Applicable WS : Water Side CR : Crown	** Rating A : Acceptable M : Minimally Acceptable U : Unacceptable	N : Not Inspected/Rated C : Corrected A/W : Acceptable but Monitor & Maintain	+ Issue Type Ma : Maintenance Deficiency Ob : Design & System Obsolescence En : Enforcement
--	--	---	---

**Flood Control Project Maintenance
Levee Inspections**

Maintenance Issue Types Only, Levee Inspection Report By Mile - Fall 2019

Reclamation District No. 0524 Middle Roberts Island

Waterway	Bank	Unit Miles	Inspection Start/End	Inspector
Unit No. 01 San Joaquin River	Left	6.20	10/02/2019 11/14/2019	Alberto De Leon

LM Start	1.56	Rating **	U	Issue No.	62 (cont)	
LM End	1.62	Issue Type +	Ma	Location *		
Category	Supplemental			GPS Latitude/Longitude		
				Start	End	
Item	DWR Erosion Survey			37.927770 °	37.927770 °	
				-121.327870 °	-121.327870 °	
DWR ID	RD0524U01RM42.2					

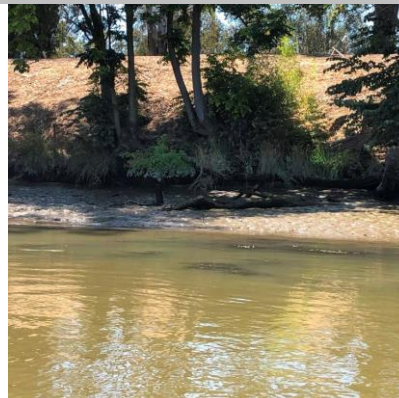
Comment Code

Inspector Comment

Site ID: RD0524U01RM42.2
 08/13/2019: No significant change observed.
 09/13/2017: No significant change observed.
 07/25/2016: No significant change observed.
 06/24/2015: No significant change observed.
 06/19/2014: No significant change observed.
 08/13/2013: No significant change observed.
 08/07/2012: The site has been visited by boat survey. No significant change observed
 08/23/2011: No significant change observed on site. Trees concerned still in place.
 09/07/2010: No significant change observed on site. The concern here is the undermining of the levee toe where most of trees are. There are erosion pockets lined along the lower slope and at the base of the trees, exposing tree roots. There is minimal slope protection.
 09/29/2009: The lower slope is lined with minor erosion pockets; some tree roots are exposed; there is visible undermining of the levee toe; site is immediately upstream of the Highway 4 Bridge; the bridge is possibly causing a scour to occur, eroding the bank.

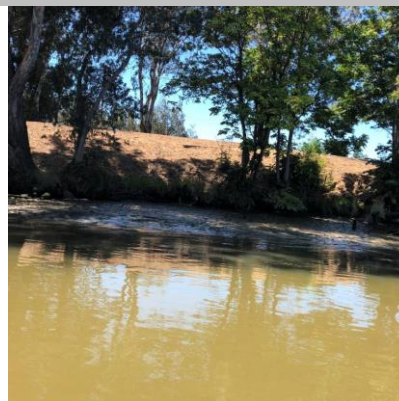
LM Start	1.56	Rating **	U	Issue No.	62 (cont)
LM End	1.62	Issue Type +	Ma	Location *	

Photo 2 of 3 : SJR2019_RD0524U01RM42.20_4.jpg



Close-up view of the erosion.

Photo 3 of 3 : SJR2019_RD0524U01RM42.20_5.jpg



Front view of the erosion.

* Location LS : Land Side N/A : Not Applicable WS : Water Side CR : Crown	** Rating A : Acceptable M : Minimally Acceptable U : Unacceptable	N : Not Inspected/Rated C : Corrected A/W : Acceptable but Monitor & Maintain	+ Issue Type Ma : Maintenance Deficiency Ob : Design & System Obsolescence En : Enforcement
--	--	---	---

**Flood Control Project Maintenance
Levee Inspections**

Maintenance Issue Types Only, Levee Inspection Report By Mile - Fall 2019

Reclamation District No. 0524 Middle Roberts Island

Waterway	Bank	Unit Miles	Inspection Start/End	Inspector
Unit No. 01 San Joaquin River	Left	6.20	10/02/2019 11/14/2019	Alberto De Leon

LM Start	1.58	Rating **	M	Issue No.	145
LM End	1.58	Issue Type +	Ma	Location *	WS
Category	Earthen Levee			GPS Latitude/Longitude	
				Start	End
Item	Animal Control			37.927883°	37.927883°
				-121.327973°	-121.327973°
DWR ID	DWR_RD0524_01_f_2019_145				
Comment Code					
A3 : No rodents visible, but rodent burrows visible; need to backfill and compact or grout burrows.					
Inspector Comment					

No Photos

LM Start	1.62	Rating **	M	Issue No.	26
LM End	1.64	Issue Type +	Ma	Location *	WS
Category	Earthen Levee			GPS Latitude/Longitude	
				Start	End
Item	Erosion / Bank Caving			37.927507 °	37.927295 °
				-121.327593 °	-121.327298 °
DWR ID	DWR_RD0524_01_s_2012_26				
Comment Code					
E1 : Note and monitor erosion site.					
Inspector Comment					
Several erosion sites along this reach.					

Photo 1 of 3 : FA_2019_RD0524_107_26_20190830_00035.jpg



Looking south at waterward erosion.

LM Start	1.62	Rating **	M	Issue No.	26 (cont)
LM End	1.64	Issue Type +	Ma	Location *	WS

Photo 2 of 3 : FA_2019_RD0524_107_26_20190830_00036.jpg



Looking east at waterward erosion.

* Location LS : Land Side N/A : Not Applicable WS : Water Side CR : Crown		** Rating A : Acceptable N : Not Inspected/Rated M : Minimally Acceptable C : Corrected U : Unacceptable A/W : Acceptable but Monitor & Maintain		+ Issue Type Ma : Maintenance Deficiency Ob : Design & System Obsolescence En : Enforcement	
--	--	---	--	---	--

**Flood Control Project Maintenance
Levee Inspections**

Maintenance Issue Types Only, Levee Inspection Report By Mile - Fall 2019

Reclamation District No. 0524 Middle Roberts Island

Waterway	Bank	Unit Miles	Inspection Start/End	Inspector
Unit No. 01 San Joaquin River	Left	6.20	10/02/2019 11/14/2019	Alberto De Leon

LM Start	1.73	Rating **	C	Issue No.	244
LM End	1.75	Issue Type +	Ma	Location *	WS
Category	Earthen Levee			GPS Latitude/Longitude	
				Start	End
Item	Vegetation			37.926395°	37.926191°
				-121.326125°	-121.325952°
DWR ID	DWR_RD0524_01_f_2017_244				
Comment Code					
V2 : Remove the wild growth other than native grasses from the levee slopes.					
Inspector Comment					

No Photos

LM Start	1.73	Rating **	U	Issue No.	245
LM End	1.75	Issue Type +	Ma	Location *	LS
Category	Earthen Levee			GPS Latitude/Longitude	
				Start	End
Item	Vegetation			37.926312 °	37.926093 °
				-121.326065 °	-121.325864 °
DWR ID	DWR_RD0524_01_f_2017_245				
Comment Code					
V2 : Remove the wild growth other than native grasses from the levee slopes.					
Inspector Comment					

Photo 1 of 1 : FA_2019_RD0524_107_245_20190830_00238.jpg



Looking southeast at the landside slope.

LM Start	1.94	Rating **	M	Issue No.	246
LM End	1.94	Issue Type +	Ma	Location *	LS
Category	Earthen Levee			GPS Latitude/Longitude	
				Start	End
Item	Trim / Thin Trees			37.923692 °	37.923692 °
				-121.324225 °	-121.324225 °
DWR ID	DWR_RD0524_01_f_2017_246				
Comment Code					
T1 : Trim trees to at least five feet above ground level.					
Inspector Comment					

No Photos

* Location LS : Land Side N/A : Not Applicable WS : Water Side CR : Crown	** Rating A : Acceptable M : Minimally Acceptable U : Unacceptable	N : Not Inspected/Rated C : Corrected A/W : Acceptable but Monitor & Maintain	+ Issue Type Ma : Maintenance Deficiency Ob : Design & System Obsolescence En : Enforcement
--	--	---	---

**Flood Control Project Maintenance
Levee Inspections**

Maintenance Issue Types Only, Levee Inspection Report By Mile - Fall 2019

Reclamation District No. 0524 Middle Roberts Island

Waterway	Bank	Unit Miles	Inspection Start/End	Inspector
Unit No. 01 San Joaquin River	Left	6.20	10/02/2019 11/14/2019	Alberto De Leon

LM Start	2.17	Rating **	M	Issue No.	151
LM End	2.17	Issue Type +	Ma	Location *	WS
Category	Earthen Levee			GPS Latitude/Longitude	
				Start	End
Item	Animal Control			37.921138°	37.921138°
				-121.321668°	-121.321668°
DWR ID	DWR_RD0524_01_f_2019_151				
Comment Code					
A3 : No rodents visible, but rodent burrows visible; need to backfill and compact or grout burrows.					
Inspector Comment					

No Photos

LM Start	2.19	Rating **	C	Issue No.	90
LM End	2.19	Issue Type +	Ma	Location *	
Category	Supplemental			GPS Latitude/Longitude	
				Start	End
Item	DWR Erosion Survey			37.920992°	37.920992°
				-121.321370°	-121.321370°
DWR ID	RD0524U01RM42.79				
Comment Code					
Inspector Comment					
Site ID: RD0524U01RM42.79					
10/29/2019: No new erosion was found at the repaired site.					
09/13/2017: This erosion site has been repaired prior to this survey.					
07/25/2016: No significant change observed.					
06/24/2015: No significant change observed.					
07/22/2014: The erosion has increased in size.					
08/13/2013: No significant change observed. Slightly more vegetation was visible.					
08/07/2012: The site was first reported in 2012 spring levee inspection report.					

No Photos

* Location LS : Land Side N/A : Not Applicable WS : Water Side CR : Crown	** Rating A : Acceptable M : Minimally Acceptable U : Unacceptable	N : Not Inspected/Rated C : Corrected A/W : Acceptable but Monitor & Maintain	+ Issue Type Ma : Maintenance Deficiency Ob : Design & System Obsolescence En : Enforcement
--	--	---	---

**Flood Control Project Maintenance
Levee Inspections**

Maintenance Issue Types Only, Levee Inspection Report By Mile - Fall 2019

Reclamation District No. 0524 Middle Roberts Island

Waterway	Bank	Unit Miles	Inspection Start/End	Inspector
Unit No. 01 San Joaquin River	Left	6.20	10/02/2019 11/14/2019	Alberto De Leon

LM Start	2.24	Rating **	C	Issue No.	92
LM End	2.27	Issue Type +	Ma	Location *	
Category	Supplemental			GPS Latitude/Longitude	
				Start	End
Item	DWR Erosion Survey			37.920650 °	37.920650 °
				-121.320370 °	-121.320370 °
DWR ID	RD0524U01RM42.84				
Comment Code					
Inspector Comment					
Site ID: RD0524U01RM42.84					
10/29/2019: No new erosion was found at the repaired site.					
09/13/2017: This erosion site has been repaired.					
07/25/2016: No significant change observed.					
06/24/2015: No significant change observed.					
06/19/2014: No significant change observed.					
08/13/2013: An irrigation pipe is on site.					

No Photos

LM Start	2.27	Rating **	U	Issue No.	32
LM End	2.29	Issue Type +	Ma	Location *	LS
Category	Earthen Levee			GPS Latitude/Longitude	
				Start	End
Item	Vegetation			37.920372 °	37.920167 °
				-121.320230 °	-121.319890 °
DWR ID	DWR_RD0524_01_s _ 2012_32				
Comment Code					
V4 : Elderberries are blocking visibility and flood fight capability.					
Inspector Comment					
Dense elderberry bushes on landside slope and toe.					

No Photos

* Location LS : Land Side N/A : Not Applicable WS : Water Side CR : Crown	** Rating A : Acceptable M : Minimally Acceptable U : Unacceptable	N : Not Inspected/Rated C : Corrected A/W : Acceptable but Monitor & Maintain	+ Issue Type Ma : Maintenance Deficiency Ob : Design & System Obsolescence En : Enforcement
--	--	---	---

**Flood Control Project Maintenance
Levee Inspections**

Maintenance Issue Types Only, Levee Inspection Report By Mile - Fall 2019

Reclamation District No. 0524 Middle Roberts Island

Waterway	Bank	Unit Miles	Inspection Start/End	Inspector
Unit No. 01 San Joaquin River	Left	6.20	10/02/2019 11/14/2019	Alberto De Leon

LM Start	2.30	Rating **	C	Issue No.	93	
LM End	2.30	Issue Type +	Ma	Location *		
Category	Supplemental			GPS Latitude/Longitude		
				Start	End	
Item	DWR Erosion Survey			37.920150 °	37.920150 °	
				-121.319700 °	-121.319700 °	
DWR ID	RD0524U01RM42.9					
Comment Code						
Inspector Comment						
Site ID: RD0524U01RM42.9						
08/13/2019: This erosion has been repaired.						
09/13/2017: The erosion is located immediately upstream of a repaired levee section.						

No Photos

LM Start	2.33	Rating **	M	Issue No.	133
LM End	2.33	Issue Type +	Ma	Location *	LS
Category	Earthen Levee			GPS Latitude/Longitude	
				Start	End
Item	Animal Control			37.919743 °	37.919743 °
				-121.319625 °	-121.319625 °
DWR ID	DWR_RD0524_01_s_2019_133				
Comment Code					
A3 : No rodents visible, but rodent burrows visible; need to backfill and compact or grout burrows.					
Inspector Comment					
Rodent holes near landside shoulder					

No Photos

LM Start	2.38	Rating **	M	Issue No.	184
LM End	2.38	Issue Type +	Ma	Location *	LS
Category	Earthen Levee			GPS Latitude/Longitude	
				Start	End
Item	Trim / Thin Trees			37.919036 °	37.919036 °
				-121.319969 °	-121.319969 °
DWR ID	DWR_RD0524_01_s_2014_184				
Comment Code					
T1 : Trim trees to at least five feet above ground level.					
Inspector Comment					

No Photos

* Location LS : Land Side N/A : Not Applicable WS : Water Side CR : Crown	** Rating A : Acceptable M : Minimally Acceptable U : Unacceptable	N : Not Inspected/Rated C : Corrected A/W : Acceptable but Monitor & Maintain	+ Issue Type Ma : Maintenance Deficiency Ob : Design & System Obsolescence En : Enforcement
--	--	---	---

**Flood Control Project Maintenance
Levee Inspections**

Maintenance Issue Types Only, Levee Inspection Report By Mile - Fall 2019

Reclamation District No. 0524 Middle Roberts Island

Waterway	Bank	Unit Miles	Inspection Start/End	Inspector
Unit No. 01 San Joaquin River	Left	6.20	10/02/2019 11/14/2019	Alberto De Leon

LM Start	2.46	Rating **	C	Issue No.	134
LM End	2.46	Issue Type +	Ma	Location *	LS
Category	Earthen Levee			GPS Latitude/Longitude	
				Start	End
Item	Encroachments			37.918420°	37.918420°
				-121.321210°	-121.321210°
DWR ID	DWR_RD0524_01_s_2019_134				
Comment Code					
DE : Debris					
Inspector Comment					
Tires on landside shoulder have been removed. Fall 2019					

No Photos

LM Start	2.47	Rating **	M	Issue No.	249
LM End	2.47	Issue Type +	Ma	Location *	WS
Category	Earthen Levee			GPS Latitude/Longitude	
				Start	End
Item	Vegetation			37.918386 °	37.918386 °
				-121.321444 °	-121.321444 °
DWR ID	DWR_RD0524_01_f _ 2017_249				
Comment Code					
V4 : Elderberries are blocking visibility and flood fight capability.					
Inspector Comment					

No Photos

LM Start	2.49	Rating **	U	Issue No.	37
LM End	2.50	Issue Type +	Ma	Location *	LS
Category	Earthen Levee			GPS Latitude/Longitude	
				Start	End
Item	Vegetation			37.918345 °	37.918302 °
				-121.321765 °	-121.321923 °
DWR ID	DWR_RD0524_01_s_2012_37				
Comment Code					
V4 : Elderberries are blocking visibility and flood fight capability.					
Inspector Comment					

No Photos

* Location LS : Land Side N/A : Not Applicable WS : Water Side CR : Crown	** Rating A : Acceptable M : Minimally Acceptable U : Unacceptable	N : Not Inspected/Rated C : Corrected A/W : Acceptable but Monitor & Maintain	+ Issue Type Ma : Maintenance Deficiency Ob : Design & System Obsolescence En : Enforcement
--	--	---	---

**Flood Control Project Maintenance
Levee Inspections**

Maintenance Issue Types Only, Levee Inspection Report By Mile - Fall 2019

Reclamation District No. 0524 Middle Roberts Island

Waterway	Bank	Unit Miles	Inspection Start/End	Inspector
Unit No. 01 San Joaquin River	Left	6.20	10/02/2019 11/14/2019	Alberto De Leon

LM Start	2.50	Rating **	U	Issue No.	38
LM End	2.50	Issue Type +	Ma	Location *	WS
Category	Earthen Levee			GPS Latitude/Longitude	
				Start	End
Item	Vegetation			37.918287°	37.918287°
				-121.321980°	-121.321980°
DWR ID	DWR_RD0524_01_s_2012_38				
Comment Code					
V4 : Elderberries are blocking visibility and flood fight capability.					
Inspector Comment					

No Photos

LM Start	2.53	Rating **	U	Issue No.	40
LM End	2.57	Issue Type +	Ma	Location *	LS
Category	Earthen Levee			GPS Latitude/Longitude	
				Start	End
Item	Vegetation			37.918047 °	37.917498 °
				-121.322415 °	-121.322797 °
DWR ID	DWR_RD0524_01_s_2012_40				
Comment Code					
V4 : Elderberries are blocking visibility and flood fight capability.					
Inspector Comment					

No Photos

LM Start	2.60	Rating **	M	Issue No.	185
LM End	2.64	Issue Type +	Ma	Location *	WS
Category	Earthen Levee			GPS Latitude/Longitude	
				Start	End
Item	Trim / Thin Trees			37.917152°	37.916807°
				-121.322582°	-121.322069°
DWR ID	DWR_RD0524_01_s_2014_185				
Comment Code					
T2 : Thin trees to allow visibility of the ground and room to flood fight.					
Inspector Comment					

Photo 1 of 1 : FA_2019_RD0524_107_185_20190830_00164.jpg



Looking northwest at untrimmed trees on landward slope and toe.

*** Location**

LS : Land Side N/A : Not Applicable
WS : Water Side
CR : Crown

**** Rating**

A : Acceptable N : Not Inspected/Rated
M : Minimally Acceptable C : Corrected
U : Unacceptable A/W : Acceptable but Monitor & Maintain

+ Issue Type

Ma : Maintenance Deficiency
Ob : Design & System Obsolescence
En : Enforcement

**Flood Control Project Maintenance
Levee Inspections**

Maintenance Issue Types Only, Levee Inspection Report By Mile - Fall 2019

Reclamation District No. 0524 Middle Roberts Island

Waterway	Bank	Unit Miles	Inspection Start/End	Inspector
Unit No. 01 San Joaquin River	Left	6.20	10/02/2019 11/14/2019	Alberto De Leon

LM Start	2.64	Rating **	U	Issue No.	43
LM End	2.64	Issue Type +	Ma	Location *	LS
Category	Earthen Levee			GPS Latitude/Longitude	
				Start	End
Item	Vegetation			37.916780 °	37.916780 °
				-121.322095 °	-121.322095 °
DWR ID	DWR_RD0524_01_s_2012_43				
Comment Code					
V4 : Elderberries are blocking visibility and flood fight capability.					
Inspector Comment					
Dense elderberry on landside shoulder, slope, and toe.					

No Photos

LM Start	2.72	Rating **	M	Issue No.	264
LM End	2.76	Issue Type +	Ma	Location *	LS
Category	Earthen Levee			GPS Latitude/Longitude	
				Start	End
Item	Trim / Thin Trees			37.915698 °	37.915304 °
				-121.322498 °	-121.322763 °
DWR ID	DWR_RD0524_01_s_2012_264				
Comment Code					
T2 : Thin trees to allow visibility of the ground and room to flood fight.					
Inspector Comment					
Untrimmed trees along landside slope and toe. Additionally, trim limbs overhanging crown road 12 feet above ground level.					

Photo 1 of 2 : FA_2019_RD0524_107_264_20190830_00249.jpg



Looking south at untrimmed trees on landward slope.

LM Start	2.72	Rating **	M	Issue No.	264 (cont)
LM End	2.76	Issue Type +	Ma	Location *	LS

Photo 2 of 2 : FA_2019_RD0524_107_264_20190830_00250.jpg



Looking north at dense trees overhanging levee crown.

* Location
LS : Land Side N/A : Not Applicable
WS : Water Side
CR : Crown

** Rating
A : Acceptable N : Not Inspected/Rated
M : Minimally Acceptable C : Corrected
U : Unacceptable A/W : Acceptable but Monitor & Maintain

+ Issue Type
Ma : Maintenance Deficiency
Ob : Design & System Obsolescence
En : Enforcement

**Flood Control Project Maintenance
Levee Inspections**

Maintenance Issue Types Only, Levee Inspection Report By Mile - Fall 2019

Reclamation District No. 0524 Middle Roberts Island

Waterway	Bank	Unit Miles	Inspection Start/End	Inspector
Unit No. 01 San Joaquin River	Left	6.20	10/02/2019 11/14/2019	Alberto De Leon

LM Start	2.75	Rating **	M	Issue No.	146
LM End	2.75	Issue Type +	Ma	Location *	LS
Category	Earthen Levee			GPS Latitude/Longitude	
				Start	End
Item	Encroachments			37.915358°	37.915358°
				-121.322768°	-121.322768°
DWR ID	DWR_RD0524_01_f_2018_146				
Comment Code					
PR : Prunings					
Inspector Comment					

No Photos

LM Start	2.77	Rating **	U	Issue No.	219
LM End	2.80	Issue Type +	Ma	Location *	LS
Category	Earthen Levee			GPS Latitude/Longitude	
				Start	End
Item	Animal Control			37.915195 °	37.915052 °
				-121.322930 °	-121.323430 °
DWR ID	DWR_RD0524_01_f_2016_219				
Comment Code					
A1 : Exterminate rodents and backfill and compact or grout burrows.					
Inspector Comment					
Several large rodent holes on landside slope.					

Photo 1 of 2 : FA_2019_RD0524_107_219_20190830_00194.jpg



Looking south at several rodent holes on landward slope.

LM Start	2.77	Rating **	U	Issue No.	219 (cont)
LM End	2.80	Issue Type +	Ma	Location *	LS

Photo 2 of 2 : FA_2019_RD0524_107_219_20190830_00195.jpg



Looking at typical rodent hole on waterward slope.

* Location LS : Land Side N/A : Not Applicable WS : Water Side CR : Crown		** Rating A : Acceptable N : Not Inspected/Rated M : Minimally Acceptable C : Corrected U : Unacceptable A/W : Acceptable but Monitor & Maintain		+ Issue Type Ma : Maintenance Deficiency Ob : Design & System Obsolescence En : Enforcement	
--	--	---	--	---	--

**Flood Control Project Maintenance
Levee Inspections**

Maintenance Issue Types Only, Levee Inspection Report By Mile - Fall 2019

Reclamation District No. 0524 Middle Roberts Island

Waterway	Bank	Unit Miles	Inspection Start/End	Inspector
Unit No. 01 San Joaquin River	Left	6.20	10/02/2019 11/14/2019	Alberto De Leon

LM Start	2.80	Rating **	U	Issue No.	48
LM End	2.80	Issue Type +	Ma	Location *	LS
Category	Earthen Levee			GPS Latitude/Longitude	
				Start	End
Item	Vegetation			37.915022 °	37.915022 °
				-121.323443 °	-121.323443 °
DWR ID	DWR_RD0524_01_s_2012_48				
Comment Code					
V4 : Elderberries are blocking visibility and flood fight capability.					
Inspector Comment					

No Photos

LM Start	2.86	Rating **	U	Issue No.	49
LM End	2.86	Issue Type +	Ma	Location *	LS
Category	Earthen Levee			GPS Latitude/Longitude	
				Start	End
Item	Vegetation			37.914427 °	37.914427 °
				-121.324198 °	-121.324198 °
DWR ID	DWR_RD0524_01_s_2012_49				
Comment Code					
V4 : Elderberries are blocking visibility and flood fight capability.					
Inspector Comment					

No Photos

LM Start	2.91	Rating **	U	Issue No.	161
LM End	2.91	Issue Type +	Ma	Location *	WS
Category	Earthen Levee			GPS Latitude/Longitude	
				Start	End
Item	Trim / Thin Trees			37.913733 °	37.913733 °
				-121.324398 °	-121.324398 °
DWR ID	DWR_RD0524_01_s_2017_161				
Comment Code					
T5 : Tree stumps.					
Inspector Comment					

Photo 1 of 1 : FA_2019_RD0524_107_161_20190830_00150.jpg



Looking east at large tree stump on waterward shoulder.

* Location
LS : Land Side N/A : Not Applicable
WS : Water Side
CR : Crown

** Rating
A : Acceptable N : Not Inspected/Rated
M : Minimally Acceptable C : Corrected
U : Unacceptable A/W : Acceptable but Monitor & Maintain

+ Issue Type
Ma : Maintenance Deficiency
Ob : Design & System Obsolescence
En : Enforcement

**Flood Control Project Maintenance
Levee Inspections**

Maintenance Issue Types Only, Levee Inspection Report By Mile - Fall 2019

Reclamation District No. 0524 Middle Roberts Island

Waterway	Bank	Unit Miles	Inspection Start/End	Inspector
Unit No. 01 San Joaquin River	Left	6.20	10/02/2019 11/14/2019	Alberto De Leon

LM Start	2.93	Rating **	U	Issue No.	51
LM End	2.93	Issue Type +	Ma	Location *	LS
Category	Earthen Levee			GPS Latitude/Longitude	
				Start	End
Item	Trim / Thin Trees			37.913415°	37.913389°
				-121.324503°	-121.324440°
DWR ID	DWR_RD0524_01_s_2012_51				
Comment Code					
T1 : Trim trees to at least five feet above ground level.					
Inspector Comment					
Untrimmed trees on landside slope and toe.					

LM Start	2.93	Rating **	U	Issue No.	51 (cont)
LM End	2.93	Issue Type +	Ma	Location *	LS

Photo 1 of 2 : FA_2019_RD0524_107_51_20190830_00067.jpg



Looking south at dense trees on landward slope fall 2015

Photo 2 of 2 : FA_2019_RD0524_107_51_20190830_00068.jpg



Looking south at dense trees on landward slope spring 2015

* Location LS : Land Side N/A : Not Applicable WS : Water Side CR : Crown	** Rating A : Acceptable M : Minimally Acceptable U : Unacceptable	N : Not Inspected/Rated C : Corrected A/W : Acceptable but Monitor & Maintain	+ Issue Type Ma : Maintenance Deficiency Ob : Design & System Obsolescence En : Enforcement
--	--	---	---

**Flood Control Project Maintenance
Levee Inspections**

Maintenance Issue Types Only, Levee Inspection Report By Mile - Fall 2019

Reclamation District No. 0524 Middle Roberts Island

Waterway	Bank	Unit Miles	Inspection Start/End	Inspector
Unit No. 01 San Joaquin River	Left	6.20	10/02/2019 11/14/2019	Alberto De Leon

LM Start	2.96	Rating **	C	Issue No.	128
LM End	2.96	Issue Type +	Ma	Location *	
Category	Supplemental			GPS Latitude/Longitude	
				Start	End
Item	DWR Erosion Survey			37.913010 °	37.913010 °
				-121.324490 °	-121.324490 °
DWR ID	RD0524U01RM43.52				
Comment Code					
Inspector Comment					
Site ID: RD0524U01RM43.52					
08/13/2019: This erosion has been repaired.					
09/13/2017: A new pocket erosion observed at the erosion site, next to an irrigation pipe.					
07/25/2016: No significant change observed.					
06/24/2015: No significant change observed.					
06/19/2014: No significant change observed.					
08/13/2013: No significant change observed.					
08/07/2012: The site was first reported in 2012 spring levee inspection report.					

No Photos

LM Start	2.96	Rating **	A/W	Issue No.	227
LM End		Issue Type +	Ma	Location *	
Category	Supplemental			GPS Latitude/Longitude	
				Start	End
Item	2017 Storm Damage			37.912900 °	°
				-121.324400 °	°
DWR ID	LMA-292				
Comment Code					
Inspector Comment					
Levee Evaluation Comments					
Description:Slope protection repairs are needed along the waterside slope due to erosion. Based upon levee inspections, it was determined the waterside levee slopes were eroding, deteriorating and degrading in concave pocket sections at various locations along this levee reach. The eroded levee sections need to be restored back to design standards to prevent further deterioration of the damaged levee sections.					
Site ID No:465					
Site Designation:LMA-292					
Repair Type: Erosion					
Rating:Area of Concern					
Field Date:7/26/2017					
Notes: Lower priority because erosion is within rip rap, is only present on lower slope and is not too deep. Levee is narrow here.					

Photo 1 of 2 : LEVAL_FA_2019_465_2231.jpg



* Location LS : Land Side N/A : Not Applicable WS : Water Side CR : Crown	** Rating A : Acceptable M : Minimally Acceptable U : Unacceptable	N : Not Inspected/Rated C : Corrected A/W : Acceptable but Monitor & Maintain	+ Issue Type Ma : Maintenance Deficiency Ob : Design & System Obsolescence En : Enforcement
--	--	---	---

Reclamation District No. 0524 Middle Roberts Island

A white Chevrolet Equinox is parked on a gravel path that runs alongside a body of water. A person is standing next to the vehicle. The background shows a clear blue sky and some distant buildings.

Page 75 of 116

Reclamation District No. 0524 Middle Roberts Island

* Location	** Rating	+ Issue Type
LS : Land Side WS : Water Side CR : Crown	N/A : Not Applicable A : Acceptable M : Minimally Acceptable U : Unacceptable	Ma : Maintenance Deficiency Ob : Design & System Obsolescence En : Enforcement
	N : Not Inspected/Rated C : Corrected A/W : Acceptable but Monitor & Maintain	

**Flood Control Project Maintenance
Levee Inspections**

Maintenance Issue Types Only, Levee Inspection Report By Mile - Fall 2019

Reclamation District No. 0524 Middle Roberts Island

Waterway	Bank	Unit Miles	Inspection Start/End	Inspector
Unit No. 01 San Joaquin River	Left	6.20	10/02/2019 11/14/2019	Alberto De Leon

LM Start	2.99	Rating **	A/W	Issue No.	228 (cont)							
LM End	3.01	Issue Type +	Ma	Location *								
Category	Supplemental		GPS Latitude/Longitude									
			Start	End								
Item	2017 Storm Damage		37.912500 °	37.912300 °								
			-121.324700 °	-121.324700 °								
DWR ID	LMA-435											
Comment Code												
Inspector Comment												
Levee Evaluation Comments Description: Slope protection repairs are needed along the waterside slope due to erosion and riprap displacement from high water. Based upon levee inspections, it was determined the waterside levee slope is eroding, deteriorating, and degrading. The eroded levee sections need to be restored back to design standards to prevent further deterioration and damage. Site ID No: 529 Site Designation: LMA-435 Repair Type: Erosion Rating: Area of Concern Field Date: 8/10/2017 Notes:												

Photo 3 of 3 : LEVAL_FA_2019_529_4189.jpg



LM Start	3.07	Rating **	M	Issue No.	925							
LM End	3.27	Issue Type +	Ma	Location *	LS							
Category	Earthen Levee		GPS Latitude/Longitude									
			Start	End								
Item	Animal Control		37.911382 °	37.908602 °								
			-121.324928 °	-121.325395 °								
DWR ID	DWR_RD0524_01_s_2012_925											
Comment Code												
A1 : Exterminate rodents and backfill and compact or grout burrows.												
Inspector Comment												
Several rodent holes on levee slopes.												

Photo 1 of 3 : FA_2019_RD0524_107_925_20190830_00256.jpg



Looking southwest at the landside slope.

* Location LS : Land Side N/A : Not Applicable WS : Water Side CR : Crown	** Rating A : Acceptable M : Minimally Acceptable U : Unacceptable	N : Not Inspected/Rated C : Corrected A/W : Acceptable but Monitor & Maintain	+ Issue Type Ma : Maintenance Deficiency Ob : Design & System Obsolescence En : Enforcement
--	--	---	---

**Flood Control Project Maintenance
Levee Inspections**

Maintenance Issue Types Only, Levee Inspection Report By Mile - Fall 2019

Reclamation District No. 0524 Middle Roberts Island

Waterway	Bank	Unit Miles	Inspection Start/End	Inspector
Unit No. 01 San Joaquin River	Left	6.20	10/02/2019 11/14/2019	Alberto De Leon

LM Start	3.07	Rating **	M	Issue No.	925 (cont)
LM End	3.27	Issue Type +	Ma	Location *	LS
Category	Earthen Levee			GPS Latitude/Longitude	
				Start	End
Item	Animal Control			37.911382 °	37.908602 °
				-121.324928 °	-121.325395 °
DWR ID	DWR_RD0524_01_s_2012_925				
Comment Code					
A1 : Exterminate rodents and backfill and compact or grout burrows.					
Inspector Comment					
Several rodent holes on levee slopes.					

LM Start	3.07	Rating **	M	Issue No.	925 (cont)
LM End	3.27	Issue Type +	Ma	Location *	LS

Photo 2 of 3 : FA_2019_RD0524_107_925_20190830_00257.jpg



Looking at typical view of rodent hole with this section fall 2015.

Photo 3 of 3 : FA_2019_RD0524_107_925_20190830_00258.jpg



Looking at typical rodent holes on landward slope along this reach.

* Location LS : Land Side N/A : Not Applicable WS : Water Side CR : Crown	** Rating A : Acceptable M : Minimally Acceptable U : Unacceptable	N : Not Inspected/Rated C : Corrected A/W : Acceptable but Monitor & Maintain	+ Issue Type Ma : Maintenance Deficiency Ob : Design & System Obsolescence En : Enforcement
--	--	---	---

Reclamation District No. 0524 Middle Roberts Island

A photograph showing a wide river with a dark, calm surface. In the immediate foreground, a steep, gravelly bank slopes down towards the water, with some dry, yellowish grass and small plants growing along its edge. A dense line of green, leafy vegetation runs along the far bank of the river. In the background, a row of houses with light-colored roofs is visible under a clear, bright blue sky. The overall scene suggests a natural area adjacent to a residential development.

* Location	** Rating	+ Issue Type
LS : Land Side	A : Acceptable	Ma : Maintenance Deficiency
N/A : Not Applicable	N : Not Inspected/Rated	Ob : Design & System Obsolescence
WS : Water Side	M : Minimally Acceptable	En : Enforcement
CR : Crown	U : Unacceptable	
	A/W : Acceptable but Monitor & Maintain	

**Flood Control Project Maintenance
Levee Inspections**

Maintenance Issue Types Only, Levee Inspection Report By Mile - Fall 2019

Reclamation District No. 0524 Middle Roberts Island

Waterway	Bank	Unit Miles	Inspection Start/End	Inspector
Unit No. 01 San Joaquin River	Left	6.20	10/02/2019 11/14/2019	Alberto De Leon

LM Start	3.26	Rating **	A/W	Issue No.	230
LM End	3.26	Issue Type +	Ma	Location *	
Category	Supplemental			GPS Latitude/Longitude	
				Start	End
Item	2017 Storm Damage			37.908800 °	37.908700 °
				-121.325400 °	-121.325300 °
DWR ID	LMA-434				
Comment Code					
Inspector Comment					
Levee Evaluation Comments					
Description:Slope protection repairs are needed along the waterside slope due to erosion and riprap displacement from high water. Based upon levee inspections, it was determined the waterside levee slope is eroding, deteriorating, and degrading. The eroded levee sections need to be restored back to design standards to prevent further deterioration and damage.					
Site ID No:528					
Site Designation:LMA-434					
Repair Type: Erosion					
Rating:Area of Concern					
Field Date:8/10/2017					
Notes: combined with LMA-433					

Photo 1 of 3 : LEVAL_FA_2019_528_4193.jpg



LM Start	3.26	Rating **	A/W	Issue No.	230 (cont)
LM End	3.26	Issue Type +	Ma	Location *	

Photo 2 of 3 : LEVAL_FA_2019_528_4197.jpg



* Location LS : Land Side N/A : Not Applicable WS : Water Side CR : Crown	** Rating A : Acceptable M : Minimally Acceptable U : Unacceptable	N : Not Inspected/Rated C : Corrected A/W : Acceptable but Monitor & Maintain	+ Issue Type Ma : Maintenance Deficiency Ob : Design & System Obsolescence En : Enforcement
--	--	---	---

**Flood Control Project Maintenance
Levee Inspections**

Maintenance Issue Types Only, Levee Inspection Report By Mile - Fall 2019

Reclamation District No. 0524 Middle Roberts Island

Waterway	Bank	Unit Miles	Inspection Start/End	Inspector
Unit No. 01 San Joaquin River	Left	6.20	10/02/2019 11/14/2019	Alberto De Leon

LM Start	3.26	Rating **	A/W	Issue No.	230 (cont)
LM End	3.26	Issue Type +	Ma	Location *	
Category	Supplemental			GPS Latitude/Longitude	
				Start	End
Item	2017 Storm Damage			37.908800 °	37.908700 °
				-121.325400 °	-121.325300 °
DWR ID	LMA-434				
Comment Code					
Inspector Comment					
<p>Levee Evaluation Comments</p> <p>Description: Slope protection repairs are needed along the waterside slope due to erosion and riprap displacement from high water. Based upon levee inspections, it was determined the waterside levee slope is eroding, deteriorating, and degrading. The eroded levee sections need to be restored back to design standards to prevent further deterioration and damage.</p> <p>Site ID No: 528</p> <p>Site Designation: LMA-434</p> <p>Repair Type: Erosion</p> <p>Rating: Area of Concern</p> <p>Field Date: 8/10/2017</p> <p>Notes: combined with LMA-433</p>					

Photo 3 of 3 : LEVAL_FA_2019_528_4198.jpg



LM Start	3.27	Rating **	A/W	Issue No.	231
LM End	3.28	Issue Type +	Ma	Location *	
Category	Supplemental			GPS Latitude/Longitude	
				Start	End
Item	2017 Storm Damage			37.908600 °	37.908500 °
				-121.325400 °	-121.325400 °
DWR ID	LMA-433				
Comment Code					
Inspector Comment					
<p>Levee Evaluation Comments</p> <p>Description: Slope protection repairs are needed along the waterside slope due to erosion and riprap displacement from high water. Based upon levee inspections, it was determined the waterside levee slope is eroding, deteriorating, and degrading. The eroded levee sections need to be restored back to design standards to prevent further deterioration and damage.</p> <p>Site ID No: 527</p> <p>Site Designation: LMA-433</p> <p>Repair Type: Erosion</p> <p>Rating: Area of Concern</p> <p>Field Date: 8/10/2017</p> <p>Notes: combined with LMA-434</p>					

No Photos

* Location LS : Land Side N/A : Not Applicable WS : Water Side CR : Crown	** Rating A : Acceptable M : Minimally Acceptable U : Unacceptable	N : Not Inspected/Rated C : Corrected A/W : Acceptable but Monitor & Maintain	+ Issue Type Ma : Maintenance Deficiency Ob : Design & System Obsolescence En : Enforcement
--	--	---	---

**Flood Control Project Maintenance
Levee Inspections**

Maintenance Issue Types Only, Levee Inspection Report By Mile - Fall 2019

Reclamation District No. 0524 Middle Roberts Island

Waterway	Bank	Unit Miles	Inspection Start/End	Inspector
Unit No. 01 San Joaquin River	Left	6.20	10/02/2019 11/14/2019	Alberto De Leon

LM Start	3.27	Rating **	C	Issue No.	186
LM End	3.27	Issue Type +	Ma	Location *	WS
Category	Earthen Levee			GPS Latitude/Longitude	
				Start	End
Item	Trim / Thin Trees			37.908551°	37.908551°
				-121.325381°	-121.325381°
DWR ID	DWR_RD0524_01_s_2014_186				
Comment Code					
T1 : Trim trees to at least five feet above ground level.					
Inspector Comment					

No Photos

LM Start	3.29	Rating **	C	Issue No.	162	
LM End	3.31	Issue Type +	Ma	Location *		
Category	Supplemental			GPS Latitude/Longitude		
				Start	End	
Item	DWR Erosion Survey			37.908090 °	37.908090 °	
				-121.325090 °	-121.325090 °	
DWR ID	RD0524U01RM43.86					
Comment Code						
Inspector Comment						
Site ID: RD0524U01RM43.86 08/13/2019: This erosion site has been repaired. 09/13/2017: No significant change observed. 07/25/2016: No significant change observed. 06/24/2015: No significant change observed. 06/19/2014: No significant change observed. 08/13/2013: The levee toe seems to have been protected by river rocks and vegetation on site.						

No Photos

* Location LS : Land Side N/A : Not Applicable WS : Water Side CR : Crown	** Rating A : Acceptable M : Minimally Acceptable U : Unacceptable	N : Not Inspected/Rated C : Corrected A/W : Acceptable but Monitor & Maintain	+ Issue Type Ma : Maintenance Deficiency Ob : Design & System Obsolescence En : Enforcement
--	--	---	---

Reclamation District No. 0524 Middle Roberts Island

* Location	** Rating	+ Issue Type
LS : Land Side	A : Acceptable	Ma : Maintenance Deficiency
N/A : Not Applicable	N : Not Inspected/Rated	Ob : Design & System Obsolescence
WS : Water Side	M : Minimally Acceptable	En : Enforcement
CR : Crown	U : Unacceptable	
	A/W : Acceptable but Monitor & Maintain	

**Flood Control Project Maintenance
Levee Inspections**

Maintenance Issue Types Only, Levee Inspection Report By Mile - Fall 2019

Reclamation District No. 0524 Middle Roberts Island

Waterway	Bank	Unit Miles	Inspection Start/End	Inspector
Unit No. 01 San Joaquin River	Left	6.20	10/02/2019 11/14/2019	Alberto De Leon

LM Start	3.30	Rating **	A/W	Issue No.	232 (cont)
LM End		Issue Type +	Ma	Location *	
Category	Supplemental			GPS Latitude/Longitude	
				Start	End
Item	2017 Storm Damage			37.908200 °	°
				-121.325300 °	°
DWR ID	LMA-294				
Comment Code					
Inspector Comment					
<p>Levee Evaluation Comments</p> <p>Description: Slope protection repairs are needed along the waterside slope due to erosion. Based upon levee inspections, it was determined the waterside levee slopes were eroding, deteriorating and degrading in concave pocket sections at various locations along this levee reach. The eroded levee sections need to be restored back to design standards to prevent further deterioration of the damaged levee sections.</p> <p>Site ID No: 467</p> <p>Site Designation: LMA-294</p> <p>Repair Type: Erosion</p> <p>Rating: Area of Concern</p> <p>Field Date: 7/26/2017</p> <p>Notes: It looks like new rip rap was placed on the lower 1/4 of the slope. There is a 2-3 ft scarp above the rip rap.</p>					

Photo 3 of 3 : LEVAL_FA_2019_467_2225.jpg



LM Start	3.30	Rating **	M	Issue No.	926
LM End	3.37	Issue Type +	Ma	Location *	LS
Category	Earthen Levee			GPS Latitude/Longitude	
				Start	End
Item	Trim / Thin Trees			37.908158 °	37.907112 °
				-121.325418 °	-121.325350 °
DWR ID	DWR_RD0524_01_s_2012_926				
Comment Code					
T1 : Trim trees to at least five feet above ground level.					
Inspector Comment					

Photo 1 of 2 : FA_2019_RD0524_107_926_20190830_00259.jpg



Looking southwest at dense veg on landward slope.

* Location LS : Land Side N/A : Not Applicable WS : Water Side CR : Crown	** Rating A : Acceptable M : Minimally Acceptable U : Unacceptable	N : Not Inspected/Rated C : Corrected A/W : Acceptable but Monitor & Maintain	+ Issue Type Ma : Maintenance Deficiency Ob : Design & System Obsolescence En : Enforcement
--	--	---	---

**Flood Control Project Maintenance
Levee Inspections**

Maintenance Issue Types Only, Levee Inspection Report By Mile - Fall 2019

Reclamation District No. 0524 Middle Roberts Island

Waterway	Bank	Unit Miles	Inspection Start/End	Inspector
Unit No. 01 San Joaquin River	Left	6.20	10/02/2019 11/14/2019	Alberto De Leon

LM Start	3.53	Rating **	A/W	Issue No.	233	
LM End	3.54	Issue Type +	Ma	Location *		
Category	Supplemental			GPS Latitude/Longitude		
				Start	End	
Item	2017 Storm Damage			37.905300 °	37.905200 °	
				-121.323800 °	-121.323900 °	
DWR ID	LMA-432					
Comment Code						
Inspector Comment						
Levee Evaluation Comments						
Description:Slope protection repairs are needed along the waterside slope due to erosion and riprap displacement from high water. Based upon levee inspections, it was determined the waterside levee slope is eroding, deteriorating, and degrading. The eroded levee sections need to be restored back to design standards to prevent further deterioration and damage.						
Site ID No:526						
Site Designation:LMA-432						
Repair Type: Erosion						
Rating:Area of Concern						
Field Date:8/10/2017						
Notes:						

Photo 1 of 3 : LEVAL_FA_2019_526_4201.jpg



LM Start	3.53	Rating **	A/W	Issue No.	233 (cont)
LM End	3.54	Issue Type +	Ma	Location *	

Photo 2 of 3 : LEVAL_FA_2019_526_4202.jpg



* Location LS : Land Side N/A : Not Applicable WS : Water Side CR : Crown	** Rating A : Acceptable M : Minimally Acceptable U : Unacceptable	N : Not Inspected/Rated C : Corrected A/W : Acceptable but Monitor & Maintain	+ Issue Type Ma : Maintenance Deficiency Ob : Design & System Obsolescence En : Enforcement
--	--	---	---

**Flood Control Project Maintenance
Levee Inspections**

Maintenance Issue Types Only, Levee Inspection Report By Mile - Fall 2019

Reclamation District No. 0524 Middle Roberts Island

Waterway	Bank	Unit Miles	Inspection Start/End	Inspector
Unit No. 01 San Joaquin River	Left	6.20	10/02/2019 11/14/2019	Alberto De Leon

LM Start	3.53	Rating **	A/W	Issue No.	233 (cont)
LM End	3.54	Issue Type +	Ma	Location *	
Category	Supplemental			GPS Latitude/Longitude	
				Start	End
Item	2017 Storm Damage			37.905300 °	37.905200 °
				-121.323800 °	-121.323900 °
DWR ID	LMA-432				
Comment Code					
Inspector Comment					
Levee Evaluation Comments					
Description:Slope protection repairs are needed along the waterside slope due to erosion and riprap displacement from high water. Based upon levee inspections, it was determined the waterside levee slope is eroding, deteriorating, and degrading. The eroded levee sections need to be restored back to design standards to prevent further deterioration and damage.					
Site ID No:526					
Site Designation:LMA-432					
Repair Type: Erosion					
Rating:Area of Concern					
Field Date:8/10/2017					
Notes:					

Photo 3 of 3 : LEVAL_FA_2019_526_4203.jpg



LM Start	3.53	Rating **	M	Issue No.	57
LM End	3.60	Issue Type +	Ma	Location *	LS
Category	Earthen Levee			GPS Latitude/Longitude	
				Start	End
Item	Trim / Thin Trees			37.905280 °	37.904475 °
				-121.323840 °	-121.324409 °
DWR ID	DWR_RD0524_01_s_2012_57				
Comment Code					
T3 : Trim and thin trees to allow visibility of the ground and room to flood fight.					
Inspector Comment					

Photo 1 of 1 : FA_2019_RD0524_107_57_20190830_00075.jpg



Looking south at dense trees on landward slope.

* Location LS : Land Side N/A : Not Applicable WS : Water Side CR : Crown	** Rating A : Acceptable M : Minimally Acceptable U : Unacceptable	N : Not Inspected/Rated C : Corrected A/W : Acceptable but Monitor & Maintain	+ Issue Type Ma : Maintenance Deficiency Ob : Design & System Obsolescence En : Enforcement
--	--	---	---

**Flood Control Project Maintenance
Levee Inspections**

Maintenance Issue Types Only, Levee Inspection Report By Mile - Fall 2019

Reclamation District No. 0524 Middle Roberts Island

Waterway	Bank	Unit Miles	Inspection Start/End	Inspector
Unit No. 01 San Joaquin River	Left	6.20	10/02/2019 11/14/2019	Alberto De Leon

LM Start	3.56	Rating **	A/W	Issue No.	234
LM End	3.57	Issue Type +	Ma	Location *	
Category	Supplemental			GPS Latitude/Longitude	
				Start	End
Item	2017 Storm Damage			37.904900 °	37.904800 °
				-121.323900 °	-121.324100 °
DWR ID	LMA-431				
Comment Code					
Inspector Comment					
Levee Evaluation Comments					
Description:Slope protection repairs are needed along the waterside slope due to erosion and riprap displacement from high water. Based upon levee inspections, it was determined the waterside levee slope is eroding, deteriorating, and degrading. The eroded levee sections need to be restored back to design standards to prevent further deterioration and damage.					
Site ID No:525					
Site Designation:LMA-431					
Repair Type: Erosion					
Rating:Area of Concern					
Field Date:8/10/2017					
Notes: No appearance of erosion, continue to monitor					

Photo 1 of 3 : LEVAL_FA_2019_525_4205.jpg



LM Start	3.56	Rating **	A/W	Issue No.	234 (cont)
LM End	3.57	Issue Type +	Ma	Location *	

Photo 2 of 3 : LEVAL_FA_2019_525_4206.jpg



* Location LS : Land Side N/A : Not Applicable WS : Water Side CR : Crown	** Rating A : Acceptable M : Minimally Acceptable U : Unacceptable	N : Not Inspected/Rated C : Corrected A/W : Acceptable but Monitor & Maintain	+ Issue Type Ma : Maintenance Deficiency Ob : Design & System Obsolescence En : Enforcement
--	--	---	---

**Flood Control Project Maintenance
Levee Inspections**

Maintenance Issue Types Only, Levee Inspection Report By Mile - Fall 2019

Reclamation District No. 0524 Middle Roberts Island

Waterway	Bank	Unit Miles	Inspection Start/End	Inspector
Unit No. 01 San Joaquin River	Left	6.20	10/02/2019 11/14/2019	Alberto De Leon

LM Start	3.56	Rating **	A/W	Issue No.	234 (cont)	
LM End	3.57	Issue Type +	Ma	Location *		
Category	Supplemental			GPS Latitude/Longitude		
				Start	End	
Item	2017 Storm Damage			37.904900 °	37.904800 °	
				-121.323900 °	-121.324100 °	
DWR ID	LMA-431					
Comment Code						
Inspector Comment						
Levee Evaluation Comments						
Description:Slope protection repairs are needed along the waterside slope due to erosion and riprap displacement from high water. Based upon levee inspections, it was determined the waterside levee slope is eroding, deteriorating, and degrading. The eroded levee sections need to be restored back to design standards to prevent further deterioration and damage.						
Site ID No:525						
Site Designation:LMA-431						
Repair Type: Erosion						
Rating:Area of Concern						
Field Date:8/10/2017						
Notes: No appearance of erosion, continue to monitor						

Photo 3 of 3 : LEVAL_FA_2019_525_4208.jpg



LM Start	3.62	Rating **	M	Issue No.	163
LM End	3.62	Issue Type +	Ma	Location *	WS
Category	Earthen Levee			GPS Latitude/Longitude	
				Start	End
Item	Animal Control			37.904348 °	37.904348 °
				-121.324683 °	-121.324683 °
DWR ID	DWR_RD0524_01_s_2017_163				
Comment Code					
A3 : No rodents visible, but rodent burrows visible; need to backfill and compact or grout burrows.					
Inspector Comment					

No Photos

* Location LS : Land Side N/A : Not Applicable WS : Water Side CR : Crown	** Rating A : Acceptable M : Minimally Acceptable U : Unacceptable	N : Not Inspected/Rated C : Corrected A/W : Acceptable but Monitor & Maintain	+ Issue Type Ma : Maintenance Deficiency Ob : Design & System Obsolescence En : Enforcement
--	--	---	---

**Flood Control Project Maintenance
Levee Inspections**

Maintenance Issue Types Only, Levee Inspection Report By Mile - Fall 2019

Reclamation District No. 0524 Middle Roberts Island

Waterway	Bank	Unit Miles	Inspection Start/End	Inspector
Unit No. 01 San Joaquin River	Left	6.20	10/02/2019 11/14/2019	Alberto De Leon

LM Start	3.64	Rating **	M	Issue No.	159
LM End	3.64	Issue Type +	Ma	Location *	WS
Category	Earthen Levee			GPS Latitude/Longitude	
				Start	End
Item	Animal Control			37.904103°	37.904103°
				-121.325056°	-121.325056°
DWR ID	DWR_RD0524_01_f_2019_159				
Comment Code					
A3 : No rodents visible, but rodent burrows visible; need to backfill and compact or grout burrows.					
Inspector Comment					

No Photos

LM Start	3.67	Rating **	U	Issue No.	251
LM End	3.67	Issue Type +	Ma	Location *	WS
Category	Earthen Levee			GPS Latitude/Longitude	
				Start	End
Item	Animal Control			37.903776 °	37.903776 °
				-121.325323 °	-121.325323 °
DWR ID	DWR_RD0524_01_f_2017_251				
Comment Code					
A3 : No rodents visible, but rodent burrows visible; need to backfill and compact or grout burrows.					
Inspector Comment					
Large rodent holes on both waterside and landside slope.					

Photo 1 of 1 : FA_2019_RD0524_107_251_20190830_00239.jpg



Looking northwest at the waterside slope.

LM Start	3.69	Rating **	M	Issue No.	160
LM End	3.76	Issue Type +	Ma	Location *	LS
Category	Earthen Levee			GPS Latitude/Longitude	
				Start	End
Item	Vegetation			37.903505 °	37.902706 °
				-121.325480 °	-121.326267 °
DWR ID	DWR_RD0524_01_f_2019_160				
Comment Code					
V2 : Remove the wild growth other than native grasses from the levee slopes.					
Inspector Comment					

No Photos

* Location LS : Land Side N/A : Not Applicable WS : Water Side CR : Crown	** Rating A : Acceptable M : Minimally Acceptable U : Unacceptable	N : Not Inspected/Rated C : Corrected A/W : Acceptable but Monitor & Maintain	+ Issue Type Ma : Maintenance Deficiency Ob : Design & System Obsolescence En : Enforcement
--	--	---	---

**Flood Control Project Maintenance
Levee Inspections**

Maintenance Issue Types Only, Levee Inspection Report By Mile - Fall 2019

Reclamation District No. 0524 Middle Roberts Island

Waterway	Bank	Unit Miles	Inspection Start/End	Inspector
Unit No. 01 San Joaquin River	Left	6.20	10/02/2019 11/14/2019	Alberto De Leon

LM Start	3.89	Rating **	U	Issue No.	94 (cont)	
LM End	3.89	Issue Type +	Ma	Location *	WS	
Category	Earthen Levee			GPS Latitude/Longitude		
				Start		End
Item	Vegetation			37.900940 °		37.900940 °
				-121.326414 °		-121.326414 °
DWR ID	DWR_RD0524_01_s_2012_94					
Comment Code						
V2 : Remove the wild growth other than native grasses from the levee slopes.						
Inspector Comment						
Remove cactus from waterside slope.						

Photo 2 of 2 : FA_2019_RD0524_107_94_20190830_00118.jpg



Looking southeast at cactus on waterside slope. Fall 2013

LM Start	3.97	Rating **	C	Issue No.	253
LM End	4.02	Issue Type +	Ma	Location *	LS
Category	Earthen Levee			GPS Latitude/Longitude	
				Start	End
Item	Vegetation			37.899748 °	37.899116 °
				-121.326596 °	-121.326905 °
DWR ID	DWR_RD0524_01_f_2017_253				
Comment Code					
V2 : Remove the wild growth other than native grasses from the levee slopes.					
Inspector Comment					

No Photos

LM Start	3.97	Rating **	M	Issue No.	254
LM End	4.03	Issue Type +	Ma	Location *	WS
Category	Earthen Levee			GPS Latitude/Longitude	
				Start	End
Item	Vegetation			37.899718 °	37.898945 °
				-121.326605 °	-121.327003 °
DWR ID	DWR_RD0524_01_f_2017_254				
Comment Code					
V2 : Remove the wild growth other than native grasses from the levee slopes.					
Inspector Comment					

Photo 1 of 1 : FA_2019_RD0524_107_254_20190830_00241.jpg



Looking southwest at the waterside slope.

* Location LS : Land Side N/A : Not Applicable WS : Water Side CR : Crown	** Rating A : Acceptable M : Minimally Acceptable U : Unacceptable	N : Not Inspected/Rated C : Corrected A/W : Acceptable but Monitor & Maintain	+ Issue Type Ma : Maintenance Deficiency Ob : Design & System Obsolescence En : Enforcement
--	--	---	---

**Flood Control Project Maintenance
Levee Inspections**

Maintenance Issue Types Only, Levee Inspection Report By Mile - Fall 2019

Reclamation District No. 0524 Middle Roberts Island

Waterway	Bank	Unit Miles	Inspection Start/End	Inspector
Unit No. 01 San Joaquin River	Left	6.20	10/02/2019 11/14/2019	Alberto De Leon

LM Start	4.03	Rating **	M	Issue No.	61
LM End	4.03	Issue Type +	Ma	Location *	LS
Category	Earthen Levee			GPS Latitude/Longitude	
				Start	End
Item	Trim / Thin Trees			37.898925 °	37.898925 °
				-121.327015 °	-121.327015 °
DWR ID	DWR_RD0524_01_s_2012_61				
Comment Code					
T1 : Trim trees to at least five feet above ground level.					
Inspector Comment					

Photo 1 of 1 : FA_2019_RD0524_107_61_20190830_00082.jpg



Looking east at untrimmed tree at landward toe.

LM Start	4.14	Rating **	M	Issue No.	137
LM End	4.14	Issue Type +	Ma	Location *	LS
Category	Earthen Levee			GPS Latitude/Longitude	
				Start	End
Item	Animal Control			37.897501 °	37.897501 °
				-121.327718 °	-121.327718 °
DWR ID	DWR_RD0524_01_s_2019_137				
Comment Code					
A3 : No rodents visible, but rodent burrows visible; need to backfill and compact or grout burrows.					
Inspector Comment					

No Photos

LM Start	4.37	Rating **	M	Issue No.	255
LM End	4.37	Issue Type +	Ma	Location *	LS
Category	Earthen Levee			GPS Latitude/Longitude	
				Start	End
Item	Animal Control			37.894442 °	37.894442 °
				-121.329238 °	-121.329238 °
DWR ID	DWR_RD0524_01_f_2017_255				
Comment Code					
A3 : No rodents visible, but rodent burrows visible; need to backfill and compact or grout burrows.					
Inspector Comment					
Multiple rodent holes around gate stop post.					

No Photos

* Location LS : Land Side N/A : Not Applicable WS : Water Side CR : Crown		** Rating A : Acceptable M : Minimally Acceptable U : Unacceptable		N : Not Inspected/Rated C : Corrected A/W : Acceptable but Monitor & Maintain		+ Issue Type Ma : Maintenance Deficiency Ob : Design & System Obsolescence En : Enforcement	
---	--	---	--	---	--	--	--

Reclamation District No. 0524 Middle Roberts Island

Looking west at dead tree at landside toe.

No Photos

View of large rodent holes on landside slope. Fall 2019

Page 94 of 116

**Flood Control Project Maintenance
Levee Inspections**

Maintenance Issue Types Only, Levee Inspection Report By Mile - Fall 2019

Reclamation District No. 0524 Middle Roberts Island

Waterway	Bank	Unit Miles	Inspection Start/End	Inspector
Unit No. 01 San Joaquin River	Left	6.20	10/02/2019 11/14/2019	Alberto De Leon

LM Start	4.52	Rating **	U	Issue No.	102
LM End	4.52	Issue Type +	Ma	Location *	WS
Category	Earthen Levee			GPS Latitude/Longitude	
				Start	End
Item	Encroachments			37.892383 °	37.892383 °
				-121.328194 °	-121.328194 °
DWR ID	DWR_RD0524_01_f _ 2016_102				
Comment Code					
TR : Tree or limb					
Inspector Comment					
Dead tree on waterside slope should be removed					

LM Start	4.52	Rating **	U	Issue No.	102 (cont)
LM End	4.52	Issue Type +	Ma	Location *	WS

Photo 1 of 2 : FA_2019_RD0524_107_102_20190830_00124.jpg



Looking southeast at dead tree on waterside slope fall 2015

Photo 2 of 2 : FA_2019_RD0524_107_102_20190830_00125.jpg



Looking southeast at dead tree on waterside slope.

* Location LS : Land Side N/A : Not Applicable WS : Water Side CR : Crown	** Rating A : Acceptable M : Minimally Acceptable U : Unacceptable	N : Not Inspected/Rated C : Corrected A/W : Acceptable but Monitor & Maintain	+ Issue Type Ma : Maintenance Deficiency Ob : Design & System Obsolescence En : Enforcement
--	--	--	---

**Flood Control Project Maintenance
Levee Inspections**

Maintenance Issue Types Only, Levee Inspection Report By Mile - Fall 2019

Reclamation District No. 0524 Middle Roberts Island

Waterway	Bank	Unit Miles	Inspection Start/End	Inspector
Unit No. 01 San Joaquin River	Left	6.20	10/02/2019 11/14/2019	Alberto De Leon

LM Start	4.53	Rating **	A/W	Issue No.	70
LM End	4.54	Issue Type +	Ma	Location *	
Category	Supplemental		GPS Latitude/Longitude		
			Start	End	
Item	DWR Erosion Survey		37.892230 °	37.892230 °	
			-121.327930 °	-121.327930 °	

DWR ID RD0524U01RM45.07

Comment Code

Inspector Comment

Site ID: RD0524U01RM45.07
 08/13/2019: No significant change observed.
 09/13/2017: No significant change observed.
 07/25/2016: No significant change observed.
 06/24/2015: No significant change observed.
 06/19/2014: No significant change observed.
 08/13/2013: No significant change observed.
 08/07/2012: The erosion is located at the inside of a river bend. Site is covered with broken concrete blocks and other debris.

LM Start	4.53	Rating **	A/W	Issue No.	70 (cont)
LM End	4.54	Issue Type +	Ma	Location *	

Photo 1 of 3 : SJR2019_RD0524U01RM45.07_1.jpg



Front view of the erosion site.

Photo 2 of 3 : SJR2019_RD0524U01RM45.07_3.jpg



Close-up view of the site.

* Location LS : Land Side N/A : Not Applicable WS : Water Side CR : Crown	** Rating A : Acceptable M : Minimally Acceptable U : Unacceptable	N : Not Inspected/Rated C : Corrected A/W : Acceptable but Monitor & Maintain	+ Issue Type Ma : Maintenance Deficiency Ob : Design & System Obsolescence En : Enforcement
--	--	---	---

**Flood Control Project Maintenance
Levee Inspections**

Maintenance Issue Types Only, Levee Inspection Report By Mile - Fall 2019

Reclamation District No. 0524 Middle Roberts Island

Waterway	Bank	Unit Miles	Inspection Start/End	Inspector
Unit No. 01 San Joaquin River	Left	6.20	10/02/2019 11/14/2019	Alberto De Leon

LM Start	4.53	Rating **	A/W	Issue No.	70 (cont)	
LM End	4.54	Issue Type +	Ma	Location *		
Category	Supplemental			GPS Latitude/Longitude		
				Start		End
Item	DWR Erosion Survey			37.892230 °		37.892230 °
				-121.327930 °		-121.327930 °
DWR ID	RD0524U01RM45.07					
Comment Code						
Inspector Comment						
Site ID: RD0524U01RM45.07						
08/13/2019: No significant change observed.						
09/13/2017: No significant change observed.						
07/25/2016: No significant change observed.						
06/24/2015: No significant change observed.						
06/19/2014: No significant change observed.						
08/13/2013: No significant change observed.						
08/07/2012: The erosion is located at the inside of a river bend. Site is covered with broken concrete blocks and other debris.						

Photo 3 of 3 : SJR2019_RD0524U01RM45.07_2.jpg



Front view of the site. Note the loosely placed concrete blocks at the site.

LM Start	4.53	Rating **	A/W	Issue No.	235
LM End		Issue Type +	Ma	Location *	
Category	Supplemental			GPS Latitude/Longitude	
				Start	End
Item	2017 Storm Damage			37.892200 °	°
				-121.328000 °	°
DWR ID	LMA-295				
Comment Code					
Inspector Comment					
Levee Evaluation Comments					
Description:Slope protection repairs are needed along the waterside slope due to erosion. Based upon levee inspections, it was determined the waterside levee slopes were eroding, deteriorating and degrading in concave pocket sections at various locations along this levee reach. The eroded levee sections need to be restored back to design standards to prevent further deterioration of the damaged levee sections.					
Site ID No:468					
Site Designation:LMA-295					
Repair Type: Erosion					
Rating:Serious					
Field Date:7/26/2017					
Notes: Serious because erosion is impacting the levee, but there is some slope protection here. Slope is armored with asphalt and concrete rubble. The surrounding slopes are pretty baren, but there is a small bush within the site so it may be older.					

Photo 1 of 3 : LEVAL_FA_2019_468_2219.jpg



* Location LS : Land Side N/A : Not Applicable WS : Water Side CR : Crown	** Rating A : Acceptable M : Minimally Acceptable U : Unacceptable	N : Not Inspected/Rated C : Corrected A/W : Acceptable but Monitor & Maintain	+ Issue Type Ma : Maintenance Deficiency Ob : Design & System Obsolescence En : Enforcement
--	--	---	---

**Flood Control Project Maintenance
Levee Inspections**

Maintenance Issue Types Only, Levee Inspection Report By Mile - Fall 2019

Reclamation District No. 0524 Middle Roberts Island

Waterway	Bank	Unit Miles	Inspection Start/End	Inspector
Unit No. 01 San Joaquin River	Left	6.20	10/02/2019 11/14/2019	Alberto De Leon

LM Start	4.53	Rating **	A/W	Issue No.	235 (cont)	
LM End		Issue Type +	Ma	Location *		
Category	Supplemental			GPS Latitude/Longitude		
				Start	End	
Item	2017 Storm Damage			37.892200 °		°
				-121.328000 °		°
DWR ID	LMA-295					

Comment Code

Inspector Comment

Levee Evaluation Comments

Description: Slope protection repairs are needed along the waterside slope due to erosion. Based upon levee inspections, it was determined the waterside levee slopes were eroding, deteriorating and degrading in concave pocket sections at various locations along this levee reach. The eroded levee sections need to be restored back to design standards to prevent further deterioration of the damaged levee sections.

Site ID No: 468

Site Designation: LMA-295

Repair Type: Erosion

Rating: Serious

Field Date: 7/26/2017

Notes: Serious because erosion is impacting the levee, but there is some slope protection here. Slope is armored with asphalt and concrete rubble. The surrounding slopes are pretty barren, but there is a small bush within the site so it may be older.

LM Start	4.53	Rating **	A/W	Issue No.	235 (cont)
LM End		Issue Type +	Ma	Location *	

Photo 2 of 3 : LEVAL_FA_2019_468_2220.jpg



Photo 3 of 3 : LEVAL_FA_2019_468_2221.jpg



* Location LS : Land Side N/A : Not Applicable WS : Water Side CR : Crown	** Rating A : Acceptable M : Minimally Acceptable U : Unacceptable	N : Not Inspected/Rated C : Corrected A/W : Acceptable but Monitor & Maintain	+ Issue Type Ma : Maintenance Deficiency Ob : Design & System Obsolescence En : Enforcement
--	--	---	---

**Flood Control Project Maintenance
Levee Inspections**

Maintenance Issue Types Only, Levee Inspection Report By Mile - Fall 2019

Reclamation District No. 0524 Middle Roberts Island

Waterway	Bank	Unit Miles	Inspection Start/End	Inspector
Unit No. 01 San Joaquin River	Left	6.20	10/02/2019 11/14/2019	Alberto De Leon

LM Start	4.63	Rating **	M	Issue No.	259
LM End	4.63	Issue Type +	Ma	Location *	LS
Category	Earthen Levee			GPS Latitude/Longitude	
				Start	End
Item	Animal Control			37.890987 °	37.890987 °
				-121.328956 °	-121.328956 °
DWR ID	DWR_RD0524_01_f_2017_259				
Comment Code					
A3 : No rodents visible, but rodent burrows visible; need to backfill and compact or grout burrows.					
Inspector Comment					

No Photos

LM Start	4.70	Rating **	M	Issue No.	67
LM End	4.70	Issue Type +	Ma	Location *	LS
Category	Earthen Levee			GPS Latitude/Longitude	
				Start	End
Item	Trim / Thin Trees			37.890108°	37.890108°
				-121.329523°	-121.329523°
DWR ID	DWR_RD0524_01_s_2012_67				
Comment Code					
T1 : Trim trees to at least five feet above ground level.					
Inspector Comment					
Fig tree at landside toe.					

Photo 1 of 1 : FA_2019_RD0524_107_67_20190830_00087.jpg



Looking northwest at untrimmed tree on landward slope.

* Location
LS : Land Side N/A : Not Applicable
WS : Water Side
CR : Crown

** Rating
A : Acceptable N : Not Inspected/Rated
M : Minimally Acceptable C : Corrected
U : Unacceptable A/W : Acceptable but Monitor & Maintain

+ Issue Type
Ma : Maintenance Deficiency
Ob : Design & System Obsolescence
En : Enforcement

**Flood Control Project Maintenance
Levee Inspections**

Maintenance Issue Types Only, Levee Inspection Report By Mile - Fall 2019

Reclamation District No. 0524 Middle Roberts Island

Waterway	Bank	Unit Miles	Inspection Start/End	Inspector
Unit No. 01 San Joaquin River	Left	6.20	10/02/2019 11/14/2019	Alberto De Leon

LM Start	4.76	Rating **	A/W	Issue No.	236
LM End	4.76	Issue Type +	Ma	Location *	
Category	Supplemental			GPS Latitude/Longitude	
				Start	End
Item	2017 Storm Damage			37.889300 °	37.889300 °
				-121.329800 °	-121.329800 °
DWR ID	LMA-429				
Comment Code					
Inspector Comment					
Levee Evaluation Comments					
Description:Slope protection repairs are needed along the waterside slope due to erosion and riprap displacement from high water. Based upon levee inspections, it was determined the waterside levee slope is eroding, deteriorating, and degrading. The eroded levee sections need to be restored back to design standards to prevent further deterioration and damage.					
Site ID No:523					
Site Designation:LMA-429					
Repair Type: Erosion					
Rating:Area of Concern					
Field Date:8/15/2017					
Notes:					

Photo 1 of 3 : LEVAL_FA_2019_523_4217.jpg



LM Start	4.76	Rating **	A/W	Issue No.	236 (cont)
LM End	4.76	Issue Type +	Ma	Location *	

Photo 2 of 3 : LEVAL_FA_2019_523_4218.jpg



* Location LS : Land Side N/A : Not Applicable WS : Water Side CR : Crown	** Rating A : Acceptable M : Minimally Acceptable U : Unacceptable	N : Not Inspected/Rated C : Corrected A/W : Acceptable but Monitor & Maintain	+ Issue Type Ma : Maintenance Deficiency Ob : Design & System Obsolescence En : Enforcement
--	--	---	---

**Flood Control Project Maintenance
Levee Inspections**

Maintenance Issue Types Only, Levee Inspection Report By Mile - Fall 2019

Reclamation District No. 0524 Middle Roberts Island

Waterway	Bank	Unit Miles	Inspection Start/End	Inspector
Unit No. 01 San Joaquin River	Left	6.20	10/02/2019 11/14/2019	Alberto De Leon

LM Start	4.76	Rating **	A/W	Issue No.	236 (cont)
LM End	4.76	Issue Type +	Ma	Location *	
Category	Supplemental			GPS Latitude/Longitude	
				Start	End
Item	2017 Storm Damage			37.889300°	37.889300°
				-121.329800°	-121.329800°
DWR ID	LMA-429				
Comment Code					
Inspector Comment					
<p>Levee Evaluation Comments</p> <p>Description: Slope protection repairs are needed along the waterside slope due to erosion and riprap displacement from high water. Based upon levee inspections, it was determined the waterside levee slope is eroding, deteriorating, and degrading. The eroded levee sections need to be restored back to design standards to prevent further deterioration and damage.</p> <p>Site ID No: 523</p> <p>Site Designation: LMA-429</p> <p>Repair Type: Erosion</p> <p>Rating: Area of Concern</p> <p>Field Date: 8/15/2017</p> <p>Notes:</p>					

Photo 3 of 3 : LEVAL_FA_2019_523_4219.jpg



LM Start	4.77	Rating **	M	Issue No.	166
LM End	4.86	Issue Type +	Ma	Location *	LS
Category	Earthen Levee			GPS Latitude/Longitude	
				Start	End
Item	Vegetation			37.889087°	37.887982°
				-121.329898°	-121.330533°
DWR ID	DWR_RD0524_01_f_2019_166				
Comment Code					
<p>V2 : Remove the wild growth other than native grasses from the levee slopes.</p>					
Inspector Comment					

No Photos

* Location LS : Land Side N/A : Not Applicable WS : Water Side CR : Crown	** Rating A : Acceptable M : Minimally Acceptable U : Unacceptable	N : Not Inspected/Rated C : Corrected A/W : Acceptable but Monitor & Maintain	+ Issue Type Ma : Maintenance Deficiency Ob : Design & System Obsolescence En : Enforcement
--	--	---	---

**Flood Control Project Maintenance
Levee Inspections**

Maintenance Issue Types Only, Levee Inspection Report By Mile - Fall 2019

Reclamation District No. 0524 Middle Roberts Island

Waterway	Bank	Unit Miles	Inspection Start/End	Inspector
Unit No. 01 San Joaquin River	Left	6.20	10/02/2019 11/14/2019	Alberto De Leon

LM Start	5.05	Rating **	U	Issue No.	188
LM End	5.07	Issue Type +	Ma	Location *	LS
Category	Earthen Levee			GPS Latitude/Longitude	
				Start	End
Item	Trim / Thin Trees			37.885673 °	37.885315 °
				-121.332122 °	-121.332139 °
DWR ID	DWR_RD0524_01_s_2014_188				
Comment Code					
T3 : Trim and thin trees to allow visibility of the ground and room to flood fight.					
Inspector Comment					
Untrimmed trees on landside slope and toe.					

No Photos

LM Start	5.22	Rating **	M	Issue No.	116
LM End	5.22	Issue Type +	Ma	Location *	WS
Category	Earthen Levee			GPS Latitude/Longitude	
				Start	End
Item	Encroachments			37.883170 °	37.883170 °
				-121.332227 °	-121.332227 °
DWR ID	DWR_RD0524_01_s_2012_116				
Comment Code					
TR : Tree or limb					
Inspector Comment					
Dead tree limbs on waterside slope.					

No Photos

LM Start	5.28	Rating **	M	Issue No.	85
LM End	5.34	Issue Type +	Ma	Location *	LS
Category	Earthen Levee			GPS Latitude/Longitude	
				Start	End
Item	Trim / Thin Trees			37.882363 °	37.881511 °
				-121.332577 °	-121.332777 °
DWR ID	DWR_RD0524_01_s_2012_85				
Comment Code					
T1 : Trim trees to at least five feet above ground level.					
Inspector Comment					

Photo 1 of 1 : FA_2019_RD0524_107_85_20190830_00107.jpg



Looking south at untrimmed trees on landward slope.

*** Location**

LS : Land Side N/A : Not Applicable
WS : Water Side
CR : Crown

**** Rating**

A : Acceptable N : Not Inspected/Rated
M : Minimally Acceptable C : Corrected
U : Unacceptable A/W : Acceptable but Monitor & Maintain

+ Issue Type

Ma : Maintenance Deficiency
Ob : Design & System Obsolescence
En : Enforcement

**Flood Control Project Maintenance
Levee Inspections**

Maintenance Issue Types Only, Levee Inspection Report By Mile - Fall 2019

Reclamation District No. 0524 Middle Roberts Island

Waterway	Bank	Unit Miles	Inspection Start/End	Inspector
Unit No. 01 San Joaquin River	Left	6.20	10/02/2019 11/14/2019	Alberto De Leon

LM Start	5.38	Rating **	M	Issue No.	932
LM End	5.41	Issue Type +	Ma	Location *	LS
Category	Earthen Levee			GPS Latitude/Longitude	
				Start	End
Item	Trim / Thin Trees			37.880945 °	37.880522 °
				-121.332837 °	-121.332918 °
DWR ID	DWR_RD0524_01_s_2012_932				
Comment Code					
T1 : Trim trees to at least five feet above ground level.					
Inspector Comment					

Photo 1 of 1 : FA_2019_RD0524_107_932_20190830_00262.jpg



Looking south at untrimmed trees on landward slope and toe.

LM Start	5.39	Rating **	M	Issue No.	178
LM End	5.39	Issue Type +	Ma	Location *	LS
Category	Earthen Levee			GPS Latitude/Longitude	
				Start	End
Item	Encroachments			37.880806 °	37.880806 °
				-121.332833 °	-121.332833 °
DWR ID	DWR_RD0524_01_f_2014_178				
Comment Code					
TR : Tree or limb					
Inspector Comment					
Tree limbs on landside toe.					

Photo 1 of 1 : FA_2019_RD0524_107_178_20190830_00159.jpg



Looking south at downed tree on landward slope.

* Location
LS : Land Side N/A : Not Applicable
WS : Water Side
CR : Crown

** Rating
A : Acceptable N : Not Inspected/Rated
M : Minimally Acceptable C : Corrected
U : Unacceptable A/W : Acceptable but Monitor & Maintain

+ Issue Type
Ma : Maintenance Deficiency
Ob : Design & System Obsolescence
En : Enforcement

**Flood Control Project Maintenance
Levee Inspections**

Maintenance Issue Types Only, Levee Inspection Report By Mile - Fall 2019

Reclamation District No. 0524 Middle Roberts Island

Waterway	Bank	Unit Miles	Inspection Start/End	Inspector
Unit No. 01 San Joaquin River	Left	6.20	10/02/2019 11/14/2019	Alberto De Leon

LM Start	5.41	Rating **	U	Issue No.	962	
LM End	5.41	Issue Type +	Ma	Location *		
Category	Supplemental			GPS Latitude/Longitude		
				Start	End	
Item	DRAFT DWR UCIP LMA Responsibility			37.880584 °	37.880584 °	
				-121.332901 °	-121.332901 °	
DWR ID	20630					
Comment Code						
Inspector Comment						
DS_ID:20630 FS_ID:53358 EP_NO: N/A Repair Type: Urgent Crossing Status: Found UCIP Comments: 10/2/2018 Same as last inspection. Holes present in pipe pose a potential threat to levee's internal integrity. Recommend video inspection (D. Sanoski - DWR UCIP).11/16/2016 same as previous inspection hole in pipe is still pressent on WS near toe. This pipe does not appear to be in use. Need to contact owner to determine status of crossing. If the crossing is abandoned or still in use, owner will need to coordinate with the CVFPB to comply with Title 23 requirements. (O. Magana - DWR UCIP)08/23/2013 flap gate damage and does not work at WS toe. Large hole in pipe at WS toe. Pipe appears abandoned and should be done so properly. (W. Wylie - DWR UCIP) FIELD_STRUCT_DESC: *ABANDONED* 1 of 2: 12-inch steel irrigation pipe through the levee, 6 feet below the crown. Pump located on the waterside (WS), no pump found in 2013. Flap gate located on the WS end. [Additional Reference(s): DWR Levee Log, 2004. USACE San Joaquin O&M Manual 7, April 1964, (HLM 5.48) 10-inch pipe listed, Drawing No. 07-04-1490, Sheet 1490/4, (Station 8+01.3)]. FS Date: 10/2/2018 1:34:00 PM						

LM Start	5.41	Rating **	U	Issue No.	962 (cont)
LM End	5.41	Issue Type +	Ma	Location *	

Photo 1 of 3 : UCIP_FA_2019_53358_30689.jpg



Pipe visible on WS slope.

Photo 2 of 3 : UCIP_FA_2019_53358_30688.jpg



Vent on pipe on WS slope. Possible slurry standpipe that has not yet been used.

* Location LS : Land Side N/A : Not Applicable WS : Water Side CR : Crown		** Rating A : Acceptable N : Not Inspected/Rated M : Minimally Acceptable C : Corrected U : Unacceptable A/W : Acceptable but Monitor & Maintain		+ Issue Type Ma : Maintenance Deficiency Ob : Design & System Obsolescence En : Enforcement	
--	--	---	--	---	--

**Flood Control Project Maintenance
Levee Inspections**

Maintenance Issue Types Only, Levee Inspection Report By Mile - Fall 2019

Reclamation District No. 0524 Middle Roberts Island

Waterway	Bank	Unit Miles	Inspection Start/End	Inspector
Unit No. 01 San Joaquin River	Left	6.20	10/02/2019 11/14/2019	Alberto De Leon

LM Start	5.41	Rating **	U	Issue No.	962 (cont)	
LM End	5.41	Issue Type +	Ma	Location *		
Category	Supplemental			GPS Latitude/Longitude		
				Start	End	
Item	DRAFT DWR UCIP LMA Responsibility			37.880584 °	37.880584 °	
				-121.332901 °	-121.332901 °	
DWR ID	20630					
Comment Code						
Inspector Comment						
DS_ID:20630 FS_ID:53358 EP_NO: N/A Repair Type: Urgent Crossing Status: Found UCIP Comments: 10/2/2018 Same as last inspection. Holes present in pipe pose a potential threat to levee's internal integrity. Recommend video inspection (D. Sanoski - DWR UCIP).11/16/2016 same as previous inspection hole in pipe is still pressent on WS near toe. This pipe does not appear to be in use. Need to contact owner to determine status of crossing. If the crossing is abandoned or still in use, owner will need to coordinate with the CVFPB to comply with Title 23 requirements. (O. Magana - DWR UCIP)08/23/2013 flap gate damage and does not work at WS toe. Large hole in pipe at WS toe. Pipe appears abandoned and should be done so properly. (W. Wylie - DWR UCIP) FIELD_STRUCT_DESC: *ABANDONED* 1 of 2: 12-inch steel irrigation pipe through the levee, 6 feet below the crown. Pump located on the waterside (WS), no pump found in 2013. Flap gate located on the WS end. [Additional Reference(s): DWR Levee Log, 2004. USACE San Joaquin O&M Manual 7, April 1964, (HLM 5.48) 10-inch pipe listed, Drawing No. 07-04-1490, Sheet 1490/4, (Station 8+01.3)]. FS Date: 10/2/2018 1:34:00 PM						

Photo 3 of 3 : UCIP_FA_2019_53358_30687.jpg



Broken flap gate at WS toe.

* Location LS : Land Side N/A : Not Applicable WS : Water Side CR : Crown	** Rating A : Acceptable M : Minimally Acceptable U : Unacceptable N : Not Inspected/Rated C : Corrected A/W : Acceptable but Monitor & Maintain	+ Issue Type Ma : Maintenance Deficiency Ob : Design & System Obsolescence En : Enforcement
--	---	---

**Flood Control Project Maintenance
Levee Inspections**

Maintenance Issue Types Only, Levee Inspection Report By Mile - Fall 2019

Reclamation District No. 0524 Middle Roberts Island

Waterway	Bank	Unit Miles	Inspection Start/End	Inspector
Unit No. 01 San Joaquin River	Left	6.20	10/02/2019 11/14/2019	Alberto De Leon

LM Start	5.42	Rating **	M	Issue No.	963	
LM End	5.42	Issue Type +	Ma	Location *		
Category	Supplemental			GPS Latitude/Longitude		
				Start	End	
Item	DRAFT DWR UCIP LMA Responsibility			37.880358 °	37.880358 °	
				-121.332972 °	-121.332972 °	
DWR ID	20631					
Comment Code						
Inspector Comment						
DS_ID:20631						
FS_ID:18348						
EP_NO: N/A						
Repair Type: Non-Urgent						
Crossing Status: Found						
UCIP Comments: Recent work being done on WS slope. Pipe may still be in use.						
FIELD_STRUCT_DESC: 10-inch steel drainage pipe through the levee, 6 feet below the crown. Pump not found on the landside (LS).						
[Additional Reference(s): DWR Levee Log, 2004. USACE San Joaquin O&M Manual 7, April 1964, (HLM 5.50)].						
FS Date: 8/23/2013						

LM Start	5.42	Rating **	M	Issue No.	963 (cont)
LM End	5.42	Issue Type +	Ma	Location *	

Photo 1 of 3 : UCIP_FA_2019_18348_30706.jpg



10-inch pipe debris on the WS slope.

Photo 2 of 3 : UCIP_FA_2019_18348_30705.jpg



8-inch pipe sleeved through 10-inch pipe with vent on WS slope.

* Location LS : Land Side N/A : Not Applicable WS : Water Side CR : Crown	** Rating A : Acceptable M : Minimally Acceptable U : Unacceptable	N : Not Inspected/Rated C : Corrected A/W : Acceptable but Monitor & Maintain	+ Issue Type Ma : Maintenance Deficiency Ob : Design & System Obsolescence En : Enforcement
--	--	---	---

**Flood Control Project Maintenance
Levee Inspections**

Maintenance Issue Types Only, Levee Inspection Report By Mile - Fall 2019

Reclamation District No. 0524 Middle Roberts Island

Waterway	Bank	Unit Miles	Inspection Start/End	Inspector
Unit No. 01 San Joaquin River	Left	6.20	10/02/2019 11/14/2019	Alberto De Leon

LM Start	5.42	Rating **	M	Issue No.	963 (cont)	
LM End	5.42	Issue Type +	Ma	Location *		
Category	Supplemental			GPS Latitude/Longitude		
				Start	End	
Item	DRAFT DWR UCIP LMA Responsibility			37.880358 °	37.880358 °	
				-121.332972 °	-121.332972 °	
DWR ID	20631					
Comment Code						
Inspector Comment						
DS_ID:20631 FS_ID:18348 EP_NO: N/A Repair Type: Non-Urgent Crossing Status: Found UCIP Comments: Recent work being done on WS slope. Pipe may still be in use. FIELD_STRUCT_DESC: 10-inch steel drainage pipe through the levee, 6 feet below the crown. Pump not found on the landside (LS). [Additional Reference(s): DWR Levee Log, 2004. USACE San Joaquin O&M Manual 7, April 1964, (HLM 5.50)]. FS Date: 8/23/2013						

Photo 3 of 3 : UCIP_FA_2019_18348_30704.jpg



No flap gate on end of pipe at WS toe.

LM Start	5.43	Rating **	C	Issue No.	167	
LM End	5.43	Issue Type +	Ma	Location *		
Category	Supplemental			GPS Latitude/Longitude		
				Start	End	
Item	DWR Erosion Survey			37.880320 °	37.880320 °	
				-121.333266 °	-121.333266 °	
DWR ID	RD0524U01RM45.97					
Comment Code						
Inspector Comment						
Site ID: RD0524U01RM45.97 10/29/2019: No new erosion was found at the repaired site. 09/13/2017: The erosion site has been repaired. No new erosion was found at the repaired site. 07/25/2016: No significant change observed. 06/24/2015: No significant change observed. 06/19/2014: No significant change observed. 08/13/2013: The erosion seems to be getting worse. More material sloughing visible. 08/07/2012: The erosion is underneath an irrigation pipe. The likely cause of the erosion is the pipe leakage.						

No Photos

* Location LS : Land Side N/A : Not Applicable WS : Water Side CR : Crown	** Rating A : Acceptable M : Minimally Acceptable U : Unacceptable	N : Not Inspected/Rated C : Corrected A/W : Acceptable but Monitor & Maintain	+ Issue Type Ma : Maintenance Deficiency Ob : Design & System Obsolescence En : Enforcement
--	--	---	---

**Flood Control Project Maintenance
Levee Inspections**

Maintenance Issue Types Only, Levee Inspection Report By Mile - Fall 2019

Reclamation District No. 0524 Middle Roberts Island

Waterway	Bank	Unit Miles	Inspection Start/End	Inspector
Unit No. 01 San Joaquin River	Left	6.20	10/02/2019 11/14/2019	Alberto De Leon

LM Start	5.44	Rating **	M	Issue No.	73
LM End	5.44	Issue Type +	Ma	Location *	LS
Category	Earthen Levee			GPS Latitude/Longitude	
				Start	End
Item	Trim / Thin Trees			37.880085 °	37.880085 °
				-121.333045 °	-121.333045 °
DWR ID	DWR_RD0524_01_s_2012_73				
Comment Code					
T1 : Trim trees to at least five feet above ground level.					
Inspector Comment					
Untrimmed trees on landside slope.					

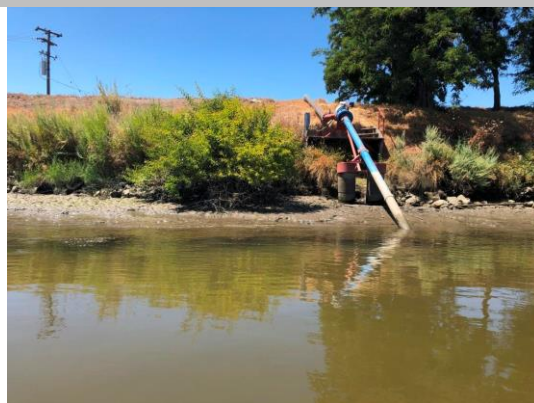
Photo 1 of 1 : FA_2019_RD0524_107_73_20190830_00095.jpg



Looking southwest at large untrimmed tree on landward slope.

LM Start	5.53	Rating **	M	Issue No.	71
LM End	5.53	Issue Type +	Ma	Location *	
Category	Supplemental			GPS Latitude/Longitude	
				Start	End
Item	DWR Erosion Survey			37.878920 °	37.878920 °
				-121.332670 °	-121.332670 °
DWR ID	RD0524U01RM46.06				
Comment Code					
Inspector Comment					
Site ID: RD0524U01RM46.06					
08/13/2019: No significant change observed. More vegetation was observed at the site.					
09/13/2017: No significant change observed.					
07/25/2016: No significant change observed.					
06/24/2015: No significant change observed.					
06/19/2014: No significant change observed.					
08/13/2013: Larger trees are at the levee shoulder, and an irrigation pump station is next to the erosion site.					

Photo 1 of 2 : SJR2019_RD0524U01RM46.06_1.JPG



Front view of the erosion.

* Location LS : Land Side N/A : Not Applicable WS : Water Side CR : Crown		** Rating A : Acceptable N : Not Inspected/Rated M : Minimally Acceptable C : Corrected U : Unacceptable A/W : Acceptable but Monitor & Maintain		+ Issue Type Ma : Maintenance Deficiency Ob : Design & System Obsolescence En : Enforcement	
---	--	--	--	--	--

**Flood Control Project Maintenance
Levee Inspections**

Maintenance Issue Types Only, Levee Inspection Report By Mile - Fall 2019

Reclamation District No. 0524 Middle Roberts Island

Waterway	Bank	Unit Miles	Inspection Start/End	Inspector
Unit No. 01 San Joaquin River	Left	6.20	10/02/2019 11/14/2019	Alberto De Leon

LM Start	5.53	Rating **	M	Issue No.	71 (cont)	
LM End	5.53	Issue Type +	Ma	Location *		
Category	Supplemental			GPS Latitude/Longitude		
				Start		End
Item	DWR Erosion Survey			37.878920 °		37.878920 °
				-121.332670 °		-121.332670 °
DWR ID	RD0524U01RM46.06					
Comment Code						
Inspector Comment						
Site ID: RD0524U01RM46.06 08/13/2019: No significant change observed. More vegetation was observed at the site. 09/13/2017: No significant change observed. 07/25/2016: No significant change observed. 06/24/2015: No significant change observed. 06/19/2014: No significant change observed. 08/13/2013: Larger trees are at the levee shoulder, and an irrigation pump station is next to the erosion site.						

Photo 2 of 2 : SJR2019_RD0524U01RM46.06_4.JPG



Close-up view of the site.

LM Start	5.66	Rating **	M	Issue No.	117
LM End	5.66	Issue Type +	Ma	Location *	LS
Category	Earthen Levee			GPS Latitude/Longitude	
				Start	End
Item	Trim / Thin Trees			37.877100 °	37.877100 °
				-121.332323 °	-121.332323 °
DWR ID	DWR_RD0524_01_f _ 2013_117				
Comment Code					
T1 : Trim trees to at least five feet above ground level.					
Inspector Comment					

Photo 1 of 1 : FA_2019_RD0524_107_117_20190830_00130.jpg



Looking northwest at untrimmed tree on landward slope.

* Location LS : Land Side N/A : Not Applicable WS : Water Side CR : Crown	** Rating A : Acceptable M : Minimally Acceptable U : Unacceptable	N : Not Inspected/Rated C : Corrected A/W : Acceptable but Monitor & Maintain	+ Issue Type Ma : Maintenance Deficiency Ob : Design & System Obsolescence En : Enforcement
--	--	---	---

Reclamation District No. 0524 Middle Roberts Island

Looking southwest at typical view of rodent hole at landward shoulder.

Looking southwest at typical rodent holes on waterward slope.

Page 112 of 116

**Flood Control Project Maintenance
Levee Inspections**

Maintenance Issue Types Only, Levee Inspection Report By Mile - Fall 2019

Reclamation District No. 0524 Middle Roberts Island

Waterway	Bank	Unit Miles	Inspection Start/End	Inspector
Unit No. 01 San Joaquin River	Left	6.20	10/02/2019 11/14/2019	Alberto De Leon

LM Start	5.86	Rating **	M	Issue No.	75 (cont)
LM End	5.88	Issue Type +	Ma	Location *	WS
Category	Earthen Levee			GPS Latitude/Longitude	
				Start	End
Item	Animal Control			37.874240 °	37.874002 °
				-121.333187 °	-121.333027 °
DWR ID	DWR_RD0524_01_s_2012_75				
Comment Code					
A1 : Exterminate rodents and backfill and compact or grout burrows.					
Inspector Comment					
District has grouted rodent holes, but other rodent holes have appeared. Active rodents in area.					

Photo 2 of 2 : FA_2019_RD0524_107_75_20190830_00097.jpg



Looking typical view of several rodent holes on landward slope and toe.

LM Start	5.87	Rating **	M	Issue No.	273
LM End	5.87	Issue Type +	Ma	Location *	WS
Category	Earthen Levee			GPS Latitude/Longitude	
				Start	End
Item	Animal Control			37.874196°	37.874196°
				-121.333195°	-121.333195°
DWR ID	DWR_RD0524_01_f_2017_273				
Comment Code					
A3 : No rodents visible, but rodent burrows visible; need to backfill and compact or grout burrows.					
Inspector Comment					

No Photos

* Location
LS : Land Side N/A : Not Applicable
WS : Water Side
CR : Crown

** Rating
A : Acceptable N : Not Inspected/Rated
M : Minimally Acceptable C : Corrected
U : Unacceptable A/W : Acceptable but Monitor & Maintain

+ Issue Type
Ma : Maintenance Deficiency
Ob : Design & System Obsolescence
En : Enforcement

**Flood Control Project Maintenance
Levee Inspections**

Maintenance Issue Types Only, Levee Inspection Report By Mile - Fall 2019

Reclamation District No. 0524 Middle Roberts Island

Waterway	Bank	Unit Miles	Inspection Start/End	Inspector
Unit No. 01 San Joaquin River	Left	6.20	10/02/2019 11/14/2019	Alberto De Leon

LM Start	5.87	Rating **	U	Issue No.	79
LM End	5.87	Issue Type +	Ma	Location *	
Category	Supplemental			GPS Latitude/Longitude	
				Start	End
Item	DWR Erosion Survey			37.874185 °	37.874185 °
				-121.333110 °	-121.333110 °
DWR ID	RD0524U01RM46.39				
Comment Code					
Inspector Comment					
Site ID: RD0524U01RM46.39 08/13/2019: No significant change observed. 09/13/2017: No significant change observed. 07/25/2016: No significant change observed. 06/24/2015: No significant change observed. 06/19/2014: No significant change observed. 08/13/2013: No significant change observed. 08/07/2012: The erosion is near a water-intake structure. Pipe leakage likely caused the erosion.					

LM Start	5.87	Rating **	U	Issue No.	79 (cont)
LM End	5.87	Issue Type +	Ma	Location *	

Photo 1 of 2 : SJR2019_RD0524U01RM46.39_1.jpg



Front view of the site.

Photo 2 of 2 : SJR2019_RD0524U01RM46.39_3.jpg



Close-up view of the erosion.

* Location LS : Land Side N/A : Not Applicable WS : Water Side CR : Crown	** Rating A : Acceptable M : Minimally Acceptable U : Unacceptable	N : Not Inspected/Rated C : Corrected A/W : Acceptable but Monitor & Maintain	+ Issue Type Ma : Maintenance Deficiency Ob : Design & System Obsolescence En : Enforcement
--	--	---	---

**Flood Control Project Maintenance
Levee Inspections**

Maintenance Issue Types Only, Levee Inspection Report By Mile - Fall 2019

Reclamation District No. 0524 Middle Roberts Island

Waterway	Bank	Unit Miles	Inspection Start/End	Inspector
Unit No. 01 San Joaquin River	Left	6.20	10/02/2019 11/14/2019	Alberto De Leon

LM Start	5.87	Rating **	M	Issue No.	98
LM End	5.87	Issue Type +	Ma	Location *	LS
Category	Earthen Levee			GPS Latitude/Longitude	
				Start	End
Item	Trim / Thin Trees			37.874085 °	37.874085 °
				-121.333154 °	-121.333154 °
DWR ID	DWR_RD0524_01_s_2012_98				
Comment Code					
T1 : Trim trees to at least five feet above ground level.					
Inspector Comment					
Untrimmed walnut tree on landside slope.					

Photo 1 of 1 : FA_2019_RD0524_107_98_20190830_00122.jpg



Looking west at walnut tree on landward slope.

LM Start	6.08	Rating **	M	Issue No.	272
LM End	6.08	Issue Type +	Ma	Location *	LS
Category	Earthen Levee			GPS Latitude/Longitude	
				Start	End
Item	Animal Control			37.872121 °	37.872121 °
				-121.330568 °	-121.330568 °
DWR ID	DWR_RD0524_01_f_2017_272				
Comment Code					
A3 : No rodents visible, but rodent burrows visible; need to backfill and compact or grout burrows.					
Inspector Comment					

No Photos

LM Start	6.08	Rating **	M	Issue No.	147
LM End	6.08	Issue Type +	Ma	Location *	LS
Category	Earthen Levee			GPS Latitude/Longitude	
				Start	End
Item	Erosion / Bank Caving			37.872017 °	37.872017 °
				-121.330487 °	-121.330487 °
DWR ID	DWR_RD0524_01_f_2018_147				
Comment Code					
E1 : Note and monitor erosion site.					
Inspector Comment					
Erosion around and near pipe on landward slope.					

Photo 1 of 1 : FA_2019_RD0524_107_147_20190830_00134.jpg



Looking at landward erosion. (Fall 2018)

*** Location**

LS : Land Side N/A : Not Applicable
WS : Water Side
CR : Crown

**** Rating**

A : Acceptable N : Not Inspected/Rated
M : Minimally Acceptable C : Corrected
U : Unacceptable A/W : Acceptable but Monitor & Maintain

+ Issue Type

Ma : Maintenance Deficiency
Ob : Design & System Obsolescence
En : Enforcement

**Flood Control Project Maintenance
Levee Inspections**

Maintenance Issue Types Only, Levee Inspection Report By Mile - Fall 2019

Reclamation District No. 0524 Middle Roberts Island

Waterway	Bank	Unit Miles	Inspection Start/End	Inspector
Unit No. 01 San Joaquin River	Left	6.20	10/02/2019 11/14/2019	Alberto De Leon

LM Start	6.11	Rating **	U	Issue No.	142
LM End	6.11	Issue Type +	Ma	Location *	LS
Category	Earthen Levee			GPS Latitude/Longitude	
				Start	End
Item	Vegetation			37.871631 °	37.871631 °
				-121.330332 °	-121.330332 °
DWR ID	DWR_RD0524_01_s_2019_142				
Comment Code					
V2 : Remove the wild growth other than native grasses from the levee slopes.					
Inspector Comment					
Dense vegetation within landside easement blocking visibility.					

Photo 1 of 1 : FA_2019_RD0524_107_142_20190830_00133.jpg



Dense vegetation on landside toe. Spring 2019.

LM Start	6.15	Rating **	M	Issue No.	81
LM End	6.15	Issue Type +	Ma	Location *	LS
Category	Earthen Levee			GPS Latitude/Longitude	
				Start	End
Item	Encroachments			37.871097°	37.871097°
				-121.330100°	-121.330100°
DWR ID	DWR_RD0524_01_s_2015_81				
Comment Code					
TR : Tree or limb					
Inspector Comment					
Fallen tree branches and limbs on landside slope.					

Photo 1 of 2 : FA_2019_RD0524_107_81_20190830_00104.jpg



Looking west at tree branches and limbs left on landward shoulder and slope. (Spring 2016)

LM Start	6.15	Rating **	M	Issue No.	81 (cont)
LM End	6.15	Issue Type +	Ma	Location *	LS

Photo 2 of 2 : FA_2019_RD0524_107_81_20190830_00105.jpg



Looking south at tree branches and limbs left on landward shoulder and slope. (Spring 2016)

*** Location**

LS : Land Side N/A : Not Applicable
WS : Water Side
CR : Crown

**** Rating**

A : Acceptable N : Not Inspected/Rated
M : Minimally Acceptable C : Corrected
U : Unacceptable A/W : Acceptable but Monitor & Maintain

+ Issue Type

Ma : Maintenance Deficiency
Ob : Design & System Obsolescence
En : Enforcement