

**Flood Control Project Maintenance  
Levee Inspections**

**Fall 2014 Levee Maintenance Deficiency Summary Report**

**Overall LMA & Unit Ratings, including DWR Erosion Survey**

***San Joaquin River Basin***

<b>RD0524</b>	Overall LMA Rating	Total LMA Miles						
<b>Reclamation District No. 0524 Middle Roberts Island</b>	<b>U</b>	<b>6.20</b>						
Rated Item	Maintenance Deficiency				Enforcement		Design & System Obsolescence	
	M Miles	U Miles	M + 4U Miles	Threshold %	M Miles	U Miles	M Miles	U Miles
<i>Earthen Levee</i>								
Vegetation	0.19	0.10	0.59	9.52%	0.07	0.02		
Trim / Thin Trees	0.79	0.19	1.55	25.01%	0.01			
Encroachments	0.14	0.03	0.26	4.20%	0.25	0.08		
Animal Control	0.34		0.34	5.49%				
Slope Stability	0.22	0.01	0.26	4.20%				
Erosion / Bank Caving	0.11	0.01	0.15	2.42%				
Crown Surface / Depressions / Rutting	0.05		0.05	0.81%				
Operations & Maintenance Manuals		0.25	0.99	15.97%				
Emergency Supplies & Equipment	0.06		0.06	0.97%				
Flood Preparedness & Training	0.06		0.06	0.97%				
<i>Supplemental</i>								
DWR Erosion Survey	0.03	0.41	1.67	26.95%				
DWR UCIP Field Study					0.33	0.02		
<i>LMA Totals:</i>	1.99	1.00	5.99	96.65%	0.66	0.12	0.00	0.00

**Flood Control Project Maintenance  
Levee Inspections**  
**LMA District Cover Sheet**  
**Fall 2014 Levee Inspection Results**

**Reclamation District No. 0524 Middle Roberts Island**

---

	Spring (March - May)	Summer ** (June - August)	Fall (September - November)	Winter ** (December - February)
* Overall LMA Rating (Fall Only)			U	

\*\* Non-receipt of Summer or Winter Inspection Reports may effect overall annual rating.

\*

SPRING INSPECTIONS: Overall maintenance ratings are not determined for the spring inspection results. Individual maintenance deficiencies are rated using the same criteria in the spring and in the fall.

FALL INSPECTIONS: The overall maintenance rating shown above is based on operation and maintenance deficiencies identified within the attached unit inspection reports. This rating is not intended to be an indication of risk.

Comments


**Flood Control Project Maintenance  
Levee Inspections**

**Unit Cover Sheet**

**Fall 2014 Levee Inspection Results**

**Reclamation District No. 0524 Middle Roberts Island**

Waterway			Bank	Unit Miles
Unit No. 01 San Joaquin River			Left	6.20
	Spring (March - May)	Summer (June - August)	(September - November) Fall	Winter (December - February)
Unit Maintenance Rating (Fall Only)			<b>U</b>	
Date of Inspection	04/08/2014 - 04/08/2014		10/20/2014 - 10/20/2014	
DWR Inspector	Richard Willoughby		Richard Willoughby	
Accompanied By	Mario Jaques RD 524		Mario Jaques RD 524	

**Summer & Winter Inspections**

The Local Maintaining Agency (LMA) is responsible for summer and winter inspections. The LMA is required to submit a report regarding summer and winter inspections to the California Department of Water Resources (DWR).

DWR must be informed on the:

- a) completion of the inspection
- b) any changes other than the results of normal maintenance
- c) corrections to deficiencies noted in this report

If additional items are noted, further documentation of those items must also be submitted.

The LMA should submit this information to DWR using the LMA web application tool available at:

<http://cdec.water.ca.gov/lma.html>

If the LMA is unable to submit information on this webpage, please contact DWR for assistance.

*The LMA should submit the information and any associated documentation by September 30 for summer inspections and March 31 for winter inspections.*

**Flood Control Project Maintenance  
Levee Inspections**

**Levee Inspection Report By Mile - Fall 2014**

**Reclamation District No. 0524 Middle Roberts Island**

Waterway	Bank	Unit Miles	Inspection Start/End	Inspector
Unit No. 01 San Joaquin River	Left	6.20	10/20/2014 10/20/2014	Richard Willoughby

LM Start	0.00	Rating **	U	Issue No.	121
LM End	0.00	Issue Type +	Ma	Location *	N/A
Category	Earthen Levee			GPS Latitude/Longitude	
				Start	End
Item	Operations & Maintenance Manuals				°
					°
DWR ID	DWR_RD0524_01_s_2012_121				
Action/Comments					
Inspector Comments: The LMA did not appear to have a copy of the O&M Manual.					

No Photos

LM Start	0.00	Rating **	M	Issue No.	123
LM End	0.00	Issue Type +	Ma	Location *	N/A
Category	Earthen Levee			GPS Latitude/Longitude	
				Start	End
Item	Flood Preparedness & Training				°
					°
DWR ID	DWR_RD0524_01_s_2012_123				
Action/Comments					
Inspector Comments: No recent training.					

No Photos

LM Start	0.00	Rating **	M	Issue No.	138
LM End	0.00	Issue Type +	Ma	Location *	N/A
Category	Earthen Levee			GPS Latitude/Longitude	
				Start	End
Item	Emergency Supplies & Equipment				°
					°
DWR ID	DWR_RD0524_01_s_2013_138				
Action/Comments					
Inspector Comments: The LMA did not appear to have emergency supplies or equipment.					

No Photos

**\* Location**  
 LS : Land Side    N/A : Not Applicable  
 WS : Water Side  
 CR : Crown

**\*\* Rating**  
 A : Acceptable                      N : Not Inspected/Rated  
 M : Minimally Acceptable        C : Corrected  
 U : Unacceptable                  A/W : Acceptable but Monitor & Maintain

**+ Issue Type**  
 Ma : Maintenance Deficiency  
 Ob : Design & System Obsolescence  
 En : Enforcement



**Flood Control Project Maintenance  
Levee Inspections**

**Levee Inspection Report By Mile - Fall 2014**

**Reclamation District No. 0524 Middle Roberts Island**

Waterway	Bank	Unit Miles	Inspection Start/End	Inspector
Unit No. 01 San Joaquin River	Left	6.20	10/20/2014 10/20/2014	Richard Willoughby

LM Start	0.18	Rating **	U	Issue No.	129
LM End	0.18	Issue Type +	Ma	Location *	WS
Category	Supplemental			GPS Latitude/Longitude	
				Start	End
Item	DWR Erosion Survey			37.939085 °	37.939085 °
				-121.343917 °	-121.343917 °
DWR ID					
Action/Comments					
Inspector Comments: 6/19/2014: No significant change observed. 08/13/2013: The erosion was discovered during 2013 spring levee inspection. Inspector comment: Erosion is located along the lower level of water-ward slope. [2014 Site ID:RD0524U01RM40.85]					

Photo 1 of 1 : SJR2014\_RD0524U01RM40.85\_1.jpg



Close view of the erosion.

LM Start	0.22	Rating **	M	Issue No.	3
LM End	0.22	Issue Type +	Ma	Location *	CR
Category	Earthen Levee			GPS Latitude/Longitude	
				Start	End
Item	Crown Surface / Depressions / Rutting			37.938890 °	37.938890 °
				-121.343657 °	-121.343657 °
DWR ID	DWR_RD0524_01_s_2012_3				
Action/Comments					
Repair depressions or ruts in the crown or slope.					
Inspector Comments: No change in status.					

Photo 1 of 3 : FA\_2014\_RD0524\_107\_3\_20141020\_00007.jpg



Looking west at 3" depression on levee crown. (Spring 2012)

LM Start	<b>0.22</b>	Rating **	M	Issue No.	<b>3 (cont)</b>
LM End	<b>0.22</b>	Issue Type +	Ma	Location *	CR

Photo 2 of 3 : FA\_2014\_RD0524\_107\_3\_20141020\_00008.jpg



Looking west at depression on levee crown near waterward shoulder.

* Location LS : Land Side    N/A : Not Applicable WS : Water Side CR : Crown		** Rating A : Acceptable M : Minimally Acceptable U : Unacceptable		N : Not Inspected/Rated C : Corrected A/W : Acceptable but Monitor & Maintain		+ Issue Type Ma : Maintenance Deficiency Ob : Design & System Obsolescence En : Enforcement	
---	--	---	--	---	--	--	--

## Levee Inspection Report By Mile - Fall 2014

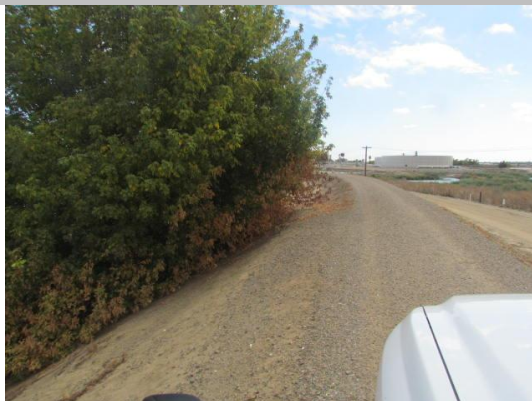
Waterway	Bank	Unit Miles	Inspection Start/End	Inspector
Unit No. 01 San Joaquin River	Left	6.20	10/20/2014 10/20/2014	Richard Willoughby

Photo 3 of 3 : FA\_2014\_RD0524\_107\_3\_20141020\_00009.jpg



Looking east at 3" depression on levee crown. (Spring 2012)

Photo 1 of 1 : FA\_2014\_RD0524\_107\_179\_20141023\_00189.jpg



Looking south at untrimmed tree on waterward slope.

Photo 1 of 1 : FA\_2014\_RD0524\_107\_174\_20141023\_00191.jpg



Looking southeast at several rodent holes on waterward slope.

* Location	** Rating	+ Issue Type
LS : Land Side    N/A : Not Applicable	A : Acceptable                      N : Not Inspected/Rated	Ma : Maintenance Deficiency
WS : Water Side	M : Minimally Acceptable        C : Corrected	Ob : Design & System Obsolescence
CR : Crown	U : Unacceptable                  A/W : Acceptable but Monitor & Maintain	En : Enforcement



**Flood Control Project Maintenance  
Levee Inspections**

**Levee Inspection Report By Mile - Fall 2014**

**Reclamation District No. 0524 Middle Roberts Island**

Waterway	Bank	Unit Miles	Inspection Start/End	Inspector
Unit No. 01 San Joaquin River	Left	6.20	10/20/2014 10/20/2014	Richard Willoughby

LM Start	0.34	Rating **	M	Issue No.	180
LM End	0.34	Issue Type +	Ma	Location *	WS
Category	Earthen Levee			GPS Latitude/Longitude	
				Start	End
Item	Erosion / Bank Caving			37.938461 °	37.938461 °
				-121.341626 °	-121.341626 °
DWR ID	DWR_RD0524_01_s_2014_180				
Action/Comments					
Schedule repair of erosion site prior to the next inspection. Inspector Comments: Erosion is located along the lower level of waterward slope.					

Photo 1 of 2 : FA\_2014\_RD0524\_107\_180\_20141020\_00135.jpg



Looking southeast at erosion on waterward toe.

LM Start	<b>0.34</b>	Rating **	M	Issue No.	<b>180 (cont)</b>
LM End	<b>0.34</b>	Issue Type +	Ma	Location *	WS

Photo 2 of 2 : FA\_2014\_RD0524\_107\_180\_20141020\_00136.jpg



Looking northeast at erosion on waterward toe.

LM Start	0.40	Rating **	U	Issue No.	131
LM End	0.40	Issue Type +	Ma	Location *	WS
Category	Supplemental			GPS Latitude/Longitude	
				Start	End
Item	DWR Erosion Survey			37.938870 °	37.938870 °
				-121.340460 °	-121.340460 °
DWR ID					
Action/Comments					
Inspector Comments: 6/19/2014: No significant change observed. 08/13/2013: No significant change at this site. 8/7/2012: The erosion is at the upper levee slope, and likely caused by slope slip. The lower levee slope is covered with dense vegetation. [2014 Site ID:RD0524U01RM40.99]					

Photo 1 of 1 : SJR2014\_RD0524U01RM40.99\_1.jpg



Front view of the erosion site. Note the vegetation at the levee toe and lower slope.

* Location LS : Land Side    N/A : Not Applicable WS : Water Side CR : Crown		** Rating A : Acceptable M : Minimally Acceptable U : Unacceptable		N : Not Inspected/Rated C : Corrected A/W : Acceptable but Monitor & Maintain		+ Issue Type Ma : Maintenance Deficiency Ob : Design & System Obsolescence En : Enforcement	
---	--	---	--	---	--	--	--

**Flood Control Project Maintenance  
Levee Inspections**

**Levee Inspection Report By Mile - Fall 2014**

**Reclamation District No. 0524 Middle Roberts Island**

Waterway	Bank	Unit Miles	Inspection Start/End	Inspector
Unit No. 01 San Joaquin River	Left	6.20	10/20/2014 10/20/2014	Richard Willoughby

LM Start	0.63	Rating **	M	Issue No.	11
LM End	0.63	Issue Type +	Ma	Location *	WS
Category	Earthen Levee			GPS Latitude/Longitude	
				Start	End
Item	Vegetation			37.938278 °	37.938247 °
				-121.336524 °	-121.336503 °
DWR ID	DWR_RD0524_01_s_2012_11				
Action/Comments					
Remove the wild growth other than native grasses from the levee slopes.					
Inspector Comments: Bamboo on waterward slope.					

Photo 1 of 3 : FA\_2014\_RD0524\_107\_11\_20141020\_00014.jpg



Looking southeast at bamboo on waterside slope. (Spring 2012)

Photo 2 of 3 : FA\_2014\_RD0524\_107\_11\_20141020\_00015.jpg



Looking south at dying bamboo on waterward slope. (Spring 2013)

Photo 3 of 3 : FA\_2014\_RD0524\_107\_11\_20141020\_00016.jpg



Looking south at bamboo on waterside slope. (Fall Inspection 2012)

LM Start	<b>0.63</b>	Rating **	M	Issue No.	<b>11 (cont)</b>
LM End	<b>0.63</b>	Issue Type +	Ma	Location *	WS

LM Start	<b>0.63</b>	Rating **	M	Issue No.	<b>11 (cont)</b>
LM End	<b>0.63</b>	Issue Type +	Ma	Location *	WS

**\* Location**

LS : Land Side    N/A : Not Applicable  
WS : Water Side  
CR : Crown

**\*\* Rating**

A : Acceptable                      N : Not Inspected/Rated  
M : Minimally Acceptable        C : Corrected  
U : Unacceptable                  A/W : Acceptable but Monitor & Maintain

**+ Issue Type**

Ma : Maintenance Deficiency  
Ob : Design & System Obsolescence  
En : Enforcement



## Levee Inspection Report By Mile - Fall 2014


Waterway	Bank	Unit Miles	Inspection Start/End	Inspector
Unit No. 01 San Joaquin River	Left	6.20	10/20/2014 10/20/2014	Richard Willoughby

Photo 1 of 1 : FA\_2014\_RD0524\_107\_10\_20141020\_00013.jpg



Looking east at waterside erosion appears to be caused by runoff.

Photo 1 of 3 : FA\_2014\_RD0524\_107\_13\_20141020\_00018.jpg



Erosion from LM 0.65 to 0.66



Photo 2 of 3 : FA\_2014\_RD0524\_107\_13\_20141020\_00019.jpg

Looking south at erosion on waterside shoulder.

* Location	** Rating	+ Issue Type
LS : Land Side    N/A : Not Applicable	A : Acceptable                      N : Not Inspected/Rated	Ma : Maintenance Deficiency
WS : Water Side	M : Minimally Acceptable        C : Corrected	Ob : Design & System Obsolescence
CR : Crown	U : Unacceptable                  A/W : Acceptable but Monitor & Maintain	En : Enforcement

**Flood Control Project Maintenance  
Levee Inspections**

**Levee Inspection Report By Mile - Fall 2014**

**Reclamation District No. 0524 Middle Roberts Island**

Waterway	Bank	Unit Miles	Inspection Start/End	Inspector
Unit No. 01 San Joaquin River	Left	6.20	10/20/2014 10/20/2014	Richard Willoughby

LM Start	0.65	Rating **	M	Issue No.	13 (cont)
LM End	0.66	Issue Type +	Ma	Location *	WS
Category	Earthen Levee			GPS Latitude/Longitude	
				Start	End
Item	Slope Stability			37.938105 °	37.938023 °
				-121.336288 °	-121.336173 °
DWR ID	DWR_RD0524_01_s_2012_13				
Action/Comments					
Repair slope instability.					
Inspector Comments: Erosion extends from mid levee slope to shoulder.					

Photo 3 of 3 : FA\_2014\_RD0524\_107\_13\_20141020\_00020.jpg



Update of erosion site at LM 0.65 to 0.66

LM Start	0.67	Rating **	M	Issue No.	15
LM End	0.67	Issue Type +	En	Location *	WS
Category	Supplemental			GPS Latitude/Longitude	
				Start	End
Item	DWR UCIP Field Study			37.937891 °	37.937891 °
				-121.335939 °	-121.335939 °
DWR ID	DWR_RD0524_01_f_2014_15				
Action/Comments					
Inspector Comments: FS_ID:17563 EP_NO: 6035 Repair Type: Non-Urgent Crossing Status: Found UCIP Comments: Flows from primer tank causing erosion on LS slope. FIELD_STRUCT_DESC: 48-inch pipe through levee 7.3 feet below crown. Siphon pumps and primer tank enclosed by cyclone fence on the landward shoulder. Gate valve at inlet sump 100-feet off LS toe. One concrete cutoff wall. (Permit No. 6035, 1968). FS Date: 8/16/2013					

No Photos

LM Start	0.68	Rating **	M	Issue No.	14
LM End	0.68	Issue Type +	Ma	Location *	WS
Category	Earthen Levee			GPS Latitude/Longitude	
				Start	End
Item	Vegetation			37.937808 °	37.937808 °
				-121.335913 °	-121.335913 °
DWR ID	DWR_RD0524_01_s_2012_14				
Action/Comments					
Remove the wild growth other than native grasses from the levee slopes.					
Inspector Comments: Bamboo on waterward slope.					

Photo 1 of 3 : FA\_2014\_RD0524\_107\_14\_20141020\_00021.jpg



Looking southeast at bamboo on waterside shoulder as of 4/2010.

<b>* Location</b> LS : Land Side    N/A : Not Applicable WS : Water Side CR : Crown	<b>** Rating</b> A : Acceptable M : Minimally Acceptable U : Unacceptable	N : Not Inspected/Rated C : Corrected A/W : Acceptable but Monitor & Maintain	<b>+ Issue Type</b> Ma : Maintenance Deficiency Ob : Design & System Obsolescence En : Enforcement
--	--	---	---

## Levee Inspection Report By Mile - Fall 2014

Waterway	Bank	Unit Miles	Inspection Start/End	Inspector
Unit No. 01 San Joaquin River	Left	6.20	10/20/2014 10/20/2014	Richard Willoughby

Photo 2 of 3 : FA\_2014\_RD0524\_107\_14\_20141020\_00022.jpg

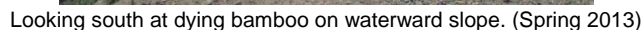


Photo 3 of 3 : FA\_2014\_RD0524\_107\_14\_20141020\_00023.jpg

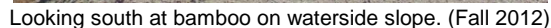
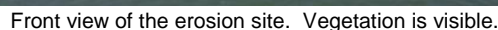


Photo 1 of 1 : SJR2014\_RD0524U01RM41.39\_1.jpg

Page 8 of 98



**Flood Control Project Maintenance  
Levee Inspections**

**Levee Inspection Report By Mile - Fall 2014**

**Reclamation District No. 0524 Middle Roberts Island**

Waterway	Bank	Unit Miles	Inspection Start/End	Inspector
Unit No. 01 San Joaquin River	Left	6.20	10/20/2014 10/20/2014	Richard Willoughby

LM Start	0.78	Rating **	M	Issue No.	262
LM End	0.78	Issue Type +	Ma	Location *	LS
Category	Earthen Levee			GPS Latitude/Longitude	
				Start	End
Item	Vegetation			37.936555 °	37.936555 °
				-121.334847 °	-121.334847 °
DWR ID	DWR_RD0524_01_s_2012_262				
Action/Comments					
Remove the wild growth other than native grasses from the levee slopes.					
Inspector Comments: Dense vegetation at landside toe along fence line.					

Photo 1 of 2 : FA\_2014\_RD0524\_107\_262\_20141020\_00142.jpg



Looking southwest at vegetation on landward slope and toe. (Spring 2013)

LM Start	<b>0.78</b>	Rating **	M	Issue No.	<b>262 (cont)</b>
LM End	<b>0.78</b>	Issue Type +	Ma	Location *	LS

Photo 2 of 2 : FA\_2014\_RD0524\_107\_262\_20141020\_00143.jpg



Looking west at dense vegetation on landside toe.

LM Start	0.79	Rating **	M	Issue No.	16
LM End	0.79	Issue Type +	En	Location *	LS
Category	Supplemental			GPS Latitude/Longitude	
				Start	End
Item	DWR UCIP Field Study			37.936474 °	37.936474 °
				-121.334830 °	-121.334830 °
DWR ID	DWR_RD0524_01_f_2014_16				
Action/Comments					
Inspector Comments: FS_ID:17571					
EP_NO: N/A					
Repair Type: Non-Urgent					
Crossing Status: Found					
UCIP Comments: Large hole in pipe at WS toe. Appears abandoned					
and should be done so properly.					

No Photos

<b>* Location</b> LS : Land Side    N/A : Not Applicable WS : Water Side CR : Crown	<b>** Rating</b> A : Acceptable M : Minimally Acceptable U : Unacceptable	<b>N : Not Inspected/Rated</b> C : Corrected A/W : Acceptable but Monitor & Maintain	<b>+ Issue Type</b> Ma : Maintenance Deficiency Ob : Design & System Obsolescence En : Enforcement
--	--	--	---



**Flood Control Project Maintenance  
Levee Inspections**

**Levee Inspection Report By Mile - Fall 2014**

**Reclamation District No. 0524 Middle Roberts Island**

Waterway	Bank	Unit Miles	Inspection Start/End	Inspector
Unit No. 01 San Joaquin River	Left	6.20	10/20/2014 10/20/2014	Richard Willoughby

LM Start	0.79	Rating **	M	Issue No.	76
LM End	0.79	Issue Type +	Ma	Location *	LS
Category	Earthen Levee			GPS Latitude/Longitude	
				Start	End
Item	Trim / Thin Trees			37.936444 °	37.936444 °
				-121.334797 °	-121.334797 °
DWR ID	DWR_RD0524_01_s_2012_76				
Action/Comments					
Trim trees to at least five feet above ground level.					

Photo 1 of 1 : FA\_2014\_RD0524\_107\_76\_20141020\_00078.jpg



Looking southwest at low hanging tree branches at landside toe.

LM Start	0.82	Rating **	U	Issue No.	2
LM End	0.82	Issue Type +	Ma	Location *	LS
Category	Earthen Levee			GPS Latitude/Longitude	
				Start	End
Item	Erosion / Bank Caving			37.936093 °	37.936004 °
				-121.334648 °	-121.334615 °
DWR ID	DWR_RD0524_01_f_2013_2				
Action/Comments					
Schedule repair of erosion site prior to the next inspection. Inspector Comments: Several holes and finger erosions on landward slope.					

Photo 1 of 5 : FA\_2014\_RD0524\_107\_2\_20141020\_00002.jpg



Looking southwest at hole on landward shoulder.

LM Start	<b>0.82</b>	Rating **	U	Issue No.	<b>2 (cont)</b>
LM End	<b>0.82</b>	Issue Type +	Ma	Location *	LS

Photo 2 of 5 : FA\_2014\_RD0524\_107\_2\_20141020\_00003.jpg



Looking west at hole on landward shoulder.

**\* Location**  
LS : Land Side    N/A : Not Applicable  
WS : Water Side  
CR : Crown

**\*\* Rating**  
A : Acceptable                      N : Not Inspected/Rated  
M : Minimally Acceptable        C : Corrected  
U : Unacceptable                  A/W : Acceptable but Monitor & Maintain

**+ Issue Type**  
Ma : Maintenance Deficiency  
Ob : Design & System Obsolescence  
En : Enforcement

**Flood Control Project Maintenance  
Levee Inspections**

**Levee Inspection Report By Mile - Fall 2014**

**Reclamation District No. 0524 Middle Roberts Island**

Waterway	Bank	Unit Miles	Inspection Start/End	Inspector
Unit No. 01 San Joaquin River	Left	6.20	10/20/2014 10/20/2014	Richard Willoughby

LM Start	0.82	Rating **	U	Issue No.	2 (cont)	
LM End	0.82	Issue Type +	Ma	Location *	LS	
Category	Earthen Levee			GPS Latitude/Longitude		
				Start		End
Item	Erosion / Bank Caving			37.936093 °		37.936004 °
				-121.334648 °		-121.334615 °
DWR ID	DWR_RD0524_01_f_2013_2					
Action/Comments						
Schedule repair of erosion site prior to the next inspection. Inspector Comments: Several holes and finger erosions on landward slope.						

Photo 3 of 5 : FA\_2014\_RD0524\_107\_2\_20141020\_00004.jpg



Looking southeast at finger erosion on landward slope.

LM Start	<b>0.82</b>	Rating **	U	Issue No.	<b>2 (cont)</b>
LM End	<b>0.82</b>	Issue Type +	Ma	Location *	LS

Photo 4 of 5 : FA\_2014\_RD0524\_107\_2\_20141020\_00005.jpg



Looking east at erosion on landward slope.

LM Start	<b>0.82</b>	Rating **	U	Issue No.	<b>2 (cont)</b>
LM End	<b>0.82</b>	Issue Type +	Ma	Location *	LS

Photo 5 of 5 : FA\_2014\_RD0524\_107\_2\_20141020\_00006.jpg



Looking northeast at several finger erosion on landward slope.

**\* Location**

LS : Land Side    N/A : Not Applicable  
WS : Water Side  
CR : Crown

**\*\* Rating**

A : Acceptable                      N : Not Inspected/Rated  
M : Minimally Acceptable        C : Corrected  
U : Unacceptable                  A/W : Acceptable but Monitor & Maintain

**+ Issue Type**

Ma : Maintenance Deficiency  
Ob : Design & System Obsolescence  
En : Enforcement



**Flood Control Project Maintenance  
Levee Inspections**

**Levee Inspection Report By Mile - Fall 2014**

**Reclamation District No. 0524 Middle Roberts Island**

Waterway	Bank	Unit Miles	Inspection Start/End	Inspector
Unit No. 01 San Joaquin River	Left	6.20	10/20/2014 10/20/2014	Richard Willoughby

LM Start	0.83	Rating **	U	Issue No.	133
LM End	0.84	Issue Type +	Ma	Location *	WS
Category	Supplemental			GPS Latitude/Longitude	
				Start	End
Item	DWR Erosion Survey			37.935930 °	37.935930 °
				-121.334133 °	-121.334133 °
DWR ID					
Action/Comments					
Inspector Comments: 06/19/2014: No significant change observed. 08/13/2013: Site was discovered during boat survey. The dense vegetation blocks a clear view of the erosion. Size of erosion site was very roughly estimated. [2014 Site ID:RD0524U01RM41.44]					

Photo 1 of 1 : SJR2014\_RD0524U01RM41.44\_1.jpg



Close view of the site. Dense vegetation covers the erosion.

LM Start	0.91	Rating **	U	Issue No.	134
LM End	0.91	Issue Type +	Ma	Location *	WS
Category	Supplemental			GPS Latitude/Longitude	
				Start	End
Item	DWR Erosion Survey			37.935576 °	37.935576 °
				-121.333202 °	-121.333202 °
DWR ID					
Action/Comments					
Inspector Comments: 6/19/2014: No significant change observed. 08/13/2013: No significant change at this site. 08/07/2012: The site has been visited by boat survey. No significant change observed 08/23/2011: The erosion site is immediately downstream of the riprap protection. [2014 Site ID:RD0524U01RM41.5]					

Photo 1 of 1 : SJR2014\_RD0524U01RM41.5\_1.jpg



Front view of the erosion. Note the riprap protection near the site.

LM Start	0.92	Rating **	M	Issue No.	122
LM End	0.92	Issue Type +	Ma	Location *	WS
Category	Earthen Levee			GPS Latitude/Longitude	
				Start	End
Item	Encroachments			37.935267 °	37.935267 °
				-121.332985 °	-121.332985 °
DWR ID	DWR_RD0524_01_s_2013_122				
Action/Comments					
Pipe					
Inspector Comments: Inch and half metal pipe should be removed.					

Photo 1 of 1 : FA\_2014\_RD0524\_107\_122\_20141020\_00113.jpg



Looking northwest at inch and half metal pipe on waterward slope.

**\* Location**

LS : Land Side    N/A : Not Applicable  
WS : Water Side  
CR : Crown

**\*\* Rating**

A : Acceptable                      N : Not Inspected/Rated  
M : Minimally Acceptable        C : Corrected  
U : Unacceptable                  A/W : Acceptable but Monitor & Maintain

**+ Issue Type**

Ma : Maintenance Deficiency  
Ob : Design & System Obsolescence  
En : Enforcement

**Flood Control Project Maintenance  
Levee Inspections**

**Levee Inspection Report By Mile - Fall 2014**

**Reclamation District No. 0524 Middle Roberts Island**

Waterway	Bank	Unit Miles	Inspection Start/End	Inspector
Unit No. 01 San Joaquin River	Left	6.20	10/20/2014 10/20/2014	Richard Willoughby

LM Start	0.94	Rating **	M	Issue No.	77
LM End	1.02	Issue Type +	Ma	Location *	LS
Category	Earthen Levee			GPS Latitude/Longitude	
				Start	End
Item	Trim / Thin Trees			37.935259 °	37.935049 °
				-121.332864 °	-121.331334 °
DWR ID	DWR_RD0524_01_s_2012_77				
Action/Comments					
Trim trees to at least five feet above ground level.					

Photo 1 of 1 : FA\_2014\_RD0524\_107\_77\_20141020\_00079.jpg



Looking south at low hanging tree branches at landside toe.

LM Start	0.97	Rating **	A/W	Issue No.	20
LM End	0.97	Issue Type +	Ma	Location *	WS
Category	Earthen Levee			GPS Latitude/Longitude	
				Start	End
Item	Trim / Thin Trees			37.935181 °	37.935181 °
				-121.332297 °	-121.332297 °
DWR ID	DWR_RD0524_01_f_2013_20				
Action/Comments					
Trim trees over roadway to at least 12 feet above ground level.					

No Photos

LM Start	0.98	Rating **	M	Issue No.	22
LM End	0.98	Issue Type +	En	Location *	WS
Category	Supplemental			GPS Latitude/Longitude	
				Start	End
Item	DWR UCIP Field Study			37.935178 °	37.935178 °
				-121.332029 °	-121.332029 °
DWR ID	DWR_RD0524_01_f_2014_22				
Action/Comments					
Inspector Comments: FS_ID:22724 EP_NO: N/A Repair Type: Non-Urgent Crossing Status: Found UCIP Comments: Pipe abandoned and should be done so properly. FIELD_STRUCT_DESC: *Abandoned* 14-inch pipe through the levee 6.0 feet below the crown. Concrete pad for pump on WS shoulder. No pump or other appurtances remain. Originally included in the 1964 O&M manual. FS Date: 8/16/2013					

No Photos

<b>* Location</b> LS : Land Side    N/A : Not Applicable WS : Water Side CR : Crown	<b>** Rating</b> A : Acceptable M : Minimally Acceptable U : Unacceptable	N : Not Inspected/Rated C : Corrected A/W : Acceptable but Monitor & Maintain	<b>+ Issue Type</b> Ma : Maintenance Deficiency Ob : Design & System Obsolescence En : Enforcement
--	--	---	---

## Levee Inspection Report By Mile - Fall 2014

Waterway	Bank	Unit Miles	Inspection Start/End	Inspector
Unit No. 01 San Joaquin River	Left	6.20	10/20/2014 10/20/2014	Richard Willoughby

Photo 1 of 1 : SJR2014\_RD0524U01RM41.58\_1.jpg



Close view of the erosion.

Photo 1 of 1 : SJR2014\_RD0524U01RM41.59\_1.jpg



Front view of the site.

Photo 1 of 3 : FA\_2014\_RD0524\_107\_17\_20141020\_00024.jpg



Looking upstream (south) at erosion site.

* Location	** Rating	+ Issue Type
LS : Land Side    N/A : Not Applicable	A : Acceptable                      N : Not Inspected/Rated	Ma : Maintenance Deficiency
WS : Water Side	M : Minimally Acceptable        C : Corrected	Ob : Design & System Obsolescence
CR : Crown	U : Unacceptable                  A/W : Acceptable but Monitor & Maintain	En : Enforcement



**Flood Control Project Maintenance  
Levee Inspections**

**Levee Inspection Report By Mile - Fall 2014**

**Reclamation District No. 0524 Middle Roberts Island**

Waterway	Bank	Unit Miles	Inspection Start/End	Inspector
Unit No. 01 San Joaquin River	Left	6.20	10/20/2014 10/20/2014	Richard Willoughby

LM Start	1.03	Rating **	M	Issue No.	17 (cont)
LM End	1.03	Issue Type +	Ma	Location *	WS
Category	Earthen Levee			GPS Latitude/Longitude	
				Start	End
Item	Erosion / Bank Caving			37.935018 °	37.935098 °
				-121.331248 °	-121.331645 °
DWR ID	DWR_RD0524_01_s_2012_17				
Action/Comments					
Schedule repair of erosion site prior to the next inspection.					
Inspector Comments: Minor erosion was noted next to repaired site.					

Photo 2 of 3 : FA\_2014\_RD0524\_107\_17\_20141020\_00025.jpg



Looking southeast at erosion next to repaired site on waterward slope (Spring 2013)

LM Start	<b>1.03</b>	Rating **	M	Issue No.	<b>17 (cont)</b>
LM End	<b>1.03</b>	Issue Type +	Ma	Location *	WS

Photo 3 of 3 : FA\_2014\_RD0524\_107\_17\_20141020\_00026.jpg



Looking north at erosion site next to repaired site. (Spring 2012)

LM Start	1.08	Rating **	M	Issue No.	29
LM End	1.08	Issue Type +	En	Location *	WS
Category	Supplemental			GPS Latitude/Longitude	
				Start	End
Item	DWR UCIP Field Study			37.934778 °	37.934778 °
				-121.330460 °	-121.330460 °
DWR ID	DWR_RD0524_01_f_2014_29				
Action/Comments					
Inspector Comments: FS_ID:18703					
EP_NO: 2725B					
Repair Type: Non-Urgent					
Crossing Status: Found					
UCIP Comments: Given amount of rust on adjacent CMP riser, it may be appropriate to do a video inspection of this pipe.					

No Photos

<b>* Location</b> LS : Land Side    N/A : Not Applicable WS : Water Side CR : Crown	<b>** Rating</b> A : Acceptable M : Minimally Acceptable U : Unacceptable	<b>+ Issue Type</b> Ma : Maintenance Deficiency Ob : Design & System Obsolescence En : Enforcement
--	--	---

**Flood Control Project Maintenance  
Levee Inspections**

**Levee Inspection Report By Mile - Fall 2014**

**Reclamation District No. 0524 Middle Roberts Island**

Waterway	Bank	Unit Miles	Inspection Start/End	Inspector
Unit No. 01 San Joaquin River	Left	6.20	10/20/2014 10/20/2014	Richard Willoughby

LM Start	1.08	Rating **	M	Issue No.	47
LM End	1.08	Issue Type +	En	Location *	WS
Category	Supplemental			GPS Latitude/Longitude	
				Start	End
Item	DWR UCIP Field Study			37.934750 °	37.934750 °
				-121.330405 °	-121.330405 °
DWR ID	DWR_RD0524_01 f _ 2014_47				

No Photos

Action/Comments					
Inspector Comments: FS_ID:17589 EP_NO: 2725B Repair Type: Non-Urgent Crossing Status: Found UCIP Comments: CMP riser severely corroded. Good indicator of potential condition of 48-inch pipe. Recommend Video Inspection. FIELD_STRUCT_DESC: 48-inch CMP sewer line through the levee 16.0 feet below crown. Runs underneath the river and through levee with 36-inch CMP riser/inspection chamber on landward shoulder. Distribution/pumphouse on LS toe (Permit No. 2725B, 1959). Included in the 1964 O&M manual. FS Date: 8/16/2013					

LM Start	1.09	Rating **	M	Issue No.	18
LM End	1.09	Issue Type +	Ma	Location *	LS
Category	Earthen Levee			GPS Latitude/Longitude	
				Start	End
Item	Slope Stability			37.934645 °	37.934645 °
				-121.330310 °	-121.330310 °
DWR ID	DWR_RD0524_01_s_2012_18				

Action/Comments					
Repair slope instability. Inspector Comments: Slope damage extend from shoulder to middle of slope.					

Photo 1 of 5 : FA\_2014\_RD0524\_107\_18\_20141020\_00027.jpg



Landward slope damage at LM 1.09.

<b>* Location</b> LS : Land Side    N/A : Not Applicable WS : Water Side CR : Crown	<b>** Rating</b> A : Acceptable                      N : Not Inspected/Rated M : Minimally Acceptable        C : Corrected U : Unacceptable                  A/W : Acceptable but Monitor & Maintain	<b>+ Issue Type</b> Ma : Maintenance Deficiency Ob : Design & System Obsolescence En : Enforcement
--	---	---

**Flood Control Project Maintenance  
Levee Inspections**

**Levee Inspection Report By Mile - Fall 2014**

**Reclamation District No. 0524 Middle Roberts Island**

Waterway	Bank	Unit Miles	Inspection Start/End	Inspector
Unit No. 01 San Joaquin River	Left	6.20	10/20/2014 10/20/2014	Richard Willoughby

LM Start	1.09	Rating **	M	Issue No.	18 (cont)	
LM End	1.09	Issue Type +	Ma	Location *	LS	
Category	Earthen Levee			GPS Latitude/Longitude		
				Start		End
Item	Slope Stability			37.934645 °		37.934645 °
				-121.330310 °		-121.330310 °
DWR ID	DWR_RD0524_01_s_2012_18					
Action/Comments						
Repair slope instability. Inspector Comments: Slope damage extend from shoulder to middle of slope.						

Photo 2 of 5 : FA\_2014\_RD0524\_107\_18\_20141020\_00028.jpg



Updated picture of the erosion site on the landside shoulder.

LM Start	<b>1.09</b>	Rating **	M	Issue No.	<b>18 (cont)</b>
LM End	<b>1.09</b>	Issue Type +	Ma	Location *	LS

Photo 3 of 5 : FA\_2014\_RD0524\_107\_18\_20141020\_00029.jpg



Looking south at caving on landside shoulder. (Sping 2012)

LM Start	<b>1.09</b>	Rating **	M	Issue No.	<b>18 (cont)</b>
LM End	<b>1.09</b>	Issue Type +	Ma	Location *	LS

Photo 4 of 5 : FA\_2014\_RD0524\_107\_18\_20141020\_00030.jpg



Looking at updated slope stability as of 4/2010.

**\* Location**  
LS : Land Side    N/A : Not Applicable  
WS : Water Side  
CR : Crown

**\*\* Rating**  
A : Acceptable                      N : Not Inspected/Rated  
M : Minimally Acceptable        C : Corrected  
U : Unacceptable                  A/W : Acceptable but Monitor & Maintain

**+ Issue Type**  
Ma : Maintenance Deficiency  
Ob : Design & System Obsolescence  
En : Enforcement



**Flood Control Project Maintenance  
Levee Inspections**

**Levee Inspection Report By Mile - Fall 2014**

**Reclamation District No. 0524 Middle Roberts Island**

Waterway	Bank	Unit Miles	Inspection Start/End	Inspector
Unit No. 01 San Joaquin River	Left	6.20	10/20/2014 10/20/2014	Richard Willoughby

LM Start	1.09	Rating **	M	Issue No.	18 (cont)
LM End	1.09	Issue Type +	Ma	Location *	LS
Category	Earthen Levee			GPS Latitude/Longitude	
				Start	End
Item	Slope Stability			37.934645 °	37.934645 °
				-121.330310 °	-121.330310 °
DWR ID	DWR_RD0524_01_s_2012_18				
Action/Comments					
Repair slope instability. Inspector Comments: Slope damage extend from shoulder to middle of slope.					



Updated view from above the slope stability.

LM Start	1.14	Rating **	M	Issue No.	175
LM End	1.14	Issue Type +	Ma	Location *	WS
Category	Earthen Levee			GPS Latitude/Longitude	
				Start	End
Item	Trim / Thin Trees			37.934171 °	37.934171 °
				-121.329584 °	-121.329584 °
DWR ID	DWR_RD0524_01_f_2014_175				
Action/Comments					
Trim trees over roadway to at least 12 feet above ground level. Inspector Comments: T					

No Photos

LM Start	1.14	Rating **	M	Issue No.	19
LM End	1.17	Issue Type +	Ma	Location *	WS
Category	Earthen Levee			GPS Latitude/Longitude	
				Start	End
Item	Trim / Thin Trees			37.934118 °	37.933775 °
				-121.329657 °	-121.329305 °
DWR ID	DWR_RD0524_01_s_2012_19				
Action/Comments					
Trim trees to at least five feet above ground level.					



Looking northwest at low hanging tree branches at waterside toe.

**\* Location**

LS : Land Side    N/A : Not Applicable  
WS : Water Side  
CR : Crown

**\*\* Rating**

A : Acceptable                      N : Not Inspected/Rated  
M : Minimally Acceptable        C : Corrected  
U : Unacceptable                  A/W : Acceptable but Monitor & Maintain

**+ Issue Type**

Ma : Maintenance Deficiency  
Ob : Design & System Obsolescence  
En : Enforcement

# Reclamation District No. 0524 Middle Roberts Island

## Levee Inspection Report By Mile - Fall 2014

Waterway	Bank	Unit Miles	Inspection Start/End	Inspector
Unit No. 01 San Joaquin River	Left	6.20	10/20/2014 10/20/2014	Richard Willoughby

Photo 1 of 2 : FA\_2014\_RD0524\_107\_263\_20141020\_00144.jpg



Looking northwest at unauthorized ramp on landside slope.

Photo 2 of 2 : FA\_2014\_RD0524\_107\_263\_20141020\_00145.jpg



Looking south at unauthorized ramp on landside slope.

Photo 1 of 1 : SJR2014\_RD0524U01RM41.92\_1.jpg



Front view of the erosion. Note the drainage pipe on the site.

* Location	** Rating	+ Issue Type
LS : Land Side    N/A : Not Applicable	A : Acceptable                      N : Not Inspected/Rated	Ma : Maintenance Deficiency
WS : Water Side	M : Minimally Acceptable        C : Corrected	Ob : Design & System Obsolescence
CR : Crown	U : Unacceptable                  A/W : Acceptable but Monitor & Maintain	En : Enforcement



**Flood Control Project Maintenance  
Levee Inspections**

**Levee Inspection Report By Mile - Fall 2014**

**Reclamation District No. 0524 Middle Roberts Island**

Waterway	Bank	Unit Miles	Inspection Start/End	Inspector
Unit No. 01 San Joaquin River	Left	6.20	10/20/2014 10/20/2014	Richard Willoughby

LM Start	1.31	Rating **	M	Issue No.	89
LM End	1.31	Issue Type +	En	Location *	WS
Category	Supplemental			GPS Latitude/Longitude	
				Start	End
Item	DWR UCIP Field Study			37.931977 °	37.931977 °
				-121.328401 °	-121.328401 °
DWR ID	DWR_RD0524_01_f_2014_89				
Action/Comments					
Inspector Comments: FS_ID:17703					
EP_NO: N/A					
Repair Type: Non-Urgent					
Crossing Status: Found					
UCIP Comments: Pipe appears to be open on both ends. Abandoned and should be done so properly.					
FIELD_STRUCT_DESC: *Abandoned* 12-inch pipe through levee 3.5 feet below crown. Open on both ends. Originally included in the 1964 O&M manual.					
FS Date: 8/16/2013 9:57:05 AM					

No Photos

LM Start	1.31	Rating **	M	Issue No.	33
LM End	1.31	Issue Type +	Ma	Location *	WS
Category	Earthen Levee			GPS Latitude/Longitude	
				Start	End
Item	Encroachments			37.931948 °	37.931948 °
				-121.328387 °	-121.328387 °
DWR ID	DWR_RD0524_01_s_2012_33				
Action/Comments					
Pipe Inspector Comments: Pipe is not in use and should be properly abandoned.					

Photo 1 of 2 : FA\_2014\_RD0524\_107\_33\_20141020\_00041.jpg



Looking west at pipe on landside slope.

LM Start	<b>1.31</b>	Rating **	M	Issue No.	<b>33 (cont)</b>
LM End	<b>1.31</b>	Issue Type +	Ma	Location *	WS

Photo 2 of 2 : FA\_2014\_RD0524\_107\_33\_20141020\_00042.jpg



Looking north at broken pipe.

<b>* Location</b> LS : Land Side    N/A : Not Applicable WS : Water Side CR : Crown		<b>** Rating</b> A : Acceptable                      N : Not Inspected/Rated M : Minimally Acceptable        C : Corrected U : Unacceptable                  A/W : Acceptable but Monitor & Maintain		<b>+ Issue Type</b> Ma : Maintenance Deficiency Ob : Design & System Obsolescence En : Enforcement
--	--	---	--	---

## Levee Inspection Report By Mile - Fall 2014

Waterway	Bank	Unit Miles	Inspection Start/End	Inspector
Unit No. 01 San Joaquin River	Left	6.20	10/20/2014 10/20/2014	Richard Willoughby

No Photos

Photo 1 of 1 : SJR2014\_RD0524U01RM42.03\_1.jpg



Front view of the erosion.

Photo 1 of 1 : SJR2014\_RD0524U01RM42.09\_1.jpg



Front view of the erosion site.

* Location	** Rating	+ Issue Type
LS : Land Side    N/A : Not Applicable WS : Water Side CR : Crown	A : Acceptable                      N : Not Inspected/Rated M : Minimally Acceptable        C : Corrected U : Unacceptable                  A/W : Acceptable but Monitor & Maintain	Ma : Maintenance Deficiency Ob : Design & System Obsolescence En : Enforcement

**Flood Control Project Maintenance  
Levee Inspections**

**Levee Inspection Report By Mile - Fall 2014**

**Reclamation District No. 0524 Middle Roberts Island**

Waterway	Bank	Unit Miles	Inspection Start/End	Inspector
Unit No. 01 San Joaquin River	Left	6.20	10/20/2014 10/20/2014	Richard Willoughby

LM Start	1.51	Rating **	M	Issue No.	916
LM End	1.51	Issue Type +	Ma	Location *	LS
Category	Earthen Levee			GPS Latitude/Longitude	
				Start	End
Item	Trim / Thin Trees			37.929118 °	37.929118 °
				-121.328368 °	-121.328368 °
DWR ID	DWR_RD0524_01_s_2012_916				
Action/Comments					
Trim and thin trees to allow visibility of the ground and room to flood fight.					

Photo 1 of 3 : FA\_2014\_RD0524\_107\_916\_20141020\_00152.jpg



Dense vegetation on landside toe.

LM Start	<b>1.51</b>	Rating **	M	Issue No.	<b>916 (cont)</b>
LM End	<b>1.51</b>	Issue Type +	Ma	Location *	LS

Photo 2 of 3 : FA\_2014\_RD0524\_107\_916\_20141020\_00153.jpg



Looking south at trees on landside slope. (Fall 2012)

LM Start	<b>1.51</b>	Rating **	M	Issue No.	<b>916 (cont)</b>
LM End	<b>1.51</b>	Issue Type +	Ma	Location *	LS

Photo 3 of 3 : FA\_2014\_RD0524\_107\_916\_20141020\_00154.jpg



Looking south at dense veg. on landside slope and toe.

**\* Location**

LS : Land Side    N/A : Not Applicable  
WS : Water Side  
CR : Crown

**\*\* Rating**

A : Acceptable                      N : Not Inspected/Rated  
M : Minimally Acceptable        C : Corrected  
U : Unacceptable                  A/W : Acceptable but Monitor & Maintain

**+ Issue Type**

Ma : Maintenance Deficiency  
Ob : Design & System Obsolescence  
En : Enforcement



## Levee Inspection Report By Mile - Fall 2014

Waterway	Bank	Unit Miles	Inspection Start/End	Inspector
Unit No. 01 San Joaquin River	Left	6.20	10/20/2014 10/20/2014	Richard Willoughby

LM Start	<b>1.55</b>	Rating **	A/W	Issue No.	<b>23 (cont)</b>
LM End	<b>1.60</b>	Issue Type +	Ma	Location *	LS

LM Start	<b>1.55</b>	Rating **	A/W	Issue No.	<b>23 (cont)</b>
LM End	<b>1.60</b>	Issue Type +	Ma	Location *	LS

* Location	** Rating	+ Issue Type
LS : Land Side    N/A : Not Applicable	A : Acceptable                      N : Not Inspected/Rated	Ma : Maintenance Deficiency
WS : Water Side	M : Minimally Acceptable        C : Corrected	Ob : Design & System Obsolescence
CR : Crown	U : Unacceptable                  A/W : Acceptable but Monitor & Maintain	En : Enforcement

**Flood Control Project Maintenance  
Levee Inspections**

**Levee Inspection Report By Mile - Fall 2014**

**Reclamation District No. 0524 Middle Roberts Island**

Waterway	Bank	Unit Miles	Inspection Start/End	Inspector
Unit No. 01 San Joaquin River	Left	6.20	10/20/2014 10/20/2014	Richard Willoughby

LM Start	1.55	Rating **	A/W	Issue No.	23 (cont)
LM End	1.60	Issue Type +	Ma	Location *	LS
Category	Earthen Levee			GPS Latitude/Longitude	
				Start	End
Item	Vegetation			37.928388 °	37.927797 °
				-121.328280 °	-121.327854 °
DWR ID	DWR_RD0524_01_s_2012_23				
Action/Comments					
Remove the wild growth other than native grasses from the levee slopes.					

Photo 4 of 5 : FA\_2014\_RD0524\_107\_23\_20141023\_00197.jpg



Looking south from levee crown at corrected site.

LM Start	<b>1.55</b>	Rating **	A/W	Issue No.	<b>23 (cont)</b>
LM End	<b>1.60</b>	Issue Type +	Ma	Location *	LS

Photo 5 of 5 : FA\_2014\_RD0524\_107\_23\_20141023\_00198.jpg



Looking south from levee crown at upstream end of corrected site.

LM Start	1.56	Rating **	M	Issue No.	99
LM End	1.56	Issue Type +	En	Location *	LS
Category	Supplemental			GPS Latitude/Longitude	
				Start	End
Item	DWR UCIP Field Study			37.928429 °	37.928429 °
				-121.328297 °	-121.328297 °
DWR ID	DWR_RD0524_01_f_2014_99				
Action/Comments					
Inspector Comments: FS_ID:17798					
EP_NO: N/A					
Repair Type: Non-Urgent					
Crossing Status: Indicator Found					
UCIP Comments: No permit identified for this crossing.					
FIELD_STRUCT_DESC: Fiber optics cable crossing. USAA marker					

No Photos

<b>* Location</b> LS : Land Side    N/A : Not Applicable WS : Water Side CR : Crown	<b>** Rating</b> A : Acceptable M : Minimally Acceptable U : Unacceptable	N : Not Inspected/Rated C : Corrected A/W : Acceptable but Monitor & Maintain	<b>+ Issue Type</b> Ma : Maintenance Deficiency Ob : Design & System Obsolescence En : Enforcement
--	--	---	---



**Flood Control Project Maintenance  
Levee Inspections**

**Levee Inspection Report By Mile - Fall 2014**

**Reclamation District No. 0524 Middle Roberts Island**

Waterway	Bank	Unit Miles	Inspection Start/End	Inspector
Unit No. 01 San Joaquin River	Left	6.20	10/20/2014 10/20/2014	Richard Willoughby

LM Start	1.58	Rating **	U	Issue No.	145
LM End	1.64	Issue Type +	Ma	Location *	WS
Category	Supplemental			GPS Latitude/Longitude	
				Start	End
Item	DWR Erosion Survey			37.927770 °	37.927770 °
				-121.327870 °	-121.327870 °
DWR ID					
Action/Comments					
Inspector Comments: 6/19/2014: No significant change observed. 08/13/2013: No significant change observed. 08/07/2012: : The site has been visited by boat survey. No significant change observed 08/23/2011: No significant change observed on site. Trees concerned still in place. 09/07/2010: No significant change observed on site. The concern here is the undermining of the levee toe where most of trees are. There are erosion pockets lined along the lower slope and at the base of the trees, exposing tree roots. There is minimal slope protection. 09/29/2009: The lower slope is lined with minor erosion pockets; some tree roots are exposed; there is visible undermining of the levee toe; site is immediately upstream of the Highway 4 Bridge; the bridge is possibly causing a scour to occur, eroding the bank. [2014 Site ID:RD0524U01RM42.2]					

Photo 1 of 1 : SJR2014\_RD0524U01RM42.2\_1.jpg



Front view of the site where undermining has occurred.

LM Start	1.60	Rating **	M	Issue No.	136
LM End	1.60	Issue Type +	Ma	Location *	CR
Category	Earthen Levee			GPS Latitude/Longitude	
				Start	End
Item	Slope Stability			37.927775 °	37.927775 °
				-121.327860 °	-121.327860 °
DWR ID	DWR_RD0524_01_s_2013_136				
Action/Comments					
Repair the levee slope damaged by foot traffic and prevent access where possible.					

Photo 1 of 1 : FA\_2014\_RD0524\_107\_136\_20141020\_00125.jpg



Looking south at depression on levee crown near waterward shoulder.

\* Location  
LS : Land Side    N/A : Not Applicable  
WS : Water Side  
CR : Crown

\*\* Rating  
A : Acceptable                      N : Not Inspected/Rated  
M : Minimally Acceptable        C : Corrected  
U : Unacceptable                  A/W : Acceptable but Monitor & Maintain

+ Issue Type  
Ma : Maintenance Deficiency  
Ob : Design & System Obsolescence  
En : Enforcement

## Levee Inspection Report By Mile - Fall 2014

Waterway	Bank	Unit Miles	Inspection Start/End	Inspector
Unit No. 01 San Joaquin River	Left	6.20	10/20/2014 10/20/2014	Richard Willoughby

LM Start	<b>1.62</b>	Rating **	M	Issue No.	<b>24 (cont)</b>
LM End	<b>1.63</b>	Issue Type +	Ma	Location *	LS

A photograph showing a white car parked on a dirt driveway. The driveway is bordered by a line of trees and shrubs. In the background, there is a paved road, a utility pole, and a field under a cloudy sky.

A photograph of a dirt road or path that curves through a field of tall, dry grass and various trees. On the left side of the road, there is a utility pole with cross-arms. The scene is brightly lit, suggesting a sunny day, and the shadows of the trees are cast onto the path.

LM Start	1.62	Rating **	A/W	Issue No.	25					
LM End	1.63	Issue Type +	Ma	Location *	WS					
Category	Earthen Levee			GPS Latitude/Longitude						
				Start	End					
Item	Vegetation			37.927635 °	37.927540 °					
				-121.327812 °	-121.327648 °					
DWR ID	DWR_RD0524_01_s _2012_25									
Action/Comments										
Remove the wild growth other than native grasses from the levee slopes.										

A gravel path leads from the foreground towards the background, flanked by dense green bushes on the left and trees in the background. The path is made of light-colored gravel and appears to be a natural or semi-natural trail. The bushes are thick and vibrant green, while the trees in the distance are taller and have darker foliage. The overall scene is a natural, outdoor setting.

Looking southeast at dense vegetation on the waterside slope.

* Location	** Rating	+ Issue Type
LS : Land Side    N/A : Not Applicable	A : Acceptable                      N : Not Inspected/Rated	Ma : Maintenance Deficiency
WS : Water Side	M : Minimally Acceptable        C : Corrected	Ob : Design & System Obsolescence
CR : Crown	U : Unacceptable                  A/W : Acceptable but Monitor & Maintain	En : Enforcement

**Flood Control Project Maintenance  
Levee Inspections**

**Levee Inspection Report By Mile - Fall 2014**

**Reclamation District No. 0524 Middle Roberts Island**

Waterway	Bank	Unit Miles	Inspection Start/End	Inspector
Unit No. 01 San Joaquin River	Left	6.20	10/20/2014 10/20/2014	Richard Willoughby

LM Start	1.63	Rating **	M	Issue No.	26
LM End	1.66	Issue Type +	Ma	Location *	WS
Category	Earthen Levee			GPS Latitude/Longitude	
				Start	End
Item	Erosion / Bank Caving			37.927507 °	37.927295 °
				-121.327593 °	-121.327298 °
DWR ID	DWR_RD0524_01_s_2012_26				
Action/Comments					
Note and monitor erosion site.					

No Photos

LM Start	1.64	Rating **	U	Issue No.	39
LM End	1.64	Issue Type +	En	Location *	WS
Category	Earthen Levee			GPS Latitude/Longitude	
				Start	End
Item	Encroachments			37.927372 °	37.927372 °
				-121.327278 °	-121.327278 °
DWR ID	DWR_RD0524_01_s_2012_39				
Action/Comments					
Pole					
Inspector Comments: Landowner constructed boat dock without permission from the CVFPB.					

Photo 1 of 2 : FA\_2014\_RD0524\_107\_39\_20141020\_00052.jpg



Looking at garbage on waterside slope.

LM Start	<b>1.64</b>	Rating **	U	Issue No.	<b>39 (cont)</b>
LM End	<b>1.64</b>	Issue Type +	En	Location *	WS

Photo 2 of 2 : FA\_2014\_RD0524\_107\_39\_20141020\_00053.jpg



Looking east at non-permitted boat dock.

<b>* Location</b> LS : Land Side    N/A : Not Applicable WS : Water Side CR : Crown		<b>** Rating</b> A : Acceptable                      N : Not Inspected/Rated M : Minimally Acceptable        C : Corrected U : Unacceptable                  A/W : Acceptable but Monitor & Maintain		<b>+ Issue Type</b> Ma : Maintenance Deficiency Ob : Design & System Obsolescence En : Enforcement
--	--	---	--	---



## Levee Inspection Report By Mile - Fall 2014

Waterway	Bank	Unit Miles	Inspection Start/End	Inspector
Unit No. 01 San Joaquin River	Left	6.20	10/20/2014 10/20/2014	Richard Willoughby

No Photos

Photo 1 of 3 : FA\_2014\_RD0524\_107\_45\_20141020\_00057.jpg



Looking northeast at non-permitted concrete stairs on waterside slope.

LM Start	<b>1.69</b>	Rating **	M	Issue No.	<b>45 (cont)</b>
LM End	<b>1.69</b>	Issue Type +	Ma	Location *	WS

Photo 2 of 3 : FA 2014 RD0524 107 45 20141020 00058.jpg



Looking southwest at retaining wall connected to concrete stairs.

* Location	** Rating	+ Issue Type
LS : Land Side    N/A : Not Applicable	A : Acceptable                      N : Not Inspected/Rated	Ma : Maintenance Deficiency
WS : Water Side	M : Minimally Acceptable        C : Corrected	Ob : Design & System Obsolescence
CR : Crown	U : Unacceptable                  A/W : Acceptable but Monitor & Maintain	En : Enforcement



## Levee Inspection Report By Mile - Fall 2014

Waterway	Bank	Unit Miles	Inspection Start/End	Inspector
Unit No. 01 San Joaquin River	Left	6.20	10/20/2014 10/20/2014	Richard Willoughby

Photo 2 of 2 : FA\_2014\_RD0524\_107\_28\_20141020\_00038.jpg



Looking at southwest at a pruning pile at landward berm.

Photo 1 of 1 : FA\_2014\_RD0524\_107\_181\_20141020\_00137.jpg



Looking west at wooden pallets at landward toe.

Photo 1 of 4 : FA\_2014\_RD0524\_107\_46\_20141023\_00201.jpg



Looking south at tree limbs on landward slope.

* Location	** Rating	+ Issue Type
LS : Land Side    N/A : Not Applicable	A : Acceptable                      N : Not Inspected/Rated	Ma : Maintenance Deficiency
WS : Water Side	M : Minimally Acceptable        C : Corrected	Ob : Design & System Obsolescence
CR : Crown	U : Unacceptable                  A/W : Acceptable but Monitor & Maintain	En : Enforcement



**Flood Control Project Maintenance  
Levee Inspections**

**Levee Inspection Report By Mile - Fall 2014**

**Reclamation District No. 0524 Middle Roberts Island**

Waterway	Bank	Unit Miles	Inspection Start/End	Inspector
Unit No. 01 San Joaquin River	Left	6.20	10/20/2014 10/20/2014	Richard Willoughby

LM Start	1.77	Rating **	U	Issue No.	46 (cont)
LM End	1.77	Issue Type +	Ma	Location *	N/A
Category	Earthen Levee			GPS Latitude/Longitude	
				Start	End
Item	Encroachments			37.925993 °	37.926152 °
				-121.325777 °	-121.325927 °
DWR ID	DWR_RD0524_01_s_2012_46				
Action/Comments					
Tree or limb					
Inspector Comments: Downed tree limbs on landward slope.					

Photo 2 of 4 : FA\_2014\_RD0524\_107\_46\_20141023\_00202.jpg



Looking southwest at tree limbs on landward slope.

LM Start	<b>1.77</b>	Rating **	U	Issue No.	<b>46 (cont)</b>
LM End	<b>1.77</b>	Issue Type +	Ma	Location *	N/A

Photo 3 of 4 : FA\_2014\_RD0524\_107\_46\_20141023\_00203.jpg



Looking south at tree limbs on landward slope.

LM Start	<b>1.77</b>	Rating **	U	Issue No.	<b>46 (cont)</b>
LM End	<b>1.77</b>	Issue Type +	Ma	Location *	N/A

Photo 4 of 4 : FA\_2014\_RD0524\_107\_46\_20141020\_00060.jpg



Looking southwest at dense vegetation and low hanging tree branches on landside slope and toe.

**\* Location**

LS : Land Side    N/A : Not Applicable  
WS : Water Side  
CR : Crown

**\*\* Rating**

A : Acceptable                      N : Not Inspected/Rated  
M : Minimally Acceptable        C : Corrected  
U : Unacceptable                  A/W : Acceptable but Monitor & Maintain

**+ Issue Type**

Ma : Maintenance Deficiency  
Ob : Design & System Obsolescence  
En : Enforcement

**Flood Control Project Maintenance  
Levee Inspections**

**Levee Inspection Report By Mile - Fall 2014**

**Reclamation District No. 0524 Middle Roberts Island**

Waterway	Bank	Unit Miles	Inspection Start/End	Inspector
Unit No. 01 San Joaquin River	Left	6.20	10/20/2014 10/20/2014	Richard Willoughby

LM Start	1.80	Rating **	A/W	Issue No.	100
LM End	1.80	Issue Type +	Ma	Location *	LS
Category	Earthen Levee			GPS Latitude/Longitude	
				Start	End
Item	Encroachments			37.925752 °	37.925752 °
				-121.325592 °	-121.325592 °
DWR ID	DWR_RD0524_01_s_2012_100				
Action/Comments					
Prunings					

Photo 1 of 1 : FA\_2014\_RD0524\_107\_100\_20141020\_00093.jpg



Looking southwest at prunings on landside toe.

LM Start	1.82	Rating **	M	Issue No.	103
LM End	1.82	Issue Type +	En	Location *	LS
Category	Supplemental			GPS Latitude/Longitude	
				Start	End
Item	DWR UCIP Field Study			37.925480 °	37.925480 °
				-121.325358 °	-121.325358 °
DWR ID	DWR_RD0524_01_f_2014_103				
Action/Comments					
Inspector Comments: FS_ID:21866					
EP_NO: N/A					
Repair Type: Non-Urgent					
Crossing Status: Found					
UCIP Comments: No permit identified for crossing.					
FIELD_STRUCT_DESC: 12-inch wrapped steel irrigation pipe through the levee at an unknown depth below the crown. Pump, butterfly valves, vent, and siphon breaker at concrete pad 50-feet off LS toe.					
Siphon breaker in 14-inch concrete standpipe on LS shoulder.					
FS Date: 8/20/2013					

No Photos

LM Start	1.83	Rating **	M	Issue No.	137
LM End	1.83	Issue Type +	En	Location *	LS
Category	Supplemental			GPS Latitude/Longitude	
				Start	End
Item	DWR UCIP Field Study			37.925431 °	37.925431 °
				-121.325310 °	-121.325310 °
DWR ID	DWR_RD0524_01_f_2014_137				
Action/Comments					
Inspector Comments: FS_ID:21865					
EP_NO: N/A					
Repair Type: Non-Urgent					
Crossing Status: Found					
UCIP Comments: Pipes appear abandoned and should be removed from levee.					
FIELD_STRUCT_DESC: One 1-inch and two 3/4-inch PVC conduits through the levee 6-inches below the crown.					
FS Date: 8/20/2013					

No Photos

* Location LS : Land Side    N/A : Not Applicable WS : Water Side CR : Crown		** Rating A : Acceptable M : Minimally Acceptable U : Unacceptable		N : Not Inspected/Rated C : Corrected A/W : Acceptable but Monitor & Maintain		+ Issue Type Ma : Maintenance Deficiency Ob : Design & System Obsolescence En : Enforcement	
---	--	---	--	---	--	--	--



**Flood Control Project Maintenance  
Levee Inspections**

**Levee Inspection Report By Mile - Fall 2014**

**Reclamation District No. 0524 Middle Roberts Island**

Waterway	Bank	Unit Miles	Inspection Start/End	Inspector
Unit No. 01 San Joaquin River	Left	6.20	10/20/2014 10/20/2014	Richard Willoughby

LM Start	1.83	Rating **	M	Issue No.	140
LM End	1.83	Issue Type +	En	Location *	LS
Category	Supplemental			GPS Latitude/Longitude	
				Start	End
Item	DWR UCIP Field Study			37.925429 °	37.925429 °
				-121.325323 °	-121.325323 °
DWR ID	DWR_RD0524_01_f _ 2014_140				
Action/Comments					
Inspector Comments: FS_ID:17847					
EP_NO: N/A					
Repair Type: Non-Urgent					
Crossing Status: Found					
UCIP Comments: Pipe appears abandoned and if so should be done so properly.					
FIELD_STRUCT_DESC: 14-inch pipe through levee 20.0 feet below crown, 2 pumps and gate valves discharge into surge tank in pump house on the waterward slope. Concrete distribution box removed from the waterward slope. Abandoned 36-inch diameter concrete standpipe on LS toe next to service pole. Originally included in the 1964 O&M manual.					
FS Date: 8/20/2013					

No Photos

LM Start	1.90	Rating **	M	Issue No.	78
LM End	1.95	Issue Type +	En	Location *	LS
Category	Earthen Levee			GPS Latitude/Longitude	
				Start	End
Item	Vegetation			37.924364 °	37.923805 °
				-121.324473 °	-121.324238 °
DWR ID	DWR_RD0524_01_s_2012_78				
Action/Comments					
Landscaping					

Photo 1 of 1 : FA\_2014\_RD0524\_107\_78\_20141020\_00080.jpg



Looking southwest at landscaping on landside slope. (Spring 2012)

**\* Location**  
LS : Land Side    N/A : Not Applicable  
WS : Water Side  
CR : Crown

**\*\* Rating**  
A : Acceptable                      N : Not Inspected/Rated  
M : Minimally Acceptable        C : Corrected  
U : Unacceptable                  A/W : Acceptable but Monitor & Maintain

**+ Issue Type**  
Ma : Maintenance Deficiency  
Ob : Design & System Obsolescence  
En : Enforcement

**Flood Control Project Maintenance  
Levee Inspections**

**Levee Inspection Report By Mile - Fall 2014**

**Reclamation District No. 0524 Middle Roberts Island**

Waterway	Bank	Unit Miles	Inspection Start/End	Inspector
Unit No. 01 San Joaquin River	Left	6.20	10/20/2014 10/20/2014	Richard Willoughby

LM Start	1.95	Rating **	A/W	Issue No.	104
LM End	1.95	Issue Type +	En	Location *	WS
Category	Earthen Levee			GPS Latitude/Longitude	
				Start	End
Item	Vegetation			37.923808 °	37.923808 °
				-121.324260 °	-121.324260 °
DWR ID	DWR_RD0524_01_s _ 2012_104				
Action/Comments					
Remove the wild growth other than native grasses from the levee slopes. Inspector Comments: Bamboo outside of the twenty foot vegetation zone.					

Photo 1 of 2 : FA\_2014\_RD0524\_107\_104\_20141020\_00096.jpg



Looking northeast at sprayed bamboo on waterside slope. (Fall 2012)

Photo 2 of 2 : FA\_2014\_RD0524\_107\_104\_20141020\_00097.jpg



Looking southeast at bamboo on waterside slope.

LM Start	2.01	Rating **	M	Issue No.	105
LM End	2.01	Issue Type +	En	Location *	LS
Category	Earthen Levee			GPS Latitude/Longitude	
				Start	End
Item	Trim / Thin Trees			37.923032 °	37.923032 °
				-121.323933 °	-121.323933 °
DWR ID	DWR_RD0524_01_s _ 2012_105				
Action/Comments					
Trim trees to at least five feet above ground level.					

No Photos

<b>* Location</b> LS : Land Side    N/A : Not Applicable WS : Water Side CR : Crown	<b>** Rating</b> A : Acceptable M : Minimally Acceptable U : Unacceptable	N : Not Inspected/Rated C : Corrected A/W : Acceptable but Monitor & Maintain	<b>+ Issue Type</b> Ma : Maintenance Deficiency Ob : Design & System Obsolescence En : Enforcement
--	--	---	---

**Flood Control Project Maintenance  
Levee Inspections**

**Levee Inspection Report By Mile - Fall 2014**

**Reclamation District No. 0524 Middle Roberts Island**

Waterway	Bank	Unit Miles	Inspection Start/End	Inspector
Unit No. 01 San Joaquin River	Left	6.20	10/20/2014 10/20/2014	Richard Willoughby

LM Start	2.01	Rating **	M	Issue No.	4
LM End	2.01	Issue Type +	En	Location *	LS
Category	Earthen Levee			GPS Latitude/Longitude	
				Start	End
Item	Encroachments			37.923068 °	37.923068 °
				-121.323990 °	-121.323990 °
DWR ID	DWR_RD0524_01_f_2012_4				
Action/Comments					
Stairway Inspector Comments: Landowner installed rubber tires for a stairway on landside slope.					

Photo 1 of 1 : FA\_2014\_RD0524\_107\_4\_20141020\_00010.jpg



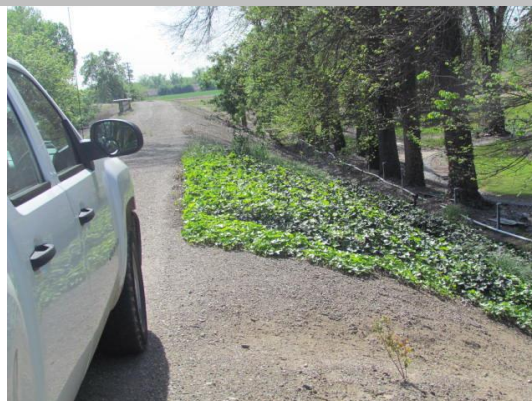
Looking west at rubber tires being used as stairs on landside slope.

LM Start	2.01	Rating **	M	Issue No.	149
LM End	2.01	Issue Type +	En	Location *	LS
Category	Supplemental			GPS Latitude/Longitude	
				Start	End
Item	DWR UCIP Field Study			37.923022 °	37.923022 °
				-121.323953 °	-121.323953 °
DWR ID	DWR_RD0524_01_f_2014_149				
Action/Comments					
Inspector Comments: FS_ID:21872					
EP_NO: N/A					
Repair Type: Non-Urgent					
Crossing Status: Found					
UCIP Comments: No permit identified for this crossing.					
FIELD_STRUCT_DESC: 3-inch PVC domestic non-potable water line					
through the levee at unknowd depth below the crown. Pump on					
concrete pad at WS toe.					
FS Date: 8/20/2013					

No Photos

LM Start	2.02	Rating **	M	Issue No.	106
LM End	2.02	Issue Type +	En	Location *	LS
Category	Earthen Levee			GPS Latitude/Longitude	
				Start	End
Item	Vegetation			37.922923 °	37.922923 °
				-121.323837 °	-121.323837 °
DWR ID	DWR_RD0524_01_s_2012_106				
Action/Comments					
Landscaping					

Photo 1 of 1 : FA\_2014\_RD0524\_107\_106\_20141020\_00098.jpg



Looking southwest at ground cover on landward slope.

<b>* Location</b> LS : Land Side    N/A : Not Applicable WS : Water Side CR : Crown	<b>** Rating</b> A : Acceptable M : Minimally Acceptable U : Unacceptable	N : Not Inspected/Rated C : Corrected A/W : Acceptable but Monitor & Maintain	<b>+ Issue Type</b> Ma : Maintenance Deficiency Ob : Design & System Obsolescence En : Enforcement
--	--	---	---



**Flood Control Project Maintenance  
Levee Inspections**

**Levee Inspection Report By Mile - Fall 2014**

**Reclamation District No. 0524 Middle Roberts Island**

Waterway	Bank	Unit Miles	Inspection Start/End	Inspector
Unit No. 01 San Joaquin River	Left	6.20	10/20/2014 10/20/2014	Richard Willoughby

LM Start	2.03	Rating **	M	Issue No.	182
LM End	2.06	Issue Type +	En	Location *	N/A
Category	Earthen Levee			GPS Latitude/Longitude	
				Start	End
Item	Encroachments			37.922837 °	37.922514 °
				-121.323785 °	-121.323504 °
DWR ID	DWR_RD0524_01_s_2014_182				
Action/Comments					
Ditch Inspector Comments: Old irrigation ditch at the landward toe should be removed.					

Photo 1 of 2 : FA\_2014\_RD0524\_107\_182\_20141020\_00138.jpg



Looking northwest at an old irrigation ditch at landward toe.

LM Start	<b>2.03</b>	Rating **	M	Issue No.	<b>182 (cont)</b>
LM End	<b>2.06</b>	Issue Type +	En	Location *	N/A

Photo 2 of 2 : FA\_2014\_RD0524\_107\_182\_20141020\_00139.jpg



Looking southwest at an old irrigation ditch at landward toe.

LM Start	2.05	Rating **	M	Issue No.	150
LM End	2.05	Issue Type +	En	Location *	N/A
Category	Supplemental			GPS Latitude/Longitude	
				Start	End
Item	DWR UCIP Field Study			37.922535 °	37.922535 °
				-121.323568 °	-121.323568 °
DWR ID	DWR_RD0524_01_f_2014_150				
Action/Comments					
Inspector Comments: FS_ID:21883					
EP_NO: N/A					
Repair Type: Non-Urgent					
Crossing Status: Found					
UCIP Comments: Pipe abandoned and should be done so properly.					
Holes visible throughout exposed pipe.					

No Photos

<b>* Location</b> LS : Land Side    N/A : Not Applicable WS : Water Side CR : Crown	<b>** Rating</b> A : Acceptable M : Minimally Acceptable U : Unacceptable	N : Not Inspected/Rated C : Corrected A/W : Acceptable but Monitor & Maintain	<b>+ Issue Type</b> Ma : Maintenance Deficiency Ob : Design & System Obsolescence En : Enforcement
--	--	---	---

**Flood Control Project Maintenance  
Levee Inspections**

**Levee Inspection Report By Mile - Fall 2014**

**Reclamation District No. 0524 Middle Roberts Island**

Waterway	Bank	Unit Miles	Inspection Start/End	Inspector
Unit No. 01 San Joaquin River	Left	6.20	10/20/2014 10/20/2014	Richard Willoughby

LM Start	2.09	Rating **	M	Issue No.	151
LM End	2.09	Issue Type +	En	Location *	N/A
Category	Supplemental			GPS Latitude/Longitude	
				Start	End
Item	DWR UCIP Field Study			37.922080 °	37.922080 °
				-121.323118 °	-121.323118 °
DWR ID	DWR_RD0524_01_f_2014_151				
Action/Comments					
Inspector Comments: FS_ID:21895					
EP_NO: N/A					
Repair Type: Non-Urgent					
Crossing Status: Found					
UCIP Comments: No permit identified for this crossing.					
FIELD_STRUCT_DESC: 6-inch steel irrigation pipe through the levee at an unknown depth. Vent, meter, butterfly valve, and pump at pumphouse on WS slope.					
FS Date: 8/20/2013					

No Photos

LM Start	2.10	Rating **	M	Issue No.	152
LM End	2.10	Issue Type +	En	Location *	N/A
Category	Supplemental			GPS Latitude/Longitude	
				Start	End
Item	DWR UCIP Field Study			37.922064 °	37.922064 °
				-121.323084 °	-121.323084 °
DWR ID	DWR_RD0524_01_f_2014_152				
Action/Comments					
Inspector Comments: FS_ID:17944					
EP_NO: N/A					
Repair Type: Non-Urgent					
Crossing Status: Found					
UCIP Comments: Soil excavated from cover over pipe on WS next to concrete riser. May indicate a leak or other problem.					
FIELD_STRUCT_DESC: 20-inch steel pipe through the levee 15.0 feet below the crown. Pump in pump house on the waterward slope. Slide gate in 4-foot diameter concrete standpipe on WS slope with secondary concrete standpipe. PVC standpipe visible 350-feet off LS toe.					
Originally included in the 1964 O&M manual.					
FS Date: 8/20/2013					

No Photos

<b>* Location</b> LS : Land Side    N/A : Not Applicable WS : Water Side CR : Crown	<b>** Rating</b> A : Acceptable M : Minimally Acceptable U : Unacceptable N : Not Inspected/Rated C : Corrected A/W : Acceptable but Monitor & Maintain	<b>+ Issue Type</b> Ma : Maintenance Deficiency Ob : Design & System Obsolescence En : Enforcement
--	---	---

**Flood Control Project Maintenance  
Levee Inspections**

**Levee Inspection Report By Mile - Fall 2014**

**Reclamation District No. 0524 Middle Roberts Island**

Waterway	Bank	Unit Miles	Inspection Start/End	Inspector
Unit No. 01 San Joaquin River	Left	6.20	10/20/2014 10/20/2014	Richard Willoughby

LM Start	2.10	Rating **	A/W	Issue No.	183
LM End	2.10	Issue Type +	Ma	Location *	WS
Category	Earthen Levee			GPS Latitude/Longitude	
				Start	End
Item	Vegetation			37.922009 °	37.922009 °
				-121.323015 °	-121.323015 °
DWR ID	DWR_RD0524_01_s_2014_183				
Action/Comments					
Remove the wild growth other than native grasses from the levee slopes.					
Inspector Comments: Cactus on waterward slope.					

No Photos

LM Start	2.15	Rating **	A/W	Issue No.	6
LM End	2.22	Issue Type +	Ma	Location *	WS
Category	Earthen Levee			GPS Latitude/Longitude	
				Start	End
Item	Vegetation			37.921540 °	37.920959 °
				-121.322293 °	-121.321365 °
DWR ID	DWR_RD0524_01_f_2012_6				
Action/Comments					
Remove the wild growth other than native grasses from the levee slopes.					

No Photos

LM Start	2.17	Rating **	A/W	Issue No.	30
LM End	2.18	Issue Type +	Ma	Location *	WS
Category	Earthen Levee			GPS Latitude/Longitude	
				Start	End
Item	Erosion / Bank Caving			37.921383 °	37.921300 °
				-121.322043 °	-121.321902 °
DWR ID	DWR_RD0524_01_s_2012_30				
Action/Comments					
Note and monitor erosion site.					

No Photos

<b>* Location</b> LS : Land Side    N/A : Not Applicable WS : Water Side CR : Crown	<b>** Rating</b> A : Acceptable M : Minimally Acceptable U : Unacceptable	N : Not Inspected/Rated C : Corrected A/W : Acceptable but Monitor & Maintain	<b>+ Issue Type</b> Ma : Maintenance Deficiency Ob : Design & System Obsolescence En : Enforcement
--	--	---	---



## Levee Inspection Report By Mile - Fall 2014

Waterway	Bank	Unit Miles	Inspection Start/End	Inspector
Unit No. 01 San Joaquin River	Left	6.20	10/20/2014 10/20/2014	Richard Willoughby

Photo 1 of 1 : SJR2014\_RD0524U01RM42.79\_1.jpg



View from downstream.

Photo 1 of 1 : FA\_2014\_RD0524\_107\_31\_20141020\_00039.jpg



Looking south slope damage on waterward shoulder and slope.

Photo 1 of 1 : SJR2014\_RD0524U01RM42.84\_1.jpg



View from upstream.

* Location	** Rating	+ Issue Type
LS : Land Side    N/A : Not Applicable	A : Acceptable                      N : Not Inspected/Rated	Ma : Maintenance Deficiency
WS : Water Side	M : Minimally Acceptable        C : Corrected	Ob : Design & System Obsolescence
CR : Crown	U : Unacceptable                  A/W : Acceptable but Monitor & Maintain	En : Enforcement

**Flood Control Project Maintenance  
Levee Inspections**

**Levee Inspection Report By Mile - Fall 2014**

**Reclamation District No. 0524 Middle Roberts Island**

Waterway	Bank	Unit Miles	Inspection Start/End	Inspector
Unit No. 01 San Joaquin River	Left	6.20	10/20/2014 10/20/2014	Richard Willoughby

LM Start	2.29	Rating **	U	Issue No.	32
LM End	2.31	Issue Type +	Ma	Location *	LS
Category	Earthen Levee			GPS Latitude/Longitude	
				Start	End
Item	Vegetation			37.920372 °	37.920273 °
				-121.320230 °	-121.320022 °
DWR ID	DWR_RD0524_01_s_2012_32				
Action/Comments					
Elderberries are blocking visibility and flood fight capability.					

Photo 1 of 1 : FA\_2014\_RD0524\_107\_32\_20141020\_00040.jpg



Looking south at dense veg on landside slope and toe.

LM Start	2.31	Rating **	C	Issue No.	148
LM End	2.33	Issue Type +	Ma	Location *	WS
Category	Supplemental			GPS Latitude/Longitude	
				Start	End
Item	DWR Erosion Survey			37.919885 °	37.919885 °
				-121.319710 °	-121.319710 °
DWR ID					
Action/Comments					
Inspector Comments: 6/19/2014: The erosion was repaired. 08/13/2013: The length of erosion has progressed downstream, and the site length has increased from 12 ft in length last year to 100 feet in length this year. 08/07/2012: The site was first reported in the 2012 spring levee inspection report. The site is located at the inside corner of a river bend. [2014 Site ID:RD0524U01RM42.93]					

No Photos

LM Start	2.34	Rating **	M	Issue No.	34
LM End	2.35	Issue Type +	Ma	Location *	WS
Category	Earthen Levee			GPS Latitude/Longitude	
				Start	End
Item	Slope Stability			37.919885 °	37.919703 °
				-121.319713 °	-121.319702 °
DWR ID	DWR_RD0524_01_s_2012_34				
Action/Comments					
Repair the levee slope damaged by foot traffic and prevent access where possible.					
Inspector Comments: Slope damage caused by walking traffic and using bank as a fishing platform.					

Photo 1 of 1 : FA\_2014\_RD0524\_107\_34\_20141020\_00043.jpg



Looking northeast at damage to the slope possibly caused by human activity.

**\* Location**  
LS : Land Side    N/A : Not Applicable  
WS : Water Side  
CR : Crown

**\*\* Rating**  
A : Acceptable                      N : Not Inspected/Rated  
M : Minimally Acceptable        C : Corrected  
U : Unacceptable                  A/W : Acceptable but Monitor & Maintain

**+ Issue Type**  
Ma : Maintenance Deficiency  
Ob : Design & System Obsolescence  
En : Enforcement

**Flood Control Project Maintenance  
Levee Inspections**

**Levee Inspection Report By Mile - Fall 2014**

**Reclamation District No. 0524 Middle Roberts Island**

Waterway	Bank	Unit Miles	Inspection Start/End	Inspector
Unit No. 01 San Joaquin River	Left	6.20	10/20/2014 10/20/2014	Richard Willoughby

LM Start	2.35	Rating **	M	Issue No.	107
LM End	2.35	Issue Type +	Ma	Location *	LS
Category	Earthen Levee			GPS Latitude/Longitude	
				Start	End
Item	Trim / Thin Trees			37.919742 °	37.919742 °
				-121.319623 °	-121.319623 °
DWR ID	DWR_RD0524_01_s_2012_107				
Action/Comments					
Trim trees to at least five feet above ground level.					

No Photos

LM Start	2.40	Rating **	M	Issue No.	184
LM End	2.40	Issue Type +	Ma	Location *	LS
Category	Earthen Levee			GPS Latitude/Longitude	
				Start	End
Item	Trim / Thin Trees			37.919036 °	37.919036 °
				-121.319969 °	-121.319969 °
DWR ID	DWR_RD0524_01_s_2014_184				
Action/Comments					
Trim trees to at least five feet above ground level.					

No Photos

LM Start	2.44	Rating **	U	Issue No.	35
LM End	2.48	Issue Type +	Ma	Location *	LS
Category	Earthen Levee			GPS Latitude/Longitude	
				Start	End
Item	Vegetation			37.918498 °	37.918515 °
				-121.321078 °	-121.321110 °
DWR ID	DWR_RD0524_01_s_2012_35				
Action/Comments					
Elderberries are blocking visibility and flood fight capability.					

Photo 1 of 1 : FA\_2014\_RD0524\_107\_35\_20141020\_00044.jpg



Looking southwest at dense vegetation on landward toe.

**\* Location**  
 LS : Land Side    N/A : Not Applicable  
 WS : Water Side  
 CR : Crown

**\*\* Rating**  
 A : Acceptable                      N : Not Inspected/Rated  
 M : Minimally Acceptable        C : Corrected  
 U : Unacceptable                  A/W : Acceptable but Monitor & Maintain

**+ Issue Type**  
 Ma : Maintenance Deficiency  
 Ob : Design & System Obsolescence  
 En : Enforcement



**Flood Control Project Maintenance  
Levee Inspections**

**Levee Inspection Report By Mile - Fall 2014**

**Reclamation District No. 0524 Middle Roberts Island**

Waterway	Bank	Unit Miles	Inspection Start/End	Inspector
Unit No. 01 San Joaquin River	Left	6.20	10/20/2014 10/20/2014	Richard Willoughby

LM Start	2.46	Rating **	M	Issue No.	36
LM End	2.50	Issue Type +	Ma	Location *	WS
Category	Earthen Levee			GPS Latitude/Longitude	
				Start	End
Item	Erosion / Bank Caving			37.918628 °	37.918438 °
				-121.320817 °	-121.321452 °
DWR ID	DWR_RD0524_01_s_2012_36				
Action/Comments					
Note and monitor erosion site.					

Photo 1 of 1 : FA\_2014\_RD0524\_107\_36\_20141020\_00045.jpg



Looking east at erosion on waterside slope.

LM Start	2.48	Rating **	M	Issue No.	80
LM End	2.48	Issue Type +	Ma	Location *	LS
Category	Earthen Levee			GPS Latitude/Longitude	
				Start	End
Item	Trim / Thin Trees			37.918480 °	37.918480 °
				-121.321114 °	-121.321114 °
DWR ID	DWR_RD0524_01_s_2012_80				
Action/Comments					
Trim trees to at least five feet above ground level.					

Photo 1 of 2 : FA\_2014\_RD0524\_107\_80\_20141020\_00082.jpg

Looking southwest at dense vegetation and trees on landside slope.  
(Fall 2012)

LM Start	<b>2.48</b>	Rating **	M	Issue No.	<b>80 (cont)</b>
LM End	<b>2.48</b>	Issue Type +	Ma	Location *	LS

Photo 2 of 2 : FA\_2014\_RD0524\_107\_80\_20141020\_00083.jpg



Looking southwest at dense vegetation on landside toe.

**\* Location**  
LS : Land Side    N/A : Not Applicable  
WS : Water Side  
CR : Crown

**\*\* Rating**  
A : Acceptable                      N : Not Inspected/Rated  
M : Minimally Acceptable        C : Corrected  
U : Unacceptable                  A/W : Acceptable but Monitor & Maintain

**+ Issue Type**  
Ma : Maintenance Deficiency  
Ob : Design & System Obsolescence  
En : Enforcement

**Flood Control Project Maintenance  
Levee Inspections**

**Levee Inspection Report By Mile - Fall 2014**

**Reclamation District No. 0524 Middle Roberts Island**

Waterway	Bank	Unit Miles	Inspection Start/End	Inspector
Unit No. 01 San Joaquin River	Left	6.20	10/20/2014 10/20/2014	Richard Willoughby

LM Start	2.52	Rating **	U	Issue No.	37
LM End	2.52	Issue Type +	Ma	Location *	LS
Category	Earthen Levee			GPS Latitude/Longitude	
				Start	End
Item	Vegetation			37.918345 °	37.918302 °
				-121.321765 °	-121.321923 °
DWR ID	DWR_RD0524_01_s_2012_37				
Action/Comments					
Elderberries are blocking visibility and flood fight capability.					

Photo 1 of 4 : FA\_2014\_RD0524\_107\_37\_20141020\_00046.jpg



Looking south at elderberry on landside slope.

LM Start	<b>2.52</b>	Rating **	U	Issue No.	<b>37 (cont)</b>
LM End	<b>2.52</b>	Issue Type +	Ma	Location *	LS

Photo 2 of 4 : FA\_2014\_RD0524\_107\_37\_20141020\_00047.jpg



Looking southwest at dense vegetation on landside toe.

LM Start	<b>2.52</b>	Rating **	U	Issue No.	<b>37 (cont)</b>
LM End	<b>2.52</b>	Issue Type +	Ma	Location *	LS

Photo 3 of 4 : FA\_2014\_RD0524\_107\_37\_20141020\_00048.jpg



Looking north at elderberry and trees on landside slope.

**\* Location**

LS : Land Side    N/A : Not Applicable  
WS : Water Side  
CR : Crown

**\*\* Rating**

A : Acceptable                      N : Not Inspected/Rated  
M : Minimally Acceptable        C : Corrected  
U : Unacceptable                  A/W : Acceptable but Monitor & Maintain

**+ Issue Type**

Ma : Maintenance Deficiency  
Ob : Design & System Obsolescence  
En : Enforcement



**Flood Control Project Maintenance  
Levee Inspections**

**Levee Inspection Report By Mile - Fall 2014**

**Reclamation District No. 0524 Middle Roberts Island**

Waterway	Bank	Unit Miles	Inspection Start/End	Inspector
Unit No. 01 San Joaquin River	Left	6.20	10/20/2014 10/20/2014	Richard Willoughby

LM Start	2.52	Rating **	U	Issue No.	37 (cont)	
LM End	2.52	Issue Type +	Ma	Location *	LS	
Category	Earthen Levee			GPS Latitude/Longitude		
				Start		End
Item	Vegetation			37.918345 °		37.918302 °
				-121.321765 °		-121.321923 °
DWR ID	DWR_RD0524_01_s_2012_37					
Action/Comments						
Elderberries are blocking visibility and flood fight capability.						

Photo 4 of 4 : FA\_2014\_RD0524\_107\_37\_20141020\_00049.jpg



Looking southwest at trees along levee landside toe.

LM Start	2.53	Rating **	U	Issue No.	38
LM End	2.53	Issue Type +	Ma	Location *	WS
Category	Earthen Levee			GPS Latitude/Longitude	
				Start	End
Item	Vegetation			37.918287 °	37.918287 °
				-121.321980 °	-121.321980 °
DWR ID	DWR_RD0524_01_s_2012_38				
Action/Comments					
Elderberries are blocking visibility and flood fight capability.					

Photo 1 of 2 : FA\_2014\_RD0524\_107\_38\_20141020\_00050.jpg



Looking north at elderberry on waterside slope.

LM Start	<b>2.53</b>	Rating **	U	Issue No.	<b>38 (cont)</b>
LM End	<b>2.53</b>	Issue Type +	Ma	Location *	WS

Photo 2 of 2 : FA\_2014\_RD0524\_107\_38\_20141020\_00051.jpg



Looking south at elderberry on waterside slope.

**\* Location**

LS : Land Side    N/A : Not Applicable  
WS : Water Side  
CR : Crown

**\*\* Rating**

A : Acceptable                      N : Not Inspected/Rated  
M : Minimally Acceptable        C : Corrected  
U : Unacceptable                  A/W : Acceptable but Monitor & Maintain

**+ Issue Type**

Ma : Maintenance Deficiency  
Ob : Design & System Obsolescence  
En : Enforcement



**Flood Control Project Maintenance  
Levee Inspections**

**Levee Inspection Report By Mile - Fall 2014**

**Reclamation District No. 0524 Middle Roberts Island**

Waterway	Bank	Unit Miles	Inspection Start/End	Inspector
Unit No. 01 San Joaquin River	Left	6.20	10/20/2014 10/20/2014	Richard Willoughby

LM Start	2.55	Rating **	M	Issue No.	82
LM End	2.59	Issue Type +	Ma	Location *	LS
Category	Earthen Levee			GPS Latitude/Longitude	
				Start	End
Item	Slope Stability			37.918060 °	37.917667 °
				-121.322384 °	-121.322713 °
DWR ID	DWR_RD0524_01_s _ 2012_82				
Action/Comments					
Repair slope instability.					

Photo 1 of 1 : FA\_2014\_RD0524\_107\_82\_20141023\_00206.jpg



Looking southwest at damaged landward slope.

LM Start	2.56	Rating **	M	Issue No.	40
LM End	2.56	Issue Type +	Ma	Location *	LS
Category	Earthen Levee			GPS Latitude/Longitude	
				Start	End
Item	Vegetation			37.918047 °	37.918047 °
				-121.322415 °	-121.322415 °
DWR ID	DWR_RD0524_01_s _ 2012_40				
Action/Comments					
Elderberries are blocking visibility and flood fight capability.					

No Photos

LM Start	2.59	Rating **	M	Issue No.	41
LM End	2.59	Issue Type +	Ma	Location *	LS
Category	Earthen Levee			GPS Latitude/Longitude	
				Start	End
Item	Vegetation			37.917673 °	37.917673 °
				-121.322718 °	-121.322718 °
DWR ID	DWR_RD0524_01_s _ 2012_41				
Action/Comments					
Elderberries are blocking visibility and flood fight capability.					

No Photos

<b>* Location</b> LS : Land Side    N/A : Not Applicable WS : Water Side CR : Crown	<b>** Rating</b> A : Acceptable M : Minimally Acceptable U : Unacceptable	N : Not Inspected/Rated C : Corrected A/W : Acceptable but Monitor & Maintain	<b>+ Issue Type</b> Ma : Maintenance Deficiency Ob : Design & System Obsolescence En : Enforcement
--	--	---	---

## Levee Inspection Report By Mile - Fall 2014

Waterway	Bank	Unit Miles	Inspection Start/End	Inspector
Unit No. 01 San Joaquin River	Left	6.20	10/20/2014 10/20/2014	Richard Willoughby

LM Start	<b>2.59</b>	Rating **	U	Issue No.	<b>42 (cont)</b>
LM End	<b>2.59</b>	Issue Type +	En	Location *	WS

LM Start	2.59	Rating **	M	Issue No.	7					
LM End	2.59	Issue Type +	En	Location *	WS					
Category	Earthen Levee			GPS Latitude/Longitude						
				Start	End					
Item	Encroachments			37.917431 °	37.917431 °					
				-121.322780 °	-121.322780 °					
DWR ID	DWR_RD0524_01_f_2012_7									
Action/Comments										
Ramp										

A wide, sandy, and dusty area, possibly a dry riverbed or a large pile of sand, with some sparse vegetation and trees in the background.

Looking southeast at unauthorized ramp on waterside slope.

* Location	** Rating	+ Issue Type
LS : Land Side    N/A : Not Applicable	A : Acceptable                      N : Not Inspected/Rated	Ma : Maintenance Deficiency
WS : Water Side	M : Minimally Acceptable        C : Corrected	Ob : Design & System Obsolescence
CR : Crown	U : Unacceptable                    A/W : Acceptable but Monitor & Maintain	En : Enforcement

**Flood Control Project Maintenance  
Levee Inspections**

**Levee Inspection Report By Mile - Fall 2014**

**Reclamation District No. 0524 Middle Roberts Island**

Waterway	Bank	Unit Miles	Inspection Start/End	Inspector
Unit No. 01 San Joaquin River	Left	6.20	10/20/2014 10/20/2014	Richard Willoughby

LM Start	2.60	Rating **	M	Issue No.	12
LM End	2.60	Issue Type +	En	Location *	LS
Category	Earthen Levee			GPS Latitude/Longitude	
				Start	End
Item	Encroachments			37.917538 °	37.917538 °
				-121.322757 °	-121.322757 °
DWR ID	DWR_RD0524_01_f_2012_12				
Action/Comments					
Pole					
Inspector Comments: Old fence poles on landside shoulder and slope should be removed.					

Photo 1 of 1 : FA\_2014\_RD0524\_107\_12\_20141020\_00017.jpg



Looking northwest at fence poles on landside shoulder.

LM Start	2.60	Rating **	M	Issue No.	917
LM End	2.60	Issue Type +	Ma	Location *	LS
Category	Earthen Levee			GPS Latitude/Longitude	
				Start	End
Item	Animal Control			37.917475 °	37.917475 °
				-121.322808 °	-121.322808 °
DWR ID	DWR_RD0524_01_s_2012_917				
Action/Comments					
Repair the levee slope damaged by livestock and prevent large animal access.					

No Photos

LM Start	2.61	Rating **	M	Issue No.	153
LM End	2.61	Issue Type +	En	Location *	LS
Category	Supplemental			GPS Latitude/Longitude	
				Start	End
Item	DWR UCIP Field Study			37.917365 °	37.917365 °
				-121.322779 °	-121.322779 °
DWR ID	DWR_RD0524_01_f_2014_153				
Action/Comments					
Inspector Comments: FS_ID:21935					
EP_NO: N/A					
Repair Type: Non-Urgent					
Crossing Status: Found					
UCIP Comments: Need to determine type of abandonment for pipe at this location.					
FIELD_STRUCT_DESC: *Abandoned* Pump pad on LS shoulder with 4'X9' brick distribution box on WS slope. No pipe visible. 4'X9' brick distribution box on LS toe.					
FS Date: 8/20/2013					

No Photos

<b>* Location</b> LS : Land Side    N/A : Not Applicable WS : Water Side CR : Crown	<b>** Rating</b> A : Acceptable M : Minimally Acceptable U : Unacceptable	<b>N : Not Inspected/Rated</b> C : Corrected A/W : Acceptable but Monitor & Maintain	<b>+ Issue Type</b> Ma : Maintenance Deficiency Ob : Design & System Obsolescence En : Enforcement
--	--	--	---



**Flood Control Project Maintenance  
Levee Inspections**

**Levee Inspection Report By Mile - Fall 2014**

**Reclamation District No. 0524 Middle Roberts Island**

Waterway	Bank	Unit Miles	Inspection Start/End	Inspector
Unit No. 01 San Joaquin River	Left	6.20	10/20/2014 10/20/2014	Richard Willoughby

LM Start	2.61	Rating **	A/W	Issue No.	9
LM End	2.61	Issue Type +	Ma	Location *	LS
Category	Earthen Levee			GPS Latitude/Longitude	
				Start	End
Item	Vegetation			37.917228 °	37.917228 °
				-121.322730 °	-121.322730 °
DWR ID	DWR_RD0524_01_s_2012_9				
Action/Comments					
Remove the wild growth other than native grasses from the levee slopes.					

No Photos

LM Start	2.63	Rating **	M	Issue No.	185
LM End	2.66	Issue Type +	Ma	Location *	WS
Category	Earthen Levee			GPS Latitude/Longitude	
				Start	End
Item	Trim / Thin Trees			37.917152 °	37.916807 °
				-121.322582 °	-121.322069 °
DWR ID	DWR_RD0524_01_s_2014_185				
Action/Comments					
Thin trees to allow visibility of the ground and room to flood fight.					

No Photos

LM Start	2.65	Rating **	C	Issue No.	192
LM End	2.65	Issue Type +	Ma	Location *	WS
Category	Supplemental			GPS Latitude/Longitude	
				Start	End
Item	DWR Erosion Survey			37.916650 °	37.916650 °
				-121.321980 °	-121.321980 °
DWR ID					
Action/Comments					
Inspector Comments: 6/19/2014: The erosion was repaired. 08/13/2013: No significant change observed. 08/07/2012: The site was first reported in 2012 spring levee inspection report. [2014 Site ID:RD0524U01RM43.23]					

No Photos

<b>* Location</b> LS : Land Side    N/A : Not Applicable WS : Water Side CR : Crown	<b>** Rating</b> A : Acceptable M : Minimally Acceptable U : Unacceptable	N : Not Inspected/Rated C : Corrected A/W : Acceptable but Monitor & Maintain	<b>+ Issue Type</b> Ma : Maintenance Deficiency Ob : Design & System Obsolescence En : Enforcement
--	--	---	---

**Flood Control Project Maintenance  
Levee Inspections**

**Levee Inspection Report By Mile - Fall 2014**

**Reclamation District No. 0524 Middle Roberts Island**

Waterway	Bank	Unit Miles	Inspection Start/End	Inspector
Unit No. 01 San Joaquin River	Left	6.20	10/20/2014 10/20/2014	Richard Willoughby

LM Start	2.66	Rating **	M	Issue No.	43
LM End	2.66	Issue Type +	Ma	Location *	LS
Category	Earthen Levee			GPS Latitude/Longitude	
				Start	End
Item	Vegetation			37.916780 °	37.916780 °
				-121.322095 °	-121.322095 °
DWR ID	DWR_RD0524_01_s_2012_43				
Action/Comments					
Elderberries are blocking visibility and flood fight capability.					

No Photos

LM Start	2.67	Rating **	M	Issue No.	918
LM End	2.69	Issue Type +	Ma	Location *	LS
Category	Earthen Levee			GPS Latitude/Longitude	
				Start	End
Item	Trim / Thin Trees			37.916718 °	37.916502 °
				-121.322020 °	-121.321980 °
DWR ID	DWR_RD0524_01_s_2012_918				
Action/Comments					
Trim trees to at least five feet above ground level.					

No Photos

LM Start	2.67	Rating **	U	Issue No.	920
LM End	2.67	Issue Type +	En	Location *	WS
Category	Earthen Levee			GPS Latitude/Longitude	
				Start	End
Item	Encroachments			37.916698 °	37.916698 °
				-121.322007 °	-121.322007 °
DWR ID	DWR_RD0524_01_s_2012_920				
Action/Comments					
Ramp					

Photo 1 of 1 : FA\_2014\_RD0524\_107\_920\_20141020\_00155.jpg



Looking southeast at unauthorized ramp on waterside slope.

**\* Location**  
 LS : Land Side    N/A : Not Applicable  
 WS : Water Side  
 CR : Crown

**\*\* Rating**  
 A : Acceptable                      N : Not Inspected/Rated  
 M : Minimally Acceptable        C : Corrected  
 U : Unacceptable                  A/W : Acceptable but Monitor & Maintain

**+ Issue Type**  
 Ma : Maintenance Deficiency  
 Ob : Design & System Obsolescence  
 En : Enforcement

## Levee Inspection Report By Mile - Fall 2014

Waterway	Bank	Unit Miles	Inspection Start/End	Inspector
Unit No. 01 San Joaquin River	Left	6.20	10/20/2014 10/20/2014	Richard Willoughby

No Photos

Photo 1 of 1 : FA\_2014\_RD0524\_107\_44\_20141020\_00056.jpg



Looking north at dense trees overhanging levee crown.

Photo 1 of 2 : FA\_2014\_RD0524\_107\_21\_20141020\_00033.jpg



Looking at erosion around irrigation pipe on waterward slope.

* Location	** Rating	+ Issue Type
LS : Land Side    N/A : Not Applicable	A : Acceptable                      N : Not Inspected/Rated	Ma : Maintenance Deficiency
WS : Water Side	M : Minimally Acceptable        C : Corrected	Ob : Design & System Obsolescence
CR : Crown	U : Unacceptable                  A/W : Acceptable but Monitor & Maintain	En : Enforcement



**Flood Control Project Maintenance  
Levee Inspections**

**Levee Inspection Report By Mile - Fall 2014**

**Reclamation District No. 0524 Middle Roberts Island**

Waterway	Bank	Unit Miles	Inspection Start/End	Inspector
Unit No. 01 San Joaquin River	Left	6.20	10/20/2014 10/20/2014	Richard Willoughby

LM Start	2.71	Rating **	M	Issue No.	21 (cont)
LM End	2.71	Issue Type +	Ma	Location *	WS
Category	Earthen Levee			GPS Latitude/Longitude	
				Start	End
Item	Erosion / Bank Caving			37.916224 °	37.916224 °
				-121.322115 °	-121.322115 °
DWR ID	DWR_RD0524_01_f_2013_21				
Action/Comments					
Schedule repair of erosion site prior to the next inspection. Inspector Comments: Large erosion around irrigation pipe.					

Photo 2 of 2 : FA\_2014\_RD0524\_107\_21\_20141020\_00034.jpg



Looking east at erosion around irrigation pipe on waterward slope.

LM Start	2.73	Rating **	A/W	Issue No.	264
LM End	2.73	Issue Type +	Ma	Location *	LS
Category	Earthen Levee			GPS Latitude/Longitude	
				Start	End
Item	Trim / Thin Trees			37.915968 °	37.915968 °
				-121.322275 °	-121.322275 °
DWR ID	DWR_RD0524_01_s_2012_264				
Action/Comments					
Trim trees over roadway to at least 12 feet above ground level.					

No Photos

LM Start	2.73	Rating **	M	Issue No.	60
LM End	2.77	Issue Type +	Ma	Location *	LS
Category	Earthen Levee			GPS Latitude/Longitude	
				Start	End
Item	Trim / Thin Trees			37.915747 °	37.915492 °
				-121.322470 °	-121.322639 °
DWR ID	DWR_RD0524_01_s_2012_60				
Action/Comments					
Trim trees to at least five feet above ground level.					

No Photos

**\* Location**  
 LS : Land Side    N/A : Not Applicable  
 WS : Water Side  
 CR : Crown

**\*\* Rating**  
 A : Acceptable                      N : Not Inspected/Rated  
 M : Minimally Acceptable        C : Corrected  
 U : Unacceptable                  A/W : Acceptable but Monitor & Maintain

**+ Issue Type**  
 Ma : Maintenance Deficiency  
 Ob : Design & System Obsolescence  
 En : Enforcement

**Flood Control Project Maintenance  
Levee Inspections**

**Levee Inspection Report By Mile - Fall 2014**

**Reclamation District No. 0524 Middle Roberts Island**

Waterway	Bank	Unit Miles	Inspection Start/End	Inspector
Unit No. 01 San Joaquin River	Left	6.20	10/20/2014 10/20/2014	Richard Willoughby

LM Start	2.75	Rating **	M	Issue No.	154
LM End	2.75	Issue Type +	En	Location *	LS
Category	Supplemental			GPS Latitude/Longitude	
				Start	End
Item	DWR UCIP Field Study			37.915698 °	37.915698 °
				-121.322501 °	-121.322501 °
DWR ID	DWR_RD0524_01_f_2014_154				
Action/Comments					
Inspector Comments: FS_ID:18085					
EP_NO: N/A					
Repair Type: Non-Urgent					
Crossing Status: Found					
UCIP Comments: No permit identified for crossing. Unknown use.					
Pipe should be removed.					
FIELD_STRUCT_DESC: 3-inch galvanized iron pipe through the levee					
0.3 feet below the crown. Valve on the landward shoulder.					
FS Date: 8/20/2013 3:28:19 PM					

No Photos

LM Start	2.77	Rating **	A/W	Issue No.	70
LM End	2.77	Issue Type +	Ma	Location *	LS
Category	Earthen Levee			GPS Latitude/Longitude	
				Start	End
Item	Encroachments			37.915503 °	37.915503 °
				-121.322745 °	-121.322745 °
DWR ID	DWR_RD0524_01_s_2012_70				
Action/Comments					
Tree or limb					
Inspector Comments: Broken tree branch.					

No Photos

LM Start	2.80	Rating **	M	Issue No.	126
LM End	2.80	Issue Type +	Ma	Location *	WS
Category	Supplemental			GPS Latitude/Longitude	
				Start	End
Item	DWR Erosion Survey			37.878920 °	37.878920 °
				-121.332670 °	-121.332670 °
DWR ID					
Action/Comments					
Inspector Comments: 6/19/2014: No significant change observed. 08/13/2013: Larger trees are at the levee shoulder, and an irrigation pump station is next to the erosion site. [2014 Site ID:RD0524U01RM46.06]					

Photo 1 of 1 : SJR2014\_RD0524U01RM46.06\_1.jpg



Front view of the erosion.

<b>* Location</b> LS : Land Side    N/A : Not Applicable WS : Water Side CR : Crown	<b>** Rating</b> A : Acceptable M : Minimally Acceptable U : Unacceptable	<b>N : Not Inspected/Rated</b> C : Corrected A/W : Acceptable but Monitor & Maintain	<b>+ Issue Type</b> Ma : Maintenance Deficiency Ob : Design & System Obsolescence En : Enforcement
--	--	--	---





## Levee Inspection Report By Mile - Fall 2014


Waterway	Bank	Unit Miles	Inspection Start/End	Inspector
Unit No. 01 San Joaquin River	Left	6.20	10/20/2014 10/20/2014	Richard Willoughby

Photo 1 of 1 : FA\_2014\_RD0524\_107\_91\_20141020\_00086.jpg



Looking southwest at dense vegetation on landside slope.

Photo 1 of 1 : FA\_2014\_RD0524\_107\_49\_20141020\_00063.jpg



Looking northwest at elderberry on landside slope.

Photo 1 of 1 : FA\_2014\_RD0524\_107\_50\_20141020\_00064.jpg



Looking southwest at prunings on landside slope.

* Location	** Rating	+ Issue Type
LS : Land Side    N/A : Not Applicable	A : Acceptable                      N : Not Inspected/Rated	Ma : Maintenance Deficiency
WS : Water Side	M : Minimally Acceptable        C : Corrected	Ob : Design & System Obsolescence
CR : Crown	U : Unacceptable                  A/W : Acceptable but Monitor & Maintain	En : Enforcement

**Flood Control Project Maintenance  
Levee Inspections**

**Levee Inspection Report By Mile - Fall 2014**

**Reclamation District No. 0524 Middle Roberts Island**

Waterway	Bank	Unit Miles	Inspection Start/End	Inspector
Unit No. 01 San Joaquin River	Left	6.20	10/20/2014 10/20/2014	Richard Willoughby

LM Start	2.96	Rating **	M	Issue No.	51
LM End	2.96	Issue Type +	Ma	Location *	LS
Category	Earthen Levee			GPS Latitude/Longitude	
				Start	End
Item	Trim / Thin Trees			37.913415 °	37.913415 °
				-121.324503 °	-121.324503 °
DWR ID	DWR_RD0524_01_s_2012_51				
Action/Comments					
Trim trees to at least five feet above ground level.					

No Photos

LM Start	2.96	Rating **	U	Issue No.	193
LM End	2.96	Issue Type +	Ma	Location *	WS
Category	Supplemental			GPS Latitude/Longitude	
				Start	End
Item	DWR Erosion Survey			37.913010 °	37.913010 °
				-121.324490 °	-121.324490 °
DWR ID					
Action/Comments					
Inspector Comments: 6/19/2014: No significant change observed. 08/13/2013: No significant change observed. 08/07/2012: The site was first reported in 2012 spring levee inspection report. [2014 Site ID:RD0524U01RM43.52]					

Photo 1 of 1 : SJR2014\_RD0524U01RM43.52\_1.jpg



Front view of the erosion.

LM Start	2.98	Rating **	M	Issue No.	155
LM End	2.98	Issue Type +	En	Location *	WS
Category	Supplemental			GPS Latitude/Longitude	
				Start	End
Item	DWR UCIP Field Study			37.913101 °	37.913101 °
				-121.324500 °	-121.324500 °
DWR ID	DWR_RD0524_01_f_2014_155				
Action/Comments					
Inspector Comments: FS_ID:18089					
EP_NO: N/A					
Repair Type: Non-Urgent					
Crossing Status: Indicator Found					
UCIP Comments: Review crossing with inspector as records indicate that this should be an 8-inch pipe through levee 3.0 feet below crown, pump on landward side. Siphon breaker on the waterward slope.					
Originally included in the 1964 O&M manual.					
FIELD_STRUCT_DESC: 16-inch wrapped steel storm discharge pipe through the levee 1.5-feet below the crown. Pump on steel pile structure at drainage canal off LS toe.					
FS Date: 8/20/2013					

No Photos

<b>* Location</b> LS : Land Side    N/A : Not Applicable WS : Water Side CR : Crown	<b>** Rating</b> A : Acceptable M : Minimally Acceptable U : Unacceptable	<b>N : Not Inspected/Rated</b> C : Corrected A/W : Acceptable but Monitor & Maintain	<b>+ Issue Type</b> Ma : Maintenance Deficiency Ob : Design & System Obsolescence En : Enforcement
--	--	--	---

**Flood Control Project Maintenance  
Levee Inspections**

**Levee Inspection Report By Mile - Fall 2014**

**Reclamation District No. 0524 Middle Roberts Island**

Waterway	Bank	Unit Miles	Inspection Start/End	Inspector
Unit No. 01 San Joaquin River	Left	6.20	10/20/2014 10/20/2014	Richard Willoughby

LM Start	3.04	Rating **	M	Issue No.	924
LM End	3.04	Issue Type +	Ma	Location *	LS
Category	Earthen Levee			GPS Latitude/Longitude	
				Start	End
Item	Animal Control			37.912163 °	37.912163 °
				-121.324702 °	-121.324702 °
DWR ID	DWR_RD0524_01_s _ 2012_924				
Action/Comments					
Repair the levee slope damaged by livestock and prevent large animal access.					

No Photos

LM Start	3.10	Rating **	M	Issue No.	925
LM End	3.12	Issue Type +	Ma	Location *	LS
Category	Earthen Levee			GPS Latitude/Longitude	
				Start	End
Item	Animal Control			37.911382 °	37.911088 °
				-121.324928 °	-121.325113 °
DWR ID	DWR_RD0524_01_s _ 2012_925				
Action/Comments					
Exterminate rodents and backfill and compact or grout burrows.					

No Photos

LM Start	3.23	Rating **	C	Issue No.	1
LM End	3.31	Issue Type +	Ma	Location *	WS
Category	Supplemental			GPS Latitude/Longitude	
				Start	End
Item	DWR Erosion Survey			37.908544 °	37.908544 °
				-121.324894 °	-121.324894 °
DWR ID					
Action/Comments					
Inspector Comments: 6/19/2014: No significant change observed. 08/13/2013: New erosion was found at the levee toe. Trees are present. 08/07/2012: The site has been repaired. Protecting riprap revetment has been placed at the levee shoulder and slope, but minor erosions are visible at the levee toe. 08/23/2011: Sloughing rip rap is visible on the site [2014 Site ID:RD0524U01RM43.83]					

No Photos

* Location LS : Land Side    N/A : Not Applicable WS : Water Side CR : Crown		** Rating A : Acceptable                      N : Not Inspected/Rated M : Minimally Acceptable        C : Corrected U : Unacceptable                  A/W : Acceptable but Monitor & Maintain		+ Issue Type Ma : Maintenance Deficiency Ob : Design & System Obsolescence En : Enforcement	
---	--	--	--	--	--



**Flood Control Project Maintenance  
Levee Inspections**

**Levee Inspection Report By Mile - Fall 2014**

**Reclamation District No. 0524 Middle Roberts Island**

Waterway	Bank	Unit Miles	Inspection Start/End	Inspector
Unit No. 01 San Joaquin River	Left	6.20	10/20/2014 10/20/2014	Richard Willoughby

LM Start	3.29	Rating **	U	Issue No.	5
LM End	3.31	Issue Type +	Ma	Location *	WS
Category	Supplemental			GPS Latitude/Longitude	
				Start	End
Item	DWR Erosion Survey			37.908090 °	37.908090 °
				-121.325090 °	-121.325090 °
DWR ID					
Action/Comments					
Inspector Comments: 6/19/2014: No significant change observed. 08/13/2013: The levee toe seems to have been protected by river rocks and vegetation on site. [2014 Site ID:RD0524U01RM43.86]					

Photo 1 of 1 : SJR2014\_RD0524U01RM43.86\_1.jpg



View from upstream of the erosion.

LM Start	3.30	Rating **	A/W	Issue No.	186
LM End	3.30	Issue Type +	Ma	Location *	WS
Category	Earthen Levee			GPS Latitude/Longitude	
				Start	End
Item	Trim / Thin Trees			37.908551 °	37.908551 °
				-121.325381 °	-121.325381 °
DWR ID	DWR_RD0524_01_s_2014_186				
Action/Comments					
Trim trees to at least five feet above ground level.					

No Photos

LM Start	3.33	Rating **	A/W	Issue No.	926
LM End	3.35	Issue Type +	Ma	Location *	LS
Category	Earthen Levee			GPS Latitude/Longitude	
				Start	End
Item	Trim / Thin Trees			37.908158 °	37.907872 °
				-121.325418 °	-121.325443 °
DWR ID	DWR_RD0524_01_s_2012_926				
Action/Comments					
Trim trees to at least five feet above ground level.					

No Photos

<b>* Location</b> LS : Land Side    N/A : Not Applicable WS : Water Side CR : Crown	<b>** Rating</b> A : Acceptable M : Minimally Acceptable U : Unacceptable	N : Not Inspected/Rated C : Corrected A/W : Acceptable but Monitor & Maintain	<b>+ Issue Type</b> Ma : Maintenance Deficiency Ob : Design & System Obsolescence En : Enforcement
--	--	---	---

**Flood Control Project Maintenance  
Levee Inspections**

**Levee Inspection Report By Mile - Fall 2014**

**Reclamation District No. 0524 Middle Roberts Island**

Waterway	Bank	Unit Miles	Inspection Start/End	Inspector
Unit No. 01 San Joaquin River	Left	6.20	10/20/2014 10/20/2014	Richard Willoughby

LM Start	3.37	Rating **	A/W	Issue No.	52
LM End	3.40	Issue Type +	Ma	Location *	LS
Category	Earthen Levee			GPS Latitude/Longitude	
				Start	End
Item	Trim / Thin Trees			37.907645 °	37.907157 °
				-121.325442 °	-121.325408 °
DWR ID	DWR_RD0524_01_s_2012_52				
Action/Comments					
Trim trees to at least five feet above ground level.					

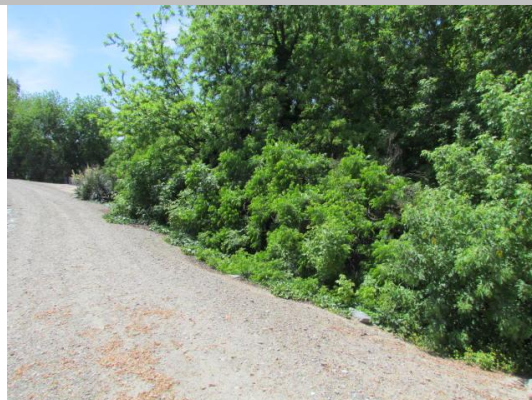
No Photos

LM Start	3.38	Rating **	U	Issue No.	156
LM End	3.38	Issue Type +	En	Location *	LS
Category	Supplemental			GPS Latitude/Longitude	
				Start	End
Item	DWR UCIP Field Study			37.907504 °	37.907504 °
				-121.325420 °	-121.325420 °
DWR ID	DWR_RD0524_01_f_2014_156				
Action/Comments					
Inspector Comments: FS_ID:18091					
EP_NO: N/A					
Repair Type: Urgent					
Crossing Status: Found					
UCIP Comments: Extensive erosion on LS toe at distribution box due to failure of box/pipe connection. Erosion on LS slope do to recently repaired leak at gate valve.					
FIELD_STRUCT_DESC: 14-inch steel irrigation pipe through the levee 7-feet below the crown, pump house on the waterward slope. Gate valve on the LS slope and a 4'X4' brick distribution box at the LS toe. Originally included in the 1964 O&M manual.					
FS Date: 8/20/2013					

No Photos

LM Start	3.38	Rating **	U	Issue No.	92
LM End	3.39	Issue Type +	En	Location *	LS
Category	Earthen Levee			GPS Latitude/Longitude	
				Start	End
Item	Vegetation			37.907407 °	37.907177 °
				-121.325435 °	-121.325392 °
DWR ID	DWR_RD0524_01_s_2012_92				
Action/Comments					
Landscaping					

Photo 1 of 1 : FA\_2014\_RD0524\_107\_92\_20141020\_00087.jpg



Looking southwest at dense landscaping on landside slope.

**\* Location**  
LS : Land Side    N/A : Not Applicable  
WS : Water Side  
CR : Crown

**\*\* Rating**  
A : Acceptable                      N : Not Inspected/Rated  
M : Minimally Acceptable        C : Corrected  
U : Unacceptable                  A/W : Acceptable but Monitor & Maintain

**+ Issue Type**  
Ma : Maintenance Deficiency  
Ob : Design & System Obsolescence  
En : Enforcement

**Flood Control Project Maintenance  
Levee Inspections**

**Levee Inspection Report By Mile - Fall 2014**

**Reclamation District No. 0524 Middle Roberts Island**

Waterway	Bank	Unit Miles	Inspection Start/End	Inspector
Unit No. 01 San Joaquin River	Left	6.20	10/20/2014 10/20/2014	Richard Willoughby

LM Start	3.39	Rating **	M	Issue No.	53
LM End	3.45	Issue Type +	Ma	Location *	WS
Category	Earthen Levee			GPS Latitude/Longitude	
				Start	End
Item	Animal Control			37.907283 °	37.906503 °
				-121.325432 °	-121.325002 °
DWR ID	DWR_RD0524_01_s_2012_53				
Action/Comments					
Exterminate rodents and backfill and compact or grout burrows.					

No Photos

LM Start	3.43	Rating **	U	Issue No.	54
LM End	3.49	Issue Type +	Ma	Location *	LS
Category	Earthen Levee			GPS Latitude/Longitude	
				Start	End
Item	Trim / Thin Trees			37.906747 °	37.906192 °
				-121.325248 °	-121.324543 °
DWR ID	DWR_RD0524_01_s_2012_54				
Action/Comments					
Trim and thin trees to allow visibility of the ground and room to flood fight.					

Photo 1 of 1 : FA\_2014\_RD0524\_107\_54\_20141020\_00065.jpg



Looking northwest at dense vegetation on landside slope.

LM Start	3.45	Rating **	M	Issue No.	56
LM End	3.45	Issue Type +	Ma	Location *	LS
Category	Earthen Levee			GPS Latitude/Longitude	
				Start	End
Item	Encroachments			37.906540 °	37.906540 °
				-121.325015 °	-121.325015 °
DWR ID	DWR_RD0524_01_s_2012_56				
Action/Comments					
Material					
Inspector Comments: Broken concrete pipes					

Photo 1 of 1 : FA\_2014\_RD0524\_107\_56\_20141020\_00067.jpg



Looking southwest at concrete pipes on landside toe.

**\* Location**

LS : Land Side    N/A : Not Applicable  
WS : Water Side  
CR : Crown

**\*\* Rating**

A : Acceptable                      N : Not Inspected/Rated  
M : Minimally Acceptable        C : Corrected  
U : Unacceptable                  A/W : Acceptable but Monitor & Maintain

**+ Issue Type**

Ma : Maintenance Deficiency  
Ob : Design & System Obsolescence  
En : Enforcement



**Flood Control Project Maintenance  
Levee Inspections**

**Levee Inspection Report By Mile - Fall 2014**

**Reclamation District No. 0524 Middle Roberts Island**

Waterway	Bank	Unit Miles	Inspection Start/End	Inspector
Unit No. 01 San Joaquin River	Left	6.20	10/20/2014 10/20/2014	Richard Willoughby

LM Start	3.47	Rating **	U	Issue No.	93
LM End	3.47	Issue Type +	Ma	Location *	LS
Category	Earthen Levee			GPS Latitude/Longitude	
				Start	End
Item	Trim / Thin Trees			37.906265 °	37.906265 °
				-121.324643 °	-121.324643 °
DWR ID	DWR_RD0524_01_s_2012_93				
Action/Comments					
Trim and thin trees to allow visibility of the ground and room to flood fight.					

Photo 1 of 1 : FA\_2014\_RD0524\_107\_93\_20141020\_00088.jpg



Looking northwest at low hanging tree branches on landside slope and toe.

LM Start	3.51	Rating **	M	Issue No.	177
LM End	3.51	Issue Type +	Ma	Location *	LS
Category	Earthen Levee			GPS Latitude/Longitude	
				Start	End
Item	Encroachments			37.905994 °	37.905994 °
				-121.324194 °	-121.324194 °
DWR ID	DWR_RD0524_01_f_2014_177				
Action/Comments					
Tree or limb					
Inspector Comments: Dead tree on landward toe.					

No Photos

LM Start	3.53	Rating **	M	Issue No.	265
LM End	3.53	Issue Type +	En	Location *	LS
Category	Earthen Levee			GPS Latitude/Longitude	
				Start	End
Item	Encroachments			37.905552 °	37.905552 °
				-121.323847 °	-121.323847 °
DWR ID	DWR_RD0524_01_s_2012_265				
Action/Comments					
Ramp					
Inspector Comments: Unauthorized ramp on landside slope.					

Photo 1 of 1 : FA\_2014\_RD0524\_107\_265\_20141020\_00146.jpg



Looking southeast at unauthorized ramp on landside slope and toe.

**\* Location**  
LS : Land Side    N/A : Not Applicable  
WS : Water Side  
CR : Crown

**\*\* Rating**  
A : Acceptable                      N : Not Inspected/Rated  
M : Minimally Acceptable        C : Corrected  
U : Unacceptable                  A/W : Acceptable but Monitor & Maintain

**+ Issue Type**  
Ma : Maintenance Deficiency  
Ob : Design & System Obsolescence  
En : Enforcement

## Levee Inspection Report By Mile - Fall 2014

Waterway	Bank	Unit Miles	Inspection Start/End	Inspector
Unit No. 01 San Joaquin River	Left	6.20	10/20/2014 10/20/2014	Richard Willoughby

Photo 1 of 1 : FA\_2014\_RD0524\_107\_57\_20141020\_00068.jpg




Looking south at dense trees on landward slope.

Photo 1 of 1 : SJR2014\_RD0524U01RM44.13\_1.jpg



View of the repaired site.

Photo 1 of 1 : FA\_2014\_RD0524\_107\_124\_20141020\_00114.jpg



Looking west at cactus on landside toe.

Page 62 of 98

**Flood Control Project Maintenance  
Levee Inspections**

**Levee Inspection Report By Mile - Fall 2014**

**Reclamation District No. 0524 Middle Roberts Island**

Waterway	Bank	Unit Miles	Inspection Start/End	Inspector
Unit No. 01 San Joaquin River	Left	6.20	10/20/2014 10/20/2014	Richard Willoughby

LM Start	3.68	Rating **	M	Issue No.	58
LM End	3.68	Issue Type +	Ma	Location *	WS
Category	Earthen Levee			GPS Latitude/Longitude	
				Start	End
Item	Slope Stability			37.904113 °	37.904113 °
				-121.325080 °	-121.325080 °
DWR ID	DWR_RD0524_01_s_2012_58				
Action/Comments					
Repair the levee slope damaged by foot traffic and prevent access where possible.					
Inspector Comments: Landowner cut steps into waterside slope.					

Photo 1 of 1 : FA\_2014\_RD0524\_107\_58\_20141020\_00069.jpg



Looking southeast steps cut into waterside slope.

LM Start	3.80	Rating **	M	Issue No.	927
LM End	3.80	Issue Type +	Ma	Location *	LS
Category	Earthen Levee			GPS Latitude/Longitude	
				Start	End
Item	Trim / Thin Trees			37.902645 °	37.902645 °
				-121.326340 °	-121.326340 °
DWR ID	DWR_RD0524_01_s_2012_927				
Action/Comments					
Trim trees to at least five feet above ground level.					

No Photos

LM Start	3.82	Rating **	M	Issue No.	59
LM End	3.82	Issue Type +	Ma	Location *	LS
Category	Earthen Levee			GPS Latitude/Longitude	
				Start	End
Item	Trim / Thin Trees			37.902417 °	37.902417 °
				-121.326482 °	-121.326482 °
DWR ID	DWR_RD0524_01_s_2012_59				
Action/Comments					
Trim trees to at least five feet above ground level.					

No Photos

<b>* Location</b> LS : Land Side    N/A : Not Applicable WS : Water Side CR : Crown	<b>** Rating</b> A : Acceptable M : Minimally Acceptable U : Unacceptable	N : Not Inspected/Rated C : Corrected A/W : Acceptable but Monitor & Maintain	<b>+ Issue Type</b> Ma : Maintenance Deficiency Ob : Design & System Obsolescence En : Enforcement
--	--	---	---



**Flood Control Project Maintenance  
Levee Inspections**

**Levee Inspection Report By Mile - Fall 2014**

**Reclamation District No. 0524 Middle Roberts Island**

Waterway	Bank	Unit Miles	Inspection Start/End	Inspector
Unit No. 01 San Joaquin River	Left	6.20	10/20/2014 10/20/2014	Richard Willoughby

LM Start	3.82	Rating **	M	Issue No.	157
LM End	3.82	Issue Type +	En	Location *	LS
Category	Supplemental			GPS Latitude/Longitude	
				Start	End
Item	DWR UCIP Field Study			37.902371 °	37.902371 °
				-121.326440 °	-121.326440 °
DWR ID	DWR_RD0524_01_f_2014_157				
Action/Comments					
Inspector Comments: FS_ID:22725					
EP_NO: N/A					
Repair Type: Non-Urgent					
Crossing Status: Found					
UCIP Comments: No permit identified for this crossing.					
FIELD_STRUCT_DESC: 8-inch steel irrigation pipe through the levee 0-					
feet below the crown. Pipe integrated into steel cattelguard style					
crossing. Slant pump and butterfly valve at concrete foundation on WS					
slope. Filter plant, vents, and butterfly valves on LS toe.					
FS Date: 8/20/2013					

No Photos

LM Start	3.82	Rating **	M	Issue No.	266
LM End	3.82	Issue Type +	En	Location *	CR
Category	Earthen Levee			GPS Latitude/Longitude	
				Start	End
Item	Encroachments			37.902365 °	37.902365 °
				-121.326453 °	-121.326453 °
DWR ID	DWR_RD0524_01_s_2012_266				
Action/Comments					
Equipment					
Inspector Comments: Landowner installed water filter piping system without permit.					

Photo 1 of 3 : FA\_2014\_RD0524\_107\_266\_20141020\_00147.jpg



Looking south at unauthorized irrigation pipe across levee and water filtration system at landside toe.

LM Start	<b>3.82</b>	Rating **	M	Issue No.	<b>266 (cont)</b>
LM End	<b>3.82</b>	Issue Type +	En	Location *	CR

Photo 2 of 3 : FA\_2014\_RD0524\_107\_266\_20141020\_00148.jpg



Looking south unauthorized pvc irrigation pipe across the levee crown.

<b>* Location</b> LS : Land Side    N/A : Not Applicable WS : Water Side CR : Crown		<b>** Rating</b> A : Acceptable M : Minimally Acceptable U : Unacceptable N : Not Inspected/Rated C : Corrected A/W : Acceptable but Monitor & Maintain		<b>+ Issue Type</b> Ma : Maintenance Deficiency Ob : Design & System Obsolescence En : Enforcement	
--	--	---	--	---	--

**Flood Control Project Maintenance  
Levee Inspections**

**Levee Inspection Report By Mile - Fall 2014**

**Reclamation District No. 0524 Middle Roberts Island**

Waterway	Bank	Unit Miles	Inspection Start/End	Inspector
Unit No. 01 San Joaquin River	Left	6.20	10/20/2014 10/20/2014	Richard Willoughby

LM Start	3.82	Rating **	M	Issue No.	266 (cont)
LM End	3.82	Issue Type +	En	Location *	CR
Category	Earthen Levee			GPS Latitude/Longitude	
				Start	End
Item	Encroachments			37.902365 °	37.902365 °
				-121.326453 °	-121.326453 °
DWR ID	DWR_RD0524_01_s_2012_266				
Action/Comments					
Equipment					
Inspector Comments: Landowner installed water filter piping system without permit.					

Photo 3 of 3 : FA\_2014\_RD0524\_107\_266\_20141020\_00149.jpg



Looking west at water filtration system on landside toe.

LM Start	3.82	Rating **	M	Issue No.	158
LM End	3.82	Issue Type +	En	Location *	CR
Category	Supplemental			GPS Latitude/Longitude	
				Start	End
Item	DWR UCIP Field Study			37.902361 °	37.902361 °
				-121.326443 °	-121.326443 °
DWR ID	DWR_RD0524_01_f_2014_158				
Action/Comments					
Inspector Comments: FS_ID:18307					
EP_NO: N/A					
Repair Type: Non-Urgent					
Crossing Status: Found					
UCIP Comments: Appears abandoned and if so should be done so properly. Evidence of severe internal corrosion in concrete distribution box at LS toe.					
FIELD_STRUCT_DESC: 12-inch concrete encased pipe through the levee 10.5 feet below the crown, pump and gate valve in pump house on the waterward slope. 6'X6' Concrete distribution box on the landward toe. Two concrete cutoff walls. Service pole at the landward toe. Originally included in the 1964 O&M manual.					
FS Date: 8/20/2013					

No Photos

<b>* Location</b> LS : Land Side    N/A : Not Applicable WS : Water Side CR : Crown	<b>** Rating</b> A : Acceptable M : Minimally Acceptable U : Unacceptable	N : Not Inspected/Rated C : Corrected A/W : Acceptable but Monitor & Maintain	<b>+ Issue Type</b> Ma : Maintenance Deficiency Ob : Design & System Obsolescence En : Enforcement
--	--	---	---

**Flood Control Project Maintenance  
Levee Inspections**

**Levee Inspection Report By Mile - Fall 2014**

**Reclamation District No. 0524 Middle Roberts Island**

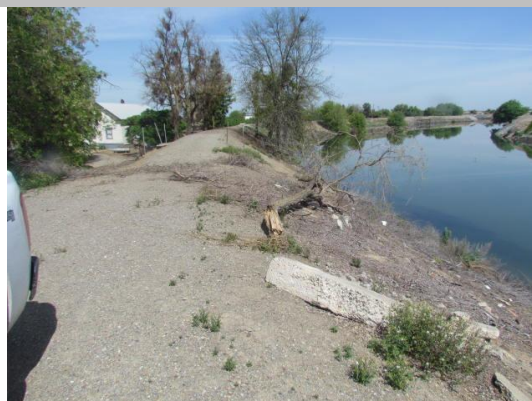
Waterway	Bank	Unit Miles	Inspection Start/End	Inspector
Unit No. 01 San Joaquin River	Left	6.20	10/20/2014 10/20/2014	Richard Willoughby

LM Start	3.84	Rating **	M	Issue No.	928
LM End	3.85	Issue Type +	Ma	Location *	LS
Category	Earthen Levee			GPS Latitude/Longitude	
				Start	End
Item	Trim / Thin Trees			37.902155 °	37.902002 °
				-121.326523 °	-121.326550 °
DWR ID	DWR_RD0524_01_s_2012_928				
Action/Comments					
Trim trees to at least five feet above ground level.					

No Photos

LM Start	3.89	Rating **	M	Issue No.	187
LM End	3.89	Issue Type +	Ma	Location *	WS
Category	Earthen Levee			GPS Latitude/Longitude	
				Start	End
Item	Encroachments			37.901447 °	37.901447 °
				-121.326500 °	-121.326500 °
DWR ID	DWR_RD0524_01_s_2014_187				
Action/Comments					
Tree or limb					
Inspector Comments: Tree limb on waterward shoulder.					

Photo 1 of 1 : FA\_2014\_RD0524\_107\_187\_20141020\_00140.jpg



Looking northeast at tree limb on waterward slope.

LM Start	3.89	Rating **	M	Issue No.	62
LM End	4.01	Issue Type +	En	Location *	LS
Category	Earthen Levee			GPS Latitude/Longitude	
				Start	End
Item	Encroachments			37.901375 °	37.899745 °
				-121.326507 °	-121.326630 °
DWR ID	DWR_RD0524_01_s_2012_62				
Action/Comments					
Equipment					

Photo 1 of 2 : FA\_2014\_RD0524\_107\_62\_20141020\_00070.jpg



Looking south at northend of equipment stored at landward slope and toe.

**\* Location**

LS : Land Side    N/A : Not Applicable  
WS : Water Side  
CR : Crown

**\*\* Rating**

A : Acceptable                      N : Not Inspected/Rated  
M : Minimally Acceptable        C : Corrected  
U : Unacceptable                  A/W : Acceptable but Monitor & Maintain

**+ Issue Type**

Ma : Maintenance Deficiency  
Ob : Design & System Obsolescence  
En : Enforcement



**Flood Control Project Maintenance  
Levee Inspections**

**Levee Inspection Report By Mile - Fall 2014**

**Reclamation District No. 0524 Middle Roberts Island**

Waterway	Bank	Unit Miles	Inspection Start/End	Inspector
Unit No. 01 San Joaquin River	Left	6.20	10/20/2014 10/20/2014	Richard Willoughby

LM Start	3.89	Rating **	M	Issue No.	62 (cont)	
LM End	4.01	Issue Type +	En	Location *	LS	
Category	Earthen Levee			GPS Latitude/Longitude		
				Start		End
Item	Encroachments			37.901375 °		37.899745 °
				-121.326507 °		-121.326630 °
DWR ID	DWR_RD0524_01_s_2012_62					
Action/Comments						
Equipment						

Photo 2 of 2 : FA\_2014\_RD0524\_107\_62\_20141020\_00071.jpg



Looking upstream at equipment on landside shoulder

LM Start	3.91	Rating **	U	Issue No.	95
LM End	3.94	Issue Type +	En	Location *	LS
Category	Earthen Levee			GPS Latitude/Longitude	
				Start	End
Item	Encroachments			37.901147 °	37.900735 °
				-121.326453 °	-121.326425 °
DWR ID	DWR_RD0524_01_f_2013_95				
Action/Comments					
Equipment					
Inspector Comments: Landowner is storing equipment on landward shoulder and landward toe.					

Photo 1 of 3 : FA\_2014\_RD0524\_107\_95\_20141020\_00090.jpg



Looking south at farm equipment stored on landward shoulder and toe.

LM Start	<b>3.91</b>	Rating **	U	Issue No.	<b>95 (cont)</b>
LM End	<b>3.94</b>	Issue Type +	En	Location *	LS

Photo 2 of 3 : FA\_2014\_RD0524\_107\_95\_20141020\_00091.jpg



Looking north at farm equipment stored on landward shoulder.

**\* Location**  
LS : Land Side    N/A : Not Applicable  
WS : Water Side  
CR : Crown

**\*\* Rating**  
A : Acceptable                      N : Not Inspected/Rated  
M : Minimally Acceptable        C : Corrected  
U : Unacceptable                  A/W : Acceptable but Monitor & Maintain

**+ Issue Type**  
Ma : Maintenance Deficiency  
Ob : Design & System Obsolescence  
En : Enforcement

**Flood Control Project Maintenance  
Levee Inspections**

**Levee Inspection Report By Mile - Fall 2014**

**Reclamation District No. 0524 Middle Roberts Island**

Waterway	Bank	Unit Miles	Inspection Start/End	Inspector
Unit No. 01 San Joaquin River	Left	6.20	10/20/2014 10/20/2014	Richard Willoughby

LM Start	3.91	Rating **	U	Issue No.	95 (cont)
LM End	3.94	Issue Type +	En	Location *	LS
Category	Earthen Levee			GPS Latitude/Longitude	
				Start	End
Item	Encroachments			37.901147 °	37.900735 °
				-121.326453 °	-121.326425 °
DWR ID	DWR_RD0524_01_f_2013_95				
Action/Comments					
Equipment					
Inspector Comments: Landowner is storing equipment on landward shoulder and landward toe.					

Photo 3 of 3 : FA\_2014\_RD0524\_107\_95\_20141020\_00092.jpg



Looking west at farm equipment stored at landward toe.

LM Start	3.92	Rating **	M	Issue No.	94
LM End	3.92	Issue Type +	Ma	Location *	WS
Category	Earthen Levee			GPS Latitude/Longitude	
				Start	End
Item	Vegetation			37.900952 °	37.900952 °
				-121.326443 °	-121.326443 °
DWR ID	DWR_RD0524_01_s_2012_94				
Action/Comments					
Remove the wild growth other than native grasses from the levee slopes.					
Inspector Comments: Remove cactus					

Photo 1 of 1 : FA\_2014\_RD0524\_107\_94\_20141020\_00089.jpg



Looking southeast at cactus on waterside slope.

LM Start	3.93	Rating **	M	Issue No.	83
LM End	3.93	Issue Type +	Ma	Location *	LS
Category	Earthen Levee			GPS Latitude/Longitude	
				Start	End
Item	Trim / Thin Trees			37.900854 °	37.900854 °
				-121.326438 °	-121.326438 °
DWR ID	DWR_RD0524_01_s_2012_83				
Action/Comments					
Trim trees to at least five feet above ground level.					

No Photos

<b>* Location</b> LS : Land Side    N/A : Not Applicable WS : Water Side CR : Crown	<b>** Rating</b> A : Acceptable M : Minimally Acceptable U : Unacceptable	N : Not Inspected/Rated C : Corrected A/W : Acceptable but Monitor & Maintain	<b>+ Issue Type</b> Ma : Maintenance Deficiency Ob : Design & System Obsolescence En : Enforcement
--	--	---	---

**Flood Control Project Maintenance  
Levee Inspections**

**Levee Inspection Report By Mile - Fall 2014**

**Reclamation District No. 0524 Middle Roberts Island**

Waterway	Bank	Unit Miles	Inspection Start/End	Inspector
Unit No. 01 San Joaquin River	Left	6.20	10/20/2014 10/20/2014	Richard Willoughby

LM Start	4.06	Rating **	U	Issue No.	101
LM End	4.06	Issue Type +	En	Location *	LS
Category	Earthen Levee			GPS Latitude/Longitude	
				Start	End
Item	Encroachments			37.899027 °	37.899027 °
				-121.326982 °	-121.326982 °
DWR ID	DWR_RD0524_01_s _ 2012_101				
Action/Comments					
Ramp Inspector Comments: Unauthorized ramp. Ramp does not meet Title 23 standard.					

Photo 1 of 1 : FA\_2014\_RD0524\_107\_101\_20141020\_00094.jpg



Looking west at unauthorized ramp on landside slope.

LM Start	4.07	Rating **	M	Issue No.	61
LM End	4.07	Issue Type +	Ma	Location *	LS
Category	Earthen Levee			GPS Latitude/Longitude	
				Start	End
Item	Trim / Thin Trees			37.898925 °	37.898925 °
				-121.327015 °	-121.327015 °
DWR ID	DWR_RD0524_01_s _ 2012_61				
Action/Comments					
Trim trees to at least five feet above ground level.					

No Photos

**\* Location**  
 LS : Land Side    N/A : Not Applicable  
 WS : Water Side  
 CR : Crown

**\*\* Rating**  
 A : Acceptable                      N : Not Inspected/Rated  
 M : Minimally Acceptable        C : Corrected  
 U : Unacceptable                  A/W : Acceptable but Monitor & Maintain

**+ Issue Type**  
 Ma : Maintenance Deficiency  
 Ob : Design & System Obsolescence  
 En : Enforcement



**Flood Control Project Maintenance  
Levee Inspections**

**Levee Inspection Report By Mile - Fall 2014**

**Reclamation District No. 0524 Middle Roberts Island**

Waterway	Bank	Unit Miles	Inspection Start/End	Inspector
Unit No. 01 San Joaquin River	Left	6.20	10/20/2014 10/20/2014	Richard Willoughby

LM Start	4.07	Rating **	M	Issue No.	159
LM End	4.07	Issue Type +	En	Location *	LS
Category	Supplemental			GPS Latitude/Longitude	
				Start	End
Item	DWR UCIP Field Study			37.898853 °	37.898853 °
				-121.327049 °	-121.327049 °
DWR ID	DWR_RD0524_01_f_2014_159				
Action/Comments					
Inspector Comments: FS_ID:18314					
EP_NO: N/A					
Repair Type: Non-Urgent					
Crossing Status: Found					
UCIP Comments: Appears abandoned and if so should be done so properly.					
FIELD_STRUCT_DESC: 8-inch concrete encased pipe through the levee 9.5-feet below crown, pump and gate valve in pump house on the waterward slope. Slide gate in 42-inch corrugated metal pipe riser on the waterward slope. Brick standpipe at the toe of the landward slope. 1.5-inch galvanized iron electrical conduit through the levee 3-feet below the crown at the same location. Originally included in the 1964 O&M manual.					
FS Date: 8/20/2013					

No Photos

LM Start	4.08	Rating **	M	Issue No.	64
LM End	4.13	Issue Type +	Ma	Location *	LS
Category	Earthen Levee			GPS Latitude/Longitude	
				Start	End
Item	Animal Control			37.898832 °	37.898090 °
				-121.327092 °	-121.327457 °
DWR ID	DWR_RD0524_01_s_2012_64				
Action/Comments					
No rodents visible, but rodent burrows visible; need to backfill and compact or grout burrows.					

No Photos

<b>* Location</b> LS : Land Side    N/A : Not Applicable WS : Water Side CR : Crown	<b>** Rating</b> A : Acceptable M : Minimally Acceptable U : Unacceptable	N : Not Inspected/Rated C : Corrected A/W : Acceptable but Monitor & Maintain	<b>+ Issue Type</b> Ma : Maintenance Deficiency Ob : Design & System Obsolescence En : Enforcement
--	--	---	---

## Levee Inspection Report By Mile - Fall 2014

Waterway	Bank	Unit Miles	Inspection Start/End	Inspector
Unit No. 01 San Joaquin River	Left	6.20	10/20/2014 10/20/2014	Richard Willoughby

Photo 1 of 1 : FA\_2014\_RD0524\_107\_108\_20141020\_00099.jpg



Looking southwest at caving slope on landside of levee.

Photo 1 of 1 : FA\_2014\_RD0524\_107\_110\_20141020\_00104.jpg



Looking southwest at an unauthorized ramp on landside slope.

Photo 1 of 5 : FA\_2014\_RD0524\_107\_109\_20141023\_00211.jpg



Looking east at repaired pipe on waterward slope.

* Location	** Rating	+ Issue Type
LS : Land Side    N/A : Not Applicable	A : Acceptable                      N : Not Inspected/Rated	Ma : Maintenance Deficiency
WS : Water Side	M : Minimally Acceptable        C : Corrected	Ob : Design & System Obsolescence
CR : Crown	U : Unacceptable                  A/W : Acceptable but Monitor & Maintain	En : Enforcement

**Flood Control Project Maintenance  
Levee Inspections**

**Levee Inspection Report By Mile - Fall 2014**

**Reclamation District No. 0524 Middle Roberts Island**

Waterway	Bank	Unit Miles	Inspection Start/End	Inspector
Unit No. 01 San Joaquin River	Left	6.20	10/20/2014 10/20/2014	Richard Willoughby

LM Start	4.19	Rating **	A/W	Issue No.	109 (cont)
LM End	4.19	Issue Type +	Ma	Location *	WS
Category	Interior Drainage & Piping Systems			GPS Latitude/Longitude	
				Start	End
Item	Metal Pipes			37.897113 °	37.897113 °
				-121.327895 °	-121.327895 °
DWR ID	DWR_RD0524_01_s_2012_109				
Action/Comments					
Inspector Comments: Landowner has temporarily repaired pipe with tape. Pipe should be repaired to stop further damage to the levee. Landowner repaired steel pipe, but pvc piping is still causing damage to waterward slope.					

LM Start	<b>4.19</b>	Rating **	A/W	Issue No.	<b>109 (cont)</b>
LM End	<b>4.19</b>	Issue Type +	Ma	Location *	WS

Photo 2 of 5 : FA\_2014\_RD0524\_107\_109\_20141020\_00100.jpg



Looking east at damaged pipe on waterside slope. (Spring 2012)

Photo 3 of 5 : FA\_2014\_RD0524\_107\_109\_20141020\_00101.jpg



Looking northeast at overview of irrigation system on waterside slope.

Photo 4 of 5 : FA\_2014\_RD0524\_107\_109\_20141020\_00102.jpg



Looking east at irrigation system on waterside slope.

LM Start	<b>4.19</b>	Rating **	A/W	Issue No.	<b>109 (cont)</b>
LM End	<b>4.19</b>	Issue Type +	Ma	Location *	WS

<b>* Location</b> LS : Land Side    N/A : Not Applicable WS : Water Side CR : Crown		<b>** Rating</b> A : Acceptable M : Minimally Acceptable U : Unacceptable N : Not Inspected/Rated C : Corrected A/W : Acceptable but Monitor & Maintain		<b>+ Issue Type</b> Ma : Maintenance Deficiency Ob : Design & System Obsolescence En : Enforcement	
--	--	---	--	---	--



**Flood Control Project Maintenance  
Levee Inspections**

**Levee Inspection Report By Mile - Fall 2014**

**Reclamation District No. 0524 Middle Roberts Island**

Waterway	Bank	Unit Miles	Inspection Start/End	Inspector
Unit No. 01 San Joaquin River	Left	6.20	10/20/2014 10/20/2014	Richard Willoughby

LM Start	4.19	Rating **	A/W	Issue No.	109 (cont)
LM End	4.19	Issue Type +	Ma	Location *	WS
Category	Interior Drainage & Piping Systems			GPS Latitude/Longitude	
				Start	End
Item	Metal Pipes			37.897113 °	37.897113 °
				-121.327895 °	-121.327895 °
DWR ID	DWR_RD0524_01_s_2012_109				
Action/Comments					
Inspector Comments: Landowner has temporarily repaired pipe with tape. Pipe should be repaired to stop further damage to the levee. Landowner repaired steel pipe, but pvc piping is still causing damage to waterward slope.					

Photo 5 of 5 : FA\_2014\_RD0524\_107\_109\_20141020\_00103.jpg



Looking east at irrigation system damaging waterside toe.

LM Start	4.20	Rating **	M	Issue No.	160
LM End	4.20	Issue Type +	En	Location *	WS
Category	Supplemental			GPS Latitude/Longitude	
				Start	End
Item	DWR UCIP Field Study			37.897118 °	37.897118 °
				-121.327910 °	-121.327910 °
DWR ID	DWR_RD0524_01_f_2014_160				
Action/Comments					
Inspector Comments: FS_ID:18318					
EP_NO: N/A					
Repair Type: Non-Urgent					
Crossing Status: Found					
UCIP Comments: Small leak on WS slope causing minor erosion on WS slope.					
FIELD_STRUCT_DESC: 12-inch steel irrigation pipe through the levee 4.5 feet below the crown, pumphouse and gate valve on the waterward slope. 36-inch concrete standpipe, power pole, and meter on LS toe. Originally included in the 1964 O&M manual.					
FS Date: 8/23/2013					

No Photos

<b>* Location</b> LS : Land Side    N/A : Not Applicable WS : Water Side CR : Crown	<b>** Rating</b> A : Acceptable M : Minimally Acceptable U : Unacceptable N : Not Inspected/Rated C : Corrected A/W : Acceptable but Monitor & Maintain	<b>+ Issue Type</b> Ma : Maintenance Deficiency Ob : Design & System Obsolescence En : Enforcement
--	---	---

**Flood Control Project Maintenance  
Levee Inspections**

**Levee Inspection Report By Mile - Fall 2014**

**Reclamation District No. 0524 Middle Roberts Island**

Waterway	Bank	Unit Miles	Inspection Start/End	Inspector
Unit No. 01 San Joaquin River	Left	6.20	10/20/2014 10/20/2014	Richard Willoughby

LM Start	4.21	Rating **	M	Issue No.	161
LM End	4.21	Issue Type +	En	Location *	WS
Category	Supplemental			GPS Latitude/Longitude	
				Start	End
Item	DWR UCIP Field Study			37.897074 °	37.897074 °
				-121.327926 °	-121.327926 °
DWR ID	DWR_RD0524_01_f_2014_161				
Action/Comments					
Inspector Comments: FS_ID:22069					
EP_NO: N/A					
Repair Type: Non-Urgent					
Crossing Status: Found					
UCIP Comments: No permit identified for this crossing.					
FIELD_STRUCT_DESC: 2.25-inch PVC domestic water service					
through the levee 5-feet below the crown. Pump and tank on WS slope					
with a vent on the LS slope.					
FS Date: 8/23/2013					

No Photos

LM Start	4.40	Rating **	M	Issue No.	65
LM End	4.56	Issue Type +	Ma	Location *	LS
Category	Earthen Levee			GPS Latitude/Longitude	
				Start	End
Item	Animal Control			37.894587 °	37.892493 °
				-121.329253 °	-121.328267 °
DWR ID	DWR_RD0524_01_s_2012_65				
Action/Comments					
No rodents visible, but rodent burrows visible; need to backfill and compact or grout burrows.					

No Photos

LM Start	4.41	Rating **	M	Issue No.	162
LM End	4.41	Issue Type +	En	Location *	LS
Category	Supplemental			GPS Latitude/Longitude	
				Start	End
Item	DWR UCIP Field Study			37.894453 °	37.894453 °
				-121.329232 °	-121.329232 °
DWR ID	DWR_RD0524_01_f_2014_162				
Action/Comments					
Inspector Comments: FS_ID:18320					
EP_NO: N/A					
Repair Type: Non-Urgent					
Crossing Status: Found					
UCIP Comments: Small leak in pipe on LS slope and pipe slightly crushed on LS toe.					
FIELD_STRUCT_DESC: 9-inch steel stormdrain pipe through the levee 3.0 feet below the crown, pump in drain ditch on the landward side.					
Siphon breaker on the waterward slope. Originally included in the 1964 O&M manual.					
FS Date: 8/23/2013					

No Photos

<b>* Location</b> LS : Land Side    N/A : Not Applicable WS : Water Side CR : Crown	<b>** Rating</b> A : Acceptable M : Minimally Acceptable U : Unacceptable	<b>+ Issue Type</b> Ma : Maintenance Deficiency Ob : Design & System Obsolescence En : Enforcement
--	--	---

N : Not Inspected/Rated  
C : Corrected  
A/W : Acceptable but Monitor & Maintain

**Flood Control Project Maintenance  
Levee Inspections**

**Levee Inspection Report By Mile - Fall 2014**

**Reclamation District No. 0524 Middle Roberts Island**

Waterway	Bank	Unit Miles	Inspection Start/End	Inspector
Unit No. 01 San Joaquin River	Left	6.20	10/20/2014 10/20/2014	Richard Willoughby

LM Start	4.42	Rating **	M	Issue No.	111
LM End	4.42	Issue Type +	En	Location *	LS
Category	Earthen Levee			GPS Latitude/Longitude	
				Start	End
Item	Encroachments			37.894258 °	37.894258 °
				-121.329247 °	-121.329247 °
DWR ID	DWR_RD0524_01_s_2012_111				
Action/Comments					
Tree or limb Inspector Comments: Dead tree at landside toe should be removed from levee toe.					

Photo 1 of 1 : FA\_2014\_RD0524\_107\_111\_20141020\_00105.jpg



Looking west at dead tree at landside toe.

LM Start	4.44	Rating **	M	Issue No.	112
LM End	4.58	Issue Type +	Ma	Location *	LS
Category	Earthen Levee			GPS Latitude/Longitude	
				Start	End
Item	Trim / Thin Trees			37.893928 °	37.892230 °
				-121.329203 °	-121.328187 °
DWR ID	DWR_RD0524_01_s_2012_112				
Action/Comments					
Trim trees to at least five feet above ground level.					

No Photos

LM Start	4.53	Rating **	U	Issue No.	79
LM End	4.54	Issue Type +	Ma	Location *	WS
Category	Supplemental			GPS Latitude/Longitude	
				Start	End
Item	DWR Erosion Survey			37.892230 °	37.892230 °
				-121.327930 °	-121.327930 °
DWR ID					
Action/Comments					
Inspector Comments: 6/19/2014: No significant change observed. 08/13/2013: No significant change observed. 08/07/2012: The erosion is located at the inside of a river bend. Site is covered with broken concrete blocks and other debris. [2014 Site ID:RD0524U01RM45.07]					

Photo 1 of 1 : SJR2014\_RD0524U01RM45.07\_1.jpg



Downstream view of the erosion site.

<b>* Location</b> LS : Land Side    N/A : Not Applicable WS : Water Side CR : Crown	<b>** Rating</b> A : Acceptable M : Minimally Acceptable U : Unacceptable	N : Not Inspected/Rated C : Corrected A/W : Acceptable but Monitor & Maintain	<b>+ Issue Type</b> Ma : Maintenance Deficiency Ob : Design & System Obsolescence En : Enforcement
--	--	---	---



## Levee Inspection Report By Mile - Fall 2014

Waterway	Bank	Unit Miles	Inspection Start/End	Inspector
Unit No. 01 San Joaquin River	Left	6.20	10/20/2014 10/20/2014	Richard Willoughby

LM Start	4.57	Rating **	M	Issue No.	102
LM End	4.57	Issue Type +	En	Location *	WS
Category	Earthen Levee			GPS Latitude/Longitude	
				Start	End
Item	Encroachments			37.892368 °	37.892368 °
				-121.328200 °	-121.328200 °
DWR ID	DWR_RD0524_01_s_2012_102				
Action/Comments					
Prunings					

A large, tangled pile of bare, brown branches and brushwood dominates the foreground and middle ground. The branches are thin and leafless, creating a complex, chaotic web. They are situated on a light-colored, sandy or silty bank. To the left of the brush, a calm body of water is visible, reflecting the overcast sky. In the background, a flat, open landscape stretches out, featuring a line of trees and several tall, thin utility poles under a grey, cloudy sky. The overall scene suggests a natural, perhaps disturbed, environment near a water body.

LM Start	<b>4.64</b>	Rating **	M	Issue No.	<b>66</b>					
LM End	<b>4.64</b>	Issue Type +	Ma	Location *	LS					
Category	Earthen Levee			GPS Latitude/Longitude						
				Start	End					
Item	Encroachments			37.891365 °	37.891365 °					
				-121.328633 °	-121.328633 °					
DWR ID	DWR_RD0524_01_s_2012_66									
Action/Comments										
Garbage										

LM Start	<b>4.65</b>	Rating **	M	Issue No.	<b>63</b>					
LM End	<b>4.65</b>	Issue Type +	Ma	Location *	LS					
Category	Earthen Levee			GPS Latitude/Longitude						
				Start	End					
Item	Trim / Thin Trees			37.891285 °	37.891285 °					
				-121.328728 °	-121.328728 °					
DWR ID	DWR_RD0524_01_s_2012_63									
Action/Comments										
Trim trees to at least five feet above ground level.										

A gravel path leads from the foreground towards a pond. On the right side of the path, there are large, lush green trees. In the background, a small bridge crosses the pond, and some buildings are visible on the far shore under a clear blue sky.

* Location	** Rating	+ Issue Type
LS : Land Side    N/A : Not Applicable	A : Acceptable                      N : Not Inspected/Rated	Ma : Maintenance Deficiency
WS : Water Side	M : Minimally Acceptable        C : Corrected	Ob : Design & System Obsolescence
CR : Crown	U : Unacceptable                  A/W : Acceptable but Monitor & Maintain	En : Enforcement

**Flood Control Project Maintenance  
Levee Inspections**

**Levee Inspection Report By Mile - Fall 2014**

**Reclamation District No. 0524 Middle Roberts Island**

Waterway	Bank	Unit Miles	Inspection Start/End	Inspector
Unit No. 01 San Joaquin River	Left	6.20	10/20/2014 10/20/2014	Richard Willoughby

LM Start	4.67	Rating **	A/W	Issue No.	113
LM End	4.67	Issue Type +	Ma	Location *	LS
Category	Earthen Levee			GPS Latitude/Longitude	
				Start	End
Item	Trim / Thin Trees			37.890973 °	37.890973 °
				-121.328970 °	-121.328970 °
DWR ID	DWR_RD0524_01_s_2012_113				
Action/Comments					
Trim trees to at least five feet above ground level.					

Photo 1 of 1 : FA\_2014\_RD0524\_107\_113\_20141020\_00106.jpg



Looking north at dense trees on landside slope.

LM Start	4.71	Rating **	C	Issue No.	90
LM End	4.71	Issue Type +	Ma	Location *	WS
Category	Supplemental			GPS Latitude/Longitude	
				Start	End
Item	DWR Erosion Survey			37.889809 °	37.889809 °
				-121.329342 °	-121.329342 °
DWR ID					
Action/Comments					
Inspector Comments: 6/19/2014: The erosion was repaired. 08/13/2013: No significant change observed. 08/07/2012: The site has been visited by boat survey. No significant change observed 08/23/2011: Cracking erosion along the levee bank. Erosion appears to be caused by river flows. [2014 Site ID:RD0524U01RM45.27]					

No Photos

LM Start	4.73	Rating **	M	Issue No.	163
LM End	4.73	Issue Type +	En	Location *	WS
Category	Supplemental			GPS Latitude/Longitude	
				Start	End
Item	DWR UCIP Field Study			37.890313 °	37.890313 °
				-121.329405 °	-121.329405 °
DWR ID	DWR_RD0524_01_f_2014_163				
Action/Comments					
Inspector Comments: FS_ID:18323					
EP_NO: 0					
Repair Type: Non-Urgent					
Crossing Status: Found					
UCIP Comments: Good candidate for video inspection as brick and mortar deteriorating inside tunnel.					
FIELD_STRUCT_DESC: 22-inch concrete pipe through the levee 12.0 feet below the crown. Pump on pier at WS toe. 16-inch pipe from pump discharges into a concrete riser inside the pumphouse on the WS shoulder. Brick and mortar channel on LS toe. Originally included in the 1964 O&M manual.					
FS Date: 8/23/2013					

No Photos

<b>* Location</b> LS : Land Side    N/A : Not Applicable WS : Water Side CR : Crown	<b>** Rating</b> A : Acceptable M : Minimally Acceptable U : Unacceptable	<b>N : Not Inspected/Rated</b> C : Corrected A/W : Acceptable but Monitor & Maintain	<b>+ Issue Type</b> Ma : Maintenance Deficiency Ob : Design & System Obsolescence En : Enforcement
--	--	--	---

**Flood Control Project Maintenance  
Levee Inspections**

**Levee Inspection Report By Mile - Fall 2014**

**Reclamation District No. 0524 Middle Roberts Island**

Waterway	Bank	Unit Miles	Inspection Start/End	Inspector
Unit No. 01 San Joaquin River	Left	6.20	10/20/2014 10/20/2014	Richard Willoughby

LM Start	4.74	Rating **	A/W	Issue No.	67
LM End	4.74	Issue Type +	Ma	Location *	LS
Category	Earthen Levee			GPS Latitude/Longitude	
				Start	End
Item	Trim / Thin Trees			37.890108 °	37.890108 °
				-121.329523 °	-121.329523 °
DWR ID	DWR_RD0524_01_s_2012_67				
Action/Comments					
Trim trees to at least five feet above ground level.					
Inspector Comments: Fig tree at landside toe.					

No Photos

LM Start	4.94	Rating **	M	Issue No.	164
LM End	4.94	Issue Type +	En	Location *	LS
Category	Supplemental			GPS Latitude/Longitude	
				Start	End
Item	DWR UCIP Field Study			37.887694 °	37.887694 °
				-121.331019 °	-121.331019 °
DWR ID	DWR_RD0524_01_f_2014_164				
Action/Comments					
Inspector Comments: FS_ID:22728					
EP_NO: 3817					
Repair Type: Non-Urgent					
Crossing Status: Found					
UCIP Comments: Appears abandoned and if so should be done so properly.					
FIELD_STRUCT_DESC: 6-inch steel pipe through the levee 3.0 feet below the crown, pump 120-feet off the LS toe. Siphon breaker in 24-inch CMP on the waterward shoulder (Permit No. 3817) Originally included in the 1964 O&M manual.					
FS Date: 8/23/2013					

No Photos

LM Start	4.98	Rating **	M	Issue No.	84
LM End	4.98	Issue Type +	Ma	Location *	LS
Category	Earthen Levee			GPS Latitude/Longitude	
				Start	End
Item	Trim / Thin Trees			37.887277 °	37.887277 °
				-121.331609 °	-121.331609 °
DWR ID	DWR_RD0524_01_s_2012_84				
Action/Comments					
Trim trees to at least five feet above ground level.					

No Photos

<b>* Location</b> LS : Land Side    N/A : Not Applicable WS : Water Side CR : Crown	<b>** Rating</b> A : Acceptable M : Minimally Acceptable U : Unacceptable	N : Not Inspected/Rated C : Corrected A/W : Acceptable but Monitor & Maintain	<b>+ Issue Type</b> Ma : Maintenance Deficiency Ob : Design & System Obsolescence En : Enforcement
--	--	---	---



**Flood Control Project Maintenance  
Levee Inspections**

**Levee Inspection Report By Mile - Fall 2014**

**Reclamation District No. 0524 Middle Roberts Island**

Waterway	Bank	Unit Miles	Inspection Start/End	Inspector
Unit No. 01 San Joaquin River	Left	6.20	10/20/2014 10/20/2014	Richard Willoughby

LM Start	5.01	Rating **	M	Issue No.	114
LM End	5.03	Issue Type +	Ma	Location *	LS
Category	Earthen Levee			GPS Latitude/Longitude	
				Start	End
Item	Vegetation			37.886907 °	37.886673 °
				-121.331862 °	-121.331965 °
DWR ID	DWR_RD0524_01_s_2012_114				
Action/Comments					
Elderberries are blocking visibility and flood fight capability.					

No Photos

LM Start	5.10	Rating **	M	Issue No.	71
LM End	5.12	Issue Type +	Ma	Location *	LS
Category	Earthen Levee			GPS Latitude/Longitude	
				Start	End
Item	Trim / Thin Trees			37.885613 °	37.885286 °
				-121.332139 °	-121.332167 °
DWR ID	DWR_RD0524_01_s_2012_71				
Action/Comments					
Trim trees to at least five feet above ground level.					

No Photos

LM Start	5.11	Rating **	U	Issue No.	68
LM End	5.11	Issue Type +	Ma	Location *	LS
Category	Earthen Levee			GPS Latitude/Longitude	
				Start	End
Item	Trim / Thin Trees			37.885400 °	37.885400 °
				-121.332153 °	-121.332153 °
DWR ID	DWR_RD0524_01_s_2012_68				
Action/Comments					
Trim trees over roadway to at least 12 feet above ground level.					

Photo 1 of 1 : FA\_2014\_RD0524\_107\_68\_20141020\_00074.jpg



Looking south at overhanging trees.

**\* Location**  
 LS : Land Side    N/A : Not Applicable  
 WS : Water Side  
 CR : Crown

**\*\* Rating**  
 A : Acceptable                      N : Not Inspected/Rated  
 M : Minimally Acceptable        C : Corrected  
 U : Unacceptable                  A/W : Acceptable but Monitor & Maintain

**+ Issue Type**  
 Ma : Maintenance Deficiency  
 Ob : Design & System Obsolescence  
 En : Enforcement

## Levee Inspection Report By Mile - Fall 2014

Waterway	Bank	Unit Miles	Inspection Start/End	Inspector
Unit No. 01 San Joaquin River	Left	6.20	10/20/2014 10/20/2014	Richard Willoughby

No Photos

No Photos

Photo 1 of 1 : FA\_2014\_RD0524\_107\_115\_20141020\_00107.jpg



Looking northwest at slope damage on landward slope.

* Location	** Rating	+ Issue Type
LS : Land Side    N/A : Not Applicable	A : Acceptable                      N : Not Inspected/Rated	Ma : Maintenance Deficiency
WS : Water Side	M : Minimally Acceptable        C : Corrected	Ob : Design & System Obsolescence
CR : Crown	U : Unacceptable                  A/W : Acceptable but Monitor & Maintain	En : Enforcement

**Flood Control Project Maintenance  
Levee Inspections**

**Levee Inspection Report By Mile - Fall 2014**

**Reclamation District No. 0524 Middle Roberts Island**

Waterway	Bank	Unit Miles	Inspection Start/End	Inspector
Unit No. 01 San Joaquin River	Left	6.20	10/20/2014 10/20/2014	Richard Willoughby

LM Start	5.26	Rating **	M	Issue No.	116
LM End	5.26	Issue Type +	Ma	Location *	WS
Category	Earthen Levee			GPS Latitude/Longitude	
				Start	End
Item	Encroachments			37.883170 °	37.883170 °
				-121.332227 °	-121.332227 °
DWR ID	DWR_RD0524_01_s _ 2012_116				
Action/Comments					
Tree or limb					
Inspector Comments: Dead tree limbs on waterside slope.					

No Photos

LM Start	5.32	Rating **	M	Issue No.	85
LM End	5.38	Issue Type +	Ma	Location *	LS
Category	Earthen Levee			GPS Latitude/Longitude	
				Start	End
Item	Trim / Thin Trees			37.882377 °	37.881498 °
				-121.332598 °	-121.332800 °
DWR ID	DWR_RD0524_01_s _ 2012_85				
Action/Comments					
Trim trees to at least five feet above ground level.					

No Photos

LM Start	5.43	Rating **	M	Issue No.	932
LM End	5.46	Issue Type +	Ma	Location *	LS
Category	Earthen Levee			GPS Latitude/Longitude	
				Start	End
Item	Trim / Thin Trees			37.880945 °	37.880522 °
				-121.332837 °	-121.332918 °
DWR ID	DWR_RD0524_01_s _ 2012_932				
Action/Comments					
Trim trees to at least five feet above ground level.					

No Photos

**\* Location**  
LS : Land Side    N/A : Not Applicable  
WS : Water Side  
CR : Crown

**\*\* Rating**  
A : Acceptable                      N : Not Inspected/Rated  
M : Minimally Acceptable        C : Corrected  
U : Unacceptable                  A/W : Acceptable but Monitor & Maintain

**+ Issue Type**  
Ma : Maintenance Deficiency  
Ob : Design & System Obsolescence  
En : Enforcement



**Flood Control Project Maintenance  
Levee Inspections**

**Levee Inspection Report By Mile - Fall 2014**

**Reclamation District No. 0524 Middle Roberts Island**

Waterway	Bank	Unit Miles	Inspection Start/End	Inspector
Unit No. 01 San Joaquin River	Left	6.20	10/20/2014 10/20/2014	Richard Willoughby

LM Start	5.43	Rating **	U	Issue No.	125
LM End	5.43	Issue Type +	Ma	Location *	WS
Category	Supplemental			GPS Latitude/Longitude	
				Start	End
Item	DWR Erosion Survey			37.880320 °	37.880320 °
				-121.333266 °	-121.333266 °
DWR ID					
Action/Comments					
Inspector Comments: 6/19/2014: No significant change observed. 08/13/2013: The erosion seems to be getting worse. More material sloughing visible. 08/07/2012: The erosion is underneath an irrigation pipe. The likely cause of the erosion is the pipe leakage. [2014 Site ID:RD0524U01RM45.97]					

Photo 1 of 1 : SJR2014\_RD0524U01RM45.97\_1.jpg



Close view of the erosion and the pipe.

LM Start	5.44	Rating **	M	Issue No.	178
LM End	5.44	Issue Type +	Ma	Location *	N/A
Category	Earthen Levee			GPS Latitude/Longitude	
				Start	End
Item	Encroachments			37.880806 °	37.880806 °
				-121.332833 °	-121.332833 °
DWR ID	DWR_RD0524_01_f_2014_178				
Action/Comments					
Tree or limb					
Inspector Comments: Downed tree on landward toe.					

Photo 1 of 1 : FA\_2014\_RD0524\_107\_178\_20141023\_00212.jpg



Looking south at downed tree on landward slope.

LM Start	5.46	Rating **	U	Issue No.	165
LM End	5.46	Issue Type +	En	Location *	N/A
Category	Supplemental			GPS Latitude/Longitude	
				Start	End
Item	DWR UCIP Field Study			37.880584 °	37.880584 °
				-121.332901 °	-121.332901 °
DWR ID	DWR_RD0524_01_f_2014_165				
Action/Comments					
Inspector Comments: FS_ID:18345					
EP_NO: N/A					
Repair Type: Urgent					
Crossing Status: Found					
UCIP Comments: flap gate damage and does not work at WS toe.					
Large hole in pipe at WS toe. Pipe appears abandoned and should be done so properly.					
FIELD_STRUCT_DESC: 1 of 2: 12-inch pipe through the levee 6.0-feet below the crown, pump missing from the landward side. Flap gate on the waterward end. Originally included in the 1964 O&M manual.					
FS Date: 8/23/2013					

No Photos

<b>* Location</b> LS : Land Side    N/A : Not Applicable WS : Water Side CR : Crown		<b>** Rating</b> A : Acceptable M : Minimally Acceptable U : Unacceptable N : Not Inspected/Rated C : Corrected A/W : Acceptable but Monitor & Maintain		<b>+ Issue Type</b> Ma : Maintenance Deficiency Ob : Design & System Obsolescence En : Enforcement	
--	--	---	--	---	--

**Flood Control Project Maintenance  
Levee Inspections**

**Levee Inspection Report By Mile - Fall 2014**

**Reclamation District No. 0524 Middle Roberts Island**

Waterway	Bank	Unit Miles	Inspection Start/End	Inspector
Unit No. 01 San Joaquin River	Left	6.20	10/20/2014 10/20/2014	Richard Willoughby

LM Start	5.46	Rating **	A/W	Issue No.	931
LM End	5.46	Issue Type +	Ma	Location *	LS
Category	Earthen Levee			GPS Latitude/Longitude	
				Start	End
Item	Animal Control			37.880575 °	37.880575 °
				-121.332890 °	-121.332890 °
DWR ID	DWR_RD0524_01_s_2012_931				
Action/Comments					
Exterminate rodents and backfill and compact or grout burrows. Inspector Comments: LMA grouted rodent holes.					

Photo 1 of 2 : FA\_2014\_RD0524\_107\_931\_20141023\_00213.jpg



Looking north at typical view of grouted rodent holes on landward shoulder and slope.

LM Start	<b>5.46</b>	Rating **	A/W	Issue No.	<b>931 (cont)</b>
LM End	<b>5.46</b>	Issue Type +	Ma	Location *	LS

Photo 2 of 2 : FA\_2014\_RD0524\_107\_931\_20141023\_00214.jpg



Looking north at typical view of grouted rodent holes on waterward slope.

LM Start	5.47	Rating **	M	Issue No.	166
LM End	5.47	Issue Type +	En	Location *	LS
Category	Supplemental			GPS Latitude/Longitude	
				Start	End
Item	DWR UCIP Field Study			37.880358 °	37.880358 °
				-121.332972 °	-121.332972 °
DWR ID	DWR_RD0524_01_f_2014_166				
Action/Comments					
Inspector Comments: FS_ID:18348					
EP_NO: N/A					
Repair Type: Non-Urgent					
Crossing Status: Found					
UCIP Comments: Recent work being done on WS slope. Pipe may still be in use.					

No Photos

<b>* Location</b> LS : Land Side    N/A : Not Applicable WS : Water Side CR : Crown	<b>** Rating</b> A : Acceptable M : Minimally Acceptable U : Unacceptable	<b>N : Not Inspected/Rated</b> C : Corrected A/W : Acceptable but Monitor & Maintain	<b>+ Issue Type</b> Ma : Maintenance Deficiency Ob : Design & System Obsolescence En : Enforcement
--	--	--	---

**Flood Control Project Maintenance  
Levee Inspections**

**Levee Inspection Report By Mile - Fall 2014**

**Reclamation District No. 0524 Middle Roberts Island**

Waterway	Bank	Unit Miles	Inspection Start/End	Inspector
Unit No. 01 San Joaquin River	Left	6.20	10/20/2014 10/20/2014	Richard Willoughby

LM Start	5.47	Rating **	M	Issue No.	118
LM End	5.47	Issue Type +	Ma	Location *	LS
Category	Earthen Levee			GPS Latitude/Longitude	
				Start	End
Item	Slope Stability			37.880323 °	37.880323 °
				-121.332968 °	-121.332968 °
DWR ID	DWR_RD0524_01_s_2012_118				
Action/Comments					
Repair slope instability.					
Inspector Comments: Slope damage caused by human activity.					

Photo 1 of 3 : FA\_2014\_RD0524\_107\_118\_20141020\_00108.jpg



Looking west at slope damage on landside slope.

LM Start	<b>5.47</b>	Rating **	M	Issue No.	<b>118 (cont)</b>
LM End	<b>5.47</b>	Issue Type +	Ma	Location *	LS

Photo 2 of 3 : FA\_2014\_RD0524\_107\_118\_20141020\_00109.jpg



Looking southeast at damaged slope.

LM Start	<b>5.47</b>	Rating **	M	Issue No.	<b>118 (cont)</b>
LM End	<b>5.47</b>	Issue Type +	Ma	Location *	LS

Photo 3 of 3 : FA\_2014\_RD0524\_107\_118\_20141020\_00110.jpg



Looking east at slope caving on landside slope.

**\* Location**

LS : Land Side    N/A : Not Applicable  
WS : Water Side  
CR : Crown

**\*\* Rating**

A : Acceptable                      N : Not Inspected/Rated  
M : Minimally Acceptable        C : Corrected  
U : Unacceptable                  A/W : Acceptable but Monitor & Maintain

**+ Issue Type**

Ma : Maintenance Deficiency  
Ob : Design & System Obsolescence  
En : Enforcement



**Flood Control Project Maintenance  
Levee Inspections**

**Levee Inspection Report By Mile - Fall 2014**

**Reclamation District No. 0524 Middle Roberts Island**

Waterway	Bank	Unit Miles	Inspection Start/End	Inspector
Unit No. 01 San Joaquin River	Left	6.20	10/20/2014 10/20/2014	Richard Willoughby

LM Start	5.48	Rating **	M	Issue No.	73
LM End	5.48	Issue Type +	Ma	Location *	LS
Category	Earthen Levee			GPS Latitude/Longitude	
				Start	End
Item	Trim / Thin Trees			37.880085 °	37.880085 °
				-121.333045 °	-121.333045 °
DWR ID	DWR_RD0524_01_s_2012_73				
Action/Comments					
Trim trees to at least five feet above ground level.					

No Photos

LM Start	5.50	Rating **	M	Issue No.	189
LM End	5.50	Issue Type +	Ma	Location *	LS
Category	Earthen Levee			GPS Latitude/Longitude	
				Start	End
Item	Encroachments			37.879998 °	37.879998 °
				-121.333079 °	-121.333079 °
DWR ID	DWR_RD0524_01_s_2014_189				
Action/Comments					
Prunings Inspector Comments: Prunings on landward shoulder should be removed.					

No Photos

LM Start	5.57	Rating **	M	Issue No.	96
LM End	5.57	Issue Type +	Ma	Location *	WS
Category	Earthen Levee			GPS Latitude/Longitude	
				Start	End
Item	Trim / Thin Trees			37.878918 °	37.878918 °
				-121.333148 °	-121.333148 °
DWR ID	DWR_RD0524_01_s_2012_96				
Action/Comments					
Trim trees to at least five feet above ground level.					

No Photos

<b>* Location</b> LS : Land Side    N/A : Not Applicable WS : Water Side CR : Crown	<b>** Rating</b> A : Acceptable M : Minimally Acceptable U : Unacceptable	N : Not Inspected/Rated C : Corrected A/W : Acceptable but Monitor & Maintain	<b>+ Issue Type</b> Ma : Maintenance Deficiency Ob : Design & System Obsolescence En : Enforcement
--	--	---	---



## Levee Inspection Report By Mile - Fall 2014

Waterway	Bank	Unit Miles	Inspection Start/End	Inspector
Unit No. 01 San Joaquin River	Left	6.20	10/20/2014 10/20/2014	Richard Willoughby

No Photos

Inspector Comments: 6/19/2014: The erosion was repaired.  
08/13/2013: The boat survey found no significant change at this site, except slight animal activity was visible at the site.  
08/07/2012: : The site has been visited by boat survey. No significant change observed  
08/23/2011: No significant change observed on site.  
09/07/2010: No significant change observed on site. Erosion site is located beneath Howard Road Bridge. Majority of the existing rip rap has slipped, dragging away levee materials and exposing the underlying soft soil.  
08/06/2010: Recommend for annual assessment and monitoring during flood events, per CLRO.  
09/30/2009: No major change observed since the last visit; upper portion of existing revetment has slipped, exposing the degrading bank; note that site # is the same as RM46.30, LM5.69 found in the CLRO CES Evaluation 2008 Report; site was previously rated "M".  
11/04/2008: Previously repaired using rock revetment; upper portion of the revetment is sliding, causing deformation on the levee slope; site is upstream of Howards Road Bridge. [2014 Site ID:RD0524U01RM46.12]

No Photos

Trim trees to at least five feet above ground level.

* Location	** Rating	+ Issue Type
LS : Land Side    N/A : Not Applicable	A : Acceptable                      N : Not Inspected/Rated	Ma : Maintenance Deficiency
WS : Water Side	M : Minimally Acceptable        C : Corrected	Ob : Design & System Obsolescence
CR : Crown	U : Unacceptable                  A/W : Acceptable but Monitor & Maintain	En : Enforcement

**Flood Control Project Maintenance  
Levee Inspections**

**Levee Inspection Report By Mile - Fall 2014**

**Reclamation District No. 0524 Middle Roberts Island**

Waterway	Bank	Unit Miles	Inspection Start/End	Inspector
Unit No. 01 San Joaquin River	Left	6.20	10/20/2014 10/20/2014	Richard Willoughby

LM Start	5.79	Rating **	M	Issue No.	167
LM End	5.79	Issue Type +	En	Location *	LS
Category	Supplemental			GPS Latitude/Longitude	
				Start	End
Item	DWR UCIP Field Study			37.876001 °	37.876001 °
				-121.332725 °	-121.332725 °
DWR ID	DWR_RD0524_01_f_2014_167				
Action/Comments					
Inspector Comments: FS_ID:40793					
EP_NO: N/A					
Repair Type: Non-Urgent					
Crossing Status: Indicator Found					
UCIP Comments: Appears abandoned and if so should be done so properly. No permit identified for this crossing.					
FIELD_STRUCT_DESC: 1-inch steel waterline through the levee 1.0-foot below the crown. Pipe visible only on LS shoulder.					
FS Date: 8/23/2013					

No Photos

LM Start	5.79	Rating **	M	Issue No.	168
LM End	5.79	Issue Type +	En	Location *	LS
Category	Supplemental			GPS Latitude/Longitude	
				Start	End
Item	DWR UCIP Field Study			37.876001 °	37.876001 °
				-121.332725 °	-121.332725 °
DWR ID	DWR_RD0524_01_f_2014_168				
Action/Comments					
Inspector Comments: FS_ID:18364					
EP_NO: N/A					
Repair Type: Non-Urgent					
Crossing Status: Found					
UCIP Comments: Abandoned and should be done so properly.					
FIELD_STRUCT_DESC: 2.25-inch steel conduit for a 1-inch plastic electrical conduit through the levee 0.25-feet below the crown. Lines exposed on both slopes.					
FS Date: 8/23/2013					

No Photos

LM Start	5.84	Rating **	M	Issue No.	267
LM End	5.84	Issue Type +	Ma	Location *	LS
Category	Earthen Levee			GPS Latitude/Longitude	
				Start	End
Item	Encroachments			37.875328 °	37.875328 °
				-121.333050 °	-121.333050 °
DWR ID	DWR_RD0524_01_s_2012_267				
Action/Comments					
Prunings Inspector Comments: Prunings at landside toe should be burned or removed.					

No Photos

<b>* Location</b> LS : Land Side    N/A : Not Applicable WS : Water Side CR : Crown	<b>** Rating</b> A : Acceptable M : Minimally Acceptable U : Unacceptable	<b>N : Not Inspected/Rated</b> C : Corrected A/W : Acceptable but Monitor & Maintain	<b>+ Issue Type</b> Ma : Maintenance Deficiency Ob : Design & System Obsolescence En : Enforcement
--	--	--	---

**Flood Control Project Maintenance  
Levee Inspections**

**Levee Inspection Report By Mile - Fall 2014**

**Reclamation District No. 0524 Middle Roberts Island**

Waterway	Bank	Unit Miles	Inspection Start/End	Inspector
Unit No. 01 San Joaquin River	Left	6.20	10/20/2014 10/20/2014	Richard Willoughby

LM Start	5.86	Rating **	U	Issue No.	128
LM End	5.86	Issue Type +	Ma	Location *	WS
Category	Supplemental			GPS Latitude/Longitude	
				Start	End
Item	DWR Erosion Survey			37.874370 °	37.874370 °
				-121.332850 °	-121.332850 °
DWR ID					
Action/Comments					
Inspector Comments: 06/19/2014: No significant change observed. 08/13/2013: No significant change observed. 08/07/2012: The erosion is near a water-intake structure. Pipe leakage likely caused the erosion. [2014 Site ID:RD0524U01RM46.39]					

Photo 1 of 1 : SJR2014\_RD0524U01RM46.39\_1.jpg



Front view of the site.

LM Start	5.86	Rating **	A/W	Issue No.	69
LM End	5.86	Issue Type +	Ma	Location *	LS
Category	Earthen Levee			GPS Latitude/Longitude	
				Start	End
Item	Animal Control			37.877298 °	37.875073 °
				-121.332343 °	-121.333168 °
DWR ID	DWR_RD0524_01_s_2012_69				
Action/Comments					
No rodents visible, but rodent burrows visible; need to backfill and compact or grout burrows.					
Inspector Comments: District has grouted rodent holes.					

No Photos

**\* Location**  
LS : Land Side    N/A : Not Applicable  
WS : Water Side  
CR : Crown

**\*\* Rating**  
A : Acceptable                      N : Not Inspected/Rated  
M : Minimally Acceptable        C : Corrected  
U : Unacceptable                  A/W : Acceptable but Monitor & Maintain

**+ Issue Type**  
Ma : Maintenance Deficiency  
Ob : Design & System Obsolescence  
En : Enforcement

**Flood Control Project Maintenance  
Levee Inspections**

**Levee Inspection Report By Mile - Fall 2014**

**Reclamation District No. 0524 Middle Roberts Island**

Waterway	Bank	Unit Miles	Inspection Start/End	Inspector
Unit No. 01 San Joaquin River	Left	6.20	10/20/2014 10/20/2014	Richard Willoughby

LM Start	5.87	Rating **	M	Issue No.	169
LM End	5.87	Issue Type +	En	Location *	LS
Category	Supplemental			GPS Latitude/Longitude	
				Start	End
Item	DWR UCIP Field Study			37.874972 °	37.874972 °
				-121.333246 °	-121.333246 °
DWR ID	DWR_RD0524_01_f_2014_169				
Action/Comments					
Inspector Comments: FS_ID:18369					
EP_NO: N/A					
Repair Type: Non-Urgent					
Crossing Status: Found					
UCIP Comments: Apparent leak on WS shoulder at concrete riser.					
Erosion under pipe. This may have been fixed when the pipe was sleeved with a PVC liner.					
FIELD_STRUCT_DESC: 10-inch steel storm drain pipe through the levee 5.0 feet below the crown. Pump on the landward side. Siphon breaker in a 36-inch concrete riser on the waterward shoulder. Power pole at the landward toe. PVC liner sleeved inside steel pipe.					
Originally included in the 1964 O&M manual.					
FS Date: 8/23/2013					

No Photos

LM Start	5.88	Rating **	M	Issue No.	170
LM End	5.88	Issue Type +	En	Location *	LS
Category	Supplemental			GPS Latitude/Longitude	
				Start	End
Item	DWR UCIP Field Study			37.874829 °	37.874829 °
				-121.333265 °	-121.333265 °
DWR ID	DWR_RD0524_01_f_2014_170				
Action/Comments					
Inspector Comments: FS_ID:18705					
EP_NO: N/A					
Repair Type: Non-Urgent					
Crossing Status: Indicator Found					
UCIP Comments: Need to verify gasline exists and if so improve signage.					
FIELD_STRUCT_DESC: Gasline marker sign on WS shoulder.					
FS Date: 8/23/2013					

No Photos

<b>* Location</b> LS : Land Side    N/A : Not Applicable WS : Water Side CR : Crown	<b>** Rating</b> A : Acceptable M : Minimally Acceptable U : Unacceptable	N : Not Inspected/Rated C : Corrected A/W : Acceptable but Monitor & Maintain	<b>+ Issue Type</b> Ma : Maintenance Deficiency Ob : Design & System Obsolescence En : Enforcement
--	--	---	---



## Levee Inspection Report By Mile - Fall 2014

Waterway	Bank	Unit Miles	Inspection Start/End	Inspector
Unit No. 01 San Joaquin River	Left	6.20	10/20/2014 10/20/2014	Richard Willoughby

Photo 1 of 2 : FA\_2014\_RD0524\_107\_75\_20141020\_00077.jpg



Looking southwest at typical rodent holes on waterward slope.

Photo 2 of 2 : FA\_2014\_RD0524\_107\_75\_20141023\_00217.jpg



Looking typical view of several rodent holes on landward slope and toe.

Photo 1 of 3 : FA\_2014\_RD0524\_107\_74\_20141020\_00075.jpg



Looking southeast at erosion around pipe.

* Location	** Rating	+ Issue Type
LS : Land Side    N/A : Not Applicable	A : Acceptable                      N : Not Inspected/Rated	Ma : Maintenance Deficiency
WS : Water Side	M : Minimally Acceptable        C : Corrected	Ob : Design & System Obsolescence
CR : Crown	U : Unacceptable                  A/W : Acceptable but Monitor & Maintain	En : Enforcement

## Levee Inspection Report By Mile - Fall 2014

Waterway	Bank	Unit Miles	Inspection Start/End	Inspector
Unit No. 01 San Joaquin River	Left	6.20	10/20/2014 10/20/2014	Richard Willoughby

LM Start	<b>5.92</b>	Rating **	M	Issue No.	<b>74 (cont)</b>
LM End	<b>5.92</b>	Issue Type +	Ma	Location *	WS

A photograph showing a red fire hydrant and a concrete pipe in a trench, with a large hole in the ground next to it.

LM Start	5.92	Rating **	A/W	Issue No.	190					
LM End	5.92	Issue Type +	Ma	Location *	WS					
Category	Earthen Levee			GPS Latitude/Longitude						
				Start	End					
Item	Encroachments			37.874197 °	37.874197 °					
				-121.333208 °	-121.333208 °					
DWR ID	DWR_RD0524_01_s_2014_190									
Action/Comments										
Pipe Inspector Comments: Landowner is replacing pump and left old pipe on waterward shoulder.										

Looking southeast at old pump shaft on waterward shoulder.

* Location	** Rating	+ Issue Type
LS : Land Side    N/A : Not Applicable	A : Acceptable                      N : Not Inspected/Rated	Ma : Maintenance Deficiency
WS : Water Side	M : Minimally Acceptable        C : Corrected	Ob : Design & System Obsolescence
CR : Crown	U : Unacceptable                  A/W : Acceptable but Monitor & Maintain	En : Enforcement

**Flood Control Project Maintenance  
Levee Inspections**

**Levee Inspection Report By Mile - Fall 2014**

**Reclamation District No. 0524 Middle Roberts Island**

Waterway	Bank	Unit Miles	Inspection Start/End	Inspector
Unit No. 01 San Joaquin River	Left	6.20	10/20/2014 10/20/2014	Richard Willoughby

LM Start	5.92	Rating **	M	Issue No.	171
LM End	5.92	Issue Type +	En	Location *	WS
Category	Supplemental			GPS Latitude/Longitude	
				Start	End
Item	DWR UCIP Field Study			37.874194 °	37.874194 °
				-121.333182 °	-121.333182 °
DWR ID	DWR_RD0524_01 f _ 2014_171				

No Photos

Action/Comments					
Inspector Comments: FS_ID:18379 EP_NO: N/A Repair Type: Non-Urgent Crossing Status: Found UCIP Comments: Heavy erosion around pipe upstream of standpipe on LS slope. Verify pipe is not leaking and repair erosion on LS slope. FIELD_STRUCT_DESC: 12-inch steel irrigation pipe through the levee 10.0 feet below the crown. Slant pump on pier at WS toe. 10-inch steel standpipe on LS slope. 42-inch concrete standpipe on LS slope. Filter plant, and power pole on LS toe. 1.5-inch galvanized iron electrical conduit at same location. Originally included in the 1964 O&M manual. FS Date: 8/23/2013					

LM Start	5.93	Rating **	U	Issue No.	119
LM End	5.93	Issue Type +	Ma	Location *	LS
Category	Earthen Levee			GPS Latitude/Longitude	
				Start	End
Item	Slope Stability			37.873893 °	37.873893 °
				-121.332978 °	-121.332978 °
DWR ID	DWR_RD0524_01_s_2012_119				

Action/Comments					
Repair the levee slope damaged by vehicle traffic and prevent access where possible. Inspector Comments: Landowner is using damaged area as a ramp.					

Photo 1 of 2 : FA\_2014\_RD0524\_107\_119\_20141020\_00111.jpg



Looking west at unauthorized ramp and landside slope damage.

* Location	** Rating	+ Issue Type
LS : Land Side    N/A : Not Applicable WS : Water Side CR : Crown	A : Acceptable M : Minimally Acceptable U : Unacceptable N : Not Inspected/Rated C : Corrected A/W : Acceptable but Monitor & Maintain	Ma : Maintenance Deficiency Ob : Design & System Obsolescence En : Enforcement



**Flood Control Project Maintenance  
Levee Inspections**

**Levee Inspection Report By Mile - Fall 2014**

**Reclamation District No. 0524 Middle Roberts Island**

Waterway	Bank	Unit Miles	Inspection Start/End	Inspector
Unit No. 01 San Joaquin River	Left	6.20	10/20/2014 10/20/2014	Richard Willoughby

LM Start	5.93	Rating **	U	Issue No.	119 (cont)
LM End	5.93	Issue Type +	Ma	Location *	LS
Category	Earthen Levee			GPS Latitude/Longitude	
				Start	End
Item	Slope Stability			37.873893 °	37.873893 °
				-121.332978 °	-121.332978 °
DWR ID	DWR_RD0524_01_s _ 2012_119				
Action/Comments					
Repair the levee slope damaged by vehicle traffic and prevent access where possible.					
Inspector Comments: Landowner is using damaged area as a ramp.					

Photo 2 of 2 : FA\_2014\_RD0524\_107\_119\_20141020\_00112.jpg



Looking southwest at damaged slope and ramp on landside slope.

LM Start	5.97	Rating **	M	Issue No.	86
LM End	5.97	Issue Type +	Ma	Location *	LS
Category	Earthen Levee			GPS Latitude/Longitude	
				Start	End
Item	Trim / Thin Trees			37.873678 °	37.873678 °
				-121.332550 °	-121.332550 °
DWR ID	DWR_RD0524_01_s _ 2012_86				
Action/Comments					
Trim trees to at least five feet above ground level.					

No Photos

LM Start	5.99	Rating **	M	Issue No.	87
LM End	6.00	Issue Type +	En	Location *	LS
Category	Earthen Levee			GPS Latitude/Longitude	
				Start	End
Item	Encroachments			37.873545 °	37.873445 °
				-121.332308 °	-121.332127 °
DWR ID	DWR_RD0524_01_s _ 2012_87				
Action/Comments					
Fence					

No Photos

<b>* Location</b> LS : Land Side    N/A : Not Applicable WS : Water Side CR : Crown	<b>** Rating</b> A : Acceptable M : Minimally Acceptable U : Unacceptable	N : Not Inspected/Rated C : Corrected A/W : Acceptable but Monitor & Maintain	<b>+ Issue Type</b> Ma : Maintenance Deficiency Ob : Design & System Obsolescence En : Enforcement
--	--	---	---



**Flood Control Project Maintenance  
Levee Inspections**

**Levee Inspection Report By Mile - Fall 2014**

**Reclamation District No. 0524 Middle Roberts Island**

Waterway	Bank	Unit Miles	Inspection Start/End	Inspector
Unit No. 01 San Joaquin River	Left	6.20	10/20/2014 10/20/2014	Richard Willoughby

LM Start	5.99	Rating **	U	Issue No.	88
LM End	6.00	Issue Type +	En	Location *	LS
Category	Earthen Levee			GPS Latitude/Longitude	
				Start	End
Item	Vegetation			37.873543 °	37.873445 °
				-121.332308 °	-121.332127 °
DWR ID	DWR_RD0524_01_s _ 2012_88				
Action/Comments					
Landscaping					
Inspector Comments: Cactus					

Photo 1 of 1 : FA\_2014\_RD0524\_107\_88\_20141020\_00084.jpg



Looking southeast at fence and cactus on landside slope and toe.

LM Start	6.01	Rating **	M	Issue No.	120
LM End	6.01	Issue Type +	Ma	Location *	LS
Category	Earthen Levee			GPS Latitude/Longitude	
				Start	End
Item	Trim / Thin Trees			37.873347 °	37.873347 °
				-121.332028 °	-121.332028 °
DWR ID	DWR_RD0524_01_s _ 2012_120				
Action/Comments					
Trim trees to at least five feet above ground level.					

No Photos

LM Start	6.02	Rating **	M	Issue No.	81
LM End	6.02	Issue Type +	Ma	Location *	LS
Category	Earthen Levee			GPS Latitude/Longitude	
				Start	End
Item	Trim / Thin Trees			37.873300 °	37.873300 °
				-121.331928 °	-121.331928 °
DWR ID	DWR_RD0524_01_s _ 2012_81				
Action/Comments					
Trim trees to at least five feet above ground level.					

No Photos

<b>* Location</b> LS : Land Side    N/A : Not Applicable WS : Water Side CR : Crown	<b>** Rating</b> A : Acceptable M : Minimally Acceptable U : Unacceptable	N : Not Inspected/Rated C : Corrected A/W : Acceptable but Monitor & Maintain	<b>+ Issue Type</b> Ma : Maintenance Deficiency Ob : Design & System Obsolescence En : Enforcement
--	--	---	---

**Flood Control Project Maintenance  
Levee Inspections**

**Levee Inspection Report By Mile - Fall 2014**

**Reclamation District No. 0524 Middle Roberts Island**

Waterway	Bank	Unit Miles	Inspection Start/End	Inspector
Unit No. 01 San Joaquin River	Left	6.20	10/20/2014 10/20/2014	Richard Willoughby

LM Start	6.05	Rating **	M	Issue No.	933
LM End	6.05	Issue Type +	Ma	Location *	LS
Category	Earthen Levee			GPS Latitude/Longitude	
				Start	End
Item	Slope Stability			37.873047 °	37.873047 °
				-121.331408 °	-121.331408 °
DWR ID	DWR_RD0524_01_s_2012_933				
Action/Comments					
Repair the levee slope damaged by foot traffic and prevent access where possible.					
Inspector Comments: Landowner cut steps into landside slope.					

Photo 1 of 1 : FA\_2014\_RD0524\_107\_933\_20141020\_00156.jpg



Looking north at steps cut into landward slope.

LM Start	6.08	Rating **	M	Issue No.	191
LM End	6.08	Issue Type +	Ma	Location *	LS
Category	Earthen Levee			GPS Latitude/Longitude	
				Start	End
Item	Vegetation			37.872844 °	37.872844 °
				-121.331070 °	-121.331070 °
DWR ID	DWR_RD0524_01_s_2014_191				
Action/Comments					
Remove the wild growth other than native grasses from the levee slopes.					
Inspector Comments: Cactus at landward toe.					

No Photos

LM Start	6.21	Rating **	M	Issue No.	172
LM End	6.21	Issue Type +	En	Location *	LS
Category	Supplemental			GPS Latitude/Longitude	
				Start	End
Item	DWR UCIP Field Study			37.871138 °	37.871138 °
				-121.330146 °	-121.330146 °
DWR ID	DWR_RD0524_01_f_2014_172				
Action/Comments					
Inspector Comments: FS_ID:18392 EP_NO: N/A Repair Type: Non-Urgent Crossing Status: Found UCIP Comments: Pipe and pump abandoned and should be done so properly. FIELD_STRUCT_DESC: *ABANDONED*10-inch pipe through levee 12.0 feet below crown, pump on the waterward slope. Originally included in the 1964 O&M manual. FS Date: 8/23/2013					

No Photos

<b>* Location</b> LS : Land Side    N/A : Not Applicable WS : Water Side CR : Crown	<b>** Rating</b> A : Acceptable M : Minimally Acceptable U : Unacceptable	<b>N : Not Inspected/Rated</b> C : Corrected A/W : Acceptable but Monitor & Maintain	<b>+ Issue Type</b> Ma : Maintenance Deficiency Ob : Design & System Obsolescence En : Enforcement
--	--	--	---

**Flood Control Project Maintenance  
Levee Inspections**

**Levee Inspection Report By Mile - Fall 2014**

**Reclamation District No. 0524 Middle Roberts Island**

Waterway	Bank	Unit Miles	Inspection Start/End	Inspector
Unit No. 01 San Joaquin River	Left	6.20	10/20/2014 10/20/2014	Richard Willoughby

LM Start	6.21	Rating **	M	Issue No.	268
LM End	6.21	Issue Type +	Ma	Location *	WS
Category	Earthen Levee			GPS Latitude/Longitude	
				Start	End
Item	Encroachments			37.871137 °	37.871137 °
				-121.330138 °	-121.330138 °
DWR ID	DWR_RD0524_01_s_2012_268				
Action/Comments					
Pipe					
Inspector Comments: Open abandoned 10" pipe on waterside slope below flood elevation. Pipe should be removed or properly abandoned.					

Photo 1 of 1 : FA\_2014\_RD0524\_107\_268\_20141020\_00150.jpg



Looking southeast at abandoned pipe on waterside slope.

LM Start	6.21	Rating **	M	Issue No.	173
LM End	6.21	Issue Type +	En	Location *	WS
Category	Supplemental			GPS Latitude/Longitude	
				Start	End
Item	DWR UCIP Field Study			37.871118 °	37.871118 °
				-121.330137 °	-121.330137 °
DWR ID	DWR_RD0524_01_f _ 2014_173				
Action/Comments					
Inspector Comments: FS_ID:22073					
EP_NO: N/A					
Repair Type: Non-Urgent					
Crossing Status: Found					
UCIP Comments: Abandoned and should be done so properly.					
FIELD_STRUCT_DESC: *ABANDONED* 1.75-inch galvanized iron					
electrical conduit through the levee 1-foot below the crown. Power pole					
on LS toe.					
FS Date: 8/23/2013					

No Photos

LM Start	6.23	Rating **	M	Issue No.	98
LM End	6.23	Issue Type +	Ma	Location *	LS
Category	Earthen Levee			GPS Latitude/Longitude	
				Start	End
Item	Trim / Thin Trees			37.870842 °	37.870842 °
				-121.330000 °	-121.330000 °
DWR ID	DWR_RD0524_01_s_2012_98				
Action/Comments					
Trim trees to at least five feet above ground level.					

No Photos

**\* Location**  
 LS : Land Side    N/A : Not Applicable  
 WS : Water Side  
 CR : Crown

**\*\* Rating**  
 A : Acceptable  
 M : Minimally Acceptable  
 U : Unacceptable  
 N : Not Inspected/Rated  
 C : Corrected  
 A/W : Acceptable but Monitor & Maintain

**+ Issue Type**  
 Ma : Maintenance Deficiency  
 Ob : Design & System Obsolescence  
 En : Enforcement

**Flood Control Project Maintenance  
Levee Inspections**

**Levee Inspection Report By Mile - Fall 2014**

**Reclamation District No. 0524 Middle Roberts Island**

Waterway	Bank	Unit Miles	Inspection Start/End	Inspector
Unit No. 01 San Joaquin River	Left	6.20	10/20/2014 10/20/2014	Richard Willoughby

LM Start	6.23	Rating **	A/W	Issue No.	97
LM End	6.23	Issue Type +	Ma	Location *	LS
Category	Earthen Levee			GPS Latitude/Longitude	
				Start	End
Item	Vegetation			37.870840 °	37.870840 °
				-121.329993 °	-121.329993 °
DWR ID	DWR_RD0524_01_s_2012_97				
Action/Comments					
Remove the wild growth other than native grasses from the levee slopes.					

No Photos

**\* Location**  
 LS : Land Side    N/A : Not Applicable  
 WS : Water Side  
 CR : Crown

**\*\* Rating**  
 A : Acceptable                      N : Not Inspected/Rated  
 M : Minimally Acceptable        C : Corrected  
 U : Unacceptable                  A/W : Acceptable but Monitor & Maintain

**+ Issue Type**  
 Ma : Maintenance Deficiency  
 Ob : Design & System Obsolescence  
 En : Enforcement