

**Flood Control Project Maintenance  
Levee Inspections**

**Fall 2014 Levee Maintenance Deficiency Summary Report**

**Overall LMA & Unit Ratings, including USACE Erosion Survey**

**Sacramento River Basin**

<b>RD0108</b>	Overall LMA Rating	Total LMA Miles						
<b>Reclamation District No. 0108 River Farms</b>	<b>A</b>	<b>20.92</b>						
Rated Item	Maintenance Deficiency				Enforcement		Design & System Obsolescence	
	M Miles	U Miles	M + 4U Miles	Threshold %	M Miles	U Miles	M Miles	U Miles
<i>Earthen Levee</i>								
Encroachments					0.74			
Cracking	0.01		0.01	0.05%				
<i>Supplemental</i>								
USACE Erosion Survey	0.01		0.01	0.05%				
DWR UCIP Field Study					0.08			
<i>LMA Totals:</i>	0.02	0.00	0.02	0.10%	0.82	0.00	0.00	0.00

<b>Unit No. 01 Colusa Basin Drain LB</b>	Overall Unit Rating	Total Unit Miles						
<b>RD0108</b>	<b>A</b>	<b>20.64</b>						
Rated Item	Maintenance Deficiency				Enforcement		Design & System Obsolescence	
	M Miles	U Miles	M + 4U Miles	Threshold %	M Miles	U Miles	M Miles	U Miles
<i>Earthen Levee</i>								
Encroachments					0.74			
Cracking	0.01		0.01	0.05%				
<i>Supplemental</i>								
USACE Erosion Survey	0.01		0.01	0.05%				
DWR UCIP Field Study					0.08			
<i>Unit Totals:</i>	0.02	0.00	0.02	0.10%	0.82	0.00	0.00	0.00

<b>Unit No. 02 Castle Properties RB</b>	Overall Unit Rating	Total Unit Miles						
<b>RD0108</b>	<b>A</b>	<b>0.28</b>						
Rated Item	Maintenance Deficiency				Enforcement		Design & System Obsolescence	
	M Miles	U Miles	M + 4U Miles	Threshold %	M Miles	U Miles	M Miles	U Miles
No Items								
<i>Unit Totals:</i>	0.00	0.00	0.00	0.00%				

**Flood Control Project Maintenance  
Levee Inspections**  
**LMA District Cover Sheet**  
**Fall 2014 Levee Inspection Results**

**Reclamation District No. 0108 River Farms**

	Spring (March - May)	Summer ** (June - August)	Fall (September - November)	Winter ** (December - February)
* Overall LMA Rating (Fall Only)			A	

\*\* Non-receipt of Summer or Winter Inspection Reports may effect overall annual rating.

\*

SPRING INSPECTIONS: Overall maintenance ratings are not determined for the spring inspection results. Individual maintenance deficiencies are rated using the same criteria in the spring and in the fall.

FALL INSPECTIONS: The overall maintenance rating shown above is based on operation and maintenance deficiencies identified within the attached unit inspection reports. This rating is not intended to be an indication of risk.

Comments


**Flood Control Project Maintenance  
Levee Inspections**

**Unit Cover Sheet**

**Fall 2014 Levee Inspection Results**

**Reclamation District No. 0108 River Farms**

Waterway			Bank	Unit Miles
Unit No. 01 Colusa Basin Drain			Left	20.64
	Spring (March - May)	Summer (June - August)	(September - November) Fall	Winter (December - February)
Unit Maintenance Rating (Fall Only)			A	
Date of Inspection	03/26/2014 - 03/26/2014		10/28/2014 - 10/28/2014	
DWR Inspector	John Williamson		Clay Thomas	
Accompanied By	Chad Navarrot RD 108		Chad Navarrot RD 108	

**Summer & Winter Inspections**

The Local Maintaining Agency (LMA) is responsible for summer and winter inspections. The LMA is required to submit a report regarding summer and winter inspections to the California Department of Water Resources (DWR).

DWR must be informed on the:

- completion of the inspection
- any changes other than the results of normal maintenance
- corrections to deficiencies noted in this report

If additional items are noted, further documentation of those items must also be submitted.

The LMA should submit this information to DWR using the LMA web application tool available at:

<http://cdec.water.ca.gov/lma.html>

If the LMA is unable to submit information on this webpage, please contact DWR for assistance.

*The LMA should submit the information and any associated documentation by September 30 for summer inspections and March 31 for winter inspections.*

**Flood Control Project Maintenance  
Levee Inspections**

**Levee Inspection Report By Mile - Fall 2014**

**Reclamation District No. 0108 River Farms**

Waterway	Bank	Unit Miles	Inspection Start/End	Inspector
Unit No. 01 Colusa Basin Drain	Left	20.64	10/28/2014 10/28/2014	Clay Thomas

LM Start		Rating **	A	Issue No.	5	
LM End		Issue Type +	Ma	Location *	N/A	
Category	Earthen Levee			GPS Latitude/Longitude		
				Start		End
Item	Operations & Maintenance Manuals				°	°
					°	°
DWR ID	DWR_RD0108_01_s_2013_5					
Action/Comments						
Inspector Comments: RD 108 has levee manuals.						

No Photos

LM Start		Rating **	A	Issue No.	7
LM End		Issue Type +	Ma	Location *	N/A
Category	Earthen Levee			GPS Latitude/Longitude	
				Start	End
Item	Emergency Supplies & Equipment				°
					°
DWR ID	DWR_RD0108_01_s_2013_7				
Action/Comments					
Inspector Comments: RD 108 maintains a stockpile of flood response materials.					

No Photos

LM Start		Rating **	A	Issue No.	9
LM End		Issue Type +	Ma	Location *	N/A
Category	Earthen Levee			GPS Latitude/Longitude	
				Start	End
Item	Flood Preparedness & Training				°
					°
DWR ID	DWR_RD0108_01_s_2013_9				
Action/Comments					
Inspector Comments: RD 108 has written response plans and regular flood response training.					

No Photos

<b>* Location</b> LS : Land Side    N/A : Not Applicable WS : Water Side CR : Crown	<b>** Rating</b> A : Acceptable M : Minimally Acceptable U : Unacceptable	N : Not Inspected/Rated C : Corrected A/W : Acceptable but Monitor & Maintain	<b>+ Issue Type</b> Ma : Maintenance Deficiency Ob : Design & System Obsolescence En : Enforcement
--	--	---	---

**Flood Control Project Maintenance  
Levee Inspections**

**Levee Inspection Report By Mile - Fall 2014**

**Reclamation District No. 0108 River Farms**

Waterway	Bank	Unit Miles	Inspection Start/End	Inspector
Unit No. 01 Colusa Basin Drain	Left	20.64	10/28/2014 10/28/2014	Clay Thomas

LM Start	0.00	Rating **	A	Issue No.	20
LM End	20.59	Issue Type +	Ma	Location *	WS
Category	Earthen Levee			GPS Latitude/Longitude	
				Start	End
Item	Vegetation				°
					°
DWR ID	DWR_RD0108_01_f_2014_20				
Action/Comments					
Control annual grass and weeds on the levee slopes and easements.					

Photo 1 of 2 : FA\_2014\_RD0108\_203\_20\_20141030\_00016.jpg



Levee mile 18.88, vegetation on water side slope. Fall 2014.

LM Start	<b>0.00</b>	Rating **	A	Issue No.	<b>20 (cont)</b>
LM End	<b>20.59</b>	Issue Type +	Ma	Location *	WS

Photo 2 of 2 : FA\_2014\_RD0108\_203\_20\_20141030\_00017.jpg



Levee mile 18.88, vegetation on land side levee slope. Fall 2014.

LM Start	0.08	Rating **	M	Issue No.	1
LM End	0.08	Issue Type +	En	Location *	WS
Category	Supplemental			GPS Latitude/Longitude	
				Start	End
Item	DWR UCIP Field Study			38.822897 °	38.822897 °
				-121.797000 °	-121.797000 °
DWR ID	DWR_RD0108_01_f_2014_1				
Action/Comments					
Inspector Comments: FS_ID:37608					
EP_NO: 9396					
Repair Type: Non-Urgent					
Crossing Status: Found					
UCIP Comments: Need to contact owner to determine status of structure. Notes indicate crossing has been abandoned. Owner will					

No Photos

<b>* Location</b> LS : Land Side    N/A : Not Applicable WS : Water Side CR : Crown	<b>** Rating</b> A : Acceptable M : Minimally Acceptable U : Unacceptable	N : Not Inspected/Rated C : Corrected A/W : Acceptable but Monitor & Maintain	<b>+ Issue Type</b> Ma : Maintenance Deficiency Ob : Design & System Obsolescence En : Enforcement
--	--	---	---

**Flood Control Project Maintenance  
Levee Inspections**

**Levee Inspection Report By Mile - Fall 2014**

**Reclamation District No. 0108 River Farms**

Waterway	Bank	Unit Miles	Inspection Start/End	Inspector
Unit No. 01 Colusa Basin Drain	Left	20.64	10/28/2014 10/28/2014	Clay Thomas

LM Start	0.08	Rating **	M	Issue No.	8
LM End	0.08	Issue Type +	En	Location *	WS
Category	Supplemental			GPS Latitude/Longitude	
				Start	End
Item	DWR UCIP Field Study			38.822919 °	38.822919 °
				-121.797046 °	-121.797046 °
DWR ID	DWR_RD0108_01_f_2014_8				
Action/Comments					
Inspector Comments: FS_ID:37609 EP_NO: 9396 Repair Type: Non-Urgent Crossing Status: Found UCIP Comments: Need to contact owner to determine status of structure. Notes indicate crossing has been abandoned. Owner will need to coordinate with CVFPB and DWR inspector to determine how to properly abandon. FIELD_STRUCT_DESC: 2 of 5. Five 72-inch abandoned pipes or culvert through levee 31.6 feet below crown. Slide gates on both ends. (App. 9736-RD 108) Ramp on landward slope. (App.9396-RD). O&M Manual SAC 132; October 1959 FS Date: 6/10/2014					

No Photos

LM Start	0.08	Rating **	M	Issue No.	14
LM End	0.08	Issue Type +	En	Location *	WS
Category	Supplemental			GPS Latitude/Longitude	
				Start	End
Item	DWR UCIP Field Study			38.822933 °	38.822933 °
				-121.797081 °	-121.797081 °
DWR ID	DWR_RD0108_01_f_2014_14				
Action/Comments					
Inspector Comments: FS_ID:37610					
EP_NO: 9396					
Repair Type: Non-Urgent					
Crossing Status: Found					
UCIP Comments: Need to contact owner to determine status of structure. Notes indicate crossing has been abandoned. Owner will need to coordinate with CVFPB and DWR inspector to determine how to properly abandon.					
FIELD_STRUCT_DESC: 3 of 5. Five 72-inch abandoned pipes or culvert through levee 31.6 feet below crown. Slide gates on both ends. (App. 9736-RD 108) Ramp on landward slope. (App.9396-RD). O&M Manual SAC 132; October 1959					
FS Date: 6/10/2014					

No Photos

<b>* Location</b> LS : Land Side    N/A : Not Applicable WS : Water Side CR : Crown	<b>** Rating</b> A : Acceptable M : Minimally Acceptable U : Unacceptable	N : Not Inspected/Rated C : Corrected A/W : Acceptable but Monitor & Maintain	<b>+ Issue Type</b> Ma : Maintenance Deficiency Ob : Design & System Obsolescence En : Enforcement
--	--	---	---

**Flood Control Project Maintenance  
Levee Inspections**

**Levee Inspection Report By Mile - Fall 2014**

**Reclamation District No. 0108 River Farms**

Waterway	Bank	Unit Miles	Inspection Start/End	Inspector
Unit No. 01 Colusa Basin Drain	Left	20.64	10/28/2014 10/28/2014	Clay Thomas

LM Start	0.08	Rating **	M	Issue No.	15
LM End	0.08	Issue Type +	En	Location *	WS
Category	Supplemental			GPS Latitude/Longitude	
				Start	End
Item	DWR UCIP Field Study			38.822897 °	38.822897 °
				-121.797000 °	-121.797000 °
DWR ID	DWR_RD0108_01_f_2014_15				
Action/Comments					
Inspector Comments: FS_ID:37611 EP_NO: 9396 Repair Type: Non-Urgent Crossing Status: Found UCIP Comments: Need to contact owner to determine status of structure. Notes indicate crossing has been abandoned. Owner will need to coordinate with CVFPB and DWR inspector to determine how to properly abandon. FIELD_STRUCT_DESC: 4 of 5. Five 72-inch abandoned pipes or culvert through levee 31.6 feet below crown. Slide gates on both ends. (App. 9736-RD 108) Ramp on landward slope. (App.9396-RD). O&M Manual SAC 132; October 1959 FS Date: 6/10/2014					

No Photos

LM Start	0.08	Rating **	M	Issue No.	16
LM End	0.08	Issue Type +	En	Location *	WS
Category	Supplemental			GPS Latitude/Longitude	
				Start	End
Item	DWR UCIP Field Study			38.822954 °	38.822954 °
				-121.797135 °	-121.797135 °
DWR ID	DWR_RD0108_01_f_2014_16				
Action/Comments					
Inspector Comments: FS_ID:37607					
EP_NO: 9396					
Repair Type: Non-Urgent					
Crossing Status: Found					
UCIP Comments: Need to contact owner to determine status of structure. Notes indicate crossing has been abandoned. Owner will need to coordinate with CVFPB and DWR inspector to determine how to properly abandon.					
FIELD_STRUCT_DESC: 5 of 5. Five 72-inch abandoned pipes or culvert through levee 31.6 feet below crown. Slide gates on both ends. (App. 9736-RD 108) Ramp on landward slope. (App.9396-RD). O&M Manual SAC 132; October 1959					
FS Date: 6/10/2014					

No Photos

<b>* Location</b> LS : Land Side    N/A : Not Applicable WS : Water Side CR : Crown	<b>** Rating</b> A : Acceptable M : Minimally Acceptable U : Unacceptable	N : Not Inspected/Rated C : Corrected A/W : Acceptable but Monitor & Maintain	<b>+ Issue Type</b> Ma : Maintenance Deficiency Ob : Design & System Obsolescence En : Enforcement
--	--	---	---

**Flood Control Project Maintenance  
Levee Inspections**

**Levee Inspection Report By Mile - Fall 2014**

**Reclamation District No. 0108 River Farms**

Waterway	Bank	Unit Miles	Inspection Start/End	Inspector
Unit No. 01 Colusa Basin Drain	Left	20.64	10/28/2014 10/28/2014	Clay Thomas

LM Start	2.92	Rating **	M	Issue No.	17
LM End	2.92	Issue Type +	En	Location *	WS
Category	Supplemental			GPS Latitude/Longitude	
				Start	End
Item	DWR UCIP Field Study			38.838696 °	38.838696 °
				-121.845843 °	-121.845843 °
DWR ID	DWR_RD0108_01_f_2014_17				
Action/Comments					
Inspector Comments: FS_ID:39707					
EP_NO: N/A					
Repair Type: Non-Urgent					
Crossing Status: Indicator Found					
UCIP Comments: No signs of pipe visible--need to contact owner to obtain permit number authorizing work. If crossing is no longer used by owner, the owner will need to coordinate with DWR Inspector and CVFPB to remove crossing according to Title 23 requirements. Dense vegetation limits the inspector's visibility to identify signs of pipe failure (leaks) along the slope. Recommend removing vegetation along pipe alignment to conduct proper inspection of structure.					
FIELD_STRUCT_DESC: Corrugated Metal (CM) pipe riser located on waterward side. Riser is filled with trash and deris. Unable to determine if crossing exists at this location.					
FS Date: 3/18/2014					

No Photos

LM Start	5.19	Rating **	M	Issue No.	10
LM End	5.19	Issue Type +	En	Location *	WS
Category	Earthen Levee			GPS Latitude/Longitude	
				Start	End
Item	Encroachments			38.846086 °	38.846086 °
				-121.886834 °	-121.886834 °
DWR ID	DWR_RD0108_01_s_2014_10				
Action/Comments					
Tree or limb					

Photo 1 of 1 : FA\_2014\_RD0108\_203\_10\_20141014\_00006.jpg



Tree limbs are along the toe of the levee. Tree is slowing dying and could be a hazard to the levee. Spring 2014

<b>* Location</b> LS : Land Side    N/A : Not Applicable WS : Water Side CR : Crown	<b>** Rating</b> A : Acceptable M : Minimally Acceptable U : Unacceptable	N : Not Inspected/Rated C : Corrected A/W : Acceptable but Monitor & Maintain	<b>+ Issue Type</b> Ma : Maintenance Deficiency Ob : Design & System Obsolescence En : Enforcement
--	--	---	---



**Flood Control Project Maintenance  
Levee Inspections**

**Levee Inspection Report By Mile - Fall 2014**

**Reclamation District No. 0108 River Farms**

Waterway	Bank	Unit Miles	Inspection Start/End	Inspector
Unit No. 01 Colusa Basin Drain	Left	20.64	10/28/2014 10/28/2014	Clay Thomas

LM Start	9.28	Rating **	A/W	Issue No.	279
LM End	9.28	Issue Type +	Ma	Location *	WS
Category	Earthen Levee			GPS Latitude/Longitude	
				Start	End
Item	Slope Stability			38.897452 °	38.897452 °
				-121.914680 °	-121.914680 °
DWR ID	DWR_RD0108_01_f _ 2013_279				
Action/Comments					
Repair slope instability.					

Photo 1 of 2 : FA\_2014\_RD0108\_203\_279\_20141014\_00011.jpg



The cracking runs in a horseshoe pattern on the levee slope Fall 2013

Photo 2 of 2 : FA\_2014\_RD0108\_203\_279\_20141014\_00012.jpg



Slope stability with cracking 1-2 inches open and 12 inches deep Fall 2013 The district is monitoring the site.

LM Start	9.28	Rating **	C	Issue No.	278
LM End	9.28	Issue Type +	Ma	Location *	LS
Category	Earthen Levee			GPS Latitude/Longitude	
				Start	End
Item	Cracking			38.897453 °	38.897453 °
				-121.914680 °	-121.914680 °
DWR ID	DWR_RD0108_01_f _ 2013_278				
Action/Comments					
Monitor and have inspected by geotechnical engineer.					

No Photos

<b>* Location</b> LS : Land Side    N/A : Not Applicable WS : Water Side CR : Crown		<b>** Rating</b> A : Acceptable                      N : Not Inspected/Rated M : Minimally Acceptable        C : Corrected U : Unacceptable                  A/W : Acceptable but Monitor & Maintain		<b>+ Issue Type</b> Ma : Maintenance Deficiency Ob : Design & System Obsolescence En : Enforcement
--	--	---	--	---

**Flood Control Project Maintenance  
Levee Inspections**

**Levee Inspection Report By Mile - Fall 2014**

**Reclamation District No. 0108 River Farms**

Waterway	Bank	Unit Miles	Inspection Start/End	Inspector
Unit No. 01 Colusa Basin Drain	Left	20.64	10/28/2014 10/28/2014	Clay Thomas

LM Start	11.22	Rating **	M	Issue No.	18
LM End	11.22	Issue Type +	En	Location *	LS
Category	Supplemental			GPS Latitude/Longitude	
				Start	End
Item	DWR UCIP Field Study			38.925662 °	38.925662 °
				-121.914303 °	-121.914303 °
DWR ID	DWR_RD0108_01_f_2014_18				
Action/Comments					
Inspector Comments: FS_ID:39717					
EP_NO: N/A					
Repair Type: Non-Urgent					
Crossing Status: Indicator Found					
UCIP Comments: Need to contact owner to determine additional details of crossing.					
FIELD_STRUCT_DESC: Natural gas line with markers on both side slightly angled through levee. Gas station located across canal on landward side.					
FS Date: 3/18/2014					

No Photos

LM Start	13.75	Rating **	C	Issue No.	11
LM End	13.75	Issue Type +	Ma	Location *	LS
Category	Earthen Levee			GPS Latitude/Longitude	
				Start	End
Item	Cracking			38.958947 °	38.958947 °
				-121.915623 °	-121.915623 °
DWR ID	DWR_RD0108_01_s_2014_11				
Action/Comments					
Monitor and have inspected by geotechnical engineer.					

No Photos

LM Start	14.22	Rating **	C	Issue No.	280
LM End	14.24	Issue Type +	Ma	Location *	LS
Category	Earthen Levee			GPS Latitude/Longitude	
				Start	End
Item	Cracking			38.964848 °	38.965205 °
				-121.920245 °	-121.920537 °
DWR ID	DWR_RD0108_01_f_2013_280				
Action/Comments					
Monitor and have inspected by geotechnical engineer.					

No Photos

<b>* Location</b> LS : Land Side    N/A : Not Applicable WS : Water Side CR : Crown	<b>** Rating</b> A : Acceptable M : Minimally Acceptable U : Unacceptable	N : Not Inspected/Rated C : Corrected A/W : Acceptable but Monitor & Maintain	<b>+ Issue Type</b> Ma : Maintenance Deficiency Ob : Design & System Obsolescence En : Enforcement
--	--	---	---

**Flood Control Project Maintenance  
Levee Inspections**

**Levee Inspection Report By Mile - Fall 2014**

**Reclamation District No. 0108 River Farms**

Waterway	Bank	Unit Miles	Inspection Start/End	Inspector
Unit No. 01 Colusa Basin Drain	Left	20.64	10/28/2014 10/28/2014	Clay Thomas

LM Start	14.46	Rating **	M	Issue No.	12
LM End	14.46	Issue Type +	Ma	Location *	LS
Category	Earthen Levee			GPS Latitude/Longitude	
				Start	End
Item	Cracking			38.967243 °	38.967243 °
				-121.923407 °	-121.923407 °
DWR ID	DWR_RD0108_01_s_2014_12				
Action/Comments					
Schedule repair of subsidence prior to the next inspection.					

Photo 1 of 1 : FA\_2014\_RD0108\_203\_12\_20141014\_00008.jpg



Cracking along the shoulder of the crown. Some slope instability has occurred. Spring 2014

LM Start	14.54	Rating **	C	Issue No.	2
LM End	14.54	Issue Type +	Ma	Location *	LS
Category	Earthen Levee			GPS Latitude/Longitude	
				Start	End
Item	Cracking			38.968032 °	38.968032 °
				-121.924480 °	-121.924480 °
DWR ID	DWR_RD0108_01_f_2012_2				
Action/Comments					
Monitor and have inspected by geotechnical engineer.					

No Photos

LM Start	14.71	Rating **	C	Issue No.	13
LM End	14.71	Issue Type +	Ma	Location *	WS
Category	Earthen Levee			GPS Latitude/Longitude	
				Start	End
Item	Animal Control			38.969708 °	38.969708 °
				-121.926840 °	-121.926840 °
DWR ID	DWR_RD0108_01_s_2014_13				
Action/Comments					
No rodents visible, but rodent burrows visible; need to backfill and compact or grout burrows.					

No Photos

<b>* Location</b> LS : Land Side    N/A : Not Applicable WS : Water Side CR : Crown		<b>** Rating</b> A : Acceptable                      N : Not Inspected/Rated M : Minimally Acceptable        C : Corrected U : Unacceptable                  A/W : Acceptable but Monitor & Maintain		<b>+ Issue Type</b> Ma : Maintenance Deficiency Ob : Design & System Obsolescence En : Enforcement
--	--	---	--	---

**Flood Control Project Maintenance  
Levee Inspections**

**Levee Inspection Report By Mile - Fall 2014**

**Reclamation District No. 0108 River Farms**

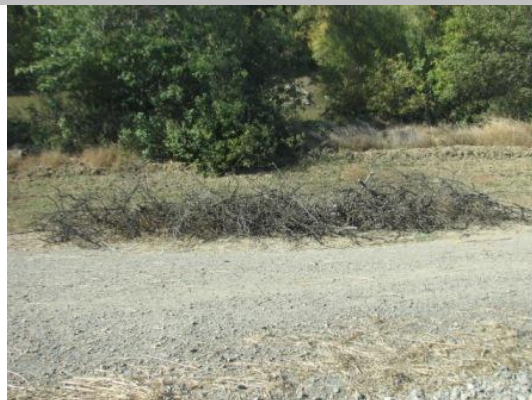
Waterway	Bank	Unit Miles	Inspection Start/End	Inspector
Unit No. 01 Colusa Basin Drain	Left	20.64	10/28/2014 10/28/2014	Clay Thomas

LM Start	14.90	Rating **	M	Issue No.	19
LM End	14.90	Issue Type +	En	Location *	WS
Category	Supplemental			GPS Latitude/Longitude	
				Start	End
Item	DWR UCIP Field Study			38.971607 °	38.971607 °
				-121.929499 °	-121.929499 °
DWR ID	DWR_RD0108_01_f_2014_19				
Action/Comments					
Inspector Comments: FS_ID:37623					
EP_NO: 3800					
Repair Type: Non-Urgent					
Crossing Status: Indicator Found					
UCIP Comments: Need to contact owner--marker missing on waterward side.					
FIELD_STRUCT_DESC: 20-inch concrete encased gas line through levee, 3.0 feet below the crown. Crossing appears to be angled through levee (App. 3800-PG&E) Small rock revetment on the waterward slope. (unable to locate) Gas well approximately 1,000 feet from landward toe.					
FS Date: 6/10/2014					

No Photos

LM Start	18.26	Rating **	M	Issue No.	281
LM End	18.26	Issue Type +	En	Location *	WS
Category	Earthen Levee			GPS Latitude/Longitude	
				Start	End
Item	Encroachments			39.006497 °	39.006497 °
				-121.973158 °	-121.973158 °
DWR ID	DWR_RD0108_01_f_2013_281				
Action/Comments					
Prunings					

Photo 1 of 1 : FA\_2014\_RD0108\_203\_281\_20141014\_00015.jpg



Piles of prunings are at the waterside berm. Fall 2013

**\* Location**  
LS : Land Side    N/A : Not Applicable  
WS : Water Side  
CR : Crown

**\*\* Rating**  
A : Acceptable                      N : Not Inspected/Rated  
M : Minimally Acceptable        C : Corrected  
U : Unacceptable                  A/W : Acceptable but Monitor & Maintain

**+ Issue Type**  
Ma : Maintenance Deficiency  
Ob : Design & System Obsolescence  
En : Enforcement

**Flood Control Project Maintenance  
Levee Inspections**

**Levee Inspection Report By Mile - Fall 2014**

**Reclamation District No. 0108 River Farms**

Waterway	Bank	Unit Miles	Inspection Start/End	Inspector
Unit No. 01 Colusa Basin Drain	Left	20.64	10/28/2014 10/28/2014	Clay Thomas

LM Start	18.88	Rating **	M	Issue No.	6
LM End	19.60	Issue Type +	En	Location *	LS
Category	Earthen Levee			GPS Latitude/Longitude	
				Start	End
Item	Encroachments			39.013245 °	39.021302 °
				-121.980795 °	-121.988557 °
DWR ID	DWR_RD0108_01_s_2012_6				
Action/Comments					
Ditch					

Photo 1 of 2 : FA\_2014\_RD0108\_203\_6\_20141014\_00004.jpg



Agricultural ditch along toe of landside. Photo taken fall 2011.

Photo 2 of 2 : FA\_2014\_RD0108\_203\_6\_20141014\_00005.jpg



Agricultural ditch

LM Start	19.23	Rating **	M	Issue No.	3
LM End	19.23	Issue Type +	Ma	Location *	WS
Category	Supplemental			GPS Latitude/Longitude	
				Start	End
Item	USACE Erosion Survey			39.016727 °	39.017516 °
				-121.985411 °	-121.986374 °
DWR ID	DWR_RD0108_01_f_2014_3				
Action/Comments					
Inspector Comments: 2011 - Toe scour at the bottom of a steep bank, large sections of the toe are sliding down. Erosion may be due to the upstream bend. 2013: Site is part of the extended inventory, last inspected 2011. [2013 Site ID: CBD_19-2_L]					

No Photos

<b>* Location</b> LS : Land Side    N/A : Not Applicable WS : Water Side CR : Crown	<b>** Rating</b> A : Acceptable M : Minimally Acceptable U : Unacceptable	N : Not Inspected/Rated C : Corrected A/W : Acceptable but Monitor & Maintain	<b>+ Issue Type</b> Ma : Maintenance Deficiency Ob : Design & System Obsolescence En : Enforcement
--	--	---	---

**Flood Control Project Maintenance  
Levee Inspections**

**Unit Cover Sheet**

**Fall 2014 Levee Inspection Results**

**Reclamation District No. 0108 River Farms**

Waterway			Bank	Unit Miles
Unit No. 02 Castle Properties			Right	0.28
	Spring (March - May)	Summer (June - August)	(September - November) Fall	Winter (December - February)
Unit Maintenance Rating (Fall Only)			A	
Date of Inspection	03/25/2014 - 03/25/2014		10/28/2014 - 10/28/2014	
DWR Inspector	John Williamson		Clay Thomas	
Accompanied By	Chad Navarrot RD 108		Chad Navarrot RD 108	

**Summer & Winter Inspections**

The Local Maintaining Agency (LMA) is responsible for summer and winter inspections. The LMA is required to submit a report regarding summer and winter inspections to the California Department of Water Resources (DWR).

DWR must be informed on the:

- completion of the inspection
- any changes other than the results of normal maintenance
- corrections to deficiencies noted in this report

If additional items are noted, further documentation of those items must also be submitted.

The LMA should submit this information to DWR using the LMA web application tool available at:

<http://cdec.water.ca.gov/lma.html>

If the LMA is unable to submit information on this webpage, please contact DWR for assistance.

*The LMA should submit the information and any associated documentation by September 30 for summer inspections and March 31 for winter inspections.*



**Flood Control Project Maintenance  
Levee Inspections**

**Levee Inspection Report By Mile - Fall 2014**

**Reclamation District No. 0108 River Farms**

Waterway	Bank	Unit Miles	Inspection Start/End	Inspector
Unit No. 02 Castle Properties	Right	0.28	10/28/2014 10/28/2014	Clay Thomas

LM Start	0.01	Rating **	A/W	Issue No.	3
LM End	0.01	Issue Type +	Ob	Location *	LS
Category	Earthen Levee			GPS Latitude/Longitude	
				Start	End
Item	Animal Control			38.798992 °	38.798992 °
				-121.724643 °	-121.724643 °
DWR ID	DWR_RD0108_02_s_2013_3				
Action/Comments					
No rodents visible, but rodent burrows visible; need to backfill and compact or grout burrows.					

Photo 1 of 1 : FA\_2014\_RD0108\_590\_3\_20141014\_00002.jpg



No rodents but holes need to be backfilled. Spring 2013

LM Start	0.02	Rating **	A	Issue No.	2
LM End	0.28	Issue Type +	Ma	Location *	WS
Category	Earthen Levee			GPS Latitude/Longitude	
				Start	End
Item	Vegetation			38.799008 °	38.796205 °
				-121.724852 °	-121.727988 °
DWR ID	DWR_RD0108_02_f_2012_2				
Action/Comments					
Control annual grass and weeds on the levee slopes and easements. Inspector Comments: Brush and trees are on the water side levee slope but do not block visibility.					

Photo 1 of 2 : FA\_2014\_RD0108\_590\_2\_20141014\_00001.jpg



Brush and trees are on the waterside slope but does not block visibility. Spring 2013

LM Start	<b>0.02</b>	Rating **	A	Issue No.	<b>2 (cont)</b>
LM End	<b>0.28</b>	Issue Type +	Ma	Location *	WS

Photo 2 of 2 : FA\_2014\_RD0108\_590\_2\_20141106\_00004.jpg



Levee mile 0.09, vegetation on the land side levee slope. Fall 2014.

**\* Location**  
LS : Land Side    N/A : Not Applicable  
WS : Water Side  
CR : Crown

**\*\* Rating**  
A : Acceptable                      N : Not Inspected/Rated  
M : Minimally Acceptable        C : Corrected  
U : Unacceptable                  A/W : Acceptable but Monitor & Maintain

**+ Issue Type**  
Ma : Maintenance Deficiency  
Ob : Design & System Obsolescence  
En : Enforcement

**Flood Control Project Maintenance  
Levee Inspections**

**Levee Inspection Report By Mile - Fall 2014**

**Reclamation District No. 0108 River Farms**

Waterway	Bank	Unit Miles	Inspection Start/End	Inspector
Unit No. 02 Castle Properties	Right	0.28	10/28/2014 10/28/2014	Clay Thomas

LM Start	0.09	Rating **	A/W	Issue No.	4
LM End	0.09	Issue Type +	Ob	Location *	LS
Category	Earthen Levee			GPS Latitude/Longitude	
				Start	End
Item	Animal Control			38.798196 °	38.798196 °
				-121.725660 °	-121.725660 °
DWR ID	DWR_RD0108_02_f_2012_4				
Action/Comments					
No rodents visible, but rodent burrows visible; need to backfill and compact or grout burrows.					

Photo 1 of 1 : FA\_2014\_RD0108\_590\_4\_20141014\_00003.jpg



A couple of rodent holes on the landside slope. Fall 2012

<b>* Location</b> LS : Land Side    N/A : Not Applicable WS : Water Side CR : Crown	<b>** Rating</b> A : Acceptable M : Minimally Acceptable U : Unacceptable	N : Not Inspected/Rated C : Corrected A/W : Acceptable but Monitor & Maintain	<b>+ Issue Type</b> Ma : Maintenance Deficiency Ob : Design & System Obsolescence En : Enforcement
--	--	---	---