

**Flood Control Project Maintenance
Levee Inspections**

Maintenance Issue Types Only, Levee Inspection Report By Mile - Fall 2022

Reclamation District No. 0003 Grand Island

Waterway	Bank	Unit Miles	Inspection Start/End	Inspector
Unit No. 01 Left Bank Steamboat Slough	Left	10.95	09/06/2022 09/06/2022	Saskia Donovan

LM Start	0.00	Rating **	A	Issue No.	102
LM End	0.00	Issue Type +	Ma	Location *	N/A
Category	Earthen Levee			GPS Latitude/Longitude	
				Start	End
Item	Operations & Maintenance Manuals			°	°
DWR ID	DWR_RD0003_01_s_2019_102				
Comment Code					
OM : O&M Manuals					
Inspector Comment					
LMA has a copy of the O & M manual on file at district office.					

No Photos

LM Start	0.00	Rating **	A	Issue No.	103
LM End	0.00	Issue Type +	Ma	Location *	N/A
Category	Earthen Levee			GPS Latitude/Longitude	
				Start	End
Item	Emergency Supplies & Equipment			°	°
DWR ID	DWR_RD0003_01_s_2013_103				
Comment Code					
ES : Emergency Supplies & Equipment					
Inspector Comment					
District keeps supplies at pumphouse on Steamboat Slough and at Ryde. District says it has adequate supplies.					

No Photos

LM Start	0.00	Rating **	A	Issue No.	104
LM End	0.00	Issue Type +	Ma	Location *	N/A
Category	Earthen Levee			GPS Latitude/Longitude	
				Start	End
Item	Flood Preparedness & Training			°	°
DWR ID	DWR_RD0003_01_s_2013_104				
Comment Code					
FP : Flood Preparedness & Training					
Inspector Comment					
District personnel has taken DWR flood fight training in August 2022.					

No Photos

* Location LS : Land Side N/A : Not Applicable WS : Water Side CR : Crown	** Rating A : Acceptable M : Minimally Acceptable U : Unacceptable	N : Not Inspected/Rated C : Corrected A/W : Acceptable but Monitor & Maintain	+ Issue Type Ma : Maintenance Deficiency Ob : Design & System Obsolescence En : Enforcement
--	--	---	---

**Flood Control Project Maintenance
Levee Inspections**

Maintenance Issue Types Only, Levee Inspection Report By Mile - Fall 2022

Reclamation District No. 0003 Grand Island

Waterway	Bank	Unit Miles	Inspection Start/End	Inspector
Unit No. 01 Left Bank Steamboat Slough	Left	10.95	09/06/2022 09/06/2022	Saskia Donovan

LM Start	0.06	Rating **	A/W	Issue No.	187
LM End	0.06	Issue Type +	Ma	Location *	LS
Category	Earthen Levee			GPS Latitude/Longitude	
				Start	End
Item	Slope Stability			38.303884 °	38.303884 °
				-121.575334 °	-121.575334 °
DWR ID	DWR_RD0003_01_s_2022_187				
Comment Code					
S1 : Repair slope instability.					
Inspector Comment					

Photo 1 of 1 : FA_2022_RD0003_24_187_20220831_00071.jpg



View looking downstream of shallow depression on the landside slope (Spring 2022)

LM Start	0.06	Rating **	M	Issue No.	189
LM End	0.06	Issue Type +	Ma	Location *	WS
Category	Earthen Levee			GPS Latitude/Longitude	
				Start	End
Item	Slope Stability			38.303884 °	38.303884 °
				-121.575334 °	-121.575334 °
DWR ID	DWR_RD0003_01_s_2022_189				
Comment Code					
S1 : Repair slope instability.					
Inspector Comment					

Photo 1 of 1 : FA_2022_RD0003_24_189_20220831_00072.jpg



View of small depression at waterside hinge (Spring 2022).

LM Start	0.13	Rating **	M	Issue No.	2
LM End	0.13	Issue Type +	Ma	Location *	WS
Category	Earthen Levee			GPS Latitude/Longitude	
				Start	End
Item	Erosion / Bank Caving			38.303303 °	38.303303 °
				-121.576538 °	-121.576538 °
DWR ID	DWR_RD0003_01_f_2013_2				
Comment Code					
E2 : Schedule repair of erosion site prior to the next inspection.					
Inspector Comment					
A hole (8ft x 2.5ft x 5ft) is next to a large tree on waterward shoulder.					

Photo 1 of 1 : FA_2022_RD0003_24_2_20220831_00001.jpg



View of hole on the waterside shoulder due to fallen tree (Fall 2020).

* Location LS : Land Side N/A : Not Applicable WS : Water Side CR : Crown		** Rating A : Acceptable M : Minimally Acceptable U : Unacceptable N : Not Inspected/Rated C : Corrected A/W : Acceptable but Monitor & Maintain		+ Issue Type Ma : Maintenance Deficiency Ob : Design & System Obsolescence En : Enforcement	
--	--	---	--	---	--

**Flood Control Project Maintenance
Levee Inspections**

Maintenance Issue Types Only, Levee Inspection Report By Mile - Fall 2022

Reclamation District No. 0003 Grand Island

Waterway	Bank	Unit Miles	Inspection Start/End	Inspector
Unit No. 01 Left Bank Steamboat Slough	Left	10.95	09/06/2022 09/06/2022	Saskia Donovan

LM Start	0.14	Rating **	M	Issue No.	64
LM End	0.14	Issue Type +	Ma	Location *	WS
Category	Earthen Levee			GPS Latitude/Longitude	
				Start	End
Item	Trim / Thin Trees			38.303210 °	38.303210 °
				-121.576642 °	-121.576642 °
DWR ID	DWR_RD0003_01_f_2019_64				
Comment Code					
T2 : Tree or limb.					
Inspector Comment					

Photo 1 of 1 : FA_2022_RD0003_24_64_20220831_00029.jpg



View of tree branches on the waterside slope (Fall 2021).

LM Start	0.16	Rating **	M	Issue No.	131
LM End	0.16	Issue Type +	Ma	Location *	LS
Category	Earthen Levee			GPS Latitude/Longitude	
				Start	End
Item	Erosion / Vehicle Traffic			38.303111 °	38.303111 °
				-121.576842 °	-121.576842 °
DWR ID	DWR_RD0003_01_f_2021_131				
Comment Code					
E6 : Repair the levee slope damaged by vehicle traffic and prevent access where possible.					
Inspector Comment					
Vehicle tracks dug out hole on the landside hinge.					

Photo 1 of 1 : FA_2022_RD0003_24_131_20220831_00053.jpg



View looking downstream at vehicle tracks in the landside hinge (Fall 2021).

* Location
LS : Land Side N/A : Not Applicable
WS : Water Side
CR : Crown

** Rating
A : Acceptable N : Not Inspected/Rated
M : Minimally Acceptable C : Corrected
U : Unacceptable A/W : Acceptable but Monitor & Maintain

+ Issue Type
Ma : Maintenance Deficiency
Ob : Design & System Obsolescence
En : Enforcement

**Flood Control Project Maintenance
Levee Inspections**

Maintenance Issue Types Only, Levee Inspection Report By Mile - Fall 2022

Reclamation District No. 0003 Grand Island

Waterway	Bank	Unit Miles	Inspection Start/End	Inspector
Unit No. 01 Left Bank Steamboat Slough	Left	10.95	09/06/2022 09/06/2022	Saskia Donovan

LM Start	0.18	Rating **	A/W	Issue No.	49
LM End	0.24	Issue Type +	Ma	Location *	WS
Category	Supplemental			GPS Latitude/Longitude	
				Start	End
Item	2018 USACE Erosion Survey			38.303035 °	38.302544 °
				-121.577357 °	-121.578241 °
DWR ID	DWR_RD0003_01_s_2022_49				

Comment Code

Inspector Comment

2018 Site ID: STM 26.0 L
Status: Critical
2018 Field Notes: New erosion throughout site.
Site History: 1997 - Mass failure of berm slope and wave wash erosion. Large trees on top of berm, some failed trees. New area of low rock to on the upstream end. 2000 - Some minor erosion near the downstream end. 2005 - One new small tree has fallen. 2009 - Minimal new erosion. 2010 - Minor new erosion. 2013 - Observed new animal holes and vertical sections at middle of site. 2015 - Minor new erosion. 2017 - Upgraded to CRITICAL. Significant bank failure on upstream end.

LM Start	0.18	Rating **	A/W	Issue No.	49 (cont)
LM End	0.24	Issue Type +	Ma	Location *	WS

Photo 1 of 2 : FA_2022_RD0003_24_49_20220831_00016.jpg



USACE 2018 Erosion Photo #1

Photo 2 of 2 : FA_2022_RD0003_24_49_20220831_00017.jpg



USACE 2018 Erosion Photo #2

* Location LS : Land Side N/A : Not Applicable WS : Water Side CR : Crown	** Rating A : Acceptable M : Minimally Acceptable U : Unacceptable N : Not Inspected/Rated C : Corrected A/W : Acceptable but Monitor & Maintain	+ Issue Type Ma : Maintenance Deficiency Ob : Design & System Obsolescence En : Enforcement
--	---	---

Reclamation District No. 0003 Grand Island

38.30282, -121.5774, -36.0m, 290°
Jul 26, 2017 12:05:40 PM

Page 5 of 22

**Flood Control Project Maintenance
Levee Inspections**

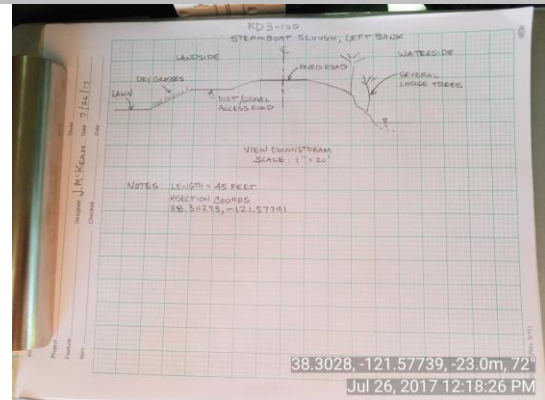
Maintenance Issue Types Only, Levee Inspection Report By Mile - Fall 2022

Reclamation District No. 0003 Grand Island

Waterway	Bank	Unit Miles	Inspection Start/End	Inspector
Unit No. 01 Left Bank Steamboat Slough	Left	10.95	09/06/2022 09/06/2022	Saskia Donovan

LM Start	0.18	Rating **	A/W	Issue No.	52 (cont)
LM End	0.21	Issue Type +	Ma	Location *	WS
Category	Supplemental			GPS Latitude/Longitude	
				Start	End
Item	2017 Storm Damage			38.302981 °	38.302778 °
				-121.577336 °	-121.577683 °
DWR ID	LMA-100				

Photo 3 of 3 : LEVAL_FA_2022_274_2395.jpg



LM Start	0.21	Rating **	C	Issue No.	65	
LM End	0.21	Issue Type +	Ma	Location *	WS	
Category	Earthen Levee			GPS Latitude/Longitude		
				Start		End
Item	Trim / Thin Trees			38.302618 °		38.302618 °
				-121.577730 °		-121.577730 °
DWR ID	DWR_RD0003_01_f_2019_65					
Comment Code						
T2 : Tree or limb.						
Inspector Comment						

No Photos

LM Start	0.44	Rating **	M	Issue No.	129
LM End	0.44	Issue Type +	Ma	Location *	WS
Category	Earthen Levee			GPS Latitude/Longitude	
				Start	End
Item	Trim / Thin Trees			38.299873 °	38.299873 °
				-121.579826 °	-121.579826 °
DWR ID	DWR_RD0003_01_s_2022_129				
Comment Code					
T2 : Tree or limb.					
Inspector Comment					

No Photos

* Location LS : Land Side N/A : Not Applicable WS : Water Side CR : Crown	** Rating A : Acceptable M : Minimally Acceptable U : Unacceptable	N : Not Inspected/Rated C : Corrected A/W : Acceptable but Monitor & Maintain	+ Issue Type Ma : Maintenance Deficiency Ob : Design & System Obsolescence En : Enforcement
--	--	---	---

**Flood Control Project Maintenance
Levee Inspections**

Maintenance Issue Types Only, Levee Inspection Report By Mile - Fall 2022

Reclamation District No. 0003 Grand Island

Waterway	Bank	Unit Miles	Inspection Start/End	Inspector
Unit No. 01 Left Bank Steamboat Slough	Left	10.95	09/06/2022 09/06/2022	Saskia Donovan

LM Start	0.48	Rating **	M	Issue No.	134
LM End	0.48	Issue Type +	Ma	Location *	LS
Category	Earthen Levee			GPS Latitude/Longitude	
				Start	End
Item	Trim / Thin Trees			38.299349 °	38.299349 °
				-121.580177 °	-121.580177 °
DWR ID	DWR_RD0003_01_s_2022_134				
Comment Code					
T2 : Tree or limb.					
Inspector Comment					

No Photos

LM Start	0.91	Rating **	A/W	Issue No.	147
LM End	0.91	Issue Type +	Ma	Location *	LS
Category	Earthen Levee			GPS Latitude/Longitude	
				Start	End
Item	Animal Control			38.293463 °	38.293463 °
				-121.582275 °	-121.582275 °
DWR ID	DWR_RD0003_01_f_2020_147				
Comment Code					
A1 : Exterminate rodents and backfill and compact or grout burrows.					
Inspector Comment					
No new rodent holes. Monitor.					

Photo 1 of 1 : FA_2022_RD0003_24_147_20220831_00061.jpg



View looking downstream at multiple rodent holes in the landside slope (Fall 2020).

* Location
LS : Land Side N/A : Not Applicable
WS : Water Side
CR : Crown

** Rating
A : Acceptable N : Not Inspected/Rated
M : Minimally Acceptable C : Corrected
U : Unacceptable A/W : Acceptable but Monitor & Maintain

+ Issue Type
Ma : Maintenance Deficiency
Ob : Design & System Obsolescence
En : Enforcement

**Flood Control Project Maintenance
Levee Inspections**

Maintenance Issue Types Only, Levee Inspection Report By Mile - Fall 2022

Reclamation District No. 0003 Grand Island

Waterway	Bank	Unit Miles	Inspection Start/End	Inspector
Unit No. 01 Left Bank Steamboat Slough	Left	10.95	09/06/2022 09/06/2022	Saskia Donovan

LM Start	0.91	Rating **	A/W	Issue No.	53
LM End	0.97	Issue Type +	Ma	Location *	WS
Category	Supplemental			GPS Latitude/Longitude	
				Start	End
Item	2017 Storm Damage			38.293381 °	38.292617 °
				-121.582450 °	-121.582675 °
DWR ID	LMA-101				
Comment Code					
Inspector Comment					
Fall 2022: Repair in progress. Levee Evaluation Comments Description:District station 48+20 to 51+06, Sec. 07, T. 5 N. R. 4 E., M.D.M. An erosion site exists along approximately 286 linear feet of the waterside slope of Steamboat Slough (Unit 1). The erosion begins approximately 1/2 of the way down the slope from the crown to the waterside toe. Erosion is undercutting existing trees. Site ID No:275 Site Designation:LMA-101 Repair Type: Erosion Rating:Serious Field Date:7/26/2017 Notes:					

Photo 1 of 3 : LEVAL_FA_2022_275_2396.jpg



Photo 2 of 3 : LEVAL_FA_2022_275_2398.jpg



* Location LS : Land Side N/A : Not Applicable WS : Water Side CR : Crown	** Rating A : Acceptable N : Not Inspected/Rated M : Minimally Acceptable C : Corrected U : Unacceptable A/W : Acceptable but Monitor & Maintain	+ Issue Type Ma : Maintenance Deficiency Ob : Design & System Obsolescence En : Enforcement
--	---	---

**Flood Control Project Maintenance
Levee Inspections**

Maintenance Issue Types Only, Levee Inspection Report By Mile - Fall 2022

Reclamation District No. 0003 Grand Island

Waterway	Bank	Unit Miles	Inspection Start/End	Inspector
Unit No. 01 Left Bank Steamboat Slough	Left	10.95	09/06/2022 09/06/2022	Saskia Donovan

LM Start	0.91	Rating **	A/W	Issue No.	53 (cont)
LM End	0.97	Issue Type +	Ma	Location *	WS
Category	Supplemental			GPS Latitude/Longitude	
				Start	End
Item	2017 Storm Damage			38.293381 °	38.292617 °
				-121.582450 °	-121.582675 °
DWR ID	LMA-101				

Photo 3 of 3 : LEVAL_FA_2022_275_2399.jpg



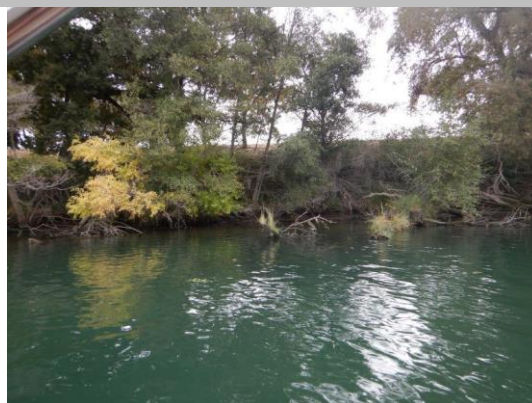
LM Start	0.91	Rating **	A/W	Issue No.	46
LM End	0.96	Issue Type +	Ma	Location *	WS
Category	Supplemental			GPS Latitude/Longitude	
				Start	End
Item	2018 USACE Erosion Survey			38.293386 °	38.292675 °
				-121.582554 °	-121.582741 °
DWR ID	DWR_RD0003_01_s_2022_46				

Comment Code

Inspector Comment

2018 Site ID: STM 25.0 L
Status: Critical
2018 Field Notes: Minor new erosion at toe. Site extended downstream to include new erosion pocket.
Site History: 1997 - Erosion of sandy levee on top left bank. Site is downstream of a rock section. Large riparian trees on the bank. 1999 - Upstream half of the reach repaired with rock, except for a 30 ft reach at the upstream end. 2001 - Rock repair on the upstream and downstream ends; no revetment at the trees. 2002 - Rock repair is starting to slide off the geotextile at the upstream end. 2005 - One new small tree has fallen. 2006 - 50 ft pocket at the downstream end and at the upstream end with new rock in between. 2007 - Upstream end has been repaired. 2008 - Area closed sign on bank. Newly fallen trees at both ends and pop outs along the bank. 2010 - Site extended downstream. 2011 - New erosion at the toe. More trees popouts. 2013 - Short vertical sections observed at the downstream end. 2015 - Significant new erosion, large oak tree on verge of popping out. 2016 - Sites 24.8 and 25 were combined. 2017 - Site upgraded to CRITICAL. Site has eroded to near vertical at the upstream end.

Photo 1 of 2 : FA_2022_RD0003_24_46_20220831_00013.jpg



USACE 2018 Erosion Photo #1

* Location LS : Land Side N/A : Not Applicable WS : Water Side CR : Crown	** Rating A : Acceptable M : Minimally Acceptable U : Unacceptable	N : Not Inspected/Rated C : Corrected A/W : Acceptable but Monitor & Maintain	+ Issue Type Ma : Maintenance Deficiency Ob : Design & System Obsolescence En : Enforcement
--	--	---	---

**Flood Control Project Maintenance
Levee Inspections**

Maintenance Issue Types Only, Levee Inspection Report By Mile - Fall 2022

Reclamation District No. 0003 Grand Island

Waterway	Bank	Unit Miles	Inspection Start/End	Inspector
Unit No. 01 Left Bank Steamboat Slough	Left	10.95	09/06/2022 09/06/2022	Saskia Donovan

LM Start	0.91	Rating **	A/W	Issue No.	46 (cont)
LM End	0.96	Issue Type +	Ma	Location *	WS
Category	Supplemental			GPS Latitude/Longitude	
				Start	End
Item	2018 USACE Erosion Survey			38.293386 °	38.292675 °
				-121.582554 °	-121.582741 °
DWR ID	DWR_RD0003_01_s _ 2022_46				

Photo 2 of 2 : FA_2022_RD0003_24_46_20220831_00014.jpg



USACE 2018 Erosion Photo #2

LM Start	0.97	Rating **	M	Issue No.	130
LM End	0.97	Issue Type +	Ma	Location *	WS
Category	Earthen Levee			GPS Latitude/Longitude	
				Start	End
Item	Trim / Thin Trees			38.292549 °	38.292549 °
				-121.582563 °	-121.582563 °
DWR ID	DWR_RD0003_01_s _ 2022_130				
Comment Code					
T2 : Tree or limb.					
Inspector Comment					

No Photos

* Location LS : Land Side N/A : Not Applicable WS : Water Side CR : Crown	** Rating A : Acceptable M : Minimally Acceptable U : Unacceptable	N : Not Inspected/Rated C : Corrected A/W : Acceptable but Monitor & Maintain	+ Issue Type Ma : Maintenance Deficiency Ob : Design & System Obsolescence En : Enforcement
--	--	---	---

**Flood Control Project Maintenance
Levee Inspections**

Maintenance Issue Types Only, Levee Inspection Report By Mile - Fall 2022

Reclamation District No. 0003 Grand Island

Waterway	Bank	Unit Miles	Inspection Start/End	Inspector
Unit No. 01 Left Bank Steamboat Slough	Left	10.95	09/06/2022 09/06/2022	Saskia Donovan

LM Start	1.09	Rating **	U	Issue No.	60
LM End	1.10	Issue Type +	Ma	Location *	WS
Category	Earthen Levee			GPS Latitude/Longitude	
				Start	End
Item	Erosion / Bank Caving			38.290819 °	38.290706 °
				-121.582942 °	-121.582939 °

Comment Code

E2 : Schedule repair of erosion site prior to the next inspection.

Inspector Comment

This was a 2017 Storm Damage site.
An erosion site exists along approximately 41 linear feet of the water side slope.
Site ID No:276
Site Designation:LMA-102
6/18/2020 Boat Inspection:
Significant erosion into waterside prism directly upstream of tree that is leaning into water. That leaning tree is creating an eddy that is causing the erosion. There is also some less significant erosion into the waterside toe upstream of the significant erosion site.

LM Start	1.09	Rating **	U	Issue No.	60 (cont)
LM End	1.10	Issue Type +	Ma	Location *	WS

Photo 1 of 2 : FA_2022_RD0003_24_60_20220831_00027.jpg



View from the channel of leaning tree and erosion into waterside prism (Summer 2020).

Photo 2 of 2 : FA_2022_RD0003_24_60_20220831_00028.jpg



View from the channel of erosion into waterside toe upstream deep erosion (Summer 2020).

* Location LS : Land Side N/A : Not Applicable WS : Water Side CR : Crown	** Rating A : Acceptable M : Minimally Acceptable U : Unacceptable	N : Not Inspected/Rated C : Corrected A/W : Acceptable but Monitor & Maintain	+ Issue Type Ma : Maintenance Deficiency Ob : Design & System Obsolescence En : Enforcement
--	--	---	---

**Flood Control Project Maintenance
Levee Inspections**

Maintenance Issue Types Only, Levee Inspection Report By Mile - Fall 2022

Reclamation District No. 0003 Grand Island

Waterway	Bank	Unit Miles	Inspection Start/End	Inspector
Unit No. 01 Left Bank Steamboat Slough	Left	10.95	09/06/2022 09/06/2022	Saskia Donovan

LM Start	1.13	Rating **	M	Issue No.	143
LM End	1.13	Issue Type +	Ma	Location *	WS
Category	Earthen Levee			GPS Latitude/Longitude	
				Start	End
Item	Trim / Thin Trees			38.290261 °	38.290261 °
				-121.582812 °	-121.582812 °
DWR ID	DWR_RD0003_01_s_2022_143				
Comment Code					
T2 : Tree or limb.					
Inspector Comment					

No Photos

LM Start	1.40	Rating **	U	Issue No.	141
LM End	1.40	Issue Type +	Ma	Location *	LS
Category	Earthen Levee			GPS Latitude/Longitude	
				Start	End
Item	Trim / Thin Trees			38.286475 °	38.286475 °
				-121.583700 °	-121.583700 °
DWR ID	DWR_RD0003_01_s_2022_141				
Comment Code					
T2 : Tree or limb.					
Inspector Comment					

Photo 1 of 1 : FA_2022_RD0003_24_141_20220921_00292.jpg



View of the large tree limb on the LS levee slope (Fall 2022).

LM Start	1.44	Rating **	C	Issue No.	139
LM End	1.44	Issue Type +	Ma	Location *	LS
Category	Earthen Levee			GPS Latitude/Longitude	
				Start	End
Item	Trim / Thin Trees			38.286107 °	38.286107 °
				-121.584268 °	-121.584268 °
DWR ID	DWR_RD0003_01_s_2022_139				
Comment Code					
T2 : Tree or limb.					
Inspector Comment					

No Photos

*** Location**
LS : Land Side N/A : Not Applicable
WS : Water Side
CR : Crown

**** Rating**
A : Acceptable N : Not Inspected/Rated
M : Minimally Acceptable C : Corrected
U : Unacceptable A/W : Acceptable but Monitor & Maintain

+ Issue Type
Ma : Maintenance Deficiency
Ob : Design & System Obsolescence
En : Enforcement

Reclamation District No. 0003 Grand Island

No Photos

View of the fallen tree on the WS levee slope (Fall 2022).

View of the fallen tree on the WS levee slope (Fall 2022).

Page 13 of 22

**Flood Control Project Maintenance
Levee Inspections**

Maintenance Issue Types Only, Levee Inspection Report By Mile - Fall 2022

Reclamation District No. 0003 Grand Island

Waterway	Bank	Unit Miles	Inspection Start/End	Inspector
Unit No. 01 Left Bank Steamboat Slough	Left	10.95	09/06/2022 09/06/2022	Saskia Donovan

LM Start	2.31	Rating **	A/W	Issue No.	154
LM End	2.31	Issue Type +	Ma	Location *	WS
Category	Earthen Levee			GPS Latitude/Longitude	
				Start	End
Item	Trim / Thin Trees			38.275362 °	38.275362 °
				-121.589280 °	-121.589280 °
DWR ID	DWR_RD0003_01_s_2022_154				
Comment Code					
T2 : Tree or limb.					
Inspector Comment					
Branches placed on turnout to prevent parked vehicles.					

Photo 1 of 1 : FA_2022_RD0003_24_154_20220831_00065.jpg



View of tree limbs placed on waterside turnout to prevent vehicle traffic (Spring 2022).

LM Start	2.63	Rating **	C	Issue No.	157	
LM End	2.63	Issue Type +	Ma	Location *	LS	
Category	Earthen Levee			GPS Latitude/Longitude		
				Start		End
Item	Trim / Thin Trees			38.271540 °		38.271540 °
				-121.588512 °		-121.588512 °
DWR ID	DWR_RD0003_01_s_2022_157					
Comment Code						
T2 : Tree or limb.						
Inspector Comment						

No Photos

LM Start	3.16	Rating **	N	Issue No.	47
LM End	3.16	Issue Type +	Ma	Location *	WS
Category	Earthen Levee			GPS Latitude/Longitude	
				Start	End
Item	Trim / Thin Trees			38.264154 °	38.264154 °
				-121.587242 °	-121.587242 °
DWR ID	DWR_RD0003_01_s_2012_47				
Comment Code					
T5 : Tree stumps.					
Inspector Comment					
There are 7 large stumps on the slope.					

No Photos

* Location LS : Land Side N/A : Not Applicable WS : Water Side CR : Crown	** Rating A : Acceptable M : Minimally Acceptable U : Unacceptable	N : Not Inspected/Rated C : Corrected A/W : Acceptable but Monitor & Maintain	+ Issue Type Ma : Maintenance Deficiency Ob : Design & System Obsolescence En : Enforcement
--	--	---	---

**Flood Control Project Maintenance
Levee Inspections**

Maintenance Issue Types Only, Levee Inspection Report By Mile - Fall 2022

Reclamation District No. 0003 Grand Island

Waterway	Bank	Unit Miles	Inspection Start/End	Inspector
Unit No. 01 Left Bank Steamboat Slough	Left	10.95	09/06/2022 09/06/2022	Saskia Donovan

LM Start	4.87	Rating **	M	Issue No.	83
LM End	4.87	Issue Type +	Ma	Location *	LS
Category	Earthen Levee			GPS Latitude/Longitude	
				Start	End
Item	Slope Stability			38.245903 °	38.245903 °
				-121.600851 °	-121.600851 °
DWR ID	DWR_RD0003_01_f_2017_83				
Comment Code					
S1 : Repair slope instability.					
Inspector Comment					
The landside slope has a depression.					

Photo 1 of 1 : FA_2022_RD0003_24_83_20220921_00304.jpg



View of the depression on the LS levee slope (Fall 2022).

LM Start	6.04	Rating **	M	Issue No.	153
LM End	6.04	Issue Type +	Ma	Location *	LS
Category	Earthen Levee			GPS Latitude/Longitude	
				Start	End
Item	Animal Control			38.229205 °	38.229205 °
				-121.601802 °	-121.601802 °
DWR ID	DWR_RD0003_01_f_2020_153				
Comment Code					
A1 : Exterminate rodents and backfill and compact or grout burrows.					
Inspector Comment					
A couple of rodent holes on the landside slope.					

Photo 1 of 1 : FA_2022_RD0003_24_153_20220831_00064.jpg



View looking up slope at a couple fresh rodent holes in the landside slope (Fall 2020).

LM Start	7.68	Rating **	C	Issue No.	76
LM End	7.68	Issue Type +	Ma	Location *	LS
Category	Earthen Levee			GPS Latitude/Longitude	
				Start	End
Item	Trim / Thin Trees			38.207036 °	38.207036 °
				-121.609540 °	-121.609540 °
DWR ID	DWR_RD0003_01_s_2012_76				
Comment Code					
T1 : Trim and thin trees to at least five feet above ground level to allow visibility of the ground and room to flood fight.					
Inspector Comment					

No Photos

* Location LS : Land Side N/A : Not Applicable WS : Water Side CR : Crown		** Rating A : Acceptable M : Minimally Acceptable U : Unacceptable N : Not Inspected/Rated C : Corrected A/W : Acceptable but Monitor & Maintain		+ Issue Type Ma : Maintenance Deficiency Ob : Design & System Obsolescence En : Enforcement	
--	--	---	--	---	--

**Flood Control Project Maintenance
Levee Inspections**

Maintenance Issue Types Only, Levee Inspection Report By Mile - Fall 2022

Reclamation District No. 0003 Grand Island

Waterway	Bank	Unit Miles	Inspection Start/End	Inspector
Unit No. 01 Left Bank Steamboat Slough	Left	10.95	09/06/2022 09/06/2022	Saskia Donovan

LM Start	8.77	Rating **	U	Issue No.	170
LM End	8.77	Issue Type +	Ma	Location *	WS
Category	Earthen Levee			GPS Latitude/Longitude	
				Start	End
Item	Trim / Thin Trees			38.193821 °	38.193821 °
				-121.618183 °	-121.618183 °
DWR ID	DWR_RD0003_01_s_2022_170				
Comment Code					
T2 : Tree or limb.					
Inspector Comment					

Photo 1 of 1 : FA_2022_RD0003_24_170_20220831_00069.jpg



View of down tree limb on the waterside shoulder (Spring 2022).

LM Start	8.92	Rating **	N	Issue No.	155
LM End	8.92	Issue Type +	Ma	Location *	WS
Category	Earthen Levee			GPS Latitude/Longitude	
				Start	End
Item	Trim / Thin Trees			38.192985 °	38.192985 °
				-121.620712 °	-121.620712 °
DWR ID	DWR_RD0003_01_f_2020_155				
Comment Code					
T5 : Tree stumps.					
Inspector Comment					
Stump on the waterside hinge.					

Photo 1 of 1 : FA_2022_RD0003_24_155_20220831_00066.jpg



View of tree stump on the waterside slope (Fall 2020).

*** Location**
LS : Land Side N/A : Not Applicable
WS : Water Side
CR : Crown

**** Rating**
A : Acceptable N : Not Inspected/Rated
M : Minimally Acceptable C : Corrected
U : Unacceptable A/W : Acceptable but Monitor & Maintain

+ Issue Type
Ma : Maintenance Deficiency
Ob : Design & System Obsolescence
En : Enforcement

**Flood Control Project Maintenance
Levee Inspections**

Maintenance Issue Types Only, Levee Inspection Report By Mile - Fall 2022

Reclamation District No. 0003 Grand Island

Waterway	Bank	Unit Miles	Inspection Start/End	Inspector
Unit No. 01 Left Bank Steamboat Slough	Left	10.95	09/06/2022 09/06/2022	Saskia Donovan

LM Start	10.15	Rating **	U	Issue No.	72
LM End	10.21	Issue Type +	Ma	Location *	WS
Category	Earthen Levee			GPS Latitude/Longitude	
				Start	End
Item	Erosion / Bank Caving			38.188431 °	38.187803 °
				-121.641703 °	-121.642478 °
DWR ID	LMA-103				
Comment Code					
E2 : Schedule repair of erosion site prior to the next inspection.					
Inspector Comment					
This was a 2017 Storm Damage site. The waterside slope experienced sloughing and erosion along approximately 312 linear feet. Sloughing commences at approximately 1/4 of the way down the slope from the crown and extends to the rip rap. Site ID No:277 Site Designation:LMA-103 4/9/2020 Field Notes: Relatively significant erosion into waterside slope.					

Photo 1 of 2 : FA_2022_RD0003_24_72_20220831_00033.jpg



LM Start	10.15	Rating **	U	Issue No.	72 (cont)
LM End	10.21	Issue Type +	Ma	Location *	WS

Photo 2 of 2 : FA_2022_RD0003_24_72_20220831_00034.jpg



* Location LS : Land Side N/A : Not Applicable WS : Water Side CR : Crown	** Rating A : Acceptable M : Minimally Acceptable U : Unacceptable	N : Not Inspected/Rated C : Corrected A/W : Acceptable but Monitor & Maintain	+ Issue Type Ma : Maintenance Deficiency Ob : Design & System Obsolescence En : Enforcement
--	--	---	---

**Flood Control Project Maintenance
Levee Inspections**

Maintenance Issue Types Only, Levee Inspection Report By Mile - Fall 2022

Reclamation District No. 0003 Grand Island

Waterway	Bank	Unit Miles	Inspection Start/End	Inspector
Unit No. 01 Left Bank Steamboat Slough	Left	10.95	09/06/2022 09/06/2022	Saskia Donovan

LM Start	10.82	Rating **	M	Issue No.	210
LM End	10.82	Issue Type +	Ma	Location *	
Category	Supplemental			GPS Latitude/Longitude	
				Start	End
Item	DWR UCIP LMA Responsibility			38.183044 °	38.183044 °
				-121.651367 °	-121.651367 °
DWR ID	22350				
Comment Code					
Inspector Comment					
DS_ID:22350 FS_ID:69661 EP_NO: N/A Repair Type: Non-Urgent EVAL Issue: Crossing Status: Not Found UCIP Comments: 05/22/2020 Record upgraded to Non-Urgent due to missing permit. No signs of pipe found during inspection. Geophysical study (07-24-2018) suggests no pipe present at this location. (S. Donovan - DWR UCIP) FIELD_STRUCT_DESC: 36-inch corrugated metal drainage pipe through the levee, invert elevation 24.0 feet below the crown. [Additional Reference(s): DWR Levee Log, 1993, (HLM 10.90). USACE Sacramento O&M Manual 104, February 1960, (RM 15.20)]. FS Date: 5/22/2020 7:49:00 AM					

Photo 1 of 3 : UCIP_FA_2022_69661_85964.jpg



Overview of the levee crown looking d/s.

LM Start	10.82	Rating **	M	Issue No.	210 (cont)
LM End	10.82	Issue Type +	Ma	Location *	

Photo 2 of 3 : UCIP_FA_2022_69661_85965.jpg



LS view: Looking down the levee slope.

* Location LS : Land Side N/A : Not Applicable WS : Water Side CR : Crown	** Rating A : Acceptable M : Minimally Acceptable U : Unacceptable N : Not Inspected/Rated C : Corrected A/W : Acceptable but Monitor & Maintain	+ Issue Type Ma : Maintenance Deficiency Ob : Design & System Obsolescence En : Enforcement
--	---	---

**Flood Control Project Maintenance
Levee Inspections**

Maintenance Issue Types Only, Levee Inspection Report By Mile - Fall 2022

Reclamation District No. 0003 Grand Island

Waterway	Bank	Unit Miles	Inspection Start/End	Inspector
Unit No. 01 Left Bank Steamboat Slough	Left	10.95	09/06/2022 09/06/2022	Saskia Donovan

LM Start	10.82	Rating **	M	Issue No.	210 (cont)
LM End	10.82	Issue Type +	Ma	Location *	
Category	Supplemental			GPS Latitude/Longitude	
				Start	End
Item	DWR UCIP LMA Responsibility			38.183044 °	38.183044 °
				-121.651367 °	-121.651367 °
DWR ID	22350				

Photo 3 of 3 : UCIP_FA_2022_69661_85966.jpg



WS view: Looking down the levee slope.

LM Start	10.83	Rating **	M	Issue No.	211
LM End	10.83	Issue Type +	Ma	Location *	
Category	Supplemental			GPS Latitude/Longitude	
				Start	End
Item	DWR UCIP LMA Responsibility			38.182982 °	38.182982 °
				-121.651610 °	-121.651610 °
DWR ID	22206				

Comment Code

Inspector Comment

DS_ID:22206
 FS_ID:69662
 EP_NO: N/A
 Repair Type: Non-Urgent
 EVAL Issue:
 Crossing Status: Found
 UCIP Comments: 05/22/2020 Record remains Non-Urgent due to missing permit and crossing being abandoned. (S. Donovan - DWR UCIP)02/11/2014 Pipe appears abandoned and should be verified as having been done so properly. (G. Wylie - DWR UCIP)
 FIELD_STRUCT_DESC: *ABANDONED* 36-inch corrugated metal drainage pipe through the levee, 15.0 feet below the crown. Slide gate in a 48-inch corrugated metal pipe (CMP) riser on the waterside (WS) shoulder. Flap gate at the WS toe has been sealed shut with sealant.
 [Additional Reference(s): DWR Levee Log, 1993, (HLM 10.90), referenced as 24.0 feet below the crown. USACE Sacramento O&M Manual 104, February 1960, (RM 15.20), referenced as invert elevation 24.0 feet below the crown].
 FS Date: 5/22/2020 8:07:00 AM

Photo 1 of 3 : UCIP_FA_2022_69662_85972.jpg



Overview of the levee crown looking d/s.

* Location LS : Land Side N/A : Not Applicable WS : Water Side CR : Crown	** Rating A : Acceptable M : Minimally Acceptable U : Unacceptable	N : Not Inspected/Rated C : Corrected A/W : Acceptable but Monitor & Maintain	+ Issue Type Ma : Maintenance Deficiency Ob : Design & System Obsolescence En : Enforcement
--	--	---	---

**Flood Control Project Maintenance
Levee Inspections**

Maintenance Issue Types Only, Levee Inspection Report By Mile - Fall 2022

Reclamation District No. 0003 Grand Island

Waterway	Bank	Unit Miles	Inspection Start/End	Inspector
Unit No. 01 Left Bank Steamboat Slough	Left	10.95	09/06/2022 09/06/2022	Saskia Donovan

LM Start	10.83	Rating **	M	Issue No.	211 (cont)
LM End	10.83	Issue Type +	Ma	Location *	
Category	Supplemental			GPS Latitude/Longitude	
				Start	End
Item	DWR UCIP LMA Responsibility			38.182982 °	38.182982 °
				-121.651610 °	-121.651610 °
DWR ID	22206				

Photo 2 of 3 : UCIP_FA_2022_69662_85967.jpg



LS view: Steel weir on the levee toe.

LM Start	10.83	Rating **	M	Issue No.	211 (cont)
LM End	10.83	Issue Type +	Ma	Location *	

Photo 3 of 3 : UCIP_FA_2022_69662_85968.jpg



WS view: Standpipe on the levee shoulder.

* Location LS : Land Side N/A : Not Applicable WS : Water Side CR : Crown	** Rating A : Acceptable M : Minimally Acceptable U : Unacceptable N : Not Inspected/Rated C : Corrected A/W : Acceptable but Monitor & Maintain	+ Issue Type Ma : Maintenance Deficiency Ob : Design & System Obsolescence En : Enforcement
--	---	---

**Flood Control Project Maintenance
Levee Inspections**

Maintenance Issue Types Only, Levee Inspection Report By Mile - Fall 2022

Reclamation District No. 0003 Grand Island

Waterway	Bank	Unit Miles	Inspection Start/End	Inspector
Unit No. 01 Left Bank Steamboat Slough	Left	10.95	09/06/2022 09/06/2022	Saskia Donovan

LM Start	10.83	Rating **	M	Issue No.	212
LM End	10.83	Issue Type +	Ma	Location *	
Category	Supplemental			GPS Latitude/Longitude	
				Start	End
Item	DWR UCIP LMA Responsibility			38.182973 °	38.182973 °
				-121.651645 °	-121.651645 °
DWR ID	22349				
Comment Code					
Inspector Comment					
DS_ID:22349 FS_ID:69663 EP_NO: N/A Repair Type: Non-Urgent EVAL Issue: Crossing Status: Found UCIP Comments: 05/22/2020 Record remains Non-Urgent due to missing permit and crossing being abandoned. (S. Donovan - DWR UCIP)02/11/2014 Pipe appears abandoned and should be verified as having been filled with grout. (G. Wylie - DWR UCIP) FIELD_STRUCT_DESC: *ABANDONED* 36-inch corrugated metal drainage pipe through the levee, 15.0 feet below the crown. Slide gate in a 48-inch corrugated metal pipe (CMP) riser on the waterside (WS) shoulder. Steel intake weir at the landside (LS) toe. Steel plate welded over the pipe on the WS toe. [Additional Reference(s): DWR Levee Log, 1993, (HLM 10.90), referenced as 24.0 feet below the crown. USACE Sacramento O&M Manual 104, February 1960, (RM 15.20), referenced as invert elevation 24.0 feet below the crown]. FS Date: 5/22/2020 8:28:00 AM					

LM Start	10.83	Rating **	M	Issue No.	212 (cont)
LM End	10.83	Issue Type +	Ma	Location *	

Photo 1 of 3 : UCIP_FA_2022_69663_85978.jpg



Overview of the levee crown looking d/s.

Photo 2 of 3 : UCIP_FA_2022_69663_85973.jpg



LS view: Steel weir on the levee toe.

* Location LS : Land Side N/A : Not Applicable WS : Water Side CR : Crown	** Rating A : Acceptable M : Minimally Acceptable U : Unacceptable	N : Not Inspected/Rated C : Corrected A/W : Acceptable but Monitor & Maintain	+ Issue Type Ma : Maintenance Deficiency Ob : Design & System Obsolescence En : Enforcement
--	--	---	---

**Flood Control Project Maintenance
Levee Inspections**

Maintenance Issue Types Only, Levee Inspection Report By Mile - Fall 2022

Reclamation District No. 0003 Grand Island

Waterway	Bank	Unit Miles	Inspection Start/End	Inspector
Unit No. 01 Left Bank Steamboat Slough	Left	10.95	09/06/2022 09/06/2022	Saskia Donovan

LM Start	10.83	Rating **	M	Issue No.	212 (cont)
LM End	10.83	Issue Type +	Ma	Location *	
Category	Supplemental			GPS Latitude/Longitude	
				Start	End
Item	DWR UCIP LMA Responsibility			38.182973 °	38.182973 °
				-121.651645 °	-121.651645 °
DWR ID	22349				

Photo 3 of 3 : UCIP_FA_2022_69663_85974.jpg



WS view: Standpipe on the levee shoulder.

* Location LS : Land Side N/A : Not Applicable WS : Water Side CR : Crown	** Rating A : Acceptable M : Minimally Acceptable U : Unacceptable N : Not Inspected/Rated C : Corrected A/W : Acceptable but Monitor & Maintain	+ Issue Type Ma : Maintenance Deficiency Ob : Design & System Obsolescence En : Enforcement
--	---	---

**Flood Control Project Maintenance
Levee Inspections**

Maintenance Issue Types Only, Levee Inspection Report By Mile - Fall 2022

Reclamation District No. 0003 Grand Island

Waterway	Bank	Unit Miles	Inspection Start/End	Inspector
Unit No. 02 Right Bank Sacramento River	Right	17.35	09/07/2022 09/08/2022	Saskia Donovan

LM Start	0.11	Rating **	M	Issue No.	97
LM End	0.11	Issue Type +	Ma	Location *	LS
Category	Earthen Levee			GPS Latitude/Longitude	
				Start	End
Item	Vegetation			38.175174 °	38.175174 °
				-121.651962 °	-121.651962 °
DWR ID	DWR_RD0003_02_s_2022_97				
Comment Code					
V2 : Remove the wild growth and woody vegetation other than native grasses from the levee slopes.					
Inspector Comment					
Willows are on the landside shoulder.					

Photo 1 of 1 : FA_2022_RD0003_25_97_20220831_00040.jpg



View of willows on the landside shoulder (Spring 2022).

LM Start	0.31	Rating **	U	Issue No.	68
LM End	0.31	Issue Type +	Ma	Location *	LS
Category	Earthen Levee			GPS Latitude/Longitude	
				Start	End
Item	Vegetation			38.174261 °	38.174261 °
				-121.648583 °	-121.648580 °
DWR ID	DWR_RD0003_02_f_2021_68				
Comment Code					
V2 : Remove the wild growth and woody vegetation other than native grasses from the levee slopes.					
Inspector Comment					
Willows are on the landside slope.					

Photo 1 of 1 : FA_2022_RD0003_25_68_20220831_00025.jpg



View of willows on the landside slope (Fall 2021).

LM Start	0.70	Rating **	C	Issue No.	160
LM End	0.70	Issue Type +	Ma	Location *	LS
Category	Earthen Levee			GPS Latitude/Longitude	
				Start	End
Item	Trim / Thin Trees			38.173455 °	38.173455 °
				-121.641456 °	-121.641456 °
DWR ID	DWR_RD0003_02_f_2021_160				
Comment Code					
T2 : Tree or limb.					
Inspector Comment					
Tree limbs have been removed and only a small branch remains on the LS slope.					

No Photos

* Location LS : Land Side N/A : Not Applicable WS : Water Side CR : Crown	** Rating A : Acceptable M : Minimally Acceptable U : Unacceptable	N : Not Inspected/Rated C : Corrected A/W : Acceptable but Monitor & Maintain	+ Issue Type Ma : Maintenance Deficiency Ob : Design & System Obsolescence En : Enforcement
--	--	---	---

**Flood Control Project Maintenance
Levee Inspections**

Maintenance Issue Types Only, Levee Inspection Report By Mile - Fall 2022

Reclamation District No. 0003 Grand Island

Waterway	Bank	Unit Miles	Inspection Start/End	Inspector
Unit No. 02 Right Bank Sacramento River	Right	17.35	09/07/2022 09/08/2022	Saskia Donovan

LM Start	1.53	Rating **	M	Issue No.	222
LM End	1.53	Issue Type +	Ma	Location *	WS
Category	Earthen Levee			GPS Latitude/Longitude	
				Start	End
Item	Encroachments			38.168908 °	38.168908 °
				-121.627748 °	-121.627748 °
DWR ID	DWR_RD0003_02_f_2019_222				
Comment Code					
GA : Garbage					
Inspector Comment					
Remove discarded chair from waterside slope.					

Photo 1 of 1 : FA_2022_RD0003_25_222_20220831_00136.jpg



View of discarded chair on the waterside slope (Spring 2021).

LM Start	2.44	Rating **	M	Issue No.	163
LM End	2.44	Issue Type +	Ma	Location *	LS
Category	Earthen Levee			GPS Latitude/Longitude	
				Start	End
Item	Trim / Thin Trees			38.164342 °	38.164342 °
				-121.612455 °	-121.612455 °
DWR ID	DWR_RD0003_02_f_2020_163				
Comment Code					
T1 : Trim and thin trees to at least five feet above ground level to allow visibility of the ground and room to flood fight.					
Inspector Comment					

Photo 1 of 1 : FA_2022_RD0003_25_163_20220831_00095.jpg



View of trees partially blocking the view down the landside slope (Fall 2020).

LM Start	2.75	Rating **	M	Issue No.	224
LM End	2.75	Issue Type +	Ma	Location *	LS
Category	Earthen Levee			GPS Latitude/Longitude	
				Start	End
Item	Encroachments			38.164814 °	38.164814 °
				-121.606704 °	-121.606704 °
DWR ID	DWR_RD0003_02_f_2021_224				
Comment Code					
PR : Prunings					
Inspector Comment					

Photo 1 of 1 : FA_2022_RD0003_25_224_20220831_00138.jpg



View of tree prunings on the landside toe (Fall 2021).

* Location LS : Land Side N/A : Not Applicable WS : Water Side CR : Crown		** Rating A : Acceptable N : Not Inspected/Rated M : Minimally Acceptable C : Corrected U : Unacceptable A/W : Acceptable but Monitor & Maintain		+ Issue Type Ma : Maintenance Deficiency Ob : Design & System Obsolescence En : Enforcement	
--	--	---	--	---	--

**Flood Control Project Maintenance
Levee Inspections**

Maintenance Issue Types Only, Levee Inspection Report By Mile - Fall 2022

Reclamation District No. 0003 Grand Island

Waterway	Bank	Unit Miles	Inspection Start/End	Inspector
Unit No. 02 Right Bank Sacramento River	Right	17.35	09/07/2022 09/08/2022	Saskia Donovan

LM Start	3.08	Rating **	C	Issue No.	227
LM End	3.08	Issue Type +	Ma	Location *	WS
Category	Earthen Levee			GPS Latitude/Longitude	
				Start	End
Item	Encroachments			38.166766 °	38.166766 °
				-121.601321 °	-121.601321 °
DWR ID	DWR_RD0003_02_f_2021_227				
Comment Code					
GA : Garbage					
Inspector Comment					
The garbage pile has been removed.					

No Photos

LM Start	3.08	Rating **	M	Issue No.	228
LM End	3.08	Issue Type +	Ma	Location *	LS
Category	Earthen Levee			GPS Latitude/Longitude	
				Start	End
Item	Erosion / Vehicle Traffic			38.166805 °	38.166805 °
				-121.601264 °	-121.601264 °
DWR ID	DWR_RD0003_02_f_2021_228				
Comment Code					
E6 : Repair the levee slope damaged by vehicle traffic and prevent access where possible.					
Inspector Comment					
There are vehicle spin-out divots in the landside hinge.					

Photo 1 of 1 : FA_2022_RD0003_25_228_20220831_00140.jpg



View of vehicle divots in the landside hinge (Fall 2021).

LM Start	3.17	Rating **	C	Issue No.	188	
LM End	3.17	Issue Type +	Ma	Location *	LS	
Category	Earthen Levee			GPS Latitude/Longitude		
				Start		End
Item	Trim / Thin Trees			38.167600 °		38.167600 °
				-121.599954 °		-121.599954 °
DWR ID	DWR_RD0003_02_s_2022_188					
Comment Code						
T2 : Tree or limb.						
Inspector Comment						

No Photos

*** Location**
LS : Land Side N/A : Not Applicable
WS : Water Side
CR : Crown

**** Rating**
A : Acceptable N : Not Inspected/Rated
M : Minimally Acceptable C : Corrected
U : Unacceptable A/W : Acceptable but Monitor & Maintain

+ Issue Type
Ma : Maintenance Deficiency
Ob : Design & System Obsolescence
En : Enforcement

Reclamation District No. 0003 Grand Island

View of the tree limb on the WS slope (Fall 2022).

Fallen tree at landside toe should be removed.

View of arundo growth on the landside slope (October 2018).

Page 4 of 30

**Flood Control Project Maintenance
Levee Inspections**

Maintenance Issue Types Only, Levee Inspection Report By Mile - Fall 2022

Reclamation District No. 0003 Grand Island

Waterway	Bank	Unit Miles	Inspection Start/End	Inspector
Unit No. 02 Right Bank Sacramento River	Right	17.35	09/07/2022 09/08/2022	Saskia Donovan

LM Start	4.56	Rating **	M	Issue No.	217
LM End	4.56	Issue Type +	Ma	Location *	LS
Category	Earthen Levee			GPS Latitude/Longitude	
				Start	End
Item	Trim / Thin Trees			38.184338 °	38.184338 °
				-121.585941 °	-121.585941 °
DWR ID	DWR_RD0003_02_f_2021_217				
Comment Code					
T1 : Trim and thin trees to at least five feet above ground level to allow visibility of the ground and room to flood fight.					
Inspector Comment					

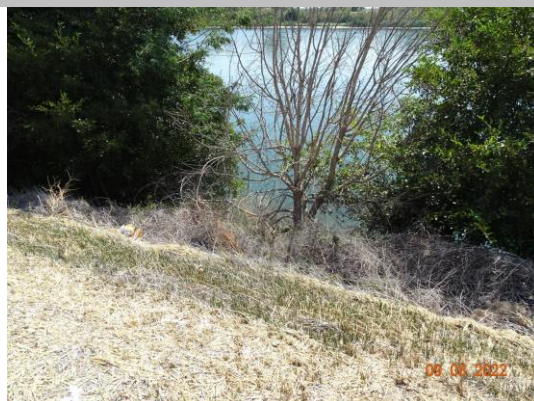
Photo 1 of 1 : FA_2022_RD0003_25_217_20220831_00133.jpg



View looking upstream at trees on the landside slope (Spring 2022).

LM Start	4.94	Rating **	M	Issue No.	194
LM End	4.94	Issue Type +	Ma	Location *	WS
Category	Earthen Levee			GPS Latitude/Longitude	
				Start	End
Item	Erosion / Bank Caving			38.188248 °	38.188248 °
				-121.581225 °	-121.581225 °
DWR ID	DWR_RD0003_02_s_2019_194				
Comment Code					
E2 : Schedule repair of erosion site prior to the next inspection.					
Inspector Comment					
There is a small amount of bank caving that should be repaired.					

Photo 1 of 1 : FA_2022_RD0003_25_194_20220923_00191.jpg



View of the erosion on the lower WS slope (Fall 2022).

LM Start	4.95	Rating **	U	Issue No.	14
LM End	4.95	Issue Type +	Ma	Location *	LS
Category	Earthen Levee			GPS Latitude/Longitude	
				Start	End
Item	Trim / Thin Trees			38.188526 °	38.188526 °
				-121.581179 °	-121.581179 °
DWR ID	DWR_RD0003_02_f_2020_14				
Comment Code					
T1 : Trim and thin trees to at least five feet above ground level to allow visibility of the ground and room to flood fight.					
Inspector Comment					
There are untrimmed trees on the landside slope and toe.					

Photo 1 of 1 : FA_2022_RD0003_25_14_20220831_00006.jpg



View of untrimmed trees on the landside slope (Fall 2020).

*** Location**

LS : Land Side N/A : Not Applicable
WS : Water Side
CR : Crown

**** Rating**

A : Acceptable N : Not Inspected/Rated
M : Minimally Acceptable C : Corrected
U : Unacceptable A/W : Acceptable but Monitor & Maintain

+ Issue Type

Ma : Maintenance Deficiency
Ob : Design & System Obsolescence
En : Enforcement

**Flood Control Project Maintenance
Levee Inspections**

Maintenance Issue Types Only, Levee Inspection Report By Mile - Fall 2022

Reclamation District No. 0003 Grand Island

Waterway	Bank	Unit Miles	Inspection Start/End	Inspector
Unit No. 02 Right Bank Sacramento River	Right	17.35	09/07/2022 09/08/2022	Saskia Donovan

LM Start	4.96	Rating **	A/W	Issue No.	1
LM End	4.96	Issue Type +	Ma	Location *	WS
Category	Earthen Levee			GPS Latitude/Longitude	
				Start	End
Item	Slope Stability			38.188420 °	38.188420 °
				-121.580910 °	-121.580910 °
DWR ID	DWR_RD0003_02_s_2020_1				
Comment Code					
S1 : Repair slope instability.					
Inspector Comment					
Waterside slope bowed in slightly, indicating possible slope instability.					

Photo 1 of 1 : FA_2022_RD0003_25_1_20220831_00001.jpg



View from the channel of slightly bowing into the waterside slope (Summer 2020).

LM Start	6.07	Rating **	M	Issue No.	956	
LM End	6.07	Issue Type +	Ma	Location *		
Category	Supplemental			GPS Latitude/Longitude		
				Start		End
Item	DWR UCIP LMA Responsibility			38.195513 °	38.195513 °	
				-121.562812 °	-121.562812 °	
DWR ID	22239					
Comment Code						
Inspector Comment						
DS_ID:22239 FS_ID:77006 EP_NO: N/A Repair Type: Non-Urgent EVAL Issue: Crossing Status: Not Found UCIP Comments: 05/19/2022 Not found, unauthorized and abandoned encroachment found in LL and O&M, pipe replaced by DSID 22238, non-urgent. (A. McDonald - DWR UCIP) FIELD_STRUCT_DESC: *ABANDONED* 10-inch steel pipe of an unknown purpose through the levee, invert elevation 2.8 feet below the crown. Pipe is capped on the waterside (WS) end. [Additional Reference(s): DWR Levee Log, 1993. USACE Sacramento O&M Manual 104, February 1960, (RM 20.99)]. FS Date: 5/19/2022						

Photo 1 of 3 : UCIP_FA_2022_77006_113084.jpg



Levee overview looking US

* Location LS : Land Side N/A : Not Applicable WS : Water Side CR : Crown	** Rating A : Acceptable M : Minimally Acceptable U : Unacceptable	N : Not Inspected/Rated C : Corrected A/W : Acceptable but Monitor & Maintain	+ Issue Type Ma : Maintenance Deficiency Ob : Design & System Obsolescence En : Enforcement
--	--	---	---

**Flood Control Project Maintenance
Levee Inspections**

Maintenance Issue Types Only, Levee Inspection Report By Mile - Fall 2022

Reclamation District No. 0003 Grand Island

Waterway	Bank	Unit Miles	Inspection Start/End	Inspector
Unit No. 02 Right Bank Sacramento River	Right	17.35	09/07/2022 09/08/2022	Saskia Donovan

LM Start	6.07	Rating **	M	Issue No.	956 (cont)	
LM End	6.07	Issue Type +	Ma	Location *		
Category	Supplemental			GPS Latitude/Longitude		
				Start	End	
Item	DWR UCIP LMA Responsibility			38.195513 °	38.195513 °	
				-121.562812 °	-121.562812 °	
DWR ID	22239					

Photo 2 of 3 : UCIP_FA_2022_77006_113085.jpg



WS overview, pump house and replacement pipe on slope

LM Start	6.07	Rating **	M	Issue No.	956 (cont)
LM End	6.07	Issue Type +	Ma	Location *	

Photo 3 of 3 : UCIP_FA_2022_77006_113086.jpg



LS overview, replacement pipe and appurtenances on slope and toe

LM Start	7.01	Rating **	U	Issue No.	16
LM End	7.01	Issue Type +	Ma	Location *	LS
Category	Earthen Levee			GPS Latitude/Longitude	
				Start	End
Item	Trim / Thin Trees			38.208205 °	38.208205 °
				-121.558565 °	-121.558565 °
DWR ID	DWR_RD0003_02_s_2012_16				
Comment Code					
T1 : Trim and thin trees to at least five feet above ground level to allow visibility of the ground and room to flood fight.					
Inspector Comment					

Photo 1 of 1 : FA_2022_RD0003_25_16_20220831_00008.jpg



View of thick vegetation at the landside toe (Fall 2019).

* Location LS : Land Side N/A : Not Applicable WS : Water Side CR : Crown	** Rating A : Acceptable M : Minimally Acceptable U : Unacceptable	N : Not Inspected/Rated C : Corrected A/W : Acceptable but Monitor & Maintain	+ Issue Type Ma : Maintenance Deficiency Ob : Design & System Obsolescence En : Enforcement
--	--	---	---

**Flood Control Project Maintenance
Levee Inspections**

Maintenance Issue Types Only, Levee Inspection Report By Mile - Fall 2022

Reclamation District No. 0003 Grand Island

Waterway	Bank	Unit Miles	Inspection Start/End	Inspector
Unit No. 02 Right Bank Sacramento River	Right	17.35	09/07/2022 09/08/2022	Saskia Donovan

LM Start	7.08	Rating **	U	Issue No.	152
LM End	7.08	Issue Type +	Ma	Location *	LS
Category	Earthen Levee			GPS Latitude/Longitude	
				Start	End
Item	Trim / Thin Trees			38.209252 °	38.209252 °
				-121.558611 °	-121.558611 °
DWR ID	DWR_RD0003_02_f_2020_152				
Comment Code					
T1 : Trim and thin trees to at least five feet above ground level to allow visibility of the ground and room to flood fight.					
Inspector Comment					

Photo 1 of 1 : FA_2022_RD0003_25_152_20220831_00086.jpg



View of thick trees on the landside slope (Fall 2020).

LM Start	7.45	Rating **	U	Issue No.	173
LM End	7.45	Issue Type +	Ma	Location *	LS
Category	Earthen Levee			GPS Latitude/Longitude	
				Start	End
Item	Trim / Thin Trees			38.214600 °	38.214600 °
				-121.558612 °	-121.558612 °
DWR ID	DWR_RD0003_02_s_2021_173				
Comment Code					
T2 : Tree or limb.					
Inspector Comment					
Remove down tree on the landside slope.					

Photo 1 of 1 : FA_2022_RD0003_25_173_20220831_00103.jpg



View of down tree limb on the landside slope (Spring 2021).

LM Start	8.11	Rating **	N	Issue No.	15
LM End	8.11	Issue Type +	Ma	Location *	WS
Category	Earthen Levee			GPS Latitude/Longitude	
				Start	End
Item	Trim / Thin Trees			38.224130 °	38.224130 °
				-121.557206 °	-121.557206 °
DWR ID	DWR_RD0003_02_f_2020_15				
Comment Code					
T5 : Tree stumps.					
Inspector Comment					
The tree was cut and the branches removed.					

Photo 1 of 1 : FA_2022_RD0003_25_15_20220923_00187.jpg



View of the tree stump below the WS shoulder (Fall 2022).

*** Location**

LS : Land Side N/A : Not Applicable
WS : Water Side
CR : Crown

**** Rating**

A : Acceptable N : Not Inspected/Rated
M : Minimally Acceptable C : Corrected
U : Unacceptable A/W : Acceptable but Monitor & Maintain

+ Issue Type

Ma : Maintenance Deficiency
Ob : Design & System Obsolescence
En : Enforcement

**Flood Control Project Maintenance
Levee Inspections**

Maintenance Issue Types Only, Levee Inspection Report By Mile - Fall 2022

Reclamation District No. 0003 Grand Island

Waterway	Bank	Unit Miles	Inspection Start/End	Inspector
Unit No. 02 Right Bank Sacramento River	Right	17.35	09/07/2022 09/08/2022	Saskia Donovan

LM Start	8.45	Rating **	U	Issue No.	179
LM End	8.45	Issue Type +	Ma	Location *	LS
Category	Earthen Levee			GPS Latitude/Longitude	
				Start	End
Item	Vegetation			38.229049 °	38.229049 °
				-121.557230 °	-121.557230 °
DWR ID	DWR_RD0003_02_s_2022_179				
Comment Code					
V2 : Remove the wild growth and woody vegetation other than native grasses from the levee slopes.					
Inspector Comment					
There are blackberries on the landside slope.					

Photo 1 of 1 : FA_2022_RD0003_25_179_20220831_00108.jpg



View of blackberries on the landside toe (Spring 2022).

LM Start	8.48	Rating **	M	Issue No.	959	
LM End	8.48	Issue Type +	Ma	Location *		
Category	Supplemental			GPS Latitude/Longitude		
				Start	End	
Item	DWR UCIP LMA Responsibility			38.229477 °	38.229477 °	
				-121.557255 °	-121.557255 °	
DWR ID	22261					
Comment Code						
Inspector Comment						
DS_ID:22261						
FS_ID:77154						
EP_NO: N/A						
Repair Type: Non-Urgent						
EVAL Issue:						
Crossing Status: Not Found						
UCIP Comments: 06/09/2022 Abandoned, not found, unauthorized encroachment, USACE legacy system pipe, non-urgent. (A. McDonald - DWR UCIP)						
FIELD_STRUCT_DESC: *ABANDONED* 10-inch steel gravity drainage pipe through the levee, invert elevation 5.8 feet below the crown.						
Concrete pad and retaining wall on the waterside (WS) slope.						
[Additional Reference(s): DWR Levee Log, 1993. USACE Sacramento O&M Manual 104, February 1960, (RM 23.43)].						
FS Date: 6/9/2022						

Photo 1 of 3 : UCIP_FA_2022_77154_114738.jpg



Levee overview looking US

* Location LS : Land Side N/A : Not Applicable WS : Water Side CR : Crown	** Rating A : Acceptable M : Minimally Acceptable U : Unacceptable	N : Not Inspected/Rated C : Corrected A/W : Acceptable but Monitor & Maintain	+ Issue Type Ma : Maintenance Deficiency Ob : Design & System Obsolescence En : Enforcement
--	--	--	---

**Flood Control Project Maintenance
Levee Inspections**

Maintenance Issue Types Only, Levee Inspection Report By Mile - Fall 2022

Reclamation District No. 0003 Grand Island

Waterway	Bank	Unit Miles	Inspection Start/End	Inspector
Unit No. 02 Right Bank Sacramento River	Right	17.35	09/07/2022 09/08/2022	Saskia Donovan

LM Start	8.48	Rating **	M	Issue No.	959 (cont)
LM End	8.48	Issue Type +	Ma	Location *	
Category	Supplemental			GPS Latitude/Longitude	
				Start	End
Item	DWR UCIP LMA Responsibility			38.229477 °	38.229477 °
				-121.557255 °	-121.557255 °
DWR ID	22261				

Photo 2 of 3 : UCIP_FA_2022_77154_114740.jpg



WS overview, gate, walkway, and dock on slope and river

LM Start	8.48	Rating **	M	Issue No.	959 (cont)
LM End	8.48	Issue Type +	Ma	Location *	

Photo 3 of 3 : UCIP_FA_2022_77154_114739.jpg



LS overview

LM Start	8.72	Rating **	A/W	Issue No.	167
LM End	8.72	Issue Type +	Ma	Location *	LS
Category	Earthen Levee			GPS Latitude/Longitude	
				Start	End
Item	Animal Control			38.232673 °	38.232673 °
				-121.558935 °	-121.558935 °
DWR ID	DWR_RD0003_02_s_2021_167				
Comment Code					
A3 : No rodents visible, but rodent burrows visible; need to backfill and compact or grout burrows.					
Inspector Comment					
There are multiple rodent holes on the landside slope. Monitor for new activity.					

Photo 1 of 1 : FA_2022_RD0003_25_167_20220831_00098.jpg



View of multiple rodent holes in the landside slope (Spring 2021).

* Location LS : Land Side N/A : Not Applicable WS : Water Side CR : Crown	** Rating A : Acceptable M : Minimally Acceptable U : Unacceptable	N : Not Inspected/Rated C : Corrected A/W : Acceptable but Monitor & Maintain	+ Issue Type Ma : Maintenance Deficiency Ob : Design & System Obsolescence En : Enforcement
--	--	--	---

**Flood Control Project Maintenance
Levee Inspections**

Maintenance Issue Types Only, Levee Inspection Report By Mile - Fall 2022

Reclamation District No. 0003 Grand Island

Waterway	Bank	Unit Miles	Inspection Start/End	Inspector
Unit No. 02 Right Bank Sacramento River	Right	17.35	09/07/2022 09/08/2022	Saskia Donovan

LM Start	8.75	Rating **	M	Issue No.	211
LM End	8.75	Issue Type +	Ma	Location *	LS
Category	Earthen Levee			GPS Latitude/Longitude	
				Start	End
Item	Trim / Thin Trees			38.233135 °	38.233135 °
				-121.559184 °	-121.559184 °
DWR ID	DWR_RD0003_02_f_2021_211				
Comment Code					
T2 : Tree or limb.					
Inspector Comment					
There are a couple of large logs on the landside slope.					

Photo 1 of 1 : FA_2022_RD0003_25_211_20220831_00130.jpg



View looking slightly downstream at tree logs on the landside slope (Fall 2021).

LM Start	8.79	Rating **	M	Issue No.	161
LM End	8.79	Issue Type +	Ma	Location *	LS
Category	Earthen Levee			GPS Latitude/Longitude	
				Start	End
Item	Animal Control			38.233653 °	38.233653 °
				-121.559325 °	-121.559325 °
DWR ID	DWR_RD0003_02_s_2022_161				
Comment Code					
A1 : Exterminate rodents and backfill and compact or grout burrows.					
Inspector Comment					

Photo 1 of 1 : FA_2022_RD0003_25_161_20220831_00093.jpg



View of a couple fresh rodent holes on the landside slope (Spring 2022).

LM Start	8.95	Rating **	M	Issue No.	209
LM End	8.95	Issue Type +	Ma	Location *	LS
Category	Earthen Levee			GPS Latitude/Longitude	
				Start	End
Item	Trim / Thin Trees			38.236011 °	38.236011 °
				-121.559624 °	-121.559624 °
DWR ID	DWR_RD0003_02_f_2021_209				
Comment Code					
T1 : Trim and thin trees to at least five feet above ground level to allow visibility of the ground and room to flood fight.					
Inspector Comment					

No Photos

* Location LS : Land Side N/A : Not Applicable WS : Water Side CR : Crown		** Rating A : Acceptable M : Minimally Acceptable U : Unacceptable N : Not Inspected/Rated C : Corrected A/W : Acceptable but Monitor & Maintain		+ Issue Type Ma : Maintenance Deficiency Ob : Design & System Obsolescence En : Enforcement	
---	--	--	--	--	--

**Flood Control Project Maintenance
Levee Inspections**

Maintenance Issue Types Only, Levee Inspection Report By Mile - Fall 2022

Reclamation District No. 0003 Grand Island

Waterway	Bank	Unit Miles	Inspection Start/End	Inspector
Unit No. 02 Right Bank Sacramento River	Right	17.35	09/07/2022 09/08/2022	Saskia Donovan

LM Start	9.61	Rating **	U	Issue No.	132
LM End	9.61	Issue Type +	Ma	Location *	LS
Category	Earthen Levee			GPS Latitude/Longitude	
				Start	End
Item	Trim / Thin Trees			38.242504 °	38.242504 °
				-121.551813 °	-121.551813 °
DWR ID	DWR_RD0003_02_s_2022_132				
Comment Code					
T2 : Tree or limb.					
Inspector Comment					
There is a large downed tree on landside the toe.					

Photo 1 of 1 : FA_2022_RD0003_25_132_20220831_00068.jpg



View of large downed tree on the landside toe (Spring 2022).

LM Start	9.74	Rating **	M	Issue No.	206
LM End	9.74	Issue Type +	Ma	Location *	LS
Category	Earthen Levee			GPS Latitude/Longitude	
				Start	End
Item	Slope Stability			38.242332 °	38.242332 °
				-121.549485 °	-121.549485 °
DWR ID	DWR_RD0003_02_f_2021_206				
Comment Code					
S1 : Repair slope instability.					
Inspector Comment					
Landside slope getting close to edge of roadway. Slight cracking in roadway.					

Photo 1 of 1 : FA_2022_RD0003_25_206_20220831_00127.jpg



View of depression in the landside slope getting close to the roadway (Fall 2021).

* Location
LS : Land Side N/A : Not Applicable
WS : Water Side
CR : Crown

** Rating
A : Acceptable N : Not Inspected/Rated
M : Minimally Acceptable C : Corrected
U : Unacceptable A/W : Acceptable but Monitor & Maintain

+ Issue Type
Ma : Maintenance Deficiency
Ob : Design & System Obsolescence
En : Enforcement

**Flood Control Project Maintenance
Levee Inspections**

Maintenance Issue Types Only, Levee Inspection Report By Mile - Fall 2022

Reclamation District No. 0003 Grand Island

Waterway	Bank	Unit Miles	Inspection Start/End	Inspector
Unit No. 02 Right Bank Sacramento River	Right	17.35	09/07/2022 09/08/2022	Saskia Donovan

LM Start	10.01	Rating **	C	Issue No.	138
LM End	10.03	Issue Type +	Ma	Location *	WS
Category	Earthen Levee			GPS Latitude/Longitude	
				Start	End
Item	Erosion / Bank Caving			38.241481 °	38.241439 °
				-121.544569 °	-121.544353 °
DWR ID	LMA-106				
Comment Code					
E2 : Schedule repair of erosion site prior to the next inspection.					
Inspector Comment					
Fall 2022: The erosion has been repaired/new riprap has been placed. This was a 2017 Storm Damage site. Site ID No:280 Site Designation:LMA-106 6/18/2020 Field Notes: Approximately 2' vertical erosion on surface of waterside slope. The erosion commences approximately 1/2 of the way down the slope from the crown and extends into the riprap. Missing riprap at this location.					

No Photos

LM Start	10.15	Rating **	M	Issue No.	170
LM End	10.15	Issue Type +	Ma	Location *	LS
Category	Earthen Levee			GPS Latitude/Longitude	
				Start	End
Item	Trim / Thin Trees			38.241125 °	38.241125 °
				-121.542075 °	-121.542075 °
DWR ID	DWR_RD0003_02_s_2018_170				
Comment Code					
T2 : Tree or limb.					
Inspector Comment					
There is a fallen tree on the landside slope.					

Photo 1 of 1 : FA_2022_RD0003_25_170_20220831_00101.jpg



Fallen tree on landside slope.

* Location LS : Land Side N/A : Not Applicable WS : Water Side CR : Crown	** Rating A : Acceptable M : Minimally Acceptable U : Unacceptable	N : Not Inspected/Rated C : Corrected A/W : Acceptable but Monitor & Maintain	+ Issue Type Ma : Maintenance Deficiency Ob : Design & System Obsolescence En : Enforcement
--	--	---	---

**Flood Control Project Maintenance
Levee Inspections**

Maintenance Issue Types Only, Levee Inspection Report By Mile - Fall 2022

Reclamation District No. 0003 Grand Island

Waterway	Bank	Unit Miles	Inspection Start/End	Inspector
Unit No. 02 Right Bank Sacramento River	Right	17.35	09/07/2022 09/08/2022	Saskia Donovan

LM Start	10.17	Rating **	U	Issue No.	145
LM End	10.18	Issue Type +	Ma	Location *	LS
Category	Earthen Levee			GPS Latitude/Longitude	
				Start	End
Item	Vegetation			38.241075 °	38.241027 °
				-121.541843 °	-121.541633 °
DWR ID	DWR_RD0003_02_s_2021_145				
Comment Code					
V2 : Remove the wild growth and woody vegetation other than native grasses from the levee slopes.					
Inspector Comment					
There is arundo on the landside slope.					

Photo 1 of 1 : FA_2022_RD0003_25_145_20220831_00079.jpg



View of thick arundo on the landside slope (Spring 2021).

LM Start	10.17	Rating **	C	Issue No.	148
LM End	10.17	Issue Type +	Ma	Location *	LS
Category	Earthen Levee			GPS Latitude/Longitude	
				Start	End
Item	Trim / Thin Trees			38.241060 °	38.241060 °
				-121.541700 °	-121.541700 °
DWR ID	DWR_RD0003_02_s_2021_148				
Comment Code					
T2 : Tree or limb.					
Inspector Comment					

No Photos

LM Start	10.44	Rating **	M	Issue No.	282	
LM End	10.48	Issue Type +	Ma	Location *	LS	
Category	Earthen Levee			GPS Latitude/Longitude		
				Start		End
Item	Vegetation			38.239901 °	38.239675 °	
				-121.537047 °	-121.536333 °	
DWR ID	DWR_RD0003_02_f_2022_282					
Comment Code						
V1 : Control annual grass and weeds on the levee slopes and easements.						
Inspector Comment						
Grasses are getting to tall on lower LS slope and needs to be mowed.						

No Photos

* Location LS : Land Side N/A : Not Applicable WS : Water Side CR : Crown		** Rating A : Acceptable M : Minimally Acceptable U : Unacceptable		N : Not Inspected/Rated C : Corrected A/W : Acceptable but Monitor & Maintain		+ Issue Type Ma : Maintenance Deficiency Ob : Design & System Obsolescence En : Enforcement	
---	--	---	--	---	--	--	--

**Flood Control Project Maintenance
Levee Inspections**

Maintenance Issue Types Only, Levee Inspection Report By Mile - Fall 2022

Reclamation District No. 0003 Grand Island

Waterway	Bank	Unit Miles	Inspection Start/End	Inspector
Unit No. 02 Right Bank Sacramento River	Right	17.35	09/07/2022 09/08/2022	Saskia Donovan

LM Start	10.54	Rating **	M	Issue No.	281
LM End	10.63	Issue Type +	Ma	Location *	LS
Category	Earthen Levee			GPS Latitude/Longitude	
				Start	End
Item	Vegetation			38.239449 °	38.239072 °
				-121.535176 °	-121.533683 °
DWR ID	DWR_RD0003_02_f_2022_281				
Comment Code					
V1 : Control annual grass and weeds on the levee slopes and easements.					
Inspector Comment					
Grasses are getting to tall on lower LS slope and needs to be mowed.					

Photo 1 of 1 : FA_2022_RD0003_25_281_20220923_00181.jpg



View of the grass along the lower LS slope (Fall 2022).

LM Start	10.88	Rating **	C	Issue No.	164
LM End	10.88	Issue Type +	Ma	Location *	WS
Category	Earthen Levee			GPS Latitude/Longitude	
				Start	End
Item	Vegetation			38.238861 °	38.238861 °
				-121.529074 °	-121.529074 °
DWR ID	DWR_RD0003_02_f_2017_164				
Comment Code					
V2 : Remove the wild growth and woody vegetation other than native grasses from the levee slopes.					
Inspector Comment					
The century plant has been removed.					

No Photos

LM Start	11.26	Rating **	C	Issue No.	201
LM End	11.26	Issue Type +	Ma	Location *	WS
Category	Earthen Levee			GPS Latitude/Longitude	
				Start	End
Item	Trim / Thin Trees			38.240012 °	38.240012 °
				-121.522418 °	-121.522418 °
DWR ID	DWR_RD0003_02_f_2018_201				
Comment Code					
T2 : Tree or limb.					
Inspector Comment					
The tree limbs have been removed.					

No Photos

* Location LS : Land Side N/A : Not Applicable WS : Water Side CR : Crown	** Rating A : Acceptable M : Minimally Acceptable U : Unacceptable	N : Not Inspected/Rated C : Corrected A/W : Acceptable but Monitor & Maintain	+ Issue Type Ma : Maintenance Deficiency Ob : Design & System Obsolescence En : Enforcement
--	--	---	---

**Flood Control Project Maintenance
Levee Inspections**

Maintenance Issue Types Only, Levee Inspection Report By Mile - Fall 2022

Reclamation District No. 0003 Grand Island

Waterway	Bank	Unit Miles	Inspection Start/End	Inspector
Unit No. 02 Right Bank Sacramento River	Right	17.35	09/07/2022 09/08/2022	Saskia Donovan

LM Start	11.37	Rating **	C	Issue No.	168
LM End	11.37	Issue Type +	Ma	Location *	WS
Category	Earthen Levee			GPS Latitude/Longitude	
				Start	End
Item	Erosion / Bank Caving			38.240140 °	38.240140 °
				-121.520310 °	-121.520310 °
DWR ID	DWR_RD0003_02_s_2020_168				
Comment Code					
E2 : Schedule repair of erosion site prior to the next inspection.					
Inspector Comment					
The erosion has been recently repaired.					

No Photos

LM Start	11.42	Rating **	M	Issue No.	162
LM End	11.42	Issue Type +	Ma	Location *	LS
Category	Earthen Levee			GPS Latitude/Longitude	
				Start	End
Item	Trim / Thin Trees			38.240244 °	38.240244 °
				-121.519352 °	-121.519352 °
DWR ID	DWR_RD0003_02_s_2019_162				
Comment Code					
T2 : Tree or limb.					
Inspector Comment					
Remove tree limbs from the landside slope.					

Photo 1 of 1 : FA_2022_RD0003_25_162_20220923_00180.jpg



View of the tree limbs at the LS toe (Fall 2022).

LM Start	11.56	Rating **	M	Issue No.	184
LM End	11.56	Issue Type +	Ma	Location *	WS
Category	Earthen Levee			GPS Latitude/Longitude	
				Start	End
Item	Trim / Thin Trees			38.241241 °	38.241241 °
				-121.517167 °	-121.517167 °
DWR ID	DWR_RD0003_02_s_2022_184				
Comment Code					
T1 : Trim and thin trees to at least five feet above ground level to allow visibility of the ground and room to flood fight.					
Inspector Comment					

No Photos

* Location LS : Land Side N/A : Not Applicable WS : Water Side CR : Crown		** Rating A : Acceptable M : Minimally Acceptable U : Unacceptable		N : Not Inspected/Rated C : Corrected A/W : Acceptable but Monitor & Maintain		+ Issue Type Ma : Maintenance Deficiency Ob : Design & System Obsolescence En : Enforcement	
--	--	--	--	---	--	---	--

**Flood Control Project Maintenance
Levee Inspections**

Maintenance Issue Types Only, Levee Inspection Report By Mile - Fall 2022

Reclamation District No. 0003 Grand Island

Waterway	Bank	Unit Miles	Inspection Start/End	Inspector
Unit No. 02 Right Bank Sacramento River	Right	17.35	09/07/2022 09/08/2022	Saskia Donovan

LM Start	11.60	Rating **	M	Issue No.	202
LM End	11.60	Issue Type +	Ma	Location *	WS
Category	Earthen Levee			GPS Latitude/Longitude	
				Start	End
Item	Vegetation			38.241630 °	38.241630 °
				-121.516703 °	-121.516703 °
DWR ID	DWR_RD0003_02_f_2019_202				
Comment Code					
V2 : Remove the wild growth and woody vegetation other than native grasses from the levee slopes.					
Inspector Comment					
Century plants are on the waterside.					

No Photos

LM Start	12.88	Rating **	N	Issue No.	135
LM End	12.88	Issue Type +	Ma	Location *	LS
Category	Earthen Levee			GPS Latitude/Longitude	
				Start	End
Item	Trim / Thin Trees			38.257244 °	38.257244 °
				-121.518037 °	-121.518037 °
DWR ID	DWR_RD0003_02_s_2018_135				
Comment Code					
T5 : Tree stumps.					
Inspector Comment					
There is a tree stump at levee toe.					

Photo 1 of 1 : FA_2022_RD0003_25_135_20220923_00179.jpg



View of the tree stump at the LS toe (Fall 2022).

LM Start	12.92	Rating **	M	Issue No.	109		
LM End	12.92	Issue Type +	Ma	Location *	LS		
Category	Earthen Levee			GPS Latitude/Longitude			
				Start		End	
Item	Trim / Thin Trees			38.257542	°	38.257542	°
				-121.518520	°	-121.518520	°
DWR ID	DWR_RD0003_02_f_2020_109						
Comment Code							
T2 : Tree or limb.							
Inspector Comment							
Remove down tree limbs on the landside toe.							

No Photos

* Location
LS : Land Side N/A : Not Applicable
WS : Water Side
CR : Crown

** Rating
A : Acceptable N : Not Inspected/Rated
M : Minimally Acceptable C : Corrected
U : Unacceptable A/W : Acceptable but Monitor & Maintain

+ Issue Type
Ma : Maintenance Deficiency
Ob : Design & System Obsolescence
En : Enforcement

**Flood Control Project Maintenance
Levee Inspections**

Maintenance Issue Types Only, Levee Inspection Report By Mile - Fall 2022

Reclamation District No. 0003 Grand Island

Waterway	Bank	Unit Miles	Inspection Start/End	Inspector
Unit No. 02 Right Bank Sacramento River	Right	17.35	09/07/2022 09/08/2022	Saskia Donovan

LM Start	12.92	Rating **	M	Issue No.	131
LM End	12.92	Issue Type +	Ma	Location *	LS
Category	Earthen Levee			GPS Latitude/Longitude	
				Start	End
Item	Erosion / Vehicle Traffic			38.257587 °	38.257587 °
				-121.518560 °	-121.518560 °
DWR ID	DWR_RD0003_02_s_2022_131				
Comment Code					
E6 : Repair the levee slope damaged by vehicle traffic and prevent access where possible.					
Inspector Comment					

Photo 1 of 1 : FA_2022_RD0003_25_131_20220831_00067.jpg



View of surface erosion due to vehicle tire on the landside shoulder (Spring 2022).

LM Start	12.97	Rating **	U	Issue No.	147
LM End	12.97	Issue Type +	Ma	Location *	LS
Category	Earthen Levee			GPS Latitude/Longitude	
				Start	End
Item	Trim / Thin Trees			38.258108 °	38.258108 °
				-121.519272 °	-121.519272 °
DWR ID	DWR_RD0003_02_f_2022_147				
Comment Code					
T2 : Tree or limb.					
Inspector Comment					
Remove the large log from the landside slope.					

Photo 1 of 1 : FA_2022_RD0003_25_147_20220923_00174.jpg



View of the tree log on the LS slope (Fall 2022).

LM Start	13.10	Rating **	M	Issue No.	189
LM End	13.10	Issue Type +	Ma	Location *	LS
Category	Earthen Levee			GPS Latitude/Longitude	
				Start	End
Item	Trim / Thin Trees			38.259363 °	38.259363 °
				-121.521007 °	-121.521007 °
DWR ID	DWR_RD0003_02_f_2021_189				
Comment Code					
T2 : Tree or limb.					
Inspector Comment					
Remove down tree limb at landside toe.					

Photo 1 of 1 : FA_2022_RD0003_25_189_20220831_00115.jpg



View of down tree limb on the landside toe (Spring 2022).

* Location LS : Land Side N/A : Not Applicable WS : Water Side CR : Crown		** Rating A : Acceptable M : Minimally Acceptable U : Unacceptable N : Not Inspected/Rated C : Corrected A/W : Acceptable but Monitor & Maintain		+ Issue Type Ma : Maintenance Deficiency Ob : Design & System Obsolescence En : Enforcement	
--	--	---	--	---	--

**Flood Control Project Maintenance
Levee Inspections**

Maintenance Issue Types Only, Levee Inspection Report By Mile - Fall 2022

Reclamation District No. 0003 Grand Island

Waterway	Bank	Unit Miles	Inspection Start/End	Inspector
Unit No. 02 Right Bank Sacramento River	Right	17.35	09/07/2022 09/08/2022	Saskia Donovan

LM Start	13.15	Rating **	C	Issue No.	139
LM End	13.17	Issue Type +	Ma	Location *	WS
Category	Earthen Levee			GPS Latitude/Longitude	
				Start	End
Item	Erosion / Bank Caving			38.260042 °	38.260219 °
				-121.521581 °	-121.521803 °
DWR ID	LMA-107				
Comment Code					
E2 : Schedule repair of erosion site prior to the next inspection.					
Inspector Comment					
Fall 2022: The erosion has been recently repaired. This was a 2017 Storm Damage site. Approximately 89 linear feet of erosion and sloughing. The erosion commences approximately 1/2 of the way down the slope from the crown and extends into the rip rap. Site ID No:281 Site Designation:LMA-107 4/8/2020 Field Notes: Evidence of minor sloughing.					

No Photos

LM Start	13.16	Rating **	C	Issue No.	108
LM End	13.16	Issue Type +	Ma	Location *	LS
Category	Earthen Levee			GPS Latitude/Longitude	
				Start	End
Item	Trim / Thin Trees			38.259958 °	38.259958 °
				-121.521750 °	-121.521750 °
DWR ID	DWR_RD0003_02_f_2020_108				
Comment Code					
T2 : Tree or limb.					
Inspector Comment					
Tree limbs have been removed and only a small branch remains on the LS slope.					

No Photos

* Location LS : Land Side N/A : Not Applicable WS : Water Side CR : Crown	** Rating A : Acceptable M : Minimally Acceptable U : Unacceptable	N : Not Inspected/Rated C : Corrected A/W : Acceptable but Monitor & Maintain	+ Issue Type Ma : Maintenance Deficiency Ob : Design & System Obsolescence En : Enforcement
--	--	---	---

Reclamation District No. 0003 Grand Island

No Photos

View looking upstream at down tree limb on the landside slope (Spring 2022).

View of down tree limbs on the landside slope (Spring 2021).

Page 20 of 30

**Flood Control Project Maintenance
Levee Inspections**

Maintenance Issue Types Only, Levee Inspection Report By Mile - Fall 2022

Reclamation District No. 0003 Grand Island

Waterway	Bank	Unit Miles	Inspection Start/End	Inspector
Unit No. 02 Right Bank Sacramento River	Right	17.35	09/07/2022 09/08/2022	Saskia Donovan

LM Start	14.55	Rating **	U	Issue No.	118
LM End	14.55	Issue Type +	Ma	Location *	LS
Category	Earthen Levee			GPS Latitude/Longitude	
				Start	End
Item	Animal Control			38.273876 °	38.273876 °
				-121.540191 °	-121.540191 °
DWR ID	DWR_RD0003_02_s_2022_118				
Comment Code					
A1 : Exterminate rodents and backfill and compact or grout burrows.					
Inspector Comment					
There are multiple large rodent holes on the landside slope.					

Photo 1 of 1 : FA_2022_RD0003_25_118_20220831_00057.jpg



View looking downslope at multiple rodent holes in the landside slope (Spring 2022).

LM Start	15.04	Rating **	C	Issue No.	142
LM End	15.04	Issue Type +	Ma	Location *	WS
Category	Earthen Levee			GPS Latitude/Longitude	
				Start	End
Item	Erosion / Bank Caving			38.279083 °	38.279083 °
				-121.546406 °	-121.546406 °
DWR ID	LMA-108				
Comment Code					
E2 : Schedule repair of erosion site prior to the next inspection.					
Inspector Comment					
Fall 2022: The erosion has been repaired. This was a 2017 Storm Damage site. Approximately 330 linear feet of erosion and sloughing. The erosion commences approximately 1/2 of the way down the slope from the crown and extends into the rip rap. Site ID No:282 Site Designation:LMA-108 4/8/2020 Field Notes: Significant erosion into waterside toe.					

No Photos

* Location LS : Land Side N/A : Not Applicable WS : Water Side CR : Crown	** Rating A : Acceptable M : Minimally Acceptable U : Unacceptable	N : Not Inspected/Rated C : Corrected A/W : Acceptable but Monitor & Maintain	+ Issue Type Ma : Maintenance Deficiency Ob : Design & System Obsolescence En : Enforcement
--	--	---	---

**Flood Control Project Maintenance
Levee Inspections**

Maintenance Issue Types Only, Levee Inspection Report By Mile - Fall 2022

Reclamation District No. 0003 Grand Island

Waterway	Bank	Unit Miles	Inspection Start/End	Inspector
Unit No. 02 Right Bank Sacramento River	Right	17.35	09/07/2022 09/08/2022	Saskia Donovan

LM Start	15.15	Rating **	M	Issue No.	280
LM End	15.15	Issue Type +	Ma	Location *	LS
Category	Earthen Levee			GPS Latitude/Longitude	
				Start	End
Item	Erosion / Bank Caving			38.280140 °	38.280140 °
				-121.547861 °	-121.547861 °
DWR ID	DWR_RD0003_02_f_2022_280				
Comment Code					
E2 : Schedule repair of erosion site prior to the next inspection.					
Inspector Comment					
There is erosion along the LS levee toe.					

Photo 1 of 1 : FA_2022_RD0003_25_280_20220923_00178.jpg



View of the erosion at the LS toe (Fall 2022).

LM Start	15.16	Rating **	C	Issue No.	187
LM End	15.16	Issue Type +	Ma	Location *	LS
Category	Earthen Levee			GPS Latitude/Longitude	
				Start	End
Item	Trim / Thin Trees			38.280239 °	38.280239 °
				-121.547971 °	-121.547971 °
DWR ID	DWR_RD0003_02_f_2021_187				
Comment Code					
T2 : Tree or limb.					
Inspector Comment					

No Photos

LM Start	15.21	Rating **	M	Issue No.	190
LM End	15.21	Issue Type +	Ma	Location *	LS
Category	Earthen Levee			GPS Latitude/Longitude	
				Start	End
Item	Trim / Thin Trees			38.280765 °	38.280765 °
				-121.548640 °	-121.548640 °
DWR ID	DWR_RD0003_02_f_2019_190				
Comment Code					
T2 : Tree or limb.					
Inspector Comment					
There are tree limbs on the LS slope and toe.					

No Photos

* Location LS : Land Side N/A : Not Applicable WS : Water Side CR : Crown	** Rating A : Acceptable M : Minimally Acceptable U : Unacceptable	N : Not Inspected/Rated C : Corrected A/W : Acceptable but Monitor & Maintain	+ Issue Type Ma : Maintenance Deficiency Ob : Design & System Obsolescence En : Enforcement
--	--	--	---

**Flood Control Project Maintenance
Levee Inspections**

Maintenance Issue Types Only, Levee Inspection Report By Mile - Fall 2022

Reclamation District No. 0003 Grand Island

Waterway	Bank	Unit Miles	Inspection Start/End	Inspector
Unit No. 02 Right Bank Sacramento River	Right	17.35	09/07/2022 09/08/2022	Saskia Donovan

LM Start	15.22	Rating **	U	Issue No.	177
LM End	15.22	Issue Type +	Ma	Location *	LS
Category	Earthen Levee			GPS Latitude/Longitude	
				Start	End
Item	Animal Control			38.280861 °	38.280861 °
				-121.548791 °	-121.548791 °
DWR ID	DWR_RD0003_02_f _ 2021_177				
Comment Code					
A1 : Exterminate rodents and backfill and compact or grout burrows.					
Inspector Comment					
The LMA has been baiting and there is less activity but holes still need to be backfilled.					

Photo 1 of 1 : FA_2022_RD0003_25_177_20220831_00106.jpg



View looking downslope at fresh rodent holes and rodent bait station in the landside slope (Fall 2021).

LM Start	15.36	Rating **	U	Issue No.	110
LM End	15.36	Issue Type +	Ma	Location *	LS
Category	Earthen Levee			GPS Latitude/Longitude	
				Start	End
Item	Animal Control			38.282142 °	38.282142 °
				-121.550846 °	-121.550846 °
DWR ID	DWR_RD0003_02_s_2022_110				
Comment Code					
A1 : Exterminate rodents and backfill and compact or grout burrows.					
Inspector Comment					
The LMA has been baiting and there is less activity but holes still need to be backfilled.					

Photo 1 of 1 : FA_2022_RD0003_25_110_20220831_00049.jpg



View looking upslope at large rodent hole in landside slope (Spring 2022).

LM Start	15.36	Rating **	M	Issue No.	107
LM End	15.36	Issue Type +	Ma	Location *	LS
Category	Earthen Levee			GPS Latitude/Longitude	
				Start	End
Item	Trim / Thin Trees			38.282146 °	38.282146 °
				-121.550846 °	-121.550846 °
DWR ID	DWR_RD0003_02_s_2022_107				
Comment Code					
T2 : Tree or limb.					
Inspector Comment					

Photo 1 of 1 : FA_2022_RD0003_25_107_20220831_00048.jpg



View of down tree limbs on the landside toe (Spring 2022).

* Location
LS : Land Side N/A : Not Applicable
WS : Water Side
CR : Crown

** Rating
A : Acceptable N : Not Inspected/Rated
M : Minimally Acceptable C : Corrected
U : Unacceptable A/W : Acceptable but Monitor & Maintain

+ Issue Type
Ma : Maintenance Deficiency
Ob : Design & System Obsolescence
En : Enforcement

**Flood Control Project Maintenance
Levee Inspections**

Maintenance Issue Types Only, Levee Inspection Report By Mile - Fall 2022

Reclamation District No. 0003 Grand Island

Waterway	Bank	Unit Miles	Inspection Start/End	Inspector
Unit No. 02 Right Bank Sacramento River	Right	17.35	09/07/2022 09/08/2022	Saskia Donovan

LM Start	15.39	Rating **	M	Issue No.	185
LM End	15.39	Issue Type +	Ma	Location *	LS
Category	Earthen Levee			GPS Latitude/Longitude	
				Start	End
Item	Trim / Thin Trees			38.282427 °	38.282427 °
				-121.551348 °	-121.551348 °
DWR ID	DWR_RD0003_02_f_2019_185				
Comment Code					
T2 : Tree or limb.					
Inspector Comment					

Photo 1 of 1 : FA_2022_RD0003_25_185_20220831_00113.jpg



View of down tree limb on the landside toe (Spring 2021).

LM Start	15.41	Rating **	U	Issue No.	151
LM End	15.43	Issue Type +	Ma	Location *	LS
Category	Earthen Levee			GPS Latitude/Longitude	
				Start	End
Item	Animal Control			38.282541 °	38.282703 °
				-121.551577 °	-121.551863 °
DWR ID	DWR_RD0003_02_f_2021_151				
Comment Code					
A1 : Exterminate rodents and backfill and compact or grout burrows.					
Inspector Comment					
The LMA has been baiting and there is less activity but holes still need to be backfilled.					

Photo 1 of 1 : FA_2022_RD0003_25_151_20220831_00085.jpg



View looking downslope at fresh rodent holes in the landside slope (Fall 2021).

LM Start	15.43	Rating **	N	Issue No.	122
LM End	15.43	Issue Type +	Ma	Location *	LS
Category	Earthen Levee			GPS Latitude/Longitude	
				Start	End
Item	Trim / Thin Trees			38.282672 °	38.282672 °
				-121.551847 °	-121.551847 °
DWR ID	DWR_RD0003_02_f_2018_122				
Comment Code					
T5 : Tree stumps.					
Inspector Comment					
Remove tree stump from the landside toe.					

Photo 1 of 1 : FA_2022_RD0003_25_122_20220923_00162.jpg



View of the tree stump at the LS toe (Fall 2022).

* Location LS : Land Side N/A : Not Applicable WS : Water Side CR : Crown		** Rating A : Acceptable M : Minimally Acceptable U : Unacceptable N : Not Inspected/Rated C : Corrected A/W : Acceptable but Monitor & Maintain		+ Issue Type Ma : Maintenance Deficiency Ob : Design & System Obsolescence En : Enforcement	
--	--	---	--	---	--

**Flood Control Project Maintenance
Levee Inspections**

Maintenance Issue Types Only, Levee Inspection Report By Mile - Fall 2022

Reclamation District No. 0003 Grand Island

Waterway	Bank	Unit Miles	Inspection Start/End	Inspector
Unit No. 02 Right Bank Sacramento River	Right	17.35	09/07/2022 09/08/2022	Saskia Donovan

LM Start	15.46	Rating **	A/W	Issue No.	149
LM End	15.47	Issue Type +	Ma	Location *	WS
Category	Earthen Levee			GPS Latitude/Longitude	
				Start	End
Item	Erosion / Bank Caving			38.283119 °	38.283172 °
				-121.552250 °	-121.552347 °
DWR ID	LMA-109				
Comment Code					
E1 : Note and monitor erosion site.					
Inspector Comment					
Fall 2022: At LM 15.46 some erosion on mid slope visible above riprap. This was a 2017 Storm Damage site. Approximately 33 linear feet of erosion. The erosion commences approximately 1/2 of the way down the slope from the crown and extends into the rip rap. A section of rip rap has eroded away in this location. Site ID No:283 Site Designation:LMA-109 4/8/2020 Field Notes: Very minor erosion into waterside toe. Monitor.					

Photo 1 of 1 : FA_2022_RD0003_25_149_20220923_00159.jpg



View of the erosion on the WS slope (Fall 2022).

LM Start	15.77	Rating **	A/W	Issue No.	144
LM End	15.77	Issue Type +	Ma	Location *	LS
Category	Earthen Levee			GPS Latitude/Longitude	
				Start	End
Item	Animal Control			38.286076 °	38.286076 °
				-121.556415 °	-121.556415 °
DWR ID	DWR_RD0003_02_f _ 2021_144				
Comment Code					
A1 : Exterminate rodents and backfill and compact or grout burrows.					
Inspector Comment					

Photo 1 of 1 : FA_2022_RD0003_25_144_20220831_00078.jpg



View of looking downslope at fresh rodent holes in the landside slope (Fall 2021).

* Location LS : Land Side N/A : Not Applicable WS : Water Side CR : Crown		** Rating A : Acceptable N : Not Inspected/Rated M : Minimally Acceptable C : Corrected U : Unacceptable A/W : Acceptable but Monitor & Maintain		+ Issue Type Ma : Maintenance Deficiency Ob : Design & System Obsolescence En : Enforcement	
---	--	--	--	--	--

**Flood Control Project Maintenance
Levee Inspections**

Maintenance Issue Types Only, Levee Inspection Report By Mile - Fall 2022

Reclamation District No. 0003 Grand Island

Waterway	Bank	Unit Miles	Inspection Start/End	Inspector
Unit No. 02 Right Bank Sacramento River	Right	17.35	09/07/2022 09/08/2022	Saskia Donovan

LM Start	15.81	Rating **	M	Issue No.	143
LM End	15.81	Issue Type +	Ma	Location *	LS
Category	Earthen Levee			GPS Latitude/Longitude	
				Start	End
Item	Slope Stability			38.286578 °	38.286578 °
				-121.556951 °	-121.556951 °
DWR ID	DWR_RD0003_02_f _ 2021_143				
Comment Code					
S1 : Repair slope instability.					
Inspector Comment					
There is a depression at the top of the landside slope.					

Photo 1 of 1 : FA_2022_RD0003_25_143_20220831_00077.jpg



View looking downslope at depression in the landside slope (Fall 2021).

LM Start	15.81	Rating **	U	Issue No.	133
LM End	15.81	Issue Type +	Ma	Location *	LS
Category	Earthen Levee			GPS Latitude/Longitude	
				Start	End
Item	Animal Control			38.286577 °	38.286577 °
				-121.556954 °	-121.556954 °
DWR ID	DWR_RD0003_02_f_2021_133				
Comment Code					
A1 : Exterminate rodents and backfill and compact or grout burrows.					
Inspector Comment					
The LMA has been baiting and there is less activity but holes still need to be backfilled.					

Photo 1 of 1 : FA_2022_RD0003_25_133_20220831_00069.jpg



View looking upslope at rodent holes in the landside slope (Spring 2022).

LM Start	15.86	Rating **	M	Issue No.	104
LM End	15.86	Issue Type +	Ma	Location *	LS
Category	Earthen Levee			GPS Latitude/Longitude	
				Start	End
Item	Animal Control			38.287104 °	38.287104 °
				-121.557485 °	-121.557485 °
DWR ID	DWR_RD0003_02_f_2021_104				
Comment Code					
A1 : Exterminate rodents and backfill and compact or grout burrows.					
Inspector Comment					
The LMA has been baiting and there is less activity but holes still need to be backfilled.					

Photo 1 of 1 : FA_2022_RD0003_25_104_20220831_00046.jpg



View looking downstream at fresh rodent hole and bait station on the landside slope (Fall 2021).

* Location LS : Land Side N/A : Not Applicable WS : Water Side CR : Crown		** Rating A : Acceptable M : Minimally Acceptable U : Unacceptable N : Not Inspected/Rated C : Corrected A/W : Acceptable but Monitor & Maintain		+ Issue Type Ma : Maintenance Deficiency Ob : Design & System Obsolescence En : Enforcement	
--	--	---	--	---	--

**Flood Control Project Maintenance
Levee Inspections**

Maintenance Issue Types Only, Levee Inspection Report By Mile - Fall 2022

Reclamation District No. 0003 Grand Island

Waterway	Bank	Unit Miles	Inspection Start/End	Inspector
Unit No. 02 Right Bank Sacramento River	Right	17.35	09/07/2022 09/08/2022	Saskia Donovan

LM Start	16.27	Rating **	M	Issue No.	115
LM End	16.27	Issue Type +	Ma	Location *	LS
Category	Earthen Levee			GPS Latitude/Longitude	
				Start	End
Item	Slope Stability			38.291552 °	38.291552 °
				-121.562552 °	-121.562552 °
DWR ID	DWR_RD0003_02_f_2019_115				
Comment Code					
S1 : Repair slope instability.					
Inspector Comment					

Photo 1 of 1 : FA_2022_RD0003_25_115_20220923_00150.jpg



View of the depression on the LS slope (Fall 2022).

LM Start	16.54	Rating **	U	Issue No.	150
LM End	16.56	Issue Type +	Ma	Location *	WS
Category	Earthen Levee			GPS Latitude/Longitude	
				Start	End
Item	Erosion / Bank Caving			38.294717 °	38.294986 °
				-121.565417 °	-121.565661 °
DWR ID	LMA-110				
Comment Code					
E2 : Schedule repair of erosion site prior to the next inspection.					
Inspector Comment					
This was a 2017 Storm Damage site. Approximately 122 linear feet of erosion. The erosion commences approximately 1/2 of the way down the slope from the crown and extends beyond the rip rap. A section of rip rap has eroded away in this location. Site ID No:284 Site Designation:LMA-110 4/8/2020 Field Notes: Erosion into waterside slope.					

Photo 1 of 1 : FA_2022_RD0003_25_150_20220923_00148.jpg



View of the erosion on the WS slope (Fall 2022).

* Location LS : Land Side N/A : Not Applicable WS : Water Side CR : Crown	** Rating A : Acceptable M : Minimally Acceptable U : Unacceptable	N : Not Inspected/Rated C : Corrected A/W : Acceptable but Monitor & Maintain	+ Issue Type Ma : Maintenance Deficiency Ob : Design & System Obsolescence En : Enforcement
--	--	---	---

**Flood Control Project Maintenance
Levee Inspections**

Maintenance Issue Types Only, Levee Inspection Report By Mile - Fall 2022

Reclamation District No. 0003 Grand Island

Waterway	Bank	Unit Miles	Inspection Start/End	Inspector
Unit No. 02 Right Bank Sacramento River	Right	17.35	09/07/2022 09/08/2022	Saskia Donovan

LM Start	16.79	Rating **	U	Issue No.	112
LM End	16.86	Issue Type +	Ma	Location *	LS
Category	Earthen Levee			GPS Latitude/Longitude	
				Start	End
Item	Animal Control			38.297486 °	38.298371 °
				-121.568300 °	-121.569008 °
DWR ID	DWR_RD0003_02_f_2019_112				
Comment Code					
A1 : Exterminate rodents and backfill and compact or grout burrows.					
Inspector Comment					
There are a couple rodent holes with material on the slope, including one very large hole.					

Photo 1 of 1 : FA_2022_RD0003_25_112_20220831_00051.jpg



View of large rodent hole in the landside slope (Spring 2022).

LM Start	16.93	Rating **	M	Issue No.	105
LM End	16.93	Issue Type +	Ma	Location *	LS
Category	Earthen Levee			GPS Latitude/Longitude	
				Start	End
Item	Trim / Thin Trees			38.299233 °	38.299233 °
				-121.569667 °	-121.569667 °
DWR ID	DWR_RD0003_02_f_2020_105				
Comment Code					
T2 : Tree or limb.					
Inspector Comment					

Photo 1 of 1 : FA_2022_RD0003_25_105_20220831_00047.jpg



View of down tree limb on the landside slope (Fall 2020).

LM Start	17.06	Rating **	N	Issue No.	111
LM End	17.06	Issue Type +	Ma	Location *	LS
Category	Earthen Levee			GPS Latitude/Longitude	
				Start	End
Item	Trim / Thin Trees			38.300783 °	38.300783 °
				-121.570958 °	-121.570958 °
DWR ID	DWR_RD0003_02_f_2019_111				
Comment Code					
T5 : Tree stumps.					
Inspector Comment					

Photo 1 of 1 : FA_2022_RD0003_25_111_20220923_00145.jpg



View of the tree stumps on the LS shoulder (Fall 2022).

*** Location**

LS : Land Side N/A : Not Applicable
WS : Water Side
CR : Crown

**** Rating**

A : Acceptable N : Not Inspected/Rated
M : Minimally Acceptable C : Corrected
U : Unacceptable A/W : Acceptable but Monitor & Maintain

+ Issue Type

Ma : Maintenance Deficiency
Ob : Design & System Obsolescence
En : Enforcement

**Flood Control Project Maintenance
Levee Inspections**

Maintenance Issue Types Only, Levee Inspection Report By Mile - Fall 2022

Reclamation District No. 0003 Grand Island

Waterway	Bank	Unit Miles	Inspection Start/End	Inspector
Unit No. 02 Right Bank Sacramento River	Right	17.35	09/07/2022 09/08/2022	Saskia Donovan

LM Start	17.27	Rating **	M	Issue No.	114
LM End	17.27	Issue Type +	Ma	Location *	LS
Category	Earthen Levee			GPS Latitude/Longitude	
				Start	End
Item	Slope Stability			38.303351 °	38.303351 °
				-121.573084 °	-121.573084 °
DWR ID	DWR_RD0003_02_s_2020_114				
Comment Code					
S1 : Repair slope instability.					
Inspector Comment					
There is a depression on the landside slope.					

Photo 1 of 1 : FA_2022_RD0003_25_114_20220831_00053.jpg



View looking downstream at depression on the landside slope (Fall 2021).

LM Start	17.29	Rating **	N	Issue No.	113
LM End	17.29	Issue Type +	Ma	Location *	LS
Category	Earthen Levee			GPS Latitude/Longitude	
				Start	End
Item	Trim / Thin Trees			38.303558 °	38.303558 °
				-121.573380 °	-121.573380 °
DWR ID	DWR_RD0003_02_s_2019_113				
Comment Code					
T5 : Tree stumps.					
Inspector Comment					
There is a tree stump about 6" at bottom of the levee slope.					

Photo 1 of 1 : FA_2022_RD0003_25_113_20220923_00195.jpg



View of the tree stumps on the lower LS slope (Fall 2022).

LM Start	17.32	Rating **	M	Issue No.	98
LM End	17.32	Issue Type +	Ma	Location *	LS
Category	Earthen Levee			GPS Latitude/Longitude	
				Start	End
Item	Erosion / Vehicle Traffic			38.303746 °	38.303746 °
				-121.573851 °	-121.573851 °
DWR ID	DWR_RD0003_02_s_2022_98				
Comment Code					
E6 : Repair the levee slope damaged by vehicle traffic and prevent access where possible.					
Inspector Comment					

Photo 1 of 1 : FA_2022_RD0003_25_98_20220831_00041.jpg



View of surface erosion due to vehicle driving on the landside slope (Spring 2022).

* Location LS : Land Side N/A : Not Applicable WS : Water Side CR : Crown		** Rating A : Acceptable M : Minimally Acceptable U : Unacceptable N : Not Inspected/Rated C : Corrected A/W : Acceptable but Monitor & Maintain		+ Issue Type Ma : Maintenance Deficiency Ob : Design & System Obsolescence En : Enforcement	
--	--	---	--	---	--

**Flood Control Project Maintenance
Levee Inspections**

Maintenance Issue Types Only, Levee Inspection Report By Mile - Fall 2022

Reclamation District No. 0003 Grand Island

Waterway	Bank	Unit Miles	Inspection Start/End	Inspector
Unit No. 02 Right Bank Sacramento River	Right	17.35	09/07/2022 09/08/2022	Saskia Donovan

* Location LS : Land Side N/A : Not Applicable WS : Water Side CR : Crown	** Rating A : Acceptable N : Not Inspected/Rated M : Minimally Acceptable C : Corrected U : Unacceptable A/W : Acceptable but Monitor & Maintain	+ Issue Type Ma : Maintenance Deficiency Ob : Design & System Obsolescence En : Enforcement
--	---	---

**Flood Control Project Maintenance
Levee Inspections**

Maintenance Issue Types Only, Levee Inspection Report By Mile - Fall 2022

Reclamation District No. 0003 Grand Island

Waterway	Bank	Unit Miles	Inspection Start/End	Inspector
Unit No. 03 Cross Levee		0.43	09/06/2022 09/06/2022	Saskia Donovan

LM Start	0.30	Rating **	M	Issue No.	1
LM End	0.30	Issue Type +	Ma	Location *	LS
Category	Earthen Levee			GPS Latitude/Longitude	
				Start	End
Item	Vegetation			38.177955 °	38.177955 °
				-121.653710 °	-121.653710 °
DWR ID	DWR_RD0003_03_f_2021_1				
Comment Code					
V2 : Remove the wild growth and woody vegetation other than native grasses from the levee slopes.					
Inspector Comment					
Willows on the landside slope.					

Photo 1 of 1 : FA_2022_RD0003_610_1_20220923_00004.jpg



View of the willows on the LS looking north (Fall 2022).

LM Start	0.37	Rating **	M	Issue No.	5
LM End	0.37	Issue Type +	Ma	Location *	LS
Category	Earthen Levee			GPS Latitude/Longitude	
				Start	End
Item	Vegetation			38.176857 °	38.176857 °
				-121.653785 °	-121.653785 °
DWR ID	DWR_RD0003_03_s_2020_5				
Comment Code					
V2 : Remove the wild growth and woody vegetation other than native grasses from the levee slopes.					
Inspector Comment					
Trim willows back from landside slope.					

Photo 1 of 1 : FA_2022_RD0003_610_5_20220831_00002.jpg



View of willows on the landside slope (Spring 2021).

* Location
LS : Land Side N/A : Not Applicable
WS : Water Side
CR : Crown

** Rating
A : Acceptable N : Not Inspected/Rated
M : Minimally Acceptable C : Corrected
U : Unacceptable A/W : Acceptable but Monitor & Maintain

+ Issue Type
Ma : Maintenance Deficiency
Ob : Design & System Obsolescence
En : Enforcement