

**Flood Control Project Maintenance
Levee Inspections**

Maintenance Issue Types Only, Levee Inspection Report By Mile - Fall 2020

Reclamation District No. 0003 Grand Island

Waterway	Bank	Unit Miles	Inspection Start/End	Inspector
Unit No. 01 Left Bank Steamboat Slough	Left	10.95	10/15/2020 10/15/2020	David Julian

LM Start	0.00	Rating **	A	Issue No.	102
LM End	0.00	Issue Type +	Ma	Location *	N/A
Category	Earthen Levee			GPS Latitude/Longitude	
				Start	End
Item	Operations & Maintenance Manuals			°	°
DWR ID	DWR_RD0003_01_s_2019_102				
Comment Code					
Inspector Comment					
LMA has a copy of the O & M manual on file at district office.					

No Photos

LM Start	0.00	Rating **	A	Issue No.	103
LM End	0.00	Issue Type +	Ma	Location *	N/A
Category	Earthen Levee			GPS Latitude/Longitude	
				Start	End
Item	Emergency Supplies & Equipment			°	°
DWR ID	DWR_RD0003_01_s_2013_103				
Comment Code					
Inspector Comment					
District keeps supplies at pumphouse on Steamboat Slough and at Ryde. District says it has adequate supplies.					

No Photos

LM Start	0.00	Rating **	A	Issue No.	104
LM End	0.00	Issue Type +	Ma	Location *	N/A
Category	Earthen Levee			GPS Latitude/Longitude	
				Start	End
Item	Flood Preparedness & Training			°	°
DWR ID	DWR_RD0003_01_s_2013_104				
Comment Code					
Inspector Comment					
District personnel have done flood fight training course in the last two years.					

No Photos

* Location LS : Land Side N/A : Not Applicable WS : Water Side CR : Crown	** Rating A : Acceptable M : Minimally Acceptable U : Unacceptable	N : Not Inspected/Rated C : Corrected A/W : Acceptable but Monitor & Maintain	+ Issue Type Ma : Maintenance Deficiency Ob : Design & System Obsolescence En : Enforcement
--	--	---	---

**Flood Control Project Maintenance
Levee Inspections**

Maintenance Issue Types Only, Levee Inspection Report By Mile - Fall 2020

Reclamation District No. 0003 Grand Island

Waterway	Bank	Unit Miles	Inspection Start/End	Inspector
Unit No. 01 Left Bank Steamboat Slough	Left	10.95	10/15/2020 10/15/2020	David Julian

LM Start	0.13	Rating **	M	Issue No.	2
LM End	0.13	Issue Type +	Ma	Location *	WS
Category	Earthen Levee			GPS Latitude/Longitude	
				Start	End
Item	Erosion / Bank Caving			38.303303 °	38.303303 °
				-121.576538 °	-121.576538 °
DWR ID	DWR_RD0003_01_f_2013_2				
Comment Code					
E2 : Schedule repair of erosion site prior to the next inspection.					
Inspector Comment					
A hole (8ft x 2.5ft x 5ft) is next to a large tree on waterward shoulder.					

Photo 1 of 1 : FA_2020_RD0003_24_2_20201015_00280.jpg



View of hole on the waterside shoulder due to fallen tree (Fall 2020).

LM Start	0.14	Rating **	M	Issue No.	64	
LM End	0.14	Issue Type +	Ma	Location *	WS	
Category	Earthen Levee			GPS Latitude/Longitude		
				Start		End
Item	Encroachments			38.303210 °		38.303210 °
				-121.576642 °		-121.576642 °
DWR ID	DWR_RD0003_01_f_2019_64					
Comment Code						
TR : Tree or limb						
Inspector Comment						

No Photos

* Location
LS : Land Side N/A : Not Applicable
WS : Water Side
CR : Crown

** Rating
A : Acceptable N : Not Inspected/Rated
M : Minimally Acceptable C : Corrected
U : Unacceptable A/W : Acceptable but Monitor & Maintain

+ Issue Type
Ma : Maintenance Deficiency
Ob : Design & System Obsolescence
En : Enforcement

**Flood Control Project Maintenance
Levee Inspections**

Maintenance Issue Types Only, Levee Inspection Report By Mile - Fall 2020

Reclamation District No. 0003 Grand Island

Waterway	Bank	Unit Miles	Inspection Start/End	Inspector
Unit No. 01 Left Bank Steamboat Slough	Left	10.95	10/15/2020 10/15/2020	David Julian

LM Start	0.18	Rating **	A/W	Issue No.	51
LM End	0.24	Issue Type +	Ma	Location *	WS
Category	Supplemental			GPS Latitude/Longitude	
				Start	End
Item	2017 USACE Erosion Survey			38.303035 °	38.302544 °
				-121.577357 °	-121.578241 °
DWR ID	DWR_RD0003_01_f_2018_51				

Comment Code

Inspector Comment

2017 Site ID: STM 26.0 L
Status: Critical
2017 Field Notes: Upgraded to critical. Significant bank failure on upstream end.
Site History: 1997 - Mass failure of berm slope and wave wash erosion. Large trees on top of berm, some failed trees. New area of low rock to on the upstream end. 2000 - Some minor erosion near the downstream end. 2005 - One new small tree has fallen. 2009 - Minimal new erosion. 2010 - Minor new erosion. 2013 - Observed new animal holes and vertical sections at middle of site. 2015 - Minor new erosion.

Photo 1 of 1 : FA_2020_RD0003_24_51_20200910_00016.jpg



USACE 2013 Photo #1

LM Start	0.18	Rating **	A/W	Issue No.	52
LM End	0.21	Issue Type +	Ma	Location *	WS
Category	Supplemental			GPS Latitude/Longitude	
				Start	End
Item	2017 Storm Damage			38.302981 °	38.302778 °
				-121.577336 °	-121.577683 °
DWR ID	LMA-100				

Comment Code

Inspector Comment

Planned For Repair.
Levee Evaluation Comments
Description: District station 9+63 to 10+85, Sec. 07, T. 5 N. R. 4 E., M.D.M. An erosion site exists along approximately 122 linear feet of the waterside slope of Steamboat Slough (Unit 1). Erosion commences approximately 1/3 of the way down the slope from the crown to the waterside toe. Erosion is undercutting existing trees.
Site ID No: 274
Site Designation: LMA-100
Repair Type: Erosion
Rating: Serious
Field Date: 7/26/2017
Notes: trees undercut by erosion

Photo 1 of 3 : LEVAL_FA_2020_274_2391.jpg



* Location LS : Land Side N/A : Not Applicable WS : Water Side CR : Crown	** Rating A : Acceptable M : Minimally Acceptable U : Unacceptable	N : Not Inspected/Rated C : Corrected A/W : Acceptable but Monitor & Maintain	+ Issue Type Ma : Maintenance Deficiency Ob : Design & System Obsolescence En : Enforcement
--	--	--	---

**Flood Control Project Maintenance
Levee Inspections**

Maintenance Issue Types Only, Levee Inspection Report By Mile - Fall 2020

Reclamation District No. 0003 Grand Island

Waterway	Bank	Unit Miles	Inspection Start/End	Inspector
Unit No. 01 Left Bank Steamboat Slough	Left	10.95	10/15/2020 10/15/2020	David Julian

LM Start	0.18	Rating **	A/W	Issue No.	52 (cont)
LM End	0.21	Issue Type +	Ma	Location *	WS
Category	Supplemental		GPS Latitude/Longitude		
			Start	End	
Item	2017 Storm Damage		38.302981 °	38.302778 °	
			-121.577336 °	-121.577683 °	
DWR ID	LMA-100				

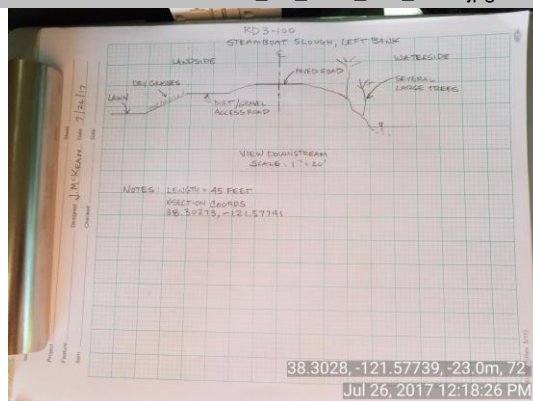
Photo 2 of 3 : LEVAL_FA_2020_274_2392.jpg



38.30282, -121.5774, -36.0m, 290°
Jul 26, 2017 12:05:40 PM

LM Start	0.18	Rating **	A/W	Issue No.	52 (cont)
LM End	0.21	Issue Type +	Ma	Location *	WS

Photo 3 of 3 : LEVAL_FA_2020_274_2395.jpg



38.3028, -121.57739, -23.0m, 72°
Jul 26, 2017 12:18:26 PM

LM Start	0.58	Rating **	M	Issue No.	145
LM End	0.58	Issue Type +	Ma	Location *	LS
Category	Earthen Levee			GPS Latitude/Longitude	
				Start	End
Item	Vegetation			38.298015 °	38.298015 °
				-121.580870 °	-121.580870 °
DWR ID	DWR_RD0003_01_f_2020_145				
Comment Code					
V2 : Remove the wild growth other than native grasses from the levee slopes.					
Inspector Comment					
Remove vegetation around pumpbox on the landside toe.					

No Photos

* Location LS : Land Side N/A : Not Applicable WS : Water Side CR : Crown	** Rating A : Acceptable M : Minimally Acceptable U : Unacceptable	N : Not Inspected/Rated C : Corrected A/W : Acceptable but Monitor & Maintain	+ Issue Type Ma : Maintenance Deficiency Ob : Design & System Obsolescence En : Enforcement
--	--	---	---

**Flood Control Project Maintenance
Levee Inspections**

Maintenance Issue Types Only, Levee Inspection Report By Mile - Fall 2020

Reclamation District No. 0003 Grand Island

Waterway	Bank	Unit Miles	Inspection Start/End	Inspector
Unit No. 01 Left Bank Steamboat Slough	Left	10.95	10/15/2020 10/15/2020	David Julian

LM Start	0.79	Rating **	M	Issue No.	146
LM End	0.79	Issue Type +	Ma	Location *	LS
Category	Earthen Levee			GPS Latitude/Longitude	
				Start	End
Item	Vegetation			38.295140 °	38.295140 °
				-121.581735 °	-121.581735 °
DWR ID	DWR_RD0003_01_f_2020_146				
Comment Code					
V1 : Control annual grass and weeds on the levee slopes and easements.					
Inspector Comment					

No Photos

LM Start	0.91	Rating **	U	Issue No.	147
LM End	0.91	Issue Type +	Ma	Location *	LS
Category	Earthen Levee			GPS Latitude/Longitude	
				Start	End
Item	Animal Control			38.293463 °	38.293463 °
				-121.582275 °	-121.582275 °
DWR ID	DWR_RD0003_01_f_2020_147				
Comment Code					
A1 : Exterminate rodents and backfill and compact or grout burrows.					
Inspector Comment					
Multiple fresh rodent holes in the landside slope.					

Photo 1 of 1 : FA_2020_RD0003_24_147_20201015_00283.jpg



View looking downstream at multiple fresh rodent holes in the landside slope (Fall 2020).

* Location
LS : Land Side N/A : Not Applicable
WS : Water Side
CR : Crown

** Rating
A : Acceptable N : Not Inspected/Rated
M : Minimally Acceptable C : Corrected
U : Unacceptable A/W : Acceptable but Monitor & Maintain

+ Issue Type
Ma : Maintenance Deficiency
Ob : Design & System Obsolescence
En : Enforcement

**Flood Control Project Maintenance
Levee Inspections**

Maintenance Issue Types Only, Levee Inspection Report By Mile - Fall 2020

Reclamation District No. 0003 Grand Island

Waterway	Bank	Unit Miles	Inspection Start/End	Inspector
Unit No. 01 Left Bank Steamboat Slough	Left	10.95	10/15/2020 10/15/2020	David Julian

LM Start	0.91	Rating **	A/W	Issue No.	53
LM End	0.97	Issue Type +	Ma	Location *	WS
Category	Supplemental			GPS Latitude/Longitude	
				Start	End
Item	2017 Storm Damage			38.293381 °	38.292617 °
				-121.582450 °	-121.582675 °
DWR ID	LMA-101				
Comment Code					
Inspector Comment					
Planned For Repair.					
Levee Evaluation Comments					
Description: District station 48+20 to 51+06, Sec. 07, T. 5 N. R. 4 E., M.D.M. An erosion site exists along approximately 286 linear feet of the waterside slope of Steamboat Slough (Unit 1). The erosion begins approximately 1/2 of the way down the slope from the crown to the waterside toe. Erosion is undercutting existing trees.					
Site ID No:275					
Site Designation:LMA-101					
Repair Type: Erosion					
Rating:Serious					
Field Date:7/26/2017					
Notes:					

Photo 1 of 3 : LEVAL_FA_2020_275_2396.jpg



LM Start	0.91	Rating **	A/W	Issue No.	53 (cont)
LM End	0.97	Issue Type +	Ma	Location *	WS

Photo 2 of 3 : LEVAL_FA_2020_275_2398.jpg



* Location LS : Land Side N/A : Not Applicable WS : Water Side CR : Crown	** Rating A : Acceptable N : Not Inspected/Rated M : Minimally Acceptable C : Corrected U : Unacceptable A/W : Acceptable but Monitor & Maintain	+ Issue Type Ma : Maintenance Deficiency Ob : Design & System Obsolescence En : Enforcement
--	---	---

Reclamation District No. 0003 Grand Island

Photo 3 of 3 : LEVAL FA 2020 275 2399.jpg



Photo 1 of 1 : FA_2020_RD0003_24_49_20200910_00014.jpg



USACE 2013 Photo #1

Site History: 1997 - Erosion of sandy levee on top left bank. Site is downstream of a rock section. Large riparian trees on the bank. 1999 - Upstream half of the reach repaired with rock, except for a 30 ft reach at the upstream end. 2001 - Rock repair on the upstream and downstream ends; no revetment at the trees. 2002 - Rock repair is starting to slide off the geotextile at the upstream end. 2005 - One new small tree has fallen. 2006 - 50 ft pocket at the downstream end and at the upstream end with new rock in between. 2007 - Upstream end has been repaired. 2008 - Area closed sign on bank. Newly fallen trees at both ends and pop outs along the bank. 2010 - Site extended downstream. 2011 - New erosion at the toe. More trees popouts. 2013 - Short vertical sections observed at the downstream end. 2015 - Significant new erosion, large oak tree on verge of popping out. 2016 - Sites 24.8 and 25 were combined.

Page 7 of 21

**Flood Control Project Maintenance
Levee Inspections**

Maintenance Issue Types Only, Levee Inspection Report By Mile - Fall 2020

Reclamation District No. 0003 Grand Island

Waterway	Bank	Unit Miles	Inspection Start/End	Inspector
Unit No. 01 Left Bank Steamboat Slough	Left	10.95	10/15/2020 10/15/2020	David Julian

LM Start	0.97	Rating **	C	Issue No.	56
LM End	0.97	Issue Type +	Ma	Location *	WS
Category	Earthen Levee			GPS Latitude/Longitude	
				Start	End
Item	Encroachments			38.292588 °	38.292588 °
				-121.582552 °	-121.582552 °
DWR ID	DWR_RD0003_01_s_2020_56				
Comment Code					
TR : Tree or limb					
Inspector Comment					

No Photos

LM Start	1.09	Rating **	U	Issue No.	60
LM End	1.10	Issue Type +	Ma	Location *	WS
Category	Earthen Levee			GPS Latitude/Longitude	
				Start	End
Item	Erosion / Bank Caving			38.290819 °	38.290706 °
				-121.582942 °	-121.582939 °
DWR ID	LMA-102				
Comment Code					
E2 : Schedule repair of erosion site prior to the next inspection.					
Inspector Comment					
<p>This was a 2017 Storm Damage site.</p> <p>An erosion site exists along approximately 41 linear feet of the water side slope.</p> <p>Site ID No:276</p> <p>Site Designation:LMA-102</p> <p>6/18/2020 Boat Inspection:</p> <p>Significant erosion into waterside prism directly upstream of tree that is leaning into water. That leaning tree is creating an eddy that is causing the erosion. There is also some less significant erosion into the waterside toe upstream of the significant erosion site.</p>					

Photo 1 of 2 : FA_2020_RD0003_24_60_20200910_00027.jpg



View from the channel of leaning tree and erosion into waterside prism (Summer 2020).

* Location LS : Land Side N/A : Not Applicable WS : Water Side CR : Crown	** Rating A : Acceptable M : Minimally Acceptable U : Unacceptable	N : Not Inspected/Rated C : Corrected A/W : Acceptable but Monitor & Maintain	+ Issue Type Ma : Maintenance Deficiency Ob : Design & System Obsolescence En : Enforcement
--	--	---	---

**Flood Control Project Maintenance
Levee Inspections**

Maintenance Issue Types Only, Levee Inspection Report By Mile - Fall 2020

Reclamation District No. 0003 Grand Island

Waterway	Bank	Unit Miles	Inspection Start/End	Inspector
Unit No. 01 Left Bank Steamboat Slough	Left	10.95	10/15/2020 10/15/2020	David Julian

LM Start	1.09	Rating **	U	Issue No.	60 (cont)
LM End	1.10	Issue Type +	Ma	Location *	WS
Category	Earthen Levee			GPS Latitude/Longitude	
				Start	End
Item	Erosion / Bank Caving			38.290819 °	38.290706 °
				-121.582942 °	-121.582939 °
DWR ID	LMA-102				

Photo 2 of 2 : FA_2020_RD0003_24_60_20200910_00028.jpg



View from the channel of erosion into waterside toe upstream deep erosion (Summer 2020).

LM Start	1.13	Rating **	C	Issue No.	82
LM End	1.13	Issue Type +	Ma	Location *	WS
Category	Earthen Levee			GPS Latitude/Longitude	
				Start	End
Item	Encroachments			38.290279 °	38.290279 °
				-121.582789 °	-121.582789 °
DWR ID	DWR_RD0003_01_s_2020_82				
Comment Code					
TR : Tree or limb					
Inspector Comment					

No Photos


LM Start	1.22	Rating **	C	Issue No.	89
LM End	1.22	Issue Type +	Ma	Location *	WS
Category	Earthen Levee			GPS Latitude/Longitude	
				Start	End
Item	Encroachments			38.288950 °	38.288950 °
				-121.582767 °	-121.582767 °
DWR ID	DWR_RD0003_01_s_2020_89				
Comment Code					
TR : Tree or limb					
Inspector Comment					

No Photos

* Location LS : Land Side N/A : Not Applicable WS : Water Side CR : Crown	** Rating A : Acceptable M : Minimally Acceptable U : Unacceptable	N : Not Inspected/Rated C : Corrected A/W : Acceptable but Monitor & Maintain	+ Issue Type Ma : Maintenance Deficiency Ob : Design & System Obsolescence En : Enforcement
--	--	---	---

Reclamation District No. 0003 Grand Island

Photo 1 of 1 : FA_2020_RD0003_24_148_20201015_00285.jpg



View of trees partially blocking view down the landside slope (Fall 2020).

Photo 1 of 1 : FA_2020_RD0003_24_149_20201015_00287.jpg



The photograph shows a grassy hillside. In the foreground, there is a patch of dry, yellowish-brown grass and some dark, possibly charred or dead, plant matter. A small, dark, irregular hole is visible in the ground, which appears to be a rodent hole. The hillside slopes upwards towards the background, where there is more green grass and some trees under a clear blue sky.

View of a fresh rodent hole in the landside slope (Fall 2020).

Wednesday, January 06, 2021 09:35 **FINAL DATA** Page 10 of 2

**Flood Control Project Maintenance
Levee Inspections**

Maintenance Issue Types Only, Levee Inspection Report By Mile - Fall 2020

Reclamation District No. 0003 Grand Island

Waterway	Bank	Unit Miles	Inspection Start/End	Inspector
Unit No. 01 Left Bank Steamboat Slough	Left	10.95	10/15/2020 10/15/2020	David Julian

LM Start	1.91	Rating **	C	Issue No.	54
LM End	1.91	Issue Type +	Ma	Location *	WS
Category	Earthen Levee			GPS Latitude/Longitude	
				Start	End
Item	Encroachments			38.280638 °	38.280638 °
				-121.588457 °	-121.588457 °
DWR ID	DWR_RD0003_01_s_2018_54				
Comment Code					
TR : Tree or limb					
Inspector Comment					

No Photos

LM Start	3.16	Rating **	N	Issue No.	47
LM End	3.16	Issue Type +	Ma	Location *	WS
Category	Earthen Levee			GPS Latitude/Longitude	
				Start	End
Item	Trim / Thin Trees			38.264154 °	38.264154 °
				-121.587242 °	-121.587242 °
DWR ID	DWR_RD0003_01_s_2012_47				
Comment Code					
T5 : Tree stumps.					
Inspector Comment					
There are 6 large stumps on the slope.					

No Photos

LM Start	4.38	Rating **	U	Issue No.	151
LM End	4.38	Issue Type +	Ma	Location *	LS
Category	Earthen Levee			GPS Latitude/Longitude	
				Start	End
Item	Trim / Thin Trees			38.253002 °	38.253002 °
				-121.600715 °	-121.600715 °
DWR ID	DWR_RD0003_01_f_2020_151				
Comment Code					
T2 : Thin trees to allow visibility of the ground and room to flood fight.					
Inspector Comment					

Photo 1 of 1 : FA_2020_RD0003_24_151_20201015_00290.jpg



View of thick palm trees on the landside slope (Fall 2020).

*** Location**

LS : Land Side N/A : Not Applicable
WS : Water Side
CR : Crown

**** Rating**

A : Acceptable N : Not Inspected/Rated
M : Minimally Acceptable C : Corrected
U : Unacceptable A/W : Acceptable but Monitor & Maintain

+ Issue Type

Ma : Maintenance Deficiency
Ob : Design & System Obsolescence
En : Enforcement

Reclamation District No. 0003 Grand Island

**Flood Control Project Maintenance
Levee Inspections**

Maintenance Issue Types Only, Levee Inspection Report By Mile - Fall 2020

Reclamation District No. 0003 Grand Island

Waterway	Bank	Unit Miles	Inspection Start/End	Inspector
Unit No. 01 Left Bank Steamboat Slough	Left	10.95	10/15/2020 10/15/2020	David Julian

LM Start	7.68	Rating **	U	Issue No.	76
LM End	7.68	Issue Type +	Ma	Location *	LS
Category	Earthen Levee			GPS Latitude/Longitude	
				Start	End
Item	Trim / Thin Trees			38.207036 °	38.207036 °
				-121.609540 °	-121.609540 °
DWR ID	DWR_RD0003_01_s_2012_76				
Comment Code					
T2 : Thin trees to allow visibility of the ground and room to flood fight.					
Inspector Comment					

Photo 1 of 1 : FA_2020_RD0003_24_76_20200910_00040.jpg



View of thick tree on the landside slope (Spring 2020).

LM Start	8.82	Rating **	C	Issue No.	101
LM End	8.82	Issue Type +	Ma	Location *	WS
Category	Earthen Levee			GPS Latitude/Longitude	
				Start	End
Item	Trim / Thin Trees			38.193568 °	38.193568 °
				-121.619040 °	-121.619040 °
DWR ID	DWR_RD0003_01_f_2018_101				
Comment Code					
T1 : Trim trees to at least five feet above ground level.					
Inspector Comment					

No Photos

LM Start	8.84	Rating **	C	Issue No.	105
LM End	8.84	Issue Type +	Ma	Location *	WS
Category	Earthen Levee			GPS Latitude/Longitude	
				Start	End
Item	Trim / Thin Trees			38.193413 °	38.193413 °
				-121.619320 °	-121.619320 °
DWR ID	DWR_RD0003_01_f_2018_105				
Comment Code					
T1 : Trim trees to at least five feet above ground level.					
Inspector Comment					

No Photos

* Location LS : Land Side N/A : Not Applicable WS : Water Side CR : Crown	** Rating A : Acceptable M : Minimally Acceptable U : Unacceptable	N : Not Inspected/Rated C : Corrected A/W : Acceptable but Monitor & Maintain	+ Issue Type Ma : Maintenance Deficiency Ob : Design & System Obsolescence En : Enforcement
--	--	---	---

**Flood Control Project Maintenance
Levee Inspections**

Maintenance Issue Types Only, Levee Inspection Report By Mile - Fall 2020

Reclamation District No. 0003 Grand Island

Waterway	Bank	Unit Miles	Inspection Start/End	Inspector
Unit No. 01 Left Bank Steamboat Slough	Left	10.95	10/15/2020 10/15/2020	David Julian

LM Start	8.92	Rating **	N	Issue No.	155
LM End	8.92	Issue Type +	Ma	Location *	WS
Category	Earthen Levee			GPS Latitude/Longitude	
				Start	End
Item	Trim / Thin Trees			38.192985 °	38.192985 °
				-121.620712 °	-121.620712 °
DWR ID	DWR_RD0003_01_f_2020_155				
Comment Code					
T5 : Tree stumps.					
Inspector Comment					
Stump on the waterside hinge.					

Photo 1 of 1 : FA_2020_RD0003_24_155_20201015_00295.jpg



View of tree stump on the waterside slope (Fall 2020).

LM Start	10.13	Rating **	M	Issue No.	74
LM End	10.13	Issue Type +	Ma	Location *	LS
Category	Earthen Levee			GPS Latitude/Longitude	
				Start	End
Item	Vegetation			38.188560 °	38.188560 °
				-121.641283 °	-121.641283 °
DWR ID	DWR_RD0003_01_s_2020_74				
Comment Code					
V2 : Remove the wild growth other than native grasses from the levee slopes.					
Inspector Comment					

Photo 1 of 1 : FA_2020_RD0003_24_74_20201015_00296.jpg



View of vegetation on the landside shoulder and slope (Fall 2020).

*** Location**

LS : Land Side N/A : Not Applicable
WS : Water Side
CR : Crown

**** Rating**

A : Acceptable N : Not Inspected/Rated
M : Minimally Acceptable C : Corrected
U : Unacceptable A/W : Acceptable but Monitor & Maintain

+ Issue Type

Ma : Maintenance Deficiency
Ob : Design & System Obsolescence
En : Enforcement

**Flood Control Project Maintenance
Levee Inspections**

Maintenance Issue Types Only, Levee Inspection Report By Mile - Fall 2020

Reclamation District No. 0003 Grand Island

Waterway	Bank	Unit Miles	Inspection Start/End	Inspector
Unit No. 01 Left Bank Steamboat Slough	Left	10.95	10/15/2020 10/15/2020	David Julian

LM Start	10.15	Rating **	U	Issue No.	72
LM End	10.21	Issue Type +	Ma	Location *	WS
Category	Earthen Levee			GPS Latitude/Longitude	
				Start	End
Item	Erosion / Bank Caving			38.188431 °	38.187803 °
				-121.641703 °	-121.642478 °
DWR ID	LMA-103				
Comment Code					
E2 : Schedule repair of erosion site prior to the next inspection.					
Inspector Comment					
This was the 2017 Storm Damage site. The waterside slope experienced sloughing and erosion along approximately 312 linear feet. Sloughing commences at approximately 1/4 of the way down the slope from the crown and extends to the rip rap. Site ID No:277 Site Designation:LMA-103 4/9/2020 Field Notes: Relatively significant erosion into waterside slope.					

LM Start	10.15	Rating **	U	Issue No.	72 (cont)
LM End	10.21	Issue Type +	Ma	Location *	WS

Photo 1 of 3 : FA_2020_RD0003_24_72_20200910_00033.jpg



Photo 2 of 3 : FA_2020_RD0003_24_72_20200910_00034.jpg



* Location LS : Land Side N/A : Not Applicable WS : Water Side CR : Crown	** Rating A : Acceptable M : Minimally Acceptable U : Unacceptable	+ Issue Type Ma : Maintenance Deficiency Ob : Design & System Obsolescence En : Enforcement
--	--	---

**Flood Control Project Maintenance
Levee Inspections**

Maintenance Issue Types Only, Levee Inspection Report By Mile - Fall 2020

Reclamation District No. 0003 Grand Island

Waterway	Bank	Unit Miles	Inspection Start/End	Inspector
Unit No. 01 Left Bank Steamboat Slough	Left	10.95	10/15/2020 10/15/2020	David Julian

LM Start	10.15	Rating **	U	Issue No.	72 (cont)
LM End	10.21	Issue Type +	Ma	Location *	WS
Category	Earthen Levee			GPS Latitude/Longitude	
				Start	End
Item	Erosion / Bank Caving			38.188431 °	38.187803 °
				-121.641703 °	-121.642478 °
DWR ID	LMA-103				

Photo 3 of 3 : FA_2020_RD0003_24_72_20200910_00035.jpg



LM Start	10.62	Rating **	M	Issue No.	46
LM End	10.69	Issue Type +	Ma	Location *	WS
Category	Supplemental			GPS Latitude/Longitude	
				Start	End
Item	2017 USACE Erosion Survey			38.184180 °	38.183798 °
				-121.648055 °	-121.649246 °
DWR ID	DWR_RD0003_01_f_2018_46				
Comment Code					
Inspector Comment					
2017 Site ID: STM 15.5 L					
Status: Eroding					
2017 Field Notes: No observed change.					
Site History: 2016 - Large erosion pockets observed.					

No Photos

LM Start	10.64	Rating **	M	Issue No.	45
LM End	10.64	Issue Type +	Ma	Location *	CR
Category	Earthen Levee			GPS Latitude/Longitude	
				Start	End
Item	Encroachments			38.183941 °	38.183941 °
				-121.648242 °	-121.648242 °
DWR ID	DWR_RD0003_01_s_2020_45				
Comment Code					
GA : Garbage					
Inspector Comment					
Large pile of bottles on the crown.					

No Photos

* Location LS : Land Side N/A : Not Applicable WS : Water Side CR : Crown	** Rating A : Acceptable M : Minimally Acceptable U : Unacceptable	N : Not Inspected/Rated C : Corrected A/W : Acceptable but Monitor & Maintain	+ Issue Type Ma : Maintenance Deficiency Ob : Design & System Obsolescence En : Enforcement
--	--	---	---

**Flood Control Project Maintenance
Levee Inspections**

Maintenance Issue Types Only, Levee Inspection Report By Mile - Fall 2020

Reclamation District No. 0003 Grand Island

Waterway	Bank	Unit Miles	Inspection Start/End	Inspector
Unit No. 01 Left Bank Steamboat Slough	Left	10.95	10/15/2020 10/15/2020	David Julian

LM Start	10.67	Rating **	A/W	Issue No.	73
LM End	10.94	Issue Type +	Ma	Location *	WS
Category	Earthen Levee			GPS Latitude/Longitude	
				Start	End
Item	Erosion / Bank Caving			38.183810 °	38.182348 °
				-121.648780 °	-121.653433 °
DWR ID	DWR_RD0003_01_s_2020_73				
Comment Code					
E1 : Note and monitor erosion site.					
Inspector Comment					
This was a 2017 Storm Damage site. Scattered erosion scarps caving into levee crown, within erosion limit crown width ranges from 15 to 30', several trees with exposed tree roots and leaning into the river. Site ID No:63 Site Designation:DWR_RD0003_01_R_2012_03 4/9/2020 Field Notes: Erosion is still outside of theoretical levee prism. LMA has mentioned USACE is in process of repairing. Monitor.					

Photo 1 of 3 : FA_2020_RD0003_24_73_20200910_00036.jpg



Looking south at erosion on waterside slope.

LM Start	10.67	Rating **	A/W	Issue No.	73 (cont)
LM End	10.94	Issue Type +	Ma	Location *	WS

Photo 2 of 3 : FA_2020_RD0003_24_73_20200910_00037.jpg



Looking northwest at erosion on waterside shoulder and slope.

* Location LS : Land Side N/A : Not Applicable WS : Water Side CR : Crown	** Rating A : Acceptable M : Minimally Acceptable U : Unacceptable	N : Not Inspected/Rated C : Corrected A/W : Acceptable but Monitor & Maintain	+ Issue Type Ma : Maintenance Deficiency Ob : Design & System Obsolescence En : Enforcement
--	--	---	---

Reclamation District No. 0003 Grand Island

**Flood Control Project Maintenance
Levee Inspections**

Maintenance Issue Types Only, Levee Inspection Report By Mile - Fall 2020

Reclamation District No. 0003 Grand Island

Waterway	Bank	Unit Miles	Inspection Start/End	Inspector
Unit No. 01 Left Bank Steamboat Slough	Left	10.95	10/15/2020 10/15/2020	David Julian

LM Start	10.83	Rating **	M	Issue No.	260 (cont)
LM End	10.83	Issue Type +	Ma	Location *	
Category	Supplemental			GPS Latitude/Longitude	
				Start	End
Item	DWR UCIP LMA Responsibility			38.182982 °	38.182982 °
				-121.651610 °	-121.651610 °
DWR ID	22206				

Photo 2 of 3 : UCIP_FA_2020_58704_85967.jpg



LS view: Steel weir on the levee toe.

LM Start	10.83	Rating **	M	Issue No.	260 (cont)
LM End	10.83	Issue Type +	Ma	Location *	

Photo 3 of 3 : UCIP_FA_2020_58704_85968.jpg



WS view: Standpipe on the levee shoulder.

* Location LS : Land Side N/A : Not Applicable WS : Water Side CR : Crown	** Rating A : Acceptable M : Minimally Acceptable U : Unacceptable N : Not Inspected/Rated C : Corrected A/W : Acceptable but Monitor & Maintain	+ Issue Type Ma : Maintenance Deficiency Ob : Design & System Obsolescence En : Enforcement
--	---	---

**Flood Control Project Maintenance
Levee Inspections**

Maintenance Issue Types Only, Levee Inspection Report By Mile - Fall 2020

Reclamation District No. 0003 Grand Island

Waterway	Bank	Unit Miles	Inspection Start/End	Inspector
Unit No. 01 Left Bank Steamboat Slough	Left	10.95	10/15/2020 10/15/2020	David Julian

LM Start	10.83	Rating **	M	Issue No.	261	
LM End	10.83	Issue Type +	Ma	Location *		
Category	Supplemental			GPS Latitude/Longitude		
				Start	End	
Item	DWR UCIP LMA Responsibility			38.182973 °	38.182973 °	
				-121.651645 °	-121.651645 °	
DWR ID	22349					
Comment Code						
Inspector Comment						
DS_ID:22349 FS_ID:58705 EP_NO: N/A Repair Type: Non-Urgent EVAL Issue: Unauthorized Encroachment, installed decades prior Crossing Status: Found UCIP Comments: 05/22/2020 Record remains Non-Urgent due to missing permit and crossing being abandoned. (S. Donovan - DWR UCIP)02/11/2014 Pipe appears abandoned and should be verified as having been filled with grout. (G. Wylie - DWR UCIP) FIELD_STRUCT_DESC: *ABANDONED* 36-inch corrugated metal drainage pipe through the levee, 15 feet below the crown. Slide gate in a 48-inch corrugated metal pipe (CMP) riser on the waterside (WS) shoulder. Steel intake weir at the landside (LS) toe. Steel plate welded over the pipe on the WS toe. [Additional Reference(s): DWR Levee Log, 1993, referenced as 24 feet below the crown. USACE Sacramento O&M Manual 104, February 1960, (RM 15.20), referenced as invert elevation 24 feet below the crown]. FS Date: 5/22/2020 8:28:00 AM						

LM Start	10.83	Rating **	M	Issue No.	261 (cont)
LM End	10.83	Issue Type +	Ma	Location *	

Photo 1 of 3 : UCIP_FA_2020_58705_85978.jpg



Overview of the levee crown looking d/s.

Photo 2 of 3 : UCIP_FA_2020_58705_85973.jpg



LS view: Steel weir on the levee toe.

* Location LS : Land Side N/A : Not Applicable WS : Water Side CR : Crown	** Rating A : Acceptable M : Minimally Acceptable U : Unacceptable	N : Not Inspected/Rated C : Corrected A/W : Acceptable but Monitor & Maintain	+ Issue Type Ma : Maintenance Deficiency Ob : Design & System Obsolescence En : Enforcement
--	--	---	---

**Flood Control Project Maintenance
Levee Inspections**

Maintenance Issue Types Only, Levee Inspection Report By Mile - Fall 2020

Reclamation District No. 0003 Grand Island

Waterway	Bank	Unit Miles	Inspection Start/End	Inspector
Unit No. 01 Left Bank Steamboat Slough	Left	10.95	10/15/2020 10/15/2020	David Julian

LM Start	10.83	Rating **	M	Issue No.	261 (cont)
LM End	10.83	Issue Type +	Ma	Location *	
Category	Supplemental			GPS Latitude/Longitude	
				Start	End
Item	DWR UCIP LMA Responsibility			38.182973 °	38.182973 °
				-121.651645 °	-121.651645 °
DWR ID	22349				

Photo 3 of 3 : UCIP_FA_2020_58705_85974.jpg



WS view: Standpipe on the levee shoulder.

* Location LS : Land Side N/A : Not Applicable WS : Water Side CR : Crown	** Rating A : Acceptable M : Minimally Acceptable U : Unacceptable N : Not Inspected/Rated C : Corrected A/W : Acceptable but Monitor & Maintain	+ Issue Type Ma : Maintenance Deficiency Ob : Design & System Obsolescence En : Enforcement
--	---	---

**Flood Control Project Maintenance
Levee Inspections**

Maintenance Issue Types Only, Levee Inspection Report By Mile - Fall 2020

Reclamation District No. 0003 Grand Island

Waterway	Bank	Unit Miles	Inspection Start/End	Inspector
Unit No. 02 Right Bank Sacramento River	Right	17.35	10/14/2020 10/14/2020	David Julian

LM Start	0.04	Rating **	M	Issue No.	225
LM End	0.10	Issue Type +	Ma	Location *	CR
Category	Earthen Levee		GPS Latitude/Longitude		
			Start	End	
Item	Vegetation		38.175636 °	38.175250 °	
			-121.653275 °	-121.652235 °	
DWR ID	DWR_RD0003_02_s_2020_225				
Comment Code					
V9 : Keep the crown roadway free of vegetation.					
Inspector Comment					

No Photos

LM Start	0.30	Rating **	M	Issue No.	181
LM End	0.37	Issue Type +	Ma	Location *	CR
Category	Earthen Levee		GPS Latitude/Longitude		
			Start	End	
Item	Vegetation		38.174278 °	38.174000 °	
			-121.648720 °	-121.647439 °	
DWR ID	DWR_RD0003_02_s_2020_181				
Comment Code					
V9 : Keep the crown roadway free of vegetation.					
Inspector Comment					

No Photos

LM Start	0.30	Rating **	U	Issue No.	5
LM End	0.32	Issue Type +	Ma	Location *	WS
Category	Earthen Levee		GPS Latitude/Longitude		
			Start	End	
Item	Vegetation		38.174281 °	38.174209 °	
			-121.648698 °	-121.648352 °	
DWR ID	DWR_RD0003_02_s_2019_5				
Comment Code					
V2 : Remove the wild growth other than native grasses from the levee slopes.					
Inspector Comment					
Arundo on the waterside slope.					

Photo 1 of 1 : FA_2020_RD0003_25_5_20200910_00004.jpg



View looking upstream at arundo on the waterside slope (Fall 2019).

*** Location**

LS : Land Side N/A : Not Applicable
WS : Water Side
CR : Crown

**** Rating**

A : Acceptable N : Not Inspected/Rated
M : Minimally Acceptable C : Corrected
U : Unacceptable A/W : Acceptable but Monitor & Maintain

+ Issue Type

Ma : Maintenance Deficiency
Ob : Design & System Obsolescence
En : Enforcement

**Flood Control Project Maintenance
Levee Inspections**

Maintenance Issue Types Only, Levee Inspection Report By Mile - Fall 2020

Reclamation District No. 0003 Grand Island

Waterway	Bank	Unit Miles	Inspection Start/End	Inspector
Unit No. 02 Right Bank Sacramento River	Right	17.35	10/14/2020 10/14/2020	David Julian

LM Start	0.31	Rating **	U	Issue No.	151
LM End	0.35	Issue Type +	Ma	Location *	LS
Category	Earthen Levee			GPS Latitude/Longitude	
				Start	End
Item	Vegetation			38.174235 °	38.174109 °
				-121.648479 °	-121.647870 °
DWR ID	DWR_RD0003_02_s_2016_151				
Comment Code					
V2 : Remove the wild growth other than native grasses from the levee slopes.					
Inspector Comment					
Remove young willows along landside toe.					

Photo 1 of 1 : FA_2020_RD0003_25_151_20200910_00086.jpg



View of willows on the landside slope (Fall 2019).

LM Start	0.37	Rating **	U	Issue No.	3
LM End	0.37	Issue Type +	Ma	Location *	WS
Category	Earthen Levee			GPS Latitude/Longitude	
				Start	End
Item	Vegetation			38.174020 °	38.174020 °
				-121.647458 °	-121.647458 °
DWR ID	DWR_RD0003_02_f_2018_3				
Comment Code					
V2 : Remove the wild growth other than native grasses from the levee slopes.					
Inspector Comment					
Remove arundo from waterside slope.					

Photo 1 of 1 : FA_2020_RD0003_25_3_20200910_00003.jpg



View of arundo on waterside slope (October 2018).

LM Start	1.53	Rating **	M	Issue No.	222
LM End	1.53	Issue Type +	Ma	Location *	WS
Category	Earthen Levee			GPS Latitude/Longitude	
				Start	End
Item	Encroachments			38.168908 °	38.168908 °
				-121.627748 °	-121.627748 °
DWR ID	DWR_RD0003_02_f_2019_222				
Comment Code					
GA : Garbage					
Inspector Comment					

No Photos

* Location LS : Land Side N/A : Not Applicable WS : Water Side CR : Crown	** Rating A : Acceptable M : Minimally Acceptable U : Unacceptable	N : Not Inspected/Rated C : Corrected A/W : Acceptable but Monitor & Maintain	+ Issue Type Ma : Maintenance Deficiency Ob : Design & System Obsolescence En : Enforcement
--	--	---	---

Reclamation District No. 0003 Grand Island

View of trees partially blocking the view down the landside slope (Fall 2020).

No Photos

Fallen tree at landside toe should be removed.

Page 3 of 20

**Flood Control Project Maintenance
Levee Inspections**

Maintenance Issue Types Only, Levee Inspection Report By Mile - Fall 2020

Reclamation District No. 0003 Grand Island

Waterway	Bank	Unit Miles	Inspection Start/End	Inspector
Unit No. 02 Right Bank Sacramento River	Right	17.35	10/14/2020 10/14/2020	David Julian

LM Start	3.78	Rating **	U	Issue No.	200
LM End	3.78	Issue Type +	Ma	Location *	LS
Category	Earthen Levee			GPS Latitude/Longitude	
				Start	End
Item	Vegetation			38.174550 °	38.174550 °
				-121.593345 °	-121.593345 °
DWR ID	DWR_RD0003_02_f_2018_200				
Comment Code					
V2 : Remove the wild growth other than native grasses from the levee slopes.					
Inspector Comment					
Remove the arundo growth.					

Photo 1 of 1 : FA_2020_RD0003_25_200_20200910_00109.jpg



View of arundo growth on the landside slope (October 2018).

LM Start	4.11	Rating **	C	Issue No.	143
LM End	4.11	Issue Type +	Ma	Location *	LS
Category	Earthen Levee			GPS Latitude/Longitude	
				Start	End
Item	Vegetation			38.178782 °	38.178782 °
				-121.590418 °	-121.590418 °
DWR ID	DWR_RD0003_02_f_2015_143				
Comment Code					
V2 : Remove the wild growth other than native grasses from the levee slopes.					
Inspector Comment					

No Photos

LM Start	4.11	Rating **	M	Issue No.	220	
LM End	4.11	Issue Type +	Ma	Location *	WS	
Category	Earthen Levee			GPS Latitude/Longitude		
				Start		End
Item	Vegetation			38.178830 °		38.178830 °
				-121.590380 °		-121.590380 °
DWR ID	DWR_RD0003_02_f_2019_220					
Comment Code						
V2 : Remove the wild growth other than native grasses from the levee slopes.						
Inspector Comment						
There are century plants on waterside shoulder.						

Photo 1 of 1 : FA_2020_RD0003_25_220_20200910_00118.jpg



View looking upstream at century plants on the waterside shoulder (Fall 2019).

* Location LS : Land Side N/A : Not Applicable WS : Water Side CR : Crown		** Rating A : Acceptable M : Minimally Acceptable U : Unacceptable N : Not Inspected/Rated C : Corrected A/W : Acceptable but Monitor & Maintain		+ Issue Type Ma : Maintenance Deficiency Ob : Design & System Obsolescence En : Enforcement	
--	--	---	--	---	--

**Flood Control Project Maintenance
Levee Inspections**

Maintenance Issue Types Only, Levee Inspection Report By Mile - Fall 2020

Reclamation District No. 0003 Grand Island

Waterway	Bank	Unit Miles	Inspection Start/End	Inspector
Unit No. 02 Right Bank Sacramento River	Right	17.35	10/14/2020 10/14/2020	David Julian

LM Start	4.65	Rating **	C	Issue No.	97
LM End	4.65	Issue Type +	Ma	Location *	LS
Category	Earthen Levee			GPS Latitude/Longitude	
				Start	End
Item	Encroachments			38.185317 °	38.185317 °
				-121.584870 °	-121.584870 °
DWR ID	DWR_RD0003_02_s_2017_97				
Comment Code					
TR : Tree or limb					
Inspector Comment					

No Photos

LM Start	4.94	Rating **	U	Issue No.	14
LM End	4.95	Issue Type +	Ma	Location *	LS
Category	Earthen Levee			GPS Latitude/Longitude	
				Start	End
Item	Trim / Thin Trees			38.188344 °	38.188493 °
				-121.581414 °	-121.581260 °
DWR ID	DWR_RD0003_02_f_2020_14				
Comment Code					
T2 : Thin trees to allow visibility of the ground and room to flood fight.					
Inspector Comment					
There are untrimmed trees on the landside slope and toe.					

Photo 1 of 1 : FA_2020_RD0003_25_14_20201014_00257.jpg



View of untrimmed trees on the landside slope (Fall 2020).

LM Start	4.94	Rating **	M	Issue No.	194
LM End	4.94	Issue Type +	Ma	Location *	WS
Category	Earthen Levee			GPS Latitude/Longitude	
				Start	End
Item	Erosion / Bank Caving			38.188248 °	38.188248 °
				-121.581225 °	-121.581225 °
DWR ID	DWR_RD0003_02_s_2019_194				
Comment Code					
E2 : Schedule repair of erosion site prior to the next inspection.					
Inspector Comment					
Small amount of bank caving.					

Photo 1 of 1 : FA_2020_RD0003_25_194_20200910_00106.jpg



View looking downslope at erosion on the waterside slope (Spring 2019).

*** Location**

LS : Land Side N/A : Not Applicable
WS : Water Side
CR : Crown

**** Rating**

A : Acceptable N : Not Inspected/Rated
M : Minimally Acceptable C : Corrected
U : Unacceptable A/W : Acceptable but Monitor & Maintain

+ Issue Type

Ma : Maintenance Deficiency
Ob : Design & System Obsolescence
En : Enforcement

Reclamation District No. 0003 Grand Island

View from the channel of slightly bowing into the waterside slope
(Summer 2020).

View of thick vegetation at the landside toe (Fall 2019).

View of thick trees on the landside slope (Fall 2020).

Page 6 of 20

**Flood Control Project Maintenance
Levee Inspections**

Maintenance Issue Types Only, Levee Inspection Report By Mile - Fall 2020

Reclamation District No. 0003 Grand Island

Waterway	Bank	Unit Miles	Inspection Start/End	Inspector
Unit No. 02 Right Bank Sacramento River	Right	17.35	10/14/2020 10/14/2020	David Julian

LM Start	8.11	Rating **	U	Issue No.	15
LM End	8.11	Issue Type +	Ma	Location *	WS
Category	Earthen Levee			GPS Latitude/Longitude	
				Start	End
Item	Encroachments			38.224130 °	38.224130 °
				-121.557206 °	-121.557206 °
DWR ID	DWR_RD0003_02_f _ 2020_15				
Comment Code					
TR : Tree or limb					
Inspector Comment					
Remove broken tree branches on waterside shoulder and slope.					

Photo 1 of 1 : FA_2020_RD0003_25_15_20201014_00256.jpg



View of fallen tree limb on the waterside slope (Fall 2020).

LM Start	8.40	Rating **	C	Issue No.	195
LM End	8.40	Issue Type +	Ma	Location *	LS
Category	Earthen Levee			GPS Latitude/Longitude	
				Start	End
Item	Trim / Thin Trees			38.228358 °	38.228358 °
				-121.557127 °	-121.557127 °
DWR ID	DWR_RD0003_02_s_2020_195				
Comment Code					
T2 : Thin trees to allow visibility of the ground and room to flood fight.					
Inspector Comment					

No Photos

LM Start	8.98	Rating **	C	Issue No.	176
LM End	8.98	Issue Type +	Ma	Location *	LS
Category	Earthen Levee			GPS Latitude/Longitude	
				Start	End
Item	Animal Control			38.236425 °	38.236425 °
				-121.559561 °	-121.559561 °
DWR ID	DWR_RD0003_02_f_2017_176				
Comment Code					
A1 : Exterminate rodents and backfill and compact or grout burrows.					
Inspector Comment					

No Photos

* Location LS : Land Side N/A : Not Applicable WS : Water Side CR : Crown	** Rating A : Acceptable M : Minimally Acceptable U : Unacceptable	N : Not Inspected/Rated C : Corrected A/W : Acceptable but Monitor & Maintain	+ Issue Type Ma : Maintenance Deficiency Ob : Design & System Obsolescence En : Enforcement
--	--	---	---

**Flood Control Project Maintenance
Levee Inspections**

Maintenance Issue Types Only, Levee Inspection Report By Mile - Fall 2020

Reclamation District No. 0003 Grand Island

Waterway	Bank	Unit Miles	Inspection Start/End	Inspector
Unit No. 02 Right Bank Sacramento River	Right	17.35	10/14/2020 10/14/2020	David Julian

LM Start	9.29	Rating **	C	Issue No.	63
LM End	9.34	Issue Type +	Ma	Location *	LS
Category	Earthen Levee		GPS Latitude/Longitude		
			Start	End	
Item	Trim / Thin Trees		38.240337 °	38.240849 °	
			-121.556870 °	-121.556307 °	
DWR ID	DWR_RD0003_02_s _ 2012_63				
Comment Code					
T2 : Thin trees to allow visibility of the ground and room to flood fight.					
Inspector Comment					

No Photos

LM Start	9.56	Rating **	C	Issue No.	64
LM End	9.62	Issue Type +	Ma	Location *	LS
Category	Earthen Levee		GPS Latitude/Longitude		
			Start	End	
Item	Trim / Thin Trees		38.242392 °	38.242501 °	
			-121.552862 °	-121.551632 °	
DWR ID	DWR_RD0003_02_s _ 2012_64				
Comment Code					
T1 : Trim trees to at least five feet above ground level.					
Inspector Comment					

No Photos

*** Location**
 LS : Land Side N/A : Not Applicable
 WS : Water Side
 CR : Crown

**** Rating**
 A : Acceptable N : Not Inspected/Rated
 M : Minimally Acceptable C : Corrected
 U : Unacceptable A/W : Acceptable but Monitor & Maintain

+ Issue Type
 Ma : Maintenance Deficiency
 Ob : Design & System Obsolescence
 En : Enforcement

**Flood Control Project Maintenance
Levee Inspections**

Maintenance Issue Types Only, Levee Inspection Report By Mile - Fall 2020

Reclamation District No. 0003 Grand Island

Waterway	Bank	Unit Miles	Inspection Start/End	Inspector
Unit No. 02 Right Bank Sacramento River	Right	17.35	10/14/2020 10/14/2020	David Julian

LM Start	10.01	Rating **	M	Issue No.	138
LM End	10.03	Issue Type +	Ma	Location *	WS
Category	Earthen Levee			GPS Latitude/Longitude	
				Start	End
Item	Erosion / Bank Caving			38.241481 °	38.241439 °
				-121.544569 °	-121.544353 °
DWR ID	LMA-106				
Comment Code					
E2 : Schedule repair of erosion site prior to the next inspection.					
Inspector Comment					
This was a 2017 Storm Damage site. Site ID No:280 Site Designation:LMA-106 6/18/2020 Field Notes: Approximately 2' vertical erosion on surface of waterside slope. The erosion commences approximately 1/2 of the way down the slope from the crown and extends into the riprap. Missing riprap at this location.					

LM Start	10.01	Rating **	M	Issue No.	138 (cont)
LM End	10.03	Issue Type +	Ma	Location *	WS

Photo 1 of 2 : FA_2020_RD0003_25_138_20200910_00075.jpg



View from the channel at erosion on the waterside (Summer 2020).

Photo 2 of 2 : FA_2020_RD0003_25_138_20200910_00076.jpg



View looking downslope at erosion on the waterside (2017).

* Location LS : Land Side N/A : Not Applicable WS : Water Side CR : Crown	** Rating A : Acceptable M : Minimally Acceptable U : Unacceptable	N : Not Inspected/Rated C : Corrected A/W : Acceptable but Monitor & Maintain	+ Issue Type Ma : Maintenance Deficiency Ob : Design & System Obsolescence En : Enforcement
--	--	---	---

**Flood Control Project Maintenance
Levee Inspections**

Maintenance Issue Types Only, Levee Inspection Report By Mile - Fall 2020

Reclamation District No. 0003 Grand Island

Waterway	Bank	Unit Miles	Inspection Start/End	Inspector
Unit No. 02 Right Bank Sacramento River	Right	17.35	10/14/2020 10/14/2020	David Julian

LM Start	10.15	Rating **	M	Issue No.	170
LM End	10.15	Issue Type +	Ma	Location *	LS
Category	Earthen Levee			GPS Latitude/Longitude	
				Start	End
Item	Encroachments			38.241125 °	38.241125 °
				-121.542075 °	-121.542075 °
DWR ID	DWR_RD0003_02_s_2018_170				
Comment Code					
TR : Tree or limb					
Inspector Comment					
There is a fallen tree on the landside slope.					

Photo 1 of 1 : FA_2020_RD0003_25_170_20200910_00097.jpg



Fallen tree on landside slope.

LM Start	10.88	Rating **	M	Issue No.	164
LM End	10.88	Issue Type +	Ma	Location *	WS
Category	Earthen Levee			GPS Latitude/Longitude	
				Start	End
Item	Vegetation			38.238861 °	38.238861 °
				-121.529074 °	-121.529074 °
DWR ID	DWR_RD0003_02_f_2017_164				
Comment Code					
V2 : Remove the wild growth other than native grasses from the levee slopes.					
Inspector Comment					
A century plant is on the waterside.					

No Photos

LM Start	11.21	Rating **	C	Issue No.	148
LM End	11.21	Issue Type +	Ma	Location *	LS
Category	Earthen Levee			GPS Latitude/Longitude	
				Start	End
Item	Trim / Thin Trees			38.239968 °	38.239968 °
				-121.523293 °	-121.523293 °
DWR ID	DWR_RD0003_02_f_2018_148				
Comment Code					
T1 : Trim trees to at least five feet above ground level.					
Inspector Comment					

No Photos

* Location LS : Land Side N/A : Not Applicable WS : Water Side CR : Crown	** Rating A : Acceptable M : Minimally Acceptable U : Unacceptable	N : Not Inspected/Rated C : Corrected A/W : Acceptable but Monitor & Maintain	+ Issue Type Ma : Maintenance Deficiency Ob : Design & System Obsolescence En : Enforcement
--	--	---	---

**Flood Control Project Maintenance
Levee Inspections**

Maintenance Issue Types Only, Levee Inspection Report By Mile - Fall 2020

Reclamation District No. 0003 Grand Island

Waterway	Bank	Unit Miles	Inspection Start/End	Inspector
Unit No. 02 Right Bank Sacramento River	Right	17.35	10/14/2020 10/14/2020	David Julian

LM Start	11.26	Rating **	M	Issue No.	201	
LM End	11.26	Issue Type +	Ma	Location *	WS	
Category	Earthen Levee			GPS Latitude/Longitude		
				Start		End
Item	Encroachments			38.240012 °	38.240012 °	
				-121.522418 °	-121.522418 °	
DWR ID	DWR_RD0003_02_f_2018_201					
Comment Code						
TR : Tree or limb						
Inspector Comment						
Remove fallen tree limbs from the waterside slope.						

Photo 1 of 1 : FA_2020_RD0003_25_201_20200910_00110.jpg



View of fallen tree that has been chopped up on the waterside slope (October 2018).

LM Start	11.37	Rating **	U	Issue No.	168
LM End	11.37	Issue Type +	Ma	Location *	WS
Category	Earthen Levee			GPS Latitude/Longitude	
				Start	End
Item	Erosion / Bank Caving			38.240140 °	38.240140 °
				-121.520310 °	-121.520310 °
DWR ID	DWR_RD0003_02_s_2020_168				
Comment Code					
E2 : Schedule repair of erosion site prior to the next inspection.					
Inspector Comment					
Significant erosion into waterside slope.					

Photo 1 of 1 : FA_2020_RD0003_25_168_20200910_00096.jpg



View of erosion into the waterside slope (Spring 2020).

LM Start	11.43	Rating **	M	Issue No.	162	
LM End	11.43	Issue Type +	Ma	Location *	LS	
Category	Earthen Levee			GPS Latitude/Longitude		
				Start		End
Item	Encroachments			38.240198 °		38.240198 °
				-121.519290 °		-121.519290 °
DWR ID	DWR_RD0003_02_s_2019_162					
Comment Code						
TR : Tree or limb						
Inspector Comment						
Remove tree limbs from the landside slope.						

Photo 1 of 1 : FA_2020_RD0003_25_162_20200910_00093.jpg



View looking downslope at fallen tree limbs on the landside slope (Spring 2019).

* Location
LS : Land Side N/A : Not Applicable
WS : Water Side
CR : Crown

** Rating
A : Acceptable N : Not Inspected/Rated
M : Minimally Acceptable C : Corrected
U : Unacceptable A/W : Acceptable but Monitor & Maintain

+ Issue Type
Ma : Maintenance Deficiency
Ob : Design & System Obsolescence
En : Enforcement

**Flood Control Project Maintenance
Levee Inspections**

Maintenance Issue Types Only, Levee Inspection Report By Mile - Fall 2020

Reclamation District No. 0003 Grand Island

Waterway	Bank	Unit Miles	Inspection Start/End	Inspector
Unit No. 02 Right Bank Sacramento River	Right	17.35	10/14/2020 10/14/2020	David Julian

LM Start	11.51	Rating **	U	Issue No.	116
LM End	11.51	Issue Type +	Ma	Location *	LS
Category	Earthen Levee			GPS Latitude/Longitude	
				Start	End
Item	Trim / Thin Trees			38.240787 °	38.240787 °
				-121.517902 °	-121.517902 °
DWR ID	DWR_RD0003_02_f_2020_116				
Comment Code					
T2 : Thin trees to allow visibility of the ground and room to flood fight.					
Inspector Comment					
Trim the fig tree on the landside.					

Photo 1 of 1 : FA_2020_RD0003_25_116_20201014_00261.jpg



View of thick fig tree on the landside slope (Fall 2020).

LM Start	11.60	Rating **	M	Issue No.	202
LM End	11.60	Issue Type +	Ma	Location *	WS
Category	Earthen Levee			GPS Latitude/Longitude	
				Start	End
Item	Vegetation			38.241630 °	38.241630 °
				-121.516703 °	-121.516703 °
DWR ID	DWR_RD0003_02_f_2019_202				
Comment Code					
V2 : Remove the wild growth other than native grasses from the levee slopes.					
Inspector Comment					
Century plants are on the waterside.					

No Photos

LM Start	12.88	Rating **	N	Issue No.	135
LM End	12.88	Issue Type +	Ma	Location *	LS
Category	Earthen Levee			GPS Latitude/Longitude	
				Start	End
Item	Trim / Thin Trees			38.257244 °	38.257244 °
				-121.518037 °	-121.518037 °
DWR ID	DWR_RD0003_02_s_2018_135				
Comment Code					
T5 : Tree stumps.					
Inspector Comment					
There is a tree stump at levee toe.					

Photo 1 of 1 : FA_2020_RD0003_25_135_20200910_00074.jpg



View looking downslope at tree trunk at the bottom of the landside slope (Spring 2019).

*** Location**
LS : Land Side N/A : Not Applicable
WS : Water Side
CR : Crown

**** Rating**
A : Acceptable N : Not Inspected/Rated
M : Minimally Acceptable C : Corrected
U : Unacceptable A/W : Acceptable but Monitor & Maintain

+ Issue Type
Ma : Maintenance Deficiency
Ob : Design & System Obsolescence
En : Enforcement

**Flood Control Project Maintenance
Levee Inspections**

Maintenance Issue Types Only, Levee Inspection Report By Mile - Fall 2020

Reclamation District No. 0003 Grand Island

Waterway	Bank	Unit Miles	Inspection Start/End	Inspector
Unit No. 02 Right Bank Sacramento River	Right	17.35	10/14/2020 10/14/2020	David Julian

LM Start	13.15	Rating **	M	Issue No.	139
LM End	13.17	Issue Type +	Ma	Location *	WS
Category	Earthen Levee			GPS Latitude/Longitude	
				Start	End
Item	Erosion / Bank Caving			38.260042 °	38.260219 °
				-121.521581 °	-121.521803 °
DWR ID	LMA-107				
Comment Code					
E2 : Schedule repair of erosion site prior to the next inspection.					
Inspector Comment					
This was a 2017 Storm Damage site. Approximately 89 linear feet of erosion and sloughing. The erosion commences approximately 1/2 of the way down the slope from the crown and extends into the rip rap. Site ID No:281 Site Designation:LMA-107 4/8/2020 Field Notes: Evidence of minor sloughing.					

Photo 1 of 1 : FA_2020_RD0003_25_139_20200910_00077.jpg



LM Start	13.30	Rating **	C	Issue No.	123
LM End	13.30	Issue Type +	Ma	Location *	LS
Category	Earthen Levee			GPS Latitude/Longitude	
				Start	End
Item	Encroachments			38.261464 °	38.261464 °
				-121.523646 °	-121.523646 °
DWR ID	DWR_RD0003_02_s_2020_123				
Comment Code					
TR : Tree or limb					
Inspector Comment					

No Photos

* Location LS : Land Side N/A : Not Applicable WS : Water Side CR : Crown	** Rating A : Acceptable M : Minimally Acceptable U : Unacceptable	N : Not Inspected/Rated C : Corrected A/W : Acceptable but Monitor & Maintain	+ Issue Type Ma : Maintenance Deficiency Ob : Design & System Obsolescence En : Enforcement
--	--	---	---

**Flood Control Project Maintenance
Levee Inspections**

Maintenance Issue Types Only, Levee Inspection Report By Mile - Fall 2020

Reclamation District No. 0003 Grand Island

Waterway	Bank	Unit Miles	Inspection Start/End	Inspector
Unit No. 02 Right Bank Sacramento River	Right	17.35	10/14/2020 10/14/2020	David Julian

LM Start	13.32	Rating **	U	Issue No.	107
LM End	13.32	Issue Type +	Ma	Location *	LS
Category	Earthen Levee			GPS Latitude/Longitude	
				Start	End
Item	Trim / Thin Trees			38.261645 °	38.261645 °
				-121.523828 °	-121.523828 °
DWR ID	DWR_RD0003_02_f_2020_107				
Comment Code					
T2 : Thin trees to allow visibility of the ground and room to flood fight.					
Inspector Comment					
Trim fig tree on the landside slope and toe.					

Photo 1 of 1 : FA_2020_RD0003_25_107_20201014_00265.jpg



View of thick trees on the landside slope (Fall 2020).

LM Start	14.29	Rating **	C	Issue No.	132
LM End	14.29	Issue Type +	Ma	Location *	LS
Category	Earthen Levee			GPS Latitude/Longitude	
				Start	End
Item	Encroachments			38.271348 °	38.271348 °
				-121.536847 °	-121.536847 °
DWR ID	DWR_RD0003_02_s_2019_132				
Comment Code					
TR : Tree or limb					
Inspector Comment					

No Photos

* Location LS : Land Side N/A : Not Applicable WS : Water Side CR : Crown	** Rating A : Acceptable M : Minimally Acceptable U : Unacceptable	N : Not Inspected/Rated C : Corrected A/W : Acceptable but Monitor & Maintain	+ Issue Type Ma : Maintenance Deficiency Ob : Design & System Obsolescence En : Enforcement
--	--	---	---

**Flood Control Project Maintenance
Levee Inspections**

Maintenance Issue Types Only, Levee Inspection Report By Mile - Fall 2020

Reclamation District No. 0003 Grand Island

Waterway	Bank	Unit Miles	Inspection Start/End	Inspector
Unit No. 02 Right Bank Sacramento River	Right	17.35	10/14/2020 10/14/2020	David Julian

LM Start	15.04	Rating **	U	Issue No.	142
LM End	15.04	Issue Type +	Ma	Location *	WS
Category	Earthen Levee			GPS Latitude/Longitude	
				Start	End
Item	Erosion / Bank Caving			38.279083 °	38.279083 °
				-121.546406 °	-121.546406 °
DWR ID	LMA-108				
Comment Code					
E2 : Schedule repair of erosion site prior to the next inspection.					
Inspector Comment					
This was a 2017 Storm Damage site. Approximately 330 linear feet of erosion and sloughing. The erosion commences approximately 1/2 of the way down the slope from the crown and extends into the rip rap. Site ID No:282 Site Designation:LMA-108 4/8/2020 Field Notes: Significant erosion into waterside toe.					

Photo 1 of 1 : FA_2020_RD0003_25_142_20200910_00078.jpg



View erosion into the waterside slope (Spring 2020).

LM Start	15.21	Rating **	M	Issue No.	190
LM End	15.21	Issue Type +	Ma	Location *	LS
Category	Earthen Levee			GPS Latitude/Longitude	
				Start	End
Item	Encroachments			38.280765 °	38.280765 °
				-121.548640 °	-121.548640 °
DWR ID	DWR_RD0003_02_f_2019_190				
Comment Code					
TR : Tree or limb					
Inspector Comment					

No Photos

* Location LS : Land Side N/A : Not Applicable WS : Water Side CR : Crown	** Rating A : Acceptable M : Minimally Acceptable U : Unacceptable	N : Not Inspected/Rated C : Corrected A/W : Acceptable but Monitor & Maintain	+ Issue Type Ma : Maintenance Deficiency Ob : Design & System Obsolescence En : Enforcement
--	--	---	---

**Flood Control Project Maintenance
Levee Inspections**

Maintenance Issue Types Only, Levee Inspection Report By Mile - Fall 2020

Reclamation District No. 0003 Grand Island

Waterway	Bank	Unit Miles	Inspection Start/End	Inspector
Unit No. 02 Right Bank Sacramento River	Right	17.35	10/14/2020 10/14/2020	David Julian

LM Start	15.43	Rating **	N	Issue No.	122
LM End	15.43	Issue Type +	Ma	Location *	LS
Category	Earthen Levee			GPS Latitude/Longitude	
				Start	End
Item	Trim / Thin Trees			38.282672 °	38.282672 °
				-121.551847 °	-121.551847 °
DWR ID	DWR_RD0003_02_f_2018_122				
Comment Code					
T5 : Tree stumps.					
Inspector Comment					
Remove tree stump from the landside toe.					

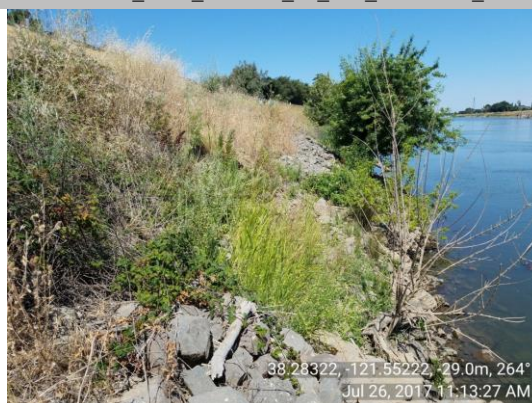
Photo 1 of 1 : FA_2020_RD0003_25_122_20200910_00065.jpg



View of large stump at the landside toe of the levee (October 2018).

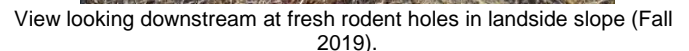
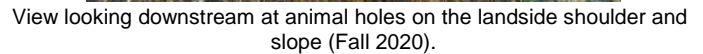
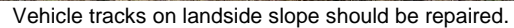
LM Start	15.46	Rating **	A/W	Issue No.	149
LM End	15.47	Issue Type +	Ma	Location *	WS
Category	Earthen Levee			GPS Latitude/Longitude	
				Start	End
Item	Erosion / Bank Caving			38.283119 °	38.283172 °
				-121.552250 °	-121.552347 °
DWR ID	LMA-109				
Comment Code					
E1 : Note and monitor erosion site.					
Inspector Comment					
This was a 2017 Storm Damage site. Approximately 33 linear feet of erosion. The erosion commences approximately 1/2 of the way down the slope from the crown and extends into the rip rap. A section of rip rap has eroded away in this location. Site ID No:283 Site Designation:LMA-109 4/8/2020 Field Notes: Very minor erosion into waterside toe. Monitor.					

Photo 1 of 1 : FA_2020_RD0003_25_149_20200910_00084.jpg



* Location LS : Land Side N/A : Not Applicable WS : Water Side CR : Crown	** Rating A : Acceptable M : Minimally Acceptable U : Unacceptable N : Not Inspected/Rated C : Corrected A/W : Acceptable but Monitor & Maintain	+ Issue Type Ma : Maintenance Deficiency Ob : Design & System Obsolescence En : Enforcement
--	---	---

Reclamation District No. 0003 Grand Island



**Flood Control Project Maintenance
Levee Inspections**

Maintenance Issue Types Only, Levee Inspection Report By Mile - Fall 2020

Reclamation District No. 0003 Grand Island

Waterway	Bank	Unit Miles	Inspection Start/End	Inspector
Unit No. 02 Right Bank Sacramento River	Right	17.35	10/14/2020 10/14/2020	David Julian

LM Start	16.27	Rating **	M	Issue No.	115
LM End	16.27	Issue Type +	Ma	Location *	LS
Category	Earthen Levee			GPS Latitude/Longitude	
				Start	End
Item	Slope Stability			38.291552 °	38.291552 °
				-121.562552 °	-121.562552 °
DWR ID	DWR_RD0003_02_f_2019_115				
Comment Code					
S2 : Repair the levee slope damaged by foot traffic and prevent access where possible.					
Inspector Comment					

Photo 1 of 1 : FA_2020_RD0003_25_115_20200910_00060.jpg



View of depression in the landside slope. Might be due to drainage (Fall 2019).

LM Start	16.54	Rating **	U	Issue No.	150
LM End	16.56	Issue Type +	Ma	Location *	WS
Category	Earthen Levee			GPS Latitude/Longitude	
				Start	End
Item	Erosion / Bank Caving			38.294717 °	38.294986 °
				-121.565417 °	-121.565661 °
DWR ID	LMA-110				
Comment Code					
E2 : Schedule repair of erosion site prior to the next inspection.					
Inspector Comment					
This was a 2017 Storm Damage site. Approximately 122 linear feet of erosion. The erosion commences approximately 1/2 of the way down the slope from the crown and extends beyond the rip rap. A section of rip rap has eroded away in this location. Site ID No:284 Site Designation:LMA-110 4/8/2020 Field Notes: Erosion into waterside slope.					

Photo 1 of 1 : FA_2020_RD0003_25_150_20200910_00085.jpg



View of erosion into the waterside slope (Spring 2020).

* Location
LS : Land Side N/A : Not Applicable
WS : Water Side
CR : Crown

** Rating
A : Acceptable N : Not Inspected/Rated
M : Minimally Acceptable C : Corrected
U : Unacceptable A/W : Acceptable but Monitor & Maintain

+ Issue Type
Ma : Maintenance Deficiency
Ob : Design & System Obsolescence
En : Enforcement

**Flood Control Project Maintenance
Levee Inspections**

Maintenance Issue Types Only, Levee Inspection Report By Mile - Fall 2020

Reclamation District No. 0003 Grand Island

Waterway	Bank	Unit Miles	Inspection Start/End	Inspector
Unit No. 02 Right Bank Sacramento River	Right	17.35	10/14/2020 10/14/2020	David Julian

LM Start	17.29	Rating **	N	Issue No.	113
LM End	17.29	Issue Type +	Ma	Location *	LS
Category	Earthen Levee			GPS Latitude/Longitude	
				Start	End
Item	Trim / Thin Trees			38.303558 °	38.303558 °
				-121.573380 °	-121.573380 °
DWR ID	DWR_RD0003_02_s_2019_113				
Comment Code					
T5 : Tree stumps.					
Inspector Comment					
There is a tree stump about 6" at bottom of the levee slope.					

Photo 1 of 1 : FA_2020_RD0003_25_113_20200910_00058.jpg



View looking downslope at tree stumps on the landside (Spring 2019).

* Location LS : Land Side N/A : Not Applicable WS : Water Side CR : Crown	** Rating A : Acceptable M : Minimally Acceptable U : Unacceptable N : Not Inspected/Rated C : Corrected A/W : Acceptable but Monitor & Maintain	+ Issue Type Ma : Maintenance Deficiency Ob : Design & System Obsolescence En : Enforcement
--	---	---

**Flood Control Project Maintenance
Levee Inspections**

Maintenance Issue Types Only, Levee Inspection Report By Mile - Fall 2020

Reclamation District No. 0003 Grand Island

Waterway	Bank	Unit Miles	Inspection Start/End	Inspector
Unit No. 03 Cross Levee		0.43	10/15/2020 10/15/2020	David Julian

LM Start	0.37	Rating **	U	Issue No.	5
LM End	0.37	Issue Type +	Ma	Location *	LS
Category	Earthen Levee			GPS Latitude/Longitude	
				Start	End
Item	Vegetation			38.176857 °	38.176857 °
				-121.653785 °	-121.653785 °
DWR ID	DWR_RD0003_03_s_2020_5				
Comment Code					
V2 : Remove the wild growth other than native grasses from the levee slopes.					
Inspector Comment					
Trim willows back from landside slope.					

Photo 1 of 1 : FA_2020_RD0003_610_5_20200910_00002.jpg



View of willow tree on the landside slope (Spring 2020).

* Location
LS : Land Side N/A : Not Applicable
WS : Water Side
CR : Crown

** Rating
A : Acceptable N : Not Inspected/Rated
M : Minimally Acceptable C : Corrected
U : Unacceptable A/W : Acceptable but Monitor & Maintain

+ Issue Type
Ma : Maintenance Deficiency
Ob : Design & System Obsolescence
En : Enforcement