

**Flood Control Project Maintenance
Levee Inspections**

Maintenance Issue Types Only, Levee Inspection Report By Mile - Fall 2019

Reclamation District No. 0003 Grand Island

Waterway	Bank	Unit Miles	Inspection Start/End	Inspector
Unit No. 01 Left Bank Steamboat Slough	Left	10.95	10/30/2019 10/30/2019	David Julian

LM Start	0.00	Rating **	A	Issue No.	102
LM End	0.00	Issue Type +	Ma	Location *	N/A
Category	Earthen Levee		GPS Latitude/Longitude		
			Start	End	
Item	Operations & Maintenance Manuals			°	°
DWR ID	DWR_RD0003_01_s_2019_102				
Comment Code					
Inspector Comment					
LMA has a copy of the O & M manual on file at district office.					

No Photos

LM Start	0.00	Rating **	A	Issue No.	103
LM End	0.00	Issue Type +	Ma	Location *	N/A
Category	Earthen Levee		GPS Latitude/Longitude		
			Start	End	
Item	Emergency Supplies & Equipment			°	°
DWR ID	DWR_RD0003_01_s_2013_103				
Comment Code					
Inspector Comment					
District keeps supplies at pumphouse on Steamboat Slough and at Ryde. District says it has adequate supplies.					

No Photos

LM Start	0.00	Rating **	A	Issue No.	104
LM End	0.00	Issue Type +	Ma	Location *	N/A
Category	Earthen Levee		GPS Latitude/Longitude		
			Start	End	
Item	Flood Preparedness & Training			°	°
DWR ID	DWR_RD0003_01_s_2013_104				
Comment Code					
Inspector Comment					
District personnel have done flood fight training course in the last two years.					

No Photos

* Location LS : Land Side N/A : Not Applicable WS : Water Side CR : Crown	** Rating A : Acceptable M : Minimally Acceptable U : Unacceptable	N : Not Inspected/Rated C : Corrected A/W : Acceptable but Monitor & Maintain	+ Issue Type Ma : Maintenance Deficiency Ob : Design & System Obsolescence En : Enforcement
--	--	---	---

**Flood Control Project Maintenance
Levee Inspections**

Maintenance Issue Types Only, Levee Inspection Report By Mile - Fall 2019

Reclamation District No. 0003 Grand Island

Waterway	Bank	Unit Miles	Inspection Start/End	Inspector
Unit No. 01 Left Bank Steamboat Slough	Left	10.95	10/30/2019 10/30/2019	David Julian

LM Start	0.13	Rating **	C	Issue No.	19
LM End	0.13	Issue Type +	Ma	Location *	WS
Category	Earthen Levee			GPS Latitude/Longitude	
				Start	End
Item	Encroachments			38.303305 °	38.303305 °
				-121.576537 °	-121.576537 °
DWR ID	DWR_RD0003_01_f_2012_19				
Comment Code					
TR : Tree or limb					
Inspector Comment					
Tree branches and limbs are located on waterward shoulder.					

No Photos

LM Start	0.13	Rating **	M	Issue No.	2
LM End	0.13	Issue Type +	Ma	Location *	WS
Category	Earthen Levee			GPS Latitude/Longitude	
				Start	End
Item	Erosion / Bank Caving			38.303303°	38.303303°
				-121.576538°	-121.576538°
DWR ID	DWR_RD0003_01_f_2013_2				
Comment Code					
E2 : Schedule repair of erosion site prior to the next inspection.					
Inspector Comment					
A hole (8ft x 2.5ft x 5ft) is next to a large tree on waterward shoulder.					

Photo 1 of 3 : FA_2019_RD0003_24_2_20190826_00001.jpg



Looking east at hole at the base of an oak tree on the waterward shoulder. (2016)

LM Start	0.13	Rating **	M	Issue No.	2 (cont)
LM End	0.13	Issue Type +	Ma	Location *	WS

Photo 2 of 3 : FA_2019_RD0003_24_2_20190826_00002.jpg



Looking at a hole next to oak tree on waterward shoulder. (2015)

* Location LS : Land Side N/A : Not Applicable WS : Water Side CR : Crown		** Rating A : Acceptable M : Minimally Acceptable U : Unacceptable N : Not Inspected/Rated C : Corrected A/W : Acceptable but Monitor & Maintain		+ Issue Type Ma : Maintenance Deficiency Ob : Design & System Obsolescence En : Enforcement	
--	--	---	--	---	--

**Flood Control Project Maintenance
Levee Inspections**

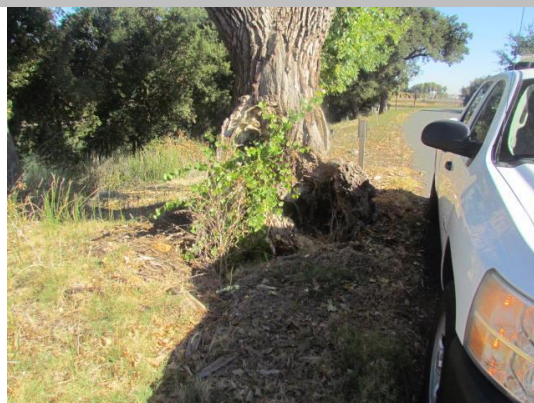
Maintenance Issue Types Only, Levee Inspection Report By Mile - Fall 2019

Reclamation District No. 0003 Grand Island

Waterway	Bank	Unit Miles	Inspection Start/End	Inspector
Unit No. 01 Left Bank Steamboat Slough	Left	10.95	10/30/2019 10/30/2019	David Julian

LM Start	0.13	Rating **	M	Issue No.	2 (cont)	
LM End	0.13	Issue Type +	Ma	Location *	WS	
Category	Earthen Levee			GPS Latitude/Longitude		
				Start		End
Item	Erosion / Bank Caving			38.303303 °	38.303303 °	
				-121.576538 °	-121.576538 °	
DWR ID	DWR_RD0003_01_f_2013_2					
Comment Code						
E2 : Schedule repair of erosion site prior to the next inspection.						
Inspector Comment						
A hole (8ft x 2.5ft x 5ft) is next to a large tree on waterward shoulder.						

Photo 3 of 3 : FA_2019_RD0003_24_2_20190826_00003.jpg



Looking east at hole at base of tree on waterward shoulder. (2014)

LM Start	0.14	Rating **	M	Issue No.	64
LM End	0.14	Issue Type +	Ma	Location *	WS
Category	Earthen Levee			GPS Latitude/Longitude	
				Start	End
Item	Encroachments			38.303210 °	38.303210 °
				-121.576642 °	-121.576642 °
DWR ID	DWR_RD0003_01_f_2019_64				
Comment Code					
TR : Tree or limb					
Inspector Comment					

No Photos

* Location LS : Land Side N/A : Not Applicable WS : Water Side CR : Crown	** Rating A : Acceptable M : Minimally Acceptable U : Unacceptable	N : Not Inspected/Rated C : Corrected A/W : Acceptable but Monitor & Maintain	+ Issue Type Ma : Maintenance Deficiency Ob : Design & System Obsolescence En : Enforcement
--	--	---	---

**Flood Control Project Maintenance
Levee Inspections**

Maintenance Issue Types Only, Levee Inspection Report By Mile - Fall 2019

Reclamation District No. 0003 Grand Island

Waterway	Bank	Unit Miles	Inspection Start/End	Inspector
Unit No. 01 Left Bank Steamboat Slough	Left	10.95	10/30/2019 10/30/2019	David Julian

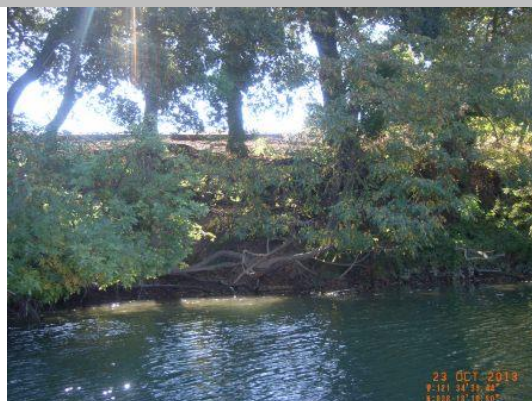
LM Start	0.18	Rating **	A/W	Issue No.	51
LM End	0.24	Issue Type +	Ma	Location *	WS
Category	Supplemental			GPS Latitude/Longitude	
				Start	End
Item	2017 USACE Erosion Survey			38.303035 °	38.302544 °
				-121.577357 °	-121.578241 °
DWR ID	DWR_RD0003_01_f_2018_51				

Comment Code

Inspector Comment

2017 Site ID: STM 26.0 L
Status: Critical
2017 Field Notes: Upgraded to critical. Significant bank failure on upstream end.
Site History: 1997 - Mass failure of berm slope and wave wash erosion. Large trees on top of berm, some failed trees. New area of low rock to on the upstream end. 2000 - Some minor erosion near the downstream end. 2005 - One new small tree has fallen. 2009 - Minimal new erosion. 2010 - Minor new erosion. 2013 - Observed new animal holes and vertical sections at middle of site. 2015 - Minor new erosion.

Photo 1 of 1 : FA_2019_RD0003_24_51_20190826_00032.jpg



USACE 2013 Photo #1

LM Start	0.18	Rating **	A/W	Issue No.	52
LM End	0.21	Issue Type +	Ma	Location *	WS
Category	Supplemental			GPS Latitude/Longitude	
				Start	End
Item	2017 Storm Damage			38.302981°	38.302778°
				-121.577336°	-121.577683°
DWR ID	LMA-100				

Comment Code

Inspector Comment

Levee Evaluation Comments
Description: District station 9+63 to 10+85, Sec. 07, T. 5 N. R. 4 E., M.D.M. An erosion site exists along approximately 122 linear feet of the waterside slope of Steamboat Slough (Unit 1). Erosion commences approximately 1/3 of the way down the slope from the crown to the waterside toe. Erosion is undercutting existing trees.
Site ID No: 274
Site Designation: LMA-100
Repair Type: Erosion
Rating: Serious
Field Date: 7/26/2017
Notes: trees undercut by erosion

Photo 1 of 3 : LEVAL_FA_2019_274_2391.jpg



* Location LS : Land Side N/A : Not Applicable WS : Water Side CR : Crown	** Rating A : Acceptable M : Minimally Acceptable U : Unacceptable N : Not Inspected/Rated C : Corrected A/W : Acceptable but Monitor & Maintain	+ Issue Type Ma : Maintenance Deficiency Ob : Design & System Obsolescence En : Enforcement
--	---	---

**Flood Control Project Maintenance
Levee Inspections**

Maintenance Issue Types Only, Levee Inspection Report By Mile - Fall 2019

Reclamation District No. 0003 Grand Island

Waterway	Bank	Unit Miles	Inspection Start/End	Inspector
Unit No. 01 Left Bank Steamboat Slough	Left	10.95	10/30/2019 10/30/2019	David Julian

LM Start	0.18	Rating **	A/W	Issue No.	52 (cont)
LM End	0.21	Issue Type +	Ma	Location *	WS
Category	Supplemental		GPS Latitude/Longitude		
			Start	End	
Item	2017 Storm Damage		38.302981°	38.302778°	
			-121.577336°	-121.577683°	

DWR ID	LMA-100
--------	---------

Comment Code

Inspector Comment

Levee Evaluation Comments

Description: District station 9+63 to 10+85, Sec. 07, T. 5 N. R. 4 E., M.D.M. An erosion site exists along approximately 122 linear feet of the waterside slope of Steamboat Slough (Unit 1). Erosion commences approximately 1/3 of the way down the slope from the crown to the waterside toe. Erosion is undercutting existing trees.

Site ID No: 274

Site Designation: LMA-100

Repair Type: Erosion

Rating: Serious

Field Date: 7/26/2017

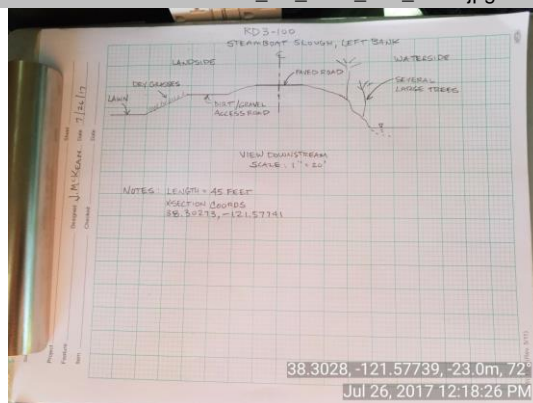
Notes: trees undercut by erosion

LM Start	0.18	Rating **	A/W	Issue No.	52 (cont)
LM End	0.21	Issue Type +	Ma	Location *	WS

Photo 2 of 3 : LEVAL_FA_2019_274_2392.jpg



Photo 3 of 3 : LEVAL_FA_2019_274_2395.jpg



* Location LS : Land Side N/A : Not Applicable WS : Water Side CR : Crown	** Rating A : Acceptable M : Minimally Acceptable U : Unacceptable	N : Not Inspected/Rated C : Corrected A/W : Acceptable but Monitor & Maintain	+ Issue Type Ma : Maintenance Deficiency Ob : Design & System Obsolescence En : Enforcement
--	--	---	---

**Flood Control Project Maintenance
Levee Inspections**

Maintenance Issue Types Only, Levee Inspection Report By Mile - Fall 2019

Reclamation District No. 0003 Grand Island

Waterway	Bank	Unit Miles	Inspection Start/End	Inspector
Unit No. 01 Left Bank Steamboat Slough	Left	10.95	10/30/2019 10/30/2019	David Julian

LM Start	0.81	Rating **	M	Issue No.	80
LM End	0.97	Issue Type +	Ma	Location *	LS
Category	Earthen Levee			GPS Latitude/Longitude	
				Start	End
Item	Vegetation			38.294823 °	38.292590 °
				-121.581922 °	-121.582550 °
DWR ID	DWR_RD0003_01_f_2019_80				
Comment Code					
V1 : Control annual grass and weeds on the levee slopes and easements.					
Inspector Comment					

No Photos

LM Start	0.91	Rating **	A/W	Issue No.	53
LM End	0.97	Issue Type +	Ma	Location *	WS
Category	Supplemental			GPS Latitude/Longitude	
				Start	End
Item	2017 Storm Damage			38.293381 °	38.292617 °
				-121.582450 °	-121.582675 °
DWR ID	LMA-101				
Comment Code					
Inspector Comment					
Levee Evaluation Comments					
Description: District station 48+20 to 51+06, Sec. 07, T. 5 N. R. 4 E., M.D.M. An erosion site exists along approximately 286 linear feet of the waterside slope of Steamboat Slough (Unit 1). The erosion begins approximately 1/2 of the way down the slope from the crown to the waterside toe. Erosion is undercutting existing trees.					
Site ID No: 275					
Site Designation: LMA-101					
Repair Type: Erosion					
Rating: Serious					
Field Date: 7/26/2017					
Notes:					

Photo 1 of 3 : LEVAL_FA_2019_275_2396.jpg



* Location LS : Land Side N/A : Not Applicable WS : Water Side CR : Crown	** Rating A : Acceptable M : Minimally Acceptable U : Unacceptable	N : Not Inspected/Rated C : Corrected A/W : Acceptable but Monitor & Maintain	+ Issue Type Ma : Maintenance Deficiency Ob : Design & System Obsolescence En : Enforcement
--	--	---	---

**Flood Control Project Maintenance
Levee Inspections**

Maintenance Issue Types Only, Levee Inspection Report By Mile - Fall 2019

Reclamation District No. 0003 Grand Island

Waterway	Bank	Unit Miles	Inspection Start/End	Inspector
Unit No. 01 Left Bank Steamboat Slough	Left	10.95	10/30/2019 10/30/2019	David Julian

LM Start	0.91	Rating **	A/W	Issue No.	53 (cont)
LM End	0.97	Issue Type +	Ma	Location *	WS
Category	Supplemental			GPS Latitude/Longitude	
				Start	End
Item	2017 Storm Damage			38.293381°	38.292617°
				-121.582450°	-121.582675°

Comment Code

Inspector Comment

Levee Evaluation Comments

Description: District station 48+20 to 51+06, Sec. 07, T. 5 N. R. 4 E., M.D.M. An erosion site exists along approximately 286 linear feet of the waterside slope of Steamboat Slough (Unit 1). The erosion begins approximately 1/2 of the way down the slope from the crown to the waterside toe. Erosion is undercutting existing trees.

Site ID No: 275

Site Designation: LMA-101

Repair Type: Erosion

Rating: Serious

Field Date: 7/26/2017

Notes:

LM Start	0.91	Rating **	A/W	Issue No.	53 (cont)
LM End	0.97	Issue Type +	Ma	Location *	WS

Photo 2 of 3 : LEVAL_FA_2019_275_2398.jpg



Photo 3 of 3 : LEVAL_FA_2019_275_2399.jpg



* Location LS : Land Side N/A : Not Applicable WS : Water Side CR : Crown		** Rating A : Acceptable M : Minimally Acceptable U : Unacceptable N : Not Inspected/Rated C : Corrected A/W : Acceptable but Monitor & Maintain		+ Issue Type Ma : Maintenance Deficiency Ob : Design & System Obsolescence En : Enforcement	
--	--	---	--	---	--

**Flood Control Project Maintenance
Levee Inspections**

Maintenance Issue Types Only, Levee Inspection Report By Mile - Fall 2019

Reclamation District No. 0003 Grand Island

Waterway	Bank	Unit Miles	Inspection Start/End	Inspector
Unit No. 01 Left Bank Steamboat Slough	Left	10.95	10/30/2019 10/30/2019	David Julian

LM Start	0.91	Rating **	A/W	Issue No.	49
LM End	0.96	Issue Type +	Ma	Location *	WS
Category	Supplemental			GPS Latitude/Longitude	
				Start	End
Item	2017 USACE Erosion Survey			38.293386°	38.292675°
				-121.582554°	-121.582741°
DWR ID	DWR_RD0003_01_f_2018_49				
Comment Code					
Inspector Comment					
2017 Site ID: STM 25.0 L					
Status: Critical					
2017 Field Notes: Upgraded to critical. Site has eroded to near vertical at upstream end.					
Site History: 1997 - Erosion of sandy levee on top left bank. Site is downstream of a rock section. Large riparian trees on the bank. 1999 - Upstream half of the reach repaired with rock, except for a 30 ft reach at the upstream end. 2001 - Rock repair on the upstream and downstream ends; no revetment at the trees. 2002 - Rock repair is starting to slide off the geotextile at the upstream end. 2005 - One new small tree has fallen. 2006 - 50 ft pocket at the downstream end and at the upstream end with new rock in between. 2007 - Upstream end has been repaired. 2008 - Area closed sign on bank. Newly fallen trees at both ends and pop outs along the bank. 2010 - Site extended downstream. 2011 - New erosion at the toe. More trees popouts. 2013 - Short vertical sections observed at the downstream end. 2015 - Significant new erosion, large oak tree on verge of popping out. 2016 - Sites 24.8 and 25 were combined.					

Photo 1 of 1 : FA_2019_RD0003_24_49_20190826_00030.jpg



USACE 2013 Photo #1

LM Start	1.09	Rating **	A/W	Issue No.	60
LM End	1.10	Issue Type +	Ma	Location *	WS
Category	Supplemental			GPS Latitude/Longitude	
				Start	End
Item	2017 Storm Damage			38.290819 °	38.290706 °
				-121.582942 °	-121.582939 °
DWR ID	LMA-102				
Comment Code					
Inspector Comment					
Levee Evaluation Comments					
Description:District station 57+57 to 57+98, Sec. 18, 1. 5 N. R. 4 E., M.D.M. An erosion site exists along approximately 41 linear feet of the water side slope of Steamboat Slough (Unit 1). The erosion commences approximately 1/2 of the way down the slope from the crown to the waterside toe.					
Site ID No:276					
Site Designation:LMA-102					
Repair Type: Erosion					
Rating:Area of Concern					
Field Date:7/26/2017					
Notes:					

Photo 1 of 3 : FA_2019_RD0003_24_60_20190826_00046.jpg



* Location LS : Land Side N/A : Not Applicable WS : Water Side CR : Crown	** Rating A : Acceptable M : Minimally Acceptable U : Unacceptable	N : Not Inspected/Rated C : Corrected A/W : Acceptable but Monitor & Maintain	+ Issue Type Ma : Maintenance Deficiency Ob : Design & System Obsolescence En : Enforcement
--	--	---	---

**Flood Control Project Maintenance
Levee Inspections**

Maintenance Issue Types Only, Levee Inspection Report By Mile - Fall 2019

Reclamation District No. 0003 Grand Island

Waterway	Bank	Unit Miles	Inspection Start/End	Inspector
Unit No. 01 Left Bank Steamboat Slough	Left	10.95	10/30/2019 10/30/2019	David Julian

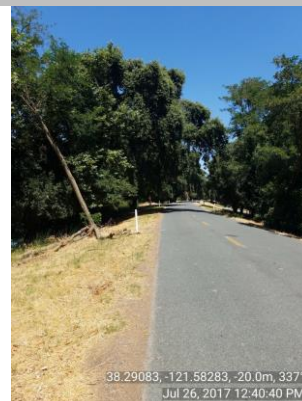
LM Start	1.09	Rating **	A/W	Issue No.	60 (cont)	
LM End	1.10	Issue Type +	Ma	Location *	WS	
Category	Supplemental			GPS Latitude/Longitude		
				Start	End	
Item	2017 Storm Damage			38.290819 °	38.290706 °	
				-121.582942 °	-121.582939 °	
DWR ID	LMA-102					
Comment Code						
Inspector Comment						
Levee Evaluation Comments						
Description: District station 57+57 to 57+98, Sec. 18, 1. 5 N. R. 4 E., M.D.M. An erosion site exists along approximately 41 linear feet of the water side slope of Steamboat Slough (Unit 1). The erosion commences approximately 1/2 of the way down the slope from the crown to the waterside toe.						
Site ID No:276						
Site Designation:LMA-102						
Repair Type: Erosion						
Rating:Area of Concern						
Field Date:7/26/2017						
Notes:						

Photo 2 of 3 : FA_2019_RD0003_24_60_20190826_00047.jpg



LM Start	1.09	Rating **	A/W	Issue No.	60 (cont)
LM End	1.10	Issue Type +	Ma	Location *	WS

Photo 3 of 3 : FA_2019_RD0003_24_60_20190826_00048.jpg



* Location LS : Land Side N/A : Not Applicable WS : Water Side CR : Crown	** Rating A : Acceptable M : Minimally Acceptable U : Unacceptable	N : Not Inspected/Rated C : Corrected A/W : Acceptable but Monitor & Maintain	+ Issue Type Ma : Maintenance Deficiency Ob : Design & System Obsolescence En : Enforcement
--	--	---	---

Reclamation District No. 0003 Grand Island

Waterway	Bank	Unit Miles	Inspection Start/End	Inspector
Unit No. 01 Left Bank Steamboat Slough	Left	10.95	10/30/2019 10/30/2019	David Julian

LM Start	1.64	Rating **	U	Issue No.	81
LM End	1.64	Issue Type +	Ma	Location *	WS
Category	Earthen Levee			GPS Latitude/Longitude	
				Start	End
Item	Encroachments			38.284252 °	38.284252 °
				-121.587053 °	-121.587053 °
DWR ID	DWR_RD0003_01_f _ 2019_81				
Comment Code					
TR : Tree or limb					
Inspector Comment					
Remove the fallen tree limb.					

A photograph showing a large, fallen tree trunk in a river, with dense green foliage and trees in the background. The date '10 30 2019' is visible in the bottom right corner.

View of large fallen tree limb on the waterside slope (Fall 2019).

LM Start	1.69	Rating **	M	Issue No.	62
LM End	1.69	Issue Type +	Ma	Location *	WS
Category	Earthen Levee			GPS Latitude/Longitude	
				Start	End
Item	Encroachments			38.283747 °	38.283747 °
				-121.587622 °	-121.587622 °
DWR ID	DWR_RD0003_01_f _ 2016_62				
Comment Code					
TR : Tree or limb					
Inspector Comment					
There is a broken tree branch on the waterward slope.					

A photograph of a large, mature tree with a thick, gnarled trunk and dense green foliage. The tree is partially obscured by a large pile of dry, yellowed leaves or branches in the foreground. The background shows a clear blue sky and other trees.

Looking southwest at broken branches on waterward slope.

LM Start	1.69	Rating **	M	Issue No.	62 (cont)
LM End	1.69	Issue Type +	Ma	Location *	WS

A photograph showing a riverbank. In the foreground, there is a dark, paved area. To the right, a large pile of cut reeds or brush is visible. The river is in the background, with a line of green trees on the opposite bank under a clear blue sky.

* Location	** Rating	+ Issue Type
LS : Land Side N/A : Not Applicable WS : Water Side CR : Crown	A : Acceptable N : Not Inspected/Rated M : Minimally Acceptable C : Corrected U : Unacceptable A/W : Acceptable but Monitor & Maintain	Ma : Maintenance Deficiency Ob : Design & System Obsolescence En : Enforcement

**Flood Control Project Maintenance
Levee Inspections**

Maintenance Issue Types Only, Levee Inspection Report By Mile - Fall 2019

Reclamation District No. 0003 Grand Island

Waterway	Bank	Unit Miles	Inspection Start/End	Inspector
Unit No. 01 Left Bank Steamboat Slough	Left	10.95	10/30/2019 10/30/2019	David Julian

LM Start	1.91	Rating **	M	Issue No.	54
LM End	1.91	Issue Type +	Ma	Location *	WS
Category	Earthen Levee			GPS Latitude/Longitude	
				Start	End
Item	Encroachments			38.280638 °	38.280638 °
				-121.588457 °	-121.588457 °
DWR ID	DWR_RD0003_01_s_2018_54				
Comment Code					
TR : Tree or limb					
Inspector Comment					
Remove tree trimmings from the waterside slope.					

Photo 1 of 1 : FA_2019_RD0003_24_54_20190826_00039.jpg



Cut branches on waterside slope.

LM Start	2.66	Rating **	C	Issue No.	82
LM End	2.66	Issue Type +	Ma	Location *	WS
Category	Earthen Levee			GPS Latitude/Longitude	
				Start	End
Item	Encroachments			38.271128 °	38.271128 °
				-121.588634 °	-121.588634 °
DWR ID	DWR_RD0003_01_f_2017_82				
Comment Code					
TR : Tree or limb					
Inspector Comment					
Tree limbs should be removed from the waterside slope.					

No Photos

LM Start	2.69	Rating **	C	Issue No.	29
LM End	2.69	Issue Type +	Ma	Location *	WS
Category	Earthen Levee			GPS Latitude/Longitude	
				Start	End
Item	Encroachments			38.270733 °	38.270733 °
				-121.588708 °	-121.588708 °
DWR ID	DWR_RD0003_01_s_2018_29				
Comment Code					
TR : Tree or limb					
Inspector Comment					
There is a large tree limb on the waterside slope.					

No Photos

* Location
LS : Land Side N/A : Not Applicable
WS : Water Side
CR : Crown

** Rating
A : Acceptable N : Not Inspected/Rated
M : Minimally Acceptable C : Corrected
U : Unacceptable A/W : Acceptable but Monitor & Maintain

+ Issue Type
Ma : Maintenance Deficiency
Ob : Design & System Obsolescence
En : Enforcement

Reclamation District No. 0003 Grand Island

No Photos

Looking east on landside slope.

View of down limb on the landside slope (Fall 2019).

Page 12 of 25

**Flood Control Project Maintenance
Levee Inspections**

Maintenance Issue Types Only, Levee Inspection Report By Mile - Fall 2019

Reclamation District No. 0003 Grand Island

Waterway	Bank	Unit Miles	Inspection Start/End	Inspector
Unit No. 01 Left Bank Steamboat Slough	Left	10.95	10/30/2019 10/30/2019	David Julian

LM Start	5.98	Rating **	C	Issue No.	94	
LM End	5.98	Issue Type +	Ma	Location *	WS	
Category	Earthen Levee			GPS Latitude/Longitude		
				Start		End
Item	Vegetation			38.230100 °		38.230100 °
				-121.601700 °		-121.601700 °
DWR ID	DWR_RD0003_01_f_2018_94					
Comment Code						
V2 : Remove the wild growth other than native grasses from the levee slopes.						
Inspector Comment						
There is wild growth on the waterside slope which should be removed						

No Photos

LM Start	7.44	Rating **	C	Issue No.	89
LM End	7.44	Issue Type +	Ma	Location *	WS
Category	Earthen Levee			GPS Latitude/Longitude	
				Start	End
Item	Trim / Thin Trees			38.210200 °	38.210200 °
				-121.607809 °	-121.607809 °
DWR ID	DWR_RD0003_01_s_2018_89				
Comment Code					
T1 : Trim trees to at least five feet above ground level.					
Inspector Comment					
The low leaning tree on the waterside is beginning to inhibit inspection and access. It should be removed.					

No Photos

LM Start	8.82	Rating **	M	Issue No.	101
LM End	8.82	Issue Type +	Ma	Location *	WS
Category	Earthen Levee			GPS Latitude/Longitude	
				Start	End
Item	Trim / Thin Trees			38.193568 °	38.193568 °
				-121.619040 °	-121.619040 °
DWR ID	DWR_RD0003_01_f_2018_101				
Comment Code					
T1 : Trim trees to at least five feet above ground level.					
Inspector Comment					

No Photos

* Location LS : Land Side N/A : Not Applicable WS : Water Side CR : Crown	** Rating A : Acceptable M : Minimally Acceptable U : Unacceptable	N : Not Inspected/Rated C : Corrected A/W : Acceptable but Monitor & Maintain	+ Issue Type Ma : Maintenance Deficiency Ob : Design & System Obsolescence En : Enforcement
--	--	---	---

**Flood Control Project Maintenance
Levee Inspections**

Maintenance Issue Types Only, Levee Inspection Report By Mile - Fall 2019

Reclamation District No. 0003 Grand Island

Waterway	Bank	Unit Miles	Inspection Start/End	Inspector
Unit No. 01 Left Bank Steamboat Slough	Left	10.95	10/30/2019 10/30/2019	David Julian

LM Start	8.84	Rating **	M	Issue No.	105
LM End	8.84	Issue Type +	Ma	Location *	WS
Category	Earthen Levee			GPS Latitude/Longitude	
				Start	End
Item	Trim / Thin Trees			38.193413 °	38.193413 °
				-121.619320 °	-121.619320 °
DWR ID	DWR_RD0003_01_f_2018_105				
Comment Code					
T1 : Trim trees to at least five feet above ground level.					
Inspector Comment					

No Photos

LM Start	8.92	Rating **	U	Issue No.	39
LM End	8.92	Issue Type +	Ma	Location *	WS
Category	Earthen Levee			GPS Latitude/Longitude	
				Start	End
Item	Trim / Thin Trees			38.193000 °	38.193000 °
				-121.620700 °	-121.620700 °
DWR ID	DWR_RD0003_01_f_2018_39				
Comment Code					
T5 : Tree stumps.					
Inspector Comment					
Remove the rotting tree stump.					

Photo 1 of 1 : FA_2019_RD0003_24_39_20190826_00026.jpg



View of rotting tree stump on water side crown (October 2018).

*** Location**
LS : Land Side N/A : Not Applicable
WS : Water Side
CR : Crown

**** Rating**
A : Acceptable N : Not Inspected/Rated
M : Minimally Acceptable C : Corrected
U : Unacceptable A/W : Acceptable but Monitor & Maintain

+ Issue Type
Ma : Maintenance Deficiency
Ob : Design & System Obsolescence
En : Enforcement

**Flood Control Project Maintenance
Levee Inspections**

Maintenance Issue Types Only, Levee Inspection Report By Mile - Fall 2019

Reclamation District No. 0003 Grand Island

Waterway	Bank	Unit Miles	Inspection Start/End	Inspector
Unit No. 01 Left Bank Steamboat Slough	Left	10.95	10/30/2019 10/30/2019	David Julian

LM Start	10.15	Rating **	A/W	Issue No.	72
LM End	10.21	Issue Type +	Ma	Location *	WS
Category	Supplemental		GPS Latitude/Longitude		
			Start	End	
Item	2017 Storm Damage		38.188431°	38.187803°	
			-121.641703°	-121.642478°	

DWR ID LMA-103

Comment Code

Inspector Comment

Levee Evaluation Comments

Description: District station 536+35 to 539+47, Sec. 16, T. 4 N. R. 3 E., M.D.M. The waterside slope experienced sloughing and erosion along approximately 312 linear feet of Steamboat Slough (Unit 1). Sloughing commences at approximately 1/4 of the way down the slope from the crown and extends to the rip rap.

Site ID No: 277

Site Designation: LMA-103

Repair Type: Erosion

Rating: Area of Concern

Field Date: 7/26/2017

Notes:

LM Start	10.15	Rating **	A/W	Issue No.	72 (cont)
LM End	10.21	Issue Type +	Ma	Location *	WS

Photo 1 of 3 : FA_2019_RD0003_24_72_20190826_00057.jpg



Photo 2 of 3 : FA_2019_RD0003_24_72_20190826_00058.jpg



* Location LS : Land Side N/A : Not Applicable WS : Water Side CR : Crown		** Rating A : Acceptable N : Not Inspected/Rated M : Minimally Acceptable C : Corrected U : Unacceptable A/W : Acceptable but Monitor & Maintain		+ Issue Type Ma : Maintenance Deficiency Ob : Design & System Obsolescence En : Enforcement	
--	--	---	--	---	--

**Flood Control Project Maintenance
Levee Inspections**

Maintenance Issue Types Only, Levee Inspection Report By Mile - Fall 2019

Reclamation District No. 0003 Grand Island

Waterway	Bank	Unit Miles	Inspection Start/End	Inspector
Unit No. 01 Left Bank Steamboat Slough	Left	10.95	10/30/2019 10/30/2019	David Julian

LM Start	10.15	Rating **	A/W	Issue No.	72 (cont)	
LM End	10.21	Issue Type +	Ma	Location *	WS	
Category	Supplemental			GPS Latitude/Longitude		
				Start	End	
Item	2017 Storm Damage			38.188431 °	38.187803 °	
				-121.641703 °	-121.642478 °	
DWR ID	LMA-103					
Comment Code						
Inspector Comment						
Levee Evaluation Comments						
Description:District station 536+35 to 539+47, Sec. 16, T. 4 N. R. 3 E., M.D.M. The waterside slope experienced sloughing and erosion along approximately 312 linear feet of Steamboat Slough (Unit 1). Sloughing commences at approximately 1/4 of the way down the slope from the crown and extends to the rip rap.						
Site ID No:277						
Site Designation:LMA-103						
Repair Type: Erosion						
Rating:Area of Concern						
Field Date:7/26/2017						
Notes:						

Photo 3 of 3 : FA_2019_RD0003_24_72_20190826_00059.jpg



LM Start	10.62	Rating **	M	Issue No.	46
LM End	10.69	Issue Type +	Ma	Location *	WS
Category	Supplemental			GPS Latitude/Longitude	
				Start	End
Item	2017 USACE Erosion Survey			38.184180 °	38.183798 °
				-121.648055 °	-121.649246 °
DWR ID	DWR_RD0003_01_f_2018_46				
Comment Code					
Inspector Comment					
2017 Site ID: STM 15.5 L					
Status: Eroding					
2017 Field Notes: No observed change.					
Site History: 2016 - Large erosion pockets observed.					

No Photos

* Location LS : Land Side N/A : Not Applicable WS : Water Side CR : Crown	** Rating A : Acceptable M : Minimally Acceptable U : Unacceptable	N : Not Inspected/Rated C : Corrected A/W : Acceptable but Monitor & Maintain	+ Issue Type Ma : Maintenance Deficiency Ob : Design & System Obsolescence En : Enforcement
--	--	---	---

**Flood Control Project Maintenance
Levee Inspections**

Maintenance Issue Types Only, Levee Inspection Report By Mile - Fall 2019

Reclamation District No. 0003 Grand Island

Waterway	Bank	Unit Miles	Inspection Start/End	Inspector
Unit No. 01 Left Bank Steamboat Slough	Left	10.95	10/30/2019 10/30/2019	David Julian

LM Start	10.67	Rating **	A/W	Issue No.	73
LM End	10.92	Issue Type +	Ma	Location *	WS
Category	Supplemental			GPS Latitude/Longitude	
				Start	End
Item	2017 Storm Damage			38.183810 °	38.182480 °
				-121.648780 °	-121.653150 °
DWR ID	DWR_RD0003_01_R_2012_03				

Comment Code

Inspector Comment

Levee Evaluation Comments

Description:

Site ID No:63

Site Designation:DWR_RD0003_01_R_2012_03

Repair Type: Erosion

Rating:Serious

Field Date:6/8/2017

Notes: scattered erosion scarps caving into levee crown, within erosion limit crown width ranges from 15 to 30', several trees with exposed tree roots and leaning into the river.

LM Start	10.67	Rating **	A/W	Issue No.	73 (cont)
LM End	10.92	Issue Type +	Ma	Location *	WS

Photo 1 of 3 : FA_2019_RD0003_24_73_20190826_00060.jpg



Photo 2 of 3 : FA_2019_RD0003_24_73_20190826_00061.jpg



*** Location**

LS : Land Side N/A : Not Applicable
WS : Water Side
CR : Crown

**** Rating**

A : Acceptable N : Not Inspected/Rated
M : Minimally Acceptable C : Corrected
U : Unacceptable A/W : Acceptable but Monitor & Maintain

+ Issue Type

Ma : Maintenance Deficiency
Ob : Design & System Obsolescence
En : Enforcement

**Flood Control Project Maintenance
Levee Inspections**

Maintenance Issue Types Only, Levee Inspection Report By Mile - Fall 2019

Reclamation District No. 0003 Grand Island

Waterway	Bank	Unit Miles	Inspection Start/End	Inspector
Unit No. 01 Left Bank Steamboat Slough	Left	10.95	10/30/2019 10/30/2019	David Julian

LM Start	10.67	Rating **	A/W	Issue No.	73 (cont)
LM End	10.92	Issue Type +	Ma	Location *	WS
Category	Supplemental			GPS Latitude/Longitude	
				Start	End
Item	2017 Storm Damage			38.183810 °	38.182480 °
				-121.648780 °	-121.653150 °
DWR ID	DWR_RD0003_01_R_2012_03				
Comment Code					
Inspector Comment					
Levee Evaluation Comments					
Description:					
Site ID No:63					
Site Designation:DWR_RD0003_01_R_2012_03					
Repair Type: Erosion					
Rating:Serious					
Field Date:6/8/2017					
Notes: scattered erosion scarps caving into levee crown, within erosion limit crown width ranges from 15 to 30', several trees with exposed tree roots and leaning into the river.					

Photo 3 of 3 : FA_2019_RD0003_24_73_20190826_00062.jpg



LM Start	10.75	Rating **	A/W	Issue No.	96
LM End	10.75	Issue Type +	Ma	Location *	WS
Category	Earthen Levee			GPS Latitude/Longitude	
				Start	End
Item	Erosion / Bank Caving			38.183422 °	38.183422 °
				-121.650182 °	-121.650182 °
DWR ID	DWR_RD0003_01_s_2013_96				
Comment Code					
E2 : Schedule repair of erosion site prior to the next inspection.					
Inspector Comment					
Levee is extra wide in this section. Erosion is occurring outside the theoretical prism.					

Photo 1 of 2 : FA_2019_RD0003_24_96_20190826_00078.jpg



Looking northwest at erosion on waterward slope.

* Location LS : Land Side N/A : Not Applicable WS : Water Side CR : Crown		** Rating A : Acceptable M : Minimally Acceptable U : Unacceptable N : Not Inspected/Rated C : Corrected A/W : Acceptable but Monitor & Maintain		+ Issue Type Ma : Maintenance Deficiency Ob : Design & System Obsolescence En : Enforcement	
--	--	---	--	---	--

**Flood Control Project Maintenance
Levee Inspections**

Maintenance Issue Types Only, Levee Inspection Report By Mile - Fall 2019

Reclamation District No. 0003 Grand Island

Waterway	Bank	Unit Miles	Inspection Start/End	Inspector
Unit No. 01 Left Bank Steamboat Slough	Left	10.95	10/30/2019 10/30/2019	David Julian

LM Start	10.75	Rating **	A/W	Issue No.	96 (cont)	
LM End	10.75	Issue Type +	Ma	Location *	WS	
Category	Earthen Levee			GPS Latitude/Longitude		
				Start		End
Item	Erosion / Bank Caving			38.183422 °		38.183422 °
				-121.650182 °		-121.650182 °
DWR ID	DWR_RD0003_01_s_2013_96					
Comment Code						
E2 : Schedule repair of erosion site prior to the next inspection.						
Inspector Comment						
Levee is extra wide in this section. Erosion is occurring outside the theoretical prism.						

Photo 2 of 2 : FA_2019_RD0003_24_96_20190826_00079.jpg



Looking southwest at erosion on waterward slope.

LM Start	10.78	Rating **	A/W	Issue No.	97
LM End	10.80	Issue Type +	Ma	Location *	WS
Category	Earthen Levee			GPS Latitude/Longitude	
				Start	End
Item	Erosion / Bank Caving			38.183228 °	38.183123 °
				-121.650797 °	-121.651070 °
DWR ID	DWR_RD0003_01_s_2013_97				
Comment Code					
E2 : Schedule repair of erosion site prior to the next inspection.					
Inspector Comment					
Levee is extra wide in this section. Erosion is occurring outside the theoretical prism.					

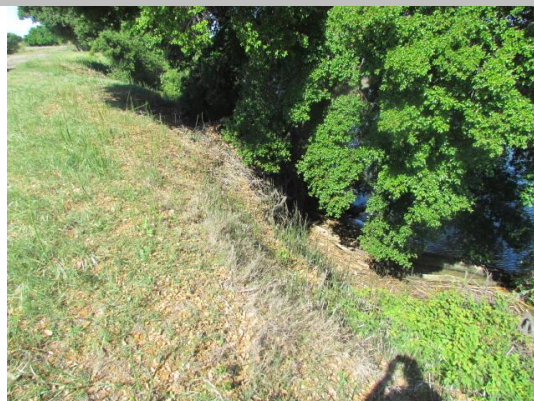
Photo 1 of 2 : FA_2019_RD0003_24_97_20190826_00080.jpg



Looking south at erosion on waterward slope.

LM Start	10.78	Rating **	A/W	Issue No.	97 (cont)
LM End	10.80	Issue Type +	Ma	Location *	WS

Photo 2 of 2 : FA_2019_RD0003_24_97_20190826_00081.jpg



Looking southwest at erosion on waterward slope.

*** Location**

LS : Land Side N/A : Not Applicable
WS : Water Side
CR : Crown

**** Rating**

A : Acceptable N : Not Inspected/Rated
M : Minimally Acceptable C : Corrected
U : Unacceptable A/W : Acceptable but Monitor & Maintain

+ Issue Type

Ma : Maintenance Deficiency
Ob : Design & System Obsolescence
En : Enforcement

**Flood Control Project Maintenance
Levee Inspections**

Maintenance Issue Types Only, Levee Inspection Report By Mile - Fall 2019

Reclamation District No. 0003 Grand Island

Waterway	Bank	Unit Miles	Inspection Start/End	Inspector
Unit No. 01 Left Bank Steamboat Slough	Left	10.95	10/30/2019 10/30/2019	David Julian

LM Start	10.83	Rating **	M	Issue No.	92
LM End	10.83	Issue Type +	Ma	Location *	LS
Category	Earthen Levee			GPS Latitude/Longitude	
				Start	End
Item	Vegetation			38.182957 °	38.182957 °
				-121.651585 °	-121.651585 °
DWR ID	DWR_RD0003_01_f_2017_92				
Comment Code					
V2 : Remove the wild growth other than native grasses from the levee slopes.					
Inspector Comment					

No Photos

LM Start	10.83	Rating **	M	Issue No.	212	
LM End	10.83	Issue Type +	Ma	Location *		
Category	Supplemental			GPS Latitude/Longitude		
				Start	End	
Item	DRAFT DWR UCIP LMA Responsibility			38.182982 °	38.182982 °	
				-121.651610 °	-121.651610 °	
DWR ID	22206					
Comment Code						
Inspector Comment						
DS_ID:22206 FS_ID:29165 EP_NO: N/A Repair Type: Non-Urgent Crossing Status: Found UCIP Comments: Pipe appears abandoned and should be verified as having been done so properly. FIELD_STRUCT_DESC: *ABANDONED* 1 of 3: 36-inch corrugated metal drainage pipe through the levee, 15 feet below the crown. Slide gate in a 48-inch corrugated metal pipe (CMP) riser on the waterside (WS) shoulder. Flap gate at the WS toe has been sealed shut with sealant. [Additional Reference(s): DWR Levee Log, 1993, referenced as 24 feet below the crown. USACE Sacramento O&M Manual 104, February 1960, (RM 15.20), referenced as invert elevation 24 feet below the crown]. FS Date: 2/11/2014						

Photo 1 of 3 : UCIP_FA_2019_29165_53866.jpg



36-inch CMP drainpipe with flapgate on WS toe.

* Location LS : Land Side N/A : Not Applicable WS : Water Side CR : Crown	** Rating A : Acceptable M : Minimally Acceptable U : Unacceptable	N : Not Inspected/Rated C : Corrected A/W : Acceptable but Monitor & Maintain	+ Issue Type Ma : Maintenance Deficiency Ob : Design & System Obsolescence En : Enforcement
--	--	---	---

**Flood Control Project Maintenance
Levee Inspections**

Maintenance Issue Types Only, Levee Inspection Report By Mile - Fall 2019

Reclamation District No. 0003 Grand Island

Waterway	Bank	Unit Miles	Inspection Start/End	Inspector
Unit No. 01 Left Bank Steamboat Slough	Left	10.95	10/30/2019 10/30/2019	David Julian

LM Start	10.83	Rating **	M	Issue No.	212 (cont)	
LM End	10.83	Issue Type +	Ma	Location *		
Category	Supplemental			GPS Latitude/Longitude		
				Start	End	
Item	DRAFT DWR UCIP LMA Responsibility			38.182982 °	38.182982 °	
				-121.651610 °	-121.651610 °	
DWR ID	22206					
Comment Code						
Inspector Comment						
DS_ID:22206 FS_ID:29165 EP_NO: N/A Repair Type: Non-Urgent Crossing Status: Found UCIP Comments: Pipe appears abandoned and should be verified as having been done so properly. FIELD_STRUCT_DESC: *ABANDONED* 1 of 3: 36-inch corrugated metal drainage pipe through the levee, 15 feet below the crown. Slide gate in a 48-inch corrugated metal pipe (CMP) riser on the waterside (WS) shoulder. Flap gate at the WS toe has been sealed shut with sealant. [Additional Reference(s): DWR Levee Log, 1993, referenced as 24 feet below the crown. USACE Sacramento O&M Manual 104, February 1960, (RM 15.20), referenced as invert elevation 24 feet below the crown]. FS Date: 2/11/2014						

Photo 2 of 3 : UCIP_FA_2019_29165_53865.jpg



Slide gate in 48-inch CMP riser on WS shoulder.

LM Start	10.83	Rating **	M	Issue No.	212 (cont)
LM End	10.83	Issue Type +	Ma	Location *	

Photo 3 of 3 : UCIP_FA_2019_29165_53864.jpg



Steel weir on LS toe.

* Location LS : Land Side N/A : Not Applicable WS : Water Side CR : Crown	** Rating A : Acceptable M : Minimally Acceptable U : Unacceptable	N : Not Inspected/Rated C : Corrected A/W : Acceptable but Monitor & Maintain	+ Issue Type Ma : Maintenance Deficiency Ob : Design & System Obsolescence En : Enforcement
--	--	---	---

**Flood Control Project Maintenance
Levee Inspections**

Maintenance Issue Types Only, Levee Inspection Report By Mile - Fall 2019

Reclamation District No. 0003 Grand Island

Waterway	Bank	Unit Miles	Inspection Start/End	Inspector
Unit No. 01 Left Bank Steamboat Slough	Left	10.95	10/30/2019 10/30/2019	David Julian

LM Start	10.83	Rating **	M	Issue No.	213
LM End	10.83	Issue Type +	Ma	Location *	
Category	Supplemental			GPS Latitude/Longitude	
				Start	End
Item	DRAFT DWR UCIP LMA Responsibility			38.182973 °	38.182973 °
				-121.651645 °	-121.651645 °
DWR ID	22349				
Comment Code					
Inspector Comment					
DS_ID:22349 FS_ID:29164 EP_NO: N/A Repair Type: Non-Urgent Crossing Status: Found UCIP Comments: Pipe appears abandoned and should be verified as having been filled with grout. FIELD_STRUCT_DESC: *ABANDONED* 2 of 3: 36-inch corrugated metal drainage pipe through the levee, 15 feet below the crown. Slide gate in a 48-inch corrugated metal pipe (CMP) riser on the waterside (WS) shoulder. Steel intake weir at the landside (LS) toe. Steel plate welded over the pipe on the WS toe. [Additional Reference(s): DWR Levee Log, 1993, referenced as 24 feet below the crown. USACE Sacramento O&M Manual 104, February 1960, (RM 15.20), referenced as invert elevation 24 feet below the crown]. FS Date: 2/11/2014					

LM Start	10.83	Rating **	M	Issue No.	213 (cont)
LM End	10.83	Issue Type +	Ma	Location *	

Photo 1 of 3 : UCIP_FA_2019_29164_53862.jpg



Drainpipe visible on WS toe with steel plate welded over end.

Photo 2 of 3 : UCIP_FA_2019_29164_53861.jpg



48-inch CMP riser with slide gate closed on WS shoulder.

* Location LS : Land Side N/A : Not Applicable WS : Water Side CR : Crown	** Rating A : Acceptable M : Minimally Acceptable U : Unacceptable	N : Not Inspected/Rated C : Corrected A/W : Acceptable but Monitor & Maintain	+ Issue Type Ma : Maintenance Deficiency Ob : Design & System Obsolescence En : Enforcement
--	--	---	---

**Flood Control Project Maintenance
Levee Inspections**

Maintenance Issue Types Only, Levee Inspection Report By Mile - Fall 2019

Reclamation District No. 0003 Grand Island

Waterway	Bank	Unit Miles	Inspection Start/End	Inspector
Unit No. 01 Left Bank Steamboat Slough	Left	10.95	10/30/2019 10/30/2019	David Julian

LM Start	10.83	Rating **	M	Issue No.	213 (cont)	
LM End	10.83	Issue Type +	Ma	Location *		
Category	Supplemental			GPS Latitude/Longitude		
				Start	End	
Item	DRAFT DWR UCIP LMA Responsibility			38.182973 °	38.182973 °	
				-121.651645 °	-121.651645 °	
DWR ID	22349					
Comment Code						
Inspector Comment						
DS_ID:22349 FS_ID:29164 EP_NO: N/A Repair Type: Non-Urgent Crossing Status: Found UCIP Comments: Pipe appears abandoned and should be verified as having been filled with grout. FIELD_STRUCT_DESC: *ABANDONED* 2 of 3: 36-inch corrugated metal drainage pipe through the levee, 15 feet below the crown. Slide gate in a 48-inch corrugated metal pipe (CMP) riser on the waterside (WS) shoulder. Steel intake weir at the landside (LS) toe. Steel plate welded over the pipe on the WS toe. [Additional Reference(s): DWR Levee Log, 1993, referenced as 24 feet below the crown. USACE Sacramento O&M Manual 104, February 1960, (RM 15.20), referenced as invert elevation 24 feet below the crown]. FS Date: 2/11/2014						

Photo 3 of 3 : UCIP_FA_2019_29164_53860.jpg



Steel weir on LS toe.

LM Start	10.86	Rating **	A/W	Issue No.	98
LM End	10.89	Issue Type +	Ma	Location *	WS
Category	Earthen Levee			GPS Latitude/Longitude	
				Start	End
Item	Erosion / Bank Caving			38.182792°	38.182672°
				-121.652142°	-121.652555°
DWR ID	DWR_RD0003_01_s_2013_98				
Comment Code					
E2 : Schedule repair of erosion site prior to the next inspection.					
Inspector Comment					
Levee is extra wide in this section. Erosion is occurring outside the theoretical prism.					

Photo 1 of 3 : FA_2019_RD0003_24_98_20190826_00082.jpg



Looking north at erosion on waterward slope.

* Location LS : Land Side N/A : Not Applicable WS : Water Side CR : Crown	** Rating A : Acceptable M : Minimally Acceptable U : Unacceptable	N : Not Inspected/Rated C : Corrected A/W : Acceptable but Monitor & Maintain	+ Issue Type Ma : Maintenance Deficiency Ob : Design & System Obsolescence En : Enforcement
--	--	---	---

Reclamation District No. 0003 Grand Island

* Location	** Rating	+ Issue Type
LS : Land Side N/A : Not Applicable	A : Acceptable N : Not Inspected/Rated	Ma : Maintenance Deficiency
WS : Water Side	M : Minimally Acceptable C : Corrected	Ob : Design & System Obsolescence
CR : Crown	U : Unacceptable A/W : Acceptable but Monitor & Maintain	En : Enforcement

**Flood Control Project Maintenance
Levee Inspections**

Maintenance Issue Types Only, Levee Inspection Report By Mile - Fall 2019

Reclamation District No. 0003 Grand Island

Waterway	Bank	Unit Miles	Inspection Start/End	Inspector
Unit No. 01 Left Bank Steamboat Slough	Left	10.95	10/30/2019 10/30/2019	David Julian

LM Start	10.91	Rating **	A/W	Issue No.	99 (cont)
LM End	10.94	Issue Type +	Ma	Location *	WS
Category	Earthen Levee			GPS Latitude/Longitude	
				Start	End
Item	Erosion / Bank Caving			38.182537 °	38.182388 °
				-121.652987 °	-121.653388 °
DWR ID	DWR_RD0003_01_s_2019_99				
Comment Code					
E2 : Schedule repair of erosion site prior to the next inspection.					
Inspector Comment					
Levee is extra wide in this section. Erosion is occurring outside the theoretical prism.					

Photo 2 of 2 : FA_2019_RD0003_24_99_20190826_00086.jpg



Looking north at erosion on waterward shoulder and slope.

*** Location**

LS : Land Side N/A : Not Applicable
WS : Water Side
CR : Crown

**** Rating**

A : Acceptable N : Not Inspected/Rated
M : Minimally Acceptable C : Corrected
U : Unacceptable A/W : Acceptable but Monitor & Maintain

+ Issue Type

Ma : Maintenance Deficiency
Ob : Design & System Obsolescence
En : Enforcement

Reclamation District No. 0003 Grand Island

No Photos

View looking upstream at arundo on the waterside slope (Fall 2019).

View of willows on the landside slope (Fall 2019).

Page 1 of 35

**Flood Control Project Maintenance
Levee Inspections**

Maintenance Issue Types Only, Levee Inspection Report By Mile - Fall 2019

Reclamation District No. 0003 Grand Island

Waterway	Bank	Unit Miles	Inspection Start/End	Inspector
Unit No. 02 Right Bank Sacramento River	Right	17.35	10/30/2019 10/29/2019	David Julian

LM Start	0.37	Rating **	U	Issue No.	3
LM End	0.37	Issue Type +	Ma	Location *	WS
Category	Earthen Levee			GPS Latitude/Longitude	
				Start	End
Item	Vegetation			38.174020°	38.174020°
				-121.647458°	-121.647458°
DWR ID	DWR_RD0003_02_f_2018_3				
Comment Code					
V2 : Remove the wild growth other than native grasses from the levee slopes.					
Inspector Comment					
Remove arundo from waterside slope.					

Photo 1 of 1 : FA_2019_RD0003_25_3_20190826_00004.jpg



View of arundo on waterside slope (October 2018).

LM Start	1.53	Rating **	M	Issue No.	222
LM End	1.53	Issue Type +	Ma	Location *	WS
Category	Earthen Levee			GPS Latitude/Longitude	
				Start	End
Item	Encroachments			38.168908 °	38.168908 °
				-121.627748 °	-121.627748 °
DWR ID	DWR_RD0003_02_f_2019_222				
Comment Code					
GA : Garbage					
Inspector Comment					

No Photos

LM Start	1.57	Rating **	C	Issue No.	129
LM End	1.57	Issue Type +	Ma	Location *	WS
Category	Earthen Levee			GPS Latitude/Longitude	
				Start	End
Item	Encroachments			38.168700 °	38.168700 °
				-121.627233 °	-121.627233 °
DWR ID	DWR_RD0003_02_s_2017_129				
Comment Code					
TR : Tree or limb					
Inspector Comment					
Remove remaining branches and stump of downed tree from the waterside slope.					

No Photos

* Location LS : Land Side N/A : Not Applicable WS : Water Side CR : Crown	** Rating A : Acceptable M : Minimally Acceptable U : Unacceptable	N : Not Inspected/Rated C : Corrected A/W : Acceptable but Monitor & Maintain	+ Issue Type Ma : Maintenance Deficiency Ob : Design & System Obsolescence En : Enforcement
--	--	--	---

**Flood Control Project Maintenance
Levee Inspections**

Maintenance Issue Types Only, Levee Inspection Report By Mile - Fall 2019

Reclamation District No. 0003 Grand Island

Waterway	Bank	Unit Miles	Inspection Start/End	Inspector
Unit No. 02 Right Bank Sacramento River	Right	17.35	10/30/2019 10/29/2019	David Julian

LM Start	1.67	Rating **	C	Issue No.	130
LM End	1.67	Issue Type +	Ma	Location *	WS
Category	Earthen Levee		GPS Latitude/Longitude		
			Start	End	
Item	Encroachments		38.167880 °	38.167880 °	
			-121.625572 °	-121.625572 °	
DWR ID	DWR_RD0003_02_s_2017_130				
Comment Code					
TR : Tree or limb					
Inspector Comment					
Remove remaining stump and branches from waterside slope.					

No Photos

LM Start	1.94	Rating **	M	Issue No.	196
LM End	1.94	Issue Type +	Ma	Location *	LS
Category	Earthen Levee		GPS Latitude/Longitude		
			Start	End	
Item	Encroachments		38.166183 °	38.166183 °	
			-121.621162 °	-121.621162 °	
DWR ID	DWR_RD0003_02_f_2019_196				
Comment Code					
TR : Tree or limb					
Inspector Comment					

No Photos

LM Start	2.01	Rating **	C	Issue No.	140
LM End	2.01	Issue Type +	Ma	Location *	WS
Category	Earthen Levee		GPS Latitude/Longitude		
			Start	End	
Item	Encroachments		38.165740 °	38.165740 °	
			-121.619970 °	-121.619970 °	
DWR ID	DWR_RD0003_02_f_2015_140				
Comment Code					
PR : Prunings					
Inspector Comment					
Remove pruning pile on waterside slope.					

No Photos

* Location LS : Land Side N/A : Not Applicable WS : Water Side CR : Crown	** Rating A : Acceptable M : Minimally Acceptable U : Unacceptable	N : Not Inspected/Rated C : Corrected A/W : Acceptable but Monitor & Maintain	+ Issue Type Ma : Maintenance Deficiency Ob : Design & System Obsolescence En : Enforcement
--	--	---	---

**Flood Control Project Maintenance
Levee Inspections**

Maintenance Issue Types Only, Levee Inspection Report By Mile - Fall 2019

Reclamation District No. 0003 Grand Island

Waterway	Bank	Unit Miles	Inspection Start/End	Inspector
Unit No. 02 Right Bank Sacramento River	Right	17.35	10/30/2019 10/29/2019	David Julian

LM Start	2.65	Rating **	M	Issue No.	204
LM End	2.65	Issue Type +	Ma	Location *	LS
Category	Earthen Levee			GPS Latitude/Longitude	
				Start	End
Item	Vegetation			38.164602 °	38.164602 °
				-121.608473 °	-121.608473 °
DWR ID	DWR_RD0003_02_f_2019_204				
Comment Code					
V2 : Remove the wild growth other than native grasses from the levee slopes.					
Inspector Comment					

No Photos

LM Start	3.20	Rating **	M	Issue No.	7
LM End	3.20	Issue Type +	Ma	Location *	LS
Category	Earthen Levee			GPS Latitude/Longitude	
				Start	End
Item	Trim / Thin Trees			38.167808 °	38.167808 °
				-121.599557 °	-121.599557 °
DWR ID	DWR_RD0003_02_s_2012_7				
Comment Code					
T1 : Trim trees to at least five feet above ground level.					
Inspector Comment					
There is dense vegetation on the landside slope and toe.					

Photo 1 of 2 : FA_2019_RD0003_25_7_20190826_00006.jpg



Looking northwest at the landside slope.

LM Start	3.20	Rating **	M	Issue No.	7 (cont)
LM End	3.20	Issue Type +	Ma	Location *	LS

Photo 2 of 2 : FA_2019_RD0003_25_7_20190826_00007.jpg



Looking north at fig tree at landward toe.

*** Location**

LS : Land Side N/A : Not Applicable
WS : Water Side
CR : Crown

**** Rating**

A : Acceptable N : Not Inspected/Rated
M : Minimally Acceptable C : Corrected
U : Unacceptable A/W : Acceptable but Monitor & Maintain

+ Issue Type

Ma : Maintenance Deficiency
Ob : Design & System Obsolescence
En : Enforcement

**Flood Control Project Maintenance
Levee Inspections**

Maintenance Issue Types Only, Levee Inspection Report By Mile - Fall 2019

Reclamation District No. 0003 Grand Island

Waterway	Bank	Unit Miles	Inspection Start/End	Inspector
Unit No. 02 Right Bank Sacramento River	Right	17.35	10/30/2019 10/29/2019	David Julian

LM Start	3.30	Rating **	M	Issue No.	154
LM End	3.30	Issue Type +	Ma	Location *	LS
Category	Earthen Levee			GPS Latitude/Longitude	
				Start	End
Item	Encroachments			38.168750 °	38.168750 °
				-121.598152 °	-121.598152 °
DWR ID	DWR_RD0003_02_f_2017_154				
Comment Code					
TR : Tree or limb					
Inspector Comment					
There is a downed tree on the landside slope.					

Photo 1 of 1 : FA_2019_RD0003_25_154_20190826_00139.jpg



Looking northwest at the landside slope.

LM Start	3.40	Rating **	M	Issue No.	179
LM End	3.40	Issue Type +	Ma	Location *	LS
Category	Earthen Levee			GPS Latitude/Longitude	
				Start	End
Item	Encroachments			38.169861 °	38.169861 °
				-121.596926 °	-121.596926 °
DWR ID	DWR_RD0003_02_s_2018_179				
Comment Code					
TR : Tree or limb					
Inspector Comment					
Fallen tree on the landside slope.					

Photo 1 of 1 : FA_2019_RD0003_25_179_20191031_00353.jpg



View of fallen tree on the landside slope (Fall 2019).

LM Start	3.44	Rating **	M	Issue No.	180
LM End	3.44	Issue Type +	Ma	Location *	LS
Category	Earthen Levee			GPS Latitude/Longitude	
				Start	End
Item	Encroachments			38.170293 °	38.170293 °
				-121.596497 °	-121.596497 °
DWR ID	DWR_RD0003_02_s_2018_180				
Comment Code					
TR : Tree or limb					
Inspector Comment					
Fallen tree at landside toe blocks access.					

Photo 1 of 1 : FA_2019_RD0003_25_180_20190826_00156.jpg



Fallen tree at landside toe should be removed.

*** Location**

LS : Land Side N/A : Not Applicable
WS : Water Side
CR : Crown

**** Rating**

A : Acceptable N : Not Inspected/Rated
M : Minimally Acceptable C : Corrected
U : Unacceptable A/W : Acceptable but Monitor & Maintain

+ Issue Type

Ma : Maintenance Deficiency
Ob : Design & System Obsolescence
En : Enforcement

**Flood Control Project Maintenance
Levee Inspections**

Maintenance Issue Types Only, Levee Inspection Report By Mile - Fall 2019

Reclamation District No. 0003 Grand Island

Waterway	Bank	Unit Miles	Inspection Start/End	Inspector
Unit No. 02 Right Bank Sacramento River	Right	17.35	10/30/2019 10/29/2019	David Julian

LM Start	4.65	Rating **	U	Issue No.	97
LM End	4.65	Issue Type +	Ma	Location *	LS
Category	Earthen Levee			GPS Latitude/Longitude	
				Start	End
Item	Encroachments			38.185317 °	38.185317 °
				-121.584870 °	-121.584870 °
DWR ID	DWR_RD0003_02_s_2017_97				
Comment Code					
TR : Tree or limb					
Inspector Comment					
Fallen tree on the landside slope.					

Photo 1 of 1 : FA_2019_RD0003_25_97_20191030_00348.jpg



View of fallen tree on landside slope (Fall 2019).

LM Start	4.86	Rating **	A/W	Issue No.	127
LM End	4.87	Issue Type +	Ma	Location *	WS
Category	Supplemental			GPS Latitude/Longitude	
				Start	End
Item	2017 Storm Damage			38.187528 °	38.187781 °
				-121.582394 °	-121.582331 °
DWR ID	LMA-104				
Comment Code					
Inspector Comment					
Levee Evaluation Comments					
Description: District station 256+60 to 257+96, Sec. 19, T. 4 N. R. 4 E., M.D.M. Approximately 136 linear feet erosion and sloughing exists along the water side slope of the Sacramento River (Unit 2). The erosion commences approximately 1/4 of the way down the slope from the crown and extends to the rip rap.					
Site ID No: 278					
Site Designation: LMA-104					
Repair Type: Erosion					
Rating: Area of Concern					
Field Date: 7/26/2017					
Notes:					

Photo 1 of 3 : FA_2019_RD0003_25_127_20190826_00093.jpg



* Location LS : Land Side N/A : Not Applicable WS : Water Side CR : Crown	** Rating A : Acceptable M : Minimally Acceptable U : Unacceptable	N : Not Inspected/Rated C : Corrected A/W : Acceptable but Monitor & Maintain	+ Issue Type Ma : Maintenance Deficiency Ob : Design & System Obsolescence En : Enforcement
--	--	---	---

**Flood Control Project Maintenance
Levee Inspections**

Maintenance Issue Types Only, Levee Inspection Report By Mile - Fall 2019

Reclamation District No. 0003 Grand Island

Waterway	Bank	Unit Miles	Inspection Start/End	Inspector
Unit No. 02 Right Bank Sacramento River	Right	17.35	10/30/2019 10/29/2019	David Julian

LM Start	4.86	Rating **	A/W	Issue No.	127 (cont)
LM End	4.87	Issue Type +	Ma	Location *	WS
Category	Supplemental		GPS Latitude/Longitude		
			Start	End	
Item	2017 Storm Damage		38.187528°	38.187781°	
			-121.582394°	-121.582331°	

DWR ID LMA-104

Comment Code

Inspector Comment

Levee Evaluation Comments

Description: District station 256+60 to 257+96, Sec. 19, T. 4 N. R. 4 E., M.D.M. Approximately 136 linear feet erosion and sloughing exists along the water side slope of the Sacramento River (Unit 2). The erosion commences approximately 1/4 of the way down the slope from the crown and extends to the rip rap.

Site ID No: 278

Site Designation: LMA-104

Repair Type: Erosion

Rating: Area of Concern

Field Date: 7/26/2017

Notes:

LM Start	4.86	Rating **	A/W	Issue No.	127 (cont)
LM End	4.87	Issue Type +	Ma	Location *	WS

Photo 2 of 3 : FA_2019_RD0003_25_127_20190826_00094.jpg



Photo 3 of 3 : FA_2019_RD0003_25_127_20190826_00095.jpg



* Location LS : Land Side N/A : Not Applicable WS : Water Side CR : Crown	** Rating A : Acceptable M : Minimally Acceptable U : Unacceptable	N : Not Inspected/Rated C : Corrected A/W : Acceptable but Monitor & Maintain	+ Issue Type Ma : Maintenance Deficiency Ob : Design & System Obsolescence En : Enforcement
--	--	---	---

Reclamation District No. 0003 Grand Island

* Location	** Rating	+ Issue Type
LS : Land Side N/A : Not Applicable	A : Acceptable N : Not Inspected/Rated	Ma : Maintenance Deficiency
WS : Water Side	M : Minimally Acceptable C : Corrected	Ob : Design & System Obsolescence
CR : Crown	U : Unacceptable A/W : Acceptable but Monitor & Maintain	En : Enforcement

**Flood Control Project Maintenance
Levee Inspections**

Maintenance Issue Types Only, Levee Inspection Report By Mile - Fall 2019

Reclamation District No. 0003 Grand Island

Waterway	Bank	Unit Miles	Inspection Start/End	Inspector
Unit No. 02 Right Bank Sacramento River	Right	17.35	10/30/2019 10/29/2019	David Julian

LM Start	8.11	Rating **	U	Issue No.	15
LM End	8.11	Issue Type +	Ma	Location *	WS
Category	Earthen Levee			GPS Latitude/Longitude	
				Start	End
Item	Encroachments			38.224130°	38.224130°
				-121.557206°	-121.557206°
DWR ID	DWR_RD0003_02_f_2015_15				
Comment Code					
TR : Tree or limb					
Inspector Comment					
Remove broken tree branches on waterside shoulder and slope.					

Photo 1 of 2 : FA_2019_RD0003_25_15_20190826_00017.jpg



Looking northeast at broken and cracked tree branches on waterward slope.

LM Start	8.11	Rating **	U	Issue No.	15 (cont)
LM End	8.11	Issue Type +	Ma	Location *	WS

Photo 2 of 2 : FA_2019_RD0003_25_15_20190826_00018.jpg



Looking east at broken and cracked tree branches on waterward slope.

LM Start	8.43	Rating **	M	Issue No.	217	
LM End	8.50	Issue Type +	Ma	Location *	LS	
Category	Earthen Levee			GPS Latitude/Longitude		
				Start		End
Item	Vegetation			38.228810 °		38.229768 °
				-121.557202 °		-121.557362 °
DWR ID	DWR_RD0003_02_f_2019_217					
Comment Code						
V1 : Control annual grass and weeds on the levee slopes and easements.						
Inspector Comment						

No Photos

* Location LS : Land Side N/A : Not Applicable WS : Water Side CR : Crown	** Rating A : Acceptable M : Minimally Acceptable U : Unacceptable	N : Not Inspected/Rated C : Corrected A/W : Acceptable but Monitor & Maintain	+ Issue Type Ma : Maintenance Deficiency Ob : Design & System Obsolescence En : Enforcement
--	--	---	---

Reclamation District No. 0003 Grand Island

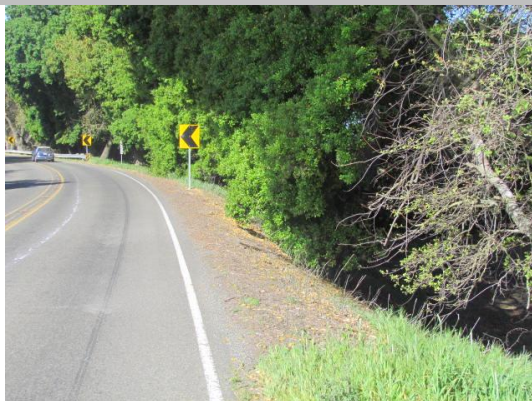
No Photos

Photo 1 of 1 : FA_2019_RD0003_25_63_20190826_00042.jpg



View looking upstream at thick trees on the landside slope (Spring 2019).

Photo 1 of 1 : FA_2019_RD0003_25_64_20190826_00043.jpg



Looking southwest at dense trees on landward shoulder and slope.

* Location	** Rating	+ Issue Type
LS : Land Side N/A : Not Applicable WS : Water Side CR : Crown	A : Acceptable N : Not Inspected/Rated M : Minimally Acceptable C : Corrected U : Unacceptable A/W : Acceptable but Monitor & Maintain	Ma : Maintenance Deficiency Ob : Design & System Obsolescence En : Enforcement

**Flood Control Project Maintenance
Levee Inspections**

Maintenance Issue Types Only, Levee Inspection Report By Mile - Fall 2019

Reclamation District No. 0003 Grand Island

Waterway	Bank	Unit Miles	Inspection Start/End	Inspector
Unit No. 02 Right Bank Sacramento River	Right	17.35	10/30/2019 10/29/2019	David Julian

LM Start	9.82	Rating **	A/W	Issue No.	137
LM End	9.84	Issue Type +	Ma	Location *	WS
Category	Supplemental		GPS Latitude/Longitude		
			Start	End	
Item	2017 Storm Damage		38.242006°	38.241950°	
			-121.548117°	-121.547681°	

DWR ID LMA-105

Comment Code

Inspector Comment

Levee Evaluation Comments

Description: District station 518+55 to 519+81, Sec. 33, T. 5 N. R. 4 E., M.D.M. Approximately 126 linear feet of erosion and sloughing exists along the water side slope of the Sacramento River (Unit 2). The erosion commences approximately 1/4 of the way down the slope from the crown and extends into the rip rap.

Site ID No: 279

Site Designation: LMA-105

Repair Type: Erosion

Rating: Area of Concern

Field Date: 7/26/2017

Notes:

LM Start	9.82	Rating **	A/W	Issue No.	137 (cont)
LM End	9.84	Issue Type +	Ma	Location *	WS

Photo 1 of 3 : FA_2019_RD0003_25_137_20190826_00107.jpg



Photo 2 of 3 : FA_2019_RD0003_25_137_20190826_00108.jpg



* Location LS : Land Side N/A : Not Applicable WS : Water Side CR : Crown		** Rating A : Acceptable N : Not Inspected/Rated M : Minimally Acceptable C : Corrected U : Unacceptable A/W : Acceptable but Monitor & Maintain		+ Issue Type Ma : Maintenance Deficiency Ob : Design & System Obsolescence En : Enforcement	
--	--	---	--	---	--

**Flood Control Project Maintenance
Levee Inspections**

Maintenance Issue Types Only, Levee Inspection Report By Mile - Fall 2019

Reclamation District No. 0003 Grand Island

Waterway	Bank	Unit Miles	Inspection Start/End	Inspector
Unit No. 02 Right Bank Sacramento River	Right	17.35	10/30/2019 10/29/2019	David Julian

LM Start	9.82	Rating **	A/W	Issue No.	137 (cont)	
LM End	9.84	Issue Type +	Ma	Location *	WS	
Category	Supplemental			GPS Latitude/Longitude		
				Start	End	
Item	2017 Storm Damage			38.242006°	38.241950°	
				-121.548117°	-121.547681°	
DWR ID	LMA-105					
Comment Code						
Inspector Comment						
Levee Evaluation Comments						
Description: District station 518+55 to 519+81 , Sec. 33, T. 5 N. R. 4 E., M.D.M. Approximately 126 linear feet of erosion and sloughing exists along the water side slope of the Sacramento River (Unit 2). The erosion commences approximately 1/4 of the way down the slope from the crown and extends into the rip rap.						
Site ID No: 279						
Site Designation: LMA-105						
Repair Type: Erosion						
Rating: Area of Concern						
Field Date: 7/26/2017						
Notes:						

Photo 3 of 3 : FA_2019_RD0003_25_137_20190826_00109.jpg



38.24207, -121.54814, -24.0m, 103°
Jul 26, 2017 10:21:05 AM

LM Start	10.00	Rating **	M	Issue No.	212
LM End	10.00	Issue Type +	Ma	Location *	LS
Category	Earthen Levee			GPS Latitude/Longitude	
				Start	End
Item	Trim / Thin Trees			38.241710°	38.241710°
				-121.544858°	-121.544858°
DWR ID	DWR_RD0003_02_f_2019_212				
Comment Code					
T2 : Thin trees to allow visibility of the ground and room to flood fight.					
Inspector Comment					
Remove broken limb from slope.					

Photo 1 of 1 : FA_2019_RD0003_25_212_20191030_00336.jpg



View of broken tree limb on the landside slope (Fall 2019).

*** Location**

LS : Land Side N/A : Not Applicable
 WS : Water Side
 CR : Crown

**** Rating**

A : Acceptable N : Not Inspected/Rated
 M : Minimally Acceptable C : Corrected
 U : Unacceptable A/W : Acceptable but Monitor & Maintain

+ Issue Type

Ma : Maintenance Deficiency
 Ob : Design & System Obsolescence
 En : Enforcement

**Flood Control Project Maintenance
Levee Inspections**

Maintenance Issue Types Only, Levee Inspection Report By Mile - Fall 2019

Reclamation District No. 0003 Grand Island

Waterway	Bank	Unit Miles	Inspection Start/End	Inspector
Unit No. 02 Right Bank Sacramento River	Right	17.35	10/30/2019 10/29/2019	David Julian

LM Start	10.01	Rating **	A/W	Issue No.	138
LM End	10.03	Issue Type +	Ma	Location *	WS
Category	Supplemental		GPS Latitude/Longitude		
			Start	End	
Item	2017 Storm Damage		38.241481°	38.241439°	
			-121.544569°	-121.544353°	

DWR ID LMA-106

Comment Code

Inspector Comment

Levee Evaluation Comments

Description: District station 528+97 to 529+58, Sec. 33, T. 5 N. R. 4 E., M.D.M. Approximately 61 linear feet of erosion and sloughing exists along the water side slope of the Sacramento River (Unit 2). The erosion commences approximately 1/2 of the way down the slope from the crown and extends into the rip rap.

Site ID No: 280

Site Designation: LMA-106

Repair Type: Erosion

Rating: Area of Concern

Field Date: 7/26/2017

Notes:

LM Start	10.01	Rating **	A/W	Issue No.	138 (cont)
LM End	10.03	Issue Type +	Ma	Location *	WS

Photo 1 of 3 : FA_2019_RD0003_25_138_20190826_00110.jpg



Photo 2 of 3 : FA_2019_RD0003_25_138_20190826_00111.jpg



* Location LS : Land Side N/A : Not Applicable WS : Water Side CR : Crown	** Rating A : Acceptable M : Minimally Acceptable U : Unacceptable	N : Not Inspected/Rated C : Corrected A/W : Acceptable but Monitor & Maintain	+ Issue Type Ma : Maintenance Deficiency Ob : Design & System Obsolescence En : Enforcement
--	--	---	---

**Flood Control Project Maintenance
Levee Inspections**

Maintenance Issue Types Only, Levee Inspection Report By Mile - Fall 2019

Reclamation District No. 0003 Grand Island

Waterway	Bank	Unit Miles	Inspection Start/End	Inspector
Unit No. 02 Right Bank Sacramento River	Right	17.35	10/30/2019 10/29/2019	David Julian

LM Start	10.01	Rating **	A/W	Issue No.	138 (cont)	
LM End	10.03	Issue Type +	Ma	Location *	WS	
Category	Supplemental			GPS Latitude/Longitude		
				Start	End	
Item	2017 Storm Damage			38.241481 °	38.241439 °	
				-121.544569 °	-121.544353 °	
DWR ID	LMA-106					
Comment Code						
Inspector Comment						
Levee Evaluation Comments						
Description: District station 528+97 to 529+58, Sec. 33, T. 5 N. R. 4 E., M.D.M. Approximately 61 linear feet of erosion and sloughing exists along the water side slope of the Sacramento River (Unit 2). The erosion commences approximately 1/2 of the way down the slope from the crown and extends into the rip rap.						
Site ID No: 280						
Site Designation: LMA-106						
Repair Type: Erosion						
Rating: Area of Concern						
Field Date: 7/26/2017						
Notes:						

Photo 3 of 3 : FA_2019_RD0003_25_138_20190826_00112.jpg



LM Start	10.11	Rating **	U	Issue No.	211
LM End	10.11	Issue Type +	Ma	Location *	LS
Category	Earthen Levee			GPS Latitude/Longitude	
				Start	End
Item	Trim / Thin Trees			38.241333 °	38.241333 °
				-121.542880 °	-121.542880 °
DWR ID	DWR_RD0003_02_f_2019_211				
Comment Code					
T2 : Thin trees to allow visibility of the ground and room to flood fight.					
Inspector Comment					
Remove broken tree limbs.					

Photo 1 of 1 : FA_2019_RD0003_25_211_20191030_00335.jpg



View of broken tree limbs on the landside slope (Fall 2019).

* Location
 LS : Land Side N/A : Not Applicable
 WS : Water Side
 CR : Crown

** Rating
 A : Acceptable N : Not Inspected/Rated
 M : Minimally Acceptable C : Corrected
 U : Unacceptable A/W : Acceptable but Monitor & Maintain

+ Issue Type
 Ma : Maintenance Deficiency
 Ob : Design & System Obsolescence
 En : Enforcement

**Flood Control Project Maintenance
Levee Inspections**

Maintenance Issue Types Only, Levee Inspection Report By Mile - Fall 2019

Reclamation District No. 0003 Grand Island

Waterway	Bank	Unit Miles	Inspection Start/End	Inspector
Unit No. 02 Right Bank Sacramento River	Right	17.35	10/30/2019 10/29/2019	David Julian

LM Start	10.15	Rating **	U	Issue No.	170
LM End	10.15	Issue Type +	Ma	Location *	LS
Category	Earthen Levee			GPS Latitude/Longitude	
				Start	End
Item	Encroachments			38.241125°	38.241125°
				-121.542075°	-121.542075°
DWR ID	DWR_RD0003_02_s_2018_170				
Comment Code					
TR : Tree or limb					
Inspector Comment					
There is a fallen tree on the landside slope.					

Photo 1 of 1 : FA_2019_RD0003_25_170_20190826_00152.jpg



Fallen tree on landside slope.

LM Start	10.88	Rating **	M	Issue No.	164
LM End	10.88	Issue Type +	Ma	Location *	WS
Category	Earthen Levee			GPS Latitude/Longitude	
				Start	End
Item	Vegetation			38.238861 °	38.238861 °
				-121.529074 °	-121.529074 °
DWR ID	DWR_RD0003_02_f_2017_164				
Comment Code					
V2 : Remove the wild growth other than native grasses from the levee slopes.					
Inspector Comment					
A century plant is on the waterside.					

No Photos

LM Start	10.99	Rating **	C	Issue No.	163
LM End	10.99	Issue Type +	Ma	Location *	LS
Category	Earthen Levee			GPS Latitude/Longitude	
				Start	End
Item	Encroachments			38.239377 °	38.239377 °
				-121.527177 °	-121.527177 °
DWR ID	DWR_RD0003_02_f_2018_163				
Comment Code					
TR : Tree or limb					
Inspector Comment					
Remove dead branch from the landside slope.					

No Photos

* Location
LS : Land Side N/A : Not Applicable
WS : Water Side
CR : Crown

** Rating
A : Acceptable N : Not Inspected/Rated
M : Minimally Acceptable C : Corrected
U : Unacceptable A/W : Acceptable but Monitor & Maintain

+ Issue Type
Ma : Maintenance Deficiency
Ob : Design & System Obsolescence
En : Enforcement

Reclamation District No. 0003 Grand Island

View of fallen tree that has been chopped up on the waterside slope (October 2018).

**Flood Control Project Maintenance
Levee Inspections**

Maintenance Issue Types Only, Levee Inspection Report By Mile - Fall 2019

Reclamation District No. 0003 Grand Island

Waterway	Bank	Unit Miles	Inspection Start/End	Inspector
Unit No. 02 Right Bank Sacramento River	Right	17.35	10/30/2019 10/29/2019	David Julian

LM Start	11.33	Rating **	C	Issue No.	118
LM End	11.41	Issue Type +	Ma	Location *	WS
Category	Supplemental			GPS Latitude/Longitude	
				Start	End
Item	2017 USACE Erosion Survey			38.239870 °	38.239992 °
				-121.520989 °	-121.519542 °
DWR ID	DWR_RD0003_02_f_2018_118				
Comment Code					
Inspector Comment					
2017 Site ID: SAC 26.3 R					
Status: Repaired					
2018: Still pocket of erosion into waterside toe.					
2017 Field Notes: Repaired by locals.					
Site History: 2009 - Hole left in levee toe from a fallen tree. Could be repaired under maintenance. 2010 - Minor new erosion. 2015 - Minor new erosion at toe.					

No Photos

LM Start	11.43	Rating **	M	Issue No.	162
LM End	11.43	Issue Type +	Ma	Location *	LS
Category	Earthen Levee			GPS Latitude/Longitude	
				Start	End
Item	Encroachments			38.240198 °	38.240198 °
				-121.519290 °	-121.519290 °
DWR ID	DWR_RD0003_02_s_2019_162				
Comment Code					
TR : Tree or limb					
Inspector Comment					
Remove tree limbs from the landside slope.					

Photo 1 of 1 : FA_2019_RD0003_25_162_20190826_00144.jpg



View looking downslope at fallen tree limbs on the landside slope (Spring 2019).

* Location LS : Land Side N/A : Not Applicable WS : Water Side CR : Crown	** Rating A : Acceptable M : Minimally Acceptable U : Unacceptable	N : Not Inspected/Rated C : Corrected A/W : Acceptable but Monitor & Maintain	+ Issue Type Ma : Maintenance Deficiency Ob : Design & System Obsolescence En : Enforcement
--	--	---	---

**Flood Control Project Maintenance
Levee Inspections**

Maintenance Issue Types Only, Levee Inspection Report By Mile - Fall 2019

Reclamation District No. 0003 Grand Island

Waterway	Bank	Unit Miles	Inspection Start/End	Inspector
Unit No. 02 Right Bank Sacramento River	Right	17.35	10/30/2019 10/29/2019	David Julian

LM Start	11.55	Rating **	M	Issue No.	24
LM End	11.57	Issue Type +	Ma	Location *	LS
Category	Earthen Levee			GPS Latitude/Longitude	
				Start	End
Item	Trim / Thin Trees			38.241093°	38.241300°
				-121.517378°	-121.517073°
DWR ID	DWR_RD0003_02_s_2012_24				
Comment Code					
T1 : Trim trees to at least five feet above ground level.					
Inspector Comment					

No Photos

LM Start	12.33	Rating **	C	Issue No.	203
LM End	12.33	Issue Type +	Ma	Location *	WS
Category	Earthen Levee			GPS Latitude/Longitude	
				Start	End
Item	Encroachments			38.250887 °	38.250887 °
				-121.512157 °	-121.512157 °
DWR ID	DWR_RD0003_02_f_2018_203				
Comment Code					
PR : Prunings					
Inspector Comment					
Remove prunings on the waterside hinge point.					

No Photos

LM Start	12.88	Rating **	N	Issue No.	135
LM End	12.88	Issue Type +	Ma	Location *	LS
Category	Earthen Levee			GPS Latitude/Longitude	
				Start	End
Item	Trim / Thin Trees			38.257244 °	38.257244 °
				-121.518037 °	-121.518037 °
DWR ID	DWR_RD0003_02_s_2018_135				
Comment Code					
T5 : Tree stumps.					
Inspector Comment					
There is a tree stump at levee toe.					

Photo 1 of 1 : FA_2019_RD0003_25_135_20190826_00106.jpg



View looking downslope at tree trunk at the bottom of the landside slope (Spring 2019).

* Location LS : Land Side N/A : Not Applicable WS : Water Side CR : Crown	** Rating A : Acceptable M : Minimally Acceptable U : Unacceptable	N : Not Inspected/Rated C : Corrected A/W : Acceptable but Monitor & Maintain	+ Issue Type Ma : Maintenance Deficiency Ob : Design & System Obsolescence En : Enforcement
--	--	---	---

**Flood Control Project Maintenance
Levee Inspections**

Maintenance Issue Types Only, Levee Inspection Report By Mile - Fall 2019

Reclamation District No. 0003 Grand Island

Waterway	Bank	Unit Miles	Inspection Start/End	Inspector
Unit No. 02 Right Bank Sacramento River	Right	17.35	10/30/2019 10/29/2019	David Julian

LM Start	13.15	Rating **	A/W	Issue No.	139
LM End	13.17	Issue Type +	Ma	Location *	WS
Category	Supplemental			GPS Latitude/Longitude	
				Start	End
Item	2017 Storm Damage			38.260042°	38.260219°
				-121.521581°	-121.521803°

Comment Code

Inspector Comment

Levee Evaluation Comments

Description: District station 694+80 to 695+69, Sec. 27, 1. 5 N. R. 4 E., M.D.M. Approximately 89 linear feet of erosion and sloughing exists along the water side slope of the Sacramento River (Unit 2). The erosion commences approximately 1/2 of the way down the slope from the crown and extends into the rip rap.

Site ID No: 281

Site Designation: LMA-107

Repair Type: Erosion

Rating: Area of Concern

Field Date: 7/26/2017

Notes:

LM Start	13.15	Rating **	A/W	Issue No.	139 (cont)
LM End	13.17	Issue Type +	Ma	Location *	WS

Photo 1 of 3 : FA_2019_RD0003_25_139_20190826_00113.jpg



38.26004, -121.52159, -24.0m, 34°
Jul 26, 2017 10:49:34 AM

Photo 2 of 3 : FA_2019_RD0003_25_139_20190826_00114.jpg



38.26003, -121.52159, -24.0m, 39°
Jul 26, 2017 10:49:41 AM

*** Location**

LS : Land Side N/A : Not Applicable
WS : Water Side
CR : Crown

**** Rating**

A : Acceptable N : Not Inspected/Rated
M : Minimally Acceptable C : Corrected
U : Unacceptable A/W : Acceptable but Monitor & Maintain

+ Issue Type

Ma : Maintenance Deficiency
Ob : Design & System Obsolescence
En : Enforcement

**Flood Control Project Maintenance
Levee Inspections**

Maintenance Issue Types Only, Levee Inspection Report By Mile - Fall 2019

Reclamation District No. 0003 Grand Island

Waterway	Bank	Unit Miles	Inspection Start/End	Inspector
Unit No. 02 Right Bank Sacramento River	Right	17.35	10/30/2019 10/29/2019	David Julian

LM Start	13.15	Rating **	A/W	Issue No.	139 (cont)
LM End	13.17	Issue Type +	Ma	Location *	WS
Category	Supplemental			GPS Latitude/Longitude	
				Start	End
Item	2017 Storm Damage			38.260042°	38.260219°
				-121.521581°	-121.521803°
DWR ID	LMA-107				

Comment Code

Inspector Comment

Levee Evaluation Comments

Description: District station 694+80 to 695+69, Sec. 27, 1. 5 N. R. 4 E., M.D.M. Approximately 89 linear feet of erosion and sloughing exists along the water side slope of the Sacramento River (Unit 2). The erosion commences approximately 1/2 of the way down the slope from the crown and extends into the rip rap.

Site ID No: 281

Site Designation: LMA-107

Repair Type: Erosion

Rating: Area of Concern

Field Date: 7/26/2017

Notes:

Photo 3 of 3 : FA_2019_RD0003_25_139_20190826_00115.jpg



LM Start	13.86	Rating **	C	Issue No.	169
LM End	13.86	Issue Type +	Ma	Location *	LS
Category	Earthen Levee			GPS Latitude/Longitude	
				Start	End
Item	Animal Control			38.267084°	38.267084°
				-121.530939°	-121.530939°

Comment Code

A1 : Exterminate rodents and backfill and compact or grout burrows.

Inspector Comment

No Photos

* Location LS : Land Side N/A : Not Applicable WS : Water Side CR : Crown	** Rating A : Acceptable M : Minimally Acceptable U : Unacceptable	N : Not Inspected/Rated C : Corrected A/W : Acceptable but Monitor & Maintain	+ Issue Type Ma : Maintenance Deficiency Ob : Design & System Obsolescence En : Enforcement
--	--	---	---

**Flood Control Project Maintenance
Levee Inspections**

Maintenance Issue Types Only, Levee Inspection Report By Mile - Fall 2019

Reclamation District No. 0003 Grand Island

Waterway	Bank	Unit Miles	Inspection Start/End	Inspector
Unit No. 02 Right Bank Sacramento River	Right	17.35	10/30/2019 10/29/2019	David Julian

LM Start	14.23	Rating **	M	Issue No.	208
LM End	14.23	Issue Type +	Ma	Location *	LS
Category	Earthen Levee			GPS Latitude/Longitude	
				Start	End
Item	Trim / Thin Trees			38.270677 °	38.270677 °
				-121.535980 °	-121.535980 °
DWR ID	DWR_RD0003_02_f_2019_208				
Comment Code					
T2 : Thin trees to allow visibility of the ground and room to flood fight.					
Inspector Comment					
Remove downed limb.					

No Photos

LM Start	14.29	Rating **	M	Issue No.	132
LM End	14.29	Issue Type +	Ma	Location *	LS
Category	Earthen Levee			GPS Latitude/Longitude	
				Start	End
Item	Encroachments			38.271348 °	38.271348 °
				-121.536847 °	-121.536847 °
DWR ID	DWR_RD0003_02_s_2019_132				
Comment Code					
TR : Tree or limb					
Inspector Comment					
Remove tree limbs from the landside slope.					

Photo 1 of 1 : FA_2019_RD0003_25_132_20190826_00103.jpg



View looking downslope at tree limbs on the landside slope (Spring 2019).

LM Start	14.86	Rating **	C	Issue No.	123
LM End	14.86	Issue Type +	Ma	Location *	LS
Category	Earthen Levee			GPS Latitude/Longitude	
				Start	End
Item	Trim / Thin Trees			38.277082°	38.277082°
				-121.544185°	-121.544185°
DWR ID	DWR_RD0003_02_f_2018_123				
Comment Code					
T2 : Thin trees to allow visibility of the ground and room to flood fight.					
Inspector Comment					
Trim trees at the landside toe.					

No Photos

* Location LS : Land Side N/A : Not Applicable WS : Water Side CR : Crown		** Rating A : Acceptable M : Minimally Acceptable U : Unacceptable		N : Not Inspected/Rated C : Corrected A/W : Acceptable but Monitor & Maintain		+ Issue Type Ma : Maintenance Deficiency Ob : Design & System Obsolescence En : Enforcement	
---	--	---	--	---	--	--	--

**Flood Control Project Maintenance
Levee Inspections**

Maintenance Issue Types Only, Levee Inspection Report By Mile - Fall 2019

Reclamation District No. 0003 Grand Island

Waterway	Bank	Unit Miles	Inspection Start/End	Inspector
Unit No. 02 Right Bank Sacramento River	Right	17.35	10/30/2019 10/29/2019	David Julian

LM Start	15.00	Rating **	A/W	Issue No.	142
LM End	15.07	Issue Type +	Ma	Location *	WS
Category	Supplemental		GPS Latitude/Longitude		
			Start	End	
Item	2017 Storm Damage		38.278806°	38.279444°	
			-121.545817°	-121.546647°	

DWR ID LMA-108

Comment Code

Inspector Comment

Levee Evaluation Comments

Description: District station 792+44 to 795+74, Sec. 16, T. 5 N. R. 4 E., M.D.M. Approximately 330 linear feet of erosion and sloughing exists along the water side slope of the Sacramento River (Unit 2). The erosion commences approximately 1/2 of the way down the slope from the crown and extends into the rip rap.

Site ID No: 282

Site Designation: LMA-108

Repair Type: Erosion

Rating: Area of Concern

Field Date: 7/28/2017

Notes: no berm

LM Start	15.00	Rating **	A/W	Issue No.	142 (cont)
LM End	15.07	Issue Type +	Ma	Location *	WS

Photo 1 of 3 : FA_2019_RD0003_25_142_20190826_00118.jpg



Photo 2 of 3 : FA_2019_RD0003_25_142_20190826_00119.jpg



* Location LS : Land Side N/A : Not Applicable WS : Water Side CR : Crown	** Rating A : Acceptable M : Minimally Acceptable U : Unacceptable	N : Not Inspected/Rated C : Corrected A/W : Acceptable but Monitor & Maintain	+ Issue Type Ma : Maintenance Deficiency Ob : Design & System Obsolescence En : Enforcement
--	--	---	---

**Flood Control Project Maintenance
Levee Inspections**

Maintenance Issue Types Only, Levee Inspection Report By Mile - Fall 2019

Reclamation District No. 0003 Grand Island

Waterway	Bank	Unit Miles	Inspection Start/End	Inspector
Unit No. 02 Right Bank Sacramento River	Right	17.35	10/30/2019 10/29/2019	David Julian

LM Start	15.00	Rating **	A/W	Issue No.	142 (cont)	
LM End	15.07	Issue Type +	Ma	Location *	WS	
Category	Supplemental			GPS Latitude/Longitude		
				Start	End	
Item	2017 Storm Damage			38.278806 °	38.279444 °	
				-121.545817 °	-121.546647 °	
DWR ID	LMA-108					
Comment Code						
Inspector Comment						
Levee Evaluation Comments						
Description: District station 792+44 to 795+74, Sec. 16, T. 5 N. R. 4 E., M.D.M. Approximately 330 linear feet of erosion and sloughing exists along the water side slope of the Sacramento River (Unit 2). The erosion commences approximately 1/2 of the way down the slope from the crown and extends into the rip rap.						
Site ID No: 282						
Site Designation: LMA-108						
Repair Type: Erosion						
Rating: Area of Concern						
Field Date: 7/28/2017						
Notes: no berm						

Photo 3 of 3 : FA_2019_RD0003_25_142_20190826_00120.jpg



LM Start	15.17	Rating **	M	Issue No.	191
LM End	15.17	Issue Type +	Ma	Location *	LS
Category	Earthen Levee			GPS Latitude/Longitude	
				Start	End
Item	Slope Stability			38.280443 °	38.280443 °
				-121.548175 °	-121.548175 °
DWR ID	DWR_RD0003_02_f_2019_191				
Comment Code					
S3 : Repair the levee slope damaged by vehicle traffic and prevent access where possible.					
Inspector Comment					
Fresh vehicle tracks on the landside slope.					

Photo 1 of 1 : FA_2019_RD0003_25_191_20191030_00319.jpg



View of fresh vehicle tracks going down the landside slope (Fall 2019).

* Location LS : Land Side N/A : Not Applicable WS : Water Side CR : Crown	** Rating A : Acceptable M : Minimally Acceptable U : Unacceptable	N : Not Inspected/Rated C : Corrected A/W : Acceptable but Monitor & Maintain	+ Issue Type Ma : Maintenance Deficiency Ob : Design & System Obsolescence En : Enforcement
--	--	---	---

**Flood Control Project Maintenance
Levee Inspections**

Maintenance Issue Types Only, Levee Inspection Report By Mile - Fall 2019

Reclamation District No. 0003 Grand Island

Waterway	Bank	Unit Miles	Inspection Start/End	Inspector
Unit No. 02 Right Bank Sacramento River	Right	17.35	10/30/2019 10/29/2019	David Julian

LM Start	15.21	Rating **	M	Issue No.	190
LM End	15.21	Issue Type +	Ma	Location *	LS
Category	Earthen Levee		GPS Latitude/Longitude		
			Start	End	
Item	Encroachments		38.280765 °	38.280765 °	
			-121.548640 °	-121.548640 °	
DWR ID	DWR_RD0003_02_f_2019_190				
Comment Code					
TR : Tree or limb					
Inspector Comment					

No Photos

LM Start	15.43	Rating **	N	Issue No.	122
LM End	15.43	Issue Type +	Ma	Location *	LS
Category	Earthen Levee		GPS Latitude/Longitude		
			Start	End	
Item	Trim / Thin Trees		38.282672 °	38.282672 °	
			-121.551847 °	-121.551847 °	
DWR ID	DWR_RD0003_02_f_2018_122				
Comment Code					
T5 : Tree stumps.					
Inspector Comment					
Remove tree stump from the landside toe.					

Photo 1 of 1 : FA_2019_RD0003_25_122_20190826_00091.jpg



View of large stump at the landside toe of the levee (October 2018).

*** Location**

LS : Land Side N/A : Not Applicable
WS : Water Side
CR : Crown

**** Rating**

A : Acceptable N : Not Inspected/Rated
M : Minimally Acceptable C : Corrected
U : Unacceptable A/W : Acceptable but Monitor & Maintain

+ Issue Type

Ma : Maintenance Deficiency
Ob : Design & System Obsolescence
En : Enforcement

**Flood Control Project Maintenance
Levee Inspections**

Maintenance Issue Types Only, Levee Inspection Report By Mile - Fall 2019

Reclamation District No. 0003 Grand Island

Waterway	Bank	Unit Miles	Inspection Start/End	Inspector
Unit No. 02 Right Bank Sacramento River	Right	17.35	10/30/2019 10/29/2019	David Julian

LM Start	15.46	Rating **	A/W	Issue No.	149
LM End	15.47	Issue Type +	Ma	Location *	WS
Category	Supplemental			GPS Latitude/Longitude	
				Start	End
Item	2017 Storm Damage			38.283119 °	38.283172 °
				-121.552250 °	-121.552347 °
DWR ID	LMA-109				
Comment Code					
Inspector Comment					
Levee Evaluation Comments					
Description:District station 816+64 to 816+97, Sec. 16, T. 5 N. R. 4 E., M.D.M. Approximately 33 linear feet of erosion exists along the water side slope of the Sacramento River (Unit 2). The erosion commences approximately 1/2 ofthe way down the slope from the crown and extends into the rip rap. A section of rip rap has eroded away in this location.					
Site ID No:283					
Site Designation:LMA-109					
Repair Type: Erosion					
Rating:Area of Concern					
Field Date:7/26/2017					
Notes:					

Photo 1 of 3 : FA_2019_RD0003_25_149_20190826_00128.jpg



LM Start	15.46	Rating **	A/W	Issue No.	149 (cont)
LM End	15.47	Issue Type +	Ma	Location *	WS

Photo 2 of 3 : FA_2019_RD0003_25_149_20190826_00129.jpg



* Location LS : Land Side N/A : Not Applicable WS : Water Side CR : Crown	** Rating A : Acceptable M : Minimally Acceptable U : Unacceptable	N : Not Inspected/Rated C : Corrected A/W : Acceptable but Monitor & Maintain	+ Issue Type Ma : Maintenance Deficiency Ob : Design & System Obsolescence En : Enforcement
--	--	---	---

**Flood Control Project Maintenance
Levee Inspections**

Maintenance Issue Types Only, Levee Inspection Report By Mile - Fall 2019

Reclamation District No. 0003 Grand Island

Waterway	Bank	Unit Miles	Inspection Start/End	Inspector
Unit No. 02 Right Bank Sacramento River	Right	17.35	10/30/2019 10/29/2019	David Julian

LM Start	15.46	Rating **	A/W	Issue No.	149 (cont)
LM End	15.47	Issue Type +	Ma	Location *	WS
Category	Supplemental			GPS Latitude/Longitude	
				Start	End
Item	2017 Storm Damage			38.283119 °	38.283172 °
				-121.552250 °	-121.552347 °
DWR ID	LMA-109				
Comment Code					
Inspector Comment					
Levee Evaluation Comments					
Description:District station 816+64 to 816+97, Sec. 16, T. 5 N. R. 4 E., M.D.M. Approximately 33 linear feet of erosion exists along the water side slope of the Sacramento River (Unit 2). The erosion commences approximately 1/2 ofthe way down the slope from the crown and extends into the rip rap. A section of rip rap has eroded away in this location.					
Site ID No:283					
Site Designation:LMA-109					
Repair Type: Erosion					
Rating:Area of Concern					
Field Date:7/26/2017					
Notes:					

Photo 3 of 3 : FA_2019_RD0003_25_149_20190826_00130.jpg



38.2831, -121.55238, 24.0m, 99°
Jul 26, 2017 11:15:44 AM

LM Start	15.70	Rating **	M	Issue No.	116
LM End	15.70	Issue Type +	Ma	Location *	LS
Category	Earthen Levee			GPS Latitude/Longitude	
				Start	End
Item	Trim / Thin Trees			38.285349 °	38.285349 °
				-121.555548 °	-121.555548 °
DWR ID	DWR_RD0003_02_s_2019_116				
Comment Code					
T1 : Trim trees to at least five feet above ground level.					
Inspector Comment					
Remove fallen palm tree limbs.					

Photo 1 of 1 : FA_2019_RD0003_25_116_20190826_00084.jpg



View looking downslope at fallen palm limbs at the bottom of the landside slope (Spring 2019).

* Location LS : Land Side N/A : Not Applicable WS : Water Side CR : Crown	** Rating A : Acceptable M : Minimally Acceptable U : Unacceptable	N : Not Inspected/Rated C : Corrected A/W : Acceptable but Monitor & Maintain	+ Issue Type Ma : Maintenance Deficiency Ob : Design & System Obsolescence En : Enforcement
--	--	---	---

**Flood Control Project Maintenance
Levee Inspections**

Maintenance Issue Types Only, Levee Inspection Report By Mile - Fall 2019

Reclamation District No. 0003 Grand Island

Waterway	Bank	Unit Miles	Inspection Start/End	Inspector
Unit No. 02 Right Bank Sacramento River	Right	17.35	10/30/2019 10/29/2019	David Julian

LM Start	15.94	Rating **	M	Issue No.	124
LM End	15.94	Issue Type +	Ma	Location *	LS
Category	Earthen Levee			GPS Latitude/Longitude	
				Start	End
Item	Slope Stability			38.288009 °	38.288009 °
				-121.558398 °	-121.558398 °
DWR ID	DWR_RD0003_02_s_2018_124				
Comment Code					
S3 : Repair the levee slope damaged by vehicle traffic and prevent access where possible.					
Inspector Comment					
There is vehicle erosion on the landside slope.					

Photo 1 of 1 : FA_2019_RD0003_25_124_20190826_00092.jpg



Vehicle erosion on landside slope should be repaired.

LM Start	16.07	Rating **	U	Issue No.	119
LM End	16.07	Issue Type +	Ma	Location *	LS
Category	Earthen Levee			GPS Latitude/Longitude	
				Start	End
Item	Animal Control			38.289377 °	38.289377 °
				-121.560002 °	-121.560002 °
DWR ID	DWR_RD0003_02_f_2019_119				
Comment Code					
A1 : Exterminate rodents and backfill and compact or grout burrows.					
Inspector Comment					
There are many fresh rodent holes in landside slope.					

Photo 1 of 3 : FA_2019_RD0003_25_119_20191030_00312.jpg



View looking downstream at fresh rodent holes in landside slope (Fall 2019).

LM Start	16.07	Rating **	U	Issue No.	119 (cont)
LM End	16.07	Issue Type +	Ma	Location *	LS

Photo 2 of 3 : FA_2019_RD0003_25_119_20191030_00313.jpg



View of large rodent hole in landside slope (Fall 2019).

*** Location**

LS : Land Side N/A : Not Applicable
WS : Water Side
CR : Crown

**** Rating**

A : Acceptable N : Not Inspected/Rated
M : Minimally Acceptable C : Corrected
U : Unacceptable A/W : Acceptable but Monitor & Maintain

+ Issue Type

Ma : Maintenance Deficiency
Ob : Design & System Obsolescence
En : Enforcement

**Flood Control Project Maintenance
Levee Inspections**

Maintenance Issue Types Only, Levee Inspection Report By Mile - Fall 2019

Reclamation District No. 0003 Grand Island

Waterway	Bank	Unit Miles	Inspection Start/End	Inspector
Unit No. 02 Right Bank Sacramento River	Right	17.35	10/30/2019 10/29/2019	David Julian

LM Start	16.07	Rating **	U	Issue No.	119 (cont)	
LM End	16.07	Issue Type +	Ma	Location *	LS	
Category	Earthen Levee			GPS Latitude/Longitude		
				Start		End
Item	Animal Control			38.289377 °		38.289377 °
				-121.560002 °		-121.560002 °
DWR ID	DWR_RD0003_02_f_2019_119					
Comment Code						
A1 : Exterminate rodents and backfill and compact or grout burrows.						
Inspector Comment						
There are many fresh rodent holes in landside slope.						

Photo 3 of 3 : FA_2019_RD0003_25_119_20191030_00314.jpg



View looking downslope at rodent holes in landside slope (Fall 2019).

LM Start	16.27	Rating **	M	Issue No.	115
LM End	16.27	Issue Type +	Ma	Location *	LS
Category	Earthen Levee			GPS Latitude/Longitude	
				Start	End
Item	Slope Stability			38.291552 °	38.291552 °
				-121.562552 °	-121.562552 °
DWR ID	DWR_RD0003_02_f_2019_115				
Comment Code					
S2 : Repair the levee slope damaged by foot traffic and prevent access where possible.					
Inspector Comment					

Photo 1 of 1 : FA_2019_RD0003_25_115_20191030_00310.jpg



View of depression in the landside slope. Might be due to drainage (Fall 2019).

* Location
LS : Land Side N/A : Not Applicable
WS : Water Side
CR : Crown

** Rating
A : Acceptable N : Not Inspected/Rated
M : Minimally Acceptable C : Corrected
U : Unacceptable A/W : Acceptable but Monitor & Maintain

+ Issue Type
Ma : Maintenance Deficiency
Ob : Design & System Obsolescence
En : Enforcement

**Flood Control Project Maintenance
Levee Inspections**

Maintenance Issue Types Only, Levee Inspection Report By Mile - Fall 2019

Reclamation District No. 0003 Grand Island

Waterway	Bank	Unit Miles	Inspection Start/End	Inspector
Unit No. 02 Right Bank Sacramento River	Right	17.35	10/30/2019 10/29/2019	David Julian

LM Start	16.84	Rating **	U	Issue No.	112
LM End	16.84	Issue Type +	Ma	Location *	LS
Category	Earthen Levee			GPS Latitude/Longitude	
				Start	End
Item	Animal Control			38.298165 °	38.298165 °
				-121.568842 °	-121.568842 °
DWR ID	DWR_RD0003_02_f_2019_112				
Comment Code					
A1 : Exterminate rodents and backfill and compact or grout burrows.					
Inspector Comment					
There is a large rodent hole with fresh material.					

Photo 1 of 1 : FA_2019_RD0003_25_112_20191030_00307.jpg



View of large fresh rodent hole on the landside slope (Fall 2019).

LM Start	16.90	Rating **	A/W	Issue No.	152
LM End	16.90	Issue Type +	Ma	Location *	WS
Category	Supplemental			GPS Latitude/Longitude	
				Start	End
Item	2017 Storm Damage			38.298914 °	38.298997 °
				-121.569156 °	-121.569217 °
DWR ID	LMA-111				
Comment Code					
Inspector Comment					
Levee Evaluation Comments					
Description:District station 892+36 to 892+70, Sec. 08, T. 5 N. R. 4 E., M.D.M. Approximately 34 linear feet of erosion exists along the water side slope of the Sacramento River (Unit 2). The erosion commences approximately 1/2 of the way down the slope from the crown and extends into the rip rap. A section of rip rap has eroded away in this location.					
Site ID No:285					
Site Designation:LMA-111					
Repair Type: Erosion					
Rating:Area of Concern					
Field Date:7/28/2017					
Notes: highway on crown					

Photo 1 of 3 : FA_2019_RD0003_25_152_20190826_00135.jpg



* Location
 LS : Land Side N/A : Not Applicable
 WS : Water Side
 CR : Crown

** Rating
 A : Acceptable N : Not Inspected/Rated
 M : Minimally Acceptable C : Corrected
 U : Unacceptable A/W : Acceptable but Monitor & Maintain

+ Issue Type
 Ma : Maintenance Deficiency
 Ob : Design & System Obsolescence
 En : Enforcement

**Flood Control Project Maintenance
Levee Inspections**

Maintenance Issue Types Only, Levee Inspection Report By Mile - Fall 2019

Reclamation District No. 0003 Grand Island

Waterway	Bank	Unit Miles	Inspection Start/End	Inspector
Unit No. 02 Right Bank Sacramento River	Right	17.35	10/30/2019 10/29/2019	David Julian

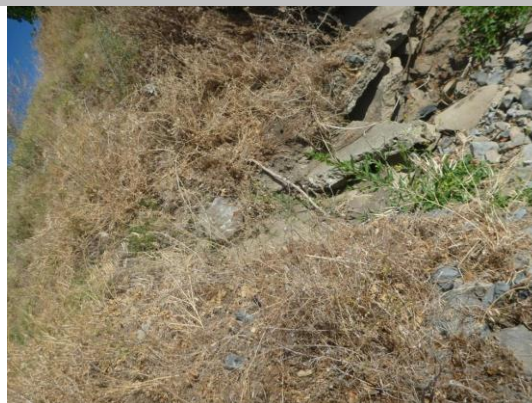
LM Start	16.90	Rating **	A/W	Issue No.	152 (cont)
LM End	16.90	Issue Type +	Ma	Location *	WS
Category	Supplemental			GPS Latitude/Longitude	
				Start	End
Item	2017 Storm Damage			38.298914 °	38.298997 °
				-121.569156 °	-121.569217 °
DWR ID	LMA-111				
Comment Code					
Inspector Comment					
Levee Evaluation Comments					
Description:District station 892+36 to 892+70, Sec. 08, T. 5 N. R. 4 E., M.D.M. Approximately 34 linear feet of erosion exists along the water side slope of the Sacramento River (Unit 2). The erosion commences approximately 1/2 of the way down the slope from the crown and extends into the rip rap. A section of rip rap has eroded away in this location.					
Site ID No:285					
Site Designation:LMA-111					
Repair Type: Erosion					
Rating:Area of Concern					
Field Date:7/28/2017					
Notes: highway on crown					

Photo 2 of 3 : FA_2019_RD0003_25_152_20190826_00136.jpg



LM Start	16.90	Rating **	A/W	Issue No.	152 (cont)
LM End	16.90	Issue Type +	Ma	Location *	WS

Photo 3 of 3 : FA_2019_RD0003_25_152_20190826_00137.jpg



* Location LS : Land Side N/A : Not Applicable WS : Water Side CR : Crown	** Rating A : Acceptable M : Minimally Acceptable U : Unacceptable	N : Not Inspected/Rated C : Corrected A/W : Acceptable but Monitor & Maintain	+ Issue Type Ma : Maintenance Deficiency Ob : Design & System Obsolescence En : Enforcement
--	--	---	---

**Flood Control Project Maintenance
Levee Inspections**

Maintenance Issue Types Only, Levee Inspection Report By Mile - Fall 2019

Reclamation District No. 0003 Grand Island

Waterway	Bank	Unit Miles	Inspection Start/End	Inspector
Unit No. 02 Right Bank Sacramento River	Right	17.35	10/30/2019 10/29/2019	David Julian

LM Start	17.06	Rating **	N	Issue No.	111
LM End	17.06	Issue Type +	Ma	Location *	LS
Category	Earthen Levee			GPS Latitude/Longitude	
				Start	End
Item	Trim / Thin Trees			38.300783 °	38.300783 °
				-121.570958 °	-121.570958 °
DWR ID	DWR_RD0003_02_f_2019_111				
Comment Code					
T5 : Tree stumps.					
Inspector Comment					

Photo 1 of 1 : FA_2019_RD0003_25_111_20191030_00305.jpg



View of recently cut tree stumps on the landside shoulder (Fall 2019).

LM Start	17.27	Rating **	M	Issue No.	114
LM End	17.27	Issue Type +	Ma	Location *	LS
Category	Earthen Levee			GPS Latitude/Longitude	
				Start	End
Item	Slope Stability			38.303351 °	38.303351 °
				-121.573084 °	-121.573084 °
DWR ID	DWR_RD0003_02_s_2019_114				
Comment Code					
S1 : Repair slope instability.					
Inspector Comment					
There is a depression on the landside slope.					

Photo 1 of 2 : FA_2019_RD0003_25_114_20190826_00082.jpg



View looking downstream at depression on the landside slope (Spring 2019).

LM Start	17.27	Rating **	M	Issue No.	114 (cont)
LM End	17.27	Issue Type +	Ma	Location *	LS

Photo 2 of 2 : FA_2019_RD0003_25_114_20190826_00083.jpg



View looking downslope at depression on the landside slope (Spring 2019).

*** Location**

LS : Land Side N/A : Not Applicable
WS : Water Side
CR : Crown

**** Rating**

A : Acceptable N : Not Inspected/Rated
M : Minimally Acceptable C : Corrected
U : Unacceptable A/W : Acceptable but Monitor & Maintain

+ Issue Type

Ma : Maintenance Deficiency
Ob : Design & System Obsolescence
En : Enforcement

**Flood Control Project Maintenance
Levee Inspections**

Maintenance Issue Types Only, Levee Inspection Report By Mile - Fall 2019

Reclamation District No. 0003 Grand Island

Waterway	Bank	Unit Miles	Inspection Start/End	Inspector
Unit No. 02 Right Bank Sacramento River	Right	17.35	10/30/2019 10/29/2019	David Julian

LM Start	17.29	Rating **	N	Issue No.	113
LM End	17.29	Issue Type +	Ma	Location *	LS
Category	Earthen Levee			GPS Latitude/Longitude	
				Start	End
Item	Trim / Thin Trees			38.303558 °	38.303558 °
				-121.573380 °	-121.573380 °
DWR ID	DWR_RD0003_02_s_2019_113				
Comment Code					
T5 : Tree stumps.					
Inspector Comment					
There is a tree stump about 6" at bottom of the levee slope.					

Photo 1 of 1 : FA_2019_RD0003_25_113_20190826_00081.jpg



View looking downslope at tree stumps on the landside (Spring 2019).

* Location LS : Land Side N/A : Not Applicable WS : Water Side CR : Crown	** Rating A : Acceptable M : Minimally Acceptable U : Unacceptable	N : Not Inspected/Rated C : Corrected A/W : Acceptable but Monitor & Maintain	+ Issue Type Ma : Maintenance Deficiency Ob : Design & System Obsolescence En : Enforcement
--	--	---	---

**Flood Control Project Maintenance
Levee Inspections**

Maintenance Issue Types Only, Levee Inspection Report By Mile - Fall 2019

Reclamation District No. 0003 Grand Island

Waterway	Bank	Unit Miles	Inspection Start/End	Inspector
Unit No. 03 Cross Levee		0.43	10/30/2019 10/30/2019	David Julian

LM Start	0.17	Rating **	M	Issue No.	2
LM End	0.17	Issue Type +	Ma	Location *	WS
Category	Earthen Levee			GPS Latitude/Longitude	
				Start	End
Item	Encroachments			38.179752°	38.179752°
				-121.653648°	-121.653648°
DWR ID	DWR_RD0003_03_f_2019_2				
Comment Code					
TR : Tree or limb					
Inspector Comment					

No Photos

* Location LS : Land Side N/A : Not Applicable WS : Water Side CR : Crown	** Rating A : Acceptable M : Minimally Acceptable U : Unacceptable	N : Not Inspected/Rated C : Corrected A/W : Acceptable but Monitor & Maintain	+ Issue Type Ma : Maintenance Deficiency Ob : Design & System Obsolescence En : Enforcement
--	--	---	---