

**Flood Control Project Maintenance
Levee Inspections**

Maintenance Issue Types Only, Levee Inspection Report By Mile - Fall 2018

Reclamation District No. 0003 Grand Island

Waterway	Bank	Unit Miles	Inspection Start/End	Inspector
Unit No. 01 Left Bank Steamboat Slough	Left	10.95	10/16/2018 10/16/2018	David Julian

LM Start	0.00	Rating **	A	Issue No.	102
LM End	0.00	Issue Type +	Ma	Location *	N/A
Category	Earthen Levee			GPS Latitude/Longitude	
				Start	End
Item	Operations & Maintenance Manuals			°	°
DWR ID	DWR_RD0003_01_s_2013_102				
Comment Code					
Inspector Comment					
LMA has a copy of the O & M manual on file at district office.					

No Photos

LM Start	0.00	Rating **	A	Issue No.	103
LM End	0.00	Issue Type +	Ma	Location *	N/A
Category	Earthen Levee			GPS Latitude/Longitude	
				Start	End
Item	Emergency Supplies & Equipment			°	°
DWR ID	DWR_RD0003_01_s_2013_103				
Comment Code					
Inspector Comment					
The LMA has an adequate flood fight supplies and equipment to respond to a flood emergency.					

No Photos

LM Start	0.00	Rating **	A	Issue No.	104
LM End	0.00	Issue Type +	Ma	Location *	N/A
Category	Earthen Levee			GPS Latitude/Longitude	
				Start	End
Item	Flood Preparedness & Training			°	°
DWR ID	DWR_RD0003_01_s_2013_104				
Comment Code					
Inspector Comment					
The LMA is organized to respond to flood emergency. District has been involved in flood fight training.					

No Photos

* Location LS : Land Side N/A : Not Applicable WS : Water Side CR : Crown	** Rating A : Acceptable M : Minimally Acceptable U : Unacceptable	N : Not Inspected/Rated C : Corrected A/W : Acceptable but Monitor & Maintain	+ Issue Type Ma : Maintenance Deficiency Ob : Design & System Obsolescence En : Enforcement
--	--	---	---

Reclamation District No. 0003 Grand Island

Looking east at hole at base of tree on waterward shoulder. (2014)

Page 3 of 28

**Flood Control Project Maintenance
Levee Inspections**

Maintenance Issue Types Only, Levee Inspection Report By Mile - Fall 2018

Reclamation District No. 0003 Grand Island

Waterway	Bank	Unit Miles	Inspection Start/End	Inspector
Unit No. 01 Left Bank Steamboat Slough	Left	10.95	10/16/2018 10/16/2018	David Julian

LM Start	0.18	Rating **	A/W	Issue No.	51
LM End	0.24	Issue Type +	Ma	Location *	WS
Category	Supplemental			GPS Latitude/Longitude	
				Start	End
Item	2017 USACE Erosion Survey, DRAFT			38.303035 °	38.302544 °
				-121.577357 °	-121.578241 °
DWR ID	DWR_RD0003_01_f_2018_51				

Comment Code

Inspector Comment

2017 Site ID: STM 26.0 L
Status: Critical
2018: Deep erosion into waterside toe, I consider this critical (Djulian).
2017 Field Notes: Upgraded to critical. Significant bank failure on upstream end.
Site History: 1997 - Mass failure of berm slope and wave wash erosion. Large trees on top of berm, some failed trees. New area of low rock to on the upstream end. 2000 - Some minor erosion near the downstream end. 2005 - One new small tree has fallen. 2009 - Minimal new erosion. 2010 - Minor new erosion. 2013 - Observed new animal holes and vertical sections at middle of site. 2015 - Minor new erosion.

Photo 1 of 1 : FA_2018_RD0003_24_51_20181023_00152.jpg



USACE 2013 Photo #1

LM Start	0.18	Rating **	A/W	Issue No.	52
LM End	0.21	Issue Type +	Ma	Location *	
Category	Supplemental			GPS Latitude/Longitude	
				Start	End
Item	2017 Storm Damage			38.302981°	38.302778°
				-121.577336°	-121.577683°
DWR ID	DWR_RD0003_01_s_2018_52				

Comment Code

Inspector Comment

Levee Evaluation Comments
Description: District station 9+63 to 10+85, Sec. 07, T. 5 N. R. 4 E., M.D.M. An erosion site exists along approximately 122 linear feet of the water side slope of Steamboat Slough (Unit 1). Erosion commences approximately 1/3 of the way down the slope from the crown to the waterside toe. Erosion is undercutting existing trees.
Site ID No: 274
Site Designation: LMA-100
Repair Type: Erosion
Rating: Serious
Field Date: 7/26/2017
Notes: trees undercut by erosion

Photo 1 of 3 : LEVAL_FA_2018_274_2391.jpg



* Location LS : Land Side N/A : Not Applicable WS : Water Side CR : Crown	** Rating A : Acceptable M : Minimally Acceptable U : Unacceptable N : Not Inspected/Rated C : Corrected A/W : Acceptable but Monitor & Maintain	+ Issue Type Ma : Maintenance Deficiency Ob : Design & System Obsolescence En : Enforcement
--	---	---

**Flood Control Project Maintenance
Levee Inspections**

Maintenance Issue Types Only, Levee Inspection Report By Mile - Fall 2018

Reclamation District No. 0003 Grand Island

Waterway	Bank	Unit Miles	Inspection Start/End	Inspector
Unit No. 01 Left Bank Steamboat Slough	Left	10.95	10/16/2018 10/16/2018	David Julian

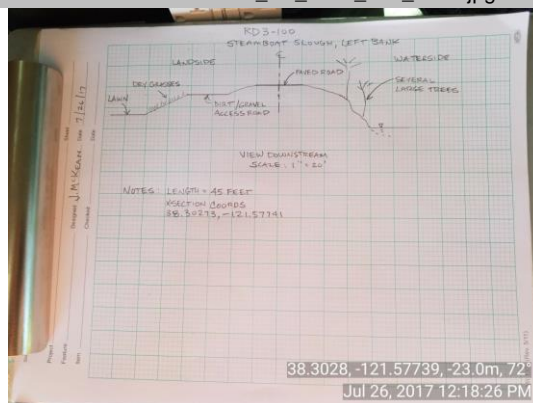
LM Start	0.18	Rating **	A/W	Issue No.	52 (cont)					
LM End	0.21	Issue Type +	Ma	Location *						
Category	Supplemental		GPS Latitude/Longitude							
			Start	End						
Item	2017 Storm Damage		38.302981°	38.302778°						
			-121.577336°	-121.577683°						
DWR ID	DWR_RD0003_01_s_2018_52									
Comment Code										
Inspector Comment										
Levee Evaluation Comments Description: District station 9+63 to 10+85, Sec. 07, T. 5 N. R. 4 E., M.D.M. An erosion site exists along approximately 122 linear feet of the water side slope of Steamboat Slough (Unit 1). Erosion commences approximately 1/3 of the way down the slope from the crown to the waterside toe. Erosion is undercutting existing trees. Site ID No: 274 Site Designation: LMA-100 Repair Type: Erosion Rating: Serious Field Date: 7/26/2017 Notes: trees undercut by erosion										

Photo 2 of 3 : LEVAL_FA_2018_274_2392.jpg



LM Start	0.18	Rating **	A/W	Issue No.	52 (cont)
LM End	0.21	Issue Type +	Ma	Location *	

Photo 3 of 3 : LEVAL_FA_2018_274_2395.jpg

*** Location**

LS : Land Side N/A : Not Applicable
WS : Water Side
CR : Crown

**** Rating**

A : Acceptable N : Not Inspected/Rated
M : Minimally Acceptable C : Corrected
U : Unacceptable A/W : Acceptable but Monitor & Maintain

+ Issue Type

Ma : Maintenance Deficiency
Ob : Design & System Obsolescence
En : Enforcement

**Flood Control Project Maintenance
Levee Inspections**

Maintenance Issue Types Only, Levee Inspection Report By Mile - Fall 2018

Reclamation District No. 0003 Grand Island

Waterway	Bank	Unit Miles	Inspection Start/End	Inspector
Unit No. 01 Left Bank Steamboat Slough	Left	10.95	10/16/2018 10/16/2018	David Julian

LM Start	0.91	Rating **	A/W	Issue No.	53
LM End	0.97	Issue Type +	Ma	Location *	
Category	Supplemental			GPS Latitude/Longitude	
				Start	End
Item	2017 Storm Damage			38.293381 °	38.292617 °
				-121.582450 °	-121.582675 °
DWR ID	DWR_RD0003_01_s_2018_53				
Comment Code					
Inspector Comment					
Levee Evaluation Comments					
Description: District station 48+20 to 51+06, Sec. 07, T. 5 N. R. 4 E., M.D.M. An erosion site exists along approximately 286 linear feet of the water side slope of Steamboat Slough (Unit 1). The erosion begins approximately 1/2 of the way down the slope from the crown to the waterside toe. Erosion is undercutting existing trees.					
Site ID No: 275					
Site Designation: LMA-101					
Repair Type: Erosion					
Rating: Serious					
Field Date: 7/26/2017					
Notes:					

Photo 1 of 3 : LEVAL_FA_2018_275_2396.jpg



38.29302, -121.58252, -26.0m, 344°
Jul 26, 2017 12:32:25 PM

LM Start	0.91	Rating **	A/W	Issue No.	53 (cont)
LM End	0.97	Issue Type +	Ma	Location *	

Photo 2 of 3 : LEVAL_FA_2018_275_2398.jpg



38.29301, -121.58242, -22.0m, 282°
Jul 26, 2017 12:33:03 PM

* Location LS : Land Side N/A : Not Applicable WS : Water Side CR : Crown	** Rating A : Acceptable M : Minimally Acceptable U : Unacceptable	N : Not Inspected/Rated C : Corrected A/W : Acceptable but Monitor & Maintain	+ Issue Type Ma : Maintenance Deficiency Ob : Design & System Obsolescence En : Enforcement
--	--	---	---

**Flood Control Project Maintenance
Levee Inspections**

Maintenance Issue Types Only, Levee Inspection Report By Mile - Fall 2018

Reclamation District No. 0003 Grand Island

Waterway	Bank	Unit Miles	Inspection Start/End	Inspector
Unit No. 01 Left Bank Steamboat Slough	Left	10.95	10/16/2018 10/16/2018	David Julian

LM Start	0.91	Rating **	A/W	Issue No.	53 (cont)	
LM End	0.97	Issue Type +	Ma	Location *		
Category	Supplemental			GPS Latitude/Longitude		
				Start	End	
Item	2017 Storm Damage			38.293381 °	38.292617 °	
				-121.582450 °	-121.582675 °	
DWR ID	DWR_RD0003_01_s_2018_53					
Comment Code						
Inspector Comment						
Levee Evaluation Comments						
Description: District station 48+20 to 51+06, Sec. 07, T. 5 N. R. 4 E., M.D.M. An erosion site exists along approximately 286 linear feet of the water side slope of Steamboat Slough (Unit 1). The erosion begins approximately 1/2 of the way down the slope from the crown to the waterside toe. Erosion is undercutting existing trees.						
Site ID No: 275						
Site Designation: LMA-101						
Repair Type: Erosion						
Rating: Serious						
Field Date: 7/26/2017						
Notes:						

Photo 3 of 3 : LEVAL_FA_2018_275_2399.jpg



* Location LS : Land Side N/A : Not Applicable WS : Water Side CR : Crown	** Rating A : Acceptable M : Minimally Acceptable U : Unacceptable N : Not Inspected/Rated C : Corrected A/W : Acceptable but Monitor & Maintain	+ Issue Type Ma : Maintenance Deficiency Ob : Design & System Obsolescence En : Enforcement
--	---	---

**Flood Control Project Maintenance
Levee Inspections**

Maintenance Issue Types Only, Levee Inspection Report By Mile - Fall 2018

Reclamation District No. 0003 Grand Island

Waterway	Bank	Unit Miles	Inspection Start/End	Inspector
Unit No. 01 Left Bank Steamboat Slough	Left	10.95	10/16/2018 10/16/2018	David Julian

LM Start	0.91	Rating **	A/W	Issue No.	49
LM End	0.96	Issue Type +	Ma	Location *	WS
Category	Supplemental			GPS Latitude/Longitude	
				Start	End
Item	2017 USACE Erosion Survey, DRAFT			38.293386 °	38.292675 °
				-121.582554 °	-121.582741 °
DWR ID	DWR_RD0003_01_f_2018_49				
Comment Code					

Comment Code

Inspector Comment

2017 Site ID: STM 25.0 L
Status: Critical
2018: Deep erosion into levee toe. Roots are exposed. I would consider this critical.
2017 Field Notes: Upgraded to critical. Site has eroded to near vertical at upstream end.
Site History: 1997 - Erosion of sandy levee on top left bank. Site is downstream of a rock section. Large riparian trees on the bank. 1999 - Upstream half of the reach repaired with rock, except for a 30 ft reach at the upstream end. 2001 - Rock repair on the upstream and downstream ends; no revetment at the trees. 2002 - Rock repair is starting to slide off the geotextile at the upstream end. 2005 - One new small tree has fallen. 2006 - 50 ft pocket at the downstream end and at the upstream end with new rock in between. 2007 - Upstream end has been repaired. 2008 - Area closed sign on bank. Newly fallen trees at both ends and pop outs along the bank. 2010 - Site extended downstream. 2011 - New erosion at the toe. More trees popouts. 2013 - Short vertical sections observed at the downstream end. 2015 - Significant new erosion, large oak tree on verge of popping out. 2016 - Sites 24.8 and 25 were combined.

Photo 1 of 1 : FA_2018_RD0003_24_49_20181023_00151.jpg



USACE 2013 Photo #1

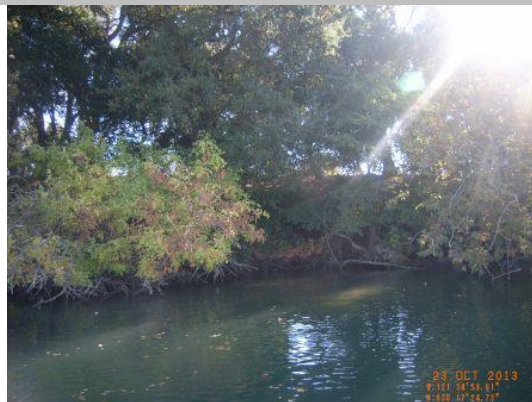
LM Start	1.03	Rating **	U	Issue No.	56
LM End	1.18	Issue Type +	Ma	Location *	WS
Category	Supplemental			GPS Latitude/Longitude	
				Start	End
Item	2017 USACE Erosion Survey, DRAFT			38.291695 °	38.289575 °
				-121.582993 °	-121.583092 °
DWR ID	DWR_RD0003_01_f_2018_56				
Comment Code					

Comment Code

Inspector Comment

2017 Site ID: STM 24.8 L
Status: Eroding
2018: Pockets of erosion that are deep into the levee toe that I would consider critical (Djulian).
2017 Field Notes: New erosion at toe.
Site History: 2008 - Area closed sign on bank. Newly fallen trees at both ends and pop outs along the bank. 2010 - Site extended downstream. 2011 - New erosion at the toe. More trees popouts. 2013 - Short vertical sections observed at the downstream end.

Photo 1 of 2 : FA_2018_RD0003_24_56_20181023_00153.jpg



USACE 2013 Photo #1

* Location LS : Land Side N/A : Not Applicable WS : Water Side CR : Crown		** Rating A : Acceptable M : Minimally Acceptable U : Unacceptable N : Not Inspected/Rated C : Corrected A/W : Acceptable but Monitor & Maintain		+ Issue Type Ma : Maintenance Deficiency Ob : Design & System Obsolescence En : Enforcement	
--	--	---	--	---	--

**Flood Control Project Maintenance
Levee Inspections**

Maintenance Issue Types Only, Levee Inspection Report By Mile - Fall 2018

Reclamation District No. 0003 Grand Island

Waterway	Bank	Unit Miles	Inspection Start/End	Inspector
Unit No. 01 Left Bank Steamboat Slough	Left	10.95	10/16/2018 10/16/2018	David Julian

LM Start	1.03	Rating **	U	Issue No.	56 (cont)	
LM End	1.18	Issue Type +	Ma	Location *	WS	
Category	Supplemental			GPS Latitude/Longitude		
				Start		End
Item	2017 USACE Erosion Survey, DRAFT			38.291695 °		38.289575 °
				-121.582993 °		-121.583092 °
DWR ID	DWR_RD0003_01_f_2018_56					
Comment Code						
Inspector Comment						
2017 Site ID: STM 24.8 L						
Status: Eroding						
2018: Pockets of erosion that are deep into the levee toe that I would consider critical (Djulian).						
2017 Field Notes: New erosion at toe.						
Site History: 2008 - Area closed sign on bank. Newly fallen trees at both ends and pop outs along the bank. 2010 - Site extended downstream. 2011 - New erosion at the toe. More trees popouts.						
2013 - Short vertical sections observed at the downstream end.						

Photo 2 of 2 : FA_2018_RD0003_24_56_20181023_00167.jpg



USACE 2013 Photo #2

LM Start	1.09	Rating **	A/W	Issue No.	60
LM End	1.10	Issue Type +	Ma	Location *	
Category	Supplemental			GPS Latitude/Longitude	
				Start	End
Item	2017 Storm Damage			38.290819 °	38.290706 °
				-121.582942 °	-121.582939 °
DWR ID	DWR_RD0003_01_f_2017_60				
Comment Code					
Inspector Comment					
Levee Evaluation Comments					
Description:District station 57+57 to 57+98, Sec. 18, 1. 5 N. R. 4 E., M.D.M. An erosion site exists along approximately 41 linear feet of the water side slope of Steamboat Slough (Unit 1). The erosion commences approximately 1/2 ofthe way down the slope from the crown to the waterside toe.					
Site ID No:276					
Site Designation:LMA-102					
Repair Type: Erosion					
Rating:Area of Concern					
Field Date:7/26/2017					
Notes:					

Photo 1 of 3 : FA_2018_RD0003_24_60_20180925_00044.jpg



* Location LS : Land Side N/A : Not Applicable WS : Water Side CR : Crown	** Rating A : Acceptable M : Minimally Acceptable U : Unacceptable	N : Not Inspected/Rated C : Corrected A/W : Acceptable but Monitor & Maintain	+ Issue Type Ma : Maintenance Deficiency Ob : Design & System Obsolescence En : Enforcement
--	--	---	---

**Flood Control Project Maintenance
Levee Inspections**

Maintenance Issue Types Only, Levee Inspection Report By Mile - Fall 2018

Reclamation District No. 0003 Grand Island

Waterway	Bank	Unit Miles	Inspection Start/End	Inspector
Unit No. 01 Left Bank Steamboat Slough	Left	10.95	10/16/2018 10/16/2018	David Julian

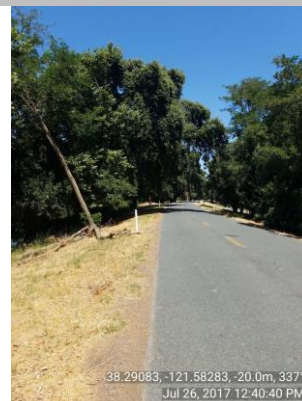
LM Start	1.09	Rating **	A/W	Issue No.	60 (cont)	
LM End	1.10	Issue Type +	Ma	Location *		
Category	Supplemental			GPS Latitude/Longitude		
				Start	End	
Item	2017 Storm Damage			38.290819 °	38.290706 °	
				-121.582942 °	-121.582939 °	
DWR ID	DWR_RD0003_01_f _ 2017_60					
Comment Code						
Inspector Comment						
Levee Evaluation Comments						
Description: District station 57+57 to 57+98, Sec. 18, 1. 5 N. R. 4 E., M.D.M. An erosion site exists along approximately 41 linear feet of the water side slope of Steamboat Slough (Unit 1). The erosion commences approximately 1/2 of the way down the slope from the crown to the waterside toe.						
Site ID No: 276						
Site Designation: LMA-102						
Repair Type: Erosion						
Rating: Area of Concern						
Field Date: 7/26/2017						
Notes:						

Photo 2 of 3 : FA_2018_RD0003_24_60_20180925_00045.jpg



LM Start	1.09	Rating **	A/W	Issue No.	60 (cont)
LM End	1.10	Issue Type +	Ma	Location *	

Photo 3 of 3 : FA_2018_RD0003_24_60_20180925_00046.jpg



* Location LS : Land Side N/A : Not Applicable WS : Water Side CR : Crown	** Rating A : Acceptable M : Minimally Acceptable U : Unacceptable	N : Not Inspected/Rated C : Corrected A/W : Acceptable but Monitor & Maintain	+ Issue Type Ma : Maintenance Deficiency Ob : Design & System Obsolescence En : Enforcement
--	--	---	---

**Flood Control Project Maintenance
Levee Inspections**

Maintenance Issue Types Only, Levee Inspection Report By Mile - Fall 2018

Reclamation District No. 0003 Grand Island

Waterway	Bank	Unit Miles	Inspection Start/End	Inspector
Unit No. 01 Left Bank Steamboat Slough	Left	10.95	10/16/2018 10/16/2018	David Julian

LM Start	1.91	Rating **	M	Issue No.	54
LM End	1.91	Issue Type +	Ma	Location *	WS
Category	Earthen Levee			GPS Latitude/Longitude	
				Start	End
Item	Encroachments			38.280638 °	38.280638 °
				-121.588457 °	-121.588457 °
DWR ID	DWR_RD0003_01_s_2018_54				
Comment Code					
TR : Tree or limb					
Inspector Comment					
Remove tree trimmings.					

Photo 1 of 1 : FA_2018_RD0003_24_54_20180925_00039.jpg



Cut branches on waterside slope.

LM Start	2.27	Rating **	M	Issue No.	55
LM End	2.27	Issue Type +	Ma	Location *	WS
Category	Earthen Levee			GPS Latitude/Longitude	
				Start	End
Item	Encroachments			38.275827 °	38.275827 °
				-121.589979 °	-121.589979 °
DWR ID	DWR_RD0003_01_s_2018_55				
Comment Code					
TR : Tree or limb					
Inspector Comment					
Fallen tree on waterside slope.					

Photo 1 of 1 : FA_2018_RD0003_24_55_20180925_00040.jpg



Fallen tree limb on waterside.

LM Start	2.53	Rating **	U	Issue No.	65
LM End	2.57	Issue Type +	Ma	Location *	LS
Category	Earthen Levee			GPS Latitude/Longitude	
				Start	End
Item	Vegetation			38.272886 °	38.272262 °
				-121.587624 °	-121.588010 °
DWR ID	DWR_RD0003_01_s_2018_65				
Comment Code					
V1 : Control annual grass and weeds on the levee slopes and easements.					
Inspector Comment					

Photo 1 of 1 : FA_2018_RD0003_24_65_20180925_00050.jpg



Landside vegetation.

*** Location**

LS : Land Side N/A : Not Applicable
WS : Water Side
CR : Crown

**** Rating**

A : Acceptable N : Not Inspected/Rated
M : Minimally Acceptable C : Corrected
U : Unacceptable A/W : Acceptable but Monitor & Maintain

+ Issue Type

Ma : Maintenance Deficiency
Ob : Design & System Obsolescence
En : Enforcement

**Flood Control Project Maintenance
Levee Inspections**

Maintenance Issue Types Only, Levee Inspection Report By Mile - Fall 2018

Reclamation District No. 0003 Grand Island

Waterway	Bank	Unit Miles	Inspection Start/End	Inspector
Unit No. 01 Left Bank Steamboat Slough	Left	10.95	10/16/2018 10/16/2018	David Julian

LM Start	2.66	Rating **	M	Issue No.	82
LM End	2.66	Issue Type +	Ma	Location *	WS
Category	Earthen Levee			GPS Latitude/Longitude	
				Start	End
Item	Encroachments			38.271128 °	38.271128 °
				-121.588634 °	-121.588634 °
DWR ID	DWR_RD0003_01_f_2017_82				
Comment Code					
TR : Tree or limb					
Inspector Comment					
Tree limbs should be removed water side slope.					

Photo 1 of 1 : FA_2018_RD0003_24_82_20180925_00070.jpg



Looking southwest at waterside slope.

LM Start	2.69	Rating **	M	Issue No.	29
LM End	2.69	Issue Type +	Ma	Location *	WS
Category	Earthen Levee			GPS Latitude/Longitude	
				Start	End
Item	Encroachments			38.270733 °	38.270733 °
				-121.588708 °	-121.588708 °
DWR ID	DWR_RD0003_01_s_2018_29				
Comment Code					
TR : Tree or limb					
Inspector Comment					
Large tree limb on waterside slope.					

No Photos

LM Start	3.16	Rating **	N	Issue No.	47
LM End	3.16	Issue Type +	Ma	Location *	WS
Category	Earthen Levee			GPS Latitude/Longitude	
				Start	End
Item	Trim / Thin Trees			38.264154 °	38.264154 °
				-121.587242 °	-121.587242 °
DWR ID	DWR_RD0003_01_s_2012_47				
Comment Code					
T5 : Tree stumps.					
Inspector Comment					
6 large stumps on slope.					

No Photos

* Location LS : Land Side N/A : Not Applicable WS : Water Side CR : Crown	** Rating A : Acceptable M : Minimally Acceptable U : Unacceptable	N : Not Inspected/Rated C : Corrected A/W : Acceptable but Monitor & Maintain	+ Issue Type Ma : Maintenance Deficiency Ob : Design & System Obsolescence En : Enforcement
--	--	---	---

**Flood Control Project Maintenance
Levee Inspections**

Maintenance Issue Types Only, Levee Inspection Report By Mile - Fall 2018

Reclamation District No. 0003 Grand Island

Waterway	Bank	Unit Miles	Inspection Start/End	Inspector
Unit No. 01 Left Bank Steamboat Slough	Left	10.95	10/16/2018 10/16/2018	David Julian

LM Start	4.38	Rating **	C	Issue No.	80
LM End	4.48	Issue Type +	Ma	Location *	LS
Category	Earthen Levee			GPS Latitude/Longitude	
				Start	End
Item	Vegetation			38.252940 °	38.251580 °
				-121.600721 °	-121.601017 °
DWR ID	DWR_RD0003_01_s_2018_80				
Comment Code					
V2 : Remove the wild growth other than native grasses from the levee slopes.					
Inspector Comment					

No Photos

LM Start	4.87	Rating **	M	Issue No.	83
LM End	4.87	Issue Type +	Ma	Location *	LS
Category	Earthen Levee			GPS Latitude/Longitude	
				Start	End
Item	Slope Stability			38.245903 °	38.245903 °
				-121.600851 °	-121.600851 °
DWR ID	DWR_RD0003_01_f_2017_83				
Comment Code					
S1 : Repair slope instability.					
Inspector Comment					
Landside slope has a depression.					

Photo 1 of 1 : FA_2018_RD0003_24_83_20180925_00071.jpg



Looking east on landside slope.

LM Start	5.65	Rating **	M	Issue No.	63
LM End	5.65	Issue Type +	Ma	Location *	LS
Category	Earthen Levee			GPS Latitude/Longitude	
				Start	End
Item	Trim / Thin Trees			38.234721 °	38.234721 °
				-121.601709 °	-121.601709 °
DWR ID	DWR_RD0003_01_f_2016_63				
Comment Code					
T1 : Trim trees to at least five feet above ground level.					
Inspector Comment					
Trim growth from tree so that levee slope can be seen.					

Photo 1 of 2 : FA_2018_RD0003_24_63_20181017_00163.jpg



View of slope where tree limb was removed. Now the extra growth on the existing branches needs to be removed (October 2018).

* Location LS : Land Side N/A : Not Applicable WS : Water Side CR : Crown		** Rating A : Acceptable M : Minimally Acceptable U : Unacceptable N : Not Inspected/Rated C : Corrected A/W : Acceptable but Monitor & Maintain		+ Issue Type Ma : Maintenance Deficiency Ob : Design & System Obsolescence En : Enforcement	
--	--	---	--	---	--

**Flood Control Project Maintenance
Levee Inspections**

Maintenance Issue Types Only, Levee Inspection Report By Mile - Fall 2018

Reclamation District No. 0003 Grand Island

Waterway	Bank	Unit Miles	Inspection Start/End	Inspector
Unit No. 01 Left Bank Steamboat Slough	Left	10.95	10/16/2018 10/16/2018	David Julian

LM Start	5.65	Rating **	M	Issue No.	63 (cont)	
LM End	5.65	Issue Type +	Ma	Location *	LS	
Category	Earthen Levee			GPS Latitude/Longitude		
				Start		End
Item	Trim / Thin Trees			38.234721°		38.234721°
				-121.601709°		-121.601709°
DWR ID	DWR_RD0003_01_f_2016_63					
Comment Code						
T1 : Trim trees to at least five feet above ground level.						
Inspector Comment						
Trim growth from tree so that levee slope can be seen.						

Photo 2 of 2 : FA_2018_RD0003_24_63_20180925_00049.jpg



Low-lying tree limb should be removed from landside slope.

LM Start	5.77	Rating **	M	Issue No.	66
LM End	5.77	Issue Type +	Ma	Location *	WS
Category	Earthen Levee			GPS Latitude/Longitude	
				Start	End
Item	Encroachments			38.233098 °	38.233098 °
				-121.601323 °	-121.601323 °
DWR ID	DWR_RD0003_01_f_2016_66				
Comment Code					
TR : Tree or limb					
Inspector Comment					
Broken tree branches and limbs on waterward slope.					

Photo 1 of 1 : FA_2018_RD0003_24_66_20180925_00051.jpg



Looking west at tree branches and limbs on waterward slope.

LM Start	5.98	Rating **	M	Issue No.	94
LM End	5.98	Issue Type +	Ma	Location *	WS
Category	Earthen Levee			GPS Latitude/Longitude	
				Start	End
Item	Vegetation			38.230100 °	38.230100 °
				-121.601700 °	-121.601700 °
DWR ID	DWR_RD0003_01_f_2018_94				
Comment Code					
V1 : Control annual grass and weeds on the levee slopes and easements.					
Inspector Comment					

No Photos

* Location LS : Land Side N/A : Not Applicable WS : Water Side CR : Crown	** Rating A : Acceptable M : Minimally Acceptable U : Unacceptable	N : Not Inspected/Rated C : Corrected A/W : Acceptable but Monitor & Maintain	+ Issue Type Ma : Maintenance Deficiency Ob : Design & System Obsolescence En : Enforcement
--	--	--	---

**Flood Control Project Maintenance
Levee Inspections**

Maintenance Issue Types Only, Levee Inspection Report By Mile - Fall 2018

Reclamation District No. 0003 Grand Island

Waterway	Bank	Unit Miles	Inspection Start/End	Inspector
Unit No. 01 Left Bank Steamboat Slough	Left	10.95	10/16/2018 10/16/2018	David Julian

LM Start	6.85	Rating **	M	Issue No.	86
LM End	6.92	Issue Type +	Ma	Location *	LS
Category	Earthen Levee			GPS Latitude/Longitude	
				Start	End
Item	Vegetation			38.217905 °	38.217060 °
				-121.603158 °	-121.603717 °
DWR ID	DWR_RD0003_01_s_2018_86				
Comment Code					
V2 : Remove the wild growth other than native grasses from the levee slopes.					
Inspector Comment					
Dense vegetation along landside toe.					

Photo 1 of 1 : FA_2018_RD0003_24_86_20180925_00073.jpg



Dense vegetation along landside toe prevents inspection and access (Spring 2018).

LM Start	7.02	Rating **	C	Issue No.	88
LM End	7.02	Issue Type +	Ma	Location *	LS
Category	Earthen Levee			GPS Latitude/Longitude	
				Start	End
Item	Trim / Thin Trees			38.215711 °	38.215711 °
				-121.604581 °	-121.604581 °
DWR ID	DWR_RD0003_01_s_2018_88				
Comment Code					
T1 : Trim trees to at least five feet above ground level.					
Inspector Comment					

No Photos

LM Start	7.44	Rating **	M	Issue No.	89
LM End	7.44	Issue Type +	Ma	Location *	WS
Category	Earthen Levee			GPS Latitude/Longitude	
				Start	End
Item	Trim / Thin Trees			38.210200 °	38.210200 °
				-121.607809 °	-121.607809 °
DWR ID	DWR_RD0003_01_s_2018_89				
Comment Code					
T1 : Trim trees to at least five feet above ground level.					
Inspector Comment					
Low leaning tree on waterside is beginning to inhibit inspection and access. Should be removed.					

No Photos

* Location LS : Land Side N/A : Not Applicable WS : Water Side CR : Crown	** Rating A : Acceptable M : Minimally Acceptable U : Unacceptable	N : Not Inspected/Rated C : Corrected A/W : Acceptable but Monitor & Maintain	+ Issue Type Ma : Maintenance Deficiency Ob : Design & System Obsolescence En : Enforcement
--	--	---	---

**Flood Control Project Maintenance
Levee Inspections**

Maintenance Issue Types Only, Levee Inspection Report By Mile - Fall 2018

Reclamation District No. 0003 Grand Island

Waterway	Bank	Unit Miles	Inspection Start/End	Inspector
Unit No. 01 Left Bank Steamboat Slough	Left	10.95	10/16/2018 10/16/2018	David Julian

LM Start	8.82	Rating **	M	Issue No.	101
LM End	8.82	Issue Type +	Ma	Location *	WS
Category	Earthen Levee			GPS Latitude/Longitude	
				Start	End
Item	Trim / Thin Trees			38.193568 °	38.193568 °
				-121.619040 °	-121.619040 °
DWR ID	DWR_RD0003_01_f_2018_101				
Comment Code					
T1 : Trim trees to at least five feet above ground level.					
Inspector Comment					

No Photos

LM Start	8.84	Rating **	M	Issue No.	105
LM End	8.84	Issue Type +	Ma	Location *	WS
Category	Earthen Levee			GPS Latitude/Longitude	
				Start	End
Item	Trim / Thin Trees			38.193413 °	38.193413 °
				-121.619320 °	-121.619320 °
DWR ID	DWR_RD0003_01_f_2018_105				
Comment Code					
T1 : Trim trees to at least five feet above ground level.					
Inspector Comment					

No Photos

LM Start	8.92	Rating **	U	Issue No.	39
LM End	8.92	Issue Type +	Ma	Location *	WS
Category	Earthen Levee			GPS Latitude/Longitude	
				Start	End
Item	Trim / Thin Trees			38.193000 °	38.193000 °
				-121.620700 °	-121.620700 °
DWR ID	DWR_RD0003_01_f_2018_39				
Comment Code					
T5 : Tree stumps.					
Inspector Comment					
Remove tree stumps.					

Photo 1 of 1 : FA_2018_RD0003_24_39_20181017_00162.jpg



View of rotting tree stump on water side crown (October 2018).

* Location LS : Land Side N/A : Not Applicable WS : Water Side CR : Crown	** Rating A : Acceptable M : Minimally Acceptable U : Unacceptable	N : Not Inspected/Rated C : Corrected A/W : Acceptable but Monitor & Maintain	+ Issue Type Ma : Maintenance Deficiency Ob : Design & System Obsolescence En : Enforcement
--	--	---	---

**Flood Control Project Maintenance
Levee Inspections**

Maintenance Issue Types Only, Levee Inspection Report By Mile - Fall 2018

Reclamation District No. 0003 Grand Island

Waterway	Bank	Unit Miles	Inspection Start/End	Inspector
Unit No. 01 Left Bank Steamboat Slough	Left	10.95	10/16/2018 10/16/2018	David Julian

LM Start	10.15	Rating **	A/W	Issue No.	72	
LM End	10.21	Issue Type +	Ma	Location *		
Category	Supplemental			GPS Latitude/Longitude		
				Start	End	
Item	2017 Storm Damage			38.188431 °	38.187803 °	
				-121.641703 °	-121.642478 °	
DWR ID	DWR_RD0003_01_f_2017_72					
Comment Code						
Inspector Comment						
Levee Evaluation Comments						
Description:District station 536+35 to 539+47, Sec. 16, T. 4 N. R. 3 E., M.D.M. The waterside slope experienced sloughing and erosion along approximately 312 linear feet of Steamboat Slough (Unit 1). Sloughing commences at approximately 1/4 ofthe way down the slope from the crown and extends to the rip rap.						
Site ID No:277						
Site Designation:LMA-103						
Repair Type: Erosion						
Rating:Area of Concern						
Field Date:7/26/2017						
Notes:						

Photo 1 of 3 : FA_2018_RD0003_24_72_20180925_00056.jpg



LM Start	10.15	Rating **	A/W	Issue No.	72 (cont)
LM End	10.21	Issue Type +	Ma	Location *	

Photo 2 of 3 : FA_2018_RD0003_24_72_20180925_00057.jpg



* Location LS : Land Side N/A : Not Applicable WS : Water Side CR : Crown	** Rating A : Acceptable M : Minimally Acceptable U : Unacceptable	N : Not Inspected/Rated C : Corrected A/W : Acceptable but Monitor & Maintain	+ Issue Type Ma : Maintenance Deficiency Ob : Design & System Obsolescence En : Enforcement
--	--	---	---

**Flood Control Project Maintenance
Levee Inspections**

Maintenance Issue Types Only, Levee Inspection Report By Mile - Fall 2018

Reclamation District No. 0003 Grand Island

Waterway	Bank	Unit Miles	Inspection Start/End	Inspector
Unit No. 01 Left Bank Steamboat Slough	Left	10.95	10/16/2018 10/16/2018	David Julian

LM Start	10.15	Rating **	A/W	Issue No.	72 (cont)
LM End	10.21	Issue Type +	Ma	Location *	
Category	Supplemental			GPS Latitude/Longitude	
				Start	End
Item	2017 Storm Damage			38.188431°	38.187803°
				-121.641703°	-121.642478°
DWR ID	DWR_RD0003_01_f_2017_72				
Comment Code					
Inspector Comment					
<p>Levee Evaluation Comments</p> <p>Description: District station 536+35 to 539+47, Sec. 16, T. 4 N. R. 3 E., M.D.M. The waterside slope experienced sloughing and erosion along approximately 312 linear feet of Steamboat Slough (Unit 1). Sloughing commences at approximately 1/4 of the way down the slope from the crown and extends to the rip rap.</p> <p>Site ID No: 277</p> <p>Site Designation: LMA-103</p> <p>Repair Type: Erosion</p> <p>Rating: Area of Concern</p> <p>Field Date: 7/26/2017</p> <p>Notes:</p>					

Photo 3 of 3 : FA_2018_RD0003_24_72_20180925_00058.jpg



LM Start	10.62	Rating **	M	Issue No.	46
LM End	10.69	Issue Type +	Ma	Location *	WS
Category	Supplemental			GPS Latitude/Longitude	
				Start	End
Item	2017 USACE Erosion Survey, DRAFT			38.184180°	38.183798°
				-121.648055°	-121.649246°
DWR ID	DWR_RD0003_01_f_2018_46				
Comment Code					
Inspector Comment					
<p>2017 Site ID: STM 15.5 L</p> <p>Status: Eroding</p> <p>2017 Field Notes: No observed change.</p> <p>Site History: 2016 - Large erosion pockets observed.</p>					

No Photos

* Location LS : Land Side N/A : Not Applicable WS : Water Side CR : Crown	** Rating A : Acceptable M : Minimally Acceptable U : Unacceptable	N : Not Inspected/Rated C : Corrected A/W : Acceptable but Monitor & Maintain	+ Issue Type Ma : Maintenance Deficiency Ob : Design & System Obsolescence En : Enforcement
--	--	---	---

Reclamation District No. 0003 Grand Island

A photograph showing a shoreline with a wooden fence, tall green reeds, and a body of water. The foreground is covered in dry, yellowish grass and some rocks. The fence is made of vertical wooden posts. The water is calm and reflects the sky. The sky is overcast and grey.Page 20 of 28

**Flood Control Project Maintenance
Levee Inspections**

Maintenance Issue Types Only, Levee Inspection Report By Mile - Fall 2018

Reclamation District No. 0003 Grand Island

Waterway	Bank	Unit Miles	Inspection Start/End	Inspector
Unit No. 01 Left Bank Steamboat Slough	Left	10.95	10/16/2018 10/16/2018	David Julian

LM Start	10.67	Rating **	A/W	Issue No.	73 (cont)	
LM End	10.92	Issue Type +	Ma	Location *		
Category	Supplemental			GPS Latitude/Longitude		
				Start		End
Item	2017 Storm Damage			38.183810 °		38.182480 °
				-121.648780 °		-121.653150 °
DWR ID	DWR_RD0003_01_f_2017_73					
Comment Code						
Inspector Comment						
Levee Evaluation Comments						
Description:						
Site ID No:63						
Site Designation:DWR_RD0003_01_R_2012_03						
Repair Type: Erosion						
Rating:Serious						
Field Date:6/8/2017						
Notes: scattered erosion scarps caving into levee crown, within erosion limit crown width ranges from 15 to 30', several trees with exposed tree roots and leaning into the river,						

Photo 3 of 3 : FA_2018_RD0003_24_73_20180925_00061.jpg



LM Start	10.75	Rating **	A/W	Issue No.	96
LM End	10.75	Issue Type +	Ma	Location *	WS
Category	Earthen Levee			GPS Latitude/Longitude	
				Start	End
Item	Erosion / Bank Caving			38.183422 °	38.183422 °
				-121.650182 °	-121.650182 °
DWR ID	DWR_RD0003_01_s_2013_96				
Comment Code					
E2 : Schedule repair of erosion site prior to the next inspection.					
Inspector Comment					
Erosion extends to waterward shoulder.					

Photo 1 of 2 : FA_2018_RD0003_24_96_20180925_00076.jpg



Looking northwest at erosion on waterward slope.

* Location		** Rating		+ Issue Type	
LS : Land Side	N/A : Not Applicable	A : Acceptable	N : Not Inspected/Rated	Ma : Maintenance Deficiency	
WS : Water Side		M : Minimally Acceptable	C : Corrected	Ob : Design & System Obsolescence	
CR : Crown		U : Unacceptable	A/W : Acceptable but Monitor & Maintain	En : Enforcement	

**Flood Control Project Maintenance
Levee Inspections**

Maintenance Issue Types Only, Levee Inspection Report By Mile - Fall 2018

Reclamation District No. 0003 Grand Island

Waterway	Bank	Unit Miles	Inspection Start/End	Inspector
Unit No. 01 Left Bank Steamboat Slough	Left	10.95	10/16/2018 10/16/2018	David Julian

LM Start	10.75	Rating **	A/W	Issue No.	96 (cont)
LM End	10.75	Issue Type +	Ma	Location *	WS
Category	Earthen Levee			GPS Latitude/Longitude	
				Start	End
Item	Erosion / Bank Caving			38.183422 °	38.183422 °
				-121.650182 °	-121.650182 °
DWR ID	DWR_RD0003_01_s_2013_96				
Comment Code					
E2 : Schedule repair of erosion site prior to the next inspection.					
Inspector Comment					
Erosion extends to waterward shoulder.					

Photo 2 of 2 : FA_2018_RD0003_24_96_20180925_00077.jpg



Looking southwest at erosion on waterward slope.

LM Start	10.78	Rating **	A/W	Issue No.	97
LM End	10.80	Issue Type +	Ma	Location *	WS
Category	Earthen Levee			GPS Latitude/Longitude	
				Start	End
Item	Erosion / Bank Caving			38.183228 °	38.183123 °
				-121.650797 °	-121.651070 °
DWR ID	DWR_RD0003_01_s_2013_97				
Comment Code					
E2 : Schedule repair of erosion site prior to the next inspection.					
Inspector Comment					
Erosion extends to waterward shoulder.					

Photo 1 of 2 : FA_2018_RD0003_24_97_20180925_00078.jpg



Looking south at erosion on waterward slope.

LM Start	10.78	Rating **	A/W	Issue No.	97 (cont)
LM End	10.80	Issue Type +	Ma	Location *	WS

Photo 2 of 2 : FA_2018_RD0003_24_97_20180925_00079.jpg



Looking southwest at erosion on waterward slope.

*** Location**

LS : Land Side N/A : Not Applicable
WS : Water Side
CR : Crown

**** Rating**

A : Acceptable N : Not Inspected/Rated
M : Minimally Acceptable C : Corrected
U : Unacceptable A/W : Acceptable but Monitor & Maintain

+ Issue Type

Ma : Maintenance Deficiency
Ob : Design & System Obsolescence
En : Enforcement

**Flood Control Project Maintenance
Levee Inspections**

Maintenance Issue Types Only, Levee Inspection Report By Mile - Fall 2018

Reclamation District No. 0003 Grand Island

Waterway	Bank	Unit Miles	Inspection Start/End	Inspector
Unit No. 01 Left Bank Steamboat Slough	Left	10.95	10/16/2018 10/16/2018	David Julian

LM Start	10.83	Rating **	M	Issue No.	92
LM End	10.83	Issue Type +	Ma	Location *	LS
Category	Earthen Levee			GPS Latitude/Longitude	
				Start	End
Item	Vegetation			38.182957°	38.182957°
				-121.651585°	-121.651585°
DWR ID	DWR_RD0003_01_f_2017_92				
Comment Code					
V2 : Remove the wild growth other than native grasses from the levee slopes.					
Inspector Comment					

No Photos

LM Start	10.83	Rating **	M	Issue No.	212	
LM End	10.83	Issue Type +	Ma	Location *		
Category	Supplemental			GPS Latitude/Longitude		
				Start	End	
Item	DWR UCIP LMA Responsibility			38.182982°	38.182982°	
				-121.651610°	-121.651610°	
DWR ID	22206					
Comment Code						
Inspector Comment						
FS_ID:29165						
DS_ID:22206						
EP_NO: N/A						
Repair Type: Non-Urgent						
Crossing Status: Found						
UCIP Comments: Pipe appears abandoned and should be verified as having been done so properly.						
FIELD_STRUCT_DESC: *ABANDONED* 1 of 3: 36-inch corrugated metal drainage pipe through the levee, 15 feet below the crown. Slide gate in a 48-inch corrugated metal pipe (CMP) riser on the waterside (WS) shoulder. Flap gate at the WS toe has been sealed shut with sealant. [Additional Reference(s): DWR Levee Log, 1993, referenced as 24 feet below the crown. USACE Sacramento O&M Manual 104, February 1960, (RM 15.20), referenced as invert elevation 24 feet below the crown].						
FS Date: 2/11/2014						

Photo 1 of 3 : UCIP_FA_2018_29165_53866.jpg



36-inch CMP drainpipe with flapgate on WS toe.

* Location LS : Land Side N/A : Not Applicable WS : Water Side CR : Crown	** Rating A : Acceptable M : Minimally Acceptable U : Unacceptable N : Not Inspected/Rated C : Corrected A/W : Acceptable but Monitor & Maintain	+ Issue Type Ma : Maintenance Deficiency Ob : Design & System Obsolescence En : Enforcement
--	---	---

**Flood Control Project Maintenance
Levee Inspections**

Maintenance Issue Types Only, Levee Inspection Report By Mile - Fall 2018

Reclamation District No. 0003 Grand Island

Waterway	Bank	Unit Miles	Inspection Start/End	Inspector
Unit No. 01 Left Bank Steamboat Slough	Left	10.95	10/16/2018 10/16/2018	David Julian

LM Start	10.83	Rating **	M	Issue No.	212 (cont)	
LM End	10.83	Issue Type +	Ma	Location *		
Category	Supplemental			GPS Latitude/Longitude		
				Start	End	
Item	DWR UCIP LMA Responsibility			38.182982 °	38.182982 °	
				-121.651610 °	-121.651610 °	
DWR ID	22206					
Comment Code						
Inspector Comment						
FS_ID:29165 DS_ID:22206 EP_NO: N/A Repair Type: Non-Urgent Crossing Status: Found UCIP Comments: Pipe appears abandoned and should be verified as having been done so properly. FIELD_STRUCT_DESC: *ABANDONED* 1 of 3: 36-inch corrugated metal drainage pipe through the levee, 15 feet below the crown. Slide gate in a 48-inch corrugated metal pipe (CMP) riser on the waterside (WS) shoulder. Flap gate at the WS toe has been sealed shut with sealant. [Additional Reference(s): DWR Levee Log, 1993, referenced as 24 feet below the crown. USACE Sacramento O&M Manual 104, February 1960, (RM 15.20), referenced as invert elevation 24 feet below the crown]. FS Date: 2/11/2014						

Photo 2 of 3 : UCIP_FA_2018_29165_53865.jpg



Slide gate in 48-inch CMP riser on WS shoulder.

LM Start	10.83	Rating **	M	Issue No.	212 (cont)
LM End	10.83	Issue Type +	Ma	Location *	

Photo 3 of 3 : UCIP_FA_2018_29165_53864.jpg



Steel weir on LS toe.

* Location LS : Land Side N/A : Not Applicable WS : Water Side CR : Crown	** Rating A : Acceptable M : Minimally Acceptable U : Unacceptable	N : Not Inspected/Rated C : Corrected A/W : Acceptable but Monitor & Maintain	+ Issue Type Ma : Maintenance Deficiency Ob : Design & System Obsolescence En : Enforcement
--	--	---	---

**Flood Control Project Maintenance
Levee Inspections**

Maintenance Issue Types Only, Levee Inspection Report By Mile - Fall 2018

Reclamation District No. 0003 Grand Island

Waterway	Bank	Unit Miles	Inspection Start/End	Inspector
Unit No. 01 Left Bank Steamboat Slough	Left	10.95	10/16/2018 10/16/2018	David Julian

LM Start	10.83	Rating **	M	Issue No.	213
LM End	10.83	Issue Type +	Ma	Location *	
Category	Supplemental			GPS Latitude/Longitude	
				Start	End
Item	DWR UCIP LMA Responsibility			38.182973 °	38.182973 °
				-121.651645 °	-121.651645 °
DWR ID	22349				
Comment Code					
Inspector Comment					
FS_ID:29164					
DS_ID:22349					
EP_NO: N/A					
Repair Type: Non-Urgent					
Crossing Status: Found					
UCIP Comments: Pipe appears abandoned and should be verified as having been filled with grout.					
FIELD_STRUCT_DESC: *ABANDONED* 2 of 3: 36-inch corrugated metal drainage pipe through the levee, 15 feet below the crown. Slide gate in a 48-inch corrugated metal pipe (CMP) riser on the waterside (WS) shoulder. Steel intake weir at the landside (LS) toe. Steel plate welded over the pipe on the WS toe. [Additional Reference(s): DWR Levee Log, 1993, referenced as 24 feet below the crown. USACE Sacramento O&M Manual 104, February 1960, (RM 15.20), referenced as invert elevation 24 feet below the crown].					
FS Date: 2/11/2014					

LM Start	10.83	Rating **	M	Issue No.	213 (cont)
LM End	10.83	Issue Type +	Ma	Location *	

Photo 1 of 3 : UCIP_FA_2018_29164_53862.jpg



Drainpipe visible on WS toe with steel plate welded over end.

Photo 2 of 3 : UCIP_FA_2018_29164_53861.jpg



48-inch CMP riser with slide gate closed on WS shoulder.

* Location LS : Land Side N/A : Not Applicable WS : Water Side CR : Crown	** Rating A : Acceptable M : Minimally Acceptable U : Unacceptable	N : Not Inspected/Rated C : Corrected A/W : Acceptable but Monitor & Maintain	+ Issue Type Ma : Maintenance Deficiency Ob : Design & System Obsolescence En : Enforcement
--	--	---	---

**Flood Control Project Maintenance
Levee Inspections**

Maintenance Issue Types Only, Levee Inspection Report By Mile - Fall 2018

Reclamation District No. 0003 Grand Island

Waterway	Bank	Unit Miles	Inspection Start/End	Inspector
Unit No. 01 Left Bank Steamboat Slough	Left	10.95	10/16/2018 10/16/2018	David Julian

LM Start	10.83	Rating **	M	Issue No.	213 (cont)	
LM End	10.83	Issue Type +	Ma	Location *		
Category	Supplemental			GPS Latitude/Longitude		
				Start	End	
Item	DWR UCIP LMA Responsibility			38.182973 °	38.182973 °	
				-121.651645 °	-121.651645 °	
DWR ID	22349					
Comment Code						
Inspector Comment						
FS_ID:29164						
DS_ID:22349						
EP_NO: N/A						
Repair Type: Non-Urgent						
Crossing Status: Found						
UCIP Comments: Pipe appears abandoned and should be verified as having been filled with grout.						
FIELD_STRUCT_DESC: *ABANDONED* 2 of 3: 36-inch corrugated metal drainage pipe through the levee, 15 feet below the crown. Slide gate in a 48-inch corrugated metal pipe (CMP) riser on the waterside (WS) shoulder. Steel intake weir at the landside (LS) toe. Steel plate welded over the pipe on the WS toe. [Additional Reference(s): DWR Levee Log, 1993, referenced as 24 feet below the crown. USACE Sacramento O&M Manual 104, February 1960, (RM 15.20), referenced as invert elevation 24 feet below the crown].						
FS Date: 2/11/2014						

Photo 3 of 3 : UCIP_FA_2018_29164_53860.jpg



Steel weir on LS toe.

LM Start	10.86	Rating **	A/W	Issue No.	98
LM End	10.89	Issue Type +	Ma	Location *	WS
Category	Earthen Levee			GPS Latitude/Longitude	
				Start	End
Item	Erosion / Bank Caving			38.182792°	38.182672°
				-121.652142°	-121.652555°
DWR ID	DWR_RD0003_01_s_2013_98				
Comment Code					
E2 : Schedule repair of erosion site prior to the next inspection.					
Inspector Comment					
Erosion extends to waterward shoulder.					

Photo 1 of 3 : FA_2018_RD0003_24_98_20180925_00080.jpg



Looking north at erosion on waterward slope.

* Location LS : Land Side N/A : Not Applicable WS : Water Side CR : Crown	** Rating A : Acceptable M : Minimally Acceptable U : Unacceptable	N : Not Inspected/Rated C : Corrected A/W : Acceptable but Monitor & Maintain	+ Issue Type Ma : Maintenance Deficiency Ob : Design & System Obsolescence En : Enforcement
--	--	---	---

**Flood Control Project Maintenance
Levee Inspections**

Maintenance Issue Types Only, Levee Inspection Report By Mile - Fall 2018

Reclamation District No. 0003 Grand Island

Waterway	Bank	Unit Miles	Inspection Start/End	Inspector
Unit No. 01 Left Bank Steamboat Slough	Left	10.95	10/16/2018 10/16/2018	David Julian

LM Start	10.91	Rating **	A/W	Issue No.	99 (cont)
LM End	10.94	Issue Type +	Ma	Location *	WS
Category	Earthen Levee			GPS Latitude/Longitude	
				Start	End
Item	Erosion / Bank Caving			38.182537 °	38.182388 °
				-121.652987 °	-121.653388 °
DWR ID	DWR_RD0003_01_f_2018_99				
Comment Code					
E2 : Schedule repair of erosion site prior to the next inspection.					
Inspector Comment					
Erosion extends to waterward shoulder.					

Photo 2 of 2 : FA_2018_RD0003_24_99_20180925_00084.jpg



Looking north at erosion on waterward shoulder and slope.

* Location LS : Land Side N/A : Not Applicable WS : Water Side CR : Crown	** Rating A : Acceptable M : Minimally Acceptable U : Unacceptable	N : Not Inspected/Rated C : Corrected A/W : Acceptable but Monitor & Maintain	+ Issue Type Ma : Maintenance Deficiency Ob : Design & System Obsolescence En : Enforcement
--	--	---	---

**Flood Control Project Maintenance
Levee Inspections**

Maintenance Issue Types Only, Levee Inspection Report By Mile - Fall 2018

Reclamation District No. 0003 Grand Island

Waterway	Bank	Unit Miles	Inspection Start/End	Inspector
Unit No. 02 Right Bank Sacramento River	Right	17.35	10/16/2018 10/17/2018	David Julian

LM Start		Rating **	C	Issue No.	119		
LM End		Issue Type +	Ma	Location *	WS		
Category	Supplemental			GPS Latitude/Longitude			
				Start		End	
Item	2017 USACE Erosion Survey, DRAFT				°		°
					°		°
DWR ID	DWR_RD0003_02_f_2018_119						
Comment Code							
Inspector Comment							
2017 Site ID: SAC 31.6 R							
Status: Repaired							
2017 Field Notes: Site repaired by locals in 2016							
Site History: 1997 - Erosion of supper sandy levee material above the water line, straight reach. 1999 - Small pocket repaired with rock.							
2005 - Downstream 400 ft have been repaired. 2011 - Site is overgrown with vegetation. 2015 - Site appears stable, may consider for removal if not change after the next large storm event. 2016 - Repairs made to the worst section, remain site appears stable.							

No Photos

LM Start	0.25	Rating **	C	Issue No.	4
LM End	0.25	Issue Type +	Ma	Location *	LS
Category	Earthen Levee			GPS Latitude/Longitude	
				Start	End
Item	Trim / Thin Trees			38.174504 °	38.174504 °
				-121.649651 °	-121.649651 °
DWR ID	DWR_RD0003_02_s_2012_4				
Comment Code					
T4 : Trim trees over roadway to at least 12 feet above ground level.					
Inspector Comment					
Trim tree at least 12 feet above ground on levee crown.					

No Photos

* Location LS : Land Side N/A : Not Applicable WS : Water Side CR : Crown	** Rating A : Acceptable M : Minimally Acceptable U : Unacceptable	N : Not Inspected/Rated C : Corrected A/W : Acceptable but Monitor & Maintain	+ Issue Type Ma : Maintenance Deficiency Ob : Design & System Obsolescence En : Enforcement
--	--	---	---

Reclamation District No. 0003 Grand Island

**Flood Control Project Maintenance
Levee Inspections**

Maintenance Issue Types Only, Levee Inspection Report By Mile - Fall 2018

Reclamation District No. 0003 Grand Island

Waterway	Bank	Unit Miles	Inspection Start/End	Inspector
Unit No. 02 Right Bank Sacramento River	Right	17.35	10/16/2018 10/17/2018	David Julian

LM Start	0.31	Rating **	U	Issue No.	151 (cont)
LM End	0.35	Issue Type +	Ma	Location *	LS
Category	Earthen Levee			GPS Latitude/Longitude	
				Start	End
Item	Vegetation			38.174235 °	38.174109 °
				-121.648479 °	-121.647870 °
DWR ID	DWR_RD0003_02_s_2016_151				
Comment Code					
V2 : Remove the wild growth other than native grasses from the levee slopes.					
Inspector Comment					
Remove young willows along landside toe.					

Photo 2 of 2 : FA_2018_RD0003_25_151_20180925_00126.jpg



Looking west at dense vegetation at landward toe.

LM Start	0.37	Rating **	U	Issue No.	3
LM End	0.37	Issue Type +	Ma	Location *	WS
Category	Earthen Levee			GPS Latitude/Longitude	
				Start	End
Item	Vegetation			38.174020 °	38.174020 °
				-121.647458 °	-121.647458 °
DWR ID	DWR_RD0003_02_f_2018_3				
Comment Code					
V2 : Remove the wild growth other than native grasses from the levee slopes.					
Inspector Comment					
Remove arundo					

Photo 1 of 1 : FA_2018_RD0003_25_3_20181018_00284.jpg



View of arundo on waterside slope (October 2018).

LM Start	1.57	Rating **	M	Issue No.	129
LM End	1.57	Issue Type +	Ma	Location *	WS
Category	Earthen Levee			GPS Latitude/Longitude	
				Start	End
Item	Encroachments			38.168700 °	38.168700 °
				-121.627233 °	-121.627233 °
DWR ID	DWR_RD0003_02_s_2017_129				
Comment Code					
TR : Tree or limb					
Inspector Comment					
Remove remaining branches and stump of down tree from water side slope.					

Photo 1 of 3 : FA_2018_RD0003_25_129_20181018_00286.jpg



View of tree limbs that have mostly been removed from water side slope (October 2018).

*** Location**

LS : Land Side N/A : Not Applicable
WS : Water Side
CR : Crown

**** Rating**


A : Acceptable N : Not Inspected/Rated
M : Minimally Acceptable C : Corrected
U : Unacceptable A/W : Acceptable but Monitor & Maintain

+ Issue Type

Ma : Maintenance Deficiency
Ob : Design & System Obsolescence
En : Enforcement


Reclamation District No. 0003 Grand Island

Photo 3 of 3 : FA_2018_RD0003_25_130_20180925_00093.jpg



Looking south at fallen tree on waterward slope.

Photo 1 of 2 : FA_2018_RD0003_25_140_20180925_00108.jpg



A photograph showing a wooded area with a pile of brush and a date stamp '08 10 2017' in the bottom right corner.

Looking south at the waterside slope.

Page 5 of 35

**Flood Control Project Maintenance
Levee Inspections**

Maintenance Issue Types Only, Levee Inspection Report By Mile - Fall 2018

Reclamation District No. 0003 Grand Island

Waterway	Bank	Unit Miles	Inspection Start/End	Inspector
Unit No. 02 Right Bank Sacramento River	Right	17.35	10/16/2018 10/17/2018	David Julian

LM Start	3.20	Rating **	M	Issue No.	7 (cont)
LM End	3.20	Issue Type +	Ma	Location *	LS
Category	Earthen Levee			GPS Latitude/Longitude	
				Start	End
Item	Trim / Thin Trees			38.167808 °	38.167808 °
				-121.599557 °	-121.599557 °
DWR ID	DWR_RD0003_02_s_2012_7				
Comment Code					
T1 : Trim trees to at least five feet above ground level.					
Inspector Comment					
Dense vegetation on landside slope and toe.					

Photo 2 of 2 : FA_2018_RD0003_25_7_20180925_00008.jpg



Looking north at fig tree at landward toe.

LM Start	3.30	Rating **	U	Issue No.	154
LM End	3.30	Issue Type +	Ma	Location *	LS
Category	Earthen Levee			GPS Latitude/Longitude	
				Start	End
Item	Encroachments			38.168750 °	38.168750 °
				-121.598152 °	-121.598152 °
DWR ID	DWR_RD0003_02_f _ 2017_154				
Comment Code					
TR : Tree or limb					
Inspector Comment					
Downed tree on landside slope.					

Photo 1 of 1 : FA_2018_RD0003_25_154_20180925_00131.jpg



Looking northwest at the landside slope.

LM Start	3.67	Rating **	C	Issue No.	8
LM End	3.82	Issue Type +	Ma	Location *	LS
Category	Earthen Levee			GPS Latitude/Longitude	
				Start	End
Item	Trim / Thin Trees			38.173242 °	38.175118 °
				-121.594305 °	-121.592925 °
DWR ID	DWR_RD0003_02_s_2012_8				
Comment Code					
T1 : Trim trees to at least five feet above ground level.					
Inspector Comment					

No Photos

* Location LS : Land Side N/A : Not Applicable WS : Water Side CR : Crown	** Rating A : Acceptable M : Minimally Acceptable U : Unacceptable	N : Not Inspected/Rated C : Corrected A/W : Acceptable but Monitor & Maintain	+ Issue Type Ma : Maintenance Deficiency Ob : Design & System Obsolescence En : Enforcement
--	--	---	---

**Flood Control Project Maintenance
Levee Inspections**

Maintenance Issue Types Only, Levee Inspection Report By Mile - Fall 2018

Reclamation District No. 0003 Grand Island

Waterway	Bank	Unit Miles	Inspection Start/End	Inspector
Unit No. 02 Right Bank Sacramento River	Right	17.35	10/16/2018 10/17/2018	David Julian

LM Start	3.78	Rating **	U	Issue No.	200
LM End	3.78	Issue Type +	Ma	Location *	LS
Category	Earthen Levee			GPS Latitude/Longitude	
				Start	End
Item	Vegetation			38.174550°	38.174550°
				-121.593345°	-121.593345°
DWR ID	DWR_RD0003_02_f_2018_200				
Comment Code					
V2 : Remove the wild growth other than native grasses from the levee slopes.					
Inspector Comment					
Remove new arundo growth.					

Photo 1 of 1 : FA_2018_RD0003_25_200_20181018_00305.jpg



View of new bamboo growth on the land side slope (October 2018).

LM Start	4.11	Rating **	A/W	Issue No.	145
LM End	4.11	Issue Type +	Ma	Location *	WS
Category	Earthen Levee			GPS Latitude/Longitude	
				Start	End
Item	Vegetation			38.178779 °	38.178779 °
				-121.590425 °	-121.590425 °
DWR ID	DWR_RD0003_02_f_2015_145				
Comment Code					
V7 : Trees / Woody Vegetation					
Inspector Comment					
Century plants on waterside shoulder and slope have been chopped back.					

Photo 1 of 2 : FA_2018_RD0003_25_145_20181018_00306.jpg



View of looking upstream at chopped century plants on the water side shoulder and slope (October 2018).

LM Start	4.11	Rating **	A/W	Issue No.	145 (cont)
LM End	4.11	Issue Type +	Ma	Location *	WS

Photo 2 of 2 : FA_2018_RD0003_25_145_20180925_00117.jpg



Looking northeast at century plants on waterward shoulder and slope.

*** Location**

LS : Land Side N/A : Not Applicable
WS : Water Side
CR : Crown

**** Rating**

A : Acceptable N : Not Inspected/Rated
M : Minimally Acceptable C : Corrected
U : Unacceptable A/W : Acceptable but Monitor & Maintain

+ Issue Type

Ma : Maintenance Deficiency
Ob : Design & System Obsolescence
En : Enforcement

**Flood Control Project Maintenance
Levee Inspections**

Maintenance Issue Types Only, Levee Inspection Report By Mile - Fall 2018

Reclamation District No. 0003 Grand Island

Waterway	Bank	Unit Miles	Inspection Start/End	Inspector
Unit No. 02 Right Bank Sacramento River	Right	17.35	10/16/2018 10/17/2018	David Julian

LM Start	4.11	Rating **	U	Issue No.	143
LM End	4.11	Issue Type +	Ma	Location *	LS
Category	Earthen Levee			GPS Latitude/Longitude	
				Start	End
Item	Vegetation			38.178782 °	38.178782 °
				-121.590418 °	-121.590418 °
DWR ID	DWR_RD0003_02_f_2015_143				
Comment Code					
V7 : Trees / Woody Vegetation					
Inspector Comment					
Large century plants on landside shoulder and slope.					

Photo 1 of 1 : FA_2018_RD0003_25_143_20180925_00114.jpg



Looking north at century plants on landward shoulder and slope.

LM Start	4.24	Rating **	C	Issue No.	10
LM End	4.24	Issue Type +	Ma	Location *	LS
Category	Earthen Levee			GPS Latitude/Longitude	
				Start	End
Item	Trim / Thin Trees			38.180361 °	38.180361 °
				-121.589127 °	-121.589127 °
DWR ID	DWR_RD0003_02_s_2012_10				
Comment Code					
T1 : Trim trees to at least five feet above ground level.					
Inspector Comment					
Dense untrimmed trees on landside slope and toe.					

No Photos

LM Start	4.29	Rating **	A	Issue No.	194
LM End	4.49	Issue Type +	Ma	Location *	LS
Category	Earthen Levee			GPS Latitude/Longitude	
				Start	End
Item	Vegetation			38.181066 °	38.183516 °
				-121.588662 °	-121.586687 °
DWR ID	DWR_RD0003_02_s_2018_194				
Comment Code					
V2 : Remove the wild growth other than native grasses from the levee slopes.					
Inspector Comment					

No Photos

* Location LS : Land Side N/A : Not Applicable WS : Water Side CR : Crown	** Rating A : Acceptable M : Minimally Acceptable U : Unacceptable	N : Not Inspected/Rated C : Corrected A/W : Acceptable but Monitor & Maintain	+ Issue Type Ma : Maintenance Deficiency Ob : Design & System Obsolescence En : Enforcement
--	--	---	---

**Flood Control Project Maintenance
Levee Inspections**

Maintenance Issue Types Only, Levee Inspection Report By Mile - Fall 2018

Reclamation District No. 0003 Grand Island

Waterway	Bank	Unit Miles	Inspection Start/End	Inspector
Unit No. 02 Right Bank Sacramento River	Right	17.35	10/16/2018 10/17/2018	David Julian

LM Start	4.61	Rating **	C	Issue No.	193
LM End	5.47	Issue Type +	Ma	Location *	LS
Category	Earthen Levee			GPS Latitude/Longitude	
				Start	End
Item	Vegetation			38.184874 °	38.192067 °
				-121.585511 °	-121.572854 °
DWR ID	DWR_RD0003_02_s _ 2018_193				
Comment Code					
V2 : Remove the wild growth other than native grasses from the levee slopes.					
Inspector Comment					

No Photos

LM Start	4.65	Rating **	U	Issue No.	97
LM End	4.65	Issue Type +	Ma	Location *	LS
Category	Earthen Levee			GPS Latitude/Longitude	
				Start	End
Item	Encroachments			38.185317 °	38.185317 °
				-121.584870 °	-121.584870 °
DWR ID	DWR_RD0003_02_s _ 2017_97				
Comment Code					
TR : Tree or limb					
Inspector Comment					
Fallen tree on landside slope.					

Photo 1 of 1 : FA_2018_RD0003_25_97_20180925_00079.jpg



Looking west at fallen tree on landward slope.

* Location LS : Land Side N/A : Not Applicable WS : Water Side CR : Crown	** Rating A : Acceptable M : Minimally Acceptable U : Unacceptable	N : Not Inspected/Rated C : Corrected A/W : Acceptable but Monitor & Maintain	+ Issue Type Ma : Maintenance Deficiency Ob : Design & System Obsolescence En : Enforcement
--	--	---	---

**Flood Control Project Maintenance
Levee Inspections**

Maintenance Issue Types Only, Levee Inspection Report By Mile - Fall 2018

Reclamation District No. 0003 Grand Island

Waterway	Bank	Unit Miles	Inspection Start/End	Inspector
Unit No. 02 Right Bank Sacramento River	Right	17.35	10/16/2018 10/17/2018	David Julian

LM Start	4.86	Rating **	A/W	Issue No.	127
LM End	4.87	Issue Type +	Ma	Location *	
Category	Supplemental			GPS Latitude/Longitude	
				Start	End
Item	2017 Storm Damage			38.187528°	38.187781°
				-121.582394°	-121.582331°
DWR ID	DWR_RD0003_02_f_2017_127				
Comment Code					
Inspector Comment					
Levee Evaluation Comments					
Description: District station 256+60 to 257+96, Sec. 19, T. 4 N. R. 4 E., M.D.M. Approximately 136 linear feet erosion and sloughing exists along the water side slope of the Sacramento River (Unit 2). The erosion commences approximately 1/4 of the way down the slope from the crown and extends to the rip rap.					
Site ID No: 278					
Site Designation: LMA-104					
Repair Type: Erosion					
Rating: Area of Concern					
Field Date: 7/26/2017					
Notes:					

Photo 1 of 3 : FA_2018_RD0003_25_127_20180925_00086.jpg



LM Start	4.86	Rating **	A/W	Issue No.	127 (cont)
LM End	4.87	Issue Type +	Ma	Location *	

Photo 2 of 3 : FA_2018_RD0003_25_127_20180925_00087.jpg



* Location LS : Land Side N/A : Not Applicable WS : Water Side CR : Crown	** Rating A : Acceptable M : Minimally Acceptable U : Unacceptable	N : Not Inspected/Rated C : Corrected A/W : Acceptable but Monitor & Maintain	+ Issue Type Ma : Maintenance Deficiency Ob : Design & System Obsolescence En : Enforcement
--	--	---	---

**Flood Control Project Maintenance
Levee Inspections**

Maintenance Issue Types Only, Levee Inspection Report By Mile - Fall 2018

Reclamation District No. 0003 Grand Island

Waterway	Bank	Unit Miles	Inspection Start/End	Inspector
Unit No. 02 Right Bank Sacramento River	Right	17.35	10/16/2018 10/17/2018	David Julian

LM Start	4.86	Rating **	A/W	Issue No.	127 (cont)	
LM End	4.87	Issue Type +	Ma	Location *		
Category	Supplemental			GPS Latitude/Longitude		
				Start	End	
Item	2017 Storm Damage			38.187528 °	38.187781 °	
				-121.582394 °	-121.582331 °	
DWR ID	DWR_RD0003_02_f_2017_127					
Comment Code						
Inspector Comment						
Levee Evaluation Comments						
Description: District station 256+60 to 257+96, Sec. 19, T. 4 N. R. 4 E., M.D.M. Approximately 136 linear feet erosion and sloughing exists along the water side slope of the Sacramento River (Unit 2). The erosion commences approximately 1/4 of the way down the slope from the crown and extends to the rip rap.						
Site ID No: 278						
Site Designation: LMA-104						
Repair Type: Erosion						
Rating: Area of Concern						
Field Date: 7/26/2017						
Notes:						

Photo 3 of 3 : FA_2018_RD0003_25_127_20180925_00088.jpg



LM Start	4.94	Rating **	M	Issue No.	14
LM End	4.98	Issue Type +	Ma	Location *	LS
Category	Earthen Levee			GPS Latitude/Longitude	
				Start	End
Item	Trim / Thin Trees			38.188344 °	38.188748 °
				-121.581414 °	-121.580743 °
DWR ID	DWR_RD0003_02_s_2012_14				
Comment Code					
T1 : Trim trees to at least five feet above ground level.					
Inspector Comment					
Untrimmed trees on landside slope and toe.					

Photo 1 of 2 : FA_2018_RD0003_25_14_20180925_00019.jpg



Looking northeast at dense vegetation on landside shoulder and slope.
(Fall 2016)

* Location LS : Land Side N/A : Not Applicable WS : Water Side CR : Crown	** Rating A : Acceptable M : Minimally Acceptable U : Unacceptable	N : Not Inspected/Rated C : Corrected A/W : Acceptable but Monitor & Maintain	+ Issue Type Ma : Maintenance Deficiency Ob : Design & System Obsolescence En : Enforcement
--	--	---	---

**Flood Control Project Maintenance
Levee Inspections**

Maintenance Issue Types Only, Levee Inspection Report By Mile - Fall 2018

Reclamation District No. 0003 Grand Island

Waterway	Bank	Unit Miles	Inspection Start/End	Inspector
Unit No. 02 Right Bank Sacramento River	Right	17.35	10/16/2018 10/17/2018	David Julian

LM Start	4.94	Rating **	M	Issue No.	14 (cont)	
LM End	4.98	Issue Type +	Ma	Location *	LS	
Category	Earthen Levee			GPS Latitude/Longitude		
				Start		End
Item	Trim / Thin Trees			38.188344 °	38.188748 °	
				-121.581414 °	-121.580743 °	
DWR ID	DWR_RD0003_02_s_2012_14					
Comment Code						
T1 : Trim trees to at least five feet above ground level.						
Inspector Comment						
Untrimmed trees on landside slope and toe.						

Photo 2 of 2 : FA_2018_RD0003_25_14_20180925_00020.jpg



Looking southwest at untrimmed trees on landward toe. (Spring 2016)

LM Start	5.03	Rating **	M	Issue No.	56
LM End	5.03	Issue Type +	Ma	Location *	LS
Category	Earthen Levee			GPS Latitude/Longitude	
				Start	End
Item	Encroachments			38.189227 °	38.189227 °
				-121.579983 °	-121.579983 °
DWR ID	DWR_RD0003_02_f_2018_56				
Comment Code					
TR : Tree or limb					
Inspector Comment					
Remove tree limbs on landside slope.					

Photo 1 of 1 : FA_2018_RD0003_25_56_20181018_00303.jpg



View of tree limbs on the land side slope (October 2018).

LM Start	5.57	Rating **	M	Issue No.	161
LM End	5.57	Issue Type +	Ma	Location *	WS
Category	Earthen Levee			GPS Latitude/Longitude	
				Start	End
Item	Vegetation			38.192528 °	38.192528 °
				-121.571192 °	-121.571192 °
DWR ID	DWR_RD0003_02_f_2017_161				
Comment Code					
V2 : Remove the wild growth other than native grasses from the levee slopes.					
Inspector Comment					
Cactus on waterside slope.					

No Photos

* Location LS : Land Side N/A : Not Applicable WS : Water Side CR : Crown	** Rating A : Acceptable M : Minimally Acceptable U : Unacceptable	N : Not Inspected/Rated C : Corrected A/W : Acceptable but Monitor & Maintain	+ Issue Type Ma : Maintenance Deficiency Ob : Design & System Obsolescence En : Enforcement
--	--	--	---

**Flood Control Project Maintenance
Levee Inspections**

Maintenance Issue Types Only, Levee Inspection Report By Mile - Fall 2018

Reclamation District No. 0003 Grand Island

Waterway	Bank	Unit Miles	Inspection Start/End	Inspector
Unit No. 02 Right Bank Sacramento River	Right	17.35	10/16/2018 10/17/2018	David Julian

LM Start	6.19	Rating **	M	Issue No.	192
LM End	6.46	Issue Type +	Ma	Location *	LS
Category	Earthen Levee		GPS Latitude/Longitude		
			Start	End	
Item	Vegetation		38.196862°	38.200294°	
			-121.561550°	-121.559346°	
DWR ID	DWR_RD0003_02_s_2018_192				
Comment Code					
V2 : Remove the wild growth other than native grasses from the levee slopes.					
Inspector Comment					

No Photos

LM Start	6.57	Rating **	M	Issue No.	191
LM End	7.20	Issue Type +	Ma	Location *	LS
Category	Earthen Levee		GPS Latitude/Longitude		
			Start	End	
Item	Vegetation		38.201947°	38.210963°	
			-121.558857°	-121.558567°	
DWR ID	DWR_RD0003_02_s_2018_191				
Comment Code					
V2 : Remove the wild growth other than native grasses from the levee slopes.					
Inspector Comment					

No Photos

LM Start	7.43	Rating **	M	Issue No.	188
LM End	7.68	Issue Type +	Ma	Location *	LS
Category	Earthen Levee		GPS Latitude/Longitude		
			Start	End	
Item	Vegetation		38.214326°	38.217941°	
			-121.558655°	-121.558415°	
DWR ID	DWR_RD0003_02_s_2018_188				
Comment Code					
V2 : Remove the wild growth other than native grasses from the levee slopes.					
Inspector Comment					

No Photos

* Location LS : Land Side N/A : Not Applicable WS : Water Side CR : Crown	** Rating A : Acceptable M : Minimally Acceptable U : Unacceptable	N : Not Inspected/Rated C : Corrected A/W : Acceptable but Monitor & Maintain	+ Issue Type Ma : Maintenance Deficiency Ob : Design & System Obsolescence En : Enforcement
--	--	---	---

**Flood Control Project Maintenance
Levee Inspections**

Maintenance Issue Types Only, Levee Inspection Report By Mile - Fall 2018

Reclamation District No. 0003 Grand Island

Waterway	Bank	Unit Miles	Inspection Start/End	Inspector
Unit No. 02 Right Bank Sacramento River	Right	17.35	10/16/2018 10/17/2018	David Julian

LM Start	7.73	Rating **	C	Issue No.	186
LM End	7.98	Issue Type +	Ma	Location *	LS
Category	Earthen Levee			GPS Latitude/Longitude	
				Start	End
Item	Vegetation			38.218724 °	38.222281 °
				-121.558315 °	-121.557632 °
DWR ID	DWR_RD0003_02_f_2018_186				
Comment Code					
V2 : Remove the wild growth other than native grasses from the levee slopes.					
Inspector Comment					

No Photos

LM Start	8.11	Rating **	U	Issue No.	15
LM End	8.11	Issue Type +	Ma	Location *	WS
Category	Earthen Levee			GPS Latitude/Longitude	
				Start	End
Item	Encroachments			38.224130 °	38.224130 °
				-121.557206 °	-121.557206 °
DWR ID	DWR_RD0003_02_f_2015_15				
Comment Code					
TR : Tree or limb					
Inspector Comment					
Remove broken tree branches on waterside shoulder and slope.					

Photo 1 of 2 : FA_2018_RD0003_25_15_20180925_00021.jpg



Looking northeast at broken and cracked tree branches on waterward slope.

LM Start	8.11	Rating **	U	Issue No.	15 (cont)
LM End	8.11	Issue Type +	Ma	Location *	WS

Photo 2 of 2 : FA_2018_RD0003_25_15_20180925_00022.jpg



Looking east at broken and cracked tree branches on waterward slope.

*** Location**

LS : Land Side N/A : Not Applicable
WS : Water Side
CR : Crown

**** Rating**

A : Acceptable N : Not Inspected/Rated
M : Minimally Acceptable C : Corrected
U : Unacceptable A/W : Acceptable but Monitor & Maintain

+ Issue Type

Ma : Maintenance Deficiency
Ob : Design & System Obsolescence
En : Enforcement

**Flood Control Project Maintenance
Levee Inspections**

Maintenance Issue Types Only, Levee Inspection Report By Mile - Fall 2018

Reclamation District No. 0003 Grand Island

Waterway	Bank	Unit Miles	Inspection Start/End	Inspector
Unit No. 02 Right Bank Sacramento River	Right	17.35	10/16/2018 10/17/2018	David Julian

LM Start	8.11	Rating **	M	Issue No.	185
LM End	8.39	Issue Type +	Ma	Location *	LS
Category	Earthen Levee		GPS Latitude/Longitude		
			Start	End	
Item	Vegetation		38.224189°	38.228139°	
			-121.557259°	-121.557094°	
DWR ID	DWR_RD0003_02_s_2018_185				
Comment Code					
V2 : Remove the wild growth other than native grasses from the levee slopes.					
Inspector Comment					

No Photos

LM Start	8.98	Rating **	M	Issue No.	176
LM End	8.98	Issue Type +	Ma	Location *	LS
Category	Earthen Levee		GPS Latitude/Longitude		
			Start	End	
Item	Animal Control		38.236425°	38.236425°	
			-121.559561°	-121.559561°	
DWR ID	DWR_RD0003_02_f_2017_176				
Comment Code					
A1 : Exterminate rodents and backfill and compact or grout burrows.					
Inspector Comment					

No Photos

LM Start	9.18	Rating **	C	Issue No.	184
LM End	9.27	Issue Type +	Ma	Location *	LS
Category	Earthen Levee		GPS Latitude/Longitude		
			Start	End	
Item	Vegetation		38.238987°	38.240126°	
			-121.558003°	-121.557005°	
DWR ID	DWR_RD0003_02_s_2018_184				
Comment Code					
V2 : Remove the wild growth other than native grasses from the levee slopes.					
Inspector Comment					

No Photos

* Location LS : Land Side N/A : Not Applicable WS : Water Side CR : Crown	** Rating A : Acceptable M : Minimally Acceptable U : Unacceptable	N : Not Inspected/Rated C : Corrected A/W : Acceptable but Monitor & Maintain	+ Issue Type Ma : Maintenance Deficiency Ob : Design & System Obsolescence En : Enforcement
--	--	---	---

**Flood Control Project Maintenance
Levee Inspections**

Maintenance Issue Types Only, Levee Inspection Report By Mile - Fall 2018

Reclamation District No. 0003 Grand Island

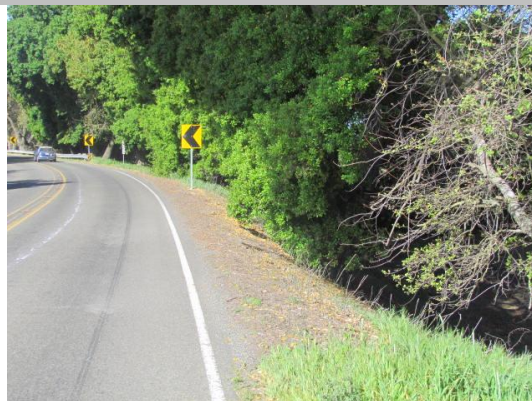
Waterway	Bank	Unit Miles	Inspection Start/End	Inspector
Unit No. 02 Right Bank Sacramento River	Right	17.35	10/16/2018 10/17/2018	David Julian

LM Start	9.29	Rating **	M	Issue No.	63
LM End	9.29	Issue Type +	Ma	Location *	LS
Category	Earthen Levee			GPS Latitude/Longitude	
				Start	End
Item	Trim / Thin Trees			38.240337 °	38.240337 °
				-121.556870 °	-121.556870 °
DWR ID	DWR_RD0003_02_s_2012_63				
Comment Code					
T1 : Trim trees to at least five feet above ground level.					
Inspector Comment					

No Photos

LM Start	9.56	Rating **	M	Issue No.	64
LM End	9.62	Issue Type +	Ma	Location *	LS
Category	Earthen Levee			GPS Latitude/Longitude	
				Start	End
Item	Trim / Thin Trees			38.242392°	38.242501°
				-121.552862°	-121.551632°
DWR ID	DWR_RD0003_02_s_2012_64				
Comment Code					
T1 : Trim trees to at least five feet above ground level.					
Inspector Comment					

Photo 1 of 1 : FA_2018_RD0003_25_64_20180925_00046.jpg



Looking southwest at dense trees on landward shoulder and slope.

LM Start	9.65	Rating **	C	Issue No.	183
LM End	9.76	Issue Type +	Ma	Location *	LS
Category	Earthen Levee			GPS Latitude/Longitude	
				Start	End
Item	Vegetation			38.242504°	38.242308°
				-121.551176°	-121.549073°
DWR ID	DWR_RD0003_02_s_2018_183				
Comment Code					
V2 : Remove the wild growth other than native grasses from the levee slopes.					
Inspector Comment					

No Photos

* Location LS : Land Side N/A : Not Applicable WS : Water Side CR : Crown		** Rating A : Acceptable M : Minimally Acceptable U : Unacceptable		N : Not Inspected/Rated C : Corrected A/W : Acceptable but Monitor & Maintain		+ Issue Type Ma : Maintenance Deficiency Ob : Design & System Obsolescence En : Enforcement	
---	--	---	--	---	--	--	--

Reclamation District No. 0003 Grand Island

Page 18 of 35

**Flood Control Project Maintenance
Levee Inspections**

Maintenance Issue Types Only, Levee Inspection Report By Mile - Fall 2018

Reclamation District No. 0003 Grand Island

Waterway	Bank	Unit Miles	Inspection Start/End	Inspector
Unit No. 02 Right Bank Sacramento River	Right	17.35	10/16/2018 10/17/2018	David Julian

LM Start	9.82	Rating **	A/W	Issue No.	137 (cont)	
LM End	9.84	Issue Type +	Ma	Location *		
Category	Supplemental			GPS Latitude/Longitude		
				Start	End	
Item	2017 Storm Damage			38.242006 °	38.241950 °	
				-121.548117 °	-121.547681 °	
DWR ID	DWR_RD0003_02_f_2017_137					
Comment Code						
Inspector Comment						
Levee Evaluation Comments						
Description: District station 518+55 to 519+81 , Sec. 33, T. 5 N. R. 4 E., M.D.M. Approximately 126 linear feet of erosion and sloughing exists along the water side slope of the Sacramento River (Unit 2). The erosion commences approximately 1/4 of the way down the slope from the crown and extends into the rip rap.						
Site ID No: 279						
Site Designation: LMA-105						
Repair Type: Erosion						
Rating: Area of Concern						
Field Date: 7/26/2017						
Notes:						

Photo 3 of 3 : FA_2018_RD0003_25_137_20180925_00101.jpg



LM Start	10.01	Rating **	A/W	Issue No.	138
LM End	10.03	Issue Type +	Ma	Location *	
Category	Supplemental			GPS Latitude/Longitude	
				Start	End
Item	2017 Storm Damage			38.241481 °	38.241439 °
				-121.544569 °	-121.544353 °
DWR ID	DWR_RD0003_02_f _ 2017_138				
Comment Code					
Inspector Comment					
Levee Evaluation Comments					
Description:District station 528+97 to 529+58, Sec. 33, T. 5 N. R. 4 E., M.D.M. Approximately 61 linear feet of erosion and sloughing exists along the water side slope of the Sacramento River (Unit 2). The erosion commences approximately 1/2 of the way down the slope from the crown and extends into the rip rap.					
Site ID No:280					
Site Designation:LMA-106					
Repair Type: Erosion					
Rating:Area of Concern					
Field Date:7/26/2017					
Notes:					

Photo 1 of 3 : FA_2018_RD0003_25_138_20180925_00102.jpg



* Location LS : Land Side N/A : Not Applicable WS : Water Side CR : Crown	** Rating A : Acceptable M : Minimally Acceptable U : Unacceptable	N : Not Inspected/Rated C : Corrected A/W : Acceptable but Monitor & Maintain	+ Issue Type Ma : Maintenance Deficiency Ob : Design & System Obsolescence En : Enforcement
--	--	---	---

**Flood Control Project Maintenance
Levee Inspections**

Maintenance Issue Types Only, Levee Inspection Report By Mile - Fall 2018

Reclamation District No. 0003 Grand Island

Waterway	Bank	Unit Miles	Inspection Start/End	Inspector
Unit No. 02 Right Bank Sacramento River	Right	17.35	10/16/2018 10/17/2018	David Julian

LM Start	10.01	Rating **	A/W	Issue No.	138 (cont)	
LM End	10.03	Issue Type +	Ma	Location *		
Category	Supplemental			GPS Latitude/Longitude		
				Start	End	
Item	2017 Storm Damage			38.241481 °	38.241439 °	
				-121.544569 °	-121.544353 °	
DWR ID	DWR_RD0003_02_f_2017_138					
Comment Code						
Inspector Comment						
Levee Evaluation Comments						
Description: District station 528+97 to 529+58, Sec. 33, T. 5 N. R. 4 E., M.D.M. Approximately 61 linear feet of erosion and sloughing exists along the water side slope of the Sacramento River (Unit 2). The erosion commences approximately 1/2 of the way down the slope from the crown and extends into the rip rap.						
Site ID No: 280						
Site Designation: LMA-106						
Repair Type: Erosion						
Rating: Area of Concern						
Field Date: 7/26/2017						
Notes:						

Photo 2 of 3 : FA_2018_RD0003_25_138_20180925_00103.jpg



LM Start	10.01	Rating **	A/W	Issue No.	138 (cont)
LM End	10.03	Issue Type +	Ma	Location *	

Photo 3 of 3 : FA_2018_RD0003_25_138_20180925_00104.jpg

*** Location**

LS : Land Side N/A : Not Applicable
 WS : Water Side
 CR : Crown

**** Rating**

A : Acceptable N : Not Inspected/Rated
 M : Minimally Acceptable C : Corrected
 U : Unacceptable A/W : Acceptable but Monitor & Maintain

+ Issue Type

Ma : Maintenance Deficiency
 Ob : Design & System Obsolescence
 En : Enforcement

Reclamation District No. 0003 Grand Island

View of dead branch on land side slope (October 2018).

View of newly sprouting fig trees on the land side slope (October 2018).

View of fallen tree that has been chopped up on the water side slope (October 2018).

Page 21 of 35

**Flood Control Project Maintenance
Levee Inspections**

Maintenance Issue Types Only, Levee Inspection Report By Mile - Fall 2018

Reclamation District No. 0003 Grand Island

Waterway	Bank	Unit Miles	Inspection Start/End	Inspector
Unit No. 02 Right Bank Sacramento River	Right	17.35	10/16/2018 10/17/2018	David Julian

LM Start	11.33	Rating **	M	Issue No.	118
LM End	11.41	Issue Type +	Ma	Location *	WS
Category	Supplemental			GPS Latitude/Longitude	
				Start	End
Item	2017 USACE Erosion Survey, DRAFT			38.239870 °	38.239992 °
				-121.520989 °	-121.519542 °
DWR ID	DWR_RD0003_02_f_2018_118				
Comment Code					
Inspector Comment					
2017 Site ID: SAC 26.3 R					
Status: Repaired					
2018: Still pocket of erosion into waterside toe.					
2017 Field Notes: Repaired by locals.					
Site History: 2009 - Hole left in levee toe from a fallen tree. Could be repaired under maintenance. 2010 - Minor new erosion. 2015 - Minor new erosion at toe.					

LM Start	11.33	Rating **	M	Issue No.	118 (cont)
LM End	11.41	Issue Type +	Ma	Location *	WS

Photo 1 of 3 : FA_2018_RD0003_25_118_20181018_00308.jpg



View of erosion at the water side toe (October 2018).

Photo 2 of 3 : FA_2018_RD0003_25_118_20181023_00042.jpg



USACE 2013 Photo #1

LM Start	11.33	Rating **	M	Issue No.	118 (cont)
LM End	11.41	Issue Type +	Ma	Location *	WS

Photo 3 of 3 : FA_2018_RD0003_25_118_20181023_00043.jpg



USACE 2013 Photo #2

* Location LS : Land Side N/A : Not Applicable WS : Water Side CR : Crown		** Rating A : Acceptable N : Not Inspected/Rated M : Minimally Acceptable C : Corrected U : Unacceptable A/W : Acceptable but Monitor & Maintain		+ Issue Type Ma : Maintenance Deficiency Ob : Design & System Obsolescence En : Enforcement	
--	--	---	--	---	--

**Flood Control Project Maintenance
Levee Inspections**

Maintenance Issue Types Only, Levee Inspection Report By Mile - Fall 2018

Reclamation District No. 0003 Grand Island

Waterway	Bank	Unit Miles	Inspection Start/End	Inspector
Unit No. 02 Right Bank Sacramento River	Right	17.35	10/16/2018 10/17/2018	David Julian

LM Start	11.55	Rating **	M	Issue No.	24
LM End	11.57	Issue Type +	Ma	Location *	LS
Category	Earthen Levee			GPS Latitude/Longitude	
				Start	End
Item	Trim / Thin Trees			38.241093°	38.241300°
				-121.517378°	-121.517073°
DWR ID	DWR_RD0003_02_s_2012_24				
Comment Code					
T1 : Trim trees to at least five feet above ground level.					
Inspector Comment					

No Photos

LM Start	12.14	Rating **	C	Issue No.	196
LM End	12.14	Issue Type +	Ma	Location *	WS
Category	Earthen Levee			GPS Latitude/Longitude	
				Start	End
Item	Encroachments			38.248094 °	38.248094 °
				-121.511659 °	-121.511659 °
DWR ID	DWR_RD0003_02_s_2018_196				
Comment Code					
TR : Tree or limb					
Inspector Comment					

No Photos

LM Start	12.33	Rating **	M	Issue No.	203
LM End	12.33	Issue Type +	Ma	Location *	WS
Category	Earthen Levee			GPS Latitude/Longitude	
				Start	End
Item	Encroachments			38.250887°	38.250887°
				-121.512157°	-121.512157°
DWR ID	DWR_RD0003_02_f_2018_203				
Comment Code					
PR : Prunings					
Inspector Comment					
Remove prunings on waterside hinge point.					

Photo 1 of 1 : FA_2018_RD0003_25_203_20181018_00309.jpg



View of prunings on the water side shoulder (October 2018).

*** Location**

LS : Land Side N/A : Not Applicable
WS : Water Side
CR : Crown

**** Rating**

A : Acceptable N : Not Inspected/Rated
M : Minimally Acceptable C : Corrected
U : Unacceptable A/W : Acceptable but Monitor & Maintain

+ Issue Type

Ma : Maintenance Deficiency
Ob : Design & System Obsolescence
En : Enforcement

**Flood Control Project Maintenance
Levee Inspections**

Maintenance Issue Types Only, Levee Inspection Report By Mile - Fall 2018

Reclamation District No. 0003 Grand Island

Waterway	Bank	Unit Miles	Inspection Start/End	Inspector
Unit No. 02 Right Bank Sacramento River	Right	17.35	10/16/2018 10/17/2018	David Julian

LM Start	12.90	Rating **	M	Issue No.	135
LM End	12.90	Issue Type +	Ma	Location *	LS
Category	Earthen Levee			GPS Latitude/Longitude	
				Start	End
Item	Trim / Thin Trees			38.257427 °	38.257427 °
				-121.518329 °	-121.518329 °
DWR ID	DWR_RD0003_02_s_2018_135				
Comment Code					
T1 : Trim trees to at least five feet above ground level.					
Inspector Comment					

No Photos

LM Start	13.15	Rating **	A/W	Issue No.	139
LM End	13.17	Issue Type +	Ma	Location *	
Category	Supplemental			GPS Latitude/Longitude	
				Start	End
Item	2017 Storm Damage			38.260042 °	38.260219 °
				-121.521581 °	-121.521803 °
DWR ID	DWR_RD0003_02_f_2017_139				
Comment Code					
Inspector Comment					
Levee Evaluation Comments					
Description:District station 694+80 to 695+69, Sec. 27, 1. 5 N. R. 4 E., M.D.M. Approximately 89 linear feet of erosion and sloughing exists along the water side slope of the Sacramento River (Unit 2). The erosion commences approximately 1/2 of the way down the slope from the crown and extends into the rip rap.					
Site ID No:281					
Site Designation:LMA-107					
Repair Type: Erosion					
Rating:Area of Concern					
Field Date:7/26/2017					
Notes:					

Photo 1 of 3 : FA_2018_RD0003_25_139_20180925_00105.jpg



38.26004, -121.52159, -24.0m, 34°
Jul 26, 2017 10:49:34 AM

* Location LS : Land Side N/A : Not Applicable WS : Water Side CR : Crown	** Rating A : Acceptable M : Minimally Acceptable U : Unacceptable N : Not Inspected/Rated C : Corrected A/W : Acceptable but Monitor & Maintain	+ Issue Type Ma : Maintenance Deficiency Ob : Design & System Obsolescence En : Enforcement
--	---	---

**Flood Control Project Maintenance
Levee Inspections**

Maintenance Issue Types Only, Levee Inspection Report By Mile - Fall 2018

Reclamation District No. 0003 Grand Island

Waterway	Bank	Unit Miles	Inspection Start/End	Inspector
Unit No. 02 Right Bank Sacramento River	Right	17.35	10/16/2018 10/17/2018	David Julian

LM Start	13.15	Rating **	A/W	Issue No.	139 (cont)	
LM End	13.17	Issue Type +	Ma	Location *		
Category	Supplemental			GPS Latitude/Longitude		
				Start	End	
Item	2017 Storm Damage			38.260042 °	38.260219 °	
				-121.521581 °	-121.521803 °	
DWR ID	DWR_RD0003_02_f_2017_139					
Comment Code						
Inspector Comment						
Levee Evaluation Comments						
Description: District station 694+80 to 695+69, Sec. 27, 1. 5 N. R. 4 E., M.D.M. Approximately 89 linear feet of erosion and sloughing exists along the water side slope of the Sacramento River (Unit 2). The erosion commences approximately 1/2 of the way down the slope from the crown and extends into the rip rap.						
Site ID No: 281						
Site Designation: LMA-107						
Repair Type: Erosion						
Rating: Area of Concern						
Field Date: 7/26/2017						
Notes:						

Photo 2 of 3 : FA_2018_RD0003_25_139_20180925_00106.jpg



LM Start	13.15	Rating **	A/W	Issue No.	139 (cont)
LM End	13.17	Issue Type +	Ma	Location *	

Photo 3 of 3 : FA_2018_RD0003_25_139_20180925_00107.jpg

*** Location**

LS : Land Side N/A : Not Applicable
 WS : Water Side
 CR : Crown

**** Rating**

A : Acceptable N : Not Inspected/Rated
 M : Minimally Acceptable C : Corrected
 U : Unacceptable A/W : Acceptable but Monitor & Maintain

+ Issue Type

Ma : Maintenance Deficiency
 Ob : Design & System Obsolescence
 En : Enforcement

**Flood Control Project Maintenance
Levee Inspections**

Maintenance Issue Types Only, Levee Inspection Report By Mile - Fall 2018

Reclamation District No. 0003 Grand Island

Waterway	Bank	Unit Miles	Inspection Start/End	Inspector
Unit No. 02 Right Bank Sacramento River	Right	17.35	10/16/2018 10/17/2018	David Julian

LM Start	13.86	Rating **	A/W	Issue No.	169
LM End	13.86	Issue Type +	Ma	Location *	LS
Category	Earthen Levee			GPS Latitude/Longitude	
				Start	End
Item	Animal Control			38.267084 °	38.267084 °
				-121.530939 °	-121.530939 °
DWR ID	DWR_RD0003_02_f_2017_169				
Comment Code					
A1 : Exterminate rodents and backfill and compact or grout burrows.					
Inspector Comment					

Photo 1 of 1 : FA_2018_RD0003_25_169_20180925_00142.jpg



Looking southeast at the landside slope.

LM Start	14.11	Rating **	C	Issue No.	132
LM End	14.11	Issue Type +	Ma	Location *	LS
Category	Earthen Levee			GPS Latitude/Longitude	
				Start	End
Item	Vegetation			38.269472 °	38.269472 °
				-121.534365 °	-121.534365 °
DWR ID	DWR_RD0003_02_s_2018_132				
Comment Code					
V2 : Remove the wild growth other than native grasses from the levee slopes.					
Inspector Comment					

No Photos

LM Start	14.44	Rating **	C	Issue No.	126
LM End	14.44	Issue Type +	Ma	Location *	LS
Category	Earthen Levee			GPS Latitude/Longitude	
				Start	End
Item	Vegetation			38.272836 °	38.272836 °
				-121.538802 °	-121.538802 °
DWR ID	DWR_RD0003_02_s_2018_126				
Comment Code					
V2 : Remove the wild growth other than native grasses from the levee slopes.					
Inspector Comment					

No Photos

* Location LS : Land Side N/A : Not Applicable WS : Water Side CR : Crown		** Rating A : Acceptable M : Minimally Acceptable U : Unacceptable		N : Not Inspected/Rated C : Corrected A/W : Acceptable but Monitor & Maintain		+ Issue Type Ma : Maintenance Deficiency Ob : Design & System Obsolescence En : Enforcement	
---	--	---	--	---	--	--	--

**Flood Control Project Maintenance
Levee Inspections**

Maintenance Issue Types Only, Levee Inspection Report By Mile - Fall 2018

Reclamation District No. 0003 Grand Island

Waterway	Bank	Unit Miles	Inspection Start/End	Inspector
Unit No. 02 Right Bank Sacramento River	Right	17.35	10/16/2018 10/17/2018	David Julian

LM Start	14.86	Rating **	M	Issue No.	123
LM End	14.86	Issue Type +	Ma	Location *	LS
Category	Earthen Levee			GPS Latitude/Longitude	
				Start	End
Item	Trim / Thin Trees			38.277082 °	38.277082 °
				-121.544185 °	-121.544185 °
DWR ID	DWR_RD0003_02_f_2018_123				
Comment Code					
T2 : Thin trees to allow visibility of the ground and room to flood fight.					
Inspector Comment					
Trim trees at land side toe					

No Photos

LM Start	15.00	Rating **	A/W	Issue No.	142
LM End	15.07	Issue Type +	Ma	Location *	
Category	Supplemental			GPS Latitude/Longitude	
				Start	End
Item	2017 Storm Damage			38.278806 °	38.279444 °
				-121.545817 °	-121.546647 °
DWR ID	DWR_RD0003_02_f_2017_142				
Comment Code					
Inspector Comment					
Levee Evaluation Comments					
Description: District station 792+44 to 795+74, Sec. 16, T. 5 N. R. 4 E., M.D.M. Approximately 330 linear feet of erosion and sloughing exists along the water side slope of the Sacramento River (Unit 2). The erosion commences approximately 1/2 of the way down the slope from the crown and extends into the rip rap.					
Site ID No: 282					
Site Designation: LMA-108					
Repair Type: Erosion					
Rating: Area of Concern					
Field Date: 7/28/2017					
Notes: no berm					

Photo 1 of 3 : FA_2018_RD0003_25_142_20180925_00111.jpg



* Location
 LS : Land Side N/A : Not Applicable
 WS : Water Side
 CR : Crown

** Rating
 A : Acceptable N : Not Inspected/Rated
 M : Minimally Acceptable C : Corrected
 U : Unacceptable A/W : Acceptable but Monitor & Maintain

+ Issue Type
 Ma : Maintenance Deficiency
 Ob : Design & System Obsolescence
 En : Enforcement

**Flood Control Project Maintenance
Levee Inspections**

Maintenance Issue Types Only, Levee Inspection Report By Mile - Fall 2018

Reclamation District No. 0003 Grand Island

Waterway	Bank	Unit Miles	Inspection Start/End	Inspector
Unit No. 02 Right Bank Sacramento River	Right	17.35	10/16/2018 10/17/2018	David Julian

LM Start	15.00	Rating **	A/W	Issue No.	142 (cont)	
LM End	15.07	Issue Type +	Ma	Location *		
Category	Supplemental			GPS Latitude/Longitude		
				Start	End	
Item	2017 Storm Damage			38.278806 °	38.279444 °	
				-121.545817 °	-121.546647 °	
DWR ID	DWR_RD0003_02_f_2017_142					
Comment Code						
Inspector Comment						
Levee Evaluation Comments						
Description: District station 792+44 to 795+74, Sec. 16, T. 5 N. R. 4 E., M.D.M. Approximately 330 linear feet of erosion and sloughing exists along the water side slope of the Sacramento River (Unit 2). The erosion commences approximately 1/2 of the way down the slope from the crown and extends into the rip rap.						
Site ID No: 282						
Site Designation: LMA-108						
Repair Type: Erosion						
Rating: Area of Concern						
Field Date: 7/28/2017						
Notes: no berm						

Photo 2 of 3 : FA_2018_RD0003_25_142_20180925_00112.jpg



LM Start	15.00	Rating **	A/W	Issue No.	142 (cont)
LM End	15.07	Issue Type +	Ma	Location *	

Photo 3 of 3 : FA_2018_RD0003_25_142_20180925_00113.jpg

*** Location**

LS : Land Side N/A : Not Applicable
 WS : Water Side
 CR : Crown

**** Rating**

A : Acceptable N : Not Inspected/Rated
 M : Minimally Acceptable C : Corrected
 U : Unacceptable A/W : Acceptable but Monitor & Maintain

+ Issue Type

Ma : Maintenance Deficiency
 Ob : Design & System Obsolescence
 En : Enforcement

Reclamation District No. 0003 Grand Island

Looking northwest at fallen tree at landward toe.

Page 29 of 35

**Flood Control Project Maintenance
Levee Inspections**

Maintenance Issue Types Only, Levee Inspection Report By Mile - Fall 2018

Reclamation District No. 0003 Grand Island

Waterway	Bank	Unit Miles	Inspection Start/End	Inspector
Unit No. 02 Right Bank Sacramento River	Right	17.35	10/16/2018 10/17/2018	David Julian

LM Start	15.43	Rating **	N	Issue No.	122
LM End	15.43	Issue Type +	Ma	Location *	LS
Category	Earthen Levee			GPS Latitude/Longitude	
				Start	End
Item	Trim / Thin Trees			38.282672 °	38.282672 °
				-121.551847 °	-121.551847 °
DWR ID	DWR_RD0003_02_f_2018_122				
Comment Code					
T5 : Tree stumps.					
Inspector Comment					
Remove tree stump at land side toe					

Photo 1 of 1 : FA_2018_RD0003_25_122_20181018_00290.jpg



View of large stump at the land side toe of the levee (October 2018).

LM Start	15.46	Rating **	A/W	Issue No.	149
LM End	15.47	Issue Type +	Ma	Location *	
Category	Supplemental			GPS Latitude/Longitude	
				Start	End
Item	2017 Storm Damage			38.283119 °	38.283172 °
				-121.552250 °	-121.552347 °
DWR ID	DWR_RD0003_02_f _ 2017_149				
Comment Code					
Inspector Comment					
Levee Evaluation Comments					
Description:District station 816+64 to 816+97, Sec. 16, T. 5 N. R. 4 E., M.D.M. Approximately 33 linear feet of erosion exists along the water side slope of the Sacramento River (Unit 2). The erosion commences approximately 1/2 ofthe way down the slope from the crown and extends into the rip rap. A section of rip rap has eroded away in this location.					
Site ID No:283					
Site Designation:LMA-109					
Repair Type: Erosion					
Rating:Area of Concern					
Field Date:7/26/2017					
Notes:					

Photo 1 of 3 : FA_2018_RD0003_25_149_20180925_00120.jpg



* Location LS : Land Side N/A : Not Applicable WS : Water Side CR : Crown	** Rating A : Acceptable M : Minimally Acceptable U : Unacceptable	N : Not Inspected/Rated C : Corrected A/W : Acceptable but Monitor & Maintain	+ Issue Type Ma : Maintenance Deficiency Ob : Design & System Obsolescence En : Enforcement
--	--	---	---

**Flood Control Project Maintenance
Levee Inspections**

Maintenance Issue Types Only, Levee Inspection Report By Mile - Fall 2018

Reclamation District No. 0003 Grand Island

Waterway	Bank	Unit Miles	Inspection Start/End	Inspector
Unit No. 02 Right Bank Sacramento River	Right	17.35	10/16/2018 10/17/2018	David Julian

LM Start	15.46	Rating **	A/W	Issue No.	149 (cont)
LM End	15.47	Issue Type +	Ma	Location *	
Category	Supplemental			GPS Latitude/Longitude	
				Start	End
Item	2017 Storm Damage			38.283119 °	38.283172 °
				-121.552250 °	-121.552347 °
DWR ID	DWR_RD0003_02_f_2017_149				
Comment Code					
Inspector Comment					
Levee Evaluation Comments					
Description:District station 816+64 to 816+97, Sec. 16, T. 5 N. R. 4 E., M.D.M. Approximately 33 linear feet of erosion exists along the water side slope of the Sacramento River (Unit 2). The erosion commences approximately 1/2 ofthe way down the slope from the crown and extends into the rip rap. A section of rip rap has eroded away in this location.					
Site ID No:283					
Site Designation:LMA-109					
Repair Type: Erosion					
Rating:Area of Concern					
Field Date:7/26/2017					
Notes:					

Photo 2 of 3 : FA_2018_RD0003_25_149_20180925_00121.jpg



LM Start	15.46	Rating **	A/W	Issue No.	149 (cont)
LM End	15.47	Issue Type +	Ma	Location *	

Photo 3 of 3 : FA_2018_RD0003_25_149_20180925_00122.jpg

*** Location**

LS : Land Side N/A : Not Applicable
 WS : Water Side
 CR : Crown

**** Rating**

A : Acceptable N : Not Inspected/Rated
 M : Minimally Acceptable C : Corrected
 U : Unacceptable A/W : Acceptable but Monitor & Maintain

+ Issue Type

Ma : Maintenance Deficiency
 Ob : Design & System Obsolescence
 En : Enforcement

**Flood Control Project Maintenance
Levee Inspections**

Maintenance Issue Types Only, Levee Inspection Report By Mile - Fall 2018

Reclamation District No. 0003 Grand Island

Waterway	Bank	Unit Miles	Inspection Start/End	Inspector
Unit No. 02 Right Bank Sacramento River	Right	17.35	10/16/2018 10/17/2018	David Julian

LM Start	16.54	Rating **	A/W	Issue No.	150 (cont)
LM End	16.56	Issue Type +	Ma	Location *	
Category	Supplemental			GPS Latitude/Longitude	
				Start	End
Item	2017 Storm Damage			38.294717 °	38.294986 °
				-121.565417 °	-121.565661 °
DWR ID	DWR_RD0003_02_f_2017_150				
Comment Code					
Inspector Comment					
Levee Evaluation Comments					
Description:District station 873+61 to 874+83, Sec. 08, T. 5 N. R. 4 E., M.D.M. Approximately 122 linear feet of erosion exists along the water side slope of the Sacramento River (Unit 2). The erosion commences approximately 1/2 of the way down the slope from the crown and extends beyond the rip rap. A section of rip rap has eroded away in this location.					
Site ID No:284					
Site Designation:LMA-110					
Repair Type: Erosion					
Rating:Area of Concern					
Field Date:7/28/2017					
Notes: no berm					

Photo 2 of 2 : FA_2018_RD0003_25_150_20180925_00124.jpg



LM Start	16.56	Rating **	C	Issue No.	147
LM End	16.56	Issue Type +	Ma	Location *	LS
Category	Earthen Levee			GPS Latitude/Longitude	
				Start	End
Item	Trim / Thin Trees			38.294809 °	38.294809 °
				-121.565765 °	-121.565765 °
DWR ID	DWR_RD0003_02_s_2016_147				
Comment Code					
T1 : Trim trees to at least five feet above ground level.					
Inspector Comment					

No Photos

* Location LS : Land Side N/A : Not Applicable WS : Water Side CR : Crown	** Rating A : Acceptable M : Minimally Acceptable U : Unacceptable	N : Not Inspected/Rated C : Corrected A/W : Acceptable but Monitor & Maintain	+ Issue Type Ma : Maintenance Deficiency Ob : Design & System Obsolescence En : Enforcement
--	--	---	---

**Flood Control Project Maintenance
Levee Inspections**

Maintenance Issue Types Only, Levee Inspection Report By Mile - Fall 2018

Reclamation District No. 0003 Grand Island

Waterway	Bank	Unit Miles	Inspection Start/End	Inspector
Unit No. 02 Right Bank Sacramento River	Right	17.35	10/16/2018 10/17/2018	David Julian

LM Start	16.90	Rating **	A/W	Issue No.	152
LM End	16.90	Issue Type +	Ma	Location *	
Category	Supplemental			GPS Latitude/Longitude	
				Start	End
Item	2017 Storm Damage			38.298914 °	38.298997 °
				-121.569156 °	-121.569217 °
DWR ID	DWR_RD0003_02_f_2017_152				
Comment Code					
Inspector Comment					
Levee Evaluation Comments					
Description:District station 892+36 to 892+70, Sec. 08, T. 5 N. R. 4 E., M.D.M. Approximately 34 linear feet of erosion exists along the water side slope of the Sacramento River (Unit 2). The erosion commences approximately 1/2 of the way down the slope from the crown and extends into the rip rap. A section of rip rap has eroded away in this location.					
Site ID No:285					
Site Designation:LMA-111					
Repair Type: Erosion					
Rating:Area of Concern					
Field Date:7/28/2017					
Notes: highway on crown					

Photo 1 of 3 : FA_2018_RD0003_25_152_20180925_00127.jpg



LM Start	16.90	Rating **	A/W	Issue No.	152 (cont)
LM End	16.90	Issue Type +	Ma	Location *	

Photo 2 of 3 : FA_2018_RD0003_25_152_20180925_00128.jpg



* Location LS : Land Side N/A : Not Applicable WS : Water Side CR : Crown	** Rating A : Acceptable M : Minimally Acceptable U : Unacceptable	N : Not Inspected/Rated C : Corrected A/W : Acceptable but Monitor & Maintain	+ Issue Type Ma : Maintenance Deficiency Ob : Design & System Obsolescence En : Enforcement
--	--	---	---

**Flood Control Project Maintenance
Levee Inspections**

Maintenance Issue Types Only, Levee Inspection Report By Mile - Fall 2018

Reclamation District No. 0003 Grand Island

Waterway	Bank	Unit Miles	Inspection Start/End	Inspector
Unit No. 02 Right Bank Sacramento River	Right	17.35	10/16/2018 10/17/2018	David Julian

LM Start	16.90	Rating **	A/W	Issue No.	152 (cont)
LM End	16.90	Issue Type +	Ma	Location *	
Category	Supplemental			GPS Latitude/Longitude	
				Start	End
Item	2017 Storm Damage			38.298914 °	38.298997 °
				-121.569156 °	-121.569217 °
DWR ID	DWR_RD0003_02_f _ 2017_152				
Comment Code					
Inspector Comment					
Levee Evaluation Comments					
Description:District station 892+36 to 892+70, Sec. 08, T. 5 N. R. 4 E., M.D.M. Approximately 34 linear feet of erosion exists along the water side slope of the Sacramento River (Unit 2). The erosion commences approximately 1/2 of the way down the slope from the crown and extends into the rip rap. A section of rip rap has eroded away in this location.					
Site ID No:285					
Site Designation:LMA-111					
Repair Type: Erosion					
Rating:Area of Concern					
Field Date:7/28/2017					
Notes: highway on crown					

Photo 3 of 3 : FA_2018_RD0003_25_152_20180925_00129.jpg



* Location LS : Land Side N/A : Not Applicable WS : Water Side CR : Crown	** Rating A : Acceptable N : Not Inspected/Rated M : Minimally Acceptable C : Corrected U : Unacceptable A/W : Acceptable but Monitor & Maintain	+ Issue Type Ma : Maintenance Deficiency Ob : Design & System Obsolescence En : Enforcement
--	---	---

