

**Flood Control Project Maintenance
Levee Inspections**

Maintenance Issue Types Only, Levee Inspection Report By Mile - Fall 2017

Reclamation District No. 0003 Grand Island

Waterway	Bank	Unit Miles	Inspection Start/End	Inspector
Unit No. 01 Left Bank Steamboat Slough	Left	10.95	09/18/2017 09/18/2017	Dave Torres

LM Start	0.00	Rating **	A	Issue No.	102
LM End	0.00	Issue Type +	Ma	Location *	N/A
Category	Earthen Levee		GPS Latitude/Longitude		
			Start	End	
Item	Operations & Maintenance Manuals			°	°
DWR ID	DWR_RD0003_01_s_2013_102				
Comment Code					
Inspector Comment					
LMA has a copy of the O & M manual on file at district office.					

No Photos

LM Start	0.00	Rating **	A	Issue No.	103
LM End	0.00	Issue Type +	Ma	Location *	N/A
Category	Earthen Levee		GPS Latitude/Longitude		
			Start	End	
Item	Emergency Supplies & Equipment			°	°
DWR ID	DWR_RD0003_01_s_2013_103				
Comment Code					
Inspector Comment					
The LMA has an adequate flood fight supplies and equipment to respond to a flood emergency.					

No Photos

* Location LS : Land Side N/A : Not Applicable WS : Water Side CR : Crown	** Rating A : Acceptable M : Minimally Acceptable U : Unacceptable	N : Not Inspected/Rated C : Corrected A/W : Acceptable but Monitor & Maintain	+ Issue Type Ma : Maintenance Deficiency Ob : Design & System Obsolescence En : Enforcement
--	--	---	---

**Flood Control Project Maintenance
Levee Inspections**

Maintenance Issue Types Only, Levee Inspection Report By Mile - Fall 2017

Reclamation District No. 0003 Grand Island

Waterway	Bank	Unit Miles	Inspection Start/End	Inspector
Unit No. 01 Left Bank Steamboat Slough	Left	10.95	09/18/2017 09/18/2017	Dave Torres

LM Start	0.00	Rating **	A	Issue No.	104	
LM End	0.00	Issue Type +	Ma	Location *	N/A	
Category	Earthen Levee			GPS Latitude/Longitude		
				Start		End
Item	Flood Preparedness & Training				o	
					o	
DWR ID	DWR_RD0003_01_s_2013_104					
Comment Code						
Inspector Comment						
The LMA is organized to respond to flood emergency. District has been involved in flood fight training.						

No Photos

LM Start	0.13	Rating **	U	Issue No.	19
LM End	0.13	Issue Type +	Ma	Location *	WS
Category	Earthen Levee			GPS Latitude/Longitude	
				Start	End
Item	Encroachments			38.303305 °	38.303305 °
				-121.576537 °	-121.576537 °
DWR ID	DWR_RD0003_01_f_2012_19				
Comment Code					
TR : Tree or limb					
Inspector Comment					
Tree branches and limbs on waterward shoulder.					

LM Start	0.13	Rating **	U	Issue No.	19 (cont)
LM End	0.13	Issue Type +	Ma	Location *	WS

Photo 1 of 4 : FA_2017_RD0003_24_19_20170911_00022.jpg



Looking north at tree branches on waterward slope. (Fall 2016)

Photo 2 of 4 : FA_2017_RD0003_24_19_20170911_00023.jpg



Looking west at tree branch on waterward shoulder and slope. (Fall 2016)

* Location LS : Land Side N/A : Not Applicable WS : Water Side CR : Crown		** Rating A : Acceptable M : Minimally Acceptable U : Unacceptable		N : Not Inspected/Rated C : Corrected A/W : Acceptable but Monitor & Maintain		+ Issue Type Ma : Maintenance Deficiency Ob : Design & System Obsolescence En : Enforcement	
---	--	---	--	---	--	--	--

**Flood Control Project Maintenance
Levee Inspections**

Maintenance Issue Types Only, Levee Inspection Report By Mile - Fall 2017

Reclamation District No. 0003 Grand Island

Waterway	Bank	Unit Miles	Inspection Start/End	Inspector
Unit No. 01 Left Bank Steamboat Slough	Left	10.95	09/18/2017 09/18/2017	Dave Torres

LM Start	0.13	Rating **	U	Issue No.	19 (cont)	
LM End	0.13	Issue Type +	Ma	Location *	WS	
Category	Earthen Levee			GPS Latitude/Longitude		
				Start		End
Item	Encroachments			38.303305 °		38.303305 °
				-121.576537 °		-121.576537 °
DWR ID	DWR_RD0003_01_f_2012_19					
Comment Code						
TR : Tree or limb						
Inspector Comment						
Tree branches and limbs on waterward shoulder.						

LM Start	0.13	Rating **	U	Issue No.	19 (cont)
LM End	0.13	Issue Type +	Ma	Location *	WS

Photo 3 of 4 : FA_2017_RD0003_24_19_20170911_00024.jpg



Looking west at tree branch on waterward shoulder and slope. (Fall 2014)

Photo 4 of 4 : FA_2017_RD0003_24_19_20170911_00025.jpg



Looking west at tree branches on waterward shoulder. (Spring 2014)

* Location LS : Land Side N/A : Not Applicable WS : Water Side CR : Crown		** Rating A : Acceptable N : Not Inspected/Rated M : Minimally Acceptable C : Corrected U : Unacceptable A/W : Acceptable but Monitor & Maintain		+ Issue Type Ma : Maintenance Deficiency Ob : Design & System Obsolescence En : Enforcement
--	--	---	--	---

**Flood Control Project Maintenance
Levee Inspections**

Maintenance Issue Types Only, Levee Inspection Report By Mile - Fall 2017

Reclamation District No. 0003 Grand Island

Waterway	Bank	Unit Miles	Inspection Start/End	Inspector
Unit No. 01 Left Bank Steamboat Slough	Left	10.95	09/18/2017 09/18/2017	Dave Torres

LM Start	0.13	Rating **	M	Issue No.	2
LM End	0.13	Issue Type +	Ma	Location *	WS
Category	Earthen Levee			GPS Latitude/Longitude	
				Start	End
Item	Erosion / Bank Caving			38.303303 °	38.303303 °
				-121.576538 °	-121.576538 °
DWR ID	DWR_RD0003_01_f_2013_2				
Comment Code					
E2 : Schedule repair of erosion site prior to the next inspection.					
Inspector Comment					
Hole (8ft x 2.5ft x 5ft) next to a large tree on waterward shoulder.					

Photo 1 of 3 : FA_2017_RD0003_24_2_20170911_00005.jpg



Looking east at hole at the base of an oak tree on the waterward shoulder. (2016)

LM Start	0.13	Rating **	M	Issue No.	2 (cont)
LM End	0.13	Issue Type +	Ma	Location *	WS

Photo 2 of 3 : FA_2017_RD0003_24_2_20170911_00004.jpg



Looking at a hole next to oak tree on waterward shoulder. (2015)

LM Start	0.13	Rating **	M	Issue No.	2 (cont)
LM End	0.13	Issue Type +	Ma	Location *	WS

Photo 3 of 3 : FA_2017_RD0003_24_2_20170911_00003.jpg



Looking east at hole at base of tree on waterward shoulder. (2014)

* Location LS : Land Side N/A : Not Applicable WS : Water Side CR : Crown		** Rating A : Acceptable M : Minimally Acceptable U : Unacceptable N : Not Inspected/Rated C : Corrected A/W : Acceptable but Monitor & Maintain		+ Issue Type Ma : Maintenance Deficiency Ob : Design & System Obsolescence En : Enforcement	
---	--	--	--	--	--

**Flood Control Project Maintenance
Levee Inspections**

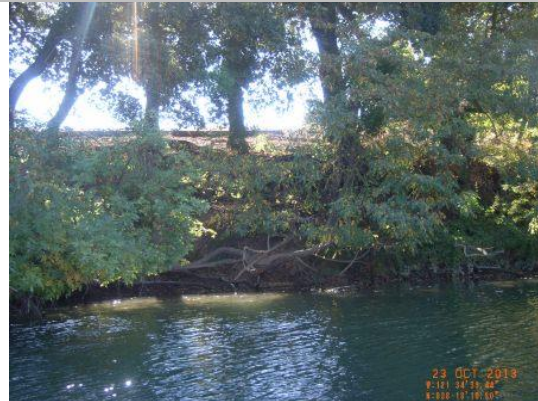
Maintenance Issue Types Only, Levee Inspection Report By Mile - Fall 2017

Reclamation District No. 0003 Grand Island

Waterway	Bank	Unit Miles	Inspection Start/End	Inspector
Unit No. 01 Left Bank Steamboat Slough	Left	10.95	09/18/2017 09/18/2017	Dave Torres

LM Start	0.18	Rating **	A/W	Issue No.	10
LM End	0.24	Issue Type +	Ma	Location *	WS
Category	Supplemental			GPS Latitude/Longitude	
				Start	End
Item	2015 USACE Erosion Survey, DRAFT			38.303035 °	38.302544 °
				-121.577357 °	-121.578241 °
DWR ID	DWR_RD0003_01_s_2016_10				
Comment Code					
Inspector Comment					
1997 - Mass failure of berm slope and wave wash erosion. Large trees on top of berm, some failed trees. New area of low rock to on the upstream end. 2000 - Some minor erosion near the downstream end. 2005 - One new small tree has fallen. 2009 - Minimal new erosion. 2010 - Minor new erosion. 2013 - Observed new animal holes and vertical sections at middle of site. 2015: Minor new erosion. [2015 Site ID: STM_26-0_L]					

Photo 1 of 1 : FA_2017_RD0003_24_10_20170911_00016.jpg



USACE 2013 Photo #1

LM Start	0.18	Rating **	A/W	Issue No.	54
LM End	0.21	Issue Type +	Ma	Location *	
Category	Supplemental			GPS Latitude/Longitude	
				Start	End
Item	2017 Storm Damage			38.302981 °	38.302778 °
				-121.577336 °	-121.577683 °
DWR ID	DWR_RD0003_01_f_2017_54				
Comment Code					
Inspector Comment					
Levee Evaluation Comments					
Description:District station 9+63 to 10+85, Sec. 07, T. 5 N. R. 4 E., M.D.M. An erosion site exists along approximately 122 linear feet of the water side slope of Steamboat Slough (Unit 1). Erosion commences approximately 1/3 of the way down the slope from the crown to the waterside toe. Erosion is undercutting existing trees.					
Site ID No:274					
Site Designation:LMA-100					
Repair Type: Erosion					
Rating:Serious					
Field Date:7/26/2017					
Notes: trees undercut by erosion					

Photo 1 of 3 : LEVAL_FA_2017_274_2391.jpg



* Location LS : Land Side N/A : Not Applicable WS : Water Side CR : Crown		** Rating A : Acceptable N : Not Inspected/Rated M : Minimally Acceptable C : Corrected U : Unacceptable A/W : Acceptable but Monitor & Maintain		+ Issue Type Ma : Maintenance Deficiency Ob : Design & System Obsolescence En : Enforcement
--	--	---	--	---

**Flood Control Project Maintenance
Levee Inspections**

Maintenance Issue Types Only, Levee Inspection Report By Mile - Fall 2017

Reclamation District No. 0003 Grand Island

Waterway	Bank	Unit Miles	Inspection Start/End	Inspector
Unit No. 01 Left Bank Steamboat Slough	Left	10.95	09/18/2017 09/18/2017	Dave Torres

LM Start	0.18	Rating **	A/W	Issue No.	54 (cont)	
LM End	0.21	Issue Type +	Ma	Location *		
Category	Supplemental			GPS Latitude/Longitude		
				Start	End	
Item	2017 Storm Damage			38.302981 °	38.302778 °	
				-121.577336 °	-121.577683 °	
DWR ID	DWR_RD0003_01_f_2017_54					
Comment Code						
Inspector Comment						
Levee Evaluation Comments						
Description: District station 9+63 to 10+85, Sec. 07, T. 5 N. R. 4 E., M.D.M. An erosion site exists along approximately 122 linear feet of the water side slope of Steamboat Slough (Unit 1). Erosion commences approximately 1/3 of the way down the slope from the crown to the waterside toe. Erosion is undercutting existing trees.						
Site ID No: 274						
Site Designation: LMA-100						
Repair Type: Erosion						
Rating: Serious						
Field Date: 7/26/2017						
Notes: trees undercut by erosion						

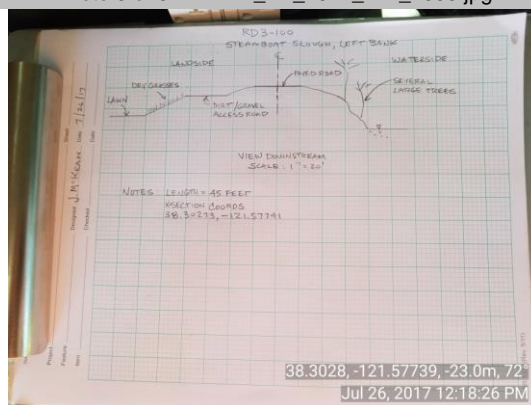
Photo 2 of 3 : LEVAL_FA_2017_274_2392.jpg



38.30282, -121.5774, -36.0m, 290°
Jul 26, 2017 12:05:40 PM

LM Start	0.18	Rating **	A/W	Issue No.	54 (cont)
LM End	0.21	Issue Type +	Ma	Location *	

Photo 3 of 3 : LEVAL_FA_2017_274_2395.jpg



38.3028, -121.57739, -23.0m, 72°
Jul 26, 2017 12:18:26 PM

* Location LS : Land Side N/A : Not Applicable WS : Water Side CR : Crown		** Rating A : Acceptable M : Minimally Acceptable U : Unacceptable N : Not Inspected/Rated C : Corrected A/W : Acceptable but Monitor & Maintain		+ Issue Type Ma : Maintenance Deficiency Ob : Design & System Obsolescence En : Enforcement
--	--	---	--	---

**Flood Control Project Maintenance
Levee Inspections**

Maintenance Issue Types Only, Levee Inspection Report By Mile - Fall 2017

Reclamation District No. 0003 Grand Island

Waterway	Bank	Unit Miles	Inspection Start/End	Inspector
Unit No. 01 Left Bank Steamboat Slough	Left	10.95	09/18/2017 09/18/2017	Dave Torres

LM Start	0.91	Rating **	A/W	Issue No.	55
LM End	0.97	Issue Type +	Ma	Location *	
Category	Supplemental			GPS Latitude/Longitude	
				Start	End
Item	2017 Storm Damage			38.293381 °	38.292617 °
				-121.582450 °	-121.582675 °
DWR ID	DWR_RD0003_01_f _ 2017_55				
Comment Code					
Inspector Comment					
Levee Evaluation Comments					
Description:District station 48+20 to 51+06, Sec. 07, T. 5 N. R. 4 E., M.D.M. An erosion site exists along approximately 286 linear feet of the water side slope of Steamboat Slough (Unit 1). The erosion begins approximately 1/2 ofthe way down the slope from the crown to the waterside toe. Erosion is undercutting existing trees.					
Site ID No:275					
Site Designation:LMA-101					
Repair Type: Erosion					
Rating:Serious					
Field Date:7/26/2017					
Notes:					

Photo 1 of 3 : LEVAL_FA_2017_275_2396.jpg



38.29302, -121.58252, 26.0m, 344°
Jul 26, 2017 12:32:25 PM

LM Start	0.91	Rating **	A/W	Issue No.	55 (cont)
LM End	0.97	Issue Type +	Ma	Location *	

Photo 2 of 3 : LEVAL_FA_2017_275_2398.jpg



38.29301, -121.58242, 22.0m, 282°
Jul 26, 2017 12:33:03 PM

* Location LS : Land Side N/A : Not Applicable WS : Water Side CR : Crown		** Rating A : Acceptable N : Not Inspected/Rated M : Minimally Acceptable C : Corrected U : Unacceptable A/W : Acceptable but Monitor & Maintain		+ Issue Type Ma : Maintenance Deficiency Ob : Design & System Obsolescence En : Enforcement	
--	--	---	--	---	--

**Flood Control Project Maintenance
Levee Inspections**

Maintenance Issue Types Only, Levee Inspection Report By Mile - Fall 2017

Reclamation District No. 0003 Grand Island

Waterway	Bank	Unit Miles	Inspection Start/End	Inspector
Unit No. 01 Left Bank Steamboat Slough	Left	10.95	09/18/2017 09/18/2017	Dave Torres

LM Start	0.91	Rating **	A/W	Issue No.	55 (cont)
LM End	0.97	Issue Type +	Ma	Location *	
Category	Supplemental			GPS Latitude/Longitude	
				Start	End
Item	2017 Storm Damage			38.293381 °	38.292617 °
				-121.582450 °	-121.582675 °
DWR ID	DWR_RD0003_01_f_2017_55				
Comment Code					
Inspector Comment					
Levee Evaluation Comments					
Description:District station 48+20 to 51+06, Sec. 07, T. 5 N. R. 4 E., M.D.M. An erosion site exists along approximately 286 linear feet of the water side slope of Steamboat Slough (Unit 1). The erosion begins approximately 1/2 ofthe way down the slope from the crown to the waterside toe. Erosion is undercutting existing trees.					
Site ID No:275					
Site Designation:LMA-101					
Repair Type: Erosion					
Rating:Serious					
Field Date:7/26/2017					
Notes:					

Photo 3 of 3 : LEVAL_FA_2017_275_2399.jpg



LM Start	0.91	Rating **	A/W	Issue No.	4
LM End	0.96	Issue Type +	Ma	Location *	WS
Category	Supplemental			GPS Latitude/Longitude	
				Start	End
Item	2015 USACE Erosion Survey, DRAFT			38.293386 °	38.292675 °
				-121.582554 °	-121.582741 °
DWR ID	DWR_RD0003_01_s_2016_4				
Comment Code					
Inspector Comment					
1997 - Erosion of sandy levee on top left bank. Site is downstream of a rock section. Large riparian trees on the bank. 1999 - Upstream half of the reach repaired with rock, except for a 30 ft reach at the upstream end. 2001 - Rock repair on the upstream and downstream ends; no revetment at the trees. 2002 - Rock repair is starting to slide off the geotextile at the upstream end. 2005 - One new small tree has fallen. 2006 - 50 ft pocket at the downstream end and at the upstream end with new rock in between. 2007 - Upstream end has been repaired. 2010 - Some minor new erosion. 2011 - Minor new erosion. 2012 - Minor new erosion at the toe. 2015: Significant new erosion, large oak tree on verge of popping out. [2015 Site ID: STM_25-0_L]					

Photo 1 of 1 : FA_2017_RD0003_24_4_20170911_00006.jpg



USACE 2013 Photo #1

* Location LS : Land Side N/A : Not Applicable WS : Water Side CR : Crown		** Rating A : Acceptable N : Not Inspected/Rated M : Minimally Acceptable C : Corrected U : Unacceptable A/W : Acceptable but Monitor & Maintain		+ Issue Type Ma : Maintenance Deficiency Ob : Design & System Obsolescence En : Enforcement
--	--	---	--	---

**Flood Control Project Maintenance
Levee Inspections**

Maintenance Issue Types Only, Levee Inspection Report By Mile - Fall 2017

Reclamation District No. 0003 Grand Island

Waterway	Bank	Unit Miles	Inspection Start/End	Inspector
Unit No. 01 Left Bank Steamboat Slough	Left	10.95	09/18/2017 09/18/2017	Dave Torres

LM Start	0.98	Rating **	M	Issue No.	65
LM End	0.98	Issue Type +	Ma	Location *	WS
Category	Earthen Levee			GPS Latitude/Longitude	
				Start	End
Item	Slope Stability			38.292392 °	38.292392 °
				-121.582717 °	-121.582717 °
DWR ID	DWR_RD0003_01_f_2015_65				
Comment Code					
S2 : Repair the levee slope damaged by foot traffic and prevent access where possible.					
Inspector Comment					
Waterward levee damage caused by foot traffic.					

LM Start	0.98	Rating **	M	Issue No.	65 (cont)
LM End	0.98	Issue Type +	Ma	Location *	WS

Photo 1 of 2 : FA_2017_RD0003_24_65_20170911_00053.jpg



Looking west at foot erosion on waterward slope (Spring 2016)

Photo 2 of 2 : FA_2017_RD0003_24_65_20170911_00054.jpg



Looking west at foot erosion on waterward slope. (Fall 2015)

LM Start	1.03	Rating **	M	Issue No.	1
LM End	1.18	Issue Type +	Ma	Location *	WS
Category	Supplemental			GPS Latitude/Longitude	
				Start	End
Item	2015 USACE Erosion Survey, DRAFT			38.291695 °	38.289575 °
				-121.582993 °	-121.583092 °
DWR ID	DWR_RD0003_01_s_2016_1				
Comment Code					
Inspector Comment					
2008 - Area closed sign on bank. Newly fallen trees at both ends and pop outs along the bank. 2010 - Site extended downstream. 2011 - New erosion at the toe. More trees popouts. 2013 - Short vertical sections observed at the downstream end. 2015: New erosion at toe. [2015 Site ID: STM 24-8 L]					

Photo 1 of 2 : FA_2017_RD0003_24_1_20170911_00001.jpg



USACE 2013 Photo #1

* Location		** Rating		+ Issue Type	
LS : Land Side	N/A : Not Applicable	A : Acceptable	N : Not Inspected/Rated	Ma : Maintenance Deficiency	
WS : Water Side		M : Minimally Acceptable	C : Corrected	Ob : Design & System Obsolescence	
CR : Crown		U : Unacceptable	A/W : Acceptable but Monitor & Maintain	En : Enforcement	

**Flood Control Project Maintenance
Levee Inspections**

Maintenance Issue Types Only, Levee Inspection Report By Mile - Fall 2017

Reclamation District No. 0003 Grand Island

Waterway	Bank	Unit Miles	Inspection Start/End	Inspector
Unit No. 01 Left Bank Steamboat Slough	Left	10.95	09/18/2017 09/18/2017	Dave Torres

LM Start	1.27	Rating **	C	Issue No.	5
LM End	1.32	Issue Type +	Ma	Location *	LS
Category	Earthen Levee			GPS Latitude/Longitude	
				Start	End
Item	Trim / Thin Trees			38.288183 °	38.287433 °
				-121.582808 °	-121.582982 °
DWR ID	DWR_RD0003_01_s_2012_5				
Comment Code					
T2 : Thin trees to allow visibility of the ground and room to flood fight.					
Inspector Comment					

No Photos

LM Start	1.29	Rating **	C	Issue No.	68
LM End	1.29	Issue Type +	Ma	Location *	LS
Category	Earthen Levee			GPS Latitude/Longitude	
				Start	End
Item	Encroachments			38.287903 °	38.287903 °
				-121.582809 °	-121.582809 °
DWR ID	DWR_RD0003_01_s_2016_68				
Comment Code					
TR : Tree or limb					
Inspector Comment					
Fallen tree on landward toe.					

No Photos

LM Start	1.69	Rating **	U	Issue No.	62
LM End	1.69	Issue Type +	Ma	Location *	WS
Category	Earthen Levee			GPS Latitude/Longitude	
				Start	End
Item	Encroachments			38.283747 °	38.283747 °
				-121.587622 °	-121.587622 °
DWR ID	DWR_RD0003_01_f_2016_62				
Comment Code					
TR : Tree or limb					
Inspector Comment					
Broken tree branch on waterward slope.					

Photo 1 of 2 : FA_2017_RD0003_24_62_20170911_00051.jpg



Looking southwest at broken branches on waterward slope.

* Location
LS : Land Side N/A : Not Applicable
WS : Water Side
CR : Crown

** Rating
A : Acceptable N : Not Inspected/Rated
M : Minimally Acceptable C : Corrected
U : Unacceptable A/W : Acceptable but Monitor & Maintain

+ Issue Type
Ma : Maintenance Deficiency
Ob : Design & System Obsolescence
En : Enforcement

**Flood Control Project Maintenance
Levee Inspections**

Maintenance Issue Types Only, Levee Inspection Report By Mile - Fall 2017

Reclamation District No. 0003 Grand Island

Waterway	Bank	Unit Miles	Inspection Start/End	Inspector
Unit No. 01 Left Bank Steamboat Slough	Left	10.95	09/18/2017 09/18/2017	Dave Torres

LM Start	1.69	Rating **	U	Issue No.	62 (cont)	
LM End	1.69	Issue Type +	Ma	Location *	WS	
Category	Earthen Levee			GPS Latitude/Longitude		
				Start		End
Item	Encroachments			38.283747 °		38.283747 °
				-121.587622 °		-121.587622 °
DWR ID	DWR_RD0003_01_f_2016_62					
Comment Code						
TR : Tree or limb						
Inspector Comment						
Broken tree branch on waterward slope.						

Photo 2 of 2 : FA_2017_RD0003_24_62_20170911_00052.jpg



LM Start	1.93	Rating **	M	Issue No.	81
LM End	1.93	Issue Type +	Ma	Location *	WS
Category	Earthen Levee			GPS Latitude/Longitude	
				Start	End
Item	Encroachments			38.280319 °	38.280319 °
				-121.588426 °	-121.588426 °
DWR ID	DWR_RD0003_01_f_2017_81				
Comment Code					
TR : Tree or limb					
Inspector Comment					

Photo 1 of 1 : FA_2017_RD0003_24_81_20170929_00174.jpg



Looking southwest at waterside slope.

LM Start	2.66	Rating **	M	Issue No.	82
LM End	2.66	Issue Type +	Ma	Location *	WS
Category	Earthen Levee			GPS Latitude/Longitude	
				Start	End
Item	Encroachments			38.271128 °	38.271128 °
				-121.588634 °	-121.588634 °
DWR ID	DWR_RD0003_01_f_2017_82				
Comment Code					
TR : Tree or limb					
Inspector Comment					

Photo 1 of 1 : FA_2017_RD0003_24_82_20170929_00175.jpg



Looking southwest at waterside slope.

* Location		** Rating		+ Issue Type	
LS : Land Side	N/A : Not Applicable	A : Acceptable	N : Not Inspected/Rated	Ma : Maintenance Deficiency	
WS : Water Side		M : Minimally Acceptable	C : Corrected	Ob : Design & System Obsolescence	
CR : Crown		U : Unacceptable	A/W : Acceptable but Monitor & Maintain	En : Enforcement	

**Flood Control Project Maintenance
Levee Inspections**

Maintenance Issue Types Only, Levee Inspection Report By Mile - Fall 2017

Reclamation District No. 0003 Grand Island

Waterway	Bank	Unit Miles	Inspection Start/End	Inspector
Unit No. 01 Left Bank Steamboat Slough	Left	10.95	09/18/2017 09/18/2017	Dave Torres

LM Start	3.16	Rating **	N	Issue No.	47
LM End	3.16	Issue Type +	Ma	Location *	WS
Category	Earthen Levee			GPS Latitude/Longitude	
				Start	End
Item	Trim / Thin Trees			38.264154 °	38.264154 °
				-121.587242 °	-121.587242 °
DWR ID	DWR_RD0003_01_s_2012_47				
Comment Code					
T5 : Tree stumps.					
Inspector Comment					
6 large stumps on slope.					

No Photos

LM Start	4.87	Rating **	M	Issue No.	83
LM End	4.87	Issue Type +	Ma	Location *	LS
Category	Earthen Levee			GPS Latitude/Longitude	
				Start	End
Item	Slope Stability			38.245903 °	38.245903 °
				-121.600851 °	-121.600851 °
DWR ID	DWR_RD0003_01_f_2017_83				
Comment Code					
S1 : Repair slope instability.					
Inspector Comment					
Landside slope has a depression.					

Photo 1 of 1 : FA_2017_RD0003_24_83_20170929_00177.jpg



Looking east on landside slope.

* Location LS : Land Side N/A : Not Applicable WS : Water Side CR : Crown		** Rating A : Acceptable N : Not Inspected/Rated M : Minimally Acceptable C : Corrected U : Unacceptable A/W : Acceptable but Monitor & Maintain		+ Issue Type Ma : Maintenance Deficiency Ob : Design & System Obsolescence En : Enforcement
--	--	---	--	---

**Flood Control Project Maintenance
Levee Inspections**

Maintenance Issue Types Only, Levee Inspection Report By Mile - Fall 2017

Reclamation District No. 0003 Grand Island

Waterway	Bank	Unit Miles	Inspection Start/End	Inspector
Unit No. 01 Left Bank Steamboat Slough	Left	10.95	09/18/2017 09/18/2017	Dave Torres

LM Start	5.09	Rating **	C	Issue No.	57
LM End	5.09	Issue Type +	Ma	Location *	WS
Category	Earthen Levee			GPS Latitude/Longitude	
				Start	End
Item	Slope Stability			38.242650 °	38.242650 °
				-121.600877 °	-121.600877 °
DWR ID	DWR_RD0003_01_s_2017_57				
Comment Code					
S1 : Repair slope instability.					
Inspector Comment					
Water eroding inside hole. LMA has corrected issue.					

No Photos

LM Start	5.46	Rating **	U	Issue No.	58
LM End	5.46	Issue Type +	Ma	Location *	LS
Category	Earthen Levee			GPS Latitude/Longitude	
				Start	End
Item	Encroachments			38.237515 °	38.237515 °
				-121.602225 °	-121.602225 °
DWR ID	DWR_RD0003_01_s_2017_58				
Comment Code					
TR : Tree or limb					
Inspector Comment					
Downed tree with large root ball on landward slope.					

Photo 1 of 2 : FA_2017_RD0003_24_58_20170911_00048.jpg



Looking east at fallen tree on landward slope and toe.

LM Start	5.46	Rating **	U	Issue No.	58 (cont)
LM End	5.46	Issue Type +	Ma	Location *	LS

Photo 2 of 2 : FA_2017_RD0003_24_58_20170911_00049.jpg



Looking at large root ball, large hole on landward slope.

* Location LS : Land Side N/A : Not Applicable WS : Water Side CR : Crown		** Rating A : Acceptable M : Minimally Acceptable U : Unacceptable		N : Not Inspected/Rated C : Corrected A/W : Acceptable but Monitor & Maintain		+ Issue Type Ma : Maintenance Deficiency Ob : Design & System Obsolescence En : Enforcement	
--	--	--	--	---	--	---	--

**Flood Control Project Maintenance
Levee Inspections**

Maintenance Issue Types Only, Levee Inspection Report By Mile - Fall 2017

Reclamation District No. 0003 Grand Island

Waterway	Bank	Unit Miles	Inspection Start/End	Inspector
Unit No. 01 Left Bank Steamboat Slough	Left	10.95	09/18/2017 09/18/2017	Dave Torres

LM Start	5.65	Rating **	M	Issue No.	63
LM End	5.65	Issue Type +	Ma	Location *	LS
Category	Earthen Levee			GPS Latitude/Longitude	
				Start	End
Item	Trim / Thin Trees			38.234721 °	38.234721 °
				-121.601709 °	-121.601709 °
DWR ID	DWR_RD0003_01_f_2016_63				
Comment Code					
T1 : Trim trees to at least five feet above ground level.					
Inspector Comment					

No Photos

LM Start	5.77	Rating **	U	Issue No.	66
LM End	5.77	Issue Type +	Ma	Location *	WS
Category	Earthen Levee			GPS Latitude/Longitude	
				Start	End
Item	Encroachments			38.233098 °	38.233098 °
				-121.601323 °	-121.601323 °
DWR ID	DWR_RD0003_01_f_2016_66				
Comment Code					
TR : Tree or limb					
Inspector Comment					
Broken tree branches and limbs on waterward slope.					

Photo 1 of 1 : FA_2017_RD0003_24_66_20170911_00055.jpg



Looking west at tree branches and limbs on waterward slope.

LM Start	8.39	Rating **	M	Issue No.	94
LM End	8.39	Issue Type +	Ma	Location *	LS
Category	Earthen Levee			GPS Latitude/Longitude	
				Start	End
Item	Encroachments			38.197202 °	38.197202 °
				-121.612962 °	-121.612962 °
DWR ID	DWR_RD0003_01_s_2013_94				
Comment Code					
PR : Prunings					
Inspector Comment					
Prunings on landward slope.					

Photo 1 of 2 : FA_2017_RD0003_24_94_20170929_00180.jpg



Looking south at landside slope.

* Location
LS : Land Side N/A : Not Applicable
WS : Water Side
CR : Crown

** Rating
A : Acceptable N : Not Inspected/Rated
M : Minimally Acceptable C : Corrected
U : Unacceptable A/W : Acceptable but Monitor & Maintain

+ Issue Type
Ma : Maintenance Deficiency
Ob : Design & System Obsolescence
En : Enforcement

**Flood Control Project Maintenance
Levee Inspections**

Maintenance Issue Types Only, Levee Inspection Report By Mile - Fall 2017

Reclamation District No. 0003 Grand Island

Waterway	Bank	Unit Miles	Inspection Start/End	Inspector
Unit No. 01 Left Bank Steamboat Slough	Left	10.95	09/18/2017 09/18/2017	Dave Torres

LM Start	8.39	Rating **	M	Issue No.	94 (cont)	
LM End	8.39	Issue Type +	Ma	Location *	LS	
Category	Earthen Levee			GPS Latitude/Longitude		
				Start		End
Item	Encroachments			38.197202 °		38.197202 °
				-121.612962 °		-121.612962 °
DWR ID	DWR_RD0003_01_s_2013_94					
Comment Code						
PR : Prunings						
Inspector Comment						
Prunings on landward slope.						

Photo 2 of 2 : FA_2017_RD0003_24_94_20170911_00071.jpg



Looking at prunings on landward slope (Spring 2016)

LM Start	8.83	Rating **	C	Issue No.	80
LM End	8.83	Issue Type +	Ma	Location *	LS
Category	Earthen Levee			GPS Latitude/Longitude	
				Start	End
Item	Encroachments			38.193479 °	38.193479 °
				-121.619290 °	-121.619290 °
DWR ID	DWR_RD0003_01_f_2016_80				
Comment Code					
TR : Tree or limb					
Inspector Comment					
Broken tree branch on landward slope.					

No Photos

LM Start	8.88	Rating **	M	Issue No.	59
LM End	8.88	Issue Type +	Ma	Location *	LS
Category	Earthen Levee			GPS Latitude/Longitude	
				Start	End
Item	Encroachments			38.193217 °	38.193217 °
				-121.620050 °	-121.620050 °
DWR ID	DWR_RD0003_01_s_2017_59				
Comment Code					
PR : Prunings					
Inspector Comment					
Pruning pile on landward slope					

Photo 1 of 1 : FA_2017_RD0003_24_59_20170911_00050.jpg



Looking east at pruning piles on landward berm.

*** Location**
LS : Land Side N/A : Not Applicable
WS : Water Side
CR : Crown

**** Rating**
A : Acceptable N : Not Inspected/Rated
M : Minimally Acceptable C : Corrected
U : Unacceptable A/W : Acceptable but Monitor & Maintain

+ Issue Type
Ma : Maintenance Deficiency
Ob : Design & System Obsolescence
En : Enforcement

**Flood Control Project Maintenance
Levee Inspections**

Maintenance Issue Types Only, Levee Inspection Report By Mile - Fall 2017

Reclamation District No. 0003 Grand Island

Waterway	Bank	Unit Miles	Inspection Start/End	Inspector
Unit No. 01 Left Bank Steamboat Slough	Left	10.95	09/18/2017 09/18/2017	Dave Torres

LM Start	10.15	Rating **	A/W	Issue No.	72
LM End	10.21	Issue Type +	Ma	Location *	
Category	Supplemental			GPS Latitude/Longitude	
				Start	End
Item	2017 Storm Damage			38.188431 °	38.187803 °
				-121.641703 °	-121.642478 °
DWR ID	DWR_RD0003_01_f_2017_72				
Comment Code					
Inspector Comment					
Levee Evaluation Comments					
Description:District station 536+35 to 539+47, Sec. 16, T. 4 N. R. 3 E., M.D.M. The waterside slope experienced sloughing and erosion along approximately 312 linear feet of Steamboat Slough (Unit 1). Sloughing commences at approximately 1/4 of the way down the slope from the crown and extends to the rip rap.					
Site ID No:277					
Site Designation:LMA-103					
Repair Type: Erosion					
Rating:Area of Concern					
Field Date:7/26/2017					
Notes:					

Photo 1 of 3 : LEVAL_FA_2017_277_2366.jpg



LM Start	10.15	Rating **	A/W	Issue No.	72 (cont)
LM End	10.21	Issue Type +	Ma	Location *	

Photo 2 of 3 : LEVAL_FA_2017_277_2367.jpg



* Location LS : Land Side N/A : Not Applicable WS : Water Side CR : Crown	** Rating A : Acceptable M : Minimally Acceptable U : Unacceptable	N : Not Inspected/Rated C : Corrected A/W : Acceptable but Monitor & Maintain	+ Issue Type Ma : Maintenance Deficiency Ob : Design & System Obsolescence En : Enforcement
--	--	---	---

**Flood Control Project Maintenance
Levee Inspections**

Maintenance Issue Types Only, Levee Inspection Report By Mile - Fall 2017

Reclamation District No. 0003 Grand Island

Waterway	Bank	Unit Miles	Inspection Start/End	Inspector
Unit No. 01 Left Bank Steamboat Slough	Left	10.95	09/18/2017 09/18/2017	Dave Torres

LM Start	10.15	Rating **	A/W	Issue No.	72 (cont)
LM End	10.21	Issue Type +	Ma	Location *	
Category	Supplemental			GPS Latitude/Longitude	
				Start	End
Item	2017 Storm Damage			38.188431 °	38.187803 °
				-121.641703 °	-121.642478 °
DWR ID	DWR_RD0003_01_f_2017_72				
Comment Code					
Inspector Comment					
<p>Levee Evaluation Comments</p> <p>Description: District station 536+35 to 539+47, Sec. 16, T. 4 N. R. 3 E., M.D.M. The waterside slope experienced sloughing and erosion along approximately 312 linear feet of Steamboat Slough (Unit 1). Sloughing commences at approximately 1/4 of the way down the slope from the crown and extends to the rip rap.</p> <p>Site ID No: 277</p> <p>Site Designation: LMA-103</p> <p>Repair Type: Erosion</p> <p>Rating: Area of Concern</p> <p>Field Date: 7/26/2017</p> <p>Notes:</p>					

Photo 3 of 3 : LEVAL_FA_2017_277_2368.jpg



LM Start	10.67	Rating **	A/W	Issue No.	73
LM End	10.92	Issue Type +	Ma	Location *	
Category	Supplemental			GPS Latitude/Longitude	
				Start	End
Item	2017 Storm Damage			38.183810 °	38.182480 °
				-121.648780 °	-121.653150 °
DWR ID	DWR_RD0003_01_f_2017_73				
Comment Code					
Inspector Comment					
<p>Levee Evaluation Comments</p> <p>Description:</p> <p>Site ID No: 63</p> <p>Site Designation: DWR_RD0003_01_R_2012_03</p> <p>Repair Type: Erosion</p> <p>Rating: Serious</p> <p>Field Date: 6/8/2017</p> <p>Notes: scattered erosion scarps caving into levee crown, within erosion limit crown width ranges from 15 to 30', several trees with exposed tree roots and leaning into the river,</p>					

Photo 1 of 3 : LEVAL_FA_2017_63_117.jpg



* Location LS : Land Side N/A : Not Applicable WS : Water Side CR : Crown	** Rating A : Acceptable M : Minimally Acceptable U : Unacceptable	N : Not Inspected/Rated C : Corrected A/W : Acceptable but Monitor & Maintain	+ Issue Type Ma : Maintenance Deficiency Ob : Design & System Obsolescence En : Enforcement
--	--	---	---

**Flood Control Project Maintenance
Levee Inspections**

Maintenance Issue Types Only, Levee Inspection Report By Mile - Fall 2017

Reclamation District No. 0003 Grand Island

Waterway	Bank	Unit Miles	Inspection Start/End	Inspector
Unit No. 01 Left Bank Steamboat Slough	Left	10.95	09/18/2017 09/18/2017	Dave Torres

LM Start	10.67	Rating **	A/W	Issue No.	73 (cont)
LM End	10.92	Issue Type +	Ma	Location *	
Category	Supplemental		GPS Latitude/Longitude		
			Start	End	
Item	2017 Storm Damage		38.183810 °	38.182480 °	
			-121.648780 °	-121.653150 °	

DWR ID DWR_RD0003_01_f_2017_73

Comment Code

Inspector Comment

Levee Evaluation Comments

Description:

Site ID No:63

Site Designation:DWR_RD0003_01_R_2012_03

Repair Type: Erosion

Rating:Serious

Field Date:6/8/2017

Notes: scattered erosion scarps caving into levee crown, within erosion limit crown width ranges from 15 to 30', several trees with exposed tree roots and leaning into the river,

LM Start	10.67	Rating **	A/W	Issue No.	73 (cont)
LM End	10.92	Issue Type +	Ma	Location *	

Photo 2 of 3 : LEVAL_FA_2017_63_124.jpg



Photo 3 of 3 : LEVAL_FA_2017_63_126.jpg

*** Location**

LS : Land Side N/A : Not Applicable
WS : Water Side
CR : Crown

**** Rating**

A : Acceptable N : Not Inspected/Rated
M : Minimally Acceptable C : Corrected
U : Unacceptable A/W : Acceptable but Monitor & Maintain

+ Issue Type

Ma : Maintenance Deficiency
Ob : Design & System Obsolescence
En : Enforcement

**Flood Control Project Maintenance
Levee Inspections**

Maintenance Issue Types Only, Levee Inspection Report By Mile - Fall 2017

Reclamation District No. 0003 Grand Island

Waterway	Bank	Unit Miles	Inspection Start/End	Inspector
Unit No. 01 Left Bank Steamboat Slough	Left	10.95	09/18/2017 09/18/2017	Dave Torres

LM Start	10.75	Rating **	A/W	Issue No.	96
LM End	10.75	Issue Type +	Ma	Location *	WS
Category	Earthen Levee			GPS Latitude/Longitude	
				Start	End
Item	Erosion / Bank Caving			38.183422 °	38.183422 °
				-121.650182 °	-121.650182 °
DWR ID	DWR_RD0003_01_s_2013_96				
Comment Code					
E2 : Schedule repair of erosion site prior to the next inspection.					
Inspector Comment					
Erosion extends to waterward shoulder.					

Photo 1 of 2 : FA_2017_RD0003_24_96_20170911_00072.jpg



Looking northwest at erosion on waterward slope.

LM Start	10.75	Rating **	A/W	Issue No.	96 (cont)
LM End	10.75	Issue Type +	Ma	Location *	WS

Photo 2 of 2 : FA_2017_RD0003_24_96_20170911_00073.jpg



Looking southwest at erosion on waterward slope.

LM Start	10.78	Rating **	A/W	Issue No.	97
LM End	10.80	Issue Type +	Ma	Location *	WS
Category	Earthen Levee			GPS Latitude/Longitude	
				Start	End
Item	Erosion / Bank Caving			38.183228 °	38.183123 °
				-121.650797 °	-121.651070 °
DWR ID	DWR_RD0003_01_s_2013_97				
Comment Code					
E2 : Schedule repair of erosion site prior to the next inspection.					
Inspector Comment					
Erosion extends to waterward shoulder.					

Photo 1 of 2 : FA_2017_RD0003_24_97_20170911_00074.jpg



Looking south at erosion on waterward slope.

*** Location**
LS : Land Side N/A : Not Applicable
WS : Water Side
CR : Crown

**** Rating**
A : Acceptable N : Not Inspected/Rated
M : Minimally Acceptable C : Corrected
U : Unacceptable A/W : Acceptable but Monitor & Maintain

+ Issue Type
Ma : Maintenance Deficiency
Ob : Design & System Obsolescence
En : Enforcement

**Flood Control Project Maintenance
Levee Inspections**

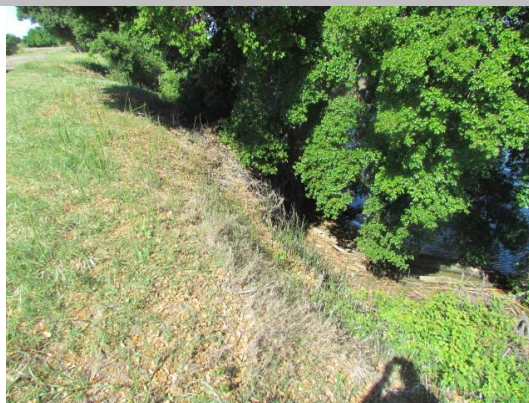
Maintenance Issue Types Only, Levee Inspection Report By Mile - Fall 2017

Reclamation District No. 0003 Grand Island

Waterway	Bank	Unit Miles	Inspection Start/End	Inspector
Unit No. 01 Left Bank Steamboat Slough	Left	10.95	09/18/2017 09/18/2017	Dave Torres

LM Start	10.78	Rating **	A/W	Issue No.	97 (cont)	
LM End	10.80	Issue Type +	Ma	Location *	WS	
Category	Earthen Levee			GPS Latitude/Longitude		
				Start		End
Item	Erosion / Bank Caving			38.183228 °	38.183123 °	
				-121.650797 °	-121.651070 °	
DWR ID	DWR_RD0003_01_s_2013_97					
Comment Code						
E2 : Schedule repair of erosion site prior to the next inspection.						
Inspector Comment						
Erosion extends to waterward shoulder.						

Photo 2 of 2 : FA_2017_RD0003_24_97_20170911_00075.jpg



Looking southwest at erosion on waterward slope.

LM Start	10.79	Rating **	M	Issue No.	92
LM End	10.92	Issue Type +	Ma	Location *	LS
Category	Earthen Levee			GPS Latitude/Longitude	
				Start	End
Item	Vegetation			38.183204 °	38.182481 °
				-121.650861 °	-121.653199 °
DWR ID	DWR_RD0003_01_f_2017_92				
Comment Code					
V2 : Remove the wild growth other than native grasses from the levee slopes.					
Inspector Comment					

No Photos

LM Start	10.86	Rating **	A/W	Issue No.	98
LM End	10.89	Issue Type +	Ma	Location *	WS
Category	Earthen Levee			GPS Latitude/Longitude	
				Start	End
Item	Erosion / Bank Caving			38.182792 °	38.182672 °
				-121.652142 °	-121.652555 °
DWR ID	DWR_RD0003_01_s_2013_98				
Comment Code					
E2 : Schedule repair of erosion site prior to the next inspection.					
Inspector Comment					
Erosion extends to waterward shoulder.					

Photo 1 of 3 : FA_2017_RD0003_24_98_20170911_00076.jpg



Looking north at erosion on waterward slope.

* Location
LS : Land Side N/A : Not Applicable
WS : Water Side
CR : Crown

** Rating
A : Acceptable N : Not Inspected/Rated
M : Minimally Acceptable C : Corrected
U : Unacceptable A/W : Acceptable but Monitor & Maintain

+ Issue Type
Ma : Maintenance Deficiency
Ob : Design & System Obsolescence
En : Enforcement

**Flood Control Project Maintenance
Levee Inspections**

Maintenance Issue Types Only, Levee Inspection Report By Mile - Fall 2017

Reclamation District No. 0003 Grand Island

Waterway	Bank	Unit Miles	Inspection Start/End	Inspector
Unit No. 01 Left Bank Steamboat Slough	Left	10.95	09/18/2017 09/18/2017	Dave Torres

LM Start	10.91	Rating **	A/W	Issue No.	99 (cont)
LM End	10.94	Issue Type +	Ma	Location *	WS
Category	Earthen Levee			GPS Latitude/Longitude	
				Start	End
Item	Erosion / Bank Caving			38.182537 °	38.182388 °
				-121.652987 °	-121.653388 °
DWR ID	DWR_RD0003_01_s_2013_99				
Comment Code					
E2 : Schedule repair of erosion site prior to the next inspection.					
Inspector Comment					
Erosion extends to waterward shoulder.					

Photo 2 of 2 : FA_2017_RD0003_24_99_20170911_00080.jpg



Looking north at erosion on waterward shoulder and slope.

**Flood Control Project Maintenance
Levee Inspections**

Maintenance Issue Types Only, Levee Inspection Report By Mile - Fall 2017

Reclamation District No. 0003 Grand Island

Waterway	Bank	Unit Miles	Inspection Start/End	Inspector
Unit No. 02 Right Bank Sacramento River	Right	17.35	09/18/2017 09/26/2017	Dave Torres

LM Start	0.17	Rating **	M	Issue No.	3
LM End	0.17	Issue Type +	Ma	Location *	WS
Category	Earthen Levee			GPS Latitude/Longitude	
				Start	End
Item	Trim / Thin Trees			38.174890 °	38.174890 °
				-121.651031 °	-121.651031 °
DWR ID	DWR_RD0003_02_s_2012_3				
Comment Code					
T1 : Trim trees to at least five feet above ground level.					
Inspector Comment					

No Photos

LM Start	0.25	Rating **	M	Issue No.	4
LM End	0.25	Issue Type +	Ma	Location *	LS
Category	Earthen Levee			GPS Latitude/Longitude	
				Start	End
Item	Trim / Thin Trees			38.174504 °	38.174504 °
				-121.649651 °	-121.649651 °
DWR ID	DWR_RD0003_02_s_2012_4				
Comment Code					
T4 : Trim trees over roadway to at least 12 feet above ground level.					
Inspector Comment					
Untrimmed tree. Trim at least five feet above ground and trim it back from overhanging the levee crown.					

Photo 1 of 1 : FA_2017_RD0003_25_4_20170911_00006.jpg



Looking east at untrimmed tree on landward shoulder.

* Location LS : Land Side N/A : Not Applicable WS : Water Side CR : Crown		** Rating A : Acceptable N : Not Inspected/Rated M : Minimally Acceptable C : Corrected U : Unacceptable A/W : Acceptable but Monitor & Maintain		+ Issue Type Ma : Maintenance Deficiency Ob : Design & System Obsolescence En : Enforcement
--	--	---	--	---

**Flood Control Project Maintenance
Levee Inspections**

Maintenance Issue Types Only, Levee Inspection Report By Mile - Fall 2017

Reclamation District No. 0003 Grand Island

Waterway	Bank	Unit Miles	Inspection Start/End	Inspector
Unit No. 02 Right Bank Sacramento River	Right	17.35	09/18/2017 09/26/2017	Dave Torres

LM Start	0.30	Rating **	M	Issue No.	5
LM End	0.32	Issue Type +	Ma	Location *	WS
Category	Earthen Levee			GPS Latitude/Longitude	
				Start	End
Item	Vegetation			38.174281 °	38.174209 °
				-121.648698 °	-121.648352 °
DWR ID	DWR_RD0003_02_s_2012_5				
Comment Code					
V2 : Remove the wild growth other than native grasses from the levee slopes.					
Inspector Comment					
Bamboo sprouts on waterward slope.					

Photo 1 of 2 : FA_2017_RD0003_25_5_20170911_00007.jpg



Looking southeast at bamboo on waterward slope. (Fall 2016)

LM Start	0.30	Rating **	M	Issue No.	5 (cont)
LM End	0.32	Issue Type +	Ma	Location *	WS

Photo 2 of 2 : FA_2017_RD0003_25_5_20170911_00008.jpg



Looking east at bamboo on waterward slope. (Spring 2016)

LM Start	0.31	Rating **	U	Issue No.	151
LM End	0.35	Issue Type +	Ma	Location *	LS
Category	Earthen Levee			GPS Latitude/Longitude	
				Start	End
Item	Vegetation			38.174235 °	38.174109 °
				-121.648479 °	-121.647870 °
DWR ID	DWR_RD0003_02_s_2016_151				
Comment Code					
V2 : Remove the wild growth other than native grasses from the levee slopes.					
Inspector Comment					

Photo 1 of 2 : FA_2017_RD0003_25_151_20171009_00274.jpg



Looking west at landside slope.

*** Location**
LS : Land Side N/A : Not Applicable
WS : Water Side
CR : Crown

**** Rating**
A : Acceptable N : Not Inspected/Rated
M : Minimally Acceptable C : Corrected
U : Unacceptable A/W : Acceptable but Monitor & Maintain

+ Issue Type
Ma : Maintenance Deficiency
Ob : Design & System Obsolescence
En : Enforcement

**Flood Control Project Maintenance
Levee Inspections**

Maintenance Issue Types Only, Levee Inspection Report By Mile - Fall 2017

Reclamation District No. 0003 Grand Island

Waterway	Bank	Unit Miles	Inspection Start/End	Inspector
Unit No. 02 Right Bank Sacramento River	Right	17.35	09/18/2017 09/26/2017	Dave Torres

LM Start	0.31	Rating **	U	Issue No.	151 (cont)	
LM End	0.35	Issue Type +	Ma	Location *	LS	
Category	Earthen Levee			GPS Latitude/Longitude		
				Start		End
Item	Vegetation			38.174235 °		38.174109 °
				-121.648479 °		-121.647870 °
DWR ID	DWR_RD0003_02_s_2016_151					
Comment Code						
V2 : Remove the wild growth other than native grasses from the levee slopes.						
Inspector Comment						

Photo 2 of 2 : FA_2017_RD0003_25_151_20170911_00103.jpg



Looking west at dense vegetation at landward toe.

LM Start	1.46	Rating **	M	Issue No.	128
LM End	1.48	Issue Type +	Ma	Location *	LS
Category	Earthen Levee			GPS Latitude/Longitude	
				Start	End
Item	Trim / Thin Trees			38.169500 °	38.169370 °
				-121.628832 °	-121.628573 °
DWR ID	DWR_RD0003_02_s_2017_128				
Comment Code					
T1 : Trim trees to at least five feet above ground level.					
Inspector Comment					

No Photos

LM Start	1.57	Rating **	U	Issue No.	129
LM End	1.57	Issue Type +	Ma	Location *	WS
Category	Earthen Levee			GPS Latitude/Longitude	
				Start	End
Item	Encroachments			38.168700 °	38.168700 °
				-121.627233 °	-121.627233 °
DWR ID	DWR_RD0003_02_s_2017_129				
Comment Code					
TR : Tree or limb					
Inspector Comment					
Large fallen tree on waterside slope.					

Photo 1 of 3 : FA_2017_RD0003_25_129_20171009_00277.jpg



Looking east at waterside slope.

* Location		** Rating		+ Issue Type	
LS : Land Side	N/A : Not Applicable	A : Acceptable	N : Not Inspected/Rated	Ma : Maintenance Deficiency	
WS : Water Side		M : Minimally Acceptable	C : Corrected	Ob : Design & System Obsolescence	
CR : Crown		U : Unacceptable	A/W : Acceptable but Monitor & Maintain	En : Enforcement	

**Flood Control Project Maintenance
Levee Inspections**

Maintenance Issue Types Only, Levee Inspection Report By Mile - Fall 2017

Reclamation District No. 0003 Grand Island

Waterway	Bank	Unit Miles	Inspection Start/End	Inspector
Unit No. 02 Right Bank Sacramento River	Right	17.35	09/18/2017 09/26/2017	Dave Torres

LM Start	1.57	Rating **	U	Issue No.	129 (cont)	
LM End	1.57	Issue Type +	Ma	Location *	WS	
Category	Earthen Levee			GPS Latitude/Longitude		
				Start	End	
Item	Encroachments			38.168700 °	38.168700 °	
				-121.627233 °	-121.627233 °	
DWR ID	DWR_RD0003_02_s_2017_129					
Comment Code						
TR : Tree or limb						
Inspector Comment						
Large fallen tree on waterside slope.						

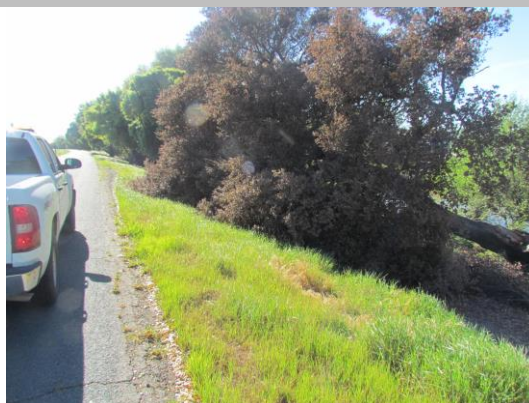
Photo 2 of 3 : FA_2017_RD0003_25_129_20170911_00088.jpg



Looking east at fallen tree on waterward slope.

LM Start	1.57	Rating **	U	Issue No.	129 (cont)
LM End	1.57	Issue Type +	Ma	Location *	WS

Photo 3 of 3 : FA_2017_RD0003_25_129_20170911_00089.jpg



Looking northeast at fallen tree on waterward slope.

LM Start	1.67	Rating **	M	Issue No.	130
LM End	1.67	Issue Type +	Ma	Location *	WS
Category	Earthen Levee			GPS Latitude/Longitude	
				Start	End
Item	Encroachments			38.167880 °	38.167880 °
				-121.625572 °	-121.625572 °
DWR ID	DWR_RD0003_02_s_2017_130				
Comment Code					
TR : Tree or limb					
Inspector Comment					
Fallen tree on waterside slope.					

Photo 1 of 3 : FA_2017_RD0003_25_130_20171009_00278.jpg



Looking south at the waterside slope.

* Location		** Rating		+ Issue Type	
LS : Land Side	N/A : Not Applicable	A : Acceptable	N : Not Inspected/Rated	Ma : Maintenance Deficiency	
WS : Water Side		M : Minimally Acceptable	C : Corrected	Ob : Design & System Obsolescence	
CR : Crown		U : Unacceptable	A/W : Acceptable but Monitor & Maintain	En : Enforcement	

**Flood Control Project Maintenance
Levee Inspections**

Maintenance Issue Types Only, Levee Inspection Report By Mile - Fall 2017

Reclamation District No. 0003 Grand Island

Waterway	Bank	Unit Miles	Inspection Start/End	Inspector
Unit No. 02 Right Bank Sacramento River	Right	17.35	09/18/2017 09/26/2017	Dave Torres

LM Start	2.01	Rating **	M	Issue No.	140 (cont)	
LM End	2.01	Issue Type +	Ma	Location *	WS	
Category	Earthen Levee			GPS Latitude/Longitude		
				Start		End
Item	Encroachments			38.165740 °		38.165740 °
				-121.619970 °		-121.619970 °
DWR ID	DWR_RD0003_02_f_2015_140					
Comment Code						
PR : Prunings						
Inspector Comment						
Prunings piles on waterside slope.						

Photo 2 of 2 : FA_2017_RD0003_25_140_20170911_00095.jpg



Looking at tree branches and tree limbs on waterward shoulder and slope.

LM Start	2.68	Rating **	M	Issue No.	131
LM End	2.72	Issue Type +	Ma	Location *	LS
Category	Earthen Levee			GPS Latitude/Longitude	
				Start	End
Item	Trim / Thin Trees			38.164652 °	38.164765 °
				-121.607927 °	-121.607212 °
DWR ID	DWR_RD0003_02_s_2017_131				
Comment Code					
T1 : Trim trees to at least five feet above ground level.					
Inspector Comment					

No Photos

* Location LS : Land Side N/A : Not Applicable WS : Water Side CR : Crown	** Rating A : Acceptable M : Minimally Acceptable U : Unacceptable N : Not Inspected/Rated C : Corrected A/W : Acceptable but Monitor & Maintain	+ Issue Type Ma : Maintenance Deficiency Ob : Design & System Obsolescence En : Enforcement
--	---	---

**Flood Control Project Maintenance
Levee Inspections**

Maintenance Issue Types Only, Levee Inspection Report By Mile - Fall 2017

Reclamation District No. 0003 Grand Island

Waterway	Bank	Unit Miles	Inspection Start/End	Inspector
Unit No. 02 Right Bank Sacramento River	Right	17.35	09/18/2017 09/26/2017	Dave Torres

LM Start	2.84	Rating **	C	Issue No.	132
LM End	2.84	Issue Type +	Ma	Location *	LS
Category	Earthen Levee			GPS Latitude/Longitude	
				Start	End
Item	Trim / Thin Trees			38.165115 °	38.165115 °
				-121.605127 °	-121.605127 °
DWR ID	DWR_RD0003_02_s_2017_132				
Comment Code					
T1 : Trim trees to at least five feet above ground level.					
Inspector Comment					

No Photos

LM Start	3.20	Rating **	M	Issue No.	7
LM End	3.20	Issue Type +	Ma	Location *	LS
Category	Earthen Levee			GPS Latitude/Longitude	
				Start	End
Item	Trim / Thin Trees			38.167808 °	38.167808 °
				-121.599557 °	-121.599557 °
DWR ID	DWR_RD0003_02_s_2012_7				
Comment Code					
T1 : Trim trees to at least five feet above ground level.					
Inspector Comment					
Dense vegetation on landside slope and toe.					

Photo 1 of 2 : FA_2017_RD0003_25_7_20171009_00282.jpg



Looking northwest at the landside slope.

LM Start	3.20	Rating **	M	Issue No.	7 (cont)
LM End	3.20	Issue Type +	Ma	Location *	LS

Photo 2 of 2 : FA_2017_RD0003_25_7_20170911_00009.jpg



Looking north at fig tree at landward toe.

* Location LS : Land Side N/A : Not Applicable WS : Water Side CR : Crown		** Rating A : Acceptable M : Minimally Acceptable U : Unacceptable N : Not Inspected/Rated C : Corrected A/W : Acceptable but Monitor & Maintain		+ Issue Type Ma : Maintenance Deficiency Ob : Design & System Obsolescence En : Enforcement
--	--	---	--	---

**Flood Control Project Maintenance
Levee Inspections**

Maintenance Issue Types Only, Levee Inspection Report By Mile - Fall 2017

Reclamation District No. 0003 Grand Island

Waterway	Bank	Unit Miles	Inspection Start/End	Inspector
Unit No. 02 Right Bank Sacramento River	Right	17.35	09/18/2017 09/26/2017	Dave Torres

LM Start	3.30	Rating **	U	Issue No.	154
LM End	3.30	Issue Type +	Ma	Location *	LS
Category	Earthen Levee			GPS Latitude/Longitude	
				Start	End
Item	Encroachments			38.168750 °	38.168750 °
				-121.598152 °	-121.598152 °
DWR ID	DWR_RD0003_02_f_2017_154				
Comment Code					
TR : Tree or limb					
Inspector Comment					
Downed tree on landside slope.					

Photo 1 of 1 : FA_2017_RD0003_25_154_20171009_00283.jpg



Looking northwest at the landside slope.

LM Start	3.40	Rating **	C	Issue No.	160
LM End	3.40	Issue Type +	Ma	Location *	LS
Category	Earthen Levee			GPS Latitude/Longitude	
				Start	End
Item	Encroachments			38.169904 °	38.169904 °
				-121.596914 °	-121.596914 °
DWR ID	DWR_RD0003_02_s_2015_160				
Comment Code					
TR : Tree or limb					
Inspector Comment					
Fallen tree on landside slope.					

No Photos

LM Start	3.67	Rating **	M	Issue No.	8
LM End	3.82	Issue Type +	Ma	Location *	LS
Category	Earthen Levee			GPS Latitude/Longitude	
				Start	End
Item	Trim / Thin Trees			38.173242 °	38.175118 °
				-121.594305 °	-121.592925 °
DWR ID	DWR_RD0003_02_s_2012_8				
Comment Code					
T1 : Trim trees to at least five feet above ground level.					
Inspector Comment					

No Photos

* Location LS : Land Side N/A : Not Applicable WS : Water Side CR : Crown		** Rating A : Acceptable N : Not Inspected/Rated M : Minimally Acceptable C : Corrected U : Unacceptable A/W : Acceptable but Monitor & Maintain		+ Issue Type Ma : Maintenance Deficiency Ob : Design & System Obsolescence En : Enforcement	
--	--	---	--	---	--

**Flood Control Project Maintenance
Levee Inspections**

Maintenance Issue Types Only, Levee Inspection Report By Mile - Fall 2017

Reclamation District No. 0003 Grand Island

Waterway	Bank	Unit Miles	Inspection Start/End	Inspector
Unit No. 02 Right Bank Sacramento River	Right	17.35	09/18/2017 09/26/2017	Dave Torres

LM Start	4.11	Rating **	U	Issue No.	143
LM End	4.11	Issue Type +	Ma	Location *	LS
Category	Earthen Levee			GPS Latitude/Longitude	
				Start	End
Item	Vegetation			38.178782 °	38.178782 °
				-121.590418 °	-121.590418 °
DWR ID	DWR_RD0003_02_f_2015_143				
Comment Code					
V7 : Trees / Woody Vegetation					
Inspector Comment					
Large century plants on landside shoulder and slope.					

Photo 1 of 1 : FA_2017_RD0003_25_143_20170911_00097.jpg



Looking north at century plants on landward shoulder and slope.

LM Start	4.14	Rating **	M	Issue No.	48
LM End	4.14	Issue Type +	Ma	Location *	LS
Category	Earthen Levee			GPS Latitude/Longitude	
				Start	End
Item	Trim / Thin Trees			38.179160 °	38.179160 °
				-121.590247 °	-121.590247 °
DWR ID	DWR_RD0003_02_s_2012_48				
Comment Code					
T1 : Trim trees to at least five feet above ground level.					
Inspector Comment					

Photo 1 of 1 : FA_2017_RD0003_25_48_20170911_00040.jpg



Looking southwest at dense trees on landward slope.

* Location
LS : Land Side N/A : Not Applicable
WS : Water Side
CR : Crown

** Rating
A : Acceptable N : Not Inspected/Rated
M : Minimally Acceptable C : Corrected
U : Unacceptable A/W : Acceptable but Monitor & Maintain

+ Issue Type
Ma : Maintenance Deficiency
Ob : Design & System Obsolescence
En : Enforcement

**Flood Control Project Maintenance
Levee Inspections**

Maintenance Issue Types Only, Levee Inspection Report By Mile - Fall 2017

Reclamation District No. 0003 Grand Island

Waterway	Bank	Unit Miles	Inspection Start/End	Inspector
Unit No. 02 Right Bank Sacramento River	Right	17.35	09/18/2017 09/26/2017	Dave Torres

LM Start	4.86	Rating **	A/W	Issue No.	127
LM End	4.87	Issue Type +	Ma	Location *	
Category	Supplemental			GPS Latitude/Longitude	
				Start	End
Item	2017 Storm Damage			38.187528 °	38.187781 °
				-121.582394 °	-121.582331 °
DWR ID	DWR_RD0003_02_f_2017_127				
Comment Code					
Inspector Comment					
Levee Evaluation Comments					
Description:District station 256+60 to 257+96, Sec. 19, T. 4 N. R. 4 E., M.D.M. Approximately 136 linear feet erosion and sloughing exists along the water side slope of the Sacramento River (Unit 2). The erosion commences approximately 1/4 of the way down the slope from the crown and extends to the rip rap.					
Site ID No:278					
Site Designation:LMA-104					
Repair Type: Erosion					
Rating:Area of Concern					
Field Date:7/26/2017					
Notes:					

Photo 1 of 3 : LEVAL_FA_2017_278_2362.jpg



LM Start	4.86	Rating **	A/W	Issue No.	127 (cont)
LM End	4.87	Issue Type +	Ma	Location *	

Photo 2 of 3 : LEVAL_FA_2017_278_2363.jpg



* Location LS : Land Side N/A : Not Applicable WS : Water Side CR : Crown	** Rating A : Acceptable M : Minimally Acceptable U : Unacceptable	N : Not Inspected/Rated C : Corrected A/W : Acceptable but Monitor & Maintain	+ Issue Type Ma : Maintenance Deficiency Ob : Design & System Obsolescence En : Enforcement
--	--	---	---

**Flood Control Project Maintenance
Levee Inspections**

Maintenance Issue Types Only, Levee Inspection Report By Mile - Fall 2017

Reclamation District No. 0003 Grand Island

Waterway	Bank	Unit Miles	Inspection Start/End	Inspector
Unit No. 02 Right Bank Sacramento River	Right	17.35	09/18/2017 09/26/2017	Dave Torres

LM Start	4.86	Rating **	A/W	Issue No.	127 (cont)	
LM End	4.87	Issue Type +	Ma	Location *		
Category	Supplemental			GPS Latitude/Longitude		
				Start	End	
Item	2017 Storm Damage			38.187528 °	38.187781 °	
				-121.582394 °	-121.582331 °	
DWR ID	DWR_RD0003_02_f_2017_127					
Comment Code						
Inspector Comment						
Levee Evaluation Comments						
Description:District station 256+60 to 257+96, Sec. 19, T. 4 N. R. 4 E., M.D.M. Approximately 136 linear feet erosion and sloughing exists along the water side slope of the Sacramento River (Unit 2). The erosion commences approximately 1/4 of the way down the slope from the crown and extends to the rip rap.						
Site ID No:278						
Site Designation:LMA-104						
Repair Type: Erosion						
Rating:Area of Concern						
Field Date:7/26/2017						
Notes:						

Photo 3 of 3 : LEVAL_FA_2017_278_2364.jpg



LM Start	4.94	Rating **	U	Issue No.	14
LM End	4.98	Issue Type +	Ma	Location *	LS
Category	Earthen Levee			GPS Latitude/Longitude	
				Start	End
Item	Trim / Thin Trees			38.188344 °	38.188748 °
				-121.581414 °	-121.580743 °
DWR ID	DWR_RD0003_02_s_2012_14				
Comment Code					
T2 : Thin trees to allow visibility of the ground and room to flood fight.					
Inspector Comment					
Dense untrimmed trees on landside slope and toe.					

Photo 1 of 2 : FA_2017_RD0003_25_14_20170911_00020.jpg



Looking northeast at dense vegetation on landward shoulder and slope.
(Fall 2016)

* Location LS : Land Side N/A : Not Applicable WS : Water Side CR : Crown	** Rating A : Acceptable M : Minimally Acceptable U : Unacceptable	N : Not Inspected/Rated C : Corrected A/W : Acceptable but Monitor & Maintain	+ Issue Type Ma : Maintenance Deficiency Ob : Design & System Obsolescence En : Enforcement
--	--	---	---

**Flood Control Project Maintenance
Levee Inspections**

Maintenance Issue Types Only, Levee Inspection Report By Mile - Fall 2017

Reclamation District No. 0003 Grand Island

Waterway	Bank	Unit Miles	Inspection Start/End	Inspector
Unit No. 02 Right Bank Sacramento River	Right	17.35	09/18/2017 09/26/2017	Dave Torres

LM Start	4.94	Rating **	U	Issue No.	14 (cont)	
LM End	4.98	Issue Type +	Ma	Location *	LS	
Category	Earthen Levee			GPS Latitude/Longitude		
				Start		End
Item	Trim / Thin Trees			38.188344 °		38.188748 °
				-121.581414 °		-121.580743 °
DWR ID	DWR_RD0003_02_s_2012_14					
Comment Code						
T2 : Thin trees to allow visibility of the ground and room to flood fight.						
Inspector Comment						
Dense untrimmed trees on landside slope and toe.						

Photo 2 of 2 : FA_2017_RD0003_25_14_20170911_00021.jpg



Looking southwest at untrimmed trees on landward toe. (Spring 2016)

LM Start	5.57	Rating **	M	Issue No.	161
LM End	5.57	Issue Type +	Ma	Location *	WS
Category	Earthen Levee			GPS Latitude/Longitude	
				Start	End
Item	Vegetation			38.192528 °	38.192528 °
				-121.571192 °	-121.571192 °
DWR ID	DWR_RD0003_02_f_2017_161				
Comment Code					
V2 : Remove the wild growth other than native grasses from the levee slopes.					
Inspector Comment					
Cactus on waterside slope.					

No Photos

LM Start	7.01	Rating **	U	Issue No.	16
LM End	7.01	Issue Type +	Ma	Location *	LS
Category	Earthen Levee			GPS Latitude/Longitude	
				Start	End
Item	Vegetation			38.208205 °	38.208205 °
				-121.558565 °	-121.558565 °
DWR ID	DWR_RD0003_02_s_2012_16				
Comment Code					
V2 : Remove the wild growth other than native grasses from the levee slopes.					
Inspector Comment					
Dense vegetation at landside toe.					

Photo 1 of 1 : FA_2017_RD0003_25_16_20170911_00024.jpg



Looking southwest at dense veg. on landside toe.

*** Location**
LS : Land Side N/A : Not Applicable
WS : Water Side
CR : Crown

**** Rating**
A : Acceptable N : Not Inspected/Rated
M : Minimally Acceptable C : Corrected
U : Unacceptable A/W : Acceptable but Monitor & Maintain

+ Issue Type
Ma : Maintenance Deficiency
Ob : Design & System Obsolescence
En : Enforcement

**Flood Control Project Maintenance
Levee Inspections**

Maintenance Issue Types Only, Levee Inspection Report By Mile - Fall 2017

Reclamation District No. 0003 Grand Island

Waterway	Bank	Unit Miles	Inspection Start/End	Inspector
Unit No. 02 Right Bank Sacramento River	Right	17.35	09/18/2017 09/26/2017	Dave Torres

LM Start	8.11	Rating **	U	Issue No.	162
LM End	8.11	Issue Type +	Ma	Location *	WS
Category	Earthen Levee			GPS Latitude/Longitude	
				Start	End
Item	Encroachments			38.224110 °	38.224110 °
				-121.557216 °	-121.557216 °
DWR ID	DWR_RD0003_02_f_2017_162				
Comment Code					
TR : Tree or limb					
Inspector Comment					

Photo 1 of 1 : FA_2017_RD0003_25_162_20171009_00284.jpg



Looking east at the waterside slope.

LM Start	8.11	Rating **	U	Issue No.	15
LM End	8.11	Issue Type +	Ma	Location *	WS
Category	Earthen Levee			GPS Latitude/Longitude	
				Start	End
Item	Encroachments			38.224130 °	38.224130 °
				-121.557206 °	-121.557206 °
DWR ID	DWR_RD0003_02_f_2015_15				
Comment Code					
TR : Tree or limb					
Inspector Comment					
Broken tree branches on waterside shoulder and slope.					

Photo 1 of 2 : FA_2017_RD0003_25_15_20170911_00022.jpg



Looking northeast at broken and cracked tree branches on waterward slope.

* Location LS : Land Side N/A : Not Applicable WS : Water Side CR : Crown		** Rating A : Acceptable N : Not Inspected/Rated M : Minimally Acceptable C : Corrected U : Unacceptable A/W : Acceptable but Monitor & Maintain		+ Issue Type Ma : Maintenance Deficiency Ob : Design & System Obsolescence En : Enforcement
--	--	---	--	---

**Flood Control Project Maintenance
Levee Inspections**

Maintenance Issue Types Only, Levee Inspection Report By Mile - Fall 2017

Reclamation District No. 0003 Grand Island

Waterway	Bank	Unit Miles	Inspection Start/End	Inspector
Unit No. 02 Right Bank Sacramento River	Right	17.35	09/18/2017 09/26/2017	Dave Torres

LM Start	8.11	Rating **	U	Issue No.	15 (cont)	
LM End	8.11	Issue Type +	Ma	Location *	WS	
Category	Earthen Levee			GPS Latitude/Longitude		
				Start		End
Item	Encroachments			38.224130 °		38.224130 °
				-121.557206 °		-121.557206 °
DWR ID	DWR_RD0003_02_f_2015_15					
Comment Code						
TR : Tree or limb						
Inspector Comment						
Broken tree branches on waterside shoulder and slope.						

Photo 2 of 2 : FA_2017_RD0003_25_15_20170911_00023.jpg



Looking east at broken and cracked tree branches on waterward slope.

LM Start	8.97	Rating **	U	Issue No.	23
LM End	8.97	Issue Type +	Ma	Location *	LS
Category	Earthen Levee			GPS Latitude/Longitude	
				Start	End
Item	Trim / Thin Trees			38.236294 °	38.236294 °
				-121.559527 °	-121.559527 °
DWR ID	DWR_RD0003_02_s_2012_23				
Comment Code					
T1 : Trim trees to at least five feet above ground level.					
Inspector Comment					
Untrimmed tree on landside slope.					

Photo 1 of 1 : FA_2017_RD0003_25_23_20170911_00029.jpg



Looking west at untrimmed trees at landward toe.

LM Start	8.98	Rating **	M	Issue No.	176
LM End	8.98	Issue Type +	Ma	Location *	LS
Category	Earthen Levee			GPS Latitude/Longitude	
				Start	End
Item	Animal Control			38.236425 °	38.236425 °
				-121.559561 °	-121.559561 °
DWR ID	DWR_RD0003_02_f_2017_176				
Comment Code					
A1 : Exterminate rodents and backfill and compact or grout burrows.					
Inspector Comment					

No Photos

* Location		** Rating		+ Issue Type	
LS : Land Side	N/A : Not Applicable	A : Acceptable	N : Not Inspected/Rated	Ma : Maintenance Deficiency	
WS : Water Side		M : Minimally Acceptable	C : Corrected	Ob : Design & System Obsolescence	
CR : Crown		U : Unacceptable	A/W : Acceptable but Monitor & Maintain	En : Enforcement	

**Flood Control Project Maintenance
Levee Inspections**

Maintenance Issue Types Only, Levee Inspection Report By Mile - Fall 2017

Reclamation District No. 0003 Grand Island

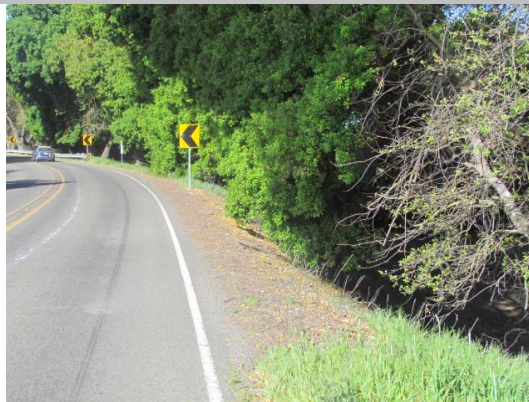
Waterway	Bank	Unit Miles	Inspection Start/End	Inspector
Unit No. 02 Right Bank Sacramento River	Right	17.35	09/18/2017 09/26/2017	Dave Torres

LM Start	9.29	Rating **	M	Issue No.	63
LM End	9.29	Issue Type +	Ma	Location *	LS
Category	Earthen Levee			GPS Latitude/Longitude	
				Start	End
Item	Trim / Thin Trees			38.240337 °	38.240337 °
				-121.556870 °	-121.556870 °
DWR ID	DWR_RD0003_02_s _ 2012_63				
Comment Code					
T1 : Trim trees to at least five feet above ground level.					
Inspector Comment					

No Photos

LM Start	9.56	Rating **	M	Issue No.	64
LM End	9.62	Issue Type +	Ma	Location *	LS
Category	Earthen Levee			GPS Latitude/Longitude	
				Start	End
Item	Trim / Thin Trees			38.242392 °	38.242501 °
				-121.552862 °	-121.551632 °
DWR ID	DWR_RD0003_02_s _2012_64				
Comment Code					
T1 : Trim trees to at least five feet above ground level.					
Inspector Comment					

Photo 1 of 1 : FA_2017_RD0003_25_64_20170911_00049.jpg



Looking southwest at dense trees on landward shoulder and slope.

* Location LS : Land Side N/A : Not Applicable WS : Water Side CR : Crown		** Rating A : Acceptable N : Not Inspected/Rated M : Minimally Acceptable C : Corrected U : Unacceptable A/W : Acceptable but Monitor & Maintain		+ Issue Type Ma : Maintenance Deficiency Ob : Design & System Obsolescence En : Enforcement
--	--	---	--	---

**Flood Control Project Maintenance
Levee Inspections**

Maintenance Issue Types Only, Levee Inspection Report By Mile - Fall 2017

Reclamation District No. 0003 Grand Island

Waterway	Bank	Unit Miles	Inspection Start/End	Inspector
Unit No. 02 Right Bank Sacramento River	Right	17.35	09/18/2017 09/26/2017	Dave Torres

LM Start	9.82	Rating **	A/W	Issue No.	137
LM End	9.84	Issue Type +	Ma	Location *	
Category	Supplemental			GPS Latitude/Longitude	
				Start	End
Item	2017 Storm Damage			38.242006 °	38.241950 °
				-121.548117 °	-121.547681 °
DWR ID	DWR_RD0003_02_f_2017_137				
Comment Code					
Inspector Comment					
Levee Evaluation Comments Description: District station 518+55 to 519+81 , Sec. 33, T. 5 N. R. 4 E., M.D.M. Approximately 126 linear feet of erosion and sloughing exists along the water side slope of the Sacramento River (Unit 2). The erosion commences approximately 1/4 of the way down the slope from the crown and extends into the rip rap. Site ID No: 279 Site Designation: LMA-105 Repair Type: Erosion Rating: Area of Concern Field Date: 7/26/2017 Notes:					

Photo 1 of 3 : LEVAL_FA_2017_279_2371.jpg



LM Start	9.82	Rating **	A/W	Issue No.	137 (cont)
LM End	9.84	Issue Type +	Ma	Location *	

Photo 2 of 3 : LEVAL_FA_2017_279_2372.jpg



* Location LS : Land Side N/A : Not Applicable WS : Water Side CR : Crown	** Rating A : Acceptable M : Minimally Acceptable U : Unacceptable	N : Not Inspected/Rated C : Corrected A/W : Acceptable but Monitor & Maintain	+ Issue Type Ma : Maintenance Deficiency Ob : Design & System Obsolescence En : Enforcement
--	--	---	---

**Flood Control Project Maintenance
Levee Inspections**

Maintenance Issue Types Only, Levee Inspection Report By Mile - Fall 2017

Reclamation District No. 0003 Grand Island

Waterway	Bank	Unit Miles	Inspection Start/End	Inspector
Unit No. 02 Right Bank Sacramento River	Right	17.35	09/18/2017 09/26/2017	Dave Torres

LM Start	9.82	Rating **	A/W	Issue No.	137 (cont)
LM End	9.84	Issue Type +	Ma	Location *	
Category	Supplemental		GPS Latitude/Longitude		
			Start	End	
Item	2017 Storm Damage		38.242006 °	38.241950 °	
			-121.548117 °	-121.547681 °	
DWR ID	DWR_RD0003_02_f_2017_137				
Comment Code					
Inspector Comment					
<p>Levee Evaluation Comments</p> <p>Description: District station 518+55 to 519+81, Sec. 33, T. 5 N. R. 4 E., M.D.M. Approximately 126 linear feet of erosion and sloughing exists along the water side slope of the Sacramento River (Unit 2). The erosion commences approximately 1/4 of the way down the slope from the crown and extends into the rip rap.</p> <p>Site ID No: 279</p> <p>Site Designation: LMA-105</p> <p>Repair Type: Erosion</p> <p>Rating: Area of Concern</p> <p>Field Date: 7/26/2017</p> <p>Notes:</p>					

Photo 3 of 3 : LEVAL_FA_2017_279_2373.jpg



LM Start	10.01	Rating **	A/W	Issue No.	138
LM End	10.03	Issue Type +	Ma	Location *	
Category	Supplemental		GPS Latitude/Longitude		
			Start	End	
Item	2017 Storm Damage		38.241481 °	38.241439 °	
			-121.544569 °	-121.544353 °	
DWR ID	DWR_RD0003_02_f_2017_138				
Comment Code					
Inspector Comment					
<p>Levee Evaluation Comments</p> <p>Description: District station 528+97 to 529+58, Sec. 33, T. 5 N. R. 4 E., M.D.M. Approximately 61 linear feet of erosion and sloughing exists along the water side slope of the Sacramento River (Unit 2). The erosion commences approximately 1/2 of the way down the slope from the crown and extends into the rip rap.</p> <p>Site ID No: 280</p> <p>Site Designation: LMA-106</p> <p>Repair Type: Erosion</p> <p>Rating: Area of Concern</p> <p>Field Date: 7/26/2017</p> <p>Notes:</p>					

Photo 1 of 3 : LEVAL_FA_2017_280_2378.jpg



* Location	** Rating	+ Issue Type
LS : Land Side WS : Water Side CR : Crown	A : Acceptable M : Minimally Acceptable U : Unacceptable	Ma : Maintenance Deficiency Ob : Design & System Obsolescence En : Enforcement
	N : Not Inspected/Rated C : Corrected A/W : Acceptable but Monitor & Maintain	

**Flood Control Project Maintenance
Levee Inspections**

Maintenance Issue Types Only, Levee Inspection Report By Mile - Fall 2017

Reclamation District No. 0003 Grand Island

Waterway	Bank	Unit Miles	Inspection Start/End	Inspector
Unit No. 02 Right Bank Sacramento River	Right	17.35	09/18/2017 09/26/2017	Dave Torres

LM Start	10.01	Rating **	A/W	Issue No.	138 (cont)	
LM End	10.03	Issue Type +	Ma	Location *		
Category	Supplemental			GPS Latitude/Longitude		
				Start	End	
Item	2017 Storm Damage			38.241481 °	38.241439 °	
				-121.544569 °	-121.544353 °	
DWR ID	DWR_RD0003_02_f_2017_138					
Comment Code						
Inspector Comment						
Levee Evaluation Comments						
Description: District station 528+97 to 529+58, Sec. 33, T. 5 N. R. 4 E., M.D.M. Approximately 61 linear feet of erosion and sloughing exists along the water side slope of the Sacramento River (Unit 2). The erosion commences approximately 1/2 of the way down the slope from the crown and extends into the rip rap.						
Site ID No: 280						
Site Designation: LMA-106						
Repair Type: Erosion						
Rating: Area of Concern						
Field Date: 7/26/2017						
Notes:						

Photo 2 of 3 : LEVAL_FA_2017_280_2379.jpg



LM Start	10.01	Rating **	A/W	Issue No.	138 (cont)
LM End	10.03	Issue Type +	Ma	Location *	

Photo 3 of 3 : LEVAL_FA_2017_280_2380.jpg



* Location LS : Land Side N/A : Not Applicable WS : Water Side CR : Crown	** Rating A : Acceptable M : Minimally Acceptable U : Unacceptable	N : Not Inspected/Rated C : Corrected A/W : Acceptable but Monitor & Maintain	+ Issue Type Ma : Maintenance Deficiency Ob : Design & System Obsolescence En : Enforcement
--	--	---	---

**Flood Control Project Maintenance
Levee Inspections**

Maintenance Issue Types Only, Levee Inspection Report By Mile - Fall 2017

Reclamation District No. 0003 Grand Island

Waterway	Bank	Unit Miles	Inspection Start/End	Inspector
Unit No. 02 Right Bank Sacramento River	Right	17.35	09/18/2017 09/26/2017	Dave Torres

LM Start	11.33	Rating **	M	Issue No.	1
LM End	11.42	Issue Type +	Ma	Location *	WS
Category	Supplemental			GPS Latitude/Longitude	
				Start	End
Item	2015 USACE Erosion Survey, DRAFT			38.239870 °	38.239983 °
				-121.520989 °	-121.519361 °
DWR ID	DWR_RD0003_02_s_2016_1				
Comment Code					
Inspector Comment					
2009 - Hole left in levee toe from a fallen tree. Could be repaired under maintenance. 2010 - Minor new erosion. 2015: Minor new erosion at toe. [2015 Site ID: SAC_26-3_R]					

Photo 1 of 2 : FA_2017_RD0003_25_1_20170911_00001.jpg



USACE 2013 Photo #1

LM Start	11.33	Rating **	M	Issue No.	1 (cont)
LM End	11.42	Issue Type +	Ma	Location *	WS

Photo 2 of 2 : FA_2017_RD0003_25_1_20170911_00002.jpg



USACE 2013 Photo #2

LM Start	11.55	Rating **	M	Issue No.	24
LM End	11.57	Issue Type +	Ma	Location *	LS
Category	Earthen Levee			GPS Latitude/Longitude	
				Start	End
Item	Trim / Thin Trees			38.241093 °	38.241300 °
				-121.517378 °	-121.517073 °
DWR ID	DWR_RD0003_02_s_2012_24				
Comment Code					
T1 : Trim trees to at least five feet above ground level.					
Inspector Comment					

No Photos

* Location LS : Land Side N/A : Not Applicable WS : Water Side CR : Crown		** Rating A : Acceptable N : Not Inspected/Rated M : Minimally Acceptable C : Corrected U : Unacceptable A/W : Acceptable but Monitor & Maintain		+ Issue Type Ma : Maintenance Deficiency Ob : Design & System Obsolescence En : Enforcement
--	--	---	--	---

**Flood Control Project Maintenance
Levee Inspections**

Maintenance Issue Types Only, Levee Inspection Report By Mile - Fall 2017

Reclamation District No. 0003 Grand Island

Waterway	Bank	Unit Miles	Inspection Start/End	Inspector
Unit No. 02 Right Bank Sacramento River	Right	17.35	09/18/2017 09/26/2017	Dave Torres

LM Start	13.15	Rating **	A/W	Issue No.	139
LM End	13.17	Issue Type +	Ma	Location *	
Category	Supplemental			GPS Latitude/Longitude	
				Start	End
Item	2017 Storm Damage			38.260042 °	38.260219 °
				-121.521581 °	-121.521803 °
DWR ID	DWR_RD0003_02_f_2017_139				
Comment Code					
Inspector Comment					
Levee Evaluation Comments					
Description: District station 694+80 to 695+69, Sec. 27, 1. 5 N. R. 4 E., M.D.M. Approximately 89 linear feet of erosion and sloughing exists along the water side slope of the Sacramento River (Unit 2). The erosion commences approximately 1/2 of the way down the slope from the crown and extends into the rip rap.					
Site ID No: 281					
Site Designation: LMA-107					
Repair Type: Erosion					
Rating: Area of Concern					
Field Date: 7/26/2017					
Notes:					

Photo 1 of 3 : LEVAL_FA_2017_281_2381.jpg



LM Start	13.15	Rating **	A/W	Issue No.	139 (cont)
LM End	13.17	Issue Type +	Ma	Location *	

Photo 2 of 3 : LEVAL_FA_2017_281_2382.jpg



* Location LS : Land Side N/A : Not Applicable WS : Water Side CR : Crown	** Rating A : Acceptable M : Minimally Acceptable U : Unacceptable N : Not Inspected/Rated C : Corrected A/W : Acceptable but Monitor & Maintain	+ Issue Type Ma : Maintenance Deficiency Ob : Design & System Obsolescence En : Enforcement
--	---	---

**Flood Control Project Maintenance
Levee Inspections**

Maintenance Issue Types Only, Levee Inspection Report By Mile - Fall 2017

Reclamation District No. 0003 Grand Island

Waterway	Bank	Unit Miles	Inspection Start/End	Inspector
Unit No. 02 Right Bank Sacramento River	Right	17.35	09/18/2017 09/26/2017	Dave Torres

LM Start	13.15	Rating **	A/W	Issue No.	139 (cont)	
LM End	13.17	Issue Type +	Ma	Location *		
Category	Supplemental			GPS Latitude/Longitude		
				Start	End	
Item	2017 Storm Damage			38.260042 °	38.260219 °	
				-121.521581 °	-121.521803 °	
DWR ID	DWR_RD0003_02_f_2017_139					
Comment Code						
Inspector Comment						
Levee Evaluation Comments						
Description: District station 694+80 to 695+69, Sec. 27, 1. 5 N. R. 4 E., M.D.M. Approximately 89 linear feet of erosion and sloughing exists along the water side slope of the Sacramento River (Unit 2). The erosion commences approximately 1/2 of the way down the slope from the crown and extends into the rip rap.						
Site ID No: 281						
Site Designation: LMA-107						
Repair Type: Erosion						
Rating: Area of Concern						
Field Date: 7/26/2017						
Notes:						

Photo 3 of 3 : LEVAL_FA_2017_281_2384.jpg



38.25998, -121.5217, -22.0m, 304°
Jul 26, 2017 10:50:07 AM

LM Start	13.86	Rating **	M	Issue No.	169
LM End	13.86	Issue Type +	Ma	Location *	LS
Category	Earthen Levee			GPS Latitude/Longitude	
				Start	End
Item	Animal Control			38.267084 °	38.267084 °
				-121.530939 °	-121.530939 °
DWR ID	DWR_RD0003_02_f_2017_169				
Comment Code					
A1 : Exterminate rodents and backfill and compact or grout burrows.					
Inspector Comment					

Photo 1 of 1 : FA_2017_RD0003_25_169_20171009_00289.jpg



Looking southeast at the landside slope.

* Location
LS : Land Side N/A : Not Applicable
WS : Water Side
CR : Crown

** Rating
A : Acceptable N : Not Inspected/Rated
M : Minimally Acceptable C : Corrected
U : Unacceptable A/W : Acceptable but Monitor & Maintain

+ Issue Type
Ma : Maintenance Deficiency
Ob : Design & System Obsolescence
En : Enforcement

**Flood Control Project Maintenance
Levee Inspections**

Maintenance Issue Types Only, Levee Inspection Report By Mile - Fall 2017

Reclamation District No. 0003 Grand Island

Waterway	Bank	Unit Miles	Inspection Start/End	Inspector
Unit No. 02 Right Bank Sacramento River	Right	17.35	09/18/2017 09/26/2017	Dave Torres

LM Start	13.96	Rating **	C	Issue No.	33
LM End	13.96	Issue Type +	Ma	Location *	LS
Category	Earthen Levee			GPS Latitude/Longitude	
				Start	End
Item	Trim / Thin Trees			38.267991 °	38.267991 °
				-121.532340 °	-121.532340 °
DWR ID	DWR_RD0003_02_s _ 2012_33				
Comment Code					
T1 : Trim trees to at least five feet above ground level.					
Inspector Comment					

No Photos

LM Start	14.23	Rating **	M	Issue No.	91
LM End	14.23	Issue Type +	Ma	Location *	LS
Category	Earthen Levee			GPS Latitude/Longitude	
				Start	End
Item	Trim / Thin Trees			38.270703 °	38.270703 °
				-121.535938 °	-121.535938 °
DWR ID	DWR_RD0003_02_s _ 2013_91				
Comment Code					
T1 : Trim trees to at least five feet above ground level.					
Inspector Comment					

No Photos

LM Start	14.61	Rating **	C	Issue No.	93
LM End	14.65	Issue Type +	Ma	Location *	LS
Category	Earthen Levee			GPS Latitude/Longitude	
				Start	End
Item	Trim / Thin Trees			38.274492 °	38.274898 °
				-121.541022 °	-121.541533 °
DWR ID	DWR_RD0003_02_s _ 2013_93				
Comment Code					
T1 : Trim trees to at least five feet above ground level.					
Inspector Comment					

No Photos

* Location		** Rating		+ Issue Type	
LS : Land Side	N/A : Not Applicable	A : Acceptable	N : Not Inspected/Rated	Ma : Maintenance Deficiency	
WS : Water Side		M : Minimally Acceptable	C : Corrected	Ob : Design & System Obsolescence	
CR : Crown		U : Unacceptable	A/W : Acceptable but Monitor & Maintain	En : Enforcement	

**Flood Control Project Maintenance
Levee Inspections**

Maintenance Issue Types Only, Levee Inspection Report By Mile - Fall 2017

Reclamation District No. 0003 Grand Island

Waterway	Bank	Unit Miles	Inspection Start/End	Inspector
Unit No. 02 Right Bank Sacramento River	Right	17.35	09/18/2017 09/26/2017	Dave Torres

LM Start	15.00	Rating **	A/W	Issue No.	142
LM End	15.07	Issue Type +	Ma	Location *	
Category	Supplemental			GPS Latitude/Longitude	
				Start	End
Item	2017 Storm Damage			38.278806 °	38.279444 °
				-121.545817 °	-121.546647 °
DWR ID	DWR_RD0003_02_f_2017_142				
Comment Code					
Inspector Comment					
Levee Evaluation Comments					
Description:District station 792+44 to 795+74, Sec. 16, T. 5 N. R. 4 E., M.D.M. Approximately 330 linear feet of erosion and sloughing exists along the water side slope of the Sacramento River (Unit 2). The erosion commences approximately 1/2 of the way down the slope from the crown and extends into the rip rap.					
Site ID No:282					
Site Designation:LMA-108					
Repair Type: Erosion					
Rating:Area of Concern					
Field Date:7/28/2017					
Notes: no berm					

Photo 1 of 3 : LEVAL_FA_2017_282_2408.jpg



LM Start	15.00	Rating **	A/W	Issue No.	142 (cont)
LM End	15.07	Issue Type +	Ma	Location *	

Photo 2 of 3 : LEVAL_FA_2017_282_2409.jpg



* Location
LS : Land Side N/A : Not Applicable
WS : Water Side
CR : Crown

** Rating
A : Acceptable
M : Minimally Acceptable
U : Unacceptable
N : Not Inspected/Rated
C : Corrected
A/W : Acceptable but Monitor & Maintain

+ Issue Type
Ma : Maintenance Deficiency
Ob : Design & System Obsolescence
En : Enforcement

**Flood Control Project Maintenance
Levee Inspections**

Maintenance Issue Types Only, Levee Inspection Report By Mile - Fall 2017

Reclamation District No. 0003 Grand Island

Waterway	Bank	Unit Miles	Inspection Start/End	Inspector
Unit No. 02 Right Bank Sacramento River	Right	17.35	09/18/2017 09/26/2017	Dave Torres

LM Start	15.00	Rating **	A/W	Issue No.	142 (cont)	
LM End	15.07	Issue Type +	Ma	Location *		
Category	Supplemental			GPS Latitude/Longitude		
				Start	End	
Item	2017 Storm Damage			38.278806 °	38.279444 °	
				-121.545817 °	-121.546647 °	
DWR ID	DWR_RD0003_02_f_2017_142					
Comment Code						
Inspector Comment						
Levee Evaluation Comments						
Description: District station 792+44 to 795+74, Sec. 16, T. 5 N. R. 4 E., M.D.M. Approximately 330 linear feet of erosion and sloughing exists along the water side slope of the Sacramento River (Unit 2). The erosion commences approximately 1/2 of the way down the slope from the crown and extends into the rip rap.						
Site ID No: 282						
Site Designation: LMA-108						
Repair Type: Erosion						
Rating: Area of Concern						
Field Date: 7/28/2017						
Notes: no berm						

Photo 3 of 3 : LEVAL_FA_2017_282_2410.jpg



LM Start	15.46	Rating **	A/W	Issue No.	149
LM End	15.47	Issue Type +	Ma	Location *	
Category	Supplemental			GPS Latitude/Longitude	
				Start	End
Item	2017 Storm Damage			38.283119 °	38.283172 °
				-121.552250 °	-121.552347 °
DWR ID	DWR_RD0003_02_f_2017_149				
Comment Code					
Inspector Comment					
Levee Evaluation Comments					
Description:District station 816+64 to 816+97, Sec. 16, T. 5 N. R. 4 E., M.D.M. Approximately 33 linear feet of erosion exists along the water side slope of the Sacramento River (Unit 2). The erosion commences approximately 1/2 ofthe way down the slope from the crown and extends into the rip rap. A section of rip rap has eroded away in this location.					
Site ID No:283					
Site Designation:LMA-109					
Repair Type: Erosion					
Rating:Area of Concern					
Field Date:7/26/2017					
Notes:					

Photo 1 of 3 : LEVAL_FA_2017_283_2386.jpg



* Location LS : Land Side N/A : Not Applicable WS : Water Side CR : Crown		** Rating A : Acceptable N : Not Inspected/Rated M : Minimally Acceptable C : Corrected U : Unacceptable A/W : Acceptable but Monitor & Maintain		+ Issue Type Ma : Maintenance Deficiency Ob : Design & System Obsolescence En : Enforcement
--	--	---	--	---

**Flood Control Project Maintenance
Levee Inspections**

Maintenance Issue Types Only, Levee Inspection Report By Mile - Fall 2017

Reclamation District No. 0003 Grand Island

Waterway	Bank	Unit Miles	Inspection Start/End	Inspector
Unit No. 02 Right Bank Sacramento River	Right	17.35	09/18/2017 09/26/2017	Dave Torres

LM Start	15.46	Rating **	A/W	Issue No.	149 (cont)
LM End	15.47	Issue Type +	Ma	Location *	
Category	Supplemental			GPS Latitude/Longitude	
				Start	End
Item	2017 Storm Damage			38.283119 °	38.283172 °
				-121.552250 °	-121.552347 °
DWR ID	DWR_RD0003_02_f_2017_149				
Comment Code					
Inspector Comment					
Levee Evaluation Comments					
Description:District station 816+64 to 816+97, Sec. 16, T. 5 N. R. 4 E., M.D.M. Approximately 33 linear feet of erosion exists along the water side slope of the Sacramento River (Unit 2). The erosion commences approximately 1/2 ofthe way down the slope from the crown and extends into the rip rap. A section of rip rap has eroded away in this location.					
Site ID No:283					
Site Designation:LMA-109					
Repair Type: Erosion					
Rating:Area of Concern					
Field Date:7/26/2017					
Notes:					

Photo 2 of 3 : LEVAL_FA_2017_283_2389.jpg



Photo 3 of 3 : LEVAL_FA_2017_283_2390.jpg



* Location LS : Land Side N/A : Not Applicable WS : Water Side CR : Crown		** Rating A : Acceptable N : Not Inspected/Rated M : Minimally Acceptable C : Corrected U : Unacceptable A/W : Acceptable but Monitor & Maintain		+ Issue Type Ma : Maintenance Deficiency Ob : Design & System Obsolescence En : Enforcement
--	--	---	--	---

**Flood Control Project Maintenance
Levee Inspections**

Maintenance Issue Types Only, Levee Inspection Report By Mile - Fall 2017

Reclamation District No. 0003 Grand Island

Waterway	Bank	Unit Miles	Inspection Start/End	Inspector
Unit No. 02 Right Bank Sacramento River	Right	17.35	09/18/2017 09/26/2017	Dave Torres

LM Start	15.70	Rating **	U	Issue No.	95
LM End	15.70	Issue Type +	Ma	Location *	LS
Category	Earthen Levee			GPS Latitude/Longitude	
				Start	End
Item	Vegetation			38.285347 °	38.285347 °
				-121.555534 °	-121.555534 °
DWR ID	DWR_RD0003_02_s_2013_95				
Comment Code					
V7 : Trees / Woody Vegetation					
Inspector Comment					
Palm tree on landside slope and toe.					

Photo 1 of 1 : FA_2017_RD0003_25_95_20170911_00080.jpg



Looking west at Palm tree at landward toe.

LM Start	15.78	Rating **	M	Issue No.	148
LM End	15.78	Issue Type +	Ma	Location *	WS
Category	Earthen Levee			GPS Latitude/Longitude	
				Start	End
Item	Trim / Thin Trees			38.286222 °	38.286222 °
				-121.556537 °	-121.556537 °
DWR ID	DWR_RD0003_02_s_2016_148				
Comment Code					
T1 : Trim trees to at least five feet above ground level.					
Inspector Comment					

No Photos

LM Start	16.28	Rating **	M	Issue No.	167
LM End	16.28	Issue Type +	Ma	Location *	LS
Category	Earthen Levee			GPS Latitude/Longitude	
				Start	End
Item	Vegetation			38.291625 °	38.291625 °
				-121.562647 °	-121.562647 °
DWR ID	DWR_RD0003_02_f_2017_167				
Comment Code					
V1 : Control annual grass and weeds on the levee slopes and easements.					
Inspector Comment					

No Photos

* Location		** Rating		+ Issue Type	
LS : Land Side	N/A : Not Applicable	A : Acceptable	N : Not Inspected/Rated	Ma : Maintenance Deficiency	
WS : Water Side		M : Minimally Acceptable	C : Corrected	Ob : Design & System Obsolescence	
CR : Crown		U : Unacceptable	A/W : Acceptable but Monitor & Maintain	En : Enforcement	

**Flood Control Project Maintenance
Levee Inspections**

Maintenance Issue Types Only, Levee Inspection Report By Mile - Fall 2017

Reclamation District No. 0003 Grand Island

Waterway	Bank	Unit Miles	Inspection Start/End	Inspector
Unit No. 02 Right Bank Sacramento River	Right	17.35	09/18/2017 09/26/2017	Dave Torres

LM Start	16.54	Rating **	A/W	Issue No.	150
LM End	16.56	Issue Type +	Ma	Location *	
Category	Supplemental			GPS Latitude/Longitude	
				Start	End
Item	2017 Storm Damage			38.294717 °	38.294986 °
				-121.565417 °	-121.565661 °
DWR ID	DWR_RD0003_02_f_2017_150				
Comment Code					
Inspector Comment					
Levee Evaluation Comments					
Description:District station 873+61 to 874+83, Sec. 08, T. 5 N. R. 4 E., M.D.M. Approximately 122 linear feet of erosion exists along the water side slope of the Sacramento River (Unit 2). The erosion commences approximately 1/2 of the way down the slope from the crown and extends beyond the rip rap. A section of rip rap has eroded away in this location.					
Site ID No:284					
Site Designation:LMA-110					
Repair Type: Erosion					
Rating:Area of Concern					
Field Date:7/28/2017					
Notes: no berm					

Photo 1 of 2 : LEVAL_FA_2017_284_2413.jpg



LM Start	16.54	Rating **	A/W	Issue No.	150 (cont)
LM End	16.56	Issue Type +	Ma	Location *	

Photo 2 of 2 : LEVAL_FA_2017_284_2414.jpg



* Location
LS : Land Side N/A : Not Applicable
WS : Water Side
CR : Crown

** Rating
A : Acceptable N : Not Inspected/Rated
M : Minimally Acceptable C : Corrected
U : Unacceptable A/W : Acceptable but Monitor & Maintain

+ Issue Type
Ma : Maintenance Deficiency
Ob : Design & System Obsolescence
En : Enforcement

**Flood Control Project Maintenance
Levee Inspections**

Maintenance Issue Types Only, Levee Inspection Report By Mile - Fall 2017

Reclamation District No. 0003 Grand Island

Waterway	Bank	Unit Miles	Inspection Start/End	Inspector
Unit No. 02 Right Bank Sacramento River	Right	17.35	09/18/2017 09/26/2017	Dave Torres

LM Start	16.54	Rating **	A/W	Issue No.	20
LM End	16.63	Issue Type +	Ma	Location *	WS
Category	Supplemental			GPS Latitude/Longitude	
				Start	End
Item	2015 USACE Erosion Survey, DRAFT			38.294757 °	38.295730 °
				-121.565376 °	-121.566295 °
DWR ID	DWR_RD0003_02_s _ 2016_20				
Comment Code					
Inspector Comment					
1997 - Erosion of supper sandy levee material above the water line, straight reach. 1999 - Small pocket repaired with rock. 2005 - Downstream 400 ft have been repaired. 2011 - Site is overgrown with vegetation. 2015: Site appears stable, may consider removal if no change after the next large storm event. [2015 Site ID: SAC_31-6_R]					

Photo 1 of 1 : FA_2017_RD0003_25_20_20170911_00026.jpg



USACE 2013 Photo #1

LM Start	16.56	Rating **	M	Issue No.	147
LM End	16.56	Issue Type +	Ma	Location *	LS
Category	Earthen Levee			GPS Latitude/Longitude	
				Start	End
Item	Trim / Thin Trees			38.294809 °	38.294809 °
				-121.565765 °	-121.565765 °
DWR ID	DWR_RD0003_02_s _ 2016_147				
Comment Code					
T1 : Trim trees to at least five feet above ground level.					
Inspector Comment					

No Photos

* Location LS : Land Side N/A : Not Applicable WS : Water Side CR : Crown		** Rating A : Acceptable N : Not Inspected/Rated M : Minimally Acceptable C : Corrected U : Unacceptable A/W : Acceptable but Monitor & Maintain		+ Issue Type Ma : Maintenance Deficiency Ob : Design & System Obsolescence En : Enforcement
--	--	---	--	---

**Flood Control Project Maintenance
Levee Inspections**

Maintenance Issue Types Only, Levee Inspection Report By Mile - Fall 2017

Reclamation District No. 0003 Grand Island

Waterway	Bank	Unit Miles	Inspection Start/End	Inspector
Unit No. 02 Right Bank Sacramento River	Right	17.35	09/18/2017 09/26/2017	Dave Torres

LM Start	16.66	Rating **	C	Issue No.	135
LM End	16.75	Issue Type +	Ma	Location *	LS
Category	Earthen Levee			GPS Latitude/Longitude	
				Start	End
Item	Trim / Thin Trees			38.295990 °	38.297058 °
				-121.566838 °	-121.567840 °
DWR ID	DWR_RD0003_02_s_2017_135				
Comment Code					
T1 : Trim trees to at least five feet above ground level.					
Inspector Comment					

No Photos

LM Start	16.90	Rating **	A/W	Issue No.	152
LM End	16.90	Issue Type +	Ma	Location *	
Category	Supplemental			GPS Latitude/Longitude	
				Start	End
Item	2017 Storm Damage			38.298914 °	38.298997 °
				-121.569156 °	-121.569217 °
DWR ID	DWR_RD0003_02_f_2017_152				
Comment Code					
Inspector Comment					
Levee Evaluation Comments					
Description:District station 892+36 to 892+70, Sec. 08, T. 5 N. R. 4 E., M.D.M. Approximately 34 linear feet of erosion exists along the water side slope of the Sacramento River (Unit 2). The erosion commences approximately 1/2 of the way down the slope from the crown and extends into the rip rap. A section of rip rap has eroded away in this location.					
Site ID No:285					
Site Designation:LMA-111					
Repair Type: Erosion					
Rating:Area of Concern					
Field Date:7/28/2017					
Notes: highway on crown					

Photo 1 of 3 : LEVAL_FA_2017_285_2419.jpg



* Location LS : Land Side N/A : Not Applicable WS : Water Side CR : Crown		** Rating A : Acceptable N : Not Inspected/Rated M : Minimally Acceptable C : Corrected U : Unacceptable A/W : Acceptable but Monitor & Maintain		+ Issue Type Ma : Maintenance Deficiency Ob : Design & System Obsolescence En : Enforcement
--	--	---	--	---

**Flood Control Project Maintenance
Levee Inspections**

Maintenance Issue Types Only, Levee Inspection Report By Mile - Fall 2017

Reclamation District No. 0003 Grand Island

Waterway	Bank	Unit Miles	Inspection Start/End	Inspector
Unit No. 03 Cross Levee		0.43	09/18/2017 09/18/2017	Dave Torres

LM Start	0.15	Rating **	M	Issue No.	5
LM End	0.18	Issue Type +	Ma	Location *	WS
Category	Earthen Levee			GPS Latitude/Longitude	
				Start	End
Item	Trim / Thin Trees			38.180150 °	38.179722 °
				-121.653645 °	-121.653663 °
DWR ID	DWR_RD0003_03_s_2013_5				
Comment Code					
T1 : Trim trees to at least five feet above ground level.					
Inspector Comment					
Untrimmed trees on waterward slope.					

Photo 1 of 1 : FA_2017_RD0003_610_5_20170911_00002.jpg



Looking southeast at untrimmed trees on waterward slope and toe.

* Location
LS : Land Side N/A : Not Applicable
WS : Water Side
CR : Crown

** Rating
A : Acceptable
M : Minimally Acceptable
U : Unacceptable
N : Not Inspected/Rated
C : Corrected
A/W : Acceptable but Monitor & Maintain

+ Issue Type
Ma : Maintenance Deficiency
Ob : Design & System Obsolescence
En : Enforcement