

**Flood Control Project Maintenance  
Levee Inspections**

## Maintenance Issue Types Only, Levee Inspection Report By Mile - Fall 2016

### Reclamation District No. 0003 Grand Island

Waterway	Bank	Unit Miles	Inspection Start/End	Inspector
Unit No. 01 Left Bank Steamboat Slough	Left	10.95	09/27/2016 09/27/2016	Richard Willoughby

LM Start	<b>0.00</b>	Rating **	A	Issue No.	<b>102</b>
LM End	<b>0.00</b>	Issue Type +	Ma	Location *	N/A
Category	Earthen Levee			GPS Latitude/Longitude	
				Start	End
Item	Operations & Maintenance Manuals			°	°
DWR ID	DWR_RD0003_01_s _ 2013_102				
Comment Code					
Inspector Comment					
LMA has a copy of the O & M manual on file at district office.					

No Photos

LM Start	<b>0.00</b>	Rating **	A	Issue No.	<b>103</b>
LM End	<b>0.00</b>	Issue Type +	Ma	Location *	N/A
Category	Earthen Levee			GPS Latitude/Longitude	
				Start	End
Item	Emergency Supplies & Equipment			°	°
DWR ID	DWR_RD0003_01_s _ 2013_103				
Comment Code					
Inspector Comment					
The LMA has an adequate flood fight supplies and equipment to respond to a flood emergency.					

No Photos

<b>* Location</b> LS : Land Side    N/A : Not Applicable WS : Water Side CR : Crown	<b>** Rating</b> A : Acceptable M : Minimally Acceptable U : Unacceptable	N : Not Inspected/Rated C : Corrected A/W : Acceptable but Monitor & Maintain	<b>+ Issue Type</b> Ma : Maintenance Deficiency Ob : Design & System Obsolescence En : Enforcement
--	--	---	---

**Flood Control Project Maintenance  
Levee Inspections**

## Maintenance Issue Types Only, Levee Inspection Report By Mile - Fall 2016

### Reclamation District No. 0003 Grand Island

Waterway	Bank	Unit Miles	Inspection Start/End	Inspector
Unit No. 01 Left Bank Steamboat Slough	Left	10.95	09/27/2016 09/27/2016	Richard Willoughby

LM Start	0.00	Rating **	A	Issue No.	104	
LM End	0.00	Issue Type +	Ma	Location *	N/A	
Category	Earthen Levee			GPS Latitude/Longitude		
				Start		End
Item	Flood Preparedness & Training				°	
					°	
DWR ID	DWR_RD0003_01_s_2013_104					
Comment Code						
Inspector Comment						
The LMA is organized to respond to flood emergency. District has been involved in flood fight training within the last few years.						

No Photos

LM Start	0.13	Rating **	U	Issue No.	19
LM End	0.13	Issue Type +	Ma	Location *	WS
Category	Earthen Levee			GPS Latitude/Longitude	
				Start	End
Item	Encroachments			38.303305 °	38.303305 °
				-121.576537 °	-121.576537 °
DWR ID	DWR_RD0003_01_f_2012_19				
Comment Code					
TR : Tree or limb					
Inspector Comment					
Tree branches and limbs on waterward shoulder.					

Photo 1 of 4 : FA\_2016\_RD0003\_24\_19\_20160929\_00154.jpg



Looking north at tree branches on waterward slope. (Fall 2016)

LM Start	<b>0.13</b>	Rating **	U	Issue No.	<b>19 (cont)</b>
LM End	<b>0.13</b>	Issue Type +	Ma	Location *	WS

Photo 2 of 4 : FA\_2016\_RD0003\_24\_19\_20160929\_00153.jpg



Looking west at tree branch on waterward shoulder and slope. (Fall 2016)

<b>* Location</b> LS : Land Side    N/A : Not Applicable WS : Water Side CR : Crown		<b>** Rating</b> A : Acceptable M : Minimally Acceptable U : Unacceptable		N : Not Inspected/Rated C : Corrected A/W : Acceptable but Monitor & Maintain		<b>+ Issue Type</b> Ma : Maintenance Deficiency Ob : Design & System Obsolescence En : Enforcement	
--	--	--	--	---	--	---	--





**Flood Control Project Maintenance  
Levee Inspections**

## Maintenance Issue Types Only, Levee Inspection Report By Mile - Fall 2016

### Reclamation District No. 0003 Grand Island

Waterway	Bank	Unit Miles	Inspection Start/End	Inspector
Unit No. 01 Left Bank Steamboat Slough	Left	10.95	09/27/2016 09/27/2016	Richard Willoughby

LM Start	0.13	Rating **	M	Issue No.	2 (cont)	
LM End	0.13	Issue Type +	Ma	Location *	WS	
Category	Earthen Levee			GPS Latitude/Longitude		
				Start		End
Item	Erosion / Bank Caving			38.303303 °		38.303303 °
				-121.576538 °		-121.576538 °
DWR ID	DWR_RD0003_01_f_2013_2					
Comment Code						
E2 : Schedule repair of erosion site prior to the next inspection.						
Inspector Comment						
Hole (8ft x 2.5ft x 5ft) next to a large tree on waterward shoulder.						

Photo 2 of 3 : FA\_2016\_RD0003\_24\_2\_20160915\_00004.jpg



Looking at a hole next to oak tree on waterward shoulder.(2015)

LM Start	<b>0.13</b>	Rating **	M	Issue No.	<b>2 (cont)</b>
LM End	<b>0.13</b>	Issue Type +	Ma	Location *	WS

Photo 3 of 3 : FA\_2016\_RD0003\_24\_2\_20160915\_00005.jpg



Looking east at hole at the base of an oak tree on the waterward shoulder. (2016)

<b>* Location</b> LS : Land Side    N/A : Not Applicable WS : Water Side CR : Crown	<b>** Rating</b> A : Acceptable M : Minimally Acceptable U : Unacceptable N : Not Inspected/Rated C : Corrected A/W : Acceptable but Monitor & Maintain	<b>+ Issue Type</b> Ma : Maintenance Deficiency Ob : Design & System Obsolescence En : Enforcement
--	---	---

**Flood Control Project Maintenance  
Levee Inspections**

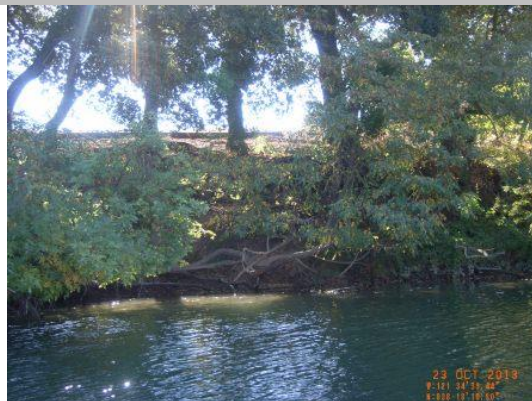
**Maintenance Issue Types Only, Levee Inspection Report By Mile - Fall 2016**

**Reclamation District No. 0003 Grand Island**

Waterway	Bank	Unit Miles	Inspection Start/End	Inspector
Unit No. 01 Left Bank Steamboat Slough	Left	10.95	09/27/2016 09/27/2016	Richard Willoughby

LM Start	0.18	Rating **	M	Issue No.	10
LM End	0.24	Issue Type +	Ma	Location *	WS
Category	Supplemental			GPS Latitude/Longitude	
				Start	End
Item	2015 USACE Erosion Survey, DRAFT			38.303035 °	38.302544 °
				-121.577357 °	-121.578241 °
DWR ID	DWR_RD0003_01_s_2016_10				
Comment Code					
Inspector Comment					
1997 - Mass failure of berm slope and wave wash erosion. Large trees on top of berm, some failed trees. New area of low rock to on the upstream end. 2000 - Some minor erosion near the downstream end. 2005 - One new small tree has fallen. 2009 - Minimal new erosion. 2010 - Minor new erosion. 2013 - Observed new animal holes and vertical sections at middle of site. 2015: Minor new erosion. [2015 Site ID: STM 26-0 L]					

Photo 1 of 1 : FA\_2016\_RD0003\_24\_10\_20160915\_00014.jpg



USACE 2013 Photo #1

LM Start	0.39	Rating **	A	Issue No.	3
LM End	0.39	Issue Type +	Ma	Location *	WS
Category	Earthen Levee			GPS Latitude/Longitude	
				Start	End
Item	Trim / Thin Trees			38.300492 °	38.300492 °
				-121.579454 °	-121.579454 °
DWR ID	DWR_RD0003_01_s_2012_3				
Comment Code					
T1 : Trim trees to at least five feet above ground level.					
Inspector Comment					

No Photos

<b>* Location</b> LS : Land Side    N/A : Not Applicable WS : Water Side CR : Crown	<b>** Rating</b> A : Acceptable M : Minimally Acceptable U : Unacceptable	N : Not Inspected/Rated C : Corrected A/W : Acceptable but Monitor & Maintain	<b>+ Issue Type</b> Ma : Maintenance Deficiency Ob : Design & System Obsolescence En : Enforcement
--	--	---	---





**Flood Control Project Maintenance  
Levee Inspections**

## Maintenance Issue Types Only, Levee Inspection Report By Mile - Fall 2016

### Reclamation District No. 0003 Grand Island

Waterway	Bank	Unit Miles	Inspection Start/End	Inspector
Unit No. 01 Left Bank Steamboat Slough	Left	10.95	09/27/2016 09/27/2016	Richard Willoughby

LM Start	0.98	Rating **	M	Issue No.	65 (cont)	
LM End	0.98	Issue Type +	Ma	Location *	WS	
Category	Earthen Levee			GPS Latitude/Longitude		
				Start		End
Item	Slope Stability			38.292392 °		38.292392 °
				-121.582717 °		-121.582717 °
DWR ID	DWR_RD0003_01_f_2015_65					
Comment Code						
S2 : Repair the levee slope damaged by foot traffic and prevent access where possible.						
Inspector Comment						
Waterward levee damage caused by foot traffic.						

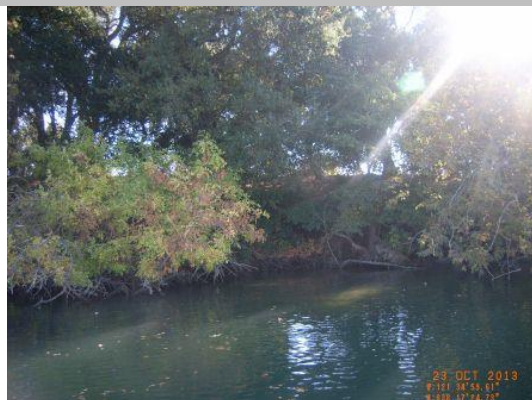
Photo 2 of 2 : FA\_2016\_RD0003\_24\_65\_20160915\_00053.jpg



Looking west at foot erosion on waterward slope. (Fall 2015)

LM Start	1.03	Rating **	M	Issue No.	1
LM End	1.18	Issue Type +	Ma	Location *	WS
Category	Supplemental			GPS Latitude/Longitude	
				Start	End
Item	2015 USACE Erosion Survey, DRAFT			38.291695 °	38.289575 °
				-121.582993 °	-121.583092 °
DWR ID	DWR_RD0003_01_s_2016_1				
Comment Code					
Inspector Comment					
2008 - Area closed sign on bank. Newly fallen trees at both ends and pop outs along the bank. 2010 - Site extended downstream. 2011 - New erosion at the toe. More trees popouts. 2013 - Short vertical sections observed at the downstream end. 2015: New erosion at toe. [2015 Site ID: STM_24-8_L]					

Photo 1 of 2 : FA\_2016\_RD0003\_24\_1\_20160915\_00001.jpg



USACE 2013 Photo #1

LM Start	<b>1.03</b>	Rating **	M	Issue No.	<b>1 (cont)</b>
LM End	<b>1.18</b>	Issue Type +	Ma	Location *	WS

Photo 2 of 2 : FA\_2016\_RD0003\_24\_1\_20160915\_00002.jpg



USACE 2013 Photo #2

<b>* Location</b> LS : Land Side    N/A : Not Applicable WS : Water Side CR : Crown		<b>** Rating</b> A : Acceptable                      N : Not Inspected/Rated M : Minimally Acceptable        C : Corrected U : Unacceptable                  A/W : Acceptable but Monitor & Maintain		<b>+ Issue Type</b> Ma : Maintenance Deficiency Ob : Design & System Obsolescence En : Enforcement	
--	--	---	--	---	--

**Flood Control Project Maintenance  
Levee Inspections**

## Maintenance Issue Types Only, Levee Inspection Report By Mile - Fall 2016

### Reclamation District No. 0003 Grand Island

Waterway	Bank	Unit Miles	Inspection Start/End	Inspector
Unit No. 01 Left Bank Steamboat Slough	Left	10.95	09/27/2016 09/27/2016	Richard Willoughby

LM Start	1.27	Rating **	M	Issue No.	5
LM End	1.32	Issue Type +	Ma	Location *	LS
Category	Earthen Levee			GPS Latitude/Longitude	
				Start	End
Item	Trim / Thin Trees			38.288183°	38.287433°
				-121.582808°	-121.582982°
DWR ID	DWR_RD0003_01_s_2012_5				
Comment Code					
T2 : Thin trees to allow visibility of the ground and room to flood fight.					
Inspector Comment					
Remove trees smaller than 4-inches in diameter at chest height at landward toe.					

Photo 1 of 1 : FA\_2016\_RD0003\_24\_5\_20160929\_00156.jpg



Looking east at small oak trees at landward toe.

LM Start	1.29	Rating **	M	Issue No.	68	
LM End	1.29	Issue Type +	Ma	Location *	LS	
Category	Earthen Levee			GPS Latitude/Longitude		
				Start		End
Item	Encroachments			38.287903 °		38.287903 °
				-121.582809 °		-121.582809 °
DWR ID	DWR_RD0003_01_s_2016_68					
Comment Code						
TR : Tree or limb						
Inspector Comment						
Fallen tree on landward toe.						

Photo 1 of 1 : FA\_2016\_RD0003\_24\_68\_20160915\_00054.jpg



Looking west at fallen tree at landward toe.

\* Location  
LS : Land Side    N/A : Not Applicable  
WS : Water Side  
CR : Crown

\*\* Rating  
A : Acceptable                      N : Not Inspected/Rated  
M : Minimally Acceptable        C : Corrected  
U : Unacceptable                  A/W : Acceptable but Monitor & Maintain

+ Issue Type  
Ma : Maintenance Deficiency  
Ob : Design & System Obsolescence  
En : Enforcement



**Flood Control Project Maintenance  
Levee Inspections**

## Maintenance Issue Types Only, Levee Inspection Report By Mile - Fall 2016

### Reclamation District No. 0003 Grand Island

Waterway	Bank	Unit Miles	Inspection Start/End	Inspector
Unit No. 01 Left Bank Steamboat Slough	Left	10.95	09/27/2016 09/27/2016	Richard Willoughby

LM Start	1.69	Rating **	U	Issue No.	62
LM End	1.69	Issue Type +	Ma	Location *	WS
Category	Earthen Levee			GPS Latitude/Longitude	
				Start	End
Item	Encroachments			38.283747 °	38.283747 °
				-121.587622 °	-121.587622 °
DWR ID	DWR_RD0003_01_f_2016_62				
Comment Code					
TR : Tree or limb					
Inspector Comment					
Broken tree branch on waterward slope.					

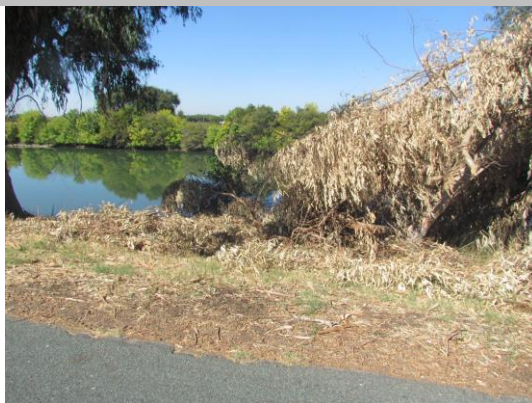
Photo 1 of 2 : FA\_2016\_RD0003\_24\_62\_20160929\_00159.jpg



Looking southwest at broken branches on waterward slope.

LM Start	<b>1.69</b>	Rating **	U	Issue No.	<b>62 (cont)</b>
LM End	<b>1.69</b>	Issue Type +	Ma	Location *	WS

Photo 2 of 2 : FA\_2016\_RD0003\_24\_62\_20160929\_00160.jpg



LM Start	2.53	Rating **	U	Issue No.	29
LM End	2.66	Issue Type +	Ma	Location *	LS
Category	Earthen Levee			GPS Latitude/Longitude	
				Start	End
Item	Trim / Thin Trees			38.272845°	38.271070°
				-121.587665°	-121.588632°
DWR ID	DWR_RD0003_01_s_2013_29				
Comment Code					
T2 : Thin trees to allow visibility of the ground and room to flood fight.					
Inspector Comment					

Photo 1 of 1 : FA\_2016\_RD0003\_24\_29\_20160915\_00037.jpg



Looking southeast at trees blocking landward toe.

**\* Location**

LS : Land Side    N/A : Not Applicable  
WS : Water Side  
CR : Crown

**\*\* Rating**

A : Acceptable                      N : Not Inspected/Rated  
M : Minimally Acceptable        C : Corrected  
U : Unacceptable                  A/W : Acceptable but Monitor & Maintain

**+ Issue Type**

Ma : Maintenance Deficiency  
Ob : Design & System Obsolescence  
En : Enforcement

**Flood Control Project Maintenance  
Levee Inspections**

## Maintenance Issue Types Only, Levee Inspection Report By Mile - Fall 2016

### Reclamation District No. 0003 Grand Island

Waterway	Bank	Unit Miles	Inspection Start/End	Inspector
Unit No. 01 Left Bank Steamboat Slough	Left	10.95	09/27/2016 09/27/2016	Richard Willoughby

LM Start	<b>2.68</b>	Rating **	C	Issue No.	<b>38</b>
LM End	<b>2.68</b>	Issue Type +	Ma	Location *	WS
Category	Earthen Levee		GPS Latitude/Longitude		
			Start	End	
Item	Encroachments		38.270768 °	38.270768 °	
			-121.588663 °	-121.588663 °	
DWR ID	DWR_RD0003_01_s_2013_38				
Comment Code					
TR : Tree or limb					
Inspector Comment					
Broken tree limb on waterward has been removed.					

No Photos

LM Start	<b>2.89</b>	Rating **	C	Issue No.	<b>105</b>
LM End	<b>2.89</b>	Issue Type +	Ma	Location *	WS
Category	Earthen Levee		GPS Latitude/Longitude		
			Start	End	
Item	Encroachments		38.267979 °	38.267979 °	
DWR ID	DWR_RD0003_01_s_2016_105				
Comment Code					
GA : Garbage					
Inspector Comment					
Garbage has been removed.					

No Photos

LM Start	<b>2.91</b>	Rating **	C	Issue No.	<b>100</b>
LM End	<b>2.91</b>	Issue Type +	Ma	Location *	WS
Category	Earthen Levee		GPS Latitude/Longitude		
			Start	End	
Item	Encroachments		38.267750 °	38.267750 °	
			-121.587463 °	-121.587463 °	
DWR ID	DWR_RD0003_01_s_2013_100				
Comment Code					
PR : Prunings					
Inspector Comment					
Grass clippings on waterward slope. Grass clippings outside 20ft. Zone.					

No Photos

**\* Location**

LS : Land Side    N/A : Not Applicable  
WS : Water Side  
CR : Crown

**\*\* Rating**

A : Acceptable                      N : Not Inspected/Rated  
M : Minimally Acceptable        C : Corrected  
U : Unacceptable                  A/W : Acceptable but Monitor & Maintain

**+ Issue Type**

Ma : Maintenance Deficiency  
Ob : Design & System Obsolescence  
En : Enforcement

**Flood Control Project Maintenance  
Levee Inspections**

**Maintenance Issue Types Only, Levee Inspection Report By Mile - Fall 2016**

**Reclamation District No. 0003 Grand Island**

Waterway	Bank	Unit Miles	Inspection Start/End	Inspector
Unit No. 01 Left Bank Steamboat Slough	Left	10.95	09/27/2016 09/27/2016	Richard Willoughby

LM Start	3.16	Rating **	N	Issue No.	47
LM End	3.16	Issue Type +	Ma	Location *	WS
Category	Earthen Levee			GPS Latitude/Longitude	
				Start	End
Item	Trim / Thin Trees			38.264154°	38.264154°
				-121.587242°	-121.587242°
DWR ID	DWR_RD0003_01_s_2012_47				
Comment Code					
T5 : Tree stumps.					
Inspector Comment					
6 large stumps on slope.					

No Photos

LM Start	3.30	Rating **	C	Issue No.	51
LM End	3.30	Issue Type +	Ma	Location *	LS
Category	Earthen Levee			GPS Latitude/Longitude	
				Start	End
Item	Vegetation			38.262289 °	38.262289 °
				-121.588250 °	-121.588250 °
DWR ID	DWR_RD0003_01_s_2012_51				
Comment Code					
V2 : Remove the wild growth other than native grasses from the levee slopes.					
Inspector Comment					
Cactus					

No Photos

**\* Location**  
LS : Land Side    N/A : Not Applicable  
WS : Water Side  
CR : Crown

**\*\* Rating**  
A : Acceptable                      N : Not Inspected/Rated  
M : Minimally Acceptable        C : Corrected  
U : Unacceptable                  A/W : Acceptable but Monitor & Maintain

**+ Issue Type**  
Ma : Maintenance Deficiency  
Ob : Design & System Obsolescence  
En : Enforcement



**Flood Control Project Maintenance  
Levee Inspections**

## Maintenance Issue Types Only, Levee Inspection Report By Mile - Fall 2016

### Reclamation District No. 0003 Grand Island

Waterway	Bank	Unit Miles	Inspection Start/End	Inspector
Unit No. 01 Left Bank Steamboat Slough	Left	10.95	09/27/2016 09/27/2016	Richard Willoughby

LM Start	3.82	Rating **	U	Issue No.	9
LM End	3.87	Issue Type +	Ma	Location *	LS
Category	Earthen Levee			GPS Latitude/Longitude	
				Start	End
Item	Trim / Thin Trees			38.258222 °	38.257453 °
				-121.593793 °	-121.593942 °
DWR ID	DWR_RD0003_01_s_2012_9				
Comment Code					
T3 : Trim and thin trees to allow visibility of the ground and room to flood fight.					
Inspector Comment					

LM Start	<b>3.82</b>	Rating **	U	Issue No.	<b>9 (cont)</b>
LM End	<b>3.87</b>	Issue Type +	Ma	Location *	LS

Photo 1 of 3 : FA\_2016\_RD0003\_24\_9\_20160915\_00011.jpg



Looking southeast at trees on landward shoulder and slope. (Fall 2014)

Photo 2 of 3 : FA\_2016\_RD0003\_24\_9\_20160915\_00012.jpg



Looking south at trees on landward shoulder and slope. (Fall 2015)

LM Start	<b>3.82</b>	Rating **	U	Issue No.	<b>9 (cont)</b>
LM End	<b>3.87</b>	Issue Type +	Ma	Location *	LS

Photo 3 of 3 : FA\_2016\_RD0003\_24\_9\_20160915\_00013.jpg



Looking south at trees on landward shoulder and slope (Spring 2016).

**\* Location**

LS : Land Side    N/A : Not Applicable  
WS : Water Side  
CR : Crown

**\*\* Rating**

A : Acceptable                      N : Not Inspected/Rated  
M : Minimally Acceptable        C : Corrected  
U : Unacceptable                  A/W : Acceptable but Monitor & Maintain

**+ Issue Type**

Ma : Maintenance Deficiency  
Ob : Design & System Obsolescence  
En : Enforcement

# Reclamation District No. 0003 Grand Island

Looking east at untrimmed trees at landward toe.

No Photos

No Photos

Page 13 of 20

**Flood Control Project Maintenance  
Levee Inspections**

**Maintenance Issue Types Only, Levee Inspection Report By Mile - Fall 2016**

**Reclamation District No. 0003 Grand Island**

Waterway	Bank	Unit Miles	Inspection Start/End	Inspector
Unit No. 01 Left Bank Steamboat Slough	Left	10.95	09/27/2016 09/27/2016	Richard Willoughby

LM Start	5.77	Rating **	U	Issue No.	66
LM End	5.77	Issue Type +	Ma	Location *	WS
Category	Earthen Levee			GPS Latitude/Longitude	
				Start	End
Item	Encroachments			38.233098 °	38.233098 °
				-121.601323 °	-121.601323 °
DWR ID	DWR_RD0003_01_f_2016_66				
Comment Code					
TR : Tree or limb					
Inspector Comment					
Broken tree branches and limbs on waterward slope.					

Photo 1 of 1 : FA\_2016\_RD0003\_24\_66\_20160929\_00164.jpg



Looking west at tree branches and limbs on waterward slope.

LM Start	7.00	Rating **	C	Issue No.	93
LM End	7.03	Issue Type +	Ma	Location *	LS
Category	Earthen Levee			GPS Latitude/Longitude	
				Start	End
Item	Trim / Thin Trees			38.215947°	38.215643°
				-121.604398°	-121.604603°
DWR ID	DWR_RD0003_01_s_2013_93				
Comment Code					
T1 : Trim trees to at least five feet above ground level.					
Inspector Comment					

No Photos

<b>* Location</b> LS : Land Side    N/A : Not Applicable WS : Water Side CR : Crown	<b>** Rating</b> A : Acceptable M : Minimally Acceptable U : Unacceptable	N : Not Inspected/Rated C : Corrected A/W : Acceptable but Monitor & Maintain	<b>+ Issue Type</b> Ma : Maintenance Deficiency Ob : Design & System Obsolescence En : Enforcement
--	--	---	---



**Flood Control Project Maintenance  
Levee Inspections**

## Maintenance Issue Types Only, Levee Inspection Report By Mile - Fall 2016

### Reclamation District No. 0003 Grand Island

Waterway	Bank	Unit Miles	Inspection Start/End	Inspector
Unit No. 01 Left Bank Steamboat Slough	Left	10.95	09/27/2016 09/27/2016	Richard Willoughby

LM Start	7.17	Rating **	C	Issue No.	72
LM End	7.44	Issue Type +	Ma	Location *	WS
Category	Earthen Levee			GPS Latitude/Longitude	
				Start	End
Item	Vegetation			38.213785 °	38.210179 °
				-121.605671 °	-121.607686 °
DWR ID	DWR_RD0003_01_s_2012_72				
Comment Code					
V2 : Remove the wild growth other than native grasses from the levee slopes.					
Inspector Comment					
Vegetation is in complies, but should be monitored.					

No Photos

LM Start	7.44	Rating **	C	Issue No.	73
LM End	7.44	Issue Type +	Ma	Location *	LS
Category	Earthen Levee			GPS Latitude/Longitude	
				Start	End
Item	Vegetation			38.210178 °	38.210178 °
				-121.607687 °	-121.607687 °
DWR ID	DWR_RD0003_01_s_2012_73				
Comment Code					
V2 : Remove the wild growth other than native grasses from the levee slopes.					
Inspector Comment					

No Photos

LM Start	8.39	Rating **	M	Issue No.	94
LM End	8.39	Issue Type +	Ma	Location *	LS
Category	Earthen Levee			GPS Latitude/Longitude	
				Start	End
Item	Encroachments			38.197202 °	38.197202 °
				-121.612962 °	-121.612962 °
DWR ID	DWR_RD0003_01_s_2013_94				
Comment Code					
PR : Prunings					
Inspector Comment					
Prunings on landward slope.					

Photo 1 of 2 : FA\_2016\_RD0003\_24\_94\_20160915\_00064.jpg



Looking east at prunings on landward slope. (Fall 2015)

**\* Location**

LS : Land Side    N/A : Not Applicable  
WS : Water Side  
CR : Crown

**\*\* Rating**

A : Acceptable                      N : Not Inspected/Rated  
M : Minimally Acceptable        C : Corrected  
U : Unacceptable                  A/W : Acceptable but Monitor & Maintain

**+ Issue Type**

Ma : Maintenance Deficiency  
Ob : Design & System Obsolescence  
En : Enforcement

### Maintenance Issue Types Only, Levee Inspection Report By Mile - Fall 2016

Waterway	Bank	Unit Miles	Inspection Start/End	Inspector
Unit No. 01 Left Bank Steamboat Slough	Left	10.95	09/27/2016 09/27/2016	Richard Willoughby

Photo 2 of 2 : FA\_2016\_RD0003\_24\_94\_20160915\_00065.jpg



Looking at prunings on landward slope (Spring 2016)

Photo 1 of 2 : FA\_2016\_RD0003\_24\_80\_20160929\_00165.jpg



Looking northeast at broken tree branch at landward toe.

Photo 2 of 2 : FA\_2016\_RD0003\_24\_80\_20160929\_00166.jpg

A photograph of a large, mature tree with a thick trunk and dense green foliage, standing in a grassy field. The tree's shadow is cast on the ground to the left. In the background, there are more trees and a clear blue sky.

Thursday, December 08, 2016 15:17 **FINAL DATA** Page 16 of 20





**Flood Control Project Maintenance  
Levee Inspections**

## Maintenance Issue Types Only, Levee Inspection Report By Mile - Fall 2016

### Reclamation District No. 0003 Grand Island

Waterway	Bank	Unit Miles	Inspection Start/End	Inspector
Unit No. 01 Left Bank Steamboat Slough	Left	10.95	09/27/2016 09/27/2016	Richard Willoughby

LM Start	10.78	Rating **	U	Issue No.	97
LM End	10.80	Issue Type +	Ma	Location *	WS
Category	Earthen Levee			GPS Latitude/Longitude	
				Start	End
Item	Erosion / Bank Caving			38.183228 °	38.183123 °
				-121.650797 °	-121.651070 °
DWR ID	DWR_RD0003_01_s_2013_97				
Comment Code					
E2 : Schedule repair of erosion site prior to the next inspection.					
Inspector Comment					
Erosion extends to waterward shoulder.					

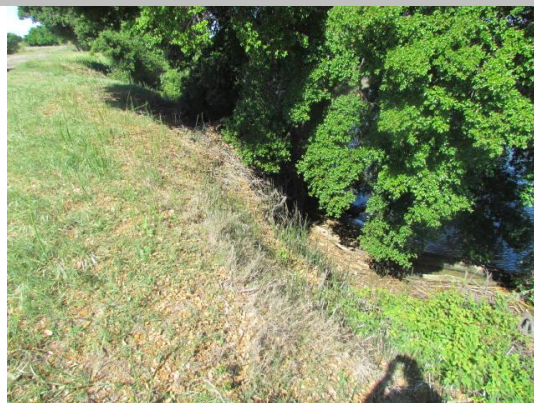
Photo 1 of 2 : FA\_2016\_RD0003\_24\_97\_20160915\_00068.jpg



Looking south at erosion on waterward slope.

LM Start	<b>10.78</b>	Rating **	U	Issue No.	<b>97 (cont)</b>
LM End	<b>10.80</b>	Issue Type +	Ma	Location *	WS

Photo 2 of 2 : FA\_2016\_RD0003\_24\_97\_20160915\_00069.jpg



Looking southwest at erosion on waterward slope.

LM Start	10.79	Rating **	M	Issue No.	92
LM End	10.92	Issue Type +	Ma	Location *	LS
Category	Earthen Levee			GPS Latitude/Longitude	
				Start	End
Item	Vegetation			38.183204 °	38.182481 °
				-121.650861 °	-121.653199 °
DWR ID	DWR_RD0003_01_s_2015_92				
Comment Code					
V2 : Remove the wild growth other than native grasses from the levee slopes.					
Inspector Comment					

No Photos

\* Location  
LS : Land Side    N/A : Not Applicable  
WS : Water Side  
CR : Crown

\*\* Rating  
A : Acceptable                      N : Not Inspected/Rated  
M : Minimally Acceptable        C : Corrected  
U : Unacceptable                  A/W : Acceptable but Monitor & Maintain

+ Issue Type  
Ma : Maintenance Deficiency  
Ob : Design & System Obsolescence  
En : Enforcement

**Flood Control Project Maintenance  
Levee Inspections**

## Maintenance Issue Types Only, Levee Inspection Report By Mile - Fall 2016

### Reclamation District No. 0003 Grand Island

Waterway	Bank	Unit Miles	Inspection Start/End	Inspector
Unit No. 01 Left Bank Steamboat Slough	Left	10.95	09/27/2016 09/27/2016	Richard Willoughby

LM Start	10.86	Rating **	U	Issue No.	98
LM End	10.89	Issue Type +	Ma	Location *	WS
Category	Earthen Levee			GPS Latitude/Longitude	
				Start	End
Item	Erosion / Bank Caving			38.182792 °	38.182672 °
				-121.652142 °	-121.652555 °
DWR ID	DWR_RD0003_01_s_2013_98				
Comment Code					
E2 : Schedule repair of erosion site prior to the next inspection.					
Inspector Comment					
Erosion extends to waterward shoulder.					

LM Start	<b>10.86</b>	Rating **	U	Issue No.	<b>98 (cont)</b>
LM End	<b>10.89</b>	Issue Type +	Ma	Location *	WS

Photo 1 of 3 : FA\_2016\_RD0003\_24\_98\_20160915\_00070.jpg



Looking north at erosion on waterward slope.

Photo 2 of 3 : FA\_2016\_RD0003\_24\_98\_20160915\_00071.jpg



Looking northwest at erosion on waterward shoulder and slope.

LM Start	<b>10.86</b>	Rating **	U	Issue No.	<b>98 (cont)</b>
LM End	<b>10.89</b>	Issue Type +	Ma	Location *	WS

Photo 3 of 3 : FA\_2016\_RD0003\_24\_98\_20160915\_00072.jpg



Looking west at erosion on waterward slope.

**\* Location**

LS : Land Side    N/A : Not Applicable  
WS : Water Side  
CR : Crown

**\*\* Rating**

A : Acceptable                      N : Not Inspected/Rated  
M : Minimally Acceptable        C : Corrected  
U : Unacceptable                  A/W : Acceptable but Monitor & Maintain

**+ Issue Type**

Ma : Maintenance Deficiency  
Ob : Design & System Obsolescence  
En : Enforcement



**Flood Control Project Maintenance  
Levee Inspections**

## Maintenance Issue Types Only, Levee Inspection Report By Mile - Fall 2016

### Reclamation District No. 0003 Grand Island

Waterway	Bank	Unit Miles	Inspection Start/End	Inspector
Unit No. 01 Left Bank Steamboat Slough	Left	10.95	09/27/2016 09/27/2016	Richard Willoughby

LM Start	10.91	Rating **	U	Issue No.	99
LM End	10.94	Issue Type +	Ma	Location *	WS
Category	Earthen Levee			GPS Latitude/Longitude	
				Start	End
Item	Erosion / Bank Caving			38.182537 °	38.182388 °
				-121.652987 °	-121.653388 °
DWR ID	DWR_RD0003_01_s_2013_99				
Comment Code					
E2 : Schedule repair of erosion site prior to the next inspection.					
Inspector Comment					
Erosion extends to waterward shoulder.					

Photo 1 of 2 : FA\_2016\_RD0003\_24\_99\_20160915\_00073.jpg



Looking west at erosion on waterward slope.

LM Start	<b>10.91</b>	Rating **	U	Issue No.	<b>99 (cont)</b>
LM End	<b>10.94</b>	Issue Type +	Ma	Location *	WS

Photo 2 of 2 : FA\_2016\_RD0003\_24\_99\_20160915\_00074.jpg



Looking north at erosion on waterward shoulder and slope.

**\* Location**

LS : Land Side    N/A : Not Applicable  
WS : Water Side  
CR : Crown

**\*\* Rating**

A : Acceptable                      N : Not Inspected/Rated  
M : Minimally Acceptable        C : Corrected  
U : Unacceptable                  A/W : Acceptable but Monitor & Maintain

**+ Issue Type**

Ma : Maintenance Deficiency  
Ob : Design & System Obsolescence  
En : Enforcement



**Flood Control Project Maintenance  
Levee Inspections**

## Maintenance Issue Types Only, Levee Inspection Report By Mile - Fall 2016

### Reclamation District No. 0003 Grand Island

Waterway	Bank	Unit Miles	Inspection Start/End	Inspector
Unit No. 02 Right Bank Sacramento River	Right	17.35	09/27/2016 09/28/2016	Richard Willoughby

LM Start	0.17	Rating **	M	Issue No.	3
LM End	0.17	Issue Type +	Ma	Location *	WS
Category	Earthen Levee			GPS Latitude/Longitude	
				Start	End
Item	Trim / Thin Trees			38.174890°	38.174890°
				-121.651031°	-121.651031°
DWR ID	DWR_RD0003_02_s_2012_3				
Comment Code					
T1 : Trim trees to at least five feet above ground level.					
Inspector Comment					

No Photos

LM Start	0.25	Rating **	M	Issue No.	4
LM End	0.25	Issue Type +	Ma	Location *	LS
Category	Earthen Levee			GPS Latitude/Longitude	
				Start	End
Item	Trim / Thin Trees			38.174504 °	38.174504 °
				-121.649651 °	-121.649651 °
DWR ID	DWR_RD0003_02_s_2012_4				
Comment Code					
T4 : Trim trees over roadway to at least 12 feet above ground level.					
Inspector Comment					
Untrimmed tree trimmed at least five feet above ground and trimmed back from overhanging levee crown.					

Photo 1 of 1 : FA\_2016\_RD0003\_25\_4\_20160929\_00246.jpg



Looking east at untrimmed tree on landward shoulder.

<b>* Location</b> LS : Land Side    N/A : Not Applicable WS : Water Side CR : Crown	<b>** Rating</b> A : Acceptable M : Minimally Acceptable U : Unacceptable N : Not Inspected/Rated C : Corrected A/W : Acceptable but Monitor & Maintain	<b>+ Issue Type</b> Ma : Maintenance Deficiency Ob : Design & System Obsolescence En : Enforcement
--	---	---

**Flood Control Project Maintenance  
Levee Inspections**

## Maintenance Issue Types Only, Levee Inspection Report By Mile - Fall 2016

### Reclamation District No. 0003 Grand Island

Waterway	Bank	Unit Miles	Inspection Start/End	Inspector
Unit No. 02 Right Bank Sacramento River	Right	17.35	09/27/2016 09/28/2016	Richard Willoughby

LM Start	0.30	Rating **	M	Issue No.	5
LM End	0.32	Issue Type +	Ma	Location *	WS
Category	Earthen Levee			GPS Latitude/Longitude	
				Start	End
Item	Vegetation			38.174281°	38.174209°
				-121.648698°	-121.648352°
DWR ID	DWR_RD0003_02_s_2012_5				
Comment Code					
V2 : Remove the wild growth other than native grasses from the levee slopes.					
Inspector Comment					
Bamboo sprouts on waterward slope.					

Photo 1 of 2 : FA\_2016\_RD0003\_25\_5\_20160929\_00247.jpg



Looking southeast at bamboo on waterward slope. (Fall 2016)

LM Start	<b>0.30</b>	Rating **	M	Issue No.	<b>5 (cont)</b>
LM End	<b>0.32</b>	Issue Type +	Ma	Location *	WS

Photo 2 of 2 : FA\_2016\_RD0003\_25\_5\_20160915\_00008.jpg



Looking east at bamboo on waterward slope. (Spring 2016)

LM Start	0.31	Rating **	U	Issue No.	151
LM End	0.35	Issue Type +	Ma	Location *	LS
Category	Earthen Levee			GPS Latitude/Longitude	
				Start	End
Item	Vegetation			38.174235°	38.174109°
				-121.648479°	-121.647870°
DWR ID	DWR_RD0003_02_s_2016_151				
Comment Code					
V2 : Remove the wild growth other than native grasses from the levee slopes.					
Inspector Comment					

Photo 1 of 1 : FA\_2016\_RD0003\_25\_151\_20160915\_00098.jpg



Looking west at dense vegetation at landward toe.

**\* Location**

LS : Land Side    N/A : Not Applicable  
WS : Water Side  
CR : Crown

**\*\* Rating**

A : Acceptable                      N : Not Inspected/Rated  
M : Minimally Acceptable        C : Corrected  
U : Unacceptable                  A/W : Acceptable but Monitor & Maintain

**+ Issue Type**

Ma : Maintenance Deficiency  
Ob : Design & System Obsolescence  
En : Enforcement

**Flood Control Project Maintenance  
Levee Inspections**

**Maintenance Issue Types Only, Levee Inspection Report By Mile - Fall 2016**

**Reclamation District No. 0003 Grand Island**

Waterway	Bank	Unit Miles	Inspection Start/End	Inspector
Unit No. 02 Right Bank Sacramento River	Right	17.35	09/27/2016 09/28/2016	Richard Willoughby

LM Start	<b>0.32</b>	Rating **	C	Issue No.	<b>41</b>
LM End	<b>0.32</b>	Issue Type +	Ma	Location *	LS
Category	Earthen Levee			GPS Latitude/Longitude	
				Start	End
Item	Trim / Thin Trees			38.174203°	38.174203°
				-121.648400°	-121.648400°
DWR ID	DWR_RD0003_02_s_2013_41				
Comment Code					
T2 : Thin trees to allow visibility of the ground and room to flood fight.					
Inspector Comment					

No Photos

LM Start	<b>1.50</b>	Rating **	C	Issue No.	<b>154</b>
LM End	<b>1.50</b>	Issue Type +	Ma	Location *	WS
Category	Earthen Levee			GPS Latitude/Longitude	
				Start	End
Item	Encroachments			38.169204°	38.169204°
				-121.628268°	-121.628268°
DWR ID	DWR_RD0003_02_f_2014_154				
Comment Code					
TR : Tree or limb					
Inspector Comment					

No Photos

LM Start	<b>1.57</b>	Rating **	C	Issue No.	<b>104</b>
LM End	<b>1.57</b>	Issue Type +	Ma	Location *	WS
Category	Earthen Levee			GPS Latitude/Longitude	
				Start	End
Item	Encroachments			38.168662°	38.168662°
				-121.627167°	-121.627167°
DWR ID	DWR_RD0003_02_s_2014_104				
Comment Code					
PR : Prunings					
Inspector Comment					

No Photos

**\* Location**

LS : Land Side    N/A : Not Applicable  
WS : Water Side  
CR : Crown

**\*\* Rating**

A : Acceptable                      N : Not Inspected/Rated  
M : Minimally Acceptable        C : Corrected  
U : Unacceptable                  A/W : Acceptable but Monitor & Maintain

**+ Issue Type**

Ma : Maintenance Deficiency  
Ob : Design & System Obsolescence  
En : Enforcement



**Flood Control Project Maintenance  
Levee Inspections**

## Maintenance Issue Types Only, Levee Inspection Report By Mile - Fall 2016

### Reclamation District No. 0003 Grand Island

Waterway	Bank	Unit Miles	Inspection Start/End	Inspector
Unit No. 02 Right Bank Sacramento River	Right	17.35	09/27/2016 09/28/2016	Richard Willoughby

LM Start	2.01	Rating **	M	Issue No.	140
LM End	2.01	Issue Type +	Ma	Location *	WS
Category	Earthen Levee			GPS Latitude/Longitude	
				Start	End
Item	Encroachments			38.165740 °	38.165740 °
				-121.619970 °	-121.619970 °
DWR ID	DWR_RD0003_02_f_2015_140				
Comment Code					
PR : Prunings					
Inspector Comment					
Prunings piles on waterward slope.					

Photo 1 of 1 : FA\_2016\_RD0003\_25\_140\_20160915\_00088.jpg



Looking at tree branches and tree limbs on waterward shoulder and slope.

LM Start	2.43	Rating **	C	Issue No.	6
LM End	2.43	Issue Type +	Ma	Location *	LS
Category	Earthen Levee			GPS Latitude/Longitude	
				Start	End
Item	Trim / Thin Trees			38.164369°	38.164369°
				-121.612548°	-121.612548°
DWR ID	DWR_RD0003_02_s_2012_6				
Comment Code					
T1 : Trim trees to at least five feet above ground level.					
Inspector Comment					

No Photos

\* Location  
LS : Land Side    N/A : Not Applicable  
WS : Water Side  
CR : Crown

\*\* Rating  
A : Acceptable                      N : Not Inspected/Rated  
M : Minimally Acceptable        C : Corrected  
U : Unacceptable                  A/W : Acceptable but Monitor & Maintain

+ Issue Type  
Ma : Maintenance Deficiency  
Ob : Design & System Obsolescence  
En : Enforcement

**Flood Control Project Maintenance  
Levee Inspections**

## Maintenance Issue Types Only, Levee Inspection Report By Mile - Fall 2016

### Reclamation District No. 0003 Grand Island

Waterway	Bank	Unit Miles	Inspection Start/End	Inspector
Unit No. 02 Right Bank Sacramento River	Right	17.35	09/27/2016 09/28/2016	Richard Willoughby

LM Start	2.71	Rating **	M	Issue No.	951
LM End	2.71	Issue Type +	Ma	Location *	LS
Category	Earthen Levee			GPS Latitude/Longitude	
				Start	End
Item	Trim / Thin Trees			38.164676 °	38.164676 °
				-121.607479 °	-121.607479 °
DWR ID	DWR_RD0003_02_s_2012_951				
Comment Code					
T1 : Trim trees to at least five feet above ground level.					
Inspector Comment					

No Photos

LM Start	3.20	Rating **	M	Issue No.	7
LM End	3.20	Issue Type +	Ma	Location *	LS
Category	Earthen Levee			GPS Latitude/Longitude	
				Start	End
Item	Trim / Thin Trees			38.167808 °	38.167808 °
				-121.599557 °	-121.599557 °
DWR ID	DWR_RD0003_02_s_2012_7				
Comment Code					
T1 : Trim trees to at least five feet above ground level.					
Inspector Comment					
Dense vegetation on landward slope and toe.					

Photo 1 of 1 : FA\_2016\_RD0003\_25\_7\_20160929\_00250.jpg



Looking north at fig tree at landward toe.

LM Start	3.23	Rating **	C	Issue No.	44
LM End	3.23	Issue Type +	Ma	Location *	LS
Category	Earthen Levee			GPS Latitude/Longitude	
				Start	End
Item	Vegetation			38.168134°	38.168134°
				-121.599028°	-121.599028°
DWR ID	DWR_RD0003_02_s_2012_44				
Comment Code					
V2 : Remove the wild growth other than native grasses from the levee slopes.					
Inspector Comment					
Obstructive blackberry.					

No Photos

<b>* Location</b> LS : Land Side    N/A : Not Applicable WS : Water Side CR : Crown		<b>** Rating</b> A : Acceptable                      N : Not Inspected/Rated M : Minimally Acceptable        C : Corrected U : Unacceptable                  A/W : Acceptable but Monitor & Maintain		<b>+ Issue Type</b> Ma : Maintenance Deficiency Ob : Design & System Obsolescence En : Enforcement
--	--	---	--	---

**Flood Control Project Maintenance  
Levee Inspections**

## Maintenance Issue Types Only, Levee Inspection Report By Mile - Fall 2016

### Reclamation District No. 0003 Grand Island

Waterway	Bank	Unit Miles	Inspection Start/End	Inspector
Unit No. 02 Right Bank Sacramento River	Right	17.35	09/27/2016 09/28/2016	Richard Willoughby

LM Start	3.40	Rating **	M	Issue No.	160
LM End	3.40	Issue Type +	Ma	Location *	LS
Category	Earthen Levee			GPS Latitude/Longitude	
				Start	End
Item	Encroachments			38.169904 °	38.169904 °
				-121.596914 °	-121.596914 °
DWR ID	DWR_RD0003_02_s_2015_160				
Comment Code					
TR : Tree or limb					
Inspector Comment					
Fallen tree on landward slope.					

Photo 1 of 2 : FA\_2016\_RD0003\_25\_160\_20160915\_00102.jpg



Looking west at fallen tree on landward slope.(Spring 2016)

LM Start	<b>3.40</b>	Rating **	M	Issue No.	<b>160 (cont)</b>
LM End	<b>3.40</b>	Issue Type +	Ma	Location *	LS

Photo 2 of 2 : FA\_2016\_RD0003\_25\_160\_20160915\_00103.jpg



Looking west at fallen tree on landward slope.

LM Start	3.40	Rating **	A	Issue No.	142
LM End	3.40	Issue Type +	Ma	Location *	LS
Category	Earthen Levee			GPS Latitude/Longitude	
				Start	End
Item	Trim / Thin Trees			38.169915 °	38.169915 °
				-121.596908 °	-121.596908 °
DWR ID	DWR_RD0003_02_f_2015_142				
Comment Code					
T1 : Trim trees to at least five feet above ground level.					
Inspector Comment					

No Photos

<b>* Location</b> LS : Land Side    N/A : Not Applicable WS : Water Side CR : Crown		<b>** Rating</b> A : Acceptable                      N : Not Inspected/Rated M : Minimally Acceptable        C : Corrected U : Unacceptable                  A/W : Acceptable but Monitor & Maintain		<b>+ Issue Type</b> Ma : Maintenance Deficiency Ob : Design & System Obsolescence En : Enforcement
--	--	---	--	---



**Flood Control Project Maintenance  
Levee Inspections**

## Maintenance Issue Types Only, Levee Inspection Report By Mile - Fall 2016

### Reclamation District No. 0003 Grand Island

Waterway	Bank	Unit Miles	Inspection Start/End	Inspector
Unit No. 02 Right Bank Sacramento River	Right	17.35	09/27/2016 09/28/2016	Richard Willoughby

LM Start	3.47	Rating **	M	Issue No.	97
LM End	3.47	Issue Type +	Ma	Location *	LS
Category	Earthen Levee			GPS Latitude/Longitude	
				Start	End
Item	Vegetation			38.170724 °	38.170724 °
				-121.596152 °	-121.596152 °
DWR ID	DWR_RD0003_02_f_2013_97				
Comment Code					
V2 : Remove the wild growth other than native grasses from the levee slopes.					
Inspector Comment					
Palm tree at landward toe.					

Photo 1 of 1 : FA\_2016\_RD0003\_25\_97\_20160915\_00081.jpg



Looking west at palm tree on landward toe.

LM Start	3.73	Rating **	M	Issue No.	8
LM End	3.82	Issue Type +	Ma	Location *	LS
Category	Earthen Levee			GPS Latitude/Longitude	
				Start	End
Item	Trim / Thin Trees			38.173977 °	38.175118 °
				-121.593725 °	-121.592925 °
DWR ID	DWR_RD0003_02_s_2012_8				
Comment Code					
T1 : Trim trees to at least five feet above ground level.					
Inspector Comment					

No Photos

<b>* Location</b> LS : Land Side    N/A : Not Applicable WS : Water Side CR : Crown	<b>** Rating</b> A : Acceptable M : Minimally Acceptable U : Unacceptable	N : Not Inspected/Rated C : Corrected A/W : Acceptable but Monitor & Maintain	<b>+ Issue Type</b> Ma : Maintenance Deficiency Ob : Design & System Obsolescence En : Enforcement
--	--	---	---

**Flood Control Project Maintenance  
Levee Inspections**

## Maintenance Issue Types Only, Levee Inspection Report By Mile - Fall 2016

### Reclamation District No. 0003 Grand Island

Waterway	Bank	Unit Miles	Inspection Start/End	Inspector
Unit No. 02 Right Bank Sacramento River	Right	17.35	09/27/2016 09/28/2016	Richard Willoughby

LM Start	3.77	Rating **	U	Issue No.	952
LM End	3.77	Issue Type +	Ma	Location *	LS
Category	Earthen Levee			GPS Latitude/Longitude	
				Start	End
Item	Vegetation			38.174430 °	38.174430 °
				-121.593372 °	-121.593372 °
DWR ID	DWR_RD0003_02_s_2012_952				
Comment Code					
V2 : Remove the wild growth other than native grasses from the levee slopes.					
Inspector Comment					
Dense bamboo on landward slope.					

Photo 1 of 2 : FA\_2016\_RD0003\_25\_952\_20160929\_00251.jpg



Looking west at bamboo on landward shoulder and slope. (Fall 2016)

LM Start	<b>3.77</b>	Rating **	U	Issue No.	<b>952 (cont)</b>
LM End	<b>3.77</b>	Issue Type +	Ma	Location *	LS

Photo 2 of 2 : FA\_2016\_RD0003\_25\_952\_20160915\_00107.jpg



Looking southwest at dense vegetation on landward slope. (Spring 2016)

LM Start	4.11	Rating **	U	Issue No.	145
LM End	4.11	Issue Type +	Ma	Location *	WS
Category	Earthen Levee			GPS Latitude/Longitude	
				Start	End
Item	Vegetation			38.178779 °	38.178779 °
				-121.590425 °	-121.590425 °
DWR ID	DWR_RD0003_02_f_2015_145				
Comment Code					
V7 : Trees / Woody Vegetation					
Inspector Comment					
Century plants on waterward shoulder and slope.					

Photo 1 of 1 : FA\_2016\_RD0003\_25\_145\_20160915\_00093.jpg



Looking northeast at century plants on waterward shoulder and slope.

**\* Location**

LS : Land Side    N/A : Not Applicable  
WS : Water Side  
CR : Crown

**\*\* Rating**

A : Acceptable                      N : Not Inspected/Rated  
M : Minimally Acceptable        C : Corrected  
U : Unacceptable                  A/W : Acceptable but Monitor & Maintain

**+ Issue Type**

Ma : Maintenance Deficiency  
Ob : Design & System Obsolescence  
En : Enforcement

### Maintenance Issue Types Only, Levee Inspection Report By Mile - Fall 2016

Waterway	Bank	Unit Miles	Inspection Start/End	Inspector
Unit No. 02 Right Bank Sacramento River	Right	17.35	09/27/2016 09/28/2016	Richard Willoughby

Photo 1 of 1 : FA\_2016\_RD000915\_25\_143\_20160915\_00090.jpg




Looking north at century plants on landward shoulder and slope.

Photo 1 of 1 : FA\_2016\_RD0003\_25\_48\_20160915\_00040.jpg



Looking southwest at dense trees on landward slope.

Photo 1 of 2 : FA\_2016\_RD0003\_25\_10\_20160929\_0025.jpg



Looking north at untrimmed trees on landwards slope and toe. (Fall 2016)

Thursday, December 08, 2016 15:18 **FINAL DATA** Page 9 of 24



**Flood Control Project Maintenance  
Levee Inspections**

## Maintenance Issue Types Only, Levee Inspection Report By Mile - Fall 2016

### Reclamation District No. 0003 Grand Island

Waterway	Bank	Unit Miles	Inspection Start/End	Inspector
Unit No. 02 Right Bank Sacramento River	Right	17.35	09/27/2016 09/28/2016	Richard Willoughby

LM Start	4.24	Rating **	U	Issue No.	10 (cont)	
LM End	4.24	Issue Type +	Ma	Location *	LS	
Category	Earthen Levee			GPS Latitude/Longitude		
				Start		End
Item	Trim / Thin Trees			38.180361 °		38.180361 °
				-121.589127 °		-121.589127 °
DWR ID	DWR_RD0003_02_s_2012_10					
Comment Code						
T1 : Trim trees to at least five feet above ground level.						
Inspector Comment						
Dense untrimmed trees on landward slope and toe.						

Photo 2 of 2 : FA\_2016\_RD0003\_25\_10\_20160915\_00014.jpg



Looking west at untrimmed tree on landward slope. (Spring 2016)

LM Start	4.94	Rating **	U	Issue No.	14
LM End	4.98	Issue Type +	Ma	Location *	LS
Category	Earthen Levee			GPS Latitude/Longitude	
				Start	End
Item	Trim / Thin Trees			38.188344 °	38.188748 °
				-121.581414 °	-121.580743 °
DWR ID	DWR_RD0003_02_s_2012_14				
Comment Code					
T2 : Thin trees to allow visibility of the ground and room to flood fight.					
Inspector Comment					
Dense untrimmed trees on landward slope and toe.					

Photo 1 of 2 : FA\_2016\_RD0003\_25\_14\_20160929\_00254.jpg



Looking northeast at dense vegetation on landward shoulder and slope. (Fall 2016)

LM Start	<b>4.94</b>	Rating **	U	Issue No.	<b>14 (cont)</b>
LM End	<b>4.98</b>	Issue Type +	Ma	Location *	LS

Photo 2 of 2 : FA\_2016\_RD0003\_25\_14\_20160915\_00022.jpg



Looking southwest at untrimmed trees on landward toe. (Spring 2016)

<b>* Location</b> LS : Land Side    N/A : Not Applicable WS : Water Side CR : Crown		<b>** Rating</b> A : Acceptable                      N : Not Inspected/Rated M : Minimally Acceptable        C : Corrected U : Unacceptable                  A/W : Acceptable but Monitor & Maintain		<b>+ Issue Type</b> Ma : Maintenance Deficiency Ob : Design & System Obsolescence En : Enforcement	
--	--	---	--	---	--

# Reclamation District No. 0003 Grand Island

Page 11 of 24



**Flood Control Project Maintenance  
Levee Inspections**

## Maintenance Issue Types Only, Levee Inspection Report By Mile - Fall 2016

### Reclamation District No. 0003 Grand Island

Waterway	Bank	Unit Miles	Inspection Start/End	Inspector
Unit No. 02 Right Bank Sacramento River	Right	17.35	09/27/2016 09/28/2016	Richard Willoughby

LM Start	7.01	Rating **	U	Issue No.	16
LM End	7.01	Issue Type +	Ma	Location *	LS
Category	Earthen Levee			GPS Latitude/Longitude	
				Start	End
Item	Vegetation			38.208205°	38.208205°
				-121.558565°	-121.558565°
DWR ID	DWR_RD0003_02_s_2012_16				
Comment Code					
V2 : Remove the wild growth other than native grasses from the levee slopes.					
Inspector Comment					
Dense vegetation at landward toe.					

Photo 1 of 1 : FA\_2016\_RD0003\_25\_16\_20160915\_00025.jpg



Looking southwest at dense veg. on landside toe.

LM Start	8.11	Rating **	U	Issue No.	15
LM End	8.11	Issue Type +	Ma	Location *	WS
Category	Earthen Levee			GPS Latitude/Longitude	
				Start	End
Item	Encroachments			38.224130 °	38.224130 °
				-121.557206 °	-121.557206 °
DWR ID	DWR_RD0003_02_f_2015_15				
Comment Code					
TR : Tree or limb					
Inspector Comment					
Broken tree branches on waterward shoulder and slope.					

Photo 1 of 2 : FA\_2016\_RD0003\_25\_15\_20160915\_00023.jpg



Looking northeast at broken and cracked tree branches on waterward slope.

LM Start	<b>8.11</b>	Rating **	U	Issue No.	<b>15 (cont)</b>
LM End	<b>8.11</b>	Issue Type +	Ma	Location *	WS

Photo 2 of 2 : FA\_2016\_RD0003\_25\_15\_20160915\_00024.jpg



Looking east at broken and cracked tree branches on waterward slope.

<b>* Location</b> LS : Land Side    N/A : Not Applicable WS : Water Side CR : Crown		<b>** Rating</b> A : Acceptable M : Minimally Acceptable U : Unacceptable N : Not Inspected/Rated C : Corrected A/W : Acceptable but Monitor & Maintain		<b>+ Issue Type</b> Ma : Maintenance Deficiency Ob : Design & System Obsolescence En : Enforcement	
--	--	---	--	---	--



**Flood Control Project Maintenance  
Levee Inspections**

**Maintenance Issue Types Only, Levee Inspection Report By Mile - Fall 2016**

**Reclamation District No. 0003 Grand Island**

Waterway	Bank	Unit Miles	Inspection Start/End	Inspector
Unit No. 02 Right Bank Sacramento River	Right	17.35	09/27/2016 09/28/2016	Richard Willoughby

LM Start	8.24	Rating **	C	Issue No.	17
LM End	8.24	Issue Type +	Ma	Location *	LS
Category	Earthen Levee			GPS Latitude/Longitude	
				Start	End
Item	Trim / Thin Trees			38.226073 °	38.226073 °
				-121.557018 °	-121.557018 °
DWR ID	DWR_RD0003_02_s_2012_17				
Comment Code					
T1 : Trim trees to at least five feet above ground level.					
Inspector Comment					

No Photos

LM Start	8.97	Rating **	U	Issue No.	23
LM End	8.97	Issue Type +	Ma	Location *	LS
Category	Earthen Levee			GPS Latitude/Longitude	
				Start	End
Item	Trim / Thin Trees			38.236294 °	38.236294 °
				-121.559527 °	-121.559527 °
DWR ID	DWR_RD0003_02_s_2012_23				
Comment Code					
T1 : Trim trees to at least five feet above ground level.					
Inspector Comment					
untrimmed tree on landside slope.					

Photo 1 of 1 : FA\_2016\_RD0003\_25\_23\_20160929\_00255.jpg



Looking west at untrimmed trees at landward toe.

<b>* Location</b> LS : Land Side    N/A : Not Applicable WS : Water Side CR : Crown	<b>** Rating</b> A : Acceptable M : Minimally Acceptable U : Unacceptable  N : Not Inspected/Rated C : Corrected A/W : Acceptable but Monitor & Maintain	<b>+ Issue Type</b> Ma : Maintenance Deficiency Ob : Design & System Obsolescence En : Enforcement
--	---	---

# Reclamation District No. 0003 Grand Island

No Photos

Looking north at plam trees on landward shoulder and slope.

Looking southwest at dense trees on landward shoulder and slope.

Page 14 of 24

**Flood Control Project Maintenance  
Levee Inspections**

## Maintenance Issue Types Only, Levee Inspection Report By Mile - Fall 2016

### Reclamation District No. 0003 Grand Island

Waterway	Bank	Unit Miles	Inspection Start/End	Inspector
Unit No. 02 Right Bank Sacramento River	Right	17.35	09/27/2016 09/28/2016	Richard Willoughby

LM Start	9.87	Rating **	M	Issue No.	101
LM End	9.99	Issue Type +	Ma	Location *	LS
Category	Earthen Levee			GPS Latitude/Longitude	
				Start	End
Item	Trim / Thin Trees			38.242017°	38.241686°
					° -121.544969°
DWR ID	DWR_RD0003_02_f_2013_101				
Comment Code					
T3 : Trim and thin trees to allow visibility of the ground and room to flood fight.					
Inspector Comment					
Large redwood trees at the landward toe and berm.					

Photo 1 of 2 : FA\_2016\_RD0003\_25\_101\_20160915\_00084.jpg



Looking northeast at dense redwood trees on landward toe and berm.

LM Start	<b>9.87</b>	Rating **	M	Issue No.	<b>101 (cont)</b>
LM End	<b>9.99</b>	Issue Type +	Ma	Location *	LS

Photo 2 of 2 : FA\_2016\_RD0003\_25\_101\_20160915\_00085.jpg



Looking southwest at dense redwood trees on landward toe and berm.

LM Start	10.43	Rating **	M	Issue No.	81
LM End	10.43	Issue Type +	Ma	Location *	LS
Category	Earthen Levee			GPS Latitude/Longitude	
				Start	End
Item	Vegetation			38.239850 °	38.239850 °
				-121.537237 °	-121.537237 °
DWR ID	DWR_RD0003_02_s_2013_81				
Comment Code					
V2 : Remove the wild growth other than native grasses from the levee slopes.					
Inspector Comment					
Century plant on landward shoulder.					

Photo 1 of 2 : FA\_2016\_RD0003\_25\_81\_20160915\_00067.jpg



Looking west at century plant on landward slope. (Spring 2015)

**\* Location**

LS : Land Side    N/A : Not Applicable  
WS : Water Side  
CR : Crown

**\*\* Rating**

A : Acceptable                      N : Not Inspected/Rated  
M : Minimally Acceptable        C : Corrected  
U : Unacceptable                  A/W : Acceptable but Monitor & Maintain

**+ Issue Type**

Ma : Maintenance Deficiency  
Ob : Design & System Obsolescence  
En : Enforcement



**Flood Control Project Maintenance  
Levee Inspections**

## Maintenance Issue Types Only, Levee Inspection Report By Mile - Fall 2016

### Reclamation District No. 0003 Grand Island

Waterway	Bank	Unit Miles	Inspection Start/End	Inspector
Unit No. 02 Right Bank Sacramento River	Right	17.35	09/27/2016 09/28/2016	Richard Willoughby

LM Start	10.43	Rating **	M	Issue No.	81 (cont)	
LM End	10.43	Issue Type +	Ma	Location *	LS	
Category	Earthen Levee			GPS Latitude/Longitude		
				Start		End
Item	Vegetation			38.239850 °		38.239850 °
				-121.537237 °		-121.537237 °
DWR ID	DWR_RD0003_02_s_2013_81					
Comment Code						
V2 : Remove the wild growth other than native grasses from the levee slopes.						
Inspector Comment						
Century plant on landward shoulder.						

Photo 2 of 2 : FA\_2016\_RD0003\_25\_81\_20160915\_00068.jpg



Looking northwest at century plant on landward shoulder and slope.

LM Start	11.33	Rating **	M	Issue No.	1
LM End	11.42	Issue Type +	Ma	Location *	WS
Category	Supplemental			GPS Latitude/Longitude	
				Start	End
Item	2015 USACE Erosion Survey, DRAFT			38.239870 °	38.239983 °
				-121.520989 °	-121.519361 °
DWR ID	DWR_RD0003_02_s_2016_1				
Comment Code					
Inspector Comment					
2009 - Hole left in levee toe from a fallen tree. Could be repaired under maintenance. 2010 - Minor new erosion. 2015: Minor new erosion at toe. [2015 Site ID: SAC_26-3_R]					

Photo 1 of 2 : FA\_2016\_RD0003\_25\_1\_20160915\_00001.jpg



USACE 2013 Photo #1

LM Start	<b>11.33</b>	Rating **	M	Issue No.	<b>1 (cont)</b>
LM End	<b>11.42</b>	Issue Type +	Ma	Location *	WS

Photo 2 of 2 : FA\_2016\_RD0003\_25\_1\_20160915\_00002.jpg



USACE 2013 Photo #2

<b>* Location</b> LS : Land Side    N/A : Not Applicable WS : Water Side CR : Crown	<b>** Rating</b> A : Acceptable M : Minimally Acceptable U : Unacceptable	N : Not Inspected/Rated C : Corrected A/W : Acceptable but Monitor & Maintain	<b>+ Issue Type</b> Ma : Maintenance Deficiency Ob : Design & System Obsolescence En : Enforcement
--	--	---	---

**Flood Control Project Maintenance  
Levee Inspections**

## Maintenance Issue Types Only, Levee Inspection Report By Mile - Fall 2016

### Reclamation District No. 0003 Grand Island

Waterway	Bank	Unit Miles	Inspection Start/End	Inspector
Unit No. 02 Right Bank Sacramento River	Right	17.35	09/27/2016 09/28/2016	Richard Willoughby

LM Start	<b>11.44</b>	Rating **	C	Issue No.	<b>26</b>
LM End	<b>11.44</b>	Issue Type +	Ma	Location *	LS
Category	Earthen Levee			GPS Latitude/Longitude	
				Start	End
Item	Trim / Thin Trees			38.240241°	38.240241°
				-121.519031°	-121.519031°
DWR ID	DWR_RD0003_02_s_2012_26				
Comment Code					
T1 : Trim trees to at least five feet above ground level.					
Inspector Comment					

No Photos

LM Start	<b>11.57</b>	Rating **	M	Issue No.	<b>24</b>
LM End	<b>11.57</b>	Issue Type +	Ma	Location *	LS
Category	Earthen Levee			GPS Latitude/Longitude	
				Start	End
Item	Trim / Thin Trees			38.241300°	38.241300°
				-121.517073°	-121.517073°
DWR ID	DWR_RD0003_02_s_2012_24				
Comment Code					
T1 : Trim trees to at least five feet above ground level.					
Inspector Comment					

No Photos

LM Start	<b>11.76</b>	Rating **	C	Issue No.	<b>103</b>
LM End	<b>11.85</b>	Issue Type +	Ma	Location *	WS
Category	Earthen Levee			GPS Latitude/Longitude	
				Start	End
Item	Trim / Thin Trees			38.243347°	38.244412°
				-121.514785°	-121.513665°
DWR ID	DWR_RD0003_02_f_2013_103				
Comment Code					
T1 : Trim trees to at least five feet above ground level.					
Inspector Comment					

No Photos

**\* Location**

LS : Land Side    N/A : Not Applicable  
WS : Water Side  
CR : Crown

**\*\* Rating**

A : Acceptable                      N : Not Inspected/Rated  
M : Minimally Acceptable        C : Corrected  
U : Unacceptable                  A/W : Acceptable but Monitor & Maintain

**+ Issue Type**

Ma : Maintenance Deficiency  
Ob : Design & System Obsolescence  
En : Enforcement

**Flood Control Project Maintenance  
Levee Inspections**

## Maintenance Issue Types Only, Levee Inspection Report By Mile - Fall 2016

### Reclamation District No. 0003 Grand Island

Waterway	Bank	Unit Miles	Inspection Start/End	Inspector
Unit No. 02 Right Bank Sacramento River	Right	17.35	09/27/2016 09/28/2016	Richard Willoughby

LM Start	12.26	Rating **	C	Issue No.	25
LM End	12.26	Issue Type +	Ma	Location *	WS
Category	Earthen Levee			GPS Latitude/Longitude	
				Start	End
Item	Trim / Thin Trees			38.249937 °	38.249937 °
				-121.511834 °	-121.511834 °
DWR ID	DWR_RD0003_02_s_2012_25				
Comment Code					
T1 : Trim trees to at least five feet above ground level.					
Inspector Comment					

No Photos

LM Start	13.36	Rating **	M	Issue No.	9
LM End	13.36	Issue Type +	Ma	Location *	LS
Category	Earthen Levee			GPS Latitude/Longitude	
				Start	End
Item	Encroachments			38.262125 °	38.262125 °
				-121.524405 °	-121.524405 °
DWR ID	DWR_RD0003_02_s_2012_9				
Comment Code					
ST : Stairway					
Inspector Comment					
Landowner installed unauthorized stairs on landside slope. No permit on record.					

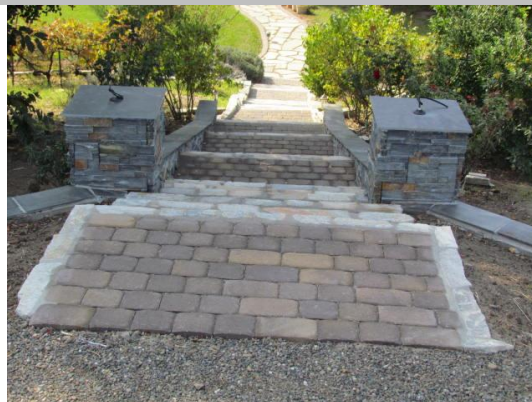
Photo 1 of 2 : FA\_2016\_RD0003\_25\_9\_20160915\_00012.jpg



Looking northwest at stairs on landside slope.

LM Start	<b>13.36</b>	Rating **	M	Issue No.	<b>9 (cont)</b>
LM End	<b>13.36</b>	Issue Type +	Ma	Location *	LS

Photo 2 of 2 : FA\_2016\_RD0003\_25\_9\_20160915\_00013.jpg



Looking west at stairs on landside slope.

<b>* Location</b> LS : Land Side    N/A : Not Applicable WS : Water Side CR : Crown	<b>** Rating</b> A : Acceptable M : Minimally Acceptable U : Unacceptable	N : Not Inspected/Rated C : Corrected A/W : Acceptable but Monitor & Maintain	<b>+ Issue Type</b> Ma : Maintenance Deficiency Ob : Design & System Obsolescence En : Enforcement
--	--	---	---



**Flood Control Project Maintenance  
Levee Inspections**

## Maintenance Issue Types Only, Levee Inspection Report By Mile - Fall 2016

### Reclamation District No. 0003 Grand Island

Waterway	Bank	Unit Miles	Inspection Start/End	Inspector
Unit No. 02 Right Bank Sacramento River	Right	17.35	09/27/2016 09/28/2016	Richard Willoughby

LM Start	13.40	Rating **	U	Issue No.	99
LM End	13.40	Issue Type +	Ma	Location *	LS
Category	Earthen Levee			GPS Latitude/Longitude	
				Start	End
Item	Trim / Thin Trees			38.262449°	38.262449°
				-121.524899°	-121.524899°
DWR ID	DWR_RD0003_02_f_2015_99				
Comment Code					
T2 : Thin trees to allow visibility of the ground and room to flood fight.					
Inspector Comment					
Figs trees and other plants blocking view of landward slope.					

LM Start	<b>13.40</b>	Rating **	U	Issue No.	<b>99 (cont)</b>
LM End	<b>13.40</b>	Issue Type +	Ma	Location *	LS

Photo 1 of 2 : FA\_2016\_RD0003\_25\_99\_20160915\_00082.jpg



Looking westly at dense vegetation on landward shoulder and slope.  
(Spring 2016)

Photo 2 of 2 : FA\_2016\_RD0003\_25\_99\_20160929\_00257.jpg



Looking westly at fig trees on landward slope. (Fall 2016)

<b>* Location</b> LS : Land Side    N/A : Not Applicable WS : Water Side CR : Crown	<b>** Rating</b> A : Acceptable M : Minimally Acceptable U : Unacceptable	N : Not Inspected/Rated C : Corrected A/W : Acceptable but Monitor & Maintain	<b>+ Issue Type</b> Ma : Maintenance Deficiency Ob : Design & System Obsolescence En : Enforcement
--	--	---	---

**Flood Control Project Maintenance  
Levee Inspections**

## Maintenance Issue Types Only, Levee Inspection Report By Mile - Fall 2016

### Reclamation District No. 0003 Grand Island

Waterway	Bank	Unit Miles	Inspection Start/End	Inspector
Unit No. 02 Right Bank Sacramento River	Right	17.35	09/27/2016 09/28/2016	Richard Willoughby

LM Start	13.57	Rating **	A	Issue No.	149
LM End	13.57	Issue Type +	Ma	Location *	WS
Category	Earthen Levee			GPS Latitude/Longitude	
				Start	End
Item	Trim / Thin Trees			38.264109°	38.264109°
				-121.527179°	-121.527179°
DWR ID	DWR_RD0003_02_s_2016_149				
Comment Code					
T1 : Trim trees to at least five feet above ground level.					
Inspector Comment					

No Photos

LM Start	13.90	Rating **	C	Issue No.	27
LM End	13.90	Issue Type +	Ma	Location *	LS
Category	Earthen Levee			GPS Latitude/Longitude	
				Start	End
Item	Trim / Thin Trees			38.267521°	38.267521°
				-121.531474°	-121.531474°
DWR ID	DWR_RD0003_02_s_2012_27				
Comment Code					
T1 : Trim trees to at least five feet above ground level.					
Inspector Comment					

No Photos

LM Start	14.23	Rating **	M	Issue No.	91
LM End	14.23	Issue Type +	Ma	Location *	LS
Category	Earthen Levee			GPS Latitude/Longitude	
				Start	End
Item	Trim / Thin Trees			38.270703 °	38.270703 °
				-121.535938 °	-121.535938 °
DWR ID	DWR_RD0003_02_s_2013_91				
Comment Code					
T1 : Trim trees to at least five feet above ground level.					
Inspector Comment					

No Photos

<b>* Location</b> LS : Land Side    N/A : Not Applicable WS : Water Side CR : Crown	<b>** Rating</b> A : Acceptable M : Minimally Acceptable U : Unacceptable	N : Not Inspected/Rated C : Corrected A/W : Acceptable but Monitor & Maintain	<b>+ Issue Type</b> Ma : Maintenance Deficiency Ob : Design & System Obsolescence En : Enforcement
--	--	---	---

**Flood Control Project Maintenance  
Levee Inspections**

## Maintenance Issue Types Only, Levee Inspection Report By Mile - Fall 2016

### Reclamation District No. 0003 Grand Island

Waterway	Bank	Unit Miles	Inspection Start/End	Inspector
Unit No. 02 Right Bank Sacramento River	Right	17.35	09/27/2016 09/28/2016	Richard Willoughby

LM Start	14.61	Rating **	M	Issue No.	93
LM End	14.65	Issue Type +	Ma	Location *	LS
Category	Earthen Levee			GPS Latitude/Longitude	
				Start	End
Item	Trim / Thin Trees			38.274492°	38.274898°
				-121.541022°	-121.541533°
DWR ID	DWR_RD0003_02_s_2013_93				
Comment Code					
T1 : Trim trees to at least five feet above ground level.					
Inspector Comment					

No Photos

LM Start	15.61	Rating **	U	Issue No.	144
LM End	15.61	Issue Type +	Ma	Location *	LS
Category	Earthen Levee			GPS Latitude/Longitude	
				Start	End
Item	Encroachments			38.284393 °	38.284393 °
				-121.554319 °	-121.554319 °
DWR ID	DWR_RD0003_02_f_2015_144				
Comment Code					
PR : Prunings					
Inspector Comment					
Prunings piled on landward slope and toe along with tree stumps.					

Photo 1 of 2 : FA\_2016\_RD0003\_25\_144\_20160929\_00258.jpg



Looking south at prunings on landward slope. (Fall 2016)

LM Start	<b>15.61</b>	Rating **	U	Issue No.	<b>144 (cont)</b>
LM End	<b>15.61</b>	Issue Type +	Ma	Location *	LS

Photo 2 of 2 : FA\_2016\_RD0003\_25\_144\_20160915\_00092.jpg



Looking southwest at prunings on landward slope and toe. (Spring 2016)

<b>* Location</b> LS : Land Side    N/A : Not Applicable WS : Water Side CR : Crown		<b>** Rating</b> A : Acceptable                      N : Not Inspected/Rated M : Minimally Acceptable        C : Corrected U : Unacceptable                  A/W : Acceptable but Monitor & Maintain		<b>+ Issue Type</b> Ma : Maintenance Deficiency Ob : Design & System Obsolescence En : Enforcement	
--	--	---	--	---	--



**Flood Control Project Maintenance  
Levee Inspections**

## Maintenance Issue Types Only, Levee Inspection Report By Mile - Fall 2016

### Reclamation District No. 0003 Grand Island

Waterway	Bank	Unit Miles	Inspection Start/End	Inspector
Unit No. 02 Right Bank Sacramento River	Right	17.35	09/27/2016 09/28/2016	Richard Willoughby

LM Start	15.70	Rating **	U	Issue No.	95
LM End	15.70	Issue Type +	Ma	Location *	LS
Category	Earthen Levee			GPS Latitude/Longitude	
				Start	End
Item	Vegetation			38.285347 °	38.285347 °
				-121.555534 °	-121.555534 °
DWR ID	DWR_RD0003_02_s_2013_95				
Comment Code					
V7 : Trees / Woody Vegetation					
Inspector Comment					
Palm tree on landward slope and toe.					

Photo 1 of 1 : FA\_2016\_RD0003\_25\_95\_20160915\_00079.jpg



Looking west at Palm tree at landward toe.

LM Start	15.78	Rating **	M	Issue No.	148
LM End	15.78	Issue Type +	Ma	Location *	WS
Category	Earthen Levee			GPS Latitude/Longitude	
				Start	End
Item	Trim / Thin Trees			38.286222 °	38.286222 °
				-121.556537 °	-121.556537 °
DWR ID	DWR_RD0003_02_s_2016_148				
Comment Code					
T1 : Trim trees to at least five feet above ground level.					
Inspector Comment					

No Photos

\* Location  
LS : Land Side    N/A : Not Applicable  
WS : Water Side  
CR : Crown

\*\* Rating  
A : Acceptable                      N : Not Inspected/Rated  
M : Minimally Acceptable        C : Corrected  
U : Unacceptable                  A/W : Acceptable but Monitor & Maintain

+ Issue Type  
Ma : Maintenance Deficiency  
Ob : Design & System Obsolescence  
En : Enforcement

**Flood Control Project Maintenance  
Levee Inspections**

**Maintenance Issue Types Only, Levee Inspection Report By Mile - Fall 2016**

**Reclamation District No. 0003 Grand Island**

Waterway	Bank	Unit Miles	Inspection Start/End	Inspector
Unit No. 02 Right Bank Sacramento River	Right	17.35	09/27/2016 09/28/2016	Richard Willoughby

LM Start	16.54	Rating **	M	Issue No.	20
LM End	16.63	Issue Type +	Ma	Location *	WS
Category	Supplemental			GPS Latitude/Longitude	
				Start	End
Item	2015 USACE Erosion Survey, DRAFT			38.294757°	38.295730°
				-121.565376°	-121.566295°
DWR ID	DWR_RD0003_02_s_2016_20				
Comment Code					
Inspector Comment					
1997 - Erosion of supper sandy levee material above the water line, straight reach. 1999 - Small pocket repaired with rock. 2005 - Downstream 400 ft have been repaired. 2011 - Site is overgrown with vegetation. 2015: Site appears stable, may consider removal if no change after the next large storm event. [2015 Site ID: SAC_31-6_R]					

Photo 1 of 1 : FA\_2016\_RD0003\_25\_20\_20160915\_00027.jpg



USACE 2013 Photo #1

LM Start	16.56	Rating **	M	Issue No.	147
LM End	16.56	Issue Type +	Ma	Location *	LS
Category	Earthen Levee			GPS Latitude/Longitude	
				Start	End
Item	Trim / Thin Trees			38.294809 °	38.294809 °
				-121.565765 °	-121.565765 °
DWR ID	DWR_RD0003_02_s_2016_147				
Comment Code					
T1 : Trim trees to at least five feet above ground level.					
Inspector Comment					

No Photos

<b>* Location</b> LS : Land Side    N/A : Not Applicable WS : Water Side CR : Crown	<b>** Rating</b> A : Acceptable M : Minimally Acceptable U : Unacceptable N : Not Inspected/Rated C : Corrected A/W : Acceptable but Monitor & Maintain	<b>+ Issue Type</b> Ma : Maintenance Deficiency Ob : Design & System Obsolescence En : Enforcement
--	---	---

**Flood Control Project Maintenance  
Levee Inspections**

**Maintenance Issue Types Only, Levee Inspection Report By Mile - Fall 2016**

**Reclamation District No. 0003 Grand Island**

Waterway	Bank	Unit Miles	Inspection Start/End	Inspector
Unit No. 02 Right Bank Sacramento River	Right	17.35	09/27/2016 09/28/2016	Richard Willoughby

LM Start	16.91	Rating **	C	Issue No.	162
LM End	16.96	Issue Type +	Ma	Location *	LS
Category	Earthen Levee			GPS Latitude/Longitude	
				Start	End
Item	Trim / Thin Trees			38.299066°	38.299650°
				-121.569477°	-121.569957°
DWR ID	DWR_RD0003_02_s_2015_162				
Comment Code					
T1 : Trim trees to at least five feet above ground level.					
Inspector Comment					

No Photos

<b>* Location</b> LS : Land Side    N/A : Not Applicable WS : Water Side CR : Crown	<b>** Rating</b> A : Acceptable M : Minimally Acceptable U : Unacceptable N : Not Inspected/Rated C : Corrected A/W : Acceptable but Monitor & Maintain	<b>+ Issue Type</b> Ma : Maintenance Deficiency Ob : Design & System Obsolescence En : Enforcement
--	---	---



**Flood Control Project Maintenance  
Levee Inspections**

## Maintenance Issue Types Only, Levee Inspection Report By Mile - Fall 2016

### Reclamation District No. 0003 Grand Island

Waterway	Bank	Unit Miles	Inspection Start/End	Inspector
Unit No. 03 Cross Levee		0.43	09/27/2016 09/27/2016	Richard Willoughby

LM Start	0.00	Rating **	M	Issue No.	2
LM End	0.43	Issue Type +	Ma	Location *	LS
Category	Earthen Levee			GPS Latitude/Longitude	
				Start	End
Item	Vegetation			38.182300°	38.176041°
				-121.653499°	-121.653739°
DWR ID	DWR_RD0003_03_f_2016_2				
Comment Code					
V2 : Remove the wild growth other than native grasses from the levee slopes.					
Inspector Comment					

Photo 1 of 1 : FA\_2016\_RD0003\_610\_2\_20160929\_00007.jpg



Looking east at typical view of landward slope.

LM Start	0.00	Rating **	M	Issue No.	8
LM End	0.43	Issue Type +	Ma	Location *	WS
Category	Earthen Levee			GPS Latitude/Longitude	
				Start	End
Item	Vegetation			38.182300 °	38.176041 °
				-121.653501 °	-121.653739 °
DWR ID	DWR_RD0003_03_f_2016_8				
Comment Code					
V2 : Remove the wild growth other than native grasses from the levee slopes.					
Inspector Comment					

Photo 1 of 1 : FA\_2016\_RD0003\_610\_8\_20160929\_00006.jpg



Looking east at typical view of levee slopes.

<b>* Location</b> LS : Land Side    N/A : Not Applicable WS : Water Side CR : Crown	<b>** Rating</b> A : Acceptable M : Minimally Acceptable U : Unacceptable  N : Not Inspected/Rated C : Corrected A/W : Acceptable but Monitor & Maintain	<b>+ Issue Type</b> Ma : Maintenance Deficiency Ob : Design & System Obsolescence En : Enforcement
--	---	---

**Flood Control Project Maintenance  
Levee Inspections**

**Maintenance Issue Types Only, Levee Inspection Report By Mile - Fall 2016**

**Reclamation District No. 0003 Grand Island**

Waterway	Bank	Unit Miles	Inspection Start/End	Inspector
Unit No. 03 Cross Levee		0.43	09/27/2016 09/27/2016	Richard Willoughby

LM Start	0.06	Rating **	C	Issue No.	3
LM End	0.06	Issue Type +	Ma	Location *	LS
Category	Earthen Levee			GPS Latitude/Longitude	
				Start	End
Item	Slope Stability			38.181427°	38.181427°
				-121.653622°	-121.653622°
DWR ID	DWR_RD0003_03_s_2013_3				
Comment Code					
S1 : Repair slope instability.					
Inspector Comment					
LMA repaired slope damage on landward shoulder and slope.					

No Photos

LM Start	0.07	Rating **	C	Issue No.	4
LM End	0.43	Issue Type +	Ma	Location *	CR
Category	Earthen Levee			GPS Latitude/Longitude	
				Start	End
Item	Crown Surface / Depressions / Rutting			38.181223 °	38.176118 °
				-121.653617 °	-121.653765 °
DWR ID	DWR_RD0003_03_s_2013_4				
Comment Code					
C3 : Add appropriate gravel or road base. Grade and compact.					
Inspector Comment					

No Photos

LM Start	0.15	Rating **	U	Issue No.	5
LM End	0.18	Issue Type +	Ma	Location *	WS
Category	Earthen Levee			GPS Latitude/Longitude	
				Start	End
Item	Trim / Thin Trees			38.180150 °	38.179722 °
				-121.653645 °	-121.653663 °
DWR ID	DWR_RD0003_03_s_2013_5				
Comment Code					
T1 : Trim trees to at least five feet above ground level.					
Inspector Comment					
Untrimmed trees on waterward slope.					

Photo 1 of 1 : FA\_2016\_RD0003\_610\_5\_20160929\_00008.jpg



Looking southeast at untrimmed trees on waterward slope and toe.

<b>* Location</b> LS : Land Side    N/A : Not Applicable WS : Water Side CR : Crown	<b>** Rating</b> A : Acceptable M : Minimally Acceptable U : Unacceptable	N : Not Inspected/Rated C : Corrected A/W : Acceptable but Monitor & Maintain	<b>+ Issue Type</b> Ma : Maintenance Deficiency Ob : Design & System Obsolescence En : Enforcement
--	--	---	---

**Flood Control Project Maintenance  
Levee Inspections**

**Maintenance Issue Types Only, Levee Inspection Report By Mile - Fall 2016**

**Reclamation District No. 0003 Grand Island**

Waterway	Bank	Unit Miles	Inspection Start/End	Inspector
Unit No. 03 Cross Levee		0.43	09/27/2016 09/27/2016	Richard Willoughby

<b>* Location</b> LS : Land Side    N/A : Not Applicable WS : Water Side CR : Crown	<b>** Rating</b> A : Acceptable                      N : Not Inspected/Rated M : Minimally Acceptable        C : Corrected U : Unacceptable                  A/W : Acceptable but Monitor & Maintain	<b>+ Issue Type</b> Ma : Maintenance Deficiency Ob : Design & System Obsolescence En : Enforcement
--	---	---