

**Flood Control Project Maintenance  
Levee Inspections**

## Maintenance Issue Types Only, Levee Inspection Report By Mile - Fall 2014

### Reclamation District No. 0003 Grand Island

Waterway	Bank	Unit Miles	Inspection Start/End	Inspector
Unit No. 01 Left Bank Steamboat Slough	Left	10.95	10/06/2014 10/07/2014	Richard Willoughby

LM Start	0.00	Rating **	A	Issue No.	102
LM End	0.00	Issue Type +	Ma	Location *	CR
Category	Earthen Levee			GPS Latitude/Longitude	
				Start	End
Item	Operations & Maintenance Manuals				°
					°
DWR ID	DWR_RD0003_01_s_2013_102				
Action/Comments					
Inspector Comments: LMA has a copy of the O & M manual on file at district office.					

No Photos

LM Start	0.00	Rating **	A	Issue No.	103
LM End	0.00	Issue Type +	Ma	Location *	CR
Category	Earthen Levee			GPS Latitude/Longitude	
				Start	End
Item	Emergency Supplies & Equipment				°
					°
DWR ID	DWR_RD0003_01_s_2013_103				
Action/Comments					
Inspector Comments: The LMA has an adequate flood fight supplies and equipment to respond to a flood emergency.					

No Photos

LM Start	0.00	Rating **	A	Issue No.	104
LM End	0.00	Issue Type +	Ma	Location *	CR
Category	Earthen Levee			GPS Latitude/Longitude	
				Start	End
Item	Flood Preparedness & Training				°
					°
DWR ID	DWR_RD0003_01_s_2013_104				
Action/Comments					
Inspector Comments: The LMA is organized to respond to flood emergency.					

No Photos

<b>* Location</b> LS : Land Side    N/A : Not Applicable WS : Water Side CR : Crown		<b>** Rating</b> A : Acceptable                      N : Not Inspected/Rated M : Minimally Acceptable        C : Corrected U : Unacceptable                  A/W : Acceptable but Monitor & Maintain		<b>+ Issue Type</b> Ma : Maintenance Deficiency Ob : Design & System Obsolescence En : Enforcement
--	--	---	--	---

**Flood Control Project Maintenance  
Levee Inspections**

## Maintenance Issue Types Only, Levee Inspection Report By Mile - Fall 2014

### Reclamation District No. 0003 Grand Island

Waterway	Bank	Unit Miles	Inspection Start/End	Inspector
Unit No. 01 Left Bank Steamboat Slough	Left	10.95	10/06/2014 10/07/2014	Richard Willoughby

LM Start	0.14	Rating **	M	Issue No.	2		
LM End	0.14	Issue Type +	Ma	Location *	WS		
Category	Earthen Levee			GPS Latitude/Longitude			
				Start		End	
Item	Erosion / Bank Caving				°		°
					°		°
DWR ID	DWR_RD0003_01_f_2013_2						
Action/Comments							
Schedule repair of erosion site prior to the next inspection.							
Inspector Comments: A hole (8ft x 2.5ft x 5ft) next to a large tree on waterward shoulder.							

Photo 1 of 3 : FA\_2014\_RD0003\_24\_2\_20141010\_00096.jpg



Looking east at hole at base of tree on waterward shoulder. (2014)

Photo 2 of 3 : FA\_2014\_RD0003\_24\_2\_20141006\_00001.jpg



Looking east at a hole next to oak tree on waterward shoulder.

Photo 3 of 3 : FA\_2014\_RD0003\_24\_2\_20141006\_00002.jpg



Looking west at a hole next to oak tree on waterward shoulder.

LM Start	<b>0.14</b>	Rating **	M	Issue No.	<b>2 (cont)</b>
LM End	<b>0.14</b>	Issue Type +	Ma	Location *	WS

LM Start	<b>0.14</b>	Rating **	M	Issue No.	<b>2 (cont)</b>
LM End	<b>0.14</b>	Issue Type +	Ma	Location *	WS

<b>* Location</b> LS : Land Side    N/A : Not Applicable WS : Water Side CR : Crown	<b>** Rating</b> A : Acceptable M : Minimally Acceptable U : Unacceptable	N : Not Inspected/Rated C : Corrected A/W : Acceptable but Monitor & Maintain	<b>+ Issue Type</b> Ma : Maintenance Deficiency Ob : Design & System Obsolescence En : Enforcement
--	--	---	---

**Flood Control Project Maintenance  
Levee Inspections**

**Maintenance Issue Types Only, Levee Inspection Report By Mile - Fall 2014**

**Reclamation District No. 0003 Grand Island**

Waterway	Bank	Unit Miles	Inspection Start/End	Inspector
Unit No. 01 Left Bank Steamboat Slough	Left	10.95	10/06/2014 10/07/2014	Richard Willoughby

LM Start	0.14	Rating **	U	Issue No.	19
LM End	0.14	Issue Type +	Ma	Location *	WS
Category	Earthen Levee			GPS Latitude/Longitude	
				Start	End
Item	Encroachments			38.303222 °	38.303222 °
				-121.576648 °	-121.576648 °
DWR ID	DWR_RD0003_01_f_2012_19				
Action/Comments					
Tree or limb					
Inspector Comments: Tree branches and limbs on waterward should.					

Photo 1 of 2 : FA\_2014\_RD0003\_24\_19\_20141010\_00097.jpg



Looking west at tree branch on waterward shoulder and slope. (Fall 2014)

LM Start	<b>0.14</b>	Rating **	U	Issue No.	<b>19 (cont)</b>
LM End	<b>0.14</b>	Issue Type +	Ma	Location *	WS

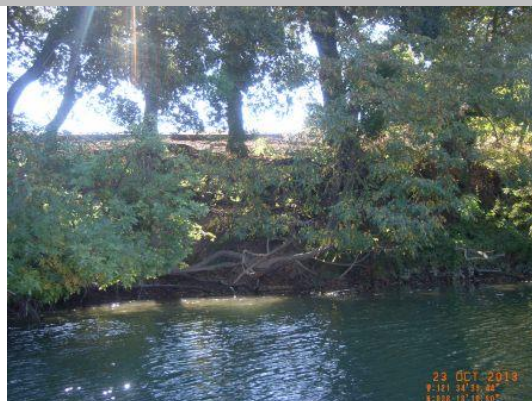
Photo 2 of 2 : FA\_2014\_RD0003\_24\_19\_20141006\_00017.jpg



Looking south at tree branches on waterward shoulder.(Spring 2014)

LM Start	0.18	Rating **	M	Issue No.	14
LM End	0.23	Issue Type +	Ma	Location *	WS
Category	Supplemental			GPS Latitude/Longitude	
				Start	End
Item	USACE Erosion Survey			38.303035 °	38.302544 °
				-121.577357 °	-121.578241 °
DWR ID	DWR_RD0003_01_f_2014_14				
Action/Comments					
Inspector Comments: 1997 - Mass failure of berm slope and wave wash erosion. Large trees on top of berm, some failed trees. New area of low rock to on the upstream end. 2000 - Some minor erosion near the downstream end. 2005 - One new small tree has fallen. 2009 - Minimal new erosion. 2010 - Minor new erosion. 2013: Observed new animal holes and vertical sections at middle of site. [2013 Site ID:					

Photo 1 of 1 : FA\_2014\_RD0003\_24\_14\_20141006\_00013.jpg



USACE 2013 Photo #1

<b>* Location</b> LS : Land Side    N/A : Not Applicable WS : Water Side CR : Crown		<b>** Rating</b> A : Acceptable M : Minimally Acceptable U : Unacceptable N : Not Inspected/Rated C : Corrected A/W : Acceptable but Monitor & Maintain		<b>+ Issue Type</b> Ma : Maintenance Deficiency Ob : Design & System Obsolescence En : Enforcement
--	--	---	--	---



**Flood Control Project Maintenance  
Levee Inspections**

**Maintenance Issue Types Only, Levee Inspection Report By Mile - Fall 2014**

**Reclamation District No. 0003 Grand Island**

Waterway	Bank	Unit Miles	Inspection Start/End	Inspector
Unit No. 01 Left Bank Steamboat Slough	Left	10.95	10/06/2014 10/07/2014	Richard Willoughby

LM Start	0.39	Rating **	A/W	Issue No.	3
LM End	0.39	Issue Type +	Ma	Location *	WS
Category	Earthen Levee			GPS Latitude/Longitude	
				Start	End
Item	Trim / Thin Trees			38.300492 °	38.300492 °
				-121.579454 °	-121.579454 °
DWR ID	DWR_RD0003_01_s_2012_3				
Action/Comments					
Trim trees to at least five feet above ground level.					

No Photos

LM Start	0.92	Rating **	M	Issue No.	10
LM End	1.01	Issue Type +	Ma	Location *	WS
Category	Supplemental			GPS Latitude/Longitude	
				Start	End
Item	USACE Erosion Survey			38.293386 °	38.292675 °
				-121.582554 °	-121.582741 °
DWR ID	DWR_RD0003_01_f_2014_10				
Action/Comments					
Inspector Comments: 1997 - Erosion of sandy levee on top left bank. Site is downstream of a rock section. Large riparian trees on the bank. 1999 - Upstream half of the reach repaired with rock, except for a 30 ft reach at the upstream end. 2001 - Rock repair on the upstream and downstream ends; no revetment at the trees. 2002 - Rock repair is starting to slide off the geotextile at the upstream end. 2005 - One new small tree has fallen. 2006 - 50 ft pocket at the downstream end and at the upstream end with new rock in between. 2007 - Upstream end has been repaired. 2010 - Some minor new erosion. 2011 - Minor new erosion. 2012 - Minor new erosion at the toe. 2013: No observed changes. [2013 Site ID: STM_25-0_L]					

Photo 1 of 1 : FA\_2014\_RD0003\_24\_10\_20141006\_00009.jpg



USACE 2013 Photo #1

LM Start	0.97	Rating **	A/W	Issue No.	30
LM End	0.97	Issue Type +	Ma	Location *	CR
Category	Earthen Levee			GPS Latitude/Longitude	
				Start	End
Item	Encroachments			38.292662 °	38.292662 °
				-121.582536 °	-121.582536 °
DWR ID	DWR_RD0003_01_s_2012_30				
Action/Comments					
Pipe Inspector Comments: Irrigation intake pipe through levee.					

Photo 1 of 1 : FA\_2014\_RD0003\_24\_30\_20141006\_00033.jpg



Irrigation intake pipe from Steamboat Slough.

* Location LS : Land Side    N/A : Not Applicable WS : Water Side CR : Crown		** Rating A : Acceptable M : Minimally Acceptable U : Unacceptable N : Not Inspected/Rated C : Corrected A/W : Acceptable but Monitor & Maintain		+ Issue Type Ma : Maintenance Deficiency Ob : Design & System Obsolescence En : Enforcement	
---	--	--	--	--	--

**Flood Control Project Maintenance  
Levee Inspections**

**Maintenance Issue Types Only, Levee Inspection Report By Mile - Fall 2014**

**Reclamation District No. 0003 Grand Island**

Waterway	Bank	Unit Miles	Inspection Start/End	Inspector
Unit No. 01 Left Bank Steamboat Slough	Left	10.95	10/06/2014 10/07/2014	Richard Willoughby

LM Start	1.01	Rating **	A/W	Issue No.	31
LM End	1.03	Issue Type +	Ma	Location *	LS
Category	Earthen Levee			GPS Latitude/Longitude	
				Start	End
Item	Vegetation			38.292052 °	38.291724 °
				-121.582671 °	-121.582729 °
DWR ID	DWR_RD0003_01_s_2012_31				
Action/Comments					
Remove the wild growth other than native grasses from the levee slopes.					
Inspector Comments: Vegetation on levee slope.					

Photo 1 of 1 : FA\_2014\_RD0003\_24\_31\_20141006\_00034.jpg



Grass on levee slope and toe exceeds 12" and partially obstructs visibility.

LM Start	1.06	Rating **	M	Issue No.	4
LM End	1.14	Issue Type +	Ma	Location *	WS
Category	Supplemental			GPS Latitude/Longitude	
				Start	End
Item	USACE Erosion Survey			38.291695 °	38.289575 °
				-121.582993 °	-121.583092 °
DWR ID	DWR_RD0003_01_f_2014_4				
Action/Comments					
Inspector Comments: 2008 - Area closed sign on bank. Newly fallen trees at both ends and pop outs along the bank. 2010 - Site extended downstream. 2011 - New erosion at the toe. More trees popouts. 2013: Short vertical sections observed at the downstream end. [2013 Site ID: STM_24-8_L]					

Photo 1 of 2 : FA\_2014\_RD0003\_24\_4\_20141006\_00003.jpg



USACE 2013 Photo #1

LM Start	<b>1.06</b>	Rating **	M	Issue No.	<b>4 (cont)</b>
LM End	<b>1.14</b>	Issue Type +	Ma	Location *	WS

Photo 2 of 2 : FA\_2014\_RD0003\_24\_4\_20141006\_00004.jpg



USACE 2013 Photo #2

<b>* Location</b> LS : Land Side    N/A : Not Applicable WS : Water Side CR : Crown		<b>** Rating</b> A : Acceptable                      N : Not Inspected/Rated M : Minimally Acceptable        C : Corrected U : Unacceptable                  A/W : Acceptable but Monitor & Maintain		<b>+ Issue Type</b> Ma : Maintenance Deficiency Ob : Design & System Obsolescence En : Enforcement	
--	--	---	--	---	--

**Flood Control Project Maintenance  
Levee Inspections**

**Maintenance Issue Types Only, Levee Inspection Report By Mile - Fall 2014**

**Reclamation District No. 0003 Grand Island**

Waterway	Bank	Unit Miles	Inspection Start/End	Inspector
Unit No. 01 Left Bank Steamboat Slough	Left	10.95	10/06/2014 10/07/2014	Richard Willoughby

LM Start	1.28	Rating **	A/W	Issue No.	5
LM End	1.33	Issue Type +	Ma	Location *	LS
Category	Earthen Levee			GPS Latitude/Longitude	
				Start	End
Item	Trim / Thin Trees			38.288183 °	38.287433 °
				-121.582808 °	-121.582982 °
DWR ID	DWR_RD0003_01_s_2012_5				
Action/Comments					
Trim trees to at least five feet above ground level.					

No Photos

LM Start	1.62	Rating **	A/W	Issue No.	34
LM End	1.62	Issue Type +	Ma	Location *	WS
Category	Earthen Levee			GPS Latitude/Longitude	
				Start	End
Item	Encroachments			38.284604 °	38.284604 °
				-121.586597 °	-121.586597 °
DWR ID	DWR_RD0003_01_s_2012_34				
Action/Comments					
Pipe					
Inspector Comments: USGS equipment and pipe penetration.					

No Photos

LM Start	1.77	Rating **	A/W	Issue No.	11
LM End	1.77	Issue Type +	Ma	Location *	LS
Category	Earthen Levee			GPS Latitude/Longitude	
				Start	End
Item	Encroachments				o
					o
DWR ID	DWR_RD0003_01_s_2012_11				
Action/Comments					
Prunings					

No Photos

<b>* Location</b> LS : Land Side    N/A : Not Applicable WS : Water Side CR : Crown	<b>** Rating</b> A : Acceptable M : Minimally Acceptable U : Unacceptable	N : Not Inspected/Rated C : Corrected A/W : Acceptable but Monitor & Maintain	<b>+ Issue Type</b> Ma : Maintenance Deficiency Ob : Design & System Obsolescence En : Enforcement
--	--	---	---



# Reclamation District No. 0003 Grand Island

Looking east at vegetation on landside slope.

No Photos

Looking west at grass clippings on waterward slope.

Page 7 of 20

**Flood Control Project Maintenance  
Levee Inspections**

**Maintenance Issue Types Only, Levee Inspection Report By Mile - Fall 2014**

**Reclamation District No. 0003 Grand Island**

Waterway	Bank	Unit Miles	Inspection Start/End	Inspector
Unit No. 01 Left Bank Steamboat Slough	Left	10.95	10/06/2014 10/07/2014	Richard Willoughby

LM Start	2.46	Rating **	A/W	Issue No.	40
LM End	2.46	Issue Type +	Ma	Location *	WS
Category	Earthen Levee			GPS Latitude/Longitude	
				Start	End
Item	Encroachments			38.274123 °	38.274123 °
				-121.587694 °	-121.587694 °
DWR ID	DWR_RD0003_01_s_2012_40				
Action/Comments					
Pipe					
Inspector Comments: Irrigation intake pipe penetration.					

No Photos

LM Start	2.55	Rating **	M	Issue No.	29
LM End	2.68	Issue Type +	Ma	Location *	LS
Category	Earthen Levee			GPS Latitude/Longitude	
				Start	End
Item	Trim / Thin Trees			38.272845 °	38.271070 °
				-121.587665 °	-121.588632 °
DWR ID	DWR_RD0003_01_s_2013_29				
Action/Comments					
Thin trees to allow visibility of the ground and room to flood fight.					

No Photos

LM Start	2.60	Rating **	A/W	Issue No.	13
LM End	2.60	Issue Type +	Ma	Location *	WS
Category	Earthen Levee			GPS Latitude/Longitude	
				Start	End
Item	Encroachments				o
					o
DWR ID	DWR_RD0003_01_f_2013_13				
Action/Comments					
Tree or limb					
Inspector Comments: Broken tree limbs on waterward shoulder.					

Photo 1 of 1 : FA\_2014\_RD0003\_24\_13\_20141006\_00012.jpg



Looking southwest at broken tree limbs on waterward shoulder and slope.

<b>* Location</b> LS : Land Side    N/A : Not Applicable WS : Water Side CR : Crown	<b>** Rating</b> A : Acceptable M : Minimally Acceptable U : Unacceptable	N : Not Inspected/Rated C : Corrected A/W : Acceptable but Monitor & Maintain	<b>+ Issue Type</b> Ma : Maintenance Deficiency Ob : Design & System Obsolescence En : Enforcement
--	--	---	---







**Flood Control Project Maintenance  
Levee Inspections**

**Maintenance Issue Types Only, Levee Inspection Report By Mile - Fall 2014**

**Reclamation District No. 0003 Grand Island**

Waterway	Bank	Unit Miles	Inspection Start/End	Inspector
Unit No. 01 Left Bank Steamboat Slough	Left	10.95	10/06/2014 10/07/2014	Richard Willoughby

LM Start	3.83	Rating **	A/W	Issue No.	53
LM End	3.83	Issue Type +	Ma	Location *	LS
Category	Earthen Levee			GPS Latitude/Longitude	
				Start	End
Item	Vegetation			38.258481 °	38.258481 °
				-121.593753 °	-121.593753 °
DWR ID	DWR_RD0003_01_s_2012_53				
Action/Comments					
Remove the wild growth other than native grasses from the levee slopes.					

No Photos

LM Start	3.85	Rating **	M	Issue No.	9
LM End	3.90	Issue Type +	Ma	Location *	LS
Category	Earthen Levee			GPS Latitude/Longitude	
				Start	End
Item	Trim / Thin Trees			38.258222 °	38.257453 °
				-121.593793 °	-121.593942 °
DWR ID	DWR_RD0003_01_s_2012_9				
Action/Comments					
Trim and thin trees to allow visibility of the ground and room to flood fight.					

Photo 1 of 1 : FA\_2014\_RD0003\_24\_9\_20141006\_00008.jpg



Looking southeast at trees on landward shoulder and slope.

LM Start	4.12	Rating **	A/W	Issue No.	54
LM End	4.12	Issue Type +	Ma	Location *	WS
Category	Earthen Levee			GPS Latitude/Longitude	
				Start	End
Item	Encroachments			38.254844 °	38.254844 °
				-121.596045 °	-121.596045 °
DWR ID	DWR_RD0003_01_s_2012_54				
Action/Comments					
Pipe					

No Photos

<b>* Location</b> LS : Land Side    N/A : Not Applicable WS : Water Side CR : Crown		<b>** Rating</b> A : Acceptable                      N : Not Inspected/Rated M : Minimally Acceptable        C : Corrected U : Unacceptable                  A/W : Acceptable but Monitor & Maintain		<b>+ Issue Type</b> Ma : Maintenance Deficiency Ob : Design & System Obsolescence En : Enforcement
--	--	---	--	---



**Flood Control Project Maintenance  
Levee Inspections**

**Maintenance Issue Types Only, Levee Inspection Report By Mile - Fall 2014**

**Reclamation District No. 0003 Grand Island**

Waterway	Bank	Unit Miles	Inspection Start/End	Inspector
Unit No. 01 Left Bank Steamboat Slough	Left	10.95	10/06/2014 10/07/2014	Richard Willoughby

LM Start	4.16	Rating **	A/W	Issue No.	55
LM End	4.16	Issue Type +	Ma	Location *	LS
Category	Earthen Levee			GPS Latitude/Longitude	
				Start	End
Item	Encroachments			38.254455 °	38.254092 °
				-121.596635 °	-121.597554 °
DWR ID	DWR_RD0003_01_s_2012_55				
Action/Comments					
Prunings					

No Photos

LM Start	4.18	Rating **	A/W	Issue No.	56
LM End	4.18	Issue Type +	Ma	Location *	LS
Category	Earthen Levee			GPS Latitude/Longitude	
				Start	End
Item	Encroachments			38.254311 °	38.254311 °
				-121.596956 °	-121.596956 °
DWR ID	DWR_RD0003_01_s_2012_56				
Action/Comments					
Pipe					

No Photos

LM Start	4.30	Rating **	A/W	Issue No.	57
LM End	4.49	Issue Type +	Ma	Location *	LS
Category	Earthen Levee			GPS Latitude/Longitude	
				Start	End
Item	Vegetation			38.253800 °	38.251824 °
				-121.599100 °	-121.600980 °
DWR ID	DWR_RD0003_01_s_2012_57				
Action/Comments					
Remove the wild growth other than native grasses from the levee slopes.					

Photo 1 of 1 : FA\_2014\_RD0003\_24\_57\_20141006\_00046.jpg



Vegetation on levee slopes and toe partially obstruct visibility.

**\* Location**  
 LS : Land Side    N/A : Not Applicable  
 WS : Water Side  
 CR : Crown

**\*\* Rating**  
 A : Acceptable                      N : Not Inspected/Rated  
 M : Minimally Acceptable        C : Corrected  
 U : Unacceptable                  A/W : Acceptable but Monitor & Maintain

**+ Issue Type**  
 Ma : Maintenance Deficiency  
 Ob : Design & System Obsolescence  
 En : Enforcement



**Flood Control Project Maintenance  
Levee Inspections**

**Maintenance Issue Types Only, Levee Inspection Report By Mile - Fall 2014**

**Reclamation District No. 0003 Grand Island**

Waterway	Bank	Unit Miles	Inspection Start/End	Inspector
Unit No. 01 Left Bank Steamboat Slough	Left	10.95	10/06/2014 10/07/2014	Richard Willoughby

LM Start	5.25	Rating **	A/W	Issue No.	59
LM End	5.25	Issue Type +	Ma	Location *	WS
Category	Earthen Levee			GPS Latitude/Longitude	
				Start	End
Item	Encroachments			38.240973 °	38.240973 °
				-121.601374 °	-121.601374 °
DWR ID	DWR_RD0003_01_s_2012_59				
Action/Comments					
Pipe Inspector Comments: Pipe crossing					

No Photos

LM Start	5.33	Rating **	A/W	Issue No.	61
LM End	5.33	Issue Type +	Ma	Location *	LS
Category	Earthen Levee			GPS Latitude/Longitude	
				Start	End
Item	Vegetation			38.239886 °	38.239886 °
				-121.601752 °	-121.601752 °
DWR ID	DWR_RD0003_01_s_2012_61				
Action/Comments					
Remove the wild growth other than native grasses from the levee slopes.					
Inspector Comments: Century plant on landside slope next to ramp.					

Photo 1 of 1 : FA\_2014\_RD0003\_24\_61\_20141006\_00049.jpg



Looking west at century plants on landside slope next to a ramp.

LM Start	5.67	Rating **	A/W	Issue No.	62
LM End	5.67	Issue Type +	Ma	Location *	LS
Category	Earthen Levee			GPS Latitude/Longitude	
				Start	End
Item	Encroachments			38.235049 °	38.235049 °
				-121.601810 °	-121.601810 °
DWR ID	DWR_RD0003_01_s_2012_62				
Action/Comments					
Pipe					
Inspector Comments: Pipe crossing					

No Photos

<b>* Location</b> LS : Land Side    N/A : Not Applicable WS : Water Side CR : Crown	<b>** Rating</b> A : Acceptable M : Minimally Acceptable U : Unacceptable	N : Not Inspected/Rated C : Corrected A/W : Acceptable but Monitor & Maintain	<b>+ Issue Type</b> Ma : Maintenance Deficiency Ob : Design & System Obsolescence En : Enforcement
--	--	---	---



**Flood Control Project Maintenance  
Levee Inspections**

**Maintenance Issue Types Only, Levee Inspection Report By Mile - Fall 2014**

**Reclamation District No. 0003 Grand Island**

Waterway	Bank	Unit Miles	Inspection Start/End	Inspector
Unit No. 01 Left Bank Steamboat Slough	Left	10.95	10/06/2014 10/07/2014	Richard Willoughby

LM Start	5.70	Rating **	C	Issue No.	63
LM End	5.70	Issue Type +	Ma	Location *	LS
Category	Earthen Levee			GPS Latitude/Longitude	
				Start	End
Item	Encroachments			38.234628 °	38.234628 °
				-121.601726 °	-121.601726 °
DWR ID	DWR_RD0003_01_s_2012_63				
Action/Comments					
Equipment					
Inspector Comments: Landplane at toe of levee.					

No Photos

LM Start	5.98	Rating **	A/W	Issue No.	65
LM End	5.98	Issue Type +	Ma	Location *	WS
Category	Earthen Levee			GPS Latitude/Longitude	
				Start	End
Item	Encroachments			38.230616 °	38.230616 °
				-121.601643 °	-121.601643 °
DWR ID	DWR_RD0003_01_s_2012_65				
Action/Comments					
Pipe					
Inspector Comments: Pipe crossing					

No Photos

LM Start	6.26	Rating **	A/W	Issue No.	66
LM End	6.26	Issue Type +	Ma	Location *	CR
Category	Earthen Levee			GPS Latitude/Longitude	
				Start	End
Item	Encroachments			38.226430 °	38.226430 °
				-121.601432 °	-121.601432 °
DWR ID	DWR_RD0003_01_s_2012_66				
Action/Comments					
Pipe					
Inspector Comments: Abandoned pipe					

No Photos

**\* Location**  
LS : Land Side    N/A : Not Applicable  
WS : Water Side  
CR : Crown

**\*\* Rating**  
A : Acceptable                      N : Not Inspected/Rated  
M : Minimally Acceptable        C : Corrected  
U : Unacceptable                  A/W : Acceptable but Monitor & Maintain

**+ Issue Type**  
Ma : Maintenance Deficiency  
Ob : Design & System Obsolescence  
En : Enforcement

**Flood Control Project Maintenance  
Levee Inspections**

**Maintenance Issue Types Only, Levee Inspection Report By Mile - Fall 2014**

**Reclamation District No. 0003 Grand Island**

Waterway	Bank	Unit Miles	Inspection Start/End	Inspector
Unit No. 01 Left Bank Steamboat Slough	Left	10.95	10/06/2014 10/07/2014	Richard Willoughby

LM Start	7.00	Rating **	A/W	Issue No.	24
LM End	7.00	Issue Type +	Ma	Location *	LS
Category	Earthen Levee			GPS Latitude/Longitude	
				Start	End
Item	Encroachments			38.216583 °	38.216583 °
				-121.603986 °	-121.603986 °
DWR ID	DWR_RD0003_01_f_2012_24				
Action/Comments					
Garbage					

Photo 1 of 1 : FA\_2014\_RD0003\_24\_24\_20141006\_00025.jpg



Looking east at garbage at landside toe.

LM Start	7.05	Rating **	M	Issue No.	93
LM End	7.07	Issue Type +	Ma	Location *	LS
Category	Earthen Levee			GPS Latitude/Longitude	
				Start	End
Item	Trim / Thin Trees			38.215947 °	38.215643 °
				-121.604398 °	-121.604603 °
DWR ID	DWR_RD0003_01_s_2013_93				
Action/Comments					
Trim trees to at least five feet above ground level. Inspector Comments: Trim trees at landward toe.					

No Photos

LM Start	8.45	Rating **	M	Issue No.	94
LM End	8.45	Issue Type +	Ma	Location *	LS
Category	Earthen Levee			GPS Latitude/Longitude	
				Start	End
Item	Encroachments			38.197202 °	38.197202 °
				-121.612962 °	-121.612962 °
DWR ID	DWR_RD0003_01_s_2013_94				
Action/Comments					
Prunings					
Inspector Comments: Prunings on landward slope.					

No Photos

<b>* Location</b> LS : Land Side    N/A : Not Applicable WS : Water Side CR : Crown	<b>** Rating</b> A : Acceptable M : Minimally Acceptable U : Unacceptable	N : Not Inspected/Rated C : Corrected A/W : Acceptable but Monitor & Maintain	<b>+ Issue Type</b> Ma : Maintenance Deficiency Ob : Design & System Obsolescence En : Enforcement
--	--	---	---

**Flood Control Project Maintenance  
Levee Inspections**

**Maintenance Issue Types Only, Levee Inspection Report By Mile - Fall 2014**

**Reclamation District No. 0003 Grand Island**

Waterway	Bank	Unit Miles	Inspection Start/End	Inspector
Unit No. 01 Left Bank Steamboat Slough	Left	10.95	10/06/2014 10/07/2014	Richard Willoughby

LM Start	8.95	Rating **	N	Issue No.	18
LM End	8.95	Issue Type +	Ma	Location *	LS
Category	Earthen Levee			GPS Latitude/Longitude	
				Start	End
Item	Trim / Thin Trees			38.193142 °	38.193142 °
				-121.620206 °	-121.620206 °
DWR ID	DWR_RD0003_01_s_2012_18				
Action/Comments					
Tree stumps.					

No Photos

LM Start	10.37	Rating **	A/W	Issue No.	107
LM End	10.37	Issue Type +	Ma	Location *	LS
Category	Earthen Levee			GPS Latitude/Longitude	
				Start	End
Item	Trim / Thin Trees				°
					°
DWR ID	DWR_RD0003_01_f_2013_107				
Action/Comments					
Trim trees to at least five feet above ground level.					

No Photos

LM Start	10.81	Rating **	M	Issue No.	95
LM End	11.02	Issue Type +	Ma	Location *	CR
Category	Earthen Levee			GPS Latitude/Longitude	
				Start	End
Item	Crown Surface / Depressions / Rutting			38.183518 °	38.182393 °
				-121.649843 °	-121.653388 °
DWR ID	DWR_RD0003_01_s_2013_95				
Action/Comments					
Add appropriate material and re-grade the levee to bring the crown above the design elevation.					

No Photos

<b>* Location</b> LS : Land Side    N/A : Not Applicable WS : Water Side CR : Crown	<b>** Rating</b> A : Acceptable M : Minimally Acceptable U : Unacceptable	N : Not Inspected/Rated C : Corrected A/W : Acceptable but Monitor & Maintain	<b>+ Issue Type</b> Ma : Maintenance Deficiency Ob : Design & System Obsolescence En : Enforcement
--	--	---	---



# Reclamation District No. 0003 Grand Island

Page 18 of 20

## Reclamation District No. 0003 Grand Island

Looking southwest at erosion on waterward slope.

Looking north at erosion on waterward slope.

Looking northwest at erosion on waterward shoulder and slope.

Page 19 of 20



# Reclamation District No. 0003 Grand Island

Looking north at erosion on waterward shoulder and slope.

Page 20 of 20

**Flood Control Project Maintenance  
Levee Inspections**

**Maintenance Issue Types Only, Levee Inspection Report By Mile - Fall 2014**

**Reclamation District No. 0003 Grand Island**

Waterway	Bank	Unit Miles	Inspection Start/End	Inspector
Unit No. 02 Right Bank Sacramento River	Right	17.35	10/06/2014 10/07/2014	Richard Willoughby

LM Start	0.07	Rating **	M	Issue No.	36
LM End	0.07	Issue Type +	Ma	Location *	LS
Category	Earthen Levee			GPS Latitude/Longitude	
				Start	End
Item	Trim / Thin Trees			38.175433 °	38.175433 °
				-121.652697 °	-121.652697 °
DWR ID	DWR_RD0003_02_s_2013_36				
Action/Comments					
Trim trees to at least five feet above ground level.					

No Photos

LM Start	0.09	Rating **	A/W	Issue No.	38
LM End	0.09	Issue Type +	Ma	Location *	LS
Category	Earthen Levee			GPS Latitude/Longitude	
				Start	End
Item	Encroachments			38.175340 °	38.175340 °
				-121.652452 °	-121.652452 °
DWR ID	DWR_RD0003_02_s_2013_38				
Action/Comments					
Garbage					

Photo 1 of 1 : FA\_2014\_RD0003\_25\_38\_20141006\_00035.jpg



Looking northwest at garbage on landward slope.

LM Start	0.25	Rating **	M	Issue No.	4
LM End	0.25	Issue Type +	Ma	Location *	LS
Category	Earthen Levee			GPS Latitude/Longitude	
				Start	End
Item	Trim / Thin Trees			38.174504 °	38.174504 °
				-121.649651 °	-121.649651 °
DWR ID	DWR_RD0003_02_s_2012_4				
Action/Comments					
Thin trees to allow visibility of the ground and room to flood fight.					

No Photos

<b>* Location</b> LS : Land Side    N/A : Not Applicable WS : Water Side CR : Crown	<b>** Rating</b> A : Acceptable M : Minimally Acceptable U : Unacceptable	N : Not Inspected/Rated C : Corrected A/W : Acceptable but Monitor & Maintain	<b>+ Issue Type</b> Ma : Maintenance Deficiency Ob : Design & System Obsolescence En : Enforcement
--	--	---	---



**Flood Control Project Maintenance  
Levee Inspections**

**Maintenance Issue Types Only, Levee Inspection Report By Mile - Fall 2014**

**Reclamation District No. 0003 Grand Island**

Waterway	Bank	Unit Miles	Inspection Start/End	Inspector
Unit No. 02 Right Bank Sacramento River	Right	17.35	10/06/2014 10/07/2014	Richard Willoughby

LM Start	0.31	Rating **	M	Issue No.	5
LM End	0.33	Issue Type +	Ma	Location *	WS
Category	Earthen Levee			GPS Latitude/Longitude	
				Start	End
Item	Vegetation			38.174281 °	38.174209 °
				-121.648698 °	-121.648352 °
DWR ID	DWR_RD0003_02_s_2012_5				
Action/Comments					
Remove the wild growth other than native grasses from the levee slopes.					
Inspector Comments: New sprouts of bamboo.					

Photo 1 of 2 : FA\_2014\_RD0003\_25\_5\_20141006\_00006.jpg



Looking northeast at the new sprouting of bamboo on waterward slope.

Photo 2 of 2 : FA\_2014\_RD0003\_25\_5\_20141006\_00007.jpg



Looking northeast at bamboo on waterside slope.

LM Start	0.33	Rating **	M	Issue No.	41
LM End	0.33	Issue Type +	Ma	Location *	LS
Category	Earthen Levee			GPS Latitude/Longitude	
				Start	End
Item	Trim / Thin Trees			38.174203 °	38.174203 °
				-121.648400 °	-121.648400 °
DWR ID	DWR_RD0003_02_s_2013_41				
Action/Comments					
Thin trees to allow visibility of the ground and room to flood fight.					

No Photos

<b>* Location</b> LS : Land Side    N/A : Not Applicable WS : Water Side CR : Crown	<b>** Rating</b> A : Acceptable M : Minimally Acceptable U : Unacceptable	N : Not Inspected/Rated C : Corrected A/W : Acceptable but Monitor & Maintain	<b>+ Issue Type</b> Ma : Maintenance Deficiency Ob : Design & System Obsolescence En : Enforcement
--	--	---	---

# Reclamation District No. 0003 Grand Island

# Reclamation District No. 0003 Grand Island



**Flood Control Project Maintenance  
Levee Inspections**

**Maintenance Issue Types Only, Levee Inspection Report By Mile - Fall 2014**

**Reclamation District No. 0003 Grand Island**

Waterway	Bank	Unit Miles	Inspection Start/End	Inspector
Unit No. 02 Right Bank Sacramento River	Right	17.35	10/06/2014 10/07/2014	Richard Willoughby

LM Start	1.61	Rating **	A/W	Issue No.	104
LM End	1.61	Issue Type +	Ma	Location *	WS
Category	Earthen Levee			GPS Latitude/Longitude	
				Start	End
Item	Encroachments			38.168662 °	38.168662 °
				-121.627167 °	-121.627167 °
DWR ID	DWR_RD0003_02_s _ 2014_104				
Action/Comments					
Tree or limb					
Inspector Comments: Downed tree branch on waterward slope. Branch has been moved outside the 20ft zone.					

Photo 1 of 2 : FA\_2014\_RD0003\_25\_104\_20141006\_00077.jpg



Looking southeast at downed tree on waterward slope.

LM Start	<b>1.61</b>	Rating **	A/W	Issue No.	<b>104 (cont)</b>
LM End	<b>1.61</b>	Issue Type +	Ma	Location *	WS

Photo 2 of 2 : FA\_2014\_RD0003\_25\_104\_20141006\_00078.jpg



Looking east at downed tree on waterward slope.

LM Start	1.71	Rating **	A/W	Issue No.	40
LM End	1.71	Issue Type +	Ma	Location *	WS
Category	Earthen Levee			GPS Latitude/Longitude	
				Start	End
Item	Encroachments			38.167958 °	38.167958 °
				-121.625706 °	-121.625706 °
DWR ID	DWR_RD0003_02_s _ 2012_40				
Action/Comments					
Pipe					

No Photos

<b>* Location</b> LS : Land Side    N/A : Not Applicable WS : Water Side CR : Crown		<b>** Rating</b> A : Acceptable                      N : Not Inspected/Rated M : Minimally Acceptable        C : Corrected U : Unacceptable                  A/W : Acceptable but Monitor & Maintain		<b>+ Issue Type</b> Ma : Maintenance Deficiency Ob : Design & System Obsolescence En : Enforcement
--	--	---	--	---





# Reclamation District No. 0003 Grand Island

No Photos

Looking west at dense vegetation on landside slope and toe.

Looking west at berryvines on landside toe.

Page 7 of 20

**Flood Control Project Maintenance  
Levee Inspections**

**Maintenance Issue Types Only, Levee Inspection Report By Mile - Fall 2014**

**Reclamation District No. 0003 Grand Island**

Waterway	Bank	Unit Miles	Inspection Start/End	Inspector
Unit No. 02 Right Bank Sacramento River	Right	17.35	10/06/2014 10/07/2014	Richard Willoughby

LM Start	3.39	Rating **	A/W	Issue No.	45
LM End	3.39	Issue Type +	Ma	Location *	WS
Category	Earthen Levee			GPS Latitude/Longitude	
				Start	End
Item	Encroachments			38.168734 °	38.168734 °
				-121.598183 °	-121.598183 °
DWR ID	DWR_RD0003_02_s_2012_45				
Action/Comments					
Pipe Inspector Comments: Pipe penetration.					

Photo 1 of 1 : FA\_2014\_RD0003\_25\_45\_20141006\_00037.jpg



Pipe penetration, closure valve in open position.

LM Start	3.56	Rating **	M	Issue No.	97
LM End	3.56	Issue Type +	Ma	Location *	LS
Category	Earthen Levee			GPS Latitude/Longitude	
				Start	End
Item	Vegetation				°
					°
DWR ID	DWR_RD0003_02_f_2013_97				
Action/Comments					
Remove the wild growth other than native grasses from the levee slopes.					
Inspector Comments: Palm tree at landward toe.					

Photo 1 of 1 : FA\_2014\_RD0003\_25\_97\_20141006\_00070.jpg



Looking west at palm tree on landward toe.

LM Start	3.83	Rating **	A/W	Issue No.	8
LM End	3.92	Issue Type +	Ma	Location *	LS
Category	Earthen Levee			GPS Latitude/Longitude	
				Start	End
Item	Trim / Thin Trees			38.173977 °	38.175118 °
				-121.593725 °	-121.592925 °
DWR ID	DWR_RD0003_02_s_2012_8				
Action/Comments					
Trim trees to at least five feet above ground level.					

No Photos

<b>* Location</b> LS : Land Side    N/A : Not Applicable WS : Water Side CR : Crown	<b>** Rating</b> A : Acceptable M : Minimally Acceptable U : Unacceptable	N : Not Inspected/Rated C : Corrected A/W : Acceptable but Monitor & Maintain	<b>+ Issue Type</b> Ma : Maintenance Deficiency Ob : Design & System Obsolescence En : Enforcement
--	--	---	---







**Flood Control Project Maintenance  
Levee Inspections**

**Maintenance Issue Types Only, Levee Inspection Report By Mile - Fall 2014**

**Reclamation District No. 0003 Grand Island**

Waterway	Bank	Unit Miles	Inspection Start/End	Inspector
Unit No. 02 Right Bank Sacramento River	Right	17.35	10/06/2014 10/07/2014	Richard Willoughby

LM Start	4.24	Rating **	M	Issue No.	48
LM End	4.24	Issue Type +	Ma	Location *	LS
Category	Earthen Levee			GPS Latitude/Longitude	
				Start	End
Item	Trim / Thin Trees			38.179160 °	38.179160 °
				-121.590247 °	-121.590247 °
DWR ID	DWR_RD0003_02_s_2012_48				
Action/Comments					
Trim trees to at least five feet above ground level.					

No Photos

LM Start	4.35	Rating **	M	Issue No.	10
LM End	4.35	Issue Type +	Ma	Location *	LS
Category	Earthen Levee			GPS Latitude/Longitude	
				Start	End
Item	Trim / Thin Trees			38.180361 °	38.180361 °
				-121.589127 °	-121.589127 °
DWR ID	DWR_RD0003_02_s_2012_10				
Action/Comments					
Trim trees to at least five feet above ground level.					

No Photos

LM Start	4.50	Rating **	A/W	Issue No.	49
LM End	4.50	Issue Type +	Ma	Location *	LS
Category	Earthen Levee			GPS Latitude/Longitude	
				Start	End
Item	Encroachments			38.182290 °	38.182290 °
				-121.587641 °	-121.587641 °
DWR ID	DWR_RD0003_02_s_2012_49				
Action/Comments					
Pipe					

No Photos

**\* Location**  
 LS : Land Side    N/A : Not Applicable  
 WS : Water Side  
 CR : Crown

**\*\* Rating**  
 A : Acceptable                      N : Not Inspected/Rated  
 M : Minimally Acceptable        C : Corrected  
 U : Unacceptable                  A/W : Acceptable but Monitor & Maintain

**+ Issue Type**  
 Ma : Maintenance Deficiency  
 Ob : Design & System Obsolescence  
 En : Enforcement

## Reclamation District No. 0003 Grand Island

Looking southwest at dense veg. on landside toe.

Page 11 of 20



**Flood Control Project Maintenance  
Levee Inspections**

**Maintenance Issue Types Only, Levee Inspection Report By Mile - Fall 2014**

**Reclamation District No. 0003 Grand Island**

Waterway	Bank	Unit Miles	Inspection Start/End	Inspector
Unit No. 02 Right Bank Sacramento River	Right	17.35	10/06/2014 10/07/2014	Richard Willoughby

LM Start	9.15	Rating **	M	Issue No.	23
LM End	9.15	Issue Type +	Ma	Location *	LS
Category	Earthen Levee			GPS Latitude/Longitude	
				Start	End
Item	Trim / Thin Trees			38.236294 °	38.236294 °
				-121.559527 °	-121.559527 °
DWR ID	DWR_RD0003_02_s_2012_23				
Action/Comments					
Trim trees to at least five feet above ground level.					

No Photos

LM Start	9.37	Rating **	A/W	Issue No.	100
LM End	9.37	Issue Type +	Ma	Location *	LS
Category	Earthen Levee			GPS Latitude/Longitude	
				Start	End
Item	Vegetation				°
					°
DWR ID	DWR_RD0003_02_f_2013_100				
Action/Comments					
Remove the wild growth other than native grasses from the levee slopes.					
Inspector Comments: Palm trees on landward slope					

Photo 1 of 1 : FA\_2014\_RD0003\_25\_100\_20141006\_00073.jpg



Looking west at palm trees on landward shoulder and slope.

LM Start	9.47	Rating **	A/W	Issue No.	63
LM End	9.47	Issue Type +	Ma	Location *	LS
Category	Earthen Levee			GPS Latitude/Longitude	
				Start	End
Item	Trim / Thin Trees			38.240337 °	38.240337 °
				-121.556870 °	-121.556870 °
DWR ID	DWR_RD0003_02_s_2012_63				
Action/Comments					
Trim trees to at least five feet above ground level.					

No Photos

<b>* Location</b> LS : Land Side    N/A : Not Applicable WS : Water Side CR : Crown	<b>** Rating</b> A : Acceptable M : Minimally Acceptable U : Unacceptable	N : Not Inspected/Rated C : Corrected A/W : Acceptable but Monitor & Maintain	<b>+ Issue Type</b> Ma : Maintenance Deficiency Ob : Design & System Obsolescence En : Enforcement
--	--	---	---







**Flood Control Project Maintenance  
Levee Inspections**

**Maintenance Issue Types Only, Levee Inspection Report By Mile - Fall 2014**

**Reclamation District No. 0003 Grand Island**

Waterway	Bank	Unit Miles	Inspection Start/End	Inspector
Unit No. 02 Right Bank Sacramento River	Right	17.35	10/06/2014 10/07/2014	Richard Willoughby

LM Start	11.44	Rating **	A/W	Issue No.	26
LM End	11.44	Issue Type +	Ma	Location *	LS
Category	Earthen Levee			GPS Latitude/Longitude	
				Start	End
Item	Trim / Thin Trees				°
					°
DWR ID	DWR_RD0003_02_s_2012_26				
Action/Comments					
Trim trees to at least five feet above ground level.					

No Photos

LM Start	11.56	Rating **	M	Issue No.	20
LM End	11.56	Issue Type +	Ma	Location *	WS
Category	Supplemental			GPS Latitude/Longitude	
				Start	End
Item	USACE Erosion Survey			38.239870 °	38.239983 °
				-121.520989 °	-121.519361 °
DWR ID	DWR_RD0003_02_f_2014_20				
Action/Comments					
Inspector Comments: 2009 - Hole left in levee toe from a fallen tree. Could be repaired under maintenance. 2010 - Minor new erosion. 2013: No observed changes. [2013 Site ID: SAC_26-3_R]					

Photo 1 of 2 : FA\_2014\_RD0003\_25\_20\_20141006\_00022.jpg



USACE 2013 Photo #1

LM Start	<b>11.56</b>	Rating **	M	Issue No.	<b>20 (cont)</b>
LM End	<b>11.56</b>	Issue Type +	Ma	Location *	WS

Photo 2 of 2 : FA\_2014\_RD0003\_25\_20\_20141006\_00023.jpg



USACE 2013 Photo #2

<b>* Location</b> LS : Land Side    N/A : Not Applicable WS : Water Side CR : Crown		<b>** Rating</b> A : Acceptable M : Minimally Acceptable U : Unacceptable N : Not Inspected/Rated C : Corrected A/W : Acceptable but Monitor & Maintain		<b>+ Issue Type</b> Ma : Maintenance Deficiency Ob : Design & System Obsolescence En : Enforcement	
--	--	---	--	---	--



**Flood Control Project Maintenance  
Levee Inspections**

**Maintenance Issue Types Only, Levee Inspection Report By Mile - Fall 2014**

**Reclamation District No. 0003 Grand Island**

Waterway	Bank	Unit Miles	Inspection Start/End	Inspector
Unit No. 02 Right Bank Sacramento River	Right	17.35	10/06/2014 10/07/2014	Richard Willoughby

LM Start	11.76	Rating **	M	Issue No.	103
LM End	11.84	Issue Type +	Ma	Location *	WS
Category	Earthen Levee			GPS Latitude/Longitude	
				Start	End
Item	Trim / Thin Trees				°
					°
DWR ID	DWR_RD0003_02_f_2013_103				
Action/Comments					
Trim trees to at least five feet above ground level.					

No Photos

LM Start	11.79	Rating **	A/W	Issue No.	24
LM End	11.79	Issue Type +	Ma	Location *	LS
Category	Earthen Levee			GPS Latitude/Longitude	
				Start	End
Item	Trim / Thin Trees			38.241300 °	38.241300 °
				-121.517073 °	-121.517073 °
DWR ID	DWR_RD0003_02_s_2012_24				
Action/Comments					
Trim trees to at least five feet above ground level.					

No Photos

LM Start	12.12	Rating **	A/W	Issue No.	87
LM End	12.12	Issue Type +	Ma	Location *	LS
Category	Earthen Levee			GPS Latitude/Longitude	
				Start	End
Item	Encroachments			38.244933 °	38.244933 °
				-121.513140 °	-121.513140 °
DWR ID	DWR_RD0003_02_s_2013_87				
Action/Comments					
Tree or limb					
Inspector Comments: Broken tree limb on landward slope.					

No Photos

**\* Location**  
LS : Land Side    N/A : Not Applicable  
WS : Water Side  
CR : Crown

**\*\* Rating**  
A : Acceptable                      N : Not Inspected/Rated  
M : Minimally Acceptable        C : Corrected  
U : Unacceptable                  A/W : Acceptable but Monitor & Maintain

**+ Issue Type**  
Ma : Maintenance Deficiency  
Ob : Design & System Obsolescence  
En : Enforcement

**Flood Control Project Maintenance  
Levee Inspections**

**Maintenance Issue Types Only, Levee Inspection Report By Mile - Fall 2014**

**Reclamation District No. 0003 Grand Island**

Waterway	Bank	Unit Miles	Inspection Start/End	Inspector
Unit No. 02 Right Bank Sacramento River	Right	17.35	10/06/2014 10/07/2014	Richard Willoughby

LM Start	12.49	Rating **	A/W	Issue No.	25
LM End	12.49	Issue Type +	Ma	Location *	WS
Category	Earthen Levee			GPS Latitude/Longitude	
				Start	End
Item	Trim / Thin Trees			38.249937 °	38.249937 °
				-121.511834 °	-121.511834 °
DWR ID	DWR_RD0003_02_s_2012_25				
Action/Comments					
Trim trees to at least five feet above ground level.					

No Photos

LM Start	13.60	Rating **	M	Issue No.	9
LM End	13.60	Issue Type +	Ma	Location *	LS
Category	Earthen Levee			GPS Latitude/Longitude	
				Start	End
Item	Encroachments			38.262125 °	38.262125 °
				-121.524405 °	-121.524405 °
DWR ID	DWR_RD0003_02_s_2012_9				
Action/Comments					
Stairway Inspector Comments: Landowner installed unauthorized stairs on landside slope.					

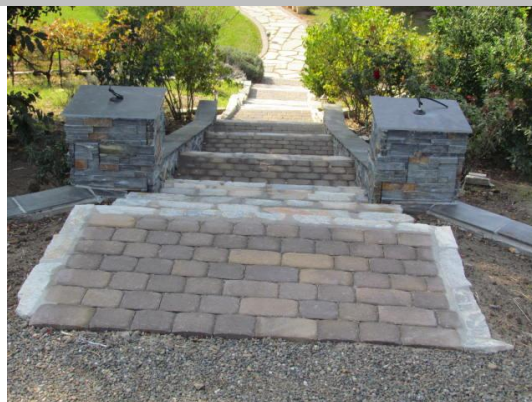
Photo 1 of 2 : FA\_2014\_RD0003\_25\_9\_20141006\_00009.jpg



Looking northwest at stairs on landside slope.

LM Start	<b>13.60</b>	Rating **	M	Issue No.	<b>9 (cont)</b>
LM End	<b>13.60</b>	Issue Type +	Ma	Location *	LS

Photo 2 of 2 : FA\_2014\_RD0003\_25\_9\_20141006\_00010.jpg



Looking west at stairs on landside slope.

* Location LS : Land Side    N/A : Not Applicable WS : Water Side CR : Crown		** Rating A : Acceptable                      N : Not Inspected/Rated M : Minimally Acceptable        C : Corrected U : Unacceptable                  A/W : Acceptable but Monitor & Maintain		+ Issue Type Ma : Maintenance Deficiency Ob : Design & System Obsolescence En : Enforcement	
---	--	--	--	--	--

**Flood Control Project Maintenance  
Levee Inspections**

**Maintenance Issue Types Only, Levee Inspection Report By Mile - Fall 2014**

**Reclamation District No. 0003 Grand Island**

Waterway	Bank	Unit Miles	Inspection Start/End	Inspector
Unit No. 02 Right Bank Sacramento River	Right	17.35	10/06/2014 10/07/2014	Richard Willoughby

LM Start	13.90	Rating **	A/W	Issue No.	27
LM End	13.90	Issue Type +	Ma	Location *	LS
Category	Earthen Levee			GPS Latitude/Longitude	
				Start	End
Item	Trim / Thin Trees				°
					°
DWR ID	DWR_RD0003_02_s_2012_27				
Action/Comments					
Trim trees to at least five feet above ground level.					

No Photos

LM Start	14.47	Rating **	A/W	Issue No.	91
LM End	14.47	Issue Type +	Ma	Location *	LS
Category	Earthen Levee			GPS Latitude/Longitude	
				Start	End
Item	Trim / Thin Trees			38.270703 °	38.270703 °
				-121.535938 °	-121.535938 °
DWR ID	DWR_RD0003_02_s_2013_91				
Action/Comments					
Trim trees to at least five feet above ground level.					

No Photos

LM Start	14.85	Rating **	M	Issue No.	93
LM End	14.88	Issue Type +	Ma	Location *	LS
Category	Earthen Levee			GPS Latitude/Longitude	
				Start	End
Item	Trim / Thin Trees			38.274492 °	38.274898 °
				-121.541022 °	-121.541533 °
DWR ID	DWR_RD0003_02_s_2013_93				
Action/Comments					
Trim trees to at least five feet above ground level.					

No Photos

<b>* Location</b> LS : Land Side    N/A : Not Applicable WS : Water Side CR : Crown	<b>** Rating</b> A : Acceptable M : Minimally Acceptable U : Unacceptable	N : Not Inspected/Rated C : Corrected A/W : Acceptable but Monitor & Maintain	<b>+ Issue Type</b> Ma : Maintenance Deficiency Ob : Design & System Obsolescence En : Enforcement
--	--	---	---



**Flood Control Project Maintenance  
Levee Inspections**

**Maintenance Issue Types Only, Levee Inspection Report By Mile - Fall 2014**

**Reclamation District No. 0003 Grand Island**

Waterway	Bank	Unit Miles	Inspection Start/End	Inspector
Unit No. 02 Right Bank Sacramento River	Right	17.35	10/06/2014 10/07/2014	Richard Willoughby

LM Start	15.53	Rating **	A/W	Issue No.	94
LM End	15.71	Issue Type +	Ma	Location *	LS
Category	Earthen Levee			GPS Latitude/Longitude	
				Start	End
Item	Trim / Thin Trees			38.281505 °	38.282957 °
				-121.549645 °	-121.552260 °
DWR ID	DWR_RD0003_02_s_2013_94				
Action/Comments					
Trim trees to at least five feet above ground level.					

No Photos

LM Start	15.95	Rating **	A/W	Issue No.	95
LM End	15.98	Issue Type +	Ma	Location *	LS
Category	Earthen Levee			GPS Latitude/Longitude	
				Start	End
Item	Trim / Thin Trees			38.285317 °	38.285605 °
				-121.555452 °	-121.555810 °
DWR ID	DWR_RD0003_02_s_2013_95				
Action/Comments					
Trim trees to at least five feet above ground level.					

No Photos

LM Start	16.80	Rating **	M	Issue No.	28
LM End	16.80	Issue Type +	Ma	Location *	WS
Category	Supplemental			GPS Latitude/Longitude	
				Start	End
Item	USACE Erosion Survey			38.294757 °	38.295730 °
				-121.565376 °	-121.566295 °
DWR ID	DWR_RD0003_02_f_2014_28				
Action/Comments					
Inspector Comments: 1997 - Erosion of supper sandy levee material above the water line, straight reach. 1999 - Small pocket repaired with rock. 2005 - Downstream 400 ft have been repaired. 2011 - Site is overgrown with vegetation. 2013: No observed changes. [2013 Site ID: SAC_31-6_R]					

Photo 1 of 1 : FA\_2014\_RD0003\_25\_28\_20141006\_00025.jpg



USACE 2013 Photo #1

<b>* Location</b> LS : Land Side    N/A : Not Applicable WS : Water Side CR : Crown	<b>** Rating</b> A : Acceptable M : Minimally Acceptable U : Unacceptable	N : Not Inspected/Rated C : Corrected A/W : Acceptable but Monitor & Maintain	<b>+ Issue Type</b> Ma : Maintenance Deficiency Ob : Design & System Obsolescence En : Enforcement
--	--	---	---

**Flood Control Project Maintenance  
Levee Inspections**

**Maintenance Issue Types Only, Levee Inspection Report By Mile - Fall 2014**

**Reclamation District No. 0003 Grand Island**

Waterway	Bank	Unit Miles	Inspection Start/End	Inspector
Unit No. 03 Cross Levee		0.43	10/07/2014 10/07/2014	Richard Willoughby

LM Start	0.02	Rating **	A/W	Issue No.	1	
LM End	0.02	Issue Type +	Ma	Location *	WS	
Category	Earthen Levee			GPS Latitude/Longitude		
				Start		End
Item	Encroachments					°
						°
DWR ID	DWR_RD0003_03_f_2013_1					
Action/Comments						
Garbage						
Inspector Comments: Old corrugated pipe on waterward slope.						

Photo 1 of 1 : FA\_2014\_RD0003\_610\_1\_20141006\_00001.jpg



Looking southeast at old corrugated pipe on waterward slope.

LM Start	0.06	Rating **	M	Issue No.	3
LM End	0.06	Issue Type +	Ma	Location *	LS
Category	Earthen Levee			GPS Latitude/Longitude	
				Start	End
Item	Slope Stability			38.181427 °	38.181427 °
				-121.653622 °	-121.653622 °
DWR ID	DWR_RD0003_03_s_2013_3				
Action/Comments					
Repair slope instability.					
Inspector Comments: Larger depression on landward slope.					

Photo 1 of 2 : FA\_2014\_RD0003\_610\_3\_20141006\_00002.jpg



Looking east at depression on landward slope.

LM Start	<b>0.06</b>	Rating **	M	Issue No.	<b>3 (cont)</b>
LM End	<b>0.06</b>	Issue Type +	Ma	Location *	LS

Photo 2 of 2 : FA\_2014\_RD0003\_610\_3\_20141006\_00003.jpg



Looking north on depression on landward slope.

**\* Location**

LS : Land Side    N/A : Not Applicable  
WS : Water Side  
CR : Crown

**\*\* Rating**

A : Acceptable                      N : Not Inspected/Rated  
M : Minimally Acceptable        C : Corrected  
U : Unacceptable                  A/W : Acceptable but Monitor & Maintain

**+ Issue Type**

Ma : Maintenance Deficiency  
Ob : Design & System Obsolescence  
En : Enforcement

**Flood Control Project Maintenance  
Levee Inspections**

**Maintenance Issue Types Only, Levee Inspection Report By Mile - Fall 2014**

**Reclamation District No. 0003 Grand Island**

Waterway	Bank	Unit Miles	Inspection Start/End	Inspector
Unit No. 03 Cross Levee		0.43	10/07/2014 10/07/2014	Richard Willoughby

LM Start	0.08	Rating **	M	Issue No.	4
LM End	0.43	Issue Type +	Ma	Location *	CR
Category	Earthen Levee			GPS Latitude/Longitude	
				Start	End
Item	Crown Surface / Depressions / Rutting			38.181223 °	38.176118 °
				-121.653617 °	-121.653765 °
DWR ID	DWR_RD0003_03_s_2013_4				
Action/Comments					
Add appropriate gravel or road base. Grade and compact.					

No Photos

LM Start	0.15	Rating **	M	Issue No.	5
LM End	0.18	Issue Type +	Ma	Location *	WS
Category	Earthen Levee			GPS Latitude/Longitude	
				Start	End
Item	Trim / Thin Trees			38.180150 °	38.179722 °
				-121.653645 °	-121.653663 °
DWR ID	DWR_RD0003_03_s_2013_5				
Action/Comments					
Trim trees to at least five feet above ground level.					

No Photos

LM Start	0.37	Rating **	M	Issue No.	7
LM End	0.37	Issue Type +	Ma	Location *	LS
Category	Earthen Levee			GPS Latitude/Longitude	
				Start	End
Item	Vegetation			38.177028 °	38.177028 °
				-121.653758 °	-121.653758 °
DWR ID	DWR_RD0003_03_s_2013_7				
Action/Comments					
Remove the wild growth other than native grasses from the levee slopes.					
Inspector Comments: Willows on landward slope and toe.					

No Photos

<b>* Location</b> LS : Land Side    N/A : Not Applicable WS : Water Side CR : Crown	<b>** Rating</b> A : Acceptable M : Minimally Acceptable U : Unacceptable	N : Not Inspected/Rated C : Corrected A/W : Acceptable but Monitor & Maintain	<b>+ Issue Type</b> Ma : Maintenance Deficiency Ob : Design & System Obsolescence En : Enforcement
--	--	---	---