

## Flood Control Project Maintenance Levee Inspections

### Fall 2020 Levee Maintenance Deficiency Summary Report

#### San Joaquin River Basin

<b>NA0013</b>	Overall LMA Rating	Total LMA Miles						
<b>Merced Streams Group</b>	<b>U</b>	<b>6.31</b>						
Rated Item	Maintenance Deficiency				Enforcement		Design & System Obsolescence	
	M Miles	U Miles	M + 4U Miles	Threshold %	M Miles	U Miles	M Miles	U Miles
<i>Earthen Levee</i>								
Vegetation	0.90	3.31	14.14	224.19%				
Trim / Thin Trees	0.01		0.01	0.16%				
Encroachments	0.01		0.01	0.16%	0.02	0.03		
Slope Stability	0.01		0.01	0.16%				
Erosion / Bank Caving	0.03		0.03	0.48%				
Crown Surface / Depressions / Rutting	0.14		0.14	2.22%				
<i>Supplemental</i>								
DWR UCIP Field Study					0.02			
DWR UCIP LMA Responsibility								
<i>LMA Totals:</i>	1.10	3.31	14.34	227.36%	0.04	0.03	0.00	0.00
<b>Unit No. 01 Black Rascal Diversion RB</b>	Overall Unit Rating	Total Unit Miles						
<b>NA0013</b>	<b>U</b>	<b>1.61</b>						
Rated Item	Maintenance Deficiency				Enforcement		Design & System Obsolescence	
	M Miles	U Miles	M + 4U Miles	Threshold %	M Miles	U Miles	M Miles	U Miles
<i>Earthen Levee</i>								
Vegetation	0.29	1.78	7.41	459.33%				
Encroachments	0.01		0.01	0.62%	0.01			
Crown Surface / Depressions / Rutting	0.11		0.11	6.82%				
<i>Supplemental</i>								
DWR UCIP Field Study					0.01			
<i>Unit Totals:</i>	0.41	1.78	7.53	466.77%	0.02	0.00	0.00	0.00
<b>Unit No. 02 Black Rascal Diversion LB</b>	Overall Unit Rating	Total Unit Miles						
<b>NA0013</b>	<b>U</b>	<b>1.85</b>						
Rated Item	Maintenance Deficiency				Enforcement		Design & System Obsolescence	
	M Miles	U Miles	M + 4U Miles	Threshold %	M Miles	U Miles	M Miles	U Miles
<i>Earthen Levee</i>								
Vegetation	0.61	1.53	6.73	363.89%				
Trim / Thin Trees	0.01		0.01	0.54%				
Encroachments						0.03		
Slope Stability	0.01		0.01	0.54%				
Erosion / Bank Caving	0.03		0.03	1.62%				
Crown Surface / Depressions / Rutting	0.02		0.02	1.08%				
<i>Supplemental</i>								
DWR UCIP Field Study					0.01			
DWR UCIP LMA Responsibility								
<i>Unit Totals:</i>	0.68	1.53	6.80	367.68%	0.01	0.03	0.00	0.00

## Flood Control Project Maintenance Levee Inspections

### Fall 2020 Levee Maintenance Deficiency Summary Report

#### ***San Joaquin River Basin (cont.)***

Unit No. 03 Owens Creek Diversion RB		Overall Unit Rating	Total Unit Miles						
NA0013		<b>A</b>	<b>1.43</b>						
Rated Item	Maintenance Deficiency				Enforcement		Design & System Obsolescence		
	M Miles	U Miles	M + 4U Miles	Threshold %	M Miles	U Miles	M Miles	U Miles	
<i>Supplemental</i>									
DWR UCIP LMA Responsibility									
<i>Unit Totals:</i>	0.00	0.00	0.00	0.00%	0.00	0.00	0.00	0.00	

Unit No. 04 Owens Creek Diversion LB		Overall Unit Rating	Total Unit Miles						
NA0013		<b>A</b>	<b>1.42</b>						
Rated Item	Maintenance Deficiency				Enforcement		Design & System Obsolescence		
	M Miles	U Miles	M + 4U Miles	Threshold %	M Miles	U Miles	M Miles	U Miles	
<i>Earthen Levee</i>									
Encroachments					0.01				
Crown Surface / Depressions / Rutting	0.01		0.01	0.70%					
<i>Supplemental</i>									
DWR UCIP LMA Responsibility									
<i>Unit Totals:</i>	0.01	0.00	0.01	0.70%	0.01	0.00	0.00	0.00	

**Flood Control Project Maintenance  
Levee Inspections  
LMA District Cover Sheet**

**Merced Streams Group**

	Spring (March - May)	Summer ** (June - August)	Fall (September - November)	Winter ** (December - February)
† Overall LMA Rating (Fall Only)			U	

\*\* Non-receipt of Summer or Winter Inspection  
Reports may effect overall annual rating.

† SPRING INSPECTIONS: Overall maintenance ratings are not determined for the spring inspection results. Individual maintenance deficiencies are rated using the same criteria in the spring and in the fall.

FALL INSPECTIONS: The overall maintenance rating shown above is based on operation and maintenance deficiencies identified within the attached unit inspection reports. This rating is not intended to be an indication of risk.

Comments


**Flood Control Project Maintenance  
Levee Inspections  
Unit Cover Sheet**

**Merced Streams Group**

Waterway			Bank	Unit Miles
Unit No. 01 Black Rascal Diversion			Right	1.61
	Spring (March - May)	Summer (June - August)	(September - November) Fall	Winter (December - February)
Unit Maintenance Rating (Fall Only)			U	
Date of Inspection	4/16/2020 - 4/16/2020		9/22/2020 - 9/22/2020	
DWR Inspector	Corey Fujitani		Corey Fujitani	
Accompanied By	Oscar Ortiz Merced County		Oscar Ortiz Merced County	

**Summer & Winter Inspections**

The Local Maintaining Agency (LMA) is responsible for summer and winter inspections. The LMA is required to submit a report regarding summer and winter inspections to the California Department of Water Resources (DWR).

DWR must be informed on the:

- a) completion of the inspection
- b) any changes other than the results of normal maintenance
- c) corrections to deficiencies noted in this report

If additional items are noted, further documentation of those items must also be submitted.

The LMA should submit this information to DWR using the LMA web application tool available at:

<http://cdec.water.ca.gov/lma.html>

If the LMA is unable to submit information on this webpage, please contact DWR for assistance.

*The LMA should submit the information and any associated documentation by September 30 for summer inspections and March 31 for winter inspections.*

**Flood Control Project Maintenance  
Levee Inspections**

**Levee Inspection Report By Mile - Fall 2020**

**Merced Streams Group**

Waterway	Bank	Unit Miles	Inspection Start/End	Inspector
Unit No. 01 Black Rascal Diversion	Right	1.61	09/22/2020 09/22/2020	Corey Fujitani

LM Start		Rating **	A	Issue No.	4
LM End		Issue Type +	Ma	Location *	
Category	Earthen Levee		GPS Latitude/Longitude		
			Start	End	
Item	Operations & Maintenance Manuals			°	°
				°	°
DWR ID	DWR_NA0013_01_f_2016_4				
Comment Code					
Inspector Comment					
Merced County has a copy of the Operation and Maintenance Manual in their Office.					

No Photos

LM Start		Rating **	A	Issue No.	5
LM End		Issue Type +	Ma	Location *	
Category	Earthen Levee		GPS Latitude/Longitude		
			Start	End	
Item	Emergency Supplies & Equipment			°	°
				°	°
DWR ID	DWR_NA0013_01_f_2016_5				
Comment Code					
Inspector Comment					
Merced Streams Group has emergency supplies and equipment on hand.					

No Photos

LM Start		Rating **	A	Issue No.	6
LM End		Issue Type +	Ma	Location *	
Category	Earthen Levee		GPS Latitude/Longitude		
			Start	End	
Item	Flood Preparedness & Training			°	°
				°	°
DWR ID	DWR_NA0013_01_f_2016_6				
Comment Code					
Inspector Comment					
Merced Streams Group are trained and prepared for Flood Fight.					

No Photos

<b>* Location</b> LS : Land Side    N/A : Not Applicable WS : Water Side CR : Crown	<b>** Rating</b> A : Acceptable M : Minimally Acceptable U : Unacceptable	N : Not Inspected/Rated C : Corrected A/W : Acceptable but Monitor & Maintain	<b>+ Issue Type</b> Ma : Maintenance Deficiency Ob : Design & System Obsolescence En : Enforcement
--	--	---	---

**Flood Control Project Maintenance  
Levee Inspections**

**Levee Inspection Report By Mile - Fall 2020**

**Merced Streams Group**

Waterway	Bank	Unit Miles	Inspection Start/End	Inspector
Unit No. 01 Black Rascal Diversion	Right	1.61	09/22/2020 09/22/2020	Corey Fujitani

LM Start	0.01	Rating **	U	Issue No.	2
LM End	1.59	Issue Type +	Ma	Location *	WS
Category	Earthen Levee			GPS Latitude/Longitude	
				Start	End
Item	Vegetation			37.314849 °	37.336860 °
				-120.396375 °	-120.396523 °
DWR ID	DWR_NA0013_01_f_2020_2				
Comment Code					
V1 : Control annual grass and weeds on the levee slopes and easements.					
Inspector Comment					

Photo 1 of 1 : FA\_2020\_NA0013\_331\_2\_20200928\_00010.jpg



View of vegetation on the waterside slope. (Fall 2020)

LM Start	0.02	Rating **	M	Issue No.	11
LM End	0.02	Issue Type +	Ma	Location *	WS
Category	Earthen Levee			GPS Latitude/Longitude	
				Start	End
Item	Encroachments			37.314942 °	37.314942 °
				-120.396394 °	-120.396394 °
DWR ID	DWR_NA0013_01_f _ 2018_11				
Comment Code					
DE : Debris					
Inspector Comment					
There is garbage on the waterside slope.					

Photo 1 of 1 : FA\_2020\_NA0013\_331\_11\_20200901\_00002.jpg



Debris and garbage on waterside slope. (Fall 2019)

LM Start	0.04	Rating **	U	Issue No.	3
LM End	0.24	Issue Type +	Ma	Location *	LS
Category	Earthen Levee			GPS Latitude/Longitude	
				Start	End
Item	Vegetation			37.315190 °	37.318057 °
				-120.396374 °	-120.396338 °
DWR ID	DWR_NA0013_01_f_2020_3				
Comment Code					
V1 : Control annual grass and weeds on the levee slopes and easements.					
Inspector Comment					

Photo 1 of 1 : FA\_2020\_NA0013\_331\_3\_20200928\_00011.jpg



View of vegetation looking upstream along the landside slope. (Fall 2020)

<b>* Location</b> LS : Land Side    N/A : Not Applicable WS : Water Side CR : Crown		<b>** Rating</b> A : Acceptable                      N : Not Inspected/Rated M : Minimally Acceptable        C : Corrected U : Unacceptable                  A/W : Acceptable but Monitor & Maintain		<b>+ Issue Type</b> Ma : Maintenance Deficiency Ob : Design & System Obsolescence En : Enforcement
--	--	---	--	---

**Flood Control Project Maintenance  
Levee Inspections**

**Levee Inspection Report By Mile - Fall 2020**

**Merced Streams Group**

Waterway	Bank	Unit Miles	Inspection Start/End	Inspector
Unit No. 01 Black Rascal Diversion	Right	1.61	09/22/2020 09/22/2020	Corey Fujitani

LM Start	0.24	Rating **	C	Issue No.	13
LM End	0.29	Issue Type +	En	Location *	LS
Category	Earthen Levee			GPS Latitude/Longitude	
				Start	End
Item	Encroachments			37.318126 °	37.318856 °
				-120.396401 °	-120.396601 °
DWR ID	DWR_NA0013_01_s_2019_13				
Comment Code					
MA : Material					
Inspector Comment					
Material is piled on the landside crown.					

No Photos

LM Start	0.44	Rating **	M	Issue No.	8
LM End	0.55	Issue Type +	Ma	Location *	CR
Category	Earthen Levee			GPS Latitude/Longitude	
				Start	End
Item	Crown Surface / Depressions / Rutting			37.320976 °	37.322571 °
				-120.396594 °	-120.396599 °
DWR ID	DWR_NA0013_01_s_2018_8				
Comment Code					
C2 : Repair depressions or ruts in the crown or slope.					
Inspector Comment					
Vehicle tracks and rutting on the crown should be repaired.					

Photo 1 of 1 : FA\_2020\_NA0013\_331\_8\_20200901\_00001.jpg



View of vehicle tracks on the levee crown. (Spring 2020)

LM Start	0.73	Rating **	M	Issue No.	19
LM End	0.80	Issue Type +	Ma	Location *	CR
Category	Earthen Levee			GPS Latitude/Longitude	
				Start	End
Item	Vegetation			37.325225 °	37.326231 °
				-120.396689 °	-120.396693 °
DWR ID	DWR_NA0013_01_s_2020_19				
Comment Code					
V9 : Keep the crown roadway free of vegetation.					
Inspector Comment					

No Photos

<b>* Location</b> LS : Land Side    N/A : Not Applicable WS : Water Side CR : Crown	<b>** Rating</b> A : Acceptable M : Minimally Acceptable U : Unacceptable	N : Not Inspected/Rated C : Corrected A/W : Acceptable but Monitor & Maintain	<b>+ Issue Type</b> Ma : Maintenance Deficiency Ob : Design & System Obsolescence En : Enforcement
--	--	---	---



**Flood Control Project Maintenance  
Levee Inspections**

**Levee Inspection Report By Mile - Fall 2020**

**Merced Streams Group**

Waterway	Bank	Unit Miles	Inspection Start/End	Inspector
Unit No. 01 Black Rascal Diversion	Right	1.61	09/22/2020 09/22/2020	Corey Fujitani

LM Start	0.75	Rating **	A/W	Issue No.	14
LM End	0.75	Issue Type +	Ma	Location *	LS
Category	Earthen Levee			GPS Latitude/Longitude	
				Start	End
Item	Erosion / Bank Caving			37.325485 °	37.325485 °
				-120.396700 °	-120.396700 °
DWR ID	DWR_NA0013_01_s_2019_14				
Comment Code					
E1 : Note and monitor erosion site.					
Inspector Comment					

Photo 1 of 1 : FA\_2020\_NA0013\_331\_14\_20200901\_00004.jpg



View of erosion on landside slope. (Spring 2019)

LM Start	0.97	Rating **	M	Issue No.	20
LM End	1.19	Issue Type +	Ma	Location *	CR
Category	Earthen Levee			GPS Latitude/Longitude	
				Start	End
Item	Vegetation			37.328695 °	37.331513 °
				-120.396691 °	-120.395066 °
DWR ID	DWR_NA0013_01_s_2020_20				
Comment Code					
V9 : Keep the crown roadway free of vegetation.					
Inspector Comment					

No Photos

LM Start	1.23	Rating **	A/W	Issue No.	16
LM End	1.23	Issue Type +	Ma	Location *	CR
Category	Earthen Levee			GPS Latitude/Longitude	
				Start	End
Item	Repair Gates			37.332005 °	37.332005 °
				-120.394751 °	-120.394751 °
DWR ID	DWR_NA0013_01_s_2019_16				
Comment Code					
Inspector Comment					
Gate has been removed.					

Photo 1 of 1 : FA\_2020\_NA0013\_331\_16\_20200901\_00005.jpg



View of barbed wire gate discarded on levee. (Spring 2019)

\* Location  
LS : Land Side N/A : Not Applicable  
WS : Water Side  
CR : Crown

\*\* Rating  
A : Acceptable N : Not Inspected/Rated  
M : Minimally Acceptable C : Corrected  
U : Unacceptable A/W : Acceptable but Monitor & Maintain

+ Issue Type  
Ma : Maintenance Deficiency  
Ob : Design & System Obsolescence  
En : Enforcement



**Flood Control Project Maintenance  
Levee Inspections**

**Levee Inspection Report By Mile - Fall 2020**

**Merced Streams Group**

Waterway	Bank	Unit Miles	Inspection Start/End	Inspector
Unit No. 01 Black Rascal Diversion	Right	1.61	09/22/2020 09/22/2020	Corey Fujitani

LM Start	1.27	Rating **	M	Issue No.	18
LM End	1.27	Issue Type +	En	Location *	WS
Category	Earthen Levee			GPS Latitude/Longitude	
				Start	End
Item	Encroachments			37.332554 °	37.332554 °
				-120.394767 °	-120.394767 °
DWR ID	DWR_NA0013_01_s_ 2019_18				
Comment Code					
RA : Ramp					
Inspector Comment					
Ramp has been fenced off at waterside shoulder.					

Photo 1 of 1 : FA\_2020\_NA0013\_331\_18\_20200901\_00006.jpg



View of ramp on waterside slope looking Northeast. (Spring 2020)

LM Start	1.29	Rating **	M	Issue No.	21
LM End	1.29	Issue Type +	En	Location *	
Category	Supplemental			GPS Latitude/Longitude	
				Start	End
Item	DWR UCIP Field Study			37.332805 °	37.332805 °
				-120.394906 °	-120.394906 °
DWR ID	23079				
Comment Code					
Inspector Comment					
DS_ID:23079 FS_ID:41672 EP_NO: N/A Repair Type: Non-Urgent EVAL Issue: Crossing Status: Indicator Found UCIP Comments: 09/17/2013 Verify Pipe is abandoned or still intact.- may be this crossing was abandoned/removed during recent levee reconstruction.- no signs of pipe and appurtenances on waterside.- only a CM pipe riser with slide gate found on landside. (DWR UCIP - P. Amatya) FIELD_STRUCT_DESC: 36-inch corrugated metal irrigation pipe through the levee, 10 feet below the crown. Riser on the landside (LS). Screw gate in a 48-inch pipe well on the waterside (WS) slope. Concrete headwall and cobble spillway at the LS toe. Concrete headwall at the WS toe. [Additional Reference(s): USACE San Joaquin O&M Manual 607, June 1962, (HLM 1.32)]. FS Date: 9/17/2013					

Photo 1 of 3 : UCIP\_FA\_2020\_41672\_35211.jpg



WS view: no signs of pipe and appurtenances on levee slope and channel bank.

<b>* Location</b> LS : Land Side    N/A : Not Applicable WS : Water Side CR : Crown	<b>** Rating</b> A : Acceptable M : Minimally Acceptable U : Unacceptable	N : Not Inspected/Rated C : Corrected A/W : Acceptable but Monitor & Maintain	<b>+ Issue Type</b> Ma : Maintenance Deficiency Ob : Design & System Obsolescence En : Enforcement
--	--	---	---

**Flood Control Project Maintenance  
Levee Inspections**

**Levee Inspection Report By Mile - Fall 2020**

**Merced Streams Group**

Waterway	Bank	Unit Miles	Inspection Start/End	Inspector
Unit No. 01 Black Rascal Diversion	Right	1.61	09/22/2020 09/22/2020	Corey Fujitani

LM Start	<b>1.29</b>	Rating **	M	Issue No.	<b>21 (cont)</b>
LM End	<b>1.29</b>	Issue Type +	En	Location *	
Category	Supplemental		GPS Latitude/Longitude		
			Start	End	
Item	DWR UCIP Field Study		37.332805 °	37.332805 °	
			-120.394906 °	-120.394906 °	
DWR ID	23079				

Photo 2 of 3 : UCIP\_FA\_2020\_41672\_35210.jpg



LS view: overview of CM pipe riser with slide gate. Dense vegetation on landside.

LM Start	<b>1.29</b>	Rating **	M	Issue No.	<b>21 (cont)</b>
LM End	<b>1.29</b>	Issue Type +	En	Location *	

Photo 3 of 3 : UCIP\_FA\_2020\_41672\_35209.jpg



LS view: inside view of CM pipe riser with slide gate.

<b>* Location</b> LS : Land Side    N/A : Not Applicable WS : Water Side CR : Crown	<b>** Rating</b> A : Acceptable M : Minimally Acceptable U : Unacceptable N : Not Inspected/Rated C : Corrected A/W : Acceptable but Monitor & Maintain	<b>+ Issue Type</b> Ma : Maintenance Deficiency Ob : Design & System Obsolescence En : Enforcement
--	---	---

**Flood Control Project Maintenance  
Levee Inspections  
Unit Cover Sheet**

**Merced Streams Group**

Waterway			Bank	Unit Miles
Unit No. 02 Black Rascal Diversion			Left	1.85
	Spring (March - May)	Summer (June - August)	(September - November) Fall	Winter (December - February)
Unit Maintenance Rating (Fall Only)			U	
Date of Inspection	4/16/2020 - 4/16/2020		9/22/2020 - 9/22/2020	
DWR Inspector	Corey Fujitani		Corey Fujitani	
Accompanied By	Oscar Ortiz Merced County		Oscar Ortiz Merced County	

**Summer & Winter Inspections**

The Local Maintaining Agency (LMA) is responsible for summer and winter inspections. The LMA is required to submit a report regarding summer and winter inspections to the California Department of Water Resources (DWR).

DWR must be informed on the:

- a) completion of the inspection
- b) any changes other than the results of normal maintenance
- c) corrections to deficiencies noted in this report

If additional items are noted, further documentation of those items must also be submitted.

The LMA should submit this information to DWR using the LMA web application tool available at:

<http://cdec.water.ca.gov/lma.html>

If the LMA is unable to submit information on this webpage, please contact DWR for assistance.

*The LMA should submit the information and any associated documentation by September 30 for summer inspections and March 31 for winter inspections.*

**Flood Control Project Maintenance  
Levee Inspections**

**Levee Inspection Report By Mile - Fall 2020**

**Merced Streams Group**

Waterway	Bank	Unit Miles	Inspection Start/End	Inspector
Unit No. 02 Black Rascal Diversion	Left	1.85	09/22/2020 09/22/2020	Corey Fujitani

LM Start	0.00	Rating **	U	Issue No.	2
LM End	0.00	Issue Type +	En	Location *	LS
Category	Earthen Levee			GPS Latitude/Longitude	
				Start	End
Item	Encroachments			37.337034 °	37.337034 °
				-120.387422 °	-120.387422 °
DWR ID	DWR_NA0013_02_f_2012_2				
Comment Code					
PI : Pipe					
Inspector Comment					
There is no CVFPB permit on record for this issue. Merced County Flood Control is aware of this issue.					

Photo 1 of 1 : FA\_2020\_NA0013\_332\_2\_20200901\_00001.jpg



Tank and filtration system installed on the landside easement. ( Spring 2020)

LM Start	0.01	Rating **	U	Issue No.	11
LM End	0.01	Issue Type +	En	Location *	WS
Category	Earthen Levee			GPS Latitude/Longitude	
				Start	End
Item	Encroachments			37.337010 °	37.337010 °
				-120.387448 °	-120.387448 °
DWR ID	DWR_NA0013_02_s_2019_11				
Comment Code					
FW : Firewood					
Inspector Comment					
Landowner left wood and pipes on waterside slope.					

Photo 1 of 1 : FA\_2020\_NA0013\_332\_11\_20200901\_00002.jpg



View of wood pile and pipes on waterside slope. (Spring 2019)

**\* Location**  
LS : Land Side    N/A : Not Applicable  
WS : Water Side  
CR : Crown

**\*\* Rating**  
A : Acceptable                      N : Not Inspected/Rated  
M : Minimally Acceptable        C : Corrected  
U : Unacceptable                  A/W : Acceptable but Monitor & Maintain

**+ Issue Type**  
Ma : Maintenance Deficiency  
Ob : Design & System Obsolescence  
En : Enforcement



**Flood Control Project Maintenance  
Levee Inspections**

**Levee Inspection Report By Mile - Fall 2020**

**Merced Streams Group**

Waterway	Bank	Unit Miles	Inspection Start/End	Inspector
Unit No. 02 Black Rascal Diversion	Left	1.85	09/22/2020 09/22/2020	Corey Fujitani

LM Start	0.01	Rating **	M	Issue No.	32	
LM End	0.01	Issue Type +	En	Location *		
Category	Supplemental			GPS Latitude/Longitude		
				Start	End	
Item	DWR UCIP Field Study			37.337019 °	37.337019 °	
				-120.387539 °	-120.387539 °	
DWR ID	23052					
Comment Code						
Inspector Comment						
DS_ID:23052						
FS_ID:21263						
EP_NO: N/A						
Repair Type: Non-Urgent						
EVAL Issue:						
Crossing Status: Found						
UCIP Comments: 09/17/2013 - needs more investigations on this crossing. - new water filtration plant on LS with pump and concrete vault.- a concrete standpipe and CM pipe riser on WS. (DWR UCIP - P. Amatya)						
FIELD_STRUCT_DESC: 10-inch steel irrigation pipe through the levee, 5 feet below the crown. Riser on the landside (LS). Screw gate in a 36-inch pipe well on the waterside (WS) slope. [Additional Reference(s): DWR Levee Log, 2005. USACE San Joaquin O&M Manual 607, June 1962, (HLM 0.00)].						
FS Date: 9/17/2013						

LM Start	<b>0.01</b>	Rating **	M	Issue No.	<b>32 (cont)</b>
LM End	<b>0.01</b>	Issue Type +	En	Location *	

Photo 1 of 3 : UCIP\_FA\_2020\_21263\_35761.jpg



WS view: concrete standpipe (left) and CMP standpipe (right).

Photo 2 of 3 : UCIP\_FA\_2020\_21263\_35760.jpg



WS view: inside view of CMP standpipe with slide gate.

<b>* Location</b> LS : Land Side    N/A : Not Applicable WS : Water Side CR : Crown	<b>** Rating</b> A : Acceptable M : Minimally Acceptable U : Unacceptable	N : Not Inspected/Rated C : Corrected A/W : Acceptable but Monitor & Maintain	<b>+ Issue Type</b> Ma : Maintenance Deficiency Ob : Design & System Obsolescence En : Enforcement
--	--	---	---

**Flood Control Project Maintenance  
Levee Inspections**

**Levee Inspection Report By Mile - Fall 2020**

**Merced Streams Group**

Waterway	Bank	Unit Miles	Inspection Start/End	Inspector
Unit No. 02 Black Rascal Diversion	Left	1.85	09/22/2020 09/22/2020	Corey Fujitani

LM Start	0.01	Rating **	M	Issue No.	32 (cont)
LM End	0.01	Issue Type +	En	Location *	
Category	Supplemental			GPS Latitude/Longitude	
				Start	End
Item	DWR UCIP Field Study			37.337019 °	37.337019 °
				-120.387539 °	-120.387539 °
DWR ID	23052				

Photo 3 of 3 : UCIP\_FA\_2020\_21263\_35764.jpg



WS view: concrete standpipe with water ponding at its base.

LM Start	0.06	Rating **	M	Issue No.	10
LM End	0.46	Issue Type +	Ma	Location *	WS
Category	Earthen Levee			GPS Latitude/Longitude	
				Start	End
Item	Vegetation			37.336674 °	37.333729 °
				-120.388235 °	-120.392887 °
DWR ID	DWR_NA0013_02_f _ 2020_10				
Comment Code					
V1 : Control annual grass and weeds on the levee slopes and easements.					
Inspector Comment					

Photo 1 of 1 : FA\_2020\_NA0013\_332\_10\_20200928\_00033.jpg



Looking downstream along the waterside slope. (Fall 2020)

<b>* Location</b> LS : Land Side    N/A : Not Applicable WS : Water Side CR : Crown	<b>** Rating</b> A : Acceptable M : Minimally Acceptable U : Unacceptable	N : Not Inspected/Rated C : Corrected A/W : Acceptable but Monitor & Maintain	<b>+ Issue Type</b> Ma : Maintenance Deficiency Ob : Design & System Obsolescence En : Enforcement
--	--	---	---

**Flood Control Project Maintenance  
Levee Inspections**

**Levee Inspection Report By Mile - Fall 2020**

**Merced Streams Group**

Waterway	Bank	Unit Miles	Inspection Start/End	Inspector
Unit No. 02 Black Rascal Diversion	Left	1.85	09/22/2020 09/22/2020	Corey Fujitani

LM Start	<b>0.29</b>	Rating **	A/W	Issue No.	<b>33</b>
LM End	<b>0.29</b>	Issue Type +	Ma	Location *	
Category	Supplemental		GPS Latitude/Longitude		
			Start	End	
Item	DWR UCIP LMA Responsibility		37.336006 °	37.336006 °	
			-120.392011 °	-120.392011 °	
DWR ID	23053				

**Comment Code**

**Inspector Comment**

DS\_ID:23053  
FS\_ID:50156  
EP\_NO: N/A  
Repair Type: No Action Needed  
EVAL Issue:  
Crossing Status: Found  
UCIP Comments: 08/23/2016: LS inlet is clear. WS gate has been cleared of vegetation and functions properly. Crossing has been downgraded from Urgent to No Action Needed. (K. Fazel - UCIP)09/17/2013:- needs vegetation cleaning on both sides.- flap gate was not closed during field survey.- inlet needs cleaning. (P. Amatya - UCIP)  
FIELD\_STRUCT\_DESC: 24-inch corrugated metal gravity drainage pipe through the levee, 8 feet below the crown. Concrete headwall, flap gate, and concrete grouted cobble spillway on the waterside (WS) toe. Concrete headwall on the landside (LS) toe. [Additional Reference(s): DWR Levee Log, 2005. USACE San Joaquin O&M Manual 607, June 1962, (HLM 0.29)].  
FS Date: 8/23/2016

LM Start	<b>0.29</b>	Rating **	A/W	Issue No.	<b>33 (cont)</b>
LM End	<b>0.29</b>	Issue Type +	Ma	Location *	

Photo 1 of 3 : UCIP\_FA\_2020\_50156\_35245.jpg



WS view: cobble spillway and channel on waterside.

Photo 2 of 3 : UCIP\_FA\_2020\_50156\_35244.jpg



WS view: U typed concrete headwall, CM pipe, and flap gate. Flap gate was not closed. Vegetation needs to be cleared.

<b>* Location</b> LS : Land Side    N/A : Not Applicable WS : Water Side CR : Crown	<b>** Rating</b> A : Acceptable M : Minimally Acceptable U : Unacceptable	<b>N : Not Inspected/Rated</b> C : Corrected A/W : Acceptable but Monitor & Maintain	<b>+ Issue Type</b> Ma : Maintenance Deficiency Ob : Design & System Obsolescence En : Enforcement
--	--	--	---



**Flood Control Project Maintenance  
Levee Inspections**

**Levee Inspection Report By Mile - Fall 2020**

**Merced Streams Group**

Waterway	Bank	Unit Miles	Inspection Start/End	Inspector
Unit No. 02 Black Rascal Diversion	Left	1.85	09/22/2020 09/22/2020	Corey Fujitani

LM Start	0.29	Rating **	A/W	Issue No.	33 (cont)	
LM End	0.29	Issue Type +	Ma	Location *		
Category	Supplemental			GPS Latitude/Longitude		
				Start		End
Item	DWR UCIP LMA Responsibility			37.336006 °	37.336006 °	
				-120.392011 °	-120.392011 °	
DWR ID	23053					

Photo 3 of 3 : UCIP\_FA\_2020\_50156\_35246.jpg



LS view: concrete headwall and CM pipe. Inlet needs cleaning.

LM Start	0.37	Rating **	C	Issue No.	25
LM End	0.63	Issue Type +	Ma	Location *	CR
Category	Earthen Levee			GPS Latitude/Longitude	
				Start	End
Item	Vegetation			37.334977 °	37.331814 °
				-120.392491 °	-120.394198 °
DWR ID	DWR_NA0013_02_s_2020_25				
Comment Code					
V9 : Keep the crown roadway free of vegetation.					
Inspector Comment					

No Photos

**\* Location**  
 LS : Land Side    N/A : Not Applicable  
 WS : Water Side  
 CR : Crown

**\*\* Rating**  
 A : Acceptable                      N : Not Inspected/Rated  
 M : Minimally Acceptable        C : Corrected  
 U : Unacceptable                  A/W : Acceptable but Monitor & Maintain

**+ Issue Type**  
 Ma : Maintenance Deficiency  
 Ob : Design & System Obsolescence  
 En : Enforcement

**Flood Control Project Maintenance  
Levee Inspections**

**Levee Inspection Report By Mile - Fall 2020**

**Merced Streams Group**

Waterway	Bank	Unit Miles	Inspection Start/End	Inspector
Unit No. 02 Black Rascal Diversion	Left	1.85	09/22/2020 09/22/2020	Corey Fujitani

LM Start	0.54	Rating **	M	Issue No.	34
LM End	0.54	Issue Type +	Ma	Location *	
Category	Supplemental			GPS Latitude/Longitude	
				Start	End
Item	DWR UCIP LMA Responsibility			37.333180 °	37.333180 °
				-120.394069 °	-120.394069 °
DWR ID	23054				
Comment Code					
Inspector Comment					
DS_ID:23054 FS_ID:20946 EP_NO: N/A Repair Type: Non-Urgent EVAL Issue: Crossing Status: Found UCIP Comments: 09/17/2013 - needs vegetation cleaning on both sides.- flap gate was not properly closed during field survey.- inlet needs cleaning. (DWR UCIP - P. Amatya) FIELD_STRUCT_DESC: 24-inch corrugated metal gravity drainage pipe through the levee, 12 feet below the crown. Concrete headwall, flap gate, and concrete grouted cobble spillway on the waterside (WS) toe. Concrete headwall on the landside (LS) toe. [Additional Reference(s): DWR Levee Log, 2005]. FS Date: 9/17/2013					

Photo 1 of 3 : UCIP\_FA\_2020\_20946\_35266.jpg



WS view: cobble spillway and channel on waterside.

LM Start	<b>0.54</b>	Rating **	M	Issue No.	<b>34 (cont)</b>
LM End	<b>0.54</b>	Issue Type +	Ma	Location *	

Photo 2 of 3 : UCIP\_FA\_2020\_20946\_35265.jpg



WS view: U typed concrete headwall, CM pipe, and flap gate. Flap gate was not properly closed.

<b>* Location</b> LS : Land Side    N/A : Not Applicable WS : Water Side CR : Crown	<b>** Rating</b> A : Acceptable M : Minimally Acceptable U : Unacceptable	N : Not Inspected/Rated C : Corrected A/W : Acceptable but Monitor & Maintain	<b>+ Issue Type</b> Ma : Maintenance Deficiency Ob : Design & System Obsolescence En : Enforcement
--	--	---	---

## Merced Streams Group

* Location	** Rating	+ Issue Type
LS : Land Side    N/A : Not Applicable	A : Acceptable                      N : Not Inspected/Rated	Ma : Maintenance Deficiency
WS : Water Side	M : Minimally Acceptable        C : Corrected	Ob : Design & System Obsolescence
CR : Crown	U : Unacceptable                  A/W : Acceptable but Monitor & Maintain	En : Enforcement



**Flood Control Project Maintenance  
Levee Inspections**

**Levee Inspection Report By Mile - Fall 2020**

**Merced Streams Group**

Waterway	Bank	Unit Miles	Inspection Start/End	Inspector
Unit No. 02 Black Rascal Diversion	Left	1.85	09/22/2020 09/22/2020	Corey Fujitani

LM Start	0.63	Rating **	M	Issue No.	26
LM End	0.84	Issue Type +	Ma	Location *	CR
Category	Earthen Levee			GPS Latitude/Longitude	
				Start	End
Item	Vegetation			37.331814 °	37.329210 °
				-120.394198 °	-120.396032 °
DWR ID	DWR_NA0013_02_s_2020_26				
Comment Code					
V9 : Keep the crown roadway free of vegetation.					
Inspector Comment					

No Photos

LM Start	0.74	Rating **	M	Issue No.	35	
LM End	0.74	Issue Type +	Ma	Location *		
Category	Supplemental			GPS Latitude/Longitude		
				Start		End
Item	DWR UCIP LMA Responsibility			37.330525 °		37.330525 °
				-120.395132 °		-120.395132 °
DWR ID	23055					
Comment Code						
Inspector Comment						
DS_ID:23055 FS_ID:20992 EP_NO: N/A Repair Type: Non-Urgent EVAL Issue: Crossing Status: Found UCIP Comments: 09/17/2013 - mud and debris from recent channel cleaning needs to be removed from spillway and outlet - pipe filled with debris, it needs cleaning.- half of intet pipe burried. (DWR UCIP - P. Amatya) FIELD_STRUCT_DESC: 24-inch corrugated metal gravity drainage pipe through the levee, 8 feet below the crown. Concrete headwall, flap gate, and concrete grouted cobble spillway on the waterside (WS) toe. Concrete headwall on the landside (LS) toe. [Additional Reference(s): DWR Levee Log, 2005. USACE San Joaquin O&M Manual 607, June 1962, (HLM 0.73)]. FS Date: 9/17/2013						

Photo 1 of 3 : UCIP\_FA\_2020\_20992\_35370.jpg



WS view: concrete headwall and CM pipe burried under debris and mud.

<b>* Location</b> LS : Land Side    N/A : Not Applicable WS : Water Side CR : Crown	<b>** Rating</b> A : Acceptable M : Minimally Acceptable U : Unacceptable	N : Not Inspected/Rated C : Corrected A/W : Acceptable but Monitor & Maintain	<b>+ Issue Type</b> Ma : Maintenance Deficiency Ob : Design & System Obsolescence En : Enforcement
--	--	---	---

**Flood Control Project Maintenance  
Levee Inspections**

**Levee Inspection Report By Mile - Fall 2020**

**Merced Streams Group**

Waterway	Bank	Unit Miles	Inspection Start/End	Inspector
Unit No. 02 Black Rascal Diversion	Left	1.85	09/22/2020 09/22/2020	Corey Fujitani

LM Start	<b>0.74</b>	Rating **	M	Issue No.	<b>35 (cont)</b>
LM End	<b>0.74</b>	Issue Type +	Ma	Location *	
Category	Supplemental		GPS Latitude/Longitude		
			Start	End	
Item	DWR UCIP LMA Responsibility		37.330525 °	37.330525 °	
			-120.395132 °	-120.395132 °	
DWR ID	23055				

Photo 2 of 3 : UCIP\_FA\_2020\_20992\_35369.jpg



WS view: debris and mud deposited from the channel cleaning. It needs to be cleared from spillway and outlet structure.

LM Start	<b>0.74</b>	Rating **	M	Issue No.	<b>35 (cont)</b>
LM End	<b>0.74</b>	Issue Type +	Ma	Location *	

Photo 3 of 3 : UCIP\_FA\_2020\_20992\_35366.jpg



LS view: concrete headwall and CM pipe. Half of inlet pipe buried.

LM Start	0.75	Rating **	M	Issue No.	22
LM End	0.75	Issue Type +	Ma	Location *	LS
Category	Earthen Levee			GPS Latitude/Longitude	
				Start	End
Item	Slope Stability			37.330340 °	37.330340 °
				-120.395288 °	-120.395288 °
DWR ID	DWR_NA0013_02_f_2018_22				
Comment Code					
S3 : Repair the levee slope damaged by vehicle traffic and prevent access where possible.					
Inspector Comment					
There is a vehicle track on the landside slope.					

No Photos

<b>* Location</b> LS : Land Side    N/A : Not Applicable WS : Water Side CR : Crown	<b>** Rating</b> A : Acceptable M : Minimally Acceptable U : Unacceptable	N : Not Inspected/Rated C : Corrected A/W : Acceptable but Monitor & Maintain	<b>+ Issue Type</b> Ma : Maintenance Deficiency Ob : Design & System Obsolescence En : Enforcement
--	--	---	---

**Flood Control Project Maintenance  
Levee Inspections**

**Levee Inspection Report By Mile - Fall 2020**

**Merced Streams Group**

Waterway	Bank	Unit Miles	Inspection Start/End	Inspector
Unit No. 02 Black Rascal Diversion	Left	1.85	09/22/2020 09/22/2020	Corey Fujitani

LM Start	0.78	Rating **	M	Issue No.	27
LM End	0.80	Issue Type +	Ma	Location *	CR
Category	Earthen Levee			GPS Latitude/Longitude	
				Start	End
Item	Crown Surface / Depressions / Rutting			37.329952 °	37.329789 °
				-120.395588 °	-120.395720 °
DWR ID	DWR_NA0013_02_s_2020_27				
Comment Code					
C2 : Repair depressions or ruts in the crown or slope.					
Inspector Comment					

No Photos

LM Start	0.88	Rating **	U	Issue No.	24
LM End	0.88	Issue Type +	En	Location *	LS
Category	Earthen Levee			GPS Latitude/Longitude	
				Start	End
Item	Encroachments			37.328567 °	37.328567 °
				-120.396062 °	-120.396062 °
DWR ID	DWR_NA0013_02_s_2014_24				
Comment Code					
TR : Tree or limb					
Inspector Comment					
Three fruit trees with irrigation system, two stock piles of material, and a rock pad are placed on landside toe. Discovered during the fall 2014 inspection was a structure had been installed on the landward levee slope and berm. There are no permits for these encroachments.					

Photo 1 of 1 : FA\_2020\_NA0013\_332\_24\_20200901\_00006.jpg



Unauthorized patio and fruit trees installed on the landside slope.  
(Spring 2020)

<b>* Location</b> LS : Land Side    N/A : Not Applicable WS : Water Side CR : Crown	<b>** Rating</b> A : Acceptable M : Minimally Acceptable U : Unacceptable	N : Not Inspected/Rated C : Corrected A/W : Acceptable but Monitor & Maintain	<b>+ Issue Type</b> Ma : Maintenance Deficiency Ob : Design & System Obsolescence En : Enforcement
--	--	---	---

**Flood Control Project Maintenance  
Levee Inspections**

**Levee Inspection Report By Mile - Fall 2020**

**Merced Streams Group**

Waterway	Bank	Unit Miles	Inspection Start/End	Inspector
Unit No. 02 Black Rascal Diversion	Left	1.85	09/22/2020 09/22/2020	Corey Fujitani

LM Start	0.90	Rating **	A/W	Issue No.	36	
LM End	0.90	Issue Type +	Ma	Location *		
Category	Supplemental			GPS Latitude/Longitude		
				Start		End
Item	DWR UCIP LMA Responsibility			37.328283 °	37.328283 °	
				-120.396074 °	-120.396074 °	
DWR ID	23056					
Comment Code						
Inspector Comment						
DS_ID:23056 FS_ID:20965 EP_NO: N/A Repair Type: No Action Needed EVAL Issue: Crossing Status: Found UCIP Comments: 09/17/2013 - working during field inspection. - vegetation on drainage ditch/channel (DWR UCIP - P. Amatya) FIELD_STRUCT_DESC: 1 of 2: 60-inch corrugated metal gravity drainage pipe through the levee, 10 feet below the crown. Concrete headwall and flap gate on the waterside (WS) berm, 5 feet from the levee toe. Concrete headwall on the landside (LS) toe. [Additional Reference(s): DWR Levee Log, 2005. USACE San Joaquin O&M Manual 607, June 1962, (HLM 0.91)]. FS Date: 9/17/2013						

LM Start	<b>0.90</b>	Rating **	A/W	Issue No.	<b>36 (cont)</b>
LM End	<b>0.90</b>	Issue Type +	Ma	Location *	

Photo 1 of 3 : UCIP\_FA\_2020\_20965\_35292.jpg



WS view: two 60" CMPs, flap gates, and headwall on channel bank.

Photo 2 of 3 : UCIP\_FA\_2020\_20965\_35291.jpg



LS view: headwall on levee toe. Green vegetation in drainage channel.

<b>* Location</b> LS : Land Side    N/A : Not Applicable WS : Water Side CR : Crown	<b>** Rating</b> A : Acceptable M : Minimally Acceptable U : Unacceptable	N : Not Inspected/Rated C : Corrected A/W : Acceptable but Monitor & Maintain	<b>+ Issue Type</b> Ma : Maintenance Deficiency Ob : Design & System Obsolescence En : Enforcement
--	--	---	---



**Flood Control Project Maintenance  
Levee Inspections**

**Levee Inspection Report By Mile - Fall 2020**

**Merced Streams Group**

Waterway	Bank	Unit Miles	Inspection Start/End	Inspector
Unit No. 02 Black Rascal Diversion	Left	1.85	09/22/2020 09/22/2020	Corey Fujitani

LM Start	0.90	Rating **	A/W	Issue No.	36 (cont)
LM End	0.90	Issue Type +	Ma	Location *	
Category	Supplemental			GPS Latitude/Longitude	
				Start	End
Item	DWR UCIP LMA Responsibility			37.328283 °	37.328283 °
				-120.396074 °	-120.396074 °
DWR ID	23056				

Photo 3 of 3 : UCIP\_FA\_2020\_20965\_35290.jpg



LS view: two CM pipes and U typed headwall on levee toe. Green vegetation in drainage channel.

LM Start	0.91	Rating **	A/W	Issue No.	37
LM End	0.91	Issue Type +	Ma	Location *	
Category	Supplemental			GPS Latitude/Longitude	
				Start	End
Item	DWR UCIP LMA Responsibility			37.328267 °	37.328267 °
				-120.396084 °	-120.396084 °
DWR ID	23080				

**Comment Code**

**Inspector Comment**

DS\_ID:23080  
FS\_ID:20983  
EP\_NO: N/A  
Repair Type: No Action Needed  
EVAL Issue:  
Crossing Status: Found  
UCIP Comments: 09/17/2013 It was working during field inspection.

Dense vegetation in drainage ditch (DWR UCIP - P. Amatya).  
FIELD\_STRUCT\_DESC: 2 of 2: 60-inch corrugated metal gravity drainage pipe through the levee, 10 feet below the crown. Concrete headwall and flap gate on the waterside (WS) berm, 5 feet from the levee toe. Concrete headwall on the landside (LS) toe. [Additional Reference(s): DWR Levee Log, 2005. USACE San Joaquin O&M Manual 607, June 1962, (HLM 0.91)].  
FS Date: 9/17/2013

Photo 1 of 3 : UCIP\_FA\_2020\_20983\_35302.jpg



WS view: two CMPs with flap gate, concrete spillway and channel on waterside.

<b>* Location</b> LS : Land Side    N/A : Not Applicable WS : Water Side CR : Crown	<b>** Rating</b> A : Acceptable M : Minimally Acceptable U : Unacceptable	<b>N : Not Inspected/Rated</b> C : Corrected A/W : Acceptable but Monitor & Maintain	<b>+ Issue Type</b> Ma : Maintenance Deficiency Ob : Design & System Obsolescence En : Enforcement
--	--	--	---

**Flood Control Project Maintenance  
Levee Inspections**

**Levee Inspection Report By Mile - Fall 2020**

**Merced Streams Group**

Waterway	Bank	Unit Miles	Inspection Start/End	Inspector
Unit No. 02 Black Rascal Diversion	Left	1.85	09/22/2020 09/22/2020	Corey Fujitani

LM Start	<b>0.91</b>	Rating **	A/W	Issue No.	<b>37 (cont)</b>
LM End	<b>0.91</b>	Issue Type +	Ma	Location *	
Category	Supplemental		GPS Latitude/Longitude		
			Start	End	
Item	DWR UCIP LMA Responsibility		37.328267 °	37.328267 °	
			-120.396084 °	-120.396084 °	
DWR ID	23080				

Photo 2 of 3 : UCIP\_FA\_2020\_20983\_35301.jpg



LS view: U typed concrete headwall, two CMPs in drainage ditch. Dense vegetation in drainage ditch.

LM Start	<b>0.91</b>	Rating **	A/W	Issue No.	<b>37 (cont)</b>
LM End	<b>0.91</b>	Issue Type +	Ma	Location *	

Photo 3 of 3 : UCIP\_FA\_2020\_20983\_35300.jpg



LS view: concrete headwall in drainage ditch. Dense vegetation in drainage ditch.

LM Start	0.96	Rating **	M	Issue No.	14
LM End	0.96	Issue Type +	Ma	Location *	LS
Category	Earthen Levee			GPS Latitude/Longitude	
				Start	End
Item	Trim / Thin Trees			37.327481 °	37.327481 °
				-120.396077 °	-120.396077 °
DWR ID	DWR_NA0013_02_f_2020_14				
Comment Code					
T2 : Thin trees to allow visibility of the ground and room to flood fight.					
Inspector Comment					
Remove palm tree sapling before it can establish.					

Photo 1 of 1 : FA\_2020\_NA0013\_332\_14\_20200928\_00036.jpg



View of palm tree sapling growing in the landside slope. (Fall 2020)

* Location	** Rating	+ Issue Type
LS : Land Side WS : Water Side CR : Crown	A : Acceptable M : Minimally Acceptable U : Unacceptable	N : Not Inspected/Rated C : Corrected A/W : Acceptable but Monitor & Maintain
N/A : Not Applicable		Ma : Maintenance Deficiency Ob : Design & System Obsolescence En : Enforcement



**Flood Control Project Maintenance  
Levee Inspections**

**Levee Inspection Report By Mile - Fall 2020**

**Merced Streams Group**

Waterway	Bank	Unit Miles	Inspection Start/End	Inspector
Unit No. 02 Black Rascal Diversion	Left	1.85	09/22/2020 09/22/2020	Corey Fujitani

LM Start	0.97	Rating **	M	Issue No.	15
LM End	0.97	Issue Type +	Ma	Location *	LS
Category	Earthen Levee			GPS Latitude/Longitude	
				Start	End
Item	Erosion / Bank Caving			37.327336 °	37.327336 °
				-120.396085 °	-120.396085 °
DWR ID	DWR_NA0013_02_f_2017_15				
Comment Code					
E2 : Schedule repair of erosion site prior to the next inspection.					
Inspector Comment					
There is large finger erosion on the landward slope. Couple of smaller erosion sites are starting just downstream of the larger erosion.					

Photo 1 of 1 : FA\_2020\_NA0013\_332\_15\_20200901\_00003.jpg



Looking at finger erosion on the landside slope. (Spring 2020)

LM Start	1.10	Rating **	M	Issue No.	16
LM End	1.10	Issue Type +	Ma	Location *	LS
Category	Earthen Levee			GPS Latitude/Longitude	
				Start	End
Item	Erosion / Bank Caving			37.325487 °	37.325487 °
				-120.396052 °	-120.396052 °
DWR ID	DWR_NA0013_02_s_2017_16				
Comment Code					
E2 : Schedule repair of erosion site prior to the next inspection.					
Inspector Comment					
Large finger erosion is located on the landside slope.					

Photo 1 of 1 : FA\_2020\_NA0013\_332\_16\_20200901\_00004.jpg



View of large finger erosion in landside slope. (Fall 2018)

LM Start	1.29	Rating **	M	Issue No.	28
LM End	1.29	Issue Type +	Ma	Location *	LS
Category	Earthen Levee			GPS Latitude/Longitude	
				Start	End
Item	Erosion / Bank Caving			37.322752 °	37.322752 °
				-120.396030 °	-120.396030 °
DWR ID	DWR_NA0013_02_s_2020_28				
Comment Code					
E1 : Note and monitor erosion site.					
Inspector Comment					

Photo 1 of 1 : FA\_2020\_NA0013\_332\_28\_20200928\_00038.jpg



View of erosion pocket in the landside slope and toe. (Fall 2020)

\* Location  
LS : Land Side N/A : Not Applicable  
WS : Water Side  
CR : Crown

\*\* Rating  
A : Acceptable N : Not Inspected/Rated  
M : Minimally Acceptable C : Corrected  
U : Unacceptable A/W : Acceptable but Monitor & Maintain

+ Issue Type  
Ma : Maintenance Deficiency  
Ob : Design & System Obsolescence  
En : Enforcement

**Flood Control Project Maintenance  
Levee Inspections**

**Levee Inspection Report By Mile - Fall 2020**

**Merced Streams Group**

Waterway	Bank	Unit Miles	Inspection Start/End	Inspector
Unit No. 02 Black Rascal Diversion	Left	1.85	09/22/2020 09/22/2020	Corey Fujitani

LM Start	1.30	Rating **	A/W	Issue No.	38	
LM End	1.30	Issue Type +	Ma	Location *		
Category	Supplemental			GPS Latitude/Longitude		
				Start		End
Item	DWR UCIP LMA Responsibility			37.322499 °	37.322499 °	
				-120.396045 °	-120.396045 °	
DWR ID	23057					
Comment Code						
Inspector Comment						
DS_ID:23057						
FS_ID:20984						
EP_NO: N/A						
Repair Type: No Action Needed						
EVAL Issue:						
Crossing Status: Found						
UCIP Comments: 09/17/2013 - working during field inspection. (DWR UCIP - P. Amatya)						
FIELD_STRUCT_DESC: 24-inch corrugated metal gravity drainage pipe through the levee, 10 feet below the crown. Concrete headwall, flap gate, and concrete grouted cobble spillway on the waterside (WS) toe. Concrete headwall on the landside (LS) toe. [Additional Reference(s): DWR Levee Log, 2005. USACE San Joaquin O&M Manual 607, June 1962, (HLM 1.32)].						
FS Date: 9/17/2013						

LM Start	<b>1.30</b>	Rating **	A/W	Issue No.	<b>38 (cont)</b>
LM End	<b>1.30</b>	Issue Type +	Ma	Location *	

Photo 1 of 3 : UCIP\_FA\_2020\_20984\_35305.jpg



WS view: U type concrete headwall and channel on waterside.

Photo 2 of 3 : UCIP\_FA\_2020\_20984\_35304.jpg



WS view: U typed concrete headwall, CM pipe, and flap gate. It was working during field inspection.

<b>* Location</b> LS : Land Side    N/A : Not Applicable WS : Water Side CR : Crown	<b>** Rating</b> A : Acceptable M : Minimally Acceptable U : Unacceptable	N : Not Inspected/Rated C : Corrected A/W : Acceptable but Monitor & Maintain	<b>+ Issue Type</b> Ma : Maintenance Deficiency Ob : Design & System Obsolescence En : Enforcement
--	--	---	---



**Flood Control Project Maintenance  
Levee Inspections**

**Levee Inspection Report By Mile - Fall 2020**

**Merced Streams Group**

Waterway	Bank	Unit Miles	Inspection Start/End	Inspector
Unit No. 02 Black Rascal Diversion	Left	1.85	09/22/2020 09/22/2020	Corey Fujitani

LM Start	<b>1.30</b>	Rating **	A/W	Issue No.	<b>38 (cont)</b>
LM End	<b>1.30</b>	Issue Type +	Ma	Location *	
Category	Supplemental		GPS Latitude/Longitude		
			Start	End	
Item	DWR UCIP LMA Responsibility		37.322499 °	37.322499 °	
			-120.396045 °	-120.396045 °	
DWR ID	23057				

Photo 3 of 3 : UCIP\_FA\_2020\_20984\_35303.jpg



LS view: concrete headwall on levee toe and drainage ditch.

LM Start	<b>1.62</b>	Rating **	M	Issue No.	<b>39</b>
LM End	<b>1.62</b>	Issue Type +	Ma	Location *	
Category	Supplemental		GPS Latitude/Longitude		
			Start	End	
Item	DWR UCIP LMA Responsibility		37.318015 °	37.318015 °	
			-120.395738 °	-120.395738 °	
DWR ID	23058				

**Comment Code**

**Inspector Comment**

DS\_ID:23058  
 FS\_ID:42993  
 EP\_NO: N/A  
 Repair Type: Non-Urgent  
 EVAL Issue:  
 Crossing Status: Found  
 UCIP Comments: 09/17/2013 - needs cleaning of debris on spillway on WS. Flapgate blocked by debris on WS. - needs cleaning inside CMP on LS. (DWR UCIP - P. Amatya)  
 FIELD\_STRUCT\_DESC: 24-inch corrugated metal gravity drainage pipe through the levee, 8 feet below the crown. Concrete headwall, flap gate, and concrete grouted cobble spillway on the waterside (WS) toe. Concrete headwall on the landside (LS) toe. [Additional Reference(s): DWR Levee Log, 2005. USACE San Joaquin O&M Manual 607, June 1962, (HLM 1.64)].  
 FS Date: 9/17/2013

Photo 1 of 3 : UCIP\_FA\_2020\_42993\_35310.jpg



WS view: overview of outlet area and channel. Debris and vegetations on spillway.

<b>* Location</b> LS : Land Side    N/A : Not Applicable WS : Water Side CR : Crown	<b>** Rating</b> A : Acceptable M : Minimally Acceptable U : Unacceptable	N : Not Inspected/Rated C : Corrected A/W : Acceptable but Monitor & Maintain	<b>+ Issue Type</b> Ma : Maintenance Deficiency Ob : Design & System Obsolescence En : Enforcement
--	--	---	---

**Flood Control Project Maintenance  
Levee Inspections**

**Levee Inspection Report By Mile - Fall 2020**

**Merced Streams Group**

Waterway	Bank	Unit Miles	Inspection Start/End	Inspector
Unit No. 02 Black Rascal Diversion	Left	1.85	09/22/2020 09/22/2020	Corey Fujitani

LM Start	<b>1.62</b>	Rating **	M	Issue No.	<b>39 (cont)</b>
LM End	<b>1.62</b>	Issue Type +	Ma	Location *	
Category	Supplemental		GPS Latitude/Longitude		
			Start	End	
Item	DWR UCIP LMA Responsibility		37.318015 °	37.318015 °	
			-120.395738 °	-120.395738 °	
DWR ID	23058				

Photo 2 of 3 : UCIP\_FA\_2020\_42993\_35309.jpg



WS view: U typed concrete headwall, CM pipe and flap gate. Vegetation and debris need to be cleared.

LM Start	<b>1.62</b>	Rating **	M	Issue No.	<b>39 (cont)</b>
LM End	<b>1.62</b>	Issue Type +	Ma	Location *	

Photo 3 of 3 : UCIP\_FA\_2020\_42993\_35312.jpg



LS view: concrete headwall and CM pipe. Inlet needs cleaning. Part of inlet pipe buried.

LM Start	1.62	Rating **	U	Issue No.	31
LM End	1.66	Issue Type +	Ma	Location *	CR
Category	Earthen Levee			GPS Latitude/Longitude	
				Start	End
Item	Vegetation			37.317992 °	37.317396 °
				-120.395735 °	-120.395744 °
DWR ID	DWR_NA0013_02_s_2020_31				
Comment Code					
V9 : Keep the crown roadway free of vegetation.					
Inspector Comment					

Photo 1 of 1 : FA\_2020\_NA0013\_332\_31\_20200928\_00039.jpg



Looking downstream along the levee crown. (Fall 2020)

<b>* Location</b> LS : Land Side    N/A : Not Applicable WS : Water Side CR : Crown		<b>** Rating</b> A : Acceptable M : Minimally Acceptable U : Unacceptable N : Not Inspected/Rated C : Corrected A/W : Acceptable but Monitor & Maintain		<b>+ Issue Type</b> Ma : Maintenance Deficiency Ob : Design & System Obsolescence En : Enforcement	
--	--	---	--	---	--

**Flood Control Project Maintenance  
Levee Inspections**

**Levee Inspection Report By Mile - Fall 2020**

**Merced Streams Group**

Waterway	Bank	Unit Miles	Inspection Start/End	Inspector
Unit No. 02 Black Rascal Diversion	Left	1.85	09/22/2020 09/22/2020	Corey Fujitani

<b>* Location</b> LS : Land Side    N/A : Not Applicable WS : Water Side CR : Crown	<b>** Rating</b> A : Acceptable                      N : Not Inspected/Rated M : Minimally Acceptable        C : Corrected U : Unacceptable                  A/W : Acceptable but Monitor & Maintain	<b>+ Issue Type</b> Ma : Maintenance Deficiency Ob : Design & System Obsolescence En : Enforcement
--	---	---



**Flood Control Project Maintenance  
Levee Inspections  
Unit Cover Sheet**

**Merced Streams Group**

Waterway			Bank	Unit Miles
Unit No. 03 Owens Creek Diversion			Right	1.43
	Spring (March - May)	Summer (June - August)	(September - November) Fall	Winter (December - February)
Unit Maintenance Rating (Fall Only)			A	
Date of Inspection	4/16/2020 - 4/16/2020		9/22/2020 - 9/22/2020	
DWR Inspector	Corey Fujitani		Corey Fujitani	
Accompanied By	Oscar Ortiz Merced County		Oscar Ortiz Merced County	

**Summer & Winter Inspections**

The Local Maintaining Agency (LMA) is responsible for summer and winter inspections. The LMA is required to submit a report regarding summer and winter inspections to the California Department of Water Resources (DWR).

DWR must be informed on the:

- a) completion of the inspection
- b) any changes other than the results of normal maintenance
- c) corrections to deficiencies noted in this report

If additional items are noted, further documentation of those items must also be submitted.

The LMA should submit this information to DWR using the LMA web application tool available at:

<http://cdec.water.ca.gov/lma.html>

If the LMA is unable to submit information on this webpage, please contact DWR for assistance.

*The LMA should submit the information and any associated documentation by September 30 for summer inspections and March 31 for winter inspections.*

**Flood Control Project Maintenance  
Levee Inspections**

**Levee Inspection Report By Mile - Fall 2020**

**Merced Streams Group**

Waterway	Bank	Unit Miles	Inspection Start/End	Inspector
Unit No. 03 Owens Creek Diversion	Right	1.43	09/22/2020 09/22/2020	Corey Fujitani

LM Start	0.04	Rating **	C	Issue No.	11
LM End	1.25	Issue Type +	Ma	Location *	CR
Category	Earthen Levee			GPS Latitude/Longitude	
				Start	End
Item	Crown Surface / Depressions / Rutting			37.258235 °	37.272856 °
				-120.288435 °	-120.280294 °
DWR ID	DWR_NA0013_03_s_2018_11				
Comment Code					
C3 : Add appropriate gravel or road base. Grade and compact.					
Inspector Comment					

No Photos

LM Start	0.09	Rating **	A	Issue No.	10
LM End	0.09	Issue Type +	Ma	Location *	WS
Category	Earthen Levee			GPS Latitude/Longitude	
				Start	End
Item	Vegetation			37.258937 °	37.258937 °
				-120.288554 °	-120.288554 °
DWR ID	DWR_NA0013_03_f_2020_10				
Comment Code					
V1 : Control annual grass and weeds on the levee slopes and easements.					
Inspector Comment					

Photo 1 of 1 : FA\_2020\_NA0013\_333\_10\_20200928\_00023.jpg



View of vegetation control on waterside slopes. (Fall 2020)

<b>* Location</b> LS : Land Side    N/A : Not Applicable WS : Water Side CR : Crown	<b>** Rating</b> A : Acceptable M : Minimally Acceptable U : Unacceptable	N : Not Inspected/Rated C : Corrected A/W : Acceptable but Monitor & Maintain	<b>+ Issue Type</b> Ma : Maintenance Deficiency Ob : Design & System Obsolescence En : Enforcement
--	--	---	---

**Flood Control Project Maintenance  
Levee Inspections**

**Levee Inspection Report By Mile - Fall 2020**

**Merced Streams Group**

Waterway	Bank	Unit Miles	Inspection Start/End	Inspector
Unit No. 03 Owens Creek Diversion	Right	1.43	09/22/2020 09/22/2020	Corey Fujitani

LM Start	0.19	Rating **	M	Issue No.	12	
LM End	0.19	Issue Type +	Ma	Location *		
Category	Supplemental			GPS Latitude/Longitude		
				Start	End	
Item	DWR UCIP LMA Responsibility			37.260355 °	37.260355 °	
				-120.288517 °	-120.288517 °	
DWR ID	23060					
Comment Code						
Inspector Comment						
DS_ID:23060 FS_ID:41815 EP_NO: N/A Repair Type: Non-Urgent EVAL Issue: Crossing Status: Found UCIP Comments: 09/17/2013 - more than a half of inet pipe burried on LS. - needs vegetation cleaning on both sides.- inlet needs silt removed and cleaning. (DWR UCIP - P. Amatya) FIELD_STRUCT_DESC: 24-inch corrugated metal gravity drainage pipe through the levee, 6 feet below the crown. Concrete headwall, flap gate, and concrete grouted cobble spillway on the waterside (WS) toe. Concrete headwall on the landside (LS) toe. [Additional Reference(s): DWR Levee Log, 2005. USACE San Joaquin O&M Manual 607, June 1962, (HLM 0.18)]. FS Date: 9/17/2013						

LM Start	<b>0.19</b>	Rating **	M	Issue No.	<b>12 (cont)</b>
LM End	<b>0.19</b>	Issue Type +	Ma	Location *	

Photo 1 of 3 : UCIP\_FA\_2020\_41815\_35533.jpg



WS view: U typed concrete headwall, CM pipe, and flap gate.

Photo 2 of 3 : UCIP\_FA\_2020\_41815\_35532.jpg



WS view: Silt needs to be removed. Vegetations needs to be cleared.

<b>* Location</b> LS : Land Side    N/A : Not Applicable WS : Water Side CR : Crown	<b>** Rating</b> A : Acceptable M : Minimally Acceptable U : Unacceptable	N : Not Inspected/Rated C : Corrected A/W : Acceptable but Monitor & Maintain	<b>+ Issue Type</b> Ma : Maintenance Deficiency Ob : Design & System Obsolescence En : Enforcement
--	--	---	---

**Flood Control Project Maintenance  
Levee Inspections**

**Levee Inspection Report By Mile - Fall 2020**

**Merced Streams Group**

Waterway	Bank	Unit Miles	Inspection Start/End	Inspector
Unit No. 03 Owens Creek Diversion	Right	1.43	09/22/2020 09/22/2020	Corey Fujitani

LM Start	<b>0.19</b>	Rating **	M	Issue No.	<b>12 (cont)</b>
LM End	<b>0.19</b>	Issue Type +	Ma	Location *	
Category	Supplemental		GPS Latitude/Longitude		
			Start	End	
Item	DWR UCIP LMA Responsibility		37.260355 °	37.260355 °	
			-120.288517 °	-120.288517 °	
DWR ID	23060				

Photo 3 of 3 : UCIP\_FA\_2020\_41815\_35531.jpg



LS view: concrete headwall and CM pipe. Inlet needs cleaning and silt removed.

LM Start	<b>0.39</b>	Rating **	A/W	Issue No.	<b>13</b>
LM End	<b>0.39</b>	Issue Type +	Ma	Location *	
Category	Supplemental		GPS Latitude/Longitude		
			Start	End	
Item	DWR UCIP LMA Responsibility		37.263182 °	37.263182 °	
			-120.288239 °	-120.288239 °	
DWR ID	23061				

**Comment Code**

**Inspector Comment**

DS\_ID:23061  
 FS\_ID:50144  
 EP\_NO: N/A  
 Repair Type: No Action Needed  
 EVAL Issue:  
 Crossing Status: Found  
 UCIP Comments: 09/01/2016: Crossing has been downgraded from Urgent to No Action Needed. (K. Fazel - UCIP)09/01/2016: Not abandoned. LS and WS cleared. Gate swings free. Photos uploaded. (M. Walejko - NA0013)08/23/2016: Same as last inspection. (K. Fazel - UCIP)09/17/2013: Appears to be abandoned. Flapgate blocked by debris.- debris blocked inlet pipe on LS.- Needs to be cleared on both sides or it needs to be abandoned properly. (P. Amatya - UCIP)  
 FIELD\_STRUCT\_DESC: 24-inch corrugated metal gravity drainage pipe through the levee, 10 feet below the crown. Concrete headwall, flap gate, and concrete grouted cobble spillway on the waterside (WS) toe. Concrete headwall on the landside (LS) toe. [Additional Reference(s): DWR Levee Log, 2005. USACE San Joaquin O&M Manual 607, June 1962, (HLM 0.40)].  
 FS Date: 9/1/2016

Photo 1 of 3 : UCIP\_FA\_2020\_50144\_35422.jpg



WS view: U typed concrete headwall, cobble spillway, and channel on waterside.

<b>* Location</b> LS : Land Side    N/A : Not Applicable WS : Water Side CR : Crown	<b>** Rating</b> A : Acceptable M : Minimally Acceptable U : Unacceptable	N : Not Inspected/Rated C : Corrected A/W : Acceptable but Monitor & Maintain	<b>+ Issue Type</b> Ma : Maintenance Deficiency Ob : Design & System Obsolescence En : Enforcement
--	--	---	---



**Flood Control Project Maintenance  
Levee Inspections**

**Levee Inspection Report By Mile - Fall 2020**

**Merced Streams Group**

Waterway	Bank	Unit Miles	Inspection Start/End	Inspector
Unit No. 03 Owens Creek Diversion	Right	1.43	09/22/2020 09/22/2020	Corey Fujitani

LM Start	<b>0.39</b>	Rating **	A/W	Issue No.	<b>13 (cont)</b>
LM End	<b>0.39</b>	Issue Type +	Ma	Location *	
Category	Supplemental		GPS Latitude/Longitude		
			Start	End	
Item	DWR UCIP LMA Responsibility		37.263182 °	37.263182 °	
			-120.288239 °	-120.288239 °	
DWR ID	23061				

Photo 2 of 3 : UCIP\_FA\_2020\_50144\_35421.jpg



WS view: U typed concrete headwall, CM pipe, and flap gate. Damaged flap gate.

LM Start	<b>0.39</b>	Rating **	A/W	Issue No.	<b>13 (cont)</b>
LM End	<b>0.39</b>	Issue Type +	Ma	Location *	

Photo 3 of 3 : UCIP\_FA\_2020\_50144\_35420.jpg



LS view: Debris dumped on inlet structure. Needs to be cleared or abandoned properly.

<b>* Location</b> LS : Land Side    N/A : Not Applicable WS : Water Side CR : Crown	<b>** Rating</b> A : Acceptable M : Minimally Acceptable U : Unacceptable	N : Not Inspected/Rated C : Corrected A/W : Acceptable but Monitor & Maintain	<b>+ Issue Type</b> Ma : Maintenance Deficiency Ob : Design & System Obsolescence En : Enforcement
--	--	---	---

**Flood Control Project Maintenance  
Levee Inspections**

**Levee Inspection Report By Mile - Fall 2020**

**Merced Streams Group**

Waterway	Bank	Unit Miles	Inspection Start/End	Inspector
Unit No. 03 Owens Creek Diversion	Right	1.43	09/22/2020 09/22/2020	Corey Fujitani

LM Start	0.58	Rating **	A/W	Issue No.	14
LM End	0.58	Issue Type +	Ma	Location *	
Category	Supplemental			GPS Latitude/Longitude	
				Start	End
Item	DWR UCIP LMA Responsibility			37.265894 °	37.265894 °
				-120.288295 °	-120.288295 °
DWR ID	23062				

**Comment Code**

**Inspector Comment**

DS\_ID:23062  
FS\_ID:50149  
EP\_NO: N/A  
Repair Type: No Action Needed  
EVAL Issue:  
Crossing Status: Found  
UCIP Comments: 09/29/2016: LS and WS ends have been cleared by Mike Walejko of NA0013. Crossing has been downgraded from Non-Urgent to No Action Needed. (K. Fazel - UCIP)09/2013:- needs clearing and cleaning on inlet and outlet. (P. Amatya - UCIP)  
FIELD\_STRUCT\_DESC: 24-inch corrugated metal gravity drainage pipe through the levee, 7.5 feet below the crown. Concrete headwall, flap gate, and concrete grouted cobble spillway on the waterside (WS) toe. Concrete headwall on the landside (LS) toe. [Additional Reference(s): DWR Levee Log, 2005. USACE San Joaquin O&M Manual 607, June 1962, (HLM 0.59), referenced as 10 feet below the crown].  
FS Date: 9/7/2016

LM Start	<b>0.58</b>	Rating **	A/W	Issue No.	<b>14 (cont)</b>
LM End	<b>0.58</b>	Issue Type +	Ma	Location *	

Photo 1 of 3 : UCIP\_FA\_2020\_50149\_35535.jpg



WS view: cobble spillway and channel on waterside. Dense vegetation on levee slope.

Photo 2 of 3 : UCIP\_FA\_2020\_50149\_35534.jpg



WS view: U typed concrete headwall, CM pipe, and flap gate. Vegetation needs to be cleared.

<b>* Location</b> LS : Land Side    N/A : Not Applicable WS : Water Side CR : Crown	<b>** Rating</b> A : Acceptable M : Minimally Acceptable U : Unacceptable N : Not Inspected/Rated C : Corrected A/W : Acceptable but Monitor & Maintain	<b>+ Issue Type</b> Ma : Maintenance Deficiency Ob : Design & System Obsolescence En : Enforcement
--	---	---

## Merced Streams Group



**Flood Control Project Maintenance  
Levee Inspections**

**Levee Inspection Report By Mile - Fall 2020**

**Merced Streams Group**

Waterway	Bank	Unit Miles	Inspection Start/End	Inspector
Unit No. 03 Owens Creek Diversion	Right	1.43	09/22/2020 09/22/2020	Corey Fujitani

LM Start	<b>0.79</b>	Rating **	A/W	Issue No.	<b>15 (cont)</b>
LM End	<b>0.79</b>	Issue Type +	Ma	Location *	
Category	Supplemental		GPS Latitude/Longitude		
			Start	End	
Item	DWR UCIP LMA Responsibility		37.268420 °	37.268420 °	
			-120.286231 °	-120.286231 °	
DWR ID	23063				

Photo 2 of 3 : UCIP\_FA\_2020\_50151\_35538.jpg



WS view: U typed concrete headwall, CM pipe, and flap gate. Vegetation needs to be cleared.

LM Start	<b>0.79</b>	Rating **	A/W	Issue No.	<b>15 (cont)</b>
LM End	<b>0.79</b>	Issue Type +	Ma	Location *	

Photo 3 of 3 : UCIP\_FA\_2020\_50151\_35541.jpg



LS view: concrete headwall and CM pipe.

LM Start	0.99	Rating **	A/W	Issue No.	9
LM End	0.99	Issue Type +	Ma	Location *	CR
Category	Earthen Levee			GPS Latitude/Longitude	
				Start	End
Item	Crown Surface / Depressions / Rutting			37.270874 °	37.270874 °
				-120.284058 °	-120.284058 °
DWR ID	DWR_NA0013_03_f_2017_9				
Comment Code					
C2 : Repair depressions or ruts in the crown or slope.					
Inspector Comment					
Rutting was repaired. Soil appeared to be loosely filled. Monitor for settlement.					

Photo 1 of 1 : FA\_2020\_NA0013\_333\_9\_20200901\_00001.jpg



View of rutted levee crown looking upstream. (Fall 2019)

* Location		** Rating		+ Issue Type	
LS : Land Side	N/A : Not Applicable	A : Acceptable	N : Not Inspected/Rated	Ma : Maintenance Deficiency	
WS : Water Side		M : Minimally Acceptable	C : Corrected	Ob : Design & System Obsolescence	
CR : Crown		U : Unacceptable	A/W : Acceptable but Monitor & Maintain	En : Enforcement	

**Flood Control Project Maintenance  
Levee Inspections**

**Levee Inspection Report By Mile - Fall 2020**

**Merced Streams Group**

Waterway	Bank	Unit Miles	Inspection Start/End	Inspector
Unit No. 03 Owens Creek Diversion	Right	1.43	09/22/2020 09/22/2020	Corey Fujitani

LM Start	1.02	Rating **	M	Issue No.	16
LM End	1.02	Issue Type +	Ma	Location *	
Category	Supplemental			GPS Latitude/Longitude	
				Start	End
Item	DWR UCIP LMA Responsibility			37.271111 °	37.271111 °
				-120.283786 °	-120.283786 °
DWR ID	23064				

**Comment Code**

**Inspector Comment**

DS\_ID:23064  
FS\_ID:50152  
EP\_NO: N/A  
Repair Type: Non-Urgent  
EVAL Issue:  
Crossing Status: Found  
UCIP Comments: 09/29/2016: WS outlet has been cleared by NA0013. Crossing will be downgraded from Non-Urgent to No Action Needed upon receipt of photo showing cleared LS. (K. Fazel - UCIP)09/2013:- vegetations need to be removed from spillway and outlet at flapgate (blocked). It needs clearing.- more than half of inlet pipe was buried in inlet. It needs cleaning & clearing. (P. Amatya - UCIP)  
FIELD\_STRUCT\_DESC: 24-inch corrugated metal gravity drainage pipe through the levee, 5 feet below the crown. Concrete headwall, flap gate, and concrete grouted cobble spillway on the waterside (WS) toe. Concrete headwall on the landside (LS) toe. [Additional Reference(s): DWR Levee Log, 2005. USACE San Joaquin O&M Manual 607, June 1962, (HLM 1.04), O&M Manual reads "HLM 0.04" by mistake].  
FS Date: 9/7/2016

LM Start	<b>1.02</b>	Rating **	M	Issue No.	<b>16 (cont)</b>
LM End	<b>1.02</b>	Issue Type +	Ma	Location *	

Photo 1 of 3 : UCIP\_FA\_2020\_50152\_35544.jpg



WS view: cobble spillway and channel on waterside.

Photo 2 of 3 : UCIP\_FA\_2020\_50152\_35543.jpg



WS view: U typed concrete headwall, CM pipe, and flap gate. Vegetation needs to be cleared.

<b>* Location</b> LS : Land Side    N/A : Not Applicable WS : Water Side CR : Crown	<b>** Rating</b> A : Acceptable M : Minimally Acceptable U : Unacceptable	<b>N : Not Inspected/Rated</b> C : Corrected A/W : Acceptable but Monitor & Maintain	<b>+ Issue Type</b> Ma : Maintenance Deficiency Ob : Design & System Obsolescence En : Enforcement
--	--	--	---



**Flood Control Project Maintenance  
Levee Inspections**

**Levee Inspection Report By Mile - Fall 2020**

**Merced Streams Group**

Waterway	Bank	Unit Miles	Inspection Start/End	Inspector
Unit No. 03 Owens Creek Diversion	Right	1.43	09/22/2020 09/22/2020	Corey Fujitani

LM Start	<b>1.02</b>	Rating **	M	Issue No.	<b>16 (cont)</b>
LM End	<b>1.02</b>	Issue Type +	Ma	Location *	
Category	Supplemental		GPS Latitude/Longitude		
			Start	End	
Item	DWR UCIP LMA Responsibility		37.271111 °	37.271111 °	
			-120.283786 °	-120.283786 °	
DWR ID	23064				

Photo 3 of 3 : UCIP\_FA\_2020\_50152\_35542.jpg



LS view: concrete headwall and CM pipe. Inlet needs clearing &amp;

LM Start	<b>1.15</b>	Rating **	M	Issue No.	<b>17</b>
LM End	<b>1.15</b>	Issue Type +	Ma	Location *	
Category	Supplemental		GPS Latitude/Longitude		
			Start	End	
Item	DWR UCIP LMA Responsibility		37.272193 °	37.272193 °	
			-120.281805 °	-120.281805 °	
DWR ID	23065				

**Comment Code**

**Inspector Comment**

DS\_ID:23065  
 FS\_ID:21063  
 EP\_NO: N/A  
 Repair Type: Non-Urgent  
 EVAL Issue:  
 Crossing Status: Found  
 UCIP Comments: 09/17/2013 - mud and debris from recent channel cleaning needs to be removed from spillway and outlet - inlet pipe needs clearing and cleaning on landside (DWR UCIP - P. Amatya).  
 FIELD\_STRUCT\_DESC: 24-inch corrugated metal gravity drainage pipe through the levee, 6 feet below the crown. Concrete headwall, flap gate, and concrete grouted cobble spillway on the waterside (WS) toe. Concrete headwall on the landside (LS) toe. [Additional Reference(s): DWR Levee Log, 2005. USACE San Joaquin O&M Manual 607, June 1962, (HLM 1.17)].  
 FS Date: 9/17/2013

Photo 1 of 3 : UCIP\_FA\_2020\_21063\_35502.jpg



WS view: U typed concrete headwall, CM pipe, and flap gate buried under mud/debris.

<b>* Location</b> LS : Land Side    N/A : Not Applicable WS : Water Side CR : Crown	<b>** Rating</b> A : Acceptable M : Minimally Acceptable U : Unacceptable	N : Not Inspected/Rated C : Corrected A/W : Acceptable but Monitor & Maintain	<b>+ Issue Type</b> Ma : Maintenance Deficiency Ob : Design & System Obsolescence En : Enforcement
--	--	---	---

**Flood Control Project Maintenance  
Levee Inspections**

**Levee Inspection Report By Mile - Fall 2020**

**Merced Streams Group**

Waterway	Bank	Unit Miles	Inspection Start/End	Inspector
Unit No. 03 Owens Creek Diversion	Right	1.43	09/22/2020 09/22/2020	Corey Fujitani

LM Start	<b>1.15</b>	Rating **	M	Issue No.	<b>17 (cont)</b>
LM End	<b>1.15</b>	Issue Type +	Ma	Location *	
Category	Supplemental		GPS Latitude/Longitude		
			Start	End	
Item	DWR UCIP LMA Responsibility		37.272193 °	37.272193 °	
			-120.281805 °	-120.281805 °	
DWR ID	23065				

Photo 2 of 3 : UCIP\_FA\_2020\_21063\_35501.jpg



LS view: concrete headwall and CM pipe. Inlet needs clearing.

LM Start	<b>1.15</b>	Rating **	M	Issue No.	<b>17 (cont)</b>
LM End	<b>1.15</b>	Issue Type +	Ma	Location *	

Photo 3 of 3 : UCIP\_FA\_2020\_21063\_35500.jpg



LS view: closer view of CM pipe. Inlet needs cleaning & clearing.

LM Start	1.21	Rating **	C	Issue No.	7
LM End	1.25	Issue Type +	Ma	Location *	LS
Category	Earthen Levee			GPS Latitude/Longitude	
				Start	End
Item	Animal Control			37.272539 °	37.272927 °
				-120.280836 °	-120.280302 °
DWR ID	DWR_NA0013_03_f_2016_7				
Comment Code					
A1 : Exterminate rodents and backfill and compact or grout burrows.					
Inspector Comment					

No Photos

<b>* Location</b> LS : Land Side    N/A : Not Applicable WS : Water Side CR : Crown	<b>** Rating</b> A : Acceptable M : Minimally Acceptable U : Unacceptable	N : Not Inspected/Rated C : Corrected A/W : Acceptable but Monitor & Maintain	<b>+ Issue Type</b> Ma : Maintenance Deficiency Ob : Design & System Obsolescence En : Enforcement
--	--	---	---



**Flood Control Project Maintenance  
Levee Inspections**

**Levee Inspection Report By Mile - Fall 2020**

**Merced Streams Group**

Waterway	Bank	Unit Miles	Inspection Start/End	Inspector
Unit No. 03 Owens Creek Diversion	Right	1.43	09/22/2020 09/22/2020	Corey Fujitani

LM Start	1.27	Rating **	M	Issue No.	18	
LM End	1.27	Issue Type +	Ma	Location *		
Category	Supplemental			GPS Latitude/Longitude		
				Start	End	
Item	DWR UCIP LMA Responsibility			37.273082 °	37.273082 °	
				-120.280288 °	-120.280288 °	
DWR ID	23066					
Comment Code						
Inspector Comment						
DS_ID:23066 FS_ID:21064 EP_NO: N/A Repair Type: Non-Urgent EVAL Issue: Crossing Status: Found UCIP Comments: 09/17/2013 - needs clearing and cleaning of vegetations on both ends of the pipe.- needs clearing and cleaning of silt deposited inside of the pipe. (DWR UCIP - P. Amatya) FIELD_STRUCT_DESC: 24-inch corrugated metal gravity drainage pipe through the levee, 4 feet below the crown. Concrete headwall, flap gate, and concrete grouted cobble spillway on the waterside (WS) toe. Concrete headwall on the landside (LS) toe. [Additional Reference(s): DWR Levee Log, 2005. USACE San Joaquin O&M Manual 607, June 1962, (HLM 1.29)]. FS Date: 9/17/2013						

LM Start	<b>1.27</b>	Rating **	M	Issue No.	<b>18 (cont)</b>
LM End	<b>1.27</b>	Issue Type +	Ma	Location *	

Photo 1 of 3 : UCIP\_FA\_2020\_21064\_35506.jpg



WS view: cobble spillway and channel on waterside. Dense vegetation on levee slope and spillway.

Photo 2 of 3 : UCIP\_FA\_2020\_21064\_35505.jpg



WS view: U typed concrete headwall, CM pipe, and flap gate. Vegetation needs to be cleared.

<b>* Location</b> LS : Land Side    N/A : Not Applicable WS : Water Side CR : Crown	<b>** Rating</b> A : Acceptable M : Minimally Acceptable U : Unacceptable	N : Not Inspected/Rated C : Corrected A/W : Acceptable but Monitor & Maintain	<b>+ Issue Type</b> Ma : Maintenance Deficiency Ob : Design & System Obsolescence En : Enforcement
--	--	---	---

**Flood Control Project Maintenance  
Levee Inspections**

**Levee Inspection Report By Mile - Fall 2020**

**Merced Streams Group**

Waterway	Bank	Unit Miles	Inspection Start/End	Inspector
Unit No. 03 Owens Creek Diversion	Right	1.43	09/22/2020 09/22/2020	Corey Fujitani

LM Start	1.27	Rating **	M	Issue No.	18 (cont)
LM End	1.27	Issue Type +	Ma	Location *	
Category	Supplemental			GPS Latitude/Longitude	
				Start	End
Item	DWR UCIP LMA Responsibility			37.273082 °	37.273082 °
				-120.280288 °	-120.280288 °
DWR ID	23066				

Photo 3 of 3 : UCIP\_FA\_2020\_21064\_35504.jpg



LS view: concrete headwall and CM pipe. Inlet needs clearing.

<b>* Location</b> LS : Land Side    N/A : Not Applicable WS : Water Side CR : Crown	<b>** Rating</b> A : Acceptable M : Minimally Acceptable U : Unacceptable  N : Not Inspected/Rated C : Corrected A/W : Acceptable but Monitor & Maintain	<b>+ Issue Type</b> Ma : Maintenance Deficiency Ob : Design & System Obsolescence En : Enforcement
--	---	---

**Flood Control Project Maintenance  
Levee Inspections  
Unit Cover Sheet**

**Merced Streams Group**

Waterway				Bank	Unit Miles
Unit No. 04 Owens Creek Diversion				Left	1.42
	Spring (March - May)	Summer (June - August)	(September - November) Fall	Winter (December - February)	
Unit Maintenance Rating (Fall Only)			A		
Date of Inspection	4/16/2020 - 4/16/2020		9/22/2020 - 9/22/2020		
DWR Inspector	Corey Fujitani		Corey Fujitani		
Accompanied By	Oscar Ortiz Merced County		Oscar Ortiz Merced County		

**Summer & Winter Inspections**

The Local Maintaining Agency (LMA) is responsible for summer and winter inspections. The LMA is required to submit a report regarding summer and winter inspections to the California Department of Water Resources (DWR).

DWR must be informed on the:

- a) completion of the inspection
- b) any changes other than the results of normal maintenance
- c) corrections to deficiencies noted in this report

If additional items are noted, further documentation of those items must also be submitted.

The LMA should submit this information to DWR using the LMA web application tool available at:

<http://cdec.water.ca.gov/lma.html>

If the LMA is unable to submit information on this webpage, please contact DWR for assistance.

*The LMA should submit the information and any associated documentation by September 30 for summer inspections and March 31 for winter inspections.*

**Flood Control Project Maintenance  
Levee Inspections**

**Levee Inspection Report By Mile - Fall 2020**

**Merced Streams Group**

Waterway	Bank	Unit Miles	Inspection Start/End	Inspector
Unit No. 04 Owens Creek Diversion	Left	1.42	09/22/2020 09/22/2020	Corey Fujitani

LM Start	0.08	Rating **	M	Issue No.	10
LM End	0.08	Issue Type +	Ma	Location *	CR
Category	Earthen Levee			GPS Latitude/Longitude	
				Start	End
Item	Crown Surface / Depressions / Rutting			37.273299 °	37.273299 °
				-120.279149 °	-120.279149 °
DWR ID	DWR_NA0013_04_f_2020_10				
Comment Code					
C2 : Repair depressions or ruts in the crown or slope.					
Inspector Comment					
Depression in crown and waterside slope possibly cause by irrigation pipe.					

Photo 1 of 1 : FA\_2020\_NA0013\_334\_10\_20200928\_00029.jpg



View of depression across the levee crown and waterside slope. (Fall 2020)

LM Start	0.11	Rating **	M	Issue No.	12	
LM End	0.11	Issue Type +	Ma	Location *		
Category	Supplemental			GPS Latitude/Longitude		
				Start	End	
Item	DWR UCIP LMA Responsibility			37.273295 °	37.273295 °	
				-120.279673 °	-120.279673 °	
DWR ID	23068					
Comment Code						
Inspector Comment						
DS_ID:23068 FS_ID:42991 EP_NO: N/A Repair Type: Non-Urgent EVAL Issue: Crossing Status: Found UCIP Comments: 09/17/2013 - needs vegetation clearing on both sides. Flapgate blocked by debris on WS. - inlet and outlet need silt clearing and cleaning. (DWR UCIP - P. Amatya) FIELD_STRUCT_DESC: 24-inch corrugated metal gravity drainage pipe through the levee, 5 feet below the crown. Concrete headwall, flap gate, and concrete grouted cobble spillway on the waterside (WS) toe. Concrete headwall on the landside (LS) toe. [Additional Reference(s): DWR Levee Log, 2005. USACE San Joaquin O&M Manual 607, June 1962, (HLM 0.10)]. FS Date: 9/17/2013						

Photo 1 of 3 : UCIP\_FA\_2020\_42991\_35751.jpg



WS view: concrete spillway and channel on waterside. Dense vegetation on levee slope and spillway.

<b>* Location</b> LS : Land Side    N/A : Not Applicable WS : Water Side CR : Crown	<b>** Rating</b> A : Acceptable M : Minimally Acceptable U : Unacceptable	N : Not Inspected/Rated C : Corrected A/W : Acceptable but Monitor & Maintain	<b>+ Issue Type</b> Ma : Maintenance Deficiency Ob : Design & System Obsolescence En : Enforcement
--	--	---	---



**Flood Control Project Maintenance  
Levee Inspections**

**Levee Inspection Report By Mile - Fall 2020**

**Merced Streams Group**

Waterway	Bank	Unit Miles	Inspection Start/End	Inspector
Unit No. 04 Owens Creek Diversion	Left	1.42	09/22/2020 09/22/2020	Corey Fujitani

LM Start	<b>0.11</b>	Rating **	M	Issue No.	<b>12 (cont)</b>
LM End	<b>0.11</b>	Issue Type +	Ma	Location *	
Category	Supplemental		GPS Latitude/Longitude		
			Start	End	
Item	DWR UCIP LMA Responsibility		37.273295 °	37.273295 °	
			-120.279673 °	-120.279673 °	
DWR ID	23068				

Photo 2 of 3 : UCIP\_FA\_2020\_42991\_35750.jpg



WS view: U typed concrete headwall, CM pipe, and flap gate.  
Vegetation and silt need to be cleared.

LM Start	<b>0.11</b>	Rating **	M	Issue No.	<b>12 (cont)</b>
LM End	<b>0.11</b>	Issue Type +	Ma	Location *	

Photo 3 of 3 : UCIP\_FA\_2020\_42991\_35749.jpg



LS view: concrete headwall and CM pipe. Inlet silt needs clearing.

<b>* Location</b> LS : Land Side    N/A : Not Applicable WS : Water Side CR : Crown	<b>** Rating</b> A : Acceptable M : Minimally Acceptable U : Unacceptable	N : Not Inspected/Rated C : Corrected A/W : Acceptable but Monitor & Maintain	<b>+ Issue Type</b> Ma : Maintenance Deficiency Ob : Design & System Obsolescence En : Enforcement
--	--	---	---

**Flood Control Project Maintenance  
Levee Inspections**

**Levee Inspection Report By Mile - Fall 2020**

**Merced Streams Group**

Waterway	Bank	Unit Miles	Inspection Start/End	Inspector
Unit No. 04 Owens Creek Diversion	Left	1.42	09/22/2020 09/22/2020	Corey Fujitani

LM Start	<b>0.18</b>	Rating **	M	Issue No.	<b>13</b>
LM End	<b>0.18</b>	Issue Type +	Ma	Location *	
Category	Supplemental		GPS Latitude/Longitude		
			Start	End	
Item	DWR UCIP LMA Responsibility		37.272437 °	37.272437 °	
			-120.280260 °	-120.280260 °	
DWR ID	23069				

**Comment Code**

**Inspector Comment**

DS\_ID:23069  
FS\_ID:50146  
EP\_NO: N/A  
Repair Type: Non-Urgent  
EVAL Issue:  
Crossing Status: Found  
UCIP Comments: 09/29/2016: WS and LS ends have been cleared. Crossing will be downgraded from Non-Urgent to No Action Needed upon receipt of photo showing cleared LS inlet. (K. Fazel - UCIP)09/2013:- needs vegetation clearing on both sides. Flapgate blocked on WS. - inlet pipe needs clearing on landside. (P. Amaty - UCIP)  
FIELD\_STRUCT\_DESC: 24-inch corrugated metal gravity drainage pipe through the levee, 6 feet below the crown. Concrete headwall, flap gate, and concrete grouted cobble spillway on the waterside (WS) toe. Concrete headwall on the landside (LS) toe. [Additional Reference(s): DWR Levee Log, 2005. USACE San Joaquin O&M Manual 607, June 1962, (HLM 0.17)].  
FS Date: 9/7/2016

LM Start	<b>0.18</b>	Rating **	M	Issue No.	<b>13 (cont)</b>
LM End	<b>0.18</b>	Issue Type +	Ma	Location *	

Photo 1 of 3 : UCIP\_FA\_2020\_50146\_35748.jpg



WS view: U typed concrete headwall, CM pipe, and flap gate. Vegetation needs to be cleared.

Photo 2 of 3 : UCIP\_FA\_2020\_50146\_35747.jpg



LS view: concrete headwall and CM pipe. Inlet needs clearing.

<b>* Location</b> LS : Land Side    N/A : Not Applicable WS : Water Side CR : Crown	<b>** Rating</b> A : Acceptable M : Minimally Acceptable U : Unacceptable	<b>N : Not Inspected/Rated</b> C : Corrected A/W : Acceptable but Monitor & Maintain	<b>+ Issue Type</b> Ma : Maintenance Deficiency Ob : Design & System Obsolescence En : Enforcement
--	--	--	---

**Flood Control Project Maintenance  
Levee Inspections**

**Levee Inspection Report By Mile - Fall 2020**

**Merced Streams Group**

Waterway	Bank	Unit Miles	Inspection Start/End	Inspector
Unit No. 04 Owens Creek Diversion	Left	1.42	09/22/2020 09/22/2020	Corey Fujitani

LM Start	<b>0.18</b>	Rating **	M	Issue No.	<b>13 (cont)</b>
LM End	<b>0.18</b>	Issue Type +	Ma	Location *	
Category	Supplemental		GPS Latitude/Longitude		
			Start	End	
Item	DWR UCIP LMA Responsibility		37.272437 °	37.272437 °	
			-120.280260 °	-120.280260 °	
DWR ID	23069				

Photo 3 of 3 : UCIP\_FA\_2020\_50146\_35746.jpg



LS view: inside view of CM pipe. Inlet pipe needs clearing.

LM Start	<b>0.32</b>	Rating **	M	Issue No.	<b>14</b>
LM End	<b>0.32</b>	Issue Type +	Ma	Location *	
Category	Supplemental		GPS Latitude/Longitude		
			Start	End	
Item	DWR UCIP LMA Responsibility		37.271495 °	37.271495 °	
			-120.282452 °	-120.282452 °	
DWR ID	23070				

**Comment Code**

**Inspector Comment**

DS\_ID:23070  
 FS\_ID:50154  
 EP\_NO: N/A  
 Repair Type: Non-Urgent  
 EVAL Issue:  
 Crossing Status: Found  
 UCIP Comments: 09/29/2016: WS and LS ends have been cleared by Mike Walejko of NA0013. Crossing will be downgraded from Non-Urgent to No Action Needed upon receipt of photo showing cleared LS inlet. (K. Fazel - UCIP)09/2013:- needs vegetation clearing on waterside.- inlet on landside needs clearing. (P. Amatya - UCIP)  
 FIELD\_STRUCT\_DESC: 24-inch corrugated metal gravity drainage pipe through the levee, 6 feet below the crown. Concrete headwall, flap gate, and concrete grouted cobble spillway on the waterside (WS) toe. Concrete headwall on the landside (LS) toe. [Additional Reference(s): DWR Levee Log, 2005. USACE San Joaquin O&M Manual 607, June 1962, (HLM 0.31)].  
 FS Date: 9/7/2016

Photo 1 of 3 : UCIP\_FA\_2020\_50154\_35608.jpg



WS view: Dense vegetation on levee slope and spillway.

<b>* Location</b> LS : Land Side    N/A : Not Applicable WS : Water Side CR : Crown	<b>** Rating</b> A : Acceptable M : Minimally Acceptable U : Unacceptable	<b>N : Not Inspected/Rated</b> C : Corrected A/W : Acceptable but Monitor & Maintain	<b>+ Issue Type</b> Ma : Maintenance Deficiency Ob : Design & System Obsolescence En : Enforcement
--	--	--	---



**Flood Control Project Maintenance  
Levee Inspections**

**Levee Inspection Report By Mile - Fall 2020**

**Merced Streams Group**

Waterway	Bank	Unit Miles	Inspection Start/End	Inspector
Unit No. 04 Owens Creek Diversion	Left	1.42	09/22/2020 09/22/2020	Corey Fujitani

LM Start	<b>0.32</b>	Rating **	M	Issue No.	<b>14 (cont)</b>
LM End	<b>0.32</b>	Issue Type +	Ma	Location *	
Category	Supplemental		GPS Latitude/Longitude		
			Start	End	
Item	DWR UCIP LMA Responsibility		37.271495 °	37.271495 °	
			-120.282452 °	-120.282452 °	
DWR ID	23070				

Photo 2 of 3 : UCIP\_FA\_2020\_50154\_35607.jpg



WS view: U typed concrete headwall, CM pipe, and flap gate. Vegetation needs to be cleared on spillway.

LM Start	<b>0.32</b>	Rating **	M	Issue No.	<b>14 (cont)</b>
LM End	<b>0.32</b>	Issue Type +	Ma	Location *	

Photo 3 of 3 : UCIP\_FA\_2020\_50154\_35606.jpg



WS view: CM pipe and flap gate. Vegetation needs to be cleared.

<b>* Location</b> LS : Land Side    N/A : Not Applicable WS : Water Side CR : Crown	<b>** Rating</b> A : Acceptable M : Minimally Acceptable U : Unacceptable	N : Not Inspected/Rated C : Corrected A/W : Acceptable but Monitor & Maintain	<b>+ Issue Type</b> Ma : Maintenance Deficiency Ob : Design & System Obsolescence En : Enforcement
--	--	---	---



**Flood Control Project Maintenance  
Levee Inspections**

**Levee Inspection Report By Mile - Fall 2020**

**Merced Streams Group**

Waterway	Bank	Unit Miles	Inspection Start/End	Inspector
Unit No. 04 Owens Creek Diversion	Left	1.42	09/22/2020 09/22/2020	Corey Fujitani

LM Start	0.45	Rating **	A/W	Issue No.	15
LM End	0.45	Issue Type +	Ma	Location *	
Category	Supplemental			GPS Latitude/Longitude	
				Start	End
Item	DWR UCIP LMA Responsibility			37.270318 °	37.270318 °
				-120.284222 °	-120.284222 °
DWR ID	23071				

**Comment Code**

**Inspector Comment**

DS\_ID:23071  
FS\_ID:50148  
EP\_NO: N/A  
Repair Type: No Action Needed  
EVAL Issue:  
Crossing Status: Found  
UCIP Comments: 09/29/2016: WS headwall, flap gate and spillway have been cleared of vegetation by Mike Walejko of NA0013. Crossing has been downgraded from Non-Urgent to No Action Needed. (K. Fazel - UCIP)09/2013:- vegetations clearing on spillway area. (P. Amatya - UCIP)  
FIELD\_STRUCT\_DESC: 24-inch corrugated metal gravity drainage pipe through the levee, 5 feet below the crown. Concrete headwall, flap gate, and concrete grouted cobble spillway on the waterside (WS) toe. Concrete headwall on the landside (LS) toe. [Additional Reference(s): DWR Levee Log, 2005. USACE San Joaquin O&M Manual 607, June 1962, (HLM 0.45)].  
FS Date: 9/7/2016

LM Start	<b>0.45</b>	Rating **	A/W	Issue No.	<b>15 (cont)</b>
LM End	<b>0.45</b>	Issue Type +	Ma	Location *	

Photo 1 of 3 : UCIP\_FA\_2020\_50148\_35613.jpg



WS view: Dense vegetation on levee slope and spillway.

Photo 2 of 3 : UCIP\_FA\_2020\_50148\_35612.jpg



WS view: U typed concrete headwall, CM pipe, and flap gate.

<b>* Location</b> LS : Land Side    N/A : Not Applicable WS : Water Side CR : Crown		<b>** Rating</b> A : Acceptable M : Minimally Acceptable U : Unacceptable N : Not Inspected/Rated C : Corrected A/W : Acceptable but Monitor & Maintain		<b>+ Issue Type</b> Ma : Maintenance Deficiency Ob : Design & System Obsolescence En : Enforcement	
--	--	---	--	---	--

**Flood Control Project Maintenance  
Levee Inspections**

**Levee Inspection Report By Mile - Fall 2020**

**Merced Streams Group**

Waterway	Bank	Unit Miles	Inspection Start/End	Inspector
Unit No. 04 Owens Creek Diversion	Left	1.42	09/22/2020 09/22/2020	Corey Fujitani

LM Start	<b>0.45</b>	Rating **	A/W	Issue No.	<b>15 (cont)</b>
LM End	<b>0.45</b>	Issue Type +	Ma	Location *	
Category	Supplemental		GPS Latitude/Longitude		
			Start	End	
Item	DWR UCIP LMA Responsibility		37.270318 °	37.270318 °	
			-120.284222 °	-120.284222 °	
DWR ID	23071				

Photo 3 of 3 : UCIP\_FA\_2020\_50148\_35611.jpg



LS view: concrete headwall and CM pipe.

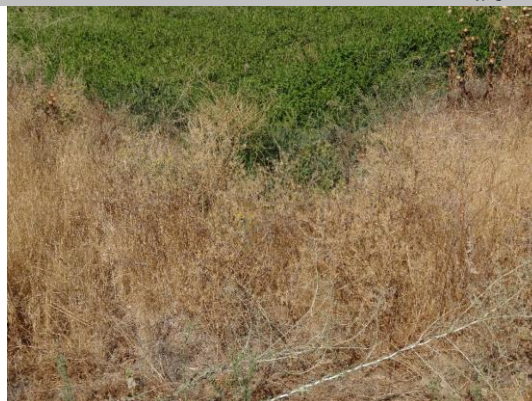
LM Start	<b>0.58</b>	Rating **	M	Issue No.	<b>16</b>
LM End	<b>0.58</b>	Issue Type +	Ma	Location *	
Category	Supplemental		GPS Latitude/Longitude		
			Start	End	
Item	DWR UCIP LMA Responsibility		37.268705 °	37.268705 °	
			-120.285546 °	-120.285546 °	
DWR ID	23072				

**Comment Code**

**Inspector Comment**

DS\_ID:23072  
 FS\_ID:50155  
 EP\_NO: N/A  
 Repair Type: Non-Urgent  
 EVAL Issue:  
 Crossing Status: Found  
 UCIP Comments: 09/29/2016: WS cleared by NA0013. Crossing will be downgraded from Non-Urgent to No Action Needed upon receipt of photo showing cleared LS inlet. (K. Fazel - UCIP)09/2013:- needs vegetation clearing on both levee sides. (P. Amaty - UCIP)  
 FIELD\_STRUCT\_DESC: 24-inch corrugated metal gravity drainage pipe through the levee, 6 feet below the crown. Concrete headwall, flap gate, and concrete grouted cobble spillway on the waterside (WS) toe. Concrete headwall on the landside (LS) toe. [Additional Reference(s): DWR Levee Log, 2005. USACE San Joaquin O&M Manual 607, June 1962, (HLM 0.58)].  
 FS Date: 9/7/2016

Photo 1 of 3 : UCIP\_FA\_2020\_50155\_35642.jpg



WS view: Dense vegetation on levee slope and spillway.

<b>* Location</b> LS : Land Side    N/A : Not Applicable WS : Water Side CR : Crown	<b>** Rating</b> A : Acceptable M : Minimally Acceptable U : Unacceptable N : Not Inspected/Rated C : Corrected A/W : Acceptable but Monitor & Maintain	<b>+ Issue Type</b> Ma : Maintenance Deficiency Ob : Design & System Obsolescence En : Enforcement
--	---	---

**Flood Control Project Maintenance  
Levee Inspections**

**Levee Inspection Report By Mile - Fall 2020**

**Merced Streams Group**

Waterway	Bank	Unit Miles	Inspection Start/End	Inspector
Unit No. 04 Owens Creek Diversion	Left	1.42	09/22/2020 09/22/2020	Corey Fujitani

LM Start	<b>0.58</b>	Rating **	M	Issue No.	<b>16 (cont)</b>
LM End	<b>0.58</b>	Issue Type +	Ma	Location *	
Category	Supplemental		GPS Latitude/Longitude		
			Start	End	
Item	DWR UCIP LMA Responsibility		37.268705 °	37.268705 °	
			-120.285546 °	-120.285546 °	
DWR ID	23072				

Photo 2 of 3 : UCIP\_FA\_2020\_50155\_35641.jpg



WS view: U typed concrete headwall, CM pipe, and flap gate. Vegetation needs to be cleared.

LM Start	<b>0.58</b>	Rating **	M	Issue No.	<b>16 (cont)</b>
LM End	<b>0.58</b>	Issue Type +	Ma	Location *	

Photo 3 of 3 : UCIP\_FA\_2020\_50155\_35640.jpg



WS view: CM pipe and flap gate. Vegetation needs to be cleared.

<b>* Location</b> LS : Land Side    N/A : Not Applicable WS : Water Side CR : Crown	<b>** Rating</b> A : Acceptable M : Minimally Acceptable U : Unacceptable	N : Not Inspected/Rated C : Corrected A/W : Acceptable but Monitor & Maintain	<b>+ Issue Type</b> Ma : Maintenance Deficiency Ob : Design & System Obsolescence En : Enforcement
--	--	---	---



**Flood Control Project Maintenance  
Levee Inspections**

**Levee Inspection Report By Mile - Fall 2020**

**Merced Streams Group**

Waterway	Bank	Unit Miles	Inspection Start/End	Inspector
Unit No. 04 Owens Creek Diversion	Left	1.42	09/22/2020 09/22/2020	Corey Fujitani

LM Start	0.81	Rating **	M	Issue No.	17	
LM End	0.81	Issue Type +	Ma	Location *		
Category	Supplemental			GPS Latitude/Longitude		
				Start	End	
Item	DWR UCIP LMA Responsibility			37.265948 °	37.265948 °	
				-120.287790 °	-120.287790 °	
DWR ID	23073					
Comment Code						
Inspector Comment						
DS_ID:23073 FS_ID:21126 EP_NO: N/A Repair Type: Non-Urgent EVAL Issue: Crossing Status: Found UCIP Comments: 09/17/2013 - needs vegetation clearing on waterside.- concrete spillway on waterside.- the drainage was working during field survey. (DWR UCIP - P. Amatya) FIELD_STRUCT_DESC: 24-inch corrugated metal gravity drainage pipe through the levee, 6 feet below the crown. Concrete headwall, flap gate, and concrete grouted cobble spillway on the waterside (WS) toe. Concrete headwall on the landside (LS) toe. [Additional Reference(s): DWR Levee Log, 2005. USACE San Joaquin O&M Manual 607, June 1962, (HLM 0.82)]. FS Date: 9/17/2013						

LM Start	<b>0.81</b>	Rating **	M	Issue No.	<b>17 (cont)</b>
LM End	<b>0.81</b>	Issue Type +	Ma	Location *	

Photo 1 of 3 : UCIP\_FA\_2020\_21126\_35652.jpg



WS view: concrete spillway and channel on waterside. Dense vegetation on levee slope and spillway.

Photo 2 of 3 : UCIP\_FA\_2020\_21126\_35651.jpg



WS view: U typed concrete headwall, CM pipe, and flap gate. Vegetation needs to be cleared on spillway.

<b>* Location</b> LS : Land Side    N/A : Not Applicable WS : Water Side CR : Crown	<b>** Rating</b> A : Acceptable M : Minimally Acceptable U : Unacceptable	N : Not Inspected/Rated C : Corrected A/W : Acceptable but Monitor & Maintain	<b>+ Issue Type</b> Ma : Maintenance Deficiency Ob : Design & System Obsolescence En : Enforcement
--	--	---	---



**Flood Control Project Maintenance  
Levee Inspections**

**Levee Inspection Report By Mile - Fall 2020**

**Merced Streams Group**

Waterway	Bank	Unit Miles	Inspection Start/End	Inspector
Unit No. 04 Owens Creek Diversion	Left	1.42	09/22/2020 09/22/2020	Corey Fujitani

LM Start	<b>0.81</b>	Rating **	M	Issue No.	<b>17 (cont)</b>
LM End	<b>0.81</b>	Issue Type +	Ma	Location *	
Category	Supplemental		GPS Latitude/Longitude		
			Start	End	
Item	DWR UCIP LMA Responsibility		37.265948 °	37.265948 °	
			-120.287790 °	-120.287790 °	
DWR ID	23073				

Photo 3 of 3 : UCIP\_FA\_2020\_21126\_35654.jpg



LS view: concrete headwall and CM pipe. Drain pipe was working during field survey.

LM Start	0.99	Rating **	M	Issue No.	11
LM End	0.99	Issue Type +	En	Location *	LS
Category	Earthen Levee			GPS Latitude/Longitude	
				Start	End
Item	Encroachments			37.263343 °	37.263343 °
				-120.287845 °	-120.287845 °
DWR ID	DWR_NA0013_04_f_2020_11				
Comment Code					
EQ : Equipment					
Inspector Comment					
Pipe being stored on LS shoulder.					

No Photos

<b>* Location</b> LS : Land Side    N/A : Not Applicable WS : Water Side CR : Crown	<b>** Rating</b> A : Acceptable M : Minimally Acceptable U : Unacceptable	N : Not Inspected/Rated C : Corrected A/W : Acceptable but Monitor & Maintain	<b>+ Issue Type</b> Ma : Maintenance Deficiency Ob : Design & System Obsolescence En : Enforcement
--	--	---	---

**Flood Control Project Maintenance  
Levee Inspections**

**Levee Inspection Report By Mile - Fall 2020**

**Merced Streams Group**

Waterway	Bank	Unit Miles	Inspection Start/End	Inspector
Unit No. 04 Owens Creek Diversion	Left	1.42	09/22/2020 09/22/2020	Corey Fujitani

LM Start	1.01	Rating **	A/W	Issue No.	18	
LM End	1.01	Issue Type +	Ma	Location *		
Category	Supplemental			GPS Latitude/Longitude		
				Start		End
Item	DWR UCIP LMA Responsibility			37.263139 °	37.263139 °	
				-120.287799 °	-120.287799 °	
DWR ID	23074					
Comment Code						
Inspector Comment						
DS_ID:23074 FS_ID:21127 EP_NO: N/A Repair Type: No Action Needed EVAL Issue: Crossing Status: Found UCIP Comments: 09/17/2013 - concrete spillway on waterside.- drainage was working during field survey (DWR UCIP - P. Amatya). FIELD_STRUCT_DESC: 24-inch corrugated metal gravity drainage pipe through the levee, 8 feet below the crown. Concrete headwall, flap gate, and concrete grouted cobble spillway on the waterside (WS) toe. Concrete headwall on the landside (LS) toe. [Additional Reference(s): DWR Levee Log, 2005. USACE San Joaquin O&M Manual 607, June 1962, (HLM 1.02)]. FS Date: 9/17/2013						

LM Start	<b>1.01</b>	Rating **	A/W	Issue No.	<b>18 (cont)</b>
LM End	<b>1.01</b>	Issue Type +	Ma	Location *	

Photo 1 of 3 : UCIP\_FA\_2020\_21127\_35657.jpg



WS view: U typed concrete headwall and channel on waterside.

Photo 2 of 3 : UCIP\_FA\_2020\_21127\_35656.jpg



WS view: concrete headwall and concrete spillway on waterside.

<b>* Location</b> LS : Land Side    N/A : Not Applicable WS : Water Side CR : Crown	<b>** Rating</b> A : Acceptable M : Minimally Acceptable U : Unacceptable	N : Not Inspected/Rated C : Corrected A/W : Acceptable but Monitor & Maintain	<b>+ Issue Type</b> Ma : Maintenance Deficiency Ob : Design & System Obsolescence En : Enforcement
--	--	---	---

**Flood Control Project Maintenance  
Levee Inspections**

**Levee Inspection Report By Mile - Fall 2020**

**Merced Streams Group**

Waterway	Bank	Unit Miles	Inspection Start/End	Inspector
Unit No. 04 Owens Creek Diversion	Left	1.42	09/22/2020 09/22/2020	Corey Fujitani

LM Start	<b>1.01</b>	Rating **	A/W	Issue No.	<b>18 (cont)</b>
LM End	<b>1.01</b>	Issue Type +	Ma	Location *	
Category	Supplemental		GPS Latitude/Longitude		
			Start	End	
Item	DWR UCIP LMA Responsibility		37.263139 °	37.263139 °	
			-120.287799 °	-120.287799 °	
DWR ID	23074				

Photo 3 of 3 : UCIP\_FA\_2020\_21127\_35655.jpg



WS view: U typed concrete headwall, CM pipe, and flap gate. Drainage was working during survey.

LM Start	<b>1.08</b>	Rating **	M	Issue No.	<b>19</b>
LM End	<b>1.08</b>	Issue Type +	Ma	Location *	
Category	Supplemental		GPS Latitude/Longitude		
			Start	End	
Item	DWR UCIP LMA Responsibility		37.262207 °	37.262207 °	
			-120.288149 °	-120.288149 °	
DWR ID	23075				

**Comment Code**

**Inspector Comment**

DS\_ID:23075  
FS\_ID:52888  
EP\_NO: N/A  
Repair Type: Non-Urgent  
EVAL Issue:  
Crossing Status: Found  
UCIP Comments: 09/17/2013 - needs clearing on both inlet and outlet.

- needs vegetations clearing on spillway on waterside and inlet on landside. (DWR UCIP - P. Amatya)  
FIELD\_STRUCT\_DESC: 24-inch corrugated metal gravity drainage pipe through the levee, 10 feet below the crown. Concrete headwall, flap gate, and concrete grouted cobble spillway on the waterside (WS) toe. Concrete headwall on the landside (LS) toe. [Additional Reference(s): DWR Levee Log, 2005. USACE San Joaquin O&M Manual 607, June 1962, (HLM 1.10)].  
FS Date: 9/17/2013

Photo 1 of 3 : UCIP\_FA\_2020\_52888\_35709.jpg



WS view: concrete spillway and channel on waterside. Dense vegetation on levee slope and spillway.

<b>* Location</b> LS : Land Side    N/A : Not Applicable WS : Water Side CR : Crown	<b>** Rating</b> A : Acceptable M : Minimally Acceptable U : Unacceptable	<b>N : Not Inspected/Rated</b> C : Corrected A/W : Acceptable but Monitor & Maintain	<b>+ Issue Type</b> Ma : Maintenance Deficiency Ob : Design & System Obsolescence En : Enforcement
--	--	--	---



**Flood Control Project Maintenance  
Levee Inspections**

**Levee Inspection Report By Mile - Fall 2020**

**Merced Streams Group**

Waterway	Bank	Unit Miles	Inspection Start/End	Inspector
Unit No. 04 Owens Creek Diversion	Left	1.42	09/22/2020 09/22/2020	Corey Fujitani

LM Start	<b>1.08</b>	Rating **	M	Issue No.	<b>19 (cont)</b>
LM End	<b>1.08</b>	Issue Type +	Ma	Location *	
Category	Supplemental		GPS Latitude/Longitude		
			Start	End	
Item	DWR UCIP LMA Responsibility		37.262207 °	37.262207 °	
			-120.288149 °	-120.288149 °	
DWR ID	23075				

Photo 2 of 3 : UCIP\_FA\_2020\_52888\_35708.jpg



WS view: U typed concrete headwall, CM pipe, and flap gate. Spillway needs to be cleared.

LM Start	<b>1.08</b>	Rating **	M	Issue No.	<b>19 (cont)</b>
LM End	<b>1.08</b>	Issue Type +	Ma	Location *	

Photo 3 of 3 : UCIP\_FA\_2020\_52888\_35707.jpg



LS view: concrete headwall and CM pipe. Inlet silt needs clearing.

<b>* Location</b> LS : Land Side    N/A : Not Applicable WS : Water Side CR : Crown	<b>** Rating</b> A : Acceptable M : Minimally Acceptable U : Unacceptable	N : Not Inspected/Rated C : Corrected A/W : Acceptable but Monitor & Maintain	<b>+ Issue Type</b> Ma : Maintenance Deficiency Ob : Design & System Obsolescence En : Enforcement
--	--	---	---



**Flood Control Project Maintenance  
Levee Inspections**

**Levee Inspection Report By Mile - Fall 2020**

**Merced Streams Group**

Waterway	Bank	Unit Miles	Inspection Start/End	Inspector
Unit No. 04 Owens Creek Diversion	Left	1.42	09/22/2020 09/22/2020	Corey Fujitani

LM Start	1.21	Rating **	A/W	Issue No.	20	
LM End	1.21	Issue Type +	Ma	Location *		
Category	Supplemental			GPS Latitude/Longitude		
				Start	End	
Item	DWR UCIP LMA Responsibility			37.260250 °	37.260250 °	
				-120.288141 °	-120.288141 °	
DWR ID	23076					
Comment Code						
Inspector Comment						
DS_ID:23076 FS_ID:50153 EP_NO: N/A Repair Type: No Action Needed EVAL Issue: Crossing Status: Found UCIP Comments: 09/01/2016: Per Mike Walejko, WS outlet has been cleared. See photos. Crossing has been downgraded from Urgent to No Action Needed. (K. Fazel - UCIP)08/23/2016: LS inlet is clear. WS outlet is still buried. Cracks on crown characteristic of entire left bank and not associated with the crossing at this location. (K. Fazel - UCIP)09/17/2013:- significant levee crown and slope cracks along the pipe. Detailed investigation required.- inlet pipe burried on landside. Needs removal of silts. Needs clearing and cleaning.- half of outlet pipe buried. Needs clearing and removal of vegetations and silts. (P. Amatya - UCIP) FIELD_STRUCT_DESC: 24-inch corrugated metal gravity drainage pipe through the levee, 10 feet below the crown. Concrete headwall, flap gate, and concrete grouted cobble spillway on the waterside (WS) toe. Concrete headwall on the landside (LS) toe. [Additional Reference(s): DWR Levee Log, 2005. USACE San Joaquin O&M Manual 607, June 1962, (HLM 1.24)]. FS Date: 9/1/2016						

LM Start	1.21	Rating **	A/W	Issue No.	20 (cont)
LM End	1.21	Issue Type +	Ma	Location *	

Photo 1 of 3 : UCIP\_FA\_2020\_50153\_35745.jpg



WS view: U typed concrete headwall, CM pipe, and flap gate. Dirt and vegetations need to be removed and cleared.

Photo 2 of 3 : UCIP\_FA\_2020\_50153\_35744.jpg



WS view: significant levee cracks along the pipe alignment. Needs detailed investigation on the issue.

<b>* Location</b> LS : Land Side    N/A : Not Applicable WS : Water Side CR : Crown	<b>** Rating</b> A : Acceptable M : Minimally Acceptable U : Unacceptable	N : Not Inspected/Rated C : Corrected A/W : Acceptable but Monitor & Maintain	<b>+ Issue Type</b> Ma : Maintenance Deficiency Ob : Design & System Obsolescence En : Enforcement
--	--	---	---

**Flood Control Project Maintenance  
Levee Inspections**

**Levee Inspection Report By Mile - Fall 2020**

**Merced Streams Group**

Waterway	Bank	Unit Miles	Inspection Start/End	Inspector
Unit No. 04 Owens Creek Diversion	Left	1.42	09/22/2020 09/22/2020	Corey Fujitani

LM Start	1.21	Rating **	A/W	Issue No.	20 (cont)	
LM End	1.21	Issue Type +	Ma	Location *		
Category	Supplemental			GPS Latitude/Longitude		
				Start		End
Item	DWR UCIP LMA Responsibility			37.260250 °		37.260250 °
				-120.288141 °		-120.288141 °
DWR ID	23076					

Photo 3 of 3 : UCIP\_FA\_2020\_50153\_35743.jpg



LS view: concrete headwall and buried CM pipe. Dirt removal and clearing needed in inlet.

<b>* Location</b> LS : Land Side    N/A : Not Applicable WS : Water Side CR : Crown	<b>** Rating</b> A : Acceptable M : Minimally Acceptable U : Unacceptable N : Not Inspected/Rated C : Corrected A/W : Acceptable but Monitor & Maintain	<b>+ Issue Type</b> Ma : Maintenance Deficiency Ob : Design & System Obsolescence En : Enforcement
--	---	---