

**Flood Control Project Maintenance  
Levee Inspections**

**Fall 2018 Levee Maintenance Deficiency Summary Report**

**Overall LMA & Unit Ratings, including DWR Erosion Survey**

***San Joaquin River Basin***

<b>NA0013</b>	Overall LMA Rating	Total LMA Miles						
<b>Merced Streams Group</b>	<b>U</b>	<b>6.31</b>						
Rated Item	Maintenance Deficiency				Enforcement		Design & System Obsolescence	
	M Miles	U Miles	M + 4U Miles	Threshold %	M Miles	U Miles	M Miles	U Miles
<i>Earthen Levee</i>								
Vegetation	0.62	1.09	4.98	78.96%				
Trim / Thin Trees	0.02		0.02	0.32%				
Encroachments	0.01		0.01	0.16%	0.23	0.02		
Animal Control	1.08		1.08	17.12%				
Slope Stability	0.01		0.01	0.16%				
Erosion / Bank Caving	0.02		0.02	0.32%				
Crown Surface / Depressions / Rutting	1.22		1.22	19.34%				
<i>Supplemental</i>								
DWR UCIP Field Study					0.02			
DWR UCIP LMA Responsibility								
<i>LMA Totals:</i>	2.98	1.09	7.34	116.38%	0.25	0.02	0.00	0.00
<b>Unit No. 01 Black Rascal Diversion RB</b>	Overall Unit Rating	Total Unit Miles						
<b>NA0013</b>	<b>M</b>	<b>1.61</b>						
Rated Item	Maintenance Deficiency				Enforcement		Design & System Obsolescence	
	M Miles	U Miles	M + 4U Miles	Threshold %	M Miles	U Miles	M Miles	U Miles
<i>Earthen Levee</i>								
Vegetation		0.05	0.20	12.40%				
Trim / Thin Trees	0.01		0.01	0.62%				
Encroachments					0.01			
<i>Supplemental</i>								
DWR UCIP Field Study					0.01			
<i>Unit Totals:</i>	0.01	0.05	0.21	13.02%	0.02	0.00	0.00	0.00
<b>Unit No. 02 Black Rascal Diversion LB</b>	Overall Unit Rating	Total Unit Miles						
<b>NA0013</b>	<b>U</b>	<b>1.85</b>						
Rated Item	Maintenance Deficiency				Enforcement		Design & System Obsolescence	
	M Miles	U Miles	M + 4U Miles	Threshold %	M Miles	U Miles	M Miles	U Miles
<i>Earthen Levee</i>								
Vegetation	0.19		0.19	10.27%				
Encroachments	0.01		0.01	0.54%	0.22	0.02		
Animal Control	0.55		0.55	29.74%				
Slope Stability	0.01		0.01	0.54%				
Erosion / Bank Caving	0.02		0.02	1.08%				
<i>Supplemental</i>								
DWR UCIP Field Study					0.01			
DWR UCIP LMA Responsibility								
<i>Unit Totals:</i>	0.78	0.00	0.78	42.18%	0.23	0.02	0.00	0.00

**Flood Control Project Maintenance  
Levee Inspections**

**Fall 2018 Levee Maintenance Deficiency Summary Report**

**Overall LMA & Unit Ratings, including DWR Erosion Survey**

***San Joaquin River Basin (cont.)***

Unit No. 03 Owens Creek Diversion RB		Overall Unit Rating	Total Unit Miles						
NA0013		<b>U</b>	<b>1.43</b>						
Rated Item	Maintenance Deficiency				Enforcement		Design & System Obsolescence		
	M Miles	U Miles	M + 4U Miles	Threshold %	M Miles	U Miles	M Miles	U Miles	
<i>Earthen Levee</i>									
Vegetation	0.23	0.40	1.83	128.42%					
Trim / Thin Trees	0.01		0.01	0.70%					
Animal Control	0.02		0.02	1.40%					
Crown Surface / Depressions / Rutting	1.22		1.22	85.61%					
<i>Supplemental</i>									
DWR UCIP LMA Responsibility									
<i>Unit Totals:</i>		1.48	0.40	3.08	216.13%	0.00	0.00	0.00	0.00

Unit No. 04 Owens Creek Diversion LB		Overall Unit Rating	Total Unit Miles						
NA0013		<b>U</b>	<b>1.42</b>						
Rated Item	Maintenance Deficiency				Enforcement		Design & System Obsolescence		
	M Miles	U Miles	M + 4U Miles	Threshold %	M Miles	U Miles	M Miles	U Miles	
<i>Earthen Levee</i>									
Vegetation	0.20	0.64	2.76	194.44%					
Animal Control	0.51		0.51	35.93%					
<i>Supplemental</i>									
DWR UCIP LMA Responsibility									
<i>Unit Totals:</i>		0.71	0.64	3.27	230.37%	0.00	0.00	0.00	0.00

**Flood Control Project Maintenance  
Levee Inspections****LMA District Cover Sheet****Fall 2018 Levee Inspection Results****Merced Streams Group**

	Spring (March - May)	Summer ** (June - August)	Fall (September - November)	Winter ** (December - February)
† Overall LMA Rating (Fall Only)			U	

\*\* Non-receipt of Summer or Winter Inspection  
Reports may effect overall annual rating.

†

SPRING INSPECTIONS: Overall maintenance ratings are not determined for the spring inspection results. Individual maintenance deficiencies are rated using the same criteria in the spring and in the fall.

FALL INSPECTIONS: The overall maintenance rating shown above is based on operation and maintenance deficiencies identified within the attached unit inspection reports. This rating is not intended to be an indication of risk.

Comments


**Flood Control Project Maintenance  
Levee Inspections**

**Unit Cover Sheet**

**Fall 2018 Levee Inspection Results**

**Merced Streams Group**

Waterway			Bank	Unit Miles
Unit No. 01 Black Rascal Diversion			Right	1.61
	Spring (March - May)	Summer (June - August)	(September - November) Fall	Winter (December - February)
Unit Maintenance Rating (Fall Only)			<b>M</b>	
Date of Inspection	4/6/2018 - 4/6/2018		10/23/2018 - 10/23/2018	
DWR Inspector	Richard Willoughby		Corey Fujitani	
Accompanied By				

**Summer & Winter Inspections**

The Local Maintaining Agency (LMA) is responsible for summer and winter inspections. The LMA is required to submit a report regarding summer and winter inspections to the California Department of Water Resources (DWR).

DWR must be informed on the:

- a) completion of the inspection
- b) any changes other than the results of normal maintenance
- c) corrections to deficiencies noted in this report

If additional items are noted, further documentation of those items must also be submitted.

The LMA should submit this information to DWR using the LMA web application tool available at:

<http://cdec.water.ca.gov/lma.html>

If the LMA is unable to submit information on this webpage, please contact DWR for assistance.

*The LMA should submit the information and any associated documentation by September 30 for summer inspections and March 31 for winter inspections.*

**Flood Control Project Maintenance  
Levee Inspections**

**Levee Inspection Report By Mile - Fall 2018**

**Merced Streams Group**

Waterway	Bank	Unit Miles	Inspection Start/End	Inspector
Unit No. 01 Black Rascal Diversion	Right	1.61	10/23/2018 10/23/2018	Corey Fujitani

LM Start		Rating **	A	Issue No.	4
LM End		Issue Type +	Ma	Location *	
Category	Earthen Levee			GPS Latitude/Longitude	
				Start	End
Item	Operations & Maintenance Manuals			°	°
				°	°
DWR ID	DWR_NA0013_01_f_2016_4				
Comment Code					
Inspector Comment					
Merced County has a copy of the Operation and Maintenance Manual in their Office.					

No Photos

LM Start		Rating **	A	Issue No.	5
LM End		Issue Type +	Ma	Location *	
Category	Earthen Levee			GPS Latitude/Longitude	
				Start	End
Item	Emergency Supplies & Equipment			°	°
				°	°
DWR ID	DWR_NA0013_01_f_2016_5				
Comment Code					
Inspector Comment					
Merced Streams Group has emergency supplies and equipment on hand.					

No Photos

LM Start		Rating **	A	Issue No.	6
LM End		Issue Type +	Ma	Location *	
Category	Earthen Levee			GPS Latitude/Longitude	
				Start	End
Item	Flood Preparedness & Training			°	°
				°	°
DWR ID	DWR_NA0013_01_f_2016_6				
Comment Code					
Inspector Comment					
Merced Streams Group are Trained and prepared for Flood Fight.					

No Photos

<b>* Location</b> LS : Land Side    N/A : Not Applicable WS : Water Side CR : Crown	<b>** Rating</b> A : Acceptable M : Minimally Acceptable U : Unacceptable	N : Not Inspected/Rated C : Corrected A/W : Acceptable but Monitor & Maintain	<b>+ Issue Type</b> Ma : Maintenance Deficiency Ob : Design & System Obsolescence En : Enforcement
--	--	---	---

**Flood Control Project Maintenance  
Levee Inspections**

**Levee Inspection Report By Mile - Fall 2018**

**Merced Streams Group**

Waterway	Bank	Unit Miles	Inspection Start/End	Inspector
Unit No. 01 Black Rascal Diversion	Right	1.61	10/23/2018 10/23/2018	Corey Fujitani

LM Start	0.02	Rating **	M	Issue No.	11
LM End	0.02	Issue Type +	En	Location *	WS
Category	Earthen Levee			GPS Latitude/Longitude	
				Start	End
Item	Encroachments			37.314942°	37.314942°
				-120.396394°	-120.396394°
DWR ID	DWR_NA0013_01_f_2018_11				
Comment Code					
DE : Debris					
Inspector Comment					
garbage on waterside slope					

Photo 1 of 1 : FA\_2018\_NA0013\_331\_11\_20181108\_00007.jpg



Debris and garbage along waterside slope. (Fall 2018)

LM Start	0.27	Rating **	A/W	Issue No.	8
LM End	1.62	Issue Type +	Ma	Location *	CR
Category	Earthen Levee			GPS Latitude/Longitude	
				Start	End
Item	Crown Surface / Depressions / Rutting			37.318525 °	37.337176 °
				-120.396598 °	-120.396531 °
DWR ID	DWR_NA0013_01_s_2018_8				
Comment Code					
C2 : Repair depressions or ruts in the crown or slope.					
Inspector Comment					
vehicle tracks and rutting on crown					

Photo 1 of 2 : FA\_2018\_NA0013\_331\_8\_20181108\_00010.jpg



View of vehicle tracks on levee crown. (Fall 2018)

LM Start	<b>0.27</b>	Rating **	A/W	Issue No.	<b>8 (cont)</b>
LM End	<b>1.62</b>	Issue Type +	Ma	Location *	CR

Photo 2 of 2 : FA\_2018\_NA0013\_331\_8\_20180905\_00003.jpg



Looking downstream at typical view of levee crown (Spring 2018)

**\* Location**

LS : Land Side    N/A : Not Applicable  
WS : Water Side  
CR : Crown

**\*\* Rating**

A : Acceptable                      N : Not Inspected/Rated  
M : Minimally Acceptable        C : Corrected  
U : Unacceptable                  A/W : Acceptable but Monitor & Maintain

**+ Issue Type**

Ma : Maintenance Deficiency  
Ob : Design & System Obsolescence  
En : Enforcement

**Flood Control Project Maintenance  
Levee Inspections**

**Levee Inspection Report By Mile - Fall 2018**

**Merced Streams Group**

Waterway	Bank	Unit Miles	Inspection Start/End	Inspector
Unit No. 01 Black Rascal Diversion	Right	1.61	10/23/2018 10/23/2018	Corey Fujitani

LM Start	1.29	Rating **	M	Issue No.	12	
LM End	1.29	Issue Type +	En	Location *		
Category	Supplemental			GPS Latitude/Longitude		
				Start	End	
Item	DWR UCIP Field Study			37.332805 °	37.332805 °	
				-120.394906 °	-120.394906 °	
DWR ID	23079					
Comment Code						
Inspector Comment						
FS_ID:41672 DS_ID:23079 EP_NO: N/A Repair Type: Non-Urgent Crossing Status: Indicator Found UCIP Comments: 09/17/2013 Verify Pipe is abandoned or still intact.- may be this crossing was abandoned/removed during recent levee reconstruction.- no signs of pipe and appurtenances on waterside.- only a CM pipe riser with slide gate found on landside. (DWR UCIP - P. Amatya) FIELD_STRUCT_DESC: 36-inch corrugated metal irrigation pipe through the levee, 10 feet below the crown. Riser on the landside (LS). Screw gate in a 48-inch pipe well on the waterside (WS) slope. Concrete headwall and cobble spillway at the LS toe. Concrete headwall at the WS toe. [Additional Reference(s): USACE San Joaquin O&M Manual 607, June 1962, (HLM 1.32)]. FS Date: 9/17/2013						

LM Start	<b>1.29</b>	Rating **	M	Issue No.	<b>12 (cont)</b>
LM End	<b>1.29</b>	Issue Type +	En	Location *	

Photo 1 of 3 : UCIP\_FA\_2018\_41672\_35211.jpg



WS view: no signs of pipe and appurtenances on levee slope and channel bank.

Photo 2 of 3 : UCIP\_FA\_2018\_41672\_35210.jpg



LS view: overview of CM pipe riser with slide gate. Dense vegetation on landside.

<b>* Location</b> LS : Land Side    N/A : Not Applicable WS : Water Side CR : Crown	<b>** Rating</b> A : Acceptable M : Minimally Acceptable U : Unacceptable	N : Not Inspected/Rated C : Corrected A/W : Acceptable but Monitor & Maintain	<b>+ Issue Type</b> Ma : Maintenance Deficiency Ob : Design & System Obsolescence En : Enforcement
--	--	---	---



## Merced Streams Group

Wild blackberry bushes on landside slope. (Fall 2018)

Page 4 of 5



**Flood Control Project Maintenance  
Levee Inspections**

**Levee Inspection Report By Mile - Fall 2018**

**Merced Streams Group**

Waterway	Bank	Unit Miles	Inspection Start/End	Inspector
Unit No. 01 Black Rascal Diversion	Right	1.61	10/23/2018 10/23/2018	Corey Fujitani

LM Start	1.54	Rating **	M	Issue No.	9
LM End	1.54	Issue Type +	Ma	Location *	WS
Category	Earthen Levee			GPS Latitude/Longitude	
				Start	End
Item	Trim / Thin Trees			37.336103°	37.336103°
				-120.396543°	-120.396543°
DWR ID	DWR_NA0013_01_s_2018_9				
Comment Code					
T1 : Trim trees to at least five feet above ground level.					
Inspector Comment					

Photo 1 of 1 : FA\_2018\_NA0013\_331\_9\_20181108\_00012.jpg



trim tree limbs 5 feet above ground surface. (Fall 2018)

LM Start	1.57	Rating **	U	Issue No.	7
LM End	1.61	Issue Type +	Ma	Location *	WS
Category	Earthen Levee			GPS Latitude/Longitude	
				Start	End
Item	Vegetation			37.336576 °	37.337098 °
				-120.396540 °	-120.396528 °
DWR ID	DWR_NA0013_01_s_2018_7				
Comment Code					
V2 : Remove the wild growth other than native grasses from the levee slopes.					
Inspector Comment					
Remove wildroses from waterward slope.					

Photo 1 of 2 : FA\_2018\_NA0013\_331\_7\_20180905\_00001.jpg



LM Start	<b>1.57</b>	Rating **	U	Issue No.	<b>7 (cont)</b>
LM End	<b>1.61</b>	Issue Type +	Ma	Location *	WS

Photo 2 of 2 : FA\_2018\_NA0013\_331\_7\_20180905\_00002.jpg



Looking downstream at wildroses on waterward slope. (Spring 2018)

<b>* Location</b> LS : Land Side    N/A : Not Applicable WS : Water Side CR : Crown		<b>** Rating</b> A : Acceptable M : Minimally Acceptable U : Unacceptable		N : Not Inspected/Rated C : Corrected A/W : Acceptable but Monitor & Maintain		<b>+ Issue Type</b> Ma : Maintenance Deficiency Ob : Design & System Obsolescence En : Enforcement	
--	--	--	--	---	--	---	--

**Flood Control Project Maintenance  
Levee Inspections**

**Unit Cover Sheet**

**Fall 2018 Levee Inspection Results**

**Merced Streams Group**

Waterway			Bank	Unit Miles
Unit No. 02 Black Rascal Diversion			Left	1.85
	Spring (March - May)	Summer (June - August)	(September - November) Fall	Winter (December - February)
Unit Maintenance Rating (Fall Only)			<b>U</b>	
Date of Inspection	4/6/2018 - 4/6/2018		10/23/2018 - 10/23/2018	
DWR Inspector	Richard Willoughby		Corey Fujitani	
Accompanied By				

**Summer & Winter Inspections**

The Local Maintaining Agency (LMA) is responsible for summer and winter inspections. The LMA is required to submit a report regarding summer and winter inspections to the California Department of Water Resources (DWR).

DWR must be informed on the:

- a) completion of the inspection
- b) any changes other than the results of normal maintenance
- c) corrections to deficiencies noted in this report

If additional items are noted, further documentation of those items must also be submitted.

The LMA should submit this information to DWR using the LMA web application tool available at:

<http://cdec.water.ca.gov/lma.html>

If the LMA is unable to submit information on this webpage, please contact DWR for assistance.

*The LMA should submit the information and any associated documentation by September 30 for summer inspections and March 31 for winter inspections.*

**Flood Control Project Maintenance  
Levee Inspections**

**Levee Inspection Report By Mile - Fall 2018**

**Merced Streams Group**

Waterway	Bank	Unit Miles	Inspection Start/End	Inspector
Unit No. 02 Black Rascal Diversion	Left	1.85	10/23/2018 10/23/2018	Corey Fujitani

LM Start	0.00	Rating **	U	Issue No.	2
LM End	0.00	Issue Type +	En	Location *	LS
Category	Earthen Levee			GPS Latitude/Longitude	
				Start	End
Item	Encroachments			37.337034 °	37.337034 °
				-120.387422 °	-120.387422 °
DWR ID	DWR_NA0013_02_f_2012_2				
Comment Code					
PI : Pipe					
Inspector Comment					
There is no CVFPB permit on record for this issue. Merced County Flood Control is aware of this issue.					

LM Start	<b>0.00</b>	Rating **	U	Issue No.	<b>2 (cont)</b>
LM End	<b>0.00</b>	Issue Type +	En	Location *	LS

Photo 1 of 3 : FA\_2018\_NA0013\_332\_2\_20180905\_00001.jpg



There is no CVFPB permit on file for this installation. Photo taken 4-23-2014

Photo 2 of 3 : FA\_2018\_NA0013\_332\_2\_20180905\_00002.jpg



No Permit for this filtration system and tank on the easement. No change since last inspection.

LM Start	<b>0.00</b>	Rating **	U	Issue No.	<b>2 (cont)</b>
LM End	<b>0.00</b>	Issue Type +	En	Location *	LS

Photo 3 of 3 : FA\_2018\_NA0013\_332\_2\_20180905\_00003.jpg



No Permit for this filtration system and tank on the easement. 2016

**\* Location**

LS : Land Side    N/A : Not Applicable  
WS : Water Side  
CR : Crown

**\*\* Rating**

A : Acceptable                      N : Not Inspected/Rated  
M : Minimally Acceptable        C : Corrected  
U : Unacceptable                  A/W : Acceptable but Monitor & Maintain

**+ Issue Type**

Ma : Maintenance Deficiency  
Ob : Design & System Obsolescence  
En : Enforcement

**Flood Control Project Maintenance  
Levee Inspections**

**Levee Inspection Report By Mile - Fall 2018**

**Merced Streams Group**

Waterway	Bank	Unit Miles	Inspection Start/End	Inspector
Unit No. 02 Black Rascal Diversion	Left	1.85	10/23/2018 10/23/2018	Corey Fujitani

LM Start	0.01	Rating **	M	Issue No.	25	
LM End	0.01	Issue Type +	En	Location *		
Category	Supplemental			GPS Latitude/Longitude		
				Start	End	
Item	DWR UCIP Field Study			37.337019 °	37.337019 °	
				-120.387539 °	-120.387539 °	
DWR ID	23052					
Comment Code						
Inspector Comment						
FS_ID:21263						
DS_ID:23052						
EP_NO: N/A						
Repair Type: Non-Urgent						
Crossing Status: Found						
UCIP Comments: 09/17/2013 - needs more investigations on this crossing. - new water filtration plant on LS with pump and concrete vault.- a concrete standpipe and CM pipe riser on WS. (DWR UCIP - P. Amatya)						
FIELD_STRUCT_DESC: 10-inch steel irrigation pipe through the levee, 5 feet below the crown. Riser on the landside (LS). Screw gate in a 36-inch pipe well on the waterside (WS) slope. [Additional Reference(s): DWR Levee Log, 2005. USACE San Joaquin O&M Manual 607, June 1962, (HLM 0.00)].						
FS Date: 9/17/2013						

LM Start	<b>0.01</b>	Rating **	M	Issue No.	<b>25 (cont)</b>
LM End	<b>0.01</b>	Issue Type +	En	Location *	

Photo 1 of 3 : UCIP\_FA\_2018\_21263\_35761.jpg



WS view: concrete standpipe (left) and CMP standpipe (right).

Photo 2 of 3 : UCIP\_FA\_2018\_21263\_35760.jpg



WS view: inside view of CMP standpipe with slide gate.

<b>* Location</b> LS : Land Side    N/A : Not Applicable WS : Water Side CR : Crown	<b>** Rating</b> A : Acceptable M : Minimally Acceptable U : Unacceptable	N : Not Inspected/Rated C : Corrected A/W : Acceptable but Monitor & Maintain	<b>+ Issue Type</b> Ma : Maintenance Deficiency Ob : Design & System Obsolescence En : Enforcement
--	--	---	---



**Flood Control Project Maintenance  
Levee Inspections**

**Levee Inspection Report By Mile - Fall 2018**

**Merced Streams Group**

Waterway	Bank	Unit Miles	Inspection Start/End	Inspector
Unit No. 02 Black Rascal Diversion	Left	1.85	10/23/2018 10/23/2018	Corey Fujitani

LM Start	0.01	Rating **	M	Issue No.	25 (cont)	
LM End	0.01	Issue Type +	En	Location *		
Category	Supplemental			GPS Latitude/Longitude		
				Start		End
Item	DWR UCIP Field Study			37.337019 °		37.337019 °
				-120.387539 °		-120.387539 °
DWR ID	23052					
Comment Code						
Inspector Comment						
FS_ID:21263 DS_ID:23052 EP_NO: N/A Repair Type: Non-Urgent Crossing Status: Found UCIP Comments: 09/17/2013 - needs more investigations on this crossing. - new water filtration plant on LS with pump and concrete vault.- a concrete standpipe and CM pipe riser on WS. (DWR UCIP - P. Amatya) FIELD_STRUCT_DESC: 10-inch steel irrigation pipe through the levee, 5 feet below the crown. Riser on the landside (LS). Screw gate in a 36-inch pipe well on the waterside (WS) slope. [Additional Reference(s): DWR Levee Log, 2005. USACE San Joaquin O&M Manual 607, June 1962, (HLM 0.00)]. FS Date: 9/17/2013						

Photo 3 of 3 : UCIP\_FA\_2018\_21263\_35764.jpg



WS view: concrete standpipe with water ponding at its base.

<b>* Location</b> LS : Land Side    N/A : Not Applicable WS : Water Side CR : Crown	<b>** Rating</b> A : Acceptable M : Minimally Acceptable U : Unacceptable	N : Not Inspected/Rated C : Corrected A/W : Acceptable but Monitor & Maintain	<b>+ Issue Type</b> Ma : Maintenance Deficiency Ob : Design & System Obsolescence En : Enforcement
--	--	---	---

**Flood Control Project Maintenance  
Levee Inspections**

**Levee Inspection Report By Mile - Fall 2018**

**Merced Streams Group**

Waterway	Bank	Unit Miles	Inspection Start/End	Inspector
Unit No. 02 Black Rascal Diversion	Left	1.85	10/23/2018 10/23/2018	Corey Fujitani

LM Start	0.29	Rating **	A/W	Issue No.	26
LM End	0.29	Issue Type +	Ma	Location *	
Category	Supplemental			GPS Latitude/Longitude	
				Start	End
Item	DWR UCIP LMA Responsibility			37.336006 °	37.336006 °
				-120.392011 °	-120.392011 °
DWR ID	23053				
Comment Code					
Inspector Comment					
FS_ID:50156 DS_ID:23053 EP_NO: N/A Repair Type: No Action Needed Crossing Status: Found UCIP Comments: 08/23/2016: LS inlet is clear. WS gate has been cleared of vegetation and functions properly. Crossing has been downgraded from Urgent to No Action Needed. (K. Fazel - UCIP)09/17/2013:- needs vegetation cleaning on both sides.- flap gate was not closed during field survey.- inlet needs cleaning. (P. Amatya - UCIP) FIELD_STRUCT_DESC: 24-inch corrugated metal gravity drainage pipe through the levee, 8 feet below the crown. Concrete headwall, flap gate, and concrete grouted cobble spillway on the waterside (WS) toe. Concrete headwall on the landside (LS) toe. [Additional Reference(s): DWR Levee Log, 2005. USACE San Joaquin O&M Manual 607, June 1962, (HLM 0.29)]. FS Date: 8/23/2016					

LM Start	<b>0.29</b>	Rating **	A/W	Issue No.	<b>26 (cont)</b>
LM End	<b>0.29</b>	Issue Type +	Ma	Location *	

Photo 1 of 3 : UCIP\_FA\_2018\_50156\_35245.jpg



WS view: cobble spillway and channel on waterside.

Photo 2 of 3 : UCIP\_FA\_2018\_50156\_35244.jpg



WS view: U typed concrete headwall, CM pipe, and flap gate. Flap gate was not closed. Vegetation needs to be cleared.

<b>* Location</b> LS : Land Side    N/A : Not Applicable WS : Water Side CR : Crown	<b>** Rating</b> A : Acceptable M : Minimally Acceptable U : Unacceptable	N : Not Inspected/Rated C : Corrected A/W : Acceptable but Monitor & Maintain	<b>+ Issue Type</b> Ma : Maintenance Deficiency Ob : Design & System Obsolescence En : Enforcement
--	--	---	---



**Flood Control Project Maintenance  
Levee Inspections**

**Levee Inspection Report By Mile - Fall 2018**

**Merced Streams Group**

Waterway	Bank	Unit Miles	Inspection Start/End	Inspector
Unit No. 02 Black Rascal Diversion	Left	1.85	10/23/2018 10/23/2018	Corey Fujitani

LM Start	0.29	Rating **	A/W	Issue No.	26 (cont)	
LM End	0.29	Issue Type +	Ma	Location *		
Category	Supplemental			GPS Latitude/Longitude		
				Start	End	
Item	DWR UCIP LMA Responsibility			37.336006 °	37.336006 °	
				-120.392011 °	-120.392011 °	
DWR ID	23053					
Comment Code						
Inspector Comment						
FS_ID:50156 DS_ID:23053 EP_NO: N/A Repair Type: No Action Needed Crossing Status: Found UCIP Comments: 08/23/2016: LS inlet is clear. WS gate has been cleared of vegetation and functions properly. Crossing has been downgraded from Urgent to No Action Needed. (K. Fazel - UCIP)09/17/2013:- needs vegetation cleaning on both sides.- flap gate was not closed during field survey.- inlet needs cleaning. (P. Amatya - UCIP) FIELD_STRUCT_DESC: 24-inch corrugated metal gravity drainage pipe through the levee, 8 feet below the crown. Concrete headwall, flap gate, and concrete grouted cobble spillway on the waterside (WS) toe. Concrete headwall on the landside (LS) toe. [Additional Reference(s): DWR Levee Log, 2005. USACE San Joaquin O&M Manual 607, June 1962, (HLM 0.29)]. FS Date: 8/23/2016						

Photo 3 of 3 : UCIP\_FA\_2018\_50156\_35246.jpg



LS view: concrete headwall and CM pipe. Inlet needs cleaning.

LM Start	0.30	Rating **	M	Issue No.	10
LM End	0.45	Issue Type +	En	Location *	LS
Category	Earthen Levee			GPS Latitude/Longitude	
				Start	End
Item	Encroachments			37.335930 °	37.333810 °
				-120.392072 °	-120.392802 °
DWR ID	DWR_NA0013_02_f_2018_10				
Comment Code					
PR : Prunings					
Inspector Comment					
prunings along landside slope					

Photo 1 of 1 : FA\_2018\_NA0013\_332\_10\_20181108\_00037.jpg



Pruning piles on landside slope. (Fall 2018)

<b>* Location</b> LS : Land Side    N/A : Not Applicable WS : Water Side CR : Crown	<b>** Rating</b> A : Acceptable M : Minimally Acceptable U : Unacceptable	N : Not Inspected/Rated C : Corrected A/W : Acceptable but Monitor & Maintain	<b>+ Issue Type</b> Ma : Maintenance Deficiency Ob : Design & System Obsolescence En : Enforcement
--	--	---	---

**Flood Control Project Maintenance  
Levee Inspections**

**Levee Inspection Report By Mile - Fall 2018**

**Merced Streams Group**

Waterway	Bank	Unit Miles	Inspection Start/End	Inspector
Unit No. 02 Black Rascal Diversion	Left	1.85	10/23/2018 10/23/2018	Corey Fujitani

LM Start	0.51	Rating **	M	Issue No.	12
LM End	0.58	Issue Type +	En	Location *	LS
Category	Earthen Levee			GPS Latitude/Longitude	
				Start	End
Item	Encroachments			37.333459 °	37.332516 °
				-120.393751 °	-120.394158 °
DWR ID	DWR_NA0013_02_f_2018_12				
Comment Code					
PR : Prunings					
Inspector Comment					
pruning on landside slope					

No Photos

LM Start	0.54	Rating **	M	Issue No.	27	
LM End	0.54	Issue Type +	Ma	Location *		
Category	Supplemental			GPS Latitude/Longitude		
				Start		End
Item	DWR UCIP LMA Responsibility			37.333180 °		37.333180 °
				-120.394069 °		-120.394069 °
DWR ID	23054					
Comment Code						
Inspector Comment						
FS_ID:20946 DS_ID:23054 EP_NO: N/A Repair Type: Non-Urgent Crossing Status: Found UCIP Comments: 09/17/2013 - needs vegetation cleaning on both sides.- flap gate was not properly closed during field survey.- inlet needs cleaning. (DWR UCIP - P. Amatya) FIELD_STRUCT_DESC: 24-inch corrugated metal gravity drainage pipe through the levee, 12 feet below the crown. Concrete headwall, flap gate, and concrete grouted cobble spillway on the waterside (WS) toe. Concrete headwall on the landside (LS) toe. [Additional Reference(s): DWR Levee Log, 2005]. FS Date: 9/17/2013						

Photo 1 of 3 : UCIP\_FA\_2018\_20946\_35266.jpg



WS view: cobble spillway and channel on waterside.

<b>* Location</b> LS : Land Side    N/A : Not Applicable WS : Water Side CR : Crown	<b>** Rating</b> A : Acceptable M : Minimally Acceptable U : Unacceptable N : Not Inspected/Rated C : Corrected A/W : Acceptable but Monitor & Maintain	<b>+ Issue Type</b> Ma : Maintenance Deficiency Ob : Design & System Obsolescence En : Enforcement
--	---	---

**Flood Control Project Maintenance  
Levee Inspections**

**Levee Inspection Report By Mile - Fall 2018**

**Merced Streams Group**

Waterway	Bank	Unit Miles	Inspection Start/End	Inspector
Unit No. 02 Black Rascal Diversion	Left	1.85	10/23/2018 10/23/2018	Corey Fujitani

LM Start	0.54	Rating **	M	Issue No.	27 (cont)	
LM End	0.54	Issue Type +	Ma	Location *		
Category	Supplemental			GPS Latitude/Longitude		
				Start	End	
Item	DWR UCIP LMA Responsibility			37.333180 °	37.333180 °	
				-120.394069 °	-120.394069 °	
DWR ID	23054					
Comment Code						
Inspector Comment						
FS_ID:20946 DS_ID:23054 EP_NO: N/A Repair Type: Non-Urgent Crossing Status: Found UCIP Comments: 09/17/2013 - needs vegetation cleaning on both sides.- flap gate was not properly closed during field survey.- inlet needs cleaning. (DWR UCIP - P. Amatya) FIELD_STRUCT_DESC: 24-inch corrugated metal gravity drainage pipe through the levee, 12 feet below the crown. Concrete headwall, flap gate, and concrete grouted cobble spillway on the waterside (WS) toe. Concrete headwall on the landside (LS) toe. [Additional Reference(s): DWR Levee Log, 2005]. FS Date: 9/17/2013						

LM Start	<b>0.54</b>	Rating **	M	Issue No.	<b>27 (cont)</b>
LM End	<b>0.54</b>	Issue Type +	Ma	Location *	

Photo 2 of 3 : UCIP\_FA\_2018\_20946\_35265.jpg



WS view: U typed concrete headwall, CM pipe, and flap gate. Flap gate was not properly closed.

Photo 3 of 3 : UCIP\_FA\_2018\_20946\_35264.jpg



LS view: concrete headwall and CM pipe. Inlet needs cleaning.

<b>* Location</b> LS : Land Side    N/A : Not Applicable WS : Water Side CR : Crown	<b>** Rating</b> A : Acceptable M : Minimally Acceptable U : Unacceptable	N : Not Inspected/Rated C : Corrected A/W : Acceptable but Monitor & Maintain	<b>+ Issue Type</b> Ma : Maintenance Deficiency Ob : Design & System Obsolescence En : Enforcement
--	--	---	---



**Flood Control Project Maintenance  
Levee Inspections**

**Levee Inspection Report By Mile - Fall 2018**

**Merced Streams Group**

Waterway	Bank	Unit Miles	Inspection Start/End	Inspector
Unit No. 02 Black Rascal Diversion	Left	1.85	10/23/2018 10/23/2018	Corey Fujitani

LM Start	0.62	Rating **	C	Issue No.	13
LM End	0.72	Issue Type +	Ma	Location *	CR
Category	Earthen Levee			GPS Latitude/Longitude	
				Start	End
Item	Vegetation			37.331990 °	37.330732 °
				-120.394108 °	-120.394970 °
DWR ID	DWR_NA0013_02_s_2017_13				
Comment Code					
V9 : Keep the crown roadway free of vegetation.					
Inspector Comment					
Keep the crown roadway free of vegetgation.					

No Photos

LM Start	0.64	Rating **	M	Issue No.	19
LM End	0.69	Issue Type +	Ma	Location *	LS
Category	Earthen Levee			GPS Latitude/Longitude	
				Start	End
Item	Vegetation			37.331678 °	37.331128 °
				-120.394287 °	-120.394670 °
DWR ID	DWR_NA0013_02_f_2018_19				
Comment Code					
V1 : Control annual grass and weeds on the levee slopes and easements.					
Inspector Comment					
patches of tall grass partially blocking view of landside slope					

Photo 1 of 1 : FA\_2018\_NA0013\_332\_19\_20181108\_00038.jpg



View of landside slope looking downstream. (Fall 2018)

LM Start	0.65	Rating **	C	Issue No.	14
LM End	0.92	Issue Type +	Ma	Location *	CR
Category	Earthen Levee			GPS Latitude/Longitude	
				Start	End
Item	Crown Surface / Depressions / Rutting			37.331592 °	37.328082 °
				-120.394317 °	-120.396098 °
DWR ID	DWR_NA0013_02_s_2017_14				
Comment Code					
C2 : Repair depressions or ruts in the crown or slope.					
Inspector Comment					

No Photos

<b>* Location</b> LS : Land Side    N/A : Not Applicable WS : Water Side CR : Crown	<b>** Rating</b> A : Acceptable M : Minimally Acceptable U : Unacceptable	N : Not Inspected/Rated C : Corrected A/W : Acceptable but Monitor & Maintain	<b>+ Issue Type</b> Ma : Maintenance Deficiency Ob : Design & System Obsolescence En : Enforcement
--	--	---	---

**Flood Control Project Maintenance  
Levee Inspections**

**Levee Inspection Report By Mile - Fall 2018**

**Merced Streams Group**

Waterway	Bank	Unit Miles	Inspection Start/End	Inspector
Unit No. 02 Black Rascal Diversion	Left	1.85	10/23/2018 10/23/2018	Corey Fujitani

LM Start	0.70	Rating **	M	Issue No.	20
LM End	0.70	Issue Type +	Ma	Location *	LS
Category	Earthen Levee			GPS Latitude/Longitude	
				Start	End
Item	Encroachments			37.331013 °	37.331013 °
				-120.394765 °	-120.394765 °
DWR ID	DWR_NA0013_02_f_2018_20				
Comment Code					
DE : Debris					
Inspector Comment					
Tires left on landside shoulder					

Photo 1 of 1 : FA\_2018\_NA0013\_332\_20\_20181108\_00039.jpg



Tires left on landside shoulder. (Fall 2018)

LM Start	0.71	Rating **	M	Issue No.	21
LM End	0.85	Issue Type +	Ma	Location *	LS
Category	Earthen Levee			GPS Latitude/Longitude	
				Start	End
Item	Vegetation			37.330788 °	37.329079 °
				-120.394933 °	-120.396047 °
DWR ID	DWR_NA0013_02_f_2018_21				
Comment Code					
V1 : Control annual grass and weeds on the levee slopes and easements.					
Inspector Comment					

No Photos

<b>* Location</b> LS : Land Side    N/A : Not Applicable WS : Water Side CR : Crown	<b>** Rating</b> A : Acceptable M : Minimally Acceptable U : Unacceptable	N : Not Inspected/Rated C : Corrected A/W : Acceptable but Monitor & Maintain	<b>+ Issue Type</b> Ma : Maintenance Deficiency Ob : Design & System Obsolescence En : Enforcement
--	--	---	---

**Flood Control Project Maintenance  
Levee Inspections**

**Levee Inspection Report By Mile - Fall 2018**

**Merced Streams Group**

Waterway	Bank	Unit Miles	Inspection Start/End	Inspector
Unit No. 02 Black Rascal Diversion	Left	1.85	10/23/2018 10/23/2018	Corey Fujitani

LM Start	0.74	Rating **	M	Issue No.	28	
LM End	0.74	Issue Type +	Ma	Location *		
Category	Supplemental			GPS Latitude/Longitude		
				Start	End	
Item	DWR UCIP LMA Responsibility			37.330525 °	37.330525 °	
				-120.395132 °	-120.395132 °	
DWR ID	23055					
Comment Code						
Inspector Comment						
FS_ID:20992						
DS_ID:23055						
EP_NO: N/A						
Repair Type: Non-Urgent						
Crossing Status: Found						
UCIP Comments: 09/17/2013 - mud and debris from recent channel cleaning needs to be removed from spillway and outlet - pipe filled with debris, it needs cleaning.- half of intet pipe burried. (DWR UCIP - P. Amatya)						
FIELD_STRUCT_DESC: 24-inch corrugated metal gravity drainage pipe through the levee, 8 feet below the crown. Concrete headwall, flap gate, and concrete grouted cobble spillway on the waterside (WS) toe. Concrete headwall on the landside (LS) toe. [Additional Reference(s): DWR Levee Log, 2005. USACE San Joaquin O&M Manual 607, June 1962, (HLM 0.73)].						
FS Date: 9/17/2013						

LM Start	<b>0.74</b>	Rating **	M	Issue No.	<b>28 (cont)</b>
LM End	<b>0.74</b>	Issue Type +	Ma	Location *	

Photo 1 of 3 : UCIP\_FA\_2018\_20992\_35370.jpg



WS view: concrete headwall and CM pipe buried under debris and mud.

Photo 2 of 3 : UCIP\_FA\_2018\_20992\_35369.jpg



WS view: debris and mud deposited from the channel cleaning. It needs to be cleared from spillway and outlet structure.

<b>* Location</b> LS : Land Side    N/A : Not Applicable WS : Water Side CR : Crown	<b>** Rating</b> A : Acceptable M : Minimally Acceptable U : Unacceptable	N : Not Inspected/Rated C : Corrected A/W : Acceptable but Monitor & Maintain	<b>+ Issue Type</b> Ma : Maintenance Deficiency Ob : Design & System Obsolescence En : Enforcement
--	--	---	---



**Flood Control Project Maintenance  
Levee Inspections**

**Levee Inspection Report By Mile - Fall 2018**

**Merced Streams Group**

Waterway	Bank	Unit Miles	Inspection Start/End	Inspector
Unit No. 02 Black Rascal Diversion	Left	1.85	10/23/2018 10/23/2018	Corey Fujitani

LM Start	0.74	Rating **	M	Issue No.	28 (cont)	
LM End	0.74	Issue Type +	Ma	Location *		
Category	Supplemental			GPS Latitude/Longitude		
				Start	End	
Item	DWR UCIP LMA Responsibility			37.330525°	37.330525°	
				-120.395132°	-120.395132°	
DWR ID	23055					
Comment Code						
Inspector Comment						
FS_ID:20992 DS_ID:23055 EP_NO: N/A Repair Type: Non-Urgent Crossing Status: Found UCIP Comments: 09/17/2013 - mud and debris from recent channel cleaning needs to be removed from spillway and outlet - pipe filled with debris, it needs cleaning.- half of intet pipe burried. (DWR UCIP - P. Amatya) FIELD_STRUCT_DESC: 24-inch corrugated metal gravity drainage pipe through the levee, 8 feet below the crown. Concrete headwall, flap gate, and concrete grouted cobble spillway on the waterside (WS) toe. Concrete headwall on the landside (LS) toe. [Additional Reference(s): DWR Levee Log, 2005. USACE San Joaquin O&M Manual 607, June 1962, (HLM 0.73)]. FS Date: 9/17/2013						

Photo 3 of 3 : UCIP\_FA\_2018\_20992\_35366.jpg



LS view: concrete headwall and CM pipe. Half of intet pipe burried.

LM Start	0.75	Rating **	M	Issue No.	22
LM End	0.75	Issue Type +	Ma	Location *	LS
Category	Earthen Levee			GPS Latitude/Longitude	
				Start	End
Item	Slope Stability			37.330340°	37.330340°
				-120.395288°	-120.395288°
DWR ID	DWR_NA0013_02_f_2018_22				
Comment Code					
S3 : Repair the levee slope damaged by vehicle traffic and prevent access where possible.					
Inspector Comment					
vehicle track in landside slope					

No Photos

<b>* Location</b> LS : Land Side    N/A : Not Applicable WS : Water Side CR : Crown	<b>** Rating</b> A : Acceptable M : Minimally Acceptable U : Unacceptable	N : Not Inspected/Rated C : Corrected A/W : Acceptable but Monitor & Maintain	<b>+ Issue Type</b> Ma : Maintenance Deficiency Ob : Design & System Obsolescence En : Enforcement
--	--	---	---

**Flood Control Project Maintenance  
Levee Inspections**

**Levee Inspection Report By Mile - Fall 2018**

**Merced Streams Group**

Waterway	Bank	Unit Miles	Inspection Start/End	Inspector
Unit No. 02 Black Rascal Diversion	Left	1.85	10/23/2018 10/23/2018	Corey Fujitani

LM Start	0.88	Rating **	U	Issue No.	24
LM End	0.88	Issue Type +	En	Location *	LS
Category	Earthen Levee			GPS Latitude/Longitude	
				Start	End
Item	Encroachments			37.328567 °	37.328567 °
				-120.396062 °	-120.396062 °
DWR ID	DWR_NA0013_02_s_2014_24				
Comment Code					
TR : Tree or limb					
Inspector Comment					
Three fruit trees with irrigation system, stock pile of material (2) piles on the land side toe and rock pad placed on land side toe. Discovered during the fall 2014 inspection a structure has been installed on the landward levee slope and berm. No permit for these encroachments.					

LM Start	<b>0.88</b>	Rating **	U	Issue No.	<b>24 (cont)</b>
LM End	<b>0.88</b>	Issue Type +	En	Location *	LS

Photo 1 of 4 : FA\_2018\_NA0013\_332\_24\_20180905\_00009.jpg



Unauthorized encroachment placed on the landside shoulder and berm.

Photo 2 of 4 : FA\_2018\_NA0013\_332\_24\_20180905\_00010.jpg



Another view of unauthorized structure.

LM Start	<b>0.88</b>	Rating **	U	Issue No.	<b>24 (cont)</b>
LM End	<b>0.88</b>	Issue Type +	En	Location *	LS

Photo 3 of 4 : FA\_2018\_NA0013\_332\_24\_20180905\_00011.jpg



Unit 2 looking downstream from levee mile 0.88.

<b>* Location</b> LS : Land Side    N/A : Not Applicable WS : Water Side CR : Crown		<b>** Rating</b> A : Acceptable                      N : Not Inspected/Rated M : Minimally Acceptable        C : Corrected U : Unacceptable                  A/W : Acceptable but Monitor & Maintain		<b>+ Issue Type</b> Ma : Maintenance Deficiency Ob : Design & System Obsolescence En : Enforcement	
--	--	---	--	---	--

**Flood Control Project Maintenance  
Levee Inspections**

**Levee Inspection Report By Mile - Fall 2018**

**Merced Streams Group**

Waterway	Bank	Unit Miles	Inspection Start/End	Inspector
Unit No. 02 Black Rascal Diversion	Left	1.85	10/23/2018 10/23/2018	Corey Fujitani

LM Start	0.88	Rating **	U	Issue No.	24 (cont)	
LM End	0.88	Issue Type +	En	Location *	LS	
Category	Earthen Levee			GPS Latitude/Longitude		
				Start	End	
Item	Encroachments			37.328567 °	37.328567 °	
				-120.396062 °	-120.396062 °	
DWR ID	DWR_NA0013_02_s_2014_24					
Comment Code						
TR : Tree or limb						
Inspector Comment						
Three fruit trees with irrigation system, stock pile of material (2) piles on the land side toe and rock pad placed on land side toe. Discovered during the fall 2014 inspection a structure has been installed on the landward levee slope and berm. No permit for these encroachments.						

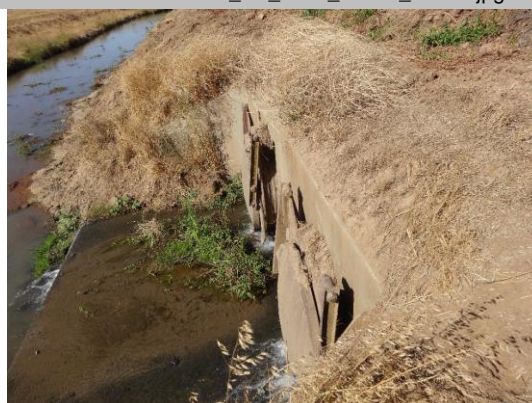
Photo 4 of 4 : FA\_2018\_NA0013\_332\_24\_20180905\_00012.jpg



No change 5-2017.

LM Start	0.90	Rating **	A/W	Issue No.	29
LM End	0.90	Issue Type +	Ma	Location *	
Category	Supplemental			GPS Latitude/Longitude	
				Start	End
Item	DWR UCIP LMA Responsibility			37.328283 °	37.328283 °
				-120.396074 °	-120.396074 °
DWR ID	23056				
Comment Code					
Inspector Comment					
FS_ID:20965					
DS_ID:23056					
EP_NO: N/A					
Repair Type: No Action Needed					
Crossing Status: Found					
UCIP Comments: 09/17/2013 - working during field inspection. -					
vegetation on drainage ditch/channel (DWR UCIP - P. Amatya)					
FIELD_STRUCT_DESC: 1 of 2: 60-inch corrugated metal gravity					
drainage pipe through the levee, 10 feet below the crown. Concrete					
headwall and flap gate on the waterside (WS) berm, 5 feet from the					
levee toe. Concrete headwall on the landside (LS) toe. [Additional					
Reference(s): DWR Levee Log, 2005. USACE San Joaquin O&M					
Manual 607, June 1962, (HLM 0.91)].					
FS Date: 9/17/2013					

Photo 1 of 3 : UCIP\_FA\_2018\_20965\_35292.jpg



WS view: two 60" CMPs, flap gates, and headwall on channel bank.

<b>* Location</b> LS : Land Side    N/A : Not Applicable WS : Water Side CR : Crown	<b>** Rating</b> A : Acceptable M : Minimally Acceptable U : Unacceptable N : Not Inspected/Rated C : Corrected A/W : Acceptable but Monitor & Maintain	<b>+ Issue Type</b> Ma : Maintenance Deficiency Ob : Design & System Obsolescence En : Enforcement
--	---	---



**Flood Control Project Maintenance  
Levee Inspections**

**Levee Inspection Report By Mile - Fall 2018**

**Merced Streams Group**

Waterway	Bank	Unit Miles	Inspection Start/End	Inspector
Unit No. 02 Black Rascal Diversion	Left	1.85	10/23/2018 10/23/2018	Corey Fujitani

LM Start	0.90	Rating **	A/W	Issue No.	29 (cont)	
LM End	0.90	Issue Type +	Ma	Location *		
Category	Supplemental			GPS Latitude/Longitude		
				Start		End
Item	DWR UCIP LMA Responsibility			37.328283 °		37.328283 °
				-120.396074 °		-120.396074 °
DWR ID	23056					
Comment Code						
Inspector Comment						
FS_ID:20965						
DS_ID:23056						
EP_NO: N/A						
Repair Type: No Action Needed						
Crossing Status: Found						
UCIP Comments: 09/17/2013 - working during field inspection.-						
vegetation on drainage ditch/channel (DWR UCIP - P. Amatya)						
FIELD_STRUCT_DESC: 1 of 2: 60-inch corrugated metal gravity						
drainage pipe through the levee, 10 feet below the crown. Concrete						
headwall and flap gate on the waterside (WS) berm, 5 feet from the						
levee toe. Concrete headwall on the landside (LS) toe. [Additional						
Reference(s): DWR Levee Log, 2005. USACE San Joaquin O&M						
Manual 607, June 1962, (HLM 0.91)].						
FS Date: 9/17/2013						

LM Start	<b>0.90</b>	Rating **	A/W	Issue No.	<b>29 (cont)</b>
LM End	<b>0.90</b>	Issue Type +	Ma	Location *	

Photo 2 of 3 : UCIP\_FA\_2018\_20965\_35291.jpg



LS view: headwall on levee toe. Green vegetation in drainage channel.

Photo 3 of 3 : UCIP\_FA\_2018\_20965\_35290.jpg



LS view: two CM pipes and U typed headwall on levee toe. Green vegetation in drainage channel.

<b>* Location</b> LS : Land Side    N/A : Not Applicable WS : Water Side CR : Crown	<b>** Rating</b> A : Acceptable M : Minimally Acceptable U : Unacceptable	N : Not Inspected/Rated C : Corrected A/W : Acceptable but Monitor & Maintain	<b>+ Issue Type</b> Ma : Maintenance Deficiency Ob : Design & System Obsolescence En : Enforcement
--	--	---	---

**Flood Control Project Maintenance  
Levee Inspections**

**Levee Inspection Report By Mile - Fall 2018**

**Merced Streams Group**

Waterway	Bank	Unit Miles	Inspection Start/End	Inspector
Unit No. 02 Black Rascal Diversion	Left	1.85	10/23/2018 10/23/2018	Corey Fujitani

LM Start	0.91	Rating **	A/W	Issue No.	30	
LM End	0.91	Issue Type +	Ma	Location *		
Category	Supplemental			GPS Latitude/Longitude		
				Start		End
Item	DWR UCIP LMA Responsibility			37.328267 °		37.328267 °
				-120.396084 °		-120.396084 °
DWR ID	23080					
Comment Code						
Inspector Comment						
FS_ID:20983 DS_ID:23080 EP_NO: N/A Repair Type: No Action Needed Crossing Status: Found UCIP Comments: 09/17/2013 It was working during field inspection.  Dense vegetation in drainage ditch (DWR UCIP - P. Amatya). FIELD_STRUCT_DESC: 2 of 2: 60-inch corrugated metal gravity drainage pipe through the levee, 10 feet below the crown. Concrete headwall and flap gate on the waterside (WS) berm, 5 feet from the levee toe. Concrete headwall on the landside (LS) toe. [Additional Reference(s): DWR Levee Log, 2005. USACE San Joaquin O&M Manual 607, June 1962, (HLM 0.91)]. FS Date: 9/17/2013						

LM Start	<b>0.91</b>	Rating **	A/W	Issue No.	<b>30 (cont)</b>
LM End	<b>0.91</b>	Issue Type +	Ma	Location *	

Photo 1 of 3 : UCIP\_FA\_2018\_20983\_35302.jpg



WS view: two CMPs with flap gate, concrete spillway and channel on waterside.

Photo 2 of 3 : UCIP\_FA\_2018\_20983\_35301.jpg



LS view: U typed concrete headwall, two CMPs in drainage ditch. Dense vegetation in drainage ditch.

<b>* Location</b> LS : Land Side    N/A : Not Applicable WS : Water Side CR : Crown	<b>** Rating</b> A : Acceptable M : Minimally Acceptable U : Unacceptable	N : Not Inspected/Rated C : Corrected A/W : Acceptable but Monitor & Maintain	<b>+ Issue Type</b> Ma : Maintenance Deficiency Ob : Design & System Obsolescence En : Enforcement
--	--	---	---

## Merced Streams Group

Looking east at finger erosion on landward slope. (Spring 2018)

Page 16 of 22



**Flood Control Project Maintenance  
Levee Inspections**

**Levee Inspection Report By Mile - Fall 2018**

**Merced Streams Group**

Waterway	Bank	Unit Miles	Inspection Start/End	Inspector
Unit No. 02 Black Rascal Diversion	Left	1.85	10/23/2018 10/23/2018	Corey Fujitani

LM Start	0.97	Rating **	M	Issue No.	15 (cont)	
LM End	0.97	Issue Type +	Ma	Location *	LS	
Category	Earthen Levee			GPS Latitude/Longitude		
				Start	End	
Item	Erosion / Bank Caving			37.327336 °	37.327336 °	
				-120.396085 °	-120.396085 °	
DWR ID	DWR_NA0013_02_f_2017_15					
Comment Code						
E1 : Note and monitor erosion site.						
Inspector Comment						
Large finger erosion on landward slope. Couple smaller erosions starting just downstream of large erosion						

Photo 2 of 3 : FA\_2018\_NA0013\_332\_15\_20180905\_00006.jpg



Looking downstream at finger erosion on landward slope. (Spring 2018)

LM Start	<b>0.97</b>	Rating **	M	Issue No.	<b>15 (cont)</b>
LM End	<b>0.97</b>	Issue Type +	Ma	Location *	LS

Photo 3 of 3 : FA\_2018\_NA0013\_332\_15\_20181108\_00040.jpg



Measurement across erosion at widest point. (Fall 2018)

LM Start	1.10	Rating **	M	Issue No.	16
LM End	1.10	Issue Type +	Ma	Location *	LS
Category	Earthen Levee			GPS Latitude/Longitude	
				Start	End
Item	Erosion / Bank Caving			37.325487 °	37.325487 °
				-120.396052 °	-120.396052 °
DWR ID	DWR_NA0013_02_s_2017_16				
Comment Code					
E1 : Note and monitor erosion site.					
Inspector Comment					
large finger erosion on landside slope					

Photo 1 of 2 : FA\_2018\_NA0013\_332\_16\_20181108\_00043.jpg



View of large finger erosion in landside slope. (Fall 2018)

**\* Location**

LS : Land Side    N/A : Not Applicable  
WS : Water Side  
CR : Crown

**\*\* Rating**

A : Acceptable                      N : Not Inspected/Rated  
M : Minimally Acceptable        C : Corrected  
U : Unacceptable                  A/W : Acceptable but Monitor & Maintain

**+ Issue Type**

Ma : Maintenance Deficiency  
Ob : Design & System Obsolescence  
En : Enforcement

**Flood Control Project Maintenance  
Levee Inspections**

**Levee Inspection Report By Mile - Fall 2018**

**Merced Streams Group**

Waterway	Bank	Unit Miles	Inspection Start/End	Inspector
Unit No. 02 Black Rascal Diversion	Left	1.85	10/23/2018 10/23/2018	Corey Fujitani

LM Start	1.10	Rating **	M	Issue No.	16 (cont)
LM End	1.10	Issue Type +	Ma	Location *	LS
Category	Earthen Levee			GPS Latitude/Longitude	
				Start	End
Item	Erosion / Bank Caving			37.325487 °	37.325487 °
				-120.396052 °	-120.396052 °
DWR ID	DWR_NA0013_02_s_2017_16				
Comment Code					
E1 : Note and monitor erosion site.					
Inspector Comment					
large finger erosion on landside slope					

Photo 2 of 2 : FA\_2018\_NA0013\_332\_16\_20181108\_00044.jpg



Measurement across finger erosion. (Fall 2018)

LM Start	1.30	Rating **	M	Issue No.	18
LM End	1.85	Issue Type +	Ma	Location *	LS
Category	Earthen Levee			GPS Latitude/Longitude	
				Start	End
Item	Animal Control			37.322518 °	37.314652 °
				-120.396042 °	-120.395827 °
DWR ID	DWR_NA0013_02_f_2017_18				
Comment Code					
A3 : No rodents visible, but rodent burrows visible; need to backfill and compact or grout burrows.					
Inspector Comment					

Photo 1 of 1 : FA\_2018\_NA0013\_332\_18\_20180905\_00008.jpg



Rodent activity on LS slope.

* Location LS : Land Side    N/A : Not Applicable WS : Water Side CR : Crown		** Rating A : Acceptable                      N : Not Inspected/Rated M : Minimally Acceptable        C : Corrected U : Unacceptable                  A/W : Acceptable but Monitor & Maintain		+ Issue Type Ma : Maintenance Deficiency Ob : Design & System Obsolescence En : Enforcement	
---	--	--	--	--	--

**Flood Control Project Maintenance  
Levee Inspections**

**Levee Inspection Report By Mile - Fall 2018**

**Merced Streams Group**

Waterway	Bank	Unit Miles	Inspection Start/End	Inspector
Unit No. 02 Black Rascal Diversion	Left	1.85	10/23/2018 10/23/2018	Corey Fujitani

LM Start	1.30	Rating **	A/W	Issue No.	31
LM End	1.30	Issue Type +	Ma	Location *	
Category	Supplemental			GPS Latitude/Longitude	
				Start	End
Item	DWR UCIP LMA Responsibility			37.322499 °	37.322499 °
				-120.396045 °	-120.396045 °
DWR ID	23057				
Comment Code					
Inspector Comment					
FS_ID:20984					
DS_ID:23057					
EP_NO: N/A					
Repair Type: No Action Needed					
Crossing Status: Found					
UCIP Comments: 09/17/2013 - working during field inspection. (DWR UCIP - P. Amatya)					
FIELD_STRUCT_DESC: 24-inch corrugated metal gravity drainage pipe through the levee, 10 feet below the crown. Concrete headwall, flap gate, and concrete grouted cobble spillway on the waterside (WS) toe. Concrete headwall on the landside (LS) toe. [Additional Reference(s): DWR Levee Log, 2005. USACE San Joaquin O&M Manual 607, June 1962, (HLM 1.32)].					
FS Date: 9/17/2013					

LM Start	<b>1.30</b>	Rating **	A/W	Issue No.	<b>31 (cont)</b>
LM End	<b>1.30</b>	Issue Type +	Ma	Location *	

Photo 1 of 3 : UCIP\_FA\_2018\_20984\_35305.jpg



WS view: U type concrete headwall and channel on waterside.

Photo 2 of 3 : UCIP\_FA\_2018\_20984\_35304.jpg



WS view: U typed concrete headwall, CM pipe, and flap gate. It was working during field inspection.

<b>* Location</b> LS : Land Side    N/A : Not Applicable WS : Water Side CR : Crown	<b>** Rating</b> A : Acceptable M : Minimally Acceptable U : Unacceptable	N : Not Inspected/Rated C : Corrected A/W : Acceptable but Monitor & Maintain	<b>+ Issue Type</b> Ma : Maintenance Deficiency Ob : Design & System Obsolescence En : Enforcement
--	--	---	---



**Flood Control Project Maintenance  
Levee Inspections**

**Levee Inspection Report By Mile - Fall 2018**

**Merced Streams Group**

Waterway	Bank	Unit Miles	Inspection Start/End	Inspector
Unit No. 02 Black Rascal Diversion	Left	1.85	10/23/2018 10/23/2018	Corey Fujitani

LM Start	1.30	Rating **	A/W	Issue No.	31 (cont)	
LM End	1.30	Issue Type +	Ma	Location *		
Category	Supplemental			GPS Latitude/Longitude		
				Start	End	
Item	DWR UCIP LMA Responsibility			37.322499 °	37.322499 °	
				-120.396045 °	-120.396045 °	
DWR ID	23057					
Comment Code						
Inspector Comment						
FS_ID:20984 DS_ID:23057 EP_NO: N/A Repair Type: No Action Needed Crossing Status: Found UCIP Comments: 09/17/2013 - working during field inspection. (DWR UCIP - P. Amatya) FIELD_STRUCT_DESC: 24-inch corrugated metal gravity drainage pipe through the levee, 10 feet below the crown. Concrete headwall, flap gate, and concrete grouted cobble spillway on the waterside (WS) toe. Concrete headwall on the landside (LS) toe. [Additional Reference(s): DWR Levee Log, 2005. USACE San Joaquin O&M Manual 607, June 1962, (HLM 1.32)]. FS Date: 9/17/2013						

Photo 3 of 3 : UCIP\_FA\_2018\_20984\_35303.jpg



LS view: concrete headwall on levee toe and drainage ditch.

LM Start	1.62	Rating **	M	Issue No.	32	
LM End	1.62	Issue Type +	Ma	Location *		
Category	Supplemental			GPS Latitude/Longitude		
				Start		End
Item	DWR UCIP LMA Responsibility			37.318015 °		37.318015 °
				-120.395738 °		-120.395738 °
DWR ID	23058					
Comment Code						
Inspector Comment						
FS_ID:42993						
DS_ID:23058						
EP_NO: N/A						
Repair Type: Non-Urgent						
Crossing Status: Found						
UCIP Comments: 09/17/2013 - needs cleaning of debris on spillway on WS. Flapgate blocked by debris on WS. - needs cleaning inside CMP on LS. (DWR UCIP - P. Amatya)						
FIELD_STRUCT_DESC: 24-inch corrugated metal gravity drainage pipe through the levee, 8 feet below the crown. Concrete headwall, flap gate, and concrete grouted cobble spillway on the waterside (WS) toe. Concrete headwall on the landside (LS) toe. [Additional Reference(s): DWR Levee Log, 2005. USACE San Joaquin O&M Manual 607, June 1962, (HLM 1.64)].						
FS Date: 9/17/2013						

Photo 1 of 3 : UCIP\_FA\_2018\_42993\_35310.jpg



WS view: overview of outlet area and channel. Debris and vegetations on spillway.

<b>* Location</b> LS : Land Side    N/A : Not Applicable WS : Water Side CR : Crown	<b>** Rating</b> A : Acceptable M : Minimally Acceptable U : Unacceptable	N : Not Inspected/Rated C : Corrected A/W : Acceptable but Monitor & Maintain	<b>+ Issue Type</b> Ma : Maintenance Deficiency Ob : Design & System Obsolescence En : Enforcement
--	--	---	---

**Flood Control Project Maintenance  
Levee Inspections**

**Levee Inspection Report By Mile - Fall 2018**

**Merced Streams Group**

Waterway	Bank	Unit Miles	Inspection Start/End	Inspector
Unit No. 02 Black Rascal Diversion	Left	1.85	10/23/2018 10/23/2018	Corey Fujitani

LM Start	1.62	Rating **	M	Issue No.	32 (cont)	
LM End	1.62	Issue Type +	Ma	Location *		
Category	Supplemental			GPS Latitude/Longitude		
				Start		End
Item	DWR UCIP LMA Responsibility			37.318015 °	37.318015 °	
				-120.395738 °	-120.395738 °	
DWR ID	23058					
Comment Code						
Inspector Comment						
FS_ID:42993						
DS_ID:23058						
EP_NO: N/A						
Repair Type: Non-Urgent						
Crossing Status: Found						
UCIP Comments: 09/17/2013 - needs cleaning of debris on spillway on WS. Flapgate blocked by debris on WS. - needs cleaning inside CMP on LS. (DWR UCIP - P. Amatya)						
FIELD_STRUCT_DESC: 24-inch corrugated metal gravity drainage pipe through the levee, 8 feet below the crown. Concrete headwall, flap gate, and concrete grouted cobble spillway on the waterside (WS) toe. Concrete headwall on the landside (LS) toe. [Additional Reference(s): DWR Levee Log, 2005. USACE San Joaquin O&M Manual 607, June 1962, (HLM 1.64)].						
FS Date: 9/17/2013						

LM Start	<b>1.62</b>	Rating **	M	Issue No.	<b>32 (cont)</b>
LM End	<b>1.62</b>	Issue Type +	Ma	Location *	

Photo 2 of 3 : UCIP\_FA\_2018\_42993\_35309.jpg



WS view: U typed concrete headwall, CM pipe and flap gate. Vegetation and debris need to be cleared.

Photo 3 of 3 : UCIP\_FA\_2018\_42993\_35312.jpg



LS view: concrete headwall and CM pipe. Inlet needs cleaning. Part of inlet pipe buried.

<b>* Location</b> LS : Land Side    N/A : Not Applicable WS : Water Side CR : Crown	<b>** Rating</b> A : Acceptable M : Minimally Acceptable U : Unacceptable	N : Not Inspected/Rated C : Corrected A/W : Acceptable but Monitor & Maintain	<b>+ Issue Type</b> Ma : Maintenance Deficiency Ob : Design & System Obsolescence En : Enforcement
--	--	---	---

**Flood Control Project Maintenance  
Levee Inspections**

**Levee Inspection Report By Mile - Fall 2018**

**Merced Streams Group**

Waterway	Bank	Unit Miles	Inspection Start/End	Inspector
Unit No. 02 Black Rascal Diversion	Left	1.85	10/23/2018 10/23/2018	Corey Fujitani

LM Start	1.62	Rating **	C	Issue No.	17
LM End	1.85	Issue Type +	Ma	Location *	CR
Category	Earthen Levee			GPS Latitude/Longitude	
				Start	End
Item	Vegetation			37.317882 °	37.314609 °
				-120.395718 °	-120.395807 °
DWR ID	DWR_NA0013_02_s_2017_17				
Comment Code					
V9 : Keep the crown roadway free of vegetation.					
Inspector Comment					
Mow to allow visibility and access.					

No Photos

**\* Location**  
 LS : Land Side    N/A : Not Applicable  
 WS : Water Side  
 CR : Crown

**\*\* Rating**  
 A : Acceptable                      N : Not Inspected/Rated  
 M : Minimally Acceptable        C : Corrected  
 U : Unacceptable                  A/W : Acceptable but Monitor & Maintain

**+ Issue Type**  
 Ma : Maintenance Deficiency  
 Ob : Design & System Obsolescence  
 En : Enforcement



**Flood Control Project Maintenance  
Levee Inspections**

**Unit Cover Sheet**

**Fall 2018 Levee Inspection Results**

**Merced Streams Group**

Waterway			Bank	Unit Miles
Unit No. 03 Owens Creek Diversion			Right	1.43
	Spring (March - May)	Summer (June - August)	(September - November) Fall	Winter (December - February)
Unit Maintenance Rating (Fall Only)			<b>U</b>	
Date of Inspection	4/6/2018 - 4/6/2018		10/23/2018 - 10/23/2018	
DWR Inspector	Richard Willoughby		Corey Fujitani	
Accompanied By				

**Summer & Winter Inspections**

The Local Maintaining Agency (LMA) is responsible for summer and winter inspections. The LMA is required to submit a report regarding summer and winter inspections to the California Department of Water Resources (DWR).

DWR must be informed on the:

- a) completion of the inspection
- b) any changes other than the results of normal maintenance
- c) corrections to deficiencies noted in this report

If additional items are noted, further documentation of those items must also be submitted.

The LMA should submit this information to DWR using the LMA web application tool available at:

<http://cdec.water.ca.gov/lma.html>

If the LMA is unable to submit information on this webpage, please contact DWR for assistance.

*The LMA should submit the information and any associated documentation by September 30 for summer inspections and March 31 for winter inspections.*

**Flood Control Project Maintenance  
Levee Inspections**

**Levee Inspection Report By Mile - Fall 2018**

**Merced Streams Group**

Waterway	Bank	Unit Miles	Inspection Start/End	Inspector
Unit No. 03 Owens Creek Diversion	Right	1.43	10/23/2018 10/23/2018	Corey Fujitani

LM Start	0.00	Rating **	C	Issue No.	12
LM End	0.43	Issue Type +	Ma	Location *	WS
Category	Earthen Levee			GPS Latitude/Longitude	
				Start	End
Item	Vegetation			37.257775 °	37.263796 °
				-120.288640 °	-120.288442 °
DWR ID	DWR_NA0013_03_s_2017_12				
Comment Code					
V2 : Remove the wild growth other than native grasses from the levee slopes.					
Inspector Comment					
Control wild growth on levee slope					

No Photos

LM Start	0.03	Rating **	U	Issue No.	10
LM End	0.43	Issue Type +	Ma	Location *	LS
Category	Earthen Levee			GPS Latitude/Longitude	
				Start	End
Item	Vegetation			37.258000 °	37.263796 °
				-120.288379 °	-120.288442 °
DWR ID	DWR_NA0013_03_s_2018_10				
Comment Code					
V2 : Remove the wild growth other than native grasses from the levee slopes.					
Inspector Comment					
Tall dense grass on landside slope.					

Photo 1 of 2 : FA\_2018\_NA0013\_333\_10\_20181108\_00033.jpg



Tall grass on landside slope. (Fall 2018)

LM Start	<b>0.03</b>	Rating **	U	Issue No.	<b>10 (cont)</b>
LM End	<b>0.43</b>	Issue Type +	Ma	Location *	LS

Photo 2 of 2 : FA\_2018\_NA0013\_333\_10\_20180905\_00002.jpg



Looking downstream at landward slope. (Spring 2018)

<b>* Location</b> LS : Land Side    N/A : Not Applicable WS : Water Side CR : Crown		<b>** Rating</b> A : Acceptable M : Minimally Acceptable U : Unacceptable N : Not Inspected/Rated C : Corrected A/W : Acceptable but Monitor & Maintain		<b>+ Issue Type</b> Ma : Maintenance Deficiency Ob : Design & System Obsolescence En : Enforcement	
--	--	---	--	---	--

**Flood Control Project Maintenance  
Levee Inspections**

**Levee Inspection Report By Mile - Fall 2018**

**Merced Streams Group**

Waterway	Bank	Unit Miles	Inspection Start/End	Inspector
Unit No. 03 Owens Creek Diversion	Right	1.43	10/23/2018 10/23/2018	Corey Fujitani

LM Start	0.04	Rating **	M	Issue No.	11
LM End	1.25	Issue Type +	Ma	Location *	CR
Category	Earthen Levee			GPS Latitude/Longitude	
				Start	End
Item	Crown Surface / Depressions / Rutting			37.258235 °	37.272856 °
				-120.288435 °	-120.280294 °
DWR ID	DWR_NA0013_03_s_2018_11				
Comment Code					
C3 : Add appropriate gravel or road base. Grade and compact.					
Inspector Comment					
Spray herbicide and add gravel to improve all weather surface.					

No Photos

LM Start	0.19	Rating **	M	Issue No.	17	
LM End	0.19	Issue Type +	Ma	Location *		
Category	Supplemental			GPS Latitude/Longitude		
				Start		End
Item	DWR UCIP LMA Responsibility			37.260355 °		37.260355 °
				-120.288517 °		-120.288517 °
DWR ID	23060					
Comment Code						
Inspector Comment						
FS_ID:41815						
DS_ID:23060						
EP_NO: N/A						
Repair Type: Non-Urgent						
Crossing Status: Found						
UCIP Comments: 09/17/2013 - more than a half of inet pipe burried on						
LS. - needs vegetation cleaning on both sides.- inlet needs silt						
removed and cleaning. (DWR UCIP - P. Amaty)						
FIELD_STRUCT_DESC: 24-inch corrugated metal gravity drainage pipe						
through the levee, 6 feet below the crown. Concrete headwall, flap gate,						
and concrete grouted cobble spillway on the waterside (WS) toe.						
Concrete headwall on the landside (LS) toe. [Additional Reference(s):						
DWR Levee Log, 2005. USACE San Joaquin O&M Manual 607, June						
1962, (HLM 0.18)].						
FS Date: 9/17/2013						

Photo 1 of 3 : UCIP\_FA\_2018\_41815\_35533.jpg



WS view: U typed concrete headwall, CM pipe, and flap gate.

<b>* Location</b> LS : Land Side    N/A : Not Applicable WS : Water Side CR : Crown	<b>** Rating</b> A : Acceptable M : Minimally Acceptable U : Unacceptable	<b>N : Not Inspected/Rated</b> C : Corrected A/W : Acceptable but Monitor & Maintain	<b>+ Issue Type</b> Ma : Maintenance Deficiency Ob : Design & System Obsolescence En : Enforcement
--	--	--	---

**Flood Control Project Maintenance  
Levee Inspections**

**Levee Inspection Report By Mile - Fall 2018**

**Merced Streams Group**

Waterway	Bank	Unit Miles	Inspection Start/End	Inspector
Unit No. 03 Owens Creek Diversion	Right	1.43	10/23/2018 10/23/2018	Corey Fujitani

LM Start	0.19	Rating **	M	Issue No.	17 (cont)	
LM End	0.19	Issue Type +	Ma	Location *		
Category	Supplemental			GPS Latitude/Longitude		
				Start		End
Item	DWR UCIP LMA Responsibility			37.260355 °		37.260355 °
				-120.288517 °		-120.288517 °
DWR ID	23060					
Comment Code						
Inspector Comment						
FS_ID:41815						
DS_ID:23060						
EP_NO: N/A						
Repair Type: Non-Urgent						
Crossing Status: Found						
UCIP Comments: 09/17/2013 - more than a half of inet pipe burried on						
LS. - needs vegetation cleaning on both sides.- inlet needs silt						
removed and cleaning. (DWR UCIP - P. Amata)						
FIELD_STRUCT_DESC: 24-inch corrugated metal gravity drainage pipe						
through the levee, 6 feet below the crown. Concrete headwall, flap gate,						
and concrete grouted cobble spillway on the waterside (WS) toe.						
Concrete headwall on the landside (LS) toe. [Additional Reference(s):						
DWR Levee Log, 2005. USACE San Joaquin O&M Manual 607, June						
1962, (HLM 0.18)].						
FS Date: 9/17/2013						

Photo 2 of 3 : UCIP\_FA\_2018\_41815\_35532.jpg



WS view: Silt needs to be removed. Vegetations needs to be cleared.

LM Start	<b>0.19</b>	Rating **	M	Issue No.	<b>17 (cont)</b>
LM End	<b>0.19</b>	Issue Type +	Ma	Location *	

Photo 3 of 3 : UCIP\_FA\_2018\_41815\_35531.jpg



LS view: concrete headwall and CM pipe. Inlet needs cleaning and silt removed.

<b>* Location</b> LS : Land Side    N/A : Not Applicable WS : Water Side CR : Crown	<b>** Rating</b> A : Acceptable M : Minimally Acceptable U : Unacceptable	N : Not Inspected/Rated C : Corrected A/W : Acceptable but Monitor & Maintain	<b>+ Issue Type</b> Ma : Maintenance Deficiency Ob : Design & System Obsolescence En : Enforcement
--	--	---	---



**Flood Control Project Maintenance  
Levee Inspections**

**Levee Inspection Report By Mile - Fall 2018**

**Merced Streams Group**

Waterway	Bank	Unit Miles	Inspection Start/End	Inspector
Unit No. 03 Owens Creek Diversion	Right	1.43	10/23/2018 10/23/2018	Corey Fujitani

LM Start	0.39	Rating **	A/W	Issue No.	18
LM End	0.39	Issue Type +	Ma	Location *	
Category	Supplemental			GPS Latitude/Longitude	
				Start	End
Item	DWR UCIP LMA Responsibility			37.263182 °	37.263182 °
				-120.288239 °	-120.288239 °
DWR ID	23061				
Comment Code					
Inspector Comment					
FS_ID:50144 DS_ID:23061 EP_NO: N/A Repair Type: No Action Needed Crossing Status: Found UCIP Comments: 09/01/2016: Crossing has been downgraded from Urgent to No Action Needed. (K. Fazel - UCIP)09/01/2016: Not abandoned. LS and WS cleared. Gate swings free. Photos uploaded. (M. Walejko - NA0013)08/23/2016: Same as last inspection. (K. Fazel - UCIP)09/17/2013:Appears to be abandoned. Flapgate blocked by debris.- debris blocked inlet pipe on LS.- Needs to be cleared on both sides or it needs to be abandoned properly. (P. Amatya - UCIP) FIELD_STRUCT_DESC: 24-inch corrugated metal gravity drainage pipe through the levee, 10 feet below the crown. Concrete headwall, flap gate, and concrete grouted cobble spillway on the waterside (WS) toe. Concrete headwall on the landside (LS) toe. [Additional Reference(s): DWR Levee Log, 2005. USACE San Joaquin O&M Manual 607, June 1962, (HLM 0.40)]. FS Date: 9/1/2016					

Photo 1 of 3 : UCIP\_FA\_2018\_50144\_35422.jpg



WS view: U typed concrete headwall, cobble spillway, and channel on waterside.

LM Start	<b>0.39</b>	Rating **	A/W	Issue No.	<b>18 (cont)</b>
LM End	<b>0.39</b>	Issue Type +	Ma	Location *	

Photo 2 of 3 : UCIP\_FA\_2018\_50144\_35421.jpg



WS view: U typed concrete headwall, CM pipe, and flap gate. Damaged flap gate.

<b>* Location</b> LS : Land Side    N/A : Not Applicable WS : Water Side CR : Crown	<b>** Rating</b> A : Acceptable M : Minimally Acceptable U : Unacceptable	N : Not Inspected/Rated C : Corrected A/W : Acceptable but Monitor & Maintain	<b>+ Issue Type</b> Ma : Maintenance Deficiency Ob : Design & System Obsolescence En : Enforcement
--	--	---	---

**Flood Control Project Maintenance  
Levee Inspections**

**Levee Inspection Report By Mile - Fall 2018**

**Merced Streams Group**

Waterway	Bank	Unit Miles	Inspection Start/End	Inspector
Unit No. 03 Owens Creek Diversion	Right	1.43	10/23/2018 10/23/2018	Corey Fujitani

LM Start	0.39	Rating **	A/W	Issue No.	18 (cont)	
LM End	0.39	Issue Type +	Ma	Location *		
Category	Supplemental			GPS Latitude/Longitude		
				Start	End	
Item	DWR UCIP LMA Responsibility			37.263182 °	37.263182 °	
				-120.288239 °	-120.288239 °	
DWR ID	23061					
Comment Code						
Inspector Comment						
FS_ID:50144 DS_ID:23061 EP_NO: N/A Repair Type: No Action Needed Crossing Status: Found UCIP Comments: 09/01/2016: Crossing has been downgraded from Urgent to No Action Needed. (K. Fazel - UCIP)09/01/2016: Not abandoned. LS and WS cleared. Gate swings free. Photos uploaded. (M. Walejko - NA0013)08/23/2016: Same as last inspection. (K. Fazel - UCIP)09/17/2013:Appears to be abandoned. Flapgate blocked by debris.- debris blocked inlet pipe on LS.- Needs to be cleared on both sides or it needs to abandoned properly. (P. Amatya - UCIP) FIELD_STRUCT_DESC: 24-inch corrugated metal gravity drainage pipe through the levee, 10 feet below the crown. Concrete headwall, flap gate, and concrete grouted cobble spillway on the waterside (WS) toe. Concrete headwall on the landside (LS) toe. [Additional Reference(s): DWR Levee Log, 2005. USACE San Joaquin O&M Manual 607, June 1962, (HLM 0.40)]. FS Date: 9/1/2016						

Photo 3 of 3 : UCIP\_FA\_2018\_50144\_35420.jpg



LS view: Debris dumped on inlet structure. Needs to be cleared or abandoned properly.

LM Start	0.44	Rating **	M	Issue No.	14
LM End	0.58	Issue Type +	Ma	Location *	LS
Category	Earthen Levee			GPS Latitude/Longitude	
				Start	End
Item	Vegetation			37.263910 °	37.265981 °
				-120.288466 °	-120.288225 °
DWR ID	DWR_NA0013_03_f_2018_14				
Comment Code					
V1 : Control annual grass and weeds on the levee slopes and easements.					
Inspector Comment					
dense vegetation at toe					

Photo 1 of 1 : FA\_2018\_NA0013\_333\_14\_20181108\_00031.jpg



Dense vegetation at landside toe. (Fall 2018)

<b>* Location</b> LS : Land Side    N/A : Not Applicable WS : Water Side CR : Crown	<b>** Rating</b> A : Acceptable M : Minimally Acceptable U : Unacceptable	N : Not Inspected/Rated C : Corrected A/W : Acceptable but Monitor & Maintain	<b>+ Issue Type</b> Ma : Maintenance Deficiency Ob : Design & System Obsolescence En : Enforcement
--	--	---	---

**Flood Control Project Maintenance  
Levee Inspections**

**Levee Inspection Report By Mile - Fall 2018**

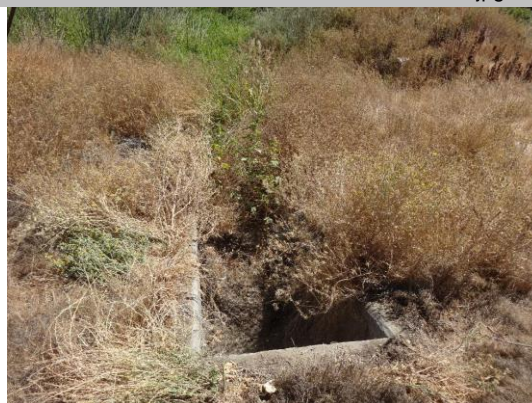
**Merced Streams Group**

Waterway	Bank	Unit Miles	Inspection Start/End	Inspector
Unit No. 03 Owens Creek Diversion	Right	1.43	10/23/2018 10/23/2018	Corey Fujitani

LM Start	0.58	Rating **	A/W	Issue No.	19	
LM End	0.58	Issue Type +	Ma	Location *		
Category	Supplemental			GPS Latitude/Longitude		
				Start	End	
Item	DWR UCIP LMA Responsibility			37.265894 °	37.265894 °	
				-120.288295 °	-120.288295 °	
DWR ID	23062					
Comment Code						
Inspector Comment						
FS_ID:50149						
DS_ID:23062						
EP_NO: N/A						
Repair Type: No Action Needed						
Crossing Status: Found						
UCIP Comments: 09/29/2016: LS and WS ends have been cleared by Mike Walejko of NA0013. Crossing has been downgraded from Non-Urgent to No Action Needed. (K. Fazel - UCIP)09/2013:- needs clearing and cleaning on inlet and outlet. (P. Amatya - UCIP)						
FIELD_STRUCT_DESC: 24-inch corrugated metal gravity drainage pipe through the levee, 7.5 feet below the crown. Concrete headwall, flap gate, and concrete grouted cobble spillway on the waterside (WS) toe. Concrete headwall on the landside (LS) toe. [Additional Reference(s): DWR Levee Log, 2005. USACE San Joaquin O&M Manual 607, June 1962, (HLM 0.59), referenced as 10 feet below the crown].						
FS Date: 9/7/2016						

LM Start	<b>0.58</b>	Rating **	A/W	Issue No.	<b>19 (cont)</b>
LM End	<b>0.58</b>	Issue Type +	Ma	Location *	

Photo 1 of 3 : UCIP\_FA\_2018\_50149\_35535.jpg



WS view: cobble spillway and channel on waterside. Dense vegetation on levee slope.

Photo 2 of 3 : UCIP\_FA\_2018\_50149\_35534.jpg



WS view: U typed concrete headwall, CM pipe, and flap gate. Vegetation needs to be cleared.

<b>* Location</b> LS : Land Side    N/A : Not Applicable WS : Water Side CR : Crown	<b>** Rating</b> A : Acceptable M : Minimally Acceptable U : Unacceptable	N : Not Inspected/Rated C : Corrected A/W : Acceptable but Monitor & Maintain	<b>+ Issue Type</b> Ma : Maintenance Deficiency Ob : Design & System Obsolescence En : Enforcement
--	--	---	---



**Flood Control Project Maintenance  
Levee Inspections**

**Levee Inspection Report By Mile - Fall 2018**

**Merced Streams Group**

Waterway	Bank	Unit Miles	Inspection Start/End	Inspector
Unit No. 03 Owens Creek Diversion	Right	1.43	10/23/2018 10/23/2018	Corey Fujitani

LM Start	0.58	Rating **	A/W	Issue No.	19 (cont)	
LM End	0.58	Issue Type +	Ma	Location *		
Category	Supplemental			GPS Latitude/Longitude		
				Start	End	
Item	DWR UCIP LMA Responsibility			37.265894 °	37.265894 °	
				-120.288295 °	-120.288295 °	
DWR ID	23062					
Comment Code						
Inspector Comment						
FS_ID:50149						
DS_ID:23062						
EP_NO: N/A						
Repair Type: No Action Needed						
Crossing Status: Found						
UCIP Comments: 09/29/2016: LS and WS ends have been cleared by Mike Walejko of NA0013. Crossing has been downgraded from Non-Urgent to No Action Needed. (K. Fazel - UCIP)09/2013:- needs clearing and cleaning on inlet and outlet. (P. Amatya - UCIP)						
FIELD_STRUCT_DESC: 24-inch corrugated metal gravity drainage pipe through the levee, 7.5 feet below the crown. Concrete headwall, flap gate, and concrete grouted cobble spillway on the waterside (WS) toe. Concrete headwall on the landside (LS) toe. [Additional Reference(s): DWR Levee Log, 2005. USACE San Joaquin O&M Manual 607, June 1962, (HLM 0.59), referenced as 10 feet below the crown].						
FS Date: 9/7/2016						

Photo 3 of 3 : UCIP\_FA\_2018\_50149\_35537.jpg



LS view: concrete headwall and CM pipe. Inlet needs clearing.

LM Start	0.64	Rating **	M	Issue No.	15
LM End	0.73	Issue Type +	Ma	Location *	LS
Category	Earthen Levee			GPS Latitude/Longitude	
				Start	End
Item	Vegetation			37.266685 °	37.267764 °
				-120.287645 °	-120.286760 °
DWR ID	DWR_NA0013_03_f_2018_15				
Comment Code					
V1 : Control annual grass and weeds on the levee slopes and easements.					
Inspector Comment					
patches of vegetation growth on landside slope					

No Photos

<b>* Location</b> LS : Land Side    N/A : Not Applicable WS : Water Side CR : Crown	<b>** Rating</b> A : Acceptable M : Minimally Acceptable U : Unacceptable	N : Not Inspected/Rated C : Corrected A/W : Acceptable but Monitor & Maintain	<b>+ Issue Type</b> Ma : Maintenance Deficiency Ob : Design & System Obsolescence En : Enforcement
--	--	---	---



**Flood Control Project Maintenance  
Levee Inspections**

**Levee Inspection Report By Mile - Fall 2018**

**Merced Streams Group**

Waterway	Bank	Unit Miles	Inspection Start/End	Inspector
Unit No. 03 Owens Creek Diversion	Right	1.43	10/23/2018 10/23/2018	Corey Fujitani

LM Start	0.79	Rating **	A/W	Issue No.	20	
LM End	0.79	Issue Type +	Ma	Location *		
Category	Supplemental			GPS Latitude/Longitude		
				Start	End	
Item	DWR UCIP LMA Responsibility			37.268420 °	37.268420 °	
				-120.286231 °	-120.286231 °	
DWR ID	23063					
Comment Code						
Inspector Comment						
FS_ID:50151						
DS_ID:23063						
EP_NO: N/A						
Repair Type: No Action Needed						
Crossing Status: Found						
UCIP Comments: 09/2016: LS and WS ends have been cleared by						
NA0013 and crossing has been downgraded to No Action Needed. (K.						
Fazel - UCIP)09/2013: Needs vegetation clearing on WS. (P.						
Amatya - UCIP)						
FIELD_STRUCT_DESC: 24-inch corrugated metal gravity drainage pipe						
through the levee, 6.5 feet below the crown. Concrete headwall, flap						
gate, and concrete grouted cobble spillway on the waterside (WS) toe.						
Concrete headwall on the landside (LS) toe. [Additional Reference(s):						
DWR Levee Log, 2005. USACE San Joaquin O&M Manual 607, June						
1962, (HLM 0.80), referenced as 10 feet below the crown].						
FS Date: 9/7/2016						

LM Start	<b>0.79</b>	Rating **	A/W	Issue No.	<b>20 (cont)</b>
LM End	<b>0.79</b>	Issue Type +	Ma	Location *	

Photo 1 of 3 : UCIP\_FA\_2018\_50151\_35539.jpg



WS view: overview of spillway/outlet area on waterside.

Photo 2 of 3 : UCIP\_FA\_2018\_50151\_35538.jpg



WS view: U typed concrete headwall, CM pipe, and flap gate. Vegetation needs to be cleared.

<b>* Location</b> LS : Land Side    N/A : Not Applicable WS : Water Side CR : Crown	<b>** Rating</b> A : Acceptable M : Minimally Acceptable U : Unacceptable	N : Not Inspected/Rated C : Corrected A/W : Acceptable but Monitor & Maintain	<b>+ Issue Type</b> Ma : Maintenance Deficiency Ob : Design & System Obsolescence En : Enforcement
--	--	---	---

**Flood Control Project Maintenance  
Levee Inspections**

**Levee Inspection Report By Mile - Fall 2018**

**Merced Streams Group**

Waterway	Bank	Unit Miles	Inspection Start/End	Inspector
Unit No. 03 Owens Creek Diversion	Right	1.43	10/23/2018 10/23/2018	Corey Fujitani

LM Start	0.79	Rating **	A/W	Issue No.	20 (cont)	
LM End	0.79	Issue Type +	Ma	Location *		
Category	Supplemental			GPS Latitude/Longitude		
				Start	End	
Item	DWR UCIP LMA Responsibility			37.268420 °	37.268420 °	
				-120.286231 °	-120.286231 °	
DWR ID	23063					
Comment Code						
Inspector Comment						
FS_ID:50151						
DS_ID:23063						
EP_NO: N/A						
Repair Type: No Action Needed						
Crossing Status: Found						
UCIP Comments: 09/2016: LS and WS ends have been cleared by						
NA0013 and crossing has been downgraded to No Action Needed. (K.						
Fazel - UCIP)09/2013: Needs vegetation clearing on WS. (P.						
Amatya - UCIP)						
FIELD_STRUCT_DESC: 24-inch corrugated metal gravity drainage pipe						
through the levee, 6.5 feet below the crown. Concrete headwall, flap						
gate, and concrete grouted cobble spillway on the waterside (WS) toe.						
Concrete headwall on the landside (LS) toe. [Additional Reference(s):						
DWR Levee Log, 2005. USACE San Joaquin O&M Manual 607, June						
1962, (HLM 0.80), referenced as 10 feet below the crown].						
FS Date: 9/7/2016						

Photo 3 of 3 : UCIP\_FA\_2018\_50151\_35541.jpg



LS view: concrete headwall and CM pipe.

LM Start	0.99	Rating **	M	Issue No.	9
LM End	0.99	Issue Type +	Ma	Location *	CR
Category	Earthen Levee			GPS Latitude/Longitude	
				Start	End
Item	Crown Surface / Depressions / Rutting			37.270874 °	37.270874 °
				-120.284058 °	-120.284058 °
DWR ID	DWR_NA0013_03_f_2017_9				
Comment Code					
C2 : Repair depressions or ruts in the crown or slope.					
Inspector Comment					
Repair rutted crossing over storm drain, restore grade and add gravel.					

Photo 1 of 1 : FA\_2018\_NA0013\_333\_9\_20180905\_00001.jpg



Repair rutted crossing over storm drain. Restore grade and add gravel.

<b>* Location</b> LS : Land Side    N/A : Not Applicable WS : Water Side CR : Crown	<b>** Rating</b> A : Acceptable M : Minimally Acceptable U : Unacceptable	N : Not Inspected/Rated C : Corrected A/W : Acceptable but Monitor & Maintain	<b>+ Issue Type</b> Ma : Maintenance Deficiency Ob : Design & System Obsolescence En : Enforcement
--	--	---	---

**Flood Control Project Maintenance  
Levee Inspections**

**Levee Inspection Report By Mile - Fall 2018**

**Merced Streams Group**

Waterway	Bank	Unit Miles	Inspection Start/End	Inspector
Unit No. 03 Owens Creek Diversion	Right	1.43	10/23/2018 10/23/2018	Corey Fujitani

LM Start	1.02	Rating **	M	Issue No.	21	
LM End	1.02	Issue Type +	Ma	Location *		
Category	Supplemental			GPS Latitude/Longitude		
				Start	End	
Item	DWR UCIP LMA Responsibility			37.271111 °	37.271111 °	
				-120.283786 °	-120.283786 °	
DWR ID	23064					
Comment Code						
Inspector Comment						
FS_ID:50152 DS_ID:23064 EP_NO: N/A Repair Type: Non-Urgent Crossing Status: Found UCIP Comments: 09/29/2016: WS outlet has been cleared by NA0013. Crossing will be downgraded from Non-Urgent to No Action Needed upon receipt of photo showing cleared LS. (K. Fazel - UCIP)09/2013:- vegetations need to be removed from spillway and outlet at flapgate (blocked). It needs clearing.- more than half of inetp pipe was burried in inlet. It needs cleaning & clearing. (P. Amatya - UCIP) FIELD_STRUCT_DESC: 24-inch corrugated metal gravity drainage pipe through the levee, 5 feet below the crown. Concrete headwall, flap gate, and concrete grouted cobble spillway on the waterside (WS) toe. Concrete headwall on the landside (LS) toe. [Additional Reference(s): DWR Levee Log, 2005. USACE San Joaquin O&M Manual 607, June 1962, (HLM 1.04), O&M Manual reads ""HLM 0.04"" by mistake]. FS Date: 9/7/2016						

Photo 1 of 3 : UCIP\_FA\_2018\_50152\_35544.jpg



WS view: cobble spillway and channel on waterside.

LM Start	<b>1.02</b>	Rating **	M	Issue No.	<b>21 (cont)</b>
LM End	<b>1.02</b>	Issue Type +	Ma	Location *	

Photo 2 of 3 : UCIP\_FA\_2018\_50152\_35543.jpg



WS view: U typed concrete headwall, CM pipe, and flap gate. Vegetation needs to be cleared.

<b>* Location</b> LS : Land Side    N/A : Not Applicable WS : Water Side CR : Crown	<b>** Rating</b> A : Acceptable M : Minimally Acceptable U : Unacceptable	N : Not Inspected/Rated C : Corrected A/W : Acceptable but Monitor & Maintain	<b>+ Issue Type</b> Ma : Maintenance Deficiency Ob : Design & System Obsolescence En : Enforcement
--	--	---	---



**Flood Control Project Maintenance  
Levee Inspections**

**Levee Inspection Report By Mile - Fall 2018**

**Merced Streams Group**

Waterway	Bank	Unit Miles	Inspection Start/End	Inspector
Unit No. 03 Owens Creek Diversion	Right	1.43	10/23/2018 10/23/2018	Corey Fujitani

LM Start	1.02	Rating **	M	Issue No.	21 (cont)	
LM End	1.02	Issue Type +	Ma	Location *		
Category	Supplemental			GPS Latitude/Longitude		
				Start	End	
Item	DWR UCIP LMA Responsibility			37.271111 °	37.271111 °	
				-120.283786 °	-120.283786 °	
DWR ID	23064					
Comment Code						
Inspector Comment						
FS_ID:50152 DS_ID:23064 EP_NO: N/A Repair Type: Non-Urgent Crossing Status: Found UCIP Comments: 09/29/2016: WS outlet has been cleared by NA0013. Crossing will be downgraded from Non-Urgent to No Action Needed upon receipt of photo showing cleared LS. (K. Fazel - UCIP)09/2013:- vegetations need to be removed from spillway and outlet at flapgate (blocked). It needs clearing.- more than half of inlet pipe was buried in inlet. It needs cleaning & clearing. (P. Amatya - UCIP) FIELD_STRUCT_DESC: 24-inch corrugated metal gravity drainage pipe through the levee, 5 feet below the crown. Concrete headwall, flap gate, and concrete grouted cobble spillway on the waterside (WS) toe. Concrete headwall on the landside (LS) toe. [Additional Reference(s): DWR Levee Log, 2005. USACE San Joaquin O&M Manual 607, June 1962, (HLM 1.04), O&M Manual reads ""HLM 0.04"" by mistake]. FS Date: 9/7/2016						

Photo 3 of 3 : UCIP\_FA\_2018\_50152\_35542.jpg



LS view: concrete headwall and CM pipe. Inlet needs clearing & cleaning.

<b>* Location</b> LS : Land Side    N/A : Not Applicable WS : Water Side CR : Crown	<b>** Rating</b> A : Acceptable M : Minimally Acceptable U : Unacceptable N : Not Inspected/Rated C : Corrected A/W : Acceptable but Monitor & Maintain	<b>+ Issue Type</b> Ma : Maintenance Deficiency Ob : Design & System Obsolescence En : Enforcement
--	---	---



**Flood Control Project Maintenance  
Levee Inspections**

**Levee Inspection Report By Mile - Fall 2018**

**Merced Streams Group**

Waterway	Bank	Unit Miles	Inspection Start/End	Inspector
Unit No. 03 Owens Creek Diversion	Right	1.43	10/23/2018 10/23/2018	Corey Fujitani

LM Start	1.15	Rating **	M	Issue No.	22	
LM End	1.15	Issue Type +	Ma	Location *		
Category	Supplemental			GPS Latitude/Longitude		
				Start		End
Item	DWR UCIP LMA Responsibility			37.272193 °		37.272193 °
				-120.281805 °		-120.281805 °
DWR ID	23065					
Comment Code						
Inspector Comment						
FS_ID:21063						
DS_ID:23065						
EP_NO: N/A						
Repair Type: Non-Urgent						
Crossing Status: Found						
UCIP Comments: 09/17/2013 - mud and debris from recent channel cleaning needs to be removed from spillway and outlet - inlet pipe needs clearing and cleaning on landside (DWR UCIP - P. Amatya).						
FIELD_STRUCT_DESC: 24-inch corrugated metal gravity drainage pipe through the levee, 6 feet below the crown. Concrete headwall, flap gate, and concrete grouted cobble spillway on the waterside (WS) toe.						
Concrete headwall on the landside (LS) toe. [Additional Reference(s): DWR Levee Log, 2005. USACE San Joaquin O&M Manual 607, June 1962, (HLM 1.17)].						
FS Date: 9/17/2013						

LM Start	<b>1.15</b>	Rating **	M	Issue No.	<b>22 (cont)</b>
LM End	<b>1.15</b>	Issue Type +	Ma	Location *	

Photo 1 of 3 : UCIP\_FA\_2018\_21063\_35502.jpg



WS view: U typed concrete headwall, CM pipe, and flap gate buried under mud/debris.

Photo 2 of 3 : UCIP\_FA\_2018\_21063\_35501.jpg



LS view: concrete headwall and CM pipe. Inlet needs clearing.

<b>* Location</b> LS : Land Side    N/A : Not Applicable WS : Water Side CR : Crown	<b>** Rating</b> A : Acceptable M : Minimally Acceptable U : Unacceptable	N : Not Inspected/Rated C : Corrected A/W : Acceptable but Monitor & Maintain	<b>+ Issue Type</b> Ma : Maintenance Deficiency Ob : Design & System Obsolescence En : Enforcement
--	--	---	---

**Flood Control Project Maintenance  
Levee Inspections**

**Levee Inspection Report By Mile - Fall 2018**

**Merced Streams Group**

Waterway	Bank	Unit Miles	Inspection Start/End	Inspector
Unit No. 03 Owens Creek Diversion	Right	1.43	10/23/2018 10/23/2018	Corey Fujitani

LM Start	1.15	Rating **	M	Issue No.	22 (cont)	
LM End	1.15	Issue Type +	Ma	Location *		
Category	Supplemental			GPS Latitude/Longitude		
				Start		End
Item	DWR UCIP LMA Responsibility			37.272193°		37.272193°
				-120.281805°		-120.281805°
DWR ID	23065					
Comment Code						
Inspector Comment						
FS_ID:21063						
DS_ID:23065						
EP_NO: N/A						
Repair Type: Non-Urgent						
Crossing Status: Found						
UCIP Comments: 09/17/2013 - mud and debris from recent channel cleaning needs to be removed from spillway and outlet - inlet pipe needs clearing and cleaning on landside (DWR UCIP - P. Amatya).						
FIELD_STRUCT_DESC: 24-inch corrugated metal gravity drainage pipe through the levee, 6 feet below the crown. Concrete headwall, flap gate, and concrete grouted cobble spillway on the waterside (WS) toe.						
Concrete headwall on the landside (LS) toe. [Additional Reference(s): DWR Levee Log, 2005. USACE San Joaquin O&M Manual 607, June 1962, (HLM 1.17)].						
FS Date: 9/17/2013						

Photo 3 of 3 : UCIP\_FA\_2018\_21063\_35500.jpg



LS view: closer view of CM pipe. Inlet needs cleaning & clearing.

LM Start	1.23	Rating **	M	Issue No.	7
LM End	1.25	Issue Type +	Ma	Location *	LS
Category	Earthen Levee			GPS Latitude/Longitude	
				Start	End
Item	Animal Control			37.272628 °	37.272927 °
				-120.280398 °	-120.280302 °
DWR ID	DWR_NA0013_03_f_2016_7				
Comment Code					
A1 : Exterminate rodents and backfill and compact or grout burrows.					
Inspector Comment					
Control the rodents along the landside slope from levee mile 1.23 to 1.25.					

No Photos

<b>* Location</b> LS : Land Side    N/A : Not Applicable WS : Water Side CR : Crown	<b>** Rating</b> A : Acceptable M : Minimally Acceptable U : Unacceptable	N : Not Inspected/Rated C : Corrected A/W : Acceptable but Monitor & Maintain	<b>+ Issue Type</b> Ma : Maintenance Deficiency Ob : Design & System Obsolescence En : Enforcement
--	--	---	---

**Flood Control Project Maintenance  
Levee Inspections**

**Levee Inspection Report By Mile - Fall 2018**

**Merced Streams Group**

Waterway	Bank	Unit Miles	Inspection Start/End	Inspector
Unit No. 03 Owens Creek Diversion	Right	1.43	10/23/2018 10/23/2018	Corey Fujitani

LM Start	1.25	Rating **	M	Issue No.	16
LM End	1.25	Issue Type +	Ma	Location *	LS
Category	Earthen Levee			GPS Latitude/Longitude	
				Start	End
Item	Trim / Thin Trees			37.272801 °	37.272801 °
				-120.280304 °	-120.280304 °
DWR ID	DWR_NA0013_03_f_2018_16				
Comment Code					
T1 : Trim trees to at least five feet above ground level.					
Inspector Comment					

Photo 1 of 1 : FA\_2018\_NA0013\_333\_16\_20181108\_00032.jpg



tree on landside slope. (Fall 2018)

LM Start	1.27	Rating **	M	Issue No.	23	
LM End	1.27	Issue Type +	Ma	Location *		
Category	Supplemental			GPS Latitude/Longitude		
				Start		End
Item	DWR UCIP LMA Responsibility			37.273082 °	37.273082 °	
				-120.280288 °	-120.280288 °	
DWR ID	23066					
Comment Code						
Inspector Comment						
FS_ID:21064						
DS_ID:23066						
EP_NO: N/A						
Repair Type: Non-Urgent						
Crossing Status: Found						
UCIP Comments: 09/17/2013 - needs clearing and cleaning of						
vegetations on both ends of the pipe.- needs clearing and cleaning of						
silt deposited inside of the pipe. (DWR UCIP - P. Amatya)						
FIELD_STRUCT_DESC: 24-inch corrugated metal gravity drainage pipe						
through the levee, 4 feet below the crown. Concrete headwall, flap gate,						
and concrete grouted cobble spillway on the waterside (WS) toe.						
Concrete headwall on the landside (LS) toe. [Additional Reference(s):						
DWR Levee Log, 2005. USACE San Joaquin O&M Manual 607, June						
1962, (HLM 1.29)].						
FS Date: 9/17/2013						

Photo 1 of 3 : UCIP\_FA\_2018\_21064\_35506.jpg



WS view: cobble spillway and channel on waterside. Dense vegetation on levee slope and spillway.

<b>* Location</b> LS : Land Side    N/A : Not Applicable WS : Water Side CR : Crown	<b>** Rating</b> A : Acceptable M : Minimally Acceptable U : Unacceptable N : Not Inspected/Rated C : Corrected A/W : Acceptable but Monitor & Maintain	<b>+ Issue Type</b> Ma : Maintenance Deficiency Ob : Design & System Obsolescence En : Enforcement
--	---	---



**Flood Control Project Maintenance  
Levee Inspections**

**Levee Inspection Report By Mile - Fall 2018**

**Merced Streams Group**

Waterway	Bank	Unit Miles	Inspection Start/End	Inspector
Unit No. 03 Owens Creek Diversion	Right	1.43	10/23/2018 10/23/2018	Corey Fujitani

LM Start	1.27	Rating **	M	Issue No.	23 (cont)	
LM End	1.27	Issue Type +	Ma	Location *		
Category	Supplemental			GPS Latitude/Longitude		
				Start		End
Item	DWR UCIP LMA Responsibility			37.273082°	37.273082°	
				-120.280288°	-120.280288°	
DWR ID	23066					
Comment Code						
Inspector Comment						
FS_ID:21064						
DS_ID:23066						
EP_NO: N/A						
Repair Type: Non-Urgent						
Crossing Status: Found						
UCIP Comments: 09/17/2013 - needs clearing and cleaning of						
vegetations on both ends of the pipe.- needs clearing and cleaning of						
silt deposited inside of the pipe. (DWR UCIP - P. Amatya)						
FIELD_STRUCT_DESC: 24-inch corrugated metal gravity drainage pipe						
through the levee, 4 feet below the crown. Concrete headwall, flap gate,						
and concrete grouted cobble spillway on the waterside (WS) toe.						
Concrete headwall on the landside (LS) toe. [Additional Reference(s):						
DWR Levee Log, 2005. USACE San Joaquin O&M Manual 607, June						
1962, (HLM 1.29)].						
FS Date: 9/17/2013						

Photo 2 of 3 : UCIP\_FA\_2018\_21064\_35505.jpg



WS view: U typed concrete headwall, CM pipe, and flap gate. Vegetation needs to be cleared.

LM Start	<b>1.27</b>	Rating **	M	Issue No.	<b>23 (cont)</b>
LM End	<b>1.27</b>	Issue Type +	Ma	Location *	

Photo 3 of 3 : UCIP\_FA\_2018\_21064\_35504.jpg



LS view: concrete headwall and CM pipe. Inlet needs clearing.

<b>* Location</b> LS : Land Side    N/A : Not Applicable WS : Water Side CR : Crown	<b>** Rating</b> A : Acceptable M : Minimally Acceptable U : Unacceptable	N : Not Inspected/Rated C : Corrected A/W : Acceptable but Monitor & Maintain	<b>+ Issue Type</b> Ma : Maintenance Deficiency Ob : Design & System Obsolescence En : Enforcement
--	--	---	---



**Flood Control Project Maintenance  
Levee Inspections**

**Unit Cover Sheet**

**Fall 2018 Levee Inspection Results**

**Merced Streams Group**

Waterway			Bank	Unit Miles
Unit No. 04 Owens Creek Diversion			Left	1.42
	Spring (March - May)	Summer (June - August)	(September - November) Fall	Winter (December - February)
Unit Maintenance Rating (Fall Only)			<b>U</b>	
Date of Inspection	4/6/2018 - 4/6/2018		10/23/2018 - 10/23/2018	
DWR Inspector	Richard Willoughby		Corey Fujitani	
Accompanied By				

**Summer & Winter Inspections**

The Local Maintaining Agency (LMA) is responsible for summer and winter inspections. The LMA is required to submit a report regarding summer and winter inspections to the California Department of Water Resources (DWR).

DWR must be informed on the:

- a) completion of the inspection
- b) any changes other than the results of normal maintenance
- c) corrections to deficiencies noted in this report

If additional items are noted, further documentation of those items must also be submitted.

The LMA should submit this information to DWR using the LMA web application tool available at:

<http://cdec.water.ca.gov/lma.html>

If the LMA is unable to submit information on this webpage, please contact DWR for assistance.

*The LMA should submit the information and any associated documentation by September 30 for summer inspections and March 31 for winter inspections.*

**Flood Control Project Maintenance  
Levee Inspections**

**Levee Inspection Report By Mile - Fall 2018**

**Merced Streams Group**

Waterway	Bank	Unit Miles	Inspection Start/End	Inspector
Unit No. 04 Owens Creek Diversion	Left	1.42	10/23/2018 10/23/2018	Corey Fujitani

LM Start	0.00	Rating **	U	Issue No.	15
LM End	0.15	Issue Type +	Ma	Location *	LS
Category	Earthen Levee			GPS Latitude/Longitude	
				Start	End
Item	Vegetation				° 37.272847 °
					° -120.280015 °
DWR ID	DWR_NA0013_04_f_2018_15				
Comment Code					
V1 : Control annual grass and weeds on the levee slopes and easements.					
Inspector Comment					

Photo 1 of 1 : FA\_2018\_NA0013\_334\_15\_20181108\_00031.jpg



LM Start	0.11	Rating **	M	Issue No.	20	
LM End	0.11	Issue Type +	Ma	Location *		
Category	Supplemental			GPS Latitude/Longitude		
				Start	End	
Item	DWR UCIP LMA Responsibility			37.273295 °	37.273295 °	
				-120.279673 °	-120.279673 °	
DWR ID	23068					
Comment Code						
Inspector Comment						
FS_ID:42991						
DS_ID:23068						
EP_NO: N/A						
Repair Type: Non-Urgent						
Crossing Status: Found						
UCIP Comments: 09/17/2013 - needs vegetation clearing on both sides. Flapgate blocked by debris on WS. - inlet and outlet need silt clearing and cleaning. (DWR UCIP - P. Amatya)						
FIELD_STRUCT_DESC: 24-inch corrugated metal gravity drainage pipe through the levee, 5 feet below the crown. Concrete headwall, flap gate, and concrete grouted cobble spillway on the waterside (WS) toe.						
Concrete headwall on the landside (LS) toe. [Additional Reference(s): DWR Levee Log, 2005. USACE San Joaquin O&M Manual 607, June 1962, (HLM 0.10)].						
FS Date: 9/17/2013						

Photo 1 of 3 : UCIP\_FA\_2018\_42991\_35751.jpg



WS view: concrete spillway and channel on waterside. Dense vegetation on levee slope and spillway.

<b>* Location</b> LS : Land Side    N/A : Not Applicable WS : Water Side CR : Crown	<b>** Rating</b> A : Acceptable M : Minimally Acceptable U : Unacceptable	N : Not Inspected/Rated C : Corrected A/W : Acceptable but Monitor & Maintain	<b>+ Issue Type</b> Ma : Maintenance Deficiency Ob : Design & System Obsolescence En : Enforcement
--	--	---	---

**Flood Control Project Maintenance  
Levee Inspections**

**Levee Inspection Report By Mile - Fall 2018**

**Merced Streams Group**

Waterway	Bank	Unit Miles	Inspection Start/End	Inspector
Unit No. 04 Owens Creek Diversion	Left	1.42	10/23/2018 10/23/2018	Corey Fujitani

LM Start	0.11	Rating **	M	Issue No.	20 (cont)	
LM End	0.11	Issue Type +	Ma	Location *		
Category	Supplemental			GPS Latitude/Longitude		
				Start		End
Item	DWR UCIP LMA Responsibility			37.273295 °	37.273295 °	
				-120.279673 °	-120.279673 °	
DWR ID	23068					
Comment Code						
Inspector Comment						
FS_ID:42991						
DS_ID:23068						
EP_NO: N/A						
Repair Type: Non-Urgent						
Crossing Status: Found						
UCIP Comments: 09/17/2013 - needs vegetation clearing on both sides. Flapgate blocked by debris on WS. - inlet and outlet need silt clearing and cleaning. (DWR UCIP - P. Amatya)						
FIELD_STRUCT_DESC: 24-inch corrugated metal gravity drainage pipe through the levee, 5 feet below the crown. Concrete headwall, flap gate, and concrete grouted cobble spillway on the waterside (WS) toe. Concrete headwall on the landside (LS) toe. [Additional Reference(s): DWR Levee Log, 2005. USACE San Joaquin O&M Manual 607, June 1962, (HLM 0.10)].						
FS Date: 9/17/2013						

LM Start	<b>0.11</b>	Rating **	M	Issue No.	<b>20 (cont)</b>
LM End	<b>0.11</b>	Issue Type +	Ma	Location *	

Photo 2 of 3 : UCIP\_FA\_2018\_42991\_35750.jpg



WS view: U typed concrete headwall, CM pipe, and flap gate. Vegetation and silt need to be cleared.

Photo 3 of 3 : UCIP\_FA\_2018\_42991\_35749.jpg



LS view: concrete headwall and CM pipe. Inlet silt needs clearing.

<b>* Location</b> LS : Land Side    N/A : Not Applicable WS : Water Side CR : Crown	<b>** Rating</b> A : Acceptable M : Minimally Acceptable U : Unacceptable	N : Not Inspected/Rated C : Corrected A/W : Acceptable but Monitor & Maintain	<b>+ Issue Type</b> Ma : Maintenance Deficiency Ob : Design & System Obsolescence En : Enforcement
--	--	---	---

**Flood Control Project Maintenance  
Levee Inspections**

**Levee Inspection Report By Mile - Fall 2018**

**Merced Streams Group**

Waterway	Bank	Unit Miles	Inspection Start/End	Inspector
Unit No. 04 Owens Creek Diversion	Left	1.42	10/23/2018 10/23/2018	Corey Fujitani

LM Start	0.18	Rating **	M	Issue No.	21
LM End	0.18	Issue Type +	Ma	Location *	
Category	Supplemental			GPS Latitude/Longitude	
				Start	End
Item	DWR UCIP LMA Responsibility			37.272437 °	37.272437 °
				-120.280260 °	-120.280260 °
DWR ID	23069				
Comment Code					
Inspector Comment					
FS_ID:50146 DS_ID:23069 EP_NO: N/A Repair Type: Non-Urgent Crossing Status: Found UCIP Comments: 09/29/2016: WS and LS ends have been cleared. Crossing will be downgraded from Non-Urgent to No Action Needed upon receipt of photo showing cleared LS inlet. (K. Fazel - UCIP)09/2013:- needs vegetation clearing on both sides. Flapgate blocked on WS. - inlet pipe needs clearing on landside. (P. Amatya - UCIP) FIELD_STRUCT_DESC: 24-inch corrugated metal gravity drainage pipe through the levee, 6 feet below the crown. Concrete headwall, flap gate, and concrete grouted cobble spillway on the waterside (WS) toe. Concrete headwall on the landside (LS) toe. [Additional Reference(s): DWR Levee Log, 2005. USACE San Joaquin O&M Manual 607, June 1962, (HLM 0.17)]. FS Date: 9/7/2016					

LM Start	<b>0.18</b>	Rating **	M	Issue No.	<b>21 (cont)</b>
LM End	<b>0.18</b>	Issue Type +	Ma	Location *	

Photo 1 of 3 : UCIP\_FA\_2018\_50146\_35748.jpg



WS view: U typed concrete headwall, CM pipe, and flap gate. Vegetation needs to be cleared.

Photo 2 of 3 : UCIP\_FA\_2018\_50146\_35747.jpg



LS view: concrete headwall and CM pipe. Inlet needs clearing.

<b>* Location</b> LS : Land Side    N/A : Not Applicable WS : Water Side CR : Crown	<b>** Rating</b> A : Acceptable M : Minimally Acceptable U : Unacceptable	N : Not Inspected/Rated C : Corrected A/W : Acceptable but Monitor & Maintain	<b>+ Issue Type</b> Ma : Maintenance Deficiency Ob : Design & System Obsolescence En : Enforcement
--	--	---	---



**Flood Control Project Maintenance  
Levee Inspections**

**Levee Inspection Report By Mile - Fall 2018**

**Merced Streams Group**

Waterway	Bank	Unit Miles	Inspection Start/End	Inspector
Unit No. 04 Owens Creek Diversion	Left	1.42	10/23/2018 10/23/2018	Corey Fujitani

LM Start	0.18	Rating **	M	Issue No.	21 (cont)	
LM End	0.18	Issue Type +	Ma	Location *		
Category	Supplemental			GPS Latitude/Longitude		
				Start	End	
Item	DWR UCIP LMA Responsibility			37.272437 °	37.272437 °	
				-120.280260 °	-120.280260 °	
DWR ID	23069					
Comment Code						
Inspector Comment						
FS_ID:50146 DS_ID:23069 EP_NO: N/A Repair Type: Non-Urgent Crossing Status: Found UCIP Comments: 09/29/2016: WS and LS ends have been cleared. Crossing will be downgraded from Non-Urgent to No Action Needed upon receipt of photo showing cleared LS inlet. (K. Fazel - UCIP)09/2013:- needs vegetation clearing on both sides. Flapgate blocked on WS. - inlet pipe needs clearing on landside. (P. Amaty - UCIP) FIELD_STRUCT_DESC: 24-inch corrugated metal gravity drainage pipe through the levee, 6 feet below the crown. Concrete headwall, flap gate, and concrete grouted cobble spillway on the waterside (WS) toe. Concrete headwall on the landside (LS) toe. [Additional Reference(s): DWR Levee Log, 2005. USACE San Joaquin O&M Manual 607, June 1962, (HLM 0.17)]. FS Date: 9/7/2016						

Photo 3 of 3 : UCIP\_FA\_2018\_50146\_35746.jpg



LS view: inside view of CM pipe. Inlet pipe needs clearing.

LM Start	0.19	Rating **	M	Issue No.	10
LM End	0.69	Issue Type +	Ma	Location *	LS
Category	Earthen Levee			GPS Latitude/Longitude	
				Start	End
Item	Animal Control			37.272373 °	37.267383 °
				-120.280392 °	-120.286598 °
DWR ID	DWR_NA0013_04_f_2016_10				
Comment Code					
A1 : Exterminate rodents and backfill and compact or grout burrows.					
Inspector Comment					
Rodent holes observed, density varies.					

Photo 1 of 1 : FA\_2018\_NA0013\_334\_10\_20180905\_00001.jpg



Numerous rodent holes on LS slope.

<b>* Location</b> LS : Land Side    N/A : Not Applicable WS : Water Side CR : Crown	<b>** Rating</b> A : Acceptable M : Minimally Acceptable U : Unacceptable	N : Not Inspected/Rated C : Corrected A/W : Acceptable but Monitor & Maintain	<b>+ Issue Type</b> Ma : Maintenance Deficiency Ob : Design & System Obsolescence En : Enforcement
--	--	---	---

**Flood Control Project Maintenance  
Levee Inspections**

**Levee Inspection Report By Mile - Fall 2018**

**Merced Streams Group**

Waterway	Bank	Unit Miles	Inspection Start/End	Inspector
Unit No. 04 Owens Creek Diversion	Left	1.42	10/23/2018 10/23/2018	Corey Fujitani

LM Start	0.25	Rating **	M	Issue No.	16
LM End	0.25	Issue Type +	Ma	Location *	LS
Category	Earthen Levee			GPS Latitude/Longitude	
				Start	End
Item	Animal Control			37.272071°	37.272071°
				-120.281475°	-120.281475°
DWR ID	DWR_NA0013_04_f_2018_16				
Comment Code					
A3 : No rodents visible, but rodent burrows visible; need to backfill and compact or grout burrows.					
Inspector Comment					

Photo 1 of 1 : FA\_2018\_NA0013\_334\_16\_20181108\_00034.jpg



View of rodent holes in landside slope. (Fall 2018)

LM Start	0.32	Rating **	M	Issue No.	22
LM End	0.32	Issue Type +	Ma	Location *	
Category	Supplemental			GPS Latitude/Longitude	
				Start	End
Item	DWR UCIP LMA Responsibility			37.271495 °	37.271495 °
				-120.282452 °	-120.282452 °
DWR ID	23070				
Comment Code					
Inspector Comment					
FS_ID:50154 DS_ID:23070 EP_NO: N/A Repair Type: Non-Urgent Crossing Status: Found UCIP Comments: 09/29/2016: WS and LS ends have been cleared by Mike Walejko of NA0013. Crossing will be downgraded from Non-Urgent to No Action Needed upon receipt of photo showing cleared LS inlet. (K. Fazel - UCIP)09/2013:- needs vegetation clearing on waterside.- inlet on landside needs clearing. (P. Amatya - UCIP) FIELD_STRUCT_DESC: 24-inch corrugated metal gravity drainage pipe through the levee, 6 feet below the crown. Concrete headwall, flap gate, and concrete grouted cobble spillway on the waterside (WS) toe. Concrete headwall on the landside (LS) toe. [Additional Reference(s): DWR Levee Log, 2005. USACE San Joaquin O&M Manual 607, June 1962, (HLM 0.31)]. FS Date: 9/7/2016					

Photo 1 of 3 : UCIP\_FA\_2018\_50154\_35608.jpg



WS view: Dense vegetation on levee slope and spillway.

<b>* Location</b> LS : Land Side    N/A : Not Applicable WS : Water Side CR : Crown	<b>** Rating</b> A : Acceptable M : Minimally Acceptable U : Unacceptable	N : Not Inspected/Rated C : Corrected A/W : Acceptable but Monitor & Maintain	<b>+ Issue Type</b> Ma : Maintenance Deficiency Ob : Design & System Obsolescence En : Enforcement
--	--	---	---

**Flood Control Project Maintenance  
Levee Inspections**

**Levee Inspection Report By Mile - Fall 2018**

**Merced Streams Group**

Waterway	Bank	Unit Miles	Inspection Start/End	Inspector
Unit No. 04 Owens Creek Diversion	Left	1.42	10/23/2018 10/23/2018	Corey Fujitani

LM Start	0.32	Rating **	M	Issue No.	22 (cont)	
LM End	0.32	Issue Type +	Ma	Location *		
Category	Supplemental			GPS Latitude/Longitude		
				Start	End	
Item	DWR UCIP LMA Responsibility			37.271495 °	37.271495 °	
				-120.282452 °	-120.282452 °	
DWR ID	23070					
Comment Code						
Inspector Comment						
FS_ID:50154 DS_ID:23070 EP_NO: N/A Repair Type: Non-Urgent Crossing Status: Found UCIP Comments: 09/29/2016: WS and LS ends have been cleared by Mike Walejko of NA0013. Crossing will be downgraded from Non-Urgent to No Action Needed upon receipt of photo showing cleared LS inlet. (K. Fazel - UCIP)09/2013:- needs vegetation clearing on waterside.- inlet on landside needs clearing. (P. Amatya - UCIP) FIELD_STRUCT_DESC: 24-inch corrugated metal gravity drainage pipe through the levee, 6 feet below the crown. Concrete headwall, flap gate, and concrete grouted cobble spillway on the waterside (WS) toe. Concrete headwall on the landside (LS) toe. [Additional Reference(s): DWR Levee Log, 2005. USACE San Joaquin O&M Manual 607, June 1962, (HLM 0.31)]. FS Date: 9/7/2016						

LM Start	<b>0.32</b>	Rating **	M	Issue No.	<b>22 (cont)</b>
LM End	<b>0.32</b>	Issue Type +	Ma	Location *	

Photo 2 of 3 : UCIP\_FA\_2018\_50154\_35607.jpg



WS view: U typed concrete headwall, CM pipe, and flap gate. Vegetation needs to be cleared on spillway.

Photo 3 of 3 : UCIP\_FA\_2018\_50154\_35606.jpg



WS view: CM pipe and flap gate. Vegetation needs to be cleared.

<b>* Location</b> LS : Land Side    N/A : Not Applicable WS : Water Side CR : Crown	<b>** Rating</b> A : Acceptable M : Minimally Acceptable U : Unacceptable	N : Not Inspected/Rated C : Corrected A/W : Acceptable but Monitor & Maintain	<b>+ Issue Type</b> Ma : Maintenance Deficiency Ob : Design & System Obsolescence En : Enforcement
--	--	---	---



**Flood Control Project Maintenance  
Levee Inspections**

**Levee Inspection Report By Mile - Fall 2018**

**Merced Streams Group**

Waterway	Bank	Unit Miles	Inspection Start/End	Inspector
Unit No. 04 Owens Creek Diversion	Left	1.42	10/23/2018 10/23/2018	Corey Fujitani

LM Start	0.45	Rating **	A/W	Issue No.	23	
LM End	0.45	Issue Type +	Ma	Location *		
Category	Supplemental			GPS Latitude/Longitude		
				Start	End	
Item	DWR UCIP LMA Responsibility			37.270318 °	37.270318 °	
				-120.284222 °	-120.284222 °	
DWR ID	23071					
Comment Code						
Inspector Comment						
FS_ID:50148 DS_ID:23071 EP_NO: N/A Repair Type: No Action Needed Crossing Status: Found UCIP Comments: 09/29/2016: WS headwall, flap gate and spillway have been cleared of vegetation by Mike Walejko of NA0013. Crossing has been downgraded from Non-Urgent to No Action Needed. (K. Fazel - UCIP)09/2013:- vegetations clearing on spillway area. (P. Amatya - UCIP) FIELD_STRUCT_DESC: 24-inch corrugated metal gravity drainage pipe through the levee, 5 feet below the crown. Concrete headwall, flap gate, and concrete grouted cobble spillway on the waterside (WS) toe. Concrete headwall on the landside (LS) toe. [Additional Reference(s): DWR Levee Log, 2005. USACE San Joaquin O&M Manual 607, June 1962, (HLM 0.45)]. FS Date: 9/7/2016						

LM Start	<b>0.45</b>	Rating **	A/W	Issue No.	<b>23 (cont)</b>
LM End	<b>0.45</b>	Issue Type +	Ma	Location *	

Photo 1 of 3 : UCIP\_FA\_2018\_50148\_35613.jpg



WS view: Dense vegetation on levee slope and spillway.

Photo 2 of 3 : UCIP\_FA\_2018\_50148\_35612.jpg



WS view: U typed concrete headwall, CM pipe, and flap gate.

<b>* Location</b> LS : Land Side    N/A : Not Applicable WS : Water Side CR : Crown	<b>** Rating</b> A : Acceptable M : Minimally Acceptable U : Unacceptable	N : Not Inspected/Rated C : Corrected A/W : Acceptable but Monitor & Maintain	<b>+ Issue Type</b> Ma : Maintenance Deficiency Ob : Design & System Obsolescence En : Enforcement
--	--	---	---



**Flood Control Project Maintenance  
Levee Inspections**

**Levee Inspection Report By Mile - Fall 2018**

**Merced Streams Group**

Waterway	Bank	Unit Miles	Inspection Start/End	Inspector
Unit No. 04 Owens Creek Diversion	Left	1.42	10/23/2018 10/23/2018	Corey Fujitani

LM Start	0.45	Rating **	A/W	Issue No.	23 (cont)	
LM End	0.45	Issue Type +	Ma	Location *		
Category	Supplemental			GPS Latitude/Longitude		
				Start	End	
Item	DWR UCIP LMA Responsibility			37.270318 °	37.270318 °	
				-120.284222 °	-120.284222 °	
DWR ID	23071					
Comment Code						
Inspector Comment						
FS_ID:50148 DS_ID:23071 EP_NO: N/A Repair Type: No Action Needed Crossing Status: Found UCIP Comments: 09/29/2016: WS headwall, flap gate and spillway have been cleared of vegetation by Mike Walejko of NA0013. Crossing has been downgraded from Non-Urgent to No Action Needed. (K. Fazel - UCIP)09/2013:- vegetations clearing on spillway area. (P. Amatya - UCIP) FIELD_STRUCT_DESC: 24-inch corrugated metal gravity drainage pipe through the levee, 5 feet below the crown. Concrete headwall, flap gate, and concrete grouted cobble spillway on the waterside (WS) toe. Concrete headwall on the landside (LS) toe. [Additional Reference(s): DWR Levee Log, 2005. USACE San Joaquin O&M Manual 607, June 1962, (HLM 0.45)]. FS Date: 9/7/2016						

Photo 3 of 3 : UCIP\_FA\_2018\_50148\_35611.jpg



LS view: concrete headwall and CM pipe.

LM Start	0.45	Rating **	M	Issue No.	17	
LM End	0.50	Issue Type +	Ma	Location *	LS	
Category	Earthen Levee			GPS Latitude/Longitude		
				Start		End
Item	Vegetation			37.270272 °		°
				-120.284268 °		°
DWR ID	DWR_NA0013_04_f_2018_17					
Comment Code						
V1 : Control annual grass and weeds on the levee slopes and easements.						
Inspector Comment						

No Photos

<b>* Location</b> LS : Land Side    N/A : Not Applicable WS : Water Side CR : Crown	<b>** Rating</b> A : Acceptable M : Minimally Acceptable U : Unacceptable	N : Not Inspected/Rated C : Corrected A/W : Acceptable but Monitor & Maintain	<b>+ Issue Type</b> Ma : Maintenance Deficiency Ob : Design & System Obsolescence En : Enforcement
--	--	---	---

**Flood Control Project Maintenance  
Levee Inspections**

**Levee Inspection Report By Mile - Fall 2018**

**Merced Streams Group**

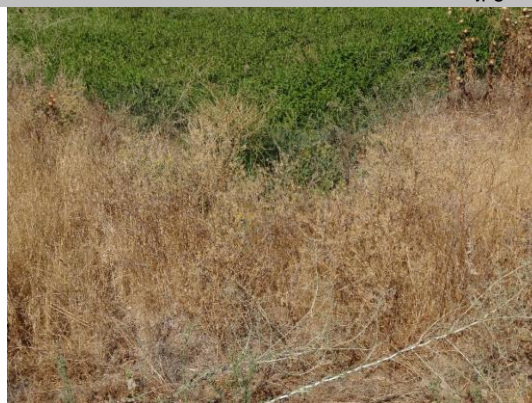
Waterway	Bank	Unit Miles	Inspection Start/End	Inspector
Unit No. 04 Owens Creek Diversion	Left	1.42	10/23/2018 10/23/2018	Corey Fujitani

LM Start	0.57	Rating **	C	Issue No.	13
LM End	1.42	Issue Type +	Ma	Location *	CR
Category	Earthen Levee			GPS Latitude/Longitude	
				Start	End
Item	Crown Surface / Depressions / Rutting			37.268811 °	37.257371 °
				-120.285444 °	-120.288249 °
DWR ID	DWR_NA0013_04_s_2018_13				
Comment Code					
C3 : Add appropriate gravel or road base. Grade and compact.					
Inspector Comment					

No Photos

LM Start	0.58	Rating **	M	Issue No.	24
LM End	0.58	Issue Type +	Ma	Location *	
Category	Supplemental			GPS Latitude/Longitude	
				Start	End
Item	DWR UCIP LMA Responsibility			37.268705 °	37.268705 °
				-120.285546 °	-120.285546 °
DWR ID	23072				
Comment Code					
Inspector Comment					
FS_ID:50155 DS_ID:23072 EP_NO: N/A Repair Type: Non-Urgent Crossing Status: Found UCIP Comments: 09/29/2016: WS cleared by NA0013. Crossing will be downgraded from Non-Urgent to No Action Needed upon receipt of photo showing cleared LS inlet. (K. Fazel - UCIP)09/2013:- needs vegetation clearing on both levee sides. (P. Amatya - UCIP) FIELD_STRUCT_DESC: 24-inch corrugated metal gravity drainage pipe through the levee, 6 feet below the crown. Concrete headwall, flap gate, and concrete grouted cobble spillway on the waterside (WS) toe. Concrete headwall on the landside (LS) toe. [Additional Reference(s): DWR Levee Log, 2005. USACE San Joaquin O&M Manual 607, June 1962, (HLM 0.58)]. FS Date: 9/7/2016					

Photo 1 of 3 : UCIP\_FA\_2018\_50155\_35642.jpg



WS view: Dense vegetation on levee slope and spillway.

<b>* Location</b> LS : Land Side    N/A : Not Applicable WS : Water Side CR : Crown	<b>** Rating</b> A : Acceptable M : Minimally Acceptable U : Unacceptable	N : Not Inspected/Rated C : Corrected A/W : Acceptable but Monitor & Maintain	<b>+ Issue Type</b> Ma : Maintenance Deficiency Ob : Design & System Obsolescence En : Enforcement
--	--	---	---

**Flood Control Project Maintenance  
Levee Inspections**

**Levee Inspection Report By Mile - Fall 2018**

**Merced Streams Group**

Waterway	Bank	Unit Miles	Inspection Start/End	Inspector
Unit No. 04 Owens Creek Diversion	Left	1.42	10/23/2018 10/23/2018	Corey Fujitani

LM Start	0.58	Rating **	M	Issue No.	24 (cont)	
LM End	0.58	Issue Type +	Ma	Location *		
Category	Supplemental			GPS Latitude/Longitude		
				Start	End	
Item	DWR UCIP LMA Responsibility			37.268705 °	37.268705 °	
				-120.285546 °	-120.285546 °	
DWR ID	23072					
Comment Code						
Inspector Comment						
FS_ID:50155						
DS_ID:23072						
EP_NO: N/A						
Repair Type: Non-Urgent						
Crossing Status: Found						
UCIP Comments: 09/29/2016: WS cleared by NA0013. Crossing will be downgraded from Non-Urgent to No Action Needed upon receipt of photo showing cleared LS inlet. (K. Fazel - UCIP)09/2013:- needs vegetation clearing on both levee sides. (P. Amatya - UCIP)						
FIELD_STRUCT_DESC: 24-inch corrugated metal gravity drainage pipe through the levee, 6 feet below the crown. Concrete headwall, flap gate, and concrete grouted cobble spillway on the waterside (WS) toe. Concrete headwall on the landside (LS) toe. [Additional Reference(s): DWR Levee Log, 2005. USACE San Joaquin O&M Manual 607, June 1962, (HLM 0.58)].						
FS Date: 9/7/2016						

LM Start	<b>0.58</b>	Rating **	M	Issue No.	<b>24 (cont)</b>
LM End	<b>0.58</b>	Issue Type +	Ma	Location *	

Photo 2 of 3 : UCIP\_FA\_2018\_50155\_35641.jpg



WS view: U typed concrete headwall, CM pipe, and flap gate. Vegetation needs to be cleared.

Photo 3 of 3 : UCIP\_FA\_2018\_50155\_35640.jpg



WS view: CM pipe and flap gate. Vegetation needs to be cleared.

<b>* Location</b> LS : Land Side    N/A : Not Applicable WS : Water Side CR : Crown	<b>** Rating</b> A : Acceptable M : Minimally Acceptable U : Unacceptable	N : Not Inspected/Rated C : Corrected A/W : Acceptable but Monitor & Maintain	<b>+ Issue Type</b> Ma : Maintenance Deficiency Ob : Design & System Obsolescence En : Enforcement
--	--	---	---

**Flood Control Project Maintenance  
Levee Inspections**

**Levee Inspection Report By Mile - Fall 2018**

**Merced Streams Group**

Waterway	Bank	Unit Miles	Inspection Start/End	Inspector
Unit No. 04 Owens Creek Diversion	Left	1.42	10/23/2018 10/23/2018	Corey Fujitani

LM Start	0.62	Rating **	M	Issue No.	18
LM End	0.77	Issue Type +	Ma	Location *	LS
Category	Earthen Levee			GPS Latitude/Longitude	
				Start	End
Item	Vegetation			37.268245 °	37.266413 °
				-120.285910 °	-120.287422 °
DWR ID	DWR_NA0013_04_f _ 2018_18				
Comment Code					
V1 : Control annual grass and weeds on the levee slopes and easements.					
Inspector Comment					

No Photos

LM Start	0.78	Rating **	U	Issue No.	19
LM End	0.94	Issue Type +	Ma	Location *	LS
Category	Earthen Levee			GPS Latitude/Longitude	
				Start	End
Item	Vegetation			37.266349°	37.264065°
				-120.287474°	-120.288054°
DWR ID	DWR_NA0013_04_f_2018_19				
Comment Code					
V1 : Control annual grass and weeds on the levee slopes and easements.					
Inspector Comment					
dense vegetation blocking slope and toe					

Photo 1 of 1 : FA\_2018\_NA0013\_334\_19\_20181108\_00035.jpg



dense vegetation on landside slope. (Fall 2018)

<b>* Location</b> LS : Land Side    N/A : Not Applicable WS : Water Side CR : Crown	<b>** Rating</b> A : Acceptable M : Minimally Acceptable U : Unacceptable	N : Not Inspected/Rated C : Corrected A/W : Acceptable but Monitor & Maintain	<b>+ Issue Type</b> Ma : Maintenance Deficiency Ob : Design & System Obsolescence En : Enforcement
--	--	---	---



**Flood Control Project Maintenance  
Levee Inspections**

**Levee Inspection Report By Mile - Fall 2018**

**Merced Streams Group**

Waterway	Bank	Unit Miles	Inspection Start/End	Inspector
Unit No. 04 Owens Creek Diversion	Left	1.42	10/23/2018 10/23/2018	Corey Fujitani

LM Start	0.81	Rating **	M	Issue No.	25	
LM End	0.81	Issue Type +	Ma	Location *		
Category	Supplemental			GPS Latitude/Longitude		
				Start		End
Item	DWR UCIP LMA Responsibility			37.265948 °		37.265948 °
				-120.287790 °		-120.287790 °
DWR ID	23073					
Comment Code						
Inspector Comment						
FS_ID:21126						
DS_ID:23073						
EP_NO: N/A						
Repair Type: Non-Urgent						
Crossing Status: Found						
UCIP Comments: 09/17/2013 - needs vegetation clearing on						
waterside.- concrete spillway on waterside.- the drainage was						
working during field survey. (DWR UCIP - P. Amatya)						
FIELD_STRUCT_DESC: 24-inch corrugated metal gravity drainage pipe						
through the levee, 6 feet below the crown. Concrete headwall, flap gate,						
and concrete grouted cobble spillway on the waterside (WS) toe.						
Concrete headwall on the landside (LS) toe. [Additional Reference(s):						
DWR Levee Log, 2005. USACE San Joaquin O&M Manual 607, June						
1962, (HLM 0.82)].						
FS Date: 9/17/2013						

Photo 1 of 3 : UCIP\_FA\_2018\_21126\_35652.jpg



WS view: concrete spillway and channel on waterside. Dense vegetation on levee slope and spillway.

LM Start	<b>0.81</b>	Rating **	M	Issue No.	<b>25 (cont)</b>
LM End	<b>0.81</b>	Issue Type +	Ma	Location *	

Photo 2 of 3 : UCIP\_FA\_2018\_21126\_35651.jpg



WS view: U typed concrete headwall, CM pipe, and flap gate. Vegetation needs to be cleared on spillway.

<b>* Location</b> LS : Land Side    N/A : Not Applicable WS : Water Side CR : Crown	<b>** Rating</b> A : Acceptable M : Minimally Acceptable U : Unacceptable	N : Not Inspected/Rated C : Corrected A/W : Acceptable but Monitor & Maintain	<b>+ Issue Type</b> Ma : Maintenance Deficiency Ob : Design & System Obsolescence En : Enforcement
--	--	---	---

**Flood Control Project Maintenance  
Levee Inspections**

**Levee Inspection Report By Mile - Fall 2018**

**Merced Streams Group**

Waterway	Bank	Unit Miles	Inspection Start/End	Inspector
Unit No. 04 Owens Creek Diversion	Left	1.42	10/23/2018 10/23/2018	Corey Fujitani

LM Start	0.81	Rating **	M	Issue No.	25 (cont)	
LM End	0.81	Issue Type +	Ma	Location *		
Category	Supplemental			GPS Latitude/Longitude		
				Start		End
Item	DWR UCIP LMA Responsibility			37.265948 °		37.265948 °
				-120.287790 °		-120.287790 °
DWR ID	23073					
Comment Code						
Inspector Comment						
FS_ID:21126						
DS_ID:23073						
EP_NO: N/A						
Repair Type: Non-Urgent						
Crossing Status: Found						
UCIP Comments: 09/17/2013 - needs vegetation clearing on						
waterside.- concrete spillway on waterside.- the drainage was						
working during field survey. (DWR UCIP - P. Amatya)						
FIELD_STRUCT_DESC: 24-inch corrugated metal gravity drainage pipe						
through the levee, 6 feet below the crown. Concrete headwall, flap gate,						
and concrete grouted cobble spillway on the waterside (WS) toe.						
Concrete headwall on the landside (LS) toe. [Additional Reference(s):						
DWR Levee Log, 2005. USACE San Joaquin O&M Manual 607, June						
1962, (HLM 0.82)].						
FS Date: 9/17/2013						

Photo 3 of 3 : UCIP\_FA\_2018\_21126\_35654.jpg



LS view: concrete headwall and CM pipe. Drain pipe was working during field survey.

LM Start	1.01	Rating **	A/W	Issue No.	26	
LM End	1.01	Issue Type +	Ma	Location *		
Category	Supplemental			GPS Latitude/Longitude		
				Start		End
Item	DWR UCIP LMA Responsibility			37.263139 °		37.263139 °
				-120.287799 °		-120.287799 °
DWR ID	23074					
Comment Code						
Inspector Comment						
FS_ID:21127						
DS_ID:23074						
EP_NO: N/A						
Repair Type: No Action Needed						
Crossing Status: Found						
UCIP Comments: 09/17/2013 - concrete spillway on waterside.- drainage was working during field survey (DWR UCIP - P. Amatya).						
FIELD_STRUCT_DESC: 24-inch corrugated metal gravity drainage pipe through the levee, 8 feet below the crown. Concrete headwall, flap gate, and concrete grouted cobble spillway on the waterside (WS) toe.						
Concrete headwall on the landside (LS) toe. [Additional Reference(s): DWR Levee Log, 2005. USACE San Joaquin O&M Manual 607, June 1962, (HLM 1.02)].						
FS Date: 9/17/2013						

Photo 1 of 3 : UCIP\_FA\_2018\_21127\_35657.jpg



WS view: U typed concrete headwall and channel on waterside.

<b>* Location</b> LS : Land Side    N/A : Not Applicable WS : Water Side CR : Crown	<b>** Rating</b> A : Acceptable M : Minimally Acceptable U : Unacceptable	N : Not Inspected/Rated C : Corrected A/W : Acceptable but Monitor & Maintain	<b>+ Issue Type</b> Ma : Maintenance Deficiency Ob : Design & System Obsolescence En : Enforcement
--	--	---	---

**Flood Control Project Maintenance  
Levee Inspections**

**Levee Inspection Report By Mile - Fall 2018**

**Merced Streams Group**

Waterway	Bank	Unit Miles	Inspection Start/End	Inspector
Unit No. 04 Owens Creek Diversion	Left	1.42	10/23/2018 10/23/2018	Corey Fujitani

LM Start	1.01	Rating **	A/W	Issue No.	26 (cont)	
LM End	1.01	Issue Type +	Ma	Location *		
Category	Supplemental			GPS Latitude/Longitude		
				Start		End
Item	DWR UCIP LMA Responsibility			37.263139 °		37.263139 °
				-120.287799 °		-120.287799 °
DWR ID	23074					
Comment Code						
Inspector Comment						
FS_ID:21127						
DS_ID:23074						
EP_NO: N/A						
Repair Type: No Action Needed						
Crossing Status: Found						
UCIP Comments: 09/17/2013 - concrete spillway on waterside.- drainage was working during field survey (DWR UCIP - P. Amatya).						
FIELD_STRUCT_DESC: 24-inch corrugated metal gravity drainage pipe through the levee, 8 feet below the crown. Concrete headwall, flap gate, and concrete grouted cobble spillway on the waterside (WS) toe.						
Concrete headwall on the landside (LS) toe. [Additional Reference(s): DWR Levee Log, 2005. USACE San Joaquin O&M Manual 607, June 1962, (HLM 1.02)].						
FS Date: 9/17/2013						

LM Start	<b>1.01</b>	Rating **	A/W	Issue No.	<b>26 (cont)</b>
LM End	<b>1.01</b>	Issue Type +	Ma	Location *	

Photo 2 of 3 : UCIP\_FA\_2018\_21127\_35656.jpg



WS view: concrete headwall and concrete spillway on waterside.

Photo 3 of 3 : UCIP\_FA\_2018\_21127\_35655.jpg



WS view: U typed concrete headwall, CM pipe, and flap gate. Drainage was working during survey.

<b>* Location</b> LS : Land Side    N/A : Not Applicable WS : Water Side CR : Crown	<b>** Rating</b> A : Acceptable M : Minimally Acceptable U : Unacceptable	N : Not Inspected/Rated C : Corrected A/W : Acceptable but Monitor & Maintain	<b>+ Issue Type</b> Ma : Maintenance Deficiency Ob : Design & System Obsolescence En : Enforcement
--	--	---	---



**Flood Control Project Maintenance  
Levee Inspections**

**Levee Inspection Report By Mile - Fall 2018**

**Merced Streams Group**

Waterway	Bank	Unit Miles	Inspection Start/End	Inspector
Unit No. 04 Owens Creek Diversion	Left	1.42	10/23/2018 10/23/2018	Corey Fujitani

LM Start	1.08	Rating **	M	Issue No.	27	
LM End	1.08	Issue Type +	Ma	Location *		
Category	Supplemental			GPS Latitude/Longitude		
				Start	End	
Item	DWR UCIP LMA Responsibility			37.262207 °	37.262207 °	
				-120.288149 °	-120.288149 °	
DWR ID	23075					
Comment Code						
Inspector Comment						
FS_ID:52888 DS_ID:23075 EP_NO: N/A Repair Type: Non-Urgent Crossing Status: Found UCIP Comments: 09/17/2013 - needs clearing on both inlet and outlet.  - needs vegetations clearing on spillway on waterside and inlet on landside. (DWR UCIP - P. Amatya) FIELD_STRUCT_DESC: 24-inch corrugated metal gravity drainage pipe through the levee, 10 feet below the crown. Concrete headwall, flap gate, and concrete grouted cobble spillway on the waterside (WS) toe. Concrete headwall on the landside (LS) toe. [Additional Reference(s): DWR Levee Log, 2005. USACE San Joaquin O&M Manual 607, June 1962, (HLM 1.10)]. FS Date: 9/17/2013						

LM Start	<b>1.08</b>	Rating **	M	Issue No.	<b>27 (cont)</b>
LM End	<b>1.08</b>	Issue Type +	Ma	Location *	

Photo 1 of 3 : UCIP\_FA\_2018\_52888\_35709.jpg



WS view: concrete spillway and channel on waterside. Dense vegetation on levee slope and spillway.

Photo 2 of 3 : UCIP\_FA\_2018\_52888\_35708.jpg



WS view: U typed concrete headwall, CM pipe, and flap gate. Spillway needs to be cleared.

<b>* Location</b> LS : Land Side    N/A : Not Applicable WS : Water Side CR : Crown	<b>** Rating</b> A : Acceptable M : Minimally Acceptable U : Unacceptable	N : Not Inspected/Rated C : Corrected A/W : Acceptable but Monitor & Maintain	<b>+ Issue Type</b> Ma : Maintenance Deficiency Ob : Design & System Obsolescence En : Enforcement
--	--	---	---



**Flood Control Project Maintenance  
Levee Inspections**

**Levee Inspection Report By Mile - Fall 2018**

**Merced Streams Group**

Waterway	Bank	Unit Miles	Inspection Start/End	Inspector
Unit No. 04 Owens Creek Diversion	Left	1.42	10/23/2018 10/23/2018	Corey Fujitani

LM Start	1.08	Rating **	M	Issue No.	27 (cont)
LM End	1.08	Issue Type +	Ma	Location *	
Category	Supplemental			GPS Latitude/Longitude	
				Start	End
Item	DWR UCIP LMA Responsibility			37.262207 °	37.262207 °
				-120.288149 °	-120.288149 °
DWR ID	23075				
Comment Code					
Inspector Comment					
FS_ID:52888 DS_ID:23075 EP_NO: N/A Repair Type: Non-Urgent Crossing Status: Found UCIP Comments: 09/17/2013 - needs clearing on both inlet and outlet.  - needs vegetations clearing on spillway on waterside and inlet on landside. (DWR UCIP - P. Amatya) FIELD_STRUCT_DESC: 24-inch corrugated metal gravity drainage pipe through the levee, 10 feet below the crown. Concrete headwall, flap gate, and concrete grouted cobble spillway on the waterside (WS) toe. Concrete headwall on the landside (LS) toe. [Additional Reference(s): DWR Levee Log, 2005. USACE San Joaquin O&M Manual 607, June 1962, (HLM 1.10)]. FS Date: 9/17/2013					

Photo 3 of 3 : UCIP\_FA\_2018\_52888\_35707.jpg



LS view: concrete headwall and CM pipe. Inlet silt needs clearing.

LM Start	1.08	Rating **	U	Issue No.	11
LM End	1.41	Issue Type +	Ma	Location *	LS
Category	Earthen Levee			GPS Latitude/Longitude	
				Start	End
Item	Vegetation			37.273322°	37.257383°
				-120.277913°	-120.288233°
DWR ID	DWR_NA0013_04_s_2017_11				
Comment Code					
V2 : Remove the wild growth other than native grasses from the levee slopes.					
Inspector Comment					
Mow on crown and slopes.					

Photo 1 of 2 : FA\_2018\_NA0013\_334\_11\_20181108\_00037.jpg



View of landside slope looking downstream. (Fall 2018)

<b>* Location</b> LS : Land Side    N/A : Not Applicable WS : Water Side CR : Crown	<b>** Rating</b> A : Acceptable M : Minimally Acceptable U : Unacceptable	N : Not Inspected/Rated C : Corrected A/W : Acceptable but Monitor & Maintain	<b>+ Issue Type</b> Ma : Maintenance Deficiency Ob : Design & System Obsolescence En : Enforcement
--	--	---	---

**Flood Control Project Maintenance  
Levee Inspections**

**Levee Inspection Report By Mile - Fall 2018**

**Merced Streams Group**

Waterway	Bank	Unit Miles	Inspection Start/End	Inspector
Unit No. 04 Owens Creek Diversion	Left	1.42	10/23/2018 10/23/2018	Corey Fujitani

LM Start	1.08	Rating **	U	Issue No.	11 (cont)	
LM End	1.41	Issue Type +	Ma	Location *	LS	
Category	Earthen Levee			GPS Latitude/Longitude		
				Start		End
Item	Vegetation			37.273322°	37.257383°	
				-120.277913°	-120.288233°	
DWR ID	DWR_NA0013_04_s_2017_11					
Comment Code						
V2 : Remove the wild growth other than native grasses from the levee slopes.						
Inspector Comment						
Mow on crown and slopes.						

Photo 2 of 2 : FA\_2018\_NA0013\_334\_11\_20180905\_00002.jpg



Owens Creek Unit 4 looking upstream the unsatisfactory wild weed growth has completely block the view of the levee section.

LM Start	1.08	Rating **	C	Issue No.	12
LM End	1.41	Issue Type +	Ma	Location *	WS
Category	Earthen Levee			GPS Latitude/Longitude	
				Start	End
Item	Vegetation			37.273302°	37.257383°
				-120.278158°	-120.288233°
DWR ID	DWR_NA0013_04_f_2018_12				
Comment Code					
V2 : Remove the wild growth other than native grasses from the levee slopes.					
Inspector Comment					

No Photos

LM Start	1.08	Rating **	C	Issue No.	14
LM End	1.42	Issue Type +	Ma	Location *	CR
Category	Earthen Levee			GPS Latitude/Longitude	
				Start	End
Item	Vegetation			37.273318°	37.257371°
				-120.277942°	-120.288247°
DWR ID	DWR_NA0013_04_s_2018_14				
Comment Code					
V9 : Keep the crown roadway free of vegetation.					
Inspector Comment					
Add gravel and spray herbicide to re-establish all weather driving surface on crown.					

No Photos

* Location		** Rating		+ Issue Type	
LS : Land Side	N/A : Not Applicable	A : Acceptable	N : Not Inspected/Rated	Ma : Maintenance Deficiency	
WS : Water Side		M : Minimally Acceptable	C : Corrected	Ob : Design & System Obsolescence	
CR : Crown		U : Unacceptable	A/W : Acceptable but Monitor & Maintain	En : Enforcement	

**Flood Control Project Maintenance  
Levee Inspections**

**Levee Inspection Report By Mile - Fall 2018**

**Merced Streams Group**

Waterway	Bank	Unit Miles	Inspection Start/End	Inspector
Unit No. 04 Owens Creek Diversion	Left	1.42	10/23/2018 10/23/2018	Corey Fujitani

LM Start	1.21	Rating **	A/W	Issue No.	28
LM End	1.21	Issue Type +	Ma	Location *	
Category	Supplemental			GPS Latitude/Longitude	
				Start	End
Item	DWR UCIP LMA Responsibility			37.260250 °	37.260250 °
				-120.288141 °	-120.288141 °
DWR ID	23076				

**Comment Code**

**Inspector Comment**

FS\_ID:50153  
DS\_ID:23076  
EP\_NO: N/A  
Repair Type: No Action Needed  
Crossing Status: Found  
UCIP Comments: 09/01/2016: Per Mike Walejko, WS outlet has been cleared. See photos. Crossing has been downgraded from Urgent to No Action Needed. (K. Fazel - UCIP)08/23/2016: LS inlet is clear. WS outlet is still buried. Cracks on crown characteristic of entire left bank and not associated with the crossing at this location. (K. Fazel - UCIP)09/17/2013:- significant levee crown and slope cracks along the pipe. Detailed investigation required.- inlet pipe buried on landside. Needs removal of silts. Needs clearing and cleaning.- half of outlet pipe buried. Needs clearing and removal of vegetations and silts. (P. Amatya - UCIP)  
FIELD\_STRUCT\_DESC: 24-inch corrugated metal gravity drainage pipe through the levee, 10 feet below the crown. Concrete headwall, flap gate, and concrete grouted cobble spillway on the waterside (WS) toe. Concrete headwall on the landside (LS) toe. [Additional Reference(s): DWR Levee Log, 2005. USACE San Joaquin O&M Manual 607, June 1962, (HLM 1.24)].  
FS Date: 9/1/2016

LM Start	<b>1.21</b>	Rating **	A/W	Issue No.	<b>28 (cont)</b>
LM End	<b>1.21</b>	Issue Type +	Ma	Location *	

Photo 1 of 3 : UCIP\_FA\_2018\_50153\_35745.jpg



WS view: U typed concrete headwall, CM pipe, and flap gate. Dirt and vegetations need to be removed and cleared.

Photo 2 of 3 : UCIP\_FA\_2018\_50153\_35744.jpg



WS view: significant levee cracks along the pipe alignment. Needs detailed investigation on the issue.

<b>* Location</b> LS : Land Side    N/A : Not Applicable WS : Water Side CR : Crown	<b>** Rating</b> A : Acceptable M : Minimally Acceptable U : Unacceptable	<b>N : Not Inspected/Rated</b> C : Corrected A/W : Acceptable but Monitor & Maintain	<b>+ Issue Type</b> Ma : Maintenance Deficiency Ob : Design & System Obsolescence En : Enforcement
--	--	--	---



**Flood Control Project Maintenance  
Levee Inspections**

**Levee Inspection Report By Mile - Fall 2018**

**Merced Streams Group**

Waterway	Bank	Unit Miles	Inspection Start/End	Inspector
Unit No. 04 Owens Creek Diversion	Left	1.42	10/23/2018 10/23/2018	Corey Fujitani

LM Start	1.21	Rating **	A/W	Issue No.	28 (cont)	
LM End	1.21	Issue Type +	Ma	Location *		
Category	Supplemental			GPS Latitude/Longitude		
				Start	End	
Item	DWR UCIP LMA Responsibility			37.260250 °	37.260250 °	
				-120.288141 °	-120.288141 °	
DWR ID	23076					
Comment Code						
Inspector Comment						
FS_ID:50153 DS_ID:23076 EP_NO: N/A Repair Type: No Action Needed Crossing Status: Found UCIP Comments: 09/01/2016: Per Mike Walejko, WS outlet has been cleared. See photos. Crossing has been downgraded from Urgent to No Action Needed. (K. Fazel - UCIP)08/23/2016: LS inlet is clear. WS outlet is still buried. Cracks on crown characteristic of entire left bank and not associated with the crossing at this location. (K. Fazel - UCIP)09/17/2013:- significant levee crown and slope cracks along the pipe. Detailed investigation required.- inlet pipe buried on landside. Needs removal of silts. Needs clearing and cleaning.- half of outlet pipe buried. Needs clearing and removal of vegetations and silts. (P. Amatya - UCIP) FIELD_STRUCT_DESC: 24-inch corrugated metal gravity drainage pipe through the levee, 10 feet below the crown. Concrete headwall, flap gate, and concrete grouted cobble spillway on the waterside (WS) toe. Concrete headwall on the landside (LS) toe. [Additional Reference(s): DWR Levee Log, 2005. USACE San Joaquin O&M Manual 607, June 1962, (HLM 1.24)]. FS Date: 9/1/2016						

Photo 3 of 3 : UCIP\_FA\_2018\_50153\_35743.jpg



LS view: concrete headwall and buried CM pipe. Dirt removal and clearing needed in inlet.

<b>* Location</b> LS : Land Side    N/A : Not Applicable WS : Water Side CR : Crown	<b>** Rating</b> A : Acceptable M : Minimally Acceptable U : Unacceptable	N : Not Inspected/Rated C : Corrected A/W : Acceptable but Monitor & Maintain	<b>+ Issue Type</b> Ma : Maintenance Deficiency Ob : Design & System Obsolescence En : Enforcement
--	--	---	---