

**Flood Control Project Maintenance  
Levee Inspections**

**Maintenance Issue Types Only, Levee Inspection Report By Mile - Spring 2020**

**Madera County FCWCA**

Waterway	Bank	Unit Miles	Inspection Start/End	Inspector
Unit No. 01 Ash Slough	Right	2.37	04/14/2020 04/14/2020	Corey Fujitani

LM Start		Rating **	A	Issue No.	<b>41</b>
LM End		Issue Type +	Ma	Location *	
Category	Earthen Levee			GPS Latitude/Longitude	
				Start	End
Item	Operations & Maintenance Manuals			°	°
				°	°
DWR ID	DWR_NA0011_01_s_2012_41				
Comment Code					
Inspector Comment					
Madera County has a copy of the O&M Manual on hand.					

No Photos

LM Start		Rating **	A	Issue No.	<b>43</b>
LM End		Issue Type +	Ma	Location *	
Category	Earthen Levee			GPS Latitude/Longitude	
				Start	End
Item	Emergency Supplies & Equipment			°	°
				°	°
DWR ID	DWR_NA0011_01_s_2012_43				
Comment Code					
Inspector Comment					
Madera County has emergency supplies.					

No Photos

LM Start		Rating **	A	Issue No.	<b>44</b>
LM End		Issue Type +	Ma	Location *	
Category	Earthen Levee			GPS Latitude/Longitude	
				Start	End
Item	Flood Preparedness & Training			°	°
				°	°
DWR ID	DWR_NA0011_01_s_2012_44				
Comment Code					
Inspector Comment					
Madera County Flood Control has a good working knowledge of flood response activities and has been involved in flood fight training.					

No Photos

**\* Location**  
 LS : Land Side    N/A : Not Applicable  
 WS : Water Side  
 CR : Crown

**\*\* Rating**  
 A : Acceptable                      N : Not Inspected/Rated  
 M : Minimally Acceptable        C : Corrected  
 U : Unacceptable                  A/W : Acceptable but Monitor & Maintain

**+ Issue Type**  
 Ma : Maintenance Deficiency  
 Ob : Design & System Obsolescence  
 En : Enforcement

**Flood Control Project Maintenance  
Levee Inspections**

## Maintenance Issue Types Only, Levee Inspection Report By Mile - Spring 2020

### Madera County FCWCA

Waterway	Bank	Unit Miles	Inspection Start/End	Inspector
Unit No. 01 Ash Slough	Right	2.37	04/14/2020 04/14/2020	Corey Fujitani

LM Start	0.03	Rating **	U	Issue No.	7
LM End	0.90	Issue Type +	Ma	Location *	WS
Category	Earthen Levee			GPS Latitude/Longitude	
				Start	End
Item	Vegetation			37.046600 °	37.054865 °
				-120.427453 °	-120.416844 °
DWR ID	DWR_NA0011_01_s_2020_7				
Comment Code					
V1 : Control annual grass and weeds on the levee slopes and easements.					
Inspector Comment					

Photo 1 of 1 : SP\_2020\_NA0011\_142\_7\_20200417\_00035.jpg



View of vegetation on the waterside slope looking downstream. (Spring 2020)

LM Start	0.04	Rating **	U	Issue No.	20
LM End	0.04	Issue Type +	Ma	Location *	LS
Category	Earthen Levee			GPS Latitude/Longitude	
				Start	End
Item	Slope Stability			37.046624 °	37.046624 °
				-120.427317 °	-120.427317 °
DWR ID	DWR_NA0011_01_s_2014_20				
Comment Code					
S1 : Repair slope instability.					
Inspector Comment					
This is not a new erosion site, it should be repaired before the condition gets any worse.					

Photo 1 of 2 : SP\_2020\_NA0011\_142\_20\_20200417\_00036.jpg



View of slope damage next to pipe headwall structure. (Spring 2020)

LM Start	<b>0.04</b>	Rating **	U	Issue No.	<b>20 (cont)</b>
LM End	<b>0.04</b>	Issue Type +	Ma	Location *	LS

Photo 2 of 2 : SP\_2020\_NA0011\_142\_20\_20200225\_00010.jpg



View of damage to landside slope. (Fall 2019)

<b>* Location</b> LS : Land Side    N/A : Not Applicable WS : Water Side CR : Crown		<b>** Rating</b> A : Acceptable                      N : Not Inspected/Rated M : Minimally Acceptable        C : Corrected U : Unacceptable                  A/W : Acceptable but Monitor & Maintain		<b>+ Issue Type</b> Ma : Maintenance Deficiency Ob : Design & System Obsolescence En : Enforcement	
--	--	---	--	---	--

**Flood Control Project Maintenance  
Levee Inspections**

**Maintenance Issue Types Only, Levee Inspection Report By Mile - Spring 2020**

**Madera County FCWCA**

Waterway	Bank	Unit Miles	Inspection Start/End	Inspector
Unit No. 01 Ash Slough	Right	2.37	04/14/2020 04/14/2020	Corey Fujitani

LM Start	0.06	Rating **	M	Issue No.	19
LM End	2.31	Issue Type +	Ma	Location *	CR
Category	Earthen Levee			GPS Latitude/Longitude	
				Start	End
Item	Crown Surface / Depressions / Rutting			37.046732 °	37.067958 °
				-120.426922 °	-120.398828 °
DWR ID	DWR_NA0011_01_s_2017_19				
Comment Code					
C2 : Repair depressions or ruts in the crown or slope.					
Inspector Comment					

No Photos

LM Start	0.11	Rating **	M	Issue No.	17
LM End	1.34	Issue Type +	Ma	Location *	LS
Category	Earthen Levee			GPS Latitude/Longitude	
				Start	End
Item	Animal Control			37.046890 °	37.058220 °
				-120.426137 °	-120.410671 °
DWR ID	DWR_NA0011_01_f_2016_17				
Comment Code					
A3 : No rodents visible, but rodent burrows visible; need to backfill and compact or grout burrows.					
Inspector Comment					

No Photos

LM Start	0.25	Rating **	U	Issue No.	12
LM End	0.80	Issue Type +	Ma	Location *	LS
Category	Earthen Levee			GPS Latitude/Longitude	
				Start	End
Item	Vegetation			37.047546 °	37.053543 °
				-120.423707 °	-120.417370 °
DWR ID	DWR_NA0011_01_s_2020_12				
Comment Code					
V1 : Control annual grass and weeds on the levee slopes and easements.					
Inspector Comment					

Photo 1 of 1 : SP\_2020\_NA0011\_142\_12\_20200417\_00038.jpg



View of the landside slope looking upstream. (Spring 2020)

\* Location  
LS : Land Side N/A : Not Applicable  
WS : Water Side  
CR : Crown

\*\* Rating  
A : Acceptable N : Not Inspected/Rated  
M : Minimally Acceptable C : Corrected  
U : Unacceptable A/W : Acceptable but Monitor & Maintain

+ Issue Type  
Ma : Maintenance Deficiency  
Ob : Design & System Obsolescence  
En : Enforcement

**Flood Control Project Maintenance  
Levee Inspections**

**Maintenance Issue Types Only, Levee Inspection Report By Mile - Spring 2020**

**Madera County FCWCA**

Waterway	Bank	Unit Miles	Inspection Start/End	Inspector
Unit No. 01 Ash Slough	Right	2.37	04/14/2020 04/14/2020	Corey Fujitani

LM Start	<b>0.28</b>	Rating **	M	Issue No.	<b>6</b>							
LM End	<b>0.30</b>	Issue Type +	Ma	Location *	WS							
Category	Earthen Levee		GPS Latitude/Longitude									
			Start	End								
Item	Encroachments		37.047812 °	37.047963 °								
			-120.423155 °	-120.422898 °								
DWR ID	DWR_NA0011_01_s_2012_6											
Comment Code												
TR : Tree or limb												
Inspector Comment												

No Photos

LM Start	<b>0.33</b>	Rating **	M	Issue No.	<b>8</b>							
LM End	<b>0.35</b>	Issue Type +	Ma	Location *	WS							
Category	Earthen Levee		GPS Latitude/Longitude									
			Start	End								
Item	Encroachments		37.048223 °	37.048467 °								
			-120.422642 °	-120.422315 °								
DWR ID	DWR_NA0011_01_s_2012_8											
Comment Code												
TR : Tree or limb												
Inspector Comment												

No Photos

LM Start	<b>0.44</b>	Rating **	M	Issue No.	<b>11</b>							
LM End	<b>0.44</b>	Issue Type +	Ma	Location *	WS							
Category	Earthen Levee		GPS Latitude/Longitude									
			Start	End								
Item	Encroachments		37.049455 °	37.049455 °								
			-120.421218 °	-120.421218 °								
DWR ID	DWR_NA0011_01_s_2012_11											
Comment Code												
TR : Tree or limb												
Inspector Comment												
Remove the dead tree from the waterside slope.												

Photo 1 of 1 : SP\_2020\_NA0011\_142\_11\_20200225\_00002.jpg



Remove downed tree from waterside slope.

**\* Location**

LS : Land Side    N/A : Not Applicable  
WS : Water Side  
CR : Crown

**\*\* Rating**

A : Acceptable                      N : Not Inspected/Rated  
M : Minimally Acceptable        C : Corrected  
U : Unacceptable                  A/W : Acceptable but Monitor & Maintain

**+ Issue Type**

Ma : Maintenance Deficiency  
Ob : Design & System Obsolescence  
En : Enforcement



**Flood Control Project Maintenance  
Levee Inspections**

**Maintenance Issue Types Only, Levee Inspection Report By Mile - Spring 2020**

**Madera County FCWCA**

Waterway	Bank	Unit Miles	Inspection Start/End	Inspector
Unit No. 01 Ash Slough	Right	2.37	04/14/2020 04/14/2020	Corey Fujitani

LM Start	0.53	Rating **	M	Issue No.	10
LM End	0.53	Issue Type +	Ma	Location *	WS
Category	Earthen Levee			GPS Latitude/Longitude	
				Start	End
Item	Encroachments			37.050335 °	37.050335 °
				-120.419965 °	-120.419965 °
DWR ID	DWR_NA0011_01_s_2012_10				
Comment Code					
TR : Tree or limb					
Inspector Comment					
Remove the tree limbs from the waterside slope.					

No Photos

LM Start	0.61	Rating **	U	Issue No.	30
LM End	0.80	Issue Type +	Ma	Location *	CR
Category	Earthen Levee			GPS Latitude/Longitude	
				Start	End
Item	Vegetation			37.051082 °	37.053543 °
				-120.419031 °	-120.417370 °
DWR ID	DWR_NA0011_01_s_2020_30				
Comment Code					
V9 : Keep the crown roadway free of vegetation.					
Inspector Comment					

Photo 1 of 1 : SP\_2020\_NA0011\_142\_30\_20200417\_00042.jpg



View of vegetation along the levee crown. (Spring 2020)

LM Start	0.62	Rating **	M	Issue No.	37
LM End	0.62	Issue Type +	Ma	Location *	WS
Category	Earthen Levee			GPS Latitude/Longitude	
				Start	End
Item	Encroachments			37.051222 °	37.051222 °
				-120.418810 °	-120.418810 °
DWR ID	DWR_NA0011_01_f_2015_37				
Comment Code					
TR : Tree or limb					
Inspector Comment					
Remove the tree branches from the waterside slope.					

No Photos

<b>* Location</b> LS : Land Side    N/A : Not Applicable WS : Water Side CR : Crown	<b>** Rating</b> A : Acceptable M : Minimally Acceptable U : Unacceptable	N : Not Inspected/Rated C : Corrected A/W : Acceptable but Monitor & Maintain	<b>+ Issue Type</b> Ma : Maintenance Deficiency Ob : Design & System Obsolescence En : Enforcement
--	--	---	---

**Flood Control Project Maintenance  
Levee Inspections**

## Maintenance Issue Types Only, Levee Inspection Report By Mile - Spring 2020

### Madera County FCWCA

Waterway	Bank	Unit Miles	Inspection Start/End	Inspector
Unit No. 01 Ash Slough	Right	2.37	04/14/2020 04/14/2020	Corey Fujitani

LM Start	0.75	Rating **	U	Issue No.	21
LM End	0.75	Issue Type +	Ma	Location *	WS
Category	Earthen Levee			GPS Latitude/Longitude	
				Start	End
Item	Encroachments			37.052796 °	37.052796 °
				-120.417641 °	-120.417640 °
DWR ID	DWR_NA0011_01_f_2017_21				
Comment Code					
TR : Tree or limb					
Inspector Comment					
Remove tree limbs from waterside slope.					

Photo 1 of 1 : SP\_2020\_NA0011\_142\_21\_20200225\_00012.jpg



Looking west at tree limbs and branches on waterward slope. (Spring 2018)

LM Start	0.79	Rating **	U	Issue No.	25
LM End	0.79	Issue Type +	Ma	Location *	WS
Category	Earthen Levee			GPS Latitude/Longitude	
				Start	End
Item	Encroachments			37.053329 °	37.053329 °
				-120.417448 °	-120.417448 °
DWR ID	DWR_NA0011_01_f_2018_25				
Comment Code					
TR : Tree or limb					
Inspector Comment					
There is a fallen tree blocking the waterside slope.					

Photo 1 of 1 : SP\_2020\_NA0011\_142\_25\_20200225\_00015.jpg



tree limbs and trunks on waterside shoulder and slope. (Fall 2018)

LM Start	0.86	Rating **	M	Issue No.	26
LM End	0.87	Issue Type +	Ma	Location *	LS
Category	Earthen Levee			GPS Latitude/Longitude	
				Start	End
Item	Trim / Thin Trees			37.054333 °	37.054460 °
				-120.417057 °	-120.417043 °
DWR ID	DWR_NA0011_01_f_2016_26				
Comment Code					
T2 : Thin trees to allow visibility of the ground and room to flood fight.					
Inspector Comment					
Maintain the trees to allow visibility of the levee slope.					

No Photos

* Location		** Rating		+ Issue Type	
LS : Land Side	N/A : Not Applicable	A : Acceptable	N : Not Inspected/Rated	Ma : Maintenance Deficiency	
WS : Water Side		M : Minimally Acceptable	C : Corrected	Ob : Design & System Obsolescence	
CR : Crown		U : Unacceptable	A/W : Acceptable but Monitor & Maintain	En : Enforcement	



**Flood Control Project Maintenance  
Levee Inspections**

**Maintenance Issue Types Only, Levee Inspection Report By Mile - Spring 2020**

**Madera County FCWCA**

Waterway	Bank	Unit Miles	Inspection Start/End	Inspector
Unit No. 01 Ash Slough	Right	2.37	04/14/2020 04/14/2020	Corey Fujitani

LM Start	1.73	Rating **	U	Issue No.	35
LM End	2.35	Issue Type +	Ma	Location *	WS
Category	Earthen Levee			GPS Latitude/Longitude	
				Start	End
Item	Vegetation			37.061636 °	37.068564 °
				-120.405209 °	-120.398652 °
DWR ID	DWR_NA0011_01_s_2020_35				
Comment Code					
V1 : Control annual grass and weeds on the levee slopes and easements.					
Inspector Comment					

Photo 1 of 1 : SP\_2020\_NA0011\_142\_35\_20200417\_00046.jpg



View of vegetation growing along the waterside slope looking upstream.  
(Spring 2020)

LM Start	1.79	Rating **	M	Issue No.	38
LM End	2.35	Issue Type +	Ma	Location *	CR
Category	Earthen Levee			GPS Latitude/Longitude	
				Start	End
Item	Vegetation			37.062304 °	37.068569 °
				-120.404445 °	-120.398649 °
DWR ID	DWR_NA0011_01_s_2020_38				
Comment Code					
V9 : Keep the crown roadway free of vegetation.					
Inspector Comment					

No Photos

**\* Location**  
LS : Land Side    N/A : Not Applicable  
WS : Water Side  
CR : Crown

**\*\* Rating**  
A : Acceptable                      N : Not Inspected/Rated  
M : Minimally Acceptable        C : Corrected  
U : Unacceptable                  A/W : Acceptable but Monitor & Maintain

**+ Issue Type**  
Ma : Maintenance Deficiency  
Ob : Design & System Obsolescence  
En : Enforcement



**Flood Control Project Maintenance  
Levee Inspections**

**Maintenance Issue Types Only, Levee Inspection Report By Mile - Spring 2020**

**Madera County FCWCA**

Waterway	Bank	Unit Miles	Inspection Start/End	Inspector
Unit No. 02 Ash Slough	Left	2.04	04/14/2020 04/14/2020	Corey Fujitani

LM Start	0.21	Rating **	C	Issue No.	46
LM End	0.21	Issue Type +	Ma	Location *	CR
Category	Earthen Levee			GPS Latitude/Longitude	
				Start	End
Item	Trim / Thin Trees			37.046533 °	37.046533 °
				-120.423762 °	-120.423762 °
DWR ID	DWR_NA0011_02_f_2015_46				
Comment Code					
T4 : Trim trees over roadway to at least 12 feet above ground level.					
Inspector Comment					
Trim tree limb hanging over the crown roadway.					

No Photos

LM Start	0.23	Rating **	U	Issue No.	37
LM End	0.94	Issue Type +	Ma	Location *	WS
Category	Earthen Levee			GPS Latitude/Longitude	
				Start	End
Item	Vegetation			37.046661 °	37.054490 °
				-120.423458 °	-120.415867 °
DWR ID	DWR_NA0011_02_s_2020_37				
Comment Code					
V1 : Control annual grass and weeds on the levee slopes and easements.					
Inspector Comment					

Photo 1 of 1 : SP\_2020\_NA0011\_143\_37\_20200417\_00050.jpg



View of the vegetation on the waterside slope looking downstream.  
(Spring 2020)

LM Start	0.27	Rating **	M	Issue No.	21
LM End	0.30	Issue Type +	Ma	Location *	WS
Category	Earthen Levee			GPS Latitude/Longitude	
				Start	End
Item	Trim / Thin Trees			37.046937 °	37.047192 °
				-120.422815 °	-120.422517 °
DWR ID	DWR_NA0011_02_s_2012_21				
Comment Code					
T1 : Trim trees to at least five feet above ground level.					
Inspector Comment					

No Photos

* Location		** Rating		+ Issue Type	
LS : Land Side	N/A : Not Applicable	A : Acceptable	N : Not Inspected/Rated	Ma : Maintenance Deficiency	
WS : Water Side		M : Minimally Acceptable	C : Corrected	Ob : Design & System Obsolescence	
CR : Crown		U : Unacceptable	A/W : Acceptable but Monitor & Maintain	En : Enforcement	

# Madera County FCWCA

**Flood Control Project Maintenance  
Levee Inspections**

**Maintenance Issue Types Only, Levee Inspection Report By Mile - Spring 2020**

**Madera County FCWCA**

Waterway	Bank	Unit Miles	Inspection Start/End	Inspector
Unit No. 02 Ash Slough	Left	2.04	04/14/2020 04/14/2020	Corey Fujitani

LM Start	0.32	Rating **	M	Issue No.	19
LM End	1.66	Issue Type +	Ma	Location *	LS
Category	Earthen Levee			GPS Latitude/Longitude	
				Start	End
Item	Animal Control			37.047376 °	37.059952 °
				-120.422190 °	-120.405448 °
DWR ID	DWR_NA0011_02_s_2017_19				
Comment Code					
A1 : Exterminate rodents and backfill and compact or grout burrows.					
Inspector Comment					

No Photos

LM Start	0.32	Rating **	U	Issue No.	39
LM End	1.67	Issue Type +	Ma	Location *	WS
Category	Earthen Levee			GPS Latitude/Longitude	
				Start	End
Item	Animal Control			37.047376 °	37.060091 °
				-120.422190 °	-120.405340 °
DWR ID	DWR_NA0011_02_f_2015_39				
Comment Code					
A1 : Exterminate rodents and backfill and compact or grout burrows.					
Inspector Comment					
The levee section waterside is covered with rodent holes.					

Photo 1 of 2 : SP\_2020\_NA0011\_143\_39\_20200225\_00028.jpg



Active rodents spotted in the area waterside slope levee mile 0.00- 1.67.

LM Start	<b>0.32</b>	Rating **	U	Issue No.	<b>39 (cont)</b>
LM End	<b>1.67</b>	Issue Type +	Ma	Location *	WS

Photo 2 of 2 : SP\_2020\_NA0011\_143\_39\_20200225\_00029.jpg



Other rodent holes noted in the slope waterside levee section.

**\* Location**  
LS : Land Side    N/A : Not Applicable  
WS : Water Side  
CR : Crown

**\*\* Rating**  
A : Acceptable                      N : Not Inspected/Rated  
M : Minimally Acceptable        C : Corrected  
U : Unacceptable                  A/W : Acceptable but Monitor & Maintain

**+ Issue Type**  
Ma : Maintenance Deficiency  
Ob : Design & System Obsolescence  
En : Enforcement







**Flood Control Project Maintenance  
Levee Inspections**

**Maintenance Issue Types Only, Levee Inspection Report By Mile - Spring 2020**

**Madera County FCWCA**

Waterway	Bank	Unit Miles	Inspection Start/End	Inspector
Unit No. 02 Ash Slough	Left	2.04	04/14/2020 04/14/2020	Corey Fujitani

LM Start	0.35	Rating **	M	Issue No.	14
LM End	0.41	Issue Type +	Ma	Location *	WS
Category	Earthen Levee			GPS Latitude/Longitude	
				Start	End
Item	Trim / Thin Trees			37.047653 °	37.048304 °
				-120.421813 °	-120.420967 °
DWR ID	DWR_NA0011_02_f_2017_14				
Comment Code					
T1 : Trim trees to at least five feet above ground level.					
Inspector Comment					
Waterside tree branches hanging over crown interfere with crown access and waterside visibility.					

Photo 1 of 1 : SP\_2020\_NA0011\_143\_14\_20200225\_00011.jpg



Looking downstream at untrimmed trees on waterward shoulder and slope. (Spring 2018)

LM Start	0.52	Rating **	M	Issue No.	35
LM End	0.52	Issue Type +	Ma	Location *	WS
Category	Earthen Levee			GPS Latitude/Longitude	
				Start	End
Item	Trim / Thin Trees			37.049289 °	37.049289 °
				-120.419542 °	-120.419542 °
DWR ID	DWR_NA0011_02_s_2013_35				
Comment Code					
T2 : Thin trees to allow visibility of the ground and room to flood fight.					
Inspector Comment					
Trim tree off the slope.					

No Photos

LM Start	0.56	Rating **	M	Issue No.	40
LM End	0.81	Issue Type +	Ma	Location *	CR
Category	Earthen Levee			GPS Latitude/Longitude	
				Start	End
Item	Vegetation			37.049693 °	37.052783 °
				-120.419066 °	-120.416534 °
DWR ID	DWR_NA0011_02_s_2020_40				
Comment Code					
V9 : Keep the crown roadway free of vegetation.					
Inspector Comment					

No Photos

* Location		** Rating		+ Issue Type	
LS : Land Side	N/A : Not Applicable	A : Acceptable	N : Not Inspected/Rated	Ma : Maintenance Deficiency	
WS : Water Side		M : Minimally Acceptable	C : Corrected	Ob : Design & System Obsolescence	
CR : Crown		U : Unacceptable	A/W : Acceptable but Monitor & Maintain	En : Enforcement	

**Flood Control Project Maintenance  
Levee Inspections**

**Maintenance Issue Types Only, Levee Inspection Report By Mile - Spring 2020**

**Madera County FCWCA**

Waterway	Bank	Unit Miles	Inspection Start/End	Inspector
Unit No. 02 Ash Slough	Left	2.04	04/14/2020 04/14/2020	Corey Fujitani

LM Start	0.56	Rating **	M	Issue No.	15
LM End	0.56	Issue Type +	Ma	Location *	WS
Category	Earthen Levee			GPS Latitude/Longitude	
				Start	End
Item	Trim / Thin Trees			37.049723 °	37.049723 °
				-120.419026 °	-120.419026 °
DWR ID	DWR_NA0011_02_f_2017_15				
Comment Code					
T2 : Thin trees to allow visibility of the ground and room to flood fight.					
Inspector Comment					
Remove fallen trees and limbs from waterside slope.					

No Photos

LM Start	0.93	Rating **	M	Issue No.	34
LM End	0.93	Issue Type +	Ma	Location *	WS
Category	Earthen Levee			GPS Latitude/Longitude	
				Start	End
Item	Encroachments			37.054407 °	37.054407 °
				-120.415928 °	-120.415928 °
DWR ID	DWR_NA0011_02_s_2017_34				
Comment Code					
TR : Tree or limb					
Inspector Comment					
Remove the prunings from the waterside slope.					

Photo 1 of 1 : SP\_2020\_NA0011\_143\_34\_20200225\_00027.jpg



Looking downstream at bush pile on waterward slope. (Spring 2018)

LM Start	0.94	Rating **	M	Issue No.	36
LM End	1.59	Issue Type +	Ma	Location *	WS
Category	Earthen Levee			GPS Latitude/Longitude	
				Start	End
Item	Vegetation			37.054490 °	37.059265 °
				-120.415867 °	-120.406242 °
DWR ID	DWR_NA0011_02_s_2020_36				
Comment Code					
V1 : Control annual grass and weeds on the levee slopes and easements.					
Inspector Comment					

No Photos

<b>* Location</b> LS : Land Side    N/A : Not Applicable WS : Water Side CR : Crown	<b>** Rating</b> A : Acceptable M : Minimally Acceptable U : Unacceptable	N : Not Inspected/Rated C : Corrected A/W : Acceptable but Monitor & Maintain	<b>+ Issue Type</b> Ma : Maintenance Deficiency Ob : Design & System Obsolescence En : Enforcement
--	--	---	---

**Flood Control Project Maintenance  
Levee Inspections**

## Maintenance Issue Types Only, Levee Inspection Report By Mile - Spring 2020

### Madera County FCWCA

Waterway	Bank	Unit Miles	Inspection Start/End	Inspector
Unit No. 02 Ash Slough	Left	2.04	04/14/2020 04/14/2020	Corey Fujitani

LM Start	0.98	Rating **	U	Issue No.	27
LM End	1.52	Issue Type +	Ma	Location *	WS
Category	Earthen Levee			GPS Latitude/Longitude	
				Start	End
Item	Encroachments			37.054928 °	37.058752 °
				-120.415482 °	-120.407323 °
DWR ID	DWR_NA0011_02_s_2017_27				
Comment Code					
TR : Tree or limb					
Inspector Comment					
Remove the dead trees from the waterside slope and shoulder.					

Photo 1 of 1 : SP\_2020\_NA0011\_143\_27\_20200417\_00053.jpg



Branches left along the waterside slope from high flow. (Spring 2020)

LM Start	1.10	Rating **	U	Issue No.	1	
LM End	1.19	Issue Type +	Ma	Location *		
Category	Supplemental			GPS Latitude/Longitude		
				Start	End	
Item	DWR Erosion Survey			37.055596 °	37.055596 °	
				-120.412647 °	-120.412647 °	
DWR ID	NA0011U02RM2.57					
Comment Code						
Inspector Comment						
Site ID: NA0011U02RM2.57 09/10/2019: No significant change observed. 09/20/2017: No significant change observed. 07/22/2016: No significant change observed. 09/08/2015: No significant change observed. 07/22/2014: No significant change observed. 08/30/2013: No significant change observed. 07/31/2012: Site was visited on 07/24/2012. No significant change observed. Dense vegetation around the site 08/09/2011: Site was inspected. No visible change was observed from the previous condition. A fallen tree was seen at the levee toe about 20 feet upstream, and tree root exposed. There has been no report from the district that this site was corrected. 11/30/2010: Site was not inspected due to time constraints. There have been no reports from the district that the site was corrected. Continue to monitor site during flood events. 08/05/2010: Recommended for annual assessment and monitoring during flood events, per CLRO. 2009: Site is recommended as a local maintenance issue, per Critical Levee Repair Office, Critical Erosion Sites Evaluation 2008 Report; site was previously rated "M" 9/6/2007: Undercutting of the toe; several trees along the WS slope with roots exposed.						

Photo 1 of 1 : SP\_2020\_NA0011\_143\_1\_20200225\_00001.jpg



View of the erosion site from the levee crest.

<b>* Location</b> LS : Land Side    N/A : Not Applicable WS : Water Side CR : Crown	<b>** Rating</b> A : Acceptable M : Minimally Acceptable U : Unacceptable	N : Not Inspected/Rated C : Corrected A/W : Acceptable but Monitor & Maintain	<b>+ Issue Type</b> Ma : Maintenance Deficiency Ob : Design & System Obsolescence En : Enforcement
--	--	---	---



# Madera County FCWCA

No Photos

Photo 1 of 1 : SP\_2020\_NA0011\_143\_25\_20200225\_00019.jpg



Looking downstream at untrimmed tree on waterward slope. (Spring 2018)

Photo 1 of 1 : SP\_2020\_NA0011\_143\_30\_20200417\_00054.jpg



Vegetation growing on the waterside slope. (Spring 2020)

* Location	** Rating	+ Issue Type
LS : Land Side    N/A : Not Applicable	A : Acceptable                      N : Not Inspected/Rated	Ma : Maintenance Deficiency
WS : Water Side	M : Minimally Acceptable        C : Corrected	Ob : Design & System Obsolescence
CR : Crown	U : Unacceptable                  A/W : Acceptable but Monitor & Maintain	En : Enforcement



**Flood Control Project Maintenance  
Levee Inspections**

**Maintenance Issue Types Only, Levee Inspection Report By Mile - Spring 2020**

**Madera County FCWCA**

Waterway	Bank	Unit Miles	Inspection Start/End	Inspector
Unit No. 02 Ash Slough	Left	2.04	04/14/2020 04/14/2020	Corey Fujitani

LM Start	<b>1.65</b>	Rating **	M	Issue No.	<b>31</b>
LM End	<b>1.94</b>	Issue Type +	Ma	Location *	CR
Category	Earthen Levee		GPS Latitude/Longitude		
			Start	End	
Item	Vegetation		37.059896 °	37.062937 °	
			-120.405538 °	-120.402072 °	
DWR ID	DWR_NA0011_02_s_2020_31				
Comment Code					
V9 : Keep the crown roadway free of vegetation.					
Inspector Comment					

No Photos

<b>* Location</b> LS : Land Side    N/A : Not Applicable WS : Water Side CR : Crown	<b>** Rating</b> A : Acceptable M : Minimally Acceptable U : Unacceptable	N : Not Inspected/Rated C : Corrected A/W : Acceptable but Monitor & Maintain	<b>+ Issue Type</b> Ma : Maintenance Deficiency Ob : Design & System Obsolescence En : Enforcement
--	--	---	---



**Flood Control Project Maintenance  
Levee Inspections**

**Maintenance Issue Types Only, Levee Inspection Report By Mile - Spring 2020**

**Madera County FCWCA**

Waterway	Bank	Unit Miles	Inspection Start/End	Inspector
Unit No. 03 Berenda Slough	Right	1.51	04/14/2020 04/14/2020	Corey Fujitani

LM Start	0.05	Rating **	M	Issue No.	35
LM End	0.05	Issue Type +	Ma	Location *	LS
Category	Earthen Levee			GPS Latitude/Longitude	
				Start	End
Item	Trim / Thin Trees			36.996468 °	36.996468 °
				-120.372902 °	-120.372902 °
DWR ID	DWR_NA0011_03_f_2012_35				
Comment Code					
T4 : Trim trees over roadway to at least 12 feet above ground level.					
Inspector Comment					
Tree drags against vehicles as they pass by. Remove overhanging tree limbs.					

No Photos

LM Start	0.05	Rating **	M	Issue No.	28
LM End	0.05	Issue Type +	Ma	Location *	LS
Category	Earthen Levee			GPS Latitude/Longitude	
				Start	End
Item	Encroachments			36.996442 °	36.996442 °
				-120.372848 °	-120.372848 °
DWR ID	DWR_NA0011_03_f_2014_28				
Comment Code					
TR : Tree or limb					
Inspector Comment					
Remove the dead tree from the landside slope.					

No Photos

LM Start	0.06	Rating **	M	Issue No.	18
LM End	0.06	Issue Type +	Ma	Location *	LS
Category	Earthen Levee			GPS Latitude/Longitude	
				Start	End
Item	Trim / Thin Trees			36.996378 °	36.996378 °
				-120.372738 °	-120.372738 °
DWR ID	DWR_NA0011_03_f_2014_18				
Comment Code					
T1 : Trim trees to at least five feet above ground level.					
Inspector Comment					
Trim tree to five feet above the ground on the landside slope.					

No Photos

<b>* Location</b> LS : Land Side    N/A : Not Applicable WS : Water Side CR : Crown	<b>** Rating</b> A : Acceptable M : Minimally Acceptable U : Unacceptable	N : Not Inspected/Rated C : Corrected A/W : Acceptable but Monitor & Maintain	<b>+ Issue Type</b> Ma : Maintenance Deficiency Ob : Design & System Obsolescence En : Enforcement
--	--	---	---





**Flood Control Project Maintenance  
Levee Inspections**

**Maintenance Issue Types Only, Levee Inspection Report By Mile - Spring 2020**

**Madera County FCWCA**

Waterway	Bank	Unit Miles	Inspection Start/End	Inspector
Unit No. 03 Berenda Slough	Right	1.51	04/14/2020 04/14/2020	Corey Fujitani

LM Start	0.45	Rating **	U	Issue No.	10
LM End	0.45	Issue Type +	Ma	Location *	LS
Category	Earthen Levee			GPS Latitude/Longitude	
				Start	End
Item	Encroachments			36.996224 °	36.996224 °
				-120.365692 °	-120.365692 °
DWR ID	DWR_NA0011_03_f_2018_10				
Comment Code					
TR : Tree or limb					
Inspector Comment					
Remove the dead tree from the landside slope.					

Photo 1 of 1 : SP\_2020\_NA0011\_144\_10\_20200225\_00012.jpg



View of dead tree on the landside slope. (Fall 2018)

LM Start	0.46	Rating **	U	Issue No.	5
LM End	0.46	Issue Type +	Ma	Location *	CR
Category	Earthen Levee			GPS Latitude/Longitude	
				Start	End
Item	Animal Control			36.996238 °	36.996238 °
				-120.365563 °	-120.365563 °
DWR ID	DWR_NA0011_03_s_2018_5				
Comment Code					
A3 : No rodents visible, but rodent burrows visible; need to backfill and compact or grout burrows.					
Inspector Comment					
There is a large rodent hole on the crown of the levee.					

Photo 1 of 1 : SP\_2020\_NA0011\_144\_5\_20200225\_00003.jpg



Looking at rodent hole on levee crown. (Spring 2018)

LM Start	0.71	Rating **	M	Issue No.	7
LM End	1.51	Issue Type +	Ma	Location *	WS
Category	Earthen Levee			GPS Latitude/Longitude	
				Start	End
Item	Animal Control			36.996252 °	36.996607 °
				-120.361063 °	-120.346568 °
DWR ID	DWR_NA0011_03_f_2016_7				
Comment Code					
A1 : Exterminate rodents and backfill and compact or grout burrows.					
Inspector Comment					
There should be bait stations placed along the levee to eradicate rodents.					

No Photos

<b>* Location</b> LS : Land Side    N/A : Not Applicable WS : Water Side CR : Crown	<b>** Rating</b> A : Acceptable M : Minimally Acceptable U : Unacceptable	N : Not Inspected/Rated C : Corrected A/W : Acceptable but Monitor & Maintain	<b>+ Issue Type</b> Ma : Maintenance Deficiency Ob : Design & System Obsolescence En : Enforcement
--	--	---	---

**Flood Control Project Maintenance  
Levee Inspections**

**Maintenance Issue Types Only, Levee Inspection Report By Mile - Spring 2020**

**Madera County FCWCA**

Waterway	Bank	Unit Miles	Inspection Start/End	Inspector
Unit No. 03 Berenda Slough	Right	1.51	04/14/2020 04/14/2020	Corey Fujitani

LM Start	0.71	Rating **	M	Issue No.	8
LM End	1.51	Issue Type +	Ma	Location *	CR
Category	Earthen Levee			GPS Latitude/Longitude	
				Start	End
Item	Animal Control			36.996257 °	36.996607 °
				-120.361025 °	-120.346568 °
DWR ID	DWR_NA0011_03_f_2016_8				
Comment Code					
A1 : Exterminate rodents and backfill and compact or grout burrows.					
Inspector Comment					
Exterminate rodents from the roadway. Active rodents observed during inspection at this site.					

Photo 1 of 1 : SP\_2020\_NA0011\_144\_8\_20200225\_00010.jpg



Berenda Slough Unit 3 looking upstream from levee miles 0.71 - to 1.51.

LM Start	1.04	Rating **	U	Issue No.	11
LM End	1.05	Issue Type +	Ma	Location *	LS
Category	Earthen Levee			GPS Latitude/Longitude	
				Start	End
Item	Trim / Thin Trees			36.996613 °	36.996610 °
				-120.355055 °	-120.354995 °
DWR ID	DWR_NA0011_03_s_2012_11				
Comment Code					
T1 : Trim trees to at least five feet above ground level.					
Inspector Comment					
Remove nut tree from the slope.					

Photo 1 of 1 : SP\_2020\_NA0011\_144\_11\_20200225\_00013.jpg



Walnut trees blocking the view of the landside levee section.

LM Start	1.07	Rating **	M	Issue No.	15
LM End	1.12	Issue Type +	Ma	Location *	LS
Category	Earthen Levee			GPS Latitude/Longitude	
				Start	End
Item	Trim / Thin Trees			36.996618 °	36.996608 °
				-120.354538 °	-120.353682 °
DWR ID	DWR_NA0011_03_s_2012_15				
Comment Code					
T1 : Trim trees to at least five feet above ground level.					
Inspector Comment					

No Photos

<b>* Location</b> LS : Land Side    N/A : Not Applicable WS : Water Side CR : Crown	<b>** Rating</b> A : Acceptable M : Minimally Acceptable U : Unacceptable	N : Not Inspected/Rated C : Corrected A/W : Acceptable but Monitor & Maintain	<b>+ Issue Type</b> Ma : Maintenance Deficiency Ob : Design & System Obsolescence En : Enforcement
--	--	---	---

# Madera County FCWCA



**Flood Control Project Maintenance  
Levee Inspections**

**Maintenance Issue Types Only, Levee Inspection Report By Mile - Spring 2020**

**Madera County FCWCA**

Waterway	Bank	Unit Miles	Inspection Start/End	Inspector
Unit No. 04 Berenda Slough	Left	2.28	04/14/2020 04/14/2020	Corey Fujitani

LM Start	0.00	Rating **	M	Issue No.	35
LM End	0.93	Issue Type +	Ma	Location *	CR
Category	Earthen Levee			GPS Latitude/Longitude	
				Start	End
Item	Vegetation			36.995382 °	36.995584 °
				-120.373470 °	-120.356688 °
DWR ID	DWR_NA0011_04_s_2020_35				
Comment Code					
V9 : Keep the crown roadway free of vegetation.					
Inspector Comment					

No Photos

LM Start	0.00	Rating **	U	Issue No.	28
LM End	1.50	Issue Type +	Ma	Location *	WS
Category	Earthen Levee			GPS Latitude/Longitude	
				Start	End
Item	Vegetation			36.995382 °	36.995604 °
				-120.373470 °	-120.346425 °
DWR ID	DWR_NA0011_04_s_2020_28				
Comment Code					
V1 : Control annual grass and weeds on the levee slopes and easements.					
Inspector Comment					

Photo 1 of 1 : SP\_2020\_NA0011\_145\_28\_20200420\_00031.jpg



View of the waterside slope looking downstream. (Spring 2020)

LM Start	0.02	Rating **	U	Issue No.	3
LM End	0.97	Issue Type +	Ma	Location *	LS
Category	Earthen Levee			GPS Latitude/Longitude	
				Start	End
Item	Slope Stability			36.995506 °	36.995550 °
				-120.373233 °	-120.355935 °
DWR ID	DWR_NA0011_04_f_2016_3				
Comment Code					
S1 : Repair slope instability.					
Inspector Comment					
The slope in this area has been damaged by farm equipment.					

Photo 1 of 1 : SP\_2020\_NA0011\_145\_3\_20200225\_00001.jpg



Berenda Slough Unit 4 Looking upstream from levee mile 0.14-0.97.

\* Location  
LS : Land Side    N/A : Not Applicable  
WS : Water Side  
CR : Crown

\*\* Rating  
A : Acceptable                      N : Not Inspected/Rated  
M : Minimally Acceptable        C : Corrected  
U : Unacceptable                  A/W : Acceptable but Monitor & Maintain

+ Issue Type  
Ma : Maintenance Deficiency  
Ob : Design & System Obsolescence  
En : Enforcement



**Flood Control Project Maintenance  
Levee Inspections**

**Maintenance Issue Types Only, Levee Inspection Report By Mile - Spring 2020**

**Madera County FCWCA**

Waterway	Bank	Unit Miles	Inspection Start/End	Inspector
Unit No. 04 Berenda Slough	Left	2.28	04/14/2020 04/14/2020	Corey Fujitani

LM Start	0.04	Rating **	M	Issue No.	20
LM End	0.06	Issue Type +	Ma	Location *	WS
Category	Earthen Levee			GPS Latitude/Longitude	
				Start	End
Item	Encroachments			36.995502 °	36.995597 °
				-120.372833 °	-120.372391 °
DWR ID	DWR_NA0011_04_f_2012_20				
Comment Code					
TR : Tree or limb					
Inspector Comment					
Remove the tree limbs from the waterside levee slope.					

No Photos

LM Start	0.12	Rating **	U	Issue No.	19
LM End	0.94	Issue Type +	Ma	Location *	LS
Category	Earthen Levee			GPS Latitude/Longitude	
				Start	End
Item	Animal Control			36.995547 °	36.995586 °
				-120.371410 °	-120.356589 °
DWR ID	DWR_NA0011_04_s_2018_19				
Comment Code					
A3 : No rodents visible, but rodent burrows visible; need to backfill and compact or grout burrows.					
Inspector Comment					

Photo 1 of 1 : SP\_2020\_NA0011\_145\_19\_20200225\_00017.jpg



Looking at large rodent hole on landward slope. (Spring 2018)

LM Start	0.14	Rating **	M	Issue No.	37
LM End	0.49	Issue Type +	Ma	Location *	LS
Category	Earthen Levee			GPS Latitude/Longitude	
				Start	End
Item	Vegetation			36.995534 °	36.995557 °
				-120.370982 °	-120.364581 °
DWR ID	DWR_NA0011_04_s_2020_37				
Comment Code					
V1 : Control annual grass and weeds on the levee slopes and easements.					
Inspector Comment					

No Photos

<b>* Location</b> LS : Land Side    N/A : Not Applicable WS : Water Side CR : Crown	<b>** Rating</b> A : Acceptable M : Minimally Acceptable U : Unacceptable	N : Not Inspected/Rated C : Corrected A/W : Acceptable but Monitor & Maintain	<b>+ Issue Type</b> Ma : Maintenance Deficiency Ob : Design & System Obsolescence En : Enforcement
--	--	---	---

**Flood Control Project Maintenance  
Levee Inspections**

**Maintenance Issue Types Only, Levee Inspection Report By Mile - Spring 2020**

**Madera County FCWCA**

Waterway	Bank	Unit Miles	Inspection Start/End	Inspector
Unit No. 04 Berenda Slough	Left	2.28	04/14/2020 04/14/2020	Corey Fujitani

LM Start	0.14	Rating **	U	Issue No.	15
LM End	0.14	Issue Type +	Ma	Location *	WS
Category	Earthen Levee			GPS Latitude/Longitude	
				Start	End
Item	Encroachments			36.995528 °	36.995528 °
				-120.370922 °	-120.370922 °
DWR ID	DWR_NA0011_04_f_2015_15				
Comment Code					
TR : Tree or limb					
Inspector Comment					
There are many dead trees in the area. Remove the dead trees from the levee section. Many more are subject to fall and possibly block access to the levee crown.					

Photo 1 of 1 : SP\_2020\_NA0011\_145\_15\_20200225\_00014.jpg



Berenda Slough looking upstream from the levee mile 0.14.

LM Start	0.22	Rating **	M	Issue No.	26
LM End	0.22	Issue Type +	Ma	Location *	WS
Category	Earthen Levee			GPS Latitude/Longitude	
				Start	End
Item	Trim / Thin Trees			36.995533 °	36.995533 °
				-120.369593 °	-120.369593 °
DWR ID	DWR_NA0011_04_f_2019_26				
Comment Code					
T4 : Trim trees over roadway to at least 12 feet above ground level.					
Inspector Comment					

No Photos

LM Start	0.28	Rating **	M	Issue No.	21
LM End	0.28	Issue Type +	Ma	Location *	WS
Category	Earthen Levee			GPS Latitude/Longitude	
				Start	End
Item	Encroachments			36.995564 °	36.995564 °
				-120.368540 °	-120.368540 °
DWR ID	DWR_NA0011_04_f_2012_21				
Comment Code					
TR : Tree or limb					
Inspector Comment					
Remove the discarded tree and branches from the levee slope.					

No Photos

* Location LS : Land Side    N/A : Not Applicable WS : Water Side CR : Crown		** Rating A : Acceptable M : Minimally Acceptable U : Unacceptable		N : Not Inspected/Rated C : Corrected A/W : Acceptable but Monitor & Maintain		+ Issue Type Ma : Maintenance Deficiency Ob : Design & System Obsolescence En : Enforcement	
---	--	---	--	---	--	--	--

**Flood Control Project Maintenance  
Levee Inspections**

**Maintenance Issue Types Only, Levee Inspection Report By Mile - Spring 2020**

**Madera County FCWCA**

Waterway	Bank	Unit Miles	Inspection Start/End	Inspector
Unit No. 04 Berenda Slough	Left	2.28	04/14/2020 04/14/2020	Corey Fujitani

LM Start	0.42	Rating **	M	Issue No.	9
LM End	1.50	Issue Type +	Ma	Location *	CR
Category	Earthen Levee			GPS Latitude/Longitude	
				Start	End
Item	Crown Surface / Depressions / Rutting			36.995572 °	36.995613 °
				-120.365980 °	-120.346358 °
DWR ID	DWR_NA0011_04_s_2017_9				
Comment Code					
C2 : Repair depressions or ruts in the crown or slope.					
Inspector Comment					

No Photos

LM Start	0.44	Rating **	U	Issue No.	22
LM End	0.44	Issue Type +	Ma	Location *	LS
Category	Earthen Levee			GPS Latitude/Longitude	
				Start	End
Item	Erosion / Bank Caving			36.995560 °	36.995560 °
				-120.365614 °	-120.365614 °
DWR ID	DWR_NA0011_04_s_2018_22				
Comment Code					
E2 : Schedule repair of erosion site prior to the next inspection.					
Inspector Comment					
Someone dug a large hole on the landward slope next to the concrete riser. There is no visible pipe at the site.					

Photo 1 of 1 : SP\_2020\_NA0011\_145\_22\_20200420\_00032.jpg



Looking west at large hole next concrete riser (no pipe) on landward slope. (Spring 2020)

LM Start	0.47	Rating **	M	Issue No.	16
LM End	0.47	Issue Type +	Ma	Location *	WS
Category	Earthen Levee			GPS Latitude/Longitude	
				Start	End
Item	Encroachments			36.995603 °	36.995603 °
				-120.364978 °	-120.364978 °
DWR ID	DWR_NA0011_04_s_2014_16				
Comment Code					
TR : Tree or limb					
Inspector Comment					
This dead tree on the waterward slope should be removed from the levee section.					

Photo 1 of 1 : SP\_2020\_NA0011\_145\_16\_20200225\_00015.jpg



Tree on WS shoulder.

<b>* Location</b> LS : Land Side    N/A : Not Applicable WS : Water Side CR : Crown		<b>** Rating</b> A : Acceptable M : Minimally Acceptable U : Unacceptable N : Not Inspected/Rated C : Corrected A/W : Acceptable but Monitor & Maintain		<b>+ Issue Type</b> Ma : Maintenance Deficiency Ob : Design & System Obsolescence En : Enforcement	
--	--	---	--	---	--

**Flood Control Project Maintenance  
Levee Inspections**

**Maintenance Issue Types Only, Levee Inspection Report By Mile - Spring 2020**

**Madera County FCWCA**

Waterway	Bank	Unit Miles	Inspection Start/End	Inspector
Unit No. 04 Berenda Slough	Left	2.28	04/14/2020 04/14/2020	Corey Fujitani

LM Start	<b>0.54</b>	Rating **	M	Issue No.	<b>33</b>
LM End	<b>0.57</b>	Issue Type +	Ma	Location *	WS
Category	Earthen Levee		GPS Latitude/Longitude		
			Start	End	
Item	Encroachments		36.995565 °	36.995553 °	
			-120.363779 °	-120.363245 °	
DWR ID	DWR_NA0011_04_f_2018_33				
Comment Code					
TR : Tree or limb					
Inspector Comment					

No Photos

LM Start	<b>0.59</b>	Rating **	M	Issue No.	<b>36</b>
LM End	<b>0.84</b>	Issue Type +	Ma	Location *	LS
Category	Earthen Levee		GPS Latitude/Longitude		
			Start	End	
Item	Vegetation		36.995562 °	36.995577 °	
			-120.362897 °	-120.358374 °	
DWR ID	DWR_NA0011_04_s_2020_36				
Comment Code					
V1 : Control annual grass and weeds on the levee slopes and easements.					
Inspector Comment					

No Photos

LM Start	<b>0.62</b>	Rating **	M	Issue No.	<b>23</b>
LM End	<b>0.62</b>	Issue Type +	Ma	Location *	WS
Category	Earthen Levee		GPS Latitude/Longitude		
			Start	End	
Item	Trim / Thin Trees		36.995568 °	36.995568 °	
			-120.362355 °	-120.362355 °	
DWR ID	DWR_NA0011_04_s_2019_23				
Comment Code					
T4 : Trim trees over roadway to at least 12 feet above ground level.					
Inspector Comment					

No Photos

<b>* Location</b> LS : Land Side    N/A : Not Applicable WS : Water Side CR : Crown	<b>** Rating</b> A : Acceptable M : Minimally Acceptable U : Unacceptable	N : Not Inspected/Rated C : Corrected A/W : Acceptable but Monitor & Maintain	<b>+ Issue Type</b> Ma : Maintenance Deficiency Ob : Design & System Obsolescence En : Enforcement
--	--	---	---





**Flood Control Project Maintenance  
Levee Inspections**

**Maintenance Issue Types Only, Levee Inspection Report By Mile - Spring 2020**

**Madera County FCWCA**

Waterway	Bank	Unit Miles	Inspection Start/End	Inspector
Unit No. 04 Berenda Slough	Left	2.28	04/14/2020 04/14/2020	Corey Fujitani

LM Start	0.93	Rating **	U	Issue No.	34
LM End	1.50	Issue Type +	Ma	Location *	CR
Category	Earthen Levee			GPS Latitude/Longitude	
				Start	End
Item	Vegetation			36.995582 °	36.995604 °
				-120.356689 °	-120.346425 °
DWR ID	DWR_NA0011_04_s_2020_34				
Comment Code					
V9 : Keep the crown roadway free of vegetation.					
Inspector Comment					

Photo 1 of 1 : SP\_2020\_NA0011\_145\_34\_20200420\_00033.jpg



Looking upstream along the levee crown. (Spring 2020)

LM Start	0.93	Rating **	U	Issue No.	4
LM End	1.50	Issue Type +	Ma	Location *	LS
Category	Earthen Levee			GPS Latitude/Longitude	
				Start	End
Item	Vegetation			36.995583 °	36.995604 °
				-120.356688 °	-120.346425 °
DWR ID	DWR_NA0011_04_s_2020_4				
Comment Code					
V1 : Control annual grass and weeds on the levee slopes and easements.					
Inspector Comment					

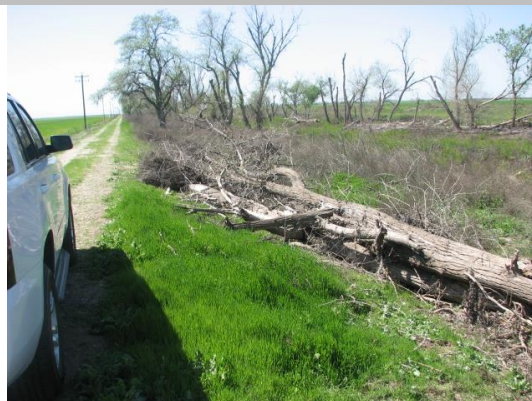
Photo 1 of 1 : SP\_2020\_NA0011\_145\_4\_20200420\_00034.jpg



Looking upstream at LM 1.50 along the landside slope. (Spring 2020)

LM Start	0.94	Rating **	M	Issue No.	14
LM End	0.94	Issue Type +	Ma	Location *	WS
Category	Earthen Levee			GPS Latitude/Longitude	
				Start	End
Item	Encroachments			36.995573 °	36.995573 °
				-120.356601 °	-120.356601 °
DWR ID	DWR_NA0011_04_f_2017_14				
Comment Code					
TR : Tree or limb					
Inspector Comment					
Remove the downed tree from the waterside slope.					

Photo 1 of 1 : SP\_2020\_NA0011\_145\_14\_20200225\_00013.jpg



Looking upstream at fallen tree on waterward slope. (Spring 2018)

**\* Location**

LS : Land Side    N/A : Not Applicable  
WS : Water Side  
CR : Crown

**\*\* Rating**

A : Acceptable                      N : Not Inspected/Rated  
M : Minimally Acceptable        C : Corrected  
U : Unacceptable                  A/W : Acceptable but Monitor & Maintain

**+ Issue Type**

Ma : Maintenance Deficiency  
Ob : Design & System Obsolescence  
En : Enforcement



**Flood Control Project Maintenance  
Levee Inspections**

**Maintenance Issue Types Only, Levee Inspection Report By Mile - Spring 2020**

**Madera County FCWCA**

Waterway	Bank	Unit Miles	Inspection Start/End	Inspector
Unit No. 04 Berenda Slough	Left	2.28	04/14/2020 04/14/2020	Corey Fujitani

LM Start	1.01	Rating **	U	Issue No.	12
LM End	1.01	Issue Type +	Ma	Location *	WS
Category	Earthen Levee			GPS Latitude/Longitude	
				Start	End
Item	Trim / Thin Trees			36.995537 °	36.995537 °
				-120.355261 °	-120.355261 °
DWR ID	DWR_NA0011_04_f_2017_12				
Comment Code					
T1 : Trim trees to at least five feet above ground level.					
Inspector Comment					
Branches from waterside tree are blocking visibility of waterside slope and crown. Levee crown is nearly impassible.					

Photo 1 of 1 : SP\_2020\_NA0011\_145\_12\_20200225\_00010.jpg



Trim trees to at least 5' above levee slope and 12' above levee crown to allow inspection and access.

LM Start	1.19	Rating **	M	Issue No.	10
LM End	1.19	Issue Type +	Ma	Location *	WS
Category	Earthen Levee			GPS Latitude/Longitude	
				Start	End
Item	Trim / Thin Trees			36.995566 °	36.995566 °
				-120.352038 °	-120.352038 °
DWR ID	DWR_NA0011_04_f_2017_10				
Comment Code					
T4 : Trim trees over roadway to at least 12 feet above ground level.					
Inspector Comment					

Photo 1 of 1 : SP\_2020\_NA0011\_145\_10\_20200225\_00007.jpg



Looking upstream at tree on waterward slope. (Spring 2018)

LM Start	1.36	Rating **	M	Issue No.	18
LM End	1.36	Issue Type +	Ma	Location *	WS
Category	Earthen Levee			GPS Latitude/Longitude	
				Start	End
Item	Trim / Thin Trees			36.995593 °	36.995593 °
				-120.348926 °	-120.348926 °
DWR ID	DWR_NA0011_04_s_2018_18				
Comment Code					
T1 : Trim trees to at least five feet above ground level.					
Inspector Comment					

No Photos

* Location		** Rating		+ Issue Type	
LS : Land Side	N/A : Not Applicable	A : Acceptable	N : Not Inspected/Rated	Ma : Maintenance Deficiency	
WS : Water Side		M : Minimally Acceptable	C : Corrected	Ob : Design & System Obsolescence	
CR : Crown		U : Unacceptable	A/W : Acceptable but Monitor & Maintain	En : Enforcement	

**Flood Control Project Maintenance  
Levee Inspections**

## Maintenance Issue Types Only, Levee Inspection Report By Mile - Spring 2020

### Madera County FCWCA

Waterway	Bank	Unit Miles	Inspection Start/End	Inspector
Unit No. 04 Berenda Slough	Left	2.28	04/14/2020 04/14/2020	Corey Fujitani

LM Start	1.50	Rating **	U	Issue No.	11
LM End	2.28	Issue Type +	Ma	Location *	LS
Category	Earthen Levee			GPS Latitude/Longitude	
				Start	End
Item	Animal Control			36.995590 °	37.003740 °
				-120.346406 °	-120.336877 °
DWR ID	DWR_NA0011_04_f_2016_11				
Comment Code					
A1 : Exterminate rodents and backfill and compact or grout burrows.					
Inspector Comment					
Exterminate the rodents and backfill and compact the burrows or grout the burrows in this area.					

Photo 1 of 1 : SP\_2020\_NA0011\_145\_11\_20200420\_00035.jpg



Representative view of rodent holes observed in this section. (Spring 2020)

LM Start	1.50	Rating **	U	Issue No.	30
LM End	2.28	Issue Type +	Ma	Location *	WS
Category	Earthen Levee			GPS Latitude/Longitude	
				Start	End
Item	Animal Control			36.995590 °	37.003740 °
				-120.346406 °	-120.336877 °
DWR ID	DWR_NA0011_04_f_2014_30				
Comment Code					
A1 : Exterminate rodents and backfill and compact or grout burrows.					
Inspector Comment					
Bait stations are needed in the rodent infested area on the waterside slope and toe.					

Photo 1 of 1 : SP\_2020\_NA0011\_145\_30\_20200420\_00036.jpg



Several large rodent holes on waterside slope. (Spring 2020)

LM Start	1.63	Rating **	M	Issue No.	59
LM End	1.67	Issue Type +	Ma	Location *	CR
Category	Earthen Levee			GPS Latitude/Longitude	
				Start	End
Item	Animal Control			36.996573 °	36.997002 °
				-120.344428 °	-120.343977 °
DWR ID	DWR_NA0011_04_s_2012_59				
Comment Code					
A1 : Exterminate rodents and backfill and compact or grout burrows.					
Inspector Comment					
Exterminate rodents in this area.					

No Photos

* Location		** Rating		+ Issue Type	
LS : Land Side	N/A : Not Applicable	A : Acceptable	N : Not Inspected/Rated	Ma : Maintenance Deficiency	
WS : Water Side		M : Minimally Acceptable	C : Corrected	Ob : Design & System Obsolescence	
CR : Crown		U : Unacceptable	A/W : Acceptable but Monitor & Maintain	En : Enforcement	



**Flood Control Project Maintenance  
Levee Inspections**

**Maintenance Issue Types Only, Levee Inspection Report By Mile - Spring 2020**

**Madera County FCWCA**

Waterway	Bank	Unit Miles	Inspection Start/End	Inspector
Unit No. 04 Berenda Slough	Left	2.28	04/14/2020 04/14/2020	Corey Fujitani

LM Start	1.80	Rating **	M	Issue No.	29
LM End	1.80	Issue Type +	Ma	Location *	CR
Category	Earthen Levee			GPS Latitude/Longitude	
				Start	End
Item	Animal Control			36.998449 °	36.998449 °
				-120.342516 °	-120.342516 °
DWR ID	DWR_NA0011_04_f_2018_29				
Comment Code					
A3 : No rodents visible, but rodent burrows visible; need to backfill and compact or grout burrows.					
Inspector Comment					

No Photos

LM Start	2.22	Rating **	M	Issue No.	27
LM End	2.22	Issue Type +	Ma	Location *	WS
Category	Earthen Levee			GPS Latitude/Longitude	
				Start	End
Item	Trim / Thin Trees			37.003160 °	37.003160 °
				-120.337747 °	-120.337747 °
DWR ID	DWR_NA0011_04_f_2018_27				
Comment Code					
T1 : Trim trees to at least five feet above ground level.					
Inspector Comment					
Trim tree back away from crown and at least 5 feet above the levee slope.					

Photo 1 of 1 : SP\_2020\_NA0011\_145\_27\_20200225\_00022.jpg



Trim tree on waterside shoulder. (Fall 2018)

<b>* Location</b> LS : Land Side    N/A : Not Applicable WS : Water Side CR : Crown	<b>** Rating</b> A : Acceptable M : Minimally Acceptable U : Unacceptable	N : Not Inspected/Rated C : Corrected A/W : Acceptable but Monitor & Maintain	<b>+ Issue Type</b> Ma : Maintenance Deficiency Ob : Design & System Obsolescence En : Enforcement
--	--	---	---

# Madera County FCWCA

**Flood Control Project Maintenance  
Levee Inspections**

**Maintenance Issue Types Only, Levee Inspection Report By Mile - Spring 2020**

**Madera County FCWCA**

Waterway	Bank	Unit Miles	Inspection Start/End	Inspector
Unit No. 05 Fresno River	Right	9.10	04/15/2020 04/15/2020	Corey Fujitani

LM Start	0.01	Rating **	U	Issue No.	21
LM End	4.05	Issue Type +	Ma	Location *	LS
Category	Earthen Levee			GPS Latitude/Longitude	
				Start	End
Item	Vegetation			36.978540 °	36.968171 °
				-120.368318 °	-120.300987 °
DWR ID	DWR_NA0011_05_s_2020_21				
Comment Code					
V1 : Control annual grass and weeds on the levee slopes and easements.					
Inspector Comment					

Photo 1 of 1 : SP\_2020\_NA0011\_146\_21\_20200504\_00049.jpg



View of the landside slope at LM 0.00. (Spring 2020)

LM Start	0.04	Rating **	U	Issue No.	31
LM End	4.05	Issue Type +	Ma	Location *	CR
Category	Earthen Levee			GPS Latitude/Longitude	
				Start	End
Item	Vegetation			36.978507 °	36.968172 °
				-120.367803 °	-120.300987 °
DWR ID	DWR_NA0011_05_s_2020_31				
Comment Code					
V9 : Keep the crown roadway free of vegetation.					
Inspector Comment					

Photo 1 of 1 : SP\_2020\_NA0011\_146\_31\_20200504\_00052.jpg



Looking downstream at the levee crown at LM 4.05. ( Spring 2020)

LM Start	2.50	Rating **	M	Issue No.	19
LM End	2.50	Issue Type +	Ma	Location *	WS
Category	Rivers, Channels & Designated Floodways			GPS Latitude/Longitude	
				Start	End
Item	Encroachments			36.967990 °	36.967990 °
				-120.329131 °	-120.329131 °
DWR ID	DWR_NA0011_05_s_2012_19				
Comment Code					
Inspector Comment					
Trash in channel.					

Photo 1 of 1 : SP\_2020\_NA0011\_146\_19\_20200225\_00015.jpg



Looking west at garbage in channel. (Spring 2018)

**\* Location**

LS : Land Side    N/A : Not Applicable  
WS : Water Side  
CR : Crown

**\*\* Rating**

A : Acceptable                      N : Not Inspected/Rated  
M : Minimally Acceptable        C : Corrected  
U : Unacceptable                  A/W : Acceptable but Monitor & Maintain

**+ Issue Type**

Ma : Maintenance Deficiency  
Ob : Design & System Obsolescence  
En : Enforcement



**Flood Control Project Maintenance  
Levee Inspections**

**Maintenance Issue Types Only, Levee Inspection Report By Mile - Spring 2020**

**Madera County FCWCA**

Waterway	Bank	Unit Miles	Inspection Start/End	Inspector
Unit No. 05 Fresno River	Right	9.10	04/15/2020 04/15/2020	Corey Fujitani

LM Start	5.56	Rating **	M	Issue No.	18
LM End	5.56	Issue Type +	Ma	Location *	LS
Category	Earthen Levee			GPS Latitude/Longitude	
				Start	End
Item	Slope Stability			36.968210 °	36.968210 °
				-120.273729 °	-120.273729 °
DWR ID	DWR_NA0011_05_f_2017_18				
Comment Code					
S3 : Repair the levee slope damaged by vehicle traffic and prevent access where possible.					
Inspector Comment					
Repair damage from vehicle traffic on slope and shoulder.					

Photo 1 of 1 : SP\_2020\_NA0011\_146\_18\_20200225\_00013.jpg



Damage to landside shoulder and slope looking upstream. (Fall 2019)

LM Start	5.67	Rating **	M	Issue No.	38
LM End	5.67	Issue Type +	Ma	Location *	WS
Category	Earthen Levee			GPS Latitude/Longitude	
				Start	End
Item	Erosion / Bank Caving			36.968204 °	36.968204 °
				-120.271707 °	-120.271707 °
DWR ID	DWR_NA0011_05_f_2018_38				
Comment Code					
E2 : Schedule repair of erosion site prior to the next inspection.					
Inspector Comment					

Photo 1 of 1 : SP\_2020\_NA0011\_146\_38\_20200504\_00057.jpg



Finger erosion on the waterside slope. (Spring 2020)

LM Start	5.90	Rating **	M	Issue No.	17
LM End	5.90	Issue Type +	Ma	Location *	LS
Category	Earthen Levee			GPS Latitude/Longitude	
				Start	End
Item	Erosion / Bank Caving			36.968205 °	36.968205 °
				-120.267562 °	-120.267562 °
DWR ID	DWR_NA0011_05_f_2019_17				
Comment Code					
E2 : Schedule repair of erosion site prior to the next inspection.					
Inspector Comment					

Photo 1 of 1 : SP\_2020\_NA0011\_146\_17\_20200225\_00011.jpg



View of landside slope erosion looking upstream. (Fall 2019)

**\* Location**

LS : Land Side    N/A : Not Applicable  
WS : Water Side  
CR : Crown

**\*\* Rating**

A : Acceptable                      N : Not Inspected/Rated  
M : Minimally Acceptable        C : Corrected  
U : Unacceptable                  A/W : Acceptable but Monitor & Maintain

**+ Issue Type**

Ma : Maintenance Deficiency  
Ob : Design & System Obsolescence  
En : Enforcement



# Madera County FCWCA



**Flood Control Project Maintenance  
Levee Inspections**

**Maintenance Issue Types Only, Levee Inspection Report By Mile - Spring 2020**

**Madera County FCWCA**

Waterway	Bank	Unit Miles	Inspection Start/End	Inspector
Unit No. 05 Fresno River	Right	9.10	04/15/2020 04/15/2020	Corey Fujitani

LM Start	6.63	Rating **	M	Issue No.	22
LM End	7.56	Issue Type +	Ma	Location *	CR
Category	Earthen Levee			GPS Latitude/Longitude	
				Start	End
Item	Crown Surface / Depressions / Rutting			36.968568 °	36.969552 °
				-120.254542 °	-120.237855 °
DWR ID	DWR_NA0011_05_s_2017_22				
Comment Code					
C2 : Repair depressions or ruts in the crown or slope.					
Inspector Comment					
Repair rutting and add appropriate gravel.					

No Photos

LM Start	6.75	Rating **	M	Issue No.	28
LM End	6.95	Issue Type +	Ma	Location *	LS
Category	Earthen Levee			GPS Latitude/Longitude	
				Start	End
Item	Animal Control			36.969200 °	36.969507 °
				-120.252462 °	-120.248893 °
DWR ID	DWR_NA0011_05_f_2016_28				
Comment Code					
A1 : Exterminate rodents and backfill and compact or grout burrows.					
Inspector Comment					
Exterminate the rodents in the area listed and place bait stations along the shoulder and/or slope.					

Photo 1 of 1 : SP\_2020\_NA0011\_146\_28\_20200225\_00020.jpg



Fresno River landside levee slope levee mile 6.75-6.95.

LM Start	6.90	Rating **	M	Issue No.	45
LM End	7.53	Issue Type +	Ma	Location *	CR
Category	Earthen Levee			GPS Latitude/Longitude	
				Start	End
Item	Vegetation			36.969519 °	36.969537 °
				-120.249843 °	-120.238482 °
DWR ID	DWR_NA0011_05_s_2020_45				
Comment Code					
V9 : Keep the crown roadway free of vegetation.					
Inspector Comment					

No Photos

<b>* Location</b> LS : Land Side    N/A : Not Applicable WS : Water Side CR : Crown	<b>** Rating</b> A : Acceptable M : Minimally Acceptable U : Unacceptable	N : Not Inspected/Rated C : Corrected A/W : Acceptable but Monitor & Maintain	<b>+ Issue Type</b> Ma : Maintenance Deficiency Ob : Design & System Obsolescence En : Enforcement
--	--	---	---



**Flood Control Project Maintenance  
Levee Inspections**

**Maintenance Issue Types Only, Levee Inspection Report By Mile - Spring 2020**

**Madera County FCWCA**

Waterway	Bank	Unit Miles	Inspection Start/End	Inspector
Unit No. 05 Fresno River	Right	9.10	04/15/2020 04/15/2020	Corey Fujitani

LM Start	7.21	Rating **	M	Issue No.	32
LM End	7.21	Issue Type +	Ma	Location *	LS
Category	Earthen Levee			GPS Latitude/Longitude	
				Start	End
Item	Animal Control			36.969539 °	36.969539 °
				-120.244142 °	-120.244142 °
DWR ID	DWR_NA0011_05_f_2018_32				
Comment Code					
A3 : No rodents visible, but rodent burrows visible; need to backfill and compact or grout burrows.					
Inspector Comment					

No Photos

LM Start	7.53	Rating **	M	Issue No.	47
LM End	8.16	Issue Type +	Ma	Location *	WS
Category	Earthen Levee			GPS Latitude/Longitude	
				Start	End
Item	Vegetation			36.969534 °	36.972367 °
				-120.238397 °	-120.228093 °
DWR ID	DWR_NA0011_05_s_2020_47				
Comment Code					
V1 : Control annual grass and weeds on the levee slopes and easements.					
Inspector Comment					

No Photos

LM Start	7.66	Rating **	U	Issue No.	24
LM End	7.66	Issue Type +	Ma	Location *	LS
Category	Earthen Levee			GPS Latitude/Longitude	
				Start	End
Item	Animal Control			36.969606 °	36.969606 °
				-120.236091 °	-120.236091 °
DWR ID	DWR_NA0011_05_f_2018_24				
Comment Code					
A3 : No rodents visible, but rodent burrows visible; need to backfill and compact or grout burrows.					
Inspector Comment					
Rodent burrows and associated erosion due to rodent activity.					

Photo 1 of 1 : SP\_2020\_NA0011\_146\_24\_20200225\_00016.jpg



Rodent activity on landside slope. (Fall 2018)

**\* Location**  
LS : Land Side    N/A : Not Applicable  
WS : Water Side  
CR : Crown

**\*\* Rating**  
A : Acceptable                      N : Not Inspected/Rated  
M : Minimally Acceptable        C : Corrected  
U : Unacceptable                  A/W : Acceptable but Monitor & Maintain

**+ Issue Type**  
Ma : Maintenance Deficiency  
Ob : Design & System Obsolescence  
En : Enforcement



**Flood Control Project Maintenance  
Levee Inspections**

**Maintenance Issue Types Only, Levee Inspection Report By Mile - Spring 2020**

**Madera County FCWCA**

Waterway	Bank	Unit Miles	Inspection Start/End	Inspector
Unit No. 05 Fresno River	Right	9.10	04/15/2020 04/15/2020	Corey Fujitani

LM Start	8.57	Rating **	U	Issue No.	10
LM End	8.57	Issue Type +	Ma	Location *	WS
Category	Earthen Levee			GPS Latitude/Longitude	
				Start	End
Item	Vegetation			36.972355 °	36.972355 °
				-120.220878 °	-120.220878 °
DWR ID	DWR_NA0011_05_f _ 2018_10				
Comment Code					
V2 : Remove the wild growth other than native grasses from the levee slopes.					
Inspector Comment					
Cactus growing on waterside slope.					

Photo 1 of 1 : SP\_2020\_NA0011\_146\_10\_20200225\_00005.jpg



Cactus growing on waterside shoulder. (Spring 2019)

<b>* Location</b> LS : Land Side    N/A : Not Applicable WS : Water Side CR : Crown	<b>** Rating</b> A : Acceptable M : Minimally Acceptable U : Unacceptable	N : Not Inspected/Rated C : Corrected A/W : Acceptable but Monitor & Maintain	<b>+ Issue Type</b> Ma : Maintenance Deficiency Ob : Design & System Obsolescence En : Enforcement
--	--	---	---



**Flood Control Project Maintenance  
Levee Inspections**

**Maintenance Issue Types Only, Levee Inspection Report By Mile - Spring 2020**

**Madera County FCWCA**

Waterway	Bank	Unit Miles	Inspection Start/End	Inspector
Unit No. 06 Fresno River	Left	9.03	04/15/2020 04/15/2020	Corey Fujitani

LM Start	0.00	Rating **	U	Issue No.	73
LM End	0.93	Issue Type +	Ma	Location *	WS
Category	Earthen Levee			GPS Latitude/Longitude	
				Start	End
Item	Vegetation			36.976941 °	36.969700 °
				-120.367494 °	-120.354557 °
DWR ID	DWR_NA0011_06_s_2020_73				
Comment Code					
V1 : Control annual grass and weeds on the levee slopes and easements.					
Inspector Comment					

Photo 1 of 1 : SP\_2020\_NA0011\_147\_73\_20200504\_00054.jpg



View of the waterside slope looking downstream. (Spring 2020)

LM Start	0.00	Rating **	U	Issue No.	74
LM End	0.93	Issue Type +	Ma	Location *	CR
Category	Earthen Levee			GPS Latitude/Longitude	
				Start	End
Item	Vegetation			36.976941 °	36.969700 °
				-120.367494 °	-120.354557 °
DWR ID	DWR_NA0011_06_s_2020_74				
Comment Code					
V9 : Keep the crown roadway free of vegetation.					
Inspector Comment					

Photo 1 of 1 : SP\_2020\_NA0011\_147\_74\_20200504\_00055.jpg



Looking downstream along the levee crown. (Spring 2020)

LM Start	0.00	Rating **	U	Issue No.	72
LM End	0.93	Issue Type +	Ma	Location *	LS
Category	Earthen Levee			GPS Latitude/Longitude	
				Start	End
Item	Vegetation			36.976941 °	36.969700 °
				-120.367494 °	-120.354556 °
DWR ID	DWR_NA0011_06_s_2020_72				
Comment Code					
V1 : Control annual grass and weeds on the levee slopes and easements.					
Inspector Comment					

Photo 1 of 1 : SP\_2020\_NA0011\_147\_72\_20200519\_00067.jpg



View of vegetation along the landside slope looking downstream. (Spring 2020)

**\* Location**

LS : Land Side    N/A : Not Applicable  
WS : Water Side  
CR : Crown

**\*\* Rating**

A : Acceptable                      N : Not Inspected/Rated  
M : Minimally Acceptable        C : Corrected  
U : Unacceptable                  A/W : Acceptable but Monitor & Maintain

**+ Issue Type**

Ma : Maintenance Deficiency  
Ob : Design & System Obsolescence  
En : Enforcement

**Flood Control Project Maintenance  
Levee Inspections**

**Maintenance Issue Types Only, Levee Inspection Report By Mile - Spring 2020**

**Madera County FCWCA**

Waterway	Bank	Unit Miles	Inspection Start/End	Inspector
Unit No. 06 Fresno River	Left	9.03	04/15/2020 04/15/2020	Corey Fujitani

LM Start	0.01	Rating **	M	Issue No.	19
LM End	3.05	Issue Type +	Ma	Location *	LS
Category	Earthen Levee			GPS Latitude/Longitude	
				Start	End
Item	Animal Control			36.976937 °	36.967320 °
				-120.367308 °	-120.317933 °
DWR ID	DWR_NA0011_06_f_2016_19				
Comment Code					
A1 : Exterminate rodents and backfill and compact or grout burrows.					
Inspector Comment					
Exterminate rodents and backfill burrows.					

No Photos

LM Start	0.44	Rating **	U	Issue No.	20
LM End	0.44	Issue Type +	Ma	Location *	LS
Category	Earthen Levee			GPS Latitude/Longitude	
				Start	End
Item	Erosion / Bank Caving			36.975030 °	36.975014 °
				-120.360382 °	-120.360401 °
DWR ID	DWR_NA0011_06_f_2012_20				
Comment Code					
E2 : Schedule repair of erosion site prior to the next inspection.					
Inspector Comment					
This erosion should be taken care of before it gets worse.					

Photo 1 of 1 : SP\_2020\_NA0011\_147\_20\_20200225\_00008.jpg



Looking downstream at the old erosion site landside slope.

LM Start	0.95	Rating **	M	Issue No.	71
LM End	1.43	Issue Type +	Ma	Location *	WS
Category	Earthen Levee			GPS Latitude/Longitude	
				Start	End
Item	Vegetation			36.969488 °	36.967173 °
				-120.354497 °	-120.347107 °
DWR ID	DWR_NA0011_06_s_2020_71				
Comment Code					
V1 : Control annual grass and weeds on the levee slopes and easements.					
Inspector Comment					

No Photos

<b>* Location</b> LS : Land Side    N/A : Not Applicable WS : Water Side CR : Crown	<b>** Rating</b> A : Acceptable M : Minimally Acceptable U : Unacceptable	N : Not Inspected/Rated C : Corrected A/W : Acceptable but Monitor & Maintain	<b>+ Issue Type</b> Ma : Maintenance Deficiency Ob : Design & System Obsolescence En : Enforcement
--	--	---	---

**Flood Control Project Maintenance  
Levee Inspections**

**Maintenance Issue Types Only, Levee Inspection Report By Mile - Spring 2020**

**Madera County FCWCA**

Waterway	Bank	Unit Miles	Inspection Start/End	Inspector
Unit No. 06 Fresno River	Left	9.03	04/15/2020 04/15/2020	Corey Fujitani

LM Start	1.02	Rating **	U	Issue No.	17
LM End	1.15	Issue Type +	Ma	Location *	WS
Category	Earthen Levee			GPS Latitude/Longitude	
				Start	End
Item	Slope Stability			36.968520 °	36.967334 °
				-120.354012 °	-120.352154 °
DWR ID	DWR_NA0011_06_f_2017_17				
Comment Code					
S1 : Repair slope instability.					
Inspector Comment					
Observed slump possibly exacerbated by rodent activity. 20' long x 8' high x 18" deep into levee slope.					

Photo 1 of 1 : SP\_2020\_NA0011\_147\_17\_20200225\_00006.jpg



Observed slump possibly exacerbated by rodent activity. 20' long x 8' high x 18" deep into levee slope.

LM Start	1.14	Rating **	M	Issue No.	41
LM End	1.19	Issue Type +	Ma	Location *	LS
Category	Earthen Levee			GPS Latitude/Longitude	
				Start	End
Item	Slope Stability			36.967387 °	36.967207 °
				-120.352332 °	-120.351590 °
DWR ID	DWR_NA0011_06_s_2013_41				
Comment Code					
S1 : Repair slope instability.					
Inspector Comment					
Repair the slope damaged by farm equipment.					

No Photos

LM Start	1.15	Rating **	M	Issue No.	18
LM End	3.49	Issue Type +	Ma	Location *	WS
Category	Earthen Levee			GPS Latitude/Longitude	
				Start	End
Item	Animal Control			36.967360 °	36.967393 °
				-120.352243 °	-120.310025 °
DWR ID	DWR_NA0011_06_f_2017_18				
Comment Code					
A1 : Exterminate rodents and backfill and compact or grout burrows.					
Inspector Comment					

No Photos

* Location LS : Land Side    N/A : Not Applicable WS : Water Side CR : Crown		** Rating A : Acceptable                      N : Not Inspected/Rated M : Minimally Acceptable        C : Corrected U : Unacceptable                  A/W : Acceptable but Monitor & Maintain		+ Issue Type Ma : Maintenance Deficiency Ob : Design & System Obsolescence En : Enforcement	
---	--	--	--	--	--



**Flood Control Project Maintenance  
Levee Inspections**

**Maintenance Issue Types Only, Levee Inspection Report By Mile - Spring 2020**

**Madera County FCWCA**

Waterway	Bank	Unit Miles	Inspection Start/End	Inspector
Unit No. 06 Fresno River	Left	9.03	04/15/2020 04/15/2020	Corey Fujitani

LM Start	1.27	Rating **	M	Issue No.	14
LM End	6.56	Issue Type +	Ma	Location *	CR
Category	Earthen Levee			GPS Latitude/Longitude	
				Start	End
Item	Crown Surface / Depressions / Rutting			36.967177 °	36.967992 °
				-120.350167 °	-120.254517 °
DWR ID	DWR_NA0011_06_s_2017_14				
Comment Code					
C2 : Repair depressions or ruts in the crown or slope.					
Inspector Comment					
Repair the crown roadway of ruts and depressions regrade where needed					

No Photos

LM Start	1.44	Rating **	U	Issue No.	70
LM End	1.75	Issue Type +	Ma	Location *	WS
Category	Earthen Levee			GPS Latitude/Longitude	
				Start	End
Item	Vegetation			36.967173 °	36.967196 °
				-120.347058 °	-120.341466 °
DWR ID	DWR_NA0011_06_s_2020_70				
Comment Code					
V1 : Control annual grass and weeds on the levee slopes and easements.					
Inspector Comment					

Photo 1 of 1 : SP\_2020\_NA0011\_147\_70\_20200504\_00058.jpg



View of vegetation along the waterside slope. (Spring 2020)

LM Start	1.75	Rating **	M	Issue No.	67
LM End	2.46	Issue Type +	Ma	Location *	WS
Category	Earthen Levee			GPS Latitude/Longitude	
				Start	End
Item	Vegetation			36.967197 °	36.967247 °
				-120.341460 °	-120.328536 °
DWR ID	DWR_NA0011_06_s_2020_67				
Comment Code					
V1 : Control annual grass and weeds on the levee slopes and easements.					
Inspector Comment					

No Photos

<b>* Location</b> LS : Land Side    N/A : Not Applicable WS : Water Side CR : Crown	<b>** Rating</b> A : Acceptable M : Minimally Acceptable U : Unacceptable	N : Not Inspected/Rated C : Corrected A/W : Acceptable but Monitor & Maintain	<b>+ Issue Type</b> Ma : Maintenance Deficiency Ob : Design & System Obsolescence En : Enforcement
--	--	---	---

**Flood Control Project Maintenance  
Levee Inspections**

## Maintenance Issue Types Only, Levee Inspection Report By Mile - Spring 2020

### Madera County FCWCA

Waterway	Bank	Unit Miles	Inspection Start/End	Inspector
Unit No. 06 Fresno River	Left	9.03	04/15/2020 04/15/2020	Corey Fujitani

LM Start	1.98	Rating **	M	Issue No.	66
LM End	2.46	Issue Type +	Ma	Location *	LS
Category	Earthen Levee			GPS Latitude/Longitude	
				Start	End
Item	Vegetation			36.967211 °	36.967247 °
				-120.337281 °	-120.328536 °
DWR ID	DWR_NA0011_06_s_2020_66				
Comment Code					
V1 : Control annual grass and weeds on the levee slopes and easements.					
Inspector Comment					

No Photos

LM Start	2.20	Rating **	M	Issue No.	69
LM End	2.23	Issue Type +	Ma	Location *	LS
Category	Earthen Levee			GPS Latitude/Longitude	
				Start	End
Item	Slope Stability			36.967231 °	36.967228 °
				-120.333365 °	-120.332781 °
DWR ID	DWR_NA0011_06_s_2020_69				
Comment Code					
S3 : Repair the levee slope damaged by vehicle traffic and prevent access where possible.					
Inspector Comment					

Photo 1 of 1 : SP\_2020\_NA0011\_147\_69\_20200504\_00059.jpg



Vehicle tracks in the landside slope. (Spring 2020)

LM Start	2.46	Rating **	U	Issue No.	64
LM End	3.47	Issue Type +	Ma	Location *	WS
Category	Earthen Levee			GPS Latitude/Longitude	
				Start	End
Item	Vegetation			36.967246 °	36.967380 °
				-120.328536 °	-120.310251 °
DWR ID	DWR_NA0011_06_s_2020_64				
Comment Code					
V1 : Control annual grass and weeds on the levee slopes and easements.					
Inspector Comment					

Photo 1 of 1 : SP\_2020\_NA0011\_147\_64\_20200504\_00061.jpg



Looking downstream along the waterside slope. (Spring 2020)

**\* Location**

LS : Land Side    N/A : Not Applicable  
WS : Water Side  
CR : Crown

**\*\* Rating**

A : Acceptable                      N : Not Inspected/Rated  
M : Minimally Acceptable        C : Corrected  
U : Unacceptable                  A/W : Acceptable but Monitor & Maintain

**+ Issue Type**

Ma : Maintenance Deficiency  
Ob : Design & System Obsolescence  
En : Enforcement

**Flood Control Project Maintenance  
Levee Inspections**

## Maintenance Issue Types Only, Levee Inspection Report By Mile - Spring 2020

### Madera County FCWCA

Waterway	Bank	Unit Miles	Inspection Start/End	Inspector
Unit No. 06 Fresno River	Left	9.03	04/15/2020 04/15/2020	Corey Fujitani

LM Start	2.51	Rating **	M	Issue No.	62
LM End	3.47	Issue Type +	Ma	Location *	CR
Category	Earthen Levee			GPS Latitude/Longitude	
				Start	End
Item	Vegetation			36.967255 °	36.967381 °
				-120.327624 °	-120.310252 °
DWR ID	DWR_NA0011_06_s_2020_62				
Comment Code					
V9 : Keep the crown roadway free of vegetation.					
Inspector Comment					

No Photos

LM Start	3.49	Rating **	M	Issue No.	27
LM End	3.49	Issue Type +	Ma	Location *	LS
Category	Earthen Levee			GPS Latitude/Longitude	
				Start	End
Item	Slope Stability			36.967393 °	36.967393 °
				-120.310025 °	-120.310025 °
DWR ID	DWR_NA0011_06_f_2017_27				
Comment Code					
S3 : Repair the levee slope damaged by vehicle traffic and prevent access where possible.					
Inspector Comment					
Repair damage at toe due to ag equipment activity between power pole and levee.					

Photo 1 of 1 : SP\_2020\_NA0011\_147\_27\_20200225\_00012.jpg



Ag activity has cut into landside toe. Activity should be stopped and levee slope repaired.

LM Start	3.76	Rating **	M	Issue No.	40
LM End	3.76	Issue Type +	Ma	Location *	CR
Category	Earthen Levee			GPS Latitude/Longitude	
				Start	End
Item	Animal Control			36.967419 °	36.967419 °
				-120.305171 °	-120.305171 °
DWR ID	DWR_NA0011_06_s_2020_40				
Comment Code					
A3 : No rodents visible, but rodent burrows visible; need to backfill and compact or grout burrows.					
Inspector Comment					
Depression on the levee crown appears to be cause by rodent burrow.					

No Photos

* Location		** Rating		+ Issue Type	
LS : Land Side	N/A : Not Applicable	A : Acceptable	N : Not Inspected/Rated	Ma : Maintenance Deficiency	
WS : Water Side		M : Minimally Acceptable	C : Corrected	Ob : Design & System Obsolescence	
CR : Crown		U : Unacceptable	A/W : Acceptable but Monitor & Maintain	En : Enforcement	



**Flood Control Project Maintenance  
Levee Inspections**

**Maintenance Issue Types Only, Levee Inspection Report By Mile - Spring 2020**

**Madera County FCWCA**

Waterway	Bank	Unit Miles	Inspection Start/End	Inspector
Unit No. 06 Fresno River	Left	9.03	04/15/2020 04/15/2020	Corey Fujitani

LM Start	<b>3.99</b>	Rating **	M	Issue No.	<b>34</b>
LM End	<b>3.99</b>	Issue Type +	Ma	Location *	LS
Category	Earthen Levee		GPS Latitude/Longitude		
			Start	End	
Item	Slope Stability		36.967457 °	36.967457 °	
			-120.301031 °	-120.301031 °	
DWR ID	DWR_NA0011_06_f_2017_34				
Comment Code					
S3 : Repair the levee slope damaged by vehicle traffic and prevent access where possible.					
Inspector Comment					

No Photos

LM Start	<b>4.56</b>	Rating **	M	Issue No.	<b>65</b>
LM End	<b>4.58</b>	Issue Type +	Ma	Location *	LS
Category	Earthen Levee		GPS Latitude/Longitude		
			Start	End	
Item	Animal Control		36.967501 °	36.967502 °	
			-120.290581 °	-120.290215 °	
DWR ID	DWR_NA0011_06_f_2018_65				
Comment Code					
A3 : No rodents visible, but rodent burrows visible; need to backfill and compact or grout burrows.					
Inspector Comment					

No Photos

LM Start	<b>4.74</b>	Rating **	M	Issue No.	<b>78</b>
LM End	<b>4.74</b>	Issue Type +	Ma	Location *	LS
Category	Earthen Levee		GPS Latitude/Longitude		
			Start	End	
Item	Animal Control		36.967508 °	36.967508 °	
			-120.287446 °	-120.287446 °	
DWR ID	DWR_NA0011_06_s_2019_78				
Comment Code					
A3 : No rodents visible, but rodent burrows visible; need to backfill and compact or grout burrows.					
Inspector Comment					

No Photos

<b>* Location</b> LS : Land Side    N/A : Not Applicable WS : Water Side CR : Crown	<b>** Rating</b> A : Acceptable M : Minimally Acceptable U : Unacceptable	N : Not Inspected/Rated C : Corrected A/W : Acceptable but Monitor & Maintain	<b>+ Issue Type</b> Ma : Maintenance Deficiency Ob : Design & System Obsolescence En : Enforcement
--	--	---	---

**Flood Control Project Maintenance  
Levee Inspections**

**Maintenance Issue Types Only, Levee Inspection Report By Mile - Spring 2020**

**Madera County FCWCA**

Waterway	Bank	Unit Miles	Inspection Start/End	Inspector
Unit No. 06 Fresno River	Left	9.03	04/15/2020 04/15/2020	Corey Fujitani

LM Start	5.18	Rating **	M	Issue No.	63
LM End	5.18	Issue Type +	Ma	Location *	LS
Category	Earthen Levee			GPS Latitude/Longitude	
				Start	End
Item	Animal Control			36.967512 °	36.967512 °
				-120.279874 °	-120.279874 °
DWR ID	DWR_NA0011_06_f_2018_63				
Comment Code					
A3 : No rodents visible, but rodent burrows visible; need to backfill and compact or grout burrows.					
Inspector Comment					

No Photos

LM Start	5.44	Rating **	M	Issue No.	53
LM End	5.44	Issue Type +	Ma	Location *	LS
Category	Earthen Levee			GPS Latitude/Longitude	
				Start	End
Item	Animal Control			36.967514 °	36.967514 °
				-120.274810 °	-120.274810 °
DWR ID	DWR_NA0011_06_s_2018_53				
Comment Code					
A3 : No rodents visible, but rodent burrows visible; need to backfill and compact or grout burrows.					
Inspector Comment					
Control rodents within this section.					

Photo 1 of 1 : SP\_2020\_NA0011\_147\_53\_20200225\_00027.jpg



Looking at typical rodent hole on landward slope. (Spring 2018)

LM Start	5.48	Rating **	M	Issue No.	49
LM End	5.96	Issue Type +	Ma	Location *	LS
Category	Earthen Levee			GPS Latitude/Longitude	
				Start	End
Item	Vegetation			36.967492 °	36.967480 °
				-120.273970 °	-120.265261 °
DWR ID	DWR_NA0011_06_s_2020_49				
Comment Code					
V1 : Control annual grass and weeds on the levee slopes and easements.					
Inspector Comment					

Photo 1 of 1 : SP\_2020\_NA0011\_147\_49\_20200504\_00064.jpg



View of the landside slope looking downstream. (Spring 2020)

\* Location  
LS : Land Side N/A : Not Applicable  
WS : Water Side  
CR : Crown

\*\* Rating  
A : Acceptable N : Not Inspected/Rated  
M : Minimally Acceptable C : Corrected  
U : Unacceptable A/W : Acceptable but Monitor & Maintain

+ Issue Type  
Ma : Maintenance Deficiency  
Ob : Design & System Obsolescence  
En : Enforcement

**Flood Control Project Maintenance  
Levee Inspections**

**Maintenance Issue Types Only, Levee Inspection Report By Mile - Spring 2020**

**Madera County FCWCA**

Waterway	Bank	Unit Miles	Inspection Start/End	Inspector
Unit No. 06 Fresno River	Left	9.03	04/15/2020 04/15/2020	Corey Fujitani

LM Start	5.48	Rating **	M	Issue No.	57
LM End	5.96	Issue Type +	Ma	Location *	CR
Category	Earthen Levee			GPS Latitude/Longitude	
				Start	End
Item	Vegetation			36.967491 °	36.967480 °
				-120.273970 °	-120.265261 °
DWR ID	DWR_NA0011_06_s_2020_57				
Comment Code					
V9 : Keep the crown roadway free of vegetation.					
Inspector Comment					

No Photos

LM Start	5.48	Rating **	M	Issue No.	61
LM End	5.96	Issue Type +	Ma	Location *	WS
Category	Earthen Levee			GPS Latitude/Longitude	
				Start	End
Item	Vegetation			36.967492 °	36.967480 °
				-120.273970 °	-120.265261 °
DWR ID	DWR_NA0011_06_s_2020_61				
Comment Code					
V1 : Control annual grass and weeds on the levee slopes and easements.					
Inspector Comment					

Photo 1 of 1 : SP\_2020\_NA0011\_147\_61\_20200504\_00063.jpg



View of waterside slope looking downstream. (Spring 2020)

LM Start	6.03	Rating **	M	Issue No.	60
LM End	6.03	Issue Type +	Ma	Location *	LS
Category	Earthen Levee			GPS Latitude/Longitude	
				Start	End
Item	Animal Control			36.967477 °	36.967477 °
				-120.264109 °	-120.264109 °
DWR ID	DWR_NA0011_06_f_2018_60				
Comment Code					
A3 : No rodents visible, but rodent burrows visible; need to backfill and compact or grout burrows.					
Inspector Comment					

No Photos

<b>* Location</b> LS : Land Side    N/A : Not Applicable WS : Water Side CR : Crown	<b>** Rating</b> A : Acceptable M : Minimally Acceptable U : Unacceptable	N : Not Inspected/Rated C : Corrected A/W : Acceptable but Monitor & Maintain	<b>+ Issue Type</b> Ma : Maintenance Deficiency Ob : Design & System Obsolescence En : Enforcement
--	--	---	---



**Flood Control Project Maintenance  
Levee Inspections**

**Maintenance Issue Types Only, Levee Inspection Report By Mile - Spring 2020**

**Madera County FCWCA**

Waterway	Bank	Unit Miles	Inspection Start/End	Inspector
Unit No. 06 Fresno River	Left	9.03	04/15/2020 04/15/2020	Corey Fujitani

LM Start	6.29	Rating **	M	Issue No.	58
LM End	6.29	Issue Type +	Ma	Location *	LS
Category	Earthen Levee			GPS Latitude/Longitude	
				Start	End
Item	Erosion / Bank Caving			36.967750 °	36.967750 °
				-120.259385 °	-120.259385 °
DWR ID	DWR_NA0011_06_f_2018_58				
Comment Code					
E2 : Schedule repair of erosion site prior to the next inspection.					
Inspector Comment					

Photo 1 of 1 : SP\_2020\_NA0011\_147\_58\_20200225\_00031.jpg



Minor erosion on landside slope. (Fall 2018)

LM Start	6.59	Rating **	M	Issue No.	29
LM End	7.30	Issue Type +	Ma	Location *	WS
Category	Earthen Levee			GPS Latitude/Longitude	
				Start	End
Item	Vegetation			36.968013 °	36.968826 °
				-120.254054 °	-120.241295 °
DWR ID	DWR_NA0011_06_s_2020_29				
Comment Code					
V1 : Control annual grass and weeds on the levee slopes and easements.					
Inspector Comment					

No Photos

LM Start	6.74	Rating **	M	Issue No.	42
LM End	6.74	Issue Type +	Ma	Location *	WS
Category	Earthen Levee			GPS Latitude/Longitude	
				Start	End
Item	Encroachments			36.968710 °	36.968710 °
				-120.251439 °	-120.251439 °
DWR ID	DWR_NA0011_06_f_2017_42				
Comment Code					
PR : Prunings					
Inspector Comment					
Remove collected wood debris from waterside shoulder.					

No Photos

<b>* Location</b> LS : Land Side    N/A : Not Applicable WS : Water Side CR : Crown	<b>** Rating</b> A : Acceptable M : Minimally Acceptable U : Unacceptable	N : Not Inspected/Rated C : Corrected A/W : Acceptable but Monitor & Maintain	<b>+ Issue Type</b> Ma : Maintenance Deficiency Ob : Design & System Obsolescence En : Enforcement
--	--	---	---

**Flood Control Project Maintenance  
Levee Inspections**

**Maintenance Issue Types Only, Levee Inspection Report By Mile - Spring 2020**

**Madera County FCWCA**

Waterway	Bank	Unit Miles	Inspection Start/End	Inspector
Unit No. 06 Fresno River	Left	9.03	04/15/2020 04/15/2020	Corey Fujitani

LM Start	7.07	Rating **	M	Issue No.	43
LM End	7.07	Issue Type +	Ma	Location *	WS
Category	Earthen Levee			GPS Latitude/Longitude	
				Start	End
Item	Encroachments			36.968801 °	36.968801 °
				-120.245557 °	-120.245557 °
DWR ID	DWR_NA0011_06_f_2017_43				
Comment Code					
PR : Prunings					
Inspector Comment					
Remove collected wood debris from waterside shoulder.					

No Photos

LM Start	7.42	Rating **	M	Issue No.	44
LM End	7.42	Issue Type +	Ma	Location *	WS
Category	Earthen Levee			GPS Latitude/Longitude	
				Start	End
Item	Encroachments			36.968851 °	36.968851 °
				-120.239236 °	-120.239236 °
DWR ID	DWR_NA0011_06_f_2017_44				
Comment Code					
PR : Prunings					
Inspector Comment					
Remove collected wood debris from waterside shoulder.					

No Photos

LM Start	7.61	Rating **	M	Issue No.	59
LM End	7.61	Issue Type +	Ma	Location *	LS
Category	Earthen Levee			GPS Latitude/Longitude	
				Start	End
Item	Slope Stability			36.968965 °	36.968965 °
				-120.235734 °	-120.235734 °
DWR ID	DWR_NA0011_06_s_2019_59				
Comment Code					
S3 : Repair the levee slope damaged by vehicle traffic and prevent access where possible.					
Inspector Comment					

Photo 1 of 1 : SP\_2020\_NA0011\_147\_59\_20200225\_00032.jpg



View of vehicle tracks on landside slope. (Spring 2019)

**\* Location**  
 LS : Land Side    N/A : Not Applicable  
 WS : Water Side  
 CR : Crown

**\*\* Rating**  
 A : Acceptable                      N : Not Inspected/Rated  
 M : Minimally Acceptable        C : Corrected  
 U : Unacceptable                  A/W : Acceptable but Monitor & Maintain

**+ Issue Type**  
 Ma : Maintenance Deficiency  
 Ob : Design & System Obsolescence  
 En : Enforcement

**Flood Control Project Maintenance  
Levee Inspections**

**Maintenance Issue Types Only, Levee Inspection Report By Mile - Spring 2020**

**Madera County FCWCA**

Waterway	Bank	Unit Miles	Inspection Start/End	Inspector
Unit No. 06 Fresno River	Left	9.03	04/15/2020 04/15/2020	Corey Fujitani

LM Start	7.71	Rating **	M	Issue No.	47
LM End	8.18	Issue Type +	Ma	Location *	LS
Category	Earthen Levee			GPS Latitude/Longitude	
				Start	End
Item	Animal Control			36.969600 °	36.971842 °
				-120.234229 °	-120.226393 °
DWR ID	DWR_NA0011_06_f_2017_47				
Comment Code					
A3 : No rodents visible, but rodent burrows visible; need to backfill and compact or grout burrows.					
Inspector Comment					

Photo 1 of 1 : SP\_2020\_NA0011\_147\_47\_20200225\_00021.jpg



Bait traps should be maintained and rodent holes should be backfilled.

LM Start	7.71	Rating **	M	Issue No.	48
LM End	9.02	Issue Type +	Ma	Location *	WS
Category	Earthen Levee			GPS Latitude/Longitude	
				Start	End
Item	Animal Control			36.969600 °	36.972656 °
				-120.234229 °	-120.211787 °
DWR ID	DWR_NA0011_06_f_2017_48				
Comment Code					
A3 : No rodents visible, but rodent burrows visible; need to backfill and compact or grout burrows.					
Inspector Comment					

No Photos

LM Start	7.91	Rating **	M	Issue No.	23
LM End	7.91	Issue Type +	Ma	Location *	LS
Category	Earthen Levee			GPS Latitude/Longitude	
				Start	End
Item	Slope Stability			36.971293 °	36.971293 °
				-120.231180 °	-120.231180 °
DWR ID	DWR_NA0011_06_f_2019_23				
Comment Code					
S3 : Repair the levee slope damaged by vehicle traffic and prevent access where possible.					
Inspector Comment					

Photo 1 of 1 : SP\_2020\_NA0011\_147\_23\_20200225\_00010.jpg



Damage to landside slope from vehicle traffic. (Fall 2019)

**\* Location**

LS : Land Side    N/A : Not Applicable  
WS : Water Side  
CR : Crown

**\*\* Rating**

A : Acceptable                      N : Not Inspected/Rated  
M : Minimally Acceptable        C : Corrected  
U : Unacceptable                  A/W : Acceptable but Monitor & Maintain

**+ Issue Type**

Ma : Maintenance Deficiency  
Ob : Design & System Obsolescence  
En : Enforcement



**Flood Control Project Maintenance  
Levee Inspections**

## Maintenance Issue Types Only, Levee Inspection Report By Mile - Spring 2020

### Madera County FCWCA

Waterway	Bank	Unit Miles	Inspection Start/End	Inspector
Unit No. 06 Fresno River	Left	9.03	04/15/2020 04/15/2020	Corey Fujitani

LM Start	7.95	Rating **	U	Issue No.	25
LM End	8.51	Issue Type +	Ma	Location *	WS
Category	Earthen Levee			GPS Latitude/Longitude	
				Start	End
Item	Vegetation			36.971485 °	36.971546 °
				-120.230566 °	-120.220596 °
DWR ID	DWR_NA0011_06_s_2020_25				
Comment Code					
V1 : Control annual grass and weeds on the levee slopes and easements.					
Inspector Comment					

Photo 1 of 1 : SP\_2020\_NA0011\_147\_25\_20200504\_00066.jpg



View of the waterside slope looking downstream. (Spring 2020)

LM Start	7.96	Rating **	M	Issue No.	32
LM End	7.96	Issue Type +	Ma	Location *	WS
Category	Earthen Levee			GPS Latitude/Longitude	
				Start	End
Item	Encroachments			36.971543 °	36.971543 °
				-120.230285 °	-120.230285 °
DWR ID	DWR_NA0011_06_s_2017_32				
Comment Code					
PR : Prunings					
Inspector Comment					
Remove the brush pile from the levee slope. This pile is providing habitat for rodents.					

Photo 1 of 1 : SP\_2020\_NA0011\_147\_32\_20200225\_00014.jpg



Fresno River waterside levee mile 7.96.

LM Start	7.98	Rating **	M	Issue No.	33
LM End	7.98	Issue Type +	Ma	Location *	WS
Category	Earthen Levee			GPS Latitude/Longitude	
				Start	End
Item	Encroachments			36.971575 °	36.971575 °
				-120.230065 °	-120.230065 °
DWR ID	DWR_NA0011_06_s_2017_33				
Comment Code					
PR : Prunings					
Inspector Comment					
Burn or remove the brush pile from the waterside slope.					

No Photos

<b>* Location</b> LS : Land Side    N/A : Not Applicable WS : Water Side CR : Crown	<b>** Rating</b> A : Acceptable M : Minimally Acceptable U : Unacceptable	N : Not Inspected/Rated C : Corrected A/W : Acceptable but Monitor & Maintain	<b>+ Issue Type</b> Ma : Maintenance Deficiency Ob : Design & System Obsolescence En : Enforcement
--	--	---	---

# Madera County FCWCA

**Flood Control Project Maintenance  
Levee Inspections**

**Maintenance Issue Types Only, Levee Inspection Report By Mile - Spring 2020**

**Madera County FCWCA**

Waterway	Bank	Unit Miles	Inspection Start/End	Inspector
Unit No. 06 Fresno River	Left	9.03	04/15/2020 04/15/2020	Corey Fujitani

LM Start	8.99	Rating **	U	Issue No.	22
LM End	8.99	Issue Type +	Ma	Location *	LS
Category	Earthen Levee			GPS Latitude/Longitude	
				Start	End
Item	Erosion / Bank Caving			36.972527 °	36.972527 °
				-120.212225 °	-120.212225 °
DWR ID	DWR_NA0011_06_s_2018_22				
Comment Code					
E2 : Schedule repair of erosion site prior to the next inspection.					
Inspector Comment					
Large finger erosion located on the landward slope.					

Photo 1 of 1 : SP\_2020\_NA0011\_147\_22\_20200225\_00009.jpg



Looking at finger erosion on landward slope. (Spring 2018)

<b>* Location</b> LS : Land Side    N/A : Not Applicable WS : Water Side CR : Crown	<b>** Rating</b> A : Acceptable M : Minimally Acceptable U : Unacceptable	N : Not Inspected/Rated C : Corrected A/W : Acceptable but Monitor & Maintain	<b>+ Issue Type</b> Ma : Maintenance Deficiency Ob : Design & System Obsolescence En : Enforcement
--	--	---	---