

**Flood Control Project Maintenance
Levee Inspections**

Maintenance Issue Types Only, Levee Inspection Report By Mile - Spring 2018

Madera County FCWCA

Waterway	Bank	Unit Miles	Inspection Start/End	Inspector
Unit No. 01 Ash Slough	Right	2.37	04/17/2018 04/17/2018	Richard Willoughby

LM Start		Rating **	A	Issue No.	41
LM End		Issue Type +	Ma	Location *	
Category	Earthen Levee		GPS Latitude/Longitude		
			Start	End	
Item	Operations & Maintenance Manuals			°	°
DWR ID	DWR_NA0011_01_s _ 2012_41				
Comment Code					
Inspector Comment					
Madera County has a copy of the O&M Manual on hand.					

No Photos

LM Start		Rating **	A	Issue No.	43
LM End		Issue Type +	Ma	Location *	
Category	Earthen Levee		GPS Latitude/Longitude		
			Start	End	
Item	Emergency Supplies & Equipment			°	°
DWR ID	DWR_NA0011_01_s _ 2012_43				
Comment Code					
Inspector Comment					
Madera County has emergency supplies.					

No Photos

* Location LS : Land Side N/A : Not Applicable WS : Water Side CR : Crown	** Rating A : Acceptable M : Minimally Acceptable U : Unacceptable	N : Not Inspected/Rated C : Corrected A/W : Acceptable but Monitor & Maintain	+ Issue Type Ma : Maintenance Deficiency Ob : Design & System Obsolescence En : Enforcement
--	--	---	---

**Flood Control Project Maintenance
Levee Inspections**

Maintenance Issue Types Only, Levee Inspection Report By Mile - Spring 2018

Madera County FCWCA

Waterway	Bank	Unit Miles	Inspection Start/End	Inspector
Unit No. 01 Ash Slough	Right	2.37	04/17/2018 04/17/2018	Richard Willoughby

LM Start		Rating **	A	Issue No.	44
LM End		Issue Type +	Ma	Location *	
Category	Earthen Levee		GPS Latitude/Longitude		
			Start	End	
Item	Flood Preparedness & Training				
DWR ID	DWR_NA0011_01_s _ 2012_44				
Comment Code					
Inspector Comment					
Madera County Flood Control has an ongoing training program.					

No Photos

LM Start	0.00	Rating **	M	Issue No.	24
LM End	2.37	Issue Type +	Ma	Location *	LS
Category	Earthen Levee		GPS Latitude/Longitude		
			Start	End	
Item	Vegetation		37.046428 °	37.068747 °	
			-120.427913 °	-120.398547 °	
DWR ID	DWR_NA0011_01_s _ 2018_24				
Comment Code					
V1 : Control annual grass and weeds on the levee slopes and easements.					
Inspector Comment					

No Photos

LM Start	0.00	Rating **	M	Issue No.	27
LM End	2.37	Issue Type +	Ma	Location *	WS
Category	Earthen Levee		GPS Latitude/Longitude		
			Start	End	
Item	Vegetation		37.046428 °	37.068747 °	
			-120.427913 °	-120.398547 °	
DWR ID	DWR_NA0011_01_s _ 2018_27				
Comment Code					
V1 : Control annual grass and weeds on the levee slopes and easements.					
Inspector Comment					

No Photos

* Location LS : Land Side N/A : Not Applicable WS : Water Side CR : Crown	** Rating A : Acceptable M : Minimally Acceptable U : Unacceptable	N : Not Inspected/Rated C : Corrected A/W : Acceptable but Monitor & Maintain	+ Issue Type Ma : Maintenance Deficiency Ob : Design & System Obsolescence En : Enforcement
--	--	---	---

**Flood Control Project Maintenance
Levee Inspections**

Maintenance Issue Types Only, Levee Inspection Report By Mile - Spring 2018

Madera County FCWCA

Waterway	Bank	Unit Miles	Inspection Start/End	Inspector
Unit No. 01 Ash Slough	Right	2.37	04/17/2018 04/17/2018	Richard Willoughby

LM Start	0.04	Rating **	U	Issue No.	20
LM End	0.05	Issue Type +	Ma	Location *	LS
Category	Earthen Levee			GPS Latitude/Longitude	
				Start	End
Item	Slope Stability			37.046624 °	37.046682 °
				-120.427317 °	-120.427108 °
DWR ID	DWR_NA0011_01_s _ 2014_20				
Comment Code					
S1 : Repair slope instability.					
Inspector Comment					
This is not a new erosion site, it should be repaired before the condition get any worse.					

Photo 1 of 1 : SP_2018_NA0011_142_20_20180411_00010.jpg



There is damage to the landside levee slope next to the concrete inlet structure.

LM Start	0.04	Rating **	M	Issue No.	36
LM End	0.04	Issue Type +	Ma	Location *	WS
Category	Earthen Levee			GPS Latitude/Longitude	
				Start	End
Item	Encroachments			37.046589 °	37.046589 °
				-120.427298 °	-120.427298 °
DWR ID	DWR_NA0011_01_s _ 2012_36				
Comment Code					
TR : Tree or limb					
Inspector Comment					
Remove the tree limbs from the waterside slope.					

No Photos

* Location LS : Land Side N/A : Not Applicable WS : Water Side CR : Crown		** Rating A : Acceptable N : Not Inspected/Rated M : Minimally Acceptable C : Corrected U : Unacceptable A/W : Acceptable but Monitor & Maintain		+ Issue Type Ma : Maintenance Deficiency Ob : Design & System Obsolescence En : Enforcement
--	--	---	--	---

**Flood Control Project Maintenance
Levee Inspections**

Maintenance Issue Types Only, Levee Inspection Report By Mile - Spring 2018

Madera County FCWCA

Waterway	Bank	Unit Miles	Inspection Start/End	Inspector
Unit No. 01 Ash Slough	Right	2.37	04/17/2018 04/17/2018	Richard Willoughby

LM Start	0.06	Rating **	M	Issue No.	19
LM End	2.31	Issue Type +	Ma	Location *	CR
Category	Earthen Levee			GPS Latitude/Longitude	
				Start	End
Item	Crown Surface / Depressions / Rutting			37.046732 °	37.067958 °
				-120.426922 °	-120.398828 °
DWR ID	DWR_NA0011_01_s_2017_19				
Comment Code					
C2 : Repair depressions or ruts in the crown or slope.					
Inspector Comment					

No Photos

LM Start	0.11	Rating **	M	Issue No.	17
LM End	2.36	Issue Type +	Ma	Location *	LS
Category	Earthen Levee			GPS Latitude/Longitude	
				Start	End
Item	Animal Control			37.046890 °	37.068730 °
				-120.426137 °	-120.398670 °
DWR ID	DWR_NA0011_01_f_2016_17				
Comment Code					
A3 : No rodents visible, but rodent burrows visible; need to backfill and compact or grout burrows.					
Inspector Comment					
There were several rodent holes observed in Unit 1 although no rodents were seen during the inspection.					

No Photos

LM Start	0.25	Rating **	U	Issue No.	9
LM End	0.81	Issue Type +	Ma	Location *	LS
Category	Earthen Levee			GPS Latitude/Longitude	
				Start	End
Item	Vegetation			37.047541 °	37.053723 °
				-120.423669 °	-120.417766 °
DWR ID	DWR_NA0011_01_f_2017_9				
Comment Code					
V2 : Remove the wild growth other than native grasses from the levee slopes.					
Inspector Comment					

Photo 1 of 1 : SP_2018_NA0011_142_9_20180411_00001.jpg



Tall weeds should be removed from landside slope.

* Location		** Rating		+ Issue Type	
LS : Land Side	N/A : Not Applicable	A : Acceptable	N : Not Inspected/Rated	Ma : Maintenance Deficiency	
WS : Water Side		M : Minimally Acceptable	C : Corrected	Ob : Design & System Obsolescence	
CR : Crown		U : Unacceptable	A/W : Acceptable but Monitor & Maintain	En : Enforcement	

**Flood Control Project Maintenance
Levee Inspections**

Maintenance Issue Types Only, Levee Inspection Report By Mile - Spring 2018

Madera County FCWCA

Waterway	Bank	Unit Miles	Inspection Start/End	Inspector
Unit No. 01 Ash Slough	Right	2.37	04/17/2018 04/17/2018	Richard Willoughby

LM Start	0.28	Rating **	M	Issue No.	6
LM End	0.30	Issue Type +	Ma	Location *	WS
Category	Earthen Levee			GPS Latitude/Longitude	
				Start	End
Item	Encroachments			37.047812 °	37.047963 °
				-120.423155 °	-120.422898 °
DWR ID	DWR_NA0011_01_s _ 2012_6				
Comment Code					
TR : Tree or limb					
Inspector Comment					
Noted on the last two inspections.					

No Photos

LM Start	0.33	Rating **	M	Issue No.	8
LM End	0.35	Issue Type +	Ma	Location *	WS
Category	Earthen Levee			GPS Latitude/Longitude	
				Start	End
Item	Encroachments			37.048223 °	37.048467 °
				-120.422642 °	-120.422315 °
DWR ID	DWR_NA0011_01_s _ 2012_8				
Comment Code					
TR : Tree or limb					
Inspector Comment					
Noted on the last two inspections.					

No Photos

* Location LS : Land Side N/A : Not Applicable WS : Water Side CR : Crown		** Rating A : Acceptable N : Not Inspected/Rated M : Minimally Acceptable C : Corrected U : Unacceptable A/W : Acceptable but Monitor & Maintain		+ Issue Type Ma : Maintenance Deficiency Ob : Design & System Obsolescence En : Enforcement
--	--	---	--	---

**Flood Control Project Maintenance
Levee Inspections**

Maintenance Issue Types Only, Levee Inspection Report By Mile - Spring 2018

Madera County FCWCA

Waterway	Bank	Unit Miles	Inspection Start/End	Inspector
Unit No. 01 Ash Slough	Right	2.37	04/17/2018 04/17/2018	Richard Willoughby

LM Start	0.39	Rating **	M	Issue No.	22
LM End	0.87	Issue Type +	Ma	Location *	CR
Category	Earthen Levee			GPS Latitude/Longitude	
				Start	End
Item	Vegetation			37.048906 °	37.054495 °
				-120.421793 °	-120.417028 °
DWR ID	DWR_NA0011_01_s_2018_22				
Comment Code					
V9 : Keep the crown roadway free of vegetation.					
Inspector Comment					
Control veg on levee crown.					

Photo 1 of 1 : SP_2018_NA0011_142_22_20180420_00029.jpg



Looking west at veg on levee crown within the section. (Spring 2018)

LM Start	0.44	Rating **	M	Issue No.	11
LM End	0.44	Issue Type +	Ma	Location *	WS
Category	Earthen Levee			GPS Latitude/Longitude	
				Start	End
Item	Encroachments			37.049455 °	37.049455 °
				-120.421218 °	-120.421218 °
DWR ID	DWR_NA0011_01_s_2012_11				
Comment Code					
TR : Tree or limb					
Inspector Comment					
Remove the dead tree from the waterside slope.					

Photo 1 of 1 : SP_2018_NA0011_142_11_20180411_00002.jpg



Remove downed tree from waterside slope.

LM Start	0.53	Rating **	M	Issue No.	10
LM End	0.53	Issue Type +	Ma	Location *	WS
Category	Earthen Levee			GPS Latitude/Longitude	
				Start	End
Item	Encroachments			37.050335 °	37.050335 °
				-120.419965 °	-120.419965 °
DWR ID	DWR_NA0011_01_s_2012_10				
Comment Code					
TR : Tree or limb					
Inspector Comment					
Remove the tree limbs from the water side slope.					

No Photos

* Location		** Rating		+ Issue Type	
LS : Land Side	N/A : Not Applicable	A : Acceptable	N : Not Inspected/Rated	Ma : Maintenance Deficiency	
WS : Water Side		M : Minimally Acceptable	C : Corrected	Ob : Design & System Obsolescence	
CR : Crown		U : Unacceptable	A/W : Acceptable but Monitor & Maintain	En : Enforcement	

**Flood Control Project Maintenance
Levee Inspections**

Maintenance Issue Types Only, Levee Inspection Report By Mile - Spring 2018

Madera County FCWCA

Waterway	Bank	Unit Miles	Inspection Start/End	Inspector
Unit No. 01 Ash Slough	Right	2.37	04/17/2018 04/17/2018	Richard Willoughby

LM Start	0.62	Rating **	M	Issue No.	37
LM End	0.62	Issue Type +	Ma	Location *	WS
Category	Earthen Levee			GPS Latitude/Longitude	
				Start	End
Item	Encroachments			37.051222 °	37.051222 °
				-120.418810 °	-120.418810 °
DWR ID	DWR_NA0011_01_f_2015_37				
Comment Code					
TR : Tree or limb					
Inspector Comment					
Remove the tree branches from the waterside slope.					

No Photos

LM Start	0.86	Rating **	A/W	Issue No.	26
LM End	0.87	Issue Type +	Ma	Location *	LS
Category	Earthen Levee			GPS Latitude/Longitude	
				Start	End
Item	Trim / Thin Trees			37.054333 °	37.054460 °
				-120.417057 °	-120.417043 °
DWR ID	DWR_NA0011_01_f_2016_26				
Comment Code					
T2 : Thin trees to allow visibility of the ground and room to flood fight.					
Inspector Comment					
Maintain the trees to allow visibility of the levee slope.					

No Photos

* Location LS : Land Side N/A : Not Applicable WS : Water Side CR : Crown		** Rating A : Acceptable N : Not Inspected/Rated M : Minimally Acceptable C : Corrected U : Unacceptable A/W : Acceptable but Monitor & Maintain		+ Issue Type Ma : Maintenance Deficiency Ob : Design & System Obsolescence En : Enforcement
--	--	---	--	---

**Flood Control Project Maintenance
Levee Inspections**

Maintenance Issue Types Only, Levee Inspection Report By Mile - Spring 2018

Madera County FCWCA

Waterway	Bank	Unit Miles	Inspection Start/End	Inspector
Unit No. 01 Ash Slough	Right	2.37	04/17/2018 04/17/2018	Richard Willoughby

LM Start	1.16	Rating **	U	Issue No.	31
LM End	1.25	Issue Type +	Ma	Location *	LS
Category	Earthen Levee			GPS Latitude/Longitude	
				Start	End
Item	Vegetation			37.056385 °	37.057060 °
				-120.412688 °	-120.411380 °
DWR ID	DWR_NA0011_01_s _ 2017_31				
Comment Code					
V2 : Remove the wild growth other than native grasses from the levee slopes.					
Inspector Comment					
Remove the unwanted weed growth from the landside slope and shoulder.					

Photo 1 of 1 : SP_2018_NA0011_142_31_20180411_00014.jpg



Unwanted tall weed growth on the landside shoulder and slope.

LM Start	1.45	Rating **	M	Issue No.	7
LM End	2.34	Issue Type +	Ma	Location *	WS
Category	Earthen Levee			GPS Latitude/Longitude	
				Start	End
Item	Slope Stability			37.059113 °	37.068344 °
				-120.408880 °	-120.398780 °
DWR ID	DWR_NA0011_01_s _ 2013_7				
Comment Code					
S1 : Repair slope instability.					
Inspector Comment					
Farmer has plowed into the toe of the levee.					

No Photos

* Location LS : Land Side N/A : Not Applicable WS : Water Side CR : Crown		** Rating A : Acceptable N : Not Inspected/Rated M : Minimally Acceptable C : Corrected U : Unacceptable A/W : Acceptable but Monitor & Maintain		+ Issue Type Ma : Maintenance Deficiency Ob : Design & System Obsolescence En : Enforcement
--	--	---	--	---

**Flood Control Project Maintenance
Levee Inspections**

Maintenance Issue Types Only, Levee Inspection Report By Mile - Spring 2018

Madera County FCWCA

Waterway	Bank	Unit Miles	Inspection Start/End	Inspector
Unit No. 02 Ash Slough	Left	2.04	04/03/2018 04/03/2018	Richard Willoughby

LM Start	0.00	Rating **	U	Issue No.	39
LM End	1.67	Issue Type +	Ma	Location *	WS
Category	Earthen Levee			GPS Latitude/Longitude	
				Start	End
Item	Animal Control			37.045485 °	37.060091 °
				-120.427423 °	-120.405340 °
DWR ID	DWR_NA0011_02_f_2015_39				
Comment Code					
A1 : Exterminate rodents and backfill and compact or grout burrows.					
Inspector Comment					
The levee section waterside is covered with rodent holes. There is no bait stations on this levee section and the weeds here are too tall to see the active rodents. No new photo was taken.					

Photo 1 of 2 : SP_2018_NA0011_143_39_20180307_00018.jpg



Active rodents spotted in the area waterside slope levee mile 0.00- 1.67.

LM Start	0.00	Rating **	U	Issue No.	39 (cont)
LM End	1.67	Issue Type +	Ma	Location *	WS

Photo 2 of 2 : SP_2018_NA0011_143_39_20180307_00019.jpg



Other rodent holes noted in the slope waterside levee section.

LM Start	0.00	Rating **	M	Issue No.	10
LM End	2.03	Issue Type +	Ma	Location *	WS
Category	Earthen Levee			GPS Latitude/Longitude	
				Start	End
Item	Vegetation			37.045513 °	37.064087 °
				-120.427355 °	-120.401194 °
DWR ID	DWR_NA0011_02_f_2017_10				
Comment Code					
V2 : Remove the wild growth other than native grasses from the levee slopes.					
Inspector Comment					

No Photos

* Location LS : Land Side N/A : Not Applicable WS : Water Side CR : Crown		** Rating A : Acceptable M : Minimally Acceptable U : Unacceptable		N : Not Inspected/Rated C : Corrected A/W : Acceptable but Monitor & Maintain		+ Issue Type Ma : Maintenance Deficiency Ob : Design & System Obsolescence En : Enforcement	
---	--	---	--	---	--	--	--

**Flood Control Project Maintenance
Levee Inspections**

Maintenance Issue Types Only, Levee Inspection Report By Mile - Spring 2018

Madera County FCWCA

Waterway	Bank	Unit Miles	Inspection Start/End	Inspector
Unit No. 02 Ash Slough	Left	2.04	04/03/2018 04/03/2018	Richard Willoughby

LM Start	0.03	Rating **	M	Issue No.	19
LM End	1.66	Issue Type +	Ma	Location *	LS
Category	Earthen Levee			GPS Latitude/Longitude	
				Start	End
Item	Animal Control			37.045623 °	37.059952 °
				-120.426988 °	-120.405448 °
DWR ID	DWR_NA0011_02_s _ 2017_19				
Comment Code					
A1 : Exterminate rodents and backfill and compact or grout burrows.					
Inspector Comment					

No Photos

LM Start	0.04	Rating **	M	Issue No.	22
LM End	2.00	Issue Type +	Ma	Location *	CR
Category	Earthen Levee			GPS Latitude/Longitude	
				Start	End
Item	Crown Surface / Depressions / Rutting			37.045627 °	37.063718 °
				-120.426788 °	-120.401358 °
DWR ID	DWR_NA0011_02_s _ 2017_22				
Comment Code					
C2 : Repair depressions or ruts in the crown or slope.					
Inspector Comment					
Repair the ruts in the crownroadway between levee mile 0.04-2.00.					

No Photos

* Location LS : Land Side N/A : Not Applicable WS : Water Side CR : Crown		** Rating A : Acceptable N : Not Inspected/Rated M : Minimally Acceptable C : Corrected U : Unacceptable A/W : Acceptable but Monitor & Maintain		+ Issue Type Ma : Maintenance Deficiency Ob : Design & System Obsolescence En : Enforcement	
--	--	---	--	---	--

**Flood Control Project Maintenance
Levee Inspections**

Maintenance Issue Types Only, Levee Inspection Report By Mile - Spring 2018

Madera County FCWCA

Waterway	Bank	Unit Miles	Inspection Start/End	Inspector
Unit No. 02 Ash Slough	Left	2.04	04/03/2018 04/03/2018	Richard Willoughby

LM Start	0.21	Rating **	M	Issue No.	46
LM End	0.21	Issue Type +	Ma	Location *	CR
Category	Earthen Levee			GPS Latitude/Longitude	
				Start	End
Item	Trim / Thin Trees			37.046533 °	37.046533 °
				-120.423762 °	-120.423762 °
DWR ID	DWR_NA0011_02_f_2015_46				
Comment Code					
T4 : Trim trees over roadway to at least 12 feet above ground level.					
Inspector Comment					
Cut the tree limb hanging over the crown roadway.					

No Photos

LM Start	0.27	Rating **	M	Issue No.	21
LM End	0.30	Issue Type +	Ma	Location *	WS
Category	Earthen Levee			GPS Latitude/Longitude	
				Start	End
Item	Trim / Thin Trees			37.046937 °	37.047192 °
				-120.422815 °	-120.422517 °
DWR ID	DWR_NA0011_02_s_2012_21				
Comment Code					
T1 : Trim trees to at least five feet above ground level.					
Inspector Comment					

No Photos

LM Start	0.31	Rating **	M	Issue No.	13
LM End	0.31	Issue Type +	Ma	Location *	LS
Category	Earthen Levee			GPS Latitude/Longitude	
				Start	End
Item	Slope Stability			37.047266 °	37.047266 °
				-120.422393 °	-120.422393 °
DWR ID	DWR_NA0011_02_f_2017_13				
Comment Code					
S3 : Repair the levee slope damaged by vehicle traffic and prevent access where possible.					
Inspector Comment					

Photo 1 of 1 : SP_2018_NA0011_143_13_20180307_00009.jpg



Vehicle access to levee slope should be prevented and erosion repaired.

*** Location**
LS : Land Side N/A : Not Applicable
WS : Water Side
CR : Crown

**** Rating**
A : Acceptable N : Not Inspected/Rated
M : Minimally Acceptable C : Corrected
U : Unacceptable A/W : Acceptable but Monitor & Maintain

+ Issue Type
Ma : Maintenance Deficiency
Ob : Design & System Obsolescence
En : Enforcement

**Flood Control Project Maintenance
Levee Inspections**

Maintenance Issue Types Only, Levee Inspection Report By Mile - Spring 2018

Madera County FCWCA

Waterway	Bank	Unit Miles	Inspection Start/End	Inspector
Unit No. 02 Ash Slough	Left	2.04	04/03/2018 04/03/2018	Richard Willoughby

LM Start	0.32	Rating **	U	Issue No.	30
LM End	0.97	Issue Type +	Ma	Location *	LS
Category	Earthen Levee			GPS Latitude/Longitude	
				Start	End
Item	Vegetation			37.047387 °	37.054878 °
				-120.422183 °	-120.415525 °
DWR ID	DWR_NA0011_02_s_2017_30				
Comment Code					
V2 : Remove the wild growth other than native grasses from the levee slopes.					
Inspector Comment					
Spray or mow the wild weeds on the landside levee slope.					

Photo 1 of 1 : SP_2018_NA0011_143_30_20180307_00014.jpg



Unwanted vegetation on the waterside levee slope.

LM Start	0.32	Rating **	M	Issue No.	28
LM End	0.32	Issue Type +	Ma	Location *	WS
Category	Earthen Levee			GPS Latitude/Longitude	
				Start	End
Item	Encroachments			37.047416 °	37.047416 °
				-120.422142 °	-120.422142 °
DWR ID	DWR_NA0011_02_f_2012_28				
Comment Code					
TR : Tree or limb					
Inspector Comment					
Remove the dead tree limbs from the waterside slope.					

Photo 1 of 1 : SP_2018_NA0011_143_28_20180411_00039.jpg



Looking downstream at tree limbs on waterward slope and toe. (Spring 2018)

* Location LS : Land Side N/A : Not Applicable WS : Water Side CR : Crown		** Rating A : Acceptable M : Minimally Acceptable U : Unacceptable N : Not Inspected/Rated C : Corrected A/W : Acceptable but Monitor & Maintain		+ Issue Type Ma : Maintenance Deficiency Ob : Design & System Obsolescence En : Enforcement	
---	--	--	--	--	--

**Flood Control Project Maintenance
Levee Inspections**

Maintenance Issue Types Only, Levee Inspection Report By Mile - Spring 2018

Madera County FCWCA

Waterway	Bank	Unit Miles	Inspection Start/End	Inspector
Unit No. 02 Ash Slough	Left	2.04	04/03/2018 04/03/2018	Richard Willoughby

LM Start	0.35	Rating **	M	Issue No.	14
LM End	0.41	Issue Type +	Ma	Location *	WS
Category	Earthen Levee			GPS Latitude/Longitude	
				Start	End
Item	Trim / Thin Trees			37.047653 °	37.048304 °
				-120.421813 °	-120.420967 °
DWR ID	DWR_NA0011_02_f_2017_14				
Comment Code					
T1 : Trim trees to at least five feet above ground level.					
Inspector Comment					
Waterside tree branches hanging over crown interfere with crown access and waterside visibility.					

Photo 1 of 1 : SP_2018_NA0011_143_14_20180411_00040.jpg



Looking downstream at untrimmed tree on waterward shoulder and slope. (Spring 2018)

LM Start	0.52	Rating **	M	Issue No.	35
LM End	0.52	Issue Type +	Ma	Location *	WS
Category	Earthen Levee			GPS Latitude/Longitude	
				Start	End
Item	Trim / Thin Trees			37.049289 °	37.049289 °
				-120.419542 °	-120.419542 °
DWR ID	DWR_NA0011_02_s_2013_35				
Comment Code					
T2 : Thin trees to allow visibility of the ground and room to flood fight.					
Inspector Comment					
Trim tree off the slope.					

No Photos

* Location LS : Land Side N/A : Not Applicable WS : Water Side CR : Crown		** Rating A : Acceptable N : Not Inspected/Rated M : Minimally Acceptable C : Corrected U : Unacceptable A/W : Acceptable but Monitor & Maintain		+ Issue Type Ma : Maintenance Deficiency Ob : Design & System Obsolescence En : Enforcement
--	--	---	--	---

**Flood Control Project Maintenance
Levee Inspections**

Maintenance Issue Types Only, Levee Inspection Report By Mile - Spring 2018

Madera County FCWCA

Waterway	Bank	Unit Miles	Inspection Start/End	Inspector
Unit No. 02 Ash Slough	Left	2.04	04/03/2018 04/03/2018	Richard Willoughby

LM Start	1.10	Rating **	U	Issue No.	1
LM End	1.19	Issue Type +	Ma	Location *	WS
Category	Supplemental			GPS Latitude/Longitude	
				Start	End
Item	DWR Erosion Survey			37.055596 °	37.055596 °
				-120.412647 °	-120.412647 °
DWR ID	NA0011U02RM2.57				
Comment Code					
Inspector Comment					
09/20/2017: No significant change observed.					
07/22/2016: No significant change observed.					
09/08/2015: No significant change observed.					
07/22/2014: No significant change observed.					
08/30/2013: No significant change observed.					
07/31/2012: Site was visited on 07/24/2012. No significant change observed. Dense vegetation around the site					
08/09/2011: Site was inspected. No visible change was observed from the previous condition. A fallen tree was seen at the levee toe about 20 feet upstream, and tree root exposed. There has been no report from the district that this site was corrected.					
11/30/2010: Site was not inspected due to time constraints. There have been no reports from the district that the site was corrected. Continue to monitor site during flood events.					
08/05/2010: Recommended for annual assessment and monitoring during flood events, per CLRO.					
2009: Site is recommended as a local maintenance issue, per Critical Levee Repair Office, Critical Erosion Sites Evaluation 2008 Report; site was previously rated "M"					
9/6/2007: Undercutting of the toe; several trees along the WS slope with roots exposed. [2017 Site ID:NA0011U02RM2.57]					

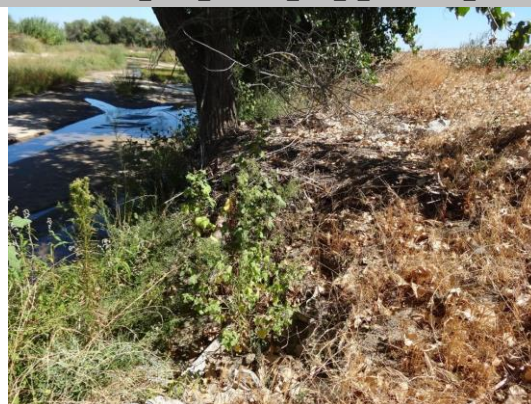
LM Start	1.10	Rating **	U	Issue No.	1 (cont)
LM End	1.19	Issue Type +	Ma	Location *	WS

Photo 1 of 4 : SP_2018_NA0011_143_1_20180307_00001.jpg



View of the erosion site from the levee crest.

Photo 2 of 4 : SP_2018_NA0011_143_1_20180307_00002.jpg



Close view of the site.

* Location LS : Land Side N/A : Not Applicable WS : Water Side CR : Crown		** Rating A : Acceptable N : Not Inspected/Rated M : Minimally Acceptable C : Corrected U : Unacceptable A/W : Acceptable but Monitor & Maintain		+ Issue Type Ma : Maintenance Deficiency Ob : Design & System Obsolescence En : Enforcement	
--	--	--	--	---	--

**Flood Control Project Maintenance
Levee Inspections**

Maintenance Issue Types Only, Levee Inspection Report By Mile - Spring 2018

Madera County FCWCA

Waterway	Bank	Unit Miles	Inspection Start/End	Inspector
Unit No. 02 Ash Slough	Left	2.04	04/03/2018 04/03/2018	Richard Willoughby

LM Start	1.10	Rating **	U	Issue No.	1 (cont)
LM End	1.19	Issue Type +	Ma	Location *	WS
Category	Supplemental			GPS Latitude/Longitude	
				Start	End
Item	DWR Erosion Survey			37.055596 °	37.055596 °
				-120.412647 °	-120.412647 °
DWR ID	NA0011U02RM2.57				

Comment Code

Inspector Comment

09/20/2017: No significant change observed.
 07/22/2016: No significant change observed.
 09/08/2015: No significant change observed.
 07/22/2014: No significant change observed.
 08/30/2013: No significant change observed.
 07/31/2012: Site was visited on 07/24/2012. No significant change observed. Dense vegetation around the site
 08/09/2011: Site was inspected. No visible change was observed from the previous condition. A fallen tree was seen at the levee toe about 20 feet upstream, and tree root exposed. There has been no report from the district that this site was corrected.
 11/30/2010: Site was not inspected due to time constraints. There have been no reports from the district that the site was corrected. Continue to monitor site during flood events.
 08/05/2010: Recommended for annual assessment and monitoring during flood events, per CLRO.
 2009: Site is recommended as a local maintenance issue, per Critical Levee Repair Office, Critical Erosion Sites Evaluation 2008 Report; site was previously rated "M"
 9/6/2007: Undercutting of the toe; several trees along the WS slope with roots exposed. [2017 Site ID:NA0011U02RM2.57]

LM Start	1.10	Rating **	U	Issue No.	1 (cont)
LM End	1.19	Issue Type +	Ma	Location *	WS

Photo 3 of 4 : SP_2018_NA0011_143_1_20180307_00003.jpg



Vegetation debris at the site.

Photo 4 of 4 : SP_2018_NA0011_143_1_20180307_00004.jpg



Close view of the site.

* Location LS : Land Side N/A : Not Applicable WS : Water Side CR : Crown		** Rating A : Acceptable N : Not Inspected/Rated M : Minimally Acceptable C : Corrected U : Unacceptable A/W : Acceptable but Monitor & Maintain		+ Issue Type Ma : Maintenance Deficiency Ob : Design & System Obsolescence En : Enforcement
--	--	---	--	---

**Flood Control Project Maintenance
Levee Inspections**

Maintenance Issue Types Only, Levee Inspection Report By Mile - Spring 2018

Madera County FCWCA

Waterway	Bank	Unit Miles	Inspection Start/End	Inspector
Unit No. 02 Ash Slough	Left	2.04	04/03/2018 04/03/2018	Richard Willoughby

LM Start	1.12	Rating **	M	Issue No.	17
LM End	1.12	Issue Type +	Ma	Location *	WS
Category	Earthen Levee			GPS Latitude/Longitude	
				Start	End
Item	Trim / Thin Trees			37.055541 °	37.055541 °
				-120.412957 °	-120.412957 °
DWR ID	DWR_NA0011_02_f_2017_17				
Comment Code					
T1 : Trim trees to at least five feet above ground level.					
Inspector Comment					
Trim branches from waterside tree hanging low over the crown inhibiting crown access.					

No Photos

LM Start	1.39	Rating **	A/W	Issue No.	42
LM End	1.39	Issue Type +	Ma	Location *	WS
Category	Earthen Levee			GPS Latitude/Longitude	
				Start	End
Item	Encroachments			37.057989 °	37.057989 °
				-120.409581 °	-120.409581 °
DWR ID	DWR_NA0011_02_s_2014_42				
Comment Code					
TR : Tree or limb					
Inspector Comment					
Remove the tree limbs from the water side levee slope.					

No Photos

LM Start	1.51	Rating **	M	Issue No.	25
LM End	1.52	Issue Type +	Ma	Location *	WS
Category	Earthen Levee			GPS Latitude/Longitude	
				Start	End
Item	Trim / Thin Trees			37.058652 °	37.058802 °
				-120.407638 °	-120.407350 °
DWR ID	DWR_NA0011_02_s_2012_25				
Comment Code					
T1 : Trim trees to at least five feet above ground level.					
Inspector Comment					
Trim the trees on the waterside slope levee miles 1.51-1.52.					

Photo 1 of 1 : SP_2018_NA0011_143_25_20180411_00044.jpg



Look downstream at untrimmed tree on waterward slope. (Spring 2018)

* Location		** Rating		+ Issue Type	
LS : Land Side	N/A : Not Applicable	A : Acceptable	N : Not Inspected/Rated	Ma : Maintenance Deficiency	
WS : Water Side		M : Minimally Acceptable	C : Corrected	Ob : Design & System Obsolescence	
CR : Crown		U : Unacceptable	A/W : Acceptable but Monitor & Maintain	En : Enforcement	

**Flood Control Project Maintenance
Levee Inspections**

Maintenance Issue Types Only, Levee Inspection Report By Mile - Spring 2018

Madera County FCWCA

Waterway	Bank	Unit Miles	Inspection Start/End	Inspector
Unit No. 02 Ash Slough	Left	2.04	04/03/2018 04/03/2018	Richard Willoughby

LM Start	1.62	Rating **	M	Issue No.	26
LM End	1.62	Issue Type +	Ma	Location *	WS
Category	Earthen Levee			GPS Latitude/Longitude	
				Start	End
Item	Encroachments			37.059505 °	37.059505 °
				-120.405946 °	-120.405946 °
DWR ID	DWR_NA0011_02_s_2018_26				
Comment Code					
PR : Prunings					
Inspector Comment					
Pruning pile on waterward shoulder.Should be burned or removed.					

No Photos

LM Start	1.64	Rating **	A/W	Issue No.	20
LM End	1.94	Issue Type +	Ma	Location *	CR
Category	Earthen Levee			GPS Latitude/Longitude	
				Start	End
Item	Vegetation			37.059746 °	37.062980 °
				-120.405716 °	-120.402029 °
DWR ID	DWR_NA0011_02_f_2017_20				
Comment Code					
V1 : Control annual grass and weeds on the levee slopes and easements.					
Inspector Comment					

No Photos

* Location LS : Land Side N/A : Not Applicable WS : Water Side CR : Crown	** Rating A : Acceptable M : Minimally Acceptable U : Unacceptable	N : Not Inspected/Rated C : Corrected A/W : Acceptable but Monitor & Maintain	+ Issue Type Ma : Maintenance Deficiency Ob : Design & System Obsolescence En : Enforcement
--	--	---	---

**Flood Control Project Maintenance
Levee Inspections**

Maintenance Issue Types Only, Levee Inspection Report By Mile - Spring 2018

Madera County FCWCA

Waterway	Bank	Unit Miles	Inspection Start/End	Inspector
Unit No. 02 Ash Slough	Left	2.04	04/03/2018 04/03/2018	Richard Willoughby

LM Start	1.66	Rating **	M	Issue No.	38
LM End	2.00	Issue Type +	Ma	Location *	LS
Category	Earthen Levee			GPS Latitude/Longitude	
				Start	End
Item	Vegetation			37.059952 °	37.063718 °
				-120.405448 °	-120.401358 °
DWR ID	DWR_NA0011_02_s_2017_38				
Comment Code					
V1 : Control annual grass and weeds on the levee slopes and easements.					
Inspector Comment					

Photo 1 of 1 : SP_2018_NA0011_143_38_20180307_00017.jpg



Looking upstream from levee mile 1.66-2.00 tall weeds present on the landside slope.

* Location LS : Land Side N/A : Not Applicable WS : Water Side CR : Crown		** Rating A : Acceptable N : Not Inspected/Rated M : Minimally Acceptable C : Corrected U : Unacceptable A/W : Acceptable but Monitor & Maintain		+ Issue Type Ma : Maintenance Deficiency Ob : Design & System Obsolescence En : Enforcement
--	--	---	--	---

**Flood Control Project Maintenance
Levee Inspections**

Maintenance Issue Types Only, Levee Inspection Report By Mile - Spring 2018

Madera County FCWCA

Waterway	Bank	Unit Miles	Inspection Start/End	Inspector
Unit No. 03 Berenda Slough	Right	1.51	04/02/2018 04/02/2018	Richard Willoughby

LM Start	0.00	Rating **	U	Issue No.	3
LM End	1.51	Issue Type +	Ma	Location *	LS
Category	Earthen Levee			GPS Latitude/Longitude	
				Start	End
Item	Vegetation			36.996596 °	36.996612 °
				-120.373711 °	-120.346643 °
DWR ID	DWR_NA0011_03_f_2017_3				
Comment Code					
V2 : Remove the wild growth other than native grasses from the levee slopes.					
Inspector Comment					

Photo 1 of 2 : SP_2018_NA0011_144_3_20180411_00018.jpg



Looking downstream at landward slope. (Spring 2018)

LM Start	0.00	Rating **	U	Issue No.	3 (cont)
LM End	1.51	Issue Type +	Ma	Location *	LS

Photo 2 of 2 : SP_2018_NA0011_144_3_20180307_00001.jpg



Manage landside vegetation to allow inspection and access to levee slope and toe.

LM Start	0.00	Rating **	U	Issue No.	9
LM End	1.51	Issue Type +	Ma	Location *	WS
Category	Earthen Levee			GPS Latitude/Longitude	
				Start	End
Item	Vegetation			36.996596 °	36.996613 °
				-120.373711 °	-120.346565 °
DWR ID	DWR_NA0011_03_s_2017_9				
Comment Code					
V2 : Remove the wild growth other than native grasses from the levee slopes.					
Inspector Comment					
Remove the wild growth from the waterside levee section, spray and mow.					

Photo 1 of 2 : SP_2018_NA0011_144_9_20180411_00019.jpg



Looking downstream at wild growth on waterward slope. (Spring 2018)

* Location		** Rating		+ Issue Type	
LS : Land Side	N/A : Not Applicable	A : Acceptable	N : Not Inspected/Rated	Ma : Maintenance Deficiency	
WS : Water Side		M : Minimally Acceptable	C : Corrected	Ob : Design & System Obsolescence	
CR : Crown		U : Unacceptable	A/W : Acceptable but Monitor & Maintain	En : Enforcement	

**Flood Control Project Maintenance
Levee Inspections**

Maintenance Issue Types Only, Levee Inspection Report By Mile - Spring 2018

Madera County FCWCA

Waterway	Bank	Unit Miles	Inspection Start/End	Inspector
Unit No. 03 Berenda Slough	Right	1.51	04/02/2018 04/02/2018	Richard Willoughby

LM Start	0.00	Rating **	U	Issue No.	9 (cont)	
LM End	1.51	Issue Type +	Ma	Location *	WS	
Category	Earthen Levee			GPS Latitude/Longitude		
				Start		End
Item	Vegetation			36.996596 °		36.996613 °
				-120.373711 °		-120.346565 °
DWR ID	DWR_NA0011_03_s_2017_9					
Comment Code						
V2 : Remove the wild growth other than native grasses from the levee slopes.						
Inspector Comment						
Remove the wild growth from the waterside levee section, spray and mow.						

Photo 2 of 2 : SP_2018_NA0011_144_9_20180307_00007.jpg



Looking upstream from the waterside shoulder wild growth covering slope and toe.

LM Start	0.03	Rating **	M	Issue No.	35
LM End	0.03	Issue Type +	Ma	Location *	LS
Category	Earthen Levee			GPS Latitude/Longitude	
				Start	End
Item	Trim / Thin Trees			36.996618 °	36.996618 °
				-120.373116 °	-120.373116 °
DWR ID	DWR_NA0011_03_f_2012_35				
Comment Code					
T4 : Trim trees over roadway to at least 12 feet above ground level.					
Inspector Comment					
Tree drags against vehicles as they pass by. Remove overhanging tree limbs.					

No Photos

* Location LS : Land Side N/A : Not Applicable WS : Water Side CR : Crown	** Rating A : Acceptable M : Minimally Acceptable U : Unacceptable N : Not Inspected/Rated C : Corrected A/W : Acceptable but Monitor & Maintain	+ Issue Type Ma : Maintenance Deficiency Ob : Design & System Obsolescence En : Enforcement
--	---	---

**Flood Control Project Maintenance
Levee Inspections**

Maintenance Issue Types Only, Levee Inspection Report By Mile - Spring 2018

Madera County FCWCA

Waterway	Bank	Unit Miles	Inspection Start/End	Inspector
Unit No. 03 Berenda Slough	Right	1.51	04/02/2018 04/02/2018	Richard Willoughby

LM Start	0.04	Rating **	M	Issue No.	45
LM End	0.04	Issue Type +	Ma	Location *	LS
Category	Earthen Levee			GPS Latitude/Longitude	
				Start	End
Item	Encroachments			36.996522 °	36.996522 °
				-120.372980 °	-120.372980 °
DWR ID	DWR_NA0011_03_s_2012_45				
Comment Code					
TR : Tree or limb					
Inspector Comment					
Remove the discarded tree branches from the landside slope.					

No Photos

LM Start	0.05	Rating **	U	Issue No.	12
LM End	1.51	Issue Type +	Ma	Location *	CR
Category	Earthen Levee			GPS Latitude/Longitude	
				Start	End
Item	Vegetation			36.996442 °	36.996613 °
				-120.372907 °	-120.346565 °
DWR ID	DWR_NA0011_03_s_2017_12				
Comment Code					
V9 : Keep the crown roadway free of vegetation.					
Inspector Comment					
Keep the crown roadway free of all vegetation.					

Photo 1 of 1 : SP_2018_NA0011_144_12_20180307_00010.jpg



Looking upstream at the crown roadway that's covered with wild vegetation.

* Location LS : Land Side N/A : Not Applicable WS : Water Side CR : Crown	** Rating A : Acceptable M : Minimally Acceptable U : Unacceptable	N : Not Inspected/Rated C : Corrected A/W : Acceptable but Monitor & Maintain	+ Issue Type Ma : Maintenance Deficiency Ob : Design & System Obsolescence En : Enforcement
--	--	---	---

**Flood Control Project Maintenance
Levee Inspections**

Maintenance Issue Types Only, Levee Inspection Report By Mile - Spring 2018

Madera County FCWCA

Waterway	Bank	Unit Miles	Inspection Start/End	Inspector
Unit No. 03 Berenda Slough	Right	1.51	04/02/2018 04/02/2018	Richard Willoughby

LM Start	0.05	Rating **	M	Issue No.	28	
LM End	0.05	Issue Type +	Ma	Location *	LS	
Category	Earthen Levee			GPS Latitude/Longitude		
				Start		End
Item	Encroachments			36.996442 °		36.996442 °
				-120.372848 °		-120.372848 °
DWR ID	DWR_NA0011_03_f_2014_28					
Comment Code						
TR : Tree or limb						
Inspector Comment						
Remove the dead tree from the landside slope.						

No Photos

LM Start	0.06	Rating **	M	Issue No.	18	
LM End	0.06	Issue Type +	Ma	Location *	LS	
Category	Earthen Levee			GPS Latitude/Longitude		
				Start		End
Item	Trim / Thin Trees			36.996378 °		36.996378 °
				-120.372738 °		-120.372738 °
DWR ID	DWR_NA0011_03_f_2014_18					
Comment Code						
T1 : Trim trees to at least five feet above ground level.						
Inspector Comment						
Trim the tree listed, five feet above the ground on the landside slope.						

No Photos

LM Start	0.08	Rating **	M	Issue No.	32
LM End	1.51	Issue Type +	Ma	Location *	CR
Category	Earthen Levee			GPS Latitude/Longitude	
				Start	End
Item	Crown Surface / Depressions / Rutting			36.996264 °	36.996613 °
				-120.372350 °	-120.346570 °
DWR ID	DWR_NA0011_03_s_2014_32				
Comment Code					
C3 : Add appropriate gravel or road base. Grade and compact.					
Inspector Comment					
Regrade the crown for proper drainage and add more rock to crown.					

Photo 1 of 1 : SP_2018_NA0011_144_32_20180411_00020.jpg



Looking downstream at levee crown. (Spring 2018)

* Location		** Rating		+ Issue Type	
LS : Land Side	N/A : Not Applicable	A : Acceptable	N : Not Inspected/Rated	Ma : Maintenance Deficiency	
WS : Water Side		M : Minimally Acceptable	C : Corrected	Ob : Design & System Obsolescence	
CR : Crown		U : Unacceptable	A/W : Acceptable but Monitor & Maintain	En : Enforcement	

**Flood Control Project Maintenance
Levee Inspections**

Maintenance Issue Types Only, Levee Inspection Report By Mile - Spring 2018

Madera County FCWCA

Waterway	Bank	Unit Miles	Inspection Start/End	Inspector
Unit No. 03 Berenda Slough	Right	1.51	04/02/2018 04/02/2018	Richard Willoughby

LM Start	0.08	Rating **	U	Issue No.	20
LM End	0.08	Issue Type +	Ma	Location *	LS
Category	Earthen Levee			GPS Latitude/Longitude	
				Start	End
Item	Encroachments			36.996204 °	36.996201 °
				-120.372352 °	-120.372345 °
DWR ID	DWR_NA0011_03_s_2012_20				
Comment Code					
PR : Prunings					
Inspector Comment					
Remove the prunings from the landside slope.					

Photo 1 of 1 : SP_2018_NA0011_144_20_20180411_00021.jpg



Looking at prunings on landward slope. (Spring 2018)

LM Start	0.40	Rating **	U	Issue No.	6
LM End	1.51	Issue Type +	Ma	Location *	LS
Category	Earthen Levee			GPS Latitude/Longitude	
				Start	End
Item	Animal Control			36.996208 °	36.996607 °
				-120.366550 °	-120.346568 °
DWR ID	DWR_NA0011_03_f_2016_6				
Comment Code					
A1 : Exterminate rodents and backfill and compact or grout burrows.					
Inspector Comment					
LMA should install rodent bait stations placed along the landside slope and or shoulder at levee miles listed. No new photo was taken. Unable to see the ground, observed rodents running across the roadway.					

Photo 1 of 6 : SP_2018_NA0011_144_6_20180411_00023.jpg



Looking at rodent hole with erosion on landward slope. (Spring 2018)

LM Start	0.40	Rating **	U	Issue No.	6 (cont)
LM End	1.51	Issue Type +	Ma	Location *	LS

Photo 2 of 6 : SP_2018_NA0011_144_6_20180411_00022.jpg



Looking at typical rodent holes within this section (Spring 2018)

* Location LS : Land Side N/A : Not Applicable WS : Water Side CR : Crown		** Rating A : Acceptable M : Minimally Acceptable U : Unacceptable		N : Not Inspected/Rated C : Corrected A/W : Acceptable but Monitor & Maintain		+ Issue Type Ma : Maintenance Deficiency Ob : Design & System Obsolescence En : Enforcement	
---	--	---	--	---	--	--	--

**Flood Control Project Maintenance
Levee Inspections**

Maintenance Issue Types Only, Levee Inspection Report By Mile - Spring 2018

Madera County FCWCA

Waterway	Bank	Unit Miles	Inspection Start/End	Inspector
Unit No. 03 Berenda Slough	Right	1.51	04/02/2018 04/02/2018	Richard Willoughby

LM Start	0.40	Rating **	U	Issue No.	6 (cont)	
LM End	1.51	Issue Type +	Ma	Location *	LS	
Category	Earthen Levee			GPS Latitude/Longitude		
				Start		End
Item	Animal Control			36.996208 °		36.996607 °
				-120.366550 °		-120.346568 °
DWR ID	DWR_NA0011_03_f_2016_6					
Comment Code						
A1 : Exterminate rodents and backfill and compact or grout burrows.						
Inspector Comment						
LMA should install rodent bait stations placed along the landside slope and or shoulder at levee miles listed. No new photo was taken. Unable to see the ground, observed rodents running across the roadway.						

LM Start	0.40	Rating **	U	Issue No.	6 (cont)
LM End	1.51	Issue Type +	Ma	Location *	LS

Photo 3 of 6 : SP_2018_NA0011_144_6_20180411_00024.jpg



Looking at rodent hole with erosion on landward slope. (Spring 2018)

Photo 4 of 6 : SP_2018_NA0011_144_6_20180307_00005.jpg



Continued rodent activity.

LM Start	0.40	Rating **	U	Issue No.	6 (cont)
LM End	1.51	Issue Type +	Ma	Location *	LS

Photo 5 of 6 : SP_2018_NA0011_144_6_20180307_00004.jpg



More active rodents holes and foot traffic seen around holes though no rodents observed.

* Location LS : Land Side N/A : Not Applicable WS : Water Side CR : Crown		** Rating A : Acceptable M : Minimally Acceptable U : Unacceptable		N : Not Inspected/Rated C : Corrected A/W : Acceptable but Monitor & Maintain		+ Issue Type Ma : Maintenance Deficiency Ob : Design & System Obsolescence En : Enforcement	
---	--	---	--	---	--	--	--

**Flood Control Project Maintenance
Levee Inspections**

Maintenance Issue Types Only, Levee Inspection Report By Mile - Spring 2018

Madera County FCWCA

Waterway	Bank	Unit Miles	Inspection Start/End	Inspector
Unit No. 03 Berenda Slough	Right	1.51	04/02/2018 04/02/2018	Richard Willoughby

LM Start	0.40	Rating **	U	Issue No.	6 (cont)	
LM End	1.51	Issue Type +	Ma	Location *	LS	
Category	Earthen Levee			GPS Latitude/Longitude		
				Start		End
Item	Animal Control			36.996208 °		36.996607 °
				-120.366550 °		-120.346568 °
DWR ID	DWR_NA0011_03_f_2016_6					
Comment Code						
A1 : Exterminate rodents and backfill and compact or grout burrows.						
Inspector Comment						
LMA should install rodent bait stations placed along the landside slope and or shoulder at levee miles listed. No new photo was taken. Unable to see the ground, observed rodents running across the roadway.						

Photo 6 of 6 : SP_2018_NA0011_144_6_20180307_00003.jpg



Berenda Slough Unit 3 levee miles 0.40-1.51 landside shoulder and slope.

LM Start	0.46	Rating **	U	Issue No.	5
LM End	0.46	Issue Type +	Ma	Location *	CR
Category	Earthen Levee			GPS Latitude/Longitude	
				Start	End
Item	Animal Control			36.996238 °	36.996238 °
				-120.365563 °	-120.365563 °
DWR ID	DWR_NA0011_03_s_2018_5				
Comment Code					
A3 : No rodents visible, but rodent burrows visible; need to backfill and compact or grout burrows.					
Inspector Comment					
Large rodent hole on crown of levee					

Photo 1 of 1 : SP_2018_NA0011_144_5_20180411_00025.jpg



Looking at rodent hole on levee crown. (Spring 2018)

* Location LS : Land Side N/A : Not Applicable WS : Water Side CR : Crown		** Rating A : Acceptable M : Minimally Acceptable U : Unacceptable N : Not Inspected/Rated C : Corrected A/W : Acceptable but Monitor & Maintain		+ Issue Type Ma : Maintenance Deficiency Ob : Design & System Obsolescence En : Enforcement	
---	--	--	--	--	--

**Flood Control Project Maintenance
Levee Inspections**

Maintenance Issue Types Only, Levee Inspection Report By Mile - Spring 2018

Madera County FCWCA

Waterway	Bank	Unit Miles	Inspection Start/End	Inspector
Unit No. 03 Berenda Slough	Right	1.51	04/02/2018 04/02/2018	Richard Willoughby

LM Start	0.71	Rating **	M	Issue No.	7
LM End	1.51	Issue Type +	Ma	Location *	WS
Category	Earthen Levee			GPS Latitude/Longitude	
				Start	End
Item	Animal Control			36.996252 °	36.996607 °
				-120.361063 °	-120.346568 °
DWR ID	DWR_NA0011_03_f_2016_7				
Comment Code					
A1 : Exterminate rodents and backfill and compact or grout burrows.					
Inspector Comment					
There should be bait stations placed along these levee miles listed to radicate rodents.					

No Photos

LM Start	0.71	Rating **	M	Issue No.	8
LM End	1.51	Issue Type +	Ma	Location *	CR
Category	Earthen Levee			GPS Latitude/Longitude	
				Start	End
Item	Animal Control			36.996257 °	36.996607 °
				-120.361025 °	-120.346568 °
DWR ID	DWR_NA0011_03_f_2016_8				
Comment Code					
A1 : Exterminate rodents and backfill and compact or grout burrows.					
Inspector Comment					
Exterminate rodents from the crown roadway in the area listed. Active rodents observed during inspection at this site.					

Photo 1 of 1 : SP_2018_NA0011_144_8_20180307_00006.jpg



Berenda Slough Unit 3 looking upstream from levee miles 0.71 - to 1.51.

* Location LS : Land Side N/A : Not Applicable WS : Water Side CR : Crown		** Rating A : Acceptable N : Not Inspected/Rated M : Minimally Acceptable C : Corrected U : Unacceptable A/W : Acceptable but Monitor & Maintain		+ Issue Type Ma : Maintenance Deficiency Ob : Design & System Obsolescence En : Enforcement
--	--	---	--	---

**Flood Control Project Maintenance
Levee Inspections**

Maintenance Issue Types Only, Levee Inspection Report By Mile - Spring 2018

Madera County FCWCA

Waterway	Bank	Unit Miles	Inspection Start/End	Inspector
Unit No. 03 Berenda Slough	Right	1.51	04/02/2018 04/02/2018	Richard Willoughby

LM Start	1.04	Rating **	U	Issue No.	11
LM End	1.05	Issue Type +	Ma	Location *	LS
Category	Earthen Levee			GPS Latitude/Longitude	
				Start	End
Item	Trim / Thin Trees			36.996613 °	36.996610 °
				-120.355055 °	-120.354995 °
DWR ID	DWR_NA0011_03_s_2012_11				
Comment Code					
T1 : Trim trees to at least five feet above ground level.					
Inspector Comment					
Take these walnuts off the levee section.					

Photo 1 of 2 : SP_2018_NA0011_144_11_20180307_00008.jpg



Berenda Slough Unit 3 looking upstream from levee mile 1.04-1.05 walnut trees blocking the view of the landside levee section.

LM Start	1.04	Rating **	U	Issue No.	11 (cont)
LM End	1.05	Issue Type +	Ma	Location *	LS

Photo 2 of 2 : SP_2018_NA0011_144_11_20180307_00009.jpg



levee mile 1.04-1.05 landside slope and shoulder wild walnut tree growth was covered with leaves that blocked the view of the levee section.

* Location LS : Land Side N/A : Not Applicable WS : Water Side CR : Crown		** Rating A : Acceptable N : Not Inspected/Rated M : Minimally Acceptable C : Corrected U : Unacceptable A/W : Acceptable but Monitor & Maintain		+ Issue Type Ma : Maintenance Deficiency Ob : Design & System Obsolescence En : Enforcement	
--	--	---	--	---	--

**Flood Control Project Maintenance
Levee Inspections**

Maintenance Issue Types Only, Levee Inspection Report By Mile - Spring 2018

Madera County FCWCA

Waterway	Bank	Unit Miles	Inspection Start/End	Inspector
Unit No. 03 Berenda Slough	Right	1.51	04/02/2018 04/02/2018	Richard Willoughby

LM Start	1.07	Rating **	M	Issue No.	15
LM End	1.10	Issue Type +	Ma	Location *	LS
Category	Earthen Levee			GPS Latitude/Longitude	
				Start	End
Item	Trim / Thin Trees			36.996618 °	36.996633 °
				-120.354538 °	-120.354012 °
DWR ID	DWR_NA0011_03_s _ 2012_15				
Comment Code					
T1 : Trim trees to at least five feet above ground level.					
Inspector Comment					
Trim the trees on the landside listed, 5.0 foot above the ground to view the slope.					

No Photos

LM Start	1.09	Rating **	U	Issue No.	14
LM End	1.09	Issue Type +	Ma	Location *	WS
Category	Earthen Levee			GPS Latitude/Longitude	
				Start	End
Item	Trim / Thin Trees			36.996618 °	36.996618 °
				-120.354307 °	-120.354307 °
DWR ID	DWR_NA0011_03_s _ 2017_14				
Comment Code					
T2 : Thin trees to allow visibility of the ground and room to flood fight.					
Inspector Comment					
Branches hanging over crown are beginning to obstruct access.					

Photo 1 of 1 : SP_2018_NA0011_144_14_20180411_00026.jpg



Looking at untrimmed tree on waterward shoulder. (Spring 2018)

* Location LS : Land Side N/A : Not Applicable WS : Water Side CR : Crown	** Rating A : Acceptable M : Minimally Acceptable U : Unacceptable N : Not Inspected/Rated C : Corrected A/W : Acceptable but Monitor & Maintain	+ Issue Type Ma : Maintenance Deficiency Ob : Design & System Obsolescence En : Enforcement
--	---	---

**Flood Control Project Maintenance
Levee Inspections**

Maintenance Issue Types Only, Levee Inspection Report By Mile - Spring 2018

Madera County FCWCA

Waterway	Bank	Unit Miles	Inspection Start/End	Inspector
Unit No. 03 Berenda Slough	Right	1.51	04/02/2018 04/02/2018	Richard Willoughby

LM Start	1.24	Rating **	M	Issue No.	4
LM End	1.25	Issue Type +	Ma	Location *	CR
Category	Earthen Levee			GPS Latitude/Longitude	
				Start	End
Item	Slope Stability			36.996582 °	36.996582 °
				-120.351482 °	-120.351258 °
DWR ID	DWR_NA0011_03_f_2016_4				
Comment Code					
S1 : Repair slope instability.					
Inspector Comment					
Repair the slope instability and damaged shoulder at this location. The cause for this damage is the walnut trees landside encroaching onto the levee crown forcing the traffic to vere around.					

Photo 1 of 1 : SP_2018_NA0011_144_4_20180307_00002.jpg



Berenda Slough looking back upstream waterside at the shoulder and slope levee miles 1.24-1.25.

LM Start	1.24	Rating **	U	Issue No.	17
LM End	1.29	Issue Type +	Ma	Location *	LS
Category	Earthen Levee			GPS Latitude/Longitude	
				Start	End
Item	Trim / Thin Trees			36.996632 °	36.996600 °
				-120.351463 °	-120.350539 °
DWR ID	DWR_NA0011_03_s_2012_17				
Comment Code					
T2 : Thin trees to allow visibility of the ground and room to flood fight.					
Inspector Comment					
The cluster of walnut trees should be removed from the levee section landward.					

Photo 1 of 2 : SP_2018_NA0011_144_17_20180411_00027.jpg



Looking at cluster of walnut trees on landward slope. (Spring 2018)

* Location LS : Land Side N/A : Not Applicable WS : Water Side CR : Crown	** Rating A : Acceptable M : Minimally Acceptable U : Unacceptable	N : Not Inspected/Rated C : Corrected A/W : Acceptable but Monitor & Maintain	+ Issue Type Ma : Maintenance Deficiency Ob : Design & System Obsolescence En : Enforcement
--	--	---	---

**Flood Control Project Maintenance
Levee Inspections**

Maintenance Issue Types Only, Levee Inspection Report By Mile - Spring 2018

Madera County FCWCA

Waterway	Bank	Unit Miles	Inspection Start/End	Inspector
Unit No. 03 Berenda Slough	Right	1.51	04/02/2018 04/02/2018	Richard Willoughby

LM Start	1.24	Rating **	U	Issue No.	17 (cont)	
LM End	1.29	Issue Type +	Ma	Location *	LS	
Category	Earthen Levee			GPS Latitude/Longitude		
				Start		End
Item	Trim / Thin Trees			36.996632 °		36.996600 °
				-120.351463 °		-120.350539 °
DWR ID	DWR_NA0011_03_s_2012_17					
Comment Code						
T2 : Thin trees to allow visibility of the ground and room to flood fight.						
Inspector Comment						
The cluster of walnut trees should be removed from the levee section landward.						

Photo 2 of 2 : SP_2018_NA0011_144_17_20180307_00011.jpg



Looking upstream from landside slope tree has blocked view of the slope and shoulder.

* Location LS : Land Side N/A : Not Applicable WS : Water Side CR : Crown		** Rating A : Acceptable N : Not Inspected/Rated M : Minimally Acceptable C : Corrected U : Unacceptable A/W : Acceptable but Monitor & Maintain		+ Issue Type Ma : Maintenance Deficiency Ob : Design & System Obsolescence En : Enforcement
--	--	---	--	---

**Flood Control Project Maintenance
Levee Inspections**

Maintenance Issue Types Only, Levee Inspection Report By Mile - Spring 2018

Madera County FCWCA

Waterway	Bank	Unit Miles	Inspection Start/End	Inspector
Unit No. 04 Berenda Slough	Left	2.28	04/02/2018 04/02/2018	Richard Willoughby

LM Start	0.01	Rating **	U	Issue No.	8
LM End	1.49	Issue Type +	Ma	Location *	CR
Category	Earthen Levee			GPS Latitude/Longitude	
				Start	End
Item	Vegetation			36.995503 °	36.995580 °
				-120.373417 °	-120.346588 °
DWR ID	DWR_NA0011_04_s_2017_8				
Comment Code					
V9 : Keep the crown roadway free of vegetation.					
Inspector Comment					
Keep the crown roadway free of vegetation.					

LM Start	0.01	Rating **	U	Issue No.	8 (cont)
LM End	1.49	Issue Type +	Ma	Location *	CR

Photo 1 of 2 : SP_2018_NA0011_145_8_20180411_00019.jpg



Looking upstream from 0.00 at wild growth on levee crown. (Spring 2018)

Photo 2 of 2 : SP_2018_NA0011_145_8_20180307_00003.jpg



Looking upstream from levee mile 0.01 at the wild vegetation growing on the grown roadway.

LM Start	0.02	Rating **	M	Issue No.	4
LM End	1.49	Issue Type +	Ma	Location *	WS
Category	Earthen Levee			GPS Latitude/Longitude	
				Start	End
Item	Vegetation			36.995504 °	36.995580 °
				-120.373234 °	-120.346588 °
DWR ID	DWR_NA0011_04_f_2017_4				
Comment Code					
V2 : Remove the wild growth other than native grasses from the levee slopes.					
Inspector Comment					

No Photos

* Location		** Rating		+ Issue Type	
LS : Land Side	N/A : Not Applicable	A : Acceptable	N : Not Inspected/Rated	Ma : Maintenance Deficiency	
WS : Water Side		M : Minimally Acceptable	C : Corrected	Ob : Design & System Obsolescence	
CR : Crown		U : Unacceptable	A/W : Acceptable but Monitor & Maintain	En : Enforcement	

**Flood Control Project Maintenance
Levee Inspections**

Maintenance Issue Types Only, Levee Inspection Report By Mile - Spring 2018

Madera County FCWCA

Waterway	Bank	Unit Miles	Inspection Start/End	Inspector
Unit No. 04 Berenda Slough	Left	2.28	04/02/2018 04/02/2018	Richard Willoughby

LM Start	0.02	Rating **	U	Issue No.	5
LM End	1.49	Issue Type +	Ma	Location *	LS
Category	Earthen Levee			GPS Latitude/Longitude	
				Start	End
Item	Vegetation			36.995504 °	36.995582 °
				-120.373233 °	-120.346586 °
DWR ID	DWR_NA0011_04_f_2017_5				
Comment Code					
V2 : Remove the wild growth other than native grasses from the levee slopes.					
Inspector Comment					

Photo 1 of 1 : SP_2018_NA0011_145_5_20180307_00002.jpg



Manage landside vegetation to allow inspection and access to levee slope and toe.

LM Start	0.02	Rating **	U	Issue No.	3
LM End	0.97	Issue Type +	Ma	Location *	LS
Category	Earthen Levee			GPS Latitude/Longitude	
				Start	End
Item	Slope Stability			36.995506 °	36.995550 °
				-120.373233 °	-120.355935 °
DWR ID	DWR_NA0011_04_f_2016_3				
Comment Code					
S1 : Repair slope instability.					
Inspector Comment					
The slope in this area has been damaged by farm equipment on the slope.					

Photo 1 of 1 : SP_2018_NA0011_145_3_20180307_00001.jpg



Berenda Slough Unit 4 Looking upstream from levee mile 0.14-0.97.

* Location
LS : Land Side N/A : Not Applicable
WS : Water Side
CR : Crown

** Rating
A : Acceptable N : Not Inspected/Rated
M : Minimally Acceptable C : Corrected
U : Unacceptable A/W : Acceptable but Monitor & Maintain

+ Issue Type
Ma : Maintenance Deficiency
Ob : Design & System Obsolescence
En : Enforcement

**Flood Control Project Maintenance
Levee Inspections**

Maintenance Issue Types Only, Levee Inspection Report By Mile - Spring 2018

Madera County FCWCA

Waterway	Bank	Unit Miles	Inspection Start/End	Inspector
Unit No. 04 Berenda Slough	Left	2.28	04/02/2018 04/02/2018	Richard Willoughby

LM Start	0.06	Rating **	M	Issue No.	20
LM End	0.06	Issue Type +	Ma	Location *	WS
Category	Earthen Levee			GPS Latitude/Longitude	
				Start	End
Item	Encroachments			36.995597 °	36.995597 °
				-120.372391 °	-120.372391 °
DWR ID	DWR_NA0011_04_f_2012_20				
Comment Code					
TR : Tree or limb					
Inspector Comment					
Remove the tree limbs from the waterside levee slope.					

No Photos

LM Start	0.08	Rating **	A/W	Issue No.	25
LM End	0.08	Issue Type +	Ma	Location *	WS
Category	Earthen Levee			GPS Latitude/Longitude	
				Start	End
Item	Trim / Thin Trees			36.995557 °	36.995557 °
				-120.372062 °	-120.372062 °
DWR ID	DWR_NA0011_04_s_2013_25				
Comment Code					
T4 : Trim trees over roadway to at least 12 feet above ground level.					
Inspector Comment					
Remove the dead tree limbs hanging over the levee crown.					

No Photos

LM Start	0.12	Rating **	A/W	Issue No.	26
LM End	0.12	Issue Type +	Ma	Location *	WS
Category	Earthen Levee			GPS Latitude/Longitude	
				Start	End
Item	Trim / Thin Trees			36.995532 °	36.995532 °
				-120.371428 °	-120.371428 °
DWR ID	DWR_NA0011_04_s_2013_26				
Comment Code					
T4 : Trim trees over roadway to at least 12 feet above ground level.					
Inspector Comment					
Trim the tree branches over roadway 12 foot above ground.					

No Photos

* Location LS : Land Side N/A : Not Applicable WS : Water Side CR : Crown		** Rating A : Acceptable N : Not Inspected/Rated M : Minimally Acceptable C : Corrected U : Unacceptable A/W : Acceptable but Monitor & Maintain		+ Issue Type Ma : Maintenance Deficiency Ob : Design & System Obsolescence En : Enforcement	
--	--	---	--	---	--

**Flood Control Project Maintenance
Levee Inspections**

Maintenance Issue Types Only, Levee Inspection Report By Mile - Spring 2018

Madera County FCWCA

Waterway	Bank	Unit Miles	Inspection Start/End	Inspector
Unit No. 04 Berenda Slough	Left	2.28	04/02/2018 04/02/2018	Richard Willoughby

LM Start	0.12	Rating **	U	Issue No.	19
LM End	0.94	Issue Type +	Ma	Location *	LS
Category	Earthen Levee			GPS Latitude/Longitude	
				Start	End
Item	Animal Control			36.995547 °	36.995586 °
				-120.371410 °	-120.356589 °
DWR ID	DWR_NA0011_04_s_2018_19				
Comment Code					
A3 : No rodents visible, but rodent burrows visible; need to backfill and compact or grout burrows.					
Inspector Comment					

Photo 1 of 1 : SP_2018_NA0011_145_19_20180411_00020.jpg



Looking at large rodent hole on landward slope. (Spring 2018)

LM Start	0.14	Rating **	U	Issue No.	15
LM End	0.14	Issue Type +	Ma	Location *	CR
Category	Earthen Levee			GPS Latitude/Longitude	
				Start	End
Item	Encroachments			36.995528 °	36.995528 °
				-120.370922 °	-120.370922 °
DWR ID	DWR_NA0011_04_f_2015_15				
Comment Code					
TR : Tree or limb					
Inspector Comment					
There are many dead trees in the area. This one happened to be blocking the crown roadway. Remove the dead trees from the levee section. Many more are subject to fall and further block access to the levee crown.					

Photo 1 of 1 : SP_2018_NA0011_145_15_20180307_00012.jpg



Berenda Slough looking upstream from the levee mile 0.14.

* Location LS : Land Side N/A : Not Applicable WS : Water Side CR : Crown		** Rating A : Acceptable N : Not Inspected/Rated M : Minimally Acceptable C : Corrected U : Unacceptable A/W : Acceptable but Monitor & Maintain		+ Issue Type Ma : Maintenance Deficiency Ob : Design & System Obsolescence En : Enforcement
--	--	---	--	---

**Flood Control Project Maintenance
Levee Inspections**

Maintenance Issue Types Only, Levee Inspection Report By Mile - Spring 2018

Madera County FCWCA

Waterway	Bank	Unit Miles	Inspection Start/End	Inspector
Unit No. 04 Berenda Slough	Left	2.28	04/02/2018 04/02/2018	Richard Willoughby

LM Start	0.28	Rating **	M	Issue No.	21
LM End	0.28	Issue Type +	Ma	Location *	WS
Category	Earthen Levee			GPS Latitude/Longitude	
				Start	End
Item	Encroachments			36.995564 °	36.995564 °
				-120.368540 °	-120.368540 °
DWR ID	DWR_NA0011_04_f_2012_21				
Comment Code					
TR : Tree or limb					
Inspector Comment					
Remove the discarded tree and branches from the levee slope.					

No Photos

LM Start	0.42	Rating **	M	Issue No.	9
LM End	1.50	Issue Type +	Ma	Location *	CR
Category	Earthen Levee			GPS Latitude/Longitude	
				Start	End
Item	Crown Surface / Depressions / Rutting			36.995572 °	36.995613 °
				-120.365980 °	-120.346358 °
DWR ID	DWR_NA0011_04_s_2017_9				
Comment Code					
C2 : Repair depressions or ruts in the crown or slope.					
Inspector Comment					

No Photos

* Location LS : Land Side N/A : Not Applicable WS : Water Side CR : Crown		** Rating A : Acceptable N : Not Inspected/Rated M : Minimally Acceptable C : Corrected U : Unacceptable A/W : Acceptable but Monitor & Maintain		+ Issue Type Ma : Maintenance Deficiency Ob : Design & System Obsolescence En : Enforcement
--	--	---	--	---

**Flood Control Project Maintenance
Levee Inspections**

Maintenance Issue Types Only, Levee Inspection Report By Mile - Spring 2018

Madera County FCWCA

Waterway	Bank	Unit Miles	Inspection Start/End	Inspector
Unit No. 04 Berenda Slough	Left	2.28	04/02/2018 04/02/2018	Richard Willoughby

LM Start	0.44	Rating **	U	Issue No.	22
LM End	0.44	Issue Type +	Ma	Location *	LS
Category	Earthen Levee			GPS Latitude/Longitude	
				Start	End
Item	Erosion / Bank Caving			36.995560 °	36.995560 °
				-120.365614 °	-120.365614 °
DWR ID	DWR_NA0011_04_s_2018_22				
Comment Code					
E2 : Schedule repair of erosion site prior to the next inspection.					
Inspector Comment					
Someone dug large hole on landward slope next to concrete riser. No visible pipe at the site.					

Photo 1 of 3 : SP_2018_NA0011_145_22_20180411_00022.jpg



Looking west at large hole next concrete riser (no pipe) on landward slope. (Spring 2018)

LM Start	0.44	Rating **	U	Issue No.	22 (cont)
LM End	0.44	Issue Type +	Ma	Location *	LS

Photo 2 of 3 : SP_2018_NA0011_145_22_20180411_00023.jpg



Looking upstream at large hole on landward slope. (Spring 2018)

LM Start	0.44	Rating **	U	Issue No.	22 (cont)
LM End	0.44	Issue Type +	Ma	Location *	LS

Photo 3 of 3 : SP_2018_NA0011_145_22_20180411_00024.jpg



Looking east at large hole next to riser (no pipe) on landward slope. (Spring 2018)

* Location LS : Land Side N/A : Not Applicable WS : Water Side CR : Crown		** Rating A : Acceptable M : Minimally Acceptable U : Unacceptable N : Not Inspected/Rated C : Corrected A/W : Acceptable but Monitor & Maintain		+ Issue Type Ma : Maintenance Deficiency Ob : Design & System Obsolescence En : Enforcement	
---	--	--	--	--	--

**Flood Control Project Maintenance
Levee Inspections**

Maintenance Issue Types Only, Levee Inspection Report By Mile - Spring 2018

Madera County FCWCA

Waterway	Bank	Unit Miles	Inspection Start/End	Inspector
Unit No. 04 Berenda Slough	Left	2.28	04/02/2018 04/02/2018	Richard Willoughby

LM Start	0.47	Rating **	U	Issue No.	16
LM End	0.47	Issue Type +	Ma	Location *	WS
Category	Earthen Levee			GPS Latitude/Longitude	
				Start	End
Item	Encroachments			36.995603 °	36.995603 °
				-120.364978 °	-120.364978 °
DWR ID	DWR_NA0011_04_s_2014_16				
Comment Code					
TR : Tree or limb					
Inspector Comment					
This dead tree on water ward slope should be removed from levee section. No change. 2017					

Photo 1 of 1 : SP_2018_NA0011_145_16_20180307_00013.jpg



Berenda Slough Unit 4 levee mile 0.47 looking back upstream.

LM Start	0.94	Rating **	M	Issue No.	13
LM End	0.94	Issue Type +	Ma	Location *	LS
Category	Earthen Levee			GPS Latitude/Longitude	
				Start	End
Item	Slope Stability			36.995571 °	36.995571 °
				-120.356609 °	-120.356609 °
DWR ID	DWR_NA0011_04_f_2017_13				
Comment Code					
S3 : Repair the levee slope damaged by vehicle traffic and prevent access where possible.					
Inspector Comment					
A proper ramp should be permitted and created to replace vehicle erosion site on landside levee slope. Slope should be repaired.					

Photo 1 of 2 : SP_2018_NA0011_145_13_20180307_00010.jpg



A proper ramp should be permitted and created to replace vehicle erosion site on landside levee slope. Slope should be repaired.

* Location LS : Land Side N/A : Not Applicable WS : Water Side CR : Crown		** Rating A : Acceptable N : Not Inspected/Rated M : Minimally Acceptable C : Corrected U : Unacceptable A/W : Acceptable but Monitor & Maintain		+ Issue Type Ma : Maintenance Deficiency Ob : Design & System Obsolescence En : Enforcement
--	--	---	--	---

**Flood Control Project Maintenance
Levee Inspections**

Maintenance Issue Types Only, Levee Inspection Report By Mile - Spring 2018

Madera County FCWCA

Waterway	Bank	Unit Miles	Inspection Start/End	Inspector
Unit No. 04 Berenda Slough	Left	2.28	04/02/2018 04/02/2018	Richard Willoughby

LM Start	0.94	Rating **	M	Issue No.	13 (cont)	
LM End	0.94	Issue Type +	Ma	Location *	LS	
Category	Earthen Levee			GPS Latitude/Longitude		
				Start		End
Item	Slope Stability			36.995571 °		36.995571 °
				-120.356609 °		-120.356609 °
DWR ID	DWR_NA0011_04_f_2017_13					
Comment Code						
S3 : Repair the levee slope damaged by vehicle traffic and prevent access where possible.						
Inspector Comment						
A proper ramp should be permitted and created to replace vehicle erosion site on landside levee slope. Slope should be repaired.						

Photo 2 of 2 : SP_2018_NA0011_145_13_20180307_00011.jpg



A proper ramp should be permitted and created to replace vehicle erosion site on landside levee slope. Slope should be repaired.

LM Start	1.01	Rating **	U	Issue No.	12
LM End	1.01	Issue Type +	Ma	Location *	WS
Category	Earthen Levee			GPS Latitude/Longitude	
				Start	End
Item	Trim / Thin Trees			36.995537 °	36.995537 °
				-120.355261 °	-120.355261 °
DWR ID	DWR_NA0011_04_f_2017_12				
Comment Code					
T1 : Trim trees to at least five feet above ground level.					
Inspector Comment					
Branches from waterside tree are blocking visibility of waterside slope and crown. Levee crown is nearly impassible.					

Photo 1 of 1 : SP_2018_NA0011_145_12_20180307_00009.jpg



Trim trees to at least 5' above levee slope and 12' above levee crown to allow inspection and access.

* Location		** Rating		+ Issue Type	
LS : Land Side	N/A : Not Applicable	A : Acceptable	N : Not Inspected/Rated	Ma : Maintenance Deficiency	
WS : Water Side		M : Minimally Acceptable	C : Corrected	Ob : Design & System Obsolescence	
CR : Crown		U : Unacceptable	A/W : Acceptable but Monitor & Maintain	En : Enforcement	

**Flood Control Project Maintenance
Levee Inspections**

Maintenance Issue Types Only, Levee Inspection Report By Mile - Spring 2018

Madera County FCWCA

Waterway	Bank	Unit Miles	Inspection Start/End	Inspector
Unit No. 04 Berenda Slough	Left	2.28	04/02/2018 04/02/2018	Richard Willoughby

LM Start	1.19	Rating **	U	Issue No.	10
LM End	1.19	Issue Type +	Ma	Location *	WS
Category	Earthen Levee			GPS Latitude/Longitude	
				Start	End
Item	Trim / Thin Trees			36.995566 °	36.995566 °
				-120.352038 °	-120.352038 °
DWR ID	DWR_NA0011_04_f_2017_10				
Comment Code					
T4 : Trim trees over roadway to at least 12 feet above ground level.					
Inspector Comment					
Trim branches hanging over crown inhibiting access.					

Photo 1 of 1 : SP_2018_NA0011_145_10_20180411_00026.jpg



Looking upstream at tree on waterward slope. (Spring 2018)

LM Start	1.36	Rating **	M	Issue No.	18
LM End	1.36	Issue Type +	Ma	Location *	WS
Category	Earthen Levee			GPS Latitude/Longitude	
				Start	End
Item	Trim / Thin Trees			36.995593 °	36.995593 °
				-120.348926 °	-120.348926 °
DWR ID	DWR_NA0011_04_s_2018_18				
Comment Code					
T1 : Trim trees to at least five feet above ground level.					
Inspector Comment					

No Photos

LM Start	1.39	Rating **	M	Issue No.	7
LM End	1.39	Issue Type +	Ma	Location *	WS
Category	Earthen Levee			GPS Latitude/Longitude	
				Start	End
Item	Vegetation			36.995576 °	36.995576 °
				-120.348348 °	-120.348348 °
DWR ID	DWR_NA0011_04_f_2017_7				
Comment Code					
V4 : Elderberries are blocking visibility and flood fight capability.					
Inspector Comment					

No Photos

* Location		** Rating		+ Issue Type	
LS : Land Side	N/A : Not Applicable	A : Acceptable	N : Not Inspected/Rated	Ma : Maintenance Deficiency	
WS : Water Side		M : Minimally Acceptable	C : Corrected	Ob : Design & System Obsolescence	
CR : Crown		U : Unacceptable	A/W : Acceptable but Monitor & Maintain	En : Enforcement	

**Flood Control Project Maintenance
Levee Inspections**

Maintenance Issue Types Only, Levee Inspection Report By Mile - Spring 2018

Madera County FCWCA

Waterway	Bank	Unit Miles	Inspection Start/End	Inspector
Unit No. 04 Berenda Slough	Left	2.28	04/02/2018 04/02/2018	Richard Willoughby

LM Start	1.49	Rating **	A/W	Issue No.	6
LM End	1.49	Issue Type +	Ma	Location *	CR
Category	Earthen Levee			GPS Latitude/Longitude	
				Start	End
Item	Trim / Thin Trees			36.995580 °	36.995580 °
				-120.346589 °	-120.346589 °
DWR ID	DWR_NA0011_04_f_2017_6				
Comment Code					
T1 : Trim trees to at least five feet above ground level.					
Inspector Comment					
Trim trees away from crown and waterside slope and remove branches from crown road.					

No Photos

LM Start	1.50	Rating **	U	Issue No.	11
LM End	2.28	Issue Type +	Ma	Location *	LS
Category	Earthen Levee			GPS Latitude/Longitude	
				Start	End
Item	Animal Control			36.995590 °	37.003740 °
				-120.346406 °	-120.336877 °
DWR ID	DWR_NA0011_04_f_2016_11				
Comment Code					
A1 : Exterminate rodents and backfill and compact or grout burrows.					
Inspector Comment					
Exterminate the rodents and backfill and compact or grout the burrows in this area listed.					

Photo 1 of 5 : SP_2018_NA0011_145_11_20180307_00004.jpg



Berenda Slough looking upstream levee mile 0.62 landward.

LM Start	1.50	Rating **	U	Issue No.	11 (cont)
LM End	2.28	Issue Type +	Ma	Location *	LS

Photo 2 of 5 : SP_2018_NA0011_145_11_20180307_00005.jpg



Looking upstream at rodent activity on landward slope and toe.

* Location LS : Land Side N/A : Not Applicable WS : Water Side CR : Crown		** Rating A : Acceptable M : Minimally Acceptable U : Unacceptable		N : Not Inspected/Rated C : Corrected A/W : Acceptable but Monitor & Maintain		+ Issue Type Ma : Maintenance Deficiency Ob : Design & System Obsolescence En : Enforcement	
--	--	--	--	---	--	---	--

**Flood Control Project Maintenance
Levee Inspections**

Maintenance Issue Types Only, Levee Inspection Report By Mile - Spring 2018

Madera County FCWCA

Waterway	Bank	Unit Miles	Inspection Start/End	Inspector
Unit No. 04 Berenda Slough	Left	2.28	04/02/2018 04/02/2018	Richard Willoughby

LM Start	1.50	Rating **	U	Issue No.	11 (cont)	
LM End	2.28	Issue Type +	Ma	Location *	LS	
Category	Earthen Levee			GPS Latitude/Longitude		
				Start		End
Item	Animal Control			36.995590 °		37.003740 °
				-120.346406 °		-120.336877 °
DWR ID	DWR_NA0011_04_f_2016_11					
Comment Code						
A1 : Exterminate rodents and backfill and compact or grout burrows.						
Inspector Comment						
Exterminate the rodents and backfill and compact or grout the burrows in this area listed.						

Photo 3 of 5 : SP_2018_NA0011_145_11_20180307_00006.jpg



Berenda Slough looking downstream levee 0.62 landside slope covered with rodent holes to levee mile 2.09.

LM Start	1.50	Rating **	U	Issue No.	11 (cont)
LM End	2.28	Issue Type +	Ma	Location *	LS

Photo 4 of 5 : SP_2018_NA0011_145_11_20180307_00007.jpg



Rodent activity at LM 2.27.

LM Start	1.50	Rating **	U	Issue No.	11 (cont)
LM End	2.28	Issue Type +	Ma	Location *	LS

Photo 5 of 5 : SP_2018_NA0011_145_11_20180307_00008.jpg



Rodent activity at LM 1.44.

* Location LS : Land Side N/A : Not Applicable WS : Water Side CR : Crown		** Rating A : Acceptable M : Minimally Acceptable U : Unacceptable		N : Not Inspected/Rated C : Corrected A/W : Acceptable but Monitor & Maintain		+ Issue Type Ma : Maintenance Deficiency Ob : Design & System Obsolescence En : Enforcement	
---	--	---	--	---	--	--	--

**Flood Control Project Maintenance
Levee Inspections**

Maintenance Issue Types Only, Levee Inspection Report By Mile - Spring 2018

Madera County FCWCA

Waterway	Bank	Unit Miles	Inspection Start/End	Inspector
Unit No. 04 Berenda Slough	Left	2.28	04/02/2018 04/02/2018	Richard Willoughby

LM Start	1.50	Rating **	U	Issue No.	30
LM End	2.28	Issue Type +	Ma	Location *	WS
Category	Earthen Levee			GPS Latitude/Longitude	
				Start	End
Item	Animal Control			36.995590 °	37.003740 °
				-120.346406 °	-120.336877 °
DWR ID	DWR_NA0011_04_f_2014_30				
Comment Code					
A1 : Exterminate rodents and backfill and compact or grout burrows.					
Inspector Comment					
Bait stations are needed in Rodent infested area waterside slope and toe. No new photo.					

Photo 1 of 1 : SP_2018_NA0011_145_30_20180307_00014.jpg



Berenda Slough levee mile 1.63-2.23 looking upstream at waterside slope.

LM Start	1.63	Rating **	M	Issue No.	59
LM End	1.67	Issue Type +	Ma	Location *	CR
Category	Earthen Levee			GPS Latitude/Longitude	
				Start	End
Item	Animal Control			36.996573 °	36.997002 °
				-120.344428 °	-120.343977 °
DWR ID	DWR_NA0011_04_s_2012_59				
Comment Code					
A1 : Exterminate rodents and backfill and compact or grout burrows.					
Inspector Comment					
Exterminate rodents in this area.					

No Photos

* Location LS : Land Side N/A : Not Applicable WS : Water Side CR : Crown		** Rating A : Acceptable N : Not Inspected/Rated M : Minimally Acceptable C : Corrected U : Unacceptable A/W : Acceptable but Monitor & Maintain		+ Issue Type Ma : Maintenance Deficiency Ob : Design & System Obsolescence En : Enforcement
--	--	---	--	---

**Flood Control Project Maintenance
Levee Inspections**

Maintenance Issue Types Only, Levee Inspection Report By Mile - Spring 2018

Madera County FCWCA

Waterway	Bank	Unit Miles	Inspection Start/End	Inspector
Unit No. 05 Fresno River	Right	9.10	04/03/2018 04/03/2018	Richard Willoughby

LM Start	0.00	Rating **	M	Issue No.	7
LM End	4.05	Issue Type +	Ma	Location *	LS
Category	Earthen Levee			GPS Latitude/Longitude	
				Start	End
Item	Vegetation			36.978520 °	36.968168 °
				-120.368567 °	-120.301035 °
DWR ID	DWR_NA0011_05_f_2016_7				
Comment Code					
V1 : Control annual grass and weeds on the levee slopes and easements.					
Inspector Comment					
Remove all tall dead weeds from the landside slope and shoulder from levee mile 0.00 -4.05.					

Photo 1 of 1 : SP_2018_NA0011_146_7_20180307_00001.jpg



Looking upstream from levee mile 0.00 landside slope unwanted tall weeds block view of levee slope.

LM Start	0.00	Rating **	M	Issue No.	14
LM End	4.05	Issue Type +	Ma	Location *	LS
Category	Earthen Levee			GPS Latitude/Longitude	
				Start	End
Item	Animal Control			36.978520 °	36.968168 °
				-120.368567 °	-120.301035 °
DWR ID	DWR_NA0011_05_f_2016_14				
Comment Code					
A1 : Exterminate rodents and backfill and compact or grout burrows.					
Inspector Comment					
Exterminate the rodents along the landside slope and toe throughout the area to levee mile 4.05. Bait stations are needed in infested areas.					

Photo 1 of 1 : SP_2018_NA0011_146_14_20180307_00003.jpg



Rodent activity on landside slope.

* Location LS : Land Side N/A : Not Applicable WS : Water Side CR : Crown		** Rating A : Acceptable M : Minimally Acceptable U : Unacceptable N : Not Inspected/Rated C : Corrected A/W : Acceptable but Monitor & Maintain		+ Issue Type Ma : Maintenance Deficiency Ob : Design & System Obsolescence En : Enforcement	
---	--	--	--	--	--

**Flood Control Project Maintenance
Levee Inspections**

Maintenance Issue Types Only, Levee Inspection Report By Mile - Spring 2018

Madera County FCWCA

Waterway	Bank	Unit Miles	Inspection Start/End	Inspector
Unit No. 05 Fresno River	Right	9.10	04/03/2018 04/03/2018	Richard Willoughby

LM Start	0.00	Rating **	M	Issue No.	10
LM End	4.05	Issue Type +	Ma	Location *	WS
Category	Earthen Levee			GPS Latitude/Longitude	
				Start	End
Item	Vegetation			36.978545 °	36.968159 °
				-120.368498 °	-120.301065 °
DWR ID	DWR_NA0011_05_f_2017_10				
Comment Code					
V1 : Control annual grass and weeds on the levee slopes and easements.					
Inspector Comment					

No Photos

LM Start	0.00	Rating **	M	Issue No.	13
LM End	4.05	Issue Type +	Ma	Location *	CR
Category	Earthen Levee			GPS Latitude/Longitude	
				Start	End
Item	Crown Surface / Depressions / Rutting			36.978548 °	36.968165 °
				-120.368454 °	-120.301151 °
DWR ID	DWR_NA0011_05_s_2012_13				
Comment Code					
C1 : Add appropriate material and re-grade the levee to bring the crown above the design elevation.					
Inspector Comment					
Regrade the crown for proper drainage. And add appropriate gravel or road base.					

Photo 1 of 1 : SP_2018_NA0011_146_13_20180411_00020.jpg



Looking downstream at levee crown from 0.00. (Spring 2018)

LM Start	0.00	Rating **	U	Issue No.	8
LM End	4.05	Issue Type +	Ma	Location *	CR
Category	Earthen Levee			GPS Latitude/Longitude	
				Start	End
Item	Vegetation			36.978557 °	36.968152 °
				-120.368423 °	-120.301103 °
DWR ID	DWR_NA0011_05_f_2015_8				
Comment Code					
V9 : Keep the crown roadway free of vegetation.					
Inspector Comment					
The crown roadway must be free of all vegetation. Tall weeds blocking view of crown roadway.					

Photo 1 of 1 : SP_2018_NA0011_146_8_20180307_00002.jpg



Fresno River looking upstream levee mile 0.00.

*** Location**

LS : Land Side N/A : Not Applicable
WS : Water Side
CR : Crown

**** Rating**

A : Acceptable N : Not Inspected/Rated
M : Minimally Acceptable C : Corrected
U : Unacceptable A/W : Acceptable but Monitor & Maintain

+ Issue Type

Ma : Maintenance Deficiency
Ob : Design & System Obsolescence
En : Enforcement

**Flood Control Project Maintenance
Levee Inspections**

Maintenance Issue Types Only, Levee Inspection Report By Mile - Spring 2018

Madera County FCWCA

Waterway	Bank	Unit Miles	Inspection Start/End	Inspector
Unit No. 05 Fresno River	Right	9.10	04/03/2018 04/03/2018	Richard Willoughby

LM Start	2.50	Rating **	M	Issue No.	19
LM End	2.50	Issue Type +	Ma	Location *	WS
Category	Rivers, Channels & Designated Floodways			GPS Latitude/Longitude	
				Start	End
Item	Encroachments			36.967990 °	36.967990 °
				-120.329131 °	-120.329131 °
DWR ID	DWR_NA0011_05_s _ 2012_19				
Comment Code					
Inspector Comment					
Trash in channel.					

Photo 1 of 1 : SP_2018_NA0011_146_19_20180411_00021.jpg



Looking west at garage in channel. (Spring 2018)

LM Start	4.20	Rating **	M	Issue No.	21
LM End	4.32	Issue Type +	Ma	Location *	LS
Category	Earthen Levee			GPS Latitude/Longitude	
				Start	End
Item	Animal Control			36.968135 °	36.968202 °
				-120.298355 °	-120.296210 °
DWR ID	DWR_NA0011_05_s _ 2012_21				
Comment Code					
A3 : No rodents visible, but rodent burrows visible; need to backfill and compact or grout burrows.					
Inspector Comment					
Observed rodent burrows but no rodents seen.					

No Photos

* Location LS : Land Side N/A : Not Applicable WS : Water Side CR : Crown		** Rating A : Acceptable N : Not Inspected/Rated M : Minimally Acceptable C : Corrected U : Unacceptable A/W : Acceptable but Monitor & Maintain		+ Issue Type Ma : Maintenance Deficiency Ob : Design & System Obsolescence En : Enforcement
--	--	---	--	---

**Flood Control Project Maintenance
Levee Inspections**

Maintenance Issue Types Only, Levee Inspection Report By Mile - Spring 2018

Madera County FCWCA

Waterway	Bank	Unit Miles	Inspection Start/End	Inspector
Unit No. 05 Fresno River	Right	9.10	04/03/2018 04/03/2018	Richard Willoughby

LM Start	4.46	Rating **	M	Issue No.	23
LM End	5.22	Issue Type +	Ma	Location *	WS
Category	Earthen Levee			GPS Latitude/Longitude	
				Start	End
Item	Animal Control			36.968230 °	36.968247 °
				-120.293665 °	-120.279957 °
DWR ID	DWR_NA0011_05_s_2012_23				
Comment Code					
A1 : Exterminate rodents and backfill and compact or grout burrows.					
Inspector Comment					
Observed many rodent burrows, no rodent was seen.					

No Photos

LM Start	5.56	Rating **	M	Issue No.	18
LM End	5.56	Issue Type +	Ma	Location *	LS
Category	Earthen Levee			GPS Latitude/Longitude	
				Start	End
Item	Slope Stability			36.968210 °	36.968210 °
				-120.273729 °	-120.273729 °
DWR ID	DWR_NA0011_05_f_2017_18				
Comment Code					
S3 : Repair the levee slope damaged by vehicle traffic and prevent access where possible.					
Inspector Comment					
Repair damage from vehicle traffic on slope and shoulder.					

Photo 1 of 1 : SP_2018_NA0011_146_18_20180307_00005.jpg



Repair damage from vehicle traffic on slope and shoulder.

LM Start	6.09	Rating **	M	Issue No.	31
LM End	6.09	Issue Type +	Ma	Location *	WS
Category	Earthen Levee			GPS Latitude/Longitude	
				Start	End
Item	Encroachments			36.968178 °	36.968178 °
				-120.264122 °	-120.264122 °
DWR ID	DWR_NA0011_05_f_2015_31				
Comment Code					
PR : Prunings					
Inspector Comment					
The pruning's here need to be burned or removed from levee slope waterside.					

No Photos

* Location LS : Land Side N/A : Not Applicable WS : Water Side CR : Crown		** Rating A : Acceptable M : Minimally Acceptable U : Unacceptable N : Not Inspected/Rated C : Corrected A/W : Acceptable but Monitor & Maintain		+ Issue Type Ma : Maintenance Deficiency Ob : Design & System Obsolescence En : Enforcement	
--	--	---	--	---	--

**Flood Control Project Maintenance
Levee Inspections**

Maintenance Issue Types Only, Levee Inspection Report By Mile - Spring 2018

Madera County FCWCA

Waterway	Bank	Unit Miles	Inspection Start/End	Inspector
Unit No. 05 Fresno River	Right	9.10	04/03/2018 04/03/2018	Richard Willoughby

LM Start	6.57	Rating **	U	Issue No.	17
LM End	9.10	Issue Type +	Ma	Location *	WS
Category	Earthen Levee			GPS Latitude/Longitude	
				Start	End
Item	Vegetation			36.968502 °	36.973318 °
				-120.255603 °	-120.211600 °
DWR ID	DWR_NA0011_05_s_2017_17				
Comment Code					
V2 : Remove the wild growth other than native grasses from the levee slopes.					
Inspector Comment					
Remove the wild growth other than native grasses.					

Photo 1 of 1 : SP_2018_NA0011_146_17_20180307_00004.jpg



Fresno River waterside looking upstream from levee mile 6.57, wild weed growth present on slope and shoulder.

LM Start	6.58	Rating **	U	Issue No.	20
LM End	7.04	Issue Type +	Ma	Location *	LS
Category	Earthen Levee			GPS Latitude/Longitude	
				Start	End
Item	Vegetation			36.968518 °	36.969543 °
				-120.255408 °	-120.247325 °
DWR ID	DWR_NA0011_05_s_2017_20				
Comment Code					
V2 : Remove the wild growth other than native grasses from the levee slopes.					
Inspector Comment					
Remove the wild weeds and tall grasses from the landside slope and shoulder.					

Photo 1 of 1 : SP_2018_NA0011_146_20_20180307_00006.jpg



Fresno River Unit 5 levee mile 6.58 looking upstream to 7.04 unsatisfactory weed growth covering levee slope.

* Location
LS : Land Side N/A : Not Applicable
WS : Water Side
CR : Crown

** Rating
A : Acceptable N : Not Inspected/Rated
M : Minimally Acceptable C : Corrected
U : Unacceptable A/W : Acceptable but Monitor & Maintain

+ Issue Type
Ma : Maintenance Deficiency
Ob : Design & System Obsolescence
En : Enforcement

**Flood Control Project Maintenance
Levee Inspections**

Maintenance Issue Types Only, Levee Inspection Report By Mile - Spring 2018

Madera County FCWCA

Waterway	Bank	Unit Miles	Inspection Start/End	Inspector
Unit No. 05 Fresno River	Right	9.10	04/03/2018 04/03/2018	Richard Willoughby

LM Start	6.58	Rating **	M	Issue No.	27
LM End	9.07	Issue Type +	Ma	Location *	WS
Category	Earthen Levee			GPS Latitude/Longitude	
				Start	End
Item	Animal Control			36.968525 °	36.973197 °
				-120.255387 °	-120.212085 °
DWR ID	DWR_NA0011_05_f_2016_27				
Comment Code					
A1 : Exterminate rodents and backfill and compact or grout burrows.					
Inspector Comment					
Exterminate the rodent in the area listed and place bait stations.					

No Photos

LM Start	6.63	Rating **	M	Issue No.	22
LM End	7.56	Issue Type +	Ma	Location *	CR
Category	Earthen Levee			GPS Latitude/Longitude	
				Start	End
Item	Crown Surface / Depressions / Rutting			36.968568 °	36.969552 °
				-120.254542 °	-120.237855 °
DWR ID	DWR_NA0011_05_s_2017_22				
Comment Code					
C2 : Repair depressions or ruts in the crown or slope.					
Inspector Comment					
Repair rutting and add appropriate gravel.					

No Photos

LM Start	6.75	Rating **	U	Issue No.	28
LM End	6.95	Issue Type +	Ma	Location *	LS
Category	Earthen Levee			GPS Latitude/Longitude	
				Start	End
Item	Animal Control			36.969200 °	36.969507 °
				-120.252462 °	-120.248893 °
DWR ID	DWR_NA0011_05_f_2016_28				
Comment Code					
A1 : Exterminate rodents and backfill and compact or grout burrows.					
Inspector Comment					
Exterminate the rodents in the area listed and place bait stations along the shoulder and or slope.					

Photo 1 of 1 : SP_2018_NA0011_146_28_20180307_00009.jpg



Fresno River landside levee slope levee mile 6.75-6.95.

* Location		** Rating		+ Issue Type	
LS : Land Side	N/A : Not Applicable	A : Acceptable	N : Not Inspected/Rated	Ma : Maintenance Deficiency	
WS : Water Side		M : Minimally Acceptable	C : Corrected	Ob : Design & System Obsolescence	
CR : Crown		U : Unacceptable	A/W : Acceptable but Monitor & Maintain	En : Enforcement	

**Flood Control Project Maintenance
Levee Inspections**

Maintenance Issue Types Only, Levee Inspection Report By Mile - Spring 2018

Madera County FCWCA

Waterway	Bank	Unit Miles	Inspection Start/End	Inspector
Unit No. 05 Fresno River	Right	9.10	04/03/2018 04/03/2018	Richard Willoughby

LM Start	7.06	Rating **	A/W	Issue No.	29
LM End	7.57	Issue Type +	Ma	Location *	CR
Category	Earthen Levee			GPS Latitude/Longitude	
				Start	End
Item	Vegetation			36.969517 °	36.969528 °
				-120.246928 °	-120.237790 °
DWR ID	DWR_NA0011_05_f_2016_29				
Comment Code					
V9 : Keep the crown roadway free of vegetation.					
Inspector Comment					
The crown roadway should be keep clear of vegetation.					

No Photos

LM Start	7.37	Rating **	M	Issue No.	24
LM End	7.52	Issue Type +	Ma	Location *	LS
Category	Earthen Levee			GPS Latitude/Longitude	
				Start	End
Item	Vegetation			36.969551 °	36.969550 °
				-120.241261 °	-120.238526 °
DWR ID	DWR_NA0011_05_f_2017_24				
Comment Code					
V1 : Control annual grass and weeds on the levee slopes and easements.					
Inspector Comment					

No Photos

* Location LS : Land Side N/A : Not Applicable WS : Water Side CR : Crown	** Rating A : Acceptable M : Minimally Acceptable U : Unacceptable	N : Not Inspected/Rated C : Corrected A/W : Acceptable but Monitor & Maintain	+ Issue Type Ma : Maintenance Deficiency Ob : Design & System Obsolescence En : Enforcement
--	--	---	---

**Flood Control Project Maintenance
Levee Inspections**

Maintenance Issue Types Only, Levee Inspection Report By Mile - Spring 2018

Madera County FCWCA

Waterway	Bank	Unit Miles	Inspection Start/End	Inspector
Unit No. 06 Fresno River	Left	9.03	04/03/2018 04/03/2018	Richard Willoughby

LM Start	0.01	Rating **	M	Issue No.	15
LM End	0.99	Issue Type +	Ma	Location *	LS
Category	Earthen Levee			GPS Latitude/Longitude	
				Start	End
Item	Vegetation			36.976937 °	36.968862 °
				-120.367310 °	-120.354232 °
DWR ID	DWR_NA0011_06_f_2017_15				
Comment Code					
V1 : Control annual grass and weeds on the levee slopes and easements.					
Inspector Comment					

Photo 1 of 1 : SP_2018_NA0011_147_15_20180307_00004.jpg



Landside vegetation should be managed to allow inspection and access.

LM Start	0.01	Rating **	M	Issue No.	11
LM End	2.48	Issue Type +	Ma	Location *	WS
Category	Earthen Levee			GPS Latitude/Longitude	
				Start	End
Item	Vegetation			36.976937 °	36.967257 °
				-120.367308 °	-120.328151 °
DWR ID	DWR_NA0011_06_f_2016_11				
Comment Code					
V1 : Control annual grass and weeds on the levee slopes and easements.					
Inspector Comment					
Remove the unwanted tall weed growth from the waterside slope and shoulder.					

Photo 1 of 1 : SP_2018_NA0011_147_11_20180307_00002.jpg



Fresno River levee mile 0.01 looking upstream wild weed growth present on the slope and shoulder.

* Location LS : Land Side N/A : Not Applicable WS : Water Side CR : Crown		** Rating A : Acceptable N : Not Inspected/Rated M : Minimally Acceptable C : Corrected U : Unacceptable A/W : Acceptable but Monitor & Maintain		+ Issue Type Ma : Maintenance Deficiency Ob : Design & System Obsolescence En : Enforcement
--	--	---	--	---

**Flood Control Project Maintenance
Levee Inspections**

Maintenance Issue Types Only, Levee Inspection Report By Mile - Spring 2018

Madera County FCWCA

Waterway	Bank	Unit Miles	Inspection Start/End	Inspector
Unit No. 06 Fresno River	Left	9.03	04/03/2018 04/03/2018	Richard Willoughby

LM Start	0.01	Rating **	M	Issue No.	19
LM End	3.49	Issue Type +	Ma	Location *	LS
Category	Earthen Levee			GPS Latitude/Longitude	
				Start	End
Item	Animal Control			36.976937 °	36.967393 °
				-120.367308 °	-120.310025 °
DWR ID	DWR_NA0011_06_f_2016_19				
Comment Code					
A1 : Exterminate rodents and backfill and compact or grout burrows.					
Inspector Comment					
Exterminate rodents and backfill burrows.					

No Photos

LM Start	0.01	Rating **	M	Issue No.	12
LM End	1.02	Issue Type +	Ma	Location *	CR
Category	Earthen Levee			GPS Latitude/Longitude	
				Start	End
Item	Vegetation			36.976960 °	36.968529 °
				-120.367233 °	-120.354011 °
DWR ID	DWR_NA0011_06_s_2017_12				
Comment Code					
V9 : Keep the crown roadway free of vegetation.					
Inspector Comment					
Keep the crown roadway free of vegetation.					

Photo 1 of 1 : SP_2018_NA0011_147_12_20180307_00003.jpg



Fresno River looking upstream from levee mile 0.01 to 0.95.

LM Start	0.44	Rating **	U	Issue No.	20
LM End	0.44	Issue Type +	Ma	Location *	LS
Category	Earthen Levee			GPS Latitude/Longitude	
				Start	End
Item	Erosion / Bank Caving			36.975030 °	36.975014 °
				-120.360382 °	-120.360401 °
DWR ID	DWR_NA0011_06_f_2012_20				
Comment Code					
E2 : Schedule repair of erosion site prior to the next inspection.					
Inspector Comment					
This erosion should be taken care of before it gets worse. During the spring inspection on 4-24-2014 the erosion couldn't be seen as the area was overtaken with weeds.					

Photo 1 of 1 : SP_2018_NA0011_147_20_20180307_00007.jpg



Looking downstream at the old erosion site landside slope.

* Location
LS : Land Side N/A : Not Applicable
WS : Water Side
CR : Crown

** Rating
A : Acceptable N : Not Inspected/Rated
M : Minimally Acceptable C : Corrected
U : Unacceptable A/W : Acceptable but Monitor & Maintain

+ Issue Type
Ma : Maintenance Deficiency
Ob : Design & System Obsolescence
En : Enforcement

**Flood Control Project Maintenance
Levee Inspections**

Maintenance Issue Types Only, Levee Inspection Report By Mile - Spring 2018

Madera County FCWCA

Waterway	Bank	Unit Miles	Inspection Start/End	Inspector
Unit No. 06 Fresno River	Left	9.03	04/03/2018 04/03/2018	Richard Willoughby

LM Start	1.14	Rating **	M	Issue No.	41
LM End	1.19	Issue Type +	Ma	Location *	LS
Category	Earthen Levee			GPS Latitude/Longitude	
				Start	End
Item	Slope Stability			36.967387 °	36.967207 °
				-120.352332 °	-120.351590 °
DWR ID	DWR_NA0011_06_s_2013_41				
Comment Code					
S1 : Repair slope instability.					
Inspector Comment					
Repair the slope damaged by farm equipment.					

No Photos

LM Start	1.15	Rating **	M	Issue No.	18
LM End	3.49	Issue Type +	Ma	Location *	WS
Category	Earthen Levee			GPS Latitude/Longitude	
				Start	End
Item	Animal Control			36.967360 °	36.967393 °
				-120.352243 °	-120.310025 °
DWR ID	DWR_NA0011_06_f_2017_18				
Comment Code					
A1 : Exterminate rodents and backfill and compact or grout burrows.					
Inspector Comment					

No Photos

* Location LS : Land Side N/A : Not Applicable WS : Water Side CR : Crown		** Rating A : Acceptable N : Not Inspected/Rated M : Minimally Acceptable C : Corrected U : Unacceptable A/W : Acceptable but Monitor & Maintain		+ Issue Type Ma : Maintenance Deficiency Ob : Design & System Obsolescence En : Enforcement
--	--	---	--	---

**Flood Control Project Maintenance
Levee Inspections**

Maintenance Issue Types Only, Levee Inspection Report By Mile - Spring 2018

Madera County FCWCA

Waterway	Bank	Unit Miles	Inspection Start/End	Inspector
Unit No. 06 Fresno River	Left	9.03	04/03/2018 04/03/2018	Richard Willoughby

LM Start	1.15	Rating **	U	Issue No.	17
LM End	1.15	Issue Type +	Ma	Location *	WS
Category	Earthen Levee			GPS Latitude/Longitude	
				Start	End
Item	Slope Stability			36.967334 °	36.967334 °
				-120.352154 °	-120.352154 °
DWR ID	DWR_NA0011_06_f_2017_17				
Comment Code					
S1 : Repair slope instability.					
Inspector Comment					
Observed slump possibly exacerbated by rodent activity. 20' long x 8' high x 18" deep into levee slope.					

Photo 1 of 2 : SP_2018_NA0011_147_17_20180307_00005.jpg



Observed slump possibly exacerbated by rodent activity. 20' long x 8' high x 18" deep into levee slope.

LM Start	1.15	Rating **	U	Issue No.	17 (cont)
LM End	1.15	Issue Type +	Ma	Location *	WS

Photo 2 of 2 : SP_2018_NA0011_147_17_20180307_00006.jpg



Observed slump possibly exacerbated by rodent activity. 20' long x 8' high x 18" deep into levee slope.

* Location LS : Land Side N/A : Not Applicable WS : Water Side CR : Crown		** Rating A : Acceptable M : Minimally Acceptable U : Unacceptable N : Not Inspected/Rated C : Corrected A/W : Acceptable but Monitor & Maintain		+ Issue Type Ma : Maintenance Deficiency Ob : Design & System Obsolescence En : Enforcement	
---	--	--	--	--	--

**Flood Control Project Maintenance
Levee Inspections**

Maintenance Issue Types Only, Levee Inspection Report By Mile - Spring 2018

Madera County FCWCA

Waterway	Bank	Unit Miles	Inspection Start/End	Inspector
Unit No. 06 Fresno River	Left	9.03	04/03/2018 04/03/2018	Richard Willoughby

LM Start	1.27	Rating **	M	Issue No.	14
LM End	6.56	Issue Type +	Ma	Location *	CR
Category	Earthen Levee			GPS Latitude/Longitude	
				Start	End
Item	Crown Surface / Depressions / Rutting			36.967177 °	36.967992 °
				-120.350167 °	-120.254517 °
DWR ID	DWR_NA0011_06_s_2017_14				
Comment Code					
C2 : Repair depressions or ruts in the crown or slope.					
Inspector Comment					
Repair the crown roadway of ruts and depressions regrade where needed					

No Photos

LM Start	1.98	Rating **	M	Issue No.	21
LM End	2.48	Issue Type +	Ma	Location *	LS
Category	Earthen Levee			GPS Latitude/Longitude	
				Start	End
Item	Vegetation			36.967221 °	36.967252 °
				-120.337208 °	-120.328226 °
DWR ID	DWR_NA0011_06_f_2017_21				
Comment Code					
V1 : Control annual grass and weeds on the levee slopes and easements.					
Inspector Comment					

Photo 1 of 1 : SP_2018_NA0011_147_21_20180307_00008.jpg



Landside vegetation should be managed to allow inspection and access to slope and toe.

* Location LS : Land Side N/A : Not Applicable WS : Water Side CR : Crown		** Rating A : Acceptable N : Not Inspected/Rated M : Minimally Acceptable C : Corrected U : Unacceptable A/W : Acceptable but Monitor & Maintain		+ Issue Type Ma : Maintenance Deficiency Ob : Design & System Obsolescence En : Enforcement
--	--	---	--	---

**Flood Control Project Maintenance
Levee Inspections**

Maintenance Issue Types Only, Levee Inspection Report By Mile - Spring 2018

Madera County FCWCA

Waterway	Bank	Unit Miles	Inspection Start/End	Inspector
Unit No. 06 Fresno River	Left	9.03	04/03/2018 04/03/2018	Richard Willoughby

LM Start	1.98	Rating **	M	Issue No.	25
LM End	5.96	Issue Type +	Ma	Location *	CR
Category	Earthen Levee			GPS Latitude/Longitude	
				Start	End
Item	Vegetation			36.967222 °	36.967499 °
				-120.337208 °	-120.265336 °
DWR ID	DWR_NA0011_06_s_2017_25				
Comment Code					
V9 : Keep the crown roadway free of vegetation.					
Inspector Comment					
Keep the crown roadway free of vegetation.					

No Photos

LM Start	2.48	Rating **	M	Issue No.	23
LM End	3.52	Issue Type +	Ma	Location *	WS
Category	Earthen Levee			GPS Latitude/Longitude	
				Start	End
Item	Vegetation			36.967257 °	36.967395 °
				-120.328151 °	-120.309471 °
DWR ID	DWR_NA0011_06_f_2017_23				
Comment Code					
V1 : Control annual grass and weeds on the levee slopes and easements.					
Inspector Comment					

No Photos

LM Start	3.49	Rating **	A/W	Issue No.	28
LM End	7.71	Issue Type +	Ma	Location *	LS
Category	Earthen Levee			GPS Latitude/Longitude	
				Start	End
Item	Animal Control			36.967394 °	36.969598 °
				-120.310027 °	-120.234230 °
DWR ID	DWR_NA0011_06_f_2017_28				
Comment Code					
A3 : No rodents visible, but rodent burrows visible; need to backfill and compact or grout burrows.					
Inspector Comment					

No Photos

* Location LS : Land Side N/A : Not Applicable WS : Water Side CR : Crown		** Rating A : Acceptable N : Not Inspected/Rated M : Minimally Acceptable C : Corrected U : Unacceptable A/W : Acceptable but Monitor & Maintain		+ Issue Type Ma : Maintenance Deficiency Ob : Design & System Obsolescence En : Enforcement	
--	--	---	--	---	--

**Flood Control Project Maintenance
Levee Inspections**

Maintenance Issue Types Only, Levee Inspection Report By Mile - Spring 2018

Madera County FCWCA

Waterway	Bank	Unit Miles	Inspection Start/End	Inspector
Unit No. 06 Fresno River	Left	9.03	04/03/2018 04/03/2018	Richard Willoughby

LM Start	3.49	Rating **	A/W	Issue No.	30
LM End	7.71	Issue Type +	Ma	Location *	WS
Category	Earthen Levee			GPS Latitude/Longitude	
				Start	End
Item	Animal Control			36.967394 °	36.969599 °
				-120.310027 °	-120.234230 °
DWR ID	DWR_NA0011_06_f_2017_30				
Comment Code					
A3 : No rodents visible, but rodent burrows visible; need to backfill and compact or grout burrows.					
Inspector Comment					

No Photos

LM Start	3.49	Rating **	U	Issue No.	27
LM End	3.49	Issue Type +	Ma	Location *	LS
Category	Earthen Levee			GPS Latitude/Longitude	
				Start	End
Item	Slope Stability			36.967393 °	36.967393 °
				-120.310025 °	-120.310025 °
DWR ID	DWR_NA0011_06_f_2017_27				
Comment Code					
S3 : Repair the levee slope damaged by vehicle traffic and prevent access where possible.					
Inspector Comment					
Repair damage at toe due to ag equipment activity between power pole and levee.					

Photo 1 of 1 : SP_2018_NA0011_147_27_20180307_00009.jpg



Ag activity has cut into landside toe. Activity should be stopped and levee slope repaired.

* Location LS : Land Side N/A : Not Applicable WS : Water Side CR : Crown		** Rating A : Acceptable M : Minimally Acceptable U : Unacceptable N : Not Inspected/Rated C : Corrected A/W : Acceptable but Monitor & Maintain		+ Issue Type Ma : Maintenance Deficiency Ob : Design & System Obsolescence En : Enforcement	
---	--	--	--	--	--

**Flood Control Project Maintenance
Levee Inspections**

Maintenance Issue Types Only, Levee Inspection Report By Mile - Spring 2018

Madera County FCWCA

Waterway	Bank	Unit Miles	Inspection Start/End	Inspector
Unit No. 06 Fresno River	Left	9.03	04/03/2018 04/03/2018	Richard Willoughby

LM Start	3.52	Rating **	M	Issue No.	26
LM End	7.52	Issue Type +	Ma	Location *	WS
Category	Earthen Levee			GPS Latitude/Longitude	
				Start	End
Item	Vegetation			36.967394 °	36.968866 °
				-120.309470 °	-120.237293 °
DWR ID	DWR_NA0011_06_f_2017_26				
Comment Code					
V1 : Control annual grass and weeds on the levee slopes and easements.					
Inspector Comment					

No Photos

LM Start	3.99	Rating **	M	Issue No.	34
LM End	3.99	Issue Type +	Ma	Location *	WS
Category	Earthen Levee			GPS Latitude/Longitude	
				Start	End
Item	Slope Stability			36.967457 °	36.967457 °
				-120.301031 °	-120.301031 °
DWR ID	DWR_NA0011_06_f_2017_34				
Comment Code					
S3 : Repair the levee slope damaged by vehicle traffic and prevent access where possible.					
Inspector Comment					

No Photos

LM Start	5.44	Rating **	U	Issue No.	53
LM End	5.44	Issue Type +	Ma	Location *	LS
Category	Earthen Levee			GPS Latitude/Longitude	
				Start	End
Item	Animal Control			36.967514 °	36.967514 °
				-120.274810 °	-120.274810 °
DWR ID	DWR_NA0011_06_s_2018_53				
Comment Code					
A3 : No rodents visible, but rodent burrows visible; need to backfill and compact or grout burrows.					
Inspector Comment					
Control rodents within this section.					

Photo 1 of 1 : SP_2018_NA0011_147_53_20180411_00040.jpg



Looking at typical rodent hole on landward slope. (Spring 2018)

* Location		** Rating		+ Issue Type	
LS : Land Side	N/A : Not Applicable	A : Acceptable	N : Not Inspected/Rated	Ma : Maintenance Deficiency	
WS : Water Side		M : Minimally Acceptable	C : Corrected	Ob : Design & System Obsolescence	
CR : Crown		U : Unacceptable	A/W : Acceptable but Monitor & Maintain	En : Enforcement	

**Flood Control Project Maintenance
Levee Inspections**

Maintenance Issue Types Only, Levee Inspection Report By Mile - Spring 2018

Madera County FCWCA

Waterway	Bank	Unit Miles	Inspection Start/End	Inspector
Unit No. 06 Fresno River	Left	9.03	04/03/2018 04/03/2018	Richard Willoughby

LM Start	5.67	Rating **	M	Issue No.	37
LM End	5.96	Issue Type +	Ma	Location *	LS
Category	Earthen Levee			GPS Latitude/Longitude	
				Start	End
Item	Slope Stability			36.967504 °	36.967498 °
				-120.270661 °	-120.265336 °
DWR ID	DWR_NA0011_06_f_2017_37				
Comment Code					
S3 : Repair the levee slope damaged by vehicle traffic and prevent access where possible.					
Inspector Comment					
Repair damage at levee toe caused by ag equipment activity.					

No Photos

LM Start	6.72	Rating **	M	Issue No.	40
LM End	6.72	Issue Type +	Ma	Location *	WS
Category	Earthen Levee			GPS Latitude/Longitude	
				Start	End
Item	Encroachments			36.968670 °	36.968670 °
				-120.251717 °	-120.251717 °
DWR ID	DWR_NA0011_06_f_2017_40				
Comment Code					
PR : Prunings					
Inspector Comment					
Remove collected wood debris on waterside shoulder.					

No Photos

* Location LS : Land Side N/A : Not Applicable WS : Water Side CR : Crown		** Rating A : Acceptable N : Not Inspected/Rated M : Minimally Acceptable C : Corrected U : Unacceptable A/W : Acceptable but Monitor & Maintain		+ Issue Type Ma : Maintenance Deficiency Ob : Design & System Obsolescence En : Enforcement
--	--	---	--	---

**Flood Control Project Maintenance
Levee Inspections**

Maintenance Issue Types Only, Levee Inspection Report By Mile - Spring 2018

Madera County FCWCA

Waterway	Bank	Unit Miles	Inspection Start/End	Inspector
Unit No. 06 Fresno River	Left	9.03	04/03/2018 04/03/2018	Richard Willoughby

LM Start	6.74	Rating **	M	Issue No.	42
LM End	6.74	Issue Type +	Ma	Location *	WS
Category	Earthen Levee			GPS Latitude/Longitude	
				Start	End
Item	Encroachments			36.968710 °	36.968710 °
				-120.251439 °	-120.251439 °
DWR ID	DWR_NA0011_06_f_2017_42				
Comment Code					
PR : Prunings					
Inspector Comment					
Remove collected wood debris from waterside shoulder.					

No Photos

LM Start	7.07	Rating **	M	Issue No.	43
LM End	7.07	Issue Type +	Ma	Location *	WS
Category	Earthen Levee			GPS Latitude/Longitude	
				Start	End
Item	Encroachments			36.968801 °	36.968801 °
				-120.245557 °	-120.245557 °
DWR ID	DWR_NA0011_06_f_2017_43				
Comment Code					
PR : Prunings					
Inspector Comment					
Remove collected wood debris from waterside shoulder.					

No Photos

LM Start	7.42	Rating **	M	Issue No.	44
LM End	7.42	Issue Type +	Ma	Location *	WS
Category	Earthen Levee			GPS Latitude/Longitude	
				Start	End
Item	Encroachments			36.968851 °	36.968851 °
				-120.239236 °	-120.239236 °
DWR ID	DWR_NA0011_06_f_2017_44				
Comment Code					
PR : Prunings					
Inspector Comment					
Remove collected wood debris from waterside shoulder.					

No Photos

* Location		** Rating		+ Issue Type	
LS : Land Side	N/A : Not Applicable	A : Acceptable	N : Not Inspected/Rated	Ma : Maintenance Deficiency	
WS : Water Side		M : Minimally Acceptable	C : Corrected	Ob : Design & System Obsolescence	
CR : Crown		U : Unacceptable	A/W : Acceptable but Monitor & Maintain	En : Enforcement	

**Flood Control Project Maintenance
Levee Inspections**

Maintenance Issue Types Only, Levee Inspection Report By Mile - Spring 2018

Madera County FCWCA

Waterway	Bank	Unit Miles	Inspection Start/End	Inspector
Unit No. 06 Fresno River	Left	9.03	04/03/2018 04/03/2018	Richard Willoughby

LM Start	7.57	Rating **	M	Issue No.	46
LM End	9.02	Issue Type +	Ma	Location *	WS
Category	Earthen Levee			GPS Latitude/Longitude	
				Start	End
Item	Vegetation			36.968883 °	36.972656 °
				-120.236491 °	-120.211787 °
DWR ID	DWR_NA0011_06_f_2017_46				
Comment Code					
V2 : Remove the wild growth other than native grasses from the levee slopes.					
Inspector Comment					

No Photos

LM Start	7.70	Rating **	M	Issue No.	29
LM End	8.52	Issue Type +	Ma	Location *	LS
Category	Earthen Levee			GPS Latitude/Longitude	
				Start	End
Item	Vegetation			36.969591 °	36.971509 °
				-120.234235 °	-120.220438 °
DWR ID	DWR_NA0011_06_s_2017_29				
Comment Code					
V2 : Remove the wild growth other than native grasses from the levee slopes.					
Inspector Comment					
Remove the wild growth from the landside slope.					

Photo 1 of 1 : SP_2018_NA0011_147_29_20180307_00010.jpg



Fresno River landside levee mile 7.71-8.59.

* Location LS : Land Side N/A : Not Applicable WS : Water Side CR : Crown		** Rating A : Acceptable N : Not Inspected/Rated M : Minimally Acceptable C : Corrected U : Unacceptable A/W : Acceptable but Monitor & Maintain		+ Issue Type Ma : Maintenance Deficiency Ob : Design & System Obsolescence En : Enforcement
--	--	---	--	---

**Flood Control Project Maintenance
Levee Inspections**

Maintenance Issue Types Only, Levee Inspection Report By Mile - Spring 2018

Madera County FCWCA

Waterway	Bank	Unit Miles	Inspection Start/End	Inspector
Unit No. 06 Fresno River	Left	9.03	04/03/2018 04/03/2018	Richard Willoughby

LM Start	7.71	Rating **	U	Issue No.	47
LM End	8.52	Issue Type +	Ma	Location *	LS
Category	Earthen Levee			GPS Latitude/Longitude	
				Start	End
Item	Animal Control			36.969600 °	36.971509 °
				-120.234229 °	-120.220438 °
DWR ID	DWR_NA0011_06_f_2017_47				
Comment Code					
A3 : No rodents visible, but rodent burrows visible; need to backfill and compact or grout burrows.					
Inspector Comment					

Photo 1 of 1 : SP_2018_NA0011_147_47_20180307_00018.jpg



Bait traps should be maintained and rodent holes should be backfilled.

LM Start	7.71	Rating **	M	Issue No.	48
LM End	9.02	Issue Type +	Ma	Location *	WS
Category	Earthen Levee			GPS Latitude/Longitude	
				Start	End
Item	Animal Control			36.969600 °	36.972656 °
				-120.234229 °	-120.211787 °
DWR ID	DWR_NA0011_06_f_2017_48				
Comment Code					
A3 : No rodents visible, but rodent burrows visible; need to backfill and compact or grout burrows.					
Inspector Comment					

No Photos

LM Start	7.96	Rating **	M	Issue No.	32
LM End	7.96	Issue Type +	Ma	Location *	WS
Category	Earthen Levee			GPS Latitude/Longitude	
				Start	End
Item	Encroachments			36.971543 °	36.971543 °
				-120.230285 °	-120.230285 °
DWR ID	DWR_NA0011_06_s_2017_32				
Comment Code					
PR : Prunings					
Inspector Comment					
Remove the brush pile from the levee slope. This pile is providing habitat for rodents.					

Photo 1 of 1 : SP_2018_NA0011_147_32_20180307_00012.jpg



Fresno River waterside levee mile 7.96.

* Location
LS : Land Side N/A : Not Applicable
WS : Water Side
CR : Crown

** Rating
A : Acceptable N : Not Inspected/Rated
M : Minimally Acceptable C : Corrected
U : Unacceptable A/W : Acceptable but Monitor & Maintain

+ Issue Type
Ma : Maintenance Deficiency
Ob : Design & System Obsolescence
En : Enforcement

**Flood Control Project Maintenance
Levee Inspections**

Maintenance Issue Types Only, Levee Inspection Report By Mile - Spring 2018

Madera County FCWCA

Waterway	Bank	Unit Miles	Inspection Start/End	Inspector
Unit No. 06 Fresno River	Left	9.03	04/03/2018 04/03/2018	Richard Willoughby

LM Start	7.98	Rating **	M	Issue No.	33
LM End	7.98	Issue Type +	Ma	Location *	WS
Category	Earthen Levee			GPS Latitude/Longitude	
				Start	End
Item	Encroachments			36.971575 °	36.971575 °
				-120.230065 °	-120.230065 °
DWR ID	DWR_NA0011_06_s_2017_33				
Comment Code					
PR : Prunings					
Inspector Comment					
Burn or remove the brush pile from the waterside slope.					

No Photos

LM Start	8.03	Rating **	M	Issue No.	36
LM End	8.03	Issue Type +	Ma	Location *	WS
Category	Earthen Levee			GPS Latitude/Longitude	
				Start	End
Item	Encroachments			36.971582 °	36.971582 °
				-120.229180 °	-120.229180 °
DWR ID	DWR_NA0011_06_f_2015_36				
Comment Code					
TR : Tree or limb					
Inspector Comment					
The dead tree has been removed from blocking the roadway but still need to be removed from the levee section.					

Photo 1 of 2 : SP_2018_NA0011_147_36_20180307_00014.jpg



Dead tree pushed upon the waterside slope and blocking the crown.

LM Start	8.03	Rating **	M	Issue No.	36 (cont)
LM End	8.03	Issue Type +	Ma	Location *	WS

Photo 2 of 2 : SP_2018_NA0011_147_36_20180307_00015.jpg



Fresno River levee mile 8.03 waterside slope and shoulder.

* Location LS : Land Side N/A : Not Applicable WS : Water Side CR : Crown		** Rating A : Acceptable M : Minimally Acceptable U : Unacceptable		N : Not Inspected/Rated C : Corrected A/W : Acceptable but Monitor & Maintain		+ Issue Type Ma : Maintenance Deficiency Ob : Design & System Obsolescence En : Enforcement	
--	--	--	--	---	--	---	--

**Flood Control Project Maintenance
Levee Inspections**

Maintenance Issue Types Only, Levee Inspection Report By Mile - Spring 2018

Madera County FCWCA

Waterway	Bank	Unit Miles	Inspection Start/End	Inspector
Unit No. 06 Fresno River	Left	9.03	04/03/2018 04/03/2018	Richard Willoughby

LM Start	8.09	Rating **	U	Issue No.	31
LM End	8.09	Issue Type +	Ma	Location *	WS
Category	Earthen Levee			GPS Latitude/Longitude	
				Start	End
Item	Encroachments			36.971692 °	36.971692 °
				-120.227957 °	-120.227957 °
DWR ID	DWR_NA0011_06_f_2015_31				
Comment Code					
TR : Tree or limb					
Inspector Comment					
Remove the dead tree off the slope and shoulder, this has been reported in the last two inspections.					

Photo 1 of 1 : SP_2018_NA0011_147_31_20180307_00011.jpg



Fresno River levee mile 8.09.

LM Start	8.99	Rating **	U	Issue No.	51
LM End	8.99	Issue Type +	Ma	Location *	LS
Category	Earthen Levee			GPS Latitude/Longitude	
				Start	End
Item	Animal Control			36.972526 °	36.972526 °
				-120.212226 °	-120.212226 °
DWR ID	DWR_NA0011_06_s_2018_51				
Comment Code					
A3 : No rodents visible, but rodent burrows visible; need to backfill and compact or grout burrows.					
Inspector Comment					
Large rodent hole on landward slope.					

Photo 1 of 1 : SP_2018_NA0011_147_51_20180411_00045.jpg



Looking at typical rodent holes on landward slope. (Spring 2018)

* Location LS : Land Side N/A : Not Applicable WS : Water Side CR : Crown		** Rating A : Acceptable N : Not Inspected/Rated M : Minimally Acceptable C : Corrected U : Unacceptable A/W : Acceptable but Monitor & Maintain		+ Issue Type Ma : Maintenance Deficiency Ob : Design & System Obsolescence En : Enforcement
--	--	---	--	---

**Flood Control Project Maintenance
Levee Inspections**

Maintenance Issue Types Only, Levee Inspection Report By Mile - Spring 2018

Madera County FCWCA

Waterway	Bank	Unit Miles	Inspection Start/End	Inspector
Unit No. 06 Fresno River	Left	9.03	04/03/2018 04/03/2018	Richard Willoughby

LM Start	8.99	Rating **	U	Issue No.	22
LM End	8.99	Issue Type +	Ma	Location *	LS
Category	Earthen Levee			GPS Latitude/Longitude	
				Start	End
Item	Erosion / Bank Caving			36.972527 °	36.972527 °
				-120.212225 °	-120.212225 °
DWR ID	DWR_NA0011_06_s_2018_22				
Comment Code					
E2 : Schedule repair of erosion site prior to the next inspection.					
Inspector Comment					
Large finger erosion on landward slope					

Photo 1 of 1 : SP_2018_NA0011_147_22_20180411_00046.jpg



Looking at finger erosion on landward slope. (Spring 2018)

* Location LS : Land Side N/A : Not Applicable WS : Water Side CR : Crown	** Rating A : Acceptable M : Minimally Acceptable U : Unacceptable N : Not Inspected/Rated C : Corrected A/W : Acceptable but Monitor & Maintain	+ Issue Type Ma : Maintenance Deficiency Ob : Design & System Obsolescence En : Enforcement
--	---	---