

**Flood Control Project Maintenance
Levee Inspections**

Maintenance Issue Types Only, Levee Inspection Report By Mile - Spring 2016

Madera County FCWCA

Waterway	Bank	Unit Miles	Inspection Start/End	Inspector
Unit No. 01 Ash Slough	Right	2.37	04/14/2016 04/14/2016	Herman Phillips

LM Start		Rating **	A	Issue No.	41
LM End		Issue Type +	Ma	Location *	WS
Category	Earthen Levee		GPS Latitude/Longitude		
			Start	End	
Item	Operations & Maintenance Manuals			°	°
				°	°
DWR ID	DWR_NA0011_01_s _ 2012_41				
Comment Code					
Inspector Comment					
Madera County has a copy of the O&M Manual on hand.					

No Photos

LM Start		Rating **	A	Issue No.	43
LM End		Issue Type +	Ma	Location *	WS
Category	Earthen Levee		GPS Latitude/Longitude		
			Start	End	
Item	Emergency Supplies & Equipment			°	°
				°	°
DWR ID	DWR_NA0011_01_s _ 2012_43				
Comment Code					
Inspector Comment					
Madera County has emergency supplies.					

No Photos

LM Start		Rating **	A	Issue No.	44
LM End		Issue Type +	Ma	Location *	WS
Category	Earthen Levee		GPS Latitude/Longitude		
			Start	End	
Item	Flood Preparedness & Training			°	°
				°	°
DWR ID	DWR_NA0011_01_s _ 2012_44				
Comment Code					
Inspector Comment					
Madera County Flood Control has an ongoing training program.					

No Photos

* Location LS : Land Side N/A : Not Applicable WS : Water Side CR : Crown	** Rating A : Acceptable M : Minimally Acceptable U : Unacceptable	N : Not Inspected/Rated C : Corrected A/W : Acceptable but Monitor & Maintain	+ Issue Type Ma : Maintenance Deficiency Ob : Design & System Obsolescence En : Enforcement
----------------------------------------------------------------------------------------------	------------------------------------------------------------------------------------	-------------------------------------------------------------------------------------	-------------------------------------------------------------------------------------------------------------

**Flood Control Project Maintenance
Levee Inspections**

Maintenance Issue Types Only, Levee Inspection Report By Mile - Spring 2016

Madera County FCWCA

Waterway	Bank	Unit Miles	Inspection Start/End	Inspector
Unit No. 01 Ash Slough	Right	2.37	04/14/2016 04/14/2016	Herman Phillips

LM Start	0.01	Rating **	U	Issue No.	26
LM End	2.37	Issue Type +	Ma	Location *	WS
Category	Earthen Levee			GPS Latitude/Longitude	
				Start	End
Item	Vegetation			37.046495 °	37.068713 °
				-120.427787 °	-120.398490 °
DWR ID	DWR_NA0011_01_f_2015_26				
Comment Code					
V1 : Control annual grass and weeds on the levee slopes and easements.					
Inspector Comment					
Remove the unwanted tall weeds from the wateside slope and shoulder.					

Photo 1 of 1 : SP_2016_NA0011_142_26_20160426_00021.jpg



Unit 1 Ash Slough looking upstream waterside slope. Tall Mustard grass and other unwanted tall weeds covering the slope and shoulder.

LM Start	0.04	Rating **	U	Issue No.	20
LM End	0.05	Issue Type +	Ma	Location *	LS
Category	Earthen Levee			GPS Latitude/Longitude	
				Start	End
Item	Slope Stability			37.046624 °	37.046682 °
				-120.427317 °	-120.427108 °
DWR ID	DWR_NA0011_01_s_2014_20				
Comment Code					
S1 : Repair slope instability.					
Inspector Comment					
This is not a new erosion site, it should be repaired before the condition get any worse.					

Photo 1 of 1 : SP_2016_NA0011_142_20_20160223_00004.jpg



There is damage to the landside slope near the concrete wing wall.

LM Start	0.04	Rating **	M	Issue No.	36
LM End	0.04	Issue Type +	Ma	Location *	WS
Category	Earthen Levee			GPS Latitude/Longitude	
				Start	End
Item	Encroachments			37.046589 °	37.046589 °
				-120.427298 °	-120.427298 °
DWR ID	DWR_NA0011_01_s_2012_36				
Comment Code					
TR : Tree or limb					
Inspector Comment					

No Photos

* Location		** Rating		+ Issue Type	
LS : Land Side	N/A : Not Applicable	A : Acceptable	N : Not Inspected/Rated	Ma : Maintenance Deficiency	
WS : Water Side		M : Minimally Acceptable	C : Corrected	Ob : Design & System Obsolescence	
CR : Crown		U : Unacceptable	A/W : Acceptable but Monitor & Maintain	En : Enforcement	

**Flood Control Project Maintenance
Levee Inspections**

Maintenance Issue Types Only, Levee Inspection Report By Mile - Spring 2016

Madera County FCWCA

Waterway	Bank	Unit Miles	Inspection Start/End	Inspector
Unit No. 01 Ash Slough	Right	2.37	04/14/2016 04/14/2016	Herman Phillips

LM Start	0.06	Rating **	M	Issue No.	22
LM End	0.85	Issue Type +	Ma	Location *	LS
Category	Earthen Levee			GPS Latitude/Longitude	
				Start	End
Item	Animal Control			37.046723 °	37.054221 °
				-120.426957 °	-120.417131 °
DWR ID	DWR_NA0011_01_s _ 2014_22				
Comment Code					
A3 : No rodents visible, but rodent burrows visible; need to backfill and compact or grout burrows.					
Inspector Comment					

No Photos

LM Start	0.28	Rating **	M	Issue No.	6	
LM End	0.30	Issue Type +	Ma	Location *	WS	
Category	Earthen Levee			GPS Latitude/Longitude		
				Start		End
Item	Encroachments			37.047812 °		37.047963 °
				-120.423155 °		-120.422898 °
DWR ID	DWR_NA0011_01_s _ 2012_6					
Comment Code						
TR : Tree or limb						
Inspector Comment						
Noted on the last two inspections.						

No Photos

LM Start	0.31	Rating **	U	Issue No.	15
LM End	0.77	Issue Type +	Ma	Location *	LS
Category	Earthen Levee			GPS Latitude/Longitude	
				Start	End
Item	Vegetation			37.047995 °	37.053033 °
				-120.422855 °	-120.417548 °
DWR ID	DWR_NA0011_01_s _ 2016_15				
Comment Code					
V2 : Remove the wild growth other than native grasses from the levee slopes.					
Inspector Comment					

No Photos

* Location		** Rating		+ Issue Type	
LS : Land Side	N/A : Not Applicable	A : Acceptable	N : Not Inspected/Rated	Ma : Maintenance Deficiency	
WS : Water Side		M : Minimally Acceptable	C : Corrected	Ob : Design & System Obsolescence	
CR : Crown		U : Unacceptable	A/W : Acceptable but Monitor & Maintain	En : Enforcement	

**Flood Control Project Maintenance
Levee Inspections**

Maintenance Issue Types Only, Levee Inspection Report By Mile - Spring 2016

Madera County FCWCA

Waterway	Bank	Unit Miles	Inspection Start/End	Inspector
Unit No. 01 Ash Slough	Right	2.37	04/14/2016 04/14/2016	Herman Phillips

LM Start	0.33	Rating **	M	Issue No.	8
LM End	0.35	Issue Type +	Ma	Location *	WS
Category	Earthen Levee		GPS Latitude/Longitude		
			Start	End	
Item	Encroachments		37.048223 °	37.048467 °	
			-120.422642 °	-120.422315 °	
DWR ID	DWR_NA0011_01_s _ 2012_8				
Comment Code					
TR : Tree or limb					
Inspector Comment					
Noted on the last two inspections.					

No Photos

LM Start	0.39	Rating **	M	Issue No.	25
LM End	0.62	Issue Type +	Ma	Location *	LS
Category	Earthen Levee		GPS Latitude/Longitude		
			Start	End	
Item	Slope Stability		37.048886 °	37.051208 °	
			-120.421838 °	-120.418903 °	
DWR ID	DWR_NA0011_01_s _ 2014_25				
Comment Code					
S1 : Repair slope instability.					
Inspector Comment					

No Photos

LM Start	0.44	Rating **	M	Issue No.	11
LM End	0.44	Issue Type +	Ma	Location *	WS
Category	Earthen Levee		GPS Latitude/Longitude		
			Start	End	
Item	Encroachments		37.049455 °	37.049455 °	
			-120.421218 °	-120.421218 °	
DWR ID	DWR_NA0011_01_s _ 2012_11				
Comment Code					
TR : Tree or limb					
Inspector Comment					

No Photos

* Location		** Rating		+ Issue Type	
LS : Land Side	N/A : Not Applicable	A : Acceptable	N : Not Inspected/Rated	Ma : Maintenance Deficiency	
WS : Water Side		M : Minimally Acceptable	C : Corrected	Ob : Design & System Obsolescence	
CR : Crown		U : Unacceptable	A/W : Acceptable but Monitor & Maintain	En : Enforcement	

**Flood Control Project Maintenance
Levee Inspections**

Maintenance Issue Types Only, Levee Inspection Report By Mile - Spring 2016

Madera County FCWCA

Waterway	Bank	Unit Miles	Inspection Start/End	Inspector
Unit No. 01 Ash Slough	Right	2.37	04/14/2016 04/14/2016	Herman Phillips

LM Start	0.45	Rating **	M	Issue No.	39
LM End	0.56	Issue Type +	Ma	Location *	LS
Category	Earthen Levee			GPS Latitude/Longitude	
				Start	End
Item	Encroachments			37.049484 °	37.050574 °
				-120.421017 °	-120.419601 °
DWR ID	DWR_NA0011_01_s _ 2012_39				
Comment Code					
TR : Tree or limb					
Inspector Comment					
Remove the dead trees from the levee section.					

No Photos

LM Start	0.53	Rating **	M	Issue No.	10
LM End	0.53	Issue Type +	Ma	Location *	WS
Category	Earthen Levee			GPS Latitude/Longitude	
				Start	End
Item	Encroachments			37.050335 °	37.050335 °
				-120.419965 °	-120.419965 °
DWR ID	DWR_NA0011_01_s _ 2012_10				
Comment Code					
TR : Tree or limb					
Inspector Comment					

No Photos

* Location LS : Land Side N/A : Not Applicable WS : Water Side CR : Crown		** Rating A : Acceptable N : Not Inspected/Rated M : Minimally Acceptable C : Corrected U : Unacceptable A/W : Acceptable but Monitor & Maintain		+ Issue Type Ma : Maintenance Deficiency Ob : Design & System Obsolescence En : Enforcement
----------------------------------------------------------------------------------------------	--	---------------------------------------------------------------------------------------------------------------------------------------------------------------------------------------------------------------	--	-------------------------------------------------------------------------------------------------------------

**Flood Control Project Maintenance
Levee Inspections**

Maintenance Issue Types Only, Levee Inspection Report By Mile - Spring 2016

Madera County FCWCA

Waterway	Bank	Unit Miles	Inspection Start/End	Inspector
Unit No. 01 Ash Slough	Right	2.37	04/14/2016 04/14/2016	Herman Phillips

LM Start	0.58	Rating **	U	Issue No.	19
LM End	0.60	Issue Type +	Ma	Location *	LS
Category	Earthen Levee			GPS Latitude/Longitude	
				Start	End
Item	Encroachments			37.050825 °	37.051057 °
				-120.419305 °	-120.419030 °
DWR ID	DWR_NA0011_01_s _ 2016_19				
Comment Code					
PR : Prunings					
Inspector Comment					
Remove the tree prunings from the levee section.					

Photo 1 of 1 : SP_2016_NA0011_142_19_20160426_00022.jpg



Looking upstream from the landward toe Tree trimmings covering the slope and toe

LM Start	0.59	Rating **	U	Issue No.	21
LM End	2.35	Issue Type +	Ma	Location *	CR
Category	Earthen Levee			GPS Latitude/Longitude	
				Start	End
Item	Vegetation			37.050968 °	37.068513 °
				-120.419167 °	-120.398665 °
DWR ID	DWR_NA0011_01_s _ 2016_21				
Comment Code					
V9 : Keep the crown roadway free of vegetation.					
Inspector Comment					
Keep the crown free of vegetation.					

Photo 1 of 1 : SP_2016_NA0011_142_21_20160426_00023.jpg



Looking upstream from the levee mile 0.59 to 2.35 tall weeds growing on the crown roadway.

* Location LS : Land Side N/A : Not Applicable WS : Water Side CR : Crown		** Rating A : Acceptable M : Minimally Acceptable U : Unacceptable		N : Not Inspected/Rated C : Corrected A/W : Acceptable but Monitor & Maintain		+ Issue Type Ma : Maintenance Deficiency Ob : Design & System Obsolescence En : Enforcement	
----------------------------------------------------------------------------------------------	--	------------------------------------------------------------------------------------	--	-------------------------------------------------------------------------------------	--	-------------------------------------------------------------------------------------------------------------	--

**Flood Control Project Maintenance
Levee Inspections**

Maintenance Issue Types Only, Levee Inspection Report By Mile - Spring 2016

Madera County FCWCA

Waterway	Bank	Unit Miles	Inspection Start/End	Inspector
Unit No. 01 Ash Slough	Right	2.37	04/14/2016 04/14/2016	Herman Phillips

LM Start	0.62	Rating **	M	Issue No.	37
LM End	0.62	Issue Type +	Ma	Location *	WS
Category	Earthen Levee			GPS Latitude/Longitude	
				Start	End
Item	Encroachments			37.051222 °	37.051222 °
				-120.418810 °	-120.418810 °
DWR ID	DWR_NA0011_01_f_2015_37				
Comment Code					
TR : Tree or limb					
Inspector Comment					

No Photos

LM Start	0.70	Rating **	U	Issue No.	16
LM End	0.70	Issue Type +	Ma	Location *	CR
Category	Earthen Levee			GPS Latitude/Longitude	
				Start	End
Item	Encroachments			37.052175 °	37.052175 °
				-120.417998 °	-120.417998 °
DWR ID	DWR_NA0011_01_s_2013_16				
Comment Code					
TR : Tree or limb					
Inspector Comment					
This tree was blown down by high winds, District needs to completely remove from levee section. Issue not corrected.					

Photo 1 of 1 : SP_2016_NA0011_142_16_20160223_00001.jpg



This dead tree has not been removed from the levee section, the shoulder, slope and toe is blocked. Photo taken 4-29-2014. There is no new picture for this issue. No change has been made prior to Fall inspection 2014.

* Location LS : Land Side N/A : Not Applicable WS : Water Side CR : Crown		** Rating A : Acceptable N : Not Inspected/Rated M : Minimally Acceptable C : Corrected U : Unacceptable A/W : Acceptable but Monitor & Maintain		+ Issue Type Ma : Maintenance Deficiency Ob : Design & System Obsolescence En : Enforcement
----------------------------------------------------------------------------------------------	--	---------------------------------------------------------------------------------------------------------------------------------------------------------------------------------------------------------------	--	-------------------------------------------------------------------------------------------------------------

**Flood Control Project Maintenance
Levee Inspections**

Maintenance Issue Types Only, Levee Inspection Report By Mile - Spring 2016

Madera County FCWCA

Waterway	Bank	Unit Miles	Inspection Start/End	Inspector
Unit No. 01 Ash Slough	Right	2.37	04/14/2016 04/14/2016	Herman Phillips

LM Start	0.72	Rating **	U	Issue No.	28	
LM End	0.73	Issue Type +	Ma	Location *	LS	
Category	Earthen Levee			GPS Latitude/Longitude		
				Start		End
Item	Encroachments			37.052350 °		37.052530 °
				-120.417874 °		-120.417800 °
DWR ID	DWR_NA0011_01_s_2014_28					
Comment Code						
PR : Prunings						
Inspector Comment						
The brush pile here is providing habitat for the rodents.						

Photo 1 of 1 : SP_2016_NA0011_142_28_20160223_00007.jpg



Unwanted brush pile on the landside toe and slope.

LM Start	1.17	Rating **	U	Issue No.	38
LM End	1.37	Issue Type +	Ma	Location *	WS
Category	Earthen Levee			GPS Latitude/Longitude	
				Start	End
Item	Slope Stability			37.056380 °	37.058520 °
				-120.412483 °	-120.410257 °
DWR ID	DWR_NA0011_01_f_2015_38				
Comment Code					
S3 : Repair the levee slope damaged by vehicle traffic and prevent access where possible.					
Inspector Comment					
The slope will have to be put back in place damaged by equipment.					

Photo 1 of 3 : SP_2016_NA0011_142_38_20160223_00008.jpg



The levee slope has been damaged by equipment, the farmer has cut the toe away while working too close to the levee.

LM Start	1.17	Rating **	U	Issue No.	38 (cont)
LM End	1.37	Issue Type +	Ma	Location *	WS

Photo 2 of 3 : SP_2016_NA0011_142_38_20160223_00009.jpg



Another view of the damaged toe.

* Location LS : Land Side N/A : Not Applicable WS : Water Side CR : Crown		** Rating A : Acceptable M : Minimally Acceptable U : Unacceptable		N : Not Inspected/Rated C : Corrected A/W : Acceptable but Monitor & Maintain		+ Issue Type Ma : Maintenance Deficiency Ob : Design & System Obsolescence En : Enforcement	
---------------------------------------------------------------------------------------	--	-----------------------------------------------------------------------------	--	-------------------------------------------------------------------------------------	--	------------------------------------------------------------------------------------------------------	--

**Flood Control Project Maintenance
Levee Inspections**

Maintenance Issue Types Only, Levee Inspection Report By Mile - Spring 2016

Madera County FCWCA

Waterway	Bank	Unit Miles	Inspection Start/End	Inspector
Unit No. 01 Ash Slough	Right	2.37	04/14/2016 04/14/2016	Herman Phillips

LM Start	1.17	Rating **	U	Issue No.	38 (cont)	
LM End	1.37	Issue Type +	Ma	Location *	WS	
Category	Earthen Levee			GPS Latitude/Longitude		
				Start		End
Item	Slope Stability			37.056380 °		37.058520 °
				-120.412483 °		-120.410257 °
DWR ID	DWR_NA0011_01_f_2015_38					
Comment Code						
S3 : Repair the levee slope damaged by vehicle traffic and prevent access where possible.						
Inspector Comment						
The slope will have to be put back in place damaged by equipment.						

Photo 3 of 3 : SP_2016_NA0011_142_38_20160223_00010.jpg



Slope damage at toe of the water side levee section.

LM Start	1.45	Rating **	M	Issue No.	7
LM End	2.34	Issue Type +	Ma	Location *	WS
Category	Earthen Levee			GPS Latitude/Longitude	
				Start	End
Item	Slope Stability			37.059113 °	37.068344 °
				-120.408880 °	-120.398780 °
DWR ID	DWR_NA0011_01_s_2013_7				
Comment Code					
S1 : Repair slope instability.					
Inspector Comment					

No Photos

* Location LS : Land Side N/A : Not Applicable WS : Water Side CR : Crown		** Rating A : Acceptable N : Not Inspected/Rated M : Minimally Acceptable C : Corrected U : Unacceptable A/W : Acceptable but Monitor & Maintain		+ Issue Type Ma : Maintenance Deficiency Ob : Design & System Obsolescence En : Enforcement
----------------------------------------------------------------------------------------------	--	---------------------------------------------------------------------------------------------------------------------------------------------------------------------------------------------------------------	--	-------------------------------------------------------------------------------------------------------------

**Flood Control Project Maintenance
Levee Inspections**

Maintenance Issue Types Only, Levee Inspection Report By Mile - Spring 2016

Madera County FCWCA

Waterway	Bank	Unit Miles	Inspection Start/End	Inspector
Unit No. 02 Ash Slough	Left	2.04	04/14/2016 04/14/2016	Herman Phillips

LM Start	0.00	Rating **	U	Issue No.	15
LM End	0.03	Issue Type +	Ma	Location *	LS
Category	Earthen Levee			GPS Latitude/Longitude	
				Start	End
Item	Vegetation			37.045485 °	37.045623 °
				-120.427457 °	-120.426987 °
DWR ID	DWR_NA0011_02_s_2016_15				
Comment Code					
V1 : Control annual grass and weeds on the levee slopes and easements.					
Inspector Comment					
Remove the weeds from the landside slope and crown roadway.					

Photo 1 of 1 : SP_2016_NA0011_143_15_20160425_00027.jpg



Unsatisfactory tall weeds on the landside slope and crown.

LM Start	0.00	Rating **	U	Issue No.	39
LM End	1.67	Issue Type +	Ma	Location *	WS
Category	Earthen Levee			GPS Latitude/Longitude	
				Start	End
Item	Animal Control			37.045485 °	37.060091 °
				-120.427423 °	-120.405340 °
DWR ID	DWR_NA0011_02_f_2015_39				
Comment Code					
A1 : Exterminate rodents and backfill and compact or grout burrows.					
Inspector Comment					
The levee section waterside is covered with rodents and rodent holes.					

No Photos

LM Start	0.00	Rating **	U	Issue No.	34
LM End	2.03	Issue Type +	Ma	Location *	WS
Category	Earthen Levee			GPS Latitude/Longitude	
				Start	End
Item	Vegetation			37.045485 °	37.064023 °
				-120.427423 °	-120.401097 °
DWR ID	DWR_NA0011_02_f_2015_34				
Comment Code					
V1 : Control annual grass and weeds on the levee slopes and easements.					
Inspector Comment					
Remove the weeds from the waterside levee slope, shoulder and toe.					

Photo 1 of 1 : SP_2016_NA0011_143_34_20160425_00030.jpg



levee mile 0.00 to 2.03 unsatisfactory tall weeds present on the levee slope and toe.

* Location LS : Land Side N/A : Not Applicable WS : Water Side CR : Crown		** Rating A : Acceptable M : Minimally Acceptable U : Unacceptable N : Not Inspected/Rated C : Corrected A/W : Acceptable but Monitor & Maintain		+ Issue Type Ma : Maintenance Deficiency Ob : Design & System Obsolescence En : Enforcement	
----------------------------------------------------------------------------------------------	--	---------------------------------------------------------------------------------------------------------------------------------------------------------------------------	--	-------------------------------------------------------------------------------------------------------------	--

**Flood Control Project Maintenance
Levee Inspections**

Maintenance Issue Types Only, Levee Inspection Report By Mile - Spring 2016

Madera County FCWCA

Waterway	Bank	Unit Miles	Inspection Start/End	Inspector
Unit No. 02 Ash Slough	Left	2.04	04/14/2016 04/14/2016	Herman Phillips

LM Start	0.04	Rating **	M	Issue No.	19
LM End	1.67	Issue Type +	Ma	Location *	LS
Category	Earthen Levee			GPS Latitude/Longitude	
				Start	End
Item	Animal Control			37.045685 °	37.060091 °
				-120.426820 °	-120.405342 °
DWR ID	DWR_NA0011_02_f_2012_19				
Comment Code					
A1 : Exterminate rodents and backfill and compact or grout burrows.					
Inspector Comment					
The rodents here on the landside need to be controlled. Bait stations are needed. Rodent mounds were seen but no rodent was observed.					

No Photos

LM Start	0.14	Rating **	U	Issue No.	17
LM End	0.14	Issue Type +	Ma	Location *	WS
Category	Earthen Levee			GPS Latitude/Longitude	
				Start	End
Item	Encroachments			37.046102 °	37.046102 °
				-120.425010 °	-120.425010 °
DWR ID	DWR_NA0011_02_s_2016_17				
Comment Code					
TR : Tree or limb					
Inspector Comment					
Remove the tree from the crown roadway crossing.					

Photo 1 of 1 : SP_2016_NA0011_143_17_20160426_00043.jpg



Looking upstream from levee mile 0.14 fallen tree blocking access along the crown roadway.

* Location LS : Land Side N/A : Not Applicable WS : Water Side CR : Crown		** Rating A : Acceptable M : Minimally Acceptable U : Unacceptable N : Not Inspected/Rated C : Corrected A/W : Acceptable but Monitor & Maintain		+ Issue Type Ma : Maintenance Deficiency Ob : Design & System Obsolescence En : Enforcement	
---------------------------------------------------------------------------------------	--	--------------------------------------------------------------------------------------------------------------------------------------------------------------------	--	------------------------------------------------------------------------------------------------------	--

**Flood Control Project Maintenance
Levee Inspections**

Maintenance Issue Types Only, Levee Inspection Report By Mile - Spring 2016

Madera County FCWCA

Waterway	Bank	Unit Miles	Inspection Start/End	Inspector
Unit No. 02 Ash Slough	Left	2.04	04/14/2016 04/14/2016	Herman Phillips

LM Start	0.16	Rating **	M	Issue No.	18
LM End	0.20	Issue Type +	Ma	Location *	LS
Category	Earthen Levee			GPS Latitude/Longitude	
				Start	End
Item	Trim / Thin Trees			37.046243 °	37.046452 °
				-120.424600 °	-120.423983 °
DWR ID	DWR_NA0011_02_s_2016_18				
Comment Code					
T1 : Trim trees to at least five feet above ground level.					
Inspector Comment					

No Photos

LM Start	0.21	Rating **	M	Issue No.	46
LM End	0.21	Issue Type +	Ma	Location *	CR
Category	Earthen Levee			GPS Latitude/Longitude	
				Start	End
Item	Trim / Thin Trees			37.046533 °	37.046533 °
				-120.423762 °	-120.423762 °
DWR ID	DWR_NA0011_02_f_2015_46				
Comment Code					
T1 : Trim trees to at least five feet above ground level.					
Inspector Comment					

No Photos

LM Start	0.27	Rating **	M	Issue No.	21
LM End	0.30	Issue Type +	Ma	Location *	WS
Category	Earthen Levee			GPS Latitude/Longitude	
				Start	End
Item	Trim / Thin Trees			37.046937 °	37.047192 °
				-120.422815 °	-120.422517 °
DWR ID	DWR_NA0011_02_s_2012_21				
Comment Code					
T1 : Trim trees to at least five feet above ground level.					
Inspector Comment					

No Photos

* Location LS : Land Side N/A : Not Applicable WS : Water Side CR : Crown		** Rating A : Acceptable N : Not Inspected/Rated M : Minimally Acceptable C : Corrected U : Unacceptable A/W : Acceptable but Monitor & Maintain		+ Issue Type Ma : Maintenance Deficiency Ob : Design & System Obsolescence En : Enforcement
----------------------------------------------------------------------------------------------	--	---------------------------------------------------------------------------------------------------------------------------------------------------------------------------------------------------------------	--	-------------------------------------------------------------------------------------------------------------

**Flood Control Project Maintenance
Levee Inspections**

Maintenance Issue Types Only, Levee Inspection Report By Mile - Spring 2016

Madera County FCWCA

Waterway	Bank	Unit Miles	Inspection Start/End	Inspector
Unit No. 02 Ash Slough	Left	2.04	04/14/2016 04/14/2016	Herman Phillips

LM Start	0.31	Rating **	U	Issue No.	24
LM End	1.62	Issue Type +	Ma	Location *	LS
Category	Earthen Levee			GPS Latitude/Longitude	
				Start	End
Item	Vegetation			37.047202 °	37.059543 °
				-120.422318 °	-120.405887 °
DWR ID	DWR_NA0011_02_s_2016_24				
Comment Code					
V1 : Control annual grass and weeds on the levee slopes and easements.					
Inspector Comment					
Control the wild growth on the landside levee slope.					

Photo 1 of 1 : SP_2016_NA0011_143_24_20160425_00031.jpg



Looking upstream from levee mile 0.31 to 1.62 landside slope.

LM Start	0.32	Rating **	M	Issue No.	28
LM End	0.32	Issue Type +	Ma	Location *	WS
Category	Earthen Levee			GPS Latitude/Longitude	
				Start	End
Item	Encroachments			37.047416 °	37.047416 °
				-120.422142 °	-120.422142 °
DWR ID	DWR_NA0011_02_f_2012_28				
Comment Code					
TR : Tree or limb					
Inspector Comment					
Remove the dead tree limbs from the waterside slope.					

No Photos

LM Start	0.33	Rating **	U	Issue No.	26
LM End	0.96	Issue Type +	Ma	Location *	CR
Category	Earthen Levee			GPS Latitude/Longitude	
				Start	End
Item	Vegetation			37.047450 °	37.054717 °
				-120.422113 °	-120.415735 °
DWR ID	DWR_NA0011_02_s_2016_26				
Comment Code					
V9 : Keep the crown roadway free of vegetation.					
Inspector Comment					
Keep the crown roadway clear of vegetation.					

Photo 1 of 1 : SP_2016_NA0011_143_26_20160425_00032.jpg



Looking downstream crown roadway from levee mile 0.33-0.96.

* Location		** Rating		+ Issue Type	
LS : Land Side	N/A : Not Applicable	A : Acceptable	N : Not Inspected/Rated	Ma : Maintenance Deficiency	
WS : Water Side		M : Minimally Acceptable	C : Corrected	Ob : Design & System Obsolescence	
CR : Crown		U : Unacceptable	A/W : Acceptable but Monitor & Maintain	En : Enforcement	

**Flood Control Project Maintenance
Levee Inspections**

Maintenance Issue Types Only, Levee Inspection Report By Mile - Spring 2016

Madera County FCWCA

Waterway	Bank	Unit Miles	Inspection Start/End	Inspector
Unit No. 02 Ash Slough	Left	2.04	04/14/2016 04/14/2016	Herman Phillips

LM Start	0.43	Rating **	M	Issue No.	27
LM End	2.03	Issue Type +	Ma	Location *	CR
Category	Earthen Levee			GPS Latitude/Longitude	
				Start	End
Item	Crown Surface / Depressions / Rutting			37.048458 °	37.064027 °
				-120.420687 °	-120.401098 °
DWR ID	DWR_NA0011_02_s _ 2016_27				
Comment Code					
C2 : Repair depressions or ruts in the crown or slope.					
Inspector Comment					

No Photos

LM Start	0.52	Rating **	M	Issue No.	35
LM End	0.52	Issue Type +	Ma	Location *	WS
Category	Earthen Levee			GPS Latitude/Longitude	
				Start	End
Item	Trim / Thin Trees			37.049289 °	37.049289 °
				-120.419542 °	-120.419542 °
DWR ID	DWR_NA0011_02_s _ 2013_35				
Comment Code					
T2 : Thin trees to allow visibility of the ground and room to flood fight.					
Inspector Comment					

No Photos

LM Start	1.03	Rating **	M	Issue No.	3
LM End	1.23	Issue Type +	Ma	Location *	WS
Category	Earthen Levee			GPS Latitude/Longitude	
				Start	End
Item	Trim / Thin Trees			37.055115 °	37.056050 °
				-120.414588 °	-120.411178 °
DWR ID	DWR_NA0011_02_s _ 2012_3				
Comment Code					
T1 : Trim trees to at least five feet above ground level.					
Inspector Comment					

No Photos

* Location		** Rating		+ Issue Type	
LS : Land Side	N/A : Not Applicable	A : Acceptable	N : Not Inspected/Rated	Ma : Maintenance Deficiency	
WS : Water Side		M : Minimally Acceptable	C : Corrected	Ob : Design & System Obsolescence	
CR : Crown		U : Unacceptable	A/W : Acceptable but Monitor & Maintain	En : Enforcement	

**Flood Control Project Maintenance
Levee Inspections**

Maintenance Issue Types Only, Levee Inspection Report By Mile - Spring 2016

Madera County FCWCA

Waterway	Bank	Unit Miles	Inspection Start/End	Inspector
Unit No. 02 Ash Slough	Left	2.04	04/14/2016 04/14/2016	Herman Phillips

LM Start	1.10	Rating **	U	Issue No.	1
LM End	1.19	Issue Type +	Ma	Location *	WS
Category	Supplemental			GPS Latitude/Longitude	
				Start	End
Item	DWR Erosion Survey			37.055596 °	37.055596 °
				-120.412647 °	-120.412647 °
DWR ID	DWR_NA0011_02_s _ 2016_1				

Comment Code

Inspector Comment

09/08/2015: No significant change observed.
 07/22/2014: No significant change observed.
 08/30/2013: No significant change observed.
 07/31/2012: Site was visited on 07/24/2012. No significant change observed. Dense vegetation around the site
 08/09/2011: Site was inspected. No visible change was observed from the previous condition. A fallen tree was seen at the levee toe about 20 feet upstream, and tree root exposed. There has been no report from the district that this site was corrected.
 11/30/2010: Site was not inspected due to time constraints. There have been no reports from the district that the site was corrected. Continue to monitor site during flood events.
 08/05/2010: Recommended for annual assessment and monitoring during flood events, per CLRO.
 2009: Site is recommended as a local maintenance issue, per Critical Levee Repair Office, Critical Erosion Sites Evaluation 2008 Report; site was previously rated "M"
 9/6/2007: Undercutting of the toe; several trees along the WS slope with roots exposed. [2015 Site ID:NA0011U02RM2.57]

LM Start	1.10	Rating **	U	Issue No.	1 (cont)
LM End	1.19	Issue Type +	Ma	Location *	WS

Photo 1 of 2 : SP_2016_NA0011_143_1_20160223_00001.jpg



Debris at the site.

Photo 2 of 2 : SP_2016_NA0011_143_1_20160223_00002.jpg



Close view of the site with the dead tree.

* Location LS : Land Side N/A : Not Applicable WS : Water Side CR : Crown		** Rating A : Acceptable N : Not Inspected/Rated M : Minimally Acceptable C : Corrected U : Unacceptable A/W : Acceptable but Monitor & Maintain		+ Issue Type Ma : Maintenance Deficiency Ob : Design & System Obsolescence En : Enforcement
----------------------------------------------------------------------------------------------	--	---------------------------------------------------------------------------------------------------------------------------------------------------------------------------------------------------------------	--	-------------------------------------------------------------------------------------------------------------

**Flood Control Project Maintenance
Levee Inspections**

Maintenance Issue Types Only, Levee Inspection Report By Mile - Spring 2016

Madera County FCWCA

Waterway	Bank	Unit Miles	Inspection Start/End	Inspector
Unit No. 02 Ash Slough	Left	2.04	04/14/2016 04/14/2016	Herman Phillips

LM Start	1.28	Rating **	M	Issue No.	41
LM End	1.36	Issue Type +	Ma	Location *	WS
Category	Earthen Levee			GPS Latitude/Longitude	
				Start	End
Item	Encroachments			37.056763 °	37.057704 °
				-120.410623 °	-120.410037 °
DWR ID	DWR_NA0011_02_s _ 2014_41				
Comment Code					
TR : Tree or limb					
Inspector Comment					
Remove the dead tree limbs from the water side slope.					

No Photos

LM Start	1.39	Rating **	M	Issue No.	42
LM End	1.39	Issue Type +	Ma	Location *	WS
Category	Earthen Levee			GPS Latitude/Longitude	
				Start	End
Item	Encroachments			37.057989 °	37.057989 °
				-120.409581 °	-120.409581 °
DWR ID	DWR_NA0011_02_s _ 2014_42				
Comment Code					
TR : Tree or limb					
Inspector Comment					
Remove the tree limbs from the water side levee slope.					

No Photos

LM Start	1.46	Rating **	U	Issue No.	43
LM End	1.49	Issue Type +	Ma	Location *	WS
Category	Earthen Levee			GPS Latitude/Longitude	
				Start	End
Item	Encroachments			37.058335 °	37.058520 °
				-120.408434 °	-120.407791 °
DWR ID	DWR_NA0011_02_s _ 2014_43				
Comment Code					
TR : Tree or limb					
Inspector Comment					
Remove the tree limbs from the levee slope.					

Photo 1 of 1 : SP_2016_NA0011_143_43_20160223_00010.jpg



Dead fallen tree not removed from levee section, reported in Spring inspection. Dead tree reported last spring not removed.

* Location		** Rating		+ Issue Type	
LS : Land Side	N/A : Not Applicable	A : Acceptable	N : Not Inspected/Rated	Ma : Maintenance Deficiency	
WS : Water Side		M : Minimally Acceptable	C : Corrected	Ob : Design & System Obsolescence	
CR : Crown		U : Unacceptable	A/W : Acceptable but Monitor & Maintain	En : Enforcement	

**Flood Control Project Maintenance
Levee Inspections**

Maintenance Issue Types Only, Levee Inspection Report By Mile - Spring 2016

Madera County FCWCA

Waterway	Bank	Unit Miles	Inspection Start/End	Inspector
Unit No. 02 Ash Slough	Left	2.04	04/14/2016 04/14/2016	Herman Phillips

LM Start	1.49	Rating **	U	Issue No.	31
LM End	1.52	Issue Type +	Ma	Location *	LS
Category	Earthen Levee			GPS Latitude/Longitude	
				Start	End
Item	Slope Stability			37.058462 °	37.058705 °
				-120.407907 °	-120.407390 °
DWR ID	DWR_NA0011_02_s_2016_31				
Comment Code					
S1 : Repair slope instability.					
Inspector Comment					
Major work need to be done to make the repairs this location. This levee was cut prior to my inspection 4-14-2016.					

LM Start	1.49	Rating **	U	Issue No.	31 (cont)
LM End	1.52	Issue Type +	Ma	Location *	LS

Photo 1 of 4 : SP_2016_NA0011_143_31_20160425_00033.jpg



Looking upstream from the landside slope pipe work being performed.

Photo 2 of 4 : SP_2016_NA0011_143_31_20160425_00035.jpg



Standing at levee mile 1.49 looking towards levee mile 1.52

LM Start	1.49	Rating **	U	Issue No.	31 (cont)
LM End	1.52	Issue Type +	Ma	Location *	LS

Photo 3 of 4 : SP_2016_NA0011_143_31_20160425_00038.jpg



Standing at the downstream end of cut landward levee toe mile 1.49.

* Location LS : Land Side N/A : Not Applicable WS : Water Side CR : Crown		** Rating A : Acceptable M : Minimally Acceptable U : Unacceptable N : Not Inspected/Rated C : Corrected A/W : Acceptable but Monitor & Maintain		+ Issue Type Ma : Maintenance Deficiency Ob : Design & System Obsolescence En : Enforcement	
----------------------------------------------------------------------------------------------	--	---------------------------------------------------------------------------------------------------------------------------------------------------------------------------	--	-------------------------------------------------------------------------------------------------------------	--

**Flood Control Project Maintenance
Levee Inspections**

Maintenance Issue Types Only, Levee Inspection Report By Mile - Spring 2016

Madera County FCWCA

Waterway	Bank	Unit Miles	Inspection Start/End	Inspector
Unit No. 02 Ash Slough	Left	2.04	04/14/2016 04/14/2016	Herman Phillips

LM Start	1.49	Rating **	U	Issue No.	31 (cont)	
LM End	1.52	Issue Type +	Ma	Location *	LS	
Category	Earthen Levee			GPS Latitude/Longitude		
				Start		End
Item	Slope Stability			37.058462 °		37.058705 °
				-120.407907 °		-120.407390 °
DWR ID	DWR_NA0011_02_s _ 2016_31					
Comment Code						
S1 : Repair slope instability.						
Inspector Comment						
Major work need to be done to make the repairs this location. This levee was cut prior to my inspection 4-14-2016.						

Photo 4 of 4 : SP_2016_NA0011_143_31_20160425_00042.jpg



Looking downstream from the landside slope.

LM Start	1.51	Rating **	M	Issue No.	25
LM End	1.52	Issue Type +	Ma	Location *	WS
Category	Earthen Levee			GPS Latitude/Longitude	
				Start	End
Item	Trim / Thin Trees			37.058652 °	37.058802 °
				-120.407638 °	-120.407350 °
DWR ID	DWR_NA0011_02_s _ 2012_25				
Comment Code					
T1 : Trim trees to at least five feet above ground level.					
Inspector Comment					

No Photos

* Location LS : Land Side N/A : Not Applicable WS : Water Side CR : Crown		** Rating A : Acceptable M : Minimally Acceptable U : Unacceptable N : Not Inspected/Rated C : Corrected A/W : Acceptable but Monitor & Maintain		+ Issue Type Ma : Maintenance Deficiency Ob : Design & System Obsolescence En : Enforcement
----------------------------------------------------------------------------------------------	--	---------------------------------------------------------------------------------------------------------------------------------------------------------------------------	--	-------------------------------------------------------------------------------------------------------------

**Flood Control Project Maintenance
Levee Inspections**

Maintenance Issue Types Only, Levee Inspection Report By Mile - Spring 2016

Madera County FCWCA

Waterway	Bank	Unit Miles	Inspection Start/End	Inspector
Unit No. 03 Berenda Slough	Right	1.51	04/14/2016 04/14/2016	Herman Phillips

LM Start	0.00	Rating **	A	Issue No.	6
LM End	0.06	Issue Type +	Ma	Location *	LS
Category	Earthen Levee			GPS Latitude/Longitude	
				Start	End
Item	Vegetation			36.996590 °	36.996408 °
				-120.373632 °	-120.372757 °
DWR ID	DWR_NA0011_03_s_2016_6				
Comment Code					
V1 : Control annual grass and weeds on the levee slopes and easements.					
Inspector Comment					

Photo 1 of 1 : SP_2016_NA0011_144_6_20160426_00015.jpg



Looking upstream Unit 3 landside levee mile 0.00 - 0.06.

LM Start	0.00	Rating **	U	Issue No.	5
LM End	1.51	Issue Type +	Ma	Location *	WS
Category	Earthen Levee			GPS Latitude/Longitude	
				Start	End
Item	Vegetation			36.996590 °	36.996618 °
				-120.373632 °	-120.346613 °
DWR ID	DWR_NA0011_03_s_2016_5				
Comment Code					
V1 : Control annual grass and weeds on the levee slopes and easements.					
Inspector Comment					
Control the wild growth of tall weeds on the waterside levee section.					

Photo 1 of 1 : SP_2016_NA0011_144_5_20160426_00017.jpg



Looking upstream levee mile 0.00-1.51 tall weeds on the shoulder and slope water ward.

LM Start	0.03	Rating **	M	Issue No.	35
LM End	0.03	Issue Type +	Ma	Location *	LS
Category	Earthen Levee			GPS Latitude/Longitude	
				Start	End
Item	Trim / Thin Trees			36.996618 °	36.996618 °
				-120.373116 °	-120.373116 °
DWR ID	DWR_NA0011_03_f_2012_35				
Comment Code					
T4 : Trim trees over roadway to at least 12 feet above ground level.					
Inspector Comment					
Tree should be trimmed so they aren't rubbing against the vehicles as they pass by.					

No Photos

* Location		** Rating		+ Issue Type	
LS : Land Side	N/A : Not Applicable	A : Acceptable	N : Not Inspected/Rated	Ma : Maintenance Deficiency	
WS : Water Side		M : Minimally Acceptable	C : Corrected	Ob : Design & System Obsolescence	
CR : Crown		U : Unacceptable	A/W : Acceptable but Monitor & Maintain	En : Enforcement	

**Flood Control Project Maintenance
Levee Inspections**

Maintenance Issue Types Only, Levee Inspection Report By Mile - Spring 2016

Madera County FCWCA

Waterway	Bank	Unit Miles	Inspection Start/End	Inspector
Unit No. 03 Berenda Slough	Right	1.51	04/14/2016 04/14/2016	Herman Phillips

LM Start	0.04	Rating **	M	Issue No.	45
LM End	0.04	Issue Type +	Ma	Location *	LS
Category	Earthen Levee			GPS Latitude/Longitude	
				Start	End
Item	Encroachments			36.996522 °	36.996522 °
				-120.372980 °	-120.372980 °
DWR ID	DWR_NA0011_03_s _ 2012_45				
Comment Code					
TR : Tree or limb					
Inspector Comment					
Burn or remove the tree limbs from the landside slope.					

No Photos

LM Start	0.04	Rating **	U	Issue No.	8
LM End	1.51	Issue Type +	Ma	Location *	CR
Category	Earthen Levee			GPS Latitude/Longitude	
				Start	End
Item	Vegetation			36.996485 °	36.996618 °
				-120.372938 °	-120.346613 °
DWR ID	DWR_NA0011_03_s _ 2016_8				
Comment Code					
V9 : Keep the crown roadway free of vegetation.					
Inspector Comment					
Remove these wild mustards from the levee crown roadway					

Photo 1 of 1 : SP_2016_NA0011_144_8_20160426_00019.jpg



Looking upstream from levee mile 0.04-1.51 crown roadway, these mustards are from 2.5-3.0-foot tall.

* Location LS : Land Side N/A : Not Applicable WS : Water Side CR : Crown		** Rating A : Acceptable N : Not Inspected/Rated M : Minimally Acceptable C : Corrected U : Unacceptable A/W : Acceptable but Monitor & Maintain		+ Issue Type Ma : Maintenance Deficiency Ob : Design & System Obsolescence En : Enforcement
----------------------------------------------------------------------------------------------	--	---------------------------------------------------------------------------------------------------------------------------------------------------------------------------------------------------------------	--	-------------------------------------------------------------------------------------------------------------

**Flood Control Project Maintenance
Levee Inspections**

Maintenance Issue Types Only, Levee Inspection Report By Mile - Spring 2016

Madera County FCWCA

Waterway	Bank	Unit Miles	Inspection Start/End	Inspector
Unit No. 03 Berenda Slough	Right	1.51	04/14/2016 04/14/2016	Herman Phillips

LM Start	0.05	Rating **	M	Issue No.	28
LM End	0.05	Issue Type +	Ma	Location *	LS
Category	Earthen Levee			GPS Latitude/Longitude	
				Start	End
Item	Encroachments			36.996442 °	36.996442 °
				-120.372848 °	-120.372848 °
DWR ID	DWR_NA0011_03_f_2014_28				
Comment Code					
TR : Tree or limb					
Inspector Comment					
Burn or remove the tree limbs from the landside levee slope.					

No Photos

LM Start	0.06	Rating **	U	Issue No.	7
LM End	1.51	Issue Type +	Ma	Location *	LS
Category	Earthen Levee			GPS Latitude/Longitude	
				Start	End
Item	Vegetation			36.996408 °	36.996618 °
				-120.372757 °	-120.346613 °
DWR ID	DWR_NA0011_03_s_2016_7				
Comment Code					
V2 : Remove the wild growth other than native grasses from the levee slopes.					
Inspector Comment					
Remove the wild mustards from the levee section landward.					

Photo 1 of 1 : SP_2016_NA0011_144_7_20160426_00018.jpg



Looking up stream from levee mile 0.06 - 1.51 wild mustards 4.0-foot tall.

LM Start	0.06	Rating **	M	Issue No.	18
LM End	0.06	Issue Type +	Ma	Location *	LS
Category	Earthen Levee			GPS Latitude/Longitude	
				Start	End
Item	Trim / Thin Trees			36.996378 °	36.996378 °
				-120.372738 °	-120.372738 °
DWR ID	DWR_NA0011_03_f_2014_18				
Comment Code					
T1 : Trim trees to at least five feet above ground level.					
Inspector Comment					

No Photos

* Location		** Rating		+ Issue Type	
LS : Land Side	N/A : Not Applicable	A : Acceptable	N : Not Inspected/Rated	Ma : Maintenance Deficiency	
WS : Water Side		M : Minimally Acceptable	C : Corrected	Ob : Design & System Obsolescence	
CR : Crown		U : Unacceptable	A/W : Acceptable but Monitor & Maintain	En : Enforcement	

**Flood Control Project Maintenance
Levee Inspections**

Maintenance Issue Types Only, Levee Inspection Report By Mile - Spring 2016

Madera County FCWCA

Waterway	Bank	Unit Miles	Inspection Start/End	Inspector
Unit No. 03 Berenda Slough	Right	1.51	04/14/2016 04/14/2016	Herman Phillips

LM Start	0.08	Rating **	M	Issue No.	32
LM End	0.89	Issue Type +	Ma	Location *	CR
Category	Earthen Levee			GPS Latitude/Longitude	
				Start	End
Item	Crown Surface / Depressions / Rutting			36.996264 °	36.996273 °
				-120.372350 °	-120.357666 °
DWR ID	DWR_NA0011_03_s _ 2014_32				
Comment Code					
C3 : Add appropriate gravel or road base. Grade and compact.					
Inspector Comment					

No Photos

LM Start	0.08	Rating **	M	Issue No.	20
LM End	0.08	Issue Type +	Ma	Location *	LS
Category	Earthen Levee			GPS Latitude/Longitude	
				Start	End
Item	Encroachments			36.996204 °	36.996201 °
				-120.372352 °	-120.372345 °
DWR ID	DWR_NA0011_03_s _ 2012_20				
Comment Code					
DE : Debris					
Inspector Comment					

No Photos

LM Start	0.71	Rating **	U	Issue No.	41
LM End	1.51	Issue Type +	Ma	Location *	LS
Category	Earthen Levee			GPS Latitude/Longitude	
				Start	End
Item	Animal Control			36.996240 °	36.996583 °
				-120.361028 °	-120.346680 °
DWR ID	DWR_NA0011_03_s _ 2016_41				
Comment Code					
A2 : Repair the levee slope damaged by livestock and prevent large animal access.					
Inspector Comment					
The District need to do a much better job of removing the rodents from the levee section. GOOD PLACE FOR BAIT STATIONS.					

Photo 1 of 3 : SP_2016_NA0011_144_41_20160426_00020.jpg



Looking along the landward slope levee mile 0.71-1.51 an active infestation of rodents present.

* Location LS : Land Side N/A : Not Applicable WS : Water Side CR : Crown		** Rating A : Acceptable M : Minimally Acceptable U : Unacceptable		+ Issue Type Ma : Maintenance Deficiency Ob : Design & System Obsolescence En : Enforcement	
		N : Not Inspected/Rated C : Corrected A/W : Acceptable but Monitor & Maintain			

**Flood Control Project Maintenance
Levee Inspections**

Maintenance Issue Types Only, Levee Inspection Report By Mile - Spring 2016

Madera County FCWCA

Waterway	Bank	Unit Miles	Inspection Start/End	Inspector
Unit No. 03 Berenda Slough	Right	1.51	04/14/2016 04/14/2016	Herman Phillips

LM Start	0.71	Rating **	U	Issue No.	41 (cont)	
LM End	1.51	Issue Type +	Ma	Location *	LS	
Category	Earthen Levee			GPS Latitude/Longitude		
				Start		End
Item	Animal Control			36.996240 °		36.996583 °
				-120.361028 °		-120.346680 °
DWR ID	DWR_NA0011_03_s _ 2016_41					
Comment Code						
A2 : Repair the levee slope damaged by livestock and prevent large animal access.						
Inspector Comment						
The District need to do a much better job of removing the rodents from the levee section. GOOD PLACE FOR BAIT STATIONS.						

Photo 2 of 3 : SP_2016_NA0011_144_41_20160426_00022.jpg



Active colony of rodents in process of borrowing in the levee section.

LM Start	0.71	Rating **	U	Issue No.	41 (cont)
LM End	1.51	Issue Type +	Ma	Location *	LS

Photo 3 of 3 : SP_2016_NA0011_144_41_20160426_00025.jpg



One of many active rodent captured in this photo.

LM Start	0.87	Rating **	M	Issue No.	39
LM End	0.87	Issue Type +	Ma	Location *	LS
Category	Earthen Levee			GPS Latitude/Longitude	
				Start	End
Item	Trim / Thin Trees			36.996261 °	36.996261 °
				-120.358095 °	-120.358095 °
DWR ID	DWR_NA0011_03_s _ 2013_39				
Comment Code					
T3 : Trim and thin trees to allow visibility of the ground and room to flood fight.					
Inspector Comment					
Trim the tree limbs up off the levee slope.					

No Photos

* Location		** Rating		+ Issue Type	
LS : Land Side	N/A : Not Applicable	A : Acceptable	N : Not Inspected/Rated	Ma : Maintenance Deficiency	
WS : Water Side		M : Minimally Acceptable	C : Corrected	Ob : Design & System Obsolescence	
CR : Crown		U : Unacceptable	A/W : Acceptable but Monitor & Maintain	En : Enforcement	

**Flood Control Project Maintenance
Levee Inspections**

Maintenance Issue Types Only, Levee Inspection Report By Mile - Spring 2016

Madera County FCWCA

Waterway	Bank	Unit Miles	Inspection Start/End	Inspector
Unit No. 03 Berenda Slough	Right	1.51	04/14/2016 04/14/2016	Herman Phillips

LM Start	1.04	Rating **	U	Issue No.	11
LM End	1.05	Issue Type +	Ma	Location *	LS
Category	Earthen Levee			GPS Latitude/Longitude	
				Start	End
Item	Trim / Thin Trees			36.996613 °	36.996610 °
				-120.355055 °	-120.354995 °
DWR ID	DWR_NA0011_03_s _ 2012_11				
Comment Code					
T1 : Trim trees to at least five feet above ground level.					
Inspector Comment					
These walnut trees are blocking the view and inspection of the landside levee shoulder and slope. Cut them back in order that the ground can be seen.					

Photo 1 of 1 : SP_2016_NA0011_144_11_20160223_00003.jpg



Berenda Slough Unit 3 looking upstream from levee mile 1.04-1.05 walnut trees blocking the view of the landside levee section.

LM Start	1.07	Rating **	M	Issue No.	15	
LM End	1.10	Issue Type +	Ma	Location *	LS	
Category	Earthen Levee			GPS Latitude/Longitude		
				Start		End
Item	Encroachments			36.996618 °	36.996633 °	
				-120.354538 °	-120.354012 °	
DWR ID	DWR_NA0011_03_s _ 2012_15					
Comment Code						
TR : Tree or limb						
Inspector Comment						
Remove the walnut tree from the landside toe.						

No Photos

* Location LS : Land Side N/A : Not Applicable WS : Water Side CR : Crown		** Rating A : Acceptable N : Not Inspected/Rated M : Minimally Acceptable C : Corrected U : Unacceptable A/W : Acceptable but Monitor & Maintain		+ Issue Type Ma : Maintenance Deficiency Ob : Design & System Obsolescence En : Enforcement
----------------------------------------------------------------------------------------------	--	---------------------------------------------------------------------------------------------------------------------------------------------------------------------------------------------------------------	--	-------------------------------------------------------------------------------------------------------------

**Flood Control Project Maintenance
Levee Inspections**

Maintenance Issue Types Only, Levee Inspection Report By Mile - Spring 2016

Madera County FCWCA

Waterway	Bank	Unit Miles	Inspection Start/End	Inspector
Unit No. 03 Berenda Slough	Right	1.51	04/14/2016 04/14/2016	Herman Phillips

LM Start	1.24	Rating **	U	Issue No.	17
LM End	1.24	Issue Type +	Ma	Location *	LS
Category	Earthen Levee			GPS Latitude/Longitude	
				Start	End
Item	Trim / Thin Trees			36.996632 °	36.996632 °
				-120.351463 °	-120.351463 °
DWR ID	DWR_NA0011_03_s _ 2012_17				
Comment Code					
T2 : Thin trees to allow visibility of the ground and room to flood fight.					
Inspector Comment					
Trim the tree blocking view of the levee slope landside.					

Photo 1 of 1 : SP_2016_NA0011_144_17_20160223_00004.jpg



Looking upstream landward levee mile 1.24 tree growth blocks slope, shoulder and portion on the crown roadway.

LM Start	1.26	Rating **	M	Issue No.	30
LM End	1.26	Issue Type +	Ma	Location *	LS
Category	Earthen Levee			GPS Latitude/Longitude	
				Start	End
Item	Trim / Thin Trees			36.996603 °	36.996603 °
				-120.351115 °	-120.351115 °
DWR ID	DWR_NA0011_03_s _ 2012_30				
Comment Code					
T2 : Thin trees to allow visibility of the ground and room to flood fight.					
Inspector Comment					

No Photos

LM Start	1.27	Rating **	M	Issue No.	9
LM End	1.51	Issue Type +	Ma	Location *	CR
Category	Earthen Levee			GPS Latitude/Longitude	
				Start	End
Item	Crown Surface / Depressions / Rutting			36.996592 °	36.996617 °
				-120.350888 °	-120.346613 °
DWR ID	DWR_NA0011_03_s _ 2016_9				
Comment Code					
C1 : Add appropriate material and re-grade the levee to bring the crown above the design elevation.					
Inspector Comment					

No Photos

* Location		** Rating		+ Issue Type	
LS : Land Side	N/A : Not Applicable	A : Acceptable	N : Not Inspected/Rated	Ma : Maintenance Deficiency	
WS : Water Side		M : Minimally Acceptable	C : Corrected	Ob : Design & System Obsolescence	
CR : Crown		U : Unacceptable	A/W : Acceptable but Monitor & Maintain	En : Enforcement	

**Flood Control Project Maintenance
Levee Inspections**

Maintenance Issue Types Only, Levee Inspection Report By Mile - Spring 2016

Madera County FCWCA

Waterway	Bank	Unit Miles	Inspection Start/End	Inspector
Unit No. 03 Berenda Slough	Right	1.51	04/14/2016 04/14/2016	Herman Phillips

* Location LS : Land Side N/A : Not Applicable WS : Water Side CR : Crown	** Rating A : Acceptable N : Not Inspected/Rated M : Minimally Acceptable C : Corrected U : Unacceptable A/W : Acceptable but Monitor & Maintain	+ Issue Type Ma : Maintenance Deficiency Ob : Design & System Obsolescence En : Enforcement
----------------------------------------------------------------------------------------------	---------------------------------------------------------------------------------------------------------------------------------------------------------------------------------------------------------------	-------------------------------------------------------------------------------------------------------------

**Flood Control Project Maintenance
Levee Inspections**

Maintenance Issue Types Only, Levee Inspection Report By Mile - Spring 2016

Madera County FCWCA

Waterway	Bank	Unit Miles	Inspection Start/End	Inspector
Unit No. 04 Berenda Slough	Left	2.28	04/14/2016 04/14/2016	Herman Phillips

LM Start	0.01	Rating **	U	Issue No.	2
LM End	0.45	Issue Type +	Ma	Location *	LS
Category	Earthen Levee			GPS Latitude/Longitude	
				Start	End
Item	Animal Control			36.995499 °	36.995610 °
				-121.373370 °	-120.365297 °
DWR ID	DWR_NA0011_04_s_2012_2				
Comment Code					
A1 : Exterminate rodents and backfill and compact or grout burrows.					
Inspector Comment					
Did not see any rodents but there is activity here at location, fresh holes present along slope and toe. No new photo taken here.					

LM Start	0.01	Rating **	U	Issue No.	2 (cont)
LM End	0.45	Issue Type +	Ma	Location *	LS

Photo 1 of 2 : SP_2016_NA0011_145_2_20160428_00020.jpg



From levee miles 0.01-0.45 landside slope rodents are very active here.

Photo 2 of 2 : SP_2016_NA0011_145_2_20160428_00021.jpg



Another view of the infestation..

LM Start	0.01	Rating **	U	Issue No.	5
LM End	1.49	Issue Type +	Ma	Location *	CR
Category	Earthen Levee			GPS Latitude/Longitude	
				Start	End
Item	Vegetation			36.995507 °	36.995597 °
				-120.373318 °	-120.346548 °
DWR ID	DWR_NA0011_04_f_2015_5				
Comment Code					
V9 : Keep the crown roadway free of vegetation.					
Inspector Comment					
The tall weeds must me removed from the levee section. Unable to see the levee section blocked by this wild growth.					

Photo 1 of 1 : SP_2016_NA0011_145_5_20160428_00018.jpg



Looking at the crown roadway from levee mile 0.01- 1.49 the tall weeds has covered the levee section.

* Location LS : Land Side N/A : Not Applicable WS : Water Side CR : Crown		** Rating A : Acceptable M : Minimally Acceptable U : Unacceptable		+ Issue Type Ma : Maintenance Deficiency Ob : Design & System Obsolescence En : Enforcement	
		N : Not Inspected/Rated C : Corrected A/W : Acceptable but Monitor & Maintain			

**Flood Control Project Maintenance
Levee Inspections**

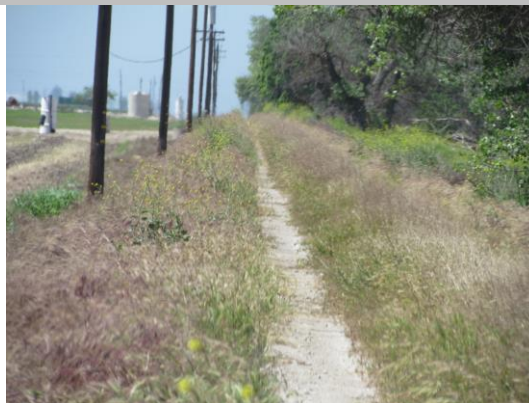
Maintenance Issue Types Only, Levee Inspection Report By Mile - Spring 2016

Madera County FCWCA

Waterway	Bank	Unit Miles	Inspection Start/End	Inspector
Unit No. 04 Berenda Slough	Left	2.28	04/14/2016 04/14/2016	Herman Phillips

LM Start	0.01	Rating **	U	Issue No.	1
LM End	1.50	Issue Type +	Ma	Location *	LS
Category	Earthen Levee			GPS Latitude/Longitude	
				Start	End
Item	Vegetation			36.995493 °	36.995593 °
				-120.373242 °	-120.346400 °
DWR ID	DWR_NA0011_04_f_2014_1				
Comment Code					
V2 : Remove the wild growth other than native grasses from the levee slopes.					
Inspector Comment					
No maintenance has been done here for several years. The weeds has completely blocked the view of the levee section.					

Photo 1 of 1 : SP_2016_NA0011_145_1_20160428_00019.jpg



Levee mile 0.01 -1.50 the tall weeds covering the entire landside levee section.

LM Start	0.01	Rating **	U	Issue No.	4
LM End	1.60	Issue Type +	Ma	Location *	WS
Category	Earthen Levee			GPS Latitude/Longitude	
				Start	End
Item	Vegetation			36.995493 °	36.996215 °
				-120.373242 °	-120.344808 °
DWR ID	DWR_NA0011_04_f_2014_4				
Comment Code					
V2 : Remove the wild growth other than native grasses from the levee slopes.					
Inspector Comment					
No maintenance has been done in several years, the weeds are 3.0 feet tall. The condition of the levee slopes can't be seen through wild weeds.					

Photo 1 of 1 : SP_2016_NA0011_145_4_20160502_00022.jpg



Berenda Slough waterside wild weeds has blocked view of the slope from 0.01 to 1.60. This photo shows entire levee covered with wild weeds.

* Location LS : Land Side N/A : Not Applicable WS : Water Side CR : Crown		** Rating A : Acceptable M : Minimally Acceptable U : Unacceptable N : Not Inspected/Rated C : Corrected A/W : Acceptable but Monitor & Maintain		+ Issue Type Ma : Maintenance Deficiency Ob : Design & System Obsolescence En : Enforcement	
---------------------------------------------------------------------------------------	--	--------------------------------------------------------------------------------------------------------------------------------------------------------------------	--	------------------------------------------------------------------------------------------------------	--

**Flood Control Project Maintenance
Levee Inspections**

Maintenance Issue Types Only, Levee Inspection Report By Mile - Spring 2016

Madera County FCWCA

Waterway	Bank	Unit Miles	Inspection Start/End	Inspector
Unit No. 04 Berenda Slough	Left	2.28	04/14/2016 04/14/2016	Herman Phillips

LM Start	0.06	Rating **	U	Issue No.	20
LM End	0.06	Issue Type +	Ma	Location *	WS
Category	Earthen Levee			GPS Latitude/Longitude	
				Start	End
Item	Encroachments			36.995597 °	36.995597 °
				-120.372391 °	-120.372391 °
DWR ID	DWR_NA0011_04_f_2012_20				
Comment Code					
TR : Tree or limb					
Inspector Comment					
This dead tree has not been removed since the last two reports. There hasn't been any maintenance done in this unit since the last two last inspections.					

No Photos

LM Start	0.08	Rating **	M	Issue No.	25
LM End	0.08	Issue Type +	Ma	Location *	WS
Category	Earthen Levee			GPS Latitude/Longitude	
				Start	End
Item	Trim / Thin Trees			36.995557 °	36.995557 °
				-120.372062 °	-120.372062 °
DWR ID	DWR_NA0011_04_s_2013_25				
Comment Code					
T4 : Trim trees over roadway to at least 12 feet above ground level.					
Inspector Comment					
Remove the dead tree that?s hanging over the roadway.					

No Photos

LM Start	0.12	Rating **	M	Issue No.	26
LM End	0.12	Issue Type +	Ma	Location *	WS
Category	Earthen Levee			GPS Latitude/Longitude	
				Start	End
Item	Trim / Thin Trees			36.995532 °	36.995532 °
				-120.371428 °	-120.371428 °
DWR ID	DWR_NA0011_04_s_2013_26				
Comment Code					
T4 : Trim trees over roadway to at least 12 feet above ground level.					
Inspector Comment					

No Photos

* Location		** Rating		+ Issue Type	
LS : Land Side	N/A : Not Applicable	A : Acceptable	N : Not Inspected/Rated	Ma : Maintenance Deficiency	
WS : Water Side		M : Minimally Acceptable	C : Corrected	Ob : Design & System Obsolescence	
CR : Crown		U : Unacceptable	A/W : Acceptable but Monitor & Maintain	En : Enforcement	

**Flood Control Project Maintenance
Levee Inspections**

Maintenance Issue Types Only, Levee Inspection Report By Mile - Spring 2016

Madera County FCWCA

Waterway	Bank	Unit Miles	Inspection Start/End	Inspector
Unit No. 04 Berenda Slough	Left	2.28	04/14/2016 04/14/2016	Herman Phillips

LM Start	0.28	Rating **	M	Issue No.	21
LM End	0.28	Issue Type +	Ma	Location *	WS
Category	Earthen Levee			GPS Latitude/Longitude	
				Start	End
Item	Encroachments			36.995564 °	36.995564 °
				-120.368540 °	-120.368540 °
DWR ID	DWR_NA0011_04_f_2012_21				
Comment Code					
TR : Tree or limb					
Inspector Comment					

No Photos

LM Start	0.47	Rating **	U	Issue No.	16
LM End	0.47	Issue Type +	Ma	Location *	WS
Category	Earthen Levee			GPS Latitude/Longitude	
				Start	End
Item	Encroachments			36.995603 °	36.995603 °
				-120.364978 °	-120.364978 °
DWR ID	DWR_NA0011_04_s_2014_16				
Comment Code					
TR : Tree or limb					
Inspector Comment					
This dead tree recorded in the fall of 2015 levee inspection has not been removed.					

Photo 1 of 1 : SP_2016_NA0011_145_16_20160428_00017.jpg



Levee mile 0.47 dead tree partially blocking the levee section along the waterside.

LM Start	0.94	Rating **	M	Issue No.	29
LM End	1.25	Issue Type +	Ma	Location *	LS
Category	Earthen Levee			GPS Latitude/Longitude	
				Start	End
Item	Animal Control			36.995552 °	36.995474 °
				-120.356537 °	-120.350890 °
DWR ID	DWR_NA0011_04_s_2013_29				
Comment Code					
A1 : Exterminate rodents and backfill and compact or grout burrows.					
Inspector Comment					
There need to be bait stations placed along the infested area. There are signs of activity although no rodent was seen.					

No Photos

* Location		** Rating		+ Issue Type	
LS : Land Side	N/A : Not Applicable	A : Acceptable	N : Not Inspected/Rated	Ma : Maintenance Deficiency	
WS : Water Side		M : Minimally Acceptable	C : Corrected	Ob : Design & System Obsolescence	
CR : Crown		U : Unacceptable	A/W : Acceptable but Monitor & Maintain	En : Enforcement	

**Flood Control Project Maintenance
Levee Inspections**

Maintenance Issue Types Only, Levee Inspection Report By Mile - Spring 2016

Madera County FCWCA

Waterway	Bank	Unit Miles	Inspection Start/End	Inspector
Unit No. 04 Berenda Slough	Left	2.28	04/14/2016 04/14/2016	Herman Phillips

LM Start	1.50	Rating **	A/W	Issue No.	7
LM End	2.23	Issue Type +	Ma	Location *	LS
Category	Earthen Levee			GPS Latitude/Longitude	
				Start	End
Item	Vegetation			36.995600 °	37.003267 °
				-120.346367 °	-120.337608 °
DWR ID	DWR_NA0011_04_s _ 2016_7				
Comment Code					
V1 : Control annual grass and weeds on the levee slopes and easements.					
Inspector Comment					

No Photos

LM Start	1.50	Rating **	A	Issue No.	8
LM End	2.23	Issue Type +	Ma	Location *	CR
Category	Earthen Levee			GPS Latitude/Longitude	
				Start	End
Item	Vegetation			36.995600 °	37.003267 °
				-120.346367 °	-120.337608 °
DWR ID	DWR_NA0011_04_s _ 2016_8				
Comment Code					
V1 : Control annual grass and weeds on the levee slopes and easements.					
Inspector Comment					

No Photos

LM Start	1.51	Rating **	U	Issue No.	9
LM End	1.51	Issue Type +	Ma	Location *	LS
Category	Earthen Levee			GPS Latitude/Longitude	
				Start	End
Item	Slope Stability			36.995611 °	36.995611 °
				-120.346236 °	-120.346236 °
DWR ID	DWR_NA0011_04_s _ 2012_9				
Comment Code					
S1 : Repair slope instability.					
Inspector Comment					
There hasn't been any change at this location, the damage has not been repaired.					

Photo 1 of 2 : SP_2016_NA0011_145_9_20160428_00015.jpg



Levee mile 1.51 landside slope damaged by the landowner.

* Location		** Rating		+ Issue Type	
LS : Land Side	N/A : Not Applicable	A : Acceptable	N : Not Inspected/Rated	Ma : Maintenance Deficiency	
WS : Water Side		M : Minimally Acceptable	C : Corrected	Ob : Design & System Obsolescence	
CR : Crown		U : Unacceptable	A/W : Acceptable but Monitor & Maintain	En : Enforcement	

**Flood Control Project Maintenance
Levee Inspections**

Maintenance Issue Types Only, Levee Inspection Report By Mile - Spring 2016

Madera County FCWCA

Waterway	Bank	Unit Miles	Inspection Start/End	Inspector
Unit No. 04 Berenda Slough	Left	2.28	04/14/2016 04/14/2016	Herman Phillips

LM Start	1.51	Rating **	U	Issue No.	9 (cont)	
LM End	1.51	Issue Type +	Ma	Location *	LS	
Category	Earthen Levee			GPS Latitude/Longitude		
				Start		End
Item	Slope Stability			36.995611 °		36.995611 °
				-120.346236 °		-120.346236 °
DWR ID	DWR_NA0011_04_s_2012_9					
Comment Code						
S1 : Repair slope instability.						
Inspector Comment						
There hasn't been any change at this location, the damage has not been repaired.						

Photo 2 of 2 : SP_2016_NA0011_145_9_20160428_00013.jpg



Another view of the slope damage.

LM Start	1.60	Rating **	A/W	Issue No.	6
LM End	2.23	Issue Type +	Ma	Location *	WS
Category	Earthen Levee			GPS Latitude/Longitude	
				Start	End
Item	Vegetation			36.996215 °	37.003267 °
				-120.344810 °	-120.337608 °
DWR ID	DWR_NA0011_04_s_2016_6				
Comment Code					
V1 : Control annual grass and weeds on the levee slopes and easements.					
Inspector Comment					
he vegetation here complies with standards but should be monitored.					

No Photos

LM Start	1.63	Rating **	U	Issue No.	30
LM End	2.23	Issue Type +	Ma	Location *	WS
Category	Earthen Levee			GPS Latitude/Longitude	
				Start	End
Item	Animal Control			36.996503 °	37.003308 °
				-120.344465 °	-120.337550 °
DWR ID	DWR_NA0011_04_f_2014_30				
Comment Code					
A1 : Exterminate rodents and backfill and compact or grout burrows.					
Inspector Comment					
Bait stations are needed in Rodent infested area.					

Photo 1 of 2 : SP_2016_NA0011_145_30_20160223_00009.jpg



Berenda Slough looking upstream water side levee slope covered with rodent holes.

* Location LS : Land Side N/A : Not Applicable WS : Water Side CR : Crown		** Rating A : Acceptable M : Minimally Acceptable U : Unacceptable N : Not Inspected/Rated C : Corrected A/W : Acceptable but Monitor & Maintain		+ Issue Type Ma : Maintenance Deficiency Ob : Design & System Obsolescence En : Enforcement	
----------------------------------------------------------------------------------------------	--	---------------------------------------------------------------------------------------------------------------------------------------------------------------------------	--	-------------------------------------------------------------------------------------------------------------	--

**Flood Control Project Maintenance
Levee Inspections**

Maintenance Issue Types Only, Levee Inspection Report By Mile - Spring 2016

Madera County FCWCA

Waterway	Bank	Unit Miles	Inspection Start/End	Inspector
Unit No. 04 Berenda Slough	Left	2.28	04/14/2016 04/14/2016	Herman Phillips

LM Start	1.63	Rating **	U	Issue No.	30 (cont)	
LM End	2.23	Issue Type +	Ma	Location *	WS	
Category	Earthen Levee			GPS Latitude/Longitude		
				Start		End
Item	Animal Control			36.996503 °		37.003308 °
				-120.344465 °		-120.337550 °
DWR ID	DWR_NA0011_04_f_2014_30					
Comment Code						
A1 : Exterminate rodents and backfill and compact or grout burrows.						
Inspector Comment						
Bait stations are needed in Rodent infested area.						

Photo 2 of 2 : SP_2016_NA0011_145_30_20160223_00010.jpg



Berenda Slough looking downstream from levee mile 1.65 waterside large rodent holes on slope.

LM Start	1.63	Rating **	U	Issue No.	57
LM End	2.23	Issue Type +	Ma	Location *	LS
Category	Earthen Levee			GPS Latitude/Longitude	
				Start	End
Item	Animal Control			36.996574 °	37.003328 °
				-120.344430 °	-120.337604 °
DWR ID	DWR_NA0011_04_s_2012_57				
Comment Code					
A1 : Exterminate rodents and backfill and compact or grout burrows.					
Inspector Comment					
The District really needs to do a better job of controlling the rodents. There should be bait stations with rodent bait present along the landside slope within the infested area.					

Photo 1 of 2 : SP_2016_NA0011_145_57_20160223_00012.jpg



Berenda Slough looking downstream from the landside slope at large rodent holes on the slope shoulder and crown roadway.

LM Start	1.63	Rating **	U	Issue No.	57 (cont)
LM End	2.23	Issue Type +	Ma	Location *	LS

Photo 2 of 2 : SP_2016_NA0011_145_57_20160502_00024.jpg



There are fresh rodent holes but so view of rodent.

* Location		** Rating		+ Issue Type	
LS : Land Side	N/A : Not Applicable	A : Acceptable	N : Not Inspected/Rated	Ma : Maintenance Deficiency	
WS : Water Side		M : Minimally Acceptable	C : Corrected	Ob : Design & System Obsolescence	
CR : Crown		U : Unacceptable	A/W : Acceptable but Monitor & Maintain	En : Enforcement	

**Flood Control Project Maintenance
Levee Inspections**

Maintenance Issue Types Only, Levee Inspection Report By Mile - Spring 2016

Madera County FCWCA

Waterway	Bank	Unit Miles	Inspection Start/End	Inspector
Unit No. 04 Berenda Slough	Left	2.28	04/14/2016 04/14/2016	Herman Phillips

LM Start	1.63	Rating **	M	Issue No.	59
LM End	1.67	Issue Type +	Ma	Location *	CR
Category	Earthen Levee			GPS Latitude/Longitude	
				Start	End
Item	Animal Control			36.996573 °	36.997002 °
				-120.344428 °	-120.343977 °
DWR ID	DWR_NA0011_04_s _ 2012_59				
Comment Code					
A1 : Exterminate rodents and backfill and compact or grout burrows.					
Inspector Comment					
There should be bait stations in this area.					

No Photos

* Location LS : Land Side N/A : Not Applicable WS : Water Side CR : Crown	** Rating A : Acceptable M : Minimally Acceptable U : Unacceptable N : Not Inspected/Rated C : Corrected A/W : Acceptable but Monitor & Maintain	+ Issue Type Ma : Maintenance Deficiency Ob : Design & System Obsolescence En : Enforcement
----------------------------------------------------------------------------------------------	---------------------------------------------------------------------------------------------------------------------------------------------------------------------------	-------------------------------------------------------------------------------------------------------------

**Flood Control Project Maintenance
Levee Inspections**

Maintenance Issue Types Only, Levee Inspection Report By Mile - Spring 2016

Madera County FCWCA

Waterway	Bank	Unit Miles	Inspection Start/End	Inspector
Unit No. 05 Fresno River	Right	9.10	05/13/2016 05/13/2016	Herman Phillips

LM Start	0.00	Rating **	M	Issue No.	8
LM End	0.00	Issue Type +	Ma	Location *	CR
Category	Earthen Levee			GPS Latitude/Longitude	
				Start	End
Item	Vegetation			36.978557 °	36.978557 °
				-120.368423 °	-120.368420 °
DWR ID	DWR_NA0011_05_f_2015_8				
Comment Code					
V9 : Keep the crown roadway free of vegetation.					
Inspector Comment					
Keep crown free of vegetation. Fresno River looking upstream from levee mile 0.00 of the crown roadway.					

Photo 1 of 1 : SP_2016_NA0011_146_8_20160502_00027.jpg



Levee mile 0.00 crown roadway.

LM Start	0.00	Rating **	U	Issue No.	7
LM End	4.05	Issue Type +	Ma	Location *	LS
Category	Earthen Levee			GPS Latitude/Longitude	
				Start	End
Item	Vegetation			36.978557 °	36.968152 °
				-120.368423 °	-120.301103 °
DWR ID	DWR_NA0011_05_f_2015_7				
Comment Code					
V1 : Control annual grass and weeds on the levee slopes and easements.					
Inspector Comment					
Remove the unsatisfactory tall tumble weed and other wild growth from the landside slope.					

Photo 1 of 1 : SP_2016_NA0011_146_7_20160502_00020.jpg



Fresno River levee mile 0.00 looking upstream landside levee slope and toe covered with tall weeds.

* Location		** Rating		+ Issue Type	
LS : Land Side	N/A : Not Applicable	A : Acceptable	N : Not Inspected/Rated	Ma : Maintenance Deficiency	
WS : Water Side		M : Minimally Acceptable	C : Corrected	Ob : Design & System Obsolescence	
CR : Crown		U : Unacceptable	A/W : Acceptable but Monitor & Maintain	En : Enforcement	

**Flood Control Project Maintenance
Levee Inspections**

Maintenance Issue Types Only, Levee Inspection Report By Mile - Spring 2016

Madera County FCWCA

Waterway	Bank	Unit Miles	Inspection Start/End	Inspector
Unit No. 05 Fresno River	Right	9.10	05/13/2016 05/13/2016	Herman Phillips

LM Start	0.00	Rating **	U	Issue No.	9
LM End	4.06	Issue Type +	Ma	Location *	WS
Category	Earthen Levee			GPS Latitude/Longitude	
				Start	End
Item	Vegetation			36.978557 °	36.968192 °
				-120.368423 °	-120.300930 °
DWR ID	DWR_NA0011_05_f_2015_9				
Comment Code					
V1 : Control annual grass and weeds on the levee slopes and easements.					
Inspector Comment					
Remove the tumble weed and other tall unwanted weeds from the landside levee slope and toe.					

Photo 1 of 1 : SP_2016_NA0011_146_9_20160502_00022.jpg



Fresno River levee mile 0.00 looking upstream to levee mile 4.06
waterside slope and toe is covered with wild growth.

LM Start	0.19	Rating **	M	Issue No.	3
LM End	0.40	Issue Type +	Ma	Location *	LS
Category	Earthen Levee			GPS Latitude/Longitude	
				Start	End
Item	Animal Control			36.977998 °	36.976882 °
				-120.365077 °	-120.361610 °
DWR ID	DWR_NA0011_05_s_2012_3				
Comment Code					
A3 : No rodents visible, but rodent burrows visible; need to backfill and compact or grout burrows.					
Inspector Comment					

No Photos

LM Start	0.20	Rating **	M	Issue No.	4
LM End	0.26	Issue Type +	Ma	Location *	WS
Category	Earthen Levee			GPS Latitude/Longitude	
				Start	End
Item	Animal Control			36.977967 °	36.977715 °
				-120.364960 °	-120.363902 °
DWR ID	DWR_NA0011_05_s_2012_4				
Comment Code					
A3 : No rodents visible, but rodent burrows visible; need to backfill and compact or grout burrows.					
Inspector Comment					

No Photos

* Location		** Rating		+ Issue Type	
LS : Land Side	N/A : Not Applicable	A : Acceptable	N : Not Inspected/Rated	Ma : Maintenance Deficiency	
WS : Water Side		M : Minimally Acceptable	C : Corrected	Ob : Design & System Obsolescence	
CR : Crown		U : Unacceptable	A/W : Acceptable but Monitor & Maintain	En : Enforcement	

**Flood Control Project Maintenance
Levee Inspections**

Maintenance Issue Types Only, Levee Inspection Report By Mile - Spring 2016

Madera County FCWCA

Waterway	Bank	Unit Miles	Inspection Start/End	Inspector
Unit No. 05 Fresno River	Right	9.10	05/13/2016 05/13/2016	Herman Phillips

LM Start	0.39	Rating **	M	Issue No.	10
LM End	0.43	Issue Type +	Ma	Location *	CR
Category	Earthen Levee			GPS Latitude/Longitude	
				Start	End
Item	Animal Control			36.976962 °	36.976635 °
				-120.361762 °	-120.361193 °
DWR ID	DWR_NA0011_05_f_2015_10				
Comment Code					
A1 : Exterminate rodents and backfill and compact or grout burrows.					
Inspector Comment					
Exterminate the rodents and back fill the holes. Bait stations are needed in this area.					

Photo 1 of 1 : SP_2016_NA0011_146_10_20160223_00004.jpg



Huge rodent holes in the crown road way levee mile 0.39 to 0.43.

LM Start	0.54	Rating **	M	Issue No.	5
LM End	0.56	Issue Type +	Ma	Location *	LS
Category	Earthen Levee			GPS Latitude/Longitude	
				Start	End
Item	Animal Control			36.975520 °	36.975350 °
				-120.359788 °	-120.359548 °
DWR ID	DWR_NA0011_05_s_2012_5				
Comment Code					
A3 : No rodents visible, but rodent burrows visible; need to backfill and compact or grout burrows.					
Inspector Comment					

No Photos

LM Start	0.60	Rating **	M	Issue No.	12
LM End	4.06	Issue Type +	Ma	Location *	LS
Category	Earthen Levee			GPS Latitude/Longitude	
				Start	End
Item	Animal Control			36.974985 °	36.968175 °
				-120.358977 °	-120.300920 °
DWR ID	DWR_NA0011_05_f_2015_12				
Comment Code					
A3 : No rodents visible, but rodent burrows visible; need to backfill and compact or grout burrows.					
Inspector Comment					

No Photos

* Location		** Rating		+ Issue Type	
LS : Land Side	N/A : Not Applicable	A : Acceptable	N : Not Inspected/Rated	Ma : Maintenance Deficiency	
WS : Water Side		M : Minimally Acceptable	C : Corrected	Ob : Design & System Obsolescence	
CR : Crown		U : Unacceptable	A/W : Acceptable but Monitor & Maintain	En : Enforcement	

**Flood Control Project Maintenance
Levee Inspections**

Maintenance Issue Types Only, Levee Inspection Report By Mile - Spring 2016

Madera County FCWCA

Waterway	Bank	Unit Miles	Inspection Start/End	Inspector
Unit No. 05 Fresno River	Right	9.10	05/13/2016 05/13/2016	Herman Phillips

LM Start	0.86	Rating **	M	Issue No.	13
LM End	1.13	Issue Type +	Ma	Location *	CR
Category	Earthen Levee			GPS Latitude/Longitude	
				Start	End
Item	Crown Surface / Depressions / Rutting			36.972344 °	36.968963 °
				-120.355692 °	-120.353347 °
DWR ID	DWR_NA0011_05_s _ 2012_13				
Comment Code					
C1 : Add appropriate material and re-grade the levee to bring the crown above the design elevation.					
Inspector Comment					
Regrade the crown for proper drainage.					

No Photos

LM Start	1.18	Rating **	M	Issue No.	16
LM End	1.19	Issue Type +	Ma	Location *	CR
Category	Earthen Levee			GPS Latitude/Longitude	
				Start	End
Item	Crown Surface / Depressions / Rutting			36.968354 °	36.968272 °
				-120.352761 °	-120.352623 °
DWR ID	DWR_NA0011_05_f _ 2012_16				
Comment Code					
C1 : Add appropriate material and re-grade the levee to bring the crown above the design elevation.					
Inspector Comment					

No Photos

LM Start	1.28	Rating **	M	Issue No.	11
LM End	1.37	Issue Type +	Ma	Location *	LS
Category	Earthen Levee			GPS Latitude/Longitude	
				Start	End
Item	Crown Surface / Depressions / Rutting			36.967858 °	36.967868 °
				-120.351064 °	-120.349417 °
DWR ID	DWR_NA0011_05_s _ 2012_11				
Comment Code					
C2 : Repair depressions or ruts in the crown or slope.					
Inspector Comment					

No Photos

* Location		** Rating		+ Issue Type	
LS : Land Side	N/A : Not Applicable	A : Acceptable	N : Not Inspected/Rated	Ma : Maintenance Deficiency	
WS : Water Side		M : Minimally Acceptable	C : Corrected	Ob : Design & System Obsolescence	
CR : Crown		U : Unacceptable	A/W : Acceptable but Monitor & Maintain	En : Enforcement	

**Flood Control Project Maintenance
Levee Inspections**

Maintenance Issue Types Only, Levee Inspection Report By Mile - Spring 2016

Madera County FCWCA

Waterway	Bank	Unit Miles	Inspection Start/End	Inspector
Unit No. 05 Fresno River	Right	9.10	05/13/2016 05/13/2016	Herman Phillips

LM Start	1.51	Rating **	M	Issue No.	30
LM End	1.85	Issue Type +	Ma	Location *	CR
Category	Earthen Levee			GPS Latitude/Longitude	
				Start	End
Item	Crown Surface / Depressions / Rutting			36.967901 °	36.967931 °
				-120.347012 °	-120.340852 °
DWR ID	DWR_NA0011_05_f_2012_30				
Comment Code					
C1 : Add appropriate material and re-grade the levee to bring the crown above the design elevation.					
Inspector Comment					
Appropriate gravel or road base need to be added to crown roadway and regraded for proper drainage.					

No Photos

LM Start	2.48	Rating **	M	Issue No.	20
LM End	4.06	Issue Type +	Ma	Location *	CR
Category	Earthen Levee			GPS Latitude/Longitude	
				Start	End
Item	Crown Surface / Depressions / Rutting			36.968020 °	36.968158 °
				-120.329418 °	-120.300927 °
DWR ID	DWR_NA0011_05_s_2016_20				
Comment Code					
C1 : Add appropriate material and re-grade the levee to bring the crown above the design elevation.					
Inspector Comment					

No Photos

LM Start	2.50	Rating **	M	Issue No.	19
LM End	2.50	Issue Type +	Ma	Location *	WS
Category	Rivers, Channels & Designated Floodways			GPS Latitude/Longitude	
				Start	End
Item	Encroachments			36.968222 °	36.968222 °
				-120.329131 °	-120.329131 °
DWR ID	DWR_NA0011_05_s_2012_19				
Comment Code					
Inspector Comment					
Trash in channel.					

No Photos

* Location		** Rating		+ Issue Type	
LS : Land Side	N/A : Not Applicable	A : Acceptable	N : Not Inspected/Rated	Ma : Maintenance Deficiency	
WS : Water Side		M : Minimally Acceptable	C : Corrected	Ob : Design & System Obsolescence	
CR : Crown		U : Unacceptable	A/W : Acceptable but Monitor & Maintain	En : Enforcement	

**Flood Control Project Maintenance
Levee Inspections**

Maintenance Issue Types Only, Levee Inspection Report By Mile - Spring 2016

Madera County FCWCA

Waterway	Bank	Unit Miles	Inspection Start/End	Inspector
Unit No. 05 Fresno River	Right	9.10	05/13/2016 05/13/2016	Herman Phillips

LM Start	2.80	Rating **	U	Issue No.	24
LM End	3.23	Issue Type +	Ma	Location *	CR
Category	Earthen Levee			GPS Latitude/Longitude	
				Start	End
Item	Animal Control			36.968030 °	36.968082 °
				-120.323677 °	-120.315832 °
DWR ID	DWR_NA0011_05_f_2015_24				
Comment Code					
A1 : Exterminate rodents and backfill and compact or grout burrows.					
Inspector Comment					
Exterminate the rodents at this location. Bait stations are needed along this reach.					

Photo 1 of 2 : SP_2016_NA0011_146_24_20160223_00005.jpg



Rodent holes in the crown roadway(fresh).

LM Start	2.80	Rating **	U	Issue No.	24 (cont)
LM End	3.23	Issue Type +	Ma	Location *	CR

Photo 2 of 2 : SP_2016_NA0011_146_24_20160223_00006.jpg



Crown road way levee mile 2.80 to 3.23 covered with active rodent holes.

LM Start	4.06	Rating **	A	Issue No.	25
LM End	6.56	Issue Type +	Ma	Location *	CR
Category	Earthen Levee			GPS Latitude/Longitude	
				Start	End
Item	Vegetation			36.968158 °	36.968517 °
				-120.300927 °	-120.255728 °
DWR ID	DWR_NA0011_05_s_2016_25				
Comment Code					
V1 : Control annual grass and weeds on the levee slopes and easements.					
Inspector Comment					

No Photos

* Location LS : Land Side N/A : Not Applicable WS : Water Side CR : Crown		** Rating A : Acceptable M : Minimally Acceptable U : Unacceptable N : Not Inspected/Rated C : Corrected A/W : Acceptable but Monitor & Maintain		+ Issue Type Ma : Maintenance Deficiency Ob : Design & System Obsolescence En : Enforcement	
---------------------------------------------------------------------------------------	--	--------------------------------------------------------------------------------------------------------------------------------------------------------------------	--	------------------------------------------------------------------------------------------------------	--

**Flood Control Project Maintenance
Levee Inspections**

Maintenance Issue Types Only, Levee Inspection Report By Mile - Spring 2016

Madera County FCWCA

Waterway	Bank	Unit Miles	Inspection Start/End	Inspector
Unit No. 05 Fresno River	Right	9.10	05/13/2016 05/13/2016	Herman Phillips

LM Start	4.06	Rating **	A	Issue No.	26
LM End	6.56	Issue Type +	Ma	Location *	WS
Category	Earthen Levee			GPS Latitude/Longitude	
				Start	End
Item	Vegetation			36.968158 °	36.968517 °
				-120.300927 °	-120.255728 °
DWR ID	DWR_NA0011_05_s _ 2016_26				
Comment Code					
V1 : Control annual grass and weeds on the levee slopes and easements.					
Inspector Comment					

No Photos

LM Start	4.06	Rating **	A	Issue No.	22
LM End	9.08	Issue Type +	Ma	Location *	LS
Category	Earthen Levee			GPS Latitude/Longitude	
				Start	End
Item	Vegetation			36.968158 °	36.973258 °
				-120.300927 °	-120.211865 °
DWR ID	DWR_NA0011_05_s _ 2016_22				
Comment Code					
V1 : Control annual grass and weeds on the levee slopes and easements.					
Inspector Comment					

No Photos

LM Start	4.20	Rating **	M	Issue No.	21
LM End	4.32	Issue Type +	Ma	Location *	LS
Category	Earthen Levee			GPS Latitude/Longitude	
				Start	End
Item	Animal Control			36.968135 °	36.968202 °
				-120.298355 °	-120.296210 °
DWR ID	DWR_NA0011_05_s _ 2012_21				
Comment Code					
A3 : No rodents visible, but rodent burrows visible; need to backfill and compact or grout burrows.					
Inspector Comment					

No Photos

* Location		** Rating		+ Issue Type	
LS : Land Side	N/A : Not Applicable	A : Acceptable	N : Not Inspected/Rated	Ma : Maintenance Deficiency	
WS : Water Side		M : Minimally Acceptable	C : Corrected	Ob : Design & System Obsolescence	
CR : Crown		U : Unacceptable	A/W : Acceptable but Monitor & Maintain	En : Enforcement	

**Flood Control Project Maintenance
Levee Inspections**

Maintenance Issue Types Only, Levee Inspection Report By Mile - Spring 2016

Madera County FCWCA

Waterway	Bank	Unit Miles	Inspection Start/End	Inspector
Unit No. 05 Fresno River	Right	9.10	05/13/2016 05/13/2016	Herman Phillips

LM Start	4.46	Rating **	M	Issue No.	23
LM End	5.22	Issue Type +	Ma	Location *	WS
Category	Earthen Levee			GPS Latitude/Longitude	
				Start	End
Item	Animal Control			36.968230 °	36.968247 °
				-120.293665 °	-120.279957 °
DWR ID	DWR_NA0011_05_s_2012_23				
Comment Code					
A1 : Exterminate rodents and backfill and compact or grout burrows.					
Inspector Comment					

No Photos

LM Start	6.59	Rating **	U	Issue No.	28
LM End	9.08	Issue Type +	Ma	Location *	WS
Category	Earthen Levee			GPS Latitude/Longitude	
				Start	End
Item	Vegetation			36.968495 °	36.973258 °
				-120.255270 °	-120.211865 °
DWR ID	DWR_NA0011_05_s_2016_28				
Comment Code					
V1 : Control annual grass and weeds on the levee slopes and easements.					
Inspector Comment					
Remove the tall weeds from the waterside levee slope.					

Photo 1 of 1 : SP_2016_NA0011_146_28_20160502_00029.jpg



Looking upstream from levee mile 6.59- 9.08 waterside slope covered with tall weeds.

LM Start	6.63	Rating **	U	Issue No.	44
LM End	6.82	Issue Type +	Ma	Location *	LS
Category	Earthen Levee			GPS Latitude/Longitude	
				Start	End
Item	Animal Control			36.968585 °	36.969465 °
				-120.254425 °	-120.251303 °
DWR ID	DWR_NA0011_05_f_2014_44				
Comment Code					
A1 : Exterminate rodents and backfill and compact or grout burrows.					
Inspector Comment					
Fresh bait is needed in the bait station, more activity at this site.					

Photo 1 of 1 : SP_2016_NA0011_146_44_20160223_00010.jpg



This area has an active rodent presence from levee mile 6.63 to 6.82.

* Location
LS : Land Side N/A : Not Applicable
WS : Water Side
CR : Crown

** Rating
A : Acceptable N : Not Inspected/Rated
M : Minimally Acceptable C : Corrected
U : Unacceptable A/W : Acceptable but Monitor & Maintain

+ Issue Type
Ma : Maintenance Deficiency
Ob : Design & System Obsolescence
En : Enforcement

**Flood Control Project Maintenance
Levee Inspections**

Maintenance Issue Types Only, Levee Inspection Report By Mile - Spring 2016

Madera County FCWCA

Waterway	Bank	Unit Miles	Inspection Start/End	Inspector
Unit No. 05 Fresno River	Right	9.10	05/13/2016 05/13/2016	Herman Phillips

LM Start	7.11	Rating **	U	Issue No.	45
LM End	7.52	Issue Type +	Ma	Location *	CR
Category	Earthen Levee			GPS Latitude/Longitude	
				Start	End
Item	Vegetation			36.969512 °	36.969528 °
				-120.245957 °	-120.238603 °
DWR ID	DWR_NA0011_05_f_2014_45				
Comment Code					
V9 : Keep the crown roadway free of vegetation.					
Inspector Comment					
Keep crown roadway free of vegetation, weeds here are 2.0 foot.					

Photo 1 of 1 : SP_2016_NA0011_146_45_20160502_00028.jpg



Looking upstream of crown roadway from levee mile 7.11- 7.52.

LM Start	8.11	Rating **	M	Issue No.	37
LM End	8.19	Issue Type +	Ma	Location *	LS
Category	Earthen Levee			GPS Latitude/Longitude	
				Start	End
Item	Animal Control			36.972391 °	36.972399 °
				-120.228857 °	-120.227424 °
DWR ID	DWR_NA0011_05_s_2013_37				
Comment Code					
A3 : No rodents visible, but rodent burrows visible; need to backfill and compact or grout burrows.					
Inspector Comment					

No Photos

* Location LS : Land Side N/A : Not Applicable WS : Water Side CR : Crown		** Rating A : Acceptable N : Not Inspected/Rated M : Minimally Acceptable C : Corrected U : Unacceptable A/W : Acceptable but Monitor & Maintain		+ Issue Type Ma : Maintenance Deficiency Ob : Design & System Obsolescence En : Enforcement
----------------------------------------------------------------------------------------------	--	---------------------------------------------------------------------------------------------------------------------------------------------------------------------------------------------------------------	--	-------------------------------------------------------------------------------------------------------------

**Flood Control Project Maintenance
Levee Inspections**

Maintenance Issue Types Only, Levee Inspection Report By Mile - Spring 2016

Madera County FCWCA

Waterway	Bank	Unit Miles	Inspection Start/End	Inspector
Unit No. 06 Fresno River	Left	9.03	05/13/2016 05/13/2016	Herman Phillips

LM Start	0.00	Rating **	U	Issue No.	11
LM End	0.96	Issue Type +	Ma	Location *	LS
Category	Earthen Levee			GPS Latitude/Longitude	
				Start	End
Item	Vegetation			36.976932 °	36.969317 °
				-120.367495 °	-120.354475 °
DWR ID	DWR_NA0011_06_s_2016_11				
Comment Code					
V1 : Control annual grass and weeds on the levee slopes and easements.					
Inspector Comment					
Remove the tall weeds from the levee slope and toe.					

Photo 1 of 1 : SP_2016_NA0011_147_11_20160502_00032.jpg



Looking upstream from levee mile 0.00 to 0.96 tall weeds covering slope and toe landside levee section.

LM Start	0.00	Rating **	U	Issue No.	15
LM End	0.96	Issue Type +	Ma	Location *	CR
Category	Earthen Levee			GPS Latitude/Longitude	
				Start	End
Item	Vegetation			36.976932 °	36.969317 °
				-120.367495 °	-120.354475 °
DWR ID	DWR_NA0011_06_s_2016_15				
Comment Code					
V1 : Control annual grass and weeds on the levee slopes and easements.					
Inspector Comment					
Keep crown roadway free of vegetation.					

Photo 1 of 1 : SP_2016_NA0011_147_15_20160502_00031.jpg



Looking upstream from levee mile 0.00 unit 6 Fresno River to 0.96.

* Location LS : Land Side N/A : Not Applicable WS : Water Side CR : Crown		** Rating A : Acceptable M : Minimally Acceptable U : Unacceptable		N : Not Inspected/Rated C : Corrected A/W : Acceptable but Monitor & Maintain		+ Issue Type Ma : Maintenance Deficiency Ob : Design & System Obsolescence En : Enforcement	
----------------------------------------------------------------------------------------------	--	------------------------------------------------------------------------------------	--	-------------------------------------------------------------------------------------	--	-------------------------------------------------------------------------------------------------------------	--

**Flood Control Project Maintenance
Levee Inspections**

Maintenance Issue Types Only, Levee Inspection Report By Mile - Spring 2016

Madera County FCWCA

Waterway	Bank	Unit Miles	Inspection Start/End	Inspector
Unit No. 06 Fresno River	Left	9.03	05/13/2016 05/13/2016	Herman Phillips

LM Start	0.00	Rating **	U	Issue No.	14
LM End	3.63	Issue Type +	Ma	Location *	WS
Category	Earthen Levee			GPS Latitude/Longitude	
				Start	End
Item	Vegetation			36.976932 °	36.967393 °
				-120.367495 °	-120.307403 °
DWR ID	DWR_NA0011_06_s_2016_14				
Comment Code					
V1 : Control annual grass and weeds on the levee slopes and easements.					
Inspector Comment					
Remove the unwanted tall weeds from the levee section waterward.					

Photo 1 of 1 : SP_2016_NA0011_147_14_20160502_00033.jpg



Looking upstream from levee mile 0.00 -3.63 unwanted tall weeds covering the water side levee section.

LM Start	0.18	Rating **	M	Issue No.	18
LM End	3.19	Issue Type +	Ma	Location *	LS
Category	Earthen Levee			GPS Latitude/Longitude	
				Start	End
Item	Animal Control			36.976901 °	36.967383 °
				-120.364174 °	-120.315330 °
DWR ID	DWR_NA0011_06_s_2012_18				
Comment Code					
A3 : No rodents visible, but rodent burrows visible; need to backfill and compact or grout burrows.					
Inspector Comment					

No Photos

LM Start	0.96	Rating **	M	Issue No.	42
LM End	2.49	Issue Type +	Ma	Location *	CR
Category	Earthen Levee			GPS Latitude/Longitude	
				Start	End
Item	Vegetation			36.969317 °	36.967245 °
				-120.354480 °	-120.328000 °
DWR ID	DWR_NA0011_06_f_2015_42				
Comment Code					
V9 : Keep the crown roadway free of vegetation.					
Inspector Comment					

No Photos

* Location		** Rating		+ Issue Type	
LS : Land Side	N/A : Not Applicable	A : Acceptable	N : Not Inspected/Rated	Ma : Maintenance Deficiency	
WS : Water Side		M : Minimally Acceptable	C : Corrected	Ob : Design & System Obsolescence	
CR : Crown		U : Unacceptable	A/W : Acceptable but Monitor & Maintain	En : Enforcement	

**Flood Control Project Maintenance
Levee Inspections**

Maintenance Issue Types Only, Levee Inspection Report By Mile - Spring 2016

Madera County FCWCA

Waterway	Bank	Unit Miles	Inspection Start/End	Inspector
Unit No. 06 Fresno River	Left	9.03	05/13/2016 05/13/2016	Herman Phillips

LM Start	2.49	Rating **	U	Issue No.	17
LM End	3.68	Issue Type +	Ma	Location *	CR
Category	Earthen Levee			GPS Latitude/Longitude	
				Start	End
Item	Vegetation			36.967245 °	36.967405 °
				-120.327995 °	-120.306562 °
DWR ID	DWR_NA0011_06_s _ 2016_17				
Comment Code					
V9 : Keep the crown roadway free of vegetation.					
Inspector Comment					
Keep the crown roadway free of vegetation.					

Photo 1 of 1 : SP_2016_NA0011_147_17_20160502_00035.jpg



Looking upstream from levee mile 2.49-3.68 weeds present on the crown roadway.

LM Start	2.71	Rating **	M	Issue No.	13
LM End	2.79	Issue Type +	Ma	Location *	LS
Category	Earthen Levee			GPS Latitude/Longitude	
				Start	End
Item	Animal Control			36.967317 °	36.967302 °
				-120.324138 °	-120.322640 °
DWR ID	DWR_NA0011_06_s _ 2012_13				
Comment Code					
A1 : Exterminate rodents and backfill and compact or grout burrows.					
Inspector Comment					
District needs to continue using the bait stations in the areas where rodents are visibly active.					

No Photos

* Location LS : Land Side N/A : Not Applicable WS : Water Side CR : Crown	** Rating A : Acceptable M : Minimally Acceptable U : Unacceptable	N : Not Inspected/Rated C : Corrected A/W : Acceptable but Monitor & Maintain	+ Issue Type Ma : Maintenance Deficiency Ob : Design & System Obsolescence En : Enforcement
----------------------------------------------------------------------------------------------	------------------------------------------------------------------------------------	-------------------------------------------------------------------------------------	-------------------------------------------------------------------------------------------------------------

**Flood Control Project Maintenance
Levee Inspections**

Maintenance Issue Types Only, Levee Inspection Report By Mile - Spring 2016

Madera County FCWCA

Waterway	Bank	Unit Miles	Inspection Start/End	Inspector
Unit No. 06 Fresno River	Left	9.03	05/13/2016 05/13/2016	Herman Phillips

LM Start	4.13	Rating **	U	Issue No.	48
LM End	4.13	Issue Type +	Ma	Location *	LS
Category	Earthen Levee			GPS Latitude/Longitude	
				Start	End
Item	Animal Control			36.967465 °	36.967465 °
				-120.298415 °	-120.298415 °
DWR ID	DWR_NA0011_06_f_2014_48				
Comment Code					
A1 : Exterminate rodents and backfill and compact or grout burrows.					
Inspector Comment					
Huge rodent hole in crown roadway landward..					

Photo 1 of 1 : SP_2016_NA0011_147_48_20160223_00011.jpg



Huge Rodent hole in crown roadway and many other holes at this location on the slope and toe.

LM Start	4.62	Rating **	M	Issue No.	38
LM End	4.62	Issue Type +	Ma	Location *	CR
Category	Earthen Levee			GPS Latitude/Longitude	
				Start	End
Item	Animal Control			36.967497 °	36.967497 °
				-120.289576 °	-120.289576 °
DWR ID	DWR_NA0011_06_s_2013_38				
Comment Code					
A1 : Exterminate rodents and backfill and compact or grout burrows.					
Inspector Comment					

No Photos

LM Start	4.92	Rating **	M	Issue No.	28
LM End	6.47	Issue Type +	Ma	Location *	LS
Category	Earthen Levee			GPS Latitude/Longitude	
				Start	End
Item	Vegetation			36.967501 °	36.967893 °
				-120.284141 °	-120.256169 °
DWR ID	DWR_NA0011_06_f_2012_28				
Comment Code					
V2 : Remove the wild growth other than native grasses from the levee slopes.					
Inspector Comment					

No Photos

* Location		** Rating		+ Issue Type	
LS : Land Side	N/A : Not Applicable	A : Acceptable	N : Not Inspected/Rated	Ma : Maintenance Deficiency	
WS : Water Side		M : Minimally Acceptable	C : Corrected	Ob : Design & System Obsolescence	
CR : Crown		U : Unacceptable	A/W : Acceptable but Monitor & Maintain	En : Enforcement	

**Flood Control Project Maintenance
Levee Inspections**

Maintenance Issue Types Only, Levee Inspection Report By Mile - Spring 2016

Madera County FCWCA

Waterway	Bank	Unit Miles	Inspection Start/End	Inspector
Unit No. 06 Fresno River	Left	9.03	05/13/2016 05/13/2016	Herman Phillips

LM Start	5.36	Rating **	M	Issue No.	12
LM End	5.40	Issue Type +	Ma	Location *	LS
Category	Earthen Levee		GPS Latitude/Longitude		
			Start	End	
Item	Animal Control		36.967550 °	36.967572 °	
			-120.276208 °	-120.275478 °	
DWR ID	DWR_NA0011_06_s _ 2012_12				
Comment Code					
A1 : Exterminate rodents and backfill and compact or grout burrows.					
Inspector Comment					

No Photos

LM Start	5.78	Rating **	M	Issue No.	9
LM End	5.78	Issue Type +	Ma	Location *	LS
Category	Earthen Levee		GPS Latitude/Longitude		
			Start	End	
Item	Animal Control		36.967538 °	36.967538 °	
			-120.268660 °	-120.268660 °	
DWR ID	DWR_NA0011_06_s _ 2012_9				
Comment Code					
A1 : Exterminate rodents and backfill and compact or grout burrows.					
Inspector Comment					

No Photos

LM Start	5.94	Rating **	M	Issue No.	8
LM End	6.13	Issue Type +	Ma	Location *	LS
Category	Earthen Levee		GPS Latitude/Longitude		
			Start	End	
Item	Animal Control		36.967530 °	36.967545 °	
			-120.265732 °	-120.262320 °	
DWR ID	DWR_NA0011_06_s _ 2012_8				
Comment Code					
A1 : Exterminate rodents and backfill and compact or grout burrows.					
Inspector Comment					

No Photos

* Location LS : Land Side N/A : Not Applicable WS : Water Side CR : Crown	** Rating A : Acceptable M : Minimally Acceptable U : Unacceptable	N : Not Inspected/Rated C : Corrected A/W : Acceptable but Monitor & Maintain	+ Issue Type Ma : Maintenance Deficiency Ob : Design & System Obsolescence En : Enforcement
----------------------------------------------------------------------------------------------	------------------------------------------------------------------------------------	-------------------------------------------------------------------------------------	-------------------------------------------------------------------------------------------------------------

**Flood Control Project Maintenance
Levee Inspections**

Maintenance Issue Types Only, Levee Inspection Report By Mile - Spring 2016

Madera County FCWCA

Waterway	Bank	Unit Miles	Inspection Start/End	Inspector
Unit No. 06 Fresno River	Left	9.03	05/13/2016 05/13/2016	Herman Phillips

LM Start	6.39	Rating **	M	Issue No.	34
LM End	6.48	Issue Type +	Ma	Location *	LS
Category	Earthen Levee			GPS Latitude/Longitude	
				Start	End
Item	Animal Control			36.967863 °	36.967854 °
				-120.257611 °	-120.256047 °
DWR ID	DWR_NA0011_06_s_2013_34				
Comment Code					
A1 : Exterminate rodents and backfill and compact or grout burrows.					
Inspector Comment					

No Photos

LM Start	7.63	Rating **	U	Issue No.	27
LM End	8.52	Issue Type +	Ma	Location *	LS
Category	Earthen Levee			GPS Latitude/Longitude	
				Start	End
Item	Vegetation			36.969052 °	36.971510 °
				-120.235442 °	-120.220425 °
DWR ID	DWR_NA0011_06_f_2015_27				
Comment Code					
V1 : Control annual grass and weeds on the levee slopes and easements.					
Inspector Comment					
Remove the tumble weed and other unwanted tall weeds form the landside levee section.					

Photo 1 of 1 : SP_2016_NA0011_147_27_20160223_00004.jpg



Fresno River Looking at the landside levee slope unsatisfactory tall weeds has covered the slope, shoulder and crown.

* Location LS : Land Side N/A : Not Applicable WS : Water Side CR : Crown		** Rating A : Acceptable N : Not Inspected/Rated M : Minimally Acceptable C : Corrected U : Unacceptable A/W : Acceptable but Monitor & Maintain		+ Issue Type Ma : Maintenance Deficiency Ob : Design & System Obsolescence En : Enforcement
----------------------------------------------------------------------------------------------	--	---------------------------------------------------------------------------------------------------------------------------------------------------------------------------------------------------------------	--	-------------------------------------------------------------------------------------------------------------

**Flood Control Project Maintenance
Levee Inspections**

Maintenance Issue Types Only, Levee Inspection Report By Mile - Spring 2016

Madera County FCWCA

Waterway	Bank	Unit Miles	Inspection Start/End	Inspector
Unit No. 06 Fresno River	Left	9.03	05/13/2016 05/13/2016	Herman Phillips

LM Start	7.70	Rating **	U	Issue No.	21
LM End	8.53	Issue Type +	Ma	Location *	WS
Category	Earthen Levee			GPS Latitude/Longitude	
				Start	End
Item	Vegetation			36.969557 °	36.971487 °
				-120.234278 °	-120.220345 °
DWR ID	DWR_NA0011_06_s_2016_21				
Comment Code					
V1 : Control annual grass and weeds on the levee slopes and easements.					
Inspector Comment					
Remove the tall weeds from the waterside levee slope and toe.					

Photo 1 of 1 : SP_2016_NA0011_147_21_20160502_00037.jpg



Looking upstream from levee mile 7.70 -8.53 weeds taller than 3.0 foot covering the slope and toe.

LM Start	7.70	Rating **	U	Issue No.	22
LM End	8.53	Issue Type +	Ma	Location *	CR
Category	Earthen Levee			GPS Latitude/Longitude	
				Start	End
Item	Vegetation			36.969557 °	36.971487 °
				-120.234278 °	-120.220345 °
DWR ID	DWR_NA0011_06_s_2016_22				
Comment Code					
V1 : Control annual grass and weeds on the levee slopes and easements.					
Inspector Comment					
Control the wild weeds from the crown roadway.					

Photo 1 of 1 : SP_2016_NA0011_147_22_20160502_00036.jpg



Looking upstream from levee mile 7.70-8.53, tall weeds 3.0-4.0 foot tall on the crown.

* Location
LS : Land Side N/A : Not Applicable
WS : Water Side
CR : Crown

** Rating
A : Acceptable
M : Minimally Acceptable
U : Unacceptable
N : Not Inspected/Rated
C : Corrected
A/W : Acceptable but Monitor & Maintain

+ Issue Type
Ma : Maintenance Deficiency
Ob : Design & System Obsolescence
En : Enforcement