

**Flood Control Project Maintenance
Levee Inspections**

Maintenance Issue Types Only, Levee Inspection Report By Mile - Spring 2015

Madera County FCWCA

Waterway	Bank	Unit Miles	Inspection Start/End	Inspector
Unit No. 01 Ash Slough	Right	2.37	05/06/2015 05/05/2015	Herman Phillips

LM Start		Rating **	A	Issue No.	41
LM End		Issue Type +	Ma	Location *	WS
Category	Earthen Levee			GPS Latitude/Longitude	
				Start	End
Item	Operations & Maintenance Manuals				°
					°
DWR ID	DWR_NA0011_01_s _ 2012_41				
Action/Comments					
Inspector Comments: Madera County has a copy of the O&M Manual on hand.					

No Photos

LM Start		Rating **	A	Issue No.	43	
LM End		Issue Type +	Ma	Location *	WS	
Category	Earthen Levee			GPS Latitude/Longitude		
				Start		End
Item	Emergency Supplies & Equipment				°	°
					°	°
DWR ID	DWR_NA0011_01_s _ 2012_43					
Action/Comments						
Inspector Comments: Madera County has emergency supplies.						

No Photos

LM Start		Rating **	A	Issue No.	44	
LM End		Issue Type +	Ma	Location *	WS	
Category	Earthen Levee			GPS Latitude/Longitude		
				Start		End
Item	Flood Preparedness & Training				°	°
					°	°
DWR ID	DWR_NA0011_01_s _ 2012_44					
Action/Comments						
Inspector Comments: Madera County Flood Control has an ongoing training program.						

No Photos

* Location LS : Land Side N/A : Not Applicable WS : Water Side CR : Crown		** Rating A : Acceptable N : Not Inspected/Rated M : Minimally Acceptable C : Corrected U : Unacceptable A/W : Acceptable but Monitor & Maintain		+ Issue Type Ma : Maintenance Deficiency Ob : Design & System Obsolescence En : Enforcement
--	--	---	--	---

**Flood Control Project Maintenance
Levee Inspections**

Maintenance Issue Types Only, Levee Inspection Report By Mile - Spring 2015

Madera County FCWCA

Waterway	Bank	Unit Miles	Inspection Start/End	Inspector
Unit No. 01 Ash Slough	Right	2.37	05/06/2015 05/05/2015	Herman Phillips

LM Start	0.01	Rating **	M	Issue No.	35
LM End	0.25	Issue Type +	Ma	Location *	LS
Category	Earthen Levee			GPS Latitude/Longitude	
				Start	End
Item	Vegetation			37.046507 °	37.047545 °
				-120.427762 °	-120.423650 °
DWR ID	DWR_NA0011_01_f_2014_35				
Action/Comments					
Remove the wild growth other than native grasses from the levee slopes.					

No Photos

LM Start	0.01	Rating **	U	Issue No.	34
LM End	2.15	Issue Type +	Ma	Location *	WS
Category	Earthen Levee			GPS Latitude/Longitude	
				Start	End
Item	Vegetation			37.046507 °	37.066035 °
				-120.427762 °	-120.399910 °
DWR ID	DWR_NA0011_01_f_2014_34				
Action/Comments					
Remove the wild growth other than native grasses from the levee slopes. Inspector Comments: Control the wild growth on the waterside of the levee slope.					

Photo 1 of 1 : SP_2015_NA0011_142_34_20150508_00072.jpg



Looking downstream from levee mile 0.01 waterside slope
unsatisfactory tall weeds present on the levee section.

LM Start	0.04	Rating **	M	Issue No.	19
LM End	0.75	Issue Type +	Ma	Location *	LS
Category	Earthen Levee			GPS Latitude/Longitude	
				Start	End
Item	Animal Control			37.046624 °	37.052790 °
				-120.427318 °	-120.417677 °
DWR ID	DWR_NA0011_01_s_2014_19				
Action/Comments					
No rodents visible, but rodent burrows visible; need to backfill and compact or grout burrows.					

No Photos

* Location LS : Land Side N/A : Not Applicable WS : Water Side CR : Crown		** Rating A : Acceptable N : Not Inspected/Rated M : Minimally Acceptable C : Corrected U : Unacceptable A/W : Acceptable but Monitor & Maintain		+ Issue Type Ma : Maintenance Deficiency Ob : Design & System Obsolescence En : Enforcement
--	--	---	--	---

**Flood Control Project Maintenance
Levee Inspections**

Maintenance Issue Types Only, Levee Inspection Report By Mile - Spring 2015

Madera County FCWCA

Waterway	Bank	Unit Miles	Inspection Start/End	Inspector
Unit No. 01 Ash Slough	Right	2.37	05/06/2015 05/05/2015	Herman Phillips

LM Start	0.04	Rating **	U	Issue No.	20
LM End	0.05	Issue Type +	Ma	Location *	LS
Category	Earthen Levee			GPS Latitude/Longitude	
				Start	End
Item	Slope Stability			37.046624 °	37.046682 °
				-120.427317 °	-120.427108 °
DWR ID	DWR_NA0011_01_s _ 2014_20				
Action/Comments					
Repair slope instability. Inspector Comments: This is not a new erosion site, it should be repaired before the condition get any worse.					

Photo 1 of 1 : SP_2015_NA0011_142_20_20150508_00077.jpg



The landside levee slope and toe has been damaged and this was reported in the last inspection.

LM Start	0.04	Rating **	M	Issue No.	21
LM End	0.06	Issue Type +	Ma	Location *	LS
Category	Earthen Levee			GPS Latitude/Longitude	
				Start	End
Item	Vegetation			37.046638 °	37.046723 °
				-120.427257 °	-120.426957 °
DWR ID	DWR_NA0011_01_s _ 2014_21				
Action/Comments					
Remove the wild growth other than native grasses from the levee slopes.					

No Photos

LM Start	0.06	Rating **	M	Issue No.	22
LM End	0.85	Issue Type +	Ma	Location *	LS
Category	Earthen Levee			GPS Latitude/Longitude	
				Start	End
Item	Animal Control			37.046723 °	37.054221 °
				-120.426957 °	-120.417131 °
DWR ID	DWR_NA0011_01_s _ 2014_22				
Action/Comments					
No rodents visible, but rodent burrows visible; need to backfill and compact or grout burrows.					

No Photos

* Location		** Rating		+ Issue Type	
LS : Land Side	N/A : Not Applicable	A : Acceptable	N : Not Inspected/Rated	Ma : Maintenance Deficiency	
WS : Water Side		M : Minimally Acceptable	C : Corrected	Ob : Design & System Obsolescence	
CR : Crown		U : Unacceptable	A/W : Acceptable but Monitor & Maintain	En : Enforcement	

**Flood Control Project Maintenance
Levee Inspections**

Maintenance Issue Types Only, Levee Inspection Report By Mile - Spring 2015

Madera County FCWCA

Waterway	Bank	Unit Miles	Inspection Start/End	Inspector
Unit No. 01 Ash Slough	Right	2.37	05/06/2015 05/05/2015	Herman Phillips

LM Start	0.09	Rating **	U	Issue No.	185
LM End	0.77	Issue Type +	Ma	Location *	LS
Category	Earthen Levee			GPS Latitude/Longitude	
				Start	End
Item	Animal Control			37.046838 °	37.053030 °
				-120.426380 °	-120.417543 °
DWR ID	DWR_NA0011_01_s _ 2015_185				
Action/Comments					
Exterminate rodents and backfill and compact or grout burrows. Inspector Comments: There should be placement of bait stations along the areas where rodents are active.					

Photo 1 of 1 : SP_2015_NA0011_142_185_20150508_00078.jpg



The rodents are very active in this area.

LM Start	0.13	Rating **	M	Issue No.	23
LM End	0.73	Issue Type +	Ma	Location *	LS
Category	Earthen Levee			GPS Latitude/Longitude	
				Start	End
Item	Vegetation			37.046994 °	37.052529 °
				-120.425776 °	-120.417800 °
DWR ID	DWR_NA0011_01_s _ 2014_23				
Action/Comments					
Remove the wild growth other than native grasses from the levee slopes.					

No Photos

LM Start	0.25	Rating **	U	Issue No.	37
LM End	0.92	Issue Type +	Ma	Location *	LS
Category	Earthen Levee			GPS Latitude/Longitude	
				Start	End
Item	Vegetation			37.047545 °	37.055148 °
				-120.423650 °	-120.416605 °
DWR ID	DWR_NA0011_01_f _ 2014_37				
Action/Comments					
Control annual grass and weeds on the levee slopes and easements. Inspector Comments: Remove the tall weeds from the levee section.					

Photo 1 of 1 : SP_2015_NA0011_142_37_20150508_00079.jpg



Unsatisfactory tall weeds on the landside slope.

* Location LS : Land Side N/A : Not Applicable WS : Water Side CR : Crown		** Rating A : Acceptable M : Minimally Acceptable U : Unacceptable N : Not Inspected/Rated C : Corrected A/W : Acceptable but Monitor & Maintain		+ Issue Type Ma : Maintenance Deficiency Ob : Design & System Obsolescence En : Enforcement	
--	--	---	--	---	--

**Flood Control Project Maintenance
Levee Inspections**

Maintenance Issue Types Only, Levee Inspection Report By Mile - Spring 2015

Madera County FCWCA

Waterway	Bank	Unit Miles	Inspection Start/End	Inspector
Unit No. 01 Ash Slough	Right	2.37	05/06/2015 05/05/2015	Herman Phillips

LM Start	0.28	Rating **	U	Issue No.	24
LM End	0.87	Issue Type +	Ma	Location *	CR
Category	Earthen Levee			GPS Latitude/Longitude	
				Start	End
Item	Vegetation			37.047754 °	37.054506 °
				-120.423295 °	-120.417041 °
DWR ID	DWR_NA0011_01_s _ 2014_24				
Action/Comments					
Keep the crown roadway free of vegetation. Inspector Comments: The levee crown roadway should be free from any vegetation.					

Photo 1 of 2 : SP_2015_NA0011_142_24_20150312_00007.jpg



Photo 2 of 2 : SP_2015_NA0011_142_24_20150312_00008.jpg



The levee crown roadway is overgrown with weeds. Photo taken 4-29-2014.

LM Start	0.28	Rating **	C	Issue No.	6
LM End	0.30	Issue Type +	Ma	Location *	WS
Category	Earthen Levee			GPS Latitude/Longitude	
				Start	End
Item	Encroachments			37.047812 °	37.047963 °
				-120.423155 °	-120.422898 °
DWR ID	DWR_NA0011_01_s _ 2012_6				
Action/Comments					
Tree or limb					
Inspector Comments: Noted on the last two inspections.					

No Photos

* Location LS : Land Side N/A : Not Applicable WS : Water Side CR : Crown		** Rating A : Acceptable N : Not Inspected/Rated M : Minimally Acceptable C : Corrected U : Unacceptable A/W : Acceptable but Monitor & Maintain		+ Issue Type Ma : Maintenance Deficiency Ob : Design & System Obsolescence En : Enforcement
--	--	---	--	---

**Flood Control Project Maintenance
Levee Inspections**

Maintenance Issue Types Only, Levee Inspection Report By Mile - Spring 2015

Madera County FCWCA

Waterway	Bank	Unit Miles	Inspection Start/End	Inspector
Unit No. 01 Ash Slough	Right	2.37	05/06/2015 05/05/2015	Herman Phillips

LM Start	0.44	Rating **	M	Issue No.	11
LM End	0.54	Issue Type +	Ma	Location *	WS
Category	Earthen Levee			GPS Latitude/Longitude	
				Start	End
Item	Encroachments			37.049455 °	37.050440 °
				-120.421218 °	-120.419783 °
DWR ID	DWR_NA0011_01_s _ 2012_11				
Action/Comments					
Tree or limb					
Inspector Comments: Remove the dead trees that has fallen onto the waterside levee slope.					

Photo 1 of 1 : SP_2015_NA0011_142_11_20150508_00081.jpg



Dead trees on the waterside slope that should have been removed already.

LM Start	0.45	Rating **	C	Issue No.	39
LM End	0.56	Issue Type +	Ma	Location *	LS
Category	Earthen Levee			GPS Latitude/Longitude	
				Start	End
Item	Encroachments			37.049484 °	37.050574 °
				-120.421017 °	-120.419601 °
DWR ID	DWR_NA0011_01_s _ 2012_39				
Action/Comments					
Tree or limb					

No Photos

LM Start	0.53	Rating **	C	Issue No.	10
LM End	0.53	Issue Type +	Ma	Location *	WS
Category	Earthen Levee			GPS Latitude/Longitude	
				Start	End
Item	Encroachments			37.050335 °	37.050335 °
				-120.419965 °	-120.419965 °
DWR ID	DWR_NA0011_01_s _ 2012_10				
Action/Comments					
Tree or limb					

No Photos

* Location LS : Land Side N/A : Not Applicable WS : Water Side CR : Crown		** Rating A : Acceptable N : Not Inspected/Rated M : Minimally Acceptable C : Corrected U : Unacceptable A/W : Acceptable but Monitor & Maintain		+ Issue Type Ma : Maintenance Deficiency Ob : Design & System Obsolescence En : Enforcement
--	--	---	--	---

**Flood Control Project Maintenance
Levee Inspections**

Maintenance Issue Types Only, Levee Inspection Report By Mile - Spring 2015

Madera County FCWCA

Waterway	Bank	Unit Miles	Inspection Start/End	Inspector
Unit No. 01 Ash Slough	Right	2.37	05/06/2015 05/05/2015	Herman Phillips

LM Start	0.89	Rating **	M	Issue No.	29
LM End	1.19	Issue Type +	Ma	Location *	WS
Category	Earthen Levee			GPS Latitude/Longitude	
				Start	End
Item	Vegetation			37.054708 °	°
				-120.416960 °	°
DWR ID	DWR_NA0011_01_s _ 2014_29				
Action/Comments					
Remove the wild growth other than native grasses from the levee slopes.					

No Photos

LM Start	1.04	Rating **	U	Issue No.	13
LM End	1.04	Issue Type +	Ma	Location *	LS
Category	Earthen Levee			GPS Latitude/Longitude	
				Start	End
Item	Slope Stability			37.055873 °	37.055873 °
				-120.414643 °	-120.414643 °
DWR ID	DWR_NA0011_01_s _ 2015_13				
Action/Comments					

No Photos

* Location LS : Land Side N/A : Not Applicable WS : Water Side CR : Crown		** Rating A : Acceptable N : Not Inspected/Rated M : Minimally Acceptable C : Corrected U : Unacceptable A/W : Acceptable but Monitor & Maintain		+ Issue Type Ma : Maintenance Deficiency Ob : Design & System Obsolescence En : Enforcement
--	--	---	--	---

**Flood Control Project Maintenance
Levee Inspections**

Maintenance Issue Types Only, Levee Inspection Report By Mile - Spring 2015

Madera County FCWCA

Waterway	Bank	Unit Miles	Inspection Start/End	Inspector
Unit No. 01 Ash Slough	Right	2.37	05/06/2015 05/05/2015	Herman Phillips

LM Start	1.11	Rating **	U	Issue No.	1
LM End	1.20	Issue Type +	Ma	Location *	WS
Category	Supplemental			GPS Latitude/Longitude	
				Start	End
Item	DWR Erosion Survey			37.055596 °	37.055596 °
				-120.412647 °	-120.412647 °
DWR ID	DWR_NA0011_01_s _ 2015_1				
Action/Comments					
Inspector Comments: 07/22/2014: No significant change observed. 08/30/2013: No significant change observed. 07/31/2012: Site was visited on 07/24/2012. No significant change observed. Dense vegetation around the site 08/09/2011: Site was inspected. No visible change was observed from the previous condition. A fallen tree was seen at the levee toe about 20 feet upstream, and tree root exposed. There has been no report from the district that this site was corrected. 11/30/2010: Site was not inspected due to time constraints. There have been no reports from the district that the site was corrected. Continue to monitor site during flood events. 08/05/2010: Recommended for annual assessment and monitoring during flood events, per CLRO. 2009: Site is recommended as a local maintenance issue, per Critical Levee Repair Office, Critical Erosion Sites Evaluation 2008 Report; site was previously rated "M" 9/6/2007: Undercutting of the toe; several trees along the WS slope with roots exposed. [2014 Site ID:NA0011U01RM2.57]					

Photo 1 of 1 : SP_2015_NA0011_142_1_20150312_00001.jpg



View of the erosion site from the levee crest.

LM Start	1.15	Rating **	M	Issue No.	8
LM End	1.37	Issue Type +	Ma	Location *	WS
Category	Earthen Levee			GPS Latitude/Longitude	
				Start	End
Item	Slope Stability			37.056343 °	37.058558 °
				-120.412690 °	-120.410278 °
DWR ID	DWR_NA0011_01_s _ 2015_8				
Action/Comments					
Repair the levee slope damaged by vehicle traffic and prevent access where possible.					
Inspector Comments: Levee toe damaged caused by tractor discing in the levee toe.					

No Photos

* Location LS : Land Side N/A : Not Applicable WS : Water Side CR : Crown		** Rating A : Acceptable M : Minimally Acceptable U : Unacceptable N : Not Inspected/Rated C : Corrected A/W : Acceptable but Monitor & Maintain		+ Issue Type Ma : Maintenance Deficiency Ob : Design & System Obsolescence En : Enforcement	
---	--	--	--	--	--

**Flood Control Project Maintenance
Levee Inspections**

Maintenance Issue Types Only, Levee Inspection Report By Mile - Spring 2015

Madera County FCWCA

Waterway	Bank	Unit Miles	Inspection Start/End	Inspector
Unit No. 01 Ash Slough	Right	2.37	05/06/2015 05/05/2015	Herman Phillips

LM Start	1.36	Rating **	U	Issue No.	32
LM End	1.81	Issue Type +	Ma	Location *	WS
Category	Earthen Levee			GPS Latitude/Longitude	
				Start	End
Item	Slope Stability			37.058460 °	37.062580 °
				-120.410390 °	-120.404180 °
DWR ID	DWR_NA0011_01_f_2014_32				
Action/Comments					
Repair slope instability. Inspector Comments: The toe has been damaged by disking too close to the levee toe waterward. 1.50-2.50 foot cut in toe					

Photo 1 of 1 : SP_2015_NA0011_142_32_20150508_00073.jpg



View looking downstream at the waterside toe damage.

LM Start	1.42	Rating **	U	Issue No.	190
LM End	2.07	Issue Type +	Ma	Location *	WS
Category	Earthen Levee			GPS Latitude/Longitude	
				Start	End
Item	Slope Stability			37.058925 °	37.065360 °
				-120.409392 °	-120.401108 °
DWR ID	DWR_NA0011_01_s_2015_190				
Action/Comments					
Repair the levee slope damaged by vehicle traffic and prevent access where possible.					
Inspector Comments: The hinge point has been cut 1.5 inches deep.					

Photo 1 of 1 : SP_2015_NA0011_142_190_20150508_00075.jpg



The hinge point has been disced from levee mile 1.42 -2.07.

LM Start	1.61	Rating **	C	Issue No.	3
LM End	1.63	Issue Type +	Ma	Location *	LS
Category	Earthen Levee			GPS Latitude/Longitude	
				Start	End
Item	Vegetation			37.060389 °	37.060678 °
				-120.406555 °	-120.406345 °
DWR ID	DWR_NA0011_01_s_2012_3				
Action/Comments					
Remove the wild growth other than native grasses from the levee slopes.					

No Photos

* Location LS : Land Side N/A : Not Applicable WS : Water Side CR : Crown		** Rating A : Acceptable M : Minimally Acceptable U : Unacceptable		N : Not Inspected/Rated C : Corrected A/W : Acceptable but Monitor & Maintain		+ Issue Type Ma : Maintenance Deficiency Ob : Design & System Obsolescence En : Enforcement	
---	--	---	--	---	--	--	--

**Flood Control Project Maintenance
Levee Inspections**

Maintenance Issue Types Only, Levee Inspection Report By Mile - Spring 2015

Madera County FCWCA

Waterway	Bank	Unit Miles	Inspection Start/End	Inspector
Unit No. 01 Ash Slough	Right	2.37	05/06/2015 05/05/2015	Herman Phillips

LM Start	1.82	Rating **	M	Issue No.	193
LM End	2.07	Issue Type +	Ma	Location *	LS
Category	Earthen Levee			GPS Latitude/Longitude	
				Start	End
Item	Vegetation			37.062715 °	37.065360 °
				-120.404058 °	-120.401108 °
DWR ID	DWR_NA0011_01_s _ 2015_193				
Action/Comments					
Remove the wild growth other than native grasses from the levee slopes.					

No Photos

LM Start	2.03	Rating **	C	Issue No.	26
LM End	2.15	Issue Type +	Ma	Location *	WS
Category	Earthen Levee			GPS Latitude/Longitude	
				Start	End
Item	Vegetation			37.064917 °	37.066035 °
				-120.401520 °	-120.399910 °
DWR ID	DWR_NA0011_01_f _ 2014_26				
Action/Comments					
Control annual grass and weeds on the levee slopes and easements. Inspector Comments: Remove the unwanted tall weeds from the waterward shoulder and slope.					

No Photos

LM Start	2.14	Rating **	M	Issue No.	7
LM End	2.37	Issue Type +	Ma	Location *	WS
Category	Earthen Levee			GPS Latitude/Longitude	
				Start	End
Item	Slope Stability			37.065995 °	37.068757 °
				-120.400048 °	-120.398570 °
DWR ID	DWR_NA0011_01_s _ 2015_7				
Action/Comments					
Repair the levee slope damaged by vehicle traffic and prevent access where possible.					

No Photos

* Location LS : Land Side N/A : Not Applicable WS : Water Side CR : Crown		** Rating A : Acceptable M : Minimally Acceptable U : Unacceptable N : Not Inspected/Rated C : Corrected A/W : Acceptable but Monitor & Maintain		+ Issue Type Ma : Maintenance Deficiency Ob : Design & System Obsolescence En : Enforcement	
--	--	---	--	---	--

**Flood Control Project Maintenance
Levee Inspections**

Maintenance Issue Types Only, Levee Inspection Report By Mile - Spring 2015

Madera County FCWCA

Waterway	Bank	Unit Miles	Inspection Start/End	Inspector
Unit No. 01 Ash Slough	Right	2.37	05/06/2015 05/05/2015	Herman Phillips

LM Start	2.35	Rating **	M	Issue No.	15
LM End	2.35	Issue Type +	Ma	Location *	WS
Category	Supplemental			GPS Latitude/Longitude	
				Start	End
Item	DWR Erosion Survey			37.068570 °	37.068570 °
				-120.398620 °	-120.398620 °
DWR ID	DWR_NA0011_01_s _ 2015_15				

Action/Comments

Inspector Comments: 07/22/2014: No significant change observed.
08/30/2013: No significant change observed
07/31/2012: Site was visited on 07/26/2012. No significant change observed
08/09/2011: Site was inspected. No visible change was observed from the previous condition. There have been no reports from the district that this site was corrected.
11/30/2010: Site was not inspected this year due to time constraints. There have been no reports from the district that this site was corrected. Continue monitor during flood events.
08/05/2010: Recommended for annual assessment and monitoring during flood events, per CLRO.
2009: Site is recommended as a local maintenance issue, per CLRO CES Evaluation 2008 Report; it was previously rated "M".
8/26/2008: Undulating waterside slope surface; vehicular damage along the waterside slope possibly caused by farming equipment; levee crown is composed of sandy material; there is a collection of concrete rubble on the waterside crown hinge; vehicular damage extends from levee toe to crown surface.
9/6/2007: Farmer degraded levee on water-ward slope and crown.
[2014 Site ID:NA0011U01RM3.8]

Photo 1 of 1 : SP_2015_NA0011_142_15_20150312_00002.jpg



Close view of the site. The site has been plowed by the farm vehicle and the erosion is not visible any longer.

* Location	** Rating	+ Issue Type
LS : Land Side WS : Water Side CR : Crown	A : Acceptable M : Minimally Acceptable U : Unacceptable	Ma : Maintenance Deficiency Ob : Design & System Obsolescence En : Enforcement
N/A : Not Applicable	N : Not Inspected/Rated C : Corrected A/W : Acceptable but Monitor & Maintain	

**Flood Control Project Maintenance
Levee Inspections**

Maintenance Issue Types Only, Levee Inspection Report By Mile - Spring 2015

Madera County FCWCA

Waterway	Bank	Unit Miles	Inspection Start/End	Inspector
Unit No. 02 Ash Slough	Left	2.04	05/05/2015 05/05/2015	Herman Phillips

LM Start	0.00	Rating **	U	Issue No.	177
LM End	0.03	Issue Type +	Ma	Location *	LS
Category	Earthen Levee			GPS Latitude/Longitude	
				Start	End
Item	Vegetation			37.045493 °	37.045608 °
				-120.427455 °	-120.426987 °
DWR ID	DWR_NA0011_02_s _ 2015_177				
Action/Comments					
Control annual grass and weeds on the levee slopes and easements. Inspector Comments: The unsatisfactory tall weeds need to be removed from levee section.					

Photo 1 of 1 : SP_2015_NA0011_143_177_20150511_00039.jpg



Tall weeds present on the landside shoulder and slope.

LM Start	0.00	Rating **	U	Issue No.	178
LM End	0.14	Issue Type +	Ma	Location *	LS
Category	Earthen Levee			GPS Latitude/Longitude	
				Start	End
Item	Animal Control			37.045493 °	37.046112 °
				-120.427455 °	-120.425045 °
DWR ID	DWR_NA0011_02_s _ 2015_178				
Action/Comments					
Exterminate rodents and backfill and compact or grout burrows. Inspector Comments: There need to be bait stations in place to control the rodent population.					

Photo 1 of 1 : SP_2015_NA0011_143_178_20150511_00040.jpg



There are many rodent holes present on the shoulder and slope of the landside section.

LM Start	0.00	Rating **	U	Issue No.	176
LM End	2.03	Issue Type +	Ma	Location *	WS
Category	Earthen Levee			GPS Latitude/Longitude	
				Start	End
Item	Vegetation			37.045493 °	37.064097 °
				-120.427455 °	-120.401053 °
DWR ID	DWR_NA0011_02_s _ 2015_176				
Action/Comments					
Remove the wild growth other than native grasses from the levee slopes.					
Inspector Comments: Remove the tall weeds from the levee slope waterside.					

Photo 1 of 1 : SP_2015_NA0011_143_176_20150511_00041.jpg



Ash Slough looking upstream from the waterside at unsatisfactory tall weeds on the levee slope.

* Location LS : Land Side N/A : Not Applicable WS : Water Side CR : Crown		** Rating A : Acceptable N : Not Inspected/Rated M : Minimally Acceptable C : Corrected U : Unacceptable A/W : Acceptable but Monitor & Maintain		+ Issue Type Ma : Maintenance Deficiency Ob : Design & System Obsolescence En : Enforcement	
--	--	---	--	---	--

**Flood Control Project Maintenance
Levee Inspections**

Maintenance Issue Types Only, Levee Inspection Report By Mile - Spring 2015

Madera County FCWCA

Waterway	Bank	Unit Miles	Inspection Start/End	Inspector
Unit No. 02 Ash Slough	Left	2.04	05/05/2015 05/05/2015	Herman Phillips

LM Start	0.01	Rating **	M	Issue No.	10
LM End	2.03	Issue Type +	Ma	Location *	WS
Category	Earthen Levee			GPS Latitude/Longitude	
				Start	End
Item	Vegetation			37.045583 °	37.064027 °
				-120.427335 °	-120.401112 °
DWR ID	DWR_NA0011_02_f_2014_10				
Action/Comments					
Control annual grass and weeds on the levee slopes and easements.					

No Photos

LM Start	0.03	Rating **	U	Issue No.	179
LM End	2.03	Issue Type +	Ma	Location *	WS
Category	Earthen Levee			GPS Latitude/Longitude	
				Start	End
Item	Animal Control			37.045633 °	37.064097 °
				-120.426912 °	-120.401053 °
DWR ID	DWR_NA0011_02_s_2015_179				
Action/Comments					
Exterminate rodents and backfill and compact or grout burrows. Inspector Comments: There are several large and small rodent holes present on slope, shoulder and toe of the water side levee section also they extend to the berm, rodents were seen running into some of the holes. No bait stations present.					

Photo 1 of 1 : SP_2015_NA0011_143_179_20150511_00042.jpg



From levee mile 0.03 through levee mile 2.03 rodent's are active and there are no bait stations in place.

LM Start	0.06	Rating **	U	Issue No.	19
LM End	1.67	Issue Type +	Ma	Location *	LS
Category	Earthen Levee			GPS Latitude/Longitude	
				Start	End
Item	Animal Control			37.045806 °	37.060091 °
				-120.426405 °	-120.405342 °
DWR ID	DWR_NA0011_02_f_2012_19				
Action/Comments					
Exterminate rodents and backfill and compact or grout burrows. Inspector Comments: The rodents here on the landside need to be controlled. Bait stations are needed. No new photo was taken.					

Photo 1 of 1 : SP_2015_NA0011_143_19_20150312_00003.jpg



Large rodent mounds underneath vine growth on the landside slope.

* Location		** Rating		+ Issue Type	
LS : Land Side	N/A : Not Applicable	A : Acceptable	N : Not Inspected/Rated	Ma : Maintenance Deficiency	
WS : Water Side		M : Minimally Acceptable	C : Corrected	Ob : Design & System Obsolescence	
CR : Crown		U : Unacceptable	A/W : Acceptable but Monitor & Maintain	En : Enforcement	

**Flood Control Project Maintenance
Levee Inspections**

Maintenance Issue Types Only, Levee Inspection Report By Mile - Spring 2015

Madera County FCWCA

Waterway	Bank	Unit Miles	Inspection Start/End	Inspector
Unit No. 02 Ash Slough	Left	2.04	05/05/2015 05/05/2015	Herman Phillips

LM Start	0.27	Rating **	M	Issue No.	21
LM End	0.30	Issue Type +	Ma	Location *	WS
Category	Earthen Levee			GPS Latitude/Longitude	
				Start	End
Item	Trim / Thin Trees			37.046937 °	37.047192 °
				-120.422815 °	-120.422517 °
DWR ID	DWR_NA0011_02_s_2012_21				
Action/Comments					
Trim trees to at least five feet above ground level.					

No Photos

LM Start	0.32	Rating **	U	Issue No.	39
LM End	0.87	Issue Type +	Ma	Location *	LS
Category	Earthen Levee			GPS Latitude/Longitude	
				Start	End
Item	Vegetation			37.047259 °	37.053507 °
				-120.422110 °	-120.416250 °
DWR ID	DWR_NA0011_02_f_2014_39				
Action/Comments					
Control annual grass and weeds on the levee slopes and easements. Inspector Comments: Wild growth on levee slope need to be removed.					

Photo 1 of 1 : SP_2015_NA0011_143_39_20150511_00043.jpg



Looking upstream from landside levee mile 0.32 wild weeds and broadleaf on levee slope. Rodent are active here also.

LM Start	0.32	Rating **	M	Issue No.	24
LM End	1.86	Issue Type +	Ma	Location *	WS
Category	Earthen Levee			GPS Latitude/Longitude	
				Start	End
Item	Vegetation			37.047415 °	37.062094 °
				-120.422141 °	-120.403083 °
DWR ID	DWR_NA0011_02_f_2012_24				
Action/Comments					
Remove the wild growth other than native grasses from the levee slopes.					

No Photos

* Location LS : Land Side N/A : Not Applicable WS : Water Side CR : Crown		** Rating A : Acceptable N : Not Inspected/Rated M : Minimally Acceptable C : Corrected U : Unacceptable A/W : Acceptable but Monitor & Maintain		+ Issue Type Ma : Maintenance Deficiency Ob : Design & System Obsolescence En : Enforcement
--	--	---	--	---

**Flood Control Project Maintenance
Levee Inspections**

Maintenance Issue Types Only, Levee Inspection Report By Mile - Spring 2015

Madera County FCWCA

Waterway	Bank	Unit Miles	Inspection Start/End	Inspector
Unit No. 02 Ash Slough	Left	2.04	05/05/2015 05/05/2015	Herman Phillips

LM Start	0.32	Rating **	M	Issue No.	28
LM End	0.32	Issue Type +	Ma	Location *	WS
Category	Earthen Levee			GPS Latitude/Longitude	
				Start	End
Item	Encroachments			37.047416 °	37.047416 °
				-120.422142 °	-120.422142 °
DWR ID	DWR_NA0011_02_f_2012_28				
Action/Comments					
Tree or limb					

Photo 1 of 1 : SP_2015_NA0011_143_28_20150511_00044.jpg



This dead tree has not been removed since last inspection.

LM Start	0.32	Rating **	M	Issue No.	29
LM End	0.99	Issue Type +	Ma	Location *	CR
Category	Earthen Levee			GPS Latitude/Longitude	
				Start	End
Item	Vegetation			37.047417 °	37.054965 °
				-120.422142 °	-120.415250 °
DWR ID	DWR_NA0011_02_f_2012_29				
Action/Comments					
Keep the crown roadway free of vegetation. Inspector Comments: The crown roadway should be free of vegetation.					

No Photos

LM Start	0.45	Rating **	M	Issue No.	38
LM End	0.96	Issue Type +	Ma	Location *	LS
Category	Earthen Levee			GPS Latitude/Longitude	
				Start	End
Item	Vegetation			37.048688 °	37.054693 °
				-120.420415 °	-120.415710 °
DWR ID	DWR_NA0011_02_f_2014_38				
Action/Comments					
Control annual grass and weeds on the levee slopes and easements.					

No Photos

* Location LS : Land Side N/A : Not Applicable WS : Water Side CR : Crown		** Rating A : Acceptable N : Not Inspected/Rated M : Minimally Acceptable C : Corrected U : Unacceptable A/W : Acceptable but Monitor & Maintain		+ Issue Type Ma : Maintenance Deficiency Ob : Design & System Obsolescence En : Enforcement
--	--	---	--	---

**Flood Control Project Maintenance
Levee Inspections**

Maintenance Issue Types Only, Levee Inspection Report By Mile - Spring 2015

Madera County FCWCA

Waterway	Bank	Unit Miles	Inspection Start/End	Inspector
Unit No. 02 Ash Slough	Left	2.04	05/05/2015 05/05/2015	Herman Phillips

LM Start	0.52	Rating **	M	Issue No.	35
LM End	0.52	Issue Type +	Ma	Location *	WS
Category	Earthen Levee			GPS Latitude/Longitude	
				Start	End
Item	Trim / Thin Trees			37.049289 °	37.049289 °
				-120.419542 °	-120.419542 °
DWR ID	DWR_NA0011_02_s _ 2013_35				
Action/Comments					
Thin trees to allow visibility of the ground and room to flood fight.					

No Photos

LM Start	0.57	Rating **	U	Issue No.	14
LM End	0.61	Issue Type +	Ma	Location *	LS
Category	Earthen Levee			GPS Latitude/Longitude	
				Start	End
Item	Encroachments			37.049830 °	37.050267 °
				-120.418812 °	-120.418329 °
DWR ID	DWR_NA0011_02_s _ 2012_14				
Action/Comments					
Pipe Inspector Comments: No permit on file for this encroachment.					

Photo 1 of 2 : SP_2015_NA0011_143_14_20150511_00045.jpg



This pipe goes all the way over to Unit 1 across the channel. No permit on file for this encroachment.

LM Start	0.57	Rating **	U	Issue No.	14 (cont)
LM End	0.61	Issue Type +	Ma	Location *	LS

Photo 2 of 2 : SP_2015_NA0011_143_14_20150511_00046.jpg



Another view of the pipe; there is evidence of leakage at the joints.

* Location LS : Land Side N/A : Not Applicable WS : Water Side CR : Crown		** Rating A : Acceptable M : Minimally Acceptable U : Unacceptable N : Not Inspected/Rated C : Corrected A/W : Acceptable but Monitor & Maintain		+ Issue Type Ma : Maintenance Deficiency Ob : Design & System Obsolescence En : Enforcement	
--	--	---	--	---	--

**Flood Control Project Maintenance
Levee Inspections**

Maintenance Issue Types Only, Levee Inspection Report By Mile - Spring 2015

Madera County FCWCA

Waterway	Bank	Unit Miles	Inspection Start/End	Inspector
Unit No. 02 Ash Slough	Left	2.04	05/05/2015 05/05/2015	Herman Phillips

LM Start	0.97	Rating **	U	Issue No.	44
LM End	1.38	Issue Type +	Ma	Location *	CR
Category	Earthen Levee			GPS Latitude/Longitude	
				Start	End
Item	Vegetation			37.054830 °	37.057948 °
				-120.415600 °	-120.409763 °
DWR ID	DWR_NA0011_02_f_2014_44				
Action/Comments					
Keep the crown roadway free of vegetation. Inspector Comments: Keep crown roadway free of vegetation. No new photo.					

Photo 1 of 1 : SP_2015_NA0011_143_44_20150312_00010.jpg



View of the crown roadway with tall grasses present. No new picture.

LM Start	1.03	Rating **	M	Issue No.	3
LM End	1.23	Issue Type +	Ma	Location *	WS
Category	Earthen Levee			GPS Latitude/Longitude	
				Start	End
Item	Trim / Thin Trees			37.055115 °	37.056050 °
				-120.414588 °	-120.411178 °
DWR ID	DWR_NA0011_02_s_2012_3				
Action/Comments					
Trim trees to at least five feet above ground level.					

No Photos

LM Start	1.13	Rating **	M	Issue No.	36
LM End	1.13	Issue Type +	Ma	Location *	WS
Category	Earthen Levee			GPS Latitude/Longitude	
				Start	End
Item	Trim / Thin Trees			37.055599 °	37.055599 °
				-120.412836 °	-120.412836 °
DWR ID	DWR_NA0011_02_s_2013_36				
Action/Comments					
Trim and thin trees to allow visibility of the ground and room to flood fight.					

No Photos

* Location LS : Land Side N/A : Not Applicable WS : Water Side CR : Crown		** Rating A : Acceptable M : Minimally Acceptable U : Unacceptable N : Not Inspected/Rated C : Corrected A/W : Acceptable but Monitor & Maintain		+ Issue Type Ma : Maintenance Deficiency Ob : Design & System Obsolescence En : Enforcement	
--	--	---	--	---	--

**Flood Control Project Maintenance
Levee Inspections**

Maintenance Issue Types Only, Levee Inspection Report By Mile - Spring 2015

Madera County FCWCA

Waterway	Bank	Unit Miles	Inspection Start/End	Inspector
Unit No. 02 Ash Slough	Left	2.04	05/05/2015 05/05/2015	Herman Phillips

LM Start	1.38	Rating **	M	Issue No.	16
LM End	2.02	Issue Type +	Ma	Location *	CR
Category	Earthen Levee			GPS Latitude/Longitude	
				Start	End
Item	Vegetation			37.057896 °	37.063896 °
				-120.409687 °	-120.401232 °
DWR ID	DWR_NA0011_02_s _ 2015_16				
Action/Comments					
Keep the crown roadway free of vegetation.					
Inspector Comments: Remove the vegetation from crown roadway.					

No Photos

LM Start	1.50	Rating **	M	Issue No.	1
LM End	1.50	Issue Type +	Ma	Location *	WS
Category	Earthen Levee			GPS Latitude/Longitude	
				Start	End
Item	Trim / Thin Trees			37.058573 °	37.058573 °
				-120.407660 °	-120.407660 °
DWR ID	DWR_NA0011_02_s _ 2012_1				
Action/Comments					
Trim trees to at least five feet above ground level.					

No Photos

LM Start	1.51	Rating **	M	Issue No.	25
LM End	1.52	Issue Type +	Ma	Location *	WS
Category	Earthen Levee			GPS Latitude/Longitude	
				Start	End
Item	Trim / Thin Trees			37.058652 °	37.058802 °
				-120.407638 °	-120.407350 °
DWR ID	DWR_NA0011_02_s _ 2012_25				
Action/Comments					
Trim trees to at least five feet above ground level.					

No Photos

* Location LS : Land Side N/A : Not Applicable WS : Water Side CR : Crown		** Rating A : Acceptable N : Not Inspected/Rated M : Minimally Acceptable C : Corrected U : Unacceptable A/W : Acceptable but Monitor & Maintain		+ Issue Type Ma : Maintenance Deficiency Ob : Design & System Obsolescence En : Enforcement
--	--	---	--	---

**Flood Control Project Maintenance
Levee Inspections**

Maintenance Issue Types Only, Levee Inspection Report By Mile - Spring 2015

Madera County FCWCA

Waterway	Bank	Unit Miles	Inspection Start/End	Inspector
Unit No. 03 Berenda Slough	Right	1.51	05/06/2015 05/06/2015	Herman Phillips

LM Start	0.00	Rating **	M	Issue No.	21
LM End	0.00	Issue Type +	Ma	Location *	LS
Category	Earthen Levee			GPS Latitude/Longitude	
				Start	End
Item	Vegetation			36.996580 °	36.996580 °
				-120.374020 °	-120.374020 °
DWR ID	DWR_NA0011_03_s_2014_21				
Action/Comments					
Remove the wild growth other than native grasses from the levee slopes.					

No Photos

LM Start	0.00	Rating **	U	Issue No.	1
LM End	1.52	Issue Type +	Ma	Location *	WS
Category	Earthen Levee			GPS Latitude/Longitude	
				Start	End
Item	Vegetation			36.996606 °	36.996612 °
				-120.373860 °	-120.346460 °
DWR ID	DWR_NA0011_03_s_2013_1				
Action/Comments					
Remove the wild growth other than native grasses from the levee slopes.					
Inspector Comments: Remove the wild weeds from the levee section.					

Photo 1 of 1 : SP_2015_NA0011_144_1_20150511_00025.jpg



Berenda Slough looking upstream from the waterside at unwanted tall weeds on the shoulder and slope.

LM Start	0.02	Rating **	M	Issue No.	119
LM End	0.48	Issue Type +	Ma	Location *	CR
Category	Earthen Levee			GPS Latitude/Longitude	
				Start	End
Item	Vegetation			36.996570 °	36.996208 °
				-120.373310 °	-120.365182 °
DWR ID	DWR_NA0011_03_s_2015_119				
Action/Comments					
Remove the wild growth other than native grasses from the levee slopes.					

No Photos

* Location		** Rating		+ Issue Type	
LS : Land Side	N/A : Not Applicable	A : Acceptable	N : Not Inspected/Rated	Ma : Maintenance Deficiency	
WS : Water Side		M : Minimally Acceptable	C : Corrected	Ob : Design & System Obsolescence	
CR : Crown		U : Unacceptable	A/W : Acceptable but Monitor & Maintain	En : Enforcement	

**Flood Control Project Maintenance
Levee Inspections**

Maintenance Issue Types Only, Levee Inspection Report By Mile - Spring 2015

Madera County FCWCA

Waterway	Bank	Unit Miles	Inspection Start/End	Inspector
Unit No. 03 Berenda Slough	Right	1.51	05/06/2015 05/06/2015	Herman Phillips

LM Start	0.03	Rating **	M	Issue No.	35
LM End	0.03	Issue Type +	Ma	Location *	LS
Category	Earthen Levee			GPS Latitude/Longitude	
				Start	End
Item	Trim / Thin Trees			36.996618 °	36.996618 °
				-120.373116 °	-120.373116 °
DWR ID	DWR_NA0011_03_f_2012_35				
Action/Comments					
Trim trees over roadway to at least 12 feet above ground level. Inspector Comments: Tree drags against vehicles as they pass by. Remove overhanging tree limbs.					

Photo 1 of 1 : SP_2015_NA0011_144_35_20150511_00026.jpg



Levee mile 0.03 landside dead trees still remain on the levee slope from last inspection.

LM Start	0.06	Rating **	M	Issue No.	18
LM End	0.06	Issue Type +	Ma	Location *	LS
Category	Earthen Levee			GPS Latitude/Longitude	
				Start	End
Item	Trim / Thin Trees			36.996378 °	36.996378 °
				-120.372738 °	-120.372738 °
DWR ID	DWR_NA0011_03_f_2014_18				
Action/Comments					
Trim trees to at least five feet above ground level.					

No Photos

LM Start	0.06	Rating **	M	Issue No.	29
LM End	1.52	Issue Type +	Ma	Location *	WS
Category	Earthen Levee			GPS Latitude/Longitude	
				Start	End
Item	Vegetation			36.996378 °	36.996611 °
				-120.372738 °	-120.346460 °
DWR ID	DWR_NA0011_03_f_2014_29				
Action/Comments					
Remove the wild growth other than native grasses from the levee slopes.					
Inspector Comments: Remove the wild growth other than native annual grasses.					

No Photos

* Location LS : Land Side N/A : Not Applicable WS : Water Side CR : Crown		** Rating A : Acceptable N : Not Inspected/Rated M : Minimally Acceptable C : Corrected U : Unacceptable A/W : Acceptable but Monitor & Maintain		+ Issue Type Ma : Maintenance Deficiency Ob : Design & System Obsolescence En : Enforcement
--	--	---	--	---

**Flood Control Project Maintenance
Levee Inspections**

Maintenance Issue Types Only, Levee Inspection Report By Mile - Spring 2015

Madera County FCWCA

Waterway	Bank	Unit Miles	Inspection Start/End	Inspector
Unit No. 03 Berenda Slough	Right	1.51	05/06/2015 05/06/2015	Herman Phillips

LM Start	0.06	Rating **	M	Issue No.	19
LM End	0.06	Issue Type +	Ma	Location *	LS
Category	Earthen Levee			GPS Latitude/Longitude	
				Start	End
Item	Encroachments			36.996348 °	36.996348 °
				-120.372699 °	-120.372699 °
DWR ID	DWR_NA0011_03_s _ 2012_19				
Action/Comments					
Tree or limb					

No Photos

LM Start	0.08	Rating **	M	Issue No.	32
LM End	0.89	Issue Type +	Ma	Location *	CR
Category	Earthen Levee			GPS Latitude/Longitude	
				Start	End
Item	Crown Surface / Depressions / Rutting			36.996264 °	36.996273 °
				-120.372350 °	-120.357666 °
DWR ID	DWR_NA0011_03_s _ 2014_32				
Action/Comments					
Add appropriate gravel or road base. Grade and compact.					

No Photos

LM Start	0.08	Rating **	C	Issue No.	20
LM End	0.08	Issue Type +	Ma	Location *	LS
Category	Earthen Levee			GPS Latitude/Longitude	
				Start	End
Item	Encroachments			36.996204 °	36.996201 °
				-120.372352 °	-120.372345 °
DWR ID	DWR_NA0011_03_s _ 2012_20				
Action/Comments					
Debris					

No Photos

* Location LS : Land Side N/A : Not Applicable WS : Water Side CR : Crown		** Rating A : Acceptable N : Not Inspected/Rated M : Minimally Acceptable C : Corrected U : Unacceptable A/W : Acceptable but Monitor & Maintain		+ Issue Type Ma : Maintenance Deficiency Ob : Design & System Obsolescence En : Enforcement
--	--	---	--	---

**Flood Control Project Maintenance
Levee Inspections**

Maintenance Issue Types Only, Levee Inspection Report By Mile - Spring 2015

Madera County FCWCA

Waterway	Bank	Unit Miles	Inspection Start/End	Inspector
Unit No. 03 Berenda Slough	Right	1.51	05/06/2015 05/06/2015	Herman Phillips

LM Start	0.13	Rating **	M	Issue No.	120
LM End	1.52	Issue Type +	Ma	Location *	WS
Category	Earthen Levee			GPS Latitude/Longitude	
				Start	End
Item	Animal Control			36.996168 °	36.996627 °
				-120.371442 °	-120.346533 °
DWR ID	DWR_NA0011_03_s _ 2015_120				
Action/Comments					
Exterminate rodents and backfill and compact or grout burrows.					

No Photos

LM Start	0.15	Rating **	U	Issue No.	121
LM End	0.45	Issue Type +	Ma	Location *	CR
Category	Earthen Levee			GPS Latitude/Longitude	
				Start	End
Item	Vegetation			36.996172 °	36.996213 °
				-120.371185 °	-120.365713 °
DWR ID	DWR_NA0011_03_s _ 2015_121				
Action/Comments					
Keep the crown roadway free of vegetation. Inspector Comments: Remove the vegetation from the crown roadway.					

Photo 1 of 1 : SP_2015_NA0011_144_121_20150513_00028.jpg



Crown roadway need to be free of vegetation.

LM Start	0.27	Rating **	M	Issue No.	122
LM End	1.52	Issue Type +	Ma	Location *	LS
Category	Earthen Levee			GPS Latitude/Longitude	
				Start	End
Item	Vegetation			36.996177 °	36.996627 °
				-120.368948 °	-120.346533 °
DWR ID	DWR_NA0011_03_s _ 2015_122				
Action/Comments					
Remove the wild growth other than native grasses from the levee slopes.					

No Photos

* Location LS : Land Side N/A : Not Applicable WS : Water Side CR : Crown		** Rating A : Acceptable N : Not Inspected/Rated M : Minimally Acceptable C : Corrected U : Unacceptable A/W : Acceptable but Monitor & Maintain		+ Issue Type Ma : Maintenance Deficiency Ob : Design & System Obsolescence En : Enforcement
--	--	---	--	---

**Flood Control Project Maintenance
Levee Inspections**

Maintenance Issue Types Only, Levee Inspection Report By Mile - Spring 2015

Madera County FCWCA

Waterway	Bank	Unit Miles	Inspection Start/End	Inspector
Unit No. 03 Berenda Slough	Right	1.51	05/06/2015 05/06/2015	Herman Phillips

LM Start	0.36	Rating **	U	Issue No.	36
LM End	1.52	Issue Type +	Ma	Location *	LS
Category	Earthen Levee			GPS Latitude/Longitude	
				Start	End
Item	Vegetation			36.996197 °	36.996611 °
				-120.367360 °	-120.346460 °
DWR ID	DWR_NA0011_03_f_2014_36				
Action/Comments					
Control annual grass and weeds on the levee slopes and easements. Inspector Comments: Control the unwanted wild growth from the landward levee section.					

Photo 1 of 1 : SP_2015_NA0011_144_36_20150312_00005.jpg



Looking upstream at levee mile 0.36 wild growth covering the landward levee section to the levee mile 1.52. No new photo taken 5-6-2015.

LM Start	0.71	Rating **	U	Issue No.	41
LM End	1.52	Issue Type +	Ma	Location *	LS
Category	Earthen Levee			GPS Latitude/Longitude	
				Start	End
Item	Animal Control			36.996240 °	36.996611 °
				-120.361028 °	-120.346460 °
DWR ID	DWR_NA0011_03_f_2014_41				
Action/Comments					
Repair the levee slope damaged by livestock and prevent large animal access.					
Inspector Comments: Need bait stations present where rodents are active.					

Photo 1 of 1 : SP_2015_NA0011_144_41_20150312_00007.jpg



Large rodent mounds on the landward levee slope. No new photo taken 5-2015, no change.

LM Start	0.87	Rating **	M	Issue No.	39
LM End	0.87	Issue Type +	Ma	Location *	LS
Category	Earthen Levee			GPS Latitude/Longitude	
				Start	End
Item	Trim / Thin Trees			36.996261 °	36.996261 °
				-120.358095 °	-120.358095 °
DWR ID	DWR_NA0011_03_s_2013_39				
Action/Comments					
Trim and thin trees to allow visibility of the ground and room to flood fight.					

No Photos

* Location		** Rating		+ Issue Type	
LS : Land Side	N/A : Not Applicable	A : Acceptable	N : Not Inspected/Rated	Ma : Maintenance Deficiency	
WS : Water Side		M : Minimally Acceptable	C : Corrected	Ob : Design & System Obsolescence	
CR : Crown		U : Unacceptable	A/W : Acceptable but Monitor & Maintain	En : Enforcement	

**Flood Control Project Maintenance
Levee Inspections**

Maintenance Issue Types Only, Levee Inspection Report By Mile - Spring 2015

Madera County FCWCA

Waterway	Bank	Unit Miles	Inspection Start/End	Inspector
Unit No. 03 Berenda Slough	Right	1.51	05/06/2015 05/06/2015	Herman Phillips

LM Start	0.96	Rating **	M	Issue No.	123
LM End	1.52	Issue Type +	Ma	Location *	CR
Category	Earthen Levee			GPS Latitude/Longitude	
				Start	End
Item	Vegetation			36.996230 °	36.996627 °
				-120.356417 °	-120.346533 °
DWR ID	DWR_NA0011_03_s_2015_123				
Action/Comments					
Keep the crown roadway free of vegetation.					

No Photos

LM Start	1.04	Rating **	U	Issue No.	47
LM End	1.04	Issue Type +	Ma	Location *	LS
Category	Earthen Levee			GPS Latitude/Longitude	
				Start	End
Item	Vegetation			36.996593 °	36.996593 °
				-120.355160 °	-120.355158 °
DWR ID	DWR_NA0011_03_s_2014_47				
Action/Comments					
Trees / Woody Vegetation					
Inspector Comments: Control the woody tree growth so the levee slope can be seen.					

Photo 1 of 1 : SP_2015_NA0011_144_47_20150513_00029.jpg



Woody tree growth completely blocking the levee slope and shoulder on the landside.

LM Start	1.04	Rating **	U	Issue No.	44
LM End	1.52	Issue Type +	Ma	Location *	CR
Category	Earthen Levee			GPS Latitude/Longitude	
				Start	End
Item	Vegetation			36.996592 °	36.996612 °
				-120.355155 °	-120.346460 °
DWR ID	DWR_NA0011_03_s_2014_44				
Action/Comments					
Keep the crown roadway free of vegetation.					
Inspector Comments: Keep crown roadway free of vegetation.					

Photo 1 of 1 : SP_2015_NA0011_144_44_20150513_00030.jpg



Looking upstream from levee mile 1.04 to levee mile 1.52 crown roadway overgrown with tall weeds.

* Location LS : Land Side N/A : Not Applicable WS : Water Side CR : Crown		** Rating A : Acceptable M : Minimally Acceptable U : Unacceptable N : Not Inspected/Rated C : Corrected A/W : Acceptable but Monitor & Maintain		+ Issue Type Ma : Maintenance Deficiency Ob : Design & System Obsolescence En : Enforcement	
--	--	---	--	---	--

**Flood Control Project Maintenance
Levee Inspections**

Maintenance Issue Types Only, Levee Inspection Report By Mile - Spring 2015

Madera County FCWCA

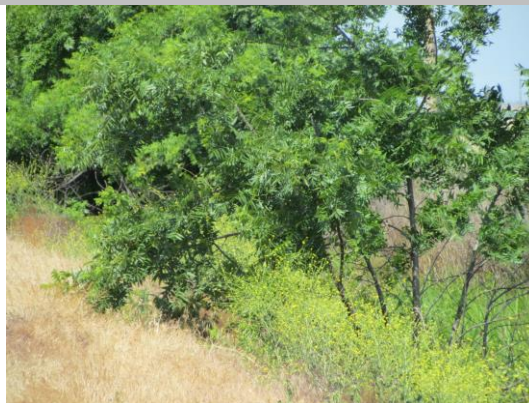
Waterway	Bank	Unit Miles	Inspection Start/End	Inspector
Unit No. 03 Berenda Slough	Right	1.51	05/06/2015 05/06/2015	Herman Phillips

LM Start	1.04	Rating **	M	Issue No.	48
LM End	1.52	Issue Type +	Ma	Location *	WS
Category	Earthen Levee			GPS Latitude/Longitude	
				Start	End
Item	Animal Control			36.996609 °	36.996612 °
				-120.355090 °	-120.346460 °
DWR ID	DWR_NA0011_03_s _ 2014_48				
Action/Comments					
Exterminate rodents and backfill and compact or grout burrows. Inspector Comments: Not able to see rodent holes on levee slope due to wild growth blocking view.					

No Photos

LM Start	1.07	Rating **	M	Issue No.	15
LM End	1.10	Issue Type +	Ma	Location *	LS
Category	Earthen Levee			GPS Latitude/Longitude	
				Start	End
Item	Trim / Thin Trees			36.996618 °	36.996633 °
				-120.354538 °	-120.354012 °
DWR ID	DWR_NA0011_03_s _ 2012_15				
Action/Comments					
Trim trees to at least five feet above ground level.					
Inspector Comments: Remove the small nut trees from the levee slope.					

Photo 1 of 1 : SP_2015_NA0011_144_15_20150513_00032.jpg



Unacceptable nut trees on the landside levee slope.

LM Start	1.07	Rating **	M	Issue No.	16
LM End	1.08	Issue Type +	Ma	Location *	WS
Category	Earthen Levee			GPS Latitude/Longitude	
				Start	End
Item	Trim / Thin Trees			36.996620 °	36.996625 °
				-120.354535 °	-120.354340 °
DWR ID	DWR_NA0011_03_s _ 2012_16				
Action/Comments					
Trim trees to at least five feet above ground level.					

No Photos

* Location LS : Land Side N/A : Not Applicable WS : Water Side CR : Crown		** Rating A : Acceptable N : Not Inspected/Rated M : Minimally Acceptable C : Corrected U : Unacceptable A/W : Acceptable but Monitor & Maintain		+ Issue Type Ma : Maintenance Deficiency Ob : Design & System Obsolescence En : Enforcement
--	--	---	--	---

**Flood Control Project Maintenance
Levee Inspections**

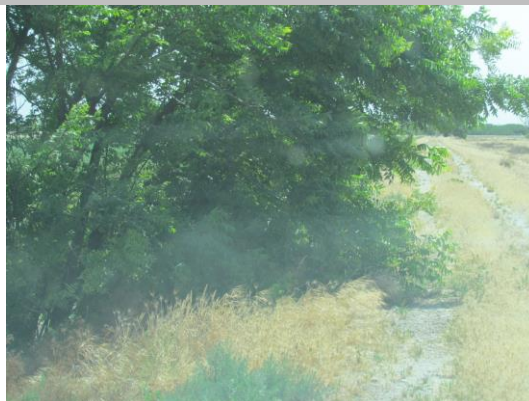
Maintenance Issue Types Only, Levee Inspection Report By Mile - Spring 2015

Madera County FCWCA

Waterway	Bank	Unit Miles	Inspection Start/End	Inspector
Unit No. 03 Berenda Slough	Right	1.51	05/06/2015 05/06/2015	Herman Phillips

LM Start	1.24	Rating **	U	Issue No.	17
LM End	1.24	Issue Type +	Ma	Location *	LS
Category	Earthen Levee			GPS Latitude/Longitude	
				Start	End
Item	Trim / Thin Trees			36.996632 °	36.996632 °
				-120.351463 °	-120.351463 °
DWR ID	DWR_NA0011_03_s _ 2012_17				
Action/Comments					
Thin trees to allow visibility of the ground and room to flood fight. Inspector Comments: Trim the tree blocking the levee slope landside.					

Photo 1 of 1 : SP_2015_NA0011_144_17_20150513_00033.jpg



Looking upstream from landward levee mile 1.24 tree growth blocks slope shoulder and portion of the crown roadway.

LM Start	1.26	Rating **	M	Issue No.	30
LM End	1.26	Issue Type +	Ma	Location *	LS
Category	Earthen Levee			GPS Latitude/Longitude	
				Start	End
Item	Trim / Thin Trees			36.996603 °	36.996603 °
				-120.351115 °	-120.351115 °
DWR ID	DWR_NA0011_03_s _ 2012_30				
Action/Comments					
Thin trees to allow visibility of the ground and room to flood fight.					

Photo 1 of 1 : SP_2015_NA0011_144_30_20150513_00034.jpg



Young nut tree on the landside levee slope.

LM Start	1.48	Rating **	U	Issue No.	8
LM End	1.51	Issue Type +	Ma	Location *	CR
Category	Earthen Levee			GPS Latitude/Longitude	
				Start	End
Item	Animal Control			36.996550 °	36.996583 °
				-120.347108 °	-120.346683 °
DWR ID	DWR_NA0011_03_s _ 2012_8				
Action/Comments					
Exterminate rodents and backfill and compact or grout burrows. Inspector Comments: At this levee section at levee mile 1.50 I measured a section of levee where there were 15 holes on the waterside, 4 on the crown roadway, and 3 on the landside. Pictures taken. This issue has not changed since last inspection, no new picture taken during spring 2015					

No Photos

* Location		** Rating		+ Issue Type	
LS : Land Side	N/A : Not Applicable	A : Acceptable	N : Not Inspected/Rated	Ma : Maintenance Deficiency	
WS : Water Side		M : Minimally Acceptable	C : Corrected	Ob : Design & System Obsolescence	
CR : Crown		U : Unacceptable	A/W : Acceptable but Monitor & Maintain	En : Enforcement	

**Flood Control Project Maintenance
Levee Inspections**

Maintenance Issue Types Only, Levee Inspection Report By Mile - Spring 2015

Madera County FCWCA

Waterway	Bank	Unit Miles	Inspection Start/End	Inspector
Unit No. 03 Berenda Slough	Right	1.51	05/06/2015 05/06/2015	Herman Phillips

LM Start	1.48	Rating **	M	Issue No.	9
LM End	1.51	Issue Type +	Ma	Location *	WS
Category	Earthen Levee			GPS Latitude/Longitude	
				Start	End
Item	Animal Control			36.996557 °	36.996583 °
				-120.347102 °	-120.346678 °
DWR ID	DWR_NA0011_03_s _ 2012_9				
Action/Comments					
Exterminate rodents and backfill and compact or grout burrows.					

No Photos

*** Location**
 LS : Land Side N/A : Not Applicable
 WS : Water Side
 CR : Crown

**** Rating**
 A : Acceptable N : Not Inspected/Rated
 M : Minimally Acceptable C : Corrected
 U : Unacceptable A/W : Acceptable but Monitor & Maintain

+ Issue Type
 Ma : Maintenance Deficiency
 Ob : Design & System Obsolescence
 En : Enforcement

**Flood Control Project Maintenance
Levee Inspections**

Maintenance Issue Types Only, Levee Inspection Report By Mile - Spring 2015

Madera County FCWCA

Waterway	Bank	Unit Miles	Inspection Start/End	Inspector
Unit No. 04 Berenda Slough	Left	2.28	05/06/2015 05/06/2015	Herman Phillips

LM Start	0.01	Rating **	U	Issue No.	2
LM End	0.45	Issue Type +	Ma	Location *	LS
Category	Earthen Levee			GPS Latitude/Longitude	
				Start	End
Item	Animal Control			36.995499 °	36.995610 °
				-121.373370 °	-120.365297 °
DWR ID	DWR_NA0011_04_s_2012_2				
Action/Comments					
Exterminate rodents and backfill and compact or grout burrows. Inspector Comments: Need a much better approach to handling the rodent population.					

Photo 1 of 2 : SP_2015_NA0011_145_2_20150312_00002.jpg



Listed last year inspection 2014. The area has not changed. The slopes look the same.

LM Start	0.01	Rating **	U	Issue No.	2 (cont)
LM End	0.45	Issue Type +	Ma	Location *	LS

Photo 2 of 2 : SP_2015_NA0011_145_2_20150513_00089.jpg



Rodents are active in the area as listed during the last inspection. No bait stations on site.

LM Start	0.01	Rating **	U	Issue No.	1
LM End	1.50	Issue Type +	Ma	Location *	LS
Category	Earthen Levee			GPS Latitude/Longitude	
				Start	End
Item	Vegetation			36.995493 °	36.995593 °
				-120.373242 °	-120.346400 °
DWR ID	DWR_NA0011_04_f_2014_1				
Action/Comments					
Remove the wild growth other than native grasses from the levee slopes.					
Inspector Comments: No maintenance has been done here for several years now. The tumble weeds are 3.0 feet tall on both slopes.					

Photo 1 of 1 : SP_2015_NA0011_145_1_20150513_00088.jpg



Berenda Slough looking upstream from levee mile 0.01 to levee mile 1.50, tall weeds present on the landward levee slope.

* Location LS : Land Side N/A : Not Applicable WS : Water Side CR : Crown		** Rating A : Acceptable M : Minimally Acceptable U : Unacceptable		N : Not Inspected/Rated C : Corrected A/W : Acceptable but Monitor & Maintain		+ Issue Type Ma : Maintenance Deficiency Ob : Design & System Obsolescence En : Enforcement	
--	--	--	--	---	--	---	--

**Flood Control Project Maintenance
Levee Inspections**

Maintenance Issue Types Only, Levee Inspection Report By Mile - Spring 2015

Madera County FCWCA

Waterway	Bank	Unit Miles	Inspection Start/End	Inspector
Unit No. 04 Berenda Slough	Left	2.28	05/06/2015 05/06/2015	Herman Phillips

LM Start	0.01	Rating **	U	Issue No.	4
LM End	1.60	Issue Type +	Ma	Location *	WS
Category	Earthen Levee			GPS Latitude/Longitude	
				Start	End
Item	Vegetation			36.995493 °	36.996215 °
				-120.373242 °	-120.344808 °
DWR ID	DWR_NA0011_04_f_2014_4				
Action/Comments					
Remove the wild growth other than native grasses from the levee slopes.					
Inspector Comments: No maintenance has been done in several years, the weeds are 3.0 feet tall. The condition of the levee slopes can't be seen through wild weeds.					

Photo 1 of 1 : SP_2015_NA0011_145_4_20150513_00090.jpg



Unacceptable wild growth on the waterside slope and shoulder.

LM Start	0.08	Rating **	M	Issue No.	25
LM End	0.08	Issue Type +	Ma	Location *	WS
Category	Earthen Levee			GPS Latitude/Longitude	
				Start	End
Item	Trim / Thin Trees			36.995557 °	36.995557 °
				-120.372062 °	-120.372062 °
DWR ID	DWR_NA0011_04_s_2013_25				
Action/Comments					
Trim trees over roadway to at least 12 feet above ground level.					

No Photos

LM Start	0.12	Rating **	M	Issue No.	26
LM End	0.12	Issue Type +	Ma	Location *	WS
Category	Earthen Levee			GPS Latitude/Longitude	
				Start	End
Item	Trim / Thin Trees			36.995532 °	36.995532 °
				-120.371428 °	-120.371428 °
DWR ID	DWR_NA0011_04_s_2013_26				
Action/Comments					
Trim trees over roadway to at least 12 feet above ground level.					

No Photos

* Location LS : Land Side N/A : Not Applicable WS : Water Side CR : Crown		** Rating A : Acceptable N : Not Inspected/Rated M : Minimally Acceptable C : Corrected U : Unacceptable A/W : Acceptable but Monitor & Maintain		+ Issue Type Ma : Maintenance Deficiency Ob : Design & System Obsolescence En : Enforcement
--	--	---	--	---

**Flood Control Project Maintenance
Levee Inspections**

Maintenance Issue Types Only, Levee Inspection Report By Mile - Spring 2015

Madera County FCWCA

Waterway	Bank	Unit Miles	Inspection Start/End	Inspector
Unit No. 04 Berenda Slough	Left	2.28	05/06/2015 05/06/2015	Herman Phillips

LM Start	0.30	Rating **	M	Issue No.	14
LM End	1.32	Issue Type +	Ma	Location *	WS
Category	Earthen Levee			GPS Latitude/Longitude	
				Start	End
Item	Vegetation			36.995526 °	36.995566 °
				-120.368064 °	-120.349628 °
DWR ID	DWR_NA0011_04_s_2012_14				
Action/Comments					
Remove the wild growth other than native grasses from the levee slopes.					

No Photos

LM Start	0.48	Rating **	M	Issue No.	6
LM End	0.48	Issue Type +	Ma	Location *	WS
Category	Earthen Levee			GPS Latitude/Longitude	
				Start	End
Item	Encroachments			36.995572 °	36.995570 °
				-120.364872 °	-120.364760 °
DWR ID	DWR_NA0011_04_s_2012_6				
Action/Comments					
Tree or limb					

No Photos

LM Start	0.58	Rating **	U	Issue No.	22
LM End	1.15	Issue Type +	Ma	Location *	CR
Category	Earthen Levee			GPS Latitude/Longitude	
				Start	End
Item	Vegetation			36.995610 °	36.995503 °
				-120.363079 °	-120.352640 °
DWR ID	DWR_NA0011_04_f_2012_22				
Action/Comments					
Remove the wild growth other than native grasses from the levee slopes.					
Inspector Comments: Unacceptable growth on crown roadway. Growth 3.0-foot tall.					

Photo 1 of 1 : SP_2015_NA0011_145_22_20150513_00093.jpg



Looking upstream where no maintenance has been done. Weeds are 3.0 foot tall on crown and both slopes.

* Location LS : Land Side N/A : Not Applicable WS : Water Side CR : Crown		** Rating A : Acceptable N : Not Inspected/Rated M : Minimally Acceptable C : Corrected U : Unacceptable A/W : Acceptable but Monitor & Maintain		+ Issue Type Ma : Maintenance Deficiency Ob : Design & System Obsolescence En : Enforcement
--	--	---	--	---

**Flood Control Project Maintenance
Levee Inspections**

Maintenance Issue Types Only, Levee Inspection Report By Mile - Spring 2015

Madera County FCWCA

Waterway	Bank	Unit Miles	Inspection Start/End	Inspector
Unit No. 04 Berenda Slough	Left	2.28	05/06/2015 05/06/2015	Herman Phillips

LM Start	0.62	Rating **	U	Issue No.	205
LM End	0.62	Issue Type +	Ma	Location *	WS
Category	Earthen Levee			GPS Latitude/Longitude	
				Start	End
Item	Animal Control			36.995568 °	36.995568 °
				-120.362345 °	-120.362345 °
DWR ID	DWR_NA0011_04_s_2015_205				
Action/Comments					
Exterminate rodents and backfill and compact or grout burrows. Inspector Comments: Bait station are needed at this location.					

Photo 1 of 2 : SP_2015_NA0011_145_205_20150513_00091.jpg



Rodents are active at this location.

LM Start	0.62	Rating **	U	Issue No.	205 (cont)
LM End	0.62	Issue Type +	Ma	Location *	WS

Photo 2 of 2 : SP_2015_NA0011_145_205_20150513_00092.jpg



Another view of the activity in area.

LM Start	0.94	Rating **	U	Issue No.	7
LM End	1.50	Issue Type +	Ma	Location *	CR
Category	Earthen Levee			GPS Latitude/Longitude	
				Start	End
Item	Vegetation			36.995632 °	36.995593 °
				-120.356600 °	-120.346400 °
DWR ID	DWR_NA0011_04_f_2014_7				
Action/Comments					
Keep the crown roadway free of vegetation. Inspector Comments: Weeds are from 2.5 to 3.0 feet tall in crown roadway from 0.95-1.52.					

Photo 1 of 1 : SP_2015_NA0011_145_7_20150312_00004.jpg



Unwanted tall weeds completely covering the levee crown roadway. No new photo.

* Location		** Rating		+ Issue Type	
LS : Land Side	N/A : Not Applicable	A : Acceptable	N : Not Inspected/Rated	Ma : Maintenance Deficiency	
WS : Water Side		M : Minimally Acceptable	C : Corrected	Ob : Design & System Obsolescence	
CR : Crown		U : Unacceptable	A/W : Acceptable but Monitor & Maintain	En : Enforcement	

**Flood Control Project Maintenance
Levee Inspections**

Maintenance Issue Types Only, Levee Inspection Report By Mile - Spring 2015

Madera County FCWCA

Waterway	Bank	Unit Miles	Inspection Start/End	Inspector
Unit No. 04 Berenda Slough	Left	2.28	05/06/2015 05/06/2015	Herman Phillips

LM Start	0.94	Rating **	M	Issue No.	29
LM End	1.25	Issue Type +	Ma	Location *	LS
Category	Earthen Levee			GPS Latitude/Longitude	
				Start	End
Item	Animal Control			36.995552 °	36.995474 °
				-120.356537 °	-120.350890 °
DWR ID	DWR_NA0011_04_s _ 2013_29				
Action/Comments					
Exterminate rodents and backfill and compact or grout burrows.					

No Photos

LM Start	0.94	Rating **	M	Issue No.	28
LM End	0.94	Issue Type +	Ma	Location *	LS
Category	Earthen Levee			GPS Latitude/Longitude	
				Start	End
Item	Slope Stability			36.995546 °	36.995546 °
				-120.356494 °	-120.356494 °
DWR ID	DWR_NA0011_04_s _ 2013_28				
Action/Comments					
Repair slope instability.					

No Photos

LM Start	1.05	Rating **	M	Issue No.	55
LM End	1.32	Issue Type +	Ma	Location *	LS
Category	Earthen Levee			GPS Latitude/Longitude	
				Start	End
Item	Vegetation			36.995596 °	36.995571 °
				-120.354562 °	-120.349736 °
DWR ID	DWR_NA0011_04_s _ 2012_55				
Action/Comments					
Remove the wild growth other than native grasses from the levee slopes.					

No Photos

* Location LS : Land Side N/A : Not Applicable WS : Water Side CR : Crown		** Rating A : Acceptable N : Not Inspected/Rated M : Minimally Acceptable C : Corrected U : Unacceptable A/W : Acceptable but Monitor & Maintain		+ Issue Type Ma : Maintenance Deficiency Ob : Design & System Obsolescence En : Enforcement
--	--	---	--	---

**Flood Control Project Maintenance
Levee Inspections**

Maintenance Issue Types Only, Levee Inspection Report By Mile - Spring 2015

Madera County FCWCA

Waterway	Bank	Unit Miles	Inspection Start/End	Inspector
Unit No. 04 Berenda Slough	Left	2.28	05/06/2015 05/06/2015	Herman Phillips

LM Start	1.07	Rating **	U	Issue No.	23
LM End	2.17	Issue Type +	Ma	Location *	LS
Category	Earthen Levee			GPS Latitude/Longitude	
				Start	End
Item	Animal Control			36.995478 °	37.002630 °
				-120.354210 °	-120.338255 °
DWR ID	DWR_NA0011_04_f_2014_23				
Action/Comments					
Exterminate rodents and backfill and compact or grout burrows. Inspector Comments: Need bait stations in active areas.					

Photo 1 of 1 : SP_2015_NA0011_145_23_20150513_00094.jpg



Rodent mounds and holes covers the slope. The levee is like this through to the end of the unit.

LM Start	1.50	Rating **	M	Issue No.	24
LM End	1.87	Issue Type +	Ma	Location *	LS
Category	Earthen Levee			GPS Latitude/Longitude	
				Start	End
Item	Animal Control			36.995662 °	37.003441 °
				-120.346381 °	-120.346460 °
DWR ID	DWR_NA0011_04_f_2012_24				
Action/Comments					
No rodents visible, but rodent burrows visible; need to backfill and compact or grout burrows. Inspector Comments: There needs to be bait stations here to control the activity along this stretch of levee.					

Photo 1 of 2 : SP_2015_NA0011_145_24_20150513_00095.jpg



Rodent are very active here from levee mile 1.50 to 1.87 slope and crown roadway.

LM Start	1.50	Rating **	M	Issue No.	24 (cont)
LM End	1.87	Issue Type +	Ma	Location *	LS

Photo 2 of 2 : SP_2015_NA0011_145_24_20150513_00096.jpg



Here in the crown roadway the rodent has burrowed through the blacktop.

* Location LS : Land Side N/A : Not Applicable WS : Water Side CR : Crown		** Rating A : Acceptable M : Minimally Acceptable U : Unacceptable		N : Not Inspected/Rated C : Corrected A/W : Acceptable but Monitor & Maintain		+ Issue Type Ma : Maintenance Deficiency Ob : Design & System Obsolescence En : Enforcement	
---	--	---	--	---	--	--	--

**Flood Control Project Maintenance
Levee Inspections**

Maintenance Issue Types Only, Levee Inspection Report By Mile - Spring 2015

Madera County FCWCA

Waterway	Bank	Unit Miles	Inspection Start/End	Inspector
Unit No. 04 Berenda Slough	Left	2.28	05/06/2015 05/06/2015	Herman Phillips

LM Start	1.51	Rating **	U	Issue No.	9
LM End	1.51	Issue Type +	Ma	Location *	LS
Category	Earthen Levee			GPS Latitude/Longitude	
				Start	End
Item	Slope Stability			36.995611 °	36.995611 °
				-120.346236 °	-120.346236 °
DWR ID	DWR_NA0011_04_s _ 2012_9				
Action/Comments					
Repair slope instability. Inspector Comments: The Madera County Resource Management Agency will be sending the landowner a letter addressing this damage. The damage here was caused by a Contractor. 11-01-2012 no repairs have been done to this site. 4-16-2013 this site was inspected and no repairs has been by landowner. Fall 2014 no change.					

Photo 1 of 3 : SP_2015_NA0011_145_9_20150312_00005.jpg



Levee mile 1.51 levee damaged by the landowner. Photo taken 4-24-2014.

LM Start	1.51	Rating **	U	Issue No.	9 (cont)
LM End	1.51	Issue Type +	Ma	Location *	LS

Photo 2 of 3 : SP_2015_NA0011_145_9_20150513_00097.jpg



No repairs to the levee observed on 5-6-2015.

LM Start	1.51	Rating **	U	Issue No.	9 (cont)
LM End	1.51	Issue Type +	Ma	Location *	LS

Photo 3 of 3 : SP_2015_NA0011_145_9_20150312_00006.jpg



Levee mile 1.51 landward slope remains unrepaired by the landowner. Photo taken 4-24-2014. No new photo taken Fall 2014. no change.

* Location LS : Land Side N/A : Not Applicable WS : Water Side CR : Crown		** Rating A : Acceptable M : Minimally Acceptable U : Unacceptable N : Not Inspected/Rated C : Corrected A/W : Acceptable but Monitor & Maintain		+ Issue Type Ma : Maintenance Deficiency Ob : Design & System Obsolescence En : Enforcement	
--	--	---	--	---	--

**Flood Control Project Maintenance
Levee Inspections**

Maintenance Issue Types Only, Levee Inspection Report By Mile - Spring 2015

Madera County FCWCA

Waterway	Bank	Unit Miles	Inspection Start/End	Inspector
Unit No. 04 Berenda Slough	Left	2.28	05/06/2015 05/06/2015	Herman Phillips

LM Start	1.57	Rating **	M	Issue No.	206
LM End	1.57	Issue Type +	Ma	Location *	CR
Category	Earthen Levee			GPS Latitude/Longitude	
				Start	End
Item	Animal Control			36.995920 °	36.995920 °
				-120.345143 °	-120.345143 °
DWR ID	DWR_NA0011_04_s_2015_206				
Action/Comments					
Exterminate rodents and backfill and compact or grout burrows.					

No Photos

LM Start	1.61	Rating **	M	Issue No.	27
LM End	1.63	Issue Type +	Ma	Location *	WS
Category	Earthen Levee			GPS Latitude/Longitude	
				Start	End
Item	Animal Control			36.996295 °	36.996503 °
				-120.344750 °	-120.344465 °
DWR ID	DWR_NA0011_04_f_2014_27				
Action/Comments					
Exterminate rodents and backfill and compact or grout burrows.					

No Photos

LM Start	1.63	Rating **	U	Issue No.	30
LM End	2.04	Issue Type +	Ma	Location *	WS
Category	Earthen Levee			GPS Latitude/Longitude	
				Start	End
Item	Animal Control			36.996503 °	37.001118 °
				-120.344465 °	-120.339812 °
DWR ID	DWR_NA0011_04_f_2014_30				
Action/Comments					
Exterminate rodents and backfill and compact or grout burrows. Inspector Comments: Bait stations are needed in this infested area.					

Photo 1 of 1 : SP_2015_NA0011_145_30_20150312_00011.jpg



Berenda Slough looking downstream along the waterside slope at large rodent holes on slope. No new photo.

* Location LS : Land Side N/A : Not Applicable WS : Water Side CR : Crown		** Rating A : Acceptable N : Not Inspected/Rated M : Minimally Acceptable C : Corrected U : Unacceptable A/W : Acceptable but Monitor & Maintain		+ Issue Type Ma : Maintenance Deficiency Ob : Design & System Obsolescence En : Enforcement	
--	--	---	--	---	--

**Flood Control Project Maintenance
Levee Inspections**

Maintenance Issue Types Only, Levee Inspection Report By Mile - Spring 2015

Madera County FCWCA

Waterway	Bank	Unit Miles	Inspection Start/End	Inspector
Unit No. 05 Fresno River	Right	9.10	05/06/2015 05/06/2015	Herman Phillips

LM Start	0.03	Rating **	U	Issue No.	40
LM End	4.06	Issue Type +	Ma	Location *	WS
Category	Earthen Levee			GPS Latitude/Longitude	
				Start	End
Item	Vegetation			36.978528 °	36.968192 °
				-120.368010 °	-120.300930 °
DWR ID	DWR_NA0011_05_f_2014_40				
Action/Comments					
Control annual grass and weeds on the levee slopes and easements. Inspector Comments: The levee slope need to be mowed or burned.					

Photo 1 of 1 : SP_2015_NA0011_146_40_20150513_00157.jpg



Looking downstream from levee mile 0.03 tall weeds on the waterside slope.

LM Start	0.03	Rating **	U	Issue No.	15
LM End	4.06	Issue Type +	Ma	Location *	CR
Category	Earthen Levee			GPS Latitude/Longitude	
				Start	End
Item	Vegetation			36.978528 °	36.968192 °
				-120.368005 °	-120.300925 °
DWR ID	DWR_NA0011_05_f_2014_15				
Action/Comments					
Keep the crown roadway free of vegetation.					
Inspector Comments: Keep the crown free of vegetation.					

Photo 1 of 1 : SP_2015_NA0011_146_15_20150513_00156.jpg



Looking downstream at the crown roadway. It should be free of vegetation.

LM Start	0.19	Rating **	M	Issue No.	3
LM End	0.40	Issue Type +	Ma	Location *	LS
Category	Earthen Levee			GPS Latitude/Longitude	
				Start	End
Item	Animal Control			36.977998 °	36.976882 °
				-120.365077 °	-120.361610 °
DWR ID	DWR_NA0011_05_s_2012_3				
Action/Comments					
No rodents visible, but rodent burrows visible; need to backfill and compact or grout burrows.					

No Photos

* Location		** Rating		+ Issue Type	
LS : Land Side	N/A : Not Applicable	A : Acceptable	N : Not Inspected/Rated	Ma : Maintenance Deficiency	
WS : Water Side		M : Minimally Acceptable	C : Corrected	Ob : Design & System Obsolescence	
CR : Crown		U : Unacceptable	A/W : Acceptable but Monitor & Maintain	En : Enforcement	

**Flood Control Project Maintenance
Levee Inspections**

Maintenance Issue Types Only, Levee Inspection Report By Mile - Spring 2015

Madera County FCWCA

Waterway	Bank	Unit Miles	Inspection Start/End	Inspector
Unit No. 05 Fresno River	Right	9.10	05/06/2015 05/06/2015	Herman Phillips

LM Start	0.20	Rating **	M	Issue No.	4
LM End	0.26	Issue Type +	Ma	Location *	WS
Category	Earthen Levee			GPS Latitude/Longitude	
				Start	End
Item	Animal Control			36.977967 °	36.977715 °
				-120.364960 °	-120.363902 °
DWR ID	DWR_NA0011_05_s _ 2012_4				
Action/Comments					
No rodents visible, but rodent burrows visible; need to backfill and compact or grout burrows.					

No Photos

LM Start	0.54	Rating **	M	Issue No.	5
LM End	0.56	Issue Type +	Ma	Location *	LS
Category	Earthen Levee			GPS Latitude/Longitude	
				Start	End
Item	Animal Control			36.975520 °	36.975350 °
				-120.359788 °	-120.359548 °
DWR ID	DWR_NA0011_05_s _ 2012_5				
Action/Comments					
Exterminate rodents and backfill and compact or grout burrows. Inspector Comments: Unable to see the rodent holes through weeds on slope.					

No Photos

LM Start	0.86	Rating **	M	Issue No.	13
LM End	1.13	Issue Type +	Ma	Location *	CR
Category	Earthen Levee			GPS Latitude/Longitude	
				Start	End
Item	Crown Surface / Depressions / Rutting			36.972344 °	36.968963 °
				-120.355692 °	-120.353347 °
DWR ID	DWR_NA0011_05_s _ 2012_13				
Action/Comments					
Add appropriate material and re-grade the levee to bring the crown above the design elevation.					

No Photos

* Location LS : Land Side N/A : Not Applicable WS : Water Side CR : Crown		** Rating A : Acceptable N : Not Inspected/Rated M : Minimally Acceptable C : Corrected U : Unacceptable A/W : Acceptable but Monitor & Maintain		+ Issue Type Ma : Maintenance Deficiency Ob : Design & System Obsolescence En : Enforcement
--	--	---	--	---

**Flood Control Project Maintenance
Levee Inspections**

Maintenance Issue Types Only, Levee Inspection Report By Mile - Spring 2015

Madera County FCWCA

Waterway	Bank	Unit Miles	Inspection Start/End	Inspector
Unit No. 05 Fresno River	Right	9.10	05/06/2015 05/06/2015	Herman Phillips

LM Start	1.28	Rating **	M	Issue No.	11
LM End	1.37	Issue Type +	Ma	Location *	LS
Category	Earthen Levee			GPS Latitude/Longitude	
				Start	End
Item	Crown Surface / Depressions / Rutting			36.967858 °	36.967868 °
				-120.351064 °	-120.349417 °
DWR ID	DWR_NA0011_05_s _ 2012_11				
Action/Comments					
Repair depressions or ruts in the crown or slope.					

No Photos

LM Start	1.51	Rating **	M	Issue No.	14
LM End	1.58	Issue Type +	Ma	Location *	LS
Category	Earthen Levee			GPS Latitude/Longitude	
				Start	End
Item	Crown Surface / Depressions / Rutting			36.967876 °	36.967865 °
				-120.347037 °	-120.345679 °
DWR ID	DWR_NA0011_05_s _ 2012_14				
Action/Comments					
Repair depressions or ruts in the crown or slope.					

No Photos

LM Start	1.57	Rating **	M	Issue No.	18
LM End	4.06	Issue Type +	Ma	Location *	LS
Category	Earthen Levee			GPS Latitude/Longitude	
				Start	End
Item	Animal Control			36.967928 °	36.968175 °
				-120.345813 °	-120.300922 °
DWR ID	DWR_NA0011_05_s _ 2012_18				
Action/Comments					
Exterminate rodents and backfill and compact or grout burrows. Inspector Comments: No photo.					

No Photos

* Location LS : Land Side N/A : Not Applicable WS : Water Side CR : Crown		** Rating A : Acceptable N : Not Inspected/Rated M : Minimally Acceptable C : Corrected U : Unacceptable A/W : Acceptable but Monitor & Maintain		+ Issue Type Ma : Maintenance Deficiency Ob : Design & System Obsolescence En : Enforcement
--	--	---	--	---

**Flood Control Project Maintenance
Levee Inspections**

Maintenance Issue Types Only, Levee Inspection Report By Mile - Spring 2015

Madera County FCWCA

Waterway	Bank	Unit Miles	Inspection Start/End	Inspector
Unit No. 05 Fresno River	Right	9.10	05/06/2015 05/06/2015	Herman Phillips

LM Start	2.50	Rating **	M	Issue No.	19
LM End	2.50	Issue Type +	Ma	Location *	WS
Category	Rivers, Channels & Designated Floodways	GPS Latitude/Longitude			
		Start		End	
Item	Encroachments	36.968222 °		36.968222 °	
		-120.329131 °		-120.329131 °	
DWR ID	DWR_NA0011_05_s _ 2012_19				
Action/Comments					
Inspector Comments: Trash in channel.					

No Photos

LM Start	4.20	Rating **	M	Issue No.	22
LM End	5.22	Issue Type +	Ma	Location *	WS
Category	Earthen Levee			GPS Latitude/Longitude	
				Start	End
Item	Animal Control			36.968138 °	36.968247 °
				-120.298362 °	-120.279960 °
DWR ID	DWR_NA0011_05_s _ 2012_22				
Action/Comments					
Exterminate rodents and backfill and compact or grout burrows. Inspector Comments: Can't see the rodent holes through the weeds currently.					

No Photos

LM Start	4.20	Rating **	M	Issue No.	21
LM End	4.32	Issue Type +	Ma	Location *	LS
Category	Earthen Levee			GPS Latitude/Longitude	
				Start	End
Item	Animal Control			36.968135 °	36.968202 °
				-120.298355 °	-120.296210 °
DWR ID	DWR_NA0011_05_s _ 2015_21				
Action/Comments					
No rodents visible, but rodent burrows visible; need to backfill and compact or grout burrows. Inspector Comments: Was not able to see the rodent through the tall weeds.					

No Photos

* Location LS : Land Side N/A : Not Applicable WS : Water Side CR : Crown		** Rating A : Acceptable N : Not Inspected/Rated M : Minimally Acceptable C : Corrected U : Unacceptable A/W : Acceptable but Monitor & Maintain		+ Issue Type Ma : Maintenance Deficiency Ob : Design & System Obsolescence En : Enforcement
--	--	---	--	---

**Flood Control Project Maintenance
Levee Inspections**

Maintenance Issue Types Only, Levee Inspection Report By Mile - Spring 2015

Madera County FCWCA

Waterway	Bank	Unit Miles	Inspection Start/End	Inspector
Unit No. 05 Fresno River	Right	9.10	05/06/2015 05/06/2015	Herman Phillips

LM Start	6.58	Rating **	U	Issue No.	34
LM End	7.52	Issue Type +	Ma	Location *	WS
Category	Earthen Levee			GPS Latitude/Longitude	
				Start	End
Item	Vegetation			36.968512 °	36.969528 °
				-120.255425 °	-120.238603 °
DWR ID	DWR_NA0011_05_f_2014_34				
Action/Comments					
Control annual grass and weeds on the levee slopes and easements. Inspector Comments: The wild growth of brush and weeds has to be controlled.					

Photo 1 of 1 : SP_2015_NA0011_146_34_20150527_00159.jpg



Looking upstream at the waterside with tall weeds on the levee slope.

LM Start	6.71	Rating **	M	Issue No.	44
LM End	6.82	Issue Type +	Ma	Location *	LS
Category	Earthen Levee			GPS Latitude/Longitude	
				Start	End
Item	Animal Control			36.968992 °	36.969465 °
				-120.253143 °	-120.251303 °
DWR ID	DWR_NA0011_05_f_2014_44				
Action/Comments					
Exterminate rodents and backfill and compact or grout burrows.					

No Photos

LM Start	7.11	Rating **	M	Issue No.	45
LM End	7.52	Issue Type +	Ma	Location *	CR
Category	Earthen Levee			GPS Latitude/Longitude	
				Start	End
Item	Vegetation			36.969512 °	36.969528 °
				-120.245957 °	-120.238603 °
DWR ID	DWR_NA0011_05_f_2014_45				
Action/Comments					
Keep the crown roadway free of vegetation.					

No Photos

* Location		** Rating		+ Issue Type	
LS : Land Side	N/A : Not Applicable	A : Acceptable	N : Not Inspected/Rated	Ma : Maintenance Deficiency	
WS : Water Side		M : Minimally Acceptable	C : Corrected	Ob : Design & System Obsolescence	
CR : Crown		U : Unacceptable	A/W : Acceptable but Monitor & Maintain	En : Enforcement	

**Flood Control Project Maintenance
Levee Inspections**

Maintenance Issue Types Only, Levee Inspection Report By Mile - Spring 2015

Madera County FCWCA

Waterway	Bank	Unit Miles	Inspection Start/End	Inspector
Unit No. 05 Fresno River	Right	9.10	05/06/2015 05/06/2015	Herman Phillips

LM Start	7.22	Rating **	M	Issue No.	441
LM End	7.22	Issue Type +	Ma	Location *	CR
Category	Earthen Levee			GPS Latitude/Longitude	
				Start	End
Item	Animal Control			36.969542 °	36.969542 °
				-120.244067 °	-120.244067 °
DWR ID	DWR_NA0011_05_s _ 2015_441				
Action/Comments					
Exterminate rodents and backfill and compact or grout burrows.					

No Photos

LM Start	8.11	Rating **	M	Issue No.	37
LM End	8.19	Issue Type +	Ma	Location *	LS
Category	Earthen Levee			GPS Latitude/Longitude	
				Start	End
Item	Animal Control			36.972391 °	36.972399 °
				-120.228857 °	-120.227424 °
DWR ID	DWR_NA0011_05_s _ 2013_37				
Action/Comments					
No rodents visible, but rodent burrows visible; need to backfill and compact or grout burrows.					

No Photos

LM Start	8.39	Rating **	C	Issue No.	28
LM End	8.41	Issue Type +	Ma	Location *	N/A
Category	Earthen Levee			GPS Latitude/Longitude	
				Start	End
Item	Encroachments			36.972931 °	36.972924 °
				-120.224024 °	-120.223538 °
DWR ID	DWR_NA0011_05_s _ 2012_28				
Action/Comments					
Firewood					
Inspector Comments: Remove the firewood from the landside slope and toe, this levee has a history of rodents. This wood pile will provide a unwanted habitat for them.					

No Photos

* Location LS : Land Side N/A : Not Applicable WS : Water Side CR : Crown		** Rating A : Acceptable N : Not Inspected/Rated M : Minimally Acceptable C : Corrected U : Unacceptable A/W : Acceptable but Monitor & Maintain		+ Issue Type Ma : Maintenance Deficiency Ob : Design & System Obsolescence En : Enforcement	
---	--	--	--	--	--

**Flood Control Project Maintenance
Levee Inspections**

Maintenance Issue Types Only, Levee Inspection Report By Mile - Spring 2015

Madera County FCWCA

Waterway	Bank	Unit Miles	Inspection Start/End	Inspector
Unit No. 06 Fresno River	Left	9.03	05/06/2015 05/06/2015	Herman Phillips

LM Start	0.00	Rating **	M	Issue No.	21
LM End	1.06	Issue Type +	Ma	Location *	LS
Category	Earthen Levee			GPS Latitude/Longitude	
				Start	End
Item	Vegetation			36.976994 °	36.968011 °
				-120.367549 °	-120.353556 °
DWR ID	DWR_NA0011_06_s _ 2012_21				
Action/Comments					
Remove the wild growth other than native grasses from the levee slopes.					
Inspector Comments: Remove the tall weeds from the slopes and from crown roadway.					

Photo 1 of 1 : SP_2015_NA0011_147_21_20150528_00137.jpg



View of weeds on both slopes and crown roadway.

LM Start	0.00	Rating **	U	Issue No.	23
LM End	3.42	Issue Type +	Ma	Location *	WS
Category	Earthen Levee			GPS Latitude/Longitude	
				Start	End
Item	Vegetation			36.976994 °	36.967421 °
				-120.367548 °	-120.311329 °
DWR ID	DWR_NA0011_06_s _ 2012_23				
Action/Comments					
Remove the wild growth other than native grasses from the levee slopes.					
Inspector Comments: Remove the wild growth of weeds from waterside levee shoulder and slope.					

Photo 1 of 1 : SP_2015_NA0011_147_23_20150528_00138.jpg



Fresno River looking upstream at tall weeds on the waterside slope.

LM Start	0.03	Rating **	M	Issue No.	35
LM End	1.13	Issue Type +	Ma	Location *	CR
Category	Earthen Levee			GPS Latitude/Longitude	
				Start	End
Item	Vegetation			36.976952 °	36.967407 °
				-120.366988 °	-120.352670 °
DWR ID	DWR_NA0011_06_f _ 2014_35				
Action/Comments					
Keep the crown roadway free of vegetation.					

No Photos

* Location		** Rating		+ Issue Type	
LS : Land Side	N/A : Not Applicable	A : Acceptable	N : Not Inspected/Rated	Ma : Maintenance Deficiency	
WS : Water Side		M : Minimally Acceptable	C : Corrected	Ob : Design & System Obsolescence	
CR : Crown		U : Unacceptable	A/W : Acceptable but Monitor & Maintain	En : Enforcement	

**Flood Control Project Maintenance
Levee Inspections**

Maintenance Issue Types Only, Levee Inspection Report By Mile - Spring 2015

Madera County FCWCA

Waterway	Bank	Unit Miles	Inspection Start/End	Inspector
Unit No. 06 Fresno River	Left	9.03	05/06/2015 05/06/2015	Herman Phillips

LM Start	0.18	Rating **	M	Issue No.	18
LM End	3.19	Issue Type +	Ma	Location *	LS
Category	Earthen Levee			GPS Latitude/Longitude	
				Start	End
Item	Animal Control			36.976901 °	36.967383 °
				-120.364174 °	-120.315330 °
DWR ID	DWR_NA0011_06_s _ 2012_18				
Action/Comments					
No rodents visible, but rodent burrows visible; need to backfill and compact or grout burrows.					

No Photos

LM Start	1.82	Rating **	M	Issue No.	427
LM End	3.38	Issue Type +	Ma	Location *	CR
Category	Earthen Levee			GPS Latitude/Longitude	
				Start	End
Item	Vegetation			36.967178 °	36.967347 °
				-120.340088 °	-120.311943 °
DWR ID	DWR_NA0011_06_s _ 2015_427				
Action/Comments					
Keep the crown roadway free of vegetation.					

No Photos

LM Start	4.13	Rating **	M	Issue No.	48
LM End	4.13	Issue Type +	Ma	Location *	LS
Category	Earthen Levee			GPS Latitude/Longitude	
				Start	End
Item	Animal Control			36.967465 °	36.967465 °
				-120.298415 °	-120.298415 °
DWR ID	DWR_NA0011_06_f _ 2014_48				
Action/Comments					
Exterminate rodents and backfill and compact or grout burrows. Inspector Comments: Huge rodent hole in crown roadway landward. The issue has not changed as of 5-6-2015					

Photo 1 of 1 : SP_2015_NA0011_147_48_20150312_00013.jpg



Huge rodent hole in crown roadway.

* Location LS : Land Side N/A : Not Applicable WS : Water Side CR : Crown		** Rating A : Acceptable N : Not Inspected/Rated M : Minimally Acceptable C : Corrected U : Unacceptable A/W : Acceptable but Monitor & Maintain		+ Issue Type Ma : Maintenance Deficiency Ob : Design & System Obsolescence En : Enforcement	
--	--	---	--	---	--

**Flood Control Project Maintenance
Levee Inspections**

Maintenance Issue Types Only, Levee Inspection Report By Mile - Spring 2015

Madera County FCWCA

Waterway	Bank	Unit Miles	Inspection Start/End	Inspector
Unit No. 06 Fresno River	Left	9.03	05/06/2015 05/06/2015	Herman Phillips

LM Start	4.62	Rating **	M	Issue No.	38
LM End	4.62	Issue Type +	Ma	Location *	CR
Category	Earthen Levee			GPS Latitude/Longitude	
				Start	End
Item	Animal Control			36.967497 °	36.967497 °
				-120.289576 °	-120.289576 °
DWR ID	DWR_NA0011_06_s _ 2013_38				
Action/Comments					
Exterminate rodents and backfill and compact or grout burrows.					

No Photos

LM Start	4.98	Rating **	U	Issue No.	426
LM End	4.98	Issue Type +	Ma	Location *	LS
Category	Earthen Levee			GPS Latitude/Longitude	
				Start	End
Item	Slope Stability			36.967488 °	36.967488 °
				-120.283082 °	-120.283082 °
DWR ID	DWR_NA0011_06_s _ 2015_426				
Action/Comments					
Repair the levee slope damaged by vehicle traffic and prevent access where possible.					

No Photos

LM Start	5.48	Rating **	M	Issue No.	15
LM End	6.16	Issue Type +	Ma	Location *	LS
Category	Earthen Levee			GPS Latitude/Longitude	
				Start	End
Item	Vegetation			36.967497 °	36.967549 °
				-120.273990 °	-120.261772 °
DWR ID	DWR_NA0011_06_s _ 2012_15				
Action/Comments					
Remove the wild growth other than native grasses from the levee slopes.					

No Photos

* Location LS : Land Side N/A : Not Applicable WS : Water Side CR : Crown		** Rating A : Acceptable N : Not Inspected/Rated M : Minimally Acceptable C : Corrected U : Unacceptable A/W : Acceptable but Monitor & Maintain		+ Issue Type Ma : Maintenance Deficiency Ob : Design & System Obsolescence En : Enforcement
--	--	---	--	---

**Flood Control Project Maintenance
Levee Inspections**

Maintenance Issue Types Only, Levee Inspection Report By Mile - Spring 2015

Madera County FCWCA

Waterway	Bank	Unit Miles	Inspection Start/End	Inspector
Unit No. 06 Fresno River	Left	9.03	05/06/2015 05/06/2015	Herman Phillips

LM Start	5.49	Rating **	M	Issue No.	16
LM End	6.09	Issue Type +	Ma	Location *	CR
Category	Earthen Levee			GPS Latitude/Longitude	
				Start	End
Item	Vegetation			36.967504 °	36.967485 °
				-120.273877 °	-120.262972 °
DWR ID	DWR_NA0011_06_s _ 2012_16				
Action/Comments					
Keep the crown roadway free of vegetation.					

No Photos

LM Start	6.15	Rating **	M	Issue No.	6
LM End	6.44	Issue Type +	Ma	Location *	LS
Category	Earthen Levee			GPS Latitude/Longitude	
				Start	End
Item	Animal Control			36.967572 °	36.967923 °
				-120.261918 °	-120.256698 °
DWR ID	DWR_NA0011_06_s _ 2012_6				
Action/Comments					
Exterminate rodents and backfill and compact or grout burrows.					

No Photos

LM Start	7.48	Rating **	U	Issue No.	422
LM End	7.66	Issue Type +	Ma	Location *	CR
Category	Earthen Levee			GPS Latitude/Longitude	
				Start	End
Item	Vegetation			36.968848 °	36.969242 °
				-120.238053 °	-120.234910 °
DWR ID	DWR_NA0011_06_s _ 2015_422				
Action/Comments					
Keep the crown roadway free of vegetation.					
Inspector Comments: Crown roadway should be free from vegetation.					

Photo 1 of 1 : SP_2015_NA0011_147_422_20150528_00144.jpg



View of unacceptable tall weeds growing on crown roadway.

* Location LS : Land Side N/A : Not Applicable WS : Water Side CR : Crown		** Rating A : Acceptable N : Not Inspected/Rated M : Minimally Acceptable C : Corrected U : Unacceptable A/W : Acceptable but Monitor & Maintain		+ Issue Type Ma : Maintenance Deficiency Ob : Design & System Obsolescence En : Enforcement
--	--	---	--	---

**Flood Control Project Maintenance
Levee Inspections**

Maintenance Issue Types Only, Levee Inspection Report By Mile - Spring 2015

Madera County FCWCA

Waterway	Bank	Unit Miles	Inspection Start/End	Inspector
Unit No. 06 Fresno River	Left	9.03	05/06/2015 05/06/2015	Herman Phillips

LM Start	7.62	Rating **	U	Issue No.	423
LM End	8.43	Issue Type +	Ma	Location *	WS
Category	Earthen Levee			GPS Latitude/Longitude	
				Start	End
Item	Vegetation			36.968915 °	36.972037 °
				-120.237210 °	-120.221900 °
DWR ID	DWR_NA0011_06_s _ 2015_423				
Action/Comments					
Remove the wild growth other than native grasses from the levee slopes.					
Inspector Comments: Control the tall weeds on the waterside levee slope.					

Photo 1 of 1 : SP_2015_NA0011_147_423_20150528_00142.jpg



View of unacceptable tall weeds on the waterside slope.

LM Start	7.90	Rating **	U	Issue No.	420
LM End	8.39	Issue Type +	Ma	Location *	CR
Category	Earthen Levee			GPS Latitude/Longitude	
				Start	End
Item	Vegetation			36.971182 °	36.972258 °
				-120.231422 °	-120.222577 °
DWR ID	DWR_NA0011_06_s _ 2015_420				
Action/Comments					
Remove the wild growth other than native grasses from the levee slopes. Inspector Comments: Crown roadway should be free from vegetation.					

Photo 1 of 1 : SP_2015_NA0011_147_420_20150528_00141.jpg



Fresno River Unit 6 from levee mile 7.90-8.39 weeds are growing on crown roadway.

LM Start	8.79	Rating **	M	Issue No.	11
LM End	8.79	Issue Type +	Ma	Location *	WS
Category	Earthen Levee			GPS Latitude/Longitude	
				Start	End
Item	Animal Control			36.971944 °	36.971944 °
				-120.215790 °	-120.215790 °
DWR ID	DWR_NA0011_06_s _ 2013_11				
Action/Comments					
Exterminate rodents and backfill and compact or grout burrows.					

No Photos

* Location		** Rating		+ Issue Type	
LS : Land Side	N/A : Not Applicable	A : Acceptable	N : Not Inspected/Rated	Ma : Maintenance Deficiency	
WS : Water Side		M : Minimally Acceptable	C : Corrected	Ob : Design & System Obsolescence	
CR : Crown		U : Unacceptable	A/W : Acceptable but Monitor & Maintain	En : Enforcement	