

**Flood Control Project Maintenance  
Levee Inspections**

**Maintenance Issue Types Only, Levee Inspection Report By Mile - Fall 2023**

**Madera County FCWCA**

Waterway	Bank	Unit Miles	Inspection Start/End	Inspector
Unit No. 01 Ash Slough	Right	2.37	10/26/2023 10/26/2023	Corey Fujitani

LM Start		Rating **	A	Issue No.	<b>41</b>
LM End		Issue Type +	Ma	Location *	
Category	Earthen Levee			GPS Latitude/Longitude	
				Start	End
Item	Operations & Maintenance Manuals			°	°
				°	°
DWR ID	DWR_NA0011_01_s_2012_41				
Comment Code					
OM : O&M Manuals					
Inspector Comment					
Madera County has a copy of the O&M Manual on hand.					

No Photos

LM Start		Rating **	A	Issue No.	<b>43</b>
LM End		Issue Type +	Ma	Location *	
Category	Earthen Levee			GPS Latitude/Longitude	
				Start	End
Item	Emergency Supplies & Equipment			°	°
				°	°
DWR ID	DWR_NA0011_01_s_2012_43				
Comment Code					
ES : Emergency Supplies & Equipment					
Inspector Comment					
Madera County has emergency supplies.					

No Photos

LM Start		Rating **	A	Issue No.	<b>44</b>
LM End		Issue Type +	Ma	Location *	
Category	Earthen Levee			GPS Latitude/Longitude	
				Start	End
Item	Flood Preparedness & Training			°	°
				°	°
DWR ID	DWR_NA0011_01_s_2012_44				
Comment Code					
FP : Flood Preparedness & Training					
Inspector Comment					
Madera County Flood Control has a good working knowledge of flood response activities and has been involved in flood fight training.					

No Photos

<b>* Location</b> LS : Land Side    N/A : Not Applicable WS : Water Side CR : Crown	<b>** Rating</b> A : Acceptable M : Minimally Acceptable U : Unacceptable	N : Not Inspected/Rated C : Corrected A/W : Acceptable but Monitor & Maintain	<b>+ Issue Type</b> Ma : Maintenance Deficiency Ob : Design & System Obsolescence En : Enforcement
--	--	---	---

**Flood Control Project Maintenance  
Levee Inspections**

**Maintenance Issue Types Only, Levee Inspection Report By Mile - Fall 2023**

**Madera County FCWCA**

Waterway	Bank	Unit Miles	Inspection Start/End	Inspector
Unit No. 01 Ash Slough	Right	2.37	10/26/2023 10/26/2023	Corey Fujitani

LM Start	0.04	Rating **	U	Issue No.	45
LM End	0.04	Issue Type +	Ma	Location *	
Category	Supplemental			GPS Latitude/Longitude	
				Start	End
Item	DWR UCIP LMA Responsibility			37.046618°	37.046618°
				-120.427350°	-120.427350°
DWR ID	21513				
Comment Code					
Inspector Comment					
DS_ID:21513 FS_ID:74905 EP_NO: N/A Repair Type: Urgent EVAL Issue: 2b, Levee Integrity Crossing Status: Found UCIP Comments: 04/19/2022 Record remains Urgent. Erosion present on LS slope in front of concrete headwall. Soil within pipe inlet, mentioned in last inspection, has been removed. WS outlet is at a low point due to sediment buildup at end of spillway; recommend removal of sediment. DMP internal video inspection has not found pipe integrity issues. LOF of crossing is less or equal to 4. Recommend next video inspection in 5 years. (M.Thao - DWR UCIP) 10/31/2018 Erosion present on both the right and the left side of the concrete headwall located on the LS. Pipe inlet is about 50 percent filled with soil. WS outlet is at a low point, water will pond against the levee until it reaches channel elevation. This crossing does not properly drain to the channel. Levee is composed of highly erodible material. Recommend clearing soil from pipe and completing internal pipe inspection to determine pipe integrity through levee. (O. Magana - DWR UCIP) 07/14/2016 No inspection completed--need to inspect October 2016. (DWR UCIP - omagana)05/06/2014 Landward slope has been excavated and a berm built in front of landward headwall. Sediment visible inside pipe from landward side. Dense vegetation limits the inspector's visibility to identify signs of pipe failure (leaks) along the waterward slope. Recommend removing vegetation along pipe alignment and waterward headwall to conduct proper inspection of structure. (DWR UCIP - omagana) FIELD_STRUCT_DESC: 30-inch corrugated metal gravity drainage pipe through the levee, 9.5 feet below the crown. Headwall and wing wall on each end. Flap gate on the waterside (WS) end. [Additional Reference(s): DWR Levee Log, 2005 (HLM 0.04). USACE San Joaquin O&M Manual 605 (Station 2+94), listed as 30-inch pipe]. FS Date: 4/19/2022					

Photo 1 of 2 : UCIP\_FA\_2023\_74905\_112090.jpg



LS view: Looking toward levee; erosion in front of concrete headwall.

<b>* Location</b> LS: Land Side    N/A: Not Applicable WS: Water Side CR: Crown	<b>** Rating</b> A: Acceptable M: Minimally Acceptable U: Unacceptable	N: Not Inspected/Rated C: Corrected A/W: Acceptable but Monitor & Maintain	<b>+ Issue Type</b> Ma: Maintenance Deficiency Ob: Design & System Obsolescence En: Enforcement
--	---	--	--

**Flood Control Project Maintenance  
Levee Inspections**

**Maintenance Issue Types Only, Levee Inspection Report By Mile - Fall 2023**

**Madera County FCWCA**

Waterway	Bank	Unit Miles	Inspection Start/End	Inspector
Unit No. 01 Ash Slough	Right	2.37	10/26/2023 10/26/2023	Corey Fujitani

LM Start	0.04	Rating **	U	Issue No.	45 (cont)	
LM End	0.04	Issue Type +	Ma	Location *		
Category	Supplemental			GPS Latitude/Longitude		
				Start	End	
Item	DWR UCIP LMA Responsibility			37.046618°	37.046618°	
				-120.427350°	-120.427350°	
DWR ID	21513					

Photo 2 of 2 : UCIP\_FA\_2023\_74905\_112092.jpg



WS view: Concrete headwall, spillway, and flap gate; outlet is at a low point due to sediment buildup at end of spillway.

LM Start	0.04	Rating **	A/W	Issue No.	20
LM End	0.04	Issue Type +	Ma	Location *	LS
Category	Earthen Levee			GPS Latitude/Longitude	
				Start	End
Item	Erosion / Bank Caving			37.046624°	37.046624°
				-120.427317°	-120.427317°
DWR ID	DWR_NA0011_01_s_2014_20				
Comment Code					
E1 : Note and monitor erosion site.					
Inspector Comment					
The site appears to have been repaired. Monitor for settlement.					

Photo 1 of 1 : FA\_2023\_NA0011\_142\_20\_20230821\_00011.jpg



View of repaired slope damage on landside slope. (Fall 2021)

LM Start	0.16	Rating **	M	Issue No.	19
LM End	0.16	Issue Type +	Ma	Location *	LS
Category	Earthen Levee			GPS Latitude/Longitude	
				Start	End
Item	Animal Control			37.047122°	37.047122°
				-120.425237°	-120.425237°
DWR ID	DWR_NA0011_01_s_2022_19				
Comment Code					
A3 : No rodents visible, but rodent burrows visible; need to backfill and compact or grout burrows.					
Inspector Comment					
Rodent holes appear to have collapsed or partially been backfilled. Burrows should be completely backfilled and compacted.					

Photo 1 of 1 : FA\_2023\_NA0011\_142\_19\_20230821\_00010.jpg



Partially collapsed rodent holes in the landside slope. (Spring 2022)

<b>* Location</b> LS : Land Side    N/A : Not Applicable WS : Water Side CR : Crown		<b>** Rating</b> A : Acceptable M : Minimally Acceptable U : Unacceptable N : Not Inspected/Rated C : Corrected A/W : Acceptable but Monitor & Maintain		<b>+ Issue Type</b> Ma : Maintenance Deficiency Ob : Design & System Obsolescence En : Enforcement	
--	--	---	--	---	--



**Flood Control Project Maintenance  
Levee Inspections**

**Maintenance Issue Types Only, Levee Inspection Report By Mile - Fall 2023**

**Madera County FCWCA**

Waterway	Bank	Unit Miles	Inspection Start/End	Inspector
Unit No. 01 Ash Slough	Right	2.37	10/26/2023 10/26/2023	Corey Fujitani

LM Start	0.25	Rating **	M	Issue No.	6
LM End	0.30	Issue Type +	Ma	Location *	WS
Category	Earthen Levee			GPS Latitude/Longitude	
				Start	End
Item	Trim / Thin Trees			37.047531°	37.047963°
				-120.423746°	-120.422898°
DWR ID	DWR_NA0011_01_s_2012_6				
Comment Code					
T2 : Tree or limb.					
Inspector Comment					

No Photos

LM Start	0.33	Rating **	M	Issue No.	8
LM End	0.35	Issue Type +	Ma	Location *	WS
Category	Earthen Levee			GPS Latitude/Longitude	
				Start	End
Item	Trim / Thin Trees			37.048223°	37.048467°
				-120.422642°	-120.422315°
DWR ID	DWR_NA0011_01_s_2012_8				
Comment Code					
T2 : Tree or limb.					
Inspector Comment					
Tree limbs on the waterside slope and toe should be removed.					

Photo 1 of 1 : FA\_2023\_NA0011\_142\_8\_20230821\_00002.jpg



Tree limbs on the waterside slope and toe should be removed. (Fall 2022)

LM Start	0.44	Rating **	M	Issue No.	11
LM End	0.44	Issue Type +	Ma	Location *	WS
Category	Earthen Levee			GPS Latitude/Longitude	
				Start	End
Item	Trim / Thin Trees			37.049455°	37.049455°
				-120.421218°	-120.421218°
DWR ID	DWR_NA0011_01_f_2023_11				
Comment Code					
T2 : Tree or limb.					
Inspector Comment					
Remove the dead tree from the waterside slope.					

Photo 1 of 1 : FA\_2023\_NA0011\_142\_11\_20230821\_00004.jpg



Remove downed tree from waterside slope. (Spring 2022)

<b>* Location</b> LS : Land Side    N/A : Not Applicable WS : Water Side CR : Crown		<b>** Rating</b> A : Acceptable M : Minimally Acceptable U : Unacceptable		N : Not Inspected/Rated C : Corrected A/W : Acceptable but Monitor & Maintain		<b>+ Issue Type</b> Ma : Maintenance Deficiency Ob : Design & System Obsolescence En : Enforcement	
--	--	--	--	---	--	---	--

**Flood Control Project Maintenance  
Levee Inspections**

**Maintenance Issue Types Only, Levee Inspection Report By Mile - Fall 2023**

**Madera County FCWCA**

Waterway	Bank	Unit Miles	Inspection Start/End	Inspector
Unit No. 01 Ash Slough	Right	2.37	10/26/2023 10/26/2023	Corey Fujitani

LM Start	0.48	Rating **	M	Issue No.	10
LM End	0.53	Issue Type +	Ma	Location *	WS
Category	Earthen Levee			GPS Latitude/Longitude	
				Start	End
Item	Trim / Thin Trees			37.049822°	37.050335°
				-120.420654°	-120.419965°
DWR ID	DWR_NA0011_01_s_2012_10				
Comment Code					
T2 : Tree or limb.					
Inspector Comment					
Remove the tree limbs from the waterside slope.					

No Photos

LM Start	0.56	Rating **	M	Issue No.	24
LM End	0.56	Issue Type +	Ma	Location *	WS
Category	Earthen Levee			GPS Latitude/Longitude	
				Start	End
Item	Erosion / Bank Caving			37.050660°	37.050660°
				-120.419583°	-120.419583°
DWR ID	DWR_NA0011_01_f_2022_24				
Comment Code					
E2 : Schedule repair of erosion site prior to the next inspection.					
Inspector Comment					
There is an erosion pocket at the waterside toe around tree trunk and downed tree limb.					

Photo 1 of 1 : FA\_2023\_NA0011\_142\_24\_20230821\_00014.jpg

Erosion on the waterside toe around a fallen tree limb and tree trunk.  
(Fall 2022)

LM Start	0.62	Rating **	A/W	Issue No.	37
LM End	0.62	Issue Type +	Ma	Location *	WS
Category	Earthen Levee			GPS Latitude/Longitude	
				Start	End
Item	Trim / Thin Trees			37.051222°	37.051222°
				-120.418810°	-120.418810°
DWR ID	DWR_NA0011_01_f_2015_37				
Comment Code					
T2 : Tree or limb.					
Inspector Comment					
Remove the tree branches from the waterside slope.					

Photo 1 of 1 : FA\_2023\_NA0011\_142\_37\_20230821\_00022.jpg



Downed tree limbs on the waterside berm should be removed. (Fall 2022)

<b>* Location</b> LS : Land Side    N/A : Not Applicable WS : Water Side CR : Crown		<b>** Rating</b> A : Acceptable M : Minimally Acceptable U : Unacceptable N : Not Inspected/Rated C : Corrected A/W : Acceptable but Monitor & Maintain		<b>+ Issue Type</b> Ma : Maintenance Deficiency Ob : Design & System Obsolescence En : Enforcement	
--	--	---	--	---	--

**Flood Control Project Maintenance  
Levee Inspections**

**Maintenance Issue Types Only, Levee Inspection Report By Mile - Fall 2023**

**Madera County FCWCA**

Waterway	Bank	Unit Miles	Inspection Start/End	Inspector
Unit No. 01 Ash Slough	Right	2.37	10/26/2023 10/26/2023	Corey Fujitani

LM Start	0.75	Rating **	M	Issue No.	21
LM End	0.75	Issue Type +	Ma	Location *	WS
Category	Earthen Levee			GPS Latitude/Longitude	
				Start	End
Item	Trim / Thin Trees			37.052796°	37.052796°
				-120.417641°	-120.417640°
DWR ID	DWR_NA0011_01_f_2023_21				
Comment Code					
T2 : Tree or limb.					
Inspector Comment					
Remove tree limbs from waterside slope.					

Photo 1 of 1 : FA\_2023\_NA0011\_142\_21\_20231101\_00025.jpg



View of tree limbs on the waterside slope. (Fall 2023)

LM Start	0.79	Rating **	U	Issue No.	25
LM End	0.79	Issue Type +	Ma	Location *	WS
Category	Earthen Levee			GPS Latitude/Longitude	
				Start	End
Item	Trim / Thin Trees			37.053329°	37.053329°
				-120.417448°	-120.417448°
DWR ID	DWR_NA0011_01_f_2018_25				
Comment Code					
T2 : Tree or limb.					
Inspector Comment					
There is a fallen tree blocking the waterside slope.					

Photo 1 of 1 : FA\_2023\_NA0011\_142\_25\_20231101\_00026.jpg



Tree limbs and trunks are on the waterside shoulder and slope. (Fall 2023)

LM Start	0.93	Rating **	M	Issue No.	15
LM End	1.32	Issue Type +	Ma	Location *	WS
Category	Earthen Levee			GPS Latitude/Longitude	
				Start	End
Item	Vegetation			37.055276°	37.057996°
				-120.416437°	-120.410838°
DWR ID	DWR_NA0011_01_f_2023_15				
Comment Code					
V1 : Control annual grass and weeds on the levee slopes and easements.					
Inspector Comment					

No Photos

* Location		** Rating		+ Issue Type	
LS : Land Side	N/A : Not Applicable	A : Acceptable	N : Not Inspected/Rated	Ma : Maintenance Deficiency	
WS : Water Side		M : Minimally Acceptable	C : Corrected	Ob : Design & System Obsolescence	
CR : Crown		U : Unacceptable	A/W : Acceptable but Monitor & Maintain	En : Enforcement	



**Flood Control Project Maintenance  
Levee Inspections**

**Maintenance Issue Types Only, Levee Inspection Report By Mile - Fall 2023**

**Madera County FCWCA**

Waterway	Bank	Unit Miles	Inspection Start/End	Inspector
Unit No. 01 Ash Slough	Right	2.37	10/26/2023 10/26/2023	Corey Fujitani

LM Start	1.00	Rating **	U	Issue No.	30
LM End	1.00	Issue Type +	Ma	Location *	WS
Category	Earthen Levee			GPS Latitude/Longitude	
				Start	End
Item	Erosion / Bank Caving			37.055763°	37.055763°
				-120.415308°	-120.415308°
DWR ID	DWR_NA0011_01_f_2022_30				
Comment Code					
E2 : Schedule repair of erosion site prior to the next inspection.					
Inspector Comment					
Erosion pocket that appears to be caused by rodent activity on the waterside slope.					

Photo 1 of 1 : FA\_2023\_NA0011\_142\_30\_20230821\_00018.jpg



Erosion pocket on the waterside slope. (Fall 2022)

LM Start	1.26	Rating **	A/W	Issue No.	31
LM End	1.31	Issue Type +	Ma	Location *	LS
Category	Earthen Levee			GPS Latitude/Longitude	
				Start	End
Item	Animal Control			37.057219°	37.057878°
				-120.411317°	-120.410915°
DWR ID	DWR_NA0011_01_f_2022_31				
Comment Code					
A3 : No rodents visible, but rodent burrows visible; need to backfill and compact or grout burrows.					
Inspector Comment					

Photo 1 of 1 : FA\_2023\_NA0011\_142\_31\_20230821\_00019.jpg



Multiple rodent holes observed on the landside slope. (Fall 2022)

LM Start	1.51	Rating **	A/W	Issue No.	33
LM End	1.51	Issue Type +	Ma	Location *	LS
Category	Earthen Levee			GPS Latitude/Longitude	
				Start	End
Item	Animal Control			37.059440°	37.059440°
				-120.407896°	-120.407896°
DWR ID	DWR_NA0011_01_f_2022_33				
Comment Code					
A3 : No rodents visible, but rodent burrows visible; need to backfill and compact or grout burrows.					
Inspector Comment					

Photo 1 of 1 : FA\_2023\_NA0011\_142\_33\_20230821\_00021.jpg



View of animal burrow on the landside slope. (Fall 2022)

<b>* Location</b> LS : Land Side    N/A : Not Applicable WS : Water Side CR : Crown		<b>** Rating</b> A : Acceptable M : Minimally Acceptable U : Unacceptable N : Not Inspected/Rated C : Corrected A/W : Acceptable but Monitor & Maintain		<b>+ Issue Type</b> Ma : Maintenance Deficiency Ob : Design & System Obsolescence En : Enforcement	
--	--	---	--	---	--

**Flood Control Project Maintenance  
Levee Inspections**

**Maintenance Issue Types Only, Levee Inspection Report By Mile - Fall 2023**

**Madera County FCWCA**

Waterway	Bank	Unit Miles	Inspection Start/End	Inspector
Unit No. 01 Ash Slough	Right	2.37	10/26/2023 10/26/2023	Corey Fujitani

LM Start	1.58	Rating **	A/W	Issue No.	23
LM End	1.58	Issue Type +	Ma	Location *	WS
Category	Earthen Levee			GPS Latitude/Longitude	
				Start	End
Item	Animal Control			37.060115°	37.060115°
				-120.406932°	-120.406932°
DWR ID	DWR_NA0011_01_s_2022_23				
Comment Code					
A3 : No rodents visible, but rodent burrows visible; need to backfill and compact or grout burrows.					
Inspector Comment					
Single rodent hole with large quantity of material displaced.					

Photo 1 of 1 : FA\_2023\_NA0011\_142\_23\_20230821\_00013.jpg



Rodent burrows observed on the waterside slope. (Spring 2022)

LM Start	1.71	Rating **	A/W	Issue No.	34
LM End	1.71	Issue Type +	Ma	Location *	CR
Category	Earthen Levee			GPS Latitude/Longitude	
				Start	End
Item	Crown Surface / Depressions / Rutting			37.061493°	37.061493°
				-120.405414°	-120.405414°
DWR ID	DWR_NA0011_01_f_2022_34				
Comment Code					
C2 : Repair depressions or ruts in the crown or slope.					
Inspector Comment					
There is a slight depression in the crown in line with the UCIP crossing possibly caused by the pipe crossing. Monitor the site.					

No Photos

<b>* Location</b> LS : Land Side    N/A : Not Applicable WS : Water Side CR : Crown	<b>** Rating</b> A : Acceptable M : Minimally Acceptable U : Unacceptable	N : Not Inspected/Rated C : Corrected A/W : Acceptable but Monitor & Maintain	<b>+ Issue Type</b> Ma : Maintenance Deficiency Ob : Design & System Obsolescence En : Enforcement
--	--	---	---



**Flood Control Project Maintenance  
Levee Inspections**

**Maintenance Issue Types Only, Levee Inspection Report By Mile - Fall 2023**

**Madera County FCWCA**

Waterway	Bank	Unit Miles	Inspection Start/End	Inspector
Unit No. 02 Ash Slough	Left	2.04	10/26/2023 10/26/2023	Corey Fujitani

LM Start	0.00	Rating **	U	Issue No.	20
LM End	0.03	Issue Type +	Ma	Location *	WS
Category	Earthen Levee			GPS Latitude/Longitude	
				Start	End
Item	Animal Control			37.045485°	37.045650°
				-120.427415°	-120.426836°
DWR ID	DWR_NA0011_02_f_2021_20				
Comment Code					
A3 : No rodents visible, but rodent burrows visible; need to backfill and compact or grout burrows.					
Inspector Comment					

Photo 1 of 1 : FA\_2023\_NA0011\_143\_20\_20230821\_00010.jpg



Representative view of rodent burrows on the waterside slope. (Fall 2021)

LM Start	0.01	Rating **	U	Issue No.	30
LM End	0.01	Issue Type +	Ma	Location *	LS
Category	Earthen Levee			GPS Latitude/Longitude	
				Start	End
Item	Animal Control			37.045531°	37.045531°
				-120.427244°	-120.427244°
DWR ID	DWR_NA0011_02_s_2022_30				
Comment Code					
A3 : No rodents visible, but rodent burrows visible; need to backfill and compact or grout burrows.					
Inspector Comment					

Photo 1 of 1 : FA\_2023\_NA0011\_143\_30\_20230821\_00016.jpg



View of animal burrow on the landside slope. (Spring 2022)

LM Start	0.01	Rating **	M	Issue No.	31
LM End	0.01	Issue Type +	Ma	Location *	WS
Category	Rivers, Channels & Designated Floodways			GPS Latitude/Longitude	
				Start	End
Item	Erosion / Bank Caving			37.045531°	37.045531°
				-120.427244°	-120.427244°
DWR ID	DWR_NA0011_02_s_2022_31				
Comment Code					
Inspector Comment					
Large hole within the channel roughly 15 feet off waterside toe. Does not appear to penetrate towards levee. Hole should be backfilled and compacted.					

Photo 1 of 1 : FA\_2023\_NA0011\_143\_31\_20230821\_00017.jpg



Large hole in the channel approximately 15 feet from the waterside toe. (Spring 2022)

<b>* Location</b> LS : Land Side    N/A : Not Applicable WS : Water Side CR : Crown		<b>** Rating</b> A : Acceptable M : Minimally Acceptable U : Unacceptable		<b>+ Issue Type</b> Ma : Maintenance Deficiency Ob : Design & System Obsolescence En : Enforcement	
		N : Not Inspected/Rated C : Corrected A/W : Acceptable but Monitor & Maintain			

**Flood Control Project Maintenance  
Levee Inspections**

**Maintenance Issue Types Only, Levee Inspection Report By Mile - Fall 2023**

**Madera County FCWCA**

Waterway	Bank	Unit Miles	Inspection Start/End	Inspector
Unit No. 02 Ash Slough	Left	2.04	10/26/2023 10/26/2023	Corey Fujitani

LM Start	0.08	Rating **	A/W	Issue No.	26
LM End	0.08	Issue Type +	Ma	Location *	LS
Category	Earthen Levee			GPS Latitude/Longitude	
				Start	End
Item	Animal Control			37.045874°	37.045874°
				-120.426013°	-120.426013°
DWR ID	DWR_NA0011_02_s _ 2022_26				
Comment Code					
A3 : No rodents visible, but rodent burrows visible; need to backfill and compact or grout burrows.					
Inspector Comment					
Large animal hole on the landside slope. There is the possibility the burrow penetrates onto the waterside as there are a couple of smaller holes located on the waterside slope.					

Photo 1 of 1 : FA\_2023\_NA0011\_143\_26\_20230821\_00013.jpg



Large rodent burrow observed on the landside toe. (Spring 2022)

LM Start	0.25	Rating **	C	Issue No.	35
LM End	0.25	Issue Type +	Ma	Location *	CR
Category	Earthen Levee			GPS Latitude/Longitude	
				Start	End
Item	Vegetation			37.046795°	37.046795°
				-120.423172°	-120.423172°
DWR ID	DWR_NA0011_02_f _ 2022_35				
Comment Code					
V3 : Keep the crown roadway free of vegetation.					
Inspector Comment					

No Photos

LM Start	0.27	Rating **	M	Issue No.	21
LM End	0.30	Issue Type +	Ma	Location *	WS
Category	Earthen Levee			GPS Latitude/Longitude	
				Start	End
Item	Trim / Thin Trees			37.046937°	37.047192°
				-120.422815°	-120.422517°
DWR ID	DWR_NA0011_02_s _ 2012_21				
Comment Code					
T1 : Trim and thin trees to at least five feet above ground level to allow visibility of the ground and room to flood fight.					
Inspector Comment					

No Photos

<b>* Location</b> LS : Land Side    N/A : Not Applicable WS : Water Side CR : Crown		<b>** Rating</b> A : Acceptable M : Minimally Acceptable U : Unacceptable N : Not Inspected/Rated C : Corrected A/W : Acceptable but Monitor & Maintain		<b>+ Issue Type</b> Ma : Maintenance Deficiency Ob : Design & System Obsolescence En : Enforcement	
--	--	---	--	---	--



**Flood Control Project Maintenance  
Levee Inspections**

**Maintenance Issue Types Only, Levee Inspection Report By Mile - Fall 2023**

**Madera County FCWCA**

Waterway	Bank	Unit Miles	Inspection Start/End	Inspector
Unit No. 02 Ash Slough	Left	2.04	10/26/2023 10/26/2023	Corey Fujitani

LM Start	0.31	Rating **	M	Issue No.	13
LM End	0.31	Issue Type +	Ma	Location *	LS
Category	Earthen Levee			GPS Latitude/Longitude	
				Start	End
Item	Erosion / Vehicle Traffic			37.047266°	37.047266°
				-120.422393°	-120.422393°
DWR ID	DWR_NA0011_02_f_2017_13				
Comment Code					
E6 : Repair the levee slope damaged by vehicle traffic and prevent access where possible.					
Inspector Comment					

Photo 1 of 1 : FA\_2023\_NA0011\_143\_13\_20230821\_00007.jpg



Vehicle access to levee slope should be prevented and erosion repaired.

LM Start	0.31	Rating **	U	Issue No.	17
LM End	0.44	Issue Type +	Ma	Location *	WS
Category	Earthen Levee			GPS Latitude/Longitude	
				Start	End
Item	Vegetation			37.047162°	37.048521°
				-120.422274°	-120.420595°
DWR ID	DWR_NA0011_02_f_2023_17				
Comment Code					
V1 : Control annual grass and weeds on the levee slopes and easements.					
Inspector Comment					

Photo 1 of 1 : FA\_2023\_NA0011\_143\_17\_20231101\_00024.jpg



View of vegetation growing on the waterside shoulder and slope. (Fall 2023)

LM Start	0.31	Rating **	U	Issue No.	15
LM End	0.44	Issue Type +	Ma	Location *	CR
Category	Earthen Levee			GPS Latitude/Longitude	
				Start	End
Item	Vegetation			37.047195°	37.048524°
				-120.422188°	-120.420595°
DWR ID	DWR_NA0011_02_f_2023_15				
Comment Code					
V3 : Keep the crown roadway free of vegetation.					
Inspector Comment					

Photo 1 of 1 : FA\_2023\_NA0011\_143\_15\_20231101\_00025.jpg



View of vegetation growing along the levee crown. (Fall 2023)

<b>* Location</b> LS : Land Side    N/A : Not Applicable WS : Water Side CR : Crown		<b>** Rating</b> A : Acceptable M : Minimally Acceptable U : Unacceptable N : Not Inspected/Rated C : Corrected A/W : Acceptable but Monitor & Maintain		<b>+ Issue Type</b> Ma : Maintenance Deficiency Ob : Design & System Obsolescence En : Enforcement	
--	--	---	--	---	--



**Flood Control Project Maintenance  
Levee Inspections**

**Maintenance Issue Types Only, Levee Inspection Report By Mile - Fall 2023**

**Madera County FCWCA**

Waterway	Bank	Unit Miles	Inspection Start/End	Inspector
Unit No. 02 Ash Slough	Left	2.04	10/26/2023 10/26/2023	Corey Fujitani

LM Start	0.32	Rating **	M	Issue No.	36
LM End	0.32	Issue Type +	Ma	Location *	CR
Category	Earthen Levee			GPS Latitude/Longitude	
				Start	End
Item	Crown Surface / Depressions / Rutting			37.047376°	37.047376°
				-120.422240°	-120.422240°
DWR ID	DWR_NA0011_02_s_2022_36				
Comment Code					
C2 : Repair depressions or ruts in the crown or slope.					
Inspector Comment					

No Photos

LM Start	0.32	Rating **	A/W	Issue No.	19
LM End	1.66	Issue Type +	Ma	Location *	LS
Category	Earthen Levee			GPS Latitude/Longitude	
				Start	End
Item	Animal Control			37.047376°	37.059952°
				-120.422190°	-120.405448°
DWR ID	DWR_NA0011_02_s_2017_19				
Comment Code					
A1 : Exterminate rodents and backfill and compact or grout burrows.					
Inspector Comment					

No Photos

LM Start	0.32	Rating **	A/W	Issue No.	39
LM End	1.67	Issue Type +	Ma	Location *	WS
Category	Earthen Levee			GPS Latitude/Longitude	
				Start	End
Item	Animal Control			37.047376°	37.060091°
				-120.422190°	-120.405340°
DWR ID	DWR_NA0011_02_f_2015_39				
Comment Code					
A1 : Exterminate rodents and backfill and compact or grout burrows.					
Inspector Comment					

Photo 1 of 1 : FA\_2023\_NA0011\_143\_39\_20230821\_00022.jpg



Representative view of burrows on the waterside slope in this section.  
(Fall 2022)

<b>* Location</b> LS : Land Side    N/A : Not Applicable WS : Water Side CR : Crown	<b>** Rating</b> A : Acceptable M : Minimally Acceptable U : Unacceptable	N : Not Inspected/Rated C : Corrected A/W : Acceptable but Monitor & Maintain	<b>+ Issue Type</b> Ma : Maintenance Deficiency Ob : Design & System Obsolescence En : Enforcement
--	--	---	---

**Flood Control Project Maintenance  
Levee Inspections**

**Maintenance Issue Types Only, Levee Inspection Report By Mile - Fall 2023**

**Madera County FCWCA**

Waterway	Bank	Unit Miles	Inspection Start/End	Inspector
Unit No. 02 Ash Slough	Left	2.04	10/26/2023 10/26/2023	Corey Fujitani

LM Start	0.33	Rating **	U	Issue No.	33
LM End	0.42	Issue Type +	Ma	Location *	WS
Category	Earthen Levee			GPS Latitude/Longitude	
				Start	End
Item	Trim / Thin Trees			37.047485°	37.048403°
				-120.422037°	-120.420810°
DWR ID	DWR_NA0011_02_s_2017_33				
Comment Code					
T2 : Tree or limb.					
Inspector Comment					
Remove the dead fallen trees from the waterside slope.					

Photo 1 of 1 : FA\_2023\_NA0011\_143\_33\_20230821\_00019.jpg



Dead fallen trees on the waterside levee slope and shoulder.

LM Start	0.33	Rating **	A/W	Issue No.	22
LM End	2.00	Issue Type +	Ma	Location *	CR
Category	Earthen Levee			GPS Latitude/Longitude	
				Start	End
Item	Crown Surface / Depressions / Rutting			37.047485°	37.063718°
				-120.422037°	-120.401358°
DWR ID	DWR_NA0011_02_s_2017_22				
Comment Code					
C2 : Repair depressions or ruts in the crown or slope.					
Inspector Comment					
Minor depressions through this section. Continue to monitor but appropriate material should be added before the condition worsens.					

No Photos

<b>* Location</b> LS : Land Side    N/A : Not Applicable WS : Water Side CR : Crown	<b>** Rating</b> A : Acceptable M : Minimally Acceptable U : Unacceptable	N : Not Inspected/Rated C : Corrected A/W : Acceptable but Monitor & Maintain	<b>+ Issue Type</b> Ma : Maintenance Deficiency Ob : Design & System Obsolescence En : Enforcement
--	--	---	---

**Flood Control Project Maintenance  
Levee Inspections**

**Maintenance Issue Types Only, Levee Inspection Report By Mile - Fall 2023**

**Madera County FCWCA**

Waterway	Bank	Unit Miles	Inspection Start/End	Inspector
Unit No. 02 Ash Slough	Left	2.04	10/26/2023 10/26/2023	Corey Fujitani

LM Start	0.97	Rating **	A/W	Issue No.	41	
LM End	0.97	Issue Type +	Ma	Location *		
Category	Supplemental			GPS Latitude/Longitude		
				Start	End	
Item	DWR UCIP LMA Responsibility			37.054815°	37.054815°	
				-120.415619°	-120.415619°	
DWR ID	21515					
Comment Code						
Inspector Comment						
DS_ID:21515 FS_ID:77411 EP_NO: N/A Repair Type: No Action Needed EVAL Issue: Crossing Status: Found UCIP Comments: 04/19/2022 Record updated from No Action Needed to Non-Urgent. Owner needs to coordinate with CVFPB to authorize crossing. DMP internal video inspection has not found pipe integrity issues. LOF of crossing is less or equal to 4. Recommend next video inspection in 5 years. No issues observed during inspection. (M.Thao - DWR UCIP) FIELD_STRUCT_DESC: 36-inch corrugated metal gravity drainage pipe through the levee, 7.3 feet below the crown. Headwall and wing wall on each end. Flap gate on the waterside (WS) end. [Additional Reference(s): Levee Log, 2005 (HLM 0.99). USACE San Joaquin O&M Manual 605 (Station 52+50), listed as 36-inch pipe]. FS Date: 4/19/2022						

LM Start	<b>0.97</b>	Rating **	A/W	Issue No.	<b>41 (cont)</b>
LM End	<b>0.97</b>	Issue Type +	Ma	Location *	

Photo 1 of 3 : UCIP\_FA\_2023\_77411\_112199.jpg



Levee crown looking upstream.

Photo 2 of 3 : UCIP\_FA\_2023\_77411\_112200.jpg



LS view: Concrete headwall and pipe inlet on toe.

<b>* Location</b> LS: Land Side    N/A: Not Applicable WS: Water Side CR: Crown	<b>** Rating</b> A: Acceptable M: Minimally Acceptable U: Unacceptable	N: Not Inspected/Rated C: Corrected A/W: Acceptable but Monitor & Maintain	<b>+ Issue Type</b> Ma: Maintenance Deficiency Ob: Design & System Obsolescence En: Enforcement
--	---	--	--



**Flood Control Project Maintenance  
Levee Inspections**

**Maintenance Issue Types Only, Levee Inspection Report By Mile - Fall 2023**

**Madera County FCWCA**

Waterway	Bank	Unit Miles	Inspection Start/End	Inspector
Unit No. 02 Ash Slough	Left	2.04	10/26/2023 10/26/2023	Corey Fujitani

LM Start	0.97	Rating **	A/W	Issue No.	41 (cont)
LM End	0.97	Issue Type +	Ma	Location *	
Category	Supplemental			GPS Latitude/Longitude	
				Start	End
Item	DWR UCIP LMA Responsibility			37.054815°	37.054815°
				-120.415619°	-120.415619°
DWR ID	21515				

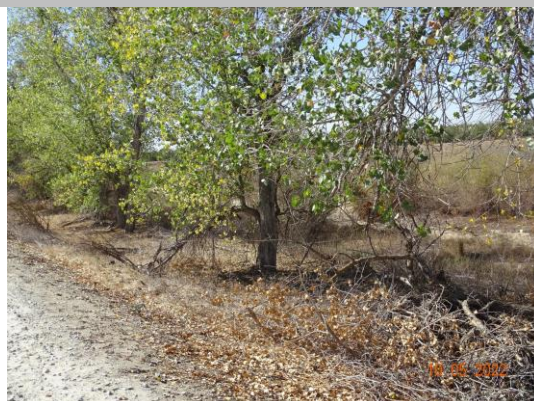
Photo 3 of 3 : UCIP\_FA\_2023\_77411\_112201.jpg



WS view: Concrete headwall and flap gate on toe.

LM Start	0.98	Rating **	M	Issue No.	27
LM End	1.52	Issue Type +	Ma	Location *	WS
Category	Earthen Levee			GPS Latitude/Longitude	
				Start	End
Item	Trim / Thin Trees			37.054928°	37.058752°
				-120.415482°	-120.407323°
DWR ID	DWR_NA0011_02_s_2017_27				
Comment Code					
T2 : Tree or limb.					
Inspector Comment					
Remove the dead trees from the waterside slope and shoulder.					

Photo 1 of 1 : FA\_2023\_NA0011\_143\_27\_20230821\_00014.jpg



Branches left along the waterside slope from high flow. (Fall 2022)

<b>* Location</b> LS: Land Side    N/A: Not Applicable WS: Water Side CR: Crown	<b>** Rating</b> A: Acceptable M: Minimally Acceptable U: Unacceptable N: Not Inspected/Rated C: Corrected A/W: Acceptable but Monitor & Maintain	<b>+ Issue Type</b> Ma: Maintenance Deficiency Ob: Design & System Obsolescence En: Enforcement
--	---	--

**Flood Control Project Maintenance  
Levee Inspections**

## Maintenance Issue Types Only, Levee Inspection Report By Mile - Fall 2023

### Madera County FCWCA

Waterway	Bank	Unit Miles	Inspection Start/End	Inspector
Unit No. 02 Ash Slough	Left	2.04	10/26/2023 10/26/2023	Corey Fujitani

LM Start	1.10	Rating **	U	Issue No.	1
LM End	1.19	Issue Type +	Ma	Location *	WS
Category	Supplemental			GPS Latitude/Longitude	
				Start	End
Item	DWR Erosion Survey			37.055596°	37.055596°
				-120.412647°	-120.412647°
DWR ID	NA0011U02RM2.57				
Comment Code					
Inspector Comment					
Site ID: NA0011U02RM2.57					
9/14/2023: From 2012 to present, no significant changes were observed during the annual survey. Vegetation is obscuring the views of the erosion.					
07/24/2012: Dense vegetation around the site.					
08/09/2011: A fallen tree was seen at the levee toe about 20 feet upstream, and tree root exposed. There has been no report from the district that this site was corrected.					
11/30/2010: Site was not inspected due to time constraints. There have been no reports from the district that the site was corrected. Continue to monitor site during flood events.					
08/05/2010: Recommended for annual assessment and monitoring during flood events, per CLRO.					
2009: Site is recommended as a local maintenance issue, per Critical Levee Repair Office, Critical Erosion Sites Evaluation 2008 Report; site was previously rated "M"					
09/6/2007: Undercutting of the toe; several trees along the WS slope with roots exposed.					

Photo 1 of 2 : SJR2023\_NA0011U02RM2.57\_1.JPG



9/14/2023: View of the erosion on the levee toe.

LM Start	<b>1.10</b>	Rating **	U	Issue No.	<b>1 (cont)</b>
LM End	<b>1.19</b>	Issue Type +	Ma	Location *	WS

Photo 2 of 2 : SJR2023\_NA0011U02RM2.57\_2.JPG



9/14/2023: Another view of the erosion.

<b>* Location</b> LS: Land Side    N/A: Not Applicable WS: Water Side CR: Crown	<b>** Rating</b> A: Acceptable M: Minimally Acceptable U: Unacceptable	N: Not Inspected/Rated C: Corrected A/W: Acceptable but Monitor & Maintain	<b>+ Issue Type</b> Ma: Maintenance Deficiency Ob: Design & System Obsolescence En: Enforcement
--	---	--	--

**Flood Control Project Maintenance  
Levee Inspections**

**Maintenance Issue Types Only, Levee Inspection Report By Mile - Fall 2023**

**Madera County FCWCA**

Waterway	Bank	Unit Miles	Inspection Start/End	Inspector
Unit No. 02 Ash Slough	Left	2.04	10/26/2023 10/26/2023	Corey Fujitani

LM Start	1.90	Rating **	M	Issue No.	14
LM End	2.00	Issue Type +	Ma	Location *	LS
Category	Earthen Levee			GPS Latitude/Longitude	
				Start	End
Item	Vegetation			37.062592°	37.063672°
				-120.402449°	-120.401394°
DWR ID	DWR_NA0011_02_f_2023_14				
Comment Code					
V1 : Control annual grass and weeds on the levee slopes and easements.					
Inspector Comment					

Photo 1 of 1 : FA\_2023\_NA0011\_143\_14\_20231101\_00026.jpg



Looking downstream along the landside slope. (Fall 2023)

<b>* Location</b> LS : Land Side    N/A : Not Applicable WS : Water Side CR : Crown	<b>** Rating</b> A : Acceptable M : Minimally Acceptable U : Unacceptable	N : Not Inspected/Rated C : Corrected A/W : Acceptable but Monitor & Maintain	<b>+ Issue Type</b> Ma : Maintenance Deficiency Ob : Design & System Obsolescence En : Enforcement
--	--	---	---



**Flood Control Project Maintenance  
Levee Inspections**

**Maintenance Issue Types Only, Levee Inspection Report By Mile - Fall 2023**

**Madera County FCWCA**

Waterway	Bank	Unit Miles	Inspection Start/End	Inspector
Unit No. 03 Berenda Slough	Right	1.51	10/26/2023 10/26/2023	Corey Fujitani

LM Start	0.08	Rating **	A/W	Issue No.	20
LM End	0.08	Issue Type +	Ma	Location *	LS
Category	Earthen Levee			GPS Latitude/Longitude	
				Start	End
Item	Encroachments			36.996204°	36.996201°
				-120.372352°	-120.372345°
DWR ID	DWR_NA0011_03_s_2012_20				
Comment Code					
PR : Prunings					
Inspector Comment					
Remove the prunings from the landside slope.					

Photo 1 of 1 : FA\_2023\_NA0011\_144\_20\_20230821\_00007.jpg



Looking at prunings on landward slope. (Spring 2022)

LM Start	0.10	Rating **	A/W	Issue No.	30
LM End	0.10	Issue Type +	Ma	Location *	
Category	Supplemental			GPS Latitude/Longitude	
				Start	End
Item	DWR UCIP LMA Responsibility			36.996177°	36.996177°
				-120.371967°	-120.371967°
DWR ID	21517				
Comment Code					
Inspector Comment					
DS_ID:21517 FS_ID:77412 EP_NO: N/A Repair Type: No Action Needed EVAL Issue: Crossing Status: Found UCIP Comments: 04/19/2022 Record updated from Non-Urgent to No Action Needed. Flap gate on the WS was held open by a chain; recommend owner close flap gate prior to flood season to prevent uncontrolled flows from WS to LS during high-water events. DMP internal video inspection has not found pipe integrity issues. LOF of crossing is less or equal to 4. Recommend next video inspection in 5 years. (M.Thao - DWR UCIP) 05/06/2014 Need to contact owner to determine status of crossing. Unable to determine if crossing is in use. (DWR UCIP - O. Magana) FIELD_STRUCT_DESC: 36-inch corrugated metal gravity drainage pipe through the levee, 7.3 feet below the crown. Headwall and wing wall on each end. Debris screen at pipe inlet and walkway on landside (LS). Flap gate on the waterside (WS) end. [Additional Reference(s): DWR Levee Log, 2005 (HLM 0.11). USACE San Joaquin O&M Manual 605 (Station 5+50), listed as 36-inch pipe]. FS Date: 4/19/2022					

Photo 1 of 3 : UCIP\_FA\_2023\_77412\_112270.jpg



Levee crown looking upstream.

<b>* Location</b> LS : Land Side    N/A : Not Applicable WS : Water Side CR : Crown	<b>** Rating</b> A : Acceptable M : Minimally Acceptable U : Unacceptable	N : Not Inspected/Rated C : Corrected A/W : Acceptable but Monitor & Maintain	<b>+ Issue Type</b> Ma : Maintenance Deficiency Ob : Design & System Obsolescence En : Enforcement
--	--	---	---

**Flood Control Project Maintenance  
Levee Inspections**

## Maintenance Issue Types Only, Levee Inspection Report By Mile - Fall 2023

### Madera County FCWCA

Waterway	Bank	Unit Miles	Inspection Start/End	Inspector
Unit No. 03 Berenda Slough	Right	1.51	10/26/2023 10/26/2023	Corey Fujitani

LM Start	<b>0.10</b>	Rating **	A/W	Issue No.	<b>30 (cont)</b>
LM End	<b>0.10</b>	Issue Type +	Ma	Location *	
Category	Supplemental			GPS Latitude/Longitude	
				Start	End
Item	DWR UCIP LMA Responsibility			36.996177°	36.996177°
				-120.371967°	-120.371967°
DWR ID	21517				

Photo 2 of 3 : UCIP\_FA\_2023\_77412\_112271.jpg



LS view: Looking from crown; concrete headwall and walk way.

LM Start	<b>0.10</b>	Rating **	A/W	Issue No.	<b>30 (cont)</b>
LM End	<b>0.10</b>	Issue Type +	Ma	Location *	

Photo 3 of 3 : UCIP\_FA\_2023\_77412\_112272.jpg



LS view: Looking into pipe through levee; flap gate is open on WS.

LM Start	0.16	Rating **	M	Issue No.	3
LM End	1.27	Issue Type +	Ma	Location *	LS
Category	Earthen Levee			GPS Latitude/Longitude	
				Start	End
Item	Vegetation			36.996209°	36.996629°
				-120.370836°	-120.350930°
DWR ID	DWR_NA0011_03_f_2023_3				
Comment Code					
V1 : Control annual grass and weeds on the levee slopes and easements.					
Inspector Comment					
Landside shoulder has been mowed. Vegetation on the landside slope should also be mowed.					

Photo 1 of 1 : FA\_2023\_NA0011\_144\_3\_20231102\_00009.jpg



View of vegetation growing along the landside slope. (Fall 2023)

* Location	** Rating	+ Issue Type
LS : Land Side WS : Water Side CR : Crown	A : Acceptable M : Minimally Acceptable U : Unacceptable	Ma : Maintenance Deficiency Ob : Design & System Obsolescence En : Enforcement
N/A : Not Applicable	N : Not Inspected/Rated C : Corrected A/W : Acceptable but Monitor & Maintain	



**Flood Control Project Maintenance  
Levee Inspections**

**Maintenance Issue Types Only, Levee Inspection Report By Mile - Fall 2023**

**Madera County FCWCA**

Waterway	Bank	Unit Miles	Inspection Start/End	Inspector
Unit No. 03 Berenda Slough	Right	1.51	10/26/2023 10/26/2023	Corey Fujitani

LM Start	0.19	Rating **	M	Issue No.	9
LM End	0.27	Issue Type +	Ma	Location *	LS
Category	Earthen Levee			GPS Latitude/Longitude	
				Start	End
Item	Animal Control			36.996196°	36.996202°
				-120.370404°	-120.368996°
DWR ID	DWR_NA0011_03_f_2022_9				
Comment Code					
A3 : No rodents visible, but rodent burrows visible; need to backfill and compact or grout burrows.					
Inspector Comment					

Photo 1 of 1 : FA\_2023\_NA0011\_144\_9\_20230821\_00004.jpg



Representative view of rodent holes on the landside slope. (Fall 2022)

LM Start	0.33	Rating **	M	Issue No.	4
LM End	0.33	Issue Type +	Ma	Location *	CR
Category	Earthen Levee			GPS Latitude/Longitude	
				Start	End
Item	Animal Control			36.996189°	36.996189°
				-120.367776°	-120.367776°
DWR ID	DWR_NA0011_03_f_2023_4				
Comment Code					
A3 : No rodents visible, but rodent burrows visible; need to backfill and compact or grout burrows.					
Inspector Comment					

Photo 1 of 1 : FA\_2023\_NA0011\_144\_4\_20231102\_00010.jpg



Rodent burrows with large amount of material displaced in the levee crown. (Fall 2023)

LM Start	0.36	Rating **	M	Issue No.	11
LM End	0.45	Issue Type +	Ma	Location *	LS
Category	Earthen Levee			GPS Latitude/Longitude	
				Start	End
Item	Animal Control			36.996205°	36.996231°
				-120.367341°	-120.365696°
DWR ID	DWR_NA0011_03_f_2022_11				
Comment Code					
A3 : No rodents visible, but rodent burrows visible; need to backfill and compact or grout burrows.					
Inspector Comment					

No Photos

<b>* Location</b> LS : Land Side    N/A : Not Applicable WS : Water Side CR : Crown		<b>** Rating</b> A : Acceptable M : Minimally Acceptable U : Unacceptable N : Not Inspected/Rated C : Corrected A/W : Acceptable but Monitor & Maintain		<b>+ Issue Type</b> Ma : Maintenance Deficiency Ob : Design & System Obsolescence En : Enforcement	
--	--	---	--	---	--



**Flood Control Project Maintenance  
Levee Inspections**

**Maintenance Issue Types Only, Levee Inspection Report By Mile - Fall 2023**

**Madera County FCWCA**

Waterway	Bank	Unit Miles	Inspection Start/End	Inspector
Unit No. 03 Berenda Slough	Right	1.51	10/26/2023 10/26/2023	Corey Fujitani

LM Start	0.46	Rating **	M	Issue No.	5
LM End	0.46	Issue Type +	Ma	Location *	CR
Category	Earthen Levee			GPS Latitude/Longitude	
				Start	End
Item	Animal Control			36.996238°	36.996238°
				-120.365563°	-120.365563°
DWR ID	DWR_NA0011_03_s_2018_5				
Comment Code					
A3 : No rodents visible, but rodent burrows visible; need to backfill and compact or grout burrows.					
Inspector Comment					
There is a large rodent hole on the crown of the levee.					

Photo 1 of 1 : FA\_2023\_NA0011\_144\_5\_20230821\_00001.jpg



View of a rodent hole on levee crown. (Fall 2022)

LM Start	0.68	Rating **	M	Issue No.	12
LM End	0.75	Issue Type +	Ma	Location *	LS
Category	Earthen Levee			GPS Latitude/Longitude	
				Start	End
Item	Animal Control			36.996240°	36.996243°
				-120.361540°	-120.360322°
DWR ID	DWR_NA0011_03_f_2022_12				
Comment Code					
A3 : No rodents visible, but rodent burrows visible; need to backfill and compact or grout burrows.					
Inspector Comment					

Photo 1 of 1 : FA\_2023\_NA0011\_144\_12\_20230821\_00005.jpg



Several rodent burrows observed on the landside slope. (Fall 2022)

LM Start	1.07	Rating **	M	Issue No.	6
LM End	1.51	Issue Type +	Ma	Location *	LS
Category	Earthen Levee			GPS Latitude/Longitude	
				Start	End
Item	Animal Control			36.996619°	36.996607°
				-120.354614°	-120.346568°
DWR ID	DWR_NA0011_03_f_2016_6				
Comment Code					
A1 : Exterminate rodents and backfill and compact or grout burrows.					
Inspector Comment					
LMA should install rodent bait stations placed along the landside slope and/or shoulder.					

Photo 1 of 1 : FA\_2023\_NA0011\_144\_6\_20230821\_00002.jpg



View of rodent burrows in the landside slope. (Fall 2021)

* Location	** Rating	+ Issue Type
LS : Land Side WS : Water Side CR : Crown	A : Acceptable M : Minimally Acceptable U : Unacceptable	Ma : Maintenance Deficiency Ob : Design & System Obsolescence En : Enforcement
N/A : Not Applicable	N : Not Inspected/Rated C : Corrected A/W : Acceptable but Monitor & Maintain	

**Flood Control Project Maintenance  
Levee Inspections**

**Maintenance Issue Types Only, Levee Inspection Report By Mile - Fall 2023**

**Madera County FCWCA**

Waterway	Bank	Unit Miles	Inspection Start/End	Inspector
Unit No. 03 Berenda Slough	Right	1.51	10/26/2023 10/26/2023	Corey Fujitani

LM Start	1.08	Rating **	M	Issue No.	7
LM End	1.40	Issue Type +	Ma	Location *	WS
Category	Earthen Levee			GPS Latitude/Longitude	
				Start	End
Item	Animal Control			36.996608°	36.996621°
				-120.354336°	-120.348700°
DWR ID	DWR_NA0011_03_f_2016_7				
Comment Code					
A1 : Exterminate rodents and backfill and compact or grout burrows.					
Inspector Comment					
There should be bait stations placed along the levee to eradicate rodents.					

No Photos

LM Start	1.14	Rating **	A/W	Issue No.	8
LM End	1.35	Issue Type +	Ma	Location *	CR
Category	Earthen Levee			GPS Latitude/Longitude	
				Start	End
Item	Animal Control			36.996606°	36.996618°
				-120.353292°	-120.349475°
DWR ID	DWR_NA0011_03_f_2016_8				
Comment Code					
A1 : Exterminate rodents and backfill and compact or grout burrows.					
Inspector Comment					
Exterminate rodents from the roadway. Active rodents observed during inspection at this site.					

Photo 1 of 1 : FA\_2023\_NA0011\_144\_8\_20230821\_00003.jpg



Berenda Slough Unit 3 looking upstream.

LM Start	1.29	Rating **	M	Issue No.	13
LM End	1.29	Issue Type +	Ma	Location *	LS
Category	Earthen Levee			GPS Latitude/Longitude	
				Start	End
Item	Trim / Thin Trees			36.996633°	36.996633°
				-120.350559°	-120.350559°
DWR ID	DWR_NA0011_03_f_2020_13				
Comment Code					
T1 : Trim and thin trees to at least five feet above ground level to allow visibility of the ground and room to flood fight.					
Inspector Comment					

No Photos

* Location LS : Land Side    N/A : Not Applicable WS : Water Side CR : Crown		** Rating A : Acceptable M : Minimally Acceptable U : Unacceptable		N : Not Inspected/Rated C : Corrected A/W : Acceptable but Monitor & Maintain		+ Issue Type Ma : Maintenance Deficiency Ob : Design & System Obsolescence En : Enforcement	
---	--	---	--	---	--	--	--

**Flood Control Project Maintenance  
Levee Inspections**

**Maintenance Issue Types Only, Levee Inspection Report By Mile - Fall 2023**

**Madera County FCWCA**

Waterway	Bank	Unit Miles	Inspection Start/End	Inspector
Unit No. 04 Berenda Slough	Left	2.28	10/26/2023 10/26/2023	Corey Fujitani

LM Start	0.02	Rating **	A/W	Issue No.	3
LM End	0.97	Issue Type +	Ma	Location *	LS
Category	Earthen Levee			GPS Latitude/Longitude	
				Start	End
Item	Erosion / Vehicle Traffic			36.995506°	36.995550°
				-120.373233°	-120.355935°
DWR ID	DWR_NA0011_04_f_2016_3				
Comment Code					
E6 : Repair the levee slope damaged by vehicle traffic and prevent access where possible.					
Inspector Comment					
The slope in this area has been damaged by farm equipment but does not threaten the integrity of the levee. Continue to monitor.					

Photo 1 of 1 : FA\_2023\_NA0011\_145\_3\_20230821\_00001.jpg



Berenda Slough Unit 4 looking upstream landside.

LM Start	0.04	Rating **	M	Issue No.	20
LM End	0.06	Issue Type +	Ma	Location *	WS
Category	Earthen Levee			GPS Latitude/Longitude	
				Start	End
Item	Trim / Thin Trees			36.995502°	36.995597°
				-120.372833°	-120.372391°
DWR ID	DWR_NA0011_04_f_2012_20				
Comment Code					
T2 : Tree or limb.					
Inspector Comment					
Remove the tree limbs from the waterside levee slope.					

No Photos

LM Start	0.05	Rating **	M	Issue No.	33
LM End	1.28	Issue Type +	Ma	Location *	WS
Category	Earthen Levee			GPS Latitude/Longitude	
				Start	End
Item	Vegetation			36.995532°	36.995593°
				-120.372580°	-120.350452°
DWR ID	DWR_NA0011_04_f_2023_33				
Comment Code					
V1 : Control annual grass and weeds on the levee slopes and easements.					
Inspector Comment					

No Photos

<b>* Location</b> LS : Land Side    N/A : Not Applicable WS : Water Side CR : Crown	<b>** Rating</b> A : Acceptable M : Minimally Acceptable U : Unacceptable	N : Not Inspected/Rated C : Corrected A/W : Acceptable but Monitor & Maintain	<b>+ Issue Type</b> Ma : Maintenance Deficiency Ob : Design & System Obsolescence En : Enforcement
--	--	---	---



**Flood Control Project Maintenance  
Levee Inspections**

**Maintenance Issue Types Only, Levee Inspection Report By Mile - Fall 2023**

**Madera County FCWCA**

Waterway	Bank	Unit Miles	Inspection Start/End	Inspector
Unit No. 04 Berenda Slough	Left	2.28	10/26/2023 10/26/2023	Corey Fujitani

LM Start	0.06	Rating **	M	Issue No.	35
LM End	0.50	Issue Type +	Ma	Location *	CR
Category	Earthen Levee			GPS Latitude/Longitude	
				Start	End
Item	Vegetation			36.995560°	36.995580°
				-120.372469°	-120.364450°
DWR ID	DWR_NA0011_04_s_2022_35				
Comment Code					
V3 : Keep the crown roadway free of vegetation.					
Inspector Comment					

Photo 1 of 1 : FA\_2023\_NA0011\_145\_35\_20230821\_00024.jpg



View of vegetation growing along the levee crown. (Spring 2022)

LM Start	0.10	Rating **	U	Issue No.	15
LM End	0.14	Issue Type +	Ma	Location *	WS
Category	Earthen Levee			GPS Latitude/Longitude	
				Start	End
Item	Trim / Thin Trees			36.995548°	36.995528°
				-120.371628°	-120.370922°
DWR ID	DWR_NA0011_04_f_2015_15				
Comment Code					
T2 : Tree or limb.					
Inspector Comment					
There are many dead trees in the area. Remove the dead trees from the levee section. Many more are subject to fall and possibly block access to the levee crown.					

Photo 1 of 1 : FA\_2023\_NA0011\_145\_15\_20230821\_00011.jpg



Berenda Slough looking upstream from the levee mile 0.14.

LM Start	0.12	Rating **	A/W	Issue No.	19
LM End	0.94	Issue Type +	Ma	Location *	LS
Category	Earthen Levee			GPS Latitude/Longitude	
				Start	End
Item	Animal Control			36.995547°	36.995586°
				-120.371410°	-120.356589°
DWR ID	DWR_NA0011_04_s_2018_19				
Comment Code					
A3 : No rodents visible, but rodent burrows visible; need to backfill and compact or grout burrows.					
Inspector Comment					
Bait stations have been placed. Occasional small burrow observed. Continue to monitor.					

Photo 1 of 1 : FA\_2023\_NA0011\_145\_19\_20230821\_00014.jpg



View of small rodent burrows observed on the landside slope. (Fall 2022)

<b>* Location</b> LS : Land Side    N/A : Not Applicable WS : Water Side CR : Crown		<b>** Rating</b> A : Acceptable M : Minimally Acceptable U : Unacceptable		<b>+ Issue Type</b> Ma : Maintenance Deficiency Ob : Design & System Obsolescence En : Enforcement	
		N : Not Inspected/Rated C : Corrected A/W : Acceptable but Monitor & Maintain			

**Flood Control Project Maintenance  
Levee Inspections**

**Maintenance Issue Types Only, Levee Inspection Report By Mile - Fall 2023**

**Madera County FCWCA**

Waterway	Bank	Unit Miles	Inspection Start/End	Inspector
Unit No. 04 Berenda Slough	Left	2.28	10/26/2023 10/26/2023	Corey Fujitani

LM Start	0.24	Rating **	M	Issue No.	21
LM End	0.39	Issue Type +	Ma	Location *	WS
Category	Earthen Levee			GPS Latitude/Longitude	
				Start	End
Item	Trim / Thin Trees			36.995554°	36.995564°
				-120.369257°	-120.366470°
DWR ID	DWR_NA0011_04_f_2012_21				
Comment Code					
T2 : Tree or limb.					
Inspector Comment					
Remove the discarded tree and branches from the levee slope.					

Photo 1 of 1 : FA\_2023\_NA0011\_145\_21\_20230821\_00015.jpg



Broken tree limbs and trunks in the channel should be removed. (Spring 2022)

LM Start	0.33	Rating **	M	Issue No.	28
LM End	0.92	Issue Type +	Ma	Location *	LS
Category	Earthen Levee			GPS Latitude/Longitude	
				Start	End
Item	Vegetation			36.995559°	36.995575°
				-120.367462°	-120.356825°
DWR ID	DWR_NA0011_04_f_2023_28				
Comment Code					
V1 : Control annual grass and weeds on the levee slopes and easements.					
Inspector Comment					

No Photos

LM Start	0.42	Rating **	M	Issue No.	9
LM End	1.50	Issue Type +	Ma	Location *	CR
Category	Earthen Levee			GPS Latitude/Longitude	
				Start	End
Item	Crown Surface / Depressions / Rutting			36.995572°	36.995613°
				-120.365980°	-120.346358°
DWR ID	DWR_NA0011_04_s_2017_9				
Comment Code					
C3 : Add appropriate gravel or road base. Grade and compact.					
Inspector Comment					

No Photos

* Location LS : Land Side    N/A : Not Applicable WS : Water Side CR : Crown		** Rating A : Acceptable M : Minimally Acceptable U : Unacceptable N : Not Inspected/Rated C : Corrected A/W : Acceptable but Monitor & Maintain		+ Issue Type Ma : Maintenance Deficiency Ob : Design & System Obsolescence En : Enforcement	
---	--	--	--	--	--



**Flood Control Project Maintenance  
Levee Inspections**

**Maintenance Issue Types Only, Levee Inspection Report By Mile - Fall 2023**

**Madera County FCWCA**

Waterway	Bank	Unit Miles	Inspection Start/End	Inspector
Unit No. 04 Berenda Slough	Left	2.28	10/26/2023 10/26/2023	Corey Fujitani

LM Start	0.47	Rating **	M	Issue No.	16
LM End	0.49	Issue Type +	Ma	Location *	WS
Category	Earthen Levee			GPS Latitude/Longitude	
				Start	End
Item	Trim / Thin Trees			36.995603°	36.995568°
				-120.364978°	-120.364634°
DWR ID	DWR_NA0011_04_s_2014_16				
Comment Code					
T2 : Tree or limb.					
Inspector Comment					
This dead tree on the waterward slope should be removed from the levee section.					

Photo 1 of 1 : FA\_2023\_NA0011\_145\_16\_20230821\_00012.jpg



Tree on WS shoulder.

LM Start	0.54	Rating **	M	Issue No.	39
LM End	0.71	Issue Type +	Ma	Location *	WS
Category	Earthen Levee			GPS Latitude/Longitude	
				Start	End
Item	Trim / Thin Trees			36.995565°	36.995574°
				-120.363779°	-120.360695°
DWR ID	DWR_NA0011_04_f_2022_39				
Comment Code					
T2 : Tree or limb.					
Inspector Comment					
Several fallen trees in this section.					

Photo 1 of 1 : FA\_2023\_NA0011\_145\_39\_20230821\_00026.jpg



Fallen trees washed up on the waterside slope and berm from high water. (Fall 2022)

LM Start	0.72	Rating **	M	Issue No.	32
LM End	0.72	Issue Type +	Ma	Location *	WS
Category	Earthen Levee			GPS Latitude/Longitude	
				Start	End
Item	Trim / Thin Trees			36.995577°	36.995577°
				-120.360438°	-120.360438°
DWR ID	DWR_NA0011_04_f_2018_32				
Comment Code					
T1 : Trim and thin trees to at least five feet above ground level to allow visibility of the ground and room to flood fight.					
Inspector Comment					

Photo 1 of 1 : FA\_2023\_NA0011\_145\_32\_20230821\_00022.jpg



Trim branches on waterside shoulder. (Fall 2018)

<b>* Location</b> LS : Land Side    N/A : Not Applicable WS : Water Side CR : Crown		<b>** Rating</b> A : Acceptable M : Minimally Acceptable U : Unacceptable N : Not Inspected/Rated C : Corrected A/W : Acceptable but Monitor & Maintain		<b>+ Issue Type</b> Ma : Maintenance Deficiency Ob : Design & System Obsolescence En : Enforcement	
--	--	---	--	---	--



**Flood Control Project Maintenance  
Levee Inspections**

**Maintenance Issue Types Only, Levee Inspection Report By Mile - Fall 2023**

**Madera County FCWCA**

Waterway	Bank	Unit Miles	Inspection Start/End	Inspector
Unit No. 04 Berenda Slough	Left	2.28	10/26/2023 10/26/2023	Corey Fujitani

LM Start	0.75	Rating **	M	Issue No.	31
LM End	0.75	Issue Type +	Ma	Location *	WS
Category	Earthen Levee			GPS Latitude/Longitude	
				Start	End
Item	Trim / Thin Trees			36.995582°	36.995582°
				-120.360028°	-120.360028°
DWR ID	DWR_NA0011_04_f_2018_31				
Comment Code					
T2 : Tree or limb.					
Inspector Comment					

Photo 1 of 1 : FA\_2023\_NA0011\_145\_31\_20230821\_00021.jpg



Tree branches strewn across levee crown and both shoulders. (Fall 2018)

LM Start	0.78	Rating **	U	Issue No.	6
LM End	0.78	Issue Type +	Ma	Location *	WS
Category	Earthen Levee			GPS Latitude/Longitude	
				Start	End
Item	Trim / Thin Trees			36.995582°	36.995582°
				-120.359451°	-120.359451°
DWR ID	DWR_NA0011_04_s_2019_6				
Comment Code					
T2 : Tree or limb.					
Inspector Comment					

Photo 1 of 1 : FA\_2023\_NA0011\_145\_6\_20230821\_00003.jpg



View of fallen tree on waterside slope. (Spring 2019)

LM Start	0.94	Rating **	U	Issue No.	14
LM End	0.94	Issue Type +	Ma	Location *	WS
Category	Earthen Levee			GPS Latitude/Longitude	
				Start	End
Item	Trim / Thin Trees			36.995573°	36.995573°
				-120.356601°	-120.356601°
DWR ID	DWR_NA0011_04_f_2017_14				
Comment Code					
T2 : Tree or limb.					
Inspector Comment					
Remove the downed tree from the waterside slope.					

Photo 1 of 1 : FA\_2023\_NA0011\_145\_14\_20230821\_00010.jpg



Looking upstream at fallen tree on waterward slope. (Spring 2018)

<b>* Location</b> LS : Land Side    N/A : Not Applicable WS : Water Side CR : Crown		<b>** Rating</b> A : Acceptable M : Minimally Acceptable U : Unacceptable		N : Not Inspected/Rated C : Corrected A/W : Acceptable but Monitor & Maintain		<b>+ Issue Type</b> Ma : Maintenance Deficiency Ob : Design & System Obsolescence En : Enforcement	
--	--	--	--	---	--	---	--

**Flood Control Project Maintenance  
Levee Inspections**

**Maintenance Issue Types Only, Levee Inspection Report By Mile - Fall 2023**

**Madera County FCWCA**

Waterway	Bank	Unit Miles	Inspection Start/End	Inspector
Unit No. 04 Berenda Slough	Left	2.28	10/26/2023 10/26/2023	Corey Fujitani

LM Start	0.96	Rating **	U	Issue No.	26
LM End	1.28	Issue Type +	Ma	Location *	CR
Category	Earthen Levee			GPS Latitude/Longitude	
				Start	End
Item	Vegetation			36.995599°	36.995606°
				-120.356155°	-120.350297°
DWR ID	DWR_NA0011_04_s_2022_26				
Comment Code					
V3 : Keep the crown roadway free of vegetation.					
Inspector Comment					

Photo 1 of 1 : FA\_2023\_NA0011\_145\_26\_20231102\_00029.jpg



View of vegetation growing along the levee crown. (Fall 2023)

LM Start	1.01	Rating **	U	Issue No.	12
LM End	1.01	Issue Type +	Ma	Location *	WS
Category	Earthen Levee			GPS Latitude/Longitude	
				Start	End
Item	Trim / Thin Trees			36.995537°	36.995537°
				-120.355261°	-120.355261°
DWR ID	DWR_NA0011_04_f_2017_12				
Comment Code					
T1 : Trim and thin trees to at least five feet above ground level to allow visibility of the ground and room to flood fight.					
Inspector Comment					
Branches from waterside tree are blocking visibility of waterside slope and crown. Levee crown is nearly impassible.					

Photo 1 of 1 : FA\_2023\_NA0011\_145\_12\_20230821\_00008.jpg



Trim trees to at least 5' above levee slope and 12' above levee crown to allow inspection and access. (Spring 2021)

LM Start	1.05	Rating **	U	Issue No.	37
LM End	1.09	Issue Type +	Ma	Location *	LS
Category	Earthen Levee			GPS Latitude/Longitude	
				Start	End
Item	Animal Control			36.995482°	36.995573°
				-120.354587°	-120.353812°
DWR ID	DWR_NA0011_04_f_2022_37				
Comment Code					
A1 : Exterminate rodents and backfill and compact or grout burrows.					
Inspector Comment					

Photo 1 of 1 : FA\_2023\_NA0011\_145\_37\_20230821\_00025.jpg



Multiple burrows observed on the landside slope. (Fall 2022)

<b>* Location</b> LS : Land Side    N/A : Not Applicable WS : Water Side CR : Crown		<b>** Rating</b> A : Acceptable M : Minimally Acceptable U : Unacceptable N : Not Inspected/Rated C : Corrected A/W : Acceptable but Monitor & Maintain		<b>+ Issue Type</b> Ma : Maintenance Deficiency Ob : Design & System Obsolescence En : Enforcement	
--	--	---	--	---	--

**Flood Control Project Maintenance  
Levee Inspections**

**Maintenance Issue Types Only, Levee Inspection Report By Mile - Fall 2023**

**Madera County FCWCA**

Waterway	Bank	Unit Miles	Inspection Start/End	Inspector
Unit No. 04 Berenda Slough	Left	2.28	10/26/2023 10/26/2023	Corey Fujitani

LM Start	1.07	Rating **	U	Issue No.	24
LM End	1.07	Issue Type +	Ma	Location *	WS
Category	Earthen Levee			GPS Latitude/Longitude	
				Start	End
Item	Trim / Thin Trees			36.995587°	36.995587°
				-120.354128°	-120.354128°
DWR ID	DWR_NA0011_04_s_2021_24				
Comment Code					
T2 : Tree or limb.					
Inspector Comment					

Photo 1 of 1 : FA\_2023\_NA0011\_145\_24\_20230821\_00016.jpg



View of fallen trees on the waterside slope and berm. (Spring 2021)

LM Start	1.28	Rating **	C	Issue No.	36
LM End	1.47	Issue Type +	Ma	Location *	CR
Category	Earthen Levee			GPS Latitude/Longitude	
				Start	End
Item	Vegetation			36.995593°	36.995585°
				-120.350452°	-120.346869°
DWR ID	DWR_NA0011_04_f_2022_36				
Comment Code					
V3 : Keep the crown roadway free of vegetation.					
Inspector Comment					

No Photos

LM Start	1.36	Rating **	M	Issue No.	18
LM End	1.36	Issue Type +	Ma	Location *	WS
Category	Earthen Levee			GPS Latitude/Longitude	
				Start	End
Item	Trim / Thin Trees			36.995593°	36.995593°
				-120.348926°	-120.348926°
DWR ID	DWR_NA0011_04_s_2018_18				
Comment Code					
T1 : Trim and thin trees to at least five feet above ground level to allow visibility of the ground and room to flood fight.					
Inspector Comment					

No Photos

<b>* Location</b> LS : Land Side    N/A : Not Applicable WS : Water Side CR : Crown		<b>** Rating</b> A : Acceptable                      N : Not Inspected/Rated M : Minimally Acceptable        C : Corrected U : Unacceptable                  A/W : Acceptable but Monitor & Maintain		<b>+ Issue Type</b> Ma : Maintenance Deficiency Ob : Design & System Obsolescence En : Enforcement
--	--	---	--	---



**Flood Control Project Maintenance  
Levee Inspections**

**Maintenance Issue Types Only, Levee Inspection Report By Mile - Fall 2023**

**Madera County FCWCA**

Waterway	Bank	Unit Miles	Inspection Start/End	Inspector
Unit No. 04 Berenda Slough	Left	2.28	10/26/2023 10/26/2023	Corey Fujitani

LM Start	1.46	Rating **	M	Issue No.	7
LM End	1.46	Issue Type +	Ma	Location *	WS
Category	Earthen Levee			GPS Latitude/Longitude	
				Start	End
Item	Trim / Thin Trees			36.995600°	36.995600°
				-120.347175°	-120.347175°
DWR ID	DWR_NA0011_04_s_2021_7				
Comment Code					
T2 : Tree or limb.					
Inspector Comment					

Photo 1 of 1 : FA\_2023\_NA0011\_145\_7\_20230821\_00004.jpg



View of tree limbs on the waterside slope. (Spring 2021)

LM Start	1.50	Rating **	U	Issue No.	11
LM End	2.28	Issue Type +	Ma	Location *	LS
Category	Earthen Levee			GPS Latitude/Longitude	
				Start	End
Item	Animal Control			36.995590°	37.003740°
				-120.346406°	-120.336877°
DWR ID	DWR_NA0011_04_f_2016_11				
Comment Code					
A1 : Exterminate rodents and backfill and compact or grout burrows.					
Inspector Comment					
Exterminate the rodents and backfill and compact the burrows or grout the burrows in this area.					

Photo 1 of 1 : FA\_2023\_NA0011\_145\_11\_20230821\_00007.jpg



Representative view of rodent holes observed in this section. (Spring 2020)

LM Start	1.50	Rating **	U	Issue No.	30
LM End	2.28	Issue Type +	Ma	Location *	WS
Category	Earthen Levee			GPS Latitude/Longitude	
				Start	End
Item	Animal Control			36.995590°	37.003740°
				-120.346406°	-120.336877°
DWR ID	DWR_NA0011_04_f_2014_30				
Comment Code					
A1 : Exterminate rodents and backfill and compact or grout burrows.					
Inspector Comment					
Bait stations are needed in the rodent infested area on the waterside slope and toe.					

Photo 1 of 1 : FA\_2023\_NA0011\_145\_30\_20230821\_00020.jpg



Several large rodent holes on waterside slope. (Spring 2020)

<b>* Location</b> LS : Land Side    N/A : Not Applicable WS : Water Side CR : Crown		<b>** Rating</b> A : Acceptable M : Minimally Acceptable U : Unacceptable N : Not Inspected/Rated C : Corrected A/W : Acceptable but Monitor & Maintain		<b>+ Issue Type</b> Ma : Maintenance Deficiency Ob : Design & System Obsolescence En : Enforcement	
--	--	---	--	---	--

**Flood Control Project Maintenance  
Levee Inspections**

**Maintenance Issue Types Only, Levee Inspection Report By Mile - Fall 2023**

**Madera County FCWCA**

Waterway	Bank	Unit Miles	Inspection Start/End	Inspector
Unit No. 04 Berenda Slough	Left	2.28	10/26/2023 10/26/2023	Corey Fujitani

LM Start	1.50	Rating **	M	Issue No.	10
LM End	1.50	Issue Type +	Ma	Location *	CR
Category	Earthen Levee			GPS Latitude/Longitude	
				Start	End
Item	Crown Surface / Depressions / Rutting			36.995629°	36.995629°
				-120.346319°	-120.346319°
DWR ID	DWR_NA0011_04_s_2022_10				
Comment Code					
C1 : Add appropriate material and re-grade the levee to bring the crown above the design elevation.					
Inspector Comment					
Depression is in line with pipe crossing and could be related to a potential issue with the pipe.					

Photo 1 of 1 : FA\_2023\_NA0011\_145\_10\_20230821\_00006.jpg



Depression in the levee crown should be brought to level with appropriate material. (Spring 2022)

LM Start	1.63	Rating **	U	Issue No.	59
LM End	1.67	Issue Type +	Ma	Location *	CR
Category	Earthen Levee			GPS Latitude/Longitude	
				Start	End
Item	Animal Control			36.996573°	36.997002°
				-120.344428°	-120.343977°
DWR ID	DWR_NA0011_04_s_2012_59				
Comment Code					
A3 : No rodents visible, but rodent burrows visible; need to backfill and compact or grout burrows.					
Inspector Comment					
Rodent holes should be backfilled and compacted or grouted.					

Photo 1 of 1 : FA\_2023\_NA0011\_145\_59\_20230821\_00028.jpg



Representative rodent hole in the levee crown along this section. (Spring 2022)

LM Start	1.80	Rating **	M	Issue No.	29
LM End	1.97	Issue Type +	Ma	Location *	CR
Category	Earthen Levee			GPS Latitude/Longitude	
				Start	End
Item	Animal Control			36.998449°	37.000398°
				-120.342516°	-120.340537°
DWR ID	DWR_NA0011_04_f_2018_29				
Comment Code					
A3 : No rodents visible, but rodent burrows visible; need to backfill and compact or grout burrows.					
Inspector Comment					

No Photos

* Location		** Rating		+ Issue Type	
LS : Land Side	N/A : Not Applicable	A : Acceptable	N : Not Inspected/Rated	Ma : Maintenance Deficiency	
WS : Water Side		M : Minimally Acceptable	C : Corrected	Ob : Design & System Obsolescence	
CR : Crown		U : Unacceptable	A/W : Acceptable but Monitor & Maintain	En : Enforcement	

**Flood Control Project Maintenance  
Levee Inspections**

**Maintenance Issue Types Only, Levee Inspection Report By Mile - Fall 2023**

**Madera County FCWCA**

Waterway	Bank	Unit Miles	Inspection Start/End	Inspector
Unit No. 04 Berenda Slough	Left	2.28	10/26/2023 10/26/2023	Corey Fujitani

LM Start	2.22	Rating **	M	Issue No.	27
LM End	2.22	Issue Type +	Ma	Location *	WS
Category	Earthen Levee			GPS Latitude/Longitude	
				Start	End
Item	Trim / Thin Trees			37.003160°	37.003160°
				-120.337747°	-120.337747°
DWR ID	DWR_NA0011_04_f_2018_27				
Comment Code					
T1 : Trim and thin trees to at least five feet above ground level to allow visibility of the ground and room to flood fight.					
Inspector Comment					
Trim tree back away from crown and at least 5 feet above the levee slope.					

Photo 1 of 1 : FA\_2023\_NA0011\_145\_27\_20230821\_00019.jpg



Trim tree on waterside shoulder. (Fall 2022)

<b>* Location</b> LS: Land Side    N/A: Not Applicable WS: Water Side CR: Crown	<b>** Rating</b> A: Acceptable M: Minimally Acceptable U: Unacceptable	N: Not Inspected/Rated C: Corrected A/W: Acceptable but Monitor & Maintain	<b>+ Issue Type</b> Ma: Maintenance Deficiency Ob: Design & System Obsolescence En: Enforcement
--	---	--	--



**Flood Control Project Maintenance  
Levee Inspections**

**Maintenance Issue Types Only, Levee Inspection Report By Mile - Fall 2023**

**Madera County FCWCA**

Waterway	Bank	Unit Miles	Inspection Start/End	Inspector
Unit No. 05 Fresno River	Right	9.10	10/25/2023 10/25/2023	Corey Fujitani

LM Start	0.00	Rating **	M	Issue No.	14
LM End	4.05	Issue Type +	Ma	Location *	LS
Category	Earthen Levee			GPS Latitude/Longitude	
				Start	End
Item	Animal Control			36.978520°	36.968168°
				-120.368567°	-120.301035°
DWR ID	DWR_NA0011_05_f_2016_14				
Comment Code					
A1 : Exterminate rodents and backfill and compact or grout burrows.					
Inspector Comment					
Exterminate the rodents along the landside slope and toe throughout the area to levee mile 4.05. Bait stations are needed in infested areas.					

Photo 1 of 1 : FA\_2023\_NA0011\_146\_14\_20230821\_00006.jpg



Rodent activity on the landside slope. (Fall 2020)

LM Start	0.05	Rating **	M	Issue No.	7
LM End	2.57	Issue Type +	Ma	Location *	CR
Category	Earthen Levee			GPS Latitude/Longitude	
				Start	End
Item	Vegetation			36.978493°	36.968014°
				-120.367529°	-120.327776°
DWR ID	DWR_NA0011_05_s_2022_7				
Comment Code					
V3 : Keep the crown roadway free of vegetation.					
Inspector Comment					

Photo 1 of 1 : FA\_2023\_NA0011\_146\_7\_20231102\_00027.jpg



Looking upstream along the levee crown. (Fall 2023)

LM Start	0.12	Rating **	U	Issue No.	21
LM End	0.12	Issue Type +	Ma	Location *	WS
Category	Earthen Levee			GPS Latitude/Longitude	
				Start	End
Item	Animal Control			36.978327°	36.978327°
				-120.366440°	-120.366440°
DWR ID	DWR_NA0011_05_f_2020_21				
Comment Code					
A1 : Exterminate rodents and backfill and compact or grout burrows.					
Inspector Comment					

Photo 1 of 1 : FA\_2023\_NA0011\_146\_21\_20230821\_00011.jpg



Rodent burrows in the waterside slope. (Fall 2020)

<b>* Location</b> LS : Land Side    N/A : Not Applicable WS : Water Side CR : Crown		<b>** Rating</b> A : Acceptable M : Minimally Acceptable U : Unacceptable		N : Not Inspected/Rated C : Corrected A/W : Acceptable but Monitor & Maintain		<b>+ Issue Type</b> Ma : Maintenance Deficiency Ob : Design & System Obsolescence En : Enforcement	
--	--	--	--	---	--	---	--

**Flood Control Project Maintenance  
Levee Inspections**

**Maintenance Issue Types Only, Levee Inspection Report By Mile - Fall 2023**

**Madera County FCWCA**

Waterway	Bank	Unit Miles	Inspection Start/End	Inspector
Unit No. 05 Fresno River	Right	9.10	10/25/2023 10/25/2023	Corey Fujitani

LM Start	<b>0.18</b>	Rating **	U	Issue No.	<b>52</b>
LM End	<b>0.18</b>	Issue Type +	Ma	Location *	
Category	Supplemental		GPS Latitude/Longitude		
			Start	End	
Item	DWR UCIP LMA Responsibility		36.978036°	36.978036°	
			-120.365246°	-120.365246°	
DWR ID	21520				

**Comment Code**

**Inspector Comment**

DS\_ID:21520  
FS\_ID:81023  
EP\_NO: N/A  
Repair Type: Urgent  
EVAL Issue: 1, Pipe Integrity  
Crossing Status: Found  
UCIP Comments: 09/19/2023 Record updated from Non-Urgent to Urgent. DMP internal video inspection has found severe pipe defects. Crossing will be monitored until funding becomes available to address the issues. (O. Yakimov - DWR UCIP)  
04/20/2022 Record remains Non-Urgent. Tumbleweeds are blocking the pipe inlet and outlet; recommend removal. Minor rodent activity was observed behind the LS headwall. DMP internal video inspection has not found pipe integrity issues. LOF of crossing is less or equal to 4. Recommend next video inspection in 5 years. (M.Thao - DWR UCIP)  
05/06/2014 Need to contact owner. Dense vegetation limits the inspector's visibility to identify signs of pipe failure (leaks) along the landward slope. Recommend removing vegetation along pipe alignment to conduct proper inspection of structure. (DWR UCIP - O. Magana)  
FIELD\_STRUCT\_DESC: 36-inch corrugated metal gravity drainage pipe through the levee, 10.8 feet below the crown. Concrete headwall and wing wall on each end. Flap gate on the waterside (WS) end. [Additional Reference(s): DWR Levee Log, 2005 (HLM 0.18). USACE San Joaquin O&M Manual, Unit 606. USACE As-Built Drawing No. 07-04-0085, Sheets 85/3.1 and 85/25.2, (Station 9+70), March 1975].  
FS Date: 4/20/2022

LM Start	<b>0.18</b>	Rating **	U	Issue No.	<b>52 (cont)</b>
LM End	<b>0.18</b>	Issue Type +	Ma	Location *	

Photo 1 of 3 : UCIP\_FA\_2023\_81023\_112417.jpg



LS view: Rodent activity behind headwall on slope.

Photo 2 of 3 : UCIP\_FA\_2023\_81023\_112410.jpg



LS view: Concrete headwall and pipe inlet; tumbleweeds in front of inlet.

* Location	** Rating	+ Issue Type
LS: Land Side WS: Water Side CR: Crown	A: Acceptable M: Minimally Acceptable U: Unacceptable	Ma: Maintenance Deficiency Ob: Design & System Obsolescence En: Enforcement
N/A: Not Applicable	N: Not Inspected/Rated C: Corrected A/W: Acceptable but Monitor & Maintain	



**Flood Control Project Maintenance  
Levee Inspections**

**Maintenance Issue Types Only, Levee Inspection Report By Mile - Fall 2023**

**Madera County FCWCA**

Waterway	Bank	Unit Miles	Inspection Start/End	Inspector
Unit No. 05 Fresno River	Right	9.10	10/25/2023 10/25/2023	Corey Fujitani

LM Start	<b>0.18</b>	Rating **	U	Issue No.	<b>52 (cont)</b>
LM End	<b>0.18</b>	Issue Type +	Ma	Location *	
Category	Supplemental			GPS Latitude/Longitude	
				Start	End
Item	DWR UCIP LMA Responsibility			36.978036°	36.978036°
				-120.365246°	-120.365246°
DWR ID	21520				

Photo 3 of 3 : UCIP\_FA\_2023\_81023\_112412.jpg



WS view: Concrete headwall and flap gate on toe; tumbleweeds at pipe outlet.

LM Start	<b>0.55</b>	Rating **	U	Issue No.	<b>53</b>
LM End	<b>0.55</b>	Issue Type +	Ma	Location *	
Category	Supplemental			GPS Latitude/Longitude	
				Start	End
Item	DWR UCIP LMA Responsibility			36.975433°	36.975433°
				-120.359611°	-120.359611°
DWR ID	21623				

**Comment Code**

**Inspector Comment**

DS\_ID:21623  
 FS\_ID:80592  
 EP\_NO: N/A  
 Repair Type: Urgent  
 EVAL Issue: 3a, Flood Risk  
 Crossing Status: Found  
 UCIP Comments: 04/20/2022 Record updated from No Action Needed to Urgent. Flap gate on WS does not close properly and does not appear to be propped open with anything; flap gate hinges appear skewed. Recommend flap gate be repaired. (M.Thao - DWR UCIP)  
 10/27/2017 This structure is inspected annually under the Structure and Channel Summer Inspection (part of the Levee Inspection Program) conducted by the DWR Flood Project Integrity and Inspection Branch (FPIIB). (DWR UCIP - O. Magana)  
 FIELD\_STRUCT\_DESC: [Fresno River Drainage Structure] 1 of 4: 48-inch corrugated metal gravity drainage pipe through the levee, 11.5 feet below the crown. Concrete headwall and wing wall on each end.  
 [Additional Reference(s): DWR Levee Log, 2005 (HLM 0.55). USACE San Joaquin O&M Manual, Unit 606. USACE As-Built Drawing No. 07-04-0085, Sheets 85/3.1 and 85/25.2, (Station 29+20), March 1975].  
 FS Date: 4/20/2022

Photo 1 of 2 : UCIP\_FA\_2023\_80592\_112507.jpg



WS view: Flap gate not closed properly and appears not to be propped open. Record associated with flap gate on the left side.

<b>* Location</b> LS: Land Side    N/A: Not Applicable WS: Water Side CR: Crown	<b>** Rating</b> A: Acceptable M: Minimally Acceptable U: Unacceptable N: Not Inspected/Rated C: Corrected A/W: Acceptable but Monitor & Maintain	<b>+ Issue Type</b> Ma: Maintenance Deficiency Ob: Design & System Obsolescence En: Enforcement
--	---	--



**Flood Control Project Maintenance  
Levee Inspections**

**Maintenance Issue Types Only, Levee Inspection Report By Mile - Fall 2023**

**Madera County FCWCA**

Waterway	Bank	Unit Miles	Inspection Start/End	Inspector
Unit No. 05 Fresno River	Right	9.10	10/25/2023 10/25/2023	Corey Fujitani

LM Start	<b>0.55</b>	Rating **	U	Issue No.	<b>53 (cont)</b>
LM End	<b>0.55</b>	Issue Type +	Ma	Location *	
Category	Supplemental			GPS Latitude/Longitude	
				Start	End
Item	DWR UCIP LMA Responsibility			36.975433°	36.975433°
				-120.359611°	-120.359611°
DWR ID	21623				

Photo 2 of 2 : UCIP\_FA\_2023\_80592\_112480.jpg



WS view: View from above; flap gate does not close properly and appears not to be propped open with anything.

LM Start	<b>0.55</b>	Rating **	A/W	Issue No.	<b>54</b>
LM End	<b>0.55</b>	Issue Type +	Ma	Location *	
Category	Supplemental			GPS Latitude/Longitude	
				Start	End
Item	DWR UCIP LMA Responsibility			36.975419°	36.975419°
				-120.359593°	-120.359593°
DWR ID	21621				

**Comment Code**

**Inspector Comment**

DS\_ID:21621  
 FS\_ID:80591  
 EP\_NO: N/A  
 Repair Type: No Action Needed  
 EVAL Issue:  
 Crossing Status: Found  
 UCIP Comments: 04/20/2022 Record remains No Action Needed. Flap gate was propped open with wood; recommend closing flap gate prior to flood season. No issues observed during inspection. (M.Thao - DWR UCIP)  
 FIELD\_STRUCT\_DESC: [Fresno River Drainage Structure] 2 of 4: 48-inch corrugated metal gravity drainage pipe through the levee, 11.5 feet below the crown. Concrete headwall and wing wall on each end.  
 [Additional Reference(s): DWR Levee Log, 2005 (HLM 0.55). USACE San Joaquin O&M Manual, Unit 606. USACE As-Built Drawing No. 07-04-0085, Sheets 85/3.1 and 85/25.2, (Station 29+20), March 1975].  
 FS Date: 4/20/2022

Photo 1 of 3 : UCIP\_FA\_2023\_80591\_112488.jpg



Levee crown looking downstream.

* Location	** Rating	+ Issue Type
LS: Land Side WS: Water Side CR: Crown	A: Acceptable M: Minimally Acceptable U: Unacceptable	Ma: Maintenance Deficiency Ob: Design & System Obsolescence En: Enforcement
N/A: Not Applicable	N: Not Inspected/Rated C: Corrected A/W: Acceptable but Monitor & Maintain	

**Flood Control Project Maintenance  
Levee Inspections**

## Maintenance Issue Types Only, Levee Inspection Report By Mile - Fall 2023

### Madera County FCWCA

Waterway	Bank	Unit Miles	Inspection Start/End	Inspector
Unit No. 05 Fresno River	Right	9.10	10/25/2023 10/25/2023	Corey Fujitani

LM Start	<b>0.55</b>	Rating **	A/W	Issue No.	<b>54 (cont)</b>
LM End	<b>0.55</b>	Issue Type +	Ma	Location *	
Category	Supplemental		GPS Latitude/Longitude		
			Start	End	
Item	DWR UCIP LMA Responsibility		36.975419°	36.975419°	
			-120.359593°	-120.359593°	
DWR ID	21621				

Photo 2 of 3 : UCIP\_FA\_2023\_80591\_112489.jpg



LS view: Looking from levee; drainage channel leading to drainage structure.

LM Start	<b>0.55</b>	Rating **	A/W	Issue No.	<b>54 (cont)</b>
LM End	<b>0.55</b>	Issue Type +	Ma	Location *	

Photo 3 of 3 : UCIP\_FA\_2023\_80591\_112490.jpg



LS view: Looking toward levee; concrete headwall and pipe inlet of drainage structure.

<b>* Location</b> LS: Land Side    N/A: Not Applicable WS: Water Side CR: Crown	<b>** Rating</b> A: Acceptable M: Minimally Acceptable U: Unacceptable	N: Not Inspected/Rated C: Corrected A/W: Acceptable but Monitor & Maintain	<b>+ Issue Type</b> Ma: Maintenance Deficiency Ob: Design & System Obsolescence En: Enforcement
--	---	--	--

**Flood Control Project Maintenance  
Levee Inspections**

**Maintenance Issue Types Only, Levee Inspection Report By Mile - Fall 2023**

**Madera County FCWCA**

Waterway	Bank	Unit Miles	Inspection Start/End	Inspector
Unit No. 05 Fresno River	Right	9.10	10/25/2023 10/25/2023	Corey Fujitani

LM Start	0.55	Rating **	A/W	Issue No.	55	
LM End	0.55	Issue Type +	Ma	Location *		
Category	Supplemental			GPS Latitude/Longitude		
				Start	End	
Item	DWR UCIP LMA Responsibility			36.975405°	36.975405°	
				-120.359575°	-120.359575°	
DWR ID	21620					
Comment Code						
Inspector Comment						
DS_ID:21620 FS_ID:80590 EP_NO: N/A Repair Type: No Action Needed EVAL Issue: Crossing Status: Found UCIP Comments: 04/20/2022 Record remains No Action Needed. Flap gate was propped open with wood; recommend closing flap gate prior to flood season. No issues observed during inspection. (M.Thao - DWR UCIP)10/27/2017 This structure is inspected annually under the Structure and Channel Summer Inspection (part of the Levee Inspection Program) conducted by the DWR Flood Project Integrity and Inspection Branch (FPIIB). (DWR UCIP - O. Magana) FIELD_STRUCT_DESC: [Fresno River Drainage Structure] 3 of 4: 48-inch corrugated metal gravity drainage pipe through the levee, 11.5 feet below the crown. Concrete headwall and wing wall on each end. [Additional Reference(s): DWR Levee Log, 2005 (HLM 0.55). USACE San Joaquin O&M Manual, Unit 606. USACE As-Built Drawing No. 07-04-0085, Sheets 85/3.1 and 85/25.2, (Station 29+20), March 1975]. FS Date: 4/20/2022						

LM Start	<b>0.55</b>	Rating **	A/W	Issue No.	<b>55 (cont)</b>
LM End	<b>0.55</b>	Issue Type +	Ma	Location *	

Photo 1 of 3 : UCIP\_FA\_2023\_80590\_112495.jpg



Levee crown looking downstream.

Photo 2 of 3 : UCIP\_FA\_2023\_80590\_112496.jpg



LS view: Looking from levee; drainage channel leading to drainage structure.

* Location	** Rating	+ Issue Type
LS: Land Side WS: Water Side CR: Crown	A: Acceptable M: Minimally Acceptable U: Unacceptable	Ma: Maintenance Deficiency Ob: Design & System Obsolescence En: Enforcement
N/A: Not Applicable	N: Not Inspected/Rated C: Corrected A/W: Acceptable but Monitor & Maintain	



**Flood Control Project Maintenance  
Levee Inspections**

**Maintenance Issue Types Only, Levee Inspection Report By Mile - Fall 2023**

**Madera County FCWCA**

Waterway	Bank	Unit Miles	Inspection Start/End	Inspector
Unit No. 05 Fresno River	Right	9.10	10/25/2023 10/25/2023	Corey Fujitani

LM Start	<b>0.55</b>	Rating **	A/W	Issue No.	<b>55 (cont)</b>
LM End	<b>0.55</b>	Issue Type +	Ma	Location *	
Category	Supplemental			GPS Latitude/Longitude	
				Start	End
Item	DWR UCIP LMA Responsibility			36.975405°	36.975405°
				-120.359575°	-120.359575°
DWR ID	21620				

Photo 3 of 3 : UCIP\_FA\_2023\_80590\_112497.jpg



LS view: Looking toward levee; concrete headwall and pipe inlet of drainage structure.

LM Start	<b>0.56</b>	Rating **	A/W	Issue No.	<b>56</b>
LM End	<b>0.56</b>	Issue Type +	Ma	Location *	
Category	Supplemental			GPS Latitude/Longitude	
				Start	End
Item	DWR UCIP LMA Responsibility			36.975391°	36.975391°
				-120.359563°	-120.359563°
DWR ID	21521				

**Comment Code**

**Inspector Comment**

DS\_ID:21521  
 FS\_ID:80589  
 EP\_NO: N/A  
 Repair Type: No Action Needed  
 EVAL Issue:  
 Crossing Status: Found  
 UCIP Comments: 04/20/2022 Record remains No Action Needed. Flap gate was propped open with wood; recommend closing flap gate prior to flood season. No issues observed during inspection. (M.Thao - DWR UCIP)10/27/2017 This structure is inspected annually under the Structure and Channel Summer Inspection (part of the Levee Inspection Program) conducted by the DWR Flood Project Integrity and Inspection Branch (FPIIB). (DWR UCIP - O. Magana)  
 FIELD\_STRUCT\_DESC: [Fresno River Drainage Structure] 4 of 4: 48-inch corrugated metal gravity drainage pipe through the levee, 11.5 feet below the crown. Concrete headwall and wing wall on each end.  
 [Additional Reference(s): DWR Levee Log, 2005 (HLM 0.55). USACE San Joaquin O&M Manual, Unit 606. USACE As-Built Drawing No. 07-04-0085, Sheets 85/3.1 and 85/25.2, (Station 29+20), March 1975].  
 FS Date: 4/20/2022

Photo 1 of 3 : UCIP\_FA\_2023\_80589\_112502.jpg



Levee crown looking downstream.

* Location	** Rating	+ Issue Type
LS: Land Side WS: Water Side CR: Crown	A: Acceptable M: Minimally Acceptable U: Unacceptable	Ma: Maintenance Deficiency Ob: Design & System Obsolescence En: Enforcement
N/A: Not Applicable	N: Not Inspected/Rated C: Corrected A/W: Acceptable but Monitor & Maintain	

**Flood Control Project Maintenance  
Levee Inspections**

**Maintenance Issue Types Only, Levee Inspection Report By Mile - Fall 2023**

**Madera County FCWCA**

Waterway	Bank	Unit Miles	Inspection Start/End	Inspector
Unit No. 05 Fresno River	Right	9.10	10/25/2023 10/25/2023	Corey Fujitani

LM Start	<b>0.56</b>	Rating **	A/W	Issue No.	<b>56 (cont)</b>
LM End	<b>0.56</b>	Issue Type +	Ma	Location *	
Category	Supplemental			GPS Latitude/Longitude	
				Start	End
Item	DWR UCIP LMA Responsibility			36.975391°	36.975391°
				-120.359563°	-120.359563°
DWR ID	21521				

Photo 2 of 3 : UCIP\_FA\_2023\_80589\_112503.jpg



LS view: Looking from levee; drainage channel leading to drainage structure.

LM Start	<b>0.56</b>	Rating **	A/W	Issue No.	<b>56 (cont)</b>
LM End	<b>0.56</b>	Issue Type +	Ma	Location *	

Photo 3 of 3 : UCIP\_FA\_2023\_80589\_112504.jpg



LS view: Looking toward levee; concrete headwall and pipe inlet of drainage structure.

<b>* Location</b> LS: Land Side    N/A: Not Applicable WS: Water Side CR: Crown	<b>** Rating</b> A: Acceptable M: Minimally Acceptable U: Unacceptable	N: Not Inspected/Rated C: Corrected A/W: Acceptable but Monitor & Maintain	<b>+ Issue Type</b> Ma: Maintenance Deficiency Ob: Design & System Obsolescence En: Enforcement
--	---	--	--

**Flood Control Project Maintenance  
Levee Inspections**

**Maintenance Issue Types Only, Levee Inspection Report By Mile - Fall 2023**

**Madera County FCWCA**

Waterway	Bank	Unit Miles	Inspection Start/End	Inspector
Unit No. 05 Fresno River	Right	9.10	10/25/2023 10/25/2023	Corey Fujitani

LM Start	4.06	Rating **	M	Issue No.	57	
LM End	4.06	Issue Type +	Ma	Location *		
Category	Supplemental			GPS Latitude/Longitude		
				Start	End	
Item	DWR UCIP LMA Responsibility			36.968154°	36.968154°	
				-120.300928°	-120.300928°	
DWR ID	21529					
Comment Code						
Inspector Comment						
DS_ID:21529 FS_ID:80588 EP_NO: N/A Repair Type: Non-Urgent EVAL Issue: 11, Maintenance Compliance Issue Crossing Status: Found UCIP Comments: 04/20/2022 Record updated from No Action Needed to Non-Urgent. Pipe inlet on LS is being blocked with sandbags; recommend removal for crossing to function properly. DMP internal video inspection has not found pipe integrity issues. LOF of crossing is less or equal to 4. Recommend next video inspection in 5 years. (M.Thao - DWR UCIP) FIELD_STRUCT_DESC: 30-inch corrugated metal gravity drainage pipe through the levee, 9 feet below the crown. Concrete headwall and wing wall on each end. Flap gate on waterside (WS) end. [Additional Reference(s): DWR Levee Log, 2005 (HLM 4.10). USACE San Joaquin O&M Manual, Unit 606. USACE As-Built Drawing No. 07-04-0085, (Station 214+20), Sheets 85/6.1 and 85/31.1, March 1975]. FS Date: 4/20/2022						

LM Start	<b>4.06</b>	Rating **	M	Issue No.	<b>57 (cont)</b>
LM End	<b>4.06</b>	Issue Type +	Ma	Location *	

Photo 1 of 3 : UCIP\_FA\_2023\_80588\_112419.jpg



Levee crown looking downstream.

Photo 2 of 3 : UCIP\_FA\_2023\_80588\_112420.jpg



LS view: Looking from crown; top of concrete headwall on toe.

<b>* Location</b> LS: Land Side    N/A: Not Applicable WS: Water Side CR: Crown	<b>** Rating</b> A: Acceptable M: Minimally Acceptable U: Unacceptable	N: Not Inspected/Rated C: Corrected A/W: Acceptable but Monitor & Maintain	<b>+ Issue Type</b> Ma: Maintenance Deficiency Ob: Design & System Obsolescence En: Enforcement
--	---	--	--



**Flood Control Project Maintenance  
Levee Inspections**

**Maintenance Issue Types Only, Levee Inspection Report By Mile - Fall 2023**

**Madera County FCWCA**

Waterway	Bank	Unit Miles	Inspection Start/End	Inspector
Unit No. 05 Fresno River	Right	9.10	10/25/2023 10/25/2023	Corey Fujitani

LM Start	4.06	Rating **	M	Issue No.	57 (cont)
LM End	4.06	Issue Type +	Ma	Location *	
Category	Supplemental			GPS Latitude/Longitude	
				Start	End
Item	DWR UCIP LMA Responsibility			36.968154°	36.968154°
				-120.300928°	-120.300928°
DWR ID	21529				

Photo 3 of 3 : UCIP\_FA\_2023\_80588\_112421.jpg



LS view: Concrete headwall at toe; stacked sandbags are blocking pipe inlet.

LM Start	4.34	Rating **	M	Issue No.	23
LM End	4.34	Issue Type +	Ma	Location *	WS
Category	Earthen Levee			GPS Latitude/Longitude	
				Start	End
Item	Animal Control			36.968189°	36.968189°
				-120.295782°	-120.295782°
DWR ID	DWR_NA0011_05_s_2021_23				
Comment Code					
A3 : No rodents visible, but rodent burrows visible; need to backfill and compact or grout burrows.					
Inspector Comment					

Photo 1 of 1 : FA\_2023\_NA0011\_146\_23\_20230821\_00012.jpg



Large rodent hole observed on the waterside slope. (Spring 2021)

<b>* Location</b> LS : Land Side    N/A : Not Applicable WS : Water Side CR : Crown	<b>** Rating</b> A : Acceptable M : Minimally Acceptable U : Unacceptable	<b>+ Issue Type</b> Ma : Maintenance Deficiency Ob : Design & System Obsolescence En : Enforcement
--	--	---

**Flood Control Project Maintenance  
Levee Inspections**

**Maintenance Issue Types Only, Levee Inspection Report By Mile - Fall 2023**

**Madera County FCWCA**

Waterway	Bank	Unit Miles	Inspection Start/End	Inspector
Unit No. 05 Fresno River	Right	9.10	10/25/2023 10/25/2023	Corey Fujitani

LM Start	4.55	Rating **	A/W	Issue No.	58	
LM End	4.55	Issue Type +	Ma	Location *		
Category	Supplemental			GPS Latitude/Longitude		
				Start	End	
Item	DWR UCIP LMA Responsibility			36.968205°	36.968205°	
				-120.292019°	-120.292019°	
DWR ID	21522					
Comment Code						
Inspector Comment						
DS_ID:21522 FS_ID:80587 EP_NO: N/A Repair Type: No Action Needed EVAL Issue: Crossing Status: Found UCIP Comments: 04/20/2022 Record remains No Action Needed. A PVC pipe buried off LS toe was observed and appears to be for drainage purposes. DMP internal video inspection has not found pipe integrity issues. LOF of crossing is less or equal to 4. Recommend next video inspection in 5 years. (M.Thao - DWR UCIP) FIELD_STRUCT_DESC: 30-inch corrugated metal gravity drainage pipe through the levee, 7.8 feet below the crown. Concrete headwall and wing wall on each end. Flap gate on the waterside (WS) end propped open. [Additional Reference(s): DWR Levee Log, 2005 (HLM 4.60). USACE San Joaquin O&M Manual, Unit 606. USACE As-Built Drawing No. 07-04-0085, Sheets 85/7.1 and 85/31.1, (Station 240+20), March 1975]. FS Date: 4/20/2022						

Photo 1 of 3 : UCIP\_FA\_2023\_80587\_112425.jpg



Levee crown looking downstream.

LM Start	<b>4.55</b>	Rating **	A/W	Issue No.	<b>58 (cont)</b>
LM End	<b>4.55</b>	Issue Type +	Ma	Location *	

Photo 2 of 3 : UCIP\_FA\_2023\_80587\_112426.jpg



LS view: Looking from crown; concrete headwall on toe.

<b>* Location</b> LS: Land Side    N/A: Not Applicable WS: Water Side CR: Crown	<b>** Rating</b> A: Acceptable M: Minimally Acceptable U: Unacceptable	N: Not Inspected/Rated C: Corrected A/W: Acceptable but Monitor & Maintain	<b>+ Issue Type</b> Ma: Maintenance Deficiency Ob: Design & System Obsolescence En: Enforcement
--	---	--	--

**Flood Control Project Maintenance  
Levee Inspections**

**Maintenance Issue Types Only, Levee Inspection Report By Mile - Fall 2023**

**Madera County FCWCA**

Waterway	Bank	Unit Miles	Inspection Start/End	Inspector
Unit No. 05 Fresno River	Right	9.10	10/25/2023 10/25/2023	Corey Fujitani

LM Start	<b>4.55</b>	Rating **	A/W	Issue No.	<b>58 (cont)</b>
LM End	<b>4.55</b>	Issue Type +	Ma	Location *	
Category	Supplemental			GPS Latitude/Longitude	
				Start	End
Item	DWR UCIP LMA Responsibility			36.968205°	36.968205°
				-120.292019°	-120.292019°
DWR ID	21522				

Photo 3 of 3 : UCIP\_FA\_2023\_80587\_112431.jpg



LS view: PVC drainage pipe inlet (yellow arrow) leading to headwall.

LM Start	<b>5.06</b>	Rating **	A/W	Issue No.	<b>59</b>
LM End	<b>5.06</b>	Issue Type +	Ma	Location *	
Category	Supplemental			GPS Latitude/Longitude	
				Start	End
Item	DWR UCIP LMA Responsibility			36.968214°	36.968214°
				-120.282916°	-120.282916°
DWR ID	21519				

**Comment Code**

**Inspector Comment**

DS\_ID:21519  
 FS\_ID:80586  
 EP\_NO: N/A  
 Repair Type: No Action Needed  
 EVAL Issue:  
 Crossing Status: Found  
 UCIP Comments: 04/20/2022 Record remains No Action Needed. DMP internal video inspection has not found pipe integrity issues. LOF of crossing is less or equal to 4. Recommend next video inspection in 5 years. No issues observed during inspection. (M.Thao - DWR UCIP)  
 FIELD\_STRUCT\_DESC: 30-inch corrugated metal gravity drainage pipe through the levee, 8.4 feet below the crown. Concrete headwall and wing wall on each end. Flap gate on the waterside (WS) end propped open. [Additional Reference(s): DWR Levee Log, 2005 (HLM 5.10). USACE San Joaquin O&M Manual, Unit 606. USACE As-Built Drawing No. 07-04-0085, Sheets 85/7.1 and 85/31.1, (Station 266+20), March 1975].  
 FS Date: 4/20/2022

Photo 1 of 1 : UCIP\_FA\_2023\_80586\_112436.jpg



WS view: Looking from crown; concrete headwall at toe. Overgrown vegetation around headwall.

* Location	** Rating	+ Issue Type
LS: Land Side WS: Water Side CR: Crown	A: Acceptable M: Minimally Acceptable U: Unacceptable	Ma: Maintenance Deficiency Ob: Design & System Obsolescence En: Enforcement
N/A: Not Applicable	N: Not Inspected/Rated C: Corrected A/W: Acceptable but Monitor & Maintain	



**Flood Control Project Maintenance  
Levee Inspections**

**Maintenance Issue Types Only, Levee Inspection Report By Mile - Fall 2023**

**Madera County FCWCA**

Waterway	Bank	Unit Miles	Inspection Start/End	Inspector
Unit No. 05 Fresno River	Right	9.10	10/25/2023 10/25/2023	Corey Fujitani

LM Start	5.12	Rating **	M	Issue No.	40
LM End	5.12	Issue Type +	Ma	Location *	WS
Category	Earthen Levee			GPS Latitude/Longitude	
				Start	End
Item	Animal Control			36.968222°	36.968222°
				-120.281784°	-120.281784°
DWR ID	DWR_NA0011_05_f_2022_40				
Comment Code					
A3 : No rodents visible, but rodent burrows visible; need to backfill and compact or grout burrows.					
Inspector Comment					
Partially collapsed rodent holes on the waterside slope. Recommend completely collapsing and compacting the burrows.					

Photo 1 of 1 : FA\_2023\_NA0011\_146\_40\_20230821\_00019.jpg



View of burrows on the waterside slope. (Fall 2022)

LM Start	5.17	Rating **	M	Issue No.	41
LM End	5.17	Issue Type +	Ma	Location *	WS
Category	Earthen Levee			GPS Latitude/Longitude	
				Start	End
Item	Animal Control			36.968219°	36.968219°
				-120.280871°	-120.280871°
DWR ID	DWR_NA0011_05_f_2022_41				
Comment Code					
A3 : No rodents visible, but rodent burrows visible; need to backfill and compact or grout burrows.					
Inspector Comment					
Partially collapsed rodent holes on the waterside slope. Recommend completely collapsing and compacting the burrows.					

Photo 1 of 1 : FA\_2023\_NA0011\_146\_41\_20230821\_00020.jpg



Partially collapsed rodent holes on the waterside slope. (Fall 2022)

LM Start	5.45	Rating **	A/W	Issue No.	13
LM End	5.45	Issue Type +	Ma	Location *	WS
Category	Earthen Levee			GPS Latitude/Longitude	
				Start	End
Item	Animal Control			36.968227°	36.968227°
				-120.275805°	-120.275805°
DWR ID	DWR_NA0011_05_s_2022_13				
Comment Code					
A3 : No rodents visible, but rodent burrows visible; need to backfill and compact or grout burrows.					
Inspector Comment					

Photo 1 of 1 : FA\_2023\_NA0011\_146\_13\_20230821\_00005.jpg



View of rodent burrows in the waterside slope. (Spring 2022)

<b>* Location</b> LS: Land Side    N/A: Not Applicable WS: Water Side CR: Crown		<b>** Rating</b> A: Acceptable M: Minimally Acceptable U: Unacceptable N: Not Inspected/Rated C: Corrected A/W: Acceptable but Monitor & Maintain		<b>+ Issue Type</b> Ma: Maintenance Deficiency Ob: Design & System Obsolescence En: Enforcement	
--	--	---	--	--	--

**Flood Control Project Maintenance  
Levee Inspections**

**Maintenance Issue Types Only, Levee Inspection Report By Mile - Fall 2023**

**Madera County FCWCA**

Waterway	Bank	Unit Miles	Inspection Start/End	Inspector
Unit No. 05 Fresno River	Right	9.10	10/25/2023 10/25/2023	Corey Fujitani

LM Start	5.56	Rating **	M	Issue No.	18
LM End	5.56	Issue Type +	Ma	Location *	LS
Category	Earthen Levee			GPS Latitude/Longitude	
				Start	End
Item	Erosion / Vehicle Traffic			36.968210°	36.968210°
				-120.273729°	-120.273729°
DWR ID	DWR_NA0011_05_f_2017_18				
Comment Code					
E6 : Repair the levee slope damaged by vehicle traffic and prevent access where possible.					
Inspector Comment					
Repair damage from vehicle traffic on slope and shoulder.					

Photo 1 of 1 : FA\_2023\_NA0011\_146\_18\_20230821\_00008.jpg



Damage to landside shoulder and slope looking upstream. (Fall 2019)

LM Start	5.56	Rating **	M	Issue No.	60
LM End	5.56	Issue Type +	Ma	Location *	
Category	Supplemental			GPS Latitude/Longitude	
				Start	End
Item	DWR UCIP LMA Responsibility			36.968197°	36.968197°
				-120.273713°	-120.273713°
DWR ID	21523				
Comment Code					
Inspector Comment					
DS_ID:21523 FS_ID:80585 EP_NO: N/A Repair Type: Non-Urgent EVAL Issue: 11, Maintenance Compliance Issue Crossing Status: Found UCIP Comments: 04/20/2022 Record updated from No Action Needed to Non-Urgent. Erosion gullies are present near concrete headwall on LS. Stacked sandbags are present at end of spillway on WS that would impede drainage. Sandbags were placed for unknown reason; recommend removal of sandbags if no longer serving its intended functions. DMP internal video inspection has not found pipe integrity issues. LOF of crossing is less or equal to 4. Recommend next video inspection in 5 years. (M.Thao - DWR UCIP) FIELD_STRUCT_DESC: 30-inch corrugated metal gravity drainage pipe through the levee, 8.6 feet below the crown. Concrete headwall and wing wall on each end. Flap gate on the waterside (WS). [Additional Reference(s): DWR Levee Log, 2005 (HLM 5.62). USACE San Joaquin O&M Manual, Unit 606. USACE As-Built Drawing No. 07-04-0085, Sheets 85/85A.1 and 85/31.1, (Station 293+70), March 1975]. FS Date: 4/20/2022					

Photo 1 of 2 : UCIP\_FA\_2023\_80585\_112441.jpg



WS view: Concrete headwall on toe; stacked sandbags at end of spillway that would impede drainage.

<b>* Location</b> LS : Land Side    N/A : Not Applicable WS : Water Side CR : Crown	<b>** Rating</b> A : Acceptable M : Minimally Acceptable U : Unacceptable	<b>+ Issue Type</b> Ma : Maintenance Deficiency Ob : Design & System Obsolescence En : Enforcement
--	--	---



**Flood Control Project Maintenance  
Levee Inspections**

**Maintenance Issue Types Only, Levee Inspection Report By Mile - Fall 2023**

**Madera County FCWCA**

Waterway	Bank	Unit Miles	Inspection Start/End	Inspector
Unit No. 05 Fresno River	Right	9.10	10/25/2023 10/25/2023	Corey Fujitani

LM Start	5.56	Rating **	M	Issue No.	60 (cont)
LM End	5.56	Issue Type +	Ma	Location *	
Category	Supplemental			GPS Latitude/Longitude	
				Start	End
Item	DWR UCIP LMA Responsibility			36.968197°	36.968197°
				-120.273713°	-120.273713°
DWR ID	21523				

Photo 2 of 2 : UCIP\_FA\_2023\_80585\_112442.jpg



WS view: Sandbags at end of spillway that would impede drainage.

LM Start	5.67	Rating **	M	Issue No.	38
LM End	5.67	Issue Type +	Ma	Location *	WS
Category	Earthen Levee			GPS Latitude/Longitude	
				Start	End
Item	Erosion / Rills			36.968204°	36.968204°
				-120.271707°	-120.271707°
DWR ID	DWR_NA0011_05_f_2018_38				
Comment Code					
E5 : Schedule repair of rills prior to the next inspection.					
Inspector Comment					
Rill in waterside slope.					

Photo 1 of 1 : FA\_2023\_NA0011\_146\_38\_20230821\_00018.jpg



Finger erosion on the waterside slope. (Spring 2020)

LM Start	5.90	Rating **	A/W	Issue No.	17
LM End	5.90	Issue Type +	Ma	Location *	LS
Category	Earthen Levee			GPS Latitude/Longitude	
				Start	End
Item	Erosion / Bank Caving			36.968205°	36.968205°
				-120.267562°	-120.267562°
DWR ID	DWR_NA0011_05_f_2019_17				
Comment Code					
E2 : Schedule repair of erosion site prior to the next inspection.					
Inspector Comment					

Photo 1 of 1 : FA\_2023\_NA0011\_146\_17\_20230821\_00007.jpg



View of landside slope erosion looking upstream. (Fall 2019)

<b>* Location</b> LS : Land Side    N/A : Not Applicable WS : Water Side CR : Crown	<b>** Rating</b> A : Acceptable M : Minimally Acceptable U : Unacceptable	<b>+ Issue Type</b> Ma : Maintenance Deficiency Ob : Design & System Obsolescence En : Enforcement
--	--	---



**Flood Control Project Maintenance  
Levee Inspections**

**Maintenance Issue Types Only, Levee Inspection Report By Mile - Fall 2023**

**Madera County FCWCA**

Waterway	Bank	Unit Miles	Inspection Start/End	Inspector
Unit No. 05 Fresno River	Right	9.10	10/25/2023 10/25/2023	Corey Fujitani

LM Start	6.03	Rating **	A/W	Issue No.	61	
LM End	6.03	Issue Type +	Ma	Location *		
Category	Supplemental			GPS Latitude/Longitude		
				Start	End	
Item	DWR UCIP LMA Responsibility			36.968193°	36.968193°	
				-120.265227°	-120.265227°	
DWR ID	21524					
Comment Code						
Inspector Comment						
DS_ID:21524 FS_ID:80584 EP_NO: N/A Repair Type: No Action Needed EVAL Issue: Crossing Status: Found UCIP Comments: 04/20/2022 Record remains No Action Needed. DMP internal video inspection has not found pipe integrity issues. LOF of crossing is less or equal to 4. Recommend next video inspection in 5 years. (M.Thao - DWR UCIP) FIELD_STRUCT_DESC: 30-inch corrugated metal gravity drainage pipe through the levee, 8 feet below the crown. Concrete headwall and wing wall on each end. Flap gate on the waterside (WS) end. [Additional Reference(s): DWR Levee Log, 2005 (HLM 6.10). USACE San Joaquin O&M Manual, Unit 606. USACE As-Built Drawing No. 07-04-0085, Sheets 85/8A.1 and 85/31.1, (Station 318+50), March 1975]. FS Date: 4/20/2022						

Photo 1 of 1 : UCIP\_FA\_2023\_80584\_112445.jpg



WS view: Concrete headwall on toe; overgrown vegetation around headwall.

LM Start	6.30	Rating **	M	Issue No.	46
LM End	6.30	Issue Type +	Ma	Location *	WS
Category	Earthen Levee			GPS Latitude/Longitude	
				Start	End
Item	Erosion / Rills			36.968399°	36.968399°
				-120.260433°	-120.260433°
DWR ID	DWR_NA0011_05_s_2019_46				
Comment Code					
E5 : Schedule repair of rills prior to the next inspection.					
Inspector Comment					
Rills on waterside slope.					

Photo 1 of 1 : FA\_2023\_NA0011\_146\_46\_20230821\_00023.jpg



Rills observed on waterside slope. (Spring 2019)

<b>* Location</b> LS: Land Side    N/A: Not Applicable WS: Water Side CR: Crown	<b>** Rating</b> A: Acceptable M: Minimally Acceptable U: Unacceptable	<b>N: Not Inspected/Rated</b> C: Corrected A/W: Acceptable but Monitor & Maintain	<b>+ Issue Type</b> Ma: Maintenance Deficiency Ob: Design & System Obsolescence En: Enforcement
--	---	---	--

**Flood Control Project Maintenance  
Levee Inspections**

**Maintenance Issue Types Only, Levee Inspection Report By Mile - Fall 2023**

**Madera County FCWCA**

Waterway	Bank	Unit Miles	Inspection Start/End	Inspector
Unit No. 05 Fresno River	Right	9.10	10/25/2023 10/25/2023	Corey Fujitani

LM Start	6.57	Rating **	M	Issue No.	29
LM End	6.57	Issue Type +	Ma	Location *	LS
Category	Earthen Levee			GPS Latitude/Longitude	
				Start	End
Item	Trim / Thin Trees			36.968477°	36.968477°
				-120.255557°	-120.255557°
DWR ID	DWR_NA0011_05_f_2019_29				
Comment Code					
T1 : Trim and thin trees to at least five feet above ground level to allow visibility of the ground and room to flood fight.					
Inspector Comment					
Tree should be trimmed above the levee crown and 5 feet above the slope.					

Photo 1 of 1 : FA\_2023\_NA0011\_146\_29\_20231102\_00028.jpg



View of tree growing on the landside slope. (Fall 2023)

LM Start	6.57	Rating **	A/W	Issue No.	62
LM End	6.57	Issue Type +	Ma	Location *	
Category	Supplemental			GPS Latitude/Longitude	
				Start	End
Item	DWR UCIP LMA Responsibility			36.968504°	36.968504°
				-120.255506°	-120.255506°
DWR ID	21625				
Comment Code					
Inspector Comment					
DS_ID:21625					
FS_ID:80623					
EP_NO: N/A					
Repair Type: No Action Needed					
EVAL Issue:					
Crossing Status: Found					
UCIP Comments: 04/20/2022 Record remains No Action Needed. No issues observed during inspection. (M.Thao - DWR UCIP)					
FIELD_STRUCT_DESC: [Fresno Diversion Weir] 1 of 3: 60-inch by 48-inch reinforced concrete box gravity drainage culvert through the levee, 13 feet below the crown. Concrete headwall and wing wall on the landside (LS) shoulder. Slide gate on the waterside (WS). [Additional Reference(s): DWR Levee Log, 2005 (HLM 6.64). USACE San Joaquin O&M Manual, Unit 606, (located just upstream from Road 16), listed as diversion dam].					
FS Date: 4/20/2022					

Photo 1 of 3 : UCIP\_FA\_2023\_80623\_112448.jpg



Levee crown looking downstream.

* Location	** Rating	+ Issue Type
LS : Land Side WS : Water Side CR : Crown	A : Acceptable M : Minimally Acceptable U : Unacceptable	Ma : Maintenance Deficiency Ob : Design & System Obsolescence En : Enforcement
N/A : Not Applicable	N : Not Inspected/Rated C : Corrected A/W : Acceptable but Monitor & Maintain	

**Flood Control Project Maintenance  
Levee Inspections**

**Maintenance Issue Types Only, Levee Inspection Report By Mile - Fall 2023**

**Madera County FCWCA**

Waterway	Bank	Unit Miles	Inspection Start/End	Inspector
Unit No. 05 Fresno River	Right	9.10	10/25/2023 10/25/2023	Corey Fujitani

LM Start	<b>6.57</b>	Rating **	A/W	Issue No.	<b>62 (cont)</b>
LM End	<b>6.57</b>	Issue Type +	Ma	Location *	
Category	Supplemental			GPS Latitude/Longitude	
				Start	End
Item	DWR UCIP LMA Responsibility			36.968504°	36.968504°
				-120.255506°	-120.255506°
DWR ID	21625				

Photo 2 of 3 : UCIP\_FA\_2023\_80623\_112450.jpg



LS view: Looking toward levee; inlet of reinforced concrete box culvert.

LM Start	<b>6.57</b>	Rating **	A/W	Issue No.	<b>62 (cont)</b>
LM End	<b>6.57</b>	Issue Type +	Ma	Location *	

Photo 3 of 3 : UCIP\_FA\_2023\_80623\_112451.jpg



WS view: Looking from crown; slide gate operator on shoulder.

<b>* Location</b> LS : Land Side    N/A : Not Applicable WS : Water Side CR : Crown	<b>** Rating</b> A : Acceptable M : Minimally Acceptable U : Unacceptable	N : Not Inspected/Rated C : Corrected A/W : Acceptable but Monitor & Maintain	<b>+ Issue Type</b> Ma : Maintenance Deficiency Ob : Design & System Obsolescence En : Enforcement
--	--	---	---



**Flood Control Project Maintenance  
Levee Inspections**

**Maintenance Issue Types Only, Levee Inspection Report By Mile - Fall 2023**

**Madera County FCWCA**

Waterway	Bank	Unit Miles	Inspection Start/End	Inspector
Unit No. 05 Fresno River	Right	9.10	10/25/2023 10/25/2023	Corey Fujitani

LM Start	6.57	Rating **	A/W	Issue No.	63	
LM End	6.57	Issue Type +	Ma	Location *		
Category	Supplemental			GPS Latitude/Longitude		
				Start	End	
Item	DWR UCIP LMA Responsibility			36.968504°	36.968504°	
				-120.255485°	-120.255485°	
DWR ID	21624					
Comment Code						
Inspector Comment						
DS_ID:21624						
FS_ID:80624						
EP_NO: N/A						
Repair Type: No Action Needed						
EVAL Issue:						
Crossing Status: Found						
UCIP Comments: 04/20/2022 Record remains No Action Needed. No issues observed during inspection. (M.Thao - DWR UCIP)						
FIELD_STRUCT_DESC: [Fresno Diversion Weir] 2 of 3: 60-inch by 48-inch reinforced concrete box gravity drainage culvert through the levee, 13 feet below the crown. Concrete headwall and wing wall on the landside (LS) shoulder. Slide gate on the waterside (WS). [Additional Reference(s): DWR Levee Log, 2005 (HLM 6.64). USACE San Joaquin O&M Manual, Unit 606, (located just upstream from Road 16), listed as diversion dam].						
FS Date: 4/20/2022						

LM Start	<b>6.57</b>	Rating **	A/W	Issue No.	<b>63 (cont)</b>
LM End	<b>6.57</b>	Issue Type +	Ma	Location *	

Photo 1 of 3 : UCIP\_FA\_2023\_80624\_112452.jpg



Levee crown looking downstream.

Photo 2 of 3 : UCIP\_FA\_2023\_80624\_112453.jpg



LS view: Looking toward levee; inlet of reinforced concrete box culvert.

<b>* Location</b> LS : Land Side    N/A : Not Applicable WS : Water Side CR : Crown	<b>** Rating</b> A : Acceptable M : Minimally Acceptable U : Unacceptable	N : Not Inspected/Rated C : Corrected A/W : Acceptable but Monitor & Maintain	<b>+ Issue Type</b> Ma : Maintenance Deficiency Ob : Design & System Obsolescence En : Enforcement
--	--	---	---

**Flood Control Project Maintenance  
Levee Inspections**

**Maintenance Issue Types Only, Levee Inspection Report By Mile - Fall 2023**

**Madera County FCWCA**

Waterway	Bank	Unit Miles	Inspection Start/End	Inspector
Unit No. 05 Fresno River	Right	9.10	10/25/2023 10/25/2023	Corey Fujitani

LM Start	<b>6.57</b>	Rating **	A/W	Issue No.	<b>63 (cont)</b>
LM End	<b>6.57</b>	Issue Type +	Ma	Location *	
Category	Supplemental			GPS Latitude/Longitude	
				Start	End
Item	DWR UCIP LMA Responsibility			36.968504°	36.968504°
				-120.255485°	-120.255485°
DWR ID	21624				

Photo 3 of 3 : UCIP\_FA\_2023\_80624\_112454.jpg



WS view: Looking from crown; slide gate operator on shoulder.

LM Start	<b>6.58</b>	Rating **	A/W	Issue No.	<b>64</b>
LM End	<b>6.58</b>	Issue Type +	Ma	Location *	
Category	Supplemental			GPS Latitude/Longitude	
				Start	End
Item	DWR UCIP LMA Responsibility			36.968503°	36.968503°
				-120.255464°	-120.255464°
DWR ID	21525				

Photo 1 of 3 : UCIP\_FA\_2023\_80625\_112456.jpg



Levee crown looking downstream.

Comment Code					
Inspector Comment					
DS_ID:21525 FS_ID:80625 EP_NO: N/A Repair Type: No Action Needed EVAL Issue: Crossing Status: Found UCIP Comments: 04/20/2022 Record remains No Action Needed. No issues observed during inspection. (M.Thao - DWR UCIP) FIELD_STRUCT_DESC: [Fresno Diversion Weir] 3 of 3: 60-inch by 48-inch reinforced concrete box gravity drainage culvert through the levee, 13 feet below the crown. Concrete headwall and wing wall on the landside (LS) shoulder. Slide gate on the waterside (WS). [Additional Reference(s): DWR Levee Log, 2005 (HLM 6.64). USACE San Joaquin O&M Manual, Unit 606, (located just upstream from Road 16), listed as diversion dam]. FS Date: 4/20/2022					

<b>* Location</b> LS : Land Side    N/A : Not Applicable WS : Water Side CR : Crown	<b>** Rating</b> A : Acceptable M : Minimally Acceptable U : Unacceptable	N : Not Inspected/Rated C : Corrected A/W : Acceptable but Monitor & Maintain	<b>+ Issue Type</b> Ma : Maintenance Deficiency Ob : Design & System Obsolescence En : Enforcement
--	--	---	---

**Flood Control Project Maintenance  
Levee Inspections**

**Maintenance Issue Types Only, Levee Inspection Report By Mile - Fall 2023**

**Madera County FCWCA**

Waterway	Bank	Unit Miles	Inspection Start/End	Inspector
Unit No. 05 Fresno River	Right	9.10	10/25/2023 10/25/2023	Corey Fujitani

LM Start	<b>6.58</b>	Rating **	A/W	Issue No.	<b>64 (cont)</b>
LM End	<b>6.58</b>	Issue Type +	Ma	Location *	
Category	Supplemental			GPS Latitude/Longitude	
				Start	End
Item	DWR UCIP LMA Responsibility			36.968503°	36.968503°
				-120.255464°	-120.255464°
DWR ID	21525				

Photo 2 of 3 : UCIP\_FA\_2023\_80625\_112457.jpg



LS view: Looking toward levee; inlet of reinforced concrete box culvert.

LM Start	<b>6.58</b>	Rating **	A/W	Issue No.	<b>64 (cont)</b>
LM End	<b>6.58</b>	Issue Type +	Ma	Location *	

Photo 3 of 3 : UCIP\_FA\_2023\_80625\_112458.jpg



WS view: Looking from crown; slide gate operator on shoulder.

LM Start	6.58	Rating **	M	Issue No.	27
LM End	9.07	Issue Type +	Ma	Location *	WS
Category	Earthen Levee			GPS Latitude/Longitude	
				Start	End
Item	Animal Control			36.968525°	36.973197°
				-120.255387°	-120.212085°
DWR ID	DWR_NA0011_05_f_2016_27				
Comment Code					
A1 : Exterminate rodents and backfill and compact or grout burrows.					
Inspector Comment					
Exterminate the rodents in the area listed and place bait stations.					

No Photos

<b>* Location</b> LS : Land Side    N/A : Not Applicable WS : Water Side CR : Crown	<b>** Rating</b> A : Acceptable M : Minimally Acceptable U : Unacceptable	N : Not Inspected/Rated C : Corrected A/W : Acceptable but Monitor & Maintain	<b>+ Issue Type</b> Ma : Maintenance Deficiency Ob : Design & System Obsolescence En : Enforcement
--	--	---	---



**Flood Control Project Maintenance  
Levee Inspections**

**Maintenance Issue Types Only, Levee Inspection Report By Mile - Fall 2023**

**Madera County FCWCA**

Waterway	Bank	Unit Miles	Inspection Start/End	Inspector
Unit No. 05 Fresno River	Right	9.10	10/25/2023 10/25/2023	Corey Fujitani

LM Start	6.75	Rating **	A/W	Issue No.	28
LM End	6.95	Issue Type +	Ma	Location *	LS
Category	Earthen Levee			GPS Latitude/Longitude	
				Start	End
Item	Animal Control			36.969200°	36.969507°
				-120.252462°	-120.248893°
DWR ID	DWR_NA0011_05_f_2016_28				
Comment Code					
A1 : Exterminate rodents and backfill and compact or grout burrows.					
Inspector Comment					
LMA has repaired rodent damage. Continue to monitor the area.					

No Photos

LM Start	6.87	Rating **	A/W	Issue No.	65	
LM End	6.87	Issue Type +	Ma	Location *		
Category	Supplemental			GPS Latitude/Longitude		
				Start	End	
Item	DWR UCIP LMA Responsibility			36.969520°	36.969520°	
				-120.250311°	-120.250311°	
DWR ID	21527					
Comment Code						
Inspector Comment						
DS_ID:21527 FS_ID:80580 EP_NO: N/A Repair Type: No Action Needed EVAL Issue: Crossing Status: Found UCIP Comments: 04/20/2022 Record updated from Non-Urgent to No Action Needed. Slide gate is no longer buried on LS. DMP internal video inspection has not found pipe integrity issues. LOF of crossing is less or equal to 4. Recommend next video inspection in 5 years. (M.Thao - DWR UCIP) 05/06/2014 Need to contact owner. Dense vegetation limits the inspector's visibility to identify signs of pipe failure (leaks) along the waterward slope. Recommend removing vegetation along pipe alignment to conduct proper inspection of structure and appurtenances. Slide gate buried on landward side. Recommend clearing sediment deposit on landward side. (DWR UCIP - O. Magana) FIELD_STRUCT_DESC: 30-inch corrugated metal gravity drainage pipe through the levee, 9.4 feet below the crown. Concrete headwall and wing wall on each end. Flap gate on the waterside (WS) end. [Additional Reference(s): DWR Levee Log, 2005 (HLM 6.95). USACE San Joaquin O&M Manual, Unit 606. USACE As-Built Drawing No. 07-04-0085, Sheets 85/8A.1 and 85/31.1, (Station 362+70), March 1975]. FS Date: 4/20/2022						

Photo 1 of 1 : UCIP\_FA\_2023\_80580\_112463.jpg



WS view: Looking from crown; dense vegetation on slope and floodway.

<b>* Location</b> LS : Land Side    N/A : Not Applicable WS : Water Side CR : Crown	<b>** Rating</b> A : Acceptable M : Minimally Acceptable U : Unacceptable N : Not Inspected/Rated C : Corrected A/W : Acceptable but Monitor & Maintain	<b>+ Issue Type</b> Ma : Maintenance Deficiency Ob : Design & System Obsolescence En : Enforcement
--	---	---

**Flood Control Project Maintenance  
Levee Inspections**

**Maintenance Issue Types Only, Levee Inspection Report By Mile - Fall 2023**

**Madera County FCWCA**

Waterway	Bank	Unit Miles	Inspection Start/End	Inspector
Unit No. 05 Fresno River	Right	9.10	10/25/2023 10/25/2023	Corey Fujitani

LM Start	<b>7.21</b>	Rating **	A/W	Issue No.	<b>32</b>
LM End	<b>7.21</b>	Issue Type +	Ma	Location *	LS
Category	Earthen Levee		GPS Latitude/Longitude		
			Start	End	
Item	Animal Control		36.969539°	36.969539°	
			-120.244142°	-120.244142°	
DWR ID	DWR_NA0011_05_f_2018_32				
Comment Code					
A3 : No rodents visible, but rodent burrows visible; need to backfill and compact or grout burrows.					
Inspector Comment					

No Photos

LM Start	<b>7.42</b>	Rating **	M	Issue No.	<b>50</b>
LM End	<b>7.60</b>	Issue Type +	Ma	Location *	WS
Category	Earthen Levee		GPS Latitude/Longitude		
			Start	End	
Item	Vegetation		36.969545°	36.969549°	
			-120.240432°	-120.237123°	
DWR ID	DWR_NA0011_05_f_2023_50				
Comment Code					
V1 : Control annual grass and weeds on the levee slopes and easements.					
Inspector Comment					

No Photos

<b>* Location</b> LS : Land Side    N/A : Not Applicable WS : Water Side CR : Crown	<b>** Rating</b> A : Acceptable M : Minimally Acceptable U : Unacceptable	N : Not Inspected/Rated C : Corrected A/W : Acceptable but Monitor & Maintain	<b>+ Issue Type</b> Ma : Maintenance Deficiency Ob : Design & System Obsolescence En : Enforcement
--	--	---	---

**Flood Control Project Maintenance  
Levee Inspections**

**Maintenance Issue Types Only, Levee Inspection Report By Mile - Fall 2023**

**Madera County FCWCA**

Waterway	Bank	Unit Miles	Inspection Start/End	Inspector
Unit No. 05 Fresno River	Right	9.10	10/25/2023 10/25/2023	Corey Fujitani

LM Start	7.53	Rating **	A/W	Issue No.	66	
LM End	7.53	Issue Type +	Ma	Location *		
Category	Supplemental			GPS Latitude/Longitude		
				Start	End	
Item	DWR UCIP LMA Responsibility			36.969553°	36.969553°	
				-120.238400°	-120.238400°	
DWR ID	21526					
Comment Code						
Inspector Comment						
DS_ID:21526 FS_ID:80579 EP_NO: N/A Repair Type: No Action Needed EVAL Issue: Crossing Status: Found UCIP Comments: 04/20/2022 Record remains No Action Needed. DMP internal video inspection has not found pipe integrity issues. LOF of crossing is less or equal to 4. Recommend next video inspection in 5 years. (M. Thao - DWR UCIP) 05/06/2014 Descriptions modified based on field confirmation. (DWR UCIP - O. Magana) FIELD_STRUCT_DESC: 30-inch corrugated metal gravity drainage pipe through the levee, 9.4 feet below the crown. Concrete headwall and wing wall on each end. Flap gate on the waterside (WS) end. [Additional Reference(s): DWR Levee Log, 2005 (HLM 7.61). USACE San Joaquin O&M Manual, Unit 606. USACE As-Built Drawing No. 07-04-0085, Sheets 85/8A.1 and 85/31.1, (Station 397+16), March 1975]. FS Date: 4/20/2022						

LM Start	<b>7.53</b>	Rating **	A/W	Issue No.	<b>66 (cont)</b>
LM End	<b>7.53</b>	Issue Type +	Ma	Location *	

Photo 1 of 3 : UCIP\_FA\_2023\_80579\_112465.jpg



Levee crown looking downstream.

Photo 2 of 3 : UCIP\_FA\_2023\_80579\_112466.jpg



LS view: Looking from crown; concrete headwall approximately 20 feet off toe.

<b>* Location</b> LS: Land Side    N/A: Not Applicable WS: Water Side CR: Crown	<b>** Rating</b> A: Acceptable M: Minimally Acceptable U: Unacceptable	N: Not Inspected/Rated C: Corrected A/W: Acceptable but Monitor & Maintain	<b>+ Issue Type</b> Ma: Maintenance Deficiency Ob: Design & System Obsolescence En: Enforcement
--	---	--	--



**Flood Control Project Maintenance  
Levee Inspections**

**Maintenance Issue Types Only, Levee Inspection Report By Mile - Fall 2023**

**Madera County FCWCA**

Waterway	Bank	Unit Miles	Inspection Start/End	Inspector
Unit No. 05 Fresno River	Right	9.10	10/25/2023 10/25/2023	Corey Fujitani

LM Start	7.53	Rating **	A/W	Issue No.	66 (cont)
LM End	7.53	Issue Type +	Ma	Location *	
Category	Supplemental			GPS Latitude/Longitude	
				Start	End
Item	DWR UCIP LMA Responsibility			36.969553°	36.969553°
				-120.238400°	-120.238400°
DWR ID	21526				

Photo 3 of 3 : UCIP\_FA\_2023\_80579\_112467.jpg



LS view: Concrete headwall and pipe inlet.

LM Start	7.55	Rating **	M	Issue No.	44
LM End	7.55	Issue Type +	Ma	Location *	LS
Category	Earthen Levee			GPS Latitude/Longitude	
				Start	End
Item	Animal Control			36.969539°	36.969539°
				-120.238136°	-120.238136°
DWR ID	DWR_NA0011_05_f_2022_44				
Comment Code					
A3 : No rodents visible, but rodent burrows visible; need to backfill and compact or grout burrows.					
Inspector Comment					

Photo 1 of 1 : FA\_2023\_NA0011\_146\_44\_20230821\_00022.jpg



View of rodent holes on the landside slope. (Fall 2022)

LM Start	7.58	Rating **	M	Issue No.	19
LM End	7.58	Issue Type +	Ma	Location *	LS
Category	Earthen Levee			GPS Latitude/Longitude	
				Start	End
Item	Animal Control			36.969574°	36.969574°
				-120.237529°	-120.237529°
DWR ID	DWR_NA0011_05_s_2022_19				
Comment Code					
A3 : No rodents visible, but rodent burrows visible; need to backfill and compact or grout burrows.					
Inspector Comment					

Photo 1 of 1 : FA\_2023\_NA0011\_146\_19\_20230821\_00009.jpg



Several rodent holes were noted at this location. (Spring 2022)

<b>* Location</b> LS : Land Side    N/A : Not Applicable WS : Water Side CR : Crown		<b>** Rating</b> A : Acceptable M : Minimally Acceptable U : Unacceptable N : Not Inspected/Rated C : Corrected A/W : Acceptable but Monitor & Maintain		<b>+ Issue Type</b> Ma : Maintenance Deficiency Ob : Design & System Obsolescence En : Enforcement	
--	--	---	--	---	--

**Flood Control Project Maintenance  
Levee Inspections**

**Maintenance Issue Types Only, Levee Inspection Report By Mile - Fall 2023**

**Madera County FCWCA**

Waterway	Bank	Unit Miles	Inspection Start/End	Inspector
Unit No. 05 Fresno River	Right	9.10	10/25/2023 10/25/2023	Corey Fujitani

LM Start	7.62	Rating **	U	Issue No.	24
LM End	7.66	Issue Type +	Ma	Location *	LS
Category	Earthen Levee			GPS Latitude/Longitude	
				Start	End
Item	Animal Control			36.969543°	36.969606°
				-120.236801°	-120.236091°
DWR ID	DWR_NA0011_05_f_2018_24				
Comment Code					
A3 : No rodents visible, but rodent burrows visible; need to backfill and compact or grout burrows.					
Inspector Comment					
Large rodent burrows on the landside slope should be backfilled and compacted.					

Photo 1 of 1 : FA\_2023\_NA0011\_146\_24\_20230821\_00013.jpg



Representative burrow on the landside slope. (Fall 2022)

LM Start	7.78	Rating **	M	Issue No.	20
LM End	7.90	Issue Type +	Ma	Location *	LS
Category	Earthen Levee			GPS Latitude/Longitude	
				Start	End
Item	Animal Control			36.970461°	36.971473°
				-120.234259°	-120.232444°
DWR ID	DWR_NA0011_05_s_2022_20				
Comment Code					
A3 : No rodents visible, but rodent burrows visible; need to backfill and compact or grout burrows.					
Inspector Comment					

Photo 1 of 1 : FA\_2023\_NA0011\_146\_20\_20230821\_00010.jpg



Representative view of rodent burrow on the landside slope. (Spring 2022)

LM Start	7.99	Rating **	A/W	Issue No.	12
LM End	8.07	Issue Type +	Ma	Location *	LS
Category	Earthen Levee			GPS Latitude/Longitude	
				Start	End
Item	Animal Control			36.972121°	36.972421°
				-120.230994°	-120.229611°
DWR ID	DWR_NA0011_05_f_2018_12				
Comment Code					
A3 : No rodents visible, but rodent burrows visible; need to backfill and compact or grout burrows.					
Inspector Comment					
Large rodent burrow observed in this section have been collapsed.					

Photo 1 of 1 : FA\_2023\_NA0011\_146\_12\_20230821\_00004.jpg



Rodent activity on landside slope. (Fall 2018)

<b>* Location</b> LS : Land Side    N/A : Not Applicable WS : Water Side CR : Crown		<b>** Rating</b> A : Acceptable M : Minimally Acceptable U : Unacceptable N : Not Inspected/Rated C : Corrected A/W : Acceptable but Monitor & Maintain		<b>+ Issue Type</b> Ma : Maintenance Deficiency Ob : Design & System Obsolescence En : Enforcement	
--	--	---	--	---	--



**Flood Control Project Maintenance  
Levee Inspections**

**Maintenance Issue Types Only, Levee Inspection Report By Mile - Fall 2023**

**Madera County FCWCA**

Waterway	Bank	Unit Miles	Inspection Start/End	Inspector
Unit No. 05 Fresno River	Right	9.10	10/25/2023 10/25/2023	Corey Fujitani

LM Start	8.09	Rating **	A/W	Issue No.	67
LM End	8.09	Issue Type +	Ma	Location *	
Category	Supplemental			GPS Latitude/Longitude	
				Start	End
Item	DWR UCIP LMA Responsibility			36.972415°	36.972415°
				-120.229285°	-120.229285°
DWR ID	21528				
Comment Code					
Inspector Comment					
DS_ID:21528 FS_ID:80578 EP_NO: N/A Repair Type: No Action Needed EVAL Issue: Crossing Status: Found UCIP Comments: 04/20/2022 Record updated from Non-Urgent to No Action Needed. A steel pipe was observed draining onto the headwall apron on the LS; drainage appears to be from an adjacent orchard. The steel pipe was buried other than the section that drains onto the headwall apron. (M.Thao - DWR UCIP) 05/06/2014 Need to contact owner. Dense vegetation limits the inspector's visibility to identify signs of pipe failure (leaks) along the waterward slope. Recommend removing vegetation along pipe alignment to conduct proper inspection of structure and appurtenances. (DWR UCIP - O. Magana) FIELD_STRUCT_DESC: 30-inch corrugated metal gravity drainage pipe through the levee, 8.3 feet below the crown. Concrete headwall and wing wall on each end. Flap gate on the waterside (WS) end. [Additional Reference(s): DWR Levee Log, 2005 (HLM 8.18). USACE San Joaquin O&M Manual, Unit 606. USACE As-Built Drawing 07-04-0085, Sheets 85/10.2 and 85/31.1, (Station 427+00), March 1975]. FS Date: 4/20/2022					

Photo 1 of 1 : UCIP\_FA\_2023\_80578\_112470.jpg



WS view: Looking from levee; dense and overgrown vegetation around headwall.

LM Start	8.40	Rating **	U	Issue No.	51
LM End	8.40	Issue Type +	Ma	Location *	LS
Category	Earthen Levee			GPS Latitude/Longitude	
				Start	End
Item	Animal Control			36.972953°	36.972953°
				-120.223839°	-120.223839°
DWR ID	DWR_NA0011_05_s_ 2019_51				
Comment Code					
A3 : No rodents visible, but rodent burrows visible; need to backfill and compact or grout burrows.					
Inspector Comment					

Photo 1 of 1 : FA\_2023\_NA0011\_146\_51\_20230821\_00026.jpg



Several rodent holes observed at this location. (Fall 2019)

<b>* Location</b> LS : Land Side    N/A : Not Applicable WS : Water Side CR : Crown	<b>** Rating</b> A : Acceptable M : Minimally Acceptable U : Unacceptable	N : Not Inspected/Rated C : Corrected A/W : Acceptable but Monitor & Maintain	<b>+ Issue Type</b> Ma : Maintenance Deficiency Ob : Design & System Obsolescence En : Enforcement
--	--	---	---



**Flood Control Project Maintenance  
Levee Inspections**

**Maintenance Issue Types Only, Levee Inspection Report By Mile - Fall 2023**

**Madera County FCWCA**

Waterway	Bank	Unit Miles	Inspection Start/End	Inspector
Unit No. 05 Fresno River	Right	9.10	10/25/2023 10/25/2023	Corey Fujitani

LM Start	8.57	Rating **	U	Issue No.	10
LM End	8.57	Issue Type +	Ma	Location *	WS
Category	Earthen Levee			GPS Latitude/Longitude	
				Start	End
Item	Vegetation			36.972355°	36.972355°
				-120.220878°	-120.220878°
DWR ID	DWR_NA0011_05_f_2018_10				
Comment Code					
V2 : Remove the wild growth and woody vegetation other than native grasses from the levee slopes.					
Inspector Comment					
Cactus growing on waterside slope.					

Photo 1 of 1 : FA\_2023\_NA0011\_146\_10\_20230821\_00003.jpg



Cactus growing on waterside shoulder. (Spring 2019)

LM Start	8.70	Rating **	M	Issue No.	8
LM End	8.70	Issue Type +	Ma	Location *	WS
Category	Earthen Levee			GPS Latitude/Longitude	
				Start	End
Item	Trim / Thin Trees			36.971970°	36.971970°
				-120.218647°	-120.218647°
DWR ID	DWR_NA0011_05_f_2021_8				
Comment Code					
T1 : Trim and thin trees to at least five feet above ground level to allow visibility of the ground and room to flood fight.					
Inspector Comment					

Photo 1 of 1 : FA\_2023\_NA0011\_146\_8\_20230821\_00002.jpg



Sapling growing on the waterside shoulder. (Fall 2021)

LM Start	9.00	Rating **	A/W	Issue No.	48
LM End	9.00	Issue Type +	Ma	Location *	LS
Category	Earthen Levee			GPS Latitude/Longitude	
				Start	End
Item	Animal Control			36.972896°	36.972896°
				-120.213267°	-120.213267°
DWR ID	DWR_NA0011_05_f_2022_48				
Comment Code					
A3 : No rodents visible, but rodent burrows visible; need to backfill and compact or grout burrows.					
Inspector Comment					
Rodent burrows have been collapsed.					

Photo 1 of 1 : FA\_2023\_NA0011\_146\_48\_20230821\_00025.jpg



View of rodent holes on the landside slope. (Fall 2022)

<b>* Location</b> LS : Land Side    N/A : Not Applicable WS : Water Side CR : Crown		<b>** Rating</b> A : Acceptable M : Minimally Acceptable U : Unacceptable		N : Not Inspected/Rated C : Corrected A/W : Acceptable but Monitor & Maintain		<b>+ Issue Type</b> Ma : Maintenance Deficiency Ob : Design & System Obsolescence En : Enforcement	
--	--	--	--	---	--	---	--

**Flood Control Project Maintenance  
Levee Inspections**

**Maintenance Issue Types Only, Levee Inspection Report By Mile - Fall 2023**

**Madera County FCWCA**

Waterway	Bank	Unit Miles	Inspection Start/End	Inspector
Unit No. 06 Fresno River	Left	9.03	10/25/2023 10/25/2023	Corey Fujitani

LM Start	0.01	Rating **	M	Issue No.	19
LM End	2.47	Issue Type +	Ma	Location *	LS
Category	Earthen Levee			GPS Latitude/Longitude	
				Start	End
Item	Animal Control			36.976937°	36.967249°
				-120.367308°	-120.328381°
DWR ID	DWR_NA0011_06_f_2016_19				
Comment Code					
A1 : Exterminate rodents and backfill and compact or grout burrows.					
Inspector Comment					
Exterminate rodents and backfill burrows.					

No Photos

LM Start	0.02	Rating **	M	Issue No.	51
LM End	0.59	Issue Type +	Ma	Location *	CR
Category	Earthen Levee			GPS Latitude/Longitude	
				Start	End
Item	Vegetation			36.976955°	36.973462°
				-120.367127°	-120.358417°
DWR ID	DWR_NA0011_06_f_2022_51				
Comment Code					
V3 : Keep the crown roadway free of vegetation.					
Inspector Comment					

Photo 1 of 1 : FA\_2023\_NA0011\_147\_51\_20231102\_00025.jpg



View of vegetation growing along the levee crown. (Fall 2023)

LM Start	0.44	Rating **	U	Issue No.	20
LM End	0.44	Issue Type +	Ma	Location *	LS
Category	Earthen Levee			GPS Latitude/Longitude	
				Start	End
Item	Erosion / Bank Caving			36.975030°	36.975014°
				-120.360382°	-120.360401°
DWR ID	DWR_NA0011_06_f_2022_20				
Comment Code					
E2 : Schedule repair of erosion site prior to the next inspection.					
Inspector Comment					
This erosion should be taken care of before it gets worse.					

Photo 1 of 1 : FA\_2023\_NA0011\_147\_20\_20230821\_00007.jpg



View of erosion on the landside slope. (Fall 2020)

<b>* Location</b> LS : Land Side    N/A : Not Applicable WS : Water Side CR : Crown	<b>** Rating</b> A : Acceptable M : Minimally Acceptable U : Unacceptable	N : Not Inspected/Rated C : Corrected A/W : Acceptable but Monitor & Maintain	<b>+ Issue Type</b> Ma : Maintenance Deficiency Ob : Design & System Obsolescence En : Enforcement
--	--	---	---

**Flood Control Project Maintenance  
Levee Inspections**

**Maintenance Issue Types Only, Levee Inspection Report By Mile - Fall 2023**

**Madera County FCWCA**

Waterway	Bank	Unit Miles	Inspection Start/End	Inspector
Unit No. 06 Fresno River	Left	9.03	10/25/2023 10/25/2023	Corey Fujitani

LM Start	1.15	Rating **	M	Issue No.	18
LM End	2.77	Issue Type +	Ma	Location *	WS
Category	Earthen Levee			GPS Latitude/Longitude	
				Start	End
Item	Animal Control			36.967360°	36.967290°
				-120.352243°	-120.322892°
DWR ID	DWR_NA0011_06_f_2017_18				
Comment Code					
A1 : Exterminate rodents and backfill and compact or grout burrows.					
Inspector Comment					

No Photos

LM Start	1.15	Rating **	M	Issue No.	17
LM End	1.15	Issue Type +	Ma	Location *	WS
Category	Earthen Levee			GPS Latitude/Longitude	
				Start	End
Item	Slope Stability			36.967330°	36.967330°
				-120.352162°	-120.352162°
DWR ID	DWR_NA0011_06_f_2017_17				
Comment Code					
S1 : Repair slope instability.					
Inspector Comment					
Observed slump possibly exacerbated by rodent activity. 20' long x 8' high x 18" deep into levee slope.					

Photo 1 of 1 : FA\_2023\_NA0011\_147\_17\_20230821\_00006.jpg



View of slump possibly the result of rodent activity. (Spring 2022)

LM Start	1.75	Rating **	M	Issue No.	46
LM End	2.42	Issue Type +	Ma	Location *	CR
Category	Earthen Levee			GPS Latitude/Longitude	
				Start	End
Item	Vegetation			36.967190°	36.967237°
				-120.341404°	-120.329312°
DWR ID	DWR_NA0011_06_f_2023_46				
Comment Code					
V3 : Keep the crown roadway free of vegetation.					
Inspector Comment					

No Photos

<b>* Location</b> LS : Land Side    N/A : Not Applicable WS : Water Side CR : Crown	<b>** Rating</b> A : Acceptable M : Minimally Acceptable U : Unacceptable	N : Not Inspected/Rated C : Corrected A/W : Acceptable but Monitor & Maintain	<b>+ Issue Type</b> Ma : Maintenance Deficiency Ob : Design & System Obsolescence En : Enforcement
--	--	---	---



**Flood Control Project Maintenance  
Levee Inspections**

**Maintenance Issue Types Only, Levee Inspection Report By Mile - Fall 2023**

**Madera County FCWCA**

Waterway	Bank	Unit Miles	Inspection Start/End	Inspector
Unit No. 06 Fresno River	Left	9.03	10/25/2023 10/25/2023	Corey Fujitani

LM Start	<b>2.20</b>	Rating **	C	Issue No.	<b>69</b>
LM End	<b>2.23</b>	Issue Type +	Ma	Location *	LS
Category	Earthen Levee			GPS Latitude/Longitude	
				Start	End
Item	Erosion / Vehicle Traffic			36.967231°	36.967228°
				-120.333365°	-120.332781°
DWR ID	DWR_NA0011_06_s _ 2020_69				
Comment Code					
E6 : Repair the levee slope damaged by vehicle traffic and prevent access where possible.					
Inspector Comment					

No Photos

LM Start	<b>3.52</b>	Rating **	M	Issue No.	<b>41</b>
LM End	<b>3.52</b>	Issue Type +	Ma	Location *	LS
Category	Earthen Levee			GPS Latitude/Longitude	
				Start	End
Item	Animal Control			36.967372°	36.967372°
				-120.309448°	-120.309448°
DWR ID	DWR_NA0011_06_f _ 2022_41				
Comment Code					
A3 : No rodents visible, but rodent burrows visible; need to backfill and compact or grout burrows.					
Inspector Comment					

No Photos

LM Start	<b>3.76</b>	Rating **	A/W	Issue No.	<b>40</b>
LM End	<b>3.76</b>	Issue Type +	Ma	Location *	CR
Category	Earthen Levee			GPS Latitude/Longitude	
				Start	End
Item	Animal Control			36.967419°	36.967419°
				-120.305171°	-120.305171°
DWR ID	DWR_NA0011_06_s _ 2020_40				
Comment Code					
A3 : No rodents visible, but rodent burrows visible; need to backfill and compact or grout burrows.					
Inspector Comment					
Depression on the levee crown appears to be cause by rodent burrow. Continue to monitor.					

No Photos

<b>* Location</b> LS : Land Side    N/A : Not Applicable WS : Water Side CR : Crown	<b>** Rating</b> A : Acceptable M : Minimally Acceptable U : Unacceptable	N : Not Inspected/Rated C : Corrected A/W : Acceptable but Monitor & Maintain	<b>+ Issue Type</b> Ma : Maintenance Deficiency Ob : Design & System Obsolescence En : Enforcement
--	--	---	---

**Flood Control Project Maintenance  
Levee Inspections**

**Maintenance Issue Types Only, Levee Inspection Report By Mile - Fall 2023**

**Madera County FCWCA**

Waterway	Bank	Unit Miles	Inspection Start/End	Inspector
Unit No. 06 Fresno River	Left	9.03	10/25/2023 10/25/2023	Corey Fujitani

LM Start	3.83	Rating **	A/W	Issue No.	26
LM End	3.83	Issue Type +	Ma	Location *	LS
Category	Earthen Levee			GPS Latitude/Longitude	
				Start	End
Item	Animal Control			36.967429°	36.967429°
				-120.303743°	-120.303743°
DWR ID	DWR_NA0011_06_s_2021_26				
Comment Code					
A3 : No rodents visible, but rodent burrows visible; need to backfill and compact or grout burrows.					
Inspector Comment					

No Photos

LM Start	4.19	Rating **	A/W	Issue No.	38
LM End	4.19	Issue Type +	Ma	Location *	LS
Category	Earthen Levee			GPS Latitude/Longitude	
				Start	End
Item	Animal Control			36.967462°	36.967462°
				-120.297282°	-120.297282°
DWR ID	DWR_NA0011_06_f_2022_38				
Comment Code					
A3 : No rodents visible, but rodent burrows visible; need to backfill and compact or grout burrows.					
Inspector Comment					

No Photos

LM Start	4.28	Rating **	A/W	Issue No.	35
LM End	4.28	Issue Type +	Ma	Location *	LS
Category	Earthen Levee			GPS Latitude/Longitude	
				Start	End
Item	Animal Control			36.967486°	36.967486°
				-120.295687°	-120.295687°
DWR ID	DWR_NA0011_06_s_2022_35				
Comment Code					
A3 : No rodents visible, but rodent burrows visible; need to backfill and compact or grout burrows.					
Inspector Comment					

Photo 1 of 1 : FA\_2023\_NA0011\_147\_35\_20230821\_00015.jpg



Multiple rodent holes observed in this section of the levee. (Spring 2022)

<b>* Location</b> LS : Land Side    N/A : Not Applicable WS : Water Side CR : Crown	<b>** Rating</b> A : Acceptable M : Minimally Acceptable U : Unacceptable	N : Not Inspected/Rated C : Corrected A/W : Acceptable but Monitor & Maintain	<b>+ Issue Type</b> Ma : Maintenance Deficiency Ob : Design & System Obsolescence En : Enforcement
--	--	---	---

**Flood Control Project Maintenance  
Levee Inspections**

**Maintenance Issue Types Only, Levee Inspection Report By Mile - Fall 2023**

**Madera County FCWCA**

Waterway	Bank	Unit Miles	Inspection Start/End	Inspector
Unit No. 06 Fresno River	Left	9.03	10/25/2023 10/25/2023	Corey Fujitani

LM Start	4.56	Rating **	A/W	Issue No.	65
LM End	4.58	Issue Type +	Ma	Location *	LS
Category	Earthen Levee			GPS Latitude/Longitude	
				Start	End
Item	Animal Control			36.967501°	36.967502°
				-120.290581°	-120.290215°
DWR ID	DWR_NA0011_06_f_2018_65				
Comment Code					
A3 : No rodents visible, but rodent burrows visible; need to backfill and compact or grout burrows.					
Inspector Comment					

No Photos

LM Start	4.74	Rating **	A/W	Issue No.	78
LM End	4.74	Issue Type +	Ma	Location *	LS
Category	Earthen Levee			GPS Latitude/Longitude	
				Start	End
Item	Animal Control			36.967508°	36.967508°
				-120.287446°	-120.287446°
DWR ID	DWR_NA0011_06_s_2019_78				
Comment Code					
A3 : No rodents visible, but rodent burrows visible; need to backfill and compact or grout burrows.					
Inspector Comment					

Photo 1 of 1 : FA\_2023\_NA0011\_147\_78\_20230821\_00024.jpg



View of large rodent hole in the landside slope. (Fall 2021)

LM Start	4.90	Rating **	M	Issue No.	25
LM End	4.90	Issue Type +	Ma	Location *	LS
Category	Earthen Levee			GPS Latitude/Longitude	
				Start	End
Item	Animal Control			36.967517°	36.967517°
				-120.284470°	-120.284470°
DWR ID	DWR_NA0011_06_s_2021_25				
Comment Code					
A3 : No rodents visible, but rodent burrows visible; need to backfill and compact or grout burrows.					
Inspector Comment					

Photo 1 of 1 : FA\_2023\_NA0011\_147\_25\_20230821\_00010.jpg



Rodent activity along the landside shoulder should be repaired. (Spring 2021)

<b>* Location</b> LS : Land Side    N/A : Not Applicable WS : Water Side CR : Crown		<b>** Rating</b> A : Acceptable M : Minimally Acceptable U : Unacceptable N : Not Inspected/Rated C : Corrected A/W : Acceptable but Monitor & Maintain		<b>+ Issue Type</b> Ma : Maintenance Deficiency Ob : Design & System Obsolescence En : Enforcement	
--	--	---	--	---	--



**Flood Control Project Maintenance  
Levee Inspections**

**Maintenance Issue Types Only, Levee Inspection Report By Mile - Fall 2023**

**Madera County FCWCA**

Waterway	Bank	Unit Miles	Inspection Start/End	Inspector
Unit No. 06 Fresno River	Left	9.03	10/25/2023 10/25/2023	Corey Fujitani

LM Start	5.00	Rating **	M	Issue No.	53
LM End	5.44	Issue Type +	Ma	Location *	LS
Category	Earthen Levee			GPS Latitude/Longitude	
				Start	End
Item	Animal Control			36.967518°	36.967514°
				-120.282684°	-120.274810°
DWR ID	DWR_NA0011_06_s_2018_53				
Comment Code					
A3 : No rodents visible, but rodent burrows visible; need to backfill and compact or grout burrows.					
Inspector Comment					
Increased rodent activity observed in this section.					

Photo 1 of 1 : FA\_2023\_NA0011\_147\_53\_20230821\_00019.jpg



Looking at typical rodent hole on landward slope. (Fall 2022)

LM Start	5.48	Rating **	M	Issue No.	16
LM End	5.48	Issue Type +	Ma	Location *	WS
Category	Earthen Levee			GPS Latitude/Longitude	
				Start	End
Item	Trim / Thin Trees			36.967494°	36.967494°
				-120.274037°	-120.274037°
DWR ID	DWR_NA0011_06_f_2021_16				
Comment Code					
T1 : Trim and thin trees to at least five feet above ground level to allow visibility of the ground and room to flood fight.					
Inspector Comment					
Sapling should be removed before it can establish.					

Photo 1 of 1 : FA\_2023\_NA0011\_147\_16\_20230821\_00005.jpg



View of sapling growing in the waterside shoulder. (Fall 2021)

LM Start	5.49	Rating **	M	Issue No.	22
LM End	5.87	Issue Type +	Ma	Location *	WS
Category	Earthen Levee			GPS Latitude/Longitude	
				Start	End
Item	Vegetation			36.967492°	36.967479°
				-120.273895°	-120.266973°
DWR ID	DWR_NA0011_06_f_2023_22				
Comment Code					
V1 : Control annual grass and weeds on the levee slopes and easements.					
Inspector Comment					

No Photos

<b>* Location</b> LS : Land Side    N/A : Not Applicable WS : Water Side CR : Crown	<b>** Rating</b> A : Acceptable M : Minimally Acceptable U : Unacceptable	N : Not Inspected/Rated C : Corrected A/W : Acceptable but Monitor & Maintain	<b>+ Issue Type</b> Ma : Maintenance Deficiency Ob : Design & System Obsolescence En : Enforcement
--	--	---	---

**Flood Control Project Maintenance  
Levee Inspections**

**Maintenance Issue Types Only, Levee Inspection Report By Mile - Fall 2023**

**Madera County FCWCA**

Waterway	Bank	Unit Miles	Inspection Start/End	Inspector
Unit No. 06 Fresno River	Left	9.03	10/25/2023 10/25/2023	Corey Fujitani

LM Start	6.17	Rating **	A/W	Issue No.	79
LM End	6.17	Issue Type +	Ma	Location *	
Category	Supplemental			GPS Latitude/Longitude	
				Start	End
Item	DWR UCIP LMA Responsibility			36.967568°	36.967568°
				-120.261594°	-120.261594°
DWR ID	21531				
Comment Code					
Inspector Comment					
DS_ID:21531 FS_ID:80596 EP_NO: N/A Repair Type: No Action Needed EVAL Issue: Crossing Status: Found UCIP Comments: 04/20/2022 Record updated from Non-Urgent to No Action Needed. Sediment build up on LS has been removed since last inspection. DMP internal video inspection has not found pipe integrity issues. LOF of crossing is less or equal to 4. Recommend next video inspection in 5 years. (M.Thao - DWR UCIP) 05/06/2014 Need to contact owner. Recommend removing sediment built up on landward side. (DWR UCIP - O. Magana) FIELD_STRUCT_DESC: 48-inch corrugated metal gravity drainage pipe through the levee, 11.5 feet below the crown. Slide gate in a 60-inch CMP riser on the waterside (WS) shoulder. Concrete headwall and wing wall on each end. Flap gate on the WS end. [Additional Reference(s): DWR Levee Log, 2005 (HLM 6.24). USACE San Joaquin O&M Manual, Unit 606. USACE As-Built Drawing No. 07-04-0085, Sheets 85/8A.1 and 85/26, Station 325+50, March 1975]. FS Date: 4/20/2022					

LM Start	<b>6.17</b>	Rating **	A/W	Issue No.	<b>79 (cont)</b>
LM End	<b>6.17</b>	Issue Type +	Ma	Location *	

Photo 1 of 3 : UCIP\_FA\_2023\_80596\_112509.jpg



Levee crown looking downstream.

Photo 2 of 3 : UCIP\_FA\_2023\_80596\_112510.jpg



LS view: Concrete headwall and pipe inlet on toe.

<b>* Location</b> LS: Land Side    N/A: Not Applicable WS: Water Side CR: Crown	<b>** Rating</b> A: Acceptable M: Minimally Acceptable U: Unacceptable	N: Not Inspected/Rated C: Corrected A/W: Acceptable but Monitor & Maintain	<b>+ Issue Type</b> Ma: Maintenance Deficiency Ob: Design & System Obsolescence En: Enforcement
--	---	--	--

**Flood Control Project Maintenance  
Levee Inspections**

**Maintenance Issue Types Only, Levee Inspection Report By Mile - Fall 2023**

**Madera County FCWCA**

Waterway	Bank	Unit Miles	Inspection Start/End	Inspector
Unit No. 06 Fresno River	Left	9.03	10/25/2023 10/25/2023	Corey Fujitani

LM Start	<b>6.17</b>	Rating **	A/W	Issue No.	<b>79 (cont)</b>
LM End	<b>6.17</b>	Issue Type +	Ma	Location *	
Category	Supplemental			GPS Latitude/Longitude	
				Start	End
Item	DWR UCIP LMA Responsibility			36.967568°	36.967568°
				-120.261594°	-120.261594°
DWR ID	21531				

Photo 3 of 3 : UCIP\_FA\_2023\_80596\_112508.jpg



LS view: Close-up view of CMP inlet; cleared of sediment.

LM Start	6.29	Rating **	M	Issue No.	58
LM End	6.29	Issue Type +	Ma	Location *	LS
Category	Earthen Levee			GPS Latitude/Longitude	
				Start	End
Item	Erosion / Bank Caving			36.967750°	36.967750°
				-120.259385°	-120.259385°
DWR ID	DWR_NA0011_06_f_2018_58				
Comment Code					
E2 : Schedule repair of erosion site prior to the next inspection.					
Inspector Comment					

Photo 1 of 1 : FA\_2023\_NA0011\_147\_58\_20230821\_00020.jpg



Minor erosion on landside slope. (Fall 2018)

LM Start	6.38	Rating **	A/W	Issue No.	30
LM End	6.38	Issue Type +	Ma	Location *	LS
Category	Earthen Levee			GPS Latitude/Longitude	
				Start	End
Item	Animal Control			36.967854°	36.967854°
				-120.257698°	-120.257698°
DWR ID	DWR_NA0011_06_f_2022_30				
Comment Code					
A3 : No rodents visible, but rodent burrows visible; need to backfill and compact or grout burrows.					
Inspector Comment					

No Photos

<b>* Location</b> LS : Land Side    N/A : Not Applicable WS : Water Side CR : Crown		<b>** Rating</b> A : Acceptable M : Minimally Acceptable U : Unacceptable N : Not Inspected/Rated C : Corrected A/W : Acceptable but Monitor & Maintain		<b>+ Issue Type</b> Ma : Maintenance Deficiency Ob : Design & System Obsolescence En : Enforcement	
--	--	---	--	---	--



**Flood Control Project Maintenance  
Levee Inspections**

**Maintenance Issue Types Only, Levee Inspection Report By Mile - Fall 2023**

**Madera County FCWCA**

Waterway	Bank	Unit Miles	Inspection Start/End	Inspector
Unit No. 06 Fresno River	Left	9.03	10/25/2023 10/25/2023	Corey Fujitani

LM Start	6.61	Rating **	M	Issue No.	28
LM End	6.72	Issue Type +	Ma	Location *	LS
Category	Earthen Levee			GPS Latitude/Longitude	
				Start	End
Item	Animal Control			36.968063°	36.968629°
				-120.253678°	-120.251785°
DWR ID	DWR_NA0011_06_f_2022_28				
Comment Code					
A3 : No rodents visible, but rodent burrows visible; need to backfill and compact or grout burrows.					
Inspector Comment					

Photo 1 of 1 : FA\_2023\_NA0011\_147\_28\_20230821\_00012.jpg



Multiple rodent holes observed in the landside slope. (Fall 2022)

LM Start	6.74	Rating **	C	Issue No.	42
LM End	6.74	Issue Type +	Ma	Location *	WS
Category	Earthen Levee			GPS Latitude/Longitude	
				Start	End
Item	Encroachments			36.968710°	36.968710°
				-120.251439°	-120.251439°
DWR ID	DWR_NA0011_06_f_2017_42				
Comment Code					
PR : Prunings					
Inspector Comment					

No Photos

LM Start	7.07	Rating **	C	Issue No.	43
LM End	7.07	Issue Type +	Ma	Location *	WS
Category	Earthen Levee			GPS Latitude/Longitude	
				Start	End
Item	Encroachments			36.968801°	36.968801°
				-120.245557°	-120.245557°
DWR ID	DWR_NA0011_06_f_2017_43				
Comment Code					
PR : Prunings					
Inspector Comment					

No Photos

<b>* Location</b> LS : Land Side    N/A : Not Applicable WS : Water Side CR : Crown		<b>** Rating</b> A : Acceptable M : Minimally Acceptable U : Unacceptable		N : Not Inspected/Rated C : Corrected A/W : Acceptable but Monitor & Maintain		<b>+ Issue Type</b> Ma : Maintenance Deficiency Ob : Design & System Obsolescence En : Enforcement	
--	--	--	--	---	--	---	--

**Flood Control Project Maintenance  
Levee Inspections**

**Maintenance Issue Types Only, Levee Inspection Report By Mile - Fall 2023**

**Madera County FCWCA**

Waterway	Bank	Unit Miles	Inspection Start/End	Inspector
Unit No. 06 Fresno River	Left	9.03	10/25/2023 10/25/2023	Corey Fujitani

LM Start	7.61	Rating **	M	Issue No.	21
LM End	8.26	Issue Type +	Ma	Location *	WS
Category	Earthen Levee			GPS Latitude/Longitude	
				Start	End
Item	Vegetation			36.968964°	36.972144°
				-120.235752°	-120.225012°
DWR ID	DWR_NA0011_06_f_2023_21				
Comment Code					
V1 : Control annual grass and weeds on the levee slopes and easements.					
Inspector Comment					

No Photos

LM Start	7.71	Rating **	M	Issue No.	47
LM End	8.18	Issue Type +	Ma	Location *	LS
Category	Earthen Levee			GPS Latitude/Longitude	
				Start	End
Item	Animal Control			36.969600°	36.971842°
				-120.234229°	-120.226393°
DWR ID	DWR_NA0011_06_f_2017_47				
Comment Code					
A3 : No rodents visible, but rodent burrows visible; need to backfill and compact or grout burrows.					
Inspector Comment					

Photo 1 of 1 : FA\_2023\_NA0011\_147\_47\_20230821\_00018.jpg



Bait traps should be maintained and rodent holes should be backfilled.

LM Start	7.71	Rating **	M	Issue No.	48
LM End	9.02	Issue Type +	Ma	Location *	WS
Category	Earthen Levee			GPS Latitude/Longitude	
				Start	End
Item	Animal Control			36.969600°	36.972656°
				-120.234229°	-120.211787°
DWR ID	DWR_NA0011_06_f_2017_48				
Comment Code					
A3 : No rodents visible, but rodent burrows visible; need to backfill and compact or grout burrows.					
Inspector Comment					

No Photos

<b>* Location</b> LS : Land Side    N/A : Not Applicable WS : Water Side CR : Crown		<b>** Rating</b> A : Acceptable M : Minimally Acceptable U : Unacceptable		<b>+ Issue Type</b> Ma : Maintenance Deficiency Ob : Design & System Obsolescence En : Enforcement	
		N : Not Inspected/Rated C : Corrected A/W : Acceptable but Monitor & Maintain			

**Flood Control Project Maintenance  
Levee Inspections**

**Maintenance Issue Types Only, Levee Inspection Report By Mile - Fall 2023**

**Madera County FCWCA**

Waterway	Bank	Unit Miles	Inspection Start/End	Inspector
Unit No. 06 Fresno River	Left	9.03	10/25/2023 10/25/2023	Corey Fujitani

LM Start	7.91	Rating **	M	Issue No.	23
LM End	7.91	Issue Type +	Ma	Location *	LS
Category	Earthen Levee			GPS Latitude/Longitude	
				Start	End
Item	Erosion / Vehicle Traffic			36.971293°	36.971293°
				-120.231180°	-120.231180°
DWR ID	DWR_NA0011_06_f_2019_23				
Comment Code					
E6 : Repair the levee slope damaged by vehicle traffic and prevent access where possible.					
Inspector Comment					

Photo 1 of 1 : FA\_2023\_NA0011\_147\_23\_20230821\_00008.jpg



Damage to landside slope from vehicle traffic. (Fall 2019)

LM Start	7.96	Rating **	M	Issue No.	32
LM End	7.96	Issue Type +	Ma	Location *	WS
Category	Earthen Levee			GPS Latitude/Longitude	
				Start	End
Item	Encroachments			36.971543°	36.971543°
				-120.230285°	-120.230285°
DWR ID	DWR_NA0011_06_s_2017_32				
Comment Code					
PR : Prunings					
Inspector Comment					
Remove the brush pile from the levee slope. This pile is providing habitat for rodents.					

Photo 1 of 1 : FA\_2023\_NA0011\_147\_32\_20230821\_00014.jpg



Fresno River waterside levee mile 7.96.

LM Start	7.98	Rating **	M	Issue No.	33
LM End	7.98	Issue Type +	Ma	Location *	WS
Category	Earthen Levee			GPS Latitude/Longitude	
				Start	End
Item	Encroachments			36.971575°	36.971575°
				-120.230065°	-120.230065°
DWR ID	DWR_NA0011_06_s_2017_33				
Comment Code					
PR : Prunings					
Inspector Comment					
Burn or remove the brush pile from the waterside slope.					

No Photos

<b>* Location</b> LS : Land Side    N/A : Not Applicable WS : Water Side CR : Crown	<b>** Rating</b> A : Acceptable M : Minimally Acceptable U : Unacceptable	<b>N : Not Inspected/Rated</b> C : Corrected A/W : Acceptable but Monitor & Maintain	<b>+ Issue Type</b> Ma : Maintenance Deficiency Ob : Design & System Obsolescence En : Enforcement
--	--	--	---



**Flood Control Project Maintenance  
Levee Inspections**

**Maintenance Issue Types Only, Levee Inspection Report By Mile - Fall 2023**

**Madera County FCWCA**

Waterway	Bank	Unit Miles	Inspection Start/End	Inspector
Unit No. 06 Fresno River	Left	9.03	10/25/2023 10/25/2023	Corey Fujitani

LM Start	8.53	Rating **	M	Issue No.	83	
LM End	8.53	Issue Type +	Ma	Location *		
Category	Supplemental			GPS Latitude/Longitude		
				Start	End	
Item	DWR UCIP LMA Responsibility			36.971462°	36.971462°	
				-120.220276°	-120.220276°	
DWR ID	21534					
Comment Code						
Inspector Comment						
DS_ID:21534 FS_ID:80595 EP_NO: N/A Repair Type: Non-Urgent EVAL Issue: 5, Pipe Damage Crossing Status: Found UCIP Comments: 04/20/2022 Record remains Non-Urgent. DMP internal video inspection has found pipe integrity issues. LOF of crossing is greater than or equal to 4.1 and less than 5. Crossing will be monitored until funding becomes available for rehabilitation. (M.Thao - DWR UCIP) 05/06/2014 Need to contact owner. Rip rap has been added around concrete headwall on waterward side--need to determine details for rip rap around structure. (DWR UCIP - O. Magana) FIELD_STRUCT_DESC: 30-inch corrugated metal gravity drainage pipe through the levee, 11 feet below the crown. Concrete headwall and wing wall on each end. Flap gate on the waterside (WS) end. [Additional Reference(s): DWR Levee Log, 2005 (8.64). USACE San Joaquin O&M Manual, Unit 606. USACE As-Built Drawing 07-04-0085, Sheets 85/10.2 and 85/31.1, Station 450+10, March 1975]. FS Date: 4/20/2022						

LM Start	<b>8.53</b>	Rating **	M	Issue No.	<b>83 (cont)</b>
LM End	<b>8.53</b>	Issue Type +	Ma	Location *	

Photo 1 of 2 : UCIP\_FA\_2023\_80595\_113270.jpg



LS view: Concrete headwall and pipe inlet approximately 30 feet off toe.

Photo 2 of 2 : UCIP\_FA\_2023\_80595\_113267.jpg



WS view: Concrete headwall and flap gate.

<b>* Location</b> LS: Land Side    N/A: Not Applicable WS: Water Side CR: Crown	<b>** Rating</b> A: Acceptable M: Minimally Acceptable U: Unacceptable	N: Not Inspected/Rated C: Corrected A/W: Acceptable but Monitor & Maintain	<b>+ Issue Type</b> Ma: Maintenance Deficiency Ob: Design & System Obsolescence En: Enforcement
--	---	--	--

**Flood Control Project Maintenance  
Levee Inspections**

**Maintenance Issue Types Only, Levee Inspection Report By Mile - Fall 2023**

**Madera County FCWCA**

Waterway	Bank	Unit Miles	Inspection Start/End	Inspector
Unit No. 06 Fresno River	Left	9.03	10/25/2023 10/25/2023	Corey Fujitani

LM Start	8.94	Rating **	M	Issue No.	84	
LM End	8.94	Issue Type +	Ma	Location *		
Category	Supplemental			GPS Latitude/Longitude		
				Start	End	
Item	DWR UCIP LMA Responsibility			36.972307°	36.972307°	
				-120.213185°	-120.213185°	
DWR ID	21530					
Comment Code						
Inspector Comment						
DS_ID:21530 FS_ID:80594 EP_NO: N/A Repair Type: Non-Urgent EVAL Issue: 6, Levee Damage or Threat for Levee Damage Crossing Status: Found UCIP Comments: 04/20/2022 Record updated from Urgent to Non-Urgent. Surface erosion and the deep hole on the LS slope behind the concrete headwall is still present; however, condition of the pipe is known. DMP internal video inspection has not found pipe integrity issues. LOF of crossing is less or equal to 4. Recommend next video inspection in 5 years. (M.Thao - DWR UCIP) 10/31/2018 Same as last inspection. Surface erosion present due to highly erodible soil. Deep hole behind concrete headwall presently unable to confirm if hole is associated with burrow activity or sink hole. Recommend internal inspection to determine pipe integrity through the levee. Crossing remains Urgent due to the unknown condition of the pipe integrity through the levee. (O. Magana - DWR UCIP) 07/14/2016 Surface erosion still present on LS shoulder. Unable to determine if surface erosion is due to internal pipe failure. Unable to locate concrete headwall on WS toe. Need to coordinate with owner to address erosion or potential pipe failure. Also recommend removing dense vegetation on WS. (DWR UCIP - omagana) 05/06/2014 Need to contact owner. Surface erosion on landward slope unable to determine if pipe failed or if rodent activity burrow hole has caused collapse on slope. Need to determine cause for erosion. (DWR UCIP - omagana) FIELD_STRUCT_DESC: 30-inch corrugated metal gravity drainage pipe through the levee, 10.2 feet below the crown. Concrete headwall and wing wall on each end. Flap gate on the waterside (WS) end. [Additional Reference(s): DWR Levee Log, 2005 (9.05). USACE San Joaquin O&M Manual, Unit 606. USACE As-Built Drawing No. 07-04-0085, Sheets 85/10.2 and 85/31.1, Station 471+50, March 1975]. FS Date: 4/20/2022						

Photo 1 of 1 : UCIP\_FA\_2023\_80594\_113279.jpg



LS view: Surface erosion on slope; deep hole located behind concrete headwall.

* Location	** Rating	+ Issue Type
LS: Land Side WS: Water Side CR: Crown	A: Acceptable M: Minimally Acceptable U: Unacceptable	Ma: Maintenance Deficiency Ob: Design & System Obsolescence En: Enforcement
N/A: Not Applicable	N: Not Inspected/Rated C: Corrected A/W: Acceptable but Monitor & Maintain	