

**Flood Control Project Maintenance
Levee Inspections**

Maintenance Issue Types Only, Levee Inspection Report By Mile - Fall 2021

Madera County FCWCA

Waterway	Bank	Unit Miles	Inspection Start/End	Inspector
Unit No. 01 Ash Slough	Right	2.37	10/14/2021 10/14/2021	Corey Fujitani

LM Start		Rating **	A	Issue No.	41
LM End		Issue Type +	Ma	Location *	
Category	Earthen Levee			GPS Latitude/Longitude	
				Start	End
Item	Operations & Maintenance Manuals			°	°
				°	°
DWR ID	DWR_NA0011_01_s_2012_41				
Comment Code					
Inspector Comment					
Madera County has a copy of the O&M Manual on hand.					

No Photos

LM Start		Rating **	A	Issue No.	43
LM End		Issue Type +	Ma	Location *	
Category	Earthen Levee			GPS Latitude/Longitude	
				Start	End
Item	Emergency Supplies & Equipment			°	°
				°	°
DWR ID	DWR_NA0011_01_s_2012_43				
Comment Code					
Inspector Comment					
Madera County has emergency supplies.					

No Photos

LM Start		Rating **	A	Issue No.	44
LM End		Issue Type +	Ma	Location *	
Category	Earthen Levee			GPS Latitude/Longitude	
				Start	End
Item	Flood Preparedness & Training			°	°
				°	°
DWR ID	DWR_NA0011_01_s_2012_44				
Comment Code					
Inspector Comment					
Madera County Flood Control has a good working knowledge of flood response activities and has been involved in flood fight training.					

No Photos

* Location LS : Land Side N/A : Not Applicable WS : Water Side CR : Crown	** Rating A : Acceptable M : Minimally Acceptable U : Unacceptable	N : Not Inspected/Rated C : Corrected A/W : Acceptable but Monitor & Maintain	+ Issue Type Ma : Maintenance Deficiency Ob : Design & System Obsolescence En : Enforcement
--	--	---	---

**Flood Control Project Maintenance
Levee Inspections**

Maintenance Issue Types Only, Levee Inspection Report By Mile - Fall 2021

Madera County FCWCA

Waterway	Bank	Unit Miles	Inspection Start/End	Inspector
Unit No. 01 Ash Slough	Right	2.37	10/14/2021 10/14/2021	Corey Fujitani

LM Start	0.04	Rating **	A/W	Issue No.	20
LM End	0.04	Issue Type +	Ma	Location *	LS
Category	Earthen Levee			GPS Latitude/Longitude	
				Start	End
Item	Erosion / Bank Caving			37.046624 °	37.046624 °
				-120.427317 °	-120.427317 °
DWR ID	DWR_NA0011_01_s_2014_20				
Comment Code					
E1 : Note and monitor erosion site.					
Inspector Comment					
Appears to have been repaired. Monitor for settlement.					

Photo 1 of 1 : FA_2021_NA0011_142_20_20211015_00026.jpg



View of repaired slope damage on landside slope. (Fall 2021)

LM Start	0.28	Rating **	M	Issue No.	6
LM End	0.30	Issue Type +	Ma	Location *	WS
Category	Earthen Levee			GPS Latitude/Longitude	
				Start	End
Item	Encroachments			37.047812 °	37.047963 °
				-120.423155 °	-120.422898 °
DWR ID	DWR_NA0011_01_s_2012_6				
Comment Code					
TR : Tree or limb					
Inspector Comment					

No Photos

LM Start	0.33	Rating **	M	Issue No.	8
LM End	0.35	Issue Type +	Ma	Location *	WS
Category	Earthen Levee			GPS Latitude/Longitude	
				Start	End
Item	Encroachments			37.048223 °	37.048467 °
				-120.422642 °	-120.422315 °
DWR ID	DWR_NA0011_01_s_2012_8				
Comment Code					
TR : Tree or limb					
Inspector Comment					

No Photos

* Location LS : Land Side N/A : Not Applicable WS : Water Side CR : Crown	** Rating A : Acceptable M : Minimally Acceptable U : Unacceptable	N : Not Inspected/Rated C : Corrected A/W : Acceptable but Monitor & Maintain	+ Issue Type Ma : Maintenance Deficiency Ob : Design & System Obsolescence En : Enforcement
--	--	---	---

**Flood Control Project Maintenance
Levee Inspections**

Maintenance Issue Types Only, Levee Inspection Report By Mile - Fall 2021

Madera County FCWCA

Waterway	Bank	Unit Miles	Inspection Start/End	Inspector
Unit No. 01 Ash Slough	Right	2.37	10/14/2021 10/14/2021	Corey Fujitani

LM Start	0.44	Rating **	M	Issue No.	11
LM End	0.44	Issue Type +	Ma	Location *	WS
Category	Earthen Levee			GPS Latitude/Longitude	
				Start	End
Item	Encroachments			37.049455 °	37.049455 °
				-120.421218 °	-120.421218 °
DWR ID	DWR_NA0011_01_s_2012_11				
Comment Code					
TR : Tree or limb					
Inspector Comment					
Remove the dead tree from the waterside slope.					

Photo 1 of 1 : FA_2021_NA0011_142_11_20210830_00001.jpg



Remove downed tree from waterside slope.

LM Start	0.53	Rating **	M	Issue No.	10
LM End	0.53	Issue Type +	Ma	Location *	WS
Category	Earthen Levee			GPS Latitude/Longitude	
				Start	End
Item	Encroachments			37.050335 °	37.050335 °
				-120.419965 °	-120.419965 °
DWR ID	DWR_NA0011_01_s_2012_10				
Comment Code					
TR : Tree or limb					
Inspector Comment					
Remove the tree limbs from the waterside slope.					

No Photos

LM Start	0.62	Rating **	M	Issue No.	37
LM End	0.62	Issue Type +	Ma	Location *	WS
Category	Earthen Levee			GPS Latitude/Longitude	
				Start	End
Item	Encroachments			37.051222 °	37.051222 °
				-120.418810 °	-120.418810 °
DWR ID	DWR_NA0011_01_f_2015_37				
Comment Code					
TR : Tree or limb					
Inspector Comment					
Remove the tree branches from the waterside slope.					

No Photos

* Location LS : Land Side N/A : Not Applicable WS : Water Side CR : Crown	** Rating A : Acceptable M : Minimally Acceptable U : Unacceptable	N : Not Inspected/Rated C : Corrected A/W : Acceptable but Monitor & Maintain	+ Issue Type Ma : Maintenance Deficiency Ob : Design & System Obsolescence En : Enforcement
--	--	---	---

**Flood Control Project Maintenance
Levee Inspections**

Maintenance Issue Types Only, Levee Inspection Report By Mile - Fall 2021

Madera County FCWCA

Waterway	Bank	Unit Miles	Inspection Start/End	Inspector
Unit No. 01 Ash Slough	Right	2.37	10/14/2021 10/14/2021	Corey Fujitani

LM Start	0.75	Rating **	U	Issue No.	21
LM End	0.75	Issue Type +	Ma	Location *	WS
Category	Earthen Levee			GPS Latitude/Longitude	
				Start	End
Item	Encroachments			37.052796 °	37.052796 °
				-120.417641 °	-120.417640 °
DWR ID	DWR_NA0011_01_f_2017_21				
Comment Code					
TR : Tree or limb					
Inspector Comment					
Remove tree limbs from waterside slope.					

Photo 1 of 1 : FA_2021_NA0011_142_21_20210830_00009.jpg



Looking west at tree limbs and branches on waterward slope. (Spring 2018)

LM Start	0.79	Rating **	U	Issue No.	25
LM End	0.79	Issue Type +	Ma	Location *	WS
Category	Earthen Levee			GPS Latitude/Longitude	
				Start	End
Item	Encroachments			37.053329 °	37.053329 °
				-120.417448 °	-120.417448 °
DWR ID	DWR_NA0011_01_f_2018_25				
Comment Code					
TR : Tree or limb					
Inspector Comment					
There is a fallen tree blocking the waterside slope.					

Photo 1 of 1 : FA_2021_NA0011_142_25_20210830_00010.jpg



Tree limbs and trunks are on the waterside shoulder and slope. (Fall 2018)

LM Start	2.12	Rating **	C	Issue No.	24
LM End	2.26	Issue Type +	Ma	Location *	CR
Category	Earthen Levee			GPS Latitude/Longitude	
				Start	End
Item	Vegetation			37.065790 °	37.067183 °
				-120.400400 °	-120.398801 °
DWR ID	DWR_NA0011_01_s_2021_24				
Comment Code					
V9 : Keep the crown roadway free of vegetation.					
Inspector Comment					

No Photos

* Location LS : Land Side N/A : Not Applicable WS : Water Side CR : Crown		** Rating A : Acceptable M : Minimally Acceptable U : Unacceptable		+ Issue Type Ma : Maintenance Deficiency Ob : Design & System Obsolescence En : Enforcement	
		N : Not Inspected/Rated C : Corrected A/W : Acceptable but Monitor & Maintain			

**Flood Control Project Maintenance
Levee Inspections**

Maintenance Issue Types Only, Levee Inspection Report By Mile - Fall 2021

Madera County FCWCA

Waterway	Bank	Unit Miles	Inspection Start/End	Inspector
Unit No. 01 Ash Slough	Right	2.37	10/14/2021 10/14/2021	Corey Fujitani

* Location LS : Land Side N/A : Not Applicable WS : Water Side CR : Crown	** Rating A : Acceptable N : Not Inspected/Rated M : Minimally Acceptable C : Corrected U : Unacceptable A/W : Acceptable but Monitor & Maintain	+ Issue Type Ma : Maintenance Deficiency Ob : Design & System Obsolescence En : Enforcement
--	---	---

**Flood Control Project Maintenance
Levee Inspections**

Maintenance Issue Types Only, Levee Inspection Report By Mile - Fall 2021

Madera County FCWCA

Waterway	Bank	Unit Miles	Inspection Start/End	Inspector
Unit No. 02 Ash Slough	Left	2.04	10/14/2021 10/14/2021	Corey Fujitani

LM Start	0.00	Rating **	U	Issue No.	20
LM End	0.03	Issue Type +	Ma	Location *	WS
Category	Earthen Levee			GPS Latitude/Longitude	
				Start	End
Item	Animal Control			37.045485 °	37.045650 °
				-120.427415 °	-120.426836 °
DWR ID	DWR_NA0011_02_f_2021_20				
Comment Code					
A3 : No rodents visible, but rodent burrows visible; need to backfill and compact or grout burrows.					
Inspector Comment					

Photo 1 of 1 : FA_2021_NA0011_143_20_20211015_00037.jpg



Representative view of rodent burrows on the waterside slope. (Fall 2021)

LM Start	0.27	Rating **	M	Issue No.	21
LM End	0.30	Issue Type +	Ma	Location *	WS
Category	Earthen Levee			GPS Latitude/Longitude	
				Start	End
Item	Trim / Thin Trees			37.046937 °	37.047192 °
				-120.422815 °	-120.422517 °
DWR ID	DWR_NA0011_02_s_2012_21				
Comment Code					
T1 : Trim trees to at least five feet above ground level.					
Inspector Comment					

No Photos

LM Start	0.28	Rating **	U	Issue No.	15
LM End	0.28	Issue Type +	Ma	Location *	CR
Category	Earthen Levee			GPS Latitude/Longitude	
				Start	End
Item	Encroachments			37.047048 °	37.047048 °
				-120.422701 °	-120.422701 °
DWR ID	DWR_NA0011_02_f_2021_15				
Comment Code					
TR : Tree or limb					
Inspector Comment					
Fallen tree limb blocking access across the crown and waterside slope.					

Photo 1 of 1 : FA_2021_NA0011_143_15_20211015_00039.jpg



Tree branches blocking access across the levee crown and waterside slope. (Fall 2021)

* Location LS : Land Side N/A : Not Applicable WS : Water Side CR : Crown		** Rating A : Acceptable N : Not Inspected/Rated M : Minimally Acceptable C : Corrected U : Unacceptable A/W : Acceptable but Monitor & Maintain		+ Issue Type Ma : Maintenance Deficiency Ob : Design & System Obsolescence En : Enforcement	
--	--	---	--	---	--

**Flood Control Project Maintenance
Levee Inspections**

Maintenance Issue Types Only, Levee Inspection Report By Mile - Fall 2021

Madera County FCWCA

Waterway	Bank	Unit Miles	Inspection Start/End	Inspector
Unit No. 02 Ash Slough	Left	2.04	10/14/2021 10/14/2021	Corey Fujitani

LM Start	0.29	Rating **	M	Issue No.	10
LM End	0.63	Issue Type +	Ma	Location *	WS
Category	Earthen Levee			GPS Latitude/Longitude	
				Start	End
Item	Vegetation			37.047062 °	37.050480 °
				-120.422530 °	-120.418173 °
DWR ID	DWR_NA0011_02_f_2021_10				
Comment Code					
V1 : Control annual grass and weeds on the levee slopes and easements.					
Inspector Comment					

No Photos

LM Start	0.31	Rating **	M	Issue No.	13
LM End	0.31	Issue Type +	Ma	Location *	LS
Category	Earthen Levee			GPS Latitude/Longitude	
				Start	End
Item	Slope Stability			37.047266 °	37.047266 °
				-120.422393 °	-120.422393 °
DWR ID	DWR_NA0011_02_f_2017_13				
Comment Code					
S3 : Repair the levee slope damaged by vehicle traffic and prevent access where possible.					
Inspector Comment					

Photo 1 of 1 : FA_2021_NA0011_143_13_20210830_00007.jpg



Vehicle access to levee slope should be prevented and erosion repaired.

LM Start	0.32	Rating **	A/W	Issue No.	19
LM End	1.66	Issue Type +	Ma	Location *	LS
Category	Earthen Levee			GPS Latitude/Longitude	
				Start	End
Item	Animal Control			37.047376 °	37.059952 °
				-120.422190 °	-120.405448 °
DWR ID	DWR_NA0011_02_s_2017_19				
Comment Code					
A1 : Exterminate rodents and backfill and compact or grout burrows.					
Inspector Comment					

No Photos

* Location LS : Land Side N/A : Not Applicable WS : Water Side CR : Crown	** Rating A : Acceptable M : Minimally Acceptable U : Unacceptable	N : Not Inspected/Rated C : Corrected A/W : Acceptable but Monitor & Maintain	+ Issue Type Ma : Maintenance Deficiency Ob : Design & System Obsolescence En : Enforcement
--	--	---	---

**Flood Control Project Maintenance
Levee Inspections**

Maintenance Issue Types Only, Levee Inspection Report By Mile - Fall 2021

Madera County FCWCA

Waterway	Bank	Unit Miles	Inspection Start/End	Inspector
Unit No. 02 Ash Slough	Left	2.04	10/14/2021 10/14/2021	Corey Fujitani

LM Start	0.32	Rating **	A/W	Issue No.	39
LM End	1.67	Issue Type +	Ma	Location *	WS
Category	Earthen Levee			GPS Latitude/Longitude	
				Start	End
Item	Animal Control			37.047376 °	37.060091 °
				-120.422190 °	-120.405340 °
DWR ID	DWR_NA0011_02_f_2015_39				
Comment Code					
A1 : Exterminate rodents and backfill and compact or grout burrows.					
Inspector Comment					

Photo 1 of 1 : FA_2021_NA0011_143_39_20210830_00018.jpg



Previously noted burrows in the area waterside slope levee mile 0.32-1.67.

LM Start	0.32	Rating **	A/W	Issue No.	22
LM End	2.00	Issue Type +	Ma	Location *	CR
Category	Earthen Levee			GPS Latitude/Longitude	
				Start	End
Item	Crown Surface / Depressions / Rutting			37.047376 °	37.063718 °
				-120.422190 °	-120.401358 °
DWR ID	DWR_NA0011_02_s_2017_22				
Comment Code					
C2 : Repair depressions or ruts in the crown or slope.					
Inspector Comment					

No Photos

* Location LS : Land Side N/A : Not Applicable WS : Water Side CR : Crown	** Rating A : Acceptable M : Minimally Acceptable U : Unacceptable	N : Not Inspected/Rated C : Corrected A/W : Acceptable but Monitor & Maintain	+ Issue Type Ma : Maintenance Deficiency Ob : Design & System Obsolescence En : Enforcement
--	--	---	---

Madera County FCWCA

**Flood Control Project Maintenance
Levee Inspections**

Maintenance Issue Types Only, Levee Inspection Report By Mile - Fall 2021

Madera County FCWCA

Waterway	Bank	Unit Miles	Inspection Start/End	Inspector
Unit No. 02 Ash Slough	Left	2.04	10/14/2021 10/14/2021	Corey Fujitani

LM Start	0.98	Rating **	U	Issue No.	27 (cont)
LM End	1.52	Issue Type +	Ma	Location *	WS
Category	Earthen Levee			GPS Latitude/Longitude	
				Start	End
Item	Encroachments			37.054928 °	37.058752 °
				-120.415482 °	-120.407323 °
DWR ID	DWR_NA0011_02_s_2017_27				

Photo 2 of 2 : FA_2021_NA0011_143_27_20210830_00012.jpg



Branches left along the waterside slope from high flow. (Spring 2020)

LM Start	1.10	Rating **	U	Issue No.	1
LM End	1.19	Issue Type +	Ma	Location *	
Category	Supplemental			GPS Latitude/Longitude	
				Start	End
Item	DWR Erosion Survey			37.055596 °	37.055596 °
				-120.412647 °	-120.412647 °
DWR ID	NA0011U02RM2.57				

Comment Code

Inspector Comment

Site ID: NA0011U02RM2.57

07/21/2021: From 2013 to present, no significant changes were observed during the annual survey. Vegetation is obscuring the views of the erosion.

07/24/2012: Dense vegetation around the site.

08/09/2011: A fallen tree was seen at the levee toe about 20 feet upstream, and tree root exposed. There has been no report from the district that this site was corrected.

11/30/2010: Site was not inspected due to time constraints. There have been no reports from the district that the site was corrected. Continue to monitor site during flood events.

08/05/2010: Recommended for annual assessment and monitoring during flood events, per CLRO.

2009: Site is recommended as a local maintenance issue, per Critical Levee Repair Office, Critical Erosion Sites Evaluation 2008 Report; site was previously rated "M"

09/6/2007: Undercutting of the toe; several trees along the WS slope with roots exposed.

Photo 1 of 2 : SJR2021_NA0011U02RM2.57_1.JPG



7/21/2021: View of the erosion on the levee toe.

* Location LS : Land Side N/A : Not Applicable WS : Water Side CR : Crown	** Rating A : Acceptable M : Minimally Acceptable U : Unacceptable	N : Not Inspected/Rated C : Corrected A/W : Acceptable but Monitor & Maintain	+ Issue Type Ma : Maintenance Deficiency Ob : Design & System Obsolescence En : Enforcement
--	--	--	---

**Flood Control Project Maintenance
Levee Inspections**

Maintenance Issue Types Only, Levee Inspection Report By Mile - Fall 2021

Madera County FCWCA

Waterway	Bank	Unit Miles	Inspection Start/End	Inspector
Unit No. 02 Ash Slough	Left	2.04	10/14/2021 10/14/2021	Corey Fujitani

LM Start	1.10	Rating **	U	Issue No.	1 (cont)
LM End	1.19	Issue Type +	Ma	Location *	
Category	Supplemental			GPS Latitude/Longitude	
				Start	End
Item	DWR Erosion Survey			37.055596 °	37.055596 °
				-120.412647 °	-120.412647 °
DWR ID	NA0011U02RM2.57				

Photo 2 of 2 : SJR2021_NA0011U02RM2.57_2.JPG



7/21/2021: Another view of the erosion.

LM Start	1.10	Rating **	M	Issue No.	17
LM End	1.13	Issue Type +	Ma	Location *	WS
Category	Earthen Levee			GPS Latitude/Longitude	
				Start	End
Item	Trim / Thin Trees			37.055437 °	37.055533 °
				-120.413392 °	-120.412863 °
DWR ID	DWR_NA0011_02_f_2017_17				
Comment Code					
T1 : Trim trees to at least five feet above ground level.					
Inspector Comment					
Trim branches from waterside tree hanging low over the crown inhibiting crown access.					

No Photos

LM Start	1.51	Rating **	M	Issue No.	25
LM End	1.52	Issue Type +	Ma	Location *	WS
Category	Earthen Levee			GPS Latitude/Longitude	
				Start	End
Item	Trim / Thin Trees			37.058652 °	37.058802 °
				-120.407638 °	-120.407350 °
DWR ID	DWR_NA0011_02_s_2012_25				
Comment Code					
T4 : Trim trees over roadway to at least 12 feet above ground level.					
Inspector Comment					
Trim the trees on the waterside slope levee miles 1.51-1.52.					

Photo 1 of 1 : FA_2021_NA0011_143_25_20210830_00011.jpg



Looking downstream at untrimmed tree on waterward slope. (Spring 2018)

*** Location**
LS : Land Side N/A : Not Applicable
WS : Water Side
CR : Crown

**** Rating**
A : Acceptable N : Not Inspected/Rated
M : Minimally Acceptable C : Corrected
U : Unacceptable A/W : Acceptable but Monitor & Maintain

+ Issue Type
Ma : Maintenance Deficiency
Ob : Design & System Obsolescence
En : Enforcement

**Flood Control Project Maintenance
Levee Inspections**

Maintenance Issue Types Only, Levee Inspection Report By Mile - Fall 2021

Madera County FCWCA

Waterway	Bank	Unit Miles	Inspection Start/End	Inspector
Unit No. 03 Berenda Slough	Right	1.51	10/14/2021 10/14/2021	Corey Fujitani

LM Start	0.05	Rating **	C	Issue No.	35
LM End	0.05	Issue Type +	Ma	Location *	LS
Category	Earthen Levee			GPS Latitude/Longitude	
				Start	End
Item	Trim / Thin Trees			36.996468 °	36.996468 °
				-120.372902 °	-120.372902 °
DWR ID	DWR_NA0011_03_f_2012_35				
Comment Code					
T4 : Trim trees over roadway to at least 12 feet above ground level.					
Inspector Comment					

No Photos

LM Start	0.08	Rating **	C	Issue No.	32
LM End	1.51	Issue Type +	Ma	Location *	CR
Category	Earthen Levee			GPS Latitude/Longitude	
				Start	End
Item	Crown Surface / Depressions / Rutting			36.996264 °	36.996613 °
				-120.372350 °	-120.346570 °
DWR ID	DWR_NA0011_03_s_2014_32				
Comment Code					
C3 : Add appropriate gravel or road base. Grade and compact.					
Inspector Comment					

No Photos

LM Start	0.08	Rating **	U	Issue No.	20
LM End	0.08	Issue Type +	Ma	Location *	LS
Category	Earthen Levee			GPS Latitude/Longitude	
				Start	End
Item	Encroachments			36.996204 °	36.996201 °
				-120.372352 °	-120.372345 °
DWR ID	DWR_NA0011_03_s_2012_20				
Comment Code					
PR : Prunings					
Inspector Comment					
Remove the prunings from the landside slope.					

Photo 1 of 1 : FA_2021_NA0011_144_20_20210830_00008.jpg



Looking at prunings on landward slope. (Spring 2018)

*** Location**
LS : Land Side N/A : Not Applicable
WS : Water Side
CR : Crown

**** Rating**
A : Acceptable N : Not Inspected/Rated
M : Minimally Acceptable C : Corrected
U : Unacceptable A/W : Acceptable but Monitor & Maintain

+ Issue Type
Ma : Maintenance Deficiency
Ob : Design & System Obsolescence
En : Enforcement

**Flood Control Project Maintenance
Levee Inspections**

Maintenance Issue Types Only, Levee Inspection Report By Mile - Fall 2021

Madera County FCWCA

Waterway	Bank	Unit Miles	Inspection Start/End	Inspector
Unit No. 03 Berenda Slough	Right	1.51	10/14/2021 10/14/2021	Corey Fujitani

LM Start	0.45	Rating **	U	Issue No.	10
LM End	0.45	Issue Type +	Ma	Location *	LS
Category	Earthen Levee			GPS Latitude/Longitude	
				Start	End
Item	Encroachments			36.996224 °	36.996224 °
				-120.365692 °	-120.365692 °
DWR ID	DWR_NA0011_03_f _ 2018_10				
Comment Code					
TR : Tree or limb					
Inspector Comment					
Remove the dead tree from the landside slope.					

Photo 1 of 1 : FA_2021_NA0011_144_10_20210830_00005.jpg



View of dead tree on the landside slope. (Fall 2018)

LM Start	0.46	Rating **	M	Issue No.	5
LM End	0.46	Issue Type +	Ma	Location *	CR
Category	Earthen Levee			GPS Latitude/Longitude	
				Start	End
Item	Animal Control			36.996238 °	36.996238 °
				-120.365563 °	-120.365563 °
DWR ID	DWR_NA0011_03_s_2018_5				
Comment Code					
A3 : No rodents visible, but rodent burrows visible; need to backfill and compact or grout burrows.					
Inspector Comment					
There is a large rodent hole on the crown of the levee.					

Photo 1 of 1 : FA_2021_NA0011_144_5_20210830_00002.jpg



Looking at rodent hole on levee crown. (Spring 2018)

LM Start	1.04	Rating **	M	Issue No.	11
LM End	1.05	Issue Type +	Ma	Location *	LS
Category	Earthen Levee			GPS Latitude/Longitude	
				Start	End
Item	Encroachments			36.996613 °	36.996610 °
				-120.355055 °	-120.354995 °
DWR ID	DWR_NA0011_03_s_2012_11				
Comment Code					
TR : Tree or limb					
Inspector Comment					
Remove nut tree from the slope.					

Photo 1 of 1 : FA_2021_NA0011_144_11_20211015_00016.jpg



Tree limbs left on the landside slope. (Fall 2021)

*** Location**
LS : Land Side N/A : Not Applicable
WS : Water Side
CR : Crown

**** Rating**
A : Acceptable N : Not Inspected/Rated
M : Minimally Acceptable C : Corrected
U : Unacceptable A/W : Acceptable but Monitor & Maintain

+ Issue Type
Ma : Maintenance Deficiency
Ob : Design & System Obsolescence
En : Enforcement

Madera County FCWCA

**Flood Control Project Maintenance
Levee Inspections**

Maintenance Issue Types Only, Levee Inspection Report By Mile - Fall 2021

Madera County FCWCA

Waterway	Bank	Unit Miles	Inspection Start/End	Inspector
Unit No. 03 Berenda Slough	Right	1.51	10/14/2021 10/14/2021	Corey Fujitani

LM Start	1.14	Rating **	M	Issue No.	8
LM End	1.35	Issue Type +	Ma	Location *	CR
Category	Earthen Levee			GPS Latitude/Longitude	
				Start	End
Item	Animal Control			36.996606 °	36.996618 °
				-120.353292 °	-120.349475 °
DWR ID	DWR_NA0011_03_f_2016_8				
Comment Code					
A1 : Exterminate rodents and backfill and compact or grout burrows.					
Inspector Comment					
Exterminate rodents from the roadway. Active rodents observed during inspection at this site.					

Photo 1 of 1 : FA_2021_NA0011_144_8_20210830_00004.jpg



Berenda Slough Unit 3 looking upstream.

LM Start	1.24	Rating **	C	Issue No.	4
LM End	1.25	Issue Type +	Ma	Location *	CR
Category	Earthen Levee			GPS Latitude/Longitude	
				Start	End
Item	Slope Stability			36.996582 °	36.996582 °
				-120.351482 °	-120.351258 °
DWR ID	DWR_NA0011_03_f_2016_4				
Comment Code					
S1 : Repair slope instability.					
Inspector Comment					

No Photos

LM Start	1.29	Rating **	M	Issue No.	13
LM End	1.29	Issue Type +	Ma	Location *	LS
Category	Earthen Levee			GPS Latitude/Longitude	
				Start	End
Item	Trim / Thin Trees			36.996633 °	36.996633 °
				-120.350559 °	-120.350559 °
DWR ID	DWR_NA0011_03_f_2020_13				
Comment Code					
T1 : Trim trees to at least five feet above ground level.					
Inspector Comment					

No Photos

* Location LS : Land Side N/A : Not Applicable WS : Water Side CR : Crown	** Rating A : Acceptable M : Minimally Acceptable U : Unacceptable	N : Not Inspected/Rated C : Corrected A/W : Acceptable but Monitor & Maintain	+ Issue Type Ma : Maintenance Deficiency Ob : Design & System Obsolescence En : Enforcement
--	--	---	---

**Flood Control Project Maintenance
Levee Inspections**

Maintenance Issue Types Only, Levee Inspection Report By Mile - Fall 2021

Madera County FCWCA

Waterway	Bank	Unit Miles	Inspection Start/End	Inspector
Unit No. 04 Berenda Slough	Left	2.28	10/14/2021 10/14/2021	Corey Fujitani

LM Start	0.02	Rating **	A/W	Issue No.	3
LM End	0.97	Issue Type +	Ma	Location *	LS
Category	Earthen Levee			GPS Latitude/Longitude	
				Start	End
Item	Slope Stability			36.995506 °	36.995550 °
				-120.373233 °	-120.355935 °
DWR ID	DWR_NA0011_04_f_2016_3				
Comment Code					
S1 : Repair slope instability.					
Inspector Comment					
The slope in this area has been damaged by farm equipment.					

Photo 1 of 1 : FA_2021_NA0011_145_3_20210830_00001.jpg



Berenda Slough Unit 4 Looking upstream landside.

LM Start	0.04	Rating **	M	Issue No.	20
LM End	0.06	Issue Type +	Ma	Location *	WS
Category	Earthen Levee			GPS Latitude/Longitude	
				Start	End
Item	Encroachments			36.995502 °	36.995597 °
				-120.372833 °	-120.372391 °
DWR ID	DWR_NA0011_04_f_2012_20				
Comment Code					
TR : Tree or limb					
Inspector Comment					
Remove the tree limbs from the waterside levee slope.					

No Photos

LM Start	0.12	Rating **	A/W	Issue No.	19
LM End	0.94	Issue Type +	Ma	Location *	LS
Category	Earthen Levee			GPS Latitude/Longitude	
				Start	End
Item	Animal Control			36.995547 °	36.995586 °
				-120.371410 °	-120.356589 °
DWR ID	DWR_NA0011_04_s_2018_19				
Comment Code					
A3 : No rodents visible, but rodent burrows visible; need to backfill and compact or grout burrows.					
Inspector Comment					
Bait stations have been placed. Occasional small burrow observed.					

No Photos

* Location LS : Land Side N/A : Not Applicable WS : Water Side CR : Crown	** Rating A : Acceptable M : Minimally Acceptable U : Unacceptable	N : Not Inspected/Rated C : Corrected A/W : Acceptable but Monitor & Maintain	+ Issue Type Ma : Maintenance Deficiency Ob : Design & System Obsolescence En : Enforcement
--	--	---	---

**Flood Control Project Maintenance
Levee Inspections**

Maintenance Issue Types Only, Levee Inspection Report By Mile - Fall 2021

Madera County FCWCA

Waterway	Bank	Unit Miles	Inspection Start/End	Inspector
Unit No. 04 Berenda Slough	Left	2.28	10/14/2021 10/14/2021	Corey Fujitani

LM Start	0.14	Rating **	U	Issue No.	15
LM End	0.14	Issue Type +	Ma	Location *	WS
Category	Earthen Levee			GPS Latitude/Longitude	
				Start	End
Item	Encroachments			36.995528 °	36.995528 °
				-120.370922 °	-120.370922 °
DWR ID	DWR_NA0011_04_f_2015_15				
Comment Code					
TR : Tree or limb					
Inspector Comment					
There are many dead trees in the area. Remove the dead trees from the levee section. Many more are subject to fall and possibly block access to the levee crown.					

Photo 1 of 1 : FA_2021_NA0011_145_15_20210830_00009.jpg



Berenda Slough looking upstream from the levee mile 0.14.

LM Start	0.28	Rating **	M	Issue No.	21
LM End	0.28	Issue Type +	Ma	Location *	WS
Category	Earthen Levee			GPS Latitude/Longitude	
				Start	End
Item	Encroachments			36.995564 °	36.995564 °
				-120.368540 °	-120.368540 °
DWR ID	DWR_NA0011_04_f _ 2012_21				
Comment Code					
TR : Tree or limb					
Inspector Comment					
Remove the discarded tree and branches from the levee slope.					

No Photos

LM Start	0.42	Rating **	A/W	Issue No.	9
LM End	1.50	Issue Type +	Ma	Location *	CR
Category	Earthen Levee			GPS Latitude/Longitude	
				Start	End
Item	Crown Surface / Depressions / Rutting			36.995572 °	36.995613 °
				-120.365980 °	-120.346358 °
DWR ID	DWR_NA0011_04_s_2017_9				
Comment Code					
C3 : Add appropriate gravel or road base. Grade and compact.					
Inspector Comment					

No Photos

* Location LS : Land Side N/A : Not Applicable WS : Water Side CR : Crown	** Rating A : Acceptable M : Minimally Acceptable U : Unacceptable	N : Not Inspected/Rated C : Corrected A/W : Acceptable but Monitor & Maintain	+ Issue Type Ma : Maintenance Deficiency Ob : Design & System Obsolescence En : Enforcement
--	--	---	---

**Flood Control Project Maintenance
Levee Inspections**

Maintenance Issue Types Only, Levee Inspection Report By Mile - Fall 2021

Madera County FCWCA

Waterway	Bank	Unit Miles	Inspection Start/End	Inspector
Unit No. 04 Berenda Slough	Left	2.28	10/14/2021 10/14/2021	Corey Fujitani

LM Start	0.44	Rating **	C	Issue No.	22
LM End	0.44	Issue Type +	Ma	Location *	LS
Category	Earthen Levee			GPS Latitude/Longitude	
				Start	End
Item	Erosion / Bank Caving			36.995560 °	36.995560 °
				-120.365614 °	-120.365614 °
DWR ID	DWR_NA0011_04_s_2018_22				
Comment Code					
E2 : Schedule repair of erosion site prior to the next inspection.					
Inspector Comment					
Hole next to the riser has been repaired.					

No Photos

LM Start	0.47	Rating **	M	Issue No.	16
LM End	0.47	Issue Type +	Ma	Location *	WS
Category	Earthen Levee			GPS Latitude/Longitude	
				Start	End
Item	Encroachments			36.995603 °	36.995603 °
				-120.364978 °	-120.364978 °
DWR ID	DWR_NA0011_04_s_2014_16				
Comment Code					
TR : Tree or limb					
Inspector Comment					
This dead tree on the waterward slope should be removed from the levee section.					

Photo 1 of 1 : FA_2021_NA0011_145_16_20210830_00010.jpg



Tree on WS shoulder.

LM Start	0.54	Rating **	M	Issue No.	33
LM End	0.57	Issue Type +	Ma	Location *	WS
Category	Earthen Levee			GPS Latitude/Longitude	
				Start	End
Item	Encroachments			36.995565 °	36.995553 °
				-120.363779 °	-120.363245 °
DWR ID	DWR_NA0011_04_f_2018_33				
Comment Code					
TR : Tree or limb					
Inspector Comment					

No Photos

* Location
LS : Land Side N/A : Not Applicable
WS : Water Side
CR : Crown

** Rating
A : Acceptable N : Not Inspected/Rated
M : Minimally Acceptable C : Corrected
U : Unacceptable A/W : Acceptable but Monitor & Maintain

+ Issue Type
Ma : Maintenance Deficiency
Ob : Design & System Obsolescence
En : Enforcement

Madera County FCWCA

No Photos

Photo 1 of 1 : FA_2021_NA0011_145_32_20210830_00019.jpg



Trim branches on waterside shoulder. (Fall 2018)

Photo 1 of 1 : FA_2021_NA0011_145_31_20210830_00018.jpg



Tree branches strewn across levee crown and both shoulders. (Fall 2018)

Page 4 of 8

**Flood Control Project Maintenance
Levee Inspections**

Maintenance Issue Types Only, Levee Inspection Report By Mile - Fall 2021

Madera County FCWCA

Waterway	Bank	Unit Miles	Inspection Start/End	Inspector
Unit No. 04 Berenda Slough	Left	2.28	10/14/2021 10/14/2021	Corey Fujitani

LM Start	0.78	Rating **	U	Issue No.	6
LM End	0.78	Issue Type +	Ma	Location *	WS
Category	Earthen Levee			GPS Latitude/Longitude	
				Start	End
Item	Encroachments			36.995582 °	36.995582 °
				-120.359451 °	-120.359451 °
DWR ID	DWR_NA0011_04_s_2019_6				
Comment Code					
TR : Tree or limb					
Inspector Comment					

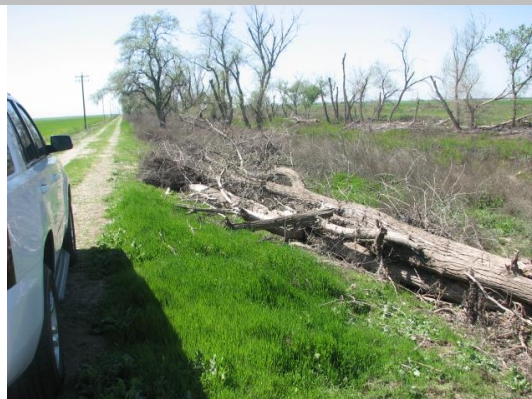
Photo 1 of 1 : FA_2021_NA0011_145_6_20210830_00002.jpg



View of fallen tree on waterside slope. (Spring 2019)

LM Start	0.94	Rating **	M	Issue No.	14
LM End	0.94	Issue Type +	Ma	Location *	WS
Category	Earthen Levee			GPS Latitude/Longitude	
				Start	End
Item	Encroachments			36.995573 °	36.995573 °
				-120.356601 °	-120.356601 °
DWR ID	DWR_NA0011_04_f_2017_14				
Comment Code					
TR : Tree or limb					
Inspector Comment					
Remove the downed tree from the waterside slope.					

Photo 1 of 1 : FA_2021_NA0011_145_14_20210830_00008.jpg



Looking upstream at fallen tree on waterward slope. (Spring 2018)

LM Start	1.01	Rating **	U	Issue No.	12
LM End	1.01	Issue Type +	Ma	Location *	WS
Category	Earthen Levee			GPS Latitude/Longitude	
				Start	End
Item	Trim / Thin Trees			36.995537 °	36.995537 °
				-120.355261 °	-120.355261 °
DWR ID	DWR_NA0011_04_f_2017_12				
Comment Code					
T1 : Trim trees to at least five feet above ground level.					
Inspector Comment					
Branches from waterside tree are blocking visibility of waterside slope and crown. Levee crown is nearly impassible.					

Photo 1 of 1 : FA_2021_NA0011_145_12_20210830_00006.jpg



Trim trees to at least 5' above levee slope and 12' above levee crown to allow inspection and access. (Spring 2021)

* Location LS : Land Side N/A : Not Applicable WS : Water Side CR : Crown		** Rating A : Acceptable M : Minimally Acceptable U : Unacceptable		N : Not Inspected/Rated C : Corrected A/W : Acceptable but Monitor & Maintain		+ Issue Type Ma : Maintenance Deficiency Ob : Design & System Obsolescence En : Enforcement	
--	--	--	--	---	--	---	--

**Flood Control Project Maintenance
Levee Inspections**

Maintenance Issue Types Only, Levee Inspection Report By Mile - Fall 2021

Madera County FCWCA

Waterway	Bank	Unit Miles	Inspection Start/End	Inspector
Unit No. 04 Berenda Slough	Left	2.28	10/14/2021 10/14/2021	Corey Fujitani

LM Start	1.07	Rating **	U	Issue No.	24
LM End	1.07	Issue Type +	Ma	Location *	WS
Category	Earthen Levee			GPS Latitude/Longitude	
				Start	End
Item	Encroachments			36.995587 °	36.995587 °
				-120.354128 °	-120.354128 °
DWR ID	DWR_NA0011_04_s_2021_24				
Comment Code					
TR : Tree or limb					
Inspector Comment					

Photo 1 of 1 : FA_2021_NA0011_145_24_20210830_00014.jpg



View of fallen trees on the waterside slope and berm. (Spring 2021)

LM Start	1.36	Rating **	M	Issue No.	18
LM End	1.36	Issue Type +	Ma	Location *	WS
Category	Earthen Levee			GPS Latitude/Longitude	
				Start	End
Item	Trim / Thin Trees			36.995593 °	36.995593 °
				-120.348926 °	-120.348926 °
DWR ID	DWR_NA0011_04_s_2018_18				
Comment Code					
T1 : Trim trees to at least five feet above ground level.					
Inspector Comment					

No Photos

LM Start	1.46	Rating **	M	Issue No.	7
LM End	1.46	Issue Type +	Ma	Location *	WS
Category	Earthen Levee			GPS Latitude/Longitude	
				Start	End
Item	Encroachments			36.995600 °	36.995600 °
				-120.347175 °	-120.347175 °
DWR ID	DWR_NA0011_04_s_2021_7				
Comment Code					
TR : Tree or limb					
Inspector Comment					

Photo 1 of 1 : FA_2021_NA0011_145_7_20210830_00003.jpg



View of tree limbs on the waterside slope. (Spring 2021)

*** Location**

LS : Land Side N/A : Not Applicable
WS : Water Side
CR : Crown

**** Rating**

A : Acceptable N : Not Inspected/Rated
M : Minimally Acceptable C : Corrected
U : Unacceptable A/W : Acceptable but Monitor & Maintain

+ Issue Type

Ma : Maintenance Deficiency
Ob : Design & System Obsolescence
En : Enforcement

**Flood Control Project Maintenance
Levee Inspections**

Maintenance Issue Types Only, Levee Inspection Report By Mile - Fall 2021

Madera County FCWCA

Waterway	Bank	Unit Miles	Inspection Start/End	Inspector
Unit No. 04 Berenda Slough	Left	2.28	10/14/2021 10/14/2021	Corey Fujitani

LM Start	1.50	Rating **	U	Issue No.	11
LM End	2.28	Issue Type +	Ma	Location *	LS
Category	Earthen Levee			GPS Latitude/Longitude	
				Start	End
Item	Animal Control			36.995590 °	37.003740 °
				-120.346406 °	-120.336877 °
DWR ID	DWR_NA0011_04_f_2016_11				
Comment Code					
A1 : Exterminate rodents and backfill and compact or grout burrows.					
Inspector Comment					
Exterminate the rodents and backfill and compact the burrows or grout the burrows in this area.					

Photo 1 of 1 : FA_2021_NA0011_145_11_20210830_00005.jpg



Representative view of rodent holes observed in this section. (Spring 2020)

LM Start	1.50	Rating **	U	Issue No.	30
LM End	2.28	Issue Type +	Ma	Location *	WS
Category	Earthen Levee			GPS Latitude/Longitude	
				Start	End
Item	Animal Control			36.995590 °	37.003740 °
				-120.346406 °	-120.336877 °
DWR ID	DWR_NA0011_04_f_2014_30				
Comment Code					
A1 : Exterminate rodents and backfill and compact or grout burrows.					
Inspector Comment					
Bait stations are needed in the rodent infested area on the waterside slope and toe.					

Photo 1 of 1 : FA_2021_NA0011_145_30_20210830_00017.jpg



Several large rodent holes on waterside slope. (Spring 2020)

LM Start	1.51	Rating **	M	Issue No.	5	
LM End	1.60	Issue Type +	Ma	Location *	WS	
Category	Earthen Levee			GPS Latitude/Longitude		
				Start		End
Item	Vegetation			36.995635 °		36.996212 °
				-120.346156 °		-120.344756 °
DWR ID	DWR_NA0011_04_f_2021_5					
Comment Code						
V1 : Control annual grass and weeds on the levee slopes and easements.						
Inspector Comment						

No Photos

* Location LS : Land Side N/A : Not Applicable WS : Water Side CR : Crown	** Rating A : Acceptable M : Minimally Acceptable U : Unacceptable	N : Not Inspected/Rated C : Corrected A/W : Acceptable but Monitor & Maintain	+ Issue Type Ma : Maintenance Deficiency Ob : Design & System Obsolescence En : Enforcement
--	--	--	---

**Flood Control Project Maintenance
Levee Inspections**

Maintenance Issue Types Only, Levee Inspection Report By Mile - Fall 2021

Madera County FCWCA

Waterway	Bank	Unit Miles	Inspection Start/End	Inspector
Unit No. 04 Berenda Slough	Left	2.28	10/14/2021 10/14/2021	Corey Fujitani

LM Start	1.63	Rating **	M	Issue No.	59
LM End	1.67	Issue Type +	Ma	Location *	CR
Category	Earthen Levee			GPS Latitude/Longitude	
				Start	End
Item	Animal Control			36.996573 °	36.997002 °
				-120.344428 °	-120.343977 °
DWR ID	DWR_NA0011_04_s_2012_59				
Comment Code					
A1 : Exterminate rodents and backfill and compact or grout burrows.					
Inspector Comment					
Exterminate rodents in this area.					

No Photos

LM Start	1.80	Rating **	M	Issue No.	29
LM End	1.80	Issue Type +	Ma	Location *	CR
Category	Earthen Levee			GPS Latitude/Longitude	
				Start	End
Item	Animal Control			36.998449 °	36.998449 °
				-120.342516 °	-120.342516 °
DWR ID	DWR_NA0011_04_f_2018_29				
Comment Code					
A3 : No rodents visible, but rodent burrows visible; need to backfill and compact or grout burrows.					
Inspector Comment					

No Photos

LM Start	2.22	Rating **	M	Issue No.	27
LM End	2.22	Issue Type +	Ma	Location *	WS
Category	Earthen Levee			GPS Latitude/Longitude	
				Start	End
Item	Trim / Thin Trees			37.003160 °	37.003160 °
				-120.337747 °	-120.337747 °
DWR ID	DWR_NA0011_04_f_2018_27				
Comment Code					
T1 : Trim trees to at least five feet above ground level.					
Inspector Comment					
Trim tree back away from crown and at least 5 feet above the levee slope.					

Photo 1 of 1 : FA_2021_NA0011_145_27_20210830_00016.jpg



Trim tree on waterside shoulder. (Fall 2018)

* Location LS : Land Side N/A : Not Applicable WS : Water Side CR : Crown	** Rating A : Acceptable M : Minimally Acceptable U : Unacceptable	N : Not Inspected/Rated C : Corrected A/W : Acceptable but Monitor & Maintain	+ Issue Type Ma : Maintenance Deficiency Ob : Design & System Obsolescence En : Enforcement
--	--	---	---

**Flood Control Project Maintenance
Levee Inspections**

Maintenance Issue Types Only, Levee Inspection Report By Mile - Fall 2021

Madera County FCWCA

Waterway	Bank	Unit Miles	Inspection Start/End	Inspector
Unit No. 05 Fresno River	Right	9.10	10/13/2021 10/13/2021	Corey Fujitani

LM Start	6.30	Rating **	M	Issue No.	46
LM End	6.30	Issue Type +	Ma	Location *	WS
Category	Earthen Levee			GPS Latitude/Longitude	
				Start	End
Item	Erosion / Bank Caving			36.968399 °	36.968399 °
				-120.260433 °	-120.260433 °
DWR ID	DWR_NA0011_05_s_2019_46				
Comment Code					
E2 : Schedule repair of erosion site prior to the next inspection.					
Inspector Comment					
Rills on waterside slope.					

Photo 1 of 1 : FA_2021_NA0011_146_46_20210830_00018.jpg



Rills observed on waterside slope. (Spring 2019)

LM Start	6.57	Rating **	U	Issue No.	29
LM End	6.57	Issue Type +	Ma	Location *	LS
Category	Earthen Levee			GPS Latitude/Longitude	
				Start	End
Item	Trim / Thin Trees			36.968477 °	36.968477 °
				-120.255557 °	-120.255557 °
DWR ID	DWR_NA0011_05_f_2019_29				
Comment Code					
T2 : Thin trees to allow visibility of the ground and room to flood fight.					
Inspector Comment					
Tree should be trimmed above the levee crown and 5 feet above the slope.					

Photo 1 of 1 : FA_2021_NA0011_146_29_20210830_00012.jpg



View of tree growing on landside slope looking upstream. (Fall 2019)

LM Start	6.58	Rating **	M	Issue No.	27
LM End	9.07	Issue Type +	Ma	Location *	WS
Category	Earthen Levee			GPS Latitude/Longitude	
				Start	End
Item	Animal Control			36.968525 °	36.973197 °
				-120.255387 °	-120.212085 °
DWR ID	DWR_NA0011_05_f_2016_27				
Comment Code					
A1 : Exterminate rodents and backfill and compact or grout burrows.					
Inspector Comment					
Exterminate the rodents in the area listed and place bait stations.					

No Photos

* Location LS : Land Side N/A : Not Applicable WS : Water Side CR : Crown	** Rating A : Acceptable M : Minimally Acceptable U : Unacceptable	N : Not Inspected/Rated C : Corrected A/W : Acceptable but Monitor & Maintain	+ Issue Type Ma : Maintenance Deficiency Ob : Design & System Obsolescence En : Enforcement
--	--	---	---

**Flood Control Project Maintenance
Levee Inspections**

Maintenance Issue Types Only, Levee Inspection Report By Mile - Fall 2021

Madera County FCWCA

Waterway	Bank	Unit Miles	Inspection Start/End	Inspector
Unit No. 05 Fresno River	Right	9.10	10/13/2021 10/13/2021	Corey Fujitani

LM Start	6.75	Rating **	A/W	Issue No.	28
LM End	6.95	Issue Type +	Ma	Location *	LS
Category	Earthen Levee			GPS Latitude/Longitude	
				Start	End
Item	Animal Control			36.969200 °	36.969507 °
				-120.252462 °	-120.248893 °
DWR ID	DWR_NA0011_05_f_2016_28				
Comment Code					
A1 : Exterminate rodents and backfill and compact or grout burrows.					
Inspector Comment					
LMA has repaired rodent damage. Continue to monitor the area.					

No Photos

LM Start	7.21	Rating **	A/W	Issue No.	32
LM End	7.21	Issue Type +	Ma	Location *	LS
Category	Earthen Levee			GPS Latitude/Longitude	
				Start	End
Item	Animal Control			36.969539 °	36.969539 °
				-120.244142 °	-120.244142 °
DWR ID	DWR_NA0011_05_f_2018_32				
Comment Code					
A3 : No rodents visible, but rodent burrows visible; need to backfill and compact or grout burrows.					
Inspector Comment					

No Photos

LM Start	7.66	Rating **	A/W	Issue No.	24
LM End	7.66	Issue Type +	Ma	Location *	LS
Category	Earthen Levee			GPS Latitude/Longitude	
				Start	End
Item	Animal Control			36.969606 °	36.969606 °
				-120.236091 °	-120.236091 °
DWR ID	DWR_NA0011_05_f_2018_24				
Comment Code					
A3 : No rodents visible, but rodent burrows visible; need to backfill and compact or grout burrows.					
Inspector Comment					
LMA has repaired the rodent burrows in the landside slope. Continue to monitor the area.					

No Photos

* Location LS : Land Side N/A : Not Applicable WS : Water Side CR : Crown	** Rating A : Acceptable M : Minimally Acceptable U : Unacceptable	N : Not Inspected/Rated C : Corrected A/W : Acceptable but Monitor & Maintain	+ Issue Type Ma : Maintenance Deficiency Ob : Design & System Obsolescence En : Enforcement
--	--	---	---

**Flood Control Project Maintenance
Levee Inspections**

Maintenance Issue Types Only, Levee Inspection Report By Mile - Fall 2021

Madera County FCWCA

Waterway	Bank	Unit Miles	Inspection Start/End	Inspector
Unit No. 05 Fresno River	Right	9.10	10/13/2021 10/13/2021	Corey Fujitani

LM Start	8.57	Rating **	U	Issue No.	10
LM End	8.57	Issue Type +	Ma	Location *	WS
Category	Earthen Levee			GPS Latitude/Longitude	
				Start	End
Item	Vegetation			36.972355 °	36.972355 °
				-120.220878 °	-120.220878 °
DWR ID	DWR_NA0011_05_f_2018_10				
Comment Code					
V2 : Remove the wild growth other than native grasses from the levee slopes.					
Inspector Comment					
Cactus growing on waterside slope.					

Photo 1 of 1 : FA_2021_NA0011_146_10_20210830_00001.jpg



Cactus growing on waterside shoulder. (Spring 2019)

LM Start	8.70	Rating **	M	Issue No.	8
LM End	8.70	Issue Type +	Ma	Location *	WS
Category	Earthen Levee			GPS Latitude/Longitude	
				Start	End
Item	Trim / Thin Trees			36.971970 °	36.971970 °
				-120.218647 °	-120.218647 °
DWR ID	DWR_NA0011_05_f_2021_8				
Comment Code					
T1 : Trim trees to at least five feet above ground level.					
Inspector Comment					

Photo 1 of 1 : FA_2021_NA0011_146_8_20211018_00031.jpg



Sapling growing on the waterside shoulder. (Fall 2021)

*** Location**
LS : Land Side N/A : Not Applicable
WS : Water Side
CR : Crown

**** Rating**
A : Acceptable N : Not Inspected/Rated
M : Minimally Acceptable C : Corrected
U : Unacceptable A/W : Acceptable but Monitor & Maintain

+ Issue Type
Ma : Maintenance Deficiency
Ob : Design & System Obsolescence
En : Enforcement

Madera County FCWCA

No Photos

View of erosion on the landside slope. (Fall 2020)

View of slump possibly the result of rodent activity.

Page 1 of 8

**Flood Control Project Maintenance
Levee Inspections**

Maintenance Issue Types Only, Levee Inspection Report By Mile - Fall 2021

Madera County FCWCA

Waterway	Bank	Unit Miles	Inspection Start/End	Inspector
Unit No. 06 Fresno River	Left	9.03	10/13/2021 10/13/2021	Corey Fujitani

LM Start	1.15	Rating **	M	Issue No.	18
LM End	2.77	Issue Type +	Ma	Location *	WS
Category	Earthen Levee			GPS Latitude/Longitude	
				Start	End
Item	Animal Control			36.967360 °	36.967290 °
				-120.352243 °	-120.322892 °
DWR ID	DWR_NA0011_06_f_2017_18				
Comment Code					
A1 : Exterminate rodents and backfill and compact or grout burrows.					
Inspector Comment					

No Photos

LM Start	2.20	Rating **	M	Issue No.	69
LM End	2.23	Issue Type +	Ma	Location *	LS
Category	Earthen Levee			GPS Latitude/Longitude	
				Start	End
Item	Slope Stability			36.967231 °	36.967228 °
				-120.333365 °	-120.332781 °
DWR ID	DWR_NA0011_06_s_2020_69				
Comment Code					
S3 : Repair the levee slope damaged by vehicle traffic and prevent access where possible.					
Inspector Comment					

Photo 1 of 1 : FA_2021_NA0011_147_69_20210830_00018.jpg



Vehicle tracks in the landside slope. (Spring 2020)

LM Start	3.76	Rating **	A/W	Issue No.	40
LM End	3.76	Issue Type +	Ma	Location *	CR
Category	Earthen Levee			GPS Latitude/Longitude	
				Start	End
Item	Animal Control			36.967419 °	36.967419 °
				-120.305171 °	-120.305171 °
DWR ID	DWR_NA0011_06_s_2020_40				
Comment Code					
A3 : No rodents visible, but rodent burrows visible; need to backfill and compact or grout burrows.					
Inspector Comment					
Depression on the levee crown appears to be cause by rodent burrow.					

No Photos

* Location LS : Land Side N/A : Not Applicable WS : Water Side CR : Crown	** Rating A : Acceptable M : Minimally Acceptable U : Unacceptable	N : Not Inspected/Rated C : Corrected A/W : Acceptable but Monitor & Maintain	+ Issue Type Ma : Maintenance Deficiency Ob : Design & System Obsolescence En : Enforcement
--	--	---	---

**Flood Control Project Maintenance
Levee Inspections**

Maintenance Issue Types Only, Levee Inspection Report By Mile - Fall 2021

Madera County FCWCA

Waterway	Bank	Unit Miles	Inspection Start/End	Inspector
Unit No. 06 Fresno River	Left	9.03	10/13/2021 10/13/2021	Corey Fujitani

LM Start	3.83	Rating **	M	Issue No.	26
LM End	3.83	Issue Type +	Ma	Location *	LS
Category	Earthen Levee		GPS Latitude/Longitude		
			Start	End	
Item	Animal Control		36.967429 °	36.967429 °	
			-120.303743 °	-120.303743 °	
DWR ID	DWR_NA0011_06_s_2021_26				
Comment Code					
A3 : No rodents visible, but rodent burrows visible; need to backfill and compact or grout burrows.					
Inspector Comment					

No Photos

LM Start	3.99	Rating **	M	Issue No.	34
LM End	3.99	Issue Type +	Ma	Location *	LS
Category	Earthen Levee		GPS Latitude/Longitude		
			Start	End	
Item	Slope Stability		36.967457 °	36.967457 °	
			-120.301031 °	-120.301031 °	
DWR ID	DWR_NA0011_06_f_2017_34				
Comment Code					
S3 : Repair the levee slope damaged by vehicle traffic and prevent access where possible.					
Inspector Comment					

No Photos

LM Start	4.56	Rating **	M	Issue No.	65
LM End	4.58	Issue Type +	Ma	Location *	LS
Category	Earthen Levee		GPS Latitude/Longitude		
			Start	End	
Item	Animal Control		36.967501 °	36.967502 °	
			-120.290581 °	-120.290215 °	
DWR ID	DWR_NA0011_06_f_2018_65				
Comment Code					
A3 : No rodents visible, but rodent burrows visible; need to backfill and compact or grout burrows.					
Inspector Comment					

No Photos

* Location LS : Land Side N/A : Not Applicable WS : Water Side CR : Crown	** Rating A : Acceptable M : Minimally Acceptable U : Unacceptable	N : Not Inspected/Rated C : Corrected A/W : Acceptable but Monitor & Maintain	+ Issue Type Ma : Maintenance Deficiency Ob : Design & System Obsolescence En : Enforcement
--	--	---	---

Madera County FCWCA

**Flood Control Project Maintenance
Levee Inspections**

Maintenance Issue Types Only, Levee Inspection Report By Mile - Fall 2021

Madera County FCWCA

Waterway	Bank	Unit Miles	Inspection Start/End	Inspector
Unit No. 06 Fresno River	Left	9.03	10/13/2021 10/13/2021	Corey Fujitani

LM Start	5.48	Rating **	M	Issue No.	16
LM End	5.48	Issue Type +	Ma	Location *	WS
Category	Earthen Levee			GPS Latitude/Longitude	
				Start	End
Item	Trim / Thin Trees			36.967494 °	36.967494 °
				-120.274037 °	-120.274037 °
DWR ID	DWR_NA0011_06_f_2021_16				
Comment Code					
T1 : Trim trees to at least five feet above ground level.					
Inspector Comment					
Sapling should be removed before it can establish.					

Photo 1 of 1 : FA_2021_NA0011_147_16_20211018_00040.jpg



View of sapling growing in the waterside shoulder. (Fall 2021)

LM Start	6.29	Rating **	M	Issue No.	58
LM End	6.29	Issue Type +	Ma	Location *	LS
Category	Earthen Levee			GPS Latitude/Longitude	
				Start	End
Item	Erosion / Bank Caving			36.967750 °	36.967750 °
				-120.259385 °	-120.259385 °
DWR ID	DWR_NA0011_06_f_2018_58				
Comment Code					
E2 : Schedule repair of erosion site prior to the next inspection.					
Inspector Comment					

Photo 1 of 1 : FA_2021_NA0011_147_58_20210830_00016.jpg



Minor erosion on landside slope. (Fall 2018)

LM Start	6.74	Rating **	M	Issue No.	42
LM End	6.74	Issue Type +	Ma	Location *	WS
Category	Earthen Levee			GPS Latitude/Longitude	
				Start	End
Item	Encroachments			36.968710 °	36.968710 °
				-120.251439 °	-120.251439 °
DWR ID	DWR_NA0011_06_f_2017_42				
Comment Code					
PR : Prunings					
Inspector Comment					
Remove collected wood debris from waterside shoulder.					

No Photos

* Location LS : Land Side N/A : Not Applicable WS : Water Side CR : Crown	** Rating A : Acceptable M : Minimally Acceptable U : Unacceptable	N : Not Inspected/Rated C : Corrected A/W : Acceptable but Monitor & Maintain	+ Issue Type Ma : Maintenance Deficiency Ob : Design & System Obsolescence En : Enforcement
--	--	---	---

**Flood Control Project Maintenance
Levee Inspections**

Maintenance Issue Types Only, Levee Inspection Report By Mile - Fall 2021

Madera County FCWCA

Waterway	Bank	Unit Miles	Inspection Start/End	Inspector
Unit No. 06 Fresno River	Left	9.03	10/13/2021 10/13/2021	Corey Fujitani

LM Start	7.07	Rating **	M	Issue No.	43
LM End	7.07	Issue Type +	Ma	Location *	WS
Category	Earthen Levee			GPS Latitude/Longitude	
				Start	End
Item	Encroachments			36.968801 °	36.968801 °
				-120.245557 °	-120.245557 °
DWR ID	DWR_NA0011_06_f_2017_43				
Comment Code					
PR : Prunings					
Inspector Comment					
Remove collected wood debris from waterside shoulder.					

No Photos

LM Start	7.71	Rating **	M	Issue No.	47
LM End	8.18	Issue Type +	Ma	Location *	LS
Category	Earthen Levee			GPS Latitude/Longitude	
				Start	End
Item	Animal Control			36.969600 °	36.971842 °
				-120.234229 °	-120.226393 °
DWR ID	DWR_NA0011_06_f_2017_47				
Comment Code					
A3 : No rodents visible, but rodent burrows visible; need to backfill and compact or grout burrows.					
Inspector Comment					

Photo 1 of 1 : FA_2021_NA0011_147_47_20210830_00013.jpg



Bait traps should be maintained and rodent holes should be backfilled.

LM Start	7.71	Rating **	M	Issue No.	48
LM End	9.02	Issue Type +	Ma	Location *	WS
Category	Earthen Levee			GPS Latitude/Longitude	
				Start	End
Item	Animal Control			36.969600 °	36.972656 °
				-120.234229 °	-120.211787 °
DWR ID	DWR_NA0011_06_f_2017_48				
Comment Code					
A3 : No rodents visible, but rodent burrows visible; need to backfill and compact or grout burrows.					
Inspector Comment					

No Photos

* Location LS : Land Side N/A : Not Applicable WS : Water Side CR : Crown	** Rating A : Acceptable M : Minimally Acceptable U : Unacceptable	N : Not Inspected/Rated C : Corrected A/W : Acceptable but Monitor & Maintain	+ Issue Type Ma : Maintenance Deficiency Ob : Design & System Obsolescence En : Enforcement
--	--	---	---

**Flood Control Project Maintenance
Levee Inspections**

Maintenance Issue Types Only, Levee Inspection Report By Mile - Fall 2021

Madera County FCWCA

Waterway	Bank	Unit Miles	Inspection Start/End	Inspector
Unit No. 06 Fresno River	Left	9.03	10/13/2021 10/13/2021	Corey Fujitani

LM Start	7.91	Rating **	M	Issue No.	23
LM End	7.91	Issue Type +	Ma	Location *	LS
Category	Earthen Levee			GPS Latitude/Longitude	
				Start	End
Item	Slope Stability			36.971293 °	36.971293 °
				-120.231180 °	-120.231180 °
DWR ID	DWR_NA0011_06_f_2019_23				
Comment Code					
S3 : Repair the levee slope damaged by vehicle traffic and prevent access where possible.					
Inspector Comment					

Photo 1 of 1 : FA_2021_NA0011_147_23_20210830_00004.jpg



Damage to landside slope from vehicle traffic. (Fall 2019)

LM Start	7.96	Rating **	M	Issue No.	32
LM End	7.96	Issue Type +	Ma	Location *	WS
Category	Earthen Levee			GPS Latitude/Longitude	
				Start	End
Item	Encroachments			36.971543 °	36.971543 °
				-120.230285 °	-120.230285 °
DWR ID	DWR_NA0011_06_s_2017_32				
Comment Code					
PR : Prunings					
Inspector Comment					
Remove the brush pile from the levee slope. This pile is providing habitat for rodents.					

Photo 1 of 1 : FA_2021_NA0011_147_32_20210830_00008.jpg



Fresno River waterside levee mile 7.96.

LM Start	7.98	Rating **	M	Issue No.	33
LM End	7.98	Issue Type +	Ma	Location *	WS
Category	Earthen Levee			GPS Latitude/Longitude	
				Start	End
Item	Encroachments			36.971575 °	36.971575 °
				-120.230065 °	-120.230065 °
DWR ID	DWR_NA0011_06_s_2017_33				
Comment Code					
PR : Prunings					
Inspector Comment					
Burn or remove the brush pile from the waterside slope.					

No Photos

* Location LS : Land Side N/A : Not Applicable WS : Water Side CR : Crown	** Rating A : Acceptable M : Minimally Acceptable U : Unacceptable	N : Not Inspected/Rated C : Corrected A/W : Acceptable but Monitor & Maintain	+ Issue Type Ma : Maintenance Deficiency Ob : Design & System Obsolescence En : Enforcement
--	--	---	---

**Flood Control Project Maintenance
Levee Inspections**

Maintenance Issue Types Only, Levee Inspection Report By Mile - Fall 2021

Madera County FCWCA

Waterway	Bank	Unit Miles	Inspection Start/End	Inspector
Unit No. 06 Fresno River	Left	9.03	10/13/2021 10/13/2021	Corey Fujitani

LM Start	8.03	Rating **	M	Issue No.	36
LM End	8.03	Issue Type +	Ma	Location *	WS
Category	Earthen Levee			GPS Latitude/Longitude	
				Start	End
Item	Encroachments			36.971582 °	36.971582 °
				-120.229180 °	-120.229180 °
DWR ID	DWR_NA0011_06_f_2015_36				
Comment Code					
TR : Tree or limb					
Inspector Comment					
The dead tree has been removed from blocking the roadway but still needs to be removed from the levee section.					

Photo 1 of 1 : FA_2021_NA0011_147_36_20210830_00009.jpg



Burn pile left on the waterside shoulder and slope. (Spring 2021)

LM Start	8.09	Rating **	M	Issue No.	31
LM End	8.09	Issue Type +	Ma	Location *	WS
Category	Earthen Levee			GPS Latitude/Longitude	
				Start	End
Item	Encroachments			36.971692 °	36.971692 °
				-120.227957 °	-120.227957 °
DWR ID	DWR_NA0011_06_f _ 2015_31				
Comment Code					
TR : Tree or limb					
Inspector Comment					
Remove the dead tree off the slope and shoulder.					

Photo 1 of 1 : FA_2021_NA0011_147_31_20210830_00007.jpg



Burn pile left on the waterside shoulder. (Spring 2021)

* Location LS : Land Side N/A : Not Applicable WS : Water Side CR : Crown	** Rating A : Acceptable M : Minimally Acceptable U : Unacceptable	N : Not Inspected/Rated C : Corrected A/W : Acceptable but Monitor & Maintain	+ Issue Type Ma : Maintenance Deficiency Ob : Design & System Obsolescence En : Enforcement
--	--	---	---