

**Flood Control Project Maintenance
Levee Inspections**

Maintenance Issue Types Only, Levee Inspection Report By Mile - Spring 2016

Lower San Joaquin Levee District

Waterway	Bank	Unit Miles	Inspection Start/End	Inspector
Unit No. 01 San Joaquin River	Right	22.52	05/16/2016 05/19/2016	Richard Willoughby

LM Start	0.00	Rating **	A	Issue No.	23
LM End	0.00	Issue Type +	Ma	Location *	N/A
Category	Earthen Levee		GPS Latitude/Longitude		
			Start	End	
Item	Operations & Maintenance Manuals			°	°
				°	°
DWR ID	DWR_NA0010_01_s _ 2013_23				
Comment Code					
Inspector Comment					
The LMA maintains a copy of the O&M manuals on file at district office.					

No Photos

LM Start	0.00	Rating **	A	Issue No.	24
LM End	0.00	Issue Type +	Ma	Location *	N/A
Category	Earthen Levee		GPS Latitude/Longitude		
			Start	End	
Item	Emergency Supplies & Equipment			°	°
				°	°
DWR ID	DWR_NA0010_01_s _ 2013_24				
Comment Code					
Inspector Comment					
The LMA has adequate supplies and equipment for flood response.					

No Photos

LM Start	0.00	Rating **	A	Issue No.	25
LM End	0.00	Issue Type +	Ma	Location *	N/A
Category	Earthen Levee		GPS Latitude/Longitude		
			Start	End	
Item	Flood Preparedness & Training			°	°
				°	°
DWR ID	DWR_NA0010_01_s _ 2013_25				
Comment Code					
Inspector Comment					
LMA preparedness and training is adequate for flood response.					

No Photos

* Location LS : Land Side N/A : Not Applicable WS : Water Side CR : Crown	** Rating A : Acceptable M : Minimally Acceptable U : Unacceptable	N : Not Inspected/Rated C : Corrected A/W : Acceptable but Monitor & Maintain	+ Issue Type Ma : Maintenance Deficiency Ob : Design & System Obsolescence En : Enforcement
----------------------------------------------------------------------------------------------	------------------------------------------------------------------------------------	-------------------------------------------------------------------------------------	-------------------------------------------------------------------------------------------------------------

**Flood Control Project Maintenance
Levee Inspections**

Maintenance Issue Types Only, Levee Inspection Report By Mile - Spring 2016

Lower San Joaquin Levee District

Waterway	Bank	Unit Miles	Inspection Start/End	Inspector
Unit No. 01 San Joaquin River	Right	22.52	05/16/2016 05/19/2016	Richard Willoughby

LM Start	0.00	Rating **	M	Issue No.	95
LM End	22.52	Issue Type +	Ma	Location *	LS
Category	Earthen Levee			GPS Latitude/Longitude	
				Start	End
Item	Vegetation			37.348678 °	37.166901 °
				-120.958734 °	-120.749937 °
DWR ID	DWR_NA0010_01_s _ 2016_95				
Comment Code					
V1 : Control annual grass and weeds on the levee slopes and easements.					
Inspector Comment					

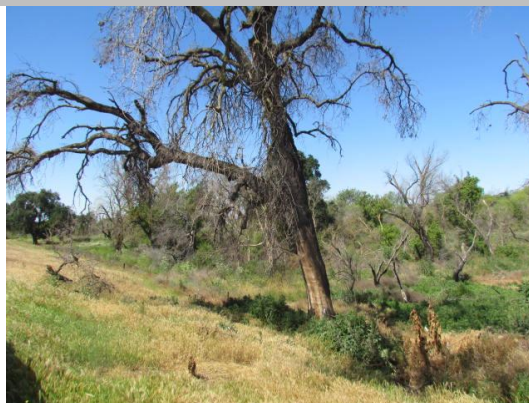
No Photos

LM Start	0.00	Rating **	M	Issue No.	96
LM End	22.52	Issue Type +	Ma	Location *	WS
Category	Earthen Levee			GPS Latitude/Longitude	
				Start	End
Item	Vegetation			37.348678 °	37.166902 °
				-120.958733 °	-120.749936 °
DWR ID	DWR_NA0010_01_s _ 2016_96				
Comment Code					
V1 : Control annual grass and weeds on the levee slopes and easements.					
Inspector Comment					

No Photos

LM Start	0.14	Rating **	U	Issue No.	7
LM End	0.14	Issue Type +	Ma	Location *	WS
Category	Earthen Levee			GPS Latitude/Longitude	
				Start	End
Item	Vegetation			37.347152 °	37.347152 °
				-120.960560 °	-120.960560 °
DWR ID	DWR_NA0010_01_s _ 2012_7				
Comment Code					
V7 : Trees / Woody Vegetation					
Inspector Comment					
Dead tree on waterward slope and toe.					

Photo 1 of 1 : SP_2016_NA0010_118_7_20160523_00232.jpg



Looking southwest at dead tree on landward slope and toe.

* Location LS : Land Side N/A : Not Applicable WS : Water Side CR : Crown		** Rating A : Acceptable M : Minimally Acceptable U : Unacceptable		N : Not Inspected/Rated C : Corrected A/W : Acceptable but Monitor & Maintain		+ Issue Type Ma : Maintenance Deficiency Ob : Design & System Obsolescence En : Enforcement	
---------------------------------------------------------------------------------------	--	-----------------------------------------------------------------------------	--	-------------------------------------------------------------------------------------	--	------------------------------------------------------------------------------------------------------	--

**Flood Control Project Maintenance
Levee Inspections**

Maintenance Issue Types Only, Levee Inspection Report By Mile - Spring 2016

Lower San Joaquin Levee District

Waterway	Bank	Unit Miles	Inspection Start/End	Inspector
Unit No. 01 San Joaquin River	Right	22.52	05/16/2016 05/19/2016	Richard Willoughby

LM Start	0.19	Rating **	M	Issue No.	3	
LM End	0.19	Issue Type +	Ma	Location *	LS	
Category	Earthen Levee			GPS Latitude/Longitude		
				Start		End
Item	Trim / Thin Trees			37.346576 °		37.346576 °
				-120.961061 °		-120.961061 °
DWR ID	DWR_NA0010_01_s _ 2016_3					
Comment Code						
T2 : Thin trees to allow visibility of the ground and room to flood fight.						
Inspector Comment						
Dead tree (limbs & branches) blocking landward right of way/ berm.						

Photo 1 of 1 : SP_2016_NA0010_118_3_20160523_00233.jpg



Looking east at brush and tree limbs blocking landward toe.

LM Start	0.23	Rating **	M	Issue No.	1
LM End	0.23	Issue Type +	Ma	Location *	LS
Category	Earthen Levee			GPS Latitude/Longitude	
				Start	End
Item	Animal Control			37.346096 °	37.346096 °
				-120.961455 °	-120.961455 °
DWR ID	DWR_NA0010_01_s _ 2012_1				
Comment Code					
A1 : Exterminate rodents and backfill and compact or grout burrows.					
Inspector Comment					
Typical view of several rodent holes on landward slope.					

Photo 1 of 1 : SP_2016_NA0010_118_1_20160512_00001.jpg



Looking at typical rodent holes on landward slope.

LM Start	3.16	Rating **	M	Issue No.	10
LM End	3.16	Issue Type +	Ma	Location *	LS
Category	Earthen Levee			GPS Latitude/Longitude	
				Start	End
Item	Animal Control			37.321053 °	37.321053 °
				-120.928785 °	-120.928785 °
DWR ID	DWR_NA0010_01_s _ 2012_10				
Comment Code					
A3 : No rodents visible, but rodent burrows visible; need to backfill and compact or grout burrows.					
Inspector Comment					
Several rodent holes noted in this section. Rodent hole noted on waterward shoulder next fence pole.					

Photo 1 of 2 : SP_2016_NA0010_118_10_20160512_00008.jpg



Looking at typical view of rodent holes on landward slope.

*** Location**
LS : Land Side N/A : Not Applicable
WS : Water Side
CR : Crown

**** Rating**
A : Acceptable N : Not Inspected/Rated
M : Minimally Acceptable C : Corrected
U : Unacceptable A/W : Acceptable but Monitor & Maintain

+ Issue Type
Ma : Maintenance Deficiency
Ob : Design & System Obsolescence
En : Enforcement

**Flood Control Project Maintenance
Levee Inspections**

Maintenance Issue Types Only, Levee Inspection Report By Mile - Spring 2016

Lower San Joaquin Levee District

Waterway	Bank	Unit Miles	Inspection Start/End	Inspector
Unit No. 01 San Joaquin River	Right	22.52	05/16/2016 05/19/2016	Richard Willoughby

LM Start	3.16	Rating **	M	Issue No.	10 (cont)	
LM End	3.16	Issue Type +	Ma	Location *	LS	
Category	Earthen Levee			GPS Latitude/Longitude		
				Start		End
Item	Animal Control			37.321053 °		37.321053 °
				-120.928785 °		-120.928785 °
DWR ID	DWR_NA0010_01_s _ 2012_10					
Comment Code						
A3 : No rodents visible, but rodent burrows visible; need to backfill and compact or grout burrows.						
Inspector Comment						
Several rodent holes noted in this section. Rodent hole noted on waterward shoulder next fence pole.						

Photo 2 of 2 : SP_2016_NA0010_118_10_20160523_00234.jpg



Looking at rodent hole next to fence pole on landward shoulder.

LM Start	3.47	Rating **	U	Issue No.	1179
LM End	3.47	Issue Type +	Ma	Location *	LS
Category	Earthen Levee			GPS Latitude/Longitude	
				Start	End
Item	Erosion / Bank Caving			37.317057 °	37.317057 °
				-120.926443 °	-120.926443 °
DWR ID	DWR_NA0010_01_s _ 2015_1179				
Comment Code					
E1 : Note and monitor erosion site.					
Inspector Comment					
Several erosions greater than three inches on landward slope.					

Photo 1 of 3 : SP_2016_NA0010_118_1179_20160512_00025.jpg



Looking south at erosion on landward slope and toe.

LM Start	3.47	Rating **	U	Issue No.	1179 (cont)
LM End	3.47	Issue Type +	Ma	Location *	LS

Photo 2 of 3 : SP_2016_NA0010_118_1179_20160512_00026.jpg



Looking southwest at erosion on landward slope and toe.

* Location		** Rating		+ Issue Type	
LS : Land Side	N/A : Not Applicable	A : Acceptable	N : Not Inspected/Rated	Ma : Maintenance Deficiency	
WS : Water Side		M : Minimally Acceptable	C : Corrected	Ob : Design & System Obsolescence	
CR : Crown		U : Unacceptable	A/W : Acceptable but Monitor & Maintain	En : Enforcement	

**Flood Control Project Maintenance
Levee Inspections**

Maintenance Issue Types Only, Levee Inspection Report By Mile - Spring 2016

Lower San Joaquin Levee District

Waterway	Bank	Unit Miles	Inspection Start/End	Inspector
Unit No. 01 San Joaquin River	Right	22.52	05/16/2016 05/19/2016	Richard Willoughby

LM Start	3.47	Rating **	U	Issue No.	1179 (cont)	
LM End	3.47	Issue Type +	Ma	Location *	LS	
Category	Earthen Levee			GPS Latitude/Longitude		
				Start		End
Item	Erosion / Bank Caving			37.317057 °		37.317057 °
				-120.926443 °		-120.926443 °
DWR ID	DWR_NA0010_01_s _ 2015_1179					
Comment Code						
E1 : Note and monitor erosion site.						
Inspector Comment						
Several erosions greater than three inches on landward slope.						

Photo 3 of 3 : SP_2016_NA0010_118_1179_20160512_00027.jpg



Looking west at erosion on landward slope and toe.

LM Start	3.50	Rating **	M	Issue No.	17
LM End	3.96	Issue Type +	Ma	Location *	CR
Category	Earthen Levee			GPS Latitude/Longitude	
				Start	End
Item	Crown Surface / Depressions / Rutting			37.316652 °	37.311006 °
				-120.926261 °	-120.926402 °
DWR ID	DWR_NA0010_01_f _ 2012_17				
Comment Code					
C1 : Add appropriate material and re-grade the levee to bring the crown above the design elevation.					
Inspector Comment					

No Photos

LM Start	3.70	Rating **	M	Issue No.	2
LM End	3.72	Issue Type +	Ma	Location *	LS
Category	Earthen Levee			GPS Latitude/Longitude	
				Start	End
Item	Animal Control			37.313892 °	37.313598 °
				-120.926507 °	-120.926607 °
DWR ID	DWR_NA0010_01_s _ 2012_2				
Comment Code					
A3 : No rodents visible, but rodent burrows visible; need to backfill and compact or grout burrows.					
Inspector Comment					

No Photos

* Location		** Rating		+ Issue Type	
LS : Land Side	N/A : Not Applicable	A : Acceptable	N : Not Inspected/Rated	Ma : Maintenance Deficiency	
WS : Water Side		M : Minimally Acceptable	C : Corrected	Ob : Design & System Obsolescence	
CR : Crown		U : Unacceptable	A/W : Acceptable but Monitor & Maintain	En : Enforcement	

**Flood Control Project Maintenance
Levee Inspections**

Maintenance Issue Types Only, Levee Inspection Report By Mile - Spring 2016

Lower San Joaquin Levee District

Waterway	Bank	Unit Miles	Inspection Start/End	Inspector
Unit No. 01 San Joaquin River	Right	22.52	05/16/2016 05/19/2016	Richard Willoughby

LM Start	4.13	Rating **	M	Issue No.	100
LM End	4.13	Issue Type +	Ma	Location *	LS
Category	Earthen Levee			GPS Latitude/Longitude	
				Start	End
Item	Encroachments			37.309049 °	37.309049 °
				-120.924421 °	-120.924421 °
DWR ID	DWR_NA0010_01_f_2014_100				
Comment Code					
GA : Garbage					
Inspector Comment					
Old PVC pipes left on landward slope.					

Photo 1 of 1 : SP_2016_NA0010_118_100_20160512_00018.jpg



Looking east at old pvc pipes on landward slope.

LM Start	4.18	Rating **	A/W	Issue No.	6
LM End	4.18	Issue Type +	Ma	Location *	LS
Category	Earthen Levee			GPS Latitude/Longitude	
				Start	End
Item	Animal Control			37.308540 °	37.308540 °
				-120.924003 °	-120.924003 °
DWR ID	DWR_NA0010_01_s_2012_6				
Comment Code					
A1 : Exterminate rodents and backfill and compact or grout burrows.					
Inspector Comment					
Several rodent holes noted in this section.					

No Photos

LM Start	4.69	Rating **	U	Issue No.	9
LM End	4.69	Issue Type +	Ma	Location *	LS
Category	Earthen Levee			GPS Latitude/Longitude	
				Start	End
Item	Animal Control			37.302398 °	37.302398 °
				-120.920920 °	-120.920920 °
DWR ID	DWR_NA0010_01_s_2013_9				
Comment Code					
A2 : Repair the levee slope damaged by livestock and prevent large animal access.					
Inspector Comment					
Levee landward toe damaged by livestock.					

Photo 1 of 1 : SP_2016_NA0010_118_9_20160512_00007.jpg



Looking at landward slope damaged by livestock.

* Location LS : Land Side N/A : Not Applicable WS : Water Side CR : Crown		** Rating A : Acceptable M : Minimally Acceptable U : Unacceptable		+ Issue Type Ma : Maintenance Deficiency Ob : Design & System Obsolescence En : Enforcement	
		N : Not Inspected/Rated C : Corrected A/W : Acceptable but Monitor & Maintain			

**Flood Control Project Maintenance
Levee Inspections**

Maintenance Issue Types Only, Levee Inspection Report By Mile - Spring 2016

Lower San Joaquin Levee District

Waterway	Bank	Unit Miles	Inspection Start/End	Inspector
Unit No. 01 San Joaquin River	Right	22.52	05/16/2016 05/19/2016	Richard Willoughby

LM Start	5.87	Rating **	U	Issue No.	93
LM End	6.86	Issue Type +	Ma	Location *	WS
Category	Earthen Levee			GPS Latitude/Longitude	
				Start	End
Item	Vegetation			37.302156 °	37.302156 °
				-120.888031 °	-120.888031 °
DWR ID	DWR_NA0010_01_f_2015_93				
Comment Code					
V2 : Remove the wild growth other than native grasses from the levee slopes.					
Inspector Comment					

Photo 1 of 1 : SP_2016_NA0010_118_93_20160523_00235.jpg



Looking south at dense veg on waterward slope.

LM Start	5.87	Rating **	U	Issue No.	92
LM End	6.86	Issue Type +	Ma	Location *	LS
Category	Earthen Levee			GPS Latitude/Longitude	
				Start	End
Item	Vegetation			37.303555 °	37.302156 °
				-120.904541 °	-120.888030 °
DWR ID	DWR_NA0010_01_f_2015_92				
Comment Code					
V2 : Remove the wild growth other than native grasses from the levee slopes.					
Inspector Comment					

Photo 1 of 1 : SP_2016_NA0010_118_92_20160523_00236.jpg



Looking south at dense veg on landward slope.

LM Start	8.99	Rating **	U	Issue No.	12
LM End	9.72	Issue Type +	Ma	Location *	LS
Category	Earthen Levee			GPS Latitude/Longitude	
				Start	End
Item	Vegetation			37.297508 °	37.293801 °
				-120.851103 °	-120.839759 °
DWR ID	DWR_NA0010_01_f_2015_12				
Comment Code					
V2 : Remove the wild growth other than native grasses from the levee slopes.					
Inspector Comment					

Photo 1 of 1 : SP_2016_NA0010_118_12_20160523_00238.jpg



Looking southeast at dense veg on landward slope.

* Location		** Rating		+ Issue Type	
LS : Land Side	N/A : Not Applicable	A : Acceptable	N : Not Inspected/Rated	Ma : Maintenance Deficiency	
WS : Water Side		M : Minimally Acceptable	C : Corrected	Ob : Design & System Obsolescence	
CR : Crown		U : Unacceptable	A/W : Acceptable but Monitor & Maintain	En : Enforcement	

**Flood Control Project Maintenance
Levee Inspections**

Maintenance Issue Types Only, Levee Inspection Report By Mile - Spring 2016

Lower San Joaquin Levee District

Waterway	Bank	Unit Miles	Inspection Start/End	Inspector
Unit No. 01 San Joaquin River	Right	22.52	05/16/2016 05/19/2016	Richard Willoughby

LM Start	9.03	Rating **	U	Issue No.	94
LM End	9.72	Issue Type +	Ma	Location *	WS
Category	Earthen Levee			GPS Latitude/Longitude	
				Start	End
Item	Vegetation			37.297380 °	37.293801 °
				-120.850388 °	-120.839759 °
DWR ID	DWR_NA0010_01_f_2015_94				
Comment Code					
V2 : Remove the wild growth other than native grasses from the levee slopes.					
Inspector Comment					

Photo 1 of 1 : SP_2016_NA0010_118_94_20160523_00239.jpg



Looking southwest at dense veg on waterward slope.

LM Start	9.16	Rating **	M	Issue No.	117
LM End	9.78	Issue Type +	Ma	Location *	CR
Category	Earthen Levee			GPS Latitude/Longitude	
				Start	End
Item	Crown Surface / Depressions / Rutting			37.296145 °	37.293077 °
				-120.848588 °	-120.839170 °
DWR ID	DWR_NA0010_01_s_2012_117				
Comment Code					
C1 : Add appropriate material and re-grade the levee to bring the crown above the design elevation.					
Inspector Comment					
Control vegetation on levee crown.					

Photo 1 of 1 : SP_2016_NA0010_118_117_20160523_00240.jpg



Looking south at veg on levee crown.

LM Start	9.57	Rating **	M	Issue No.	14
LM End	9.57	Issue Type +	Ma	Location *	CR
Category	Earthen Levee			GPS Latitude/Longitude	
				Start	End
Item	Crown Surface / Depressions / Rutting			37.295517 °	37.295517 °
				-120.841452 °	-120.841452 °
DWR ID	DWR_NA0010_01_s_2015_14				
Comment Code					
C2 : Repair depressions or ruts in the crown or slope.					
Inspector Comment					
Depression greater than 3" deep by 18" wide by 18" long on levee crown					

Photo 1 of 3 : SP_2016_NA0010_118_14_20160512_00009.jpg



Looking at depression on levee crown. (Fall 2015)

* Location		** Rating		+ Issue Type	
LS : Land Side	N/A : Not Applicable	A : Acceptable	N : Not Inspected/Rated	Ma : Maintenance Deficiency	
WS : Water Side		M : Minimally Acceptable	C : Corrected	Ob : Design & System Obsolescence	
CR : Crown		U : Unacceptable	A/W : Acceptable but Monitor & Maintain	En : Enforcement	

**Flood Control Project Maintenance
Levee Inspections**

Maintenance Issue Types Only, Levee Inspection Report By Mile - Spring 2016

Lower San Joaquin Levee District

Waterway	Bank	Unit Miles	Inspection Start/End	Inspector
Unit No. 01 San Joaquin River	Right	22.52	05/16/2016 05/19/2016	Richard Willoughby

LM Start	9.57	Rating **	M	Issue No.	14 (cont)	
LM End	9.57	Issue Type +	Ma	Location *	CR	
Category	Earthen Levee			GPS Latitude/Longitude		
				Start		End
Item	Crown Surface / Depressions / Rutting			37.295517 °		37.295517 °
				-120.841452 °		-120.841452 °
DWR ID	DWR_NA0010_01_s_2015_14					
Comment Code						
C2 : Repair depressions or ruts in the crown or slope.						
Inspector Comment						
Depression greater than 3" deep by 18" wide by 18" long on levee crown						

Photo 2 of 3 : SP_2016_NA0010_118_14_20160512_00010.jpg



Looking west at depression greater than three inches on levee crown.

LM Start	9.57	Rating **	M	Issue No.	14 (cont)
LM End	9.57	Issue Type +	Ma	Location *	CR

Photo 3 of 3 : SP_2016_NA0010_118_14_20160512_00011.jpg



Looking west at depression on levee crown.

LM Start	20.28	Rating **	C	Issue No.	20
LM End	22.01	Issue Type +	Ma	Location *	LS
Category	Earthen Levee			GPS Latitude/Longitude	
				Start	End
Item	Encroachments			37.193426 °	37.172663 °
				-120.760419 °	-120.754894 °
DWR ID	DWR_NA0010_01_f_2012_20				
Comment Code					
AT : Agricultural tilling					
Inspector Comment					
Landowner corrected deficiency.					

No Photos

* Location		** Rating		+ Issue Type	
LS : Land Side	N/A : Not Applicable	A : Acceptable	N : Not Inspected/Rated	Ma : Maintenance Deficiency	
WS : Water Side		M : Minimally Acceptable	C : Corrected	Ob : Design & System Obsolescence	
CR : Crown		U : Unacceptable	A/W : Acceptable but Monitor & Maintain	En : Enforcement	

**Flood Control Project Maintenance
Levee Inspections**

Maintenance Issue Types Only, Levee Inspection Report By Mile - Spring 2016

Lower San Joaquin Levee District

Waterway	Bank	Unit Miles	Inspection Start/End	Inspector
Unit No. 01 San Joaquin River	Right	22.52	05/16/2016 05/19/2016	Richard Willoughby

LM Start	21.32	Rating **	A/W	Issue No.	8
LM End	21.35	Issue Type +	Ma	Location *	WS
Category	Earthen Levee			GPS Latitude/Longitude	
				Start	End
Item	Vegetation			37.180109 °	37.179711 °
				-120.762154 °	-120.761884 °
DWR ID	DWR_NA0010_01_f_2015_8				
Comment Code					
V2 : Remove the wild growth other than native grasses from the levee slopes.					
Inspector Comment					
Dense vegetation on waterward slope.					

No Photos

* Location LS : Land Side N/A : Not Applicable WS : Water Side CR : Crown	** Rating A : Acceptable M : Minimally Acceptable U : Unacceptable N : Not Inspected/Rated C : Corrected A/W : Acceptable but Monitor & Maintain	+ Issue Type Ma : Maintenance Deficiency Ob : Design & System Obsolescence En : Enforcement
----------------------------------------------------------------------------------------------	---------------------------------------------------------------------------------------------------------------------------------------------------------------------------	-------------------------------------------------------------------------------------------------------------

**Flood Control Project Maintenance
Levee Inspections**

Maintenance Issue Types Only, Levee Inspection Report By Mile - Spring 2016

Lower San Joaquin Levee District

Waterway	Bank	Unit Miles	Inspection Start/End	Inspector
Unit No. 02A San Joaquin River	Left	7.87	05/19/2016 05/19/2016	Richard Willoughby

LM Start	0.00	Rating **	M	Issue No.	23
LM End	7.87	Issue Type +	Ma	Location *	WS
Category	Earthen Levee			GPS Latitude/Longitude	
				Start	End
Item	Vegetation			37.296313 °	37.231292 °
				-120.880567 °	-120.811872 °
DWR ID	DWR_NA0010_02A_s_2016_23				
Comment Code					
V1 : Control annual grass and weeds on the levee slopes and easements.					
Inspector Comment					

No Photos

LM Start	0.00	Rating **	M	Issue No.	22
LM End	7.87	Issue Type +	Ma	Location *	LS
Category	Earthen Levee			GPS Latitude/Longitude	
				Start	End
Item	Vegetation			37.296313 °	37.231292 °
				-120.880567 °	-120.811871 °
DWR ID	DWR_NA0010_02A_s_2016_22				
Comment Code					
V1 : Control annual grass and weeds on the levee slopes and easements.					
Inspector Comment					

No Photos

LM Start	0.00	Rating **	M	Issue No.	24
LM End	2.30	Issue Type +	Ma	Location *	LS
Category	Earthen Levee			GPS Latitude/Longitude	
				Start	End
Item	Crown Surface / Depressions / Rutting			37.296313 °	37.291556 °
				-120.880576 °	-120.851252 °
DWR ID	DWR_NA0010_02A_s_2016_24				
Comment Code					
C1 : Add appropriate material and re-grade the levee to bring the crown above the design elevation.					
Inspector Comment					
Control annual weeds and regrade levee crown.					

Photo 1 of 1 : SP_2016_NA0010_119_24_20160523_00065.jpg



Looking northeast at veg on levee crown.

* Location		** Rating		+ Issue Type	
LS : Land Side	N/A : Not Applicable	A : Acceptable	N : Not Inspected/Rated	Ma : Maintenance Deficiency	
WS : Water Side		M : Minimally Acceptable	C : Corrected	Ob : Design & System Obsolescence	
CR : Crown		U : Unacceptable	A/W : Acceptable but Monitor & Maintain	En : Enforcement	

**Flood Control Project Maintenance
Levee Inspections**

Maintenance Issue Types Only, Levee Inspection Report By Mile - Spring 2016

Lower San Joaquin Levee District

Waterway	Bank	Unit Miles	Inspection Start/End	Inspector
Unit No. 02A San Joaquin River	Left	7.87	05/19/2016 05/19/2016	Richard Willoughby

LM Start	0.00	Rating **	U	Issue No.	27
LM End	2.30	Issue Type +	Ma	Location *	LS
Category	Earthen Levee			GPS Latitude/Longitude	
				Start	End
Item	Vegetation			37.296305 °	37.291556 °
				-120.880567 °	-120.851252 °
DWR ID	DWR_NA0010_02A_f_2015_27				
Comment Code					
V2 : Remove the wild growth other than native grasses from the levee slopes.					
Inspector Comment					

Photo 1 of 1 : SP_2016_NA0010_119_27_20160523_00070.jpg



Looking at dense veg on landward slope.

LM Start	0.00	Rating **	U	Issue No.	28
LM End	2.30	Issue Type +	Ma	Location *	WS
Category	Earthen Levee			GPS Latitude/Longitude	
				Start	End
Item	Vegetation			37.296305 °	37.291556 °
				-120.880567 °	-120.851252 °
DWR ID	DWR_NA0010_02A_f_2015_28				
Comment Code					
V2 : Remove the wild growth other than native grasses from the levee slopes.					
Inspector Comment					

Photo 1 of 1 : SP_2016_NA0010_119_28_20160523_00071.jpg



Looking north at dense veg on waterward slope.

LM Start	0.75	Rating **	U	Issue No.	5
LM End	0.75	Issue Type +	Ma	Location *	WS
Category	Earthen Levee			GPS Latitude/Longitude	
				Start	End
Item	Erosion / Bank Caving			37.286877 °	37.286877 °
				-120.874222 °	-120.874222 °
DWR ID	DWR_NA0010_02A_s_2012_5				
Comment Code					
E2 : Schedule repair of erosion site prior to the next inspection.					
Inspector Comment					
A field investigation report in on file. For more information and pictures see field investigation report #4301.					

Photo 1 of 3 : SP_2016_NA0010_119_5_20160512_00003.jpg



Looking north at erosion on waterward slope. (Fall 2014)

* Location LS : Land Side N/A : Not Applicable WS : Water Side CR : Crown		** Rating A : Acceptable M : Minimally Acceptable U : Unacceptable		N : Not Inspected/Rated C : Corrected A/W : Acceptable but Monitor & Maintain		+ Issue Type Ma : Maintenance Deficiency Ob : Design & System Obsolescence En : Enforcement	
----------------------------------------------------------------------------------------------	--	------------------------------------------------------------------------------------	--	-------------------------------------------------------------------------------------	--	-------------------------------------------------------------------------------------------------------------	--

**Flood Control Project Maintenance
Levee Inspections**

Maintenance Issue Types Only, Levee Inspection Report By Mile - Spring 2016

Lower San Joaquin Levee District

Waterway	Bank	Unit Miles	Inspection Start/End	Inspector
Unit No. 02A San Joaquin River	Left	7.87	05/19/2016 05/19/2016	Richard Willoughby

LM Start	0.75	Rating **	U	Issue No.	5 (cont)	
LM End	0.75	Issue Type +	Ma	Location *	WS	
Category	Earthen Levee			GPS Latitude/Longitude		
				Start		End
Item	Erosion / Bank Caving			37.286877 °		37.286877 °
				-120.874222 °		-120.874222 °
DWR ID	DWR_NA0010_02A_s_2012_5					
Comment Code						
E2 : Schedule repair of erosion site prior to the next inspection.						
Inspector Comment						
A field investigation report in on file. For more information and pictures see field investigation report #4301.						

LM Start	0.75	Rating **	U	Issue No.	5 (cont)
LM End	0.75	Issue Type +	Ma	Location *	WS

Photo 2 of 3 : SP_2016_NA0010_119_5_20160512_00004.jpg



Looking north at large erosion on waterward slope. (Fall 2013)

Photo 3 of 3 : SP_2016_NA0010_119_5_20160512_00005.jpg



Looking south at large erosion on waterside slope. (Spring 2012)

* Location LS : Land Side N/A : Not Applicable WS : Water Side CR : Crown		** Rating A : Acceptable M : Minimally Acceptable U : Unacceptable N : Not Inspected/Rated C : Corrected A/W : Acceptable but Monitor & Maintain		+ Issue Type Ma : Maintenance Deficiency Ob : Design & System Obsolescence En : Enforcement	
----------------------------------------------------------------------------------------------	--	---------------------------------------------------------------------------------------------------------------------------------------------------------------------------	--	-------------------------------------------------------------------------------------------------------------	--

**Flood Control Project Maintenance
Levee Inspections**

Maintenance Issue Types Only, Levee Inspection Report By Mile - Spring 2016

Lower San Joaquin Levee District

Waterway	Bank	Unit Miles	Inspection Start/End	Inspector
Unit No. 02B San Joaquin River	Left	5.92	05/19/2016 05/20/2016	Richard Willoughby

LM Start	7.87	Rating **	M	Issue No.	17
LM End	13.75	Issue Type +	Ma	Location *	LS
Category	Earthen Levee			GPS Latitude/Longitude	
				Start	End
Item	Vegetation			37.231291 °	37.172165 °
				-120.811871 °	-120.761208 °
DWR ID	DWR_NA0010_02B_s_2016_17				
Comment Code					
V1 : Control annual grass and weeds on the levee slopes and easements.					
Inspector Comment					

Photo 1 of 1 : SP_2016_NA0010_120_17_20160523_00006.jpg



Looking at typical view of landward slope.

LM Start	7.87	Rating **	M	Issue No.	18
LM End	13.75	Issue Type +	Ma	Location *	WS
Category	Earthen Levee			GPS Latitude/Longitude	
				Start	End
Item	Vegetation			37.231291 °	37.172166 °
				-120.811871 °	-120.761209 °
DWR ID	DWR_NA0010_02B_s _ 2016_18				
Comment Code					
V1 : Control annual grass and weeds on the levee slopes and easements.					
Inspector Comment					

Photo 1 of 1 : SP_2016_NA0010_120_18_20160523_00007.jpg



Looking north at typical view of waterward slope.

LM Start	9.76	Rating **	M	Issue No.	5
LM End	9.76	Issue Type +	Ma	Location *	LS
Category	Earthen Levee			GPS Latitude/Longitude	
				Start	End
Item	Encroachments			37.218959 °	37.218959 °
				-120.784356 °	-120.784356 °
DWR ID	DWR_NA0010_02B_s_2016_5				
Comment Code					
TR : Tree or limb					
Inspector Comment					
Broken tree limbs on landward toe.					

Photo 1 of 1 : SP_2016_NA0010_120_5_20160523_00008.jpg



Looking northwest at broken tree limb on landward toe.

*** Location**
LS : Land Side N/A : Not Applicable
WS : Water Side
CR : Crown

**** Rating**
A : Acceptable N : Not Inspected/Rated
M : Minimally Acceptable C : Corrected
U : Unacceptable A/W : Acceptable but Monitor & Maintain

+ Issue Type
Ma : Maintenance Deficiency
Ob : Design & System Obsolescence
En : Enforcement

**Flood Control Project Maintenance
Levee Inspections**

Maintenance Issue Types Only, Levee Inspection Report By Mile - Spring 2016

Lower San Joaquin Levee District

Waterway	Bank	Unit Miles	Inspection Start/End	Inspector
Unit No. 02B San Joaquin River	Left	5.92	05/19/2016 05/20/2016	Richard Willoughby

LM Start	10.94	Rating **	M	Issue No.	14
LM End	10.94	Issue Type +	Ma	Location *	LS
Category	Earthen Levee			GPS Latitude/Longitude	
				Start	End
Item	Encroachments			37.205711 °	37.205711 °
				-120.774741 °	-120.774741 °
DWR ID	DWR_NA0010_02B_f_2015_14				
Comment Code					
PR : Prunings					
Inspector Comment					
Prunings on landward slope.					

Photo 1 of 1 : SP_2016_NA0010_120_14_20160512_00005.jpg



Looking at prunings on landward slope.

LM Start	12.21	Rating **	M	Issue No.	1
LM End	12.21	Issue Type +	Ma	Location *	LS
Category	Earthen Levee			GPS Latitude/Longitude	
				Start	End
Item	Encroachments			37.191528 °	37.191528 °
				-120.764541 °	-120.764541 °
DWR ID	DWR_NA0010_02B_f_2014_1				
Comment Code					
TR : Tree or limb					
Inspector Comment					
Fallen tree limbs on landward slope.					

Photo 1 of 2 : SP_2016_NA0010_120_1_20160512_00001.jpg



Looking southwest at tree limb on waterward slope.

LM Start	12.21	Rating **	M	Issue No.	1 (cont)
LM End	12.21	Issue Type +	Ma	Location *	LS

Photo 2 of 2 : SP_2016_NA0010_120_1_20160512_00002.jpg



Looking southwest at tree limb on waterward slope.

*** Location**
LS : Land Side N/A : Not Applicable
WS : Water Side
CR : Crown

**** Rating**
A : Acceptable N : Not Inspected/Rated
M : Minimally Acceptable C : Corrected
U : Unacceptable A/W : Acceptable but Monitor & Maintain

+ Issue Type
Ma : Maintenance Deficiency
Ob : Design & System Obsolescence
En : Enforcement

**Flood Control Project Maintenance
Levee Inspections**

Maintenance Issue Types Only, Levee Inspection Report By Mile - Spring 2016

Lower San Joaquin Levee District

Waterway	Bank	Unit Miles	Inspection Start/End	Inspector
Unit No. 02B San Joaquin River	Left	5.92	05/19/2016 05/20/2016	Richard Willoughby

LM Start	13.42	Rating **	M	Issue No.	167
LM End	13.42	Issue Type +	Ma	Location *	WS
Category	Earthen Levee			GPS Latitude/Longitude	
				Start	End
Item	Trim / Thin Trees			37.176379 °	37.176379 °
				-120.762255 °	-120.762255 °
DWR ID	DWR_NA0010_02B_s_2015_167				
Comment Code					
T3 : Trim and thin trees to allow visibility of the ground and room to flood fight.					
Inspector Comment					

No Photos

* Location LS : Land Side N/A : Not Applicable WS : Water Side CR : Crown	** Rating A : Acceptable M : Minimally Acceptable U : Unacceptable N : Not Inspected/Rated C : Corrected A/W : Acceptable but Monitor & Maintain	+ Issue Type Ma : Maintenance Deficiency Ob : Design & System Obsolescence En : Enforcement
----------------------------------------------------------------------------------------------	---------------------------------------------------------------------------------------------------------------------------------------------------------------------------	-------------------------------------------------------------------------------------------------------------

**Flood Control Project Maintenance
Levee Inspections**

Maintenance Issue Types Only, Levee Inspection Report By Mile - Spring 2016

Lower San Joaquin Levee District

Waterway	Bank	Unit Miles	Inspection Start/End	Inspector
Unit No. 03 San Joaquin River	Right	2.10	05/18/2016 05/18/2016	Richard Willoughby

LM Start	0.00	Rating **	M	Issue No.	7
LM End	2.09	Issue Type +	Ma	Location *	WS
Category	Earthen Levee			GPS Latitude/Longitude	
				Start	End
Item	Vegetation			37.111700 °	37.088992 °
				-120.587580 °	-120.566894 °
DWR ID	DWR_NA0010_03_s _ 2016_7				
Comment Code					
V1 : Control annual grass and weeds on the levee slopes and easements.					
Inspector Comment					

Photo 1 of 1 : SP_2016_NA0010_121_7_20160523_00012.jpg



Looking east at veg on waterward slope.

LM Start	0.00	Rating **	M	Issue No.	5
LM End	2.09	Issue Type +	Ma	Location *	LS
Category	Earthen Levee			GPS Latitude/Longitude	
				Start	End
Item	Vegetation			37.111699 °	37.088993 °
				-120.587580 °	-120.566895 °
DWR ID	DWR_NA0010_03_s _ 2016_5				
Comment Code					
V1 : Control annual grass and weeds on the levee slopes and easements.					
Inspector Comment					

Photo 1 of 1 : SP_2016_NA0010_121_5_20160523_00013.jpg



Looking west at landward slope.

LM Start	0.19	Rating **	M	Issue No.	67
LM End	0.19	Issue Type +	Ma	Location *	LS
Category	Earthen Levee			GPS Latitude/Longitude	
				Start	End
Item	Animal Control			37.109013 °	37.109013 °
				-120.587799 °	-120.587799 °
DWR ID	DWR_NA0010_03_s _ 2015_67				
Comment Code					
A3 : No rodents visible, but rodent burrows visible; need to backfill and compact or grout burrows.					
Inspector Comment					
Rodent holes noted at landward toe.					

No Photos

* Location		** Rating		+ Issue Type	
LS : Land Side	N/A : Not Applicable	A : Acceptable	N : Not Inspected/Rated	Ma : Maintenance Deficiency	
WS : Water Side		M : Minimally Acceptable	C : Corrected	Ob : Design & System Obsolescence	
CR : Crown		U : Unacceptable	A/W : Acceptable but Monitor & Maintain	En : Enforcement	

**Flood Control Project Maintenance
Levee Inspections**

Maintenance Issue Types Only, Levee Inspection Report By Mile - Spring 2016

Lower San Joaquin Levee District

Waterway	Bank	Unit Miles	Inspection Start/End	Inspector
Unit No. 03 San Joaquin River	Right	2.10	05/18/2016 05/18/2016	Richard Willoughby

LM Start	0.48	Rating **	M	Issue No.	4
LM End	2.03	Issue Type +	Ma	Location *	CR
Category	Earthen Levee			GPS Latitude/Longitude	
				Start	End
Item	Vegetation			37.105485 °	37.089425 °
				-120.585086 °	-120.567777 °
DWR ID	DWR_NA0010_03_s _ 2016_4				
Comment Code					
V1 : Control annual grass and weeds on the levee slopes and easements.					
Inspector Comment					
Control annual weeds on levee crown.					

Photo 1 of 1 : SP_2016_NA0010_121_4_20160523_00014.jpg



Looking west at veg on levee crown.

LM Start	1.54	Rating **	M	Issue No.	65
LM End	1.54	Issue Type +	Ma	Location *	LS
Category	Earthen Levee			GPS Latitude/Longitude	
				Start	End
Item	Animal Control			37.094270 °	37.094270 °
				-120.573112 °	-120.573112 °
DWR ID	DWR_NA0010_03_s _ 2015_65				
Comment Code					
A3 : No rodents visible, but rodent burrows visible; need to backfill and compact or grout burrows.					
Inspector Comment					

No Photos

* Location LS : Land Side N/A : Not Applicable WS : Water Side CR : Crown		** Rating A : Acceptable M : Minimally Acceptable U : Unacceptable N : Not Inspected/Rated C : Corrected A/W : Acceptable but Monitor & Maintain		+ Issue Type Ma : Maintenance Deficiency Ob : Design & System Obsolescence En : Enforcement
----------------------------------------------------------------------------------------------	--	---------------------------------------------------------------------------------------------------------------------------------------------------------------------------	--	-------------------------------------------------------------------------------------------------------------

**Flood Control Project Maintenance
Levee Inspections**

Maintenance Issue Types Only, Levee Inspection Report By Mile - Spring 2016

Lower San Joaquin Levee District

Waterway	Bank	Unit Miles	Inspection Start/End	Inspector
Unit No. 04 San Joaquin River	Left	1.41	05/18/2016 05/18/2016	Richard Willoughby

LM Start	0.00	Rating **	M	Issue No.	11
LM End	1.41	Issue Type +	Ma	Location *	LS
Category	Earthen Levee			GPS Latitude/Longitude	
				Start	End
Item	Vegetation			37.112579 °	37.097555 °
				-120.589106 °	-120.578130 °
DWR ID	DWR_NA0010_04_s _ 2016_11				
Comment Code					
V1 : Control annual grass and weeds on the levee slopes and easements.					
Inspector Comment					

Photo 1 of 1 : SP_2016_NA0010_122_11_20160523_00026.jpg



Looking southeast at landward slope.

LM Start	0.00	Rating **	A	Issue No.	12
LM End	1.41	Issue Type +	Ma	Location *	WS
Category	Earthen Levee			GPS Latitude/Longitude	
				Start	End
Item	Vegetation			37.112579 °	37.097555 °
				-120.589106 °	-120.578130 °
DWR ID	DWR_NA0010_04_s _ 2016_12				
Comment Code					
V1 : Control annual grass and weeds on the levee slopes and easements.					
Inspector Comment					

Photo 1 of 1 : SP_2016_NA0010_122_12_20160523_00025.jpg



Looking north at waterward slope.

LM Start	0.54	Rating **	M	Issue No.	4
LM End	1.41	Issue Type +	Ma	Location *	CR
Category	Earthen Levee			GPS Latitude/Longitude	
				Start	End
Item	Vegetation			37.106025 °	37.097556 °
				-120.588746 °	-120.578129 °
DWR ID	DWR_NA0010_04_s _ 2016_4				
Comment Code					
V1 : Control annual grass and weeds on the levee slopes and easements.					
Inspector Comment					
Control annual weeds on levee crown.					

Photo 1 of 1 : SP_2016_NA0010_122_4_20160523_00027.jpg



Looking north at levee crown.

* Location LS : Land Side N/A : Not Applicable WS : Water Side CR : Crown		** Rating A : Acceptable M : Minimally Acceptable U : Unacceptable		N : Not Inspected/Rated C : Corrected A/W : Acceptable but Monitor & Maintain		+ Issue Type Ma : Maintenance Deficiency Ob : Design & System Obsolescence En : Enforcement	
----------------------------------------------------------------------------------------------	--	------------------------------------------------------------------------------------	--	-------------------------------------------------------------------------------------	--	-------------------------------------------------------------------------------------------------------------	--

**Flood Control Project Maintenance
Levee Inspections**

Maintenance Issue Types Only, Levee Inspection Report By Mile - Spring 2016

Lower San Joaquin Levee District

Waterway	Bank	Unit Miles	Inspection Start/End	Inspector
Unit No. 05 East Side Bypass	Right	34.85	05/16/2016 05/18/2016	Richard Willoughby

LM Start	0.00	Rating **	M	Issue No.	81
LM End	34.62	Issue Type +	Ma	Location *	WS
Category	Earthen Levee			GPS Latitude/Longitude	
				Start	End
Item	Vegetation			37.279069 °	36.978531 °
				-120.824250 °	-120.367994 °
DWR ID	DWR_NA0010_05_s _ 2016_81				
Comment Code					
V1 : Control annual grass and weeds on the levee slopes and easements.					
Inspector Comment					

No Photos

LM Start	0.00	Rating **	M	Issue No.	79
LM End	34.62	Issue Type +	Ma	Location *	LS
Category	Earthen Levee			GPS Latitude/Longitude	
				Start	End
Item	Vegetation			37.279069 °	36.978532 °
				-120.824249 °	-120.367994 °
DWR ID	DWR_NA0010_05_s _ 2016_79				
Comment Code					
V1 : Control annual grass and weeds on the levee slopes and easements.					
Inspector Comment					

No Photos

LM Start	1.66	Rating **	M	Issue No.	80
LM End	1.75	Issue Type +	Ma	Location *	LS
Category	Earthen Levee			GPS Latitude/Longitude	
				Start	End
Item	Animal Control			37.263448 °	37.262225 °
				-120.802715 °	-120.802296 °
DWR ID	DWR_NA0010_05_f _ 2015_80				
Comment Code					
A3 : No rodents visible, but rodent burrows visible; need to backfill and compact or grout burrows.					
Inspector Comment					
Several rodent holes on levee crown within this section.					

Photo 1 of 1 : SP_2016_NA0010_123_80_20160512_00008.jpg



Looking at typical view of rodent holes within this section on landward slope.

* Location LS : Land Side N/A : Not Applicable WS : Water Side CR : Crown		** Rating A : Acceptable M : Minimally Acceptable U : Unacceptable N : Not Inspected/Rated C : Corrected A/W : Acceptable but Monitor & Maintain		+ Issue Type Ma : Maintenance Deficiency Ob : Design & System Obsolescence En : Enforcement	
----------------------------------------------------------------------------------------------	--	---------------------------------------------------------------------------------------------------------------------------------------------------------------------------	--	-------------------------------------------------------------------------------------------------------------	--

**Flood Control Project Maintenance
Levee Inspections**

Maintenance Issue Types Only, Levee Inspection Report By Mile - Spring 2016

Lower San Joaquin Levee District

Waterway	Bank	Unit Miles	Inspection Start/End	Inspector
Unit No. 05 East Side Bypass	Right	34.85	05/16/2016 05/18/2016	Richard Willoughby

LM Start	2.82	Rating **	M	Issue No.	1308
LM End	2.82	Issue Type +	Ma	Location *	LS
Category	Earthen Levee			GPS Latitude/Longitude	
				Start	End
Item	Encroachments			37.256783 °	37.256783 °
				-120.785438 °	-120.785438 °
DWR ID	DWR_NA0010_05_s _ 2015_1308				
Comment Code					
TR : Tree or limb					
Inspector Comment					
Dead tree limbs at landward toe.					

Photo 1 of 1 : SP_2016_NA0010_123_1308_20160512_00011.jpg



Looking at dead tree limbs on landward toe.

LM Start	3.20	Rating **	M	Issue No.	6
LM End	3.20	Issue Type +	Ma	Location *	WS
Category	Earthen Levee			GPS Latitude/Longitude	
				Start	End
Item	Animal Control			37.256635 °	37.256635 °
				-120.778935 °	-120.778935 °
DWR ID	DWR_NA0010_05_s _ 2014_6				
Comment Code					
A1 : Exterminate rodents and backfill and compact or grout burrows.					
Inspector Comment					
No rodent visible but several rodent holes visible.					

Photo 1 of 1 : SP_2016_NA0010_123_6_20160512_00003.jpg



Looking at typical view of rodent holes on waterward slope.

LM Start	6.52	Rating **	M	Issue No.	15
LM End	6.52	Issue Type +	Ma	Location *	WS
Category	Earthen Levee			GPS Latitude/Longitude	
				Start	End
Item	Animal Control			37.230497 °	37.230497 °
				-120.727263 °	-120.727263 °
DWR ID	DWR_NA0010_05_s _ 2012_15				
Comment Code					
A3 : No rodents visible, but rodent burrows visible; need to backfill and compact or grout burrows.					
Inspector Comment					

No Photos

* Location		** Rating		+ Issue Type	
LS : Land Side	N/A : Not Applicable	A : Acceptable	N : Not Inspected/Rated	Ma : Maintenance Deficiency	
WS : Water Side		M : Minimally Acceptable	C : Corrected	Ob : Design & System Obsolescence	
CR : Crown		U : Unacceptable	A/W : Acceptable but Monitor & Maintain	En : Enforcement	

**Flood Control Project Maintenance
Levee Inspections**

Maintenance Issue Types Only, Levee Inspection Report By Mile - Spring 2016

Lower San Joaquin Levee District

Waterway	Bank	Unit Miles	Inspection Start/End	Inspector
Unit No. 05 East Side Bypass	Right	34.85	05/16/2016 05/18/2016	Richard Willoughby

LM Start	6.59	Rating **	M	Issue No.	1309
LM End	6.59	Issue Type +	Ma	Location *	LS
Category	Earthen Levee			GPS Latitude/Longitude	
				Start	End
Item	Slope Stability			37.229682 °	37.229682 °
				-120.726305 °	-120.726305 °
DWR ID	DWR_NA0010_05_s _ 2015_1309				
Comment Code					
S2 : Repair the levee slope damaged by foot traffic and prevent access where possible.					
Inspector Comment					
Landward slope damage caused by animal foot traffic.					

LM Start	6.59	Rating **	M	Issue No.	1309 (cont)
LM End	6.59	Issue Type +	Ma	Location *	LS

Photo 1 of 2 : SP_2016_NA0010_123_1309_20160512_00012.jpg



Looking north at damaged landward slope.

Photo 2 of 2 : SP_2016_NA0010_123_1309_20160512_00013.jpg



Looking east at damaged landward slope.

LM Start	8.08	Rating **	M	Issue No.	4
LM End	8.08	Issue Type +	Ma	Location *	LS
Category	Earthen Levee			GPS Latitude/Longitude	
				Start	End
Item	Animal Control			37.213600 °	37.213600 °
				-120.706630 °	-120.706630 °
DWR ID	DWR_NA0010_05_s _ 2012_4				
Comment Code					
A3 : No rodents visible, but rodent burrows visible; need to backfill and compact or grout burrows.					
Inspector Comment					

No Photos

* Location LS : Land Side N/A : Not Applicable WS : Water Side CR : Crown		** Rating A : Acceptable M : Minimally Acceptable U : Unacceptable		N : Not Inspected/Rated C : Corrected A/W : Acceptable but Monitor & Maintain		+ Issue Type Ma : Maintenance Deficiency Ob : Design & System Obsolescence En : Enforcement	
----------------------------------------------------------------------------------------------	--	------------------------------------------------------------------------------------	--	-------------------------------------------------------------------------------------	--	-------------------------------------------------------------------------------------------------------------	--

**Flood Control Project Maintenance
Levee Inspections**

Maintenance Issue Types Only, Levee Inspection Report By Mile - Spring 2016

Lower San Joaquin Levee District

Waterway	Bank	Unit Miles	Inspection Start/End	Inspector
Unit No. 05 East Side Bypass	Right	34.85	05/16/2016 05/18/2016	Richard Willoughby

LM Start	8.85	Rating **	M	Issue No.	5
LM End	8.85	Issue Type +	Ma	Location *	WS
Category	Earthen Levee			GPS Latitude/Longitude	
				Start	End
Item	Animal Control			37.205778 °	37.205778 °
				-120.696843 °	-120.696843 °
DWR ID	DWR_NA0010_05_s _ 2012_5				
Comment Code					
A3 : No rodents visible, but rodent burrows visible; need to backfill and compact or grout burrows.					
Inspector Comment					

No Photos

LM Start	13.01	Rating **	M	Issue No.	2
LM End	13.01	Issue Type +	Ma	Location *	LS
Category	Earthen Levee			GPS Latitude/Longitude	
				Start	End
Item	Encroachments			37.175576 °	37.175576 °
				-120.638755 °	-120.638755 °
DWR ID	DWR_NA0010_05_s _ 2016_2				
Comment Code					
TR : Tree or limb					
Inspector Comment					
Downed tree on landward toe.					

Photo 1 of 1 : SP_2016_NA0010_123_2_20160523_00207.jpg



Looking west at down tree at landward toe.

LM Start	13.59	Rating **	M	Issue No.	1311
LM End	13.59	Issue Type +	Ma	Location *	LS
Category	Earthen Levee			GPS Latitude/Longitude	
				Start	End
Item	Encroachments			37.169607 °	37.169607 °
				-120.631358 °	-120.631358 °
DWR ID	DWR_NA0010_05_s _ 2015_1311				
Comment Code					
TR : Tree or limb					
Inspector Comment					
Downed tree on landward slope.					

Photo 1 of 1 : SP_2016_NA0010_123_1311_20160512_00015.jpg



Looking east at a fallen tree limbs on waterward slope.

* Location
LS : Land Side N/A : Not Applicable
WS : Water Side
CR : Crown

** Rating
A : Acceptable N : Not Inspected/Rated
M : Minimally Acceptable C : Corrected
U : Unacceptable A/W : Acceptable but Monitor & Maintain

+ Issue Type
Ma : Maintenance Deficiency
Ob : Design & System Obsolescence
En : Enforcement

**Flood Control Project Maintenance
Levee Inspections**

Maintenance Issue Types Only, Levee Inspection Report By Mile - Spring 2016

Lower San Joaquin Levee District

Waterway	Bank	Unit Miles	Inspection Start/End	Inspector
Unit No. 05 East Side Bypass	Right	34.85	05/16/2016 05/18/2016	Richard Willoughby

LM Start	25.59	Rating **	M	Issue No.	9
LM End	25.64	Issue Type +	Ma	Location *	LS
Category	Earthen Levee			GPS Latitude/Longitude	
				Start	End
Item	Animal Control			37.047630 °	37.047042 °
				-120.488530 °	-120.488092 °
DWR ID	DWR_NA0010_05_s _ 2012_9				
Comment Code					
A3 : No rodents visible, but rodent burrows visible; need to backfill and compact or grout burrows.					
Inspector Comment					

No Photos

LM Start	29.68	Rating **	M	Issue No.	171
LM End	29.80	Issue Type +	Ma	Location *	LS
Category	Earthen Levee			GPS Latitude/Longitude	
				Start	End
Item	Erosion / Bank Caving			37.020272 °	37.018712 °
				-120.433737 °	-120.432682 °
DWR ID	DWR_NA0010_05_s _ 2014_171				
Comment Code					
E1 : Note and monitor erosion site.					
Inspector Comment					
Waterside erosion caused by livestock.					

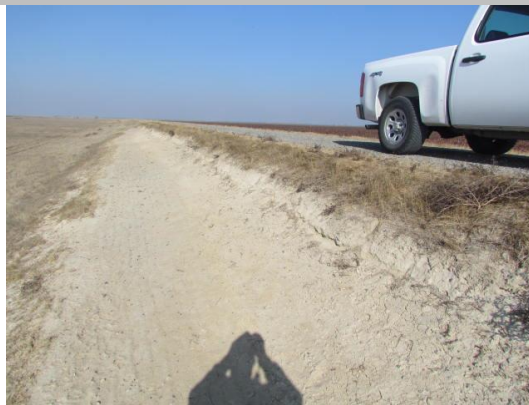
Photo 1 of 2 : SP_2016_NA0010_123_171_20160512_00009.jpg



Looking south at erosion caused by livestock on landside slope.

LM Start	29.68	Rating **	M	Issue No.	171 (cont)
LM End	29.80	Issue Type +	Ma	Location *	LS

Photo 2 of 2 : SP_2016_NA0010_123_171_20160512_00010.jpg



Looking south at livestock erosion on landward slope.

* Location LS : Land Side N/A : Not Applicable WS : Water Side CR : Crown		** Rating A : Acceptable M : Minimally Acceptable U : Unacceptable		N : Not Inspected/Rated C : Corrected A/W : Acceptable but Monitor & Maintain		+ Issue Type Ma : Maintenance Deficiency Ob : Design & System Obsolescence En : Enforcement	
----------------------------------------------------------------------------------------------	--	------------------------------------------------------------------------------------	--	-------------------------------------------------------------------------------------	--	-------------------------------------------------------------------------------------------------------------	--

**Flood Control Project Maintenance
Levee Inspections**

Maintenance Issue Types Only, Levee Inspection Report By Mile - Spring 2016

Lower San Joaquin Levee District

Waterway	Bank	Unit Miles	Inspection Start/End	Inspector
Unit No. 05 East Side Bypass	Right	34.85	05/16/2016 05/18/2016	Richard Willoughby

LM Start	29.89	Rating **	M	Issue No.	16
LM End	29.89	Issue Type +	Ma	Location *	LS
Category	Earthen Levee		GPS Latitude/Longitude		
			Start	End	
Item	Animal Control		37.017540 °	37.017540 °	
			-120.431955 °	-120.431955 °	
DWR ID	DWR_NA0010_05_s _ 2012_16				
Comment Code					
A3 : No rodents visible, but rodent burrows visible; need to backfill and compact or grout burrows.					
Inspector Comment					

No Photos

* Location LS : Land Side N/A : Not Applicable WS : Water Side CR : Crown	** Rating A : Acceptable M : Minimally Acceptable U : Unacceptable N : Not Inspected/Rated C : Corrected A/W : Acceptable but Monitor & Maintain	+ Issue Type Ma : Maintenance Deficiency Ob : Design & System Obsolescence En : Enforcement
----------------------------------------------------------------------------------------------	---------------------------------------------------------------------------------------------------------------------------------------------------------------------------	-------------------------------------------------------------------------------------------------------------

**Flood Control Project Maintenance
Levee Inspections**

Maintenance Issue Types Only, Levee Inspection Report By Mile - Spring 2016

Lower San Joaquin Levee District

Waterway	Bank	Unit Miles	Inspection Start/End	Inspector
Unit No. 06 East Side Bypass	Left	36.47	05/18/2016 05/19/2016	Richard Willoughby

LM Start	0.00	Rating **	M	Issue No.	74
LM End	36.47	Issue Type +	Ma	Location *	LS
Category	Earthen Levee			GPS Latitude/Longitude	
				Start	End
Item	Vegetation			37.275832 °	36.974113 °
				-120.825837 °	-120.363239 °
DWR ID	DWR_NA0010_06_s _ 2016_74				
Comment Code					
V1 : Control annual grass and weeds on the levee slopes and easements.					
Inspector Comment					

No Photos

LM Start	0.00	Rating **	M	Issue No.	75
LM End	36.47	Issue Type +	Ma	Location *	WS
Category	Earthen Levee			GPS Latitude/Longitude	
				Start	End
Item	Vegetation			37.275832 °	36.974113 °
				-120.825837 °	-120.363239 °
DWR ID	DWR_NA0010_06_s _ 2016_75				
Comment Code					
V1 : Control annual grass and weeds on the levee slopes and easements.					
Inspector Comment					

No Photos

LM Start	1.84	Rating **	M	Issue No.	125
LM End	1.84	Issue Type +	Ma	Location *	LS
Category	Earthen Levee			GPS Latitude/Longitude	
				Start	End
Item	Animal Control			37.259527 °	37.259527 °
				-120.803300 °	-120.803300 °
DWR ID	DWR_NA0010_06_s _ 2012_125				
Comment Code					
A1 : Exterminate rodents and backfill and compact or grout burrows.					
Inspector Comment					

No Photos

* Location		** Rating		+ Issue Type	
LS : Land Side	N/A : Not Applicable	A : Acceptable	N : Not Inspected/Rated	Ma : Maintenance Deficiency	
WS : Water Side		M : Minimally Acceptable	C : Corrected	Ob : Design & System Obsolescence	
CR : Crown		U : Unacceptable	A/W : Acceptable but Monitor & Maintain	En : Enforcement	

**Flood Control Project Maintenance
Levee Inspections**

Maintenance Issue Types Only, Levee Inspection Report By Mile - Spring 2016

Lower San Joaquin Levee District

Waterway	Bank	Unit Miles	Inspection Start/End	Inspector
Unit No. 06 East Side Bypass	Left	36.47	05/18/2016 05/19/2016	Richard Willoughby

LM Start	4.61	Rating **	M	Issue No.	16
LM End	4.61	Issue Type +	Ma	Location *	CR
Category	Earthen Levee			GPS Latitude/Longitude	
				Start	End
Item	Animal Control			37.244012 °	37.244012 °
				-120.761372 °	-120.761372 °
DWR ID	DWR_NA0010_06_s _ 2012_16				
Comment Code					
A3 : No rodents visible, but rodent burrows visible; need to backfill and compact or grout burrows.					
Inspector Comment					
Several rodent holes on levee crown.					

No Photos

LM Start	4.66	Rating **	M	Issue No.	10
LM End	4.66	Issue Type +	Ma	Location *	LS
Category	Earthen Levee			GPS Latitude/Longitude	
				Start	End
Item	Animal Control			37.243540 °	37.243540 °
				-120.760782 °	-120.760782 °
DWR ID	DWR_NA0010_06_s _ 2012_10				
Comment Code					
A3 : No rodents visible, but rodent burrows visible; need to backfill and compact or grout burrows.					
Inspector Comment					
Rodent holes next to fence post on landward slope.					

Photo 1 of 2 : SP_2016_NA0010_124_10_20160512_00012.jpg



Looking at rodent hole along fence line on landward slope.

LM Start	4.66	Rating **	M	Issue No.	10 (cont)
LM End	4.66	Issue Type +	Ma	Location *	LS

Photo 2 of 2 : SP_2016_NA0010_124_10_20160512_00013.jpg



Looking at typical rodent holes on landward slope.

* Location LS : Land Side N/A : Not Applicable WS : Water Side CR : Crown		** Rating A : Acceptable M : Minimally Acceptable U : Unacceptable N : Not Inspected/Rated C : Corrected A/W : Acceptable but Monitor & Maintain		+ Issue Type Ma : Maintenance Deficiency Ob : Design & System Obsolescence En : Enforcement	
---------------------------------------------------------------------------------------	--	--------------------------------------------------------------------------------------------------------------------------------------------------------------------	--	------------------------------------------------------------------------------------------------------	--

**Flood Control Project Maintenance
Levee Inspections**

Maintenance Issue Types Only, Levee Inspection Report By Mile - Spring 2016

Lower San Joaquin Levee District

Waterway	Bank	Unit Miles	Inspection Start/End	Inspector
Unit No. 06 East Side Bypass	Left	36.47	05/18/2016 05/19/2016	Richard Willoughby

LM Start	5.98	Rating **	U	Issue No.	1
LM End	5.98	Issue Type +	Ma	Location *	WS
Category	Interior Drainage & Piping Systems			GPS Latitude/Longitude	
				Start	End
Item	Erosion Areas			37.236386 °	37.236386 °
				-120.739706 °	-120.739706 °
DWR ID	DWR_NA0010_06_s_2016_1				
Comment Code					
Inspector Comment					
Erosion is undermining the headwall on both sides of the drainage structure.					

LM Start	5.98	Rating **	U	Issue No.	1 (cont)
LM End	5.98	Issue Type +	Ma	Location *	WS

Photo 1 of 6 : SP_2016_NA0010_124_1_20160523_00170.jpg



Photo 2 of 6 : SP_2016_NA0010_124_1_20160523_00171.jpg



LM Start	5.98	Rating **	U	Issue No.	1 (cont)
LM End	5.98	Issue Type +	Ma	Location *	WS

Photo 3 of 6 : SP_2016_NA0010_124_1_20160523_00172.jpg



* Location LS : Land Side N/A : Not Applicable WS : Water Side CR : Crown		** Rating A : Acceptable M : Minimally Acceptable U : Unacceptable N : Not Inspected/Rated C : Corrected A/W : Acceptable but Monitor & Maintain		+ Issue Type Ma : Maintenance Deficiency Ob : Design & System Obsolescence En : Enforcement	
---------------------------------------------------------------------------------------	--	--------------------------------------------------------------------------------------------------------------------------------------------------------------------	--	------------------------------------------------------------------------------------------------------	--

**Flood Control Project Maintenance
Levee Inspections**

Maintenance Issue Types Only, Levee Inspection Report By Mile - Spring 2016

Lower San Joaquin Levee District

Waterway	Bank	Unit Miles	Inspection Start/End	Inspector
Unit No. 06 East Side Bypass	Left	36.47	05/18/2016 05/19/2016	Richard Willoughby

LM Start	5.98	Rating **	U	Issue No.	1 (cont)	
LM End	5.98	Issue Type +	Ma	Location *	WS	
Category	Interior Drainage & Piping Systems			GPS Latitude/Longitude		
				Start		End
Item	Erosion Areas			37.236386 °	37.236386 °	
				-120.739706 °	-120.739706 °	
DWR ID	DWR_NA0010_06_s _ 2016_1					
Comment Code						
Inspector Comment						
Erosion is undermining the headwall on both sides of the drainage structure.						

LM Start	5.98	Rating **	U	Issue No.	1 (cont)
LM End	5.98	Issue Type +	Ma	Location *	WS

Photo 4 of 6 : SP_2016_NA0010_124_1_20160523_00173.jpg



Photo 5 of 6 : SP_2016_NA0010_124_1_20160523_00169.jpg



Looking west at erosion on waterside around structure.

LM Start	5.98	Rating **	U	Issue No.	1 (cont)
LM End	5.98	Issue Type +	Ma	Location *	WS

Photo 6 of 6 : SP_2016_NA0010_124_1_20160523_00174.jpg



* Location LS : Land Side N/A : Not Applicable WS : Water Side CR : Crown		** Rating A : Acceptable M : Minimally Acceptable U : Unacceptable N : Not Inspected/Rated C : Corrected A/W : Acceptable but Monitor & Maintain		+ Issue Type Ma : Maintenance Deficiency Ob : Design & System Obsolescence En : Enforcement	
---------------------------------------------------------------------------------------	--	--------------------------------------------------------------------------------------------------------------------------------------------------------------------	--	------------------------------------------------------------------------------------------------------	--

**Flood Control Project Maintenance
Levee Inspections**

Maintenance Issue Types Only, Levee Inspection Report By Mile - Spring 2016

Lower San Joaquin Levee District

Waterway	Bank	Unit Miles	Inspection Start/End	Inspector
Unit No. 06 East Side Bypass	Left	36.47	05/18/2016 05/19/2016	Richard Willoughby

LM Start	5.98	Rating **	C	Issue No.	65
LM End	5.98	Issue Type +	Ma	Location *	LS
Category	Interior Drainage & Piping Systems			GPS Latitude/Longitude	
				Start	End
Item	Erosion Areas			37.236372 °	37.236372 °
				-120.739706 °	-120.739706 °
DWR ID	DWR_NA0010_06_f_2014_65				
Comment Code					
Inspector Comment					
Erosion on right side of headwall at landward toe.					

No Photos

LM Start	6.06	Rating **	M	Issue No.	22
LM End	6.06	Issue Type +	Ma	Location *	LS
Category	Earthen Levee			GPS Latitude/Longitude	
				Start	End
Item	Animal Control			37.235777 °	37.235777 °
				-120.738598 °	-120.738598 °
DWR ID	DWR_NA0010_06_s_2012_22				
Comment Code					
A3 : No rodents visible, but rodent burrows visible; need to backfill and compact or grout burrows.					
Inspector Comment					

No Photos

LM Start	6.09	Rating **	M	Issue No.	21
LM End	6.09	Issue Type +	Ma	Location *	WS
Category	Earthen Levee			GPS Latitude/Longitude	
				Start	End
Item	Animal Control			37.235623 °	37.235623 °
				-120.738017 °	-120.738017 °
DWR ID	DWR_NA0010_06_s_2012_21				
Comment Code					
A3 : No rodents visible, but rodent burrows visible; need to backfill and compact or grout burrows.					
Inspector Comment					

No Photos

* Location		** Rating		+ Issue Type	
LS : Land Side	N/A : Not Applicable	A : Acceptable	N : Not Inspected/Rated	Ma : Maintenance Deficiency	
WS : Water Side		M : Minimally Acceptable	C : Corrected	Ob : Design & System Obsolescence	
CR : Crown		U : Unacceptable	A/W : Acceptable but Monitor & Maintain	En : Enforcement	

**Flood Control Project Maintenance
Levee Inspections**

Maintenance Issue Types Only, Levee Inspection Report By Mile - Spring 2016

Lower San Joaquin Levee District

Waterway	Bank	Unit Miles	Inspection Start/End	Inspector
Unit No. 06 East Side Bypass	Left	36.47	05/18/2016 05/19/2016	Richard Willoughby

LM Start	7.10	Rating **	M	Issue No.	7
LM End	7.10	Issue Type +	Ma	Location *	LS
Category	Earthen Levee			GPS Latitude/Longitude	
				Start	End
Item	Animal Control			37.226675 °	37.226675 °
				-120.724498 °	-120.724498 °
DWR ID	DWR_NA0010_06_s _ 2012_7				
Comment Code					
A1 : Exterminate rodents and backfill and compact or grout burrows.					
Inspector Comment					

No Photos

LM Start	9.74	Rating **	M	Issue No.	6
LM End	11.00	Issue Type +	Ma	Location *	CR
Category	Earthen Levee			GPS Latitude/Longitude	
				Start	End
Item	Crown Surface / Depressions / Rutting			37.200697 °	37.187645 °
				-120.692927 °	-120.676996 °
DWR ID	DWR_NA0010_06_s _ 2012_6				
Comment Code					
C2 : Repair depressions or ruts in the crown or slope.					
Inspector Comment					
Levee crown should be regraded due to excessive rutting.					

No Photos

LM Start	11.49	Rating **	M	Issue No.	14
LM End	11.49	Issue Type +	Ma	Location *	WS
Category	Earthen Levee			GPS Latitude/Longitude	
				Start	End
Item	Trim / Thin Trees			37.186189 °	37.186189 °
				-120.668476 °	-120.668476 °
DWR ID	DWR_NA0010_06_s _ 2015_14				
Comment Code					
T1 : Trim trees to at least five feet above ground level.					
Inspector Comment					
Almond tree located along Sandy Mush Rd. on waterward slope.					

Photo 1 of 1 : SP_2016_NA0010_124_14_20160512_00014.jpg



Looking west at tree on waterward slope.

* Location LS : Land Side N/A : Not Applicable WS : Water Side CR : Crown		** Rating A : Acceptable M : Minimally Acceptable U : Unacceptable N : Not Inspected/Rated C : Corrected A/W : Acceptable but Monitor & Maintain		+ Issue Type Ma : Maintenance Deficiency Ob : Design & System Obsolescence En : Enforcement	
----------------------------------------------------------------------------------------------	--	---------------------------------------------------------------------------------------------------------------------------------------------------------------------------	--	-------------------------------------------------------------------------------------------------------------	--

**Flood Control Project Maintenance
Levee Inspections**

Maintenance Issue Types Only, Levee Inspection Report By Mile - Spring 2016

Lower San Joaquin Levee District

Waterway	Bank	Unit Miles	Inspection Start/End	Inspector
Unit No. 06 East Side Bypass	Left	36.47	05/18/2016 05/19/2016	Richard Willoughby

LM Start	14.94	Rating **	M	Issue No.	1212
LM End	14.94	Issue Type +	Ma	Location *	CR
Category	Earthen Levee			GPS Latitude/Longitude	
				Start	End
Item	Animal Control			37.162287 °	37.162287 °
				-120.628791 °	-120.628791 °
DWR ID	DWR_NA0010_06_s _ 2015_1212				
Comment Code					
A3 : No rodents visible, but rodent burrows visible; need to backfill and compact or grout burrows.					
Inspector Comment					
Several rodent holes noted on levee crown and landside and waterside slopes.					

Photo 1 of 1 : SP_2016_NA0010_124_1212_20160512_00041.jpg



Looking at rodent hole on levee crown.

LM Start	15.46	Rating **	M	Issue No.	124
LM End	15.70	Issue Type +	Ma	Location *	LS
Category	Earthen Levee			GPS Latitude/Longitude	
				Start	End
Item	Animal Control			37.158920 °	37.157217 °
				-120.620232 °	-120.618915 °
DWR ID	DWR_NA0010_06_s _ 2012_124				
Comment Code					
A1 : Exterminate rodents and backfill and compact or grout burrows.					
Inspector Comment					

No Photos

LM Start	19.14	Rating **	U	Issue No.	1211
LM End	19.14	Issue Type +	Ma	Location *	WS
Category	Earthen Levee			GPS Latitude/Longitude	
				Start	End
Item	Animal Control			37.114793 °	37.114793 °
				-120.587582 °	-120.587582 °
DWR ID	DWR_NA0010_06_s _ 2015_1211				
Comment Code					
A1 : Exterminate rodents and backfill and compact or grout burrows.					
Inspector Comment					
Several large rodent holes with more than 2 cubic feet of material was noted on waterward slope					

Photo 1 of 5 : SP_2016_NA0010_124_1211_20160523_00178.jpg



Looking at rodent hole on waterward slope. Spring 2016

* Location LS : Land Side N/A : Not Applicable WS : Water Side CR : Crown		** Rating A : Acceptable M : Minimally Acceptable U : Unacceptable		N : Not Inspected/Rated C : Corrected A/W : Acceptable but Monitor & Maintain		+ Issue Type Ma : Maintenance Deficiency Ob : Design & System Obsolescence En : Enforcement	
----------------------------------------------------------------------------------------------	--	------------------------------------------------------------------------------------	--	-------------------------------------------------------------------------------------	--	-------------------------------------------------------------------------------------------------------------	--

**Flood Control Project Maintenance
Levee Inspections**

Maintenance Issue Types Only, Levee Inspection Report By Mile - Spring 2016

Lower San Joaquin Levee District

Waterway	Bank	Unit Miles	Inspection Start/End	Inspector
Unit No. 06 East Side Bypass	Left	36.47	05/18/2016 05/19/2016	Richard Willoughby

LM Start	19.14	Rating **	U	Issue No.	1211 (cont)	
LM End	19.14	Issue Type +	Ma	Location *	WS	
Category	Earthen Levee			GPS Latitude/Longitude		
				Start		End
Item	Animal Control			37.114793 °		37.114793 °
				-120.587582 °		-120.587582 °
DWR ID	DWR_NA0010_06_s _ 2015_1211					
Comment Code						
A1 : Exterminate rodents and backfill and compact or grout burrows.						
Inspector Comment						
Several large rodent holes with more than 2 cubic feet of material was noted on waterward slope						

LM Start	19.14	Rating **	U	Issue No.	1211 (cont)
LM End	19.14	Issue Type +	Ma	Location *	WS

LM Start	19.14	Rating **	U	Issue No.	1211 (cont)
LM End	19.14	Issue Type +	Ma	Location *	WS

Photo 2 of 5 : SP_2016_NA0010_124_1211_20160512_00037.jpg



Looking at several rodent holes on waterward slope. (Fall 2015)

Photo 3 of 5 : SP_2016_NA0010_124_1211_20160512_00038.jpg



Looking at close-up view of large rodent hole on waterward slope. (Spring 2015)

Photo 4 of 5 : SP_2016_NA0010_124_1211_20160512_00039.jpg



Looking at large rodent hole on waterward slope. Spring 2015

* Location LS : Land Side N/A : Not Applicable WS : Water Side CR : Crown		** Rating A : Acceptable M : Minimally Acceptable U : Unacceptable N : Not Inspected/Rated C : Corrected A/W : Acceptable but Monitor & Maintain		+ Issue Type Ma : Maintenance Deficiency Ob : Design & System Obsolescence En : Enforcement	
----------------------------------------------------------------------------------------------	--	---------------------------------------------------------------------------------------------------------------------------------------------------------------------------	--	-------------------------------------------------------------------------------------------------------------	--

**Flood Control Project Maintenance
Levee Inspections**

Maintenance Issue Types Only, Levee Inspection Report By Mile - Spring 2016

Lower San Joaquin Levee District

Waterway	Bank	Unit Miles	Inspection Start/End	Inspector
Unit No. 06 East Side Bypass	Left	36.47	05/18/2016 05/19/2016	Richard Willoughby

LM Start	19.14	Rating **	U	Issue No.	1211 (cont)	
LM End	19.14	Issue Type +	Ma	Location *	WS	
Category	Earthen Levee			GPS Latitude/Longitude		
				Start		End
Item	Animal Control			37.114793 °		37.114793 °
				-120.587582 °		-120.587582 °
DWR ID	DWR_NA0010_06_s _ 2015_1211					
Comment Code						
A1 : Exterminate rodents and backfill and compact or grout burrows.						
Inspector Comment						
Several large rodent holes with more than 2 cubic feet of material was noted on waterward slope						

Photo 5 of 5 : SP_2016_NA0010_124_1211_20160512_00040.jpg



Looking west at several rodent holes on waterward slope. Spring 2015

LM Start	19.31	Rating **	C	Issue No.	66
LM End	19.31	Issue Type +	Ma	Location *	WS
Category	Earthen Levee			GPS Latitude/Longitude	
				Start	End
Item	Encroachments			37.112512 °	37.112512 °
				-120.589051 °	-120.589051 °
DWR ID	DWR_NA0010_06_f _ 2015_66				
Comment Code					
GA : Garbage					
Inspector Comment					
Garbage (sofa) on waterward slope and berm.					

No Photos

LM Start	20.79	Rating **	U	Issue No.	1209
LM End	20.88	Issue Type +	Ma	Location *	LS
Category	Earthen Levee			GPS Latitude/Longitude	
				Start	End
Item	Erosion / Bank Caving			37.113107 °	37.112176 °
				-120.563782 °	-120.562516 °
DWR ID	DWR_NA0010_06_s _ 2015_1209				
Comment Code					
E1 : Note and monitor erosion site.					
Inspector Comment					
Erosion on landward slope greater than 3 inches. Erosion caused by livestock.					

Photo 1 of 2 : SP_2016_NA0010_124_1209_20160512_00034.jpg



Looking north at livestock erosion on landward slope.

* Location LS : Land Side N/A : Not Applicable WS : Water Side CR : Crown		** Rating A : Acceptable M : Minimally Acceptable U : Unacceptable		N : Not Inspected/Rated C : Corrected A/W : Acceptable but Monitor & Maintain		+ Issue Type Ma : Maintenance Deficiency Ob : Design & System Obsolescence En : Enforcement	
----------------------------------------------------------------------------------------------	--	------------------------------------------------------------------------------------	--	-------------------------------------------------------------------------------------	--	-------------------------------------------------------------------------------------------------------------	--

**Flood Control Project Maintenance
Levee Inspections**

Maintenance Issue Types Only, Levee Inspection Report By Mile - Spring 2016

Lower San Joaquin Levee District

Waterway	Bank	Unit Miles	Inspection Start/End	Inspector
Unit No. 06 East Side Bypass	Left	36.47	05/18/2016 05/19/2016	Richard Willoughby

LM Start	20.79	Rating **	U	Issue No.	1209 (cont)	
LM End	20.88	Issue Type +	Ma	Location *	LS	
Category	Earthen Levee			GPS Latitude/Longitude		
				Start		End
Item	Erosion / Bank Caving			37.113107 °	37.112176 °	
				-120.563782 °	-120.562516 °	
DWR ID	DWR_NA0010_06_s _ 2015_1209					
Comment Code						
E1 : Note and monitor erosion site.						
Inspector Comment						
Erosion on landward slope greater than 3 inches. Erosion caused by livestock.						

Photo 2 of 2 : SP_2016_NA0010_124_1209_20160512_00035.jpg



Looking northeast at livestock erosion on landward slope.

LM Start	22.99	Rating **	M	Issue No.	8
LM End	23.05	Issue Type +	Ma	Location *	LS
Category	Earthen Levee			GPS Latitude/Longitude	
				Start	End
Item	Animal Control			37.088663 °	37.087968 °
				-120.538193 °	-120.537485 °
DWR ID	DWR_NA0010_06_s _ 2012_8				
Comment Code					
A3 : No rodents visible, but rodent burrows visible; need to backfill and compact or grout burrows.					
Inspector Comment					

No Photos

LM Start	24.58	Rating **	M	Issue No.	5	
LM End	24.93	Issue Type +	Ma	Location *	LS	
Category	Earthen Levee			GPS Latitude/Longitude		
				Start		End
Item	Slope Stability			37.071198 °		°
				-120.519220 °		°
DWR ID	DWR_NA0010_06_s _ 2012_5					
Comment Code						
S2 : Repair the levee slope damaged by foot traffic and prevent access where possible.						
Inspector Comment						
Landside erosion caused by livestock.						

Photo 1 of 3 : SP_2016_NA0010_124_5_20160512_00007.jpg



Looking north at livestock erosion on landward slope. (Spring 2015)

* Location		** Rating		+ Issue Type	
LS : Land Side	N/A : Not Applicable	A : Acceptable	N : Not Inspected/Rated	Ma : Maintenance Deficiency	
WS : Water Side		M : Minimally Acceptable	C : Corrected	Ob : Design & System Obsolescence	
CR : Crown		U : Unacceptable	A/W : Acceptable but Monitor & Maintain	En : Enforcement	

**Flood Control Project Maintenance
Levee Inspections**

Maintenance Issue Types Only, Levee Inspection Report By Mile - Spring 2016

Lower San Joaquin Levee District

Waterway	Bank	Unit Miles	Inspection Start/End	Inspector
Unit No. 06 East Side Bypass	Left	36.47	05/18/2016 05/19/2016	Richard Willoughby

LM Start	24.58	Rating **	M	Issue No.	5 (cont)	
LM End	24.93	Issue Type +	Ma	Location *	LS	
Category	Earthen Levee			GPS Latitude/Longitude		
				Start		End
Item	Slope Stability			37.071198 °		°
				-120.519220 °		°
DWR ID	DWR_NA0010_06_s _ 2012_5					
Comment Code						
S2 : Repair the levee slope damaged by foot traffic and prevent access where possible.						
Inspector Comment						
Landside erosion caused by livestock.						

LM Start	24.58	Rating **	M	Issue No.	5 (cont)
LM End	24.93	Issue Type +	Ma	Location *	LS

Photo 2 of 3 : SP_2016_NA0010_124_5_20160512_00008.jpg



Looking north at livestock erosion on landward slope. (Spring 2014)

Photo 3 of 3 : SP_2016_NA0010_124_5_20160512_00009.jpg



Looking north at livestock erosion on landside slope. (Fall 2014)

LM Start	26.13	Rating **	M	Issue No.	1208
LM End	26.13	Issue Type +	Ma	Location *	LS
Category	Earthen Levee			GPS Latitude/Longitude	
				Start	End
Item	Animal Control			37.054222 °	37.054222 °
				-120.500862 °	-120.500862 °
DWR ID	DWR_NA0010_06_s _ 2015_1208				
Comment Code					
A1 : Exterminate rodents and backfill and compact or grout burrows.					
Inspector Comment					
Noted several rodent holes next to and within rock revertment on landward slope.					

Photo 1 of 1 : SP_2016_NA0010_124_1208_20160512_00033.jpg



Looking northeast at several rodent holes on landward slope.

* Location LS : Land Side N/A : Not Applicable WS : Water Side CR : Crown		** Rating A : Acceptable M : Minimally Acceptable U : Unacceptable		+ Issue Type Ma : Maintenance Deficiency Ob : Design & System Obsolescence En : Enforcement	
		N : Not Inspected/Rated C : Corrected A/W : Acceptable but Monitor & Maintain			

**Flood Control Project Maintenance
Levee Inspections**

Maintenance Issue Types Only, Levee Inspection Report By Mile - Spring 2016

Lower San Joaquin Levee District

Waterway	Bank	Unit Miles	Inspection Start/End	Inspector
Unit No. 06 East Side Bypass	Left	36.47	05/18/2016 05/19/2016	Richard Willoughby

LM Start	27.64	Rating **	M	Issue No.	3
LM End	27.97	Issue Type +	Ma	Location *	LS
Category	Earthen Levee			GPS Latitude/Longitude	
				Start	End
Item	Slope Stability			37.036955 °	37.032887 °
				-120.484395 °	-120.481225 °
DWR ID	DWR_NA0010_06_s _ 2012_3				
Comment Code					
S2 : Repair the levee slope damaged by foot traffic and prevent access where possible.					
Inspector Comment					
Landside erosion caused by livestock. Erosion greater than 3" in depth on landward slope. Levee crown has narrowed within this reach.					

LM Start	27.64	Rating **	M	Issue No.	3 (cont)
LM End	27.97	Issue Type +	Ma	Location *	LS

LM Start	27.64	Rating **	M	Issue No.	3 (cont)
LM End	27.97	Issue Type +	Ma	Location *	LS

Photo 1 of 4 : SP_2016_NA0010_124_3_20160512_00003.jpg



Looking north at livestock erosion on landward slope. Fall 2015

Photo 2 of 4 : SP_2016_NA0010_124_3_20160512_00004.jpg



Looking north at livestock erosion on landward shoulder and slope.(Spring 2015)

Photo 3 of 4 : SP_2016_NA0010_124_3_20160512_00005.jpg



Looking north at livestock erosion on landside shoulder and slope. (Fall 2014)

* Location LS : Land Side N/A : Not Applicable WS : Water Side CR : Crown		** Rating A : Acceptable M : Minimally Acceptable U : Unacceptable N : Not Inspected/Rated C : Corrected A/W : Acceptable but Monitor & Maintain		+ Issue Type Ma : Maintenance Deficiency Ob : Design & System Obsolescence En : Enforcement	
----------------------------------------------------------------------------------------------	--	---------------------------------------------------------------------------------------------------------------------------------------------------------------------------	--	-------------------------------------------------------------------------------------------------------------	--

**Flood Control Project Maintenance
Levee Inspections**

Maintenance Issue Types Only, Levee Inspection Report By Mile - Spring 2016

Lower San Joaquin Levee District

Waterway	Bank	Unit Miles	Inspection Start/End	Inspector
Unit No. 06 East Side Bypass	Left	36.47	05/18/2016 05/19/2016	Richard Willoughby

LM Start	27.64	Rating **	M	Issue No.	3 (cont)	
LM End	27.97	Issue Type +	Ma	Location *	LS	
Category	Earthen Levee			GPS Latitude/Longitude		
				Start		End
Item	Slope Stability			37.036955 °		37.032887 °
				-120.484395 °		-120.481225 °
DWR ID	DWR_NA0010_06_s _ 2012_3					
Comment Code						
S2 : Repair the levee slope damaged by foot traffic and prevent access where possible.						
Inspector Comment						
Landside erosion caused by livestock. Erosion greater than 3" in depth on landward slope. Levee crown has narrowed within this reach.						

Photo 4 of 4 : SP_2016_NA0010_124_3_20160512_00006.jpg



Looking north at livestock erosion on landward slope. (Spring 2013)

LM Start	28.47	Rating **	M	Issue No.	19
LM End	28.71	Issue Type +	Ma	Location *	LS
Category	Earthen Levee			GPS Latitude/Longitude	
				Start	End
Item	Animal Control			37.029937 °	37.030102 °
				-120.473384 °	-120.469122 °
DWR ID	DWR_NA0010_06_s _ 2015_19				
Comment Code					
A3 : No rodents visible, but rodent burrows visible; need to backfill and compact or grout burrows.					
Inspector Comment					

No Photos

LM Start	30.81	Rating **	U	Issue No.	1207
LM End	31.06	Issue Type +	Ma	Location *	LS
Category	Earthen Levee			GPS Latitude/Longitude	
				Start	End
Item	Erosion / Bank Caving			37.021615 °	37.018428 °
				-120.437587 °	-120.435378 °
DWR ID	DWR_NA0010_06_s _ 2015_1207				
Comment Code					
E1 : Note and monitor erosion site.					
Inspector Comment					
Landward erosion greater than 1" in depth and greater than 3" in length. Erosion caused by livestock traffic.					

Photo 1 of 2 : SP_2016_NA0010_124_1207_20160512_00031.jpg



Looking northeast at livestock erosion on landward slope.

* Location		** Rating		+ Issue Type	
LS : Land Side	N/A : Not Applicable	A : Acceptable	N : Not Inspected/Rated	Ma : Maintenance Deficiency	
WS : Water Side		M : Minimally Acceptable	C : Corrected	Ob : Design & System Obsolescence	
CR : Crown		U : Unacceptable	A/W : Acceptable but Monitor & Maintain	En : Enforcement	

**Flood Control Project Maintenance
Levee Inspections**

Maintenance Issue Types Only, Levee Inspection Report By Mile - Spring 2016

Lower San Joaquin Levee District

Waterway	Bank	Unit Miles	Inspection Start/End	Inspector
Unit No. 06 East Side Bypass	Left	36.47	05/18/2016 05/19/2016	Richard Willoughby

LM Start	30.81	Rating **	U	Issue No.	1207 (cont)	
LM End	31.06	Issue Type +	Ma	Location *	LS	
Category	Earthen Levee			GPS Latitude/Longitude		
				Start		End
Item	Erosion / Bank Caving			37.021615 °	37.018428 °	
				-120.437587 °	-120.435378 °	
DWR ID	DWR_NA0010_06_s _ 2015_1207					
Comment Code						
E1 : Note and monitor erosion site.						
Inspector Comment						
Landward erosion greater than 1" in depth and greater than 3" in length.						
Erosion caused by livestock traffic.						

Photo 2 of 2 : SP_2016_NA0010_124_1207_20160512_00032.jpg



Looking south at livestock erosion on landward slope.

LM Start	31.10	Rating **	U	Issue No.	2
LM End	31.10	Issue Type +	Ma	Location *	LS
Category	Earthen Levee			GPS Latitude/Longitude	
				Start	End
Item	Animal Control			37.017955 °	37.017955 °
				-120.435017 °	-120.435017 °
DWR ID	DWR_NA0010_06_s _ 2012_2				
Comment Code					
A1 : Exterminate rodents and backfill and compact or grout burrows.					
Inspector Comment					

Photo 1 of 2 : SP_2016_NA0010_124_2_20160512_00001.jpg



Looking west at rodent holes on landside slope and toe near fence line.

LM Start	31.10	Rating **	U	Issue No.	2 (cont)
LM End	31.10	Issue Type +	Ma	Location *	LS

Photo 2 of 2 : SP_2016_NA0010_124_2_20160512_00002.jpg



Looking at typical rodent hole on landside slope.

* Location LS : Land Side N/A : Not Applicable WS : Water Side CR : Crown		** Rating A : Acceptable M : Minimally Acceptable U : Unacceptable		N : Not Inspected/Rated C : Corrected A/W : Acceptable but Monitor & Maintain		+ Issue Type Ma : Maintenance Deficiency Ob : Design & System Obsolescence En : Enforcement	
---------------------------------------------------------------------------------------	--	-----------------------------------------------------------------------------	--	-------------------------------------------------------------------------------------	--	------------------------------------------------------------------------------------------------------	--

**Flood Control Project Maintenance
Levee Inspections**

Maintenance Issue Types Only, Levee Inspection Report By Mile - Spring 2016

Lower San Joaquin Levee District

Waterway	Bank	Unit Miles	Inspection Start/End	Inspector
Unit No. 07 Bear Creek Bypass	Right	3.62	05/16/2016 05/16/2016	Richard Willoughby

LM Start	0.00	Rating **	M	Issue No.	9
LM End	3.61	Issue Type +	Ma	Location *	LS
Category	Earthen Levee			GPS Latitude/Longitude	
				Start	End
Item	Vegetation			37.255613 °	37.254805 °
				-120.772341 °	-120.719687 °
DWR ID	DWR_NA0010_07_s _ 2016_9				
Comment Code					
V1 : Control annual grass and weeds on the levee slopes and easements.					
Inspector Comment					

No Photos

LM Start	0.00	Rating **	M	Issue No.	13
LM End	3.61	Issue Type +	Ma	Location *	WS
Category	Earthen Levee			GPS Latitude/Longitude	
				Start	End
Item	Vegetation			37.255613 °	37.254808 °
				-120.772341 °	-120.719686 °
DWR ID	DWR_NA0010_07_s _ 2016_13				
Comment Code					
V1 : Control annual grass and weeds on the levee slopes and easements.					
Inspector Comment					

No Photos

LM Start	0.50	Rating **	M	Issue No.	29
LM End	0.50	Issue Type +	Ma	Location *	LS
Category	Earthen Levee			GPS Latitude/Longitude	
				Start	End
Item	Animal Control			37.258722 °	37.258722 °
				-120.764867 °	-120.764867 °
DWR ID	DWR_NA0010_07_s _ 2012_29				
Comment Code					
A3 : No rodents visible, but rodent burrows visible; need to backfill and compact or grout burrows.					
Inspector Comment					
Several rodent holes noted on landward and waterward slope and shoulder.					

Photo 1 of 1 : SP_2016_NA0010_125_29_20160512_00011.jpg



Looking at typical view of rodent holes on landward slope.

* Location LS : Land Side N/A : Not Applicable WS : Water Side CR : Crown		** Rating A : Acceptable M : Minimally Acceptable U : Unacceptable		N : Not Inspected/Rated C : Corrected A/W : Acceptable but Monitor & Maintain		+ Issue Type Ma : Maintenance Deficiency Ob : Design & System Obsolescence En : Enforcement	
---------------------------------------------------------------------------------------	--	-----------------------------------------------------------------------------	--	-------------------------------------------------------------------------------------	--	------------------------------------------------------------------------------------------------------	--

**Flood Control Project Maintenance
Levee Inspections**

Maintenance Issue Types Only, Levee Inspection Report By Mile - Spring 2016

Lower San Joaquin Levee District

Waterway	Bank	Unit Miles	Inspection Start/End	Inspector
Unit No. 07 Bear Creek Bypass	Right	3.62	05/16/2016 05/16/2016	Richard Willoughby

LM Start	0.85	Rating **	C	Issue No.	10
LM End	0.85	Issue Type +	Ma	Location *	WS
Category	Interior Drainage & Piping Systems			GPS Latitude/Longitude	
				Start	End
Item	Flap Gates			37.262991 °	37.262991 °
				-120.761711 °	-120.761711 °
DWR ID	DWR_NA0010_07_f_2015_10				
Comment Code					
Inspector Comment					

No Photos

LM Start	1.22	Rating **	M	Issue No.	1
LM End	1.22	Issue Type +	Ma	Location *	LS
Category	Earthen Levee			GPS Latitude/Longitude	
				Start	End
Item	Animal Control			37.264387 °	37.264387 °
				-120.755805 °	-120.755805 °
DWR ID	DWR_NA0010_07_f_2012_1				
Comment Code					
A1 : Exterminate rodents and backfill and compact or grout burrows.					
Inspector Comment					

Photo 1 of 2 : SP_2016_NA0010_125_1_20160512_00001.jpg



Looking north at several rodent holes on landward slope.

LM Start	1.22	Rating **	M	Issue No.	1 (cont)
LM End	1.22	Issue Type +	Ma	Location *	LS

Photo 2 of 2 : SP_2016_NA0010_125_1_20160512_00002.jpg



Looking at east at active rodent holes on landside berm.

* Location LS : Land Side N/A : Not Applicable WS : Water Side CR : Crown		** Rating A : Acceptable M : Minimally Acceptable U : Unacceptable		N : Not Inspected/Rated C : Corrected A/W : Acceptable but Monitor & Maintain		+ Issue Type Ma : Maintenance Deficiency Ob : Design & System Obsolescence En : Enforcement	
----------------------------------------------------------------------------------------------	--	------------------------------------------------------------------------------------	--	-------------------------------------------------------------------------------------	--	-------------------------------------------------------------------------------------------------------------	--

**Flood Control Project Maintenance
Levee Inspections**

Maintenance Issue Types Only, Levee Inspection Report By Mile - Spring 2016

Lower San Joaquin Levee District

Waterway	Bank	Unit Miles	Inspection Start/End	Inspector
Unit No. 07 Bear Creek Bypass	Right	3.62	05/16/2016 05/16/2016	Richard Willoughby

LM Start	1.25	Rating **	A/W	Issue No.	11
LM End	1.25	Issue Type +	Ma	Location *	LS
Category	Earthen Levee			GPS Latitude/Longitude	
				Start	End
Item	Slope Stability			37.264367 °	37.264367 °
				-120.755218 °	-120.755218 °
DWR ID	DWR_NA0010_07_f_2014_11				
Comment Code					
S2 : Repair the levee slope damaged by foot traffic and prevent access where possible.					
Inspector Comment					

No Photos

LM Start	1.51	Rating **	M	Issue No.	6
LM End	1.51	Issue Type +	Ma	Location *	LS
Category	Earthen Levee			GPS Latitude/Longitude	
				Start	End
Item	Animal Control			37.263885 °	37.263885 °
				-120.750527 °	-120.750527 °
DWR ID	DWR_NA0010_07_s_2014_6				
Comment Code					
A1 : Exterminate rodents and backfill and compact or grout burrows.					
Inspector Comment					

No Photos

LM Start	1.71	Rating **	M	Issue No.	5
LM End	1.72	Issue Type +	Ma	Location *	LS
Category	Earthen Levee			GPS Latitude/Longitude	
				Start	End
Item	Animal Control			37.262570 °	37.262467 °
				-120.747453 °	-120.747180 °
DWR ID	DWR_NA0010_07_s_2013_5				
Comment Code					
A1 : Exterminate rodents and backfill and compact or grout burrows.					
Inspector Comment					

No Photos

* Location		** Rating		+ Issue Type	
LS : Land Side	N/A : Not Applicable	A : Acceptable	N : Not Inspected/Rated	Ma : Maintenance Deficiency	
WS : Water Side		M : Minimally Acceptable	C : Corrected	Ob : Design & System Obsolescence	
CR : Crown		U : Unacceptable	A/W : Acceptable but Monitor & Maintain	En : Enforcement	

**Flood Control Project Maintenance
Levee Inspections**

Maintenance Issue Types Only, Levee Inspection Report By Mile - Spring 2016

Lower San Joaquin Levee District

Waterway	Bank	Unit Miles	Inspection Start/End	Inspector
Unit No. 07 Bear Creek Bypass	Right	3.62	05/16/2016 05/16/2016	Richard Willoughby

LM Start	1.94	Rating **	A/W	Issue No.	187
LM End	1.94	Issue Type +	Ma	Location *	CR
Category	Earthen Levee			GPS Latitude/Longitude	
				Start	End
Item	Animal Control			37.261032 °	37.261032 °
				-120.743705 °	-120.743705 °
DWR ID	DWR_NA0010_07_s_2015_187				
Comment Code					
A3 : No rodents visible, but rodent burrows visible; need to backfill and compact or grout burrows.					
Inspector Comment					

Photo 1 of 1 : SP_2016_NA0010_125_187_20160512_00012.jpg



Looking at several rodent holes on levee crown.

LM Start	2.09	Rating **	M	Issue No.	12
LM End	2.09	Issue Type +	Ma	Location *	LS
Category	Earthen Levee			GPS Latitude/Longitude	
				Start	End
Item	Animal Control			37.259187 °	37.259187 °
				-120.742551 °	-120.742551 °
DWR ID	DWR_NA0010_07_f_2014_12				
Comment Code					
A3 : No rodents visible, but rodent burrows visible; need to backfill and compact or grout burrows.					
Inspector Comment					
Rodent activity noted next to fence post.					

Photo 1 of 2 : SP_2016_NA0010_125_12_20160512_00010.jpg



Looking east at rodent hole next to fence post on landward shoulder.

LM Start	2.09	Rating **	M	Issue No.	12 (cont)
LM End	2.09	Issue Type +	Ma	Location *	LS

Photo 2 of 2 : SP_2016_NA0010_125_12_20160523_00025.jpg



Looking at rodent activity next to fence post

* Location LS : Land Side N/A : Not Applicable WS : Water Side CR : Crown		** Rating A : Acceptable M : Minimally Acceptable U : Unacceptable		N : Not Inspected/Rated C : Corrected A/W : Acceptable but Monitor & Maintain		+ Issue Type Ma : Maintenance Deficiency Ob : Design & System Obsolescence En : Enforcement	
---------------------------------------------------------------------------------------	--	-----------------------------------------------------------------------------	--	-------------------------------------------------------------------------------------	--	------------------------------------------------------------------------------------------------------	--

**Flood Control Project Maintenance
Levee Inspections**

Maintenance Issue Types Only, Levee Inspection Report By Mile - Spring 2016

Lower San Joaquin Levee District

Waterway	Bank	Unit Miles	Inspection Start/End	Inspector
Unit No. 08 Bear Creek Bypass	Left	3.63	05/17/2016 05/17/2016	Richard Willoughby

LM Start	0.00	Rating **	M	Issue No.	14
LM End	3.63	Issue Type +	Ma	Location *	WS
Category	Earthen Levee			GPS Latitude/Longitude	
				Start	End
Item	Vegetation			37.253099 °	37.254108 °
				-120.768445 °	-120.718832 °
DWR ID	DWR_NA0010_08_s _ 2016_14				
Comment Code					
V1 : Control annual grass and weeds on the levee slopes and easements.					
Inspector Comment					

No Photos

LM Start	0.00	Rating **	M	Issue No.	13
LM End	3.63	Issue Type +	Ma	Location *	LS
Category	Earthen Levee			GPS Latitude/Longitude	
				Start	End
Item	Vegetation			37.253100 °	37.254108 °
				-120.768444 °	-120.718832 °
DWR ID	DWR_NA0010_08_s _ 2016_13				
Comment Code					
V1 : Control annual grass and weeds on the levee slopes and easements.					
Inspector Comment					

No Photos

LM Start	0.43	Rating **	M	Issue No.	15
LM End	0.43	Issue Type +	Ma	Location *	WS
Category	Earthen Levee			GPS Latitude/Longitude	
				Start	End
Item	Animal Control			37.257019 °	37.257019 °
				-120.764488 °	-120.764488 °
DWR ID	DWR_NA0010_08_s _ 2016_15				
Comment Code					
A1 : Exterminate rodents and backfill and compact or grout burrows.					
Inspector Comment					

No Photos

* Location		** Rating		+ Issue Type	
LS : Land Side	N/A : Not Applicable	A : Acceptable	N : Not Inspected/Rated	Ma : Maintenance Deficiency	
WS : Water Side		M : Minimally Acceptable	C : Corrected	Ob : Design & System Obsolescence	
CR : Crown		U : Unacceptable	A/W : Acceptable but Monitor & Maintain	En : Enforcement	

**Flood Control Project Maintenance
Levee Inspections**

Maintenance Issue Types Only, Levee Inspection Report By Mile - Spring 2016

Lower San Joaquin Levee District

Waterway	Bank	Unit Miles	Inspection Start/End	Inspector
Unit No. 08 Bear Creek Bypass	Left	3.63	05/17/2016 05/17/2016	Richard Willoughby

LM Start	1.16	Rating **	M	Issue No.	5
LM End	1.16	Issue Type +	Ma	Location *	CR
Category	Earthen Levee			GPS Latitude/Longitude	
				Start	End
Item	Crown Surface / Depressions / Rutting			37.263243 °	37.263243 °
				-120.756372 °	-120.756372 °
DWR ID	DWR_NA0010_08_s _ 2016_5				
Comment Code					
C2 : Repair depressions or ruts in the crown or slope.					
Inspector Comment					
Depression noted on levee crown.					

Photo 1 of 1 : SP_2016_NA0010_126_5_20160523_00025.jpg



Looking west at depression on toward landward shoulder.

LM Start	1.20	Rating **	M	Issue No.	2
LM End	1.20	Issue Type +	Ma	Location *	LS
Category	Earthen Levee			GPS Latitude/Longitude	
				Start	End
Item	Animal Control			37.263182 °	37.263183 °
				-120.755650 °	-120.755637 °
DWR ID	DWR_NA0010_08_s _ 2012_2				
Comment Code					
A3 : No rodents visible, but rodent burrows visible; need to backfill and compact or grout burrows.					
Inspector Comment					

No Photos

LM Start	1.38	Rating **	M	Issue No.	8
LM End	1.38	Issue Type +	Ma	Location *	LS
Category	Earthen Levee			GPS Latitude/Longitude	
				Start	End
Item	Animal Control			37.263175 °	37.263175 °
				-120.752307 °	-120.752307 °
DWR ID	DWR_NA0010_08_s _ 2013_8				
Comment Code					
A1 : Exterminate rodents and backfill and compact or grout burrows.					
Inspector Comment					

Photo 1 of 1 : SP_2016_NA0010_126_8_20160512_00003.jpg



Looking west at rodent holes on landward slope.

* Location		** Rating		+ Issue Type	
LS : Land Side	N/A : Not Applicable	A : Acceptable	N : Not Inspected/Rated	Ma : Maintenance Deficiency	
WS : Water Side		M : Minimally Acceptable	C : Corrected	Ob : Design & System Obsolescence	
CR : Crown		U : Unacceptable	A/W : Acceptable but Monitor & Maintain	En : Enforcement	

**Flood Control Project Maintenance
Levee Inspections**

Maintenance Issue Types Only, Levee Inspection Report By Mile - Spring 2016

Lower San Joaquin Levee District

Waterway	Bank	Unit Miles	Inspection Start/End	Inspector
Unit No. 08 Bear Creek Bypass	Left	3.63	05/17/2016 05/17/2016	Richard Willoughby

LM Start	1.61	Rating **	M	Issue No.	1
LM End	1.61	Issue Type +	Ma	Location *	WS
Category	Earthen Levee			GPS Latitude/Longitude	
				Start	End
Item	Animal Control			37.261842 °	37.261842 °
				-120.748510 °	-120.748510 °
DWR ID	DWR_NA0010_08_s _ 2012_1				
Comment Code					
A1 : Exterminate rodents and backfill and compact or grout burrows.					
Inspector Comment					

No Photos

LM Start	2.07	Rating **	M	Issue No.	7
LM End	2.13	Issue Type +	Ma	Location *	LS
Category	Earthen Levee			GPS Latitude/Longitude	
				Start	End
Item	Animal Control			37.258063 °	37.257688 °
				-120.742460 °	-120.741573 °
DWR ID	DWR_NA0010_08_s _ 2012_7				
Comment Code					
A1 : Exterminate rodents and backfill and compact or grout burrows.					
Inspector Comment					
No rodent activity and no rodent holes noted.					

Photo 1 of 1 : SP_2016_NA0010_126_7_20160512_00002.jpg



Looking at typical rodent hole on landside slope near headwall.

LM Start	3.40	Rating **	M	Issue No.	3
LM End	3.54	Issue Type +	Ma	Location *	LS
Category	Earthen Levee			GPS Latitude/Longitude	
				Start	End
Item	Animal Control			37.253052 °	37.253600 °
				-120.722647 °	-120.720198 °
DWR ID	DWR_NA0010_08_s _ 2012_3				
Comment Code					
A3 : No rodents visible, but rodent burrows visible; need to backfill and compact or grout burrows.					
Inspector Comment					
Noted several rodent holes on landward slope within this reach.					

Photo 1 of 1 : SP_2016_NA0010_126_3_20160512_00001.jpg



Looking at typical view of rodent holes on landward slope.

* Location LS : Land Side N/A : Not Applicable WS : Water Side CR : Crown		** Rating A : Acceptable M : Minimally Acceptable U : Unacceptable		N : Not Inspected/Rated C : Corrected A/W : Acceptable but Monitor & Maintain		+ Issue Type Ma : Maintenance Deficiency Ob : Design & System Obsolescence En : Enforcement	
---------------------------------------------------------------------------------------	--	-----------------------------------------------------------------------------	--	-------------------------------------------------------------------------------------	--	------------------------------------------------------------------------------------------------------	--

**Flood Control Project Maintenance
Levee Inspections**

Maintenance Issue Types Only, Levee Inspection Report By Mile - Spring 2016

Lower San Joaquin Levee District

Waterway	Bank	Unit Miles	Inspection Start/End	Inspector
Unit No. 09 Owens Creek Bypass	Right	0.87	05/17/2016 05/17/2016	Richard Willoughby

LM Start	0.00	Rating **	M	Issue No.	3
LM End	0.87	Issue Type +	Ma	Location *	LS
Category	Earthen Levee			GPS Latitude/Longitude	
				Start	End
Item	Vegetation			37.220261 °	37.220065 °
				-120.713028 °	-120.698350 °
DWR ID	DWR_NA0010_09_s _ 2016_3				
Comment Code					
V1 : Control annual grass and weeds on the levee slopes and easements.					
Inspector Comment					

Photo 1 of 1 : SP_2016_NA0010_127_3_20160523_00008.jpg



Looking west at typical view of waterward slope.

LM Start	0.00	Rating **	M	Issue No.	4
LM End	0.87	Issue Type +	Ma	Location *	WS
Category	Earthen Levee			GPS Latitude/Longitude	
				Start	End
Item	Vegetation			37.220262 °	37.220065 °
				-120.713028 °	-120.698350 °
DWR ID	DWR_NA0010_09_s _ 2016_4				
Comment Code					
V1 : Control annual grass and weeds on the levee slopes and easements.					
Inspector Comment					

Photo 1 of 1 : SP_2016_NA0010_127_4_20160523_00007.jpg



Looking east at typical view of waterward slope.

LM Start	0.87	Rating **	U	Issue No.	5
LM End	0.87	Issue Type +	Ma	Location *	CR
Category	Earthen Levee			GPS Latitude/Longitude	
				Start	End
Item	Repair Gates			37.220065 °	37.220065 °
				-120.698350 °	-120.698350 °
DWR ID	DWR_NA0010_09_s _ 2016_5				
Comment Code					
Inspector Comment					
Gate hinges broken. Safety hazard.					

Photo 1 of 1 : SP_2016_NA0010_127_5_20160523_00009.jpg



Looking at missing hinges on fence post.

* Location
LS : Land Side N/A : Not Applicable
WS : Water Side
CR : Crown

** Rating
A : Acceptable N : Not Inspected/Rated
M : Minimally Acceptable C : Corrected
U : Unacceptable A/W : Acceptable but Monitor & Maintain

+ Issue Type
Ma : Maintenance Deficiency
Ob : Design & System Obsolescence
En : Enforcement

**Flood Control Project Maintenance
Levee Inspections**

Maintenance Issue Types Only, Levee Inspection Report By Mile - Spring 2016

Lower San Joaquin Levee District

Waterway	Bank	Unit Miles	Inspection Start/End	Inspector
Unit No. 10 Owens Creek Bypass	Left	0.80	05/17/2016 05/17/2016	Richard Willoughby

LM Start	0.00	Rating **	M	Issue No.	3
LM End	0.79	Issue Type +	Ma	Location *	LS
Category	Earthen Levee			GPS Latitude/Longitude	
				Start	End
Item	Vegetation			37.217903 °	37.219366 °
				-120.711439 °	-120.698019 °
DWR ID	DWR_NA0010_10_s_2016_3				
Comment Code					
V1 : Control annual grass and weeds on the levee slopes and easements.					
Inspector Comment					

Photo 1 of 1 : SP_2016_NA0010_128_3_20160523_00005.jpg



Looking at typical of landward slope.

LM Start	0.00	Rating **	M	Issue No.	4
LM End	0.79	Issue Type +	Ma	Location *	WS
Category	Earthen Levee			GPS Latitude/Longitude	
				Start	End
Item	Vegetation			37.217903 °	37.219366 °
				-120.711439 °	-120.698018 °
DWR ID	DWR_NA0010_10_s_2016_4				
Comment Code					
V1 : Control annual grass and weeds on the levee slopes and easements.					
Inspector Comment					

Photo 1 of 1 : SP_2016_NA0010_128_4_20160523_00006.jpg



Looking at typical view of waterward slope.

* Location
LS : Land Side N/A : Not Applicable
WS : Water Side
CR : Crown

** Rating
A : Acceptable
M : Minimally Acceptable
U : Unacceptable
N : Not Inspected/Rated
C : Corrected
A/W : Acceptable but Monitor & Maintain

+ Issue Type
Ma : Maintenance Deficiency
Ob : Design & System Obsolescence
En : Enforcement

**Flood Control Project Maintenance
Levee Inspections**

Maintenance Issue Types Only, Levee Inspection Report By Mile - Spring 2016

Lower San Joaquin Levee District

Waterway	Bank	Unit Miles	Inspection Start/End	Inspector
Unit No. 11 Mariposa Bypass	Right	3.31	05/19/2016 05/19/2016	Richard Willoughby

LM Start	0.00	Rating **	A	Issue No.	9
LM End	3.31	Issue Type +	Ma	Location *	LS
Category	Earthen Levee			GPS Latitude/Longitude	
				Start	End
Item	Vegetation			37.202748 °	37.202310 °
				-120.755210 °	-120.695281 °
DWR ID	DWR_NA0010_11_s _ 2016_9				
Comment Code					
V1 : Control annual grass and weeds on the levee slopes and easements.					
Inspector Comment					

Photo 1 of 1 : SP_2016_NA0010_129_9_20160523_00023.jpg



Looking at typical view of landward slope.

LM Start	0.00	Rating **	A	Issue No.	10
LM End	3.31	Issue Type +	Ma	Location *	WS
Category	Earthen Levee			GPS Latitude/Longitude	
				Start	End
Item	Vegetation			37.202748 °	37.202310 °
				-120.755210 °	-120.695281 °
DWR ID	DWR_NA0010_11_s _ 2016_10				
Comment Code					
V1 : Control annual grass and weeds on the levee slopes and easements.					
Inspector Comment					

Photo 1 of 1 : SP_2016_NA0010_129_10_20160523_00022.jpg



Looking east at typical view of waterward slope.

LM Start	1.77	Rating **	M	Issue No.	1
LM End	1.77	Issue Type +	Ma	Location *	LS
Category	Earthen Levee			GPS Latitude/Longitude	
				Start	End
Item	Animal Control			37.202743 °	37.202743 °
				-120.723187 °	-120.723187 °
DWR ID	DWR_NA0010_11_s _ 2012_1				
Comment Code					
A3 : No rodents visible, but rodent burrows visible; need to backfill and compact or grout burrows.					
Inspector Comment					

No Photos

* Location		** Rating		+ Issue Type	
LS : Land Side	N/A : Not Applicable	A : Acceptable	N : Not Inspected/Rated	Ma : Maintenance Deficiency	
WS : Water Side		M : Minimally Acceptable	C : Corrected	Ob : Design & System Obsolescence	
CR : Crown		U : Unacceptable	A/W : Acceptable but Monitor & Maintain	En : Enforcement	

**Flood Control Project Maintenance
Levee Inspections**

Maintenance Issue Types Only, Levee Inspection Report By Mile - Spring 2016

Lower San Joaquin Levee District

Waterway	Bank	Unit Miles	Inspection Start/End	Inspector
Unit No. 12 Mariposa Bypass	Left	3.33	05/19/2016 05/19/2016	Richard Willoughby

LM Start	0.00	Rating **	A	Issue No.	10
LM End	3.33	Issue Type +	Ma	Location *	WS
Category	Earthen Levee			GPS Latitude/Longitude	
				Start	End
Item	Vegetation			37.200939 °	37.200973 °
				-120.755179 °	-120.694883 °
DWR ID	DWR_NA0010_12_s_2016_10				
Comment Code					
V1 : Control annual grass and weeds on the levee slopes and easements.					
Inspector Comment					

Photo 1 of 1 : SP_2016_NA0010_130_10_20160523_00022.jpg



Looking at typical view of waterward slope.

LM Start	0.00	Rating **	A	Issue No.	11	
LM End	3.33	Issue Type +	Ma	Location *	LS	
Category	Earthen Levee			GPS Latitude/Longitude		
				Start		End
Item	Vegetation			37.200939 °		37.200973 °
				-120.755178 °		-120.694883 °
DWR ID	DWR_NA0010_12_s_2016_11					
Comment Code						
V1 : Control annual grass and weeds on the levee slopes and easements.						
Inspector Comment						

Photo 1 of 1 : SP_2016_NA0010_130_11_20160523_00023.jpg



Looking at typical view of landward slope.

LM Start	2.33	Rating **	M	Issue No.	1
LM End	2.33	Issue Type +	Ma	Location *	LS
Category	Earthen Levee			GPS Latitude/Longitude	
				Start	End
Item	Animal Control			37.200907 °	37.200907 °
				-120.712978 °	-120.712978 °
DWR ID	DWR_NA0010_12_s_2012_1				
Comment Code					
A1 : Exterminate rodents and backfill and compact or grout burrows.					
Inspector Comment					

No Photos

* Location LS : Land Side N/A : Not Applicable WS : Water Side CR : Crown		** Rating A : Acceptable M : Minimally Acceptable U : Unacceptable		N : Not Inspected/Rated C : Corrected A/W : Acceptable but Monitor & Maintain		+ Issue Type Ma : Maintenance Deficiency Ob : Design & System Obsolescence En : Enforcement	
----------------------------------------------------------------------------------------------	--	------------------------------------------------------------------------------------	--	-------------------------------------------------------------------------------------	--	-------------------------------------------------------------------------------------------------------------	--

**Flood Control Project Maintenance
Levee Inspections**

Maintenance Issue Types Only, Levee Inspection Report By Mile - Spring 2016

Lower San Joaquin Levee District

Waterway	Bank	Unit Miles	Inspection Start/End	Inspector
Unit No. 13 Ash Slough	Right	1.27	05/17/2016 05/17/2016	Richard Willoughby

LM Start	0.00	Rating **	M	Issue No.	8
LM End	1.26	Issue Type +	Ma	Location *	WS
Category	Earthen Levee			GPS Latitude/Longitude	
				Start	End
Item	Vegetation			37.033723 °	37.046331 °
				-120.442164 °	-120.428130 °
DWR ID	DWR_NA0010_13_s _ 2016_8				
Comment Code					
V1 : Control annual grass and weeds on the levee slopes and easements.					
Inspector Comment					

No Photos

LM Start	0.00	Rating **	M	Issue No.	7
LM End	1.26	Issue Type +	Ma	Location *	LS
Category	Earthen Levee			GPS Latitude/Longitude	
				Start	End
Item	Vegetation			37.033724 °	37.046331 °
				-120.442164 °	-120.428130 °
DWR ID	DWR_NA0010_13_s _ 2016_7				
Comment Code					
V1 : Control annual grass and weeds on the levee slopes and easements.					
Inspector Comment					

No Photos

LM Start	0.15	Rating **	M	Issue No.	3
LM End	0.15	Issue Type +	Ma	Location *	LS
Category	Earthen Levee			GPS Latitude/Longitude	
				Start	End
Item	Animal Control			37.035697 °	37.035697 °
				-120.441197 °	-120.441197 °
DWR ID	DWR_NA0010_13_s _ 2012_3				
Comment Code					
A3 : No rodents visible, but rodent burrows visible; need to backfill and compact or grout burrows.					
Inspector Comment					

No Photos

* Location		** Rating		+ Issue Type	
LS : Land Side	N/A : Not Applicable	A : Acceptable	N : Not Inspected/Rated	Ma : Maintenance Deficiency	
WS : Water Side		M : Minimally Acceptable	C : Corrected	Ob : Design & System Obsolescence	
CR : Crown		U : Unacceptable	A/W : Acceptable but Monitor & Maintain	En : Enforcement	

**Flood Control Project Maintenance
Levee Inspections**

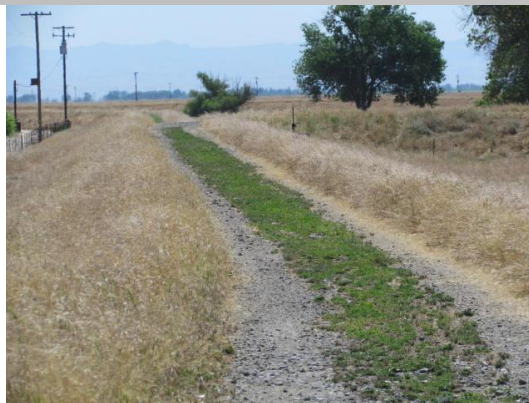
Maintenance Issue Types Only, Levee Inspection Report By Mile - Spring 2016

Lower San Joaquin Levee District

Waterway	Bank	Unit Miles	Inspection Start/End	Inspector
Unit No. 14 Ash Slough	Left	1.28	05/17/2016 05/17/2016	Richard Willoughby

LM Start	0.00	Rating **	M	Issue No.	2
LM End	1.26	Issue Type +	Ma	Location *	CR
Category	Earthen Levee			GPS Latitude/Longitude	
				Start	End
Item	Crown Surface / Depressions / Rutting			37.032379 °	37.045404 °
				-120.441265 °	-120.427749 °
DWR ID	DWR_NA0010_14_f_2012_2				
Comment Code					
C3 : Add appropriate gravel or road base. Grade and compact.					
Inspector Comment					
Control vegetation on levee crown.					

Photo 1 of 1 : SP_2016_NA0010_132_2_20160523_00005.jpg



Looking at typical view of levee crown.

LM Start	0.00	Rating **	M	Issue No.	3
LM End	1.26	Issue Type +	Ma	Location *	LS
Category	Earthen Levee			GPS Latitude/Longitude	
				Start	End
Item	Vegetation			37.032393 °	37.045430 °
				-120.441279 °	-120.427710 °
DWR ID	DWR_NA0010_14_s_2016_3				
Comment Code					
V1 : Control annual grass and weeds on the levee slopes and easements.					
Inspector Comment					

Photo 1 of 1 : SP_2016_NA0010_132_3_20160523_00006.jpg



Looking at typical view of levee slope.

LM Start	0.00	Rating **	M	Issue No.	4
LM End	1.26	Issue Type +	Ma	Location *	WS
Category	Earthen Levee			GPS Latitude/Longitude	
				Start	End
Item	Vegetation			37.032394 °	37.045430 °
				-120.441279 °	-120.427711 °
DWR ID	DWR_NA0010_14_s_2016_4				
Comment Code					
V1 : Control annual grass and weeds on the levee slopes and easements.					
Inspector Comment					

Photo 1 of 1 : SP_2016_NA0010_132_4_20160523_00007.jpg



Looking at typical view of waterward slope.

* Location		** Rating		+ Issue Type	
LS : Land Side	N/A : Not Applicable	A : Acceptable	N : Not Inspected/Rated	Ma : Maintenance Deficiency	
WS : Water Side		M : Minimally Acceptable	C : Corrected	Ob : Design & System Obsolescence	
CR : Crown		U : Unacceptable	A/W : Acceptable but Monitor & Maintain	En : Enforcement	

**Flood Control Project Maintenance
Levee Inspections**

Maintenance Issue Types Only, Levee Inspection Report By Mile - Spring 2016

Lower San Joaquin Levee District

Waterway	Bank	Unit Miles	Inspection Start/End	Inspector
Unit No. 14 Ash Slough	Left	1.28	05/17/2016 05/17/2016	Richard Willoughby

LM Start	1.24	Rating **	M	Issue No.	79
LM End	1.24	Issue Type +	Ma	Location *	LS
Category	Earthen Levee			GPS Latitude/Longitude	
				Start	End
Item	Animal Control			37.045343 °	37.045343 °
				-120.428007 °	-120.428007 °
DWR ID	DWR_NA0010_14_s _ 2015_79				
Comment Code					
A3 : No rodents visible, but rodent burrows visible; need to backfill and compact or grout burrows.					
Inspector Comment					
Noted several rodent holes on landward at this location.					

Photo 1 of 1 : SP_2016_NA0010_132_79_20160512_00001.jpg



Looking at typical view of rodent holes on landward slope.

* Location LS : Land Side N/A : Not Applicable WS : Water Side CR : Crown		** Rating A : Acceptable N : Not Inspected/Rated M : Minimally Acceptable C : Corrected U : Unacceptable A/W : Acceptable but Monitor & Maintain		+ Issue Type Ma : Maintenance Deficiency Ob : Design & System Obsolescence En : Enforcement
----------------------------------------------------------------------------------------------	--	---------------------------------------------------------------------------------------------------------------------------------------------------------------------------------------------------------------	--	-------------------------------------------------------------------------------------------------------------

**Flood Control Project Maintenance
Levee Inspections**

Maintenance Issue Types Only, Levee Inspection Report By Mile - Spring 2016

Lower San Joaquin Levee District

Waterway	Bank	Unit Miles	Inspection Start/End	Inspector
Unit No. 15 Berenda Slough	Right	2.03	05/17/2016 05/17/2016	Richard Willoughby

LM Start	0.00	Rating **	M	Issue No.	4
LM End	1.99	Issue Type +	Ma	Location *	WS
Category	Earthen Levee			GPS Latitude/Longitude	
				Start	End
Item	Vegetation			36.996606 °	36.996587 °
				-120.410410 °	-120.374500 °
DWR ID	DWR_NA0010_15_s _ 2016_4				
Comment Code					
V1 : Control annual grass and weeds on the levee slopes and easements.					
Inspector Comment					

Photo 1 of 1 : SP_2016_NA0010_133_4_20160524_00009.jpg



Looking at typical view of waterward slope.

LM Start	0.00	Rating **	M	Issue No.	3
LM End	1.99	Issue Type +	Ma	Location *	LS
Category	Earthen Levee			GPS Latitude/Longitude	
				Start	End
Item	Vegetation			36.996606 °	36.996587 °
				-120.410409 °	-120.374500 °
DWR ID	DWR_NA0010_15_s _ 2016_3				
Comment Code					
V1 : Control annual grass and weeds on the levee slopes and easements.					
Inspector Comment					

Photo 1 of 1 : SP_2016_NA0010_133_3_20160524_00010.jpg



Looking at typical view of landward slope.

LM Start	0.01	Rating **	M	Issue No.	11
LM End	1.99	Issue Type +	Ma	Location *	CR
Category	Earthen Levee			GPS Latitude/Longitude	
				Start	End
Item	Crown Surface / Depressions / Rutting			36.996547 °	36.996587 °
				-120.410220 °	-120.374503 °
DWR ID	DWR_NA0010_15_s _ 2012_11				
Comment Code					
C1 : Add appropriate material and re-grade the levee to bring the crown above the design elevation.					
Inspector Comment					
Control vegetation on levee crown.					

Photo 1 of 2 : SP_2016_NA0010_133_11_20160512_00001.jpg



Looking east at typical view of levee in compliance with standards. Fall 2015

* Location LS : Land Side N/A : Not Applicable WS : Water Side CR : Crown		** Rating A : Acceptable M : Minimally Acceptable U : Unacceptable N : Not Inspected/Rated C : Corrected A/W : Acceptable but Monitor & Maintain		+ Issue Type Ma : Maintenance Deficiency Ob : Design & System Obsolescence En : Enforcement	
----------------------------------------------------------------------------------------------	--	---------------------------------------------------------------------------------------------------------------------------------------------------------------------------	--	-------------------------------------------------------------------------------------------------------------	--

**Flood Control Project Maintenance
Levee Inspections**

Maintenance Issue Types Only, Levee Inspection Report By Mile - Spring 2016

Lower San Joaquin Levee District

Waterway	Bank	Unit Miles	Inspection Start/End	Inspector
Unit No. 15 Berenda Slough	Right	2.03	05/17/2016 05/17/2016	Richard Willoughby

LM Start	0.01	Rating **	M	Issue No.	11 (cont)	
LM End	1.99	Issue Type +	Ma	Location *	CR	
Category	Earthen Levee			GPS Latitude/Longitude		
				Start		End
Item	Crown Surface / Depressions / Rutting			36.996547 °		36.996587 °
				-120.410220 °		-120.374503 °
DWR ID	DWR_NA0010_15_s _ 2012_11					
Comment Code						
C1 : Add appropriate material and re-grade the levee to bring the crown above the design elevation.						
Inspector Comment						
Control vegetation on levee crown.						

Photo 2 of 2 : SP_2016_NA0010_133_11_20160512_00002.jpg



Looking east at vegetation on levee crown. Spring 2015

* Location LS : Land Side N/A : Not Applicable WS : Water Side CR : Crown		** Rating A : Acceptable N : Not Inspected/Rated M : Minimally Acceptable C : Corrected U : Unacceptable A/W : Acceptable but Monitor & Maintain		+ Issue Type Ma : Maintenance Deficiency Ob : Design & System Obsolescence En : Enforcement
----------------------------------------------------------------------------------------------	--	---------------------------------------------------------------------------------------------------------------------------------------------------------------------------------------------------------------	--	-------------------------------------------------------------------------------------------------------------

**Flood Control Project Maintenance
Levee Inspections**

Maintenance Issue Types Only, Levee Inspection Report By Mile - Spring 2016

Lower San Joaquin Levee District

Waterway	Bank	Unit Miles	Inspection Start/End	Inspector
Unit No. 16 Berenda Slough	Left	1.96	05/18/2016 05/18/2016	Richard Willoughby

LM Start	0.00	Rating **	M	Issue No.	7
LM End	1.42	Issue Type +	Ma	Location *	WS
Category	Earthen Levee			GPS Latitude/Longitude	
				Start	End
Item	Vegetation			36.995374 °	36.995468 °
				-120.408913 °	-120.383341 °
DWR ID	DWR_NA0010_16_s _ 2016_7				
Comment Code					
V1 : Control annual grass and weeds on the levee slopes and easements.					
Inspector Comment					

No Photos

LM Start	0.00	Rating **	M	Issue No.	3
LM End	1.42	Issue Type +	Ma	Location *	LS
Category	Earthen Levee			GPS Latitude/Longitude	
				Start	End
Item	Vegetation			36.995374 °	36.995468 °
				-120.408912 °	-120.383341 °
DWR ID	DWR_NA0010_16_s _ 2016_3				
Comment Code					
V1 : Control annual grass and weeds on the levee slopes and easements.					
Inspector Comment					

No Photos

LM Start	0.01	Rating **	M	Issue No.	14
LM End	1.96	Issue Type +	Ma	Location *	CR
Category	Earthen Levee			GPS Latitude/Longitude	
				Start	End
Item	Crown Surface / Depressions / Rutting			36.995388 °	36.995507 °
				-120.408738 °	-120.373592 °
DWR ID	DWR_NA0010_16_s _ 2012_14				
Comment Code					
C1 : Add appropriate material and re-grade the levee to bring the crown above the design elevation.					
Inspector Comment					
Control vegetation and regrade levee crown.					

Photo 1 of 1 : SP_2016_NA0010_134_14_20160524_00008.jpg



Looking at typical view of levee crown.

* Location LS : Land Side N/A : Not Applicable WS : Water Side CR : Crown		** Rating A : Acceptable M : Minimally Acceptable U : Unacceptable N : Not Inspected/Rated C : Corrected A/W : Acceptable but Monitor & Maintain		+ Issue Type Ma : Maintenance Deficiency Ob : Design & System Obsolescence En : Enforcement	
---------------------------------------------------------------------------------------	--	--------------------------------------------------------------------------------------------------------------------------------------------------------------------	--	------------------------------------------------------------------------------------------------------	--

**Flood Control Project Maintenance
Levee Inspections**

Maintenance Issue Types Only, Levee Inspection Report By Mile - Spring 2016

Lower San Joaquin Levee District

Waterway	Bank	Unit Miles	Inspection Start/End	Inspector
Unit No. 16 Berenda Slough	Left	1.96	05/18/2016 05/18/2016	Richard Willoughby

LM Start	0.93	Rating **	M	Issue No.	92
LM End	0.93	Issue Type +	Ma	Location *	LS
Category	Earthen Levee			GPS Latitude/Longitude	
				Start	End
Item	Animal Control			36.995439 °	36.995439 °
				-120.392146 °	-120.392146 °
DWR ID	DWR_NA0010_16_s _ 2015_92				
Comment Code					
A3 : No rodents visible, but rodent burrows visible; need to backfill and compact or grout burrows.					
Inspector Comment					
Notice several rodent holes within this section.					

Photo 1 of 1 : SP_2016_NA0010_134_92_20160512_00004.jpg



Looking at several rodent holes on landward slope.

LM Start	1.43	Rating **	U	Issue No.	5
LM End	1.96	Issue Type +	Ma	Location *	LS
Category	Earthen Levee			GPS Latitude/Longitude	
				Start	End
Item	Vegetation			36.995466 °	36.995487 °
				-120.383089 °	-120.373596 °
DWR ID	DWR_NA0010_16_s _ 2016_5				
Comment Code					
V1 : Control annual grass and weeds on the levee slopes and easements.					
Inspector Comment					

Photo 1 of 1 : SP_2016_NA0010_134_5_20160524_00010.jpg



Looking west at dense veg on landward slope.

LM Start	1.43	Rating **	U	Issue No.	6
LM End	1.96	Issue Type +	Ma	Location *	WS
Category	Earthen Levee			GPS Latitude/Longitude	
				Start	End
Item	Vegetation			36.995466 °	36.995487 °
				-120.383089 °	-120.373595 °
DWR ID	DWR_NA0010_16_s _ 2016_6				
Comment Code					
V1 : Control annual grass and weeds on the levee slopes and easements.					
Inspector Comment					

Photo 1 of 1 : SP_2016_NA0010_134_6_20160524_00011.jpg



Looking west at dense veg on waterward slope.

* Location LS : Land Side N/A : Not Applicable WS : Water Side CR : Crown		** Rating A : Acceptable M : Minimally Acceptable U : Unacceptable		N : Not Inspected/Rated C : Corrected A/W : Acceptable but Monitor & Maintain		+ Issue Type Ma : Maintenance Deficiency Ob : Design & System Obsolescence En : Enforcement	
---------------------------------------------------------------------------------------	--	-----------------------------------------------------------------------------	--	-------------------------------------------------------------------------------------	--	------------------------------------------------------------------------------------------------------	--

**Flood Control Project Maintenance
Levee Inspections**

Maintenance Issue Types Only, Levee Inspection Report By Mile - Spring 2016

Lower San Joaquin Levee District

Waterway	Bank	Unit Miles	Inspection Start/End	Inspector
Unit No. 16 Berenda Slough	Left	1.96	05/18/2016 05/18/2016	Richard Willoughby

LM Start	1.68	Rating **	M	Issue No.	4
LM End	1.68	Issue Type +	Ma	Location *	LS
Category	Earthen Levee			GPS Latitude/Longitude	
				Start	End
Item	Animal Control			36.995503 °	36.995503 °
				-120.378579 °	-120.378579 °
DWR ID	DWR_NA0010_16_s_2014_4				
Comment Code					
A3 : No rodents visible, but rodent burrows visible; need to backfill and compact or grout burrows.					
Inspector Comment					

No Photos

LM Start	1.77	Rating **	U	Issue No.	2
LM End	1.77	Issue Type +	Ma	Location *	LS
Category	Earthen Levee			GPS Latitude/Longitude	
				Start	End
Item	Animal Control			36.995487 °	36.995487 °
				-120.377054 °	-120.377054 °
DWR ID	DWR_NA0010_16_f_2014_2				
Comment Code					
A3 : No rodents visible, but rodent burrows visible; need to backfill and compact or grout burrows.					
Inspector Comment					
Large rodent holes on landward slope.					

Photo 1 of 2 : SP_2016_NA0010_134_2_20160512_00001.jpg



Looking at large rodent holes on landward slope.

LM Start	1.77	Rating **	U	Issue No.	2 (cont)
LM End	1.77	Issue Type +	Ma	Location *	LS

Photo 2 of 2 : SP_2016_NA0010_134_2_20160512_00002.jpg



Looking southwest at several rodent holes on landward slope.

* Location LS : Land Side N/A : Not Applicable WS : Water Side CR : Crown		** Rating A : Acceptable M : Minimally Acceptable U : Unacceptable		N : Not Inspected/Rated C : Corrected A/W : Acceptable but Monitor & Maintain		+ Issue Type Ma : Maintenance Deficiency Ob : Design & System Obsolescence En : Enforcement	
---------------------------------------------------------------------------------------	--	-----------------------------------------------------------------------------	--	-------------------------------------------------------------------------------------	--	------------------------------------------------------------------------------------------------------	--

**Flood Control Project Maintenance
Levee Inspections**

Maintenance Issue Types Only, Levee Inspection Report By Mile - Spring 2016

Lower San Joaquin Levee District

Waterway	Bank	Unit Miles	Inspection Start/End	Inspector
Unit No. 17 Chowchilla Canal Bypass	Right	16.09	05/18/2016 05/18/2016	Richard Willoughby

LM Start	0.00	Rating **	M	Issue No.	13
LM End	16.09	Issue Type +	Ma	Location *	LS
Category	Earthen Levee			GPS Latitude/Longitude	
				Start	End
Item	Vegetation			36.976460 °	36.774431 °
				-120.374695 °	-120.283758 °
DWR ID	DWR_NA0010_17_s _ 2016_13				
Comment Code					
V1 : Control annual grass and weeds on the levee slopes and easements.					
Inspector Comment					

Photo 1 of 1 : SP_2016_NA0010_135_13_20160524_00027.jpg



Looking at typical view of landward slope.

LM Start	0.00	Rating **	M	Issue No.	14
LM End	16.09	Issue Type +	Ma	Location *	WS
Category	Earthen Levee			GPS Latitude/Longitude	
				Start	End
Item	Vegetation			36.976460 °	36.774431 °
				-120.374695 °	-120.283758 °
DWR ID	DWR_NA0010_17_s _ 2016_14				
Comment Code					
V1 : Control annual grass and weeds on the levee slopes and easements.					
Inspector Comment					

Photo 1 of 1 : SP_2016_NA0010_135_14_20160524_00026.jpg



Looking at typical view of waterward slope.

LM Start	5.75	Rating **	M	Issue No.	8
LM End	5.90	Issue Type +	Ma	Location *	LS
Category	Earthen Levee			GPS Latitude/Longitude	
				Start	End
Item	Animal Control			36.908605 °	36.906507 °
				-120.331112 °	-120.330353 °
DWR ID	DWR_NA0010_17_s _ 2012_8				
Comment Code					
A1 : Exterminate rodents and backfill and compact or grout burrows.					
Inspector Comment					
Several rodent holes noted on landward slope.					

Photo 1 of 2 : SP_2016_NA0010_135_8_20160512_00005.jpg



Looking at several rodent holes on landward slope. (Spring 2015)

* Location LS : Land Side N/A : Not Applicable WS : Water Side CR : Crown		** Rating A : Acceptable M : Minimally Acceptable U : Unacceptable		+ Issue Type Ma : Maintenance Deficiency Ob : Design & System Obsolescence En : Enforcement	
		N : Not Inspected/Rated C : Corrected A/W : Acceptable but Monitor & Maintain			

**Flood Control Project Maintenance
Levee Inspections**

Maintenance Issue Types Only, Levee Inspection Report By Mile - Spring 2016

Lower San Joaquin Levee District

Waterway	Bank	Unit Miles	Inspection Start/End	Inspector
Unit No. 17 Chowchilla Canal Bypass	Right	16.09	05/18/2016 05/18/2016	Richard Willoughby

LM Start	5.75	Rating **	M	Issue No.	8 (cont)	
LM End	5.90	Issue Type +	Ma	Location *	LS	
Category	Earthen Levee			GPS Latitude/Longitude		
				Start		End
Item	Animal Control			36.908605 °		36.906507 °
				-120.331112 °		-120.330353 °
DWR ID	DWR_NA0010_17_s _ 2012_8					
Comment Code						
A1 : Exterminate rodents and backfill and compact or grout burrows.						
Inspector Comment						
Several rodent holes noted on landward slope.						

Photo 2 of 2 : SP_2016_NA0010_135_8_20160512_00006.jpg



Looking at several rodent holes on landside slope. (Fall 2014)

LM Start	6.51	Rating **	M	Issue No.	4
LM End	6.60	Issue Type +	Ma	Location *	LS
Category	Earthen Levee			GPS Latitude/Longitude	
				Start	End
Item	Animal Control			36.898124 °	36.896943 °
				-120.326714 °	-120.326133 °
DWR ID	DWR_NA0010_17_s _ 2012_4				
Comment Code					
A1 : Exterminate rodents and backfill and compact or grout burrows.					
Inspector Comment					
Notice several rodent holes within this reach.					

Photo 1 of 1 : SP_2016_NA0010_135_4_20160512_00003.jpg



Looking at typical view of rodent holes on landward slope.

LM Start	7.27	Rating **	M	Issue No.	5
LM End	7.38	Issue Type +	Ma	Location *	LS
Category	Earthen Levee			GPS Latitude/Longitude	
				Start	End
Item	Animal Control			36.887869 °	36.886341 °
				-120.321697 °	-120.320940 °
DWR ID	DWR_NA0010_17_s _ 2012_5				
Comment Code					
A3 : No rodents visible, but rodent burrows visible; need to backfill and compact or grout burrows.					
Inspector Comment					
Notice several rodent holes within this reach.					

Photo 1 of 1 : SP_2016_NA0010_135_5_20160512_00004.jpg



Looking at typical view of rodent holes on landward slope.

* Location LS : Land Side N/A : Not Applicable WS : Water Side CR : Crown		** Rating A : Acceptable M : Minimally Acceptable U : Unacceptable		N : Not Inspected/Rated C : Corrected A/W : Acceptable but Monitor & Maintain		+ Issue Type Ma : Maintenance Deficiency Ob : Design & System Obsolescence En : Enforcement	
----------------------------------------------------------------------------------------------	--	------------------------------------------------------------------------------------	--	-------------------------------------------------------------------------------------	--	-------------------------------------------------------------------------------------------------------------	--

**Flood Control Project Maintenance
Levee Inspections**

Maintenance Issue Types Only, Levee Inspection Report By Mile - Spring 2016

Lower San Joaquin Levee District

Waterway	Bank	Unit Miles	Inspection Start/End	Inspector
Unit No. 17 Chowchilla Canal Bypass	Right	16.09	05/18/2016 05/18/2016	Richard Willoughby

LM Start	12.34	Rating **	M	Issue No.	3
LM End	12.37	Issue Type +	Ma	Location *	LS
Category	Earthen Levee			GPS Latitude/Longitude	
				Start	End
Item	Animal Control			36.820558 °	36.820155 °
				-120.300616 °	-120.300784 °
DWR ID	DWR_NA0010_17_s_2014_3				
Comment Code					
A3 : No rodents visible, but rodent burrows visible; need to backfill and compact or grout burrows.					
Inspector Comment					
Noted several rodent holes with this reach.					

LM Start	12.34	Rating **	M	Issue No.	3 (cont)
LM End	12.37	Issue Type +	Ma	Location *	LS

Photo 1 of 2 : SP_2016_NA0010_135_3_20160512_00001.jpg



Looking at typical view of rodent holes on landward slope. Fall 2015

Photo 2 of 2 : SP_2016_NA0010_135_3_20160512_00002.jpg



Looking at several rodent holes on landward slope. Spring 2015

* Location LS : Land Side N/A : Not Applicable WS : Water Side CR : Crown		** Rating A : Acceptable N : Not Inspected/Rated M : Minimally Acceptable C : Corrected U : Unacceptable A/W : Acceptable but Monitor & Maintain		+ Issue Type Ma : Maintenance Deficiency Ob : Design & System Obsolescence En : Enforcement
----------------------------------------------------------------------------------------------	--	---------------------------------------------------------------------------------------------------------------------------------------------------------------------------------------------------------------	--	-------------------------------------------------------------------------------------------------------------

**Flood Control Project Maintenance
Levee Inspections**

Maintenance Issue Types Only, Levee Inspection Report By Mile - Spring 2016

Lower San Joaquin Levee District

Waterway	Bank	Unit Miles	Inspection Start/End	Inspector
Unit No. 18 Chowchilla Canal Bypass	Left	15.35	05/18/2016 05/18/2016	Richard Willoughby

LM Start	0.00	Rating **	M	Issue No.	10
LM End	15.35	Issue Type +	Ma	Location *	WS
Category	Earthen Levee			GPS Latitude/Longitude	
				Start	End
Item	Vegetation			36.974113 °	36.773466 °
				-120.363239 °	-120.285220 °
DWR ID	DWR_NA0010_18_s_2016_10				
Comment Code					
V1 : Control annual grass and weeds on the levee slopes and easements.					
Inspector Comment					

No Photos

LM Start	0.00	Rating **	M	Issue No.	11
LM End	15.35	Issue Type +	Ma	Location *	LS
Category	Earthen Levee			GPS Latitude/Longitude	
				Start	End
Item	Vegetation			36.974113 °	36.773465 °
				-120.363239 °	-120.285221 °
DWR ID	DWR_NA0010_18_s_2016_11				
Comment Code					
V1 : Control annual grass and weeds on the levee slopes and easements.					
Inspector Comment					

No Photos

LM Start	1.44	Rating **	M	Issue No.	7
LM End	1.44	Issue Type +	Ma	Location *	LS
Category	Earthen Levee			GPS Latitude/Longitude	
				Start	End
Item	Animal Control			36.956163 °	36.956163 °
				-120.353672 °	-120.353672 °
DWR ID	DWR_NA0010_18_s_2014_7				
Comment Code					
A3 : No rodents visible, but rodent burrows visible; need to backfill and compact or grout burrows.					
Inspector Comment					
Several noted on landward slope and on levee crown.					

Photo 1 of 1 : SP_2016_NA0010_137_7_20160512_00002.jpg



Looking at typical view of rodent holes within this section on landward slope.

* Location LS : Land Side N/A : Not Applicable WS : Water Side CR : Crown		** Rating A : Acceptable M : Minimally Acceptable U : Unacceptable N : Not Inspected/Rated C : Corrected A/W : Acceptable but Monitor & Maintain		+ Issue Type Ma : Maintenance Deficiency Ob : Design & System Obsolescence En : Enforcement	
----------------------------------------------------------------------------------------------	--	---------------------------------------------------------------------------------------------------------------------------------------------------------------------------	--	-------------------------------------------------------------------------------------------------------------	--

**Flood Control Project Maintenance
Levee Inspections**

Maintenance Issue Types Only, Levee Inspection Report By Mile - Spring 2016

Lower San Joaquin Levee District

Waterway	Bank	Unit Miles	Inspection Start/End	Inspector
Unit No. 18 Chowchilla Canal Bypass	Left	15.35	05/18/2016 05/18/2016	Richard Willoughby

LM Start	2.25	Rating **	U	Issue No.	8
LM End	2.25	Issue Type +	Ma	Location *	LS
Category	Earthen Levee			GPS Latitude/Longitude	
				Start	End
Item	Animal Control			36.945563 °	36.945563 °
				-120.347121 °	-120.347121 °
DWR ID	DWR_NA0010_18_f_2015_8				
Comment Code					
A3 : No rodents visible, but rodent burrows visible; need to backfill and compact or grout burrows.					
Inspector Comment					
One large rodent hole and other rodent holes within this area.					

LM Start	2.25	Rating **	U	Issue No.	8 (cont)
LM End	2.25	Issue Type +	Ma	Location *	LS

Photo 1 of 2 : SP_2016_NA0010_137_8_20160512_00003.jpg



Looking at large rodent hole on landward slope.

Photo 2 of 2 : SP_2016_NA0010_137_8_20160512_00004.jpg



Looking at close-up view of large rodent hole on landward slope.

LM Start	5.89	Rating **	M	Issue No.	1
LM End	5.89	Issue Type +	Ma	Location *	LS
Category	Earthen Levee			GPS Latitude/Longitude	
				Start	End
Item	Animal Control			36.895175 °	36.895175 °
				-120.327632 °	-120.327632 °
DWR ID	DWR_NA0010_18_s_2015_1				
Comment Code					
A3 : No rodents visible, but rodent burrows visible; need to backfill and compact or grout burrows.					
Inspector Comment					
Several large rodent holes noted on landward slope and berm within this section.					

Photo 1 of 1 : SP_2016_NA0010_137_1_20160512_00001.jpg



Looking at several rodent holes on landward slope.

* Location LS : Land Side N/A : Not Applicable WS : Water Side CR : Crown		** Rating A : Acceptable M : Minimally Acceptable U : Unacceptable		+ Issue Type Ma : Maintenance Deficiency Ob : Design & System Obsolescence En : Enforcement	
		N : Not Inspected/Rated C : Corrected A/W : Acceptable but Monitor & Maintain			

**Flood Control Project Maintenance
Levee Inspections**

Maintenance Issue Types Only, Levee Inspection Report By Mile - Spring 2016

Lower San Joaquin Levee District

Waterway	Bank	Unit Miles	Inspection Start/End	Inspector
Unit No. 18 Chowchilla Canal Bypass	Left	15.35	05/18/2016 05/18/2016	Richard Willoughby

LM Start	6.52	Rating **	M	Issue No.	9
LM End	6.52	Issue Type +	Ma	Location *	WS
Category	Earthen Levee		GPS Latitude/Longitude		
			Start	End	
Item	Animal Control		36.886767 °	36.886767 °	
			-120.323482 °	-120.323482 °	
DWR ID	DWR_NA0010_18_f_2014_9				
Comment Code					
A1 : Exterminate rodents and backfill and compact or grout burrows.					
Inspector Comment					

No Photos

* Location LS : Land Side N/A : Not Applicable WS : Water Side CR : Crown	** Rating A : Acceptable M : Minimally Acceptable U : Unacceptable N : Not Inspected/Rated C : Corrected A/W : Acceptable but Monitor & Maintain	+ Issue Type Ma : Maintenance Deficiency Ob : Design & System Obsolescence En : Enforcement
----------------------------------------------------------------------------------------------	---------------------------------------------------------------------------------------------------------------------------------------------------------------------------	-------------------------------------------------------------------------------------------------------------

**Flood Control Project Maintenance
Levee Inspections**

Maintenance Issue Types Only, Levee Inspection Report By Mile - Spring 2016

Lower San Joaquin Levee District

Waterway	Bank	Unit Miles	Inspection Start/End	Inspector
Unit No. 22A East Side Canal	Left	5.51	05/17/2016 05/17/2016	Richard Willoughby

LM Start	0.00	Rating **	M	Issue No.	13
LM End	5.51	Issue Type +	Ma	Location *	LS
Category	Earthen Levee			GPS Latitude/Longitude	
				Start	End
Item	Vegetation			37.205992 °	37.272398 °
				-120.697018 °	-120.741902 °
DWR ID	DWR_NA0010_22A_s_2016_13				
Comment Code					
V1 : Control annual grass and weeds on the levee slopes and easements.					
Inspector Comment					

No Photos

LM Start	0.00	Rating **	M	Issue No.	14
LM End	5.51	Issue Type +	Ma	Location *	WS
Category	Earthen Levee			GPS Latitude/Longitude	
				Start	End
Item	Vegetation			37.205992 °	37.272398 °
				-120.697018 °	-120.741902 °
DWR ID	DWR_NA0010_22A_s_2016_14				
Comment Code					
V1 : Control annual grass and weeds on the levee slopes and easements.					
Inspector Comment					

No Photos

LM Start	0.53	Rating **	U	Issue No.	21
LM End	0.53	Issue Type +	Ma	Location *	LS
Category	Earthen Levee			GPS Latitude/Longitude	
				Start	End
Item	Vegetation			37.213006 °	37.213006 °
				-120.698019 °	-120.698019 °
DWR ID	DWR_NA0010_22A_f_2014_21				
Comment Code					
V2 : Remove the wild growth other than native grasses from the levee slopes.					
Inspector Comment					
Dense vegetation on landward slope.					

Photo 1 of 2 : SP_2016_NA0010_138_21_20160512_00009.jpg



Looking at dense vegetation on landward slope. Fall 2015

* Location LS : Land Side N/A : Not Applicable WS : Water Side CR : Crown		** Rating A : Acceptable M : Minimally Acceptable U : Unacceptable N : Not Inspected/Rated C : Corrected A/W : Acceptable but Monitor & Maintain		+ Issue Type Ma : Maintenance Deficiency Ob : Design & System Obsolescence En : Enforcement	
----------------------------------------------------------------------------------------------	--	---------------------------------------------------------------------------------------------------------------------------------------------------------------------------	--	-------------------------------------------------------------------------------------------------------------	--

**Flood Control Project Maintenance
Levee Inspections**

Maintenance Issue Types Only, Levee Inspection Report By Mile - Spring 2016

Lower San Joaquin Levee District

Waterway	Bank	Unit Miles	Inspection Start/End	Inspector
Unit No. 22A East Side Canal	Left	5.51	05/17/2016 05/17/2016	Richard Willoughby

LM Start	0.53	Rating **	U	Issue No.	21 (cont)	
LM End	0.53	Issue Type +	Ma	Location *	LS	
Category	Earthen Levee			GPS Latitude/Longitude		
				Start		End
Item	Vegetation			37.213006 °		37.213006 °
				-120.698019 °		-120.698019 °
DWR ID	DWR_NA0010_22A_f_2014_21					
Comment Code						
V2 : Remove the wild growth other than native grasses from the levee slopes.						
Inspector Comment						
Dense vegetation on landward slope.						

Photo 2 of 2 : SP_2016_NA0010_138_21_20160512_00010.jpg



Looking south at dense vegetation on landward slope. Spring 2015

LM Start	0.96	Rating **	C	Issue No.	22
LM End	0.96	Issue Type +	Ma	Location *	WS
Category	Earthen Levee			GPS Latitude/Longitude	
				Start	End
Item	Slope Stability			37.219137 °	37.219137 °
				-120.697857 °	-120.697857 °
DWR ID	DWR_NA0010_22A_f_2014_22				
Comment Code					
S1 : Repair slope instability.					
Inspector Comment					
LMA repaired slope damage.					

No Photos

LM Start	2.86	Rating **	M	Issue No.	15
LM End	3.05	Issue Type +	Ma	Location *	LS
Category	Earthen Levee			GPS Latitude/Longitude	
				Start	End
Item	Animal Control			37.245431 °	37.247343 °
				-120.707990 °	-120.710362 °
DWR ID	DWR_NA0010_22A_s_2014_15				
Comment Code					
A3 : No rodents visible, but rodent burrows visible; need to backfill and compact or grout burrows.					
Inspector Comment					
Noted several rodent holes on landward slope and toe.					

Photo 1 of 1 : SP_2016_NA0010_138_15_20160512_00008.jpg



Looking at several rodent holes on landward slope.

* Location LS : Land Side N/A : Not Applicable WS : Water Side CR : Crown		** Rating A : Acceptable M : Minimally Acceptable U : Unacceptable		N : Not Inspected/Rated C : Corrected A/W : Acceptable but Monitor & Maintain		+ Issue Type Ma : Maintenance Deficiency Ob : Design & System Obsolescence En : Enforcement	
----------------------------------------------------------------------------------------------	--	------------------------------------------------------------------------------------	--	-------------------------------------------------------------------------------------	--	-------------------------------------------------------------------------------------------------------------	--

**Flood Control Project Maintenance
Levee Inspections**

Maintenance Issue Types Only, Levee Inspection Report By Mile - Spring 2016

Lower San Joaquin Levee District

Waterway	Bank	Unit Miles	Inspection Start/End	Inspector
Unit No. 22A East Side Canal	Left	5.51	05/17/2016 05/17/2016	Richard Willoughby

LM Start	3.14	Rating **	A/W	Issue No.	2
LM End	3.14	Issue Type +	Ma	Location *	WS
Category	Earthen Levee			GPS Latitude/Longitude	
				Start	End
Item	Trim / Thin Trees			37.248208 °	37.248208 °
				-120.711500 °	-120.711500 °
DWR ID	DWR_NA0010_22A_s_2012_2				
Comment Code					
T2 : Thin trees to allow visibility of the ground and room to flood fight.					
Inspector Comment					

No Photos

LM Start	3.79	Rating **	M	Issue No.	11
LM End	3.79	Issue Type +	Ma	Location *	LS
Category	Earthen Levee			GPS Latitude/Longitude	
				Start	End
Item	Animal Control			37.254923 °	37.254923 °
				-120.719769 °	-120.719769 °
DWR ID	DWR_NA0010_22A_s_2014_11				
Comment Code					
A1 : Exterminate rodents and backfill and compact or grout burrows.					
Inspector Comment					

No Photos

LM Start	3.80	Rating **	M	Issue No.	259
LM End	3.80	Issue Type +	Ma	Location *	WS
Category	Earthen Levee			GPS Latitude/Longitude	
				Start	End
Item	Encroachments			37.255067 °	37.255067 °
				-120.719910 °	-120.719910 °
DWR ID	DWR_NA0010_22A_s_2015_259				
Comment Code					
TR : Tree or limb					
Inspector Comment					
Dead tree stump on waterward slope.					

Photo 1 of 1 : SP_2016_NA0010_138_259_20160512_00012.jpg



Looking east at dead stump on waterward slope.

*** Location**
LS : Land Side N/A : Not Applicable
WS : Water Side
CR : Crown

**** Rating**
A : Acceptable N : Not Inspected/Rated
M : Minimally Acceptable C : Corrected
U : Unacceptable A/W : Acceptable but Monitor & Maintain

+ Issue Type
Ma : Maintenance Deficiency
Ob : Design & System Obsolescence
En : Enforcement

**Flood Control Project Maintenance
Levee Inspections**

Maintenance Issue Types Only, Levee Inspection Report By Mile - Spring 2016

Lower San Joaquin Levee District

Waterway	Bank	Unit Miles	Inspection Start/End	Inspector
Unit No. 22A East Side Canal	Left	5.51	05/17/2016 05/17/2016	Richard Willoughby

LM Start	3.82	Rating **	M	Issue No.	10
LM End	5.09	Issue Type +	Ma	Location *	CR
Category	Earthen Levee			GPS Latitude/Longitude	
				Start	End
Item	Crown Surface / Depressions / Rutting			37.255246 °	37.267962 °
				-120.720110 °	-120.736909 °
DWR ID	DWR_NA0010_22A_s_2012_10				
Comment Code					
C2 : Repair depressions or ruts in the crown or slope.					
Inspector Comment					

Photo 1 of 1 : SP_2016_NA0010_138_10_20160524_00025.jpg



Looking west at typical rutting on levee crown.

LM Start	5.03	Rating **	M	Issue No.	12
LM End	5.03	Issue Type +	Ma	Location *	WS
Category	Earthen Levee			GPS Latitude/Longitude	
				Start	End
Item	Slope Stability			37.267271 °	37.267271 °
				-120.736067 °	-120.736067 °
DWR ID	DWR_NA0010_22A_s_2014_12				
Comment Code					
S2 : Repair the levee slope damaged by foot traffic and prevent access where possible.					
Inspector Comment					
Slope damage caused by animal traffic.					

Photo 1 of 1 : SP_2016_NA0010_138_12_20160512_00007.jpg



Looking south at slope damage cause by animal traffic on waterside slope.

LM Start	5.05	Rating **	M	Issue No.	4
LM End	5.05	Issue Type +	Ma	Location *	WS
Category	Earthen Levee			GPS Latitude/Longitude	
				Start	End
Item	Erosion / Bank Caving			37.267516 °	37.267516 °
				-120.736401 °	-120.736401 °
DWR ID	DWR_NA0010_22A_f_2013_4				
Comment Code					
E2 : Schedule repair of erosion site prior to the next inspection.					
Inspector Comment					
Erosion caused by animal traffic.					

Photo 1 of 2 : SP_2016_NA0010_138_4_20160512_00001.jpg



Looking southeast at livestock erosion on waterward toe.

* Location
LS : Land Side N/A : Not Applicable
WS : Water Side
CR : Crown

** Rating
A : Acceptable N : Not Inspected/Rated
M : Minimally Acceptable C : Corrected
U : Unacceptable A/W : Acceptable but Monitor & Maintain

+ Issue Type
Ma : Maintenance Deficiency
Ob : Design & System Obsolescence
En : Enforcement

**Flood Control Project Maintenance
Levee Inspections**

Maintenance Issue Types Only, Levee Inspection Report By Mile - Spring 2016

Lower San Joaquin Levee District

Waterway	Bank	Unit Miles	Inspection Start/End	Inspector
Unit No. 22A East Side Canal	Left	5.51	05/17/2016 05/17/2016	Richard Willoughby

LM Start	5.05	Rating **	M	Issue No.	4 (cont)	
LM End	5.05	Issue Type +	Ma	Location *	WS	
Category	Earthen Levee			GPS Latitude/Longitude		
				Start		End
Item	Erosion / Bank Caving			37.267516 °		37.267516 °
				-120.736401 °		-120.736401 °
DWR ID	DWR_NA0010_22A_f_2013_4					
Comment Code						
E2 : Schedule repair of erosion site prior to the next inspection.						
Inspector Comment						
Erosion caused by animal traffic.						

Photo 2 of 2 : SP_2016_NA0010_138_4_20160512_00002.jpg



Looking south livestock erosion on waterward toe.

LM Start	5.14	Rating **	M	Issue No.	6
LM End	5.20	Issue Type +	Ma	Location *	WS
Category	Earthen Levee			GPS Latitude/Longitude	
				Start	End
Item	Animal Control			37.268492 °	37.269133 °
				-120.737493 °	-120.738208 °
DWR ID	DWR_NA0010_22A_s_2012_6				
Comment Code					
A2 : Repair the levee slope damaged by livestock and prevent large animal access.					
Inspector Comment					
Slope damage caused by livestock on waterside toe.					

Photo 1 of 2 : SP_2016_NA0010_138_6_20160512_00005.jpg



Looking south at livestock erosion on waterward toe.

LM Start	5.14	Rating **	M	Issue No.	6 (cont)
LM End	5.20	Issue Type +	Ma	Location *	WS

Photo 2 of 2 : SP_2016_NA0010_138_6_20160512_00006.jpg



Looking north at livestock erosion along waterside slope and toe.

*** Location**
LS : Land Side N/A : Not Applicable
WS : Water Side
CR : Crown

**** Rating**
A : Acceptable
M : Minimally Acceptable
U : Unacceptable
N : Not Inspected/Rated
C : Corrected
A/W : Acceptable but Monitor & Maintain

+ Issue Type
Ma : Maintenance Deficiency
Ob : Design & System Obsolescence
En : Enforcement

**Flood Control Project Maintenance
Levee Inspections**

Maintenance Issue Types Only, Levee Inspection Report By Mile - Spring 2016

Lower San Joaquin Levee District

Waterway	Bank	Unit Miles	Inspection Start/End	Inspector
Unit No. 23 San Joaquin River	Right	10.24	05/18/2016 05/18/2016	Richard Willoughby

LM Start	0.00	Rating **	M	Issue No.	23
LM End	10.24	Issue Type +	Ma	Location *	LS
Category	Earthen Levee			GPS Latitude/Longitude	
				Start	End
Item	Vegetation			36.774431 °	36.814800 °
				-120.283759 °	-120.168948 °
DWR ID	DWR_NA0010_23_s _ 2016_23				
Comment Code					
V1 : Control annual grass and weeds on the levee slopes and easements.					
Inspector Comment					

No Photos

LM Start	0.00	Rating **	M	Issue No.	26
LM End	10.24	Issue Type +	Ma	Location *	WS
Category	Earthen Levee			GPS Latitude/Longitude	
				Start	End
Item	Vegetation			36.774431 °	36.814800 °
				-120.283759 °	-120.168948 °
DWR ID	DWR_NA0010_23_s _ 2016_26				
Comment Code					
V1 : Control annual grass and weeds on the levee slopes and easements.					
Inspector Comment					

No Photos

LM Start	1.21	Rating **	M	Issue No.	6
LM End	1.21	Issue Type +	Ma	Location *	LS
Category	Earthen Levee			GPS Latitude/Longitude	
				Start	End
Item	Vegetation			36.772973 °	36.772973 °
				-120.264768 °	-120.264768 °
DWR ID	DWR_NA0010_23_s _ 2013_6				
Comment Code					
V4 : Elderberries are blocking visibility and flood fight capability.					
Inspector Comment					
Control growth of elderberry on landward toe.					

Photo 1 of 1 : SP_2016_NA0010_139_6_20160512_00006.jpg



Looking at elderberry on landward toe.

* Location		** Rating		+ Issue Type	
LS : Land Side	N/A : Not Applicable	A : Acceptable	N : Not Inspected/Rated	Ma : Maintenance Deficiency	
WS : Water Side		M : Minimally Acceptable	C : Corrected	Ob : Design & System Obsolescence	
CR : Crown		U : Unacceptable	A/W : Acceptable but Monitor & Maintain	En : Enforcement	

**Flood Control Project Maintenance
Levee Inspections**

Maintenance Issue Types Only, Levee Inspection Report By Mile - Spring 2016

Lower San Joaquin Levee District

Waterway	Bank	Unit Miles	Inspection Start/End	Inspector
Unit No. 23 San Joaquin River	Right	10.24	05/18/2016 05/18/2016	Richard Willoughby

LM Start	1.91	Rating **	U	Issue No.	1
LM End	1.91	Issue Type +	Ma	Location *	WS
Category	Earthen Levee			GPS Latitude/Longitude	
				Start	End
Item	Trim / Thin Trees			36.772943 °	36.772943 °
				-120.253511 °	-120.253511 °
DWR ID	DWR_NA0010_23_s _ 2015_1				
Comment Code					
T1 : Trim trees to at least five feet above ground level.					
Inspector Comment					
Untrimmed tree on waterward slope					

Photo 1 of 1 : SP_2016_NA0010_139_1_20160512_00001.jpg



Looking at untrimmed tree on waterward slope.

LM Start	2.12	Rating **	M	Issue No.	16
LM End	2.42	Issue Type +	Ma	Location *	WS
Category	Earthen Levee			GPS Latitude/Longitude	
				Start	End
Item	Slope Stability			36.775507 °	36.774423 °
				-120.251672 °	-120.246993 °
DWR ID	DWR_NA0010_23_s _ 2013_16				
Comment Code					
S3 : Repair the levee slope damaged by vehicle traffic and prevent access where possible.					
Inspector Comment					
Several damaged sites within this reach. Damage caused by vehicle traffic. At. LM. 2.12, 2.21, 2.37, & 2.41					

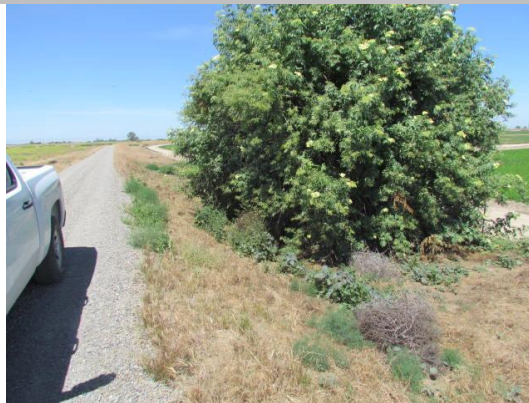
Photo 1 of 1 : SP_2016_NA0010_139_16_20160524_00052.jpg



Looking west at one of several slope damaged cause by vehicle traffic.

LM Start	2.85	Rating **	U	Issue No.	15
LM End	2.85	Issue Type +	Ma	Location *	LS
Category	Earthen Levee			GPS Latitude/Longitude	
				Start	End
Item	Vegetation			36.771537 °	36.771537 °
				-120.240917 °	-120.240917 °
DWR ID	DWR_NA0010_23_s _ 2012_15				
Comment Code					
V4 : Elderberries are blocking visibility and flood fight capability.					
Inspector Comment					
Control growth of elderberry bush on landward toe.					

Photo 1 of 3 : SP_2016_NA0010_139_15_20160524_00053.jpg



Looking north at elderberry at landward toe. (Spring 2016)

* Location		** Rating		+ Issue Type	
LS : Land Side	N/A : Not Applicable	A : Acceptable	N : Not Inspected/Rated	Ma : Maintenance Deficiency	
WS : Water Side		M : Minimally Acceptable	C : Corrected	Ob : Design & System Obsolescence	
CR : Crown		U : Unacceptable	A/W : Acceptable but Monitor & Maintain	En : Enforcement	

**Flood Control Project Maintenance
Levee Inspections**

Maintenance Issue Types Only, Levee Inspection Report By Mile - Spring 2016

Lower San Joaquin Levee District

Waterway	Bank	Unit Miles	Inspection Start/End	Inspector
Unit No. 23 San Joaquin River	Right	10.24	05/18/2016 05/18/2016	Richard Willoughby

LM Start	2.85	Rating **	U	Issue No.	15 (cont)	
LM End	2.85	Issue Type +	Ma	Location *	LS	
Category	Earthen Levee			GPS Latitude/Longitude		
				Start		End
Item	Vegetation			36.771537 °		36.771537 °
				-120.240917 °		-120.240917 °
DWR ID	DWR_NA0010_23_s_2012_15					
Comment Code						
V4 : Elderberries are blocking visibility and flood fight capability.						
Inspector Comment						
Control growth of elderberry bush on landward toe.						

LM Start	2.85	Rating **	U	Issue No.	15 (cont)
LM End	2.85	Issue Type +	Ma	Location *	LS

Photo 2 of 3 : SP_2016_NA0010_139_15_20160512_00014.jpg



Looking south at elderberry at landward toe. (Spring 2015)

Photo 3 of 3 : SP_2016_NA0010_139_15_20160512_00015.jpg



Looking south at elderberry on landside toe and berm. (Fall 2014)

LM Start	3.30	Rating **	U	Issue No.	3
LM End	3.30	Issue Type +	Ma	Location *	LS
Category	Earthen Levee			GPS Latitude/Longitude	
				Start	End
Item	Vegetation			36.774403 °	36.774403 °
				-120.234705 °	-120.234705 °
DWR ID	DWR_NA0010_23_s_2012_3				
Comment Code					
V4 : Elderberries are blocking visibility and flood fight capability.					
Inspector Comment					
Control growth of elderberry on landward toe.					

Photo 1 of 4 : SP_2016_NA0010_139_3_20160524_00054.jpg



Looking south at elderberry on landward toe and berm. (Spring 2016)

* Location		** Rating		+ Issue Type	
LS : Land Side	N/A : Not Applicable	A : Acceptable	N : Not Inspected/Rated	Ma : Maintenance Deficiency	
WS : Water Side		M : Minimally Acceptable	C : Corrected	Ob : Design & System Obsolescence	
CR : Crown		U : Unacceptable	A/W : Acceptable but Monitor & Maintain	En : Enforcement	

**Flood Control Project Maintenance
Levee Inspections**

Maintenance Issue Types Only, Levee Inspection Report By Mile - Spring 2016

Lower San Joaquin Levee District

Waterway	Bank	Unit Miles	Inspection Start/End	Inspector
Unit No. 23 San Joaquin River	Right	10.24	05/18/2016 05/18/2016	Richard Willoughby

LM Start	3.30	Rating **	U	Issue No.	3 (cont)	
LM End	3.30	Issue Type +	Ma	Location *	LS	
Category	Earthen Levee			GPS Latitude/Longitude		
				Start		End
Item	Vegetation			36.774403 °		36.774403 °
				-120.234705 °		-120.234705 °
DWR ID	DWR_NA0010_23_s_2012_3					
Comment Code						
V4 : Elderberries are blocking visibility and flood fight capability.						
Inspector Comment						
Control growth of elderberry on landward toe.						

LM Start	3.30	Rating **	U	Issue No.	3 (cont)
LM End	3.30	Issue Type +	Ma	Location *	LS

Photo 2 of 4 : SP_2016_NA0010_139_3_20160512_00002.jpg



Looking south at elderberry on landward toe and berm. (Spring 2015)

Photo 3 of 4 : SP_2016_NA0010_139_3_20160512_00003.jpg



Looking south at elderberry on landside toe and berm. (Fall 2014)

LM Start	3.30	Rating **	U	Issue No.	3 (cont)
LM End	3.30	Issue Type +	Ma	Location *	LS

Photo 4 of 4 : SP_2016_NA0010_139_3_20160512_00004.jpg



Looking south at elderberry bush on landward toe. (Spring 2013)

* Location LS : Land Side N/A : Not Applicable WS : Water Side CR : Crown		** Rating A : Acceptable M : Minimally Acceptable U : Unacceptable		N : Not Inspected/Rated C : Corrected A/W : Acceptable but Monitor & Maintain		+ Issue Type Ma : Maintenance Deficiency Ob : Design & System Obsolescence En : Enforcement	
----------------------------------------------------------------------------------------------	--	------------------------------------------------------------------------------------	--	-------------------------------------------------------------------------------------	--	-------------------------------------------------------------------------------------------------------------	--

**Flood Control Project Maintenance
Levee Inspections**

Maintenance Issue Types Only, Levee Inspection Report By Mile - Spring 2016

Lower San Joaquin Levee District

Waterway	Bank	Unit Miles	Inspection Start/End	Inspector
Unit No. 23 San Joaquin River	Right	10.24	05/18/2016 05/18/2016	Richard Willoughby

LM Start	3.45	Rating **	M	Issue No.	9
LM End	3.45	Issue Type +	Ma	Location *	LS
Category	Earthen Levee			GPS Latitude/Longitude	
				Start	End
Item	Vegetation			36.776537 °	36.776537 °
				-120.234573 °	-120.234573 °
DWR ID	DWR_NA0010_23_s _ 2012_9				
Comment Code					
V4 : Elderberries are blocking visibility and flood fight capability.					
Inspector Comment					
Control growth of elderberry on landward toe and berm.					

Photo 1 of 1 : SP_2016_NA0010_139_9_20160512_00007.jpg



Looking south at elderberry on landside toe and berm.

LM Start	4.13	Rating **	U	Issue No.	10
LM End	4.13	Issue Type +	Ma	Location *	LS
Category	Earthen Levee			GPS Latitude/Longitude	
				Start	End
Item	Vegetation			36.784212 °	36.784212 °
				-120.228815 °	-120.228815 °
DWR ID	DWR_NA0010_23_s _ 2012_10				
Comment Code					
V4 : Elderberries are blocking visibility and flood fight capability.					
Inspector Comment					
Control growth of elderberry on landward toe.					

Photo 1 of 3 : SP_2016_NA0010_139_10_20160524_00055.jpg



Looking south at elderberry bush on landward toe. (Spring 2016)

LM Start	4.13	Rating **	U	Issue No.	10 (cont)
LM End	4.13	Issue Type +	Ma	Location *	LS

Photo 2 of 3 : SP_2016_NA0010_139_10_20160512_00009.jpg



Looking south at elderberry on landside toe and berm. (Spring 2015)

* Location LS : Land Side N/A : Not Applicable WS : Water Side CR : Crown		** Rating A : Acceptable M : Minimally Acceptable U : Unacceptable		N : Not Inspected/Rated C : Corrected A/W : Acceptable but Monitor & Maintain		+ Issue Type Ma : Maintenance Deficiency Ob : Design & System Obsolescence En : Enforcement	
----------------------------------------------------------------------------------------------	--	------------------------------------------------------------------------------------	--	-------------------------------------------------------------------------------------	--	-------------------------------------------------------------------------------------------------------------	--

**Flood Control Project Maintenance
Levee Inspections**

Maintenance Issue Types Only, Levee Inspection Report By Mile - Spring 2016

Lower San Joaquin Levee District

Waterway	Bank	Unit Miles	Inspection Start/End	Inspector
Unit No. 23 San Joaquin River	Right	10.24	05/18/2016 05/18/2016	Richard Willoughby

LM Start	4.13	Rating **	U	Issue No.	10 (cont)	
LM End	4.13	Issue Type +	Ma	Location *	LS	
Category	Earthen Levee			GPS Latitude/Longitude		
				Start		End
Item	Vegetation			36.784212 °		36.784212 °
				-120.228815 °		-120.228815 °
DWR ID	DWR_NA0010_23_s_2012_10					
Comment Code						
V4 : Elderberries are blocking visibility and flood fight capability.						
Inspector Comment						
Control growth of elderberry on landward toe.						

Photo 3 of 3 : SP_2016_NA0010_139_10_20160512_00008.jpg



Looking south at elderberry bush on landward toe. (Fall 2013)

LM Start	4.45	Rating **	M	Issue No.	11
LM End	4.45	Issue Type +	Ma	Location *	LS
Category	Earthen Levee			GPS Latitude/Longitude	
				Start	End
Item	Vegetation			36.784523 °	36.784523 °
				-120.223292 °	-120.223292 °
DWR ID	DWR_NA0010_23_s_2012_11				
Comment Code					
V4 : Elderberries are blocking visibility and flood fight capability.					
Inspector Comment					
Control growth of elderberry on landward toe and berm.					

Photo 1 of 2 : SP_2016_NA0010_139_11_20160512_00010.jpg



Looking south at elderberry on landward toe and berm. (Spring 2015)

LM Start	4.45	Rating **	M	Issue No.	11 (cont)
LM End	4.45	Issue Type +	Ma	Location *	LS

Photo 2 of 2 : SP_2016_NA0010_139_11_20160512_00011.jpg



Looking south at elderberry on landside toe and berm.

* Location LS : Land Side N/A : Not Applicable WS : Water Side CR : Crown		** Rating A : Acceptable M : Minimally Acceptable U : Unacceptable N : Not Inspected/Rated C : Corrected A/W : Acceptable but Monitor & Maintain		+ Issue Type Ma : Maintenance Deficiency Ob : Design & System Obsolescence En : Enforcement
----------------------------------------------------------------------------------------------	--	---------------------------------------------------------------------------------------------------------------------------------------------------------------------------	--	-------------------------------------------------------------------------------------------------------------

**Flood Control Project Maintenance
Levee Inspections**

Maintenance Issue Types Only, Levee Inspection Report By Mile - Spring 2016

Lower San Joaquin Levee District

Waterway	Bank	Unit Miles	Inspection Start/End	Inspector
Unit No. 23 San Joaquin River	Right	10.24	05/18/2016 05/18/2016	Richard Willoughby

LM Start	5.68	Rating **	U	Issue No.	5
LM End	5.68	Issue Type +	Ma	Location *	WS
Category	Earthen Levee			GPS Latitude/Longitude	
				Start	End
Item	Animal Control			36.791981 °	36.791981 °
				-120.206274 °	-120.206274 °
DWR ID	DWR_NA0010_23_s _ 2012_5				
Comment Code					
A1 : Exterminate rodents and backfill and compact or grout burrows.					
Inspector Comment					
Several large rodent holes in this area.					

Photo 1 of 1 : SP_2016_NA0010_139_5_20160512_00005.jpg



Looking at several rodent holes on landside slope.

* Location LS : Land Side N/A : Not Applicable WS : Water Side CR : Crown		** Rating A : Acceptable M : Minimally Acceptable U : Unacceptable N : Not Inspected/Rated C : Corrected A/W : Acceptable but Monitor & Maintain		+ Issue Type Ma : Maintenance Deficiency Ob : Design & System Obsolescence En : Enforcement	
---------------------------------------------------------------------------------------	--	--------------------------------------------------------------------------------------------------------------------------------------------------------------------	--	------------------------------------------------------------------------------------------------------	--

**Flood Control Project Maintenance
Levee Inspections**

Maintenance Issue Types Only, Levee Inspection Report By Mile - Spring 2016

Lower San Joaquin Levee District

Waterway	Bank	Unit Miles	Inspection Start/End	Inspector
Unit No. 24 San Joaquin River	Left	8.36	05/18/2016 05/18/2016	Richard Willoughby

LM Start	0.00	Rating **	M	Issue No.	18
LM End	8.36	Issue Type +	Ma	Location *	LS
Category	Earthen Levee			GPS Latitude/Longitude	
				Start	End
Item	Vegetation			36.773205 °	36.778302 °
				-120.285222 °	-120.183975 °
DWR ID	DWR_NA0010_24_s _ 2016_18				
Comment Code					
V1 : Control annual grass and weeds on the levee slopes and easements.					
Inspector Comment					

No Photos

LM Start	0.00	Rating **	M	Issue No.	19
LM End	8.36	Issue Type +	Ma	Location *	WS
Category	Earthen Levee			GPS Latitude/Longitude	
				Start	End
Item	Vegetation			36.773205 °	36.778302 °
				-120.285222 °	-120.183975 °
DWR ID	DWR_NA0010_24_s _ 2016_19				
Comment Code					
V1 : Control annual grass and weeds on the levee slopes and easements.					
Inspector Comment					

No Photos

LM Start	0.82	Rating **	M	Issue No.	6
LM End	0.82	Issue Type +	Ma	Location *	LS
Category	Earthen Levee			GPS Latitude/Longitude	
				Start	End
Item	Animal Control			36.766775 °	36.766775 °
				-120.278757 °	-120.278757 °
DWR ID	DWR_NA0010_24_s _ 2013_6				
Comment Code					
A1 : Exterminate rodents and backfill and compact or grout burrows.					
Inspector Comment					
Noted several rodent holes within this section.					

Photo 1 of 1 : SP_2016_NA0010_140_6_20160512_00005.jpg



Looking at several rodent holes on landward slope.

* Location LS : Land Side N/A : Not Applicable WS : Water Side CR : Crown		** Rating A : Acceptable M : Minimally Acceptable U : Unacceptable		N : Not Inspected/Rated C : Corrected A/W : Acceptable but Monitor & Maintain		+ Issue Type Ma : Maintenance Deficiency Ob : Design & System Obsolescence En : Enforcement	
---------------------------------------------------------------------------------------	--	-----------------------------------------------------------------------------	--	-------------------------------------------------------------------------------------	--	------------------------------------------------------------------------------------------------------	--

**Flood Control Project Maintenance
Levee Inspections**

Maintenance Issue Types Only, Levee Inspection Report By Mile - Spring 2016

Lower San Joaquin Levee District

Waterway	Bank	Unit Miles	Inspection Start/End	Inspector
Unit No. 24 San Joaquin River	Left	8.36	05/18/2016 05/18/2016	Richard Willoughby

LM Start	3.46	Rating **	M	Issue No.	7
LM End	3.46	Issue Type +	Ma	Location *	LS
Category	Earthen Levee			GPS Latitude/Longitude	
				Start	End
Item	Animal Control			36.769345 °	36.769345 °
				-120.238370 °	-120.238370 °
DWR ID	DWR_NA0010_24_s_2012_7				
Comment Code					
A3 : No rodents visible, but rodent burrows visible; need to backfill and compact or grout burrows.					
Inspector Comment					
One of several rodent holes on landward slope.					

Photo 1 of 1 : SP_2016_NA0010_140_7_20160512_00006.jpg



Looking east at one of several rodent holes on landward slope.

LM Start	6.33	Rating **	U	Issue No.	3
LM End	6.33	Issue Type +	Ma	Location *	WS
Category	Earthen Levee			GPS Latitude/Longitude	
				Start	End
Item	Encroachments			36.788155 °	36.788155 °
				-120.209655 °	-120.209655 °
DWR ID	DWR_NA0010_24_s_2012_3				
Comment Code					
PR : Prunings					
Inspector Comment					
Large pruning pile in channel.					

Photo 1 of 1 : SP_2016_NA0010_140_3_20160524_00036.jpg



Looking east at pruning pile on waterward berm.

LM Start	6.72	Rating **	U	Issue No.	15
LM End	6.91	Issue Type +	Ma	Location *	LS
Category	Earthen Levee			GPS Latitude/Longitude	
				Start	End
Item	Vegetation			36.786678 °	36.783993 °
				-120.204741 °	-120.203779 °
DWR ID	DWR_NA0010_24_f_2015_15				
Comment Code					
V2 : Remove the wild growth other than native grasses from the levee slopes.					
Inspector Comment					
Dense vegetation on landward slope					

Photo 1 of 1 : SP_2016_NA0010_140_15_20160524_00037.jpg



Looking northwest at dense veg on landward slope and toe.

* Location LS : Land Side N/A : Not Applicable WS : Water Side CR : Crown		** Rating A : Acceptable M : Minimally Acceptable U : Unacceptable		N : Not Inspected/Rated C : Corrected A/W : Acceptable but Monitor & Maintain		+ Issue Type Ma : Maintenance Deficiency Ob : Design & System Obsolescence En : Enforcement	
----------------------------------------------------------------------------------------------	--	------------------------------------------------------------------------------------	--	-------------------------------------------------------------------------------------	--	-------------------------------------------------------------------------------------------------------------	--

**Flood Control Project Maintenance
Levee Inspections**

Maintenance Issue Types Only, Levee Inspection Report By Mile - Spring 2016

Lower San Joaquin Levee District

Waterway	Bank	Unit Miles	Inspection Start/End	Inspector
Unit No. 25 Salt Slough	Right	2.49	05/19/2016 05/19/2016	Richard Willoughby

LM Start	0.00	Rating **	U	Issue No.	7
LM End	2.48	Issue Type +	Ma	Location *	LS
Category	Earthen Levee			GPS Latitude/Longitude	
				Start	End
Item	Vegetation			37.296261 °	37.271165 °
				-120.880678 °	-120.866629 °
DWR ID	DWR_NA0010_25_f_2015_7				
Comment Code					
V2 : Remove the wild growth other than native grasses from the levee slopes.					
Inspector Comment					

Photo 1 of 1 : SP_2016_NA0010_141_7_20160524_00022.jpg



Looking at typical view of landward slope.

LM Start	0.00	Rating **	U	Issue No.	9
LM End	2.49	Issue Type +	Ma	Location *	WS
Category	Earthen Levee			GPS Latitude/Longitude	
				Start	End
Item	Vegetation			37.296261 °	37.271117 °
				-120.880678 °	-120.866599 °
DWR ID	DWR_NA0010_25_f_2015_9				
Comment Code					
V2 : Remove the wild growth other than native grasses from the levee slopes.					
Inspector Comment					

Photo 1 of 1 : SP_2016_NA0010_141_9_20160524_00023.jpg



Looking at typical view of waterward slope.

LM Start	0.01	Rating **	U	Issue No.	8
LM End	2.49	Issue Type +	Ma	Location *	CR
Category	Earthen Levee			GPS Latitude/Longitude	
				Start	End
Item	Vegetation			37.296117 °	37.271117 °
				-120.880724 °	-120.866599 °
DWR ID	DWR_NA0010_25_s_2012_8				
Comment Code					
V2 : Remove the wild growth other than native grasses from the levee slopes.					
Inspector Comment					
Control weeds on levee crown.					

Photo 1 of 1 : SP_2016_NA0010_141_8_20160524_00024.jpg



Looking at typical view of levee crown.

* Location LS : Land Side N/A : Not Applicable WS : Water Side CR : Crown		** Rating A : Acceptable M : Minimally Acceptable U : Unacceptable		N : Not Inspected/Rated C : Corrected A/W : Acceptable but Monitor & Maintain		+ Issue Type Ma : Maintenance Deficiency Ob : Design & System Obsolescence En : Enforcement	
----------------------------------------------------------------------------------------------	--	------------------------------------------------------------------------------------	--	-------------------------------------------------------------------------------------	--	-------------------------------------------------------------------------------------------------------------	--