

**Flood Control Project Maintenance  
Levee Inspections**

## Maintenance Issue Types Only, Levee Inspection Report By Mile - Spring 2015

### Lower San Joaquin Levee District

Waterway	Bank	Unit Miles	Inspection Start/End	Inspector
Unit No. 01 San Joaquin River	Right	22.52	05/18/2015 05/22/2015	Richard Willoughby

LM Start	<b>0.00</b>	Rating **	A	Issue No.	<b>23</b>
LM End	<b>0.00</b>	Issue Type +	Ma	Location *	N/A
Category	Earthen Levee		GPS Latitude/Longitude		
			Start	End	
Item	Operations & Maintenance Manuals			°	°
				°	°
DWR ID	DWR_NA0010_01_s _ 2013_23				
Action/Comments					
Inspector Comments: The LMA maintains a copy of the O&M manuals on file at district office.					

No Photos

LM Start	<b>0.00</b>	Rating **	A	Issue No.	<b>24</b>
LM End	<b>0.00</b>	Issue Type +	Ma	Location *	N/A
Category	Earthen Levee		GPS Latitude/Longitude		
			Start	End	
Item	Emergency Supplies & Equipment			°	°
				°	°
DWR ID	DWR_NA0010_01_s _ 2013_24				
Action/Comments					
Inspector Comments: The LMA has an adequate supplies and equipment for flood response.					

No Photos

LM Start	<b>0.00</b>	Rating **	A	Issue No.	<b>25</b>
LM End	<b>0.00</b>	Issue Type +	Ma	Location *	N/A
Category	Earthen Levee		GPS Latitude/Longitude		
			Start	End	
Item	Flood Preparedness & Training			°	°
				°	°
DWR ID	DWR_NA0010_01_s _ 2013_25				
Action/Comments					
Inspector Comments: LMA preparedness and training is adequate for flood response.					

No Photos

<b>* Location</b> LS : Land Side    N/A : Not Applicable WS : Water Side CR : Crown	<b>** Rating</b> A : Acceptable M : Minimally Acceptable U : Unacceptable	N : Not Inspected/Rated C : Corrected A/W : Acceptable but Monitor & Maintain	<b>+ Issue Type</b> Ma : Maintenance Deficiency Ob : Design & System Obsolescence En : Enforcement
--	--	---	---

**Flood Control Project Maintenance  
Levee Inspections**

## Maintenance Issue Types Only, Levee Inspection Report By Mile - Spring 2015

### Lower San Joaquin Levee District

Waterway	Bank	Unit Miles	Inspection Start/End	Inspector
Unit No. 01 San Joaquin River	Right	22.52	05/18/2015 05/22/2015	Richard Willoughby

LM Start	0.05	Rating **	A/W	Issue No.	4
LM End	0.13	Issue Type +	Ma	Location *	WS
Category	Earthen Levee			GPS Latitude/Longitude	
				Start	End
Item	Vegetation			37.348223 °	37.347282 °
				-120.959593 °	-120.960470 °
DWR ID	DWR_NA0010_01_s _ 2012_4				
Action/Comments					
Remove the wild growth other than native grasses from the levee slopes.					

No Photos

LM Start	0.05	Rating **	A/W	Issue No.	3
LM End	2.49	Issue Type +	Ma	Location *	LS
Category	Earthen Levee			GPS Latitude/Longitude	
				Start	End
Item	Vegetation			37.348222 °	37.328627 °
				-120.959598 °	-120.934388 °
DWR ID	DWR_NA0010_01_s _ 2012_3				
Action/Comments					
Remove the wild growth other than native grasses from the levee slopes.					

No Photos

LM Start	0.06	Rating **	A/W	Issue No.	98
LM End	0.06	Issue Type +	Ma	Location *	WS
Category	Earthen Levee			GPS Latitude/Longitude	
				Start	End
Item	Encroachments			37.348157 °	37.348157 °
				-120.959658 °	-120.959658 °
DWR ID	DWR_NA0010_01_f _ 2014_98				
Action/Comments					
Tree or limb					
Inspector Comments: Downed tree limbs due to fire along levee slope.					

Photo 1 of 2 : SP\_2015\_NA0010\_118\_98\_20150309\_00012.jpg



Looking southwest at tree limbs on waterwater toe.

<b>* Location</b> LS : Land Side    N/A : Not Applicable WS : Water Side CR : Crown		<b>** Rating</b> A : Acceptable                      N : Not Inspected/Rated M : Minimally Acceptable        C : Corrected U : Unacceptable                  A/W : Acceptable but Monitor & Maintain		<b>+ Issue Type</b> Ma : Maintenance Deficiency Ob : Design & System Obsolescence En : Enforcement
--	--	---	--	---

**Flood Control Project Maintenance  
Levee Inspections**

## Maintenance Issue Types Only, Levee Inspection Report By Mile - Spring 2015

### Lower San Joaquin Levee District

Waterway	Bank	Unit Miles	Inspection Start/End	Inspector
Unit No. 01 San Joaquin River	Right	22.52	05/18/2015 05/22/2015	Richard Willoughby

LM Start	0.06	Rating **	A/W	Issue No.	98 (cont)
LM End	0.06	Issue Type +	Ma	Location *	WS
Category	Earthen Levee			GPS Latitude/Longitude	
				Start	End
Item	Encroachments			37.348157 °	37.348157 °
				-120.959658 °	-120.959658 °
DWR ID	DWR_NA0010_01_f_2014_98				
Action/Comments					
Tree or limb					
Inspector Comments: Downed tree limbs due to fire along levee slope.					

Photo 2 of 2 : SP\_2015\_NA0010\_118\_98\_20150309\_00013.jpg



Looking north at tree limbs on waterward toe.

LM Start	0.14	Rating **	A/W	Issue No.	7
LM End	0.14	Issue Type +	Ma	Location *	WS
Category	Earthen Levee			GPS Latitude/Longitude	
				Start	End
Item	Trim / Thin Trees			37.347152 °	37.347152 °
				-120.960560 °	-120.960560 °
DWR ID	DWR_NA0010_01_s_2012_7				
Action/Comments					
Trim trees over roadway to at least 12 feet above ground level.					

No Photos

LM Start	0.19	Rating **	A/W	Issue No.	99
LM End	0.19	Issue Type +	Ma	Location *	LS
Category	Earthen Levee			GPS Latitude/Longitude	
				Start	End
Item	Encroachments			37.346582 °	37.346582 °
				-120.961052 °	-120.961052 °
DWR ID	DWR_NA0010_01_f_2014_99				
Action/Comments					
Tree or limb					
Inspector Comments: Downed tree limbs on landward slope.					

Photo 1 of 1 : SP\_2015\_NA0010\_118\_99\_20150309\_00014.jpg



Looking south at tree limbs on landward slope and toe.

\* Location  
LS : Land Side    N/A : Not Applicable  
WS : Water Side  
CR : Crown

\*\* Rating  
A : Acceptable                      N : Not Inspected/Rated  
M : Minimally Acceptable        C : Corrected  
U : Unacceptable                  A/W : Acceptable but Monitor & Maintain

+ Issue Type  
Ma : Maintenance Deficiency  
Ob : Design & System Obsolescence  
En : Enforcement

**Flood Control Project Maintenance  
Levee Inspections**

## Maintenance Issue Types Only, Levee Inspection Report By Mile - Spring 2015

### Lower San Joaquin Levee District

Waterway	Bank	Unit Miles	Inspection Start/End	Inspector
Unit No. 01 San Joaquin River	Right	22.52	05/18/2015 05/22/2015	Richard Willoughby

LM Start	0.21	Rating **	M	Issue No.	1178
LM End	1.39	Issue Type +	Ma	Location *	CR
Category	Earthen Levee			GPS Latitude/Longitude	
				Start	End
Item	Vegetation			37.346380 °	37.337123 °
				-120.961222 °	-120.949735 °
DWR ID	DWR_NA0010_01_s _ 2015_1178				
Action/Comments					
Control annual grass and weeds on the levee slopes and easements. Inspector Comments: Control vegetation on levee crown.					

No Photos

LM Start	0.23	Rating **	M	Issue No.	1
LM End	0.39	Issue Type +	Ma	Location *	LS
Category	Earthen Levee			GPS Latitude/Longitude	
				Start	End
Item	Animal Control			37.346152 °	37.343935 °
				-120.961402 °	-120.962536 °
DWR ID	DWR_NA0010_01_s _ 2012_1				
Action/Comments					
Exterminate rodents and backfill and compact or grout burrows. Inspector Comments: Typical view of several rodent holes on landward slope.					

Photo 1 of 1 : SP\_2015\_NA0010\_118\_1\_20150309\_00001.jpg



Looking at typical rodent holes on landward slope.

LM Start	3.16	Rating **	U	Issue No.	10
LM End	3.16	Issue Type +	Ma	Location *	LS
Category	Earthen Levee			GPS Latitude/Longitude	
				Start	End
Item	Animal Control			37.321053 °	37.321053 °
				-120.928785 °	-120.928785 °
DWR ID	DWR_NA0010_01_s _ 2012_10				
Action/Comments					
No rodents visible, but rodent burrows visible; need to backfill and compact or grout burrows. Inspector Comments: Several rodent holes noted in this section.					

Photo 1 of 1 : SP\_2015\_NA0010\_118\_10\_20150527\_00180.jpg



Looking at typical view of rodent holes on landward slope.

<b>* Location</b> LS : Land Side    N/A : Not Applicable WS : Water Side CR : Crown		<b>** Rating</b> A : Acceptable                      N : Not Inspected/Rated M : Minimally Acceptable        C : Corrected U : Unacceptable                  A/W : Acceptable but Monitor & Maintain		<b>+ Issue Type</b> Ma : Maintenance Deficiency Ob : Design & System Obsolescence En : Enforcement	
--	--	---	--	---	--

**Flood Control Project Maintenance  
Levee Inspections**

## Maintenance Issue Types Only, Levee Inspection Report By Mile - Spring 2015

### Lower San Joaquin Levee District

Waterway	Bank	Unit Miles	Inspection Start/End	Inspector
Unit No. 01 San Joaquin River	Right	22.52	05/18/2015 05/22/2015	Richard Willoughby

LM Start	3.47	Rating **	U	Issue No.	1179
LM End	3.47	Issue Type +	Ma	Location *	LS
Category	Earthen Levee			GPS Latitude/Longitude	
				Start	End
Item	Erosion / Bank Caving			37.317057 °	37.317057 °
				-120.926443 °	-120.926443 °
DWR ID	DWR_NA0010_01_s_2015_1179				
Action/Comments					
Note and monitor erosion site. Inspector Comments: Several erosions greater than three inches on landward slope.					

LM Start	<b>3.47</b>	Rating **	U	Issue No.	<b>1179 (cont)</b>
LM End	<b>3.47</b>	Issue Type +	Ma	Location *	LS

LM Start	<b>3.47</b>	Rating **	U	Issue No.	<b>1179 (cont)</b>
LM End	<b>3.47</b>	Issue Type +	Ma	Location *	LS

Photo 1 of 3 : SP\_2015\_NA0010\_118\_1179\_20150527\_00181.jpg



Looking south at erosion on landward slope and toe.

Photo 2 of 3 : SP\_2015\_NA0010\_118\_1179\_20150527\_00182.jpg



Looking southwest at erosion on landward slope and toe.

Photo 3 of 3 : SP\_2015\_NA0010\_118\_1179\_20150527\_00183.jpg



Looking west at erosion on landward slope and toe.

<b>* Location</b> LS : Land Side    N/A : Not Applicable WS : Water Side CR : Crown		<b>** Rating</b> A : Acceptable M : Minimally Acceptable U : Unacceptable N : Not Inspected/Rated C : Corrected A/W : Acceptable but Monitor & Maintain		<b>+ Issue Type</b> Ma : Maintenance Deficiency Ob : Design & System Obsolescence En : Enforcement	
--	--	---	--	---	--

**Flood Control Project Maintenance  
Levee Inspections**

## Maintenance Issue Types Only, Levee Inspection Report By Mile - Spring 2015

### Lower San Joaquin Levee District

Waterway	Bank	Unit Miles	Inspection Start/End	Inspector
Unit No. 01 San Joaquin River	Right	22.52	05/18/2015 05/22/2015	Richard Willoughby

LM Start	3.50	Rating **	A/W	Issue No.	17
LM End	3.96	Issue Type +	Ma	Location *	CR
Category	Earthen Levee			GPS Latitude/Longitude	
				Start	End
Item	Crown Surface / Depressions / Rutting				°
					°
DWR ID	DWR_NA0010_01_f_2012_17				
Action/Comments					
Add appropriate material and re-grade the levee to bring the crown above the design elevation.					

No Photos

LM Start	3.70	Rating **	M	Issue No.	2
LM End	3.72	Issue Type +	Ma	Location *	LS
Category	Earthen Levee			GPS Latitude/Longitude	
				Start	End
Item	Animal Control			37.313892 °	37.313598 °
				-120.926507 °	-120.926607 °
DWR ID	DWR_NA0010_01_s_2012_2				
Action/Comments					
No rodents visible, but rodent burrows visible; need to backfill and compact or grout burrows.					

No Photos

LM Start	4.00	Rating **	M	Issue No.	1180
LM End	5.43	Issue Type +	Ma	Location *	LS
Category	Earthen Levee			GPS Latitude/Longitude	
				Start	End
Item	Vegetation			37.310637 °	37.301495 °
				-120.925935 °	-120.911238 °
DWR ID	DWR_NA0010_01_s_2015_1180				
Action/Comments					
Control annual grass and weeds on the levee slopes and easements.					

No Photos

<b>* Location</b> LS : Land Side    N/A : Not Applicable WS : Water Side CR : Crown		<b>** Rating</b> A : Acceptable                      N : Not Inspected/Rated M : Minimally Acceptable        C : Corrected U : Unacceptable                  A/W : Acceptable but Monitor & Maintain		<b>+ Issue Type</b> Ma : Maintenance Deficiency Ob : Design & System Obsolescence En : Enforcement	
--	--	---	--	---	--

**Flood Control Project Maintenance  
Levee Inspections**

## Maintenance Issue Types Only, Levee Inspection Report By Mile - Spring 2015

### Lower San Joaquin Levee District

Waterway	Bank	Unit Miles	Inspection Start/End	Inspector
Unit No. 01 San Joaquin River	Right	22.52	05/18/2015 05/22/2015	Richard Willoughby

LM Start	4.00	Rating **	M	Issue No.	1181
LM End	5.43	Issue Type +	Ma	Location *	WS
Category	Earthen Levee			GPS Latitude/Longitude	
				Start	End
Item	Vegetation			37.310637 °	37.301495 °
				-120.925935 °	-120.911238 °
DWR ID	DWR_NA0010_01_s_2015_1181				
Action/Comments					
Control annual grass and weeds on the levee slopes and easements.					

No Photos

LM Start	4.13	Rating **	M	Issue No.	100
LM End	4.13	Issue Type +	Ma	Location *	LS
Category	Earthen Levee			GPS Latitude/Longitude	
				Start	End
Item	Encroachments			37.309049 °	37.309049 °
				-120.924421 °	-120.924421 °
DWR ID	DWR_NA0010_01_f_2014_100				
Action/Comments					
Garbage					
Inspector Comments: Old PVC pipes left on landward slope.					

Photo 1 of 1 : SP\_2015\_NA0010\_118\_100\_20150309\_00015.jpg



Looking east at old pvc pipes on landward slope.

LM Start	4.18	Rating **	M	Issue No.	6
LM End	4.18	Issue Type +	Ma	Location *	LS
Category	Earthen Levee			GPS Latitude/Longitude	
				Start	End
Item	Animal Control			37.308540 °	37.308540 °
				-120.924003 °	-120.924003 °
DWR ID	DWR_NA0010_01_s_2012_6				
Action/Comments					
Exterminate rodents and backfill and compact or grout burrows. Inspector Comments: Several rodent holes noted in this section.					

Photo 1 of 1 : SP\_2015\_NA0010\_118\_6\_20150527\_00184.jpg



Looking at typical rodent holes within this section.

<b>* Location</b> LS : Land Side    N/A : Not Applicable WS : Water Side CR : Crown		<b>** Rating</b> A : Acceptable M : Minimally Acceptable U : Unacceptable N : Not Inspected/Rated C : Corrected A/W : Acceptable but Monitor & Maintain		<b>+ Issue Type</b> Ma : Maintenance Deficiency Ob : Design & System Obsolescence En : Enforcement	
--	--	---	--	---	--

**Flood Control Project Maintenance  
Levee Inspections**

## Maintenance Issue Types Only, Levee Inspection Report By Mile - Spring 2015

### Lower San Joaquin Levee District

Waterway	Bank	Unit Miles	Inspection Start/End	Inspector
Unit No. 01 San Joaquin River	Right	22.52	05/18/2015 05/22/2015	Richard Willoughby

LM Start	4.69	Rating **	A/W	Issue No.	9
LM End	4.69	Issue Type +	Ma	Location *	LS
Category	Earthen Levee			GPS Latitude/Longitude	
				Start	End
Item	Animal Control			37.302398 °	37.302398 °
				-120.920920 °	-120.920920 °
DWR ID	DWR_NA0010_01_s_2013_9				
Action/Comments					
Repair the levee slope damaged by livestock and prevent large animal access.					
Inspector Comments: Levee landward toe damaged by livestock.					

Photo 1 of 3 : SP\_2015\_NA0010\_118\_9\_20150527\_00185.jpg



Looking northeast at corrected site on landward slope.

LM Start	<b>4.69</b>	Rating **	A/W	Issue No.	<b>9 (cont)</b>
LM End	<b>4.69</b>	Issue Type +	Ma	Location *	LS

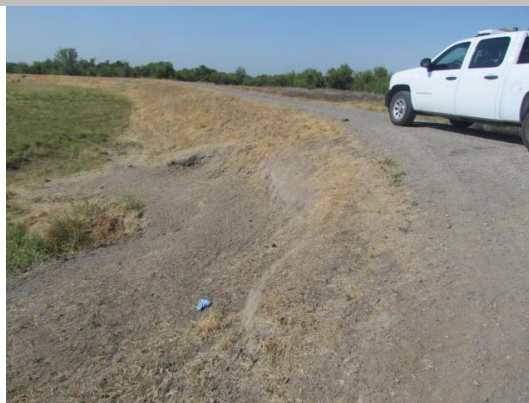
Photo 2 of 3 : SP\_2015\_NA0010\_118\_9\_20150309\_00005.jpg



Looking southeast at erosion on landward toe.

LM Start	<b>4.69</b>	Rating **	A/W	Issue No.	<b>9 (cont)</b>
LM End	<b>4.69</b>	Issue Type +	Ma	Location *	LS

Photo 3 of 3 : SP\_2015\_NA0010\_118\_9\_20150309\_00006.jpg



Looking south at damage slope by livestock on landward slope.

* Location LS : Land Side    N/A : Not Applicable WS : Water Side CR : Crown		** Rating A : Acceptable M : Minimally Acceptable U : Unacceptable N : Not Inspected/Rated C : Corrected A/W : Acceptable but Monitor & Maintain		+ Issue Type Ma : Maintenance Deficiency Ob : Design & System Obsolescence En : Enforcement	
---	--	--	--	--	--

**Flood Control Project Maintenance  
Levee Inspections**

## Maintenance Issue Types Only, Levee Inspection Report By Mile - Spring 2015

### Lower San Joaquin Levee District

Waterway	Bank	Unit Miles	Inspection Start/End	Inspector
Unit No. 01 San Joaquin River	Right	22.52	05/18/2015 05/22/2015	Richard Willoughby

LM Start	5.72	Rating **	A/W	Issue No.	116
LM End	5.72	Issue Type +	Ma	Location *	LS
Category	Earthen Levee			GPS Latitude/Longitude	
				Start	End
Item	Animal Control			37.304057 °	37.304057 °
				-120.907200 °	-120.907200 °
DWR ID	DWR_NA0010_01_s_2012_116				
Action/Comments					
No rodents visible, but rodent burrows visible; need to backfill and compact or grout burrows.					
Inspector Comments: Large rodent holes on landside slope near fence pole.					

Photo 1 of 3 : SP\_2015\_NA0010\_118\_116\_20150309\_00016.jpg



Looking east at one of several rodent holes on landside shoulder and slope.

LM Start	<b>5.72</b>	Rating **	A/W	Issue No.	<b>116 (cont)</b>
LM End	<b>5.72</b>	Issue Type +	Ma	Location *	LS

Photo 2 of 3 : SP\_2015\_NA0010\_118\_116\_20150309\_00017.jpg



Looking south at repaired rodent site on landside slope. (Fall 2012)

LM Start	<b>5.72</b>	Rating **	A/W	Issue No.	<b>116 (cont)</b>
LM End	<b>5.72</b>	Issue Type +	Ma	Location *	LS

Photo 3 of 3 : SP\_2015\_NA0010\_118\_116\_20150309\_00018.jpg



Looking northeast at one of several holes on landside shoulder and slope.

<b>* Location</b> LS : Land Side    N/A : Not Applicable WS : Water Side CR : Crown		<b>** Rating</b> A : Acceptable M : Minimally Acceptable U : Unacceptable N : Not Inspected/Rated C : Corrected A/W : Acceptable but Monitor & Maintain		<b>+ Issue Type</b> Ma : Maintenance Deficiency Ob : Design & System Obsolescence En : Enforcement	
--	--	---	--	---	--

**Flood Control Project Maintenance  
Levee Inspections**

## Maintenance Issue Types Only, Levee Inspection Report By Mile - Spring 2015

### Lower San Joaquin Levee District

Waterway	Bank	Unit Miles	Inspection Start/End	Inspector
Unit No. 01 San Joaquin River	Right	22.52	05/18/2015 05/22/2015	Richard Willoughby

LM Start	5.72	Rating **	M	Issue No.	1182
LM End	9.93	Issue Type +	Ma	Location *	LS
Category	Earthen Levee			GPS Latitude/Longitude	
				Start	End
Item	Vegetation			37.304118 °	37.291132 °
				-120.907068 °	-120.839647 °
DWR ID	DWR_NA0010_01_s _ 2015_1182				
Action/Comments					
Control annual grass and weeds on the levee slopes and easements.					

No Photos

LM Start	5.72	Rating **	M	Issue No.	1183
LM End	9.93	Issue Type +	Ma	Location *	WS
Category	Earthen Levee			GPS Latitude/Longitude	
				Start	End
Item	Vegetation			37.304118 °	37.291132 °
				-120.907068 °	-120.839647 °
DWR ID	DWR_NA0010_01_s _ 2015_1183				
Action/Comments					
Control annual grass and weeds on the levee slopes and easements.					

No Photos

LM Start	6.01	Rating **	U	Issue No.	12
LM End	6.01	Issue Type +	Ma	Location *	LS
Category	Earthen Levee			GPS Latitude/Longitude	
				Start	End
Item	Vegetation			37.303725 °	37.303725 °
				-120.902003 °	-120.902003 °
DWR ID	DWR_NA0010_01_s _ 2012_12				
Action/Comments					
Remove the wild growth other than native grasses from the levee slopes.					

Photo 1 of 1 : SP\_2015\_NA0010\_118\_12\_20150527\_00186.jpg



Looking south at dense vegetation on landward slope.

<b>* Location</b> LS : Land Side    N/A : Not Applicable WS : Water Side CR : Crown		<b>** Rating</b> A : Acceptable                      N : Not Inspected/Rated M : Minimally Acceptable        C : Corrected U : Unacceptable                  A/W : Acceptable but Monitor & Maintain		<b>+ Issue Type</b> Ma : Maintenance Deficiency Ob : Design & System Obsolescence En : Enforcement
--	--	---	--	---

**Flood Control Project Maintenance  
Levee Inspections**

## Maintenance Issue Types Only, Levee Inspection Report By Mile - Spring 2015

### Lower San Joaquin Levee District

Waterway	Bank	Unit Miles	Inspection Start/End	Inspector
Unit No. 01 San Joaquin River	Right	22.52	05/18/2015 05/22/2015	Richard Willoughby

LM Start	9.16	Rating **	M	Issue No.	117
LM End	9.78	Issue Type +	Ma	Location *	CR
Category	Earthen Levee			GPS Latitude/Longitude	
				Start	End
Item	Crown Surface / Depressions / Rutting			37.296145 °	37.293077 °
				-120.848588 °	-120.839170 °
DWR ID	DWR_NA0010_01_s_2012_117				
Action/Comments					
Add appropriate material and re-grade the levee to bring the crown above the design elevation. Inspector Comments: Control vegetation on levee crown.					

Photo 1 of 3 : SP\_2015\_NA0010\_118\_117\_20150309\_00019.jpg



Looking south at typical view of vegetation on levee crown.

Photo 2 of 3 : SP\_2015\_NA0010\_118\_117\_20150309\_00020.jpg



Looking south at levee crown. (Fall 2013)

Photo 3 of 3 : SP\_2015\_NA0010\_118\_117\_20150309\_00021.jpg



Looking south at vegetation on levee crown. (Spring 2013)

LM Start	<b>9.16</b>	Rating **	M	Issue No.	<b>117 (cont)</b>
LM End	<b>9.78</b>	Issue Type +	Ma	Location *	CR

LM Start	<b>9.16</b>	Rating **	M	Issue No.	<b>117 (cont)</b>
LM End	<b>9.78</b>	Issue Type +	Ma	Location *	CR

* Location	** Rating	+ Issue Type
LS : Land Side    N/A : Not Applicable WS : Water Side CR : Crown	A : Acceptable M : Minimally Acceptable U : Unacceptable N : Not Inspected/Rated C : Corrected A/W : Acceptable but Monitor & Maintain	Ma : Maintenance Deficiency Ob : Design & System Obsolescence En : Enforcement

**Flood Control Project Maintenance  
Levee Inspections**

## Maintenance Issue Types Only, Levee Inspection Report By Mile - Spring 2015

### Lower San Joaquin Levee District

Waterway	Bank	Unit Miles	Inspection Start/End	Inspector
Unit No. 01 San Joaquin River	Right	22.52	05/18/2015 05/22/2015	Richard Willoughby

LM Start	9.57	Rating **	M	Issue No.	14
LM End	9.57	Issue Type +	Ma	Location *	CR
Category	Earthen Levee			GPS Latitude/Longitude	
				Start	End
Item	Crown Surface / Depressions / Rutting			37.295517 °	37.295517 °
				-120.841452 °	-120.841452 °
DWR ID	DWR_NA0010_01_s_2015_14				
Action/Comments					
Repair depressions or ruts in the crown or slope. Inspector Comments: Depression greater than 3" deep by 18" wide by 18" long on levee crown					

Photo 1 of 2 : SP\_2015\_NA0010\_118\_14\_20150527\_00188.jpg



Looking west at depression greater than three inches on levee crown.

Photo 2 of 2 : SP\_2015\_NA0010\_118\_14\_20150527\_00187.jpg



Looking west at depression on levee crown.

LM Start	10.70	Rating **	M	Issue No.	15
LM End	11.34	Issue Type +	Ma	Location *	CR
Category	Earthen Levee			GPS Latitude/Longitude	
				Start	End
Item	Vegetation			37.283672 °	37.278767 °
				-120.833150 °	-120.824107 °
DWR ID	DWR_NA0010_01_s_2015_15				
Action/Comments					
Control annual grass and weeds on the levee slopes and easements. Inspector Comments: Control vegetation on levee crown					

No Photos

* Location		** Rating		+ Issue Type	
LS : Land Side	N/A : Not Applicable	A : Acceptable	N : Not Inspected/Rated	Ma : Maintenance Deficiency	
WS : Water Side		M : Minimally Acceptable	C : Corrected	Ob : Design & System Obsolescence	
CR : Crown		U : Unacceptable	A/W : Acceptable but Monitor & Maintain	En : Enforcement	

**Flood Control Project Maintenance  
Levee Inspections**

**Maintenance Issue Types Only, Levee Inspection Report By Mile - Spring 2015**

**Lower San Joaquin Levee District**

Waterway	Bank	Unit Miles	Inspection Start/End	Inspector
Unit No. 01 San Joaquin River	Right	22.52	05/18/2015 05/22/2015	Richard Willoughby

LM Start	19.32	Rating **	M	Issue No.	8
LM End	19.32	Issue Type +	Ma	Location *	CR
Category	Earthen Levee			GPS Latitude/Longitude	
				Start	End
Item	Encroachments			37.200923 °	37.200923 °
				-120.756987 °	-120.756987 °
DWR ID	DWR_NA0010_01_s_2012_8				
Action/Comments					
Pipe					
Inspector Comments: Farmer installed a pipe across levee crown, landside and waterside slopes. Ramp is not according to standards.					

Photo 1 of 1 : SP\_2015\_NA0010\_118\_8\_20150309\_00004.jpg



Looking south at pipe across levee crown.

LM Start	20.69	Rating **	M	Issue No.	101
LM End	21.57	Issue Type +	Ma	Location *	LS
Category	Earthen Levee			GPS Latitude/Longitude	
				Start	End
Item	Vegetation			37.188074 °	37.178114 °
				-120.763419 °	-120.758790 °
DWR ID	DWR_NA0010_01_f_2014_101				
Action/Comments					
Control annual grass and weeds on the levee slopes and easements.					

No Photos

<b>* Location</b> LS : Land Side    N/A : Not Applicable WS : Water Side CR : Crown		<b>** Rating</b> A : Acceptable                      N : Not Inspected/Rated M : Minimally Acceptable        C : Corrected U : Unacceptable                  A/W : Acceptable but Monitor & Maintain		<b>+ Issue Type</b> Ma : Maintenance Deficiency Ob : Design & System Obsolescence En : Enforcement
--	--	---	--	---

**Flood Control Project Maintenance  
Levee Inspections**

## Maintenance Issue Types Only, Levee Inspection Report By Mile - Spring 2015

### Lower San Joaquin Levee District

Waterway	Bank	Unit Miles	Inspection Start/End	Inspector
Unit No. 02A San Joaquin River	Left	7.87	05/22/2015 05/22/2015	Richard Willoughby

LM Start	0.00	Rating **	M	Issue No.	250
LM End	7.84	Issue Type +	Ma	Location *	LS
Category	Earthen Levee			GPS Latitude/Longitude	
				Start	End
Item	Vegetation			37.296314 °	37.231606 °
				-120.880559 °	-120.812192 °
DWR ID	DWR_NA0010_02A_s_2015_250				
Action/Comments					
Control annual grass and weeds on the levee slopes and easements.					

Photo 1 of 1 : SP\_2015\_NA0010\_119\_250\_20150527\_00006.jpg



Looking west at typical view of landward slope.

LM Start	0.00	Rating **	M	Issue No.	251
LM End	7.84	Issue Type +	Ma	Location *	WS
Category	Earthen Levee			GPS Latitude/Longitude	
				Start	End
Item	Vegetation			37.296314 °	37.231601 °
				-120.880559 °	-120.812191 °
DWR ID	DWR_NA0010_02A_s_2015_251				
Action/Comments					
Control annual grass and weeds on the levee slopes and easements.					

Photo 1 of 1 : SP\_2015\_NA0010\_119\_251\_20150527\_00007.jpg



Looking northwest at typical view of waterward slope.

LM Start	0.75	Rating **	U	Issue No.	5
LM End	0.75	Issue Type +	Ma	Location *	WS
Category	Earthen Levee			GPS Latitude/Longitude	
				Start	End
Item	Erosion / Bank Caving			37.286877 °	37.286877 °
				-120.874222 °	-120.874222 °
DWR ID	DWR_NA0010_02A_s_2012_5				
Action/Comments					
Schedule repair of erosion site prior to the next inspection. Inspector Comments: A field investigation report in on file. For more information and pictures see field investigation report #4301.					

Photo 1 of 3 : SP\_2015\_NA0010\_119\_5\_20150309\_00003.jpg



Looking north at erosion on waterward slope. (Fall 2014)

<b>* Location</b> LS : Land Side    N/A : Not Applicable WS : Water Side CR : Crown		<b>** Rating</b> A : Acceptable                      N : Not Inspected/Rated M : Minimally Acceptable        C : Corrected U : Unacceptable                  A/W : Acceptable but Monitor & Maintain		<b>+ Issue Type</b> Ma : Maintenance Deficiency Ob : Design & System Obsolescence En : Enforcement	
--	--	---	--	---	--

**Flood Control Project Maintenance  
Levee Inspections**

## Maintenance Issue Types Only, Levee Inspection Report By Mile - Spring 2015

### Lower San Joaquin Levee District

Waterway	Bank	Unit Miles	Inspection Start/End	Inspector
Unit No. 02A San Joaquin River	Left	7.87	05/22/2015 05/22/2015	Richard Willoughby

LM Start	0.75	Rating **	U	Issue No.	5 (cont)	
LM End	0.75	Issue Type +	Ma	Location *	WS	
Category	Earthen Levee			GPS Latitude/Longitude		
				Start		End
Item	Erosion / Bank Caving			37.286877 °	37.286877 °	
				-120.874222 °	-120.874222 °	
DWR ID	DWR_NA0010_02A_s_2012_5					
Action/Comments						
Schedule repair of erosion site prior to the next inspection. Inspector Comments: A field investigation report in on file. For more information and pictures see field investigation report #4301.						

Photo 2 of 3 : SP\_2015\_NA0010\_119\_5\_20150309\_00004.jpg



Looking north at large erosion on waterward slope. (Fall 2013)

Photo 3 of 3 : SP\_2015\_NA0010\_119\_5\_20150309\_00005.jpg



Looking south at large erosion on waterside slope. (Spring 2012)

LM Start	<b>0.75</b>	Rating **	U	Issue No.	<b>5 (cont)</b>
LM End	<b>0.75</b>	Issue Type +	Ma	Location *	WS

LM Start	5.27	Rating **	A/W	Issue No.	1
LM End	7.37	Issue Type +	Ma	Location *	CR
Category	Earthen Levee			GPS Latitude/Longitude	
				Start	End
Item	Crown Surface / Depressions / Rutting			37.261990 °	37.236516 °
				-120.832408 °	-120.817542 °
DWR ID	DWR_NA0010_02A_f_2012_1				
Action/Comments					
Repair depressions or ruts in the crown or slope. Inspector Comments: Rutting on levee crown.					

No Photos

<b>* Location</b> LS : Land Side    N/A : Not Applicable WS : Water Side CR : Crown		<b>** Rating</b> A : Acceptable M : Minimally Acceptable U : Unacceptable N : Not Inspected/Rated C : Corrected A/W : Acceptable but Monitor & Maintain		<b>+ Issue Type</b> Ma : Maintenance Deficiency Ob : Design & System Obsolescence En : Enforcement	
--	--	---	--	---	--

**Flood Control Project Maintenance  
Levee Inspections**

## Maintenance Issue Types Only, Levee Inspection Report By Mile - Spring 2015

### Lower San Joaquin Levee District

Waterway	Bank	Unit Miles	Inspection Start/End	Inspector
Unit No. 02A San Joaquin River	Left	7.87	05/22/2015 05/22/2015	Richard Willoughby

LM Start	7.71	Rating **	M	Issue No.	252
LM End	7.71	Issue Type +	Ma	Location *	CR
Category	Earthen Levee			GPS Latitude/Longitude	
				Start	End
Item	Animal Control			37.232828 °	37.232828 °
				-120.813799 °	-120.813799 °
DWR ID	DWR_NA0010_02A_s_2015_252				
Action/Comments					
No rodents visible, but rodent burrows visible; need to backfill and compact or grout burrows.					
Inspector Comments: Two rodent holes on levee crown.					

Photo 1 of 1 : SP\_2015\_NA0010\_119\_252\_20150527\_00008.jpg



Looking at rodent holes on levee crown.

<b>* Location</b> LS : Land Side    N/A : Not Applicable WS : Water Side CR : Crown		<b>** Rating</b> A : Acceptable                      N : Not Inspected/Rated M : Minimally Acceptable        C : Corrected U : Unacceptable                  A/W : Acceptable but Monitor & Maintain		<b>+ Issue Type</b> Ma : Maintenance Deficiency Ob : Design & System Obsolescence En : Enforcement
--	--	---	--	---

**Flood Control Project Maintenance  
Levee Inspections**

## Maintenance Issue Types Only, Levee Inspection Report By Mile - Spring 2015

### Lower San Joaquin Levee District

Waterway	Bank	Unit Miles	Inspection Start/End	Inspector
Unit No. 02B San Joaquin River	Left	5.92	05/22/2015 05/22/2015	Richard Willoughby

LM Start	7.87	Rating **	M	Issue No.	168
LM End	13.22	Issue Type +	Ma	Location *	CR
Category	Earthen Levee			GPS Latitude/Longitude	
				Start	End
Item	Vegetation			37.231604 °	37.178622 °
				-120.812190 °	-120.764448 °
DWR ID	DWR_NA0010_02B_s_2015_168				
Action/Comments					
Control annual grass and weeds on the levee slopes and easements. Inspector Comments: Control vegetation on levee crown.					

Photo 1 of 1 : SP\_2015\_NA0010\_120\_168\_20150527\_00006.jpg



Looking north at typical view of levee crown.

LM Start	7.87	Rating **	M	Issue No.	169
LM End	13.79	Issue Type +	Ma	Location *	LS
Category	Earthen Levee			GPS Latitude/Longitude	
				Start	End
Item	Vegetation			37.231604 °	°
				-120.812190 °	°
DWR ID	DWR_NA0010_02B_s_2015_169				
Action/Comments					
Control annual grass and weeds on the levee slopes and easements.					

Photo 1 of 1 : SP\_2015\_NA0010\_120\_169\_20150527\_00008.jpg



Looking northwest at typical view of waterward slope.

LM Start	7.87	Rating **	M	Issue No.	170
LM End	13.79	Issue Type +	Ma	Location *	WS
Category	Earthen Levee			GPS Latitude/Longitude	
				Start	End
Item	Vegetation			37.231603 °	°
				-120.812190 °	°
DWR ID	DWR_NA0010_02B_s_2015_170				
Action/Comments					
Control annual grass and weeds on the levee slopes and easements.					

Photo 1 of 1 : SP\_2015\_NA0010\_120\_170\_20150527\_00007.jpg



Looking northwest at typical view of waterward slope.

<b>* Location</b> LS : Land Side    N/A : Not Applicable WS : Water Side CR : Crown		<b>** Rating</b> A : Acceptable                      N : Not Inspected/Rated M : Minimally Acceptable        C : Corrected U : Unacceptable                  A/W : Acceptable but Monitor & Maintain		<b>+ Issue Type</b> Ma : Maintenance Deficiency Ob : Design & System Obsolescence En : Enforcement
--	--	---	--	---

**Flood Control Project Maintenance  
Levee Inspections**

## Maintenance Issue Types Only, Levee Inspection Report By Mile - Spring 2015

### Lower San Joaquin Levee District

Waterway	Bank	Unit Miles	Inspection Start/End	Inspector
Unit No. 02B San Joaquin River	Left	5.92	05/22/2015 05/22/2015	Richard Willoughby

LM Start	9.46	Rating **	A/W	Issue No.	2
LM End	9.46	Issue Type +	Ma	Location *	LS
Category	Earthen Levee			GPS Latitude/Longitude	
				Start	End
Item	Trim / Thin Trees			37.220223 °	37.220223 °
				-120.788590 °	-120.788590 °
DWR ID	DWR_NA0010_02B_f_2014_2				
Action/Comments					
Trim trees to at least five feet above ground level.					

No Photos

LM Start	12.10	Rating **	A/W	Issue No.	5
LM End	12.10	Issue Type +	Ma	Location *	LS
Category	Earthen Levee			GPS Latitude/Longitude	
				Start	End
Item	Vegetation			37.193504 °	37.193504 °
				-120.763859 °	-120.763859 °
DWR ID	DWR_NA0010_02B_s_2012_5				
Action/Comments					
Remove the wild growth other than native grasses from the levee slopes.					
Inspector Comments: Remove wild roses on landside toe.					

Photo 1 of 1 : SP\_2015\_NA0010\_120\_5\_20150309\_00005.jpg



Looking north at wildroses on landward slope.

LM Start	12.25	Rating **	M	Issue No.	1
LM End	12.25	Issue Type +	Ma	Location *	LS
Category	Earthen Levee			GPS Latitude/Longitude	
				Start	End
Item	Encroachments			37.191500 °	37.191500 °
				-120.764521 °	-120.764521 °
DWR ID	DWR_NA0010_02B_f_2014_1				
Action/Comments					
Tree or limb					
Inspector Comments: Fallen tree limbs on landward slope.					

Photo 1 of 2 : SP\_2015\_NA0010\_120\_1\_20150309\_00001.jpg



Looking southwest at tree limb on waterward slope.

<b>* Location</b> LS : Land Side    N/A : Not Applicable WS : Water Side CR : Crown		<b>** Rating</b> A : Acceptable                      N : Not Inspected/Rated M : Minimally Acceptable        C : Corrected U : Unacceptable                  A/W : Acceptable but Monitor & Maintain		<b>+ Issue Type</b> Ma : Maintenance Deficiency Ob : Design & System Obsolescence En : Enforcement	
--	--	---	--	---	--

**Flood Control Project Maintenance  
Levee Inspections**

## Maintenance Issue Types Only, Levee Inspection Report By Mile - Spring 2015

### Lower San Joaquin Levee District

Waterway	Bank	Unit Miles	Inspection Start/End	Inspector
Unit No. 02B San Joaquin River	Left	5.92	05/22/2015 05/22/2015	Richard Willoughby

LM Start	12.25	Rating **	M	Issue No.	1 (cont)	
LM End	12.25	Issue Type +	Ma	Location *	LS	
Category	Earthen Levee			GPS Latitude/Longitude		
				Start		End
Item	Encroachments			37.191500 °		37.191500 °
				-120.764521 °		-120.764521 °
DWR ID	DWR_NA0010_02B_f_2014_1					
Action/Comments						
Tree or limb						
Inspector Comments: Fallen tree limbs on landward slope.						

Photo 2 of 2 : SP\_2015\_NA0010\_120\_1\_20150309\_00002.jpg



Looking southwest at tree limb on waterward slope.

LM Start	13.42	Rating **	M	Issue No.	167
LM End	13.42	Issue Type +	Ma	Location *	LS
Category	Earthen Levee			GPS Latitude/Longitude	
				Start	End
Item	Trim / Thin Trees			37.176379 °	37.176379 °
				-120.762255 °	-120.762255 °
DWR ID	DWR_NA0010_02B_s_2015_167				
Action/Comments					
Trim trees over roadway to at least 12 feet above ground level.					

No Photos

<b>* Location</b> LS : Land Side    N/A : Not Applicable WS : Water Side CR : Crown		<b>** Rating</b> A : Acceptable                      N : Not Inspected/Rated M : Minimally Acceptable        C : Corrected U : Unacceptable                  A/W : Acceptable but Monitor & Maintain		<b>+ Issue Type</b> Ma : Maintenance Deficiency Ob : Design & System Obsolescence En : Enforcement
--	--	---	--	---

**Flood Control Project Maintenance  
Levee Inspections**

## Maintenance Issue Types Only, Levee Inspection Report By Mile - Spring 2015

### Lower San Joaquin Levee District

Waterway	Bank	Unit Miles	Inspection Start/End	Inspector
Unit No. 03 San Joaquin River	Right	2.10	05/21/2015 05/21/2015	Richard Willoughby

LM Start	0.00	Rating **	M	Issue No.	66
LM End	2.10	Issue Type +	Ma	Location *	WS
Category	Earthen Levee			GPS Latitude/Longitude	
				Start	End
Item	Vegetation			37.111728 °	37.088908 °
				-120.587563 °	-120.566846 °
DWR ID	DWR_NA0010_03_s_2015_66				
Action/Comments					
Control annual grass and weeds on the levee slopes and easements. Inspector Comments: Control annual growth on waterward slope.					

Photo 1 of 1 : SP\_2015\_NA0010\_121\_66\_20150527\_00023.jpg



Looking at typical view of waterward slope.

LM Start	0.19	Rating **	M	Issue No.	67
LM End	0.19	Issue Type +	Ma	Location *	LS
Category	Earthen Levee			GPS Latitude/Longitude	
				Start	End
Item	Animal Control			37.109013 °	37.109013 °
				-120.587799 °	-120.587799 °
DWR ID	DWR_NA0010_03_s_2015_67				
Action/Comments					
No rodents visible, but rodent burrows visible; need to backfill and compact or grout burrows.					
Inspector Comments: Rodent holes noted at landward toe.					

No Photos

LM Start	0.40	Rating **	M	Issue No.	4
LM End	2.09	Issue Type +	Ma	Location *	LS
Category	Earthen Levee			GPS Latitude/Longitude	
				Start	End
Item	Vegetation			37.106450 °	37.088965 °
				-120.586024 °	-120.566867 °
DWR ID	DWR_NA0010_03_f_2014_4				
Action/Comments					
Control annual grass and weeds on the levee slopes and easements. Inspector Comments: Control growth on landward slope.					

Photo 1 of 1 : SP\_2015\_NA0010\_121\_4\_20150527\_00024.jpg



Looking at typical view of landward slope.

\* Location  
LS : Land Side    N/A : Not Applicable  
WS : Water Side  
CR : Crown

\*\* Rating  
A : Acceptable                      N : Not Inspected/Rated  
M : Minimally Acceptable        C : Corrected  
U : Unacceptable                  A/W : Acceptable but Monitor & Maintain

+ Issue Type  
Ma : Maintenance Deficiency  
Ob : Design & System Obsolescence  
En : Enforcement

**Flood Control Project Maintenance  
Levee Inspections**

## Maintenance Issue Types Only, Levee Inspection Report By Mile - Spring 2015

### Lower San Joaquin Levee District

Waterway	Bank	Unit Miles	Inspection Start/End	Inspector
Unit No. 03 San Joaquin River	Right	2.10	05/21/2015 05/21/2015	Richard Willoughby

LM Start	1.54	Rating **	M	Issue No.	65
LM End	1.54	Issue Type +	Ma	Location *	LS
Category	Earthen Levee			GPS Latitude/Longitude	
				Start	End
Item	Animal Control			37.094270 °	37.094270 °
				-120.573112 °	-120.573112 °
DWR ID	DWR_NA0010_03_s_2015_65				
Action/Comments					
No rodents visible, but rodent burrows visible; need to backfill and compact or grout burrows.					

No Photos

LM Start	2.05	Rating **	A/W	Issue No.	5
LM End	2.05	Issue Type +	Ma	Location *	LS
Category	Earthen Levee			GPS Latitude/Longitude	
				Start	End
Item	Encroachments			37.089317 °	37.089317 °
				-120.567480 °	-120.567480 °
DWR ID	DWR_NA0010_03_f_2014_5				
Action/Comments					
Prunings					
Inspector Comments: Prunings on landward toe.					

No Photos

<b>* Location</b> LS : Land Side    N/A : Not Applicable WS : Water Side CR : Crown	<b>** Rating</b> A : Acceptable M : Minimally Acceptable U : Unacceptable	N : Not Inspected/Rated C : Corrected A/W : Acceptable but Monitor & Maintain	<b>+ Issue Type</b> Ma : Maintenance Deficiency Ob : Design & System Obsolescence En : Enforcement
--	--	---	---

**Flood Control Project Maintenance  
Levee Inspections**

## Maintenance Issue Types Only, Levee Inspection Report By Mile - Spring 2015

### Lower San Joaquin Levee District

Waterway	Bank	Unit Miles	Inspection Start/End	Inspector
Unit No. 04 San Joaquin River	Left	1.41	05/21/2015 05/21/2015	Richard Willoughby

LM Start	0.00	Rating **	M	Issue No.	105
LM End	1.19	Issue Type +	Ma	Location *	LS
Category	Earthen Levee			GPS Latitude/Longitude	
				Start	End
Item	Vegetation			37.112570 °	37.100055 °
				-120.589082 °	-120.580240 °
DWR ID	DWR_NA0010_04_s_2015_105				
Action/Comments					
Control annual grass and weeds on the levee slopes and easements. Inspector Comments: Control growth on landward slope.					

Photo 1 of 1 : SP\_2015\_NA0010\_122\_105\_20150527\_00051.jpg



Looking at typical view of landward slope.

LM Start	0.00	Rating **	M	Issue No.	106
LM End	1.41	Issue Type +	Ma	Location *	WS
Category	Earthen Levee			GPS Latitude/Longitude	
				Start	End
Item	Vegetation			37.112570 °	37.097534 °
				-120.589082 °	-120.578145 °
DWR ID	DWR_NA0010_04_s_2015_106				
Action/Comments					
Control annual grass and weeds on the levee slopes and easements. Inspector Comments: Control growth on waterward slope.					

Photo 1 of 1 : SP\_2015\_NA0010\_122\_106\_20150527\_00052.jpg



Looking at typical view of waterward slope.

\* Location  
LS : Land Side    N/A : Not Applicable  
WS : Water Side  
CR : Crown

\*\* Rating  
A : Acceptable                      N : Not Inspected/Rated  
M : Minimally Acceptable        C : Corrected  
U : Unacceptable                  A/W : Acceptable but Monitor & Maintain

+ Issue Type  
Ma : Maintenance Deficiency  
Ob : Design & System Obsolescence  
En : Enforcement

**Flood Control Project Maintenance  
Levee Inspections**

## Maintenance Issue Types Only, Levee Inspection Report By Mile - Spring 2015

### Lower San Joaquin Levee District

Waterway	Bank	Unit Miles	Inspection Start/End	Inspector
Unit No. 05 East Side Bypass	Right	34.85	05/19/2015 05/20/2015	Richard Willoughby

LM Start	0.03	Rating **	M	Issue No.	1307
LM End	0.65	Issue Type +	Ma	Location *	CR
Category	Earthen Levee			GPS Latitude/Longitude	
				Start	End
Item	Vegetation			37.278767 °	37.273430 °
				-120.824107 °	-120.815127 °
DWR ID	DWR_NA0010_05_s _ 2015_1307				
Action/Comments					
Control annual grass and weeds on the levee slopes and easements. Inspector Comments: Control vegetation on levee crown.					

No Photos

LM Start	2.82	Rating **	M	Issue No.	1308
LM End	2.82	Issue Type +	Ma	Location *	LS
Category	Earthen Levee			GPS Latitude/Longitude	
				Start	End
Item	Encroachments			37.256783 °	37.256783 °
				-120.785438 °	-120.785438 °
DWR ID	DWR_NA0010_05_s _ 2015_1308				
Action/Comments					
Tree or limb					
Inspector Comments: Discard dead tree limbs at landward toe.					

LM Start	<b>2.82</b>	Rating **	M	Issue No.	<b>1308 (cont)</b>
LM End	<b>2.82</b>	Issue Type +	Ma	Location *	LS

Photo 1 of 2 : SP\_2015\_NA0010\_123\_1308\_20150527\_00459.jpg



Looking southeast at dead tree limbs on landward toe.

Photo 2 of 2 : SP\_2015\_NA0010\_123\_1308\_20150527\_00460.jpg



Looking south at several dead tree limbs on landward toe.

* Location LS : Land Side    N/A : Not Applicable WS : Water Side CR : Crown		** Rating A : Acceptable M : Minimally Acceptable U : Unacceptable N : Not Inspected/Rated C : Corrected A/W : Acceptable but Monitor & Maintain		+ Issue Type Ma : Maintenance Deficiency Ob : Design & System Obsolescence En : Enforcement	
---	--	--	--	--	--

**Flood Control Project Maintenance  
Levee Inspections**

## Maintenance Issue Types Only, Levee Inspection Report By Mile - Spring 2015

### Lower San Joaquin Levee District

Waterway	Bank	Unit Miles	Inspection Start/End	Inspector
Unit No. 05 East Side Bypass	Right	34.85	05/19/2015 05/20/2015	Richard Willoughby

LM Start	2.82	Rating **	A/W	Issue No.	3
LM End	2.87	Issue Type +	Ma	Location *	LS
Category	Earthen Levee			GPS Latitude/Longitude	
				Start	End
Item	Trim / Thin Trees			37.256803 °	37.256835 °
				-120.785407 °	-120.784528 °
DWR ID	DWR_NA0010_05_s _ 2012_3				
Action/Comments					
Thin trees to allow visibility of the ground and room to flood fight.					

Photo 1 of 2 : SP\_2015\_NA0010\_123\_3\_20150309\_00002.jpg



Looking south at trimmed trees on landward slope and toe.

LM Start	<b>2.82</b>	Rating **	A/W	Issue No.	<b>3 (cont)</b>
LM End	<b>2.87</b>	Issue Type +	Ma	Location *	LS

Photo 2 of 2 : SP\_2015\_NA0010\_123\_3\_20150309\_00003.jpg



Looking south at dense trees on landside slope.

LM Start	3.20	Rating **	M	Issue No.	6
LM End	3.20	Issue Type +	Ma	Location *	WS
Category	Earthen Levee			GPS Latitude/Longitude	
				Start	End
Item	Animal Control			37.256635 °	37.256635 °
				-120.778935 °	-120.778935 °
DWR ID	DWR_NA0010_05_s _ 2014_6				
Action/Comments					
Exterminate rodents and backfill and compact or grout burrows. Inspector Comments: No rodent visible but several rodent holes visible.					

Photo 1 of 1 : SP\_2015\_NA0010\_123\_6\_20150527\_00461.jpg



Looking at typical view of rodent holes on waterward slope.

<b>* Location</b> LS : Land Side    N/A : Not Applicable WS : Water Side CR : Crown		<b>** Rating</b> A : Acceptable M : Minimally Acceptable U : Unacceptable N : Not Inspected/Rated C : Corrected A/W : Acceptable but Monitor & Maintain		<b>+ Issue Type</b> Ma : Maintenance Deficiency Ob : Design & System Obsolescence En : Enforcement	
--	--	---	--	---	--

**Flood Control Project Maintenance  
Levee Inspections**

## Maintenance Issue Types Only, Levee Inspection Report By Mile - Spring 2015

### Lower San Joaquin Levee District

Waterway	Bank	Unit Miles	Inspection Start/End	Inspector
Unit No. 05 East Side Bypass	Right	34.85	05/19/2015 05/20/2015	Richard Willoughby

LM Start	3.34	Rating **	A/W	Issue No.	1
LM End	3.34	Issue Type +	Ma	Location *	LS
Category	Earthen Levee			GPS Latitude/Longitude	
				Start	End
Item	Trim / Thin Trees			37.255297 °	37.255297 °
				-120.777032 °	-120.777032 °
DWR ID	DWR_NA0010_05_s _ 2012_1				
Action/Comments					
Trim trees to at least five feet above ground level.					

No Photos

LM Start	3.55	Rating **	A/W	Issue No.	2
LM End	3.55	Issue Type +	Ma	Location *	LS
Category	Earthen Levee			GPS Latitude/Longitude	
				Start	End
Item	Encroachments			37.255192 °	37.255192 °
				-120.773595 °	-120.773595 °
DWR ID	DWR_NA0010_05_s _ 2012_2				
Action/Comments					
Tree or limb					
Inspector Comments: Downed tree limb on landside slope and toe.					

Photo 1 of 1 : SP\_2015\_NA0010\_123\_2\_20150309\_00001.jpg



Looking south at down tree limb on landside slope and toe.

LM Start	6.52	Rating **	M	Issue No.	15
LM End	6.52	Issue Type +	Ma	Location *	WS
Category	Earthen Levee			GPS Latitude/Longitude	
				Start	End
Item	Animal Control			37.230497 °	37.230497 °
				-120.727263 °	-120.727263 °
DWR ID	DWR_NA0010_05_s _ 2012_15				
Action/Comments					
No rodents visible, but rodent burrows visible; need to backfill and compact or grout burrows.					

No Photos

<b>* Location</b> LS : Land Side    N/A : Not Applicable WS : Water Side CR : Crown		<b>** Rating</b> A : Acceptable M : Minimally Acceptable U : Unacceptable N : Not Inspected/Rated C : Corrected A/W : Acceptable but Monitor & Maintain		<b>+ Issue Type</b> Ma : Maintenance Deficiency Ob : Design & System Obsolescence En : Enforcement	
--	--	---	--	---	--

**Flood Control Project Maintenance  
Levee Inspections**

## Maintenance Issue Types Only, Levee Inspection Report By Mile - Spring 2015

### Lower San Joaquin Levee District

Waterway	Bank	Unit Miles	Inspection Start/End	Inspector
Unit No. 05 East Side Bypass	Right	34.85	05/19/2015 05/20/2015	Richard Willoughby

LM Start	8.08	Rating **	M	Issue No.	4
LM End	8.08	Issue Type +	Ma	Location *	LS
Category	Earthen Levee			GPS Latitude/Longitude	
				Start	End
Item	Animal Control			37.213600 °	37.213600 °
				-120.706630 °	-120.706630 °
DWR ID	DWR_NA0010_05_s _ 2012_4				
Action/Comments					
No rodents visible, but rodent burrows visible; need to backfill and compact or grout burrows.					

No Photos

LM Start	8.85	Rating **	M	Issue No.	5
LM End	8.85	Issue Type +	Ma	Location *	WS
Category	Earthen Levee			GPS Latitude/Longitude	
				Start	End
Item	Animal Control			37.205778 °	37.205778 °
				-120.696843 °	-120.696843 °
DWR ID	DWR_NA0010_05_s _ 2012_5				
Action/Comments					
No rodents visible, but rodent burrows visible; need to backfill and compact or grout burrows.					

No Photos

LM Start	13.01	Rating **	M	Issue No.	1310
LM End	13.01	Issue Type +	Ma	Location *	LS
Category	Earthen Levee			GPS Latitude/Longitude	
				Start	End
Item	Encroachments			37.175587 °	37.175587 °
				-120.638730 °	-120.638730 °
DWR ID	DWR_NA0010_05_s _ 2015_1310				
Action/Comments					
Tree or limb					
Inspector Comments: Downed tree on landward slope.					

Photo 1 of 1 : SP\_2015\_NA0010\_123\_1310\_20150527\_00464.jpg



Looking south at fallen tree limbs on waterward slope.

<b>* Location</b> LS : Land Side    N/A : Not Applicable WS : Water Side CR : Crown		<b>** Rating</b> A : Acceptable                      N : Not Inspected/Rated M : Minimally Acceptable        C : Corrected U : Unacceptable                  A/W : Acceptable but Monitor & Maintain		<b>+ Issue Type</b> Ma : Maintenance Deficiency Ob : Design & System Obsolescence En : Enforcement
--	--	---	--	---

**Flood Control Project Maintenance  
Levee Inspections**

## Maintenance Issue Types Only, Levee Inspection Report By Mile - Spring 2015

### Lower San Joaquin Levee District

Waterway	Bank	Unit Miles	Inspection Start/End	Inspector
Unit No. 05 East Side Bypass	Right	34.85	05/19/2015 05/20/2015	Richard Willoughby

LM Start	13.59	Rating **	M	Issue No.	1311
LM End	13.59	Issue Type +	Ma	Location *	LS
Category	Earthen Levee			GPS Latitude/Longitude	
				Start	End
Item	Encroachments			37.169607 °	37.169607 °
				-120.631358 °	-120.631358 °
DWR ID	DWR_NA0010_05_s_2015_1311				
Action/Comments					
Tree or limb					
Inspector Comments: Downed tree on landward slope.					

Photo 1 of 1 : SP\_2015\_NA0010\_123\_1311\_20150527\_00465.jpg



Looking east at a fallen tree limbs on waterward slope.

LM Start	29.68	Rating **	M	Issue No.	171
LM End	29.80	Issue Type +	Ma	Location *	WS
Category	Earthen Levee			GPS Latitude/Longitude	
				Start	End
Item	Erosion / Bank Caving			37.020272 °	37.018712 °
				-120.433737 °	-120.432682 °
DWR ID	DWR_NA0010_05_s_2014_171				
Action/Comments					
Note and monitor erosion site.					
Inspector Comments: Waterside erosion caused by livestock.					

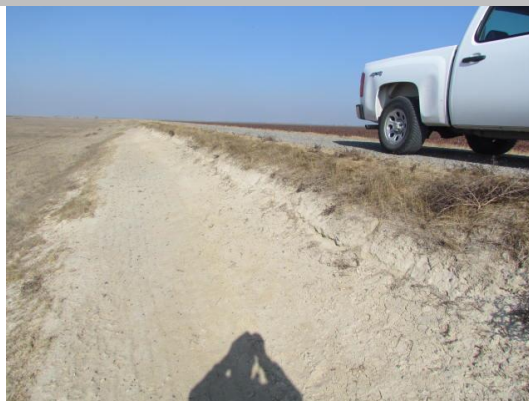
Photo 1 of 3 : SP\_2015\_NA0010\_123\_171\_20150309\_00011.jpg



Looking south at erosion caused by livestock on landside slope.

LM Start	<b>29.68</b>	Rating **	M	Issue No.	<b>171 (cont)</b>
LM End	<b>29.80</b>	Issue Type +	Ma	Location *	WS

Photo 2 of 3 : SP\_2015\_NA0010\_123\_171\_20150309\_00012.jpg



Looking south at livestock erosion on landward slope.

* Location		** Rating		+ Issue Type	
LS : Land Side	N/A : Not Applicable	A : Acceptable	N : Not Inspected/Rated	Ma : Maintenance Deficiency	
WS : Water Side		M : Minimally Acceptable	C : Corrected	Ob : Design & System Obsolescence	
CR : Crown		U : Unacceptable	A/W : Acceptable but Monitor & Maintain	En : Enforcement	

**Flood Control Project Maintenance  
Levee Inspections**

## Maintenance Issue Types Only, Levee Inspection Report By Mile - Spring 2015

### Lower San Joaquin Levee District

Waterway	Bank	Unit Miles	Inspection Start/End	Inspector
Unit No. 05 East Side Bypass	Right	34.85	05/19/2015 05/20/2015	Richard Willoughby

LM Start	29.68	Rating **	M	Issue No.	171 (cont)
LM End	29.80	Issue Type +	Ma	Location *	WS
Category	Earthen Levee			GPS Latitude/Longitude	
				Start	End
Item	Erosion / Bank Caving			37.020272 °	37.018712 °
				-120.433737 °	-120.432682 °
DWR ID	DWR_NA0010_05_s_2014_171				
Action/Comments					
Note and monitor erosion site.					
Inspector Comments: Waterside erosion caused by livestock.					

Photo 3 of 3 : SP\_2015\_NA0010\_123\_171\_20150309\_00013.jpg



Looking east at livestock erosion on landward slope.

LM Start	29.86	Rating **	A/W	Issue No.	21
LM End	31.76	Issue Type +	Ma	Location *	WS
Category	Earthen Levee			GPS Latitude/Longitude	
				Start	End
Item	Vegetation			37.017953 °	36.996773 °
				-120.432132 °	-120.410739 °
DWR ID	DWR_NA0010_05_f_2012_21				
Action/Comments					
Remove the wild growth other than native grasses from the levee slopes.					

No Photos

LM Start	29.89	Rating **	M	Issue No.	16
LM End	29.89	Issue Type +	Ma	Location *	LS
Category	Earthen Levee			GPS Latitude/Longitude	
				Start	End
Item	Animal Control			37.017540 °	37.017540 °
				-120.431955 °	-120.431955 °
DWR ID	DWR_NA0010_05_s_2012_16				
Action/Comments					
No rodents visible, but rodent burrows visible; need to backfill and compact or grout burrows.					

No Photos

<b>* Location</b> LS : Land Side    N/A : Not Applicable WS : Water Side CR : Crown		<b>** Rating</b> A : Acceptable                      N : Not Inspected/Rated M : Minimally Acceptable        C : Corrected U : Unacceptable                  A/W : Acceptable but Monitor & Maintain		<b>+ Issue Type</b> Ma : Maintenance Deficiency Ob : Design & System Obsolescence En : Enforcement	
--	--	---	--	---	--

**Flood Control Project Maintenance  
Levee Inspections**

## Maintenance Issue Types Only, Levee Inspection Report By Mile - Spring 2015

### Lower San Joaquin Levee District

Waterway	Bank	Unit Miles	Inspection Start/End	Inspector
Unit No. 05 East Side Bypass	Right	34.85	05/19/2015 05/20/2015	Richard Willoughby

LM Start	30.46	Rating **	A/W	Issue No.	22
LM End	34.61	Issue Type +	Ma	Location *	LS
Category	Earthen Levee			GPS Latitude/Longitude	
				Start	End
Item	Vegetation			37.010443 °	36.978581 °
				-120.426820 °	-120.368381 °
DWR ID	DWR_NA0010_05_f_2012_22				
Action/Comments					
Keep the crown roadway free of vegetation. Inspector Comments: Control wild growth on levee crown.					

Photo 1 of 1 : SP\_2015\_NA0010\_123\_22\_20150309\_00010.jpg



Looking at vegetation on levee crown.

<b>* Location</b> LS : Land Side    N/A : Not Applicable WS : Water Side CR : Crown	<b>** Rating</b> A : Acceptable                      N : Not Inspected/Rated M : Minimally Acceptable        C : Corrected U : Unacceptable                  A/W : Acceptable but Monitor & Maintain	<b>+ Issue Type</b> Ma : Maintenance Deficiency Ob : Design & System Obsolescence En : Enforcement
--	---	---

**Flood Control Project Maintenance  
Levee Inspections**

## Maintenance Issue Types Only, Levee Inspection Report By Mile - Spring 2015

### Lower San Joaquin Levee District

Waterway	Bank	Unit Miles	Inspection Start/End	Inspector
Unit No. 06 East Side Bypass	Left	36.47	05/20/2015 05/21/2015	Richard Willoughby

LM Start	1.84	Rating **	A/W	Issue No.	125
LM End	1.84	Issue Type +	Ma	Location *	LS
Category	Earthen Levee			GPS Latitude/Longitude	
				Start	End
Item	Animal Control			37.259527 °	37.259527 °
				-120.803300 °	-120.803300 °
DWR ID	DWR_NA0010_06_s _ 2012_125				
Action/Comments					
Exterminate rodents and backfill and compact or grout burrows.					

No Photos

LM Start	4.66	Rating **	M	Issue No.	10
LM End	4.66	Issue Type +	Ma	Location *	LS
Category	Earthen Levee			GPS Latitude/Longitude	
				Start	End
Item	Animal Control			37.243540 °	37.243540 °
				-120.760782 °	-120.760782 °
DWR ID	DWR_NA0010_06_s _ 2012_10				
Action/Comments					
No rodents visible, but rodent burrows visible; need to backfill and compact or grout burrows. Inspector Comments: Rodent holes next to fence post on landward slope.					

Photo 1 of 2 : SP\_2015\_NA0010\_124\_10\_20150309\_00011.jpg



Looking at rodent hole along fence line on landward slope.

Photo 2 of 2 : SP\_2015\_NA0010\_124\_10\_20150309\_00012.jpg



Looking at typical rodent holes on landward slope.

<b>* Location</b> LS : Land Side    N/A : Not Applicable WS : Water Side CR : Crown		<b>** Rating</b> A : Acceptable M : Minimally Acceptable U : Unacceptable N : Not Inspected/Rated C : Corrected A/W : Acceptable but Monitor & Maintain		<b>+ Issue Type</b> Ma : Maintenance Deficiency Ob : Design & System Obsolescence En : Enforcement	
--	--	---	--	---	--

**Flood Control Project Maintenance  
Levee Inspections**

## Maintenance Issue Types Only, Levee Inspection Report By Mile - Spring 2015

### Lower San Joaquin Levee District

Waterway	Bank	Unit Miles	Inspection Start/End	Inspector
Unit No. 06 East Side Bypass	Left	36.47	05/20/2015 05/21/2015	Richard Willoughby

LM Start	5.76	Rating **	A/W	Issue No.	9
LM End	5.76	Issue Type +	Ma	Location *	LS
Category	Earthen Levee			GPS Latitude/Longitude	
				Start	End
Item	Slope Stability			37.238355 °	37.238355 °
				-120.742677 °	-120.742677 °
DWR ID	DWR_NA0010_06_s _ 2012_9				
Action/Comments					
Repair the levee slope damaged by vehicle traffic and prevent access where possible.					
Inspector Comments: Levee damage caused by motorcylce traffic.					

Photo 1 of 2 : SP\_2015\_NA0010\_124\_9\_20150309\_00009.jpg



Looking northwest at damaged slope repaired.

LM Start	<b>5.76</b>	Rating **	A/W	Issue No.	<b>9 (cont)</b>
LM End	<b>5.76</b>	Issue Type +	Ma	Location *	LS

Photo 2 of 2 : SP\_2015\_NA0010\_124\_9\_20150309\_00010.jpg



Looking at slope damage caused by vehicle traffic on landward slope.

LM Start	5.98	Rating **	U	Issue No.	65
LM End	5.98	Issue Type +	Ma	Location *	LS
Category	Interior Drainage & Piping Systems			GPS Latitude/Longitude	
				Start	End
Item	Erosion Areas			37.236372 °	37.236372 °
				-120.739706 °	-120.739706 °
DWR ID	DWR_NA0010_06_f _ 2014_65				
Action/Comments					
Inspector Comments: Erosion on right side of headwall at landward toe.					

Photo 1 of 2 : SP\_2015\_NA0010\_124\_65\_20150309\_00016.jpg



Looking northwest at erosion around headwall of drainage structure on landward toe.

<b>* Location</b> LS : Land Side    N/A : Not Applicable WS : Water Side CR : Crown		<b>** Rating</b> A : Acceptable M : Minimally Acceptable U : Unacceptable N : Not Inspected/Rated C : Corrected A/W : Acceptable but Monitor & Maintain		<b>+ Issue Type</b> Ma : Maintenance Deficiency Ob : Design & System Obsolescence En : Enforcement	
--	--	---	--	---	--

**Flood Control Project Maintenance  
Levee Inspections**

## Maintenance Issue Types Only, Levee Inspection Report By Mile - Spring 2015

### Lower San Joaquin Levee District

Waterway	Bank	Unit Miles	Inspection Start/End	Inspector
Unit No. 06 East Side Bypass	Left	36.47	05/20/2015 05/21/2015	Richard Willoughby

LM Start	5.98	Rating **	U	Issue No.	65 (cont)	
LM End	5.98	Issue Type +	Ma	Location *	LS	
Category	Interior Drainage & Piping Systems			GPS Latitude/Longitude		
				Start		End
Item	Erosion Areas			37.236372 °	37.236372 °	
				-120.739706 °	-120.739706 °	
DWR ID	DWR_NA0010_06_f_2014_65					
Action/Comments						
Inspector Comments: Erosion on right side of headwall at landward toe.						

Photo 2 of 2 : SP\_2015\_NA0010\_124\_65\_20150309\_00017.jpg



Looking south erosion around headwall of drainage structure on landward toe.

LM Start	6.06	Rating **	A/W	Issue No.	22
LM End	6.06	Issue Type +	Ma	Location *	LS
Category	Earthen Levee			GPS Latitude/Longitude	
				Start	End
Item	Animal Control			37.235777 °	37.235777 °
				-120.738598 °	-120.738598 °
DWR ID	DWR_NA0010_06_s_2012_22				
Action/Comments					
No rodents visible, but rodent burrows visible; need to backfill and compact or grout burrows.					

No Photos

LM Start	6.09	Rating **	A/W	Issue No.	21
LM End	6.09	Issue Type +	Ma	Location *	WS
Category	Earthen Levee			GPS Latitude/Longitude	
				Start	End
Item	Animal Control			37.235623 °	37.235623 °
				-120.738017 °	-120.738017 °
DWR ID	DWR_NA0010_06_s_2012_21				
Action/Comments					
No rodents visible, but rodent burrows visible; need to backfill and compact or grout burrows.					

No Photos

<b>* Location</b> LS : Land Side    N/A : Not Applicable WS : Water Side CR : Crown		<b>** Rating</b> A : Acceptable                      N : Not Inspected/Rated M : Minimally Acceptable        C : Corrected U : Unacceptable                  A/W : Acceptable but Monitor & Maintain		<b>+ Issue Type</b> Ma : Maintenance Deficiency Ob : Design & System Obsolescence En : Enforcement
--	--	---	--	---

**Flood Control Project Maintenance  
Levee Inspections**

## Maintenance Issue Types Only, Levee Inspection Report By Mile - Spring 2015

### Lower San Joaquin Levee District

Waterway	Bank	Unit Miles	Inspection Start/End	Inspector
Unit No. 06 East Side Bypass	Left	36.47	05/20/2015 05/21/2015	Richard Willoughby

LM Start	7.10	Rating **	A/W	Issue No.	7
LM End	7.10	Issue Type +	Ma	Location *	LS
Category	Earthen Levee			GPS Latitude/Longitude	
				Start	End
Item	Animal Control			37.226675 °	37.226675 °
				-120.724498 °	-120.724498 °
DWR ID	DWR_NA0010_06_s _ 2012_7				
Action/Comments					
Exterminate rodents and backfill and compact or grout burrows.					

No Photos

LM Start	9.74	Rating **	M	Issue No.	6
LM End	10.95	Issue Type +	Ma	Location *	CR
Category	Earthen Levee			GPS Latitude/Longitude	
				Start	End
Item	Crown Surface / Depressions / Rutting			37.200697 °	37.188106 °
				-120.692927 °	-120.677684 °
DWR ID	DWR_NA0010_06_s _ 2012_6				
Action/Comments					
Repair depressions or ruts in the crown or slope. Inspector Comments: Levee crown should be regraded due to excessive rutting.					

No Photos

LM Start	11.49	Rating **	M	Issue No.	14
LM End	11.49	Issue Type +	Ma	Location *	WS
Category	Earthen Levee			GPS Latitude/Longitude	
				Start	End
Item	Trim / Thin Trees			37.186189 °	37.186189 °
				-120.668476 °	-120.668476 °
DWR ID	DWR_NA0010_06_s _ 2015_14				
Action/Comments					
Trim trees to at least five feet above ground level. Inspector Comments: Almond tree located along Sandy Mush Rd. on waterward slope.					

Photo 1 of 1 : SP\_2015\_NA0010\_124\_14\_20150309\_00013.jpg



Looking east at tree on waterward slope.

<b>* Location</b> LS : Land Side    N/A : Not Applicable WS : Water Side CR : Crown		<b>** Rating</b> A : Acceptable                      N : Not Inspected/Rated M : Minimally Acceptable        C : Corrected U : Unacceptable                  A/W : Acceptable but Monitor & Maintain		<b>+ Issue Type</b> Ma : Maintenance Deficiency Ob : Design & System Obsolescence En : Enforcement	
--	--	---	--	---	--

**Flood Control Project Maintenance  
Levee Inspections**

## Maintenance Issue Types Only, Levee Inspection Report By Mile - Spring 2015

### Lower San Joaquin Levee District

Waterway	Bank	Unit Miles	Inspection Start/End	Inspector
Unit No. 06 East Side Bypass	Left	36.47	05/20/2015 05/21/2015	Richard Willoughby

LM Start	14.94	Rating **	M	Issue No.	1212
LM End	14.94	Issue Type +	Ma	Location *	CR
Category	Earthen Levee			GPS Latitude/Longitude	
				Start	End
Item	Animal Control			37.162287 °	37.162287 °
				-120.628791 °	-120.628791 °
DWR ID	DWR_NA0010_06_s _ 2015_1212				
Action/Comments					
No rodents visible, but rodent burrows visible; need to backfill and compact or grout burrows. Inspector Comments: Several rodent holes noted on levee crown and landside and waterside slopes.					

Photo 1 of 1 : SP\_2015\_NA0010\_124\_1212\_20150528\_00399.jpg



Looking at rodent hole on levee crown.

LM Start	15.46	Rating **	M	Issue No.	124
LM End	15.70	Issue Type +	Ma	Location *	LS
Category	Earthen Levee			GPS Latitude/Longitude	
				Start	End
Item	Animal Control			37.158920 °	37.157217 °
				-120.620232 °	-120.618915 °
DWR ID	DWR_NA0010_06_s _ 2012_124				
Action/Comments					
Exterminate rodents and backfill and compact or grout burrows.					

No Photos

LM Start	16.89	Rating **	A/W	Issue No.	63
LM End	19.22	Issue Type +	Ma	Location *	LS
Category	Earthen Levee			GPS Latitude/Longitude	
				Start	End
Item	Vegetation			37.144129 °	37.113644 °
				-120.602479 °	-120.588271 °
DWR ID	DWR_NA0010_06_f _ 2014_63				
Action/Comments					
Remove the wild growth other than native grasses from the levee slopes.					
Inspector Comments: Control tumble weeds on landward and waterward slopes.					

Photo 1 of 1 : SP\_2015\_NA0010\_124\_63\_20150309\_00014.jpg



Looking north at tumble weeds on levee slopes.

<b>* Location</b> LS : Land Side    N/A : Not Applicable WS : Water Side CR : Crown		<b>** Rating</b> A : Acceptable M : Minimally Acceptable U : Unacceptable		N : Not Inspected/Rated C : Corrected A/W : Acceptable but Monitor & Maintain		<b>+ Issue Type</b> Ma : Maintenance Deficiency Ob : Design & System Obsolescence En : Enforcement	
--	--	--	--	---	--	---	--

**Flood Control Project Maintenance  
Levee Inspections**

## Maintenance Issue Types Only, Levee Inspection Report By Mile - Spring 2015

### Lower San Joaquin Levee District

Waterway	Bank	Unit Miles	Inspection Start/End	Inspector
Unit No. 06 East Side Bypass	Left	36.47	05/20/2015 05/21/2015	Richard Willoughby

LM Start	16.89	Rating **	A/W	Issue No.	64
LM End	18.79	Issue Type +	Ma	Location *	WS
Category	Earthen Levee			GPS Latitude/Longitude	
				Start	End
Item	Vegetation			37.144128 °	37.119569 °
				-120.602479 °	-120.587353 °
DWR ID	DWR_NA0010_06_f_2014_64				
Action/Comments					
Remove the wild growth other than native grasses from the levee slopes.					
Inspector Comments: Dense tumble weeds on waterward slope.					

Photo 1 of 1 : SP\_2015\_NA0010\_124\_64\_20150309\_00015.jpg



Looking northeast at dense tumble weeds on waterward slope.

LM Start	19.14	Rating **	U	Issue No.	1211
LM End	19.14	Issue Type +	Ma	Location *	WS
Category	Earthen Levee			GPS Latitude/Longitude	
				Start	End
Item	Animal Control			37.114793 °	37.114793 °
				-120.587582 °	-120.587582 °
DWR ID	DWR_NA0010_06_s_2015_1211				
Action/Comments					
No rodents visible, but rodent burrows visible; need to backfill and compact or grout burrows.					
Inspector Comments: Several large rodent holes with more than 2 cubic feet of material was noted on waterward slope					

Photo 1 of 3 : SP\_2015\_NA0010\_124\_1211\_20150528\_00402.jpg



Looking at close-up view of large rodent hole on waterward slope.

LM Start	<b>19.14</b>	Rating **	U	Issue No.	<b>1211 (cont)</b>
LM End	<b>19.14</b>	Issue Type +	Ma	Location *	WS

Photo 2 of 3 : SP\_2015\_NA0010\_124\_1211\_20150528\_00400.jpg



Looking at large rodent hole on waterward slope.

<b>* Location</b> LS : Land Side    N/A : Not Applicable WS : Water Side CR : Crown		<b>** Rating</b> A : Acceptable M : Minimally Acceptable U : Unacceptable		N : Not Inspected/Rated C : Corrected A/W : Acceptable but Monitor & Maintain		<b>+ Issue Type</b> Ma : Maintenance Deficiency Ob : Design & System Obsolescence En : Enforcement	
--	--	--	--	---	--	---	--

**Flood Control Project Maintenance  
Levee Inspections**

## Maintenance Issue Types Only, Levee Inspection Report By Mile - Spring 2015

### Lower San Joaquin Levee District

Waterway	Bank	Unit Miles	Inspection Start/End	Inspector
Unit No. 06 East Side Bypass	Left	36.47	05/20/2015 05/21/2015	Richard Willoughby

LM Start	19.14	Rating **	U	Issue No.	1211 (cont)
LM End	19.14	Issue Type +	Ma	Location *	WS
Category	Earthen Levee			GPS Latitude/Longitude	
				Start	End
Item	Animal Control			37.114793 °	37.114793 °
				-120.587582 °	-120.587582 °
DWR ID	DWR_NA0010_06_s_2015_1211				
Action/Comments					
No rodents visible, but rodent burrows visible; need to backfill and compact or grout burrows. Inspector Comments: Several large rodent holes with more than 2 cubic feet of material was noted on waterward slope					

Photo 3 of 3 : SP\_2015\_NA0010\_124\_1211\_20150528\_00401.jpg



Looking east at several rodent holes on waterward slope.

LM Start	20.79	Rating **	U	Issue No.	1209
LM End	20.88	Issue Type +	Ma	Location *	LS
Category	Earthen Levee			GPS Latitude/Longitude	
				Start	End
Item	Erosion / Bank Caving			37.113107 °	37.112176 °
				-120.563782 °	-120.562516 °
DWR ID	DWR_NA0010_06_s_2015_1209				
Action/Comments					
Note and monitor erosion site. Inspector Comments: Erosion on landward slope greater than 3 inches. Erosion caused by livestock.					

Photo 1 of 2 : SP\_2015\_NA0010\_124\_1209\_20150528\_00403.jpg



Looking north at livestock erosion on landward slope.

LM Start	<b>20.79</b>	Rating **	U	Issue No.	<b>1209 (cont)</b>
LM End	<b>20.88</b>	Issue Type +	Ma	Location *	LS

Photo 2 of 2 : SP\_2015\_NA0010\_124\_1209\_20150528\_00404.jpg



Looking northeast at livestock erosion on landward slope.

* Location		** Rating		+ Issue Type	
LS : Land Side	N/A : Not Applicable	A : Acceptable	N : Not Inspected/Rated	Ma : Maintenance Deficiency	
WS : Water Side		M : Minimally Acceptable	C : Corrected	Ob : Design & System Obsolescence	
CR : Crown		U : Unacceptable	A/W : Acceptable but Monitor & Maintain	En : Enforcement	

**Flood Control Project Maintenance  
Levee Inspections**

## Maintenance Issue Types Only, Levee Inspection Report By Mile - Spring 2015

### Lower San Joaquin Levee District

Waterway	Bank	Unit Miles	Inspection Start/End	Inspector
Unit No. 06 East Side Bypass	Left	36.47	05/20/2015 05/21/2015	Richard Willoughby

LM Start	22.99	Rating **	M	Issue No.	8
LM End	23.05	Issue Type +	Ma	Location *	LS
Category	Earthen Levee			GPS Latitude/Longitude	
				Start	End
Item	Animal Control			37.088663 °	37.087968 °
				-120.538193 °	-120.537485 °
DWR ID	DWR_NA0010_06_s _ 2012_8				
Action/Comments					
No rodents visible, but rodent burrows visible; need to backfill and compact or grout burrows.					

No Photos

LM Start	24.58	Rating **	M	Issue No.	5
LM End	24.93	Issue Type +	Ma	Location *	LS
Category	Earthen Levee			GPS Latitude/Longitude	
				Start	End
Item	Slope Stability			37.071198 °	°
				-120.519220 °	°
DWR ID	DWR_NA0010_06_s _ 2012_5				
Action/Comments					
Repair the levee slope damaged by foot traffic and prevent access where possible.					
Inspector Comments: Landside erosion caused by livestock.					

Photo 1 of 3 : SP\_2015\_NA0010\_124\_5\_20150528\_00406.jpg



Looking north at livestock erosion on landward slope. (Spring 2015)

LM Start	<b>24.58</b>	Rating **	M	Issue No.	<b>5 (cont)</b>
LM End	<b>24.93</b>	Issue Type +	Ma	Location *	LS

Photo 2 of 3 : SP\_2015\_NA0010\_124\_5\_20150309\_00007.jpg



Looking north at livestock erosion on landward slope. (Spring 2014)

<b>* Location</b> LS : Land Side    N/A : Not Applicable WS : Water Side CR : Crown		<b>** Rating</b> A : Acceptable M : Minimally Acceptable U : Unacceptable N : Not Inspected/Rated C : Corrected A/W : Acceptable but Monitor & Maintain		<b>+ Issue Type</b> Ma : Maintenance Deficiency Ob : Design & System Obsolescence En : Enforcement	
--	--	---	--	---	--

**Flood Control Project Maintenance  
Levee Inspections**

## Maintenance Issue Types Only, Levee Inspection Report By Mile - Spring 2015

### Lower San Joaquin Levee District

Waterway	Bank	Unit Miles	Inspection Start/End	Inspector
Unit No. 06 East Side Bypass	Left	36.47	05/20/2015 05/21/2015	Richard Willoughby

LM Start	24.58	Rating **	M	Issue No.	5 (cont)	
LM End	24.93	Issue Type +	Ma	Location *	LS	
Category	Earthen Levee			GPS Latitude/Longitude		
				Start		End
Item	Slope Stability			37.071198 °		°
				-120.519220 °		°
DWR ID	DWR_NA0010_06_s _ 2012_5					
Action/Comments						
Repair the levee slope damaged by foot traffic and prevent access where possible.						
Inspector Comments: Landside erosion caused by livestock.						

Photo 3 of 3 : SP\_2015\_NA0010\_124\_5\_20150309\_00008.jpg



Looking north at livestock erosion on landside slope. (Fall 2014)

LM Start	26.13	Rating **	M	Issue No.	1208
LM End	26.13	Issue Type +	Ma	Location *	LS
Category	Earthen Levee			GPS Latitude/Longitude	
				Start	End
Item	Animal Control			37.054222 °	37.054222 °
				-120.500862 °	-120.500862 °
DWR ID	DWR_NA0010_06_s _ 2015_1208				
Action/Comments					
Exterminate rodents and backfill and compact or grout burrows. Inspector Comments: Noted several rodent holes next to and within rock revertment on landward slope.					

Photo 1 of 1 : SP\_2015\_NA0010\_124\_1208\_20150528\_00407.jpg



Looking northeast at several rodent holes on landward slope.

LM Start	27.64	Rating **	M	Issue No.	3
LM End	27.97	Issue Type +	Ma	Location *	LS
Category	Earthen Levee			GPS Latitude/Longitude	
				Start	End
Item	Slope Stability			37.036955 °	37.032887 °
				-120.484395 °	-120.481225 °
DWR ID	DWR_NA0010_06_s _ 2012_3				
Action/Comments					
Repair the levee slope damaged by foot traffic and prevent access where possible.					
Inspector Comments: Landside erosion caused by livestock. Erosion greater than 3" in depth on landward slope. Levee crown has narrowed within this reach.					

Photo 1 of 5 : SP\_2015\_NA0010\_124\_3\_20150528\_00408.jpg



Looking north at livestock erosion on landward shoulder and slope.(Spring 2015)

<b>* Location</b> LS : Land Side    N/A : Not Applicable WS : Water Side CR : Crown		<b>** Rating</b> A : Acceptable M : Minimally Acceptable U : Unacceptable		N : Not Inspected/Rated C : Corrected A/W : Acceptable but Monitor & Maintain		<b>+ Issue Type</b> Ma : Maintenance Deficiency Ob : Design & System Obsolescence En : Enforcement	
--	--	--	--	---	--	---	--

**Flood Control Project Maintenance  
Levee Inspections**

## Maintenance Issue Types Only, Levee Inspection Report By Mile - Spring 2015

### Lower San Joaquin Levee District

Waterway	Bank	Unit Miles	Inspection Start/End	Inspector
Unit No. 06 East Side Bypass	Left	36.47	05/20/2015 05/21/2015	Richard Willoughby

LM Start	27.64	Rating **	M	Issue No.	3 (cont)	
LM End	27.97	Issue Type +	Ma	Location *	LS	
Category	Earthen Levee			GPS Latitude/Longitude		
				Start		End
Item	Slope Stability			37.036955 °		37.032887 °
				-120.484395 °		-120.481225 °
DWR ID	DWR_NA0010_06_s _ 2012_3					
Action/Comments						
Repair the levee slope damaged by foot traffic and prevent access where possible.						
Inspector Comments: Landside erosion caused by livestock. Erosion greater than 3" in depth on landward slope. Levee crown has narrowed within this reach.						

Photo 2 of 5 : SP\_2015\_NA0010\_124\_3\_20150309\_00003.jpg



Looking north at livestock erosion on landside shoulder and slope. (Fall 2014)

Photo 3 of 5 : SP\_2015\_NA0010\_124\_3\_20150309\_00004.jpg



Looking south at livestock erosion on landward slope. (Fall 2013)

Photo 4 of 5 : SP\_2015\_NA0010\_124\_3\_20150309\_00005.jpg



Looking north at livestock erosion on landward slope. (Spring 2013)

LM Start	<b>27.64</b>	Rating **	M	Issue No.	<b>3 (cont)</b>
LM End	<b>27.97</b>	Issue Type +	Ma	Location *	LS

LM Start	<b>27.64</b>	Rating **	M	Issue No.	<b>3 (cont)</b>
LM End	<b>27.97</b>	Issue Type +	Ma	Location *	LS

<b>* Location</b> LS : Land Side    N/A : Not Applicable WS : Water Side CR : Crown		<b>** Rating</b> A : Acceptable                      N : Not Inspected/Rated M : Minimally Acceptable        C : Corrected U : Unacceptable                  A/W : Acceptable but Monitor & Maintain		<b>+ Issue Type</b> Ma : Maintenance Deficiency Ob : Design & System Obsolescence En : Enforcement	
--	--	---	--	---	--

**Flood Control Project Maintenance  
Levee Inspections**

## Maintenance Issue Types Only, Levee Inspection Report By Mile - Spring 2015

### Lower San Joaquin Levee District

Waterway	Bank	Unit Miles	Inspection Start/End	Inspector
Unit No. 06 East Side Bypass	Left	36.47	05/20/2015 05/21/2015	Richard Willoughby

LM Start	27.64	Rating **	M	Issue No.	3 (cont)
LM End	27.97	Issue Type +	Ma	Location *	LS
Category	Earthen Levee			GPS Latitude/Longitude	
				Start	End
Item	Slope Stability			37.036955 °	37.032887 °
				-120.484395 °	-120.481225 °
DWR ID	DWR_NA0010_06_s _ 2012_3				
Action/Comments					
Repair the levee slope damaged by foot traffic and prevent access where possible.					
Inspector Comments: Landside erosion caused by livestock. Erosion greater than 3" in depth on landward slope. Levee crown has narrowed within this reach.					

Photo 5 of 5 : SP\_2015\_NA0010\_124\_3\_20150309\_00006.jpg



Looking south at livestock erosion on landside shoulder and slope.

LM Start	28.47	Rating **	M	Issue No.	19
LM End	28.71	Issue Type +	Ma	Location *	LS
Category	Earthen Levee			GPS Latitude/Longitude	
				Start	End
Item	Animal Control			37.029937 °	37.030102 °
				-120.473384 °	-120.469122 °
DWR ID	DWR_NA0010_06_s _ 2015_19				
Action/Comments					
No rodents visible, but rodent burrows visible; need to backfill and compact or grout burrows.					

No Photos

LM Start	30.81	Rating **	U	Issue No.	1207
LM End	31.06	Issue Type +	Ma	Location *	LS
Category	Earthen Levee			GPS Latitude/Longitude	
				Start	End
Item	Erosion / Bank Caving			37.021615 °	37.018428 °
				-120.437587 °	-120.435378 °
DWR ID	DWR_NA0010_06_s _ 2015_1207				
Action/Comments					
Note and monitor erosion site. Inspector Comments: Landward erosion greater than 1" in depth and greater than 3" in length. Erosion caused by livestock traffic.					

Photo 1 of 2 : SP\_2015\_NA0010\_124\_1207\_20150528\_00409.jpg



Looking northeast at livestock erosion on landward slope.

<b>* Location</b> LS : Land Side    N/A : Not Applicable WS : Water Side CR : Crown		<b>** Rating</b> A : Acceptable M : Minimally Acceptable U : Unacceptable N : Not Inspected/Rated C : Corrected A/W : Acceptable but Monitor & Maintain		<b>+ Issue Type</b> Ma : Maintenance Deficiency Ob : Design & System Obsolescence En : Enforcement	
--	--	---	--	---	--

**Flood Control Project Maintenance  
Levee Inspections**

## Maintenance Issue Types Only, Levee Inspection Report By Mile - Spring 2015

### Lower San Joaquin Levee District

Waterway	Bank	Unit Miles	Inspection Start/End	Inspector
Unit No. 06 East Side Bypass	Left	36.47	05/20/2015 05/21/2015	Richard Willoughby

LM Start	30.81	Rating **	U	Issue No.	1207 (cont)
LM End	31.06	Issue Type +	Ma	Location *	LS
Category	Earthen Levee			GPS Latitude/Longitude	
				Start	End
Item	Erosion / Bank Caving			37.021615 °	37.018428 °
				-120.437587 °	-120.435378 °
DWR ID	DWR_NA0010_06_s_2015_1207				
Action/Comments					
Note and monitor erosion site. Inspector Comments: Landward erosion greater than 1" in depth and greater than 3" in length. Erosion caused by livestock traffic.					

Photo 2 of 2 : SP\_2015\_NA0010\_124\_1207\_20150528\_00410.jpg



Looking south at livestock erosion on landward slope.

LM Start	31.10	Rating **	M	Issue No.	2
LM End	31.10	Issue Type +	Ma	Location *	LS
Category	Earthen Levee			GPS Latitude/Longitude	
				Start	End
Item	Animal Control			37.017955 °	37.017955 °
				-120.435017 °	-120.435017 °
DWR ID	DWR_NA0010_06_s_2012_2				
Action/Comments					
Exterminate rodents and backfill and compact or grout burrows.					

Photo 1 of 2 : SP\_2015\_NA0010\_124\_2\_20150309\_00001.jpg



Looking west at rodent holes on landside slope and toe near fence line.

LM Start	<b>31.10</b>	Rating **	M	Issue No.	<b>2 (cont)</b>
LM End	<b>31.10</b>	Issue Type +	Ma	Location *	LS

Photo 2 of 2 : SP\_2015\_NA0010\_124\_2\_20150309\_00002.jpg



Looking at typical rodent hole on landside slope.

* Location		** Rating		+ Issue Type	
LS : Land Side	N/A : Not Applicable	A : Acceptable	N : Not Inspected/Rated	Ma : Maintenance Deficiency	
WS : Water Side		M : Minimally Acceptable	C : Corrected	Ob : Design & System Obsolescence	
CR : Crown		U : Unacceptable	A/W : Acceptable but Monitor & Maintain	En : Enforcement	

**Flood Control Project Maintenance  
Levee Inspections**

## Maintenance Issue Types Only, Levee Inspection Report By Mile - Spring 2015

### Lower San Joaquin Levee District

Waterway	Bank	Unit Miles	Inspection Start/End	Inspector
Unit No. 06 East Side Bypass	Left	36.47	05/20/2015 05/21/2015	Richard Willoughby

LM Start	35.36	Rating **	A/W	Issue No.	1
LM End	36.25	Issue Type +	Ma	Location *	LS
Category	Earthen Levee			GPS Latitude/Longitude	
				Start	End
Item	Vegetation			36.974650 °	36.974430 °
				-120.383022 °	-120.367090 °
DWR ID	DWR_NA0010_06_s _ 2012_1				
Action/Comments					
Remove the wild growth other than native grasses from the levee slopes.					

No Photos

**\* Location**  
 LS : Land Side    N/A : Not Applicable  
 WS : Water Side  
 CR : Crown

**\*\* Rating**  
 A : Acceptable                      N : Not Inspected/Rated  
 M : Minimally Acceptable        C : Corrected  
 U : Unacceptable                  A/W : Acceptable but Monitor & Maintain

**+ Issue Type**  
 Ma : Maintenance Deficiency  
 Ob : Design & System Obsolescence  
 En : Enforcement

**Flood Control Project Maintenance  
Levee Inspections**

## Maintenance Issue Types Only, Levee Inspection Report By Mile - Spring 2015

### Lower San Joaquin Levee District

Waterway	Bank	Unit Miles	Inspection Start/End	Inspector
Unit No. 07 Bear Creek Bypass	Right	3.62	05/19/2015 05/19/2015	Richard Willoughby

LM Start	0.50	Rating **	M	Issue No.	29
LM End	0.50	Issue Type +	Ma	Location *	LS
Category	Earthen Levee			GPS Latitude/Longitude	
				Start	End
Item	Animal Control			37.258722 °	37.258722 °
				-120.764867 °	-120.764867 °
DWR ID	DWR_NA0010_07_s _ 2012_29				
Action/Comments					
No rodents visible, but rodent burrows visible; need to backfill and compact or grout burrows. Inspector Comments: Several rodent holes noted on landward and waterward slope and shoulder.					

Photo 1 of 1 : SP\_2015\_NA0010\_125\_29\_20150528\_00010.jpg



Looking at typical view of rodent holes on landward slope.

LM Start	1.22	Rating **	M	Issue No.	1
LM End	1.22	Issue Type +	Ma	Location *	LS
Category	Earthen Levee			GPS Latitude/Longitude	
				Start	End
Item	Animal Control			37.264387 °	37.264387 °
				-120.755805 °	-120.755805 °
DWR ID	DWR_NA0010_07_f _ 2012_1				
Action/Comments					
Exterminate rodents and backfill and compact or grout burrows.					

Photo 1 of 2 : SP\_2015\_NA0010\_125\_1\_20150309\_00001.jpg



Looking north at several rodent holes on landward slope.

LM Start	<b>1.22</b>	Rating **	M	Issue No.	<b>1 (cont)</b>
LM End	<b>1.22</b>	Issue Type +	Ma	Location *	LS

Photo 2 of 2 : SP\_2015\_NA0010\_125\_1\_20150309\_00002.jpg



Looking at east at active rodent holes on landside berm.

* Location LS : Land Side    N/A : Not Applicable WS : Water Side CR : Crown		** Rating A : Acceptable M : Minimally Acceptable U : Unacceptable		N : Not Inspected/Rated C : Corrected A/W : Acceptable but Monitor & Maintain		+ Issue Type Ma : Maintenance Deficiency Ob : Design & System Obsolescence En : Enforcement	
---	--	---	--	---	--	--	--

**Flood Control Project Maintenance  
Levee Inspections**

## Maintenance Issue Types Only, Levee Inspection Report By Mile - Spring 2015

### Lower San Joaquin Levee District

Waterway	Bank	Unit Miles	Inspection Start/End	Inspector
Unit No. 07 Bear Creek Bypass	Right	3.62	05/19/2015 05/19/2015	Richard Willoughby

LM Start	1.25	Rating **	A/W	Issue No.	11
LM End	1.25	Issue Type +	Ma	Location *	LS
Category	Earthen Levee			GPS Latitude/Longitude	
				Start	End
Item	Slope Stability			37.264367 °	37.264367 °
				-120.755218 °	-120.755218 °
DWR ID	DWR_NA0010_07_f_2014_11				
Action/Comments					
Repair the levee slope damaged by foot traffic and prevent access where possible.					
Inspector Comments: Slope damage caused by livestock and rodent activity.					

Photo 1 of 1 : SP\_2015\_NA0010\_125\_11\_20150309\_00008.jpg



Looking west at slope damage and rodent activity on landward slope.

LM Start	1.50	Rating **	A/W	Issue No.	3
LM End	1.50	Issue Type +	Ma	Location *	LS
Category	Earthen Levee			GPS Latitude/Longitude	
				Start	End
Item	Animal Control			37.263930 °	37.263930 °
				-120.750680 °	-120.750680 °
DWR ID	DWR_NA0010_07_s_2012_3				
Action/Comments					
Repair the levee slope damaged by livestock and prevent large animal access.					
Inspector Comments: Erosion on landward slope has been repaired by district. Landward toe erosion not repaired.					

Photo 1 of 5 : SP\_2015\_NA0010\_125\_3\_20150528\_00012.jpg



Looking east at repaired landward slope.

LM Start	<b>1.50</b>	Rating **	A/W	Issue No.	<b>3 (cont)</b>
LM End	<b>1.50</b>	Issue Type +	Ma	Location *	LS

Photo 2 of 5 : SP\_2015\_NA0010\_125\_3\_20150309\_00003.jpg



Looking northeast at landside slope damaged by livestock.

* Location LS : Land Side    N/A : Not Applicable WS : Water Side CR : Crown		** Rating A : Acceptable M : Minimally Acceptable U : Unacceptable		N : Not Inspected/Rated C : Corrected A/W : Acceptable but Monitor & Maintain		+ Issue Type Ma : Maintenance Deficiency Ob : Design & System Obsolescence En : Enforcement	
---	--	---	--	---	--	--	--

**Flood Control Project Maintenance  
Levee Inspections**

## Maintenance Issue Types Only, Levee Inspection Report By Mile - Spring 2015

### Lower San Joaquin Levee District

Waterway	Bank	Unit Miles	Inspection Start/End	Inspector
Unit No. 07 Bear Creek Bypass	Right	3.62	05/19/2015 05/19/2015	Richard Willoughby

LM Start	1.50	Rating **	A/W	Issue No.	3 (cont)	
LM End	1.50	Issue Type +	Ma	Location *	LS	
Category	Earthen Levee			GPS Latitude/Longitude		
				Start		End
Item	Animal Control			37.263930 °	37.263930 °	
				-120.750680 °	-120.750680 °	
DWR ID	DWR_NA0010_07_s_2012_3					
Action/Comments						
Repair the levee slope damaged by livestock and prevent large animal access.						
Inspector Comments: Erosion on landward slope has been repaired by district. Landward toe erosion not repaired.						

Photo 3 of 5 : SP\_2015\_NA0010\_125\_3\_20150309\_00004.jpg



Looking south at landward slope.

LM Start	<b>1.50</b>	Rating **	A/W	Issue No.	<b>3 (cont)</b>
LM End	<b>1.50</b>	Issue Type +	Ma	Location *	LS

Photo 4 of 5 : SP\_2015\_NA0010\_125\_3\_20150309\_00005.jpg



Looking southeast at damage on landward toe.(Spring 2013)

LM Start	<b>1.50</b>	Rating **	A/W	Issue No.	<b>3 (cont)</b>
LM End	<b>1.50</b>	Issue Type +	Ma	Location *	LS

Photo 5 of 5 : SP\_2015\_NA0010\_125\_3\_20150309\_00006.jpg



Looking southeast at landside slope and toe damage by livestock.

**\* Location**  
LS : Land Side    N/A : Not Applicable  
WS : Water Side  
CR : Crown

**\*\* Rating**  
A : Acceptable                      N : Not Inspected/Rated  
M : Minimally Acceptable        C : Corrected  
U : Unacceptable                  A/W : Acceptable but Monitor & Maintain

**+ Issue Type**  
Ma : Maintenance Deficiency  
Ob : Design & System Obsolescence  
En : Enforcement

**Flood Control Project Maintenance  
Levee Inspections**

## Maintenance Issue Types Only, Levee Inspection Report By Mile - Spring 2015

### Lower San Joaquin Levee District

Waterway	Bank	Unit Miles	Inspection Start/End	Inspector
Unit No. 07 Bear Creek Bypass	Right	3.62	05/19/2015 05/19/2015	Richard Willoughby

LM Start	1.51	Rating **	M	Issue No.	6
LM End	1.51	Issue Type +	Ma	Location *	LS
Category	Earthen Levee			GPS Latitude/Longitude	
				Start	End
Item	Animal Control			37.263885 °	37.263885 °
				-120.750527 °	-120.750527 °
DWR ID	DWR_NA0010_07_s _ 2014_6				
Action/Comments					
Exterminate rodents and backfill and compact or grout burrows.					

No Photos

LM Start	1.71	Rating **	M	Issue No.	5
LM End	1.72	Issue Type +	Ma	Location *	LS
Category	Earthen Levee			GPS Latitude/Longitude	
				Start	End
Item	Animal Control			37.262570 °	37.262467 °
				-120.747453 °	-120.747180 °
DWR ID	DWR_NA0010_07_s _ 2013_5				
Action/Comments					
Exterminate rodents and backfill and compact or grout burrows.					

No Photos

LM Start	1.94	Rating **	M	Issue No.	187
LM End	1.94	Issue Type +	Ma	Location *	CR
Category	Earthen Levee			GPS Latitude/Longitude	
				Start	End
Item	Animal Control			37.261032 °	37.261032 °
				-120.743705 °	-120.743705 °
DWR ID	DWR_NA0010_07_s _ 2015_187				
Action/Comments					
No rodents visible, but rodent burrows visible; need to backfill and compact or grout burrows.					
Inspector Comments: Several rodent holes noted on levee crown.					

Photo 1 of 1 : SP\_2015\_NA0010\_125\_187\_20150528\_00013.jpg



Looking at several rodent holes on levee crown.

* Location		** Rating		+ Issue Type	
LS : Land Side	N/A : Not Applicable	A : Acceptable	N : Not Inspected/Rated	Ma : Maintenance Deficiency	
WS : Water Side		M : Minimally Acceptable	C : Corrected	Ob : Design & System Obsolescence	
CR : Crown		U : Unacceptable	A/W : Acceptable but Monitor & Maintain	En : Enforcement	

**Flood Control Project Maintenance  
Levee Inspections**

## Maintenance Issue Types Only, Levee Inspection Report By Mile - Spring 2015

### Lower San Joaquin Levee District

Waterway	Bank	Unit Miles	Inspection Start/End	Inspector
Unit No. 07 Bear Creek Bypass	Right	3.62	05/19/2015 05/19/2015	Richard Willoughby

LM Start	2.09	Rating **	M	Issue No.	12
LM End	2.09	Issue Type +	Ma	Location *	LS
Category	Earthen Levee			GPS Latitude/Longitude	
				Start	End
Item	Animal Control			37.259187 °	37.259187 °
				-120.742551 °	-120.742551 °
DWR ID	DWR_NA0010_07_f_2014_12				
Action/Comments					
No rodents visible, but rodent burrows visible; need to backfill and compact or grout burrows.					
Inspector Comments: Rodent activity noted next to fence post.					

Photo 1 of 1 : SP\_2015\_NA0010\_125\_12\_20150309\_00009.jpg



Looking east at rodent hole next to fence post on landward shoulder.

<b>* Location</b> LS : Land Side    N/A : Not Applicable WS : Water Side CR : Crown		<b>** Rating</b> A : Acceptable                      N : Not Inspected/Rated M : Minimally Acceptable        C : Corrected U : Unacceptable                  A/W : Acceptable but Monitor & Maintain		<b>+ Issue Type</b> Ma : Maintenance Deficiency Ob : Design & System Obsolescence En : Enforcement
--	--	---	--	---

**Flood Control Project Maintenance  
Levee Inspections**

## Maintenance Issue Types Only, Levee Inspection Report By Mile - Spring 2015

### Lower San Joaquin Levee District

Waterway	Bank	Unit Miles	Inspection Start/End	Inspector
Unit No. 08 Bear Creek Bypass	Left	3.63	05/19/2015 05/19/2015	Richard Willoughby

LM Start	0.01	Rating **	A/W	Issue No.	28
LM End	2.22	Issue Type +	Ma	Location *	LS
Category	Earthen Levee			GPS Latitude/Longitude	
				Start	End
Item	Vegetation			37.253178 °	37.256802 °
				-120.768513 °	-120.740452 °
DWR ID	DWR_NA0010_08_s _ 2012_28				
Action/Comments					
Keep the crown roadway free of vegetation.					

Photo 1 of 2 : SP\_2015\_NA0010\_126\_28\_20150309\_00005.jpg



Looking west at levee crown in complies with standards.

LM Start	<b>0.01</b>	Rating **	A/W	Issue No.	<b>28 (cont)</b>
LM End	<b>2.22</b>	Issue Type +	Ma	Location *	LS

Photo 2 of 2 : SP\_2015\_NA0010\_126\_28\_20150309\_00006.jpg



Looking west at vegetation on levee crown.

LM Start	1.20	Rating **	M	Issue No.	2
LM End	1.20	Issue Type +	Ma	Location *	LS
Category	Earthen Levee			GPS Latitude/Longitude	
				Start	End
Item	Animal Control			37.263182 °	37.263183 °
				-120.755650 °	-120.755637 °
DWR ID	DWR_NA0010_08_s _ 2012_2				
Action/Comments					
No rodents visible, but rodent burrows visible; need to backfill and compact or grout burrows.					

No Photos

<b>* Location</b> LS : Land Side    N/A : Not Applicable WS : Water Side CR : Crown		<b>** Rating</b> A : Acceptable                      N : Not Inspected/Rated M : Minimally Acceptable        C : Corrected U : Unacceptable                  A/W : Acceptable but Monitor & Maintain		<b>+ Issue Type</b> Ma : Maintenance Deficiency Ob : Design & System Obsolescence En : Enforcement
--	--	---	--	---

**Flood Control Project Maintenance  
Levee Inspections**

## Maintenance Issue Types Only, Levee Inspection Report By Mile - Spring 2015

### Lower San Joaquin Levee District

Waterway	Bank	Unit Miles	Inspection Start/End	Inspector
Unit No. 08 Bear Creek Bypass	Left	3.63	05/19/2015 05/19/2015	Richard Willoughby

LM Start	1.38	Rating **	M	Issue No.	8
LM End	1.38	Issue Type +	Ma	Location *	LS
Category	Earthen Levee			GPS Latitude/Longitude	
				Start	End
Item	Animal Control			37.263175 °	37.263175 °
				-120.752307 °	-120.752307 °
DWR ID	DWR_NA0010_08_s _ 2013_8				
Action/Comments					
Exterminate rodents and backfill and compact or grout burrows.					

Photo 1 of 1 : SP\_2015\_NA0010\_126\_8\_20150309\_00004.jpg



Looking west at rodent holes on landward slope.

LM Start	1.61	Rating **	M	Issue No.	1	
LM End	1.61	Issue Type +	Ma	Location *	WS	
Category	Earthen Levee			GPS Latitude/Longitude		
				Start	End	
Item	Animal Control			37.261842 °	37.261842 °	
				-120.748510 °	-120.748510 °	
DWR ID	DWR_NA0010_08_s _ 2012_1					
Action/Comments						
Exterminate rodents and backfill and compact or grout burrows.						

No Photos

LM Start	2.07	Rating **	M	Issue No.	7
LM End	2.13	Issue Type +	Ma	Location *	LS
Category	Earthen Levee			GPS Latitude/Longitude	
				Start	End
Item	Animal Control			37.258063 °	37.257688 °
				-120.742460 °	-120.741573 °
DWR ID	DWR_NA0010_08_s _ 2012_7				
Action/Comments					
Exterminate rodents and backfill and compact or grout burrows. Inspector Comments: Several rodent holes were noted on landside slope near drainage pipe. Also noted rodent holes near gate.					

Photo 1 of 4 : SP\_2015\_NA0010\_126\_7\_20150528\_00034.jpg



Looking at several rodent holes near fence line on landward slope.

<b>* Location</b> LS : Land Side    N/A : Not Applicable WS : Water Side CR : Crown		<b>** Rating</b> A : Acceptable M : Minimally Acceptable U : Unacceptable N : Not Inspected/Rated C : Corrected A/W : Acceptable but Monitor & Maintain		<b>+ Issue Type</b> Ma : Maintenance Deficiency Ob : Design & System Obsolescence En : Enforcement	
--	--	---	--	---	--

**Flood Control Project Maintenance  
Levee Inspections**

## Maintenance Issue Types Only, Levee Inspection Report By Mile - Spring 2015

### Lower San Joaquin Levee District

Waterway	Bank	Unit Miles	Inspection Start/End	Inspector
Unit No. 08 Bear Creek Bypass	Left	3.63	05/19/2015 05/19/2015	Richard Willoughby

LM Start	2.07	Rating **	M	Issue No.	7 (cont)	
LM End	2.13	Issue Type +	Ma	Location *	LS	
Category	Earthen Levee			GPS Latitude/Longitude		
				Start		End
Item	Animal Control			37.258063 °	37.257688 °	
				-120.742460 °	-120.741573 °	
DWR ID	DWR_NA0010_08_s_2012_7					
Action/Comments						
Exterminate rodents and backfill and compact or grout burrows. Inspector Comments: Several rodent holes were noted on landside slope near drainage pipe. Also noted rodent holes near gate.						

Photo 2 of 4 : SP\_2015\_NA0010\_126\_7\_20150309\_00001.jpg



Looking at typical rodent hole along the section.

LM Start	<b>2.07</b>	Rating **	M	Issue No.	<b>7 (cont)</b>
LM End	<b>2.13</b>	Issue Type +	Ma	Location *	LS

Photo 3 of 4 : SP\_2015\_NA0010\_126\_7\_20150309\_00002.jpg



Looking south at several rodent holes on landward slope.

LM Start	<b>2.07</b>	Rating **	M	Issue No.	<b>7 (cont)</b>
LM End	<b>2.13</b>	Issue Type +	Ma	Location *	LS

Photo 4 of 4 : SP\_2015\_NA0010\_126\_7\_20150309\_00003.jpg



Looking at typical rodent hole on landside slope near headwall.

\* Location  
LS : Land Side    N/A : Not Applicable  
WS : Water Side  
CR : Crown

\*\* Rating  
A : Acceptable                      N : Not Inspected/Rated  
M : Minimally Acceptable        C : Corrected  
U : Unacceptable                  A/W : Acceptable but Monitor & Maintain

+ Issue Type  
Ma : Maintenance Deficiency  
Ob : Design & System Obsolescence  
En : Enforcement

**Flood Control Project Maintenance  
Levee Inspections**

## Maintenance Issue Types Only, Levee Inspection Report By Mile - Spring 2015

### Lower San Joaquin Levee District

Waterway	Bank	Unit Miles	Inspection Start/End	Inspector
Unit No. 08 Bear Creek Bypass	Left	3.63	05/19/2015 05/19/2015	Richard Willoughby

LM Start	3.40	Rating **	M	Issue No.	3
LM End	3.54	Issue Type +	Ma	Location *	LS
Category	Earthen Levee			GPS Latitude/Longitude	
				Start	End
Item	Animal Control			37.253052 °	37.253600 °
				-120.722647 °	-120.720198 °
DWR ID	DWR_NA0010_08_s _ 2012_3				
Action/Comments					
No rodents visible, but rodent burrows visible; need to backfill and compact or grout burrows. Inspector Comments: Noted several rodent holes on landward slope within this reach.					

Photo 1 of 1 : SP\_2015\_NA0010\_126\_3\_20150528\_00035.jpg



Looking at typical view of rodent holes on landward slope.

<b>* Location</b> LS : Land Side    N/A : Not Applicable WS : Water Side CR : Crown	<b>** Rating</b> A : Acceptable M : Minimally Acceptable U : Unacceptable N : Not Inspected/Rated C : Corrected A/W : Acceptable but Monitor & Maintain	<b>+ Issue Type</b> Ma : Maintenance Deficiency Ob : Design & System Obsolescence En : Enforcement
--	---	---

**Flood Control Project Maintenance  
Levee Inspections**

## Maintenance Issue Types Only, Levee Inspection Report By Mile - Spring 2015

### Lower San Joaquin Levee District

Waterway	Bank	Unit Miles	Inspection Start/End	Inspector
Unit No. 09 Owens Creek Bypass	Right	0.87	05/19/2015 05/19/2015	Richard Willoughby

LM Start	0.00	Rating **	A	Issue No.	33
LM End	0.87	Issue Type +	Ma	Location *	LS
Category	Earthen Levee	GPS Latitude/Longitude			
		Start		End	
Item	Vegetation		°	37.220075	°
			°	-120.698360	°
DWR ID	DWR_NA0010_09_s_2015_33				
Action/Comments					
Control annual grass and weeds on the levee slopes and easements.					

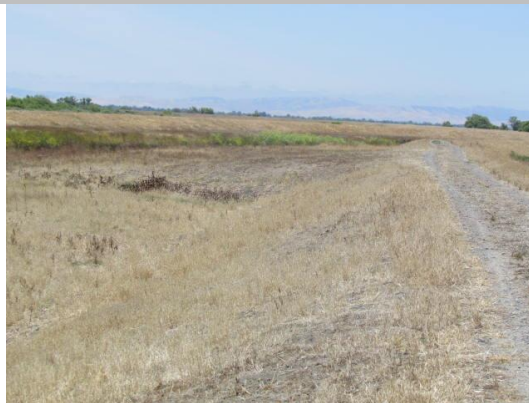
Photo 1 of 1 : SP\_2015\_NA0010\_127\_33\_20150528\_00010.jpg



Looking at typical view of landward slope.

LM Start	0.00	Rating **	A	Issue No.	34
LM End	0.87	Issue Type +	Ma	Location *	WS
Category	Earthen Levee	GPS Latitude/Longitude			
		Start		End	
Item	Vegetation			°	37.220075 °
				°	-120.698360 °
DWR ID	DWR_NA0010_09_s_2015_34				
Action/Comments					
Control annual grass and weeds on the levee slopes and easements.					

Photo 1 of 1 : SP\_2015\_NA0010\_127\_34\_20150528\_00011.jpg



Looking at typical view of waterward slope.

<b>* Location</b> LS : Land Side    N/A : Not Applicable WS : Water Side CR : Crown		<b>** Rating</b> A : Acceptable                      N : Not Inspected/Rated M : Minimally Acceptable        C : Corrected U : Unacceptable                  A/W : Acceptable but Monitor & Maintain		<b>+ Issue Type</b> Ma : Maintenance Deficiency Ob : Design & System Obsolescence En : Enforcement
--	--	---	--	---

**Flood Control Project Maintenance  
Levee Inspections**

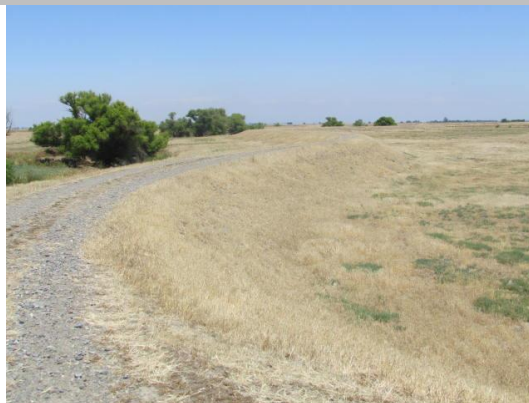
## Maintenance Issue Types Only, Levee Inspection Report By Mile - Spring 2015

### Lower San Joaquin Levee District

Waterway	Bank	Unit Miles	Inspection Start/End	Inspector
Unit No. 10 Owens Creek Bypass	Left	0.80	05/19/2015 05/19/2015	Richard Willoughby

LM Start	0.00	Rating **	M	Issue No.	49
LM End	0.78	Issue Type +	Ma	Location *	LS
Category	Earthen Levee			GPS Latitude/Longitude	
				Start	End
Item	Vegetation			37.217918 °	37.219343 °
				-120.711430 °	-120.698195 °
DWR ID	DWR_NA0010_10_s_2015_49				
Action/Comments					
Control annual grass and weeds on the levee slopes and easements.					

Photo 1 of 1 : SP\_2015\_NA0010\_128\_49\_20150528\_00009.jpg



Looking at typical view of landward slope.

LM Start	0.00	Rating **	M	Issue No.	50
LM End	0.78	Issue Type +	Ma	Location *	WS
Category	Earthen Levee			GPS Latitude/Longitude	
				Start	End
Item	Vegetation			37.217918 °	37.219343 °
				-120.711430 °	-120.698195 °
DWR ID	DWR_NA0010_10_s_2015_50				
Action/Comments					
Control annual grass and weeds on the levee slopes and easements.					

Photo 1 of 1 : SP\_2015\_NA0010\_128\_50\_20150528\_00008.jpg



Looking at typical view of waterward slope.

<b>* Location</b> LS : Land Side    N/A : Not Applicable WS : Water Side CR : Crown		<b>** Rating</b> A : Acceptable                      N : Not Inspected/Rated M : Minimally Acceptable        C : Corrected U : Unacceptable                  A/W : Acceptable but Monitor & Maintain		<b>+ Issue Type</b> Ma : Maintenance Deficiency Ob : Design & System Obsolescence En : Enforcement
--	--	---	--	---

**Flood Control Project Maintenance  
Levee Inspections**

## Maintenance Issue Types Only, Levee Inspection Report By Mile - Spring 2015

### Lower San Joaquin Levee District

Waterway	Bank	Unit Miles	Inspection Start/End	Inspector
Unit No. 11 Mariposa Bypass	Right	3.31	05/21/2015 05/21/2015	Richard Willoughby

LM Start	0.00	Rating **	M	Issue No.	136
LM End	3.31	Issue Type +	Ma	Location *	LS
Category	Earthen Levee			GPS Latitude/Longitude	
				Start	End
Item	Vegetation			37.202777 °	37.202333 °
				-120.755150 °	-120.695280 °
DWR ID	DWR_NA0010_11_s_2015_136				
Action/Comments					
Control annual grass and weeds on the levee slopes and easements.					
Inspector Comments: Control growth on landward slope.					

Photo 1 of 1 : SP\_2015\_NA0010\_129\_136\_20150528\_00037.jpg



Looking at typical view of landward slope.

LM Start	0.00	Rating **	M	Issue No.	137
LM End	3.31	Issue Type +	Ma	Location *	WS
Category	Earthen Levee			GPS Latitude/Longitude	
				Start	End
Item	Vegetation			37.202778 °	37.202333 °
				-120.755150 °	-120.695280 °
DWR ID	DWR_NA0010_11_s_2015_137				
Action/Comments					
Control annual grass and weeds on the levee slopes and easements. Inspector Comments: Control growth on waterward slope.					

Photo 1 of 1 : SP\_2015\_NA0010\_129\_137\_20150528\_00038.jpg



Looking at typical view of waterward slope.

LM Start	1.77	Rating **	M	Issue No.	1
LM End	1.77	Issue Type +	Ma	Location *	LS
Category	Earthen Levee			GPS Latitude/Longitude	
				Start	End
Item	Animal Control			37.202743 °	37.202743 °
				-120.723187 °	-120.723187 °
DWR ID	DWR_NA0010_11_s_2012_1				
Action/Comments					
No rodents visible, but rodent burrows visible; need to backfill and compact or grout burrows.					

No Photos

* Location		** Rating		+ Issue Type	
LS : Land Side	N/A : Not Applicable	A : Acceptable	N : Not Inspected/Rated	Ma : Maintenance Deficiency	
WS : Water Side		M : Minimally Acceptable	C : Corrected	Ob : Design & System Obsolescence	
CR : Crown		U : Unacceptable	A/W : Acceptable but Monitor & Maintain	En : Enforcement	

**Flood Control Project Maintenance  
Levee Inspections**

## Maintenance Issue Types Only, Levee Inspection Report By Mile - Spring 2015

### Lower San Joaquin Levee District

Waterway	Bank	Unit Miles	Inspection Start/End	Inspector
Unit No. 12 Mariposa Bypass	Left	3.33	05/22/2015 05/22/2015	Richard Willoughby

LM Start	0.00	Rating **	M	Issue No.	149
LM End	3.33	Issue Type +	Ma	Location *	WS
Category	Earthen Levee			GPS Latitude/Longitude	
				Start	End
Item	Vegetation			37.200935 °	°
				-120.755205 °	°
DWR ID	DWR_NA0010_12_s_2015_149				
Action/Comments					
Control annual grass and weeds on the levee slopes and easements. Inspector Comments: Control growth on waterward slope.					

Photo 1 of 1 : SP\_2015\_NA0010\_130\_149\_20150528\_00077.jpg



Looking at typical view of growth on waterward slope.

LM Start	0.00	Rating **	M	Issue No.	148
LM End	3.33	Issue Type +	Ma	Location *	LS
Category	Earthen Levee			GPS Latitude/Longitude	
				Start	End
Item	Vegetation			37.200934 °	37.200959 °
				-120.755205 °	-120.694810 °
DWR ID	DWR_NA0010_12_s_2015_148				
Action/Comments					
Control annual grass and weeds on the levee slopes and easements. Inspector Comments: Control growth on landward slope.					

Photo 1 of 1 : SP\_2015\_NA0010\_130\_148\_20150528\_00078.jpg



Looking at typical view of growth on landward slope.

LM Start	2.33	Rating **	M	Issue No.	1
LM End	2.33	Issue Type +	Ma	Location *	LS
Category	Earthen Levee			GPS Latitude/Longitude	
				Start	End
Item	Animal Control			37.200907 °	37.200907 °
				-120.712978 °	-120.712978 °
DWR ID	DWR_NA0010_12_s_2012_1				
Action/Comments					
Exterminate rodents and backfill and compact or grout burrows.					

No Photos

* Location		** Rating		+ Issue Type	
LS : Land Side	N/A : Not Applicable	A : Acceptable	N : Not Inspected/Rated	Ma : Maintenance Deficiency	
WS : Water Side		M : Minimally Acceptable	C : Corrected	Ob : Design & System Obsolescence	
CR : Crown		U : Unacceptable	A/W : Acceptable but Monitor & Maintain	En : Enforcement	

**Flood Control Project Maintenance  
Levee Inspections**

## Maintenance Issue Types Only, Levee Inspection Report By Mile - Spring 2015

### Lower San Joaquin Levee District

Waterway	Bank	Unit Miles	Inspection Start/End	Inspector
Unit No. 13 Ash Slough	Right	1.27	05/19/2015 05/19/2015	Richard Willoughby

LM Start	0.00	Rating **	M	Issue No.	65
LM End	1.26	Issue Type +	Ma	Location *	LS
Category	Earthen Levee			GPS Latitude/Longitude	
				Start	End
Item	Vegetation				° 37.046297 °
					° -120.428123 °
DWR ID	DWR_NA0010_13_s_2015_65				
Action/Comments					
Control annual grass and weeds on the levee slopes and easements. Inspector Comments: Control growth on landward slope.					

Photo 1 of 1 : SP\_2015\_NA0010\_131\_65\_20150528\_00026.jpg



Looking at typical view of growth on landward slope.

LM Start	0.00	Rating **	M	Issue No.	66
LM End	1.26	Issue Type +	Ma	Location *	WS
Category	Earthen Levee	GPS Latitude/Longitude			
		Start		End	
Item	Vegetation			°	37.046297 °
				°	-120.428123 °
DWR ID	DWR_NA0010_13_s_2015_66				
Action/Comments					
Control annual grass and weeds on the levee slopes and easements. Inspector Comments: Control growth on waterward slope.					

Photo 1 of 1 : SP\_2015\_NA0010\_131\_66\_20150528\_00027.jpg



Looking at typical view of growth on waterward slope.

LM Start	0.15	Rating **	M	Issue No.	3
LM End	0.15	Issue Type +	Ma	Location *	LS
Category	Earthen Levee			GPS Latitude/Longitude	
				Start	End
Item	Animal Control			37.035697 °	37.035697 °
				-120.441197 °	-120.441197 °
DWR ID	DWR_NA0010_13_s_2012_3				
Action/Comments					
No rodents visible, but rodent burrows visible; need to backfill and compact or grout burrows.					

No Photos

<b>* Location</b> LS : Land Side    N/A : Not Applicable WS : Water Side CR : Crown		<b>** Rating</b> A : Acceptable M : Minimally Acceptable U : Unacceptable		N : Not Inspected/Rated C : Corrected A/W : Acceptable but Monitor & Maintain		<b>+ Issue Type</b> Ma : Maintenance Deficiency Ob : Design & System Obsolescence En : Enforcement	
--	--	--	--	---	--	---	--

**Flood Control Project Maintenance  
Levee Inspections**

## Maintenance Issue Types Only, Levee Inspection Report By Mile - Spring 2015

### Lower San Joaquin Levee District

Waterway	Bank	Unit Miles	Inspection Start/End	Inspector
Unit No. 13 Ash Slough	Right	1.27	05/19/2015 05/19/2015	Richard Willoughby

LM Start	0.31	Rating **	A/W	Issue No.	2
LM End	1.24	Issue Type +	Ma	Location *	CR
Category	Earthen Levee			GPS Latitude/Longitude	
				Start	End
Item	Crown Surface / Depressions / Rutting			37.037893 °	37.046269 °
				-120.440373 °	-120.428350 °
DWR ID	DWR_NA0010_13_f_2012_2				
Action/Comments					
Add appropriate material and re-grade the levee to bring the crown above the design elevation.					
Inspector Comments: Control vegetation on levee crown.					

No Photos

**\* Location**  
LS : Land Side    N/A : Not Applicable  
WS : Water Side  
CR : Crown

**\*\* Rating**  
A : Acceptable                      N : Not Inspected/Rated  
M : Minimally Acceptable        C : Corrected  
U : Unacceptable                  A/W : Acceptable but Monitor & Maintain

**+ Issue Type**  
Ma : Maintenance Deficiency  
Ob : Design & System Obsolescence  
En : Enforcement

**Flood Control Project Maintenance  
Levee Inspections**

## Maintenance Issue Types Only, Levee Inspection Report By Mile - Spring 2015

### Lower San Joaquin Levee District

Waterway	Bank	Unit Miles	Inspection Start/End	Inspector
Unit No. 14 Ash Slough	Left	1.28	05/19/2015 05/19/2015	Richard Willoughby

LM Start	0.00	Rating **	M	Issue No.	77
LM End	1.26	Issue Type +	Ma	Location *	LS
Category	Earthen Levee			GPS Latitude/Longitude	
				Start	End
Item	Vegetation			37.032377 °	37.045398 °
				-120.441273 °	-120.427757 °
DWR ID	DWR_NA0010_14_s_2015_77				
Action/Comments					
Remove the wild growth other than native grasses from the levee slopes.					
Inspector Comments: Control growth on landward slope.					

Photo 1 of 1 : SP\_2015\_NA0010\_132\_77\_20150528\_00030.jpg



Looking at typical view of growth on landward slope.

LM Start	0.00	Rating **	M	Issue No.	78
LM End	1.26	Issue Type +	Ma	Location *	WS
Category	Earthen Levee			GPS Latitude/Longitude	
				Start	End
Item	Vegetation			37.032377 °	37.045398 °
				-120.441273 °	-120.427757 °
DWR ID	DWR_NA0010_14_s_2015_78				
Action/Comments					
Control annual grass and weeds on the levee slopes and easements. Inspector Comments: Control growth on waterward slope.					

Photo 1 of 1 : SP\_2015\_NA0010\_132\_78\_20150528\_00031.jpg



Looking at typical view of growth on waterward slope.

LM Start	0.00	Rating **	A/W	Issue No.	2
LM End	1.26	Issue Type +	Ma	Location *	CR
Category	Earthen Levee			GPS Latitude/Longitude	
				Start	End
Item	Crown Surface / Depressions / Rutting			37.032379 °	37.045404 °
				-120.441265 °	-120.427749 °
DWR ID	DWR_NA0010_14_f_2012_2				
Action/Comments					
Add appropriate material and re-grade the levee to bring the crown above the design elevation.					
Inspector Comments: Control vegetation on levee crown.					

No Photos

* Location		** Rating		+ Issue Type	
LS : Land Side	N/A : Not Applicable	A : Acceptable	N : Not Inspected/Rated	Ma : Maintenance Deficiency	
WS : Water Side		M : Minimally Acceptable	C : Corrected	Ob : Design & System Obsolescence	
CR : Crown		U : Unacceptable	A/W : Acceptable but Monitor & Maintain	En : Enforcement	

**Flood Control Project Maintenance  
Levee Inspections**

## Maintenance Issue Types Only, Levee Inspection Report By Mile - Spring 2015

### Lower San Joaquin Levee District

Waterway	Bank	Unit Miles	Inspection Start/End	Inspector
Unit No. 14 Ash Slough	Left	1.28	05/19/2015 05/19/2015	Richard Willoughby

LM Start	1.24	Rating **	M	Issue No.	79
LM End	1.24	Issue Type +	Ma	Location *	LS
Category	Earthen Levee			GPS Latitude/Longitude	
				Start	End
Item	Animal Control			37.045343 °	37.045343 °
				-120.428007 °	-120.428007 °
DWR ID	DWR_NA0010_14_s _ 2015_79				
Action/Comments					
No rodents visible, but rodent burrows visible; need to backfill and compact or grout burrows. Inspector Comments: Noted several rodent holes on landward at this location.					

Photo 1 of 1 : SP\_2015\_NA0010\_132\_79\_20150528\_00032.jpg



Looking at typical view of rodent holes on landward slope.

<b>* Location</b> LS : Land Side    N/A : Not Applicable WS : Water Side CR : Crown		<b>** Rating</b> A : Acceptable                      N : Not Inspected/Rated M : Minimally Acceptable        C : Corrected U : Unacceptable                  A/W : Acceptable but Monitor & Maintain		<b>+ Issue Type</b> Ma : Maintenance Deficiency Ob : Design & System Obsolescence En : Enforcement
--	--	---	--	---

**Flood Control Project Maintenance  
Levee Inspections**

## Maintenance Issue Types Only, Levee Inspection Report By Mile - Spring 2015

### Lower San Joaquin Levee District

Waterway	Bank	Unit Miles	Inspection Start/End	Inspector
Unit No. 15 Berenda Slough	Right	2.03	05/20/2015 05/20/2015	Richard Willoughby

LM Start	0.01	Rating **	A/W	Issue No.	11
LM End	1.99	Issue Type +	Ma	Location *	CR
Category	Earthen Levee			GPS Latitude/Longitude	
				Start	End
Item	Crown Surface / Depressions / Rutting			36.996547 °	36.996587 °
				-120.410220 °	-120.374503 °
DWR ID	DWR_NA0010_15_s_2012_11				
Action/Comments					
Add appropriate material and re-grade the levee to bring the crown above the design elevation. Inspector Comments: Control vegetation on levee crown.					

Photo 1 of 2 : SP\_2015\_NA0010\_133\_11\_20150309\_00001.jpg



Looking east at typical view of levee in compliance with standards.

LM Start	<b>0.01</b>	Rating **	A/W	Issue No.	<b>11 (cont)</b>
LM End	<b>1.99</b>	Issue Type +	Ma	Location *	CR

Photo 2 of 2 : SP\_2015\_NA0010\_133\_11\_20150309\_00002.jpg



Looking east at vegetation on levee crown.

LM Start	0.03	Rating **	M	Issue No.	75
LM End	2.02	Issue Type +	Ma	Location *	WS
Category	Earthen Levee			GPS Latitude/Longitude	
				Start	End
Item	Vegetation			36.996551 °	36.996560 °
				-120.409814 °	-120.383500 °
DWR ID	DWR_NA0010_15_s_2015_75				
Action/Comments					
Control annual grass and weeds on the levee slopes and easements.					
Inspector Comments: Control growth on waterward slope.					

Photo 1 of 1 : SP\_2015\_NA0010\_133\_75\_20150528\_00009.jpg



Looking at typical view of growth on waterward slope.

<b>* Location</b> LS : Land Side    N/A : Not Applicable WS : Water Side CR : Crown		<b>** Rating</b> A : Acceptable M : Minimally Acceptable U : Unacceptable N : Not Inspected/Rated C : Corrected A/W : Acceptable but Monitor & Maintain		<b>+ Issue Type</b> Ma : Maintenance Deficiency Ob : Design & System Obsolescence En : Enforcement	
--	--	---	--	---	--

**Flood Control Project Maintenance  
Levee Inspections**

## Maintenance Issue Types Only, Levee Inspection Report By Mile - Spring 2015

### Lower San Joaquin Levee District

Waterway	Bank	Unit Miles	Inspection Start/End	Inspector
Unit No. 15 Berenda Slough	Right	2.03	05/20/2015 05/20/2015	Richard Willoughby

LM Start	0.03	Rating **	M	Issue No.	74
LM End	2.02	Issue Type +	Ma	Location *	LS
Category	Earthen Levee			GPS Latitude/Longitude	
				Start	End
Item	Vegetation			36.996552 °	36.996560 °
				-120.409813 °	-120.383500 °
DWR ID	DWR_NA0010_15_s _ 2015_74				
Action/Comments					
Control annual grass and weeds on the levee slopes and easements.					
Inspector Comments: Control growth on landward slope.					

Photo 1 of 1 : SP\_2015\_NA0010\_133\_74\_20150528\_00010.jpg



Looking at typical view of growth on landward slope.

<b>* Location</b> LS : Land Side    N/A : Not Applicable WS : Water Side CR : Crown		<b>** Rating</b> A : Acceptable                      N : Not Inspected/Rated M : Minimally Acceptable        C : Corrected U : Unacceptable                  A/W : Acceptable but Monitor & Maintain		<b>+ Issue Type</b> Ma : Maintenance Deficiency Ob : Design & System Obsolescence En : Enforcement
--	--	---	--	---

**Flood Control Project Maintenance  
Levee Inspections**

## Maintenance Issue Types Only, Levee Inspection Report By Mile - Spring 2015

### Lower San Joaquin Levee District

Waterway	Bank	Unit Miles	Inspection Start/End	Inspector
Unit No. 16 Berenda Slough	Left	1.96	05/20/2015 05/20/2015	Richard Willoughby

LM Start	0.00	Rating **	M	Issue No.	91
LM End	1.96	Issue Type +	Ma	Location *	WS
Category	Earthen Levee			GPS Latitude/Longitude	
				Start	End
Item	Vegetation			36.995349 °	36.995456 °
				-120.408896 °	-120.383420 °
DWR ID	DWR_NA0010_16_s _ 2015_91				
Action/Comments					
Control annual grass and weeds on the levee slopes and easements. Inspector Comments: Control growth on waterward slope.					

Photo 1 of 1 : SP\_2015\_NA0010\_134\_91\_20150528\_00022.jpg



Looking at typical view of growth on waterward slope.

LM Start	0.00	Rating **	M	Issue No.	90
LM End	1.97	Issue Type +	Ma	Location *	LS
Category	Earthen Levee			GPS Latitude/Longitude	
				Start	End
Item	Vegetation			36.995349 °	36.995457 °
				-120.408896 °	-120.383420 °
DWR ID	DWR_NA0010_16_s _ 2015_90				
Action/Comments					
Control annual grass and weeds on the levee slopes and easements. Inspector Comments: Control growth on landward slope.					

Photo 1 of 1 : SP\_2015\_NA0010\_134\_90\_20150528\_00023.jpg



Looking at typical view of growth on landward slope.

LM Start	0.01	Rating **	A/W	Issue No.	14
LM End	1.96	Issue Type +	Ma	Location *	CR
Category	Earthen Levee			GPS Latitude/Longitude	
				Start	End
Item	Crown Surface / Depressions / Rutting			36.995388 °	36.995507 °
				-120.408738 °	-120.373592 °
DWR ID	DWR_NA0010_16_s _ 2012_14				
Action/Comments					
Add appropriate material and re-grade the levee to bring the crown above the design elevation.					
Inspector Comments: Control vegetation on levee crown.					

Photo 1 of 1 : SP\_2015\_NA0010\_134\_14\_20150309\_00003.jpg



Looking west at the properly maintained levee crown.

* Location		** Rating		+ Issue Type	
LS : Land Side	N/A : Not Applicable	A : Acceptable	N : Not Inspected/Rated	Ma : Maintenance Deficiency	
WS : Water Side		M : Minimally Acceptable	C : Corrected	Ob : Design & System Obsolescence	
CR : Crown		U : Unacceptable	A/W : Acceptable but Monitor & Maintain	En : Enforcement	

**Flood Control Project Maintenance  
Levee Inspections**

## Maintenance Issue Types Only, Levee Inspection Report By Mile - Spring 2015

### Lower San Joaquin Levee District

Waterway	Bank	Unit Miles	Inspection Start/End	Inspector
Unit No. 16 Berenda Slough	Left	1.96	05/20/2015 05/20/2015	Richard Willoughby

LM Start	0.93	Rating **	M	Issue No.	92
LM End	0.93	Issue Type +	Ma	Location *	LS
Category	Earthen Levee			GPS Latitude/Longitude	
				Start	End
Item	Animal Control			36.995439 °	36.995439 °
				-120.392146 °	-120.392146 °
DWR ID	DWR_NA0010_16_s_2015_92				
Action/Comments					
No rodents visible, but rodent burrows visible; need to backfill and compact or grout burrows.					
Inspector Comments: Notice several rodent holes within this section.					

Photo 1 of 1 : SP\_2015\_NA0010\_134\_92\_20150528\_00024.jpg



Looking at several rodent holes on landward slope.

LM Start	1.68	Rating **	M	Issue No.	4
LM End	1.68	Issue Type +	Ma	Location *	LS
Category	Earthen Levee			GPS Latitude/Longitude	
				Start	End
Item	Animal Control			36.995503 °	36.995503 °
				-120.378579 °	-120.378579 °
DWR ID	DWR_NA0010_16_s_2014_4				
Action/Comments					
No rodents visible, but rodent burrows visible; need to backfill and compact or grout burrows.					

No Photos

LM Start	1.76	Rating **	A/W	Issue No.	3
LM End	1.76	Issue Type +	Ma	Location *	LS
Category	Earthen Levee			GPS Latitude/Longitude	
				Start	End
Item	Slope Stability			36.995488 °	36.995488 °
				-120.377152 °	-120.377152 °
DWR ID	DWR_NA0010_16_s_2012_3				
Action/Comments					
Repair the levee slope damaged by vehicle traffic and prevent access where possible.					

No Photos

* Location		** Rating		+ Issue Type	
LS : Land Side	N/A : Not Applicable	A : Acceptable	N : Not Inspected/Rated	Ma : Maintenance Deficiency	
WS : Water Side		M : Minimally Acceptable	C : Corrected	Ob : Design & System Obsolescence	
CR : Crown		U : Unacceptable	A/W : Acceptable but Monitor & Maintain	En : Enforcement	

**Flood Control Project Maintenance  
Levee Inspections**

## Maintenance Issue Types Only, Levee Inspection Report By Mile - Spring 2015

### Lower San Joaquin Levee District

Waterway	Bank	Unit Miles	Inspection Start/End	Inspector
Unit No. 16 Berenda Slough	Left	1.96	05/20/2015 05/20/2015	Richard Willoughby

LM Start	1.77	Rating **	M	Issue No.	2
LM End	1.77	Issue Type +	Ma	Location *	LS
Category	Earthen Levee			GPS Latitude/Longitude	
				Start	End
Item	Animal Control			36.995487 °	36.995487 °
				-120.377054 °	-120.377054 °
DWR ID	DWR_NA0010_16_f_2014_2				
Action/Comments					
No rodents visible, but rodent burrows visible; need to backfill and compact or grout burrows.					
Inspector Comments: Large rodent holes on landward slope.					

Photo 1 of 2 : SP\_2015\_NA0010\_134\_2\_20150309\_00001.jpg



Looking at large rodent holes on landward slope.

LM Start	<b>1.77</b>	Rating **	M	Issue No.	<b>2 (cont)</b>
LM End	<b>1.77</b>	Issue Type +	Ma	Location *	LS

Photo 2 of 2 : SP\_2015\_NA0010\_134\_2\_20150309\_00002.jpg



Looking southwest at several rodent holes on landward slope.

<b>* Location</b> LS : Land Side    N/A : Not Applicable WS : Water Side CR : Crown		<b>** Rating</b> A : Acceptable M : Minimally Acceptable U : Unacceptable		<b>+ Issue Type</b> Ma : Maintenance Deficiency Ob : Design & System Obsolescence En : Enforcement	
		N : Not Inspected/Rated C : Corrected A/W : Acceptable but Monitor & Maintain			

**Flood Control Project Maintenance  
Levee Inspections**

## Maintenance Issue Types Only, Levee Inspection Report By Mile - Spring 2015

### Lower San Joaquin Levee District

Waterway	Bank	Unit Miles	Inspection Start/End	Inspector
Unit No. 17 Chowchilla Canal Bypass	Right	16.09	05/20/2015 05/20/2015	Richard Willoughby

LM Start	0.00	Rating **	M	Issue No.	11
LM End	16.09	Issue Type +	Ma	Location *	LS
Category	Earthen Levee			GPS Latitude/Longitude	
				Start	End
Item	Vegetation				°
					°
DWR ID	DWR_NA0010_17_f_2014_11				
Action/Comments					
Control annual grass and weeds on the levee slopes and easements. Inspector Comments: Control growth on landward slope.					

Photo 1 of 1 : SP\_2015\_NA0010\_135\_11\_20150528\_00112.jpg



Looking at typical view of growth on landward slope.

LM Start	0.00	Rating **	M	Issue No.	12
LM End	16.09	Issue Type +	Ma	Location *	WS
Category	Earthen Levee			GPS Latitude/Longitude	
				Start	End
Item	Vegetation				°
					°
DWR ID	DWR_NA0010_17_f_2014_12				
Action/Comments					
Control annual grass and weeds on the levee slopes and easements. Inspector Comments: Control growth on waterward slope.					

Photo 1 of 1 : SP\_2015\_NA0010\_135\_12\_20150528\_00113.jpg



Looking at typical view of growth on waterward slope.

LM Start	5.75	Rating **	M	Issue No.	8
LM End	5.90	Issue Type +	Ma	Location *	LS
Category	Earthen Levee			GPS Latitude/Longitude	
				Start	End
Item	Animal Control			36.908605 °	36.906507 °
				-120.331112 °	-120.330353 °
DWR ID	DWR_NA0010_17_s_2012_8				
Action/Comments					
Exterminate rodents and backfill and compact or grout burrows. Inspector Comments: Several rodent holes noted on landward slope.					

Photo 1 of 2 : SP\_2015\_NA0010\_135\_8\_20150528\_00114.jpg



Looking at several rodent holes on landward slope. (Spring 2015)

<b>* Location</b> LS : Land Side    N/A : Not Applicable WS : Water Side CR : Crown		<b>** Rating</b> A : Acceptable M : Minimally Acceptable U : Unacceptable		N : Not Inspected/Rated C : Corrected A/W : Acceptable but Monitor & Maintain		<b>+ Issue Type</b> Ma : Maintenance Deficiency Ob : Design & System Obsolescence En : Enforcement	
--	--	--	--	---	--	---	--

**Flood Control Project Maintenance  
Levee Inspections**

## Maintenance Issue Types Only, Levee Inspection Report By Mile - Spring 2015

### Lower San Joaquin Levee District

Waterway	Bank	Unit Miles	Inspection Start/End	Inspector
Unit No. 17 Chowchilla Canal Bypass	Right	16.09	05/20/2015 05/20/2015	Richard Willoughby

LM Start	5.75	Rating **	M	Issue No.	8 (cont)
LM End	5.90	Issue Type +	Ma	Location *	LS
Category	Earthen Levee			GPS Latitude/Longitude	
				Start	End
Item	Animal Control			36.908605 °	36.906507 °
				-120.331112 °	-120.330353 °
DWR ID	DWR_NA0010_17_s_2012_8				
Action/Comments					
Exterminate rodents and backfill and compact or grout burrows. Inspector Comments: Several rodent holes noted on landward slope.					

Photo 2 of 2 : SP\_2015\_NA0010\_135\_8\_20150309\_00001.jpg



Looking at several rodent holes on landside slope. (Fall 2014)

LM Start	6.51	Rating **	M	Issue No.	4
LM End	6.60	Issue Type +	Ma	Location *	LS
Category	Earthen Levee			GPS Latitude/Longitude	
				Start	End
Item	Animal Control			36.898124 °	36.896943 °
				-120.326714 °	-120.326133 °
DWR ID	DWR_NA0010_17_s_2012_4				
Action/Comments					
Exterminate rodents and backfill and compact or grout burrows. Inspector Comments: Notice several rodent holes within this reach.					

Photo 1 of 1 : SP\_2015\_NA0010\_135\_4\_20150528\_00115.jpg



Looking at typical view of rodent holes on landward slope.

LM Start	7.27	Rating **	M	Issue No.	5
LM End	7.38	Issue Type +	Ma	Location *	LS
Category	Earthen Levee			GPS Latitude/Longitude	
				Start	End
Item	Animal Control			36.887869 °	36.886341 °
				-120.321697 °	-120.320940 °
DWR ID	DWR_NA0010_17_s_2012_5				
Action/Comments					
No rodents visible, but rodent burrows visible; need to backfill and compact or grout burrows.					
Inspector Comments: Notice several rodent holes within this reach.					

Photo 1 of 1 : SP\_2015\_NA0010\_135\_5\_20150528\_00116.jpg



Looking at typical view of rodent holes on landward slope.

* Location LS : Land Side    N/A : Not Applicable WS : Water Side CR : Crown		** Rating A : Acceptable M : Minimally Acceptable U : Unacceptable		N : Not Inspected/Rated C : Corrected A/W : Acceptable but Monitor & Maintain		+ Issue Type Ma : Maintenance Deficiency Ob : Design & System Obsolescence En : Enforcement	
---	--	---	--	---	--	--	--

**Flood Control Project Maintenance  
Levee Inspections**

## Maintenance Issue Types Only, Levee Inspection Report By Mile - Spring 2015

### Lower San Joaquin Levee District

Waterway	Bank	Unit Miles	Inspection Start/End	Inspector
Unit No. 17 Chowchilla Canal Bypass	Right	16.09	05/20/2015 05/20/2015	Richard Willoughby

LM Start	12.34	Rating **	M	Issue No.	3
LM End	12.37	Issue Type +	Ma	Location *	LS
Category	Earthen Levee			GPS Latitude/Longitude	
				Start	End
Item	Animal Control			36.820558 °	36.820155 °
				-120.300616 °	-120.300784 °
DWR ID	DWR_NA0010_17_s _ 2014_3				
Action/Comments					
No rodents visible, but rodent burrows visible; need to backfill and compact or grout burrows.					
Inspector Comments: Noted several rodent holes with this reach.					

Photo 1 of 1 : SP\_2015\_NA0010\_135\_3\_20150528\_00117.jpg



Looking at several rodent holes on landward slope.

<b>* Location</b> LS : Land Side    N/A : Not Applicable WS : Water Side CR : Crown	<b>** Rating</b> A : Acceptable M : Minimally Acceptable U : Unacceptable	N : Not Inspected/Rated C : Corrected A/W : Acceptable but Monitor & Maintain	<b>+ Issue Type</b> Ma : Maintenance Deficiency Ob : Design & System Obsolescence En : Enforcement
--	--	---	---

**Flood Control Project Maintenance  
Levee Inspections**

## Maintenance Issue Types Only, Levee Inspection Report By Mile - Spring 2015

### Lower San Joaquin Levee District

Waterway	Bank	Unit Miles	Inspection Start/End	Inspector
Unit No. 18 Chowchilla Canal Bypass	Left	15.35	05/20/2015 05/20/2015	Richard Willoughby

LM Start	0.00	Rating **	M	Issue No.	365
LM End	15.31	Issue Type +	Ma	Location *	LS
Category	Earthen Levee			GPS Latitude/Longitude	
				Start	End
Item	Vegetation			36.974113 °	36.773934 °
				-120.363229 °	-120.285420 °
DWR ID	DWR_NA0010_18_s _ 2015_365				
Action/Comments					
Control annual grass and weeds on the levee slopes and easements. Inspector Comments: Control growth on landward slope.					

No Photos

LM Start	0.00	Rating **	M	Issue No.	366
LM End	15.31	Issue Type +	Ma	Location *	WS
Category	Earthen Levee			GPS Latitude/Longitude	
				Start	End
Item	Vegetation			36.974113 °	36.773934 °
				-120.363228 °	-120.285420 °
DWR ID	DWR_NA0010_18_s _ 2015_366				
Action/Comments					
Control annual grass and weeds on the levee slopes and easements. Inspector Comments: Control growth on waterward slope.					

No Photos

LM Start	1.44	Rating **	M	Issue No.	7
LM End	1.44	Issue Type +	Ma	Location *	LS
Category	Earthen Levee			GPS Latitude/Longitude	
				Start	End
Item	Animal Control			36.956163 °	36.956163 °
				-120.353672 °	-120.353672 °
DWR ID	DWR_NA0010_18_s _ 2014_7				
Action/Comments					
No rodents visible, but rodent burrows visible; need to backfill and compact or grout burrows. Inspector Comments: Several noted on landward slope and on levee crown.					

Photo 1 of 1 : SP\_2015\_NA0010\_137\_7\_20150528\_00044.jpg



Looking at typical view of rodent holes within this section on landward slope.

* Location		** Rating		+ Issue Type	
LS : Land Side	N/A : Not Applicable	A : Acceptable	N : Not Inspected/Rated	Ma : Maintenance Deficiency	
WS : Water Side		M : Minimally Acceptable	C : Corrected	Ob : Design & System Obsolescence	
CR : Crown		U : Unacceptable	A/W : Acceptable but Monitor & Maintain	En : Enforcement	

**Flood Control Project Maintenance  
Levee Inspections**

## Maintenance Issue Types Only, Levee Inspection Report By Mile - Spring 2015

### Lower San Joaquin Levee District

Waterway	Bank	Unit Miles	Inspection Start/End	Inspector
Unit No. 18 Chowchilla Canal Bypass	Left	15.35	05/20/2015 05/20/2015	Richard Willoughby

LM Start	5.89	Rating **	M	Issue No.	1
LM End	5.89	Issue Type +	Ma	Location *	LS
Category	Earthen Levee			GPS Latitude/Longitude	
				Start	End
Item	Animal Control			36.895175 °	36.895175 °
				-120.327632 °	-120.327632 °
DWR ID	DWR_NA0010_18_s_2015_1				
Action/Comments					
No rodents visible, but rodent burrows visible; need to backfill and compact or grout burrows. Inspector Comments: Several large rodent holes noted on landward slope and berm within this section.					

Photo 1 of 1 : SP\_2015\_NA0010\_137\_1\_20150528\_00048.jpg



Looking at several rodent holes on landward slope.

LM Start	6.52	Rating **	M	Issue No.	9
LM End	6.52	Issue Type +	Ma	Location *	WS
Category	Earthen Levee			GPS Latitude/Longitude	
				Start	End
Item	Animal Control			36.886767 °	36.886767 °
				-120.323482 °	-120.323482 °
DWR ID	DWR_NA0010_18_f_2014_9				
Action/Comments					
Exterminate rodents and backfill and compact or grout burrows.					

No Photos

LM Start	13.57	Rating **	A/W	Issue No.	3
LM End	15.14	Issue Type +	Ma	Location *	LS
Category	Earthen Levee			GPS Latitude/Longitude	
				Start	End
Item	Crown Surface / Depressions / Rutting			36.792861 °	36.776058 °
				-120.304907 °	-120.287111 °
DWR ID	DWR_NA0010_18_f_2012_3				
Action/Comments					
Repair depressions or ruts in the crown or slope.					

No Photos

<b>* Location</b> LS : Land Side    N/A : Not Applicable WS : Water Side CR : Crown		<b>** Rating</b> A : Acceptable                      N : Not Inspected/Rated M : Minimally Acceptable        C : Corrected U : Unacceptable                  A/W : Acceptable but Monitor & Maintain		<b>+ Issue Type</b> Ma : Maintenance Deficiency Ob : Design & System Obsolescence En : Enforcement
--	--	---	--	---

**Flood Control Project Maintenance  
Levee Inspections**

## Maintenance Issue Types Only, Levee Inspection Report By Mile - Spring 2015

### Lower San Joaquin Levee District

Waterway	Bank	Unit Miles	Inspection Start/End	Inspector
Unit No. 22A East Side Canal	Left	5.51	05/19/2015 05/19/2015	Richard Willoughby

LM Start	0.53	Rating **	M	Issue No.	21
LM End	0.53	Issue Type +	Ma	Location *	LS
Category	Earthen Levee			GPS Latitude/Longitude	
				Start	End
Item	Vegetation			37.213006 °	37.213006 °
				-120.698019 °	-120.698019 °
DWR ID	DWR_NA0010_22A_f_2014_21				
Action/Comments					
Remove the wild growth other than native grasses from the levee slopes.					
Inspector Comments: Dense brush on landward slope.					

Photo 1 of 1 : SP\_2015\_NA0010\_138\_21\_20150309\_00011.jpg



Looking south at dense brushes on landward slope.

LM Start	0.69	Rating **	A/W	Issue No.	8
LM End	0.89	Issue Type +	Ma	Location *	LS
Category	Earthen Levee			GPS Latitude/Longitude	
				Start	End
Item	Vegetation			37.215360 °	37.218128 °
				-120.698078 °	-120.697457 °
DWR ID	DWR_NA0010_22A_s_2012_8				
Action/Comments					
Remove the wild growth other than native grasses from the levee slopes.					

No Photos

LM Start	0.90	Rating **	M	Issue No.	260
LM End	1.72	Issue Type +	Ma	Location *	LS
Category	Earthen Levee			GPS Latitude/Longitude	
				Start	End
Item	Vegetation			37.218218 °	37.229712 °
				-120.697507 °	-120.701757 °
DWR ID	DWR_NA0010_22A_s_2015_260				
Action/Comments					
Control annual grass and weeds on the levee slopes and easements.					

No Photos

<b>* Location</b> LS : Land Side    N/A : Not Applicable WS : Water Side CR : Crown		<b>** Rating</b> A : Acceptable                      N : Not Inspected/Rated M : Minimally Acceptable        C : Corrected U : Unacceptable                  A/W : Acceptable but Monitor & Maintain		<b>+ Issue Type</b> Ma : Maintenance Deficiency Ob : Design & System Obsolescence En : Enforcement
--	--	---	--	---

**Flood Control Project Maintenance  
Levee Inspections**

## Maintenance Issue Types Only, Levee Inspection Report By Mile - Spring 2015

### Lower San Joaquin Levee District

Waterway	Bank	Unit Miles	Inspection Start/End	Inspector
Unit No. 22A East Side Canal	Left	5.51	05/19/2015 05/19/2015	Richard Willoughby

LM Start	0.95	Rating **	M	Issue No.	261
LM End	1.72	Issue Type +	Ma	Location *	WS
Category	Earthen Levee			GPS Latitude/Longitude	
				Start	End
Item	Vegetation			37.218987 °	37.229712 °
				-120.697753 °	-120.701757 °
DWR ID	DWR_NA0010_22A_s_2015_261				
Action/Comments					
Control annual grass and weeds on the levee slopes and easements.					

No Photos

LM Start	0.96	Rating **	A/W	Issue No.	22
LM End	0.96	Issue Type +	Ma	Location *	WS
Category	Earthen Levee			GPS Latitude/Longitude	
				Start	End
Item	Slope Stability			37.219137 °	37.219137 °
				-120.697857 °	-120.697857 °
DWR ID	DWR_NA0010_22A_f_2014_22				
Action/Comments					
Repair slope instability.					
Inspector Comments: Irrigation district excavated waterward slope.					

Photo 1 of 3 : SP\_2015\_NA0010\_138\_22\_20150309\_00012.jpg



Looking south at excavated waterward slope.

LM Start	<b>0.96</b>	Rating **	A/W	Issue No.	<b>22 (cont)</b>
LM End	<b>0.96</b>	Issue Type +	Ma	Location *	WS

Photo 2 of 3 : SP\_2015\_NA0010\_138\_22\_20150309\_00013.jpg



Looking southeast at excavated waterward slope.

<b>* Location</b> LS : Land Side    N/A : Not Applicable WS : Water Side CR : Crown		<b>** Rating</b> A : Acceptable M : Minimally Acceptable U : Unacceptable N : Not Inspected/Rated C : Corrected A/W : Acceptable but Monitor & Maintain		<b>+ Issue Type</b> Ma : Maintenance Deficiency Ob : Design & System Obsolescence En : Enforcement	
--	--	---	--	---	--

**Flood Control Project Maintenance  
Levee Inspections**

## Maintenance Issue Types Only, Levee Inspection Report By Mile - Spring 2015

### Lower San Joaquin Levee District

Waterway	Bank	Unit Miles	Inspection Start/End	Inspector
Unit No. 22A East Side Canal	Left	5.51	05/19/2015 05/19/2015	Richard Willoughby

LM Start	0.96	Rating **	A/W	Issue No.	22 (cont)
LM End	0.96	Issue Type +	Ma	Location *	WS
Category	Earthen Levee			GPS Latitude/Longitude	
				Start	End
Item	Slope Stability			37.219137 °	37.219137 °
				-120.697857 °	-120.697857 °
DWR ID	DWR_NA0010_22A_f_2014_22				
Action/Comments					
Repair slope instability.					
Inspector Comments: Irrigation district excavated waterward slope.					

Photo 3 of 3 : SP\_2015\_NA0010\_138\_22\_20150309\_00014.jpg



Looking north at excavated waterward slope.

LM Start	2.86	Rating **	M	Issue No.	15
LM End	3.05	Issue Type +	Ma	Location *	LS
Category	Earthen Levee			GPS Latitude/Longitude	
				Start	End
Item	Animal Control			37.245431 °	37.247343 °
				-120.707990 °	-120.710362 °
DWR ID	DWR_NA0010_22A_s_2014_15				
Action/Comments					
No rodents visible, but rodent burrows visible; need to backfill and compact or grout burrows.					
Inspector Comments: Noted several rodent holes on landward slope and toe.					

Photo 1 of 1 : SP\_2015\_NA0010\_138\_15\_20150528\_00049.jpg



Looking at several rodent holes on landward slope.

LM Start	3.14	Rating **	A/W	Issue No.	2
LM End	3.14	Issue Type +	Ma	Location *	WS
Category	Earthen Levee			GPS Latitude/Longitude	
				Start	End
Item	Trim / Thin Trees			37.248208 °	37.248208 °
				-120.711500 °	-120.711500 °
DWR ID	DWR_NA0010_22A_s_2012_2				
Action/Comments					
Thin trees to allow visibility of the ground and room to flood fight.					

No Photos

* Location		** Rating		+ Issue Type	
LS : Land Side	N/A : Not Applicable	A : Acceptable	N : Not Inspected/Rated	Ma : Maintenance Deficiency	
WS : Water Side		M : Minimally Acceptable	C : Corrected	Ob : Design & System Obsolescence	
CR : Crown		U : Unacceptable	A/W : Acceptable but Monitor & Maintain	En : Enforcement	

**Flood Control Project Maintenance  
Levee Inspections**

## Maintenance Issue Types Only, Levee Inspection Report By Mile - Spring 2015

### Lower San Joaquin Levee District

Waterway	Bank	Unit Miles	Inspection Start/End	Inspector
Unit No. 22A East Side Canal	Left	5.51	05/19/2015 05/19/2015	Richard Willoughby

LM Start	3.79	Rating **	M	Issue No.	11
LM End	3.79	Issue Type +	Ma	Location *	LS
Category	Earthen Levee			GPS Latitude/Longitude	
				Start	End
Item	Animal Control			37.254923 °	37.254923 °
				-120.719769 °	-120.719769 °
DWR ID	DWR_NA0010_22A_s_2014_11				
Action/Comments					
Exterminate rodents and backfill and compact or grout burrows.					

No Photos

LM Start	3.80	Rating **	M	Issue No.	259
LM End	3.80	Issue Type +	Ma	Location *	WS
Category	Earthen Levee			GPS Latitude/Longitude	
				Start	End
Item	Encroachments			37.255067 °	37.255067 °
				-120.719910 °	-120.719910 °
DWR ID	DWR_NA0010_22A_s_2015_259				
Action/Comments					
Tree or limb					
Inspector Comments: Dead tree stump on waterward slope.					

Photo 1 of 1 : SP\_2015\_NA0010\_138\_259\_20150528\_00050.jpg



Looking northeast at dead stump on waterward slope.

LM Start	4.79	Rating **	A/W	Issue No.	5
LM End	4.86	Issue Type +	Ma	Location *	WS
Category	Earthen Levee			GPS Latitude/Longitude	
				Start	End
Item	Animal Control			37.265180 °	37.265743 °
				-120.732745 °	-120.733602 °
DWR ID	DWR_NA0010_22A_s_2012_5				
Action/Comments					
Repair the levee slope damaged by livestock and prevent large animal access.					
Inspector Comments: Erosion sites repaired by LMA on waterward toe.					

Photo 1 of 2 : SP\_2015\_NA0010\_138\_5\_20150528\_00052.jpg



Looking at erosion sites repaired with rip-rap on waterward slope and toe. (Spring 2015)

<b>* Location</b> LS : Land Side    N/A : Not Applicable WS : Water Side CR : Crown		<b>** Rating</b> A : Acceptable                      N : Not Inspected/Rated M : Minimally Acceptable        C : Corrected U : Unacceptable                  A/W : Acceptable but Monitor & Maintain		<b>+ Issue Type</b> Ma : Maintenance Deficiency Ob : Design & System Obsolescence En : Enforcement	
--	--	---	--	---	--

**Flood Control Project Maintenance  
Levee Inspections**

## Maintenance Issue Types Only, Levee Inspection Report By Mile - Spring 2015

### Lower San Joaquin Levee District

Waterway	Bank	Unit Miles	Inspection Start/End	Inspector
Unit No. 22A East Side Canal	Left	5.51	05/19/2015 05/19/2015	Richard Willoughby

LM Start	4.79	Rating **	A/W	Issue No.	5 (cont)	
LM End	4.86	Issue Type +	Ma	Location *	WS	
Category	Earthen Levee			GPS Latitude/Longitude		
				Start		End
Item	Animal Control			37.265180 °		37.265743 °
				-120.732745 °		-120.733602 °
DWR ID	DWR_NA0010_22A_s_2012_5					
Action/Comments						
Repair the levee slope damaged by livestock and prevent large animal access.						
Inspector Comments: Erosion sites repaired by LMA on waterward toe.						

Photo 2 of 2 : SP\_2015\_NA0010\_138\_5\_20150309\_00007.jpg



Looking north at waterside erosion from livestock. (Fall 2014)

LM Start	4.81	Rating **	A/W	Issue No.	10
LM End	4.85	Issue Type +	Ma	Location *	CR
Category	Earthen Levee			GPS Latitude/Longitude	
				Start	End
Item	Crown Surface / Depressions / Rutting			37.265330 °	37.265705 °
				-120.732960 °	-120.733553 °
DWR ID	DWR_NA0010_22A_s_2012_10				
Action/Comments					
Add appropriate gravel or road base. Grade and compact.					

No Photos

LM Start	5.03	Rating **	M	Issue No.	12
LM End	5.03	Issue Type +	Ma	Location *	WS
Category	Earthen Levee			GPS Latitude/Longitude	
				Start	End
Item	Slope Stability			37.267271 °	37.267271 °
				-120.736067 °	-120.736067 °
DWR ID	DWR_NA0010_22A_s_2014_12				
Action/Comments					
Repair the levee slope damaged by foot traffic and prevent access where possible.					
Inspector Comments: Slope damage caused by animal traffic.					

Photo 1 of 1 : SP\_2015\_NA0010\_138\_12\_20150309\_00010.jpg



Looking south at slope damage cause by animal traffic on waterside slope.

<b>* Location</b> LS : Land Side    N/A : Not Applicable WS : Water Side CR : Crown		<b>** Rating</b> A : Acceptable M : Minimally Acceptable U : Unacceptable N : Not Inspected/Rated C : Corrected A/W : Acceptable but Monitor & Maintain		<b>+ Issue Type</b> Ma : Maintenance Deficiency Ob : Design & System Obsolescence En : Enforcement	
--	--	---	--	---	--

**Flood Control Project Maintenance  
Levee Inspections**

## Maintenance Issue Types Only, Levee Inspection Report By Mile - Spring 2015

### Lower San Joaquin Levee District

Waterway	Bank	Unit Miles	Inspection Start/End	Inspector
Unit No. 22A East Side Canal	Left	5.51	05/19/2015 05/19/2015	Richard Willoughby

LM Start	5.05	Rating **	M	Issue No.	4
LM End	5.05	Issue Type +	Ma	Location *	WS
Category	Earthen Levee			GPS Latitude/Longitude	
				Start	End
Item	Erosion / Bank Caving			37.267516 °	37.267516 °
				-120.736401 °	-120.736401 °
DWR ID	DWR_NA0010_22A_f_2013_4				
Action/Comments					
Schedule repair of erosion site prior to the next inspection. Inspector Comments: Erosion caused by animal traffic.					

Photo 1 of 2 : SP\_2015\_NA0010\_138\_4\_20150309\_00005.jpg



Looking southeast at livestock erosion on waterward toe.

LM Start	<b>5.05</b>	Rating **	M	Issue No.	<b>4 (cont)</b>
LM End	<b>5.05</b>	Issue Type +	Ma	Location *	WS

Photo 2 of 2 : SP\_2015\_NA0010\_138\_4\_20150309\_00006.jpg



Looking south livestock erosion on waterward toe.

LM Start	5.14	Rating **	M	Issue No.	6
LM End	5.20	Issue Type +	Ma	Location *	WS
Category	Earthen Levee			GPS Latitude/Longitude	
				Start	End
Item	Animal Control			37.268492 °	37.269133 °
				-120.737493 °	-120.738208 °
DWR ID	DWR_NA0010_22A_s_2012_6				
Action/Comments					
Repair the levee slope damaged by livestock and prevent large animal access.					
Inspector Comments: Erosion caused by livestock on waterside toe.					

Photo 1 of 2 : SP\_2015\_NA0010\_138\_6\_20150309\_00008.jpg



Looking south at livestock erosion on waterward toe.

* Location		** Rating		+ Issue Type	
LS : Land Side	N/A : Not Applicable	A : Acceptable	N : Not Inspected/Rated	Ma : Maintenance Deficiency	
WS : Water Side		M : Minimally Acceptable	C : Corrected	Ob : Design & System Obsolescence	
CR : Crown		U : Unacceptable	A/W : Acceptable but Monitor & Maintain	En : Enforcement	

**Flood Control Project Maintenance  
Levee Inspections**

## Maintenance Issue Types Only, Levee Inspection Report By Mile - Spring 2015

### Lower San Joaquin Levee District

Waterway	Bank	Unit Miles	Inspection Start/End	Inspector
Unit No. 22A East Side Canal	Left	5.51	05/19/2015 05/19/2015	Richard Willoughby

LM Start	5.14	Rating **	M	Issue No.	6 (cont)	
LM End	5.20	Issue Type +	Ma	Location *	WS	
Category	Earthen Levee			GPS Latitude/Longitude		
				Start		End
Item	Animal Control			37.268492 °		37.269133 °
				-120.737493 °		-120.738208 °
DWR ID	DWR_NA0010_22A_s_2012_6					
Action/Comments						
Repair the levee slope damaged by livestock and prevent large animal access.						
Inspector Comments: Erosion caused by livestock on waterside toe.						

Photo 2 of 2 : SP\_2015\_NA0010\_138\_6\_20150309\_00009.jpg



Looking north at livestock erosion along waterside slope and toe.

<b>* Location</b> LS : Land Side    N/A : Not Applicable WS : Water Side CR : Crown		<b>** Rating</b> A : Acceptable                      N : Not Inspected/Rated M : Minimally Acceptable        C : Corrected U : Unacceptable                  A/W : Acceptable but Monitor & Maintain		<b>+ Issue Type</b> Ma : Maintenance Deficiency Ob : Design & System Obsolescence En : Enforcement
--	--	---	--	---

**Flood Control Project Maintenance  
Levee Inspections**

## Maintenance Issue Types Only, Levee Inspection Report By Mile - Spring 2015

### Lower San Joaquin Levee District

Waterway	Bank	Unit Miles	Inspection Start/End	Inspector
Unit No. 23 San Joaquin River	Right	10.24	05/20/2015 05/20/2015	Richard Willoughby

LM Start	0.00	Rating **	M	Issue No.	440
LM End	10.23	Issue Type +	Ma	Location *	WS
Category	Earthen Levee			GPS Latitude/Longitude	
				Start	End
Item	Vegetation			36.774356 °	36.814748 °
				-120.283656 °	-120.168878 °
DWR ID	DWR_NA0010_23_s _ 2015_440				
Action/Comments					
Control annual grass and weeds on the levee slopes and easements.					

No Photos

LM Start	0.00	Rating **	M	Issue No.	439
LM End	10.23	Issue Type +	Ma	Location *	LS
Category	Earthen Levee			GPS Latitude/Longitude	
				Start	End
Item	Vegetation			36.774356 °	36.814749 °
				-120.283656 °	-120.168878 °
DWR ID	DWR_NA0010_23_s _ 2015_439				
Action/Comments					
Control annual grass and weeds on the levee slopes and easements.					

No Photos

LM Start	1.21	Rating **	M	Issue No.	6
LM End	1.21	Issue Type +	Ma	Location *	LS
Category	Earthen Levee			GPS Latitude/Longitude	
				Start	End
Item	Vegetation			36.772973 °	36.772973 °
				-120.264768 °	-120.264768 °
DWR ID	DWR_NA0010_23_s _ 2013_6				
Action/Comments					
Elderberries are blocking visibility and flood fight capability. Inspector Comments: Control growth of elderberry on landward toe.					

Photo 1 of 1 : SP\_2015\_NA0010\_139\_6\_20150528\_00114.jpg



Looking at elderberry on landward toe.

<b>* Location</b> LS : Land Side    N/A : Not Applicable WS : Water Side CR : Crown		<b>** Rating</b> A : Acceptable                      N : Not Inspected/Rated M : Minimally Acceptable        C : Corrected U : Unacceptable                  A/W : Acceptable but Monitor & Maintain		<b>+ Issue Type</b> Ma : Maintenance Deficiency Ob : Design & System Obsolescence En : Enforcement
--	--	---	--	---

**Flood Control Project Maintenance  
Levee Inspections**

## Maintenance Issue Types Only, Levee Inspection Report By Mile - Spring 2015

### Lower San Joaquin Levee District

Waterway	Bank	Unit Miles	Inspection Start/End	Inspector
Unit No. 23 San Joaquin River	Right	10.24	05/20/2015 05/20/2015	Richard Willoughby

LM Start	1.53	Rating **	M	Issue No.	29
LM End	1.53	Issue Type +	Ma	Location *	LS
Category	Earthen Levee			GPS Latitude/Longitude	
				Start	End
Item	Slope Stability			36.772041 °	36.772041 °
				-120.259549 °	-120.259549 °
DWR ID	DWR_NA0010_23_f_2014_29				
Action/Comments					
Repair slope instability. Inspector Comments: Trench at landward toe. Trench is ten to twelve inches wide and twenty feet long.					

Photo 1 of 3 : SP\_2015\_NA0010\_139\_29\_20150528\_00115.jpg



Looking south at trench at landward toe. (Spring 2015)

LM Start	<b>1.53</b>	Rating **	M	Issue No.	<b>29 (cont)</b>
LM End	<b>1.53</b>	Issue Type +	Ma	Location *	LS

Photo 2 of 3 : SP\_2015\_NA0010\_139\_29\_20150309\_00015.jpg



Looking south at trench at landward toe.

LM Start	<b>1.53</b>	Rating **	M	Issue No.	<b>29 (cont)</b>
LM End	<b>1.53</b>	Issue Type +	Ma	Location *	LS

Photo 3 of 3 : SP\_2015\_NA0010\_139\_29\_20150309\_00014.jpg



Looking north at trench at landward toe.

**\* Location**  
LS : Land Side    N/A : Not Applicable  
WS : Water Side  
CR : Crown

**\*\* Rating**  
A : Acceptable                      N : Not Inspected/Rated  
M : Minimally Acceptable        C : Corrected  
U : Unacceptable                  A/W : Acceptable but Monitor & Maintain

**+ Issue Type**  
Ma : Maintenance Deficiency  
Ob : Design & System Obsolescence  
En : Enforcement

**Flood Control Project Maintenance  
Levee Inspections**

## Maintenance Issue Types Only, Levee Inspection Report By Mile - Spring 2015

### Lower San Joaquin Levee District

Waterway	Bank	Unit Miles	Inspection Start/End	Inspector
Unit No. 23 San Joaquin River	Right	10.24	05/20/2015 05/20/2015	Richard Willoughby

LM Start	1.91	Rating **	M	Issue No.	1
LM End	1.91	Issue Type +	Ma	Location *	WS
Category	Earthen Levee			GPS Latitude/Longitude	
				Start	End
Item	Trim / Thin Trees			36.772943 °	36.772943 °
				-120.253511 °	-120.253511 °
DWR ID	DWR_NA0010_23_s_2015_1				
Action/Comments					
Trim trees to at least five feet above ground level.					

No Photos

LM Start	2.12	Rating **	M	Issue No.	16
LM End	2.42	Issue Type +	Ma	Location *	WS
Category	Earthen Levee			GPS Latitude/Longitude	
				Start	End
Item	Slope Stability			36.775507 °	36.774423 °
				-120.251672 °	-120.246993 °
DWR ID	DWR_NA0010_23_s_2013_16				
Action/Comments					
Repair the levee slope damaged by vehicle traffic and prevent access where possible.					
Inspector Comments: Several damaged sites within this reach. Damage caused by vehicle traffic.					

Photo 1 of 1 : SP\_2015\_NA0010\_139\_16\_20150309\_00012.jpg



Looking south at waterward slope damaged by vehicle traffic

LM Start	2.85	Rating **	M	Issue No.	15
LM End	2.85	Issue Type +	Ma	Location *	LS
Category	Earthen Levee			GPS Latitude/Longitude	
				Start	End
Item	Vegetation			36.771537 °	36.771537 °
				-120.240917 °	-120.240917 °
DWR ID	DWR_NA0010_23_s_2012_15				
Action/Comments					
Elderberries are blocking visibility and flood fight capability. Inspector Comments: Control growth of elderberry bush on landward toe.					

Photo 1 of 2 : SP\_2015\_NA0010\_139\_15\_20150528\_00116.jpg



Looking south at elderberry at landward toe. (Spring 2015)

<b>* Location</b> LS : Land Side    N/A : Not Applicable WS : Water Side CR : Crown		<b>** Rating</b> A : Acceptable                      N : Not Inspected/Rated M : Minimally Acceptable        C : Corrected U : Unacceptable                  A/W : Acceptable but Monitor & Maintain		<b>+ Issue Type</b> Ma : Maintenance Deficiency Ob : Design & System Obsolescence En : Enforcement	
--	--	---	--	---	--

**Flood Control Project Maintenance  
Levee Inspections**

## Maintenance Issue Types Only, Levee Inspection Report By Mile - Spring 2015

### Lower San Joaquin Levee District

Waterway	Bank	Unit Miles	Inspection Start/End	Inspector
Unit No. 23 San Joaquin River	Right	10.24	05/20/2015 05/20/2015	Richard Willoughby

LM Start	2.85	Rating **	M	Issue No.	15 (cont)
LM End	2.85	Issue Type +	Ma	Location *	LS
Category	Earthen Levee			GPS Latitude/Longitude	
				Start	End
Item	Vegetation			36.771537 °	36.771537 °
				-120.240917 °	-120.240917 °
DWR ID	DWR_NA0010_23_s_2012_15				
Action/Comments					
Elderberries are blocking visibility and flood fight capability. Inspector Comments: Control growth of elderberry bush on landward toe.					

Photo 2 of 2 : SP\_2015\_NA0010\_139\_15\_20150309\_00011.jpg



Looking south at elderberry on landside toe and berm. (Fall 2014)

LM Start	3.30	Rating **	M	Issue No.	3
LM End	3.30	Issue Type +	Ma	Location *	LS
Category	Earthen Levee			GPS Latitude/Longitude	
				Start	End
Item	Vegetation			36.774403 °	36.774403 °
				-120.234705 °	-120.234705 °
DWR ID	DWR_NA0010_23_s_2012_3				
Action/Comments					
Elderberries are blocking visibility and flood fight capability. Inspector Comments: Control growth of elderberry on landward toe.					

Photo 1 of 3 : SP\_2015\_NA0010\_139\_3\_20150528\_00117.jpg



Looking south at elderberry on landward toe and berm. (Spring 2015)

LM Start	<b>3.30</b>	Rating **	M	Issue No.	<b>3 (cont)</b>
LM End	<b>3.30</b>	Issue Type +	Ma	Location *	LS

Photo 2 of 3 : SP\_2015\_NA0010\_139\_3\_20150309\_00002.jpg



Looking south at elderberry on landside toe and berm. (Fall 2014)

<b>* Location</b> LS : Land Side    N/A : Not Applicable WS : Water Side CR : Crown		<b>** Rating</b> A : Acceptable M : Minimally Acceptable U : Unacceptable		N : Not Inspected/Rated C : Corrected A/W : Acceptable but Monitor & Maintain		<b>+ Issue Type</b> Ma : Maintenance Deficiency Ob : Design & System Obsolescence En : Enforcement	
--	--	--	--	---	--	---	--

**Flood Control Project Maintenance  
Levee Inspections**

## Maintenance Issue Types Only, Levee Inspection Report By Mile - Spring 2015

### Lower San Joaquin Levee District

Waterway	Bank	Unit Miles	Inspection Start/End	Inspector
Unit No. 23 San Joaquin River	Right	10.24	05/20/2015 05/20/2015	Richard Willoughby

LM Start	3.30	Rating **	M	Issue No.	3 (cont)	
LM End	3.30	Issue Type +	Ma	Location *	LS	
Category	Earthen Levee			GPS Latitude/Longitude		
				Start		End
Item	Vegetation			36.774403 °		36.774403 °
				-120.234705 °		-120.234705 °
DWR ID	DWR_NA0010_23_s _ 2012_3					
Action/Comments						
Elderberries are blocking visibility and flood fight capability. Inspector Comments: Control growth of elderberry on landward toe.						

Photo 3 of 3 : SP\_2015\_NA0010\_139\_3\_20150309\_00001.jpg



Looking south at elderberry bush on landward toe. (Spring 2013)

LM Start	3.45	Rating **	M	Issue No.	9
LM End	3.45	Issue Type +	Ma	Location *	LS
Category	Earthen Levee			GPS Latitude/Longitude	
				Start	End
Item	Vegetation			36.776537 °	36.776537 °
				-120.234573 °	-120.234573 °
DWR ID	DWR_NA0010_23_s _ 2012_9				
Action/Comments					
Elderberries are blocking visibility and flood fight capability. Inspector Comments: Control growth of elderberry on landward toe and berm.					

Photo 1 of 1 : SP\_2015\_NA0010\_139\_9\_20150309\_00004.jpg



Looking south at elderberry on landside toe and berm.

LM Start	4.13	Rating **	M	Issue No.	10
LM End	4.13	Issue Type +	Ma	Location *	LS
Category	Earthen Levee			GPS Latitude/Longitude	
				Start	End
Item	Vegetation			36.784212 °	36.784212 °
				-120.228815 °	-120.228815 °
DWR ID	DWR_NA0010_23_s _ 2012_10				
Action/Comments					
Elderberries are blocking visibility and flood fight capability. Inspector Comments: Control growth of elderberry on landward toe.					

Photo 1 of 2 : SP\_2015\_NA0010\_139\_10\_20150309\_00005.jpg



Looking south at elderberry bush on landward toe. (Fall 2013)

<b>* Location</b>		<b>** Rating</b>		<b>+ Issue Type</b>	
LS : Land Side	N/A : Not Applicable	A : Acceptable	N : Not Inspected/Rated	Ma : Maintenance Deficiency	
WS : Water Side		M : Minimally Acceptable	C : Corrected	Ob : Design & System Obsolescence	
CR : Crown		U : Unacceptable	A/W : Acceptable but Monitor & Maintain	En : Enforcement	

**Flood Control Project Maintenance  
Levee Inspections**

## Maintenance Issue Types Only, Levee Inspection Report By Mile - Spring 2015

### Lower San Joaquin Levee District

Waterway	Bank	Unit Miles	Inspection Start/End	Inspector
Unit No. 23 San Joaquin River	Right	10.24	05/20/2015 05/20/2015	Richard Willoughby

LM Start	4.13	Rating **	M	Issue No.	10 (cont)
LM End	4.13	Issue Type +	Ma	Location *	LS
Category	Earthen Levee			GPS Latitude/Longitude	
				Start	End
Item	Vegetation			36.784212 °	36.784212 °
				-120.228815 °	-120.228815 °
DWR ID	DWR_NA0010_23_s_2012_10				
Action/Comments					
Elderberries are blocking visibility and flood fight capability. Inspector Comments: Control growth of elderberry on landward toe.					

Photo 2 of 2 : SP\_2015\_NA0010\_139\_10\_20150309\_00006.jpg



Looking south at elderberry on landside toe and berm.

LM Start	4.45	Rating **	M	Issue No.	11
LM End	4.45	Issue Type +	Ma	Location *	LS
Category	Earthen Levee			GPS Latitude/Longitude	
				Start	End
Item	Vegetation			36.784523 °	36.784523 °
				-120.223292 °	-120.223292 °
DWR ID	DWR_NA0010_23_s_2012_11				
Action/Comments					
Elderberries are blocking visibility and flood fight capability. Inspector Comments: Control growth of elderberry on landward toe and berm.					

Photo 1 of 2 : SP\_2015\_NA0010\_139\_11\_20150528\_00118.jpg



Looking south at elderberry on landward toe and berm. (Spring 2015)

LM Start	<b>4.45</b>	Rating **	M	Issue No.	<b>11 (cont)</b>
LM End	<b>4.45</b>	Issue Type +	Ma	Location *	LS

Photo 2 of 2 : SP\_2015\_NA0010\_139\_11\_20150309\_00007.jpg



Looking south at elderberry on landside toe and berm.

* Location		** Rating		+ Issue Type	
LS : Land Side	N/A : Not Applicable	A : Acceptable	N : Not Inspected/Rated	Ma : Maintenance Deficiency	
WS : Water Side		M : Minimally Acceptable	C : Corrected	Ob : Design & System Obsolescence	
CR : Crown		U : Unacceptable	A/W : Acceptable but Monitor & Maintain	En : Enforcement	

**Flood Control Project Maintenance  
Levee Inspections**

## Maintenance Issue Types Only, Levee Inspection Report By Mile - Spring 2015

### Lower San Joaquin Levee District

Waterway	Bank	Unit Miles	Inspection Start/End	Inspector
Unit No. 23 San Joaquin River	Right	10.24	05/20/2015 05/20/2015	Richard Willoughby

LM Start	5.68	Rating **	M	Issue No.	5
LM End	5.68	Issue Type +	Ma	Location *	WS
Category	Earthen Levee			GPS Latitude/Longitude	
				Start	End
Item	Animal Control			36.791981 °	36.791981 °
				-120.206274 °	-120.206274 °
DWR ID	DWR_NA0010_23_s_2012_5				
Action/Comments					
Exterminate rodents and backfill and compact or grout burrows. Inspector Comments: Several large rodent holes in this area.					

Photo 1 of 1 : SP\_2015\_NA0010\_139\_5\_20150309\_00003.jpg



Looking at several rodent holes on landside slope.

LM Start	6.58	Rating **	M	Issue No.	14
LM End	6.58	Issue Type +	Ma	Location *	CR
Category	Earthen Levee			GPS Latitude/Longitude	
				Start	End
Item	Crown Surface / Depressions / Rutting			36.782020 °	36.782020 °
				-120.199789 °	-120.199789 °
DWR ID	DWR_NA0010_23_s_2015_14				
Action/Comments					
Repair depressions or ruts in the crown or slope. Inspector Comments: Two depressions greater than 3' on levee crown.					

Photo 1 of 2 : SP\_2015\_NA0010\_139\_14\_20150528\_00119.jpg



Looking at two depression on levee crown.

LM Start	<b>6.58</b>	Rating **	M	Issue No.	<b>14 (cont)</b>
LM End	<b>6.58</b>	Issue Type +	Ma	Location *	CR

Photo 2 of 2 : SP\_2015\_NA0010\_139\_14\_20150528\_00120.jpg



Looking at one of two depression on levee crown.

<b>* Location</b> LS : Land Side    N/A : Not Applicable WS : Water Side CR : Crown		<b>** Rating</b> A : Acceptable M : Minimally Acceptable U : Unacceptable N : Not Inspected/Rated C : Corrected A/W : Acceptable but Monitor & Maintain		<b>+ Issue Type</b> Ma : Maintenance Deficiency Ob : Design & System Obsolescence En : Enforcement	
--	--	---	--	---	--

**Flood Control Project Maintenance  
Levee Inspections**

## Maintenance Issue Types Only, Levee Inspection Report By Mile - Spring 2015

### Lower San Joaquin Levee District

Waterway	Bank	Unit Miles	Inspection Start/End	Inspector
Unit No. 23 San Joaquin River	Right	10.24	05/20/2015 05/20/2015	Richard Willoughby

LM Start	8.47	Rating **	A/W	Issue No.	17
LM End	8.47	Issue Type +	Ma	Location *	WS
Category	Earthen Levee			GPS Latitude/Longitude	
				Start	End
Item	Slope Stability			36.793717 °	36.793717 °
				-120.178997 °	-120.178997 °
DWR ID	DWR_NA0010_23_s_2015_17				
Action/Comments					
Repair the levee slope damaged by vehicle traffic and prevent access where possible.					
Inspector Comments: Waterward slope.					

Photo 1 of 1 : SP\_2015\_NA0010\_139\_17\_20150309\_00013.jpg



Looking southwest at waterward slope damaged due to vehicle traffic.

LM Start	9.10	Rating **	A/W	Issue No.	18
LM End	9.50	Issue Type +	Ma	Location *	CR
Category	Earthen Levee			GPS Latitude/Longitude	
				Start	End
Item	Crown Surface / Depressions / Rutting			36.801334 °	36.804311 °
				-120.174397 °	-120.169135 °
DWR ID	DWR_NA0010_23_s_2014_18				
Action/Comments					
Add appropriate material and re-grade the levee to bring the crown above the design elevation. Inspector Comments: Control vegetation on crown.					

No Photos

<b>* Location</b> LS : Land Side    N/A : Not Applicable WS : Water Side CR : Crown		<b>** Rating</b> A : Acceptable                      N : Not Inspected/Rated M : Minimally Acceptable        C : Corrected U : Unacceptable                  A/W : Acceptable but Monitor & Maintain		<b>+ Issue Type</b> Ma : Maintenance Deficiency Ob : Design & System Obsolescence En : Enforcement
--	--	---	--	---

**Flood Control Project Maintenance  
Levee Inspections**

## Maintenance Issue Types Only, Levee Inspection Report By Mile - Spring 2015

### Lower San Joaquin Levee District

Waterway	Bank	Unit Miles	Inspection Start/End	Inspector
Unit No. 24 San Joaquin River	Left	8.36	05/20/2015 05/20/2015	Richard Willoughby

LM Start	0.00	Rating **	A/W	Issue No.	12
LM End	6.72	Issue Type +	Ma	Location *	CR
Category	Earthen Levee			GPS Latitude/Longitude	
				Start	End
Item	Crown Surface / Depressions / Rutting				°
					°
DWR ID	DWR_NA0010_24_f_2014_12				
Action/Comments					
Repair depressions or ruts in the crown or slope.					

No Photos

LM Start	0.82	Rating **	M	Issue No.	6
LM End	0.82	Issue Type +	Ma	Location *	LS
Category	Earthen Levee			GPS Latitude/Longitude	
				Start	End
Item	Animal Control			36.766775 °	36.766775 °
				-120.278757 °	-120.278757 °
DWR ID	DWR_NA0010_24_s_2013_6				
Action/Comments					
Exterminate rodents and backfill and compact or grout burrows. Inspector Comments: Noted several rodent holes within this section.					

Photo 1 of 1 : SP\_2015\_NA0010\_140\_6\_20150528\_00070.jpg



Looking at several rodent holes on landward slope.

LM Start	1.25	Rating **	A/W	Issue No.	13
LM End	1.25	Issue Type +	Ma	Location *	LS
Category	Earthen Levee			GPS Latitude/Longitude	
				Start	End
Item	Slope Stability			36.771834 °	36.771834 °
				-120.274224 °	-120.274224 °
DWR ID	DWR_NA0010_24_f_2014_13				
Action/Comments					
Repair the levee slope damaged by vehicle traffic and prevent access where possible.					
Inspector Comments: Slope damage due to vehicle traffic.					

Photo 1 of 1 : SP\_2015\_NA0010\_140\_13\_20150309\_00004.jpg



Looking north at slope damage by vehicle traffic on landward slope.

<b>* Location</b> LS : Land Side    N/A : Not Applicable WS : Water Side CR : Crown		<b>** Rating</b> A : Acceptable M : Minimally Acceptable U : Unacceptable N : Not Inspected/Rated C : Corrected A/W : Acceptable but Monitor & Maintain		<b>+ Issue Type</b> Ma : Maintenance Deficiency Ob : Design & System Obsolescence En : Enforcement	
--	--	---	--	---	--

**Flood Control Project Maintenance  
Levee Inspections**

## Maintenance Issue Types Only, Levee Inspection Report By Mile - Spring 2015

### Lower San Joaquin Levee District

Waterway	Bank	Unit Miles	Inspection Start/End	Inspector
Unit No. 24 San Joaquin River	Left	8.36	05/20/2015 05/20/2015	Richard Willoughby

LM Start	3.46	Rating **	M	Issue No.	7
LM End	3.46	Issue Type +	Ma	Location *	LS
Category	Earthen Levee			GPS Latitude/Longitude	
				Start	End
Item	Animal Control			36.769345 °	36.769345 °
				-120.238370 °	-120.238370 °
DWR ID	DWR_NA0010_24_s_2012_7				
Action/Comments					
No rodents visible, but rodent burrows visible; need to backfill and compact or grout burrows.					
Inspector Comments: One of several rodent holes on landward slope.					

Photo 1 of 1 : SP\_2015\_NA0010\_140\_7\_20150309\_00003.jpg



Looking east at one of several rodent holes on landward slope.

LM Start	4.50	Rating **	M	Issue No.	268
LM End	4.50	Issue Type +	Ma	Location *	LS
Category	Earthen Levee			GPS Latitude/Longitude	
				Start	End
Item	Vegetation			36.775118 °	36.775118 °
				-120.231114 °	-120.231114 °
DWR ID	DWR_NA0010_24_s_2015_268				
Action/Comments					
Remove the wild growth other than native grasses from the levee slopes.					
Inspector Comments: Control Johnson Grass on landward toe and berm.					

Photo 1 of 1 : SP\_2015\_NA0010\_140\_268\_20150528\_00071.jpg



Looking south at Johnson Grass at landward toe and berm.

LM Start	5.39	Rating **	A/W	Issue No.	2
LM End	6.47	Issue Type +	Ma	Location *	WS
Category	Earthen Levee			GPS Latitude/Longitude	
				Start	End
Item	Vegetation			36.782337 °	36.789063 °
				-120.222930 °	-120.207438 °
DWR ID	DWR_NA0010_24_s_2012_2				
Action/Comments					
Remove the wild growth other than native grasses from the levee slopes.					

No Photos

* Location		** Rating		+ Issue Type	
LS : Land Side	N/A : Not Applicable	A : Acceptable	N : Not Inspected/Rated	Ma : Maintenance Deficiency	
WS : Water Side		M : Minimally Acceptable	C : Corrected	Ob : Design & System Obsolescence	
CR : Crown		U : Unacceptable	A/W : Acceptable but Monitor & Maintain	En : Enforcement	

**Flood Control Project Maintenance  
Levee Inspections**

## Maintenance Issue Types Only, Levee Inspection Report By Mile - Spring 2015

### Lower San Joaquin Levee District

Waterway	Bank	Unit Miles	Inspection Start/End	Inspector
Unit No. 24 San Joaquin River	Left	8.36	05/20/2015 05/20/2015	Richard Willoughby

LM Start	6.33	Rating **	M	Issue No.	3
LM End	6.33	Issue Type +	Ma	Location *	WS
Category	Earthen Levee			GPS Latitude/Longitude	
				Start	End
Item	Encroachments			36.788155 °	36.788155 °
				-120.209655 °	-120.209655 °
DWR ID	DWR_NA0010_24_s _ 2012_3				
Action/Comments					
Prunings					
Inspector Comments: Large pruning pile in channel.					

LM Start	<b>6.33</b>	Rating **	M	Issue No.	<b>3 (cont)</b>
LM End	<b>6.33</b>	Issue Type +	Ma	Location *	WS

LM Start	<b>6.33</b>	Rating **	M	Issue No.	<b>3 (cont)</b>
LM End	<b>6.33</b>	Issue Type +	Ma	Location *	WS

Photo 1 of 3 : SP\_2015\_NA0010\_140\_3\_20150528\_00073.jpg



Looking northeast at pruning pile on waterward berm. (Spring 2015)

Photo 2 of 3 : SP\_2015\_NA0010\_140\_3\_20150309\_00001.jpg



Looking north at large pruning pile in channel. (Spring 2014)

Photo 3 of 3 : SP\_2015\_NA0010\_140\_3\_20150309\_00002.jpg



Looking south at large pruning pile in channel. (Spring 2013)

<b>* Location</b> LS : Land Side    N/A : Not Applicable WS : Water Side CR : Crown		<b>** Rating</b> A : Acceptable M : Minimally Acceptable U : Unacceptable N : Not Inspected/Rated C : Corrected A/W : Acceptable but Monitor & Maintain		<b>+ Issue Type</b> Ma : Maintenance Deficiency Ob : Design & System Obsolescence En : Enforcement	
--	--	---	--	---	--

**Flood Control Project Maintenance  
Levee Inspections**

## Maintenance Issue Types Only, Levee Inspection Report By Mile - Spring 2015

### Lower San Joaquin Levee District

Waterway	Bank	Unit Miles	Inspection Start/End	Inspector
Unit No. 25 Salt Slough	Right	2.49	05/22/2015 05/22/2015	Richard Willoughby

LM Start	0.00	Rating **	U	Issue No.	48
LM End	2.49	Issue Type +	Ma	Location *	LS
Category	Earthen Levee			GPS Latitude/Longitude	
				Start	End
Item	Vegetation			37.296314 °	37.271098 °
				-120.880559 °	-120.866570 °
DWR ID	DWR_NA0010_25_s_2015_48				
Action/Comments					
Control annual grass and weeds on the levee slopes and easements. Inspector Comments: Control dense growth on waterward slope. Vegetation blocking view of slope.					

Photo 1 of 1 : SP\_2015\_NA0010\_141\_48\_20150528\_00003.jpg



Looking north at dense growth on landward slope.

LM Start	0.00	Rating **	U	Issue No.	49
LM End	2.49	Issue Type +	Ma	Location *	WS
Category	Earthen Levee			GPS Latitude/Longitude	
				Start	End
Item	Vegetation			37.296314 °	37.271097 °
				-120.880559 °	-120.866570 °
DWR ID	DWR_NA0010_25_s_2015_49				
Action/Comments					
Control annual grass and weeds on the levee slopes and easements. Inspector Comments: Control dense growth on landward slope. Vegetation blocking view of slope.					

Photo 1 of 1 : SP\_2015\_NA0010\_141\_49\_20150528\_00004.jpg



Looking north at dense growth on waterward slope.

LM Start	0.01	Rating **	M	Issue No.	8
LM End	2.48	Issue Type +	Ma	Location *	CR
Category	Earthen Levee			GPS Latitude/Longitude	
				Start	End
Item	Crown Surface / Depressions / Rutting			37.296117 °	37.271193 °
				-120.880724 °	-120.866633 °
DWR ID	DWR_NA0010_25_s_2012_8				
Action/Comments					
Add appropriate material and re-grade the levee to bring the crown above the design elevation.					
Inspector Comments: Control weeds on levee crown.					

Photo 1 of 1 : SP\_2015\_NA0010\_141\_8\_20150528\_00005.jpg



Looking north at growth on levee crown.

* Location		** Rating		+ Issue Type	
LS : Land Side	N/A : Not Applicable	A : Acceptable	N : Not Inspected/Rated	Ma : Maintenance Deficiency	
WS : Water Side		M : Minimally Acceptable	C : Corrected	Ob : Design & System Obsolescence	
CR : Crown		U : Unacceptable	A/W : Acceptable but Monitor & Maintain	En : Enforcement	