

**Flood Control Project Maintenance  
Levee Inspections**  
**LMA District Cover Sheet**  
**Spring 2014 Levee Inspection Results**

**Lower San Joaquin Levee District**

---

	Spring (March - May)	Summer ** (June - August)	Fall (September - November)	Winter ** (December - February)
* Overall LMA Rating (Fall Only)				

\*\* Non-receipt of Summer or Winter Inspection Reports may effect overall annual rating.

\*  
SPRING INSPECTIONS: Overall maintenance ratings are not determined for the spring inspection results. Individual maintenance deficiencies are rated using the same criteria in the spring and in the fall.

FALL INSPECTIONS: The overall maintenance rating shown above is based on operation and maintenance deficiencies identified within the attached unit inspection reports. This rating is not intended to be an indication of risk.

Comments


**Flood Control Project Maintenance  
Levee Inspections**

**Unit Cover Sheet**

**Spring 2014 Levee Inspection Results**

**Lower San Joaquin Levee District**

Waterway			Bank	Unit Miles
Unit No. 01 San Joaquin River			Right	22.56
	Spring (March - May)	Summer (June - August)	(September - November) Fall	Winter (December - February)
Unit Maintenance Rating (Fall Only)				
Date of Inspection	05/12/2014 - 05/16/2014			
DWR Inspector	Richard Willoughby			
Accompanied By				

**Summer & Winter Inspections**

The Local Maintaining Agency (LMA) is responsible for summer and winter inspections. The LMA is required to submit a report regarding summer and winter inspections to the California Department of Water Resources (DWR).

DWR must be informed on the:

- a) completion of the inspection
- b) any changes other than the results of normal maintenance
- c) corrections to deficiencies noted in this report

If additional items are noted, further documentation of those items must also be submitted.

The LMA should submit this information to DWR using the LMA web application tool available at:

<http://cdec.water.ca.gov/lma.html>

If the LMA is unable to submit information on this webpage, please contact DWR for assistance.

*The LMA should submit the information and any associated documentation by September 30 for summer inspections and March 31 for winter inspections.*

**Flood Control Project Maintenance  
Levee Inspections**

**Levee Inspection Report By Mile - Spring 2014**

**Lower San Joaquin Levee District**

Waterway	Bank	Unit Miles	Inspection Start/End	Inspector
Unit No. 01 San Joaquin River	Right	22.56	05/12/2014 05/16/2014	Richard Willoughby

LM Start	0.00	Rating **	A	Issue No.	23
LM End	0.00	Issue Type +	Ma	Location *	CR
Category	Earthen Levee			GPS Latitude/Longitude	
				Start	End
Item	Operations & Maintenance Manuals				°
					°
DWR ID	DWR_NA0010_01_s _ 2013_23				
Action/Comments					

No Photos

LM Start	0.00	Rating **	A	Issue No.	24
LM End	0.00	Issue Type +	Ma	Location *	CR
Category	Earthen Levee			GPS Latitude/Longitude	
				Start	End
Item	Emergency Supplies & Equipment				°
					°
DWR ID	DWR_NA0010_01_s _ 2013_24				
Action/Comments					

No Photos

LM Start	0.00	Rating **	A	Issue No.	25
LM End	0.00	Issue Type +	Ma	Location *	CR
Category	Earthen Levee			GPS Latitude/Longitude	
				Start	End
Item	Flood Preparedness & Training				°
					°
DWR ID	DWR_NA0010_01_s _ 2013_25				
Action/Comments					

No Photos

**\* Location**

LS : Land Side  
WS : Water Side  
CR : Crown

**\*\* Rating**

A : Acceptable  
M : Minimally Acceptable  
U : Unacceptable  
N : Not Inspected/Rated  
C : Corrected  
A/W : Acceptable but Monitor & Maintain

**+ Issue Type**

Ma : Maintenance Deficiency  
Ob : Design & System Obsolescence  
En : Enforcement

**Flood Control Project Maintenance  
Levee Inspections**

**Levee Inspection Report By Mile - Spring 2014**

**Lower San Joaquin Levee District**

Waterway	Bank	Unit Miles	Inspection Start/End	Inspector
Unit No. 01 San Joaquin River	Right	22.56	05/12/2014 05/16/2014	Richard Willoughby

LM Start	0.00	Rating **	M	Issue No.	19
LM End	22.56	Issue Type +	Ma	Location *	LS
Category	Earthen Levee			GPS Latitude/Longitude	
				Start	End
Item	Vegetation			37.348644 °	°
				-120.958878 °	°
DWR ID	DWR_NA0010_01_s _ 2014_19				
Action/Comments					
Control annual grass and weeds on the levee slopes and easements.					

No Photos

LM Start	0.00	Rating **	M	Issue No.	26
LM End	22.56	Issue Type +	Ma	Location *	WS
Category	Earthen Levee			GPS Latitude/Longitude	
				Start	End
Item	Vegetation			37.348644 °	°
				-120.958878 °	°
DWR ID	DWR_NA0010_01_s _ 2014_26				
Action/Comments					
Control annual grass and weeds on the levee slopes and easements.					

No Photos

LM Start	0.07	Rating **	A/W	Issue No.	4
LM End	0.15	Issue Type +	Ma	Location *	WS
Category	Earthen Levee			GPS Latitude/Longitude	
				Start	End
Item	Vegetation			37.348223 °	37.347282 °
				-120.959593 °	-120.960470 °
DWR ID	DWR_NA0010_01_s _ 2012_4				
Action/Comments					
Remove the wild growth other than native grasses from the levee slopes.					

No Photos

**\* Location**  
LS : Land Side  
WS : Water Side  
CR : Crown

**\*\* Rating**  
A : Acceptable  
M : Minimally Acceptable  
U : Unacceptable  
N : Not Inspected/Rated  
C : Corrected  
A/W : Acceptable but Monitor & Maintain

**+ Issue Type**  
Ma : Maintenance Deficiency  
Ob : Design & System Obsolescence  
En : Enforcement



**Flood Control Project Maintenance  
Levee Inspections**

## Levee Inspection Report By Mile - Spring 2014

### Lower San Joaquin Levee District

Waterway	Bank	Unit Miles	Inspection Start/End	Inspector
Unit No. 01 San Joaquin River	Right	22.56	05/12/2014 05/16/2014	Richard Willoughby

LM Start	0.07	Rating **	A/W	Issue No.	3
LM End	2.52	Issue Type +	Ma	Location *	LS
Category	Earthen Levee			GPS Latitude/Longitude	
				Start	End
Item	Vegetation			37.348222 °	37.328627 °
				-120.959598 °	-120.934388 °
DWR ID	DWR_NA0010_01_s _ 2012_3				
Action/Comments					
Remove the wild growth other than native grasses from the levee slopes.					

No Photos

LM Start	0.16	Rating **	M	Issue No.	7
LM End	0.16	Issue Type +	Ma	Location *	WS
Category	Earthen Levee			GPS Latitude/Longitude	
				Start	End
Item	Trim / Thin Trees			37.347152 °	37.347152 °
				-120.960560 °	-120.960560 °
DWR ID	DWR_NA0010_01_s _ 2012_7				
Action/Comments					
Trim trees over roadway to at least 12 feet above ground level.					

No Photos

LM Start	0.24	Rating **	M	Issue No.	1
LM End	0.41	Issue Type +	Ma	Location *	LS
Category	Earthen Levee			GPS Latitude/Longitude	
				Start	End
Item	Animal Control			37.346152 °	37.343935 °
				-120.961402 °	-120.962536 °
DWR ID	DWR_NA0010_01_s _ 2012_1				
Action/Comments					
Exterminate rodents and backfill and compact or grout burrows. Inspector Comments: Typical view of several rodent holes on landward slope.					

Photo 1 of 1 : richard\_s\_20140520\_846.jpg



Looking at typical rodent holes on landward slope.

**\* Location**

LS : Land Side  
WS : Water Side  
CR : Crown

**\*\* Rating**

A : Acceptable                      N : Not Inspected/Rated  
M : Minimally Acceptable        C : Corrected  
U : Unacceptable                  A/W : Acceptable but Monitor & Maintain

**+ Issue Type**

Ma : Maintenance Deficiency  
Ob : Design & System Obsolescence  
En : Enforcement

**Flood Control Project Maintenance  
Levee Inspections**

**Levee Inspection Report By Mile - Spring 2014**

**Lower San Joaquin Levee District**

Waterway	Bank	Unit Miles	Inspection Start/End	Inspector
Unit No. 01 San Joaquin River	Right	22.56	05/12/2014 05/16/2014	Richard Willoughby

LM Start	3.18	Rating **	M	Issue No.	10
LM End	3.18	Issue Type +	Ma	Location *	LS
Category	Earthen Levee			GPS Latitude/Longitude	
				Start	End
Item	Animal Control			37.321053 °	37.321053 °
				-120.928785 °	-120.928785 °
DWR ID	DWR_NA0010_01_s _ 2012_10				
Action/Comments					
No rodents visible, but rodent burrows visible; need to backfill and compact or grout burrows.					

No Photos

LM Start	3.50	Rating **	M	Issue No.	17
LM End	3.96	Issue Type +	Ma	Location *	CR
Category	Earthen Levee			GPS Latitude/Longitude	
				Start	End
Item	Crown Surface / Depressions / Rutting			°	°
				°	°
DWR ID	DWR_NA0010_01_f _ 2012_17				
Action/Comments					
Add appropriate material and re-grade the levee to bring the crown above the design elevation.					

No Photos

LM Start	3.72	Rating **	M	Issue No.	2
LM End	3.74	Issue Type +	Ma	Location *	LS
Category	Earthen Levee			GPS Latitude/Longitude	
				Start	End
Item	Animal Control			37.313892 °	37.313598 °
				-120.926507 °	-120.926607 °
DWR ID	DWR_NA0010_01_s _ 2012_2				
Action/Comments					
No rodents visible, but rodent burrows visible; need to backfill and compact or grout burrows.					

No Photos

<b>* Location</b> LS : Land Side WS : Water Side CR : Crown	<b>** Rating</b> A : Acceptable M : Minimally Acceptable U : Unacceptable N : Not Inspected/Rated C : Corrected A/W : Acceptable but Monitor & Maintain	<b>+ Issue Type</b> Ma : Maintenance Deficiency Ob : Design & System Obsolescence En : Enforcement
--	---	---

**Flood Control Project Maintenance  
Levee Inspections**

**Levee Inspection Report By Mile - Spring 2014**

**Lower San Joaquin Levee District**

Waterway	Bank	Unit Miles	Inspection Start/End	Inspector
Unit No. 01 San Joaquin River	Right	22.56	05/12/2014 05/16/2014	Richard Willoughby

LM Start	4.00	Rating **	M	Issue No.	5
LM End	4.08	Issue Type +	En	Location *	LS
Category	Earthen Levee			GPS Latitude/Longitude	
				Start	End
Item	Encroachments			37.310837 °	37.310003 °
				-120.926182 °	-120.925313 °
DWR ID	DWR_NA0010_01_s _ 2012_5				
Action/Comments					
Ditch					
Inspector Comments: Irrigation ditch at landside toe					

Photo 1 of 2 : richard\_s\_20140417\_541.jpg



Looking south at irrigation ditch at landside toe.

LM Start	<b>4.00</b>	Rating **	M	Issue No.	<b>5 (cont)</b>
LM End	<b>4.08</b>	Issue Type +	En	Location *	LS

Photo 2 of 2 : richard\_s\_20140417\_542.jpg



Looking north at irrigation ditch at landside toe.

LM Start	4.20	Rating **	M	Issue No.	6
LM End	4.20	Issue Type +	Ma	Location *	LS
Category	Earthen Levee			GPS Latitude/Longitude	
				Start	End
Item	Animal Control			37.308540 °	37.308540 °
				-120.924003 °	-120.924003 °
DWR ID	DWR_NA0010_01_s _ 2012_6				
Action/Comments					
Exterminate rodents and backfill and compact or grout burrows.					

No Photos

\* Location  
LS : Land Side  
WS : Water Side  
CR : Crown

\*\* Rating  
A : Acceptable  
M : Minimally Acceptable  
U : Unacceptable  
N : Not Inspected/Rated  
C : Corrected  
A/W : Acceptable but Monitor & Maintain

+ Issue Type  
Ma : Maintenance Deficiency  
Ob : Design & System Obsolescence  
En : Enforcement

**Flood Control Project Maintenance  
Levee Inspections**

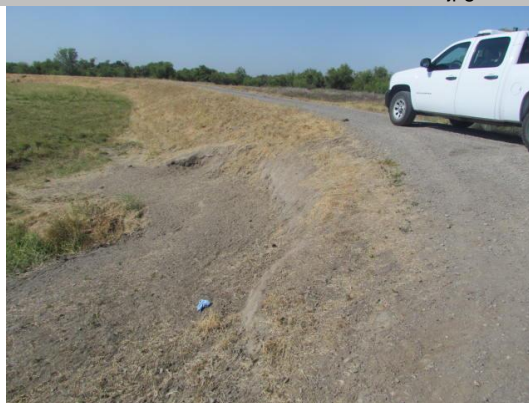
**Levee Inspection Report By Mile - Spring 2014**

**Lower San Joaquin Levee District**

Waterway	Bank	Unit Miles	Inspection Start/End	Inspector
Unit No. 01 San Joaquin River	Right	22.56	05/12/2014 05/16/2014	Richard Willoughby

LM Start	4.72	Rating **	M	Issue No.	9
LM End	4.72	Issue Type +	Ma	Location *	LS
Category	Earthen Levee			GPS Latitude/Longitude	
				Start	End
Item	Animal Control			37.302398 °	37.302398 °
				-120.920920 °	-120.920920 °
DWR ID	DWR_NA0010_01_s _ 2013_9				
Action/Comments					
Repair the levee slope damaged by livestock and prevent large animal access.					
Inspector Comments: Levee landward toe damaged by livestock.					

Photo 1 of 2 : richard\_s\_20140417\_544.jpg



Looking south at damage slope by livestock on landward slope.

LM Start	<b>4.72</b>	Rating **	M	Issue No.	<b>9 (cont)</b>
LM End	<b>4.72</b>	Issue Type +	Ma	Location *	LS

Photo 2 of 2 : richard\_s\_20140417\_545.jpg



Looking southeast at erosion on landward toe.

LM Start	5.75	Rating **	A/W	Issue No.	116
LM End	5.75	Issue Type +	Ma	Location *	LS
Category	Earthen Levee			GPS Latitude/Longitude	
				Start	End
Item	Animal Control			37.304057 °	37.304057 °
				-120.907200 °	-120.907200 °
DWR ID	DWR_NA0010_01_s _ 2012_116				
Action/Comments					
No rodents visible, but rodent burrows visible; need to backfill and					

Photo 1 of 3 : richard\_s\_20140417\_555.jpg



Looking east at one of several rodent holes on landside shoulder and slope.

\* Location  
LS : Land Side  
WS : Water Side  
CR : Crown

\*\* Rating  
A : Acceptable  
M : Minimally Acceptable  
U : Unacceptable  
N : Not Inspected/Rated  
C : Corrected  
A/W : Acceptable but Monitor & Maintain

+ Issue Type  
Ma : Maintenance Deficiency  
Ob : Design & System Obsolescence  
En : Enforcement



**Flood Control Project Maintenance  
Levee Inspections**

**Levee Inspection Report By Mile - Spring 2014**

**Lower San Joaquin Levee District**

Waterway	Bank	Unit Miles	Inspection Start/End	Inspector
Unit No. 01 San Joaquin River	Right	22.56	05/12/2014 05/16/2014	Richard Willoughby

LM Start	5.75	Rating **	A/W	Issue No.	116 (cont)
LM End	5.75	Issue Type +	Ma	Location *	LS
Category	Earthen Levee			GPS Latitude/Longitude	
				Start	End
Item	Animal Control			37.304057 °	37.304057 °
				-120.907200 °	-120.907200 °
DWR ID	DWR_NA0010_01_s _ 2012_116				
Action/Comments					
No rodents visible, but rodent burrows visible; need to backfill and compact or grout burrows. Inspector Comments: Large rodent holes on landside slope near fence pole.					

Photo 2 of 3 : richard\_s\_20140417\_556.jpg



Looking northeast at one of several holes on landside shoulder and slope.

LM Start	<b>5.75</b>	Rating **	A/W	Issue No.	<b>116 (cont)</b>
LM End	<b>5.75</b>	Issue Type +	Ma	Location *	LS

Photo 3 of 3 : richard\_s\_20140417\_557.jpg



Looking south at repaired rodent site on landside slope. (Fall 2012)

LM Start	6.04	Rating **	A/W	Issue No.	13
LM End	6.46	Issue Type +	Ma	Location *	WS
Category	Earthen Levee			GPS Latitude/Longitude	
				Start	End
Item	Vegetation			37.303715 °	37.303838 °
				-120.902115 °	-120.891912 °
DWR ID	DWR_NA0010_01_s _ 2012_13				
Action/Comments					
Keep the crown roadway free of vegetation.					

No Photos

\* Location  
LS : Land Side  
WS : Water Side  
CR : Crown

\*\* Rating  
A : Acceptable  
M : Minimally Acceptable  
U : Unacceptable  
N : Not Inspected/Rated  
C : Corrected  
A/W : Acceptable but Monitor & Maintain

+ Issue Type  
Ma : Maintenance Deficiency  
Ob : Design & System Obsolescence  
En : Enforcement

**Flood Control Project Maintenance  
Levee Inspections**

## Levee Inspection Report By Mile - Spring 2014

### Lower San Joaquin Levee District

Waterway	Bank	Unit Miles	Inspection Start/End	Inspector
Unit No. 01 San Joaquin River	Right	22.56	05/12/2014 05/16/2014	Richard Willoughby

LM Start	6.04	Rating **	M	Issue No.	12
LM End	6.46	Issue Type +	Ma	Location *	LS
Category	Earthen Levee			GPS Latitude/Longitude	
				Start	End
Item	Vegetation			37.303717 °	37.303837 °
				-120.902108 °	-120.891907 °
DWR ID	DWR_NA0010_01_s _ 2012_12				
Action/Comments					
Remove the wild growth other than native grasses from the levee slopes.					

No Photos

LM Start	6.83	Rating **	A/W	Issue No.	11
LM End	7.36	Issue Type +	Ma	Location *	CR
Category	Earthen Levee			GPS Latitude/Longitude	
				Start	End
Item	Crown Surface / Depressions / Rutting			37.302540 °	37.299882 °
				-120.889113 °	-120.880217 °
DWR ID	DWR_NA0010_01_s _ 2013_11				
Action/Comments					
Repair depressions or ruts in the crown or slope.					

No Photos

LM Start	7.41	Rating **	A/W	Issue No.	14
LM End	7.81	Issue Type +	Ma	Location *	WS
Category	Earthen Levee			GPS Latitude/Longitude	
				Start	End
Item	Vegetation			37.299855 °	37.298730 °
				-120.879455 °	-120.872387 °
DWR ID	DWR_NA0010_01_s _ 2012_14				
Action/Comments					
Remove the wild growth other than native grasses from the levee slopes.					

No Photos

<b>* Location</b> LS : Land Side WS : Water Side CR : Crown	<b>** Rating</b> A : Acceptable M : Minimally Acceptable U : Unacceptable N : Not Inspected/Rated C : Corrected A/W : Acceptable but Monitor & Maintain	<b>+ Issue Type</b> Ma : Maintenance Deficiency Ob : Design & System Obsolescence En : Enforcement
--	---	---

**Flood Control Project Maintenance  
Levee Inspections**

**Levee Inspection Report By Mile - Spring 2014**

**Lower San Joaquin Levee District**

Waterway	Bank	Unit Miles	Inspection Start/End	Inspector
Unit No. 01 San Joaquin River	Right	22.56	05/12/2014 05/16/2014	Richard Willoughby

LM Start	8.53	Rating **	A/W	Issue No.	16
LM End	9.04	Issue Type +	Ma	Location *	LS
Category	Earthen Levee			GPS Latitude/Longitude	
				Start	End
Item	Vegetation			37.296267 °	37.297492 °
				-120.860195 °	-120.851050 °
DWR ID	DWR_NA0010_01_s _ 2012_16				
Action/Comments					
Remove the wild growth other than native grasses from the levee slopes.					

No Photos

LM Start	8.53	Rating **	A/W	Issue No.	15
LM End	9.04	Issue Type +	Ma	Location *	WS
Category	Earthen Levee			GPS Latitude/Longitude	
				Start	End
Item	Vegetation			37.296262 °	37.297492 °
				-120.860183 °	-120.851052 °
DWR ID	DWR_NA0010_01_s _ 2012_15				
Action/Comments					
Remove the wild growth other than native grasses from the levee slopes.					

No Photos

LM Start	9.21	Rating **	M	Issue No.	117
LM End	10.76	Issue Type +	Ma	Location *	CR
Category	Earthen Levee			GPS Latitude/Longitude	
				Start	End
Item	Crown Surface / Depressions / Rutting			37.296145 °	37.293077 °
				-120.848588 °	-120.839170 °
DWR ID	DWR_NA0010_01_s _ 2012_117				
Action/Comments					
Add appropriate material and re-grade the levee to bring the crown above the design elevation.					
Inspector Comments: Control vegetation on levee crown.					

Photo 1 of 3 : richard\_s\_20140417\_558.jpg



Looking south at typical view of vegetation on levee crown.

**\* Location**

LS : Land Side  
WS : Water Side  
CR : Crown

**\*\* Rating**

A : Acceptable                      N : Not Inspected/Rated  
M : Minimally Acceptable        C : Corrected  
U : Unacceptable                  A/W : Acceptable but Monitor & Maintain

**+ Issue Type**

Ma : Maintenance Deficiency  
Ob : Design & System Obsolescence  
En : Enforcement

**Flood Control Project Maintenance  
Levee Inspections**

**Levee Inspection Report By Mile - Spring 2014**

**Lower San Joaquin Levee District**

Waterway	Bank	Unit Miles	Inspection Start/End	Inspector
Unit No. 01 San Joaquin River	Right	22.56	05/12/2014 05/16/2014	Richard Willoughby

LM Start	9.21	Rating **	M	Issue No.	117 (cont)
LM End	10.76	Issue Type +	Ma	Location *	CR
Category	Earthen Levee			GPS Latitude/Longitude	
				Start	End
Item	Crown Surface / Depressions / Rutting			37.296145 °	37.293077 °
				-120.848588 °	-120.839170 °
DWR ID	DWR_NA0010_01_s _ 2012_117				
Action/Comments					
Add appropriate material and re-grade the levee to bring the crown above the design elevation. Inspector Comments: Control vegetation on levee crown.					

Photo 2 of 3 : richard\_s\_20140417\_559.jpg



Looking south at vegetation on levee crown. (Spring 2013)

LM Start	<b>9.21</b>	Rating **	M	Issue No.	<b>117 (cont)</b>
LM End	<b>10.76</b>	Issue Type +	Ma	Location *	CR

Photo 3 of 3 : richard\_s\_20140417\_560.jpg



Looking south at levee crown. (Fall 2013)

LM Start	9.67	Rating **	C	Issue No.	18
LM End	9.67	Issue Type +	Ma	Location *	CR
Category	Earthen Levee			GPS Latitude/Longitude	
				Start	End
Item	Repair Gates			37.294984 °	37.294984 °
				-120.840680 °	-120.840680 °
DWR ID	DWR_NA0010_01_f _ 2013_18				
Action/Comments					
Inspector Comments: Need to replace hinges.					

No Photos

\* Location  
LS : Land Side  
WS : Water Side  
CR : Crown

\*\* Rating  
A : Acceptable  
M : Minimally Acceptable  
U : Unacceptable  
N : Not Inspected/Rated  
C : Corrected  
A/W : Acceptable but Monitor & Maintain

+ Issue Type  
Ma : Maintenance Deficiency  
Ob : Design & System Obsolescence  
En : Enforcement



**Flood Control Project Maintenance  
Levee Inspections**

**Levee Inspection Report By Mile - Spring 2014**

**Lower San Joaquin Levee District**

Waterway	Bank	Unit Miles	Inspection Start/End	Inspector
Unit No. 01 San Joaquin River	Right	22.56	05/12/2014 05/16/2014	Richard Willoughby

LM Start	10.88	Rating **	A/W	Issue No.	28
LM End	11.41	Issue Type +	Ma	Location *	CR
Category	Earthen Levee			GPS Latitude/Longitude	
				Start	End
Item	Crown Surface / Depressions / Rutting			37.283153 °	37.278878 °
				-120.830870 °	-120.824165 °
DWR ID	DWR_NA0010_01_s _ 2013_28				
Action/Comments					
Add appropriate gravel or road base. Grade and compact.					

Photo 1 of 2 : richard\_s\_20140417\_551.jpg



Looking south at vegetation on levee crown.

LM Start	<b>10.88</b>	Rating **	A/W	Issue No.	<b>28 (cont)</b>
LM End	<b>11.41</b>	Issue Type +	Ma	Location *	CR

Photo 2 of 2 : richard\_s\_20140417\_552.jpg



Looking south at re-graded levee and added road base on levee crown.

LM Start	12.62	Rating **	A/W	Issue No.	29
LM End	12.62	Issue Type +	Ma	Location *	LS
Category	Earthen Levee			GPS Latitude/Longitude	
				Start	End
Item	Animal Control			37.258970 °	37.258970 °
				-120.826388 °	-120.826388 °
DWR ID	DWR_NA0010_01_s _ 2013_29				
Action/Comments					
No rodents visible, but rodent burrows visible; need to backfill and					

No Photos

\* Location  
LS : Land Side  
WS : Water Side  
CR : Crown

\*\* Rating  
A : Acceptable  
M : Minimally Acceptable  
U : Unacceptable  
N : Not Inspected/Rated  
C : Corrected  
A/W : Acceptable but Monitor & Maintain

+ Issue Type  
Ma : Maintenance Deficiency  
Ob : Design & System Obsolescence  
En : Enforcement

**Flood Control Project Maintenance  
Levee Inspections**

**Levee Inspection Report By Mile - Spring 2014**

**Lower San Joaquin Levee District**

Waterway	Bank	Unit Miles	Inspection Start/End	Inspector
Unit No. 01 San Joaquin River	Right	22.56	05/12/2014 05/16/2014	Richard Willoughby

LM Start	15.79	Rating **	A/W	Issue No.	30
LM End	15.79	Issue Type +	Ma	Location *	LS
Category	Earthen Levee			GPS Latitude/Longitude	
				Start	End
Item	Encroachments			37.226470 °	37.226470 °
				-120.799622 °	-120.799622 °
DWR ID	DWR_NA0010_01_s _ 2013_30				
Action/Comments					
Tree or limb					
Inspector Comments: Broken tree limb on landward toe.					

Photo 1 of 1 : richard\_s\_20140417\_553.jpg



Looking north at a downed tree limb on landward slope and toe.

LM Start	17.45	Rating **	C	Issue No.	118
LM End	17.45	Issue Type +	Ma	Location *	LS
Category	Earthen Levee			GPS Latitude/Longitude	
				Start	End
Item	Animal Control			37.216000 °	37.216000 °
				-120.778950 °	-120.778950 °
DWR ID	DWR_NA0010_01_s _ 2012_118				
Action/Comments					
No rodents visible, but rodent burrows visible; need to backfill and compact or grout burrows.					

No Photos

LM Start	17.68	Rating **	C	Issue No.	31
LM End	17.68	Issue Type +	Ma	Location *	LS
Category	Earthen Levee			GPS Latitude/Longitude	
				Start	End
Item	Animal Control			37.215890 °	37.215890 °
				-120.774858 °	-120.774858 °
DWR ID	DWR_NA0010_01_s _ 2013_31				
Action/Comments					
Exterminate rodents and backfill and compact or grout burrows. Inspector Comments: Rodent holes located on landward ramp.					

No Photos

**\* Location**

LS : Land Side  
WS : Water Side  
CR : Crown

**\*\* Rating**

A : Acceptable  
M : Minimally Acceptable  
U : Unacceptable  
N : Not Inspected/Rated  
C : Corrected  
A/W : Acceptable but Monitor & Maintain

**+ Issue Type**

Ma : Maintenance Deficiency  
Ob : Design & System Obsolescence  
En : Enforcement

**Flood Control Project Maintenance  
Levee Inspections**

**Levee Inspection Report By Mile - Spring 2014**

**Lower San Joaquin Levee District**

Waterway	Bank	Unit Miles	Inspection Start/End	Inspector
Unit No. 01 San Joaquin River	Right	22.56	05/12/2014 05/16/2014	Richard Willoughby

LM Start	18.78	Rating **	M	Issue No.	27
LM End	18.78	Issue Type +	En	Location *	WS
Category	Earthen Levee			GPS Latitude/Longitude	
				Start	End
Item	Encroachments			37.205080 °	37.205080 °
				-120.762655 °	-120.762655 °
DWR ID	DWR_NA0010_01_s _ 2014_27				
Action/Comments					
Prunings					

Photo 1 of 1 : richard\_s\_20140520\_848.jpg



Looking at prunings on waterwater shoulder and slope.

LM Start	19.33	Rating **	M	Issue No.	8
LM End	19.33	Issue Type +	Ma	Location *	CR
Category	Earthen Levee			GPS Latitude/Longitude	
				Start	End
Item	Encroachments			37.200923 °	37.200923 °
				-120.756987 °	-120.756987 °
DWR ID	DWR_NA0010_01_s _ 2012_8				
Action/Comments					
Pipe Inspector Comments: Farmer installed a pipe across levee crown, landside and waterside slopes. Ramp is not according to standards.					

Photo 1 of 1 : richard\_s\_20140417\_543.jpg



Looking south at pipe across levee crown.

LM Start	19.95	Rating **	C	Issue No.	32
LM End	20.23	Issue Type +	Ma	Location *	CR
Category	Earthen Levee			GPS Latitude/Longitude	
				Start	End
Item	Vegetation			37.196218 °	37.193945 °
				-120.762400 °	-120.759845 °
DWR ID	DWR_NA0010_01_s _ 2013_32				
Action/Comments					
Remove the wild growth other than native grasses from the levee slopes.					
Inspector Comments: Remove wild growth from levee crown.					

No Photos

\* Location  
LS : Land Side  
WS : Water Side  
CR : Crown

\*\* Rating  
A : Acceptable  
M : Minimally Acceptable  
U : Unacceptable  
N : Not Inspected/Rated  
C : Corrected  
A/W : Acceptable but Monitor & Maintain

+ Issue Type  
Ma : Maintenance Deficiency  
Ob : Design & System Obsolescence  
En : Enforcement

**Flood Control Project Maintenance  
Levee Inspections**

**Levee Inspection Report By Mile - Spring 2014**

**Lower San Joaquin Levee District**

Waterway	Bank	Unit Miles	Inspection Start/End	Inspector
Unit No. 01 San Joaquin River	Right	22.56	05/12/2014 05/16/2014	Richard Willoughby

LM Start	20.28	Rating **	M	Issue No.	20
LM End	22.02	Issue Type +	Ma	Location *	LS
Category	Earthen Levee			GPS Latitude/Longitude	
				Start	End
Item	Encroachments			37.193426 °	37.172663 °
				-120.760419 °	-120.754894 °
DWR ID	DWR_NA0010_01_f_2012_20				
Action/Comments					
Agricultural tilling					
Inspector Comments: Farmer cutting into landside toe and slope.					

Photo 1 of 2 : richard\_s\_20140417\_547.jpg



Looking west at farmer discing landside slope.

LM Start	<b>20.28</b>	Rating **	M	Issue No.	<b>20 (cont)</b>
LM End	<b>22.02</b>	Issue Type +	Ma	Location *	LS

Photo 2 of 2 : richard\_s\_20140417\_548.jpg



Looking east at farmer discing into landside slope.

LM Start	22.09	Rating **	M	Issue No.	22
LM End	22.56	Issue Type +	En	Location *	LS
Category	Earthen Levee			GPS Latitude/Longitude	
				Start	End
Item	Encroachments			37.169962 °	37.166983 °
				-120.754240 °	-120.750127 °
DWR ID	DWR_NA0010_01_s_2012_22				
Action/Comments					
Ditch					

Photo 1 of 2 : richard\_s\_20140417\_549.jpg



Looking upstream at irrigation at landside toe.

**\* Location**

LS : Land Side  
WS : Water Side  
CR : Crown

**\*\* Rating**

A : Acceptable  
M : Minimally Acceptable  
U : Unacceptable  
N : Not Inspected/Rated  
C : Corrected  
A/W : Acceptable but Monitor & Maintain

**+ Issue Type**

Ma : Maintenance Deficiency  
Ob : Design & System Obsolescence  
En : Enforcement



**Flood Control Project Maintenance  
Levee Inspections**

**Levee Inspection Report By Mile - Spring 2014**

**Lower San Joaquin Levee District**

Waterway	Bank	Unit Miles	Inspection Start/End	Inspector
Unit No. 01 San Joaquin River	Right	22.56	05/12/2014 05/16/2014	Richard Willoughby

LM Start	22.09	Rating **	M	Issue No.	22 (cont)
LM End	22.56	Issue Type +	En	Location *	LS
Category	Earthen Levee			GPS Latitude/Longitude	
				Start	End
Item	Encroachments			37.169962 °	37.166983 °
				-120.754240 °	-120.750127 °
DWR ID	DWR_NA0010_01_s_2012_22				
Action/Comments					
Ditch					

Photo 2 of 2 : richard\_s\_20140417\_550.jpg



Looking downstream at irrigation ditch at landside toe.

LM Start	22.16	Rating **	C	Issue No.	21
LM End	22.55	Issue Type +	Ma	Location *	CR
Category	Earthen Levee			GPS Latitude/Longitude	
				Start	End
Item	Crown Surface / Depressions / Rutting			37.170692 °	37.166802 °
				-120.754445 °	-120.749623 °
DWR ID	DWR_NA0010_01_f_2012_21				
Action/Comments					
Repair depressions or ruts in the crown or slope. Inspector Comments: Rutting on levee crown.					

No Photos

\* Location  
LS : Land Side  
WS : Water Side  
CR : Crown

\*\* Rating  
A : Acceptable  
M : Minimally Acceptable  
U : Unacceptable  
N : Not Inspected/Rated  
C : Corrected  
A/W : Acceptable but Monitor & Maintain

+ Issue Type  
Ma : Maintenance Deficiency  
Ob : Design & System Obsolescence  
En : Enforcement

**Flood Control Project Maintenance  
Levee Inspections**

**Unit Cover Sheet**

**Spring 2014 Levee Inspection Results**

**Lower San Joaquin Levee District**

Waterway			Bank	Unit Miles
Unit No. 02A San Joaquin River			Left	7.87
	Spring (March - May)	Summer (June - August)	(September - November) Fall	Winter (December - February)
Unit Maintenance Rating (Fall Only)				
Date of Inspection	05/16/2014 - 05/16/2014			
DWR Inspector	Richard Willoughby			
Accompanied By				

**Summer & Winter Inspections**

The Local Maintaining Agency (LMA) is responsible for summer and winter inspections. The LMA is required to submit a report regarding summer and winter inspections to the California Department of Water Resources (DWR).

DWR must be informed on the:

- a) completion of the inspection
- b) any changes other than the results of normal maintenance
- c) corrections to deficiencies noted in this report

If additional items are noted, further documentation of those items must also be submitted.

The LMA should submit this information to DWR using the LMA web application tool available at:

<http://cdec.water.ca.gov/lma.html>

If the LMA is unable to submit information on this webpage, please contact DWR for assistance.

*The LMA should submit the information and any associated documentation by September 30 for summer inspections and March 31 for winter inspections.*

**Flood Control Project Maintenance  
Levee Inspections**

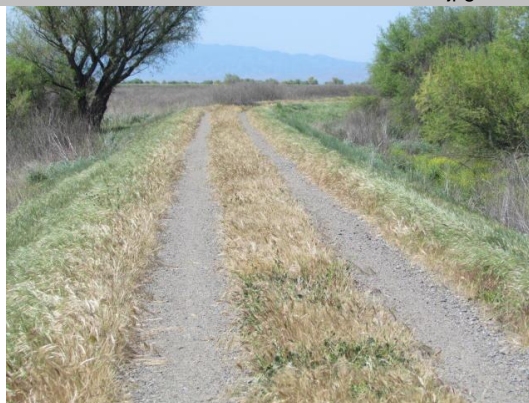
**Levee Inspection Report By Mile - Spring 2014**

**Lower San Joaquin Levee District**

Waterway	Bank	Unit Miles	Inspection Start/End	Inspector
Unit No. 02A San Joaquin River	Left	7.87	05/16/2014 05/16/2014	Richard Willoughby

LM Start	0.00	Rating **	M	Issue No.	3
LM End	1.70	Issue Type +	Ma	Location *	LS
Category	Earthen Levee			GPS Latitude/Longitude	
				Start	End
Item	Crown Surface / Depressions / Rutting			37.296122 °	37.289429 °
				-120.880723 °	-120.861115 °
DWR ID	DWR_NA0010_02A_s_2012_3				
Action/Comments					
Repair depressions or ruts in the crown or slope.					

Photo 1 of 1 : richard\_s\_20140417\_733.jpg



Looking north at vegetation on levee crown.

LM Start	0.00	Rating **	M	Issue No.	9
LM End	5.30	Issue Type +	Ma	Location *	CR
Category	Earthen Levee			GPS Latitude/Longitude	
				Start	End
Item	Vegetation			37.296229 °	37.261893 °
				-120.880732 °	-120.832390 °
DWR ID	DWR_NA0010_02A_s_2014_9				
Action/Comments					
Remove the wild growth other than native grasses from the levee slopes.					
Inspector Comments: Control vegetation on levee crown.					

Photo 1 of 1 : richard\_s\_20140520\_844.jpg



Looking north at vegetation on levee crown.

LM Start	0.00	Rating **	M	Issue No.	4
LM End	7.87	Issue Type +	Ma	Location *	LS
Category	Earthen Levee			GPS Latitude/Longitude	
				Start	End
Item	Vegetation			37.296229 °	37.231304 °
				-120.880732 °	-120.811878 °
DWR ID	DWR_NA0010_02A_s_2014_4				
Action/Comments					
Control annual grass and weeds on the levee slopes and easements.					

No Photos

**\* Location**

LS : Land Side  
WS : Water Side  
CR : Crown

**\*\* Rating**

A : Acceptable                      N : Not Inspected/Rated  
M : Minimally Acceptable        C : Corrected  
U : Unacceptable                  A/W : Acceptable but Monitor & Maintain

**+ Issue Type**

Ma : Maintenance Deficiency  
Ob : Design & System Obsolescence  
En : Enforcement

**Flood Control Project Maintenance  
Levee Inspections**

**Levee Inspection Report By Mile - Spring 2014**

**Lower San Joaquin Levee District**

Waterway	Bank	Unit Miles	Inspection Start/End	Inspector
Unit No. 02A San Joaquin River	Left	7.87	05/16/2014 05/16/2014	Richard Willoughby

LM Start	0.00	Rating **	M	Issue No.	6
LM End	7.87	Issue Type +	Ma	Location *	WS
Category	Earthen Levee			GPS Latitude/Longitude	
				Start	End
Item	Vegetation			37.296229 °	37.231304 °
				-120.880732 °	-120.811878 °
DWR ID	DWR_NA0010_02A_s_2014_6				
Action/Comments					
Control annual grass and weeds on the levee slopes and easements.					

No Photos

LM Start	0.13	Rating **	C	Issue No.	8
LM End	0.13	Issue Type +	Ma	Location *	LS
Category	Earthen Levee			GPS Latitude/Longitude	
				Start	End
Item	Animal Control			37.294857 °	37.294857 °
				-120.879782 °	-120.879782 °
DWR ID	DWR_NA0010_02A_s_2013_8				
Action/Comments					
No rodents visible, but rodent burrows visible; need to backfill and compact or grout burrows. Inspector Comments: Large possible rodent hole on landward slope.					

No Photos

LM Start	0.13	Rating **	C	Issue No.	7
LM End	0.13	Issue Type +	Ma	Location *	CR
Category	Earthen Levee			GPS Latitude/Longitude	
				Start	End
Item	Animal Control			37.294855 °	37.294855 °
				-120.879782 °	-120.879782 °
DWR ID	DWR_NA0010_02A_s_2013_7				
Action/Comments					
No rodents visible, but rodent burrows visible; need to backfill and compact or grout burrows.					
Inspector Comments: Small rodent holes on levee crown.					

No Photos

<b>* Location</b> LS : Land Side WS : Water Side CR : Crown	<b>** Rating</b> A : Acceptable M : Minimally Acceptable U : Unacceptable N : Not Inspected/Rated C : Corrected A/W : Acceptable but Monitor & Maintain	<b>+ Issue Type</b> Ma : Maintenance Deficiency Ob : Design & System Obsolescence En : Enforcement
--	---	---



**Flood Control Project Maintenance  
Levee Inspections**

**Levee Inspection Report By Mile - Spring 2014**

**Lower San Joaquin Levee District**

Waterway	Bank	Unit Miles	Inspection Start/End	Inspector
Unit No. 02A San Joaquin River	Left	7.87	05/16/2014 05/16/2014	Richard Willoughby

LM Start	0.77	Rating **	U	Issue No.	5
LM End	0.77	Issue Type +	Ma	Location *	WS
Category	Earthen Levee			GPS Latitude/Longitude	
				Start	End
Item	Erosion / Bank Caving			37.286877 °	37.286877 °
				-120.874222 °	-120.874222 °
DWR ID	DWR_NA0010_02A_s_2012_5				
Action/Comments					
Schedule repair of erosion site prior to the next inspection. Inspector Comments: A field investigation report in on file. For more information and pictures see field investigation report #4301.					

Photo 1 of 2 : richard\_s\_20140417\_734.jpg



Looking south at large erosion on waterside slope. (Spring 2012)

LM Start	<b>0.77</b>	Rating **	U	Issue No.	<b>5 (cont)</b>
LM End	<b>0.77</b>	Issue Type +	Ma	Location *	WS

Photo 2 of 2 : richard\_s\_20140417\_735.jpg



Looking north at large erosion on waterward slope. (Fall 2013)

LM Start	2.33	Rating **	M	Issue No.	2
LM End	2.33	Issue Type +	En	Location *	LS
Category	Earthen Levee			GPS Latitude/Longitude	
				Start	End
Item	Encroachments			37.291433 °	37.291433 °
				-120.850917 °	-120.850917 °
DWR ID	DWR_NA0010_02A_s_2012_2				
Action/Comments					
Ramp					

Photo 1 of 2 : richard\_s\_20140417\_731.jpg



Looking northwest at ramp on landside slope near Hwy 140.

**\* Location**

LS : Land Side  
WS : Water Side  
CR : Crown

**\*\* Rating**

A : Acceptable  
M : Minimally Acceptable  
U : Unacceptable  
N : Not Inspected/Rated  
C : Corrected  
A/W : Acceptable but Monitor & Maintain

**+ Issue Type**

Ma : Maintenance Deficiency  
Ob : Design & System Obsolescence  
En : Enforcement

**Flood Control Project Maintenance  
Levee Inspections**

**Levee Inspection Report By Mile - Spring 2014**

**Lower San Joaquin Levee District**

Waterway	Bank	Unit Miles	Inspection Start/End	Inspector
Unit No. 02A San Joaquin River	Left	7.87	05/16/2014 05/16/2014	Richard Willoughby

LM Start	2.33	Rating **	M	Issue No.	2 (cont)	
LM End	2.33	Issue Type +	En	Location *	LS	
Category	Earthen Levee			GPS Latitude/Longitude		
				Start		End
Item	Encroachments			37.291433 °		37.291433 °
				-120.850917 °		-120.850917 °
DWR ID	DWR_NA0010_02A_s_2012_2					
Action/Comments						
Ramp Inspector Comments: Unauthorized ramp on landside and waterside slope.						

Photo 2 of 2 : richard\_s\_20140417\_732.jpg



Looking northeast at ramp on waterside slope near Hwy 140.

LM Start	5.29	Rating **	A/W	Issue No.	1
LM End	7.39	Issue Type +	Ma	Location *	CR
Category	Earthen Levee			GPS Latitude/Longitude	
				Start	End
Item	Crown Surface / Depressions / Rutting			37.261990 °	37.236516 °
				-120.832408 °	-120.817542 °
DWR ID	DWR_NA0010_02A_f_2012_1				
Action/Comments					
Repair depressions or ruts in the crown or slope. Inspector Comments: Rutting on levee crown.					

No Photos

LM Start	7.76	Rating **	C	Issue No.	36
LM End	7.76	Issue Type +	Ma	Location *	LS
Category	Earthen Levee			GPS Latitude/Longitude	
				Start	End
Item	Vegetation			37.232718 °	37.232718 °
				-120.813565 °	-120.813565 °
DWR ID	DWR_NA0010_02A_s_2012_36				
Action/Comments					
Remove the wild growth other than native grasses from the levee slopes.					

No Photos

**\* Location**

LS : Land Side  
WS : Water Side  
CR : Crown

**\*\* Rating**

A : Acceptable                      N : Not Inspected/Rated  
M : Minimally Acceptable        C : Corrected  
U : Unacceptable                  A/W : Acceptable but Monitor & Maintain

**+ Issue Type**

Ma : Maintenance Deficiency  
Ob : Design & System Obsolescence  
En : Enforcement

**Flood Control Project Maintenance  
Levee Inspections**

**Levee Inspection Report By Mile - Spring 2014**

**Lower San Joaquin Levee District**

Waterway	Bank	Unit Miles	Inspection Start/End	Inspector
Unit No. 02A San Joaquin River	Left	7.87	05/16/2014 05/16/2014	Richard Willoughby

<b>* Location</b> LS : Land Side WS : Water Side CR : Crown	<b>** Rating</b> A : Acceptable M : Minimally Acceptable U : Unacceptable N : Not Inspected/Rated C : Corrected A/W : Acceptable but Monitor & Maintain	<b>+ Issue Type</b> Ma : Maintenance Deficiency Ob : Design & System Obsolescence En : Enforcement
--	---	---

**Flood Control Project Maintenance  
Levee Inspections**

**Unit Cover Sheet**

**Spring 2014 Levee Inspection Results**

**Lower San Joaquin Levee District**

Waterway			Bank	Unit Miles
Unit No. 02B San Joaquin River			Left	5.92
	Spring (March - May)	Summer (June - August)	(September - November) Fall	Winter (December - February)
Unit Maintenance Rating (Fall Only)				
Date of Inspection	05/16/2014 - 05/16/2014			
DWR Inspector	Richard Willoughby			
Accompanied By				

**Summer & Winter Inspections**

The Local Maintaining Agency (LMA) is responsible for summer and winter inspections. The LMA is required to submit a report regarding summer and winter inspections to the California Department of Water Resources (DWR).

DWR must be informed on the:

- a) completion of the inspection
- b) any changes other than the results of normal maintenance
- c) corrections to deficiencies noted in this report

If additional items are noted, further documentation of those items must also be submitted.

The LMA should submit this information to DWR using the LMA web application tool available at:

<http://cdec.water.ca.gov/lma.html>

If the LMA is unable to submit information on this webpage, please contact DWR for assistance.

*The LMA should submit the information and any associated documentation by September 30 for summer inspections and March 31 for winter inspections.*

**Flood Control Project Maintenance  
Levee Inspections**

**Levee Inspection Report By Mile - Spring 2014**

**Lower San Joaquin Levee District**

Waterway	Bank	Unit Miles	Inspection Start/End	Inspector
Unit No. 02B San Joaquin River	Left	5.92	05/16/2014 05/16/2014	Richard Willoughby

LM Start	7.87	Rating **	M	Issue No.	3
LM End	13.45	Issue Type +	Ma	Location *	CR
Category	Earthen Levee			GPS Latitude/Longitude	
				Start	End
Item	Crown Surface / Depressions / Rutting			37.231279 °	37.176608 °
				-120.811852 °	-120.762619 °
DWR ID	DWR_NA0010_02B_s _ 2012_3				
Action/Comments					
Add appropriate gravel or road base. Grade and compact. Inspector Comments: Control vegetation growth on levee crown.					

Photo 1 of 1 : richard\_s\_20140520\_838.jpg



Looking north at vegetation on levee crown.

LM Start	7.87	Rating **	M	Issue No.	1
LM End	13.78	Issue Type +	Ma	Location *	LS
Category	Earthen Levee			GPS Latitude/Longitude	
				Start	End
Item	Vegetation			37.231304 °	37.172353 °
				-120.811878 °	-120.761186 °
DWR ID	DWR_NA0010_02B_s _ 2014_1				
Action/Comments					
Control annual grass and weeds on the levee slopes and easements.					

No Photos

LM Start	7.87	Rating **	M	Issue No.	7
LM End	13.78	Issue Type +	Ma	Location *	WS
Category	Earthen Levee			GPS Latitude/Longitude	
				Start	End
Item	Vegetation			37.231304 °	37.172353 °
				-120.811878 °	-120.761186 °
DWR ID	DWR_NA0010_02B_s _ 2014_7				
Action/Comments					
Control annual grass and weeds on the levee slopes and easements.					

No Photos

\* Location  
LS : Land Side  
WS : Water Side  
CR : Crown

\*\* Rating  
A : Acceptable  
M : Minimally Acceptable  
U : Unacceptable  
N : Not Inspected/Rated  
C : Corrected  
A/W : Acceptable but Monitor & Maintain

+ Issue Type  
Ma : Maintenance Deficiency  
Ob : Design & System Obsolescence  
En : Enforcement

**Flood Control Project Maintenance  
Levee Inspections**

**Levee Inspection Report By Mile - Spring 2014**

**Lower San Joaquin Levee District**

Waterway	Bank	Unit Miles	Inspection Start/End	Inspector
Unit No. 02B San Joaquin River	Left	5.92	05/16/2014 05/16/2014	Richard Willoughby

LM Start	9.46	Rating **	C	Issue No.	2
LM End	9.46	Issue Type +	Ma	Location *	LS
Category	Earthen Levee			GPS Latitude/Longitude	
				Start	End
Item	Encroachments			37.220212 °	37.220212 °
				-120.788637 °	-120.788637 °
DWR ID	DWR_NA0010_02B_f_2012_2				
Action/Comments					
Tree or limb					
Inspector Comments: Broken tree limb on landside slope.					

No Photos

LM Start	9.50	Rating **	C	Issue No.	6
LM End	9.98	Issue Type +	Ma	Location *	LS
Category	Earthen Levee			GPS Latitude/Longitude	
				Start	End
Item	Vegetation			37.220463 °	37.216298 °
				-120.787837 °	-120.783906 °
DWR ID	DWR_NA0010_02B_s_2012_6				
Action/Comments					
Remove the wild growth other than native grasses from the levee slopes.					

No Photos

LM Start	9.66	Rating **	C	Issue No.	9
LM End	9.66	Issue Type +	Ma	Location *	LS
Category	Earthen Levee			GPS Latitude/Longitude	
				Start	End
Item	Trim / Thin Trees			37.220598 °	37.220598 °
				-120.785293 °	-120.785293 °
DWR ID	DWR_NA0010_02B_s_2013_9				
Action/Comments					
Trim trees to at least five feet above ground level.					

No Photos

<b>* Location</b> LS : Land Side WS : Water Side CR : Crown	<b>** Rating</b> A : Acceptable M : Minimally Acceptable U : Unacceptable N : Not Inspected/Rated C : Corrected A/W : Acceptable but Monitor & Maintain	<b>+ Issue Type</b> Ma : Maintenance Deficiency Ob : Design & System Obsolescence En : Enforcement
--	---	---



**Flood Control Project Maintenance  
Levee Inspections**

**Levee Inspection Report By Mile - Spring 2014**

**Lower San Joaquin Levee District**

Waterway	Bank	Unit Miles	Inspection Start/End	Inspector
Unit No. 02B San Joaquin River	Left	5.92	05/16/2014 05/16/2014	Richard Willoughby

LM Start	10.50	Rating **	M	Issue No.	12
LM End	10.50	Issue Type +	En	Location *	LS
Category	Earthen Levee			GPS Latitude/Longitude	
				Start	End
Item	Encroachments			37.209635 °	37.209635 °
				-120.781379 °	-120.781379 °
DWR ID	DWR_NA0010_02B_s_2014_12				
Action/Comments					
Tree or limb Inspector Comments: Remove tree limbs and branches and prunings on landward slope.					

No Photos

LM Start	12.10	Rating **	M	Issue No.	5
LM End	12.10	Issue Type +	Ma	Location *	LS
Category	Earthen Levee			GPS Latitude/Longitude	
				Start	End
Item	Vegetation			37.193504 °	37.193504 °
				-120.763859 °	-120.763859 °
DWR ID	DWR_NA0010_02B_s_2012_5				
Action/Comments					
Remove the wild growth other than native grasses from the levee slopes.					
Inspector Comments: Remove wild roses on landside toe.					

Photo 1 of 1 : richard\_s\_20140520\_839.jpg



Looking north at wildroses on landward slope.

LM Start	12.71	Rating **	C	Issue No.	4
LM End	12.71	Issue Type +	Ma	Location *	LS
Category	Earthen Levee			GPS Latitude/Longitude	
				Start	End
Item	Trim / Thin Trees			37.185688 °	37.185688 °
				-120.768181 °	-120.768181 °
DWR ID	DWR_NA0010_02B_s_2012_4				
Action/Comments					
Trim trees over roadway to at least 12 feet above ground level.					

No Photos

**\* Location**  
LS : Land Side  
WS : Water Side  
CR : Crown

**\*\* Rating**  
A : Acceptable  
M : Minimally Acceptable  
U : Unacceptable  
N : Not Inspected/Rated  
C : Corrected  
A/W : Acceptable but Monitor & Maintain

**+ Issue Type**  
Ma : Maintenance Deficiency  
Ob : Design & System Obsolescence  
En : Enforcement

**Flood Control Project Maintenance  
Levee Inspections**

**Levee Inspection Report By Mile - Spring 2014**

**Lower San Joaquin Levee District**

Waterway	Bank	Unit Miles	Inspection Start/End	Inspector
Unit No. 02B San Joaquin River	Left	5.92	05/16/2014 05/16/2014	Richard Willoughby

LM Start	12.73	Rating **	M	Issue No.	10
LM End	12.73	Issue Type +	En	Location *	LS
Category	Earthen Levee			GPS Latitude/Longitude	
				Start	End
Item	Encroachments			37.185467 °	37.185467 °
				-120.768510 °	-120.768510 °
DWR ID	DWR_NA0010_02B_s_2014_10				
Action/Comments					
Tree or limb					
Inspector Comments: Large tree on landward slope.					

Photo 1 of 2 : richard\_s\_20140520\_840.jpg



Looking north at tree branch on landward slope.

LM Start	12.73	Rating **	M	Issue No.	10 (cont)
LM End	12.73	Issue Type +	En	Location *	LS

Photo 2 of 2 : richard\_s\_20140520\_841.jpg



Looking southwest at down tree on landward slope.

LM Start	12.73	Rating **	U	Issue No.	11
LM End	12.73	Issue Type +	Ma	Location *	LS
Category	Earthen Levee			GPS Latitude/Longitude	
				Start	End
Item	Slope Stability			37.185467 °	37.185467 °
				-120.768506 °	-120.768506 °
DWR ID	DWR_NA0010_02B_s_2014_11				
Action/Comments					
Repair slope instability.					

Photo 1 of 2 : richard\_s\_20140520\_842.jpg



Looking at hole on landward shoulder and slope.

**\* Location**

LS : Land Side  
WS : Water Side  
CR : Crown

**\*\* Rating**

A : Acceptable  
M : Minimally Acceptable  
U : Unacceptable  
N : Not Inspected/Rated  
C : Corrected  
A/W : Acceptable but Monitor & Maintain

**+ Issue Type**

Ma : Maintenance Deficiency  
Ob : Design & System Obsolescence  
En : Enforcement



**Flood Control Project Maintenance  
Levee Inspections**

**Levee Inspection Report By Mile - Spring 2014**

**Lower San Joaquin Levee District**

Waterway	Bank	Unit Miles	Inspection Start/End	Inspector
Unit No. 02B San Joaquin River	Left	5.92	05/16/2014 05/16/2014	Richard Willoughby

LM Start	12.73	Rating **	U	Issue No.	11 (cont)
LM End	12.73	Issue Type +	Ma	Location *	LS
Category	Earthen Levee			GPS Latitude/Longitude	
				Start	End
Item	Slope Stability			37.185467 °	37.185467 °
				-120.768506 °	-120.768506 °
DWR ID	DWR_NA0010_02B_s_2014_11				
Action/Comments					
Repair slope instability. Inspector Comments: Large hole on landward slope from fallen tree. Hole is approx. 3-4' in diameter.					

Photo 2 of 2 : richard\_s\_20140520\_843.jpg



Looking north at second hole on landward shoulder and slope.

LM Start	13.47	Rating **	C	Issue No.	8
LM End	13.47	Issue Type +	Ma	Location *	WS
Category	Earthen Levee			GPS Latitude/Longitude	
				Start	End
Item	Trim / Thin Trees			37.176397 °	37.176397 °
				-120.762280 °	-120.762280 °
DWR ID	DWR_NA0010_02B_s_2013_8				
Action/Comments					
Trim trees over roadway to at least 12 feet above ground level.					

No Photos

\* Location  
LS : Land Side  
WS : Water Side  
CR : Crown

\*\* Rating  
A : Acceptable  
M : Minimally Acceptable  
U : Unacceptable  
N : Not Inspected/Rated  
C : Corrected  
A/W : Acceptable but Monitor & Maintain

+ Issue Type  
Ma : Maintenance Deficiency  
Ob : Design & System Obsolescence  
En : Enforcement

**Flood Control Project Maintenance  
Levee Inspections**

**Unit Cover Sheet**

**Spring 2014 Levee Inspection Results**

**Lower San Joaquin Levee District**

Waterway			Bank	Unit Miles
Unit No. 03 San Joaquin River			Right	2.16
	Spring (March - May)	Summer (June - August)	(September - November) Fall	Winter (December - February)
Unit Maintenance Rating (Fall Only)				
Date of Inspection	05/15/2014 - 05/15/2014			
DWR Inspector	Richard Willoughby			
Accompanied By				

**Summer & Winter Inspections**

The Local Maintaining Agency (LMA) is responsible for summer and winter inspections. The LMA is required to submit a report regarding summer and winter inspections to the California Department of Water Resources (DWR).

DWR must be informed on the:

- a) completion of the inspection
- b) any changes other than the results of normal maintenance
- c) corrections to deficiencies noted in this report

If additional items are noted, further documentation of those items must also be submitted.

The LMA should submit this information to DWR using the LMA web application tool available at:

<http://cdec.water.ca.gov/lma.html>

If the LMA is unable to submit information on this webpage, please contact DWR for assistance.

*The LMA should submit the information and any associated documentation by September 30 for summer inspections and March 31 for winter inspections.*

**Flood Control Project Maintenance  
Levee Inspections**

**Levee Inspection Report By Mile - Spring 2014**

**Lower San Joaquin Levee District**

Waterway	Bank	Unit Miles	Inspection Start/End	Inspector
Unit No. 03 San Joaquin River	Right	2.16	05/15/2014 05/15/2014	Richard Willoughby

LM Start	0.00	Rating **	M	Issue No.	2
LM End	2.16	Issue Type +	Ma	Location *	WS
Category	Earthen Levee			GPS Latitude/Longitude	
				Start	End
Item	Vegetation			37.111974 °	37.088339 °
				-120.587371 °	-120.566930 °
DWR ID	DWR_NA0010_03_s _ 2014_2				
Action/Comments					
Control annual grass and weeds on the levee slopes and easements.					

Photo 1 of 2 : richard\_s\_20140520\_831.jpg



Looking at typical view of waterward slope.

LM Start	<b>0.00</b>	Rating **	M	Issue No.	<b>2 (cont)</b>
LM End	<b>2.16</b>	Issue Type +	Ma	Location *	WS

Photo 2 of 2 : richard\_s\_20140520\_832.jpg



Looking at typical view of landward slope.

LM Start	0.00	Rating **	M	Issue No.	1
LM End	2.16	Issue Type +	Ma	Location *	LS
Category	Earthen Levee			GPS Latitude/Longitude	
				Start	End
Item	Vegetation			37.111974 °	37.088338 °
				-120.587371 °	-120.566929 °
DWR ID	DWR_NA0010_03_s _ 2014_1				
Action/Comments					
Control annual grass and weeds on the levee slopes and easements.					

No Photos

\* Location  
LS : Land Side  
WS : Water Side  
CR : Crown

\*\* Rating  
A : Acceptable  
M : Minimally Acceptable  
U : Unacceptable  
N : Not Inspected/Rated  
C : Corrected  
A/W : Acceptable but Monitor & Maintain

+ Issue Type  
Ma : Maintenance Deficiency  
Ob : Design & System Obsolescence  
En : Enforcement

**Flood Control Project Maintenance  
Levee Inspections**

**Unit Cover Sheet**

**Spring 2014 Levee Inspection Results**

**Lower San Joaquin Levee District**

Waterway			Bank	Unit Miles
Unit No. 04 San Joaquin River			Left	1.58
	Spring (March - May)	Summer (June - August)	(September - November) Fall	Winter (December - February)
Unit Maintenance Rating (Fall Only)				
Date of Inspection	05/15/2014 - 05/15/2014			
DWR Inspector	Richard Willoughby			
Accompanied By				

**Summer & Winter Inspections**

The Local Maintaining Agency (LMA) is responsible for summer and winter inspections. The LMA is required to submit a report regarding summer and winter inspections to the California Department of Water Resources (DWR).

DWR must be informed on the:

- a) completion of the inspection
- b) any changes other than the results of normal maintenance
- c) corrections to deficiencies noted in this report

If additional items are noted, further documentation of those items must also be submitted.

The LMA should submit this information to DWR using the LMA web application tool available at:

<http://cdec.water.ca.gov/lma.html>

If the LMA is unable to submit information on this webpage, please contact DWR for assistance.

*The LMA should submit the information and any associated documentation by September 30 for summer inspections and March 31 for winter inspections.*

**Flood Control Project Maintenance  
Levee Inspections**

**Levee Inspection Report By Mile - Spring 2014**

**Lower San Joaquin Levee District**

Waterway	Bank	Unit Miles	Inspection Start/End	Inspector
Unit No. 04 San Joaquin River	Left	1.58	05/15/2014 05/15/2014	Richard Willoughby

LM Start	0.00	Rating **	M	Issue No.	1
LM End	1.58	Issue Type +	Ma	Location *	LS
Category	Earthen Levee			GPS Latitude/Longitude	
				Start	End
Item	Vegetation			37.112522 °	37.095328 °
				-120.589098 °	-120.577941 °
DWR ID	DWR_NA0010_04_s _ 2014_1				
Action/Comments					
Control annual grass and weeds on the levee slopes and easements.					

Photo 1 of 1 : richard\_s\_20140520\_833.jpg



Looking at typical view of landside slope.

LM Start	0.00	Rating **	M	Issue No.	2
LM End	1.58	Issue Type +	Ma	Location *	WS
Category	Earthen Levee			GPS Latitude/Longitude	
				Start	End
Item	Vegetation			37.112522 °	37.095326 °
				-120.589098 °	-120.577943 °
DWR ID	DWR_NA0010_04_s _ 2014_2				
Action/Comments					
Control annual grass and weeds on the levee slopes and easements. Inspector Comments: Typical view of levee slopes.					

Photo 1 of 1 : richard\_s\_20140520\_834.jpg



Looking at typical view of waterward slope.

LM Start	0.30	Rating **	M	Issue No.	4
LM End	0.30	Issue Type +	En	Location *	LS
Category	Earthen Levee			GPS Latitude/Longitude	
				Start	End
Item	Encroachments			37.109052 °	37.109052 °
				-120.590800 °	-120.590800 °
DWR ID	DWR_NA0010_04_s _ 2014_4				
Action/Comments					
Tree or limb Inspector Comments: Downed tree on landward slope and toe.					

Photo 1 of 1 : richard\_s\_20140520\_835.jpg



Looking east at downed tree and prunings on landward slope and toe.

**\* Location**

LS : Land Side  
WS : Water Side  
CR : Crown

**\*\* Rating**

A : Acceptable                      N : Not Inspected/Rated  
M : Minimally Acceptable        C : Corrected  
U : Unacceptable                  A/W : Acceptable but Monitor & Maintain

**+ Issue Type**

Ma : Maintenance Deficiency  
Ob : Design & System Obsolescence  
En : Enforcement



**Flood Control Project Maintenance  
Levee Inspections**

## Levee Inspection Report By Mile - Spring 2014

### Lower San Joaquin Levee District

Waterway	Bank	Unit Miles	Inspection Start/End	Inspector
Unit No. 04 San Joaquin River	Left	1.58	05/15/2014 05/15/2014	Richard Willoughby

LM Start	0.32	Rating **	M	Issue No.	3
LM End	1.49	Issue Type +	En	Location *	CR
Category	Earthen Levee			GPS Latitude/Longitude	
				Start	End
Item	Encroachments			37.108822 °	37.096532 °
				-120.590718 °	-120.578027 °
DWR ID	DWR_NA0010_04_s _ 2012_3				
Action/Comments					
Ditch					
Inspector Comments: Agricultural Ditch within 10' easement.					

Photo 1 of 3 : richard\_s\_20140417\_748.jpg



Looking north at irrigation ditch at landside toe.

LM Start	<b>0.32</b>	Rating **	M	Issue No.	<b>3 (cont)</b>
LM End	<b>1.49</b>	Issue Type +	En	Location *	CR

Photo 2 of 3 : richard\_s\_20140417\_749.jpg



Looking north at irrigation ditch at landside toe.

LM Start	<b>0.32</b>	Rating **	M	Issue No.	<b>3 (cont)</b>
LM End	<b>1.49</b>	Issue Type +	En	Location *	CR

Photo 3 of 3 : richard\_s\_20140417\_750.jpg



Looking north at irrigation ditch at landward toe. (Fall 2013)

**\* Location**

LS : Land Side  
WS : Water Side  
CR : Crown

**\*\* Rating**

A : Acceptable                      N : Not Inspected/Rated  
M : Minimally Acceptable        C : Corrected  
U : Unacceptable                  A/W : Acceptable but Monitor & Maintain

**+ Issue Type**

Ma : Maintenance Deficiency  
Ob : Design & System Obsolescence  
En : Enforcement

**Flood Control Project Maintenance  
Levee Inspections**

**Unit Cover Sheet**

**Spring 2014 Levee Inspection Results**

**Lower San Joaquin Levee District**

Waterway			Bank	Unit Miles
Unit No. 05 East Side Bypass			Right	34.75
	Spring (March - May)	Summer (June - August)	(September - November) Fall	Winter (December - February)
Unit Maintenance Rating (Fall Only)				
Date of Inspection	05/12/2014 - 05/14/2014			
DWR Inspector	Richard Willoughby			
Accompanied By				

**Summer & Winter Inspections**

The Local Maintaining Agency (LMA) is responsible for summer and winter inspections. The LMA is required to submit a report regarding summer and winter inspections to the California Department of Water Resources (DWR).

DWR must be informed on the:

- a) completion of the inspection
- b) any changes other than the results of normal maintenance
- c) corrections to deficiencies noted in this report

If additional items are noted, further documentation of those items must also be submitted.

The LMA should submit this information to DWR using the LMA web application tool available at:

<http://cdec.water.ca.gov/lma.html>

If the LMA is unable to submit information on this webpage, please contact DWR for assistance.

*The LMA should submit the information and any associated documentation by September 30 for summer inspections and March 31 for winter inspections.*

**Flood Control Project Maintenance  
Levee Inspections**

## Levee Inspection Report By Mile - Spring 2014

### Lower San Joaquin Levee District

Waterway	Bank	Unit Miles	Inspection Start/End	Inspector
Unit No. 05 East Side Bypass	Right	34.75	05/12/2014 05/14/2014	Richard Willoughby

LM Start	0.64	Rating **	A/W	Issue No.	24
LM End	0.64	Issue Type +	Ma	Location *	LS
Category	Earthen Levee			GPS Latitude/Longitude	
				Start	End
Item	Trim / Thin Trees			37.273445 °	37.273445 °
				-120.815210 °	-120.815210 °
DWR ID	DWR_NA0010_05_s _ 2013_24				
Action/Comments					
Trim trees to at least five feet above ground level.					

Photo 1 of 1 : richard\_s\_20140417\_762.jpg



Looking east at untrimmed trees on landward toe.

LM Start	0.81	Rating **	A/W	Issue No.	169
LM End	2.07	Issue Type +	En	Location *	CR
Category	Earthen Levee			GPS Latitude/Longitude	
				Start	End
Item	Crown Surface / Depressions / Rutting			37.272262 °	37.259735 °
				-120.812532 °	-120.797307 °
DWR ID	DWR_NA0010_05_s _ 2012_169				
Action/Comments					
Add appropriate material and re-grade the levee to bring the crown above the design elevation.					

No Photos

LM Start	2.81	Rating **	A/W	Issue No.	3
LM End	2.86	Issue Type +	Ma	Location *	LS
Category	Earthen Levee			GPS Latitude/Longitude	
				Start	End
Item	Trim / Thin Trees			37.256803 °	37.256835 °
				-120.785407 °	-120.784528 °
DWR ID	DWR_NA0010_05_s _ 2012_3				
Action/Comments					
Thin trees to allow visibility of the ground and room to flood fight.					

Photo 1 of 2 : richard\_s\_20140417\_752.jpg



Looking south at dense trees on landside slope.

**\* Location**

LS : Land Side  
WS : Water Side  
CR : Crown

**\*\* Rating**

A : Acceptable                      N : Not Inspected/Rated  
M : Minimally Acceptable        C : Corrected  
U : Unacceptable                  A/W : Acceptable but Monitor & Maintain

**+ Issue Type**

Ma : Maintenance Deficiency  
Ob : Design & System Obsolescence  
En : Enforcement



**Flood Control Project Maintenance  
Levee Inspections**

**Levee Inspection Report By Mile - Spring 2014**

**Lower San Joaquin Levee District**

Waterway	Bank	Unit Miles	Inspection Start/End	Inspector
Unit No. 05 East Side Bypass	Right	34.75	05/12/2014 05/14/2014	Richard Willoughby

LM Start	2.81	Rating **	A/W	Issue No.	3 (cont)
LM End	2.86	Issue Type +	Ma	Location *	LS
Category	Earthen Levee			GPS Latitude/Longitude	
				Start	End
Item	Trim / Thin Trees			37.256803 °	37.256835 °
				-120.785407 °	-120.784528 °
DWR ID	DWR_NA0010_05_s _ 2012_3				
Action/Comments					
Thin trees to allow visibility of the ground and room to flood fight.					

Photo 2 of 2 : richard\_s\_20140417\_753.jpg



Looking south at trimmed trees on landward slope and toe.

LM Start	3.19	Rating **	M	Issue No.	6
LM End	3.19	Issue Type +	Ma	Location *	WS
Category	Earthen Levee			GPS Latitude/Longitude	
				Start	End
Item	Animal Control			37.256635 °	37.256635 °
				-120.778935 °	-120.778935 °
DWR ID	DWR_NA0010_05_s _ 2014_6				
Action/Comments					
Exterminate rodents and backfill and compact or grout burrows.					

No Photos

LM Start	3.19	Rating **	M	Issue No.	7
LM End	3.19	Issue Type +	En	Location *	WS
Category	Earthen Levee			GPS Latitude/Longitude	
				Start	End
Item	Encroachments			37.256554 °	37.256554 °
				-120.778847 °	-120.778847 °
DWR ID	DWR_NA0010_05_f _ 2012_7				
Action/Comments					
Ramp Inspector Comments: Unauthorized ramp on waterside slope.					

Photo 1 of 3 : richard\_s\_20140417\_754.jpg



Looking south at unauthorized ramp on waterside slope.

\* Location  
LS : Land Side  
WS : Water Side  
CR : Crown

\*\* Rating  
A : Acceptable  
M : Minimally Acceptable  
U : Unacceptable  
N : Not Inspected/Rated  
C : Corrected  
A/W : Acceptable but Monitor & Maintain

+ Issue Type  
Ma : Maintenance Deficiency  
Ob : Design & System Obsolescence  
En : Enforcement

**Flood Control Project Maintenance  
Levee Inspections**

**Levee Inspection Report By Mile - Spring 2014**

**Lower San Joaquin Levee District**

Waterway	Bank	Unit Miles	Inspection Start/End	Inspector
Unit No. 05 East Side Bypass	Right	34.75	05/12/2014 05/14/2014	Richard Willoughby

LM Start	3.19	Rating **	M	Issue No.	7 (cont)	
LM End	3.19	Issue Type +	En	Location *	WS	
Category	Earthen Levee			GPS Latitude/Longitude		
				Start		End
Item	Encroachments			37.256554 °	37.256554 °	
				-120.778847 °	-120.778847 °	
DWR ID	DWR_NA0010_05_f_2012_7					
Action/Comments						
Ramp						
Inspector Comments: Unauthorized ramp on waterside slope.						

Photo 2 of 3 : richard\_s\_20140417\_755.jpg



Looking northwest at unauthorized ramp on waterside slope.

LM Start	<b>3.19</b>	Rating **	M	Issue No.	<b>7 (cont)</b>
LM End	<b>3.19</b>	Issue Type +	En	Location *	WS

Photo 3 of 3 : richard\_s\_20140417\_756.jpg



Looking northwest at unauthorized ramp on waterward slope.

LM Start	3.32	Rating **	A/W	Issue No.	1
LM End	3.32	Issue Type +	Ma	Location *	LS
Category	Earthen Levee			GPS Latitude/Longitude	
				Start	End
Item	Trim / Thin Trees			37.255297 °	37.255297 °
				-120.777032 °	-120.777032 °
DWR ID	DWR_NA0010_05_s_2012_1				
Action/Comments					
Trim trees to at least five feet above ground level.					

No Photos

\* Location  
LS : Land Side  
WS : Water Side  
CR : Crown

\*\* Rating  
A : Acceptable  
M : Minimally Acceptable  
U : Unacceptable  
N : Not Inspected/Rated  
C : Corrected  
A/W : Acceptable but Monitor & Maintain

+ Issue Type  
Ma : Maintenance Deficiency  
Ob : Design & System Obsolescence  
En : Enforcement

**Flood Control Project Maintenance  
Levee Inspections**

**Levee Inspection Report By Mile - Spring 2014**

**Lower San Joaquin Levee District**

Waterway	Bank	Unit Miles	Inspection Start/End	Inspector
Unit No. 05 East Side Bypass	Right	34.75	05/12/2014 05/14/2014	Richard Willoughby

LM Start	3.54	Rating **	M	Issue No.	2
LM End	3.54	Issue Type +	Ma	Location *	LS
Category	Earthen Levee			GPS Latitude/Longitude	
				Start	End
Item	Encroachments			37.255192 °	37.255192 °
				-120.773595 °	-120.773595 °
DWR ID	DWR_NA0010_05_s _ 2012_2				
Action/Comments					
Tree or limb					
Inspector Comments: Downed tree limb on landside slope and toe.					

Photo 1 of 1 : richard\_s\_20140417\_751.jpg



Looking south at down tree limb on landside slope and toe.

LM Start	4.99	Rating **	A/W	Issue No.	12
LM End	4.99	Issue Type +	Ma	Location *	LS
Category	Earthen Levee			GPS Latitude/Longitude	
				Start	End
Item	Animal Control			37.240732 °	37.240732 °
				-120.749512 °	-120.749512 °
DWR ID	DWR_NA0010_05_f _ 2012_12				
Action/Comments					
Repair the levee slope damaged by livestock and prevent large animal access.					

Photo 1 of 2 : richard\_s\_20140417\_758.jpg



Looking east at levee damage by livestock on landside slope.

LM Start	<b>4.99</b>	Rating **	A/W	Issue No.	<b>12 (cont)</b>
LM End	<b>4.99</b>	Issue Type +	Ma	Location *	LS

Photo 2 of 2 : richard\_s\_20140417\_759.jpg



Looking south at repaired livestock erosion on landward slope.

**\* Location**

LS : Land Side  
WS : Water Side  
CR : Crown

**\*\* Rating**

A : Acceptable  
M : Minimally Acceptable  
U : Unacceptable  
N : Not Inspected/Rated  
C : Corrected  
A/W : Acceptable but Monitor & Maintain

**+ Issue Type**

Ma : Maintenance Deficiency  
Ob : Design & System Obsolescence  
En : Enforcement

**Flood Control Project Maintenance  
Levee Inspections**

**Levee Inspection Report By Mile - Spring 2014**

**Lower San Joaquin Levee District**

Waterway	Bank	Unit Miles	Inspection Start/End	Inspector
Unit No. 05 East Side Bypass	Right	34.75	05/12/2014 05/14/2014	Richard Willoughby

LM Start	5.56	Rating **	M	Issue No.	8
LM End	5.56	Issue Type +	En	Location *	LS
Category	Earthen Levee			GPS Latitude/Longitude	
				Start	End
Item	Encroachments			37.238970 °	37.238970 °
				-120.739688 °	-120.739688 °
DWR ID	DWR_NA0010_05_s _ 2014_8				
Action/Comments					
Pipe					

No Photos

LM Start	6.50	Rating **	M	Issue No.	15
LM End	6.50	Issue Type +	Ma	Location *	WS
Category	Earthen Levee			GPS Latitude/Longitude	
				Start	End
Item	Animal Control			37.230497 °	37.230497 °
				-120.727263 °	-120.727263 °
DWR ID	DWR_NA0010_05_s _ 2012_15				
Action/Comments					
No rodents visible, but rodent burrows visible; need to backfill and compact or grout burrows.					

No Photos

LM Start	6.59	Rating **	C	Issue No.	25
LM End	6.59	Issue Type +	Ma	Location *	CR
Category	Earthen Levee			GPS Latitude/Longitude	
				Start	End
Item	Animal Control			37.229672 °	37.229672 °
				-120.726358 °	-120.726358 °
DWR ID	DWR_NA0010_05_s _ 2013_25				
Action/Comments					
Inspector Comments: Rodent hole on top of levee crown.					

No Photos

**\* Location**

LS : Land Side  
WS : Water Side  
CR : Crown

**\*\* Rating**

A : Acceptable                      N : Not Inspected/Rated  
M : Minimally Acceptable        C : Corrected  
U : Unacceptable                  A/W : Acceptable but Monitor & Maintain

**+ Issue Type**

Ma : Maintenance Deficiency  
Ob : Design & System Obsolescence  
En : Enforcement



**Flood Control Project Maintenance  
Levee Inspections**

**Levee Inspection Report By Mile - Spring 2014**

**Lower San Joaquin Levee District**

Waterway	Bank	Unit Miles	Inspection Start/End	Inspector
Unit No. 05 East Side Bypass	Right	34.75	05/12/2014 05/14/2014	Richard Willoughby

LM Start	8.06	Rating **	M	Issue No.	4
LM End	8.06	Issue Type +	Ma	Location *	LS
Category	Earthen Levee			GPS Latitude/Longitude	
				Start	End
Item	Animal Control			37.213600 °	37.213600 °
				-120.706630 °	-120.706630 °
DWR ID	DWR_NA0010_05_s _ 2012_4				
Action/Comments					
No rodents visible, but rodent burrows visible; need to backfill and compact or grout burrows.					

No Photos

LM Start	8.83	Rating **	M	Issue No.	5
LM End	8.83	Issue Type +	Ma	Location *	WS
Category	Earthen Levee			GPS Latitude/Longitude	
				Start	End
Item	Animal Control			37.205778 °	37.205778 °
				-120.696843 °	-120.696843 °
DWR ID	DWR_NA0010_05_s _ 2012_5				
Action/Comments					
No rodents visible, but rodent burrows visible; need to backfill and compact or grout burrows.					

No Photos

LM Start	11.49	Rating **	C	Issue No.	10
LM End	11.49	Issue Type +	En	Location *	LS
Category	Earthen Levee			GPS Latitude/Longitude	
				Start	End
Item	Trim / Thin Trees			37.186440 °	37.186440 °
				-120.657870 °	-120.657870 °
DWR ID	DWR_NA0010_05_s _ 2012_10				
Action/Comments					
Trim trees to at least five feet above ground level.					

No Photos

<b>* Location</b> LS : Land Side WS : Water Side CR : Crown	<b>** Rating</b> A : Acceptable M : Minimally Acceptable U : Unacceptable N : Not Inspected/Rated C : Corrected A/W : Acceptable but Monitor & Maintain	<b>+ Issue Type</b> Ma : Maintenance Deficiency Ob : Design & System Obsolescence En : Enforcement
--	---	---



**Flood Control Project Maintenance  
Levee Inspections**

**Levee Inspection Report By Mile - Spring 2014**

**Lower San Joaquin Levee District**

Waterway	Bank	Unit Miles	Inspection Start/End	Inspector
Unit No. 05 East Side Bypass	Right	34.75	05/12/2014 05/14/2014	Richard Willoughby

LM Start	12.63	Rating **	C	Issue No.	13
LM End	13.14	Issue Type +	Ma	Location *	WS
Category	Earthen Levee			GPS Latitude/Longitude	
				Start	End
Item	Vegetation			37.175822 °	37.174496 °
				-120.645384 °	-120.636638 °
DWR ID	DWR_NA0010_05_f_2012_13				
Action/Comments					
Remove the wild growth other than native grasses from the levee slopes.					

No Photos

LM Start	12.87	Rating **	M	Issue No.	27
LM End	13.08	Issue Type +	En	Location *	LS
Category	Earthen Levee			GPS Latitude/Longitude	
				Start	End
Item	Encroachments			37.175782 °	37.174977 °
				-120.641112 °	-120.637342 °
DWR ID	DWR_NA0010_05_s_2013_27				
Action/Comments					
Fence					
Inspector Comments: Electric fence on landward slope.					

No Photos

LM Start	24.86	Rating **	C	Issue No.	18
LM End	25.66	Issue Type +	Ma	Location *	WS
Category	Earthen Levee			GPS Latitude/Longitude	
				Start	End
Item	Vegetation			37.054377 °	37.045531 °
				-120.496231 °	-120.486959 °
DWR ID	DWR_NA0010_05_f_2012_18				
Action/Comments					
Remove the wild growth other than native grasses from the levee slopes.					

No Photos

<b>* Location</b> LS : Land Side WS : Water Side CR : Crown	<b>** Rating</b> A : Acceptable M : Minimally Acceptable U : Unacceptable N : Not Inspected/Rated C : Corrected A/W : Acceptable but Monitor & Maintain	<b>+ Issue Type</b> Ma : Maintenance Deficiency Ob : Design & System Obsolescence En : Enforcement
--	---	---

**Flood Control Project Maintenance  
Levee Inspections**

**Levee Inspection Report By Mile - Spring 2014**

**Lower San Joaquin Levee District**

Waterway	Bank	Unit Miles	Inspection Start/End	Inspector
Unit No. 05 East Side Bypass	Right	34.75	05/12/2014 05/14/2014	Richard Willoughby

LM Start	25.49	Rating **	A/W	Issue No.	9
LM End	25.54	Issue Type +	En	Location *	LS
Category	Earthen Levee			GPS Latitude/Longitude	
				Start	End
Item	Animal Control			37.047630 °	37.047042 °
				-120.488530 °	-120.488092 °
DWR ID	DWR_NA0010_05_s _ 2012_9				
Action/Comments					
No rodents visible, but rodent burrows visible; need to backfill and compact or grout burrows.					

No Photos

LM Start	26.88	Rating **	C	Issue No.	19
LM End	27.90	Issue Type +	Ma	Location *	WS
Category	Earthen Levee			GPS Latitude/Longitude	
				Start	End
Item	Vegetation			37.032681 °	37.032574 °
				-120.473372 °	-120.454938 °
DWR ID	DWR_NA0010_05_f _ 2012_19				
Action/Comments					
Remove the wild growth other than native grasses from the levee slopes.					

No Photos

LM Start	26.88	Rating **	C	Issue No.	20
LM End	27.90	Issue Type +	Ma	Location *	CR
Category	Earthen Levee			GPS Latitude/Longitude	
				Start	End
Item	Crown Surface / Depressions / Rutting			37.032681 °	37.032573 °
				-120.473370 °	-120.454938 °
DWR ID	DWR_NA0010_05_f _ 2012_20				
Action/Comments					
Add appropriate material and re-grade the levee to bring the crown above the design elevation.					

No Photos

<b>* Location</b> LS : Land Side WS : Water Side CR : Crown	<b>** Rating</b> A : Acceptable M : Minimally Acceptable U : Unacceptable N : Not Inspected/Rated C : Corrected A/W : Acceptable but Monitor & Maintain	<b>+ Issue Type</b> Ma : Maintenance Deficiency Ob : Design & System Obsolescence En : Enforcement
--	---	---

**Flood Control Project Maintenance  
Levee Inspections**

**Levee Inspection Report By Mile - Spring 2014**

**Lower San Joaquin Levee District**

Waterway	Bank	Unit Miles	Inspection Start/End	Inspector
Unit No. 05 East Side Bypass	Right	34.75	05/12/2014 05/14/2014	Richard Willoughby

LM Start	29.58	Rating **	M	Issue No.	171
LM End	29.70	Issue Type +	Ma	Location *	WS
Category	Earthen Levee			GPS Latitude/Longitude	
				Start	End
Item	Erosion / Bank Caving			37.020272 °	37.018712 °
				-120.433737 °	-120.432682 °
DWR ID	DWR_NA0010_05_s_2014_171				
Action/Comments					
Note and monitor erosion site.					

Photo 1 of 3 : richard\_s\_20140417\_763.jpg



Looking south at erosion caused by livestock on landside slope.

LM Start	<b>29.58</b>	Rating **	M	Issue No.	<b>171 (cont)</b>
LM End	<b>29.70</b>	Issue Type +	Ma	Location *	WS

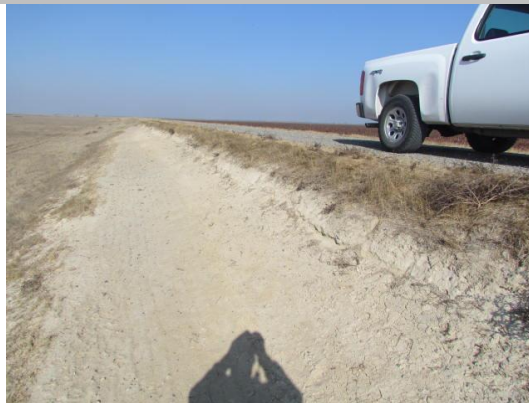
Photo 2 of 3 : richard\_s\_20140417\_764.jpg



Looking east at livestock erosion on landward slope.

LM Start	<b>29.58</b>	Rating **	M	Issue No.	<b>171 (cont)</b>
LM End	<b>29.70</b>	Issue Type +	Ma	Location *	WS

Photo 3 of 3 : richard\_s\_20140417\_765.jpg



Looking south at livestock erosion on landward slope.

**\* Location**

LS : Land Side  
WS : Water Side  
CR : Crown

**\*\* Rating**

A : Acceptable                      N : Not Inspected/Rated  
M : Minimally Acceptable        C : Corrected  
U : Unacceptable                  A/W : Acceptable but Monitor & Maintain

**+ Issue Type**

Ma : Maintenance Deficiency  
Ob : Design & System Obsolescence  
En : Enforcement

**Flood Control Project Maintenance  
Levee Inspections**

**Levee Inspection Report By Mile - Spring 2014**

**Lower San Joaquin Levee District**

Waterway	Bank	Unit Miles	Inspection Start/End	Inspector
Unit No. 05 East Side Bypass	Right	34.75	05/12/2014 05/14/2014	Richard Willoughby

LM Start	29.76	Rating **	A/W	Issue No.	21
LM End	31.66	Issue Type +	Ma	Location *	WS
Category	Earthen Levee			GPS Latitude/Longitude	
				Start	End
Item	Vegetation			37.017953 °	36.996773 °
				-120.432132 °	-120.410739 °
DWR ID	DWR_NA0010_05_f_2012_21				
Action/Comments					
Remove the wild growth other than native grasses from the levee					

No Photos

LM Start	29.80	Rating **	M	Issue No.	16
LM End	29.80	Issue Type +	Ma	Location *	LS
Category	Earthen Levee			GPS Latitude/Longitude	
				Start	End
Item	Animal Control			37.017540 °	37.017540 °
				-120.431955 °	-120.431955 °
DWR ID	DWR_NA0010_05_s_2012_16				
Action/Comments					
No rodents visible, but rodent burrows visible; need to backfill and compact or grout burrows.					

No Photos

LM Start	30.36	Rating **	M	Issue No.	22
LM End	34.51	Issue Type +	Ma	Location *	CR
Category	Earthen Levee			GPS Latitude/Longitude	
				Start	End
Item	Crown Surface / Depressions / Rutting			37.010443 °	36.978581 °
				-120.426820 °	-120.368381 °
DWR ID	DWR_NA0010_05_f_2012_22				
Action/Comments					
Add appropriate material and re-grade the levee to bring the crown above the design elevation.					
Inspector Comments: Control wild growth on levee crown.					

Photo 1 of 1 : richard\_s\_20140520\_825.jpg



Looking at vegetation on levee crown.

**\* Location**

LS : Land Side  
WS : Water Side  
CR : Crown

**\*\* Rating**

A : Acceptable  
M : Minimally Acceptable  
U : Unacceptable  
N : Not Inspected/Rated  
C : Corrected  
A/W : Acceptable but Monitor & Maintain

**+ Issue Type**

Ma : Maintenance Deficiency  
Ob : Design & System Obsolescence  
En : Enforcement

**Flood Control Project Maintenance  
Levee Inspections**

**Levee Inspection Report By Mile - Spring 2014**

**Lower San Joaquin Levee District**

Waterway	Bank	Unit Miles	Inspection Start/End	Inspector
Unit No. 05 East Side Bypass	Right	34.75	05/12/2014 05/14/2014	Richard Willoughby

LM Start	34.50	Rating **	M	Issue No.	11
LM End	34.50	Issue Type +	En	Location *	WS
Category	Earthen Levee			GPS Latitude/Longitude	
				Start	End
Item	Encroachments			36.978555 °	36.978555 °
				-120.368467 °	-120.368467 °
DWR ID	DWR_NA0010_05_s _ 2012_11				
Action/Comments					
Ramp					
Inspector Comments: Unauthorized ramp on waterside slope.					

Photo 1 of 1 : richard\_s\_20140417\_757.jpg



Looking west at unauthorized ramp on waterward slope.

**\* Location**  
LS : Land Side  
WS : Water Side  
CR : Crown

**\*\* Rating**  
A : Acceptable  
M : Minimally Acceptable  
U : Unacceptable  
N : Not Inspected/Rated  
C : Corrected  
A/W : Acceptable but Monitor & Maintain

**+ Issue Type**  
Ma : Maintenance Deficiency  
Ob : Design & System Obsolescence  
En : Enforcement



**Flood Control Project Maintenance  
Levee Inspections**

**Unit Cover Sheet**

**Spring 2014 Levee Inspection Results**

**Lower San Joaquin Levee District**

Waterway			Bank	Unit Miles
Unit No. 06 East Side Bypass			Left	36.38
	Spring (March - May)	Summer (June - August)	(September - November) Fall	Winter (December - February)
Unit Maintenance Rating (Fall Only)				
Date of Inspection	05/13/2014 - 05/15/2014			
DWR Inspector	Richard Willoughby			
Accompanied By				

**Summer & Winter Inspections**

The Local Maintaining Agency (LMA) is responsible for summer and winter inspections. The LMA is required to submit a report regarding summer and winter inspections to the California Department of Water Resources (DWR).

DWR must be informed on the:

- a) completion of the inspection
- b) any changes other than the results of normal maintenance
- c) corrections to deficiencies noted in this report

If additional items are noted, further documentation of those items must also be submitted.

The LMA should submit this information to DWR using the LMA web application tool available at:

<http://cdec.water.ca.gov/lma.html>

If the LMA is unable to submit information on this webpage, please contact DWR for assistance.

*The LMA should submit the information and any associated documentation by September 30 for summer inspections and March 31 for winter inspections.*

**Flood Control Project Maintenance  
Levee Inspections**

**Levee Inspection Report By Mile - Spring 2014**

**Lower San Joaquin Levee District**

Waterway	Bank	Unit Miles	Inspection Start/End	Inspector
Unit No. 06 East Side Bypass	Left	36.38	05/13/2014 05/15/2014	Richard Willoughby

LM Start	0.00	Rating **	M	Issue No.	13
LM End	36.31	Issue Type +	Ma	Location *	CR
Category	Earthen Levee			GPS Latitude/Longitude	
				Start	End
Item	Vegetation			37.275071 °	36.974446 °
				-120.825917 °	-120.364424 °
DWR ID	DWR_NA0010_06_s _ 2014_13				
Action/Comments					
Control annual grass and weeds on the levee slopes and easements. Inspector Comments: Control the vegetation on levee crown.					

No Photos

LM Start	0.00	Rating **	M	Issue No.	11
LM End	36.38	Issue Type +	Ma	Location *	LS
Category	Earthen Levee			GPS Latitude/Longitude	
				Start	End
Item	Vegetation			37.275074 °	36.974046 °
				-120.825918 °	-120.363130 °
DWR ID	DWR_NA0010_06_s _ 2014_11				
Action/Comments					
Control annual grass and weeds on the levee slopes and easements.					

No Photos

LM Start	0.00	Rating **	M	Issue No.	12
LM End	36.38	Issue Type +	Ma	Location *	WS
Category	Earthen Levee			GPS Latitude/Longitude	
				Start	End
Item	Vegetation			37.275074 °	37.275074 °
				-120.825918 °	-120.825918 °
DWR ID	DWR_NA0010_06_s _ 2014_12				
Action/Comments					
Control annual grass and weeds on the levee slopes and easements.					

No Photos

<b>* Location</b> LS : Land Side WS : Water Side CR : Crown	<b>** Rating</b> A : Acceptable M : Minimally Acceptable U : Unacceptable N : Not Inspected/Rated C : Corrected A/W : Acceptable but Monitor & Maintain	<b>+ Issue Type</b> Ma : Maintenance Deficiency Ob : Design & System Obsolescence En : Enforcement
--	---	---

**Flood Control Project Maintenance  
Levee Inspections**

## Levee Inspection Report By Mile - Spring 2014

### Lower San Joaquin Levee District

Waterway	Bank	Unit Miles	Inspection Start/End	Inspector
Unit No. 06 East Side Bypass	Left	36.38	05/13/2014 05/15/2014	Richard Willoughby

LM Start	1.90	Rating **	M	Issue No.	125
LM End	1.90	Issue Type +	Ma	Location *	LS
Category	Earthen Levee			GPS Latitude/Longitude	
				Start	End
Item	Animal Control			37.259527 °	37.259527 °
				-120.803300 °	-120.803300 °
DWR ID	DWR_NA0010_06_s _ 2012_125				
Action/Comments					
Exterminate rodents and backfill and compact or grout burrows.					

No Photos

LM Start	4.67	Rating **	A/W	Issue No.	16
LM End	4.67	Issue Type +	En	Location *	CR
Category	Earthen Levee			GPS Latitude/Longitude	
				Start	End
Item	Animal Control			37.244012 °	37.244012 °
				-120.761372 °	-120.761372 °
DWR ID	DWR_NA0010_06_s _ 2012_16				
Action/Comments					
No rodents visible, but rodent burrows visible; need to backfill and compact or grout burrows. Inspector Comments: Several rodent holes on levee crown.					

No Photos

LM Start	4.72	Rating **	M	Issue No.	10
LM End	4.72	Issue Type +	Ma	Location *	LS
Category	Earthen Levee			GPS Latitude/Longitude	
				Start	End
Item	Animal Control			37.243540 °	37.243540 °
				-120.760782 °	-120.760782 °
DWR ID	DWR_NA0010_06_s _ 2012_10				
Action/Comments					
No rodents visible, but rodent burrows visible; need to backfill and compact or grout burrows. Inspector Comments: Rodent holes next to fence post on landward slope.					

Photo 1 of 2 : richard\_s\_20140417\_774.jpg



Looking at typical rodent holes on landward slope.

**\* Location**

LS : Land Side  
WS : Water Side  
CR : Crown

**\*\* Rating**

A : Acceptable                      N : Not Inspected/Rated  
M : Minimally Acceptable        C : Corrected  
U : Unacceptable                  A/W : Acceptable but Monitor & Maintain

**+ Issue Type**

Ma : Maintenance Deficiency  
Ob : Design & System Obsolescence  
En : Enforcement

**Flood Control Project Maintenance  
Levee Inspections**

**Levee Inspection Report By Mile - Spring 2014**

**Lower San Joaquin Levee District**

Waterway	Bank	Unit Miles	Inspection Start/End	Inspector
Unit No. 06 East Side Bypass	Left	36.38	05/13/2014 05/15/2014	Richard Willoughby

LM Start	4.72	Rating **	M	Issue No.	10 (cont)
LM End	4.72	Issue Type +	Ma	Location *	LS
Category	Earthen Levee			GPS Latitude/Longitude	
				Start	End
Item	Animal Control			37.243540 °	37.243540 °
				-120.760782 °	-120.760782 °
DWR ID	DWR_NA0010_06_s _ 2012_10				
Action/Comments					
No rodents visible, but rodent burrows visible; need to backfill and compact or grout burrows. Inspector Comments: Rodent holes next to fence post on landward slope.					

Photo 2 of 2 : richard\_s\_20140417\_775.jpg



Looking at rodent hole along fence line on landward slope.

LM Start	5.83	Rating **	M	Issue No.	9
LM End	5.83	Issue Type +	Ma	Location *	LS
Category	Earthen Levee			GPS Latitude/Longitude	
				Start	End
Item	Slope Stability			37.238355 °	37.238355 °
				-120.742677 °	-120.742677 °
DWR ID	DWR_NA0010_06_s _ 2012_9				
Action/Comments					
Repair the levee slope damaged by vehicle traffic and prevent access where possible.					
Inspector Comments: Levee damage caused by motorcylce traffic.					

Photo 1 of 1 : richard\_s\_20140520\_836.jpg



Looking at slope damage cause by vehicle traffic on landward slope.

LM Start	6.12	Rating **	M	Issue No.	22
LM End	6.12	Issue Type +	Ma	Location *	LS
Category	Earthen Levee			GPS Latitude/Longitude	
				Start	End
Item	Animal Control			37.235777 °	37.235777 °
				-120.738598 °	-120.738598 °
DWR ID	DWR_NA0010_06_s _ 2012_22				
Action/Comments					
No rodents visible, but rodent burrows visible; need to backfill and compact or grout burrows.					

No Photos

<b>* Location</b> LS : Land Side WS : Water Side CR : Crown	<b>** Rating</b> A : Acceptable M : Minimally Acceptable U : Unacceptable N : Not Inspected/Rated C : Corrected A/W : Acceptable but Monitor & Maintain	<b>+ Issue Type</b> Ma : Maintenance Deficiency Ob : Design & System Obsolescence En : Enforcement
--	---	---

**Flood Control Project Maintenance  
Levee Inspections**

**Levee Inspection Report By Mile - Spring 2014**

**Lower San Joaquin Levee District**

Waterway	Bank	Unit Miles	Inspection Start/End	Inspector
Unit No. 06 East Side Bypass	Left	36.38	05/13/2014 05/15/2014	Richard Willoughby

LM Start	6.15	Rating **	M	Issue No.	21
LM End	6.15	Issue Type +	Ma	Location *	WS
Category	Earthen Levee			GPS Latitude/Longitude	
				Start	End
Item	Animal Control			37.235623 °	37.235623 °
				-120.738017 °	-120.738017 °
DWR ID	DWR_NA0010_06_s _ 2012_21				
Action/Comments					
No rodents visible, but rodent burrows visible; need to backfill and compact or grout burrows.					

No Photos

LM Start	7.17	Rating **	M	Issue No.	7
LM End	7.17	Issue Type +	Ma	Location *	LS
Category	Earthen Levee			GPS Latitude/Longitude	
				Start	End
Item	Animal Control			37.226675 °	37.226675 °
				-120.724498 °	-120.724498 °
DWR ID	DWR_NA0010_06_s _ 2012_7				
Action/Comments					
Exterminate rodents and backfill and compact or grout burrows.					

No Photos

LM Start	9.81	Rating **	A/W	Issue No.	6
LM End	11.03	Issue Type +	Ma	Location *	CR
Category	Earthen Levee			GPS Latitude/Longitude	
				Start	End
Item	Crown Surface / Depressions / Rutting			37.200697 °	37.188106 °
				-120.692927 °	-120.677684 °
DWR ID	DWR_NA0010_06_s _ 2012_6				
Action/Comments					
Repair depressions or ruts in the crown or slope. Inspector Comments: Levee crown should be regraded due to excessive rutting.					

No Photos

<b>* Location</b> LS : Land Side WS : Water Side CR : Crown	<b>** Rating</b> A : Acceptable M : Minimally Acceptable U : Unacceptable N : Not Inspected/Rated C : Corrected A/W : Acceptable but Monitor & Maintain	<b>+ Issue Type</b> Ma : Maintenance Deficiency Ob : Design & System Obsolescence En : Enforcement
--	---	---



**Flood Control Project Maintenance  
Levee Inspections**

**Levee Inspection Report By Mile - Spring 2014**

**Lower San Joaquin Levee District**

Waterway	Bank	Unit Miles	Inspection Start/End	Inspector
Unit No. 06 East Side Bypass	Left	36.38	05/13/2014 05/15/2014	Richard Willoughby

LM Start	11.57	Rating **	M	Issue No.	14
LM End	11.57	Issue Type +	Ma	Location *	WS
Category	Earthen Levee			GPS Latitude/Longitude	
				Start	End
Item	Trim / Thin Trees			37.186189 °	37.186189 °
				-120.668476 °	-120.668476 °
DWR ID	DWR_NA0010_06_s _ 2014_14				
Action/Comments					
Trim trees to at least five feet above ground level. Inspector Comments: Tree is located along Sandy Mush Rd. on waterward slope.					

Photo 1 of 1 : richard\_s\_20140520\_837.jpg



Looking east at tree on waterward slope.

LM Start	13.56	Rating **	C	Issue No.	15
LM End	14.45	Issue Type +	En	Location *	WS
Category	Earthen Levee			GPS Latitude/Longitude	
				Start	End
Item	Encroachments			37.171643 °	37.167813 °
				-120.650367 °	-120.636337 °
DWR ID	DWR_NA0010_06_s _ 2013_15				
Action/Comments					
Fence					
Inspector Comments: Electric fence on waterward shoulder.					

No Photos

LM Start	14.91	Rating **	C	Issue No.	4
LM End	17.23	Issue Type +	Ma	Location *	LS
Category	Earthen Levee			GPS Latitude/Longitude	
				Start	End
Item	Crown Surface / Depressions / Rutting			37.163025 °	37.141161 °
				-120.630648 °	-120.599867 °
DWR ID	DWR_NA0010_06_s _ 2012_4				
Action/Comments					
Add appropriate material and re-grade the levee to bring the crown					

No Photos

\* Location  
LS : Land Side  
WS : Water Side  
CR : Crown

\*\* Rating  
A : Acceptable  
M : Minimally Acceptable  
U : Unacceptable  
N : Not Inspected/Rated  
C : Corrected  
A/W : Acceptable but Monitor & Maintain

+ Issue Type  
Ma : Maintenance Deficiency  
Ob : Design & System Obsolescence  
En : Enforcement

**Flood Control Project Maintenance  
Levee Inspections**

**Levee Inspection Report By Mile - Spring 2014**

**Lower San Joaquin Levee District**

Waterway	Bank	Unit Miles	Inspection Start/End	Inspector
Unit No. 06 East Side Bypass	Left	36.38	05/13/2014 05/15/2014	Richard Willoughby

LM Start	15.55	Rating **	M	Issue No.	124
LM End	15.70	Issue Type +	Ma	Location *	LS
Category	Earthen Levee			GPS Latitude/Longitude	
				Start	End
Item	Animal Control			37.158920 °	37.157217 °
				-120.620232 °	-120.618915 °
DWR ID	DWR_NA0010_06_s _ 2012_124				
Action/Comments					
Exterminate rodents and backfill and compact or grout burrows.					

No Photos

LM Start	22.90	Rating **	M	Issue No.	8
LM End	22.96	Issue Type +	Ma	Location *	LS
Category	Earthen Levee			GPS Latitude/Longitude	
				Start	End
Item	Animal Control			37.088663 °	37.087968 °
				-120.538193 °	-120.537485 °
DWR ID	DWR_NA0010_06_s _ 2012_8				
Action/Comments					
No rodents visible, but rodent burrows visible; need to backfill and compact or grout burrows.					

No Photos

LM Start	24.50	Rating **	M	Issue No.	5
LM End	24.93	Issue Type +	Ma	Location *	LS
Category	Earthen Levee			GPS Latitude/Longitude	
				Start	End
Item	Slope Stability			37.071198 °	°
				-120.519220 °	°
DWR ID	DWR_NA0010_06_s _ 2012_5				
Action/Comments					
Repair the levee slope damaged by foot traffic and prevent access where possible.					
Inspector Comments: Landside erosion caused by livestock.					

Photo 1 of 2 : richard\_s\_20140417\_772.jpg



Looking north at livestock erosion on landside slope.

**\* Location**

LS : Land Side  
WS : Water Side  
CR : Crown

**\*\* Rating**

A : Acceptable                      N : Not Inspected/Rated  
M : Minimally Acceptable        C : Corrected  
U : Unacceptable                  A/W : Acceptable but Monitor & Maintain

**+ Issue Type**

Ma : Maintenance Deficiency  
Ob : Design & System Obsolescence  
En : Enforcement

**Flood Control Project Maintenance  
Levee Inspections**

**Levee Inspection Report By Mile - Spring 2014**

**Lower San Joaquin Levee District**

Waterway	Bank	Unit Miles	Inspection Start/End	Inspector
Unit No. 06 East Side Bypass	Left	36.38	05/13/2014 05/15/2014	Richard Willoughby

LM Start	24.50	Rating **	M	Issue No.	5 (cont)	
LM End	24.93	Issue Type +	Ma	Location *	LS	
Category	Earthen Levee			GPS Latitude/Longitude		
				Start		End
Item	Slope Stability			37.071198 °		°
				-120.519220 °		°
DWR ID	DWR_NA0010_06_s _ 2012_5					
Action/Comments						
Repair the levee slope damaged by foot traffic and prevent access where possible.						
Inspector Comments: Landside erosion caused by livestock.						

Photo 2 of 2 : richard\_s\_20140417\_773.jpg



Looking north at livestock erosion on landward slope.

LM Start	27.56	Rating **	M	Issue No.	3
LM End	27.87	Issue Type +	Ma	Location *	LS
Category	Earthen Levee			GPS Latitude/Longitude	
				Start	End
Item	Slope Stability			37.036955 °	37.032887 °
				-120.484395 °	-120.481225 °
DWR ID	DWR_NA0010_06_s _ 2012_3				
Action/Comments					
Repair the levee slope damaged by foot traffic and prevent access where possible.					
Inspector Comments: Landside erosion caused by livestock.					

Photo 1 of 4 : richard\_s\_20140417\_768.jpg



Looking north at livestock erosion on landside shoulder and slope.

LM Start	<b>27.56</b>	Rating **	M	Issue No.	<b>3 (cont)</b>
LM End	<b>27.87</b>	Issue Type +	Ma	Location *	LS

Photo 2 of 4 : richard\_s\_20140417\_769.jpg



Looking south at livestock erosion on landside shoulder and slope.

\* Location  
LS : Land Side  
WS : Water Side  
CR : Crown

\*\* Rating  
A : Acceptable  
M : Minimally Acceptable  
U : Unacceptable  
N : Not Inspected/Rated  
C : Corrected  
A/W : Acceptable but Monitor & Maintain

+ Issue Type  
Ma : Maintenance Deficiency  
Ob : Design & System Obsolescence  
En : Enforcement

**Flood Control Project Maintenance  
Levee Inspections**

**Levee Inspection Report By Mile - Spring 2014**

**Lower San Joaquin Levee District**

Waterway	Bank	Unit Miles	Inspection Start/End	Inspector
Unit No. 06 East Side Bypass	Left	36.38	05/13/2014 05/15/2014	Richard Willoughby

LM Start	27.56	Rating **	M	Issue No.	3 (cont)	
LM End	27.87	Issue Type +	Ma	Location *	LS	
Category	Earthen Levee			GPS Latitude/Longitude		
				Start		End
Item	Slope Stability			37.036955 °	37.032887 °	
				-120.484395 °	-120.481225 °	
DWR ID	DWR_NA0010_06_s _ 2012_3					
Action/Comments						
Repair the levee slope damaged by foot traffic and prevent access						

Photo 3 of 4 : richard\_s\_20140417\_770.jpg



Looking north at livestock erosion on landward slope. (Spring 2013)

Photo 4 of 4 : richard\_s\_20140417\_771.jpg



Looking south at livestock erosion on landward slope. (Fall 2013)

LM Start	28.32	Rating **	M	Issue No.	19
LM End	28.62	Issue Type +	Ma	Location *	LS
Category	Earthen Levee			GPS Latitude/Longitude	
				Start	End
Item	Animal Control			37.029965 °	37.030102 °
				-120.474483 °	-120.469122 °
DWR ID	DWR_NA0010_06_s _ 2012_19				
Action/Comments					
No rodents visible, but rodent burrows visible; need to backfill and					

No Photos

**\* Location**  
LS : Land Side  
WS : Water Side  
CR : Crown

**\*\* Rating**  
A : Acceptable  
M : Minimally Acceptable  
U : Unacceptable  
N : Not Inspected/Rated  
C : Corrected  
A/W : Acceptable but Monitor & Maintain

**+ Issue Type**  
Ma : Maintenance Deficiency  
Ob : Design & System Obsolescence  
En : Enforcement



**Flood Control Project Maintenance  
Levee Inspections**

**Levee Inspection Report By Mile - Spring 2014**

**Lower San Joaquin Levee District**

Waterway	Bank	Unit Miles	Inspection Start/End	Inspector
Unit No. 06 East Side Bypass	Left	36.38	05/13/2014 05/15/2014	Richard Willoughby

LM Start	31.01	Rating **	A/W	Issue No.	2
LM End	31.01	Issue Type +	Ma	Location *	LS
Category	Earthen Levee			GPS Latitude/Longitude	
				Start	End
Item	Animal Control			37.017955 °	37.017955 °
				-120.435017 °	-120.435017 °
DWR ID	DWR_NA0010_06_s _ 2012_2				
Action/Comments					
Exterminate rodents and backfill and compact or grout burrows.					

Photo 1 of 2 : richard\_s\_20140417\_766.jpg



Looking at typical rodent hole on landside slope.

LM Start	<b>31.01</b>	Rating **	A/W	Issue No.	<b>2 (cont)</b>
LM End	<b>31.01</b>	Issue Type +	Ma	Location *	LS

Photo 2 of 2 : richard\_s\_20140417\_767.jpg



Looking west at rodent holes on landside slope and toe near fence line.

LM Start	32.99	Rating **	M	Issue No.	123
LM End	32.99	Issue Type +	En	Location *	WS
Category	Earthen Levee			GPS Latitude/Longitude	
				Start	End
Item	Encroachments			36.995667 °	36.995667 °
				-120.412910 °	-120.412910 °
DWR ID	DWR_NA0010_06_s _ 2012_123				
Action/Comments					
Fence					

Photo 1 of 1 : richard\_s\_20140417\_779.jpg



Looking northeast at new metal fence around slant pump on waterside slope.

**\* Location**

LS : Land Side  
WS : Water Side  
CR : Crown

**\*\* Rating**

A : Acceptable  
M : Minimally Acceptable  
U : Unacceptable  
N : Not Inspected/Rated  
C : Corrected  
A/W : Acceptable but Monitor & Maintain

**+ Issue Type**

Ma : Maintenance Deficiency  
Ob : Design & System Obsolescence  
En : Enforcement



**Flood Control Project Maintenance  
Levee Inspections**

**Levee Inspection Report By Mile - Spring 2014**

**Lower San Joaquin Levee District**

Waterway	Bank	Unit Miles	Inspection Start/End	Inspector
Unit No. 06 East Side Bypass	Left	36.38	05/13/2014 05/15/2014	Richard Willoughby

LM Start	35.27	Rating **	A/W	Issue No.	1
LM End	36.16	Issue Type +	Ma	Location *	LS
Category	Earthen Levee			GPS Latitude/Longitude	
				Start	End
Item	Vegetation			36.974650 °	36.974430 °
				-120.383022 °	-120.367090 °
DWR ID	DWR_NA0010_06_s _ 2012_1				
Action/Comments					
Remove the wild growth other than native grasses from the levee slopes.					

No Photos

**\* Location**  
LS : Land Side  
WS : Water Side  
CR : Crown

**\*\* Rating**  
A : Acceptable  
M : Minimally Acceptable  
U : Unacceptable  
N : Not Inspected/Rated  
C : Corrected  
A/W : Acceptable but Monitor & Maintain

**+ Issue Type**  
Ma : Maintenance Deficiency  
Ob : Design & System Obsolescence  
En : Enforcement

**Flood Control Project Maintenance  
Levee Inspections**

**Unit Cover Sheet**

**Spring 2014 Levee Inspection Results**

**Lower San Joaquin Levee District**

Waterway			Bank	Unit Miles
Unit No. 07 Bear Creek Bypass			Right	3.62
	Spring (March - May)	Summer (June - August)	(September - November) Fall	Winter (December - February)
Unit Maintenance Rating (Fall Only)				
Date of Inspection	05/12/2014 - 05/12/2014			
DWR Inspector	Richard Willoughby			
Accompanied By				

**Summer & Winter Inspections**

The Local Maintaining Agency (LMA) is responsible for summer and winter inspections. The LMA is required to submit a report regarding summer and winter inspections to the California Department of Water Resources (DWR).

DWR must be informed on the:

- a) completion of the inspection
- b) any changes other than the results of normal maintenance
- c) corrections to deficiencies noted in this report

If additional items are noted, further documentation of those items must also be submitted.

The LMA should submit this information to DWR using the LMA web application tool available at:

<http://cdec.water.ca.gov/lma.html>

If the LMA is unable to submit information on this webpage, please contact DWR for assistance.

*The LMA should submit the information and any associated documentation by September 30 for summer inspections and March 31 for winter inspections.*

**Flood Control Project Maintenance  
Levee Inspections**

**Levee Inspection Report By Mile - Spring 2014**

**Lower San Joaquin Levee District**

Waterway	Bank	Unit Miles	Inspection Start/End	Inspector
Unit No. 07 Bear Creek Bypass	Right	3.62	05/12/2014 05/12/2014	Richard Willoughby

LM Start	0.11	Rating **	A/W	Issue No.	30
LM End	2.57	Issue Type +	Ma	Location *	CR
Category	Earthen Levee			GPS Latitude/Longitude	
				Start	End
Item	Crown Surface / Depressions / Rutting			37.256091 °	37.255397 °
				-120.770417 °	-120.735555 °
DWR ID	DWR_NA0010_07_s _ 2012_30				
Action/Comments					
Add appropriate material and re-grade the levee to bring the crown above the design elevation.					

Photo 1 of 2 : richard\_s\_20140417\_786.jpg



Looking east at vegetation on levee crown.

LM Start	<b>0.11</b>	Rating **	A/W	Issue No.	<b>30 (cont)</b>
LM End	<b>2.57</b>	Issue Type +	Ma	Location *	CR

Photo 2 of 2 : richard\_s\_20140417\_787.jpg



Looking east at un-regraded levee crown. (Fall 2012)

LM Start	0.19	Rating **	M	Issue No.	2
LM End	3.61	Issue Type +	Ma	Location *	LS
Category	Earthen Levee			GPS Latitude/Longitude	
				Start	End
Item	Vegetation			37.256560 °	37.254801 °
				-120.769136 °	-120.719830 °
DWR ID	DWR_NA0010_07_s _ 2014_2				
Action/Comments					
Control annual grass and weeds on the levee slopes and easements.					

No Photos

\* Location  
LS : Land Side  
WS : Water Side  
CR : Crown

\*\* Rating  
A : Acceptable  
M : Minimally Acceptable  
U : Unacceptable  
N : Not Inspected/Rated  
C : Corrected  
A/W : Acceptable but Monitor & Maintain

+ Issue Type  
Ma : Maintenance Deficiency  
Ob : Design & System Obsolescence  
En : Enforcement

**Flood Control Project Maintenance  
Levee Inspections**

## Levee Inspection Report By Mile - Spring 2014

### Lower San Joaquin Levee District

Waterway	Bank	Unit Miles	Inspection Start/End	Inspector
Unit No. 07 Bear Creek Bypass	Right	3.62	05/12/2014 05/12/2014	Richard Willoughby

LM Start	0.19	Rating **	M	Issue No.	4
LM End	3.61	Issue Type +	Ma	Location *	WS
Category	Earthen Levee			GPS Latitude/Longitude	
				Start	End
Item	Vegetation			37.256560 °	37.254801 °
				-120.769136 °	-120.719829 °
DWR ID	DWR_NA0010_07_s _ 2014_4				
Action/Comments					
Control annual grass and weeds on the levee slopes and easements.					

No Photos

LM Start	0.50	Rating **	A/W	Issue No.	29
LM End	0.50	Issue Type +	Ma	Location *	LS
Category	Earthen Levee			GPS Latitude/Longitude	
				Start	End
Item	Animal Control			37.258722 °	37.258722 °
				-120.764867 °	-120.764867 °
DWR ID	DWR_NA0010_07_s _ 2012_29				
Action/Comments					
No rodents visible, but rodent burrows visible; need to backfill and compact or grout burrows.					

No Photos

LM Start	1.22	Rating **	M	Issue No.	1
LM End	1.22	Issue Type +	Ma	Location *	LS
Category	Earthen Levee			GPS Latitude/Longitude	
				Start	End
Item	Animal Control			37.264387 °	37.264387 °
				-120.755805 °	-120.755805 °
DWR ID	DWR_NA0010_07_f _ 2012_1				
Action/Comments					
Exterminate rodents and backfill and compact or grout burrows.					

Photo 1 of 2 : richard\_s\_20140417\_781.jpg



Looking north at several rodent holes on landward slope.

**\* Location**

LS : Land Side  
WS : Water Side  
CR : Crown

**\*\* Rating**

A : Acceptable                      N : Not Inspected/Rated  
M : Minimally Acceptable        C : Corrected  
U : Unacceptable                  A/W : Acceptable but Monitor & Maintain

**+ Issue Type**

Ma : Maintenance Deficiency  
Ob : Design & System Obsolescence  
En : Enforcement

**Flood Control Project Maintenance  
Levee Inspections**

**Levee Inspection Report By Mile - Spring 2014**

**Lower San Joaquin Levee District**

Waterway	Bank	Unit Miles	Inspection Start/End	Inspector
Unit No. 07 Bear Creek Bypass	Right	3.62	05/12/2014 05/12/2014	Richard Willoughby

LM Start	1.22	Rating **	M	Issue No.	1 (cont)	
LM End	1.22	Issue Type +	Ma	Location *	LS	
Category	Earthen Levee			GPS Latitude/Longitude		
				Start		End
Item	Animal Control			37.264387 °		37.264387 °
				-120.755805 °		-120.755805 °
DWR ID	DWR_NA0010_07_f_2012_1					
Action/Comments						
Exterminate rodents and backfill and compact or grout burrows.						

Photo 2 of 2 : richard\_s\_20140417\_780.jpg



Looking at east at active rodent holes on landside berm.

LM Start	1.51	Rating **	M	Issue No.	3
LM End	1.51	Issue Type +	Ma	Location *	LS
Category	Earthen Levee			GPS Latitude/Longitude	
				Start	End
Item	Animal Control			37.263930 °	37.263930 °
				-120.750680 °	-120.750680 °
DWR ID	DWR_NA0010_07_s_2012_3				
Action/Comments					
Repair the levee slope damaged by livestock and prevent large animal access.					
Inspector Comments: Erosion on landward slope has been repaired by district. Landward toe erosion not repaired.					

Photo 1 of 4 : richard\_s\_20140417\_782.jpg



Looking northeast at landside slope damaged by livestock.

\* Location  
LS : Land Side  
WS : Water Side  
CR : Crown

\*\* Rating  
A : Acceptable  
M : Minimally Acceptable  
U : Unacceptable  
N : Not Inspected/Rated  
C : Corrected  
A/W : Acceptable but Monitor & Maintain

+ Issue Type  
Ma : Maintenance Deficiency  
Ob : Design & System Obsolescence  
En : Enforcement



**Flood Control Project Maintenance  
Levee Inspections**

## Levee Inspection Report By Mile - Spring 2014

### Lower San Joaquin Levee District

Waterway	Bank	Unit Miles	Inspection Start/End	Inspector
Unit No. 07 Bear Creek Bypass	Right	3.62	05/12/2014 05/12/2014	Richard Willoughby

LM Start	1.51	Rating **	M	Issue No.	3 (cont)	
LM End	1.51	Issue Type +	Ma	Location *	LS	
Category	Earthen Levee			GPS Latitude/Longitude		
				Start	End	
Item	Animal Control			37.263930 °	37.263930 °	
				-120.750680 °	-120.750680 °	
DWR ID	DWR_NA0010_07_s _ 2012_3					
Action/Comments						
Repair the levee slope damaged by livestock and prevent large animal access.						
Inspector Comments: Erosion on landward slope has been repaired by district. Landward toe erosion not repaired.						

Photo 2 of 4 : richard\_s\_20140417\_783.jpg



Looking southeast at landside slope and toe damage by livestock.

LM Start	<b>1.51</b>	Rating **	M	Issue No.	<b>3 (cont)</b>
LM End	<b>1.51</b>	Issue Type +	Ma	Location *	LS

Photo 3 of 4 : richard\_s\_20140417\_784.jpg



Looking southeast at damage on landward toe.(Spring 2013)

LM Start	<b>1.51</b>	Rating **	M	Issue No.	<b>3 (cont)</b>
LM End	<b>1.51</b>	Issue Type +	Ma	Location *	LS

Photo 4 of 4 : richard\_s\_20140417\_785.jpg



Looking south at landward slope.

**\* Location**  
LS : Land Side  
WS : Water Side  
CR : Crown

**\*\* Rating**  
A : Acceptable  
M : Minimally Acceptable  
U : Unacceptable  
N : Not Inspected/Rated  
C : Corrected  
A/W : Acceptable but Monitor & Maintain

**+ Issue Type**  
Ma : Maintenance Deficiency  
Ob : Design & System Obsolescence  
En : Enforcement

**Flood Control Project Maintenance  
Levee Inspections**

## Levee Inspection Report By Mile - Spring 2014

### Lower San Joaquin Levee District

Waterway	Bank	Unit Miles	Inspection Start/End	Inspector
Unit No. 07 Bear Creek Bypass	Right	3.62	05/12/2014 05/12/2014	Richard Willoughby

LM Start	1.52	Rating **	M	Issue No.	6
LM End	1.52	Issue Type +	Ma	Location *	LS
Category	Earthen Levee			GPS Latitude/Longitude	
				Start	End
Item	Animal Control			37.263885 °	37.263885 °
				-120.750527 °	-120.750527 °
DWR ID	DWR_NA0010_07_s _ 2014_6				
Action/Comments					
Exterminate rodents and backfill and compact or grout burrows.					

No Photos

LM Start	1.71	Rating **	M	Issue No.	5
LM End	1.72	Issue Type +	Ma	Location *	LS
Category	Earthen Levee			GPS Latitude/Longitude	
				Start	End
Item	Animal Control			37.262570 °	37.262467 °
				-120.747453 °	-120.747180 °
DWR ID	DWR_NA0010_07_s _ 2013_5				
Action/Comments					
Exterminate rodents and backfill and compact or grout burrows.					

No Photos

LM Start	1.86	Rating **	A/W	Issue No.	31
LM End	1.86	Issue Type +	Ma	Location *	CR
Category	Earthen Levee			GPS Latitude/Longitude	
				Start	End
Item	Animal Control			37.261670 °	37.261670 °
				-120.745010 °	-120.745010 °
DWR ID	DWR_NA0010_07_s _ 2012_31				
Action/Comments					
No rodents visible, but rodent burrows visible; need to backfill and compact or grout burrows. Inspector Comments: Large rodent holes on crown of levee and landside shoulder of levee.					

Photo 1 of 3 : richard\_s\_20140417\_788.jpg



Looking at rodent hole on levee crown.

**\* Location**

LS : Land Side  
WS : Water Side  
CR : Crown

**\*\* Rating**

A : Acceptable                      N : Not Inspected/Rated  
M : Minimally Acceptable        C : Corrected  
U : Unacceptable                  A/W : Acceptable but Monitor & Maintain

**+ Issue Type**

Ma : Maintenance Deficiency  
Ob : Design & System Obsolescence  
En : Enforcement

**Flood Control Project Maintenance  
Levee Inspections**

**Levee Inspection Report By Mile - Spring 2014**

**Lower San Joaquin Levee District**

Waterway	Bank	Unit Miles	Inspection Start/End	Inspector
Unit No. 07 Bear Creek Bypass	Right	3.62	05/12/2014 05/12/2014	Richard Willoughby

LM Start	1.86	Rating **	A/W	Issue No.	31 (cont)	
LM End	1.86	Issue Type +	Ma	Location *	CR	
Category	Earthen Levee			GPS Latitude/Longitude		
				Start	End	
Item	Animal Control			37.261670 °	37.261670 °	
				-120.745010 °	-120.745010 °	
DWR ID	DWR_NA0010_07_s _ 2012_31					
Action/Comments						
No rodents visible, but rodent burrows visible; need to backfill and compact or grout burrows. Inspector Comments: Large rodent holes on crown of levee and landside shoulder of levee.						

Photo 2 of 3 : richard\_s\_20140417\_789.jpg



Looking at rodent hole on levee crown.

LM Start	<b>1.86</b>	Rating **	A/W	Issue No.	<b>31 (cont)</b>
LM End	<b>1.86</b>	Issue Type +	Ma	Location *	CR

Photo 3 of 3 : richard\_s\_20140417\_790.jpg



Looking north a repaired rodent hole on levee crown.

\* Location  
LS : Land Side  
WS : Water Side  
CR : Crown

\*\* Rating  
A : Acceptable  
M : Minimally Acceptable  
U : Unacceptable  
N : Not Inspected/Rated  
C : Corrected  
A/W : Acceptable but Monitor & Maintain

+ Issue Type  
Ma : Maintenance Deficiency  
Ob : Design & System Obsolescence  
En : Enforcement



**Flood Control Project Maintenance  
Levee Inspections**

**Levee Inspection Report By Mile - Spring 2014**

**Lower San Joaquin Levee District**

Waterway	Bank	Unit Miles	Inspection Start/End	Inspector
Unit No. 07 Bear Creek Bypass	Right	3.62	05/12/2014 05/12/2014	Richard Willoughby

LM Start	2.48	Rating **	M	Issue No.	7
LM End	2.48	Issue Type +	En	Location *	LS
Category	Earthen Levee			GPS Latitude/Longitude	
				Start	End
Item	Encroachments			37.255830 °	37.255830 °
				-120.737255 °	-120.737255 °
DWR ID	DWR_NA0010_07_s _ 2014_7				
Action/Comments					
Pipe					

Photo 1 of 4 : richard\_s\_20140519\_805.jpg



Looking east at installation of 18" pvc pipe into 24 inch drain pipe on landside slope.

LM Start	<b>2.48</b>	Rating **	M	Issue No.	<b>7 (cont)</b>
LM End	<b>2.48</b>	Issue Type +	En	Location *	LS

Photo 2 of 4 : richard\_s\_20140519\_806.jpg



Looking southeast at 18" pvc pipe.

LM Start	<b>2.48</b>	Rating **	M	Issue No.	<b>7 (cont)</b>
LM End	<b>2.48</b>	Issue Type +	En	Location *	LS

Photo 3 of 4 : richard\_s\_20140519\_807.jpg



Looking north at 18" pipe.

**\* Location**

LS : Land Side  
WS : Water Side  
CR : Crown

**\*\* Rating**

A : Acceptable  
M : Minimally Acceptable  
U : Unacceptable  
N : Not Inspected/Rated  
C : Corrected  
A/W : Acceptable but Monitor & Maintain

**+ Issue Type**

Ma : Maintenance Deficiency  
Ob : Design & System Obsolescence  
En : Enforcement

**Flood Control Project Maintenance  
Levee Inspections**

**Levee Inspection Report By Mile - Spring 2014**

**Lower San Joaquin Levee District**

Waterway	Bank	Unit Miles	Inspection Start/End	Inspector
Unit No. 07 Bear Creek Bypass	Right	3.62	05/12/2014 05/12/2014	Richard Willoughby

LM Start	2.48	Rating **	M	Issue No.	7 (cont)	
LM End	2.48	Issue Type +	En	Location *	LS	
Category	Earthen Levee			GPS Latitude/Longitude		
				Start		End
Item	Encroachments			37.255830 °	37.255830 °	
				-120.737255 °	-120.737255 °	
DWR ID	DWR_NA0010_07_s _ 2014_7					
Action/Comments						
Pipe						

Photo 4 of 4 : richard\_s\_20140519\_808.jpg



Looking south at 18" pipe.

LM Start	2.62	Rating **	M	Issue No.	8
LM End	2.62	Issue Type +	En	Location *	LS
Category	Earthen Levee			GPS Latitude/Longitude	
				Start	End
Item	Encroachments			37.254896 °	37.254896 °
				-120.734926 °	-120.734926 °
DWR ID	DWR_NA0010_07_s _ 2014_8				
Action/Comments					
Pipe					
Inspector Comments: Same landowner at LM 2.48 is connecting eighteen inch to drain pipe to montior water draining into channel.					

No Photos

\* Location  
LS : Land Side  
WS : Water Side  
CR : Crown

\*\* Rating  
A : Acceptable  
M : Minimally Acceptable  
U : Unacceptable  
N : Not Inspected/Rated  
C : Corrected  
A/W : Acceptable but Monitor & Maintain

+ Issue Type  
Ma : Maintenance Deficiency  
Ob : Design & System Obsolescence  
En : Enforcement



**Flood Control Project Maintenance  
Levee Inspections**

**Unit Cover Sheet**

**Spring 2014 Levee Inspection Results**

**Lower San Joaquin Levee District**

Waterway			Bank	Unit Miles
Unit No. 08 Bear Creek Bypass			Left	3.63
	Spring (March - May)	Summer (June - August)	(September - November) Fall	Winter (December - February)
Unit Maintenance Rating (Fall Only)				
Date of Inspection	05/13/2014 - 05/13/2014			
DWR Inspector	Richard Willoughby			
Accompanied By				

**Summer & Winter Inspections**

The Local Maintaining Agency (LMA) is responsible for summer and winter inspections. The LMA is required to submit a report regarding summer and winter inspections to the California Department of Water Resources (DWR).

DWR must be informed on the:

- a) completion of the inspection
- b) any changes other than the results of normal maintenance
- c) corrections to deficiencies noted in this report

If additional items are noted, further documentation of those items must also be submitted.

The LMA should submit this information to DWR using the LMA web application tool available at:

<http://cdec.water.ca.gov/lma.html>

If the LMA is unable to submit information on this webpage, please contact DWR for assistance.

*The LMA should submit the information and any associated documentation by September 30 for summer inspections and March 31 for winter inspections.*

**Flood Control Project Maintenance  
Levee Inspections**

**Levee Inspection Report By Mile - Spring 2014**

**Lower San Joaquin Levee District**

Waterway	Bank	Unit Miles	Inspection Start/End	Inspector
Unit No. 08 Bear Creek Bypass	Left	3.63	05/13/2014 05/13/2014	Richard Willoughby

LM Start	0.00	Rating **	M	Issue No.	28
LM End	2.22	Issue Type +	Ma	Location *	CR
Category	Earthen Levee			GPS Latitude/Longitude	
				Start	End
Item	Crown Surface / Depressions / Rutting			37.253178 °	37.256802 °
				-120.768513 °	-120.740452 °
DWR ID	DWR_NA0010_08_s _ 2012_28				
Action/Comments					
Add appropriate material and re-grade the levee to bring the crown above the design elevation.					

Photo 1 of 4 : richard\_s\_20140417\_795.jpg



Looking west at vegetation on levee crown.

Photo 2 of 4 : richard\_s\_20140417\_796.jpg



Looking east at vegetation on levee crown.

Photo 3 of 4 : richard\_s\_20140417\_797.jpg



Looking east at un-regraded levee crown. (Fall 2012)

LM Start	<b>0.00</b>	Rating **	M	Issue No.	<b>28 (cont)</b>
LM End	<b>2.22</b>	Issue Type +	Ma	Location *	CR

LM Start	<b>0.00</b>	Rating **	M	Issue No.	<b>28 (cont)</b>
LM End	<b>2.22</b>	Issue Type +	Ma	Location *	CR

**\* Location**

LS : Land Side  
WS : Water Side  
CR : Crown

**\*\* Rating**

A : Acceptable                      N : Not Inspected/Rated  
M : Minimally Acceptable        C : Corrected  
U : Unacceptable                  A/W : Acceptable but Monitor & Maintain

**+ Issue Type**

Ma : Maintenance Deficiency  
Ob : Design & System Obsolescence  
En : Enforcement

**Flood Control Project Maintenance  
Levee Inspections**

**Levee Inspection Report By Mile - Spring 2014**

**Lower San Joaquin Levee District**

Waterway	Bank	Unit Miles	Inspection Start/End	Inspector
Unit No. 08 Bear Creek Bypass	Left	3.63	05/13/2014 05/13/2014	Richard Willoughby

LM Start	0.00	Rating **	M	Issue No.	28 (cont)	
LM End	2.22	Issue Type +	Ma	Location *	CR	
Category	Earthen Levee			GPS Latitude/Longitude		
				Start		End
Item	Crown Surface / Depressions / Rutting			37.253178 °	37.256802 °	
				-120.768513 °	-120.740452 °	
DWR ID	DWR_NA0010_08_s _ 2012_28					
Action/Comments						
Add appropriate material and re-grade the levee to bring the crown						

Photo 4 of 4 : richard\_s\_20140417\_798.jpg



Looking east at levee crown.

LM Start	0.00	Rating **	M	Issue No.	5
LM End	3.62	Issue Type +	Ma	Location *	WS
Category	Earthen Levee			GPS Latitude/Longitude	
				Start	End
Item	Vegetation				37.254031 °
					-120.718859 °
DWR ID	DWR_NA0010_08_s _ 2014_5				
Action/Comments					
Control annual grass and weeds on the levee slopes and easements.					

No Photos

LM Start	0.00	Rating **	M	Issue No.	4
LM End	3.62	Issue Type +	Ma	Location *	LS
Category	Earthen Levee			GPS Latitude/Longitude	
				Start	End
Item	Vegetation				37.254032 °
					-120.718859 °
DWR ID	DWR_NA0010_08_s _ 2014_4				
Action/Comments					
Control annual grass and weeds on the levee slopes and easements.					

No Photos

\* Location  
LS : Land Side  
WS : Water Side  
CR : Crown

\*\* Rating  
A : Acceptable  
M : Minimally Acceptable  
U : Unacceptable  
N : Not Inspected/Rated  
C : Corrected  
A/W : Acceptable but Monitor & Maintain

+ Issue Type  
Ma : Maintenance Deficiency  
Ob : Design & System Obsolescence  
En : Enforcement

**Flood Control Project Maintenance  
Levee Inspections**

## Levee Inspection Report By Mile - Spring 2014

### Lower San Joaquin Levee District

Waterway	Bank	Unit Miles	Inspection Start/End	Inspector
Unit No. 08 Bear Creek Bypass	Left	3.63	05/13/2014 05/13/2014	Richard Willoughby

LM Start	1.19	Rating **	M	Issue No.	2
LM End	1.19	Issue Type +	Ma	Location *	LS
Category	Earthen Levee			GPS Latitude/Longitude	
				Start	End
Item	Animal Control			37.263183 °	37.263182 °
				-120.755637 °	-120.755650 °
DWR ID	DWR_NA0010_08_s _ 2012_2				
Action/Comments					
No rodents visible, but rodent burrows visible; need to backfill and compact or grout burrows.					

No Photos

LM Start	1.38	Rating **	M	Issue No.	8
LM End	1.38	Issue Type +	Ma	Location *	LS
Category	Earthen Levee			GPS Latitude/Longitude	
				Start	End
Item	Animal Control			37.263175 °	37.263175 °
				-120.752307 °	-120.752307 °
DWR ID	DWR_NA0010_08_s _ 2013_8				
Action/Comments					
Exterminate rodents and backfill and compact or grout burrows.					

Photo 1 of 1 : richard\_s\_20140417\_794.jpg



Looking west at rodent holes on landward slope.

LM Start	1.61	Rating **	M	Issue No.	1
LM End	1.61	Issue Type +	Ma	Location *	WS
Category	Earthen Levee			GPS Latitude/Longitude	
				Start	End
Item	Animal Control			37.261842 °	37.261842 °
				-120.748510 °	-120.748510 °
DWR ID	DWR_NA0010_08_s _ 2012_1				
Action/Comments					
Exterminate rodents and backfill and compact or grout burrows.					

No Photos

\* Location  
LS : Land Side  
WS : Water Side  
CR : Crown

\*\* Rating  
A : Acceptable  
M : Minimally Acceptable  
U : Unacceptable  
N : Not Inspected/Rated  
C : Corrected  
A/W : Acceptable but Monitor & Maintain

+ Issue Type  
Ma : Maintenance Deficiency  
Ob : Design & System Obsolescence  
En : Enforcement



**Flood Control Project Maintenance  
Levee Inspections**

**Levee Inspection Report By Mile - Spring 2014**

**Lower San Joaquin Levee District**

Waterway	Bank	Unit Miles	Inspection Start/End	Inspector
Unit No. 08 Bear Creek Bypass	Left	3.63	05/13/2014 05/13/2014	Richard Willoughby

LM Start	2.07	Rating **	M	Issue No.	7
LM End	2.12	Issue Type +	Ma	Location *	LS
Category	Earthen Levee			GPS Latitude/Longitude	
				Start	End
Item	Animal Control			37.258063 °	37.257688 °
				-120.742460 °	-120.741573 °
DWR ID	DWR_NA0010_08_s_2012_7				
Action/Comments					
Exterminate rodents and backfill and compact or grout burrows. Inspector Comments: Several rodent holes were noted on landside slope near drainage pipe.					

Photo 1 of 3 : richard\_s\_20140417\_791.jpg



Looking at typical rodent hole along the section.

LM Start	<b>2.07</b>	Rating **	M	Issue No.	<b>7 (cont)</b>
LM End	<b>2.12</b>	Issue Type +	Ma	Location *	LS

Photo 2 of 3 : richard\_s\_20140417\_792.jpg



Looking at typical rodent hole on landside slope near headwall.

LM Start	<b>2.07</b>	Rating **	M	Issue No.	<b>7 (cont)</b>
LM End	<b>2.12</b>	Issue Type +	Ma	Location *	LS

Photo 3 of 3 : richard\_s\_20140417\_793.jpg



Looking south at several rodent holes on landward slope.

**\* Location**

LS : Land Side  
WS : Water Side  
CR : Crown

**\*\* Rating**

A : Acceptable  
M : Minimally Acceptable  
U : Unacceptable  
N : Not Inspected/Rated  
C : Corrected  
A/W : Acceptable but Monitor & Maintain

**+ Issue Type**

Ma : Maintenance Deficiency  
Ob : Design & System Obsolescence  
En : Enforcement



**Flood Control Project Maintenance  
Levee Inspections**

## Levee Inspection Report By Mile - Spring 2014

### Lower San Joaquin Levee District

Waterway	Bank	Unit Miles	Inspection Start/End	Inspector
Unit No. 08 Bear Creek Bypass	Left	3.63	05/13/2014 05/13/2014	Richard Willoughby

LM Start	2.12	Rating **	M	Issue No.	6
LM End	2.12	Issue Type +	En	Location *	LS
Category	Earthen Levee			GPS Latitude/Longitude	
				Start	End
Item	Encroachments			37.257781 °	37.257781 °
				-120.741556 °	-120.741556 °
DWR ID	DWR_NA0010_08_s_2014_6				
Action/Comments					
Pipe					

Photo 1 of 3 : richard\_s\_20140519\_809.jpg



Looking meter connect to 18" pvc pipe on landside.

LM Start	<b>2.12</b>	Rating **	M	Issue No.	<b>6 (cont)</b>
LM End	<b>2.12</b>	Issue Type +	En	Location *	LS

Photo 2 of 3 : richard\_s\_20140519\_810.jpg



Looking north at 18" pvc pipe connected to 24" drain pipe on landside.

LM Start	<b>2.12</b>	Rating **	M	Issue No.	<b>6 (cont)</b>
LM End	<b>2.12</b>	Issue Type +	En	Location *	LS

Photo 3 of 3 : richard\_s\_20140519\_811.jpg



Looking north at 18" pvc pipe connected to 24" draing pipe on landside.

**\* Location**

LS : Land Side  
WS : Water Side  
CR : Crown

**\*\* Rating**

A : Acceptable  
M : Minimally Acceptable  
U : Unacceptable  
N : Not Inspected/Rated  
C : Corrected  
A/W : Acceptable but Monitor & Maintain

**+ Issue Type**

Ma : Maintenance Deficiency  
Ob : Design & System Obsolescence  
En : Enforcement

**Flood Control Project Maintenance  
Levee Inspections**

**Levee Inspection Report By Mile - Spring 2014**

**Lower San Joaquin Levee District**

Waterway	Bank	Unit Miles	Inspection Start/End	Inspector
Unit No. 08 Bear Creek Bypass	Left	3.63	05/13/2014 05/13/2014	Richard Willoughby

LM Start	3.40	Rating **	M	Issue No.	3
LM End	3.54	Issue Type +	Ma	Location *	LS
Category	Earthen Levee			GPS Latitude/Longitude	
				Start	End
Item	Animal Control			37.253052 °	37.253600 °
				-120.722647 °	-120.720198 °
DWR ID	DWR_NA0010_08_s _ 2012_3				
Action/Comments					
No rodents visible, but rodent burrows visible; need to backfill and					

No Photos

**\* Location**  
LS : Land Side  
WS : Water Side  
CR : Crown

**\*\* Rating**  
A : Acceptable  
M : Minimally Acceptable  
U : Unacceptable  
N : Not Inspected/Rated  
C : Corrected  
A/W : Acceptable but Monitor & Maintain

**+ Issue Type**  
Ma : Maintenance Deficiency  
Ob : Design & System Obsolescence  
En : Enforcement

**Flood Control Project Maintenance  
Levee Inspections**

**Unit Cover Sheet**

**Spring 2014 Levee Inspection Results**

**Lower San Joaquin Levee District**

Waterway			Bank	Unit Miles
Unit No. 09 Owens Creek Bypass			Right	0.88
	Spring (March - May)	Summer (June - August)	(September - November) Fall	Winter (December - February)
Unit Maintenance Rating (Fall Only)				
Date of Inspection	05/13/2014 - 05/13/2014			
DWR Inspector	Richard Willoughby			
Accompanied By				

**Summer & Winter Inspections**

The Local Maintaining Agency (LMA) is responsible for summer and winter inspections. The LMA is required to submit a report regarding summer and winter inspections to the California Department of Water Resources (DWR).

DWR must be informed on the:

- a) completion of the inspection
- b) any changes other than the results of normal maintenance
- c) corrections to deficiencies noted in this report

If additional items are noted, further documentation of those items must also be submitted.

The LMA should submit this information to DWR using the LMA web application tool available at:

<http://cdec.water.ca.gov/lma.html>

If the LMA is unable to submit information on this webpage, please contact DWR for assistance.

*The LMA should submit the information and any associated documentation by September 30 for summer inspections and March 31 for winter inspections.*

**Flood Control Project Maintenance  
Levee Inspections**

**Levee Inspection Report By Mile - Spring 2014**

**Lower San Joaquin Levee District**

Waterway	Bank	Unit Miles	Inspection Start/End	Inspector
Unit No. 09 Owens Creek Bypass	Right	0.88	05/13/2014 05/13/2014	Richard Willoughby

LM Start	0.01	Rating **	M	Issue No.	2
LM End	0.87	Issue Type +	Ma	Location *	WS
Category	Earthen Levee			GPS Latitude/Longitude	
				Start	End
Item	Vegetation			37.220130 °	37.220039 °
				-120.712960 °	-120.698416 °
DWR ID	DWR_NA0010_09_s _ 2014_2				
Action/Comments					
Control annual grass and weeds on the levee slopes and easements.					

No Photos

LM Start	0.01	Rating **	M	Issue No.	1
LM End	0.88	Issue Type +	Ma	Location *	LS
Category	Earthen Levee			GPS Latitude/Longitude	
				Start	End
Item	Vegetation			37.220130 °	37.220058 °
				-120.712960 °	-120.698264 °
DWR ID	DWR_NA0010_09_s _ 2014_1				
Action/Comments					
Control annual grass and weeds on the levee slopes and easements.					

Photo 1 of 1 : richard\_s\_20140519\_817.jpg



Looking west at typical view of levee slopes.

\* Location  
LS : Land Side  
WS : Water Side  
CR : Crown

\*\* Rating  
A : Acceptable  
M : Minimally Acceptable  
U : Unacceptable  
N : Not Inspected/Rated  
C : Corrected  
A/W : Acceptable but Monitor & Maintain

+ Issue Type  
Ma : Maintenance Deficiency  
Ob : Design & System Obsolescence  
En : Enforcement

**Flood Control Project Maintenance  
Levee Inspections**

**Unit Cover Sheet**

**Spring 2014 Levee Inspection Results**

**Lower San Joaquin Levee District**

Waterway			Bank	Unit Miles
Unit No. 10 Owens Creek Bypass			Left	0.82
	Spring (March - May)	Summer (June - August)	(September - November) Fall	Winter (December - February)
Unit Maintenance Rating (Fall Only)				
Date of Inspection	05/14/2014 - 05/14/2014			
DWR Inspector	Richard Willoughby			
Accompanied By				

**Summer & Winter Inspections**

The Local Maintaining Agency (LMA) is responsible for summer and winter inspections. The LMA is required to submit a report regarding summer and winter inspections to the California Department of Water Resources (DWR).

DWR must be informed on the:

- a) completion of the inspection
- b) any changes other than the results of normal maintenance
- c) corrections to deficiencies noted in this report

If additional items are noted, further documentation of those items must also be submitted.

The LMA should submit this information to DWR using the LMA web application tool available at:

<http://cdec.water.ca.gov/lma.html>

If the LMA is unable to submit information on this webpage, please contact DWR for assistance.

*The LMA should submit the information and any associated documentation by September 30 for summer inspections and March 31 for winter inspections.*



**Flood Control Project Maintenance  
Levee Inspections**

**Levee Inspection Report By Mile - Spring 2014**

**Lower San Joaquin Levee District**

Waterway	Bank	Unit Miles	Inspection Start/End	Inspector
Unit No. 10 Owens Creek Bypass	Left	0.82	05/14/2014 05/14/2014	Richard Willoughby

LM Start	0.00	Rating **	M	Issue No.	3
LM End	0.81	Issue Type +	Ma	Location *	CR
Category	Earthen Levee			GPS Latitude/Longitude	
				Start	End
Item	Vegetation			37.217944 °	37.219338 °
				-120.711418 °	-120.698026 °
DWR ID	DWR_NA0010_10_s _ 2014_3				
Action/Comments					
Control annual grass and weeds on the levee slopes and easements. Inspector Comments: Control vegetation on levee crown.					

Photo 1 of 1 : richard\_s\_20140519\_815.jpg



Looking west at typical view of levee crown.

LM Start	0.00	Rating **	A	Issue No.	1
LM End	0.82	Issue Type +	Ma	Location *	LS
Category	Earthen Levee			GPS Latitude/Longitude	
				Start	End
Item	Vegetation			37.217944 °	37.219331 °
				-120.711418 °	-120.697938 °
DWR ID	DWR_NA0010_10_s _ 2014_1				
Action/Comments					
Control annual grass and weeds on the levee slopes and easements. Inspector Comments: Typical view of landside slope.					

Photo 1 of 1 : richard\_s\_20140519\_816.jpg



Looking at typical view of levee slope.

LM Start	0.00	Rating **	A	Issue No.	2
LM End	0.82	Issue Type +	Ma	Location *	WS
Category	Earthen Levee			GPS Latitude/Longitude	
				Start	End
Item	Vegetation			37.217944 °	37.219330 °
				-120.711418 °	-120.697937 °
DWR ID	DWR_NA0010_10_s _ 2014_2				
Action/Comments					
Control annual grass and weeds on the levee slopes and easements. Inspector Comments: Typical view of waterside slope.					

No Photos

\* Location  
LS : Land Side  
WS : Water Side  
CR : Crown

\*\* Rating  
A : Acceptable  
M : Minimally Acceptable  
U : Unacceptable  
N : Not Inspected/Rated  
C : Corrected  
A/W : Acceptable but Monitor & Maintain

+ Issue Type  
Ma : Maintenance Deficiency  
Ob : Design & System Obsolescence  
En : Enforcement

**Flood Control Project Maintenance  
Levee Inspections**

**Unit Cover Sheet**

**Spring 2014 Levee Inspection Results**

**Lower San Joaquin Levee District**

Waterway			Bank	Unit Miles
Unit No. 11 Mariposa Bypass			Right	3.31
	Spring (March - May)	Summer (June - August)	(September - November) Fall	Winter (December - February)
Unit Maintenance Rating (Fall Only)				
Date of Inspection	05/15/2014 - 05/15/2014			
DWR Inspector	Richard Willoughby			
Accompanied By				

**Summer & Winter Inspections**

The Local Maintaining Agency (LMA) is responsible for summer and winter inspections. The LMA is required to submit a report regarding summer and winter inspections to the California Department of Water Resources (DWR).

DWR must be informed on the:

- a) completion of the inspection
- b) any changes other than the results of normal maintenance
- c) corrections to deficiencies noted in this report

If additional items are noted, further documentation of those items must also be submitted.

The LMA should submit this information to DWR using the LMA web application tool available at:

<http://cdec.water.ca.gov/lma.html>

If the LMA is unable to submit information on this webpage, please contact DWR for assistance.

*The LMA should submit the information and any associated documentation by September 30 for summer inspections and March 31 for winter inspections.*

**Flood Control Project Maintenance  
Levee Inspections**

## Levee Inspection Report By Mile - Spring 2014

### Lower San Joaquin Levee District

Waterway	Bank	Unit Miles	Inspection Start/End	Inspector
Unit No. 11 Mariposa Bypass	Right	3.31	05/15/2014 05/15/2014	Richard Willoughby

LM Start	0.03	Rating **	M	Issue No.	3
LM End	3.29	Issue Type +	Ma	Location *	LS
Category	Earthen Levee			GPS Latitude/Longitude	
				Start	End
Item	Vegetation			37.202788 °	37.202359 °
				-120.754748 °	-120.695366 °
DWR ID	DWR_NA0010_11_s _ 2014_3				
Action/Comments					
Control annual grass and weeds on the levee slopes and easements.					

No Photos

LM Start	0.03	Rating **	M	Issue No.	4
LM End	3.29	Issue Type +	Ma	Location *	WS
Category	Earthen Levee			GPS Latitude/Longitude	
				Start	End
Item	Vegetation			37.202787 °	37.202359 °
				-120.754748 °	-120.695366 °
DWR ID	DWR_NA0010_11_s _ 2014_4				
Action/Comments					
Control annual grass and weeds on the levee slopes and easements.					

No Photos

LM Start	0.67	Rating **	M	Issue No.	2
LM End	0.67	Issue Type +	Ma	Location *	WS
Category	Earthen Levee			GPS Latitude/Longitude	
				Start	End
Item	Repair Gates			37.202725 °	37.202725 °
				-120.743028 °	-120.743028 °
DWR ID	DWR_NA0010_11_f _ 2013_2				
Action/Comments					
Inspector Comments: Bottom hinge broken on gate across levee crown.					

Photo 1 of 1 : richard\_s\_20140417\_629.jpg



Looking at bottom hinge broken on gate across levee crown.

\* Location  
LS : Land Side  
WS : Water Side  
CR : Crown

\*\* Rating  
A : Acceptable  
M : Minimally Acceptable  
U : Unacceptable  
N : Not Inspected/Rated  
C : Corrected  
A/W : Acceptable but Monitor & Maintain

+ Issue Type  
Ma : Maintenance Deficiency  
Ob : Design & System Obsolescence  
En : Enforcement

**Flood Control Project Maintenance  
Levee Inspections**

## Levee Inspection Report By Mile - Spring 2014

### Lower San Joaquin Levee District

Waterway	Bank	Unit Miles	Inspection Start/End	Inspector
Unit No. 11 Mariposa Bypass	Right	3.31	05/15/2014 05/15/2014	Richard Willoughby

LM Start	1.77	Rating **	M	Issue No.	1
LM End	1.77	Issue Type +	Ma	Location *	LS
Category	Earthen Levee			GPS Latitude/Longitude	
				Start	End
Item	Animal Control			37.202743 °	37.202743 °
				-120.723187 °	-120.723187 °
DWR ID	DWR_NA0010_11_s _ 2012_1				
Action/Comments					
No rodents visible, but rodent burrows visible; need to backfill and compact or grout burrows.					

No Photos

**\* Location**  
LS : Land Side  
WS : Water Side  
CR : Crown

**\*\* Rating**  
A : Acceptable  
M : Minimally Acceptable  
U : Unacceptable  
N : Not Inspected/Rated  
C : Corrected  
A/W : Acceptable but Monitor & Maintain

**+ Issue Type**  
Ma : Maintenance Deficiency  
Ob : Design & System Obsolescence  
En : Enforcement

**Flood Control Project Maintenance  
Levee Inspections**

**Unit Cover Sheet**

**Spring 2014 Levee Inspection Results**

**Lower San Joaquin Levee District**

Waterway			Bank	Unit Miles
Unit No. 12 Mariposa Bypass			Left	3.33
	Spring (March - May)	Summer (June - August)	(September - November) Fall	Winter (December - February)
Unit Maintenance Rating (Fall Only)				
Date of Inspection	05/16/2014 - 05/16/2014			
DWR Inspector	Richard Willoughby			
Accompanied By				

**Summer & Winter Inspections**

The Local Maintaining Agency (LMA) is responsible for summer and winter inspections. The LMA is required to submit a report regarding summer and winter inspections to the California Department of Water Resources (DWR).

DWR must be informed on the:

- a) completion of the inspection
- b) any changes other than the results of normal maintenance
- c) corrections to deficiencies noted in this report

If additional items are noted, further documentation of those items must also be submitted.

The LMA should submit this information to DWR using the LMA web application tool available at:

<http://cdec.water.ca.gov/lma.html>

If the LMA is unable to submit information on this webpage, please contact DWR for assistance.

*The LMA should submit the information and any associated documentation by September 30 for summer inspections and March 31 for winter inspections.*



**Flood Control Project Maintenance  
Levee Inspections**

**Levee Inspection Report By Mile - Spring 2014**

**Lower San Joaquin Levee District**

Waterway	Bank	Unit Miles	Inspection Start/End	Inspector
Unit No. 12 Mariposa Bypass	Left	3.33	05/16/2014 05/16/2014	Richard Willoughby

LM Start	0.00	Rating **	A	Issue No.	2
LM End	3.32	Issue Type +	Ma	Location *	CR
Category	Earthen Levee			GPS Latitude/Longitude	
				Start	End
Item	Vegetation			37.200942 °	37.200966 °
				-120.754971 °	-120.694968 °
DWR ID	DWR_NA0010_12_s_2014_2				
Action/Comments					
Control annual grass and weeds on the levee slopes and easements.					

No Photos

LM Start	0.00	Rating **	A	Issue No.	4
LM End	3.32	Issue Type +	Ma	Location *	WS
Category	Earthen Levee			GPS Latitude/Longitude	
				Start	End
Item	Vegetation			37.200943 °	37.200965 °
				-120.754972 °	-120.694968 °
DWR ID	DWR_NA0010_12_s_2014_4				
Action/Comments					
Control annual grass and weeds on the levee slopes and easements.					

No Photos

LM Start	0.00	Rating **	A	Issue No.	3
LM End	3.32	Issue Type +	Ma	Location *	LS
Category	Earthen Levee			GPS Latitude/Longitude	
				Start	End
Item	Vegetation			37.200929 °	37.200907 °
				-120.755187 °	-120.711110 °
DWR ID	DWR_NA0010_12_f_2012_3				
Action/Comments					
Control annual grass and weeds on the levee slopes and easements. Inspector Comments: Typical view of vegetation on levee slopes.					

Photo 1 of 1 : richard\_s\_20140417\_630.jpg



Looking west at a properly maintained levee crown. (Fall 2013)

\* Location  
LS : Land Side  
WS : Water Side  
CR : Crown

\*\* Rating  
A : Acceptable  
M : Minimally Acceptable  
U : Unacceptable  
N : Not Inspected/Rated  
C : Corrected  
A/W : Acceptable but Monitor & Maintain

+ Issue Type  
Ma : Maintenance Deficiency  
Ob : Design & System Obsolescence  
En : Enforcement

**Flood Control Project Maintenance  
Levee Inspections**

**Levee Inspection Report By Mile - Spring 2014**

**Lower San Joaquin Levee District**

Waterway	Bank	Unit Miles	Inspection Start/End	Inspector
Unit No. 12 Mariposa Bypass	Left	3.33	05/16/2014 05/16/2014	Richard Willoughby

LM Start	2.33	Rating **	M	Issue No.	1
LM End	2.33	Issue Type +	Ma	Location *	LS
Category	Earthen Levee			GPS Latitude/Longitude	
				Start	End
Item	Animal Control			37.200907 °	37.200907 °
				-120.712978 °	-120.712978 °
DWR ID	DWR_NA0010_12_s _ 2012_1				
Action/Comments					
Exterminate rodents and backfill and compact or grout burrows.					

No Photos

**\* Location**  
LS : Land Side  
WS : Water Side  
CR : Crown

**\*\* Rating**  
A : Acceptable  
M : Minimally Acceptable  
U : Unacceptable  
N : Not Inspected/Rated  
C : Corrected  
A/W : Acceptable but Monitor & Maintain

**+ Issue Type**  
Ma : Maintenance Deficiency  
Ob : Design & System Obsolescence  
En : Enforcement

**Flood Control Project Maintenance  
Levee Inspections**

**Unit Cover Sheet**

**Spring 2014 Levee Inspection Results**

**Lower San Joaquin Levee District**

Waterway			Bank	Unit Miles
Unit No. 13 Ash Slough			Right	1.28
	Spring (March - May)	Summer (June - August)	(September - November) Fall	Winter (December - February)
Unit Maintenance Rating (Fall Only)				
Date of Inspection	05/14/2014 - 05/14/2014			
DWR Inspector	Richard Willoughby			
Accompanied By				

**Summer & Winter Inspections**

The Local Maintaining Agency (LMA) is responsible for summer and winter inspections. The LMA is required to submit a report regarding summer and winter inspections to the California Department of Water Resources (DWR).

DWR must be informed on the:

- a) completion of the inspection
- b) any changes other than the results of normal maintenance
- c) corrections to deficiencies noted in this report

If additional items are noted, further documentation of those items must also be submitted.

The LMA should submit this information to DWR using the LMA web application tool available at:

<http://cdec.water.ca.gov/lma.html>

If the LMA is unable to submit information on this webpage, please contact DWR for assistance.

*The LMA should submit the information and any associated documentation by September 30 for summer inspections and March 31 for winter inspections.*

**Flood Control Project Maintenance  
Levee Inspections**

## Levee Inspection Report By Mile - Spring 2014

### Lower San Joaquin Levee District

Waterway	Bank	Unit Miles	Inspection Start/End	Inspector
Unit No. 13 Ash Slough	Right	1.28	05/14/2014 05/14/2014	Richard Willoughby

LM Start	0.00	Rating **	M	Issue No.	4
LM End	1.26	Issue Type +	Ma	Location *	WS
Category	Earthen Levee			GPS Latitude/Longitude	
				Start	End
Item	Vegetation			37.033760 °	37.046328 °
				-120.442120 °	-120.428105 °
DWR ID	DWR_NA0010_13_s _ 2014_4				
Action/Comments					
Control annual grass and weeds on the levee slopes and easements.					

No Photos

LM Start	0.00	Rating **	M	Issue No.	1
LM End	1.26	Issue Type +	Ma	Location *	LS
Category	Earthen Levee			GPS Latitude/Longitude	
				Start	End
Item	Vegetation			37.033760 °	37.046328 °
				-120.442121 °	-120.428104 °
DWR ID	DWR_NA0010_13_s _ 2014_1				
Action/Comments					
Control annual grass and weeds on the levee slopes and easements.					

No Photos

LM Start	0.14	Rating **	M	Issue No.	3
LM End	0.14	Issue Type +	Ma	Location *	LS
Category	Earthen Levee			GPS Latitude/Longitude	
				Start	End
Item	Animal Control			37.035697 °	37.035697 °
				-120.441197 °	-120.441197 °
DWR ID	DWR_NA0010_13_s _ 2012_3				
Action/Comments					
No rodents visible, but rodent burrows visible; need to backfill and compact or grout burrows.					

No Photos

<b>* Location</b> LS : Land Side WS : Water Side CR : Crown	<b>** Rating</b> A : Acceptable M : Minimally Acceptable U : Unacceptable	N : Not Inspected/Rated C : Corrected A/W : Acceptable but Monitor & Maintain	<b>+ Issue Type</b> Ma : Maintenance Deficiency Ob : Design & System Obsolescence En : Enforcement
--	--	---	---

**Flood Control Project Maintenance  
Levee Inspections**

**Levee Inspection Report By Mile - Spring 2014**

**Lower San Joaquin Levee District**

Waterway	Bank	Unit Miles	Inspection Start/End	Inspector
Unit No. 13 Ash Slough	Right	1.28	05/14/2014 05/14/2014	Richard Willoughby

LM Start	0.30	Rating **	M	Issue No.	2
LM End	1.25	Issue Type +	Ma	Location *	CR
Category	Earthen Levee			GPS Latitude/Longitude	
				Start	End
Item	Crown Surface / Depressions / Rutting			37.037893 °	37.046269 °
				-120.440373 °	-120.428350 °
DWR ID	DWR_NA0010_13_f_2012_2				
Action/Comments					
Add appropriate material and re-grade the levee to bring the crown above the design elevation.					
Inspector Comments: Control vegetation on levee crown.					

No Photos

LM Start	0.90	Rating **	M	Issue No.	5
LM End	0.90	Issue Type +	En	Location *	WS
Category	Earthen Levee			GPS Latitude/Longitude	
				Start	End
Item	Encroachments			37.044855 °	37.044855 °
				-120.434106 °	-120.434106 °
DWR ID	DWR_NA0010_13_s_2014_5				
Action/Comments					
Ramp					
Inspector Comments: Unauthorized ramp on waterward slope.					

Photo 1 of 2 : richard\_s\_20140520\_818.jpg



Looking east at unauthorized ramp on waterward slope.

Photo 2 of 2 : richard\_s\_20140520\_819.jpg



Looking west at unauthorized ramp on waterward slope.

<b>* Location</b> LS : Land Side WS : Water Side CR : Crown	<b>** Rating</b> A : Acceptable M : Minimally Acceptable U : Unacceptable N : Not Inspected/Rated C : Corrected A/W : Acceptable but Monitor & Maintain	<b>+ Issue Type</b> Ma : Maintenance Deficiency Ob : Design & System Obsolescence En : Enforcement
--	---	---



**Flood Control Project Maintenance  
Levee Inspections**

**Unit Cover Sheet**

**Spring 2014 Levee Inspection Results**

**Lower San Joaquin Levee District**

Waterway			Bank	Unit Miles
Unit No. 14 Ash Slough			Left	1.28
	Spring (March - May)	Summer (June - August)	(September - November) Fall	Winter (December - February)
Unit Maintenance Rating (Fall Only)				
Date of Inspection	05/14/2014 - 05/14/2014			
DWR Inspector	Richard Willoughby			
Accompanied By				

**Summer & Winter Inspections**

The Local Maintaining Agency (LMA) is responsible for summer and winter inspections. The LMA is required to submit a report regarding summer and winter inspections to the California Department of Water Resources (DWR).

DWR must be informed on the:

- a) completion of the inspection
- b) any changes other than the results of normal maintenance
- c) corrections to deficiencies noted in this report

If additional items are noted, further documentation of those items must also be submitted.

The LMA should submit this information to DWR using the LMA web application tool available at:

<http://cdec.water.ca.gov/lma.html>

If the LMA is unable to submit information on this webpage, please contact DWR for assistance.

*The LMA should submit the information and any associated documentation by September 30 for summer inspections and March 31 for winter inspections.*

**Flood Control Project Maintenance  
Levee Inspections**

**Levee Inspection Report By Mile - Spring 2014**

**Lower San Joaquin Levee District**

Waterway	Bank	Unit Miles	Inspection Start/End	Inspector
Unit No. 14 Ash Slough	Left	1.28	05/14/2014 05/14/2014	Richard Willoughby

LM Start	0.00	Rating **	M	Issue No.	1
LM End	1.26	Issue Type +	Ma	Location *	LS
Category	Earthen Levee			GPS Latitude/Longitude	
				Start	End
Item	Vegetation			37.032402 °	37.045434 °
				-120.441245 °	-120.427688 °
DWR ID	DWR_NA0010_14_s_2014_1				
Action/Comments					
Control annual grass and weeds on the levee slopes and easements.					

No Photos

LM Start	0.00	Rating **	M	Issue No.	3
LM End	1.26	Issue Type +	Ma	Location *	WS
Category	Earthen Levee			GPS Latitude/Longitude	
				Start	End
Item	Vegetation			37.032402 °	37.045434 °
				-120.441246 °	-120.427688 °
DWR ID	DWR_NA0010_14_s_2014_3				
Action/Comments					
Control annual grass and weeds on the levee slopes and easements. Inspector Comments: Typical view of levee slopes.					

Photo 1 of 1 : richard\_s\_20140520\_820.jpg



Looking west at typical view of levee slopes.

LM Start	0.00	Rating **	M	Issue No.	2
LM End	1.25	Issue Type +	Ma	Location *	CR
Category	Earthen Levee			GPS Latitude/Longitude	
				Start	End
Item	Crown Surface / Depressions / Rutting			37.032379 °	37.045404 °
				-120.441265 °	-120.427749 °
DWR ID	DWR_NA0010_14_f_2012_2				
Action/Comments					
Add appropriate material and re-grade the levee to bring the crown above the design elevation.					
Inspector Comments: Control vegetation on levee crown.					

No Photos

**\* Location**

LS : Land Side  
WS : Water Side  
CR : Crown

**\*\* Rating**

A : Acceptable                      N : Not Inspected/Rated  
M : Minimally Acceptable        C : Corrected  
U : Unacceptable                  A/W : Acceptable but Monitor & Maintain

**+ Issue Type**

Ma : Maintenance Deficiency  
Ob : Design & System Obsolescence  
En : Enforcement

**Flood Control Project Maintenance  
Levee Inspections**

**Unit Cover Sheet**

**Spring 2014 Levee Inspection Results**

**Lower San Joaquin Levee District**

Waterway			Bank	Unit Miles
Unit No. 15 Berenda Slough			Right	2.03
	Spring (March - May)	Summer (June - August)	(September - November) Fall	Winter (December - February)
Unit Maintenance Rating (Fall Only)				
Date of Inspection	05/14/2014 - 05/14/2014			
DWR Inspector	Richard Willoughby			
Accompanied By				

**Summer & Winter Inspections**

The Local Maintaining Agency (LMA) is responsible for summer and winter inspections. The LMA is required to submit a report regarding summer and winter inspections to the California Department of Water Resources (DWR).

DWR must be informed on the:

- a) completion of the inspection
- b) any changes other than the results of normal maintenance
- c) corrections to deficiencies noted in this report

If additional items are noted, further documentation of those items must also be submitted.

The LMA should submit this information to DWR using the LMA web application tool available at:

<http://cdec.water.ca.gov/lma.html>

If the LMA is unable to submit information on this webpage, please contact DWR for assistance.

*The LMA should submit the information and any associated documentation by September 30 for summer inspections and March 31 for winter inspections.*

**Flood Control Project Maintenance  
Levee Inspections**

**Levee Inspection Report By Mile - Spring 2014**

**Lower San Joaquin Levee District**

Waterway	Bank	Unit Miles	Inspection Start/End	Inspector
Unit No. 15 Berenda Slough	Right	2.03	05/14/2014 05/14/2014	Richard Willoughby

LM Start	0.00	Rating **	M	Issue No.	11
LM End	1.99	Issue Type +	Ma	Location *	CR
Category	Earthen Levee			GPS Latitude/Longitude	
				Start	End
Item	Crown Surface / Depressions / Rutting			36.996547 °	36.996587 °
				-120.410220 °	-120.374503 °
DWR ID	DWR_NA0010_15_s _ 2012_11				
Action/Comments					
Add appropriate material and re-grade the levee to bring the crown above the design elevation.					
Inspector Comments: Control vegetation on levee crown.					

Photo 1 of 1 : richard\_s\_20140520\_822.jpg



Looking east at vegetation on levee crown.

LM Start	0.01	Rating **	M	Issue No.	1
LM End	2.03	Issue Type +	Ma	Location *	LS
Category	Earthen Levee			GPS Latitude/Longitude	
				Start	End
Item	Vegetation			36.996592 °	36.996601 °
				-120.410233 °	-120.373992 °
DWR ID	DWR_NA0010_15_s _ 2014_1				
Action/Comments					
Control annual grass and weeds on the levee slopes and easements.					

No Photos

LM Start	0.01	Rating **	M	Issue No.	2
LM End	2.03	Issue Type +	Ma	Location *	WS
Category	Earthen Levee			GPS Latitude/Longitude	
				Start	End
Item	Vegetation			36.996592 °	36.996601 °
				-120.410232 °	-120.373992 °
DWR ID	DWR_NA0010_15_s _ 2014_2				
Action/Comments					
Control annual grass and weeds on the levee slopes and easements.					

No Photos

\* Location  
LS : Land Side  
WS : Water Side  
CR : Crown

\*\* Rating  
A : Acceptable  
M : Minimally Acceptable  
U : Unacceptable  
N : Not Inspected/Rated  
C : Corrected  
A/W : Acceptable but Monitor & Maintain

+ Issue Type  
Ma : Maintenance Deficiency  
Ob : Design & System Obsolescence  
En : Enforcement

**Flood Control Project Maintenance  
Levee Inspections**

**Unit Cover Sheet**

**Spring 2014 Levee Inspection Results**

**Lower San Joaquin Levee District**

Waterway			Bank	Unit Miles
Unit No. 16 Berenda Slough			Left	1.98
	Spring (March - May)	Summer (June - August)	(September - November) Fall	Winter (December - February)
Unit Maintenance Rating (Fall Only)				
Date of Inspection	05/14/2014 - 05/14/2014			
DWR Inspector	Richard Willoughby			
Accompanied By				

**Summer & Winter Inspections**

The Local Maintaining Agency (LMA) is responsible for summer and winter inspections. The LMA is required to submit a report regarding summer and winter inspections to the California Department of Water Resources (DWR).

DWR must be informed on the:

- a) completion of the inspection
- b) any changes other than the results of normal maintenance
- c) corrections to deficiencies noted in this report

If additional items are noted, further documentation of those items must also be submitted.

The LMA should submit this information to DWR using the LMA web application tool available at:

<http://cdec.water.ca.gov/lma.html>

If the LMA is unable to submit information on this webpage, please contact DWR for assistance.

*The LMA should submit the information and any associated documentation by September 30 for summer inspections and March 31 for winter inspections.*



**Flood Control Project Maintenance  
Levee Inspections**

## Levee Inspection Report By Mile - Spring 2014

### Lower San Joaquin Levee District

Waterway	Bank	Unit Miles	Inspection Start/End	Inspector
Unit No. 16 Berenda Slough	Left	1.98	05/14/2014 05/14/2014	Richard Willoughby

LM Start	0.00	Rating **	M	Issue No.	1
LM End	1.98	Issue Type +	Ma	Location *	LS
Category	Earthen Levee			GPS Latitude/Longitude	
				Start	End
Item	Vegetation			36.995412 °	36.995508 °
				-120.408755 °	-120.373591 °
DWR ID	DWR_NA0010_16_s _ 2014_1				
Action/Comments					
Control annual grass and weeds on the levee slopes and easements.					

No Photos

LM Start	0.00	Rating **	M	Issue No.	2
LM End	1.98	Issue Type +	Ma	Location *	WS
Category	Earthen Levee			GPS Latitude/Longitude	
				Start	End
Item	Vegetation			36.995412 °	36.995508 °
				-120.408755 °	-120.373591 °
DWR ID	DWR_NA0010_16_s _ 2014_2				
Action/Comments					
Control annual grass and weeds on the levee slopes and easements.					

No Photos

LM Start	0.00	Rating **	M	Issue No.	14
LM End	1.98	Issue Type +	Ma	Location *	CR
Category	Earthen Levee			GPS Latitude/Longitude	
				Start	End
Item	Crown Surface / Depressions / Rutting			36.995388 °	36.995507 °
				-120.408738 °	-120.373592 °
DWR ID	DWR_NA0010_16_s _ 2012_14				
Action/Comments					
Add appropriate material and re-grade the levee to bring the crown above the design elevation.					
Inspector Comments: Control vegetation on levee crown.					

Photo 1 of 1 : richard\_s\_20140417\_632.jpg



Looking west at the properly maintained levee crown.

**\* Location**

LS : Land Side  
WS : Water Side  
CR : Crown

**\*\* Rating**

A : Acceptable                      N : Not Inspected/Rated  
M : Minimally Acceptable        C : Corrected  
U : Unacceptable                  A/W : Acceptable but Monitor & Maintain

**+ Issue Type**

Ma : Maintenance Deficiency  
Ob : Design & System Obsolescence  
En : Enforcement

**Flood Control Project Maintenance  
Levee Inspections**

**Levee Inspection Report By Mile - Spring 2014**

**Lower San Joaquin Levee District**

Waterway	Bank	Unit Miles	Inspection Start/End	Inspector
Unit No. 16 Berenda Slough	Left	1.98	05/14/2014 05/14/2014	Richard Willoughby

LM Start	1.69	Rating **	M	Issue No.	4
LM End	1.69	Issue Type +	Ma	Location *	LS
Category	Earthen Levee			GPS Latitude/Longitude	
				Start	End
Item	Animal Control			36.995503 °	36.995503 °
				-120.378579 °	-120.378579 °
DWR ID	DWR_NA0010_16_s _ 2014_4				
Action/Comments					
No rodents visible, but rodent burrows visible; need to backfill and compact or grout burrows.					

No Photos

LM Start	1.77	Rating **	M	Issue No.	3
LM End	1.77	Issue Type +	Ma	Location *	LS
Category	Earthen Levee			GPS Latitude/Longitude	
				Start	End
Item	Slope Stability			36.995488 °	36.995488 °
				-120.377152 °	-120.377152 °
DWR ID	DWR_NA0010_16_s _ 2012_3				
Action/Comments					
Repair the levee slope damaged by vehicle traffic and prevent access where possible.					

No Photos

**\* Location**

LS : Land Side  
WS : Water Side  
CR : Crown

**\*\* Rating**

A : Acceptable                      N : Not Inspected/Rated  
M : Minimally Acceptable        C : Corrected  
U : Unacceptable                  A/W : Acceptable but Monitor & Maintain

**+ Issue Type**

Ma : Maintenance Deficiency  
Ob : Design & System Obsolescence  
En : Enforcement

**Flood Control Project Maintenance  
Levee Inspections**

**Unit Cover Sheet**

**Spring 2014 Levee Inspection Results**

**Lower San Joaquin Levee District**

Waterway			Bank	Unit Miles
Unit No. 17 Chowchilla Canal Bypass			Right	16.09
	Spring (March - May)	Summer (June - August)	(September - November) Fall	Winter (December - February)
Unit Maintenance Rating (Fall Only)				
Date of Inspection	05/13/2014 - 05/13/2014			
DWR Inspector	Richard Willoughby			
Accompanied By				

**Summer & Winter Inspections**

The Local Maintaining Agency (LMA) is responsible for summer and winter inspections. The LMA is required to submit a report regarding summer and winter inspections to the California Department of Water Resources (DWR).

DWR must be informed on the:

- a) completion of the inspection
- b) any changes other than the results of normal maintenance
- c) corrections to deficiencies noted in this report

If additional items are noted, further documentation of those items must also be submitted.

The LMA should submit this information to DWR using the LMA web application tool available at:

<http://cdec.water.ca.gov/lma.html>

If the LMA is unable to submit information on this webpage, please contact DWR for assistance.

*The LMA should submit the information and any associated documentation by September 30 for summer inspections and March 31 for winter inspections.*

**Flood Control Project Maintenance  
Levee Inspections**

**Levee Inspection Report By Mile - Spring 2014**

**Lower San Joaquin Levee District**

Waterway	Bank	Unit Miles	Inspection Start/End	Inspector
Unit No. 17 Chowchilla Canal Bypass	Right	16.09	05/13/2014 05/13/2014	Richard Willoughby

LM Start	0.00	Rating **	M	Issue No.	7
LM End	5.77	Issue Type +	Ma	Location *	CR
Category	Earthen Levee			GPS Latitude/Longitude	
				Start	End
Item	Crown Surface / Depressions / Rutting			36.976430 °	36.908282 °
				-120.374748 °	-120.330995 °
DWR ID	DWR_NA0010_17_s _ 2012_7				
Action/Comments					
Add appropriate material and re-grade the levee to bring the crown above the design elevation.					

Photo 1 of 1 : richard\_s\_20140417\_633.jpg



Looking south at vegetation properly maintained on the levee crown.

LM Start	0.00	Rating **	M	Issue No.	1
LM End	16.09	Issue Type +	Ma	Location *	LS
Category	Earthen Levee			GPS Latitude/Longitude	
				Start	End
Item	Vegetation			36.976441 °	36.774435 °
				-120.374740 °	-120.283773 °
DWR ID	DWR_NA0010_17_s _ 2014_1				
Action/Comments					
Control annual grass and weeds on the levee slopes and easements.					

No Photos

LM Start	0.00	Rating **	M	Issue No.	2
LM End	16.09	Issue Type +	Ma	Location *	WS
Category	Earthen Levee			GPS Latitude/Longitude	
				Start	End
Item	Vegetation			36.976441 °	36.774435 °
				-120.374740 °	-120.283773 °
DWR ID	DWR_NA0010_17_s _ 2014_2				
Action/Comments					
Control annual grass and weeds on the levee slopes and easements. Inspector Comments: Typical view of levee					

Photo 1 of 1 : richard\_s\_20140520\_826.jpg



Looking at typical view of levee slopes.

**\* Location**

LS : Land Side  
WS : Water Side  
CR : Crown

**\*\* Rating**

A : Acceptable  
M : Minimally Acceptable  
U : Unacceptable  
N : Not Inspected/Rated  
C : Corrected  
A/W : Acceptable but Monitor & Maintain

**+ Issue Type**

Ma : Maintenance Deficiency  
Ob : Design & System Obsolescence  
En : Enforcement

**Flood Control Project Maintenance  
Levee Inspections**

**Levee Inspection Report By Mile - Spring 2014**

**Lower San Joaquin Levee District**

Waterway	Bank	Unit Miles	Inspection Start/End	Inspector
Unit No. 17 Chowchilla Canal Bypass	Right	16.09	05/13/2014 05/13/2014	Richard Willoughby

LM Start	5.75	Rating **	M	Issue No.	8
LM End	5.90	Issue Type +	Ma	Location *	LS
Category	Earthen Levee			GPS Latitude/Longitude	
				Start	End
Item	Animal Control			36.908605 °	36.906507 °
				-120.331112 °	-120.330353 °
DWR ID	DWR_NA0010_17_s_2012_8				
Action/Comments					
Exterminate rodents and backfill and compact or grout burrows.					

Photo 1 of 1 : richard\_s\_20140417\_634.jpg



Looking at several rodent holes on landside slope.

LM Start	6.51	Rating **	M	Issue No.	4
LM End	6.60	Issue Type +	Ma	Location *	LS
Category	Earthen Levee			GPS Latitude/Longitude	
				Start	End
Item	Animal Control			36.898124 °	36.896943 °
				-120.326714 °	-120.326133 °
DWR ID	DWR_NA0010_17_s_2012_4				
Action/Comments					
Exterminate rodents and backfill and compact or grout burrows.					

No Photos

LM Start	7.27	Rating **	M	Issue No.	5
LM End	7.39	Issue Type +	Ma	Location *	LS
Category	Earthen Levee			GPS Latitude/Longitude	
				Start	End
Item	Animal Control			36.887869 °	36.886341 °
				-120.321697 °	-120.320940 °
DWR ID	DWR_NA0010_17_s_2012_5				
Action/Comments					
No rodents visible, but rodent burrows visible; need to backfill and compact or grout burrows.					

No Photos

**\* Location**

LS : Land Side  
WS : Water Side  
CR : Crown

**\*\* Rating**

A : Acceptable                      N : Not Inspected/Rated  
M : Minimally Acceptable        C : Corrected  
U : Unacceptable                  A/W : Acceptable but Monitor & Maintain

**+ Issue Type**

Ma : Maintenance Deficiency  
Ob : Design & System Obsolescence  
En : Enforcement



**Flood Control Project Maintenance  
Levee Inspections**

**Levee Inspection Report By Mile - Spring 2014**

**Lower San Joaquin Levee District**

Waterway	Bank	Unit Miles	Inspection Start/End	Inspector
Unit No. 17 Chowchilla Canal Bypass	Right	16.09	05/13/2014 05/13/2014	Richard Willoughby

LM Start	12.38	Rating **	M	Issue No.	3
LM End	13.01	Issue Type +	Ma	Location *	LS
Category	Earthen Levee			GPS Latitude/Longitude	
				Start	End
Item	Animal Control			36.820009 °	36.811370 °
				-120.300833 °	-120.304454 °
DWR ID	DWR_NA0010_17_s _ 2014_3				
Action/Comments					
No rodents visible, but rodent burrows visible; need to backfill and compact or grout burrows.					

No Photos

**\* Location**  
LS : Land Side  
WS : Water Side  
CR : Crown

**\*\* Rating**  
A : Acceptable  
M : Minimally Acceptable  
U : Unacceptable  
N : Not Inspected/Rated  
C : Corrected  
A/W : Acceptable but Monitor & Maintain

**+ Issue Type**  
Ma : Maintenance Deficiency  
Ob : Design & System Obsolescence  
En : Enforcement

**Flood Control Project Maintenance  
Levee Inspections**

**Unit Cover Sheet**

**Spring 2014 Levee Inspection Results**

**Lower San Joaquin Levee District**

Waterway			Bank	Unit Miles
Unit No. 18 Chowchilla Canal Bypass			Left	15.33
	Spring (March - May)	Summer (June - August)	(September - November) Fall	Winter (December - February)
Unit Maintenance Rating (Fall Only)				
Date of Inspection	05/13/2014 - 05/13/2014			
DWR Inspector	Richard Willoughby			
Accompanied By				

**Summer & Winter Inspections**

The Local Maintaining Agency (LMA) is responsible for summer and winter inspections. The LMA is required to submit a report regarding summer and winter inspections to the California Department of Water Resources (DWR).

DWR must be informed on the:

- a) completion of the inspection
- b) any changes other than the results of normal maintenance
- c) corrections to deficiencies noted in this report

If additional items are noted, further documentation of those items must also be submitted.

The LMA should submit this information to DWR using the LMA web application tool available at:

<http://cdec.water.ca.gov/lma.html>

If the LMA is unable to submit information on this webpage, please contact DWR for assistance.

*The LMA should submit the information and any associated documentation by September 30 for summer inspections and March 31 for winter inspections.*

**Flood Control Project Maintenance  
Levee Inspections**

**Levee Inspection Report By Mile - Spring 2014**

**Lower San Joaquin Levee District**

Waterway	Bank	Unit Miles	Inspection Start/End	Inspector
Unit No. 18 Chowchilla Canal Bypass	Left	15.33	05/13/2014 05/13/2014	Richard Willoughby

LM Start	0.00	Rating **	M	Issue No.	2
LM End	15.29	Issue Type +	Ma	Location *	LS
Category	Earthen Levee			GPS Latitude/Longitude	
				Start	End
Item	Vegetation			36.974046 °	36.773752 °
				-120.363130 °	-120.285262 °
DWR ID	DWR_NA0010_18_s _ 2014_2				
Action/Comments					
Control annual grass and weeds on the levee slopes and easements.					

No Photos

LM Start	0.00	Rating **	M	Issue No.	4
LM End	15.29	Issue Type +	Ma	Location *	WS
Category	Earthen Levee			GPS Latitude/Longitude	
				Start	End
Item	Vegetation			36.974046 °	36.773752 °
				-120.363130 °	-120.285262 °
DWR ID	DWR_NA0010_18_s _ 2014_4				
Action/Comments					
Control annual grass and weeds on the levee slopes and easements.					

No Photos

LM Start	1.43	Rating **	M	Issue No.	7
LM End	1.43	Issue Type +	Ma	Location *	LS
Category	Earthen Levee			GPS Latitude/Longitude	
				Start	End
Item	Animal Control			36.956163 °	36.956163 °
				-120.353672 °	-120.353672 °
DWR ID	DWR_NA0010_18_s _ 2014_7				
Action/Comments					
No rodents visible, but rodent burrows visible; need to backfill and compact or grout burrows.					

No Photos

<b>* Location</b> LS : Land Side WS : Water Side CR : Crown	<b>** Rating</b> A : Acceptable M : Minimally Acceptable U : Unacceptable	N : Not Inspected/Rated C : Corrected A/W : Acceptable but Monitor & Maintain	<b>+ Issue Type</b> Ma : Maintenance Deficiency Ob : Design & System Obsolescence En : Enforcement
--	--	---	---

**Flood Control Project Maintenance  
Levee Inspections**

**Levee Inspection Report By Mile - Spring 2014**

**Lower San Joaquin Levee District**

Waterway	Bank	Unit Miles	Inspection Start/End	Inspector
Unit No. 18 Chowchilla Canal Bypass	Left	15.33	05/13/2014 05/13/2014	Richard Willoughby

LM Start	1.74	Rating **	M	Issue No.	6
LM End	4.24	Issue Type +	Ma	Location *	CR
Category	Earthen Levee			GPS Latitude/Longitude	
				Start	End
Item	Vegetation			36.952162 °	36.917909 °
				-120.351198 °	-120.336831 °
DWR ID	DWR_NA0010_18_s _ 2014_6				
Action/Comments					
Control annual grass and weeds on the levee slopes and easements. Inspector Comments: control vegetation on levee crown.					

No Photos

LM Start	8.04	Rating **	M	Issue No.	5
LM End	8.04	Issue Type +	En	Location *	WS
Category	Earthen Levee			GPS Latitude/Longitude	
				Start	End
Item	Encroachments			36.865074 °	36.865074 °
				-120.317996 °	-120.317996 °
DWR ID	DWR_NA0010_18_s _ 2014_5				
Action/Comments					
Garbage Inspector Comments: Trash on waterward slope.					

Photo 1 of 1 : richard\_s\_20140520\_827.jpg



Looking west at trash on waterward slope.

LM Start	11.86	Rating **	A/W	Issue No.	1
LM End	13.15	Issue Type +	Ma	Location *	LS
Category	Earthen Levee			GPS Latitude/Longitude	
				Start	End
Item	Vegetation			36.815400 °	36.797353 °
				-120.305080 °	-120.308560 °
DWR ID	DWR_NA0010_18_s _ 2012_1				
Action/Comments					
Remove the wild growth other than native grasses from the levee slopes. Inspector Comments: Dense tumble weed on landside and waterside shoulder and slope.					

Photo 1 of 1 : richard\_s\_20140417\_635.jpg



Looking north at controlled tumble weeds on landward and waterward slope. (Fall 2013)

<b>* Location</b> LS : Land Side WS : Water Side CR : Crown	<b>** Rating</b> A : Acceptable M : Minimally Acceptable U : Unacceptable N : Not Inspected/Rated C : Corrected A/W : Acceptable but Monitor & Maintain	<b>+ Issue Type</b> Ma : Maintenance Deficiency Ob : Design & System Obsolescence En : Enforcement
--	---	---

**Flood Control Project Maintenance  
Levee Inspections**

**Levee Inspection Report By Mile - Spring 2014**

**Lower San Joaquin Levee District**

Waterway	Bank	Unit Miles	Inspection Start/End	Inspector
Unit No. 18 Chowchilla Canal Bypass	Left	15.33	05/13/2014 05/13/2014	Richard Willoughby

LM Start	13.55	Rating **	A/W	Issue No.	3
LM End	15.12	Issue Type +	Ma	Location *	LS
Category	Earthen Levee			GPS Latitude/Longitude	
				Start	End
Item	Crown Surface / Depressions / Rutting			36.792861 °	36.776058 °
				-120.304907 °	-120.287111 °
DWR ID	DWR_NA0010_18_f_2012_3				
Action/Comments					
Repair depressions or ruts in the crown or slope.					

No Photos

**\* Location**  
LS : Land Side  
WS : Water Side  
CR : Crown

**\*\* Rating**  
A : Acceptable  
M : Minimally Acceptable  
U : Unacceptable  
N : Not Inspected/Rated  
C : Corrected  
A/W : Acceptable but Monitor & Maintain

**+ Issue Type**  
Ma : Maintenance Deficiency  
Ob : Design & System Obsolescence  
En : Enforcement



**Flood Control Project Maintenance  
Levee Inspections**

**Unit Cover Sheet**

**Spring 2014 Levee Inspection Results**

**Lower San Joaquin Levee District**

Waterway			Bank	Unit Miles
Unit No. 22A East Side Canal			Left	5.50
	Spring (March - May)	Summer (June - August)	(September - November) Fall	Winter (December - February)
Unit Maintenance Rating (Fall Only)				
Date of Inspection	05/12/2014 - 05/13/2014			
DWR Inspector	Richard Willoughby			
Accompanied By				

**Summer & Winter Inspections**

The Local Maintaining Agency (LMA) is responsible for summer and winter inspections. The LMA is required to submit a report regarding summer and winter inspections to the California Department of Water Resources (DWR).

DWR must be informed on the:

- a) completion of the inspection
- b) any changes other than the results of normal maintenance
- c) corrections to deficiencies noted in this report

If additional items are noted, further documentation of those items must also be submitted.

The LMA should submit this information to DWR using the LMA web application tool available at:

<http://cdec.water.ca.gov/lma.html>

If the LMA is unable to submit information on this webpage, please contact DWR for assistance.

*The LMA should submit the information and any associated documentation by September 30 for summer inspections and March 31 for winter inspections.*

**Flood Control Project Maintenance  
Levee Inspections**

## Levee Inspection Report By Mile - Spring 2014

### Lower San Joaquin Levee District

Waterway	Bank	Unit Miles	Inspection Start/End	Inspector
Unit No. 22A East Side Canal	Left	5.50	05/12/2014 05/13/2014	Richard Willoughby

LM Start	0.00	Rating **	M	Issue No.	13
LM End	5.50	Issue Type +	Ma	Location *	LS
Category	Earthen Levee			GPS Latitude/Longitude	
				Start	End
Item	Vegetation			37.206008 °	°
				-120.696977 °	°
DWR ID	DWR_NA0010_22A_s_2014_13				
Action/Comments					
Control annual grass and weeds on the levee slopes and easements.					

No Photos

LM Start	0.00	Rating **	M	Issue No.	14
LM End	5.50	Issue Type +	Ma	Location *	WS
Category	Earthen Levee			GPS Latitude/Longitude	
				Start	End
Item	Vegetation			37.206008 °	°
				-120.696977 °	°
DWR ID	DWR_NA0010_22A_s_2014_14				
Action/Comments					
Control annual grass and weeds on the levee slopes and easements.					

No Photos

LM Start	0.10	Rating **	C	Issue No.	7
LM End	0.10	Issue Type +	Ma	Location *	WS
Category	Earthen Levee			GPS Latitude/Longitude	
				Start	End
Item	Erosion / Bank Caving			37.206985 °	37.206985 °
				-120.696225 °	-120.696225 °
DWR ID	DWR_NA0010_22A_s_2012_7				
Action/Comments					
Note and monitor erosion site.					
Inspector Comments: Erosion located next to screw gate was repaired by district.					

No Photos

**\* Location**  
LS : Land Side  
WS : Water Side  
CR : Crown

**\*\* Rating**  
A : Acceptable  
M : Minimally Acceptable  
U : Unacceptable  
N : Not Inspected/Rated  
C : Corrected  
A/W : Acceptable but Monitor & Maintain

**+ Issue Type**  
Ma : Maintenance Deficiency  
Ob : Design & System Obsolescence  
En : Enforcement

**Flood Control Project Maintenance  
Levee Inspections**

**Levee Inspection Report By Mile - Spring 2014**

**Lower San Joaquin Levee District**

Waterway	Bank	Unit Miles	Inspection Start/End	Inspector
Unit No. 22A East Side Canal	Left	5.50	05/12/2014 05/13/2014	Richard Willoughby

LM Start	0.68	Rating **	A/W	Issue No.	8
LM End	0.88	Issue Type +	Ma	Location *	LS
Category	Earthen Levee			GPS Latitude/Longitude	
				Start	End
Item	Vegetation			37.215360 °	37.218128 °
				-120.698078 °	-120.697457 °
DWR ID	DWR_NA0010_22A_s_2012_8				
Action/Comments					
Remove the wild growth other than native grasses from the levee					

No Photos

LM Start	2.65	Rating **	A/W	Issue No.	1
LM End	3.65	Issue Type +	Ma	Location *	WS
Category	Earthen Levee			GPS Latitude/Longitude	
				Start	End
Item	Animal Control			37.242563 °	37.253465 °
				-120.706435 °	-120.717952 °
DWR ID	DWR_NA0010_22A_s_2012_1				
Action/Comments					
Repair the levee slope damaged by livestock and prevent large animal access.					
Inspector Comments: There are several slope stability issues along this channel cause by animals that need to be monitored.					

Photo 1 of 2 : richard\_s\_20140417\_636.jpg



Looking northeast at erosion caused by animals on waterside slope.

Photo 2 of 2 : richard\_s\_20140417\_637.jpg



Looking south at erosion caused by animals on waterside slope.

<b>* Location</b> LS : Land Side WS : Water Side CR : Crown		<b>** Rating</b> A : Acceptable M : Minimally Acceptable U : Unacceptable		N : Not Inspected/Rated C : Corrected A/W : Acceptable but Monitor & Maintain		<b>+ Issue Type</b> Ma : Maintenance Deficiency Ob : Design & System Obsolescence En : Enforcement	
--	--	--	--	---	--	---	--

**Flood Control Project Maintenance  
Levee Inspections**

**Levee Inspection Report By Mile - Spring 2014**

**Lower San Joaquin Levee District**

Waterway	Bank	Unit Miles	Inspection Start/End	Inspector
Unit No. 22A East Side Canal	Left	5.50	05/12/2014 05/13/2014	Richard Willoughby

LM Start	2.87	Rating **	M	Issue No.	15
LM End	3.05	Issue Type +	Ma	Location *	LS
Category	Earthen Levee			GPS Latitude/Longitude	
				Start	End
Item	Animal Control			37.245431 °	37.247343 °
				-120.707990 °	-120.710362 °
DWR ID	DWR_NA0010_22A_s_2014_15				
Action/Comments					
No rodents visible, but rodent burrows visible; need to backfill and					

No Photos

LM Start	2.88	Rating **	M	Issue No.	16
LM End	2.88	Issue Type +	Ma	Location *	WS
Category	Earthen Levee			GPS Latitude/Longitude	
				Start	End
Item	Animal Control			37.245537 °	37.245537 °
				-120.708120 °	-120.708120 °
DWR ID	DWR_NA0010_22A_s_2014_16				
Action/Comments					
Repair the levee slope damaged by livestock and prevent large animal access.					

Photo 1 of 1 : richard\_s\_20140519\_812.jpg



Looking south at slope damage cause by animal traffic on waterside slope.

LM Start	2.96	Rating **	M	Issue No.	17
LM End	2.96	Issue Type +	Ma	Location *	WS
Category	Earthen Levee			GPS Latitude/Longitude	
				Start	End
Item	Animal Control			37.246417 °	37.246417 °
				-120.709206 °	-120.709206 °
DWR ID	DWR_NA0010_22A_s_2014_17				
Action/Comments					
Repair the levee slope damaged by livestock and prevent large animal access.					

Photo 1 of 1 : richard\_s\_20140519\_813.jpg



Looking south at slope damage caused by animal traffic on waterside slope.

**\* Location**

LS : Land Side  
WS : Water Side  
CR : Crown

**\*\* Rating**

A : Acceptable  
M : Minimally Acceptable  
U : Unacceptable  
N : Not Inspected/Rated  
C : Corrected  
A/W : Acceptable but Monitor & Maintain

**+ Issue Type**

Ma : Maintenance Deficiency  
Ob : Design & System Obsolescence  
En : Enforcement

**Flood Control Project Maintenance  
Levee Inspections**

**Levee Inspection Report By Mile - Spring 2014**

**Lower San Joaquin Levee District**

Waterway	Bank	Unit Miles	Inspection Start/End	Inspector
Unit No. 22A East Side Canal	Left	5.50	05/12/2014 05/13/2014	Richard Willoughby

LM Start	3.14	Rating **	A/W	Issue No.	2
LM End	3.14	Issue Type +	Ma	Location *	WS
Category	Earthen Levee			GPS Latitude/Longitude	
				Start	End
Item	Trim / Thin Trees			37.248208 °	37.248208 °
				-120.711500 °	-120.711500 °
DWR ID	DWR_NA0010_22A_s_2012_2				
Action/Comments					
Thin trees to allow visibility of the ground and room to flood fight.					

No Photos

LM Start	3.47	Rating **	M	Issue No.	18
LM End	3.47	Issue Type +	Ma	Location *	WS
Category	Earthen Levee			GPS Latitude/Longitude	
				Start	End
Item	Animal Control			37.251630 °	37.251630 °
				-120.715682 °	-120.715682 °
DWR ID	DWR_NA0010_22A_s_2014_18				
Action/Comments					
Repair the levee slope damaged by livestock and prevent large animal access.					

No Photos

LM Start	3.54	Rating **	M	Issue No.	19
LM End	3.65	Issue Type +	Ma	Location *	WS
Category	Earthen Levee			GPS Latitude/Longitude	
				Start	End
Item	Animal Control			37.252410 °	37.253465 °
				-120.716658 °	-120.717974 °
DWR ID	DWR_NA0010_22A_s_2014_19				
Action/Comments					
Repair the levee slope damaged by livestock and prevent large animal access.					

No Photos

\* Location  
LS : Land Side  
WS : Water Side  
CR : Crown

\*\* Rating  
A : Acceptable  
M : Minimally Acceptable  
U : Unacceptable  
N : Not Inspected/Rated  
C : Corrected  
A/W : Acceptable but Monitor & Maintain

+ Issue Type  
Ma : Maintenance Deficiency  
Ob : Design & System Obsolescence  
En : Enforcement



**Flood Control Project Maintenance  
Levee Inspections**

**Levee Inspection Report By Mile - Spring 2014**

**Lower San Joaquin Levee District**

Waterway	Bank	Unit Miles	Inspection Start/End	Inspector
Unit No. 22A East Side Canal	Left	5.50	05/12/2014 05/13/2014	Richard Willoughby

LM Start	3.79	Rating **	M	Issue No.	11
LM End	3.79	Issue Type +	Ma	Location *	LS
Category	Earthen Levee			GPS Latitude/Longitude	
				Start	End
Item	Animal Control			37.254923 °	37.254923 °
				-120.719769 °	-120.719769 °
DWR ID	DWR_NA0010_22A_s_2014_11				
Action/Comments					
Exterminate rodents and backfill and compact or grout burrows.					

No Photos

LM Start	4.25	Rating **	A/W	Issue No.	52
LM End	4.32	Issue Type +	Ma	Location *	CR
Category	Earthen Levee			GPS Latitude/Longitude	
				Start	End
Item	Crown Surface / Depressions / Rutting			37.259822 °	37.259823 °
				-120.725557 °	-120.725558 °
DWR ID	DWR_NA0010_22A_s_2012_52				
Action/Comments					
Repair depressions or ruts in the crown or slope.					

No Photos

LM Start	4.68	Rating **	M	Issue No.	3
LM End	4.68	Issue Type +	En	Location *	WS
Category	Channels			GPS Latitude/Longitude	
				Start	End
Item	Encroachments			37.264250 °	37.264250 °
				-120.731280 °	-120.731280 °
DWR ID	DWR_NA0010_22A_s_2012_3				
Action/Comments					
Inspector Comments: Old wooden bridge in channel should be removed.					

Photo 1 of 2 : richard\_s\_20140417\_638.jpg



Looking east at dilapidated bridge across canal.

\* Location  
LS : Land Side  
WS : Water Side  
CR : Crown

\*\* Rating  
A : Acceptable  
M : Minimally Acceptable  
U : Unacceptable  
N : Not Inspected/Rated  
C : Corrected  
A/W : Acceptable but Monitor & Maintain

+ Issue Type  
Ma : Maintenance Deficiency  
Ob : Design & System Obsolescence  
En : Enforcement

**Flood Control Project Maintenance  
Levee Inspections**

**Levee Inspection Report By Mile - Spring 2014**

**Lower San Joaquin Levee District**

Waterway	Bank	Unit Miles	Inspection Start/End	Inspector
Unit No. 22A East Side Canal	Left	5.50	05/12/2014 05/13/2014	Richard Willoughby

LM Start	4.68	Rating **	M	Issue No.	3 (cont)
LM End	4.68	Issue Type +	En	Location *	WS
Category	Channels			GPS Latitude/Longitude	
				Start	End
Item	Encroachments			37.264250 °	37.264250 °
				-120.731280 °	-120.731280 °
DWR ID	DWR_NA0010_22A_s_2012_3				
Action/Comments					
Inspector Comments: Old wooden bridge in channel should be removed.					

Photo 2 of 2 : richard\_s\_20140417\_639.jpg



Looking northeast at dilapidated bridge across canal.

LM Start	4.80	Rating **	M	Issue No.	5
LM End	4.86	Issue Type +	Ma	Location *	WS
Category	Earthen Levee			GPS Latitude/Longitude	
				Start	End
Item	Animal Control			37.265180 °	37.265743 °
				-120.732745 °	-120.733602 °
DWR ID	DWR_NA0010_22A_s_2012_5				
Action/Comments					
Repair the levee slope damaged by livestock and prevent large animal access.					
Inspector Comments: Erosion caused by livestock on waterside toe.					

Photo 1 of 1 : richard\_s\_20140417\_642.jpg



Looking north at waterside erosion from livestock.

LM Start	4.81	Rating **	M	Issue No.	10
LM End	4.84	Issue Type +	Ma	Location *	CR
Category	Earthen Levee			GPS Latitude/Longitude	
				Start	End
Item	Crown Surface / Depressions / Rutting			37.265330 °	37.265705 °
				-120.732960 °	-120.733553 °
DWR ID	DWR_NA0010_22A_s_2012_10				
Action/Comments					
Add appropriate gravel or road base. Grade and compact.					

No Photos

\* Location  
LS : Land Side  
WS : Water Side  
CR : Crown

\*\* Rating  
A : Acceptable  
M : Minimally Acceptable  
U : Unacceptable  
N : Not Inspected/Rated  
C : Corrected  
A/W : Acceptable but Monitor & Maintain

+ Issue Type  
Ma : Maintenance Deficiency  
Ob : Design & System Obsolescence  
En : Enforcement

**Flood Control Project Maintenance  
Levee Inspections**

**Levee Inspection Report By Mile - Spring 2014**

**Lower San Joaquin Levee District**

Waterway	Bank	Unit Miles	Inspection Start/End	Inspector
Unit No. 22A East Side Canal	Left	5.50	05/12/2014 05/13/2014	Richard Willoughby

LM Start	5.03	Rating **	M	Issue No.	12
LM End	5.03	Issue Type +	Ma	Location *	WS
Category	Earthen Levee			GPS Latitude/Longitude	
				Start	End
Item	Slope Stability			37.267271 °	37.267271 °
				-120.736067 °	-120.736067 °
DWR ID	DWR_NA0010_22A_s_2014_12				
Action/Comments					
Repair the levee slope damaged by foot traffic and prevent access where possible.					
Inspector Comments: Slope damage caused by animal traffic.					

Photo 1 of 1 : richard\_s\_20140519\_814.jpg



Looking south at slope damage cause by animal traffic on waterside slope.

LM Start	5.05	Rating **	M	Issue No.	4
LM End	5.05	Issue Type +	Ma	Location *	WS
Category	Earthen Levee			GPS Latitude/Longitude	
				Start	End
Item	Erosion / Bank Caving			37.267516 °	37.267516 °
				-120.736401 °	-120.736401 °
DWR ID	DWR_NA0010_22A_f_2013_4				
Action/Comments					
Schedule repair of erosion site prior to the next inspection. Inspector Comments: Erosion caused by animal traffic.					

Photo 1 of 2 : richard\_s\_20140417\_640.jpg



Looking south livestock erosion on waterward toe.

LM Start	<b>5.05</b>	Rating **	M	Issue No.	<b>4 (cont)</b>
LM End	<b>5.05</b>	Issue Type +	Ma	Location *	WS

Photo 2 of 2 : richard\_s\_20140417\_641.jpg



Looking southeast at livestock erosion on waterward toe.

\* Location  
LS : Land Side  
WS : Water Side  
CR : Crown

\*\* Rating  
A : Acceptable  
M : Minimally Acceptable  
U : Unacceptable  
N : Not Inspected/Rated  
C : Corrected  
A/W : Acceptable but Monitor & Maintain

+ Issue Type  
Ma : Maintenance Deficiency  
Ob : Design & System Obsolescence  
En : Enforcement

**Flood Control Project Maintenance  
Levee Inspections**

**Levee Inspection Report By Mile - Spring 2014**

**Lower San Joaquin Levee District**

Waterway	Bank	Unit Miles	Inspection Start/End	Inspector
Unit No. 22A East Side Canal	Left	5.50	05/12/2014 05/13/2014	Richard Willoughby

LM Start	5.07	Rating **	A/W	Issue No.	9
LM End	5.10	Issue Type +	Ma	Location *	CR
Category	Earthen Levee			GPS Latitude/Longitude	
				Start	End
Item	Crown Surface / Depressions / Rutting			37.267682 °	37.267967 °
				-120.736597 °	-120.736913 °
DWR ID	DWR_NA0010_22A_s_2012_9				
Action/Comments					
Repair depressions or ruts in the crown or slope.					

Photo 1 of 1 : richard\_s\_20140417\_648.jpg



Looking south at rutting on levee crown.

LM Start	5.09	Rating **	A/W	Issue No.	57
LM End	5.09	Issue Type +	Ma	Location *	CR
Category	Earthen Levee			GPS Latitude/Longitude	
				Start	End
Item	Crown Surface / Depressions / Rutting			37.267903 °	37.267903 °
				-120.736878 °	-120.736878 °
DWR ID	DWR_NA0010_22A_s_2012_57				
Action/Comments					
Repair depressions or ruts in the crown or slope.					

No Photos

LM Start	5.15	Rating **	M	Issue No.	6
LM End	5.20	Issue Type +	Ma	Location *	WS
Category	Earthen Levee			GPS Latitude/Longitude	
				Start	End
Item	Animal Control			37.268492 °	37.269133 °
				-120.737493 °	-120.738208 °
DWR ID	DWR_NA0010_22A_s_2012_6				
Action/Comments					
Repair the levee slope damaged by livestock and prevent large animal access.					
Inspector Comments: Erosion caused by livestock on waterside toe.					

Photo 1 of 2 : richard\_s\_20140417\_643.jpg



Looking north at livestock erosion along waterside slope and toe.

\* Location  
LS : Land Side  
WS : Water Side  
CR : Crown

\*\* Rating  
A : Acceptable  
M : Minimally Acceptable  
U : Unacceptable  
N : Not Inspected/Rated  
C : Corrected  
A/W : Acceptable but Monitor & Maintain

+ Issue Type  
Ma : Maintenance Deficiency  
Ob : Design & System Obsolescence  
En : Enforcement



**Flood Control Project Maintenance  
Levee Inspections**

**Levee Inspection Report By Mile - Spring 2014**

**Lower San Joaquin Levee District**

Waterway	Bank	Unit Miles	Inspection Start/End	Inspector
Unit No. 22A East Side Canal	Left	5.50	05/12/2014 05/13/2014	Richard Willoughby

LM Start	5.15	Rating **	M	Issue No.	6 (cont)
LM End	5.20	Issue Type +	Ma	Location *	WS
Category	Earthen Levee			GPS Latitude/Longitude	
				Start	End
Item	Animal Control			37.268492 °	37.269133 °
				-120.737493 °	-120.738208 °
DWR ID	DWR_NA0010_22A_s_2012_6				
Action/Comments					
Repair the levee slope damaged by livestock and prevent large animal access.					
Inspector Comments: Erosion caused by livestock on waterside toe.					

Photo 2 of 2 : richard\_s\_20140417\_644.jpg



Looking south at livestock erosion on waterward toe.

**\* Location**  
LS : Land Side  
WS : Water Side  
CR : Crown

**\*\* Rating**  
A : Acceptable  
M : Minimally Acceptable  
U : Unacceptable  
N : Not Inspected/Rated  
C : Corrected  
A/W : Acceptable but Monitor & Maintain

**+ Issue Type**  
Ma : Maintenance Deficiency  
Ob : Design & System Obsolescence  
En : Enforcement



**Flood Control Project Maintenance  
Levee Inspections**

**Unit Cover Sheet**

**Spring 2014 Levee Inspection Results**

**Lower San Joaquin Levee District**

Waterway			Bank	Unit Miles
Unit No. 23 San Joaquin River			Right	10.25
	Spring (March - May)	Summer (June - August)	(September - November) Fall	Winter (December - February)
Unit Maintenance Rating (Fall Only)				
Date of Inspection	05/13/2014 - 05/13/2014			
DWR Inspector	Richard Willoughby			
Accompanied By				

**Summer & Winter Inspections**

The Local Maintaining Agency (LMA) is responsible for summer and winter inspections. The LMA is required to submit a report regarding summer and winter inspections to the California Department of Water Resources (DWR).

DWR must be informed on the:

- a) completion of the inspection
- b) any changes other than the results of normal maintenance
- c) corrections to deficiencies noted in this report

If additional items are noted, further documentation of those items must also be submitted.

The LMA should submit this information to DWR using the LMA web application tool available at:

<http://cdec.water.ca.gov/lma.html>

If the LMA is unable to submit information on this webpage, please contact DWR for assistance.

*The LMA should submit the information and any associated documentation by September 30 for summer inspections and March 31 for winter inspections.*

**Flood Control Project Maintenance  
Levee Inspections**

**Levee Inspection Report By Mile - Spring 2014**

**Lower San Joaquin Levee District**

Waterway	Bank	Unit Miles	Inspection Start/End	Inspector
Unit No. 23 San Joaquin River	Right	10.25	05/13/2014 05/13/2014	Richard Willoughby

LM Start	0.00	Rating **	M	Issue No.	4
LM End	10.25	Issue Type +	Ma	Location *	LS
Category	Earthen Levee			GPS Latitude/Longitude	
				Start	End
Item	Vegetation			36.774369 °	36.814835 °
				-120.283704 °	-120.168888 °
DWR ID	DWR_NA0010_23_s _ 2014_4				
Action/Comments					
Control annual grass and weeds on the levee slopes and easements.					

Photo 1 of 1 : richard\_s\_20140520\_828.jpg



Looking at typical view of vegetation on levee crown and slopes.

LM Start	0.00	Rating **	M	Issue No.	8
LM End	10.25	Issue Type +	Ma	Location *	WS
Category	Earthen Levee			GPS Latitude/Longitude	
				Start	End
Item	Vegetation			36.774368 °	36.814834 °
				-120.283705 °	-120.168889 °
DWR ID	DWR_NA0010_23_s _ 2014_8				
Action/Comments					
Control annual grass and weeds on the levee slopes and easements.					

No Photos

LM Start	1.16	Rating **	A/W	Issue No.	1
LM End	1.28	Issue Type +	Ma	Location *	LS
Category	Earthen Levee			GPS Latitude/Longitude	
				Start	End
Item	Vegetation			36.772832 °	36.773123 °
				-120.265742 °	-120.263603 °
DWR ID	DWR_NA0010_23_s _ 2012_1				
Action/Comments					
Remove the wild growth other than native grasses from the levee slopes.					

No Photos

\* Location  
LS : Land Side  
WS : Water Side  
CR : Crown

\*\* Rating  
A : Acceptable  
M : Minimally Acceptable  
U : Unacceptable  
N : Not Inspected/Rated  
C : Corrected  
A/W : Acceptable but Monitor & Maintain

+ Issue Type  
Ma : Maintenance Deficiency  
Ob : Design & System Obsolescence  
En : Enforcement

**Flood Control Project Maintenance  
Levee Inspections**

## Levee Inspection Report By Mile - Spring 2014

### Lower San Joaquin Levee District

Waterway	Bank	Unit Miles	Inspection Start/End	Inspector
Unit No. 23 San Joaquin River	Right	10.25	05/13/2014 05/13/2014	Richard Willoughby

LM Start	1.21	Rating **	M	Issue No.	6
LM End	1.21	Issue Type +	Ma	Location *	LS
Category	Earthen Levee			GPS Latitude/Longitude	
				Start	End
Item	Vegetation			36.772973 °	36.772973 °
				-120.264768 °	-120.264768 °
DWR ID	DWR_NA0010_23_s_2013_6				
Action/Comments					
Elderberries are blocking visibility and flood fight capability.					

No Photos

LM Start	1.53	Rating **	M	Issue No.	14
LM End	1.53	Issue Type +	Ma	Location *	LS
Category	Earthen Levee			GPS Latitude/Longitude	
				Start	End
Item	Slope Stability			36.772035 °	36.772035 °
				-120.259560 °	-120.259560 °
DWR ID	DWR_NA0010_23_f_2012_14				
Action/Comments					
Repair the levee slope damaged by vehicle traffic and prevent access where possible.					

Photo 1 of 2 : richard\_s\_20140417\_660.jpg



Looking north at slope damaged by vehicle traffic.

Photo 2 of 2 : richard\_s\_20140417\_661.jpg



Looking south at slope damaged by vehicle traffic. (Fall 2013)

<b>* Location</b> LS : Land Side WS : Water Side CR : Crown		<b>** Rating</b> A : Acceptable M : Minimally Acceptable U : Unacceptable		<b>+ Issue Type</b> Ma : Maintenance Deficiency Ob : Design & System Obsolescence En : Enforcement	
		N : Not Inspected/Rated C : Corrected A/W : Acceptable but Monitor & Maintain			

**Flood Control Project Maintenance  
Levee Inspections**

**Levee Inspection Report By Mile - Spring 2014**

**Lower San Joaquin Levee District**

Waterway	Bank	Unit Miles	Inspection Start/End	Inspector
Unit No. 23 San Joaquin River	Right	10.25	05/13/2014 05/13/2014	Richard Willoughby

LM Start	1.56	Rating **	A/W	Issue No.	2
LM End	1.75	Issue Type +	Ma	Location *	LS
Category	Earthen Levee			GPS Latitude/Longitude	
				Start	End
Item	Vegetation			36.771778 °	36.771625 °
				-120.259143 °	-120.255817 °
DWR ID	DWR_NA0010_23_s_2012_2				
Action/Comments					
Remove the wild growth other than native grasses from the levee					

Photo 1 of 2 : richard\_s\_20140417\_649.jpg



Looking south at dense vegetation on landside slope.

LM Start	<b>1.56</b>	Rating **	A/W	Issue No.	<b>2 (cont)</b>
LM End	<b>1.75</b>	Issue Type +	Ma	Location *	LS

Photo 2 of 2 : richard\_s\_20140417\_650.jpg



Looking south at typical view of landward slope.

LM Start	2.13	Rating **	M	Issue No.	16
LM End	2.42	Issue Type +	Ma	Location *	WS
Category	Earthen Levee			GPS Latitude/Longitude	
				Start	End
Item	Slope Stability			36.775507 °	36.774423 °
				-120.251672 °	-120.246993 °
DWR ID	DWR_NA0010_23_s_2013_16				
Action/Comments					
Repair the levee slope damaged by vehicle traffic and prevent access					

Photo 1 of 1 : richard\_s\_20140417\_663.jpg



Looking south at waterward slope damaged by vehicle traffic

\* Location  
LS : Land Side  
WS : Water Side  
CR : Crown

\*\* Rating  
A : Acceptable  
M : Minimally Acceptable  
U : Unacceptable  
N : Not Inspected/Rated  
C : Corrected  
A/W : Acceptable but Monitor & Maintain

+ Issue Type  
Ma : Maintenance Deficiency  
Ob : Design & System Obsolescence  
En : Enforcement



**Flood Control Project Maintenance  
Levee Inspections**

**Levee Inspection Report By Mile - Spring 2014**

**Lower San Joaquin Levee District**

Waterway	Bank	Unit Miles	Inspection Start/End	Inspector
Unit No. 23 San Joaquin River	Right	10.25	05/13/2014 05/13/2014	Richard Willoughby

LM Start	2.85	Rating **	M	Issue No.	15
LM End	2.85	Issue Type +	Ma	Location *	LS
Category	Earthen Levee			GPS Latitude/Longitude	
				Start	End
Item	Vegetation			36.771537 °	36.771537 °
				-120.240917 °	-120.240917 °
DWR ID	DWR_NA0010_23_s _ 2012_15				
Action/Comments					
Elderberries are blocking visibility and flood fight capability.					

Photo 1 of 1 : richard\_s\_20140417\_662.jpg



Looking south at elderberry on landside toe and berm.

LM Start	3.30	Rating **	M	Issue No.	3
LM End	3.30	Issue Type +	Ma	Location *	LS
Category	Earthen Levee			GPS Latitude/Longitude	
				Start	End
Item	Vegetation			36.774403 °	36.774403 °
				-120.234705 °	-120.234705 °
DWR ID	DWR_NA0010_23_s _ 2012_3				
Action/Comments					
Elderberries are blocking visibility and flood fight capability.					

Photo 1 of 2 : richard\_s\_20140417\_651.jpg



Looking south at elderberry on landside toe and berm.

LM Start	<b>3.30</b>	Rating **	M	Issue No.	<b>3 (cont)</b>
LM End	<b>3.30</b>	Issue Type +	Ma	Location *	LS

Photo 2 of 2 : richard\_s\_20140417\_652.jpg



Looking south at elderberry bush on landward toe. (Fall 2013)

\* Location  
LS : Land Side  
WS : Water Side  
CR : Crown

\*\* Rating  
A : Acceptable  
M : Minimally Acceptable  
U : Unacceptable  
N : Not Inspected/Rated  
C : Corrected  
A/W : Acceptable but Monitor & Maintain

+ Issue Type  
Ma : Maintenance Deficiency  
Ob : Design & System Obsolescence  
En : Enforcement



**Flood Control Project Maintenance  
Levee Inspections**

**Levee Inspection Report By Mile - Spring 2014**

**Lower San Joaquin Levee District**

Waterway	Bank	Unit Miles	Inspection Start/End	Inspector
Unit No. 23 San Joaquin River	Right	10.25	05/13/2014 05/13/2014	Richard Willoughby

LM Start	3.45	Rating **	M	Issue No.	9
LM End	3.45	Issue Type +	Ma	Location *	LS
Category	Earthen Levee			GPS Latitude/Longitude	
				Start	End
Item	Vegetation			36.776537 °	36.776537 °
				-120.234573 °	-120.234573 °
DWR ID	DWR_NA0010_23_s _ 2012_9				
Action/Comments					
Elderberries are blocking visibility and flood fight capability.					

Photo 1 of 1 : richard\_s\_20140417\_656.jpg



Looking south at elderberry on landside toe and berm.

LM Start	4.14	Rating **	M	Issue No.	10
LM End	4.14	Issue Type +	Ma	Location *	LS
Category	Earthen Levee			GPS Latitude/Longitude	
				Start	End
Item	Vegetation			36.784212 °	36.784212 °
				-120.228815 °	-120.228815 °
DWR ID	DWR_NA0010_23_s _ 2012_10				
Action/Comments					
Elderberries are blocking visibility and flood fight capability.					

Photo 1 of 2 : richard\_s\_20140417\_657.jpg



Looking south at elderberry on landside toe and berm.

LM Start	<b>4.14</b>	Rating **	M	Issue No.	<b>10 (cont)</b>
LM End	<b>4.14</b>	Issue Type +	Ma	Location *	LS

Photo 2 of 2 : richard\_s\_20140417\_658.jpg



Looking south at elderberry bush on landward toe. (Fall 2013)

**\* Location**  
LS : Land Side  
WS : Water Side  
CR : Crown

**\*\* Rating**  
A : Acceptable  
M : Minimally Acceptable  
U : Unacceptable  
N : Not Inspected/Rated  
C : Corrected  
A/W : Acceptable but Monitor & Maintain

**+ Issue Type**  
Ma : Maintenance Deficiency  
Ob : Design & System Obsolescence  
En : Enforcement

**Flood Control Project Maintenance  
Levee Inspections**

**Levee Inspection Report By Mile - Spring 2014**

**Lower San Joaquin Levee District**

Waterway	Bank	Unit Miles	Inspection Start/End	Inspector
Unit No. 23 San Joaquin River	Right	10.25	05/13/2014 05/13/2014	Richard Willoughby

LM Start	4.46	Rating **	M	Issue No.	11
LM End	4.46	Issue Type +	Ma	Location *	LS
Category	Earthen Levee			GPS Latitude/Longitude	
				Start	End
Item	Vegetation			36.784523 °	36.784523 °
				-120.223292 °	-120.223292 °
DWR ID	DWR_NA0010_23_s_2012_11				
Action/Comments					
Elderberries are blocking visibility and flood fight capability.					

Photo 1 of 1 : richard\_s\_20140417\_659.jpg



Looking south at elderberry on landside toe and berm.

LM Start	5.23	Rating **	A/W	Issue No.	7
LM End	5.23	Issue Type +	Ma	Location *	WS
Category	Earthen Levee			GPS Latitude/Longitude	
				Start	End
Item	Encroachments			36.791400 °	36.791400 °
				-120.214222 °	-120.214222 °
DWR ID	DWR_NA0010_23_s_2012_7				
Action/Comments					
Material					
Inspector Comments: Sand pile in levee channel over three feet high.					
Pile is too close to levee.					

Photo 1 of 2 : richard\_s\_20140417\_654.jpg



Looking south at sand pile 20-30 feet away from waterside slope.

LM Start	<b>5.23</b>	Rating **	A/W	Issue No.	<b>7 (cont)</b>
LM End	<b>5.23</b>	Issue Type +	Ma	Location *	WS

Photo 2 of 2 : richard\_s\_20140417\_655.jpg



Looking southwest at de-graded sandpile in channel.

**\* Location**  
LS : Land Side  
WS : Water Side  
CR : Crown

**\*\* Rating**  
A : Acceptable  
M : Minimally Acceptable  
U : Unacceptable  
N : Not Inspected/Rated  
C : Corrected  
A/W : Acceptable but Monitor & Maintain

**+ Issue Type**  
Ma : Maintenance Deficiency  
Ob : Design & System Obsolescence  
En : Enforcement

**Flood Control Project Maintenance  
Levee Inspections**

**Levee Inspection Report By Mile - Spring 2014**

**Lower San Joaquin Levee District**

Waterway	Bank	Unit Miles	Inspection Start/End	Inspector
Unit No. 23 San Joaquin River	Right	10.25	05/13/2014 05/13/2014	Richard Willoughby

LM Start	5.69	Rating **	M	Issue No.	5
LM End	5.90	Issue Type +	Ma	Location *	WS
Category	Earthen Levee			GPS Latitude/Longitude	
				Start	End
Item	Animal Control			36.792012 °	36.790972 °
				-120.206270 °	-120.202588 °
DWR ID	DWR_NA0010_23_s _ 2012_5				
Action/Comments					
Exterminate rodents and backfill and compact or grout burrows.					

Photo 1 of 1 : richard\_s\_20140417\_653.jpg



Looking at several rodent holes on landside slope.

LM Start	7.84	Rating **	A/W	Issue No.	13
LM End	8.08	Issue Type +	Ma	Location *	LS
Category	Earthen Levee			GPS Latitude/Longitude	
				Start	End
Item	Vegetation			36.785663 °	36.789127 °
				-120.182890 °	-120.182298 °
DWR ID	DWR_NA0010_23_s _ 2012_13				
Action/Comments					
Remove the wild growth other than native grasses from the levee slopes.					

No Photos

LM Start	7.84	Rating **	A/W	Issue No.	12
LM End	8.08	Issue Type +	Ma	Location *	WS
Category	Earthen Levee			GPS Latitude/Longitude	
				Start	End
Item	Vegetation			36.785672 °	36.789130 °
				-120.182873 °	-120.182297 °
DWR ID	DWR_NA0010_23_s _ 2012_12				
Action/Comments					
Remove the wild growth other than native grasses from the levee slopes.					

No Photos

<b>* Location</b> LS : Land Side WS : Water Side CR : Crown	<b>** Rating</b> A : Acceptable M : Minimally Acceptable U : Unacceptable	N : Not Inspected/Rated C : Corrected A/W : Acceptable but Monitor & Maintain	<b>+ Issue Type</b> Ma : Maintenance Deficiency Ob : Design & System Obsolescence En : Enforcement
--	--	---	---

**Flood Control Project Maintenance  
Levee Inspections**

**Levee Inspection Report By Mile - Spring 2014**

**Lower San Joaquin Levee District**

Waterway	Bank	Unit Miles	Inspection Start/End	Inspector
Unit No. 23 San Joaquin River	Right	10.25	05/13/2014 05/13/2014	Richard Willoughby

LM Start	8.48	Rating **	M	Issue No.	17
LM End	8.48	Issue Type +	Ma	Location *	WS
Category	Earthen Levee			GPS Latitude/Longitude	
				Start	End
Item	Slope Stability			36.793717 °	36.793717 °
				-120.178997 °	-120.178997 °
DWR ID	DWR_NA0010_23_s _ 2013_17				
Action/Comments					
Repair the levee slope damaged by vehicle traffic and prevent access where possible.					
Inspector Comments: Waterward slope has been damaged due to vehicle traffic.					

Photo 1 of 1 : richard\_s\_20140417\_664.jpg



Looking southwest at waterward slope damaged due to vehicle traffic.

LM Start	9.11	Rating **	M	Issue No.	18
LM End	9.51	Issue Type +	Ma	Location *	CR
Category	Earthen Levee			GPS Latitude/Longitude	
				Start	End
Item	Crown Surface / Depressions / Rutting			36.801334 °	36.804311 °
				-120.174397 °	-120.169135 °
DWR ID	DWR_NA0010_23_s _ 2014_18				
Action/Comments					
Add appropriate material and re-grade the levee to bring the crown above the design elevation.					
Inspector Comments: Control vegetation on crown.					

No Photos

\* Location  
LS : Land Side  
WS : Water Side  
CR : Crown

\*\* Rating  
A : Acceptable  
M : Minimally Acceptable  
U : Unacceptable  
N : Not Inspected/Rated  
C : Corrected  
A/W : Acceptable but Monitor & Maintain

+ Issue Type  
Ma : Maintenance Deficiency  
Ob : Design & System Obsolescence  
En : Enforcement

**Flood Control Project Maintenance  
Levee Inspections**

**Unit Cover Sheet**

**Spring 2014 Levee Inspection Results**

**Lower San Joaquin Levee District**

Waterway			Bank	Unit Miles
Unit No. 24 San Joaquin River			Left	8.34
	Spring (March - May)	Summer (June - August)	(September - November) Fall	Winter (December - February)
Unit Maintenance Rating (Fall Only)				
Date of Inspection	05/13/2014 - 05/13/2014			
DWR Inspector	Richard Willoughby			
Accompanied By				

**Summer & Winter Inspections**

The Local Maintaining Agency (LMA) is responsible for summer and winter inspections. The LMA is required to submit a report regarding summer and winter inspections to the California Department of Water Resources (DWR).

DWR must be informed on the:

- a) completion of the inspection
- b) any changes other than the results of normal maintenance
- c) corrections to deficiencies noted in this report

If additional items are noted, further documentation of those items must also be submitted.

The LMA should submit this information to DWR using the LMA web application tool available at:

<http://cdec.water.ca.gov/lma.html>

If the LMA is unable to submit information on this webpage, please contact DWR for assistance.

*The LMA should submit the information and any associated documentation by September 30 for summer inspections and March 31 for winter inspections.*



**Flood Control Project Maintenance  
Levee Inspections**

**Levee Inspection Report By Mile - Spring 2014**

**Lower San Joaquin Levee District**

Waterway	Bank	Unit Miles	Inspection Start/End	Inspector
Unit No. 24 San Joaquin River	Left	8.34	05/13/2014 05/13/2014	Richard Willoughby

LM Start	0.06	Rating **	M	Issue No.	47
LM End	0.06	Issue Type +	En	Location *	LS
Category	Earthen Levee			GPS Latitude/Longitude	
				Start	End
Item	Encroachments			36.772328 °	36.772328 °
				-120.285117 °	-120.285117 °
DWR ID	DWR_NA0010_24_s _ 2014_47				
Action/Comments					
Material					
Inspector Comments: District constructed a berm on waterward slope. Berm is being used for staging of earthen material.					

Photo 1 of 2 : richard\_s\_20140520\_829.jpg



Looking north at berm on waterward slope.

LM Start	<b>0.06</b>	Rating **	M	Issue No.	<b>47 (cont)</b>
LM End	<b>0.06</b>	Issue Type +	En	Location *	LS

Photo 2 of 2 : richard\_s\_20140520\_830.jpg



Looking south at berm on waterward slope.

LM Start	0.82	Rating **	M	Issue No.	6
LM End	0.82	Issue Type +	Ma	Location *	LS
Category	Earthen Levee			GPS Latitude/Longitude	
				Start	End
Item	Animal Control			36.766775 °	36.766775 °
				-120.278757 °	-120.278757 °
DWR ID	DWR_NA0010_24_s _ 2013_6				
Action/Comments					
Exterminate rodents and backfill and compact or grout burrows.					

No Photos

\* Location  
LS : Land Side  
WS : Water Side  
CR : Crown

\*\* Rating  
A : Acceptable  
M : Minimally Acceptable  
U : Unacceptable  
N : Not Inspected/Rated  
C : Corrected  
A/W : Acceptable but Monitor & Maintain

+ Issue Type  
Ma : Maintenance Deficiency  
Ob : Design & System Obsolescence  
En : Enforcement

**Flood Control Project Maintenance  
Levee Inspections**

**Levee Inspection Report By Mile - Spring 2014**

**Lower San Joaquin Levee District**

Waterway	Bank	Unit Miles	Inspection Start/End	Inspector
Unit No. 24 San Joaquin River	Left	8.34	05/13/2014 05/13/2014	Richard Willoughby

LM Start	3.46	Rating **	M	Issue No.	7
LM End	3.46	Issue Type +	Ma	Location *	LS
Category	Earthen Levee			GPS Latitude/Longitude	
				Start	End
Item	Animal Control			36.769345 °	36.769345 °
				-120.238370 °	-120.238370 °
DWR ID	DWR_NA0010_24_s_2012_7				
Action/Comments					
No rodents visible, but rodent burrows visible; need to backfill and compact or grout burrows. Inspector Comments: One of several rodent holes on landward slope.					

Photo 1 of 1 : richard\_s\_20140417\_666.jpg



Looking east at one of several rodent holes on landward slope.

LM Start	5.39	Rating **	A/W	Issue No.	2
LM End	6.46	Issue Type +	Ma	Location *	WS
Category	Earthen Levee			GPS Latitude/Longitude	
				Start	End
Item	Vegetation			36.782337 °	36.789063 °
				-120.222930 °	-120.207438 °
DWR ID	DWR_NA0010_24_s_2012_2				
Action/Comments					
Remove the wild growth other than native grasses from the levee slopes.					

No Photos

LM Start	6.33	Rating **	M	Issue No.	3
LM End	6.33	Issue Type +	En	Location *	WS
Category	Earthen Levee			GPS Latitude/Longitude	
				Start	End
Item	Encroachments			36.788155 °	36.788155 °
				-120.209655 °	-120.209655 °
DWR ID	DWR_NA0010_24_s_2012_3				
Action/Comments					
Prunings					
Inspector Comments: Pruning pile in channel.					

Photo 1 of 1 : richard\_s\_20140417\_665.jpg



Looking north at prunings on waterside berm.

**\* Location**

LS : Land Side  
WS : Water Side  
CR : Crown

**\*\* Rating**

A : Acceptable                      N : Not Inspected/Rated  
M : Minimally Acceptable        C : Corrected  
U : Unacceptable                  A/W : Acceptable but Monitor & Maintain

**+ Issue Type**

Ma : Maintenance Deficiency  
Ob : Design & System Obsolescence  
En : Enforcement

**Flood Control Project Maintenance  
Levee Inspections**

**Unit Cover Sheet**

**Spring 2014 Levee Inspection Results**

**Lower San Joaquin Levee District**

Waterway			Bank	Unit Miles
Unit No. 25 Salt Slough			Right	2.47
	Spring (March - May)	Summer (June - August)	(September - November) Fall	Winter (December - February)
Unit Maintenance Rating (Fall Only)				
Date of Inspection	05/16/2014 - 05/16/2014			
DWR Inspector	Richard Willoughby			
Accompanied By				

**Summer & Winter Inspections**

The Local Maintaining Agency (LMA) is responsible for summer and winter inspections. The LMA is required to submit a report regarding summer and winter inspections to the California Department of Water Resources (DWR).

DWR must be informed on the:

- a) completion of the inspection
- b) any changes other than the results of normal maintenance
- c) corrections to deficiencies noted in this report

If additional items are noted, further documentation of those items must also be submitted.

The LMA should submit this information to DWR using the LMA web application tool available at:

<http://cdec.water.ca.gov/lma.html>

If the LMA is unable to submit information on this webpage, please contact DWR for assistance.

*The LMA should submit the information and any associated documentation by September 30 for summer inspections and March 31 for winter inspections.*

**Flood Control Project Maintenance  
Levee Inspections**

**Levee Inspection Report By Mile - Spring 2014**

**Lower San Joaquin Levee District**

Waterway	Bank	Unit Miles	Inspection Start/End	Inspector
Unit No. 25 Salt Slough	Right	2.47	05/16/2014 05/16/2014	Richard Willoughby

LM Start	0.00	Rating **	M	Issue No.	8
LM End	2.47	Issue Type +	Ma	Location *	CR
Category	Earthen Levee			GPS Latitude/Longitude	
				Start	End
Item	Crown Surface / Depressions / Rutting			37.296117 °	37.271193 °
				-120.880724 °	-120.866633 °
DWR ID	DWR_NA0010_25_s _ 2012_8				
Action/Comments					
Add appropriate material and re-grade the levee to bring the crown above the design elevation.					
Inspector Comments: Control weeds on levee crown.					

Photo 1 of 1 : richard\_s\_20140520\_845.jpg



Looking north at typical view of vegetation on levee crown.

LM Start	0.18	Rating **	M	Issue No.	1
LM End	2.47	Issue Type +	Ma	Location *	LS
Category	Earthen Levee			GPS Latitude/Longitude	
				Start	End
Item	Vegetation			37.293548 °	37.271192 °
				-120.880744 °	-120.866641 °
DWR ID	DWR_NA0010_25_s _ 2014_1				
Action/Comments					
Control annual grass and weeds on the levee slopes and easements.					

No Photos

LM Start	0.18	Rating **	M	Issue No.	2
LM End	2.47	Issue Type +	Ma	Location *	WS
Category	Earthen Levee			GPS Latitude/Longitude	
				Start	End
Item	Vegetation			37.293548 °	37.271192 °
				-120.880744 °	-120.866641 °
DWR ID	DWR_NA0010_25_s _ 2014_2				
Action/Comments					
Control annual grass and weeds on the levee slopes and easements.					

No Photos

\* Location  
LS : Land Side  
WS : Water Side  
CR : Crown

\*\* Rating  
A : Acceptable  
M : Minimally Acceptable  
U : Unacceptable  
N : Not Inspected/Rated  
C : Corrected  
A/W : Acceptable but Monitor & Maintain

+ Issue Type  
Ma : Maintenance Deficiency  
Ob : Design & System Obsolescence  
En : Enforcement