

**Flood Control Project Maintenance
Levee Inspections**

Fall 2012 Levee Maintenance Deficiency Summary Report

Overall LMA & Unit Ratings, including DWR Erosion Survey

San Joaquin River Basin

NA0010	Overall LMA Rating	Total LMA Miles						
Lower San Joaquin Levee District	U	191.36						
Rated Item	Maintenance Deficiency				Enforcement		Design & System Obsolescence	
	M Miles	U Miles	M + 4U Miles	Threshold %	M Miles	U Miles	M Miles	U Miles
<i>Earthen Levee</i>								
Vegetation	145.00		145.00	75.77%				
Trim / Thin Trees	0.02		0.02	0.01%				
Encroachments	0.61		0.61	0.32%	1.78			
Animal Control	2.68		2.68	1.40%				
Slope Stability	0.76		0.76	0.40%				
Erosion / Bank Caving	0.13	0.01	0.17	0.09%				
Crown Surface / Depressions / Rutting	43.08		43.08	22.51%				
<i>Interior Drainage & Piping Systems</i>								
Vegetation & Obstructions		0.01	0.04	0.02%				
<i>Channels</i>								
Encroachments					0.01			
Concrete Foundations	0.01		0.01	0.01%				
<i>LMA Totals:</i>	192.29	0.02	192.37	100.53%	1.79	0.00	0.00	0.00

Unit No. 01 San Joaquin River RB	Overall Unit Rating	Total Unit Miles						
NA0010	U	22.56						
Rated Item	Maintenance Deficiency				Enforcement		Design & System Obsolescence	
	M Miles	U Miles	M + 4U Miles	Threshold %	M Miles	U Miles	M Miles	U Miles
<i>Earthen Levee</i>								
Vegetation	2.45		2.45	10.86%				
Trim / Thin Trees	0.01		0.01	0.04%				
Encroachments	0.57		0.57	2.53%	0.55			
Animal Control	0.12		0.12	0.53%				
Crown Surface / Depressions / Rutting	2.40		2.40	10.64%				
<i>Unit Totals:</i>	5.55	0.00	5.55	24.60%	0.55	0.00	0.00	0.00

Unit No. 02A San Joaquin River LB	Overall Unit Rating	Total Unit Miles						
NA0010	U	7.87						
Rated Item	Maintenance Deficiency				Enforcement		Design & System Obsolescence	
	M Miles	U Miles	M + 4U Miles	Threshold %	M Miles	U Miles	M Miles	U Miles
<i>Earthen Levee</i>								
Vegetation	7.87		7.87	100.00%				
Encroachments					0.01			
Erosion / Bank Caving		0.01	0.04	0.51%				
Crown Surface / Depressions / Rutting	4.51		4.51	57.31%				
<i>Unit Totals:</i>	12.38	0.01	12.42	157.81%	0.01	0.00	0.00	0.00

**Flood Control Project Maintenance
Levee Inspections**

Fall 2012 Levee Maintenance Deficiency Summary Report

Overall LMA & Unit Ratings, including DWR Erosion Survey

San Joaquin River Basin (cont.)

Unit No. 02B San Joaquin River LB	Overall Unit Rating	Total Unit Miles						
NA0010	U	5.92						
Rated Item	Maintenance Deficiency				Enforcement		Design & System Obsolescence	
	M Miles	U Miles	M + 4U Miles	Threshold %	M Miles	U Miles	M Miles	U Miles
<i>Earthen Levee</i>								
Vegetation	0.31		0.31	5.24%				
Encroachments	0.01		0.01	0.17%				
Crown Surface / Depressions / Rutting	5.58		5.58	94.26%				
<i>Unit Totals:</i>	5.90	0.00	5.90	99.66%	0.00	0.00	0.00	0.00
Unit No. 03 San Joaquin River RB	Overall Unit Rating	Total Unit Miles						
NA0010	M *	2.16	* Overall Unit Threshold Percent is less than 10.00%; however, U Rated Miles are present, so the Overall Unit Rating is M instead of A.					
Rated Item	Maintenance Deficiency				Enforcement		Design & System Obsolescence	
	M Miles	U Miles	M + 4U Miles	Threshold %	M Miles	U Miles	M Miles	U Miles
<i>Interior Drainage & Piping Systems</i>								
Vegetation & Obstructions		0.01	0.04	1.85%				
<i>Unit Totals:</i>	0.00	0.01	0.04	1.85% *	0.00	0.00	0.00	0.00
Unit No. 04 San Joaquin River LB	Overall Unit Rating	Total Unit Miles						
NA0010	A	1.58						
Rated Item	Maintenance Deficiency				Enforcement		Design & System Obsolescence	
	M Miles	U Miles	M + 4U Miles	Threshold %	M Miles	U Miles	M Miles	U Miles
<i>Earthen Levee</i>								
Encroachments					1.17			
<i>Unit Totals:</i>	0.00	0.00	0.00	0.00%	1.17	0.00	0.00	0.00
Unit No. 05 East Side Bypass RB	Overall Unit Rating	Total Unit Miles						
NA0010	U	34.75						
Rated Item	Maintenance Deficiency				Enforcement		Design & System Obsolescence	
	M Miles	U Miles	M + 4U Miles	Threshold %	M Miles	U Miles	M Miles	U Miles
<i>Earthen Levee</i>								
Vegetation	8.75		8.75	25.18%				
Encroachments	0.01		0.01	0.03%	0.02			
Animal Control	0.05		0.05	0.14%				
Erosion / Bank Caving	0.12		0.12	0.35%				
Crown Surface / Depressions / Rutting	6.20		6.20	17.84%				
<i>Unit Totals:</i>	15.13	0.00	15.13	43.54%	0.02	0.00	0.00	0.00

**Flood Control Project Maintenance
Levee Inspections**

Fall 2012 Levee Maintenance Deficiency Summary Report

Overall LMA & Unit Ratings, including DWR Erosion Survey

San Joaquin River Basin (cont.)

Unit No. 06 East Side Bypass LB		Overall Unit Rating	Total Unit Miles						
NA0010		U	36.38						
Rated Item	Maintenance Deficiency				Enforcement		Design & System Obsolescence		
	M Miles	U Miles	M + 4U Miles	Threshold %	M Miles	U Miles	M Miles	U Miles	
<i>Earthen Levee</i>									
Vegetation	37.27		37.27	102.45%					
Encroachments					0.02				
Animal Control	0.29		0.29	0.80%					
Slope Stability	0.74		0.74	2.03%					
Crown Surface / Depressions / Rutting	1.22		1.22	3.35%					
<i>Unit Totals:</i>	39.52	0.00	39.52	108.63%	0.02	0.00	0.00	0.00	

Unit No. 07 Bear Creek Bypass RB		Overall Unit Rating	Total Unit Miles						
NA0010		U	3.62						
Rated Item	Maintenance Deficiency				Enforcement		Design & System Obsolescence		
	M Miles	U Miles	M + 4U Miles	Threshold %	M Miles	U Miles	M Miles	U Miles	
<i>Earthen Levee</i>									
Animal Control	0.04		0.04	1.11%					
Crown Surface / Depressions / Rutting	2.46		2.46	67.96%					
<i>Unit Totals:</i>	2.50	0.00	2.50	69.06%	0.00	0.00	0.00	0.00	

Unit No. 08 Bear Creek Bypass LB		Overall Unit Rating	Total Unit Miles						
NA0010		U	3.63						
Rated Item	Maintenance Deficiency				Enforcement		Design & System Obsolescence		
	M Miles	U Miles	M + 4U Miles	Threshold %	M Miles	U Miles	M Miles	U Miles	
<i>Earthen Levee</i>									
Animal Control	0.21		0.21	5.79%					
Crown Surface / Depressions / Rutting	2.22		2.22	61.16%					
<i>Unit Totals:</i>	2.43	0.00	2.43	66.94%	0.00	0.00	0.00	0.00	

Unit No. 09 Owens Creek Bypass RB		Overall Unit Rating	Total Unit Miles						
NA0010		U	0.88						
Rated Item	Maintenance Deficiency				Enforcement		Design & System Obsolescence		
	M Miles	U Miles	M + 4U Miles	Threshold %	M Miles	U Miles	M Miles	U Miles	
<i>Earthen Levee</i>									
Crown Surface / Depressions / Rutting	0.40		0.40	45.46%					
<i>Unit Totals:</i>	0.40	0.00	0.40	45.46%	0.00	0.00	0.00	0.00	

Unit No. 10 Owens Creek Bypass LB		Overall Unit Rating	Total Unit Miles						
NA0010		U	0.82						
Rated Item	Maintenance Deficiency				Enforcement		Design & System Obsolescence		
	M Miles	U Miles	M + 4U Miles	Threshold %	M Miles	U Miles	M Miles	U Miles	
<i>Earthen Levee</i>									
Crown Surface / Depressions / Rutting	0.80		0.80	97.56%					
<i>Unit Totals:</i>	0.80	0.00	0.80	97.56%	0.00	0.00	0.00	0.00	

**Flood Control Project Maintenance
Levee Inspections**

Fall 2012 Levee Maintenance Deficiency Summary Report

Overall LMA & Unit Ratings, including DWR Erosion Survey

San Joaquin River Basin (cont.)

Unit No. 11 Mariposa Bypass RB	Overall Unit Rating	Total Unit Miles						
NA0010	A	3.31						
Rated Item	Maintenance Deficiency				Enforcement		Design & System Obsolescence	
	M Miles	U Miles	M + 4U Miles	Threshold %	M Miles	U Miles	M Miles	U Miles
<i>Earthen Levee</i>								
Animal Control	0.01		0.01	0.30%				
<i>Unit Totals:</i>	0.01	0.00	0.01	0.30%	0.00	0.00	0.00	0.00

Unit No. 12 Mariposa Bypass LB	Overall Unit Rating	Total Unit Miles						
NA0010	U	3.33						
Rated Item	Maintenance Deficiency				Enforcement		Design & System Obsolescence	
	M Miles	U Miles	M + 4U Miles	Threshold %	M Miles	U Miles	M Miles	U Miles
<i>Earthen Levee</i>								
Vegetation	6.62		6.62	198.80%				
Animal Control	0.01		0.01	0.30%				
Crown Surface / Depressions / Rutting	1.73		1.73	51.95%				
<i>Unit Totals:</i>	8.36	0.00	8.36	251.05%	0.00	0.00	0.00	0.00

Unit No. 13 Ash Slough RB	Overall Unit Rating	Total Unit Miles						
NA0010	U	1.28						
Rated Item	Maintenance Deficiency				Enforcement		Design & System Obsolescence	
	M Miles	U Miles	M + 4U Miles	Threshold %	M Miles	U Miles	M Miles	U Miles
<i>Earthen Levee</i>								
Vegetation	2.50		2.50	195.31%				
Animal Control	0.01		0.01	0.78%				
Crown Surface / Depressions / Rutting	0.95		0.95	74.22%				
<i>Unit Totals:</i>	3.46	0.00	3.46	270.31%	0.00	0.00	0.00	0.00

Unit No. 14 Ash Slough LB	Overall Unit Rating	Total Unit Miles						
NA0010	U	1.28						
Rated Item	Maintenance Deficiency				Enforcement		Design & System Obsolescence	
	M Miles	U Miles	M + 4U Miles	Threshold %	M Miles	U Miles	M Miles	U Miles
<i>Earthen Levee</i>								
Vegetation	2.50		2.50	195.31%				
Crown Surface / Depressions / Rutting	1.25		1.25	97.66%				
<i>Channels</i>								
Concrete Foundations	0.01		0.01	0.78%				
<i>Unit Totals:</i>	3.76	0.00	3.76	293.75%	0.00	0.00	0.00	0.00

Unit No. 15 Berenda Slough RB	Overall Unit Rating	Total Unit Miles						
NA0010	U	2.03						
Rated Item	Maintenance Deficiency				Enforcement		Design & System Obsolescence	
	M Miles	U Miles	M + 4U Miles	Threshold %	M Miles	U Miles	M Miles	U Miles
<i>Earthen Levee</i>								
Vegetation	3.98		3.98	196.06%				
Crown Surface / Depressions / Rutting	1.99		1.99	98.03%				
<i>Unit Totals:</i>	5.97	0.00	5.97	294.09%	0.00	0.00	0.00	0.00

**Flood Control Project Maintenance
Levee Inspections**

Fall 2012 Levee Maintenance Deficiency Summary Report

Overall LMA & Unit Ratings, including DWR Erosion Survey

San Joaquin River Basin (cont.)

Unit No. 16 Berenda Slough LB	Overall Unit Rating	Total Unit Miles						
NA0010	U	1.98						
Rated Item	Maintenance Deficiency				Enforcement		Design & System Obsolescence	
	M Miles	U Miles	M + 4U Miles	Threshold %	M Miles	U Miles	M Miles	U Miles
<i>Earthen Levee</i>								
Vegetation	3.94		3.94	198.99%				
Slope Stability	0.01		0.01	0.51%				
Crown Surface / Depressions / Rutting	1.42		1.42	71.72%				
<i>Unit Totals:</i>	5.37	0.00	5.37	271.21%	0.00	0.00	0.00	0.00

Unit No. 17 Chowchilla Canal Bypass RB	Overall Unit Rating	Total Unit Miles						
NA0010	U	16.09						
Rated Item	Maintenance Deficiency				Enforcement		Design & System Obsolescence	
	M Miles	U Miles	M + 4U Miles	Threshold %	M Miles	U Miles	M Miles	U Miles
<i>Earthen Levee</i>								
Vegetation	32.12		32.12	199.63%				
Encroachments	0.01		0.01	0.06%				
Animal Control	0.61		0.61	3.79%				
Crown Surface / Depressions / Rutting	5.77		5.77	35.86%				
<i>Unit Totals:</i>	38.51	0.00	38.51	239.34%	0.00	0.00	0.00	0.00

Unit No. 18 Chowchilla Canal Bypass LB	Overall Unit Rating	Total Unit Miles						
NA0010	U	15.33						
Rated Item	Maintenance Deficiency				Enforcement		Design & System Obsolescence	
	M Miles	U Miles	M + 4U Miles	Threshold %	M Miles	U Miles	M Miles	U Miles
<i>Earthen Levee</i>								
Vegetation	17.64		17.64	115.07%				
Encroachments	0.01		0.01	0.07%				
Crown Surface / Depressions / Rutting	1.57		1.57	10.24%				
<i>Unit Totals:</i>	19.22	0.00	19.22	125.38%	0.00	0.00	0.00	0.00

Unit No. 22A East Side Canal LB	Overall Unit Rating	Total Unit Miles						
NA0010	U	5.50						
Rated Item	Maintenance Deficiency				Enforcement		Design & System Obsolescence	
	M Miles	U Miles	M + 4U Miles	Threshold %	M Miles	U Miles	M Miles	U Miles
<i>Earthen Levee</i>								
Trim / Thin Trees	0.01		0.01	0.18%				
Animal Control	1.11		1.11	20.18%				
Erosion / Bank Caving	0.01		0.01	0.18%				
Crown Surface / Depressions / Rutting	0.14		0.14	2.55%				
<i>Channels</i>								
Encroachments					0.01			
<i>Unit Totals:</i>	1.27	0.00	1.27	23.09%	0.01	0.00	0.00	0.00

**Flood Control Project Maintenance
Levee Inspections**

Fall 2012 Levee Maintenance Deficiency Summary Report

Overall LMA & Unit Ratings, including DWR Erosion Survey

San Joaquin River Basin (cont.)

Unit No. 23 San Joaquin River RB	Overall Unit Rating	Total Unit Miles						
NA0010	U	10.25						
Rated Item	Maintenance Deficiency				Enforcement		Design & System Obsolescence	
	M Miles	U Miles	M + 4U Miles	Threshold %	M Miles	U Miles	M Miles	U Miles
<i>Earthen Levee</i>								
Vegetation	10.58		10.58	103.22%				
Animal Control	0.21		0.21	2.05%				
Slope Stability	0.01		0.01	0.10%				
<i>Unit Totals:</i>	10.80	0.00	10.80	105.37%	0.00	0.00	0.00	0.00

Unit No. 24 San Joaquin River LB	Overall Unit Rating	Total Unit Miles						
NA0010	U	8.34						
Rated Item	Maintenance Deficiency				Enforcement		Design & System Obsolescence	
	M Miles	U Miles	M + 4U Miles	Threshold %	M Miles	U Miles	M Miles	U Miles
<i>Earthen Levee</i>								
Vegetation	7.15		7.15	85.73%				
Encroachments					0.01			
Animal Control	0.01		0.01	0.12%				
<i>Unit Totals:</i>	7.16	0.00	7.16	85.85%	0.01	0.00	0.00	0.00

Unit No. 25 Salt Slough RB	Overall Unit Rating	Total Unit Miles						
NA0010	U	2.47						
Rated Item	Maintenance Deficiency				Enforcement		Design & System Obsolescence	
	M Miles	U Miles	M + 4U Miles	Threshold %	M Miles	U Miles	M Miles	U Miles
<i>Earthen Levee</i>								
Vegetation	1.32		1.32	53.44%				
Crown Surface / Depressions / Rutting	2.47		2.47	100.00%				
<i>Unit Totals:</i>	3.79	0.00	3.79	153.44%	0.00	0.00	0.00	0.00

**Flood Control Project Maintenance
Levee Inspections**
LMA District Cover Sheet
Fall 2012 Levee Inspection Results

Lower San Joaquin Levee District

	Spring (March - May)	Summer ** (June - August)	Fall (September - November)	Winter ** (December - February)
* Overall LMA Rating (Fall Only)			U	

** Non-receipt of Summer or Winter Inspection Reports may effect overall annual rating.

*
SPRING INSPECTIONS: Overall maintenance ratings are not determined for the spring inspection results. Individual maintenance deficiencies are rated using the same criteria in the spring and in the fall.

FALL INSPECTIONS: The overall maintenance rating shown above is based on operation and maintenance deficiencies identified within the attached unit inspection reports.

Comments

**Flood Control Project Maintenance
Levee Inspections**

Unit Cover Sheet

Fall 2012 Levee Inspection Results

Lower San Joaquin Levee District

Waterway			Bank	Unit Miles
Unit No. 01 San Joaquin River			Right	22.56
	Spring (March - May)	Summer (June - August)	(September - November) Fall	Winter (December - February)
Unit Maintenance Rating (Fall Only)			U	
Date of Inspection	04/23/2012 - 04/26/2012		11/05/2012 - 11/08/2012	
DWR Inspector	Richard Willoughby		Richard Willoughby	
Accompanied By				

Summer & Winter Inspections

The Local Maintaining Agency (LMA) is responsible for summer and winter inspections. The LMA is required to submit a report regarding summer and winter inspections to the California Department of Water Resources (DWR).

DWR must be informed on the:

- a) completion of the inspection
- b) any changes other than the results of normal maintenance
- c) corrections to deficiencies noted in this report

If additional items are noted, further documentation of those items must also be submitted.

The LMA should submit this information to DWR using the LMA web application tool available at:

<http://cdec.water.ca.gov/lma.html>

If the LMA is unable to submit information on this webpage, please contact DWR for assistance.

The LMA should submit the information and any associated documentation by September 30 for summer inspections and March 31 for winter inspections.

**Flood Control Project Maintenance
Levee Inspections**

Levee Inspection Report By Mile - Fall 2012

Lower San Joaquin Levee District

Waterway					Bank	Unit Miles	Inspection Start/End	Inspector
Unit No. 01 San Joaquin River					Right	22.56	11/05/2012 11/08/2012	Richard Willoughby

LMR No.	Levee Mile		Category	Item	Location	Rating	Action/Comment	GPS Latitude/Longitude		Issue No. Photo
	Start	End						Start	End	
1	0.00	0.00	Earthen Levee	Operations & Maintenance Manuals	LS	A Ma		°	°	119
DWR ID: DWR_NA0010_01_s_2012_119										
2	0.00	0.00	Earthen Levee	Emergency Supplies & Equipment	LS	A Ma		°	°	120
DWR ID: DWR_NA0010_01_s_2012_120										
3	0.00	0.00	Earthen Levee	Flood Preparedness & Training	LS	A Ma		°	°	121
DWR ID: DWR_NA0010_01_s_2012_121										
4	0.03	0.07	Earthen Levee	Animal Control	LS	M Ma	A1 : Exterminate rodents and backfill and compact or grout burrows.	37.348522 ° -120.959090 °	37.348190 ° -120.959603 °	114 Y
DWR ID: DWR_NA0010_01_s_2012_114										
5	0.07	0.15	Earthen Levee	Vegetation	WSA/W	Ma	V2 : Remove the wild growth other than native grasses from the levee slopes.	37.348223 ° -120.959593 °	37.347282 ° -120.960470 °	4
DWR ID: DWR_NA0010_01_s_2012_4										
6	0.07	2.52	Earthen Levee	Vegetation	LS A/W	Ma	V2 : Remove the wild growth other than native grasses from the levee slopes.	37.348222 ° -120.959598 °	37.328627 ° -120.934388 °	3
DWR ID: DWR_NA0010_01_s_2012_3										
7	0.10	0.75	Earthen Levee	Vegetation	WS	M Ma	V1 : Control annual grass and weeds on the levee slopes and easements.	37.340858 ° -120.961470 °	37.328637 ° -120.934398 °	9
DWR ID: DWR_NA0010_01_s_2012_9										
8	0.16	0.16	Earthen Levee	Trim / Thin Trees	WS	M Ma	T4 : Trim trees over roadway to at least 12 feet above ground level.	37.347152 ° -120.960560 °	37.347152 ° -120.960560 °	7
DWR ID: DWR_NA0010_01_s_2012_7										
9	0.24	0.27	Earthen Levee	Animal Control	LS	M Ma	A1 : Exterminate rodents and backfill and compact or grout burrows.	37.346152 ° -120.961402 °	37.345822 ° -120.961638 °	1
DWR ID: DWR_NA0010_01_s_2012_1										
10	3.18	3.18	Earthen Levee	Animal Control	LS	M Ma	A3 : No rodents visible, but rodent burrows visible; need to backfill and compact or grout burrows.	37.321053 ° -120.928785 °	37.321053 ° -120.928785 °	10
DWR ID: DWR_NA0010_01_s_2012_10										
11	3.50	3.96	Earthen Levee	Crown Surface / Depressions / Rutting	CR	M Ma	C1 : Add appropriate material and re-grade the levee to bring the crown above the design elevation.	°	°	17
DWR ID: DWR_NA0010_01_f_2012_17										
12	3.72	3.74	Earthen Levee	Animal Control	LS	M Ma	A3 : No rodents visible, but rodent burrows visible; need to backfill and compact or grout burrows.	37.313892 ° -120.926507 °	37.313598 ° -120.926607 °	2
DWR ID: DWR_NA0010_01_s_2012_2										
13	3.96	3.96	Earthen Levee	Repair Gates	CR	C Ma	Inspector Comments: Gate is bent and out of alignment and can not be locked. Repair or replace gate.	37.311127 ° -120.926905 °	37.311127 ° -120.926905 °	115
DWR ID: DWR_NA0010_01_s_2012_115										
14	4.00	4.08	Earthen Levee	Encroachments	LS	M En	DT : Ditch Inspector Comments: Irrigation ditch at landside toe	37.310837 ° -120.926182 °	37.310003 ° -120.925313 °	5 Y
DWR ID: DWR_NA0010_01_s_2012_5										

*** Location**

LS : Land Side
WS : Water Side
CR : Crown

**** Rating**

A : Acceptable
M : Minimally Acceptable
U : Unacceptable
N : Not Inspected/Rated
C : Corrected
A/W : Acceptable but Monitor & Maintain

+ Issue Type

Ma : Maintenance Deficiency
Ob : Design & System Obsolescence
En : Enforcement

**Flood Control Project Maintenance
Levee Inspections**

Levee Inspection Report By Mile - Fall 2012

Lower San Joaquin Levee District

Waterway				Bank	Unit Miles	Inspection Start/End	Inspector
Unit No. 01 San Joaquin River				Right	22.56	11/05/2012 11/08/2012	Richard Willoughby

LMR No.	Levee Mile		Category	Item	Location	Rating	Action/Comment	GPS Latitude/Longitude		Issue No. Photo
	Start	End						Start	End	
15	4.20	4.20	Earthen Levee	Animal Control	LS	M Ma	A1 : Exterminate rodents and backfill and compact or grout burrows.	37.308540 ° -120.924003 °	37.308540 ° -120.924003 °	6
DWR ID: DWR_NA0010_01_s_2012_6										
16	4.45	4.71	Earthen Levee	Vegetation	WSA/W	M Ma	V2 : Remove the wild growth other than native grasses from the levee slopes.	37.306242 ° -120.920797 °	37.302563 ° -120.920903 °	11
DWR ID: DWR_NA0010_01_s_2012_11										
17	5.75	5.75	Earthen Levee	Animal Control	LS A/W	M Ma	A3 : No rodents visible, but rodent burrows visible; need to backfill and compact or grout burrows. Inspector Comments: Large rodent holes on landside slope near fence pole.	37.304057 ° -120.907200 °	37.304057 ° -120.907200 °	116 Y
DWR ID: DWR_NA0010_01_s_2012_116										
18	6.04	6.46	Earthen Levee	Vegetation	WS	M Ma	V9 : Keep the crown roadway free of vegetation.	37.303715 ° -120.902115 °	37.303838 ° -120.891912 °	13
DWR ID: DWR_NA0010_01_s_2012_13										
19	6.04	6.46	Earthen Levee	Vegetation	LS	M Ma	V2 : Remove the wild growth other than native grasses from the levee slopes.	37.303717 ° -120.902108 °	37.303837 ° -120.891907 °	12
DWR ID: DWR_NA0010_01_s_2012_12										
20	7.41	7.81	Earthen Levee	Vegetation	WSA/W	M Ma	V2 : Remove the wild growth other than native grasses from the levee slopes.	37.299855 ° -120.879455 °	37.298730 ° -120.872387 °	14
DWR ID: DWR_NA0010_01_s_2012_14										
21	8.53	9.04	Earthen Levee	Vegetation	LS A/W	M Ma	V2 : Remove the wild growth other than native grasses from the levee slopes.	37.296267 ° -120.860195 °	37.297492 ° -120.851050 °	16
DWR ID: DWR_NA0010_01_s_2012_16										
22	8.53	9.04	Earthen Levee	Vegetation	WSA/W	M Ma	V2 : Remove the wild growth other than native grasses from the levee slopes.	37.296262 ° -120.860183 °	37.297492 ° -120.851052 °	15
DWR ID: DWR_NA0010_01_s_2012_15										
23	9.02	9.50	Earthen Levee	Vegetation	WS	M Ma	V1 : Control annual grass and weeds on the levee slopes and easements.	° °	° °	18 Y
DWR ID: DWR_NA0010_01_f_2012_18										
24	9.02	9.50	Earthen Levee	Vegetation	LS	M Ma	V1 : Control annual grass and weeds on the levee slopes and easements.	° °	° °	19
DWR ID: DWR_NA0010_01_f_2012_19										
25	9.21	10.76	Earthen Levee	Crown Surface / Depressions / Rutting	CR	M Ma	C1 : Add appropriate material and re-grade the levee to bring the crown above the design elevation.	37.296145 ° -120.848588 °	37.293077 ° -120.839170 °	117 Y
DWR ID: DWR_NA0010_01_s_2012_117										
26	17.45	17.45	Earthen Levee	Animal Control	LS	M Ma	A3 : No rodents visible, but rodent burrows visible; need to backfill and compact or grout burrows.	37.216000 ° -120.778950 °	37.216000 ° -120.778950 °	118
DWR ID: DWR_NA0010_01_s_2012_118										
27	19.33	19.33	Earthen Levee	Encroachments	CR	M Ma	PI : Pipe Inspector Comments: Farmer installed a pipe across levee crown, landside and waterside slopes. Ramp is not according to standards.	37.200923 ° -120.756987 °	37.200923 ° -120.756987 °	8 Y
DWR ID: DWR_NA0010_01_s_2012_8										

* Location LS : Land Side WS : Water Side CR : Crown	** Rating A : Acceptable M : Minimally Acceptable U : Unacceptable N : Not Inspected/Rated C : Corrected A/W : Acceptable but Monitor & Maintain	+ Issue Type Ma : Maintenance Deficiency Ob : Design & System Obsolescence En : Enforcement
--	---	---

**Flood Control Project Maintenance
Levee Inspections**

Levee Inspection Report By Mile - Fall 2012

Lower San Joaquin Levee District

Waterway				Bank	Unit Miles	Inspection Start/End	Inspector
Unit No. 01 San Joaquin River				Right	22.56	11/05/2012 11/08/2012	Richard Willoughby

LMR No.	Levee Mile		Category	Item	Location *	Rating **	Action/Comment	GPS Latitude/Longitude		Issue No.
	Start	End						Start	End	Photo
28	21.46	22.02	Earthen Levee	Encroachments	LS	M _{Ma}	AT : Agricultural tilling Inspector Comments: Farmer cutting into landside toe and slope.	37.178679 ° -120.760710 °	37.172663 ° -120.754894 °	20 Y
DWR ID: DWR_NA0010_01_f_2012_20										
29	22.09	22.56	Earthen Levee	Encroachments	LS	M _{En}	DT : Ditch	37.169962 ° -120.754240 °	37.166983 ° -120.750127 °	22 Y
DWR ID: DWR_NA0010_01_s_2012_22										
30	22.16	22.55	Earthen Levee	Crown Surface / Depressions / Rutting	CR	M _{Ma}	C2 : Repair depressions or ruts in the crown or slope. Inspector Comments: Rutting on levee crown.	37.170692 ° -120.754445 °	37.166802 ° -120.749623 °	21
DWR ID: DWR_NA0010_01_f_2012_21										

*** Location**

LS : Land Side
WS : Water Side
CR : Crown

**** Rating**

A : Acceptable
M : Minimally Acceptable
U : Unacceptable
N : Not Inspected/Rated
C : Corrected
A/W : Acceptable but Monitor & Maintain

+ Issue Type

Ma : Maintenance Deficiency
Ob : Design & System Obsolescence
En : Enforcement

**Flood Control Project Maintenance
Levee Inspections**

Levee Inspection Report By Mile - Fall 2012

Lower San Joaquin Levee District

Waterway	Bank	Unit Miles	Inspection Start/End	Inspector
Unit No. 01 San Joaquin River	Right	22.56	11/05/2012 11/08/2012	Richard Willoughby

Levee Mile Report Line	4
Start Levee Mile	0.03
End Levee Mile	0.07
Location	Land Side
Category	Earthen Levee
Item	Animal Control

Looking at typical rodent hole at this location.

richard_f_20121101_058.jpg



Levee Mile Report Line	14
Start Levee Mile	4.00
End Levee Mile	4.08
Location	Land Side
Category	Earthen Levee
Item	Encroachments

Looking south at irrigation ditch at landside toe.

richard_f_20121101_053.jpg



Levee Mile Report Line	14
Start Levee Mile	4.00
End Levee Mile	4.08
Location	Land Side
Category	Earthen Levee
Item	Encroachments

Looking north at irrigation ditch at landside toe.

richard_f_20121101_054.jpg



*** Location**

LS : Land Side
WS : Water Side
CR : Crown

**** Rating**

A : Acceptable
M : Minimally Acceptable
U : Unacceptable
N : Not Inspected/Rated
C : Corrected
A/W : Acceptable but Monitor & Maintain

+ Issue Type

Ma : Maintenance Deficiency
Ob : Design & System Obsolescence
En : Enforcement

**Flood Control Project Maintenance
Levee Inspections**

Levee Inspection Report By Mile - Fall 2012

Lower San Joaquin Levee District

Waterway	Bank	Unit Miles	Inspection Start/End	Inspector
Unit No. 01 San Joaquin River	Right	22.56	11/05/2012 11/08/2012	Richard Willoughby

Levee Mile Report Line	17
Start Levee Mile	5.75
End Levee Mile	5.75
Location	Land Side
Category	Earthen Levee
Item	Animal Control

Looking east at one of several rodent holes on landside shoulder and slope.

richard_f_20121101_061.jpg



Levee Mile Report Line	17
Start Levee Mile	5.75
End Levee Mile	5.75
Location	Land Side
Category	Earthen Levee
Item	Animal Control

Looking northeast at one of several holes on landside shoulder and slope.

richard_f_20121101_062.jpg



Levee Mile Report Line	17
Start Levee Mile	5.75
End Levee Mile	5.75
Location	Land Side
Category	Earthen Levee
Item	Animal Control

Looking south at repaired rodent site on landside slope. (Fall 2012)

richard_f_20121113_863.JPG



*** Location**

LS : Land Side
WS : Water Side
CR : Crown

**** Rating**

A : Acceptable
M : Minimally Acceptable
U : Unacceptable
N : Not Inspected/Rated
C : Corrected
A/W : Acceptable but Monitor & Maintain

+ Issue Type

Ma : Maintenance Deficiency
Ob : Design & System Obsolescence
En : Enforcement

**Flood Control Project Maintenance
Levee Inspections**

Levee Inspection Report By Mile - Fall 2012

Lower San Joaquin Levee District

Waterway	Bank	Unit Miles	Inspection Start/End	Inspector
Unit No. 01 San Joaquin River	Right	22.56	11/05/2012 11/08/2012	Richard Willoughby

Levee Mile Report Line	23
Start Levee Mile	9.02
End Levee Mile	9.50
Location	Water Side
Category	Earthen Levee
Item	Vegetation

Looking south at typical view of tumble weeds on landside and waterside slope.

richard_f_20121113_864.JPG



Levee Mile Report Line	25
Start Levee Mile	9.21
End Levee Mile	10.76
Location	Crown
Category	Earthen Levee
Item	Crown Surface / Depressions / Rutting

Looking south at typical view of vegetation on levee crown.

richard_f_20121101_063.jpg



Levee Mile Report Line	27
Start Levee Mile	19.33
End Levee Mile	19.33
Location	Crown
Category	Earthen Levee
Item	Encroachments

Looking south at pipe across levee crown.

richard_f_20121101_055.jpg



*** Location**

LS : Land Side
WS : Water Side
CR : Crown

**** Rating**

A : Acceptable
M : Minimally Acceptable
U : Unacceptable
N : Not Inspected/Rated
C : Corrected
A/W : Acceptable but Monitor & Maintain

+ Issue Type

Ma : Maintenance Deficiency
Ob : Design & System Obsolescence
En : Enforcement

**Flood Control Project Maintenance
Levee Inspections**

Levee Inspection Report By Mile - Fall 2012

Lower San Joaquin Levee District

Waterway	Bank	Unit Miles	Inspection Start/End	Inspector
Unit No. 01 San Joaquin River	Right	22.56	11/05/2012 11/08/2012	Richard Willoughby

Levee Mile Report Line	28
Start Levee Mile	21.46
End Levee Mile	22.02
Location	Land Side
Category	Earthen Levee
Item	Encroachments

Looking west at farmer discing landside slope.

richard_f_20121113_865.JPG



Levee Mile Report Line	28
Start Levee Mile	21.46
End Levee Mile	22.02
Location	Land Side
Category	Earthen Levee
Item	Encroachments

Looking east at farmer discing into landside slope.

richard_f_20121113_866.JPG



Levee Mile Report Line	29
Start Levee Mile	22.09
End Levee Mile	22.56
Location	Land Side
Category	Earthen Levee
Item	Encroachments

Looking upstream at irrigation at landside toe.

richard_f_20121101_056.jpg



*** Location**

LS : Land Side
WS : Water Side
CR : Crown

**** Rating**

A : Acceptable
M : Minimally Acceptable
U : Unacceptable
N : Not Inspected/Rated
C : Corrected
A/W : Acceptable but Monitor & Maintain

+ Issue Type

Ma : Maintenance Deficiency
Ob : Design & System Obsolescence
En : Enforcement

**Flood Control Project Maintenance
Levee Inspections**

Levee Inspection Report By Mile - Fall 2012

Lower San Joaquin Levee District

Waterway	Bank	Unit Miles	Inspection Start/End	Inspector
Unit No. 01 San Joaquin River	Right	22.56	11/05/2012 11/08/2012	Richard Willoughby

Levee Mile Report Line	29
Start Levee Mile	22.09
End Levee Mile	22.56
Location	Land Side
Category	Earthen Levee
Item	Encroachments

Looking downstream at irrigation ditch at landside toe.

richard_f_20121101_057.jpg



* Location LS : Land Side WS : Water Side CR : Crown	** Rating A : Acceptable M : Minimally Acceptable U : Unacceptable N : Not Inspected/Rated C : Corrected A/W : Acceptable but Monitor & Maintain	+ Issue Type Ma : Maintenance Deficiency Ob : Design & System Obsolescence En : Enforcement
--	---	---

**Flood Control Project Maintenance
Levee Inspections**

Unit Cover Sheet

Fall 2012 Levee Inspection Results

Lower San Joaquin Levee District

Waterway			Bank	Unit Miles
Unit No. 02A San Joaquin River			Left	7.87
	Spring (March - May)	Summer (June - August)	(September - November) Fall	Winter (December - February)
Unit Maintenance Rating (Fall Only)			U	
Date of Inspection	04/27/2012 - 04/27/2012		11/08/2012 - 11/09/2012	
DWR Inspector	Richard Willoughby		Richard Willoughby	
Accompanied By				

Summer & Winter Inspections

The Local Maintaining Agency (LMA) is responsible for summer and winter inspections. The LMA is required to submit a report regarding summer and winter inspections to the California Department of Water Resources (DWR).

DWR must be informed on the:

- a) completion of the inspection
- b) any changes other than the results of normal maintenance
- c) corrections to deficiencies noted in this report

If additional items are noted, further documentation of those items must also be submitted.

The LMA should submit this information to DWR using the LMA web application tool available at:

<http://cdec.water.ca.gov/lma.html>

If the LMA is unable to submit information on this webpage, please contact DWR for assistance.

The LMA should submit the information and any associated documentation by September 30 for summer inspections and March 31 for winter inspections.

**Flood Control Project Maintenance
Levee Inspections**

Levee Inspection Report By Mile - Fall 2012

Lower San Joaquin Levee District

Waterway				Bank	Unit Miles	Inspection Start/End	Inspector
Unit No. 02A San Joaquin River				Left	7.87	11/08/2012 11/09/2012	Richard Willoughby

LMR No.	Levee Mile		Category	Item	Location *	Rating ** +	Action/Comment	GPS Latitude/Longitude		Issue No. Photo
	Start	End						Start	End	
1	0.00	1.70	Earthen Levee	Crown Surface / Depressions / Rutting	LS	M Ma	C1 : Add appropriate material and re-grade the levee to bring the crown above the design elevation.	37.296122 ° -120.880723 °	37.289429 ° -120.861115 °	3 Y
DWR ID: DWR_NA0010_02A_s_2012_3										
2	0.00	7.87	Earthen Levee	Vegetation	LS	M Ma	V1 : Control annual grass and weeds on the levee slopes and easements.	° 37.296271 ° ° -120.880667 °		4 Y
DWR ID: DWR_NA0010_02A_f_2012_4										
3	0.77	0.77	Earthen Levee	Erosion / Bank Caving	WS	U Ma	E2 : Schedule repair of erosion site prior to the next inspection. Inspector Comments: A field investigation report in on file. For more information and pictures see field investigation report #4301.	37.286877 ° -120.874222 °	37.286877 ° -120.874222 °	5 Y
DWR ID: DWR_NA0010_02A_s_2012_5										
4	2.29	5.10	Earthen Levee	Crown Surface / Depressions / Rutting	CR	M Ma	C1 : Add appropriate material and re-grade the levee to bring the crown above the design elevation. Inspector Comments: Rutting on levee crown.	37.291751 ° -120.851697 °	37.264660 ° -120.833013 °	1
DWR ID: DWR_NA0010_02A_f_2012_1										
5	2.33	2.33	Earthen Levee	Encroachments	LS	M En	RA : Ramp Inspector Comments: Unauthorized ramp on landside and waterside slope.	37.291433 ° -120.850917 °	37.291433 ° -120.850917 °	2 Y
DWR ID: DWR_NA0010_02A_s_2012_2										
6	7.76	7.76	Earthen Levee	Vegetation	LS A/W	M Ma	V2 : Remove the wild growth other than native grasses from the levee slopes.	37.232718 ° -120.813565 °	37.232718 ° -120.813565 °	36 Y
DWR ID: DWR_NA0010_02A_s_2012_36										

*** Location**

LS : Land Side
WS : Water Side
CR : Crown

**** Rating**

A : Acceptable
M : Minimally Acceptable
U : Unacceptable
N : Not Inspected/Rated
C : Corrected
A/W : Acceptable but Monitor & Maintain

+ Issue Type

Ma : Maintenance Deficiency
Ob : Design & System Obsolescence
En : Enforcement

**Flood Control Project Maintenance
Levee Inspections**

Levee Inspection Report By Mile - Fall 2012

Lower San Joaquin Levee District

Waterway	Bank	Unit Miles	Inspection Start/End	Inspector
Unit No. 02A San Joaquin River	Left	7.87	11/08/2012 11/09/2012	Richard Willoughby

Levee Mile Report Line	1
Start Levee Mile	0.00
End Levee Mile	1.70
Location	Land Side
Category	Earthen Levee
Item	Crown Surface / Depressions / Rutting

Looking north at vegetation on levee crown.

richard_f_20121101_066.jpg



Levee Mile Report Line	2
Start Levee Mile	0.00
End Levee Mile	7.87
Location	Land Side
Category	Earthen Levee
Item	Vegetation

Looking north at typical view of levee slopes.

richard_f_20121115_909.JPG



Levee Mile Report Line	3
Start Levee Mile	0.77
End Levee Mile	0.77
Location	Water Side
Category	Earthen Levee
Item	Erosion / Bank Caving

Looking south at large erosion on waterside slope. (Spring 2012)

richard_f_20121101_067.jpg



* Location LS : Land Side WS : Water Side CR : Crown	** Rating A : Acceptable M : Minimally Acceptable U : Unacceptable N : Not Inspected/Rated C : Corrected A/W : Acceptable but Monitor & Maintain	+ Issue Type Ma : Maintenance Deficiency Ob : Design & System Obsolescence En : Enforcement
--	---	---

**Flood Control Project Maintenance
Levee Inspections**

Levee Inspection Report By Mile - Fall 2012

Lower San Joaquin Levee District

Waterway	Bank	Unit Miles	Inspection Start/End	Inspector
Unit No. 02A San Joaquin River	Left	7.87	11/08/2012 11/09/2012	Richard Willoughby

Levee Mile Report Line	5
Start Levee Mile	2.33
End Levee Mile	2.33
Location	Land Side
Category	Earthen Levee
Item	Encroachments

Looking northwest at ramp on landside slope near Hwy 140.

richard_f_20121101_064.jpg



Levee Mile Report Line	5
Start Levee Mile	2.33
End Levee Mile	2.33
Location	Land Side
Category	Earthen Levee
Item	Encroachments

Looking northeast at ramp on waterside slope near Hwy 140.

richard_f_20121101_065.jpg



Levee Mile Report Line	6
Start Levee Mile	7.76
End Levee Mile	7.76
Location	Land Side
Category	Earthen Levee
Item	Vegetation

Looking north dense vegetation at landside slope and toe.

richard_f_20121101_068.jpg



*** Location**

LS : Land Side
WS : Water Side
CR : Crown

**** Rating**

A : Acceptable
M : Minimally Acceptable
U : Unacceptable
N : Not Inspected/Rated
C : Corrected
A/W : Acceptable but Monitor & Maintain

+ Issue Type

Ma : Maintenance Deficiency
Ob : Design & System Obsolescence
En : Enforcement

**Flood Control Project Maintenance
Levee Inspections**

Levee Inspection Report By Mile - Fall 2012

Lower San Joaquin Levee District

Waterway	Bank	Unit Miles	Inspection Start/End	Inspector
Unit No. 02A San Joaquin River	Left	7.87	11/08/2012 11/09/2012	Richard Willoughby

Levee Mile Report Line	6
Start Levee Mile	7.76
End Levee Mile	7.76
Location	Land Side
Category	Earthen Levee
Item	Vegetation

Looking north at removed vegetation on landside berm. (Fall 2012)

richard_f_20121115_908.JPG



* Location	** Rating	+ Issue Type
LS : Land Side	A : Acceptable	Ma : Maintenance Deficiency
WS : Water Side	M : Minimally Acceptable	Ob : Design & System Obsolescence
CR : Crown	N : Not Inspected/Rated	En : Enforcement
	C : Corrected	
	A/W : Acceptable but Monitor & Maintain	
	U : Unacceptable	

**Flood Control Project Maintenance
Levee Inspections**

Unit Cover Sheet

Fall 2012 Levee Inspection Results

Lower San Joaquin Levee District

Waterway			Bank	Unit Miles
Unit No. 02B San Joaquin River			Left	5.92
	Spring (March - May)	Summer (June - August)	(September - November) Fall	Winter (December - February)
Unit Maintenance Rating (Fall Only)			U	
Date of Inspection	04/27/2012 - 04/27/2012		11/08/2012 - 11/08/2012	
DWR Inspector	Richard Willoughby		Richard Willoughby	
Accompanied By				

Summer & Winter Inspections

The Local Maintaining Agency (LMA) is responsible for summer and winter inspections. The LMA is required to submit a report regarding summer and winter inspections to the California Department of Water Resources (DWR).

DWR must be informed on the:

- a) completion of the inspection
- b) any changes other than the results of normal maintenance
- c) corrections to deficiencies noted in this report

If additional items are noted, further documentation of those items must also be submitted.

The LMA should submit this information to DWR using the LMA web application tool available at:

<http://cdec.water.ca.gov/lma.html>

If the LMA is unable to submit information on this webpage, please contact DWR for assistance.

The LMA should submit the information and any associated documentation by September 30 for summer inspections and March 31 for winter inspections.

**Flood Control Project Maintenance
Levee Inspections**

Levee Inspection Report By Mile - Fall 2012

Lower San Joaquin Levee District

Waterway				Bank	Unit Miles	Inspection Start/End	Inspector
Unit No. 02B San Joaquin River				Left	5.92	11/08/2012 11/08/2012	Richard Willoughby

LMR No.	Levee Mile		Category	Item	Location *	Rating ** +	Action/Comment	GPS Latitude/Longitude		Issue No. Photo
	Start	End						Start	End	
1	7.87	13.45	Earthen Levee	Crown Surface / Depressions / Rutting	CR	M _{Ma}	C1 : Add appropriate material and re-grade the levee to bring the crown above the design elevation.	37.231279 ° -120.811852 °	37.176608 ° -120.762619 °	3 Y
DWR ID: DWR_NA0010_02B_s_2012_3										
2	9.46	9.46	Earthen Levee	Encroachments	LS	M _{Ma}	TR : Tree or limb Inspector Comments: Broken tree limb on landside slope.	37.220212 ° -120.788637 °	37.220212 ° -120.788637 °	2 Y
DWR ID: DWR_NA0010_02B_f_2012_2										
3	9.50	9.98	Earthen Levee	Vegetation	LS	A/W _{Ma}	V2 : Remove the wild growth other than native grasses from the levee slopes.	37.220463 ° -120.787837 °	37.216298 ° -120.783906 °	6 Y
DWR ID: DWR_NA0010_02B_s_2012_6										
4	12.10	12.10	Earthen Levee	Vegetation	WSA/W	M _{Ma}	V2 : Remove the wild growth other than native grasses from the levee slopes. Inspector Comments: Remove wild roses or berryvines on landside toe.	37.193504 ° -120.763859 °	37.193504 ° -120.763859 °	5
DWR ID: DWR_NA0010_02B_s_2012_5										
5	12.71	12.71	Earthen Levee	Trim / Thin Trees	LS	A/W _{Ma}	T4 : Trim trees over roadway to at least 12 feet above ground level.	37.185688 ° -120.768181 °	37.185688 ° -120.768181 °	4
DWR ID: DWR_NA0010_02B_s_2012_4										
6	13.45	13.76	Earthen Levee	Vegetation	LS	M _{Ma}	V1 : Control annual grass and weeds on the levee slopes and easements.	37.176491 ° -120.762493 °	37.172668 ° -120.761138 °	1
DWR ID: DWR_NA0010_02B_f_2012_1										

*** Location**

LS : Land Side
WS : Water Side
CR : Crown

**** Rating**

A : Acceptable
M : Minimally Acceptable
U : Unacceptable
N : Not Inspected/Rated
C : Corrected
A/W : Acceptable but Monitor & Maintain

+ Issue Type

Ma : Maintenance Deficiency
Ob : Design & System Obsolescence
En : Enforcement

**Flood Control Project Maintenance
Levee Inspections**

Levee Inspection Report By Mile - Fall 2012

Lower San Joaquin Levee District

Waterway	Bank	Unit Miles	Inspection Start/End	Inspector
Unit No. 02B San Joaquin River	Left	5.92	11/08/2012 11/08/2012	Richard Willoughby

Levee Mile Report Line	1
Start Levee Mile	7.87
End Levee Mile	13.45
Location	Crown
Category	Earthen Levee
Item	Crown Surface / Depressions / Rutting

Looking north at vegetation on levee crown.

richard_f_20121101_069.jpg



Levee Mile Report Line	1
Start Levee Mile	7.87
End Levee Mile	13.45
Location	Crown
Category	Earthen Levee
Item	Crown Surface / Depressions / Rutting

Looking at typical view of levee crown.

richard_f_20121115_905.JPG



Levee Mile Report Line	2
Start Levee Mile	9.46
End Levee Mile	9.46
Location	Land Side
Category	Earthen Levee
Item	Encroachments

Looking north at broken tree limb on landside slope.

richard_f_20121115_907.JPG



*** Location**

LS : Land Side
WS : Water Side
CR : Crown

**** Rating**

A : Acceptable
M : Minimally Acceptable
U : Unacceptable
N : Not Inspected/Rated
C : Corrected
A/W : Acceptable but Monitor & Maintain

+ Issue Type

Ma : Maintenance Deficiency
Ob : Design & System Obsolescence
En : Enforcement

**Flood Control Project Maintenance
Levee Inspections**

Levee Inspection Report By Mile - Fall 2012

Lower San Joaquin Levee District

Waterway	Bank	Unit Miles	Inspection Start/End	Inspector
Unit No. 02B San Joaquin River	Left	5.92	11/08/2012 11/08/2012	Richard Willoughby

Levee Mile Report Line	3
Start Levee Mile	9.50
End Levee Mile	9.98
Location	Land Side
Category	Earthen Levee
Item	Vegetation

Looking northwest at dense vegetation on landside slope and toe.

richard_f_20121101_070.jpg



Levee Mile Report Line	3
Start Levee Mile	9.50
End Levee Mile	9.98
Location	Land Side
Category	Earthen Levee
Item	Vegetation

Looking north at removed wild growth on landside toe. (Fall 2012)

richard_f_20121115_906.JPG



*** Location**

LS : Land Side
WS : Water Side
CR : Crown

**** Rating**

A : Acceptable N : Not Inspected/Rated
M : Minimally Acceptable C : Corrected
U : Unacceptable A/W : Acceptable but Monitor & Maintain

+ Issue Type

Ma : Maintenance Deficiency
Ob : Design & System Obsolescence
En : Enforcement

**Flood Control Project Maintenance
Levee Inspections**

Unit Cover Sheet

Fall 2012 Levee Inspection Results

Lower San Joaquin Levee District

Waterway			Bank	Unit Miles
Unit No. 03 San Joaquin River			Right	2.16
	Spring (March - May)	Summer (June - August)	(September - November) Fall	Winter (December - February)
Unit Maintenance Rating (Fall Only)			M	
Date of Inspection	04/26/2012 - 04/26/2012		11/08/2012 - 11/08/2012	
DWR Inspector	Richard Willoughby		Richard Willoughby	
Accompanied By				

Summer & Winter Inspections

The Local Maintaining Agency (LMA) is responsible for summer and winter inspections. The LMA is required to submit a report regarding summer and winter inspections to the California Department of Water Resources (DWR).

DWR must be informed on the:

- a) completion of the inspection
- b) any changes other than the results of normal maintenance
- c) corrections to deficiencies noted in this report

If additional items are noted, further documentation of those items must also be submitted.

The LMA should submit this information to DWR using the LMA web application tool available at:

<http://cdec.water.ca.gov/lma.html>

If the LMA is unable to submit information on this webpage, please contact DWR for assistance.

The LMA should submit the information and any associated documentation by September 30 for summer inspections and March 31 for winter inspections.

**Flood Control Project Maintenance
Levee Inspections**

Levee Inspection Report By Mile - Fall 2012

Lower San Joaquin Levee District

Waterway						Bank	Unit Miles	Inspection Start/End	Inspector
Unit No. 03 San Joaquin River						Right	2.16	11/08/2012 11/08/2012	Richard Willoughby

LMR No.	Levee Mile		Category	Item	Location *	Rating ** +	Action/Comment	GPS Latitude/Longitude		Issue No.
	Start	End						Start	End	Photo
1	0.02	2.11	Earthen Levee	Vegetation	LS	A Ma	V7 : Trees / Woody Vegetation	37.111815 ° -120.587514 °	37.088892 ° -120.566835 °	3 Y
DWR ID: DWR_NA0010_03_f_2012_3										
2	0.43	0.43	Interior Drainage & Piping Systems	Vegetation & Obstructions	LS	U Ma	Inspector Comments: Drain pipe plugged on inlet side.	37.106284 ° -120.585848 °	37.106284 ° -120.585848 °	2 Y
DWR ID: DWR_NA0010_03_f_2012_2										
3	0.44	1.17	Earthen Levee	Vegetation	WSA/W	V2 : Remove the wild growth other than native grasses from the levee slopes.		37.106122 ° -120.585670 °	37.098825 ° -120.576995 °	1
DWR ID: DWR_NA0010_03_s_2012_1										

*** Location**

LS : Land Side
WS : Water Side
CR : Crown

**** Rating**

A : Acceptable
M : Minimally Acceptable
U : Unacceptable
N : Not Inspected/Rated
C : Corrected
A/W : Acceptable but Monitor & Maintain

+ Issue Type

Ma : Maintenance Deficiency
Ob : Design & System Obsolescence
En : Enforcement

**Flood Control Project Maintenance
Levee Inspections**

Levee Inspection Report By Mile - Fall 2012

Lower San Joaquin Levee District

Waterway	Bank	Unit Miles	Inspection Start/End	Inspector
Unit No. 03 San Joaquin River	Right	2.16	11/08/2012 11/08/2012	Richard Willoughby

Levee Mile Report Line	1
Start Levee Mile	0.02
End Levee Mile	2.11
Location	Land Side
Category	Earthen Levee
Item	Vegetation

Looking north at typical view of levee slopes.

richard_f_20121115_899.JPG



Levee Mile Report Line	2
Start Levee Mile	0.43
End Levee Mile	0.43
Location	Land Side
Category	Interior Drainage & Piping Systems
Item	Vegetation & Obstructions

Looking east at inlet of pipe on landside toe.

richard_f_20121115_900.JPG



*** Location**

LS : Land Side
WS : Water Side
CR : Crown

**** Rating**

A : Acceptable
M : Minimally Acceptable
U : Unacceptable
N : Not Inspected/Rated
C : Corrected
A/W : Acceptable but Monitor & Maintain

+ Issue Type

Ma : Maintenance Deficiency
Ob : Design & System Obsolescence
En : Enforcement

**Flood Control Project Maintenance
Levee Inspections**

Unit Cover Sheet

Fall 2012 Levee Inspection Results

Lower San Joaquin Levee District

Waterway			Bank	Unit Miles
Unit No. 04 San Joaquin River			Left	1.58
	Spring (March - May)	Summer (June - August)	(September - November) Fall	Winter (December - February)
Unit Maintenance Rating (Fall Only)			A	
Date of Inspection	04/26/2012 - 04/26/2012		11/08/2012 - 11/08/2012	
DWR Inspector	Richard Willoughby		Richard Willoughby	
Accompanied By				

Summer & Winter Inspections

The Local Maintaining Agency (LMA) is responsible for summer and winter inspections. The LMA is required to submit a report regarding summer and winter inspections to the California Department of Water Resources (DWR).

DWR must be informed on the:

- a) completion of the inspection
- b) any changes other than the results of normal maintenance
- c) corrections to deficiencies noted in this report

If additional items are noted, further documentation of those items must also be submitted.

The LMA should submit this information to DWR using the LMA web application tool available at:

<http://cdec.water.ca.gov/lma.html>

If the LMA is unable to submit information on this webpage, please contact DWR for assistance.

The LMA should submit the information and any associated documentation by September 30 for summer inspections and March 31 for winter inspections.

**Flood Control Project Maintenance
Levee Inspections**

Levee Inspection Report By Mile - Fall 2012

Lower San Joaquin Levee District

Waterway	Bank	Unit Miles	Inspection Start/End	Inspector
Unit No. 04 San Joaquin River	Left	1.58	11/08/2012 11/08/2012	Richard Willoughby

LMR No.	Levee Mile		Category	Item	Location *	Rating **	Action/Comment	GPS Latitude/Longitude		Issue No.
	Start	End						Start	End	
1	0.03	1.58	Earthen Levee	Vegetation	LS	A	V7 : Trees / Woody Vegetation	37.112388 ° -120.589444 °	37.095293 ° -120.577959 °	1 Y
								DWR ID: DWR_NA0010_04_f_2012_1		
2	0.32	1.49	Earthen Levee	Encroachments	CR	M	DT : Ditch Inspector Comments: Agricultural Ditch within 10' easement.	37.108822 ° -120.590718 °	37.096532 ° -120.578027 °	3 Y
								DWR ID: DWR_NA0010_04_s_2012_3		

*** Location**

LS : Land Side
WS : Water Side
CR : Crown

**** Rating**

A : Acceptable
M : Minimally Acceptable
U : Unacceptable
N : Not Inspected/Rated
C : Corrected
A/W : Acceptable but Monitor & Maintain

+ Issue Type

Ma : Maintenance Deficiency
Ob : Design & System Obsolescence
En : Enforcement

**Flood Control Project Maintenance
Levee Inspections**

Levee Inspection Report By Mile - Fall 2012

Lower San Joaquin Levee District

Waterway	Bank	Unit Miles	Inspection Start/End	Inspector
Unit No. 04 San Joaquin River	Left	1.58	11/08/2012 11/08/2012	Richard Willoughby

Levee Mile Report Line	1
Start Levee Mile	0.03
End Levee Mile	1.58
Location	Land Side
Category	Earthen Levee
Item	Vegetation

Looking north at typical view of levee slopes.

richard_f_20121115_901.JPG



Levee Mile Report Line	2
Start Levee Mile	0.32
End Levee Mile	1.49
Location	Crown
Category	Earthen Levee
Item	Encroachments

Looking north at irrigation ditch at landside toe.

richard_f_20121101_071.jpg



Levee Mile Report Line	2
Start Levee Mile	0.32
End Levee Mile	1.49
Location	Crown
Category	Earthen Levee
Item	Encroachments

Looking north at irrigation ditch at landside toe.

richard_f_20121101_072.jpg



*** Location**

LS : Land Side
WS : Water Side
CR : Crown

**** Rating**

A : Acceptable
M : Minimally Acceptable
U : Unacceptable
N : Not Inspected/Rated
C : Corrected
A/W : Acceptable but Monitor & Maintain

+ Issue Type

Ma : Maintenance Deficiency
Ob : Design & System Obsolescence
En : Enforcement

**Flood Control Project Maintenance
Levee Inspections**

Unit Cover Sheet

Fall 2012 Levee Inspection Results

Lower San Joaquin Levee District

Waterway			Bank	Unit Miles
Unit No. 05 East Side Bypass			Right	34.75
	Spring (March - May)	Summer (June - August)	(September - November) Fall	Winter (December - February)
Unit Maintenance Rating (Fall Only)			U	
Date of Inspection	04/23/2012 - 04/25/2012		11/06/2012 - 11/07/2012	
DWR Inspector	Richard Willoughby		Richard Willoughby	
Accompanied By				

Summer & Winter Inspections

The Local Maintaining Agency (LMA) is responsible for summer and winter inspections. The LMA is required to submit a report regarding summer and winter inspections to the California Department of Water Resources (DWR).

DWR must be informed on the:

- a) completion of the inspection
- b) any changes other than the results of normal maintenance
- c) corrections to deficiencies noted in this report

If additional items are noted, further documentation of those items must also be submitted.

The LMA should submit this information to DWR using the LMA web application tool available at:

<http://cdec.water.ca.gov/lma.html>

If the LMA is unable to submit information on this webpage, please contact DWR for assistance.

The LMA should submit the information and any associated documentation by September 30 for summer inspections and March 31 for winter inspections.

**Flood Control Project Maintenance
Levee Inspections**

Levee Inspection Report By Mile - Fall 2012

Lower San Joaquin Levee District

Waterway	Bank	Unit Miles	Inspection Start/End	Inspector
Unit No. 05 East Side Bypass	Right	34.75	11/06/2012 11/07/2012	Richard Willoughby

LMR No.	Levee Mile		Category	Item	Location	Rating	Action/Comment	GPS Latitude/Longitude		Issue No.
	Start	End						Start	End	
1	0.81	2.07	Earthen Levee	Crown Surface / Depressions / Rutting	CR	M _{Ma}	C1 : Add appropriate material and re-grade the levee to bring the crown above the design elevation.	37.272262 ° -120.812532 °	37.259735 ° -120.797307 °	169
DWR ID: DWR_NA0010_05_s_2012_169										
2	2.81	2.86	Earthen Levee	Trim / Thin Trees	LS	A/W _{Ma}	T2 : Thin trees to allow visibility of the ground and room to flood fight.	37.256803 ° -120.785407 °	37.256835 ° -120.784528 °	3 Y
DWR ID: DWR_NA0010_05_s_2012_3										
3	3.19	3.19	Earthen Levee	Encroachments	WS	M _{En}	RA : Ramp Inspector Comments: Unauthorized ramp on waterside slope.	37.256554 ° -120.778847 °	37.256554 ° -120.778847 °	7 Y
DWR ID: DWR_NA0010_05_f_2012_7										
4	3.32	3.32	Earthen Levee	Trim / Thin Trees	LS	A/W _{Ma}	T1 : Trim trees to at least five feet above ground level.	37.255297 ° -120.777032 °	37.255297 ° -120.777032 °	1
DWR ID: DWR_NA0010_05_s_2012_1										
5	3.54	3.54	Earthen Levee	Encroachments	LS	M _{Ma}	TR : Tree or limb Inspector Comments: Downed tree limb on landside slope and toe.	37.255192 ° -120.773595 °	37.255192 ° -120.773595 °	2 Y
DWR ID: DWR_NA0010_05_s_2012_2										
6	4.50	5.61	Earthen Levee	Crown Surface / Depressions / Rutting	CR	M _{Ma}	C1 : Add appropriate material and re-grade the levee to bring the crown above the design elevation.	37.243842 ° -120.757263 °	37.238453 ° -120.739068 °	170 Y
DWR ID: DWR_NA0010_05_s_2012_170										
7	4.99	4.99	Earthen Levee	Animal Control	LS	M _{Ma}	A2 : Repair the levee slope damaged by livestock and prevent large animal access.	37.240732 ° -120.749512 °	37.240732 ° -120.749512 °	12 Y
DWR ID: DWR_NA0010_05_f_2012_12										
8	6.50	6.50	Earthen Levee	Animal Control	WS	M _{Ma}	A3 : No rodents visible, but rodent burrows visible; need to backfill and compact or grout burrows.	37.230497 ° -120.727263 °	37.230497 ° -120.727263 °	15
DWR ID: DWR_NA0010_05_s_2012_15										
9	6.58	8.09	Earthen Levee	Crown Surface / Depressions / Rutting	CR	M _{Ma}	C3 : Add appropriate gravel or road base. Grade and compact.	37.229733 ° -120.726450 °	37.213520 ° -120.706475 °	6
DWR ID: DWR_NA0010_05_s_2012_6										
10	8.06	8.06	Earthen Levee	Animal Control	LS	M _{Ma}	A3 : No rodents visible, but rodent burrows visible; need to backfill and compact or grout burrows.	37.213600 ° -120.706630 °	37.213600 ° -120.706630 °	4
DWR ID: DWR_NA0010_05_s_2012_4										
11	8.83	8.83	Earthen Levee	Animal Control	WS	M _{Ma}	A3 : No rodents visible, but rodent burrows visible; need to backfill and compact or grout burrows.	37.205778 ° -120.696843 °	37.205778 ° -120.696843 °	5
DWR ID: DWR_NA0010_05_s_2012_5										
12	11.48	11.48	Earthen Levee	Encroachments	LS	C _{Ma}	GA : Garbage Inspector Comments: Sofa and chair on landside slope.	37.186510 ° -120.657923 °	37.186510 ° -120.657923 °	8
DWR ID: DWR_NA0010_05_s_2012_8										
13	11.49	11.49	Earthen Levee	Trim / Thin Trees	LS	A/W _{Ma}	T1 : Trim trees to at least five feet above ground level.	37.186440 ° -120.657870 °	37.186440 ° -120.657870 °	10
DWR ID: DWR_NA0010_05_s_2012_10										
14	12.63	13.14	Earthen Levee	Vegetation	WS	M _{Ma}	V2 : Remove the wild growth other than native grasses from the levee slopes.	37.175822 ° -120.645384 °	37.174496 ° -120.636638 °	13
DWR ID: DWR_NA0010_05_f_2012_13										

* Location LS : Land Side WS : Water Side CR : Crown	** Rating A : Acceptable M : Minimally Acceptable U : Unacceptable N : Not Inspected/Rated C : Corrected A/W : Acceptable but Monitor & Maintain	+ Issue Type Ma : Maintenance Deficiency Ob : Design & System Obsolescence En : Enforcement
--	---	---

**Flood Control Project Maintenance
Levee Inspections**

Levee Inspection Report By Mile - Fall 2012

Lower San Joaquin Levee District

Waterway					Bank	Unit Miles	Inspection Start/End		Inspector
Unit No. 05 East Side Bypass					Right	34.75	11/06/2012 11/07/2012		Richard Willoughby
LMR No.	Levee Mile		Category	Item	Location * Rating + Ma	Action/Comment	GPS Latitude/Longitude		Issue No. Photo
	Start	End					Start	End	
15	13.86	15.09	Earthen Levee	Vegetation	WS Ma	V1 : Control annual grass and weeds on the levee slopes and easements.	37.166592 ° -120.628050 °	37.156798 ° -120.609486 °	14
DWR ID: DWR_NA0010_05_f_2012_14									
16	17.53	20.82	Earthen Levee	Vegetation	WS Ma	V2 : Remove the wild growth other than native grasses from the levee slopes.	37.127740 ° -120.585198 °	37.098363 ° -120.544555 °	17
DWR ID: DWR_NA0010_05_f_2012_17									
17	24.86	25.66	Earthen Levee	Vegetation	WS Ma	V2 : Remove the wild growth other than native grasses from the levee slopes.	37.054377 ° -120.496231 °	37.045531 ° -120.486959 °	18
DWR ID: DWR_NA0010_05_f_2012_18									
18	25.49	25.54	Earthen Levee	Animal Control	LS A/W Ma	A3 : No rodents visible, but rodent burrows visible; need to backfill and compact or grout burrows.	37.047630 ° -120.488530 °	37.047042 ° -120.488092 °	9
DWR ID: DWR_NA0010_05_s_2012_9									
19	26.88	27.90	Earthen Levee	Vegetation	WS Ma	V2 : Remove the wild growth other than native grasses from the levee slopes.	37.032681 ° -120.473372 °	37.032574 ° -120.454938 °	19
DWR ID: DWR_NA0010_05_f_2012_19									
20	26.88	27.90	Earthen Levee	Crown Surface / Depressions / Rutting	CR Ma	C1 : Add appropriate material and re-grade the levee to bring the crown above the design elevation.	37.032681 ° -120.473370 °	37.032573 ° -120.454938 °	20 Y
DWR ID: DWR_NA0010_05_f_2012_20									
21	29.58	29.70	Earthen Levee	Erosion / Bank Caving	WS Ma	E1 : Note and monitor erosion site. Inspector Comments: Waterside erosion caused by livestock.	37.020272 ° -120.433737 °	37.018712 ° -120.432682 °	171 Y
DWR ID: DWR_NA0010_05_s_2012_171									
22	29.76	31.66	Earthen Levee	Vegetation	WS Ma	V2 : Remove the wild growth other than native grasses from the levee slopes.	37.017953 ° -120.432132 °	36.996773 ° -120.410739 °	21
DWR ID: DWR_NA0010_05_f_2012_21									
23	29.80	29.80	Earthen Levee	Animal Control	LS Ma	A3 : No rodents visible, but rodent burrows visible; need to backfill and compact or grout burrows.	37.017540 ° -120.431955 °	37.017540 ° -120.431955 °	16
DWR ID: DWR_NA0010_05_s_2012_16									
24	30.36	31.66	Earthen Levee	Crown Surface / Depressions / Rutting	CR Ma	C1 : Add appropriate material and re-grade the levee to bring the crown above the design elevation.	37.010443 ° -120.426820 °	36.996772 ° -120.410739 °	22
DWR ID: DWR_NA0010_05_f_2012_22									
25	34.50	34.50	Earthen Levee	Encroachments	WS En	RA : Ramp Inspector Comments: Unauthorized ramp on waterside slope.	36.978555 ° -120.368467 °	36.978555 ° -120.368467 °	11
DWR ID: DWR_NA0010_05_s_2012_11									

*** Location**

LS : Land Side
WS : Water Side
CR : Crown

**** Rating**

A : Acceptable
M : Minimally Acceptable
U : Unacceptable
N : Not Inspected/Rated
C : Corrected
A/W : Acceptable but Monitor & Maintain

+ Issue Type

Ma : Maintenance Deficiency
Ob : Design & System Obsolescence
En : Enforcement

**Flood Control Project Maintenance
Levee Inspections**

Levee Inspection Report By Mile - Fall 2012

Lower San Joaquin Levee District

Waterway	Bank	Unit Miles	Inspection Start/End	Inspector
Unit No. 05 East Side Bypass	Right	34.75	11/06/2012 11/07/2012	Richard Willoughby

Levee Mile Report Line	2
Start Levee Mile	2.81
End Levee Mile	2.86
Location	Land Side
Category	Earthen Levee
Item	Trim / Thin Trees

Looking south at dense trees on landside slope.

richard_f_20121101_074.jpg



Levee Mile Report Line	3
Start Levee Mile	3.19
End Levee Mile	3.19
Location	Water Side
Category	Earthen Levee
Item	Encroachments

Looking south at unauthorized ramp on waterside slope.

richard_f_20121113_867.JPG



Levee Mile Report Line	3
Start Levee Mile	3.19
End Levee Mile	3.19
Location	Water Side
Category	Earthen Levee
Item	Encroachments

Looking northwest at unauthorized ramp on waterside slope.

richard_f_20121113_868.JPG



*** Location**

LS : Land Side
WS : Water Side
CR : Crown

**** Rating**

A : Acceptable
M : Minimally Acceptable
U : Unacceptable
N : Not Inspected/Rated
C : Corrected
A/W : Acceptable but Monitor & Maintain

+ Issue Type

Ma : Maintenance Deficiency
Ob : Design & System Obsolescence
En : Enforcement

**Flood Control Project Maintenance
Levee Inspections**

Levee Inspection Report By Mile - Fall 2012

Lower San Joaquin Levee District

Waterway	Bank	Unit Miles	Inspection Start/End	Inspector
Unit No. 05 East Side Bypass	Right	34.75	11/06/2012 11/07/2012	Richard Willoughby

Levee Mile Report Line	5
Start Levee Mile	3.54
End Levee Mile	3.54
Location	Land Side
Category	Earthen Levee
Item	Encroachments

Looking south at down tree limb on landside slope and toe.

richard_f_20121101_073.jpg



Levee Mile Report Line	6
Start Levee Mile	4.50
End Levee Mile	5.61
Location	Crown
Category	Earthen Levee
Item	Crown Surface / Depressions / Rutting

Looking south at vegetation on levee crown.

richard_f_20121101_076.jpg



Levee Mile Report Line	6
Start Levee Mile	4.50
End Levee Mile	5.61
Location	Crown
Category	Earthen Levee
Item	Crown Surface / Depressions / Rutting

Looking south at un-regraded levee crown.

richard_f_20121115_876.JPG



* Location LS : Land Side WS : Water Side CR : Crown	** Rating A : Acceptable M : Minimally Acceptable U : Unacceptable N : Not Inspected/Rated C : Corrected A/W : Acceptable but Monitor & Maintain	+ Issue Type Ma : Maintenance Deficiency Ob : Design & System Obsolescence En : Enforcement
--	---	---

**Flood Control Project Maintenance
Levee Inspections**

Levee Inspection Report By Mile - Fall 2012

Lower San Joaquin Levee District

Waterway	Bank	Unit Miles	Inspection Start/End	Inspector
Unit No. 05 East Side Bypass	Right	34.75	11/06/2012 11/07/2012	Richard Willoughby

Levee Mile Report Line	7
Start Levee Mile	4.99
End Levee Mile	4.99
Location	Land Side
Category	Earthen Levee
Item	Animal Control

Looking east at levee damage by livestock on landside slope.

richard_f_20121115_877.JPG



Levee Mile Report Line	20
Start Levee Mile	26.88
End Levee Mile	27.90
Location	Crown
Category	Earthen Levee
Item	Crown Surface / Depressions / Rutting

Looking south at typical view of levee crown.

richard_f_20121115_881.JPG



Levee Mile Report Line	21
Start Levee Mile	29.58
End Levee Mile	29.70
Location	Water Side
Category	Earthen Levee
Item	Erosion / Bank Caving

Looking south at erosion caused by livestock on landside slope.

richard_f_20121101_077.jpg



* Location LS : Land Side WS : Water Side CR : Crown	** Rating A : Acceptable M : Minimally Acceptable U : Unacceptable N : Not Inspected/Rated C : Corrected A/W : Acceptable but Monitor & Maintain	+ Issue Type Ma : Maintenance Deficiency Ob : Design & System Obsolescence En : Enforcement
--	---	---

**Flood Control Project Maintenance
Levee Inspections**

Unit Cover Sheet

Fall 2012 Levee Inspection Results

Lower San Joaquin Levee District

Waterway			Bank	Unit Miles
Unit No. 06 East Side Bypass			Left	36.38
	Spring (March - May)	Summer (June - August)	(September - November) Fall	Winter (December - February)
Unit Maintenance Rating (Fall Only)			U	
Date of Inspection	04/25/2012 - 04/26/2012		11/07/2012 - 11/08/2012	
DWR Inspector	Richard Willoughby		Richard Willoughby	
Accompanied By				

Summer & Winter Inspections

The Local Maintaining Agency (LMA) is responsible for summer and winter inspections. The LMA is required to submit a report regarding summer and winter inspections to the California Department of Water Resources (DWR).

DWR must be informed on the:

- a) completion of the inspection
- b) any changes other than the results of normal maintenance
- c) corrections to deficiencies noted in this report

If additional items are noted, further documentation of those items must also be submitted.

The LMA should submit this information to DWR using the LMA web application tool available at:

<http://cdec.water.ca.gov/lma.html>

If the LMA is unable to submit information on this webpage, please contact DWR for assistance.

The LMA should submit the information and any associated documentation by September 30 for summer inspections and March 31 for winter inspections.

**Flood Control Project Maintenance
Levee Inspections**

Levee Inspection Report By Mile - Fall 2012

Lower San Joaquin Levee District

Waterway							Bank	Unit Miles	Inspection Start/End		Inspector
Unit No. 06 East Side Bypass							Left	36.38	11/07/2012 11/08/2012		Richard Willoughby
LMR No.	Levee Mile		Category	Item	Location	Rating	Action/Comment	GPS Latitude/Longitude		Issue No.	
	Start	End						Start	End	Photo	
1	0.00	36.38	Earthen Levee	Vegetation	WS	M Ma	V1 : Control annual grass and weeds on the levee slopes and easements. Inspector Comments: Control tumble weed on landside and waterside slope.	37.275312 ° -120.826040 °	36.974190 ° -120.363322 °	122 Y	
								DWR ID: DWR_NA0010_06_s_2012_122			
2	1.90	1.90	Earthen Levee	Animal Control	LS	M Ma	A1 : Exterminate rodents and backfill and compact or grout burrows.	37.259527 ° -120.803300 °	37.259527 ° -120.803300 °	125 Y	
								DWR ID: DWR_NA0010_06_s_2012_125			
3	4.67	4.67	Earthen Levee	Animal Control	CR A/W	Ma	A3 : No rodents visible, but rodent burrows visible; need to backfill and compact or grout burrows. Inspector Comments: Several rodent holes on levee crown.	37.244012 ° -120.761372 °	37.244012 ° -120.761372 °	16 Y	
								DWR ID: DWR_NA0010_06_s_2012_16			
4	4.72	4.72	Earthen Levee	Animal Control	LS	M Ma	A3 : No rodents visible, but rodent burrows visible; need to backfill and compact or grout burrows. Inspector Comments: Rodent holes next to gate post on waterside shoulder.	37.243540 ° -120.760782 °	37.243540 ° -120.760782 °	10 Y	
								DWR ID: DWR_NA0010_06_s_2012_10			
5	5.83	5.83	Earthen Levee	Animal Control	LS	M Ma	A3 : No rodents visible, but rodent burrows visible; need to backfill and compact or grout burrows.	37.238355 ° -120.742677 °	37.238355 ° -120.742677 °	9 Y	
								DWR ID: DWR_NA0010_06_s_2012_9			
6	6.12	6.12	Earthen Levee	Animal Control	LS	M Ma	A3 : No rodents visible, but rodent burrows visible; need to backfill and compact or grout burrows.	37.235777 ° -120.738598 °	37.235777 ° -120.738598 °	22 Y	
								DWR ID: DWR_NA0010_06_s_2012_22			
7	6.15	6.15	Earthen Levee	Animal Control	WS	M Ma	A3 : No rodents visible, but rodent burrows visible; need to backfill and compact or grout burrows.	37.235623 ° -120.738017 °	37.235623 ° -120.738017 °	21 Y	
								DWR ID: DWR_NA0010_06_s_2012_21			
8	7.17	7.17	Earthen Levee	Animal Control	LS	M Ma	A1 : Exterminate rodents and backfill and compact or grout burrows.	37.226675 ° -120.724498 °	37.226675 ° -120.724498 °	7 Y	
								DWR ID: DWR_NA0010_06_s_2012_7			
9	9.81	11.03	Earthen Levee	Crown Surface / Depressions / Rutting	CR	M Ma	C2 : Repair depressions or ruts in the crown or slope. Inspector Comments: Levee crown should be regraded due to excessive rutting.	37.200697 ° -120.692927 °	37.188106 ° -120.677684 °	6 Y	
								DWR ID: DWR_NA0010_06_s_2012_6			
10	14.91	17.23	Earthen Levee	Crown Surface / Depressions / Rutting	LS A/W	Ma	C1 : Add appropriate material and re-grade the levee to bring the crown above the design elevation.	37.163025 ° -120.630648 °	37.141161 ° -120.599867 °	4 Y	
								DWR ID: DWR_NA0010_06_s_2012_4			
11	15.55	15.70	Earthen Levee	Animal Control	LS	M Ma	A1 : Exterminate rodents and backfill and compact or grout burrows.	37.158920 ° -120.620232 °	37.157217 ° -120.618915 °	124 Y	
								DWR ID: DWR_NA0010_06_s_2012_124			
12	22.90	22.96	Earthen Levee	Animal Control	LS	M Ma	A3 : No rodents visible, but rodent burrows visible; need to backfill and compact or grout burrows.	37.088663 ° -120.538193 °	37.087968 ° -120.537485 °	8 Y	
								DWR ID: DWR_NA0010_06_s_2012_8			

*** Location**

LS : Land Side
WS : Water Side
CR : Crown

**** Rating**

A : Acceptable
M : Minimally Acceptable
U : Unacceptable
N : Not Inspected/Rated
C : Corrected
A/W : Acceptable but Monitor & Maintain

+ Issue Type

Ma : Maintenance Deficiency
Ob : Design & System Obsolescence
En : Enforcement

Lower San Joaquin Levee District

DWR ID: DWR_NA0010_06_s_2012_1Page 2 of 5

**Flood Control Project Maintenance
Levee Inspections**

Levee Inspection Report By Mile - Fall 2012

Lower San Joaquin Levee District

Waterway	Bank	Unit Miles	Inspection Start/End	Inspector
Unit No. 06 East Side Bypass	Left	36.38	11/07/2012 11/08/2012	Richard Willoughby

Levee Mile Report Line	1
Start Levee Mile	0.00
End Levee Mile	36.38
Location	Water Side
Category	Earthen Levee
Item	Vegetation

Looking north at typical view of tumble weeds on levee slopes.

richard_f_20121115_898.JPG



Levee Mile Report Line	13
Start Levee Mile	24.50
End Levee Mile	24.93
Location	Land Side
Category	Earthen Levee
Item	Slope Stability

Looking north at livestock erosion on landside slope.

richard_f_20121101_082.jpg



Levee Mile Report Line	14
Start Levee Mile	27.56
End Levee Mile	27.87
Location	Land Side
Category	Earthen Levee
Item	Slope Stability

Looking north at livestock erosion on landside shoulder and slope.

richard_f_20121101_080.jpg



*** Location**

LS : Land Side
WS : Water Side
CR : Crown

**** Rating**

A : Acceptable
M : Minimally Acceptable
U : Unacceptable
N : Not Inspected/Rated
C : Corrected
A/W : Acceptable but Monitor & Maintain

+ Issue Type

Ma : Maintenance Deficiency
Ob : Design & System Obsolescence
En : Enforcement

**Flood Control Project Maintenance
Levee Inspections**

Levee Inspection Report By Mile - Fall 2012

Lower San Joaquin Levee District

Waterway	Bank	Unit Miles	Inspection Start/End	Inspector
Unit No. 06 East Side Bypass	Left	36.38	11/07/2012 11/08/2012	Richard Willoughby

Levee Mile Report Line	14
Start Levee Mile	27.56
End Levee Mile	27.87
Location	Land Side
Category	Earthen Levee
Item	Slope Stability

Looking south at livestock erosion on landside shoulder and slope.

richard_f_20121101_081.jpg



Levee Mile Report Line	16
Start Levee Mile	30.41
End Levee Mile	30.41
Location	Crown
Category	Earthen Levee
Item	Encroachments

Looking east at 3/4 inch PVC pipe on landside slope.

richard_f_20121115_896.JPG



Levee Mile Report Line	16
Start Levee Mile	30.41
End Levee Mile	30.41
Location	Crown
Category	Earthen Levee
Item	Encroachments

Looking west at 3/4 inch PVC pipe on waterside slope.

richard_f_20121115_897.JPG



*** Location**

LS : Land Side
WS : Water Side
CR : Crown

**** Rating**

A : Acceptable
M : Minimally Acceptable
U : Unacceptable
N : Not Inspected/Rated
C : Corrected
A/W : Acceptable but Monitor & Maintain

+ Issue Type

Ma : Maintenance Deficiency
Ob : Design & System Obsolescence
En : Enforcement

**Flood Control Project Maintenance
Levee Inspections**

Levee Inspection Report By Mile - Fall 2012

Lower San Joaquin Levee District

Waterway	Bank	Unit Miles	Inspection Start/End	Inspector
Unit No. 06 East Side Bypass	Left	36.38	11/07/2012 11/08/2012	Richard Willoughby

Levee Mile Report Line	17
Start Levee Mile	31.01
End Levee Mile	31.01
Location	Land Side
Category	Earthen Levee
Item	Animal Control

Looking at typical rodent hole on landside slope.

richard_f_20121101_078.jpg



Levee Mile Report Line	17
Start Levee Mile	31.01
End Levee Mile	31.01
Location	Land Side
Category	Earthen Levee
Item	Animal Control

Looking west at rodent holes on landside slope and toe near fence line.

richard_f_20121101_079.jpg



Levee Mile Report Line	18
Start Levee Mile	32.99
End Levee Mile	32.99
Location	Water Side
Category	Earthen Levee
Item	Encroachments

Looking northeast at new metal fence around slant pump on waterside slope.

richard_f_20121101_083.jpg



*** Location**

LS : Land Side
WS : Water Side
CR : Crown

**** Rating**

A : Acceptable
M : Minimally Acceptable
U : Unacceptable
N : Not Inspected/Rated
C : Corrected
A/W : Acceptable but Monitor & Maintain

+ Issue Type

Ma : Maintenance Deficiency
Ob : Design & System Obsolescence
En : Enforcement

**Flood Control Project Maintenance
Levee Inspections**

Unit Cover Sheet

Fall 2012 Levee Inspection Results

Lower San Joaquin Levee District

Waterway			Bank	Unit Miles
Unit No. 07 Bear Creek Bypass			Right	3.62
	Spring (March - May)	Summer (June - August)	(September - November) Fall	Winter (December - February)
Unit Maintenance Rating (Fall Only)			U	
Date of Inspection	04/23/2012 - 04/23/2012		11/06/2012 - 11/06/2012	
DWR Inspector	Richard Willoughby		Richard Willoughby	
Accompanied By				

Summer & Winter Inspections

The Local Maintaining Agency (LMA) is responsible for summer and winter inspections. The LMA is required to submit a report regarding summer and winter inspections to the California Department of Water Resources (DWR).

DWR must be informed on the:

- a) completion of the inspection
- b) any changes other than the results of normal maintenance
- c) corrections to deficiencies noted in this report

If additional items are noted, further documentation of those items must also be submitted.

The LMA should submit this information to DWR using the LMA web application tool available at:

<http://cdec.water.ca.gov/lma.html>

If the LMA is unable to submit information on this webpage, please contact DWR for assistance.

The LMA should submit the information and any associated documentation by September 30 for summer inspections and March 31 for winter inspections.

**Flood Control Project Maintenance
Levee Inspections**

Levee Inspection Report By Mile - Fall 2012

Lower San Joaquin Levee District

Waterway	Bank	Unit Miles	Inspection Start/End	Inspector
Unit No. 07 Bear Creek Bypass	Right	3.62	11/06/2012 11/06/2012	Richard Willoughby

LMR No.	Levee Mile		Category	Item	Location *	Rating **	Action/Comment	GPS Latitude/Longitude		Issue No. Photo
	Start	End						Start	End	
1	0.11	2.57	Earthen Levee	Crown Surface / Depressions / Rutting	CR	M _{Ma}	C1 : Add appropriate material and re-grade the levee to bring the crown above the design elevation.	37.256091 ° -120.770417 °	37.255397 ° -120.735555 °	30 Y
DWR ID: DWR_NA0010_07_s_2012_30										
2	0.50	0.50	Earthen Levee	Animal Control	LS	M _{Ma}	A3 : No rodents visible, but rodent burrows visible; need to backfill and compact or grout burrows.	37.258722 ° -120.764867 °	37.258722 ° -120.764867 °	29 Y
DWR ID: DWR_NA0010_07_s_2012_29										
3	1.22	1.22	Earthen Levee	Animal Control	LS	M _{Ma}	A1 : Exterminate rodents and backfill and compact or grout burrows.	37.264387 ° -120.755805 °	37.264387 ° -120.755805 °	1 Y
DWR ID: DWR_NA0010_07_f_2012_1										
4	1.51	1.51	Earthen Levee	Animal Control	LS	M _{Ma}	A2 : Repair the levee slope damaged by livestock and prevent large animal access. Inspector Comments: Landside erosion cause by livestock.	37.263930 ° -120.750680 °	37.263930 ° -120.750680 °	3 Y
DWR ID: DWR_NA0010_07_s_2012_3										
5	1.86	1.86	Earthen Levee	Animal Control	CR	M _{Ma}	A3 : No rodents visible, but rodent burrows visible; need to backfill and compact or grout burrows. Inspector Comments: Large rodent holes on crown of levee and landside shoulder of levee.	37.261670 ° -120.745010 °	37.261670 ° -120.745010 °	31 Y
DWR ID: DWR_NA0010_07_s_2012_31										

*** Location**

LS : Land Side
WS : Water Side
CR : Crown

**** Rating**

A : Acceptable
M : Minimally Acceptable
U : Unacceptable
N : Not Inspected/Rated
C : Corrected
A/W : Acceptable but Monitor & Maintain

+ Issue Type

Ma : Maintenance Deficiency
Ob : Design & System Obsolescence
En : Enforcement

**Flood Control Project Maintenance
Levee Inspections**

Levee Inspection Report By Mile - Fall 2012

Lower San Joaquin Levee District

Waterway	Bank	Unit Miles	Inspection Start/End	Inspector
Unit No. 07 Bear Creek Bypass	Right	3.62	11/06/2012 11/06/2012	Richard Willoughby

Levee Mile Report Line	1
Start Levee Mile	0.11
End Levee Mile	2.57
Location	Crown
Category	Earthen Levee
Item	Crown Surface / Depressions / Rutting

Looking east at vegetation on levee crown.

richard_f_20121101_085.jpg



Levee Mile Report Line	1
Start Levee Mile	0.11
End Levee Mile	2.57
Location	Crown
Category	Earthen Levee
Item	Crown Surface / Depressions / Rutting

Looking east at un-regraded levee crown. (Fall 2012)

richard_f_20121115_869.JPG



Levee Mile Report Line	3
Start Levee Mile	1.22
End Levee Mile	1.22
Location	Land Side
Category	Earthen Levee
Item	Animal Control

Looking at east at active rodent holes on landside berm.

richard_f_20121115_870.JPG



*** Location**

LS : Land Side
WS : Water Side
CR : Crown

**** Rating**

A : Acceptable
M : Minimally Acceptable
U : Unacceptable
N : Not Inspected/Rated
C : Corrected
A/W : Acceptable but Monitor & Maintain

+ Issue Type

Ma : Maintenance Deficiency
Ob : Design & System Obsolescence
En : Enforcement

**Flood Control Project Maintenance
Levee Inspections**

Levee Inspection Report By Mile - Fall 2012

Lower San Joaquin Levee District

Waterway	Bank	Unit Miles	Inspection Start/End	Inspector
Unit No. 07 Bear Creek Bypass	Right	3.62	11/06/2012 11/06/2012	Richard Willoughby

Levee Mile Report Line	4
Start Levee Mile	1.51
End Levee Mile	1.51
Location	Land Side
Category	Earthen Levee
Item	Animal Control
Looking northeast at landside slope damaged by livestock.	
richard_f_20121101_084.jpg	



Levee Mile Report Line	4
Start Levee Mile	1.51
End Levee Mile	1.51
Location	Land Side
Category	Earthen Levee
Item	Animal Control
Looking southeast at landside slope and toe damage by livestock.	
richard_f_20121115_871.JPG	



Levee Mile Report Line	5
Start Levee Mile	1.86
End Levee Mile	1.86
Location	Crown
Category	Earthen Levee
Item	Animal Control
Looking at rodent hole on levee crown.	
richard_f_20121101_086.jpg	

*** Location**

LS : Land Side
WS : Water Side
CR : Crown

**** Rating**

A : Acceptable
M : Minimally Acceptable
U : Unacceptable
N : Not Inspected/Rated
C : Corrected
A/W : Acceptable but Monitor & Maintain

+ Issue Type

Ma : Maintenance Deficiency
Ob : Design & System Obsolescence
En : Enforcement

**Flood Control Project Maintenance
Levee Inspections**

Levee Inspection Report By Mile - Fall 2012

Lower San Joaquin Levee District

Waterway	Bank	Unit Miles	Inspection Start/End	Inspector
Unit No. 07 Bear Creek Bypass	Right	3.62	11/06/2012 11/06/2012	Richard Willoughby

Levee Mile Report Line	5
Start Levee Mile	1.86
End Levee Mile	1.86
Location	Crown
Category	Earthen Levee
Item	Animal Control

Looking at rodent hole on levee crown.

richard_f_20121101_087.jpg



* Location LS : Land Side WS : Water Side CR : Crown	** Rating A : Acceptable M : Minimally Acceptable U : Unacceptable	N : Not Inspected/Rated C : Corrected A/W : Acceptable but Monitor & Maintain	+ Issue Type Ma : Maintenance Deficiency Ob : Design & System Obsolescence En : Enforcement
--	--	---	---

**Flood Control Project Maintenance
Levee Inspections**

Unit Cover Sheet

Fall 2012 Levee Inspection Results

Lower San Joaquin Levee District

Waterway			Bank	Unit Miles
Unit No. 08 Bear Creek Bypass			Left	3.63
	Spring (March - May)	Summer (June - August)	(September - November) Fall	Winter (December - February)
Unit Maintenance Rating (Fall Only)			U	
Date of Inspection	04/24/2012 - 04/24/2012		11/06/2012 - 11/06/2012	
DWR Inspector	Richard Willoughby		Richard Willoughby	
Accompanied By				

Summer & Winter Inspections

The Local Maintaining Agency (LMA) is responsible for summer and winter inspections. The LMA is required to submit a report regarding summer and winter inspections to the California Department of Water Resources (DWR).

DWR must be informed on the:

- a) completion of the inspection
- b) any changes other than the results of normal maintenance
- c) corrections to deficiencies noted in this report

If additional items are noted, further documentation of those items must also be submitted.

The LMA should submit this information to DWR using the LMA web application tool available at:

<http://cdec.water.ca.gov/lma.html>

If the LMA is unable to submit information on this webpage, please contact DWR for assistance.

The LMA should submit the information and any associated documentation by September 30 for summer inspections and March 31 for winter inspections.

**Flood Control Project Maintenance
Levee Inspections**

Levee Inspection Report By Mile - Fall 2012

Lower San Joaquin Levee District

Waterway						Bank	Unit Miles	Inspection Start/End	Inspector	
Unit No. 08 Bear Creek Bypass						Left	3.63	11/06/2012 11/06/2012	Richard Willoughby	
LMR No.	Levee Mile		Category	Item	Location * + Rating	Action/Comment	GPS Latitude/Longitude		Issue No.	Photo
	Start	End					Start	End		
1	0.00	2.22	Earthen Levee	Crown Surface / Depressions / Rutting	CR Ma	C1 : Add appropriate material and re-grade the levee to bring the crown above the design elevation.	37.253178 ° -120.768513 °	37.256802 ° -120.740452 °	28 Y	
DWR ID: DWR_NA0010_08_s_2012_28										
2	0.00	3.45	Earthen Levee	Vegetation	LS Ma	V7 : Trees / Woody Vegetation	37.253127 ° -120.768504 °	37.253219 ° -120.721787 °	4 Y	
DWR ID: DWR_NA0010_08_f_2012_4										
3	1.19	1.19	Earthen Levee	Animal Control	LS Ma	A3 : No rodents visible, but rodent burrows visible; need to backfill and compact or grout burrows.	37.263183 ° -120.755637 °	37.263182 ° -120.755650 °	2	
DWR ID: DWR_NA0010_08_s_2012_2										
4	1.61	1.61	Earthen Levee	Animal Control	WS Ma	A1 : Exterminate rodents and backfill and compact or grout burrows.	37.261842 ° -120.748510 °	37.261842 ° -120.748510 °	1	
DWR ID: DWR_NA0010_08_s_2012_1										
5	2.07	2.12	Earthen Levee	Animal Control	LS Ma	A1 : Exterminate rodents and backfill and compact or grout burrows. Inspector Comments: Several rodent holes was noted on landside slope near drainage pipe.	37.258063 ° -120.742460 °	37.257688 ° -120.741573 °	7 Y	
DWR ID: DWR_NA0010_08_s_2012_7										
6	3.40	3.54	Earthen Levee	Animal Control	LS Ma	A3 : No rodents visible, but rodent burrows visible; need to backfill and compact or grout burrows.	37.253052 ° -120.722647 °	37.253600 ° -120.720198 °	3	
DWR ID: DWR_NA0010_08_s_2012_3										

*** Location**

LS : Land Side
WS : Water Side
CR : Crown

**** Rating**

A : Acceptable
M : Minimally Acceptable
U : Unacceptable
N : Not Inspected/Rated
C : Corrected
A/W : Acceptable but Monitor & Maintain

+ Issue Type

Ma : Maintenance Deficiency
Ob : Design & System Obsolescence
En : Enforcement

**Flood Control Project Maintenance
Levee Inspections**

Levee Inspection Report By Mile - Fall 2012

Lower San Joaquin Levee District

Waterway	Bank	Unit Miles	Inspection Start/End	Inspector
Unit No. 08 Bear Creek Bypass	Left	3.63	11/06/2012 11/06/2012	Richard Willoughby

Levee Mile Report Line	1
Start Levee Mile	0.00
End Levee Mile	2.22
Location	Crown
Category	Earthen Levee
Item	Crown Surface / Depressions / Rutting
Looking west at vegetation on levee crown.	
richard_f_20121101_090.jpg	



Levee Mile Report Line	1
Start Levee Mile	0.00
End Levee Mile	2.22
Location	Crown
Category	Earthen Levee
Item	Crown Surface / Depressions / Rutting
Looking east at vegetation on levee crown.	
richard_f_20121101_091.jpg	



Levee Mile Report Line	1
Start Levee Mile	0.00
End Levee Mile	2.22
Location	Crown
Category	Earthen Levee
Item	Crown Surface / Depressions / Rutting
Looking east at un-graded levee crown.(Fall 2012)	
richard_f_20121115_875.JPG	

*** Location**

LS : Land Side
WS : Water Side
CR : Crown

**** Rating**

A : Acceptable
M : Minimally Acceptable
U : Unacceptable
N : Not Inspected/Rated
C : Corrected
A/W : Acceptable but Monitor & Maintain

+ Issue Type

Ma : Maintenance Deficiency
Ob : Design & System Obsolescence
En : Enforcement

**Flood Control Project Maintenance
Levee Inspections**

Levee Inspection Report By Mile - Fall 2012

Lower San Joaquin Levee District

Waterway	Bank	Unit Miles	Inspection Start/End	Inspector
Unit No. 08 Bear Creek Bypass	Left	3.63	11/06/2012 11/06/2012	Richard Willoughby

Levee Mile Report Line	2
Start Levee Mile	0.00
End Levee Mile	3.45
Location	Land Side
Category	Earthen Levee
Item	Vegetation

Looking west at typical view of landside and waterside slope.

richard_f_20121115_874.JPG



Levee Mile Report Line	5
Start Levee Mile	2.07
End Levee Mile	2.12
Location	Land Side
Category	Earthen Levee
Item	Animal Control

Looking at typical rodent hole along the section.

richard_f_20121101_088.jpg



Levee Mile Report Line	5
Start Levee Mile	2.07
End Levee Mile	2.12
Location	Land Side
Category	Earthen Levee
Item	Animal Control

Looking at typical rodent hole on landside slope near headwall.

richard_f_20121101_089.jpg



*** Location**

LS : Land Side
WS : Water Side
CR : Crown

**** Rating**

A : Acceptable
M : Minimally Acceptable
U : Unacceptable
N : Not Inspected/Rated
C : Corrected
A/W : Acceptable but Monitor & Maintain

+ Issue Type

Ma : Maintenance Deficiency
Ob : Design & System Obsolescence
En : Enforcement

**Flood Control Project Maintenance
Levee Inspections**

Unit Cover Sheet

Fall 2012 Levee Inspection Results

Lower San Joaquin Levee District

Waterway			Bank	Unit Miles
Unit No. 09 Owens Creek Bypass			Right	0.88
	Spring (March - May)	Summer (June - August)	(September - November) Fall	Winter (December - February)
Unit Maintenance Rating (Fall Only)			U	
Date of Inspection	04/24/2012 - 04/24/2012		11/06/2012 - 11/06/2012	
DWR Inspector	Richard Willoughby		Richard Willoughby	
Accompanied By				

Summer & Winter Inspections

The Local Maintaining Agency (LMA) is responsible for summer and winter inspections. The LMA is required to submit a report regarding summer and winter inspections to the California Department of Water Resources (DWR).

DWR must be informed on the:

- a) completion of the inspection
- b) any changes other than the results of normal maintenance
- c) corrections to deficiencies noted in this report

If additional items are noted, further documentation of those items must also be submitted.

The LMA should submit this information to DWR using the LMA web application tool available at:

<http://cdec.water.ca.gov/lma.html>

If the LMA is unable to submit information on this webpage, please contact DWR for assistance.

The LMA should submit the information and any associated documentation by September 30 for summer inspections and March 31 for winter inspections.

**Flood Control Project Maintenance
Levee Inspections**

Levee Inspection Report By Mile - Fall 2012

Lower San Joaquin Levee District

Waterway	Bank	Unit Miles	Inspection Start/End	Inspector
Unit No. 09 Owens Creek Bypass	Right	0.88	11/06/2012 11/06/2012	Richard Willoughby

LMR No.	Levee Mile		Category	Item	* Location	** Rating	Action/Comment	GPS Latitude/Longitude		Issue No. Photo
	Start	End						Start	End	
1	0.00	0.40	Earthen Levee	Crown Surface / Depressions / Rutting	CR	M Ma	C3 : Add appropriate gravel or road base. Grade and compact.	37.220193 ° -120.712993 °	37.219950 ° -120.706498 °	2 Y
DWR ID: DWR_NA0010_09_s_2012_2										
2	0.04	0.87	Earthen Levee	Vegetation	LS	A Ma	V7 : Trees / Woody Vegetation	37.219770 ° -120.712531 °	37.220033 ° -120.698435 °	1 Y
DWR ID: DWR_NA0010_09_f_2012_1										

*** Location**

LS : Land Side
WS : Water Side
CR : Crown

**** Rating**

A : Acceptable
M : Minimally Acceptable
U : Unacceptable
N : Not Inspected/Rated
C : Corrected
A/W : Acceptable but Monitor & Maintain

+ Issue Type

Ma : Maintenance Deficiency
Ob : Design & System Obsolescence
En : Enforcement

**Flood Control Project Maintenance
Levee Inspections**

Levee Inspection Report By Mile - Fall 2012

Lower San Joaquin Levee District

Waterway	Bank	Unit Miles	Inspection Start/End	Inspector
Unit No. 09 Owens Creek Bypass	Right	0.88	11/06/2012 11/06/2012	Richard Willoughby

Levee Mile Report Line	1
Start Levee Mile	0.00
End Levee Mile	0.40
Location	Crown
Category	Earthen Levee
Item	Crown Surface / Depressions / Rutting

Looking north at levee crown

richard_f_20121115_878.JPG



Levee Mile Report Line	2
Start Levee Mile	0.04
End Levee Mile	0.87
Location	Land Side
Category	Earthen Levee
Item	Vegetation

Looking north at typical view of landside and waterside slopes.

richard_f_20121115_879.JPG



*** Location**

LS : Land Side
WS : Water Side
CR : Crown

**** Rating**

A : Acceptable
M : Minimally Acceptable
U : Unacceptable
N : Not Inspected/Rated
C : Corrected
A/W : Acceptable but Monitor & Maintain

+ Issue Type

Ma : Maintenance Deficiency
Ob : Design & System Obsolescence
En : Enforcement

**Flood Control Project Maintenance
Levee Inspections**

Unit Cover Sheet

Fall 2012 Levee Inspection Results

Lower San Joaquin Levee District

Waterway			Bank	Unit Miles
Unit No. 10 Owens Creek Bypass			Left	0.82
	Spring (March - May)	Summer (June - August)	(September - November) Fall	Winter (December - February)
Unit Maintenance Rating (Fall Only)			U	
Date of Inspection	04/24/2012 - 04/24/2012		11/06/2012 - 11/06/2012	
DWR Inspector	Richard Willoughby		Richard Willoughby	
Accompanied By				

Summer & Winter Inspections

The Local Maintaining Agency (LMA) is responsible for summer and winter inspections. The LMA is required to submit a report regarding summer and winter inspections to the California Department of Water Resources (DWR).

DWR must be informed on the:

- a) completion of the inspection
- b) any changes other than the results of normal maintenance
- c) corrections to deficiencies noted in this report

If additional items are noted, further documentation of those items must also be submitted.

The LMA should submit this information to DWR using the LMA web application tool available at:

<http://cdec.water.ca.gov/lma.html>

If the LMA is unable to submit information on this webpage, please contact DWR for assistance.

The LMA should submit the information and any associated documentation by September 30 for summer inspections and March 31 for winter inspections.

**Flood Control Project Maintenance
Levee Inspections**

Levee Inspection Report By Mile - Fall 2012

Lower San Joaquin Levee District

Waterway	Bank	Unit Miles	Inspection Start/End	Inspector
Unit No. 10 Owens Creek Bypass	Left	0.82	11/06/2012 11/06/2012	Richard Willoughby

LMR No.	Levee Mile		Category	Item	Location *	Rating ** +	Action/Comment	GPS Latitude/Longitude		Issue No. Photo
	Start	End						Start	End	
1	0.00	0.80	Earthen Levee	Crown Surface / Depressions / Rutting	CR	M Ma	C3 : Add appropriate gravel or road base. Grade and compact.	37.217983 ° -120.711388 °	37.219322 ° -120.698155 °	2
DWR ID: DWR_NA0010_10_s_2012_2										
2	0.00	0.82	Earthen Levee	Vegetation	LS	A Ma	V7 : Trees / Woody Vegetation	37.217952 ° -120.711402 °	37.217906 ° -120.711426 °	1 Y
DWR ID: DWR_NA0010_10_f_2012_1										

*** Location**

LS : Land Side
WS : Water Side
CR : Crown

**** Rating**

A : Acceptable
M : Minimally Acceptable
U : Unacceptable
N : Not Inspected/Rated
C : Corrected
A/W : Acceptable but Monitor & Maintain

+ Issue Type

Ma : Maintenance Deficiency
Ob : Design & System Obsolescence
En : Enforcement

**Flood Control Project Maintenance
Levee Inspections**

Levee Inspection Report By Mile - Fall 2012

Lower San Joaquin Levee District

Waterway	Bank	Unit Miles	Inspection Start/End	Inspector
Unit No. 10 Owens Creek Bypass	Left	0.82	11/06/2012 11/06/2012	Richard Willoughby

Levee Mile Report Line	2
Start Levee Mile	0.00
End Levee Mile	0.82
Location	Land Side
Category	Earthen Levee
Item	Vegetation

Looking south at typical view of landside and waterside slopes.

richard_f_20121115_880.JPG



* Location LS : Land Side WS : Water Side CR : Crown	** Rating A : Acceptable M : Minimally Acceptable U : Unacceptable N : Not Inspected/Rated C : Corrected A/W : Acceptable but Monitor & Maintain	+ Issue Type Ma : Maintenance Deficiency Ob : Design & System Obsolescence En : Enforcement
--	---	---

**Flood Control Project Maintenance
Levee Inspections**

Unit Cover Sheet

Fall 2012 Levee Inspection Results

Lower San Joaquin Levee District

Waterway			Bank	Unit Miles
Unit No. 11 Mariposa Bypass			Right	3.31
	Spring (March - May)	Summer (June - August)	(September - November) Fall	Winter (December - February)
Unit Maintenance Rating (Fall Only)			A	
Date of Inspection	04/26/2012 - 04/26/2012		11/08/2012 - 11/08/2012	
DWR Inspector	Richard Willoughby		Richard Willoughby	
Accompanied By				

Summer & Winter Inspections

The Local Maintaining Agency (LMA) is responsible for summer and winter inspections. The LMA is required to submit a report regarding summer and winter inspections to the California Department of Water Resources (DWR).

DWR must be informed on the:

- a) completion of the inspection
- b) any changes other than the results of normal maintenance
- c) corrections to deficiencies noted in this report

If additional items are noted, further documentation of those items must also be submitted.

The LMA should submit this information to DWR using the LMA web application tool available at:

<http://cdec.water.ca.gov/lma.html>

If the LMA is unable to submit information on this webpage, please contact DWR for assistance.

The LMA should submit the information and any associated documentation by September 30 for summer inspections and March 31 for winter inspections.

**Flood Control Project Maintenance
Levee Inspections**

Levee Inspection Report By Mile - Fall 2012

Lower San Joaquin Levee District

Waterway	Bank	Unit Miles	Inspection Start/End	Inspector
Unit No. 11 Mariposa Bypass	Right	3.31	11/08/2012 11/08/2012	Richard Willoughby

LMR No.	Levee Mile		Category	Item	Location *	Rating ** +	Action/Comment	GPS Latitude/Longitude		Issue No. Photo
	Start	End						Start	End	
1	0.00	3.30	Earthen Levee	Vegetation	LS	A	V7 : Trees / Woody Vegetation Inspector Comments: Vegetation complies with O & M standards.	37.202748 ° -120.752976 °	37.202312 ° -120.695318 °	2 Y
DWR ID: DWR_NA0010_11_s_2012_2										
2	1.77	1.77	Earthen Levee	Animal Control	LS	M	A3 : No rodents visible, but rodent burrows visible; need to backfill and compact or grout burrows.	37.202743 ° -120.723187 °	37.202743 ° -120.723187 °	1
DWR ID: DWR_NA0010_11_s_2012_1										

*** Location**

LS : Land Side
WS : Water Side
CR : Crown

**** Rating**

A : Acceptable
M : Minimally Acceptable
U : Unacceptable
N : Not Inspected/Rated
C : Corrected
A/W : Acceptable but Monitor & Maintain

+ Issue Type

Ma : Maintenance Deficiency
Ob : Design & System Obsolescence
En : Enforcement

**Flood Control Project Maintenance
Levee Inspections**

Levee Inspection Report By Mile - Fall 2012

Lower San Joaquin Levee District

Waterway	Bank	Unit Miles	Inspection Start/End	Inspector
Unit No. 11 Mariposa Bypass	Right	3.31	11/08/2012 11/08/2012	Richard Willoughby

Levee Mile Report Line	1
Start Levee Mile	0.00
End Levee Mile	3.30
Location	Land Side
Category	Earthen Levee
Item	Vegetation

Looking east at typical view of levee slopes.

richard_f_20121115_902.JPG



Levee Mile Report Line	1
Start Levee Mile	0.00
End Levee Mile	3.30
Location	Land Side
Category	Earthen Levee
Item	Vegetation

Looking west at typical view of levee slope.

richard_f_20121115_903.JPG



*** Location**

LS : Land Side
WS : Water Side
CR : Crown

**** Rating**

A : Acceptable
M : Minimally Acceptable
U : Unacceptable
N : Not Inspected/Rated
C : Corrected
A/W : Acceptable but Monitor & Maintain

+ Issue Type

Ma : Maintenance Deficiency
Ob : Design & System Obsolescence
En : Enforcement

**Flood Control Project Maintenance
Levee Inspections**

Unit Cover Sheet

Fall 2012 Levee Inspection Results

Lower San Joaquin Levee District

Waterway			Bank	Unit Miles
Unit No. 12 Mariposa Bypass			Left	3.33
	Spring (March - May)	Summer (June - August)	(September - November) Fall	Winter (December - February)
Unit Maintenance Rating (Fall Only)			U	
Date of Inspection	04/26/2012 - 04/26/2012		11/08/2012 - 11/08/2012	
DWR Inspector	Richard Willoughby		Richard Willoughby	
Accompanied By				

Summer & Winter Inspections

The Local Maintaining Agency (LMA) is responsible for summer and winter inspections. The LMA is required to submit a report regarding summer and winter inspections to the California Department of Water Resources (DWR).

DWR must be informed on the:

- a) completion of the inspection
- b) any changes other than the results of normal maintenance
- c) corrections to deficiencies noted in this report

If additional items are noted, further documentation of those items must also be submitted.

The LMA should submit this information to DWR using the LMA web application tool available at:

<http://cdec.water.ca.gov/lma.html>

If the LMA is unable to submit information on this webpage, please contact DWR for assistance.

The LMA should submit the information and any associated documentation by September 30 for summer inspections and March 31 for winter inspections.

**Flood Control Project Maintenance
Levee Inspections**

Levee Inspection Report By Mile - Fall 2012

Lower San Joaquin Levee District

Waterway						Bank	Unit Miles	Inspection Start/End	Inspector
Unit No. 12 Mariposa Bypass						Left	3.33	11/08/2012 11/08/2012	Richard Willoughby

LMR No.	Levee Mile		Category	Item	Location *	Rating **	Action/Comment	GPS Latitude/Longitude		Issue No. Photo
	Start	End						Start	End	
1	0.00	3.31	Earthen Levee	Vegetation	WS	M Ma	V2 : Remove the wild growth other than native grasses from the levee slopes.	° °	° °	4
DWR ID: DWR_NA0010_12_f_2012_4										
2	0.00	1.73	Earthen Levee	Crown Surface / Depressions / Rutting	CR	M Ma	C1 : Add appropriate material and re-grade the levee to bring the crown above the design elevation.	37.200929 ° -120.755187 °	37.200896 ° -120.723815 °	3
DWR ID: DWR_NA0010_12_f_2012_3										
3	0.00	3.31	Earthen Levee	Vegetation	LS	M Ma	V2 : Remove the wild growth other than native grasses from the levee slopes. Inspector Comments: Control the tumble weeds on landside and waterside slope.	37.200929 ° -120.755187 °	37.200945 ° -120.695179 °	2 Y
DWR ID: DWR_NA0010_12_f_2012_2										
4	2.33	2.33	Earthen Levee	Animal Control	LS	M Ma	A1 : Exterminate rodents and backfill and compact or grout burrows.	37.200907 ° -120.712978 °	37.200907 ° -120.712978 °	1
DWR ID: DWR_NA0010_12_s_2012_1										

*** Location**

LS : Land Side
WS : Water Side
CR : Crown

**** Rating**

A : Acceptable
M : Minimally Acceptable
U : Unacceptable
N : Not Inspected/Rated
C : Corrected
A/W : Acceptable but Monitor & Maintain

+ Issue Type

Ma : Maintenance Deficiency
Ob : Design & System Obsolescence
En : Enforcement

**Flood Control Project Maintenance
Levee Inspections**

Levee Inspection Report By Mile - Fall 2012

Lower San Joaquin Levee District

Waterway	Bank	Unit Miles	Inspection Start/End	Inspector
Unit No. 12 Mariposa Bypass	Left	3.33	11/08/2012 11/08/2012	Richard Willoughby

Levee Mile Report Line	3
Start Levee Mile	0.00
End Levee Mile	3.31
Location	Land Side
Category	Earthen Levee
Item	Vegetation

Looking at dense tumble weeds on landside and waterside slopes.

richard_f_20121115_904.JPG



*** Location**

LS : Land Side
WS : Water Side
CR : Crown

**** Rating**

A : Acceptable N : Not Inspected/Rated
M : Minimally Acceptable C : Corrected
U : Unacceptable A/W : Acceptable but Monitor & Maintain

+ Issue Type

Ma : Maintenance Deficiency
Ob : Design & System Obsolescence
En : Enforcement

**Flood Control Project Maintenance
Levee Inspections**

Unit Cover Sheet

Fall 2012 Levee Inspection Results

Lower San Joaquin Levee District

Waterway			Bank	Unit Miles
Unit No. 13 Ash Slough			Right	1.28
	Spring (March - May)	Summer (June - August)	(September - November) Fall	Winter (December - February)
Unit Maintenance Rating (Fall Only)			U	
Date of Inspection	04/25/2012 - 04/25/2012		11/07/2012 - 11/07/2012	
DWR Inspector	Richard Willoughby		Richard Willoughby	
Accompanied By				

Summer & Winter Inspections

The Local Maintaining Agency (LMA) is responsible for summer and winter inspections. The LMA is required to submit a report regarding summer and winter inspections to the California Department of Water Resources (DWR).

DWR must be informed on the:

- a) completion of the inspection
- b) any changes other than the results of normal maintenance
- c) corrections to deficiencies noted in this report

If additional items are noted, further documentation of those items must also be submitted.

The LMA should submit this information to DWR using the LMA web application tool available at:

<http://cdec.water.ca.gov/lma.html>

If the LMA is unable to submit information on this webpage, please contact DWR for assistance.

The LMA should submit the information and any associated documentation by September 30 for summer inspections and March 31 for winter inspections.

Lower San Joaquin Levee District

LMR No.	Levee Mile		Category	Item	Location	Rating	Action/Comment	GPS Latitude/Longitude		Issue No.
	Start	End						Start	End	
1	0.00	1.26	Earthen Levee	Vegetation	LS	M Ma	V1 : Control annual grass and weeds on the levee slopes and easements.	°	°	4
								DWR ID: DWR_NA0010_13_f_2012_4		
2	0.02	1.26	Earthen Levee	Vegetation	WS	M Ma	V1 : Control annual grass and weeds on the levee slopes and easements.	37.033982 ° -120.441997 °	37.046320 ° -120.428138 °	1 Y
								DWR ID: DWR_NA0010_13_s_2012_1		
3	0.14	0.14	Earthen Levee	Animal Control	LS	M Ma	A3 : No rodents visible, but rodent burrows visible; need to backfill and compact or grout burrows.	37.035697 ° -120.441197 °	37.035697 ° -120.441197 °	3
								DWR ID: DWR_NA0010_13_s_2012_3		
4	0.30	1.25	Earthen Levee	Crown Surface / Depressions / Rutting	CR	M Ma	C1 : Add appropriate material and re-grade the levee to bring the crown above the design elevation.	37.037893 ° -120.440373 °	37.046269 ° -120.428350 °	2
								DWR ID: DWR_NA0010_13_f_2012_2		

* Location	** Rating	+ Issue Type
LS : Land Side	A : Acceptable	Ma : Maintenance Deficiency
WS : Water Side	N : Not Inspected/Rated	Ob : Design & System Obsolescence
CR : Crown	M : Minimally Acceptable	En : Enforcement
	U : Unacceptable	
	A/W : Acceptable but Monitor & Maintain	

**Flood Control Project Maintenance
Levee Inspections**

Levee Inspection Report By Mile - Fall 2012

Lower San Joaquin Levee District

Waterway	Bank	Unit Miles	Inspection Start/End	Inspector
Unit No. 13 Ash Slough	Right	1.28	11/07/2012 11/07/2012	Richard Willoughby

Levee Mile Report Line	2
Start Levee Mile	0.02
End Levee Mile	1.26
Location	Water Side
Category	Earthen Levee
Item	Vegetation

Looking east at typical view of landside and waterside slopes.

richard_f_20121115_882.JPG



* Location LS : Land Side WS : Water Side CR : Crown	** Rating A : Acceptable M : Minimally Acceptable U : Unacceptable N : Not Inspected/Rated C : Corrected A/W : Acceptable but Monitor & Maintain	+ Issue Type Ma : Maintenance Deficiency Ob : Design & System Obsolescence En : Enforcement
--	---	---

**Flood Control Project Maintenance
Levee Inspections**

Unit Cover Sheet

Fall 2012 Levee Inspection Results

Lower San Joaquin Levee District

Waterway			Bank	Unit Miles
Unit No. 14 Ash Slough			Left	1.28
	Spring (March - May)	Summer (June - August)	(September - November) Fall	Winter (December - February)
Unit Maintenance Rating (Fall Only)			U	
Date of Inspection	04/25/2012 - 04/25/2012		11/07/2012 - 11/07/2012	
DWR Inspector	Richard Willoughby		Richard Willoughby	
Accompanied By				

Summer & Winter Inspections

The Local Maintaining Agency (LMA) is responsible for summer and winter inspections. The LMA is required to submit a report regarding summer and winter inspections to the California Department of Water Resources (DWR).

DWR must be informed on the:

- a) completion of the inspection
- b) any changes other than the results of normal maintenance
- c) corrections to deficiencies noted in this report

If additional items are noted, further documentation of those items must also be submitted.

The LMA should submit this information to DWR using the LMA web application tool available at:

<http://cdec.water.ca.gov/lma.html>

If the LMA is unable to submit information on this webpage, please contact DWR for assistance.

The LMA should submit the information and any associated documentation by September 30 for summer inspections and March 31 for winter inspections.

**Flood Control Project Maintenance
Levee Inspections**

Levee Inspection Report By Mile - Fall 2012

Lower San Joaquin Levee District

Waterway						Bank	Unit Miles	Inspection Start/End	Inspector
Unit No. 14 Ash Slough						Left	1.28	11/07/2012 11/07/2012	Richard Willoughby

LMR No.	Levee Mile		Category	Item	Location *	Rating **	Action/Comment	GPS Latitude/Longitude		Issue No. Photo
	Start	End						Start	End	
1	0.00	1.25	Earthen Levee	Vegetation	LS	M _{Ma}	V1 : Control annual grass and weeds on the levee slopes and easements.	°	°	4
								°	°	
DWR ID: DWR_NA0010_14_f_2012_4										
2	0.00	1.25	Earthen Levee	Vegetation	WS	M _{Ma}	V1 : Control annual grass and weeds on the levee slopes and easements.	37.032379 °	37.045405 °	1
								-120.441265 °	-120.427750 °	Y
DWR ID: DWR_NA0010_14_f_2012_1										
3	0.00	1.25	Earthen Levee	Crown Surface / Depressions / Rutting	CR	M _{Ma}	C1 : Add appropriate material and re-grade the levee to bring the crown above the design elevation.	37.032379 °	37.045404 °	2
								-120.441265 °	-120.427749 °	
DWR ID: DWR_NA0010_14_f_2012_2										
4	0.08	0.08	Channels	Concrete Foundations	WS	M _{Ma}	Inspector Comments: Erosion on downstream side of structure.	37.033473 °	37.033473 °	3
								-120.440802 °	-120.440802 °	Y
DWR ID: DWR_NA0010_14_s_2012_3										

*** Location**

LS : Land Side
WS : Water Side
CR : Crown

**** Rating**

A : Acceptable
M : Minimally Acceptable
U : Unacceptable
N : Not Inspected/Rated
C : Corrected
A/W : Acceptable but Monitor & Maintain

+ Issue Type

Ma : Maintenance Deficiency
Ob : Design & System Obsolescence
En : Enforcement

**Flood Control Project Maintenance
Levee Inspections**

Levee Inspection Report By Mile - Fall 2012

Lower San Joaquin Levee District

Waterway	Bank	Unit Miles	Inspection Start/End	Inspector
Unit No. 14 Ash Slough	Left	1.28	11/07/2012 11/07/2012	Richard Willoughby

Levee Mile Report Line	2
Start Levee Mile	0.00
End Levee Mile	1.25
Location	Water Side
Category	Earthen Levee
Item	Vegetation

Looking west at typical view of tumble weeds on levee slopes.

richard_f_20121115_883.JPG



Levee Mile Report Line	4
Start Levee Mile	0.08
End Levee Mile	0.08
Location	Water Side
Category	Channels
Item	Concrete Foundations

Looking south at erosion in channel near drop structure.

richard_f_20121115_884.JPG



*** Location**

LS : Land Side
WS : Water Side
CR : Crown

**** Rating**

A : Acceptable
M : Minimally Acceptable
U : Unacceptable
N : Not Inspected/Rated
C : Corrected
A/W : Acceptable but Monitor & Maintain

+ Issue Type

Ma : Maintenance Deficiency
Ob : Design & System Obsolescence
En : Enforcement

**Flood Control Project Maintenance
Levee Inspections**

Unit Cover Sheet

Fall 2012 Levee Inspection Results

Lower San Joaquin Levee District

Waterway			Bank	Unit Miles
Unit No. 15 Berenda Slough			Right	2.03
	Spring (March - May)	Summer (June - August)	(September - November) Fall	Winter (December - February)
Unit Maintenance Rating (Fall Only)			U	
Date of Inspection	04/25/2012 - 04/25/2012		11/07/2012 - 11/07/2012	
DWR Inspector	Richard Willoughby		Richard Willoughby	
Accompanied By				

Summer & Winter Inspections

The Local Maintaining Agency (LMA) is responsible for summer and winter inspections. The LMA is required to submit a report regarding summer and winter inspections to the California Department of Water Resources (DWR).

DWR must be informed on the:

- a) completion of the inspection
- b) any changes other than the results of normal maintenance
- c) corrections to deficiencies noted in this report

If additional items are noted, further documentation of those items must also be submitted.

The LMA should submit this information to DWR using the LMA web application tool available at:

<http://cdec.water.ca.gov/lma.html>

If the LMA is unable to submit information on this webpage, please contact DWR for assistance.

The LMA should submit the information and any associated documentation by September 30 for summer inspections and March 31 for winter inspections.

**Flood Control Project Maintenance
Levee Inspections**

Levee Inspection Report By Mile - Fall 2012

Lower San Joaquin Levee District

Waterway	Bank	Unit Miles	Inspection Start/End	Inspector
Unit No. 15 Berenda Slough	Right	2.03	11/07/2012 11/07/2012	Richard Willoughby

LMR No.	Levee Mile		Category	Item	Location *	Rating **	Action/Comment	GPS Latitude/Longitude		Issue No. Photo
	Start	End						Start	End	
1	0.00	1.99	Earthen Levee	Vegetation	LS	M Ma	V1 : Control annual grass and weeds on the levee slopes and easements.	°	°	1
								°	°	
DWR ID: DWR_NA0010_15_f_2012_1										
2	0.00	1.99	Earthen Levee	Crown Surface / Depressions / Rutting	CR	M Ma	C1 : Add appropriate material and re-grade the levee to bring the crown above the design elevation.	36.996547 °	36.996587 °	11
								-120.410220 °	-120.374503 °	Y
DWR ID: DWR_NA0010_15_s_2012_11										
3	0.00	1.99	Earthen Levee	Vegetation	WS	M Ma	V1 : Control annual grass and weeds on the levee slopes and easements. Inspector Comments: Wild growth on landside, waterside and crown of levee.	36.996565 °	36.996587 °	3
								-120.409607 °	-120.374503 °	Y
DWR ID: DWR_NA0010_15_s_2012_3										

*** Location**

LS : Land Side
WS : Water Side
CR : Crown

**** Rating**

A : Acceptable
M : Minimally Acceptable
U : Unacceptable
N : Not Inspected/Rated
C : Corrected
A/W : Acceptable but Monitor & Maintain

+ Issue Type

Ma : Maintenance Deficiency
Ob : Design & System Obsolescence
En : Enforcement

**Flood Control Project Maintenance
Levee Inspections**

Levee Inspection Report By Mile - Fall 2012

Lower San Joaquin Levee District

Waterway	Bank	Unit Miles	Inspection Start/End	Inspector
Unit No. 15 Berenda Slough	Right	2.03	11/07/2012 11/07/2012	Richard Willoughby

Levee Mile Report Line	2
Start Levee Mile	0.00
End Levee Mile	1.99
Location	Crown
Category	Earthen Levee
Item	Crown Surface / Depressions / Rutting
Looking east at typical view of vegetation on levee crown.	
richard_f_20121101_093.jpg	



Levee Mile Report Line	2
Start Levee Mile	0.00
End Levee Mile	1.99
Location	Crown
Category	Earthen Levee
Item	Crown Surface / Depressions / Rutting
Looking east at levee crown.	
richard_f_20121115_885.JPG	



Levee Mile Report Line	3
Start Levee Mile	0.00
End Levee Mile	1.99
Location	Water Side
Category	Earthen Levee
Item	Vegetation
Looking east at unwanted vegetation on levee crown and slope.	
richard_f_20121101_092.jpg	

*** Location**

LS : Land Side
WS : Water Side
CR : Crown

**** Rating**

A : Acceptable
M : Minimally Acceptable
U : Unacceptable
N : Not Inspected/Rated
C : Corrected
A/W : Acceptable but Monitor & Maintain

+ Issue Type

Ma : Maintenance Deficiency
Ob : Design & System Obsolescence
En : Enforcement

**Flood Control Project Maintenance
Levee Inspections**

Unit Cover Sheet

Fall 2012 Levee Inspection Results

Lower San Joaquin Levee District

Waterway			Bank	Unit Miles
Unit No. 16 Berenda Slough			Left	1.98
	Spring (March - May)	Summer (June - August)	(September - November) Fall	Winter (December - February)
Unit Maintenance Rating (Fall Only)			U	
Date of Inspection	04/25/2012 - 04/25/2012		11/07/2012 - 11/07/2012	
DWR Inspector	Richard Willoughby		Richard Willoughby	
Accompanied By				

Summer & Winter Inspections

The Local Maintaining Agency (LMA) is responsible for summer and winter inspections. The LMA is required to submit a report regarding summer and winter inspections to the California Department of Water Resources (DWR).

DWR must be informed on the:

- a) completion of the inspection
- b) any changes other than the results of normal maintenance
- c) corrections to deficiencies noted in this report

If additional items are noted, further documentation of those items must also be submitted.

The LMA should submit this information to DWR using the LMA web application tool available at:

<http://cdec.water.ca.gov/lma.html>

If the LMA is unable to submit information on this webpage, please contact DWR for assistance.

The LMA should submit the information and any associated documentation by September 30 for summer inspections and March 31 for winter inspections.

**Flood Control Project Maintenance
Levee Inspections**

Levee Inspection Report By Mile - Fall 2012

Lower San Joaquin Levee District

Waterway						Bank	Unit Miles	Inspection Start/End	Inspector	
Unit No. 16 Berenda Slough						Left	1.98	11/07/2012 11/07/2012	Richard Willoughby	

LMR No.	Levee Mile		Category	Item	Location	Rating	Action/Comment	GPS Latitude/Longitude		Issue No.
	Start	End						Start	End	Photo
1	0.00	1.42	Earthen Levee	Crown Surface / Depressions / Rutting	CR	M _{Ma}	C1 : Add appropriate material and re-grade the levee to bring the crown above the design elevation.	36.995388 ° -120.408738 °	36.995447 ° -120.383467 °	14 Y
DWR ID: DWR_NA0010_16_s_2012_14										
2	0.00	1.97	Earthen Levee	Vegetation	WS	M _{Ma}	V1 : Control annual grass and weeds on the levee slopes and easements.	° °	° °	2
DWR ID: DWR_NA0010_16_f_2012_2										
3	0.00	1.97	Earthen Levee	Vegetation	LS	M _{Ma}	V1 : Control annual grass and weeds on the levee slopes and easements. Inspector Comments: Wild growth is on landside, waterside and crown of levee.	36.995378 ° -120.408866 °	36.995488 ° -120.373568 °	1 Y
DWR ID: DWR_NA0010_16_s_2012_1										
4	1.77	1.77	Earthen Levee	Slope Stability	LS	M _{Ma}	S3 : Repair the levee slope damaged by vehicle traffic and prevent access where possible.	36.995488 ° -120.377152 °	36.995488 ° -120.377152 °	3
DWR ID: DWR_NA0010_16_s_2012_3										

*** Location**

LS : Land Side
WS : Water Side
CR : Crown

**** Rating**

A : Acceptable
M : Minimally Acceptable
U : Unacceptable
N : Not Inspected/Rated
C : Corrected
A/W : Acceptable but Monitor & Maintain

+ Issue Type

Ma : Maintenance Deficiency
Ob : Design & System Obsolescence
En : Enforcement

**Flood Control Project Maintenance
Levee Inspections**

Levee Inspection Report By Mile - Fall 2012

Lower San Joaquin Levee District

Waterway	Bank	Unit Miles	Inspection Start/End	Inspector
Unit No. 16 Berenda Slough	Left	1.98	11/07/2012 11/07/2012	Richard Willoughby

Levee Mile Report Line	1
Start Levee Mile	0.00
End Levee Mile	1.42
Location	Crown
Category	Earthen Levee
Item	Crown Surface / Depressions / Rutting

Looking west (downstream) at unwanted vegetation on levee crown.

richard_f_20121101_095.jpg



Levee Mile Report Line	3
Start Levee Mile	0.00
End Levee Mile	1.97
Location	Land Side
Category	Earthen Levee
Item	Vegetation

Looking east (upstream) at unwanted vegetation on both levee slope and levee crown.

richard_f_20121101_094.jpg



Levee Mile Report Line	3
Start Levee Mile	0.00
End Levee Mile	1.97
Location	Land Side
Category	Earthen Levee
Item	Vegetation

Looking west at typical view dense vegetation on waterside and landside slopes.

richard_f_20121115_886.JPG



*** Location**

LS : Land Side
WS : Water Side
CR : Crown

**** Rating**

A : Acceptable
M : Minimally Acceptable
U : Unacceptable
N : Not Inspected/Rated
C : Corrected
A/W : Acceptable but Monitor & Maintain

+ Issue Type

Ma : Maintenance Deficiency
Ob : Design & System Obsolescence
En : Enforcement

**Flood Control Project Maintenance
Levee Inspections**

Unit Cover Sheet

Fall 2012 Levee Inspection Results

Lower San Joaquin Levee District

Waterway			Bank	Unit Miles
Unit No. 17 Chowchilla Canal Bypass			Right	16.09
	Spring (March - May)	Summer (June - August)	(September - November) Fall	Winter (December - February)
Unit Maintenance Rating (Fall Only)			U	
Date of Inspection	04/25/2012 - 04/25/2012		11/07/2012 - 11/07/2012	
DWR Inspector	Richard Willoughby		Richard Willoughby	
Accompanied By				

Summer & Winter Inspections

The Local Maintaining Agency (LMA) is responsible for summer and winter inspections. The LMA is required to submit a report regarding summer and winter inspections to the California Department of Water Resources (DWR).

DWR must be informed on the:

- a) completion of the inspection
- b) any changes other than the results of normal maintenance
- c) corrections to deficiencies noted in this report

If additional items are noted, further documentation of those items must also be submitted.

The LMA should submit this information to DWR using the LMA web application tool available at:

<http://cdec.water.ca.gov/lma.html>

If the LMA is unable to submit information on this webpage, please contact DWR for assistance.

The LMA should submit the information and any associated documentation by September 30 for summer inspections and March 31 for winter inspections.

**Flood Control Project Maintenance
Levee Inspections**

Levee Inspection Report By Mile - Fall 2012

Lower San Joaquin Levee District

Waterway				Bank	Unit Miles	Inspection Start/End	Inspector	
Unit No. 17 Chowchilla Canal Bypass				Right	16.09	11/07/2012 11/07/2012	Richard Willoughby	

LMR No.	Levee Mile		Category	Item	Location	Rating	Action/Comment	GPS Latitude/Longitude		Issue No.
	Start	End						Start	End	Photo
1	0.00	5.77	Earthen Levee	Crown Surface / Depressions / Rutting	CR	M _{Ma}	C1 : Add appropriate material and re-grade the levee to bring the crown above the design elevation.	36.976430 ° -120.374748 °	36.908282 ° -120.330995 °	7 Y
DWR ID: DWR_NA0010_17_s_2012_7										
2	0.03	16.09	Earthen Levee	Vegetation	WS	M _{Ma}	V1 : Control annual grass and weeds on the levee slopes and easements. Inspector Comments: Remove tumble weeds on landside and waterside slopes.	36.976442 ° -120.374297 °	36.774435 ° -120.283787 °	2 Y
DWR ID: DWR_NA0010_17_f_2012_2										
3	0.03	16.09	Earthen Levee	Vegetation	LS	M _{Ma}	V1 : Control annual grass and weeds on the levee slopes and easements.	° °	° °	3
DWR ID: DWR_NA0010_17_f_2012_3										
4	4.69	4.69	Earthen Levee	Encroachments	CR	M _{Ma}	PI : Pipe Inspector Comments: Farmer installed 10" steel irrigation pipe across levee crown.	36.923368 ° -120.336500 °	36.923368 ° -120.336500 °	1 Y
DWR ID: DWR_NA0010_17_s_2012_1										
5	5.67	5.90	Earthen Levee	Animal Control	LS	M _{Ma}	A1 : Exterminate rodents and backfill and compact or grout burrows.	36.909658 ° -120.331508 °	36.906507 ° -120.330353 °	8 Y
DWR ID: DWR_NA0010_17_s_2012_8										
6	6.51	6.60	Earthen Levee	Animal Control	LS	M _{Ma}	A1 : Exterminate rodents and backfill and compact or grout burrows.	36.898124 ° -120.326714 °	36.896943 ° -120.326133 °	4
DWR ID: DWR_NA0010_17_s_2012_4										
7	7.27	7.39	Earthen Levee	Animal Control	LS	M _{Ma}	A3 : No rodents visible, but rodent burrows visible; need to backfill and compact or grout burrows.	36.887869 ° -120.321697 °	36.886341 ° -120.320940 °	5
DWR ID: DWR_NA0010_17_s_2012_5										
8	8.11	8.28	Earthen Levee	Animal Control	LS	M _{Ma}	A3 : No rodents visible, but rodent burrows visible; need to backfill and compact or grout burrows.	36.876132 ° -120.317926 °	36.873749 ° -120.317465 °	6
DWR ID: DWR_NA0010_17_s_2012_6										

*** Location**

LS : Land Side
WS : Water Side
CR : Crown

**** Rating**

A : Acceptable
M : Minimally Acceptable
U : Unacceptable
N : Not Inspected/Rated
C : Corrected
A/W : Acceptable but Monitor & Maintain

+ Issue Type

Ma : Maintenance Deficiency
Ob : Design & System Obsolescence
En : Enforcement

**Flood Control Project Maintenance
Levee Inspections**

Levee Inspection Report By Mile - Fall 2012

Lower San Joaquin Levee District

Waterway	Bank	Unit Miles	Inspection Start/End	Inspector
Unit No. 17 Chowchilla Canal Bypass	Right	16.09	11/07/2012 11/07/2012	Richard Willoughby

Levee Mile Report Line	1
Start Levee Mile	0.00
End Levee Mile	5.77
Location	Crown
Category	Earthen Levee
Item	Crown Surface / Depressions / Rutting

Looking south at unwanted vegetation on levee crown.

richard_f_20121101_097.jpg



Levee Mile Report Line	2
Start Levee Mile	0.03
End Levee Mile	16.09
Location	Water Side
Category	Earthen Levee
Item	Vegetation

Looking south at typical view of levee slopes.

richard_f_20121115_887.JPG



Levee Mile Report Line	4
Start Levee Mile	4.69
End Levee Mile	4.69
Location	Crown
Category	Earthen Levee
Item	Encroachments

Looking south at unauthorized steel pipe across levee crown.

richard_f_20121101_096.jpg



*** Location**

LS : Land Side
WS : Water Side
CR : Crown

**** Rating**

A : Acceptable
M : Minimally Acceptable
U : Unacceptable
N : Not Inspected/Rated
C : Corrected
A/W : Acceptable but Monitor & Maintain

+ Issue Type

Ma : Maintenance Deficiency
Ob : Design & System Obsolescence
En : Enforcement

**Flood Control Project Maintenance
Levee Inspections**

Levee Inspection Report By Mile - Fall 2012

Lower San Joaquin Levee District

Waterway	Bank	Unit Miles	Inspection Start/End	Inspector
Unit No. 17 Chowchilla Canal Bypass	Right	16.09	11/07/2012 11/07/2012	Richard Willoughby

Levee Mile Report Line	5
Start Levee Mile	5.67
End Levee Mile	5.90
Location	Land Side
Category	Earthen Levee
Item	Animal Control

Looking at several rodent holes on landside slope.

richard_f_20121101_098.jpg



*** Location**

LS : Land Side
WS : Water Side
CR : Crown

**** Rating**

A : Acceptable
M : Minimally Acceptable
U : Unacceptable
N : Not Inspected/Rated
C : Corrected
A/W : Acceptable but Monitor & Maintain

+ Issue Type

Ma : Maintenance Deficiency
Ob : Design & System Obsolescence
En : Enforcement

**Flood Control Project Maintenance
Levee Inspections**

Unit Cover Sheet

Fall 2012 Levee Inspection Results

Lower San Joaquin Levee District

Waterway			Bank	Unit Miles
Unit No. 18 Chowchilla Canal Bypass			Left	15.33
	Spring (March - May)	Summer (June - August)	(September - November) Fall	Winter (December - February)
Unit Maintenance Rating (Fall Only)			U	
Date of Inspection	04/25/2012 - 04/25/2012		11/07/2012 - 11/07/2012	
DWR Inspector	Richard Willoughby		Richard Willoughby	
Accompanied By				

Summer & Winter Inspections

The Local Maintaining Agency (LMA) is responsible for summer and winter inspections. The LMA is required to submit a report regarding summer and winter inspections to the California Department of Water Resources (DWR).

DWR must be informed on the:

- a) completion of the inspection
- b) any changes other than the results of normal maintenance
- c) corrections to deficiencies noted in this report

If additional items are noted, further documentation of those items must also be submitted.

The LMA should submit this information to DWR using the LMA web application tool available at:

<http://cdec.water.ca.gov/lma.html>

If the LMA is unable to submit information on this webpage, please contact DWR for assistance.

The LMA should submit the information and any associated documentation by September 30 for summer inspections and March 31 for winter inspections.

**Flood Control Project Maintenance
Levee Inspections**

Levee Inspection Report By Mile - Fall 2012

Lower San Joaquin Levee District

Waterway					Bank	Unit Miles	Inspection Start/End		Inspector
Unit No. 18 Chowchilla Canal Bypass					Left	15.33	11/07/2012 11/07/2012		Richard Willoughby

LMR No.	Levee Mile		Category	Item	Location	Rating	Action/Comment	GPS Latitude/Longitude		Issue No.
	Start	End						Start	End	Photo
1	0.00	15.10	Earthen Levee	Vegetation	LS	M _{Ma}	V1 : Control annual grass and weeds on the levee slopes and easements. Inspector Comments: Control tumble weed on landside and waterside slope.	36.974141 ° -120.363274 °	36.776268 ° -120.287293 °	5 Y
DWR ID: DWR_NA0010_18_f_2012_5										
2	7.53	8.78	Earthen Levee	Vegetation	WS	M _{Ma}	V2 : Remove the wild growth other than native grasses from the levee slopes. Inspector Comments: Dense tumble weed on landside and waterside shoulder.	36.872307 ° -120.319380 °	36.854355 ° -120.316502 °	2 Y
DWR ID: DWR_NA0010_18_s_2012_2										
3	8.04	8.04	Earthen Levee	Encroachments	WS	M _{Ma}	GA : Garbage Inspector Comments: Garbage on waterside shoulder.	36.865062 ° -120.317977 °	36.865062 ° -120.317977 °	4 Y
DWR ID: DWR_NA0010_18_s_2012_4										
4	11.86	13.15	Earthen Levee	Vegetation	LS	M _{Ma}	V2 : Remove the wild growth other than native grasses from the levee slopes. Inspector Comments: Dense tumble weed on landside and waterside shoulder and slope	36.815400 ° -120.305080 °	36.797353 ° -120.308560 °	1 Y
DWR ID: DWR_NA0010_18_s_2012_1										
5	13.55	15.12	Earthen Levee	Crown Surface / Depressions / Rutting	LS	M _{Ma}	C2 : Repair depressions or ruts in the crown or slope.	36.792861 ° -120.304907 °	36.776058 ° -120.287111 °	3 Y
DWR ID: DWR_NA0010_18_f_2012_3										

*** Location**

LS : Land Side
WS : Water Side
CR : Crown

**** Rating**

A : Acceptable
M : Minimally Acceptable
U : Unacceptable
N : Not Inspected/Rated
C : Corrected
A/W : Acceptable but Monitor & Maintain

+ Issue Type

Ma : Maintenance Deficiency
Ob : Design & System Obsolescence
En : Enforcement

**Flood Control Project Maintenance
Levee Inspections**

Levee Inspection Report By Mile - Fall 2012

Lower San Joaquin Levee District

Waterway	Bank	Unit Miles	Inspection Start/End	Inspector
Unit No. 18 Chowchilla Canal Bypass	Left	15.33	11/07/2012 11/07/2012	Richard Willoughby

Levee Mile Report Line	1
Start Levee Mile	0.00
End Levee Mile	15.10
Location	Land Side
Category	Earthen Levee
Item	Vegetation

Looking north at dense tumble weeds on levee slopes.

richard_f_20121115_894.JPG



Levee Mile Report Line	3
Start Levee Mile	8.04
End Levee Mile	8.04
Location	Water Side
Category	Earthen Levee
Item	Encroachments

Looking north at garbage on waterside slope.

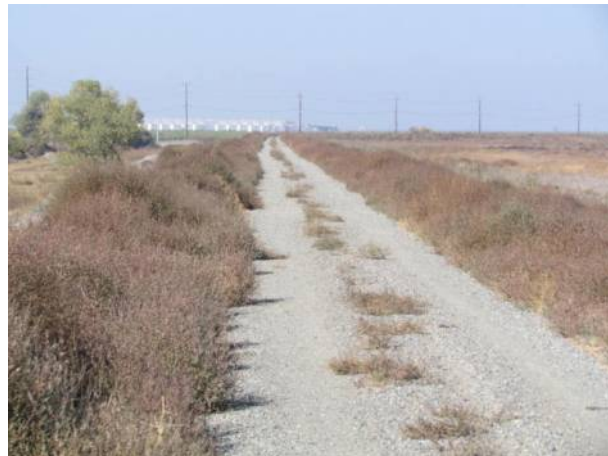
richard_f_20121101_099.jpg



Levee Mile Report Line	4
Start Levee Mile	11.86
End Levee Mile	13.15
Location	Land Side
Category	Earthen Levee
Item	Vegetation

Looking north at typical tumble weeds on levee slopes.

richard_f_20121115_895.JPG



*** Location**

LS : Land Side
WS : Water Side
CR : Crown

**** Rating**

A : Acceptable
M : Minimally Acceptable
U : Unacceptable
N : Not Inspected/Rated
C : Corrected
A/W : Acceptable but Monitor & Maintain

+ Issue Type

Ma : Maintenance Deficiency
Ob : Design & System Obsolescence
En : Enforcement

**Flood Control Project Maintenance
Levee Inspections**

Unit Cover Sheet

Fall 2012 Levee Inspection Results

Lower San Joaquin Levee District

Waterway			Bank	Unit Miles
Unit No. 22A East Side Canal			Left	5.50
	Spring (March - May)	Summer (June - August)	(September - November) Fall	Winter (December - February)
Unit Maintenance Rating (Fall Only)			U	
Date of Inspection	04/24/2012 - 04/24/2012		11/06/2012 - 11/06/2012	
DWR Inspector	Richard Willoughby		Richard Willoughby	
Accompanied By				

Summer & Winter Inspections

The Local Maintaining Agency (LMA) is responsible for summer and winter inspections. The LMA is required to submit a report regarding summer and winter inspections to the California Department of Water Resources (DWR).

DWR must be informed on the:

- a) completion of the inspection
- b) any changes other than the results of normal maintenance
- c) corrections to deficiencies noted in this report

If additional items are noted, further documentation of those items must also be submitted.

The LMA should submit this information to DWR using the LMA web application tool available at:

<http://cdec.water.ca.gov/lma.html>

If the LMA is unable to submit information on this webpage, please contact DWR for assistance.

The LMA should submit the information and any associated documentation by September 30 for summer inspections and March 31 for winter inspections.

**Flood Control Project Maintenance
Levee Inspections**

Levee Inspection Report By Mile - Fall 2012

Lower San Joaquin Levee District

Waterway				Bank	Unit Miles	Inspection Start/End	Inspector
Unit No. 22A East Side Canal				Left	5.50	11/06/2012 11/06/2012	Richard Willoughby

LMR No.	Levee Mile		Category	Item	Location	Rating	Action/Comment	GPS Latitude/Longitude		Issue No.
	Start	End						Start	End	
1	0.10	0.10	Earthen Levee	Erosion / Bank Caving	WS	M Ma	E1 : Note and monitor erosion site. Inspector Comments: Erosion located next to screw gate.	37.206985 ° -120.696225 °	37.206985 ° -120.696225 °	7 Y
DWR ID: DWR_NA0010_22A_s_2012_7										
2	0.68	0.88	Earthen Levee	Vegetation	LS A/W	M Ma	V2 : Remove the wild growth other than native grasses from the levee slopes.	37.215360 ° -120.698078 °	37.218128 ° -120.697457 °	8 Y
DWR ID: DWR_NA0010_22A_s_2012_8										
3	2.65	3.65	Earthen Levee	Animal Control	WS	M Ma	A2 : Repair the levee slope damaged by livestock and prevent large animal access. Inspector Comments: There're several slope stability issues along this channel cause by animal foot traffic that need to be monitored.	37.242563 ° -120.706435 °	37.253465 ° -120.717952 °	1 Y
DWR ID: DWR_NA0010_22A_s_2012_1										
4	3.14	3.14	Earthen Levee	Trim / Thin Trees	WS	M Ma	T2 : Thin trees to allow visibility of the ground and room to flood fight.	37.248208 ° -120.711500 °	37.248208 ° -120.711500 °	2 Y
DWR ID: DWR_NA0010_22A_s_2012_2										
5	3.85	3.85	Channels	Encroachments	WS	A En	Inspector Comments: Stevinson Water District received approved CVFPB permit (18705) dated April 04, 2012 for the existing 1.5 foot high broad-crested weir with a metal bridge over the East Side Canal.	37.255568 ° -120.720551 °	37.255568 ° -120.720551 °	4 Y
DWR ID: DWR_NA0010_22A_s_2012_4										
6	4.25	4.32	Earthen Levee	Crown Surface / Depressions / Rutting	CR	M Ma	C2 : Repair depressions or ruts in the crown or slope.	37.259822 ° -120.725557 °	37.259823 ° -120.725558 °	52 Y
DWR ID: DWR_NA0010_22A_s_2012_52										
7	4.68	4.68	Channels	Encroachments	WS	M En	Inspector Comments: Old wooden bridge in channel should be removed.	37.264250 ° -120.731280 °	37.264250 ° -120.731280 °	3 Y
DWR ID: DWR_NA0010_22A_s_2012_3										
8	4.80	4.86	Earthen Levee	Animal Control	WS	M Ma	A2 : Repair the levee slope damaged by livestock and prevent large animal access. Inspector Comments: Erosion caused by livestock on waterside toe.	37.265180 ° -120.732745 °	37.265743 ° -120.733602 °	5 Y
DWR ID: DWR_NA0010_22A_s_2012_5										
9	4.81	4.84	Earthen Levee	Crown Surface / Depressions / Rutting	CR	M Ma	C3 : Add appropriate gravel or road base. Grade and compact.	37.265330 ° -120.732960 °	37.265705 ° -120.733553 °	10 Y
DWR ID: DWR_NA0010_22A_s_2012_10										
10	5.07	5.10	Earthen Levee	Crown Surface / Depressions / Rutting	CR	M Ma	C2 : Repair depressions or ruts in the crown or slope. Inspector Comments: Minor rutting on levee crown.	37.267682 ° -120.736597 °	37.267967 ° -120.736913 °	9 Y
DWR ID: DWR_NA0010_22A_s_2012_9										
11	5.09	5.09	Earthen Levee	Crown Surface / Depressions / Rutting	CR	M Ma	C2 : Repair depressions or ruts in the crown or slope.	37.267903 ° -120.736878 °	37.267903 ° -120.736878 °	57 Y
DWR ID: DWR_NA0010_22A_s_2012_57										

* Location		** Rating		+ Issue Type	
LS : Land Side		A : Acceptable	N : Not Inspected/Rated	Ma : Maintenance Deficiency	
WS : Water Side		M : Minimally Acceptable	C : Corrected	Ob : Design & System Obsolescence	
CR : Crown		U : Unacceptable	A/W : Acceptable but Monitor & Maintain	En : Enforcement	

**Flood Control Project Maintenance
Levee Inspections**

Levee Inspection Report By Mile - Fall 2012

Lower San Joaquin Levee District

Waterway	Bank	Unit Miles	Inspection Start/End	Inspector
Unit No. 22A East Side Canal	Left	5.50	11/06/2012 11/06/2012	Richard Willoughby

LMR No.	Levee Mile		Category	Item	Location *	Rating ** +	Action/Comment	GPS Latitude/Longitude		Issue No. Photo
	Start	End						Start	End	
12	5.15	5.20	Earthen Levee	Animal Control	WS	M	A2 : Repair the levee slope damaged by livestock and prevent large animal access. Inspector Comments: Erosion caused by livestock on waterside toe.	37.268492 ° -120.737493 °	37.269133 ° -120.738208 °	6 Y

DWR ID: DWR_NA0010_22A_s_2012_6

* Location LS : Land Side WS : Water Side CR : Crown	** Rating A : Acceptable M : Minimally Acceptable U : Unacceptable N : Not Inspected/Rated C : Corrected A/W : Acceptable but Monitor & Maintain	+ Issue Type Ma : Maintenance Deficiency Ob : Design & System Obsolescence En : Enforcement
--	---	---

**Flood Control Project Maintenance
Levee Inspections**

Levee Inspection Report By Mile - Fall 2012

Lower San Joaquin Levee District

Waterway	Bank	Unit Miles	Inspection Start/End	Inspector
Unit No. 22A East Side Canal	Left	5.50	11/06/2012 11/06/2012	Richard Willoughby

Levee Mile Report Line	1
Start Levee Mile	0.10
End Levee Mile	0.10
Location	Water Side
Category	Earthen Levee
Item	Erosion / Bank Caving

Looking north at erosion on waterside toe near screw gate.

richard_f_20121101_107.jpg



Levee Mile Report Line	1
Start Levee Mile	0.10
End Levee Mile	0.10
Location	Water Side
Category	Earthen Levee
Item	Erosion / Bank Caving

Looking south at erosion near screw gate. (Fall 2012)

richard_f_20121115_873.JPG



Levee Mile Report Line	3
Start Levee Mile	2.65
End Levee Mile	3.65
Location	Water Side
Category	Earthen Levee
Item	Animal Control

Looking northeast at animal erosion on waterside slope.

richard_f_20121101_100.jpg



*** Location**

LS : Land Side
WS : Water Side
CR : Crown

**** Rating**

A : Acceptable
M : Minimally Acceptable
U : Unacceptable
N : Not Inspected/Rated
C : Corrected
A/W : Acceptable but Monitor & Maintain

+ Issue Type

Ma : Maintenance Deficiency
Ob : Design & System Obsolescence
En : Enforcement

**Flood Control Project Maintenance
Levee Inspections**

Levee Inspection Report By Mile - Fall 2012

Lower San Joaquin Levee District

Waterway	Bank	Unit Miles	Inspection Start/End	Inspector
Unit No. 22A East Side Canal	Left	5.50	11/06/2012 11/06/2012	Richard Willoughby

Levee Mile Report Line	3
Start Levee Mile	2.65
End Levee Mile	3.65
Location	Water Side
Category	Earthen Levee
Item	Animal Control

Looking south at animal erosion on waterside slope.

richard_f_20121101_101.jpg



Levee Mile Report Line	5
Start Levee Mile	3.85
End Levee Mile	3.85
Location	Water Side
Category	Channels
Item	Encroachments

Looking north at weir across Eastside Canal.

richard_f_20121101_104.jpg



Levee Mile Report Line	5
Start Levee Mile	3.85
End Levee Mile	3.85
Location	Water Side
Category	Channels
Item	Encroachments

Looking east at authorized weir and metal bridge across East Side Canal.

richard_f_20121115_872.JPG



*** Location**

LS : Land Side
WS : Water Side
CR : Crown

**** Rating**

A : Acceptable
M : Minimally Acceptable
U : Unacceptable
N : Not Inspected/Rated
C : Corrected
A/W : Acceptable but Monitor & Maintain

+ Issue Type

Ma : Maintenance Deficiency
Ob : Design & System Obsolescence
En : Enforcement

**Flood Control Project Maintenance
Levee Inspections**

Levee Inspection Report By Mile - Fall 2012

Lower San Joaquin Levee District

Waterway	Bank	Unit Miles	Inspection Start/End	Inspector
Unit No. 22A East Side Canal	Left	5.50	11/06/2012 11/06/2012	Richard Willoughby

Levee Mile Report Line	7
Start Levee Mile	4.68
End Levee Mile	4.68
Location	Water Side
Category	Channels
Item	Encroachments

Looking east at dilapidated bridge across canal.

richard_f_20121101_102.jpg



Levee Mile Report Line	7
Start Levee Mile	4.68
End Levee Mile	4.68
Location	Water Side
Category	Channels
Item	Encroachments

Looking northeas at dilapidated bridge across canal.

richard_f_20121101_103.jpg



Levee Mile Report Line	8
Start Levee Mile	4.80
End Levee Mile	4.86
Location	Water Side
Category	Earthen Levee
Item	Animal Control

Looking north at waterside erosion from livestock.

richard_f_20121101_105.jpg



* Location LS : Land Side WS : Water Side CR : Crown	** Rating A : Acceptable M : Minimally Acceptable U : Unacceptable N : Not Inspected/Rated C : Corrected A/W : Acceptable but Monitor & Maintain	+ Issue Type Ma : Maintenance Deficiency Ob : Design & System Obsolescence En : Enforcement
--	---	---

**Flood Control Project Maintenance
Levee Inspections**

Levee Inspection Report By Mile - Fall 2012

Lower San Joaquin Levee District

Waterway	Bank	Unit Miles	Inspection Start/End	Inspector
Unit No. 22A East Side Canal	Left	5.50	11/06/2012 11/06/2012	Richard Willoughby

Levee Mile Report Line	10
Start Levee Mile	5.07
End Levee Mile	5.10
Location	Crown
Category	Earthen Levee
Item	Crown Surface / Depressions / Rutting

Looking south at rutting on levee crown.

richard_f_20121101_108.jpg



Levee Mile Report Line	12
Start Levee Mile	5.15
End Levee Mile	5.20
Location	Water Side
Category	Earthen Levee
Item	Animal Control

Looking north at livestock erosion along waterside slope and toe.

richard_f_20121101_106.jpg



*** Location**

LS : Land Side
WS : Water Side
CR : Crown

**** Rating**

A : Acceptable
M : Minimally Acceptable
U : Unacceptable
N : Not Inspected/Rated
C : Corrected
A/W : Acceptable but Monitor & Maintain

+ Issue Type

Ma : Maintenance Deficiency
Ob : Design & System Obsolescence
En : Enforcement

**Flood Control Project Maintenance
Levee Inspections**

Unit Cover Sheet

Fall 2012 Levee Inspection Results

Lower San Joaquin Levee District

Waterway			Bank	Unit Miles
Unit No. 23 San Joaquin River			Right	10.25
	Spring (March - May)	Summer (June - August)	(September - November) Fall	Winter (December - February)
Unit Maintenance Rating (Fall Only)			U	
Date of Inspection	04/25/2012 - 04/25/2012		11/07/2012 - 11/07/2012	
DWR Inspector	Richard Willoughby		Richard Willoughby	
Accompanied By				

Summer & Winter Inspections

The Local Maintaining Agency (LMA) is responsible for summer and winter inspections. The LMA is required to submit a report regarding summer and winter inspections to the California Department of Water Resources (DWR).

DWR must be informed on the:

- a) completion of the inspection
- b) any changes other than the results of normal maintenance
- c) corrections to deficiencies noted in this report

If additional items are noted, further documentation of those items must also be submitted.

The LMA should submit this information to DWR using the LMA web application tool available at:

<http://cdec.water.ca.gov/lma.html>

If the LMA is unable to submit information on this webpage, please contact DWR for assistance.

The LMA should submit the information and any associated documentation by September 30 for summer inspections and March 31 for winter inspections.

**Flood Control Project Maintenance
Levee Inspections**

Levee Inspection Report By Mile - Fall 2012

Lower San Joaquin Levee District

Waterway						Bank	Unit Miles	Inspection Start/End	Inspector
Unit No. 23 San Joaquin River						Right	10.25	11/07/2012 11/07/2012	Richard Willoughby

LMR No.	Levee Mile		Category	Item	Location	Rating	Action/Comment	GPS Latitude/Longitude		Issue No.
	Start	End						Start	End	
1	0.03	9.77	Earthen Levee	Vegetation	WS	M Ma	V1 : Control annual grass and weeds on the levee slopes and easements. Inspector Comments: Remove tumble weeds from landside and waterside slope.	36.774150 ° -120.283377 °	36.807828 ° -120.168834 °	8 Y
DWR ID: DWR_NA0010_23_f_2012_8										
2	1.16	1.28	Earthen Levee	Vegetation	LS	M Ma	V2 : Remove the wild growth other than native grasses from the levee slopes.	36.772832 ° -120.265742 °	36.773123 ° -120.263603 °	1 Y
DWR ID: DWR_NA0010_23_s_2012_1										
3	1.53	1.53	Earthen Levee	Slope Stability	LS	M Ma	S3 : Repair the levee slope damaged by vehicle traffic and prevent access where possible.	36.772035 ° -120.259560 °	36.772035 ° -120.259560 °	14 Y
DWR ID: DWR_NA0010_23_f_2012_14										
4	1.56	1.75	Earthen Levee	Vegetation	LS	M Ma	V2 : Remove the wild growth other than native grasses from the levee slopes.	36.771778 ° -120.259143 °	36.771625 ° -120.255817 °	2 Y
DWR ID: DWR_NA0010_23_s_2012_2										
5	2.85	2.85	Earthen Levee	Vegetation	LS	M Ma	V4 : Elderberries are blocking visibility and flood fight capability.	36.771537 ° -120.240917 °	36.771537 ° -120.240917 °	15 Y
DWR ID: DWR_NA0010_23_s_2012_15										
6	3.30	3.30	Earthen Levee	Vegetation	LS	M Ma	V4 : Elderberries are blocking visibility and flood fight capability.	36.774403 ° -120.234705 °	36.774403 ° -120.234705 °	3 Y
DWR ID: DWR_NA0010_23_s_2012_3										
7	3.45	3.45	Earthen Levee	Vegetation	LS	M Ma	V4 : Elderberries are blocking visibility and flood fight capability.	36.776537 ° -120.234573 °	36.776537 ° -120.234573 °	9 Y
DWR ID: DWR_NA0010_23_s_2012_9										
8	4.14	4.14	Earthen Levee	Vegetation	LS	M Ma	V4 : Elderberries are blocking visibility and flood fight capability.	36.784212 ° -120.228815 °	36.784212 ° -120.228815 °	10 Y
DWR ID: DWR_NA0010_23_s_2012_10										
9	4.46	4.46	Earthen Levee	Vegetation	LS	M Ma	V4 : Elderberries are blocking visibility and flood fight capability.	36.784523 ° -120.223292 °	36.784523 ° -120.223292 °	11 Y
DWR ID: DWR_NA0010_23_s_2012_11										
10	5.23	5.23	Earthen Levee	Encroachments	WSA/W	Ma	MA : Material Inspector Comments: Sand pile in levee channel over three feet high. Pile is to close to levee.	36.791400 ° -120.214222 °	36.791400 ° -120.214222 °	7 Y
DWR ID: DWR_NA0010_23_s_2012_7										
11	5.69	5.90	Earthen Levee	Animal Control	WS	M Ma	A1 : Exterminate rodents and backfill and compact or grout burrows. Inspector Comments: Several large rodent holes in this area.	36.792012 ° -120.206270 °	36.790972 ° -120.202588 °	5 Y
DWR ID: DWR_NA0010_23_s_2012_5										
12	7.84	8.08	Earthen Levee	Vegetation	LS	M Ma	V2 : Remove the wild growth other than native grasses from the levee slopes.	36.785663 ° -120.182890 °	36.789127 ° -120.182298 °	13 Y
DWR ID: DWR_NA0010_23_s_2012_13										
13	7.84	8.08	Earthen Levee	Vegetation	WS	M Ma	V2 : Remove the wild growth other than native grasses from the levee slopes.	36.785672 ° -120.182873 °	36.789130 ° -120.182297 °	12 Y
DWR ID: DWR_NA0010_23_s_2012_12										

*** Location**

LS : Land Side
WS : Water Side
CR : Crown

**** Rating**

A : Acceptable
M : Minimally Acceptable
U : Unacceptable
N : Not Inspected/Rated
C : Corrected
A/W : Acceptable but Monitor & Maintain

+ Issue Type

Ma : Maintenance Deficiency
Ob : Design & System Obsolescence
En : Enforcement

**Flood Control Project Maintenance
Levee Inspections**

Levee Inspection Report By Mile - Fall 2012

Lower San Joaquin Levee District

Waterway	Bank	Unit Miles	Inspection Start/End	Inspector
Unit No. 23 San Joaquin River	Right	10.25	11/07/2012 11/07/2012	Richard Willoughby

LMR No.	Levee Mile		Category	Item	Location	Rating	Action/Comment	GPS Latitude/Longitude		Issue No. Photo
	Start	End						Start	End	

14	9.10	9.21	Supplemental	DWR Erosion Survey	WS	C	Inspector Comments: 07/24/2012: Site has been repaired with riprap rocks and broken concrete blocks, but loose material and cracking are visible at the top of the repaired site. The site needs close monitoring for performance evaluation. 08/16/2011: This site is immediately downstream of the riparian protection section. Dense vegetation growing on the toe and slope of the bank seems to indicate the most part of the erosion occurred prior to last winter. The closest spot is 12 feet away from the levee toe. [2012 Site ID:NA0010U23RM224.27]	36.802116 ° -120.173847 °	36.802116 ° -120.173847 °	4
----	------	------	--------------	--------------------	----	---	--	------------------------------	------------------------------	---

DWR ID:

15	9.21	9.26	Supplemental	DWR Erosion Survey	WS	C	Inspector Comments: 07/24/2012: The site has been repaired with clay material, riprap rocks, and broken concrete blocks, but the loose material and large crackings at the repaired site are visible. Need monitoring for the performance during the coming high flow events. 08/16/2011: The erosion is cutting into the levee. The site is located at the outside of a river bend, and the erosions were caused by river flows during the last flooding season. The ground was covered by dense grasses. Animal burrow holes are visible. [2012 Site ID:NA0010U23RM224.33]	36.802898 ° -120.173278 °	36.802898 ° -120.173278 °	6
----	------	------	--------------	--------------------	----	---	--	------------------------------	------------------------------	---

DWR ID:

* Location LS : Land Side WS : Water Side CR : Crown	** Rating A : Acceptable M : Minimally Acceptable U : Unacceptable	N : Not Inspected/Rated C : Corrected A/W : Acceptable but Monitor & Maintain	+ Issue Type Ma : Maintenance Deficiency Ob : Design & System Obsolescence En : Enforcement
--	--	---	---

**Flood Control Project Maintenance
Levee Inspections**

Levee Inspection Report By Mile - Fall 2012

Lower San Joaquin Levee District

Waterway	Bank	Unit Miles	Inspection Start/End	Inspector
Unit No. 23 San Joaquin River	Right	10.25	11/07/2012 11/07/2012	Richard Willoughby

Levee Mile Report Line	1
Start Levee Mile	0.03
End Levee Mile	9.77
Location	Water Side
Category	Earthen Levee
Item	Vegetation

Looking south at tumble weeds on levee slopes.

richard_f_20121115_889.JPG



Levee Mile Report Line	3
Start Levee Mile	1.53
End Levee Mile	1.53
Location	Land Side
Category	Earthen Levee
Item	Slope Stability

Looking north at slope damage by vehicle traffic.

richard_f_20121115_888.JPG



Levee Mile Report Line	4
Start Levee Mile	1.56
End Levee Mile	1.75
Location	Land Side
Category	Earthen Levee
Item	Vegetation

Looking south at dense vegetation on landside slope.

richard_f_20121115_890.JPG



*** Location**

LS : Land Side
WS : Water Side
CR : Crown

**** Rating**

A : Acceptable
M : Minimally Acceptable
U : Unacceptable
N : Not Inspected/Rated
C : Corrected
A/W : Acceptable but Monitor & Maintain

+ Issue Type

Ma : Maintenance Deficiency
Ob : Design & System Obsolescence
En : Enforcement

**Flood Control Project Maintenance
Levee Inspections**

Levee Inspection Report By Mile - Fall 2012

Lower San Joaquin Levee District

Waterway	Bank	Unit Miles	Inspection Start/End	Inspector
Unit No. 23 San Joaquin River	Right	10.25	11/07/2012 11/07/2012	Richard Willoughby

Levee Mile Report Line	5
Start Levee Mile	2.85
End Levee Mile	2.85
Location	Land Side
Category	Earthen Levee
Item	Vegetation

Looking south at elderberry on landside toe and berm.

richard_f_20121101_115.jpg



Levee Mile Report Line	6
Start Levee Mile	3.30
End Levee Mile	3.30
Location	Land Side
Category	Earthen Levee
Item	Vegetation

Looking south at elderberry on landside toe and berm.

richard_f_20121101_109.jpg



Levee Mile Report Line	7
Start Levee Mile	3.45
End Levee Mile	3.45
Location	Land Side
Category	Earthen Levee
Item	Vegetation

Looking south at elderberry on landside toe and berm.

richard_f_20121101_112.jpg



*** Location**

LS : Land Side
WS : Water Side
CR : Crown

**** Rating**

A : Acceptable
M : Minimally Acceptable
U : Unacceptable
N : Not Inspected/Rated
C : Corrected
A/W : Acceptable but Monitor & Maintain

+ Issue Type

Ma : Maintenance Deficiency
Ob : Design & System Obsolescence
En : Enforcement

**Flood Control Project Maintenance
Levee Inspections**

Levee Inspection Report By Mile - Fall 2012

Lower San Joaquin Levee District

Waterway	Bank	Unit Miles	Inspection Start/End	Inspector
Unit No. 23 San Joaquin River	Right	10.25	11/07/2012 11/07/2012	Richard Willoughby

Levee Mile Report Line	8
Start Levee Mile	4.14
End Levee Mile	4.14
Location	Land Side
Category	Earthen Levee
Item	Vegetation

Looking south at elderberry on landside toe and berm.

richard_f_20121101_113.jpg



Levee Mile Report Line	9
Start Levee Mile	4.46
End Levee Mile	4.46
Location	Land Side
Category	Earthen Levee
Item	Vegetation

Looking south at elderberry on landside toe and berm.

richard_f_20121101_114.jpg



Levee Mile Report Line	10
Start Levee Mile	5.23
End Levee Mile	5.23
Location	Water Side
Category	Earthen Levee
Item	Encroachments

Looking south at sand pile 20-30 feet away from waterside slope.

richard_f_20121101_111.jpg



*** Location**

LS : Land Side
WS : Water Side
CR : Crown

**** Rating**

A : Acceptable
M : Minimally Acceptable
U : Unacceptable
N : Not Inspected/Rated
C : Corrected
A/W : Acceptable but Monitor & Maintain

+ Issue Type

Ma : Maintenance Deficiency
Ob : Design & System Obsolescence
En : Enforcement

**Flood Control Project Maintenance
Levee Inspections**

Levee Inspection Report By Mile - Fall 2012

Lower San Joaquin Levee District

Waterway	Bank	Unit Miles	Inspection Start/End	Inspector
Unit No. 23 San Joaquin River	Right	10.25	11/07/2012 11/07/2012	Richard Willoughby

Levee Mile Report Line	10
Start Levee Mile	5.23
End Levee Mile	5.23
Location	Water Side
Category	Earthen Levee
Item	Encroachments

Looking southwest at de-graded sandpile in channel.

richard_f_20121115_891.JPG



Levee Mile Report Line	11
Start Levee Mile	5.69
End Levee Mile	5.90
Location	Water Side
Category	Earthen Levee
Item	Animal Control

Looking at several rodent holes on landside slope.

richard_f_20121101_110.jpg



*** Location**

LS : Land Side
WS : Water Side
CR : Crown

**** Rating**

A : Acceptable N : Not Inspected/Rated
M : Minimally Acceptable C : Corrected
U : Unacceptable A/W : Acceptable but Monitor & Maintain

+ Issue Type

Ma : Maintenance Deficiency
Ob : Design & System Obsolescence
En : Enforcement

**Flood Control Project Maintenance
Levee Inspections**

Unit Cover Sheet

Fall 2012 Levee Inspection Results

Lower San Joaquin Levee District

Waterway			Bank	Unit Miles
Unit No. 24 San Joaquin River			Left	8.34
	Spring (March - May)	Summer (June - August)	(September - November) Fall	Winter (December - February)
Unit Maintenance Rating (Fall Only)			U	
Date of Inspection	04/25/2012 - 04/25/2012		11/07/2012 - 11/07/2012	
DWR Inspector	Richard Willoughby		Richard Willoughby	
Accompanied By				

Summer & Winter Inspections

The Local Maintaining Agency (LMA) is responsible for summer and winter inspections. The LMA is required to submit a report regarding summer and winter inspections to the California Department of Water Resources (DWR).

DWR must be informed on the:

- a) completion of the inspection
- b) any changes other than the results of normal maintenance
- c) corrections to deficiencies noted in this report

If additional items are noted, further documentation of those items must also be submitted.

The LMA should submit this information to DWR using the LMA web application tool available at:

<http://cdec.water.ca.gov/lma.html>

If the LMA is unable to submit information on this webpage, please contact DWR for assistance.

The LMA should submit the information and any associated documentation by September 30 for summer inspections and March 31 for winter inspections.

**Flood Control Project Maintenance
Levee Inspections**

Levee Inspection Report By Mile - Fall 2012

Lower San Joaquin Levee District

Waterway				Bank	Unit Miles	Inspection Start/End	Inspector
Unit No. 24 San Joaquin River				Left	8.34	11/07/2012 11/07/2012	Richard Willoughby

LMR No.	Levee Mile		Category	Item	Location *	Rating ** +	Action/Comment	GPS Latitude/Longitude		Issue No. Photo
	Start	End						Start	End	
1	0.02	6.08	Earthen Levee	Vegetation	LS	M Ma	V1 : Control annual grass and weeds on the levee slopes and easements. Inspector Comments: Remove tumble weeds from landside and waterside slope.	36.772940 ° -120.285206 °	36.787822 ° -120.214055 °	1 Y
DWR ID: DWR_NA0010_24_f_2012_1										
2	0.76	1.85	Earthen Levee	Vegetation	LS	M Ma	V2 : Remove the wild growth other than native grasses from the levee slopes.	36.766028 ° -120.279443 °	36.771655 ° -120.264455 °	4
DWR ID: DWR_NA0010_24_s_2012_4										
3	3.46	3.46	Earthen Levee	Animal Control	LS	M Ma	A3 : No rodents visible, but rodent burrows visible; need to backfill and compact or grout burrows.	36.769345 ° -120.238370 °	36.769345 ° -120.238370 °	7
DWR ID: DWR_NA0010_24_s_2012_7										
4	5.39	6.46	Earthen Levee	Vegetation	WSA/W	M Ma	V2 : Remove the wild growth other than native grasses from the levee slopes.	36.782337 ° -120.222930 °	36.789063 ° -120.207438 °	2
DWR ID: DWR_NA0010_24_s_2012_2										
5	6.33	6.33	Earthen Levee	Encroachments	WS	M En	PR : Prunings Inspector Comments: Pruning pile in channel.	36.788155 ° -120.209655 °	36.788155 ° -120.209655 °	3 Y
DWR ID: DWR_NA0010_24_s_2012_3										

*** Location**

LS : Land Side
WS : Water Side
CR : Crown

**** Rating**

A : Acceptable
M : Minimally Acceptable
U : Unacceptable
N : Not Inspected/Rated
C : Corrected
A/W : Acceptable but Monitor & Maintain

+ Issue Type

Ma : Maintenance Deficiency
Ob : Design & System Obsolescence
En : Enforcement

**Flood Control Project Maintenance
Levee Inspections**

Levee Inspection Report By Mile - Fall 2012

Lower San Joaquin Levee District

Waterway	Bank	Unit Miles	Inspection Start/End	Inspector
Unit No. 24 San Joaquin River	Left	8.34	11/07/2012 11/07/2012	Richard Willoughby

Levee Mile Report Line	1
Start Levee Mile	0.02
End Levee Mile	6.08
Location	Land Side
Category	Earthen Levee
Item	Vegetation

Looking north at tumble weeds on landside and waterside slopes.

richard_f_20121115_893.JPG



Levee Mile Report Line	5
Start Levee Mile	6.33
End Levee Mile	6.33
Location	Water Side
Category	Earthen Levee
Item	Encroachments

Looking north at prunings on waterside berm.

richard_f_20121115_892.JPG



*** Location**

LS : Land Side
WS : Water Side
CR : Crown

**** Rating**

A : Acceptable
M : Minimally Acceptable
U : Unacceptable
N : Not Inspected/Rated
C : Corrected
A/W : Acceptable but Monitor & Maintain

+ Issue Type

Ma : Maintenance Deficiency
Ob : Design & System Obsolescence
En : Enforcement

**Flood Control Project Maintenance
Levee Inspections**

Unit Cover Sheet

Fall 2012 Levee Inspection Results

Lower San Joaquin Levee District

Waterway			Bank	Unit Miles
Unit No. 25 Salt Slough			Right	2.47
	Spring (March - May)	Summer (June - August)	(September - November) Fall	Winter (December - February)
Unit Maintenance Rating (Fall Only)			U	
Date of Inspection	04/27/2012 - 04/27/2012		11/09/2012 - 11/09/2012	
DWR Inspector	Richard Willoughby		Richard Willoughby	
Accompanied By				

Summer & Winter Inspections

The Local Maintaining Agency (LMA) is responsible for summer and winter inspections. The LMA is required to submit a report regarding summer and winter inspections to the California Department of Water Resources (DWR).

DWR must be informed on the:

- a) completion of the inspection
- b) any changes other than the results of normal maintenance
- c) corrections to deficiencies noted in this report

If additional items are noted, further documentation of those items must also be submitted.

The LMA should submit this information to DWR using the LMA web application tool available at:

<http://cdec.water.ca.gov/lma.html>

If the LMA is unable to submit information on this webpage, please contact DWR for assistance.

The LMA should submit the information and any associated documentation by September 30 for summer inspections and March 31 for winter inspections.

**Flood Control Project Maintenance
Levee Inspections**

Levee Inspection Report By Mile - Fall 2012

Lower San Joaquin Levee District

Waterway	Bank	Unit Miles	Inspection Start/End	Inspector
Unit No. 25 Salt Slough	Right	2.47	11/09/2012 11/09/2012	Richard Willoughby

LMR No.	Levee Mile		Category	Item	* Location	** Rating	Action/Comment	GPS Latitude/Longitude		Issue No. Photo
	Start	End						Start	End	
1	0.00	2.47	Earthen Levee	Crown Surface / Depressions / Rutting	CR	M _{Ma}	C1 : Add appropriate material and re-grade the levee to bring the crown above the design elevation.	37.296117 ° -120.880724 °	37.271163 ° -120.866629 °	8 Y
DWR ID: DWR_NA0010_25_s_2012_8										
2	0.00	1.32	Earthen Levee	Vegetation	LS	M _{Ma}	V2 : Remove the wild growth other than native grasses from the levee slopes. Inspector Comments: Remove tumble weeds from landside and waterside slope.	37.296042 ° -120.880736 °	37.281675 ° -120.874762 °	1 Y
DWR ID: DWR_NA0010_25_f_2012_1										

*** Location**

LS : Land Side
WS : Water Side
CR : Crown

**** Rating**

A : Acceptable
M : Minimally Acceptable
U : Unacceptable
N : Not Inspected/Rated
C : Corrected
A/W : Acceptable but Monitor & Maintain

+ Issue Type

Ma : Maintenance Deficiency
Ob : Design & System Obsolescence
En : Enforcement

**Flood Control Project Maintenance
Levee Inspections**

Levee Inspection Report By Mile - Fall 2012

Lower San Joaquin Levee District

Waterway	Bank	Unit Miles	Inspection Start/End	Inspector
Unit No. 25 Salt Slough	Right	2.47	11/09/2012 11/09/2012	Richard Willoughby

Levee Mile Report Line	1
Start Levee Mile	0.00
End Levee Mile	2.47
Location	Crown
Category	Earthen Levee
Item	Crown Surface / Depressions / Rutting

Looking west at vegetation on levee crown.

richard_f_20121101_116.jpg



Levee Mile Report Line	1
Start Levee Mile	0.00
End Levee Mile	2.47
Location	Crown
Category	Earthen Levee
Item	Crown Surface / Depressions / Rutting

Looking north at vegetation on levee crown.

richard_f_20121115_910.JPG



Levee Mile Report Line	2
Start Levee Mile	0.00
End Levee Mile	1.32
Location	Land Side
Category	Earthen Levee
Item	Vegetation

Looking west at typical view of tumble weeds on levee slope.

richard_f_20121115_911.JPG



*** Location**

LS : Land Side
WS : Water Side
CR : Crown

**** Rating**

A : Acceptable
M : Minimally Acceptable
U : Unacceptable
N : Not Inspected/Rated
C : Corrected
A/W : Acceptable but Monitor & Maintain

+ Issue Type

Ma : Maintenance Deficiency
Ob : Design & System Obsolescence
En : Enforcement