

**Flood Control Project Maintenance
Levee Inspections**

Maintenance Issue Types Only, Levee Inspection Report By Mile - Fall 2023

Butte County Department of Public Works

Waterway	Bank	Unit Miles	Inspection Start/End	Inspector
Unit No. 01 Mud Creek	Right	6.80	10/11/2023 10/11/2023	Makar Sokol

LM Start		Rating **	A	Issue No.	6
LM End		Issue Type +	Ma	Location *	N/A
Category	Earthen Levee			GPS Latitude/Longitude	
				Start	End
Item	Emergency Supplies & Equipment			°	°
				°	°
DWR ID	DWR_NA0003_01_s_2013_6				
Comment Code					
ES : Emergency Supplies & Equipment					
Inspector Comment					
LMA has flood fight supplies & equipment.					

No Photos

LM Start		Rating **	A	Issue No.	10
LM End		Issue Type +	Ma	Location *	N/A
Category	Earthen Levee			GPS Latitude/Longitude	
				Start	End
Item	Flood Preparedness & Training			°	°
				°	°
DWR ID	DWR_NA0003_01_s_2013_10				
Comment Code					
FP : Flood Preparedness & Training					
Inspector Comment					
The LMA completed flood fight training in 2022.					

No Photos

LM Start		Rating **	A	Issue No.	58
LM End		Issue Type +	Ma	Location *	N/A
Category	Earthen Levee			GPS Latitude/Longitude	
				Start	End
Item	Operations & Maintenance Manuals			°	°
				°	°
DWR ID	DWR_NA0003_01_f_2017_58				
Comment Code					
OM : O&M Manuals					
Inspector Comment					
The LMA has O&M Manuals.					

No Photos

* Location LS : Land Side N/A : Not Applicable WS : Water Side CR : Crown	** Rating A : Acceptable M : Minimally Acceptable U : Unacceptable	N : Not Inspected/Rated C : Corrected A/W : Acceptable but Monitor & Maintain	+ Issue Type Ma : Maintenance Deficiency Ob : Design & System Obsolescence En : Enforcement
--	--	---	---

**Flood Control Project Maintenance
Levee Inspections**

Maintenance Issue Types Only, Levee Inspection Report By Mile - Fall 2023

Butte County Department of Public Works

Waterway	Bank	Unit Miles	Inspection Start/End	Inspector
Unit No. 01 Mud Creek	Right	6.80	10/11/2023 10/11/2023	Makar Sokol

LM Start	0.25	Rating **	M	Issue No.	64	
LM End	0.25	Issue Type +	Ma	Location *		
Category	Supplemental			GPS Latitude/Longitude		
				Start	End	
Item	DWR UCIP LMA Responsibility			39.729219°	39.729219°	
				-121.933437°	-121.933437°	
DWR ID	19209					
Comment Code						
Inspector Comment						
DS_ID:19209						
FS_ID:77889						
EP_NO: N/A						
Repair Type: Non-Urgent						
EVAL Issue:						
Crossing Status: Found						
UCIP Comments: 12/19/2022 Record updated from Urgent to Non-Urgent. Pipe has been CIPP-lined. LOF of crossing is less or equal to 4. Recommend next video inspection in 5 years. (O.Yakimov - DWR UCIP).						
03/17/2021 Record updated from No Action Needed to Urgent. DMP internal video inspection has found pipe integrity issues. LOF of crossing is between 5 and 6. Crossing will be monitored until funding becomes available to address the issues. No permit has been identified authorizing pipe. (O.Yakimov - DWR UCIP)						
02/20/2014 Looks cleaned recently. (P. Amatya - DWR UCIP)						
FIELD_STRUCT_DESC: 24-inch CIPP-lined corrugated metal gravity drainage pipe through the levee, 12.5 feet below the crown. Flap gate on the waterside (WS) end. Concrete U-shaped headwall on each end. Grouted riprap apron on the landside (LS) end. Grouted riprap spillway on the WS end. [Additional Reference(s): DWR Levee Log, 1992 (HLM 0.26). USACE Sacramento O&M Manual, Unit 504, May 1965, Revised 2 February 2011, (HLM 0.26), listed as 24-inch pipe. USACE As-Built Drawing No. 50-04-3685, Sheet 41 table of drainage structures, STA 92+46, 19 May 1965].						
FS Date: 3/17/2021 3:41:29 PM						

LM Start	0.25	Rating **	M	Issue No.	64 (cont)
LM End	0.25	Issue Type +	Ma	Location *	

Photo 1 of 3 : UCIP_FA_2023_77889_99222.jpg



Top of Levee: View of levee crown looking downstream

Photo 2 of 3 : UCIP_FA_2023_77889_99225.jpg



Water-Side: Headwall and flap gate at levee toe

* Location LS: Land Side N/A: Not Applicable WS: Water Side CR: Crown	** Rating A: Acceptable M: Minimally Acceptable U: Unacceptable	N: Not Inspected/Rated C: Corrected A/W: Acceptable but Monitor & Maintain	+ Issue Type Ma: Maintenance Deficiency Ob: Design & System Obsolescence En: Enforcement
--	---	--	--

**Flood Control Project Maintenance
Levee Inspections**

Maintenance Issue Types Only, Levee Inspection Report By Mile - Fall 2023

Butte County Department of Public Works

Waterway	Bank	Unit Miles	Inspection Start/End	Inspector
Unit No. 01 Mud Creek	Right	6.80	10/11/2023 10/11/2023	Makar Sokol

LM Start	0.25	Rating **	M	Issue No.	64 (cont)
LM End	0.25	Issue Type +	Ma	Location *	
Category	Supplemental			GPS Latitude/Longitude	
				Start	End
Item	DWR UCIP LMA Responsibility			39.729219°	39.729219°
				-121.933437°	-121.933437°
DWR ID	19209				

Photo 3 of 3 : UCIP_FA_2023_77889_99224.jpg



Water-Side: View of levee slope looking from crown

* Location LS : Land Side N/A : Not Applicable WS : Water Side CR : Crown	** Rating A : Acceptable M : Minimally Acceptable U : Unacceptable	N : Not Inspected/Rated C : Corrected A/W : Acceptable but Monitor & Maintain	+ Issue Type Ma : Maintenance Deficiency Ob : Design & System Obsolescence En : Enforcement
--	--	---	---

**Flood Control Project Maintenance
Levee Inspections**

Maintenance Issue Types Only, Levee Inspection Report By Mile - Fall 2023

Butte County Department of Public Works

Waterway	Bank	Unit Miles	Inspection Start/End	Inspector
Unit No. 01 Mud Creek	Right	6.80	10/11/2023 10/11/2023	Makar Sokol

LM Start	1.00	Rating **	A/W	Issue No.	65	
LM End	1.00	Issue Type +	Ma	Location *		
Category	Supplemental			GPS Latitude/Longitude		
				Start	End	
Item	DWR UCIP LMA Responsibility			39.739268°	39.739268°	
				-121.931891°	-121.931891°	
DWR ID	19211					
Comment Code						
Inspector Comment						
DS_ID:19211 FS_ID:67238 EP_NO: N/A Repair Type: No Action Needed EVAL Issue: Crossing Status: Found UCIP Comments: 09/15/2023 Record updated from Non-Urgent to No Action Needed. Pipe was CIPP lined. DMP internal video inspection has found none or minor pipe defects. Recommend next video inspection in 5 years. (O. Yakimov - DWR UCIP) 03/17/2021 Record remains Non-Urgent. Vegetation on waterside has been cleared. No permit has been identified authorizing pipe. DMP internal video inspection has found pipe integrity issues. LOF of crossing is greater than or equal to 4.1 and less than 5. Crossing will be monitored until funding becomes available for rehabilitation. (O.Yakimov - DWR UCIP) 02/20/2014 Vegetation debris on waterside. Needs clearing and cleaning. (P. Amatya - DWR UCIP) FIELD_STRUCT_DESC: 24-inch CIPP-lined corrugated metal gravity drainage pipe through the levee, 12 feet below the crown. Flap gate on the waterside (WS) end. Concrete U-shaped headwall on each end. Grouted riprap apron on the landside (LS) end. Grouted riprap spillway on the WS end. [Additional Reference(s): DWR Levee Log, 1992 (HLM 1.01). USACE Sacramento O&M Manual, Unit 504, May 1965, Revised 2 February 2011, (HLM 1.03), listed as 24-inch pipe. USACE As-Built Drawing No. 50-04-3685, Sheet 3, STA 132+00, 19 May 1965. USACE As-Built Drawing No. 50-04-3685, Sheet 41 table of drainage structures, STA 132+00, 19 May 1965]. FS Date: 3/17/2021						

Photo 1 of 3 : UCIP_FA_2023_67238_99231.jpg



Top of Levee: View of levee crown looking upstream

* Location LS: Land Side N/A: Not Applicable WS: Water Side CR: Crown	** Rating A: Acceptable M: Minimally Acceptable U: Unacceptable	N: Not Inspected/Rated C: Corrected A/W: Acceptable but Monitor & Maintain	+ Issue Type Ma: Maintenance Deficiency Ob: Design & System Obsolescence En: Enforcement
--	---	--	--

**Flood Control Project Maintenance
Levee Inspections**

Maintenance Issue Types Only, Levee Inspection Report By Mile - Fall 2023

Butte County Department of Public Works

Waterway	Bank	Unit Miles	Inspection Start/End	Inspector
Unit No. 01 Mud Creek	Right	6.80	10/11/2023 10/11/2023	Makar Sokol

LM Start	1.00	Rating **	A/W	Issue No.	65 (cont)
LM End	1.00	Issue Type +	Ma	Location *	
Category	Supplemental			GPS Latitude/Longitude	
				Start	End
Item	DWR UCIP LMA Responsibility			39.739268°	39.739268°
				-121.931891°	-121.931891°
DWR ID	19211				

Photo 2 of 3 : UCIP_FA_2023_67238_99232.jpg



Water-Side: View of levee slope looking from crown

LM Start	1.00	Rating **	A/W	Issue No.	65 (cont)
LM End	1.00	Issue Type +	Ma	Location *	

Photo 3 of 3 : UCIP_FA_2023_67238_99236.jpg



Water-Side: Headwall and flap gate at levee toe

* Location LS : Land Side N/A : Not Applicable WS : Water Side CR : Crown	** Rating A : Acceptable M : Minimally Acceptable U : Unacceptable N : Not Inspected/Rated C : Corrected A/W : Acceptable but Monitor & Maintain	+ Issue Type Ma : Maintenance Deficiency Ob : Design & System Obsolescence En : Enforcement
--	---	---

**Flood Control Project Maintenance
Levee Inspections**

Maintenance Issue Types Only, Levee Inspection Report By Mile - Fall 2023

Butte County Department of Public Works

Waterway	Bank	Unit Miles	Inspection Start/End	Inspector
Unit No. 01 Mud Creek	Right	6.80	10/11/2023 10/11/2023	Makar Sokol

LM Start	1.90	Rating **	M	Issue No.	66	
LM End	1.90	Issue Type +	Ma	Location *		
Category	Supplemental			GPS Latitude/Longitude		
				Start	End	
Item	DWR UCIP LMA Responsibility			39.747563°	39.747563°	
				-121.920170°	-121.920170°	
DWR ID	19212					
Comment Code						
Inspector Comment						
DS_ID:19212 FS_ID:67239 EP_NO: N/A Repair Type: Non-Urgent EVAL Issue: Crossing Status: Found UCIP Comments: 03/17/2021 Record updated from No Action Needed to Non-Urgent. No permit has been identified authorizing pipe. DMP internal video inspection has not found pipe integrity issues. LOF of crossing is less or equal to 4.0. Recommend next video inspection in 5 years. (O.Yakimov - DWR UCIP) 08/29/2016: Shawn Bates of NA0003 has cleared the LS and WS of debris and blockage; WS gate functions properly now. Crossing has been downgraded from Urgent to No Action Needed. (K. Fazel - UCIP) 08/11/2016: Same as last inspection. (K. Fazel - UCIP) 02/20/2014: No riprap spillway on waterside. Needs cleaning and clearing of debris. Flap gate was not fully closed. (P. Amatya - DWR UCIP) FIELD_STRUCT_DESC: 24-inch corrugated metal gravity drainage pipe through the levee, 13 feet below the crown. Flap gate on the waterside (WS) end. Concrete U-shaped headwall on each end. Grouted riprap apron on the landside (LS) end. Grouted riprap spillway on the WS end. [Additional Reference(s): DWR Levee Log, 1992 (HLM 1.90). USACE Sacramento O&M Manual, Unit 504, May 1965, Revised 2 February 2011, (HLM 1.95), listed as 24-inch pipe. USACE As-Built Drawing No. 50-04-3685, Sheet 4, STA 179+60, 19 May 1965. USACE As-Built Drawing No. 50-04-3685, Sheet 41 table of drainage structures, STA 179+60, 19 May 1965]. FS Date: 3/17/2021 9:01:17 AM						

Photo 1 of 3 : UCIP_FA_2023_67239_99237.jpg



Top of Levee: View of levee crown looking upstream

* Location LS: Land Side N/A: Not Applicable WS: Water Side CR: Crown	** Rating A: Acceptable M: Minimally Acceptable U: Unacceptable	N: Not Inspected/Rated C: Corrected A/W: Acceptable but Monitor & Maintain	+ Issue Type Ma: Maintenance Deficiency Ob: Design & System Obsolescence En: Enforcement
--	---	--	--

**Flood Control Project Maintenance
Levee Inspections**

Maintenance Issue Types Only, Levee Inspection Report By Mile - Fall 2023

Butte County Department of Public Works

Waterway	Bank	Unit Miles	Inspection Start/End	Inspector
Unit No. 01 Mud Creek	Right	6.80	10/11/2023 10/11/2023	Makar Sokol

LM Start	1.90	Rating **	M	Issue No.	66 (cont)
LM End	1.90	Issue Type +	Ma	Location *	
Category	Supplemental			GPS Latitude/Longitude	
				Start	End
Item	DWR UCIP LMA Responsibility			39.747563°	39.747563°
				-121.920170°	-121.920170°
DWR ID	19212				

Photo 2 of 3 : UCIP_FA_2023_67239_99238.jpg



Water-Side: View of levee slope looking from crown

LM Start	1.90	Rating **	M	Issue No.	66 (cont)
LM End	1.90	Issue Type +	Ma	Location *	

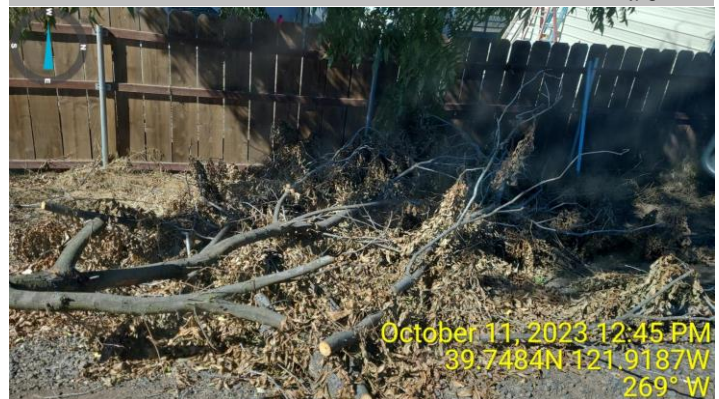
Photo 3 of 3 : UCIP_FA_2023_67239_99242.jpg



Water-Side: Headwall and flap gate at levee toe

LM Start	2.01	Rating **	M	Issue No.	20
LM End	2.01	Issue Type +	Ma	Location *	LS
Category	Earthen Levee			GPS Latitude/Longitude	
				Start	End
Item	Trim / Thin Trees			39.748400°	39.748400°
				-121.918700°	-121.918700°
DWR ID	DWR_NA0003_01_f_2023_20				
Comment Code					
T2 : Tree or limb.					
Inspector Comment					

Photo 1 of 1 : FA_2023_NA0003_64_20_20231016_00049.jpg



View of tree limbs along the landside slope and toe. Fall 2023.

* Location LS : Land Side N/A : Not Applicable WS : Water Side CR : Crown	** Rating A : Acceptable M : Minimally Acceptable U : Unacceptable	N : Not Inspected/Rated C : Corrected A/W : Acceptable but Monitor & Maintain	+ Issue Type Ma : Maintenance Deficiency Ob : Design & System Obsolescence En : Enforcement
--	--	--	---

**Flood Control Project Maintenance
Levee Inspections**

Maintenance Issue Types Only, Levee Inspection Report By Mile - Fall 2023

Butte County Department of Public Works

Waterway	Bank	Unit Miles	Inspection Start/End	Inspector
Unit No. 01 Mud Creek	Right	6.80	10/11/2023 10/11/2023	Makar Sokol

LM Start	3.03	Rating **	M	Issue No.	67	
LM End	3.03	Issue Type +	Ma	Location *		
Category	Supplemental			GPS Latitude/Longitude		
				Start	End	
Item	DWR UCIP LMA Responsibility			39.761224°	39.761224°	
				-121.911108°	-121.911108°	
DWR ID	19216					
Comment Code						
Inspector Comment						
DS_ID:19216 FS_ID:67246 EP_NO: N/A Repair Type: Non-Urgent EVAL Issue: Crossing Status: Found UCIP Comments: 03/17/2021 Record remains Non-Urgent. No permit has been identified authorizing pipe. DMP internal video inspection has not found pipe integrity issues. LOF of crossing is less or equal to 4.0. Recommend next video inspection in 5 years. (O.Yakimov - DWR UCIP) 02/20/2014 Inlet and outlet needs cleaning and clearing of debris. (P. Amatya - DWR UCIP) FIELD_STRUCT_DESC: 24-inch corrugated metal gravity drainage pipe through the levee, 8.5 feet below the crown. Flap gate on the waterside (WS) end. Concrete U-shaped headwall on each end. Grouted riprap apron on the landside (LS) end. Grouted riprap spillway on the WS end. [Additional Reference(s): DWR Levee Log, 1992 (HLM 3.11). USACE Sacramento O&M Manual, Unit 504, May 1965, Revised 2 February 2011, (HLM 3.11), listed as 24-inch pipe. USACE As-Built Drawing No. 50-04-3685, Sheet 5, STA 239+60, 19 May 1965. USACE As-Built Drawing No. 50-04-3685, Sheet 41 table of drainage structures, STA 239+60, 19 May 1965]. FS Date: 3/17/2021 10:06:03 AM						

LM Start	3.03	Rating **	M	Issue No.	67 (cont)
LM End	3.03	Issue Type +	Ma	Location *	

Photo 1 of 3 : UCIP_FA_2023_67246_99270.jpg



Top of Levee: View of levee crown looking upstream

Photo 2 of 3 : UCIP_FA_2023_67246_99272.jpg



Water-Side: View of levee slope looking from crown

* Location LS: Land Side N/A: Not Applicable WS: Water Side CR: Crown	** Rating A: Acceptable M: Minimally Acceptable U: Unacceptable	N: Not Inspected/Rated C: Corrected A/W: Acceptable but Monitor & Maintain	+ Issue Type Ma: Maintenance Deficiency Ob: Design & System Obsolescence En: Enforcement
--	---	--	--

**Flood Control Project Maintenance
Levee Inspections**

Maintenance Issue Types Only, Levee Inspection Report By Mile - Fall 2023

Butte County Department of Public Works

Waterway	Bank	Unit Miles	Inspection Start/End	Inspector
Unit No. 01 Mud Creek	Right	6.80	10/11/2023 10/11/2023	Makar Sokol

LM Start	3.03	Rating **	M	Issue No.	67 (cont)
LM End	3.03	Issue Type +	Ma	Location *	
Category	Supplemental			GPS Latitude/Longitude	
				Start	End
Item	DWR UCIP LMA Responsibility			39.761224°	39.761224°
				-121.911108°	-121.911108°
DWR ID	19216				

Photo 3 of 3 : UCIP_FA_2023_67246_99273.jpg



Water-Side: Headwall and flap gate at levee toe

LM Start	3.18	Rating **	M	Issue No.	68
LM End	3.18	Issue Type +	Ma	Location *	
Category	Supplemental			GPS Latitude/Longitude	
				Start	End
Item	DWR UCIP LMA Responsibility			39.763067°	39.763067°
				-121.909608°	-121.909608°
DWR ID	19217				

Comment Code

Inspector Comment

DS_ID:19217
 FS_ID:67247
 EP_NO: N/A
 Repair Type: Non-Urgent
 EVAL Issue:
 Crossing Status: Found
 UCIP Comments: 03/17/2021 Record remains Non-Urgent. No permit has been identified authorizing pipe. DMP internal video inspection has not found pipe integrity issues. LOF of crossing is less or equal to 4.0. Recommend next video inspection in 5 years. Debris has been cleared. (O.Yakimov - DWR UCIP)
 02/20/2014 It needs cleaning and clearing in inlet and outlet ends. (P. Amatya - DWR UCIP)
 FIELD_STRUCT_DESC: 24-inch corrugated metal gravity drainage pipe through the levee, 9 feet below the crown. Flap gate on the waterside (WS) end. Concrete U-shaped headwall on each end. Grouted riprap apron on the landside (LS) end. Grouted riprap spillway on the WS end.
 [Additional Reference(s): DWR Levee Log, 1992 (HLM 3.27). USACE Sacramento O&M Manual, Unit 504, May 1965, Revised 2 February 2011, (HLM 3.27), listed as 24-inch pipe. USACE As-Built Drawing No. 50-04-3685, Sheet 5, STA 247+60, 19 May 1965. USACE As-Built Drawing No. 50-04-3685, Sheet 41 table of drainage structures, STA 247+60, 19 May 1965].
 FS Date: 3/17/2021 10:15:12 AM

Photo 1 of 3 : UCIP_FA_2023_67247_99276.jpg



Top of Levee: View of levee crown looking upstream

* Location LS: Land Side N/A: Not Applicable WS: Water Side CR: Crown	** Rating A: Acceptable M: Minimally Acceptable U: Unacceptable N: Not Inspected/Rated C: Corrected A/W: Acceptable but Monitor & Maintain	+ Issue Type Ma: Maintenance Deficiency Ob: Design & System Obsolescence En: Enforcement
--	---	--

**Flood Control Project Maintenance
Levee Inspections**

Maintenance Issue Types Only, Levee Inspection Report By Mile - Fall 2023

Butte County Department of Public Works

Waterway	Bank	Unit Miles	Inspection Start/End	Inspector
Unit No. 01 Mud Creek	Right	6.80	10/11/2023 10/11/2023	Makar Sokol

LM Start	3.18	Rating **	M	Issue No.	68 (cont)
LM End	3.18	Issue Type +	Ma	Location *	
Category	Supplemental			GPS Latitude/Longitude	
				Start	End
Item	DWR UCIP LMA Responsibility			39.763067°	39.763067°
				-121.909608°	-121.909608°
DWR ID	19217				

Photo 2 of 3 : UCIP_FA_2023_67247_99277.jpg



Water-Side: View of levee slope looking from crown

LM Start	3.18	Rating **	M	Issue No.	68 (cont)
LM End	3.18	Issue Type +	Ma	Location *	

Photo 3 of 3 : UCIP_FA_2023_67247_99281.jpg



Water-Side: Headwall and flap gate at levee toe

LM Start	3.19	Rating **	M	Issue No.	27
LM End	3.21	Issue Type +	Ma	Location *	LS
Category	Earthen Levee			GPS Latitude/Longitude	
				Start	End
Item	Animal Control			39.763087°	39.763493°
				-121.909616°	-121.909440°
DWR ID	DWR_NA0003_01_f_2022_27				
Comment Code					
A3 : No rodents visible, but rodent burrows visible; need to backfill and compact or grout burrows.					
Inspector Comment					

Photo 1 of 1 : FA_2023_NA0003_64_27_20231002_00004.jpg



View of animal burrows along the landside slope. Fall 2022.

* Location	** Rating	+ Issue Type
LS : Land Side WS : Water Side CR : Crown	A : Acceptable M : Minimally Acceptable U : Unacceptable	Ma : Maintenance Deficiency Ob : Design & System Obsolescence En : Enforcement
N/A : Not Applicable	N : Not Inspected/Rated C : Corrected A/W : Acceptable but Monitor & Maintain	

**Flood Control Project Maintenance
Levee Inspections**

Maintenance Issue Types Only, Levee Inspection Report By Mile - Fall 2023

Butte County Department of Public Works

Waterway	Bank	Unit Miles	Inspection Start/End	Inspector
Unit No. 01 Mud Creek	Right	6.80	10/11/2023 10/11/2023	Makar Sokol

LM Start	3.39	Rating **	M	Issue No.	69
LM End	3.39	Issue Type +	Ma	Location *	
Category	Supplemental			GPS Latitude/Longitude	
				Start	End
Item	DWR UCIP LMA Responsibility			39.765440°	39.765440°
				-121.907261°	-121.907261°
DWR ID	19218				
Comment Code					
Inspector Comment					
DS_ID:19218 FS_ID:67248 EP_NO: N/A Repair Type: Non-Urgent EVAL Issue: Crossing Status: Found UCIP Comments: 03/17/2021 Record remains Non-Urgent. No permit has been identified authorizing pipe. DMP internal video inspection has not found pipe integrity issues. LOF of crossing is less or equal to 4.0. Recommend next video inspection in 5 years. (O.Yakimov - DWR UCIP) 02/20/2014 Needs cleaning and clearing of debris. (P. Amatya - DWR UCIP) FIELD_STRUCT_DESC: 24-inch corrugated metal gravity drainage pipe through the levee, 10 feet below the crown. Flap gate on the waterside (WS) end. Concrete U-shaped headwall on each end. Grouted riprap apron on the landside (LS) end. Grouted riprap spillway on the WS end. [Additional Reference(s): DWR Levee Log, 1992 (HLM 3.48). USACE Sacramento O&M Manual, Unit 504, May 1965, Revised 2 February 2011, (HLM 3.48), listed as 24-inch pipe. USACE As-Built Drawing No. 50-04-3685, Sheet 5, STA 258+70, 19 May 1965. USACE As-Built Drawing No. 50-04-3685, Sheet 41 table of drainage structures, STA 258+70, 19 May 1965]. FS Date: 3/17/2021 10:18:14 AM					

LM Start	3.39	Rating **	M	Issue No.	69 (cont)
LM End	3.39	Issue Type +	Ma	Location *	

Photo 1 of 3 : UCIP_FA_2023_67248_99282.jpg



Top of Levee: View of levee crown looking upstream

Photo 2 of 3 : UCIP_FA_2023_67248_99283.jpg



Water-Side: View of levee slope looking from crown

* Location LS: Land Side N/A: Not Applicable WS: Water Side CR: Crown	** Rating A: Acceptable M: Minimally Acceptable U: Unacceptable	N: Not Inspected/Rated C: Corrected A/W: Acceptable but Monitor & Maintain	+ Issue Type Ma: Maintenance Deficiency Ob: Design & System Obsolescence En: Enforcement
--	---	--	--

**Flood Control Project Maintenance
Levee Inspections**

Maintenance Issue Types Only, Levee Inspection Report By Mile - Fall 2023

Butte County Department of Public Works

Waterway	Bank	Unit Miles	Inspection Start/End	Inspector
Unit No. 01 Mud Creek	Right	6.80	10/11/2023 10/11/2023	Makar Sokol

LM Start	3.39	Rating **	M	Issue No.	69 (cont)
LM End	3.39	Issue Type +	Ma	Location *	
Category	Supplemental			GPS Latitude/Longitude	
				Start	End
Item	DWR UCIP LMA Responsibility			39.765440°	39.765440°
				-121.907261°	-121.907261°
DWR ID	19218				

Photo 3 of 3 : UCIP_FA_2023_67248_99287.jpg



Water-Side: Headwall and flap gate at levee toe

LM Start	3.97	Rating **	M	Issue No.	70
LM End	3.97	Issue Type +	Ma	Location *	
Category	Supplemental			GPS Latitude/Longitude	
				Start	End
Item	DWR UCIP LMA Responsibility			39.771293°	39.771293°
				-121.900247°	-121.900247°
DWR ID	19219				

Comment Code

Inspector Comment

DS_ID:19219
FS_ID:67249
EP_NO: N/A
Repair Type: Non-Urgent
EVAL Issue:
Crossing Status: Found
UCIP Comments: 03/17/2021 Record remains Non-Urgent. No permit has been identified authorizing pipe. DMP internal video inspection has not found pipe integrity issues. LOF of crossing is less or equal to 4.0. Recommend next video inspection in 5 years. (O.Yakimov - DWR UCIP)
02/20/2014 Needs cleaning and clearing of debris in both ends of the pipe. (P. Amatya - DWR UCIP)
FIELD_STRUCT_DESC: 24-inch corrugated metal gravity drainage pipe through the levee, 9 feet below the crown. Flap gate on the waterside (WS) end. Concrete U-shaped headwall on each end. Grouted riprap apron on the landside (LS) end. Grouted riprap spillway on the WS end. [Additional Reference(s): DWR Levee Log, 1992 (HLM 4.08). USACE Sacramento O&M Manual, Unit 504, May 1965, Revised 2 February 2011, (HLM 4.08), listed as 24-inch pipe. USACE As-Built Drawing No. 50-04-3685, Sheet 41 table of drainage structures, STA 289+20, 19 May 1965].
FS Date: 3/17/2021 10:21:26 AM

Photo 1 of 3 : UCIP_FA_2023_67249_99288.jpg



Top of Levee: View of levee crown looking upstream

* Location	** Rating	+ Issue Type
LS: Land Side WS: Water Side CR: Crown	A: Acceptable M: Minimally Acceptable U: Unacceptable	Ma: Maintenance Deficiency Ob: Design & System Obsolescence En: Enforcement
N/A: Not Applicable	N: Not Inspected/Rated C: Corrected A/W: Acceptable but Monitor & Maintain	

**Flood Control Project Maintenance
Levee Inspections**

Maintenance Issue Types Only, Levee Inspection Report By Mile - Fall 2023

Butte County Department of Public Works

Waterway	Bank	Unit Miles	Inspection Start/End	Inspector
Unit No. 01 Mud Creek	Right	6.80	10/11/2023 10/11/2023	Makar Sokol

LM Start	3.97	Rating **	M	Issue No.	70 (cont)
LM End	3.97	Issue Type +	Ma	Location *	
Category	Supplemental			GPS Latitude/Longitude	
				Start	End
Item	DWR UCIP LMA Responsibility			39.771293°	39.771293°
				-121.900247°	-121.900247°
DWR ID	19219				

Photo 2 of 3 : UCIP_FA_2023_67249_99289.jpg



Water-Side: View of levee slope looking from crown

LM Start	3.97	Rating **	M	Issue No.	70 (cont)
LM End	3.97	Issue Type +	Ma	Location *	

Photo 3 of 3 : UCIP_FA_2023_67249_99293.jpg



Water-Side: Headwall and flap gate at levee toe

LM Start	4.16	Rating **	M	Issue No.	34
LM End	4.16	Issue Type +	Ma	Location *	LS
Category	Earthen Levee			GPS Latitude/Longitude	
				Start	End
Item	Animal Control			39.772301°	39.772301°
				-121.897062°	-121.897062°
DWR ID	DWR_NA0003_01_s_2022_34				
Comment Code					
A3 : No rodents visible, but rodent burrows visible; need to backfill and compact or grout burrows.					
Inspector Comment					

No Photos

* Location LS : Land Side N/A : Not Applicable WS : Water Side CR : Crown	** Rating A : Acceptable M : Minimally Acceptable U : Unacceptable	N : Not Inspected/Rated C : Corrected A/W : Acceptable but Monitor & Maintain	+ Issue Type Ma : Maintenance Deficiency Ob : Design & System Obsolescence En : Enforcement
--	--	--	---

**Flood Control Project Maintenance
Levee Inspections**

Maintenance Issue Types Only, Levee Inspection Report By Mile - Fall 2023

Butte County Department of Public Works

Waterway	Bank	Unit Miles	Inspection Start/End	Inspector
Unit No. 01 Mud Creek	Right	6.80	10/11/2023 10/11/2023	Makar Sokol

LM Start	4.26	Rating **	A/W	Issue No.	5
LM End	4.32	Issue Type +	Ma	Location *	WS
Category	Supplemental			GPS Latitude/Longitude	
				Start	End
Item	2018 USACE Erosion Survey			39.773257°	39.773969°
				-121.895618°	-121.895078°
DWR ID	DWR_NA0003_01_s_2022_5				
Comment Code					
Inspector Comment					
2018 Site ID: MUD 4.4 R					
Status: Eroding					
2018 Field Notes: Last observed in 2017.					
Site History: 2011 - Two large erosion scallops at the toe from a rotational failure. Deep cracks along the slope indicate the potential for further failures. 2017 - Erosion scarps have increased in size since 2011 inspection.					

No Photos

LM Start	4.46	Rating **	M	Issue No.	71
LM End	4.46	Issue Type +	Ma	Location *	
Category	Supplemental			GPS Latitude/Longitude	
				Start	End
Item	DWR UCIP LMA Responsibility			39.775905°	39.775905°
				-121.893980°	-121.893980°
DWR ID	19220				
Comment Code					
Inspector Comment					
DS_ID:19220 FS_ID:67250 EP_NO: N/A Repair Type: Non-Urgent EVAL Issue: Crossing Status: Found UCIP Comments: 03/17/2021 Record remains Non-Urgent. Debris has been cleared. No permit has been identified authorizing pipe. DMP internal video inspection has not found pipe integrity issues. LOF of crossing is less or equal to 4.0. Recommend next video inspection in 5 years. (O.Yakimov - DWR UCIP) 02/20/2014 Needs cleaning and clearing of debris. (P. Amatya - DWR UCIP) FIELD_STRUCT_DESC: 24-inch corrugated metal gravity drainage pipe through the levee, 13 feet below the crown. Flap gate on the waterside (WS) end. Concrete U-shaped headwall on each end. Grouted riprap apron on the landside (LS) end. Grouted riprap spillway on the WS end. [Additional Reference(s): DWR Levee Log, 1992 (HLM 4.57). USACE Sacramento O&M Manual, Unit 504, May 1965, Revised 2 February 2011, (HLM 4.58), listed as 24-inch pipe. USACE As-Built Drawing No. 50-04-3685, Sheet 6, STA 315+18, 19 May 1965]. FS Date: 3/17/2021 10:24:31 AM					

Photo 1 of 3 : UCIP_FA_2023_67250_99294.jpg



Top of Levee: View of levee crown looking upstream

* Location LS: Land Side N/A: Not Applicable WS: Water Side CR: Crown	** Rating A: Acceptable M: Minimally Acceptable U: Unacceptable	N: Not Inspected/Rated C: Corrected A/W: Acceptable but Monitor & Maintain	+ Issue Type Ma: Maintenance Deficiency Ob: Design & System Obsolescence En: Enforcement
--	---	---	--

**Flood Control Project Maintenance
Levee Inspections**

Maintenance Issue Types Only, Levee Inspection Report By Mile - Fall 2023

Butte County Department of Public Works

Waterway	Bank	Unit Miles	Inspection Start/End	Inspector
Unit No. 01 Mud Creek	Right	6.80	10/11/2023 10/11/2023	Makar Sokol

LM Start	4.46	Rating **	M	Issue No.	71 (cont)
LM End	4.46	Issue Type +	Ma	Location *	
Category	Supplemental			GPS Latitude/Longitude	
				Start	End
Item	DWR UCIP LMA Responsibility			39.775905°	39.775905°
				-121.893980°	-121.893980°
DWR ID	19220				

Photo 2 of 3 : UCIP_FA_2023_67250_99296.jpg



Water-Side: View of levee slope looking from crown

LM Start	4.46	Rating **	M	Issue No.	71 (cont)
LM End	4.46	Issue Type +	Ma	Location *	

Photo 3 of 3 : UCIP_FA_2023_67250_99299.jpg



Water-Side: Headwall and flap gate on levee slope

* Location LS : Land Side N/A : Not Applicable WS : Water Side CR : Crown	** Rating A : Acceptable M : Minimally Acceptable U : Unacceptable	N : Not Inspected/Rated C : Corrected A/W : Acceptable but Monitor & Maintain	+ Issue Type Ma : Maintenance Deficiency Ob : Design & System Obsolescence En : Enforcement
--	--	---	---

**Flood Control Project Maintenance
Levee Inspections**

Maintenance Issue Types Only, Levee Inspection Report By Mile - Fall 2023

Butte County Department of Public Works

Waterway	Bank	Unit Miles	Inspection Start/End	Inspector
Unit No. 01 Mud Creek	Right	6.80	10/11/2023 10/11/2023	Makar Sokol

LM Start	4.81	Rating **	U	Issue No.	72	
LM End	4.81	Issue Type +	Ma	Location *		
Category	Supplemental			GPS Latitude/Longitude		
				Start	End	
Item	DWR UCIP LMA Responsibility			39.780244°	39.780244°	
				-121.891267°	-121.891267°	
DWR ID	19221					
Comment Code						
Inspector Comment						
DS_ID:19221 FS_ID:67251 EP_NO: N/A Repair Type: Urgent EVAL Issue: 1, Pipe Integrity Crossing Status: Found UCIP Comments: 03/17/2021 Record updated from Non-Urgent to Urgent. DMP internal video inspection has found pipe integrity issues. LOF of crossing is between 5 and 6. Crossing will be monitored until funding becomes available to address the issues. Flap gate on waterside pipe end is non-operating. Recommend lubricating hinges for easy opening. Drainage inlet at landside toe is buried in soil - unable to locate. Crossing appears abandoned. No permit has been identified authorizing pipe. (O.Yakimov - DWR UCIP) 02/20/2014 CM Standpipe intake. Intake pipe with air vent. Steel rib-bar grit cover on the standpipe on landside levee toe.Needs cleaning and clearing on both ends of the pip. (P. Amatya - DWR UCIP). FIELD_STRUCT_DESC: 24-inch corrugated metal gravity drainage pipe through the levee, 15 feet below the crown. Flap gate on the waterside (WS) end. Concrete U-shaped headwall on the WS end. Grouted riprap spillway on the WS end. Corrugated metal standpipe intake. Intake pipe with an air vent. Steel rib-bar grit cover on the standpipe on the landside (LS) toe. [Additional Reference(s): DWR Levee Log, 1992 (HLM 4.93). USACE Sacramento O&M Manual, Unit 504, May 1965, Revised 2 February 2011, (HLM 4.94), listed as 24-inch pipe. USACE As-Built Drawing No. 50-04-3685, Sheet 6, STA 333+70, 19 May 1965]. FS Date: 3/17/2021 10:28:36 AM						

LM Start	4.81	Rating **	U	Issue No.	72 (cont)
LM End	4.81	Issue Type +	Ma	Location *	

Photo 1 of 3 : UCIP_FA_2023_67251_99304.jpg



Top of Levee: View of levee crown looking upstream

Photo 2 of 3 : UCIP_FA_2023_67251_99303.jpg



Land-Side: View of levee slope looking from crown

* Location LS: Land Side N/A: Not Applicable WS: Water Side CR: Crown	** Rating A: Acceptable M: Minimally Acceptable U: Unacceptable	N: Not Inspected/Rated C: Corrected A/W: Acceptable but Monitor & Maintain	+ Issue Type Ma: Maintenance Deficiency Ob: Design & System Obsolescence En: Enforcement
--	---	--	--

**Flood Control Project Maintenance
Levee Inspections**

Maintenance Issue Types Only, Levee Inspection Report By Mile - Fall 2023

Butte County Department of Public Works

Waterway	Bank	Unit Miles	Inspection Start/End	Inspector
Unit No. 01 Mud Creek	Right	6.80	10/11/2023 10/11/2023	Makar Sokol

LM Start	4.81	Rating **	U	Issue No.	72 (cont)
LM End	4.81	Issue Type +	Ma	Location *	
Category	Supplemental			GPS Latitude/Longitude	
				Start	End
Item	DWR UCIP LMA Responsibility			39.780244°	39.780244°
				-121.891267°	-121.891267°
DWR ID	19221				

Photo 3 of 3 : UCIP_FA_2023_67251_99302.jpg



Land-Side: Approximate location on pipe inlet at levee toe, although inlet was not found

LM Start	5.09	Rating **	M	Issue No.	73
LM End	5.09	Issue Type +	Ma	Location *	
Category	Supplemental			GPS Latitude/Longitude	
				Start	End
Item	DWR UCIP LMA Responsibility			39.783636°	39.783636°
				-121.888463°	-121.888463°
DWR ID	19222				

Comment Code

Inspector Comment

DS_ID:19222
 FS_ID:67286
 EP_NO: N/A
 Repair Type: Non-Urgent
 EVAL Issue:
 Crossing Status: Found
 UCIP Comments: 03/17/2021 Record updated from No Action Needed to Non-Urgent. No permit has been identified authorizing pipe. DMP internal video inspection has not found pipe integrity issues. LOF of crossing is less or equal to 4.0. Recommend next video inspection in 5 years. (O.Yakimov - DWR UCIP)
 02/20/2014 Slide gate in CM stadpipe on waterside levee slope. (P. Amatya - DWR UCIP)
 FIELD_STRUCT_DESC: 36-inch corrugated metal gravity drainage pipe through the levee, 17 feet below the crown. Slide gate in a corrugated metal standpipe on the waterside (WS) slope. Flap gate on the WS end. Concrete U-shaped headwall on each end. Grouted riprap apron on the landside (LS) end. Grouted riprap spillway on the WS end. [Additional Reference(s): DWR Levee Log, 1992 (HLM 5.22). USACE Sacramento O&M Manual, Unit 504, May 1965, Revised 2 February 2011, (HLM 5.22), listed as 36-inch pipe. USACE As-Built Drawing No. 50-04-3685, Sheet 7, from STA 348+25 to STA 352+50, 19 May 1965].
 FS Date: 3/17/2021 3:46:02 PM

Photo 1 of 3 : UCIP_FA_2023_67286_99399.jpg



Top of Levee: View of levee crown looking upstream

* Location LS: Land Side WS: Water Side CR: Crown	** Rating A: Acceptable M: Minimally Acceptable U: Unacceptable	N: Not Inspected/Rated C: Corrected A/W: Acceptable but Monitor & Maintain	+ Issue Type Ma: Maintenance Deficiency Ob: Design & System Obsolescence En: Enforcement
---	---	---	--

**Flood Control Project Maintenance
Levee Inspections**

Maintenance Issue Types Only, Levee Inspection Report By Mile - Fall 2023

Butte County Department of Public Works

Waterway	Bank	Unit Miles	Inspection Start/End	Inspector
Unit No. 01 Mud Creek	Right	6.80	10/11/2023 10/11/2023	Makar Sokol

LM Start	5.09	Rating **	M	Issue No.	73 (cont)
LM End	5.09	Issue Type +	Ma	Location *	
Category	Supplemental			GPS Latitude/Longitude	
				Start	End
Item	DWR UCIP LMA Responsibility			39.783636°	39.783636°
				-121.888463°	-121.888463°
DWR ID	19222				

Photo 2 of 3 : UCIP_FA_2023_67286_99400.jpg



Land-Side: View of levee slope looking from crown. Drainage ditch on landside

LM Start	5.09	Rating **	M	Issue No.	73 (cont)
LM End	5.09	Issue Type +	Ma	Location *	

Photo 3 of 3 : UCIP_FA_2023_67286_99404.jpg



Land-Side: Headwall and pipe inlet in drainage ditch at levee toe

* Location LS: Land Side N/A: Not Applicable WS: Water Side CR: Crown	** Rating A: Acceptable M: Minimally Acceptable U: Unacceptable	N: Not Inspected/Rated C: Corrected A/W: Acceptable but Monitor & Maintain	+ Issue Type Ma: Maintenance Deficiency Ob: Design & System Obsolescence En: Enforcement
--	---	--	--

**Flood Control Project Maintenance
Levee Inspections**

Maintenance Issue Types Only, Levee Inspection Report By Mile - Fall 2023

Butte County Department of Public Works

Waterway	Bank	Unit Miles	Inspection Start/End	Inspector
Unit No. 01 Mud Creek	Right	6.80	10/11/2023 10/11/2023	Makar Sokol

LM Start	6.83	Rating **	M	Issue No.	76	
LM End	6.83	Issue Type +	Ma	Location *		
Category	Supplemental			GPS Latitude/Longitude		
				Start	End	
Item	DWR UCIP LMA Responsibility			39.801892°	39.801892°	
				-121.876823°	-121.876823°	
DWR ID	19226					
Comment Code						
Inspector Comment						
DS_ID:19226 FS_ID:67292 EP_NO: N/A Repair Type: Non-Urgent EVAL Issue: Crossing Status: Not Found UCIP Comments: 03/23/2021 Record is Non-Urgent. Crossing not found. A valley on waterside slope may indicate former pipe location. Need to confirm if pipe was removed. No permit has been identified authorizing pipe installation. (O.Yakimov - DWR UCIP) FIELD_STRUCT_DESC: 18-inch corrugated metal gravity drainage pipe through the levee, 2 feet below the crown. Pipe is open on both ends. Both ends appear to be covered with rock. [Additional Reference(s): DWR Levee Log, 1992 (HLM 7.00). USACE Sacramento O&M Manual, Unit 504, May 1965, Revised 2 February 2011, (HLM 7.01), listed as 18-inch pipe. USACE As-Built Drawing No. 50-04-3685, Sheet 8, STA 80+70, 19 May 1965]. FS Date: 3/23/2021 11:21:39 AM						

LM Start	6.83	Rating **	M	Issue No.	76 (cont)
LM End	6.83	Issue Type +	Ma	Location *	

Photo 1 of 3 : UCIP_FA_2023_67292_99434.jpg



Top of Levee: View of levee crown looking upstream

Photo 2 of 3 : UCIP_FA_2023_67292_99435.jpg



Water-Side: View of levee slope looking from crown. Valley on the slope may indicate pipe location

* Location LS : Land Side N/A : Not Applicable WS : Water Side CR : Crown	** Rating A : Acceptable M : Minimally Acceptable U : Unacceptable	N : Not Inspected/Rated C : Corrected A/W : Acceptable but Monitor & Maintain	+ Issue Type Ma : Maintenance Deficiency Ob : Design & System Obsolescence En : Enforcement
--	--	---	---

**Flood Control Project Maintenance
Levee Inspections**

Maintenance Issue Types Only, Levee Inspection Report By Mile - Fall 2023

Butte County Department of Public Works

Waterway	Bank	Unit Miles	Inspection Start/End	Inspector
Unit No. 01 Mud Creek	Right	6.80	10/11/2023 10/11/2023	Makar Sokol

LM Start	6.83	Rating **	M	Issue No.	76 (cont)
LM End	6.83	Issue Type +	Ma	Location *	
Category	Supplemental			GPS Latitude/Longitude	
				Start	End
Item	DWR UCIP LMA Responsibility			39.801892°	39.801892°
				-121.876823°	-121.876823°
DWR ID	19226				

Photo 3 of 3 : UCIP_FA_2023_67292_99436.jpg



Land-Side: View of levee slope looking from crown

* Location LS: Land Side N/A: Not Applicable WS: Water Side CR: Crown	** Rating A: Acceptable M: Minimally Acceptable U: Unacceptable	N: Not Inspected/Rated C: Corrected A/W: Acceptable but Monitor & Maintain	+ Issue Type Ma: Maintenance Deficiency Ob: Design & System Obsolescence En: Enforcement
--	---	--	--

**Flood Control Project Maintenance
Levee Inspections**

Maintenance Issue Types Only, Levee Inspection Report By Mile - Fall 2023

Butte County Department of Public Works

Waterway	Bank	Unit Miles	Inspection Start/End	Inspector
Unit No. 02 Mud Creek	Left	7.96	10/10/2023 10/10/2023	Makar Sokol

LM Start	0.23	Rating **	A/W	Issue No.	45	
LM End	0.23	Issue Type +	Ma	Location *		
Category	Supplemental			GPS Latitude/Longitude		
				Start	End	
Item	DWR UCIP LMA Responsibility			39.797416°	39.797416°	
				-121.881675°	-121.881675°	
DWR ID	19234					
Comment Code						
Inspector Comment						
DS_ID:19234 FS_ID:67304 EP_NO: N/A Repair Type: No Action Needed EVAL Issue: Crossing Status: Found UCIP Comments: 09/15/2023 Record updated from Non-Urgent to No Action Needed. Pipe was CIPP lined. DMP internal video inspection has found none or minor pipe defects. Recommend next video inspection in 5 years. (O. Yakimov - DWR UCIP) 03/23/2021 Record remains Non-Urgent. No permit has been identified authorizing pipe. Debris noted in previous inspection has been cleared. DMP internal video inspection has found pipe integrity issues. LOF of crossing is greater than or equal to 4.1 and less than 5. Crossing will be monitored until funding becomes available for rehabilitation. (O.Yakimov - DWR UCIP) 03/11/2014 Needs cleaning and clearing the culvert. (P. Amatya - DWR UCIP) FIELD_STRUCT_DESC: 24-inch CIPP-lined corrugated metal gravity drainage pipe through the levee, 6.6 feet below the crown. Flap gate on the waterside (WS) end. Concrete U-shaped headwall on each end. Grouted riprap spillway on the WS end. [Additional Reference(s): DWR Levee Log, 1992 (HLM 0.25). USACE Sacramento O&M Manual, Unit 504, May 1965, Revised 2 February 2011, (HLM 0.25), listed as 24-inch pipe. USACE As-Built Drawing No. 50-04-3685, Sheet 8, STA 53+90, 19 May 1965]. FS Date: 3/23/2021 2:26:18 PM						

LM Start	0.23	Rating **	A/W	Issue No.	45 (cont)
LM End	0.23	Issue Type +	Ma	Location *	

Photo 1 of 3 : UCIP_FA_2023_67304_99515.jpg



Top of Levee: View of levee crown looking upstream

Photo 2 of 3 : UCIP_FA_2023_67304_99516.jpg



Water-Side: View of levee slope looking from crown

* Location LS: Land Side N/A: Not Applicable WS: Water Side CR: Crown	** Rating A: Acceptable M: Minimally Acceptable U: Unacceptable	N: Not Inspected/Rated C: Corrected A/W: Acceptable but Monitor & Maintain	+ Issue Type Ma: Maintenance Deficiency Ob: Design & System Obsolescence En: Enforcement
--	---	--	--

**Flood Control Project Maintenance
Levee Inspections**

Maintenance Issue Types Only, Levee Inspection Report By Mile - Fall 2023

Butte County Department of Public Works

Waterway	Bank	Unit Miles	Inspection Start/End	Inspector
Unit No. 02 Mud Creek	Left	7.96	10/10/2023 10/10/2023	Makar Sokol

LM Start	0.23	Rating **	A/W	Issue No.	45 (cont)
LM End	0.23	Issue Type +	Ma	Location *	
Category	Supplemental			GPS Latitude/Longitude	
				Start	End
Item	DWR UCIP LMA Responsibility			39.797416°	39.797416°
				-121.881675°	-121.881675°
DWR ID	19234				

Photo 3 of 3 : UCIP_FA_2023_67304_99520.jpg



Water-Side: Headwall and flap gate at levee toe

* Location LS: Land Side N/A: Not Applicable WS: Water Side CR: Crown	** Rating A: Acceptable M: Minimally Acceptable U: Unacceptable	N: Not Inspected/Rated C: Corrected A/W: Acceptable but Monitor & Maintain	+ Issue Type Ma: Maintenance Deficiency Ob: Design & System Obsolescence En: Enforcement
--	---	--	--

**Flood Control Project Maintenance
Levee Inspections**

Maintenance Issue Types Only, Levee Inspection Report By Mile - Fall 2023

Butte County Department of Public Works

Waterway	Bank	Unit Miles	Inspection Start/End	Inspector
Unit No. 02 Mud Creek	Left	7.96	10/10/2023 10/10/2023	Makar Sokol

LM Start	1.26	Rating **	M	Issue No.	46	
LM End	1.26	Issue Type +	Ma	Location *		
Category	Supplemental			GPS Latitude/Longitude		
				Start	End	
Item	DWR UCIP LMA Responsibility			39.784062°	39.784062°	
				-121.884344°	-121.884344°	
DWR ID	19235					
Comment Code						
Inspector Comment						
DS_ID:19235 FS_ID:77890 EP_NO: N/A Repair Type: Non-Urgent EVAL Issue: Crossing Status: Found UCIP Comments: 12/19/2022 Record updated from Urgent to Non-Urgent. Pipe has been CIPP-lined. LOF of crossing is less or equal to 4. Recommend next video inspection in 5 years. (O.Yakimov - DWR UCIP) 03/23/2021 Record updated from Non-Urgent to Urgent. DMP internal video inspection has found pipe integrity issues. LOF of crossing is between 5 and 6. Crossing will be monitored until funding becomes available to address the issues. No permit has been identified authorizing pipe. Recommend clearing debris from landside end of pipe. (O.Yakimov - DWR UCIP) 02/24/2014 Needs cleaning and clearing of debris. (P. Amatya - DWR UCIP) FIELD_STRUCT_DESC: 24-inch CIPP-lined corrugated metal gravity drainage pipe through the levee, 12.5 feet below the crown. Flap gate on the waterside (WS) end. Concrete U-shaped headwall on each end. Grouted riprap apron on the landside (LS) end. Grouted riprap spillway on the WS end. [Additional Reference(s): DWR Levee Log, 1992 (HLM 1.34). USACE Sacramento O&M Manual, Unit 504, May 1965, Revised 2 February 2011, (HLM 1.34), listed as 24-inch pipe. USACE As-Built Drawing No. 50-04-3685, Sheets 7 and 41, STA 358+10, 19 May 1965]. FS Date: 3/23/2021 3:56:40 PM						

LM Start	1.26	Rating **	M	Issue No.	46 (cont)
LM End	1.26	Issue Type +	Ma	Location *	

Photo 1 of 3 : UCIP_FA_2023_77890_99521.jpg



Top of Levee: View of levee crown looking downstream

Photo 2 of 3 : UCIP_FA_2023_77890_99522.jpg



Water-Side: View of levee slope looking from crown

* Location		** Rating		+ Issue Type	
LS: Land Side	N/A: Not Applicable	A: Acceptable	N: Not Inspected/Rated	Ma: Maintenance Deficiency	
WS: Water Side		M: Minimally Acceptable	C: Corrected	Ob: Design & System Obsolescence	
CR: Crown		U: Unacceptable	A/W: Acceptable but Monitor & Maintain	En: Enforcement	

**Flood Control Project Maintenance
Levee Inspections**

Maintenance Issue Types Only, Levee Inspection Report By Mile - Fall 2023

Butte County Department of Public Works

Waterway	Bank	Unit Miles	Inspection Start/End	Inspector
Unit No. 02 Mud Creek	Left	7.96	10/10/2023 10/10/2023	Makar Sokol

LM Start	1.26	Rating **	M	Issue No.	46 (cont)
LM End	1.26	Issue Type +	Ma	Location *	
Category	Supplemental			GPS Latitude/Longitude	
				Start	End
Item	DWR UCIP LMA Responsibility			39.784062°	39.784062°
				-121.884344°	-121.884344°
DWR ID	19235				

Photo 3 of 3 : UCIP_FA_2023_77890_99526.jpg



Water-Side: Headwall and flap gate at levee toe

LM Start	1.46	Rating **	M	Issue No.	48
LM End	1.46	Issue Type +	Ma	Location *	
Category	Supplemental			GPS Latitude/Longitude	
				Start	End
Item	DWR UCIP LMA Responsibility			39.782980°	39.782980°
				-121.887834°	-121.887834°
DWR ID	19237				

Comment Code

Inspector Comment

DS_ID:19237
 FS_ID:67308
 EP_NO: N/A
 Repair Type: Non-Urgent
 EVAL Issue:
 Crossing Status: Found
 UCIP Comments: 03/16/2021 Record remains Non-Urgent. No permit has been identified authorizing pipe. DMP internal video inspection has not found pipe integrity issues. LOF of crossing is less or equal to 4. Recommend next video inspection in 5 years. (O.Yakimov - DWR UCIP)
 02/24/2014 Needs cleaning and clearing of debris. (P. Amatya - DWR UCIP)
 FIELD_STRUCT_DESC: 24-inch corrugated metal gravity drainage pipe through the levee, 11 feet below the crown. Flap gate on the waterside (WS) end. Concrete U-shaped headwall on each end. Grouted riprap apron on the landside (LS) end. Grouted riprap spillway on the WS end.
 [Additional Reference(s): DWR Levee Log, 1992 (HLM 1.55). USACE Sacramento O&M Manual, Unit 504, May 1965, Revised 2 February 2011, (HLM 1.55), listed as 24-inch pipe. USACE As-Built Drawing No. 50-04-3685, Sheet 41, STA 347+55, 19 May 1965].
 FS Date: 3/16/2021 3:10:19 PM

Photo 1 of 3 : UCIP_FA_2023_67308_99539.jpg



Top of Levee: View of levee crown looking downstream

* Location LS: Land Side WS: Water Side CR: Crown	** Rating A: Acceptable M: Minimally Acceptable U: Unacceptable	N: Not Inspected/Rated C: Corrected A/W: Acceptable but Monitor & Maintain	+ Issue Type Ma: Maintenance Deficiency Ob: Design & System Obsolescence En: Enforcement
---	---	---	--

**Flood Control Project Maintenance
Levee Inspections**

Maintenance Issue Types Only, Levee Inspection Report By Mile - Fall 2023

Butte County Department of Public Works

Waterway	Bank	Unit Miles	Inspection Start/End	Inspector
Unit No. 02 Mud Creek	Left	7.96	10/10/2023 10/10/2023	Makar Sokol

LM Start	1.46	Rating **	M	Issue No.	48 (cont)
LM End	1.46	Issue Type +	Ma	Location *	
Category	Supplemental			GPS Latitude/Longitude	
				Start	End
Item	DWR UCIP LMA Responsibility			39.782980°	39.782980°
				-121.887834°	-121.887834°
DWR ID	19237				

Photo 2 of 3 : UCIP_FA_2023_67308_99540.jpg



Water-Side: View of levee slope looking from crown

LM Start	1.46	Rating **	M	Issue No.	48 (cont)
LM End	1.46	Issue Type +	Ma	Location *	

Photo 3 of 3 : UCIP_FA_2023_67308_99544.jpg



Water-Side: Headwall and flap gate at levee toe

LM Start	1.59	Rating **	M	Issue No.	28
LM End	1.59	Issue Type +	Ma	Location *	CR
Category	Earthen Levee			GPS Latitude/Longitude	
				Start	End
Item	Trim / Thin Trees			39.781557°	39.781557°
				-121.889238°	-121.889238°
DWR ID	DWR_NA0003_02_f_2023_28				
Comment Code					
T4 : Trim trees over roadway to at least 12 feet above ground level.					
Inspector Comment					

No Photos

* Location LS : Land Side N/A : Not Applicable WS : Water Side CR : Crown	** Rating A : Acceptable M : Minimally Acceptable U : Unacceptable	N : Not Inspected/Rated C : Corrected A/W : Acceptable but Monitor & Maintain	+ Issue Type Ma : Maintenance Deficiency Ob : Design & System Obsolescence En : Enforcement
--	--	---	---

**Flood Control Project Maintenance
Levee Inspections**

Maintenance Issue Types Only, Levee Inspection Report By Mile - Fall 2023

Butte County Department of Public Works

Waterway	Bank	Unit Miles	Inspection Start/End	Inspector
Unit No. 02 Mud Creek	Left	7.96	10/10/2023 10/10/2023	Makar Sokol

LM Start	1.62	Rating **	N	Issue No.	32
LM End	1.62	Issue Type +	Ma	Location *	LS
Category	Earthen Levee			GPS Latitude/Longitude	
				Start	End
Item	Trim / Thin Trees			39.781173°	39.781173°
				-121.889526°	-121.889526°
DWR ID	DWR_NA0003_02_f_2016_32				
Comment Code					
T5 : Tree stumps.					
Inspector Comment					

No Photos

LM Start	1.68	Rating **	M	Issue No.	29
LM End	1.68	Issue Type +	Ma	Location *	CR
Category	Earthen Levee			GPS Latitude/Longitude	
				Start	End
Item	Trim / Thin Trees			39.780385°	39.780385°
				-121.890029°	-121.890029°
DWR ID	DWR_NA0003_02_f_2023_29				
Comment Code					
T4 : Trim trees over roadway to at least 12 feet above ground level.					
Inspector Comment					

No Photos

* Location LS : Land Side N/A : Not Applicable WS : Water Side CR : Crown	** Rating A : Acceptable M : Minimally Acceptable U : Unacceptable	N : Not Inspected/Rated C : Corrected A/W : Acceptable but Monitor & Maintain	+ Issue Type Ma : Maintenance Deficiency Ob : Design & System Obsolescence En : Enforcement
--	--	---	---

**Flood Control Project Maintenance
Levee Inspections**

Maintenance Issue Types Only, Levee Inspection Report By Mile - Fall 2023

Butte County Department of Public Works

Waterway	Bank	Unit Miles	Inspection Start/End	Inspector
Unit No. 02 Mud Creek	Left	7.96	10/10/2023 10/10/2023	Makar Sokol

LM Start	2.03	Rating **	A/W	Issue No.	49
LM End	2.03	Issue Type +	Ma	Location *	
Category	Supplemental			GPS Latitude/Longitude	
				Start	End
Item	DWR UCIP LMA Responsibility			39.776025°	39.776025°
				-121.892911°	-121.892911°
DWR ID	19238				
Comment Code					
Inspector Comment					
DS_ID:19238 FS_ID:67339 EP_NO: 12619A Repair Type: No Action Needed EVAL Issue: Crossing Status: Found UCIP Comments: 03/16/2021 Record updated from Non-Urgent to No Action Needed. Sleeved pipe has been removed from crossing. Enforcement case closed. DMP internal video inspection has not found pipe integrity issues. LOF of crossing is less or equal to 4. Recommend next video inspection in 5 years. (O.Yakimov - DWR UCIP) 11/03/2020 Field ispection revealed 15-inch HDPE pipe sleeved through 24-inch drainage pipe. Enforcement case No. 2020-15568 open for this crossing. (Oleg Yakimov - DWR UCIP) 02/24/2014 Inlet and spillway may need cleaning and clearing. (P. Amatya - DWR UCIP) FIELD_STRUCT_DESC: 24-inch corrugated metal gravity storm drainage pipe through the levee, 11 feet below the crown. Flap gate on the waterside (WS) end. Concrete U-shaped headwall on each end. Grouted riprap apron on the landside (LS) end. Grouted riprap spillway on the WS end. (Replacement an existing 24-inch storm drain inlet to the Mud Creek Diversion Channel with a 36-inch storm drain located approximately 500 feet upstream from Nord Highway authorized under Permit No. 12619, 1979 - Richard E. Vermillion). (Time extension to replace an existing 24-inch storm drain inlet to the Mud Creek Diversion Channel with a 36-inch storm drain located upstream from Nord Highway authorized under Permit No. 12619-A, 1980 - Richard E. Vermillion). The storm drain never got replaced. [Additional Reference(s): DWR Levee Log, 1992 (HLM 2.13), listed as 36-inch pipe. USACE Sacramento O&M Manual, Unit 504, May 1965, Revised 2 February 2011, (HLM 2.13), listed as 24-inch pipe. USACE As-Built Drawing No. 50-04-3685, Sheets 6 and 41, STA 317+50, 19 May 1965]. FS Date: 3/16/2021 10:57:49 AM					

Photo 1 of 3 : UCIP_FA_2023_67339_99728.jpg



Top of Levee: View of levee crown looking downstream

* Location LS: Land Side N/A: Not Applicable WS: Water Side CR: Crown	** Rating A: Acceptable M: Minimally Acceptable U: Unacceptable	N: Not Inspected/Rated C: Corrected A/W: Acceptable but Monitor & Maintain	+ Issue Type Ma: Maintenance Deficiency Ob: Design & System Obsolescence En: Enforcement
--	---	--	--

**Flood Control Project Maintenance
Levee Inspections**

Maintenance Issue Types Only, Levee Inspection Report By Mile - Fall 2023

Butte County Department of Public Works

Waterway	Bank	Unit Miles	Inspection Start/End	Inspector
Unit No. 02 Mud Creek	Left	7.96	10/10/2023 10/10/2023	Makar Sokol

LM Start	2.03	Rating **	A/W	Issue No.	49 (cont)
LM End	2.03	Issue Type +	Ma	Location *	
Category	Supplemental			GPS Latitude/Longitude	
				Start	End
Item	DWR UCIP LMA Responsibility			39.776025°	39.776025°
				-121.892911°	-121.892911°
DWR ID	19238				

Photo 2 of 3 : UCIP_FA_2023_67339_99729.jpg



Land-Side: View of levee slope looking from crown. Newly constructed drainage on the berm

LM Start	2.03	Rating **	A/W	Issue No.	49 (cont)
LM End	2.03	Issue Type +	Ma	Location *	

Photo 3 of 3 : UCIP_FA_2023_67339_99733.jpg



Land-Side: U-shaped headwall and covered pipe inlet at levee toe

LM Start	2.05	Rating **	M	Issue No.	25
LM End	2.05	Issue Type +	Ma	Location *	LS
Category	Earthen Levee			GPS Latitude/Longitude	
				Start	End
Item	Erosion / Vehicle Traffic			39.775748°	39.775748°
				-121.892958°	-121.892958°
DWR ID	DWR_NA0003_02_f_2019_25				
Comment Code					
E6 : Repair the levee slope damaged by vehicle traffic and prevent access where possible.					
Inspector Comment					

Photo 1 of 1 : FA_2023_NA0003_65_25_20231002_00003.jpg



View of the erosion on the landside slope due to vehicle traffic. Spring 2023.

* Location LS : Land Side N/A : Not Applicable WS : Water Side CR : Crown	** Rating A : Acceptable M : Minimally Acceptable U : Unacceptable	N : Not Inspected/Rated C : Corrected A/W : Acceptable but Monitor & Maintain	+ Issue Type Ma : Maintenance Deficiency Ob : Design & System Obsolescence En : Enforcement
--	--	--	---

**Flood Control Project Maintenance
Levee Inspections**

Maintenance Issue Types Only, Levee Inspection Report By Mile - Fall 2023

Butte County Department of Public Works

Waterway	Bank	Unit Miles	Inspection Start/End	Inspector
Unit No. 02 Mud Creek	Left	7.96	10/10/2023 10/10/2023	Makar Sokol

LM Start	2.34	Rating **	M	Issue No.	50	
LM End	2.34	Issue Type +	Ma	Location *		
Category	Supplemental			GPS Latitude/Longitude		
				Start		End
Item	DWR UCIP LMA Responsibility			39.772185°		39.772185°
				-121.895681°		-121.895681°
DWR ID	19239					
Comment Code						
Inspector Comment						
DS_ID:19239						
FS_ID:67340						
EP_NO: N/A						
Repair Type: Non-Urgent						
EVAL Issue:						
Crossing Status: Found						
UCIP Comments: 03/16/2021 Record remains Non-Urgent. No permit has been identified authorizing pipe. Debris around landside headwall has been cleared. DMP internal video inspection has not found pipe integrity issues. LOF of crossing is less or equal to 4. Recommend next video inspection in 5 years. (O.Yakimov - DWR UCIP)						
02/24/2014 Debris in landside inlet area. Needs cleaning and clearing of debris. (P. Amatya - DWR UCIP)						
FIELD_STRUCT_DESC: 24-inch corrugated metal gravity drainage pipe through the levee, 10 feet below the crown. Flap gate on the waterside (WS) end. Concrete U-shaped headwall on each end. Grouted riprap apron on the landside (LS) end. Grouted riprap spillway on the WS end. [Additional Reference(s): DWR Levee Log, 1992 (HLM 2.44). USACE Sacramento O&M Manual, Unit 504, May 1965, Revised 2 February 2011, (HLM 2.44), listed as 24-inch pipe. USACE As-Built Drawing No. 50-04-3685, Sheets 6 and 41, STA 302+00, 19 May 1965].						
FS Date: 3/16/2021 11:39:32 AM						

LM Start	2.34	Rating **	M	Issue No.	50 (cont)
LM End	2.34	Issue Type +	Ma	Location *	

Photo 1 of 3 : UCIP_FA_2023_67340_99744.jpg



Top of Levee: View of levee crown looking upstream

Photo 2 of 3 : UCIP_FA_2023_67340_99746.jpg



Water-Side: View of levee slope looking from crown

* Location LS: Land Side N/A: Not Applicable WS: Water Side CR: Crown	** Rating A: Acceptable M: Minimally Acceptable U: Unacceptable	N: Not Inspected/Rated C: Corrected A/W: Acceptable but Monitor & Maintain	+ Issue Type Ma: Maintenance Deficiency Ob: Design & System Obsolescence En: Enforcement
--	---	--	--

**Flood Control Project Maintenance
Levee Inspections**

Maintenance Issue Types Only, Levee Inspection Report By Mile - Fall 2023

Butte County Department of Public Works

Waterway	Bank	Unit Miles	Inspection Start/End	Inspector
Unit No. 02 Mud Creek	Left	7.96	10/10/2023 10/10/2023	Makar Sokol

LM Start	2.34	Rating **	M	Issue No.	50 (cont)
LM End	2.34	Issue Type +	Ma	Location *	
Category	Supplemental			GPS Latitude/Longitude	
				Start	End
Item	DWR UCIP LMA Responsibility			39.772185°	39.772185°
				-121.895681°	-121.895681°
DWR ID	19239				

Photo 3 of 3 : UCIP_FA_2023_67340_99747.jpg



Water-Side: Headwall and flap gate at levee toe

LM Start	2.54	Rating **	A/W	Issue No.	41
LM End	2.68	Issue Type +	Ma	Location *	WS
Category	Supplemental			GPS Latitude/Longitude	
				Start	End
Item	2018 USACE Erosion Survey			39.771186°	39.769616°
				-121.899060°	-121.900854°
DWR ID	DWR_NA0003_02_s_2022_41				
Comment Code					
Inspector Comment					
2018 Site ID: MUD 2.6 L					
Status: Eroding					
2018 Field Notes: Last observed in 2017.					
Site History: 2017 - Large mass failure of lower bank slope.					

No Photos

* Location LS: Land Side N/A: Not Applicable WS: Water Side CR: Crown	** Rating A: Acceptable M: Minimally Acceptable U: Unacceptable	N: Not Inspected/Rated C: Corrected A/W: Acceptable but Monitor & Maintain	+ Issue Type Ma: Maintenance Deficiency Ob: Design & System Obsolescence En: Enforcement
--	---	--	--

**Flood Control Project Maintenance
Levee Inspections**

Maintenance Issue Types Only, Levee Inspection Report By Mile - Fall 2023

Butte County Department of Public Works

Waterway	Bank	Unit Miles	Inspection Start/End	Inspector
Unit No. 02 Mud Creek	Left	7.96	10/10/2023 10/10/2023	Makar Sokol

LM Start	2.74	Rating **	U	Issue No.	51
LM End	2.74	Issue Type +	Ma	Location *	
Category	Supplemental			GPS Latitude/Longitude	
				Start	End
Item	DWR UCIP LMA Responsibility			39.768741°	39.768741°
				-121.901176°	-121.901176°
DWR ID	19240				
Comment Code					
Inspector Comment					
DS_ID:19240 FS_ID:67341 EP_NO: N/A Repair Type: Urgent EVAL Issue: 3a, Flood Risk Crossing Status: Found UCIP Comments: 03/16/2021 Record updated from Non-Urgent to Urgent. Flap gate not closing complitely. A gap between flap gate and pipe is visible. Adjustments and lubrication to flap gate hinges need to be done. DMP internal video inspection has not found pipe integrity issues. LOF of crossing is less or equal to 4. Recommend next video inspection in 5 years. (O.Yakimov - DWR UCIP) 02/24/2014 Needs cleaning and clearing of debris. (P. Amatya - DWR UCIP) FIELD_STRUCT_DESC: 24-inch corrugated metal gravity drainage pipe through the levee, 10 feet below the crown. Flap gate on the waterside (WS) end. Concrete U-shaped headwall on each end. Grouted riprap apron on the landside (LS) end. Grouted riprap spillway on the WS end. [Additional Reference(s): DWR Levee Log, 1992 (HLM 2.84). USACE Sacramento O&M Manual, Unit 504, May 1965, Revised 2 February 2011, (HLM 2.86), listed as 24-inch pipe. USACE As-Built Drawing No. 50-04-3685, Sheets 6 and 41, STA 280+00, 19 May 1965]. FS Date: 3/16/2021 12:43:55 PM					

LM Start	2.74	Rating **	U	Issue No.	51 (cont)
LM End	2.74	Issue Type +	Ma	Location *	

Photo 1 of 3 : UCIP_FA_2023_67341_99750.jpg



Top of Levee: View of levee crown looking upstream

Photo 2 of 3 : UCIP_FA_2023_67341_99755.jpg



Water-Side: Gap visible between flap gate and pipe. Flap gate is unable to close tightly

* Location LS: Land Side N/A: Not Applicable WS: Water Side CR: Crown	** Rating A: Acceptable M: Minimally Acceptable U: Unacceptable	N: Not Inspected/Rated C: Corrected A/W: Acceptable but Monitor & Maintain	+ Issue Type Ma: Maintenance Deficiency Ob: Design & System Obsolescence En: Enforcement
--	---	--	--

**Flood Control Project Maintenance
Levee Inspections**

Maintenance Issue Types Only, Levee Inspection Report By Mile - Fall 2023

Butte County Department of Public Works

Waterway	Bank	Unit Miles	Inspection Start/End	Inspector
Unit No. 02 Mud Creek	Left	7.96	10/10/2023 10/10/2023	Makar Sokol

LM Start	2.74	Rating **	U	Issue No.	51 (cont)
LM End	2.74	Issue Type +	Ma	Location *	
Category	Supplemental			GPS Latitude/Longitude	
				Start	End
Item	DWR UCIP LMA Responsibility			39.768741°	39.768741°
				-121.901176°	-121.901176°
DWR ID	19240				

Photo 3 of 3 : UCIP_FA_2023_67341_99753.jpg



Land-Side: U-shaped headwall and pipe at levee toe

LM Start	3.08	Rating **	A/W	Issue No.	42
LM End	3.16	Issue Type +	Ma	Location *	WS
Category	Supplemental			GPS Latitude/Longitude	
				Start	End
Item	2018 USACE Erosion Survey			39.765543°	39.764869°
				-121.905367°	-121.906737°
DWR ID	DWR_NA0003_02_s_2022_42				
Comment Code					
Inspector Comment					
2018 Site ID: MUD 3.3 L					
Status: Eroding					
2018 Field Notes: Last observed in 2017.					
Site History: 2017 - Large erosion scarp along lower toe.					

No Photos

* Location LS: Land Side N/A: Not Applicable WS: Water Side CR: Crown	** Rating A: Acceptable M: Minimally Acceptable U: Unacceptable	N: Not Inspected/Rated C: Corrected A/W: Acceptable but Monitor & Maintain	+ Issue Type Ma: Maintenance Deficiency Ob: Design & System Obsolescence En: Enforcement
--	---	--	--

**Flood Control Project Maintenance
Levee Inspections**

Maintenance Issue Types Only, Levee Inspection Report By Mile - Fall 2023

Butte County Department of Public Works

Waterway	Bank	Unit Miles	Inspection Start/End	Inspector
Unit No. 02 Mud Creek	Left	7.96	10/10/2023 10/10/2023	Makar Sokol

LM Start	3.50	Rating **	M	Issue No.	52
LM End	3.50	Issue Type +	Ma	Location *	
Category	Supplemental			GPS Latitude/Longitude	
				Start	End
Item	DWR UCIP LMA Responsibility			39.760847°	39.760847°
				-121.910265°	-121.910265°
DWR ID	19241				
Comment Code					
Inspector Comment					
DS_ID:19241 FS_ID:67342 EP_NO: N/A Repair Type: Non-Urgent EVAL Issue: Crossing Status: Found UCIP Comments: 03/16/2021 Record remains Non-Urgent. No permit has been identified authorizing pipe. Debris has been cleared. DMP internal video inspection has not found pipe integrity issues. LOF of crossing is less or equal to 4. Recommend next video inspection in 5 years. (O.Yakimov - DWR UCIP) 02/24/2014 Needs cleaning and clearing of debris. (P. Amatya - DWR UCIP) FIELD_STRUCT_DESC: 24-inch corrugated metal gravity drainage pipe through the levee, 6.5 feet below the crown. Flap gate on the waterside (WS) end. Concrete U-shaped headwall on each end. Grouted riprap apron on the landside (LS) end. Grouted riprap spillway on the WS end. [Additional Reference(s): DWR Levee Log, 1992 (HLM 3.64). USACE Sacramento O&M Manual, Unit 504, May 1965, Revised 2 February 2011, (HLM 3.64), listed as 24-inch pipe. USACE As-Built Drawing No. 50-04-3685, Sheet 41, STA 239+80, 19 May 1965]. FS Date: 3/16/2021 12:48:10 PM					

LM Start	3.50	Rating **	M	Issue No.	52 (cont)
LM End	3.50	Issue Type +	Ma	Location *	

Photo 1 of 3 : UCIP_FA_2023_67342_99757.jpg



Top of Levee: View of levee crown looking upstream

Photo 2 of 3 : UCIP_FA_2023_67342_99758.jpg



Land-Side: View of levee slope looking from crown

* Location	** Rating	+ Issue Type
LS: Land Side WS: Water Side CR: Crown	A: Acceptable M: Minimally Acceptable U: Unacceptable	Ma: Maintenance Deficiency Ob: Design & System Obsolescence En: Enforcement
N/A: Not Applicable	N: Not Inspected/Rated C: Corrected A/W: Acceptable but Monitor & Maintain	

**Flood Control Project Maintenance
Levee Inspections**

Maintenance Issue Types Only, Levee Inspection Report By Mile - Fall 2023

Butte County Department of Public Works

Waterway	Bank	Unit Miles	Inspection Start/End	Inspector
Unit No. 02 Mud Creek	Left	7.96	10/10/2023 10/10/2023	Makar Sokol

LM Start	3.50	Rating **	M	Issue No.	52 (cont)
LM End	3.50	Issue Type +	Ma	Location *	
Category	Supplemental			GPS Latitude/Longitude	
				Start	End
Item	DWR UCIP LMA Responsibility			39.760847°	39.760847°
				-121.910265°	-121.910265°
DWR ID	19241				

Photo 3 of 3 : UCIP_FA_2023_67342_99761.jpg



Land-Side: U-shaped headwall and pipe at levee toe

LM Start	3.52	Rating **	M	Issue No.	10
LM End	3.52	Issue Type +	Ma	Location *	LS
Category	Earthen Levee			GPS Latitude/Longitude	
				Start	End
Item	Erosion / Vehicle Traffic			39.760582°	39.760582°
				-121.910303°	-121.910303°
DWR ID	DWR_NA0003_02_s_2022_10				
Comment Code					
E6 : Repair the levee slope damaged by vehicle traffic and prevent access where possible.					
Inspector Comment					

Photo 1 of 1 : FA_2023_NA0003_65_10_20231002_00002.jpg



View of the damaged landside slope due to vehicle traffic. Fall 2022.

LM Start	3.77	Rating **	M	Issue No.	24
LM End	3.77	Issue Type +	Ma	Location *	CR
Category	Earthen Levee			GPS Latitude/Longitude	
				Start	End
Item	Crown Surface / Depressions / Rutting			39.757596°	39.757596°
				-121.912148°	-121.912148°
DWR ID	DWR_NA0003_02_s_2020_24				
Comment Code					
C2 : Repair depressions or ruts in the crown or slope.					
Inspector Comment					

No Photos

* Location LS : Land Side N/A : Not Applicable WS : Water Side CR : Crown	** Rating A : Acceptable M : Minimally Acceptable U : Unacceptable	N : Not Inspected/Rated C : Corrected A/W : Acceptable but Monitor & Maintain	+ Issue Type Ma : Maintenance Deficiency Ob : Design & System Obsolescence En : Enforcement
--	--	--	---

**Flood Control Project Maintenance
Levee Inspections**

Maintenance Issue Types Only, Levee Inspection Report By Mile - Fall 2023

Butte County Department of Public Works

Waterway	Bank	Unit Miles	Inspection Start/End	Inspector
Unit No. 02 Mud Creek	Left	7.96	10/10/2023 10/10/2023	Makar Sokol

LM Start	3.82	Rating **	M	Issue No.	26
LM End	3.82	Issue Type +	Ma	Location *	CR
Category	Earthen Levee		GPS Latitude/Longitude		
			Start	End	
Item	Crown Surface / Depressions / Rutting		39.757022°	39.757022°	
			-121.912657°	-121.912657°	
DWR ID	DWR_NA0003_02_s _ 2020_26				
Comment Code					
C2 : Repair depressions or ruts in the crown or slope.					
Inspector Comment					

No Photos

LM Start	4.30	Rating **	M	Issue No.	23
LM End	4.30	Issue Type +	Ma	Location *	LS
Category	Earthen Levee		GPS Latitude/Longitude		
			Start	End	
Item	Erosion / Vehicle Traffic		39.752579°	39.752579°	
			-121.914516°	-121.914516°	
DWR ID	DWR_NA0003_02_f _ 2020_23				
Comment Code					
E6 : Repair the levee slope damaged by vehicle traffic and prevent access where possible.					
Inspector Comment					

No Photos

* Location LS : Land Side N/A : Not Applicable WS : Water Side CR : Crown	** Rating A : Acceptable M : Minimally Acceptable U : Unacceptable	N : Not Inspected/Rated C : Corrected A/W : Acceptable but Monitor & Maintain	+ Issue Type Ma : Maintenance Deficiency Ob : Design & System Obsolescence En : Enforcement
--	--	---	---

**Flood Control Project Maintenance
Levee Inspections**

Maintenance Issue Types Only, Levee Inspection Report By Mile - Fall 2023

Butte County Department of Public Works

Waterway	Bank	Unit Miles	Inspection Start/End	Inspector
Unit No. 02 Mud Creek	Left	7.96	10/10/2023 10/10/2023	Makar Sokol

LM Start	4.61	Rating **	M	Issue No.	54	
LM End	4.61	Issue Type +	Ma	Location *		
Category	Supplemental			GPS Latitude/Longitude		
				Start	End	
Item	DWR UCIP LMA Responsibility			39.748731°	39.748731°	
				-121.917577°	-121.917577°	
DWR ID	19245					
Comment Code						
Inspector Comment						
DS_ID:19245 FS_ID:67347 EP_NO: N/A Repair Type: Non-Urgent EVAL Issue: Crossing Status: Found UCIP Comments: 03/16/2021 Record remains Non-Urgent. No permit has been identified authorizing pipe. Debris has been cleared. DMP internal video inspection has not found pipe integrity issues. LOF of crossing is less or equal to 4. Recommend next video inspection in 5 years. (O.Yakimov - DWR UCIP) 02/25/2014 Needs cleaning and clearing of debris. (P. Amatya - DWR UCIP) FIELD_STRUCT_DESC: 24-inch corrugated metal gravity drainage pipe through the levee, 10 feet below the crown. Flap gate on the waterside (WS) end. Concrete U-shaped headwall on each end. Grouted riprap apron on the landside (LS) end. Grouted riprap spillway on the WS end. [Additional Reference(s): DWR Levee Log, 1992 (HLM 4.77). USACE Sacramento O&M Manual, Unit 504, May 1965, Revised 2 February 2011, (HLM 4.77), listed as 24-inch pipe. USACE As-Built Drawing No. 50-04-3685, Sheet 41, STA 188+80, 19 May 1965]. FS Date: 3/16/2021 2:59:36 PM						

LM Start	4.61	Rating **	M	Issue No.	54 (cont)
LM End	4.61	Issue Type +	Ma	Location *	

Photo 1 of 3 : UCIP_FA_2023_67347_99780.jpg



Top of Levee: View of levee crown looking upstream

Photo 2 of 3 : UCIP_FA_2023_67347_99781.jpg



Land-Side: View of levee slope looking from crown

* Location LS: Land Side N/A: Not Applicable WS: Water Side CR: Crown	** Rating A: Acceptable M: Minimally Acceptable U: Unacceptable	N: Not Inspected/Rated C: Corrected A/W: Acceptable but Monitor & Maintain	+ Issue Type Ma: Maintenance Deficiency Ob: Design & System Obsolescence En: Enforcement
--	---	--	--

**Flood Control Project Maintenance
Levee Inspections**

Maintenance Issue Types Only, Levee Inspection Report By Mile - Fall 2023

Butte County Department of Public Works

Waterway	Bank	Unit Miles	Inspection Start/End	Inspector
Unit No. 02 Mud Creek	Left	7.96	10/10/2023 10/10/2023	Makar Sokol

LM Start	4.61	Rating **	M	Issue No.	54 (cont)
LM End	4.61	Issue Type +	Ma	Location *	
Category	Supplemental			GPS Latitude/Longitude	
				Start	End
Item	DWR UCIP LMA Responsibility			39.748731°	39.748731°
				-121.917577°	-121.917577°
DWR ID	19245				

Photo 3 of 3 : UCIP_FA_2023_67347_99784.jpg



Land-Side: U-shaped headwall and pipe at levee toe

* Location LS: Land Side N/A: Not Applicable WS: Water Side CR: Crown	** Rating A: Acceptable M: Minimally Acceptable U: Unacceptable	N: Not Inspected/Rated C: Corrected A/W: Acceptable but Monitor & Maintain	+ Issue Type Ma: Maintenance Deficiency Ob: Design & System Obsolescence En: Enforcement
--	---	--	--

**Flood Control Project Maintenance
Levee Inspections**

Maintenance Issue Types Only, Levee Inspection Report By Mile - Fall 2023

Butte County Department of Public Works

Waterway	Bank	Unit Miles	Inspection Start/End	Inspector
Unit No. 02 Mud Creek	Left	7.96	10/10/2023 10/10/2023	Makar Sokol

LM Start	5.64	Rating **	M	Issue No.	55	
LM End	5.64	Issue Type +	Ma	Location *		
Category	Supplemental			GPS Latitude/Longitude		
				Start	End	
Item	DWR UCIP LMA Responsibility			39.738898°	39.738898°	
				-121.930242°	-121.930242°	
DWR ID	19247					
Comment Code						
Inspector Comment						
DS_ID:19247						
FS_ID:77891						
EP_NO: N/A						
Repair Type: Non-Urgent						
EVAL Issue:						
Crossing Status: Found						
UCIP Comments: 12/19/2022 Record updated from Urgent to Non-Urgent. Pipe has been CIPP-lined. LOF of crossing is less or equal to 4. Recommend next video inspection in 5 years. (O.Yakimov - DWR UCIP)						
03/16/2021 Record updated from Non-Urgent to Urgent. DMP internal video inspection has found pipe integrity issues. LOF of crossing is between 5 and 6. Crossing will be monitored until funding becomes available to address the issues. No permit has been identified authorizing pipe. Sediment at bottom of CMP is still present. (O.Yakimov - DWR UCIP)						
02/25/2014 Needs cleaning and clearing of debris. (P. Amatya - DWR UCIP)						
FIELD_STRUCT_DESC: 24-inch CIPP-lined corrugated metal gravity drainage pipe through the levee, 11.5 feet below the crown. Flap gate on the waterside (WS) end. Concrete U-shaped headwall on each end. Grouted riprap apron on the landside (LS) end. Grouted riprap spillway on the WS end. [Additional Reference(s): DWR Levee Log, 1992 (HLM 5.83). USACE Sacramento O&M Manual, Unit 504, May 1965, Revised 2 February 2011, (HLM 5.83), listed as 24-inch pipe. USACE As-Built Drawing No. 50-04-3685, Sheets 3 and 41, STA 134+60, 19 May 1965]. FS Date: 3/16/2021 3:59:32 PM						

LM Start	5.64	Rating **	M	Issue No.	55 (cont)
LM End	5.64	Issue Type +	Ma	Location *	

Photo 1 of 3 : UCIP_FA_2023_77891_99792.jpg



Top of Levee: View of levee crown looking upstream

Photo 2 of 3 : UCIP_FA_2023_77891_99793.jpg



Water-Side: View of levee slope looking from crown

* Location LS : Land Side N/A : Not Applicable WS : Water Side CR : Crown	** Rating A : Acceptable M : Minimally Acceptable U : Unacceptable	N : Not Inspected/Rated C : Corrected A/W : Acceptable but Monitor & Maintain	+ Issue Type Ma : Maintenance Deficiency Ob : Design & System Obsolescence En : Enforcement
--	--	---	---

**Flood Control Project Maintenance
Levee Inspections**

Maintenance Issue Types Only, Levee Inspection Report By Mile - Fall 2023

Butte County Department of Public Works

Waterway	Bank	Unit Miles	Inspection Start/End	Inspector
Unit No. 02 Mud Creek	Left	7.96	10/10/2023 10/10/2023	Makar Sokol

LM Start	5.64	Rating **	M	Issue No.	55 (cont)
LM End	5.64	Issue Type +	Ma	Location *	
Category	Supplemental			GPS Latitude/Longitude	
				Start	End
Item	DWR UCIP LMA Responsibility			39.738898°	39.738898°
				-121.930242°	-121.930242°
DWR ID	19247				

Photo 3 of 3 : UCIP_FA_2023_77891_99795.jpg



Water-Side: Headwall and flap gate at levee toe

* Location LS: Land Side N/A: Not Applicable WS: Water Side CR: Crown	** Rating A: Acceptable M: Minimally Acceptable U: Unacceptable	N: Not Inspected/Rated C: Corrected A/W: Acceptable but Monitor & Maintain	+ Issue Type Ma: Maintenance Deficiency Ob: Design & System Obsolescence En: Enforcement
--	---	--	--

**Flood Control Project Maintenance
Levee Inspections**

Maintenance Issue Types Only, Levee Inspection Report By Mile - Fall 2023

Butte County Department of Public Works

Waterway	Bank	Unit Miles	Inspection Start/End	Inspector
Unit No. 02 Mud Creek	Left	7.96	10/10/2023 10/10/2023	Makar Sokol

LM Start	6.09	Rating **	A/W	Issue No.	56	
LM End	6.09	Issue Type +	Ma	Location *		
Category	Supplemental			GPS Latitude/Longitude		
				Start	End	
Item	DWR UCIP LMA Responsibility			39.733297°	39.733297°	
				-121.930411°	-121.930411°	
DWR ID	19248					
Comment Code						
Inspector Comment						
DS_ID:19248 FS_ID:67351 EP_NO: N/A Repair Type: No Action Needed EVAL Issue: Crossing Status: Found UCIP Comments: 09/15/2023 Record updated from Non-Urgent to No Action Needed. Pipe was CIPP lined. DMP internal video inspection has found none or minor pipe defects. Recommend next video inspection in 5 years. (O. Yakimov - DWR UCIP) 03/16/2021 Record remains Non-Urgent. DMP internal video inspection has found pipe integrity issues. LOF of crossing is between 4.1 and 5. Crossing will be monitored until funding becomes available for rehabilitation. No permit has been identified authorizing pipe. Debris has been cleared. (O.Yakimov - DWR UCIP) 02/25/2014 Needs cleaning and clearing of debris. (P. Amatya - DWR UCIP) FIELD_STRUCT_DESC: [Channel Slough Drainage Structure] 1 of 2: 42-inch CIPP-lined corrugated metal gravity drainage pipe through the levee, 16 feet below the crown. Flap gate on the waterside (WS) end. Slide gate in a corrugated metal pipe (CMP) riser on the WS slope. Concrete U-shaped headwall on each end. Grouted riprap apron and rock revetment on the landside (LS) end. [Additional Reference(s): DWR Levee Log, 1992 (HLM 6.30). USACE Sacramento O&M Manual, Unit 504, May 1965, Revised 2 February 2011, (HLM 6.30), listed as 42-inch pipe]. FS Date: 3/16/2021 11:45:20 AM						

LM Start	6.09	Rating **	A/W	Issue No.	56 (cont)
LM End	6.09	Issue Type +	Ma	Location *	

Photo 1 of 3 : UCIP_FA_2023_67351_99802.jpg



Top of Levee: View of levee crown looking upstream

Photo 2 of 3 : UCIP_FA_2023_67351_99800.jpg



Land-Side: View of levee slope looking from crown

* Location		** Rating		+ Issue Type	
LS: Land Side	N/A: Not Applicable	A: Acceptable	N: Not Inspected/Rated	Ma: Maintenance Deficiency	
WS: Water Side		M: Minimally Acceptable	C: Corrected	Ob: Design & System Obsolescence	
CR: Crown		U: Unacceptable	A/W: Acceptable but Monitor & Maintain	En: Enforcement	

**Flood Control Project Maintenance
Levee Inspections**

Maintenance Issue Types Only, Levee Inspection Report By Mile - Fall 2023

Butte County Department of Public Works

Waterway	Bank	Unit Miles	Inspection Start/End	Inspector
Unit No. 02 Mud Creek	Left	7.96	10/10/2023 10/10/2023	Makar Sokol

LM Start	6.09	Rating **	A/W	Issue No.	56 (cont)
LM End	6.09	Issue Type +	Ma	Location *	
Category	Supplemental			GPS Latitude/Longitude	
				Start	End
Item	DWR UCIP LMA Responsibility			39.733297°	39.733297°
				-121.930411°	-121.930411°
DWR ID	19248				

Photo 3 of 3 : UCIP_FA_2023_67351_99801.jpg



Land-Side: U-shaped headwall and pipe at levee toe

* Location LS: Land Side N/A: Not Applicable WS: Water Side CR: Crown	** Rating A: Acceptable M: Minimally Acceptable U: Unacceptable	N: Not Inspected/Rated C: Corrected A/W: Acceptable but Monitor & Maintain	+ Issue Type Ma: Maintenance Deficiency Ob: Design & System Obsolescence En: Enforcement
--	---	--	--

**Flood Control Project Maintenance
Levee Inspections**

Maintenance Issue Types Only, Levee Inspection Report By Mile - Fall 2023

Butte County Department of Public Works

Waterway	Bank	Unit Miles	Inspection Start/End	Inspector
Unit No. 02 Mud Creek	Left	7.96	10/10/2023 10/10/2023	Makar Sokol

LM Start	6.09	Rating **	A/W	Issue No.	57	
LM End	6.09	Issue Type +	Ma	Location *		
Category	Supplemental			GPS Latitude/Longitude		
				Start	End	
Item	DWR UCIP LMA Responsibility			39.733280°	39.733280°	
				-121.930409°	-121.930409°	
DWR ID	19259					
Comment Code						
Inspector Comment						
DS_ID:19259 FS_ID:67352 EP_NO: N/A Repair Type: No Action Needed EVAL Issue: Crossing Status: Found UCIP Comments: 09/15/2023 Record updated from Non-Urgent to No Action Needed. Pipe was CIPP lined. DMP internal video inspection has found none or minor pipe defects. Recommend next video inspection in 5 years. (O. Yakimov - DWR UCIP) 03/16/2021 Record remains Non-Urgent. No permit has been identified authorizing pipe. Debris has been cleared. DMP internal video inspection has found pipe integrity issues. LOF of crossing is greater than or equal to 4.1 and less than 5. Crossing will be monitored until funding becomes available for rehabilitation. (O.Yakimov - DWR UCIP) 02/25/2014 Needs cleaning and clearing of debris. (P. Amatya - DWR UCIP) FIELD_STRUCT_DESC: [Channel Slough Drainage Structure] 2 of 2: 42-inch CIPP-lined corrugated metal gravity drainage pipe through the levee, 16 feet below the crown. Flap gate on the waterside (WS) end. Slide gate in a corrugated metal pipe (CMP) riser on the WS slope. Concrete U-shaped headwall on each end. Grouted riprap apron and rock revetment on the landside (LS) end. [Additional Reference(s): DWR Levee Log, 1992 (HLM 6.30). USACE Sacramento O&M Manual, Unit 504, May 1965, Revised 2 February 2011, (HLM 6.30), listed as 42-inch pipe]. FS Date: 3/16/2021 11:47:02 AM						

LM Start	6.09	Rating **	A/W	Issue No.	57 (cont)
LM End	6.09	Issue Type +	Ma	Location *	

Photo 1 of 3 : UCIP_FA_2023_67352_99808.jpg



Top of Levee: View of levee crown looking upstream

Photo 2 of 3 : UCIP_FA_2023_67352_99806.jpg



Land-Side: View of levee slope looking from crown

* Location		** Rating		+ Issue Type	
LS: Land Side	N/A: Not Applicable	A: Acceptable	N: Not Inspected/Rated	Ma: Maintenance Deficiency	
WS: Water Side		M: Minimally Acceptable	C: Corrected	Ob: Design & System Obsolescence	
CR: Crown		U: Unacceptable	A/W: Acceptable but Monitor & Maintain	En: Enforcement	

**Flood Control Project Maintenance
Levee Inspections**

Maintenance Issue Types Only, Levee Inspection Report By Mile - Fall 2023

Butte County Department of Public Works

Waterway	Bank	Unit Miles	Inspection Start/End	Inspector
Unit No. 02 Mud Creek	Left	7.96	10/10/2023 10/10/2023	Makar Sokol

LM Start	6.09	Rating **	A/W	Issue No.	57 (cont)
LM End	6.09	Issue Type +	Ma	Location *	
Category	Supplemental			GPS Latitude/Longitude	
				Start	End
Item	DWR UCIP LMA Responsibility			39.733280°	39.733280°
				-121.930409°	-121.930409°
DWR ID	19259				

Photo 3 of 3 : UCIP_FA_2023_67352_99807.jpg



Land-Side: U-shaped headwall and pipe at levee toe

LM Start	6.15	Rating **	U	Issue No.	58
LM End	6.15	Issue Type +	Ma	Location *	
Category	Supplemental			GPS Latitude/Longitude	
				Start	End
Item	DWR UCIP LMA Responsibility			39.732515°	39.732515°
				-121.930373°	-121.930373°
DWR ID	19249				

Comment Code

Inspector Comment

DS_ID:19249
FS_ID:67353
EP_NO: N/A
Repair Type: Urgent
EVAL Issue: 1, Pipe Integrity
Crossing Status: Found
UCIP Comments: 03/16/2021 Record updated from Non-Urgent to Urgent. DMP internal video inspection has found pipe integrity issues. LOF of crossing is between 5 and 6. Crossing will be monitored until funding becomes available to address the issues. No permit has been identified authorizing pipe. Debris has been cleared. (O.Yakimov - DWR UCIP)
02/25/2014 Needs cleaning and clearing of debris. (P. Amatya - DWR UCIP)
FIELD_STRUCT_DESC: 24-inch corrugated metal gravity drainage pipe through the levee, 12 feet below the crown. Flap gate on the waterside (WS) end. Concrete U-shaped headwall on each end. Grouted riprap apron on the landside (LS) end. Grouted riprap spillway on the WS end. [Additional Reference(s): DWR Levee Log, 1992 (HLM 6.35). USACE Sacramento O&M Manual, Unit 504, May 1965, Revised 2 February 2011, (HLM 6.35), listed as 24-inch pipe. USACE As-Built Drawing No. 50-04-3685, Sheets 3 and 41, STA 107+10, 19 May 1965].
FS Date: 3/16/2021 11:50:15 AM

Photo 1 of 3 : UCIP_FA_2023_67353_99809.jpg



Top of Levee: View of levee crown looking upstream

* Location	** Rating	+ Issue Type
LS: Land Side WS: Water Side CR: Crown	A: Acceptable M: Minimally Acceptable U: Unacceptable	Ma: Maintenance Deficiency Ob: Design & System Obsolescence En: Enforcement
N/A: Not Applicable	N: Not Inspected/Rated C: Corrected A/W: Acceptable but Monitor & Maintain	

**Flood Control Project Maintenance
Levee Inspections**

Maintenance Issue Types Only, Levee Inspection Report By Mile - Fall 2023

Butte County Department of Public Works

Waterway	Bank	Unit Miles	Inspection Start/End	Inspector
Unit No. 02 Mud Creek	Left	7.96	10/10/2023 10/10/2023	Makar Sokol

LM Start	6.15	Rating **	U	Issue No.	58 (cont)
LM End	6.15	Issue Type +	Ma	Location *	
Category	Supplemental			GPS Latitude/Longitude	
				Start	End
Item	DWR UCIP LMA Responsibility			39.732515°	39.732515°
				-121.930373°	-121.930373°
DWR ID	19249				

Photo 2 of 3 : UCIP_FA_2023_67353_99810.jpg



Water-Side: View of levee slope looking from crown

LM Start	6.15	Rating **	U	Issue No.	58 (cont)
LM End	6.15	Issue Type +	Ma	Location *	

Photo 3 of 3 : UCIP_FA_2023_67353_99814.jpg



Water-Side: Headwall and flap gate at levee toe

* Location LS : Land Side N/A : Not Applicable WS : Water Side CR : Crown	** Rating A : Acceptable M : Minimally Acceptable U : Unacceptable	N : Not Inspected/Rated C : Corrected A/W : Acceptable but Monitor & Maintain	+ Issue Type Ma : Maintenance Deficiency Ob : Design & System Obsolescence En : Enforcement
--	--	---	---

**Flood Control Project Maintenance
Levee Inspections**

Maintenance Issue Types Only, Levee Inspection Report By Mile - Fall 2023

Butte County Department of Public Works

Waterway	Bank	Unit Miles	Inspection Start/End	Inspector
Unit No. 02 Mud Creek	Left	7.96	10/10/2023 10/10/2023	Makar Sokol

LM Start	6.43	Rating **	M	Issue No.	59	
LM End	6.43	Issue Type +	Ma	Location *		
Category	Supplemental			GPS Latitude/Longitude		
				Start	End	
Item	DWR UCIP LMA Responsibility			39.728812°	39.728812°	
				-121.932623°	-121.932623°	
DWR ID	19251					
Comment Code						
Inspector Comment						
DS_ID:19251 FS_ID:77892 EP_NO: N/A Repair Type: Non-Urgent EVAL Issue: Crossing Status: Found UCIP Comments: 12/19/2022 Record updated from Urgent to Non-Urgent. Pipe has been CIPP-lined. LOF of crossing is less or equal to 4. Recommend next video inspection in 5 years. (O.Yakimov - DWR UCIP) 03/16/2021 Record updated from Non-Urgent to Urgent. DMP internal video inspection has found pipe integrity issues. LOF of crossing is between 5 and 6. Crossing will be monitored until funding becomes available to address the issues. No permit has been identified authorizing pipe. Debris has been cleared. (O.Yakimov - DWR UCIP) 02/25/2014 Needs cleaning and clearing of debris. (P. Amatya - DWR UCIP) FIELD_STRUCT_DESC: 24-inch CIPP-lined corrugated metal gravity drainage pipe through the levee, 15.5 feet below the crown. Flap gate on the waterside (WS) end. Concrete U-shaped headwall on each end. Grouted riprap apron on the landside (LS) end. Grouted riprap spillway on the WS end. Pipe crossing levee at angle. [Additional Reference(s): DWR Levee Log, 1992 (HLM 6.65). USACE Sacramento O&M Manual, Unit 504, May 1965, Revised 2 February 2011, (HLM 6.65), listed as 24-inch pipe. USACE As-Built Drawing No. 50-04-3685, Sheet 41, STA 91+98, 19 May 1965]. FS Date: 3/16/2021 4:01:52 PM						

LM Start	6.43	Rating **	M	Issue No.	59 (cont)
LM End	6.43	Issue Type +	Ma	Location *	

Photo 1 of 3 : UCIP_FA_2023_77892_99827.jpg



Top of Levee: View of levee crown looking downstream

Photo 2 of 3 : UCIP_FA_2023_77892_99828.jpg



Water-Side: View of levee slope looking from crown

* Location		** Rating		+ Issue Type	
LS: Land Side	N/A: Not Applicable	A: Acceptable	N: Not Inspected/Rated	Ma: Maintenance Deficiency	
WS: Water Side		M: Minimally Acceptable	C: Corrected	Ob: Design & System Obsolescence	
CR: Crown		U: Unacceptable	A/W: Acceptable but Monitor & Maintain	En: Enforcement	

**Flood Control Project Maintenance
Levee Inspections**

Maintenance Issue Types Only, Levee Inspection Report By Mile - Fall 2023

Butte County Department of Public Works

Waterway	Bank	Unit Miles	Inspection Start/End	Inspector
Unit No. 02 Mud Creek	Left	7.96	10/10/2023 10/10/2023	Makar Sokol

LM Start	6.43	Rating **	M	Issue No.	59 (cont)
LM End	6.43	Issue Type +	Ma	Location *	
Category	Supplemental			GPS Latitude/Longitude	
				Start	End
Item	DWR UCIP LMA Responsibility			39.728812°	39.728812°
				-121.932623°	-121.932623°
DWR ID	19251				

Photo 3 of 3 : UCIP_FA_2023_77892_99832.jpg



Water-Side: Headwall and flap gate at levee toe

* Location LS: Land Side N/A: Not Applicable WS: Water Side CR: Crown	** Rating A: Acceptable M: Minimally Acceptable U: Unacceptable	N: Not Inspected/Rated C: Corrected A/W: Acceptable but Monitor & Maintain	+ Issue Type Ma: Maintenance Deficiency Ob: Design & System Obsolescence En: Enforcement
--	---	--	--

**Flood Control Project Maintenance
Levee Inspections**

Maintenance Issue Types Only, Levee Inspection Report By Mile - Fall 2023

Butte County Department of Public Works

Waterway	Bank	Unit Miles	Inspection Start/End	Inspector
Unit No. 02 Mud Creek	Left	7.96	10/10/2023 10/10/2023	Makar Sokol

LM Start	6.94	Rating **	M	Issue No.	60	
LM End	6.94	Issue Type +	Ma	Location *		
Category	Supplemental			GPS Latitude/Longitude		
				Start	End	
Item	DWR UCIP LMA Responsibility			39.722798°	39.722798°	
				-121.937828°	-121.937828°	
DWR ID	19252					
Comment Code						
Inspector Comment						
DS_ID:19252 FS_ID:77893 EP_NO: N/A Repair Type: Non-Urgent EVAL Issue: Crossing Status: Found UCIP Comments: 12/19/2022 Record updated from Urgent to Non-Urgent. Pipe has been CIPP-lined. LOF of crossing is less or equal to 4. Recommend next video inspection in 5 years. (O.Yakimov - DWR UCIP) 03/16/2021 Record updated from Non-Urgent to Urgent. DMP internal video inspection has found pipe integrity issues. LOF of crossing is between 5 and 6. Crossing will be monitored until funding becomes available to address the issues. No permit has been identified authorizing pipe. Sediment at the bottom of CMP needs claering. (O.Yakimov - DWR UCIP) 02/25/2014 Needs cleaning and clearing of debris. (P. Amatya - DWR UCIP) FIELD_STRUCT_DESC: 24-inch CIPP-lined corrugated metal gravity drainage pipe through the levee, 15 feet below the crown. Flap gate on the waterside (WS) end. Concrete U-shaped headwall on each end. Grouted riprap apron on the landside (LS) end. Grouted riprap spillway on the WS end. [Additional Reference(s): DWR Levee Log, 1992 (HLM 7.17). USACE Sacramento O&M Manual, Unit 504, May 1965, Revised 2 February 2011, (HLM 7.17), listed as 24-inch pipe. USACE As-Built Drawing No. 50-04-3684, Sheets 3 and 6, STA 64+80, 15 April 1963]. FS Date: 3/16/2021 4:02:29 PM						

LM Start	6.94	Rating **	M	Issue No.	60 (cont)
LM End	6.94	Issue Type +	Ma	Location *	

Photo 1 of 3 : UCIP_FA_2023_77893_99833.jpg



Top of Levee: View of levee crown looking upstream

Photo 2 of 3 : UCIP_FA_2023_77893_99835.jpg



Water-Side: View of levee slope looking from crown

* Location		** Rating		+ Issue Type	
LS: Land Side	N/A: Not Applicable	A: Acceptable	N: Not Inspected/Rated	Ma: Maintenance Deficiency	
WS: Water Side		M: Minimally Acceptable	C: Corrected	Ob: Design & System Obsolescence	
CR: Crown		U: Unacceptable	A/W: Acceptable but Monitor & Maintain	En: Enforcement	

**Flood Control Project Maintenance
Levee Inspections**

Maintenance Issue Types Only, Levee Inspection Report By Mile - Fall 2023

Butte County Department of Public Works

Waterway	Bank	Unit Miles	Inspection Start/End	Inspector
Unit No. 02 Mud Creek	Left	7.96	10/10/2023 10/10/2023	Makar Sokol

LM Start	6.94	Rating **	M	Issue No.	60 (cont)
LM End	6.94	Issue Type +	Ma	Location *	
Category	Supplemental			GPS Latitude/Longitude	
				Start	End
Item	DWR UCIP LMA Responsibility			39.722798°	39.722798°
				-121.937828°	-121.937828°
DWR ID	19252				

Photo 3 of 3 : UCIP_FA_2023_77893_99836.jpg



Water-Side: Headwall and flap gate on levee berm

LM Start	7.22	Rating **	M	Issue No.	61
LM End	7.22	Issue Type +	Ma	Location *	
Category	Supplemental			GPS Latitude/Longitude	
				Start	End
Item	DWR UCIP LMA Responsibility			39.718882°	39.718882°
				-121.937602°	-121.937602°
DWR ID	19253				

Photo 1 of 3 : UCIP_FA_2023_67359_99839.jpg



Top of Levee: View of levee crown looking downstream

Comment Code

--

Inspector Comment

DS_ID:19253
 FS_ID:67359
 EP_NO: N/A
 Repair Type: Non-Urgent
 EVAL Issue:
 Crossing Status: Found
 UCIP Comments: 03/16/2021 Record remains Non-Urgent. No permit has been identified authorizing pipe. Debris has been cleared. DMP internal video inspection has not found pipe integrity issues. LOF of crossing is less or equal to 4. Recommend next video inspection in 5 years. (O.Yakimov - DWR UCIP)
 02/25/2014 Slide gates in CMP risers on waterside shoulder. Needs cleaning and clearing of debris. (P. Amatya - DWR UCIP)
 FIELD_STRUCT_DESC: 1 of 3: 48-inch corrugated metal gravity drainage pipe through the levee, 18 feet below the crown. Flap gate on the waterside (WS) end. Slide gate in a corrugated metal pipe (CMP) riser on the WS shoulder. Concrete U-shaped headwall on each end. Grouted riprap apron on the landside (LS) end. Grouted riprap spillway on the WS end. [Additional Reference(s): DWR Levee Log, 1992 (HLM 7.46). USACE Sacramento O&M Manual, Unit 504, May 1965, Revised 2 February 2011, (HLM 7.46), listed as 48-inch pipe. USACE As-Built Drawing No. 50-04-3684, Sheets 3 and 6, STA 50+00, 15 April 1963].
 FS Date: 3/16/2021

* Location LS: Land Side N/A: Not Applicable WS: Water Side CR: Crown	** Rating A: Acceptable M: Minimally Acceptable U: Unacceptable N: Not Inspected/Rated C: Corrected A/W: Acceptable but Monitor & Maintain	+ Issue Type Ma: Maintenance Deficiency Ob: Design & System Obsolescence En: Enforcement
--	---	--

**Flood Control Project Maintenance
Levee Inspections**

Maintenance Issue Types Only, Levee Inspection Report By Mile - Fall 2023

Butte County Department of Public Works

Waterway	Bank	Unit Miles	Inspection Start/End	Inspector
Unit No. 02 Mud Creek	Left	7.96	10/10/2023 10/10/2023	Makar Sokol

LM Start	7.22	Rating **	M	Issue No.	61 (cont)
LM End	7.22	Issue Type +	Ma	Location *	
Category	Supplemental			GPS Latitude/Longitude	
				Start	End
Item	DWR UCIP LMA Responsibility			39.718882°	39.718882°
				-121.937602°	-121.937602°
DWR ID	19253				

Photo 2 of 3 : UCIP_FA_2023_67359_99840.jpg



Water-Side: View of levee slope looking from crown. CMP riser with slide gate on levee shoulder

LM Start	7.22	Rating **	M	Issue No.	61 (cont)
LM End	7.22	Issue Type +	Ma	Location *	

Photo 3 of 3 : UCIP_FA_2023_67359_99842.jpg



Water-Side: Headwall and flap gate at levee toe

* Location LS: Land Side N/A: Not Applicable WS: Water Side CR: Crown		** Rating A: Acceptable N: Not Inspected/Rated M: Minimally Acceptable C: Corrected U: Unacceptable A/W: Acceptable but Monitor & Maintain		+ Issue Type Ma: Maintenance Deficiency Ob: Design & System Obsolescence En: Enforcement	
--	--	---	--	--	--

**Flood Control Project Maintenance
Levee Inspections**

Maintenance Issue Types Only, Levee Inspection Report By Mile - Fall 2023

Butte County Department of Public Works

Waterway	Bank	Unit Miles	Inspection Start/End	Inspector
Unit No. 02 Mud Creek	Left	7.96	10/10/2023 10/10/2023	Makar Sokol

LM Start	7.23	Rating **	M	Issue No.	62
LM End	7.23	Issue Type +	Ma	Location *	
Category	Supplemental			GPS Latitude/Longitude	
				Start	End
Item	DWR UCIP LMA Responsibility			39.718849°	39.718849°
				-121.937580°	-121.937580°
DWR ID	19261				
Comment Code					
Inspector Comment					
DS_ID:19261 FS_ID:67361 EP_NO: N/A Repair Type: Non-Urgent EVAL Issue: Crossing Status: Found UCIP Comments: 03/16/2021 Record remains Non-Urgent. No permit has been identified authorizing pipe. Debris has been cleared. DMP internal video inspection has not found pipe integrity issues. LOF of crossing is less or equal to 4. Recommend next video inspection in 5 years. (O.Yakimov - DWR UCIP) 02/25/2014 Slide gates in CMP risers on waterside shoulder. Needs cleaning and clearing on both pipe ends. (P. Amatya - DWR UCIP) FIELD_STRUCT_DESC: 3 of 3: 48-inch corrugated metal gravity drainage pipe through the levee, 18 feet below the crown. Flap gate on the waterside (WS) end. Slide gate in a corrugated metal pipe (CMP) riser on the WS shoulder. Concrete U-shaped headwall on each end. Grouted riprap apron on the landside (LS) end. Grouted riprap spillway on the WS end. [Additional Reference(s): DWR Levee Log, 1992 (HLM 7.46). USACE Sacramento O&M Manual, Unit 504, May 1965, Revised 2 February 2011, (HLM 7.46), listed as 48-inch pipe. USACE As-Built Drawing No. 50-04-3684, Sheets 3 and 6, STA 50+00, 15 April 1963]. FS Date: 3/16/2021 3:17:31 PM					

LM Start	7.23	Rating **	M	Issue No.	62 (cont)
LM End	7.23	Issue Type +	Ma	Location *	

Photo 1 of 3 : UCIP_FA_2023_67361_99849.jpg



Top of Levee: View of levee crown looking downstream

Photo 2 of 3 : UCIP_FA_2023_67361_99850.jpg



Water-Side: View of levee slope looking from crown. CMP riser with slide gate on levee shoulder

* Location LS: Land Side N/A: Not Applicable WS: Water Side CR: Crown	** Rating A: Acceptable M: Minimally Acceptable U: Unacceptable	N: Not Inspected/Rated C: Corrected A/W: Acceptable but Monitor & Maintain	+ Issue Type Ma: Maintenance Deficiency Ob: Design & System Obsolescence En: Enforcement
--	---	--	--

**Flood Control Project Maintenance
Levee Inspections**

Maintenance Issue Types Only, Levee Inspection Report By Mile - Fall 2023

Butte County Department of Public Works

Waterway	Bank	Unit Miles	Inspection Start/End	Inspector
Unit No. 02 Mud Creek	Left	7.96	10/10/2023 10/10/2023	Makar Sokol

LM Start	7.23	Rating **	M	Issue No.	62 (cont)
LM End	7.23	Issue Type +	Ma	Location *	
Category	Supplemental			GPS Latitude/Longitude	
				Start	End
Item	DWR UCIP LMA Responsibility			39.718849°	39.718849°
				-121.937580°	-121.937580°
DWR ID	19261				

Photo 3 of 3 : UCIP_FA_2023_67361_99852.jpg



Water-Side: Headwall and flap gate at levee toe

* Location LS : Land Side N/A : Not Applicable WS : Water Side CR : Crown	** Rating A : Acceptable M : Minimally Acceptable U : Unacceptable	N : Not Inspected/Rated C : Corrected A/W : Acceptable but Monitor & Maintain	+ Issue Type Ma : Maintenance Deficiency Ob : Design & System Obsolescence En : Enforcement
--	--	---	---

**Flood Control Project Maintenance
Levee Inspections**

Maintenance Issue Types Only, Levee Inspection Report By Mile - Fall 2023

Butte County Department of Public Works

Waterway	Bank	Unit Miles	Inspection Start/End	Inspector
Unit No. 02 Mud Creek	Left	7.96	10/10/2023 10/10/2023	Makar Sokol

LM Start	7.23	Rating **	A/W	Issue No.	63	
LM End	7.23	Issue Type +	Ma	Location *		
Category	Supplemental			GPS Latitude/Longitude		
				Start	End	
Item	DWR UCIP LMA Responsibility			39.718862°	39.718862°	
				-121.937594°	-121.937594°	
DWR ID	19260					
Comment Code						
Inspector Comment						
DS_ID:19260 FS_ID:67360 EP_NO: N/A Repair Type: No Action Needed EVAL Issue: Crossing Status: Found UCIP Comments: 09/15/2023 Record updated from Non-Urgent to No Action Needed. Pipe was CIPP lined. DMP internal video inspection has found none or minor pipe defects. Recommend next video inspection in 5 years. (O. Yakimov - DWR UCIP) 03/16/2021 Record remains Non-Urgent. DMP internal video inspection has found pipe integrity issues. LOF of crossing is greater than or equal to 4.1 and less than 5. Crossing will be monitored until funding becomes available for rehabilitation. No permit has been identified authorizing pipe. Debris has been cleared. (O.Yakimov - DWR UCIP) 02/25/2014 Slide gates in CMP risers on waterside shoulder. Needs cleaning and clearing of debris. (P. Amatya - DWR UCIP) FIELD_STRUCT_DESC: 2 of 3: 48-inch corrugated metal gravity drainage pipe through the levee, 18 feet below the crown. Flap gate on the waterside (WS) end. Slide gate in a corrugated metal pipe (CMP) riser on the WS shoulder. Concrete U-shaped headwall on each end. Grouted riprap apron on the landside (LS) end. Grouted riprap spillway on the WS end. [Additional Reference(s): DWR Levee Log, 1992 (HLM 7.46). USACE Sacramento O&M Manual, Unit 504, May 1965, Revised 2 February 2011, (HLM 7.46), listed as 48-inch pipe. USACE As-Built Drawing No. 50-04-3684, Sheets 3 and 6, STA 50+00, 15 April 1963]. FS Date: 3/16/2021 3:16:09 PM						

Photo 1 of 3 : UCIP_FA_2023_67360_99844.jpg



Top of Levee: View of levee crown looking downstream

* Location LS: Land Side N/A: Not Applicable WS: Water Side CR: Crown	** Rating A: Acceptable M: Minimally Acceptable U: Unacceptable N: Not Inspected/Rated C: Corrected A/W: Acceptable but Monitor & Maintain	+ Issue Type Ma: Maintenance Deficiency Ob: Design & System Obsolescence En: Enforcement
--	---	--

**Flood Control Project Maintenance
Levee Inspections**

Maintenance Issue Types Only, Levee Inspection Report By Mile - Fall 2023

Butte County Department of Public Works

Waterway	Bank	Unit Miles	Inspection Start/End	Inspector
Unit No. 02 Mud Creek	Left	7.96	10/10/2023 10/10/2023	Makar Sokol

LM Start	7.23	Rating **	A/W	Issue No.	63 (cont)
LM End	7.23	Issue Type +	Ma	Location *	
Category	Supplemental			GPS Latitude/Longitude	
				Start	End
Item	DWR UCIP LMA Responsibility			39.718862°	39.718862°
				-121.937594°	-121.937594°
DWR ID	19260				

Photo 2 of 3 : UCIP_FA_2023_67360_99845.jpg



Water-Side: View of levee slope looking from crown. CMP riser with slide gate on levee shoulder

LM Start	7.23	Rating **	A/W	Issue No.	63 (cont)
LM End	7.23	Issue Type +	Ma	Location *	

Photo 3 of 3 : UCIP_FA_2023_67360_99847.jpg



Water-Side: Headwall and flap gate at levee toe

* Location LS: Land Side N/A: Not Applicable WS: Water Side CR: Crown	** Rating A: Acceptable M: Minimally Acceptable U: Unacceptable	N: Not Inspected/Rated C: Corrected A/W: Acceptable but Monitor & Maintain	+ Issue Type Ma: Maintenance Deficiency Ob: Design & System Obsolescence En: Enforcement
--	---	--	--

**Flood Control Project Maintenance
Levee Inspections**

Maintenance Issue Types Only, Levee Inspection Report By Mile - Fall 2023

Butte County Department of Public Works

Waterway	Bank	Unit Miles	Inspection Start/End	Inspector
Unit No. 02 Mud Creek	Left	7.96	10/10/2023 10/10/2023	Makar Sokol

LM Start	7.77	Rating **	A/W	Issue No.	64
LM End	7.77	Issue Type +	Ma	Location *	
Category	Supplemental			GPS Latitude/Longitude	
				Start	End
Item	DWR UCIP LMA Responsibility			39.711436°	39.711436°
				-121.937135°	-121.937135°
DWR ID	19254				
Comment Code					
Inspector Comment					
DS_ID:19254 FS_ID:67362 EP_NO: N/A Repair Type: No Action Needed EVAL Issue: Crossing Status: Found UCIP Comments: 09/15/2023 Record updated from Non-Urgent to No Action Needed. Pipe was CIPP lined. DMP internal video inspection has found none or minor pipe defects. Recommend next video inspection in 5 years. (O. Yakimov - DWR UCIP) 03/16/2021 Record remains Non-Urgent. DMP internal video inspection has found pipe integrity issues. LOF of crossing is greater than or equal to 4.1 and less than 5. Crossing will be monitored until funding becomes available for rehabilitation. No permit has been identified authorizing pipe. Debris has been cleared. (O.Yakimov - DWR UCIP) 02/25/2014 Debris in inlet pipe, needs cleaning and clearing. (P. Amatya - DWR UCIP) FIELD_STRUCT_DESC: 24-inch CIPP-lined corrugated metal gravity drainage pipe through the levee, 18 feet below the crown. Flap gate on the waterside (WS) end. Concrete U-shaped headwall on each end. Grouted riprap apron on the landside (LS) end. Grouted riprap spillway on the WS end. [Additional Reference(s): DWR Levee Log, 1992 (HLM 8.01). USACE Sacramento O&M Manual, Unit 504, May 1965, Revised 2 February 2011, (HLM 8.09), listed as 24-inch pipe. USACE As-Built Drawing No. 50-04-3684, footnote Sheet 2, Sheet 6, STA 21+23, 15 April 1963]. FS Date: 3/16/2021 3:19:02 PM					

LM Start	7.77	Rating **	A/W	Issue No.	64 (cont)
LM End	7.77	Issue Type +	Ma	Location *	

Photo 1 of 3 : UCIP_FA_2023_67362_99859.jpg



Water-Side: Headwall and flap gate at levee toe

Photo 2 of 3 : UCIP_FA_2023_67362_99854.jpg



Top of Levee: View of levee crown looking downstream

* Location		** Rating		+ Issue Type	
LS: Land Side	N/A: Not Applicable	A: Acceptable	N: Not Inspected/Rated	Ma: Maintenance Deficiency	
WS: Water Side		M: Minimally Acceptable	C: Corrected	Ob: Design & System Obsolescence	
CR: Crown		U: Unacceptable	A/W: Acceptable but Monitor & Maintain	En: Enforcement	

**Flood Control Project Maintenance
Levee Inspections**

Maintenance Issue Types Only, Levee Inspection Report By Mile - Fall 2023

Butte County Department of Public Works

Waterway	Bank	Unit Miles	Inspection Start/End	Inspector
Unit No. 02 Mud Creek	Left	7.96	10/10/2023 10/10/2023	Makar Sokol

LM Start	7.77	Rating **	A/W	Issue No.	64 (cont)
LM End	7.77	Issue Type +	Ma	Location *	
Category	Supplemental			GPS Latitude/Longitude	
				Start	End
Item	DWR UCIP LMA Responsibility			39.711436°	39.711436°
				-121.937135°	-121.937135°
DWR ID	19254				

Photo 3 of 3 : UCIP_FA_2023_67362_99855.jpg



Water-Side: View of levee slope looking from crown

* Location LS : Land Side N/A : Not Applicable WS : Water Side CR : Crown	** Rating A : Acceptable M : Minimally Acceptable U : Unacceptable N : Not Inspected/Rated C : Corrected A/W : Acceptable but Monitor & Maintain	+ Issue Type Ma : Maintenance Deficiency Ob : Design & System Obsolescence En : Enforcement
--	---	---

**Flood Control Project Maintenance
Levee Inspections**

Maintenance Issue Types Only, Levee Inspection Report By Mile - Fall 2023

Butte County Department of Public Works

Waterway	Bank	Unit Miles	Inspection Start/End	Inspector
Unit No. 02A Channel Slough	Left	0.26	10/10/2023 10/10/2023	Makar Sokol

LM Start	0.15	Rating **	M	Issue No.	2
LM End	0.15	Issue Type +	Ma	Location *	WS
Category	Earthen Levee			GPS Latitude/Longitude	
				Start	End
Item	Vegetation			39.734946°	39.734946°
				-121.929191°	-121.929191°
DWR ID	DWR_NA0003_02A_s_2023_2				
Comment Code					
V2 : Remove the wild growth and woody vegetation other than native grasses from the levee slopes.					
Inspector Comment					

Photo 1 of 1 : FA_2023_NA0003_66_2_20231016_00003.jpg



View of wild growth along the waterside slope. Fall 2023.

* Location LS : Land Side N/A : Not Applicable WS : Water Side CR : Crown	** Rating A : Acceptable M : Minimally Acceptable U : Unacceptable	N : Not Inspected/Rated C : Corrected A/W : Acceptable but Monitor & Maintain	+ Issue Type Ma : Maintenance Deficiency Ob : Design & System Obsolescence En : Enforcement
--	--	---	---

**Flood Control Project Maintenance
Levee Inspections**

Maintenance Issue Types Only, Levee Inspection Report By Mile - Fall 2023

Butte County Department of Public Works

Waterway	Bank	Unit Miles	Inspection Start/End	Inspector
Unit No. 03 Sycamore and Sheep Hollow Creeks	Right	4.05	10/10/2023 10/10/2023	Makar Sokol

LM Start	0.07	Rating **	M	Issue No.	19
LM End	0.07	Issue Type +	Ma	Location *	LS
Category	Earthen Levee			GPS Latitude/Longitude	
				Start	End
Item	Erosion / Vehicle Traffic			39.786028°	39.786028°
				-121.881924°	-121.881924°
DWR ID	DWR_NA0003_03_f_2021_19				
Comment Code					
E6 : Repair the levee slope damaged by vehicle traffic and prevent access where possible.					
Inspector Comment					

Photo 1 of 1 : FA_2023_NA0003_67_19_20231002_00002.jpg



View of the damaged landside slope due to vehicle traffic. Spring 2022.

LM Start	0.07	Rating **	M	Issue No.	21
LM End	0.07	Issue Type +	Ma	Location *	WS
Category	Earthen Levee			GPS Latitude/Longitude	
				Start	End
Item	Erosion / Vehicle Traffic			39.786037°	39.786037°
				-121.881857°	-121.881857°
DWR ID	DWR_NA0003_03_s_2022_21				
Comment Code					
E6 : Repair the levee slope damaged by vehicle traffic and prevent access where possible.					
Inspector Comment					

Photo 1 of 1 : FA_2023_NA0003_67_21_20231016_00047.jpg



View of erosion on the waterside slope due to vehicle traffic. Fall 2023.

* Location LS : Land Side N/A : Not Applicable WS : Water Side CR : Crown	** Rating A : Acceptable M : Minimally Acceptable U : Unacceptable	N : Not Inspected/Rated C : Corrected A/W : Acceptable but Monitor & Maintain	+ Issue Type Ma : Maintenance Deficiency Ob : Design & System Obsolescence En : Enforcement
--	--	---	---

**Flood Control Project Maintenance
Levee Inspections**

Maintenance Issue Types Only, Levee Inspection Report By Mile - Fall 2023

Butte County Department of Public Works

Waterway	Bank	Unit Miles	Inspection Start/End	Inspector
Unit No. 03 Sycamore and Sheep Hollow Creeks	Right	4.05	10/10/2023 10/10/2023	Makar Sokol

LM Start	0.10	Rating **	M	Issue No.	26
LM End	0.10	Issue Type +	Ma	Location *	
Category	Supplemental			GPS Latitude/Longitude	
				Start	End
Item	DWR UCIP LMA Responsibility			39.786195°	39.786195°
				-121.881325°	-121.881325°
DWR ID	19262				
Comment Code					
Inspector Comment					
DS_ID:19262 FS_ID:77894 EP_NO: N/A Repair Type: Non-Urgent EVAL Issue: Crossing Status: Found UCIP Comments: 12/19/2022 Record updated from Urgent to Non-Urgent. Pipe has been CIPP-lined. LOF of crossing is less or equal to 4. Recommend next video inspection in 5 years. (O.Yakimov - DWR UCIP) 03/23/2021 Record updated from No Action Needed to Urgent. DMP internal video inspection has found pipe integrity issues. LOF of crossing is between 5 and 6. Crossing will be monitored until funding becomes available to address the issues. No permit has been identified authorizing pipe. (O.Yakimov - DWR UCIP) 05/16/2017 Crossing has been downgraded from Non-Urgent to No Action Needed. The flap gate appears to be in good working order based on the photos, and the small pile of debris not enough to warrant Non-Urgent rating. (K. Fazel - DWR UCIP) 03/11/2014 Slide gate in CMP riser on watersie. The culvert was working during field inspection. (P. Amatya - DWR) FIELD_STRUCT_DESC: 42-inch CIPP-lined corrugated metal gravity drainage pipe through the levee, 14 feet below the crown. Flap gate on the waterside (WS) end. Slide gate in a corrugated metal pipe (CMP) riser on the WS slope. Concrete U-shaped headwall on each end. Grouted riprap apron on the landside (LS) end. Grouted riprap spillway on the WS end. [Additional Reference(s): DWR Levee Log, 1992 (HLM 0.09). USACE Sacramento O&M Manual, Unit 504, May 1965, Revised 2 February 2011, (HLM 0.09), listed as 42-inch pipe. USACE As-Built Drawing No. 50-04-3685, Sheets 7 and 40, STA 370+60, 19 May 1965]. FS Date: 3/23/2021 4:04:43 PM					

Photo 1 of 3 : UCIP_FA_2023_77894_100475.jpg



Top of Levee: View of levee crown looking downstream

* Location	** Rating	+ Issue Type
LS: Land Side WS: Water Side CR: Crown	A: Acceptable M: Minimally Acceptable U: Unacceptable	Ma: Maintenance Deficiency Ob: Design & System Obsolescence En: Enforcement
N/A: Not Applicable	N: Not Inspected/Rated C: Corrected A/W: Acceptable but Monitor & Maintain	

**Flood Control Project Maintenance
Levee Inspections**

Maintenance Issue Types Only, Levee Inspection Report By Mile - Fall 2023

Butte County Department of Public Works

Waterway	Bank	Unit Miles	Inspection Start/End	Inspector
Unit No. 03 Sycamore and Sheep Hollow Creeks	Right	4.05	10/10/2023 10/10/2023	Makar Sokol

LM Start	0.10	Rating **	M	Issue No.	26 (cont)	
LM End	0.10	Issue Type +	Ma	Location *		
Category	Supplemental			GPS Latitude/Longitude		
				Start	End	
Item	DWR UCIP LMA Responsibility			39.786195°	39.786195°	
				-121.881325°	-121.881325°	
DWR ID	19262					

Photo 2 of 3 : UCIP_FA_2023_77894_100476.jpg



Land-Side: View of levee slope looking from crown

LM Start	0.10	Rating **	M	Issue No.	26 (cont)
LM End	0.10	Issue Type +	Ma	Location *	

Photo 3 of 3 : UCIP_FA_2023_77894_100474.jpg



Land-Side: View inside of pipe looking from landside end

* Location LS : Land Side N/A : Not Applicable WS : Water Side CR : Crown	** Rating A : Acceptable M : Minimally Acceptable U : Unacceptable	N : Not Inspected/Rated C : Corrected A/W : Acceptable but Monitor & Maintain	+ Issue Type Ma : Maintenance Deficiency Ob : Design & System Obsolescence En : Enforcement
--	--	---	---

**Flood Control Project Maintenance
Levee Inspections**

Maintenance Issue Types Only, Levee Inspection Report By Mile - Fall 2023

Butte County Department of Public Works

Waterway	Bank	Unit Miles	Inspection Start/End	Inspector
Unit No. 03 Sycamore and Sheep Hollow Creeks	Right	4.05	10/10/2023 10/10/2023	Makar Sokol

LM Start	0.39	Rating **	M	Issue No.	27
LM End	0.39	Issue Type +	Ma	Location *	
Category	Supplemental			GPS Latitude/Longitude	
				Start	End
Item	DWR UCIP LMA Responsibility			39.785262°	39.785262°
				-121.876622°	-121.876622°
DWR ID	19278				
Comment Code					
Inspector Comment					
DS_ID:19278 FS_ID:67669 EP_NO: N/A Repair Type: Non-Urgent EVAL Issue: Crossing Status: Found UCIP Comments: 03/23/2021 Record updated from No Action Needed to Non-Urgent. No permit has been identified authorizing pipe. DMP internal video inspection has not found pipe integrity issues. LOF of crossing is less or equal to 4. Recommend next video inspection in 5 years. (O.Yakimov - DWR UCIP) 03/11/2014 Slide gate in CMP riser on waterside. The culvert was working during the field visit. (P. Amatya - DWR UCIP) FIELD_STRUCT_DESC: 1 of 3: 48-inch corrugated metal gravity drainage pipe through the levee, 11.7 feet below the crown. Slide gate in a riser well on the waterside (WS) slope. Concrete U-shaped headwall on each end. Flap gate on the WS end. Grouted riprap outlet channel on the WS. [Additional Reference(s): DWR Levee Log, 1992 (HLM 0.39). USACE Sacramento O&M Manual, Unit 504, May 1965, Revised 2 February 2011, (HLM 0.39), listed as 48-inch pipe. USACE As-Built Drawing No. 50-04-3685, Sheets 7 and 39, STA 385+90, 19 May 1965]. FS Date: 3/23/2021 2:00:15 PM					

LM Start	0.39	Rating **	M	Issue No.	27 (cont)
LM End	0.39	Issue Type +	Ma	Location *	

Photo 1 of 3 : UCIP_FA_2023_67669_100480.jpg



Top of Levee: View of levee crown looking downstream

Photo 2 of 3 : UCIP_FA_2023_67669_100481.jpg



Land-Side: View of levee slope looking from crown

* Location LS: Land Side N/A: Not Applicable WS: Water Side CR: Crown	** Rating A: Acceptable M: Minimally Acceptable U: Unacceptable	N: Not Inspected/Rated C: Corrected A/W: Acceptable but Monitor & Maintain	+ Issue Type Ma: Maintenance Deficiency Ob: Design & System Obsolescence En: Enforcement
--	---	--	--

**Flood Control Project Maintenance
Levee Inspections**

Maintenance Issue Types Only, Levee Inspection Report By Mile - Fall 2023

Butte County Department of Public Works

Waterway	Bank	Unit Miles	Inspection Start/End	Inspector
Unit No. 03 Sycamore and Sheep Hollow Creeks	Right	4.05	10/10/2023 10/10/2023	Makar Sokol

LM Start	0.39	Rating **	M	Issue No.	27 (cont)
LM End	0.39	Issue Type +	Ma	Location *	
Category	Supplemental		GPS Latitude/Longitude		
			Start	End	
Item	DWR UCIP LMA Responsibility		39.785262°	39.785262°	
			-121.876622°	-121.876622°	
DWR ID	19278				

Photo 3 of 3 : UCIP_FA_2023_67669_100482.jpg



Water-Side: View of levee slope looking from crown. CMP riser with slide gate on levee shoulder

LM Start	0.39	Rating **	M	Issue No.	28
LM End	0.39	Issue Type +	Ma	Location *	
Category	Supplemental		GPS Latitude/Longitude		
			Start	End	
Item	DWR UCIP LMA Responsibility		39.785246°	39.785246°	
			-121.876609°	-121.876609°	
DWR ID	19277				

Comment Code

Inspector Comment

DS_ID:19277
FS_ID:67670
EP_NO: N/A
Repair Type: Non-Urgent
EVAL Issue:
Crossing Status: Found
UCIP Comments: 03/23/2021 Record updated from No Action Needed to Non-Urgent. No permit has been identified authorizing pipe. DMP internal video inspection has not found pipe integrity issues. LOF of crossing is less or equal to 4. Recommend next video inspection in 5 years. (O.Yakimov - DWR UCIP)
03/11/2014 Slide gate in CMP riser on waterside. The culvert was working during the field visit. (P. Amatya - DWR UCIP)
FIELD_STRUCT_DESC: 2 of 3: 48-inch corrugated metal gravity drainage pipe through the levee, 11.7 feet below the crown. Slide gate in a riser well on the waterside (WS) slope. Concrete U-shaped headwall on each end. Flap gate on the WS end. Grouted riprap outlet channel on the WS. [Additional Reference(s): DWR Levee Log, 1992 (HLM 0.39). USACE Sacramento O&M Manual, Unit 504, May 1965, Revised 2 February 2011, (HLM 0.39), listed as 48-inch pipe. USACE As-Built Drawing No. 50-04-3685, Sheets 7 and 39, STA 385+90, 19 May 1965].
FS Date: 3/23/2021 2:59:04 PM

Photo 1 of 3 : UCIP_FA_2023_67670_100486.jpg



Top of Levee: View of levee crown looking downstream

* Location LS : Land Side N/A : Not Applicable WS : Water Side CR : Crown	** Rating A : Acceptable M : Minimally Acceptable U : Unacceptable N : Not Inspected/Rated C : Corrected A/W : Acceptable but Monitor & Maintain	+ Issue Type Ma : Maintenance Deficiency Ob : Design & System Obsolescence En : Enforcement
--	---	---

**Flood Control Project Maintenance
Levee Inspections**

Maintenance Issue Types Only, Levee Inspection Report By Mile - Fall 2023

Butte County Department of Public Works

Waterway	Bank	Unit Miles	Inspection Start/End	Inspector
Unit No. 03 Sycamore and Sheep Hollow Creeks	Right	4.05	10/10/2023 10/10/2023	Makar Sokol

LM Start	0.39	Rating **	M	Issue No.	28 (cont)	
LM End	0.39	Issue Type +	Ma	Location *		
Category	Supplemental			GPS Latitude/Longitude		
				Start	End	
Item	DWR UCIP LMA Responsibility			39.785246°	39.785246°	
				-121.876609°	-121.876609°	
DWR ID	19277					

Photo 2 of 3 : UCIP_FA_2023_67670_100487.jpg



Land-Side: View of levee slope looking from crown

LM Start	0.39	Rating **	M	Issue No.	28 (cont)
LM End	0.39	Issue Type +	Ma	Location *	

Photo 3 of 3 : UCIP_FA_2023_67670_100488.jpg



Water-Side: View of levee slope looking from crown. CMP riser with slide gate on levee shoulder

* Location LS: Land Side N/A: Not Applicable WS: Water Side CR: Crown	** Rating A: Acceptable M: Minimally Acceptable U: Unacceptable N: Not Inspected/Rated C: Corrected A/W: Acceptable but Monitor & Maintain	+ Issue Type Ma: Maintenance Deficiency Ob: Design & System Obsolescence En: Enforcement
--	---	--

**Flood Control Project Maintenance
Levee Inspections**

Maintenance Issue Types Only, Levee Inspection Report By Mile - Fall 2023

Butte County Department of Public Works

Waterway	Bank	Unit Miles	Inspection Start/End	Inspector
Unit No. 03 Sycamore and Sheep Hollow Creeks	Right	4.05	10/10/2023 10/10/2023	Makar Sokol

LM Start	0.39	Rating **	M	Issue No.	29
LM End	0.39	Issue Type +	Ma	Location *	
Category	Supplemental			GPS Latitude/Longitude	
				Start	End
Item	DWR UCIP LMA Responsibility			39.785230°	39.785230°
				-121.876592°	-121.876592°
DWR ID	19263				
Comment Code					
Inspector Comment					
DS_ID:19263 FS_ID:67671 EP_NO: N/A Repair Type: Non-Urgent EVAL Issue: Crossing Status: Found UCIP Comments: 03/23/2021 Record updated from No Action Needed to Non-Urgent. No permit has been identified authorizing pipe. DMP internal video inspection has not found pipe integrity issues. LOF of crossing is less or equal to 4. Recommend next video inspection in 5 years. (O.Yakimov - DWR UCIP) 03/11/2014 Slide gate in CMP riser on waterside. The culvert was working during the field visit. (P. Amatya - DWR UCIP) FIELD_STRUCT_DESC: 3 of 3: 48-inch corrugated metal gravity drainage pipe through the levee, 11.7 feet below the crown. Slide gate in a riser well on the waterside (WS) slope. Concrete U-shaped headwall on each end. Flap gate on the WS end. Grouted riprap outlet channel on the WS. [Additional Reference(s): DWR Levee Log, 1992 (HLM 0.39). USACE Sacramento O&M Manual, Unit 504, May 1965, Revised 2 February 2011, (HLM 0.39), listed as 48-inch pipe. USACE As-Built Drawing No. 50-04-3685, Sheets 7 and 39, STA 385+90, 19 May 1965]. FS Date: 3/23/2021 3:06:10 PM					

LM Start	0.39	Rating **	M	Issue No.	29 (cont)
LM End	0.39	Issue Type +	Ma	Location *	

Photo 1 of 3 : UCIP_FA_2023_67671_100492.jpg



Top of Levee: View of levee crown looking downstream

Photo 2 of 3 : UCIP_FA_2023_67671_100493.jpg



Land-Side: View of levee slope looking from crown

* Location LS: Land Side N/A: Not Applicable WS: Water Side CR: Crown	** Rating A: Acceptable M: Minimally Acceptable U: Unacceptable	N: Not Inspected/Rated C: Corrected A/W: Acceptable but Monitor & Maintain	+ Issue Type Ma: Maintenance Deficiency Ob: Design & System Obsolescence En: Enforcement
--	---	--	--

**Flood Control Project Maintenance
Levee Inspections**

Maintenance Issue Types Only, Levee Inspection Report By Mile - Fall 2023

Butte County Department of Public Works

Waterway	Bank	Unit Miles	Inspection Start/End	Inspector
Unit No. 03 Sycamore and Sheep Hollow Creeks	Right	4.05	10/10/2023 10/10/2023	Makar Sokol

LM Start	0.39	Rating **	M	Issue No.	29 (cont)
LM End	0.39	Issue Type +	Ma	Location *	
Category	Supplemental		GPS Latitude/Longitude		
			Start	End	
Item	DWR UCIP LMA Responsibility		39.785230°	39.785230°	
			-121.876592°	-121.876592°	
DWR ID	19263				

Photo 3 of 3 : UCIP_FA_2023_67671_100494.jpg



Water-Side: View of levee slope looking from crown. CMP riser with slide gate on levee shoulder

LM Start	1.25	Rating **	M	Issue No.	30
LM End	1.25	Issue Type +	Ma	Location *	
Category	Supplemental		GPS Latitude/Longitude		
			Start	End	
Item	DWR UCIP LMA Responsibility		39.779678°	39.779678°	
			-121.862632°	-121.862632°	
DWR ID	19264				

Comment Code

Inspector Comment

DS_ID:19264
 FS_ID:77895
 EP_NO: N/A
 Repair Type: Non-Urgent
 EVAL Issue:
 Crossing Status: Found
 UCIP Comments: 12/19/2022 Record updated from Urgent to Non-Urgent. Pipe has been CIPP-lined. LOF of crossing is less or equal to 4. Recommend next video inspection in 5 years. (O.Yakimov - DWR UCIP).
 03/23/2021 Record updated from No Action Needed to Urgent. DMP internal video inspection has found pipe integrity issues. LOF of crossing is between 5 and 6. Crossing will be monitored until funding becomes available to address the issues. No permit has been identified authorizing pipe. (O.Yakimov - DWR UCIP)
 03/11/2014 The culvert was working during the field visit. (P. Amatya - DWR UCIP)
 FIELD_STRUCT_DESC: 24-inch CIPP-lined corrugated metal gravity drainage pipe through the levee, 11.7 feet below the crown. Flap gate on the waterside (WS) end. Concrete U-shaped headwall on each end. [Additional Reference(s): DWR Levee Log, 1992 (HLM 1.26). USACE Sacramento O&M Manual, Unit 504, May 1965, Revised 2 February 2011, (HLM 1.28), listed as 24-inch pipe. USACE As-Built Drawing No. 50-04-3685, Sheet 9, STA 431+50, 19 May 1965].
 FS Date: 3/23/2021 4:07:44 PM

Photo 1 of 3 : UCIP_FA_2023_77895_100511.jpg



Top of Levee: View of levee crown looking upstream

* Location	** Rating	+ Issue Type
LS: Land Side WS: Water Side CR: Crown	A: Acceptable M: Minimally Acceptable U: Unacceptable	Ma: Maintenance Deficiency Ob: Design & System Obsolescence En: Enforcement
N/A: Not Applicable	N: Not Inspected/Rated C: Corrected A/W: Acceptable but Monitor & Maintain	

**Flood Control Project Maintenance
Levee Inspections**

Maintenance Issue Types Only, Levee Inspection Report By Mile - Fall 2023

Butte County Department of Public Works

Waterway	Bank	Unit Miles	Inspection Start/End	Inspector
Unit No. 03 Sycamore and Sheep Hollow Creeks	Right	4.05	10/10/2023 10/10/2023	Makar Sokol

LM Start	1.25	Rating **	M	Issue No.	30 (cont)
LM End	1.25	Issue Type +	Ma	Location *	
Category	Supplemental			GPS Latitude/Longitude	
				Start	End
Item	DWR UCIP LMA Responsibility			39.779678°	39.779678°
				-121.862632°	-121.862632°
DWR ID	19264				

Photo 2 of 3 : UCIP_FA_2023_77895_100515.jpg



Land-Side: View inside of pipe looking from landside end

LM Start	1.25	Rating **	M	Issue No.	30 (cont)
LM End	1.25	Issue Type +	Ma	Location *	

Photo 3 of 3 : UCIP_FA_2023_77895_100516.jpg



Water-Side: Headwall and flap gate at levee toe

* Location LS: Land Side N/A: Not Applicable WS: Water Side CR: Crown		** Rating A: Acceptable N: Not Inspected/Rated M: Minimally Acceptable C: Corrected U: Unacceptable A/W: Acceptable but Monitor & Maintain		+ Issue Type Ma: Maintenance Deficiency Ob: Design & System Obsolescence En: Enforcement	
--	--	---	--	--	--

**Flood Control Project Maintenance
Levee Inspections**

Maintenance Issue Types Only, Levee Inspection Report By Mile - Fall 2023

Butte County Department of Public Works

Waterway	Bank	Unit Miles	Inspection Start/End	Inspector
Unit No. 03 Sycamore and Sheep Hollow Creeks	Right	4.05	10/10/2023 10/10/2023	Makar Sokol

LM Start	1.50	Rating **	A/W	Issue No.	31	
LM End	1.50	Issue Type +	Ma	Location *		
Category	Supplemental			GPS Latitude/Longitude		
				Start	End	
Item	DWR UCIP LMA Responsibility			39.779230°	39.779230°	
				-121.857945°	-121.857945°	
DWR ID	19265					
Comment Code						
Inspector Comment						
DS_ID:19265 FS_ID:67677 EP_NO: N/A Repair Type: No Action Needed EVAL Issue: Crossing Status: Found UCIP Comments: 09/15/2023 Record updated from Non-Urgent to No Action Needed. Pipe was CIPP lined. DMP internal video inspection has found none or minor pipe defects. Recommend next video inspection in 5 years. (O. Yakimov - DWR UCIP) 03/23/2021 Record updated from No Action Needed to Non-Urgent. DMP internal video inspection has found pipe integrity issues. LOF of crossing is greater than or equal to 4.1 and less than 5. Crossing will be monitored until funding becomes available for rehabilitation. No permit has been identified authorizing pipe. (O.Yakimov - DWR UCIP) 03/11/2014 Working during the field visit. (P. Amatya - DWR UCIP) FIELD_STRUCT_DESC: 24-inch CIPP-lined corrugated metal gravity drainage pipe through the levee, 11 feet below the crown. Flap gate on the waterside (WS) end. Concrete U-shaped headwall on each end. Grouted riprap apron on each end. [Additional Reference(s): DWR Levee Log, 1992 (HLM 1.52). USACE Sacramento O&M Manual, Unit 504, May 1965, Revised 2 February 2011, (HLM 1.53), listed as 24-inch pipe. USACE As-Built Drawing No. 50-04-3685, Sheet 9, STA 444+80, 19 May 1965]. FS Date: 3/23/2021 8:35:54 AM						

LM Start	1.50	Rating **	A/W	Issue No.	31 (cont)
LM End	1.50	Issue Type +	Ma	Location *	

Photo 1 of 3 : UCIP_FA_2023_67677_100517.jpg



Top of Levee: View of levee crown looking upstream

Photo 2 of 3 : UCIP_FA_2023_67677_100520.jpg



Land-Side: View inside of pipe looking from landside end

* Location LS: Land Side N/A: Not Applicable WS: Water Side CR: Crown	** Rating A: Acceptable M: Minimally Acceptable U: Unacceptable	N: Not Inspected/Rated C: Corrected A/W: Acceptable but Monitor & Maintain	+ Issue Type Ma: Maintenance Deficiency Ob: Design & System Obsolescence En: Enforcement
--	---	--	--

**Flood Control Project Maintenance
Levee Inspections**

Maintenance Issue Types Only, Levee Inspection Report By Mile - Fall 2023

Butte County Department of Public Works

Waterway	Bank	Unit Miles	Inspection Start/End	Inspector
Unit No. 03 Sycamore and Sheep Hollow Creeks	Right	4.05	10/10/2023 10/10/2023	Makar Sokol

LM Start	1.50	Rating **	A/W	Issue No.	31 (cont)
LM End	1.50	Issue Type +	Ma	Location *	
Category	Supplemental			GPS Latitude/Longitude	
				Start	End
Item	DWR UCIP LMA Responsibility			39.779230°	39.779230°
				-121.857945°	-121.857945°
DWR ID	19265				

Photo 3 of 3 : UCIP_FA_2023_67677_100521.jpg



Water-Side: Levee slope, headwall and flap gate at levee toe

* Location LS : Land Side N/A : Not Applicable WS : Water Side CR : Crown	** Rating A : Acceptable M : Minimally Acceptable U : Unacceptable	N : Not Inspected/Rated C : Corrected A/W : Acceptable but Monitor & Maintain	+ Issue Type Ma : Maintenance Deficiency Ob : Design & System Obsolescence En : Enforcement
--	--	---	---

**Flood Control Project Maintenance
Levee Inspections**

Maintenance Issue Types Only, Levee Inspection Report By Mile - Fall 2023

Butte County Department of Public Works

Waterway	Bank	Unit Miles	Inspection Start/End	Inspector
Unit No. 03 Sycamore and Sheep Hollow Creeks	Right	4.05	10/10/2023 10/10/2023	Makar Sokol

LM Start	1.95	Rating **	A/W	Issue No.	32
LM End	1.95	Issue Type +	Ma	Location *	
Category	Supplemental			GPS Latitude/Longitude	
				Start	End
Item	DWR UCIP LMA Responsibility			39.781722°	39.781722°
				-121.850975°	-121.850975°
DWR ID	19266				
Comment Code					
Inspector Comment					
DS_ID:19266 FS_ID:67678 EP_NO: N/A Repair Type: No Action Needed EVAL Issue: Crossing Status: Indicator Found UCIP Comments: 09/15/2023 Record updated from Non-Urgent to No Action Needed. Pipe was CIPP lined. DMP internal video inspection has found none or minor pipe defects. Recommend next video inspection in 5 years. (O. Yakimov - DWR UCIP) 03/23/2021 Record remains Non-Urgent. DMP internal video inspection has found pipe integrity issues. LOF of crossing is greater than or equal to 4.1 and less than 5. Crossing will be monitored until funding becomes available for rehabilitation. No permit has been identified authorizing pipe. Coordinates of crossing have been updated. (O.Yakimov - DWR UCIP) 03/11/2014 Needs location confirmation, GPS reading has not taken due to access problem. (P. Amatya - DWR UCIP) FIELD_STRUCT_DESC: 24-inch CIPP-lined corrugated metal gravity drainage pipe through the levee, 8 feet below the crown. Flap gate on the waterside (WS) end. Concrete U-shaped headwall on each end. Grouted riprap apron on the landside (LS) end. Grouted riprap spillway on the WS end. (4-inch PVC pipe through existing landside headwall authorized under Permit No. 17680, 2003 - City of Chico, Department of Public Works). [Additional Reference(s): DWR Levee Log, 1992 (HLM 2.00). USACE Sacramento O&M Manual, Unit 504, May 1965, Revised 2 February 2011, (HLM 2.00), listed as 24-inch pipe. USACE As-Built Drawing No. 50-04-3685, Sheet 10, STA 20+30, 19 May 1965]. FS Date: 3/23/2021 8:39:14 AM					

Photo 1 of 3 : UCIP_FA_2023_67678_100522.jpg



Top of Levee: View of levee crown looking upstream

* Location LS : Land Side N/A : Not Applicable WS : Water Side CR : Crown	** Rating A : Acceptable M : Minimally Acceptable U : Unacceptable	N : Not Inspected/Rated C : Corrected A/W : Acceptable but Monitor & Maintain	+ Issue Type Ma : Maintenance Deficiency Ob : Design & System Obsolescence En : Enforcement
--	--	---	---

**Flood Control Project Maintenance
Levee Inspections**

Maintenance Issue Types Only, Levee Inspection Report By Mile - Fall 2023

Butte County Department of Public Works

Waterway	Bank	Unit Miles	Inspection Start/End	Inspector
Unit No. 03 Sycamore and Sheep Hollow Creeks	Right	4.05	10/10/2023 10/10/2023	Makar Sokol

LM Start	1.95	Rating **	A/W	Issue No.	32 (cont)
LM End	1.95	Issue Type +	Ma	Location *	
Category	Supplemental			GPS Latitude/Longitude	
				Start	End
Item	DWR UCIP LMA Responsibility			39.781722°	39.781722°
				-121.850975°	-121.850975°
DWR ID	19266				

Photo 2 of 3 : UCIP_FA_2023_67678_100525.jpg



Land-Side: Levee slope, U-shaped headwall and pipe at levee toe

LM Start	1.95	Rating **	A/W	Issue No.	32 (cont)
LM End	1.95	Issue Type +	Ma	Location *	

Photo 3 of 3 : UCIP_FA_2023_67678_100526.jpg



Land-Side: View inside of pipe looking from landside end

* Location LS : Land Side N/A : Not Applicable WS : Water Side CR : Crown		** Rating A : Acceptable N : Not Inspected/Rated M : Minimally Acceptable C : Corrected U : Unacceptable A/W : Acceptable but Monitor & Maintain		+ Issue Type Ma : Maintenance Deficiency Ob : Design & System Obsolescence En : Enforcement	
--	--	---	--	---	--

**Flood Control Project Maintenance
Levee Inspections**

Maintenance Issue Types Only, Levee Inspection Report By Mile - Fall 2023

Butte County Department of Public Works

Waterway	Bank	Unit Miles	Inspection Start/End	Inspector
Unit No. 03 Sycamore and Sheep Hollow Creeks	Right	4.05	10/10/2023 10/10/2023	Makar Sokol

LM Start	2.17	Rating **	M	Issue No.	33	
LM End	2.17	Issue Type +	Ma	Location *		
Category	Supplemental			GPS Latitude/Longitude		
				Start	End	
Item	DWR UCIP LMA Responsibility			39.785290°	39.785290°	
				-121.844235°	-121.844235°	
DWR ID	19267					
Comment Code						
Inspector Comment						
DS_ID:19267						
FS_ID:67679						
EP_NO: N/A						
Repair Type: Non-Urgent						
EVAL Issue:						
Crossing Status: Found						
UCIP Comments: 03/25/2021 Record remains Non-Urgent. No permit has been identified authorizing pipe. DMP internal video inspection has not found pipe integrity issues. LOF of crossing is less or equal to 4. Recommend next video inspection in 5 years. (O.Yakimov - DWR UCIP)						
03/07/2014 Pipe is about 4 feet below the crown. Needs cleaning and clearing the culvert. (P. Amatya - DWR UCIP)						
FIELD_STRUCT_DESC: 24-inch corrugated metal gravity drainage pipe through the levee, 6 feet below the crown. Flap gate on the waterside (WS) end. Concrete U-shaped headwall on each end. [Additional Reference(s): DWR Levee Log, 1992 (HLM 2.23). USACE Sacramento O&M Manual, Unit 504, May 1965, Revised 2 February 2011, (HLM 2.23), listed as 24-inch pipe. USACE As-Built Drawing No. 50-04-3685, Sheet 10, STA 46+90, 19 May 1965].						
FS Date: 3/25/2021 8:45:44 AM						

LM Start	2.17	Rating **	M	Issue No.	33 (cont)
LM End	2.17	Issue Type +	Ma	Location *	

Photo 1 of 3 : UCIP_FA_2023_67679_100529.jpg



Top of Levee: View of levee crown looking upstream

Photo 2 of 3 : UCIP_FA_2023_67679_100528.jpg



Water-Side: U-shaped Headwall and revetment on levee slope

* Location LS: Land Side N/A: Not Applicable WS: Water Side CR: Crown	** Rating A: Acceptable M: Minimally Acceptable U: Unacceptable	N: Not Inspected/Rated C: Corrected A/W: Acceptable but Monitor & Maintain	+ Issue Type Ma: Maintenance Deficiency Ob: Design & System Obsolescence En: Enforcement
--	---	--	--

**Flood Control Project Maintenance
Levee Inspections**

Maintenance Issue Types Only, Levee Inspection Report By Mile - Fall 2023

Butte County Department of Public Works

Waterway	Bank	Unit Miles	Inspection Start/End	Inspector
Unit No. 03 Sycamore and Sheep Hollow Creeks	Right	4.05	10/10/2023 10/10/2023	Makar Sokol

LM Start	2.17	Rating **	M	Issue No.	33 (cont)
LM End	2.17	Issue Type +	Ma	Location *	
Category	Supplemental			GPS Latitude/Longitude	
				Start	End
Item	DWR UCIP LMA Responsibility			39.785290°	39.785290°
				-121.844235°	-121.844235°
DWR ID	19267				

Photo 3 of 3 : UCIP_FA_2023_67679_100530.jpg



Land-Side: U-shaped headwall and pipe at levee toe

LM Start	2.68	Rating **	A/W	Issue No.	20
LM End	2.72	Issue Type +	Ma	Location *	WS
Category	Supplemental			GPS Latitude/Longitude	
				Start	End
Item	2018 USACE Erosion Survey			39.781508°	39.781327°
				-121.850137°	-121.850828°
DWR ID	DWR_NA0003_03_s_2022_20				
Comment Code					
Inspector Comment					
2018 Site ID: CHI 2.7 L					
Status: Eroding					
2018 Field Notes: Last observed in 2017.					
Site History: 2017 - No trees on bank or levee. Large erosion scarp along lower bank. Technically on Sheeps Hollow.					

No Photos

* Location LS: Land Side N/A: Not Applicable WS: Water Side CR: Crown	** Rating A: Acceptable M: Minimally Acceptable U: Unacceptable	N: Not Inspected/Rated C: Corrected A/W: Acceptable but Monitor & Maintain	+ Issue Type Ma: Maintenance Deficiency Ob: Design & System Obsolescence En: Enforcement
--	---	--	--

**Flood Control Project Maintenance
Levee Inspections**

Maintenance Issue Types Only, Levee Inspection Report By Mile - Fall 2023

Butte County Department of Public Works

Waterway	Bank	Unit Miles	Inspection Start/End	Inspector
Unit No. 03 Sycamore and Sheep Hollow Creeks	Right	4.05	10/10/2023 10/10/2023	Makar Sokol

LM Start	3.08	Rating **	M	Issue No.	34	
LM End	3.08	Issue Type +	Ma	Location *		
Category	Supplemental			GPS Latitude/Longitude		
				Start	End	
Item	DWR UCIP LMA Responsibility			39.778016°	39.778016°	
				-121.854460°	-121.854460°	
DWR ID	19269					
Comment Code						
Inspector Comment						
DS_ID:19269 FS_ID:67681 EP_NO: N/A Repair Type: Non-Urgent EVAL Issue: Crossing Status: Found UCIP Comments: 03/25/2021 Record remains Non-Urgent. No permit has been identified authorizing pipe. DMP internal video inspection has not found pipe integrity issues. LOF of crossing is less or equal to 4. Recommend next video inspection in 5 years. (O.Yakimov - DWR UCIP) 03/07/2021 Needs cleaning and clearing the culvert. (P. Amatya - DWR UCIP) FIELD_STRUCT_DESC: 24-inch corrugated metal gravity drainage pipe through the levee, 11 feet below the crown. Flap gate on the waterside (WS) end. Concrete U-shaped headwall on each end. Grouted riprap apron on the landside (LS) end. Grouted riprap spillway on the WS end. [Additional Reference(s): DWR Levee Log, 1992 (HLM 3.16). USACE Sacramento O&M Manual, Unit 504, May 1965, Revised 2 February 2011, (HLM 3.16), listed as 24-inch pipe]. FS Date: 3/25/2021 10:55:20 AM						

LM Start	3.08	Rating **	M	Issue No.	34 (cont)
LM End	3.08	Issue Type +	Ma	Location *	

Photo 1 of 3 : UCIP_FA_2023_67681_100537.jpg



Top of Levee: View of levee crown looking upstream

Photo 2 of 3 : UCIP_FA_2023_67681_100538.jpg



Water-Side: View of levee slope looking from crown

* Location LS: Land Side N/A: Not Applicable WS: Water Side CR: Crown	** Rating A: Acceptable M: Minimally Acceptable U: Unacceptable	N: Not Inspected/Rated C: Corrected A/W: Acceptable but Monitor & Maintain	+ Issue Type Ma: Maintenance Deficiency Ob: Design & System Obsolescence En: Enforcement
--	---	--	--

**Flood Control Project Maintenance
Levee Inspections**

Maintenance Issue Types Only, Levee Inspection Report By Mile - Fall 2023

Butte County Department of Public Works

Waterway	Bank	Unit Miles	Inspection Start/End	Inspector
Unit No. 03 Sycamore and Sheep Hollow Creeks	Right	4.05	10/10/2023 10/10/2023	Makar Sokol

LM Start	3.08	Rating **	M	Issue No.	34 (cont)
LM End	3.08	Issue Type +	Ma	Location *	
Category	Supplemental			GPS Latitude/Longitude	
				Start	End
Item	DWR UCIP LMA Responsibility			39.778016°	39.778016°
				-121.854460°	-121.854460°
DWR ID	19269				

Photo 3 of 3 : UCIP_FA_2023_67681_100539.jpg



Land-Side: View of levee slope looking from crown

LM Start	3.09	Rating **	M	Issue No.	22
LM End	3.09	Issue Type +	Ma	Location *	LS
Category	Earthen Levee			GPS Latitude/Longitude	
				Start	End
Item	Vegetation			39.777880°	39.777880°
				-121.854230°	-121.854230°
DWR ID	DWR_NA0003_03_s_2019_22				
Comment Code					
V2 : Remove the wild growth and woody vegetation other than native grasses from the levee slopes.					
Inspector Comment					

Photo 1 of 1 : FA_2023_NA0003_67_22_20231002_00003.jpg



View of the wild growth at the landside toe. Spring 2019.

* Location LS: Land Side N/A: Not Applicable WS: Water Side CR: Crown	** Rating A: Acceptable M: Minimally Acceptable U: Unacceptable	+ Issue Type Ma: Maintenance Deficiency Ob: Design & System Obsolescence En: Enforcement
--	---	--

**Flood Control Project Maintenance
Levee Inspections**

Maintenance Issue Types Only, Levee Inspection Report By Mile - Fall 2023

Butte County Department of Public Works

Waterway	Bank	Unit Miles	Inspection Start/End	Inspector
Unit No. 03 Sycamore and Sheep Hollow Creeks	Right	4.05	10/10/2023 10/10/2023	Makar Sokol

LM Start	3.19	Rating **	M	Issue No.	35	
LM End	3.19	Issue Type +	Ma	Location *		
Category	Supplemental			GPS Latitude/Longitude		
				Start	End	
Item	DWR UCIP LMA Responsibility			39.777463°	39.777463°	
				-121.852512°	-121.852512°	
DWR ID	19270					
Comment Code						
Inspector Comment						
DS_ID:19270 FS_ID:67682 EP_NO: N/A Repair Type: Non-Urgent EVAL Issue: Crossing Status: Found UCIP Comments: 03/25/2021 Record is Non-Urgent. No permit has been identified authorizing pipe. DMP internal video inspection has not found pipe integrity issues. LOF of crossing is less or equal to 4. Recommend next video inspection in 5 years. (O.Yakimov - DWR UCIP)						
FIELD_STRUCT_DESC: 24-inch corrugated metal gravity drainage pipe through the levee, 11 feet below the crown. Flap gate on the waterside (WS) end. Concrete U-shaped headwall on each end. Grouted riprap apron on the landside (LS) end. Grouted riprap spillway on the WS end. [Additional Reference(s): DWR Levee Log, 1992 (HLM 3.28). USACE Sacramento O&M Manual, Unit 504, May 1965, Revised 2 February 2011, (HLM 3.28), listed as 24-inch pipe. USACE As-Built Drawing No. 50-04-3685, Sheet 9, STA 462+10, 19 May 1965]]. FS Date: 3/25/2021 10:58:02 AM						

LM Start	3.19	Rating **	M	Issue No.	35 (cont)
LM End	3.19	Issue Type +	Ma	Location *	

Photo 1 of 3 : UCIP_FA_2023_67682_100543.jpg



Top of Levee: View of levee crown looking upstream

Photo 2 of 3 : UCIP_FA_2023_67682_100544.jpg



Water-Side: View of levee slope looking from crown

* Location LS : Land Side N/A : Not Applicable WS : Water Side CR : Crown	** Rating A : Acceptable M : Minimally Acceptable U : Unacceptable	N : Not Inspected/Rated C : Corrected A/W : Acceptable but Monitor & Maintain	+ Issue Type Ma : Maintenance Deficiency Ob : Design & System Obsolescence En : Enforcement
--	--	---	---

**Flood Control Project Maintenance
Levee Inspections**

Maintenance Issue Types Only, Levee Inspection Report By Mile - Fall 2023

Butte County Department of Public Works

Waterway	Bank	Unit Miles	Inspection Start/End	Inspector
Unit No. 03 Sycamore and Sheep Hollow Creeks	Right	4.05	10/10/2023 10/10/2023	Makar Sokol

LM Start	3.19	Rating **	M	Issue No.	35 (cont)
LM End	3.19	Issue Type +	Ma	Location *	
Category	Supplemental			GPS Latitude/Longitude	
				Start	End
Item	DWR UCIP LMA Responsibility			39.777463°	39.777463°
				-121.852512°	-121.852512°
DWR ID	19270				

Photo 3 of 3 : UCIP_FA_2023_67682_100545.jpg



Land-Side: View of levee slope looking from crown

LM Start	3.34	Rating **	M	Issue No.	36
LM End	3.34	Issue Type +	Ma	Location *	
Category	Supplemental			GPS Latitude/Longitude	
				Start	End
Item	DWR UCIP LMA Responsibility			39.777410°	39.777410°
				-121.849627°	-121.849627°
DWR ID	19271				

Comment Code

Inspector Comment

DS_ID:19271
 FS_ID:67683
 EP_NO: N/A
 Repair Type: Non-Urgent
 EVAL Issue:
 Crossing Status: Found
 UCIP Comments: 03/25/2021 Record remains Non-Urgent. Debris around culver has been cleared. No permit has been identified authorizing pipe. DMP internal video inspection has not found pipe integrity issues. LOF of crossing is less or equal to 4. Recommend next video inspection in 5 years. (O.Yakimov - DWR UCIP)
 03/07/2014 Needs cleaning and clearing the culvert. (P. Amatya - DWR UCIP)
 FIELD_STRUCT_DESC: 24-inch corrugated metal gravity drainage pipe through the levee, 10.5 feet below the crown. Flap gate on the waterside (WS) end. Concrete U-shaped headwall on each end. Grouted riprap apron on the landside (LS) end. Grouted riprap spillway on the WS end. [Additional Reference(s): DWR Levee Log, 1992 (HLM 3.43). USACE Sacramento O&M Manual, Unit 504, May 1965, Revised 2 February 2011, (HLM 3.43), listed as 24-inch pipe. USACE As-Built Drawing No. 50-04-3685, Sheet 11, STA 470+20, 19 May 1965].
 FS Date: 3/25/2021 11:00:29 AM

Photo 1 of 3 : UCIP_FA_2023_67683_100549.jpg



Top of Levee: View of levee crown looking upstream

* Location LS : Land Side N/A : Not Applicable WS : Water Side CR : Crown	** Rating A : Acceptable M : Minimally Acceptable U : Unacceptable N : Not Inspected/Rated C : Corrected A/W : Acceptable but Monitor & Maintain	+ Issue Type Ma : Maintenance Deficiency Ob : Design & System Obsolescence En : Enforcement
--	---	---

**Flood Control Project Maintenance
Levee Inspections**

Maintenance Issue Types Only, Levee Inspection Report By Mile - Fall 2023

Butte County Department of Public Works

Waterway	Bank	Unit Miles	Inspection Start/End	Inspector
Unit No. 03 Sycamore and Sheep Hollow Creeks	Right	4.05	10/10/2023 10/10/2023	Makar Sokol

LM Start	3.34	Rating **	M	Issue No.	36 (cont)
LM End	3.34	Issue Type +	Ma	Location *	
Category	Supplemental			GPS Latitude/Longitude	
				Start	End
Item	DWR UCIP LMA Responsibility			39.777410°	39.777410°
				-121.849627°	-121.849627°
DWR ID	19271				

Photo 2 of 3 : UCIP_FA_2023_67683_100550.jpg



Water-Side: View of levee slope looking from crown

LM Start	3.34	Rating **	M	Issue No.	36 (cont)
LM End	3.34	Issue Type +	Ma	Location *	

Photo 3 of 3 : UCIP_FA_2023_67683_100551.jpg



Land-Side: View of levee slope looking from crown

LM Start	3.38	Rating **	M	Issue No.	14
LM End	3.38	Issue Type +	Ma	Location *	LS
Category	Earthen Levee			GPS Latitude/Longitude	
				Start	End
Item	Vegetation			39.777429°	39.777429°
				-121.848937°	-121.848937°
DWR ID	DWR_NA0003_03_f_2016_14				
Comment Code					
V2 : Remove the wild growth and woody vegetation other than native grasses from the levee slopes.					
Inspector Comment					

Photo 1 of 1 : FA_2023_NA0003_67_14_20231002_00001.jpg



View of a bush along the landside slope. Fall 2020.

* Location LS : Land Side N/A : Not Applicable WS : Water Side CR : Crown	** Rating A : Acceptable M : Minimally Acceptable U : Unacceptable	N : Not Inspected/Rated C : Corrected A/W : Acceptable but Monitor & Maintain	+ Issue Type Ma : Maintenance Deficiency Ob : Design & System Obsolescence En : Enforcement
--	--	--	---

**Flood Control Project Maintenance
Levee Inspections**

Maintenance Issue Types Only, Levee Inspection Report By Mile - Fall 2023

Butte County Department of Public Works

Waterway	Bank	Unit Miles	Inspection Start/End	Inspector
Unit No. 03 Sycamore and Sheep Hollow Creeks	Right	4.05	10/10/2023 10/10/2023	Makar Sokol

LM Start	3.50	Rating **	M	Issue No.	37
LM End	3.50	Issue Type +	Ma	Location *	
Category	Supplemental			GPS Latitude/Longitude	
				Start	End
Item	DWR UCIP LMA Responsibility			39.777139°	39.777139°
				-121.846769°	-121.846769°
DWR ID	19272				
Comment Code					
Inspector Comment					
DS_ID:19272 FS_ID:67684 EP_NO: N/A Repair Type: Non-Urgent EVAL Issue: Crossing Status: Found UCIP Comments: 03/25/2021 Record remains Non-Urgent. Debris around culvert has been cleared. No permit has been identified authorizing pipe. DMP internal video inspection has not found pipe integrity issues. LOF of crossing is less or equal to 4. Recommend next video inspection in 5 years. (O.Yakimov - DWR UCIP) 03/07/2014 Needs cleaning and clearing the culvert. (P. Amatya - DWR UCIP) FIELD_STRUCT_DESC: 24-inch corrugated metal gravity drainage pipe through the levee, 9.5 feet below the crown. Flap gate on the waterside (WS) end. Concrete U-shaped headwall on each end. Grouted riprap apron on the landside (LS) end. Grouted riprap spillway on the WS end. [Additional Reference(s): DWR Levee Log, 1992 (HLM 3.59). USACE Sacramento O&M Manual, Unit 504, May 1965, Revised 2 February 2011, (HLM 3.59), listed as 24-inch pipe. USACE As-Built Drawing No. 50-04-3685, Sheet 11, STA 478+40, 19 May 1965]. FS Date: 3/25/2021 11:16:33 AM					

LM Start	3.50	Rating **	M	Issue No.	37 (cont)
LM End	3.50	Issue Type +	Ma	Location *	

Photo 1 of 3 : UCIP_FA_2023_67684_100555.jpg



Top of Levee: View of levee crown looking upstream

Photo 2 of 3 : UCIP_FA_2023_67684_100556.jpg



Water-Side: View of levee slope looking from crown

* Location LS: Land Side N/A: Not Applicable WS: Water Side CR: Crown	** Rating A: Acceptable M: Minimally Acceptable U: Unacceptable	N: Not Inspected/Rated C: Corrected A/W: Acceptable but Monitor & Maintain	+ Issue Type Ma: Maintenance Deficiency Ob: Design & System Obsolescence En: Enforcement
--	---	--	--

**Flood Control Project Maintenance
Levee Inspections**

Maintenance Issue Types Only, Levee Inspection Report By Mile - Fall 2023

Butte County Department of Public Works

Waterway	Bank	Unit Miles	Inspection Start/End	Inspector
Unit No. 03 Sycamore and Sheep Hollow Creeks	Right	4.05	10/10/2023 10/10/2023	Makar Sokol

LM Start	3.50	Rating **	M	Issue No.	37 (cont)
LM End	3.50	Issue Type +	Ma	Location *	
Category	Supplemental			GPS Latitude/Longitude	
				Start	End
Item	DWR UCIP LMA Responsibility			39.777139°	39.777139°
				-121.846769°	-121.846769°
DWR ID	19272				

Photo 3 of 3 : UCIP_FA_2023_67684_100557.jpg



Land-Side: View of levee slope looking from crown

LM Start	3.68	Rating **	M	Issue No.	38
LM End	3.68	Issue Type +	Ma	Location *	
Category	Supplemental			GPS Latitude/Longitude	
				Start	End
Item	DWR UCIP LMA Responsibility			39.777662°	39.777662°
				-121.843489°	-121.843489°
DWR ID	19275				

Comment Code

Inspector Comment

DS_ID:19275
FS_ID:67687
EP_NO: N/A
Repair Type: Non-Urgent
EVAL Issue:
Crossing Status: Found
UCIP Comments: 03/25/2021 Record remains Non-Urgent. No permit has been identified authorizing pipe. DMP internal video inspection has not found pipe integrity issues. LOF of crossing is less or equal to 4. Recommend next video inspection in 5 years. (O.Yakimov - DWR UCIP)
03/04/2014 The culvert was working during the field visit. Needs cleaning and clearing on both ends of the pipe. (P. Amatya - DWR UCIP)
FIELD_STRUCT_DESC: 24-inch corrugated metal gravity drainage pipe through the levee, 7.5 feet below the crown. Flap gate on the waterside (WS) end. Concrete U-shaped headwall on each end. Grouted riprap apron on the landside (LS) end. Grouted riprap spillway on the WS end. (Installation of flap gate to existing 24-inch-diameter outfall pipe authorized under Permit No. 18106, 2006 - City of Chico). [Additional Reference(s): DWR Levee Log, 1992 (HLM 3.75). USACE Sacramento O&M Manual, Unit 504, May 1965, Revised 2 February 2011, (HLM 3.76), listed as 24-inch pipe. USACE As-Built Drawing No. 50-04-3685, Sheet 11, STA 486+62, 19 May 1965].
FS Date: 3/25/2021 1:22:36 PM

Photo 1 of 3 : UCIP_FA_2023_67687_100570.jpg



Top of Levee: View of levee crown looking upstream

* Location LS: Land Side N/A: Not Applicable WS: Water Side CR: Crown	** Rating A: Acceptable M: Minimally Acceptable U: Unacceptable	N: Not Inspected/Rated C: Corrected A/W: Acceptable but Monitor & Maintain	+ Issue Type Ma: Maintenance Deficiency Ob: Design & System Obsolescence En: Enforcement
--	---	---	--

**Flood Control Project Maintenance
Levee Inspections**

Maintenance Issue Types Only, Levee Inspection Report By Mile - Fall 2023

Butte County Department of Public Works

Waterway	Bank	Unit Miles	Inspection Start/End	Inspector
Unit No. 03 Sycamore and Sheep Hollow Creeks	Right	4.05	10/10/2023 10/10/2023	Makar Sokol

LM Start	3.68	Rating **	M	Issue No.	38 (cont)
LM End	3.68	Issue Type +	Ma	Location *	
Category	Supplemental			GPS Latitude/Longitude	
				Start	End
Item	DWR UCIP LMA Responsibility			39.777662°	39.777662°
				-121.843489°	-121.843489°
DWR ID	19275				

Photo 2 of 3 : UCIP_FA_2023_67687_100571.jpg



Water-Side: View of levee slope looking from crown

LM Start	3.68	Rating **	M	Issue No.	38 (cont)
LM End	3.68	Issue Type +	Ma	Location *	

Photo 3 of 3 : UCIP_FA_2023_67687_100572.jpg



Land-Side: View of levee slope looking from crown

* Location LS: Land Side N/A: Not Applicable WS: Water Side CR: Crown	** Rating A: Acceptable M: Minimally Acceptable U: Unacceptable	+ Issue Type Ma: Maintenance Deficiency Ob: Design & System Obsolescence En: Enforcement
--	---	--

**Flood Control Project Maintenance
Levee Inspections**

Maintenance Issue Types Only, Levee Inspection Report By Mile - Fall 2023

Butte County Department of Public Works

Waterway	Bank	Unit Miles	Inspection Start/End	Inspector
Unit No. 03 Sycamore and Sheep Hollow Creeks	Right	4.05	10/10/2023 10/10/2023	Makar Sokol

LM Start	3.70	Rating **	M	Issue No.	39	
LM End	3.70	Issue Type +	Ma	Location *		
Category	Supplemental			GPS Latitude/Longitude		
				Start	End	
Item	DWR UCIP LMA Responsibility			39.777853°	39.777853°	
				-121.843220°	-121.843220°	
DWR ID	19274					
Comment Code						
Inspector Comment						
DS_ID:19274 FS_ID:67688 EP_NO: N/A Repair Type: Non-Urgent EVAL Issue: Crossing Status: Not Found UCIP Comments: 03/25/2021 Record is Non-Urgent. Crossing not found. Geophysical results did not confirm presence of pipe through levee. Record will remain in UCIP's inspection records until future Levee Improvement Project can confirm no crossing was found through the levee. No permit has been identified authorizing pipe. (O.Yakimov - DWR UCIP)						
FIELD_STRUCT_DESC: 24-inch corrugated metal gravity drainage pipe through the levee, 10 feet below the crown. Flap gate on the waterside (WS) end. Concrete U-shaped headwall on each end. Grouted riprap apron on the landside (LS) end. Grouted riprap spillway on the WS end. [Additional Reference(s): DWR Levee Log, 1992 (HLM 3.78). USACE Sacramento O&M Manual, Unit 504, May 1965, Revised 2 February 2011, (HLM 3.78), listed as 24-inch pipe. USACE As-Built Drawing No. 50-04-3685, Sheet 11, STA 488+20, 19 May 1965]. FS Date: 3/25/2021 1:25:15 PM						

Photo 1 of 3 : UCIP_FA_2023_67688_100576.jpg



Top of Levee: View of levee crown looking upstream

LM Start	3.70	Rating **	M	Issue No.	39 (cont)
LM End	3.70	Issue Type +	Ma	Location *	

Photo 2 of 3 : UCIP_FA_2023_67688_100577.jpg



Land-Side: View of levee slope looking from crown

* Location LS: Land Side N/A: Not Applicable WS: Water Side CR: Crown	** Rating A: Acceptable M: Minimally Acceptable U: Unacceptable	N: Not Inspected/Rated C: Corrected A/W: Acceptable but Monitor & Maintain	+ Issue Type Ma: Maintenance Deficiency Ob: Design & System Obsolescence En: Enforcement
--	---	--	--

**Flood Control Project Maintenance
Levee Inspections**

Maintenance Issue Types Only, Levee Inspection Report By Mile - Fall 2023

Butte County Department of Public Works

Waterway	Bank	Unit Miles	Inspection Start/End	Inspector
Unit No. 03 Sycamore and Sheep Hollow Creeks	Right	4.05	10/10/2023 10/10/2023	Makar Sokol

LM Start	3.70	Rating **	M	Issue No.	39 (cont)
LM End	3.70	Issue Type +	Ma	Location *	
Category	Supplemental			GPS Latitude/Longitude	
				Start	End
Item	DWR UCIP LMA Responsibility			39.777853°	39.777853°
				-121.843220°	-121.843220°
DWR ID	19274				

Photo 3 of 3 : UCIP_FA_2023_67688_100578.jpg



Water-Side: View of levee slope looking from crown

* Location LS : Land Side N/A : Not Applicable WS : Water Side CR : Crown	** Rating A : Acceptable M : Minimally Acceptable U : Unacceptable	N : Not Inspected/Rated C : Corrected A/W : Acceptable but Monitor & Maintain	+ Issue Type Ma : Maintenance Deficiency Ob : Design & System Obsolescence En : Enforcement
--	--	---	---

**Flood Control Project Maintenance
Levee Inspections**

Maintenance Issue Types Only, Levee Inspection Report By Mile - Fall 2023

Butte County Department of Public Works

Waterway	Bank	Unit Miles	Inspection Start/End	Inspector
Unit No. 04 Sycamore and Dry Creeks	Right	2.86	10/10/2023 10/10/2023	Makar Sokol

LM Start	0.16	Rating **	M	Issue No.	17
LM End	0.16	Issue Type +	Ma	Location *	LS
Category	Earthen Levee			GPS Latitude/Longitude	
				Start	End
Item	Vegetation			39.776499°	39.776499°
				-121.848688°	-121.848688°
DWR ID	DWR_NA0003_04_s_2023_17				
Comment Code					
V2 : Remove the wild growth and woody vegetation other than native grasses from the levee slopes.					
Inspector Comment					

Photo 1 of 1 : FA_2023_NA0003_68_17_20231016_00041.jpg



View of wild growth along the landside toe. Fall 2023.

LM Start	0.27	Rating **	M	Issue No.	42
LM End	0.27	Issue Type +	Ma	Location *	
Category	Supplemental			GPS Latitude/Longitude	
				Start	End
Item	DWR UCIP LMA Responsibility			39.776554°	39.776554°
				-121.850730°	-121.850730°
DWR ID	19279				
Comment Code					
Inspector Comment					
DS_ID:19279					
FS_ID:67692					
EP_NO: N/A					
Repair Type: Non-Urgent					
EVAL Issue:					
Crossing Status: Found					
UCIP Comments: 03/25/2021 Record remains Non-Urgent. No permit has not found pipe integrity issues. LOF of crossing is less or equal to 4. Recommend next video inspection in 5 years. (O.Yakimov - DWR UCIP)					
03/07/2014 Needs cleaning and clearing the culvert (P. Amatya - DWR UCIP)					
FIELD_STRUCT_DESC: 24-inch corrugated metal gravity drainage pipe through the levee, 10 feet below the crown. Flap gate on the waterside (WS) end. Concrete U-shaped headwall on each end. Grouted riprap apron on the landside (LS) end. Grouted riprap spillway on the WS end. [Additional Reference(s): DWR Levee Log, 1992 (HLM 0.28). USACE Sacramento O&M Manual, Unit 504, May 1965, Revised 2 February 2011, (HLM 0.28), listed as 24-inch pipe. USACE As-Built Drawing No. 50-04-3685, Sheets 11 and 41, STA 464+00, 19 May 1965].					
FS Date: 3/25/2021 2:10:39 PM					

Photo 1 of 3 : UCIP_FA_2023_67692_100580.jpg



Top of Levee: View of levee crown looking downstream

* Location LS : Land Side N/A : Not Applicable WS : Water Side CR : Crown	** Rating A : Acceptable M : Minimally Acceptable U : Unacceptable	N : Not Inspected/Rated C : Corrected A/W : Acceptable but Monitor & Maintain	+ Issue Type Ma : Maintenance Deficiency Ob : Design & System Obsolescence En : Enforcement
--	--	---	---

**Flood Control Project Maintenance
Levee Inspections**

Maintenance Issue Types Only, Levee Inspection Report By Mile - Fall 2023

Butte County Department of Public Works

Waterway	Bank	Unit Miles	Inspection Start/End	Inspector
Unit No. 04 Sycamore and Dry Creeks	Right	2.86	10/10/2023 10/10/2023	Makar Sokol

LM Start	0.27	Rating **	M	Issue No.	42 (cont)
LM End	0.27	Issue Type +	Ma	Location *	
Category	Supplemental			GPS Latitude/Longitude	
				Start	End
Item	DWR UCIP LMA Responsibility			39.776554°	39.776554°
				-121.850730°	-121.850730°
DWR ID	19279				

Photo 2 of 3 : UCIP_FA_2023_67692_100581.jpg



Water-Side: View of levee slope looking from crown

LM Start	0.27	Rating **	M	Issue No.	42 (cont)
LM End	0.27	Issue Type +	Ma	Location *	

Photo 3 of 3 : UCIP_FA_2023_67692_100582.jpg



Land-Side: View of levee slope looking from crown

* Location LS : Land Side N/A : Not Applicable WS : Water Side CR : Crown	** Rating A : Acceptable M : Minimally Acceptable U : Unacceptable	N : Not Inspected/Rated C : Corrected A/W : Acceptable but Monitor & Maintain	+ Issue Type Ma : Maintenance Deficiency Ob : Design & System Obsolescence En : Enforcement
--	--	---	---

**Flood Control Project Maintenance
Levee Inspections**

Maintenance Issue Types Only, Levee Inspection Report By Mile - Fall 2023

Butte County Department of Public Works

Waterway	Bank	Unit Miles	Inspection Start/End	Inspector
Unit No. 04 Sycamore and Dry Creeks	Right	2.86	10/10/2023 10/10/2023	Makar Sokol

LM Start	0.33	Rating **	M	Issue No.	43	
LM End	0.33	Issue Type +	Ma	Location *		
Category	Supplemental			GPS Latitude/Longitude		
				Start	End	
Item	DWR UCIP LMA Responsibility			39.775926°	39.775926°	
				-121.850647°	-121.850647°	
DWR ID	19280					
Comment Code						
Inspector Comment						
DS_ID:19280						
FS_ID:67693						
EP_NO: N/A						
Repair Type: Non-Urgent						
EVAL Issue:						
Crossing Status: Found						
UCIP Comments: 03/25/2021 Record remains Non-Urgent. Debris around on inlet has been cleared. No permit has been identified authorizing pipe. DMP internal video inspection has not found pipe integrity issues. LOF of crossing is less or equal to 4. Recommend next video inspection in 5 years. (O.Yakimov - DWR UCIP)						
03/07/2014 Slide gate in a CMP riser. Vegetation debris and mud on inlet box. Needs cleaning and clearing the culvert. (P. Amatya - DWR UCIP)						
FIELD_STRUCT_DESC: 24-inch corrugated metal gravity drainage pipe through the levee and under the channel, 9.5 feet below the crown. Slide gate in a corrugated metal pipe (CMP) riser on the waterside (WS) slope. Concrete U-shaped headwall on the landside (LS) end. [Additional Reference(s): DWR Levee Log, 1992 (HLM 0.34). USACE Sacramento O&M Manual, Unit 504, May 1965, Revised 2 February 2011, (HLM 0.34), listed as 24-inch pipe. USACE As-Built Drawing No. 50-04-3685, Sheet 11, between STA 2+20 and STA 3+20, 19 May 1965, shown as existing siphon through both levees and under channel].						
FS Date: 3/25/2021 2:16:53 PM						

LM Start	0.33	Rating **	M	Issue No.	43 (cont)
LM End	0.33	Issue Type +	Ma	Location *	

Photo 1 of 3 : UCIP_FA_2023_67693_100586.jpg



Top of Levee: View of levee crown looking upstream

Photo 2 of 3 : UCIP_FA_2023_67693_100588.jpg



Land-Side: View of levee slope looking from crown

* Location LS: Land Side N/A: Not Applicable WS: Water Side CR: Crown	** Rating A: Acceptable M: Minimally Acceptable U: Unacceptable	N: Not Inspected/Rated C: Corrected A/W: Acceptable but Monitor & Maintain	+ Issue Type Ma: Maintenance Deficiency Ob: Design & System Obsolescence En: Enforcement
--	---	--	--

**Flood Control Project Maintenance
Levee Inspections**

Maintenance Issue Types Only, Levee Inspection Report By Mile - Fall 2023

Butte County Department of Public Works

Waterway	Bank	Unit Miles	Inspection Start/End	Inspector
Unit No. 04 Sycamore and Dry Creeks	Right	2.86	10/10/2023 10/10/2023	Makar Sokol

LM Start	0.33	Rating **	M	Issue No.	43 (cont)	
LM End	0.33	Issue Type +	Ma	Location *		
Category	Supplemental			GPS Latitude/Longitude		
				Start		End
Item	DWR UCIP LMA Responsibility			39.775926°		39.775926°
				-121.850647°		-121.850647°
DWR ID	19280					

Photo 3 of 3 : UCIP_FA_2023_67693_100589.jpg



Water-Side: Detailed view of levee slope. Pipe outfall not visible on waterside. Crossing DSID 19288 on opposite side of levee

LM Start	0.35	Rating **	U	Issue No.	44
LM End	0.35	Issue Type +	Ma	Location *	
Category	Supplemental			GPS Latitude/Longitude	
				Start	End
Item	DWR UCIP LMA Responsibility			39.775682°	39.775682°
				-121.850375°	-121.850375°
DWR ID	19281				

Comment Code

Inspector Comment

DS_ID:19281
FS_ID:67694
EP_NO: N/A
Repair Type: Urgent
EVAL Issue: 3a, Flood Risk
Crossing Status: Found
UCIP Comments: 03/25/2021 Record updated from Non-Urgent to Urgent. Debris inside pipe holds flap gate from complete closing. Backflow may cause flood risk to landside. No permit has been identified authorizing pipe. DMP internal video inspection has not found pipe integrity issues. LOF of crossing is less or equal to 4. Recommend next video inspection in 5 years. (O.Yakimov - DWR UCIP)
03/07/2014 Needs cleaning and clearing the culvert. (P. Amatya - DWR UCIP)
FIELD_STRUCT_DESC: 24-inch corrugated metal gravity drainage pipe through the levee, 8 feet below the crown. Flap gate on the waterside (WS) end. Concrete U-shaped headwall on each end. Grouted riprap apron on the landside (LS) end. Grouted riprap spillway on the WS end. [Additional Reference(s): DWR Levee Log, 1992 (HLM 0.36). USACE Sacramento O&M Manual, Unit 504, May 1965, Revised 2 February 2011, (HLM 0.36), listed as 24-inch pipe. USACE As-Built Drawing No. 50-04-3685, Sheets 11 and 41, STA 4+20, 19 May 1965].
FS Date: 3/25/2021 2:21:16 PM

Photo 1 of 3 : UCIP_FA_2023_67694_100595.jpg



Water-Side: Headwall and flap gate at levee toe

* Location LS: Land Side N/A: Not Applicable WS: Water Side CR: Crown	** Rating A: Acceptable M: Minimally Acceptable U: Unacceptable	N: Not Inspected/Rated C: Corrected A/W: Acceptable but Monitor & Maintain	+ Issue Type Ma: Maintenance Deficiency Ob: Design & System Obsolescence En: Enforcement
--	---	---	--

**Flood Control Project Maintenance
Levee Inspections**

Maintenance Issue Types Only, Levee Inspection Report By Mile - Fall 2023

Butte County Department of Public Works

Waterway	Bank	Unit Miles	Inspection Start/End	Inspector
Unit No. 04 Sycamore and Dry Creeks	Right	2.86	10/10/2023 10/10/2023	Makar Sokol

LM Start	0.35	Rating **	U	Issue No.	44 (cont)
LM End	0.35	Issue Type +	Ma	Location *	
Category	Supplemental			GPS Latitude/Longitude	
				Start	End
Item	DWR UCIP LMA Responsibility			39.775682°	39.775682°
				-121.850375°	-121.850375°
DWR ID	19281				

Photo 2 of 3 : UCIP_FA_2023_67694_100596.jpg



Water-Side: Debris inside of pipe blocks flap gate from complete closing

LM Start	0.35	Rating **	U	Issue No.	44 (cont)
LM End	0.35	Issue Type +	Ma	Location *	

Photo 3 of 3 : UCIP_FA_2023_67694_100598.jpg



Land-Side: View inside of pipe looking from landside end

* Location LS : Land Side N/A : Not Applicable WS : Water Side CR : Crown		** Rating A : Acceptable N : Not Inspected/Rated M : Minimally Acceptable C : Corrected U : Unacceptable A/W : Acceptable but Monitor & Maintain		+ Issue Type Ma : Maintenance Deficiency Ob : Design & System Obsolescence En : Enforcement	
--	--	---	--	---	--

**Flood Control Project Maintenance
Levee Inspections**

Maintenance Issue Types Only, Levee Inspection Report By Mile - Fall 2023

Butte County Department of Public Works

Waterway	Bank	Unit Miles	Inspection Start/End	Inspector
Unit No. 04 Sycamore and Dry Creeks	Right	2.86	10/10/2023 10/10/2023	Makar Sokol

LM Start	0.63	Rating **	U	Issue No.	45	
LM End	0.63	Issue Type +	Ma	Location *		
Category	Supplemental			GPS Latitude/Longitude		
				Start	End	
Item	DWR UCIP LMA Responsibility			39.774004°	39.774004°	
				-121.846344°	-121.846344°	
DWR ID	19283					
Comment Code						
Inspector Comment						
DS_ID:19283 FS_ID:67757 EP_NO: N/A Repair Type: Urgent EVAL Issue: 1, Pipe Integrity Crossing Status: Found UCIP Comments: 03/25/2021 Record updated from No Action Needed to Urgent. DMP internal video inspection has found pipe integrity issues. LOF of crossing is between 5 and 6. Crossing will be monitored until funding becomes available to address the issues. (O.Yakimov - DWR UCIP) 03/07/2014 Concrete vault on landside. Not found- grouted apron on the landward end. (P. Amatya - DWR UCIP) FIELD_STRUCT_DESC: 18-inch corrugated metal gravity drainage pipe through the levee, 4 feet below the crown. Concrete drainage vault in parking space on landside, flap gate on waterside pipe end. Grouted riprap spillway on the waterside (WS) end. [Additional Reference(s): DWR Levee Log, 1992 (HLM 0.65). USACE Sacramento O&M Manual, Unit 504, May 1965, Revised 2 February 2011, (HLM 0.66), listed as 18-inch pipe. USACE As-Built Drawing No. 50-04-3685, Sheet 11, STA 25+30???, 19 May 1965]. FS Date: 3/25/2021 2:07:20 PM						

LM Start	0.63	Rating **	U	Issue No.	45 (cont)
LM End	0.63	Issue Type +	Ma	Location *	

Photo 1 of 3 : UCIP_FA_2023_67757_100818.jpg



Land-Side: Fence on levee berm. Storm drain manhole covered with plywood sheet on levee berm

Photo 2 of 3 : UCIP_FA_2023_67757_100820.jpg



Water-Side: View of levee slope looking from toe. Flap gate installed on pipe end

* Location LS: Land Side N/A: Not Applicable WS: Water Side CR: Crown	** Rating A: Acceptable M: Minimally Acceptable U: Unacceptable	N: Not Inspected/Rated C: Corrected A/W: Acceptable but Monitor & Maintain	+ Issue Type Ma: Maintenance Deficiency Ob: Design & System Obsolescence En: Enforcement
--	---	--	--

**Flood Control Project Maintenance
Levee Inspections**

Maintenance Issue Types Only, Levee Inspection Report By Mile - Fall 2023

Butte County Department of Public Works

Waterway	Bank	Unit Miles	Inspection Start/End	Inspector
Unit No. 04 Sycamore and Dry Creeks	Right	2.86	10/10/2023 10/10/2023	Makar Sokol

LM Start	0.63	Rating **	U	Issue No.	45 (cont)
LM End	0.63	Issue Type +	Ma	Location *	
Category	Supplemental			GPS Latitude/Longitude	
				Start	End
Item	DWR UCIP LMA Responsibility			39.774004°	39.774004°
				-121.846344°	-121.846344°
DWR ID	19283				

Photo 3 of 3 : UCIP_FA_2023_67757_100821.jpg



Water-Side: Close up view of flap gate on levee slope

LM Start	0.63	Rating **	C	Issue No.	26
LM End	0.63	Issue Type +	Ma	Location *	WS
Category	Earthen Levee			GPS Latitude/Longitude	
				Start	End
Item	Erosion / Rills			39.773988°	39.773988°
				-121.846320°	-121.846320°
DWR ID	DWR_NA0003_04_s_2019_26				
Comment Code					
E5 : Schedule repair of rills prior to the next inspection.					
Inspector Comment					

No Photos

LM Start	0.70	Rating **	M	Issue No.	22
LM End	0.70	Issue Type +	Ma	Location *	WS
Category	Earthen Levee			GPS Latitude/Longitude	
				Start	End
Item	Vegetation			39.773080°	39.773080°
				-121.845936°	-121.845936°
DWR ID	DWR_NA0003_04_f_2022_22				
Comment Code					
V2 : Remove the wild growth and woody vegetation other than native grasses from the levee slopes.					
Inspector Comment					

Photo 1 of 1 : FA_2023_NA0003_68_22_20231002_00004.jpg



View of wild growth along the waterside slope and toe. Fall 2022.

* Location LS : Land Side N/A : Not Applicable WS : Water Side CR : Crown		** Rating A : Acceptable M : Minimally Acceptable U : Unacceptable		+ Issue Type Ma : Maintenance Deficiency Ob : Design & System Obsolescence En : Enforcement	
		N : Not Inspected/Rated C : Corrected A/W : Acceptable but Monitor & Maintain			

**Flood Control Project Maintenance
Levee Inspections**

Maintenance Issue Types Only, Levee Inspection Report By Mile - Fall 2023

Butte County Department of Public Works

Waterway	Bank	Unit Miles	Inspection Start/End	Inspector
Unit No. 04 Sycamore and Dry Creeks	Right	2.86	10/10/2023 10/10/2023	Makar Sokol

LM Start	0.71	Rating **	M	Issue No.	25
LM End	0.71	Issue Type +	Ma	Location *	WS
Category	Earthen Levee			GPS Latitude/Longitude	
				Start	End
Item	Erosion / Bank Caving			39.773019°	39.773019°
				-121.845927°	-121.845927°
DWR ID	DWR_NA0003_04_s_2022_25				
Comment Code					
E2 : Schedule repair of erosion site prior to the next inspection.					
Inspector Comment					

Photo 1 of 1 : FA_2023_NA0003_68_25_20231002_00006.jpg



View of the erosion along the waterside slope. Spring 2022.

LM Start	0.92	Rating **	M	Issue No.	47	
LM End	0.92	Issue Type +	Ma	Location *		
Category	Supplemental			GPS Latitude/Longitude		
				Start	End	
Item	DWR UCIP LMA Responsibility			39.775704°	39.775704°	
				-121.850901°	-121.850901°	
DWR ID	19287					
Comment Code						
Inspector Comment						
DS_ID:19287						
FS_ID:67765						
EP_NO: N/A						
Repair Type: Non-Urgent						
EVAL Issue:						
Crossing Status: Found						
UCIP Comments: 03/23/2021 Record remains Non-Urgent. Debris has been cleared. No permit has been identified authorizing pipe. DMP internal video inspection has not found pipe integrity issues. LOF of crossing is less or equal to 4. Recommend next video inspection in 5 years. (O.Yakimov - DWR UCIP)						
03/07/2014 Needs cleaning and clearing the culvert. (P. Amatya - DWR UCIP)						
FIELD_STRUCT_DESC: 24-inch corrugated metal gravity drainage pipe through the levee, 9 feet below the crown. Flap gate on the waterside (WS) end. Concrete U-shaped headwall on each end. Grouted riprap apron on the landside (LS) end. Grouted riprap spillway on the WS end. [Additional Reference(s): DWR Levee Log, 1992 (HLM 0.96). USACE Sacramento O&M Manual, Unit 504, May 1965, Revised 2 February 2011, (HLM 0.96), listed as 24-inch pipe. USACE As-Built Drawing No. 50-04-3685, Sheets 11 and 41, STA 4+00, 19 May 1965].						
FS Date: 3/23/2021 2:28:32 PM						

Photo 1 of 3 : UCIP_FA_2023_67765_100840.jpg



Top of Levee: View of levee crown looking upstream

* Location LS : Land Side N/A : Not Applicable WS : Water Side CR : Crown	** Rating A : Acceptable M : Minimally Acceptable U : Unacceptable	N : Not Inspected/Rated C : Corrected A/W : Acceptable but Monitor & Maintain	+ Issue Type Ma : Maintenance Deficiency Ob : Design & System Obsolescence En : Enforcement
--	--	---	---

**Flood Control Project Maintenance
Levee Inspections**

Maintenance Issue Types Only, Levee Inspection Report By Mile - Fall 2023

Butte County Department of Public Works

Waterway	Bank	Unit Miles	Inspection Start/End	Inspector
Unit No. 04 Sycamore and Dry Creeks	Right	2.86	10/10/2023 10/10/2023	Makar Sokol

LM Start	0.92	Rating **	M	Issue No.	47 (cont)
LM End	0.92	Issue Type +	Ma	Location *	
Category	Supplemental			GPS Latitude/Longitude	
				Start	End
Item	DWR UCIP LMA Responsibility			39.775704°	39.775704°
				-121.850901°	-121.850901°
DWR ID	19287				

Photo 2 of 3 : UCIP_FA_2023_67765_100841.jpg



Water-Side: View of levee slope looking from crown

LM Start	0.92	Rating **	M	Issue No.	47 (cont)
LM End	0.92	Issue Type +	Ma	Location *	

Photo 3 of 3 : UCIP_FA_2023_67765_100845.jpg



Water-Side: Headwall and flap gate at levee toe

* Location LS : Land Side N/A : Not Applicable WS : Water Side CR : Crown		** Rating A : Acceptable N : Not Inspected/Rated M : Minimally Acceptable C : Corrected U : Unacceptable A/W : Acceptable but Monitor & Maintain		+ Issue Type Ma : Maintenance Deficiency Ob : Design & System Obsolescence En : Enforcement
--	--	---	--	---

**Flood Control Project Maintenance
Levee Inspections**

Maintenance Issue Types Only, Levee Inspection Report By Mile - Fall 2023

Butte County Department of Public Works

Waterway	Bank	Unit Miles	Inspection Start/End	Inspector
Unit No. 04 Sycamore and Dry Creeks	Right	2.86	10/10/2023 10/10/2023	Makar Sokol

LM Start	0.94	Rating **	M	Issue No.	48
LM End	0.94	Issue Type +	Ma	Location *	
Category	Supplemental			GPS Latitude/Longitude	
				Start	End
Item	DWR UCIP LMA Responsibility			39.775899°	39.775899°
				-121.851124°	-121.851124°
DWR ID	19288				
Comment Code					
Inspector Comment					
DS_ID:19288 FS_ID:67774 EP_NO: N/A Repair Type: Non-Urgent EVAL Issue: 5, Pipe Damage Crossing Status: Found UCIP Comments: 03/23/2021 Record remains Non-Urgent. DMP internal video inspection has found pipe integrity issues. LOF of crossing is greater than or equal to 4.1 and less than 5. Crossing will be monitored until funding becomes available for rehabilitation. No permit has been identified authorizing pipe. (O.Yakimov - DWR UCIP) 03/07/2014 Slide gate in CMP riser on waterside. No access to CMP riser. Needs cleaning and clearing the culvert. (P. Amatya - DWR UCIP) FIELD_STRUCT_DESC: 24-inch corrugated metal gravity drainage pipe through the levee and under the channel, 9.5 feet below the crown. Slide gate in a pipe riser on the waterside (WS) slope. Concrete U-shaped headwall on the landside (LS) end. [Additional Reference(s): DWR Levee Log, 1992 (HLM 0.98). USACE Sacramento O&M Manual, Unit 504, May 1965, Revised 2 February 2011, (HLM 0.98), listed as 24-inch pipe. USACE As-Built Drawing No. 50-04-3685, Sheet 11, between STA 2+20 and STA 3+20, 19 May 1965, shown as existing siphon through both levees and under channel]. FS Date: 3/23/2021 3:07:34 PM					

LM Start	0.94	Rating **	M	Issue No.	48 (cont)
LM End	0.94	Issue Type +	Ma	Location *	

Photo 1 of 3 : UCIP_FA_2023_67774_100885.jpg



Land-Side: View of levee slope looking from crown

Photo 2 of 3 : UCIP_FA_2023_67774_100886.jpg



Water-Side: View of levee slope looking from crown. CMP riser with slide gate on levee slope

* Location LS: Land Side N/A: Not Applicable WS: Water Side CR: Crown	** Rating A: Acceptable M: Minimally Acceptable U: Unacceptable	N: Not Inspected/Rated C: Corrected A/W: Acceptable but Monitor & Maintain	+ Issue Type Ma: Maintenance Deficiency Ob: Design & System Obsolescence En: Enforcement
--	---	--	--

**Flood Control Project Maintenance
Levee Inspections**

Maintenance Issue Types Only, Levee Inspection Report By Mile - Fall 2023

Butte County Department of Public Works

Waterway	Bank	Unit Miles	Inspection Start/End	Inspector
Unit No. 04 Sycamore and Dry Creeks	Right	2.86	10/10/2023 10/10/2023	Makar Sokol

LM Start	0.94	Rating **	M	Issue No.	48 (cont)
LM End	0.94	Issue Type +	Ma	Location *	
Category	Supplemental		GPS Latitude/Longitude		
			Start	End	
Item	DWR UCIP LMA Responsibility		39.775899°	39.775899°	
			-121.851124°	-121.851124°	
DWR ID	19288				

Photo 3 of 3 : UCIP_FA_2023_67774_100888.jpg



Land-Side: View inside of pipe looking from landside end

LM Start	1.01	Rating **	M	Issue No.	15
LM End	1.01	Issue Type +	Ma	Location *	LS
Category	Earthen Levee			GPS Latitude/Longitude	
				Start	End
Item	Animal Control			39.776563°	39.776563°
				-121.852175°	-121.852175°
DWR ID	DWR_NA0003_04_f_2023_15				
Comment Code					
A1 : Exterminate rodents and backfill and compact or grout burrows.					
Inspector Comment					

No Photos

LM Start	1.04	Rating **	M	Issue No.	23
LM End	1.04	Issue Type +	Ma	Location *	LS
Category	Earthen Levee			GPS Latitude/Longitude	
				Start	End
Item	Vegetation			39.776589°	39.776589°
				-121.852600°	-121.852600°
DWR ID	DWR_NA0003_04_f_2016_23				
Comment Code					
V2 : Remove the wild growth and woody vegetation other than native grasses from the levee slopes.					
Inspector Comment					

Photo 1 of 1 : FA_2023_NA0003_68_23_20231002_00005.jpg



View of the blackberry bushes along the landside toe. Spring 2021.

* Location LS : Land Side N/A : Not Applicable WS : Water Side CR : Crown		** Rating A : Acceptable M : Minimally Acceptable U : Unacceptable		+ Issue Type Ma : Maintenance Deficiency Ob : Design & System Obsolescence En : Enforcement	
		N : Not Inspected/Rated C : Corrected A/W : Acceptable but Monitor & Maintain			

**Flood Control Project Maintenance
Levee Inspections**

Maintenance Issue Types Only, Levee Inspection Report By Mile - Fall 2023

Butte County Department of Public Works

Waterway	Bank	Unit Miles	Inspection Start/End	Inspector
Unit No. 04 Sycamore and Dry Creeks	Right	2.86	10/10/2023 10/10/2023	Makar Sokol

LM Start	1.11	Rating **	M	Issue No.	49	
LM End	1.11	Issue Type +	Ma	Location *		
Category	Supplemental			GPS Latitude/Longitude		
				Start	End	
Item	DWR UCIP LMA Responsibility			39.776709°	39.776709°	
				-121.853932°	-121.853932°	
DWR ID	19289					
Comment Code						
Inspector Comment						
DS_ID:19289 FS_ID:67776 EP_NO: N/A Repair Type: Non-Urgent EVAL Issue: 11, Maintenance Compliance Issue Crossing Status: Found UCIP Comments: 03/23/2021 Record remains Non-Urgent. Flap gate at waterside headwall is stuck closed. Hinges may need lubrication. No permit has been identified authorizing pipe. DMP internal video inspection has not found pipe integrity issues. LOF of crossing is less or equal to 4. Recommend next video inspection in 5 years. (O.Yakimov - DWR UCIP) 03/07/2014 Needs cleaning and clearing the culvert. (P. Amatya - DWR UCIP) FIELD_STRUCT_DESC: 24-inch corrugated metal gravity drainage pipe through the levee, 11 feet below the crown. Flap gate on the waterside (WS) end. Concrete U-shaped headwall on each end. Grouted riprap apron on the landside (LS) end. Grouted riprap spillway on the WS end. [Additional Reference(s): DWR Levee Log, 1992 (HLM 1.15). USACE Sacramento O&M Manual, Unit 504, May 1965, Revised 2 February 2011, (HLM 1.15), listed as 24-inch pipe. USACE As-Built Drawing No. 50-04-3685, Sheet 41, STA 455+00, 19 May 1965]. FS Date: 3/23/2021 3:10:19 PM						

LM Start	1.11	Rating **	M	Issue No.	49 (cont)
LM End	1.11	Issue Type +	Ma	Location *	

Photo 1 of 3 : UCIP_FA_2023_67776_100894.jpg



Top of Levee: View of levee crown looking upstream

Photo 2 of 3 : UCIP_FA_2023_67776_100899.jpg



Water-Side: U-shaped headwall and flap gate at levee toe

* Location LS: Land Side N/A: Not Applicable WS: Water Side CR: Crown	** Rating A: Acceptable M: Minimally Acceptable U: Unacceptable	N: Not Inspected/Rated C: Corrected A/W: Acceptable but Monitor & Maintain	+ Issue Type Ma: Maintenance Deficiency Ob: Design & System Obsolescence En: Enforcement
--	---	--	--

**Flood Control Project Maintenance
Levee Inspections**

Maintenance Issue Types Only, Levee Inspection Report By Mile - Fall 2023

Butte County Department of Public Works

Waterway	Bank	Unit Miles	Inspection Start/End	Inspector
Unit No. 04 Sycamore and Dry Creeks	Right	2.86	10/10/2023 10/10/2023	Makar Sokol

LM Start	1.11	Rating **	M	Issue No.	49 (cont)
LM End	1.11	Issue Type +	Ma	Location *	
Category	Supplemental			GPS Latitude/Longitude	
				Start	End
Item	DWR UCIP LMA Responsibility			39.776709°	39.776709°
				-121.853932°	-121.853932°
DWR ID	19289				

Photo 3 of 3 : UCIP_FA_2023_67776_100897.jpg



Land-Side: Levee slope, headwall, and pipe inlet

LM Start	1.35	Rating **	M	Issue No.	50
LM End	1.35	Issue Type +	Ma	Location *	
Category	Supplemental			GPS Latitude/Longitude	
				Start	End
Item	DWR UCIP LMA Responsibility			39.778370°	39.778370°
				-121.857904°	-121.857904°
DWR ID	19290				

Comment Code

Inspector Comment

DS_ID:19290
 FS_ID:67777
 EP_NO: N/A
 Repair Type: Non-Urgent
 EVAL Issue:
 Crossing Status: Found
 UCIP Comments: 03/23/2021 Record remains Non-Urgent. Debris has been cleared. No permit has been identified authorizing pipe. DMP internal video inspection has not found pipe integrity issues. LOF of crossing is less or equal to 4. Recommend next video inspection in 5 years. (O.Yakimov - DWR UCIP)
 03/07/2014 Needs cleaning and clearing the culvert. (P. Amatya - DWR UCIP)
 FIELD_STRUCT_DESC: 24-inch corrugated metal gravity drainage pipe through the levee, 13 feet below the crown. Flap gate on the waterside (WS) end. Concrete U-shaped headwall on each end. Grouted riprap apron on the landside (LS) end. Grouted riprap spillway on the WS end.
 [Additional Reference(s): DWR Levee Log, 1992 (HLM 1.39). USACE Sacramento O&M Manual, Unit 504, May 1965, Revised 2 February 2011, (HLM 1.41), listed as 24-inch pipe. USACE As-Built Drawing No. 50-04-3685, Sheets 9 and 40, STA 442+05, 19 May 1965].
 FS Date: 3/23/2021 3:14:57 PM

Photo 1 of 3 : UCIP_FA_2023_67777_100900.jpg



Top of Levee: View of levee crown looking upstream

* Location	** Rating	+ Issue Type
LS: Land Side WS: Water Side CR: Crown	A: Acceptable M: Minimally Acceptable U: Unacceptable	Ma: Maintenance Deficiency Ob: Design & System Obsolescence En: Enforcement
N/A: Not Applicable	N: Not Inspected/Rated C: Corrected A/W: Acceptable but Monitor & Maintain	

**Flood Control Project Maintenance
Levee Inspections**

Maintenance Issue Types Only, Levee Inspection Report By Mile - Fall 2023

Butte County Department of Public Works

Waterway	Bank	Unit Miles	Inspection Start/End	Inspector
Unit No. 04 Sycamore and Dry Creeks	Right	2.86	10/10/2023 10/10/2023	Makar Sokol

LM Start	1.35	Rating **	M	Issue No.	50 (cont)	
LM End	1.35	Issue Type +	Ma	Location *		
Category	Supplemental			GPS Latitude/Longitude		
				Start	End	
Item	DWR UCIP LMA Responsibility			39.778370°	39.778370°	
				-121.857904°	-121.857904°	
DWR ID	19290					

Photo 2 of 3 : UCIP_FA_2023_67777_100901.jpg



Land-Side: View of levee slope looking from crown

LM Start	1.35	Rating **	M	Issue No.	50 (cont)
LM End	1.35	Issue Type +	Ma	Location *	

Photo 3 of 3 : UCIP_FA_2023_67777_100902.jpg



Water-Side: View of levee slope looking from crown

* Location LS : Land Side N/A : Not Applicable WS : Water Side CR : Crown	** Rating A : Acceptable M : Minimally Acceptable U : Unacceptable	N : Not Inspected/Rated C : Corrected A/W : Acceptable but Monitor & Maintain	+ Issue Type Ma : Maintenance Deficiency Ob : Design & System Obsolescence En : Enforcement
--	--	---	---

**Flood Control Project Maintenance
Levee Inspections**

Maintenance Issue Types Only, Levee Inspection Report By Mile - Fall 2023

Butte County Department of Public Works

Waterway	Bank	Unit Miles	Inspection Start/End	Inspector
Unit No. 04 Sycamore and Dry Creeks	Right	2.86	10/10/2023 10/10/2023	Makar Sokol

LM Start	2.15	Rating **	A/W	Issue No.	51
LM End	2.15	Issue Type +	Ma	Location *	
Category	Supplemental			GPS Latitude/Longitude	
				Start	End
Item	DWR UCIP LMA Responsibility			39.782777°	39.782777°
				-121.871179°	-121.871179°
DWR ID	19291				

Comment Code

Inspector Comment

DS_ID:19291
FS_ID:67779
EP_NO: N/A
Repair Type: No Action Needed
EVAL Issue:
Crossing Status: Found
UCIP Comments: 09/15/2023 Record updated from Non-Urgent to No Action Needed. Pipe was CIPP lined. DMP internal video inspection has found none or minor pipe defects. Recommend next video inspection in 5 years. (O. Yakimov - DWR UCIP)
03/23/2021 Record remains Non-Urgent. Debris has been cleared. DMP internal video inspection has found pipe integrity issues. LOF of crossing is greater than or equal to 4.1 and less than 5. Crossing will be monitored until funding becomes available for rehabilitation. No permit has been identified authorizing pipe. (O.Yakimov - DWR UCIP)
03/07/2014 Needs cleaning and clearing the culvert. (P. Amatya - DWR UCIP)
FIELD_STRUCT_DESC: 24-inch CIPP-lined corrugated metal gravity drainage pipe through the levee, 11 feet below the crown. Flap gate on the waterside (WS) end. Concrete U-shaped headwall on each end. Grouted riprap apron on the landside (LS) end. Grouted riprap spillway on the WS end. [Additional Reference(s): DWR Levee Log, 1992 (HLM 2.22). USACE Sacramento O&M Manual, Unit 504, May 1965, Revised 2 February 2011, (HLM 2.22), listed as 24-inch pipe. USACE As-Built Drawing No. 50-04-3685, Sheets 9 and 41, STA 400+00, 19 May 1965].
FS Date: 3/23/2021 3:17:08 PM

LM Start	2.15	Rating **	A/W	Issue No.	51 (cont)
LM End	2.15	Issue Type +	Ma	Location *	

Photo 1 of 3 : UCIP_FA_2023_67779_100908.jpg



Top of Levee: View of levee crown looking upstream

Photo 2 of 3 : UCIP_FA_2023_67779_100909.jpg



Land-Side: View of levee slope looking from crown

* Location LS: Land Side WS: Water Side CR: Crown	** Rating A: Acceptable M: Minimally Acceptable U: Unacceptable	N: Not Inspected/Rated C: Corrected A/W: Acceptable but Monitor & Maintain	+ Issue Type Ma: Maintenance Deficiency Ob: Design & System Obsolescence En: Enforcement
---	---	---	--

**Flood Control Project Maintenance
Levee Inspections**

Maintenance Issue Types Only, Levee Inspection Report By Mile - Fall 2023

Butte County Department of Public Works

Waterway	Bank	Unit Miles	Inspection Start/End	Inspector
Unit No. 04 Sycamore and Dry Creeks	Right	2.86	10/10/2023 10/10/2023	Makar Sokol

LM Start	2.15	Rating **	A/W	Issue No.	51 (cont)
LM End	2.15	Issue Type +	Ma	Location *	
Category	Supplemental			GPS Latitude/Longitude	
				Start	End
Item	DWR UCIP LMA Responsibility			39.782777°	39.782777°
				-121.871179°	-121.871179°
DWR ID	19291				

Photo 3 of 3 : UCIP_FA_2023_67779_100910.jpg



Water-Side: View of levee slope looking from crown

LM Start	2.47	Rating **	A/W	Issue No.	52
LM End	2.47	Issue Type +	Ma	Location *	
Category	Supplemental			GPS Latitude/Longitude	
				Start	End
Item	DWR UCIP LMA Responsibility			39.784244°	39.784244°
				-121.876810°	-121.876810°
DWR ID	19292				

Comment Code

Inspector Comment

DS_ID:19292
 FS_ID:67780
 EP_NO: N/A
 Repair Type: No Action Needed
 EVAL Issue:
 Crossing Status: Found
 UCIP Comments: 09/15/2023 Record updated from Non-Urgent to No Action Needed. Pipe was CIPP lined. DMP internal video inspection has found none or minor pipe defects. Recommend next video inspection in 5 years. (O. Yakimov - DWR UCIP)
 03/23/2021 Record remains Non-Urgent. Debris has been cleared. DMP internal video inspection has found pipe integrity issues. LOF of crossing is greater than or equal to 4.1 and less than 5. Crossing will be monitored until funding becomes available for rehabilitation. No permit has been identified authorizing pipe. (O.Yakimov - DWR UCIP)
 03/07/2014 Needs cleaning and clearing the culvert. (P. Amatya - DWR UCIP)
 FIELD_STRUCT_DESC: 24-inch CIPP-lined corrugated metal gravity drainage pipe through the levee, 11 feet below the crown. Flap gate on the waterside (WS) end. Concrete U-shaped headwall on each end. Grouted riprap apron on the landside (LS) end. Grouted riprap spillway on the WS end. [Additional Reference(s): DWR Levee Log, 1992 (HLM 2.56). USACE Sacramento O&M Manual, Unit 504, May 1965, Revised 2 February 2011, (HLM 2.56), listed as 24-inch pipe. USACE As-Built Drawing No. 50-04-3685, Sheets 7 and 41, STA 382+90, 19 May 1965].
 FS Date: 3/23/2021 3:19:43 PM

Photo 1 of 3 : UCIP_FA_2023_67780_100915.jpg



Land-Side: View of levee slope looking from crown

* Location LS: Land Side WS: Water Side CR: Crown	** Rating A: Acceptable M: Minimally Acceptable U: Unacceptable	N: Not Inspected/Rated C: Corrected A/W: Acceptable but Monitor & Maintain	+ Issue Type Ma: Maintenance Deficiency Ob: Design & System Obsolescence En: Enforcement
---	---	---	--

**Flood Control Project Maintenance
Levee Inspections**

Maintenance Issue Types Only, Levee Inspection Report By Mile - Fall 2023

Butte County Department of Public Works

Waterway	Bank	Unit Miles	Inspection Start/End	Inspector
Unit No. 04 Sycamore and Dry Creeks	Right	2.86	10/10/2023 10/10/2023	Makar Sokol

LM Start	2.47	Rating **	A/W	Issue No.	52 (cont)
LM End	2.47	Issue Type +	Ma	Location *	
Category	Supplemental			GPS Latitude/Longitude	
				Start	End
Item	DWR UCIP LMA Responsibility			39.784244°	39.784244°
				-121.876810°	-121.876810°
DWR ID	19292				

Photo 2 of 3 : UCIP_FA_2023_67780_100916.jpg



Water-Side: View of levee slope looking from crown

LM Start	2.47	Rating **	A/W	Issue No.	52 (cont)
LM End	2.47	Issue Type +	Ma	Location *	

Photo 3 of 3 : UCIP_FA_2023_67780_100919.jpg



Water-Side: View inside of pipe looking from landside end

* Location LS: Land Side N/A: Not Applicable WS: Water Side CR: Crown		** Rating A: Acceptable M: Minimally Acceptable U: Unacceptable N: Not Inspected/Rated C: Corrected A/W: Acceptable but Monitor & Maintain		+ Issue Type Ma: Maintenance Deficiency Ob: Design & System Obsolescence En: Enforcement	
--	--	---	--	--	--

**Flood Control Project Maintenance
Levee Inspections**

Maintenance Issue Types Only, Levee Inspection Report By Mile - Fall 2023

Butte County Department of Public Works

Waterway	Bank	Unit Miles	Inspection Start/End	Inspector
Unit No. 05 Big Chico Diversion	Left	1.85	10/10/2023 10/10/2023	Makar Sokol

LM Start	0.03	Rating **	M	Issue No.	1
LM End	0.20	Issue Type +	Ma	Location *	LS
Category	Earthen Levee			GPS Latitude/Longitude	
				Start	End
Item	Vegetation			39.763164°	39.761860°
				-121.790335°	-121.792635°
DWR ID	DWR_NA0003_05_s_2012_1				
Comment Code					
V2 : Remove the wild growth and woody vegetation other than native grasses from the levee slopes.					
Inspector Comment					

Photo 1 of 1 : FA_2023_NA0003_69_1_20231002_00001.jpg



View of the wild growth on the landside slope. Spring 2019.

LM Start	0.08	Rating **	M	Issue No.	4
LM End	0.08	Issue Type +	Ma	Location *	WS
Category	Earthen Levee			GPS Latitude/Longitude	
				Start	End
Item	Vegetation			39.762693°	39.762693°
				-121.790925°	-121.790925°
DWR ID	DWR_NA0003_05_s_2019_4				
Comment Code					
V2 : Remove the wild growth and woody vegetation other than native grasses from the levee slopes.					
Inspector Comment					

No Photos

LM Start	0.33	Rating **	M	Issue No.	2
LM End	0.35	Issue Type +	Ma	Location *	WS
Category	Earthen Levee			GPS Latitude/Longitude	
				Start	End
Item	Vegetation			39.761627°	39.761571°
				-121.795099°	-121.795444°
DWR ID	DWR_NA0003_05_f_2023_2				
Comment Code					
V1 : Control annual grass and weeds on the levee slopes and easements.					
Inspector Comment					

No Photos

* Location LS : Land Side N/A : Not Applicable WS : Water Side CR : Crown		** Rating A : Acceptable M : Minimally Acceptable U : Unacceptable		N : Not Inspected/Rated C : Corrected A/W : Acceptable but Monitor & Maintain		+ Issue Type Ma : Maintenance Deficiency Ob : Design & System Obsolescence En : Enforcement	
---	--	---	--	---	--	--	--

**Flood Control Project Maintenance
Levee Inspections**

Maintenance Issue Types Only, Levee Inspection Report By Mile - Fall 2023

Butte County Department of Public Works

Waterway	Bank	Unit Miles	Inspection Start/End	Inspector
Unit No. 05 Big Chico Diversion	Left	1.85	10/10/2023 10/10/2023	Makar Sokol

LM Start	0.38	Rating **	M	Issue No.	27
LM End	0.41	Issue Type +	Ma	Location *	LS
Category	Earthen Levee			GPS Latitude/Longitude	
				Start	End
Item	Vegetation			39.761497°	39.761185°
				-121.795868°	-121.796387°
DWR ID	DWR_NA0003_05_f_2022_27				
Comment Code					
V2 : Remove the wild growth and woody vegetation other than native grasses from the levee slopes.					
Inspector Comment					
Wild growth must be maintained to prevent the rating to change to a U rating.					

Photo 1 of 1 : FA_2023_NA0003_69_27_20231016_00006.jpg



View of the wild growth along the landside slope. Fall 2023.

LM Start	0.42	Rating **	M	Issue No.	24
LM End	0.42	Issue Type +	Ma	Location *	LS
Category	Earthen Levee			GPS Latitude/Longitude	
				Start	End
Item	Erosion / Foot Traffic			39.761082°	39.761082°
				-121.796524°	-121.796524°
DWR ID	DWR_NA0003_05_s_2022_24				
Comment Code					
E3 : Repair the levee slope damaged by foot traffic and prevent access where possible.					
Inspector Comment					

Photo 1 of 1 : FA_2023_NA0003_69_24_20231002_00004.jpg



View of the erosion on the landside slope due to foot traffic. Spring 2022.

LM Start	0.89	Rating **	M	Issue No.	25
LM End	0.89	Issue Type +	Ma	Location *	LS
Category	Earthen Levee			GPS Latitude/Longitude	
				Start	End
Item	Vegetation			39.764426°	39.764426°
				-121.803324°	-121.803324°
DWR ID	DWR_NA0003_05_s_2022_25				
Comment Code					
V2 : Remove the wild growth and woody vegetation other than native grasses from the levee slopes.					
Inspector Comment					

No Photos

* Location LS : Land Side N/A : Not Applicable WS : Water Side CR : Crown	** Rating A : Acceptable M : Minimally Acceptable U : Unacceptable	N : Not Inspected/Rated C : Corrected A/W : Acceptable but Monitor & Maintain	+ Issue Type Ma : Maintenance Deficiency Ob : Design & System Obsolescence En : Enforcement
--	--	---	---

**Flood Control Project Maintenance
Levee Inspections**

Maintenance Issue Types Only, Levee Inspection Report By Mile - Fall 2023

Butte County Department of Public Works

Waterway	Bank	Unit Miles	Inspection Start/End	Inspector
Unit No. 05 Big Chico Diversion	Left	1.85	10/10/2023 10/10/2023	Makar Sokol

LM Start	0.91	Rating **	M	Issue No.	26
LM End	0.91	Issue Type +	Ma	Location *	WS
Category	Earthen Levee			GPS Latitude/Longitude	
				Start	End
Item	Vegetation			39.764623°	39.764623°
				-121.803493°	-121.803493°
DWR ID	DWR_NA0003_05_s_2022_26				
Comment Code					
V2 : Remove the wild growth and woody vegetation other than native grasses from the levee slopes.					
Inspector Comment					

No Photos

LM Start	1.19	Rating **	M	Issue No.	12
LM End	1.19	Issue Type +	Ma	Location *	LS
Category	Earthen Levee			GPS Latitude/Longitude	
				Start	End
Item	Erosion / Foot Traffic			39.767958°	39.767958°
				-121.806326°	-121.806326°
DWR ID	DWR_NA0003_05_s_2019_12				
Comment Code					
E3 : Repair the levee slope damaged by foot traffic and prevent access where possible.					
Inspector Comment					

Photo 1 of 1 : FA_2023_NA0003_69_12_20231002_00002.jpg



View of the landside slope erosion caused by foot traffic. Spring 2020.

LM Start	1.25	Rating **	M	Issue No.	13
LM End	1.25	Issue Type +	Ma	Location *	LS
Category	Earthen Levee			GPS Latitude/Longitude	
				Start	End
Item	Erosion / Foot Traffic			39.768621°	39.768621°
				-121.807052°	-121.807052°
DWR ID	DWR_NA0003_05_f_2016_13				
Comment Code					
E3 : Repair the levee slope damaged by foot traffic and prevent access where possible.					
Inspector Comment					

Photo 1 of 1 : FA_2023_NA0003_69_13_20231002_00003.jpg



View of the damaged landside slope due to foot traffic. Fall 2020.

* Location LS : Land Side N/A : Not Applicable WS : Water Side CR : Crown		** Rating A : Acceptable M : Minimally Acceptable U : Unacceptable		N : Not Inspected/Rated C : Corrected A/W : Acceptable but Monitor & Maintain		+ Issue Type Ma : Maintenance Deficiency Ob : Design & System Obsolescence En : Enforcement	
--	--	--	--	---	--	---	--

**Flood Control Project Maintenance
Levee Inspections**

Maintenance Issue Types Only, Levee Inspection Report By Mile - Fall 2023

Butte County Department of Public Works

Waterway	Bank	Unit Miles	Inspection Start/End	Inspector
Unit No. 05 Big Chico Diversion	Left	1.85	10/10/2023 10/10/2023	Makar Sokol

LM Start	1.49	Rating **	A/W	Issue No.	17
LM End	1.49	Issue Type +	Ma	Location *	WS
Category	Earthen Levee			GPS Latitude/Longitude	
				Start	End
Item	Erosion / Bank Caving			39.771379°	39.771379°
				-121.809849°	-121.809849°
DWR ID	DWR_NA0003_05_s_2019_17				
Comment Code					
E1 : Note and monitor erosion site.					
Inspector Comment					

No Photos

* Location LS : Land Side N/A : Not Applicable WS : Water Side CR : Crown	** Rating A : Acceptable M : Minimally Acceptable U : Unacceptable	N : Not Inspected/Rated C : Corrected A/W : Acceptable but Monitor & Maintain	+ Issue Type Ma : Maintenance Deficiency Ob : Design & System Obsolescence En : Enforcement
--	--	---	---