

**Flood Control Project Maintenance
Levee Inspections**

Maintenance Issue Types Only, Levee Inspection Report By Mile - Fall 2022

Butte County Department of Public Works

Waterway	Bank	Unit Miles	Inspection Start/End	Inspector
Unit No. 01 Mud Creek	Right	6.80	10/04/2022 10/04/2022	Makar Sokol

LM Start		Rating **	A	Issue No.	6
LM End		Issue Type +	Ma	Location *	N/A
Category	Earthen Levee			GPS Latitude/Longitude	
				Start	End
Item	Emergency Supplies & Equipment			°	°
				°	°
DWR ID	DWR_NA0003_01_s_2013_6				
Comment Code					
ES : Emergency Supplies & Equipment					
Inspector Comment					
LMA has flood fight supplies & equipment.					

No Photos

LM Start		Rating **	M	Issue No.	10
LM End		Issue Type +	Ma	Location *	N/A
Category	Earthen Levee			GPS Latitude/Longitude	
				Start	End
Item	Flood Preparedness & Training			°	°
				°	°
DWR ID	DWR_NA0003_01_s_2013_10				
Comment Code					
FP : Flood Preparedness & Training					
Inspector Comment					
The LMA completed flood fight training in 2016.					

No Photos

LM Start		Rating **	A	Issue No.	58
LM End		Issue Type +	Ma	Location *	N/A
Category	Earthen Levee			GPS Latitude/Longitude	
				Start	End
Item	Operations & Maintenance Manuals			°	°
				°	°
DWR ID	DWR_NA0003_01_f_2017_58				
Comment Code					
OM : O&M Manuals					
Inspector Comment					
The LMA has O&M Manuals.					

No Photos

*** Location**
 LS : Land Side N/A : Not Applicable
 WS : Water Side
 CR : Crown

**** Rating**
 A : Acceptable
 M : Minimally Acceptable
 U : Unacceptable
 N : Not Inspected/Rated
 C : Corrected
 A/W : Acceptable but Monitor & Maintain

+ Issue Type
 Ma : Maintenance Deficiency
 Ob : Design & System Obsolescence
 En : Enforcement

**Flood Control Project Maintenance
Levee Inspections**

Maintenance Issue Types Only, Levee Inspection Report By Mile - Fall 2022

Butte County Department of Public Works

Waterway	Bank	Unit Miles	Inspection Start/End	Inspector
Unit No. 01 Mud Creek	Right	6.80	10/04/2022 10/04/2022	Makar Sokol

LM Start	0.25	Rating **	U	Issue No.	64	
LM End	0.25	Issue Type +	Ma	Location *		
Category	Supplemental			GPS Latitude/Longitude		
				Start	End	
Item	DWR UCIP LMA Responsibility			39.729219 °	39.729219 °	
				-121.933437 °	-121.933437 °	
DWR ID	19209					
Comment Code						
Inspector Comment						
DS_ID:19209 FS_ID:67236 EP_NO: N/A Repair Type: Urgent EVAL Issue: 1, Pipe Integrity Crossing Status: Found UCIP Comments: 03/17/2021 Record updated from No Action Needed to Urgent. DMP internal video inspection has found pipe integrity issues. LOF of crossing is between 5 and 6. Crossing will be monitored until funding becomes available to address the issues. No permit has been identified authorizing pipe. (O.Yakimov - DWR UCIP) 02/20/2014 Looks cleaned recently. (P. Amatya - DWR UCIP) FIELD_STRUCT_DESC: 24-inch corrugated metal gravity drainage pipe through the levee, 12.5 feet below the crown. Flap gate on the waterside (WS) end. Concrete U-shaped headwall on each end. Grouted riprap apron on the landside (LS) end. Grouted riprap spillway on the WS end. [Additional Reference(s): DWR Levee Log, 1992 (HLM 0.26). USACE Sacramento O&M Manual, Unit 504, May 1965, Revised 2 February 2011, (HLM 0.26), listed as 24-inch pipe. USACE As-Built Drawing No. 50-04-3685, Sheet 41 table of drainage structures, STA 92+46, 19 May 1965]. FS Date: 3/17/2021 8:31:45 AM						

LM Start	0.25	Rating **	U	Issue No.	64 (cont)
LM End	0.25	Issue Type +	Ma	Location *	

Photo 1 of 3 : UCIP_FA_2022_67236_99222.jpg



Top of Levee: View of levee crown looking downstream

Photo 2 of 3 : UCIP_FA_2022_67236_99225.jpg



Water-Side: Headwall and flap gate at levee toe

* Location LS : Land Side N/A : Not Applicable WS : Water Side CR : Crown	** Rating A : Acceptable M : Minimally Acceptable U : Unacceptable	N : Not Inspected/Rated C : Corrected A/W : Acceptable but Monitor & Maintain	+ Issue Type Ma : Maintenance Deficiency Ob : Design & System Obsolescence En : Enforcement
--	--	---	---

**Flood Control Project Maintenance
Levee Inspections**

Maintenance Issue Types Only, Levee Inspection Report By Mile - Fall 2022

Butte County Department of Public Works

Waterway	Bank	Unit Miles	Inspection Start/End	Inspector
Unit No. 01 Mud Creek	Right	6.80	10/04/2022 10/04/2022	Makar Sokol

LM Start	0.25	Rating **	U	Issue No.	64 (cont)
LM End	0.25	Issue Type +	Ma	Location *	
Category	Supplemental			GPS Latitude/Longitude	
				Start	End
Item	DWR UCIP LMA Responsibility			39.729219 °	39.729219 °
				-121.933437 °	-121.933437 °
DWR ID	19209				

Photo 3 of 3 : UCIP_FA_2022_67236_99224.jpg



Water-Side: View of levee slope looking from crown

LM Start	1.00	Rating **	M	Issue No.	65
LM End	1.00	Issue Type +	Ma	Location *	
Category	Supplemental			GPS Latitude/Longitude	
				Start	End
Item	DWR UCIP LMA Responsibility			39.739268 °	39.739268 °
				-121.931891 °	-121.931891 °
DWR ID	19211				

Comment Code

Inspector Comment

DS_ID:19211
FS_ID:67238
EP_NO: N/A
Repair Type: Non-Urgent
EVAL Issue: 5, Pipe Damage
Crossing Status: Found
UCIP Comments: 03/17/2021 Record remains Non-Urgent. Vegetation on waterside has been cleared. No permit has been identified authorizing pipe. DMP internal video inspection has found pipe integrity issues. LOF of crossing is greater than or equal to 4.1 and less than 5. Crossing will be monitored until funding becomes available for rehabilitation. (O.Yakimov - DWR UCIP)
02/20/2014 Vegetation debris on waterside. Needs clearing and cleaning. (P. Amatya - DWR UCIP)
FIELD_STRUCT_DESC: 24-inch corrugated metal gravity drainage pipe through the levee, 12 feet below the crown. Flap gate on the waterside (WS) end. Concrete U-shaped headwall on each end. Grouted riprap apron on the landside (LS) end. Grouted riprap spillway on the WS end. [Additional Reference(s): DWR Levee Log, 1992 (HLM 1.01). USACE Sacramento O&M Manual, Unit 504, May 1965, Revised 2 February 2011, (HLM 1.03), listed as 24-inch pipe. USACE As-Built Drawing No. 50-04-3685, Sheet 3, STA 132+00, 19 May 1965. USACE As-Built Drawing No. 50-04-3685, Sheet 41 table of drainage structures, STA 132+00, 19 May 1965].
FS Date: 3/17/2021

Photo 1 of 3 : UCIP_FA_2022_67238_99231.jpg



Top of Levee: View of levee crown looking upstream

* Location LS : Land Side N/A : Not Applicable WS : Water Side CR : Crown	** Rating A : Acceptable M : Minimally Acceptable U : Unacceptable N : Not Inspected/Rated C : Corrected A/W : Acceptable but Monitor & Maintain	+ Issue Type Ma : Maintenance Deficiency Ob : Design & System Obsolescence En : Enforcement
--	---	---

**Flood Control Project Maintenance
Levee Inspections**

Maintenance Issue Types Only, Levee Inspection Report By Mile - Fall 2022

Butte County Department of Public Works

Waterway	Bank	Unit Miles	Inspection Start/End	Inspector
Unit No. 01 Mud Creek	Right	6.80	10/04/2022 10/04/2022	Makar Sokol

LM Start	1.00	Rating **	M	Issue No.	65 (cont)
LM End	1.00	Issue Type +	Ma	Location *	
Category	Supplemental			GPS Latitude/Longitude	
				Start	End
Item	DWR UCIP LMA Responsibility			39.739268 °	39.739268 °
				-121.931891 °	-121.931891 °
DWR ID	19211				

Photo 2 of 3 : UCIP_FA_2022_67238_99232.jpg



Water-Side: View of levee slope looking from crown

LM Start	1.00	Rating **	M	Issue No.	65 (cont)
LM End	1.00	Issue Type +	Ma	Location *	

Photo 3 of 3 : UCIP_FA_2022_67238_99236.jpg



Water-Side: Headwall and flap gate at levee toe

* Location LS : Land Side N/A : Not Applicable WS : Water Side CR : Crown	** Rating A : Acceptable M : Minimally Acceptable U : Unacceptable	N : Not Inspected/Rated C : Corrected A/W : Acceptable but Monitor & Maintain	+ Issue Type Ma : Maintenance Deficiency Ob : Design & System Obsolescence En : Enforcement
--	--	---	---

**Flood Control Project Maintenance
Levee Inspections**

Maintenance Issue Types Only, Levee Inspection Report By Mile - Fall 2022

Butte County Department of Public Works

Waterway	Bank	Unit Miles	Inspection Start/End	Inspector
Unit No. 01 Mud Creek	Right	6.80	10/04/2022 10/04/2022	Makar Sokol

LM Start	1.90	Rating **	M	Issue No.	66	
LM End	1.90	Issue Type +	Ma	Location *		
Category	Supplemental			GPS Latitude/Longitude		
				Start	End	
Item	DWR UCIP LMA Responsibility			39.747563 °	39.747563 °	
				-121.920170 °	-121.920170 °	
DWR ID	19212					
Comment Code						
Inspector Comment						
DS_ID:19212 FS_ID:67239 EP_NO: N/A Repair Type: Non-Urgent EVAL Issue: Crossing Status: Found UCIP Comments: 03/17/2021 Record updated from No Action Needed to Non-Urgent. No permit has been identified authorizing pipe. DMP internal video inspection has not found pipe integrity issues. LOF of crossing is less or equal to 4.0. Recommend next video inspection in 5 years. (O.Yakimov - DWR UCIP) 08/29/2016: Shawn Bates of NA0003 has cleared the LS and WS of debris and blockage; WS gate functions properly now. Crossing has been downgraded from Urgent to No Action Needed. (K. Fazel - UCIP) 08/11/2016: Same as last inspection. (K. Fazel - UCIP) 02/20/2014: No riprap spillway on waterside. Needs cleaning and clearing of debris. Flap gate was not fully closed. (P. Amatya - DWR UCIP) FIELD_STRUCT_DESC: 24-inch corrugated metal gravity drainage pipe through the levee, 13 feet below the crown. Flap gate on the waterside (WS) end. Concrete U-shaped headwall on each end. Grouted riprap apron on the landside (LS) end. Grouted riprap spillway on the WS end. [Additional Reference(s): DWR Levee Log, 1992 (HLM 1.90). USACE Sacramento O&M Manual, Unit 504, May 1965, Revised 2 February 2011, (HLM 1.95), listed as 24-inch pipe. USACE As-Built Drawing No. 50-04-3685, Sheet 4, STA 179+60, 19 May 1965. USACE As-Built Drawing No. 50-04-3685, Sheet 41 table of drainage structures, STA 179+60, 19 May 1965]. FS Date: 3/17/2021 9:01:17 AM						

Photo 1 of 3 : UCIP_FA_2022_67239_99237.jpg



Top of Levee: View of levee crown looking upstream

* Location LS : Land Side N/A : Not Applicable WS : Water Side CR : Crown	** Rating A : Acceptable M : Minimally Acceptable U : Unacceptable N : Not Inspected/Rated C : Corrected A/W : Acceptable but Monitor & Maintain	+ Issue Type Ma : Maintenance Deficiency Ob : Design & System Obsolescence En : Enforcement
--	---	---

**Flood Control Project Maintenance
Levee Inspections**

Maintenance Issue Types Only, Levee Inspection Report By Mile - Fall 2022

Butte County Department of Public Works

Waterway	Bank	Unit Miles	Inspection Start/End	Inspector
Unit No. 01 Mud Creek	Right	6.80	10/04/2022 10/04/2022	Makar Sokol

LM Start	1.90	Rating **	M	Issue No.	66 (cont)
LM End	1.90	Issue Type +	Ma	Location *	
Category	Supplemental			GPS Latitude/Longitude	
				Start	End
Item	DWR UCIP LMA Responsibility			39.747563 °	39.747563 °
				-121.920170 °	-121.920170 °
DWR ID	19212				

Photo 2 of 3 : UCIP_FA_2022_67239_99238.jpg



Water-Side: View of levee slope looking from crown

LM Start	1.90	Rating **	M	Issue No.	66 (cont)
LM End	1.90	Issue Type +	Ma	Location *	

Photo 3 of 3 : UCIP_FA_2022_67239_99242.jpg



Water-Side: Headwall and flap gate at levee toe

* Location LS : Land Side N/A : Not Applicable WS : Water Side CR : Crown	** Rating A : Acceptable M : Minimally Acceptable U : Unacceptable	N : Not Inspected/Rated C : Corrected A/W : Acceptable but Monitor & Maintain	+ Issue Type Ma : Maintenance Deficiency Ob : Design & System Obsolescence En : Enforcement
--	--	---	---

**Flood Control Project Maintenance
Levee Inspections**

Maintenance Issue Types Only, Levee Inspection Report By Mile - Fall 2022

Butte County Department of Public Works

Waterway	Bank	Unit Miles	Inspection Start/End	Inspector
Unit No. 01 Mud Creek	Right	6.80	10/04/2022 10/04/2022	Makar Sokol

LM Start	3.03	Rating **	M	Issue No.	67
LM End	3.03	Issue Type +	Ma	Location *	
Category	Supplemental			GPS Latitude/Longitude	
				Start	End
Item	DWR UCIP LMA Responsibility			39.761224 °	39.761224 °
				-121.911108 °	-121.911108 °
DWR ID	19216				
Comment Code					
Inspector Comment					
DS_ID:19216 FS_ID:67246 EP_NO: N/A Repair Type: Non-Urgent EVAL Issue: Crossing Status: Found UCIP Comments: 03/17/2021 Record remains Non-Urgent. No permit has been identified authorizing pipe. DMP internal video inspection has not found pipe integrity issues. LOF of crossing is less or equal to 4.0. Recommend next video inspection in 5 years. (O.Yakimov - DWR UCIP) 02/20/2014 Inlet and outlet needs cleaning and clearing of debris. (P. Amatya - DWR UCIP) FIELD_STRUCT_DESC: 24-inch corrugated metal gravity drainage pipe through the levee, 8.5 feet below the crown. Flap gate on the waterside (WS) end. Concrete U-shaped headwall on each end. Grouted riprap apron on the landside (LS) end. Grouted riprap spillway on the WS end. [Additional Reference(s): DWR Levee Log, 1992 (HLM 3.11). USACE Sacramento O&M Manual, Unit 504, May 1965, Revised 2 February 2011, (HLM 3.11), listed as 24-inch pipe. USACE As-Built Drawing No. 50-04-3685, Sheet 5, STA 239+60, 19 May 1965. USACE As-Built Drawing No. 50-04-3685, Sheet 41 table of drainage structures, STA 239+60, 19 May 1965]. FS Date: 3/17/2021 10:06:03 AM					

LM Start	3.03	Rating **	M	Issue No.	67 (cont)
LM End	3.03	Issue Type +	Ma	Location *	

Photo 1 of 3 : UCIP_FA_2022_67246_99270.jpg



Top of Levee: View of levee crown looking upstream

Photo 2 of 3 : UCIP_FA_2022_67246_99272.jpg



Water-Side: View of levee slope looking from crown

* Location LS : Land Side N/A : Not Applicable WS : Water Side CR : Crown	** Rating A : Acceptable M : Minimally Acceptable U : Unacceptable	N : Not Inspected/Rated C : Corrected A/W : Acceptable but Monitor & Maintain	+ Issue Type Ma : Maintenance Deficiency Ob : Design & System Obsolescence En : Enforcement
--	--	---	---

**Flood Control Project Maintenance
Levee Inspections**

Maintenance Issue Types Only, Levee Inspection Report By Mile - Fall 2022

Butte County Department of Public Works

Waterway	Bank	Unit Miles	Inspection Start/End	Inspector
Unit No. 01 Mud Creek	Right	6.80	10/04/2022 10/04/2022	Makar Sokol

LM Start	3.03	Rating **	M	Issue No.	67 (cont)
LM End	3.03	Issue Type +	Ma	Location *	
Category	Supplemental			GPS Latitude/Longitude	
				Start	End
Item	DWR UCIP LMA Responsibility			39.761224 °	39.761224 °
				-121.911108 °	-121.911108 °
DWR ID	19216				

Photo 3 of 3 : UCIP_FA_2022_67246_99273.jpg



Water-Side: Headwall and flap gate at levee toe

LM Start	3.18	Rating **	M	Issue No.	68
LM End	3.18	Issue Type +	Ma	Location *	
Category	Supplemental			GPS Latitude/Longitude	
				Start	End
Item	DWR UCIP LMA Responsibility			39.763067 °	39.763067 °
				-121.909608 °	-121.909608 °
DWR ID	19217				

Comment Code

Inspector Comment

DS_ID:19217
 FS_ID:67247
 EP_NO: N/A
 Repair Type: Non-Urgent
 EVAL Issue:
 Crossing Status: Found
 UCIP Comments: 03/17/2021 Record remains Non-Urgent. No permit has been identified authorizing pipe. DMP internal video inspection has not found pipe integrity issues. LOF of crossing is less or equal to 4.0. Recommend next video inspection in 5 years. Debris has been cleared. (O.Yakimov - DWR UCIP)
 02/20/2014 It needs cleaning and clearing in inlet and outlet ends. (P. Amatya - DWR UCIP)
 FIELD_STRUCT_DESC: 24-inch corrugated metal gravity drainage pipe through the levee, 9 feet below the crown. Flap gate on the waterside (WS) end. Concrete U-shaped headwall on each end. Grouted riprap apron on the landside (LS) end. Grouted riprap spillway on the WS end. [Additional Reference(s): DWR Levee Log, 1992 (HLM 3.27). USACE Sacramento O&M Manual, Unit 504, May 1965, Revised 2 February 2011, (HLM 3.27), listed as 24-inch pipe. USACE As-Built Drawing No. 50-04-3685, Sheet 5, STA 247+60, 19 May 1965. USACE As-Built Drawing No. 50-04-3685, Sheet 41 table of drainage structures, STA 247+60, 19 May 1965].
 FS Date: 3/17/2021 10:15:12 AM

Photo 1 of 3 : UCIP_FA_2022_67247_99276.jpg



Top of Levee: View of levee crown looking upstream

* Location LS : Land Side N/A : Not Applicable WS : Water Side CR : Crown	** Rating A : Acceptable M : Minimally Acceptable U : Unacceptable	N : Not Inspected/Rated C : Corrected A/W : Acceptable but Monitor & Maintain	+ Issue Type Ma : Maintenance Deficiency Ob : Design & System Obsolescence En : Enforcement
--	--	--	---

**Flood Control Project Maintenance
Levee Inspections**

Maintenance Issue Types Only, Levee Inspection Report By Mile - Fall 2022

Butte County Department of Public Works

Waterway	Bank	Unit Miles	Inspection Start/End	Inspector
Unit No. 01 Mud Creek	Right	6.80	10/04/2022 10/04/2022	Makar Sokol

LM Start	3.18	Rating **	M	Issue No.	68 (cont)
LM End	3.18	Issue Type +	Ma	Location *	
Category	Supplemental			GPS Latitude/Longitude	
				Start	End
Item	DWR UCIP LMA Responsibility			39.763067 °	39.763067 °
				-121.909608 °	-121.909608 °
DWR ID	19217				

Photo 2 of 3 : UCIP_FA_2022_67247_99277.jpg



Water-Side: View of levee slope looking from crown

LM Start	3.18	Rating **	M	Issue No.	68 (cont)
LM End	3.18	Issue Type +	Ma	Location *	

Photo 3 of 3 : UCIP_FA_2022_67247_99281.jpg



Water-Side: Headwall and flap gate at levee toe

LM Start	3.19	Rating **	M	Issue No.	27
LM End	3.26	Issue Type +	Ma	Location *	LS
Category	Earthen Levee			GPS Latitude/Longitude	
				Start	End
Item	Animal Control			39.763087 °	39.764081 °
				-121.909616 °	-121.909045 °
DWR ID	DWR_NA0003_01_f_2022_27				
Comment Code					
A3 : No rodents visible, but rodent burrows visible; need to backfill and compact or grout burrows.					
Inspector Comment					

Photo 1 of 1 : FA_2022_NA0003_64_27_20221011_00067.jpg



View of animal burrows along the landside slope. Fall 2022.

* Location	** Rating	+ Issue Type
LS : Land Side WS : Water Side CR : Crown	A : Acceptable M : Minimally Acceptable U : Unacceptable	Ma : Maintenance Deficiency Ob : Design & System Obsolescence En : Enforcement
N/A : Not Applicable	N : Not Inspected/Rated C : Corrected A/W : Acceptable but Monitor & Maintain	

**Flood Control Project Maintenance
Levee Inspections**

Maintenance Issue Types Only, Levee Inspection Report By Mile - Fall 2022

Butte County Department of Public Works

Waterway	Bank	Unit Miles	Inspection Start/End	Inspector
Unit No. 01 Mud Creek	Right	6.80	10/04/2022 10/04/2022	Makar Sokol

LM Start	3.39	Rating **	M	Issue No.	69	
LM End	3.39	Issue Type +	Ma	Location *		
Category	Supplemental			GPS Latitude/Longitude		
				Start	End	
Item	DWR UCIP LMA Responsibility			39.765440 °	39.765440 °	
				-121.907261 °	-121.907261 °	
DWR ID	19218					
Comment Code						
Inspector Comment						
DS_ID:19218 FS_ID:67248 EP_NO: N/A Repair Type: Non-Urgent EVAL Issue: Crossing Status: Found UCIP Comments: 03/17/2021 Record remains Non-Urgent. No permit has been identified authorizing pipe. DMP internal video inspection has not found pipe integrity issues. LOF of crossing is less or equal to 4.0. Recommend next video inspection in 5 years. (O.Yakimov - DWR UCIP) 02/20/2014 Needs cleaning and clearing of debris. (P. Amatya - DWR UCIP) FIELD_STRUCT_DESC: 24-inch corrugated metal gravity drainage pipe through the levee, 10 feet below the crown. Flap gate on the waterside (WS) end. Concrete U-shaped headwall on each end. Grouted riprap apron on the landside (LS) end. Grouted riprap spillway on the WS end. [Additional Reference(s): DWR Levee Log, 1992 (HLM 3.48). USACE Sacramento O&M Manual, Unit 504, May 1965, Revised 2 February 2011, (HLM 3.48), listed as 24-inch pipe. USACE As-Built Drawing No. 50-04-3685, Sheet 5, STA 258+70, 19 May 1965. USACE As-Built Drawing No. 50-04-3685, Sheet 41 table of drainage structures, STA 258+70, 19 May 1965]. FS Date: 3/17/2021 10:18:14 AM						

LM Start	3.39	Rating **	M	Issue No.	69 (cont)
LM End	3.39	Issue Type +	Ma	Location *	

Photo 1 of 3 : UCIP_FA_2022_67248_99282.jpg



Top of Levee: View of levee crown looking upstream

Photo 2 of 3 : UCIP_FA_2022_67248_99283.jpg



Water-Side: View of levee slope looking from crown

* Location LS : Land Side N/A : Not Applicable WS : Water Side CR : Crown	** Rating A : Acceptable M : Minimally Acceptable U : Unacceptable	N : Not Inspected/Rated C : Corrected A/W : Acceptable but Monitor & Maintain	+ Issue Type Ma : Maintenance Deficiency Ob : Design & System Obsolescence En : Enforcement
--	--	---	---

**Flood Control Project Maintenance
Levee Inspections**

Maintenance Issue Types Only, Levee Inspection Report By Mile - Fall 2022

Butte County Department of Public Works

Waterway	Bank	Unit Miles	Inspection Start/End	Inspector
Unit No. 01 Mud Creek	Right	6.80	10/04/2022 10/04/2022	Makar Sokol

LM Start	3.39	Rating **	M	Issue No.	69 (cont)
LM End	3.39	Issue Type +	Ma	Location *	
Category	Supplemental			GPS Latitude/Longitude	
				Start	End
Item	DWR UCIP LMA Responsibility			39.765440 °	39.765440 °
				-121.907261 °	-121.907261 °
DWR ID	19218				

Photo 3 of 3 : UCIP_FA_2022_67248_99287.jpg



Water-Side: Headwall and flap gate at levee toe

LM Start	3.97	Rating **	M	Issue No.	70
LM End	3.97	Issue Type +	Ma	Location *	
Category	Supplemental			GPS Latitude/Longitude	
				Start	End
Item	DWR UCIP LMA Responsibility			39.771293 °	39.771293 °
				-121.900247 °	-121.900247 °
DWR ID	19219				

Comment Code

Inspector Comment

DS_ID:19219
FS_ID:67249
EP_NO: N/A
Repair Type: Non-Urgent
EVAL Issue:
Crossing Status: Found
UCIP Comments: 03/17/2021 Record remains Non-Urgent. No permit has been identified authorizing pipe. DMP internal video inspection has not found pipe integrity issues. LOF of crossing is less or equal to 4.0. Recommend next video inspection in 5 years. (O.Yakimov - DWR UCIP)
02/20/2014 Needs cleaning and clearing of debris in both ends of the pipe. (P. Amatya - DWR UCIP)
FIELD_STRUCT_DESC: 24-inch corrugated metal gravity drainage pipe through the levee, 9 feet below the crown. Flap gate on the waterside (WS) end. Concrete U-shaped headwall on each end. Grouted riprap apron on the landside (LS) end. Grouted riprap spillway on the WS end. [Additional Reference(s): DWR Levee Log, 1992 (HLM 4.08). USACE Sacramento O&M Manual, Unit 504, May 1965, Revised 2 February 2011, (HLM 4.08), listed as 24-inch pipe. USACE As-Built Drawing No. 50-04-3685, Sheet 41 table of drainage structures, STA 289+20, 19 May 1965].
FS Date: 3/17/2021 10:21:26 AM

Photo 1 of 3 : UCIP_FA_2022_67249_99288.jpg



Top of Levee: View of levee crown looking upstream

* Location LS : Land Side N/A : Not Applicable WS : Water Side CR : Crown	** Rating A : Acceptable M : Minimally Acceptable U : Unacceptable N : Not Inspected/Rated C : Corrected A/W : Acceptable but Monitor & Maintain	+ Issue Type Ma : Maintenance Deficiency Ob : Design & System Obsolescence En : Enforcement
--	---	---

**Flood Control Project Maintenance
Levee Inspections**

Maintenance Issue Types Only, Levee Inspection Report By Mile - Fall 2022

Butte County Department of Public Works

Waterway	Bank	Unit Miles	Inspection Start/End	Inspector
Unit No. 01 Mud Creek	Right	6.80	10/04/2022 10/04/2022	Makar Sokol

LM Start	3.97	Rating **	M	Issue No.	70 (cont)
LM End	3.97	Issue Type +	Ma	Location *	
Category	Supplemental			GPS Latitude/Longitude	
				Start	End
Item	DWR UCIP LMA Responsibility			39.771293 °	39.771293 °
				-121.900247 °	-121.900247 °
DWR ID	19219				

Photo 2 of 3 : UCIP_FA_2022_67249_99289.jpg



Water-Side: View of levee slope looking from crown

LM Start	3.97	Rating **	M	Issue No.	70 (cont)
LM End	3.97	Issue Type +	Ma	Location *	

Photo 3 of 3 : UCIP_FA_2022_67249_99293.jpg



Water-Side: Headwall and flap gate at levee toe

LM Start	4.16	Rating **	M	Issue No.	34
LM End	4.16	Issue Type +	Ma	Location *	LS
Category	Earthen Levee			GPS Latitude/Longitude	
				Start	End
Item	Animal Control			39.772301 °	39.772301 °
				-121.897062 °	-121.897062 °
DWR ID	DWR_NA0003_01_s_2022_34				
Comment Code					
A3 : No rodents visible, but rodent burrows visible; need to backfill and compact or grout burrows.					
Inspector Comment					

No Photos

* Location LS : Land Side N/A : Not Applicable WS : Water Side CR : Crown	** Rating A : Acceptable M : Minimally Acceptable U : Unacceptable	N : Not Inspected/Rated C : Corrected A/W : Acceptable but Monitor & Maintain	+ Issue Type Ma : Maintenance Deficiency Ob : Design & System Obsolescence En : Enforcement
--	--	--	---

**Flood Control Project Maintenance
Levee Inspections**

Maintenance Issue Types Only, Levee Inspection Report By Mile - Fall 2022

Butte County Department of Public Works

Waterway	Bank	Unit Miles	Inspection Start/End	Inspector
Unit No. 01 Mud Creek	Right	6.80	10/04/2022 10/04/2022	Makar Sokol

LM Start	4.26	Rating **	A/W	Issue No.	5
LM End	4.32	Issue Type +	Ma	Location *	WS
Category	Supplemental			GPS Latitude/Longitude	
				Start	End
Item	2018 USACE Erosion Survey			39.773257 °	39.773969 °
				-121.895618 °	-121.895078 °
DWR ID	DWR_NA0003_01_s_2022_5				
Comment Code					
Inspector Comment					
2018 Site ID: MUD 4.4 R					
Status: Eroding					
2018 Field Notes: Last observed in 2017.					
Site History: 2011 - Two large erosion scallops at the toe from a rotational failure. Deep cracks along the slope indicate the potential for further failures. 2017 - Erosion scarps have increased in size since 2011 inspection.					

No Photos

LM Start	4.46	Rating **	M	Issue No.	71
LM End	4.46	Issue Type +	Ma	Location *	
Category	Supplemental			GPS Latitude/Longitude	
				Start	End
Item	DWR UCIP LMA Responsibility			39.775905 °	39.775905 °
				-121.893980 °	-121.893980 °
DWR ID	19220				
Comment Code					
Inspector Comment					
DS_ID:19220 FS_ID:67250 EP_NO: N/A Repair Type: Non-Urgent EVAL Issue: Crossing Status: Found UCIP Comments: 03/17/2021 Record remains Non-Urgent. Debris has been cleared. No permit has been identified authorizing pipe. DMP internal video inspection has not found pipe integrity issues. LOF of crossing is less or equal to 4.0. Recommend next video inspection in 5 years. (O.Yakimov - DWR UCIP) 02/20/2014 Needs cleaning and clearing of debris. (P. Amatya - DWR UCIP) FIELD_STRUCT_DESC: 24-inch corrugated metal gravity drainage pipe through the levee, 13 feet below the crown. Flap gate on the waterside (WS) end. Concrete U-shaped headwall on each end. Grouted riprap apron on the landside (LS) end. Grouted riprap spillway on the WS end. [Additional Reference(s): DWR Levee Log, 1992 (HLM 4.57). USACE Sacramento O&M Manual, Unit 504, May 1965, Revised 2 February 2011, (HLM 4.58), listed as 24-inch pipe. USACE As-Built Drawing No. 50-04-3685, Sheet 6, STA 315+18, 19 May 1965]. FS Date: 3/17/2021 10:24:31 AM					

Photo 1 of 3 : UCIP_FA_2022_67250_99294.jpg



Top of Levee: View of levee crown looking upstream

* Location LS : Land Side N/A : Not Applicable WS : Water Side CR : Crown	** Rating A : Acceptable M : Minimally Acceptable U : Unacceptable	N : Not Inspected/Rated C : Corrected A/W : Acceptable but Monitor & Maintain	+ Issue Type Ma : Maintenance Deficiency Ob : Design & System Obsolescence En : Enforcement
--	--	---	---

**Flood Control Project Maintenance
Levee Inspections**

Maintenance Issue Types Only, Levee Inspection Report By Mile - Fall 2022

Butte County Department of Public Works

Waterway	Bank	Unit Miles	Inspection Start/End	Inspector
Unit No. 01 Mud Creek	Right	6.80	10/04/2022 10/04/2022	Makar Sokol

LM Start	4.46	Rating **	M	Issue No.	71 (cont)
LM End	4.46	Issue Type +	Ma	Location *	
Category	Supplemental			GPS Latitude/Longitude	
				Start	End
Item	DWR UCIP LMA Responsibility			39.775905 °	39.775905 °
				-121.893980 °	-121.893980 °
DWR ID	19220				

Photo 2 of 3 : UCIP_FA_2022_67250_99296.jpg



Water-Side: View of levee slope looking from crown

LM Start	4.46	Rating **	M	Issue No.	71 (cont)
LM End	4.46	Issue Type +	Ma	Location *	

Photo 3 of 3 : UCIP_FA_2022_67250_99299.jpg



Water-Side: Headwall and flap gate on levee slope

* Location LS : Land Side N/A : Not Applicable WS : Water Side CR : Crown	** Rating A : Acceptable M : Minimally Acceptable U : Unacceptable	N : Not Inspected/Rated C : Corrected A/W : Acceptable but Monitor & Maintain	+ Issue Type Ma : Maintenance Deficiency Ob : Design & System Obsolescence En : Enforcement
--	--	---	---

**Flood Control Project Maintenance
Levee Inspections**

Maintenance Issue Types Only, Levee Inspection Report By Mile - Fall 2022

Butte County Department of Public Works

Waterway	Bank	Unit Miles	Inspection Start/End	Inspector
Unit No. 01 Mud Creek	Right	6.80	10/04/2022 10/04/2022	Makar Sokol

LM Start	4.81	Rating **	U	Issue No.	72
LM End	4.81	Issue Type +	Ma	Location *	
Category	Supplemental			GPS Latitude/Longitude	
				Start	End
Item	DWR UCIP LMA Responsibility			39.780244 °	39.780244 °
				-121.891267 °	-121.891267 °
DWR ID	19221				
Comment Code					
Inspector Comment					
DS_ID:19221 FS_ID:67251 EP_NO: N/A Repair Type: Urgent EVAL Issue: 1, Pipe Integrity Crossing Status: Found UCIP Comments: 03/17/2021 Record updated from Non-Urgent to Urgent. DMP internal video inspection has found pipe integrity issues. LOF of crossing is between 5 and 6. Crossing will be monitored until funding becomes available to address the issues. Flap gate on waterside pipe end is non-operating. Recommend lubricating hinges for easy opening. Drainage inlet at landside toe is burried in soil - unable to locate. Crossing appears abandoned. No permit has been identified authorizing pipe. (O.Yakimov - DWR UCIP) 02/20/2014 CM Standpipe intake. Intake pipe with air vent. Steel rib-bar grit cover on the standpipe on landside levee toe.Needs cleaning and clearing on both ends of the pip. (P. Amatya - DWR UCIP). FIELD_STRUCT_DESC: 24-inch corrugated metal gravity drainage pipe through the levee, 15 feet below the crown. Flap gate on the waterside (WS) end. Concrete U-shaped headwall on the WS end. Grouted riprap spillway on the WS end. Corrugated metal standpipe intake. Intake pipe with an air vent. Steel rib-bar grit cover on the standpipe on the landside (LS) toe. [Additional Reference(s): DWR Levee Log, 1992 (HLM 4.93). USACE Sacramento O&M Manual, Unit 504, May 1965, Revised 2 February 2011, (HLM 4.94), listed as 24-inch pipe. USACE As-Built Drawing No. 50-04-3685, Sheet 6, STA 333+70, 19 May 1965]. FS Date: 3/17/2021 10:28:36 AM					

Photo 1 of 3 : UCIP_FA_2022_67251_99304.jpg



Top of Levee: View of levee crown looking upstream

* Location LS : Land Side N/A : Not Applicable WS : Water Side CR : Crown	** Rating A : Acceptable M : Minimally Acceptable U : Unacceptable N : Not Inspected/Rated C : Corrected A/W : Acceptable but Monitor & Maintain	+ Issue Type Ma : Maintenance Deficiency Ob : Design & System Obsolescence En : Enforcement
--	---	---

**Flood Control Project Maintenance
Levee Inspections**

Maintenance Issue Types Only, Levee Inspection Report By Mile - Fall 2022

Butte County Department of Public Works

Waterway	Bank	Unit Miles	Inspection Start/End	Inspector
Unit No. 01 Mud Creek	Right	6.80	10/04/2022 10/04/2022	Makar Sokol

LM Start	4.81	Rating **	U	Issue No.	72 (cont)
LM End	4.81	Issue Type +	Ma	Location *	
Category	Supplemental			GPS Latitude/Longitude	
				Start	End
Item	DWR UCIP LMA Responsibility			39.780244 °	39.780244 °
				-121.891267 °	-121.891267 °
DWR ID	19221				

Photo 2 of 3 : UCIP_FA_2022_67251_99303.jpg



Land-Side: View of levee slope looking from crown

LM Start	4.81	Rating **	U	Issue No.	72 (cont)
LM End	4.81	Issue Type +	Ma	Location *	

Photo 3 of 3 : UCIP_FA_2022_67251_99302.jpg



Land-Side: Approximate location on pipe inlet at levee toe, although inlet was not found

* Location LS : Land Side N/A : Not Applicable WS : Water Side CR : Crown	** Rating A : Acceptable M : Minimally Acceptable U : Unacceptable	N : Not Inspected/Rated C : Corrected A/W : Acceptable but Monitor & Maintain	+ Issue Type Ma : Maintenance Deficiency Ob : Design & System Obsolescence En : Enforcement
--	--	---	---

**Flood Control Project Maintenance
Levee Inspections**

Maintenance Issue Types Only, Levee Inspection Report By Mile - Fall 2022

Butte County Department of Public Works

Waterway	Bank	Unit Miles	Inspection Start/End	Inspector
Unit No. 01 Mud Creek	Right	6.80	10/04/2022 10/04/2022	Makar Sokol

LM Start	5.09	Rating **	M	Issue No.	73
LM End	5.09	Issue Type +	Ma	Location *	
Category	Supplemental			GPS Latitude/Longitude	
				Start	End
Item	DWR UCIP LMA Responsibility			39.783636 °	39.783636 °
				-121.888463 °	-121.888463 °
DWR ID	19222				
Comment Code					
Inspector Comment					
DS_ID:19222 FS_ID:67286 EP_NO: N/A Repair Type: Non-Urgent EVAL Issue: Crossing Status: Found UCIP Comments: 03/17/2021 Record updated from No Action Needed to Non-Urgent. No permit has been identified authorizing pipe. DMP internal video inspection has not found pipe integrity issues. LOF of crossing is less or equal to 4.0. Recommend next video inspection in 5 years. (O.Yakimov - DWR UCIP) 02/20/2014 Slide gate in CM stadpipe on waterside levee slope. (P. Amatya - DWR UCIP) FIELD_STRUCT_DESC: 36-inch corrugated metal gravity drainage pipe through the levee, 17 feet below the crown. Slide gate in a corrugated metal standpipe on the waterside (WS) slope. Flap gate on the WS end. Concrete U-shaped headwall on each end. Grouted riprap apron on the landside (LS) end. Grouted riprap spillway on the WS end. [Additional Reference(s): DWR Levee Log, 1992 (HLM 5.22). USACE Sacramento O&M Manual, Unit 504, May 1965, Revised 2 February 2011, (HLM 5.22), listed as 36-inch pipe. USACE As-Built Drawing No. 50-04-3685, Sheet 7, from STA 348+25 to STA 352+50, 19 May 1965]. FS Date: 3/17/2021 3:46:02 PM					

LM Start	5.09	Rating **	M	Issue No.	73 (cont)
LM End	5.09	Issue Type +	Ma	Location *	

Photo 1 of 3 : UCIP_FA_2022_67286_99399.jpg



Top of Levee: View of levee crown looking upstream

Photo 2 of 3 : UCIP_FA_2022_67286_99400.jpg



Land-Side: View of levee slope looking from crown. Drainage ditch on landside

* Location LS : Land Side N/A : Not Applicable WS : Water Side CR : Crown	** Rating A : Acceptable M : Minimally Acceptable U : Unacceptable	N : Not Inspected/Rated C : Corrected A/W : Acceptable but Monitor & Maintain	+ Issue Type Ma : Maintenance Deficiency Ob : Design & System Obsolescence En : Enforcement
--	--	---	---

**Flood Control Project Maintenance
Levee Inspections**

Maintenance Issue Types Only, Levee Inspection Report By Mile - Fall 2022

Butte County Department of Public Works

Waterway	Bank	Unit Miles	Inspection Start/End	Inspector
Unit No. 01 Mud Creek	Right	6.80	10/04/2022 10/04/2022	Makar Sokol

LM Start	5.09	Rating **	M	Issue No.	73 (cont)	
LM End	5.09	Issue Type +	Ma	Location *		
Category	Supplemental			GPS Latitude/Longitude		
				Start	End	
Item	DWR UCIP LMA Responsibility			39.783636 °	39.783636 °	
				-121.888463 °	-121.888463 °	
DWR ID	19222					

Photo 3 of 3 : UCIP_FA_2022_67286_99404.jpg



Land-Side: Headwall and pipe inlet in drainage ditch at levee toe

LM Start	6.83	Rating **	M	Issue No.	76
LM End	6.83	Issue Type +	Ma	Location *	
Category	Supplemental			GPS Latitude/Longitude	
				Start	End
Item	DWR UCIP LMA Responsibility			39.801892 °	39.801892 °
				-121.876823 °	-121.876823 °
DWR ID	19226				

Comment Code

Inspector Comment

DS_ID:19226
 FS_ID:67292
 EP_NO: N/A
 Repair Type: Non-Urgent
 EVAL Issue:
 Crossing Status: Not Found
 UCIP Comments: 03/23/2021 Record is Non-Urgent. Crossing not found. A valley on waterside slope may indicate former pipe location. Need to confirm if pipe was removed. No permit has been identified authorizing pipe installation. (O.Yakimov - DWR UCIP)
 FIELD_STRUCT_DESC: 18-inch corrugated metal gravity drainage pipe through the levee, 2 feet below the crown. Pipe is open on both ends. Both ends appear to be covered with rock. [Additional Reference(s): DWR Levee Log, 1992 (HLM 7.00). USACE Sacramento O&M Manual, Unit 504, May 1965, Revised 2 February 2011, (HLM 7.01), listed as 18-inch pipe. USACE As-Built Drawing No. 50-04-3685, Sheet 8, STA 80+70, 19 May 1965].
 FS Date: 3/23/2021 11:21:39 AM

Photo 1 of 3 : UCIP_FA_2022_67292_99434.jpg



Top of Levee: View of levee crown looking upstream

* Location LS : Land Side N/A : Not Applicable WS : Water Side CR : Crown	** Rating A : Acceptable M : Minimally Acceptable U : Unacceptable	N : Not Inspected/Rated C : Corrected A/W : Acceptable but Monitor & Maintain	+ Issue Type Ma : Maintenance Deficiency Ob : Design & System Obsolescence En : Enforcement
--	--	---	---

**Flood Control Project Maintenance
Levee Inspections**

Maintenance Issue Types Only, Levee Inspection Report By Mile - Fall 2022

Butte County Department of Public Works

Waterway	Bank	Unit Miles	Inspection Start/End	Inspector
Unit No. 01 Mud Creek	Right	6.80	10/04/2022 10/04/2022	Makar Sokol

LM Start	6.83	Rating **	M	Issue No.	76 (cont)
LM End	6.83	Issue Type +	Ma	Location *	
Category	Supplemental			GPS Latitude/Longitude	
				Start	End
Item	DWR UCIP LMA Responsibility			39.801892 °	39.801892 °
				-121.876823 °	-121.876823 °
DWR ID	19226				

Photo 2 of 3 : UCIP_FA_2022_67292_99435.jpg



Water-Side: View of levee slope looking from crown. Valley on the slope may indicate pipe location

LM Start	6.83	Rating **	M	Issue No.	76 (cont)
LM End	6.83	Issue Type +	Ma	Location *	

Photo 3 of 3 : UCIP_FA_2022_67292_99436.jpg



Land-Side: View of levee slope looking from crown

* Location LS : Land Side N/A : Not Applicable WS : Water Side CR : Crown	** Rating A : Acceptable M : Minimally Acceptable U : Unacceptable	N : Not Inspected/Rated C : Corrected A/W : Acceptable but Monitor & Maintain	+ Issue Type Ma : Maintenance Deficiency Ob : Design & System Obsolescence En : Enforcement
--	--	---	---

**Flood Control Project Maintenance
Levee Inspections**

Maintenance Issue Types Only, Levee Inspection Report By Mile - Fall 2022

Butte County Department of Public Works

Waterway	Bank	Unit Miles	Inspection Start/End	Inspector
Unit No. 02 Mud Creek	Left	7.96	10/04/2022 10/04/2022	Makar Sokol

LM Start	0.23	Rating **	M	Issue No.	45
LM End	0.23	Issue Type +	Ma	Location *	
Category	Supplemental			GPS Latitude/Longitude	
				Start	End
Item	DWR UCIP LMA Responsibility			39.797416 °	39.797416 °
				-121.881675 °	-121.881675 °
DWR ID	19234				
Comment Code					
Inspector Comment					
DS_ID:19234 FS_ID:67304 EP_NO: N/A Repair Type: Non-Urgent EVAL Issue: 5, Pipe Damage Crossing Status: Found UCIP Comments: 03/23/2021 Record remains Non-Urgent. No permit has been identified authorizing pipe. Debris noted in previous inspection has been cleared. DMP internal video inspection has found pipe integrity issues. LOF of crossing is greater than or equal to 4.1 and less than 5. Crossing will be monitored until funding becomes available for rehabilitation. (O.Yakimov - DWR UCIP) 03/11/2014 Needs cleaning and clearing the culvert. (P. Amatya - DWR UCIP) FIELD_STRUCT_DESC: 24-inch corrugated metal gravity drainage pipe through the levee, 6.6 feet below the crown. Flap gate on the waterside (WS) end. Concrete U-shaped headwall on each end. Grouted riprap spillway on the WS end. [Additional Reference(s): DWR Levee Log, 1992 (HLM 0.25). USACE Sacramento O&M Manual, Unit 504, May 1965, Revised 2 February 2011, (HLM 0.25), listed as 24-inch pipe. USACE As-Built Drawing No. 50-04-3685, Sheet 8, STA 53+90, 19 May 1965]. FS Date: 3/23/2021 2:26:18 PM					

LM Start	0.23	Rating **	M	Issue No.	45 (cont)
LM End	0.23	Issue Type +	Ma	Location *	

Photo 1 of 3 : UCIP_FA_2022_67304_99515.jpg



Top of Levee: View of levee crown looking upstream

Photo 2 of 3 : UCIP_FA_2022_67304_99516.jpg



Water-Side: View of levee slope looking from crown

* Location LS : Land Side N/A : Not Applicable WS : Water Side CR : Crown	** Rating A : Acceptable M : Minimally Acceptable U : Unacceptable	N : Not Inspected/Rated C : Corrected A/W : Acceptable but Monitor & Maintain	+ Issue Type Ma : Maintenance Deficiency Ob : Design & System Obsolescence En : Enforcement
--	--	---	---

**Flood Control Project Maintenance
Levee Inspections**

Maintenance Issue Types Only, Levee Inspection Report By Mile - Fall 2022

Butte County Department of Public Works

Waterway	Bank	Unit Miles	Inspection Start/End	Inspector
Unit No. 02 Mud Creek	Left	7.96	10/04/2022 10/04/2022	Makar Sokol

LM Start	0.23	Rating **	M	Issue No.	45 (cont)
LM End	0.23	Issue Type +	Ma	Location *	
Category	Supplemental			GPS Latitude/Longitude	
				Start	End
Item	DWR UCIP LMA Responsibility			39.797416 °	39.797416 °
				-121.881675 °	-121.881675 °
DWR ID	19234				

Photo 3 of 3 : UCIP_FA_2022_67304_99520.jpg



Water-Side: Headwall and flap gate at levee toe

LM Start	0.38	Rating **	M	Issue No.	31
LM End	0.38	Issue Type +	Ma	Location *	LS
Category	Earthen Levee			GPS Latitude/Longitude	
				Start	End
Item	Trim / Thin Trees			39.796062 °	39.796062 °
				-121.883440 °	-121.883440 °
DWR ID	DWR_NA0003_02_s_2019_31				
Comment Code					
T1 : Trim and thin trees to at least five feet above ground level to allow visibility of the ground and room to flood fight.					
Inspector Comment					
Trees smaller than 4-inches in diameter at chest height should be removed.					

No Photos

* Location LS : Land Side N/A : Not Applicable WS : Water Side CR : Crown	** Rating A : Acceptable M : Minimally Acceptable U : Unacceptable	N : Not Inspected/Rated C : Corrected A/W : Acceptable but Monitor & Maintain	+ Issue Type Ma : Maintenance Deficiency Ob : Design & System Obsolescence En : Enforcement
--	--	---	---

**Flood Control Project Maintenance
Levee Inspections**

Maintenance Issue Types Only, Levee Inspection Report By Mile - Fall 2022

Butte County Department of Public Works

Waterway	Bank	Unit Miles	Inspection Start/End	Inspector
Unit No. 02 Mud Creek	Left	7.96	10/04/2022 10/04/2022	Makar Sokol

LM Start	1.26	Rating **	U	Issue No.	46
LM End	1.26	Issue Type +	Ma	Location *	
Category	Supplemental			GPS Latitude/Longitude	
				Start	End
Item	DWR UCIP LMA Responsibility			39.784062 °	39.784062 °
				-121.884344 °	-121.884344 °
DWR ID	19235				
Comment Code					
Inspector Comment					
DS_ID:19235 FS_ID:67305 EP_NO: N/A Repair Type: Urgent EVAL Issue: 1, Pipe Integrity Crossing Status: Found UCIP Comments: 03/23/2021 Record updated from Non-Urgent to Urgent. DMP internal video inspection has found pipe integrity issues. LOF of crossing is between 5 and 6. Crossing will be monitored until funding becomes available to address the issues. No permit has been identified authorizing pipe. Recommend clearing debris from landside end of pipe. (O.Yakimov - DWR UCIP) 02/24/2014 Needs cleaning and clearing of debris. (P. Amatya - DWR UCIP) FIELD_STRUCT_DESC: 24-inch corrugated metal gravity drainage pipe through the levee, 12.5 feet below the crown. Flap gate on the waterside (WS) end. Concrete U-shaped headwall on each end. Grouted riprap apron on the landside (LS) end. Grouted riprap spillway on the WS end. [Additional Reference(s): DWR Levee Log, 1992 (HLM 1.34). USACE Sacramento O&M Manual, Unit 504, May 1965, Revised 2 February 2011, (HLM 1.34), listed as 24-inch pipe. USACE As-Built Drawing No. 50-04-3685, Sheets 7 and 41, STA 358+10, 19 May 1965]. FS Date: 3/23/2021 2:30:04 PM					

LM Start	1.26	Rating **	U	Issue No.	46 (cont)
LM End	1.26	Issue Type +	Ma	Location *	

Photo 1 of 3 : UCIP_FA_2022_67305_99521.jpg



Top of Levee: View of levee crown looking downstream

Photo 2 of 3 : UCIP_FA_2022_67305_99522.jpg



Water-Side: View of levee slope looking from crown

* Location LS : Land Side N/A : Not Applicable WS : Water Side CR : Crown	** Rating A : Acceptable M : Minimally Acceptable U : Unacceptable	N : Not Inspected/Rated C : Corrected A/W : Acceptable but Monitor & Maintain	+ Issue Type Ma : Maintenance Deficiency Ob : Design & System Obsolescence En : Enforcement
--	--	---	---

**Flood Control Project Maintenance
Levee Inspections**

Maintenance Issue Types Only, Levee Inspection Report By Mile - Fall 2022

Butte County Department of Public Works

Waterway	Bank	Unit Miles	Inspection Start/End	Inspector
Unit No. 02 Mud Creek	Left	7.96	10/04/2022 10/04/2022	Makar Sokol

LM Start	1.26	Rating **	U	Issue No.	46 (cont)
LM End	1.26	Issue Type +	Ma	Location *	
Category	Supplemental			GPS Latitude/Longitude	
				Start	End
Item	DWR UCIP LMA Responsibility			39.784062 °	39.784062 °
				-121.884344 °	-121.884344 °
DWR ID	19235				

Photo 3 of 3 : UCIP_FA_2022_67305_99526.jpg



Water-Side: Headwall and flap gate at levee toe

LM Start	1.46	Rating **	M	Issue No.	48
LM End	1.46	Issue Type +	Ma	Location *	
Category	Supplemental			GPS Latitude/Longitude	
				Start	End
Item	DWR UCIP LMA Responsibility			39.782980 °	39.782980 °
				-121.887834 °	-121.887834 °
DWR ID	19237				

Comment Code

Inspector Comment

DS_ID:19237
 FS_ID:67308
 EP_NO: N/A
 Repair Type: Non-Urgent
 EVAL Issue:
 Crossing Status: Found
 UCIP Comments: 03/16/2021 Record remains Non-Urgent. No permit has been identified authorizing pipe. DMP internal video inspection has not found pipe integrity issues. LOF of crossing is less or equal to 4. Recommend next video inspection in 5 years. (O.Yakimov - DWR UCIP)
 02/24/2014 Needs cleaning and clearing of debris. (P. Amatya - DWR UCIP)
 FIELD_STRUCT_DESC: 24-inch corrugated metal gravity drainage pipe through the levee, 11 feet below the crown. Flap gate on the waterside (WS) end. Concrete U-shaped headwall on each end. Grouted riprap apron on the landside (LS) end. Grouted riprap spillway on the WS end. [Additional Reference(s): DWR Levee Log, 1992 (HLM 1.55). USACE Sacramento O&M Manual, Unit 504, May 1965, Revised 2 February 2011, (HLM 1.55), listed as 24-inch pipe. USACE As-Built Drawing No. 50-04-3685, Sheet 41, STA 347+55, 19 May 1965].
 FS Date: 3/16/2021 3:10:19 PM

Photo 1 of 3 : UCIP_FA_2022_67308_99539.jpg



Top of Levee: View of levee crown looking downstream

* Location LS : Land Side N/A : Not Applicable WS : Water Side CR : Crown	** Rating A : Acceptable M : Minimally Acceptable U : Unacceptable N : Not Inspected/Rated C : Corrected A/W : Acceptable but Monitor & Maintain	+ Issue Type Ma : Maintenance Deficiency Ob : Design & System Obsolescence En : Enforcement
--	---	---

**Flood Control Project Maintenance
Levee Inspections**

Maintenance Issue Types Only, Levee Inspection Report By Mile - Fall 2022

Butte County Department of Public Works

Waterway	Bank	Unit Miles	Inspection Start/End	Inspector
Unit No. 02 Mud Creek	Left	7.96	10/04/2022 10/04/2022	Makar Sokol

LM Start	1.46	Rating **	M	Issue No.	48 (cont)
LM End	1.46	Issue Type +	Ma	Location *	
Category	Supplemental			GPS Latitude/Longitude	
				Start	End
Item	DWR UCIP LMA Responsibility			39.782980 °	39.782980 °
				-121.887834 °	-121.887834 °
DWR ID	19237				

Photo 2 of 3 : UCIP_FA_2022_67308_99540.jpg



Water-Side: View of levee slope looking from crown

LM Start	1.46	Rating **	M	Issue No.	48 (cont)
LM End	1.46	Issue Type +	Ma	Location *	

Photo 3 of 3 : UCIP_FA_2022_67308_99544.jpg



Water-Side: Headwall and flap gate at levee toe

LM Start	1.62	Rating **	N	Issue No.	32
LM End	1.62	Issue Type +	Ma	Location *	LS
Category	Earthen Levee			GPS Latitude/Longitude	
				Start	End
Item	Trim / Thin Trees			39.781173 °	39.781173 °
				-121.889526 °	-121.889526 °
DWR ID	DWR_NA0003_02_f_2016_32				
Comment Code					
T5 : Tree stumps.					
Inspector Comment					

No Photos

* Location LS : Land Side N/A : Not Applicable WS : Water Side CR : Crown	** Rating A : Acceptable M : Minimally Acceptable U : Unacceptable	N : Not Inspected/Rated C : Corrected A/W : Acceptable but Monitor & Maintain	+ Issue Type Ma : Maintenance Deficiency Ob : Design & System Obsolescence En : Enforcement
--	--	---	---

**Flood Control Project Maintenance
Levee Inspections**

Maintenance Issue Types Only, Levee Inspection Report By Mile - Fall 2022

Butte County Department of Public Works

Waterway	Bank	Unit Miles	Inspection Start/End	Inspector
Unit No. 02 Mud Creek	Left	7.96	10/04/2022 10/04/2022	Makar Sokol

LM Start	2.05	Rating **	M	Issue No.	25
LM End	2.05	Issue Type +	Ma	Location *	LS
Category	Earthen Levee			GPS Latitude/Longitude	
				Start	End
Item	Erosion / Vehicle Traffic			39.775748 °	39.775748 °
				-121.892958 °	-121.892958 °
DWR ID	DWR_NA0003_02_f_2019_25				
Comment Code					
E6 : Repair the levee slope damaged by vehicle traffic and prevent access where possible.					
Inspector Comment					

Photo 1 of 1 : FA_2022_NA0003_65_25_20221011_00082.jpg



View of the erosion on the landside slope due to vehicle traffic. Fall 2022.

LM Start	2.34	Rating **	M	Issue No.	49	
LM End	2.34	Issue Type +	Ma	Location *		
Category	Supplemental			GPS Latitude/Longitude		
				Start	End	
Item	DWR UCIP LMA Responsibility			39.772185 °	39.772185 °	
				-121.895681 °	-121.895681 °	
DWR ID	19239					
Comment Code						
Inspector Comment						
DS_ID:19239 FS_ID:67340 EP_NO: N/A Repair Type: Non-Urgent EVAL Issue: Crossing Status: Found UCIP Comments: 03/16/2021 Record remains Non-Urgent. No permit has been identified authorizing pipe. Debris around landside headwall has been cleared. DMP internal video inspection has not found pipe integrity issues. LOF of crossing is less or equal to 4. Recommend next video inspection in 5 years. (O.Yakimov - DWR UCIP) 02/24/2014 Debris in landside inlet area. Needs cleaning and clearing of debris. (P. Amatya - DWR UCIP) FIELD_STRUCT_DESC: 24-inch corrugated metal gravity drainage pipe through the levee, 10 feet below the crown. Flap gate on the waterside (WS) end. Concrete U-shaped headwall on each end. Grouted riprap apron on the landside (LS) end. Grouted riprap spillway on the WS end. [Additional Reference(s): DWR Levee Log, 1992 (HLM 2.44). USACE Sacramento O&M Manual, Unit 504, May 1965, Revised 2 February 2011, (HLM 2.44), listed as 24-inch pipe. USACE As-Built Drawing No. 50-04-3685, Sheets 6 and 41, STA 302+00, 19 May 1965]. FS Date: 3/16/2021 11:39:32 AM						

Photo 1 of 3 : UCIP_FA_2022_67340_99744.jpg



Top of Levee: View of levee crown looking upstream

* Location LS : Land Side N/A : Not Applicable WS : Water Side CR : Crown	** Rating A : Acceptable M : Minimally Acceptable U : Unacceptable	N : Not Inspected/Rated C : Corrected A/W : Acceptable but Monitor & Maintain	+ Issue Type Ma : Maintenance Deficiency Ob : Design & System Obsolescence En : Enforcement
--	--	---	---

**Flood Control Project Maintenance
Levee Inspections**

Maintenance Issue Types Only, Levee Inspection Report By Mile - Fall 2022

Butte County Department of Public Works

Waterway	Bank	Unit Miles	Inspection Start/End	Inspector
Unit No. 02 Mud Creek	Left	7.96	10/04/2022 10/04/2022	Makar Sokol

LM Start	2.34	Rating **	M	Issue No.	49 (cont)
LM End	2.34	Issue Type +	Ma	Location *	
Category	Supplemental			GPS Latitude/Longitude	
				Start	End
Item	DWR UCIP LMA Responsibility			39.772185 °	39.772185 °
				-121.895681 °	-121.895681 °
DWR ID	19239				

Photo 2 of 3 : UCIP_FA_2022_67340_99746.jpg



Water-Side: View of levee slope looking from crown

LM Start	2.34	Rating **	M	Issue No.	49 (cont)
LM End	2.34	Issue Type +	Ma	Location *	

Photo 3 of 3 : UCIP_FA_2022_67340_99747.jpg



Water-Side: Headwall and flap gate at levee toe

LM Start	2.54	Rating **	A/W	Issue No.	41
LM End	2.68	Issue Type +	Ma	Location *	WS
Category	Supplemental			GPS Latitude/Longitude	
				Start	End
Item	2018 USACE Erosion Survey			39.771186 °	39.769616 °
				-121.899060 °	-121.900854 °
DWR ID	DWR_NA0003_02_s_2022_41				
Comment Code					
Inspector Comment					
2018 Site ID: MUD 2.6 L					
Status: Eroding					
2018 Field Notes: Last observed in 2017.					
Site History: 2017 - Large mass failure of lower bank slope.					

No Photos

* Location LS : Land Side N/A : Not Applicable WS : Water Side CR : Crown	** Rating A : Acceptable M : Minimally Acceptable U : Unacceptable	N : Not Inspected/Rated C : Corrected A/W : Acceptable but Monitor & Maintain	+ Issue Type Ma : Maintenance Deficiency Ob : Design & System Obsolescence En : Enforcement
--	--	---	---

**Flood Control Project Maintenance
Levee Inspections**

Maintenance Issue Types Only, Levee Inspection Report By Mile - Fall 2022

Butte County Department of Public Works

Waterway	Bank	Unit Miles	Inspection Start/End	Inspector
Unit No. 02 Mud Creek	Left	7.96	10/04/2022 10/04/2022	Makar Sokol

LM Start	2.74	Rating **	U	Issue No.	50
LM End	2.74	Issue Type +	Ma	Location *	
Category	Supplemental			GPS Latitude/Longitude	
				Start	End
Item	DWR UCIP LMA Responsibility			39.768741 °	39.768741 °
				-121.901176 °	-121.901176 °
DWR ID	19240				
Comment Code					
Inspector Comment					
DS_ID:19240 FS_ID:67341 EP_NO: N/A Repair Type: Urgent EVAL Issue: 3a, Flood Risk Crossing Status: Found UCIP Comments: 03/16/2021 Record updated from Non-Urgent to Urgent. Flap gate not closing complitely. A gap between flap gate and pipe is visible. Adjustments and lubrication to flap gate hinges need to be done. DMP internal video inspection has not found pipe integrity issues. LOF of crossing is less or equal to 4. Recommend next video inspection in 5 years. (O.Yakimov - DWR UCIP) 02/24/2014 Needs cleaning and clearing of debris. (P. Amatya - DWR UCIP) FIELD_STRUCT_DESC: 24-inch corrugated metal gravity drainage pipe through the levee, 10 feet below the crown. Flap gate on the waterside (WS) end. Concrete U-shaped headwall on each end. Grouted riprap apron on the landside (LS) end. Grouted riprap spillway on the WS end. [Additional Reference(s): DWR Levee Log, 1992 (HLM 2.84). USACE Sacramento O&M Manual, Unit 504, May 1965, Revised 2 February 2011, (HLM 2.86), listed as 24-inch pipe. USACE As-Built Drawing No. 50-04-3685, Sheets 6 and 41, STA 280+00, 19 May 1965]. FS Date: 3/16/2021 12:43:55 PM					

LM Start	2.74	Rating **	U	Issue No.	50 (cont)
LM End	2.74	Issue Type +	Ma	Location *	

Photo 1 of 3 : UCIP_FA_2022_67341_99750.jpg



Top of Levee: View of levee crown looking upstream

Photo 2 of 3 : UCIP_FA_2022_67341_99755.jpg



Water-Side: Gap visible between flap gate and pipe. Flap gate is unable to close tightly

* Location LS : Land Side N/A : Not Applicable WS : Water Side CR : Crown	** Rating A : Acceptable M : Minimally Acceptable U : Unacceptable	N : Not Inspected/Rated C : Corrected A/W : Acceptable but Monitor & Maintain	+ Issue Type Ma : Maintenance Deficiency Ob : Design & System Obsolescence En : Enforcement
--	--	---	---

**Flood Control Project Maintenance
Levee Inspections**

Maintenance Issue Types Only, Levee Inspection Report By Mile - Fall 2022

Butte County Department of Public Works

Waterway	Bank	Unit Miles	Inspection Start/End	Inspector
Unit No. 02 Mud Creek	Left	7.96	10/04/2022 10/04/2022	Makar Sokol

LM Start	2.74	Rating **	U	Issue No.	50 (cont)
LM End	2.74	Issue Type +	Ma	Location *	
Category	Supplemental			GPS Latitude/Longitude	
				Start	End
Item	DWR UCIP LMA Responsibility			39.768741 °	39.768741 °
				-121.901176 °	-121.901176 °
DWR ID	19240				

Photo 3 of 3 : UCIP_FA_2022_67341_99753.jpg



Land-Side: U-shaped headwall and pipe at levee toe

LM Start	3.08	Rating **	A/W	Issue No.	42
LM End	3.16	Issue Type +	Ma	Location *	WS
Category	Supplemental			GPS Latitude/Longitude	
				Start	End
Item	2018 USACE Erosion Survey			39.765543 °	39.764869 °
				-121.905367 °	-121.906737 °
DWR ID	DWR_NA0003_02_s_2022_42				
Comment Code					
Inspector Comment					
2018 Site ID: MUD 3.3 L					
Status: Eroding					
2018 Field Notes: Last observed in 2017.					
Site History: 2017 - Large erosion scarp along lower toe.					

No Photos

* Location LS : Land Side N/A : Not Applicable WS : Water Side CR : Crown	** Rating A : Acceptable M : Minimally Acceptable U : Unacceptable	N : Not Inspected/Rated C : Corrected A/W : Acceptable but Monitor & Maintain	+ Issue Type Ma : Maintenance Deficiency Ob : Design & System Obsolescence En : Enforcement
--	--	---	---

**Flood Control Project Maintenance
Levee Inspections**

Maintenance Issue Types Only, Levee Inspection Report By Mile - Fall 2022

Butte County Department of Public Works

Waterway	Bank	Unit Miles	Inspection Start/End	Inspector
Unit No. 02 Mud Creek	Left	7.96	10/04/2022 10/04/2022	Makar Sokol

LM Start	3.50	Rating **	M	Issue No.	51	
LM End	3.50	Issue Type +	Ma	Location *		
Category	Supplemental			GPS Latitude/Longitude		
				Start	End	
Item	DWR UCIP LMA Responsibility			39.760847 °	39.760847 °	
				-121.910265 °	-121.910265 °	
DWR ID	19241					
Comment Code						
Inspector Comment						
DS_ID:19241 FS_ID:67342 EP_NO: N/A Repair Type: Non-Urgent EVAL Issue: Crossing Status: Found UCIP Comments: 03/16/2021 Record remains Non-Urgent. No permit has been identified authorizing pipe. Debris has been cleared. DMP internal video inspection has not found pipe integrity issues. LOF of crossing is less or equal to 4. Recommend next video inspection in 5 years. (O.Yakimov - DWR UCIP) 02/24/2014 Needs cleaning and clearing of debris. (P. Amatya - DWR UCIP) FIELD_STRUCT_DESC: 24-inch corrugated metal gravity drainage pipe through the levee, 6.5 feet below the crown. Flap gate on the waterside (WS) end. Concrete U-shaped headwall on each end. Grouted riprap apron on the landside (LS) end. Grouted riprap spillway on the WS end. [Additional Reference(s): DWR Levee Log, 1992 (HLM 3.64). USACE Sacramento O&M Manual, Unit 504, May 1965, Revised 2 February 2011, (HLM 3.64), listed as 24-inch pipe. USACE As-Built Drawing No. 50-04-3685, Sheet 41, STA 239+80, 19 May 1965]. FS Date: 3/16/2021 12:48:10 PM						

LM Start	3.50	Rating **	M	Issue No.	51 (cont)
LM End	3.50	Issue Type +	Ma	Location *	

Photo 1 of 3 : UCIP_FA_2022_67342_99757.jpg



Top of Levee: View of levee crown looking upstream

Photo 2 of 3 : UCIP_FA_2022_67342_99758.jpg



Land-Side: View of levee slope looking from crown

* Location	** Rating	+ Issue Type
LS : Land Side WS : Water Side CR : Crown	A : Acceptable M : Minimally Acceptable U : Unacceptable	N : Not Inspected/Rated C : Corrected A/W : Acceptable but Monitor & Maintain
N/A : Not Applicable		Ma : Maintenance Deficiency Ob : Design & System Obsolescence En : Enforcement

**Flood Control Project Maintenance
Levee Inspections**

Maintenance Issue Types Only, Levee Inspection Report By Mile - Fall 2022

Butte County Department of Public Works

Waterway	Bank	Unit Miles	Inspection Start/End	Inspector
Unit No. 02 Mud Creek	Left	7.96	10/04/2022 10/04/2022	Makar Sokol

LM Start	3.50	Rating **	M	Issue No.	51 (cont)
LM End	3.50	Issue Type +	Ma	Location *	
Category	Supplemental		GPS Latitude/Longitude		
			Start	End	
Item	DWR UCIP LMA Responsibility		39.760847 °	39.760847 °	
			-121.910265 °	-121.910265 °	
DWR ID	19241				

Photo 3 of 3 : UCIP_FA_2022_67342_99761.jpg



Land-Side: U-shaped headwall and pipe at levee toe

LM Start	3.52	Rating **	M	Issue No.	10
LM End	3.52	Issue Type +	Ma	Location *	LS
Category	Earthen Levee			GPS Latitude/Longitude	
				Start	End
Item	Erosion / Vehicle Traffic			39.760582 °	39.760582 °
				-121.910303 °	-121.910303 °
DWR ID	DWR_NA0003_02_s_2022_10				
Comment Code					
E6 : Repair the levee slope damaged by vehicle traffic and prevent access where possible.					
Inspector Comment					

Photo 1 of 1 : FA_2022_NA0003_65_10_20221011_00083.jpg



View of the damaged landside slope due to vehicle traffic. Fall 2022.

LM Start	3.77	Rating **	M	Issue No.	24
LM End	3.77	Issue Type +	Ma	Location *	CR
Category	Earthen Levee			GPS Latitude/Longitude	
				Start	End
Item	Crown Surface / Depressions / Rutting			39.757596 °	39.757596 °
				-121.912148 °	-121.912148 °
DWR ID	DWR_NA0003_02_s_2020_24				
Comment Code					
C2 : Repair depressions or ruts in the crown or slope.					
Inspector Comment					

No Photos

* Location LS : Land Side N/A : Not Applicable WS : Water Side CR : Crown		** Rating A : Acceptable M : Minimally Acceptable U : Unacceptable N : Not Inspected/Rated C : Corrected A/W : Acceptable but Monitor & Maintain		+ Issue Type Ma : Maintenance Deficiency Ob : Design & System Obsolescence En : Enforcement	
--	--	---	--	---	--

**Flood Control Project Maintenance
Levee Inspections**

Maintenance Issue Types Only, Levee Inspection Report By Mile - Fall 2022

Butte County Department of Public Works

Waterway	Bank	Unit Miles	Inspection Start/End	Inspector
Unit No. 02 Mud Creek	Left	7.96	10/04/2022 10/04/2022	Makar Sokol

LM Start	3.82	Rating **	M	Issue No.	26
LM End	3.82	Issue Type +	Ma	Location *	CR
Category	Earthen Levee		GPS Latitude/Longitude		
			Start	End	
Item	Crown Surface / Depressions / Rutting		39.757022 °	39.757022 °	
			-121.912657 °	-121.912657 °	
DWR ID	DWR_NA0003_02_s _ 2020_26				
Comment Code					
C2 : Repair depressions or ruts in the crown or slope.					
Inspector Comment					

No Photos

LM Start	4.30	Rating **	M	Issue No.	23
LM End	4.30	Issue Type +	Ma	Location *	LS
Category	Earthen Levee		GPS Latitude/Longitude		
			Start	End	
Item	Erosion / Vehicle Traffic		39.752579 °	39.752579 °	
			-121.914516 °	-121.914516 °	
DWR ID	DWR_NA0003_02_f _ 2020_23				
Comment Code					
E6 : Repair the levee slope damaged by vehicle traffic and prevent access where possible.					
Inspector Comment					

No Photos

* Location LS : Land Side N/A : Not Applicable WS : Water Side CR : Crown	** Rating A : Acceptable M : Minimally Acceptable U : Unacceptable	N : Not Inspected/Rated C : Corrected A/W : Acceptable but Monitor & Maintain	+ Issue Type Ma : Maintenance Deficiency Ob : Design & System Obsolescence En : Enforcement
--	--	---	---

**Flood Control Project Maintenance
Levee Inspections**

Maintenance Issue Types Only, Levee Inspection Report By Mile - Fall 2022

Butte County Department of Public Works

Waterway	Bank	Unit Miles	Inspection Start/End	Inspector
Unit No. 02 Mud Creek	Left	7.96	10/04/2022 10/04/2022	Makar Sokol

LM Start	4.61	Rating **	M	Issue No.	53	
LM End	4.61	Issue Type +	Ma	Location *		
Category	Supplemental			GPS Latitude/Longitude		
				Start		End
Item	DWR UCIP LMA Responsibility			39.748731 °	39.748731 °	
				-121.917577 °	-121.917577 °	
DWR ID	19245					
Comment Code						
Inspector Comment						
DS_ID:19245 FS_ID:67347 EP_NO: N/A Repair Type: Non-Urgent EVAL Issue: Crossing Status: Found UCIP Comments: 03/16/2021 Record remains Non-Urgent. No permit has been identified authorizing pipe. Debris has been cleared. DMP internal video inspection has not found pipe integrity issues. LOF of crossing is less or equal to 4. Recommend next video inspection in 5 years. (O.Yakimov - DWR UCIP) 02/25/2014 Needs cleaning and clearing of debris. (P. Amatya - DWR UCIP) FIELD_STRUCT_DESC: 24-inch corrugated metal gravity drainage pipe through the levee, 10 feet below the crown. Flap gate on the waterside (WS) end. Concrete U-shaped headwall on each end. Grouted riprap apron on the landside (LS) end. Grouted riprap spillway on the WS end. [Additional Reference(s): DWR Levee Log, 1992 (HLM 4.77). USACE Sacramento O&M Manual, Unit 504, May 1965, Revised 2 February 2011, (HLM 4.77), listed as 24-inch pipe. USACE As-Built Drawing No. 50-04-3685, Sheet 41, STA 188+80, 19 May 1965]. FS Date: 3/16/2021 2:59:36 PM						

LM Start	4.61	Rating **	M	Issue No.	53 (cont)
LM End	4.61	Issue Type +	Ma	Location *	

Photo 1 of 3 : UCIP_FA_2022_67347_99780.jpg



Top of Levee: View of levee crown looking upstream

Photo 2 of 3 : UCIP_FA_2022_67347_99781.jpg



Land-Side: View of levee slope looking from crown

* Location LS : Land Side N/A : Not Applicable WS : Water Side CR : Crown	** Rating A : Acceptable M : Minimally Acceptable U : Unacceptable	N : Not Inspected/Rated C : Corrected A/W : Acceptable but Monitor & Maintain	+ Issue Type Ma : Maintenance Deficiency Ob : Design & System Obsolescence En : Enforcement
--	--	---	---

**Flood Control Project Maintenance
Levee Inspections**

Maintenance Issue Types Only, Levee Inspection Report By Mile - Fall 2022

Butte County Department of Public Works

Waterway	Bank	Unit Miles	Inspection Start/End	Inspector
Unit No. 02 Mud Creek	Left	7.96	10/04/2022 10/04/2022	Makar Sokol

LM Start	4.61	Rating **	M	Issue No.	53 (cont)	
LM End	4.61	Issue Type +	Ma	Location *		
Category	Supplemental			GPS Latitude/Longitude		
				Start		End
Item	DWR UCIP LMA Responsibility			39.748731 °	39.748731 °	
				-121.917577 °	-121.917577 °	
DWR ID	19245					

Photo 3 of 3 : UCIP_FA_2022_67347_99784.jpg



Land-Side: U-shaped headwall and pipe at levee toe

LM Start	5.64	Rating **	U	Issue No.	54
LM End	5.64	Issue Type +	Ma	Location *	
Category	Supplemental			GPS Latitude/Longitude	
				Start	End
Item	DWR UCIP LMA Responsibility			39.738898 °	39.738898 °
				-121.930242 °	-121.930242 °
DWR ID	19247				

Comment Code

Inspector Comment

DS_ID:19247
FS_ID:67350
EP_NO: N/A
Repair Type: Urgent
EVAL Issue: 1, Pipe Integrity
Crossing Status: Found
UCIP Comments: 03/16/2021 Record updated from Non-Urgent to Urgent. DMP internal video inspection has found pipe integrity issues. LOF of crossing is between 5 and 6. Crossing will be monitored until funding becomes available to address the issues. No permit has been identified authorizing pipe. Sediment at bottom of CMP is still present. (O.Yakimov - DWR UCIP)
02/25/2014 Needs cleaning and clearing of debris. (P. Amatya - DWR UCIP)
FIELD_STRUCT_DESC: 24-inch corrugated metal gravity drainage pipe through the levee, 11.5 feet below the crown. Flap gate on the waterside (WS) end. Concrete U-shaped headwall on each end. Grouted riprap apron on the landside (LS) end. Grouted riprap spillway on the WS end. [Additional Reference(s): DWR Levee Log, 1992 (HLM 5.83). USACE Sacramento O&M Manual, Unit 504, May 1965, Revised 2 February 2011, (HLM 5.83), listed as 24-inch pipe. USACE As-Built Drawing No. 50-04-3685, Sheets 3 and 41, STA 134+60, 19 May 1965]. FS Date: 3/16/2021 11:38:06 AM

Photo 1 of 3 : UCIP_FA_2022_67350_99792.jpg



Top of Levee: View of levee crown looking upstream

* Location LS : Land Side N/A : Not Applicable WS : Water Side CR : Crown	** Rating A : Acceptable M : Minimally Acceptable U : Unacceptable	N : Not Inspected/Rated C : Corrected A/W : Acceptable but Monitor & Maintain	+ Issue Type Ma : Maintenance Deficiency Ob : Design & System Obsolescence En : Enforcement
--	--	--	---

**Flood Control Project Maintenance
Levee Inspections**

Maintenance Issue Types Only, Levee Inspection Report By Mile - Fall 2022

Butte County Department of Public Works

Waterway	Bank	Unit Miles	Inspection Start/End	Inspector
Unit No. 02 Mud Creek	Left	7.96	10/04/2022 10/04/2022	Makar Sokol

LM Start	5.64	Rating **	U	Issue No.	54 (cont)
LM End	5.64	Issue Type +	Ma	Location *	
Category	Supplemental			GPS Latitude/Longitude	
				Start	End
Item	DWR UCIP LMA Responsibility			39.738898 °	39.738898 °
				-121.930242 °	-121.930242 °
DWR ID	19247				

Photo 2 of 3 : UCIP_FA_2022_67350_99793.jpg



Water-Side: View of levee slope looking from crown

LM Start	5.64	Rating **	U	Issue No.	54 (cont)
LM End	5.64	Issue Type +	Ma	Location *	

Photo 3 of 3 : UCIP_FA_2022_67350_99795.jpg



Water-Side: Headwall and flap gate at levee toe

* Location LS : Land Side N/A : Not Applicable WS : Water Side CR : Crown	** Rating A : Acceptable M : Minimally Acceptable U : Unacceptable	N : Not Inspected/Rated C : Corrected A/W : Acceptable but Monitor & Maintain	+ Issue Type Ma : Maintenance Deficiency Ob : Design & System Obsolescence En : Enforcement
--	--	---	---

**Flood Control Project Maintenance
Levee Inspections**

Maintenance Issue Types Only, Levee Inspection Report By Mile - Fall 2022

Butte County Department of Public Works

Waterway	Bank	Unit Miles	Inspection Start/End	Inspector
Unit No. 02 Mud Creek	Left	7.96	10/04/2022 10/04/2022	Makar Sokol

LM Start	6.09	Rating **	M	Issue No.	55
LM End	6.09	Issue Type +	Ma	Location *	
Category	Supplemental			GPS Latitude/Longitude	
				Start	End
Item	DWR UCIP LMA Responsibility			39.733297 °	39.733297 °
				-121.930411 °	-121.930411 °
DWR ID	19248				
Comment Code					
Inspector Comment					
DS_ID:19248 FS_ID:67351 EP_NO: N/A Repair Type: Non-Urgent EVAL Issue: 5, Pipe Damage Crossing Status: Found UCIP Comments: 03/16/2021 Record remains Non-Urgent. DMP internal video inspection has found pipe integrity issues. LOF of crossing is between 4.1 and 5. Crossing will be monitored until funding becomes available for rehabilitation. No permit has been identified authorizing pipe. Debris has been cleared. (O.Yakimov - DWR UCIP) 02/25/2014 Needs cleaning and clearing of debris. (P. Amatya - DWR UCIP) FIELD_STRUCT_DESC: [Channel Slough Drainage Structure] 1 of 2: 42-inch corrugated metal gravity drainage pipe through the levee, 16 feet below the crown. Flap gate on the waterside (WS) end. Slide gate in a corrugated metal pipe (CMP) riser on the WS slope. Concrete U-shaped headwall on each end. Grouted riprap apron and rock revetment on the landside (LS) end. [Additional Reference(s): DWR Levee Log, 1992 (HLM 6.30). USACE Sacramento O&M Manual, Unit 504, May 1965, Revised 2 February 2011, (HLM 6.30), listed as 42-inch pipe]. FS Date: 3/16/2021 11:45:20 AM					

LM Start	6.09	Rating **	M	Issue No.	55 (cont)
LM End	6.09	Issue Type +	Ma	Location *	

Photo 1 of 3 : UCIP_FA_2022_67351_99802.jpg



Top of Levee: View of levee crown looking upstream

Photo 2 of 3 : UCIP_FA_2022_67351_99800.jpg



Land-Side: View of levee slope looking from crown

* Location LS : Land Side N/A : Not Applicable WS : Water Side CR : Crown	** Rating A : Acceptable M : Minimally Acceptable U : Unacceptable	N : Not Inspected/Rated C : Corrected A/W : Acceptable but Monitor & Maintain	+ Issue Type Ma : Maintenance Deficiency Ob : Design & System Obsolescence En : Enforcement
--	--	---	---

**Flood Control Project Maintenance
Levee Inspections**

Maintenance Issue Types Only, Levee Inspection Report By Mile - Fall 2022

Butte County Department of Public Works

Waterway	Bank	Unit Miles	Inspection Start/End	Inspector
Unit No. 02 Mud Creek	Left	7.96	10/04/2022 10/04/2022	Makar Sokol

LM Start	6.09	Rating **	M	Issue No.	55 (cont)
LM End	6.09	Issue Type +	Ma	Location *	
Category	Supplemental		GPS Latitude/Longitude		
			Start	End	
Item	DWR UCIP LMA Responsibility		39.733297 °	39.733297 °	
			-121.930411 °	-121.930411 °	
DWR ID	19248				

Photo 3 of 3 : UCIP_FA_2022_67351_99801.jpg



Land-Side: U-shaped headwall and pipe at levee toe

LM Start	6.09	Rating **	M	Issue No.	56
LM End	6.09	Issue Type +	Ma	Location *	
Category	Supplemental		GPS Latitude/Longitude		
			Start	End	
Item	DWR UCIP LMA Responsibility		39.733280 °	39.733280 °	
			-121.930409 °	-121.930409 °	
DWR ID	19259				

Comment Code

Inspector Comment

DS_ID:19259
 FS_ID:67352
 EP_NO: N/A
 Repair Type: Non-Urgent
 EVAL Issue: 5, Pipe Damage
 Crossing Status: Found
 UCIP Comments: 03/16/2021 Record remains Non-Urgent. No permit has been identified authorizing pipe. Debris has been cleared. DMP internal video inspection has found pipe integrity issues. LOF of crossing is greater than or equal to 4.1 and less than 5. Crossing will be monitored until funding becomes available for rehabilitation.
 (O.Yakimov - DWR UCIP)
 02/25/2014 Needs cleaning and clearing of debris. (P. Amatya - DWR UCIP)
 FIELD_STRUCT_DESC: [Channel Slough Drainage Structure] 2 of 2: 42-inch corrugated metal gravity drainage pipe through the levee, 16 feet below the crown. Flap gate on the waterside (WS) end. Slide gate in a corrugated metal pipe (CMP) riser on the WS slope. Concrete U-shaped headwall on each end. Grouted riprap apron and rock revetment on the landside (LS) end. [Additional Reference(s): DWR Levee Log, 1992 (HLM 6.30). USACE Sacramento O&M Manual, Unit 504, May 1965, Revised 2 February 2011, (HLM 6.30), listed as 42-inch pipe].
 FS Date: 3/16/2021 11:47:02 AM

Photo 1 of 3 : UCIP_FA_2022_67352_99808.jpg



Top of Levee: View of levee crown looking upstream

* Location LS : Land Side N/A : Not Applicable WS : Water Side CR : Crown	** Rating A : Acceptable M : Minimally Acceptable U : Unacceptable	N : Not Inspected/Rated C : Corrected A/W : Acceptable but Monitor & Maintain	+ Issue Type Ma : Maintenance Deficiency Ob : Design & System Obsolescence En : Enforcement
--	--	--	---

**Flood Control Project Maintenance
Levee Inspections**

Maintenance Issue Types Only, Levee Inspection Report By Mile - Fall 2022

Butte County Department of Public Works

Waterway	Bank	Unit Miles	Inspection Start/End	Inspector
Unit No. 02 Mud Creek	Left	7.96	10/04/2022 10/04/2022	Makar Sokol

LM Start	6.09	Rating **	M	Issue No.	56 (cont)
LM End	6.09	Issue Type +	Ma	Location *	
Category	Supplemental			GPS Latitude/Longitude	
				Start	End
Item	DWR UCIP LMA Responsibility			39.733280 °	39.733280 °
				-121.930409 °	-121.930409 °
DWR ID	19259				

Photo 2 of 3 : UCIP_FA_2022_67352_99806.jpg



Land-Side: View of levee slope looking from crown

LM Start	6.09	Rating **	M	Issue No.	56 (cont)
LM End	6.09	Issue Type +	Ma	Location *	

Photo 3 of 3 : UCIP_FA_2022_67352_99807.jpg



Land-Side: U-shaped headwall and pipe at levee toe

* Location LS : Land Side N/A : Not Applicable WS : Water Side CR : Crown	** Rating A : Acceptable M : Minimally Acceptable U : Unacceptable	N : Not Inspected/Rated C : Corrected A/W : Acceptable but Monitor & Maintain	+ Issue Type Ma : Maintenance Deficiency Ob : Design & System Obsolescence En : Enforcement
--	--	---	---

**Flood Control Project Maintenance
Levee Inspections**

Maintenance Issue Types Only, Levee Inspection Report By Mile - Fall 2022

Butte County Department of Public Works

Waterway	Bank	Unit Miles	Inspection Start/End	Inspector
Unit No. 02 Mud Creek	Left	7.96	10/04/2022 10/04/2022	Makar Sokol

LM Start	6.15	Rating **	U	Issue No.	57
LM End	6.15	Issue Type +	Ma	Location *	
Category	Supplemental			GPS Latitude/Longitude	
				Start	End
Item	DWR UCIP LMA Responsibility			39.732515 °	39.732515 °
				-121.930373 °	-121.930373 °
DWR ID	19249				
Comment Code					
Inspector Comment					
DS_ID:19249 FS_ID:67353 EP_NO: N/A Repair Type: Urgent EVAL Issue: 1, Pipe Integrity Crossing Status: Found UCIP Comments: 03/16/2021 Record updated from Non-Urgent to Urgent. DMP internal video inspection has found pipe integrity issues. LOF of crossing is between 5 and 6. Crossing will be monitored until funding becomes available to address the issues. No permit has been identified authorizing pipe. Debris has been cleared. (O.Yakimov - DWR UCIP) 02/25/2014 Needs cleaning and clearing of debris. (P. Amatya - DWR UCIP) FIELD_STRUCT_DESC: 24-inch corrugated metal gravity drainage pipe through the levee, 12 feet below the crown. Flap gate on the waterside (WS) end. Concrete U-shaped headwall on each end. Grouted riprap apron on the landside (LS) end. Grouted riprap spillway on the WS end. [Additional Reference(s): DWR Levee Log, 1992 (HLM 6.35). USACE Sacramento O&M Manual, Unit 504, May 1965, Revised 2 February 2011, (HLM 6.35), listed as 24-inch pipe. USACE As-Built Drawing No. 50-04-3685, Sheets 3 and 41, STA 107+10, 19 May 1965]. FS Date: 3/16/2021 11:50:15 AM					

LM Start	6.15	Rating **	U	Issue No.	57 (cont)
LM End	6.15	Issue Type +	Ma	Location *	

Photo 1 of 3 : UCIP_FA_2022_67353_99809.jpg



Top of Levee: View of levee crown looking upstream

Photo 2 of 3 : UCIP_FA_2022_67353_99810.jpg



Water-Side: View of levee slope looking from crown

* Location LS : Land Side N/A : Not Applicable WS : Water Side CR : Crown	** Rating A : Acceptable M : Minimally Acceptable U : Unacceptable	N : Not Inspected/Rated C : Corrected A/W : Acceptable but Monitor & Maintain	+ Issue Type Ma : Maintenance Deficiency Ob : Design & System Obsolescence En : Enforcement
--	--	---	---

**Flood Control Project Maintenance
Levee Inspections**

Maintenance Issue Types Only, Levee Inspection Report By Mile - Fall 2022

Butte County Department of Public Works

Waterway	Bank	Unit Miles	Inspection Start/End	Inspector
Unit No. 02 Mud Creek	Left	7.96	10/04/2022 10/04/2022	Makar Sokol

LM Start	6.15	Rating **	U	Issue No.	57 (cont)
LM End	6.15	Issue Type +	Ma	Location *	
Category	Supplemental			GPS Latitude/Longitude	
				Start	End
Item	DWR UCIP LMA Responsibility			39.732515 °	39.732515 °
				-121.930373 °	-121.930373 °
DWR ID	19249				

Photo 3 of 3 : UCIP_FA_2022_67353_99814.jpg



Water-Side: Headwall and flap gate at levee toe

LM Start	6.43	Rating **	U	Issue No.	58
LM End	6.43	Issue Type +	Ma	Location *	
Category	Supplemental			GPS Latitude/Longitude	
				Start	End
Item	DWR UCIP LMA Responsibility			39.728812 °	39.728812 °
				-121.932623 °	-121.932623 °
DWR ID	19251				

Comment Code

Inspector Comment

DS_ID:19251
 FS_ID:67357
 EP_NO: N/A
 Repair Type: Urgent
 EVAL Issue: 1, Pipe Integrity
 Crossing Status: Found
 UCIP Comments: 03/16/2021 Record updated from Non-Urgent to Urgent. DMP internal video inspection has found pipe integrity issues. LOF of crossing is between 5 and 6. Crossing will be monitored until funding becomes available to address the issues. No permit has been identified authorizing pipe. Debris has been cleared. (O.Yakimov - DWR UCIP)
 02/25/2014 Needs cleaning and clearing of debris. (P. Amatya - DWR UCIP)
 FIELD_STRUCT_DESC: 24-inch corrugated metal gravity drainage pipe through the levee, 15.5 feet below the crown. Flap gate on the waterside (WS) end. Concrete U-shaped headwall on each end. Grouted riprap apron on the landside (LS) end. Grouted riprap spillway on the WS end. Pipe crossing levee at angle. [Additional Reference(s): DWR Levee Log, 1992 (HLM 6.65). USACE Sacramento O&M Manual, Unit 504, May 1965, Revised 2 February 2011, (HLM 6.65), listed as 24-inch pipe. USACE As-Built Drawing No. 50-04-3685, Sheet 41, STA 91+98, 19 May 1965].
 FS Date: 3/16/2021 2:47:48 PM

Photo 1 of 3 : UCIP_FA_2022_67357_99827.jpg



Top of Levee: View of levee crown looking downstream

* Location LS : Land Side N/A : Not Applicable WS : Water Side CR : Crown	** Rating A : Acceptable M : Minimally Acceptable U : Unacceptable N : Not Inspected/Rated C : Corrected A/W : Acceptable but Monitor & Maintain	+ Issue Type Ma : Maintenance Deficiency Ob : Design & System Obsolescence En : Enforcement
--	---	---

**Flood Control Project Maintenance
Levee Inspections**

Maintenance Issue Types Only, Levee Inspection Report By Mile - Fall 2022

Butte County Department of Public Works

Waterway	Bank	Unit Miles	Inspection Start/End	Inspector
Unit No. 02 Mud Creek	Left	7.96	10/04/2022 10/04/2022	Makar Sokol

LM Start	6.43	Rating **	U	Issue No.	58 (cont)
LM End	6.43	Issue Type +	Ma	Location *	
Category	Supplemental			GPS Latitude/Longitude	
				Start	End
Item	DWR UCIP LMA Responsibility			39.728812 °	39.728812 °
				-121.932623 °	-121.932623 °
DWR ID	19251				

Photo 2 of 3 : UCIP_FA_2022_67357_99828.jpg



Water-Side: View of levee slope looking from crown

LM Start	6.43	Rating **	U	Issue No.	58 (cont)
LM End	6.43	Issue Type +	Ma	Location *	

Photo 3 of 3 : UCIP_FA_2022_67357_99832.jpg



Water-Side: Headwall and flap gate at levee toe

* Location LS : Land Side N/A : Not Applicable WS : Water Side CR : Crown	** Rating A : Acceptable M : Minimally Acceptable U : Unacceptable	N : Not Inspected/Rated C : Corrected A/W : Acceptable but Monitor & Maintain	+ Issue Type Ma : Maintenance Deficiency Ob : Design & System Obsolescence En : Enforcement
--	--	---	---

**Flood Control Project Maintenance
Levee Inspections**

Maintenance Issue Types Only, Levee Inspection Report By Mile - Fall 2022

Butte County Department of Public Works

Waterway	Bank	Unit Miles	Inspection Start/End	Inspector
Unit No. 02 Mud Creek	Left	7.96	10/04/2022 10/04/2022	Makar Sokol

LM Start	6.94	Rating **	U	Issue No.	59
LM End	6.94	Issue Type +	Ma	Location *	
Category	Supplemental			GPS Latitude/Longitude	
				Start	End
Item	DWR UCIP LMA Responsibility			39.722798 °	39.722798 °
				-121.937828 °	-121.937828 °
DWR ID	19252				
Comment Code					
Inspector Comment					
DS_ID:19252 FS_ID:67358 EP_NO: N/A Repair Type: Urgent EVAL Issue: 1, Pipe Integrity Crossing Status: Found UCIP Comments: 03/16/2021 Record updated from Non-Urgent to Urgent. DMP internal video inspection has found pipe integrity issues. LOF of crossing is between 5 and 6. Crossing will be monitored until funding becomes available to address the issues. No permit has been identified authorizing pipe. Sediment at the bottom of CMP needs claeirng. (O.Yakimov - DWR UCIP) 02/25/2014 Needs cleaning and clearing of debris. (P. Amatya - DWR UCIP) FIELD_STRUCT_DESC: 24-inch corrugated metal gravity drainage pipe through the levee, 15 feet below the crown. Flap gate on the waterside (WS) end. Concrete U-shaped headwall on each end. Grouted riprap apron on the landside (LS) end. Grouted riprap spillway on the WS end. [Additional Reference(s): DWR Levee Log, 1992 (HLM 7.17). USACE Sacramento O&M Manual, Unit 504, May 1965, Revised 2 February 2011, (HLM 7.17), listed as 24-inch pipe. USACE As-Built Drawing No. 50-04-3684, Sheets 3 and 6, STA 64+80, 15 April 1963]. FS Date: 3/16/2021 2:50:50 PM					

LM Start	6.94	Rating **	U	Issue No.	59 (cont)
LM End	6.94	Issue Type +	Ma	Location *	

Photo 1 of 3 : UCIP_FA_2022_67358_99833.jpg



Top of Levee: View of levee crown looking upstream

Photo 2 of 3 : UCIP_FA_2022_67358_99835.jpg



Water-Side: View of levee slope looking from crown

* Location LS : Land Side N/A : Not Applicable WS : Water Side CR : Crown	** Rating A : Acceptable M : Minimally Acceptable U : Unacceptable	N : Not Inspected/Rated C : Corrected A/W : Acceptable but Monitor & Maintain	+ Issue Type Ma : Maintenance Deficiency Ob : Design & System Obsolescence En : Enforcement
--	--	---	---

**Flood Control Project Maintenance
Levee Inspections**

Maintenance Issue Types Only, Levee Inspection Report By Mile - Fall 2022

Butte County Department of Public Works

Waterway	Bank	Unit Miles	Inspection Start/End	Inspector
Unit No. 02 Mud Creek	Left	7.96	10/04/2022 10/04/2022	Makar Sokol

LM Start	6.94	Rating **	U	Issue No.	59 (cont)
LM End	6.94	Issue Type +	Ma	Location *	
Category	Supplemental			GPS Latitude/Longitude	
				Start	End
Item	DWR UCIP LMA Responsibility			39.722798 °	39.722798 °
				-121.937828 °	-121.937828 °
DWR ID	19252				

Photo 3 of 3 : UCIP_FA_2022_67358_99836.jpg



Water-Side: Headwall and flap gate on levee berm

LM Start	7.22	Rating **	M	Issue No.	60
LM End	7.22	Issue Type +	Ma	Location *	
Category	Supplemental			GPS Latitude/Longitude	
				Start	End
Item	DWR UCIP LMA Responsibility			39.718882 °	39.718882 °
				-121.937602 °	-121.937602 °
DWR ID	19253				

Comment Code

Inspector Comment

DS_ID:19253
 FS_ID:67359
 EP_NO: N/A
 Repair Type: Non-Urgent
 EVAL Issue:
 Crossing Status: Found
 UCIP Comments: 03/16/2021 Record remains Non-Urgent. No permit has been identified authorizing pipe. Debris has been cleared. DMP internal video inspection has not found pipe integrity issues. LOF of crossing is less or equal to 4. Recommend next video inspection in 5 years. (O.Yakimov - DWR UCIP)
 02/25/2014 Slide gates in CMP risers on waterside shoulder. Needs cleaning and clearing of debris. (P. Amatya - DWR UCIP)
 FIELD_STRUCT_DESC: 1 of 3: 48-inch corrugated metal gravity drainage pipe through the levee, 18 feet below the crown. Flap gate on the waterside (WS) end. Slide gate in a corrugated metal pipe (CMP) riser on the WS shoulder. Concrete U-shaped headwall on each end. Grouted riprap apron on the landside (LS) end. Grouted riprap spillway on the WS end. [Additional Reference(s): DWR Levee Log, 1992 (HLM 7.46). USACE Sacramento O&M Manual, Unit 504, May 1965, Revised 2 February 2011, (HLM 7.46), listed as 48-inch pipe. USACE As-Built Drawing No. 50-04-3684, Sheets 3 and 6, STA 50+00, 15 April 1963].
 FS Date: 3/16/2021

Photo 1 of 3 : UCIP_FA_2022_67359_99839.jpg



Top of Levee: View of levee crown looking downstream

* Location LS : Land Side N/A : Not Applicable WS : Water Side CR : Crown	** Rating A : Acceptable M : Minimally Acceptable U : Unacceptable	N : Not Inspected/Rated C : Corrected A/W : Acceptable but Monitor & Maintain	+ Issue Type Ma : Maintenance Deficiency Ob : Design & System Obsolescence En : Enforcement
--	--	--	---

**Flood Control Project Maintenance
Levee Inspections**

Maintenance Issue Types Only, Levee Inspection Report By Mile - Fall 2022

Butte County Department of Public Works

Waterway	Bank	Unit Miles	Inspection Start/End	Inspector
Unit No. 02 Mud Creek	Left	7.96	10/04/2022 10/04/2022	Makar Sokol

LM Start	7.22	Rating **	M	Issue No.	60 (cont)
LM End	7.22	Issue Type +	Ma	Location *	
Category	Supplemental			GPS Latitude/Longitude	
				Start	End
Item	DWR UCIP LMA Responsibility			39.718882 °	39.718882 °
				-121.937602 °	-121.937602 °
DWR ID	19253				

Photo 2 of 3 : UCIP_FA_2022_67359_99840.jpg



Water-Side: View of levee slope looking from crown. CMP riser with slide gate on levee shoulder

LM Start	7.22	Rating **	M	Issue No.	60 (cont)
LM End	7.22	Issue Type +	Ma	Location *	

Photo 3 of 3 : UCIP_FA_2022_67359_99842.jpg



Water-Side: Headwall and flap gate at levee toe

* Location LS : Land Side N/A : Not Applicable WS : Water Side CR : Crown	** Rating A : Acceptable M : Minimally Acceptable U : Unacceptable	N : Not Inspected/Rated C : Corrected A/W : Acceptable but Monitor & Maintain	+ Issue Type Ma : Maintenance Deficiency Ob : Design & System Obsolescence En : Enforcement
--	--	---	---

**Flood Control Project Maintenance
Levee Inspections**

Maintenance Issue Types Only, Levee Inspection Report By Mile - Fall 2022

Butte County Department of Public Works

Waterway	Bank	Unit Miles	Inspection Start/End	Inspector
Unit No. 02 Mud Creek	Left	7.96	10/04/2022 10/04/2022	Makar Sokol

LM Start	7.23	Rating **	M	Issue No.	61
LM End	7.23	Issue Type +	Ma	Location *	
Category	Supplemental			GPS Latitude/Longitude	
				Start	End
Item	DWR UCIP LMA Responsibility			39.718849 °	39.718849 °
				-121.937580 °	-121.937580 °
DWR ID	19261				
Comment Code					
Inspector Comment					
DS_ID:19261 FS_ID:67361 EP_NO: N/A Repair Type: Non-Urgent EVAL Issue: Crossing Status: Found UCIP Comments: 03/16/2021 Record remains Non-Urgent. No permit has been identified authorizing pipe. Debris has been cleared. DMP internal video inspection has not found pipe integrity issues. LOF of crossing is less or equal to 4. Recommend next video inspection in 5 years. (O.Yakimov - DWR UCIP) 02/25/2014 Slide gates in CMP risers on waterside shoulder. Needs cleaning and clearing on both pipe ends. (P. Amatya - DWR UCIP) FIELD_STRUCT_DESC: 3 of 3: 48-inch corrugated metal gravity drainage pipe through the levee, 18 feet below the crown. Flap gate on the waterside (WS) end. Slide gate in a corrugated metal pipe (CMP) riser on the WS shoulder. Concrete U-shaped headwall on each end. Grouted riprap apron on the landside (LS) end. Grouted riprap spillway on the WS end. [Additional Reference(s): DWR Levee Log, 1992 (HLM 7.46). USACE Sacramento O&M Manual, Unit 504, May 1965, Revised 2 February 2011, (HLM 7.46), listed as 48-inch pipe. USACE As-Built Drawing No. 50-04-3684, Sheets 3 and 6, STA 50+00, 15 April 1963]. FS Date: 3/16/2021 3:17:31 PM					

LM Start	7.23	Rating **	M	Issue No.	61 (cont)
LM End	7.23	Issue Type +	Ma	Location *	

Photo 1 of 3 : UCIP_FA_2022_67361_99849.jpg



Top of Levee: View of levee crown looking downstream

Photo 2 of 3 : UCIP_FA_2022_67361_99850.jpg



Water-Side: View of levee slope looking from crown. CMP riser with slide gate on levee shoulder

* Location LS : Land Side N/A : Not Applicable WS : Water Side CR : Crown	** Rating A : Acceptable M : Minimally Acceptable U : Unacceptable	N : Not Inspected/Rated C : Corrected A/W : Acceptable but Monitor & Maintain	+ Issue Type Ma : Maintenance Deficiency Ob : Design & System Obsolescence En : Enforcement
--	--	---	---

**Flood Control Project Maintenance
Levee Inspections**

Maintenance Issue Types Only, Levee Inspection Report By Mile - Fall 2022

Butte County Department of Public Works

Waterway	Bank	Unit Miles	Inspection Start/End	Inspector
Unit No. 02 Mud Creek	Left	7.96	10/04/2022 10/04/2022	Makar Sokol

LM Start	7.23	Rating **	M	Issue No.	61 (cont)
LM End	7.23	Issue Type +	Ma	Location *	
Category	Supplemental			GPS Latitude/Longitude	
				Start	End
Item	DWR UCIP LMA Responsibility			39.718849 °	39.718849 °
				-121.937580 °	-121.937580 °
DWR ID	19261				

Photo 3 of 3 : UCIP_FA_2022_67361_99852.jpg



Water-Side: Headwall and flap gate at levee toe

LM Start	7.23	Rating **	M	Issue No.	62
LM End	7.23	Issue Type +	Ma	Location *	
Category	Supplemental			GPS Latitude/Longitude	
				Start	End
Item	DWR UCIP LMA Responsibility			39.718862 °	39.718862 °
				-121.937594 °	-121.937594 °
DWR ID	19260				

Comment Code

Inspector Comment

DS_ID:19260
FS_ID:67360
EP_NO: N/A
Repair Type: Non-Urgent
EVAL Issue: 5, Pipe Damage
Crossing Status: Found
UCIP Comments: 03/16/2021 Record remains Non-Urgent. DMP internal video inspection has found pipe integrity issues. LOF of crossing is greater than or equal to 4.1 and less than 5. Crossing will be monitored until funding becomes available for rehabilitation. No permit has been identified authorizing pipe. Debris has been cleared.
(O.Yakimov - DWR UCIP)
02/25/2014 Slide gates in CMP risers on waterside shoulder. Needs cleaning and clearing of debris. (P. Amatya - DWR UCIP)
FIELD_STRUCT_DESC: 2 of 3: 48-inch corrugated metal gravity drainage pipe through the levee, 18 feet below the crown. Flap gate on the waterside (WS) end. Slide gate in a corrugated metal pipe (CMP) riser on the WS shoulder. Concrete U-shaped headwall on each end. Grouted riprap apron on the landside (LS) end. Grouted riprap spillway on the WS end. [Additional Reference(s): DWR Levee Log, 1992 (HLM 7.46). USACE Sacramento O&M Manual, Unit 504, May 1965, Revised 2 February 2011, (HLM 7.46), listed as 48-inch pipe. USACE As-Built Drawing No. 50-04-3684, Sheets 3 and 6, STA 50+00, 15 April 1963].
FS Date: 3/16/2021 3:16:09 PM

Photo 1 of 3 : UCIP_FA_2022_67360_99844.jpg



Top of Levee: View of levee crown looking downstream

* Location LS : Land Side N/A : Not Applicable WS : Water Side CR : Crown	** Rating A : Acceptable M : Minimally Acceptable U : Unacceptable N : Not Inspected/Rated C : Corrected A/W : Acceptable but Monitor & Maintain	+ Issue Type Ma : Maintenance Deficiency Ob : Design & System Obsolescence En : Enforcement
--	---	---

**Flood Control Project Maintenance
Levee Inspections**

Maintenance Issue Types Only, Levee Inspection Report By Mile - Fall 2022

Butte County Department of Public Works

Waterway	Bank	Unit Miles	Inspection Start/End	Inspector
Unit No. 02 Mud Creek	Left	7.96	10/04/2022 10/04/2022	Makar Sokol

LM Start	7.23	Rating **	M	Issue No.	62 (cont)
LM End	7.23	Issue Type +	Ma	Location *	
Category	Supplemental			GPS Latitude/Longitude	
				Start	End
Item	DWR UCIP LMA Responsibility			39.718862 °	39.718862 °
				-121.937594 °	-121.937594 °
DWR ID	19260				

Photo 2 of 3 : UCIP_FA_2022_67360_99845.jpg



Water-Side: View of levee slope looking from crown. CMP riser with slide gate on levee shoulder

LM Start	7.23	Rating **	M	Issue No.	62 (cont)
LM End	7.23	Issue Type +	Ma	Location *	

Photo 3 of 3 : UCIP_FA_2022_67360_99847.jpg



Water-Side: Headwall and flap gate at levee toe

* Location LS : Land Side N/A : Not Applicable WS : Water Side CR : Crown	** Rating A : Acceptable M : Minimally Acceptable U : Unacceptable	N : Not Inspected/Rated C : Corrected A/W : Acceptable but Monitor & Maintain	+ Issue Type Ma : Maintenance Deficiency Ob : Design & System Obsolescence En : Enforcement
--	--	---	---

**Flood Control Project Maintenance
Levee Inspections**

Maintenance Issue Types Only, Levee Inspection Report By Mile - Fall 2022

Butte County Department of Public Works

Waterway	Bank	Unit Miles	Inspection Start/End	Inspector
Unit No. 02 Mud Creek	Left	7.96	10/04/2022 10/04/2022	Makar Sokol

LM Start	7.77	Rating **	M	Issue No.	63	
LM End	7.77	Issue Type +	Ma	Location *		
Category	Supplemental			GPS Latitude/Longitude		
				Start		End
Item	DWR UCIP LMA Responsibility			39.711436 °		39.711436 °
				-121.937135 °		-121.937135 °
DWR ID	19254					
Comment Code						
Inspector Comment						
DS_ID:19254 FS_ID:67362 EP_NO: N/A Repair Type: Non-Urgent EVAL Issue: 5, Pipe Damage Crossing Status: Found UCIP Comments: 03/16/2021 Record remains Non-Urgent. DMP internal video inspection has found pipe integrity issues. LOF of crossing is greater than or equal to 4.1 and less than 5. Crossing will be monitored until funding becomes available for rehabilitation. No permit has been identified authorizing pipe. Debris has been cleared. (O.Yakimov - DWR UCIP) 02/25/2014 Debris in inlet pipe, needs cleaning and clearing. (P. Amatya - DWR UCIP) FIELD_STRUCT_DESC: 24-inch corrugated metal gravity drainage pipe through the levee, 18 feet below the crown. Flap gate on the waterside (WS) end. Concrete U-shaped headwall on each end. Grouted riprap apron on the landside (LS) end. Grouted riprap spillway on the WS end. [Additional Reference(s): DWR Levee Log, 1992 (HLM 8.01). USACE Sacramento O&M Manual, Unit 504, May 1965, Revised 2 February 2011, (HLM 8.09), listed as 24-inch pipe. USACE As-Built Drawing No. 50-04-3684, footnote Sheet 2, Sheet 6, STA 21+23, 15 April 1963]. FS Date: 3/16/2021 3:19:02 PM						

Photo 1 of 3 : UCIP_FA_2022_67362_99859.jpg



Water-Side: Headwall and flap gate at levee toe

LM Start	7.77	Rating **	M	Issue No.	63 (cont)
LM End	7.77	Issue Type +	Ma	Location *	

Photo 2 of 3 : UCIP_FA_2022_67362_99854.jpg



Top of Levee: View of levee crown looking downstream

* Location LS : Land Side N/A : Not Applicable WS : Water Side CR : Crown	** Rating A : Acceptable M : Minimally Acceptable U : Unacceptable	N : Not Inspected/Rated C : Corrected A/W : Acceptable but Monitor & Maintain	+ Issue Type Ma : Maintenance Deficiency Ob : Design & System Obsolescence En : Enforcement
--	--	---	---

**Flood Control Project Maintenance
Levee Inspections**

Maintenance Issue Types Only, Levee Inspection Report By Mile - Fall 2022

Butte County Department of Public Works

Waterway	Bank	Unit Miles	Inspection Start/End	Inspector
Unit No. 02 Mud Creek	Left	7.96	10/04/2022 10/04/2022	Makar Sokol

LM Start	7.77	Rating **	M	Issue No.	63 (cont)
LM End	7.77	Issue Type +	Ma	Location *	
Category	Supplemental			GPS Latitude/Longitude	
				Start	End
Item	DWR UCIP LMA Responsibility			39.711436 °	39.711436 °
				-121.937135 °	-121.937135 °
DWR ID	19254				

Photo 3 of 3 : UCIP_FA_2022_67362_99855.jpg



Water-Side: View of levee slope looking from crown

* Location LS : Land Side N/A : Not Applicable WS : Water Side CR : Crown	** Rating A : Acceptable M : Minimally Acceptable U : Unacceptable N : Not Inspected/Rated C : Corrected A/W : Acceptable but Monitor & Maintain	+ Issue Type Ma : Maintenance Deficiency Ob : Design & System Obsolescence En : Enforcement
--	---	---

**Flood Control Project Maintenance
Levee Inspections**

Maintenance Issue Types Only, Levee Inspection Report By Mile - Fall 2022

Butte County Department of Public Works

Waterway	Bank	Unit Miles	Inspection Start/End	Inspector
Unit No. 02A Channel Slough	Left	0.26	10/04/2022 10/04/2022	Makar Sokol

LM Start		Rating **		Issue No.	
LM End		Issue Type +	--	Location *	
Category				GPS Latitude/Longitude	
				Start	End
Item				°	°
				°	°
DWR ID					
Comment Code					
Inspector Comment					
No issues were reported.					

No Photos

* Location LS : Land Side N/A : Not Applicable WS : Water Side CR : Crown	** Rating A : Acceptable M : Minimally Acceptable U : Unacceptable	N : Not Inspected/Rated C : Corrected A/W : Acceptable but Monitor & Maintain	+ Issue Type Ma : Maintenance Deficiency Ob : Design & System Obsolescence En : Enforcement
--	--	---	---

**Flood Control Project Maintenance
Levee Inspections**

Maintenance Issue Types Only, Levee Inspection Report By Mile - Fall 2022

Butte County Department of Public Works

Waterway	Bank	Unit Miles	Inspection Start/End	Inspector
Unit No. 03 Sycamore and Sheep Hollow Creeks	Right	4.05	10/04/2022 10/04/2022	Makar Sokol

LM Start	0.07	Rating **	M	Issue No.	19
LM End	0.07	Issue Type +	Ma	Location *	LS
Category	Earthen Levee			GPS Latitude/Longitude	
				Start	End
Item	Erosion / Vehicle Traffic			39.786028 °	39.786028 °
				-121.881924 °	-121.881924 °
DWR ID	DWR_NA0003_03_f _ 2021_19				
Comment Code					
E6 : Repair the levee slope damaged by vehicle traffic and prevent access where possible.					
Inspector Comment					

Photo 1 of 1 : FA_2022_NA0003_67_19_20220906_00002.jpg



View of the damaged landside slope due to vehicle traffic. Spring 2022.

LM Start	0.07	Rating **	M	Issue No.	21
LM End	0.07	Issue Type +	Ma	Location *	WS
Category	Earthen Levee			GPS Latitude/Longitude	
				Start	End
Item	Erosion / Vehicle Traffic			39.786037 °	39.786037 °
				-121.881857 °	-121.881857 °
DWR ID	DWR_NA0003_03_s_2022_21				
Comment Code					
E6 : Repair the levee slope damaged by vehicle traffic and prevent access where possible.					
Inspector Comment					

No Photos

* Location LS : Land Side N/A : Not Applicable WS : Water Side CR : Crown	** Rating A : Acceptable M : Minimally Acceptable U : Unacceptable	N : Not Inspected/Rated C : Corrected A/W : Acceptable but Monitor & Maintain	+ Issue Type Ma : Maintenance Deficiency Ob : Design & System Obsolescence En : Enforcement
--	--	---	---

**Flood Control Project Maintenance
Levee Inspections**

Maintenance Issue Types Only, Levee Inspection Report By Mile - Fall 2022

Butte County Department of Public Works

Waterway	Bank	Unit Miles	Inspection Start/End	Inspector
Unit No. 03 Sycamore and Sheep Hollow Creeks	Right	4.05	10/04/2022 10/04/2022	Makar Sokol

LM Start	0.10	Rating **	U	Issue No.	26	
LM End	0.10	Issue Type +	Ma	Location *		
Category	Supplemental			GPS Latitude/Longitude		
				Start	End	
Item	DWR UCIP LMA Responsibility			39.786195 °	39.786195 °	
				-121.881325 °	-121.881325 °	
DWR ID	19262					
Comment Code						
Inspector Comment						
DS_ID:19262 FS_ID:67668 EP_NO: N/A Repair Type: Urgent EVAL Issue: 1, Pipe Integrity Crossing Status: Found UCIP Comments: 03/23/2021 Record updated from No Action Needed to Urgent. DMP internal video inspection has found pipe integrity issues. LOF of crossing is between 5 and 6. Crossing will be monitored until funding becomes available to address the issues. No permit has been identified authorizing pipe. (O.Yakimov - DWR UCIP) 05/16/2017 Crossing has been downgraded from Non-Urgent to No Action Needed. The flap gate appears to be in good working order based on the photos, and the small pile of debris not enough to warrant Non-Urgent rating. (K. Fazel - DWR UCIP) 03/11/2014 Slide gate in CMP riser on watersie. The culvert was working during field inspection. (P. Amatya - DWR) FIELD_STRUCT_DESC: 42-inch corrugated metal gravity drainage pipe through the levee, 14 feet below the crown. Flap gate on the waterside (WS) end. Slide gate in a corrugated metal pipe (CMP) riser on the WS slope. Concrete U-shaped headwall on each end. Grouted riprap apron on the landside (LS) end. Grouted riprap spillway on the WS end. [Additional Reference(s): DWR Levee Log, 1992 (HLM 0.09). USACE Sacramento O&M Manual, Unit 504, May 1965, Revised 2 February 2011, (HLM 0.09), listed as 42-inch pipe. USACE As-Built Drawing No. 50-04-3685, Sheets 7 and 40, STA 370+60, 19 May 1965]. FS Date: 3/23/2021 1:52:32 PM						

LM Start	0.10	Rating **	U	Issue No.	26 (cont)
LM End	0.10	Issue Type +	Ma	Location *	

Photo 1 of 3 : UCIP_FA_2022_67668_100475.jpg



Top of Levee: View of levee crown looking downstream

Photo 2 of 3 : UCIP_FA_2022_67668_100476.jpg



Land-Side: View of levee slope looking from crown

* Location LS : Land Side N/A : Not Applicable WS : Water Side CR : Crown	** Rating A : Acceptable M : Minimally Acceptable U : Unacceptable	N : Not Inspected/Rated C : Corrected A/W : Acceptable but Monitor & Maintain	+ Issue Type Ma : Maintenance Deficiency Ob : Design & System Obsolescence En : Enforcement
--	--	---	---

**Flood Control Project Maintenance
Levee Inspections**

Maintenance Issue Types Only, Levee Inspection Report By Mile - Fall 2022

Butte County Department of Public Works

Waterway	Bank	Unit Miles	Inspection Start/End	Inspector
Unit No. 03 Sycamore and Sheep Hollow Creeks	Right	4.05	10/04/2022 10/04/2022	Makar Sokol

LM Start	0.10	Rating **	U	Issue No.	26 (cont)	
LM End	0.10	Issue Type +	Ma	Location *		
Category	Supplemental			GPS Latitude/Longitude		
				Start		End
Item	DWR UCIP LMA Responsibility			39.786195 °		39.786195 °
				-121.881325 °		-121.881325 °
DWR ID	19262					

Photo 3 of 3 : UCIP_FA_2022_67668_100474.jpg



Land-Side: View inside of pipe looking from landside end

LM Start	0.39	Rating **	M	Issue No.	27
LM End	0.39	Issue Type +	Ma	Location *	
Category	Supplemental			GPS Latitude/Longitude	
				Start	End
Item	DWR UCIP LMA Responsibility			39.785262 °	39.785262 °
				-121.876622 °	-121.876622 °
DWR ID	19278				

Comment Code

Inspector Comment

DS_ID:19278
FS_ID:67669
EP_NO: N/A
Repair Type: Non-Urgent
EVAL Issue:
Crossing Status: Found
UCIP Comments: 03/23/2021 Record updated from No Action Needed to Non-Urgent. No permit has been identified authorizing pipe. DMP internal video inspection has not found pipe integrity issues. LOF of crossing is less or equal to 4. Recommend next video inspection in 5 years. (O.Yakimov - DWR UCIP)
03/11/2014 Slide gate in CMP riser on waterside. The culvert was working during the field visit. (P. Amatya - DWR UCIP)
FIELD_STRUCT_DESC: 1 of 3: 48-inch corrugated metal gravity drainage pipe through the levee, 11.7 feet below the crown. Slide gate in a riser well on the waterside (WS) slope. Concrete U-shaped headwall on each end. Flap gate on the WS end. Grouted riprap outlet channel on the WS. [Additional Reference(s): DWR Levee Log, 1992 (HLM 0.39). USACE Sacramento O&M Manual, Unit 504, May 1965, Revised 2 February 2011, (HLM 0.39), listed as 48-inch pipe. USACE As-Built Drawing No. 50-04-3685, Sheets 7 and 39, STA 385+90, 19 May 1965].
FS Date: 3/23/2021 2:00:15 PM

Photo 1 of 3 : UCIP_FA_2022_67669_100480.jpg



Top of Levee: View of levee crown looking downstream

* Location LS : Land Side N/A : Not Applicable WS : Water Side CR : Crown	** Rating A : Acceptable M : Minimally Acceptable U : Unacceptable	N : Not Inspected/Rated C : Corrected A/W : Acceptable but Monitor & Maintain	+ Issue Type Ma : Maintenance Deficiency Ob : Design & System Obsolescence En : Enforcement
--	--	--	---

**Flood Control Project Maintenance
Levee Inspections**

Maintenance Issue Types Only, Levee Inspection Report By Mile - Fall 2022

Butte County Department of Public Works

Waterway	Bank	Unit Miles	Inspection Start/End	Inspector
Unit No. 03 Sycamore and Sheep Hollow Creeks	Right	4.05	10/04/2022 10/04/2022	Makar Sokol

LM Start	0.39	Rating **	M	Issue No.	27 (cont)
LM End	0.39	Issue Type +	Ma	Location *	
Category	Supplemental			GPS Latitude/Longitude	
				Start	End
Item	DWR UCIP LMA Responsibility			39.785262 °	39.785262 °
				-121.876622 °	-121.876622 °
DWR ID	19278				

Photo 2 of 3 : UCIP_FA_2022_67669_100481.jpg



Land-Side: View of levee slope looking from crown

LM Start	0.39	Rating **	M	Issue No.	27 (cont)
LM End	0.39	Issue Type +	Ma	Location *	

Photo 3 of 3 : UCIP_FA_2022_67669_100482.jpg



Water-Side: View of levee slope looking from crown. CMP riser with slide gate on levee shoulder

* Location LS : Land Side N/A : Not Applicable WS : Water Side CR : Crown	** Rating A : Acceptable M : Minimally Acceptable U : Unacceptable	N : Not Inspected/Rated C : Corrected A/W : Acceptable but Monitor & Maintain	+ Issue Type Ma : Maintenance Deficiency Ob : Design & System Obsolescence En : Enforcement
--	--	---	---

**Flood Control Project Maintenance
Levee Inspections**

Maintenance Issue Types Only, Levee Inspection Report By Mile - Fall 2022

Butte County Department of Public Works

Waterway	Bank	Unit Miles	Inspection Start/End	Inspector
Unit No. 03 Sycamore and Sheep Hollow Creeks	Right	4.05	10/04/2022 10/04/2022	Makar Sokol

LM Start	0.39	Rating **	M	Issue No.	28
LM End	0.39	Issue Type +	Ma	Location *	
Category	Supplemental			GPS Latitude/Longitude	
				Start	End
Item	DWR UCIP LMA Responsibility			39.785246 °	39.785246 °
				-121.876609 °	-121.876609 °
DWR ID	19277				
Comment Code					
Inspector Comment					
DS_ID:19277 FS_ID:67670 EP_NO: N/A Repair Type: Non-Urgent EVAL Issue: Crossing Status: Found UCIP Comments: 03/23/2021 Record updated from No Action Needed to Non-Urgent. No permit has been identified authorizing pipe. DMP internal video inspection has not found pipe integrity issues. LOF of crossing is less or equal to 4. Recommend next video inspection in 5 years. (O.Yakimov - DWR UCIP) 03/11/2014 Slide gate in CMP riser on waterside. The culvert was working during the field visit. (P. Amatya - DWR UCIP) FIELD_STRUCT_DESC: 2 of 3: 48-inch corrugated metal gravity drainage pipe through the levee, 11.7 feet below the crown. Slide gate in a riser well on the waterside (WS) slope. Concrete U-shaped headwall on each end. Flap gate on the WS end. Grouted riprap outlet channel on the WS. [Additional Reference(s): DWR Levee Log, 1992 (HLM 0.39). USACE Sacramento O&M Manual, Unit 504, May 1965, Revised 2 February 2011, (HLM 0.39), listed as 48-inch pipe. USACE As-Built Drawing No. 50-04-3685, Sheets 7 and 39, STA 385+90, 19 May 1965]. FS Date: 3/23/2021 2:59:04 PM					

LM Start	0.39	Rating **	M	Issue No.	28 (cont)
LM End	0.39	Issue Type +	Ma	Location *	

Photo 1 of 3 : UCIP_FA_2022_67670_100486.jpg



Top of Levee: View of levee crown looking downstream

Photo 2 of 3 : UCIP_FA_2022_67670_100487.jpg



Land-Side: View of levee slope looking from crown

* Location LS : Land Side N/A : Not Applicable WS : Water Side CR : Crown	** Rating A : Acceptable M : Minimally Acceptable U : Unacceptable	N : Not Inspected/Rated C : Corrected A/W : Acceptable but Monitor & Maintain	+ Issue Type Ma : Maintenance Deficiency Ob : Design & System Obsolescence En : Enforcement
--	--	---	---

**Flood Control Project Maintenance
Levee Inspections**

Maintenance Issue Types Only, Levee Inspection Report By Mile - Fall 2022

Butte County Department of Public Works

Waterway	Bank	Unit Miles	Inspection Start/End	Inspector
Unit No. 03 Sycamore and Sheep Hollow Creeks	Right	4.05	10/04/2022 10/04/2022	Makar Sokol

LM Start	0.39	Rating **	M	Issue No.	28 (cont)
LM End	0.39	Issue Type +	Ma	Location *	
Category	Supplemental			GPS Latitude/Longitude	
				Start	End
Item	DWR UCIP LMA Responsibility			39.785246 °	39.785246 °
				-121.876609 °	-121.876609 °
DWR ID	19277				

Photo 3 of 3 : UCIP_FA_2022_67670_100488.jpg



Water-Side: View of levee slope looking from crown. CMP riser with slide gate on levee shoulder

LM Start	0.39	Rating **	M	Issue No.	29
LM End	0.39	Issue Type +	Ma	Location *	
Category	Supplemental			GPS Latitude/Longitude	
				Start	End
Item	DWR UCIP LMA Responsibility			39.785230 °	39.785230 °
				-121.876592 °	-121.876592 °
DWR ID	19263				

Comment Code

Inspector Comment

DS_ID:19263
 FS_ID:67671
 EP_NO: N/A
 Repair Type: Non-Urgent
 EVAL Issue:
 Crossing Status: Found
 UCIP Comments: 03/23/2021 Record updated from No Action Needed to Non-Urgent. No permit has been identified authorizing pipe. DMP internal video inspection has not found pipe integrity issues. LOF of crossing is less or equal to 4. Recommend next video inspection in 5 years. (O.Yakimov - DWR UCIP)
 03/11/2014 Slide gate in CMP riser on waterside. The culvert was working during the field visit. (P. Amatya - DWR UCIP)
 FIELD_STRUCT_DESC: 3 of 3: 48-inch corrugated metal gravity drainage pipe through the levee, 11.7 feet below the crown. Slide gate in a riser well on the waterside (WS) slope. Concrete U-shaped headwall on each end. Flap gate on the WS end. Grouted riprap outlet channel on the WS. [Additional Reference(s): DWR Levee Log, 1992 (HLM 0.39). USACE Sacramento O&M Manual, Unit 504, May 1965, Revised 2 February 2011, (HLM 0.39), listed as 48-inch pipe. USACE As-Built Drawing No. 50-04-3685, Sheets 7 and 39, STA 385+90, 19 May 1965].
 FS Date: 3/23/2021 3:06:10 PM

Photo 1 of 3 : UCIP_FA_2022_67671_100492.jpg



Top of Levee: View of levee crown looking downstream

* Location LS : Land Side N/A : Not Applicable WS : Water Side CR : Crown	** Rating A : Acceptable M : Minimally Acceptable U : Unacceptable	N : Not Inspected/Rated C : Corrected A/W : Acceptable but Monitor & Maintain	+ Issue Type Ma : Maintenance Deficiency Ob : Design & System Obsolescence En : Enforcement
--	--	---	---

**Flood Control Project Maintenance
Levee Inspections**

Maintenance Issue Types Only, Levee Inspection Report By Mile - Fall 2022

Butte County Department of Public Works

Waterway	Bank	Unit Miles	Inspection Start/End	Inspector
Unit No. 03 Sycamore and Sheep Hollow Creeks	Right	4.05	10/04/2022 10/04/2022	Makar Sokol

LM Start	0.39	Rating **	M	Issue No.	29 (cont)
LM End	0.39	Issue Type +	Ma	Location *	
Category	Supplemental			GPS Latitude/Longitude	
				Start	End
Item	DWR UCIP LMA Responsibility			39.785230 °	39.785230 °
				-121.876592 °	-121.876592 °
DWR ID	19263				

Photo 2 of 3 : UCIP_FA_2022_67671_100493.jpg



Land-Side: View of levee slope looking from crown

LM Start	0.39	Rating **	M	Issue No.	29 (cont)
LM End	0.39	Issue Type +	Ma	Location *	

Photo 3 of 3 : UCIP_FA_2022_67671_100494.jpg



Water-Side: View of levee slope looking from crown. CMP riser with slide gate on levee shoulder

* Location LS : Land Side N/A : Not Applicable WS : Water Side CR : Crown	** Rating A : Acceptable M : Minimally Acceptable U : Unacceptable	N : Not Inspected/Rated C : Corrected A/W : Acceptable but Monitor & Maintain	+ Issue Type Ma : Maintenance Deficiency Ob : Design & System Obsolescence En : Enforcement
--	--	---	---

**Flood Control Project Maintenance
Levee Inspections**

Maintenance Issue Types Only, Levee Inspection Report By Mile - Fall 2022

Butte County Department of Public Works

Waterway	Bank	Unit Miles	Inspection Start/End	Inspector
Unit No. 03 Sycamore and Sheep Hollow Creeks	Right	4.05	10/04/2022 10/04/2022	Makar Sokol

LM Start	1.25	Rating **	U	Issue No.	30	
LM End	1.25	Issue Type +	Ma	Location *		
Category	Supplemental			GPS Latitude/Longitude		
				Start	End	
Item	DWR UCIP LMA Responsibility			39.779678 °	39.779678 °	
				-121.862632 °	-121.862632 °	
DWR ID	19264					
Comment Code						
Inspector Comment						
DS_ID:19264 FS_ID:67676 EP_NO: N/A Repair Type: Urgent EVAL Issue: 1, Pipe Integrity Crossing Status: Found UCIP Comments: 03/23/2021 Record updated from No Action Needed to Urgent. DMP internal video inspection has found pipe integrity issues. LOF of crossing is between 5 and 6. Crossing will be monitored until funding becomes available to address the issues. No permit has been identified authorizing pipe. (O.Yakimov - DWR UCIP) 03/11/2014 The culvert was working during the field visit. (P. Amatya - DWR UCIP) FIELD_STRUCT_DESC: 24-inch corrugated metal gravity drainage pipe through the levee, 11.7 feet below the crown. Flap gate on the waterside (WS) end. Concrete U-shaped headwall on each end. [Additional Reference(s): DWR Levee Log, 1992 (HLM 1.26). USACE Sacramento O&M Manual, Unit 504, May 1965, Revised 2 February 2011, (HLM 1.28), listed as 24-inch pipe. USACE As-Built Drawing No. 50-04-3685, Sheet 9, STA 431+50, 19 May 1965]. FS Date: 3/23/2021						

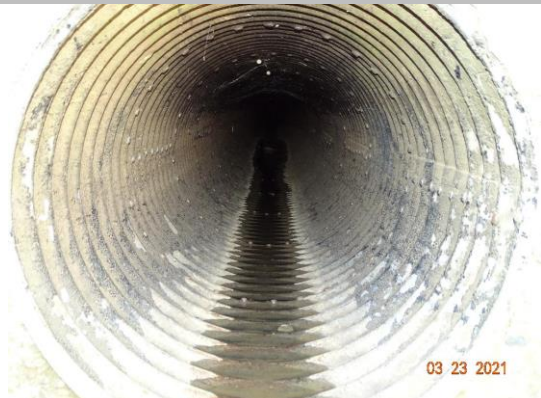
LM Start	1.25	Rating **	U	Issue No.	30 (cont)
LM End	1.25	Issue Type +	Ma	Location *	

Photo 1 of 3 : UCIP_FA_2022_67676_100511.jpg



Top of Levee: View of levee crown looking upstream

Photo 2 of 3 : UCIP_FA_2022_67676_100515.jpg



Land-Side: View inside of pipe looking from landside end

* Location LS : Land Side N/A : Not Applicable WS : Water Side CR : Crown	** Rating A : Acceptable M : Minimally Acceptable U : Unacceptable	N : Not Inspected/Rated C : Corrected A/W : Acceptable but Monitor & Maintain	+ Issue Type Ma : Maintenance Deficiency Ob : Design & System Obsolescence En : Enforcement
--	--	---	---

**Flood Control Project Maintenance
Levee Inspections**

Maintenance Issue Types Only, Levee Inspection Report By Mile - Fall 2022

Butte County Department of Public Works

Waterway	Bank	Unit Miles	Inspection Start/End	Inspector
Unit No. 03 Sycamore and Sheep Hollow Creeks	Right	4.05	10/04/2022 10/04/2022	Makar Sokol

LM Start	1.25	Rating **	U	Issue No.	30 (cont)
LM End	1.25	Issue Type +	Ma	Location *	
Category	Supplemental			GPS Latitude/Longitude	
				Start	End
Item	DWR UCIP LMA Responsibility			39.779678 °	39.779678 °
				-121.862632 °	-121.862632 °
DWR ID	19264				

Photo 3 of 3 : UCIP_FA_2022_67676_100516.jpg



Water-Side: Headwall and flap gate at levee toe

LM Start	1.50	Rating **	M	Issue No.	31
LM End	1.50	Issue Type +	Ma	Location *	
Category	Supplemental			GPS Latitude/Longitude	
				Start	End
Item	DWR UCIP LMA Responsibility			39.779230 °	39.779230 °
				-121.857945 °	-121.857945 °
DWR ID	19265				

Comment Code

Inspector Comment

DS_ID:19265
 FS_ID:67677
 EP_NO: N/A
 Repair Type: Non-Urgent
 EVAL Issue: 5, Pipe Damage
 Crossing Status: Found
 UCIP Comments: 03/23/2021 Record updated from No Action Needed to Non-Urgent. DMP internal video inspection has found pipe integrity issues. LOF of crossing is greater than or equal to 4.1 and less than 5. Crossing will be monitored until funding becomes available for rehabilitation. No permit has been identified authorizing pipe. (O.Yakimov - DWR UCIP)
 03/11/2014 Working during the field visit. (P. Amatya - DWR UCIP)
 FIELD_STRUCT_DESC: 24-inch corrugated metal gravity drainage pipe through the levee, 11 feet below the crown. Flap gate on the waterside (WS) end. Concrete U-shaped headwall on each end. Grouted riprap apron on each end. [Additional Reference(s): DWR Levee Log, 1992 (HLM 1.52). USACE Sacramento O&M Manual, Unit 504, May 1965, Revised 2 February 2011, (HLM 1.53), listed as 24-inch pipe. USACE As-Built Drawing No. 50-04-3685, Sheet 9, STA 444+80, 19 May 1965].
 FS Date: 3/23/2021 8:35:54 AM

Photo 1 of 3 : UCIP_FA_2022_67677_100517.jpg



Top of Levee: View of levee crown looking upstream

* Location LS : Land Side N/A : Not Applicable WS : Water Side CR : Crown	** Rating A : Acceptable M : Minimally Acceptable U : Unacceptable N : Not Inspected/Rated C : Corrected A/W : Acceptable but Monitor & Maintain	+ Issue Type Ma : Maintenance Deficiency Ob : Design & System Obsolescence En : Enforcement
--	---	---

**Flood Control Project Maintenance
Levee Inspections**

Maintenance Issue Types Only, Levee Inspection Report By Mile - Fall 2022

Butte County Department of Public Works

Waterway	Bank	Unit Miles	Inspection Start/End	Inspector
Unit No. 03 Sycamore and Sheep Hollow Creeks	Right	4.05	10/04/2022 10/04/2022	Makar Sokol

LM Start	1.50	Rating **	M	Issue No.	31 (cont)
LM End	1.50	Issue Type +	Ma	Location *	
Category	Supplemental			GPS Latitude/Longitude	
				Start	End
Item	DWR UCIP LMA Responsibility			39.779230 °	39.779230 °
				-121.857945 °	-121.857945 °
DWR ID	19265				

Photo 2 of 3 : UCIP_FA_2022_67677_100520.jpg



Land-Side: View inside of pipe looking from landside end

LM Start	1.50	Rating **	M	Issue No.	31 (cont)
LM End	1.50	Issue Type +	Ma	Location *	

Photo 3 of 3 : UCIP_FA_2022_67677_100521.jpg



Water-Side: Levee slope, headwall and flap gate at levee toe

* Location LS : Land Side N/A : Not Applicable WS : Water Side CR : Crown	** Rating A : Acceptable M : Minimally Acceptable U : Unacceptable	N : Not Inspected/Rated C : Corrected A/W : Acceptable but Monitor & Maintain	+ Issue Type Ma : Maintenance Deficiency Ob : Design & System Obsolescence En : Enforcement
--	--	---	---

**Flood Control Project Maintenance
Levee Inspections**

Maintenance Issue Types Only, Levee Inspection Report By Mile - Fall 2022

Butte County Department of Public Works

Waterway	Bank	Unit Miles	Inspection Start/End	Inspector
Unit No. 03 Sycamore and Sheep Hollow Creeks	Right	4.05	10/04/2022 10/04/2022	Makar Sokol

LM Start	1.95	Rating **	M	Issue No.	32	
LM End	1.95	Issue Type +	Ma	Location *		
Category	Supplemental			GPS Latitude/Longitude		
				Start	End	
Item	DWR UCIP LMA Responsibility			39.781722 °	39.781722 °	
				-121.850975 °	-121.850975 °	
DWR ID	19266					
Comment Code						
Inspector Comment						
DS_ID:19266 FS_ID:67678 EP_NO: N/A Repair Type: Non-Urgent EVAL Issue: 5, Pipe Damage Crossing Status: Indicator Found UCIP Comments: 03/23/2021 Record remains Non-Urgent. DMP internal video inspection has found pipe integrity issues. LOF of crossing is greater than or equal to 4.1 and less than 5. Crossing will be monitored until funding becomes available for rehabilitation. No permit has been identified authorizing pipe. Coordinates of crossing have been updated. (O.Yakimov - DWR UCIP) 03/11/2014 Needs location confirmation, GPS reading has not taken due to access problem. (P. Amatya - DWR UCIP) FIELD_STRUCT_DESC: 24-inch corrugated metal gravity drainage pipe through the levee, 8 feet below the crown. Flap gate on the waterside (WS) end. Concrete U-shaped headwall on each end. Grouted riprap apron on the landside (LS) end. Grouted riprap spillway on the WS end. (4-inch PVC pipe through existing landside headwall authorized under Permit No. 17680, 2003 - City of Chico, Department of Public Works). [Additional Reference(s): DWR Levee Log, 1992 (HLM 2.00). USACE Sacramento O&M Manual, Unit 504, May 1965, Revised 2 February 2011, (HLM 2.00), listed as 24-inch pipe. USACE As-Built Drawing No. 50-04-3685, Sheet 10, STA 20+30, 19 May 1965]. FS Date: 3/23/2021 8:39:14 AM						

LM Start	1.95	Rating **	M	Issue No.	32 (cont)
LM End	1.95	Issue Type +	Ma	Location *	

Photo 1 of 3 : UCIP_FA_2022_67678_100522.jpg



Top of Levee: View of levee crown looking upstream

Photo 2 of 3 : UCIP_FA_2022_67678_100525.jpg



Land-Side: Levee slope, U-shaped headwall and pipe at levee toe

* Location LS : Land Side N/A : Not Applicable WS : Water Side CR : Crown	** Rating A : Acceptable M : Minimally Acceptable U : Unacceptable	N : Not Inspected/Rated C : Corrected A/W : Acceptable but Monitor & Maintain	+ Issue Type Ma : Maintenance Deficiency Ob : Design & System Obsolescence En : Enforcement
--	--	---	---

**Flood Control Project Maintenance
Levee Inspections**

Maintenance Issue Types Only, Levee Inspection Report By Mile - Fall 2022

Butte County Department of Public Works

Waterway	Bank	Unit Miles	Inspection Start/End	Inspector
Unit No. 03 Sycamore and Sheep Hollow Creeks	Right	4.05	10/04/2022 10/04/2022	Makar Sokol

LM Start	1.95	Rating **	M	Issue No.	32 (cont)
LM End	1.95	Issue Type +	Ma	Location *	
Category	Supplemental			GPS Latitude/Longitude	
				Start	End
Item	DWR UCIP LMA Responsibility			39.781722 °	39.781722 °
				-121.850975 °	-121.850975 °
DWR ID	19266				

Photo 3 of 3 : UCIP_FA_2022_67678_100526.jpg



Land-Side: View inside of pipe looking from landside end

LM Start	2.17	Rating **	M	Issue No.	33
LM End	2.17	Issue Type +	Ma	Location *	
Category	Supplemental			GPS Latitude/Longitude	
				Start	End
Item	DWR UCIP LMA Responsibility			39.785290 °	39.785290 °
				-121.844235 °	-121.844235 °
DWR ID	19267				

Comment Code

Inspector Comment

DS_ID:19267
FS_ID:67679
EP_NO: N/A
Repair Type: Non-Urgent
EVAL Issue:
Crossing Status: Found
UCIP Comments: 03/25/2021 Record remains Non-Urgent. No permit has been identified authorizing pipe. DMP internal video inspection has not found pipe integrity issues. LOF of crossing is less or equal to 4. Recommend next video inspection in 5 years. (O.Yakimov - DWR UCIP)
03/07/2014 Pipe is about 4 feet below the crown. Needs cleaning and clearing the culvert. (P. Amatya - DWR UCIP)
FIELD_STRUCT_DESC: 24-inch corrugated metal gravity drainage pipe through the levee, 6 feet below the crown. Flap gate on the waterside (WS) end. Concrete U-shaped headwall on each end.
[Additional Reference(s): DWR Levee Log, 1992 (HLM 2.23). USACE Sacramento O&M Manual, Unit 504, May 1965, Revised 2 February 2011, (HLM 2.23), listed as 24-inch pipe. USACE As-Built Drawing No. 50-04-3685, Sheet 10, STA 46+90, 19 May 1965].
FS Date: 3/25/2021 8:45:44 AM

Photo 1 of 3 : UCIP_FA_2022_67679_100529.jpg



Top of Levee: View of levee crown looking upstream

* Location LS : Land Side N/A : Not Applicable WS : Water Side CR : Crown	** Rating A : Acceptable M : Minimally Acceptable U : Unacceptable	N : Not Inspected/Rated C : Corrected A/W : Acceptable but Monitor & Maintain	+ Issue Type Ma : Maintenance Deficiency Ob : Design & System Obsolescence En : Enforcement
--	--	---	---

**Flood Control Project Maintenance
Levee Inspections**

Maintenance Issue Types Only, Levee Inspection Report By Mile - Fall 2022

Butte County Department of Public Works

Waterway	Bank	Unit Miles	Inspection Start/End	Inspector
Unit No. 03 Sycamore and Sheep Hollow Creeks	Right	4.05	10/04/2022 10/04/2022	Makar Sokol

LM Start	2.17	Rating **	M	Issue No.	33 (cont)	
LM End	2.17	Issue Type +	Ma	Location *		
Category	Supplemental			GPS Latitude/Longitude		
				Start	End	
Item	DWR UCIP LMA Responsibility			39.785290 °	39.785290 °	
				-121.844235 °	-121.844235 °	
DWR ID	19267					

Photo 2 of 3 : UCIP_FA_2022_67679_100528.jpg



Water-Side: U-shaped Headwall and revetment on levee slope

LM Start	2.17	Rating **	M	Issue No.	33 (cont)
LM End	2.17	Issue Type +	Ma	Location *	

Photo 3 of 3 : UCIP_FA_2022_67679_100530.jpg



Land-Side: U-shaped headwall and pipe at levee toe

LM Start	2.68	Rating **	A/W	Issue No.	20
LM End	2.72	Issue Type +	Ma	Location *	WS
Category	Supplemental			GPS Latitude/Longitude	
				Start	End
Item	2018 USACE Erosion Survey			39.781508 °	39.781327 °
				-121.850137 °	-121.850828 °
DWR ID	DWR_NA0003_03_s_2022_20				
Comment Code					
Inspector Comment					
2018 Site ID: CHI 2.7 L					
Status: Eroding					
2018 Field Notes: Last observed in 2017.					
Site History: 2017 - No trees on bank or levee. Large erosion scarp along lower bank. Technically on Sheeps Hollow.					

No Photos

* Location LS : Land Side N/A : Not Applicable WS : Water Side CR : Crown	** Rating A : Acceptable M : Minimally Acceptable U : Unacceptable	N : Not Inspected/Rated C : Corrected A/W : Acceptable but Monitor & Maintain	+ Issue Type Ma : Maintenance Deficiency Ob : Design & System Obsolescence En : Enforcement
--	--	--	---

**Flood Control Project Maintenance
Levee Inspections**

Maintenance Issue Types Only, Levee Inspection Report By Mile - Fall 2022

Butte County Department of Public Works

Waterway	Bank	Unit Miles	Inspection Start/End	Inspector
Unit No. 03 Sycamore and Sheep Hollow Creeks	Right	4.05	10/04/2022 10/04/2022	Makar Sokol

LM Start	3.08	Rating **	M	Issue No.	34	
LM End	3.08	Issue Type +	Ma	Location *		
Category	Supplemental			GPS Latitude/Longitude		
				Start	End	
Item	DWR UCIP LMA Responsibility			39.778016 °	39.778016 °	
				-121.854460 °	-121.854460 °	
DWR ID	19269					
Comment Code						
Inspector Comment						
DS_ID:19269 FS_ID:67681 EP_NO: N/A Repair Type: Non-Urgent EVAL Issue: Crossing Status: Found UCIP Comments: 03/25/2021 Record remains Non-Urgent. No permit has been identified authorizing pipe. DMP internal video inspection has not found pipe integrity issues. LOF of crossing is less or equal to 4. Recommend next video inspection in 5 years. (O.Yakimov - DWR UCIP) 03/07/2014 Needs cleaning and clearing the culvert. (P. Amatya - DWR UCIP) FIELD_STRUCT_DESC: 24-inch corrugated metal gravity drainage pipe through the levee, 11 feet below the crown. Flap gate on the waterside (WS) end. Concrete U-shaped headwall on each end. Grouted riprap apron on the landside (LS) end. Grouted riprap spillway on the WS end. [Additional Reference(s): DWR Levee Log, 1992 (HLM 3.16). USACE Sacramento O&M Manual, Unit 504, May 1965, Revised 2 February 2011, (HLM 3.16), listed as 24-inch pipe]. FS Date: 3/25/2021 10:55:20 AM						

LM Start	3.08	Rating **	M	Issue No.	34 (cont)
LM End	3.08	Issue Type +	Ma	Location *	

Photo 1 of 3 : UCIP_FA_2022_67681_100537.jpg



Top of Levee: View of levee crown looking upstream

Photo 2 of 3 : UCIP_FA_2022_67681_100538.jpg



Water-Side: View of levee slope looking from crown

* Location LS : Land Side N/A : Not Applicable WS : Water Side CR : Crown	** Rating A : Acceptable M : Minimally Acceptable U : Unacceptable	N : Not Inspected/Rated C : Corrected A/W : Acceptable but Monitor & Maintain	+ Issue Type Ma : Maintenance Deficiency Ob : Design & System Obsolescence En : Enforcement
--	--	---	---

**Flood Control Project Maintenance
Levee Inspections**

Maintenance Issue Types Only, Levee Inspection Report By Mile - Fall 2022

Butte County Department of Public Works

Waterway	Bank	Unit Miles	Inspection Start/End	Inspector
Unit No. 03 Sycamore and Sheep Hollow Creeks	Right	4.05	10/04/2022 10/04/2022	Makar Sokol

LM Start	3.08	Rating **	M	Issue No.	34 (cont)
LM End	3.08	Issue Type +	Ma	Location *	
Category	Supplemental			GPS Latitude/Longitude	
				Start	End
Item	DWR UCIP LMA Responsibility			39.778016 °	39.778016 °
				-121.854460 °	-121.854460 °
DWR ID	19269				

Photo 3 of 3 : UCIP_FA_2022_67681_100539.jpg



Land-Side: View of levee slope looking from crown

LM Start	3.09	Rating **	M	Issue No.	22
LM End	3.09	Issue Type +	Ma	Location *	LS
Category	Earthen Levee			GPS Latitude/Longitude	
				Start	End
Item	Vegetation			39.777880 °	39.777880 °
				-121.854230 °	-121.854230 °
DWR ID	DWR_NA0003_03_s_2019_22				
Comment Code					
V2 : Remove the wild growth and woody vegetation other than native grasses from the levee slopes.					
Inspector Comment					

Photo 1 of 1 : FA_2022_NA0003_67_22_20220906_00003.jpg



View of the wild growth at the landside toe. Spring 2019.

* Location LS : Land Side N/A : Not Applicable WS : Water Side CR : Crown	** Rating A : Acceptable M : Minimally Acceptable U : Unacceptable	N : Not Inspected/Rated C : Corrected A/W : Acceptable but Monitor & Maintain	+ Issue Type Ma : Maintenance Deficiency Ob : Design & System Obsolescence En : Enforcement
--	--	---	---

**Flood Control Project Maintenance
Levee Inspections**

Maintenance Issue Types Only, Levee Inspection Report By Mile - Fall 2022

Butte County Department of Public Works

Waterway	Bank	Unit Miles	Inspection Start/End	Inspector
Unit No. 03 Sycamore and Sheep Hollow Creeks	Right	4.05	10/04/2022 10/04/2022	Makar Sokol

LM Start	3.19	Rating **	M	Issue No.	35	
LM End	3.19	Issue Type +	Ma	Location *		
Category	Supplemental			GPS Latitude/Longitude		
				Start	End	
Item	DWR UCIP LMA Responsibility			39.777463 °	39.777463 °	
				-121.852512 °	-121.852512 °	
DWR ID	19270					
Comment Code						
Inspector Comment						
DS_ID:19270 FS_ID:67682 EP_NO: N/A Repair Type: Non-Urgent EVAL Issue: Crossing Status: Found UCIP Comments: 03/25/2021 Record is Non-Urgent. No permit has been identified authorizing pipe. DMP internal video inspection has not found pipe integrity issues. LOF of crossing is less or equal to 4. Recommend next video inspection in 5 years. (O.Yakimov - DWR UCIP)						
FIELD_STRUCT_DESC: 24-inch corrugated metal gravity drainage pipe through the levee, 11 feet below the crown. Flap gate on the waterside (WS) end. Concrete U-shaped headwall on each end. Grouted riprap apron on the landside (LS) end. Grouted riprap spillway on the WS end. [Additional Reference(s): DWR Levee Log, 1992 (HLM 3.28). USACE Sacramento O&M Manual, Unit 504, May 1965, Revised 2 February 2011, (HLM 3.28), listed as 24-inch pipe. USACE As-Built Drawing No. 50-04-3685, Sheet 9, STA 462+10, 19 May 1965]]. FS Date: 3/25/2021 10:58:02 AM						

LM Start	3.19	Rating **	M	Issue No.	35 (cont)
LM End	3.19	Issue Type +	Ma	Location *	

Photo 1 of 3 : UCIP_FA_2022_67682_100543.jpg



Top of Levee: View of levee crown looking upstream

Photo 2 of 3 : UCIP_FA_2022_67682_100544.jpg



Water-Side: View of levee slope looking from crown

* Location LS : Land Side N/A : Not Applicable WS : Water Side CR : Crown	** Rating A : Acceptable M : Minimally Acceptable U : Unacceptable	N : Not Inspected/Rated C : Corrected A/W : Acceptable but Monitor & Maintain	+ Issue Type Ma : Maintenance Deficiency Ob : Design & System Obsolescence En : Enforcement
--	--	---	---

**Flood Control Project Maintenance
Levee Inspections**

Maintenance Issue Types Only, Levee Inspection Report By Mile - Fall 2022

Butte County Department of Public Works

Waterway	Bank	Unit Miles	Inspection Start/End	Inspector
Unit No. 03 Sycamore and Sheep Hollow Creeks	Right	4.05	10/04/2022 10/04/2022	Makar Sokol

LM Start	3.19	Rating **	M	Issue No.	35 (cont)
LM End	3.19	Issue Type +	Ma	Location *	
Category	Supplemental			GPS Latitude/Longitude	
				Start	End
Item	DWR UCIP LMA Responsibility			39.777463 °	39.777463 °
				-121.852512 °	-121.852512 °
DWR ID	19270				

Photo 3 of 3 : UCIP_FA_2022_67682_100545.jpg



Land-Side: View of levee slope looking from crown

LM Start	3.34	Rating **	M	Issue No.	36
LM End	3.34	Issue Type +	Ma	Location *	
Category	Supplemental			GPS Latitude/Longitude	
				Start	End
Item	DWR UCIP LMA Responsibility			39.777410 °	39.777410 °
				-121.849627 °	-121.849627 °
DWR ID	19271				

Comment Code

Inspector Comment

DS_ID:19271
 FS_ID:67683
 EP_NO: N/A
 Repair Type: Non-Urgent
 EVAL Issue:
 Crossing Status: Found
 UCIP Comments: 03/25/2021 Record remains Non-Urgent. Debris around culver has been cleared. No permit has been identified authorizing pipe. DMP internal video inspection has not found pipe integrity issues. LOF of crossing is less or equal to 4. Recommend next video inspection in 5 years. (O.Yakimov - DWR UCIP)
 03/07/2014 Needs cleaning and clearing the culvert. (P. Amatya - DWR UCIP)
 FIELD_STRUCT_DESC: 24-inch corrugated metal gravity drainage pipe through the levee, 10.5 feet below the crown. Flap gate on the waterside (WS) end. Concrete U-shaped headwall on each end. Grouted riprap apron on the landside (LS) end. Grouted riprap spillway on the WS end. [Additional Reference(s): DWR Levee Log, 1992 (HLM 3.43). USACE Sacramento O&M Manual, Unit 504, May 1965, Revised 2 February 2011, (HLM 3.43), listed as 24-inch pipe. USACE As-Built Drawing No. 50-04-3685, Sheet 11, STA 470+20, 19 May 1965].
 FS Date: 3/25/2021 11:00:29 AM

Photo 1 of 3 : UCIP_FA_2022_67683_100549.jpg



Top of Levee: View of levee crown looking upstream

* Location LS : Land Side N/A : Not Applicable WS : Water Side CR : Crown	** Rating A : Acceptable M : Minimally Acceptable U : Unacceptable N : Not Inspected/Rated C : Corrected A/W : Acceptable but Monitor & Maintain	+ Issue Type Ma : Maintenance Deficiency Ob : Design & System Obsolescence En : Enforcement
--	---	---

**Flood Control Project Maintenance
Levee Inspections**

Maintenance Issue Types Only, Levee Inspection Report By Mile - Fall 2022

Butte County Department of Public Works

Waterway	Bank	Unit Miles	Inspection Start/End	Inspector
Unit No. 03 Sycamore and Sheep Hollow Creeks	Right	4.05	10/04/2022 10/04/2022	Makar Sokol

LM Start	3.34	Rating **	M	Issue No.	36 (cont)
LM End	3.34	Issue Type +	Ma	Location *	
Category	Supplemental			GPS Latitude/Longitude	
				Start	End
Item	DWR UCIP LMA Responsibility			39.777410 °	39.777410 °
				-121.849627 °	-121.849627 °
DWR ID	19271				

Photo 2 of 3 : UCIP_FA_2022_67683_100550.jpg



Water-Side: View of levee slope looking from crown

LM Start	3.34	Rating **	M	Issue No.	36 (cont)
LM End	3.34	Issue Type +	Ma	Location *	

Photo 3 of 3 : UCIP_FA_2022_67683_100551.jpg



Land-Side: View of levee slope looking from crown

LM Start	3.38	Rating **	M	Issue No.	14
LM End	3.38	Issue Type +	Ma	Location *	LS
Category	Earthen Levee			GPS Latitude/Longitude	
				Start	End
Item	Vegetation			39.777429 °	39.777429 °
				-121.848937 °	-121.848937 °
DWR ID	DWR_NA0003_03_f_2016_14				
Comment Code					
V2 : Remove the wild growth and woody vegetation other than native grasses from the levee slopes.					
Inspector Comment					

Photo 1 of 1 : FA_2022_NA0003_67_14_20220906_00001.jpg



View of a bush along the landside slope. Fall 2020.

* Location LS : Land Side N/A : Not Applicable WS : Water Side CR : Crown	** Rating A : Acceptable M : Minimally Acceptable U : Unacceptable	N : Not Inspected/Rated C : Corrected A/W : Acceptable but Monitor & Maintain	+ Issue Type Ma : Maintenance Deficiency Ob : Design & System Obsolescence En : Enforcement
--	--	--	---

**Flood Control Project Maintenance
Levee Inspections**

Maintenance Issue Types Only, Levee Inspection Report By Mile - Fall 2022

Butte County Department of Public Works

Waterway	Bank	Unit Miles	Inspection Start/End	Inspector
Unit No. 03 Sycamore and Sheep Hollow Creeks	Right	4.05	10/04/2022 10/04/2022	Makar Sokol

LM Start	3.50	Rating **	M	Issue No.	37
LM End	3.50	Issue Type +	Ma	Location *	
Category	Supplemental			GPS Latitude/Longitude	
				Start	End
Item	DWR UCIP LMA Responsibility			39.777139 °	39.777139 °
				-121.846769 °	-121.846769 °
DWR ID	19272				
Comment Code					
Inspector Comment					
DS_ID:19272 FS_ID:67684 EP_NO: N/A Repair Type: Non-Urgent EVAL Issue: Crossing Status: Found UCIP Comments: 03/25/2021 Record remains Non-Urgent. Debris around culvert has been cleared. No permit has been identified authorizing pipe. DMP internal video inspection has not found pipe integrity issues. LOF of crossing is less or equal to 4. Recommend next video inspection in 5 years. (O.Yakimov - DWR UCIP) 03/07/2014 Needs cleaning and clearing the culvert. (P. Amatya - DWR UCIP) FIELD_STRUCT_DESC: 24-inch corrugated metal gravity drainage pipe through the levee, 9.5 feet below the crown. Flap gate on the waterside (WS) end. Concrete U-shaped headwall on each end. Grouted riprap apron on the landside (LS) end. Grouted riprap spillway on the WS end. [Additional Reference(s): DWR Levee Log, 1992 (HLM 3.59). USACE Sacramento O&M Manual, Unit 504, May 1965, Revised 2 February 2011, (HLM 3.59), listed as 24-inch pipe. USACE As-Built Drawing No. 50-04-3685, Sheet 11, STA 478+40, 19 May 1965]. FS Date: 3/25/2021 11:16:33 AM					

LM Start	3.50	Rating **	M	Issue No.	37 (cont)
LM End	3.50	Issue Type +	Ma	Location *	

Photo 1 of 3 : UCIP_FA_2022_67684_100555.jpg



Top of Levee: View of levee crown looking upstream

Photo 2 of 3 : UCIP_FA_2022_67684_100556.jpg



Water-Side: View of levee slope looking from crown

* Location LS : Land Side N/A : Not Applicable WS : Water Side CR : Crown	** Rating A : Acceptable M : Minimally Acceptable U : Unacceptable	N : Not Inspected/Rated C : Corrected A/W : Acceptable but Monitor & Maintain	+ Issue Type Ma : Maintenance Deficiency Ob : Design & System Obsolescence En : Enforcement
--	--	---	---

**Flood Control Project Maintenance
Levee Inspections**

Maintenance Issue Types Only, Levee Inspection Report By Mile - Fall 2022

Butte County Department of Public Works

Waterway	Bank	Unit Miles	Inspection Start/End	Inspector
Unit No. 03 Sycamore and Sheep Hollow Creeks	Right	4.05	10/04/2022 10/04/2022	Makar Sokol

LM Start	3.50	Rating **	M	Issue No.	37 (cont)
LM End	3.50	Issue Type +	Ma	Location *	
Category	Supplemental			GPS Latitude/Longitude	
				Start	End
Item	DWR UCIP LMA Responsibility			39.777139°	39.777139°
				-121.846769°	-121.846769°
DWR ID	19272				

Photo 3 of 3 : UCIP_FA_2022_67684_100557.jpg



Land-Side: View of levee slope looking from crown

LM Start	3.68	Rating **	M	Issue No.	38
LM End	3.68	Issue Type +	Ma	Location *	
Category	Supplemental			GPS Latitude/Longitude	
				Start	End
Item	DWR UCIP LMA Responsibility			39.777662 °	39.777662 °
				-121.843489 °	-121.843489 °
DWR ID	19275				

Comment Code

Inspector Comment

DS_ID:19275
 FS_ID:67687
 EP_NO: N/A
 Repair Type: Non-Urgent
 EVAL Issue:
 Crossing Status: Found
 UCIP Comments: 03/25/2021 Record remains Non-Urgent. No permit has been identified authorizing pipe. DMP internal video inspection has not found pipe integrity issues. LOF of crossing is less or equal to 4. Recommend next video inspection in 5 years. (O.Yakimov - DWR UCIP)
 03/04/2014 The culvert was working during the field visit. Needs cleaning and clearing on both ends of the pipe. (P. Amatya - DWR UCIP)
 FIELD_STRUCT_DESC: 24-inch corrugated metal gravity drainage pipe through the levee, 7.5 feet below the crown. Flap gate on the waterside (WS) end. Concrete U-shaped headwall on each end. Grouted riprap apron on the landside (LS) end. Grouted riprap spillway on the WS end. (Installation of flap gate to existing 24-inch-diameter outfall pipe authorized under Permit No. 18106, 2006 - City of Chico). [Additional Reference(s): DWR Levee Log, 1992 (HLM 3.75). USACE Sacramento O&M Manual, Unit 504, May 1965, Revised 2 February 2011, (HLM 3.76), listed as 24-inch pipe. USACE As-Built Drawing No. 50-04-3685, Sheet 11, STA 486+62, 19 May 1965].
 FS Date: 3/25/2021 1:22:36 PM

Photo 1 of 3 : UCIP_FA_2022_67687_100570.jpg



Top of Levee: View of levee crown looking upstream

* Location LS : Land Side N/A : Not Applicable WS : Water Side CR : Crown	** Rating A : Acceptable M : Minimally Acceptable U : Unacceptable	N : Not Inspected/Rated C : Corrected A/W : Acceptable but Monitor & Maintain	+ Issue Type Ma : Maintenance Deficiency Ob : Design & System Obsolescence En : Enforcement
--	--	---	---

**Flood Control Project Maintenance
Levee Inspections**

Maintenance Issue Types Only, Levee Inspection Report By Mile - Fall 2022

Butte County Department of Public Works

Waterway	Bank	Unit Miles	Inspection Start/End	Inspector
Unit No. 03 Sycamore and Sheep Hollow Creeks	Right	4.05	10/04/2022 10/04/2022	Makar Sokol

LM Start	3.68	Rating **	M	Issue No.	38 (cont)
LM End	3.68	Issue Type +	Ma	Location *	
Category	Supplemental			GPS Latitude/Longitude	
				Start	End
Item	DWR UCIP LMA Responsibility			39.777662 °	39.777662 °
				-121.843489 °	-121.843489 °
DWR ID	19275				

Photo 2 of 3 : UCIP_FA_2022_67687_100571.jpg



Water-Side: View of levee slope looking from crown

LM Start	3.68	Rating **	M	Issue No.	38 (cont)
LM End	3.68	Issue Type +	Ma	Location *	

Photo 3 of 3 : UCIP_FA_2022_67687_100572.jpg



Land-Side: View of levee slope looking from crown

* Location LS : Land Side N/A : Not Applicable WS : Water Side CR : Crown	** Rating A : Acceptable M : Minimally Acceptable U : Unacceptable	N : Not Inspected/Rated C : Corrected A/W : Acceptable but Monitor & Maintain	+ Issue Type Ma : Maintenance Deficiency Ob : Design & System Obsolescence En : Enforcement
--	--	---	---

**Flood Control Project Maintenance
Levee Inspections**

Maintenance Issue Types Only, Levee Inspection Report By Mile - Fall 2022

Butte County Department of Public Works

Waterway	Bank	Unit Miles	Inspection Start/End	Inspector
Unit No. 03 Sycamore and Sheep Hollow Creeks	Right	4.05	10/04/2022 10/04/2022	Makar Sokol

LM Start	3.70	Rating **	M	Issue No.	39	
LM End	3.70	Issue Type +	Ma	Location *		
Category	Supplemental			GPS Latitude/Longitude		
				Start	End	
Item	DWR UCIP LMA Responsibility			39.777853 °	39.777853 °	
				-121.843220 °	-121.843220 °	
DWR ID	19274					
Comment Code						
Inspector Comment						
DS_ID:19274 FS_ID:67688 EP_NO: N/A Repair Type: Non-Urgent EVAL Issue: Crossing Status: Not Found UCIP Comments: 03/25/2021 Record is Non-Urgent. Crossing not found. Geophysical results did not confirm presence of pipe through levee. Record will remain in UCIP's inspection records until future Levee Improvement Project can confirm no crossing was found through the levee. No permit has been identified authorizing pipe. (O.Yakimov - DWR UCIP)						
FIELD_STRUCT_DESC: 24-inch corrugated metal gravity drainage pipe through the levee, 10 feet below the crown. Flap gate on the waterside (WS) end. Concrete U-shaped headwall on each end. Grouted riprap apron on the landside (LS) end. Grouted riprap spillway on the WS end. [Additional Reference(s): DWR Levee Log, 1992 (HLM 3.78). USACE Sacramento O&M Manual, Unit 504, May 1965, Revised 2 February 2011, (HLM 3.78), listed as 24-inch pipe. USACE As-Built Drawing No. 50-04-3685, Sheet 11, STA 488+20, 19 May 1965]. FS Date: 3/25/2021 1:25:15 PM						

LM Start	3.70	Rating **	M	Issue No.	39 (cont)
LM End	3.70	Issue Type +	Ma	Location *	

Photo 1 of 3 : UCIP_FA_2022_67688_100576.jpg



Top of Levee: View of levee crown looking upstream

Photo 2 of 3 : UCIP_FA_2022_67688_100577.jpg



Land-Side: View of levee slope looking from crown

* Location LS : Land Side N/A : Not Applicable WS : Water Side CR : Crown	** Rating A : Acceptable M : Minimally Acceptable U : Unacceptable	N : Not Inspected/Rated C : Corrected A/W : Acceptable but Monitor & Maintain	+ Issue Type Ma : Maintenance Deficiency Ob : Design & System Obsolescence En : Enforcement
--	--	---	---

**Flood Control Project Maintenance
Levee Inspections**

Maintenance Issue Types Only, Levee Inspection Report By Mile - Fall 2022

Butte County Department of Public Works

Waterway	Bank	Unit Miles	Inspection Start/End	Inspector
Unit No. 03 Sycamore and Sheep Hollow Creeks	Right	4.05	10/04/2022 10/04/2022	Makar Sokol

LM Start	3.70	Rating **	M	Issue No.	39 (cont)
LM End	3.70	Issue Type +	Ma	Location *	
Category	Supplemental			GPS Latitude/Longitude	
				Start	End
Item	DWR UCIP LMA Responsibility			39.777853 °	39.777853 °
				-121.843220 °	-121.843220 °
DWR ID	19274				

Photo 3 of 3 : UCIP_FA_2022_67688_100578.jpg



Water-Side: View of levee slope looking from crown

* Location LS : Land Side N/A : Not Applicable WS : Water Side CR : Crown	** Rating A : Acceptable M : Minimally Acceptable U : Unacceptable N : Not Inspected/Rated C : Corrected A/W : Acceptable but Monitor & Maintain	+ Issue Type Ma : Maintenance Deficiency Ob : Design & System Obsolescence En : Enforcement
--	---	---

**Flood Control Project Maintenance
Levee Inspections**

Maintenance Issue Types Only, Levee Inspection Report By Mile - Fall 2022

Butte County Department of Public Works

Waterway	Bank	Unit Miles	Inspection Start/End	Inspector
Unit No. 04 Sycamore and Dry Creeks	Right	2.86	10/04/2022 10/04/2022	Makar Sokol

LM Start	0.27	Rating **	M	Issue No.	42
LM End	0.27	Issue Type +	Ma	Location *	
Category	Supplemental			GPS Latitude/Longitude	
				Start	End
Item	DWR UCIP LMA Responsibility			39.776554 °	39.776554 °
				-121.850730 °	-121.850730 °
DWR ID	19279				
Comment Code					
Inspector Comment					
DS_ID:19279 FS_ID:67692 EP_NO: N/A Repair Type: Non-Urgent EVAL Issue: Crossing Status: Found UCIP Comments: 03/25/2021 Record remains Non-Urgent. No permit has been identified authorizing pipe. DMP internal video inspection has not found pipe integrity issues. LOF of crossing is less or equal to 4. Recommend next video inspection in 5 years. (O.Yakimov - DWR UCIP) 03/07/2014 Needs cleaning and clearing the culvert (P. Amatya - DWR UCIP) FIELD_STRUCT_DESC: 24-inch corrugated metal gravity drainage pipe through the levee, 10 feet below the crown. Flap gate on the waterside (WS) end. Concrete U-shaped headwall on each end. Grouted riprap apron on the landside (LS) end. Grouted riprap spillway on the WS end. [Additional Reference(s): DWR Levee Log, 1992 (HLM 0.28). USACE Sacramento O&M Manual, Unit 504, May 1965, Revised 2 February 2011, (HLM 0.28), listed as 24-inch pipe. USACE As-Built Drawing No. 50-04-3685, Sheets 11 and 41, STA 464+00, 19 May 1965]. FS Date: 3/25/2021 2:10:39 PM					

LM Start	0.27	Rating **	M	Issue No.	42 (cont)
LM End	0.27	Issue Type +	Ma	Location *	

Photo 1 of 3 : UCIP_FA_2022_67692_100580.jpg



Top of Levee: View of levee crown looking downstream

Photo 2 of 3 : UCIP_FA_2022_67692_100581.jpg



Water-Side: View of levee slope looking from crown

* Location LS : Land Side N/A : Not Applicable WS : Water Side CR : Crown	** Rating A : Acceptable M : Minimally Acceptable U : Unacceptable	N : Not Inspected/Rated C : Corrected A/W : Acceptable but Monitor & Maintain	+ Issue Type Ma : Maintenance Deficiency Ob : Design & System Obsolescence En : Enforcement
--	--	---	---

**Flood Control Project Maintenance
Levee Inspections**

Maintenance Issue Types Only, Levee Inspection Report By Mile - Fall 2022

Butte County Department of Public Works

Waterway	Bank	Unit Miles	Inspection Start/End	Inspector
Unit No. 04 Sycamore and Dry Creeks	Right	2.86	10/04/2022 10/04/2022	Makar Sokol

LM Start	0.27	Rating **	M	Issue No.	42 (cont)
LM End	0.27	Issue Type +	Ma	Location *	
Category	Supplemental			GPS Latitude/Longitude	
				Start	End
Item	DWR UCIP LMA Responsibility			39.776554 °	39.776554 °
				-121.850730 °	-121.850730 °
DWR ID	19279				

Photo 3 of 3 : UCIP_FA_2022_67692_100582.jpg



Land-Side: View of levee slope looking from crown

LM Start	0.33	Rating **	M	Issue No.	43
LM End	0.33	Issue Type +	Ma	Location *	
Category	Supplemental			GPS Latitude/Longitude	
				Start	End
Item	DWR UCIP LMA Responsibility			39.775926 °	39.775926 °
				-121.850647 °	-121.850647 °
DWR ID	19280				

Comment Code

Inspector Comment

DS_ID:19280
FS_ID:67693
EP_NO: N/A
Repair Type: Non-Urgent
EVAL Issue:
Crossing Status: Found
UCIP Comments: 03/25/2021 Record remains Non-Urgent. Debris around on inlet has been cleared. No permit has been identified authorizing pipe. DMP internal video inspection has not found pipe integrity issues. LOF of crossing is less or equal to 4. Recommend next video inspection in 5 years. (O.Yakimov - DWR UCIP)
03/07/2014 Slide gate in a CMP riser. Vegetation debris and mud on inlet box. Needs cleaning and clearing the culvert. (P. Amatya - DWR UCIP)
FIELD_STRUCT_DESC: 24-inch corrugated metal gravity drainage pipe through the levee and under the channel, 9.5 feet below the crown. Slide gate in a corrugated metal pipe (CMP) riser on the waterside (WS) slope. Concrete U-shaped headwall on the landside (LS) end. [Additional Reference(s): DWR Levee Log, 1992 (HLM 0.34). USACE Sacramento O&M Manual, Unit 504, May 1965, Revised 2 February 2011, (HLM 0.34), listed as 24-inch pipe. USACE As-Built Drawing No. 50-04-3685, Sheet 11, between STA 2+20 and STA 3+20, 19 May 1965, shown as existing siphon through both levees and under channel]. FS Date: 3/25/2021 2:16:53 PM

Photo 1 of 3 : UCIP_FA_2022_67693_100586.jpg



Top of Levee: View of levee crown looking upstream

* Location LS : Land Side N/A : Not Applicable WS : Water Side CR : Crown	** Rating A : Acceptable M : Minimally Acceptable U : Unacceptable N : Not Inspected/Rated C : Corrected A/W : Acceptable but Monitor & Maintain	+ Issue Type Ma : Maintenance Deficiency Ob : Design & System Obsolescence En : Enforcement
--	---	---

**Flood Control Project Maintenance
Levee Inspections**

Maintenance Issue Types Only, Levee Inspection Report By Mile - Fall 2022

Butte County Department of Public Works

Waterway	Bank	Unit Miles	Inspection Start/End	Inspector
Unit No. 04 Sycamore and Dry Creeks	Right	2.86	10/04/2022 10/04/2022	Makar Sokol

LM Start	0.33	Rating **	M	Issue No.	43 (cont)
LM End	0.33	Issue Type +	Ma	Location *	
Category	Supplemental		GPS Latitude/Longitude		
			Start	End	
Item	DWR UCIP LMA Responsibility		39.775926 °	39.775926 °	
			-121.850647 °	-121.850647 °	
DWR ID	19280				

Photo 2 of 3 : UCIP_FA_2022_67693_100588.jpg



Land-Side: View of levee slope looking from crown

LM Start	0.33	Rating **	M	Issue No.	43 (cont)
LM End	0.33	Issue Type +	Ma	Location *	

Photo 3 of 3 : UCIP_FA_2022_67693_100589.jpg



Water-Side: Detailed view of levee slope. Pipe outfall not visible on waterside. Crossing DSID 19288 on opposite side of levee

* Location LS : Land Side N/A : Not Applicable WS : Water Side CR : Crown	** Rating A : Acceptable M : Minimally Acceptable U : Unacceptable	N : Not Inspected/Rated C : Corrected A/W : Acceptable but Monitor & Maintain	+ Issue Type Ma : Maintenance Deficiency Ob : Design & System Obsolescence En : Enforcement
--	--	---	---

**Flood Control Project Maintenance
Levee Inspections**

Maintenance Issue Types Only, Levee Inspection Report By Mile - Fall 2022

Butte County Department of Public Works

Waterway	Bank	Unit Miles	Inspection Start/End	Inspector
Unit No. 04 Sycamore and Dry Creeks	Right	2.86	10/04/2022 10/04/2022	Makar Sokol

LM Start	0.35	Rating **	U	Issue No.	44
LM End	0.35	Issue Type +	Ma	Location *	
Category	Supplemental			GPS Latitude/Longitude	
				Start	End
Item	DWR UCIP LMA Responsibility			39.775682 °	39.775682 °
				-121.850375 °	-121.850375 °
DWR ID	19281				
Comment Code					
Inspector Comment					
DS_ID:19281 FS_ID:67694 EP_NO: N/A Repair Type: Urgent EVAL Issue: 3a, Flood Risk Crossing Status: Found UCIP Comments: 03/25/2021 Record updated from Non-Urgent to Urgent. Debris inside pipe holds flap gate from complete closing. Backflow may cause flood risk to landside. No permit has been identified authorizing pipe. DMP internal video inspection has not found pipe integrity issues. LOF of crossing is less or equal to 4. Recommend next video inspection in 5 years. (O.Yakimov - DWR UCIP) 03/07/2014 Needs cleaning and clearing the culvert. (P. Amatya - DWR UCIP) FIELD_STRUCT_DESC: 24-inch corrugated metal gravity drainage pipe through the levee, 8 feet below the crown. Flap gate on the waterside (WS) end. Concrete U-shaped headwall on each end. Grouted riprap apron on the landside (LS) end. Grouted riprap spillway on the WS end. [Additional Reference(s): DWR Levee Log, 1992 (HLM 0.36). USACE Sacramento O&M Manual, Unit 504, May 1965, Revised 2 February 2011, (HLM 0.36), listed as 24-inch pipe. USACE As-Built Drawing No. 50-04-3685, Sheets 11 and 41, STA 4+20, 19 May 1965]. FS Date: 3/25/2021 2:21:16 PM					

LM Start	0.35	Rating **	U	Issue No.	44 (cont)
LM End	0.35	Issue Type +	Ma	Location *	

Photo 1 of 3 : UCIP_FA_2022_67694_100595.jpg



Water-Side: Headwall and flap gate at levee toe

Photo 2 of 3 : UCIP_FA_2022_67694_100596.jpg



Water-Side: Debris inside of pipe blocks flap gate from complete closing

* Location LS : Land Side N/A : Not Applicable WS : Water Side CR : Crown	** Rating A : Acceptable M : Minimally Acceptable U : Unacceptable	N : Not Inspected/Rated C : Corrected A/W : Acceptable but Monitor & Maintain	+ Issue Type Ma : Maintenance Deficiency Ob : Design & System Obsolescence En : Enforcement
--	--	---	---

Butte County Department of Public Works

Page 5 of 15

**Flood Control Project Maintenance
Levee Inspections**

Maintenance Issue Types Only, Levee Inspection Report By Mile - Fall 2022

Butte County Department of Public Works

Waterway	Bank	Unit Miles	Inspection Start/End	Inspector
Unit No. 04 Sycamore and Dry Creeks	Right	2.86	10/04/2022 10/04/2022	Makar Sokol

LM Start	0.71	Rating **	M	Issue No.	25
LM End	0.71	Issue Type +	Ma	Location *	WS
Category	Earthen Levee			GPS Latitude/Longitude	
				Start	End
Item	Erosion / Bank Caving			39.773019 °	39.773019 °
				-121.845927 °	-121.845927 °
DWR ID	DWR_NA0003_04_s_2022_25				
Comment Code					
E2 : Schedule repair of erosion site prior to the next inspection.					
Inspector Comment					

Photo 1 of 1 : FA_2022_NA0003_68_25_20220906_00005.jpg



View of the erosion along the waterside slope. Spring 2022.

LM Start	0.92	Rating **	M	Issue No.	48
LM End	0.92	Issue Type +	Ma	Location *	
Category	Supplemental			GPS Latitude/Longitude	
				Start	End
Item	DWR UCIP LMA Responsibility			39.775704 °	39.775704 °
				-121.850901 °	-121.850901 °
DWR ID	19287				
Comment Code					
Inspector Comment					
DS_ID:19287 FS_ID:67765 EP_NO: N/A Repair Type: Non-Urgent EVAL Issue: Crossing Status: Found UCIP Comments: 03/23/2021 Record remains Non-Urgent. Debris has been cleared. No permit has been identified authorizing pipe. DMP internal video inspection has not found pipe integrity issues. LOF of crossing is less or equal to 4. Recommend next video inspection in 5 years. (O.Yakimov - DWR UCIP) 03/07/2014 Needs cleaning and clearing the culvert. (P. Amatya - DWR UCIP) FIELD_STRUCT_DESC: 24-inch corrugated metal gravity drainage pipe through the levee, 9 feet below the crown. Flap gate on the waterside (WS) end. Concrete U-shaped headwall on each end. Grouted riprap apron on the landside (LS) end. Grouted riprap spillway on the WS end. [Additional Reference(s): DWR Levee Log, 1992 (HLM 0.96). USACE Sacramento O&M Manual, Unit 504, May 1965, Revised 2 February 2011, (HLM 0.96), listed as 24-inch pipe. USACE As-Built Drawing No. 50-04-3685, Sheets 11 and 41, STA 4+00, 19 May 1965]. FS Date: 3/23/2021 2:28:32 PM					

Photo 1 of 3 : UCIP_FA_2022_67765_100840.jpg



Top of Levee: View of levee crown looking upstream

* Location LS : Land Side N/A : Not Applicable WS : Water Side CR : Crown	** Rating A : Acceptable M : Minimally Acceptable U : Unacceptable	N : Not Inspected/Rated C : Corrected A/W : Acceptable but Monitor & Maintain	+ Issue Type Ma : Maintenance Deficiency Ob : Design & System Obsolescence En : Enforcement
--	--	---	---

**Flood Control Project Maintenance
Levee Inspections**

Maintenance Issue Types Only, Levee Inspection Report By Mile - Fall 2022

Butte County Department of Public Works

Waterway	Bank	Unit Miles	Inspection Start/End	Inspector
Unit No. 04 Sycamore and Dry Creeks	Right	2.86	10/04/2022 10/04/2022	Makar Sokol

LM Start	0.92	Rating **	M	Issue No.	48 (cont)
LM End	0.92	Issue Type +	Ma	Location *	
Category	Supplemental			GPS Latitude/Longitude	
				Start	End
Item	DWR UCIP LMA Responsibility			39.775704 °	39.775704 °
				-121.850901 °	-121.850901 °
DWR ID	19287				

Photo 2 of 3 : UCIP_FA_2022_67765_100841.jpg



Water-Side: View of levee slope looking from crown

LM Start	0.92	Rating **	M	Issue No.	48 (cont)
LM End	0.92	Issue Type +	Ma	Location *	

Photo 3 of 3 : UCIP_FA_2022_67765_100845.jpg



Water-Side: Headwall and flap gate at levee toe

* Location LS : Land Side N/A : Not Applicable WS : Water Side CR : Crown		** Rating A : Acceptable N : Not Inspected/Rated M : Minimally Acceptable C : Corrected U : Unacceptable A/W : Acceptable but Monitor & Maintain		+ Issue Type Ma : Maintenance Deficiency Ob : Design & System Obsolescence En : Enforcement
--	--	---	--	---

**Flood Control Project Maintenance
Levee Inspections**

Maintenance Issue Types Only, Levee Inspection Report By Mile - Fall 2022

Butte County Department of Public Works

Waterway	Bank	Unit Miles	Inspection Start/End	Inspector
Unit No. 04 Sycamore and Dry Creeks	Right	2.86	10/04/2022 10/04/2022	Makar Sokol

LM Start	0.94	Rating **	M	Issue No.	49
LM End	0.94	Issue Type +	Ma	Location *	
Category	Supplemental			GPS Latitude/Longitude	
				Start	End
Item	DWR UCIP LMA Responsibility			39.775899 °	39.775899 °
				-121.851124 °	-121.851124 °
DWR ID	19288				
Comment Code					
Inspector Comment					
DS_ID:19288 FS_ID:67774 EP_NO: N/A Repair Type: Non-Urgent EVAL Issue: 5, Pipe Damage Crossing Status: Found UCIP Comments: 03/23/2021 Record remains Non-Urgent. DMP internal video inspection has found pipe integrity issues. LOF of crossing is greater than or equal to 4.1 and less than 5. Crossing will be monitored until funding becomes available for rehabilitation. No permit has been identified authorizing pipe. (O.Yakimov - DWR UCIP) 03/07/2014 Slide gate in CMP riser on waterside. No access to CMP riser.Needs cleaning and clearing the culvert. (P. Amatya - DWR UCIP) FIELD_STRUCT_DESC: 24-inch corrugated metal gravity drainage pipe through the levee and under the channel, 9.5 feet below the crown. Slide gate in a pipe riser on the waterside (WS) slope. Concrete U-shaped headwall on the landside (LS) end. [Additional Reference(s): USACE Levee Log, 1992 (HLM 0.98). USACE Sacramento O&M Manual, Unit 504, May 1965, Revised 2 February 2011, (HLM 0.98), listed as 24-inch pipe. USACE As-Built Drawing No. 50-04-3685, Sheet 11, between STA 2+20 and STA 3+20, 19 May 1965, shown as existing siphon through both levees and under channel]. FS Date: 3/23/2021 3:07:34 PM					

LM Start	0.94	Rating **	M	Issue No.	49 (cont)
LM End	0.94	Issue Type +	Ma	Location *	

Photo 1 of 3 : UCIP_FA_2022_67774_100885.jpg



Land-Side: View of levee slope looking from crown

Photo 2 of 3 : UCIP_FA_2022_67774_100886.jpg



Water-Side: View of levee slope looking from crown. CMP riser with slide gate on levee slope

* Location LS : Land Side N/A : Not Applicable WS : Water Side CR : Crown	** Rating A : Acceptable M : Minimally Acceptable U : Unacceptable	N : Not Inspected/Rated C : Corrected A/W : Acceptable but Monitor & Maintain	+ Issue Type Ma : Maintenance Deficiency Ob : Design & System Obsolescence En : Enforcement
--	--	---	---

**Flood Control Project Maintenance
Levee Inspections**

Maintenance Issue Types Only, Levee Inspection Report By Mile - Fall 2022

Butte County Department of Public Works

Waterway	Bank	Unit Miles	Inspection Start/End	Inspector
Unit No. 04 Sycamore and Dry Creeks	Right	2.86	10/04/2022 10/04/2022	Makar Sokol

LM Start	0.94	Rating **	M	Issue No.	49 (cont)
LM End	0.94	Issue Type +	Ma	Location *	
Category	Supplemental			GPS Latitude/Longitude	
				Start	End
Item	DWR UCIP LMA Responsibility			39.775899 °	39.775899 °
				-121.851124 °	-121.851124 °
DWR ID	19288				

Photo 3 of 3 : UCIP_FA_2022_67774_100888.jpg



Land-Side: View inside of pipe looking from landside end

LM Start	1.04	Rating **	M	Issue No.	23
LM End	1.04	Issue Type +	Ma	Location *	LS
Category	Earthen Levee			GPS Latitude/Longitude	
				Start	End
Item	Vegetation			39.776589 °	39.776589 °
				-121.852600 °	-121.852600 °
DWR ID	DWR_NA0003_04_f_2016_23				
Comment Code					
V2 : Remove the wild growth and woody vegetation other than native grasses from the levee slopes.					
Inspector Comment					

Photo 1 of 1 : FA_2022_NA0003_68_23_20220906_00004.jpg



View of the blackberry bushes along the landside toe. Spring 2021.

* Location LS : Land Side N/A : Not Applicable WS : Water Side CR : Crown	** Rating A : Acceptable M : Minimally Acceptable U : Unacceptable	N : Not Inspected/Rated C : Corrected A/W : Acceptable but Monitor & Maintain	+ Issue Type Ma : Maintenance Deficiency Ob : Design & System Obsolescence En : Enforcement
--	--	---	---

**Flood Control Project Maintenance
Levee Inspections**

Maintenance Issue Types Only, Levee Inspection Report By Mile - Fall 2022

Butte County Department of Public Works

Waterway	Bank	Unit Miles	Inspection Start/End	Inspector
Unit No. 04 Sycamore and Dry Creeks	Right	2.86	10/04/2022 10/04/2022	Makar Sokol

LM Start	1.11	Rating **	M	Issue No.	50	
LM End	1.11	Issue Type +	Ma	Location *		
Category	Supplemental			GPS Latitude/Longitude		
				Start	End	
Item	DWR UCIP LMA Responsibility			39.776709 °	39.776709 °	
				-121.853932 °	-121.853932 °	
DWR ID	19289					
Comment Code						
Inspector Comment						
DS_ID:19289 FS_ID:67776 EP_NO: N/A Repair Type: Non-Urgent EVAL Issue: 11, Maintenance Compliance Issue Crossing Status: Found UCIP Comments: 03/23/2021 Record remains Non-Urgent. Flap gate at waterside headwall is stuck closed. Hinges may need lubrication. No permit has been identified authorizing pipe. DMP internal video inspection has not found pipe integrity issues. LOF of crossing is less or equal to 4. Recommend next video inspection in 5 years. (O.Yakimov - DWR UCIP) 03/07/2014 Needs cleaning and clearing the culvert. (P. Amatya - DWR UCIP) FIELD_STRUCT_DESC: 24-inch corrugated metal gravity drainage pipe through the levee, 11 feet below the crown. Flap gate on the waterside (WS) end. Concrete U-shaped headwall on each end. Grouted riprap apron on the landside (LS) end. Grouted riprap spillway on the WS end. [Additional Reference(s): DWR Levee Log, 1992 (HLM 1.15). USACE Sacramento O&M Manual, Unit 504, May 1965, Revised 2 February 2011, (HLM 1.15), listed as 24-inch pipe. USACE As-Built Drawing No. 50-04-3685, Sheet 41, STA 455+00, 19 May 1965]. FS Date: 3/23/2021 3:10:19 PM						

LM Start	1.11	Rating **	M	Issue No.	50 (cont)
LM End	1.11	Issue Type +	Ma	Location *	

Photo 1 of 3 : UCIP_FA_2022_67776_100894.jpg



Top of Levee: View of levee crown looking upstream

Photo 2 of 3 : UCIP_FA_2022_67776_100899.jpg



Water-Side: U-shaped headwall and flap gate at levee toe

* Location LS : Land Side N/A : Not Applicable WS : Water Side CR : Crown	** Rating A : Acceptable M : Minimally Acceptable U : Unacceptable	N : Not Inspected/Rated C : Corrected A/W : Acceptable but Monitor & Maintain	+ Issue Type Ma : Maintenance Deficiency Ob : Design & System Obsolescence En : Enforcement
--	--	---	---

**Flood Control Project Maintenance
Levee Inspections**

Maintenance Issue Types Only, Levee Inspection Report By Mile - Fall 2022

Butte County Department of Public Works

Waterway	Bank	Unit Miles	Inspection Start/End	Inspector
Unit No. 04 Sycamore and Dry Creeks	Right	2.86	10/04/2022 10/04/2022	Makar Sokol

LM Start	1.11	Rating **	M	Issue No.	50 (cont)
LM End	1.11	Issue Type +	Ma	Location *	
Category	Supplemental			GPS Latitude/Longitude	
				Start	End
Item	DWR UCIP LMA Responsibility			39.776709 °	39.776709 °
				-121.853932 °	-121.853932 °
DWR ID	19289				

Photo 3 of 3 : UCIP_FA_2022_67776_100897.jpg



Land-Side: Levee slope, headwall, and pipe inlet

LM Start	1.35	Rating **	M	Issue No.	51
LM End	1.35	Issue Type +	Ma	Location *	
Category	Supplemental			GPS Latitude/Longitude	
				Start	End
Item	DWR UCIP LMA Responsibility			39.778370 °	39.778370 °
				-121.857904 °	-121.857904 °
DWR ID	19290				

Comment Code

Inspector Comment

DS_ID:19290
 FS_ID:67777
 EP_NO: N/A
 Repair Type: Non-Urgent
 EVAL Issue:
 Crossing Status: Found
 UCIP Comments: 03/23/2021 Record remains Non-Urgent. Debris has been cleared. No permit has been identified authorizing pipe. DMP internal video inspection has not found pipe integrity issues. LOF of crossing is less or equal to 4. Recommend next video inspection in 5 years. (O.Yakimov - DWR UCIP)
 03/07/2014 Needs cleaning and clearing the culvert. (P. Amatya - DWR UCIP)
 FIELD_STRUCT_DESC: 24-inch corrugated metal gravity drainage pipe through the levee, 13 feet below the crown. Flap gate on the waterside (WS) end. Concrete U-shaped headwall on each end. Grouted riprap apron on the landside (LS) end. Grouted riprap spillway on the WS end. [Additional Reference(s): DWR Levee Log, 1992 (HLM 1.39). USACE Sacramento O&M Manual, Unit 504, May 1965, Revised 2 February 2011, (HLM 1.41), listed as 24-inch pipe. USACE As-Built Drawing No. 50-04-3685, Sheets 9 and 40, STA 442+05, 19 May 1965].
 FS Date: 3/23/2021 3:14:57 PM

Photo 1 of 3 : UCIP_FA_2022_67777_100900.jpg



Top of Levee: View of levee crown looking upstream

* Location LS : Land Side N/A : Not Applicable WS : Water Side CR : Crown	** Rating A : Acceptable M : Minimally Acceptable U : Unacceptable N : Not Inspected/Rated C : Corrected A/W : Acceptable but Monitor & Maintain	+ Issue Type Ma : Maintenance Deficiency Ob : Design & System Obsolescence En : Enforcement
--	---	---

**Flood Control Project Maintenance
Levee Inspections**

Maintenance Issue Types Only, Levee Inspection Report By Mile - Fall 2022

Butte County Department of Public Works

Waterway	Bank	Unit Miles	Inspection Start/End	Inspector
Unit No. 04 Sycamore and Dry Creeks	Right	2.86	10/04/2022 10/04/2022	Makar Sokol

LM Start	1.35	Rating **	M	Issue No.	51 (cont)
LM End	1.35	Issue Type +	Ma	Location *	
Category	Supplemental			GPS Latitude/Longitude	
				Start	End
Item	DWR UCIP LMA Responsibility			39.778370 °	39.778370 °
				-121.857904 °	-121.857904 °
DWR ID	19290				

Photo 2 of 3 : UCIP_FA_2022_67777_100901.jpg



Land-Side: View of levee slope looking from crown

LM Start	1.35	Rating **	M	Issue No.	51 (cont)
LM End	1.35	Issue Type +	Ma	Location *	

Photo 3 of 3 : UCIP_FA_2022_67777_100902.jpg



Water-Side: View of levee slope looking from crown

* Location LS : Land Side N/A : Not Applicable WS : Water Side CR : Crown	** Rating A : Acceptable M : Minimally Acceptable U : Unacceptable	N : Not Inspected/Rated C : Corrected A/W : Acceptable but Monitor & Maintain	+ Issue Type Ma : Maintenance Deficiency Ob : Design & System Obsolescence En : Enforcement
--	--	---	---

**Flood Control Project Maintenance
Levee Inspections**

Maintenance Issue Types Only, Levee Inspection Report By Mile - Fall 2022

Butte County Department of Public Works

Waterway	Bank	Unit Miles	Inspection Start/End	Inspector
Unit No. 04 Sycamore and Dry Creeks	Right	2.86	10/04/2022 10/04/2022	Makar Sokol

LM Start	2.15	Rating **	M	Issue No.	52
LM End	2.15	Issue Type +	Ma	Location *	
Category	Supplemental			GPS Latitude/Longitude	
				Start	End
Item	DWR UCIP LMA Responsibility			39.782777 °	39.782777 °
				-121.871179 °	-121.871179 °
DWR ID	19291				
Comment Code					
Inspector Comment					
DS_ID:19291 FS_ID:67779 EP_NO: N/A Repair Type: Non-Urgent EVAL Issue: 5, Pipe Damage Crossing Status: Found UCIP Comments: 03/23/2021 Record remains Non-Urgent. Debris has been cleared. DMP internal video inspection has found pipe integrity issues. LOF of crossing is greater than or equal to 4.1 and less than 5. Crossing will be monitored until funding becomes available for rehabilitation. No permit has been identified authorizing pipe. (O.Yakimov - DWR UCIP) 03/07/2014 Needs cleaning and clearing the culvert. (P. Amatya - DWR UCIP) FIELD_STRUCT_DESC: 24-inch corrugated metal gravity drainage pipe through the levee, 11 feet below the crown. Flap gate on the waterside (WS) end. Concrete U-shaped headwall on each end. Grouted riprap apron on the landside (LS) end. Grouted riprap spillway on the WS end. [Additional Reference(s): DWR Levee Log, 1992 (HLM 2.22). USACE Sacramento O&M Manual, Unit 504, May 1965, Revised 2 February 2011, (HLM 2.22), listed as 24-inch pipe. USACE As-Built Drawing No. 50-04-3685, Sheets 9 and 41, STA 400+00, 19 May 1965]. FS Date: 3/23/2021 3:17:08 PM					

LM Start	2.15	Rating **	M	Issue No.	52 (cont)
LM End	2.15	Issue Type +	Ma	Location *	

Photo 1 of 3 : UCIP_FA_2022_67779_100908.jpg



Top of Levee: View of levee crown looking upstream

Photo 2 of 3 : UCIP_FA_2022_67779_100909.jpg



Land-Side: View of levee slope looking from crown

* Location LS : Land Side N/A : Not Applicable WS : Water Side CR : Crown	** Rating A : Acceptable M : Minimally Acceptable U : Unacceptable	N : Not Inspected/Rated C : Corrected A/W : Acceptable but Monitor & Maintain	+ Issue Type Ma : Maintenance Deficiency Ob : Design & System Obsolescence En : Enforcement
--	--	---	---

**Flood Control Project Maintenance
Levee Inspections**

Maintenance Issue Types Only, Levee Inspection Report By Mile - Fall 2022

Butte County Department of Public Works

Waterway	Bank	Unit Miles	Inspection Start/End	Inspector
Unit No. 04 Sycamore and Dry Creeks	Right	2.86	10/04/2022 10/04/2022	Makar Sokol

LM Start	2.15	Rating **	M	Issue No.	52 (cont)
LM End	2.15	Issue Type +	Ma	Location *	
Category	Supplemental			GPS Latitude/Longitude	
				Start	End
Item	DWR UCIP LMA Responsibility			39.782777 °	39.782777 °
				-121.871179 °	-121.871179 °
DWR ID	19291				

Photo 3 of 3 : UCIP_FA_2022_67779_100910.jpg



Water-Side: View of levee slope looking from crown

LM Start	2.47	Rating **	M	Issue No.	53
LM End	2.47	Issue Type +	Ma	Location *	
Category	Supplemental			GPS Latitude/Longitude	
				Start	End
Item	DWR UCIP LMA Responsibility			39.784244 °	39.784244 °
				-121.876810 °	-121.876810 °
DWR ID	19292				

Comment Code

Inspector Comment

DS_ID:19292
FS_ID:67780
EP_NO: N/A
Repair Type: Non-Urgent
EVAL Issue: 5, Pipe Damage
Crossing Status: Found
UCIP Comments: 03/23/2021 Record remains Non-Urgent. Debris has been cleared. DMP internal video inspection has found pipe integrity issues. LOF of crossing is greater than or equal to 4.1 and less than 5. Crossing will be monitored until funding becomes available for rehabilitation. No permit has been identified authorizing pipe. (O.Yakimov - DWR UCIP)
03/07/2014 Needs cleaning and clearing the culvert. (P. Amatya - DWR UCIP)
FIELD_STRUCT_DESC: 24-inch corrugated metal gravity drainage pipe through the levee, 11 feet below the crown. Flap gate on the waterside (WS) end. Concrete U-shaped headwall on each end. Grouted riprap apron on the landside (LS) end. Grouted riprap spillway on the WS end. [Additional Reference(s): DWR Levee Log, 1992 (HLM 2.56). USACE Sacramento O&M Manual, Unit 504, May 1965, Revised 2 February 2011, (HLM 2.56), listed as 24-inch pipe. USACE As-Built Drawing No. 50-04-3685, Sheets 7 and 41, STA 382+90, 19 May 1965]. FS Date: 3/23/2021 3:19:43 PM

Photo 1 of 3 : UCIP_FA_2022_67780_100915.jpg



Land-Side: View of levee slope looking from crown

* Location LS : Land Side N/A : Not Applicable WS : Water Side CR : Crown	** Rating A : Acceptable M : Minimally Acceptable U : Unacceptable N : Not Inspected/Rated C : Corrected A/W : Acceptable but Monitor & Maintain	+ Issue Type Ma : Maintenance Deficiency Ob : Design & System Obsolescence En : Enforcement
--	---	---

**Flood Control Project Maintenance
Levee Inspections**

Maintenance Issue Types Only, Levee Inspection Report By Mile - Fall 2022

Butte County Department of Public Works

Waterway	Bank	Unit Miles	Inspection Start/End	Inspector
Unit No. 04 Sycamore and Dry Creeks	Right	2.86	10/04/2022 10/04/2022	Makar Sokol

LM Start	2.47	Rating **	M	Issue No.	53 (cont)
LM End	2.47	Issue Type +	Ma	Location *	
Category	Supplemental			GPS Latitude/Longitude	
				Start	End
Item	DWR UCIP LMA Responsibility			39.784244 °	39.784244 °
				-121.876810 °	-121.876810 °
DWR ID	19292				

Photo 2 of 3 : UCIP_FA_2022_67780_100916.jpg



Water-Side: View of levee slope looking from crown

LM Start	2.47	Rating **	M	Issue No.	53 (cont)
LM End	2.47	Issue Type +	Ma	Location *	

Photo 3 of 3 : UCIP_FA_2022_67780_100919.jpg



Water-Side: View inside of pipe looking from landside end

* Location LS : Land Side N/A : Not Applicable WS : Water Side CR : Crown	** Rating A : Acceptable M : Minimally Acceptable U : Unacceptable	N : Not Inspected/Rated C : Corrected A/W : Acceptable but Monitor & Maintain	+ Issue Type Ma : Maintenance Deficiency Ob : Design & System Obsolescence En : Enforcement
--	--	---	---

**Flood Control Project Maintenance
Levee Inspections**

Maintenance Issue Types Only, Levee Inspection Report By Mile - Fall 2022

Butte County Department of Public Works

Waterway	Bank	Unit Miles	Inspection Start/End	Inspector
Unit No. 05 Big Chico Diversion	Left	1.85	10/04/2022 10/04/2022	Makar Sokol

LM Start	0.03	Rating **	M	Issue No.	1
LM End	0.20	Issue Type +	Ma	Location *	LS
Category	Earthen Levee			GPS Latitude/Longitude	
				Start	End
Item	Vegetation			39.763164 °	39.761860 °
				-121.790335 °	-121.792635 °
DWR ID	DWR_NA0003_05_s_2012_1				
Comment Code					
V2 : Remove the wild growth and woody vegetation other than native grasses from the levee slopes.					
Inspector Comment					

Photo 1 of 1 : FA_2022_NA0003_69_1_20220906_00001.jpg



View of the wild growth on the landside slope. Spring 2019.

LM Start	0.08	Rating **	M	Issue No.	4
LM End	0.08	Issue Type +	Ma	Location *	WS
Category	Earthen Levee			GPS Latitude/Longitude	
				Start	End
Item	Vegetation			39.762693 °	39.762693 °
				-121.790925 °	-121.790925 °
DWR ID	DWR_NA0003_05_s_2019_4				
Comment Code					
V2 : Remove the wild growth and woody vegetation other than native grasses from the levee slopes.					
Inspector Comment					

No Photos

LM Start	0.38	Rating **	M	Issue No.	27
LM End	0.41	Issue Type +	Ma	Location *	LS
Category	Earthen Levee			GPS Latitude/Longitude	
				Start	End
Item	Vegetation			39.761497 °	39.761185 °
				-121.795868 °	-121.796387 °
DWR ID	DWR_NA0003_05_f_2022_27				
Comment Code					
V2 : Remove the wild growth and woody vegetation other than native grasses from the levee slopes.					
Inspector Comment					

Photo 1 of 1 : FA_2022_NA0003_69_27_20221011_00051.jpg



View of the wild growth along the landside slope. Fall 2022.

* Location LS : Land Side N/A : Not Applicable WS : Water Side CR : Crown	** Rating A : Acceptable M : Minimally Acceptable U : Unacceptable	N : Not Inspected/Rated C : Corrected A/W : Acceptable but Monitor & Maintain	+ Issue Type Ma : Maintenance Deficiency Ob : Design & System Obsolescence En : Enforcement
--	--	---	---

**Flood Control Project Maintenance
Levee Inspections**

Maintenance Issue Types Only, Levee Inspection Report By Mile - Fall 2022

Butte County Department of Public Works

Waterway	Bank	Unit Miles	Inspection Start/End	Inspector
Unit No. 05 Big Chico Diversion	Left	1.85	10/04/2022 10/04/2022	Makar Sokol

LM Start	0.42	Rating **	M	Issue No.	24
LM End	0.42	Issue Type +	Ma	Location *	LS
Category	Earthen Levee			GPS Latitude/Longitude	
				Start	End
Item	Erosion / Foot Traffic			39.761082 °	39.761082 °
				-121.796524 °	-121.796524 °
DWR ID	DWR_NA0003_05_s_2022_24				
Comment Code					
E3 : Repair the levee slope damaged by foot traffic and prevent access where possible.					
Inspector Comment					

Photo 1 of 1 : FA_2022_NA0003_69_24_20220906_00005.jpg



View of the erosion on the landside slope due to foot traffic. Spring 2022.

LM Start	0.89	Rating **	M	Issue No.	25
LM End	0.89	Issue Type +	Ma	Location *	LS
Category	Earthen Levee			GPS Latitude/Longitude	
				Start	End
Item	Vegetation			39.764426 °	39.764426 °
				-121.803324 °	-121.803324 °
DWR ID	DWR_NA0003_05_s_2022_25				
Comment Code					
V2 : Remove the wild growth and woody vegetation other than native grasses from the levee slopes.					
Inspector Comment					

No Photos

LM Start	0.91	Rating **	M	Issue No.	26
LM End	0.91	Issue Type +	Ma	Location *	WS
Category	Earthen Levee			GPS Latitude/Longitude	
				Start	End
Item	Vegetation			39.764623 °	39.764623 °
				-121.803493 °	-121.803493 °
DWR ID	DWR_NA0003_05_s_2022_26				
Comment Code					
V2 : Remove the wild growth and woody vegetation other than native grasses from the levee slopes.					
Inspector Comment					

No Photos

* Location LS : Land Side N/A : Not Applicable WS : Water Side CR : Crown		** Rating A : Acceptable N : Not Inspected/Rated M : Minimally Acceptable C : Corrected U : Unacceptable A/W : Acceptable but Monitor & Maintain		+ Issue Type Ma : Maintenance Deficiency Ob : Design & System Obsolescence En : Enforcement
--	--	---	--	---

**Flood Control Project Maintenance
Levee Inspections**

Maintenance Issue Types Only, Levee Inspection Report By Mile - Fall 2022

Butte County Department of Public Works

Waterway	Bank	Unit Miles	Inspection Start/End	Inspector
Unit No. 05 Big Chico Diversion	Left	1.85	10/04/2022 10/04/2022	Makar Sokol

LM Start	1.19	Rating **	M	Issue No.	12
LM End	1.19	Issue Type +	Ma	Location *	LS
Category	Earthen Levee			GPS Latitude/Longitude	
				Start	End
Item	Erosion / Foot Traffic			39.767958 °	39.767958 °
				-121.806326 °	-121.806326 °
DWR ID	DWR_NA0003_05_s_2019_12				
Comment Code					
E3 : Repair the levee slope damaged by foot traffic and prevent access where possible.					
Inspector Comment					

Photo 1 of 1 : FA_2022_NA0003_69_12_20220906_00002.jpg



View of the landside slope erosion caused by foot traffic. Spring 2020.

LM Start	1.25	Rating **	M	Issue No.	13
LM End	1.25	Issue Type +	Ma	Location *	LS
Category	Earthen Levee			GPS Latitude/Longitude	
				Start	End
Item	Erosion / Foot Traffic			39.768621 °	39.768621 °
				-121.807052 °	-121.807052 °
DWR ID	DWR_NA0003_05_f_2016_13				
Comment Code					
E3 : Repair the levee slope damaged by foot traffic and prevent access where possible.					
Inspector Comment					

Photo 1 of 1 : FA_2022_NA0003_69_13_20220906_00003.jpg



View of the damaged landside slope due to foot traffic. Fall 2020.

LM Start	1.49	Rating **	A/W	Issue No.	17
LM End	1.49	Issue Type +	Ma	Location *	WS
Category	Earthen Levee			GPS Latitude/Longitude	
				Start	End
Item	Erosion / Bank Caving			39.771379 °	39.771379 °
				-121.809849 °	-121.809849 °
DWR ID	DWR_NA0003_05_s_2019_17				
Comment Code					
E1 : Note and monitor erosion site.					
Inspector Comment					

No Photos

* Location LS : Land Side N/A : Not Applicable WS : Water Side CR : Crown	** Rating A : Acceptable M : Minimally Acceptable U : Unacceptable	N : Not Inspected/Rated C : Corrected A/W : Acceptable but Monitor & Maintain	+ Issue Type Ma : Maintenance Deficiency Ob : Design & System Obsolescence En : Enforcement
--	--	---	---